

## **Priority healthcare needs amongst people experiencing homelessness in Dublin, Ireland: a qualitative evaluation of community expert experiences and opinions**

Carolyn Ingram<sup>a\*</sup>, Isobel MacNamara<sup>ab</sup>, Conor Buggy<sup>a</sup>, Carla Perrotta<sup>a</sup>

<sup>a</sup> School of Public Health, Physiotherapy, and Sports Science, University College Dublin, D04 V1W8, Dublin, Ireland

<sup>b</sup> School of Medicine, University College Dublin, D04 V1W8, Dublin, Ireland

\*Corresponding author: Email - [Carolyn.ingram@ucd.ie](mailto:Carolyn.ingram@ucd.ie)

### **ABSTRACT**

In light of evidence that housing-related disparities in mortality are worsening over time, this study aimed to explore the perspectives of experts working in homeless health and addiction services on priority healthcare needs amongst people experiencing homelessness in Dublin, Ireland, a city facing problematic increases in homelessness. As part of a larger qualitative study, a series of semi-structured interviews were carried out with 19 community experts followed by inductive thematic framework analysis to identify emergent themes and sub-themes relating to priority healthcare needs. At the societal level, community experts identified a need to promote a culture that values health equity. At the policy level, accelerating action in addressing health inequalities was recommended with an emphasis on strategic planning, Housing First, social support options, interagency collaboration, improved data linkage and sharing, and auditing. At the health services level, removing barriers to access will require the provision of more and safer mental health, addiction, women-centred, and general practice services; resolved care pathways in relation to crisis points and multi-morbidity; expanded trauma-informed education and training and hospital-led Inclusion Health programmes; and outreach programmes and peer support for chronic disease management. The voices of people experiencing homelessness, including representatives from specific homeless groups such as migrants, youth, and the elderly, must be thoroughly embedded into health and social service design and delivery to facilitate impactful change.

### **KEY WORDS**

Homelessness, addiction, health inequalities, healthcare needs assessment, Ireland

### **INTRODUCTION**

Rising homelessness levels across Europe have drawn increased attention to the health consequences of precarious housing. People experiencing homelessness (PEH) are at higher risk of premature mortality, disability, and chronic conditions but face increased

barriers to accessing health services <sup>1</sup>. In the Republic of Ireland, a country facing a worsening housing crisis, homelessness is associated with reduced access to a general practitioner (GP) and an overreliance on acute care <sup>2</sup>. PEH in Ireland are at increased risk of substance misuse, self-harm, frequent emergency department (ED) presentation, and psychiatric admission. They are more likely to be hospitalised for venous thromboembolism (VTE), pneumonia/bronchitis, cellulitis, and seizure but less likely to complete their hospital admission <sup>2</sup>.

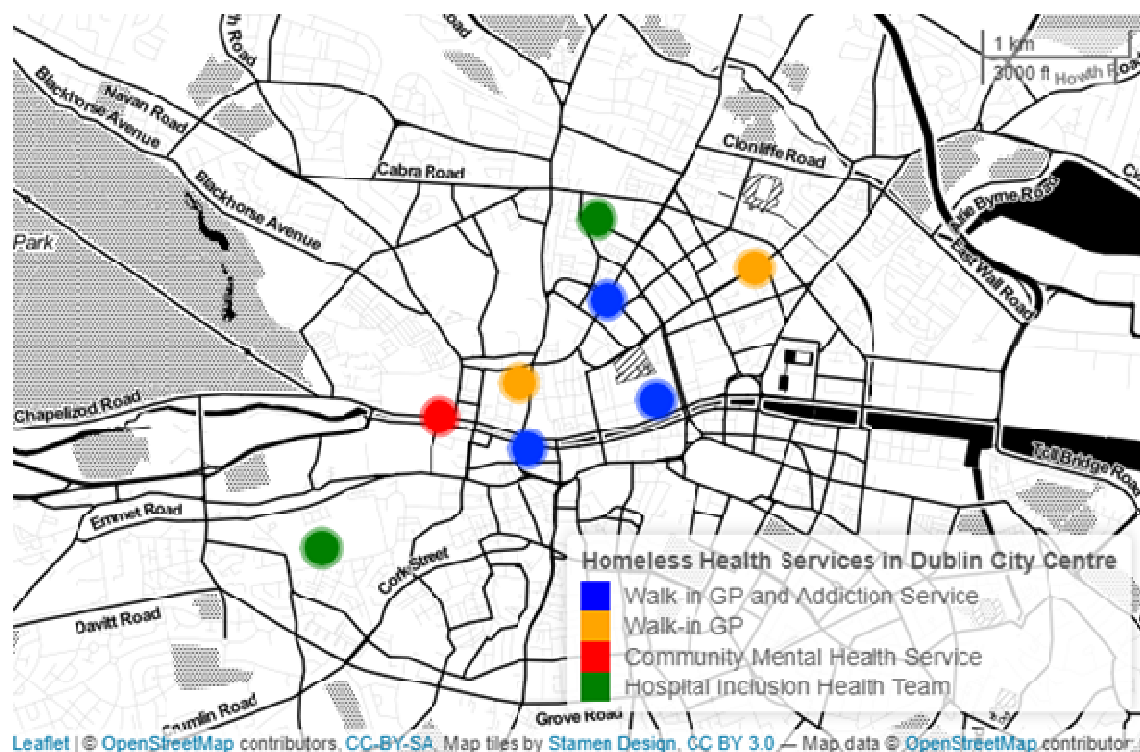
To promote equity in health status and improve equitable access to healthcare, there is a need to strengthen health planning in relation to homelessness. This requires understanding priority health concerns amongst PEH within a shared system<sup>3</sup>. In autumn 2022, multiple factors highlighted a need to prioritise healthcare needs amongst PEH in Dublin. First, Ireland is unique in Europe in the severity of recent spikes in homelessness with three quarters of homeless individuals residing in the capital city<sup>4</sup>. Second, evidence shows that disparities in mortality between homeless and housed populations are worsening over time. In Dublin, standardised mortality ratios (SMRs) are more than 10 times higher in PEH compared with the general population <sup>5</sup>. Finally, the Covid-19 pandemic acted as a catalyst for change in the delivery of harm reduction measures to homeless individuals who use drugs. Two of those changes (the removal of barriers to rapid access to methadone and the expanded distribution of Naloxone) demonstrated the capacity for policymakers to facilitate change in response to a strong public health argument <sup>6</sup>. Researchers saw the potential for positive change and sought to provide further evidence on how and where to allocate health and social service resources effectively.

Traditionally, community health needs assessments involve systematic, comprehensive data collection and analysis <sup>7</sup>. However, qualitative methods have been recommended for providing more timely insights into pressing health and social care needs as they can be conducted within a short time period and with involvement of community experts and members <sup>3</sup>. The aim of this facet of a larger qualitative study<sup>8</sup> was to explore the perspectives of experts working in homeless health and addiction services in Dublin on priority healthcare needs amongst PEH using qualitative semi-structured interviews. To ensure the integration of community voices <sup>9</sup>, health concerns of homeless service users in Dublin were explored through ethnographic field work and will be reported as a separate paper within the larger study.

## **METHODS**

### **Study design and setting**

The study's target population comprised health and social care professionals, government health agents, and addiction services employees who have worked for at least five years with PEH in Dublin City. Under Ireland's Housing Act 1988, homelessness is defined as (1) having no accommodation available that can reasonably be stayed in or living in a hospital, county home, night shelter or other such institution, and (2) being unable to provide accommodation from one's own resources<sup>10</sup>. In Dublin City (population 588,233), approximately 6,358 adults and 2,802 children are currently residing in emergency accommodation<sup>11</sup>. An estimated 80 individuals are sleeping rough<sup>12</sup>, and up to 6% of the city's residents are experiencing hidden homelessness (i.e., sleeping cars, in squats, on the floors or sofas of family and friends, or in unsafe accommodation<sup>13</sup>. Drug and alcohol use is the primary driver of homelessness in Ireland and remains a leading cause of death within the homeless population<sup>14</sup>. Most of the country's homeless and addiction services are concentrated in Dublin inner city, comprising the city centre and its immediately surrounding neighbourhoods within two canals, reflecting the gravity of need within this area (Fig 1).



**Figure 1.** Map of homeless health services available in Dublin City Centre (2023). *Note: Map constructed by the authors using R version 4.1.3 leaflet package (R Foundation for Statistical Computing, Vienna, 1Austria).*

Qualitative approaches are recommended for exploring health needs specific to underrepresented, marginalised segments of the community<sup>15</sup>. Semi-structured interviews with community experts (CE) allow for in-depth understanding of community history, social activities, local resources and gaps in services<sup>16</sup>. Thus, the researchers chose to conduct

qualitative, semi-structured interviews with CEs. During the study period, the lead researcher simultaneously conducted 60 hours of participant observation at a drop-in primary care and addiction service during which they routinely spoke with homeless service users (Ethics Reference: LS-22-41-Ingram-Perrotta). These interactions informed the selection of CEs, design of interview questions, and allowed the researchers to contextualise and better reflect upon interview findings.

### **Sample and recruitment**

A purposive, criterion-i/snowball sampling strategy was used to identify professionals working in homeless health and/or addiction services in Dublin, stratified by occupation type. Criterion-i sampling refers to the identification and selection of cases that meet a predetermined criteria of importance<sup>17</sup> (in this case, providing services to PEH in Dublin). Potential CEs were identified through an internet search of homeless health and addiction services in Dublin. Interviewed CEs were invited to recommend colleagues they felt would have relevant perspectives on community health needs. In total, 30 potential CEs were contacted via phone or email between 01 August 2022 and 31 March 2023, of which 19 agreed to participate in an interview.

### **Data collection**

Semi-structured interviews were conducted between September 2022 and March 2023 utilising ZOOM™, the phone, or in person according to participant preference. The interviewer, CI, has formal qualitative research training. CEs were presented with an information sheet and gave audio recorded, informed oral consent – considered appropriate for remote research conducted with non-vulnerable participants<sup>18</sup> - in the full knowledge that interviews would be audio recorded, transcribed, and anonymised. Interview questions were based on World Health Organization Community Health Needs Assessment guidelines and refined based on the lead researcher's field work with homeless service users (Table 1)<sup>19</sup>. The low risk study was approved for ethical exemption by the University College Dublin Human Research Ethics Committee – Life Sciences (LS-E-125-Ingram-Perrotta-Exemption).

**Table 1.** Community healthcare needs topics included in the semi-structured interview guide.

| <b>Topic</b>            | <b>Guiding Questions</b>  |
|-------------------------|---|
| Work Focus & Experience | <ul style="list-style-type: none"><li>• What does your work currently focus on and with what populations?</li></ul> |

|                             |   |
|-----------------------------|---|
| Priority Areas of Action    | <ul style="list-style-type: none"> <li>• What changes have you seen take place in the community and the services you provide?</li> <li>• What programmes do you see working well? Or less well?</li> <li>• What changes would you make if you could?</li> </ul> |
| Healthcare Access & Use     | <ul style="list-style-type: none"> <li>• Have you spotted any gaps in services?</li> <li>• Are most homeless people using provided services?</li> </ul>   |
| Understanding the Community | <ul style="list-style-type: none"> <li>• Which health issues are of most concern to the communities you work with?</li> <li>• What are the strengths and assets in these communities?</li> </ul>  |
| Gaps in Research            | <ul style="list-style-type: none"> <li>• Where do we need more evidence?</li> <li>• What would you focus your next research project on?</li> </ul>  |

### Data analysis

Data were coded and analysed using an inductive thematic framework method according to the following recommended stages of trustworthy, thematic analysis<sup>20,21</sup>:

- **Transcription:** Audio recordings were transcribed verbatim by the lead researcher (CI).
- **Familiarisation:** Two researchers (CI, IM) familiarised themselves with the data by re-reading the transcripts. Each researcher recorded analytical notes, thoughts, and impressions in the transcript margins.
- **Identification of a Thematic Framework:** The same researchers independently coded three transcripts before meeting to discuss key themes and constructing an initial coding framework. Using this framework, CI and IM coded three more transcripts each before further discussing, revising and refining the work. This process was repeated six times until no new themes were generated.
- **Applying the thematic framework:** Using NVivo™ software (Version 11), the working thematic framework was systematically applied to all transcripts by CI who then organised codes into categories reflecting priority healthcare needs.
- **Critical friend approach:** CI met with CB and CP to critically review and discuss codes, themes, and sub-themes using a critical friends approach. ‘Critical friends’ serve as a theoretical sounding board to encourage reflection upon alternative pathways and explanations<sup>22</sup>. These discussions led to the merging of existing codes.
- **Charting and interpreting the data:** A matrix was used to summarise data for each CE, code, and theme. Connections within and between codes and cases were made in order to explain priority healthcare needs, their causes, and implications.

- **Member checking:** All participants were made aware of their pseudonym, sent a copy of anonymised results, and invited to provide feedback on the accuracy of the researchers' thematic analysis and use of quotes.

## RESULTS

### Context

#### **Participant Characteristics**

In total, 19 CE semi-structured interviews (6 men, 13 women) were conducted over ZOOM™ (N=12), in-person (N=5), and over the phone (N=2). Interviews lasted 40 minutes on average. Participants' characteristics are described in Table 2. All CEs work full-time with individuals experiencing homelessness in Dublin and see high rates of co-occurring addiction (~80% of homeless service users). The five primary healthcare professionals interviewed represent four drop-in health and addiction care services available to PEH in Dublin inner city. Three CEs represent Dublin's hospital-led Inclusion Health services. Other interviews were held with government health agents (N=2), researchers (N=3), addiction services operations and nursing staff (N=4), one social care professional (N=1), and one psychotherapist providing crisis intervention to PEH (N=1).

**Table 2.** Community Expert characteristics: Dublin, Ireland 2022-2023

| CE ID                     | Professional Role                      | Location                           | Interview Format |
|---------------------------|--|------------------------------------|------------------|
| Homeless Health Services1 | Healthcare professional (Primary care) | Drop-in primary and addiction care | Zoom             |
| Homeless Health Services2 | Healthcare professional (Primary care) | Drop-in primary and addiction care | Zoom             |
| Homeless Health Services3 | Healthcare professional (Primary care) | Drop-in primary and addiction care | Zoom             |
| Homeless Health Services4 | Healthcare professional (Primary care) | Drop-in primary and addiction care | In person        |
| Homeless Health Services5 | Healthcare professional (Primary care) | Drop-in primary and addiction care | In person        |
| Hospital1                 | Healthcare professional (Hospital)     | Hospital Inclusion Health service  | Zoom             |
| Hospital2                 | Healthcare professional (Hospital)     | Hospital Inclusion Health service  | Zoom             |
| Hospital3                 | Healthcare professional (Hospital)     | Hospital Inclusion Health service  | Zoom             |
| Government1               | Research and Data Officer              | Health Service Executive Ireland   | Zoom             |
| Government2               | Project Manager                        | Health Service Executive           | Zoom             |

|                     |  |  |           |
|---------------------|--|--|-----------|
|                     |  | Ireland  |           |
| Psychotherapist1    | Psychotherapist                              | Drop-in primary and addiction care                         | In person |
| Researcher1         | Researcher and Physiotherapist               | Drop-in primary and addiction care                         | Zoom      |
| Researcher2         | Researcher                                   | Residential treatment facility                             | Zoom      |
| Researcher3         | Researcher                                   | Drop-in primary and addiction care<br>Emergency department | Zoom      |
| Social Care1        | Child and Family Support Network Coordinator | Government Child and Family Agency                         | Zoom      |
| Addiction Services1 | Programme Coordinator                        | Drugs and Alcohol Task Force                               | Phone     |
| Addiction Services2 | Team Leader                                  | Dublin Harm Reduction NGO                                  | In person |
| Addiction Services3 | Head of Service                              | Residential treatment facility                             | In person |
| Addiction Services4 | Clinical Nurse Specialist                    | Residential treatment facility                             | Phone     |

### **State of Homelessness & Addiction in Dublin**

CEs described the changing landscape of homelessness in the city. Though a ban on evictions reduced the number of people entering homelessness during the Covid-19 pandemic, housing statistics show a sharp increase as soon as the ban was lifted (Government1). The severity of the housing crisis has resulted in emerging homelessness unrelated to addiction. More migrants and asylum seekers, youth leaving social care, elderly individuals, women, and families are entering homelessness (Government1, Hospital1). For the first time in 2023, newly arrived asylum seekers are being discharged from hospital with no place to sleep due to a shortage of beds in homeless accommodation (Hospital3).

CEs noted that the nature of drug addiction is also changing. Today, most substance misuse in Ireland involves some combination of alcohol, cocaine, benzodiazepines, cannabis, and opiates. CEs primarily treat and respond to this type of polydrug use: *“a lot of people will probe back into heroin and [benzodiazepines] to come down from a crack cocaine binge. Very rarely I’ve met somebody who was going to the clinic and only taking methadone.”* (Addiction Services1) Crack cocaine use has skyrocketed and is a particularly difficult problem as there are few effective treatment options (Homeless Health Services4, Addiction Services1). For other substances, Dublin’s addiction care services offer a mixture of opiate substitution – mostly methadone with some suboxone prescribing –, alcohol detoxification, benzodiazepine detoxification, and more recently, benzodiazepine maintenance.

### **Healthcare Usage & Outcomes**



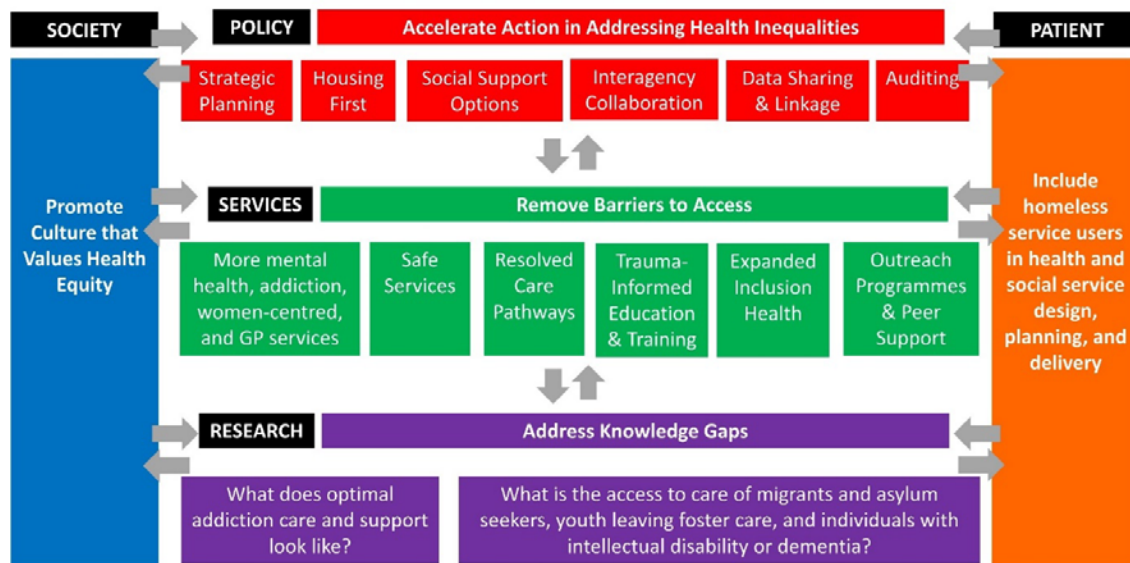
Patterns of healthcare usage by PEH have been widely documented. CEs reiterated that when in homelessness, immediate health needs (e.g., addiction, housing, acute injury, infection) take precedence over long-term preventative needs. PEH have lower rates of medication adherence, tend to see the GP mostly for methadone, and to otherwise present to health services as a last resort. Internal barriers to presentation include mental health conditions, distrust of the health system, and internalised stigma, shame, and embarrassment. External barriers, particularly at the hospital level, include not getting methadone or Librium in a timely way, lack of freedom – particularly for those who have been in prison –, and judgement and blame from healthcare providers. Participant Hospital2 noted a tendency for transience across services. PEH may struggle to sustain a hospital admission due to their addiction or having co- diagnosis of a psychiatric disorder.

CEs working in drop-in primary care perform mostly acute medicine, often related to addiction. They see high rates of blood borne infectious diseases (i.e., HIV and Hep C), nutritional issues, psychiatric anxieties from taking street tablets, and physical – often injection-related – injury such as ulcers, cellulitis, or trauma. Comorbidity, physical frailty, and early ageing are common. Many patients have ischemic heart disease or chronic airways disease made worse by smoking heroin or crack cocaine along with comorbidity of injuries caused by injecting. Other presenting issues include musculoskeletal and dermatological conditions, pregnancy, and high rates of depression and self-harm. CEs working in hospital settings see many patients in homelessness for deteriorating mental health conditions, overdose, orthopaedic surgical issues, or seizure disorder related to injury or substance use. CEs' patients experience high rates of childhood and adulthood trauma, and/or domestic violence that tend to proceed problematic substance use.

### **Priority Healthcare Needs**

Five key themes relating to priority healthcare needs were identified (Fig 2). Table 3 provides a list of themes, sub-themes, and sample quotes.





**Figure 2.** Map of Healthcare Priorities amongst Individuals Experiencing Homelessness in Dublin: Community Expert Perspectives

**Table 3.** Priority Healthcare Needs Themes & Sub-Themes and Related Recommendations

| Level    | Theme/Sub-Theme  | Sample Quote  | Recommendations   |
|----------|--|---|---|
| Societal | <b>Promote Culture that Values Health Equity</b>           | <i>“You have to remember that things have been set up and taught in a very set way for a long, long time and that’s with the hospital at the centre and your specialist in the hospital.... It’s really about breaking away and changing the mindset around that. As a nation we’re not that comfortable with accepting any degree of risk around things, and that’s because we’re kind of population focused rather than patient focused.” (Hospital2)</i> | <ul style="list-style-type: none"> <li>Develop a national strategy for making health equity a shared vision and value (e.g., building public support for social change by integrating grassroots outreach methods with traditional mass media tools).<sup>23</sup></li> </ul> |
| Policy   | <b>Accelerate Action in Addressing Health Inequalities</b> | <i>“In terms of health, long standing and sometimes chronic health issues may not be completely related to substance use. It’s related to poverty, housing, potentially domestic violence, tragic accidents, incidents... a conglomeration of issues that require additional support and back up.” (Researcher2)</i>  |   |

|  |                        |  |   |
|--|------------------------|--|---|
|  | Strategic Planning     | <p><i>"It's just not thought out. The government will come out with...and again I use that 'reactive policy' because that's what it is. They'll say, 'Ok, we've drug deaths at the moment, how are we going to deal with that? Safe injecting rooms? Ok, we'll do that.' And everybody jumps on the bandwagon and it's a big fuss about who gets the funding. The funding's given and nothing happens. That's the same with community detoxes. All that kind of stuff. Suboxone would be another one."</i> (Addiction Services1)</p>   | <ul style="list-style-type: none"> <li>• Review the national strategy for healthcare provision for PEH in consultation with independent international experts, service providers from homeless, addiction, mental health, and social services, and homeless service users.</li> <li>• Take forward recommendations for establishing gender-sensitive health policies.<sup>24</sup></li> </ul> |
|  | Housing First          | <p><i>"You have to understand, these people have no homes. Their healthcare isn't going to be a priority. There has to be more housing available for people in addiction because, I mean, how can you expect somebody to get off drugs who's living on the streets?"</i> (Addiction Services4)</p>   | <ul style="list-style-type: none"> <li>• Establish additional Housing First tenancies.</li> <li>• Include the provision of independent living skills training and social integration support as part of wrap-around service delivery provided through Housing First.</li> </ul>   |
|  | Social Support Options | <p><i>"A lot of health interventions, particularly for homeless people in hospital, are medication but a lot of the issues are symptoms. They're symptomatic of loneliness, loss, trauma, or whatever it is that life has thrown at them. Or the 'lack'. For a lot of people on the streets, there would have been a lack in terms of mothering, parenting..."</i> (Psychotherapist1)</p> <p><i>"The health service, if you're talking about physical health, hospitals, and stuff like that, it's quite medicalised and they deal with people as individuals. I'm very much a social worker that [believes in] community social work. I'd like to</i></p> | <ul style="list-style-type: none"> <li>• Increase resourcing of community development initiatives as a means of reducing the prevalence of early substance misuse by those that have experienced adverse childhood experiences.</li> <li>• Work with PEH to identify desired social support and mental health interventions.</li> </ul>   |

|                 |                                  |   |  |
|-----------------|----------------------------------|---|--|
|                 |                                  | <i>see more about that collaboration pieces with ourselves and community development workers, community development programmes, that kind of brings us very much back into the communities. As things stand, we tend to parachute in.” (Social Care1)</i>   |  |
|                 | Interagency Collaboration        | <i>“If you think about it, clients don’t know what’s happening with support services when they’re dealing with them all in different silos. When they all come together and actually have a meeting, they’re much more informed. All the other services are also much more informed. They’re seeing the person in a much broader perspective.” (Social Care1)</i>   | <ul style="list-style-type: none"> <li>• Develop an interagency protocol clarifying pathways and processes for interagency collaboration &amp; data sharing between homeless, homeless health, mental health, addiction, and social services.</li> </ul> |
|                 | Data sharing and Linkage         | <i>“That would be the goal, that that would be the dream to have the electronic patient record that follows the patient and makes healthcare seamless. But no...Often people get the wheel recreated, they start an admission again from scratch. They’ll get the same investigations done; the same treatment initiated for the original duration...there’s a bit of repetition”. (Hospital2)</i>                    | <ul style="list-style-type: none"> <li>• Accelerate the rolling out of Individual Health Identifiers.</li> <li>• Establish data sharing policies between homeless health and mainstream health services.</li> </ul>                                      |
|                 | Auditing                         | <i>“Case managers should be involved in every single aspect of someone’s care. All of it. Now we’re seeing people being called case managers but they’re actually key workers, maybe they just deal with addiction. Clients end up in court and the judge sees they’ve had case management for a year and it’s not working, but they haven’t. Nobody’s looked after their mental health...” (Addiction Services3)</i> | <ul style="list-style-type: none"> <li>• Conduct routine external monitoring, evaluation, and auditing of organisations providing services to PEH.</li> </ul>  |
| Health Services | <b>Remove Barriers to Access</b> | <i>“Primary care is set up for people with addresses. It’s not set up for people in homelessness. Then the current hospital system for people in homelessness doesn’t work. It’s never</i>  |  |

|  |  |  |   |
|--|--|--|---|
|  |  | <p><i>their priority, their healthcare. Their priority is where they're going to sleep tonight, where they're going to get their next meal, where they're going to get money for their next week of drugs. So, coming to a busy public hospital and sitting in a waiting room for hours on end... Then if a person in homelessness is for discharge, they'll hand them a prescription for a long list of medications. They're not going to check, 'Have they a medical card? Have they money to get it?' Unfortunately, due to the business of the hospital, they treat them like everyone else."</i> (Hospital3)</p>  |   |
|  | <p>More mental health, addiction, women-centred, and GP services</p> | <p><i>"Women were saying, 'Look, I have a personality disorder, but apparently that's not a Category 1 illness.' So, women were really struggling with their mental health and trying to reach out, but the services were insufficient."</i> (Researcher3)</p> <p><i>"People are out in the community fighting to get drug free and to go into treatment. The whole idea is that when they say they want to do something about this, let's get them into residential treatment straight away, not be on waiting lists for months."</i> (Addiction Services1)</p> <p><i>"Ideally, we would work with homeless people and as soon as people have an address, we would try and get them into a regular local, practice in their area. For instance, I have a girl today who's pregnant and due a baby in two months' time. She needs to have a GP do the baby's vaccines and the baby's development. We couldn't do any of that [here]. There's a practice that I'd like her to go to. She now has a home, but they're full."</i> (Homeless Health Services4)</p> | <ul style="list-style-type: none"> <li>• Create more inpatient stabilisation and residential treatment beds with an allotted number for pregnant women.</li> <li>• Create more acute mental health beds.</li> <li>• Fill essential posts in mental health and mainstream general practice services.</li> <li>• Remove the requirement that an individual applies to and is refused from 3 GPs before the Health Services Executive (HSE) assigns a doctor.</li> </ul> |
|  | <p>Safe</p>  | <p><i>"People who mightn't use [that low-threshold health service] are people</i></p>  | <ul style="list-style-type: none"> <li>• Provide training to spot and report</li> </ul>   |

|  |  |   |  |
|--|--|---|--|
|  | Services                               | <p><i>who are trying to stay off drugs because there's a lot of drug use around and that's really difficult to navigate. A lot of women might feel intimidated, people who aren't drug users might find it intimidating, and then there's also often a problem for some of the people we work with that they owe drug debts. Sometimes they can't go to services because they are worried that somebody there will know them and be looking for them to beat them up or kill them.” (Hospital1)</i></p> | <p>signs of intimidation or violence to all clinical and non-clinical staff in organisations providing services to PEH.</p> <ul style="list-style-type: none"> <li>• Establish effective recruitment and retainment strategies for experienced operations staff within homeless health services.</li> </ul>                              |
|  | Resolved Care Pathways                 | <p><i>“Mental health services and drug services have always ping ponged off each other. ‘Oh, it's not a drug issue, it's a mental health issue. It's not a mental health issue, it's a drug issue.’ All these families that fall between the stools of other services come to us and it becomes a child protection issue, but it's not. It's a disability issue. It's a mental health issue. It's a substance use issue from the parents.” (Social Care1)</i></p>                                       | <ul style="list-style-type: none"> <li>• Improve screening and specific care pathways for ED presentations of PEH in crisis (e.g., domestic or sexual assault, repeat overdose, self-harm).</li> </ul>   |
|  | Trauma-Informed Education and Training | <p><i>“In our lectures, there was nothing about ‘How does an addiction emerge? What is its relation to socioeconomic circumstance? To gender? To violence? To age?’ Look, it's a societal thing, but for people who were absolutely going to come face to face with substance use, we were not taught about it, and it was only once I left college that I started to learn about terms like harm reduction, methadone, exploitation, trauma.” (Researcher3)</i></p>                                    | <ul style="list-style-type: none"> <li>• Include content that addresses trauma epidemiology, physiology, and effects, and trauma-informed clinical skills in undergraduate medical training in Ireland.</li> <li>• Provide trauma training to all clinical and non-clinical staff in organisations providing services to PEH.</li> </ul> |
|  | Expanding Inclusion Health             | <p><i>“I saw a guy today who has a big knife slash wound and it's caught his nerve and he's got nerve pain. We made several appointments and we even had people meet him to bring him to</i></p>  | <ul style="list-style-type: none"> <li>• Conduct policymaker consultations with existing Inclusion Health teams to</li> </ul>  |



|                 |   |  |   |
|-----------------|---|--|---|
|                 |   | <p><i>appointments and he still misses the appointments because he can't be found. He's sleeping rough. But the inclusion team get that. They completely understand, and they will give someone a cup of tea when they arrive and give them an appointment soon after if they miss one. Whereas if you were dealing with the general hospital, a missed appointment means back down to the end of the list". (Homeless Health Services4)</i></p>   | <p>determine how best to expand/replicate the programme.</p>  |
|                 | <p>Outreach Programmes and Peer Support</p> | <p><i>"With Hep-C, we were able to break away from that really traditional, kind of patriarchal view of how medicine should work, and we got the treatment out to the patients in the community in a way that really worked for them... With epilepsy, chronic obstructive pulmonary disease, even HIV care, those are things that really take a lot more long-term management than the HEP-C programme did. We need to be able to think outside the box a little bit in how we're delivering that healthcare to patients...it'll be new ground. It's not an established thing." (Hospital2)</i></p> | <ul style="list-style-type: none"> <li>• Assess the feasibility, acceptability, and eventual effectiveness of expanded outreach programmes for chronic disease management.</li> </ul>                                   |
| <p>Research</p> | <p><b>Address Knowledge Gaps</b></p>        | <p><i>"I'm very aware that I only know about the people that come to us and the people who don't come to us don't trust us, probably, and I don't know anything about them because they don't come to us." (Homeless Health Services2)</i></p>   |   |
|                 | <p>Optimal Addiction Care and Support</p>   | <p><i>"I'm fascinated at the gap in knowledge or belief between doctors and those in addiction, and maybe we have different ideas of what would be the best path because we don't actually have the same aim in mind. Are patients seeking stability... would they ultimately like to be drug-free, or something else? Are we having honest conversations with patients in which they feel they can share what their preference/their treatment goal would be?" (Homeless Health Services1)</i></p>  | <ul style="list-style-type: none"> <li>• Explore service users' views on optimal addiction care and support, including views on the pilot benzodiazepine maintenance programme currently in place in Dublin.</li> </ul> |

|  |   |   |   |
|--|---|---|---|
|  |   | <p><i>"We have patients who have - because of their addiction - sleeping difficulties, - because of their hostel - sleeping difficulties. If you were to prescribe sleeping tablets, they would be on them forever and that is what I know because I'm 20 years doing this, and I cannot get people who are on sleeping tablets off of them. So, for all of us, there's a problem. I don't know what the answer is, but I know the whole benzodiazepine scene has changed utterly from pre-COVID in that most of our patients are on five Benzodiazepine three times a day now, or a benzodiazepine detox. The ones who are on five three times a day are doing much, much better. That's what I can see. They're not buying handfuls or presenting drug affected."</i> (Homeless Health Services4)</p>   |   |
|  | <p>Healthcare Access Amongst Vulnerable Populations</p> | <p><i>"[Asylum seekers] are landing in Ireland, they register at the International Protection Office, and they're told, 'There are no beds'. This is very new now as in the last six weeks to two months. I'd a man who was diabetic and had to tell him to sleep on the street on that freezing cold night. Maybe a month ago, three weeks ago, on a Thursday, I remember. And he kept on asking on his Google Translate code, 'But where am I to sleep?' and I had nothing. We never did that before."</i> (Hospital3)</p> <p><i>"For me at the moment, the thing that worries me the most are people entering homelessness with intellectual disability or the ones leaving foster care. If you picked one of one of those groups and looked at their trajectories and how the services are set up to access them. I think that if society as a whole was really aware of what's going on, I think that there would be, there could be change in that system."</i> (Hospital1)</p> | <ul style="list-style-type: none"> <li>• Explore how homeless asylum seekers and migrants, youth leaving foster care, and individuals with intellectual disability or dementia are accessing health services in Ireland.</li> </ul> |



|            |  |  |   |
|------------|--|--|---|
| Individual | <p><b>Include homeless service users in health and social service design, planning, and delivery</b></p> | <p><i>"I'm thinking of my HIV outpatients or Hep C outpatients. If somebody makes them do it, or prompts them to come, they kind of just do it to keep you happy rather than doing it to look after their health. They can't usually choose what food they eat. They can't choose their living environment. There's very little control over their health anyway...There's a sense of not being entitled to anything better." (Hospital1)</i></p> <p><i>"We really don't have any data that looks at how people who are in homelessness, or in socially marginalised groups would like their healthcare, or think is the best way for their healthcare to be delivered. So that obviously we're not just making all the decisions for them." (Hospital2)</i></p> | <ul style="list-style-type: none"> <li>• Include Irish and ethnic minority homeless service users in national strategies for service user involvement in the Irish health and social services.</li> <li>• Establish regular forums and meetings between policymakers, service providers, and service users to strengthen shared decision making.</li> </ul> |
|------------|--|--|---|

### **Theme 1 – Promote Culture that Values Health Equity (Level: Societal)**

To sustainably improve the provision of healthcare to PEH, CEs outlined a need to increase the social value attributed to health equity. Currently, health policies are designed and implemented in a cultural context that values tradition and evades risk to the detriment of marginalised populations. As a result, despite worsening health inequalities, long-time administrative barriers to healthcare for PEH persist (e.g., appointment systems, proof of address requirements, management of addiction in hospital) (Hospital1 and 3, Addiction Services4, Researcher3). CEs noted unanimously that the current standard of care excludes PEH and encouraged a shift towards proactive, innovative, patient-centred initiatives moving forward. This will require a cultural shift towards understanding that homelessness and addiction stem from systemic inequity rather than personal choice.

### **Theme 2 – Accelerate Action in Addressing Health Inequalities (Level: Policy)**

#### **Sub-theme 2.1 –Strategic Planning**

CEs noted an overreliance on reactive, shortsighted healthcare strategies implemented in response to co-occurring housing, addiction, and mental health crises. Instead, they hoped to see policymakers take the lead in developing a wider and more strategic approach to achieving equitable health. This will require the redistribution of resources in proportion to relevant needs and long-term funding allocation for innovative but evidence-based initiatives.

Vulnerabilities specific to youth, women, migrants, and ethnic minority individuals in homelessness were a recurring theme throughout interviews, underlining the urgency of strengthening social protection policies for each group.

### **Sub-theme 2.2 – Housing First**

CEs emphasised that efforts to improve someone's health cannot work if that individual does not have safe and stable housing. Dissatisfaction with temporary accommodation for PEH in Dublin was mentioned by all CEs. Homeless hostels are often detrimental to health due to ubiquitous use of drugs, physical and sexual violence, noise, and lack of storage for medications (Addiction Services4, Hospital1 and 3). CEs mentioned clients who preferred prison or sleeping rough to temporary homeless accommodation (Homeless Health Services5, Addiction Services1 and 2, Hospital2 and 3). Others – especially those without proof of Dublin residency – struggle to access temporary accommodation at all. Some PEH rely on the emergency department (ED) as a safe place to sleep. Others are being discharged from hospital with no place to go.

Four CEs mentioned the effectiveness of the Housing First programme which, by providing permanent housing for people experiencing homelessness without any preconditions around addiction or mental health treatment, views housing as healthcare (Government1 and 2, Addiction Services1 and 4). CEs hoped to see an expansion of this programme (Government1 and 2, Addiction Services4) accompanied by more extensive wraparound supports that include daily living skills training (Addiction Services1).

### **Sub-theme 2.3 – Social Support Options**

CEs felt that Ireland relies on an overmedicalized response to homelessness and its associated conditions that fails to address underlying causes such as loneliness, neglect, isolation, and grief. With limited avenues for social and emotional support, clients in homelessness often lack the self-esteem required for recovery.

CEs considered ways to reformulate how the system views, responds to, and prevents intersecting homelessness, addiction, mental health, and physical health impairments. Suggestions included having a societal conversation on the drivers of homelessness and addiction; focusing on the strengths rather than weaknesses unique to PEH including resilience, creative problem solving, honesty, humour, and altruism (Psychotherapist1, Hospital1); and – in more concrete terms – prioritising funding for community development initiatives. CEs hoped to see more spaces and opportunities for PEH to make social connections (e.g., adult education, exercise) (Addiction Services1, Researcher1). For individuals for whom addiction impedes participation in social programmes, showing

patience, compassion, and advocacy in the provision of healthcare was mentioned as a way to encourage self-confidence (Researcher1, Hospital3).

#### **Sub-theme 2.4 – Interagency Collaboration**

CEs reiterated, as has been widely documented, that homeless individuals have long standing and sometimes chronic health issues which relate not just to housing but to a conglomeration of issues such as poverty, substance use, domestic violence, tragic accidents, and social isolation. Despite the intersection of issues, Researcher2 noted that historically in Ireland, substance use has been viewed and responded to separately from health. Today, according to CEs, homelessness, mental health, and addiction services continue to act as separate agencies with little communication between them. Many services (e.g., probation, housing, addiction, healthcare, mental health, child services) are involved in one care plan and communication is not always optimal between them. To address this, truly comprehensive case management and routine interagency meetings were recommended moving forward.

#### **Sub-theme 2.5 – Data sharing & linkage**

CEs noted that lack of data linkage between agencies contributes to the compartmentalisation of care. Separate electronic records systems and lack of individual patient identifiers impeded work, specifically. While homeless medical services use a shared system, that data is not accessible to normal GP practices and vice versa (Homeless Health Services4), nor are primary care records linked to secondary care records (Homeless Health Services5). In the hospital setting, lack of electronic patient identifiers contributes to repetition in care as repeat admissions are sometimes started again from scratch. Government1 outlined Health Service Executive Ireland (HSE) Social Inclusion's plan to establish data sharing policies between different partner agencies and to look at linking homelessness administrative data with health data by 2026. Accelerating these aims will be important to ensure that health policies are data driven in future.

#### **Sub-theme 2.6 – Auditing**

Addiction Services1 and 3 commented on how a lack of objective quality control procedures result in a lack of standardisation and transparency. For example, the HSE and NGOs employ case managers to coordinate a service user's care plan across many services (e.g., housing, health, addiction, social services, justice). Yet, Addiction Services3 had noticed instances where purported case managers held a role similar to a key worker or project worker, only dealing with one aspect of a client's care. Addiction Services1 noted inconsistencies in reported progressions in housing (i.e., clients are just being moved from

one hostel to another) and in drug assessments (i.e., a client's 'problem drug' is noted as heroin when in fact there is polydrug use). In addition to impacting the quality of care, mislabelling can impact clients' convictions in court as their progress is assessed based on the health and housing supports received (Addiction Services3). Clients – who respond well to fairness and consistency after growing up in unpredictable environments – can further lose their already tenuous faith in the system (Homeless Health Services1).

### **Theme 3 – Remove Barriers to Access (Level: Health Services)**

#### **Sub-theme 3.1 – More Services**

Though health system flaws are not unique to the homeless health sector, service shortages disproportionately affect PEH who face worse health outcomes and increased barriers to care. A lack of vital health services was noted in the following areas:

- **Mental health services:** Lack of beds for psychiatry was highlighted as a “*huge, huge issue*” in Ireland (Hospital3, Addiction Services2), as was lack of accessible psychiatrists. The shortages result in that patients struggle to receive mental health diagnoses. Patients who are diagnosed but not at immediate risk to themselves or others may not be eligible for care. For those who don't fit criteria for admission, providers generally advise patients to “*go home to rest and be with family*” (Hospital3); advice that is inappropriate for someone in homelessness. Some GPs are responding to the emergency by prescribing mental health medications without diagnosis.
- **Residential addiction services:** Lack of drug treatment beds was of major concern to CEs who see clients waiting between 3 and 6 months to enter a facility (Addiction Services1,2, and 4, Researcher3). Capacity constraints result in that most drug treatment facilities have clean urine requirements and maximum entry doses for methadone (Addiction Services1, 2 and 4). Patients in homelessness struggle to meet these requirements without additional support, yet stabilisation programmes that house people while they come down to make the criteria for other residential services are in short supply. Two stabilisation units now exist in North Dublin, but they are not enough to account for the explosion of crack cocaine use for which “*the most effective treatment option is to get somebody into a stabilisation residential admission.*” (Homeless Health Services4)

- Women-centred services: CEs wanted to see more services that respond to the intersection of substance use, domestic and sexual violence, homelessness, and motherhood. Specifically, there is a shortage of methadone and suboxone stabilisation programmes for pregnant women (Addiction Services1 and 4). In terms of residential treatment, encouragingly Ireland is one of few countries across Europe with a facility for domestic violence victims active in their substance use, and two more for mothers with children under five (Researcher2). When capacity is reached, however, or for women with older children, recovery remains a challenge. Gender-specific spaces are also needed in homeless health services. Many homeless women choose to stay with a violent partner who offers them protection from other men and are likely to present to health services with that partner (Hospital1).
- GPs in the Dublin area: CEs noted that a recent shortage of GP availability is severely impeding access to care (Addiction Services4, Homeless Health Services4, Hospital3). Homeless individuals who have an address are unable to step down from homeless health services to a normal GP practice with capacity to treat longer-term conditions. The system the HSE has in place requires that someone applies to and is refused from 3 GP practices before they are assisted in finding a provider. Hospital3 noted, “for someone in homelessness, how are they going to do that unless somebody does it for them?”
- Administration support: Community health providers in Dublin are facing the dual burden of increased administrative work related to wider-system saturation (e.g., needing to apply for 3GPs before the HSE steps in) and navigating the mismatches between traditional referral/appointment systems and homelessness over the phone and via email (Hospital3). Facing overcrowding in their own clinics, homeless health providers require additional administration support in order to maximise time with patients (Hospital3).
- Services outside of Dublin: A number of CEs mentioned that shortages of homeless services in rural areas across Ireland are contributing to system pressures in Dublin. CEs currently provide care to homeless clients from all over the country.

One consequence of system pressures is that homeless health providers have limited time with each patient and focus primarily on acute conditions and addiction rather than chronic disease management.

### **Sub-theme 3.2 – Safe Services**

CEs underlined how safety must be built into health services as well as temporary housing. In addition to safety issues connected to gender-based violence, the complexity of addressing safety issues related to drug debts and drug dealing in proximity to low threshold services was noted by CEs (Hospital1, Homeless Health Services4, Addiction Services1, Researcher3). To address safety issues beyond the control of the health system, CEs commented on the importance of having experienced operations staff as gatekeepers within homeless health services. The provision of training for healthcare staff to spot and report signs of intimidation or violence was also recommended (Addiction Services1). Homeless Health Services1 and Researcher3 also hoped to see conversations commence on how to create safe services for people trying to manage their addiction without creating additional barriers to care for people active in their drug use.

### **Sub-theme 3.3 – Resolved Care Pathways**

CEs highlighted that care pathways in response to ‘crisis points’ aren’t fully resolved. Domestic and sexual violence, for example, often go undetected in hospital (Researcher2 and 3). The current system also fails to assess and support individuals who experience repeat overdose (OD) (Homeless Health Services3 and 5). CEs noted that identifying and supporting patients at these critical junctures could set them on a road to recovery, however this will require overcoming barriers to detection. At the patient level, fear of stigma and shame may prevent full disclosure of an event. At the provider level, underlying conditions and traumatic events may be put down to addiction and not explored further. At the system level, staffing shortages and lack of services result in that healthcare providers are expected to detect and respond to conditions with which they are unfamiliar. Overcrowding limits time with patients to build trust, detect a point of crisis, and refer to specialised care and support. Even if the referral stage has been reached, there may be no space available in the appropriate service.

Another unresolved care pathway relates to multi-morbidity. CEs found that patients with multiple conditions tend to get lost between health services. Though actions and pathways are improving around dual diagnosis of mental health and addiction issues (Researcher2, Addiction Services1 and 2), CEs noted that they’re still not fully resolved (Researcher2 and 3, Addiction Services2) particularly when another layer of complexity is added (e.g., domestic violence, trauma). Parents whose conditions fall between the stools of other services can be reverted to child protection (Social Care1, Addiction Services1); a pattern that has grave consequences for mothers who do not present to health services for fear of their child being taken into care (Hospital3, Researcher3). For mothers who *do* present,

Researcher3 and Homeless Health Services3 spoke on the lack of designated support or pathway for homeless women facing addiction whose children are taken into care at birth.

### **Sub-theme 3.4 – Trauma-Informed Education & Training**

A majority of CEs noted that widely cited attitudinal barriers to care persist in mainstream health services. Homeless patients regularly encounter disrespect, discrimination, blame, impatience, and judgement from healthcare providers (Hospital3, Researcher3, Addiction Services4).

Researcher3 noted that insufficient training around addiction perpetuates stigma. In Ireland, general healthcare professionals – despite the inevitability of encountering addiction in practice – receive very little education on its underlying causes.

CEs recommended expanding trauma-informed care training in both university and medical settings, *“We’re trying to discuss getting funding to do trauma-informed care for all staff, from cleaners to secretaries to porters to nurses to doctors. Across the board.”* (Hospital3) The goal of these trainings would be for all professionals interacting with individuals experiencing homelessness and/or addiction to provide care imbedded in an understanding of trauma experiences and how they shape patients’ views of and interactions with healthcare.

### **Sub-theme 3.5 – Expanding Inclusion Health**

CEs recommended expanding hospital Inclusion Health teams (Homeless Health Services 4 and 5, Hospital2 and 3). Two Dublin hospitals now offer dedicated services providing patient-centred, trauma-informed care to individuals experiencing homelessness. To prevent repeat presentations, the teams support patients to attend appointments, to create feasible discharge plans, and to access medications. At the primary-acute care interface, these services are vastly improving continuity of care by linking in with homeless primary health services about specific clients. The services are also set up to manage withdrawal in hospital, meaning patients are less likely to leave early and return to primary care with unresolved issues.

### **Sub-theme 3.6 – Outreach Programmes & Peer Support**

CEs commented on a need for more outreach integrated care programmes like Ireland’s Hepatitis C treatment programme which brought screening, diagnosis, and treatment out into the community. Managing chronic conditions through outreach programmes was of interest as they are difficult to treat in drop-in primary care or traditional hospital settings (Homeless Health Services4, Hospital2 and 3). Moving forward, CEs recommended testing the feasibility, acceptability, and eventual effectiveness of outreach programmes for epilepsy (St



James's hospital have an outreach programme for epilepsy but it cannot match the quantity of homeless patients across Dublin with seizure disorder (Hospital2 and 3)), respiratory issues related to smoking crack (Hospital3, Homeless Health Services4), and diabetes (Hospital3). These programmes will have to anticipate and overcome challenges associated with long-term disease management within a transient population.

All CEs who mentioned potential outreach programmes noted the importance of involving peer support workers with lived experience in addiction and homelessness (Hospital2 and 3, Homeless Health Services1-3). CEs spoke of the potential value in expanding peer support roles to new programmes for both the employee and client. For the peer support worker, the job is an avenue for rebuilding confidence and routine on the other side of addiction. For the client, interacting with someone with shared experiences creates "*an identifiable sort of bond.*" (Homeless Health Services1) Homeless Health Services2

#### **Theme 4 - Address Knowledge Gaps**

**Theme 4.1 - *Appropriate addiction care and support.*** Uncertainties linger surrounding appropriate addiction care and support in response to a changing drugs landscape. For example, CEs were divided in their views on methadone. Some viewed it as "*liquid handcuffs*" (Addiction Services1 and 3), while others noted its effectiveness in preventing overdose and relapse (Homeless Health Services1). The question of suboxone versus methadone for the treatment of opioid dependence arose, as did the potential for Ireland to expand prescription of buprenorphine prolonged-release injection (Buvidal).

CEs held differing opinions on benzodiazepine prescribing. Addiction service providers referred back to their sense that GPs are overprescribing for addiction, whereas GPs had a sense that benzodiazepine intoxication has improved since the implementation of a maintenance programme during the Covid-19 pandemic.

CEs did not entirely understand why, "*people seem to be dying to finish methadone, but don't want to finish benzodiazepines*" (Homeless Health Services1). Another 'unknown' relates to sleeping difficulties. GPs are unsure of how to respond to clients who strongly prefer to stay on sleeping tablets even after they are no longer effective.

**Theme 4.2 - *Understanding access amongst vulnerable populations.*** CEs were careful to point out that they don't know about the health of individuals who do not interact with their services. Vulnerable groups whose health needs are not adequately understood include:

- *Undocumented migrants and asylum seekers:* Eight CEs mentioned how little is understood about the health needs of migrants and asylum seekers in Ireland who are experiencing increasing rates of homelessness. Potential barriers to care

amongst this population include language barriers and lack of rights to welfare, housing, and medical care. This group will also have specific health needs: “a lot of them wouldn’t have addiction issues or alcohol issues, but they’d have huge trauma from war” (Hospital3).

- Emerging homelessness: CEs were concerned about the transition from adolescence to adulthood for teenagers leaving state care. Many are entering directly into homelessness at 18 (Hospital1, Government1), a situation that is challenging to navigate and extremely detrimental to health. With the ongoing housing crisis, some elderly people with dementia are going into homelessness after forgetting to pay their rent (Hospital1). Finally, people with intellectual disability are falling into homelessness *because* of their intellectual disability. Little is understood about each of these groups’ trajectories, health needs, and how they access and interact with services.
- Minority groups: Five CEs mentioned uncertainties relating to the health usage behaviour and access to care for Irish Travellers and Roma people in homelessness who face increased discrimination due to their ethnicity. Specific, intersecting identities may further shape health needs (Hospital1, Government1). Research gaps mentioned related to rough sleepers, lone parents in homelessness, homeless women engaging in sex work, and members of the LGBTQ+ community (Government1 and 2).

### **Theme 5 – Include homeless service users in health and social service design, planning, and delivery**

Policy and system-level flaws result in a lack of immediacy of care which “*is key when you’re dealing with individuals that have a large degree of instability in their lives.*” (Researcher2) In turn, many clients have lost faith in and disengaged from the system. Furthermore, to have available services and clear pathways in place does not imply that patients – especially those in great deals of emotional and/or physical pain – will have the trust or capacity to use them.

There was a general sense that resolving flaws in the system (e.g., availability of services, compartmentalised care, unresolved pathways) and reducing stigma through trauma-informed training will play a role in rebuilding trust and engagement. However, CEs noted a simultaneous need to increase empowerment by providing PEH a participatory space through which to take part in decision-making about health services.

Traditionally, people in homelessness and addiction have little freedom of choice. Often as a result, patients do not feel in charge of their own health or a sense of entitlement to anything better (Hospital1). Providing service users with opportunities to have ownership and self-expression over their care can be a mechanism for re-instilling a sense of responsibility and engagement. Incorporating user voices will also improve the quality and effectiveness of services. CEs mentioned how well-versed people experiencing homelessness are in the system (Researcher3, Hospital3) and skills such as resourcefulness and creativity (Hospital1). Despite this, there is a lack of data looking at how PEH would like their own healthcare in Ireland (Hospital2).

Considerations moving forward include creating spaces for service users to provide feedback anonymously and without repercussion (Hospital1), creating opportunities for exchange between policymakers and service users (Addiction Services2, Social Care1), and accounting for potential literacy barriers (Hospital1) and the well-cited dilemma that, *“the individuals that need support the most, unfortunately, are the ones that may be least likely to engage.”* (Social Care1)

## **DISCUSSION**

This qualitative study was the first in Ireland to examine priority healthcare needs amongst PEH through consultation with community experts. Research, policy, and practice recommendations based on study findings are summarised in Table 3. Encouragingly, CEs' views are in line with internationally recognised community solutions for promoting health equity, including making health equity a shared vision and value, fostering multi-sector collaboration, and increasing community capacity to shape outcomes<sup>25</sup>. At the societal level, CEs identified a need to promote a culture that values health equity. In the United States, 'public will building' approaches have successfully integrated grassroots methods with traditional mass media tools to – by connecting to the existing, closely held values of target groups – encourage social change<sup>23</sup>.

At the policy level, accelerating action in addressing health inequalities was recommended with an emphasis on strategic planning, Housing First, social support options, interagency collaboration, improved data linkage and sharing, and auditing. People with lived experience of homelessness and health professionals across Canada ranked access to housing and care coordination/case management as top priorities<sup>26–28</sup>. Findings from Toronto highlight a need for more services that encourage the integration of homeless individuals into social networks and the building of specific types of social support within networks<sup>29</sup>. Other policy needs are specific to the Irish context. For example, Ireland lags behind other countries in adopting digital health and remains one of three EU countries without a shared electronic

health records system or individual health identifiers<sup>30</sup>. In terms of the potential effectiveness of CEs' recommendations, Housing First, with immediate provision of housing in independent units with support, improves outcomes for individuals with serious mental illnesses<sup>31</sup>. Standard case management with coordination of services improves mental health, housing, and addiction outcomes<sup>31</sup>. However, our findings re-iterate that the effectiveness of these interventions depends upon their availability and comprehensiveness; two conditions that CEs felt would be better upheld in response to routine, external auditing.

At Ireland's health services level, removing barriers to access will require the provision of more mental health, addiction, women-centred, and GP services; the embedding of safety within those services; resolved care pathways in relation to crisis points and multi-morbidity; trauma-informed education and training for university medical students, clinical and non-clinical staff; expanded hospital-led Inclusion Health programmes; and, potentially, outreach programmes and peer support for chronic disease management. Evidence shows that primary health-care programmes specifically tailored to homeless individuals might be more effective than standard care and are more likely to achieve higher patient-rated quality of care<sup>31</sup>. Ireland, like neighbouring Scotland, follows this model by providing specialist homeless health services. However, the success of this approach requires that PEH are able to move back into mainstream services when their crisis is resolved<sup>32</sup>. CEs described a scenario in Ireland where individuals who have experienced homelessness and/or addiction cannot re-integrate into mainstream services due to shortages of GPs and mental health professionals. Resolving these shortages will require addressing disproportionately high rates of emigration among Irish medical graduates and junior doctors<sup>33</sup>.

In other areas, Ireland is leading innovation at the community level. The 'HepCheck Dublin' programme mentioned by CEs provides a model for a community-based treatment approach<sup>34</sup>. The North Dublin City General Practitioner Training Programme educates doctors to work with marginalised, urban populations and has increased empathy and decreased prejudice amongst trainees<sup>35</sup>. Very few hospitals internationally offer dedicated Inclusion Health services like the two in Ireland that, by providing a more coordinated approach to patient care, are improving patient outcomes<sup>36</sup>. Incorporating this type of patient-centred programmes into strategic healthcare planning could be a way to remove barriers to care in Ireland and abroad. Similar to our findings, community experts and members from Canada, the US, and the UK identified a need for better chronic disease management, expanded clinical outreach programmes, trauma-informed training, and improved referral pathways for PEH<sup>28,37,38</sup>.

CEs highlighted knowledge gaps relating to optimal addiction care and support and access to healthcare amongst vulnerable populations that are not unique to Ireland. There is international debate regarding the desirability of interventions that emphasise abstinence versus harm reduction approaches for substance misuse<sup>31</sup>. Evidence suggests homelessness as a risk for and consequence of Alzheimer's disease and related dementia (ADRD) but there is a dearth of studies on the intersection of homelessness and ADRD<sup>39</sup>. There is also an identified a need to improve the knowledge base around the health and housing needs of individuals and children with intellectual disability (ID) and/or autism<sup>40</sup>. To our knowledge, this is the first study to document the need to assess health needs amongst homeless asylum seekers and other migrants in Ireland. Incorporating service users' perspectives will be vital for answering these research questions. However, our study findings emphasise that the voices of PEH, including representatives from specific homeless groups, must be embedded more deeply into health and social service design, planning, and delivery to facilitate lasting change.

### ***Limitations***

As this study was located in one city, findings may not be transferrable to other locations with different health systems. That being said, we identified crossover with priority healthcare needs identified amongst PEH in Canada, the US, and the UK, indicating the potential relevance of findings to other countries with similar specialist service approaches to homeless healthcare. Our choice of a qualitative approach to community health needs assessment means that we will not have identified all healthcare needs of PEH in Dublin, instead focusing on timely insights. Readers are encouraged to use this document as a starting place for understanding priority system flaws and unmet needs rather than an exhaustive list. Furthermore, this study reports the views of service providers which may differ from those of service users. Our research team intends to report homeless service users' views for comparison in a subsequent study. Finally, though no new themes emerged during the last few interviews and we felt that our data had reached saturation, it is possible that a larger sample may have yielded more themes.

### ***Conclusion***

Qualitative interviews conducted with community experts revealed five key healthcare priorities for homeless individuals in Dublin at the societal, policy, health services, and patient levels. In the short-term, findings reveal an urgent need for more Housing First tenancies, inpatient stabilisation and residential treatment beds, acute mental health beds, and women-centred services. Essential posts in mental health and mainstream general practice services must be filled to ensure that individuals who are no longer in crisis can step

down from specialised homeless to mainstream health services. In the long-term, CEs considered ways to reformulate how the system responds to intersecting homelessness, addiction, mental health, and physical health impairments including prioritising funding for community development initiatives and social support. The success of future reforms will require establishing a national culture that values health equity and incorporating the voices of people experiencing homelessness at all levels of service design and delivery. Priority research needs include understanding service users' views on optimal addiction care and support and investigating access to healthcare for homeless asylum seekers and migrants, youth leaving foster care, and individuals with intellectual disability or dementia.

## REFERENCES

1. Fazel S, Geddes JR, Kushel M. The health of homeless people in high-income countries: descriptive epidemiology, health consequences, and clinical and policy recommendations. *The Lancet*. 2014 Oct 25;384(9953):1529–40.
2. Ingram C, Buggy C, Elabbasy D, Perrotta C. Homelessness and health-related outcomes in the Republic of Ireland: a systematic review, meta-analysis and evidence map. *J Public Health (Berl)*. 2023. Available from: <https://doi.org/10.1007/s10389-023-01934-0>
3. Annett H, Rifkin SB. Guidelines for rapid participatory appraisals to assess community health needs: a focus on health improvements for low-income urban and rural areas. World Health Organization; 1995. Report No.: WHO/SHS/DHS/95.8.
4. Allen M, Benjaminsen L, O’Sullivan E, Pleace N. Trends in homelessness in Denmark, Finland and Ireland. In: *Ending Homelessness?* 1st ed. Bristol University Press; 2020. p. 73–102.
5. Ivers JH, Zgaga L, O’Donoghue-Hynes B, Heary A, Gallwey B, Barry J. Five-year standardised mortality ratios in a cohort of homeless people in Dublin. *BMJ Open*. 2019 Jan 1;9(1):e023010.
6. O’Carroll A, Duffin T, Collins J. Harm reduction in the time of COVID-19: Case study of homelessness and drug use in Dublin, Ireland. *International Journal of Drug Policy*. 2021 Jan 1;87:102966.
7. CDC - Assessment and Plans - Community Health Assessment - STLT Gateway [Internet]. 2022 [cited 2023 Jul 26]. Available from: <https://www.cdc.gov/publichealthgateway/cha/plan.html>
8. Ingram C. Exploring health and health care needs amongst marginalised Dublin communities: formative research with a community health centre. 2022 Sep 14 [cited 2023 Aug 10]; Available from: <https://osf.io/ay5uj>
9. Cain CL, Orionzi D, O’Brien M, Trahan L. The Power of Community Voices for Enhancing Community Health Needs Assessments. *Health Promotion Practice*. 2017 May 1;18(3):437–43.
10. Government of Ireland. Housing Act [Internet]. electronic Irish Statue Book (eISB). Office of the Attorney General; 1988 [cited 2023 Jul 07]. Available from: <https://www.irishstatutebook.ie/eli/1988/act/28/enacted/en/print#sec2>
11. Dublin Regional Homeless Executive. Monthly Report to Dublin City Councillors on Homelessness [Internet]. 2023 May. [cited 2023 Jul 07]. Available from: <https://www.homelessdublin.ie/info/figures?type=monthly-report>
12. Dublin Regional Homeless Executive. Week long assessment of rough sleepers in the Dublin Region [Internet]. 2023 May. [cited 2023 Jul 07]. Available from: <https://www.dublincity.ie/news/spring-2023-count-people-who-are-sleeping-rough-dublin-region#:~:text=The%20Official%20Spring%202023%20Count,the%20week%20of%20the%20count.>



13. REDC, Simon Community. Simon Community - Hidden Homelessness Poll [Internet]. 2022 [cited 2023 Jan 5]. Available from: [https://www.simon.ie/wp-content/uploads/2022/09/Simon-Communities-of-Ireland\\_Hidden-Homeless-Poll.pdf](https://www.simon.ie/wp-content/uploads/2022/09/Simon-Communities-of-Ireland_Hidden-Homeless-Poll.pdf)
14. Lynn E, Devin J, Craig S, Lyons S. Deaths among people who were homeless at the time of death in Ireland, 2019 [Internet]. Health Research Board; 2019. Available from: <https://www.hrb.ie/publications/publication/deaths-among-people-who-were-homeless-at-time-of-death-in-ireland-2019/returnPage/1/>
15. Ravaghi H, Guisset AL, Elfeky S, Nasir N, Khani S, Ahmadnezhad E, et al. A scoping review of community health needs and assets assessment: concepts, rationale, tools and uses. *BMC Health Services Research*. 2023 Jan 17;23(1):44.
16. Schensul JJ, LeCompte MD. *Essential Ethnographic Methods: a Mixed Methods Approach*. Maryland: Altamira Press; 2013.
17. Palinkas LA, Horwitz SM, Green CA, Wisdom JP, Duan N, Hoagwood K. Purposeful sampling for qualitative data collection and analysis in mixed method implementation research. *Adm Policy Ment Health*. 2015 Sep;42(5):533–44.
18. University of Oxford. Informed consent [Internet]. [cited 2023 Aug 10]. Available from: <https://researchsupport.admin.ox.ac.uk/governance/ethics/resources/consent>
19. World Health Organization. Community Health Needs Assessment: An introductory guide for the family health nurse in Europe [Internet]. 2001 [cited 2022 Sep 13]. Available from: <https://apps.who.int/iris/handle/10665/108440>
20. Nowell LS, Norris JM, White DE, Moules NJ. Thematic Analysis: Striving to Meet the Trustworthiness Criteria. *Int J Qual Methods*. 2017 Dec 1;16(1):1–13.
21. Gale NK, Heath G, Cameron E, Rashid S, Redwood S. Using the framework method for the analysis of qualitative data in multi-disciplinary health research. *BMC Med Res Methodol*. 2013 Sep 18;13(1):117.
22. Wolcott HF. *Transforming Qualitative Data: Description, Analysis, and Interpretation*. SAGE; 1994.
23. National Academies of Sciences, Engineering, and Medicine; Health and Medicine Division; Board on Population Health and Public Health Practice; Committee on Community-Based Solutions to Promote Health Equity in the United States. The Need to Promote Health Equity. In: *Communities in Action: Pathways to Health Equity* [Internet]. National Academies Press (US); 2017 [cited 2023 Aug 1]. Available from: <https://www.ncbi.nlm.nih.gov/books/NBK425853/>
24. The Women's Health Council. A guide to creating gender-sensitive health services [Internet]. The Women's Health Council; 2007 Jan [cited 2023 Aug 1]. Available from: <https://www.lenus.ie/handle/10147/298907>
25. National Academies of Sciences, Engineering, and Medicine; Health and Medicine Division; Board on Population Health and Public Health Practice; Committee on Community-Based Solutions to Promote Health Equity in the United States. In: *Communities in Action: Pathways to Health Equity* [Internet]. National Academies Press (US); 2017 [cited 2023 Aug 1]. Available from: <https://www.ncbi.nlm.nih.gov/books/NBK425860/>
26. Liu M, Hwang SW. Health care for homeless people. *Nat Rev Dis Primers*. 2021 Jan 14;7(1):1–2.
27. Shoemaker ES, Kendall CE, Mathew C, Crispo S, Welch V, Andermann A, et al. Establishing need and population priorities to improve the health of homeless and vulnerably housed women, youth, and men: A Delphi consensus study. *PLoS One*. 2020 Apr 16;15(4):e0231758.

28. Campbell D, O'Neill B, Gibson K, Thurston W. Primary healthcare needs and barriers to care among Calgary's homeless populations. *BMC Family Practice*. 2015;16(139).
29. Hwang SW, Kirst MJ, Chiu S, Tolomiczenko G, Kiss A, Cowan L, et al. Multidimensional Social Support and the Health of Homeless Individuals. *J Urban Health*. 2009 Sep 1;86(5):791–803.
30. Jacquemard T. eHealth in Ireland: Social and Ethical Values in Irish Policy on eHealth [Internet]. Dublin: House of the Oireachtas; 2021. Available from: <https://www.oireachtas.ie/en/how-parliament-is-run/houses-of-the-oireachtas-service/library-and-research-service/for-researchers/researcher-tim-jacquemard/>
31. Hwang SW, Burns T. Health interventions for people who are homeless. *The Lancet*. 2014;384:1541–7.
32. Anderson I, Ytrehus S. Re-conceptualising Approaches to Meeting the Health Needs of Homeless People. *Journal of Social Policy*. 2012 Jul;41(3):551–68.
33. Brugha R, Cronin F, Clarke N. Retaining our Doctors: Medical Workforce Evidence 2013-18. Dublin: Royal College of Surgeons in Ireland; 2018.
34. Lambert JS, Murtagh R, Menezes D, O'Carroll A, Murphy C, Cullen W, et al. "HepCheck Dublin": an intensified hepatitis C screening programme in a homeless population demonstrates the need for alternative models of care. *BMC Infect Dis*. 2019;19(1):128.
35. O Carroll A, O'Reilly F. Medicine on the margins. An innovative GP training programme prepares GPs for work with underserved communities. *Education for Primary Care*. 2019 Nov 2;30(6):375–80.
36. Cheallaigh CN, Lawlee AM, Sears J, Dowds J. The Development of an Inclusion Health Integrated Care Programme for Homeless Adults in Dublin, Ireland. *International Journal of Integrated Care (IJIC)*. 2018;18:1–2.
37. Thorndike AL, Yetman HE, Thorndike AN, Jeffrys M, Rowe M. Unmet health needs and barriers to health care among people experiencing homelessness in San Francisco's Mission District: a qualitative study. *BMC Public Health*. 2022 May 30;22(1):1071.
38. Jagpal P, Saunders K, Plahe G, Russell S, Barnes N, Lowrie R, et al. Research priorities in healthcare of persons experiencing homelessness: outcomes of a national multi-disciplinary stakeholder discussion in the United Kingdom. *International Journal for Equity in Health*. 2020 Jun 5;19(1):86.
39. Babulal GM, Rani R, Adkins-Jackson P, Pearson AC, Williams MM. Associations between Homelessness and Alzheimer's Disease and Related Dementia: A Systematic Review. *J Appl Gerontol*. 2022 Nov 1;41(11):2404–13.
40. Mary-Ann O'Donovan, Emer Lynch, Linda O'Donnell, Kathyan Kelly. The Experience and Risk of Homelessness for People with Intellectual Disability and/or Autism and their Families in Dublin: A Mixed Methods Study. Dublin: Trinity College Dublin; 2020.