

1 **Clinical outcomes after viraemia among people receiving dolutegravir versus efavirenz-**
2 **based first-line antiretroviral therapy in South Africa**

3 **Authors:** Kwabena Asare^{1,6}, Lara Lewis¹, Johan van der Molen¹, Yuktेशwar Sookrajh²,
4 Thokozani Khubone², Pravikrishnen Moodley³, Richard J Lessells^{1,4}, Kogieleum Naidoo^{1,5},
5 Phelelani Sosibo², Nigel Garrett^{1,6} and Jienchi Dorward^{1,7}

6 **Institutions**

- 7 1. Centre for the AIDS Programme of Research in South Africa (CAPRISA), Durban, South
8 Africa.
- 9 2. eThekweni Municipality Health Unit, eThekweni Municipality, Durban KwaZulu-Natal,
10 South Africa
- 11 3. Department of Virology, University of KwaZulu-Natal and National Health Laboratory
12 Service, Inkosi Albert Luthuli Central Hospital, Durban, KwaZulu-Natal, South Africa
- 13 4. KwaZulu-Natal Research and Innovation Sequencing Platform (KRISP), University of
14 KwaZulu-Natal, Durban, KwaZulu-Natal, South Africa
- 15 5. South African Medical Research Council (SAMRC)-CAPRISA-TB-HIV Pathogenesis and
16 Treatment Research Unit, University of KwaZulu-Natal Nelson R Mandela School of
17 Medicine, Durban, South Africa
- 18 6. Discipline of Public Health Medicine, School of Nursing and Public Health, University of
19 KwaZulu-Natal, Durban, KwaZulu-Natal, South Africa
- 20 7. Nuffield Department of Primary Care Health Sciences, University of Oxford, Oxfordshire,
21 United Kingdom

22

23 **Corresponding author:** Mr Kwabena Asare, MSc. Centre for the AIDS Programme of Research
24 in South Africa. Doris Duke Medical Research Institute, Nelson R Mandela School of Medicine,
25 University of KwaZulu-Natal, Private Bag X7, Congella, 4013, South Africa.

26 Telephone: +27 31 260 4453; E-mail: kwabena.asare@caprisa.org

27 **Abstract**

28 **Introduction.** We aimed to compare clinical outcomes after viraemia between dolutegravir
29 versus efavirenz-based first-line antiretroviral therapy (ART) as evidence is lacking outside
30 clinical trials in resource-limited settings.

31 **Methods.** We conducted a retrospective cohort analysis with routine data from 59 South African
32 clinics. We included people living with HIV ≥ 15 years old receiving first-line tenofovir disoproxil
33 fumarate, lamivudine, dolutegravir (TLD) or tenofovir disoproxil fumarate, emtricitabine,
34 efavirenz (TEE), and with first viraemia (≥ 50 copies/ml) between June to November 2020. We
35 used multivariable modified Poisson regression models to compare retention-in-care and viral
36 suppression (< 50 copies/ml) after 12 months between participants on TLD versus TEE.

37 **Results.** At first viraemia, among 9657 participants, 6457 (66.9%) were female, median age
38 was 37 years (interquartile range [IQR] 31-44); 7598 (78.7%) were receiving TEE and 2059
39 (21.3%) TLD. Retention-in-care was higher in the TLD group (84.9%) than TEE (80.8%),
40 adjusted risk ratio (aRR) 1.03, 95%CI 1.00-1.06. Of 6569 participants retained in care and had a
41 12-month viral load, viral suppression was similar between TLD (78.9%) and TEE (78.8%)
42 groups, aRR 1.02, 95%CI 0.98-1.05. However, 3368 participants changed ART during follow-up;
43 the majority from TEE to first-line TLD (89.1%) or second-line (TLD 3.4%,
44 zidovudine/emtricitabine/lopinavir-ritonavir 2.1%). In sensitivity analysis among the remaining
45 3980 participants who did not change ART during follow-up and had a 12-month viral load, viral
46 suppression was higher in the TLD group (78.9%) than TEE (74.9%), aRR 1.07, 95%CI 1.03-
47 1.12.

48 **Conclusions.** Among people with viraemia on first-line ART, dolutegravir was associated with
49 better retention-in-care and similar or better viral suppression than efavirenz.

50 **Keywords:** Antiretroviral therapy; dolutegravir; retention-in-care; viraemia; viral suppression.

51 **INTRODUCTION**

52 In South Africa, about 23% of people living with HIV (PLHIV) experience an episode of viraemia
53 during first-line antiretroviral therapy (ART)[1]. Persistent viraemia during ART in PLHIV is
54 usually due to inconsistent adherence[2, 3] or drug resistance[3-5] and increases the risk of
55 virologic or treatment failure[6, 7]. This often leads to a slower immune reconstitution[8] and a
56 higher incidence of all-cause mortality[9-11].

57 Dolutegravir is an integrase strand transfer inhibitor (INSTI) being rolled out for ART in South
58 Africa since 2019[12] and in most low- and middle-income countries (LMICs)[13], replacing the
59 previous drug efavirenz. Compared to efavirenz and other non-nucleoside reverse transcriptase
60 (NNRTI) based regimens, dolutegravir is more effective and tolerable with an increased genetic
61 barrier against drug resistance based on clinical trial evidence[14-18]. Accordingly, people
62 receiving first-line dolutegravir-based regimens who present with viraemia may be more likely to
63 have inconsistent treatment adherence rather than drug resistance and could be more likely to
64 virally re-suppress without the need for changing regimens, unlike people receiving
65 efavirenz[19].

66 Based on these therapeutic strengths of dolutegravir, the World Health Organisation 2021 ART
67 treatment guidelines recommend delaying switching to second-line ART in people with
68 virological failure on first-line dolutegravir-based regimens[20]. This contrasts with
69 recommendations for an early switch to second-line ART among people with virological failure
70 receiving first-line efavirenz and other NNRTI-based regimens[20]. However, there is limited
71 evidence from routine healthcare settings on clinical outcomes and viral load trajectories after
72 viraemia in people receiving first-line dolutegravir-based ART from high HIV prevalence settings
73 in LMICs.

74 Therefore, we aimed to assess retention-in-care and viral load trajectories after viraemia in
75 people receiving first-line dolutegravir-based ART compared to those receiving efavirenz.

76

77 **METHODS**

78 **Study design and setting**

79 We conducted a retrospective cohort study with de-identified, routinely collected data from 59
80 public, primary healthcare facilities in eThekweni Municipality, KwaZulu-Natal, South Africa. In
81 these clinics, viral load testing is done at 6 and 12 months after ART initiation and then 12-

82 monthly thereafter[12]. CD4 count is routinely measured at ART initiation and after 12 months
83 and subsequently repeated if clinically indicated (e.g., viral load ≥ 1000 copies/ml).

84 The 2019 South African HIV treatment guideline[12] recommends that PLHIV with a viral load
85 ≥ 50 copies/ml during first-line ART should receive enhanced adherence counselling, and a
86 repeat viral load should be performed after two to three months. People receiving first-line ART
87 with two consecutive viral loads ≥ 1000 copies/ml two to three months apart are classified as
88 having virological failure, and switching to second-line ART is recommended if they were
89 receiving an NNRTI-based regimen including efavirenz or nevirapine. However, for those
90 receiving dolutegravir, switching to second-line ART is only recommended after two years of
91 ongoing viraemia.

92 This study was approved by the Biomedical Research Ethics Committee of the University of
93 Kwazulu-Natal (BE646/17), the KwaZulu-Natal Provincial Health Research Ethics Committee
94 (KZ_201807_021), the TB/HIV Information Systems Data Request Committee, and the
95 eThekweni Municipality Health Unit.

96 **Data sources and data management**

97 The data source for this study was South Africa's TIER.Net electronic database which contains
98 demographics, clinical status, regimen and clinic visit information of people receiving ART in
99 public sector healthcare clinics[21]. All datasets were de-identified by the South African National
100 Department of Health's TB/HIV Information Systems (THIS-www.tbhivinfosys.org.za/) before
101 access and use. We performed data cleaning to remove duplicate entries and rationalize ART
102 regimen lines according to clinical guidelines.

103 **Participants**

104 The study cohort included PLHIV aged ≥ 15 years with first viraemia (viral load ≥ 50 copies/ml)
105 between June 01, 2020, and November 30, 2020, while receiving first-line TEE or TLD
106 regimens. The TLD group included participants who initiated TLD and who transitioned from an
107 NNRTI-based regimen to TLD before viraemia. The ART regimen lines were based on a
108 predefined variable from the TIER.Net dataset, prevailing guidelines, and clinical considerations.
109 For example, someone who transitioned from TEE to TLD with two previous viral loads ≥ 1000
110 copies/ml was reclassified as second-line TLD. The ART regimen at viraemia was defined as
111 the regimen participants were receiving at the time of viraemia, so all participants who
112 transitioned from TEE to TLD on the date of viraemia were classified as being on TEE at the
113 time of viraemia. We selected the baseline period of viraemia to include as many participants as

114 possible on dolutegravir as implementation started in December 2019 and to allow a minimum
115 of 365 days (12 months) plus 90 days of follow-up before the data cutoff of our dataset on April
116 30, 2022. We excluded participants who had been receiving their ART regimen at the time of
117 viraemia for less than 90 days and those not receiving standard first-line regimens of TEE or
118 TLD at the time of viraemia.

119 **Primary outcomes**

120 Our primary outcomes were retention-in-care and viral suppression at 12 months follow-up after
121 viraemia. Retention-in-care at 12 months was defined as not being lost to follow-up or recorded
122 in TIER.Net as either deceased or 'transferred out' to another clinic (as we could not access or
123 link to data at other clinics to establish subsequent retention-in-care) by 365 days after viraemia.
124 Loss to follow-up was defined based on the South African ART programme guidelines of being
125 ≥ 90 days late for a visit[22]. Viral suppression was defined as viral load < 50 copies/ml.
126 Considering viral loads are not always completed on time in routine care, we defined the 12-
127 month window as the closest viral load to 365 days between 181 to 545 days after viraemia. We
128 included only the viral loads of participants retained in care.

129 **Secondary outcomes**

130 To assess implementation fidelity to the guidelines for managing viraemia, we evaluated the
131 secondary outcomes of clinic visit attendance up to 6 months after viraemia and 3-month repeat
132 viral load completion and viral suppression (< 50 copies/ml). We defined the 3-month viral load
133 window as the closest viral load testing date to 90 days between 28 to 180 days after viraemia.

134 **Exposures**

135 The primary exposure was the first-line ART regimen combination (TLD versus TEE) that
136 participants were receiving at the time of viraemia. Potential confounders included participant
137 characteristics at viraemia, including age, gender, active tuberculosis disease, viral load
138 category, CD4 count category, and time-period of viraemia.

139 **Statistical analyses**

140 We performed all statistical analyses using R 4.2.0 (R Foundation for Statistical Computing,
141 Vienna, Austria)[23]. We used modified Poisson regression models with robust standard errors
142 adjusting for clustering by clinic[24] to determine the risk ratios of retention-in-care at 12 months
143 and viral suppression at 3 and 12 months after viraemia. In all regression models, we compared
144 TLD versus TEE first-line regimens and adjusted for participant characteristics at viraemia: age,

145 gender, active tuberculosis disease, time-period of viraemia, viral load category and CD4 count
146 category.

147 We performed two separate sensitivity analyses. The first sensitivity analysis involved the 12-
148 month retention-in-care outcome, where we included participants who were transferred out to
149 another clinic as being retained in care. The second sensitivity analysis involved the 12-month
150 viral suppression outcome, where we excluded participants who changed their ART regimen
151 during the 12-month follow-up.

152 To better understand management and outcomes among people with high-level viraemia, we
153 conducted a secondary analysis in participants with viraemia ≥ 1000 copies/ml. In this sub-
154 group, we plotted a Sankey diagram to graphically present viral load trajectories after viraemia
155 and switching to second-line ART (only in the TEE group). We only included participants with
156 complete 3- and 12-month viral load results for the Sankey diagram.

157

158 **RESULTS**

159 **Cohort characteristics at the time of viraemia**

160 Between June 01, 2020, and November 30, 2020, 11366 people aged ≥ 15 had viraemia while
161 receiving first-line ART at the study clinics (Figure 1). At the time of viraemia, 1389 had been
162 receiving their current regimen for less than 90 days, and 320 participants were not receiving
163 standard TEE or TLD regimens and were excluded. Of the remaining 9657 people included in
164 the analyses, 7598 (78.7%) were receiving TEE, and 2059 (21.3%) were receiving TLD
165 regimens at the time of viraemia (Table 1). In the TLD group, 584 (28.4%) had been initiated on
166 TLD, and 1475 (71.6%) had transitioned to TLD from an NNRTI-based regimen before viraemia.
167 The time on the current regimen was lower in the TLD group (0.5 years, IQR 0.4-0.5) than in the
168 TEE group (3.0 years, IQR 1.1-5.3). The median age of the cohort was 37 years (IQR 31-44),
169 and 6457 (66.9%) were female, of whom 196 (3.0%) were pregnant. There were more females
170 ($n=5624$, 74.0%) in the TEE group and more males ($n=1226$, 59.5%) in the TLD group.

171 **Clinical outcomes after viraemia**

172 Twelve months after viraemia, 1183 (12.3%) participants were recorded as lost to follow-up, 59
173 (0.6%) had died, 528 (5.5%) had transferred out to another clinic, and 7887 (81.7%) were
174 retained in care (Table 2). Retention-in-care at 12 months was 80.8% ($n=6139$) in the TEE
175 group and 84.9% ($n=1748$) in the TLD group (Table 2). In the multivariable Poisson regression
176 analysis adjusted for age, gender, active tuberculosis disease, time-period of viraemia, viral load

177 category and CD4 count category, all at the time of viraemia, 12-month retention-in-care was
178 higher in the TLD group than TEE (adjusted risk ratio [aRR] 1.03, 95% confidence interval [CI]
179 1.00-1.06, $p=0.047$) (Table 3). In sensitivity analysis (Table S 1), where we classified people
180 who were transferred out to another clinic as being retained in care, 12-month retention-in-care
181 was similar between the TLD (89.1%) and TEE (86.6%) groups, aRR 1.02, 95% CI 0.99-1.04,
182 $p=0.149$.

183 Of participants retained in care at 12 months, 6569 (83.3%) had a follow-up viral load done at a
184 median of 363 days (IQR, 320-384) after viraemia. By regimen, 5164 (84.1%) in the TEE group
185 and 1405 (80.4%) in the TLD group had a 12-month viral load (Table 2). Of participants with a
186 12-month viral load, 4067 (78.8%) in the TEE group and 1108 (78.9%) in the TLD group were
187 virally suppressed. The multivariable Poisson regression analysis showed no difference in 12-
188 month viral suppression in the TLD group versus TEE (aRR 1.02, 95% CI 0.98-1.05, $p=0.418$)
189 (Table 4).

190 However, at a median of 189 days (IQR, 84-271) after viraemia, 3368 (34.9%) participants
191 changed their ART regimen (Table 2). Of these, 3074 (91.3%) transitioned to another first-line,
192 and 294 (8.7%) switched to second-line regimens. Participants in the TEE group had more
193 regimen changes after viraemia ($n=3323$, 43.7%) than those in the TLD group ($n=45$, 2.2%). In
194 a sensitivity analysis among 3980 participants who did not change their regimen within 12
195 months after viraemia and had a 12-month viral load, 12-month viral suppression was more
196 likely in the TLD group (78.9%) than TEE (74.9%), aRR 1.07, 95% CI 1.03-1.12, $p=0.001$)
197 (Table 5).

198 We assessed implementation fidelity to viraemia management guidelines. In the first 6 months
199 after viraemia, 7038 (92.6%) participants in the TEE group and 1848 (89.8%) in the TLD group
200 had at least one visit after a median of 85 (IQR, 69-107) and 86 (IQR, 77-111) days respectively.
201 Within the 6 months, participants in the TEE group had a median of 3 (IQR, 2-4) visits, and
202 participants in the TLD group had a median of 3 (IQR, 2-3) visits (Table 2). Regarding viral load
203 monitoring after viraemia, only 2961 (42.1%) participants in the TEE group and 780 (42.2%) in
204 the TLD group had a 3-month repeat viral load done after a median of 112 (IQR, 87-141) and
205 120 (IQR, 96-161) days respectively. Three-month repeat viral load suppression was higher in
206 the TLD group ($n=576$, 73.8%) than the TEE group ($n=1962$, 66.3%), aRR 1.07, 95% CI 1.02-
207 1.13, $p=0.009$; Table S 2).

208 We also assessed follow-up outcomes restricted to participants with high-level viraemia (≥ 1000
209 copies/ml). A total of 2163 participants presented with high-level viraemia, of whom 1804
210 (83.4%) were receiving TEE and 359 (16.6%) were receiving TLD (Table S 3). Of these, 328
211 (34.7%) participants in the TEE group and 38 (20.0%) in the TLD group had a virological failure
212 (repeat 3-month viral load ≥ 1000 copies/ml). Of participants with virological failure in the TEE
213 group, 104 (31.7%) were switched to second-line ART within the 12-month follow-up period
214 (from the time of viraemia). In the multivariable Poisson regression models, participants who
215 were on TLD at the time of high-level viraemia had better outcomes than those on TEE
216 regarding 3-month viral suppression (63.7% versus 42.3%, aRR 1.39, 95% CI 1.22-1.58,
217 $p < 0.001$, Table S 4), 12-month retention-in-care (71.9% versus 63.3%, aRR 1.11, 95% CI 1.02-
218 1.22, $p = 0.018$, Table S 5) and 12-month viral suppression (76.6% versus 61.6%, aRR 1.24, 95%
219 CI 1.12-1.36, $p < 0.001$, Table S 6). A graphical overview of outcomes after high-level viraemia is
220 presented in the Sankey diagram in Figure 2.

221 In the Poisson regression analyses, outcomes were generally less likely among participants
222 aged < 25 at the time of viraemia than older participants.

223 Discussion

224 In this cohort study with large-scale ART programmatic data from 59 public sector healthcare
225 clinics in South Africa, retention-in-care after viraemia was better among PLHIV on first-line TLD
226 than TEE. Viral suppression after viraemia was better among PLHIV, who stayed on first-line
227 TLD than those who stayed on first-line TEE. Retention-in-care and viral suppression were
228 better among participants with high-level viraemia (≥ 1000 copies/ml) on TLD than TEE.

229 Limited evidence exists on retention-in-care and viral suppression after viraemia on first-line
230 dolutegravir-based ART in routine LMIC settings, but such data is urgently needed to optimise
231 strategies for managing viraemia on dolutegravir. Evidence from clinical trials has shown lower
232 rates of treatment discontinuation and abandonment due to lower rates of adverse events with
233 dolutegravir-based than efavirenz-based ART regimens[17, 18]. Our finding of better retention-
234 in-care with TLD than TEE after viraemia on first-line ART is consistent with the results from
235 these studies[17, 18]. It emphasises the potential effect of the tolerability of dolutegravir in
236 ensuring consistent treatment adherence and improved clinical outcomes after viraemia.

237 For viral suppression after viraemia, we found one similar study conducted in South Africa
238 among 385 participants enrolled in the ADVANCE trial who had viraemia while receiving first-
239 line dolutegravir-based or efavirenz-based ART regimens[19]. The study used a protocol-

240 defined virologic failure of either ≥ 1000 copies/ml at week 12, ≥ 200 copies/ml at week 24, or
241 ≥ 50 copies/ml at week 48 after enrolment. In participants with follow-up viral load available, viral
242 suppression (< 50 copies/ml) within three follow-up visits after the first protocol-defined virologic
243 failure was 74.0% (n=77/104) with tenofovir alafenamide (TAF)/emtricitabine (FTC)/dolutegravir,
244 85.0% (n=85/100) with TDF/FTC/dolutegravir and 40.4% (n=44/109) with
245 TDF/FTC/efavirenz[19]. This evidence from the ADVANCE trial is consistent with our findings
246 from routine healthcare settings, but the efavirenz group in the ADVANCE trial had lower viral
247 suppression.

248 Our findings are essential in resource-limited settings approaching a full rollout to dolutegravir-
249 based regimens for monitoring implementation successes. We used South African guideline
250 definitions of viraemia, retention-in-care, and viral suppression and adjusted for potential
251 confounders of clinical outcomes after viraemia, such as age, gender, active tuberculosis
252 disease, time-period of viraemia, viral load and CD4 count. Our findings support 2019[12] and
253 current 2023[25] South African ART treatment guidelines that recommend the delay of switching
254 to second-line ART after virologic failure among participants receiving first-line dolutegravir-
255 based regimens since enhanced adherence counselling is more likely to lead to re-suppression
256 due to dolutegravir's efficacy[14] and increased genetic barrier to drug resistance[26].

257 Furthermore, our analysis on viraemia management revealed healthcare bottlenecks that can
258 be addressed to improve clinical outcomes after viraemia. Although about 90% of participants
259 had a clinic visit within the first 6 months after viraemia, less than half had a repeat 3-month viral
260 load. Some of these missing repeat viral loads might have been done but not recorded in
261 TIER.Net. However, studies in South Africa[27] and Lesotho[28] that used prospectively
262 collected clinic data have shown similar rates of 47.7% and 40.0% of repeat viral load
263 completion within 6 months after the first elevated viral load ≥ 1000 copies/ml in participants
264 receiving ART. These gaps lead to missed opportunities for adequate viraemia management,
265 such as confirming persistent viraemia and switching to second-line ART with potentially
266 negative implications for increased morbidity and mortality[29, 30].

267 Our analysis also revealed poorer retention-in-care and viral suppression outcomes among
268 younger PLHIV. Younger people remain a high-risk group of the HIV epidemic[31], and these
269 findings indicate they might also struggle to achieve better treatment outcomes during chronic
270 HIV infection. Thus, engaging and paying particular attention to young people with viraemia on
271 first-line ART might also be necessary as they likely have special needs that must be addressed
272 for improved outcomes.

273 Our study had some limitations. Although most people currently initiating ART in South Africa
274 are prescribed dolutegravir-based regimens[32], new initiations on dolutegravir and the
275 transition from other regimens to dolutegravir are not random. People initiating or transitioning to
276 dolutegravir may be more likely to be clinically stable than people on different regimens, so we
277 adjusted for the viral load category at the time of viraemia in all regression models. However, we
278 cannot rule out confounding by variables not recorded in the dataset. The timing of viraemia
279 was also different as more participants in the TEE group were viraemic during the COVID-19
280 period and might have been at a higher risk of interruptions in care post-viraemia. However, we
281 adjusted for the time-period of viraemia in our analyses. This study is also at the early stages of
282 the dolutegravir implementation in South Africa, and more extended follow-up data are needed
283 as dolutegravir resistance may increase over time. Our analysis is also limited to one province,
284 and a national-level study would be more representative of the South African population.

285 In conclusion, our findings demonstrate that, among people with viraemia during first-line ART in
286 routine healthcare settings, dolutegravir use was associated with better retention-in-care and
287 better viral suppression among people who did not change ART regimen. Among people with
288 high-level viraemia ≥ 1000 copies/mL, TLD was even more strongly associated with improved
289 retention-in-care and viral suppression. Improving adherence to guidelines for managing
290 viraemia, including enhanced adherence counselling and repeat viral load monitoring, is
291 important for better outcomes with TLD after viraemia. Further research to investigate longer-
292 term outcomes, such as switching to second-line ART after two years of ongoing viraemia on
293 first-line dolutegravir, would be a great addition to the evidence.

294 **Notes**

295 **Author contributions.** KA, YS, LL, JvdM, RJL, KN, NG and JD conceptualised the study. TK,
296 YS, PM, and PS managed data collection. TK, PS, and JvdM oversaw data curation. KA, YS,
297 TK, JvdM, PS, LL, RvH, NG and JD had full access to the data in the study. KA, JvdM, LL, and
298 JD analysed the data. KA drafted the manuscript. All authors reviewed and approved the final
299 version for submission.

300 **Acknowledgements.** We acknowledge the eThekweni Municipality Health Unit staff, patients,
301 and primary care clinics.

302 **Financial support.** This work was supported with funding from the Africa Oxford Initiative
303 (AfiOx-160) and the Bill & Melinda Gates Foundation (INV-051067). JD, Academic Clinical
304 Lecturer (CL-2022-13-005), is funded by the UK National Institute of Health and Social Care
305 Research (NIHR). The views expressed in this publication are those of the author (s) and not
306 necessarily those of the NIHR, NHS or the UK Department of Health and Social Care.

307 **Potential conflicts of interest.** All authors declare no competing interests.

308 **References**

- 309 1. Hermans LE, Moorhouse M, Carmona S, et al. Effect of HIV-1 low-level viraemia during
310 antiretroviral therapy on treatment outcomes in WHO-guided South African treatment
311 programmes: a multicentre cohort study. *Lancet Infect Dis* **2018**; 18(2): 188-97.
- 312 2. Assemie MA, Alene M, Ketema DB, Mulatu S. Treatment failure and associated factors
313 among first line patients on highly active antiretroviral therapy in Ethiopia: a systematic
314 review and meta-analysis. *Global Health Research and Policy* **2019**; 4(1).
- 315 3. El-Khatib Z, Ekstrom AM, Ledwaba J, et al. Viremia and drug resistance among HIV-1
316 patients on antiretroviral treatment: a cross-sectional study in Soweto, South Africa.
317 *AIDS* **2010**; 24(11): 1679-87.
- 318 4. Musengimana G, Tuyishime E, Kiromera A, et al. Acquired HIV drug resistance among
319 adults living with HIV receiving first-line antiretroviral therapy in Rwanda: A cross-
320 sectional nationally representative survey. *Antivir Ther* **2022**; 27(3):
321 13596535221102690.
- 322 5. Henerico S, Mikasi SG, Kalluvya SE, et al. Prevalence and patterns of HIV drug
323 resistance in patients with suspected virological failure in North-Western Tanzania. *J*
324 *Antimicrob Chemother* **2022**; 77(2): 483-91.
- 325 6. Joya C, Won SH, Schofield C, et al. Persistent Low-level Viremia While on Antiretroviral
326 Therapy Is an Independent Risk Factor for Virologic Failure. *Clin Infect Dis* **2019**; 69(12):
327 2145-52.
- 328 7. Fleming J, Mathews WC, Rutstein RM, et al. Low-level viremia and virologic failure in
329 persons with HIV infection treated with antiretroviral therapy. *AIDS* **2019**; 33(13): 2005-
330 12.
- 331 8. Deeks SG. Determinants of virological response to antiretroviral therapy: implications for
332 long-term strategies. *Clin Infect Dis* **2000**; 30 Suppl 2: S177-84.
- 333 9. Elvstam O, Medstrand P, Yilmaz A, Isberg PE, Gisslen M, Bjorkman P. Virological failure
334 and all-cause mortality in HIV-positive adults with low-level viremia during antiretroviral
335 treatment. *PLoS One* **2017**; 12(7): e0180761.
- 336 10. Gupta-Wright A, Fielding K, van Oosterhout JJ, et al. Virological failure, HIV-1 drug
337 resistance, and early mortality in adults admitted to hospital in Malawi: an observational
338 cohort study. *Lancet HIV* **2020**; 7(9): e620-e8.
- 339 11. Ayele TA, Worku A, Kebede Y, Alemu K, Kasim A, Shkedy Z. Choice of initial
340 antiretroviral drugs and treatment outcomes among HIV-infected patients in sub-Saharan

- 341 Africa: systematic review and meta-analysis of observational studies. *Syst Rev* **2017**;
342 6(1): 173.
- 343 12. The South African National Department of Health. 2019 ART Clinical Guidelines for the
344 management of HIV in Adults, Pregnancy, Adolescents, Children, Infants and Neonates.
345 Available at: [https://www.health.gov.za/wp-content/uploads/2020/11/2019-art-](https://www.health.gov.za/wp-content/uploads/2020/11/2019-art-guideline.pdf)
346 [guideline.pdf](https://www.health.gov.za/wp-content/uploads/2020/11/2019-art-guideline.pdf). Accessed 12 June 2023.
- 347 13. World Health Organisation. WHO HIV policy adoption and implementation status in
348 countries. Available at: [https://cdn.who.int/media/docs/default-source/hq-hiv-hepatitis-](https://cdn.who.int/media/docs/default-source/hq-hiv-hepatitis-and-stis-library/who-hiv-policy-adoption-and-implementation-status-in-countries_nov.pdf?sfvrsn=bb35e6ae_8)
349 [and-stis-library/who-hiv-policy-adoption-and-implementation-status-in-](https://cdn.who.int/media/docs/default-source/hq-hiv-hepatitis-and-stis-library/who-hiv-policy-adoption-and-implementation-status-in-countries_nov.pdf?sfvrsn=bb35e6ae_8)
350 [countries_nov.pdf?sfvrsn=bb35e6ae_8](https://cdn.who.int/media/docs/default-source/hq-hiv-hepatitis-and-stis-library/who-hiv-policy-adoption-and-implementation-status-in-countries_nov.pdf?sfvrsn=bb35e6ae_8). Accessed 25-May-2023.
- 351 14. Kanters S, Vitoria M, Zoratti M, et al. Comparative efficacy, tolerability and safety of
352 dolutegravir and efavirenz 400mg among antiretroviral therapies for first-line HIV
353 treatment: A systematic literature review and network meta-analysis. *EClinicalMedicine*
354 **2020**; 28: 100573.
- 355 15. Nickel K, Halfpenny NJA, Snedecor SJ, Puneekar YS. Comparative efficacy, safety and
356 durability of dolutegravir relative to common core agents in treatment-naïve patients
357 infected with HIV-1: an update on a systematic review and network meta-analysis. *BMC*
358 *Infect Dis* **2021**; 21(1): 222.
- 359 16. Santoro MM, Di Carlo D, Armenia D, et al. Viro-immunological response of drug-naive
360 HIV-1-infected patients starting a first-line regimen with viraemia >500,000 copies/ml in
361 clinical practice. *Antivir Ther* **2018**; 23(3): 249-57.
- 362 17. Venter WDF, Moorhouse M, Sokhela S, et al. Dolutegravir plus Two Different Prodrugs of
363 Tenofovir to Treat HIV. *New England Journal of Medicine* **2019**; 381(9): 803-15.
- 364 18. Walmsley SL, Antela A, Clumeck N, et al. Dolutegravir plus Abacavir–Lamivudine for the
365 Treatment of HIV-1 Infection. *New England Journal of Medicine* **2013**; 369(19): 1807-18.
- 366 19. Pepperrell T, Venter WDF, McCann K, et al. Participants on Dolutegravir Resuppress
367 Human Immunodeficiency Virus RNA After Virologic Failure: Updated Data from the
368 ADVANCE Trial. *Clinical Infectious Diseases* **2021**; 73(4): e1008-e10.
- 369 20. World Health Organisation. Consolidated guidelines on HIV prevention, testing,
370 treatment, service delivery and monitoring: recommendations for a public health
371 approach. Available at: <https://www.who.int/publications/i/item/9789240031593>.
372 Accessed 25-May-2023.

- 373 21. Osler M, Hilderbrand K, Hennessey C, et al. A three-tier framework for monitoring
374 antiretroviral therapy in high HIV burden settings. *Journal of the International AIDS*
375 *Society* **2014**; 17(1): 18908.
- 376 22. South Africa: National Department of Health. Adherence guidelines for HIV, TB and
377 NCDs: Policy and service delivery guidelines for linkage to care, adherence to treatment
378 and retention in care. **2016**.
- 379 23. R Core Team. R: A language and environment for statistical computing. Available at:
380 <https://www.R-project.org/>.
- 381 24. Zou GY, Donner A. Extension of the modified Poisson regression model to prospective
382 studies with correlated binary data. *Stat Methods Med Res* **2013**; 22(6): 661-70.
- 383 25. The South African National Department of Health. 2023 ART Clinical Guidelines for the
384 Management of HIV in Adults, Pregnancy and Breastfeeding, Adolescents, Children,
385 Infants and Neonates. Available at: [https://knowledgehub.health.gov.za/elibrary/2023-art-](https://knowledgehub.health.gov.za/elibrary/2023-art-clinical-guidelines-management-hiv-adults-pregnancy-and-breastfeeding-adolescents)
386 [clinical-guidelines-management-hiv-adults-pregnancy-and-breastfeeding-adolescents](https://knowledgehub.health.gov.za/elibrary/2023-art-clinical-guidelines-management-hiv-adults-pregnancy-and-breastfeeding-adolescents).
387 Accessed 10 July 2023.
- 388 26. Llibre JM, Pulido F, García F, García Deltoro M, Blanco JL, Delgado R. Genetic barrier to
389 resistance for dolutegravir. *AIDS Rev* **2015**; 17(1): 56-64.
- 390 27. Fox MP, Brennan AT, Nattey C, et al. Delays in repeat HIV viral load testing for those
391 with elevated viral loads: a national perspective from South Africa. *J Int AIDS Soc* **2020**;
392 23(7): e25542.
- 393 28. Glass TR, Motaboli L, Nsakala B, et al. The viral load monitoring cascade in a resource-
394 limited setting: A prospective multicentre cohort study after introduction of routine viral
395 load monitoring in rural Lesotho. *PLoS One* **2019**; 14(8): e0220337.
- 396 29. Bell Gorrod H, Court R, Schomaker M, Maartens G, Murphy RA. Increased Mortality
397 With Delayed and Missed Switch to Second-Line Antiretroviral Therapy in South Africa.
398 *JAIDS Journal of Acquired Immune Deficiency Syndromes* **2020**; 84(1): 107-13.
- 399 30. Bell-Gorrod H, Fox MP, Boule A, et al. The Impact of Delayed Switch to Second-Line
400 Antiretroviral Therapy on Mortality, Depending on Definition of Failure Time and CD4
401 Count at Failure. *American Journal of Epidemiology* **2020**; 189(8): 811-9.
- 402 31. Risher KA, Cori A, Reniers G, et al. Age patterns of HIV incidence in eastern and
403 southern Africa: a modelling analysis of observational population-based cohort studies.
404 *The Lancet HIV* **2021**; 8(7): e429-e39.

405 32. Dorward J, Sookrajh Y, Khubone T, et al. Implementation and outcomes of dolutegravir-
406 based first-line antiretroviral therapy for people with HIV in South Africa: a retrospective
407 cohort study. *The Lancet HIV* **2023**.

408

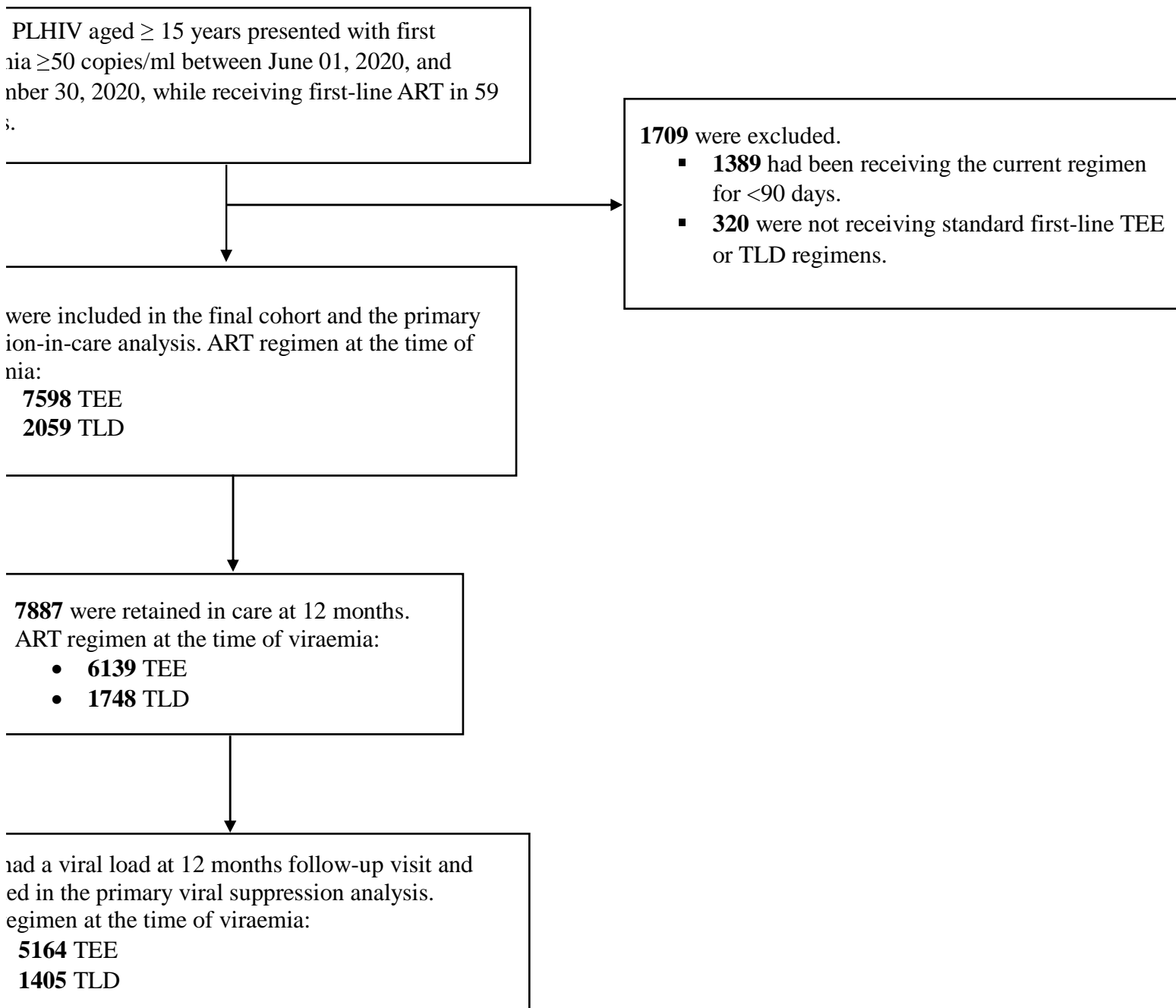
409 **Figure legends**

410 **Figure 1.** Flow diagram of PLHIV receiving antiretroviral therapy at 59 clinics in South Africa.

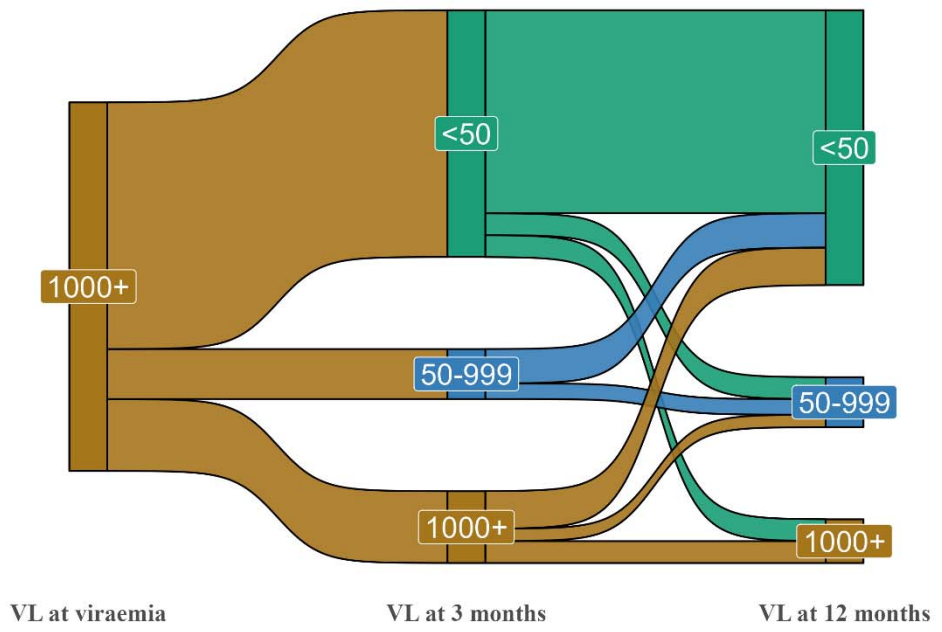
411 ART=Antiretroviral therapy, ml=Milliliter, PLHIV=People living with HIV, TEE=Tenofovir disoproxil
412 fumarate plus emtricitabine plus efavirenz, TLD=Tenofovir disoproxil fumarate plus lamivudine
413 plus dolutegravir.

414 **Figure 2.** Sankey diagram showing the flow of viraemia management outcomes in PLHIV with
415 high-level viraemia (≥ 1000 copies/ml) while receiving first-line antiretroviral therapy for ≥ 90 days
416 at the time of viraemia. Panel (A) TLD group and panel (B) TEE group. ml=Milliliter,
417 PLHIV=People living with HIV, TEE=Tenofovir disoproxil fumarate plus emtricitabine plus
418 efavirenz, TLD=Tenofovir disoproxil fumarate plus lamivudine plus dolutegravir, VL=Viral load
419 (copies/ml).

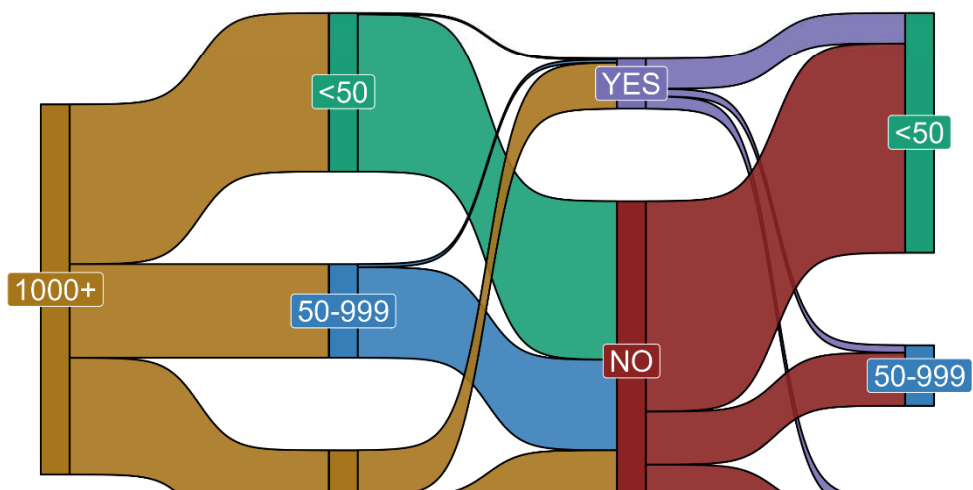
e 1



A. TLD group



B. TEE group



Characteristics of people with viraemia (≥ 50 copies/ml) while receiving first-line ART

Variable	Overall, N = 9,657	ART regimen at the time of viraemia	
		TEE, N = 7,598	Other, N = 2,059
Age in years, median (IQR)	37 (31-44)	36 (30-43)	38 (31-45)
Age in years			
15-24	717 (7.4%)	601 (7.9%)	116 (5.6%)
25-34	3,234 (33.5%)	2,727 (35.9%)	507 (24.5%)
35-44	3,455 (35.8%)	2,690 (35.4%)	765 (36.9%)
45+	2,251 (23.3%)	1,580 (20.8%)	671 (32.1%)
Gender			
Male	3,200 (33.1%)	1,974 (26.0%)	1,226 (59.0%)
Female	6,457 (66.9%)	5,624 (74.0%)	833 (40.0%)
Known pregnant (females only)	196 (3.0%)	188 (3.3%)	8 (0.4%)
Known active tuberculosis disease	103 (1.1%)	69 (0.9%)	34 (1.6%)
Baseline time-period of viraemia			
June 2020	730 (7.6%)	703 (9.3%)	27 (1.3%)
July 2020	1,116 (11.6%)	1,018 (13.4%)	98 (4.7%)
August 2020	2,144 (22.2%)	1,796 (23.6%)	348 (16.6%)
September 2020	2,562 (26.5%)	1,996 (26.3%)	566 (27.1%)
October 2020	1,704 (17.6%)	1,222 (16.1%)	482 (23.1%)
November 2020	1,401 (14.5%)	863 (11.4%)	538 (25.6%)
TLD group category			
Not treated with TLD at ART initiation before viraemia	584 (28.4%)	-	584 (28.4%)
Treated with TLD at ART initiation before viraemia	1,475 (71.6%)	-	1,475 (71.6%)
Years since ART initiation, median (IQR)	4.0 (1.1-6.8)	4.0 (1.5-6.9)	4.0 (1.1-6.8)
Years on current ART regimen, median (IQR)	2.0 (0.5-4.9)	3.0 (1.1-5.3)	2.0 (0.5-4.9)
Viral load at viraemia (copies/ml)			
50-199	4,650 (48.2%)	3,550 (46.7%)	1,100 (51.3%)
200-999	2,844 (29.5%)	2,244 (29.5%)	600 (28.1%)
≥ 1000	2,163 (22.4%)	1,804 (23.7%)	359 (16.6%)

times after viraemia (≥ 50 copies/ml) in people receiving first-line ART

Variable	ART regimen	
	Overall, N = 9,657	TEE, N = 7,598
At least one ART visit within 6 months	8,886 (92.0%)	7,038 (92.6%)
Number of ART visits within 6 months, median (IQR)	3 (2-3)	3 (2-4)
Time to first ART visit within 6 months, median (IQR)	85 (70-108)	85 (69-107)
Repeat 3-month viral load test done ^a	3,741 (42.1%)	2,961 (42.1%)
Time to repeat 3-month viral load, median (IQR)	113 (89-145)	112 (87-141)
Repeat 3-month viral load (copies/ml)		
<50	2,538 (67.8%)	1,962 (66.3%)
50-199	445 (11.9%)	344 (11.6%)
200-999	288 (7.7%)	241 (8.1%)
1000+	470 (12.6%)	414 (14.0%)
ART regimen change within 12 months	3,368 (34.9%)	3,323 (43.7%)
Number of regimens changed to (of participants who changed regimen)		
1	3,074 (91.3%)	3,040 (91.5%)
2	294 (8.7%)	283 (8.5%)
Time to change within 12 months (of participants who changed regimen)	189 (84-271)	189 (83-272)
Regimen change to within 12 months (of participants who changed regimen)		
TEE (1st-line)	16 (0.5%)	0 (0.0%)
TLD (1st-line)	3,001 (89.1%)	3,001 (90.3%)
Other (1st-line)	57 (1.7%)	39 (1.2%)
AZT/XTC/LPV/r (2nd-line)	72 (2.1%)	66 (2.0%)
AZT/XTC/DTG (2nd-line)	81 (2.4%)	78 (2.3%)
TLD (2nd-line)	116 (3.4%)	116 (3.5%)
Other (2nd-line)	25 (0.7%)	23 (0.7%)
Follow-up outcome at 12 months		
Lost to follow-up	1,183 (12.3%)	967 (12.7%)
Died	59 (0.6%)	50 (0.7%)
Transferred out to another clinic	529 (5.5%)	442 (5.8%)

Table 3

Multivariable Poisson regression models of factors associated with retention-in-care at 12 months follow-up after viraemia (n=657)

Exposure	Level	Retention-in-care at 12 months follow-up n/N (%)	Unadjusted RR (95% CI)	P value	Reference
Treatment at viraemia	TEE	6139/7598 (80.8)	1	-	
	TLD	1748/2059 (84.9)	1.04 (1.01-1.07)	0.012	1.0
Age at viraemia	15-24	485/717 (67.6)	1	-	
	25-34	2479/3234 (76.7)	1.13 (1.08-1.18)	<0.001	1.0
	35-44	2939/3455 (85.1)	1.25 (1.19-1.30)	<0.001	1.0
	45+	1984/2251 (88.1)	1.29 (1.22-1.35)	<0.001	1.0
	Missing				
Sex at viraemia	Male	2573/3200 (80.4)	1	-	
	Female	5314/6457 (82.3)	1.03 (1.01-1.06)	0.007	1.0
HIV disease at viraemia	No	7821/9554 (81.9)	1	-	
	Yes	66/103 (64.1)	0.78 (0.69-0.89)	<0.001	0.0
Time at viraemia	June to July 2020	1431/1846 (77.5)	1	-	
	August 2020	1799/2144 (83.9)	1.07 (1.03-1.11)	<0.001	1.0
	September 2020	2173/2562 (84.8)	1.09 (1.05-1.12)	<0.001	1.0
	October 2020	1376/1704 (80.8)	1.03 (1.00-1.07)	0.051	1.0
	November 2020	1108/1401 (79.1)	1.01 (0.97-1.06)	0.541	0.0
CD4 count at viraemia	50-199	4087/4650 (87.9)	1	-	
	200-999	2400/2844 (84.4)	0.96 (0.94-0.98)	<0.001	0.0
	1000+	1400/2163 (64.7)	0.74 (0.71-0.78)	<0.001	0.0
Viral load at viraemia	≤ 200	1088/1393 (78.1)	1	-	
	201-350	1466/1803 (81.3)	1.04 (1.01-1.08)	0.018	1.0
	351-500	1555/1881 (82.7)	1.07 (1.04-1.10)	<0.001	1.0
	> 500	2685/3194 (84.1)	1.08 (1.05-1.12)	<0.001	1.0
	Missing	1093/1386 (78.9)	1.02 (0.97-1.06)	0.461	1.0

otherwise stated. ^a The primary exposure effect (retention-in-care at 12 months) is adjusted for all other variables in the table. µl=Microliter, ml=Milliliter, RR=Risk ratio, TEE=Tenofovir disoproxil fumarate plus emtricitabine plus efavirenz, TLD=Teravigvir.

Table 4

Multivariable Poisson regression models of factors associated with viral suppression at 12 months follow-up after viraemia were retained-in-care at 12 months follow-up and had viral load done (N=6569)

Level	Viral suppression (<50 copies/ml) at 12 months n/N (%)	Unadjusted RR (95% CI)	P value	P
at viraemia	TEE	4067/5164 (78.8)	1	-
	TLD	1108/1405 (78.9)	1.00 (0.97-1.04)	0.915
emia	15-24	281/398 (70.6)	1	-
	25-34	1572/2050 (76.7)	1.08 (1.01-1.16)	0.022
	35-44	1979/2480 (79.8)	1.12 (1.06-1.19)	<0.001
	45+	1343/1641 (81.8)	1.15 (1.08-1.23)	<0.001
r	Male	1631/2086 (78.2)	1	-
	Female	3544/4483 (79.1)	1.01 (0.98-1.05)	0.380
disease at viraemia	No	5139/6514 (78.9)	1	-
	Yes	36/55 (65.5)	0.83 (0.70-0.99)	0.038
viraemia	June to July 2020	968/1229 (78.8)	1	-
	August 2020	1301/1555 (83.7)	1.07 (1.02-1.11)	0.002
	September 2020	1476/1845 (80.0)	1.02 (0.97-1.07)	0.415
	October 2020	822/1109 (74.1)	0.94 (0.90-0.99)	0.012
	November 2020	608/831 (73.2)	0.93 (0.87-0.99)	0.017
copies/ml) at viraemia	50-199	2808/3385 (83.0)	1	-
	200-999	1628/2033 (80.1)	0.97 (0.94-1.00)	0.042
	1000+	739/1151 (64.2)	0.78 (0.74-0.81)	<0.001
copies/μl) at viraemia	≤ 200	674/901 (74.8)	1	-
	201-350	952/1205 (79.0)	1.06 (1.01-1.11)	0.023
	351-500	1018/1308 (77.8)	1.04 (0.98-1.10)	0.170
	> 500	1838/2246 (81.8)	1.10 (1.04-1.15)	<0.001
	Missing	693/909 (76.2)	1.02 (0.97-1.07)	0.384

otherwise stated. ^a The primary exposure effect (viral suppression at 12 months) is adjusted for all other variables in the table. μl=Micro liter, ml=Milliliter, RR=Risk ratio, TEE=Tenofvir disoproxil fumarate plus emtricitabine plus efavirenz, TLD=Teravir.

Table 5

Univariable and multivariable Poisson regression models of factors associated with viral suppression at 12 months following first-line ART who did not change their ART regimen within 12 months, were retained in care at 12 months follow-up.

	Level	Viral suppression (<50 copies/ml) at 12 months follow-up n/N (%)	Unadjusted RR (95% CI)	P value	
Regimen	TEE	1950/2604 (74.9)	1	-	
	TLD	1086/1376 (78.9)	1.05 (1.01-1.10)	0.007	1
Age at viraemia	15-24	161/246 (65.4)	1	-	
	25-34	890/1215 (73.3)	1.11 (1.00-1.23)	0.042	1
	35-44	1164/1493 (78.0)	1.18 (1.07-1.30)	0.001	1
	45+	821/1026 (80.0)	1.21 (1.10-1.33)	<0.001	1
	Male	1006/1326 (75.9)	1	-	
	Female	2030/2654 (76.5)	1.01 (0.97-1.05)	0.527	1
HIV disease at viraemia	No	3015/3945 (76.4)	1	-	
	Yes	21/35 (60.0)	0.79 (0.61-1.01)	0.056	0
Time at viraemia	June to July 2020	469/640 (73.3)	1	-	
	August 2020	747/917 (81.5)	1.11 (1.05-1.18)	<0.001	1
	September 2020	903/1141 (79.1)	1.08 (1.02-1.15)	0.010	1
	October 2020	510/712 (71.6)	0.98 (0.92-1.04)	0.433	0
	November 2020	407/570 (71.4)	0.97 (0.89-1.06)	0.490	0
Viral load (copies/ml) at viraemia	50-199	1715/2107 (81.4)	1	-	
	200-999	940/1222 (76.9)	0.95 (0.91-0.99)	0.009	0
	1000+	381/651 (58.5)	0.72 (0.67-0.78)	<0.001	0
Viral load (copies/μl) at viraemia	≤ 200	427/582 (73.4)	1	-	
	201-350	553/720 (76.8)	1.05 (0.98-1.12)	0.138	1
	351-500	586/787 (74.5)	1.02 (0.94-1.10)	0.637	1
	> 500	1077/1344 (80.1)	1.10 (1.04-1.16)	0.002	1
	Missing	393/547 (71.8)	0.98 (0.92-1.05)	0.604	0

otherwise stated. ^a The primary exposure effect (viral suppression at 12 months) is adjusted for all other variables in the table. μl=Microliter, ml=Milliliter, RR=Risk ratio, TEE=Tenofovir disoproxil fumarate plus emtricitabine plus efavirenz, TLD=Teravigir.