

FULL TITLE:

Protective effects of sacubitril/valsartan in anthracyclines-induced cardiotoxicity: A Systematic Review and Meta-Analysis

AUTHOR NAMES:

Felipe Israel López Trejo, M.D. ^{1,2}

¹ Departamento de Medicina Interna, Hospital General de México Dr Eduardo Liceaga, Mexico City, Mexico.

² Departamento de Cardiología, Centro Médico Nacional 20 de Noviembre, Mexico City, Mexico.

Telephone number: +52 (55) 4718 8374

Email: felipe.israel.lopez.trejo@hotmail.com

Mónica Daniela Sánchez Barrera, M.D. ³

³ Facultad de Medicina, Universidad Nacional Autónoma de México, Mexico City, Mexico.

Telephone number: +52 (55) 4354 8162

Email: dannibarrera03@gmail.com

Elias Noel Andrade Cuellar, M.D. ²

² Departamento de Cardiología, Centro Médico Nacional 20 de Noviembre, Mexico City, Mexico.

Telephone number: +52 (55) 4797 955

Email: elias.noel.ac@gmail.com

Julieta Danira Morales Portano, M.D. ²

² Departamento de Cardiología, Centro Médico Nacional 20 de Noviembre, Mexico City, Mexico.

Telephone number: +52 (55) 4185 6805

Email: jmoralesportano@gmail.com

Laura Aline Martínez Martínez, Ph.D. ⁴

⁴ Departamento de Reumatología, Instituto Nacional de Cardiología Ignacio Chávez, Mexico City, Mexico

Telephone number: +52 (55) 2106 8740

Email: alinemt2@yahoo.es

SHORT TITLE:

Sacubitril/valsartan in anthracycline-induced cardiotoxicity

ABSTRACT

Background

One of the adverse effects of anthracycline use is cardiotoxicity manifested as heart failure. The benefit of sacubitril/valsartan in patients with heart failure of ischemic origin has been demonstrated, but not due to toxicity. Our objective was to determine if there are protective effects of the use of sacubitril/valsartan in cardiotoxicity induced by anthracyclines.

Methods

A bibliographic search was carried out in PubMed, Cochrane Library, LILACS, Scopus, EBSCO and Google Scholar. A systematic review and meta-analysis was performed to assess mean differences (MD) with 95% confidence intervals following the PRISMA Statement.

Results

558 published articles were found, of which three were submitted to analysis, with a total sample of 69 patients. With the use of sacubitril/valsartan there was an increase in the percentage of left ventricular ejection fraction (LVEF) [MD 6.78% ($p < 0.001$)], an increase in the percentage of global longitudinal strain of the left ventricle (LV-GLS) [MD 3.37 % ($p < 0.001$)], and decreased serum levels of NT-proBNP [MD -1003.64 pg/mL ($p < 0.001$)]; in addition, there was an increase in the distance traveled with the use of sacubitril/valsartan [MD 95.23 meters ($p < 0.001$)] compared to their baseline values, respectively.

Conclusions

This meta-analysis suggests that there is a benefit from the use of sacubitril/valsartan in patients with heart failure related to the use of anthracyclines on ventricular remodeling and functional capacity. This is the first meta-analysis to our knowledge evaluating this effect. Randomized double-blind placebo-controlled clinical trials are required to confirm these findings.

KEYWORDS

Cardiotoxicity, anthracyclines, sacubitril/valsartan, cancer therapy-related cardiac dysfunction.

INTRODUCTION

Chemotherapies unwanted side effects, among which cardiotoxicity stands out, are causing patients die from cardiotoxicity and not from cancer-related causes¹, being the cardiovascular disease currently the second leading cause of long-term morbidity and mortality among cancer survivors². Chemotherapy-related cardiotoxicity is clinically manifested as heart failure³, being the anthracyclines the main group involved⁴. It is worrisome that only 11 % of patients who develop this complication recover myocardial function, leaving the remaining 89% with sequelae⁵. Left ventricular ejection fraction (LVEF) is the most commonly accepted parameter for evaluating cardiac function, as it independently predicts short- and long- term mortality from cardiovascular events, including anthracycline-induced cardiomyopathy⁸. Serum biomarkers have also shown utility as diagnostic and prognostic methods in this disease, mainly NT-proBNP⁷ and troponin I⁶. In the treatment of heart failure, the main therapeutic targets are blockade in the renin-angiotensin-aldosterone system (RAAS) and neprilysin inhibition (ARNI). The drug currently available that allows combined inhibition of the renin-angiotensin system and neprilysin without adverse events is sacubitril/valsartan⁹. The use of ARNI has shown superiority over other combination therapies¹⁰ in reducing mortality rates. The current guidelines of the American Heart Association (AHA)¹¹ and the ESC¹² recommend the use of four drugs that have been shown to reduce mortality and hospitalization rates as standard treatment for heart failure with reduced ejection fraction, including angiotensin-neprilysin receptor inhibitors (ARNI); however, the clinical trials that support the benefits of their use do not include cancer patients, so the use of these drugs is controversial in the context of chemotherapy-related cardiac dysfunction, and prevention and treatment strategies are needed to improve the clinical outcomes in these patients. For these reasons, we decided to carry out a systematic review and meta-analysis of the

beneficial cardioprotective effects of the use of sacubitril/valsartan in the treatment of patients with anthracycline-induced cardiotoxicity, to provide more scientific information that supports or not the performance of randomized controlled trials, since there are no complete published studies to date, and there is no meta-analysis to our knowledge that evaluates this.

METHODS

The primary objective of this study was to determine whether there are protective effects of the use of sacubitril/valsartan in the treatment of adult patients with anthracycline-induced cardiotoxicity. Secondary objectives were to determine the effects of sacubitril/valsartan on echocardiographic variables of myocardial function, on serum biomarker levels, and on drug safety variables (serum creatinine and potassium levels).

A systematic search was performed in six databases until July 2022: PubMed, Cochrane Library, LILACS, Scopus, EBSCO and Google Scholar, with four search algorithms by two reviewers: [cardiotoxicity AND anthracyclines AND sacubitril and valsartan sodium hydrate drug combination], [cardiotoxicity AND anthracyclines AND sacubitril], [cancer therapy-related cardiac dysfunction AND sacubitril and valsartan sodium hydrate drug combination] and [cancer therapy-related cardiac dysfunction AND sacubitril].

The inclusion criteria were articles that include individuals older than 18 years, with cancer, who had received treatment with an anthracycline at any cumulative dose, who presented chemotherapy-related myocardial dysfunction as a manifestation of cardiotoxicity, and who had received treatment with sacubitril/valsartan at any dose. The exclusion criteria were individuals who had presented heart failure prior to their inclusion in the corresponding prospective study and individuals with follow-up of less than three months.

A systematic review and meta-analysis was performed based on the Cochrane methodology for non-randomized studies. Data are expressed as means and standard deviation or interquartile ranges for quantitative variables according to their distribution. Qualitative variables are expressed in percentages or proportions. Inverse variance was used to measure the effect. Confidence intervals were set at 95 %. Results are expressed as mean difference. The fixed

effects analysis model was used. Only in cases of significant heterogeneity was the random effects model used. Tests for heterogeneity between studies were performed using the Cochran Q test¹³ and the I² test¹⁴. A p value < 0.05 or an I² greater than 70 % were considered significant evidence of heterogeneity. Statistical analysis was performed using the Review Manager software version 5.4. The risk of publication bias was assessed using the ROBINS-I¹⁵ tool for non-randomized studies. The systematic review and meta-analysis were carried out in accordance with the Cochrane¹⁶ guidelines and the PRISMA¹⁷ 2020 declaration for the preparation of intervention systematic reviews. Data analysis was performed using the Review Manager version 5.4 software to obtain results. Egger's visual inspection test was not performed due to the inclusion of less than 10 studies^{18,19}. The literature review in databases, the variables obtained, the data processing and the results were managed in accordance with the regulations for the protection of sensitive information and confidentiality, and were used exclusively for academic and research purposes.

RESULTS

In the systematic search of the six databases, duplicate articles were identified and excluded, the inclusion and exclusion criteria were applied by title and/or abstract of the article, and later by review of the full text and during the extraction of the articles data (Figure 1).

A total of 558 published articles were found, of which only three met the inclusion criteria and were submitted to analysis, with a total sample of 69 patients²⁰⁻²². The average age was 62 years, being predominantly female (79%). Table 1 shows the baseline demographic characteristics of the population in each study. One third of the population had a history of dyslipidemia and diabetes. The largest population with coronary artery disease was found in the study by Vitsenya et al (33 %), where 42.9 % also had some known arrhythmia (predominantly atrial fibrillation). The 40 % (Vitsenya et al) and 33.3 % (Frey et al) of the patients had arterial hypertension at the time of inclusion in the studies. Table 2 shows the concomitant therapy for the management of heart failure in the population of each study. The entire population received some ACEi or ARB in the three studies; in the studies by Vitsenya et al and Frey et al, they are reported as 100 % for both pharmacological groups, however, it is specified that it was one or the other drug, never both at the same time. Between 85 % and 100 % of the patients received some BB. More than half of the patients received an MRA. The use of diuretics was present from 47 % to 71 % of the patients. Less than a third of the populations in the studies by Gregorietti et al and Frey et al had an implantable cardioverter-defibrillator (ICD) or Cardiac Resynchronization Therapy-Defibrillation (CRT-D).

The effects of the use of sacubitril/valsartan on variables that assess ventricular remodeling (echocardiographic and biochemical), functional capacity, and safety profile were analyzed.

1. EFFECTS ON VENTRICULAR REMODELING

1.1 Percent Change in Left Ventricular Ejection Fraction (LVEF)

All 3 studies examined the effects of sacubitril/valsartan use on the percentage change in left ventricular ejection fraction. A fixed effects model was used due to heterogeneity between studies ($I^2= 67\%$). There was a statistically significant percentage increase in LVEF with the use of sacubitril/valsartan [mean difference 6.78 % (95 % CI: 4.91 – 8.65), $p < 0.001$] compared to baseline LVEF (Figure 1.1).

1.2 Percent Change in Left Ventricular Global Longitudinal Strain (LV-GLS)

Two studies examined the effects of the use of sacubitril/valsartan on the change in the percentage of global longitudinal strain of the left ventricle. A fixed effects model was used due to heterogeneity between studies ($I^2= 39\%$). There was a statistically significant percentage increase in LV-GLS with the use of sacubitril/valsartan [mean difference 3.37 % (95 % CI: 1.91 – 4.82), $p < 0.001$] compared to baseline LV-GLS (Figure 1.2).

1.3 Change in left atrial volume (LAV)

Two studies examined the effects of sacubitril/valsartan use on change in left atrial volume. A fixed effects model was used due to the null heterogeneity between studies ($I^2= 0\%$). There was a statistically significant decrease in left atrial volume with the use of sacubitril/valsartan [mean difference -9.91 % (95 % CI -14.32 to -5.50), $p < 0.001$] compared to baseline LAV (Figure 1.3).

1.4 Change in Left Ventricular End Diastolic Volume (LVED)

Two studies examined the effects of sacubitril/valsartan use on change in left ventricular end-diastolic volume. A fixed effects model was used due to heterogeneity between studies ($I^2= 54$ %). There was a statistically significant decrease in left ventricular end-diastolic volume with the use of sacubitril/valsartan [mean difference -5.67 % (95 % CI -11.02 to -0.32), $p = 0.04$] compared to baseline LVED (Figure 1.4).

1.5 Change in serum NT-proBNP levels

All three studies examined the effects of sacubitril/valsartan use on the change in serum NT-proBNP levels. A fixed effects model was used due to heterogeneity between studies ($I^2= 64$ %). There was a statistically significant decrease in serum NT-proBNP levels with the use of sacubitril/valsartan [mean difference of -1003.64 pg/mL (95 % CI: -1334.49 to -672.78), $p < 0.001$] compared with NT- basal proBNP (Figure 1.5).

2. EFFECTS ON FUNCTIONAL CAPACITY

2.1 Change in meters walked in the 6-minute walk test (SMWT)

Two studies examined the effects of sacubitril/valsartan use on change in meters walked in the 6-minute walk test. A fixed effects model was used due to heterogeneity between studies ($I^2= 70$ %). There was a statistically significant increase in distance walked with the use of sacubitril/valsartan [mean difference 95.23 meters (95 % CI: -1334.49 to -672.78), $p < 0.001$] compared to baseline SMWT (Figure 2.1).

3. EFFECTS ON DRUG SAFETY

3.1 Change in serum creatinine levels (mg/dL)

All three studies examined the effects of sacubitril/valsartan use on the change in serum creatinine levels. A fixed effects model was used due to the null heterogeneity between studies ($I^2 = 0\%$). There were no statistically significant changes with the use of sacubitril/valsartan [mean difference 0.04 mg/dL (95 % CI: -0.02 – 0.11), $p = 0.19$] compared to baseline creatinine levels (supplementary Figure 3.1).

3.2 Change in serum potassium levels (mmol/L)

All three studies examined the effects of sacubitril/valsartan use on changing serum potassium levels. A fixed effects model was used due to the null heterogeneity between studies ($I^2 = 0\%$). There were no statistically significant changes with the use of sacubitril/valsartan [mean difference 0.08 mg/dL (95 % CI: -0.00 – 0.16), $p = 0.05$] compared to baseline potassium levels (supplementary Figure 3.2).

DISCUSSION

Cardiovascular disease has become one of the leading causes of mortality in long-term cancer survivors. In this group of patients, early-onset cardiotoxicity is a strong predictor of late-onset or chronic cardiomyopathy. Heart failure due to cardiomyopathy induced by anthracyclines is a fatal complication, reaching up to 60 % mortality rate at two years. Regarding the use of sacubitril/valsartan in patients with heart failure secondary to the use of anthracyclines, to date there are only non-randomized prospective cohorts and series of case reports, however, there are no randomized clinical trials evaluating its beneficial effect in this population. Therefore, to our knowledge, this is the first meta-analysis evaluating the response to treatment with sacubitril/valsartan in patients with anthracycline cardiotoxicity. In the population analyzed in our study, the presence of comorbidities such as dyslipidemia, diabetes, coronary artery disease, and arterial hypertension stand out, as they are known risk factors for developing anthracycline-induced cardiomyopathy²³. In our study, the female sex predominated because breast cancer was the most prevalent in the three studies, and it is the main cancer in frequency, followed by hematological cancer, with use of anthracyclines. Angiotensin-II receptor plays an important role in anthracycline-induced cardiomyopathy, by increasing oxidative stress that leads to structural damage to cardiomyocytes²⁴. We can see that in the population analyzed, all the patients were managed with some ACEi or ARB. The only pharmacological group that is not mentioned in the studies are the sodium-glucose cotransporter type 2 inhibitors, perhaps due to the little existing evidence at the time of their performance, but which we now know is part of the treatment pillars. In evaluating myocardial function, LVEF has been shown to be an independent predictor of short- and long-term mortality in patients with anthracycline-induced cardiomyopathy,²⁵ so that its decrease (symptomatic or asymptomatic) is associated with higher mortality in these

patients²⁶. For this reason, LVEF was the main variable in the evaluation of myocardial function in our study, which included those patients with a subclinical reduction in systolic function. When analyzing the effects of the use of sacubitril/valsartan on LVEF, there was an increase with respect to the baseline, which translates into a quantitative improvement with clinical implication since there was improvement in the functional class; however, due to the way this last variable was reported, it was not possible to perform the analysis of paired groups. A meta-analysis analyzed different potentially cardioprotective therapies, of which only dexrazoxane²⁷ was shown to reduce the probability of heart failure; however, it did not show a benefit on survival. We must take into account that the United States Food and Drug Administration (FDA) and the European Medical Agency limit the approval of the use of dexrazoxane for patients treated with high-dose anthracyclines, who are with metastatic disease and not in the adjuvant setting. With the use of beta-blockers and angiotensin blockers^{28,29}, there was an improvement of 6.06 %; however, no difference was observed between the primary and secondary outcomes according to the number of cardioprotective agents (monotherapy versus combination), so in our study, the concomitant use of other drugs might not contribute to the effect, however this finding is just suggestive at best and in need of formal investigation. Other authors^{30,31} reported that the use of ACEi/ARB preserved the LVEF compared with controls, but Gujral et al³² found no significant difference. Regarding the use of beta-blockers^{33,34}, there is a benefit for drop in LVEF, with a significant increase in LVEF reported in favor of beta-blockers at maximum 4.46 %. However, Huang et al³⁵ reported a smaller improvement in LVEF (3.47 %) and the sensitivity analysis excluding the study with the greatest heterogeneity (the study that did not report the standard deviation of LVEF) lost statistical significance. About statins, there are reported an maximum improvement in LVEF of 6.14 % with the use of statins^{36,37}. For its part, sacubitril/valsartan in this meta-analysis

demonstrated an improvement in LVEF of 6.78 %, being one of the highest values documented to date.

Since BNP responds to end-diastolic pressure and NT-proBNP is more sensitive, this variable was analyzed in our study. Slight increases in serum BNP levels identify a risk of cardiac dysfunction, suggesting that elevated BNP levels may be a diagnostic marker of cardiotoxicity risk and even improve diagnostic performance of another similar cardiac dysfunction related to cancer therapy. In our study, a reduction in serum levels was found after the use of sacubitril/valsartan, which suggests an improvement in diastolic function, which could be a useful index for monitoring in the early stages of cardiotoxicity. There is not improvement for the BNP variable with the use of carvedilol combined with candesartan³⁴.

The strength of our study is that analyzes of variables other than LVEF were included, since it has been documented that a drop in LVEF is not the only finding indicative of cardiotoxicity.

Another question is whether there is a difference in the rate of response to cardioprotective drugs according to gender, so we did a sensitivity analysis finding an improvement in LVEF in women of 7.46 %, so it will be necessary to investigate whether sacubitril/valsartan has a greater benefit in women or is the higher prevalence of breast cancer the confounding factor. The inclusion of observational studies potentially strengthened our conclusions by allowing longer follow-up.

The main finding of this analysis of three non-randomized prospective studies is that in patients with heart failure attributable to the use of anthracyclines, the use of sacubitril/valsartan preserves and even increases the percentage of LVEF after chemotherapy-induced damage.

Study limitations

Possible confounding factors such as race and smoking status were not included in the report, because we did not have access to these data, so it was not possible to adjust the results in this

meta-analysis. Dose of anthracycline used was unknown, so it was not possible to perform a subgroup analysis for the different doses. Due to the small number of studies, we were unable to assess publication bias or perform meta-regression or another exploration of heterogeneity.

CONCLUSIONS

This meta-analysis suggests that there is benefit on the variables that evaluate ventricular remodeling and functional capacity, with the use of sacubitril/valsartan in patients with heart failure related to the use of anthracyclines, without altering the safety profile measured by serum creatinine and potassium levels. This is the first meta-analysis to our knowledge evaluating the effect of sacubitril/valsartan in patients with anthracycline-induced cardiotoxicity. Randomized double-blind placebo-controlled clinical trials are required to confirm these findings.

ACKNOWLEDGMENTS

The authors declare that there are not acknowledgments in this paper.

SOURCES OF FUNDING

The authors declare that this work was not supported by pharmaceutical industry.

DISCLOSURES

The authors declare that there was not relevant or material financial interests that relate to the research described in this paper.

REFERENCES

- ¹ Siegel RL, Miller KD, Jemal A. Cancer statistics. *CA Cancer J Clin* 2019;**69**(1):7–34. doi: 10.3322/caac.21551.
- ² Perez IE, Taveras Alam S, Hernandez GA, Sancassani R. Cancer therapy-related cardiac dysfunction: an overview for the clinician. *Clin Med Insights Cardiol* 2019;**13**:1179546819866445. doi: 10.1177/1179546819866445.
- ³ Steinherz LJ, Steinherz PG, Tan CT, Heller G, Murphy ML. Cardiac toxicity 4 to 20 years after completing anthracycline therapy. *JAMA* 1991;**266**:1672–1677.
- ⁴ Octavia Y, Tocchetti CG, Gabrielson KL, Janssens S, Crijns HJ, Moens AL. Doxorubicin-induced cardiomyopathy: From molecular mechanisms to therapeutic strategies. *J Mol Cell Cardiol* 2012;**52**(6):1213–25. doi: 10.1016/j.yjmcc.2012.03.006.
- ⁵ Oeffinger, K. C., Mertens, A. C., Sklar, C. A., et al., & Childhood Cancer Survivor. Chronic health conditions in adult survivors of childhood cancer. *N Engl J Med* 2006;**355**(15):1572-82. doi: 10.1056/NEJMsa060185.
- ⁶ Cardinale, D., Colombo, A., Bacchiani, G., et al. Early detection of anthracycline cardiotoxicity and improvement with heart failure therapy. *Circulation* 2015;**131**(22):1981–8. doi: 10.1161/CIRCULATIONAHA.114.013777.
- ⁷ Lee HS, Son CB, Shin SH, Kim YS. Clinical Correlation between Brain Natriuretic Peptide and Anthracycline-induced Cardiac Toxicity. *Cancer Res Treat* 2008;**40**(3):121. doi: 10.4143/crt.2008.40.3.121.
- ⁸ Zamorano, J. L., Lancellotti, P., Rodriguez Muñoz, D., et al., & ESC Scientific Document Group. 2016 ESC Position Paper on cancer treatments and cardiovascular toxicity developed under the auspices of the ESC Committee for Practice Guidelines: The Task Force for cancer

treatments and cardiovascular toxicity of the European Society of Cardiology (ESC). *Eur Heart J* 2016;**37**(36):2768-2801. doi: 10.1093/eurheartj/ehw211.

⁹ McMurray, J. J., Packer, M., Desai, A. S., et al., & PARADIGM-HF Investigators and Committees. Angiotensin-neprilysin inhibition versus enalapril in heart failure. *N Engl J Med* 2014;**371**(11):993-1004. doi: 10.1056/NEJMoa1409077.

¹⁰ Burnett, H., Earley, A., Voors, A. A., et al. Thirty Years of Evidence on the Efficacy of Drug Treatments for Chronic Heart Failure With Reduced Ejection Fraction: A Network Meta-Analysis. *Circ Heart Fail* 2017;**10**(1):e003529. doi: 10.1161/CIRCHEARTFAILURE.116.003529.

¹¹ Writing Committee, Maddox, T. M., Januzzi, J. L., Jr, Allen, L. A., et al. 2021 Update to the 2017 ACC Expert Consensus Decision Pathway for Optimization of Heart Failure Treatment: Answers to 10 Pivotal Issues About Heart Failure With Reduced Ejection Fraction, A Report of the American College of Cardiology Solution Set Oversight Committee. *J Am Coll Cardiol* 2021;**77**(6):772-810. doi: 10.1016/j.jacc.2020.11.022.

¹² Theresa A McDonagh, Marco Metra, Marianna Adamo, et al. 2021 ESC Guidelines for the diagnosis and treatment of acute and chronic heart failure. *Eur Heart J* 2021;**42**(36):3599-3726. doi: 10.1093/eurheartj/ehab368.

¹³ Cochran WG. The comparison of percentages in matched samples. *Biometrika* 1950;**37**(3–4):256–266. <https://doi.org/10.2307/2332378>

¹⁴ Higgins JPT, Thompson SG, Deeks JJ, Altman DG. Measuring inconsistency in meta-analyses. *BMJ* 2003;**327**(7414):557-60. doi: 10.1136/bmj.327.7414.557.

¹⁵ Sterne, J. A., Hernán, M. A., Reeves, B. C., Savović, J., Berkman, N. D., Viswanathan, M. ROBINS-I: a tool for assessing risk of bias in non-randomised studies of interventions. *BMJ* 2016;**355**:i4919. doi: 10.1136/bmj.i4919.

¹⁶ Higgins JPT, Green S (editors). Cochrane Handbook for Systematic Reviews of Interventions Version 5.1.0 [updated March 2011]. *The Cochrane Collaboration*, 2011. Available from www.cochrane-handbook.org.

¹⁷ Matthew J. Page, Joanne E. McKenzie, Patrick M. Bossuyt. The PRISMA 2020 statement: an updated guideline for reporting systematic reviews. *BMJ* 2021;**372**:71. doi:10.1136/bmj.n71.

¹⁸ Egger M, Davey Smith G, Schneider M, Minder C. Bias in meta-analysis detected by a simple, graphical test. *BMJ* 1997;**315**(7109):629-34. doi: 10.1136/bmj.315.7109.629. PMID: 9310563; PMCID: PMC2127453.

¹⁹ Fau Christian, Nabzo Solange. Metaanálisis: bases conceptuales, análisis e interpretación estadística. *Rev. mex. oftalmol* 2020;**94**(6):260-273. <https://doi.org/10.24875/rmo.m20000134>.

²⁰ Gregorietti V, Fernandez TL, Costa D, Chahla EO, Daniele AJ. Use of Sacubitril/valsartan in patients with cardio toxicity and heart failure due to chemotherapy. *Cardiooncology* 2020;**6**(1):24. doi: 10.1186/s40959-020-00078-4. PMID: 33292750; PMCID: PMC7643279.

²¹ Frey MK, Arfsten H, Pavo N, et al. Sacubitril/valsartan is well tolerated in patients with longstanding heart failure and history of cancer and improves ventricular function: real-world data. *Cardiooncology* 2021;**7**(1):35. doi: 10.1186/s40959-021-00121-y. PMID: 34645527; PMCID: PMC8513362.

²² Vitsenya MV, Potekhina AV, Gavryushina SV. Prevention and treatment of left ventricular dysfunction and heart failure associated with antitumor therapy: opportunities and perspectives. *Effective pharmacotherapy* 2020;**16**(18):108–120. DOI 10.33978/2307-3586-2020-16-18-108-120.

²³ Yeh, E. T., Tong, A. T., Lenihan, D. J., et al. Cardiovascular complications of cancer therapy: diagnosis, pathogenesis, and management. *Circulation* 2004;**109**:3122–31. doi: 10.1161/01.CIR.0000133187.74800.B9.

- ²⁴ Soga, M., Kamal, F. A., Watanabe, K., et al. Effects of angiotensin II receptor blocker (candesartan) in daunorubicin-induced cardiomyopathic rats. *Int J Cardiol* 2006;**110**:378–85. doi: 10.1016/j.ijcard.2005.08.061.
- ²⁵ Cardinale, D., Colombo, A., Lamantia, G., et al. Anthracycline-induced cardiomyopathy: clinical relevance and response to pharmacologic therapy. *J Am Coll Cardiol* 2010;**55**:213–20. doi: 10.1016/j.jacc.2009.03.095.
- ²⁶ Dargie HJ. Effect of carvedilol on outcome after myocardial infarction in patients with left-ventricular dysfunction: the CAPRICORN randomised trial. *Lancet* 2001;**357**:1385–90. doi: 10.1016/s0140-6736(00)04560-8.
- ²⁷ Lotrionte, M., Biondi-Zoccai, G., Abbate, A., et al. Review and meta-analysis of incidence and clinical predictors of anthracycline cardiotoxicity. *Am J Cardiol* 2013;**112**(12):1980-4. doi: 10.1016/j.amjcard.2013.08.026.
- ²⁸ Kalam K, Marwick TH. Role of cardioprotective therapy for prevention of cardiotoxicity with chemotherapy: a systematic review and meta-analysis. *Eur J Cancer* 2013;**49**(13):2900-9. doi: 10.1016/j.ejca.2013.04.030.
- ²⁹ Yun S, Vincelette ND, Abraham I. Cardioprotective role of β -blockers and angiotensin antagonists in early-onset anthracyclines-induced cardiotoxicity in adult patients: a systematic review and meta-analysis. *Postgrad Med J* 2015;**91**(1081):627-33. doi: 10.1136/postgradmedj-2015-133535.
- ³⁰ Fang K, Zhang Y, Liu W, He C. Effects of angiotensin-converting enzyme inhibitor/angiotensin receptor blocker use on cancer therapy-related cardiac dysfunction: a meta-analysis of randomized controlled trials. *Heart Fail Rev* 2021;**26**(1):101-109. doi: 10.1007/s10741-019-09906-x.

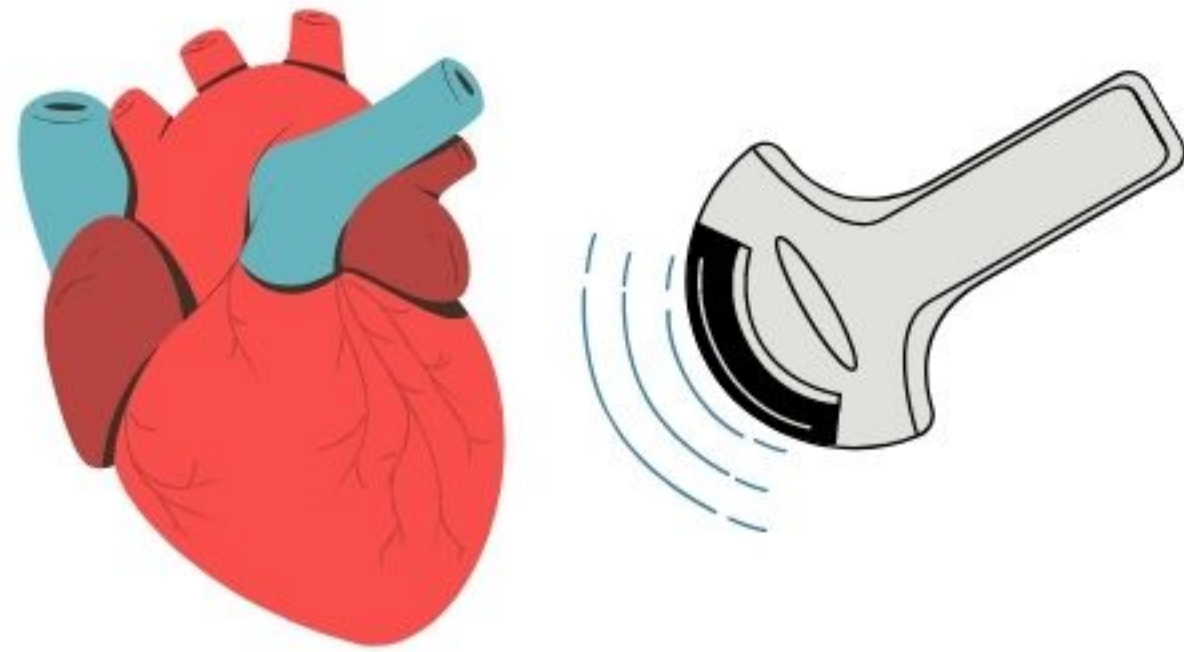
- ³¹ Ghasemi K, Vaseghi G, Mansourian M. Pharmacological interventions for preventing anthracycline-induced clinical and subclinical cardiotoxicity: A network meta-analysis of metastatic breast cancer. *J Oncol Pharm Pract* 2021;**27**(2):414-427. doi: 10.1177/1078155220965674.
- ³² Gujral DM, Lloyd G, Bhattacharyya S. Effect of prophylactic betablocker or ACE inhibitor on cardiac dysfunction & heart failure during anthracycline chemotherapy ± trastuzumab. *Breast* 2018;**37**:64-71. doi: 10.1016/j.breast.2017.10.010.
- ³³ Kheiri, B., Abdalla, A., Osman, M., et al. Meta-Analysis of Carvedilol for the Prevention of Anthracycline-Induced Cardiotoxicity. *Am J Cardiol* 2018;**122**(11):1959-1964. doi: 10.1016/j.amjcard.2018.08.039.
- ³⁴ Huang, S., Zhao, Q., Yang, Z. G., et al. Protective role of beta-blockers in chemotherapy-induced cardiotoxicity-a systematic review and meta-analysis of carvedilol. *Heart Fail Rev* 2019;**24**(3):325-333. doi: 10.1007/s10741-018-9755-3.
- ³⁵ Shahid I, Yamani N, Ali A, et al. Meta-analysis Evaluating the Use of Statins to attenuate Cardiotoxicity in Cancer Patients receiving Anthracyclines and Trastuzumab-based Chemotherapy. *Am J Cardiol* 2021;**156**:142-145. doi: 10.1016/j.amjcard.2021.07.001.
- ³⁶ Obasi, M., Abovich, A., Vo, J. B., et al. Statins to mitigate cardiotoxicity in cancer patients treated with anthracyclines and/or trastuzumab: a systematic review and meta-analysis. *Cancer Causes Control* 2021;**32**(12):1395-1405. doi: 10.1007/s10552-021-01487-1.
- ³⁷ Liu, L., Liu, Z. Z., Liu, Y. Y., et al. Preventive effect of low-dose carvedilol combined with candesartan on the cardiotoxicity of anthracycline drugs in the adjuvant chemotherapy of breast cancer. *Zhonghua Zhong Liu Za Zhi* [Chinese journal of oncology] 2013;**35**(12):936–940.

Protective effects of the use of sacubitril/valsartan in cardiotoxicity induced by anthracyclines

medRxiv preprint doi: <https://doi.org/10.1101/2023.08.14.23294099>; this version posted August 17, 2023. The copyright holder for this preprint (which was not certified by peer review) is the author/funder, who has granted medRxiv a license to display the preprint in perpetuity. It is made available under a [CC-BY-NC-ND 4.0 International license](#).

Left Ventricular Global Longitudinal Strain (LV-GLS)

3.37 %
95 % CI: 1.91 – 4.82
 $p < 0.00001$



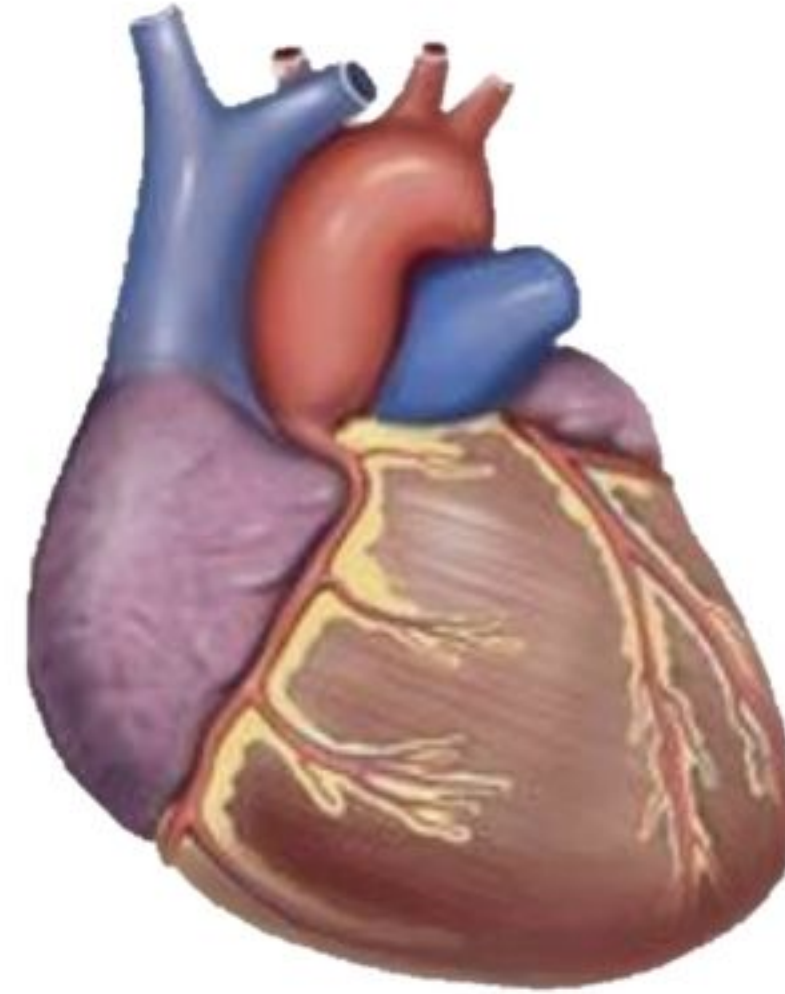
Left atrial volume (LAV)

-9.91 %
95 % CI -14.32 to -5.50
 $p < 0.0001$



Left Ventricular Ejection Fraction (LVEF)

6.78 %
95 % CI: 4.91 – 8.65
 $p < 0.00001$



Serum NT-proBNP levels

-1003.64 pg/mL
95 % CI: -1334.49 to -672.78
 $p < 0.00001$



Meters walked in the 6-minute walk test (SMWT)

95.23 meters
95 % CI: -1334.49 to -672.78
 $p < 0.00001$



Effects on ventricular remodeling

Effects on functional capacity

Tables

Baseline Characteristics of the Study Population								
Trial	Age (years)	Female n (%)	Male n (%)	Dyslipidemia n (%)	Diabetes n (%)	CAD n (%)	SAH n (%)	AF* n (%)
Gregoriotti 2020	56.2 +/- 13.4	25 (89.3)	3 (10.7)	10 (35.71)	8 (28.6)	2 (7.14)	-	-
Vitsenya 2020	61 (51-67)	20 (100)	0 (0)	-	1 (5)	0 (0)	8 (40)	-
Frey 2021	70 (20-91)	10 (48)	11 (52)	5 (23.8)	5 (23.8)	7 (33.3)	7 (33.3)	9 (42.9)

Table 1. Baseline Characteristics of the Study Population.

CAD: Coronary Artery Disease; SAH: Systemic Arterial Hypertension; AF: Atrial Fibrillation. (*) or another arrhythmia.

The boxes with (-) indicate that this variable was not reported in the corresponding study.

Concomitant Therapy for Heart Failure, n (%)								
Trial	ACEi	B-B	ARBs-II	Digitalis	MRAs	Diuretic	ICD	CRT-D
Gregoriotti 2020	12 (42.85)	26 (92.85)	13 (46.43)	9 (32.14)	18 (64.28)	20 (71.43)	3 (10.71)	2 (7.14)
Vitsenya 2020	20 (100) *	17 (85)	20 (100) †	-	12 (60)	10 (50)	-	-
Frey 2021	21 (100) *	21 (100)	21 (100) †	1 (4.8)	19 (90.5)	10 (47.6)	6 (28.6)	5 (23.8)

Table 2. Concomitant Therapy for Heart Failure.

ACEi: Angiotensin Converting Enzyme Inhibitor; B-B: Beta Blocker; ARBs-II: Angiotensin Receptor Blocker type II; MRAs:

Mineralocorticoid Receptor Antagonist; ICD: implantable cardioverter-defibrillator; CRT-D: Cardiac Resynchronization

Therapy-Defibrillation. (*)= or ARBs-II, (†)= or ACEi.

The boxes with (-) indicate that this variable was not reported in the corresponding study.

