

1 Rare damaging *CCR2* variants are associated with lower lifetime cardiovascular risk

2
3 Marios K. Georgakis, MD, PhD¹⁻³, Rainer Malik, PhD^{*1}, Omar El Bounkari, PhD¹, Natalie R.
4 Hasbani, MPH⁴, Jiang Li MD, PhD⁵, Jennifer E. Huffman, PhD⁶, Gabrielle Shakt^{7,8}, Reinier W. P.
5 Tack, MD^{2,9}, Tamara N. Kimball, MD^{2,10}, Yaw Asare, PhD¹, Alanna C. Morrison, PhD⁴, BS, Noah
6 L. Tsao, BS^{7,8}, Renae Judy, MS^{7,8}, Braxton D. Mitchell, PhD^{11,12}, Huichun Xu, MD, PhD¹¹, May
7 E. Montasser, PhD¹¹, Ron Do, PhD^{13,14}, Eimear E. Kenny^{13,15-17}, Ruth J.F. Loos, PhD¹³, James
8 G. Terry, MS¹⁸, John Jeffrey Carr, MD¹⁸, Joshua C. Bis, PhD¹⁹, Bruce M. Psaty, MD, PhD¹⁹⁻²¹,
9 W. T. Longstreth, MD, MPH^{21,22}, Kendra A Young, MSPH, PhD²³, Sharon M Lutz, PhD^{24,25},
10 Michael H Cho, MD, MPH²⁶, Jai Broome, BA²⁷, Alyna T. Khan²⁷, Fei Fei Wang, BS²⁷, Nancy
11 Heard-Costa, PhD^{28,29}, Sudha Seshadri, MD³⁰, Ramachandran S. Vasam, MD^{28,29,31}, Nicholette
12 D. Palmer, PhD³², Barry I. Freedman, MD³³, Donald W. Bowden, PhD³², Lisa R. Yanek, MPH³⁴,
13 Brian G. Kral, MD, MPH³⁴, Lewis C. Becker, MD³⁴, Patricia A. Peyser, PhD³⁵, Lawrence F.
14 Bielak, DDS, MPH³⁵, Farah Ammous, PhD³⁵, April P. Carson, PhD, MSPH³⁶, Michael E. Hall,
15 MD, MS³⁶, Laura M. Raffield, PhD³⁷, Stephen S. Rich, PhD³⁸, Wendy S. Post, MD³⁹, Russel P.
16 Tracy, PhD⁴⁰, Kent D. Taylor, PhD⁴¹, Xiuqing Guo, PhD⁴¹, Michael C. Mahaney, PhD⁴², Joanne
17 E. Curran, PhD⁴², John Blangero, PhD⁴², Shoa L. Clarke, MD, PhD⁴³⁻⁴⁵, Jeffrey W. Haessler,
18 MS⁴⁶, Yao Hu, PhD⁴⁶, Themistocles L. Assimes, MS, PhD⁴³⁻⁴⁵, Charles Kooperberg, PhD⁴⁶,
19 Jürgen Bernhagen, PhD^{1,3,51}, Christopher D. Anderson, MD, MMSc^{2,9,10}, Scott M. Damrauer,
20 MD^{7,8,47}, Ramin Zand MD, MPH^{48,49}, Jerome I. Rotter, MD⁴¹, Paul S. de Vries, PhD⁴, Martin
21 Dichgans, MD^{1,3,50,51}

22
23 ¹ Institute for Stroke and Dementia Research (ISD), University Hospital, Ludwig-Maximilians-
24 University (LMU), Munich, Germany

25 ² Program in Medical and Population Genetics, Broad Institute of MIT and Harvard, Cambridge,
26 MA, USA

27 ³ Munich Cluster for Systems Neurology (SyNergy), Munich, Germany.

28 ⁴ Human Genetics Center, Department of Epidemiology, Human Genetics, and Environmental
29 Sciences, School of Public Health, The University of Texas Health Science Center at Houston,
30 Houston, TX, USA

31 ⁵ Department of Molecular and Functional Genomics, Geisinger Health System, Danville,
32 Pennsylvania, USA

33 ⁶ Veterans Affairs Healthcare System, Boston, MA, USA

34 ⁷ Department of Surgery, Perelman School of Medicine at the University of Pennsylvania,
35 Philadelphia, PA, USA

- 36 ⁸ Corporal Michael Crescenz VA Medical Center, Philadelphia, PA, USA
- 37 ⁹ Center for Genomic Medicine, Massachusetts General Hospital, Boston, MA, USA
- 38 ¹⁰ Department of Neurology, Brigham and Women's Hospital, Boston, MA, USA
- 39 ¹¹ Department of Medicine, University of Maryland School of Medicine, Baltimore, MD
- 40 ¹² Geriatrics Research and Education Clinical Center, Baltimore Veterans Administration
- 41 Medical Center, Baltimore, MD
- 42 ¹³ The Charles Bronfman Institute for Personalized Medicine, Icahn School of Medicine at Mount
- 43 Sinai, New York, NY, USA
- 44 ¹⁴ Department of Genetics and Genomic Sciences, Icahn School of Medicine at Mount Sinai,
- 45 New York, NY, USA
- 46 ¹⁵ The Center for Genomic Health, Icahn School of Medicine at Mount Sinai, New York, NY,
- 47 USA
- 48 ¹⁶ Pamela Sklar Division of Psychiatric Genomics, Icahn School of Medicine at Mount Sinai,
- 49 New York, NY, USA
- 50 ¹⁷ Department of Medicine, Icahn School of Medicine at Mount Sinai, New York, NY, USA
- 51 ¹⁸ Department of Radiology, Vanderbilt University Medical Center, Nashville, TN, USA
- 52 ¹⁹ Cardiovascular Health Research Unit, Department of Medicine, University of Washington,
- 53 Seattle, WA, USA
- 54 ²⁰ Department of Health Systems and Population Health, University of Washington, Seattle, WA,
- 55 USA
- 56 ²¹ Department of Epidemiology, University of Washington, Seattle, WA, USA
- 57 ²² Department of Neurology, University of Washington, Seattle, WA, USA
- 58 ²³ Department of Epidemiology, University of Colorado Anschutz Medical Campus, Aurora CO,
- 59 USA
- 60 ²⁴ Department of Population Medicine, PRecisiOn Medicine Translational Research
- 61 (PROMoTeR) Center, Harvard Pilgrim Health Care and Harvard Medical School, Boston, MA,
- 62 USA
- 63 ²⁵ Department of Biostatistics, T.H. Chan School of Public Health, Harvard University, Boston,
- 64 MA, USA
- 65 ²⁶ Channing Division of Network Medicine, Brigham and Women's Hospital, Harvard Medical
- 66 School, Boston, MA, USA
- 67 ²⁷ Department of Biostatistics, University of Washington, Seattle, WA, USA
- 68 ²⁸ Department of Medicine, Boston University School of Medicine, Boston, MA, USA
- 69 ²⁹ Boston University and National Heart, Lung, and Blood Institute's Framingham Heart Study,
- 70 Framingham, MA, USA

- 71 ³⁰ Bigg's Institute for Alzheimer's Disease and neurodegenerative disorders, University of Texas
72 Health Science Center, San Antonio, TX, USA
- 73 ³¹ Department of Epidemiology, Boston University School of Public Health, Boston, MA, USA
- 74 ³² Department of Biochemistry, Wake Forest School of Medicine, Winston-Salem, NC, USA
- 75 ³³ Section on Nephrology, Department of Internal Medicine, Wake Forest School of Medicine,
76 Winston-Salem, NC, USA
- 77 ³⁴ Department of Medicine, Johns Hopkins University School of Medicine, Baltimore, MD, USA
- 78 ³⁵ Department of Epidemiology, School of Public Health, University of Michigan, Ann Arbor, MI,
79 USA
- 80 ³⁶ Department of Medicine, University of Mississippi Medical Center, Jackson, MS
- 81 ³⁷ Department of Genetics, University of North Carolina at Chapel Hill, Chapel Hill, NC
- 82 ³⁸ Center for Public Health Genomics, University of Virginia, Charlottesville, VA USA
- 83 ³⁹ Johns Hopkins Bloomberg School of Public Health, Johns Hopkins School of Medicine,
84 Baltimore, MD USA
- 85 ⁴⁰ Departments of Pathology & Laboratory Medicine, and Biochemistry, Larner College of
86 Medicine, University of Vermont, Burlington, VT USA
- 87 ⁴¹ The Institute for Translational Genomics and Population Sciences, Department of Pediatrics,
88 The Lundquist Institute for Biomedical Innovation at Harbor-UCLA Medical Center, Torrance,
89 CA USA
- 90 ⁴² Department of Human Genetics and South Texas Diabetes and Obesity Institute, University of
91 Texas Rio Grande Valley School of Medicine, Brownsville TX USA
- 92 ⁴³ Department of Medicine (Division of Cardiovascular Medicine), Stanford University School of
93 Medicine, Stanford, CA, USA
- 94 ⁴⁴ Stanford Cardiovascular Institute, Stanford, CA, USA
- 95 ⁴⁵ VA Palo Alto Health Care System, Palo Alto, CA, USA
- 96 ⁴⁶ Division of Public Health Sciences, Fred Hutchinson Cancer Center, Seattle WA 98109 USA
- 97 ⁴⁷ Department of Genetics, Perelman School of Medicine at the University of Pennsylvania,
98 Philadelphia, PA, USA
- 99 ⁴⁸ Department of Neurology, Pennsylvania State University, Hershey, Pennsylvania, USA.
- 100 ⁴⁹ Department of Neurology, Neuroscience Institute, Geisinger Health System, Danville, PA,
101 USA
- 102 ⁵⁰ German Centre for Neurodegenerative Diseases (DZNE), Munich, Germany
- 103 ⁵¹ German Centre for Cardiovascular Research (DZHK, Munich), partner site Munich Heart
104 Alliance, Munich, Germany
- 105

106 *equally contributed

107

108

109

110 **Address for Correspondence:**

Marios K. Georgakis, MD, PhD

Clinician-Scientist

E-mail: marios.georgakis@med.uni-muenchen.de;

mgeorgak@broadinstitute.org

Tel: +49-89-4400-46156

Institute for Stroke and Dementia Research, Ludwig-Maximilians-University Hospital

Feodor-Lynen-Str. 17, 81377 Munich, Germany

Martin Dichgans, MD

Director

E-mail: [martin.dichgans@med.uni-](mailto:martin.dichgans@med.uni-muenchen.de)

[muenchen.de](mailto:martin.dichgans@med.uni-muenchen.de)

Tel: +49-89-4400-46019

111

112

113 **ABSTRACT**

114

115 **Background:** Previous work has shown a role of CCL2, a key chemokine governing monocyte
116 trafficking, in atherosclerosis. However, it remains unknown whether targeting CCR2, the
117 cognate receptor of CCL2, provides protection against human atherosclerotic cardiovascular
118 disease.

119 **Methods:** Computationally predicted damaging or loss-of-function (REVEL>0.5) variants within
120 CCR2 were detected in whole-exome-sequencing data from 454,775 UK Biobank participants
121 and tested for association with cardiovascular endpoints in gene-burden tests. Given the key
122 role of CCR2 in monocyte mobilization, variants associated with lower monocyte count were
123 prioritized for experimental validation. The response to CCL2 of human cells transfected with
124 these variants was tested in migration and cAMP assays. Validated damaging variants were
125 tested for association with cardiovascular endpoints, atherosclerosis burden, and vascular risk
126 factors. Significant associations were replicated in six independent datasets (n=1,062,595).

127 **Results:** Carriers of 45 predicted damaging or loss-of-function CCR2 variants (n=787
128 individuals) were at lower risk of myocardial infarction and coronary artery disease. One of
129 these variants (M249K, n=585, 0.15% of European ancestry individuals) was associated with
130 lower monocyte count and with both decreased downstream signaling and chemoattraction in
131 response to CCL2. While M249K showed no association with conventional vascular risk factors,
132 it was consistently associated with a lower risk of myocardial infarction (Odds Ratio [OR]: 0.66
133 95% Confidence Interval [CI]: 0.54-0.81, p=6.1x10⁻⁵) and coronary artery disease (OR: 0.74
134 95%CI: 0.63-0.87, p=2.9x10⁻⁴) in the UK Biobank and in six replication cohorts. In a phenome-
135 wide association study, there was no evidence of a higher risk of infections among M249K
136 carriers.

137 **Conclusions:** Carriers of an experimentally confirmed damaging CCR2 variant are at a lower
138 lifetime risk of myocardial infarction and coronary artery disease without carrying a higher risk of
139 infections. Our findings provide genetic support for the translational potential of CCR2-targeting
140 as an atheroprotective approach.

141

142 **Key words:** atherosclerosis, CCR2, genetics, inflammation, cardiovascular disease

143

144 INTRODUCTION

145 Atherosclerotic cardiovascular disease (CVD) is the leading cause of morbidity and mortality
146 worldwide.¹⁻³ Over 20 years of preclinical research have provided overwhelming evidence for a
147 causal role of inflammation in atherogenesis^{4,5} and recent trials provided proof-of-concept that
148 targeting inflammation can lead to reductions in adverse cardiovascular events.⁶⁻⁸ The
149 canakinumab anti-inflammatory thrombosis outcome study (CANTOS) demonstrated that
150 treatment with a monoclonal antibody against IL-1 β lowers risk of recurrent vascular events
151 among individuals with recent myocardial infarction.⁶ The colchicine cardiovascular outcomes
152 trial (COLCOT)⁷ and the low-dose colchicine-2 (LoDoCo2) trial⁸ further showed that colchicine,
153 an established drug with widespread inhibitory effects on inflammatory pathways,^{9,10} lowers the
154 risk of recurrent vascular events in patients with coronary artery disease (CAD). Targeting
155 inflammation for atheroprotection must be balanced against the impact on any host defense
156 responses. For example, both canakinumab⁶ and colchicine⁷ were associated with adverse
157 effects including fatal infections in the CANTOS and the colchicine trials. While translational
158 efforts have mostly focused on the inflammasome-IL-1 β /IL-6 axis,¹¹ evidence from preclinical
159 studies and early-phase clinical trials highlights the promise of alternative cytokines⁵ for the
160 development of a second generation of atherosclerosis-centered anti-inflammatory treatments.⁴

161 CC-motif chemokine ligand 2 (CCL2) is a pivotal inflammatory chemokine regulating monocyte
162 trafficking¹² that has been studied as a potential target in atherosclerosis. Preclinical data
163 suggest that pharmacological targeting of CCL2 or its receptor CCR2 might lower
164 atherosclerosis burden in experimental models.¹³ However, only recently large-scale genetic
165 and epidemiological studies have highlighted the relevance of the CCL2/CCR2 pathway in
166 human CVD, calling for clinical translation of strategies targeting this pathway.¹⁴ Prospective
167 observational studies^{15,16} support associations of higher circulating CCL2 levels with ischemic
168 stroke and cardiovascular death, whereas Mendelian randomization analyses from population
169 genetic studies^{17,18} show associations with higher risk of ischemic stroke and coronary artery
170 disease. Furthermore, CCL2 levels are higher in atherosclerotic lesions from patients with
171 symptomatic carotid stenosis, as compared to asymptomatic disease and are associated with
172 features of plaque vulnerability.¹⁹

173 Although these studies support a role of the CCL2/CCR2 axis in human atherosclerosis, it
174 remains unclear whether pharmacological intervention in this pathway could lead to
175 atheroprotection in humans. Several molecules targeting CCR2 are currently under
176 development for autoimmune disease, liver disease, and cancer and could be repurposed for
177 prevention of atherosclerotic cardiovascular disease.¹⁴ Studies examining the phenotypic effects

178 of rare genetic variants in population-based studies have been instrumental in predicting the
179 consequences of pharmacological interventions²⁰⁻²⁴ and might thus serve as a validation step for
180 drug targets under development.

181 Here, we leveraged whole-exome sequencing (WES) data from 454,775 participants of the
182 population-based UK Biobank (UKB) study to explore whether rare damaging variants in the
183 *CCR2* gene are associated with cardiovascular disease risk, burden of atherosclerosis, and
184 traditional vascular risk biomarkers. We experimentally confirmed the damaging effects of one
185 variant (M249K), which has a frequency of 0.15% among UKB participants of European
186 ancestry and replicated its effects on cardiovascular risk in external population- and hospital-
187 based biobanks. Finally, we performed a phenome-wide association study across two biobanks
188 to explore associations of this damaging variant with the risk of infections or other potential
189 safety signals of any *CCR2*-targeting treatments.

190

191 **METHODS**

192 **Study population**

193 We used data from the UKB, a population-based prospective cohort study of UK residents aged
194 40-69 years recruited between 2006-2010 from 22 assessment centers across the UK.²⁵ This
195 analysis was restricted to 454,775 out of 502,419 participants with available whole-exome
196 sequencing data (UKB Exome 450k release from October 2021). Primary and secondary
197 analyses were performed with an updated Functional Equivalence (FE) protocol that retains
198 original quality scores in the CRAM files (referred to as the OQFE protocol). We included only
199 variants that met published criteria²⁶: individual and variant missingness <10%, Hardy Weinberg
200 Equilibrium $p\text{-value} > 10^{-15}$, minimum read coverage depth of 7 for SNPs and 10 for indels, at
201 least one sample per site passed the allele balance threshold > 0.15 for SNPs and 0.20 for
202 indels. We used genotype array data released by the UKB study to assign individuals to
203 continental ancestry super-groups (African (AFR), Hispanic or Latin American (HLA, originally
204 referred to as 'AMR' by the 1000 Genomes Project), East Asian (EAS), European (EUR) and
205 South Asian (SAS)) by projecting each sample onto reference principal components (PCs)
206 calculated from the 1000 Genomes reference panel. We included only individuals without
207 evidence of relatedness within the UKB samples, as defined by a KING cut-off of < 0.084 .

208

209 **Detection of damaging genetic variants in *CCR2* and experimental validation**

210 Restricting our analyses to the *CCR2* gene, we detected predicted LoF or damaging missense
211 variants with a MAF<1% in the *CCR2* exonic region and then explored which of those are
212 associated with monocyte count as a functional readout. Variants from WES were annotated as
213 previously described²⁷ using VEP v101.^{28,29} We used the LofTee plugin for predicting LoF
214 variants³⁰ and a REVEL cutoff of >0.5 from dbNSFP version 4.0a for predicted damaging
215 missense mutations.

216 We aimed to further restrict our analyses to damaging variants with proven functional effects.
217 One of the key functions of the CCL2 axis is the recruitment of classical monocytes from the
218 bone marrow to the circulation in a *CCR2*-dependent way.³¹⁻³³ Consequently, damaging
219 variants in the *CCR2* gene would be expected to be associated with a lower monocyte count in
220 the circulation. To test associations with the circulating counts of monocytes and other white
221 blood cells (WBC), absolute counts were extracted from the UKB fields 30160 (basophil counts),
222 30150 (eosinophil counts), 30130 (monocyte counts), 30120 (lymphocyte counts) and 30140
223 (neutrophil counts). Distributions were visually checked for normal distribution and log-
224 normalized when needed. Associations were tested using regenie v2.2.4.³⁴ For WBC analyses,
225 we used sex, age at blood draw, and the first 5 ancestral PCs as covariates. The mixed model
226 parameters were estimated using 200,000 genotyped common variants. Saddle point
227 approximation regression was applied. Genetic variants associated with monocyte count at a
228 false discovery rate (FDR)-corrected p-value <0.05 were prioritized for further experimental
229 validation. To test whether the associations are specific for monocyte count, we also tested
230 associations with other WBC counts (basophils, eosinophils, lymphocytes, neutrophils) for each
231 variant.

232 Two predicted damaging *CCR2* variants showing a significant association with lower monocyte
233 count were brought forward to experimental testing. The two variants were M249K
234 (3:46358273:T:A) and W165S (3:46358021:G:C, both hg38). First, we tested how human
235 *CCR2*-knockout monocytic THP-1 cells transfected with these variants or wild-type *CCR2*
236 respond to chemoattraction by CCL2 using a Transwell migration assay (details in
237 **Supplementary Methods**). Next, we tested whether M249K-mutant *CCR2* (which showed an
238 effect in the migration assay) influences cAMP production in response to CCL2 in transfected
239 human HEK293T cells (details in **Supplementary Methods**).

240

241 **Associations with cardiovascular risk, atherosclerosis burden and vascular risk factors**

242 Focusing on two sets of variants, we then explored associations of *CCR2* variants with clinical
243 cardiovascular endpoints including myocardial infarction, coronary artery disease, acute
244 ischemic stroke, peripheral artery disease, and abdominal aortic aneurysm using ICD-10- and
245 ICD-9- coded diagnoses, OPCS4-coded procedures, self-report, and algorithmically-defined
246 phenotypes provided by the UKB as detailed in **Supplementary Table S1**. As our hypothesis
247 was that these variants would lead to reductions in risk by lowering the lifetime burden of
248 atherosclerosis, we also constructed a combined phenotype of atherosclerosis manifestations in
249 four vascular beds (coronary arteries, cerebrovascular system, peripheral arteries of the
250 extremities, and aortic atherosclerosis). Severe atherosclerosis was defined as presence of
251 clinical manifestations in at least two vascular beds (**Supplementary Table S1**).

252 We followed two approaches to test associations with these phenotypes: (i) we performed a
253 burden test combining all predicted damaging variants (LoF or REVEL >0.5) within *CCR2*; (ii)
254 focusing on M249K, the only damaging monocyte-lowering *CCR2* variant that was
255 experimentally validated in the migration and cAMP assays, we performed logistic regression
256 analysis adjusted for age, sex, and the first 5 ancestral PCs testing. We included both prevalent
257 and incident endpoints as outcomes in all analyses and used Firth's correction for unbalanced
258 case/control ratios in our logistic regression analysis. To explore whether the associations with
259 cardiovascular risk are mediated through known vascular risk factors, we further tested
260 associations of the damaging genetic variants with the following phenotypes: systolic and
261 diastolic blood pressure, circulating LDL and HDL cholesterol, circulating apolipoprotein B
262 levels, circulating glycated hemoglobin A1c (HbA1c) concentration, body mass index, and C-
263 reactive protein. Individuals under antihypertensive medications were excluded in the analyses
264 for systolic and diastolic blood pressure, individuals under lipid-lowering medications were
265 excluded from the analyses for LDL and HDL cholesterol and apolipoprotein B levels, and
266 individuals under glucose-lowering treatments were excluded from the analyses for HbA1c.

267

268 **Validation of M249K *CCR2* variant in external datasets and meta-analysis**

269 For external validation, we obtained summary statistics from six different data sources based on
270 a pre-defined protocol: the TransOmics and Precision Medicine Program supported by NHLBI
271 (TOPMed) Program including multiple studies and a trans-ancestry population in the US
272 (n=51,732), the population-based deCODE dataset in Iceland (n=345,992), the hospital-based
273 Penn Medicine Biobank (PMBB, n=43,721), the Million Veteran Programme (MVP, n=438,905),
274 the Geisinger DiscovEHR-MyCode cohort in central and northeastern Pennsylvania
275 (n=145,826), as well as the hospital-based Mass General Brigham Biobank (MGBB, n=36,419).

276 Specifically, we requested data from logistic regression models adjusted for age, sex, race,
277 study-specific variables (e.g. sequencing center) and the first 10 PCs (with the Firth's correction)
278 for the M249K variant. The variant was either assessed by sequencing or directly genotyped in
279 all cohorts. Details about the individual cohorts are provided in **Supplementary Methods**. The
280 derived odds ratios (OR) from the six datasets were meta-analyzed using fixed-effects and
281 random-effects meta-analyses and were subsequently also meta-analyzed with the results from
282 the UKB. We set a significance threshold of $p < 0.05$ in the replication meta-analysis.
283 Heterogeneity was assessed with the I^2 and the Cochran Q statistic.

284

285 **Phenome-wide association study**

286 To explore potential adverse effects associated with damaging *CCR2* genetic variants, we
287 tested associations of M249K with the full range of clinical phenotypes encoded in the UKB and
288 replicated in an external cohort (Geisinger DiscovEHR-MyCode). We used the Phecode Map
289 1.2 to map UKB ICD10-codes to Phecodes³⁵ using all ICD10 codes (main position, secondary
290 position, death records) from the UKB. We excluded Phecodes with < 100 cases and Phecodes
291 that are male- or female-specific. Individuals were assigned a case status if > 1 ICD10 code was
292 mapped to the respective Phecode. To approximate effect size in a logistic regression
293 framework, we used minor allele carrier status as an independent variable and age at baseline,
294 sex and 5 ancestry PCs as covariates. We used Firth's correction for unbalanced case/control
295 ratios in our logistic regression analysis for all results with $p < 0.05$. The results from the two
296 cohorts were meta-analyzed using fixed- and random-effects models. Heterogeneity was
297 assessed with the I^2 and the Cochran Q statistic.

298

299 **Ethics and data availability**

300 All studies have received ethical approvals from the respective ethical authorities and
301 participants in all studies have provided written informed consent. Data from the UKB are
302 available upon submission and approval of a research proposal. The UKB has institutional
303 review board approval from the Northwest Multi-Center Research Ethics Committee
304 (Manchester, UK). We accessed the data following approval of an application by the UKB Ethics
305 and Governance Council (Application No. 36993 and 2532). Summary results from the external
306 cohorts were obtained following a common pre-defined research protocol to principal
307 investigators of the study and are presented in the figures and supplementary tables. deCODE
308 has been approved by the National Bioethics Committee of Iceland, and the study was

309 conducted in agreement with conditions issued by the Data Protection Authority of Iceland
310 (VSN_14-015). All common research protocols for the TOPMed Program have been approved
311 by the institutional review board at the University of Maryland Baltimore, whereas individual
312 participating studies have obtained ethical approval from their local ethical authorities, as
313 described previously.³⁶ The Penn Medicine BioBank is approved by the University of
314 Pennsylvania, MVP by the Veterans Affairs Central Institutional Review Board, the Geisinger
315 DiscovEHR-MyCode cohort by Geisinger Institutional Review Boards, and MGBB by the Ethics
316 Committee of Mass General Brigham.

317

318 **RESULTS**

319 **Computationally predicted damaging *CCR2* variants**

320 Among 428,191 unrelated (out of 454,775 with whole-exome sequencing data) UK Biobank
321 participants from the whole-exome sequencing data release, we found a total of 45 predicted
322 LoF or damaging (REVEL>0.5) variants in the exonic region of the *CCR2* gene distributed
323 across 787 heterozygous carriers (frequency 0.18%, **Figure 1** and **Supplementary Table S2**).
324 There was no homozygous carrier of any of these variants and variants were predominantly
325 prevalent in individuals of European ancestry (779 carriers, frequency 0.20%), as compared to
326 individuals of African, Hispanic or Latin American, East Asian, and South Asian ancestry (total
327 of 8 carriers, pooled frequency 0.02%). Due to the very low frequency in other ancestries, we
328 restricted our analyses to individuals of European ancestry (n=393,416), Baseline
329 characteristics of the study population are presented in **Supplementary Table S3**.

330

331 **Associations of *CCR2* variants with cardiovascular endpoints in gene-burden tests**

332 In a discovery analysis including all 45 computationally predicted LoF or damaging variants, we
333 next explored whether genetic variation in *CCR2* is associated with atherosclerotic disease
334 using a gene-based burden test. We found nominally significant associations of the predicted
335 damaging *CCR2* variants with myocardial infarction (OR: 0.60, 95%CI: 0.40-0.90, p=0.008) and
336 coronary artery disease (OR: 0.76, 95%CI: 0.59-0.99, p=0.03), as well as directionally
337 consistent associations with the odds of all other examined outcomes (ischemic stroke,
338 peripheral artery disease, abdominal aortic aneurysm, **Figure 2A**). Variant burden was
339 associated with lower risk of a combined atherosclerotic endpoint (OR: 0.80, 95%CI: 0.65-0.98,
340 p=0.03), as well as with severe atherosclerotic disease, defined by clinical manifestations in at
341 least two vascular beds (OR: 0.24, 95%CI: 0.07-0.82 p=0.003; **Figure 2B**). We found a trend for

342 a dose-response pattern with lower frequency of clinically manifest atherosclerotic disease
343 across the number of vascular beds involved among carriers for these *CCR2* variants
344 (frequency of atherosclerosis presence among carriers vs. non-carriers: in no vascular bed
345 88.0% vs. 90.7%; in 1 vascular bed 10.5% vs. 9.1%; in 2 vascular beds 1.2% vs. 0.3%; in 3
346 vascular beds 0.3% vs 0.1%, in 4 vascular beds 0.03% vs 0%; OR from ordinal regression:
347 0.74, 95%CI: 0.54-0.97, $p=0.01$).

348

349 **Functional consequences of *CCR2* damaging variants**

350 To move beyond computationally predicted functional effects, we followed a two-step approach
351 to select *CCR2* variants with functional relevance. Since one of the key functions of *CCL2* is the
352 *CCR2*-dependent recruitment of classical monocytes from the bone marrow to the circulation,
353 we first tested the association of the predicted damaging variants in *CCR2* with circulating
354 monocyte counts. We found two variants (M249K and W165S) to be associated with lower
355 monocyte counts FDR-corrected $p<0.05$, **Supplementary Table S2**) and prioritized them for
356 experimental validation.

357 We tested whether transfection of human *CCR2*-knockout THP-1 monocytes with either of these
358 two variants influences directed migration towards *CCL2* in a trans-migration cell assay. Cells
359 transfected with M249K showed a clearly reduced response to *CCL2*, when compared to cells
360 transfected with wild-type *CCR2*, resembling the response of *CCR2*-knockout cells (**Figure 3A**
361 and **Supplementary Figure S1**). Cells transfected with W165S showed a profile similar to cells
362 transfected with wild-type *CCR2* (**Supplementary Figure S1**). HEK293T cells transfected with
363 M249K further showed a profound reduction of cAMP production in response to *CCL2*, when
364 compared to HEK293T cells transfected with wild-type *CCR2* (**Figure 3B**).

365 M249K has a frequency of 0.15% among UKB participants of European ancestry and leads to
366 the replacement of methionine by lysine in the sixth transmembrane domain of the *CCR2*
367 receptor (**Figure 1**). Confirming the specificity of the consequences of M249K on monocyte
368 recruitment, we found no evidence of associations with any of the other leukocyte type counts in
369 the UKB (**Figure 3C**).

370

371 **Associations of M249K with cardiovascular risk and replication in external cohorts**

372 Carriers of the M249K variant were at lower risk of myocardial infarction (OR: 0.62 95%CI: 0.40-
373 0.97, $p=0.03$) and coronary artery disease (OR: 0.73 95%CI: 0.56-0.97, $p=0.02$) in the UKB
374 (**Figure 4A**). As expected, given that M249K was by far the most frequent among

375 computationally predicted damaging CCR2 variants, we found associations with a lower risk of
376 the combined atherosclerosis endpoint, as well as significantly lower risk of severe
377 atherosclerosis (manifestations in ≥ 2 vascular beds, **Figure 4B**), similar to the burden test. To
378 explore whether the effects of M249K are mediated through effects on risk factors targeted by
379 current preventive approaches, we next tested associations with established biomarkers of
380 vascular risk. We found no associations with any of the tested vascular risk factors including
381 blood pressure, hyperglycemia, or circulating lipids. Furthermore, there was no evidence of
382 association with the levels of the known inflammatory biomarker C-reactive protein, thus
383 suggesting that the effects might be independent of factors targeted by current atheroprotective
384 anti-inflammatory treatments (**Figure 4C**).

385 As these associations were only nominally significant and suggestive of an effect of this variant,
386 we aimed to externally replicate our findings to provide robust evidence for an association with a
387 lower risk of myocardial infarction and coronary artery disease. To externally replicate the
388 effects of M249K, we meta-analyzed data from six external datasets (TOPMed, deCODE,
389 PMBB, MGB, MVP, Geisinger). The frequency of the variant varied between the six datasets
390 (range: 0.0006% in MVP to 0.228% in Geisinger), totaling 767 heterozygous carriers among
391 1,062,595 individuals (91,420 myocardial infarction and 142,361 coronary artery disease
392 cases). When meta-analyzing data from the six cohorts for the association between carrying
393 M249K and risk of myocardial infarction or coronary artery disease, the ORs were comparable
394 to those of the UKB (OR for myocardial infarction: 0.67 95%CI: 0.53-0.85, $p=0.0006$; OR for
395 coronary artery disease: 0.74 95%CI: 0.53-0.85, $p=0.003$, **Supplementary Figure S2** and
396 **Supplementary Table S4**). When meta-analyzing these data with UKB reaching a sample size
397 of 1,456,011 individuals including 1,314 M249K carriers (111,394 and 207,019 cases of
398 myocardial infarction and coronary artery disease, respectively), we found M249K carriers to
399 have 34% lower odds of suffering a myocardial infarction (OR: 0.66 95%CI: 0.54-0.81,
400 $p=6.1 \times 10^{-5}$) and 26% lower odds of coronary artery disease (OR: 0.74 95%CI: 0.63-0.87,
401 $p=2.9 \times 10^{-4}$, **Figure 4D-E, Supplementary Table S4**).

402

403 **Phenome-wide association study**

404 As a last step, we performed a PheWAS to explore whether M249K is associated with potential
405 adverse effects that would raise signals for possible side-effects of any CCR2-targeting
406 treatments. Because we lacked statistical power for most of the outcomes, we restricted our
407 analyses to endpoints with ≥ 10 cases in the carrier group of the UKB. To increase statistical
408 power, we meta-analyzed our results with the Geisinger cohort. Across all phenotypes only

409 myocardial infarction showed an association with M249K that passed the FDR-corrected $p < 0.05$
410 threshold. Coronary atherosclerosis and angina pectoris were also less frequent ($p < 0.05$)
411 among carriers although only at a nominal non-corrected $p < 0.05$ (**Figure 4A**). No infectious
412 disease phenotypes were found to be more common ($p < 0.05$) among M249K carriers
413 (**Supplementary Table S5**). Senile cataract was more common among carriers ($p < 0.05$).
414 Among UKB participants, we found no evidence for an association between carrier status for a
415 CCR2 damaging variants and survival over a 15-year follow-up period (**Figure 4B**).

416

417 DISCUSSION

418 Using data from 1.5M individuals we found that heterozygous carriers of a rare experimentally
419 confirmed damaging CCR2 variant (M249K) are at lower lifetime risk of myocardial infarction
420 and coronary artery disease. Carriers of this variant showed no differences in LDL cholesterol,
421 blood pressure, BMI, HbA1c and C-reactive protein levels, indicating that damaging CCR2
422 variants exert their effects independently of conventional vascular risk factors targeted by
423 available atheroprotective treatments. On the other hand, we found no evidence of associations
424 with higher risk of infectious diseases or overall mortality among carriers. Collectively, our
425 results provide genetic support for CCR2 as a potential therapeutic target for atherosclerotic
426 cardiovascular disease.

427 Our findings extend our previous results from a Mendelian randomization study suggesting a
428 higher atherosclerosis risk among individuals with genetic predisposition to elevated CCL2
429 levels.¹⁷ That study focused on common genetic variants distributed across the genome and
430 shown to influence CCL2 levels in *trans*. In contrast, the current study assessed damaging rare
431 genetic variants within the CCR2 gene. The functional impact of M249K, the most frequent
432 variant among those associated with atherosclerotic disease, was experimentally confirmed. As
433 such, our results are unlikely to be confounded by pleiotropic effects of the variants. Despite the
434 lack of data from clinical trials targeting CCR2 in patients with cardiovascular disease, studies in
435 experimental models of atherosclerosis have provided supportive evidence for an
436 atheroprotective effect of pharmacologically targeting CCR2.¹³

437 Our work consistently connects these findings to humans and provides a rationale for
438 conducting a clinical trial with pharmacological targeting of CCR2 in patients with
439 atherosclerosis. Ultimately, only clinical testing can provide evidence in favor of or against
440 pharmacological targeting of CCR2 for patients with atherosclerosis. A major bottleneck for
441 initiating a clinical trial would be the need for proof of concept in a phase 2 trial before a trial with

442 hard endpoint is conducted. Given the evidence that CRP levels are not directly affected by the
443 CCL2/CCR2 axis,¹⁵ an intermediate endpoint is needed that captures plaque inflammation, and
444 in particular, macrophage accumulation.¹³ PET imaging, particularly with an FDG tracer, has
445 shown promise for detecting macrophage content in large plaques and has already been used
446 in phase 2 trials targeting plaque inflammation.³⁷⁻³⁹ In addition, recent advances in tracer
447 development have enabled the development of a tracer that specifically binds to CCR2.⁴⁰ Initial
448 data from patients have shown promise in imaging monocyte recruitment to the heart following
449 myocardial infarction.⁴⁰

450 Interestingly, we found no evidence supporting a connection of *M249K* with established
451 pharmacological targets of atherosclerosis, such as LDL cholesterol, hyperglycemia, or elevated
452 blood pressure. This implies that any benefit from CCR2-targeting approaches would be
453 expected to be independent of available preventive approaches against atherosclerotic disease.
454 Also, we found no evidence of associations with circulating C-reactive protein levels, a
455 biomarker of the activity of the IL-6 signaling pathway that is also the target of atheroprotective
456 anti-inflammatory treatments currently under development.⁴¹ Based on this, our findings suggest
457 that CCR2 inhibition might have an atheroprotective effect on top of such approaches, which in
458 turn might be an argument to pursue approaches embracing combination therapies.

459 Our PheWAS analysis was limited by low statistical power. Nevertheless, it is noteworthy that
460 we found no evidence for an association of *M249K* with risk of infections, which is a potential
461 barrier to the use of atheroprotective anti-inflammatory treatments. This is in line with previous
462 early phase clinical trials testing inhibitors of CCR2 for other indications, which also found no
463 important safety concerns.⁴²⁻⁴⁴ Furthermore, we found no evidence of associations with overall
464 survival, minimizing concerns about a significant impact on unknown fatal adverse effects. The
465 reason why we do not see a protective effect on survival despite the effect on risk of myocardial
466 infarction could be related to statistical power and length of follow-up. It is a common
467 observation that medications with strong effects on lowering cardiovascular risk, such as statins,
468 have failed to show survival benefits.

469 Our study has limitations. First, despite leveraging the largest available whole-exome
470 sequencing studies totaling almost 1.5 million individuals, our results for the PheWAS analyses
471 are still limited by low statistical power and should be interpreted cautiously. Given the rarity of
472 the damaging *CCR2* variants, any association with rare potential side-effects would ultimately
473 be undetectable in the context of this study. While formal statistical replication is precluded by
474 this power issue, the consistent effect directions and the overall significance of the meta-
475 analysis raise confidence that the identified association is valid. Further, our main results for

476 associations between M249K and myocardial infarction or coronary artery disease failed to
477 reach the formal thresholds of statistical significance for gene-based or variant-based testing
478 (2.7×10^{-6} and 5×10^{-8} , respectively). As such, this result should be interpreted as suggestive.
479 Genetic analyses with rare variants are still underpowered, as also highlighted in recent burden
480 test studies from the UK Biobank, where no gene showed significant associations with either
481 myocardial infarction or ischemic stroke.⁴⁵ Future research should aim to pool additional data as
482 they become available. Second, UK Biobank consists primarily of European individuals, and
483 consequently, we detected damaging *CCR2* variants that are predominantly detected in
484 European populations. As such, our results should not be extended to non-European
485 individuals. Third, all analyses are based on individuals heterozygous for the damaging *CCR2*
486 variants, as we found no homozygotes for damaging *CCR2* variants. While this lack of
487 homozygotes can be fully explained by the frequency of damaging *CCR2* variants in the general
488 population, it remains unknown whether homozygous status for damaging *CCR2* variants would
489 lead to potentially fatal complications. Fourth, the data from the UKB do not allow a distinction to
490 be made between classical and non-classical monocytes. The available data suggest that *CCL2*
491 only acts on classical *CCR2*⁺ monocytes in humans or *Ly6C*^{hi} monocytes in mice. Experimental
492 studies in mice have revealed that *Ccr2*-deficient *Ly6C*^{hi} monocytes are trapped in the bone
493 marrow and are not mobilized after infections.³¹ Future studies in humans should further explore
494 the impact of the examined mutations on monocytes subtypes. However, it should be noted that
495 inhibition of monocyte recruitment from the circulation into atherosclerotic lesions is the main
496 suspected mechanism by which *CCR2* damaging variants act, and the effects of lowering
497 monocyte counts remain to be tested.

498 In conclusion, we found that heterozygous carriers of a rare damaging *CCR2* variant are at
499 lower lifetime risk of myocardial infarction and coronary artery disease without carrying a higher
500 risk of infections. This provides further genetic support for the concept that pharmacological
501 targeting of *CCR2* might be an efficient and viable immunotherapeutic strategy to prevent
502 atherosclerotic cardiovascular disease.

503

504 **Conflicts of Interest:** SMD receives research support from RenalytixAI and personal fees from
505 Calico Labs, both outside the current work. MEM receives funding from Regeneron
506 Pharmaceutical Inc. unrelated to this work. RD has received research support from AstraZeneca
507 and Goldfinch Bio, not related to this work. BMP serves on the Steering Committee of the Yale
508 Open Data Access Program funded by Johnson & Johnson. CDA has received sponsored
509 research support from Bayer AG, has consulted for ApoPharma, and is a member of the

510 Editorial Board of *Neurology*. LMR is a consultant for the TOPMed Administrative Coordinating
511 Center (through WeStat). The other authors have nothing to declare.

512

513 **Acknowledgements:** Marios K. Georgakis is supported with a clinician-scientist grant from the
514 Munich Cluster for Systems Neurology (EXC 2145 SyNergy, ID 390857198), and an Emmy
515 Noether grant (GZ: GE 3461/2-1, ID 512461526) by the German Research Foundation
516 (Deutsche Forschungsgemeinschaft, DFG), as well as by the Fritz-Thyssen Foundation (Ref.
517 10.22.2.024MN) and the Hertie Foundation (Hertie Network of Excellence in Clinical
518 Neuroscience, ID P1230035). Scott M. Damrauer is supported by IK2-CX001780. We
519 acknowledge the Penn Medicine BioBank (PMBB) for providing data and thank the patient-
520 participants of Penn Medicine who consented to participate in this research program. We would
521 also like to thank the Penn Medicine BioBank team and Regeneron Genetics Center for
522 providing genetic variant data for analysis. The PMBB is approved under IRB protocol# 813913
523 and supported by Perelman School of Medicine at University of Pennsylvania, a gift from the
524 Smilow family, and the National Center for Advancing Translational Sciences of the National
525 Institutes of Health under CTSA award number UL1TR001878. We thank Geisinger MyCode
526 Community Health Initiative and Geisinger-Regeneron DiscovEHR collaboration contributors
527 who have been critical in the generation of the original data used for this study. This publication
528 does not represent the views of the Department of Veterans Affairs or the United States
529 Government. Paul S. de Vries, Natalie R. Hasbani, and Alanna C. Morrison were supported by
530 R01 HL146860. Joshua C. Bis and Bruce M. Psaty were funded in part by R01HL105756.
531 Reading of the carotid IMT measures was supported by N01HC85085, N01HC45133; Coronary
532 Calcium scans were supported by R01HL64587. Kendra A. Young is supported by NHLBI N01
533 HL089897 and U01 HL089856. Sharon M. Lutz was supported by R01 MH129337. Nicholette
534 D. Palmer, Barry I. Freedman and Donald W. Bowden were supported by R01 AG058921.
535 Patricia A. Peyser was supported by R01 HL146860. Lawrence F. Bielak was supported by R01
536 HL146860. LMR was supported by T32 HL129982 and by the National Center for Advancing
537 Translational Sciences, National Institutes of Health, through Grant KL2TR002490. Christopher
538 D. Anderson receives sponsored research support from the US National Institutes of Health
539 (R01NS103924, U01NS069673), the American Heart Association (AHA 21SFRN812095).
540 Whole genome sequencing (WGS) for the Trans-Omics in Precision Medicine (TOPMed)
541 program was supported by the National Heart, Lung and Blood Institute (NHLBI). Cohort-
542 specific acknowledgements for studies included in the TOPMed program are provided in
543 **Supplementary Table S6**. Jürgen Bernhagen is supported by grants from the Deutsche

544 Forschungsgemeinschaft (DFG; CRC 1123 [A3], BE 1977/14-1, and Munich Cluster for
545 Systems Neurology [SyNergy, EXC 2145; ID390857198]. Martin Dichgans is supported by
546 grants from the Deutsche Forschungsgemeinschaft (DFG; CRC 1123 [B3], DI-722/16-1 [ID:
547 428668490], DI-722/21-1, and Munich Cluster for Systems Neurology [SyNergy, EXC 2145;
548 ID390857198]), the Leducq Foundation, the flagship P4-medicine project *DigiMed* Bayern and
549 the Vascular Dementia Research Foundation.

550

551

552

553 **REFERENCES**

554

- 555 1. Diseases GBD, Injuries C. Global burden of 369 diseases and injuries in 204 countries
556 and territories, 1990-2019: a systematic analysis for the Global Burden of Disease Study
557 2019. *Lancet*. 2020;396:1204-1222. doi: 10.1016/S0140-6736(20)30925-9
- 558 2. Guedeney P, Claessen BE, Kalkman DN, Aquino M, Sorrentino S, Giustino G, Farhan S,
559 Vogel B, Sartori S, Montalescot G, et al. Residual Inflammatory Risk in Patients With
560 Low LDL Cholesterol Levels Undergoing Percutaneous Coronary Intervention. *J Am Coll*
561 *Cardiol*. 2019;73:2401-2409. doi: 10.1016/j.jacc.2019.01.077
- 562 3. Ridker PM. How Common Is Residual Inflammatory Risk? *Circ Res*. 2017;120:617-619.
563 doi: 10.1161/CIRCRESAHA.116.310527
- 564 4. Lutgens E, Atzler D, Doring Y, Duchene J, Steffens S, Weber C. Immunotherapy for
565 cardiovascular disease. *Eur Heart J*. 2019;40:3937-3946. doi: 10.1093/eurheartj/ehz283
- 566 5. Weber C, Noels H. Atherosclerosis: current pathogenesis and therapeutic options. *Nat*
567 *Med*. 2011;17:1410-1422. doi: 10.1038/nm.2538
- 568 6. Ridker PM, Everett BM, Thuren T, MacFadyen JG, Chang WH, Ballantyne C, Fonseca
569 F, Nicolau J, Koenig W, Anker SD, et al. Antiinflammatory Therapy with Canakinumab
570 for Atherosclerotic Disease. *N Engl J Med*. 2017;377:1119-1131. doi:
571 10.1056/NEJMoa1707914
- 572 7. Tardif JC, Kouz S, Waters DD, Bertrand OF, Diaz R, Maggioni AP, Pinto FJ, Ibrahim R,
573 Gamra H, Kiwan GS, et al. Efficacy and Safety of Low-Dose Colchicine after Myocardial
574 Infarction. *The New England journal of medicine*. 2019;381:2497-2505. doi:
575 10.1056/NEJMoa1912388
- 576 8. Nidorf SM, Fiolet ATL, Mosterd A, Eikelboom JW, Schut A, Opstal TSJ, The SHK, Xu
577 XF, Ireland MA, Lenderink T, et al. Colchicine in Patients with Chronic Coronary
578 Disease. *N Engl J Med*. 2020;383:1838-1847. doi: 10.1056/NEJMoa2021372
- 579 9. Leung YY, Yao Hui LL, Kraus VB. Colchicine--Update on mechanisms of action and
580 therapeutic uses. *Semin Arthritis Rheum*. 2015;45:341-350. doi:
581 10.1016/j.semarthrit.2015.06.013
- 582 10. Opstal TSJ, Hoogeveen RM, Fiolet ATL, Silvis MJM, The SHK, Bax WA, de Kleijn DPV,
583 Mosterd A, Stroes ESG, Cornel JH. Colchicine Attenuates Inflammation Beyond the
584 Inflammasome in Chronic Coronary Artery Disease: A LoDoCo2 Proteomic Substudy.
585 *Circulation*. 2020;142:1996-1998. doi: 10.1161/CIRCULATIONAHA.120.050560

- 586 11. Ridker PM. From C-Reactive Protein to Interleukin-6 to Interleukin-1: Moving Upstream
587 To Identify Novel Targets for Atheroprotection. *Circ Res*. 2016;118:145-156. doi:
588 10.1161/CIRCRESAHA.115.306656
- 589 12. Mackay CR. Chemokines: immunology's high impact factors. *Nat Immunol*. 2001;2:95-
590 101.
- 591 13. Živković L, Asare Y, Bernhagen J, Dichgans M, Georgakis MK. Pharmacological
592 Targeting of the CCL2/CCR2 Axis for Atheroprotection: A Meta-Analysis of Preclinical
593 Studies. *Arteriosclerosis, thrombosis, and vascular biology*. 2022;42:e131-e144. doi:
594 10.1161/atvbaha.122.317492
- 595 14. Georgakis MK, Bernhagen J, Heitman LH, Weber C, Dichgans M. Targeting the CCL2-
596 CCR2 axis for atheroprotection. *Eur Heart J*. 2022;43:1799-1808. doi:
597 10.1093/eurheartj/ehac094
- 598 15. Georgakis MK, Malik R, Björkbacka H, Pana TA, Demissie S, Ayers C, Elhadad MA,
599 Fornage M, Beiser AS, Benjamin EJ, et al. Circulating Monocyte Chemoattractant
600 Protein-1 and Risk of Stroke: Meta-Analysis of Population-Based Studies Involving 17
601 180 Individuals. *Circ Res*. 2019;125:773-782. doi: 10.1161/CIRCRESAHA.119.315380
- 602 16. Georgakis MK, de Lemos JA, Ayers C, Wang B, Björkbacka H, Pana TA, Thorand B,
603 Sun C, Fani L, Malik R, et al. Association of Circulating Monocyte Chemoattractant
604 Protein-1 Levels With Cardiovascular Mortality: A Meta-analysis of Population-Based
605 Studies. *JAMA Cardiol*. 2021;6:587-592. doi: 10.1001/jamacardio.2020.5392
- 606 17. Georgakis MK, Gill D, Rannikmae K, Traylor M, Anderson CD, Lee JM, Kamatani Y,
607 Hopewell JC, Worrall BB, Bernhagen J, et al. Genetically Determined Levels of
608 Circulating Cytokines and Risk of Stroke. *Circulation*. 2019;139:256-268. doi:
609 10.1161/CIRCULATIONAHA.118.035905
- 610 18. Georgakis MK, Parodi L, Frerich S, Mayerhofer E, Tsivgoulis G, Pirruccello JP, Slowik A,
611 Rundek T, Malik R, Dichgans M, et al. Genetic Architecture of Stroke of Undetermined
612 Source: Overlap with Known Stroke Etiologies and Associations with Modifiable Risk
613 Factors. *Ann Neurol*. 2022;91:640-651. doi: 10.1002/ana.26332
- 614 19. Georgakis MK, van der Laan SW, Asare Y, Mekke JM, Haitjema S, Schoneveld AH, de
615 Jager SCA, Nurmohamed NS, Kroon J, Stroes ESG, et al. Monocyte-Chemoattractant
616 Protein-1 Levels in Human Atherosclerotic Lesions Associate With Plaque Vulnerability.
617 *Arteriosclerosis, thrombosis, and vascular biology*. 2021;41:2038-2048. doi:
618 10.1161/atvbaha.121.316091
- 619 20. Interleukin-6 Receptor Mendelian Randomisation Analysis C, Swerdlow DI, Holmes MV,
620 Kuchenbaecker KB, Engmann JE, Shah T, Sofat R, Guo Y, Chung C, Peasey A, et al.

- 621 The interleukin-6 receptor as a target for prevention of coronary heart disease: a
622 mendelian randomisation analysis. *Lancet*. 2012;379:1214-1224. doi: 10.1016/S0140-
623 6736(12)60110-X
- 624 21. Cohen JC, Boerwinkle E, Mosley TH, Jr., Hobbs HH. Sequence variations in PCSK9,
625 low LDL, and protection against coronary heart disease. *The New England journal of*
626 *medicine*. 2006;354:1264-1272. doi: 10.1056/NEJMoa054013
- 627 22. Clarke R, Peden JF, Hopewell JC, Kyriakou T, Goel A, Heath SC, Parish S, Barlera S,
628 Franzosi MG, Rust S, et al. Genetic variants associated with Lp(a) lipoprotein level and
629 coronary disease. *N Engl J Med*. 2009;361:2518-2528. doi: 10.1056/NEJMoa0902604
- 630 23. Nioi P, Sigurdsson A, Thorleifsson G, Helgason H, Agustsdottir AB, Norddahl GL,
631 Helgadottir A, Magnusdottir A, Jonasdottir A, Gretarsdottir S, et al. Variant ASGR1
632 Associated with a Reduced Risk of Coronary Artery Disease. *N Engl J Med*.
633 2016;374:2131-2141. doi: 10.1056/NEJMoa1508419
- 634 24. Stitzel NO, Khera AV, Wang X, Bierhals AJ, Vourakis AC, Sperry AE, Natarajan P,
635 Klarin D, Emdin CA, Zekavat SM, et al. ANGPTL3 Deficiency and Protection Against
636 Coronary Artery Disease. *J Am Coll Cardiol*. 2017;69:2054-2063. doi:
637 10.1016/j.jacc.2017.02.030
- 638 25. Sudlow C, Gallacher J, Allen N, Beral V, Burton P, Danesh J, Downey P, Elliott P, Green
639 J, Landray M, et al. UK biobank: an open access resource for identifying the causes of a
640 wide range of complex diseases of middle and old age. *PLoS Med*. 2015;12:e1001779.
641 doi: 10.1371/journal.pmed.1001779
- 642 26. Backman JD, Li AH, Marcketta A, Sun D, Mbatchou J, Kessler MD, Benner C, Liu D,
643 Locke AE, Balasubramanian S, et al. Exome sequencing and analysis of 454,787 UK
644 Biobank participants. *Nature*. 2021;599:628-634. doi: 10.1038/s41586-021-04103-z
- 645 27. Malik R, Beaufort N, Frerich S, Gesierich B, Georgakis MK, Rannikmäe K, Ferguson AC,
646 Haffner C, Traylor M, Ehrmann M, et al. Whole-exome sequencing reveals a role of
647 HTRA1 and EGFL8 in brain white matter hyperintensities. *Brain : a journal of neurology*.
648 2021;144:2670-2682. doi: 10.1093/brain/awab253
- 649 28. McLaren W, Gil L, Hunt SE, Riat HS, Ritchie GR, Thormann A, Flicek P, Cunningham F.
650 The Ensembl Variant Effect Predictor. *Genome Biol*. 2016;17:122. doi: 10.1186/s13059-
651 016-0974-4
- 652 29. Ioannidis NM, Rothstein JH, Pejaver V, Middha S, McDonnell SK, Baheti S, Musolf A, Li
653 Q, Holzinger E, Karyadi D, et al. REVEL: An Ensemble Method for Predicting the
654 Pathogenicity of Rare Missense Variants. *Am J Hum Genet*. 2016;99:877-885. doi:
655 10.1016/j.ajhg.2016.08.016

- 656 30. Karczewski KJ, Francioli LC, Tiao G, Cummings BB, Alfoldi J, Wang Q, Collins RL,
657 Laricchia KM, Ganna A, Birnbaum DP, et al. The mutational constraint spectrum
658 quantified from variation in 141,456 humans. *Nature*. 2020;581:434-443. doi:
659 10.1038/s41586-020-2308-7
- 660 31. Serbina NV, Pamer EG. Monocyte emigration from bone marrow during bacterial
661 infection requires signals mediated by chemokine receptor CCR2. *Nat Immunol*.
662 2006;7:311-317. doi: 10.1038/ni1309
- 663 32. Tsou CL, Peters W, Si Y, Slaymaker S, Aslanian AM, Weisberg SP, Mack M, Charo IF.
664 Critical roles for CCR2 and MCP-3 in monocyte mobilization from bone marrow and
665 recruitment to inflammatory sites. *J Clin Invest*. 2007;117:902-909. doi:
666 10.1172/JCI29919
- 667 33. Shi C, Jia T, Mendez-Ferrer S, Hohl TM, Serbina NV, Lipuma L, Leiner I, Li MO,
668 Frenette PS, Pamer EG. Bone marrow mesenchymal stem and progenitor cells induce
669 monocyte emigration in response to circulating toll-like receptor ligands. *Immunity*.
670 2011;34:590-601. doi: 10.1016/j.immuni.2011.02.016
- 671 34. Mbatchou J, Barnard L, Backman J, Marcketta A, Kosmicki JA, Ziyatdinov A, Benner C,
672 O'Dushlaine C, Barber M, Boutkov B, et al. Computationally efficient whole-genome
673 regression for quantitative and binary traits. *Nat Genet*. 2021;53:1097-1103. doi:
674 10.1038/s41588-021-00870-7
- 675 35. Wu P, Gifford A, Meng X, Li X, Campbell H, Varley T, Zhao J, Carroll R, Bastarache L,
676 Denny JC, et al. Mapping ICD-10 and ICD-10-CM Codes to Phecodes: Workflow
677 Development and Initial Evaluation. *JMIR Med Inform*. 2019;7:e14325. doi:
678 10.2196/14325
- 679 36. Taliun D, Harris DN, Kessler MD, Carlson J, Szpiech ZA, Torres R, Taliun SAG, Corvelo
680 A, Gogarten SM, Kang HM, et al. Sequencing of 53,831 diverse genomes from the
681 NHLBI TOPMed Program. *Nature*. 2021;590:290-299. doi: 10.1038/s41586-021-03205-y
- 682 37. Fayad ZA, Mani V, Woodward M, Kallend D, Abt M, Burgess T, Fuster V, Ballantyne
683 CM, Stein EA, Tardif JC, et al. Safety and efficacy of dalcetrapib on atherosclerotic
684 disease using novel non-invasive multimodality imaging (dal-PLAQUE): a randomised
685 clinical trial. *Lancet*. 2011;378:1547-1559. doi: 10.1016/s0140-6736(11)61383-4
- 686 38. Gaztanaga J, Farkouh M, Rudd JH, Brotz TM, Rosenbaum D, Mani V, Kerwin TC, Taub
687 R, Tardif JC, Tawakol A, et al. A phase 2 randomized, double-blind, placebo-controlled
688 study of the effect of VIA-2291, a 5-lipoxygenase inhibitor, on vascular inflammation in
689 patients after an acute coronary syndrome. *Atherosclerosis*. 2015;240:53-60. doi:
690 10.1016/j.atherosclerosis.2015.02.027

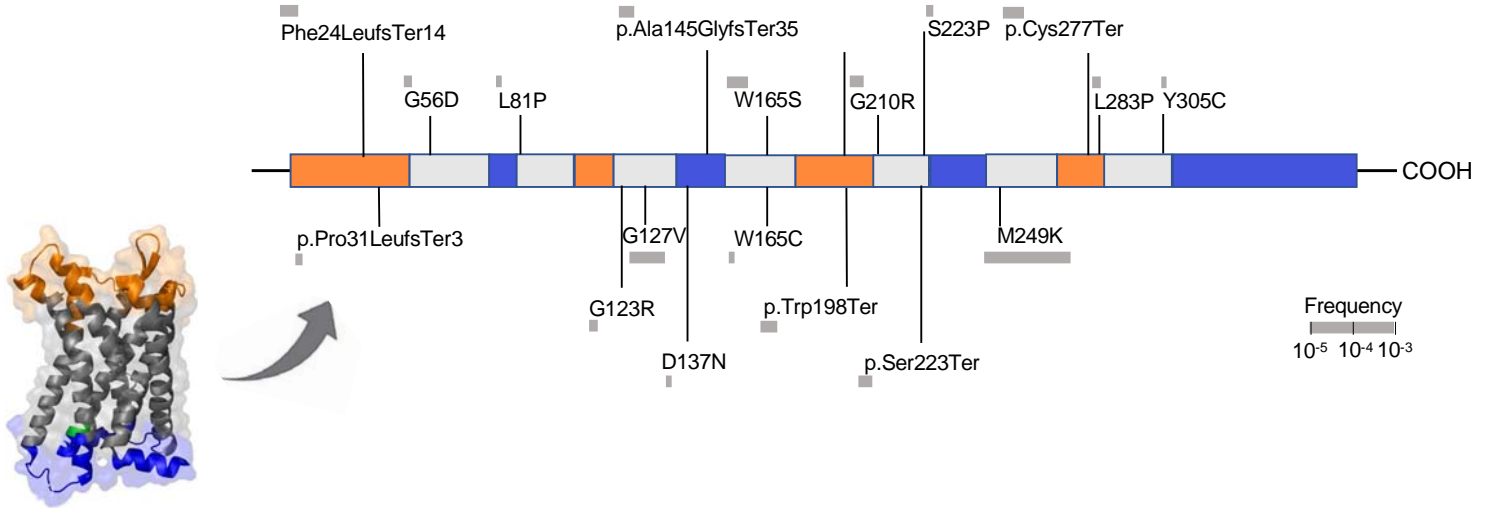
- 691 39. van Wijk DF, Sjouke B, Figueroa A, Emami H, van der Valk FM, MacNabb MH, Hemphill
692 LC, Schulte DM, Koopman MG, Lobatto ME, et al. Nonpharmacological lipoprotein
693 apheresis reduces arterial inflammation in familial hypercholesterolemia. *J Am Coll*
694 *Cardiol.* 2014;64:1418-1426. doi: 10.1016/j.jacc.2014.01.088
- 695 40. Liu Y, Imanishi T, Ikejima H, Tsujioka H, Ozaki Y, Kuroi A, Okochi K, Ishibashi K,
696 Tanimoto T, Ino Y, et al. Association between circulating monocyte subsets and in-stent
697 restenosis after coronary stent implantation in patients with ST-elevation myocardial
698 infarction. *Circ J.* 2010;74:2585-2591. doi: 10.1253/circj.cj-10-0544
- 699 41. Ridker PM, Devalaraja M, Baeres FMM, Engelmann MDM, Hovingh GK, Ivkovic M, Lo L,
700 Kling D, Pergola P, Raj D, et al. IL-6 inhibition with ziltivekimab in patients at high
701 atherosclerotic risk (RESCUE): a double-blind, randomised, placebo-controlled, phase 2
702 trial. *Lancet.* 2021;397:2060-2069. doi: 10.1016/S0140-6736(21)00520-1
- 703 42. Friedman SL, Ratziu V, Harrison SA, Abdelmalek MF, Aithal GP, Caballeria J, Francque
704 S, Farrell G, Kowdley KV, Craxi A, et al. A randomized, placebo-controlled trial of
705 cenicriviroc for treatment of nonalcoholic steatohepatitis with fibrosis. *Hepatology.*
706 2018;67:1754-1767. doi: 10.1002/hep.29477
- 707 43. de Zeeuw D, Bekker P, Henkel E, Hasslacher C, Gouni-Berthold I, Mehling H, Potarca
708 A, Tesar V, Heerspink HJ, Schall TJ, et al. The effect of CCR2 inhibitor CCX140-B on
709 residual albuminuria in patients with type 2 diabetes and nephropathy: a randomised
710 trial. *Lancet Diabetes Endocrinol.* 2015;3:687-696. doi: 10.1016/S2213-8587(15)00261-2
- 711 44. Vergunst CE, Gerlag DM, Lopatinskaya L, Klareskog L, Smith MD, van den Bosch F,
712 Dinant HJ, Lee Y, Wyant T, Jacobson EW, et al. Modulation of CCR2 in rheumatoid
713 arthritis: a double-blind, randomized, placebo-controlled clinical trial. *Arthritis Rheum.*
714 2008;58:1931-1939. doi: 10.1002/art.23591
- 715 45. Karczewski KJ, Solomonson M, Chao KR, Goodrich JK, Tiao G, Lu W, Riley-Gillis BM,
716 Tsai EA, Kim HI, Zheng X, et al. Systematic single-variant and gene-based association
717 testing of thousands of phenotypes in 394,841 UK Biobank exomes. *Cell Genom.*
718 2022;2:100168. doi: 10.1016/j.xgen.2022.100168

719

720

721 **Figure 1. Damaging CCR2 variants.** Domain structure of the CCR2 protein and position of the
722 predicted loss-of-function (LoF) or missense damaging (REVEL>0.5) variants present in >2 UK
723 Biobank participants in the CCR2 exonic regions.

724



726

Figure 2. Associations of rare computationally predicted damaging CCR2 variants with risk of atherosclerotic cardiovascular disease in the UK Biobank. Associations of 45 predicted loss-of-function (LoF) or damaging (REVEL>0.5) CCR2 variants (minimum allele frequency <0.01) in burden tests with (A) risk of cardiovascular disease endpoints and (B) a combined atherosclerosis endpoint as well as severe clinical atherosclerotic disease defined by manifestations in at least 2 vascular beds (coronary arteries, cerebrovascular system, peripheral arteries of extremities, aorta) among UK Biobank participants of European ancestry. (C) Prevalence of clinically manifest atherosclerosis across 4 vascular beds (coronary arteries, cerebrovascular system, peripheral arteries of extremities, aorta) among carriers and non-carriers of the 45 predicted LoF or damaging CCR2 variants. The odds ratio (OR) is derived from ordinal regression adjusted for age, sex, and the first 5 ancestral principal components.

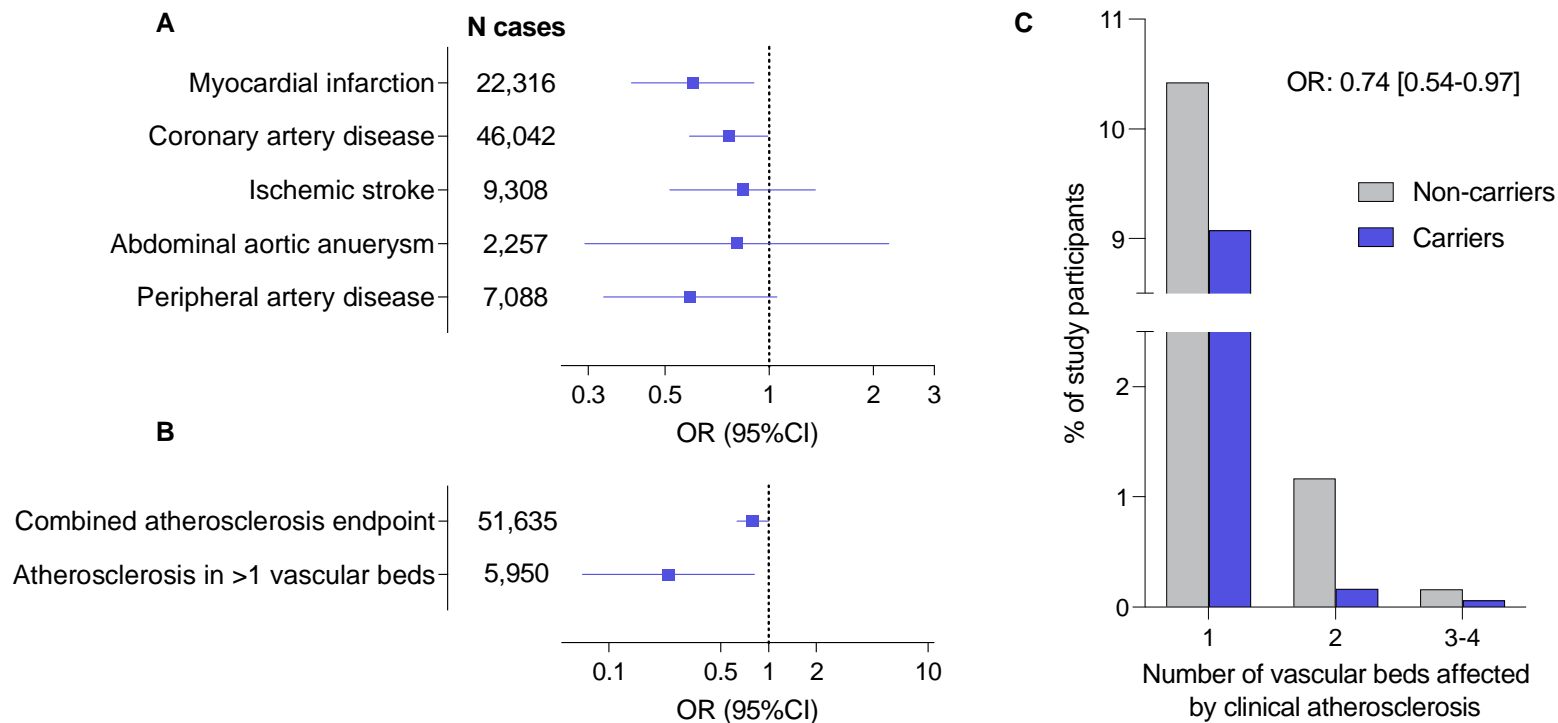


Figure 3. Validation of the damaging effect of M249K (3:46358273:T:A) on CCL2-driven monocyte chemotaxis. (A) Experimental outline of chemotaxis assay. Transfected CCR2^{-/-} THP-1 cells (marked in green) and non-transfected cells (marked in red) were used in a Transwell chemotaxis assay. The cells that moved to the lower chamber were collected, stained, and quantified using flow cytometry. (B) Chemotaxis in response to increasing concentrations of CCL2 for human CCR2-knockout monocytic THP-1 cells transfected with the mutant M249K vs. wild-type CCR2, as determined in a trans-well migration assay (comparisons derived from two-way ANOVA, ns: $p > 0.05$, *** $p < 0.001$, **** $p < 0.0001$). (C) Results of cyclic AMP (cAMP) assay. Shown is the cAMP activity in HEK293T cells transfected with either empty vector or wild-type or M249K CCR2 in response to different concentrations of CCL2. Results are presented as “Ratio 665/620 x 10,000” (ratio of fluorescence at 665 nm and 620 nm x 10,000). (D) Associations of M249K with counts of different leukocyte populations in the subset of European ancestry participants of the UK Biobank (N=393,838), as derived from linear regression models adjusted for age, sex, and the first 5 ancestral principal components.

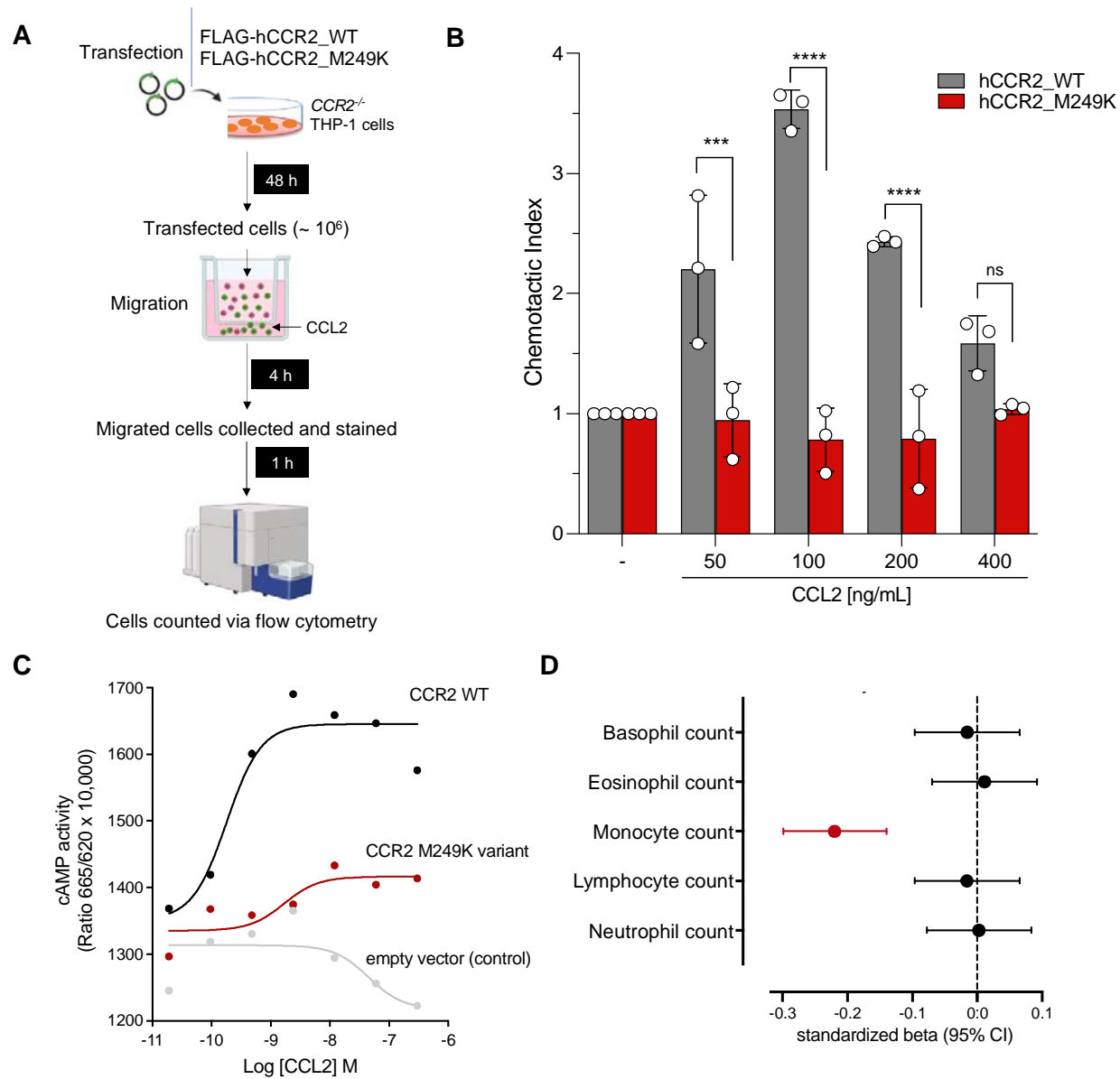


Figure 4. Association of the damaging M249K CCR2 variant with lifetime cardiovascular risk. Associations of the M249K CCR2 variant with risk of **(A)** cardiovascular disease endpoints, **(B)** a combined atherosclerosis endpoint and severe clinical atherosclerotic disease defined by manifestations in at least 2 vascular beds (coronary arteries, cerebrovascular system, peripheral arteries of extremities, aorta), and **(C)** conventional vascular risk biomarkers in models adjusted for age, sex, and the first five principal components among UK Biobank participants of European ancestry. HbA1c and C-reactive protein levels are log-transformed for normalization. Fixed-effects and random-effects meta-analysis of the effects of M249K on risk of **(D)** myocardial infarction and **(E)** coronary artery disease across 7 population- and hospital-based biobanks. The effects correspond to odds ratios (OR) derived from logistic regression models adjusted for age, sex, and the first 5 ancestral principal components in each biobank.

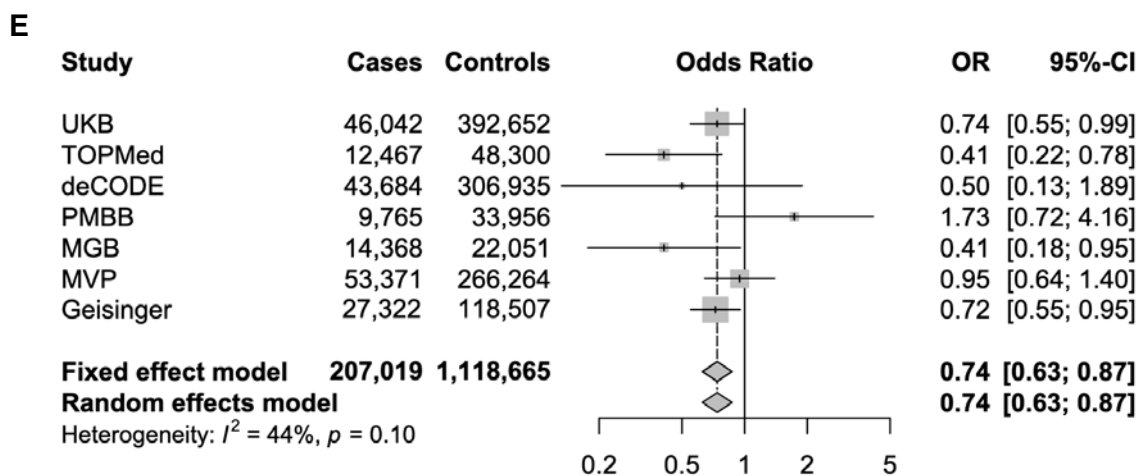
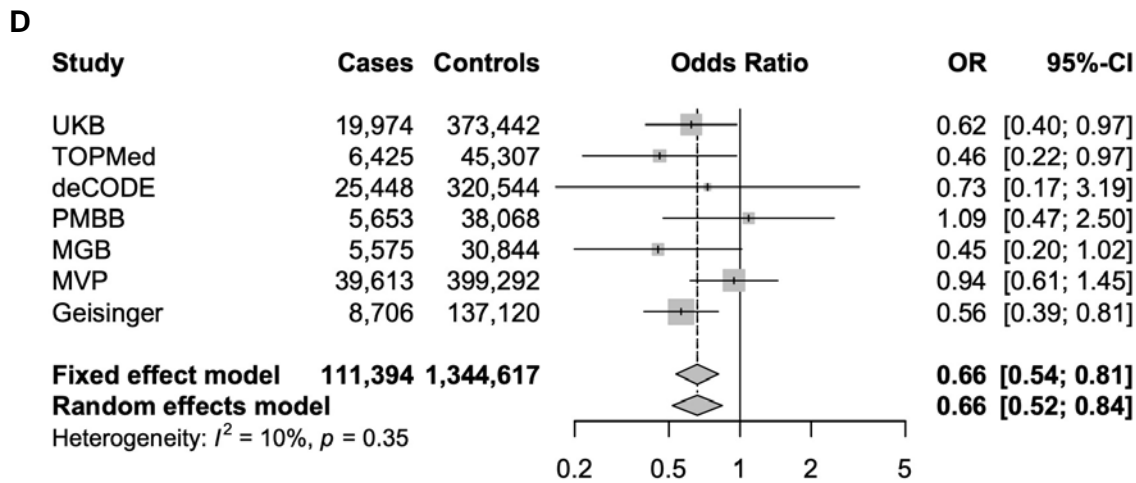
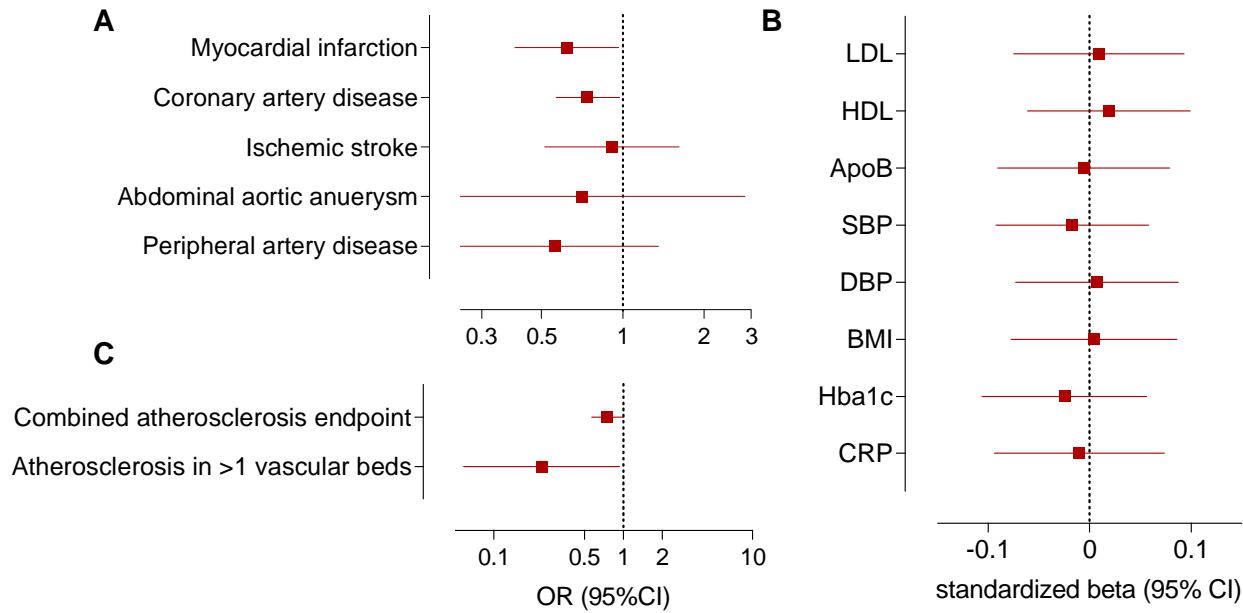


Figure 5. Phenome-wide association study of the damaging M249K CCR2 variant and associations with overall survival. (A) Results from a phenome-wide association study in UK Biobank and the Geisinger DiscovEHR-MyCode cohort for the M249K CCR2 variant among participants of European ancestry. Only phecodes with ≥ 10 cases in UK Biobank were analyzed. We present the names of phenotypes associated with rare CCR2 variants at $p < 0.05$. Only myocardial infarction reached an FDR-corrected p -value of < 0.05 . The results are presented as log-Odds Ratios (log-OR). (B) Kaplan-Meier curves for overall survival across 15 years of follow-up among carriers and non-carriers of the M249K CCR2 variant in the European subset of UK Biobank participants.

