

The efficacy and safety of the prasugrel, ticagrelor, and clopidogrel dual antiplatelet therapies following an acute coronary syndrome: A systematic review and Bayesian network meta-analysis

Stephen A. Kutcher MSc PhD(c)^{1,2}, Leah Flatman, MSc, PhD (c)¹,
Rachelle Haber, MSc, PhD (c)¹, Nandini Dendukuri, PhD^{2,3}, Sonny Dandona, MD³,
James M. Brophy MD PhD^{1,2,3}

¹Department of Epidemiology, Biostatistics, and Occupational Health, McGill University, Montreal, Canada; ²Center for Outcomes Research and Evaluation, Research Institute of McGill University Health Center, Montreal, Quebec, Canada, ³Department of Medicine, McGill University, Montreal, Canada

Address for Correspondence

Stephen A. Kutcher MSc PhD(c)

Department of Epidemiology, Biostatistics, and Occupational Health, McGill University

2001 McGill College, Suite 1200, Montreal, QC H3A 1G1 Canada

Email: Stephen.kutcher@mail.mcgill.ca

Abstract: 446 words

Word count: 3505 words

1 ABSTRACT

2 **Background:** The dual-antiplatelet therapies (DAPT) of clopidogrel, prasugrel, or ticagrelor in
3 concomitant use with acetylsalicylic acid are the contemporary treatment regimens for acute
4 coronary syndromes (ACS). Systematic comparative effectiveness and safety analyses currently
5 lack clinically meaningful interpretations of the summarized evidence.

6 **Methods:** We systematically searched MEDLINE, EMBASE, CENTRAL, and clinicaltrials.gov
7 for randomized controlled trials (RCTs) that reported on either the efficacy or safety between
8 clopidogrel, prasugrel, or ticagrelor DAPTs in ACS patients. The primary efficacy endpoint was a
9 composite of all-cause mortality, a recurrent non-fatal myocardial infarction, or non-fatal stroke.
10 The primary safety endpoint was study-reported major bleeding events. A Bayesian network meta-
11 analysis was performed using a generalized linear model logit transformation with a log-
12 transformation of ‘time’ for varying lengths of study follow-up. Studies published in either English
13 or French with a minimum of 6 months of follow-up and a “low” rating from the Cochrane risk of
14 bias assessment tool were included in the main analyses. Fixed and random effects models fit was
15 assessed by the deviance information criterion (DIC) and node-splitting methods were used to
16 assess the consistency of direct and indirect network evidence. An HR >0.9 and <1.11 were set as
17 our clinically important thresholds, and represented the range of practical equivalence (ROPE).

18 **Results:** From a total of 15,232 articles identified, 138 were selected for full-text review. From a
19 total of 29 identified RCT’s, 17 trials, representing 57,814 subjects, were identified as a “low” risk
20 of bias and were included in the final Bayesian network meta-analysis. Compared to clopidogrel,
21 prasugrel and ticagrelor reduced major acute coronary events (MACE) endpoints by a median of
22 13% (Hazard ratio [HR]_{PC}, 0.87; 95% credible interval [95% CrI]: 0.74, 1.06) and 5% (HR_{TC}, 0.95;
23 95% CrI: 0.81, 1.14), respectively. The HR posterior distributions estimated that prasugrel had a
24 67.5% chance of producing a clinically meaningful – greater than 10% (HR<0.9) – decrease in the
25 risk of MACE outcomes, while ticagrelor only had a 22.4% chance of exceeding the clinically
26 important threshold. The primary safety outcome found prasugrel (HR_{PC}, 1.23; 95% CrI: 1.04,
27 1.40) and ticagrelor (HR_{TC}, 1.07; 95% CrI: 0.99, 1.17) DAPTs to be associated with a median
28 increase in events relative to clopidogrel. This translates to a probability of a clinically meaningful
29 increase (HR>1.11) in major bleeding of 83.7% for prasugrel and 67.7% for ticagrelor, when
30 compared to clopidogrel.

31 **Conclusion:** When compared with ACS patients assigned to clopidogrel, prasugrel and ticagrelor
32 were associated with moderate and modest probabilities respectively in clinically meaningful
33 MACE reductions. Prasugrel and ticagrelor had high and modest probabilities respectively of
34 clinically meaningful increases in bleeding. Despite guideline recommendations, the net clinical
35 benefit for these drugs compared to clopidogrel appears uncertain.
36

1 INTRODUCTION

2 Dual antiplatelet therapy (DAPT), consisting of the concomitant use of acetylsalicylic acid
3 (ASA) and clopidogrel, is standard secondary prevention following an acute coronary syndrome
4 (ACS) hospitalization. The most recent American,¹ Canadian,² and European³ ACS guidelines
5 suggest the use of ticagrelor and prasugrel DAPT over clopidogrel for the treatment of ACS, unless
6 patients are at high-risk of bleeding. These ACS guidelines largely rely on evidence from two large
7 multinational randomized controlled trials, PLATO⁴ and TRITON-TIMI-38,⁵ that reported a
8 clinical efficacy benefit of ticagrelor (hazard ratio[HR]: 0.84, 95% confidence interval [CI]: 0.77
9 to 0.92; P<0.001) and prasugrel (HR: 0.81, 95%CI: 0.73 to 0.90; P<0.001), respectively, when
10 compared to clopidogrel.

11 However, if one desires to personalize DAPT choice, for example by considering the
12 geographic region where the patient is treated the situation becomes less clear. Two publications
13 report on the pre-specified PLATO regional analysis. One study includes the 1,413 patients from
14 the United States (HR_{US}: 1.27, 95%CI: 0.92 to 1.75)⁶ and another by the Food and Drug
15 Administration (FDA) on the whole 1,814 North American subjects (HR_{NA}: 1.25, 95%CI: 0.93 to
16 1.67),⁷ find no benefit for the efficacy outcome, major acute coronary events (MACE), from
17 ticagrelor over clopidogrel. In fact, the sub-analyses suggest the potential for an increase in MACE
18 outcomes with reported HRs greater than one. These North American sub-population estimates
19 deviate substantially from the overall pooled effect reported for the entire study population
20 (HR_{PLATO}: 0.84).

21 It may be argued that there is *one* overall “true” treatment effect (a fixed effect) and that
22 the results within North American patients are simply due to random chance. Alternatively, it can
23 be viewed that the observed HR discrepancies are due to inherent and meaningful population

1 differences and healthcare practices across the study regions; patients were recruited from a total
2 of 43 and 21 countries in PLATO and TRITON-TIMI-38, respectively. It is plausible that the effect
3 estimates from these large RCTs rather come from a distribution of effects (a random effect) and
4 the added uncertainty from regional variability should be accounted for in the analyses.⁸ A recent
5 discussion⁹ describing the utility of Bayesian analytical methodologies, re-analyzed the PLATO
6 data applying a hierarchical (random effects) approach accounting for the regional differences.
7 They reported a pooled HR of 0.87 with a 95% credible interval (CrI) from 0.70 to 1.15. The
8 superiority of ticagrelor over clopidogrel became less confident using the hierarchical model, as
9 the interpretation of the effect estimate was not robust – the 95%CrI crosses the null (HR=1.0) –
10 to a simple change in a modelling assumption (fixed versus random effects). This signal was not
11 dismissed in the FDA report,⁷ as multiple reviewers made calls for further evidence prior to the
12 drug's approval.

13 The purpose of this paper is to systematically search the literature for RCTs comparing
14 clopidogrel, ticagrelor, or prasugrel in ACS patients that include MACE and/or major bleeding
15 outcomes with a minimum of 6 months follow-up. A Bayesian network meta-analysis will be
16 performed to compare the direct and indirect evidence on the efficacy and safety across the three
17 DAPTs, with a particular focus on identifying RCT evidence from North American study
18 populations.

19 **METHODS**

20 Following the PRISMA extension for network meta-analyses¹⁰ we performed a systematic
21 search of EMBASE, MEDLINE, the Cochrane controlled register of trials (CENTRAL), and
22 clinicaltrials.gov, last updated on August 1st, 2022. The PRISMA checklist can be found in the
23 appendix. The complete search strategy is also described in the appendix but briefly, we searched

1 for RCTs using the terms “acute coronary syndrome” or “myocardial ischemia” or “unstable
2 angina” or “ST segment elevation myocardial infarction” or “non-ST segment elevation
3 myocardial infarction” or “unstable angina” and related keywords. Additionally, we searched for
4 “dual antiplatelet therapy” or “DAPT” or a combination of “prasugrel” and “clopidogrel” and
5 “ticagrelor”. A hand-search of the references from relevant articles was further performed. Article
6 inclusion criteria were: (1) patients diagnosed with ACS with or without percutaneous coronary
7 intervention (PCI) or coronary artery bypass graft (CABG) surgeries; (2) patients assigned to two
8 of the following DAPT treatment regimens: clopidogrel, ticagrelor, or prasugrel – with a minimum
9 of 6-month planned treatment duration and follow-up; (3) randomized controlled trials of human
10 subjects; (4) reporting at on the main composite outcome of MACE (defined as mortality, recurrent
11 MI, or stroke); and, (5) studies published in either English or French.

12 Due to likely variations in reporting definitions of major acute coronary events (MACE),
13 we adopted a “hard” MACE definition for the primary efficacy outcome, a composite measure of
14 reported all-cause mortality, non-fatal MI, or stroke. Secondary efficacy endpoints include the
15 individual MACE outcomes, all-cause mortality, non-fatal MI, or non-fatal stroke, as well as
16 cardiovascular-caused mortality, if available. The primary safety endpoint of interest was major
17 bleeding as defined by the trial. Our expectation was that most studies will report Thrombolysis
18 In Myocardial Infarction (TIMI) major bleeding, PLATO-defined major bleeding, and Bleeding
19 Academic Research Consortium (BARC) types 3-5, but we will accept the bleeding definition
20 provided by the included study (Table 1). The secondary safety endpoint included minor bleeding
21 as defined by TIMI, PLATO, and BARC (types 1 and 2), or other reported minor bleeding
22 definitions.

1 Data extraction was performed by S.K. and quality assessment of eligible studies was
2 carried out simultaneously by S.K., L.F., and R.H. Information on the year of publication, sample
3 size, the loading and maintenance dosages of treatment regimens, length of planned treatment
4 duration, the mean age, body mass index (BMI), proportion of males, and those who underwent
5 PCI or CABG, as well as the description of the study population and country of origin were
6 collected. The Cochrane revised tool to assess risk of bias in randomized trials (RoB 2.0)¹¹ was
7 used to assess allocation concealment, blinding of participants and trial personnel, reporting on
8 completeness and selection of outcomes, and other biases. The scoring system for each component
9 of the RoB 2.0 includes a “low”, “some concerns” or “high” risk of bias. Studies with a score of
10 “low” across all five categories were considered low risk of bias and included in the analyses. A
11 funnel plot will be used to visually assess publication bias.

12 **STATISTICAL ANALYSIS**

13 Mixed treatment, or network meta-analyses (NMA), is a technique that allows for the
14 synthesis of multiple treatment strategies from independent research studies, using direct (head-
15 to-head) and indirect (common node/comparator) comparisons.^{12,13} Direct effects come from the
16 head-to-head comparisons of the treatments. Indirect effects come from comparing the non-head-
17 to-head comparisons by using the information from across the studies that have a common node,
18 or comparator.

19 Due to the potential for variations in reporting practices of the outcomes of interest, we
20 chose a Bayesian random effect generalized linear model with a logit outcome transformation.¹⁴
21 The further potential for trials reporting differing lengths of follow-up, a complementary log-log
22 (cloglog) link function was included to the model, by adding a log(follow-up time) variable, to
23 account for these variations in follow-up times. The cloglog model estimates log-hazard ratios and

1 assumes that hazards are constant over the duration of follow-up and is homogenous across each
2 trial.¹⁴

3 Both fixed and random effects binomial likelihood models with a cloglog link function
4 were applied to the data using the “*gemtc*” R package¹⁵ with Bayesian posterior distribution
5 sampling from the Markov Chain Monte Carlo (MCMC) which was estimated via the Just Another
6 Gibbs Sampler (JAGS) using the “*rjags*” R package.¹⁶ The models were estimated using a
7 minimum of 50,000 iterations with a 10,000 burn-in period run on 3 chains. Model diagnostics
8 were verified by examining traceplots (via monitoring of MCMC sampling), posterior distributions
9 and a multivariate potential scale reduction factor (mvsrf) above 1.1.^{17,18} In the case of model
10 inconsistencies, the burn-in and number of iterations were increased. The *gemtc* default non-
11 informative priors were used for all model parameters. Statistical analyses were performed using
12 R version 4.0.2 from the R Project for Statistical Computing.¹⁹

13 The random effects (RE) model was selected as our primary analysis as the fixed effect
14 (FE) assumption of a homogeneous population-level effect across multiple study populations
15 seems improbable. Nonetheless, the assessment of model fit was performed using the lowest
16 deviance information criterion (DIC) – the sum of the models’ residual deviance and its’ leverage
17 – which penalizes models with more parameters. Some have suggested that when a FE and a RE
18 model are within five DIC units,¹⁴ the model with fewer parameters (FE) should be favoured. To
19 be comprehensive, we also reported the FE estimates for comparative purposes. Further, the
20 network consistency – the agreement between the direct, indirect and total network evidence across
21 the pair-wise comparisons – was visually assessed using the node splitting methods.¹²

22 The use of a Bayesian analytical approach allows for direct probability statements for the
23 interpretation of the summarized evidence for the efficacy and safety endpoints. It eliminates the

1 need for null hypothesis significance testing and the commonly misunderstood P-value.²⁰ Instead,
2 probability statements, about the likely benefit or harm of the antiplatelet strategy relative to the
3 reference, clopidogrel, will be presented. In addition, probability statements will be provided for a
4 net “clinical” benefit or harm, which has been arbitrarily set at a 10% decrease (HR=0.9) or an
5 equivalent increase (HR=1.11) in the effect estimate. The proportion of the posterior distribution
6 that falls within the region of practical equivalence (ROPE), between HR = [0.9, 1.11], will also
7 be reported.²¹ In short, we are presenting readers the proportion of the HR posterior distribution
8 that lies above, below, and between the “important” clinical thresholds.

9 As the study material consisted only of previously published material IRB and/or ethics
10 committee approvals were not required.

11

12 **RESULTS**

13 A total of 9,196 titles and abstracts were screened following the removal of duplicates and
14 research abstracts from the 15,232 records identified from the systematic search. This resulted in
15 a full-text assessment of 138 articles from which 29 trials,^{4,5,22-48} for a total of 60,278 study
16 participants, met the inclusion criteria for the primary efficacy or safety endpoint. A flowchart
17 (Figure 1) presents a summary of the screening process, and a description of the included studies
18 are presented in Table 1. Seventeen^{4,5,22-36} of the 29 articles were assessed a “low” risk of bias
19 score, across all five RoB 2.0 assessment categories, and included in the Bayesian network meta-
20 analysis.

21 For this triangular NMA a total of nine (52.9%),^{4,22-29} of the included RCTs compared the
22 DAPTs’ clopidogrel with ticagrelor, while five (29.4%)^{5,30-33} trials compared clopidogrel to
23 prasugrel and three (17.6%)³⁴⁻³⁶ contrasted ticagrelor with prasugrel (Figure 2). The majority of

1 the included RCTs built-in 12 months of follow-up time, with two^{23,26} studies following patients
2 for 6 months, and another two trials^{5,30} following subjects for up to 15 and 30 months, respectively.
3 The average or median age of the included study populations ranged from 47.9 years²⁷ to 80
4 years,³² in 13 (76.5%) of the median age was between 60 to 69. Twelve (70.6%) of the study
5 populations had planned invasive ACS management and reported that greater than 80% of patients
6 underwent a PCI. All but one RCT (5.9%)²⁶ reported studying a majority (>60%) of male patients.

7 **PRIMARY OUTCOMES**

8 ***Major acute coronary events***

9 The seventeen included studies, with a total of 57,814 subjects, reported a total of 6,897
10 (11.9%) “hard” MACE outcomes. The RE model ($DIC_{RE}=56.60$) was considered a better overall
11 fit relative to the FE model ($DIC_{FE}=65.29$). Visual inspection of the node-splitting models favoured
12 the RE model, with more concordance between the direct, indirect, and network evidence (Figure
13 3E-F), suggesting heterogeneity of the efficacy estimates across the included pairwise RCTs.

14 The ticagrelor to clopidogrel HR estimand for MACE outcomes was 0.95 (95% CrI: 0.81,
15 1.14) (Table 2; Figure 5). This translated to 22.4% of the posterior distribution being below the
16 10%, clinically important reduction threshold ($HR<0.9$) (Table 2; Figure 3C). The majority of the
17 HR_{TC} distribution (73.2%) for MACE outcomes fell within the ROPE ($HR = [0.9 \text{ to } 1.11]$).

18 The prasugrel to clopidogrel HR estimand for MACE outcomes was, 0.87 (95% CrI: 0.74,
19 1.06) (Table 2; Figure 5). This extrapolated to 67.5% of the posterior distribution of the HR falling
20 beyond the meaningful clinical threshold ($HR<0.9$) for a reduction in MACE outcomes, with
21 31.4% of the distribution captured within the ROPE (Table 2; Figure 3C).

22 ***Major bleeding***

1 The primary safety outcome, reported major bleeding (Table 1), was available in the 17
2 (57,110 patients) trials for a total of 2,858 (5.0%) recorded events. The RE model ($DIC_{RE}=52.82$)
3 was considered a similar fit overall relative to the FE model ($DIC_{FE}=54.40$). Visual inspection of
4 the node-splitting models found superior concordance between estimates from the direct, indirect,
5 and network in the RE model (Figure 4 E-F), across all 3 pairwise comparisons.

6 In comparison to clopidogrel, the ticagrelor HR estimand for major bleeding, as defined
7 within the included trial, was 1.16 (95% CrI: 0.98, 1.48) (Table 2; Figure 5). This translated to
8 67.7% of the posterior surpassing a clinically meaningful increase in major bleeding events in
9 those exposed to clopidogrel, relative to ticagrelor, while 31.9% of the posterior fell within the
10 ROPE (Table 2; Figure 4E).

11 The prasugrel to clopidogrel HR estimand for major bleeding events was 1.23 (95% CrI:
12 0.99, 1.57) (Table 2; Figure 5). This extrapolated to 83.7% of the posterior surpassing the clinically
13 important threshold for an increase in bleeding, with 15.7% found within the ROPE (Table 2;
14 Figure 4E).

15 **SECONDARY OUTCOMES**

16 *All-cause mortality*

17 The 17 RCTs reported a total of 2,688 (4.6%) mortality outcomes. The FE ($DIC=51.38$)
18 and RE ($DIC=51.60$) models had comparable fits, though, node-splitting models identified some
19 potential inconsistency (disagreement) between the indirect, direct, and network model estimates.
20 The HR estimand for all-cause mortality, comparing ticagrelor to clopidogrel, was 0.87 (95% CrI:
21 0.75, 1.07), where 64.2% of the posterior fell below the clinically important reduction threshold
22 ($HR<0.9$). Meanwhile, the HR estimand, for prasugrel relative to clopidogrel, was 0.94 (95% CrI:

1 0.79, 1.14), with 30.5% of the posterior found below the clinically meaningful threshold
2 (Supplemental Table 2).

3 ***Cardiovascular-related mortality***

4 Fifteen trials (57,438 patients) reported 2,182 (3.80%) cardiovascular-related deaths (CV-
5 deaths). In comparison to clopidogrel, the HR estimand of CV-related mortality for ticagrelor was
6 0.85 (95% CrI: 0.73, 1.04). It was estimated that 75.3% of the posterior was below the clinically
7 meaningful threshold. Meanwhile, the HR estimand comparing prasugrel to clopidogrel was 0.90
8 (95% CrI: 0.76, 1.07), where 51.6% of the posterior distribution was below the threshold of clinical
9 importance (Supplemental Table 2).

10 ***Myocardial infarction***

11 The 17 RCTs (57,148 patients) reported a total of 3,539 (6.1%) non-fatal MIs. The RE
12 model (DIC=52.09) was borderline a statistical improvement (<5 DIC units), relative to the FE
13 model (DIC=57.00). However, moderate qualitative inconsistency from the node-splitting method
14 reinforced the RE model assumptions. When compared to clopidogrel, the HR for MI outcomes
15 for ticagrelor was found to be 0.94 (95% CrI: 0.76, 1.17), with 32.8% of the posterior being
16 represented below a clinically meaningful threshold and 61.2% within the ROPE. The HR
17 estimand, comparing prasugrel to clopidogrel, was estimated as 0.81 (95% CrI: 0.65, 1.00)
18 (Supplemental Table 2). A total of 87.4% of the prasugrel posterior was beyond the threshold of a
19 clinical important reduction in MI's.

20 ***Stroke***

21 A total of 12 studies (56,521 patients) reported on 670 (1.2%) stroke outcomes. Node-
22 splitting models suggested the network to be unstable with inconsistent direct, indirect, and
23 network estimates across all three (C-T, C-P, and T-P) pair-wise comparisons. The posterior

1 distributions for ticagrelor (HR, 1.02; 95% CrI: 0.72, 1.33) and prasugrel (HR, 0.88; 95% CrI:
2 0.64, 1.18), when compared with clopidogrel are presented (Supplemental Table 2).

3 ***Minor bleeding***

4 Twelve (49,677 patients) RCTs reported a total of 1,352 (2.7%) minor bleeding events.
5 Node-splitting models, under both FE and RE assumptions, suggested the network to be somewhat
6 unstable regarding the inconsistent direct, indirect, and network estimates across all three (C-T, C-
7 P, and T-P) pair-wise comparisons. The RE posterior distributions for minor bleeding outcomes
8 for ticagrelor (HR, 1.35; 95% CrI: 1.08, 1.71) and prasugrel (HR, 1.42; 95% CrI: 1.08, 1.94), when
9 compared with clopidogrel are provided (Supplemental Table 2).

10 The FE results for both the primary and secondary, efficacy and safety outcomes were
11 reported in the appendix (Supplemental Tables 1 & 3).

12 **DISCUSSION**

13 The main efficacy findings from this large (n=57,814) Bayesian network meta-analysis of
14 DAPT strategies following an ACS hospitalization are: (1) ticagrelor is associated with a small
15 decrease in MACE outcomes but that is unlikely to provide a meaningfully clinically important
16 (>10%) reduction in endpoints; (2) prasugrel, when compared with clopidogrel, is associated with
17 a larger (13%) reduction in MACE but only a moderate probability (67.5%) of providing a
18 clinically relevant reduction. The primary safety findings from the NMA include: (3) that
19 ticagrelor compared to clopidogrel is associated with an increase in major bleeding events, but
20 only a small probability (21.3%) that this exceeds a clinically meaningful increase. And, (4)
21 prasugrel, when compared with clopidogrel, is also associated increased in major bleeding with a
22 moderate to high probability (85.3%) that this exceeds a clinically meaningful threshold.

1 The results from our Bayesian NMA do not fully align with the recommendations of the
2 published North American guidelines^{1,2} and other previous NMAs.^{49,50} While the summary
3 estimates for prasugrel and ticagrelor show a reduction in MACE outcomes, they do not
4 demonstrate the same degree of certainty as the PLATO and TRITON-TIMI trials or NMAs, on
5 which the guidelines rely. Using classic confidence limits of 95%, neither prasugrel (95%CrI: 0.74,
6 1.06) nor ticagrelor (95%CrI: 0.81, 1.14) establish superiority over clopidogrel. Further, our results
7 estimate that there is a 32.5% and 77.6% chance that prasugrel and ticagrelor, respectively, do not
8 provide a clinically meaningful reduction in MACE endpoints when compared with clopidogrel.
9 There is some concordance in the guidelines with respect to the primary safety outcome, major
10 bleeding, and exercising caution when using these more potent platelet inhibitors – prasugrel (95%
11 CrI: 0.99, 1.17) and ticagrelor (95% CrI: 1.04, 1.40) – in subjects with a higher risk of bleeding. It
12 remains a balance of weighing the benefits and harms of the treatments and secondary patient
13 outcomes.

14 The strength of our findings are built upon the mixed-treatment models of the BNMA,
15 which optimizes evidence synthesis, under certain assumptions, by permitting the use of both
16 direct and indirect evidence across the three guidelines approved DAPTs – clopidogrel, ticagrelor,
17 and prasugrel –in ACS patients. The inclusion of only low-risk RCTs bolsters the internal validity
18 of the current findings, which is supported by a large ACS patient population (n=57,814). The
19 Bayesian approach in this study allows for direct probability statements to be made for the
20 interpretation of the treatment effect estimates, thus avoiding the often-misinterpreted P-value.
21 This BNMA goes beyond others^{49,50} by also providing probability statements regarding the
22 chances of observing a clinically meaningful change (>10%) in the benefits or harms, an important
23 factor for clinical decision-makers.

1 As with all research, our study comes with limitations. Our findings *do not* account for the
2 potential challenges previously identified internal modelling decisions (RE vs FE) found in the
3 large multinational RCTs^{4,5,22,30} included in this BNMA. This study assumed that the within study
4 variance was properly specified in the individual RCTs when the between-study and between-
5 study-arm variance were modelled. Meaning, we likely underestimated the size of the credible
6 intervals of the posterior estimates. Further, our BNMA models included only those studies that
7 received a “low” risk of bias score across the five RoB 2.0 bias assessment tool. Twelve studies
8 (2,464 patients)^{37-40,42-48} received at minimum a “some concerns” reviewer score in at least one
9 RoB 2.0 assessment category. Of note, all twelve excluded studies recruited 200 or fewer patients,
10 and only two^{37,48} of the excluded RCTs (16.7%) reported a RCT registration number versus all
11 seventeen (100%) of the included trials. Conditioning the analyses on could also impact funnel
12 plot symmetry for bias assessment. Although our analyses did not elucidate any concerns regarding
13 the distribution of effect sizes (Supplemental Figure 1), it has been suggested that this is difficult
14 to assess with fewer than 10 studies⁵¹ – T vs. C (n=9); P vs. C (n=5); and, P vs. T (n=3). Transitivity
15 (between network arms) and homogeneity (between study arms) can be assessed qualitatively by
16 comparing the similarity of study populations and treatments. There were some minor differences
17 across some of the study populations, such as age, percent PCI, percent male characteristics, and
18 outcome definitions, which could represent some between study heterogeneity of which could
19 impact the transitivity and consistency assumptions. Overall, the populations represented patients
20 with acute cardiac symptoms (STEMI, NSTEMI, and/or UA) and received well defined
21 medications. Reporting differences for the efficacy outcome was minimized through adopting a
22 “hard” MACE outcome, to include the more objective clinical outcomes of death, MI, or stroke.

1 In conclusion, ticagrelor was estimated to have a 22.4% chance of decreasing MACE and
2 a probability of 21.3% of increased major bleeding, while prasugrel was associated with a 67.5%
3 probability in reducing MACE and an 85.3% increased chance of major bleeding outcomes, when
4 compared with ACS patients assigned to clopidogrel. The results of this BNMA do not provide
5 robust evidence regarding the superiority of ticagrelor and prasugrel, over clopidogrel, as the 95%
6 credible intervals include the null and are substantially captured within the ROPE region. We were
7 also unable to identify a recent RCT on North American subjects. Further research is required to
8 better understand the heterogeneity in the effects of DAPTs within diverse ACS populations,
9 especially with limited North American evidence.
10

1 REFERENCES

- 2
- 3 1. Levine GN, Bates ER, Bittl JA, et al. 2016 ACC/AHA Guideline Focused Update on
4 Duration of Dual Antiplatelet Therapy in Patients With Coronary Artery Disease. *J Am Coll*
5 *Cardiol.* 2016;68(10):1082-1115. doi:10.1016/j.jacc.2016.03.513
- 6 2. Mehta SR, Bainey KR, Cantor WJ, et al. 2018 Canadian Cardiovascular Society/Canadian
7 Association of Interventional Cardiology Focused Update of the Guidelines for the Use of
8 Antiplatelet Therapy. *Can J Cardiol.* 2018;34(3):214-233. doi:10.1016/j.cjca.2017.12.012
- 9 3. Bueno H, Byrne RA, Collet JP, et al. 2017 ESC focused update on dual antiplatelet therapy
10 in coronary artery disease developed in collaboration with EACTS. :48.
- 11 4. Wallentin L, Becker RC, Budaj A, et al. Ticagrelor versus Clopidogrel in Patients with Acute
12 Coronary Syndromes. *N Engl J Med.* 2009;361(11):1045-1057.
13 doi:10.1056/NEJMoa0904327
- 14 5. Wiviott SD, Braunwald E, McCabe CH, et al. Prasugrel versus Clopidogrel in Patients with
15 Acute Coronary Syndromes. *N Engl J Med.* 2007;357(20):2001-2015.
16 doi:10.1056/NEJMoa0706482
- 17 6. Mahaffey KW, Wojdyla DM, Carroll K, et al. Ticagrelor Compared With Clopidogrel by
18 Geographic Region in the Platelet Inhibition and Patient Outcomes (PLATO) Trial.
19 *Circulation.* 2011;124(5):544-554. doi:10.1161/CIRCULATIONAHA.111.047498
- 20 7. *Center for Drug Evaluation and Research, Complete Response Review Addendum Sponsor*
21 *Safety Reporting Submissions: NDA 22-433 and IND 65,808 SD 632 Drug: Ticagrelor*
22 *(Brilinta™),*
23 *https://www.accessdata.fda.gov/drugsatfda_docs/nda/2011/022433orig1s000medr.pdf.*
- 24 8. Brophy JM. Multicenter trials, guidelines, and uncertainties — Do we know as much as we
25 think we do? *Int J Cardiol.* 2015;187:600-603. doi:10.1016/j.ijcard.2015.04.004
- 26 9. Brophy JM. Key issues in the statistical interpretation of randomized clinical trials. *Can J*
27 *Cardiol.* Published online January 2021:S0828282X20311806.
28 doi:10.1016/j.cjca.2020.12.014
- 29 10. Hutton B, Salanti G, Caldwell DM, et al. The PRISMA Extension Statement for Reporting of
30 Systematic Reviews Incorporating Network Meta-analyses of Health Care Interventions:
31 Checklist and Explanations. *Ann Intern Med.* 2015;162(11):777-784. doi:10.7326/M14-2385
- 32 11. Sterne JAC, Savović J, Page MJ, et al. RoB 2: a revised tool for assessing risk of bias in
33 randomised trials. *Br Med J.* 2019;366:14898.
- 34 12. Dias S, Welton NJ, Caldwell DM, Ades AE. Checking consistency in mixed treatment
35 comparison meta-analysis. *Stat Med.* 2010;29(7-8):932-944. doi:10.1002/sim.3767

- 1 13. Dias S, Welton NJ, Sutton AJ, Caldwell DM, Lu G, Ades AE. Evidence Synthesis for
2 Decision Making 4: Inconsistency in Networks of Evidence Based on Randomized
3 Controlled Trials. *Med Decis Making*. 2013;33(5):641-656. doi:10.1177/0272989X12455847
- 4 14. Dias S, Sutton AJ, Ades AE, Welton NJ. Evidence Synthesis for Decision Making 2: A
5 Generalized Linear Modeling Framework for Pairwise and Network Meta-analysis of
6 Randomized Controlled Trials. *Med Decis Making*. 2013;33(5):607-617.
7 doi:10.1177/0272989X12458724
- 8 15. Gert van Valkenhoef and Joel Kuiper (2021). gemtc: Network Meta-Analysis Using
9 Bayesian Methods. R package version 1.0-1. <https://CRAN.R-project.org/package=gemtc>.
- 10 16. Martyn Plummer (2022). rjags: Bayesian Graphical Models using MCMC. R package
11 version 4-13. <https://CRAN.R-project.org/package=rjags>.
- 12 17. Brooks SP, Gelman A. General Methods for Monitoring Convergence of Iterative
13 Simulations. *J Comput Graph Stat*. 1998;7(4):434-455.
14 doi:10.1080/10618600.1998.10474787
- 15 18. Gelman A, Carlin JB, Stern HS, Dunson DB, Vehtari A, Rubin DB. Bayesian Data Analysis
16 Third edition (with errors fixed as of 15 February 2021).
- 17 19. R Core Team (2020). R: A language and environment for statistical computing. R
18 Foundation for Statistical Computing, Vienna, Austria. URL <https://www.R-project.org/>.
- 19 20. Wijeyesundera DN, Austin PC, Hux JE, Beattie WS, Laupacis A. Bayesian statistical
20 inference enhances the interpretation of contemporary randomized controlled trials. *J Clin*
21 *Epidemiol*. 2009;62(1):13-21.e5. doi:10.1016/j.jclinepi.2008.07.006
- 22 21. Kruschke JK. Bayesian Analysis Reporting Guidelines. *Nat Hum Behav*. 2021;5(10):1282-
23 1291. doi:10.1038/s41562-021-01177-7
- 24 22. Berwanger O, Lopes RD, Moia DDF, et al. Ticagrelor Versus Clopidogrel in Patients With
25 STEMI Treated With Fibrinolysis. *J Am Coll Cardiol*. 2019;73(22):2819-2828.
26 doi:10.1016/j.jacc.2019.03.011
- 27 23. Gasecka A, Nieuwland R, Budnik M, et al. Ticagrelor attenuates the increase of extracellular
28 vesicle concentrations in plasma after acute myocardial infarction compared to clopidogrel. *J*
29 *Thromb Haemost JTH*. 2020;18(3):609-623. doi:10.1111/jth.14689
- 30 24. Gimbel M, Qaderdan K, Willemsen L, et al. Clopidogrel versus ticagrelor or prasugrel in
31 patients aged 70 years or older with non-ST-elevation acute coronary syndrome (POPular
32 AGE): the randomised, open-label, non-inferiority trial. *The Lancet*. 2020;395(10233):1374-
33 1381. doi:10.1016/S0140-6736%2820%2930325-1
- 34 25. Goto S, Huang CH, Park SJ, Emanuelsson H, Kimura T. Ticagrelor vs. Clopidogrel in
35 Japanese, Korean and Taiwanese Patients With Acute Coronary Syndrome – Randomized,

- 1 Double-Blind, Phase III PHILO Study –. *Circ J.* 2015;79(11):2452-2460.
2 doi:10.1253/circj.CJ-15-0112
- 3 26. He P, Luo X, Li J, et al. Clinical Outcome between Ticagrelor versus Clopidogrel in Patients
4 with Acute Coronary Syndrome and Diabetes. Puthanveetil P, ed. *Cardiovasc Ther.*
5 2021;2021:1-9. doi:10.1155/2021/5546260
- 6 27. Mohareb MW, AbdElghany M, Zaki HF, El-Abhar HS. Diabetes and CYP2C19
7 Polymorphism Synergistically Impair the Antiplatelet Activity of Clopidogrel Compared
8 With Ticagrelor in Percutaneous Coronary Intervention-treated Acute Coronary Syndrome
9 Patients. *J Cardiovasc Pharmacol.* 2020;76(4):478-488.
10 doi:10.1097/FJC.0000000000000881
- 11 28. Park DW, Kwon O, Jang JS, et al. Clinically Significant Bleeding With Ticagrelor Versus
12 Clopidogrel in Korean Patients With Acute Coronary Syndromes Intended for Invasive
13 Management: A Randomized Clinical Trial. *Circulation.* 2019;140(23):1865-1877.
14 doi:10.1161/CIRCULATIONAHA.119.041766
- 15 29. Wu X, You W, Wu Z, et al. Ticagrelor versus clopidogrel for prevention of subclinical stent
16 thrombosis detected by optical coherence tomography in patients with drug-eluting stent
17 implantation-a multicenter and randomized study. *Platelets.* 2021;32(3):404-412.
18 doi:10.1080/09537104.2020.1754381
- 19 30. Roe M.T., Armstrong P.W., Fox K.A.A., et al. Prasugrel versus clopidogrel for acute
20 coronary syndromes without revascularization. *N Engl J Med.* 2012;367(14):1297-1309.
21 doi:10.1056/NEJMoa1205512
- 22 31. Saito S, Isshiki T, Kimura T, et al. Efficacy and Safety of Adjusted-Dose Prasugrel
23 Compared With Clopidogrel in Japanese Patients With Acute Coronary Syndrome: – The
24 PRASFIT-ACS Study –. *Circ J.* 2014;78(7):1684-1692. doi:10.1253/circj.CJ-13-1482
- 25 32. Savonitto S, Ferri LA, Piatti L, et al. Comparison of Reduced-Dose Prasugrel and Standard-
26 Dose Clopidogrel in Elderly Patients With Acute Coronary Syndromes Undergoing Early
27 Percutaneous Revascularization. *Circulation.* 2018;137(23):2435-2445.
28 doi:10.1161/CIRCULATIONAHA.117.032180
- 29 33. Yabe T., Noike R., Okubo R., Amano H., Ikeda T. Infarct Size and Long-Term Clinical
30 Outcomes of Prasugrel versus Clopidogrel in Patients with Acute Coronary Syndrome
31 Undergoing Coronary Artery Stenting: A Prospective Randomized Study. *Int J Angiol.*
32 2022;((Yabe, Noike, Okubo, Amano, Ikeda) Department of Cardiovascular Medicine, Toho
33 University, Faculty of Medicine, 6-11-1 Omorinishi, Ota-ku, Tokyo 143-8541, Japan).
34 doi:10.1055/s-0042-1746417
- 35 34. Motovska Z, Hlinomaz O, Kala P, et al. 1-Year Outcomes of Patients Undergoing Primary
36 Angioplasty for Myocardial Infarction Treated With Prasugrel Versus Ticagrelor. *J Am Coll*
37 *Cardiol.* 2018;71(4):371-381. doi:10.1016/j.jacc.2017.11.008

- 1 35. Schupke S, Neumann FJ, Menichelli M, et al. Ticagrelor or Prasugrel in Patients with Acute
2 Coronary Syndromes. *N Engl J Med*. 2019;381(16):1524-1534.
3 doi:10.1056/NEJMoa1908973
- 4 36. van der Hoeven NW, Janssens GN, Everaars H, et al. Platelet Inhibition, Endothelial
5 Function, and Clinical Outcome in Patients Presenting With ST-Segment-Elevation
6 Myocardial Infarction Randomized to Ticagrelor Versus Prasugrel Maintenance Therapy:
7 Long-Term Follow-Up of the REDUCE-MVI Trial. *J Am Heart Assoc*. 2020;9(5):e014411.
8 doi:10.1161/JAHA.119.014411
- 9 37. Jin CD, Kim MH, Song K, et al. Pharmacodynamics and Outcomes of a De-Escalation
10 Strategy with Half-Dose Prasugrel or Ticagrelor in East Asians Patients with Acute Coronary
11 Syndrome: Results from HOPE-TAILOR Trial. *J Clin Med*. 2021;10(12).
12 doi:10.3390/jcm10122699
- 13 38. Li DT, Li SB, Zheng JY, et al. Analysis of Ticagrelor's Cardio-protective Effects on Patients
14 with ST-segment Elevation Acute Coronary Syndrome Accompanied with Diabetes. *Open*
15 *Med Wars Pol*. 2019;14(101672167):234-240. doi:10.1515/med-2019-0017
- 16 39. Lu Y, Li Y, Yao R, et al. Clinical effect of ticagrelor administered in acute coronary
17 syndrome patients following percutaneous coronary intervention. *Exp Ther Med*.
18 2016;11(6):2177-2184.
- 19 40. Tang X, Li R, Jing Q, et al. Assessment of Ticagrelor Versus Clopidogrel Treatment in
20 Patients With ST-elevation Myocardial Infarction Undergoing Primary Percutaneous
21 Coronary Intervention. *J Cardiovasc Pharmacol*. 2016;68(2):115-120.
22 doi:10.1097/FJC.0000000000000390
- 23 41. Wang H, Wang X. Efficacy and safety outcomes of ticagrelor compared with clopidogrel in
24 Chinese elderly patients with acute coronary syndrome. *Ther Clin Risk Manag*.
25 2016;Volume 12:1101-1105. doi:10.2147/TCRM.S108965
- 26 42. Wang X, Li X, Wu H, et al. Beneficial effect of ticagrelor on microvascular perfusion in
27 patients with ST-segment elevation myocardial infarction undergoing a primary
28 percutaneous coronary intervention. *Coron Artery Dis*. 2019;30(5):317-322.
29 doi:10.1097/MCA.0000000000000707
- 30 43. Wu HB, Tian HP, Wang XC, et al. Clinical efficacy of ticagrelor in patients undergoing
31 emergency intervention for acute myocardial infarction and its impact on platelet
32 aggregation rate. *Am J Transl Res*. 2018;10(7):2175-2183.
- 33 44. Yang B, Zheng C, Yu H, et al. Comparison of Ticagrelor and Clopidogrel for Patients
34 Undergoing Emergency Percutaneous Coronary Intervention. *Iran J Public Health*.
35 2018;47(7):952-957.
- 36 45. Yao G, Su G, Li K, Li B, Dong H. Comparative study of ticagrelor and clopidogrel in
37 therapeutic effect of acute myocardial infarction patients undergoing percutaneous coronary
38 intervention. *Saudi J Biol Sci*. 2017;24(8):1818-1820. doi:10.1016/j.sjbs.2017.11.020

- 1 46. You J, Li H, Guo W, et al. Platelet function testing guided antiplatelet therapy reduces
2 cardiovascular events in Chinese patients with ST-segment elevation myocardial infarction
3 undergoing percutaneous coronary intervention: The PATROL study. *Catheter Cardiovasc*
4 *Interv.* 2020;95(S1):598-605. doi:10.1002/ccd.28712
- 5 47. Zhang Y, Zhao Y, Pang M, et al. High-dose clopidogrel versus ticagrelor for treatment of
6 acute coronary syndromes after percutaneous coronary intervention in CYP2C19
7 intermediate or poor metabolizers: a prospective, randomized, open-label, single-centre trial.
8 *Acta Cardiol.* 2016;71(3):309-316. doi:10.1080/AC.71.3.3152091
- 9 48. Kitano D, Takayama T, Fukamachi D, et al. Impact of low-dose prasugrel on platelet
10 reactivity and cardiac dysfunction in acute coronary syndrome patients requiring primary
11 drug-eluting stent implantation: A randomized comparative study. *Catheter Cardiovasc*
12 *Interv Off J Soc Card Angiogr Interv.* 2020;95(1):E8-E16. doi:10.1002/ccd.28277
- 13 49. Navarese EP, Khan SU, Kolodziejczak M, et al. Comparative Efficacy and Safety of Oral
14 P2Y12 Inhibitors in Acute Coronary Syndrome: Network Meta-Analysis of 52 816 Patients
15 From 12 Randomized Trials. *Circulation.* 2020;142(2):150-160.
16 doi:10.1161/CIRCULATIONAHA.120.046786
- 17 50. Singh S, Singh M, Grewal N, Khosla S. Comparative Efficacy and Safety of Prasugrel,
18 Ticagrelor, and Standard-Dose and High-Dose Clopidogrel in Patients Undergoing
19 Percutaneous Coronary Intervention: A Network Meta-analysis. *Am J Ther.* Published online
20 2016.
- 21 51. Sterne JAC, Sutton AJ, Ioannidis JPA, et al. Recommendations for examining and
22 interpreting funnel plot asymmetry in meta-analyses of randomised controlled trials. *BMJ.*
23 2011;343(jul22 1):d4002-d4002. doi:10.1136/bmj.d4002
- 24
- 25

1 TABLES

Table 1: The descriptive characteristics of the twenty-nine studies identified from the systematic review. The first seventeen studies were identified as having a “low” risk of bias and included in the meta-analysis.

Study; First author (year)	Registry	N.Cnts	Sample Size	DAPT, dose (mg)	F-up (mths)	Age (years)	PCI (n, %)	Men (n, %)	ACS population	MACE definition	Major Bleeding definition	RoB 2.0 score
TREAT; Berwanger, O. (2019)	NCT 02298088	10	1886 1913	Clopidogrel, 75 Ticagrelor, 90	12 12	58.8 59	1064, 56.4 1095, 57.2	1449, 76.8 1480, 77.4	STEMI, <75yrs, w/ fibrinolytic therapy	death from vascular causes, myocardial infarction, or stroke	TIMI major, PLATO major	low
Gasecka, A. (2020)	NCT 02931045	1	28 27	Clopidogrel, 75 Ticagrelor, 90	6 6	63 66	28, 100.0 27, 100.0	21, 75 19, 70	STEMI, NSTEMI; PCI	N/A	N/R	low
POPular AGE; Gimbel, M. (2020)	NCT 02317198	1	500 502	Clopidogrel, 75 Ticagrelor, 90	12 12	77 77	232, 46.4 242, 48.2	313, 63 325, 65	NSTEMI, >70yrs	death from any cause, nonfatal MI, nonfatal stroke, and PLATO major and minor bleeding	TIMI major	low
PHILO; Goto, S. (2015)	NCT 01294462	3	400 401	Clopidogrel, 75 Ticagrelor, 90	12 12	66 67	338, 84.5 340, 84.8	307, 76.8 306, 76.3	NSTEMI, STEMI	CV-related death, MI, and stroke	PLATO major	low
He, P. (2021)	ChiCTR 18000151 04	1	133 133	Clopidogrel, 75 Ticagrelor, 90	6 6	64 64	133, 100.0 133, 100.0	47, 35.3 39, 29.3	PCI diabetic	nonfatal MI, target vessel revascularization, rehospitalization, stroke, and death from any cause	BARC types 1 - 5	low
Mohareb, M.W. (2020)	NCT 03613857	1	472 471	Clopidogrel, 75 Ticagrelor, 90	12 12	47.91 49.84	472, 100.0 471, 100.0	302, 64.0 318, 67.5	PCI	recurrent ACS, namely, acute stent thrombosis, nonacute stent thrombosis, nonfatal MI, cardiovascular death, and nonfatal stroke	major bleeding events	low
TICAKOREA; Park, D-W. (2019)	NCT 02094963	1	400 400	Clopidogrel, 75 Ticagrelor, 90	12 12	62.3 62.5	342, 85.5 326, 81.5	302, 75.5 297, 74.2	STEMI, NSTEMI, UA, planned invasive management	death from cardiovascular causes, nonfatal MI, or nonfatal stroke	PLATO major	low
PLATO; Wallentin, L. (2009)	NCT 00391872	43	9291 9333	Clopidogrel, 75 Ticagrelor, 90	12 12	62 62	5676, 61.1 5687, 60.9	6658, 71.7 6678, 71.6	STEMI, NSTEMI	death from vascular causes, myocardial infarction, or stroke	PLATO major	low
Wu, X. (2021)	NCT 02140801	1	174 176	Clopidogrel, 75 Ticagrelor, 90	12 12	64.1 64.5	174, 100.0 176, 100.0	124, 70.9 134, 75.7	ischemic symptoms, PCI	CV death, MI, revascularization	PLATO major	low
TRILOGY ACS; Roe, M.T. (2012)	NCT 00699998	52	4663 4663	Clopidogrel, 75 Prasugrel, 10-5	30 30	66 66	0, 0.0 0, 0.0	2840, 60.9 2835, 60.8	UA, NSTEMI	death from cardiovascular causes, nonfatal myocardial infarction, or nonfatal stroke	TIMI major	low
PRASFIT-ACS; Saito, S. (2014)	JapicCTI- 101339	1	678 685	Clopidogrel, 75 Prasugrel, 3.75	12 12	65.1 65.4	637, 94.0 651, 95.0	558, 82.3 536, 78.2	scheduled PCI, >20yrs	cardiovascular death, nonfatal myocardial infarction (MI), and nonfatal ischemic stroke	TIMI major	low
Elderly ACS II; Savonitto, S. (2018)	NCT 01777503	1	730 713	Clopidogrel, 75 Prasugrel, 5	12 12	80 80	726, 99.5 707, 99.0	448, 61 419, 59	STEMI, NSTEMI, PCI	all-cause mortality, MI, disabling stroke, and rehospitalization for cardiovascular causes or bleeding	BARC type 2 or 3	low
TRITON-TIMI 38; Wiviott, S.D. (2007)	NCT 00097591	30	6795 6813	Clopidogrel, 75 Prasugrel, 10	15 15	61 61	N/A, 99.0 NA, 99.0	N/A, 73 N/A, 75	scheduled PCI	cardiovascular death, MI, or stroke	GUSTO and TIMI	low
Yabe T. (2022)	00004419 3	1	39 37	Clopidogrel, 75 Prasugrel, 3.75	12 12	63.1 62.5	39, 100.0 37, 100.0	30, 76.9 33, 89.1	PCI	cardiac death, nonfatal MI, hospitalization due to heart failure, or TVR	TIMI major	low
PRAGUE-18; Motovska, Z. (2018)	NCT 02808767	1	596 634	Ticagrelor, 90 Prasugrel, 10-5	12 12	61.8 61.8	591, 99.2 629, 99.2	439, 73.7 489, 77.1	ACS, PCI	cardiovascular death, nonfatal MI, or stroke	TIMI major	low
ISAR-REACT 5; Schupke, S (2019)	NCT 01944800	2	2012 2006	Ticagrelor, 90 Prasugrel, 10	12 12	64.5 64.6	1676, 83.3 1701, 84.8	1534, 76.2 1528, 76.2	planned invasive evaluation	composite of death, myocardial infarction, or stroke	BARC type 3 - 5	low
REDUCE-MVI Trial; van der Hoeven, N.W. (2020)	NCT 02422888	2	56 54	Ticagrelor, 90 Prasugrel, 10	12 12	60.2 61	N/R N/R	49, 87.5 45, 83.3	STEMI	death and recurrent myocardial infarction	BARC type > 2	low
HOPE-TAILOR; Jin, C-D (2021)	NCT 02944123	1	41 40 39	Clopidogrel, 75 Ticagrelor, 90-45 Prasugrel, 10-5	9 9 9	63 61 57	41, 100.0 40, 100.0 39, 100.0	38, 92.7 34, 85.0 37, 94.9	PCI	cardiac death, myocardial infarction, target vessel	BARC type > 2	high

Li, D-T. (2019)	1	100	Clopidogrel, 75	6	79.1	100, 100.0	61, 61.0	STEMI, diabetes	revascularization (TVR) and stroke	hemorrhage	high
		100	Ticagrelor, 90		70.8	100, 100.0	55, 55.0		recurrent myocardial infarction, recurrent angina, and heart failure		
Lu, Y. (2016)	1	108	Clopidogrel, 75	12	59.6	108, 100.0	60, 55.6	PCI	N/A	Hemorrhage	some concerns
		95	Ticagrelor, 90		59.3	95, 100.0	52, 54.7				
Tang, X. (2016)	1	200	Clopidogrel, 75	6	64.2	200, 100.0	146, 73	STEMI, PCI	death, myocardial infarction (MI), unplanned revascularization, and stroke.	TIMI major	some concerns
		200	Ticagrelor, 90	6	64.4	200, 100.0	142, 71				
Wang, H. (2016)	1	100	Clopidogrel, 75	12	80	71, 71.0	66, 66.0		myocardial infarction (MI), stroke, or CV death	PLATO major	some concerns
		100	Ticagrelor, 90	12	79	75, 75.0	69, 69.0				
Wang, X. (2019)	1	148	Clopidogrel, 75	6	59.7	148, 100.0	121, 81.8	STEMI, PCI	death, nonfatal myocardial infarction (MI), and target vessel revascularization were recorded	"major bleeding"	some concerns
		150	Ticagrelor, 90	6	60.9	150, 100.0	115, 76.7				
Wu, H-B. (2018)	1	120	Clopidogrel, 75	12	61.1	120, 100.0	94, 78.3	PCI	recurrent angina, recurrent myocardial infarction, stroke, heart failure, in-stent thrombosis, other thromboembolic events and cardiovascular death	"no massive hemorrhage event occurred"	some concerns
		124	Ticagrelor, 90	12	59	124, 100.0	98, 79.0				
Yang, B. (2018)	1	60	Clopidogrel, 75	6	58.7	60, 100.0	38, 63.3	AMI, PCI	target vascular remodeling, recurrence of myocardial infarction, heart failure, re-hospitalization and sudden cardiac death	none	some concerns
		60	Ticagrelor, 90	6	59.6	60, 100.0	35, 58.3				
Yao, Z. (2017)	1	60	Clopidogrel, 75	6	59.8	60, 100.0	36, 60.0	AMI, undergoing PCI	contained restenosis of target vessel and non-target vessel, thrombosis, recurrent angina, second myocardial infarction, all-cause death and so forth.	BARC ≥3	some concerns
		60	Ticagrelor, 90	6	60.4	60, 100.0	38, 63.3				
PATROL; You, J. (2020)	1	195	Clopidogrel, 75	12	68.62	195, 100.0	118, 60.5	STEMI, PCI	all-cause death, cardiac death, recurrence of myocardial infarction (MI), target vessel revascularization (TVR), and ischemic stroke	BARC ≥3	high
		105	Ticagrelor, 90	12	66.29	105, 100.0	77, 73.3				
Zhang, Y. (2016)	1	90	Clopidogrel, 150(7d)-75(6m)	6	71.7	90, 100.0	49, 54.4	PCI (CYP2C19*2 or *3 carriers)	death, stroke, recurrent MI, and stent thrombosis	PLATO major	some concerns
		91	Ticagrelor, 90	6	68.8	91, 100.0	42, 46.2				
PACS Study; Kitano, D. (2020)	1	39	Clopidogrel, 75	12	64	39, 100.0	33, 84.6	UA, NSTEMI, STEMI	all-cause death, revascularization, stroke, and bleeding were defined as adverse cardiac events	N/R	some concerns
		39	Prasugrel, 3.75	12	65.6	39, 100.0	31, 79.5				

Abbreviations: N.Cnts, number of countries; DAPT, dual-antiplatelet therapy; mg, milligram; F-up, follow-up; mnths, months PCI, percutaneous coronary intervention; n, number of patients; %, percentage; ACS, acute coronary syndrome; MACE, major acute coronary syndrome; RoB 2.0, risk of bias assessment tool.

Table 2: The results of the random effects Bayesian network meta-analyses for the primary outcomes of MACE and major bleeding.

Outcome	DAPT	events	n	HR (95% CrI)	Posterior distribution		
					Pr _{HR<0.9}	Pr _{HR[0.9, 1.11]}	Pr _{HR>1.11}
MACE	C	3,402	26,189	1.0 (ref.)	-	-	-
<i>N=17</i>	T	1,614	16,020	0.95 (0.81, 1.14)	0.224	0.732	0.044
<i>n=57,814</i>	P	1,811	15,605	0.87 (0.74, 1.06)	0.675	0.314	0.011
Maj. Bleeding	C	1,224	25,959	1.0 (ref.)	-	-	-
<i>N=17</i>	T	1,251	15,894	1.16 (0.98, 1.48)	0.004	0.319	0.677
<i>n=57,110</i>	P	383	15,257	1.23 (0.99, 1.57)	0.006	0.157	0.837

Abbreviations: *dapt*, dual-antiplatelet therapy; *N*, number of studies; *n*, number of patients; *HR*, hazard ratio; *CrI*, credible interval; *Pr*, probability; *MACE*, major acute coronary event (composite of death, non-fatal myocardial infarction, and non-fatal stroke); *C*, clopidogrel; *T*, ticagrelor; *P*, prasugrel; *ref.*, reference group; *Maj.*, major.

1
2

1 FIGURES

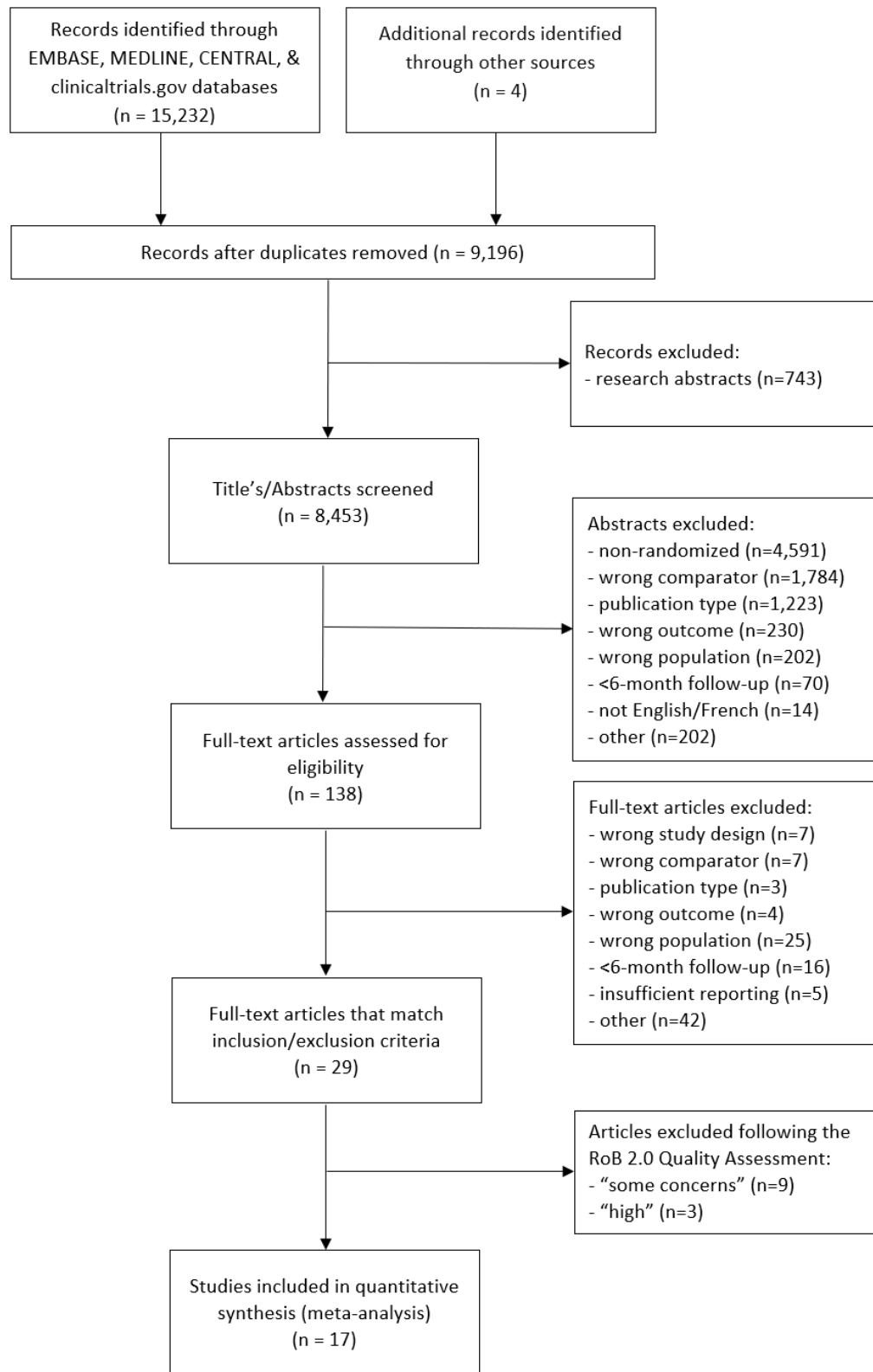


Figure 1: A flowchart describing the systematic screening results.

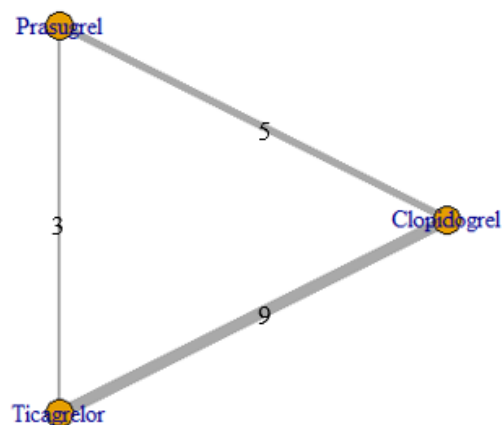


Figure 2: The network structure of the Bayesian meta-analysis for the 17 trials identified from the systematic review.

1

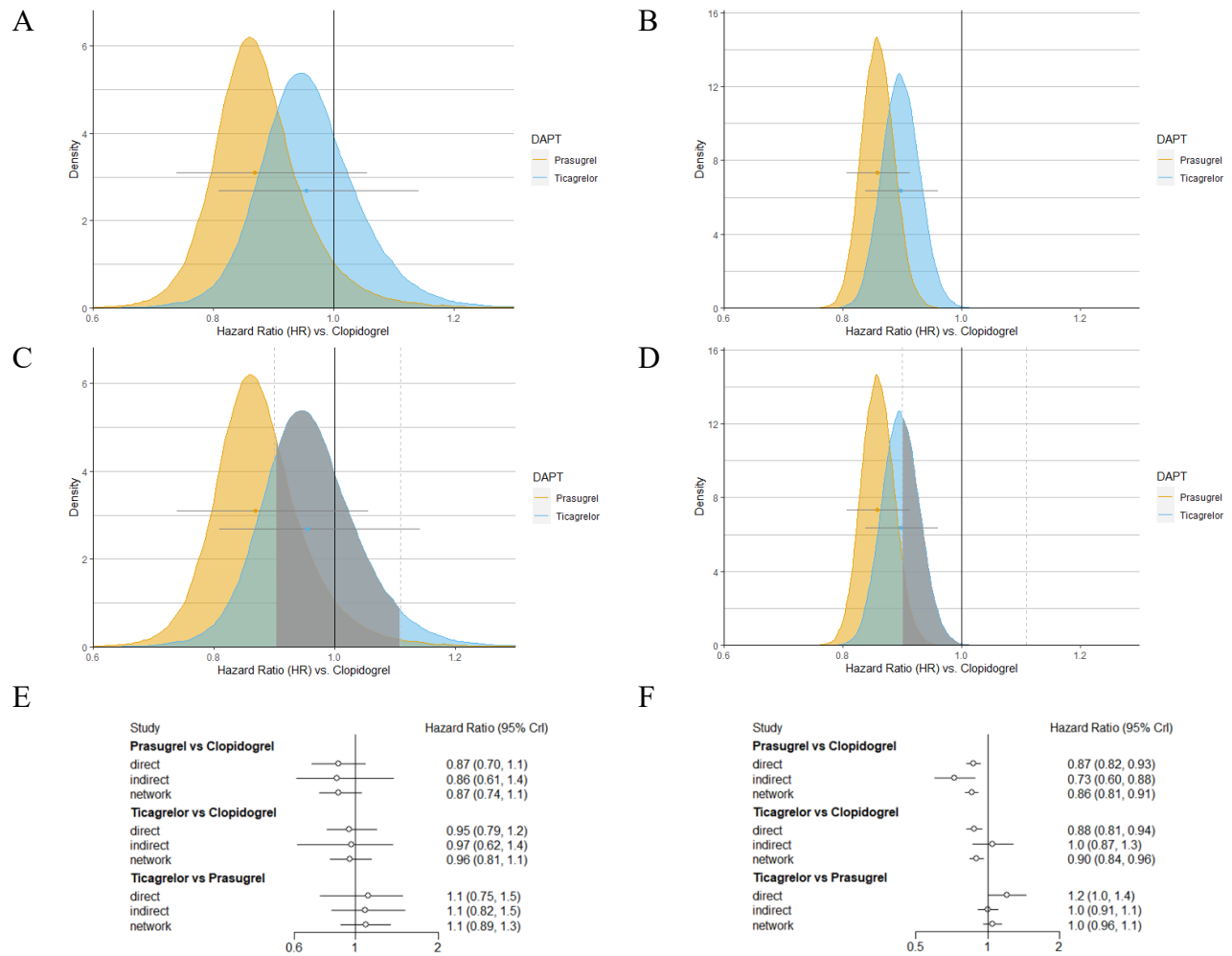


Figure 3: The posterior distributions for major acute coronary events (MACE) comparing clopidogrel (reference) to ticagrelor (blue) and prasugrel (yellow) using a [A] random effects (RE) and [B] fixed effects models. The range of practical equivalence (ROPE) is highlighted in grey across the RE [C] and FE [D] models. The node splitting results for MACE in the RE [E] and FE [F] models. *Abbreviations: DAPT, dual anti-platelet therapy; CrI, credible interval.*

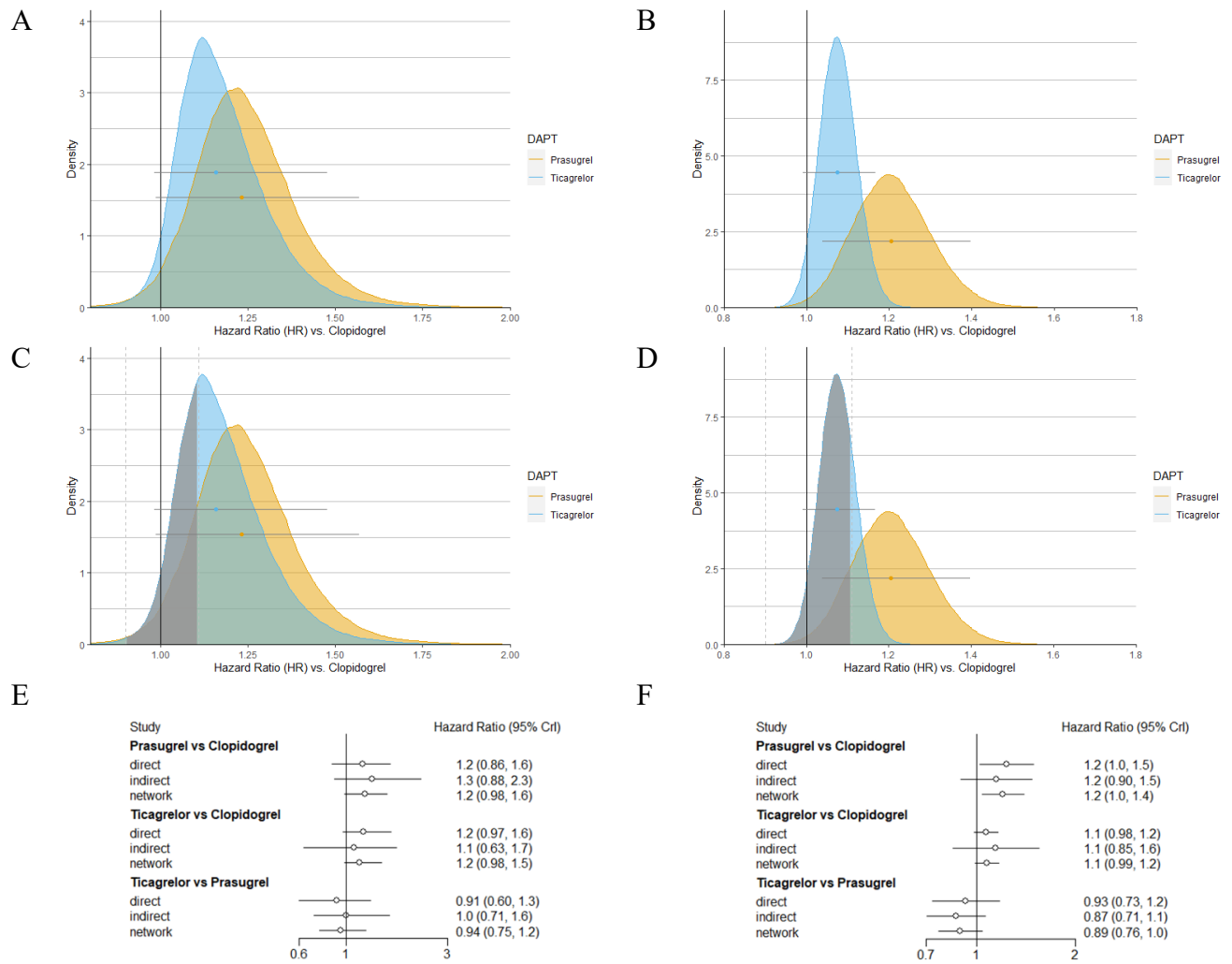


Figure 4: The posterior distributions for major bleeding events comparing clopidogrel (reference) to ticagrelor (blue) and prasugrel (yellow) using a [A] random effects (RE) and [B] fixed effects models. The range of practical equivalence (ROPE) is highlighted in grey across the RE [C] and FE [D] models. The node splitting results for major bleeding in the RE [E] and FE [F] models. *Abbreviations: DAPT, dual anti-platelet therapy; CrI, credible interval.*

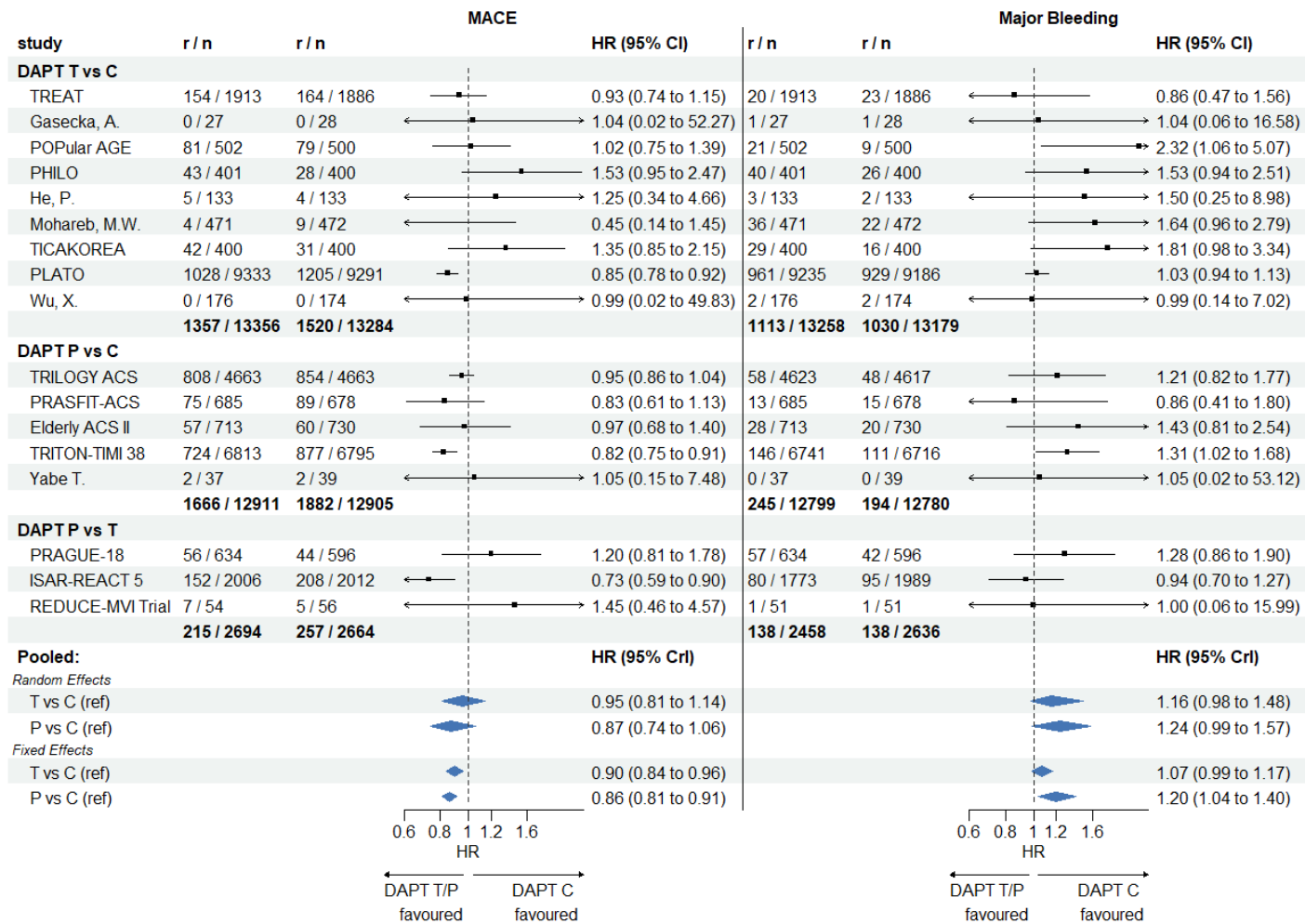


Figure 5: Forest plot of summary of the Bayesian network meta-analyses for MACE and major bleeding events in patients taking clopidogrel compared to ticagrelor and clopidogrel. *Abbreviations: MACE, major acute coronary events; r, number of events; n, number of subjects per study arm; HR, hazard ratio; CI, confidence interval; CrI, Bayesian credible interval; DAPT, dual-antiplatelet therapy; C, clopidogrel; T, ticagrelor; P, prasugrel; ref, reference group.*

1 APPENDIX

Supplemental Table 1: The results of the fixed effects Bayesian network meta-analyses for the primary outcomes of MACE and major bleeding.

Outcome	DAPT	events	n	HR (95% CrI)	Posterior distribution		
					Pr _{HR<0.9}	Pr _{HR[0.9, 1.11]}	Pr _{HR>1.11}
MACE	C	3,402	26,189	1.0 (ref)	-	-	-
<i>N=17</i>	T	1,614	16,020	0.90 (0.84, 0.96)	0.534	0.466	0.00
<i>n=57,814</i>	P	1,811	15,605	0.86 (0.81, 0.91)	0.932	0.068	0.00
Maj. Bleeding	C	1,224	25,959	1.0 (ref)	-	-	-
<i>N=17</i>	T	1,251	15,894	1.08 (0.99, 1.17)	0.00	0.787	0.213
<i>n=57,110</i>	P	383	15,257	1.20 (1.04, 1.40)	0.00	0.147	0.853

Abbreviations: *dapt*, dual-antiplatelet therapy; *N*, number of studies; *n*, number of patients; *HR*, hazard ratio; *CrI*, credible interval; *Pr*, probability; *MACE*, major acute coronary event (composite of death, non-fatal myocardial infarction, and non-fatal stroke); *C*, clopidogrel; *T*, ticagrelor; *P*, prasugrel; *ref.*, reference group; *Maj.*, major.

2

Supplemental Table 2: The random effect results of secondary outcomes from the Bayesian network meta-analyses.

Outcome	DAPT	events	n	HR (95% CrI)	Posterior distribution		
					Pr _{HR<0.9}	Pr _{HR[0.9, 1.11]}	Pr _{HR>1.11}
Mortality <i>N=17</i> <i>n=57,814</i>	C	1,299	26,189	1.0 (ref)	-	-	-
	T	661	16,020	0.87 (0.75, 1.07)	0.642	0.344	0.014
	P	728	15,605	0.94 (0.79, 1.14)	0.305	0.658	0.037
CV Mortality <i>N=15</i> <i>n=57,438</i>	C	1,076	26,056	1.0 (ref)	-	-	-
	T	547	15,831	0.85 (0.73, 1.04)	0.753	0.239	0.008
	P	559	15,551	0.90 (0.76, 1.07)	0.516	0.473	0.011
MI <i>N=17</i> <i>n=57,814</i>	C	1,798	26,189	1.0 (ref)	-	-	-
	T	750	16,020	0.94 (0.76, 1.17)	0.328	0.612	0.060
	P	991	15,605	0.81 (0.65, 1.00)	0.874	0.121	0.005
Stroke <i>N=15</i> <i>n=56,521</i>	C	305	25,543	1.0 (ref)	-	-	-
	T	203	15,373	1.02 (0.72, 1.33)	0.199	0.552	0.249
	P	162	15,605	0.88 (0.64, 1.18)	0.551	0.388	0.061
Min. Bleeding <i>N=12</i> <i>n=49,677</i>	C	548	24,729	1.0 (ref)	-	-	-
	T	550	12,811	1.35 (1.08, 1.71)	0.002	0.034	0.964
	P	254	12,137	1.42 (1.08, 1.94)	0.003	0.031	0.966

Abbreviations: *dapt*, dual-antiplatelet therapy; *N*, number of studies; *n*, number of patients; *HR*, hazard ratio; *CrI*, credible interval; *Pr*, probability; *CV*, cardiovascular; *MI*, non-fatal myocardial infarction, and non-fatal stroke); *C*, clopidogrel; *T*, ticagrelor; *P*, prasugrel; *ref.*, reference group; *Min.*, minor.

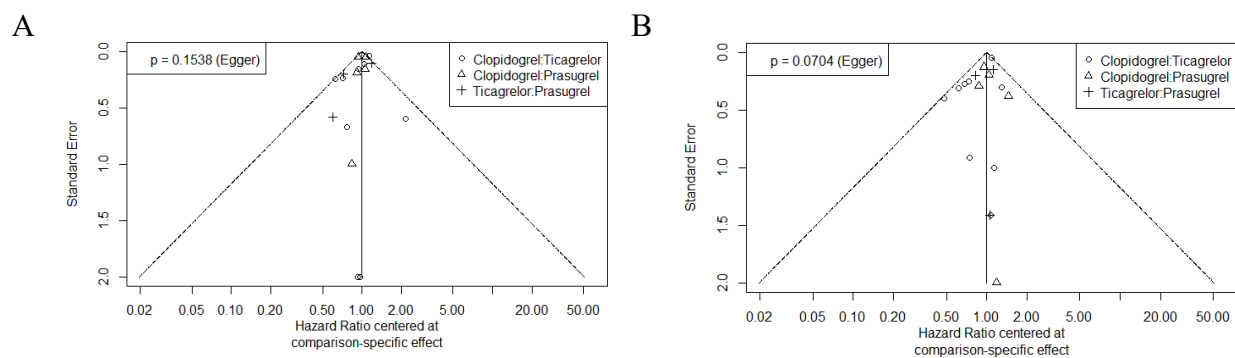
1
2
3

Supplemental Table 3: The fixed effect results of secondary outcomes from the Bayesian network meta-analyses.

Outcome	DAPT	events	n	HR (95% CrI)	Posterior distribution		
					Pr _{HR<0.9}	Pr _{HR[0.9, 1.11]}	Pr _{HR>1.11}
Mortality <i>N=17</i> <i>n=57,814</i>	C	1,299	26,189	1.0 (ref)	-	-	-
	T	661	16,020	0.84 (0.76, 0.94)	0.890	0.110	0.00
	P	728	15,605	0.93 (0.83, 1.03)	0.305	0.695	0.00
CV Mortality <i>N=15</i> <i>n=57,438</i>	C	1,076	26,056	1.0 (ref)	-	-	-
	T	547	15,831	0.83 (0.74, 0.93)	0.918	0.082	0.00
	P	559	15,551	0.90 (0.80, 1.01)	0.517	0.483	0.00
MI <i>N=17</i> <i>n=57,814</i>	C	1,798	26,189	1.0 (ref)	-	-	-
	T	750	16,020	0.90 (0.81, 0.99)	0.531	0.469	0.00
	P	991	15,605	0.81 (0.74, 0.88)	0.992	0.008	0.00
Stroke <i>N=15</i> <i>n=56,521</i>	C	305	25,543	1.0 (ref)	-	-	-
	T	203	15,373	1.06 (0.86, 1.29)	0.059	0.632	0.309
	P	162	15,605	0.91 (0.73, 1.12)	0.471	0.498	0.031
Min. Bleeding <i>N=12</i> <i>n=49,677</i>	C	548	24,729	1.0 (ref)	-	-	-
	T	550	12,811	1.34 (1.18, 1.52)	0.00	0.002	0.998
	P	254	12,137	1.39 (1.15, 1.68)	0.00	0.009	0.991

Abbreviations: *dapt*, dual-antiplatelet therapy; *N*, number of studies; *n*, number of patients; *HR*, hazard ratio; *CrI*, credible interval; *Pr*, probability; *CV*, cardiovascular; *MI*, non-fatal myocardial infarction, and non-fatal stroke); *C*, clopidogrel; *T*, ticagrelor; *P*, prasugrel; *ref.*, reference group; *Min.*, minor.

1



Supplemental Figure 1: Publication bias funnel plots for major acute coronary events and major bleeding outcomes

1

1 Search Strategies

2 MEDLINE:

- 3 1. ((randomized controlled trial or controlled clinical trial).pt. or randomized.ab. or
- 4 randomised.ab. or placebo.ab. or drug therapy.fs. or randomly.ab. or trial.ab. or groups.ab.) not
- 5 (exp animals/ not humans.sh.)
- 6 2. acute coronary syndrome*.mp. or Acute Coronary Syndrome/ or ((myocardial or heart) adj
- 7 infarction*).mp. or acute mi.mp. or exp Myocardial Infarction/ or ((myocardial or heart muscle)
- 8 adj isch?emi*).mp. or Myocardial Ischemia/ or unstable angina*.mp. or Angina, Unstable/ or
- 9 STEMI.mp. or NSTEMI.mp.
- 10 3. (((percutaneous coronary or heart muscle) adj (intervention* or revasculari#ation*)) or
- 11 pci).mp. or Percutaneous Coronary Intervention/
- 12 4. stent*.mp. or Stents/
- 13 5. coronary artery bypass*.mp. or Coronary Artery Bypass/
- 14 6. 2 or 3 or 4 or 5
- 15 7. (clopidogrel and ticagrelor).mp.
- 16 8. (clopidogrel and prasugrel).mp.
- 17 9. (prasugrel and ticagrelor).mp.
- 18 10. (dual antiplatelet* or dual anti platelet* or DAPT).mp.
- 19 11. 7 or 8 or 9 or 10
- 20 12. 1 and 6 and 11

21

22 EMBASE:

- 23 1. crossover-procedure/ or double-blind procedure/ or randomized controlled trial/ or single-
- 24 blind procedure/ or (random* or factorial* or crossover* or cross over* or placebo* or (doubl*
- 25 adj blind*) or (singl* adj blind*) or assign* or allocat* or volunteer*).tw.
- 26 2. acute coronary syndrome*.mp. or acute coronary syndrome/
- 27 3. ((myocardial or heart) adj infarction*).mp. or heart infarction/
- 28 4. acute mi.mp.
- 29 5. myocardial isch?emi*.mp. or heart muscle ischemia/
- 30 6. unstable angina*.mp. or unstable angina pectoris/
- 31 7. non ST segment elevation myocardial infarction/
- 32 8. ST segment elevation myocardial infarction/
- 33 9. percutaneous coronary intervention.mp. or percutaneous coronary intervention/
- 34 10. heart muscle revascularization/ or ((percutaneous coronary or heart muscle) adj
- 35 revasculari#ation*).mp.
- 36 11. percutaneous coronary revasculari#ation*.mp.
- 37 12. stent*.mp. or stent/
- 38 13. coronary artery bypass*.mp. or coronary artery bypass graft/
- 39 14. 2 or 3 or 4 or 5 or 6 or 7 or 8 or 9 or 10 or 11 or 12 or 13
- 40 15. (clopidogrel and prasugrel).mp.
- 41 16. (clopidogrel and ticagrelor).mp.
- 42 17. (prasugrel and ticagrelor).mp.
- 43 18. (dual antiplatelet* or dual anti platelet* or DAPT).mp.
- 44 19. 15 or 16 or 17 or 18
- 45 20. 1 and 14 and 19

46

1	<u>CENTRAL:</u>		
2	ID	Search Hits	
3	#1	MeSH descriptor: [Acute Coronary Syndrome] this term only	1544
4	#2	(acute coronary syndrome*):ti,ab,kw	5194
5	#3	MeSH descriptor: [Myocardial Infarction] this term only	9758
6	#4	((myocardial or heart) NEAR/1 infarction*):ti,ab,kw	25161
7	#5	((myocardial or "heart muscle") NEAR/1 isch*emi*):ti,ab,kw	5803
8	#6	(acute MI):ti,ab,kw	2007
9	#7	MeSH descriptor: [Angina, Unstable] this term only	975
10	#8	(unstable angina*):ti,ab,kw	2910
11	#9	MeSH descriptor: [ST Elevation Myocardial Infarction] this term only	226
12	#10	(STEMI):ti,ab,kw	2364
13	#11	MeSH descriptor: [Non-ST Elevated Myocardial Infarction] this term only	47
14	#12	(NSTEMI):ti,ab,kw	339
15	#13	MeSH descriptor: [Percutaneous Coronary Intervention] this term only	1541
16	#14	(("percutaneous coronary" or "heart muscle") NEAR/1 (intervention* or	
17		revasculari?ation*)):ti,ab,kw	7932
18	#15	(PCI):ti,ab,kw	5681
19	#16	MeSH descriptor: [Stents] this term only	2807
20	#17	(stent*):ti,ab,kw	11274
21	#18	MeSH descriptor: [Coronary Artery Bypass] this term only	4919
22	#19	(coronary artery bypass*):ti,ab,kw	9676
23	#20	(prasugrel AND clopidogrel):ti,ab,kw	682
24	#21	(prasugrel AND ticagrelor):ti,ab,kw	343
25	#22	(clopidogrel AND ticagrelor):ti,ab,kw	743
26	#23	(dual anti platelet therap*):ti,ab,kw	150
27	#24	(dual antiplatelet therap*):ti,ab,kw	1279
28	#25	#1 or #2 or #3 or #4 or #5 or #6 or #7 or #8 or #9 or #10 or #11 or #12 or #13 or #14 or	
29	#15 or #16 or #17 or #18 or #19		46911
30	#26	#20 or #21 or #22 or #23 or #24	2256
31	#27	#25 AND #26	1880

32

33 CLINICALTRIALS.GOV:

34 **Conditions or disease**

35 ((Acute Coronary Syndrome*) OR (myocardial infarction*) OR (myocardial
36 ischemia*) OR (unstable angina*) OR (stemi) OR
37 (nSTEMI) OR (percutaneous coronary) OR (stent*) OR (coronary artery bypass*))

38

39 **Other terms**

40 ((clopidogrel AND ticagrelor) OR (prasugrel AND ticagrelor) OR (clopidogrel AND
41 ticagrelor) OR (dual antiplatelet*) OR (dual anti platelet*) OR (DAPT))

42

43

1 **PRISMA NMA Checklist of Items to Include When Reporting A Systematic Review**
 2 **Involving a Network Meta-Analysis**

Section/Topic	Item #	Checklist Item	Reported on Page #
TITLE			
Title	1	Identify the report as a systematic review <i>incorporating a network meta-analysis (or related form of meta-analysis)</i> .	1
ABSTRACT			
Structured summary	2	Provide a structured summary including, as applicable: Background: main objectives Methods: data sources; study eligibility criteria, participants, and interventions; study appraisal; and <i>synthesis methods, such as network meta-analysis</i> . Results: number of studies and participants identified; summary estimates with corresponding confidence/credible intervals; <i>treatment rankings may also be discussed. Authors may choose to summarize pairwise comparisons against a chosen treatment included in their analyses for brevity.</i> Discussion/Conclusions: limitations; conclusions and implications of findings. Other: primary source of funding; systematic review registration number with registry name.	2
INTRODUCTION			
Rationale	3	Describe the rationale for the review in the context of what is already known, <i>including mention of why a network meta-analysis has been conducted</i>	4-5
Objectives	4	Provide an explicit statement of questions being addressed, with reference to participants, interventions, comparisons, outcomes, and study design (PICOS).	4
METHODS			
Protocol and registration	5	Indicate whether a review protocol exists and if and where it can be accessed (e.g., Web address); and, if available, provide registration information, including registration number.	Not Published
Eligibility criteria	6	Specify study characteristics (e.g., PICOS, length of follow-up) and report characteristics	5-6

(e.g., years considered, language, publication status) used as criteria for eligibility, giving rationale. *Clearly describe eligible treatments included in the treatment network, and note whether any have been clustered or merged into the same node (with justification).*

Information sources	7	Describe all information sources (e.g., databases with dates of coverage, contact with study authors to identify additional studies) in the search and date last searched.	5
Search	8	Present full electronic search strategy for at least one database, including any limits used, such that it could be repeated.	5, Appendix
Study selection	9	State the process for selecting studies (i.e., screening, eligibility, included in systematic review, and, if applicable, included in the meta-analysis).	5
Data collection process	10	Describe method of data extraction from reports (e.g., piloted forms, independently, in duplicate) and any processes for obtaining and confirming data from investigators.	6
Data items	11	List and define all variables for which data were sought (e.g., PICOS, funding sources) and any assumptions and simplifications made.	6
Geometry of the network	S1	Describe methods used to explore the geometry of the treatment network under study and potential biases related to it. This should include how the evidence base has been graphically summarized for presentation, and what characteristics were compiled and used to describe the evidence base to readers.	7, Figure 2
Risk of bias within individual studies	12	Describe methods used for assessing risk of bias of individual studies (including specification of whether this was done at the study or outcome level), and how this information is to be used in any data synthesis.	6
Summary measures	13	State the principal summary measures (e.g., risk ratio, difference in means). <i>Also describe the use of additional summary measures assessed, such as treatment rankings and surface under the cumulative ranking curve (SUCRA) values, as well as modified approaches used to present summary findings from meta-analyses.</i>	7
Planned methods of analysis	14	Describe the methods of handling data and combining results of studies for each network meta-analysis. This should include, but not be limited to: <ul style="list-style-type: none"> • <i>Handling of multi-arm trials;</i> • <i>Selection of variance structure</i> 	7

		<ul style="list-style-type: none"> • <i>Selection of prior distributions in Bayesian analyses; and</i> • <i>Assessment of model fit.</i> 	
Assessment of inconsistency	S2	Describe the statistical methods used to evaluate the agreement of direct and indirect evidence in the treatment network(s) studied. Describe efforts taken to address its presence when found.	7
Risk of bias across studies	15	Specify any assessment of risk of bias that may affect the cumulative evidence (e.g., publication bias, selective reporting within studies).	5, Figure 6
Additional analyses	16	Describe methods of additional analyses if done, indicating which were pre-specified. This may include, but not be limited to, the following: <ul style="list-style-type: none"> • Sensitivity or subgroup analyses; • Meta-regression analyses; • <i>Alternative formulations of the treatment network; and</i> • <i>Use of alternative prior distributions for Bayesian analyses (if applicable).</i> 	5-6
RESULTS†			
Study selection	17	Give numbers of studies screened, assessed for eligibility, and included in the review, with reasons for exclusions at each stage, ideally with a flow diagram.	7, Figure 1
Presentation of network structure	S3	Provide a network graph of the included studies to enable visualization of the geometry of the treatment network.	Figure 2
Summary of network geometry	S4	Provide a brief overview of characteristics of the treatment network. This may include commentary on the abundance of trials and randomized patients for the different interventions and pairwise comparisons in the network, gaps of evidence in the treatment network, and potential biases reflected by the network structure.	7
Study characteristics	18	For each study, present characteristics for which data were extracted (e.g., study size, PICOS, follow-up period) and provide the citations.	7, Table 1
Risk of bias within studies	19	Present data on risk of bias of each study and, if available, any outcome level assessment.	Table 1
Results of individual studies	20	For all outcomes considered (benefits or harms), present, for each study: 1) simple summary data for each intervention group, and 2) effect estimates and confidence intervals. <i>Modified approaches may be needed to deal with information from larger networks.</i>	8-10, Tables 2-3

Synthesis of results	21	Present results of each meta-analysis done, including confidence/credible intervals. <i>In larger networks, authors may focus on comparisons versus a particular comparator (e.g. placebo or standard care), with full findings presented in an appendix. League tables and forest plots may be considered to summarize pairwise comparisons.</i> If additional summary measures were explored (such as treatment rankings), these should also be presented.	8-10, Figure 4
Exploration for inconsistency	S5	Describe results from investigations of inconsistency. This may include such information as measures of model fit to compare consistency and inconsistency models, P values from statistical tests, or summary of inconsistency estimates from different parts of the treatment network.	Figures 3-4
Risk of bias across studies	22	Present results of any assessment of risk of bias across studies for the evidence base being studied.	Table 1
Results of additional analyses	23	Give results of additional analyses, if done (e.g., sensitivity or subgroup analyses, meta-regression analyses, <i>alternative network geometries studied, alternative choice of prior distributions for Bayesian analyses, and so forth</i>).	Not Applicable
DISCUSSION			
Summary of evidence	24	Summarize the main findings, including the strength of evidence for each main outcome; consider their relevance to key groups (e.g., healthcare providers, users, and policy-makers).	11-12
Limitations	25	Discuss limitations at study and outcome level (e.g., risk of bias), and at review level (e.g., incomplete retrieval of identified research, reporting bias). <i>Comment on the validity of the assumptions, such as transitivity and consistency. Comment on any concerns regarding network geometry (e.g., avoidance of certain comparisons).</i>	12-13
Conclusions	26	Provide a general interpretation of the results in the context of other evidence, and implications for future research.	13
FUNDING			
Funding	27	Describe sources of funding for the systematic	None

review and other support (e.g., supply of data); role of funders for the systematic review. This should also include information regarding whether funding has been received from manufacturers of treatments in the network and/or whether some of the authors are content experts with professional conflicts of interest that could affect use of treatments in the network.

- 1 PICOS = population, intervention, comparators, outcomes, study design.
- 2 * Text in italics Indicates wording specific to reporting of network meta-analyses that has been
- 3 added to guidance from the PRISMA statement.
- 4 † Authors may wish to plan for use of appendices to present all relevant information in full detail
- 5 for items in this section
- 6