

1
2
3
4
5
6
7
8
9
10
11
12
13
14
15
16
17
18
19
20
21

Scanning electron microscopy observations on the surface morphology of placenta villi from HIV-positive women having preterm birth while receiving antiretroviral therapy

Moses M. Obimbo^{1,2,3*}, Shem Ochieng^{4,5}, Samwel R. Gesaka³, Julius Ogeng'o^{2,3}

¹ Department of Obstetrics and Gynecology, University of Nairobi, Nairobi, Kenya

² Department of Human Anatomy and Physiology, University of Nairobi, Nairobi, Kenya

³ Basic Clinical and Translational (BCT) Research Laboratory, University of Nairobi, Nairobi, Kenya

⁴ Electron Microscopy Laboratory, International Centre for Insect Physiology and Ecology (ICIPE), Nairobi, Kenya

⁵ School of Medicine, Kenyatta University, Nairobi, Kenya

* Corresponding author

E-mail: moses.obimbo@uonbi.ac.ke (MMO)

22 **Abstract**

23 **Background:** Preterm birth is a significant global issue. Antiretroviral therapy (ART) use
24 and human immunodeficiency virus (HIV) infection have both been linked in recent
25 research as independent risk factors for preterm birth. Although there has been
26 evidence linking preterm delivery to significant pathological alterations in the placenta, it
27 is still unclear how exactly HIV and ART harm the placenta and raise the risk of
28 prematurity. To explain the increased risk of preterm birth (PTB), we set out to describe
29 the surface morphological alterations in placenta villi associated with HIV and ART.

30 **Methods and materials:** We collected and processed 160 placentas from 40 HIV-
31 positive women on ART and 40 HIV-negative women who had preterm deliveries, 40
32 HIV- positive women and 40 HIV - negative women with term delivery in Nairobi, Kenya.
33 The placenta biopsies were harvested, washed in phosphate buffer solution, and
34 processed for scanning electron microscopy. The dried tissue was mounted onto
35 specimen stubs, sputter coated with gold and visualized using Zeiss Merlin FESEM in-
36 lens. Forty representative samples, 10 from each group, were randomly selected and
37 examined by investigators who were blinded to maternal HIV serostatus.

38 **Results:** The average gestational age for preterm and term births was 34 and 39
39 weeks, respectively. The average age of the mothers of preterm and term babies was
40 26.8 + 4.6 years and 24.3 + 4.3 years, respectively. The villous core of the placenta
41 from HIV-negative patients was covered with microvilli that varied in size and
42 appearance, and there were hardly any residual red blood cells. Placenta from HIV-
43 positive women with preterm birth had widespread damage with shrunken and wrinkled
44 villi, predominant blunting of the microvilli, with attendant syncytiotrophoblast disruption,

45 and significant erythrocyte adhesion within extensive fibrillar meshwork and on surface
46 of the syncytium.

47 **Conclusion:** Our results show distinctive alterations in the placenta of HIV-positive
48 mothers who gave birth prematurely, which may impair the syncytium's ability to
49 function normally. Microvilli blunting, syncytial disruptions, and syncytial erythrocyte
50 adhesion might be the symptoms of a deeper biological process. Further work to
51 understand the effect of HIV/ART on the syncytiotrophoblast in relation to prematurity is
52 recommended.

53 **Introduction**

54 The surface interface between fetus and mother is formed by fetal syncytiotrophoblasts.
55 These are fused multinucleated cells generated from trophoblasts and are constantly
56 bathed in maternal blood. These cells are involved in exchange of nutrients,
57 electrolytes, and gases between the fetus and the mother, hormone production, and are
58 also important in fetomaternal immunotolerance [1–3]. Efficient transfer of substances
59 across the placenta is essential in maintaining fetal growth and development and to
60 ensure maternal health [4–6]. The surface of the placenta syncytium exposed to the
61 maternal blood has a brush border on their free surface; This border facilitates diverse
62 functions including absorption, secretion, and mechanotransduction [7–9]. Equally, this
63 surface is also exposed to toxic substances and pathogens circulating in maternal
64 blood, putting it at risk of impaired morphology [10–12].

65
66 Preterm birth (PTB) is a leading cause of perinatal morbidity and mortality in both
67 developing and developed countries. The mechanism by which it occurs remains to be
68 elucidated. Human immunodeficiency virus (HIV) and antiretroviral therapy (ART) have
69 recently been identified as independent risk factors for preterm birth [13–17]. Our recent
70 work demonstrated unfavorable histological changes in placenta from HIV positive
71 women with preterm birth [18], similar to findings from other studies [19–21]. These
72 findings give credence to the belief that there is a strong association between HIV and
73 ART with adverse pregnancy outcome via diminishing placenta functional capacity.
74 Nevertheless, the exact mechanisms by which HIV and ART cause placental damage
75 and increase the risk of prematurity is far from being fully understood. We set out to

76 determine the surface morphological changes on placenta villi associated with HIV and
77 ART that could explain an increased risk of preterm labor (PTB) in this population.
78 Scanning electron microscopy (SEM) has been used as a standard method of exploring
79 features on the cell surface and therefore a suitable tool to use to characterize placental
80 syncytium.

81 **Methods and materials**

82 **Study setting and population.**

83 The clinical information and placental samples were collected at the Kenyatta National
84 Hospital (KNH) and Pumwani Maternity Hospital. The two are the busiest maternity
85 hospitals in Nairobi, Kenya each with a delivery rate of over 10,000 annually.
86 Forty placentas were collected in the numbers given from each of the following groups:
87 (1) HIV-positive women who received ART and had a PTB, (2) HIV- negative women
88 who delivered preterm, (3) HIV-positive women who received ART and delivered at
89 term, and (4) HIV- negative women who delivered at term. All the placentas were from
90 women of African descent aged 18 to 40 years with a singleton live birth. Only women
91 with an early pregnancy obstetric scan before 16 weeks and sure of the last normal
92 menstrual period were included in the study. Preterm births were defined as delivery at
93 <37 weeks of gestation and term births were defined as delivery >37 weeks of
94 gestation. We excluded women with medical and obstetric complications during
95 pregnancy and at the time of labor.

96

97 **Ethical considerations**

98 Approval to conduct the study and permission to transport specimens was sought from
99 the Kenyatta National Hospital/University of Nairobi Ethics and Research Committee
100 (registration number P5/01/2017).

101

102 **Recruitment and informed consent**

103 A trained research assistant cum midwife identified women who were admitted to labor
104 and delivery meeting our inclusion criteria. He gave a full explanation of the study and
105 obtained a written consent to enroll. Study participants were recruited from February 14,
106 2017, to June 22, 2017.

107

108 **Sample collection and preparation**

109 Placentas were collected after obtaining a written consent from the recruited mothers.
110 Six sampling sites were aseptically biopsied systematically from each placenta, trimmed
111 and labeled a-f [22], rinsed in phosphate buffer solution and then immediately fixed in
112 3% glutaraldehyde solution at pH 7.2 (at ambient temperature) and stored at 4°C for 24
113 hours at the Kenya Aids Vaccine Initiative Institute of Clinical Research (KAVI-ICR),
114 University of Nairobi, Kenya. The specimens were transported to the International
115 Centre for Insect Physiology and Ecology, Kenya (ICIPE) and were post fixed in 1%
116 osmium tetroxide in 0.1 M cacodylate buffer for 60 minutes. The blocks were then
117 washed in distilled water three times, dehydrated in an ascending series of ethanol
118 starting at 30%, 50%, 70%, 90% to absolute concentration for 20 minutes each and

119 stored in epoxy/propylenoxide (1:1) overnight. The blocks were then embedded in
120 epoxy resin polymerized at 60°C for 36 hours and stored. Final drying was done using
121 100% hexamethyldisilazane (HMDS, 30mins each) and left to dry for 24hrs in a fume
122 hood at the Central Analytical Facilities, Stellenbosch University, South Africa. Analysis
123 of tissue ultrastructure with conventional scanning electron microscopes is labor
124 intensive procedure and requires significant resources. To circumvent this challenge ten
125 out of forty representative placenta samples were randomly selected from each of the
126 above groups and examined.

127

128 **Scanning electron microscopy imaging**

129 After mounting onto standard 12mm aluminum SEM stubs, specimens were sputter-
130 coated with gold and visualized using Zeiss Merlin FESEM in-lens (secondary electron
131 (SE) and SE2) detector at 1.8 mm working distance, 60 µm aperture and operated at 3-
132 5kV keV acceleration voltage, 100 pA probe current.

133 **Results**

134

135 A total of 160 placentas were collected and processed, 80 preterm and 80 term. All HIV-
136 positive women were on treatment with ART. The average gestational ages of the
137 preterm placenta was 34 (range 30-37) weeks and 39 (range 38-41) weeks for the term
138 placenta, respectively. The mean maternal age for mothers with preterm delivery was
139 26.8+4.6 years and 24.3 +4.3 for the mothers with term delivery. Thirty-six (36) and 28
140 patients with preterm and term deliveries had cesarean deliveries, respectively.

141

142 **Structure of the placenta from HIV-negative women with**
143 **preterm and term birth**

144 The chorionic villous structures had a tree-like appearance with gradual branching.
145 Branching seemed to increase gradually with advancing gestation. The terminal
146 ramifications appeared as buds and some extended to the neighboring terminal villous
147 structure via intervillous bridges (Fig 1A, B). The villous core structure was covered with
148 microvilli of variable sizes and appearance, closely apposed against each other (Fig
149 1C). There were syncytial knots which appeared as dome-shaped like elevations on the
150 surface of the syncytium and seemed to increase with advancing gestation. A few red
151 blood cells were observed on the surface, pitting the structure of the syncytium (Fig 1D).
152 In a few areas, the syncytial continuity was interrupted and the gap to a lesser extent
153 filled with fibrinoid material (Fig 1E, F). There were occurrences of tip-to-tip fusion of the
154 terminal villi in some placental sections. The preterm placenta demonstrated
155 intermediate villi transitioning into terminal villi. In some instances, the terminal villi were
156 cross-sectionally cut and revealed capillaries, many of which were dilated and occupied
157 most of the cross-sectional area of the villous core (Fig 1F).

158

159 **Fig 1. Electron microscopy structure of term and preterm placentas from HIV-**
160 **negative women.** (A, B) The chorionic structures with a tree-like appearance with
161 gradual branching. The terminal ramifications and joining via intervillous bridges (white
162 arrows). (C) The villous core structure covered with microvilli (MV) of variable sizes and
163 appearance. (D) Red blood cells (asterisks) observed on the syncytial surface, pitting
164 the structure of the syncytium. (E) The syncytial continuity (white arrow) disrupted and

165 filled with fibrinoid material (black arrow). (F) Cross-sectionally cut terminal villi revealed
166 capillaries with fetal red blood cells (FRBC).

167 **Structure of the placenta from HIV-positive women with** 168 **preterm birth**

169 The general structure of preterm placenta consisted of villous tree structure with
170 intermediate and terminal villi. Most sections of these placentas showed widespread
171 damage with shrunken and wrinkled villi. The terminal villi showed thinning with loss of
172 congruently shaped terminal buds. Microvilli were either blunted or absent in significant
173 areas of both the intermediate and the terminal villi with attendant syncytiotrophoblast
174 disruption (Fig 2A, C). Massive fibrinoid material covered the cross-sectional cuts (Fig
175 2B). At the bases and sometimes along the surface of the terminal villi, red blood cells
176 appeared to be adherent on the surfaces of these villi. The red blood cells were in
177 different shapes and sizes and seemed to be trapped within extensive fibrillar meshwork
178 (Fig 2D, E).

179

180 **Fig 2. Electron microscopy structure of preterm placentas from HIV-positive**
181 **women.** (A) The villi appeared shrunken (SV) and wrinkled with thinning terminal villi
182 and loss of congruently shaped terminal buds. (B) Microvilli (MV) were either blunted or
183 absent with attendant syncytiotrophoblast disruption (white arrows). Red blood cells
184 (RBC) were seen and massive fibrinoid material (black arrow) covered the villous
185 structures in C, D, and E, red blood cells (asterisks) on the surface of the syncytium at
186 advancing magnification

187 **Structure of the placenta from HIV-positive women with term** 188 **birth**

189 There was a progressive expansion of the villous tree with predominance of terminal villi
190 in the term placenta. Focal villous syncytiotrophoblast thinning as a key feature was
191 also apparent (Fig 3A). Club-shaped microvilli were present in most parts of the surface
192 of the syncytium (Fig 3B). The red blood cells were observed on the surface of
193 syncytium but not as significant as was seen in HIV-positive preterm placenta. The
194 syncytium is obliterated (Fig 3C, D).

195

196 **Fig 3. Electron microscopy structure of term placentas from HIV-positive women.**

197 (A) Focal thinning and loss of congruence of the terminal villi. (B) Club-shaped syncytial
198 knots on the villi (black arrow). (C, D) Red blood cells trapped in the fibrillar meshwork
199 (asterisks) on the surface of the syncytium with diminished microvilli (black arrow).

200

201 **Discussion**

202 The maturation spectrum of the placenta from the HIV-negative women was in keeping
203 with what has previously been observed in normal placenta. The gradual ramifications
204 of the chorionic villi has been described and forms the functional core of the human
205 placenta [23]. The branches are covered by the syncytialized villous trophoblast that is
206 in direct contact with maternal blood in the intervillous space. The presence of the
207 syncytial knots and intervillous bridges in these cases mostly signify a normal placental
208 ageing process [24,25]. In other cases, they may be associated with pathological

209 processes such as preeclampsia, obesity, malaria, oxidative stress and intrauterine
210 growth restriction [26–29]. The intervillous bridges are involved in support role within
211 placenta though the formation of an internal strut mechanism [30] and act to protect the
212 villous capillaries from collapse during labor process. Dilatation of the capillary villi
213 occurs at the tip of the terminal villi forming sinusoids that facilitate exchange of
214 substances between the mother and the fetus via a thinned vasculosyncytial
215 membranes [31].

216
217 The shrinking, wrinkling and thinning of the placenta villi observed in placenta of HIV-
218 positive women with preterm birth is in keeping with the decreased villi surface area and
219 perimeter observed in our previous work [18], but has also been noted in some
220 infections involving the placenta [32,33], intrauterine growth restriction [34], and
221 preeclampsia [35]. By the virtue of exposure to maternal blood, the syncytium is always
222 under constant danger of immunological or reactive oxygen species attack that could
223 result in apoptosis, degeneration and sometimes attempt to regeneration. As stated
224 above, the shriveling of the syncytium may be due to reduced trophoblast regeneration
225 capacity occasioned either independently or in combination by HIV infection or the
226 antiretrovirals. The result is that many functions of the villous syncytiotrophoblast like
227 gaseous exchange, nutrient transfer and hormone production may be impaired.

228
229 Microvilli, found on the apical aspect of some epithelial cells are surface specialization
230 that provide an increased surface area for absorption, secretion, mechanosensation,
231 and also provide cellular polarity enhancing certain cellular functions such as

232 membrane transportation, cytoskeletal distribution, and enzymatic function [8,36]. These
233 cells, in addition, must maintain the barrier function of the compartments being
234 separated [37]. The loss of microvilli on the surface of syncytium has been correlated
235 with diminished placental function and has been reported in eclampsia, gestational
236 diabetes, intrauterine growth restriction, and small for gestational age fetuses [38–40]. In
237 the current study, the loss of microvilli may signify a possible diminished placental
238 function which may have played a role in instigating preterm labor. Syncytiotrophoblast
239 disruption, red cell adhesion, and an extensive fibrillar meshwork that were frequently
240 found on the surface of the syncytium in these patients might be indicative of apoptotic
241 process of the syncytiotrophoblast, attempt to repair, and attendant inflammatory
242 process [41]. Fibrinoid deposition, in small amounts may be physiological as a response
243 to minimize maternal bleeding to improve pregnancy outcome. In extensive amounts, as
244 observed in this study, it may result in obliteration of the intervillous space, with atrophy
245 of the chorionic villi. The basis for this observation is related to syncytiotrophoblastic
246 damage, immunological derangement with initiation of coagulation events that results
247 into adherence of the red blood cells on the surface of the syncytium and within the
248 fibrinoid material [42–44]. This phenomenon heralds adverse pregnancy outcome and
249 has been identified as a signature of maternal anti-fetal rejection [45].

250

251 The remarkable similarities illustrated in this study between the placenta from term HIV-
252 positive patients and placenta from HIV-negative patients strongly suggest that these
253 pregnancies were minimally affected by HIV/ART. We however, observed to a lesser
254 extent, syncytiotrophoblast thinning, microvilli missing in some parts and the red blood

255 cells adherence on the surface of syncytium. The difference between this group and
256 placenta from HIV-positive women with preterm birth may be explained by
257 interindividual biologic variability in response to drug metabolism, immune reaction or
258 duration of HIV/ART exposure [46–48]. These results suggest HIV and ART may play a
259 role in inducing syncytial morphological changes in placentas.

260 **Conclusion**

261 Our results show distinctive alterations in the placenta of HIV-positive mothers who
262 gave birth prematurely, which may impair the syncytium's ability to function normally.
263 Microvilli blunting, syncytial disruptions, and syncytial erythrocyte adhesion might be the
264 symptoms of a deeper biological process. Further work to understand the effect of
265 HIV/ART on the syncytiotrophoblast in relation to prematurity is recommended.

266 **Acknowledgments**

267 All our patients who graciously donated the placenta for our research. Our research and
268 laboratory assistants who made this work possible we say thank you.

269

270 **References**

- 271 1. Ellery PM, Cindrova-Davies T, Jauniaux E, Ferguson-Smith AC, Burton GJ. Evidence for
272 Transcriptional Activity in the Syncytiotrophoblast of the Human Placenta. *Placenta*.
273 2009.
- 274 2. Burton GJ, Jauniaux E, Charnock-Jones DS. Human Early Placental Development:
275 Potential Roles of the Endometrial Glands. *Placenta*. 2007.
- 276 3. Abumaree MH, Chamley LW, Badri M, El-Muzaini MF. Trophoblast debris modulates the
277 expression of immune proteins in macrophages: A key to maternal tolerance of the fetal
278 allograft? *Journal of Reproductive Immunology*. 2012.
- 279 4. Cross JC, Werb Z, Fisher SJ. Implantation and the placenta: Key pieces of the
280 development puzzle. *Science*. 1994.
- 281 5. Fisher SJ. Why is placentation abnormal in preeclampsia? Vol. 213, *American Journal of*
282 *Obstetrics and Gynecology*. 2015. p. S115–22.
- 283 6. Salafia CM, Charles AK, Maas EM. Placenta and fetal growth restriction. *Clinical*
284 *Obstetrics and Gynecology*. 2006.
- 285 7. Kenny AJ, Maroux S. Topology of microvillar membrane hydrolases of kidney and
286 intestine. *Physiological Reviews*. 2017.
- 287 8. Lange K. Fundamental role of microvilli in the main functions of differentiated cells:
288 Outline of an universal regulating and signaling system at the cell periphery. *Journal of*
289 *Cellular Physiology*. 2011.
- 290 9. Al-Zuhair AGH, Ibrahim MEA, Mughal S, Abdulla MA. Loss and regeneration of the
291 microvilli of human placental syncytiotrophoblast. *Archives of Gynecology*. 1987.

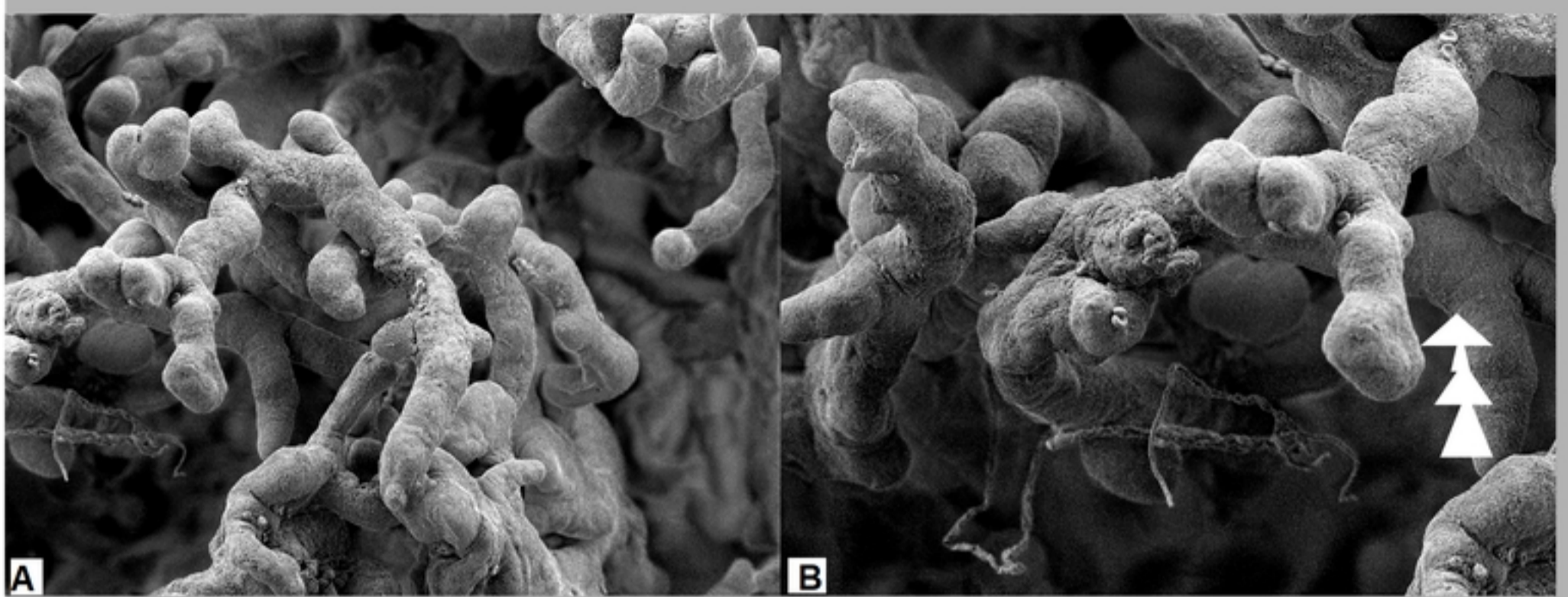
- 292 10. Obimbo M, Qureshi Z, Ogeng'o J. Infection in pregnancy; understanding impact on
293 placental microenvironment and preterm birth: a review. *Journal of Obstetrics and*
294 *Gynecology of East and Central Africa*. 2018;29(1):17–24.
- 295 11. Rudge C V., Röllin HB, Nogueira CM, Thomassen Y, Rudge MC, Odland JO. The placenta as
296 a barrier for toxic and essential elements in paired maternal and cord blood samples of
297 South African delivering women. *Journal of Environmental Monitoring*. 2009.
- 298 12. Delorme-Axford E, Sadovsky Y, Coyne CB. The Placenta as a Barrier to Viral Infections.
299 *Annual Review of Virology*. 2014.
- 300 13. Ategeka J, Wasswa R, Olwoch P, Kakuru A, Natureeba P, Muehlenbachs A, et al. The
301 prevalence of histologic acute chorioamnionitis among HIV infected pregnant women in
302 Uganda and its association with adverse birth outcomes. *Plos One*. 2019;14(4):e0215058.
- 303 14. Mandelbrot L, Sibiude J. A link between antiretrovirals and perinatal outcomes? *The*
304 *Lancet HIV*. 2017.
- 305 15. Gagnon LH, MacGillivray J, Urquia ML, Caprara D, Murphy KE, Yudin MH. Antiretroviral
306 therapy during pregnancy and risk of preterm birth. *European Journal of Obstetrics*
307 *Gynecology and Reproductive Biology*. 2016.
- 308 16. Cotter AM, Garcia AG, Duthely ML, Luke B, O'Sullivan MJ. Is Antiretroviral Therapy during
309 Pregnancy Associated with an Increased Risk of Preterm Delivery, Low Birth Weight, or
310 Stillbirth? *The Journal of Infectious Diseases*. 2006.
- 311 17. Nlend AEN, Motazé AN, Tetang SM, Zeudja C, Ngantcha M, Tejiokem M. Preterm birth
312 and low birth weight after in Utero exposure to antiretrovirals initiated during pregnancy
313 in Yaoundé, Cameroon. *PLoS ONE*. 2016.

- 314 18. Obimbo MM, Zhou Y, McMaster MT, Cohen CR, Qureshi Z, Ong'ech J, et al. Placental
315 Structure in Preterm Birth Among HIV-Positive Versus HIV-Negative Women in Kenya.
316 Journal of acquired immune deficiency syndromes (1999). 2019.
- 317 19. Castejón OC, López AJ, Pérez Ybarra LM, Castejón OC. [Placental villous lesions in HIV-1
318 infection treated with zidovudine]. Ginecología y obstetricia de México. 2011.
- 319 20. Shapiro RL, Souda S, Parekh N, Binda K, Kayembe M, Lockman S, et al. High prevalence of
320 hypertension and placental insufficiency, but no in utero HIV transmission, among
321 women on HAART with stillbirths in botswana. PLoS ONE. 2012.
- 322 21. Mohammadi H, Papp E, Cahill L, Rennie M, Banko N, Pinnaduwage L, et al. HIV
323 antiretroviral exposure in pregnancy induces detrimental placenta vascular changes that
324 are rescued by progesterone supplementation. Scientific Reports. 2018;8(1).
- 325 22. Burton GJ, Sebire NJ, Myatt L, Tannetta D, Wang YL, Sadovsky Y, et al. Optimising sample
326 collection for placental research. Placenta. 2014.
- 327 23. Kingdom J, Huppertz B, Seaward G, Kaufmann P. Development of the placental villous
328 tree and its consequences for fetal growth. European Journal of Obstetrics Gynecology
329 and Reproductive Biology. 2000.
- 330 24. Loukeris K, Sela R, Baergen RN. Syncytial Knots as a Reflection of Placental Maturity:
331 Reference Values for 20 to 40 Weeks' Gestational Age. Pediatric and Developmental
332 Pathology. 2009.
- 333 25. Fox H. THE SIGNIFICANCE OF VILLOUS SYNCYTIAL KNOTS IN THE HUMAN PLACENTA.
334 BJOG: An International Journal of Obstetrics & Gynaecology. 1965.

- 335 26. Heazell AEP, Moll SJ, Jones CJP, Baker PN, Crocker IP. Formation of Syncytial Knots is
336 Increased by Hyperoxia, Hypoxia and Reactive Oxygen Species. *Placenta*. 2007.
- 337 27. Narasimha A, Vasudeva D. Spectrum of changes in placenta in toxemia of pregnancy.
338 *Indian Journal of Pathology and Microbiology*. 2011.
- 339 28. Crocker IP, Tanner OM, Myers JE, Bulmer JN, Walraven G, Baker PN. Syncytiotrophoblast
340 degradation and the pathophysiology of the malaria-infected placenta. *Placenta*. 2004;
- 341 29. Roberts KA, Riley SC, Reynolds RM, Barr S, Evans M, Statham A, et al. Placental structure
342 and inflammation in pregnancies associated with obesity. *Placenta*. 2011.
- 343 30. Hormann G. No Title. *Archiv fur Gynakologie*. 1954;184(1):109–23.
- 344 31. Jirkovská M, Janáček J, Kaláb J, Kubínová L. Three-dimensional Arrangement of the
345 Capillary Bed and Its Relationship to Microrheology in the Terminal Villi of Normal Term
346 Placenta. *Placenta*. 2008.
- 347 32. Chaikitgosiyakul S, Rijken MJ, Muehlenbachs A, Lee SJ, Chaisri U, Viriyavejakul P, et al. A
348 morphometric and histological study of placental malaria shows significant changes to
349 villous architecture in both *Plasmodium falciparum* and *Plasmodium vivax* infection.
350 *Malaria Journal*. 2014.
- 351 33. Walter PR, Garin Y, Blot P. Placental pathologic changes in malaria: A histologic and
352 ultrastructural study. *Obstetrical and Gynecological Survey*. 1983.
- 353 34. Almasry SM, Elfayomy AK. Morphometric analysis of terminal villi and gross
354 morphological changes in the placentae of term idiopathic intrauterine growth
355 restriction. *Tissue and Cell*. 2012.

- 356 35. Saleh RA, Dkhil MAM. Structural changes of placenta in preeclamptic patients: Light and
357 electron microscopic study. Turkish Journal of Medical Sciences. 2008.
- 358 36. Lange K. Microvillar ion channels: Cytoskeletal modulation of ion fluxes. Journal of
359 Theoretical Biology. 2000.
- 360 37. Kraehenbuhl JP, Neutra MR. Molecular and cellular basis of immune protection of
361 mucosal surfaces. Physiological Reviews. 2017.
- 362 38. Meng Q, Shao L, Luo X, Mu Y, Xu W, Gao C, et al. Ultrastructure of Placenta of Gravidas
363 with Gestational Diabetes Mellitus. Obstetrics and Gynecology International. 2015.
- 364 39. Salgado SS, Salgado MKR. Structural changes in pre-eclamptic and eclamptic placentas -
365 an ultrastructural study. Journal of the College of Physicians and Surgeons Pakistan.
366 2011.
- 367 40. Ansari TI, Fenlon S, Pasha S, O'Neill B, Gillan JE, Green CJ, et al. Morphometric
368 assessment of the oxygen diffusion conductance in placentae from pregnancies
369 complicated by intra-uterine growth restriction. Placenta. 2003.
- 370 41. Roberts DJ. Placental Pathology. In: Reproductive and Developmental Toxicology. 2011.
- 371 42. Fitzgerald J, Bonnke C, Brückmann A, Schlußner E, Sossdorf M, Lösche W. Pro-coagulant
372 capacity of syncytiotrophoblastic microparticles (STBMs). Zeitschrift für Geburtshilfe und
373 Neonatologie. 2011.
- 374 43. Moe N, Jørgensen L. FIBRIN DEPOSITS ON THE SYNCYTIUM OF THE NORMAL HUMAN
375 PLACENTA: EVIDENCE OF THEIR THROMBOGENIC ORIGIN. Acta Pathologica
376 Microbiologica Scandinavica. 1968.

- 377 44. Guller S. Role of the syncytium in placenta-mediated complications of preeclampsia.
378 Thrombosis Research. 2009.
- 379 45. Romero R, Whitten A, Korzeniewski SJ, Than NG, Chaemsaitong P, Miranda J, et al.
380 Maternal Floor Infarction/Massive Perivillous Fibrin Deposition: A Manifestation of
381 Maternal Antifetal Rejection? American Journal of Reproductive Immunology. 2013.
- 382 46. Yasuda SU, Zhang L, Huang SM. The role of ethnicity in variability in response to drugs:
383 Focus on clinical pharmacology studies. Clinical Pharmacology and Therapeutics. 2008.
- 384 47. Niepel M, Spencer SL, Sorger PK. Non-genetic cell-to-cell variability and the
385 consequences for pharmacology. Current Opinion in Chemical Biology. 2009.
- 386 48. Sweeney GD. Variability in the human drug response. Thrombosis Research. 1983.
387



medRxiv preprint doi: <https://doi.org/10.1101/2023.08.11.23294011>; this version posted August 16, 2023. The copyright holder for this preprint (which was not certified by peer review) is the author/funder, who has granted medRxiv a license to display the preprint in perpetuity. It is made available under a [CC-BY 4.0 International license](https://creativecommons.org/licenses/by/4.0/).

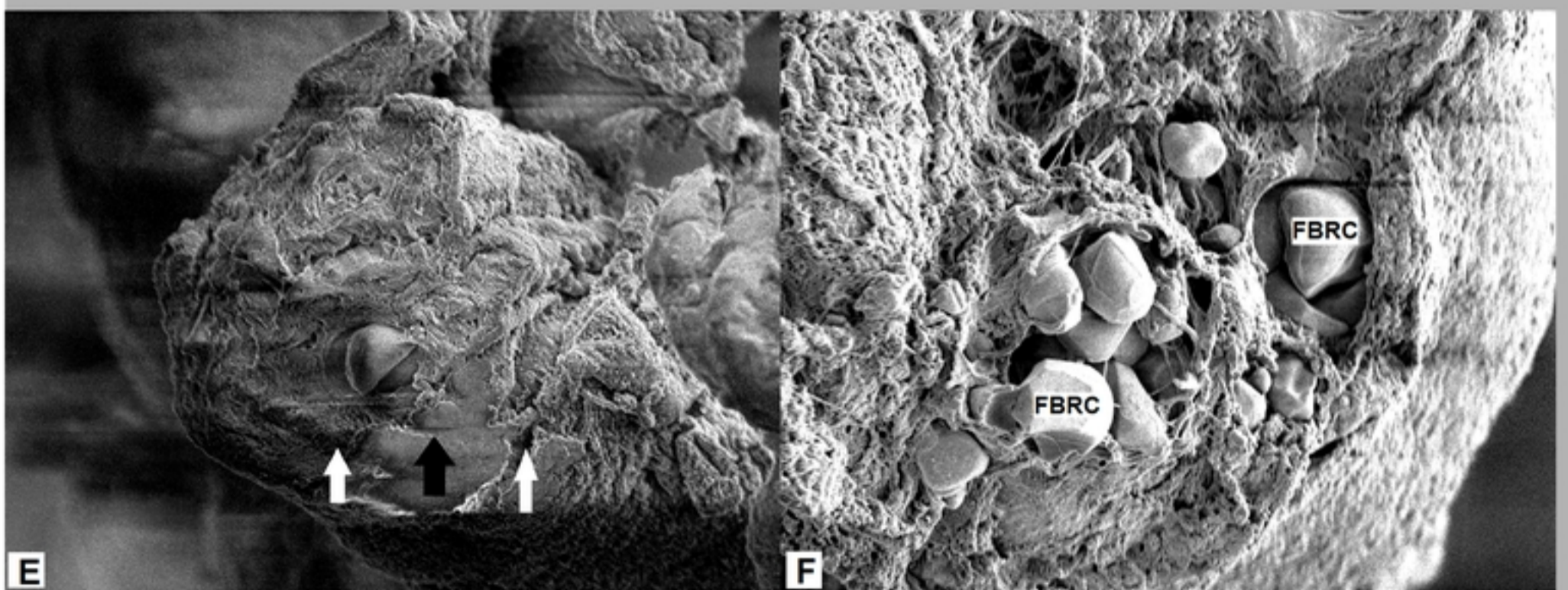
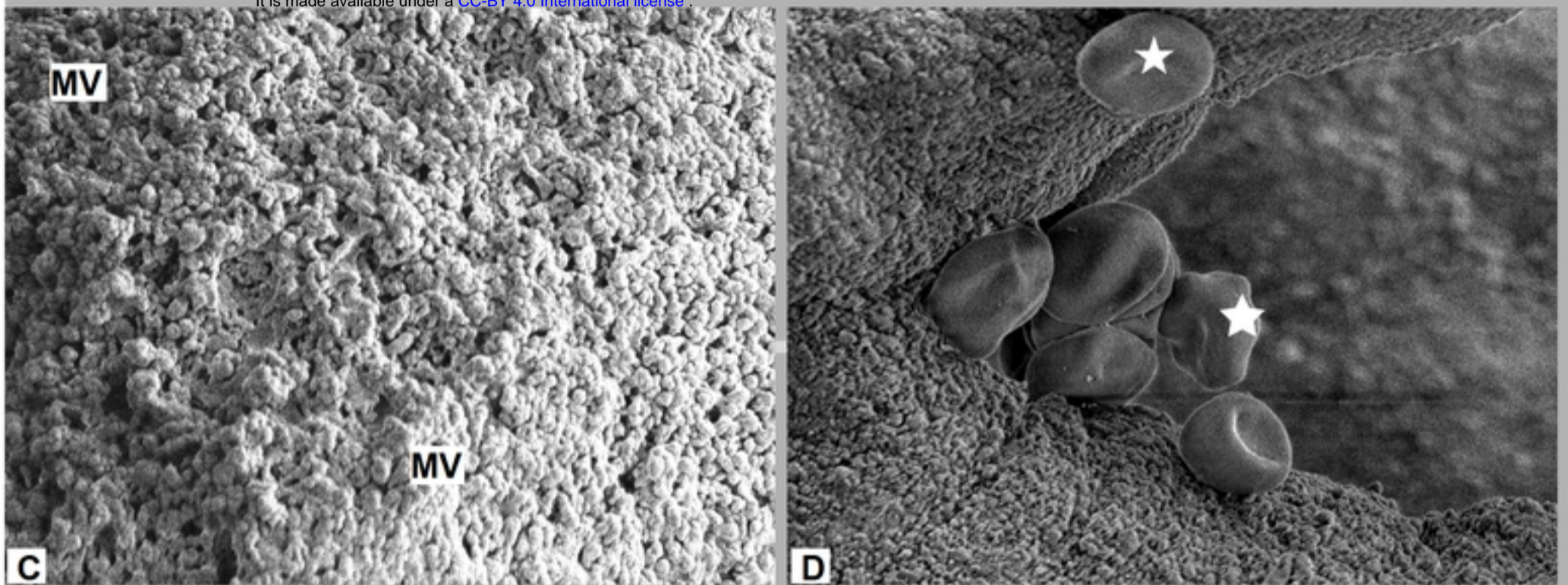
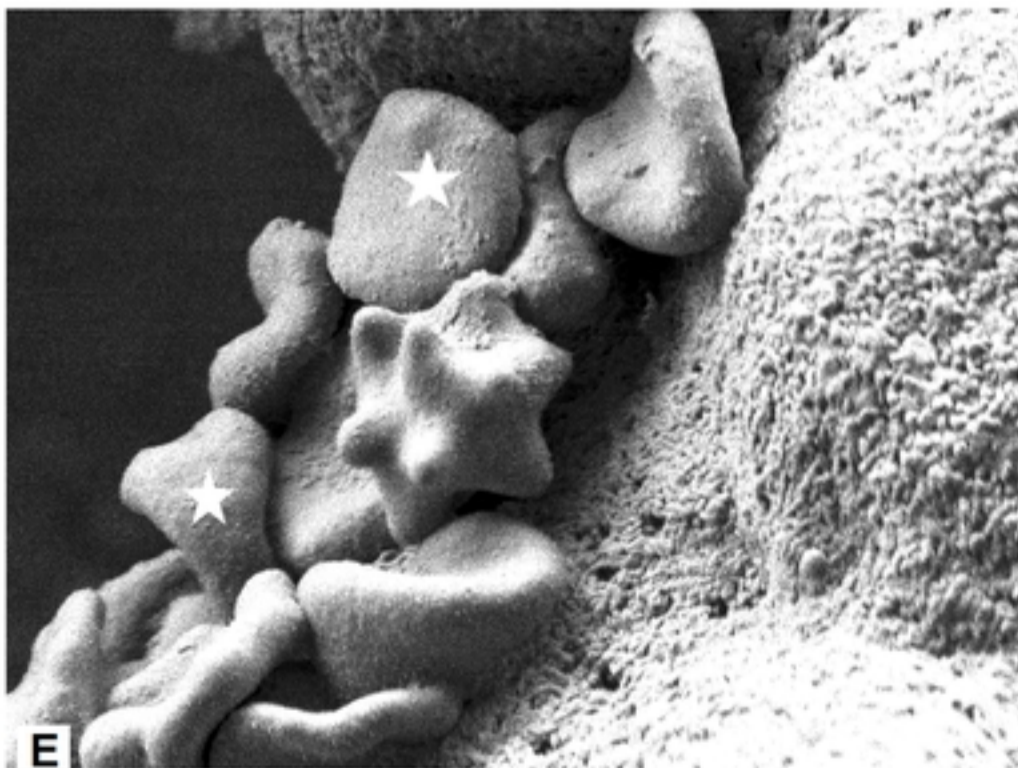
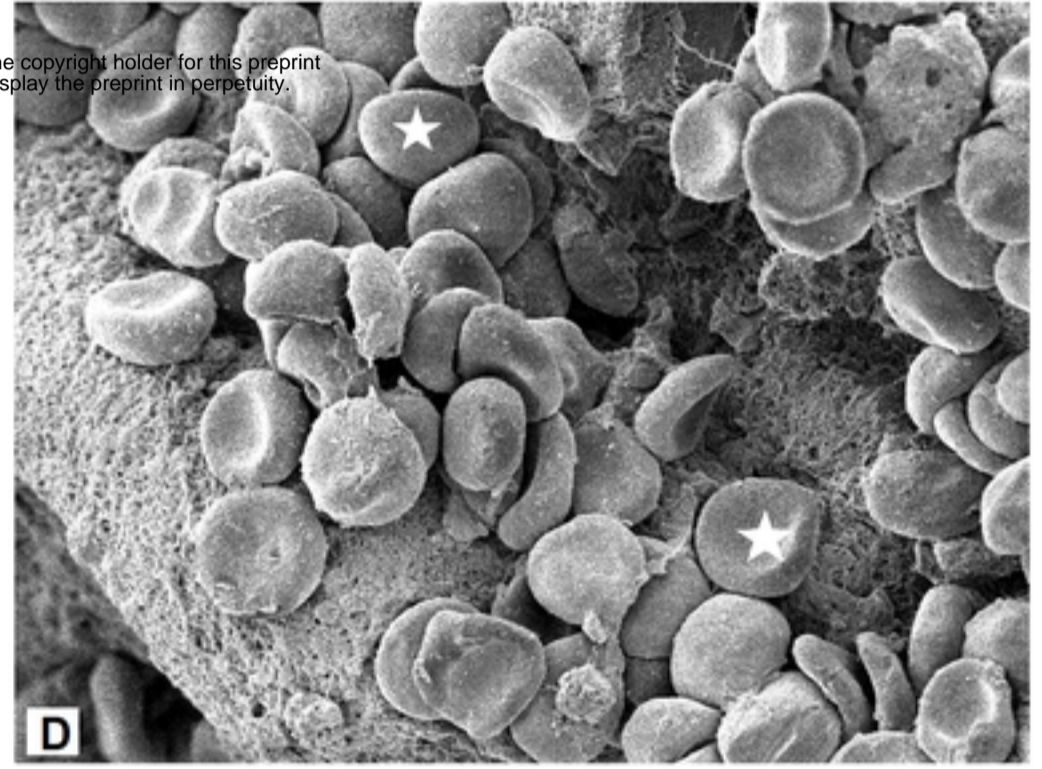
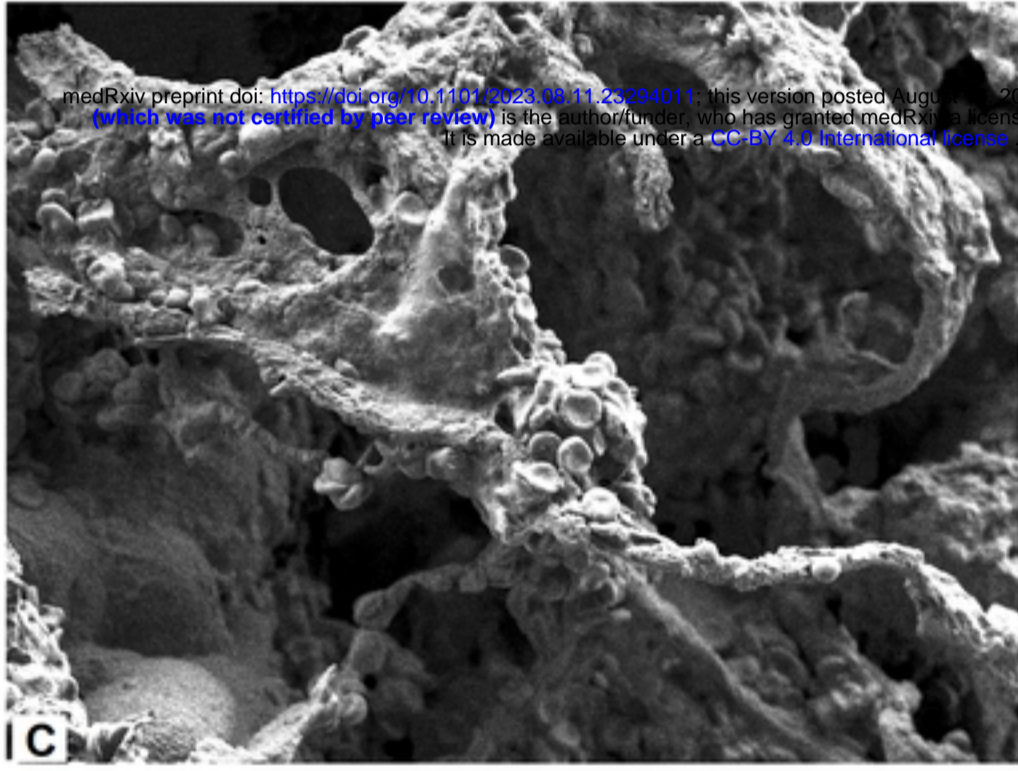
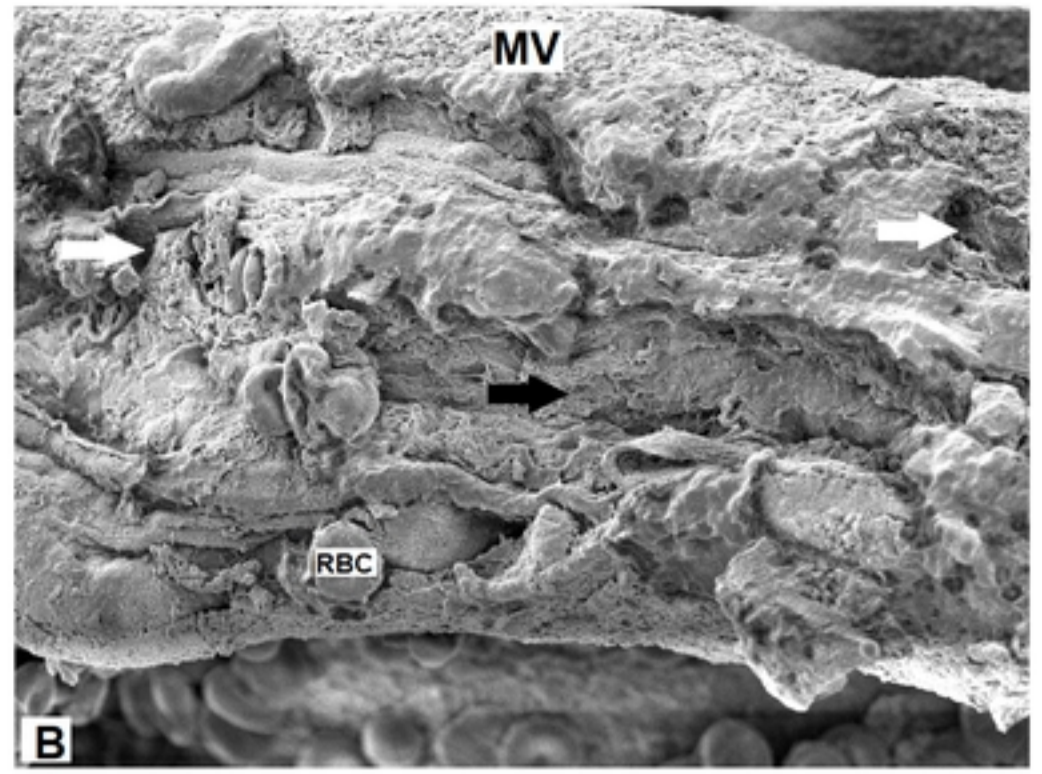
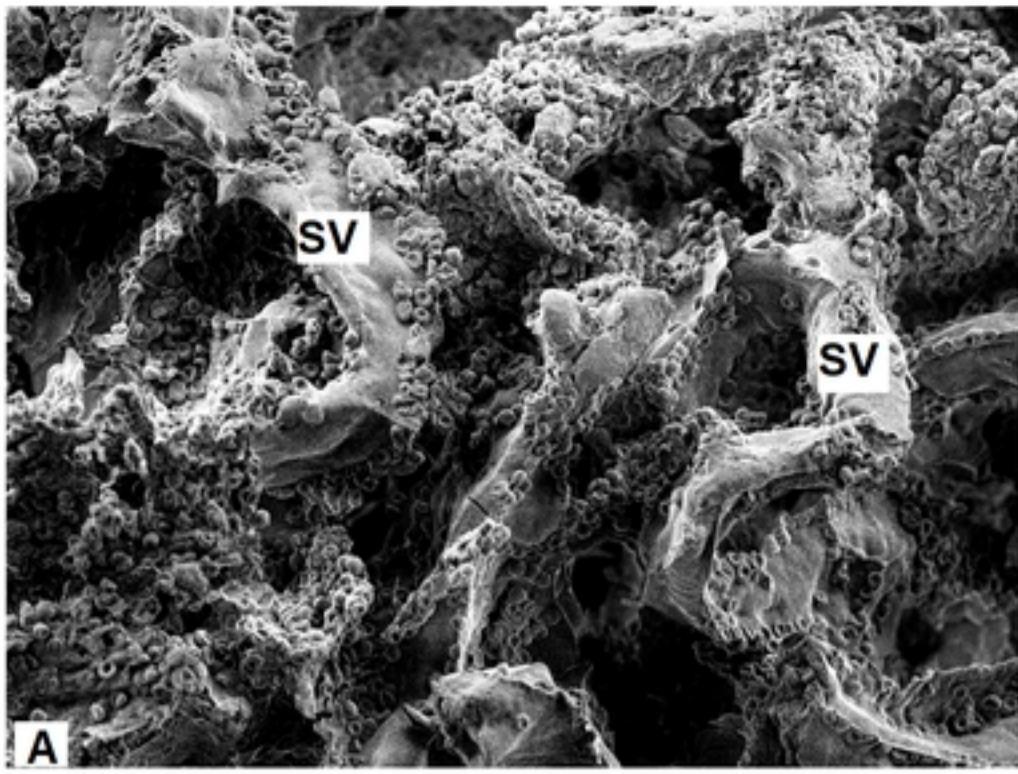


Fig1



medRxiv preprint doi: <https://doi.org/10.1101/2023.08.11.23294011>; this version posted August 11, 2023. The copyright holder for this preprint (which was not certified by peer review) is the author/funder, who has granted medRxiv a license to display the preprint in perpetuity. It is made available under a [CC-BY 4.0 International license](https://creativecommons.org/licenses/by/4.0/).

Fig2

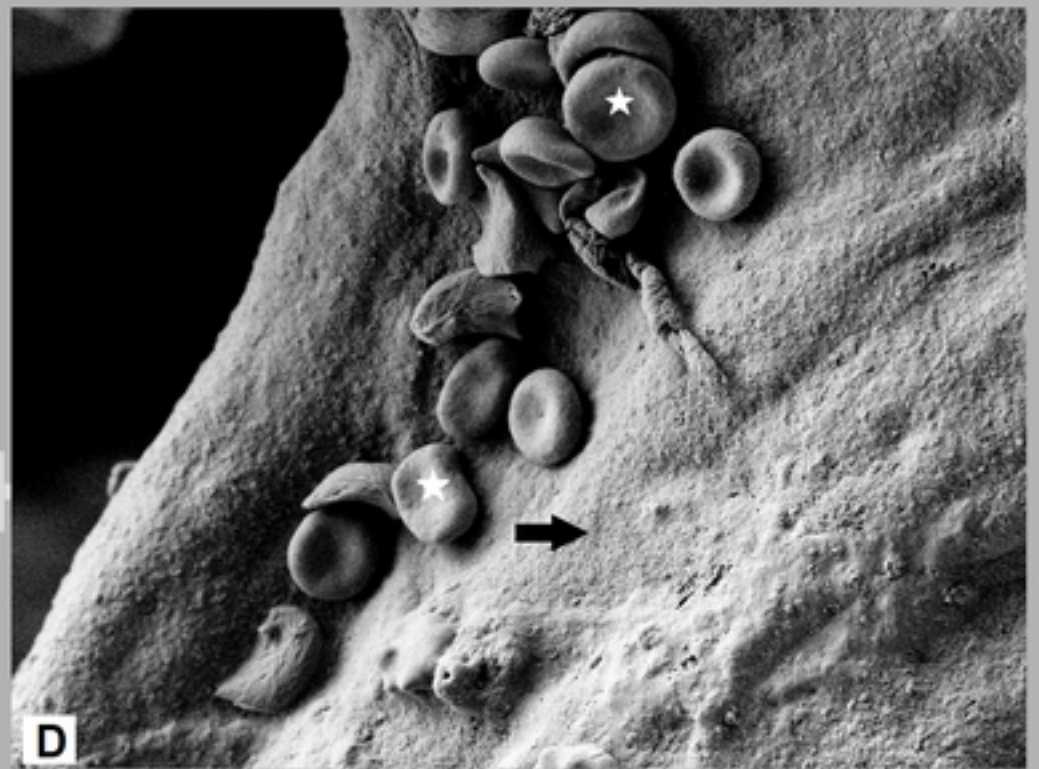
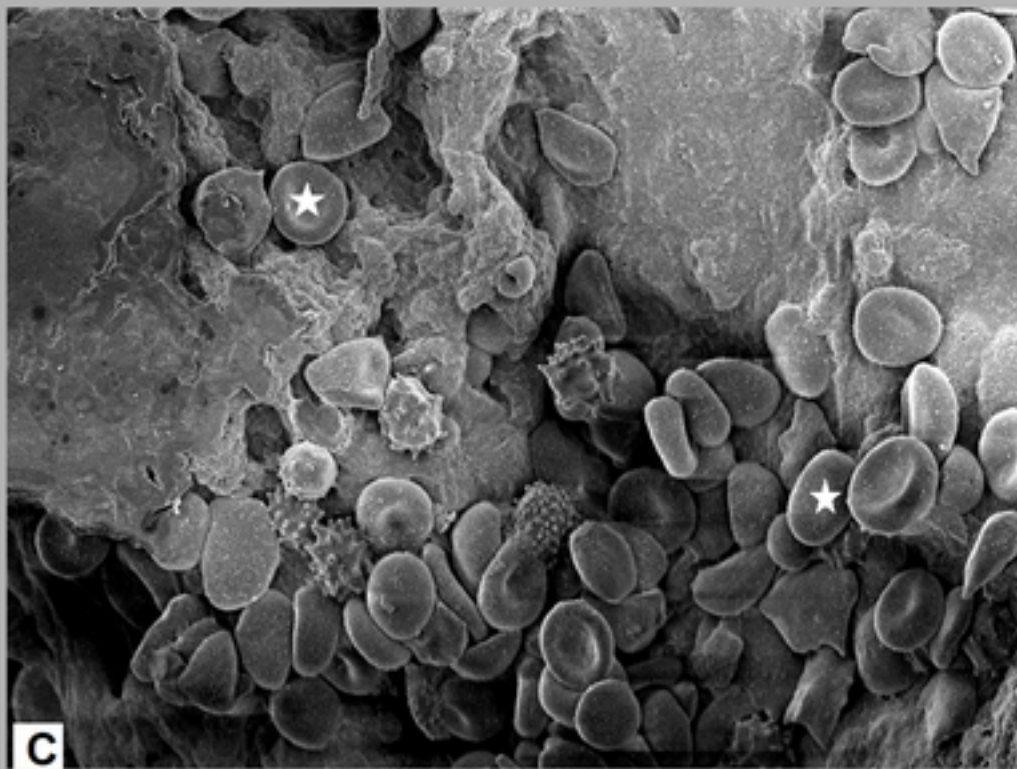
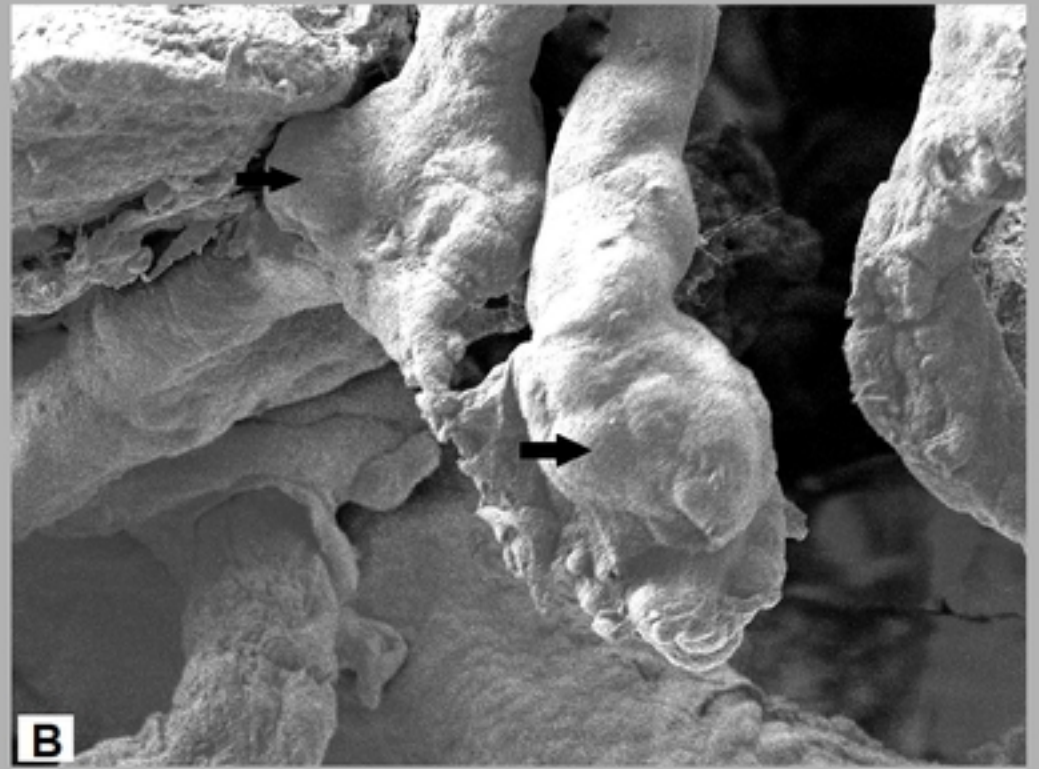


Fig3