

1 **Title:** Effectiveness and cost-effectiveness of a culturally tailored Behavioural Activation
2 intervention (DiaDeM) for treating Depression in Type 2 Diabetes: Protocol for a parallel arm,
3 multi-country, randomised controlled trial in South Asia

4
5 **Authors:**
6 Faraz Siddiqui^{1*}, Faiza Aslam², Naveed Ahmed³, Saima Afaq^{1,4,5}, Asima Khan⁶, Ada Keding^{1,7},
7 Simon Walker⁸, Hannah Maria Jennings^{1,9}, Gerardo A Zavala¹, David Ekers^{1,10}, Edward
8 Fottrell¹¹, Catherine Hewitt^{1,7}, Zia Ul Haq⁴ and Najma Siddiqi^{1,9} on behalf of the DiaDeM Global
9 Health Research Group

10
11 **Institutional Affiliations:**
12 ¹ Department of Health Sciences, University of York, Heslington, York, YO10 5DD, UK
13 ² Institute of Psychiatry, Rawalpindi Medical University, Rawalpindi, Punjab, 23000, Pakistan
14 ³ Diabetic Association of Bangladesh, BIRDEM General Hospital, Dhaka, 1000, Bangladesh
15 ⁴ Institute of Public Health, Khyber Medical University, Peshawar, Khyber Pakhtunkhwa, 25100,
16 Pakistan
17 ⁵ School of Public Health, Imperial College London, London, W2 1PG, UK
18 ⁶ Baqai Institute of Diabetes and Endocrinology, Karachi, Sindh 74600, Pakistan
19 ⁷ York Trials Unit, Department of Health Sciences, University of York, Heslington, York, YO10
20 5DD, UK
21 ⁸ Centre for Health Economics, University of York, Heslington, York, YO10 5DD, UK
22 ⁹ Hull York Medical School, Heslington, York YO10 5DD
23 ¹⁰ Tees, Esk and Wear Valleys NHS Foundation Trust, YO30 4XT
24 ¹¹UCL Institute for Global Health, University College London, London, WC1N 1EH, UK
25 Hull York Medical School, Heslington, York, YO10 5DD, UK

26

27 ***Correspondence address**

28 Email: faraz.siddiqui@york.ac.uk

29 Address: Department of Health Sciences, University of York, Heslington YO10 5DD

30 **Abstract:** (340 words)

31 **Background:**

32 The co-occurrence of depression among individuals with type 2 diabetes is a recognised global
33 health problem and can lead to poorer health outcomes for both conditions. Behavioural
34 activation is an evidence-based brief, low-cost psychological therapy which can be delivered by
35 trained non-specialists, and is useful in treating depression, particularly in low-resource settings.
36 The aim of this study is to test the effectiveness and cost-effectiveness of culturally adapted
37 behavioural activation for depression in people with both depression and type 2 diabetes in two
38 South Asian countries - Bangladesh and Pakistan.

39

40 **Methods:**

41 A parallel arm, multi-country randomised controlled trial will be conducted in urban health care
42 facilities providing diabetes services. We will recruit 604 adults in total, and randomise them
43 using a 1:1 allocation ratio to receive culturally adapted behavioural activation (DiaDeM), or
44 optimised usual care. DiaDeM comprises six sessions of behavioural activation with a trained
45 non-mental health facilitator, conducted face-to-face and/or remotely. Optimised usual care
46 includes information on depression, pharmacological and non-pharmacological treatment
47 options for depression and details for accessing help locally. Participants in both arms will be
48 followed up at 6- and 12-months post-randomisation. The primary outcome is the severity of
49 depressive symptoms at 6 months, measured using the 9-item Patient Health Questionnaire
50 (PHQ-9). Secondary outcomes include diabetes control, measured using glycosylated
51 haemoglobin. An embedded process evaluation will evaluate the quality of intervention delivery
52 and explore mechanisms of change and the contextual factors associated with the
53 implementation and observed outcomes of DiaDeM. An economic evaluation will gauge
54 DiaDeM's cost-effectiveness and estimate the impact of diabetes and depression on economic
55 outcomes.

56

57 **Conclusion:**

58 There is an urgent need to address the rising burden of depression and chronic physical
59 illnesses, such as type 2 diabetes. Interventions such as DiaDeM, which are culturally relevant
60 and rely on a task-sharing approach, offer a potentially low-cost treatment within existing health
61 services. If found to be effective and cost-effective, DiaDeM may be scaled up to address the
62 mental health ‘treatment gap’ and improve mental and physical health outcomes for people with
63 diabetes in South Asia.

64

65 **Trial registration:** ISRCTN40885204. Trial registered on 11th April 2023

66

67 **Keywords:** Behavioural activation; intervention adaptation; Diabetes; Depression;

68 Multimorbidity; South Asia; Low and Middle-Income countries

70 **Background**

71 Type 2 diabetes is a chronic non-communicable disease (NCD) associated with a
72 disproportionately higher risk of having comorbid mental health conditions, particularly depression
73 [1]. The two conditions have a bi-directional relationship - individuals with diabetes have double
74 the risk of developing depression as compared to the general population [2–4], and having
75 persistent depression also raises the risk of developing diabetes later in life [5]. Having depression
76 alongside diabetes may impede diabetes self-care, causing a subsequent lack of control of
77 overlapping risk factors such as diet and physical activity, and deterioration in the overall quality
78 of life [2,3]. It also results in significantly higher healthcare use and expenditure as compared to
79 diabetes alone [6]. These effects are likely to more severely impact populations in low-resource
80 settings, particularly in low and middle-income countries (LMICs) where approximately 80% of
81 individuals living with diabetes reside worldwide [7,8]. South Asia is a typical example of such
82 low-resource, high-burden settings. Published literature from South Asian settings estimates the
83 prevalence of diabetes to be as high as 26% [9], with at least a quarter of such individuals also
84 having co-morbid depression [10,11].

85 Psychological therapies are increasingly being recognised for their relevance to the treatment of
86 common mental disorders in people with diabetes, particularly because of their consideration of
87 the wider psychosocial aspects of illness, and they have proven to be effective to reduce
88 depressive symptoms in people with NCDs in LMICs [12]. Behavioural activation (BA) is a type of
89 psychological treatment, recognised for its parsimony, portability across cultures and efficiency of
90 training. It is a relatively simple, low-cost treatment, with established effectiveness for the
91 treatment of depression in a range of settings and populations [13]. BA conceptualises depression
92 in terms of the interaction between an individual and their environment; it helps people understand
93 the link between mood and activities and encourages them to identify and engage in meaningful

94 and rewarding activities as a means to improve depression [14,15]. BA treatment is widely
95 accepted and is considered an economical alternative to, or adjunct to pharmacological treatment
96 [16]. It can be effectively delivered by mental health staff, as well as trained non-mental health
97 specialists [17,18]. Given these qualities, BA could be particularly relevant for LMIC populations
98 and for priority groups such as those with co-occurring physical and mental illnesses. It can
99 overcome resource constraints in the provision of staged therapies and pharmacological
100 interventions, and potentially contribute to reducing the burden of depression in people with
101 diabetes. To date, only two clinical trials have evaluated the use of BA for the treatment of
102 depression among individuals living with NCDs. Both were conducted in the United States, and
103 only one demonstrated short and medium-term effectiveness in the remission of depression [19].
104 This evidence is limited, inconclusive and has little relevance for LMICs. Further high-quality
105 studies are needed to evaluate the effectiveness and cost-effectiveness of BA for people with
106 NCDs such as diabetes.

107 We have recently demonstrated the feasibility and acceptability of a culturally adapted BA
108 intervention (the Diabetes and Depression Multimorbidity intervention - henceforth “DiaDeM”) to
109 treat depression in people with diabetes in Bangladesh and Pakistan [14]. Building on this, we
110 now aim to carry out a full-scale trial to test the effectiveness and cost-effectiveness of DiaDeM
111 in these settings. Our objectives are to:

- 112 1. Evaluate the clinical effectiveness of the DiaDeM intervention in reducing the severity of
113 depression at 6 months, compared with optimised usual care
- 114 2. Evaluate the clinical effectiveness of the DiaDeM intervention on secondary outcomes,
115 compared with optimised usual care at 6 and 12 months

- 116 3. Evaluate the cost-effectiveness of the DiaDeM intervention over the trial period as well
117 as the lifetime of affected individuals, considering the healthcare system and other
118 broader perspectives
- 119 4. Estimate the causal impact of diabetes and depression on economic outcomes such as
120 employment status, productivity loss, catastrophic health spending, household
121 expenditure and household assets
- 122 5. Assess the fidelity and quality of intervention delivery, and identify the mechanisms of
123 change and contextual factors associated with the implementation and outcomes of the
124 DiaDeM intervention

125 **Methods**

126 **Study design:**

127 The study is a multi-country, parallel arm, randomised controlled trial which will test the
128 effectiveness and cost-effectiveness of the DiaDeM intervention compared to optimised usual
129 care (control), and includes an embedded mixed-method process evaluation. The trial protocol
130 (v1.0, dated 20/1/2023) was developed, and is reported in accordance with the Standard
131 Protocol Items: Recommendations for Interventional Trials (SPIRIT) guidelines for clinical trial
132 protocols (supplementary file 1) and the Template for Intervention Description and Replication
133 (TIDieR) checklist (supplementary file 2) [20]. The DiaDeM trial was launched on 6th March
134 2023 and is currently in the recruitment phase. The activities related to trial recruitment,
135 intervention delivery and follow-up assessments, and the overall flow of the trial are presented
136 in Figures 1 and 2 respectively.

137

138

139

140

141

142 Figure1. SPIRIT schedule of trial recruitment and follow-up, intervention delivery and
143 assessments

144 Figure 2. Flow diagram representing the recruitment, randomisation and follow up procedures of
145 the DiaDeM trial

146 **Study settings and locations:**

147 The DiaDeM trial is being conducted in five urban health care facilities in South Asian settings
148 that provide diabetes related services. Three of these sites are based in Pakistan (Karachi,
149 Peshawar, and Rawalpindi) and two in Bangladesh (Dhaka, Sylhet). The chosen sites have well
150 established diabetes services and available healthcare staff within these to deliver the DiaDeM
151 intervention and have adequate research infrastructure. The sites are (in alphabetic order):

- 152 1. Baqai Institute of Diabetes and Endocrinology (BIDE), Karachi, Sindh, Pakistan.
- 153 2. Bangladesh Institute of Research and Rehabilitation in Diabetes, Endocrine and
154 Metabolic Disorders (BIRDEM) General Hospital, Dhaka, Bangladesh.
- 155 3. Sugar Hospital, Phase V, Hayatabad, Peshawar, Pakistan
- 156 4. Sughra Diabetic Centre, Benazir Bhutto Hospital, Rawalpindi, Pakistan
- 157 5. Sylhet Diabetic Hospital, Sylhet, Bangladesh

158 **Eligibility criteria:**

159 This trial will be conducted in a sample of individuals who have a confirmed diagnosis of type 2
160 diabetes and depression and are seeking outpatient diabetes care in the above-mentioned

161 study sites in Bangladesh and Pakistan. Eligible individuals will be identified based on the
162 following criteria:

- 163 - Age ≥ 18 years old at the time of screening/recruitment
- 164 - Confirmed physician diagnosis of type 2 diabetes based on standardised diagnostic
165 criteria (clinical presentation and HbA1C levels) and currently receiving treatment at the
166 diabetes centre
- 167 - Scoring ≥ 3 on the Patient Health Questionnaire-2 (PHQ-2)[21] depression screening
168 tool, and subsequently scoring ≥ 5 on the Patient Health Questionnaire-9 (PHQ-9)[22]
169 with depression confirmed using the current major depressive disorder section of module
170 A “Mood Episodes and Disorders” of the Research Version of the Structured Clinical
171 Interview for the DSM-V (SCID-V-RV)[23]
- 172 - Willingness to attend BA sessions in person or remotely

173

174 Individuals in any of the following categories will not be eligible for trial participation.

- 175 - Currently receiving psychotherapy for depression at the time of screening/recruitment
- 176 - Unable to provide consent due to cognitive impairment or severity of psychological or
177 physical illness

178 **Screening and identification of eligible participants:**

179 Eligible participants will be identified using a two-stage process. In the first stage, patients
180 attending outpatient clinics at each study site will be screened for depressive symptoms by
181 clinical staff, using the two-item Patient Health Questionnaire (PHQ-2). Positively screened
182 individuals will be provided information about the importance of depression screening (leaflet 1)
183 (supplementary file 3) and where to access help; those who agree to further screening will be
184 taken to phase 2 following written consent for the screening of depression (Supplementary file

185 4). Each individual will be assigned a unique screening ID at this stage and will be assessed
186 further by a research assistant (RA) for depression using the Urdu or Bangla versions of the
187 nine-item PhQ-9 followed by the Current Major Depressive Disorder section of module A of the
188 SCID-V.

189 The RAs will check, confirm and record the eligibility of the identified individuals for trial
190 participation. Those who score positive on both PHQ 9 (score ≥ 5) and SCID-V and fulfil the
191 remaining eligibility criteria described above will be taken forward for full consent for trial
192 participation.

193 **Informed consent and recruitment:**

194 RAs will provide eligible individuals with a local language (Urdu or Bangla) version of the
195 participant information sheet (Supplementary file 5), which provides details about the trial, its
196 methods and assessment procedures, as well as any possible advantages and risks associated
197 with participation. The opportunity to read the information sheet will be given to eligible
198 participants; those who are unable to read will have the information sheet read out to them.
199 Participants will be made aware of their rights, including the right to withdraw from the study at
200 any time and the procedure to follow in such a situation.

201 After the information sheet has been read, the RAs will provide a study consent form
202 (Supplementary file 6) to the participants to read and confirm their participation. Written consent
203 will be recorded. Following consent, the recruited participant will be taken forward to baseline data
204 collection and then randomised. The participant's consent status and contact information will be
205 recorded in a participant log and an electronic database.

206 **Randomisation and blinding:**

207 After completion of the baseline Case Report Form (CRF), each recruited participant will be
208 randomly allocated to either the treatment or control arm. Randomisation will use a 1:1 allocation
209 ratio and will follow a computer-generated randomisation sequence that will be stratified by
210 country with randomly permuted blocks of varying block sizes, generated using Stata version 17
211 or later (StataCorp, 4905 Lakeway Drive, College Station, Texas, 77845 USA). A request for
212 randomisation will be made to the independent statistician based at the University of York. This
213 will be done via email by the site RA or by the country data manager in case of internet disruption
214 at the study site. An automated email will be sent back to the RA and data manager containing
215 the trial ID and allocation. The trial ID will be recorded on the completed baseline CRF and the
216 recruitment log. The trial manager and the RAs collecting outcome data at the follow-up stage will
217 be blinded to participant allocation status.

218 **Details of Intervention and Control:**

219 *Behavioural activation (DIADEM)*: The DiaDeM BA intervention is a culturally adapted, brief,
220 psychological therapy for depression which focuses on behaviour change to enhance mental and
221 physical well-being for people living with depression and diabetes multimorbidity. The intervention
222 was adapted from the Multimorbidity in older adults intervention (MODS) [24] programme using
223 the intervention mapping framework for the development, implementation and evaluation of health
224 promotion interventions [25]. This framework provides a structured approach for the development
225 and evaluation of health interventions. Additionally, the Bernal [26] and Escoffery [27] frameworks
226 were employed to specifically address the cultural components of the adaptation process. These
227 frameworks facilitated a comprehensive and systematic adaptation of DiaDeM, ensuring that it
228 was culturally relevant and appropriate for the South Asian population. As part of the adaptation
229 process, we developed a logic model based on the desired outcome “to improve depression in

230 people with diabetes in Bangladesh and Pakistan”. To understand the “mechanisms of action”
231 through which the intervention affects behaviour, we identified behavioural change techniques
232 and the mechanisms of action they target. Full details of the adaptation process are described in
233 detail elsewhere [28].

234 DiaDeM will be delivered by non-mental health specialist staff (diabetes staff working as
235 nutritionists, health educators, nurses, or paramedics etc). The non-mental health specialist BA
236 facilitators (referred to henceforth as ‘BA facilitators’) will be guided and supervised by mental
237 health specialists in Bangladesh and Pakistan who will be referred to as ‘BA supervisors.

238
239 DiaDeM comprises six weekly sessions (each lasting 30-45 minutes) delivered by a BA facilitator
240 using the BA facilitator’s manual. Session one will introduce the concept of the relationship
241 between mood and behaviour and between purposefully scheduling and engaging in rewarding
242 activities in improving symptoms of depression and self-management of diabetes. Sessions two
243 to five are skills-based for learning and practising skills that support the participant in re-engaging
244 in personally chosen, rewarding behaviours. Each of these sessions incorporates a recap of
245 learning from the previous session and a review of planned between-session work. Participants
246 are supported by the BA facilitator to increase both the number of rewarding behaviours engaged
247 in week-by-week and to gradually introduce behaviours previously considered too difficult to
248 manage as their symptoms of depression improve. Session six consolidates prior learning and
249 promotes maintenance behaviours by developing a personalised “staying well” plan. The
250 participants will also be given a ‘participant booklet’, a take-home resource that incorporates key
251 messages from the intervention sessions as well as space in which to record information about
252 between-session behaviour change activities to practice, chosen by each participant with the
253 support of the BA facilitator. DiaDeM sessions will be delivered individually in private treatment
254 rooms at each study site. If the participant is unable to travel to the treatment centre, they will be
255 offered a video call or telephone treatment session by the BA facilitator as an alternative.

256
257 BA facilitators and the supervisors will receive prior training in using the DiaDeM manual and
258 participant booklet to support DiaDeM treatment sessions and in supporting participants in
259 choosing between-session behaviour change activities. All the BA facilitators and supervisors
260 will attend an online, introductory course on Behavioural Activation for Depression developed by
261 the University of York (<https://www.impactsouthasia.com/behavioural-activation-learning/>) as a
262 requisite for attending the BA training. A three-day hands-on face-to-face BA training will be
263 conducted in Bangladesh and Pakistan by BA experts and therapists. Training will be conducted
264 for both facilitators and supervisors jointly, using PowerPoint presentations, individual and group
265 activities, and role-play. The supervisors will receive additional training on oversight, after which
266 they will perform the competency assessments of BA facilitators. During the intervention
267 delivery phase of the trial, the supervisors will oversee and guide the BA facilitators and will
268 conduct refresher training, if required. The supervisors will also record supervisory notes and
269 competency assessments in “supervisor’s logs”; BA facilitators will record details of the BA
270 delivery sessions for each participant in the facilitator’s logs.

271
272 Optimised usual care: Optimised usual care comprises information leaflets on depression,
273 pharmacological and non-pharmacological treatment options for depression and the procedures
274 for accessing local help, provided by the study team. The leaflets were developed by the project
275 team in consultation with mental health experts (Supplementary file 8). The intervention group will
276 also receive optimised usual care.

277 **Sample size:**

278 The sample size was calculated in Stata (Version 17) and is based on sufficient power for the
279 analysis of data in each country, although data will be combined for the primary analysis. A meta-

280 analysis of Behavioural Activation for depression reported a standard effect size of -0.74 (95% CI
281 of -0.91 to -0.56) [29]. The lower bound value of 0.5 is equivalent to a difference of approximately
282 2 PHQ-9 points (SD of 4). The feasible number of intervention facilitators differs in each country
283 setting, resulting in different potential clustering effects to account for.

284 In Pakistan, in order to detect the above difference with 90% power and 5% alpha, accounting for
285 clustering by therapist (ICC of 0.04, average of 10 intervention participants per therapist) and
286 assuming 20% attrition, a total of 294 participants is required to be recruited (147 participants in
287 each arm). A minimum of 15 intervention facilitators is required. In Bangladesh, in order to detect
288 the same difference, assuming an average of 12 intervention participants per therapist (minimum
289 of 13 intervention facilitators), a total of 310 participants are required to be recruited (155 in each
290 arm).

291 This sample size estimate is conservative, applying the clustering inflation factor to both study
292 arms to maintain the randomised allocation ratio of 1:1. The achieved power for the recruitment
293 target in each country based on clustering in the intervention arm only exceeds 97% (clsampsi
294 command in Stata). The combined total sample size for both participating countries is 604.
295 Assuming a conservative estimate of depression prevalence of 10% and a 60% consent rate,
296 approximately 10,070 patients will need to be screened.

297 **Primary and secondary trial outcomes:**

298 The primary trial outcome will be the severity of depressive symptoms, assessed using the
299 PHQ-9 instrument at 6 months post-randomisation. This is a nine-item questionnaire scored
300 from a minimum of 0 to a maximum of 27 [22,30]. Secondary trial outcomes are depression
301 (caseness), anxiety, diabetes self-management, glycaemic control, BMI, diabetes distress,
302 cardiometabolic outcomes, health-related quality of life, healthcare costs, adverse events at 6

303 and 12 months; severity of depressive symptoms at 12 months. Details of how and when these
304 outcomes will be measured are provided in the text below.

305 **Baseline and follow-up data collection:**

306 Baseline participant data will be obtained before randomisation at the time of recruitment.
307 Follow-up participant data will be collected 6 months and 12 months post-randomisation. RAs
308 will use electronic CRFs to collect information either face-to-face, or remotely (in case of
309 COVID-19 restrictions, or if not feasible to travel) at all time points. To reduce the risk of
310 unblinding the treatment allocation, the RAs will be switched at follow-up time points. The details
311 of each planned assessment are provided below, and the time-points at which these will be
312 collected are presented in Figure 1.

313 Socio-demographic information: The WHO Stepwise approach to surveillance (STEPS)
314 instrument, Version 3.2 [31] will be used to collect information about participants' age, sex,
315 education and marital status. Translated versions of this instrument have been used and
316 validated in different countries of South Asia including Bangladesh [32] and Pakistan [33].

317 Anthropometric and physical body measurements: The following physical body measurements
318 will be taken by trained RAs following the protocols elaborated in the WHO manual [34].

319 - Weight (in kilograms) will be measured using a portable digital weighing scale will be
320 used at all sites. The weighing scale will be placed on a flat surface - two repeated
321 readings will be collected and recorded to two decimal places. Participants will be
322 instructed to wear light clothing and to remove footwear and socks at the time of
323 weighing.

324 - Height (in centimetres) will be measured using a portable stadiometer, without footwear
325 and headgear. Two consecutive readings will be recorded to 0.1 cm.

- 326 - Body Mass Index will be calculated as weight in kilograms (kgs) divided by height in
327 meters squared (kg/m^2). and recorded in the electronic tablet.
- 328 - Waist circumference (in centimeters) will be measured at the midpoint between the lower
329 margin of the last palpable rib and the top of the iliac crest (hip bone) with a relaxed
330 arms position and fully exhaling process at the end of expiration. Two repeated readings
331 will be recorded with a precision of 0.1 cm.
- 332 - Hip circumference (in centimeters) measurement will be recorded using a flexible
333 anthropometric tape by wrapping the tape around the widest part of the buttocks, and
334 taking the parallel to the floor. Two repeated readings will be recorded in centimetres
335 with a precision of 0.1 cm.
- 336 - The waist-hip ratio will be calculated by dividing the waist circumference by the hip
337 circumference, and recorded on the electronic tablet.
- 338 - Blood pressure and heart rate will be measured with the help of an automated blood
339 pressure measuring instrument. Three consecutive readings will be recorded (each with
340 a 3-minute gap) from the same wrist/elbow and using the same device. The participant
341 will be comfortably seated at the time of conducting the measurement. After completing
342 the whole process participants will be informed about the readings. The measurement of
343 blood pressure will be recorded from the left wrist/arm but in the case of a stroke on that
344 side/limb then it will be measured from the right side.
- 345 Blood tests: Blood samples of all the study participants will be drawn at each study site for the
346 biochemical assessment after completion of all the measures using standardised protocols. The
347 blood samples in Pakistan will be transported and investigated at the standardised pathological
348 clinical laboratory of Baqai Institute of Diabetes and Endocrinology, Karachi. In Bangladesh,
349 samples collected for the glycated hemoglobin (HbA1C) will be transported for analysis at the

350 BIRDEM General Hospital, Dhaka. Glycated haemoglobin (HbA1c) will be assessed at baseline,
351 6 and 12 months follow-ups. Hemoglobin level (Hb), Complete Blood Count, Random Blood
352 Glucose (RBG) test, renal function test including serum creatinine and estimated Glomerular
353 Filtration Rate (eGFR), lipid function test including Total Cholesterol (TC), High-Density
354 Lipoprotein Cholesterol (HDLC) and Low-Density Lipoprotein Cholesterol (LDLC) will be
355 assessed at baseline and 6 months. Thyroid-Stimulating Hormone (TSH) test will be performed
356 only at baseline.

357 Comorbidities and medications: Data on comorbidities and medications will be collected using
358 participant self-report, through a set of questions adapted from the STEPs module for NCDs
359 [35]. Participants will be asked for a medically diagnosed history of raised blood pressure, heart
360 disease, hypercholesterolemia, stroke, lung diseases, the treatment offered by their health
361 workers and communicable/ infectious diseases (e.g. Tuberculosis, Malaria, HIV, Hepatitis B, C,
362 Dengue, COVID-19, Chikungunya).

363 Caseness and severity of depression: The Patient Health Questionnaire-9 (PHQ-9) is a nine-
364 item questionnaire and scored from a minimum of 0 to a maximum of 27, with a cut-off of 0–4
365 represents no depressive symptoms, 5–9 mild depressive symptoms, 10–14 moderate
366 depressive symptoms, 15–19 moderately-severe depressive symptoms, and 20–27 severe
367 depressive symptoms [22,30].

368 Anxiety: The severity of generalised anxiety disorder will be assessed with the use of a
369 generalised anxiety disorder (GAD-7) [36,37] scale. It is a 7-item scale with scores ranging from
370 0 to 21, where the scores of 5, 10, and 15 will be taken as cut off points for mild, moderate, and
371 severe anxiety [36].

372 Diabetes-related distress: The Problem Area in Diabetes Scale-5 (PAID-5) will be used to
373 collect information on diabetes-related emotional distress [38,39]. This scale will assess

374 common issues and feelings linked with complications of diabetes. The 5-item scale scores
375 range from 0 (not a problem) to 4 (serious problem). The total sum of scores of the PAID scale
376 determines the level of diabetes-related distress and a cut-off of ≥ 8 indicates diabetes-related
377 distress [38].

378 Diabetes-related self-efficacy and self-management: Three measures will be used: the
379 Diabetes Empowerment Scale Short Form (DES-SF)[40], Perceived Diabetes Self-Management
380 Scale (PDSMS) [41] and Summary of Self-Care Diabetes Activities scale (SDSCA) [42]. The
381 DES-SF is an 8-item scale to assess general diabetes-related psychosocial self-efficacy. The 8-
382 item PDSMS measures confidence in self-management with individual scores ranging from 1
383 (strongly disagree) to 5 (strongly agree) with 4 items being reversed scores. The total score of
384 the PDSMS scale ranges from 8 to 40, with higher scores indicating higher confidence in self-
385 management. The 11-item SDSCA measures diabetes self-management activities related to
386 general diet, specific diet, exercise, blood glucose testing, foot care and smoking).

387 Health risk behaviours: Information on physical activity will be collected using the International
388 Physical Activity Questionnaire (IPAQ), a nine-item scale (short version) [43]. The scale
389 measures activities and their intensity over the past seven days i.e. 1) vigorous-intensity activity
390 such as aerobics, 2) moderate-intensity activity e.g. leisure cycling, 3) walking and 4) sitting.
391 Current use of smoked or smokeless tobacco in the past 30 days will be assessed through
392 questions adapted from GATS questionnaire and the STEPs expanded modules on tobacco
393 and smokeless tobacco use [31]. Alcohol use: Questions related to alcohol use, adapted from
394 the STEPs module [31] will also be applied to measure alcohol consumption.

395 Diabetes-related microvascular and macrovascular complications: Current or previous episodes
396 of macrovascular complications (coronary artery disease, stroke and peripheral arterial disease)

397 along with microvascular complications of diabetes (diabetic nephropathy, neuropathy and
398 retinopathy) will be assessed based on health care staff reporting or by participant's self-report.

399 Health-related quality of life: Euroqol's instrument EQ-5D-5L will be administered to measure
400 health-related quality of life (HRQoL) [44]. EQ-5D is a standardised measure of health status
401 developed by the EuroQol Group. It provides a simple, generic measure of health for clinical
402 and economic appraisal, where health is characterised by five dimensions; mobility, self-care,
403 ability to undertake usual activities, pain/discomfort, and anxiety/ depression [45]. participants'
404 subjective evaluation of their health state based on a visual analogue scale (EQ-5D-VAS) is
405 also included in the scale, ranging from 0 (representing the worst imaginable health state) to
406 the maximum attainable value of 100 (indicating the best imaginable health state).

407 Measures of potential mediators: Measures of potential mediators consisting of knowledge,
408 goals, behavioural cuing, intentions and beliefs about consequences adapted from the
409 intervention logic model will be assessed. A mix of seven bespoke and standardised questions
410 will be used: 1)You set goals and keep track of progress; 2) you are motivated to make
411 changes in your daily activities to change your mood; 3) you are willing to make changes in your
412 life to improve your mood; 4) you find it easy to make a plan [to achieve your goals]; 5) you have
413 trouble making plans to help you reach your goals 6) your behaviour influences your future
414 emotions; and 7) If you make positive changes now you will feel better in the future. Each
415 statement will be scored on a 5-point Likert type scale, with responses ranging from completely
416 agree to completely disagree. In addition, participant's activation will be assessed at 6 and 12
417 months follow-up with the Premium Abbreviated Activation scale (PAAS) [46]. PAAS is a 5-item
418 scale, adapted from the behavioural activation for depression scale (BADS-SF) [47]. PAAS
419 encompasses Behavioral Activation of five indicators on a scale of 0 (not at all) to 5 (yes,
420 completely) with scores ranging from 0 to 25.

421

422 Healthcare resource use and Economic outcomes: Healthcare resource use will be collected
423 using a modified Client Service Receipt Inventory (CSRI) [48]. Data will be collected on the use
424 of clinic and outpatient facilities, inpatient stays, tests, imaging and medication, with details of
425 specialities Information on other economic outcomes including employment status, productivity
426 loss, catastrophic health spending, household expenditure and household assets will also be
427 collected.

428 **Statistical analysis:**

429 Baseline characteristics will be summarised by the study arm, using means and standard
430 deviations for continuous data and counts and percentages for categorical data. The flow of study
431 participants will be presented in a CONSORT diagram [49] and fidelity with the BA intervention in
432 terms of the number of sessions and duration of the intervention will be detailed. All primary and
433 secondary outcomes will be summarised descriptively at all available time points, including the
434 extent of missing data.

435 The primary analysis will be on intention to treat (ITT) basis using a linear mixed effects model,
436 comparing PHQ-9 scores between randomised treatment groups at 6 months from a treatment
437 group by time interaction term, adjusting for country and PHQ-9 at baseline as fixed effects and
438 including a random effect for therapists, nested within the treatment group. The model will
439 incorporate outcomes from all available time points. The treatment group difference at 6 months
440 will be presented as a mean estimate with a 95% confidence interval and associated p-value; the
441 difference at 12 months will be reported as a secondary endpoint. Assumptions of the analysis
442 model will be evaluated (normality and data missing at random), and transformation and multiple
443 imputation considered if appropriate. A Complier Average Causal Effects (CACE) analysis will be
444 conducted as a sensitivity analysis, adjusting for compliance with the BA intervention. Estimates

445 of group differences by country will be explored by including a country by treatment group by time
446 interaction term in the above model as a secondary analysis of the primary outcome.

447 Secondary outcomes will be analysed similarly to the primary analysis model, using linear or
448 logistic mixed models for continuous and binary outcomes respectively. Adverse events will be
449 summarised by treatment arm in terms of the total number of events, adverse events by type and
450 the average number of events per participant. There will be no statistical comparison of these.
451 Full analysis details will be given in a separate pre-specified statistical analysis plan (SAP).

452 **Process evaluation:**

453 A mixed methods process evaluation will aid in understanding the causal mechanisms
454 underpinning the intervention, along with understanding how such interventions might be
455 implemented and scaled up in practice in primary or secondary healthcare services.

456 In line with recent guidance, we will focus on understanding:

- 457 1. Implementation and fidelity of the intervention
- 458 2. Mechanisms of impact of the intervention
- 459 3. How context affects delivery and outcomes

460 We will use data collected from other parts of the programme as well as specifically for the process
461 evaluation.

462 Qualitative data collection using a range of methods: We will collect qualitative data from
463 participants, carers and healthcare staff to explore the responses to the intervention, contextual
464 factors and the mechanisms of action. We will use a range of methods in order to explore these
465 factors in depth, to facilitate discussion and triangulate findings. These may include interviews,
466 focus group discussions and participatory methods such as photovoice. In each country, we will
467 collect data from up to 20 participants, 10 carers, 5 facilitators/supervisors and 3 healthcare

468 managerial staff (exact numbers will be decided closer to the time and will also depend on
469 reaching data saturation). We will also collect data from participants and carers in the control arm.
470 Data will be analysed thematically, comparing data from the controls and any overlap in changes
471 and contextual factors.

472 Reports and observations: The CRFs and session audio recordings will capture important
473 information about the dose and fidelity of the intervention, and behaviour change techniques
474 (BCTs) that were implemented.

475 Trial data: Collected at baseline, after completion of BA sessions and at 6- and 12-months post-
476 randomisation looking at potential mediators derived from the intervention logic model will be
477 analysed, to see which are important and changes that may occur during the intervention.

478 Findings from the process evaluation will be mapped to an implementation framework to explain
479 how the intervention was delivered, the mechanisms of action and contextual factors. Additionally,
480 it will provide opportunities to generate hypotheses that might explain differential responses
481 among groups of participants. This will inform secondary and pre-planned subgroup analysis of
482 the main trial data to further investigate differential treatment responses.

483 **Economic analyses:**

484 Information on the costs and health effects of alternative interventions are needed to inform the
485 allocation of limited healthcare resources to meet population health needs. The economic
486 analysis will provide evidence to consider the value for money of the DiaDeM intervention.

487 Further, it will examine the economic consequences of diabetes and depression more generally.

488 Cost-effectiveness analysis: Cost-effectiveness analysis will examine the value for money of the
489 DiaDeM intervention for individuals with diabetes and depression multimorbidity over the trial
490 period and over the individuals' lifetime. The within-trial analysis will examine the value for

491 money of the DiaDeM intervention compared to optimised usual care over the 12-month trial
492 period. This will be assessed from a healthcare perspective in the base case. Alternative
493 perspectives reflecting broader economic outcomes will also be considered as scenario
494 analyses [50]. Outcomes will be measured in both quality-adjusted life-years (QALYs) and
495 disability-adjusted life-years (DALYs), generic measures of health which capture both morbidity
496 and mortality[51]. Resource use will be captured, and costs estimated by applying unit costs to
497 resource use. Cost-effectiveness will be presented using incremental cost-effectiveness ratios
498 and incremental net health benefits and net monetary benefits based on appropriate cost-
499 effectiveness thresholds [52,53].

500 Analyses will control for any baseline differences in covariates between patient groups and for
501 issues with non-normality of cost and outcome data using appropriate statistical techniques [54].
502 Missing data will be imputed using imputation with chained equations [55].

503 Extrapolation of results over a lifetime: Treatment effects observed in the trial on depression and
504 other risk factors (e.g., HbA1c) will be incorporated into the previously developed DiaDeM
505 depression and diabetes multimorbidity model to estimate the lifetime cost-effectiveness of
506 DiaDeM versus optimised usual care. Evidence on resource use and costs from the trial will
507 also be incorporated into the model.

508 Cost-effectiveness will be presented using incremental cost-effectiveness ratios and incremental
509 net health benefits and net monetary benefits based on appropriate cost-effectiveness
510 thresholds [52,53]. Scenario analyses will also be conducted.

511 Evaluating economic impacts of depression and diabetes: Using evidence on depression and
512 diabetes status and economic outcomes (including employment status, productivity loss,
513 catastrophic health spending, household expenditure and household assets) collected in the
514 trial, the causal impact of disease on economic outcomes will be assessed. A two-stage

515 modelling approach will be employed. First, we will evaluate the distributional impact of DiaDeM
516 using difference-in-differences (DID) analysis to compare outcomes for the DiaDeM treatment
517 arm with the control arm. To account for heterogeneity in the impact of DiaDeM, we will interact
518 the DID estimator with the wealth level of the household, measured by the asset index. This first
519 stage will allow us to obtain the predicted measure of depression-diabetes multimorbidity. In the
520 second part, to evaluate the causal impact on economic outcomes, we will regress the predicted
521 measure of depression-diabetes multimorbidity from the first stage, on the economic outcome
522 variables. For each outcome, we will run appropriate regressions. We will take account of socio-
523 demographic and other control variables including gender and will run sensitivity checks to
524 ensure the robustness of our models. This approach will help us with the identification problem
525 arising from the fact that several of our economic outcomes can also determine depression (i.e.
526 reverse causality). We will condition on baseline depression status and look at attributed
527 changes in the outcome variable to the intervention, i.e., the mental health of participants which
528 is mediated by the impact of the DiaDeM intervention on their depression.

529 **Adverse events monitoring:**

530 Although we expect adverse or serious adverse events encountered during the trial will be
531 minimal, a standard approach to the collection, recording and reporting of adverse and serious
532 adverse events will be followed in order to ensure the safety of trial participants.

533 Definition of adverse events: Adverse events (AEs) are defined as an untoward clinical
534 development that may occur in an individual during their participation in a clinical trial. This could
535 be an unfavourable and unintended sign, symptom, or disease that may or may not be related to
536 the treatment provided [56]. In our study population of people with diabetes and depression, a
537 range of potential adverse events could be expected. These include, but may not be limited to:
538 hospitalisation for any given cause, diabetes emergencies like the development of cataracts,
539 partial or complete blindness, development of ulcers, hypersensitivity reactions, hypoglycemia,

540 severe hypoglycemia (hypoglycemic shock), diabetic ketoacidosis (DKA) and hyperosmolar
541 hyperglycemic state (HHS) deterioration of renal function leading to chronic kidney disease
542 (CKD), kidney failure, diabetes complications like angina, myocardial infarction, stroke, transient
543 ischemic attacks, loss of sensation in the feet, diabetic foot, gangrene, limb, foot or toe
544 amputations. Depression-related emergencies (suicidal ideation) captured on the PhQ-9
545 assessment either at baseline or follow-up assessments will also be recorded as an adverse
546 event.

547 Adverse events will not include medical or surgical procedures other than those identified in the
548 list of potential adverse events above. They will not include pre-existing diseases or
549 hospitalisation in cases where no untoward or unintended response has occurred (elective
550 cosmetic surgery, or social admissions).

551 *Identification and reporting of adverse events:* Information on adverse events will be collected
552 by RAs as reported by the medical officers at the study sites and/or by the trial participants' self-
553 report through the course of their involvement in the trial. Information on the type of expected
554 adverse events, along with information on how to report adverse events in a quarterly newsletter
555 will be mailed to all study participants from the month of their recruitment till the end of follow-up
556 activities. Trial participants who contact the study team to report adverse events will be put in
557 touch with the study RA, who will use a pre-designed data collection form to collect the relevant
558 information.

559 The collected adverse events information will be assessed by a designated member of clinical
560 staff at each study site for expectedness, relatedness, and seriousness. The WHO Uppsala
561 Monitoring Centre (WHO-UMC) scale [57] will be used to identify the relatedness of each
562 unexpected event, which will classify events as certain, probable, possible and unlikely.
563 Seriousness will be assessed on the basis of whether the observed event i) results in death ii) is

564 life-threatening, ii) requires inpatient hospitalisation or prolongation of existing hospitalisation or
565 iv) results in persistent or significant disability or incapacity.

566 For expected adverse events, a standard reporting procedure will be followed, whereby the
567 information will be reported at scheduled meetings of the Data Monitoring Committee. Adverse
568 events that are classified as serious, unexpected and related to the intervention will require
569 expedited reporting to the Trial Manager and the Principal Investigator who will review the report
570 and inform the York ethics committee within 15 days of the occurrence. Participants reporting
571 such events will be followed up until the episode has resolved or an outcome has been reached.
572 Follow-up information, where applicable, will also be sent as soon as it is available. In addition,
573 each study site staff will follow their institution's procedure for local notification and as per the
574 guidelines of their local Research Ethics Committees Boards.

575 **Trial monitoring and quality assurance:**

576 We will ensure that our research activities align with internationally-agreed ethical standards
577 [58,59], and the Medical Research Council's (MRC) guidance on the management of global health
578 trials [60] while at the same time complying with local legislation governing research participation
579 and staff employment in Bangladesh and Pakistan. Research staff will be trained (and re-trained
580 in due course, where necessary) on Good Clinical Practices (GCP), and on key trial procedures
581 such as taking informed consent, administering questionnaires, recording participant responses,
582 and maintaining study logs, ethical considerations, and data management. We will follow the
583 University of York and its partners' policies for the safety of staff and research participants. Ethics
584 applications and protocols will detail how this will be monitored and risks mitigated. For UK staff
585 travelling to partner countries, risk assessments will be carried out according to university policy.
586 For LMIC staff working in field settings, risks will be assessed by the site lead and any mitigations

587 required will be put in place. We will work within York’s Safeguarding Policy, and in line with the
588 statement on standards for safeguarding international development research.[61]

589 A Data Monitoring Committee (DMC) comprising independent members will act as the oversight
590 body for the DiaDeM trial. The DMC will safeguard the interests of trial participants, assess the
591 safety of the interventions during the trial, and monitor the overall conduct of the trial. The DMC
592 will decide the frequency of their meetings before and during the trial to review the progress,
593 and quality of data and monitor AEs. They will monitor the safety of study participants and that
594 they are not exposed to unnecessary risks because of their trial participation.

595
596 The overall conduct of the trial and its procedures will be monitored regularly by an Independent
597 Trial Steering Committee (ITSC). The ITSC will provide oversight of the trial procedures to
598 ensure the validity and credibility of the trial, and protocol adherence. The ITSC will also be
599 advised on the conduct of the trial with special reference to the safety of the participants and
600 researchers by the DMC after continuously appraising and evaluating the validity and integrity of
601 the trial data as it is accrued. The trial may be stopped if guided by ITSC and DMC, as per
602 termination guidelines.

603

604 **Community Engagement and Involvement**

605 Community Advisory panels (CAP) will be convened in each country every 6 months throughout
606 the duration of the trial. Each panel will help to ensure the programme remains focused on the
607 prioritised needs of the community and that planned activities are ethically sound, culturally
608 appropriate, feasible and have community support. Panel members will review plans and study
609 materials for recruitment and data collection; they will also advise on and contribute to the
610 dissemination of key findings to participants, healthcare providers, and public. CAP involvement

611 will improve research quality, help engender a sense of ownership of outputs by the community,
612 help to accelerate uptake and maximise the reach and impact of our programme.

613 **Ethical considerations:**

614 Formal ethical approvals have been acquired from the Health Sciences Research Governance
615 Committee (HSRGC), University of York (Ref: HSRGC/2020/409/B), Diabetic Association of
616 Bangladesh (Ref: BADAS-ERC/EC/20/00300), National Bioethics Committee Pakistan (Ref:
617 No.4-87/NBC-578/23/1382), Institutional Research and Ethics Forum of Rawalpindi Medical
618 University (Ref:242/IREF/RMU/2020) and Ethics Committee of the Office of Research Innovation
619 & Commercialization (ORIC), Khyber Medical University (KMU),(Ref: DIR/KMU/UEC/25),
620 Pakistan.

621 The study protocol adheres to the Declaration of Helsinki's principles of human rights and dignity
622 [62]. All research activities will be conducted in accordance with current MRC Good Clinical
623 Practice guidelines [63], the NHS Research Governance Framework [64], and the Mental
624 Capacity Act (UK) 2005 [65]. The latter identifies good practices governing the participation of
625 people lacking capacity. All individuals screened for the trial will be provided an information leaflet,
626 highlighting the importance of depression screening and possible care pathways for those who
627 have depressive symptoms. For those taking part, we will follow standard procedures for informed
628 consent, maintain participant anonymity and explain the right to withdraw at any time during the
629 study. For those who choose to withdraw, we will retain and utilise data gathered up until the day
630 of withdrawal, unless otherwise specified. We will also seek permission to retain contact
631 information for possible contact in the future for other research projects.

632 Adverse events that need expedited reporting will be notified according to the requirements and
633 within the time periods specified in the Adverse events procedures. In the case of abnormal blood
634 reports, or the detection of a comorbid illness based on biochemical assessment or screening

635 tests/scales, referrals will be made to the relevant medical department. The suicide risk pathway
636 and standard operational procedure developed for each study site will be followed for those who
637 are identified as being at risk of self-harm (Supplementary file 9). All participants will be
638 appropriately reimbursed for their travel for each contact session.

639 **Data Management:**

640 During the trial, quantitative and qualitative data will be collected through researcher-administered
641 interviews, face-to-face assessments, interviews, observations, photos, and focus groups. For
642 screening and blood tests, data will be entered on paper and will then be entered into a secure
643 online, password-protected data entry software. Baseline and follow-up CRFs and information on
644 anthropometric measurements will be entered directly into Qualtrics. This will be done by RAs
645 using handheld tablets at each site. In addition to the above, some DiaDeM intervention sessions
646 will be audio recorded, with consent, for the process evaluation and fidelity assessment of
647 intervention delivery. Interviews and focus group discussions will also be audio-recorded. Written
648 notes will also be recorded in hard copies along with screening forms, consent forms and blood
649 reports. Participant logs for completion of fidelity indices, follow-up and withdrawal will be
650 recorded using standard electronic templates. All collected data will be stored on a central server
651 at the University of York.

652 Qualitative interviews will be transcribed in the interview language, but linked with the trial ID
653 and will be anonymised before translation for analysis. Digital recordings of the interviews will
654 be stored locally on a temporary basis in a password-protected folder. Once the analysis of the
655 interviews is completed all recorded versions will be erased from digital recorders.

656 The Trial Statistician/data manager based at the University of York and the country trial data
657 managers will have access to the datasets. They will use verification, validation, and checking
658 procedures to ensure that the data are accurate and comprehensive. All members of the research

659 team will adhere to the data management policy developed for DiaDeM under the direction of the
660 University of York Trials Unit's Standard Operating Procedures. The research team will ensure
661 the confidentiality and anonymity of participants to those with delegated responsibilities within the
662 trial team. Participants will be assigned a unique ID so that no identifiable information is accessible
663 to non-authorized persons. Moreover, all identifiable information of the participants will be stored
664 at each study site securely; electronic records will be kept under password protection and hard
665 copies will be stored in locked filing cabinets.

666 Secure services available through the University of York (University of York drop-off:
667 <https://www.york.ac.uk/it-services/services/dropoff/>) will be used to transfer encrypted data
668 between study sites and the University of York, where necessary. All files transported through
669 this will be encrypted as zip files using passwords consisting of at least 8 characters with a mix
670 of letters and numbers in upper and lower case, and punctuation or other symbols. Data
671 received via drop-off will only be accessed on desktop computers or laptops which are
672 connected to an encrypted server. Moreover, for non-confidential data or non-sensitive data,
673 researchers will share the data through the DiaDeM team drive on the Google Drive cloud-
674 based storage platform, or through the University of York [drop-off](#) service.

675 In line with the University of York Research Data Management Policy, all anonymised research
676 data that underpin published results or have long-term value will be retained indefinitely after the
677 completion of trial activities. Upon completion of the DiaDeM activities, all non-anonymised data
678 will be destroyed.

679 **Discussion**

680 The DiaDeM trial aims to test the potential of a culturally adapted behavioural activation
681 intervention (DiaDeM) as a suitable and cost-effective treatment to address depression among

682 individuals with Type 2 Diabetes who are living in South Asian settings. We have identified an
683 evidence-based intervention and further adapted it for cultural appropriateness in South Asian
684 users and settings [28]. Our plans for implementing the trial are based on a robust study design,
685 backed by the use of validated measures for outcome evaluation. Findings of our stand-alone
686 feasibility trial of DiaDeM [14] are yet to be published, however, the key message from this work
687 is that the DiaDeM intervention is feasible to deliver in both Bangladesh and Pakistan and is
688 acceptable to both users (to receive) and BA facilitators (to deliver). We have built on the
689 experiences and learning from the feasibility trial by further strengthening our training and
690 supervision processes for BA facilitators. We have further refined the intervention materials (eg.
691 the use of more appropriate images/photographs) based on feedback from research staff and
692 participants. No changes were proposed for the intervention content. We have also expanded the
693 trial to a third location (BIDE, Karachi), which will ensure a more representative sample in
694 Pakistan.

695 The DiaDeM trial is the first of its kind to be implemented in South Asia. It uses a task-sharing
696 approach, incorporating non-mental health resources available within existing health facilities to
697 address the growing issue of physical and mental multimorbidity. This approach has great
698 relevance for South Asia given its potential for scalability as a feasible and potentially cost-
699 effective solution. We anticipate that our real-world evaluation of the DiaDeM intervention will fill
700 in the existing gaps, paving the way for DiaDeM's adaptation, implementation, and further
701 evaluation beyond South Asian settings, with a view to improving health-related and economic
702 outcomes in low-resource settings and populations.

703 **Acknowledgements**

704 All authors were involved in the development of this protocol, and therefore the author sequence
705 is based on an equal contribution approach [66]. We would also like to acknowledge the DiaDeM

706 Program Steering Committee and the Data Monitoring Committee for their oversight, and the
707 Community Advisory Panels in Bangladesh and Pakistan for their input in the development of the
708 trial protocol.

709

710 **Funding:**

711 This study is being carried out under the National Institute of Health Research, Global Health Research
712 project, [Grant reference: Research & Innovation for Global Health Transformation (RIGHT)
713 NIHR200806]. The University of York is the trial sponsor. The views expressed in this publication are
714 those of the author(s) and not necessarily those of the NIHR or the UK Department of Health and Social
715 Care. The funders had no role in study design, data collection and analysis, decision to publish, or
716 preparation of the manuscript.

717 **Conflicts of Interest:**

718 Authors do not have any conflicts of interests to declare.

719 **List of supplementary files**

720 S1- SPIRIT checklist

721 S2- TIDieR checklist

722 S3 - Information leaflet on the recognition of depression

723 S4- Consent form for stage 2 screening

724 S5- Participant information sheet

725 S6- Consent form for trial participation

726 S7- DiaDeM logic model

- 727 S8- Optimised usual care leaflet
- 728 S9- Suicide risk pathway and referral procedure

729 References

- 730 1 Yang X, Li Z, Sun J. Effects of Cognitive Behavioral Therapy-Based Intervention on
731 Improving Glycaemic, Psychological, and Physiological Outcomes in Adult Patients With
732 Diabetes Mellitus: A Meta-Analysis of Randomized Controlled Trials. *Front Psychiatry*
733 2020;**11**:711.
- 734 2 Bădescu SV, Tătaru C, Kobylinska L, *et al.* The association between Diabetes mellitus and
735 Depression. *J Med Life* 2016;**9**:120–5.
- 736 3 Cicek M, Buckley J, Pearson-Stuttard J, *et al.* Characterizing Multimorbidity from Type 2
737 Diabetes: Insights from Clustering Approaches. *Endocrinol Metab Clin North Am*
738 2021;**50**:531–58.
- 739 4 Matt. Psychological aspects of diabetes. *European Medical Journal*.
740 2020.<http://www.emjreviews.com/diabetes/article/psychological-aspects-of-diabetes>
741 (accessed 21 Sep 2022).
- 742 5 de Groot M, Kushnick M, Doyle T, *et al.* Depression Among Adults With Diabetes:
743 Prevalence, Impact, and Treatment Options. *Diabetes Spectr* 2010;**23**:15–8.
- 744 6 Mendenhall E, Norris SA, Shidhaye R, *et al.* Depression and type 2 diabetes in low- and
745 middle-income countries: a systematic review. *Diabetes Res Clin Pract* 2014;**103**:276–85.
- 746 7 Flood D, Seiglie JA, Dunn M, *et al.* The state of diabetes treatment coverage in 55 low-
747 income and middle-income countries: a cross-sectional study of nationally representative,
748 individual-level data in 680 102 adults. *Lancet Healthy Longev* 2021;**2**:e340–51.
- 749 8 Federation ID. IDF Diabetes Atlas 10th ed. 2021.
- 750 9 Basit A, Fawwad A, Qureshi H, *et al.* Prevalence of diabetes, pre-diabetes and associated
751 risk factors: second National Diabetes Survey of Pakistan (NDSP), 2016–2017. *BMJ Open*
752 2018;**8**:e020961.
- 753 10 Kant R, Yadav P, Barnwal S, *et al.* Prevalence and predictors of depression in type 2
754 diabetes mellitus. *J Educ Health Promot* 2021;**10**:352.
- 755 11 Farhan A, Ayub AR, Zafar J. Depression In Type-2 Diabetic Patients Presenting To A
756 Tertiary Care Hospital In Pakistan. *J Ayub Med Coll Abbottabad* 2017;**29**:262–5.
- 757 12 Zavala GA, Jennings HM, Afaq S, *et al.* Effectiveness and implementation of psychological
758 interventions for depression in people with non-communicable diseases in South Asia:
759 Systematic review and meta-analysis. *Int J Ment Health* 2023;:1–25.

- 760 13 Martin F, Oliver T. Behavioral activation for children and adolescents: a systematic review
761 of progress and promise. *Eur Child Adolesc Psychiatry* 2019;**28**:427–41.
- 762 14 Aslam F, Afaq S, Siddiqui F, *et al.* An adapted behavioural activation intervention (DiaDeM)
763 for people with diabetes and depression in South Asia: A feasibility study protocol.
764 *F1000Res* 2022;**11**:887.
- 765 15 Kring AM, Sloan DM. *Emotion Regulation and Psychopathology: A Transdiagnostic*
766 *Approach to Etiology and Treatment*. Guilford Press 2009.
- 767 16 Mir G, Meer S, Cottrell D, *et al.* Adapted behavioural activation for the treatment of
768 depression in Muslims. *J Affect Disord* 2015;**180**:190–9.
- 769 17 Ekers DM, Dawson MS, Bailey E. Dissemination of behavioural activation for depression to
770 mental health nurses: training evaluation and benchmarked clinical outcomes. *J Psychiatr*
771 *Ment Health Nurs* 2013;**20**:186–92.
- 772 18 Ekers D, Richards D, McMillan D, *et al.* Behavioural activation delivered by the non-
773 specialist: phase II randomised controlled trial. *Br J Psychiatry* 2011;**198**:66–72.
- 774 19 Uphoff E, Pires M, Barbui C, *et al.* Behavioural activation therapy for depression in adults
775 with non-communicable diseases. *Cochrane Database Syst Rev* 2020;**8**:CD013461.
- 776 20 Chan A-W, Tetzlaff JM, Altman DG, *et al.* SPIRIT 2013 statement: defining standard
777 protocol items for clinical trials. *Ann Intern Med* 2013;**158**:200–7.
- 778 21 Kroenke K, Spitzer RL, Williams JBW. The Patient Health Questionnaire-2: validity of a two-
779 item depression screener. *Med Care* 2003;**41**:1284–92.
- 780 22 Kroenke Kurt, Spitzer Robert L. The PHQ-9: A New Depression Diagnostic and Severity
781 Measure. *Psychiatr Ann* 2002;**32**:509–15.
- 782 23 First MB, Williams JBW, Karg RS, Spitzer RL: Structured Clinical Interview for DSM-5—
783 Research Version (SCID-5 for DSM-5, Research Version; SCID-5-RV). Arlington, VA,
784 American Psychiatric Association, 2015. [https://www.appi.org/products/structured-clinical-](https://www.appi.org/products/structured-clinical-interview-for-dsm-5-scid-5)
785 [interview-for-dsm-5-scid-5](https://www.appi.org/products/structured-clinical-interview-for-dsm-5-scid-5) (accessed 5 Feb 2023).
- 786 24 MODS Programme of Research. Managing multiple health conditions in older adults.
787 <https://sites.google.com/nih.ac.uk/mods/home> (accessed 8 Feb 2023).
- 788 25 Kok G, Schaalma H, Ruiters RAC, *et al.* Intervention mapping: protocol for applying health
789 psychology theory to prevention programmes. *J Health Psychol* 2004;**9**:85–98.
- 790 26 Bernal G, Jiménez-Chafey MI, Domenech Rodríguez MM. Cultural adaptation of
791 treatments: A resource for considering culture in evidence-based practice. *Prof Psychol*
792 *Res Pr* 2009;**40**:361–8.
- 793 27 Escoffery C, Lebow-Skelley E, Udelson H, *et al.* A scoping study of frameworks for
794 adapting public health evidence-based interventions. *Transl Behav Med* 2019;**9**:1–10.
- 795 28 Zavala GA, Afaq S, Anas A, *et al.* Adaptation of a behavioural activation intervention for
796 depression in people with diabetes in Bangladesh and Pakistan: DiaDeM intervention. *Glob*
797 *Implement Res Appl* 2023;**3**:44–55.

- 798 29 Ekers D, Webster L, Van Straten A, *et al.* Behavioural activation for depression; an update
799 of meta-analysis of effectiveness and sub group analysis. *PLoS One* 2014;**9**:e100100.
- 800 30 Kroenke K, Spitzer RL, Williams JB. The PHQ-9: validity of a brief depression severity
801 measure. *J Gen Intern Med* 2001;**16**:606–13.
- 802 31 Bonita R, Winkelmann R, Douglas KA, *et al.* The WHO Stepwise Approach to Surveillance
803 (Steps) of Non-Communicable Disease Risk Factors. In: McQueen DV, Puska P, eds.
804 *Global Behavioral Risk Factor Surveillance*. Boston, MA: : Springer US 2003. 9–22.
- 805 32 Zaman MM, Rahman MM, Rahman MR, *et al.* Prevalence of risk factors for non-
806 communicable diseases in Bangladesh: Results from STEPS survey 2010. *Indian J Public*
807 *Health* 2016;**60**:17–25.
- 808 33 Nishtar S, Bile KM, Ahmed A, *et al.* Integrated population-based surveillance of
809 noncommunicable diseases: the Pakistan model. *Am J Prev Med* 2005;**29**:102–6.
- 810 34 Physical status: the use and interpretation of anthropometry. Report of a WHO Expert
811 Committee. *World Health Organ Tech Rep Ser* 1995;**854**:1–452.
- 812 35 *WHO steps surveillance manual: the WHO stepwise approach to chronic disease risk factor*
813 *surveillance*. WHO 2005.
- 814 36 Spitzer RL, Kroenke K, Williams JBW, *et al.* A brief measure for assessing generalized
815 anxiety disorder: the GAD-7. *Arch Intern Med* 2006;**166**:1092–7.
- 816 37 Swinson RP. The GAD-7 scale was accurate for diagnosing generalised anxiety disorder.
817 *Evid. Based. Med.* 2006;**11**:184.
- 818 38 McGuire BE, Morrison TG, Hermanns N, *et al.* Short-form measures of diabetes-related
819 emotional distress: the Problem Areas in Diabetes Scale (PAID)-5 and PAID-1.
820 *Diabetologia* 2010;**53**:66–9.
- 821 39 Welch GW, Jacobson AM, Polonsky WH. The Problem Areas in Diabetes Scale. An
822 evaluation of its clinical utility. *Diabetes Care* 1997;**20**:760–6.
- 823 40 Anderson RM, Fitzgerald JT, Gruppen LD, *et al.* The Diabetes Empowerment Scale-Short
824 Form (DES-SF). *Diabetes Care* 2003;**26**:1641–2.
- 825 41 Wallston KA, Rothman RL, Cherrington A. Psychometric properties of the Perceived
826 Diabetes Self-Management Scale (PDSMS). *J Behav Med* 2007;**30**:395–401.
- 827 42 Toobert DJ, Hampson SE, Glasgow RE. The summary of diabetes self-care activities
828 measure: results from 7 studies and a revised scale. *Diabetes Care* 2000;**23**:943–50.
- 829 43 Lee PH, Macfarlane DJ, Lam TH, *et al.* Validity of the International Physical Activity
830 Questionnaire Short Form (IPAQ-SF): a systematic review. *Int J Behav Nutr Phys Act*
831 2011;**8**:115.
- 832 44 Feng Y-S, Kohlmann T, Janssen MF, *et al.* Psychometric properties of the EQ-5D-5L: a
833 systematic review of the literature. *Qual Life Res* 2021;**30**:647–73.
- 834 45 Brooks R, Rabin R, de Charro F. *The Measurement and Valuation of Health Status Using*

- 835 *EQ-5D: A European Perspective: Evidence from the EuroQol BIOMED Research*
836 *Programme*. Springer Science & Business Media 2013.
- 837 46 Weobong B, Weiss HA, McDaid D, *et al*. Sustained effectiveness and cost-effectiveness of
838 the Healthy Activity Programme, a brief psychological treatment for depression delivered by
839 lay counsellors in primary care: 12-month follow-up of a randomised controlled trial. *PLoS*
840 *Med* 2017;**14**:e1002385.
- 841 47 Manos RC, Kanter JW, Luo W. The behavioral activation for depression scale-short form:
842 development and validation. *Behav Ther* 2011;**42**:726–39.
- 843 48 Beecham J, Knapp M. COSTING PSYCHIATRIC INTERVENTIONS.
844 1999.<https://www.pssru.ac.uk/pub/dp1536.pdf> (accessed 12 Dec 2022).
- 845 49 Osborne N, Avey MT, Anestidou L, *et al*. Improving animal research reporting standards:
846 HARRP, the first step of a unified approach by ICLAS to improve animal research reporting
847 standards worldwide. *EMBO Rep* 2018;**19**. doi:10.15252/embr.201846069
- 848 50 Walker S, Griffin S, Asaria M, *et al*. Striving for a Societal Perspective: A Framework for
849 Economic Evaluations When Costs and Effects Fall on Multiple Sectors and Decision
850 Makers. *Appl Health Econ Health Policy* 2019;**17**:577–90.
- 851 51 Drummond MF, Sculpher MJ, Claxton K, *et al*. *Methods for the Economic Evaluation of*
852 *Health Care Programmes*. Oxford University Press 2015.
- 853 52 Woods B, Revill P, Sculpher M, *et al*. Country-Level Cost-Effectiveness Thresholds: Initial
854 Estimates and the Need for Further Research. *Value Health* 2016;**19**:929–35.
- 855 53 Ochalek J, Lomas J, Claxton K. Estimating health opportunity costs in low-income and
856 middle-income countries: a novel approach and evidence from cross-country data. *BMJ*
857 *Glob Health* 2018;**3**:e000964.
- 858 54 Barber J, Thompson S. Multiple regression of cost data: use of generalised linear models. *J*
859 *Health Serv Res Policy* 2004;**9**:197–204.
- 860 55 White IR, Royston P, Wood AM. Multiple imputation using chained equations: Issues and
861 guidance for practice. *Stat Med* 2011;**30**:377–99.
- 862 56 Guideline IH. Integrated addendum to ICH E6 (R1): guideline for good clinical practice E6
863 (R2). *Current Step* 2015;**2**:1–60.
- 864 57 Center UM, Health Organization W. The use of the WHO-UMC system for standardised
865 case causality assessment. *Im Internet (Stand: 79 2020)*: <https://www>
- 866 58 World Medical Association Declaration of Helsinki. *JAMA* 2013;**310**:2191.
- 867 59 International Ethical Guidelines for Health-related Research Involving Humans. Fourth.
868 Geneva: : Council for International Organizations of Medical Sciences (CIOMS) 2016.
- 869 60 MRC Guidelines for Global Health Trials Involving Clinical or Public Health Interventions.
870 Version 2.0 (2019). Medical Research Council 2017.
871 <https://mrc.ukri.org/documents/pdf/guidelines-for-management-of-global-health-trials/>

- 872 61 International Development Research Funders Statement on Safeguarding.
873 2019.<https://www.ukri.org/files/international/ukcdr-safeguarding-statement-pdf/> (accessed
874 2019).
- 875 62 Williams JR. The Declaration of Helsinki and public health. *Bull World Health Organ*
876 2008;**86**:650–2.
- 877 63 Vere D. MRC Guidelines for Good Clinical Practice in Clinical Trials. *J Med Ethics*
878 1999;**25**:280.
- 879 64 Taylor M. Research governance framework for health and social care. *Health Soc Care*
880 *Community* 2002;**10**:6–9.
- 881 65 Johnston C, Liddle J. The Mental Capacity Act 2005: a new framework for healthcare
882 decision making. *J Med Ethics* 2007;**33**:94–7.
- 883 66 Tschamtko T, Hochberg ME, Rand TA, *et al.* Author sequence and credit for contributions
884 in multiauthored publications. *PLoS Biol* 2007;**5**:e18.
- 885

Blood tests: renal function and lipid function	X							X	
Blood tests: thyroid function	X								
Blood tests: Glycosylated Hemoglobin (HbA1C)	X							X	X
Comorbidities and medications	X							X	X
Caseness and severity of depression	X							X	X
Anxiety	X							X	X
Diabetes related: diabetes distress, self-efficacy, self-management, micro and macrovascular complications	X							X	X
Health risk behaviors: physical activity, tobacco, and alcohol use	X							X	X
Health related quality of life	X							X	X
Mediator measures*	X							X	X
Health care resource use and Economic outcomes	X							X	X

* Premium abbreviated activation scale (PAAS) will only be administered at 6 and 12 months

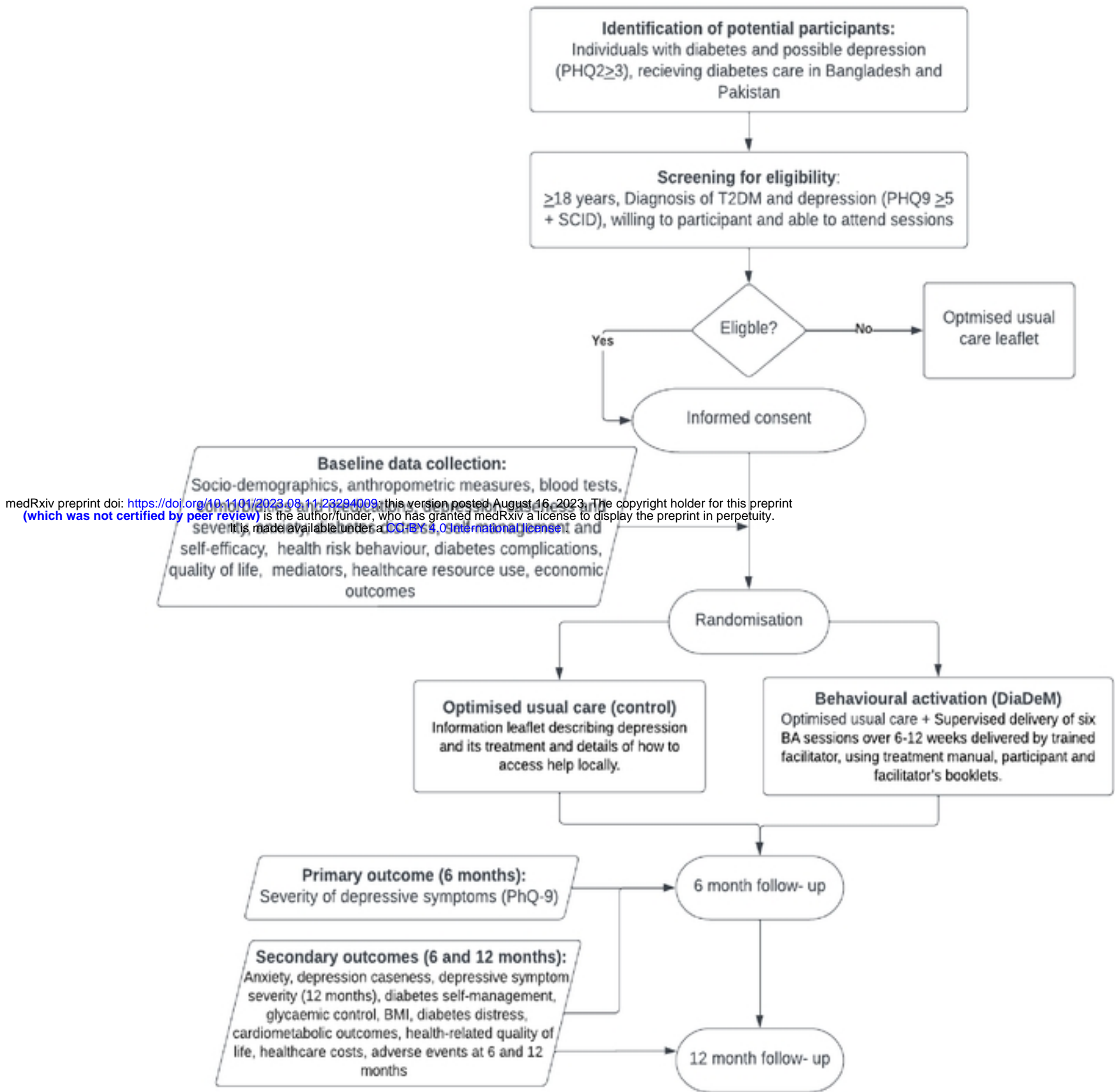


Figure 2. Trial flow diagram