

1 **High Extracellular-to-Intracellular Water Ratio in Limb Muscles is Associated with**

2 **Low Muscle Strength in Patients with Heart Failure**

3 Kensuke Nakamura, MD\*<sup>1</sup>, Yoshiharu Kinugasa, MD, PhD\*<sup>1</sup>, Takeshi Sota, PT<sup>2</sup>, Masayuki

4 Hirai, MD, PhD<sup>1</sup>, Masahiko Kato, MD, PhD<sup>3</sup>, Kazuhiro Yamamoto, MD, PhD<sup>1</sup>

5

6 \*These authors contributed equally to this manuscript.

7 <sup>1</sup>Department of Cardiovascular Medicine and Endocrinology and Metabolism, Faculty of

8 Medicine, Tottori University, Yonago, Japan

9 <sup>2</sup>Division of Rehabilitation, Tottori University Hospital, Yonago, Japan

10 <sup>3</sup>Department of Pathobiological Science and Technology, School of Health Science; Major in

11 Clinical Laboratory Science, Faculty of Medicine, Tottori University, Yonago, Japan

12

13 **Corresponding author:** Yoshiharu Kinugasa, MD, PhD

14 Department of Cardiovascular Medicine and Endocrinology and Metabolism, Faculty of

15 Medicine, Tottori University, 36-1 Nishicho, Yonago 683-8504, Japan

16 E-mail: [ykinugasa-circ@tottori-u.ac.jp](mailto:ykinugasa-circ@tottori-u.ac.jp)

17 Phone: +81-859-38-6517, Fax: +81-859-38-6519

18

19 **Short title:** High ECW/ICW Ratio and Low Muscle Strength in HF

1 **Key words:** heart failure, muscle strength, extracellular water, intracellular water

2

3 **Nonstandard Abbreviations and Acronyms**

4 ECW: extracellular water

5 ICW: intracellular water

6

7 **Abstract**

8 **Background:** A high extracellular water (ECW) to intracellular water (ICW) ratio of skeletal  
9 muscle as assessed by bioelectrical impedance analysis is reportedly associated with loss of  
10 muscle strength. However, the validity of this index for heart failure (HF), which is likely  
11 associated with changes in the water distribution, is unclear.

12 **Methods:** This study involved 190 patients with HF. The total ECW and ICW of both upper  
13 and lower extremities were measured, and a high ECW/ICW ratio was defined as an  
14 ECW/ICW ratio higher than the median ( $\geq 0.636$  for men,  $\geq 0.652$  for women). Low muscle  
15 strength was defined as reduced handgrip strength according to the criteria established by the  
16 Asian Working Group for Sarcopenia.

17 **Results:** Patients with a high ECW/ICW ratio were older, had a higher left ventricular  
18 ejection fraction and B-type natriuretic peptide level, and had a lower body mass index,  
19 hemoglobin level, albumin level, estimated glomerular filtration rate, handgrip strength, and

1 6-minute walk distance than patients with a low ECW/ICW ratio ( $p < 0.05$ ). An increasing  
2 ECW and/or decreasing ICW was associated with a higher ECW/ICW ratio ( $p < 0.05$ ). In the  
3 multivariate logistic regression analysis, a high ECW/ICW ratio and low skeletal muscle  
4 mass were independently associated with low muscle strength ( $p < 0.05$ ).

5 **Conclusion:** A high ECW/ICW ratio in limb muscles (i.e., an increasing ECW and/or  
6 decreasing ICW) is independently associated with muscle weakness regardless of skeletal  
7 muscle mass in patients with HF.

8

#### 9 **What Is New?**

10 ◆ A high extracellular water (ECW) to intracellular water (ICW) ratio of skeletal muscle as  
11 assessed by bioelectrical impedance analysis was independently associated with low  
12 muscle strength regardless of skeletal muscle mass in patients with heart failure (HF).

13 ◆ Both an increasing ECW and decreasing ICW were independently associated with low  
14 muscle strength in patients with HF.

15

#### 16 **What Are the Clinical Implications?**

17 ◆ The ECW/ICW ratio in limb muscles is a new index that can be used to assess muscle  
18 function apart from muscle mass in patients with HF.

19

## 1 **Introduction**

2           The number of older patients with heart failure (HF) is rapidly increasing worldwide.

3   Physical frailty is a common condition in this population, and it leads to worse quality of life

4   and outcomes such as impaired daily function, falls, hospitalization, and mortality.<sup>1</sup> Physical

5   frailty is largely caused by skeletal muscle dysfunction, which results from changes in both

6   the quantity and quality of skeletal muscle.<sup>2</sup> Patients with HF have structural and functional

7   abnormalities in their skeletal muscle, such as altered myofiber types, increased fat

8   infiltration, mitochondrial dysfunction, decreased capillary density, and impaired oxygen and

9   metabolite transport.<sup>3</sup> Research has demonstrated the usefulness of noninvasive assessment of

10   structural and functional changes in skeletal muscle using computed tomography,<sup>4</sup> magnetic

11   resonance imaging,<sup>5</sup> ultrasound,<sup>6</sup> and bioelectrical impedance analysis (BIA).<sup>7</sup> BIA can be

12   used to measure the impedance of body parts by applying a weak electric current; it can also

13   enable body composition analysis. Moreover, BIA can be used to measure the intracellular

14   water (ICW) and extracellular water (ECW) of skeletal muscle by using multiple frequencies.

15   ICW reflects the water volume of muscle cells, and ECW reflects the water volume of

16   extracellular spaces.<sup>8,9</sup> A high ECW/ICW ratio has been associated with muscle weakness in

17   patients with chronic kidney disease, patients with liver disease, and healthy older people.<sup>10-12</sup>

18   However, the validity of the ECW/ICW ratio in patients with HF, which is likely associated

19   with changes in the water distribution, is unclear. The present study was performed to

1 examine the relationship between the ECW/ICW ratio and muscle strength in patients with

2 HF.

3

#### 4 **Methods**

##### 5 **Patients**

6 In this retrospective observational study, we screened 976 patients who were

7 hospitalized for acute decompensated HF without pulmonary embolism or acute myocardial

8 infarction and discharged from Tottori University Hospital from April 2014 to March 2022.

9 We excluded 352 patients with missing body composition data and 434 patients with missing

10 handgrip strength data. Finally, we analyzed 190 patients.

11 We defined HF as the presence of symptoms and signs of HF according to the

12 Framingham criteria, along with pulmonary congestion on X-rays and/or elevated left atrial

13 pressure on Doppler echocardiography as previously described.<sup>13</sup> All patients received

14 adequate decongestion therapy during hospitalization. After their HF had been stabilized, the

15 patients underwent cardiac rehabilitation during their hospital stay.

##### 16 **Data collection**

17 We reviewed the patients' medical records to gather data on their demographics,

18 medical history, comorbidities, laboratory data, echocardiograms, medications, body

19 composition, and physical function test results. We obtained all measurements at discharge

1 when HF was stable. We classified the etiology of HF as ischemic or non-ischemic heart  
2 disease. Ischemic heart disease was defined as the presence of significant coronary artery  
3 disease and/or a history of coronary artery intervention. We measured the patients'  
4 echocardiographic data according to the recommendations of the American Society of  
5 Echocardiography.<sup>14</sup>

## 6 **Measurement of body composition**

7 Body composition was measured using a BIA device (InBody 770; InBody Co., Ltd.,  
8 Seoul, South Korea) as previously described.<sup>13</sup> The patients stood barefoot on the foot  
9 electrodes of the device, their weight equally distributed on both feet in a completely vertical  
10 position, and held the hand electrodes with both hands. Thirty impedance measurements were  
11 taken at five body sites (right and left arms, trunk, and right and left legs) using six different  
12 frequencies (1, 5, 50, 250, 500, and 1000 kHz).<sup>15</sup>

13 The skeletal muscle mass of the upper and lower extremities was measured, and the  
14 skeletal muscle mass index (SMI) was calculated as follows<sup>13</sup>:  $SMI = \text{extremity skeletal}$   
15  $\text{muscle mass} / (\text{height})^2$ . ECW and ICW of the upper and lower extremities were measured  
16 and similarly divided by the square of the height to correct for body size.<sup>16</sup>

## 17 **Physical performance**

18 Handgrip strength was measured with a grip dynamometer (GRIP-D; Takei  
19 Scientific Instruments Co., Ltd., Niigata, Japan) in the standing position with the upper limb

1 abducted about 20 degrees from the body.<sup>13</sup> Each hand was measured twice, and the  
2 maximum value was used as the representative value. The 6-minute walk distance was  
3 measured as previously described<sup>13</sup> and was available for 90 of the study patients.

#### 4 **Definition of high ECW/ICW ratio, low skeletal muscle mass, and low muscle strength**

5 A high ECW/ICW ratio was defined as an ECW/ICW ratio higher than the median for  
6 each sex because the ratio differed between men and women:  $\geq 0.636$  for men and  $\geq 0.652$  for  
7 women. Low muscle mass and low muscle strength were defined according to the criteria  
8 established by the Asian Working Group for Sarcopenia.<sup>17</sup> Low muscle mass was defined as  
9 an SMI of  $< 7.0 \text{ kg/m}^2$  for men and  $< 5.7 \text{ kg/m}^2$  for women. Low muscle strength was defined  
10 as a handgrip strength of  $< 28 \text{ kg}$  for men and  $< 18 \text{ kg}$  for women.

#### 11 **Ethical considerations**

12 This investigation conformed to the Declaration of Helsinki principles. The research  
13 ethics committee of Tottori University approved the study. Written informed consent from  
14 patients was not required because this was a retrospective observational study of medical  
15 records. The study was posted on the hospital's website according to the Japanese Ministry of  
16 Health, Labour and Welfare guidelines; patients were informed of their right to refuse  
17 participation in the study, and opt-out consent was obtained.

#### 18 **Statistical analysis**

19 Continuous variables are expressed as mean  $\pm$  standard deviation for normally

1 distributed variables and median (interquartile range) for non-normally distributed variables.  
2 Categorical variables are expressed as percentages. The t-test was used to compare  
3 continuous variables with a normal distribution, and the Mann–Whitney U test was used to  
4 compare those without a normal distribution. Fisher’s exact test was used to compare  
5 categorical variables. The correlation between handgrip strength and the ECW/ICW ratio was  
6 tested using Pearson’s correlation analysis. Multivariate logistic regression analysis was used  
7 to assess the factors associated with low muscle strength. All clinical variables that were  
8 associated with low muscle strength in the univariate analysis were entered into the  
9 multivariate analysis. The following analyses of the combined effect of two indicators were  
10 performed using the thin plate smoothing spline: the combined effect of ECW and ICW on  
11 the ECW/ICW ratio, the combined effect of ECW and ICW on handgrip strength, and the  
12 combined effect of the ECW/ICW ratio and SMI on handgrip strength. These spline models  
13 were adjusted for sex because there were sex-related differences in muscle strength and the  
14 ECW/ICW ratio. A p value of <0.05 was considered statistically significant. All analyses  
15 were performed using R version 4.1.2 (R Foundation for Statistical Computing, Vienna,  
16 Austria).

17

## 18 **Results**

### 19 **Characteristics of patients with low and high ECW/ICW ratio**



1 Table 1 shows the characteristics of the entire study cohort. The median age of the  
2 patients was 75 years (60–83), and 64.2% were male. The prevalence of ischemic heart  
3 disease and atrial fibrillation was 25.3% and 41.1%, respectively. The mean left ventricular  
4 ejection fraction was  $48.6\% \pm 15.5\%$ . A New York Heart Association functional classification  
5 of III or IV and a history of HF hospitalization were prevalent in 22.1% and 23.2% of  
6 patients, respectively. Non-cardiac comorbidities, specifically chronic obstructive pulmonary  
7 disease, diabetes mellitus, and severe renal dysfunction (stage 4 or 5 chronic kidney disease,  
8 defined as an estimated glomerular filtration rate of  $<30 \text{ mL/min/1.73 m}^2$ ), were found in  
9 6.3%, 32.8%, and 20.5% of the patients, respectively. The prevalence of loss of muscle mass  
10 and loss of muscle strength as defined by the Asian Working Group for Sarcopenia diagnostic  
11 criteria was 65.7% and 55.3%, respectively. Low muscle strength was observed in 30.8% of  
12 patients with preserved muscle mass. By contrast, 32% of patients with reduced muscle mass  
13 had preserved muscle strength.

14 Figure 1 shows the distribution of the ECW/ICW ratio for the entire study cohort and the  
15 sex-related difference. The mean and median ECW/ICW ratio for the entire cohort were  
16  $0.643 \pm 0.033$  and 0.641 (0.622–0.663), respectively. The ECW/ICW ratio was significantly  
17 higher in women than in men ( $0.651 \pm 0.025$  vs.  $0.639 \pm 0.036$ ,  $p < 0.05$ ). The median  
18 ECW/ICW ratio was 0.636 (0.614–0.659) for men and 0.652 (0.635–0.667) for women.

19 Table 1 shows the characteristics of patients with a low and high ECW/ICW ratio,

1 defined using the median ECW/ICW ratio for each sex. Patients with a high ECW/ICW ratio  
2 were older and had a higher incidence of hypertension, higher left ventricular ejection  
3 fraction, and higher New York Heart Association functional classification and a lower body  
4 mass index than patients with a low ECW/ICW ratio ( $p < 0.05$ ). The hemoglobin level,  
5 albumin level, and estimated glomerular filtration rate were significantly lower and the  
6 B-type natriuretic peptide level was significantly higher in patients with a high ECW/ICW  
7 ratio than in those with a low ECW/ICW ratio ( $p < 0.05$ ). Patients with a high ECW/ICW  
8 ratio had fewer prescribed mineralocorticoid receptor antagonists than those with a low  
9 ECW/ICW ratio ( $p < 0.05$ ). Most patients' data were obtained before sodium–glucose  
10 transporter 2 inhibitors were allowed to be used for HF in Japan, and the prescription rate of  
11 sodium–glucose transporter 2 inhibitors was low in both groups.

## 12 **Association of skeletal muscle structure with physical function**

13 Table 1 also shows the association of the ECW/ICW ratio with skeletal muscle  
14 structure and physical function. Patients with a high ECW/ICW ratio had a lower ICW,  
15 handgrip strength, and 6-minute walk distance than those with a low ECW/ICW ratio ( $p <$   
16  $0.05$ ). When analyzed separately for men and women, a high ECW/ICW ratio was associated  
17 with decreased handgrip strength in both men and women ( $32.6 \pm 7.0$  vs.  $24.6 \pm 7.4$  kg in  
18 men and  $18.6 \pm 5.1$  vs.  $14.8 \pm 4.8$  kg in women, respectively;  $p < 0.05$ ). There was a  
19 significant inverse correlation between handgrip strength and the ECW/ICW ratio in both

1 men and women ( $r = -0.583$  and  $-0.485$ , respectively;  $p < 0.05$ ) (Figure 2).

2           Figure 3 shows the results of the multivariate logistic regression analysis for  
3 predicting low muscle strength as defined by the Asian Working Group for Sarcopenia. We  
4 used the three models to examine the factors associated with low muscle strength. In Models  
5 1 and 2, we included the factors that were significant in the univariate analysis ( $p < 0.05$ ) and  
6 the ECW/ICW ratio as a continuous and categorical variable, respectively. We found that a  
7 high ECW/ICW ratio and low SMI were independently associated with low muscle strength  
8 in both models ( $p < 0.05$ ). In Model 3, we replaced the ECW/ICW ratio with ECW and ICW  
9 separately. We found that both an increasing ECW and decreasing ICW were independently  
10 associated with low muscle strength ( $p < 0.05$ ).

11           Figure 4 depicts the relationship between skeletal muscle structure and handgrip  
12 strength in a three-dimensional diagram using thin plate smoothing splines. An increasing  
13 ECW and/or decreasing ICW was associated with an increasing ECW/ICW ratio and reduced  
14 handgrip strength ( $p < 0.05$ ) (Figure 4A, B). Handgrip strength decreased with a decreasing  
15 SMI, and an increasing ECW/ICW ratio further decreased handgrip strength regardless of the  
16 SMI value ( $p < 0.05$ ) (Figure 4C). Therefore, a high ECW/ICW ratio (i.e., an increasing ECW  
17 and/or decreasing ICW) promotes muscle weakness regardless of skeletal muscle mass.

18

19 **Discussion**

1           This study demonstrated that a high ECW/ICW ratio of skeletal muscle was  
2 independently associated with muscle weakness regardless of skeletal muscle mass in  
3 patients with HF.

4           Patients with HF have structural and functional abnormalities of skeletal muscle as  
5 well as loss of muscle mass.<sup>3,18</sup> In this study, a higher ECW/ICW ratio was associated with  
6 lower handgrip strength even with the same muscle mass (Figure 4). Thus, the ECW/ICW  
7 ratio provides additional information about how the skeletal muscle structure is related to  
8 muscle strength apart from muscle mass. A recent study also showed that a high ECW/ICW  
9 ratio was associated with decreased muscle strength in patients with HF patients, but the  
10 sample size was small (n = 51).<sup>19</sup> The present study expanded on this finding in a larger  
11 sample (n = 190) by demonstrating the relationship of handgrip strength with the ECW and  
12 ICW separately.

13           The mechanisms underlying how a high ECW/ICW ratio is related to muscle  
14 weakness in patients with HF are as follows. A high ECW/ICW ratio reflects a decrease in  
15 ICW and/or an increase in ECW (Figure 4). A decrease in ICW and an increase in ECW were  
16 independently associated with muscle weakness (Figure 3). Thus, both a decreasing ICW and  
17 an increasing ECW contribute to the mechanism by which a high ECW/ICW ratio is  
18 associated with muscle weakness. ICW reflects the volume of muscle cells. Aging and  
19 malnutrition reportedly lead to loss and atrophy of muscle cells, resulting in decreasing ICW

1 and muscle strength.<sup>20</sup> When muscle cells shrink, more space is created between muscle cells  
2 (graphical abstract). This leads to lower ICW and a relative increase in ECW, resulting in a  
3 high ECW/ICW ratio.<sup>10</sup> If muscle volume remained the same, muscles with higher  
4 ECW/ICW ratios would have relatively fewer myocytes and lower muscle strength.<sup>21</sup> We  
5 found that a high ECW/ICW ratio was associated with older age and malnutrition,  
6 characterized by a low body mass index and low albumin level (Table 1). Therefore, aging  
7 and malnutrition may lead to loss and/or atrophy of muscle cells and result in low ICW, a  
8 high ECW/ICW ratio, and muscle weakness. The enlarged intercellular spaces directly impair  
9 the diffusion of oxygen from capillaries to myocytes, resulting in muscle weakness due to  
10 insufficient oxygen supply.<sup>3,22</sup> This study showed that increasing ECW was associated with  
11 muscle weakness independently of decreasing ICW. Thus, even if the volume of myocytes  
12 was the same, muscles with a higher ECW/ICW ratio would have more impaired muscle  
13 strength due to enlarged intercellular spaces and impaired oxygen diffusion. All patients in  
14 the present study had no clinical signs of congestion at the time of data collection. However,  
15 we found that a high ECW/ICW ratio was associated with a high B-type natriuretic peptide  
16 level, low renal function, and hypoalbuminemia (Table 1). These conditions may be  
17 associated with muscle edema due to subclinical fluid retention, resulting in an increasing  
18 ECW and ECW/ICW ratio.<sup>6,22</sup> Thus, the expansion of the intercellular space due to fluid  
19 retention and the subsequent increase in the ECW and ECW/ICW ratio may be associated

1 with muscle weakness.

2           This study had three main limitations. First, it was a single-center, retrospective,  
3 observational study. Second, the sample size was relatively small. Third, the data did not  
4 allow us to conclude whether a high ECW/ICW ratio is a cause or effect of muscle weakness.  
5 Although the speculated pathogenesis suggests that interventions to increase ICW and  
6 decrease ECW (i.e., overcoming malnutrition and reducing muscle edema) may help to  
7 recover the muscle strength in patients with HF who have a high ECW/ICW ratio and muscle  
8 weakness, future interventional studies are necessary to confirm this hypothesis.

9           In conclusion, a high ECW/ICW ratio of skeletal muscle was associated with loss of  
10 muscle strength independently of skeletal muscle mass in patients with HF. Future  
11 interventional studies are necessary to establish treatment strategies based on the ECW/ICW  
12 ratio.

13

#### 14 **Acknowledgment**

15 The authors would like to thank Angela Morben, DVM, ELS, from Edanz  
16 (<https://jp.edanz.com/ac>) for editing a draft of this manuscript.

17

#### 18 **Source of Funding**

19 This study was supported by a grant from the Japan Society for the Promotion of Science

1 (JSPS KAKENHI Grant No. 19K08582).

2

### 3 **Disclosures**

4 KY received research grants from Abbott Co., Ltd.; Otsuka Pharmaceutical Co., Ltd.;

5 Biotronik Japan Inc.; Japan Lifeline Co., Ltd.; and Fukuda Denshi. KY also received speakers’

6 bureau fees from Otsuka Pharmaceutical Co., Ltd.; Novartis; and Daiichi-Sankyo Co., Ltd.

7

### 8 **Data availability statement**

9 The research data will not be shared.

10

### 11 **References**

12 1. McNallan SM, Singh M, Chamberlain AM, Kane RL, Dunlay SM, Redfield MM, Weston

13 SA, Roger VL. Frailty and healthcare utilization among patients with heart failure in the

14 community. *JACC Heart Fail.* 2013;1:135–141.

15 2. Kinugasa Y, Yamamoto K. The challenge of frailty and sarcopenia in heart failure with

16 preserved ejection fraction. *Heart.* 2017;103:184–189.

17 3. Buono MGD, Arena R, Borlaug BA, Carbone S, Canada JM, Kirkman DL, Garten R,

18 Miguelez PR, Guazzi M, Lavie CJ, et al. Exercise intolerance in patients with heart failure:

19 JACC state-of-the-art review. *J Am Coll Cardiol.* 2019;73:2209–2225.

- 1 4. Huynh K, Ayers C, Butler J, Neeland I, Kritchevsky S, Pandey A, Barton G, Berry JD.  
2 Association between thigh muscle fat infiltration and incident heart failure: the Health ABC  
3 Study. *JACC Heart Fail.* 2022;10:485–493.
- 4 5. Huber FA, Grande FD, Rizzo S, Guglielmi G, Guggenberger R. MRI in the assessment of  
5 adipose tissues and muscle composition: how to use it. *Quant Imaging Med Surg.*  
6 2020;10:1636–1649.
- 7 6. Taniguchi M, Yamada Y, Fukumoto Y, Sawano S, Minami S, Ikezoe T, Watanabe Y,  
8 Kimura M, Ichihashi N. Increase in echo intensity and extracellular-to-intracellular water  
9 ratio is independently associated with muscle weakness in elderly women. *Eur J Appl Physiol.*  
10 2017;117:2001–2007.
- 11 7. Yamada Y, Yoshida T, Yokoyama K, Watanabe Y, Miyake M, Yamagata E, Yamada M,  
12 Kimura M; Kyoto-Kameoka Study. The extracellular to intracellular water ratio in upper legs  
13 is negatively associated with skeletal muscle strength and gait speed in older people. *J*  
14 *Gerontol A Biol Sci Med Sci.* 2017;72:293–298.
- 15 8. Ohashi Y, Joki N, Yamazaki K, Kawamura T, Tai R, Oguchi H, Yuasa R, Sakai K. Changes  
16 in the fluid volume balance between intra- and extracellular water in a sample of Japanese  
17 adults aged 15-88 yr old: a cross-sectional study. *Am J Physiol Renal Physiol.*  
18 2018;314:F614–F622.
- 19 9. Sartorio A, Malavolti M, Agosti F, Marinone PG, Caiti O, Battistini N, Bedogni G. Body



- 1 water distribution in severe obesity and its assessment from eight-polar bioelectrical  
2 impedance analysis. *Eur J Clin Nutr.* 2005;59:155–160.
- 3 10. Hioka A, Akazawa N, Okawa N, Nagahiro S. Increased total body  
4 extracellular-to-intracellular water ratio in community-dwelling elderly women is associated  
5 with decreased handgrip strength and gait speed. *Nutrition.* 2021;86:111175.
- 6 11. Omichi Y, Srivareerat M, Panorchan K, Greenhall GHB, Gupta S, Davenport A.  
7 Measurement of muscle strength in haemodialysis patients by pinch and hand grip strength  
8 and comparison to lean body mass measured by multifrequency bio-electrical impedance.  
9 *Ann Nutr Metab.* 2016;68:268–275.
- 10 12. Nishikawa H, Yoh K, Enomoto H, Ikeda N, Takashima T, Aizawa N, Nishimura T,  
11 Nishiguchi S, Iijima H. Predictors for grip strength loss in patients with chronic liver diseases.  
12 *In Vivo.* 2021;35:363–371.
- 13 13. Miyagi M, Kinugasa Y, Sota T, Yamada K, Ishisugi T, Hirai M, Yanagihara K, Haruki N,  
14 Matsubara K, Kato M, et al. Diaphragm muscle dysfunction in patients with heart failure. *J*  
15 *Card Fail.* 2018;24:209–216.
- 16 14. Lang RM, Badano LP, Avi VM, Afilalo J, Armstrong A, Ernande L, Flachskampf FA,  
17 Foster E, Goldstein SA, Kuznetsova T, et al. Recommendations for cardiac chamber  
18 quantification by echocardiography in adults: an update from the American Society of  
19 Echocardiography and the European Association of Cardiovascular Imaging. *J Am Soc*

- 1 *Echocardiogr.* 2015;28:1–39.e14.
- 2 15. Choi G, Yoon HJ, Song YJ, Jeong HM, Gu JE, Han M, Kim SH, Yoon JW, Kim H.
- 3 Consistency of the estimated target weights and ECW/TBW using BIA after hemodialysis in
- 4 patients between standing and lying-down positions. *BMC Nephrol.* 2022;23:106.
- 5 16. Davies SJ, Davenport A. The role of bioimpedance and biomarkers in helping to aid
- 6 clinical decision-making of volume assessments in dialysis patients. *Kidney Int.*
- 7 2014;86:489–496.
- 8 17. Chen LK, Woo J, Assantachai P, Auyeung TW, Chou MY, Iijima K, Jang HC, Kang L,
- 9 Kim M, Kim S, et al. Asian Working Group for Sarcopenia: 2019 Consensus Update on
- 10 Sarcopenia Diagnosis and Treatment. *J Am Med Dir Assoc.* 2020;21:300–307.e2.
- 11 18. Kuschel LB, Sonnenburg D, Engel T. Factors of muscle quality and determinants of
- 12 muscle strength: a systematic literature review. *Healthcare (Basel).* 2022;10:1937.
- 13 19. Umehara T, Kaneguchi K, Kawakami W, Katayama N, Kito N. Association of muscle
- 14 mass and quality with hand grip strength in elderly patients with heart failure. *Heart Vessels.*
- 15 2022;37:1380–1386.
- 16 20. Lorenzo I, Prat MS, Yébenes JC. The role of water homeostasis in muscle function and
- 17 frailty: a review. *Nutrition.* 2019;11:1857.
- 18 21. Yamada Y, Schoeller DA, Nakamura E, Morimoto T, Kimura M, Oda S. Extracellular
- 19 water may mask actual muscle atrophy during aging. *J Gerontol A Biol Sci Med Sci.*

1 2010;65:510–516.

2 22. Nóvoa FV, Gonçalves AA, Alvarenga JMG, Nobrega J, Cerqueira RJ, Mancio J, Moreira

3 AFL, Albuquerque Jr RR. Myocardial oedema: pathophysiological basis and implications for  
4 the failing heart. *ESC Heart Fail.* 2022;9:958–976.

5

## 6 **Figure legends**

7 **Figure 1.** Distribution of the ICW/ ECW ratio in the entire study cohort and sex-related  
8 difference in the ratio. ICW, intracellular water; ECW, extracellular water; IQR, interquartile  
9 range; SD, standard deviation.

10 **Figure 2.** Relationship between high ECW/ICW ratio and handgrip strength for men and  
11 women. ICW, intracellular water; ECW, extracellular water.

12 **Figure 3.** Multivariate logistic regression analysis for predicting low handgrip strength.  
13 Models 1 and 2 included the factors that were significant in the univariate analysis and the  
14 ECW/ICW ratio as a continuous and categorical variable, respectively. Model 3 included  
15 ECW and ICW instead of the ECW/ICW ratio. BMI, body mass index; HF, heart failure;  
16 LVEF, left ventricular ejection fraction; NYHA, New York Heart Association; eGFR,  
17 estimated glomerular filtration rate; SMI, skeletal muscle index; ICW, intracellular water;  
18 ECW, extracellular water.

19 **Figure 4.** Relationship between skeletal muscle structure and muscle strength in a

- 1 three-dimensional diagram using thin plate smoothing splines. (A) Relationship between
- 2 ECW, ICW, and the ECW/ICW ratio. (B) Relationship between ECW, ICW, and handgrip
- 3 strength. (C) Relationship between ECW/ICW ratio, SMI, and handgrip strength. ICW,
- 4 intracellular water; ECW, extracellular water; SMI, skeletal muscle index.

**Table 1. Characteristics of patients with low and high ECW/ICW ratio**

Characteristics	Overall (n=190)	Low ECW/ICW ratio (n=95)	High ECW/ICW ratio (n=95)	P value
Age (years)	75 (60-83)	69 (49-79)	81 (71-86)	<0.001
Male	122 (64.2)	61 (64.2)	61 (64.2)	1.000
BMI (kg/m <sup>2</sup> )	21.6±4.2	22.2±4.4	20.9±3.9	0.029
Systolic blood pressure (mmHg)	113±20	112±18	114±22	0.460
Prior heart failure admissions	44 (23.2)	20 (21.1)	24 (25.3)	0.610
LVEF (%)	48.6±15.5	44.9±16.9	52.2±13.0	0.001
NYHA Class III/IV (%)	42 (22.1)	13 (13.7)	29 (30.5)	0.008
Ischemic heart disease	48 (25.3)	18 (18.9)	30 (31.6)	0.066
<b>Co-morbidities</b>				
Hypertension	125 (65.8)	55 (57.9)	70 (73.7)	0.032
Diabetes	61 (32.1)	26 (27.4)	35 (36.8)	0.210
Dyslipidemia	84 (44.2)	37 (38.9)	47 (49.5)	0.188
Atrial fibrillation	78 (41.1)	35 (36.8)	43 (45.3)	0.300
COPD	12 (6.3)	7 (7.4)	5 (5.3)	0.767
Cerebrovascular disease	23 (12.1)	11 (11.6)	12 (12.6)	1.000
<b>Laboratory value at discharge</b>				
Sodium (mmol/L)	139±3	138±3	139±4	0.160
Hemoglobin (g/dL)	12.5±2.5	13.7±2.5	11.2±1.9	<0.001
Albumin (g/dL)	3.7±0.5	3.9±0.4	3.5±0.4	<0.001
eGFR (mL/min/1.73 m <sup>2</sup> )	46.2 (34.0-63.7)	58.3 (41.5-69.4)	40.2 (26.5-50.4)	<0.001
CRP (mg/dL)	0.17 (0.07-0.50)	0.22 (0.08-0.56)	0.14 (0.06-0.43)	0.232
BNP (pg/mL) (n=189)	209 (118-396)	167 (93-309)	286 (155-502)	<0.001
<b>Medications at discharge</b>				
ACE-I/ARB/ARNI	135 (71.1)	66 (69.5)	69 (72.6)	0.749
β-blockers	149 (78.4)	80 (84.2)	69 (72.6)	0.077
Mineralocorticoid receptor antagonists	86 (46.3)	57 (60.0)	29 (30.5)	<0.001

medRxiv preprint doi: <https://doi.org/10.1101/2023.08.09.23293909>; this version posted August 15, 2023. The copyright holder for this preprint (which was not certified by peer review) is the author/funder, who has granted medRxiv a license to display the preprint in perpetuity. All rights reserved. No reuse allowed without permission.

SGLT-2 inhibitors	5 (2.6)	5 (5.3)	0 (0.00)	0.059
Loop diuretics	172 (90.4)	87 (91.6)	85 (89.5)	0.805
Tolvaptan	34 (17.9)	14 (14.7)	20 (21.1)	0.344
<b>Skeletal muscle structure</b>				
SMI (kg/m <sup>2</sup> )	6.2±1.3	6.3±1.3	6.0±1.4	0.132
ECW (L/m <sup>2</sup> )	1.86±0.38	1.86±0.33	1.86±0.44	0.956
ICW (L/m <sup>2</sup> )	2.91±0.62	3.03±0.59	2.78±0.63	0.006
ECW/ICW ratio	0.64±0.03	0.62±0.02	0.67±0.02	<0.001
<b>Physical performance</b>				
Hand grip strength (kg)	24.4±9.3	27.6±9.3	21.1±8.1	<0.001
Low muscle strength	105 (55.3)	34 (35.8)	71 (74.7)	<0.001
6-minute walk distance (m) (n=90)	389±127	440±114	329±116	<0.001

medRxiv preprint doi: <https://doi.org/10.1101/2023.08.09.23293909>; this version posted August 15, 2023. The copyright holder for this preprint (which was not certified by peer review) is the author/funder, who has granted medRxiv a license to display the preprint in perpetuity. All rights reserved. No reuse allowed without permission.

Data given as n (%), mean ± standard deviation, or median (interquartile range). BMI, body mass index; GNRI, geriatric nutritional risk index; LVEF, left ventricular ejection fraction; NYHA, New York Heart Association; COPD, chronic obstructive pulmonary disease; BUN, blood urea nitrogen; eGFR, estimated glomerular filtration rate; CRP, C-reactive protein; BNP, B-type natriuretic peptide; ACE-I, angiotensin-converting enzyme inhibitor; ARB, angiotensin receptor blocker; ARNI, angiotensin receptor–neprilysin inhibitor; SGLT-2, sodium–glucose cotransporter 2; ICW, intracellular water; ECW, extracellular water; SMI, skeletal muscle index.

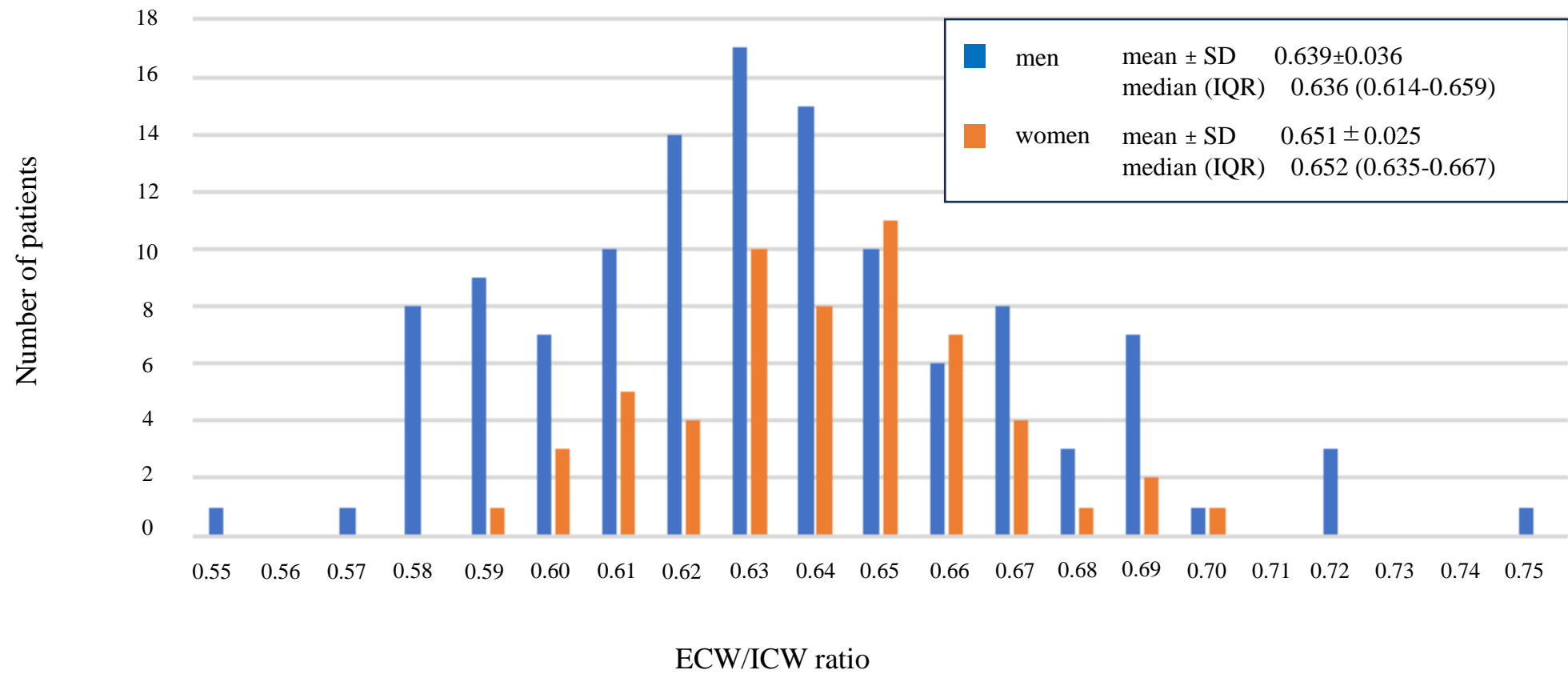


Figure 1

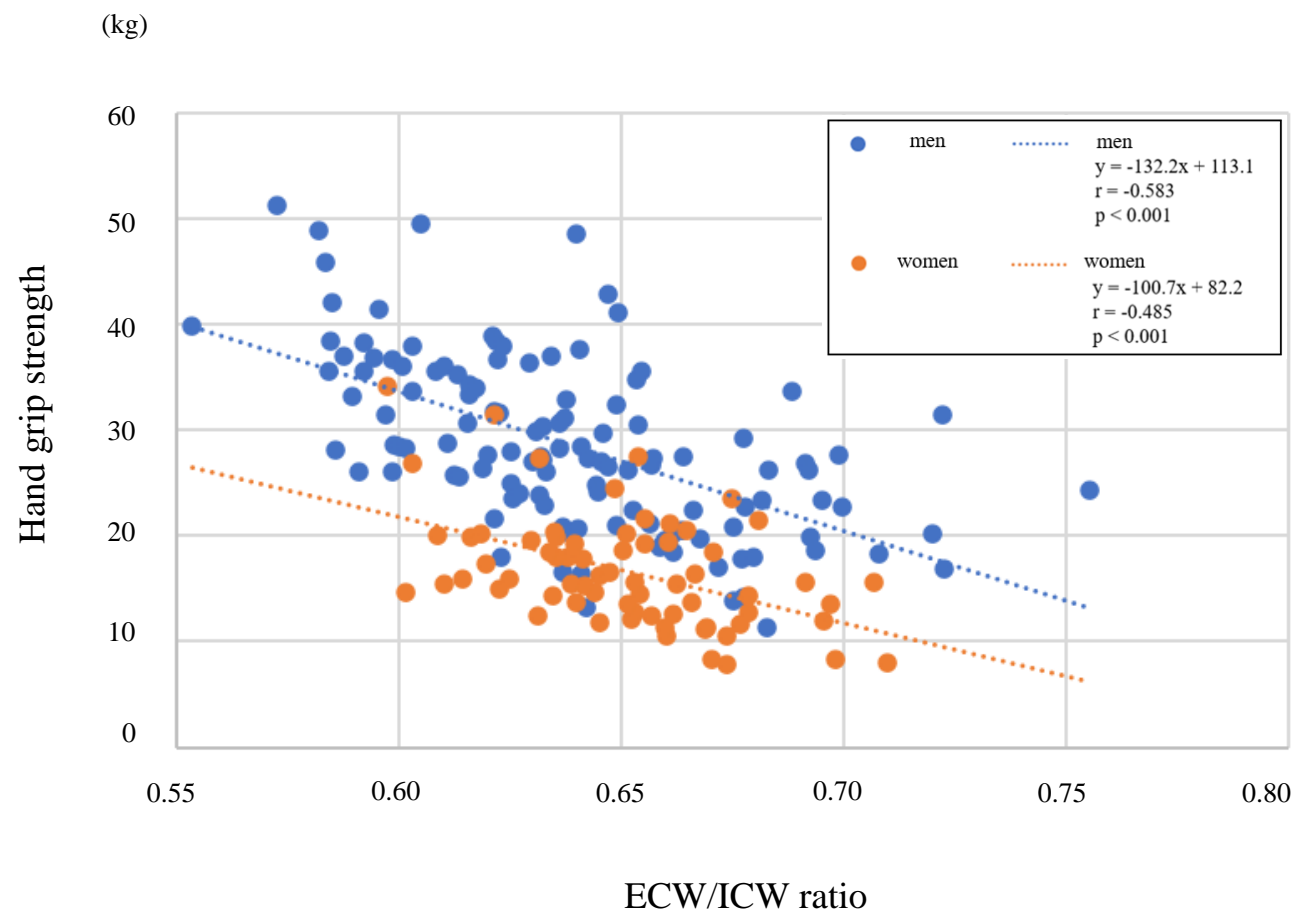


Figure 2



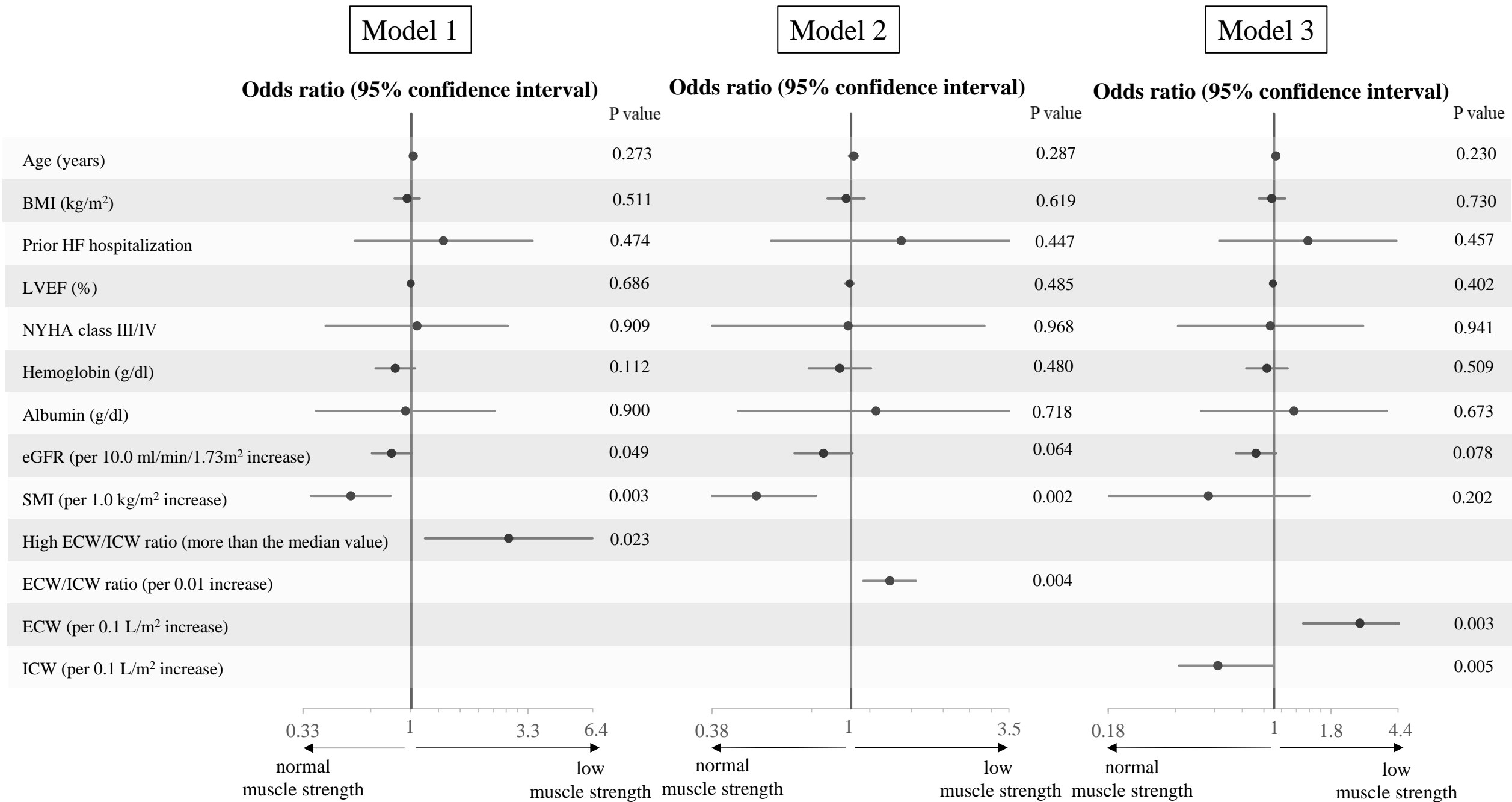
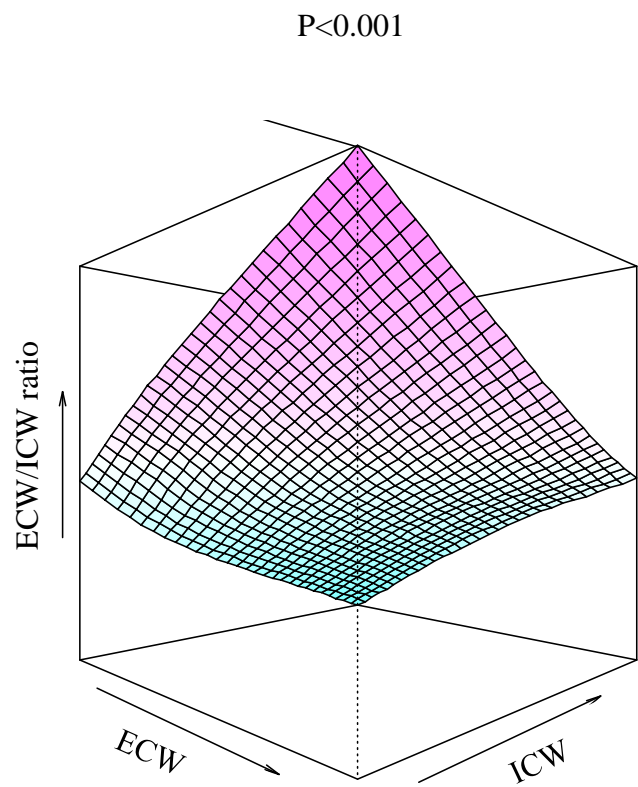
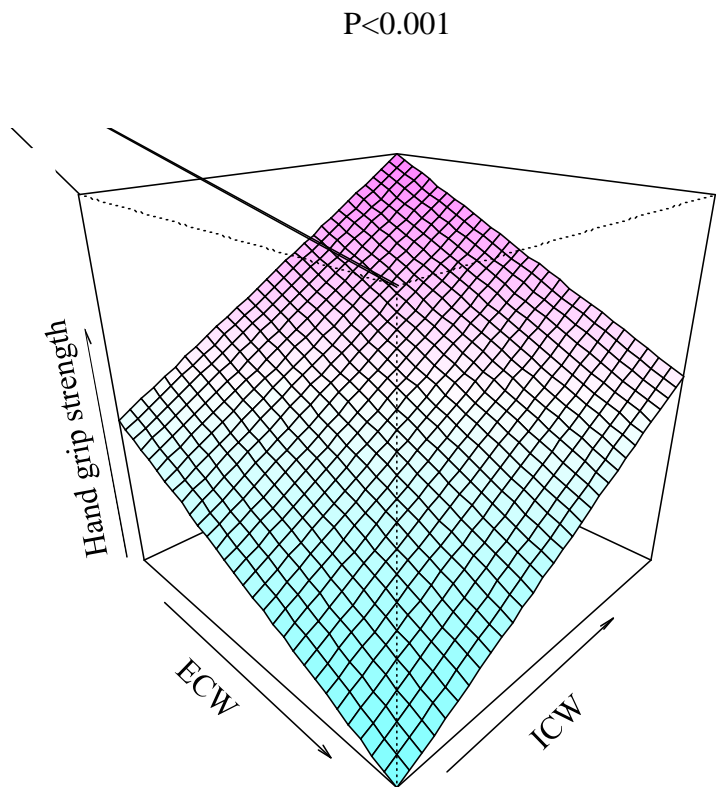


Figure 3

A



B



C

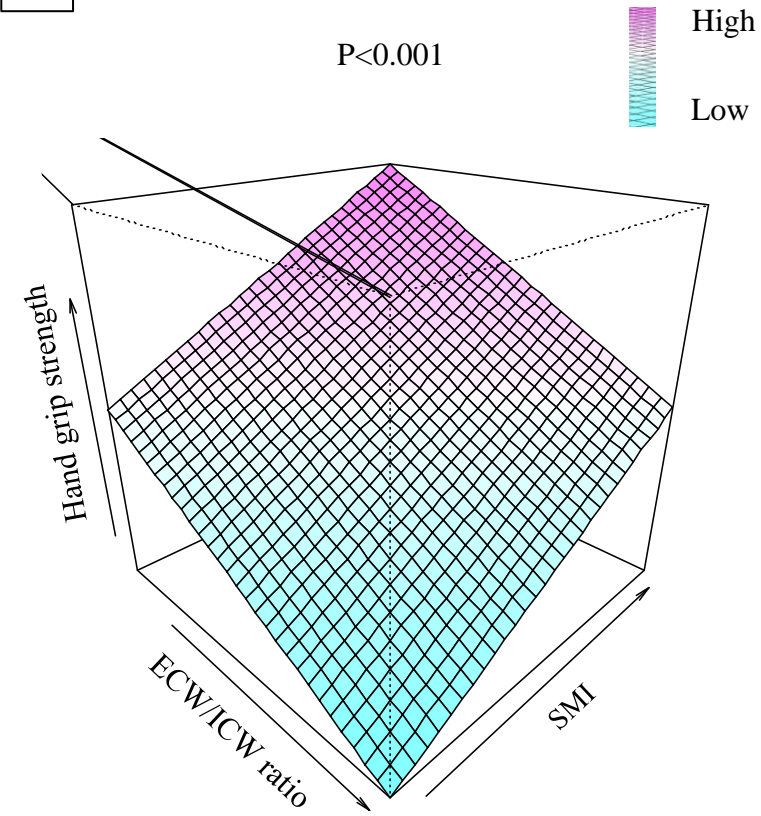


Figure 4