

Sputum microbiome α -diversity is a key feature of the COPD frequent exacerbator phenotype

Alexa A. Pragman,¹ Shane W. Hodgson,² Tianhua Wu,³ Allison Zank,² Cavan S. Reilly,³ and Chris H. Wendt¹

Affiliations: ¹Department of Medicine, Minneapolis VA Health Care System and Department of Medicine, University of Minnesota, Minneapolis, MN; ²Research Service, Minneapolis VA Health Care System, Minneapolis, MN; ³Division of Biostatistics, University of Minnesota, Minneapolis, MN.

Corresponding author: Alexa A. Pragman, Minneapolis VA Health Care System, 111F, 1 Veterans Dr., Minneapolis, MN 55417; 612-467-6671; 612-725-2273; alexa@umn.edu

Take home message: Low sputum microbiome α -diversity and decreased compositional stability (increased β -diversity) are associated with the COPD frequent exacerbator phenotype. Low sputum microbiome α -diversity is also associated with lung inflammation.

Authors' contributions: Conception and Design: A.A.P., C.S.R., and C.H.W. Data Acquisition: A.A.P., S.W.H., and A.Z. Data analysis: A.A.P., T.W., C.S.R., and C.H.W. Data interpretation: A.A.P., T.W., C.S.R., and C.H.W. Drafting the manuscript: A.A.P. Revision and final approval of the version to be published: All authors.

1 **ABSTRACT**

2 Background: The lung microbiome is an inflammatory stimulus whose role in chronic
3 obstructive pulmonary disease (COPD) pathogenesis is incompletely understood. We
4 hypothesized that the frequent exacerbator phenotype is associated with decreased α -
5 diversity and increased lung inflammation. Our objective was to assess correlations
6 between the frequent exacerbator phenotype, the microbiome, and inflammation
7 longitudinally during exacerbation-free periods.

8 Methods: We conducted a case-control longitudinal observational study of the frequent
9 exacerbator phenotype and characteristics of the airway microbiome. Eighty-one
10 subjects (41 frequent and 40 infrequent exacerbators) provided nasal, oral, and sputum
11 microbiome samples at two visits over 2-4 months. Exacerbation phenotype, relevant
12 clinical factors, and sputum cytokine values were associated with microbiome findings.

13 Results: The frequent exacerbator phenotype was associated with lower sputum
14 microbiome α -diversity ($p=0.0031$). This decrease in α -diversity among frequent
15 exacerbators was enhanced when the sputum bacterial culture was positive ($p<0.001$).
16 Older age was associated with decreased sputum microbiome α -diversity ($p=0.0030$).
17 Between-visit β -diversity was increased among frequent exacerbators and those who
18 experienced a COPD exacerbation between visits ($p=0.025$, $p=0.014$). Sputum cytokine
19 values did not differ based on exacerbation phenotype or other clinical characteristics.
20 IL-17A was negatively associated with α -diversity, while IL-6 and IL-8 were positively
21 associated with α -diversity ($p=0.012$, $p=0.012$, $p=0.0496$). IL-22, IL-17A, and IL-5 levels
22 were positively associated with *Moraxella* abundance ($p=0.027$, $p=0.0014$, $p=0.0020$).

23 Conclusions: Even during exacerbation-free intervals, the COPD frequent exacerbator
24 phenotype is associated with decreased sputum microbiome α -diversity and increased
25 β -diversity. Decreased sputum microbiome α -diversity and *Moraxella* abundance are
26 associated with lung inflammation.

27 INTRODUCTION

28

29 Chronic obstructive pulmonary disease (COPD) is a leading cause of death, however
30 the mechanisms driving its progression remain incompletely understood. One recently
31 recognized mechanism is inflammation triggered by the lung microbiome. Cycles of
32 recurrent lung infection, inflammation, and antibiotic use may disrupt the microbiome
33 with downstream consequences for lung function [1]. Even in the absence of clinical
34 infection, COPD patients with pathogenic bacteria in their airways have higher levels of
35 sputum and systemic inflammatory markers and increased pulmonary symptoms [2, 3].

36

37 The COPD frequent exacerbator phenotype identifies a subset of patients at high risk of
38 recurrent COPD exacerbation. Frequent exacerbators (FE) suffer increased morbidity
39 and mortality compared to those who experience exacerbations less often [4–7].

40 Approximately half of COPD exacerbations are attributed to bacterial infection, and
41 pathogenic bacteria such as *Haemophilus influenzae*, *Moraxella catarrhalis*, and
42 *Streptococcus pneumoniae* are often identified in the lung microbiome of COPD
43 patients even during periods of stable lung disease [3].

44

45 Inflammatory markers are increased in the sputum of FE [8–10] and COPD patients
46 colonized with potentially pathogenic bacteria [9, 11–15]. The COPD lung microbiome
47 provides an inflammatory stimulus, even in the absence of overt lung infection. In
48 particular, IL-17A, IL-8, IL-6, IL-1 β , IL-22, IL-5, and leukotriene B4 (LTB4) levels in
49 sputum have been associated with various components of the COPD lung microbiome

50 during exacerbation-free intervals [2, 8, 11–19]. It remains unclear which particular
51 components of the microbiome (bacterial biomass, α -diversity, the particular taxa
52 present, etc.) are most closely associated with sputum inflammation or the FE
53 phenotype.

54
55 We and others have shown that the sputum microbiome of FE has lower alpha diversity
56 compared to non-FE [18, 20–26]. Few of these studies, however, evaluate the COPD
57 lung microbiome solely during periods of clinical stability (when findings are less
58 influenced by exacerbation treatments), longitudinally, and including an analysis of
59 concurrent lung inflammation. We undertook the present case-control longitudinal
60 observational study of COPD exacerbation phenotype, the upper airway and sputum
61 microbiome, and lung inflammation to address these gaps.

62

63 **METHODS**

64 **Study design and recruitment.** We conducted a case-control longitudinal
65 observational study of exacerbation phenotype and characteristics of the upper airway
66 and sputum microbiome. All participants were recruited from a single site and were age
67 40 or older with COPD. Frequent exacerbators (FE) had at least one severe
68 exacerbation (an exacerbation requiring hospital admission or emergency department
69 visit) in the last 12 months, in accordance with descriptions found in GOLD guidelines
70 [27]. Infrequent exacerbators (IE) must have had 0 exacerbations in the prior 24
71 months. Recruitment and all visits/samples were deferred until participants had
72 recovered for at least 1 month from the most recent exacerbation. The protocol was

73 approved by the Minneapolis VA IRB (#4541-B). Additional details on recruitment and
74 other methods can be found in the supplementary information. Samples from 22
75 participants have been previously published (PRJNA543785) [20], however all data
76 analyzed here were re-sequenced for this analysis (PRJNA944199).

77

78 **Study procedures.** At visit 1, participants provided their medical history, underwent
79 spirometry, completed the St. George's Respiratory Questionnaire (SGRQ), and
80 provided oral wash, nasal swab, and induced sputum samples. All participants returned
81 for a second study visit ~2 months following visit 1, where they provided information on
82 interim COPD exacerbations, repeated the SGRQ, and provided oral, nasal, and
83 sputum samples. Visit 2 was deferred (for up to 4 months following visit 1) if the
84 participant reported any COPD exacerbations or antibiotic use in the 1 month prior to
85 the visit. Exacerbation phenotype was determined at visit 1 and was not revised based
86 on exacerbations observed during the study.

87

88 **Sample processing, 16S rRNA gene quantification, and MiSeq sequencing.** All
89 samples and negative controls were extracted using the MO BIO PowerSoil DNA
90 Isolation Kit (QIAGEN, Germantown, MD). Extracted DNA underwent 16S rRNA gene
91 quantification using droplet digital PCR (ddPCR) and 16S rRNA gene V4 MiSeq
92 sequencing. 16S rRNA V4 sequences were processed as described in the
93 supplementary information.

94

95 **Sputum culture results.** The clinical microbiology laboratory performed Gram stain
96 and aerobic culture on all sputum samples. Any organism identified in culture was
97 considered a pathogen.

98
99 **Cytokine analyses.** Sputum samples were submitted to the University of Minnesota
100 Cytokine Reference Laboratory for determination of LTB₄, GM-CSF, IL-8, IL-6, IL-1 β ,
101 IL-17A, IL-22, IL-5, and TNF- α (R&D Systems, Minneapolis, MN USA).

102
103 **Statistical analyses.** Data presented is from visit 1 only (V1) or both visits (BV), as
104 described in the text. Linear regression (LR), including random effects censored
105 regression models, linear mixed models (LMM), and generalized estimating equations
106 (GEE), were used to test for associations between variables. Analyses of α -diversity
107 metrics were adjusted for age, forced expiratory volume in 1 second percent predicted
108 (FEV_{1pp}), BMI, current tobacco use, and current alcohol use. β -diversity was assessed
109 via the Bray-Curtis dissimilarity metric and illustrated via principal coordinates analysis
110 (PCoA). Univariate PERMANOVA analyses of β -diversity were performed for each
111 anatomical site. Permutation tests were used to determine if within-subject visit 1-visit 2
112 similarity differed by permuting levels of categorical clinical factors. After eliminating
113 genera present in <10% of samples, tests of association between taxa and clinical
114 characteristics used Holm's procedure to control the family-wise error rate across all
115 taxa at 5%. GM-CSF and TNF- α were not analyzed and IL-22 results were
116 dichotomized (detected vs. not detected) as too few samples contained quantifiable
117 results. Random effects censored regression models were used to test for associations

118 between clinical or microbiome characteristics and cytokine levels (modeled as the
119 response variable). All analyses were conducted in R version 3.6.0.

120

121 **RESULTS**

122 **Cohort.** Eighty-one subjects consisting of 40 IE and 41 FE provided data and samples
123 during two visits over 2-4 months. Subjects were balanced with respect to age, gender,
124 race, ICS use, and dental care habits (Table 1). Consistent with the VA patient
125 population, most subjects were male. FE phenotype was associated with lower BMI
126 (median 27.9 vs. 30.2, $p=0.022$), lower FEV₁pp (44.0 vs. 52.5, $p<0.001$), and a higher
127 number of COPD exacerbations in the last 12 months (median 2 vs. 0, mean 2.39 vs.
128 0). FE were less likely than IE to be current tobacco users (19.5% FE vs. 42.5% IE,
129 $p=0.032$). Relationships between microbiome measures at each site and clinical factors
130 (exacerbation phenotype, age, FEV₁pp, ICS use, pack-years of tobacco use, current
131 tobacco use, toothbrushing frequency, SGRQ score, pathogen detection in sputum
132 samples, or experiencing a COPD exacerbation or use of an antibiotic between study
133 visits) were examined; unless mentioned, these analyses did not reveal an association.

134

135 **Alpha Diversity.** Alpha diversity was assessed using Shannon diversity, Simpson
136 diversity, and Chao1 metrics. For simplicity, Simpson diversity findings are discussed in
137 detail here (Figure E1), as they are largely consistent with the Shannon and Chao1
138 diversity findings.

139

140 *Nasal samples.* No significant relationships between nasal sample Simpson diversity
141 and any of the evaluated clinical factors were observed.

142

143 *Oral samples.* In multiple models of oral wash Simpson diversity, FEV1pp (a model
144 covariate) was consistently associated with increased oral wash Simpson diversity (FE
145 phenotype V1 LR, FEV1pp coefficient estimate [CE] 0.0008, 95% confidence interval
146 [CI, 0.00002, 0.0016], $p=0.027$, Figure 1A; BV GEE, FEV1pp CE 0.0007, 95% CI
147 [0.0001, 0.0013], $p=0.023$). In light of this association, we further evaluated potential
148 relationships between FE phenotype, FEV1pp and Simpson diversity. In a model of FE
149 phenotype, FEV1pp, and their interaction, FE phenotype and the interaction of FE
150 phenotype and FEV1pp were associated with oral wash Simpson diversity (interaction
151 BV GEE CE 0.0010, 95% CI [0.00002, 0.0020], $p=0.048$). Higher SGRQ scores
152 (indicating worse quality of life) were associated with lower oral wash Simpson diversity
153 (V1 LR, CE -0.0007, 95% CI [-0.0013, -0.00011], $p=0.018$, Figure 1B; and BV GEE, CE
154 -0.0005, 95% CI [-0.0009, -0.0001], $p=0.020$).

155

156 *Sputum samples.* The FE phenotype was associated with lower Simpson diversity in
157 sputum at V1 and BV (V1 LR, CE -0.077, 95% CI [-0.15, -0.0048], $p=0.041$, Figure E2;
158 BV GEE, CE -0.075, 95%CI [-0.12, -0.025], $p=0.0031$). Older age (another model
159 covariate) was also associated with lower sputum Simpson diversity in a model of
160 exacerbation phenotype (V1 LR, age CE -0.0090, 95% CI [-0.015, -0.0025], $p=0.0080$,
161 Figures 2a and E3; BV GEE, age CE -0.0074, 95% CI [-0.012, -0.0025], $p=0.0030$).

162

163 When exacerbation phenotype, age, and their interaction were included in a model of
164 sputum α -diversity, their interaction was significantly associated with lower Simpson
165 diversity (V1 LR, interaction CE -0.013, 95% CI [-0.024, -0.0024], $p=0.020$, Figure 2A;
166 BV GEE, interaction CE -0.0099, 95% CI [-0.018, -0.0017], $p=0.017$). This shows that
167 the association between exacerbation phenotype and sputum Simpson diversity differs
168 based on age.

169
170 Sputum samples from 6 subjects (3 FE and 3 IE) were positive for clinically relevant
171 respiratory pathogens (*Moraxella catarrhalis*, *Haemophilus influenzae*, methicillin-
172 resistant *Staphylococcus aureus*, and *Klebsiella pneumoniae*) at visit 1. Presence of a
173 pathogen was associated with lower sputum Simpson diversity at V1 and BV (V1 LR,
174 CE -0.19, 95% CI [-0.31, -0.074], $p=0.0028$; BV LMM, CE -0.20, 95% CI [-0.26, -0.14],
175 $p<0.001$). When FE phenotype, pathogen, and their interaction were included in the
176 model, only their interaction was significant at V1 and BV (V1 LR, CE -0.46, 95% CI [-
177 0.63, -0.30], $p<0.001$, Figure 2B; BV LMM, CE -0.27, 95% CI [-0.38, -0.15], $p<0.001$).
178 This shows that the association between sputum culture positivity during clinically stable
179 periods and Simpson diversity differs based on exacerbation phenotype.

180
181 In summary, sputum α -diversity is associated with FE phenotype, age, and pathogen
182 detection in sputum culture during clinically stable periods. The association between FE
183 phenotype and decreased sputum α -diversity is also modified by older age or the
184 identification of a pathogen from sputum culture.

185

186 *Alpha diversity over time.* Visit 1 values were significantly associated with visit 2 values
187 at all sites (data not shown). Self-reported COPD exacerbation or self-reported use of
188 an antibiotic for any indication in between study visits was not associated with α -
189 diversity at visit 2 (when baseline values were included in the models). Exacerbation
190 phenotype, age, FEV1pp, current tobacco use, pack-years of tobacco use, and SGRQ
191 score were not associated with a change in α -diversity between study visits.

192

193 **Beta diversity.** Environmental, equipment, and reagent control samples were distinct
194 from subject samples (Figure E4). After subsampling to include only subject samples
195 from visit 1, PCoA revealed significant clustering by anatomic site (PERMANOVA,
196 $p=0.001$ for all pair-wise testing; Figure 3).

197

198 *PERMANOVA analyses.* Clustering on PCoA based on exacerbation phenotype and
199 other clinical factors was investigated using PERMANOVA analyses. The analyses
200 were conducted at each anatomic site separately and using visit 1 data, unless noted
201 below. At visit 1, nasal samples clustered based on FEV1pp (PERMANOVA, $R^2=0.029$,
202 $p=0.033$). Several other PERMANOVA results with $p<0.10$ are provided in Table E1.
203 When visit 2 data were analyzed, sputum samples from participants who reported
204 between-visit antibiotic use for any indication clustered separately from participants who
205 did not report between-visit antibiotic use (PERMANOVA, $R^2=0.029$, $p=0.049$).

206

207 *Beta-diversity over time.* Visit 1 samples were compared to corresponding visit 2
208 samples for all subjects and sites to assess the stability of microbiome composition over

209 time. Among nasal samples, the FE phenotype and antibiotic use between study visits
210 was associated with decreased similarity between paired samples (permutation testing
211 [P], $p=0.044$ and $p=0.032$, respectively). There were no associations with oral wash
212 similarity between visits. Among sputum samples, the FE phenotype and experiencing a
213 COPD exacerbation between visits were associated with lower similarity between paired
214 samples (P, $p=0.025$ and $p=0.014$, respectively; Figure 4).

215
216 **Bacterial taxa.** We investigated the bacterial taxa present in each sample to determine
217 potential associations with relevant clinical factors (97 tests). Many taxa were
218 associated with clinical site, in accordance with clinical findings and the human
219 microbiome literature. Nasal samples were enriched with *Corynebacterium*,
220 *Staphylococcus*, *Cutibacterium*, and *Moraxella* (among others) compared with oral and
221 sputum samples (LR, all $p<0.05$ following Holm correction; Table E2). Oral and sputum
222 samples were enriched with *Veillonella*, *Rothia*, *Prevotella*, *Streptococcus*, and
223 *Haemophilus* (among others) when compared with nasal samples (LR, all $p<0.05$
224 following Holm correction; Table E3). Across all anatomic sites, *Mannheimia* abundance
225 was positively associated with age (LR, $p=0.0014$); *Mogibacterium* abundance was
226 lower among FE compared to IE ($p=0.029$); *Leuconostoc* abundance was negatively
227 associated with FEV1pp ($p=0.020$); *Bulleidia* abundance was higher among current
228 tobacco users ($p=0.013$); and *Pseudomonas* abundance was positively associated with
229 pack-years of tobacco use ($p<0.0001$).

230

231 **Sputum cytokine analyses.** Sputum sample cytokine levels were tested for an
232 association with clinical factors and sputum microbiome characteristics. Cytokines were
233 chosen for analysis based on prior reported associations with culture or microbiome
234 results, and analyses of the 7 evaluable cytokines are provided here. Samples from all
235 available visits were analyzed using GEE or random effects censored regression
236 models, as appropriate, accounting for visit.

237
238 *Cytokines associated with clinical characteristics.* None of the clinical factors
239 (exacerbation phenotype, age, FEV1pp, pack-years of tobacco exposure, current
240 tobacco use, or SGRQ score) were associated with cytokine levels in a random effects
241 censored regression model.

242
243 *Cytokines associated with Alpha diversity (Simpson).* Three sputum cytokines were
244 associated with sputum sample α -diversity on univariate analysis. IL-17A levels were
245 negatively associated with Simpson diversity, while IL-6 and IL-8 were positively
246 associated with Simpson diversity (random effects censored regression model, IL-17A
247 CE -1.3, 95% CI [-2.2, -0.50], $p=0.012$; IL-6 CE 6.0, 95% CI [2.2, 9.8], $p=0.012$; and IL-8
248 CE 4.2, 95% CI [1.0, 7.4], $p=0.0496$; respectively; Figure 5). IL-22, IL-5, IL-1 β , and
249 LTB4 were not associated with Simpson diversity.

250
251 *Cytokines associated with positive bacterial sputum culture.* Presence of typical COPD
252 pathogens in sputum samples, such as *Streptococcus*, *Moraxella*, or *Haemophilus*,
253 have been associated with exacerbation phenotype, increased inflammation, and

254 decreased α -diversity. We found that IL-22, IL-17A, and IL-5 levels were positively
255 associated with *Moraxella* abundance (GEE with Holm correction, IL-22 CE 10.26, 95%
256 CI [3.96, 16.55], $p=0.027$; random effects censored regression model with Holm
257 correction, IL-17A CE 2.01, 95% CI [1.02, 2.99], $p=0.0014$; and IL-5 CE 1.87, 95% CI [0.
258 93, 2.81], $p=0.002$, respectively; Figure 6). There were no significant associations with
259 other cytokines or the genera *Streptococcus* or *Haemophilus*.

260

261 **DISCUSSION**

262 Our case-control longitudinal observational study of the upper airway and sputum
263 microbiome during periods of clinical stability identified low sputum microbiome α -
264 diversity as a key feature of the COPD frequent exacerbator phenotype. In turn, low
265 sputum microbiome α -diversity was associated with airway bacterial colonization and
266 lung inflammation, two other characteristics consistent with the increased morbidity and
267 mortality associated with the frequent exacerbator phenotype. Additionally, the frequent
268 exacerbator phenotype was associated with decreased microbiome compositional
269 stability (increased β -diversity) on longitudinal sputum sampling. These findings suggest
270 that low α -diversity and an unstable sputum microbiome are key features of the frequent
271 exacerbator phenotype.

272

273 In addition to our findings on the frequent exacerbator phenotype, we also detected
274 associations between the sputum, oral, or nasal microbiome and age and COPD-related
275 symptom severity. Also, among the small number of subjects who experienced an
276 exacerbation between study visits, we observed compositional changes (increased β -

277 diversity) in the microbiome following the occurrence of a COPD exacerbation. Our
278 study determined that the frequent exacerbator phenotype is associated with low
279 sputum microbiome α -diversity. Low α -diversity among FE has been found by many—
280 but not all—investigators, possibly related to differences in how exacerbation frequency
281 was analyzed [20, 22–26, 28, 29]. In the case of the sputum microbiome, this
282 homogeneity was enhanced among older participants and among participants with
283 airway bacterial colonization. This phenotype also correlated with increased
284 *Mogibacterium*, an oral taxon associated with oral inflammation and stable COPD [30,
285 31].

286
287 In this study and others, older age was associated with decreased α -diversity among
288 sputum samples [23, 28]. Here, we also determined that older age is associated with a
289 further decrease in α -diversity among FE. Although aging is associated with an
290 increased likelihood of COPD diagnosis—as well as increased susceptibility to lung
291 infections and declines in lung function—the associations between aging and the
292 microbiome are relatively understudied. The aging COPD lung microbiome and the gut-
293 lung axis may exist at a juncture between declining lung function, immunosenescence,
294 nutritional changes, and increased antibiotic use [32]. Our work suggests that age itself
295 may influence the COPD lung microbiome, possibly via mechanisms independent of
296 typical factors (such as COPD exacerbations) that are known to influence the lung
297 microbiome.

298

299 Our analysis of associations between the microbiome and tobacco use encompassed
300 both pack-years of tobacco use as well as current (vs. former) tobacco use status.
301 Consistent with many of the previous studies [33–35], which identified more tobacco-
302 associated microbiome changes of the upper vs. lower airway, we identified that greater
303 pack-years of tobacco exposure were associated with increased *Pseudomonas*
304 abundance, while current (vs. former) tobacco use was associated with increased
305 *Bulleidia* abundance, primarily in the oropharynx. *Bulleidia* has previously been
306 associated with tobacco use and lung cancer [36, 37].

307
308 The present study also evaluated the longitudinal stability of the upper and lower airway
309 microbiome. Although microbiome findings were generally similar on repeated sampling
310 (low β -diversity), we identified several scenarios in which β -diversity was increased. The
311 sputum microbiome of FE exhibited decreased similarity (increased β -diversity)
312 compared with IE. Subjects who experienced a COPD exacerbation between study
313 visits also exhibited decreased compositional similarity vs. those who did not report
314 interim exacerbations.

315
316 We also found significant differences in sputum cytokine levels which associated with
317 sputum microbiome α -diversity, but not related to exacerbation phenotype, COPD
318 severity, age, tobacco use, or COPD-related quality of life. Low sputum α -diversity was
319 associated with increased concentrations of sputum IL-17A and decreased
320 concentrations of IL-6 and IL-8. *Moraxella* abundance in the sputum microbiome was
321 also associated with increased concentrations of IL-22, IL-17A, and IL-5. IL-17A, IL-22,

322 and IL-6 are key mediators of a Th17 response, often at mucosal sites [38]. IL-8 is a
323 neutrophil chemoattractant. IL-5 is involved in Th2 responses and eosinophil
324 recruitment. In prior COPD studies, elevated sputum IL-6 and IL-8 levels have been
325 associated with tobacco use, lower FEV₁pp, frequent exacerbations, and acute
326 exacerbation (vs. clinical stability) [8, 39–42]. Our finding of a positive association
327 between IL-6 and IL-8 levels and α -diversity is somewhat unexpected, but it is possible
328 that the acute rise in IL-6 and IL-8 observed during exacerbations is not reflected in our
329 samples, which were collected during exacerbation-free intervals. Furthermore, few
330 investigators have assessed the sputum microbiome—specifically low α -diversity—in
331 relationship to inflammatory cytokines.

332
333 Our manuscript has several strengths. We used well-defined FE and IE phenotypes
334 consistent with GOLD guidelines [27], allowing us address associations between the
335 microbiome and exacerbation phenotype. We deferred all study visits for 1 month
336 following a COPD exacerbation or antibiotic use for any reason, in order to focus on the
337 microbiome during periods of clinical stability. This approach minimizes, to the extent
338 possible in an observational study of COPD, the influence of recent antibiotic or
339 systemic steroid use on our microbiome findings. Lastly, our longitudinal approach
340 allowed us to assess the stability of microbiome composition in relationship to
341 exacerbation phenotype and recent COPD exacerbations. Our use of sputum
342 inflammatory cytokines, in the context of the microbiome findings, identified clinical
343 correlates of our microbiome findings.

344

345 Despite these strengths, our study had several relative weaknesses. We are unable to
346 assess the influence of sex on the microbiome, as our single-center study was
347 conducted at a Veterans Affairs hospital with a limited female population. Sputum
348 samples may be contaminated by saliva during expectoration and therefore may not
349 reflect only the lower airway microbiome. Despite this potential limitation, we note that
350 most of our key microbiome findings were identified only in the sputum microbiome and
351 not identified in the oral microbiome. This suggests that sputum analysis can identify
352 microbiome associations unique to the lower airways, despite potential upper airway
353 contamination.

354

355 In conclusion, we found that FEs exhibit lower sputum microbiome α -diversity, which is
356 enhanced by older age or bacterial colonization of the airways. Sputum microbiome α -
357 diversity is a significant correlate of lung inflammation. The sputum microbiome
358 composition of FEs changes more over time when compared to the compositional
359 stability of IEs.

360 **ACKNOWLEDGEMENTS**

361

362 The authors wish to thank Ms. Susan Johnson, LPN, for assistance with study
363 recruitment. This material is based upon work supported by the Department of Veterans
364 Affairs, Veterans Health Administration, Office of Research and Development (Clinical
365 Sciences Research and Development). The views expressed in this article are those of
366 the authors and do not necessarily reflect the position or policy of the Department of
367 Veterans Affairs or the United States government. This publication was supported by
368 Grant Number 1UL1RR033183 from the National Center for Research Resources
369 (NCRR) and by Grant Number 8 UL1 TR000114-02 from the National Center for
370 Advancing Translational Sciences (NCATS) of the National Institutes of Health (NIH) to
371 the University of Minnesota Clinical and Translational Science Institute (CTSI). Its
372 contents are solely the responsibility of the authors and do not necessarily represent the
373 official views of the CTSI or the NIH. The University of Minnesota CTSI is part of a
374 national Clinical and Translational Science Award (CTSA) consortium created to
375 accelerate laboratory discoveries into treatments for patients.

376

377 Conflict of interest: None of the authors declare any potential conflict of interest.

378

379 Financial Support: U.S. Department of Veterans Affairs Office of Research and
380 Development 1 IK2 CX001095, 1 I01 CX002130, and NIH/University of Minnesota
381 Clinical and Translational Science Institute 1UL1RR033183, 8 UL1 TR000114-02.

382 **Tables:**

383

384 **Table 1. Subject Baseline Characteristics**

	Infrequent Exacerbator (N=40)	Frequent Exacerbator (N=41)	Overall (N=81)	<i>p</i> value *
Gender, Male (%)	40 (100)	40 (97.6)	80 (98.8)	1.00
Age, median (IQR)	69 (5)	69 (8)	69 (7)	0.632
Race, Caucasian white (%)	37 (92.5)	40 (97.6)	77 (95.1)	0.359
BMI, median (IQR)	30.2 (7.79)	27.93 (9.26)	29.57 (8.46)	0.022
COPD Severity (%)				
Moderate	24 (60)	14 (34.1)	38 (46.9)	
Severe	14 (35)	18 (43.9)	32 (39.5)	
Very Severe	2 (5)	9 (22)	11 (13.6)	
FEV ₁ % predicted, median (IQR)	52.5 (19)	44 (17)	48 (19)	< 0.001
COPD exacerbations in the last 12 months, median (IQR)	0 (0)	2 (1)	1 (2)	< 0.001
COPD hospitalizations in the last 12 months, median (IQR)	0 (0)	0 (1)	0 (0)	< 0.001
Inhaled corticosteroids, Yes (%)	11 (27.5)	14 (34.1)	25 (30.9)	0.632
Pack-years of smoking, median (IQR)	41 (23.12)	50 (23)	50 (24.5)	0.059
Current tobacco use, Yes (%)	17 (42.5)	8 (19.5)	25 (30.9)	0.032
Current alcohol use, Yes (%)	24 (60)	32 (78)	56 (69.1)	0.096
Brush teeth ≥ once daily (%) ^a	30 (75) ^a	30 (75) ^a	60 (75) ^a	1.00
SGRQ Score, median (IQR)	43.62 (10.49)	52.4 (20.6)	47.29 (17.84)	0.074

385 Frequencies and percentages are presented unless specified otherwise. BMI, body
 386 mass index; COPD, chronic obstructive pulmonary disease; FEV₁% predicted, forced
 387 expiratory volume in 1 s, percent of predicted value; IQR, interquartile range; SGRQ, St.
 388 George's Respiratory Questionnaire

389 *A Two-Sample t test was conducted for all continuous variables and a Fisher exact test
 390 for all categorical variables

391 ^aOne subject did not provide frequency of brushing teeth

392

393 **REFERENCES**

394

395 1. Sethi S, Maloney J, Grove L *et al.* Airway inflammation and bronchial bacterial
396 colonization in chronic obstructive pulmonary disease. *Am J Respir Crit Care Med*
397 2006; 173: 991-998.

398 2. Desai H, Eschberger K, Wrona C *et al.* Bacterial Colonization Increases Daily
399 Symptoms in Patients with Chronic Obstructive Pulmonary Disease. *Ann Am*
400 *Thorac Soc* 2014; 11: 303-309.

401 3. Sethi S, Murphy TF. Bacterial infection in chronic obstructive pulmonary disease in
402 2000: a state-of-the-art review. *Clinical Microbiology Reviews* 2001; 14: 336-363.

403 4. Carolan BJ, Sutherland ER. Clinical phenotypes of chronic obstructive pulmonary
404 disease and asthma: recent advances. *J Allergy Clin Immunol* 2013; 131: 627-34;
405 quiz 635.

406 5. Hurst JR, Vestbo J, Anzueto A *et al.* Susceptibility to exacerbation in chronic
407 obstructive pulmonary disease. *N Engl J Med* 2010; 363: 1128-1138.

408 6. Soler-Cataluna JJ, Martinez-Garcia MA, Roman Sanchez P *et al.* Severe acute
409 exacerbations and mortality in patients with chronic obstructive pulmonary disease.
410 *Thorax* 2005; 60: 925-931.

411 7. Spencer S, Jones PW. Time course of recovery of health status following an
412 infective exacerbation of chronic bronchitis. *Thorax* 2003; 58: 589-593.

413 8. Bhowmik A, Seemungal TA, Sapsford RJ *et al.* Relation of sputum inflammatory
414 markers to symptoms and lung function changes in COPD exacerbations. *Thorax*
415 2000; 55: 114-120.

- 416 9. Garcha DS, Thurston SJ, Patel AR *et al.* Changes in prevalence and load of airway
417 bacteria using quantitative PCR in stable and exacerbated COPD. *Thorax* 2012;
418 67: 1075-1080.
- 419 10. Thomsen M, Ingebrigtsen TS, Marott JL *et al.* Inflammatory biomarkers and
420 exacerbations in chronic obstructive pulmonary disease. *JAMA* 2013; 309: 2353-
421 2361.
- 422 11. Barker BL, Haldar K, Patel H *et al.* Association between pathogens detected using
423 quantitative polymerase chain reaction with airway inflammation in COPD at stable
424 state and exacerbations. *Chest* 2014; 147: 46-55.
- 425 12. Hill AT, Campbell EJ, Hill SL *et al.* Association between airway bacterial load and
426 markers of airway inflammation in patients with stable chronic bronchitis. *Am J*
427 *Med* 2000; 109: 288-295.
- 428 13. Marin A, Garcia-Aymerich J, Sauleda J *et al.* Effect of Bronchial Colonisation on
429 Airway and Systemic Inflammation in Stable COPD. *COPD* 2012; 9: 121-130.
- 430 14. Patel IS, Seemungal TA, Wilks M *et al.* Relationship between bacterial colonisation
431 and the frequency, character, and severity of COPD exacerbations. *Thorax* 2002;
432 57: 759-764.
- 433 15. Stockley RA, Hill AT, Hill SL *et al.* Bronchial inflammation: its relationship to
434 colonizing microbial load and alpha(1)-antitrypsin deficiency. *Chest* 2000; 117:
435 291S-3S.
- 436 16. Singh R, Mackay AJ, Patel AR *et al.* Inflammatory thresholds and the species-
437 specific effects of colonising bacteria in stable chronic obstructive pulmonary
438 disease. *Respir Res* 2014; 15: 114.

- 439 17. Ramsheh MY, Haldar K, Esteve-Codina A *et al.* Lung microbiome composition and
440 bronchial epithelial gene expression in patients with COPD versus healthy
441 individuals: a bacterial 16S rRNA gene sequencing and host transcriptomic
442 analysis. *Lancet Microbe* 2021; 2: e300-e310.
- 443 18. Wang Z, Locantore N, Haldar K *et al.* Inflammatory Endotype-associated Airway
444 Microbiome in Chronic Obstructive Pulmonary Disease Clinical Stability and
445 Exacerbations: A Multicohort Longitudinal Analysis. *Am J Respir Crit Care Med*
446 2021; 203: 1488-1502.
- 447 19. Tufvesson E, Bjermer L, Ekberg M. Patients with chronic obstructive pulmonary
448 disease and chronically colonized with *Haemophilus influenzae* during stable
449 disease phase have increased airway inflammation. *Int J Chron Obstruct Pulmon*
450 *Dis* 2015; 10: 881-889.
- 451 20. Pragman AA, Knutson KA, Gould TJ *et al.* Chronic obstructive pulmonary disease
452 upper airway microbiota alpha diversity is associated with exacerbation phenotype:
453 a case-control observational study. *Respir Res* 2019; 20: 114.
- 454 21. Wang Z, Singh R, Miller BE *et al.* Sputum microbiome temporal variability and
455 dysbiosis in chronic obstructive pulmonary disease exacerbations: an analysis of
456 the COPDMAP study. *Thorax* 2017; 73: 331-338.
- 457 22. Mayhew D, Devos N, Lambert C *et al.* Longitudinal profiling of the lung microbiome
458 in the AERIS study demonstrates repeatability of bacterial and eosinophilic COPD
459 exacerbations. *Thorax* 2018; 73: 422-430.

- 460 23. Li W, Wang B, Tan M *et al.* Analysis of sputum microbial metagenome in COPD
461 based on exacerbation frequency and lung function: a case control study. *Respir*
462 *Res* 2022; 23: 321.
- 463 24. Dicker AJ, Huang JTJ, Lonergan M *et al.* The sputum microbiome, airway
464 inflammation, and mortality in chronic obstructive pulmonary disease. *J Allergy Clin*
465 *Immunol* 2021; 147: 158-167.
- 466 25. Yang CY, Li SW, Chin CY *et al.* Association of exacerbation phenotype with the
467 sputum microbiome in chronic obstructive pulmonary disease patients during the
468 clinically stable state. *J Transl Med* 2021; 19: 121.
- 469 26. Su L, Qiao Y, Luo J *et al.* Exome and Sputum Microbiota as Predictive Markers of
470 Frequent Exacerbations in Chronic Obstructive Pulmonary Disease. *Biomolecules*
471 2022; 12
- 472 27. Agustí A, Celli BR, Criner GJ *et al.* Global Initiative for Chronic Obstructive Lung
473 Disease 2023 Report: GOLD Executive Summary. *Eur Respir J* 2023; 61
- 474 28. Millares L, Pascual S, Montón C *et al.* Relationship between the respiratory
475 microbiome and the severity of airflow limitation, history of exacerbations and
476 circulating eosinophils in COPD patients. *BMC Pulm Med* 2019; 19: 112.
- 477 29. Wang Z, Maschera B, Lea S *et al.* Airway host-microbiome interactions in chronic
478 obstructive pulmonary disease. *Respir Res* 2019; 20: 113.
- 479 30. Li Q, Pu Y, Lu H *et al.* *Porphyromonas*, *Treponema*, and *Mogibacterium* promote
480 IL8/IFN γ /TNF α -based pro-inflammation in patients with medication-related
481 osteonecrosis of the jaw. *J Oral Microbiol* 2020; 13: 1851112.

- 482 31. Huang YJ, Sethi S, Murphy T *et al.* Airway microbiome dynamics in exacerbations
483 of chronic obstructive pulmonary disease. *J Clin Microbiol* 2014; 52: 2813-2823.
- 484 32. Saint-Criq V, Lugo-Villarino G, Thomas M. Dysbiosis, malnutrition and enhanced
485 gut-lung axis contribute to age-related respiratory diseases. *Ageing Res Rev* 2020;
486 66: 101235.
- 487 33. Morris A, Beck JM, Schloss PD *et al.* Comparison of the respiratory microbiome in
488 healthy nonsmokers and smokers. *Am J Respir Crit Care Med* 2013; 187: 1067-
489 1075.
- 490 34. Pfeiffer S, Herzmann C, Gaede KI *et al.* Different responses of the oral, nasal and
491 lung microbiomes to cigarette smoke. *Thorax* 2022; 77: 191-195.
- 492 35. Ying KL, Brasky TM, Freudenheim JL *et al.* Saliva and Lung Microbiome
493 Associations with Electronic Cigarette Use and Smoking. *Cancer Prev Res (Phila)*
494 2022; 15: 435-446.
- 495 36. Camelo-Castillo AJ, Mira A, Pico A *et al.* Subgingival microbiota in health
496 compared to periodontitis and the influence of smoking. *Front Microbiol* 2015; 6:
497 119.
- 498 37. Tsay J-CJ, Wu BG, Badri MH *et al.* Airway Microbiota Is Associated with
499 Upregulation of the PI3K Pathway in Lung Cancer. *American Journal of*
500 *Respiratory and Critical Care Medicine* 2018; 198: 1188-1198.
- 501 38. Schnell A, Littman DR, Kuchroo VK. T_H17 cell heterogeneity and its role in tissue
502 inflammation. *Nat Immunol* 2023; 24: 19-29.

- 503 39. Hacievliyagil SS, Gunen H, Mutlu LC *et al.* Association between cytokines in
504 induced sputum and severity of chronic obstructive pulmonary disease. *Respir*
505 *Med* 2006; 100: 846-854.
- 506 40. Wedzicha JA, Seemungal TA, MacCallum PK *et al.* Acute exacerbations of chronic
507 obstructive pulmonary disease are accompanied by elevations of plasma
508 fibrinogen and serum IL-6 levels. *Thromb Haemost* 2000; 84: 210-215.
- 509 41. Wilkinson TM, Hurst JR, Perera WR *et al.* Effect of interactions between lower
510 airway bacterial and rhinoviral infection in exacerbations of COPD. *Chest* 2006;
511 129: 317-324.
- 512 42. Aaron SD, Angel JB, Lunau M *et al.* Granulocyte inflammatory markers and airway
513 infection during acute exacerbation of chronic obstructive pulmonary disease. *Am J*
514 *Respir Crit Care Med* 2001; 163: 349-355.
- 515
- 516

517 **FIGURE LEGENDS.**

518 **Figure 1. Oral Wash α -diversity is associated with FEV1pp and COPD-related**

519 **quality of life.** A. Oral wash Simpson diversity at visit 1 is associated with FEV1pp (a

520 model covariate) in a model of FE phenotype (FE phenotype V1 LR, FEV1pp CE

521 0.0008, 95% CI [0.00002, 0.0016], $p=0.027$. FEV1pp is associated with low Simpson

522 diversity in the adjusted model. B. Oral wash Simpson diversity at visit 1 is associated

523 with SGRQ score at Visit 1 (LR, CE -0.0007, 95% CI [-0.0013, -0.00011], $p=0.018$).

524 Higher SGRQ scores indicate worse COPD-related quality of life.

525

526 **Figure 2. Sputum α -diversity is associated with exacerbation phenotype, age, and**

527 **culture results.** A. Both the FE phenotype and older age were significantly associated

528 with lower Simpson diversity at Visit 1 (LR, CE -0.077, 95% CI [-0.15, -0.0048], $p=0.041$

529 and CE -0.0090, 95% CI [-0.015, -0.0025], $p=0.0080$, respectively). When the

530 interaction of exacerbation phenotype and age was added to the model, only the

531 interaction of age and exacerbation phenotype was significant (LR, CE -0.013, 95% CI

532 [-0.024, -0.0024], $p=0.020$). The regression lines represent the association between

533 phenotype, age, and Simpson diversity. The significant interaction between age and

534 phenotype indicates that older FE have lower sputum α -diversity than younger FE or

535 older IE. B. Presence of a pathogen in sputum culture was associated with lower

536 sputum Simpson diversity at V1 (LR, CE -0.19, 95% CI [-0.31, -0.074], $p=0.0028$). When

537 FE phenotype, pathogen, and their interaction were included in the model, only their

538 interaction was significant (V1 LR, CE -0.46, 95% CI [-0.63, -0.30], $p<0.001$). The

539 association between sputum culture positivity during clinically stable periods and
540 Simpson diversity differs based on exacerbation phenotype.

541
542 **Figure 3. Beta-diversity reveals clustering by anatomic site.** Principal coordinate
543 analysis using Bray-Curtis dissimilarity on visit 1 samples demonstrating significant
544 clustering by anatomic site (PERMANOVA, $p=0.001$ for all pair-wise testing). Centroids
545 are illustrated by black dots, with lines connecting each sample to its corresponding
546 centroid.

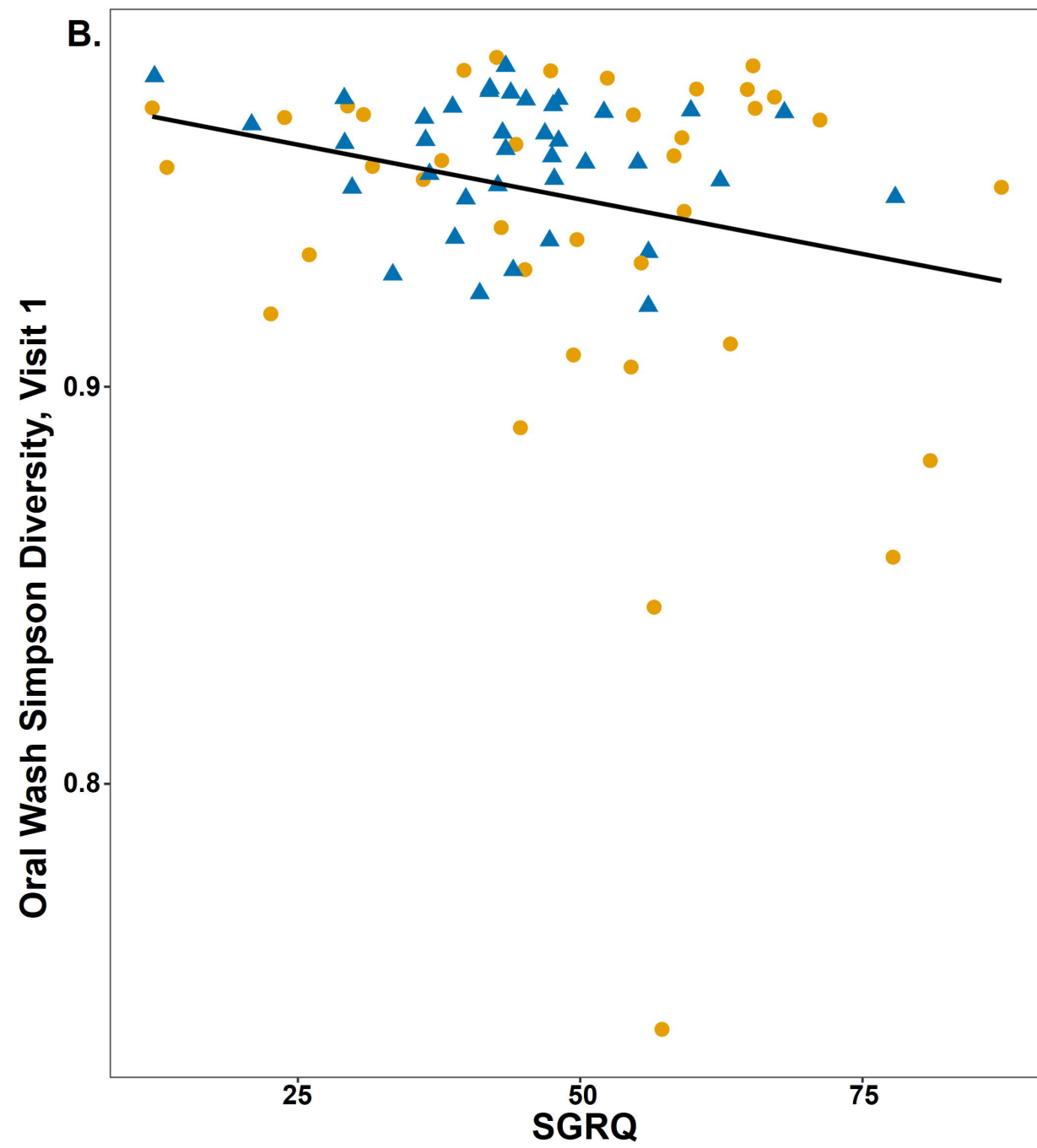
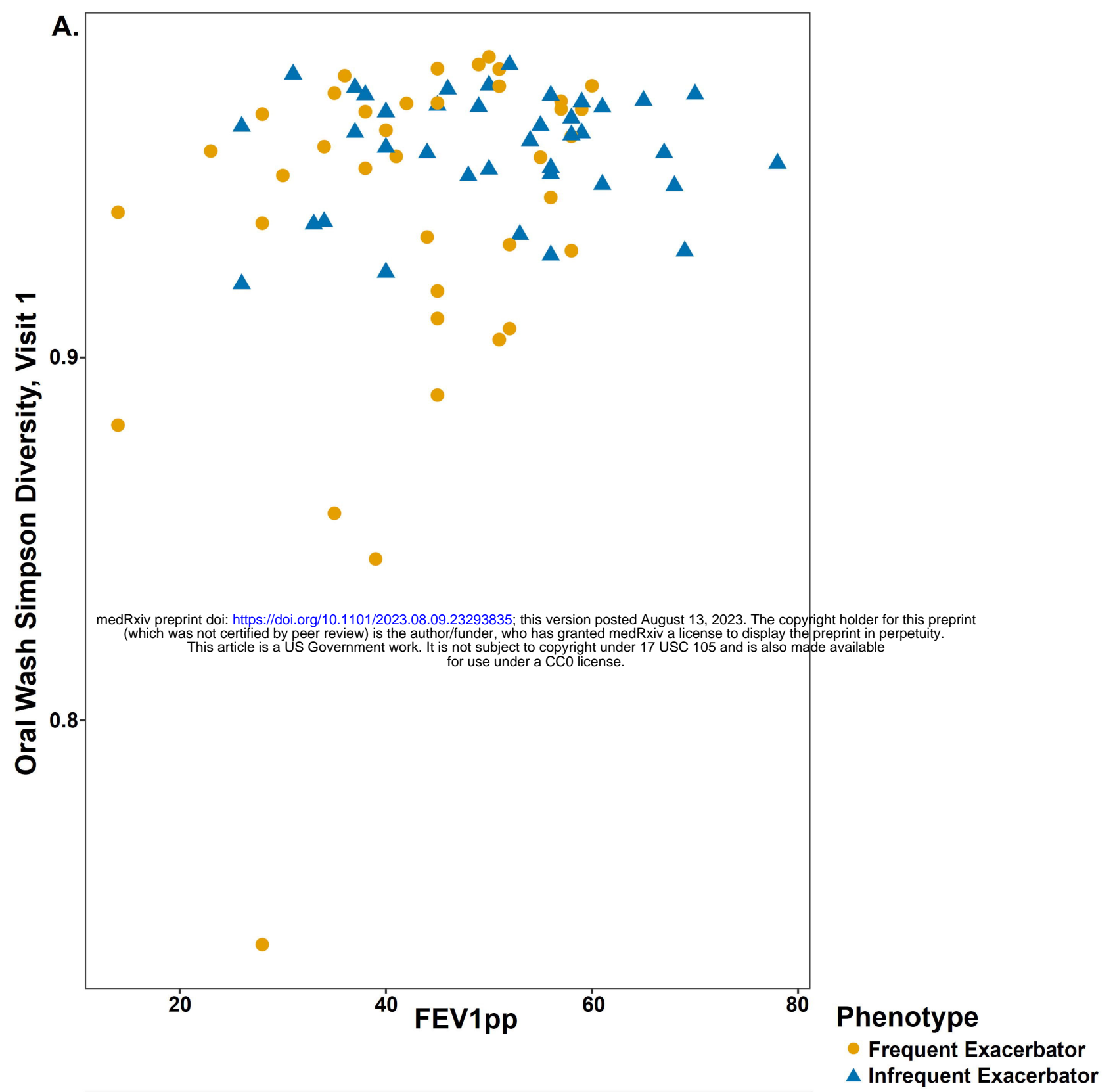
547
548 **Figure 4. Within-subject microbiome composition stability.** Self-report of a COPD
549 exacerbation between study visits corresponded with an increase in microbiome
550 compositional changes (increased β -diversity, or a decrease in sample similarity)
551 compared with subjects who did not experience a COPD exacerbation between study
552 visits.

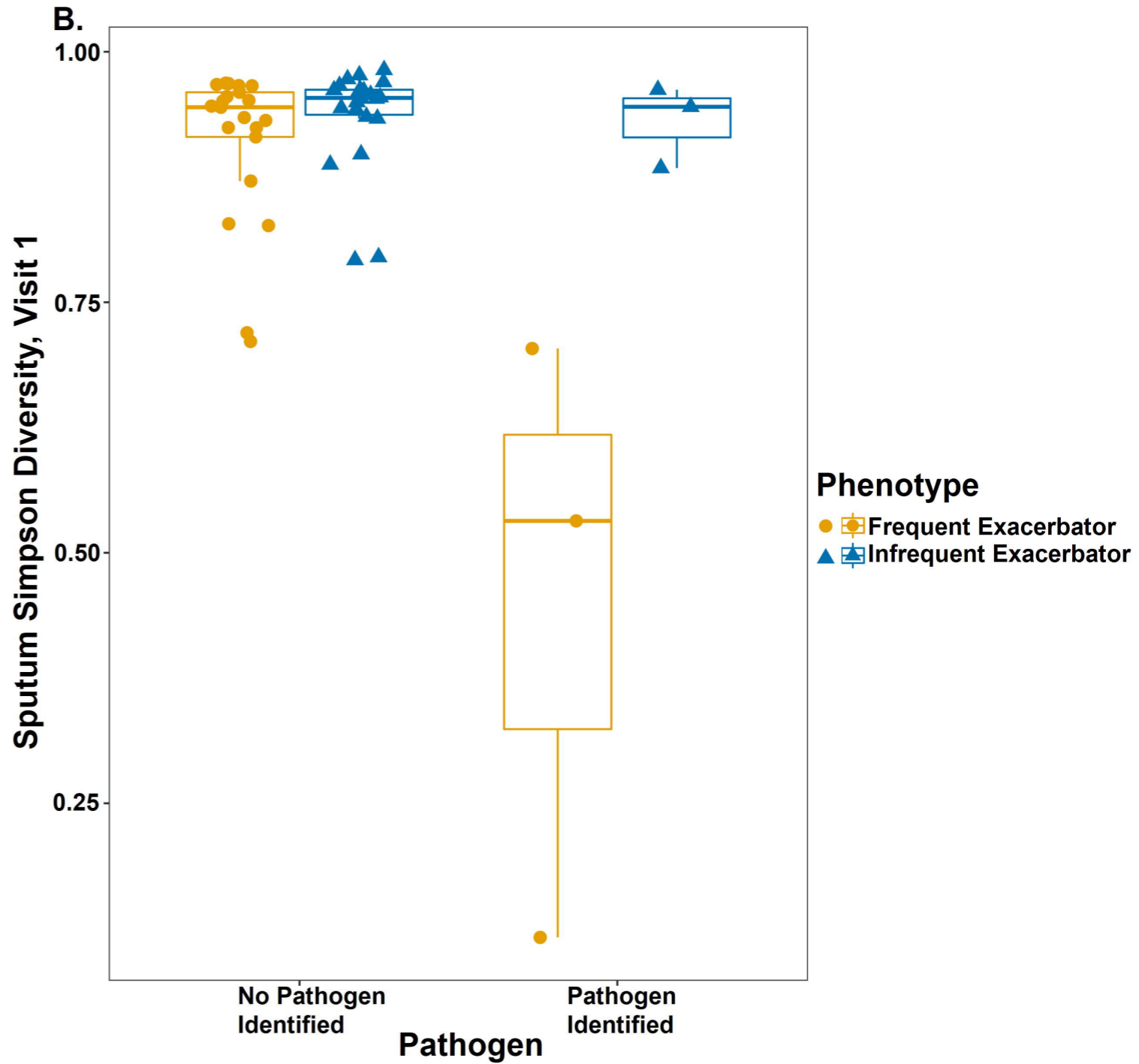
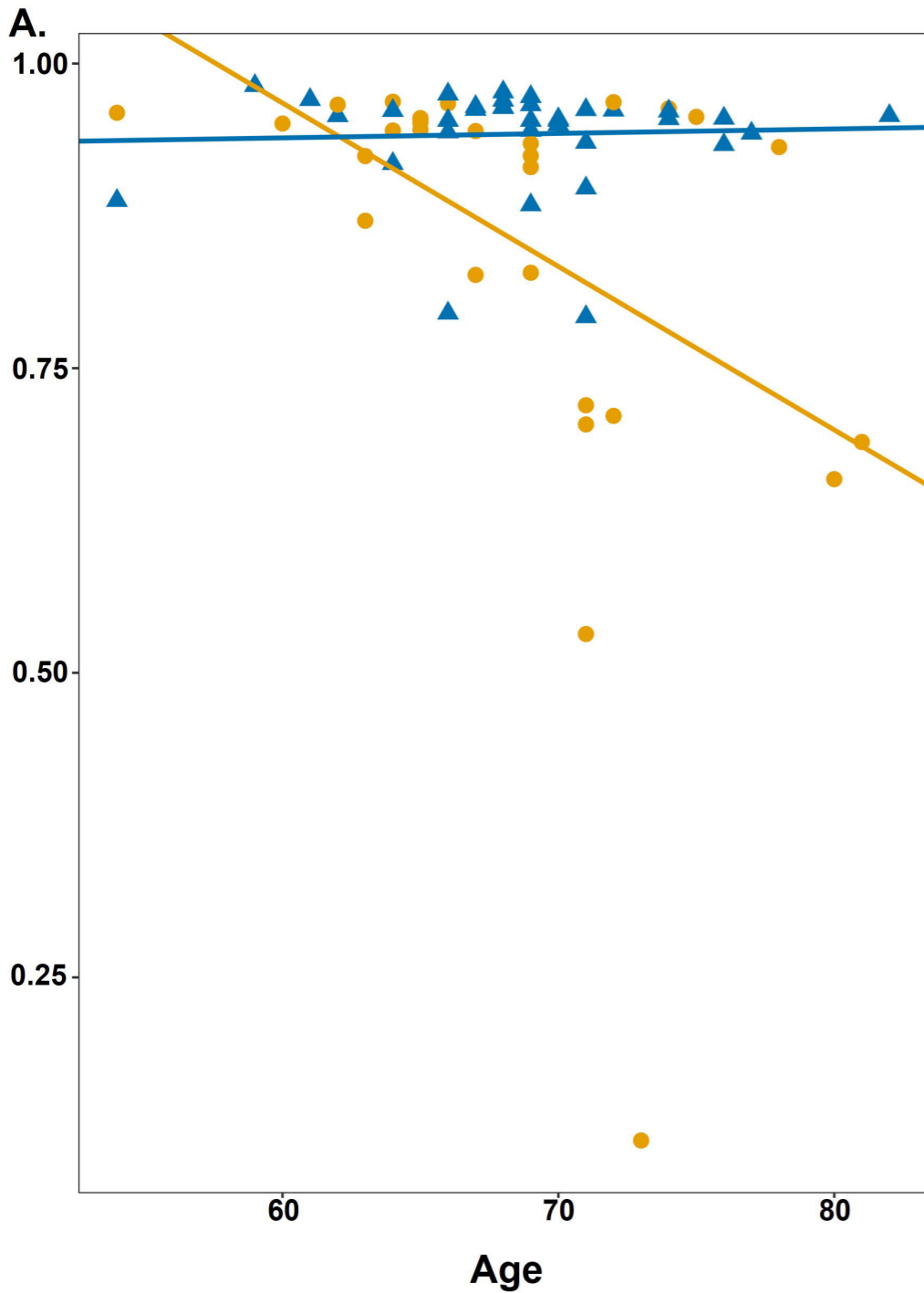
553
554 **Figure 5. Multiple sputum cytokines are associated with α -diversity.** Increased
555 sputum concentrations of IL-17A were associated with decreased Simpson diversity in
556 the sputum, while increased sputum concentrations of IL-6 and IL-8 were associated
557 with increased Simpson diversity (random effects censored regression model, IL-17A
558 CE -1.3, 95% CI [-2.2, -0.50], $p=0.012$; IL-6 CE 6.0, 95% CI [2.2, 9.8], $p=0.012$; and IL-8
559 CE 4.2, 95% CI [1.0, 7.4], $p=0.0496$; respectively).

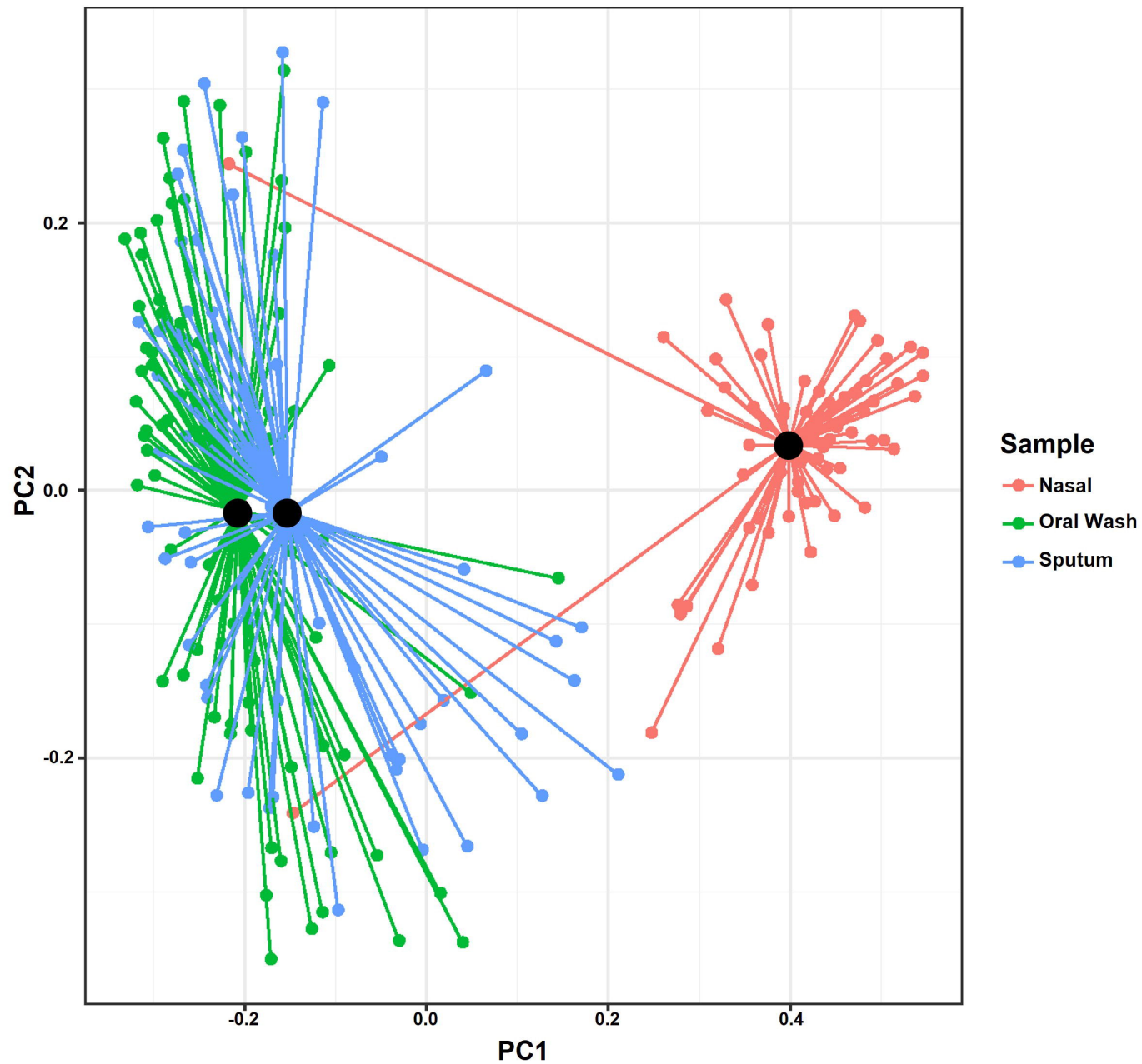
560

561 **Figure 6. Sputum cytokines are associated with *Moraxella* abundance.** Increased
562 sputum concentrations of IL-22, IL-17A, and IL-5 were correlated with increased
563 abundance of *Moraxella* in sputum samples (GEE with Holm correction, IL-22 CE 10.26,
564 95% CI [3.96, 16.55], $p=0.027$; random effects censored regression model with Holm
565 correction, IL-17A CE 2.01, 95% CI [1.02, 2.99], $p=0.0014$; and IL-5 CE 1.87, 95% CI
566 [0.93, 2.81], $p=0.002$, respectively).

567
568 **FIGURES.**
569







Sputum β -diversity (Visit 1-Visit 2, within subject)

MORE SIMILAR

LESS SIMILAR

1.00
0.75
0.50
0.25

No Yes
Between-visit COPD Exacerbation

Phenotype

- Frequent Exacerbator
- Infrequent Exacerbator

