

1 **Long-term risk of repeat hospital admission involving self-harm by**
2 **Aboriginal and non-Aboriginal people: A retrospective cohort study**

3 Bernard Leckning^{1,2*}, Rohan Borschmann^{3,4,5,6,7}, Tanja Hirvonen⁸, Sven R.
4 Silburn¹, Steven Guthridge¹, Gary W. Robinson¹

5

6 ¹ *Menzies School of Health Research, Charles Darwin University, Darwin, Northern*
7 *Territory, Australia*

8 ² *Black Dog Institute, University of New South Wales Sydney, Sydney, New South Wales,*
9 *Australia*

10 ³ *Centre for Mental Health; Melbourne School of Population and Global Health; University*
11 *of Melbourne, Melbourne, Victoria, Australia*

12 ⁴ *Department of Psychiatry; University of Oxford, Oxford OX7 3JX, UK*

13 ⁵ *Centre for Adolescent Health; Murdoch Children's Research Institute, Melbourne, VIC,*
14 *Australia*

15 ⁶ *Melbourne School of Psychological Sciences; University of Melbourne, Melbourne,*
16 *Victoria, Australia*

17 ⁷ *School of Population Health, Curtin University, Western Australia, Australia*

18 ⁸ *College of Medicine and Public Health, Flinders University, Adelaide, South Australia,*
19 *Australia*

20

21 *Corresponding author:

22 Bernard Leckning

23 Hospital Road

24 Randwick NSW 2031

25 +61 2 9065 0023

26 b.leckning@blackdog.org.au

27

28

29 **Abstract**

30 Background: Identify risk factors for repeat hospitalisation involving self-harm by
31 Aboriginal and non-Aboriginal people in the Northern Territory (NT), Australia.

32 Methods: A retrospective cohort study of hospitalisations involving suicidal ideation
33 and/or self-harm between 1 July 2001 and 31 December 2013 followed up to 31
34 December 2018. Survival analyses identified demographic and clinical characteristics
35 associated with repeat hospitalisation involving self-harm.

36 Results: The risk of repeat hospitalisation involving self-harm was higher (HR 1.39;
37 95% CI: 1.22-1.59) amongst Aboriginal (n=2,304) than non-Aboriginal people
38 (n=2,087). Compared to suicidal ideation only, a higher risk of repetition was observed
39 for any self-harm method (aHR: 1.71; 95% CI: 1.37-2.12) amongst Aboriginal people
40 and self-poisoning only (aHR: 1.45; 95% CI: 1.13-1.85) amongst non-Aboriginal
41 people. Previous substance misuse was associated with a higher risk of repeat
42 hospitalisation involving self-harm for Aboriginal (aHR: 1.7; 95% CI: 1.38-2.1) and
43 non-Aboriginal (aHR: 1.6; 95% CI: 1.14-2.25) people. For non-Aboriginal people,
44 several mental health diagnoses were associated with higher risks of repetition.

45 Limitations: The use of routinely collected administrative data limits analysis to only
46 coded diagnoses and does not represent the full burden of self-harm and suicidal
47 ideation in hospitals.

48 Conclusion: The similarities and differences in long-term risk of repeat hospitalisation
49 involving self-harm between Aboriginal and non-Aboriginal people pose distinct
50 challenges for clinical management and prevention. The results emphasise the
51 importance of comprehensive psychosocial assessment to properly understand the
52 interplay of individual and contextual influences and highlights the need to better
53 understand the availability and effectiveness of culturally tailored clinical interventions
54 and community-based solutions.

55

56 **Introduction**

57 The Northern Territory (NT) of Australia has the highest rates of hospitalised self-
58 harm [1] and deaths from suicide [2] of any jurisdiction in Australia. Self-harm is one of the
59 strongest predictors of suicide [3], which makes it an important and urgent target for suicide
60 prevention in the NT. Additionally, the repetition of self-harm is associated with further
61 increasing the risk of suicide [4–6]. This has also been investigated in the NT in a cohort of
62 hospital admissions involving self-harm and suicidal ideation, where the risk of suicide was
63 found to increase by up to 30% for each repeat hospital admission involving self-harm [7].
64 Therefore, preventing repeat hospital admissions involving self-harm can contribute to
65 reducing the risk of suicide in the NT.

66 Whilst there is evidence to inform measures that prevent the repetition of hospital-
67 treated self-harm [8], its relevance to the unique context of the NT remains unclear. The NT
68 has the highest proportion of Aboriginal and Torres Strait Islander (hereafter, respectfully
69 referred to as Aboriginal) residents. Aboriginal people are the sovereign owners of and share
70 collective and ancestral ties to the lands, waters, and skies that are intimately linked to their
71 physical, psychological and spiritual wellbeing. They hold vital knowledge systems and
72 expertise about health and wellbeing, but are grappling with the ongoing effects of
73 colonisation contributing to health and social inequities and compromises in access to quality
74 health care [9]. Aboriginal peoples continue to experience a higher risk of self-harm and
75 suicide. A considered response is required which supports a self-determined cultural approach
76 to address the complex systemic, social, historical, and political influences that are distinct
77 from those affecting non-Aboriginal people in Australia [10]. However, only two recent
78 cohort studies are known to have reported outcomes following hospitalisation involving self-
79 harm, suicidal ideation, or both amongst Indigenous peoples from post-colonial countries
80 similar to Australia. A cohort study from New Zealand found Māori were at higher risk
81 compared to non-Māori of repeat presentation to ED involving self-harm, but this association

82 was insignificant after adjusting for other demographic and clinical characteristics [11]. In a
83 Canadian cohort study of children and adolescents hospitalised with self-harm the risk of
84 repeat self-harm and suicide was higher amongst people who identified as American Indian or
85 Alaska Native descent [12]. Whilst both studies suggest a greater risk of repeat self-harm
86 exists amongst Indigenous peoples, they do not clarify the distinct risk factors that may need
87 to be targeted for each of these population groups. Nor have these cohort studies considered
88 suicidal ideation as an exposure, which has been identified as a potentially important
89 expression of suicide risk amongst Aboriginal people in Australia [13,14].

90 Few longitudinal studies have highlighted risk factors for repeat hospitalisations
91 involving self-harm amongst people initially hospitalised with suicidal ideation. In a study
92 using Northern Ireland's national self-harm registry surveillance data from episodes of
93 hospitalisation involving both thoughts about and acts of self-harm, the risk of repeat hospital
94 presentations involving self-harm was higher amongst individuals with an initial presentation
95 involving suicidal ideation compared to self-harm [15]. Whilst the risk of repeat presentations
96 involving self-harm was found to increase with the number of previous episodes of self-harm
97 in a study from Spain, no differences in relative risk were observed between individuals
98 presenting with self-harm and those presenting with suicidal ideation at the initial hospital
99 presentation [16]. Further research is needed to bolster the mixed but limited evidence
100 regarding the risk of self-harm following suicidal ideation in hospital settings.

101 In order to address these gaps in the evidence and inform efforts to reduce the
102 population burden of self-harm in the NT a whole population retrospective cohort study was
103 designed. Our aim with this study was to identify distinct risk factors amongst Aboriginal and
104 non-Aboriginal people separately for repeat hospital admissions involving self-harm
105 following an initial admission involving self-harm and/or suicidal ideation.

106 **Methods**

107 *Study design and population*

108 A retrospective cohort study was designed to include all NT residents with at least one
109 hospital admission involving a diagnosis of self-harm (ICD-10-AM codes: X60-X84) and/or
110 suicidal thoughts (ICD-10-AM codes: R45.81) between 1 July 2001 and 31 December 2013.
111 The first hospital admission observed during the study period with a diagnosis of self-harm or
112 suicidal ideation represented the index admission for longitudinal analysis. Individuals were
113 excluded if, at the time of their index admission: no Indigenous status was recorded (n=2);
114 their age was less than 10 years (n=10); or death occurred during admission (n=22). The
115 follow-up period for each person in the study cohort was defined as the number of days from
116 discharge at index admission until their next hospital admission involving self-harm or the
117 first of any of the following censoring events: death, last recorded health service use in the
118 NT, or end of follow-up on 31 December 2018.

119 *Data sources and collection*

120 Individuals in the study cohort were linked to hospital records in the NT Inpatient
121 Activity collection containing records of admissions to all NT public hospitals and to
122 mortality records from the National Death Index (NDI) and the NT Deaths Registry. Details
123 of these mortality data sources and how they were linked are described in more detail
124 elsewhere [7].

125 The timestamps for last health service event in the NT were obtained from the Client
126 Master Index (CMI). The CMI is a dataset established by the NT Department of Health to
127 manage the Hospital Reference Number (HRN) used to uniquely identify individual users of
128 any government-run health service, including public hospitals [17]. As part of the data
129 management process, the CMI records the timestamp of the last service event by all
130 individuals seen at any government-run health service. NT Department of Health staff

131 deterministically linked each individual in the study cohort to their CMI records using the
132 HRN obtained from hospital records collected for the study. Once each individual was linked,
133 the timestamps for last health service event were extracted in 2020 and de-identified by
134 replacing the HRN with encrypted project-specific keys that had been used for extracting the
135 hospital and mortality records. These timestamps were then used for censoring individuals, as
136 described above, for the purposes of analysis.

137 ***Repeat hospital admissions involving self-harm***

138 Repeat hospital admissions involving self-harm by any method were identified as
139 records of hospital admissions during the follow-up period after the index admission
140 containing any ICD-10-AM diagnosis code in the range of X60 to X84.

141 ***Risk factors for repeat hospital admissions involving self-harm***

142 *Demographic characteristics*

143 Sex, age, Indigenous status (coded as either Aboriginal or non-Aboriginal), and
144 residence were obtained from the record of index admission. Administrative districts,
145 established by the NT Department of Health for planning and organising health service
146 delivery, was used to derive categories of residence. Residence was also categorised by region
147 (Top End, for residents of the mostly tropical north of the NT from Katherine up to the capital
148 city of Darwin; and Central Australia, for residents of the mostly arid areas in the south of the
149 NT taking in the important service hub of Alice Springs) and remoteness (Urban, for residents
150 of Alice Springs and Darwin Urban administrative districts; and Remote for residents in all
151 other administrative districts) and a combination of region and remoteness (Top End Urban,
152 Top End Remote, Central Australia Urban, and Central Australia Remote) to ensure the
153 geographic distribution of the resident population can be adequately modelled with respect to
154 how service delivery is organised.

155 *Type of suicidal behaviour*

156 Suicidal behaviour at the index admission was categorised as either suicidal ideation
157 only or any type of self-harm. A more detailed categorisation distinguished between suicidal
158 ideation and common methods of self-harm: self-poisoning (ICD-10-AM: X60-X69), self-
159 cutting (ICD-10-AM: X78), hanging (ICD-10-AM: X70), and other types of self-harm (ICD-
160 10-AM: X71-X77 and X79-X84). Where diagnosis codes of self-harm and suicidal ideation
161 were co-present, admissions were coded into the relevant category of self-harm to ensure
162 mutually exclusive categories. Where more than one type of method of self-harm was found,
163 the admission was coded into the most lethal category of self-harm defined by national case
164 fatality ratios [18].

165 *Mental health conditions*

166 Historical and current mental health conditions were derived from the diagnosis codes
167 of prior and index hospital admission records, respectively. These codes were organised into
168 mutually exclusive clinically relevant diagnosis groups that have been validated in other
169 studies using administrative data from hospitals [19]. From the more refined diagnosis
170 groups, aggregated categories of mental health conditions were also developed: severe mental
171 disorders (comprising psychotic illnesses); common mental disorders (such as depression and
172 anxiety); personality disorders; substance use disorders; other adult-onset disorders, and;
173 other childhood onset-disorders. Other adult- and child-onset disorder categories were omitted
174 from the final analysis due to small numbers that prevented meaningful analysis.

175 *Statistical analyses and procedures*

176 A survival analysis approach was adopted to model the time to repeat hospital
177 admissions involving self-harm associated with socio-demographic and clinical characteristics
178 at index admission. Semi-parametric approaches were favoured to account for the distribution
179 of survival times and right censoring observed. All analyses were stratified by Indigenous

180 status to identify characteristics distinct to Aboriginal and non-Aboriginal populations. The
181 Kaplan-Meier (KM) estimator was used to determine survival probability over time, which
182 reflects the probability of not encountering a repeat hospital admission involving self-harm
183 during follow-up. The absolute risk or probability of the outcome was determined by
184 calculating 1-KM over the whole follow-up and at 1, 2, 5 and 10 years. Factors associated
185 with a higher risk over time of repeat hospital admission involving self-harm were determined
186 by hazard ratios (HR) estimated using multivariable Cox proportional hazards regression
187 models. Adjusted Hazard Ratios (aHR) estimated for each covariate included in the final
188 models were used to describe the relative risk over time of the outcome across different levels
189 of the covariates. The final multivariable models were developed iteratively by including all
190 candidate covariates from univariate analysis (see S1 Table and S2 Table in Supporting
191 information) and removing one at a time where no strong evidence of an association could be
192 observed.

193 All models retained adjustments by important population-level characteristics: sex,
194 age at index admission, and residence. Residence was initially modelled using refined
195 categories combining region and remoteness, but the small number of outcomes in some
196 categories prevented the calculation of reliable estimates. Therefore, residence was modelled
197 using region alone. Similarly, aggregated categories of mental health conditions were the
198 preferred covariates used for developing multivariable models, with the broader categories
199 being used to improve model performance or where all sub-categories were found to have
200 similar estimated coefficients. The proportionality assumption of each covariate and the
201 models overall were tested formally and visually using Schoenfeld residuals. The diagnostic
202 value of the final multivariable regression models were measured using a pseudo R^2 estimate
203 of explained variation [20]. All analyses were undertaken using Stata 15.0 [21].

204 ***Ethical approval***

205 Ethical approval for this study was provided by the Human and Research Ethics
206 Committees of the NT Department of Health and Menzies School of Health Research (Ref:
207 15-392) and the Australian Institute of Health and Welfare (Ref: 2013-3-31) for linkage to
208 national mortality records used in this study for censoring.

209 **Results**

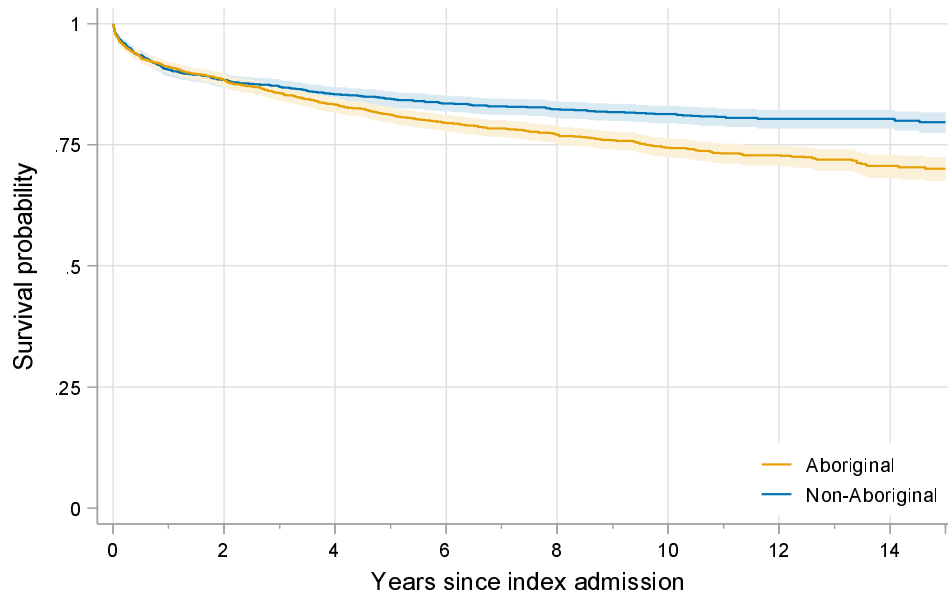
210 During the study period, 4,391 individuals recorded an index hospital admission
211 involving self-harm (n=2,956), suicidal ideation (n=1,292), or both (n=143). Just over half of
212 the cohort (n=2,304; 52.5%) identified as Aboriginal, just under half (n=2,084; 47.5%) were
213 female, and the median age at index admission was 30 years (IQR: 22-40). A more detailed
214 summary of the demographic and clinical characteristics for Aboriginal and non-Aboriginal
215 people is provided in the supporting information (see S1 Table and S2 Table).

216 During the follow-up period, 943 individuals were admitted on 1,985 occasions for
217 self-harm (Aboriginal n=1,208; non-Aboriginal n=777). Of those with a repeat hospital
218 admission involving self-harm, the number of episodes ranged from 1 to 28 (median: 1; IQR:
219 1-2). After accounting for censoring, 25.3% (95% CI: 23.8%-27.0%) of individuals in the
220 study had experienced at least one repeat hospital admission involving self-harm (Aboriginal:
221 29.9%, 95% CI: 27.5%-32.4%; non-Aboriginal: 20.3%, 95% CI: 18.3%-22.4%). Figure 1
222 shows the survival probability (i.e., probability of not experiencing a repeat hospital
223 admission involving self-harm) by Indigenous status illustrating a 40% higher risk of the
224 outcome for Aboriginal compared to non-Aboriginal people over the course of the study (HR:
225 1.39; p < 0.001; 95% CI: 1.22-1.59). Table 1 provides a further summary of the distribution of
226 absolute risk of repeat hospital admissions involving self-harm across demographic
227 characteristics and type of suicidal behaviour at index admission for Aboriginal and non-
228 Aboriginal people.

229 *Table 1 Descriptive summary and probability of repeat hospital admission for self-harm by*
 230 *Aboriginal and non-Aboriginal people with a hospital admission involving self-harm and*
 231 *suicidal ideation, NT 2001-2013*

	Individuals	Outcomes	Probability of outcome			
	n	n	1 year	2 years	5 years	Overall
Aboriginal						
Total	2,304	567	8.9%	11.6%	18.8%	29.9%
<i>Sex</i>						
Female	1,131	286	9.6%	12.3%	19.2%	32.1%
Male	1,173	281	8.2%	10.9%	18.3%	28.0%
<i>Age (years)</i>						
10-19	425	96	7.1%	8.5%	18.2%	26.7%
20-34	1,181	299	9.4%	12.1%	19.1%	30.4%
35-54	663	165	9.4%	12.6%	18.5%	31.2%
55+	35	7	5.8%	11.9%	18.0%	22.1%
<i>Residence</i>						
Central Aust.	1,050	290	10.7%	13.7%	21.3%	34.2%
Top End	1,254	277	7.4%	9.9%	16.6%	26.5%
<i>Type of suicidal behaviour</i>						
Suicidal ideation	628	100	5.0%	6.1%	12.2%	21.5%
Self-harm	1,676	467	10.4%	13.6%	21.2%	32.6%
Self-poisoning	440	113	9.4%	13.3%	21.2%	28.8%
Self-cutting	718	237	11.9%	15.6%	24.8%	38.5%
Hanging	379	81	7.7%	10.1%	15.5%	26.2%
Other methods	139	36	13.1%	14.5%	18.2%	31.7%
Non-Aboriginal						
Total	2,087	376	9.4%	11.6%	15.5%	20.3%
<i>Sex</i>						
Female	953	185	8.6%	11.4%	15.7%	22.3%
Male	1,134	191	10.1%	11.8%	15.2%	18.3%
<i>Age (years)</i>						
10-19	346	65	9.6%	13.0%	16.2%	19.9%
20-34	784	132	10.0%	11.1%	14.4%	19.0%
35-54	763	156	9.6%	12.5%	17.3%	23.4%
55+	194	23	5.9%	7.6%	11.8%	13.7%
<i>Residence</i>						
Central Aust.	508	103	11.1%	13.3%	17.9%	22.2%
Top End	1,579	273	8.9%	11.1%	14.7%	19.7%
<i>Type of suicidal behaviour</i>						
Suicidal ideation	664	107	8.2%	10.1%	14.8%	18.1%
Self-harm	1,423	269	10.0%	12.3%	15.8%	21.0%
Self-poisoning	956	202	11.1%	13.6%	17.2%	23.5%
Self-cutting	262	49	10.0%	13.1%	16.2%	20.2%
Hanging	99	7	4.1%	4.1%	6.1%	7.3%
Other methods	106	11	4.8%	6.7%	10.7%	10.7%

233 *Figure 1 Probability of survival for Aboriginal and non-Aboriginal people following hospital*
 234 *admission involving self-harm and suicidal ideation, NT 2001-2013*



No. at risk	0	2	4	6	8	10	12	14
Aboriginal	2,304	1,990	1,854	1,539	1,103	775	510	281
Non-Aboriginal	2,087	1,795	1,718	1,461	1,117	804	480	274

235

236 In the multivariable modelling for both Aboriginal and non-Aboriginal people (Table
 237 2), no strong evidence of substantial differences was observed in the relative risk of repeat
 238 hospital admission involving self-harm according to demographic characteristics, except for
 239 age in non-Aboriginal people. Compared to index admissions involving suicidal ideation
 240 alone, all methods of self-harm carried a higher risk of repeat hospital admission involving
 241 self-harm for Aboriginal people, whereas for non-Aboriginal people this was only the case for
 242 index admissions involving self-poisoning. Additionally, index admissions involving hanging
 243 by non-Aboriginal people had an approximately 2 times lower risk of repeat hospital
 244 admission involving self-harm compared to index admissions involving suicidal ideation.
 245 Diagnoses of substance use disorders, especially in relation to alcohol, were the most notable
 246 clinical risk factor associated with the outcome for both Aboriginal and non-Aboriginal
 247 people. For Aboriginal people, this association was found for diagnoses of alcohol use
 248 disorders in both index and previous hospital admissions, although the statistical support for
 249 the former was weak after adjusting for other factors. For non-Aboriginal people, diagnoses
 250 of alcohol use disorders at index admission and of substance use disorder in previous

251 admissions were associated with repeat hospital admissions involving self-harm. Furthermore,
 252 diagnoses of severe mental disorders and personality disorders at index admission and
 253 diagnoses of common mental disorders in previous admissions were all independently
 254 associated with a higher risk of repetition for non-Aboriginal people. However, the pseudo R^2
 255 statistics estimated from the best fitting models ($R^2_{Aboriginal}$: 0.097; $R^2_{Non-Aboriginal}$: 0.109)
 256 suggests that very little of the variance in the outcome was explained by the available data.

257 *Table 2 Estimates from Cox regression models of repeat hospital admission involving self-*
 258 *harm by Aboriginal and non-Aboriginal people admitted to hospital with self-harm and*
 259 *suicidal ideation, NT 2001-2013*

		Aboriginal		Non-Aboriginal	
		HR	95% CI	HR	95% CI
Demographic characteristics at index admission					
<i>Sex</i>					
Female		1		1	
Male		0.87	(0.73-1.03)	0.95	(0.76-1.17)
Age in years (median centred)		0.99	(0.98-1)	0.99*	(0.98-0.99)
<i>Residence</i>					
Top End		1		1	
Central Australia		1.13	(0.94-1.34)	1.13	(0.9-1.42)
Clinical characteristics at index admission					
<i>Type of suicidal behaviour</i>					
Suicidal ideation		1		1	
Self-harm		1.71***	(1.37-2.12)	1.24	(0.99-1.57)
Self-poisoning		1.67***	(1.27-2.2)	1.45**	(1.13-1.85)
Self-cutting		1.94***	(1.53-2.47)	1.14	(0.81-1.6)
Hanging		1.35*	(1.01-1.82)	0.45*	(0.2-0.97)
Other methods		1.62*	(1.1-2.38)	0.71	(0.38-1.33)
Severe mental disorders	No			1	
	Yes			1.58**	(1.18-2.1)
Personality disorders	No			1	
	Yes			1.83***	(1.33-2.52)
Alcohol use disorders	No	1		1	
	Yes	1.19	(0.99-1.43)	1.4**	(1.11-1.76)
Clinical characteristics from previous admissions					
Common mental disorders	No			1	
	Yes			1.58*	(1.1-2.26)
Substance use disorders	No			1	
	Yes			1.6**	(1.14-2.25)
Alcohol use disorders	No	1			
	Yes	1.7***	(1.38-2.1)		

260 **Discussion**

261 This is the first known cohort study to distinguish the risk of repeat episodes of
262 hospital-treated self-harm by Indigenous status and one of a few that has compared outcomes
263 between suicidal ideation and self-harm. The results point to several important implications
264 for better understanding opportunities for preventing self-harm. Firstly, the lower absolute
265 risk of repeat hospital admissions involving self-harm estimated in this study compared to
266 others requires some clarification. The 1-year incidence of repeat hospital admissions
267 involving self-harm in the NT we observed (8.9% and 9.4% amongst Aboriginal and non-
268 Aboriginal people, respectively) is just over half of what was reported in a recent meta-
269 analysis (17.0%) [22] and is the lowest reported in other hospital-based studies from Australia
270 [23–25]. Study characteristics may explain this difference since studies that use hospital
271 admissions data to define cohorts and outcome measures have tended to report a lower
272 incidence of repeat episodes of self-harm [3]. This could be because the use of hospital
273 admissions alone may be prone to underestimating the true incidence of hospital-treated self-
274 harm due to the higher threshold of medical seriousness requiring admission [26,27]. Another
275 factor could be the inclusion of suicidal ideation at inception, which is not common in other
276 studies and which the results in this study show is associated with a lower risk of the outcome
277 compared to self-harm at inception. However, of the methods associated with repetition from
278 multivariable modelling, the estimated 1-year absolute risk of repetition for all self-harm
279 amongst Aboriginal people (10.4%) and self-poisoning amongst non-Aboriginal people
280 (11.1%) is still lower in this study compared to other studies. The relatively lower rate of
281 repeat self-harm taken together with increasing trends in hospital admission involving suicidal
282 ideation and self-harm in the NT observed during this study period [13] point to a potentially
283 concerning increase in incident episodes that may suggest the need to also consider early
284 intervention strategies to help prevent self-harm and subsequent suicide. However, it also
285 possible that the results either point to potentially protective follow-up responses to hospital

286 admissions involving suicidal ideation and self-harm or are an artefact of alternatives to
287 hospital responses to repeat self-harm in community settings or in other parts of the healthcare
288 system.

289 It should be noted that the absolute risk of repeat hospital admissions involving self-
290 harm in the NT continued to increase over time compared to other studies, growing to around
291 three quarters of the 5-year pooled incidence of repeat self-harm estimated by a meta-analysis
292 of hospital-based studies (18.8% Aboriginal and 15.5% non-Aboriginal vs. 22.4% pooled
293 estimated incidence) [3]. Whilst it has been suggested that the risk of repeat self-harm tends to
294 plateau after 5 years [28], this study has shown continual long-term increases to almost 30%
295 and just over 20% for Aboriginal and non-Aboriginal people, respectively. This suggests that
296 the underlying risk of self-harm repetition observed in NT hospitals is likely the result of
297 persistent or recurring long-term influences. In the absence of any association between
298 enduring demographic characteristics that could explain these results, it is important that the
299 broader context and longer-term influence of clinical characteristics are considered in drawing
300 out implications for hospital management and further care in the community.

301 Substance misuse, especially involving alcohol, was especially prevalent and found to
302 be associated with an increased risk of repeat hospital admissions involving self-harm. These
303 results are consistent with existing evidence demonstrating a higher risk of a range of suicidal
304 behaviours associated with alcohol use disorders [29]. Furthermore, the results appear to
305 confirm both the proximal and distal influence of harmful alcohol consumption on the
306 repetition of self-harm. That is, the association with previous admissions involving alcohol
307 use disorders (for both Aboriginal and non-Aboriginal people) potentially points to the role of
308 chronic misuse creating an underlying vulnerability to suicidal behaviour and the association
309 with alcohol use disorders at index admission (non-Aboriginal people only) suggests that
310 acute alcohol intoxication is a potential facilitator of suicidal behaviour and barrier to
311 adopting alternative coping behaviours [30]. In light of the high rates of harmful alcohol

312 consumption in the NT [31], the findings from this study reinforce the need for evidence-
313 based population level policies to reduce harmful alcohol consumption that should contribute
314 to reducing the risk of self-harm [32] and its repetition. Moreover, the very high burden of
315 alcohol misuse on the hospital system in the NT [33] and the particularly high risk of self-
316 harm associated with high levels of acute alcohol intoxication [34] suggests self-harm hospital
317 admissions involving alcohol represent an important opportunity for referral to psychological
318 interventions targeting misuse that are known to reduce the risk of subsequent self-harm in
319 individuals [35]. Whilst further investigation is needed to determine the appropriateness and
320 effectiveness of existing treatment services in the NT [36], it is even more important that
321 mental health staff in the hospital are adequately supported to deal with the challenges posed
322 by alcohol intoxication that often lead to poorer quality of care and non-assessment of self-
323 harm [37].

324 The findings relating to mental health conditions diagnosed in non-Aboriginal people
325 in the study point to important clinical risk factors that are known to increase vulnerability to
326 self-harm [38] and help to clarify the potential opportunities for intervention. Psychological
327 interventions, such as CBT, recommended for reducing vulnerability to self-harm repetition
328 [39] should be considered as a therapeutic option as they have been shown to also effectively
329 treat common mental disorders in self-harm, such as depression [40] and anxiety [41].
330 Furthermore, these treatments have also demonstrated effectiveness in reducing rates of self-
331 harm repetition in the presence of personality disorder [42], especially borderline personality
332 disorders, which this study suggests should also be a target for prevention in the NT. Since
333 the NT has the highest rates of specialist mental health service use of any jurisdiction in
334 Australia [43], further investigation into the quality and appropriateness of such care
335 following hospitalisation for self-harm and suicidal ideation is warranted.

336 The association observed in non-Aboriginal people between repeat self-harm and
337 severe mental disorders, comprising mostly schizophrenia and schizoaffective disorders, may

338 require different approaches to clinical management depending on the stage and severity of
339 psychosis or psychotic symptoms. The risk of self-harm is known to be greatest during early
340 onset psychosis [44] and higher amongst those with other common risk factors for suicidal
341 behaviour [45]. Furthermore, the existing evidence suggests that a higher risk of self-harm is
342 associated with inadequate care and management in the community such as: poor adherence
343 to medication [46], longer period of untreated psychosis [47,48], and higher frequency of
344 psychiatric admissions [45]. These concerns may be particularly important for the NT where
345 the use of depot antipsychotic medication for the treatment of psychotic illness has
346 historically been the highest of any Australian jurisdiction [49]. The high use of depot
347 medication may, among other things, reflect the application of clinical recommendations
348 associated with widespread concerns with suicide risk in the NT clinical population [50]. For
349 these reasons, comprehensive and integrated models of care, especially for people with early
350 onset psychotic illnesses, are required that are known to assist with the management of
351 significant mental health issues and reduce the risk of further suicidal behaviour [39].

352 The results from the stratified analysis point to distinct risks for repetition within
353 Aboriginal and non-Aboriginal populations hospitalised for self-harm and suicidal ideation.
354 The methods of self-harm associated with a higher risk of repetition differed by Indigenous
355 status. Consistent with the evidence pointing towards higher risk of repetition associated with
356 less fatal methods [51–53], self-poisoning was associated with a higher risk and hanging
357 associated with a lower risk of repetition amongst non-Aboriginal people. For Aboriginal
358 people, however, all methods of self-harm were associated with an increased risk of
359 repetition. Since any form of self-harm repetition has been found to be associated with a
360 higher risk of suicide [7], the findings from this study may point to overlaps between those at
361 risk of repeat self-harm and suicide. Therefore, means restriction counselling to reduce the
362 risk of repeat self-harm should be informed by comprehensive psychosocial assessment to
363 ensure the effectiveness of such strategies are based on an understanding of the psychological

364 and interpersonal contexts of intent and unmet needs. Younger age was associated with a
365 higher risk of repetition for non-Aboriginal but not Aboriginal people, despite their younger
366 age profile at index admission. Whilst the results for non-Aboriginal people are consistent
367 with the evidence pointing to a higher frequency of repetition associated with the earlier onset
368 of self-harm, especially in adolescence [54], issues of confounding or universally experienced
369 influences may be at play for Aboriginal people. For example, it may be the case that
370 clinically relevant associations, such as substance misuse and type of self-harm, may better
371 explain age related differences in the results for Aboriginal people. Alternatively, it may be
372 that Aboriginal people of all ages are universally affected by contextual influences not
373 measured by this study, such as conditions of relative disadvantage, marginalisation and
374 discrimination, cultural loss and intergenerational trauma [55]. However, the prevalence and
375 role of alcohol misuse in this study more likely suggests the interplay of individual
376 psychosocial stressors and underlying social determinants [56]. That is, the results from this
377 study, taken together with Aboriginal perspectives, point to a combination of both
378 individually experienced and collectively shared factors. Clinical management and aftercare
379 for Aboriginal people should be informed by careful consideration of these influences, which
380 requires culturally responsive assessment that balances both patient and cultural safety [57].
381 More importantly, investments in more culturally appropriate and safe services to effectively
382 treat individuals in the community needs to be coupled with greater investments in self-
383 determined and strengths-based prevention efforts targeting locally relevant issues and
384 cultural supports [10]. Overall, this study suggests that the risk of repetition amongst non-
385 Aboriginal people to be more closely associated with clinical populations for whom there is a
386 need to ensure proper access to evidence-based treatments and effective services. But, for
387 Aboriginal people, the higher risk of repeat hospital admission involving self-harm may be
388 seen as the individual expression of adverse contextual influences requiring access to
389 evidence-based individual treatments complemented by community-led cultural solutions.

390 **Strengths and limitations**

391 This study makes a unique and important contribution to better understanding self-
392 harm and suicidal ideation in the NT population, and amongst Aboriginal people in particular,
393 with findings based on careful consideration of the distinctive social and cultural diversity of
394 communities in the NT and availability of services. However, the uniqueness of the NT
395 context means that caution must be used when generalising implications from these findings
396 to other Australian settings or other Indigenous populations globally. Whilst the use of
397 routinely collected administrative records for hospital admissions offers a high quality and
398 reliable standard of data regarding demographic and clinical information, they do not
399 represent all episodes of self-harm and suicidal ideation treated in the hospital setting.
400 However, without reliable recording of self-harm and suicidal ideation in the emergency
401 department, population-level insights to inform prevention can only make use of records for
402 hospital admission [26]. Furthermore, the standardised coding of diagnoses does not include
403 important interpersonal, social, and cultural influences that may or may not be recorded in
404 hospital records and are especially important for understanding self-harm by Aboriginal
405 people. This is likely one of the more important reasons for the limited explanatory value of
406 clinical risk factors observed in this study. Further research that can access information
407 typically gathered from psychosocial assessments and that privileges Aboriginal perspectives
408 and knowledge are necessary to addressing these gaps.

409 **Conclusion**

410 This study highlights important similarities and differences in long-term risk of repeat
411 hospital admission involving self-harm for Aboriginal compared to non-Aboriginal people in
412 the NT. The role of alcohol and substance misuse for both Aboriginal and non-Aboriginal
413 people may reflect a complex intersection of individual vulnerability and specific
414 psychosocial stressors that requires further investigation to better determine the role that
415 hospitals may play in encouraging individual treatment and promoting prevention at a

416 population level. For non-Aboriginal people the higher risk of repetition also appears to be
417 associated with clinical populations, pointing to the need to better understand the availability
418 of evidence-based interventions and the effectiveness of existing services in reducing risk and
419 supporting recovery. There is also an urgent need to ensure that Aboriginal people can access
420 culturally safe and responsive options for effectively managing and treating the immediate
421 unmet needs of individuals after discharge. This should be complemented by greater
422 investments in community-based interventions that promote culture, resilience, and self-
423 determination that may better address the long-term underlying risk for self-harm. These
424 findings highlight the challenges for prevention in the NT and reinforces the importance for
425 comprehensive psychosocial assessment in hospitals to identify risk, needs, and strengths
426 distinct to Aboriginal and non-Aboriginal people to better inform appropriate and effective
427 options for care both within and beyond the hospital setting.
428

429 **Conflict of interest**

430 All authors declare that they have no conflicts of interest.

431 **Contributors**

432 BL: Conceptualisation, methodology, formal analysis, data curation, writing – original
433 draft, writing – review and editing, visualisation, project administration, funding acquisition;
434 RB: Writing – review and editing; TH: Writing – review and editing; SS: Conceptualisation,
435 methodology, writing – review and editing, funding acquisition; SG: Methodology, writing –
436 review and editing; GR: Conceptualisation, methodology, writing – review and editing,
437 funding acquisition.

438 **Acknowledgements**

439 We would like to acknowledge the participants of this study who have had direct
440 experience of suicide, including those who have attempted suicide and those bereaved by
441 suicide. We would like to thank the advisory group to this study comprising Aboriginal and
442 non-Aboriginal experts with clinical and lived experience for their generous insight and
443 feedback. We thank the NT Department of Health for their support in obtaining and
444 understanding the data for this study. The views expressed in this publication are those of the
445 authors and not necessarily those of the funding body and partners to this study.

446 **Funding**

447 BL was provided a research scholarship from the National Suicide Prevention
448 Research Fund administered by Suicide Prevention Australia to undertake this work.

449

450 **References**

- 451 1. Australian Institute of Health and Welfare (AIHW). Suicide & self-harm monitoring. In:
452 Australian Institute of Health and Welfare [Internet]. 2021 [cited 31 May 2021].
453 Available: <https://www.aihw.gov.au/suicide-self-harm-monitoring/data/intentional-self-harm-hospitalisations/intentional-self-harm-hospitalisations-by-states>
454
- 455 2. Australian Bureau of Statistics (ABS). Causes of Death, Australia, 2020. Canberra:
456 ABS; 2021. Report No.: Cat. no. 3303.0. Available:
457 <https://www.abs.gov.au/statistics/health/causes-death/causes-death-australia/2020>
- 458 3. Carroll R, Metcalfe C, Gunnell D. Hospital presenting self-harm and risk of fatal and
459 non-fatal repetition: systematic review and meta-analysis. *PLOS One*. 2014;9: e89944–
460 e89944. doi:10.1371/journal.pone.0089944
- 461 4. Birtwistle J, Kelley R, House A, Owens D. Combination of self-harm methods and fatal
462 and non-fatal repetition: A cohort study. *Journal of affective disorders*. 2017;218: 188–
463 194.
- 464 5. Haw C, Bergen H, Casey D, Hawton K. Repetition of Deliberate Self-Harm: A Study of
465 the Characteristics and Subsequent Deaths in Patients Presenting to a General Hospital
466 According to Extent of Repetition. *Suicide and Life-Threatening Behavior*. 2007;37:
467 379–396. doi:10.1521/suli.2007.37.4.379
- 468 6. Zahl DL, Hawton K. Repetition of deliberate self-harm and subsequent suicide risk:
469 long-term follow-up study of 11,583 patients. *The British Journal Of Psychiatry: The*
470 *Journal Of Mental Science*. 2004;185: 70–75.
- 471 7. Leckning B, Borschmann R, Guthridge S, Silburn SR, Hirvonen T, Robinson GW.
472 Suicides in Aboriginal and non-Aboriginal people following hospital admission for
473 suicidal ideation and self-harm: A retrospective cohort data linkage study from the
474 Northern Territory. *Aust N Z J Psychiatry*. 2023;57: 391–400.
475 doi:10.1177/00048674221099822
- 476 8. Carroll R, Metcalfe C, Gunnell D. Hospital management of self-harm patients and risk
477 of repetition: Systematic review and meta-analysis. *Journal of Affective Disorders*.
478 2014;168: 476–483. doi:10.1016/j.jad.2014.06.027
- 479 9. Jones B, Heslop D, Harrison R. Seldom heard voices: a meta-narrative systematic
480 review of Aboriginal and Torres Strait Islander peoples healthcare experiences.
481 *International Journal for Equity in Health*. 2020;19: 222. doi:10.1186/s12939-020-
482 01334-w
- 483 10. Dudgeon P, Bray A, Walker R. Chapter 12 - Self-determination and strengths-based
484 Aboriginal and Torres Strait Islander suicide prevention: an emerging evidence-based
485 approach. In: Page AC, Stritzke WGK, editors. *Alternatives to Suicide*. Academic Press;
486 2020. pp. 237–256. doi:10.1016/B978-0-12-814297-4.00012-1
- 487 11. Kuehl S, Stanley J, Nelson K, Collings S. The Serious Self-Harm Risk of “Mixed
488 Presenters,” People Who Presented to New Zealand Emergency Departments for Self-
489 Harm and Other Reasons: A Cohort Study. *Archives of suicide research* □: official
490 journal of the International Academy for Suicide Research. 2021;25: 475–490.

- 491 12. Olfson M, Wall M, Wang S, Crystal S, Bridge J, Liu S, et al. Suicide After Deliberate
492 Self-Harm in Adolescents and Young Adults. *Pediatrics*. 2018;141.
- 493 13. Leckning B, Li SQ, Cunningham T, Guthridge S, Robinson G, Nagel T, et al. Trends in
494 hospital admissions involving suicidal behaviour in the Northern Territory, 2001-2013.
495 *Australasian Psychiatry: Bulletin Of Royal Australian And New Zealand College Of*
496 *Psychiatrists*. 2016;24: 300–304. doi:10.1177/1039856216629838
- 497 14. McHugh C, Balaratnasingam S, Campbell A, Chapman M. Suicidal ideation and non-
498 fatal deliberate self-harm presentations in the Kimberley from an enhanced police-
499 mental health service notification database. *Australasian Psychiatry*. 2017;25: 35–39.
500 doi:10.1177/1039856216671682
- 501 15. Griffin E, Bonner B, O’Hagan D, Kavalidou K, Corcoran P. Hospital-presenting self-
502 harm and ideation: Comparison of incidence, profile and risk of repetition. *General*
503 *hospital psychiatry*. 2019;61: 76–81.
- 504 16. Suárez-Pinilla P, Pérez-Herrera M, Suárez-Pinilla M, Medina-Blanco R, López-García
505 E, Artal-Simón J, et al. Recurrence of suicidal thoughts and behaviors during one year of
506 follow-up: An exploratory study. *Psychiatry research*. 2020;288: 112988.
- 507 17. Foley M, Zhao Y, Condon J. Demographic Data Quality Assessment for Northern
508 Territory Public Hospitals 2011. Darwin: NT Department of Health; 2012 p. 39.
509 Available: <http://hdl.handle.net/10137/513>
- 510 18. Spittal MJ, Pirkis J, Miller M, Studdert DM. Declines in the Lethality of Suicide
511 Attempts Explain the Decline in Suicide Deaths in Australia. *PLOS One*. 2012;7:
512 e44565. doi:10.1371/journal.pone.0044565
- 513 19. Dean K, Green MJ, Laurens KR, Kariuki M, Tzoumakis S, Sprague T, et al. The impact
514 of parental mental illness across the full diagnostic spectrum on externalising and
515 internalising vulnerabilities in young offspring. *Psychological Medicine*. 2018;48: 2257–
516 2263. doi:10.1017/S0033291717003786
- 517 20. Royston P. Explained variation for survival models. *The Stata Journal*. 2006;6: 83–96.
- 518 21. StataCorp. *Stata Statistical Software: Release 15*. College Station, TX: StataCorp LLC;
519 2017.
- 520 22. Liu B-P, Lunde KB, Jia C-X, Qin P. The short-term rate of non-fatal and fatal repetition
521 of deliberate self-harm: A systematic review and meta-analysis of longitudinal studies.
522 *Journal of Affective Disorders*. 2020;273: 597–603. doi:10.1016/j.jad.2020.05.072
- 523 23. Borruso L, Buckley N, Kirby K, Carter G, Pilgrim J, Chitty K. Acute Alcohol Co-
524 Ingestion and Hospital-Treated Deliberate Self-Poisoning: Is There an Effect on
525 Subsequent Self-Harm? *Suicide & life-threatening behavior*. 2019;49: 293–302.
- 526 24. Carter GL, Whyte IM, Ball K, Carter NT, Dawson AH, Carr VJ, et al. Repetition of
527 deliberate self-poisoning in an Australian hospital-treated population. *Med J Aust*.
528 1999;170: 307–311.
- 529 25. Maiden M, Trisno R, Finnis M, Norris C, Mulvey A, Nasr-Esfahani S, et al. Long-term
530 outcomes of patients admitted to an intensive care unit with intentional self-harm.
531 *Anaesthesia and intensive care*. 2021;49: 173–182.

- 532 26. Leckning B, Borschmann R, Guthridge S, Bradley P, Silburn S, Robinson G. Aboriginal
533 and Non-Aboriginal Emergency Department Presentations Involving Suicide-Related
534 Thoughts and Behaviors. *Crisis*. 2020;41: 459–468. doi:10.1027/0227-5910/a000675
- 535 27. Spittal MJ, Pirkis J, Miller M, Carter G, Studdert DM. The Repeated Episodes of Self-
536 Harm (RESH) score: A tool for predicting risk of future episodes of self-harm by
537 hospital patients. *Journal of Affective Disorders*. 2014;161: 36–42.
538 doi:10.1016/j.jad.2014.02.032
- 539 28. Monnin J, Thiemard E, Vandel P, Nicolier M, Tio G, Courtet P, et al. Sociodemographic
540 and psychopathological risk factors in repeated suicide attempts: Gender differences in a
541 prospective study. *Journal of Affective Disorders*. 2012;136: 35–43.
542 doi:10.1016/j.jad.2011.09.001
- 543 29. Darvishi N, Farhadi M, Haghtalab T, Poorolajal J. Alcohol-Related Risk of Suicidal
544 Ideation, Suicide Attempt, and Completed Suicide: A Meta-Analysis. *PLOS ONE*.
545 2015;10: e0126870. doi:10.1371/journal.pone.0126870
- 546 30. Hufford MR. Alcohol and suicidal behavior. *Clinical Psychology Review*. 2001;21:
547 797–811. doi:10.1016/S0272-7358(00)00070-2
- 548 31. Skov SJ, Chikritzhs TN, Li SQ, Pircher S, Whetton S. How much is too much? Alcohol
549 consumption and related harm in the Northern Territory. *PUBLIC HEALTH*. 2010;193:
550 4.
- 551 32. Kølves K, Chitty KM, Wardhani R, Värnik A, de Leo D, Witt K. Impact of Alcohol
552 Policies on Suicidal Behavior: A Systematic Literature Review. *International Journal of
553 Environmental Research and Public Health*. 2020;17: 7030. doi:10.3390/ijerph17197030
- 554 33. Springer AM, Condon JR, Li SQ, Guthridge SL. Frequent use of hospital inpatient
555 services during a nine year period: a retrospective cohort study. *BMC Health Services
556 Research*. 2017;17: 348. doi:10/gc5vks
- 557 34. Borges G, Bagge CL, Cherpitel CJ, Conner KR, Orozco R, Rossow I. A meta-analysis of
558 acute use of alcohol and the risk of suicide attempt. *Psychological Medicine*. 2017;47:
559 949–957. doi:10.1017/S0033291716002841
- 560 35. Witt K, Chitty KM, Wardhani R, Värnik A, de Leo D, Kølves K. Effect of alcohol
561 interventions on suicidal ideation and behaviour: A systematic review and meta-analysis.
562 *Drug and Alcohol Dependence*. 2021;226: 108885.
563 doi:10.1016/j.drugalcdep.2021.108885
- 564 36. Stephens D, Clifford S, Mellor R, van de Ven K, Ritter A, Smith JA, et al. Demand
565 Study for Alcohol Treatment Services in the Northern Territory. Darwin: Menzies
566 School of Health Research; 2019. Available:
567 https://www.menzies.edu.au/icms_docs/304515_Demand_Study_for_Alcohol_Treatment_Services_in_the_Northern_Territory_%E2%80%93_Final_Report.pdf
568
- 569 37. Quinlivan L, Gorman L, Littlewood DL, Monaghan E, Barlow SJ, Campbell S, et al.
570 ‘Wasn’t offered one, too poorly to ask for one’ – Reasons why some patients do not
571 receive a psychosocial assessment following self-harm: Qualitative patient and carer
572 survey. *Australian & New Zealand Journal of Psychiatry*. 2022;56: 398–407.
573 doi:10.1177/00048674211011262

- 574 38. Larkin C, Di Blasi Z, Arensman E. Risk factors for repetition of self-harm: a systematic
575 review of prospective hospital-based studies. *Plos One*. 2014;9: e84282–e84282.
576 doi:10.1371/journal.pone.0084282
- 577 39. Carter G, Page A, Large M, Hetrick S, Milner AJ, Bendit N, et al. Royal Australian and
578 New Zealand College of Psychiatrists clinical practice guideline for the management of
579 deliberate self-harm. *Aust N Z J Psychiatry*. 2016;50: 939–1000. doi:10/gdf379
- 580 40. Lepping P, Whittington R, Sambhi RS, Lane S, Poole R, Leucht S, et al. Clinical
581 relevance of findings in trials of CBT for depression. *European Psychiatry*. 2017;45:
582 207–211. doi:10.1016/j.eurpsy.2017.07.003
- 583 41. Norton PJ, Price EC. A Meta-Analytic Review of Adult Cognitive-Behavioral Treatment
584 Outcome Across the Anxiety Disorders. *Journal of Nervous & Mental Disease*.
585 2007;195: 521–531. doi:10.1097/01.nmd.0000253843.70149.9a
- 586 42. Calati R, Courtet P. Is psychotherapy effective for reducing suicide attempt and non-
587 suicidal self-injury rates? Meta-analysis and meta-regression of literature data. *Journal*
588 *Of Psychiatric Research*. 2016;79: 8–20. doi:10.1016/j.jpsychires.2016.04.003
- 589 43. Looi JC, Kisely SR, Allison S, Bastiampillai T. National Mental Health Performance
590 Framework: Descriptive analysis of state and national data for 2019–2020. *Australasian*
591 *Psychiatry*. 2022;30: 624–631. doi:10.1177/10398562221103807
- 592 44. Addington J, Williams J, Young J, Addington D. Suicidal behaviour in early psychosis.
593 *Acta Psychiatrica Scandinavica*. 2004;109: 116–120. doi:10.1046/j.0001-
594 690X.2003.00232.x
- 595 45. Haw C, Hawton K, Sutton L, Sinclair J, Deeks J. Schizophrenia and Deliberate Self-
596 Harm: A Systematic Review of Risk Factors. *Suicide and Life-Threatening Behavior*.
597 2005;35: 50–62. doi:10.1521/suli.35.1.50.59260
- 598 46. Mork E, Mehlum L, Barrett EA, Agartz I, Harkavy-Friedman JM, Lorentzen S, et al.
599 Self-Harm in Patients with Schizophrenia Spectrum Disorders. *Archives of Suicide*
600 *Research*. 2012;16: 111–123. doi:10.1080/13811118.2012.667328
- 601 47. Clarke M, Whitty P, Browne S, Mc Tighe O, Kinsella A, Waddington JL, et al.
602 Suicidality in first episode psychosis. *Schizophrenia Research*. 2006;86: 221–225.
603 doi:10.1016/j.schres.2006.05.026
- 604 48. Harvey SB, Dean K, Morgan C, Walsh E, Demjaha A, Dazzan P, et al. Self-harm in
605 first-episode psychosis. *The British Journal of Psychiatry*. 2008;192: 178–184.
606 doi:10.1192/bjp.bp.107.037192
- 607 49. Mond J, Morice R, Owen C. Use of Antipsychotic Medications in Australian States and
608 Territories Between July 1995 and December 2001. *Australasian Psychiatry*. 2003;11:
609 267–272. doi:10.1046/j.1440-1665.2003.00561.x
- 610 50. Roy A, Pompili M. Management of Schizophrenia with Suicide Risk. *Psychiatric*
611 *Clinics*. 2009;32: 863–883. doi:10.1016/j.psc.2009.08.005
- 612 51. Hawton K, Bergen H, Kapur N, Cooper J, Steeg S, Ness J, et al. Repetition of self-harm
613 and suicide following self-harm in children and adolescents: findings from the
614 Multicentre Study of Self-harm in England. *Journal Of Child Psychology And*

- 615 Psychiatry, And Allied Disciplines. 2012;53: 1212–1219. doi:10.1111/j.1469-
616 7610.2012.02559.x
- 617 52. Huang Y-C, Wu Y-W, Chen C-K, Wang L-J. Methods of suicide predict the risks and
618 method-switching of subsequent suicide attempts: a community cohort study in Taiwan.
619 *Neuropsychiatric Disease And Treatment*. 2014;10: 711–718. doi:10.2147/NDT.S61965
- 620 53. Thomas N, Barber C, Miller M. A cohort study of initial self-harm events: method-
621 specific case fatality of index events, predictors of fatal and nonfatal repetition, and
622 frequency of method-switching. *International Review of Psychiatry*. 2021; 1–9.
- 623 54. Brager-Larsen A, Zeiner P, Klungsøyr O, Mehlum L. Is age of self-harm onset
624 associated with increased frequency of non-suicidal self-injury and suicide attempts in
625 adolescent outpatients? *BMC Psychiatry*. 2022;22: 58. doi:10.1186/s12888-022-03712-
626 w
- 627 55. Dudgeon P, Calma T, Holland C. The context and causes of the suicide of Indigenous
628 people in Australia. *Journal of Indigenous Wellbeing*. 2017;2: 5–15.
- 629 56. Ramamoorthi R, Jayaraj R, Notaras L, Thomas M. Epidemiology, Etiology, and
630 Motivation of Alcohol Misuse Among Australian Aboriginal and Torres Strait Islanders
631 of the Northern Territory: A Descriptive Review. *Journal of Ethnicity in Substance
632 Abuse*. 2015;14: 1–11. doi:10.1080/15332640.2014.958642
- 633 57. Leckning B, Hirvonen T, Armstrong G, Carey TA, Westby M, Ringbauer A, et al.
634 Developing best practice guidelines for the psychosocial assessment of Aboriginal and
635 Torres Strait Islander people presenting to hospital with self-harm and suicidal thoughts:
636 Australian & New Zealand Journal of Psychiatry. 2020;54: 847–882.
637 doi:10.1177/0004867420924082

638

639 **Supporting information**

640 **S1 Table. Descriptive summary and univariate analysis of repeat hospital admission involving**
641 **self-harm by Aboriginal people with a hospital admission involving self-harm and suicidal**
642 **ideation, NT 2001-2013**

643

644 **S2 Table. Descriptive summary and univariate analysis of repeat hospital admission involving**
645 **self-harm by non-Aboriginal people with a hospital admission involving self-harm and suicidal**
646 **ideation**

647