

1 **Running head:** Human migration, city growth, and vector surveillance and emergence

2

3 **Title:** Migration and the Emergence of Chagas Disease Vectors in the Growing City of El Pedregal,

4 **Peru**

5

6 **Authors**

7 Raquel Gonçalves¹, Kathryn P. Hacker^{2,3}, Carlos Condori¹, Sherrie Xie², Katty Borrini-Mayori¹, Lina

8 Mollesaca Riveros¹, Roger Quispe Apaza¹, Manuel Ysidro Arratea¹, Gustavo Nativio², Ricardo Castillo-

9 Neyra^{1,2}, Valerie A. Paz-Soldan^{1,4}, Michael Z. Levy^{1,2*}

10

11 *Corresponding author: Michael Z. Levy: mzlevy@pennmedicine.upenn.edu

12

13 **Filiations:**

14 ¹ Zoonotic Disease Research Lab (LIEZ), One Health Unit, School of Public Health and Administration,
15 Universidad Peruana Cayetano Heredia, Lima, Peru

16 ² Department of Biostatistics, Epidemiology and Informatics, University of Pennsylvania, Philadelphia,
17 Pennsylvania, United States of America

18 ³ Department of Epidemiology, University of Michigan, Ann Arbor, Michigan, United States of America

19 ⁴ Department of Tropical Medicine, Tulane University School of Public Health and Tropical Medicine,
20 New Orleans, Louisiana, United States of America

21

22 **Abstract**

23 The city of El Pedregal grew out of a desert, following an agricultural irrigation project in Southern Peru.

24 We conducted door-to-door entomological surveys to document the emergence of triatomines and bed

25 bugs into this new urban environment. We inspected 5,191 households for *Triatoma infestans* (known

26 locally as the *Chirimacha*); 21 (0.41%) were infested. These were extremely spatially clustered (Ripley's

27 K p-value <0.001 at various spatial scales). Using remote sensing we compared the year of construction of
28 infested to un-infested households and found that infested houses were older than controls (Wilcoxon
29 rank-sum: $W=33$; $p=0.02$). We confirmed infestations through a subsequent bed bug specific inspection in
30 34 households. These households were more spatially disperse across El Pedregal. To gain a better
31 understanding of the context surrounding triatomine infestations, we conducted in-depth interviews with
32 residents to explore their migration histories and previous experiences with *Chirimachas*. Main reasons
33 for migration includes searching for work on land, opportunity to buying a house, and scape adverse
34 climate effects. Permanent migration flow and poor housing conditions create suitable environment for
35 emergence triatomine infestation. We discuss how changes in the landscape could potentially heighten
36 vulnerability to vector-borne illnesses.

37

38 *Keywords: Migration; Triatoma infestans; Bed bugs; Disease Vectors; Peru*

39

40 **Funding:** This work was supported by the National Institute of Health [NIH-NIAID 1R01AI146129]

41

42

43 **Author summary**

44 Large-scale irrigation and changes in land-use have been linked with emergence of infectious disease
45 worldwide. In El Pedregal, Southern Peru, the Majes-Siguas irrigation was designed to supply water to
46 agribusiness companies installed in a desert area. This project has propelled a constant migration flow and
47 the growth of this new city, promoting conditions to emergence of *Triatoma infestans*, an insect vector of
48 Chagas disease, as well as bed bugs. Triatomine infestation presented a clustered pattern, its dispersion
49 limited by unoccupied houses. Triatomine infested houses tend to be older than other houses. Bed bug
50 infestations were more spread out, and not related to construction age. Household's stories of migration
51 shed light on some of the socioeconomic determinants that promote conditions for infestation. Amongst
52 these, living in poor housing conditions, and the constant migration flow; driven by seeking opportunities

53 to work, to buy a house, or to escape from adverse climate effects in other farming regions.
54 Environmental and socioeconomic impacts of large-scale development disproportionately affect
55 vulnerable populations. Design of surveillance systems that account for these contexts is urgently needed
56 to support early detection and control of emergence of vector-borne diseases.

57

58 **Introduction**

59 Some great cities of the world have mythical origin stories; the origins of others are more mundane. In
60 many cases the impetus for a *de novo* city is political—national capitals like Washington DC (1) and
61 Brasilia (2) were placed in central locations, and the blank slates allowed for national architectural
62 expression (1). In many other cases, cities grow *de novo* in response to the exploitation or cultivation of
63 new economic resources, such as rubber (Manaus, Belem, Iquitos) (3), gold (San Francisco) (4), oil
64 (Houston, Texas USA) (5), among many others. The rapid emergence of entirely new cities allows for the
65 close study of the processes of arrival and spread of urban pests, including disease vectors.

66

67 The foundation of new cities increases human migration, mainly as a workforce, and can act as a
68 persistent social determinant in the processes of introduction and emergence of vector-borne diseases
69 (6,7). Further landscape changes, such as expansion of agricultural frontiers, and changes in land use,
70 provide broad opportunities for new contacts among hosts, vectors, and pathogens (8). Socioeconomic
71 factors and the poorly planned occupation of spaces associated with poverty, are structural processes that
72 can promote conditions for infestation by triatomine bugs, the vectors of the parasite *Trypanosoma cruzi*,
73 causative agent of Chagas disease. Poor housing conditions, such as poor quality construction materials,
74 cracks on the walls, unplastered surfaces, and presence of animals are factors associated with increased
75 risk of triatomine infestation (9,10).

76

77 In southern Peru, a new city, El Pedregal, was created *de novo* following an irrigation project that created
78 numerous job opportunities attracting migrants from local towns as well as more distant regions. We

79 studied the early stages of emergence of the insect vector of Chagas disease, *Triatoma infestans*, in El
80 Pedregal as well as bed bugs, *Cimex* sp., which are also competent vectors of *Trypanosoma cruzi* (11–13).
81 We performed door-to-door entomological surveys throughout El Pedregal, and, in concert with targeted
82 insecticide application, conducted in-depth interviews with affected residents and their neighbors to
83 examine the economic and social forces that led to the rapid growth of the city in a barren desert.

84

85 **Study site**

86 The study was conducted in Villa El Pedregal (-16.32699, -72.19480), Distrito de Majes, Provincia de
87 Caylloma, Departamento de Arequipa, Perú. Located in the Subtropical Coastal desert (14) the city sits at
88 an altitude of around 500m, and boasts a year-round temperate climate (mean annual temperature of
89 19°C), but with very little precipitation (150mm annual mean) (15). In 2017, the Peruvian census for
90 Majes district reported 60,108 inhabitants.

91

92 In the 70's, the Peruvian Government initiated an irrigation project, '*Proyecto Especial Majes-Siguas*',
93 with the goal of providing a water source for the irrigation of 60,000 hectares destined to agroindustry in
94 the 'Pampas de Majes'. The first phase of the project consisted of the construction of the Condorama dam,
95 and channelling (and in some cases tunnelling) water from the the Colca River to the Siguas River, and
96 from there to Pampas de Majes. By the 1980s the project had supported the establishment of agroindustry
97 and processing plants in El Pedregal. These in turn attracted subsistence farmers from different parts of
98 Peru, who came to the region seeking work opportunities (16).

99

100 **Methods**

101 *Entomological surveys*

102 In collaboration with the Ministry of Health of Arequipa we conducted at-the-door interviews and
103 entomological inspections in El Pedregal between October, 2019 and April, 2022, with numerous
104 disruptions due to the Covid-19 pandemic. These surveys were meant to assess the distribution of

105 triatomine vectors for the purposes of planning indoor residual spraying (IRS) to eliminate them. We
106 asked several questions at the door regarding individuals' experience with triatomines and bed bugs. We
107 then requested permission to perform a full inspection of the house, both inside and outside, for
108 triatomines. We separately offered to inspect beds and furniture for bed bugs to those individuals who
109 reported bites or suspected an infestation. Prior to the entomological surveys, we created a georeferenced
110 map of all households and other structures and integrated entomological data into this map in real time
111 using the Vectorpoint app – an app created by our research team for use by house inspectors to guide
112 entomological searches (17). We informed the Ministry of Health of all households in which we detected
113 triatomines, and, in coordination with them, scheduled the households and their immediate neighbors for
114 insecticide treatment per Ministry of Health guidelines.

115

116 *Indoor Residual Spray (IRS)*

117 IRS was offered to all householders where triatomine infestation was confirmed. In the blocks that
118 infestation was confirmed in more than one household, IRS was offered to all houses within block, and to
119 households in the neighboring blocks that faced the treated block.

120 IRS was conducted twice per household at a target 6-month interval, though the pandemic led to a longer
121 delay between applications. The first phase (IRS-1) was conducted between November 20th, 2020 and
122 March 17th, 2021; 135 households were treated. The second phase (IRS-2) was conducted between
123 October 5th, 2021 and February 13th, 2022, and encompassed 118 households. All participating
124 households were treated with Lambda-cyhalothrin SC 10% (Arpon® 10 SC) in a dilution of 60ml of
125 insecticide: 8 Litres of water, according to the manufacture's indications. The insecticide was provided by
126 the Ministry of Health. Vector control technicians applied the insecticide using a Hudson® sprayer tank
127 (H.D. Hudson Manufacturing Company, Chicago, IL), with 8.5L capacity (Pressure 60 P.S.I.; 414 kPa)
128 (Fig. 1).

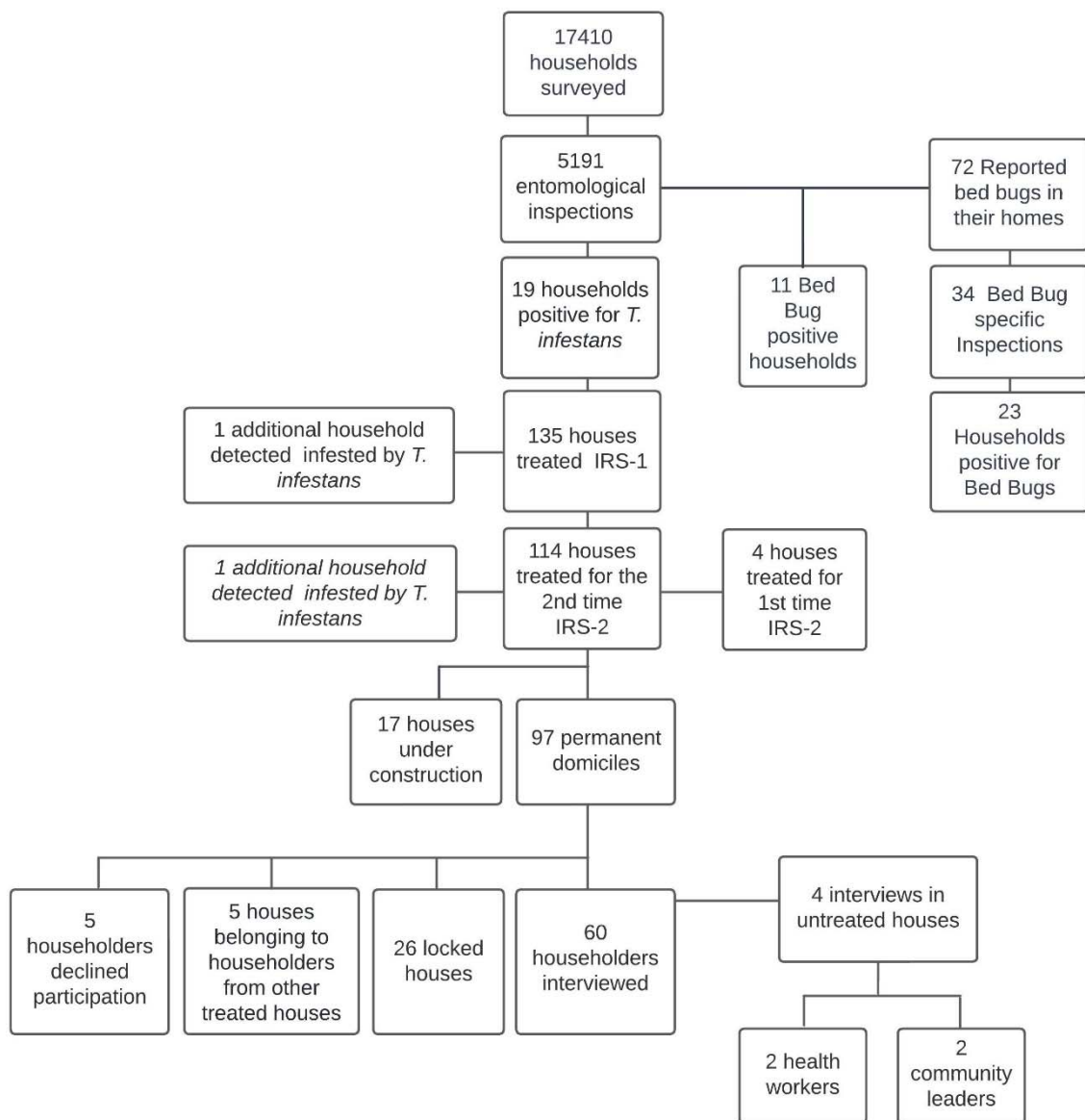


Figure 1: Flowchart of entomological and sociological activities

147

148 and in-depth interviews conducted in El Pedregal.

149

150 *Semi-structured interviews*

151 We visited 97 houses (of 118) treated during the 2nd IRS application. Houses were visited up to three

152 times, in different work hours and during weekends. A total of 65 householders were contacted, and

153 individuals 18 years or older were invited to participate in semi-structured interviews. Sixty individuals

154 agreed to participate, while 5 declined participation. Additionally, two community health workers and 2

155 community leaders were invited to participate to provide additional context surrounding vector infestation
156 and control in the region (Fig. 1).

157
158 A semi-structured interview guide was developed to ensure that all interviews covered similar topics and
159 was organized in three main areas of interest: 1) migration story, 2) resident perceptions regarding the
160 city's growth, and 3) experiences and knowledge related to dangerous insects, specifically focusing on
161 triatomines and bed bugs. All interviews were recorded; one of us (RG) listened to each at least twice to
162 add detail to handwritten field notes. A matrix summarising themes that emerged inductively associated to
163 the three main areas of interest was created manually; this matrix was used to generate the summary of
164 themes and quantify how often these topics emerged. For additional detail and sample quotes, thirty-five
165 audios were transcribed (n=25 randomly selected and an additional n=10 selected by the authors due to
166 their richness), uploaded to Dedoose (18), and coded. Coding was both deductive (i.e., based on the main
167 themes explored) and inductive (based on responses that emerged from interviews). Themes and related
168 quotes are summarised and presented in the results section.

169

170 *Assessment of Household Development via Satellite Images*

171 A sample of 142 uninfested houses (2.75% of total surveyed houses n=5,164) was randomly selected in
172 order to compare the median year of construction with houses infested by *T. infestans*, and with houses
173 infested by *Cimex* sp. The estimated statistical power to detect difference between medians was 80%
174 ($\alpha=0.05$) by application of non-parametric Wilcoxon rank-sum test. The set of houses was assessed in
175 Google Earth images, obtained for the years 2004, 2010, 2012, 2017, 2018, and 2020. A matrix was
176 generated, registering for each house the year in which images indicated first evidence of development,
177 defined as the presence of a building covering any portion of the sample city lot.

178

179 *Spatial Analysis*

180 We assessed spatial clustering of triatomine and bed bug infestations using Ripley's K function, which
181 compares a given point distribution to complete spatial randomness to determine if points are clustered,
182 dispersed, or occur at random (19). Separate K functions were used to examine point patterns of cases
183 (inspected houses that were positive for the infestation of interest) and controls (inspected houses that
184 were negative for the infestation of interest) for both triatomines and bed bugs for a distance of 0 to 1000
185 metres. For each infestation type, we calculated the difference between K functions (KD) for cases and
186 controls to assess for clustering of cases while accounting for underlying spatial heterogeneity in the
187 locations of inspected houses; positive KD values indicate significant clustering of cases. Monte Carlo
188 random labelling simulations (n = 999) were performed to determine 95% confidence intervals to assess
189 statistical significance for alpha level = 0.05. Spatial analyses were conducted in R using the spatstat and
190 smacpod libraries (20,21).

191

192 *Ethical approval*

193 The study was approved by the ethical review board of the Universidad Peruana Cayetano Heredia
194 (protocol #103096), the University of Pennsylvania (protocol #833122), and the Tulane School of Public
195 Health and Tropical Medicine (#2019-909). Individuals who agreed to participate in the semi-structured
196 interviews signed a consent form, authorising recording of the interviews. Entomological surveys and
197 insecticide application conducted as part of the Ministry of Health's control campaign were deemed not
198 human subjects research and were conducted following verbal consent in accord with the Ministry of
199 Health's usual protocols.

200

201 **Results**

202

203 Entomological surveys

204

205 We conducted visits to 17,410 households to survey for triatomine bugs. We were able to interview
206 household members at the door of 12,129 houses (69.7%) and enter and inspect 5,191 (29.81%). We
207 confirmed infestation by *T. infestans* in 19. All households infested by *T. infestans*, as well as their
208 immediate neighbors, were requested to allow indoor residual insecticide (IRS) treatment. During these
209 treatments we detected triatomines in an additional 2 households, bringing the total number of infested
210 households to 21 (0.41% of those inspected).

211
212 During the at-the-door interviews we asked household members about potential infestations with bed
213 bugs. We presented a Petri dish with bed bug specimens at different development phases. We found that
214 619 householders recognized bed bugs, 72 reported that they had seen a bed bug in their house, and 53
215 reported that they had been bitten by bed bugs in the last year. Of the 53 who reported recent exposure to
216 bed bugs 34 requested bed bug specific inspections (including beds, furniture, and other likely
217 harbourages). We detected bed bugs in 23 of these houses.

218
219 Infested triatomine households were extremely spatially clustered; the 21 total infestations were located
220 on only 6 city blocks. Four of these blocks were themselves clustered together in two neighborhoods, and
221 one household was not obviously associated with either focus of infestation. By contrast households
222 infested with bed bugs were more widely dispersed, though still clustered in some areas.

223
224 A total of 258 triatomines were collected in the 21 positive households [median: 5 per household, IQR: 2,
225 14.5]. Eleven households had insects solely in peri-domestic spaces; 5 had insects solely inside in
226 domestic spaces, and 5 had both. Nymphs were captured in 71% of infested houses indicating colonisation
227 by the vector. We microscopically examined a total of 215 of the 258 (83.3%) specimens for *Try. cruzi*
228 infection (the remaining insects were too damaged or too dry to examine) and all were negative. The lack
229 of *Try. cruzi* in these insects is in line with our observations in the city of Arequipa, where we have not
230 had parasite-infected insects in areas with very sparse vector infestation (22,23).

231 Semi-structured interviews

232

233 *Socio-demographic and migration patterns*

234 Table 1 presents participants demographic information, work at arrival in El Pedregal, and migration

235 history. The majority of migrants (53.1%) reported repeated migration movements, living in at least one

236 city different from their origin place before their move to El Pedregal.

237

238

239

240

241

242

243

244

245

246

247

248

249

250

251

252

253

254

255

256

257 Table 1. Participants demographic, migration history and work at arrival in El Pedregal.

<i>Participants</i>	Median age (IQR)	
Female (n=44)	39.5 (30.2; 48)	
Male (n=20)	40 (27; 58)	
<i>Place of origin (Department level)</i>	n (%)	
Apurimac	1 (1.56)	
Arequipa	25 (39.06)	
Arequipa (born in El Pedregal)	5 (7.81)	
Ayacucho	1 (1.56)	
Cusco	12 (18.75)	
Moquegua	1 (1.56)	
Huánuco	1 (1.56)	
Puno	18 (28.13)	
<i>Education level</i>	Female n (%)	Male n (%)
Uncompleted primary	4 (9.1)	2 (10)
Completed primary	3 (6.8)	2 (10)
Uncompleted secondary	3 (6.8)	3 (15)
Completed secondary	11 (25)	5 (25)
Institute/technical education	3 (6.8)	1 (5)
Graduated	4 (9.1)	3 (15)
Missing information	16 (36.4)	4 (20)
<i>Work at arrival in El Pedregal</i>	Female n (%)	Male n (%)
Agriculture	12 (27.3)	8 (40)
Agriculture and commerce	3 (6.8)	0
Agribusiness companies	4 (9.1)	3 (15)
Commerce and services	8 (18.2)	3 (15)
Housewives	8 (18.2)	0
Arrived as child	6 (13.6)	3 (15)
Born in El Pedregal	3 (6.8)	2 (10)
Missing information	0	1 (5)
<i>Migration history</i>	n (%)	
Born in El Pedregal and has never left	5 (7.8)	
Migrated from their place of origin straight to El Pedregal	21 (32.8)	
Migrated through more than 1 local apart from their place of origin before moving to El Pedregal	34 (53.1)	
Migrated from their place of origin to El Pedregal, left, and returned to El Pedregal (back-forth)	4 (6.3)	

258

259

260

261

262 *Work at arrival: the agribusiness companies and changes in agricultural practices*

263 Upon arrival to El Pedregal, about half of the migrants interviewed reported working in agriculture (Table
264 1), either in “parcelas” (i.e., a portion of agriculture terrain of 5 hectares that are part of a bigger farming
265 unit) or in the crop companies.

266
267 Initially, in the 1980’s, agricultural activities were focused around raising cattle for milk production. The
268 first settlers received credits and imported animals to support this production. Participants also recounted
269 how one of the first agribusiness companies established in El Pedregal controlled the milk price and,
270 together with the high prices of supplies needed for this activity, made it unsustainable for small farmers
271 to compete. Participants recalled having to sell their cattle and dedicate themselves to other agricultural
272 activities.

273
274 “... *With dairy cows, the colonists with dairy cows, there was very little agriculture. It was a rare few that*
275 *grew carrots or onions. There was no other farming... The majority of people worked with dairy cows*
276 *because there was a credit system that facilitated the colonists to obtain cows, imported cows.”*

277
278 “*The people dedicated themselves to dairy because this was a dairy zone; cattle, to the sale of milk, the*
279 *fattening of cattle, was the principal source of income here in the Majes irrigation. Unfortunately, with*
280 *the price the company... that had the monopoly, of course [they] always had been here, and the elevated*
281 *cost of supplies, it was a losing battle. Many gave up on cattle, it’s no longer sustainable to keep up that*
282 *business.”*

283
284 “*...I had cattle and I thought 'What do I do with my cattle? Because they don’t bring in money...Most of*
285 *my friends that had cattle gave up on the cows”*

286
287 *Reasons for migration to El Pedregal*

288 Migrants perceived – and moved to — El Pedregal as a place with opportunities to improve their lives;
289 with more permanent opportunities to work, to build their homes, and to provide education for their
290 children. Some migrated to El Pedregal to reunite with a family member already established there; others
291 migrated from locations with seasonal work activities, such as those from Puno who mentioned that
292 agriculture and cattle raising was seasonal, compared to opportunities in El Pedregal where the cultivation
293 of different plant species provided year-round employment.

294

295 *“... Because where I am from (Puno), there is not much work. Here in Pedregal there are jobs, of all*
296 *kinds... There [in Puno] I only dedicated myself to my livestock. I would watch my livestock because I*
297 *did not have much work. Livestock is sold annually, not monthly... I also have 5 children and I have*
298 *come here to be able to support my children, to have them study.”*

299

300 The demand for goods increased as the population increased, boosting the local economy, and generating
301 additional work opportunities in commerce, construction, and various service industries. The stability of
302 these permanent year-round labor opportunities combined with the possibility to participate in
303 “loteamiento” (procurement of land lots) in El Pedregal, were reported as reasons for migration.

304

305 Climatic conditions were also mentioned as a reason for migration. In Puno, for example, climate events
306 such as flooding affect crops, lives, and food security in the recent years (24); the climate in El Pedregal is
307 considered appropriate year-round for different agricultural activities.

308

309 *“... Over there [Puno] we suffered from flooding... floods have taken all the crops, that is why we have*
310 *come, we arrived looking for work... Now everything is being flooded over there...”*

311

312 *"Firstly, this is an irrigation, an irrigation where everything grows. The people count on this. The climate*
313 *is appropriate for everything, raising animals... in 40 days the chickens are ready. For this they come, the*
314 *climate is very good... The production grows quickly, you have three crops a year."*

315
316 *Changes in landscape, land ownership, and housing*

317 Participants reported that when the irrigation project started, El Pedregal was a desert. There were no
318 houses, and all the people used to live in the *parcelas*. The *parcela* owners (locally called "settlers" or
319 'colonists'), hired the migrant farmers to live and work on their lands. The first populated area in El
320 Pedregal was the La Colina neighborhood (one of the tree neighborhoods where triatomine infestation
321 was detected), and the first constructions there were dedicated as "sedes" (headquarters) for a cooperative,
322 the agrarian bank, and to a milk company, which used to buy milk from the farmers and, through their
323 headquarters in La Colina, to make the respective payments. Over time, people applied for formal tenancy
324 lots (land title or similar recognition). The time frame between land acquisition and tenancy is reported to
325 be long in the newest settled areas, particularly due to the lack of infrastructure. In order to push for
326 permanent tenancy, land acquisition was sometimes conditioned on its immediate occupation. As arriving
327 migrants had few resources, they constructed shelters for themselves with fragile materials (e.g. "*esteras*"
328 which are woven straw mats), but as they gradually become settled, with titles of land ownership or access
329 to electricity, they invested in materials for more permanent house construction, which generates job
330 opportunities for those in construction. First local schools, health facilities, and food markets were also
331 recalled being constructed with *esteras*, and rocks, replaced by plywood.

332
333 The absence of permanent neighbors is recalled in the past, and still reported in the present in newly
334 settled areas (where triatomine infestation was also detected), where at the time of interviews, there is still
335 no public water supply.

336

337

338 *"... we bought the lot and they told us 'you have to live on the lot because if not we'll take it' ... So all the*
339 *houses were just 4 esteras [Woven reed mats], there was nothing around the lot. Now people with a little*
340 *money close their lot in"*

341
342 *"At first we bought esteras [Woven reed mats] ... it was hard, I slept on a doubled-over estera, we folded*
343 *an estera and my children slept below ... It has been hard... like everyone we started like that..."*

344
345 *"... Not even the market was like that, it was just some fabrics, the health post also was made of esteras, it*
346 *wasn't even concrete, just rustic, later they made it of wood."*

347
348 *"... Modulo G was empty land, not a single house. Ours was a house of little esteras, with a little room...*
349 *the school wasn't there, later bit by bit [the urbanization] formed, the rooms were of plywood and later*
350 *they constructed them. Still people didn't live here, we didn't have any neighbors, we still don't..."*

351
352 *Occurrence of dangerous insects and experiences regarding triatomine and bed bug infestation*

353 When asked about occurrences of dangerous insects in their community, participants recalled seeing
354 triatomines at their homes among other insects and arachnids (e.g., spiders, scorpions, flies, mosquitoes,
355 ticks). The oldest inhabitants reported triatomine infestation in different neighborhoods of El Pedregal
356 (e.g., Pedregal Norte, Alto, Colina, Malvinas, and in the *parcelas*, particularly in the animal paddocks)
357 and in the neighboring locality of Santa Rita de Siguas in the late 1980's/early 1990's. Frequent insecticide
358 spraying campaigns are recalled having controlled triatomine infestations.

359
360 Migrants demonstrated knowledge regarding risk factors for triatomine infestation, particularly related to
361 poor housing conditions and breeding animals near human dwellings. Participants knew they had to report
362 infestation at the health centre facility, and posters and flyers displaying pictures of triatomines were
363 mentioned as sources of information about how to identify the insect and how to report infestation.

364 *"... I'll tell you when, in 1986, 1987, there were tons. I lived in a parcel, I worked in a parcel, and when I*
365 *arrived on the parcel itself there were tons and here in Pedregal the people complained a lot about*
366 *Chirimachas. There was a fumigation company, they fumigated frequently, after that the bugs*
367 *disappeared."*

368
369 *"I knew of the Chirimacha because, when we lived in the valley, we used to see lots.... In the valley [The*
370 *Valley of Siguanas] there are strong campaigns for Chagas disease, because there are tons of Chirimachas.*
371 *The majority of the houses were of adobe and in the adobe lived the Chirimachas. The thing is, in the*
372 *valley we had all our houses tied to the hillside, and well, the hills were of that red earth and there always*
373 *were Chirimachas. Although in our house there weren't many because, as I raised roosters, I always*
374 *fumigated. But one year they went to the neighbor who raised guinea pigs on the roof of her house. She*
375 *made her house out of cement, supposedly more hygienic than my house that was of adobe, and then they*
376 *fumigated her house in her guinea pig pens and waaaa how they came down! It looked like the procession*
377 *of the Señor de los Milagros*, tons. We never saw so many Chirimachas as that day they fumigated the*
378 *house of our neighbor."*

379
380 **the procession of the Señor de los Milagros is a religious procession that occurs in Peru each October*

381
382 *"It was a big black thing, with a kind of swollen belly, I looked at it, I had never seen it before. I saw it on*
383 *the wall when we turned on the light... What could it be? I didn't know, what animal could it be... As I*
384 *often went with my daughter to the health post, I went there and I had seen a sign that said 'Chirimacha'*
385 *and that it produced a disease, Chaga. So I left it there."*

386
387 *"... I came to know it here because where I slept was made of esteras, while I slept, they walked all over*
388 *me, on my face, and I'd turn on the light and see the Chirimachas..."*

389

390 Participants reported having heard about bed bug infestations from their neighbors, friends, and health
391 workers in door-to door prevention campaigns. Inhabitants who had their houses infested by bed bugs,
392 reported use of different products and practices to control infestation, such as: use of "Sapolio® aerosol",
393 "Bolfo®" (Propoxur- carbamates), chlorine, and cleaning activities (taking out the mattress to expose it to
394 the sun). Some of those who experienced infestation believe that bedbugs may transmit diseases but did
395 not know which one.

396
397 *"...I moved recently, a year ago, and bumps appeared... I washed, cleaned and there was nothing, you*
398 *can't see them "G-d what is this? and a friend told me 'the bed bugs bite you that way in one spot, lots in*
399 *one spot'. She asked me to show her the bumps and she told me that it was bed bugs, I was frightened, I*
400 *asked her 'What do I have to do? Then she told me about a sign on a kiosk that said, 'Call when you have*
401 *Chirimahcas'. I called then and I told them 'Please, I don't know what I have' so they came and inspected*
402 *everything, the women took apart my bed and there they were, inside. I had to use bleach, boiling water; I*
403 *didn't want to sleep there anymore".*

404
405 *"...Because every little animal passes from neighbor to neighbor...If they had here those bugs I'd use*
406 *Bolfo®, It doesn't cause harm, and put everything out in the sun, more than anything, put things in the*
407 *sun, like for fleas, there used to be tons of fleas, we had to put the blankets out in the son, and as the sun*
408 *warmed the covers the fleas walked off, they left to search for a place to hide themselves... because at*
409 *night you can't see them... But if you spread the covers out in the sun they leave. They might come from*
410 *the mountains in the things that travellers bring, they could come in clothing, in the bedding, in anything*
411 *that they bring they could come and I understand that this little animal adapts itself to any environment,*
412 *from cold to hot..."*

413
414 Although participants had their houses IRS treated, 79.3% (23/29) reported having used other insecticidal
415 products, such as: Butox® (deltamethrin) against spiders and mosquitoes; Raid® against chicken

416 ectoparasites; Sapolio® against spiders, mosquitoes, flies, triatomines and bed bugs; Baygon® against
417 spiders and flies. Two respondents reported using the agricultural pesticide Lannate® (Methomyl-
418 carbamate), applied indoors and outdoors (against triatomine infestations), and applied directly on a dog
419 (for fleas).

420

421 “... if there were a lot of [triatomines] we definitely have to fumigate...What we used was what we used
422 on the fields, those sprayers the work by pressure, spraying with those, relying on a special product for
423 Chirimachas, I dont remember which. There are various products that have various names, we used
424 Lannate [Methomyl], which was a strong poison, we sprayed with that and we had to be outside the
425 house for at least 12 hours.”

426

427 “In La Joya we sprayed, but I can't remember the name [of the insecticide]. We haven't sprayed here... A
428 long time ago I had a dog... It got fleas and couldn't get rid of them...I tried everything until a neighbor
429 told me to use Lannate, which they use on the farms, and then I could kill the fleas.”

430

431 *Assessment of Household Development via Satellite Images*

432 Houses infested by *T. infestans* were constructed significantly earlier than control houses (Wilcoxon rank-
433 sum test: $W=33$, $p=0.02$). No statistical difference was observed between median years of construction
434 when we compared houses infested by *Cimex* sp. and control houses ($W=6.5$, $p=0.07$).

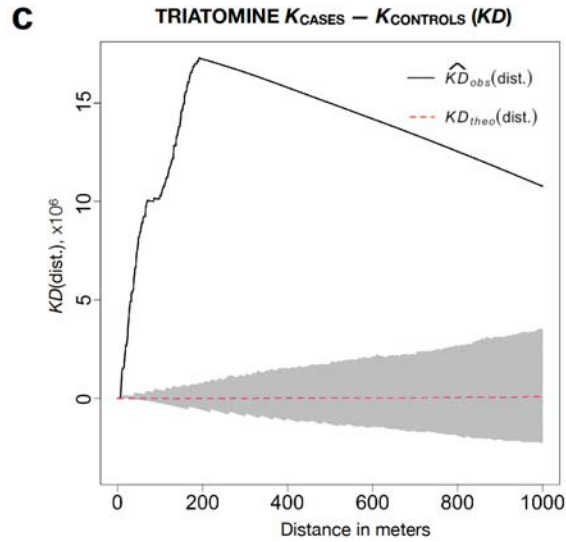
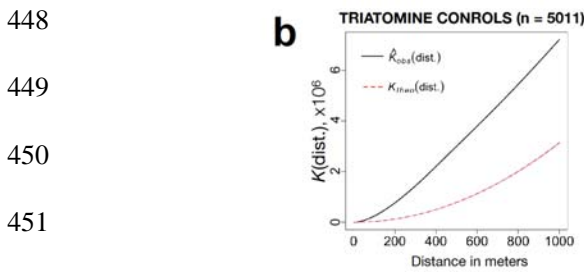
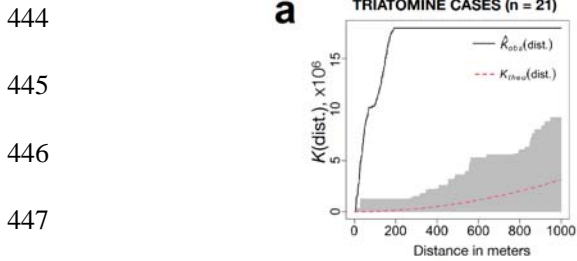
435 *Spatial Analysis*

436 The difference in K functions (KD) indicated significant clustering of both triatomine and bed bug
437 infestations at various spatial scales (Fig. 2). The Ripley's *K* functions of observed case and control data
438 for both infestation types showed significant clustering across all distances considered (Fig. 2A -2B and
439 2D-2E), suggesting that the locations of inspected houses exhibit significant clustering at baseline.

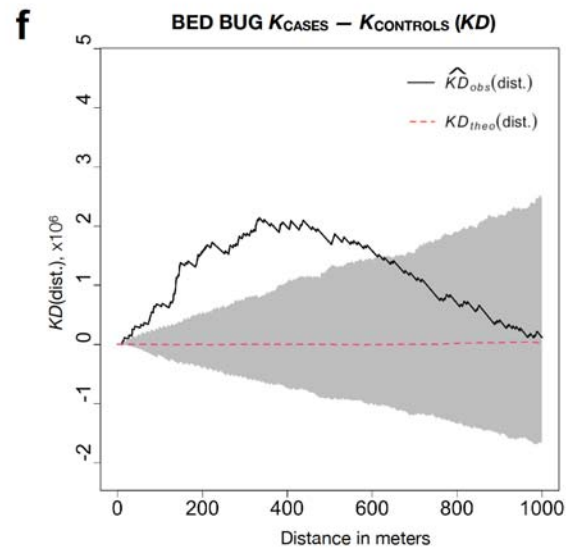
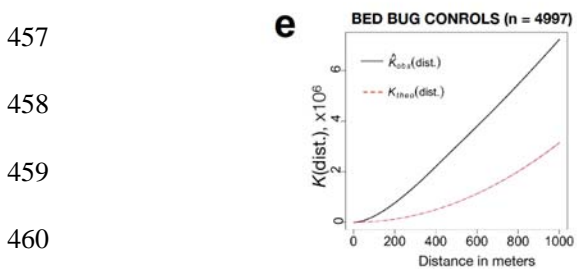
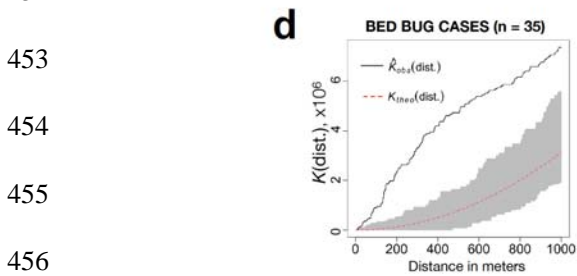
440 However, the observed *KD* functions were positive up to 1000m for triatomines and up to 600m for bed

441 bugs, which suggests that triatomine and bed bug infestation exhibit clustering over and above any
442 clustering observed in non-infested homes (Fig. 2C and 2F).

443



447



451

452

453

454

455

456

457

458

459

460

461

462 Figure 2. Ripley's K functions measuring spatial clustering for triatomine cases (a) and controls (b) and

463 bed bug cases (d) and controls (e), as well as the difference in K functions (KD) for cases and controls for

464 triatomines (c) and bed bugs (f) for a distance of 0-1000m. Black lines indicate observed values, dotted

465 red lines represent null hypothesis of no clustering, and grey shading represent 95% tolerance envelopes.

466 Significant clustering for triatomine infestations is detected at all distances, while clustering for bed bug

467 infestations is detected for distances less than ~600m.

468

469 **Discussion**

470 Throughout history, human populations have employed migration as a survival strategy in response to
471 various challenges, including the impacts of climatic events (26–28), food insecurity (29,30), or pursuing
472 improved living conditions (31). Governmental policies focused on the implementation of extensive
473 infrastructure projects, extractive industries, and agribusiness activities, can generate a need for additional
474 labor force (32), often leading to migration into newly urbanizing areas. The resulting, often haphazard,
475 settlement promotes conditions conducive to disease transmission by connecting hosts, pathogens, and
476 vectors (33).

477
478 The *Chirimacha*, *Triatoma infestans*, successfully invaded urban and peri-urban areas in Arequipa, Peru
479 (10,23); Cochabamba, Bolivia (34); São Paulo, Brazil (35); and Argentina (36,37); complicating regional
480 efforts to eliminate vector-borne Chagas disease (23,37). Here, we describe the migration stories that
481 contributed to population growth in El Pedregal, and we assess residents' perceptions regarding urban
482 development, and their experiences regarding triatomine and bed bug infestations.

483
484 The Majes irrigation project was designed to supply water resources for the establishment of agribusiness
485 companies in El Pedregal (16). These companies had a huge impact in local farming practices and
486 economy, by introducing new products and agriculture practices, fixing prices for milk, and eventually
487 leading to a shift in the main products in this region: from cattle and dairy to fruits and vegetables. Their
488 establishment required a permanent labor force, which attracted subsistence farmers from across the
489 country. These populations declared different reasons for migrating to El Pedregal; while some of them
490 were seeking opportunities to own a house or to improve their living conditions, others were only
491 searching for a new place to keeping working the land. Subsistence farmers assumed the agribusiness
492 companies would secure a permanent work offer, a different reality than they faced elsewhere, where their
493 farming practices were vulnerable to seasonality, local trade dynamics, and to adverse climate events.
494 Coming to a desert, these migrants arrived with few resources; only enough to live in shelters constructed

495 of woven reeds and other poor-quality materials. Over time, working in the fields with a fairly consistent
496 income, they constructed more permanent houses. Most of the houses, however, continued to incorporate
497 precarious materials, such as unmortared stone. The prolonged precarity of houses in the area provided
498 stable environments for introduced triatomines to establish colonies.

499
500 Through interviews and satellite images, we assessed house construction and the expansion of the
501 settlement over space and time. We observed that not all constructed houses were immediately inhabited,
502 as evidenced by the nearly one-to-one inhabitant-to-dwelling ratio in the 2017 Peruvian census for Majes
503 district, which reported 60,108 inhabitants and 58,298 dwellings registered (38). This low ratio is likely
504 due to the large number of dwellings that have been 'staked out' but not fully constructed. In our door-to-
505 door surveys in the fairly established areas, we found that approximately 15% of houses were uninhabited.
506 The long interval between the tenancy of space and its effective use was also mentioned by participants in
507 the in-depth interviews. Uninhabited neighboring houses might act as a limiting factor for triatomine
508 dispersion, as few sources of food are available in these structures (39). The uneven construction may
509 thereby have restricted triatomines to a small number of households, spatially clustered, in the older
510 sections of El Pedregal.

511
512 Households infested with *T. infestans* tended to be older, in areas where migrants had come many years
513 ago. In contrast, infestation by bed bugs presented a different pattern, more dispersed in comparison to
514 those infested by *T. infestans*. Bed bug infestation was not associated with the age of the home, nor the
515 level of construction of the structure. Although bed bug infested households were more spatially clustered
516 than would occur by chance, they were much more widely dispersed across El Pedregal than the
517 triatomines. Bed bugs are likely less dependent on active dispersal in El Pedregal, and, by being carried
518 passively in belongings, less affected by the barriers of uninhabited houses, barren vacant lots, and streets.
519 Awareness of bed bug infestation was amplified through communication amongst community members
520 and health workers. Still, knowledge regarding infestation control is low, and indiscriminate use of

521 insecticides products were reported against domestic infestations of bed bugs, triatomines, and other
522 synanthropic insects. Similar results were observed in peri-urban neighborhoods of the metropolitan
523 Arequipa (40). Although householder application of insecticides was associated with lower risk of
524 infestation by *T. infestans* in endemic area in Argentina (36), insecticide misuse might decrease
525 susceptibility of vector populations to these and related products (41). Aerosol insecticide formulations, in
526 particular, are easily available for purchase in Peru, and their use is widespread. These products often
527 combine different insecticides and synergists agents and are unlikely to control triatomine infestations
528 effectively. Use of aerosol products has shown to increase resistance to pyrethroids in populations of
529 *Aedes aegypti* in Mexico (41). Health educational campaigns to improve community knowledge regarding
530 methods to control synanthropic insects, particularly for bed bug infestations, could help to prevent
531 misuse of insecticide products. However, until a safe and affordable alternative is made available for bed
532 bugs, as it is for triatomines, it is hard to imagine the bed bug situation improving.

533 We suggest, based on our synthesis of spatial entomological data and our interviews, that the *Chirimacha*
534 populations we detected and eliminated arrived at El Pedregal rather recently, and were hindered from
535 dispersing by the numerous uninhabited lots in the growing city. It is possible that the insects are
536 remnants of much earlier infestation processes that our participants recounted, but we believe that
537 alternative explanation is less likely, because it is hard to imagine the insects being constrained to such
538 small foci of infestations for such a long time. Indeed, in the neighboring district of La Joya, *Chirimachas*
539 redispersed following control in the 1990s to infest over a quarter of households (42). It is also possible
540 that the actions of residents applying their own insecticides prevented the further dissemination of
541 *Chirimachas*, though again it is hard to imagine those activities would be effective and uniform enough
542 for long term control. If we are correct our results are concerning—they suggest that as El Pedregal
543 develops further, and the empty lots are filled in, the new city will be highly susceptible to triatomine
544 infestations.

545

546 The historic and current triatomine infestations, which occurred about 30 years apart, seem to differ in
547 their dispersal and density and the settings of space occupation. The former is recalled in interviews as a
548 widespread event, affecting different neighborhoods, houses, and animal corrals at high densities.
549 Housing conditions in those days were described as improvised constructions, using poor quality
550 materials. The infestations we observed in Pedregal, however, were extremely spatially clustered, of low
551 insect densities and only in a few houses that were constructed many years ago. Still, those houses were
552 infested at low densities, and infestation spread was limited, likely by the environmental barriers created
553 by unoccupied, or very sparsely occupied, lots, interspersed with more permanent and, for the insects,
554 habitable, dwellings. Housing conditions, particularly construction materials and crowding, which
555 provide availability of refuges and source of food for triatomines, are limiting factors for domestic
556 infestation by triatomines, density of its colonies, and infection by *Try. cruzi* across many contexts
557 (9,10,43–45). In the interval between the two (re-)introduction events, changes in housing materials and
558 conditions in El Pedregal may not have made houses entirely refractory to infestation, but they hampered
559 infestation, dispersal, and density of the insects.

560
561 Large government decisions involving water and changes in land use can have outsized impacts on the
562 lives of farmers and other laborers, and these impacts can reverberate through society, leading to mass
563 migration and, ultimately, increasing populations' vulnerability to disease (46–49). The cost of these
564 decisions is ultimately borne by those with the least recourse to bear them (50,51). Migration has been
565 also driven by adverse climate conditions, and this phenomenon is expected to increase in the following
566 years. It is urgent to advocate to a shift in governance that contemplates both a responsible use of common
567 natural resources, and a preparedness to ensure food security to populations affected and displaced by
568 climatic events.

569
570 Ironically for a city that grew around an irrigation project, many residents of El Pedregal lack access to
571 clean water (16). Without running water many resort to storing water in barrels, which creates risk for the

572 emergence of *Aedes aegypti* and Dengue virus (52). Emergence of vectors highlight the importance that
573 communities and health authorities to remain hypervigilant, as the complex forces of migration and poor
574 housing conditions makes El Pedregal especially vulnerable to vector-borne disease.

575

576 **Acknowledgements**

577 The authors gratefully acknowledge the contributions of the Ministerio de Salud del Perú (MINSA), the
578 Dirección General de Salud de las Personas (DGSP), the Estrategia Sanitaria Nacional de Prevención y
579 Control de Enfermedades Metaxénicas y Otras Transmitidas por Vectores (ESNPCEMOTVS), the
580 Dirección General de Salud Ambiental (DIGESA), the Gobierno Regional de Arequipa, the Gerencia
581 Regional de Salud de Arequipa (GRSA), the Pan American Health Organization (PAHO/OPS), the
582 Canadian International Development Agency (CIDA). We also thank Amparo Toledo, Claudia Arevalo
583 Nieto and Laura Tamayo for their valuable contributions to these studies.

584

585 **References**

- 586 1. Stephenson, Richard W. A plan whol[l]y new□: Pierre Charles L'Enfant's plan of the City of
587 Washington. 1°. United States Govt Printing Office; 1993.
- 588 2. Lispector, Clarice. Brasilia. In: Todos os Contos. 1°. Editora Rocco; 2016. p. 656.
- 589 3. Barham BL, work(s): OTCR. Reinterpreting the Amazon Rubber Boom: Investment, the State, and
590 Dutch Disease. *Lat Am Res Rev.* 1994;29(2):73–109. Available from:
591 <http://www.jstor.org/stable/2503594>
- 592 4. St. Clair DJ. The Gold Rush and the Beginnings of California Industry. *Calif Hist.* 1998;77(4):185–
593 208. Available from: <https://ch.ucpress.edu/cgi/doi/10.2307/25462514>
- 594 5. Lee J. The regional economic impact of oil and gas extraction in Texas. *Energy Policy.* 2015; 87:60–
595 71. Available from: <https://linkinghub.elsevier.com/retrieve/pii/S0301421515300768>

- 596 6. Barnett ED, Walker PF. Role of Immigrants and Migrants in Emerging Infectious Diseases. *Med Clin*
597 *North Am.* 2008;92(6):1447–58. Available from:
598 <https://linkinghub.elsevier.com/retrieve/pii/S0025712508000941>
- 599 7. Wilke ABB, Benelli G, Beier JC. Anthropogenic changes and associated impacts on vector-borne
600 diseases. *Trends Parasitol.* 2021;37(12):1027–30. Available from:
601 <https://linkinghub.elsevier.com/retrieve/pii/S1471492221002385>
- 602 8. Baker RE, Mahmud AS, Miller IF, Rajeev M, Rasambainarivo F, Rice BL, et al. Infectious disease in
603 an era of global change. *Nat Rev Microbiol.* 2022;20(4):193–205. Available from:
604 <https://www.nature.com/articles/s41579-021-00639-z>
- 605 9. Samuels AM, Clark EH, Galdos-Cardenas G, Wiegand RE, Ferrufino L, Menacho S, et al.
606 Epidemiology of and Impact of Insecticide Spraying on Chagas Disease in Communities in the
607 Bolivian Chaco. McCall PJ, editor. *PLoS Negl Trop Dis.* 2013;7(8):e2358. Available from:
608 <https://dx.plos.org/10.1371/journal.pntd.0002358>
- 609 10. Levy MZ, Bowman NM, Kawai V, Waller LA, Cornejo del Carpio JG, Cordova Benzaquen E, et al.
610 Periurban *Trypanosoma cruzi*-infected *Triatoma infestans*, Arequipa, Peru. *Emerg Infect Dis.*
611 2006;12(7):1345–52. Available from: http://wwwnc.cdc.gov/eid/article/12/09/05-1662_article.htm
- 612 11. Salazar R, Castillo-Neyra R, Tustin AW, Borrini-Mayorí K, Náquira C, Levy MZ. Bed Bugs (*Cimex*
613 *lectularius*) as Vectors of *Trypanosoma cruzi*. *Am J Trop Med Hyg.* 2015;92(2):331–5. Available
614 from: <https://ajtmh.org/doi/10.4269/ajtmh.14-0483>
- 615 12. Jorg ME, Natula CN. *Cimex lectularius*, L. (La chinche común de cama) transmisor de *Trypanosoma*
616 *cruzi*. *Prensa Médica Argent.* 1982;69:528–33.

- 617 13. Jörg ME. *Cimex lectularius*, L. (la chinche comun de cama) trasmisor de *Trypanosoma cruzi*. Rev
618 Soc Bras Med Trop. 1992;25(4):277–8. Available from:
619 [http://www.scielo.br/scielo.php?script=sci_arttext&pid=S0037-](http://www.scielo.br/scielo.php?script=sci_arttext&pid=S0037-86821992000400012&lng=es&tlng=es)
620 [86821992000400012&lng=es&tlng=es](http://www.scielo.br/scielo.php?script=sci_arttext&pid=S0037-86821992000400012&lng=es&tlng=es)
- 621 14. SINIA - Sistema Nacional de Información Ambiental. Mapa Nacional de Ecosistemas del Perú.
622 Available from: <https://sinia.minam.gob.pe/mapas/mapa-nacional-ecosistemas-peru>
- 623 15. SENAMHI – Sistema Nacional de Meteorología e Hidrología de Perú. Available from:
624 <https://www.senamhi.gob.pe/?p=mapa-climatico-del-peru>
- 625 16. Erwin A, Ma Z, Popovici R, Salas O’Brien EP, Zanotti L, Silva CA, et al. Linking migration to
626 community resilience in the receiving basin of a large-scale water transfer project. *Land Use Policy*.
627 2022;114:105900. Available from: <https://linkinghub.elsevier.com/retrieve/pii/S0264837721006232>
- 628 17. Gutfraind A, Peterson JK, Billig Rose E, Arevalo-Nieto C, Sheen J, Condori-Luna GF, et al.
629 Integrating evidence, models and maps to enhance Chagas disease vector surveillance. Basáñez MG,
630 editor. *PLoS Negl Trop Dis*. 2018;12(11):e0006883. Available from:
631 <https://dx.plos.org/10.1371/journal.pntd.0006883>
- 632 18. Dedoose Software. Los Angeles, CA: SocioCultural Research Consultants, LLC; 2021. Available
633 from: www.dedoose.com
- 634 19. Spatial Statistics. In: *Spatial Statistics* [Internet]. Hoboken, NJ, USA: John Wiley & Sons, Inc.; 2005.
635 p. i–ix. (Wiley Series in Probability and Statistics). Available from:
636 <https://onlinelibrary.wiley.com/doi/10.1002/0471725218.fmatter>
- 637 20. Baddeley A, Turner R. spatstat \square : An R Package for Analyzing Spatial Point Patterns. *J Stat Software*.
638 2005;12(6). Available from: <http://www.jstatsoft.org/v12/i06/>

- 639 21. Joshua French. *smacpod*: Statistical Methods for the Analysis of Case-Control Point Data. 2022.
- 640 22. Barbu CM, Buitenen AM, Pumahuanca MLH, Calderón JEQ, Salazar R, Carrión M, et al. Residual
641 Infestation and Recolonization during Urban *Triatoma infestans* Bug Control Campaign, Peru. *Emerg Infect Dis*. 2014;20(12):2055–63. Available from: [http://wwwnc.cdc.gov/eid/article/20/12/13-](http://wwwnc.cdc.gov/eid/article/20/12/13-1820_article.htm)
642 [1820_article.htm](http://wwwnc.cdc.gov/eid/article/20/12/13-1820_article.htm)
- 644 23. Delgado S, Ernst KC, Pumahuanca MLH, Yool SR, Comrie AC, Sterling CR, et al. A country bug in
645 the city: urban infestation by the Chagas disease vector *Triatoma infestans* in Arequipa, Peru. *Int J*
646 *Health Geogr*. 2013;12(1):48. Available from: [https://ij-](https://ij-healthgeographics.biomedcentral.com/articles/10.1186/1476-072X-12-48)
647 [healthgeographics.biomedcentral.com/articles/10.1186/1476-072X-12-48](https://ij-healthgeographics.biomedcentral.com/articles/10.1186/1476-072X-12-48)
- 648 24. Wilfredo Gonzales-Valero. Hazards to food caloric availability and coverage per capita due to climate
649 change in the Puno region, Peruvian Altiplano: Challenges in food security and sovereignty. *Food*
650 *Energy Security*. 2018;7(2). Available from: <https://onlinelibrary.wiley.com/doi/full/10.1002/fes3.134>
- 651 25. PubChem. Lannate. Available from: <https://pubchem.ncbi.nlm.nih.gov/compound/5353758>
- 652 26. McMichael C, Barnett J, McMichael AJ. An Ill Wind? Climate Change, Migration, and Health.
653 *Environ Health Perspect*. 2012;120(5):646–54. Available from:
654 <https://ehp.niehs.nih.gov/doi/10.1289/ehp.1104375>
- 655 27. McLeman RA, Hunter LM. Migration in the context of vulnerability and adaptation to climate
656 change: insights from analogues: Migration and adaptation to climate change. *Wiley Interdiscip Rev*
657 *Clim Change*. 2010;1(3):450–61. Available from: <https://onlinelibrary.wiley.com/doi/10.1002/wcc.51>
- 658 28. Louis N, Mathew TH, Shyleen C. Migration as a Determinant for Climate Change Adaptation:
659 Implications on Rural Women in Muzarabani communities, Zimbabwe. In: Leal Filho W, Luetz J,
660 Ayal D, editors. *Handbook of Climate Change Management: Research, Leadership, Transformation*.

- 661 Cham: Springer International Publishing; 2020. p. 1–24. Available from: [https://doi.org/10.1007/978-](https://doi.org/10.1007/978-3-030-22759-3_273-1)
662 [3-030-22759-3_273-1](https://doi.org/10.1007/978-3-030-22759-3_273-1)
- 663 29. Sadiddin A, Cattaneo A, Cirillo M, Miller M. Food insecurity as a determinant of international
664 migration: evidence from Sub-Saharan Africa. *Food Secur.* 2019;11(3):515–30. Available from:
665 <https://link.springer.com/10.1007/s12571-019-00927-w>
- 666 30. Carney MA, Krause KC. Immigration/migration and healthy publics: the threat of food insecurity.
667 *Palgrave Commun.* 2020;6(1):93. Available from: [https://www.nature.com/articles/s41599-020-0461-](https://www.nature.com/articles/s41599-020-0461-0)
668 [0](https://www.nature.com/articles/s41599-020-0461-0)
- 669 31. Gustafsson C. “‘*For a better life ...* “ A study on migration and health in Nicaragua’. *Glob Health*
670 *Action.* 2018;11(1):1428467. Available from:
671 <https://www.tandfonline.com/doi/full/10.1080/16549716.2018.1428467>
- 672 32. Bebbington AJ, Humphreys Bebbington D, Sauls LA, Rogan J, Agrawal S, Gamboa C, et al.
673 Resource extraction and infrastructure threaten forest cover and community rights. *Proc Natl Acad*
674 *Sci.* 2018;115(52):13164–73. Available from: <https://pnas.org/doi/full/10.1073/pnas.1812505115>
- 675 33. Alirol E, Getaz L, Stoll B, Chappuis F, Loutan L. Urbanisation and infectious diseases in a globalised
676 world. *Lancet Infect Dis.* 2011;11(2):131–41. Available from:
677 <https://linkinghub.elsevier.com/retrieve/pii/S1473309910702231>
- 678 34. Medrano-Mercado N, Ugarte-Fernandez R, Butrón V, Uber-Busek S, Guerra H, Araújo-Jorge TC de,
679 et al. Urban transmission of Chagas disease in Cochabamba, Bolivia. *Mem Inst Oswaldo Cruz.*
680 2008;103(5):423–30. Available from: [http://www.scielo.br/scielo.php?script=sci_arttext&pid=S0074-](http://www.scielo.br/scielo.php?script=sci_arttext&pid=S0074-02762008000500003&lng=en&tlng=en)
681 [02762008000500003&lng=en&tlng=en](http://www.scielo.br/scielo.php?script=sci_arttext&pid=S0074-02762008000500003&lng=en&tlng=en)

- 682 35. Ceretti-Junior W, Vendrami DP, de Matos MO, Rimoldi-Ribeiro A, Alvarez JV, Marques S, et al.
683 Occurrences of triatomines (Hemiptera: Reduviidae) and first reports of *Panstrongylus geniculatus* in
684 urban environments in the city of Sao Paulo, Brazil. *Rev Inst Med Trop São Paulo*. 2018; 60: e33.
685 Available from: <https://www.scielo.br/j/rimtsp/a/zzFKXqJCzFGSpnRfxMfnjSm/?lang=en>
- 686 36. Gaspe MS, Fernández M del P, Cardinal MV, Enriquez GF, Rodríguez-Planes LI, Macchiaverna NP,
687 et al. Urbanisation, risk stratification and house infestation with a major vector of Chagas disease in
688 an endemic municipality of the Argentine Chaco. *Parasit Vectors*. 2020;13(1):316. Available from:
689 <https://parasitesandvectors.biomedcentral.com/articles/10.1186/s13071-020-04182-3>
- 690 37. Provecho YM, Fernández M del P, Salvá L, Meli S, Cano F, Sartor P, et al. Urban infestation by
691 *Triatoma infestans* (Hemiptera: Reduviidae), an overlooked phenomena for Chagas disease in
692 Argentina. *Mem Inst Oswaldo Cruz* [Internet]. 2021 [cited 2023 Mar 31];116:e210056. Available
693 from: http://www.scielo.br/scielo.php?script=sci_arttext&pid=S0074-02762021000100402&tIng=en
- 694 38. Instituto Nacional de Estadística e Informatica. Arequipa- resultados definitivos. 2018. Available
695 from:
696 https://www.inei.gob.pe/media/MenuRecursivo/publicaciones_digitaes/Est/Lib1551/04TOMO_01.pdf
697 f
- 698 39. Levy MZ, Barbu CM, Castillo-Neyra R, Quispe-Machaca VR, Ancca-Juarez J, Escalante-Mejia P, et
699 al. Urbanization, land tenure security and vector-borne Chagas disease. *Proc R Soc B Biol Sci*.2014;
700 281(1789):20141003. Available from: <https://royalsocietypublishing.org/doi/10.1098/rspb.2014.1003>
- 701 40. Larson AJ, Paz-Soldán VA, Arevalo-Nieto C, Brown J, Condori-Pino C, Levy MZ, et al. Misuse,
702 perceived risk, and safety issues of household insecticides: Qualitative findings from focus groups in
703 Arequipa, Peru. Hayden M, editor. *PLoS Negl Trop Dis*. 202;15(5):e0009251. Available from:
704 <https://dx.plos.org/10.1371/journal.pntd.0009251>

- 705 41. Gray L, Florez SD, Barreiro AM, Vadillo-Sánchez J, González-Olvera G, Lenhart A, et al.
706 Experimental evaluation of the impact of household aerosolized insecticides on pyrethroid resistant
707 *Aedes aegypti*. *Sci Rep*. 2018;8(1):12535. Available from: [https://www.nature.com/articles/s41598-](https://www.nature.com/articles/s41598-018-30968-8)
708 018-30968-8
- 709 42. Delgado S, Castillo Neyra R, Quispe Machaca VR, Ancca Juárez J, Chou Chu L, Verastegui MR, et
710 al. A History of Chagas Disease Transmission, Control, and Re-Emergence in Peri-Rural La Joya,
711 Peru. Gürtler RE, editor. *PLoS Negl Trop Dis*. 2011;5(2):e970. Available from:
712 <https://dx.plos.org/10.1371/journal.pntd.0000970>
- 713 43. Campbell-Lendrum D, Angulo V, Esteban L, Tarazona Z, Parra G, Restrepo M, et al. House-level
714 risk factors for triatomine infestation in Colombia. *Int J Epidemiol*.;36(4):866–72. Available from:
715 <https://academic.oup.com/ije/article-lookup/doi/10.1093/ije/dym065>
- 716 44. Cardona ÁS, Angulo V, Parra-Henao G, Quirós-Gómez O, Alexander N. House-Level Risk Factors
717 for *Triatoma dimidiata* Infestation in Colombia. *Am J Trop Med Hyg*.;92(1):193–200. Available
718 from: <https://ajtmh.org/doi/10.4269/ajtmh.14-0273>
- 719 45. Schofield CJ, Marsden PD. Efecto del revoque de las paredes sobre una población domestica de
720 *Triatoma infestans*. *Bol Oficina Sanit Panam*. 1982; 93(1). Available from:
721 <https://iris.paho.org/bitstream/handle/10665.2/15992/v93n1p3.pdf?sequence=1>
- 722 46. Gates MC, Boston RC. Irrigation linked to a greater incidence of human and veterinary West Nile
723 virus cases in the United States from 2004 to 2006. *Prev Vet Med*. 2009;89(1–2):134–7. Available
724 from: <https://linkinghub.elsevier.com/retrieve/pii/S0167587708002535>
- 725 47. Kibret S, McCartney M, Lautze J, Nhamo L, Yan G. The impact of large and small dams on malaria
726 transmission in four basins in Africa. *Sci Rep*. 2021;11(1):13355. Available from:
727 <https://www.nature.com/articles/s41598-021-92924-3>

- 728 48. Lerer LB, Scudder T. Health impacts of large dams. *Environ Impact Assess Rev.*1999;19(2):113–23.
729 Available from: <https://linkinghub.elsevier.com/retrieve/pii/S0195925598000419>
- 730 49. Rohr JR, Barrett CB, Civitello DJ, Craft ME, Delius B, DeLeo GA, et al. Emerging human infectious
731 diseases and the links to global food production. *Nat Sustain.* 2019;2(6):445–56. Available from:
732 <https://www.nature.com/articles/s41893-019-0293-3>
- 733 50. Randell H, Klein P. Hydropower Development, Collective Action, and Environmental Justice in the
734 Brazilian Amazon. *Soc Nat Resour.* 2021;34(9):1232–49. Available from:
735 <https://www.tandfonline.com/doi/full/10.1080/08941920.2021.1948649>
- 736 51. Zhouri A, Pascoal WV. From the muddy banks of the Watu: The Krenak and the Rio Doce mining
737 disaster in Brazil. In: *Current Directions in Water Scarcity Research*. Elsevier; 2022. p. 145–65.
738 Available from: <https://linkinghub.elsevier.com/retrieve/pii/B978012824538500008X>
- 739 52. Heukelbach J, de Oliveira FAS, Kerr-Pontes LRS, Feldmeier H. Risk factors associated with an
740 outbreak of dengue fever in a favela in Fortaleza, north-east Brazil. *Trop Med Int Health.*
741 2001;6(8):635–42. Available from: <http://doi.wiley.com/10.1046/j.1365-3156.2001.00762.z>