

1 **Caffeinated or decaffeinated coffee consumption and risk of cancer**
2 **incidence: meta-analyses of prospective cohort studies**

3

4 Thanh N. Nguyen¹, Olga S. Cherepakhin¹, Devin K. Eng², Masaoki Kawasumi^{3,*}

5

6 ¹School of Medicine, University of Washington, Seattle, Washington, USA

7 ²College of Engineering, University of Washington, Seattle, Washington, USA

8 ³Division of Dermatology, Department of Medicine, University of Washington, Seattle,
9 Washington, USA

10

11 *Correspondence should be addressed to M.K. (kawasumi@uw.edu)

12

13

14 **Contact information**

15 Masaoki Kawasumi, M.D., Ph.D.

16 Division of Dermatology, Department of Medicine, University of Washington

17 850 Republican Street, Brotman Building, Room D254, Seattle, WA 98109, USA

18 Phone: 206-897-5456; Fax: 206-897-5442; Email: kawasumi@uw.edu

19

20 **Abstract**

21

22 Many epidemiological studies have investigated the association between coffee consumption and
23 risks for various types of cancer, yet results are conflicting. To determine the impact of coffee
24 consumption on cancer incidence, we systematically reviewed high-quality prospective cohort
25 studies for 10 major cancer types and performed meta-analyses of 63 studies from different
26 countries. For each cancer type, we calculated summary relative risks using the DerSimonian–
27 Laird random-effects model and assessed dose-response relationships. Our meta-analyses
28 found that caffeinated coffee consumption, but not decaffeinated coffee, prevented liver and skin
29 cancers, highlighting the significant role of caffeine in cancer prevention. Furthermore, both
30 caffeinated and decaffeinated coffee prevented endometrial cancer, indicating the role of other
31 active compounds in coffee. Collectively, our meta-analyses revealed that coffee consumption,
32 particularly caffeinated coffee, prevents the incidence of liver, endometrial, and skin cancers in a
33 dose-dependent manner, suggesting that coffee consumption has a large impact on public health.

34

35 **Introduction**

36

37 Cancer is the second leading cause of death in the United States¹. In 2023, 1,958,310 new cancer
38 cases and 609,820 cancer deaths are projected to occur in the United States¹. Thus, cancer has
39 a significant impact on public health, and sustainable cancer prevention strategies are needed.
40 Some strategies include avoiding risk factors such as smoking and increasing the consumption
41 of fruits and vegetables². Therefore, identifying which foods and drinks prevent cancer is of great
42 importance.

43

44 Coffee is a commonly consumed beverage. In the United States, 49% of adults drink coffee every
45 day³. Strikingly, coffee consumption reduces the risk of developing some diseases, including
46 cancer, type 2 diabetes mellitus, and hepatic fibrosis⁴⁻⁶. In a large prospective study, coffee
47 consumption was inversely associated with total and cause-specific mortality, showing health
48 benefits of coffee consumption⁷. Coffee contains many bioactive compounds that affect the
49 human body, such as caffeine, chlorogenic acid, diterpenes, and trigonelline⁸. Among these,
50 caffeine has been shown to prevent UV-induced skin carcinogenesis in mouse models^{9,10}. Human
51 epidemiological studies also showed that daily consumption of caffeinated coffee, but not
52 decaffeinated coffee, was inversely associated with skin cancer (nonmelanoma skin cancer and
53 melanoma)¹¹⁻¹³. There are more than 100 types of cancer, which behave differently, and the effect
54 of coffee on cancer prevention may differ among these cancer types. Thus, it is important to
55 comprehensively investigate the preventive effects of caffeinated and decaffeinated coffee on
56 different cancer types.

57

58 More than 500 studies have been conducted in different countries to investigate the association
59 between coffee consumption and risks for various types of cancer⁴, yet results are conflicting

60 among different cancer types. Caffeinated coffee consumption prevents skin cancer¹¹⁻¹³, whereas
61 coffee consumption may increase the risk of bladder cancer⁴. Furthermore, the results from
62 independent studies on the same cancer type may be conflicting; one study showed that coffee
63 intake decreased the risk of ovarian cancer¹⁴, but another study demonstrated that caffeinated
64 coffee intake increased the risk of ovarian cancer¹⁵. To better understand the impact of coffee on
65 human cancer incidence, high-quality human studies are needed. Among multiple types of
66 observational studies without any interventions, prospective cohort studies provide the strongest
67 scientific evidence by identifying exposure before the outcome, collecting specific exposure data,
68 and assessing causality¹⁶. Here, we systematically reviewed prospective cohort studies on major
69 cancer types and performed meta-analyses of 63 studies to quantitatively synthesize the results
70 of multiple independent studies. This allows us to more precisely determine the effects of coffee
71 consumption on cancer incidence than the results derived from individual studies. To elucidate
72 the impact of caffeine, we analyzed the effects of caffeinated and decaffeinated coffee separately.
73 We also assessed whether the effect of coffee on cancer incidence differs between men and
74 women and whether it is dose dependent. Given the fact that coffee is widely consumed and
75 cancer is a common disease, the effect of coffee consumption on cancer incidence could have a
76 large impact on public health.

77

78 **Results**

79

80 **Study selection and characteristics**

81 Through our initial literature search using PubMed, Scopus, and Embase, we found 980 potential
82 articles on coffee consumption and cancer risk (**Supplementary Fig. 1a**). Additionally, 113
83 articles were found by reviewing reference lists from the initially selected articles and using the
84 “Similar articles” function in PubMed. After uploading these articles to Rayyan QCRI system,
85 duplicates were removed with 861 articles remaining. The initial screening selected only full-text
86 articles, which were then assessed for inclusion criteria. Subsequently, the quality of 74 remaining
87 articles was assessed using the Newcastle-Ottawa Scale (NOS) for nonrandomized studies in
88 meta-analyses, removing seven studies whose NOS scores were lower than 5. After data
89 extraction, we further eliminated four studies from our analysis because the data reported in these
90 four studies were not compatible with other studies for meta-analyses (i.e., the lowest coffee
91 consumption category was not used as reference; the number of cases in the lowest coffee
92 consumption category was less than 10; cancer subtypes were analyzed separately). As a result,
93 63 studies for 10 major cancer types were included in our meta-analyses.

94

95 The 63 prospective cohort studies included 10,068,955 people in total and were conducted in
96 different geographical regions of the world: one study from Australia, 14 from Asia (Japan and
97 Singapore), 21 from Europe (Netherlands, Sweden, Denmark, France, Germany, Greece, Italy,
98 Norway, Spain, United Kingdom, and Finland), and 27 from North America (United States and
99 Canada). The Egger’s test ($p = 0.0903$), Begg’s test ($p = 0.5424$), and a funnel plot of the meta-
100 analysis showed no significant publication bias (**Supplementary Fig. 1b**). The overall summary
101 relative risk (SRR) for 10 major cancer types for high coffee consumption was 0.93 (95%
102 confidence interval [CI], 0.88–0.97) (**Supplementary Fig. 2**). There was high between-study

103 heterogeneity among included cohort studies ($I^2 = 65.7\%$, $p < 0.001$), which prompted us to
104 analyze each cancer type separately.

105

106 **Liver cancer (hepatocellular carcinoma)**

107 Overall, our meta-analysis of seven prospective studies^{14,17-22} found that coffee consumption
108 decreased the incidence of hepatocellular carcinoma by 38% (SRR, 0.62; 95% CI, 0.52–0.75)
109 (**Fig. 1a**). Caffeinated coffee consumption reduced the incidence of hepatocellular carcinoma by
110 46% (SRR, 0.54; 95% CI, 0.39–0.74), whereas decaffeinated coffee consumption had a 16%
111 reduction (SRR, 0.84; 95%CI, 0.64–1.10) (**Fig. 1a**). A greater reduction in the incidence of
112 hepatocellular carcinoma was observed in male coffee drinkers than in female coffee drinkers:
113 44% reduction in men (SRR, 0.56; 95% CI, 0.39–0.80) and 36% reduction in women (SRR, 0.64;
114 95% CI, 0.36–1.14) (**Fig. 1b**). A dose-response analysis showed a noticeable decreasing trend
115 in hepatocellular carcinoma incidence with higher coffee consumption: 9.9% reduction per daily
116 cup (**Fig. 1c**).

117

118 **Endometrial cancer**

119 Overall, our meta-analysis of 12 prospective studies^{14,23-33} found that coffee consumption
120 decreased endometrial cancer incidence by 30% (SRR, 0.70; 95% CI, 0.61–0.80) (**Fig. 2a**).
121 Endometrial cancer incidence was reduced more in caffeinated coffee drinkers (SRR, 0.61; 95%
122 CI, 0.44–0.84) than in decaffeinated coffee drinkers (SRR, 0.73; 95% CI, 0.58–0.93) (**Fig. 2a**). A
123 dose-response analysis demonstrated a decreasing trend in endometrial cancer incidence with
124 higher coffee consumption: 7.4% reduction per daily cup (**Fig. 2b**).

125

126 **Skin cancer**

127 Overall, our meta-analysis of seven prospective studies^{13,14,30,34-37} found that coffee consumption
128 decreased the incidence of skin cancer by 14% (SRR, 0.86; 95% CI, 0.77–0.96) (**Fig. 3a**).

129 Caffeinated coffee consumption lowered skin cancer incidence by 18% (SRR, 0.82; 95% CI, 0.71–
130 0.94), whereas decaffeinated coffee consumption had no association with skin cancer incidence
131 (SRR, 0.97; 95% CI, 0.86–1.10) (**Fig. 3a**). There was a greater decrease in skin cancer incidence
132 by 49% in men (SRR, 0.51; 95% CI, 0.20–1.29), compared to a 22% reduction in women (SRR,
133 0.78; 95% CI, 0.50–1.22) (**Fig. 3b**). A dose-response analysis showed a noticeable decreasing
134 trend in skin cancer incidence with an increase in coffee consumption: 7.8% reduction per daily
135 cup (**Fig. 3c**).

136

137 **Breast cancer**

138 Overall, our meta-analysis of 15 prospective studies^{14,23,29,30,38-48} found that coffee consumption
139 slightly lowered breast cancer incidence (SRR, 0.95; 95% CI, 0.92–0.99) (**Fig. 4a**). Both
140 caffeinated coffee consumption (SRR, 0.95; 95% CI, 0.90–1.01) and decaffeinated coffee
141 consumption (SRR, 0.96; 95% CI, 0.89–1.04) had a decreasing trend in breast cancer risk (**Fig.**
142 **4a**). A dose-response analysis showed a decreasing trend in breast cancer incidence with an
143 increase in coffee consumption: 1.2% reduction per daily cup (**Fig. 4b**).

144

145 **Pancreatic cancer**

146 Overall, our meta-analysis of eight prospective studies^{14,30,49-54} found that coffee consumption had
147 no significant association with pancreatic cancer incidence (SRR, 0.96; 95% CI, 0.84–1.09) (**Fig.**
148 **5a**). Caffeinated coffee consumption may protect against pancreatic cancer (SRR, 0.94; 95% CI,
149 0.59–1.48), whereas decaffeinated coffee consumption may increase pancreatic cancer risk
150 (SRR, 1.08; 95% CI, 0.77–1.50) (**Fig. 5a**). Coffee consumption may have a greater protective
151 effect in men (SRR, 0.83; 95% CI 0.62–1.12) than in women (SRR, 0.93; 95% CI 0.76–1.12) (**Fig.**
152 **5b**). A dose-response analysis showed a decreasing trend in pancreatic cancer incidence with an
153 increase in coffee consumption (**Fig. 5c**).

154

155 **Prostate cancer**

156 Our meta-analysis of eight prospective studies^{29,30,55-60} found that the overall SRR for prostate
157 cancer with coffee consumption was 0.98 (95% CI, 0.94–1.02), indicating no significant
158 association between coffee consumption and prostate cancer risk (**Fig. 6a**). Caffeinated (SRR,
159 0.98; 95% CI, 0.89–1.07) and decaffeinated coffee consumption (SRR, 0.98; 95% CI, 0.87–1.11)
160 also had no association with prostate cancer risk (**Fig. 6a**). A dose-response analysis
161 demonstrated no significant relationship between coffee consumption and prostate cancer risk
162 (**Fig. 6b**).

163

164 **Colorectal cancer**

165 Overall, our meta-analysis of 11 prospective studies^{14,30,45,61-68} found that coffee consumption had
166 no association with colorectal cancer incidence (SRR, 0.99; 95% CI, 0.91–1.08) (**Fig. 7a**).
167 Intriguingly, decaffeinated coffee consumption had a decreasing trend in colorectal cancer
168 incidence (SRR, 0.88; 95% CI, 0.73–1.07), but caffeinated coffee consumption did not (SRR,
169 0.99; 95% CI, 0.86–1.14) (**Fig. 7a**). SRRs for male and female coffee drinkers were 1.10 (95%
170 CI, 0.95–1.28) and 1.02 (95% CI, 0.85–1.21), respectively (**Fig. 7b**). A dose-response analysis
171 showed no significant relationship between coffee consumption and colorectal cancer risk (**Fig.**
172 **7c**).

173

174 **Ovarian cancer**

175 Overall, our meta-analysis of nine prospective studies^{14,15,23,29,30,45,69-71} found that SRR for ovarian
176 cancer in coffee drinkers was 1.00 (95% CI, 0.82–1.23), indicating no association between coffee
177 consumption and ovarian cancer risk (**Fig. 8a**). The I^2 of 53.9% indicated moderate heterogeneity;
178 the Park et al. study showed hazard ratio (HR) of 0.33 (95% CI, 0.17–0.65)¹⁴, whereas the Silvera
179 et al. study showed HR of 1.62 (95% CI, 0.95–2.75)⁷¹. Although it was not statistically significant,
180 caffeinated coffee consumption had an increasing trend in ovarian cancer risk (SRR, 1.13; 95%

181 CI, 0.78–1.64), and decaffeinated coffee consumption had a decreasing trend (SRR, 0.89; 95%
182 CI, 0.68–1.17) (**Fig. 8a**). A dose-response analysis demonstrated no significant relationship
183 between coffee consumption and ovarian cancer risk (**Fig. 8b**).

184

185 **Bladder cancer**

186 Our meta-analysis of six prospective studies^{14,29,52,72-74}, including 8,012 bladder cancer cases
187 across the United States, Japan, Norway, and Sweden, found that SRR for bladder cancer in
188 coffee drinkers was 1.11 (95% CI, 0.98–1.26), demonstrating no significant association between
189 coffee consumption and bladder cancer risk (**Fig. 9a**). Only the Lofffield et al. study differentiated
190 between caffeinated and decaffeinated coffee consumption; HRs for caffeinated coffee and
191 decaffeinated coffee were 1.20 (95% CI, 1.06–1.35) and 1.18 (95% CI, 1.00–1.38), respectively,
192 when adjusted for smoking and other confounders⁷². Positive associations between coffee
193 consumption and bladder cancer risk were found among those who had ever smoked, but not in
194 those who had never smoked, suggesting that residual confounding from imperfect measurement
195 of smoking or unmeasured risk factors contributes to the observed positive associations⁷². SRRs
196 for male and female coffee drinkers were 1.08 (95% CI, 0.84–1.39) and 0.96 (95% CI, 0.71–1.29),
197 respectively (**Fig. 9b**). A dose-response analysis showed no significant relationship between
198 coffee consumption and bladder cancer risk (**Fig. 9c**).

199

200 **Lung cancer**

201 Our meta-analysis of five prospective studies^{14,29,45,75,76} included 12,725 cases of lung cancer and
202 found an overall SRR of 1.19 (95% CI, 1.07–1.34) for coffee drinkers, demonstrating a significant
203 positive association (**Fig. 10a**). Only the Guertin et al. study differentiated between caffeinated
204 and decaffeinated coffee consumption; HRs for caffeinated coffee and decaffeinated coffee were
205 1.18 (95% CI, 1.07–1.31) and 1.13 (95% CI, 1.00–1.29), respectively⁷⁵. Compared to SRR for
206 male coffee drinkers (SRR, 1.08; 95% CI, 0.90–1.29), SRR for female coffee drinkers was higher

207 (SRR, 1.48; 95% CI, 0.97–2.28) (**Fig. 10b**). This is due to the Lukic et al. study that found a
208 greater effect for heavy coffee drinkers (>7 cups per day)⁴⁵, which is a higher consumption than
209 in other studies. A dose-response analysis demonstrated an increasing trend in lung cancer
210 incidence with higher coffee consumption: 5.3% increase per daily cup (**Fig. 10c**).
211

212 Discussion

213

214 To investigate whether coffee prevents cancer, we systematically identified and meta-analyzed
215 63 high-quality prospective cohort studies from different geographical regions of the world, which
216 included 10,068,955 people in total. We excluded case-control studies, which may have recall
217 and selection biases. Unlike most prior meta-analyses, we comprehensively included 10 major
218 cancer types, which cover 59.9% of cancer incidences world-wide⁷⁷, and uniquely differentiated
219 between caffeinated and decaffeinated coffee consumption and between men and women. The
220 overall SRR for 10 major cancer types for high coffee consumption was 0.93 (95% CI, 0.88–0.97),
221 demonstrating the cancer-preventive effects of coffee (**Supplementary Fig. 2**). Between-study
222 heterogeneity among included cohort studies was high ($I^2 = 65.7\%$, $p < 0.001$), and thus we
223 analyzed each cancer type separately. Our meta-analyses revealed that coffee consumption
224 reduced the risk of developing liver cancer (SRR, 0.62; 95% CI, 0.52–0.75), endometrial cancer
225 (SRR, 0.70; 95% CI, 0.61–0.80), skin cancer (SRR, 0.86; 95% CI, 0.77–0.96), and breast cancer
226 (SRR, 0.95; 95% CI, 0.92–0.99), whereas coffee consumption increased lung cancer incidence
227 (SRR, 1.19; 95% CI, 1.07–1.34) (**Supplementary Fig. 3**). There was no significant difference in
228 cancer-preventive effects of coffee between male and female coffee drinkers. The observed
229 positive association for coffee consumption with increased risk of lung cancer is likely due to the
230 residual confounding by tobacco smoking. Coffee drinkers were far more likely to smoke tobacco
231 than nondrinkers⁷⁵. Furthermore, the positive association between coffee consumption and risk
232 of lung cancer was only observed in tobacco smokers, but not in nonsmokers^{78,79}.

233

234 One of the limitations of our meta-analyses is that, even after differentiating caffeinated and
235 decaffeinated coffee consumption, between-study heterogeneity was significant in caffeinated
236 coffee studies for endometrial cancer ($I^2 = 65.1\%$, $p = 0.035$), colorectal cancer ($I^2 = 51.2\%$, $p =$

237 0.105), and ovarian cancer ($I^2 = 70.3\%$, $p = 0.018$). This could be due to the inaccuracy of self-
238 reported coffee consumption or changes in coffee intake after study recruitment⁸⁰. Also,
239 considerable heterogeneity exists in coffee cup size and caffeine content per serving⁸¹. Our meta-
240 analyses included studies from many different countries, and there are different cultural norms for
241 standard size and brewing of coffee. The degree of coffee bean roasting alters the chemical
242 composition of coffee⁸², and coffee brewing methods significantly affect caffeine content^{83,84}.
243 Furthermore, the effect of coffee consumption on inflammatory responses is variable in humans;
244 coffee consumption had pro-inflammatory effects in some individuals but anti-inflammatory effects
245 in other individuals⁸⁵.

246
247 Our meta-analyses found that caffeinated coffee, but not decaffeinated coffee, prevents liver
248 cancer (SRR, 0.54; 95% CI, 0.39–0.74) and skin cancer (SRR, 0.82; 95% CI, 0.71–0.94),
249 highlighting the significant role of caffeine in cancer prevention (**Supplementary Fig. 3**). Coffee
250 contains many bioactive compounds, but previous mouse studies clearly showed that caffeine is
251 the active compound that prevents UV-induced skin carcinogenesis^{9,10}. Caffeine inhibits multiple
252 enzymes, including the ATR kinase that senses UV-induced DNA damage⁸⁶. Genetic inhibition of
253 ATR in skin augments UV-induced apoptosis and suppresses UV-induced skin carcinogenesis,
254 suggesting that ATR inhibition is the relevant mechanism for cancer-preventive effects of
255 caffeine⁸⁷. The augmentation of UV-induced apoptosis by caffeine or ATR inhibition may be
256 beneficial to eliminate DNA-damaged cells that are precancerous, leading to the suppression of
257 UV-induced skin cancer development^{88,89}. Additionally, caffeine induces phase II detoxifying and
258 antioxidant enzymes, thereby inhibiting carcinogenesis⁹⁰.

259
260 Our meta-analyses also found that decaffeinated coffee prevents endometrial cancer (SRR, 0.73;
261 95% CI, 0.58–0.93), although caffeinated coffee consumption has a stronger preventive effect
262 (SRR, 0.61; 95% CI, 0.44–0.84) (**Supplementary Fig. 3**). This indicates that active compounds

263 in coffee other than caffeine also play a key role in endometrial cancer prevention. Coffee contains
264 caffeine, chlorogenic acid, diterpenes (mainly cafestol and kahweol), and trigonelline, which affect
265 many different biological processes⁸. Coffee consumption induces glutathione-S-transferases
266 (GSTs), which inactivate a broad variety of environmental and dietary toxins⁹¹. GST induction by
267 unfiltered and paper filtered coffees, differing in cafestol and kahweol contents, was identical,
268 indicating that the diterpene concentrations were not responsible for GST induction⁹¹. Instead,
269 chlorogenic acid, which is an abundant polyphenol in coffee, stimulates NRF2, a transcription
270 factor that induces antioxidant defense including GST induction⁹²⁻⁹⁴. Activation of NRF2
271 decreases reactive oxygen species (ROS) levels and prevents ROS-induced mutations, thereby
272 inhibiting carcinogenesis^{88,95}. Cafestol and kahweol have anti-angiogenic properties, which may
273 contribute to cancer prevention⁹⁶.

274
275 Due to the popularity of coffee and high frequency of cancer, coffee consumption has a large
276 impact on saving healthcare cost. Based on the estimated numbers of new cancer cases in one
277 year (liver 41,210; uterine corpus 66,200; melanoma 97,610; nonmelanoma skin cancer
278 5,434,193 [equal incidence rates for basal cell carcinoma and squamous cell carcinoma])^{1,97}, per-
279 patient annualized average cancer-attributable costs for initial care (liver \$62,776; uterus \$39,040;
280 melanoma \$8,537; basal cell carcinoma \$1,456; squamous cell carcinoma \$1,326)⁹⁸⁻¹⁰⁰, and per-
281 cup risk changes from our meta-analyses (liver -9.9%; endometrial -7.4%; skin -7.8%), we
282 estimate that total \$1.1 billion of healthcare cost could be saved annually in the United States if
283 Americans drink one additional cup of coffee every day. Furthermore, a previous large prospective
284 cohort study showed that coffee consumption reduced all-cause mortality, highlighting the health
285 benefits of coffee⁷. However, coffee consumption was not inversely associated with deaths due
286 to cancer⁷. This may be because the greatest number of cancer deaths are from cancers of the
287 lung, prostate, colorectum, and pancreas in men and of the lung, breast, colorectum, pancreas,

288 and ovary in women¹. All these cancers were not prevented by coffee consumption in our meta-
289 analyses, except for a minimal preventive effect found for breast cancer.

290

291 Taken together, our meta-analyses of high-quality prospective cohort studies on 10 major cancer
292 types from different countries revealed that coffee consumption, in particular caffeinated coffee,
293 prevents the incidence of liver, endometrial, and skin cancers in a dose-dependent manner.
294 Further investigations are needed to clarify why some types of cancer are prevented by coffee
295 consumption while others are not.

296

297 **Methods**

298

299 **Literature search**

300 We utilized electronic databases PubMed, Scopus, and Embase to comprehensively search for
301 peer-reviewed prospective cohort studies published up to July 2020 without a specific start date.
302 To create a comprehensive list of potential studies, we used the following search terms for all
303 three databases: caffeine, coffee, economics, consumption, drinking, skin cancer, breast cancer,
304 lung cancer, prostate cancer, colorectal cancer, non-Hodgkin lymphoma, renal cell cancer,
305 endometrial cancer, childhood leukemia, pancreatic cancer, thyroid cancer, hepatocellular
306 cancer, ovarian cancer, bladder cancer, epidemiology, prevalence, incidence, risk, humans, and
307 English language. We also utilized reference lists from compiled studies to get a comprehensive
308 list of cohort studies. Furthermore, we utilized the “Similar articles” function in PubMed to include
309 other related articles. Search results were uploaded to Rayyan QCRI system to detect and delete
310 duplications among the three databases.

311

312 **Inclusion and exclusion criteria**

313 When compiling a list of potential cohort studies to systematically review, we only included articles
314 that fulfilled the following inclusion criteria: full-length, published, peer-reviewed articles written in
315 English with a prospective cohort study design that included relative risks (or hazard ratios) with
316 95% confidence intervals (CIs), dose-response relationships between coffee consumption and
317 cancer risk, human subjects, and coffee beverage. Studies were excluded if they are a case-
318 control or retrospective cohort study, do not discuss coffee or caffeine, or do not have a dose-
319 response categorization. In the instance that multiple studies analyzed the same cohort, we
320 included the most updated study.

321

322 After a comprehensive list was compiled, we performed a full-text screening to further eliminate
323 any unrelated studies that did not fulfill our inclusion criteria. To assess the quality of prospective
324 cohort studies we selected, we utilized the Newcastle-Ottawa Scale (NOS) for nonrandomized
325 studies in meta-analyses¹⁰¹. Studies that had a NOS score less than 5 were excluded. After our
326 comprehensive screening, we had to eliminate our analysis for non-Hodgkin lymphoma, renal cell
327 cancer, childhood leukemia, and thyroid cancer because of limited data availability from
328 prospective cohort studies. As a result, the following 10 cancer types were included in the final
329 analysis: liver, endometrial, skin, breast, pancreatic, prostate, colorectal, ovarian, bladder, and
330 lung.

331

332 **Data extraction**

333 From the final list of high-quality prospective cohort studies, we extracted the following data:
334 publication year, cancer type, country, region, study year, total sample size, relative risk (or
335 hazard ratio) with 95% CI for each dose of coffee consumption, coffee type (caffeinated and
336 decaffeinated), and sex (men and women). Only multivariable adjusted data were extracted to
337 eliminate potential confounding factors.

338

339 **Data analysis**

340 We performed random-effects meta-analyses using Stata 18 (StataCorp LLC) to integrate the
341 results of included studies for the highest coffee consumption. For each cancer type (liver,
342 endometrial, skin, breast, pancreatic, prostate, colorectal, ovarian, bladder, and lung), coffee type
343 (caffeinated and decaffeinated), and sex (men and women), summary relative risks (SRRs) and
344 95% CIs were calculated using the DerSimonian–Laird random-effects model, estimating the
345 between-study variance. Hazard ratio is an estimate of relative risk¹⁰², and thus we treated hazard
346 ratio as relative risk to calculate SRR. To quantify the impact of heterogeneity in a meta-analysis,
347 we calculated I^2 , which ranges from 0% to 100%¹⁰³.

348

349 For dose-response analyses of coffee consumption and cancer risk, we performed linear
350 regression using Prism 9 (GraphPad Software). Coffee data (without distinguishing between
351 caffeinated and decaffeinated) and caffeinated coffee data, but not decaffeinated coffee data,
352 were included because the majority of coffee drinkers consume caffeinated coffee rather than
353 decaffeinated coffee¹⁰⁴. Due to the varying nature of how each cohort study reported the amount
354 of coffee consumption, we categorized varying amounts of coffee consumption into low and high
355 consumption groups. We defined low consumption to be less than three cups of coffee per day
356 and high consumption to be greater than or equal to three cups per day. After this grouping, we
357 used relative risk (or hazard ratio) from each study and calculated a SRR for each consumption
358 group. The x-value for our linear regression model represented the mean daily cup of coffee
359 consumption with its 95% CI. The y-value represented SRR with reference set at 1. We excluded
360 the studies that reported nonquantifiable coffee consumption from our linear regression analysis.

361

362 Publication bias in our meta-analysis was evaluated using the Egger's test, Begg's test, and a
363 funnel plot after applying the trim-and-fill method¹⁰⁵⁻¹⁰⁷.

364

365 **References**

- 366 1. Siegel, R.L., Miller, K.D., Wagle, N.S. & Jemal, A. Cancer statistics, 2023. *CA Cancer J*
367 *Clin* **73**, 17-48 (2023).
- 368 2. Ames, B.N., Gold, L.S. & Willett, W.C. The causes and prevention of cancer. *Proc Natl*
369 *Acad Sci U S A* **92**, 5258-5265 (1995).
- 370 3. Lofffield, E. et al. Coffee Drinking Is Widespread in the United States, but Usual Intake
371 Varies by Key Demographic and Lifestyle Factors. *J Nutr* **146**, 1762-1768 (2016).
- 372 4. Arab, L. Epidemiologic evidence on coffee and cancer. *Nutr Cancer* **62**, 271-283 (2010).
- 373 5. Huxley, R. et al. Coffee, decaffeinated coffee, and tea consumption in relation to incident
374 type 2 diabetes mellitus: a systematic review with meta-analysis. *Arch Intern Med* **169**,
375 2053-2063 (2009).
- 376 6. Modi, A.A. et al. Increased caffeine consumption is associated with reduced hepatic
377 fibrosis. *Hepatology* **51**, 201-209 (2010).
- 378 7. Freedman, N.D., Park, Y., Abnet, C.C., Hollenbeck, A.R. & Sinha, R. Association of
379 coffee drinking with total and cause-specific mortality. *N Engl J Med* **366**, 1891-1904
380 (2012).
- 381 8. Nuhu, A.A. Bioactive micronutrients in coffee: recent analytical approaches for
382 characterization and quantification. *ISRN Nutr* **2014**, 384230 (2014).
- 383 9. Huang, M.T. et al. Effects of tea, decaffeinated tea, and caffeine on UVB light-induced
384 complete carcinogenesis in SKH-1 mice: demonstration of caffeine as a biologically
385 important constituent of tea. *Cancer Res* **57**, 2623-2629 (1997).
- 386 10. Conney, A.H., Lu, Y.P., Lou, Y.R., Kawasumi, M. & Nghiem, P. Mechanisms of Caffeine-
387 Induced Inhibition of UVB Carcinogenesis. *Front Oncol* **3**, 144 (2013).
- 388 11. Abel, E.L. et al. Daily coffee consumption and prevalence of nonmelanoma skin cancer
389 in Caucasian women. *Eur J Cancer Prev* **16**, 446-452 (2007).

- 390 12. Song, F., Qureshi, A.A. & Han, J. Increased caffeine intake is associated with reduced
391 risk of basal cell carcinoma of the skin. *Cancer Res* **72**, 3282-3289 (2012).
- 392 13. Lofffield, E. et al. Coffee drinking and cutaneous melanoma risk in the NIH-AARP diet
393 and health study. *J Natl Cancer Inst* **107**(2015).
- 394 14. Park, S.Y. et al. Prospective Study of Coffee Consumption and Cancer Incidence in
395 Non-White Populations. *Cancer Epidemiol Biomarkers Prev* **27**, 928-935 (2018).
- 396 15. Lueth, N.A., Anderson, K.E., Harnack, L.J., Fulkerson, J.A. & Robien, K. Coffee and
397 caffeine intake and the risk of ovarian cancer: the Iowa Women's Health Study. *Cancer*
398 *Causes Control* **19**, 1365-1372 (2008).
- 399 16. Song, J.W. & Chung, K.C. Observational studies: cohort and case-control studies. *Plast*
400 *Reconstr Surg* **126**, 2234-2242 (2010).
- 401 17. Bamia, C. et al. Coffee, tea and decaffeinated coffee in relation to hepatocellular
402 carcinoma in a European population: multicentre, prospective cohort study. *Int J Cancer*
403 **136**, 1899-1908 (2015).
- 404 18. Petrick, J.L. et al. Coffee Consumption and Risk of Hepatocellular Carcinoma and
405 Intrahepatic Cholangiocarcinoma by Sex: The Liver Cancer Pooling Project. *Cancer*
406 *Epidemiol Biomarkers Prev* **24**, 1398-1406 (2015).
- 407 19. Setiawan, V.W. et al. Association of coffee intake with reduced incidence of liver cancer
408 and death from chronic liver disease in the US multiethnic cohort. *Gastroenterology* **148**,
409 118-125 (2015).
- 410 20. Tamura, T. et al. Coffee, Green Tea, and Caffeine Intake and Liver Cancer Risk: A
411 Prospective Cohort Study. *Nutr Cancer* **70**, 1210-1216 (2018).
- 412 21. Inoue, M., Yoshimi, I., Sobue, T., Tsugane, S. & Group, J.S. Influence of coffee drinking
413 on subsequent risk of hepatocellular carcinoma: a prospective study in Japan. *J Natl*
414 *Cancer Inst* **97**, 293-300 (2005).

- 415 22. Shimazu, T. et al. Coffee consumption and the risk of primary liver cancer: pooled
416 analysis of two prospective studies in Japan. *Int J Cancer* **116**, 150-154 (2005).
- 417 23. Arthur, R., Kirsh, V.A. & Rohan, T.E. Associations of coffee, tea and caffeine intake with
418 risk of breast, endometrial and ovarian cancer among Canadian women. *Cancer*
419 *Epidemiol* **56**, 75-82 (2018).
- 420 24. Giri, A. et al. Caffeinated coffee, decaffeinated coffee and endometrial cancer risk: a
421 prospective cohort study among US postmenopausal women. *Nutrients* **3**, 937-950
422 (2011).
- 423 25. Gunter, M.J. et al. A prospective investigation of coffee drinking and endometrial cancer
424 incidence. *Int J Cancer* **131**, E530-536 (2012).
- 425 26. Uccella, S. et al. Intake of coffee, caffeine and other methylxanthines and risk of Type I
426 vs Type II endometrial cancer. *Br J Cancer* **109**, 1908-1913 (2013).
- 427 27. Friberg, E., Orsini, N., Mantzoros, C.S. & Wolk, A. Coffee drinking and risk of
428 endometrial cancer--a population-based cohort study. *Int J Cancer* **125**, 2413-2417
429 (2009).
- 430 28. Gavriilyuk, O. et al. High coffee consumption and different brewing methods in relation to
431 postmenopausal endometrial cancer risk in the Norwegian women and cancer study: a
432 population-based prospective study. *BMC Womens Health* **14**, 48 (2014).
- 433 29. Hashibe, M. et al. Coffee, tea, caffeine intake, and the risk of cancer in the PLCO cohort.
434 *Br J Cancer* **113**, 809-816 (2015).
- 435 30. Nilsson, L.M., Johansson, I., Lenner, P., Lindahl, B. & Van Guelpen, B. Consumption of
436 filtered and boiled coffee and the risk of incident cancer: a prospective cohort study.
437 *Cancer Causes Control* **21**, 1533-1544 (2010).
- 438 31. Shimazu, T. et al. Coffee consumption and risk of endometrial cancer: a prospective
439 study in Japan. *Int J Cancer* **123**, 2406-2410 (2008).

- 440 32. Weiderpass, E. et al. Endometrial cancer in relation to coffee, tea, and caffeine
441 consumption: a prospective cohort study among middle-aged women in Sweden. *Nutr*
442 *Cancer* **66**, 1132-1143 (2014).
- 443 33. Yang, T.O., Crowe, F., Cairns, B.J., Reeves, G.K. & Beral, V. Tea and coffee and risk of
444 endometrial cancer: cohort study and meta-analysis. *Am J Clin Nutr* **101**, 570-578
445 (2015).
- 446 34. Caini, S. et al. Coffee, tea and melanoma risk: findings from the European Prospective
447 Investigation into Cancer and Nutrition. *Int J Cancer* **140**, 2246-2255 (2017).
- 448 35. Miura, K., Hughes, M.C., Green, A.C. & van der Pols, J.C. Caffeine intake and risk of
449 basal cell and squamous cell carcinomas of the skin in an 11-year prospective study.
450 *Eur J Nutr* **53**, 511-520 (2014).
- 451 36. Wu, S. et al. Caffeine Intake, Coffee Consumption, and Risk of Cutaneous Malignant
452 Melanoma. *Epidemiology* **26**, 898-908 (2015).
- 453 37. Oh, C.C., Jin, A., Yuan, J.M. & Koh, W.P. Coffee, tea, caffeine, and risk of
454 nonmelanoma skin cancer in a Chinese population: The Singapore Chinese Health
455 Study. *J Am Acad Dermatol* **81**, 395-402 (2019).
- 456 38. Bhoo-Pathy, N. et al. Coffee and tea consumption and risk of pre- and postmenopausal
457 breast cancer in the European Prospective Investigation into Cancer and Nutrition
458 (EPIC) cohort study. *Breast Cancer Res* **17**, 15 (2015).
- 459 39. Boggs, D.A. et al. Tea and coffee intake in relation to risk of breast cancer in the Black
460 Women's Health Study. *Cancer Causes Control* **21**, 1941-1948 (2010).
- 461 40. Ganmaa, D. et al. Coffee, tea, caffeine and risk of breast cancer: a 22-year follow-up. *Int*
462 *J Cancer* **122**, 2071-2076 (2008).
- 463 41. Gierach, G.L. et al. Coffee intake and breast cancer risk in the NIH-AARP diet and
464 health study cohort. *Int J Cancer* **131**, 452-460 (2012).

- 465 42. Ishitani, K., Lin, J., Manson, J.E., Buring, J.E. & Zhang, S.M. Caffeine consumption and
466 the risk of breast cancer in a large prospective cohort of women. *Arch Intern Med* **168**,
467 2022-2031 (2008).
- 468 43. Bhoo Pathy, N. et al. Coffee and tea intake and risk of breast cancer. *Breast Cancer Res*
469 *Treat* **121**, 461-467 (2010).
- 470 44. Larsson, S.C., Bergkvist, L. & Wolk, A. Coffee and black tea consumption and risk of
471 breast cancer by estrogen and progesterone receptor status in a Swedish cohort.
472 *Cancer Causes Control* **20**, 2039-2044 (2009).
- 473 45. Lukic, M. et al. Coffee consumption and the risk of cancer in the Norwegian Women and
474 Cancer (NOWAC) Study. *Eur J Epidemiol* **31**, 905-916 (2016).
- 475 46. Michels, K.B., Holmberg, L., Bergkvist, L. & Wolk, A. Coffee, tea, and caffeine
476 consumption and breast cancer incidence in a cohort of Swedish women. *Ann Epidemiol*
477 **12**, 21-26 (2002).
- 478 47. Oh, J.K. et al. Prospective study of breast cancer in relation to coffee, tea and caffeine in
479 Sweden. *Int J Cancer* **137**, 1979-1989 (2015).
- 480 48. Vatten, L.J., Solvoll, K. & Loken, E.B. Coffee consumption and the risk of breast cancer.
481 A prospective study of 14,593 Norwegian women. *Br J Cancer* **62**, 267-270 (1990).
- 482 49. Bhoo-Pathy, N. et al. Intake of coffee, decaffeinated coffee, or tea does not affect risk for
483 pancreatic cancer: results from the European Prospective Investigation into Nutrition and
484 Cancer Study. *Clin Gastroenterol Hepatol* **11**, 1486-1492 (2013).
- 485 50. Michaud, D.S., Giovannucci, E., Willett, W.C., Colditz, G.A. & Fuchs, C.S. Coffee and
486 alcohol consumption and the risk of pancreatic cancer in two prospective United States
487 cohorts. *Cancer Epidemiol Biomarkers Prev* **10**, 429-437 (2001).
- 488 51. Bidel, S. et al. Coffee consumption and risk of gastric and pancreatic cancer--a
489 prospective cohort study. *Int J Cancer* **132**, 1651-1659 (2013).

- 490 52. Lukic, M., Nilsson, L.M., Skeie, G., Lindahl, B. & Braaten, T. Coffee consumption and
491 risk of rare cancers in Scandinavian countries. *Eur J Epidemiol* **33**, 287-302 (2018).
- 492 53. Luo, J. et al. Green tea and coffee intake and risk of pancreatic cancer in a large-scale,
493 population-based cohort study in Japan (JPHC study). *Eur J Cancer Prev* **16**, 542-548
494 (2007).
- 495 54. Zhou, C.D. et al. Coffee and pancreatic cancer risk among never-smokers in the UK
496 prospective Million Women Study. *Int J Cancer* **145**, 1484-1492 (2019).
- 497 55. Sen, A. et al. Coffee and tea consumption and risk of prostate cancer in the European
498 Prospective Investigation into Cancer and Nutrition. *Int J Cancer* **144**, 240-250 (2019).
- 499 56. Wilson, K.M. et al. Coffee consumption and prostate cancer risk and progression in the
500 Health Professionals Follow-up Study. *J Natl Cancer Inst* **103**, 876-884 (2011).
- 501 57. Bosire, C. et al. Coffee consumption and the risk of overall and fatal prostate cancer in
502 the NIH-AARP Diet and Health Study. *Cancer Causes Control* **24**, 1527-1534 (2013).
- 503 58. Ellison, L.F. Tea and other beverage consumption and prostate cancer risk: a Canadian
504 retrospective cohort study. *Eur J Cancer Prev* **9**, 125-130 (2000).
- 505 59. Li, Q. et al. Coffee consumption and the risk of prostate cancer: the Ohsaki Cohort
506 Study. *Br J Cancer* **108**, 2381-2389 (2013).
- 507 60. Shafique, K. et al. Coffee consumption and prostate cancer risk: further evidence for
508 inverse relationship. *Nutr J* **11**, 42 (2012).
- 509 61. Dominianni, C., Huang, W.Y., Berndt, S., Hayes, R.B. & Ahn, J. Prospective study of the
510 relationship between coffee and tea with colorectal cancer risk: the PLCO Cancer
511 Screening Trial. *Br J Cancer* **109**, 1352-1359 (2013).
- 512 62. Groessl, E.J. et al. Coffee Consumption and the Incidence of Colorectal Cancer in
513 Women. *J Cancer Epidemiol* **2016**, 6918431 (2016).
- 514 63. Sinha, R. et al. Caffeinated and decaffeinated coffee and tea intakes and risk of
515 colorectal cancer in a large prospective study. *Am J Clin Nutr* **96**, 374-381 (2012).

- 516 64. Um, C.Y. et al. Coffee consumption and risk of colorectal cancer in the Cancer
517 Prevention Study-II Nutrition Cohort. *Cancer Epidemiol* **67**, 101730 (2020).
- 518 65. Lee, K.J. et al. Coffee consumption and risk of colorectal cancer in a population-based
519 prospective cohort of Japanese men and women. *Int J Cancer* **121**, 1312-1318 (2007).
- 520 66. Naganuma, T. et al. Coffee consumption and the risk of colorectal cancer: a prospective
521 cohort study in Japan. *Int J Cancer* **120**, 1542-1547 (2007).
- 522 67. Peterson, S. et al. Coffee intake and risk of colorectal cancer among Chinese in
523 Singapore: the Singapore Chinese Health Study. *Nutr Cancer* **62**, 21-29 (2010).
- 524 68. Yamada, H. et al. Coffee consumption and risk of colorectal cancer: the Japan
525 Collaborative Cohort Study. *J Epidemiol* **24**, 370-378 (2014).
- 526 69. Braem, M.G. et al. Coffee and tea consumption and the risk of ovarian cancer: a
527 prospective cohort study and updated meta-analysis. *Am J Clin Nutr* **95**, 1172-1181
528 (2012).
- 529 70. Tworoger, S.S., Gertig, D.M., Gates, M.A., Hecht, J.L. & Hankinson, S.E. Caffeine,
530 alcohol, smoking, and the risk of incident epithelial ovarian cancer. *Cancer* **112**, 1169-
531 1177 (2008).
- 532 71. Silvera, S.A., Jain, M., Howe, G.R., Miller, A.B. & Rohan, T.E. Intake of coffee and tea
533 and risk of ovarian cancer: a prospective cohort study. *Nutr Cancer* **58**, 22-27 (2007).
- 534 72. Lofffield, E., Freedman, N.D., Inoue-Choi, M., Graubard, B.I. & Sinha, R. A Prospective
535 Investigation of Coffee Drinking and Bladder Cancer Incidence in the United States.
536 *Epidemiology* **28**, 685-693 (2017).
- 537 73. Kurahashi, N. et al. Coffee, green tea, and caffeine consumption and subsequent risk of
538 bladder cancer in relation to smoking status: a prospective study in Japan. *Cancer Sci*
539 **100**, 294-291 (2009).

- 540 74. Sugiyama, K. et al. The association between coffee consumption and bladder cancer
541 incidence in a pooled analysis of the Miyagi Cohort Study and Ohsaki Cohort Study. *Eur*
542 *J Cancer Prev* **26**, 125-130 (2017).
- 543 75. Guertin, K.A. et al. Coffee consumption and incidence of lung cancer in the NIH-AARP
544 Diet and Health Study. *Int J Epidemiol* **45**, 929-939 (2016).
- 545 76. Narita, S. et al. Coffee Consumption and Lung Cancer Risk: The Japan Public Health
546 Center-Based Prospective Study. *J Epidemiol* **28**, 207-213 (2018).
- 547 77. World Cancer Research Fund International. Cancer Trends: Worldwide Cancer Data;
548 2022. Available from: <https://www.wcrf.org/cancer-trends/worldwide-cancer-data/>.
- 549 78. Xie, Y. et al. Coffee consumption and the risk of lung cancer: an updated meta-analysis
550 of epidemiological studies. *Eur J Clin Nutr* **70**, 199-206 (2016).
- 551 79. Galarraga, V. & Boffetta, P. Coffee Drinking and Risk of Lung Cancer-A Meta-Analysis.
552 *Cancer Epidemiol Biomarkers Prev* **25**, 951-957 (2016).
- 553 80. Pauwels, E.K.J. & Volterrani, D. Coffee Consumption and Cancer Risk: An Assessment
554 of the Health Implications Based on Recent Knowledge. *Med Princ Pract* **30**, 401-411
555 (2021).
- 556 81. Bracken, M.B. et al. Heterogeneity in assessing self-reports of caffeine exposure:
557 implications for studies of health effects. *Epidemiology* **13**, 165-171 (2002).
- 558 82. Ludwig, I.A. et al. Variations in caffeine and chlorogenic acid contents of coffees: what
559 are we drinking? *Food Funct* **5**, 1718-1726 (2014).
- 560 83. Severini, C. et al. How the variance of some extraction variables may affect the quality of
561 espresso coffees served in coffee shops. *J Sci Food Agric* **96**, 3023-3031 (2016).
- 562 84. Angeloni, G. et al. What kind of coffee do you drink? An investigation on effects of eight
563 different extraction methods. *Food Res Int* **116**, 1327-1335 (2019).
- 564 85. Muqaku, B. et al. Coffee consumption modulates inflammatory processes in an
565 individual fashion. *Mol Nutr Food Res* **60**, 2529-2541 (2016).

- 566 86. Sarkaria, J.N. et al. Inhibition of ATM and ATR kinase activities by the radiosensitizing
567 agent, caffeine. *Cancer Res* **59**, 4375-4382 (1999).
- 568 87. Kawasumi, M. et al. Protection from UV-induced skin carcinogenesis by genetic
569 inhibition of the ataxia telangiectasia and Rad3-related (ATR) kinase. *Proc Natl Acad Sci*
570 *U S A* **108**, 13716-13721 (2011).
- 571 88. Lee, J.W., Ratnakumar, K., Hung, K.F., Rokunohe, D. & Kawasumi, M. Deciphering UV-
572 induced DNA Damage Responses to Prevent and Treat Skin Cancer. *Photochem*
573 *Photobiol* **96**, 478-499 (2020).
- 574 89. Heffernan, T.P. et al. ATR-Chk1 pathway inhibition promotes apoptosis after UV
575 treatment in primary human keratinocytes: potential basis for the UV protective effects of
576 caffeine. *J Invest Dermatol* **129**, 1805-1815 (2009).
- 577 90. Tao, K.S. et al. The multifaceted mechanisms for coffee's anti-tumorigenic effect on liver.
578 *Med Hypotheses* **71**, 730-736 (2008).
- 579 91. Steinkellner, H. et al. Coffee consumption induces GSTP in plasma and protects
580 lymphocytes against (+/-)-anti-benzo[a]pyrene-7,8-dihydrodiol-9,10-epoxide induced
581 DNA-damage: results of controlled human intervention trials. *Mutat Res* **591**, 264-275
582 (2005).
- 583 92. Feng, R. et al. Inhibition of activator protein-1, NF-kappaB, and MAPKs and induction of
584 phase 2 detoxifying enzyme activity by chlorogenic acid. *J Biol Chem* **280**, 27888-27895
585 (2005).
- 586 93. Ramos, S. Cancer chemoprevention and chemotherapy: dietary polyphenols and
587 signalling pathways. *Mol Nutr Food Res* **52**, 507-526 (2008).
- 588 94. Kolb, H., Kempf, K. & Martin, S. Health Effects of Coffee: Mechanism Unraveled?
589 *Nutrients* **12**(2020).
- 590 95. Misik, M. et al. Impact of paper filtered coffee on oxidative DNA-damage: results of a
591 clinical trial. *Mutat Res* **692**, 42-48 (2010).

- 592 96. Moeenfard, M. et al. Anti-Angiogenic Properties of Cafestol and Kahweol Palmitate
593 Diterpene Esters. *J Cell Biochem* **117**, 2748-2756 (2016).
- 594 97. Rogers, H.W., Weinstock, M.A., Feldman, S.R. & Coldiron, B.M. Incidence Estimate of
595 Nonmelanoma Skin Cancer (Keratinocyte Carcinomas) in the U.S. Population, 2012.
596 *JAMA Dermatol* **151**, 1081-1086 (2015).
- 597 98. National Cancer Institute. Cancer Trends Progress Report: Financial Burden of Cancer
598 Care; 2022. Available from: https://progressreport.cancer.gov/after/economic_burden.
- 599 99. Mariotto, A.B., Enewold, L., Zhao, J., Zeruto, C.A. & Yabroff, K.R. Medical Care Costs
600 Associated with Cancer Survivorship in the United States. *Cancer Epidemiol Biomarkers*
601 *Prev* **29**, 1304-1312 (2020).
- 602 100. Yoon, J., Phibbs, C.S., Chow, A., Pomerantz, H. & Weinstock, M.A. Costs of
603 Keratinocyte Carcinoma (Nonmelanoma Skin Cancer) and Actinic Keratosis Treatment
604 in the Veterans Health Administration. *Dermatol Surg* **42**, 1041-1047 (2016).
- 605 101. Wells, G.A. et al. The Newcastle-Ottawa Scale (NOS) for assessing the quality of
606 nonrandomised studies in meta-analyses; 2022. Available from:
607 https://www.ohri.ca//programs/clinical_epidemiology/oxford.asp.
- 608 102. Spruance, S.L., Reid, J.E., Grace, M. & Samore, M. Hazard ratio in clinical trials.
609 *Antimicrob Agents Chemother* **48**, 2787-2792 (2004).
- 610 103. Higgins, J.P. & Thompson, S.G. Quantifying heterogeneity in a meta-analysis. *Stat Med*
611 **21**, 1539-1558 (2002).
- 612 104. Kubo Shlonsky, A., Klatsky, A.L. & Armstrong, M.A. Traits of persons who drink
613 decaffeinated coffee. *Ann Epidemiol* **13**, 273-279 (2003).
- 614 105. Egger, M., Davey Smith, G., Schneider, M. & Minder, C. Bias in meta-analysis detected
615 by a simple, graphical test. *BMJ* **315**, 629-634 (1997).
- 616 106. Begg, C.B. & Mazumdar, M. Operating characteristics of a rank correlation test for
617 publication bias. *Biometrics* **50**, 1088-1101 (1994).

618 107. Duval, S. & Tweedie, R. Trim and fill: A simple funnel-plot-based method of testing and
619 adjusting for publication bias in meta-analysis. *Biometrics* **56**, 455-463 (2000).
620

621 **Author contributions**

622 All authors contributed intellectual input and assistance to this study.

623 T.N.N. and M.K. designed the research.

624 T.N.N. and D.K.E. conducted literature search and data extraction.

625 T.N.N. and M.K. analyzed and visualized data.

626 T.N.N., O.S.C., D.K.E., and M.K. interpreted data and wrote the manuscript.

627 M.K. supervised the research.

628

629 **Competing interests**

630 The authors declare no competing interest.

631

632 **Data availability**

633 All data are presented within this paper and in the accompanying Supplementary Information.

634

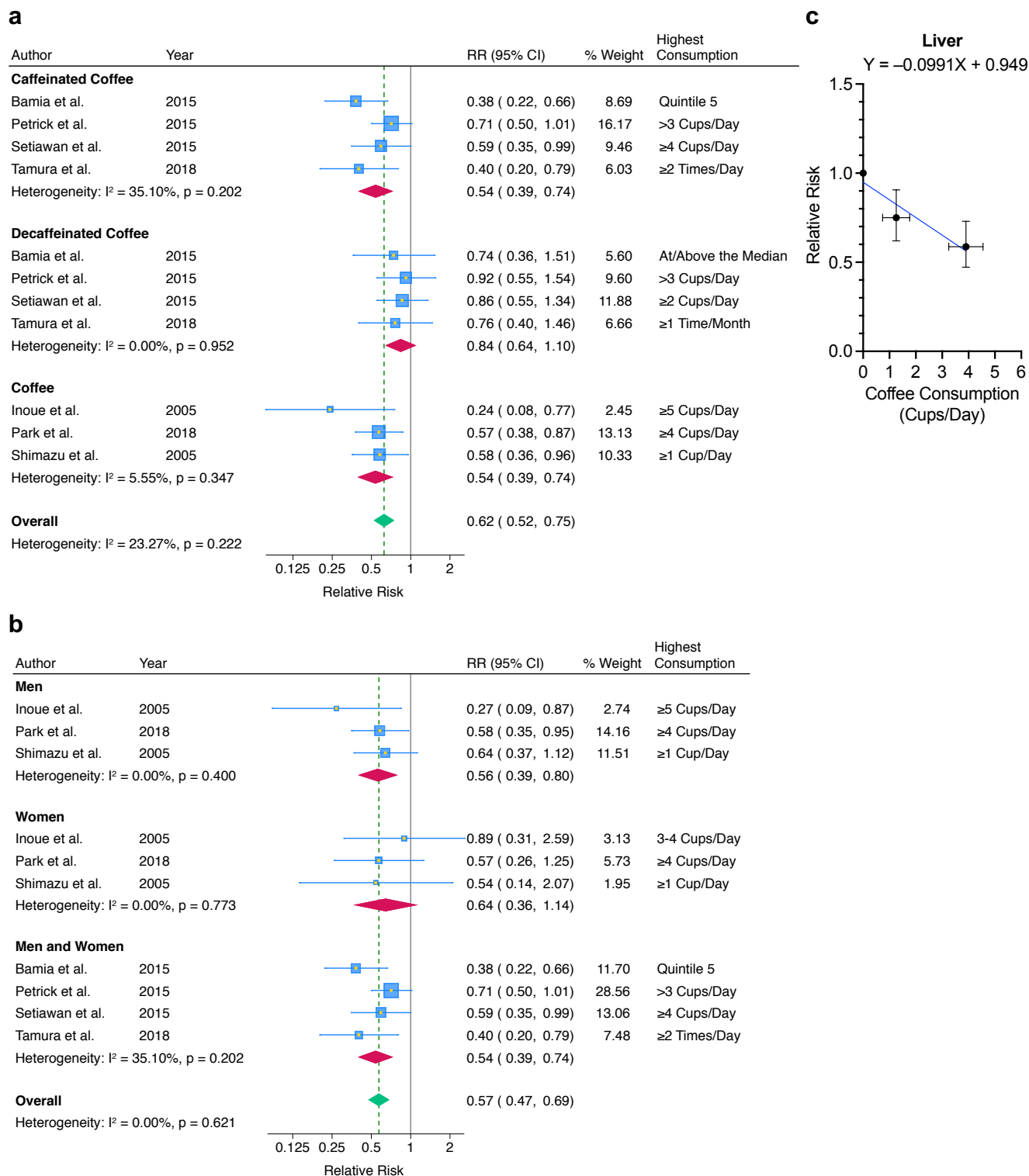


Fig. 1: Coffee consumption and hepatocellular carcinoma risk.

a Meta-analyses classified by coffee type. “Coffee” data did not distinguish between caffeinated and decaffeinated coffee consumption.

b Meta-analyses classified by sex. Coffee data (without distinguishing between caffeinated and decaffeinated) and caffeinated coffee data, but not decaffeinated coffee data, were included.

c Dose-response analysis of coffee consumption and hepatocellular carcinoma risk. Mean coffee consumption (cups per day) with 95% confidence interval and summary relative risk with 95% confidence interval for reference, low, and high consumption groups are shown. Coffee data (without distinguishing between caffeinated and decaffeinated) and caffeinated coffee data, but not decaffeinated coffee data, were included.

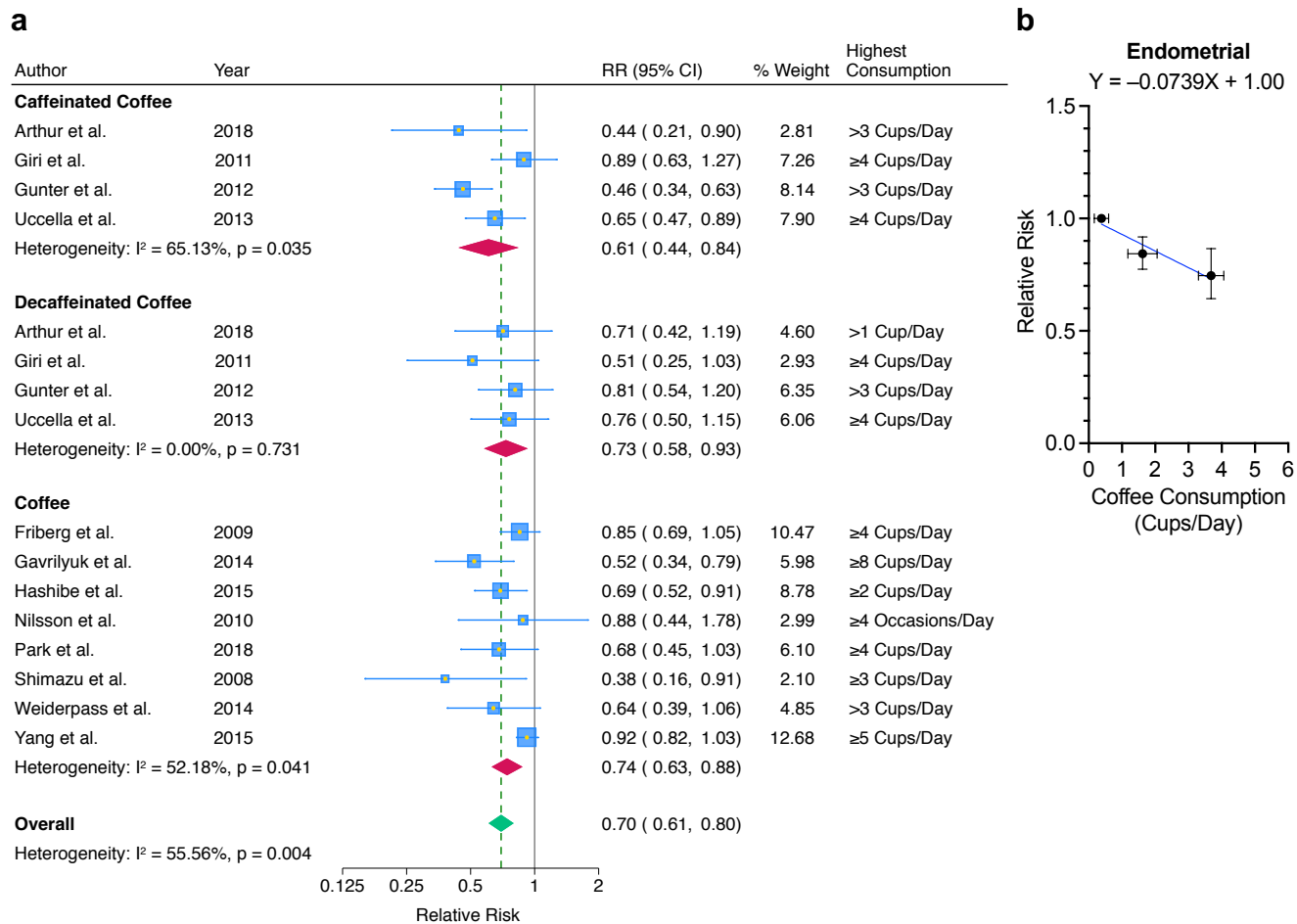


Fig. 2: Coffee consumption and endometrial cancer risk.

a Meta-analyses classified by coffee type. “Coffee” data did not distinguish between caffeinated and decaffeinated coffee consumption.

b Dose-response analysis of coffee consumption and endometrial cancer risk. Mean coffee consumption (cups per day) with 95% confidence interval and summary relative risk with 95% confidence interval for reference, low, and high consumption groups are shown. Coffee data (without distinguishing between caffeinated and decaffeinated) and caffeinated coffee data, but not decaffeinated coffee data, were included.

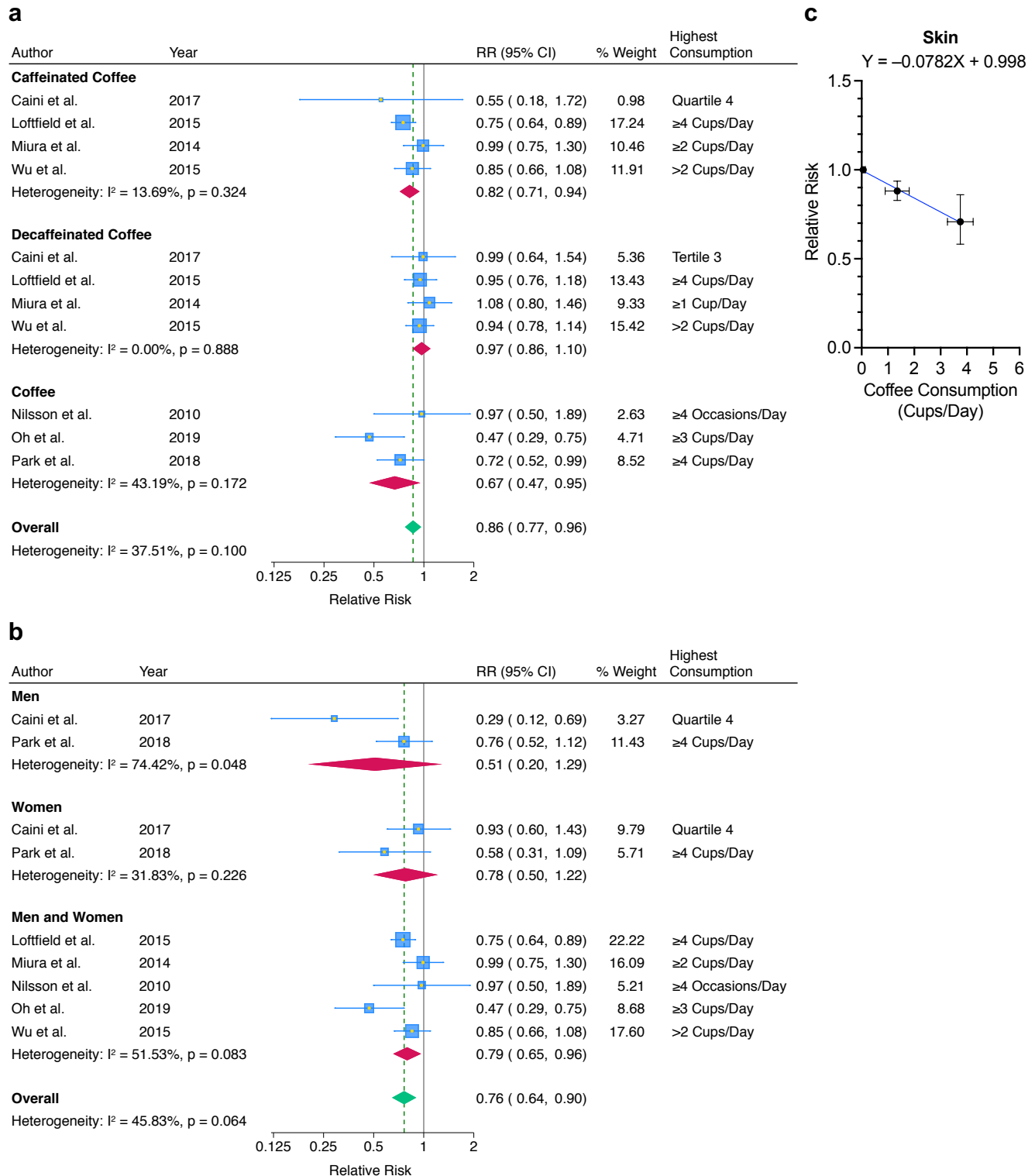


Fig. 3: Coffee consumption and skin cancer risk.

a Meta-analyses classified by coffee type. “Coffee” data did not distinguish between caffeinated and decaffeinated coffee consumption.

b Meta-analyses classified by sex. Coffee data (without distinguishing between caffeinated and decaffeinated) and caffeinated coffee data, but not decaffeinated coffee data, were included.

c Dose-response analysis of coffee consumption and skin cancer risk. Mean coffee consumption (cups per day) with 95% confidence interval and summary relative risk with 95% confidence interval for reference, low, and high consumption groups are shown. Coffee data (without distinguishing between caffeinated and decaffeinated) and caffeinated coffee data, but not decaffeinated coffee data, were included.

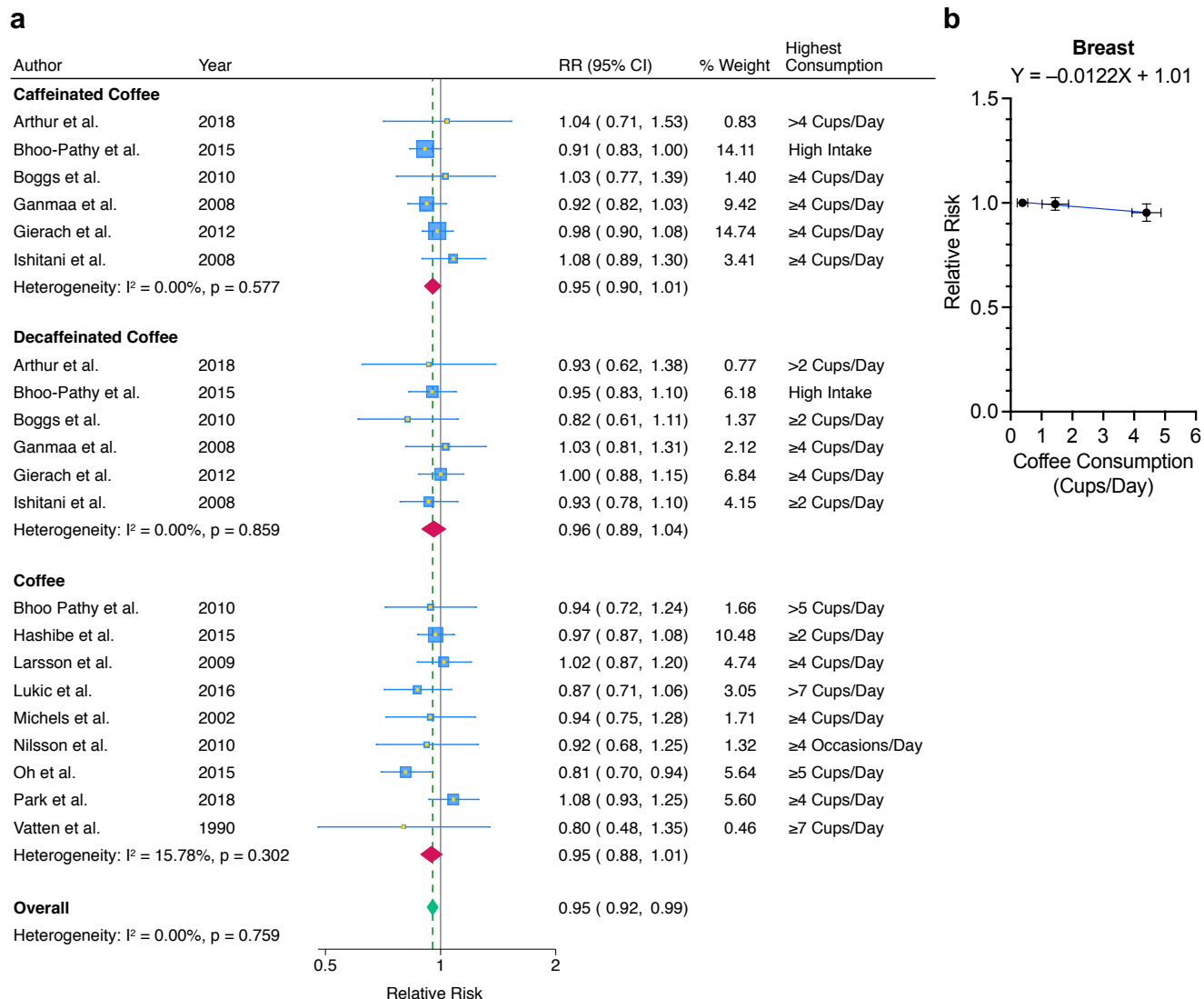


Fig. 4: Coffee consumption and breast cancer risk.

a Meta-analyses classified by coffee type. “Coffee” data did not distinguish between caffeinated and decaffeinated coffee consumption.

b Dose-response analysis of coffee consumption and breast cancer risk. Mean coffee consumption (cups per day) with 95% confidence interval and summary relative risk with 95% confidence interval for reference, low, and high consumption groups are shown. Coffee data (without distinguishing between caffeinated and decaffeinated) and caffeinated coffee data, but not decaffeinated coffee data, were included.

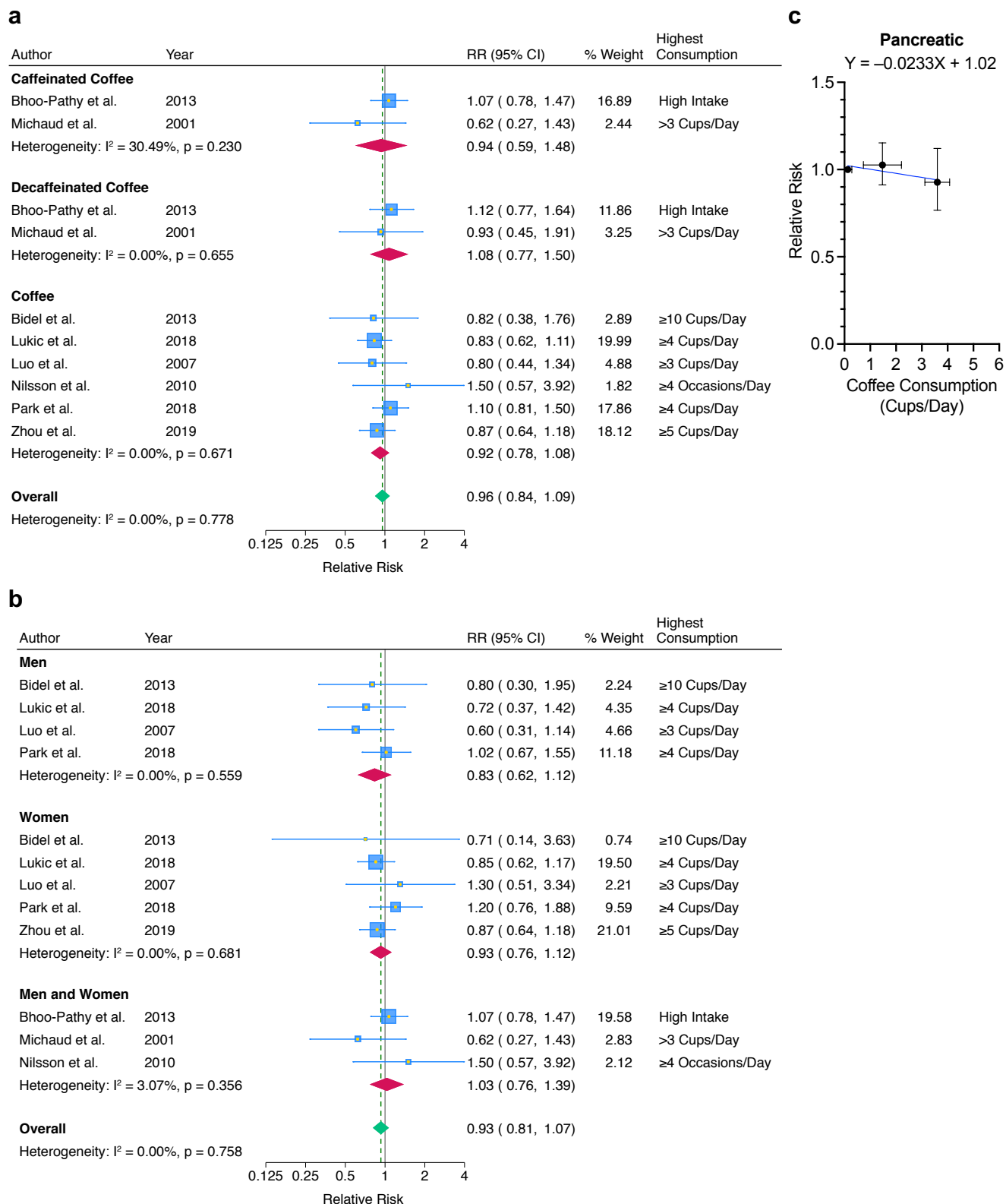


Fig. 5: Coffee consumption and pancreatic cancer risk.

a Meta-analyses classified by coffee type. “Coffee” data did not distinguish between caffeinated and decaffeinated coffee consumption.

b Meta-analyses classified by sex. Coffee data (without distinguishing between caffeinated and decaffeinated) and caffeinated coffee data, but not decaffeinated coffee data, were included.

c Dose-response analysis of coffee consumption and pancreatic cancer risk. Mean coffee consumption (cups per day) with 95% confidence interval and summary relative risk with 95% confidence interval for reference, low, and high consumption groups are shown. Coffee data (without distinguishing between caffeinated and decaffeinated) and caffeinated coffee data, but not decaffeinated coffee data, were included.

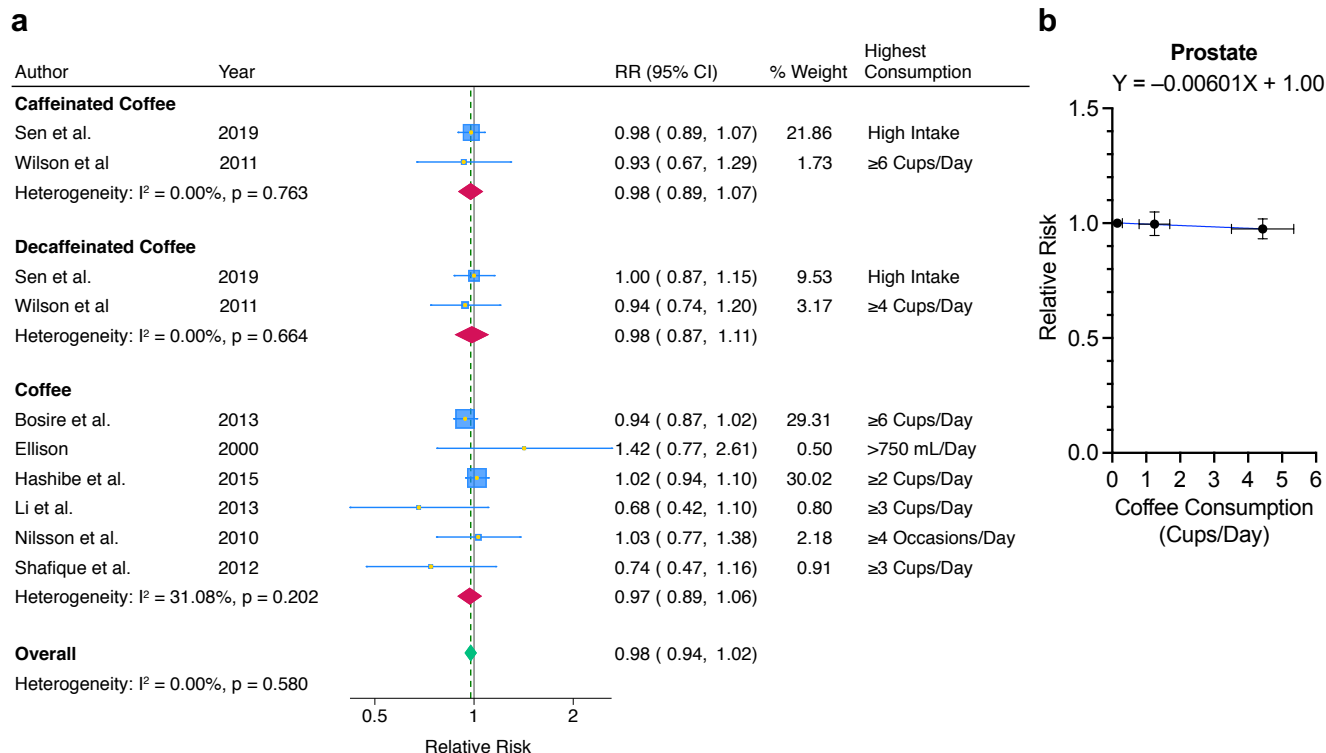


Fig. 6: Coffee consumption and prostate cancer risk.

a Meta-analyses classified by coffee type. “Coffee” data did not distinguish between caffeinated and decaffeinated coffee consumption.

b Dose-response analysis of coffee consumption and prostate cancer risk. Mean coffee consumption (cups per day) with 95% confidence interval and summary relative risk with 95% confidence interval for reference, low, and high consumption groups are shown. Coffee data (without distinguishing between caffeinated and decaffeinated) and caffeinated coffee data, but not decaffeinated coffee data, were included.

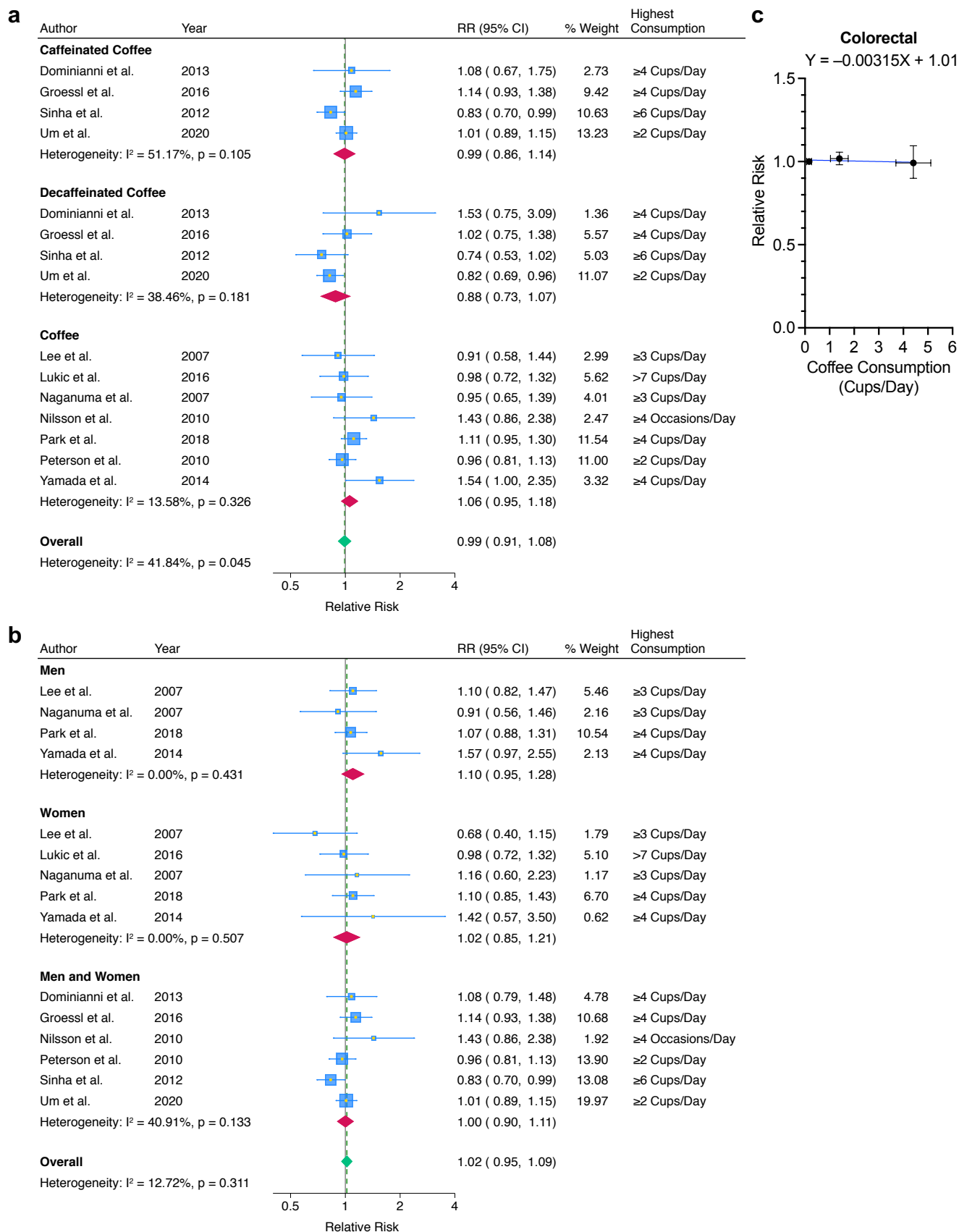


Fig. 7: Coffee consumption and colorectal cancer risk.

a Meta-analyses classified by coffee type. "Coffee" data did not distinguish between caffeinated and decaffeinated coffee consumption.

b Meta-analyses classified by sex. Coffee data (without distinguishing between caffeinated and decaffeinated) and caffeinated coffee data, but not decaffeinated coffee data, were included.

c Dose-response analysis of coffee consumption and colorectal cancer risk. Mean coffee consumption (cups per day) with 95% confidence interval and summary relative risk with 95% confidence interval for reference, low, and high consumption groups are shown. Coffee data (without distinguishing between caffeinated and decaffeinated) and caffeinated coffee data, but not decaffeinated coffee data, were included.

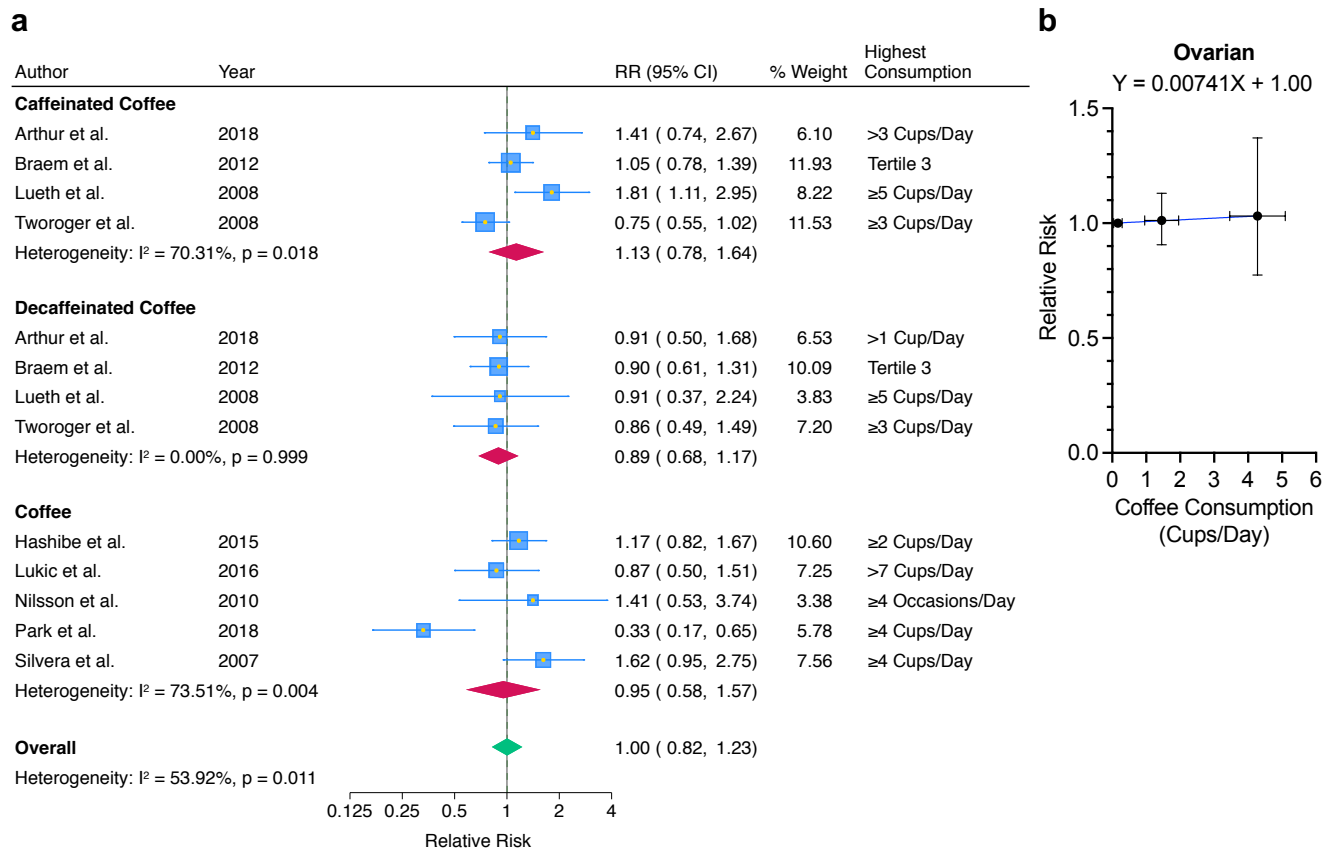


Fig. 8: Coffee consumption and ovarian cancer risk.

a Meta-analyses classified by coffee type. “Coffee” data did not distinguish between caffeinated and decaffeinated coffee consumption.

b Dose-response analysis of coffee consumption and ovarian cancer risk. Mean coffee consumption (cups per day) with 95% confidence interval and summary relative risk with 95% confidence interval for reference, low, and high consumption groups are shown. Coffee data (without distinguishing between caffeinated and decaffeinated) and caffeinated coffee data, but not decaffeinated coffee data, were included.

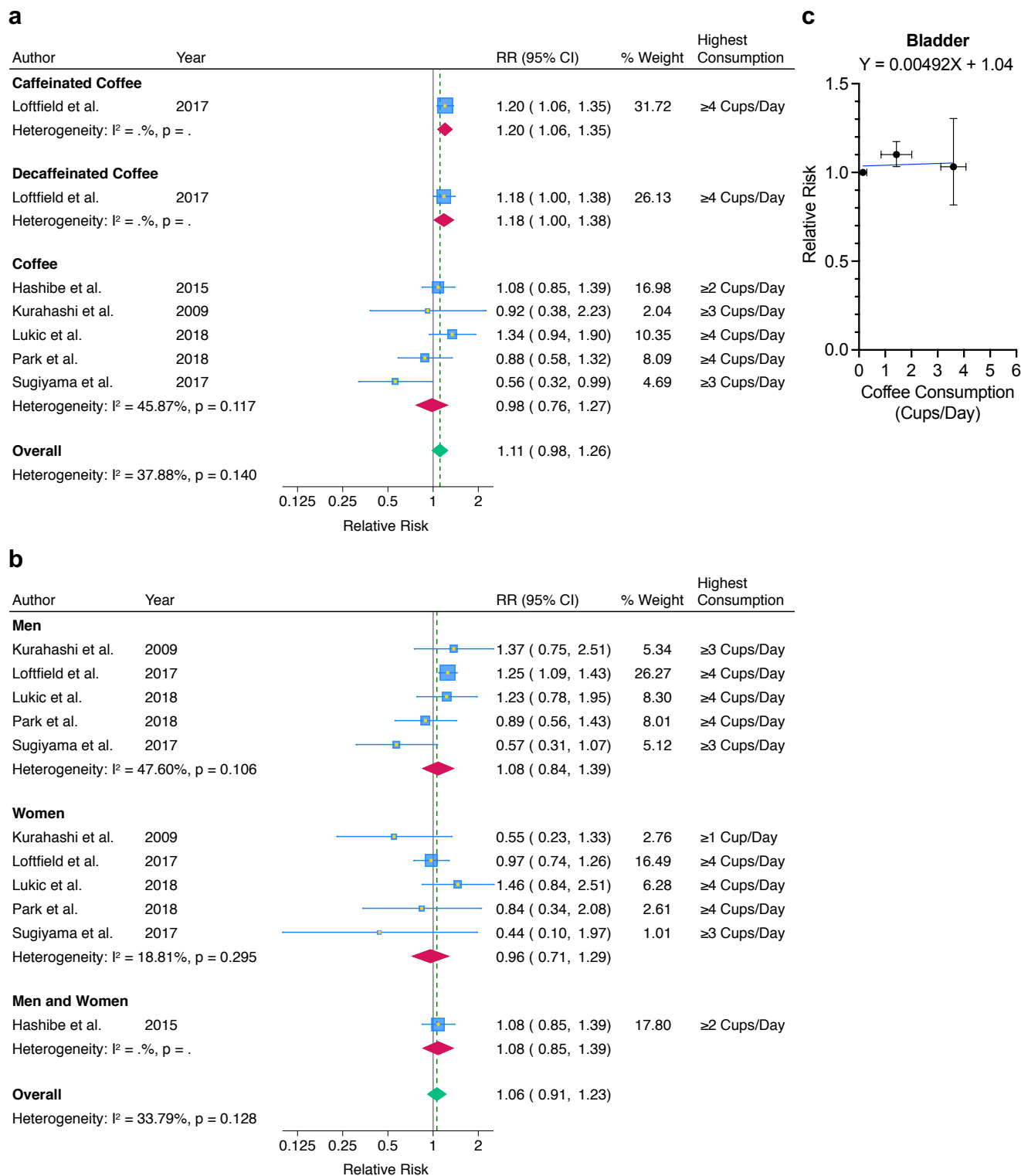


Fig. 9: Coffee consumption and bladder cancer risk.

a Meta-analyses classified by coffee type. “Coffee” data did not distinguish between caffeinated and decaffeinated coffee consumption.

b Meta-analyses classified by sex. Coffee data (without distinguishing between caffeinated and decaffeinated), but not caffeinated coffee data or decaffeinated coffee data, were included.

c Dose-response analysis of coffee consumption and bladder cancer risk. Mean coffee consumption (cups per day) with 95% confidence interval and summary relative risk with 95% confidence interval for reference, low, and high consumption groups are shown. Coffee data (without distinguishing between caffeinated and decaffeinated) and caffeinated coffee data, but not decaffeinated coffee data, were included.

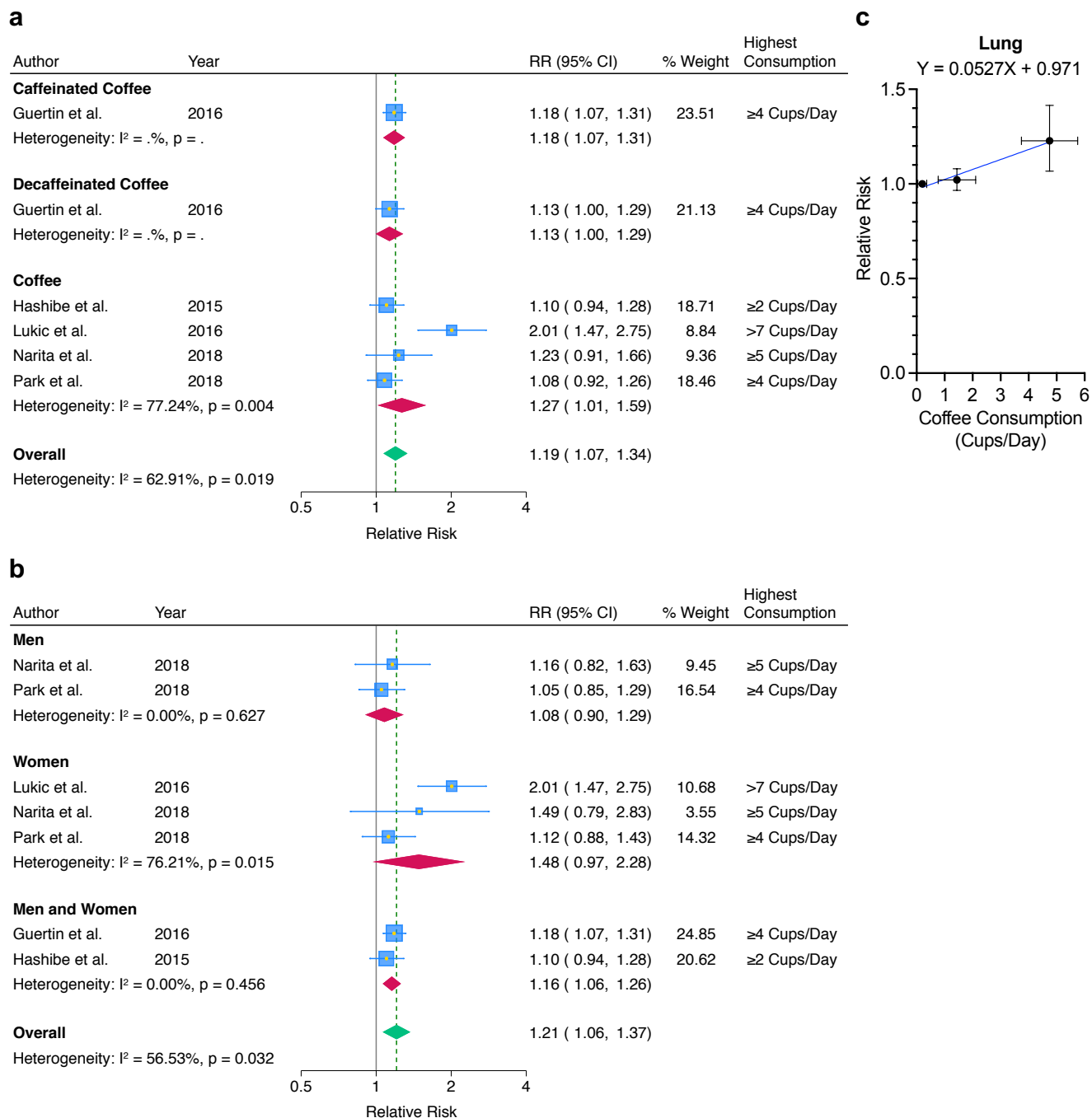


Fig. 10: Coffee consumption and lung cancer risk.

a Meta-analyses classified by coffee type. “Coffee” data did not distinguish between caffeinated and decaffeinated coffee consumption.

b Meta-analyses classified by sex. Coffee data (without distinguishing between caffeinated and decaffeinated) and caffeinated coffee data, but not decaffeinated coffee data, were included.

c Dose-response analysis of coffee consumption and lung cancer risk. Mean coffee consumption (cups per day) with 95% confidence interval and summary relative risk with 95% confidence interval for reference, low, and high consumption groups are shown. Coffee data (without distinguishing between caffeinated and decaffeinated) and caffeinated coffee data, but not decaffeinated coffee data, were included.