

1 **Effectiveness of Switching CGRP monoclonal antibodies in non-responder** 2 **patients in the UAE: A retrospective study.**

3 Reem Suliman^{1*}, Vanessa Santos¹, Ibrahim Al Qaissi¹, Batool Aldaher¹, Ahmed Al Fardan¹, Hajir Al

4 Barrawy¹, Yazan Bader¹, Jonna Lyn Supena¹, Kathrina Alejandro¹, Taoufik Alsaadi^{1*}

5 Affiliations:

6 ¹Departemnt of Neurology, American Center for Psychiatry and Neurology, Abu Dhabi, UAE

7 *Corresponding authors

8 E-mail: Rk.suliman16@gmail.com (RS) Talsaasi@live.ca (TA)

9 **Abstract**

10

11 Calcitonin gene-related peptide monoclonal antibodies (CGRP mAbs) have shown promising
12 effectiveness in migraine management compared to other preventative treatment options. Currently
13 there are several studies related to the efficacy and tolerability of CGRP mAbs in the management of
14 migraine. However, many questions remain unanswered when it comes to switching between antibody
15 classes as a treatment option in patients with migraine headaches. The present study seeks to explore
16 and assess the treatment response to CGRP mAb in patients who have previously failed other CGRP
17 mAbs.

18 This was a retrospective, real-world, exploratory study. The participants included within the study were
19 adult (≥ 18 years) patients diagnosed with migraine. Patients who were treated with two or more GCRP
20 mAbs were retrospectively analyzed. Data was collected from one site, 53 patients with migraine
21 headache switched between three CGRP mAb types (Eptinezumab, Erenumab, and Glacanezumab) due
22 to lack of efficacy of the original prescribed CGRP mAb. Efficacy of switching between types of CGRP
23 mAb's was evaluated through documented MMD's in patient diaries and clinical records. Non-
24 parametric analysis was used to compare efficacy of the first six months of each prescribed medication.
25 The analysis of efficacy demonstrated that some improvements were seen in both class switch cohorts
26 (CGRP/R to CGRP/L and CGRP/L to CGRP/R). However, the most noticeable improvement in efficacy
27 of the prescription switch was found in patients who switched between different medications of the
28 CGRP/L class. Both chronic migraine and episodic migraine patients showed improved MMD's,
29 however chronic migraine patients demonstrated higher responsiveness of efficacy following this lateral
30 switching. The safety of switching between CGRP classes was well observed as any adverse events
31 presented pre- class switch did not lead to the discontinuation of treatment following the later switch.
32 The findings of this study suggest that switching between different classes of CGRP mAbs is a
33 potentially safe and clinically viable practice that may have some applications for those experiencing
34 side effects on their current CGRP mAb or have suboptimal response. This is especially true for patients
35 initiating treatment on ligand targeted CGRP mAb who experience side effects or lack of meaningful
36 efficacy, as the ligand-ligand cohort seems to demonstrate the best outcome. Larger cohort studies and
37 longer follow ups are needed to validate our findings.

38

39

40

41

42

NOTE: This preprint reports new research that has not been certified by peer review and should not be used to guide clinical practice.

43 Introduction

44
45 Migraine is a neurological disorder experienced by an estimated global point prevalence range of 14,107
46 cases per 100,000 (1). According to the 2019 Global Burden of Disease Study, migraine is the second
47 most common non-fatal disease in terms of “years lived with disability” (2). Those suffering from
48 migraine experience a significant impact on their ability to maintain their productivity and relationships,
49 mandating continuous efforts to better understand its pathophysiology and optimal treatment options
50 (3). Although the precise mechanism of migraine remains unknown, recent findings suggest the
51 calcitonin gene-related peptide (CGRP) plays an integral role (4). Responsible for nociception within
52 the trigeminal ganglion, CGRP represents a major point of intrigue in the development of migraine
53 prophylactic medication. Thus, numerous studies have emerged within the past decade investigating the
54 effectiveness of monoclonal antibodies (mAbs) as CGRP receptor antagonists in migraine treatment.

55
56 Older treatment options for migraine prevention have not been very successful in alleviating the
57 personal and economic burden of migraine (5). A major reason for the lack of success is their limited
58 tolerability and patient adherence (6). Antiepileptics, beta-blockers and antidepressants are examples of
59 these medications. Furthermore, these medications have not been very effective in treating migraine
60 headaches and reducing migraine burden (6).

61
62 On the other hand, mAbs result in better treatment outcomes and, due to their long half-lives, they can
63 be dosed at long intervals, which can be a preferable option for some patients (7). Less frequent dosing
64 can minimize the burden on the patient and assures better treatment adherence. Presently, a small
65 collection of monoclonal antibody medications have been approved for the preventative treatment of
66 episodic and chronic migraine by the U.S. Food and Drug Administration (FDA). Such monoclonal
67 antibodies include: Galcanezumab, Eptinezumab and Fremanezumab which target the CGRP ligand
68 and Erenumab which targets CGRP receptors Table 1 (4).

69
70 Recent studies examining usage of Erenumab suggest that it can effectively reduce migraine frequency
71 and improve quality of life (8). In a similar study assessing the efficacy and tolerability of Erenumab
72 among 418 patients, 168 (69.7 %) reported that the benefits of Erenumab outweighed any potential
73 drawbacks (9). Episodic migraine patients with at least one previous preventative treatment failure
74 (PPTF) exhibited significantly greater gains in efficacy compared to placebo (10). Among the
75 aforementioned mAbs, Eptinezumab stands out as the sole drug capable of intravenous administration,
76 allowing for a rapid onset of action (11). This unique quality allows for quicker headache pain relief
77 (12), and reduced monthly migraine days compared to placebo (13). Similarly, the effectiveness of
78 Galcanezumab was well established for patients with episodic and chronic migraines (14). Existing
79 literature on CGRP monoclonal antibodies (CGRP mAbs) suggests high patient tolerability;

80 discontinuation is most commonly attributed to lack of efficacy rather than adverse effects (15). Despite
81 a lack of major differences in efficacy across clinical trials, a few case series studies found some patients
82 who have suboptimal response to one mAb has managed to successfully switch to another one with
83 noted significant improvements (16–19). One real-world analysis study demonstrated that one-third of
84 Erenumab non-responders achieved >30% response after switching to another CGRP-mAb (20).

85
86 These findings warrant further investigation into the efficacy and safety of switching between CGRP-
87 mAb classes. Therefore, this study will investigate the treatment effectiveness, tolerability, and
88 adherence of migraine patients in the United Arab Emirates (UAE) following a switch from a PPTF to
89 another mAb. This study will serve as an integral step toward advancing our understanding of migraine
90 treatment. It shall also represent the first of its kind by focusing on an underrepresented population in
91 clinical research.

92
93

94 **Table 1: CGRP Targeting drugs.**

95

Drug	Mechanism	Indication	Dosing	FDA Approved	Availability in the UAE
Erenumab	Blocks CGRP receptor	Prophylactic	Monthly, subcutaneous	2018	Yes
Eptinezumab	Binds to CGRP ligand	Prophylactic	Quarterly, intravenous	2020	Yes
Glacanezumab	Binds to CGRP ligand	Prophylactic	Monthly, subcutaneous	2018	Yes
Fremanezumab	Binds to CGRP ligand	Prophylactic	Monthly or quarterly, subcutaneous, but intravenous load for cluster headache	2018	No

96
97

98 **Methods**

99 **Study Design**

100 This was a retrospective, real-world exploratory study. Data used was gathered from one site, The
101 American Center for Psychiatry and Neurology (ACPN), Abu Dhabi, UAE. A total of 391 patients with
102 episodic migraine (EM) or chronic migraine (CM) who have received at least one dose of GCGRP/R
103 mAb (Erenumab), or CGRP/L mAb (Eptinezumab, or Glacanezumab) were reviewed for eligibility to
104 be included in the study. Fremanezumab is currently not available in the UAE, therefore it has not been
105 included in the analysis.

106

107 Data was gathered from patient's clinical records which contain all the required demographic
108 information, diagnosis, medication history, Monthly Migraine Day (MMD) at baseline and at follow up
109 visits. Additionally, patient satisfaction with medication was documented in their clinical records.
110 Patients were asked to keep a record of attacks and symptoms in their headache diaries. Efficacy of the
111 prescribed treatment was evaluated by measuring the change in MMD between visits. Safety was also
112 assessed; this was done by monitoring adverse events.

113
114 Follow-up visits were scheduled monthly or as deemed necessary, which is a standard protocol at our
115 site for all patients initiating treatment on mAbs. Patients were assessed on their baseline frequency of
116 MMDs and, subsequently, thorough discussions with treating physician on which mAb would be most
117 effective, addressing each patients' specific needs. If the current medication did not result in any
118 meaningful reduction of MMDs, an option to switch to another mAb was offered to the patient.

119
120 The retrospective analysis mainly focused on two main periods. The first period included data of
121 patients treated with a specific CGRP mAb, while the second period involved data on patients who
122 switched to another anti CGRP mAb. Switching was mainly due to lack of efficacy; it was ensured that
123 patients included in the analysis completed at least 3 months of treatment before switching. During each
124 phase, patients' MMDs were assessed at 3 stages prior to and following their medication switch: at least
125 one month before the first injection (baseline), at a 3-month follow-up, and at a 6-month follow-up.

126 127 Ethics

128
129 This study was conducted in accordance with the Helsinki Declaration of 1964 and consistent with
130 Good Clinical Practice (GCP). All ethical guidelines, health authority regulations and data privacy laws
131 were ensured. Prior to the start of the study all relevant approvals were obtained from ACPNs
132 Institutional Review Board (IRB), a waiver of informed consent from the corresponding ethics
133 committee was obtained. To ensure transparency and accuracy all authors were given access to the study
134 data.

135 136 Sample

137
138 Records from ACPNs nursing department were gathered where all patients who have been administered
139 one mAb have been screened and identified (Figure 1). Data included patients from January 2018 up to
140 September 2022, who are adults (≥ 18 years), and who had a diagnosis of either EM or CM, as per the
141 International Classification of Headache Disorders (ICHD-3) criteria. Data was shared independent of
142 treatment effects or cause for the GGRP mAb switch.

143 Patients were included in the analysis if they (i) switched between two of the previously mentioned
144 CGRP mAbs (switchers) (ii) received at least three doses of the first CGRP mAb and maintained
145 treatment for a minimum of 6 month after switching, Those who have demonstrated a meaningful
146 response, which is defined as more than 50% reduction in MMD for EM, and more than 30% for CM, and were
147 satisfied with their treatment remained on their current preventative treatment hence they were not
148 included in the effectiveness analysis. Patients were categorized according to their switching profiles.
149 The three profiles represented were: CGRP/R mAb to GCRP/L mAb, CGRP/L to CGRP/R, or CGRP/L
150 to another CGRP/L mAb (Fig 1).

151

152 Variables, data extraction, and endpoints

153

154 The number of MMDS were extracted from the headache diaries as documented on the patients'
155 electronic medical record (EMR). Due to the non-standardized headache diaries and the varying details
156 of documentation of headache characteristics and accompanying symptoms during each headache
157 attack, reliable differentiation between headache and migraine days was not possible. The primary
158 endpoint was the absolute change from baseline in MMDs response rate (>25%, >50%, >75%, and
159 100% reduction in MMDs) of each category of the switchers. As per the methodology outlined by
160 Kaltseis et al. in 2023, patients who demonstrated a positive response to treatment were classified as
161 responders. This was determined by a minimum reduction of 50% in MMDs for EM or a minimum
162 reduction of 30% in MMDs for CM after receiving treatment for a minimum of 3 months. Patient
163 characteristics including age, gender, migraine diagnoses, migraine years, and type of CGRP-mAb from
164 the EMR.

165

166

167 Objectives

168

169 The primary objective was to retrospectively assess the reduction in frequency of migraines and
170 determine the efficacy of the current preventative treatment following the switch from a previous CGRP
171 mAb. Additionally, the study sought to evaluate the tolerability of the treatment and report any adverse
172 reactions.

173

174 Statistical Analysis

175 Since this analysis was conducted retrospectively the sample size was not based on any statistical
176 consideration. The sample size was achieved depending on the number of cases fulfilling the inclusion
177 criteria treated at ACPN. Continuous variables were summarized using mean \pm standard deviation [SD]
178 or median interquartile range [IQR], while categorical data were presented as numbers and percentages.
179 The normality assumption was evaluated using the Shapiro-Wilk test. Given that the data did not follow
180 a normal distribution, the Wilcoxon signed-rank test was used to analyze the changes in quantitative
181 variables pre-post changes. A significance level of $p < 0.05$ was considered statistically significant for

182 all variables. The statistical software SPSS version 26.0 (IBM Corp. SPSS Statistics, Armonk, NY,
183 USA) was utilized for all data analyses.

184

185 Results

186 Demographic and Baseline Characteristics

187 The participant pool was composed of 53 individuals; all of whom had undergone a switch from one
188 CGRP mAb to another; the descriptive statistics for this cohort are visualized in **Table 2**. Among the
189 53 participants, 42 (79.2%) of whom were female, 20 (37.7%) were diagnosed with CM while the
190 remaining 33 (62.3%) were diagnosed with EM. The mean age (SD) of participants in years was 39.2
191 (11.0). Furthermore, patients were categorized according to their switching profile, they had the
192 following distribution CGRP/L to R mAb (n=11; 20.7%), CGRP/R to L mAb (n=24; 45.3%), and
193 CGRP/L to L mAb (n=18; 34.0%).

194 Out of the 53 patients, 16 individuals had previously attempted preventative treatment for migraine.
195 One patient has tried two preventative therapies before switching to a CGRP mAb, while the remaining
196 15 only had one preventative treatment failure prior to switching. Previous preventative treatments
197 included: Propranolol, Amitriptyline, Flunarizine, Topiramate, and OnabotulinumtoxinA **Table 2**.

198

199 **Table 2: Patient demographics and clinical features**

200

	<i>Total Cohort (n=53)</i>
<i>Demographics</i>	
<i>Age (years), mean +/- SD.</i>	<i>39.2 +/-11.0</i>
<i>Sex female, n (%)</i>	<i>42 (79.2%)</i>
<i>Migraine features</i>	
<i>Chronic Migraine, n (%)</i>	<i>20 (37.7%)</i>
<i>Patients with daily headaches, n (%)</i>	<i>10 (18.9%)</i>
<i>Age at Migraine Diagnosis, mean +/- SD</i>	<i>27.56 +/- 10.62</i>
<i>Migraine duration (years), mean +/- SD</i>	<i>11.6 +/- 11.3</i>
<i>Other features</i>	
<i>Positive family history of migraine, n (%)</i>	<i>16 (30%)</i>
<i>Received prior preventive treatment, n (%)</i>	<i>16 (30%)</i>
<i>Psychiatric comorbidity, n (%)</i>	<i>24 (45.0%)</i>
<i>Previous Preventative Class Failures</i>	
<i>2 classes, n (%)</i>	<i>1 (1.8%)</i>
<i>1 class, n (%)</i>	<i>15 (28.3%)</i>
<i>Drug Classes</i>	
<i>Beta-blockers, n (%)</i>	<i>1 (1.8%)</i>
<i>Tricyclic antidepressant, n (%)</i>	<i>8 (15.1%)</i>
<i>Calcium channel blockers, n (%)</i>	<i>3 (5.7%)</i>
<i>Anticonvulsants, n (%)</i>	<i>2 (3.8%)</i>
<i>OnabotulinumtoxinA, n (%)</i>	<i>3 (5.7%)</i>
<i>First monoclonal antibody</i>	

201	<i>CGRP/L mAb, n (%)</i>	<i>29(55.0%)</i>
202	<i>Galacanezumab, n (%)</i>	<i>28 (53)</i>
203	<i>Eptinezumab, n (%)</i>	<i>1(2.0%)</i>
204	<i>CGRP/R mAb (erenumab), n (%)</i>	<i>24 (45.0%)</i>
205	Second monoclonal antibody	
206	<i>CGRP/L mAb, n</i>	<i>42</i>
207	<i>Galacanezumab, n</i>	<i>7</i>
208	<i>Eptinezumab, n</i>	<i>35</i>
209	<i>CGRP/R mAb (erenumab), n</i>	<i>11</i>
210	Switching Profile	
211	<i>CGRP/L to CGRP/R, n</i>	<i>11</i>
212	<i>CGRP/L to another CGRP/L, n</i>	<i>18</i>
213	<i>CGRP/R to CGRP/L, n</i>	<i>24</i>

213 Throughout the study, the frequency of participants' monthly migraine days (MMD) was assessed at 3
 214 stages prior and following their medication switch: at baseline, at a 3-month follow-up, and a 6-month
 215 follow-up, this can be visualized in **Fig 2**. As exhibited in **Table 3**, the greatest mean (SD) MMD values
 216 were recorded at the baseline assessments; however, it is worth mentioning that the post-switch baseline
 217 mean of 10.21 (5.42) was lower than that of the pre-switch baseline mean of 12.92 (8.23). Following
 218 the pre-switch baseline assessment, the mean was reduced to 5.53 (5.73) by month 3, however it rose
 219 slightly to 5.92 (6.69) by month 6. Following the post-switch baseline assessment, mean MMD dropped
 220 to 5.74 (4.32) by month 3 further decreased to 5.42 (4.98) by month 6.

221
222
223 **Table 3: MMD Mean Data Pre- and Post-Switch**

Variable	Mean	Minimum	Maximum	Standard Deviation
Pre-switch BL				
MMD	12.92	1.0	28.0	8.23
Pre-switch M3				
MMD	5.53	0.0	28.0	5.73
Pre-switch M6				
MMD	5.92	0.0	28.0	6.69
Post-switch BL				
MMD	10.21	2.0	28.0	5.42
Post-switch M3				
MMD	5.74	0.0	15.0	4.32
Post-switch M6				
MMD	5.42	0.0	28.0	4.98

224
225
226 **First anti-CGRP monoclonal antibody**

227 A total of 29 patients were initiated on CGRP/L mAbs, while 24 patients were started on CGRP/R
 228 mAbs. Upon conducting a follow-up at month 3, it was observed that patients with CM exhibited a

229 higher response rate as compared to patients with EM. Specifically, 72% of CM patients responded to
230 treatment with CGRP/L mAb, whereas 100% of CM patients responded to CGRP/R mAb. On the other
231 hand, 61% and 63% of EM patients responded to CGRP/L mAb and CGRP/R mAb respectively.
232 However, it is worth noting that the CM group displayed higher rates of non-responsiveness when
233 treated with CGRP/L mAb (27%) as opposed to CGRP/R mAb (0%). Upon analyzing the 6-month
234 follow-up data, no significant improvement in response rates was observed. Notably, 8 EM patients
235 remained non-responders to both classes of CGRP-mAb. Further details regarding response rates during
236 the initial observational period on the first medication are displayed on **Fig 3**.

237

238 Second anti-CGRP monoclonal antibody

239 During the second observational period, the 24 patients who received CGRP/R-mAb as their first
240 CGRP- mAbs switched to anti-CGRP/L-mAbs (7 Galcanezumab and 17 Eptinezumab), whereas out of
241 the 29 patients who started on CGRP/L-mAb (28 Galcanezumab and 1 Eptinezumab), 11 patients were
242 switched to CGRP/R-mAbs (Erenumab) and 18 patients to another class of CGRP/L-mAb
243 (galcanezumab). All the patients in the latter group have switched from Galcanezumab to Eptinezumab,
244 while the one patient who initially received Eptinezumab was switched to Erenumab. Surprisingly,
245 response rates during the second observational period at month 3 follow-up dropped in the CM and EM
246 patients who were switched from CGRP/R-mAbs to CGRP/L-mAbs, from 100% and 63% to 71% and
247 41% respectively, (**Fig 3b and 4a**). On the other hand, CM patients who started on CGRP/L-mAb, had
248 a higher response rate when they were switched to another anti-CGRP/L-mAb (100%) than to anti-
249 CGRP/R-mAb (87.5%) at month 3, (**Fig 4b and 4c**). Overall, CM had a better response rate than EM
250 during the second observational period **Fig 4**.

251

252 First vs Second anti-CGRP monoclonal antibody

253 **Table 4** and **table 5** present the median differences in MMDs at 6 months compared to the baseline.
254 These tables specifically focus on the first and second CGRP mAbs administered to different patient
255 groups. Interestingly, the overall reduction in MMDs for all patients is precisely identical for both the
256 first and second mAbs.

257

258

259 **Table 4:** Changes in MMD during first CGRP mAb from 1st baseline.

	<i>Median difference (IQR) 6 Month</i>	N
<i>All patients</i>	-5.1 (5.5)	53
P-value	0.000	

<i>Anti-CGRP/L before switching to anti CGRP/R</i>	-2.2 (7.0)	11
P-value	0.025	
<i>Anti-CGRP/R before switching to anti CGRP/L</i>	-3.15 (4.5)	24
P-value	0.002	
<i>Anti-CGRP/L before switching to another anti-CGRP/L</i>	-3.21 (5.25)	18
P-value	0.001	

260 *IQR, Interquartile range*

261

262 **Table 5: Changes in MMD during second CGRP mAb from 2nd baseline**

	Median difference (IQR) 6 Month	N
<i>All patients</i>	-5.0 (5.0)	53
P-value	0.000	
<i>Anti CGRP/R after Anti CGRP/L</i>	-1.60 (9.0)	11
P-value	0.109	
<i>Anti-CGRP/L after CGRP/R</i>	-3.73 (3.75)	24
P-value	0.000	
<i>Anti-CGRP/L after another anti-CGRP/L</i>	-3.47 (7.25)	18
P-value	0.001	

263

264

265 Documented in **Table 6**, patients were assessed on their reduction in MMDs from the 6-month follow-up pre-switch to their 6-month follow-up post-switch as an additional evaluation of treatment efficacy following a medication switch. In line with the results of the Wilcoxon tests, among ligand-receptor switchers, only 1 (11.1%) participant experienced a greater than 50% reduction in MMDs, while the vast majority (66.7%) experienced less than 25% reduction. Although a greater proportion of receptor-ligand switchers (19.1%) experienced greater than 50% reduction on MMDs, an overwhelming majority (71.4%) experienced less than 25% reduction. Interestingly, the ligand-ligand cohort exhibited the greatest proportion (33.4%) of participants experiencing greater than 50% reduction, and the lowest proportion (44.4%) of those experiencing less than 25% reduction.

274

275 **Table 6: M6-M6 Percent Reductions**

Switching Profile	Q1 frequency (%)	Q2 frequency (%)	Q3 frequency (%)	Q4 frequency (%)
Ligand-Receptor	6.0 (66.7)	2.0 (22.2)	0.0 (0.0)	1.0 (11.1)
Receptor-Ligand	15.0 (71.4)	2.0 (9.5)	1.0 (4.8)	3.0 (14.3)
Ligand-Ligand	8.0 (44.4)	4.0 (22.2)	3.0 (16.7)	3.0 (16.7)

276 *Q1: <25% reduction in MMD, Q2: 25%<x<50% reduction in MMD, Q3: 50%<x<75% reduction in MMD, Q4: >75% reduction in MMD*

277

278

279 Exposure and Safety

280 In this particular study, a total of 53 patients were included. Out of these patients, it was observed that
281 4 individuals had an adverse event (AE), 3 of which took place prior to the switch in treatment.
282 However, it is important to mention that despite these AEs, these patients did not opt to discontinue the
283 treatment, indicating that the AEs were of a minor nature. AEs included constipation, slight pain on
284 injection site, and increased itchiness. The remaining patient reported an AE after the switch. This
285 particular AE involved peri labial numbness and swelling, which occurred during the infusion. The
286 patient was closely monitored and subsequently discharged safely. Treatment was well-tolerated among
287 the remaining 49 patients.

288

289

290 Discussion

291 Despite the recent growth in CGRP-mAb use as a unique migraine treatment strategy, relatively little
292 is known regarding how switching between CGRP-mAb classes can impact the efficacy and tolerability
293 of treatment. Therefore, this study represents another step in furthering our understanding of how
294 CGRP-mAb treatments can be safely and effectively applied in a clinical context. Moreover, to our
295 knowledge, this is the first real-world study of its kind to be conducted in the United Arab Emirates and
296 GCC region, including, this underrepresented population, from the pivotal trials. Determined prior to
297 data analysis, our primary endpoint was to determine the impact, if any, of switching between CGRP-
298 mAb medications on the effectiveness of MMD reduction. Furthermore, our secondary endpoint was to
299 assess the safety and tolerability associated with that switching.

300

301 The 53 patients included in data analysis were classified according to their switching profile including:
302 switching from receptor-targeted to ligand-targeted treatment (RL), from ligand-targeted to ligand-
303 targeted (LL) treatment, and from ligand-targeted to receptor-targeted (LR) treatment. Using a
304 Wilcoxon Signed Ranks Test, groups were compared at baseline (BL), month 3 (M3), and month 6
305 (M6) stages to assess if changes in MMDs were attributable to treatment. Although RL and LL patients
306 experienced significant reductions in MMD between BL and M6 after switching, this was not the case
307 for LR patients. This incongruence between groups warrants further investigation, with larger cohorts,
308 into the pathophysiology of CGRP-mAb treatments to explain why switching in one direction produces
309 starkly different outcomes than the other.

310 Indeed, prior to conducting the study, we expected switching between different classes of CGRP mAbs
311 would yield improved results, especially for those switching from L to R or vice versa. However, to our
312 surprise, our results showed that switching from ligand to ligand produced better outcomes. This
313 unexpected finding underscores the importance of studying the mechanism of CGRP mAb treatments
314 in greater detail. Conducting future studies with larger cohorts would provide a better insight into the

315 pathophysiology of these treatments and may help further understand why switching from ligand to
316 ligand produces a better outcome.

317

318 Despite a lack of statistically significant difference between M6 values pre- and post-switching, we
319 found it valuable to quantify the percent MMD reduction according to switching profile. Notably, 33.4%
320 of LL patients experienced at least 50% reduction in MMDs 6 months post-switch, when compared to
321 their 6-month data from their initial medication. Among LR and RL patients, less than 20% of each
322 group experienced a similar degree of MMD reduction. These findings offer modest support to the
323 notion that considering drug mechanism of action may lend itself to improved outcomes post-switching.
324 Unfortunately, as Erenumab is the only drug included targeting CGRP receptors, there is no means of
325 assessing a receptor-receptor switch for a similar phenomenon.

326

327 On the topic of safety, 3 of 4 documented AEs took place prior to switching, all of which were
328 considered mild and did not impact patients' continuation on treatment. It is worth noting that despite
329 experiencing AEs on their previous CGRP-mAb treatment, the aforementioned 3 patients switching to
330 another mAb did not result in worsening or new AEs. This is a promising development pointing to
331 switching being as a safe, tolerable, and, probably, effective process for those experiencing side effects
332 with their first CGRP-mAb prescription.

333

334 We have identified two retrospective studies examining lateral switching between CGRP mAb therapies
335 (20,21), to serve as points of comparison of our findings relative to those in the existing literature. The
336 study by Overeem et al. (20) conducted a real-world, multicentre analysis of 78 patients with PPTF on
337 erenumab (receptor-targeted therapy) who switched to ligand-targeted therapies. Unlike the 50 %
338 meaningful response rate that was used in our study, their analysis yielded >30% reduction in MHDs
339 by month 3 after switching in 32% of patients and >50% reduction in 12% of patients.

340 On the other hand, the study by Kaltseis et al. (20,21), conducted a larger retrospective assessment of
341 171 who received either one, two, or three different anti-CGRP mAbs. In contrast to the study by
342 Overeem et al., non-response was set at <50% reduction in MMDS in EM patients, and <30% reduction
343 in CM patients. (5.3%) of participants discontinued due to negative side effects. As compared to our
344 study, that study was heavily focused on the quantity of PPTFs. Our study, however, has carefully
345 analysed, the impact of switching directionality on outcomes.

346

347 In addition, and in contrast to the study by Overeem et al (20), where patients who switched from
348 CGRP/R mAb to any CGRP/L mAb experienced improved MMDs, our study did not observe similar
349 outcomes, which could be due to the different characteristics of our cohorts as compared to theirs.
350 Indeed, our cohorts included 37 naïve patients who have not previously tried other preventive therapies,

351 representing, probably, less refractory patients than those previously studied in the literature. Out of the
352 53 patients in our cohorts, 16 individuals had previously attempted preventative treatment for migraine.

353

354 Limitations

355

356 Our study had several limitations that must be acknowledged. Being retrospective in nature means that
357 controlling certain variables that may have affected the results was not possible. Additionally, the
358 sample size included was small, which limits the generalizability of our findings. As a result, it is worth
359 noting that the data analyzed involved one patient who was initially on Eptinezumab who have switched
360 to Glacanezumab, and consequently further studies may be required to confirm our findings on Ligand-
361 Ligand lateral switching outcomes following similar direction of switching, and to verify the
362 generalizability of the data. Furthermore, the effectiveness outcome was solely based on MMD
363 reduction. Thus, it may not fully capture the impact of the intervention on other patient related
364 outcomes. Due to the relatively short observation period of six months for both first and second
365 medication, it is not possible to rule out the potential for further improvement that could have been
366 attained if patients had prolonged their use of the initial medication before switching to an alternative
367 one. However, the recent European Headache Federation (EHF) guidelines have suggested 3 months
368 of observation is sufficient to assess the effectiveness of mAbs (22). Finally, it is important to
369 acknowledge the differences in regulation of prescribing mAbs in UAE as compared to other parts of
370 the world. It is worth noting that currently in UAE there exists no prerequisite for individuals to have
371 undergone a specific number of unsuccessful preventative treatment prior to being administered a
372 CGRP mAb, which make our studied cohorts unique in that regards.

373

374 Conclusion

375 This retrospective, real-world exploratory study examining the effectiveness and safety of switching
376 between CGRP-mAb treatments serves as an essential step into furthering our understanding of an
377 under-researched topic. The findings of this study suggest that the outcome of switching from a previous
378 treatment does not significantly influence the outcome of future prescriptions' effectiveness nor safety.

379

380 Among 53 patients enrolled, none experienced significant changes in their MMD when comparing their
381 mean data 6 months on the previous medication against 6 months on the new medication. Nevertheless,
382 the data suggests that those switching from one ligand-targeted treatment to another ligand-targeted
383 treatment were more likely to experience additional or compounded reductions in MMD on top of
384 improvements gained from their initial prescription.

385

386 Overall, the findings present in this study point to CGRP-switching as a potentially safe and clinically
387 viable practice that may have applications for those experiencing suboptimal response on their current
388 CGRP-mAb. Further research is warranted to better understand the long-term implications of switching
389 beyond a 6-month period, as well as if those switching to a CGRP-mAb of the same class are truly
390 likely to experience greater improvements than their counterparts.

391
392
393 **References:**
394

- 395 1. Safiri S, Pourfathi H, Eagan A, Mansournia MA, Khodayari MT, Sullman MJM, et al.
396 Global, regional, and national burden of migraine in 204 countries and territories, 1990 to
397 2019. *Pain* [Internet]. 2022 Feb [cited 2023 Apr 25];163(2):e293–309. Available from:
398 <https://journals.lww.com/10.1097/j.pain.0000000000002275>
- 399 2. on behalf of Lifting The Burden: the Global Campaign against Headache, Steiner TJ,
400 Stovner LJ, Jensen R, Uluduz D, Katsarava Z. Migraine remains second among the
401 world's causes of disability, and first among young women: findings from GBD2019. *J*
402 *Headache Pain* [Internet]. 2020 Dec [cited 2023 Apr 25];21(1):137, s10194-020-01208–
403 0. Available from:
404 [https://thejournalofheadacheandpain.biomedcentral.com/articles/10.1186/s10194-020-](https://thejournalofheadacheandpain.biomedcentral.com/articles/10.1186/s10194-020-01208-0)
405 [01208-0](https://thejournalofheadacheandpain.biomedcentral.com/articles/10.1186/s10194-020-01208-0)
- 406 3. Buse DC, Scher AI, Dodick DW, Reed ML, Fanning KM, Manack Adams A, et al. Impact
407 of Migraine on the Family: Perspectives of People With Migraine and Their
408 Spouse/Domestic Partner in the CaMEO Study. *Mayo Clin Proc* [Internet]. 2016 May
409 [cited 2023 Apr 25];91(5):596–611. Available from:
410 <https://linkinghub.elsevier.com/retrieve/pii/S0025619616001269>
- 411 4. Wattiez AS, Sowers LP, Russo AF. Calcitonin gene-related peptide (CGRP): role in
412 migraine pathophysiology and therapeutic targeting. *Expert Opin Ther Targets* [Internet].
413 2020 Feb 1 [cited 2023 Apr 25];24(2):91–100. Available from:
414 <https://www.tandfonline.com/doi/full/10.1080/14728222.2020.1724285>
- 415 5. Edvinsson L, Haanes KA, Warfvinge K, Krause DN. CGRP as the target of new migraine
416 therapies — successful translation from bench to clinic. *Nat Rev Neurol* [Internet]. 2018
417 Jun [cited 2023 Jul 13];14(6):338–50. Available from:
418 <https://www.nature.com/articles/s41582-018-0003-1>
- 419 6. Schuster NM, Rapoport AM. New strategies for the treatment and prevention of primary
420 headache disorders. *Nat Rev Neurol* [Internet]. 2016 Nov [cited 2023 Jul
421 13];12(11):635–50. Available from: <https://www.nature.com/articles/nrneurol.2016.143>
- 422 7. Raffaelli B, Reuter U. The Biology of Monoclonal Antibodies: Focus on Calcitonin Gene-
423 Related Peptide for Prophylactic Migraine Therapy. *Neurotherapeutics* [Internet]. 2018
424 Apr [cited 2023 Jul 13];15(2):324–35. Available from:
425 <http://link.springer.com/10.1007/s13311-018-0622-7>
- 426 8. Tepper SJ, Ashina M, Reuter U, Brandes JL, Doležil D, Silberstein SD, et al. Long-term
427 safety and efficacy of erenumab in patients with chronic migraine: Results from a 52-
428 week, open-label extension study. *Cephalalgia* [Internet]. 2020 May [cited 2023 Apr

- 429 25];40(6):543–53. Available from:
430 <http://journals.sagepub.com/doi/10.1177/0333102420912726>
- 431 9. Kanaan S, Hettie G, Loder E, Burch R. Real-world effectiveness and tolerability of
432 erenumab: A retrospective cohort study. *Cephalalgia* [Internet]. 2020 Nov [cited 2023
433 Apr 25];40(13):1511–22. Available from:
434 <http://journals.sagepub.com/doi/10.1177/0333102420946725>
- 435 10. Ruff DD, Ford JH, Tockhorn-Heidenreich A, Stauffer VL, Govindan S, Aurora SK, et al.
436 Efficacy of galcanezumab in patients with episodic migraine and a history of preventive
437 treatment failure: results from two global randomized clinical trials. *Eur J Neurol*
438 [Internet]. 2020 Apr [cited 2023 Apr 25];27(4):609–18. Available from:
439 <https://onlinelibrary.wiley.com/doi/10.1111/ene.14114>
- 440 11. Dhillon S. Eptinezumab: First Approval. *Drugs* [Internet]. 2020 May [cited 2023 Apr
441 25];80(7):733–9. Available from: <http://link.springer.com/10.1007/s40265-020-01300-4>
- 442 12. Winner PK, McAllister P, Chakhava G, Ailani J, Ettrup A, Krog Josiassen M, et al. Effects
443 of Intravenous Eptinezumab vs Placebo on Headache Pain and Most Bothersome
444 Symptom When Initiated During a Migraine Attack: A Randomized Clinical Trial. *JAMA*
445 [Internet]. 2021 Jun 15 [cited 2023 Apr 25];325(23):2348. Available from:
446 <https://jamanetwork.com/journals/jama/fullarticle/2781053>
- 447 13. Dodick DW, Goadsby PJ, Silberstein SD, Lipton RB, Olesen J, Ashina M, et al. Safety
448 and efficacy of ALD403, an antibody to calcitonin gene-related peptide, for the
449 prevention of frequent episodic migraine: a randomised, double-blind, placebo-
450 controlled, exploratory phase 2 trial. *Lancet Neurol* [Internet]. 2014 Nov [cited 2023 Apr
451 25];13(11):1100–7. Available from:
452 <https://linkinghub.elsevier.com/retrieve/pii/S1474442214702091>
- 453 14. Martin V, Samaan KH, Aurora S, Pearlman EM, Zhou C, Li X, et al. Efficacy and Safety
454 of Galcanezumab for the Preventive Treatment of Migraine: A Narrative Review. *Adv
455 Ther* [Internet]. 2020 May [cited 2023 Jul 21];37(5):2034–49. Available from:
456 <https://link.springer.com/10.1007/s12325-020-01319-9>
- 457 15. Alex A, Vaughn C, Rayhill M. Safety and Tolerability of 3 CGRP Monoclonal Antibodies
458 in Practice: A Retrospective Cohort Study. *Headache J Head Face Pain* [Internet]. 2020
459 Nov [cited 2023 Apr 25];60(10):2454–62. Available from:
460 <https://onlinelibrary.wiley.com/doi/10.1111/head.13956>
- 461 16. López Moreno Y, Castro Sánchez MV, García Trujillo L, Serrano Castro PJ. Fracaso de
462 un anticuerpo monoclonal anti-CGRP en el tratamiento de la migraña. ¿Tiene sentido
463 probar otro? *Rev Neurol* [Internet]. 2022 [cited 2023 Apr 25];75(04):87. Available from:
464 <https://www.neurologia.com/articulo/2021526>
- 465 17. Briceño-Casado MDP, Gil-Sierra MD, De-La-Calle-Riaguas B. Switching of monoclonal
466 antibodies against calcitonin gene-related peptide in chronic migraine in clinical practice:
467 a case series. *Eur J Hosp Pharm* [Internet]. 2021 Sep 14 [cited 2023 Apr 25];ejhpharm-
468 2021-002946. Available from: [https://ejhp.bmj.com/lookup/doi/10.1136/ejhpharm-2021-
469 002946](https://ejhp.bmj.com/lookup/doi/10.1136/ejhpharm-2021-002946)
- 470 18. Patier Ruiz I, Sánchez-Rubio Ferrández J, Cárcamo Fonfría A, Molina García T. Early
471 Experiences in Switching between Monoclonal Antibodies in Patients with
472 Nonresponsive Migraine in Spain: A Case Series. *Eur Neurol* [Internet]. 2022 [cited 2023
473 Apr 25];85(2):132–5. Available from: <https://www.karger.com/Article/FullText/518899>

- 474 19. Ziegeler C, May A. Non-Responders to Treatment With Antibodies to the
475 CGRP-Receptor May Profit From a Switch of Antibody Class. *Headache J Head Face*
476 *Pain* [Internet]. 2020 Feb [cited 2023 Apr 25];60(2):469–70. Available from:
477 <https://onlinelibrary.wiley.com/doi/10.1111/head.13729>
- 478 20. Overeem LH, Peikert A, Hofacker MD, Kamm K, Ruscheweyh R, Gendolla A, et al.
479 Effect of antibody switch in non-responders to a CGRP receptor antibody treatment in
480 migraine: A multi-center retrospective cohort study. *Cephalalgia* [Internet]. 2022 Apr
481 [cited 2023 Apr 25];42(4–5):291–301. Available from:
482 <http://journals.sagepub.com/doi/10.1177/03331024211048765>
- 483 21. Kaltseis K, Filippi V, Frank F, Eckhardt C, Schiefecker A, Broessner G. Monoclonal
484 antibodies against CGRP (R): non-responders and switchers: real world data from an
485 austrian case series. *BMC Neurol* [Internet]. 2023 Apr 28 [cited 2023 Jun 12];23(1):174.
486 Available from: [https://bmcneurol.biomedcentral.com/articles/10.1186/s12883-023-](https://bmcneurol.biomedcentral.com/articles/10.1186/s12883-023-03203-9)
487 [03203-9](https://bmcneurol.biomedcentral.com/articles/10.1186/s12883-023-03203-9)
- 488 22. Sacco S, Amin FM, Ashina M, Bendtsen L, Deligianni CI, Gil-Gouveia R, et al. European
489 Headache Federation guideline on the use of monoclonal antibodies targeting the
490 calcitonin gene related peptide pathway for migraine prevention – 2022 update. *J*
491 *Headache Pain* [Internet]. 2022 Dec [cited 2023 Jun 22];23(1):67. Available from:
492 [https://thejournalofheadacheandpain.biomedcentral.com/articles/10.1186/s10194-022-](https://thejournalofheadacheandpain.biomedcentral.com/articles/10.1186/s10194-022-01431-x)
493 [01431-x](https://thejournalofheadacheandpain.biomedcentral.com/articles/10.1186/s10194-022-01431-x)

494

Table 1: CGRP Targeting drugs

Drug	Mechanism	Indication	Dosing	FDA Approved	Availability in the UAE
Erenumab	Blocks CGRP receptor	Prophylactic	Monthly, subcutaneous	2018	Yes
Eptinezumab	Binds to CGRP ligand	Prophylactic	Quarterly, intravenous	2020	Yes
Galcanezumab	Binds to CGRP ligand	Prophylactic	Monthly, subcutaneous	2018	Yes
Fremantumab	Binds to CGRP ligand	Prophylactic	Monthly or quarterly, subcutaneous, but intravenous load for cluster headache	2018	No

medRxiv preprint doi: <https://doi.org/10.1101/2023.08.04.23293651>; this version posted August 10, 2023. The copyright holder for this preprint (which was not certified by peer review) is the author/funder, who has granted medRxiv a license to display the preprint in perpetuity.

It is made available under a [CC-BY 4.0 International license](https://creativecommons.org/licenses/by/4.0/).

Table 2: Patient demographics and clinical features

	Total Cohort (n=53)
Demographics	
Age (years), mean +/- SD.	39.2 +/-11.0
Sex female, n (%)	42 (79.2%)
Migraine features	
Chronic Migraine, n (%)	20 (37.7%)
Patients with daily headaches, n (%)	10 (18.9%)
Age at Migraine Diagnosis, mean +/- SD	27.56 +/- 10.62
Migraine duration (years), mean +/- SD	11.6 +/- 11.3
Other features	
Positive family history of migraine, n (%)	16 (30%)
Received prior preventive treatment, n (%)	16 (30%)
Psychiatric comorbidity, n (%)	24 (45.0%)
Previous Preventative Class Failures	
2 classes, n (%)	1 (1.8%)
1 class, n (%)	15 (28.3%)
Drug Classes	
Beta-blockers, n (%)	1 (1.8%)
Tricyclic antidepressant, n (%)	8 (15.1%)
Calcium channel blockers, n (%)	3 (5.7%)
Anticonvulsants, n (%)	2 (3.8%)
OnabotulinumtoxinA, n (%)	3 (5.7%)
First monoclonal antibody	
CGRP/L mAb, n (%)	29(55.0%)
Galacanezumab, n (%)	28 (53)
Eptinezumab, n (%)	1(2.0%)
CGRP/R mAb (erenumab), n (%)	24 (45.0%)
Second monoclonal antibody	
CGRP/L mAb, n	42
Galacanezumab, n	7
Eptinezumab, n	35
CGRP/R mAb (erenumab), n	11
Switching Profile	
CGRP/L to CGRP/R, n	11
CGRP/L to another CGRP/L, n	18
CGRP/R to CGRP/L, n	24

medRxiv preprint doi: <https://doi.org/10.1101/2023.08.04.23299651>; this version posted August 8, 2023. The copyright holder for this preprint (which was not certified by peer review) is the author/funder, who has granted medRxiv a license to display the preprint in perpetuity.

It is made available under a [CC-BY 4.0 International license](https://creativecommons.org/licenses/by/4.0/).

Table 3: MMD Mean Data Pre- and Post-Switch

Variable	Mean	Minimum	Maximum	Standard Deviation
Pre-switch BL				
MMD	12.92	1.0	28.0	8.23
Pre-switch M3				
MMD	5.53	0.0	28.0	5.73
Pre-switch M6				
MMD	5.92	0.0	28.0	6.69
Post-switch BL				
MMD	10.21	2.0	28.0	5.42
Post-switch M3				
MMD	5.74	0.0	15.0	4.32
Post-switch M6				
MMD	5.42	0.0	28.0	4.98

medRxiv preprint doi: <https://doi.org/10.1101/2023.08.04.23293651>; this version posted August 8, 2023. The copyright holder for this preprint (which was not certified by peer review) is the author/funder, who has granted medRxiv a license to display the preprint in perpetuity. It is made available under a [CC-BY 4.0 International license](https://creativecommons.org/licenses/by/4.0/).

Table 4: Changes in MMD during first CGRP mAb from 1st baseline.

	<i>Median difference (IQR) 6 Month</i>	N
<i>All patients</i>	-5.1 (5.5)	53
P-value	0.000	
<i>Anti-CGRP/L before switching to anti CGRP/R</i>	-2.2 (7.0)	11
P-value	0.025	
<i>Anti-CGRP/R before switching to anti CGRP/L</i>	-3.15 (4.5)	24
P-value	0.002	
<i>Anti-CGRP/L before switching to another anti-CGRP/L</i>	-3.21 (5.25)	18
P-value	0.001	

medRxiv preprint doi: <https://doi.org/10.1101/2023.08.04.23293651>; this version posted August 8, 2023. The copyright holder for this preprint (which was not certified by peer review) is the author/funder, who has granted medRxiv a license to display the preprint in perpetuity. It is made available under a [CC-BY 4.0 International license](https://creativecommons.org/licenses/by/4.0/).

IQR, Interquartile range

Table 5: Changes in MMD during second CGRP mAb from 2nd baseline

	<i>Median difference (IQR) 6 Month</i>	N
<i>All patients</i>	-5.0 (5.0)	53
P-value	0.000	
<i>Anti CGRP/R after Anti CGRP/L</i>	-1.60 (9.0)	11
P-value	0.109	
<i>Anti-CGRP/L after CGRP/R</i>	-3.73 (3.75)	24
P-value	0.000	
<i>Anti-CGRP/L after another anti-CGRP/L</i>	-3.47 (7.25)	18
P-value	0.001	

medRxiv preprint doi: <https://doi.org/10.1101/2023.08.04.23293651>; this version posted August 8, 2023. The copyright holder for this preprint (which was not certified by peer review) is the author/funder, who has granted medRxiv a license to display the preprint in perpetuity.
It is made available under a [CC-BY 4.0 International license](https://creativecommons.org/licenses/by/4.0/) .

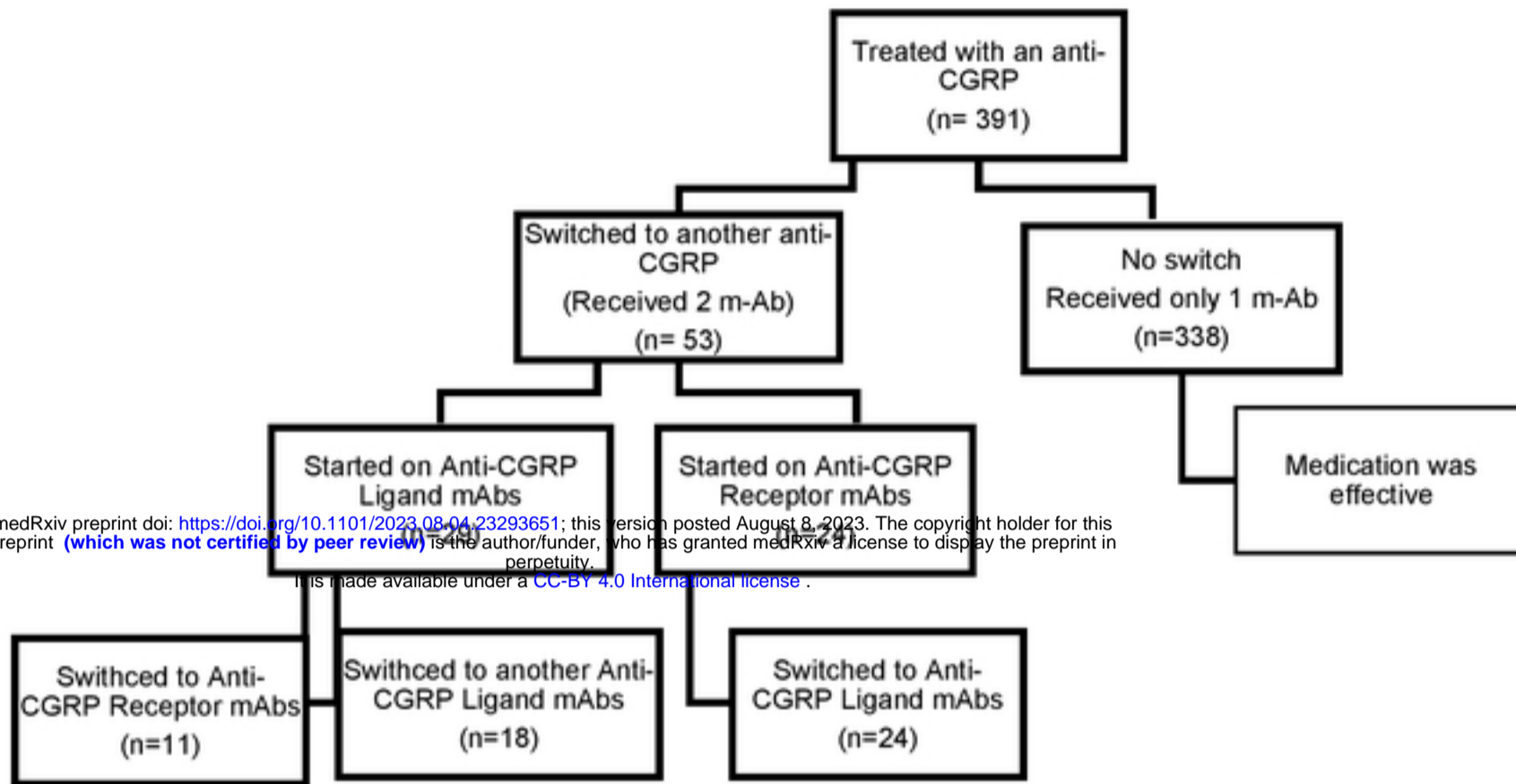
Table 6: M6-M6 Percent Reductions

Switching Profile	Q1 frequency (%)	Q2 frequency (%)	Q3 frequency (%)	Q4 frequency (%)
Ligand-Receptor	6.0 (66.7)	2.0 (22.2)	0.0 (0.0)	1.0 (11.1)
Receptor-Ligand	15.0 (71.4)	2.0 (9.5)	1.0 (4.8)	3.0 (14.3)
Ligand-Ligand	8.0 (44.4)	4.0 (22.2)	3.0 (16.7)	3.0 (16.7)

Q1: <25% reduction in MMD, Q2: 25%<x<50% reduction in MMD, Q3: 50%<x<75% reduction in MMD, Q4: >75% reduction in MMD

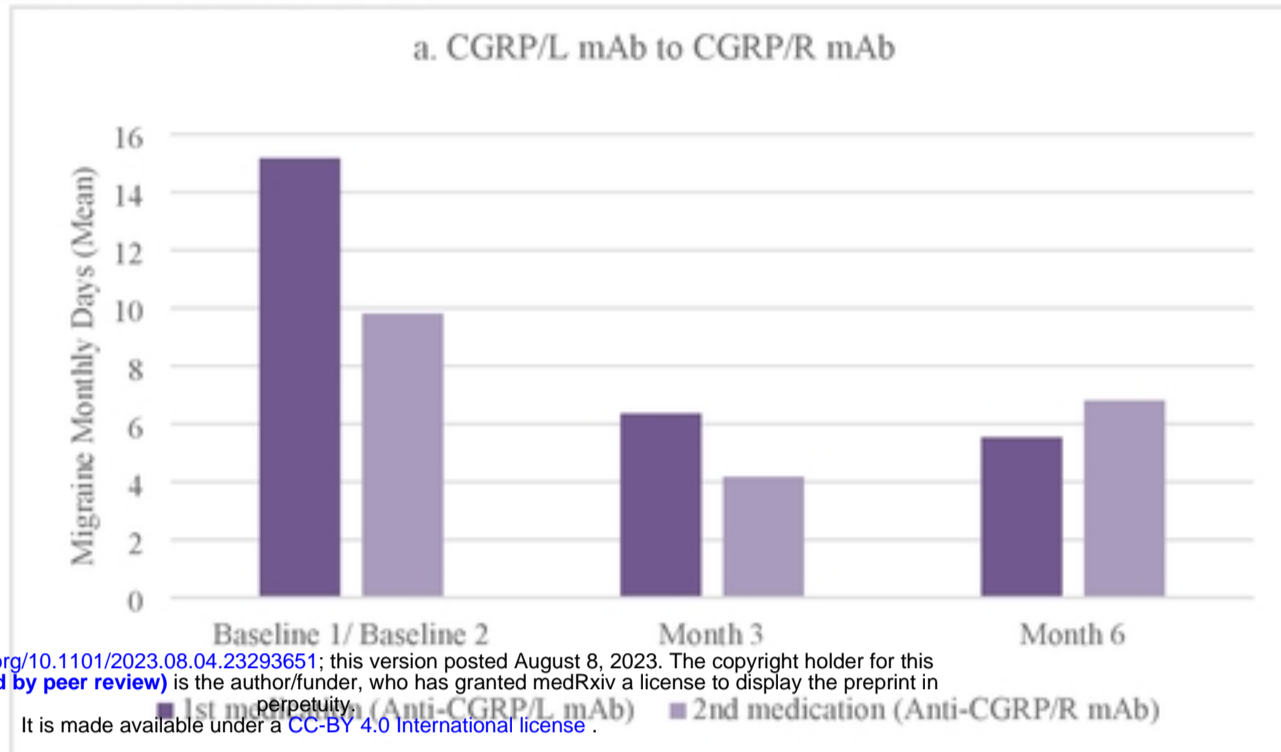
medRxiv preprint doi: <https://doi.org/10.1101/2023.08.04.23293651>; this version posted August 8, 2023. The copyright holder for this preprint (which was not certified by peer review) is the author/funder, who has granted medRxiv a license to display the preprint in perpetuity.
It is made available under a [CC-BY 4.0 International license](#) .

Figure 1: Flowchart of patients



medRxiv preprint doi: <https://doi.org/10.1101/2023.08.04.23293651>; this version posted August 8, 2023. The copyright holder for this preprint (which was not certified by peer review) is the author/funder, who has granted medRxiv a license to display the preprint in perpetuity. It is made available under a [CC-BY 4.0 International license](https://creativecommons.org/licenses/by/4.0/).

Figure 2: Mean MMD's of switchers



medRxiv preprint doi: <https://doi.org/10.1101/2023.08.04.23293651>; this version posted August 8, 2023. The copyright holder for this preprint (which was not certified by peer review) is the author/funder, who has granted medRxiv a license to display the preprint in perpetuity. It is made available under a [CC-BY 4.0 International license](https://creativecommons.org/licenses/by/4.0/).

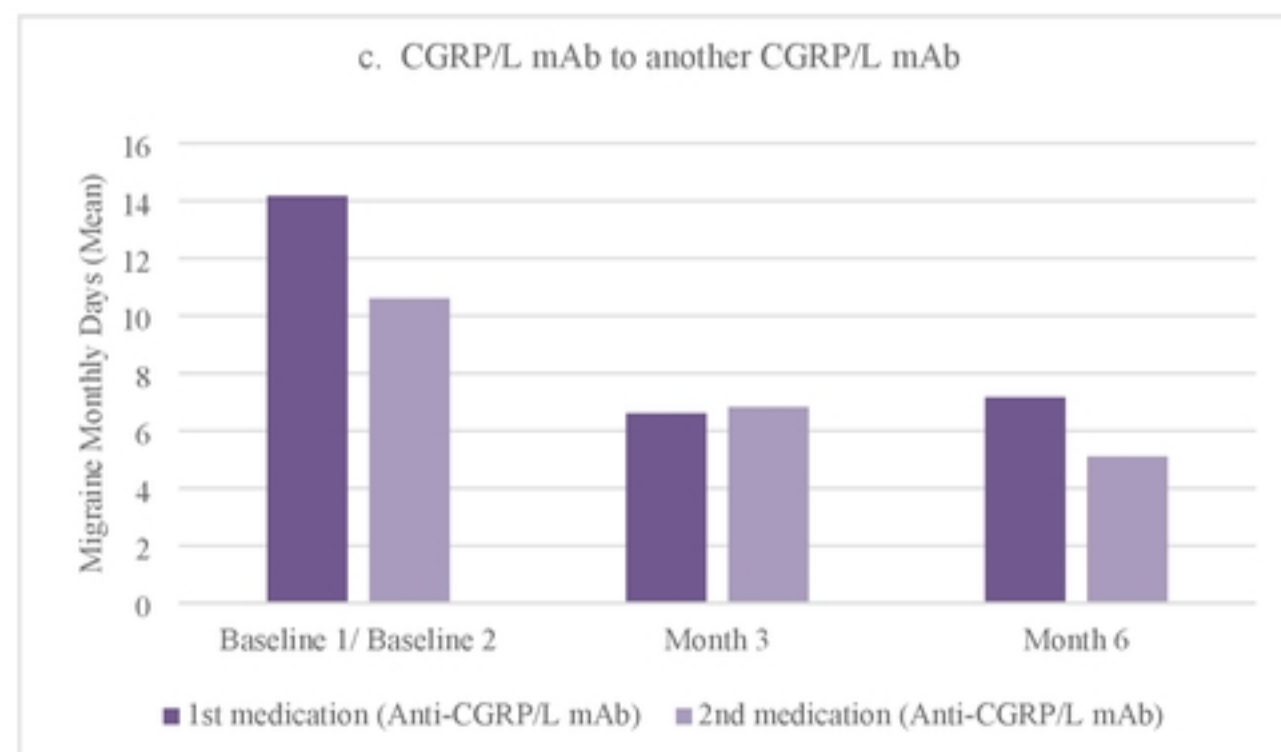
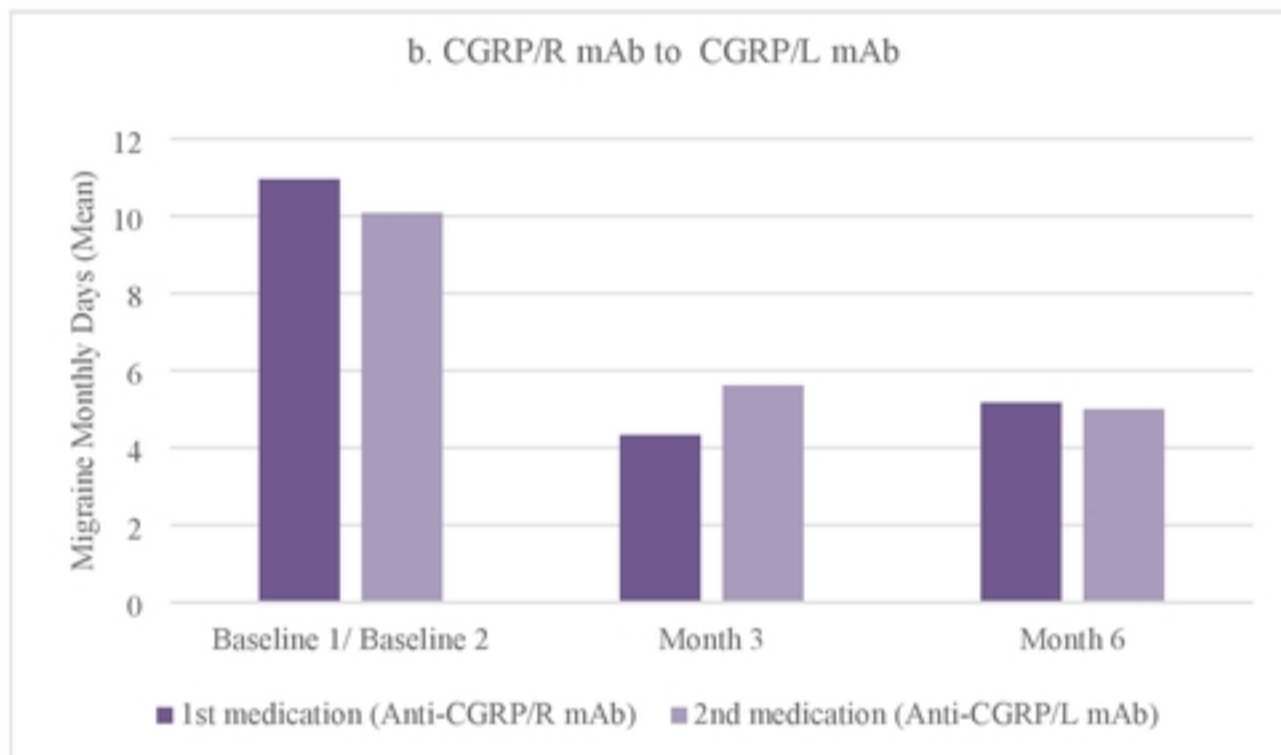


Figure 3: Responders and non-responders' rates at month 3 and month 6 of patients with EM or CM on **3a:** CGRP/L mAb and **3b:** CGRP/R mAb during the first observational period.

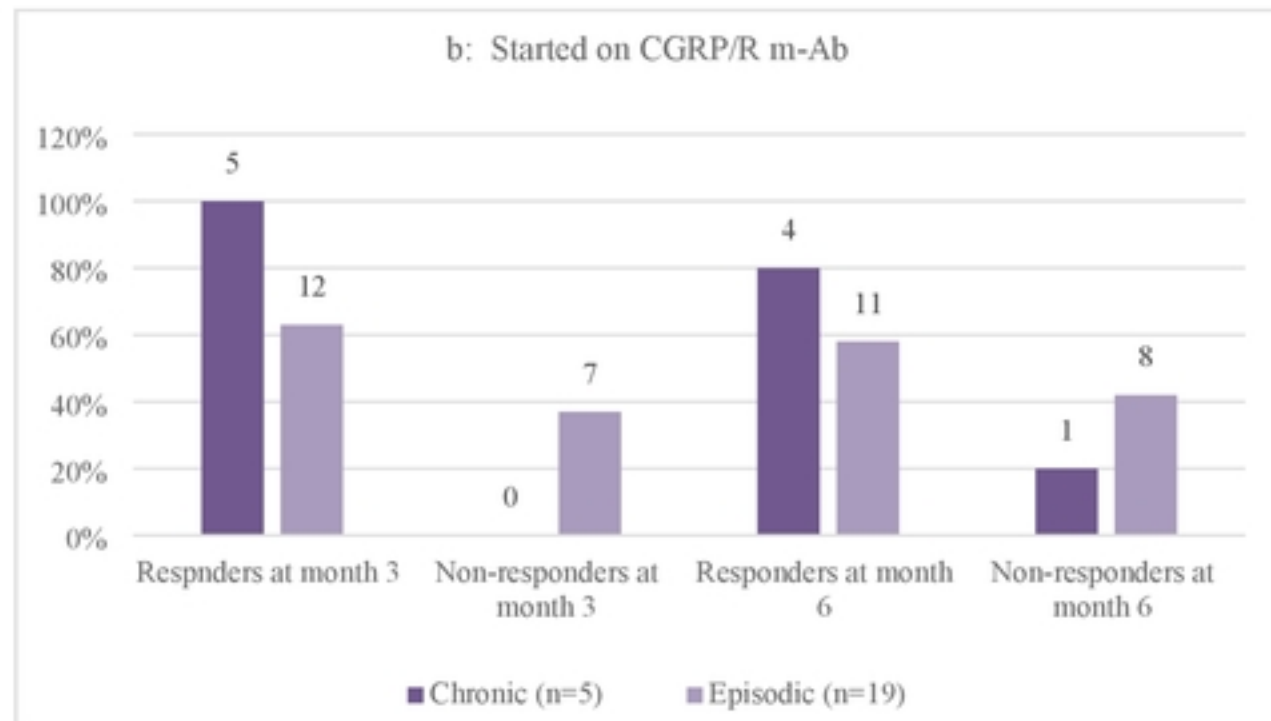
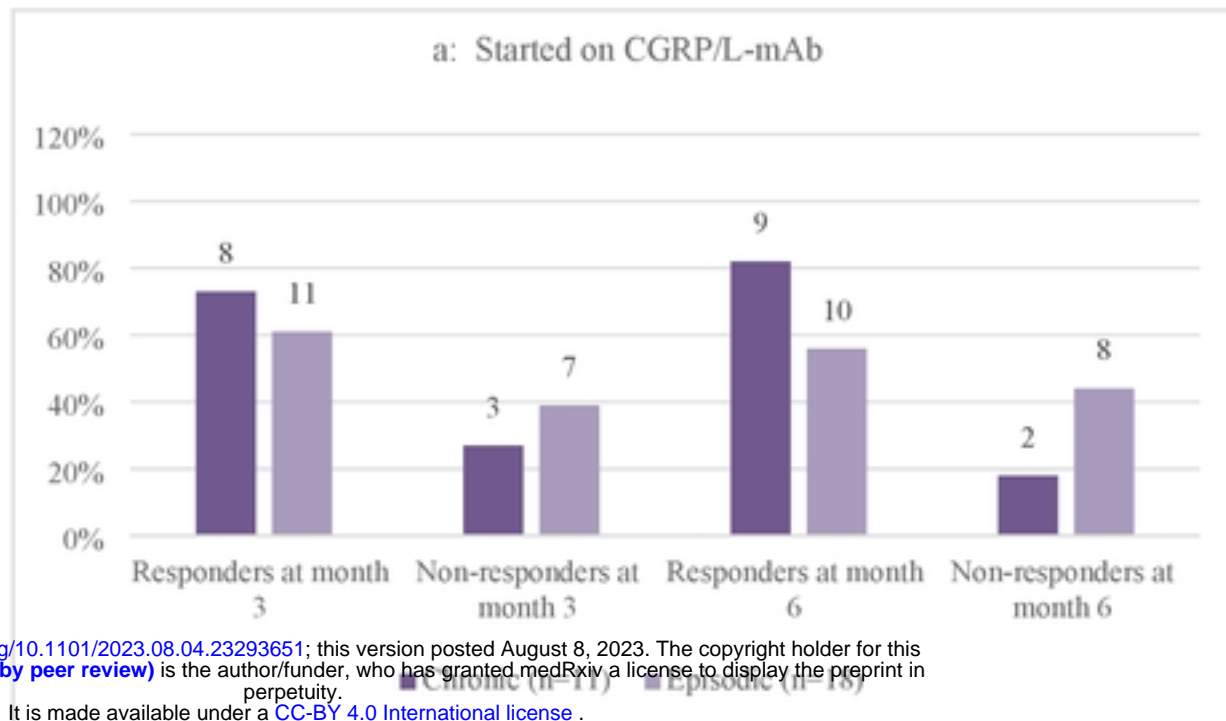


Fig 4: Responders and non-responders' rates at month 3 and month 6 of patients with EM or CM on **4a** after switching from CGRP/R-mAb to CGRP/L-mAb, **4b:** from CGRP/L-mAb to CGRP/L-mAb **4c:** Switched from CGRP/L-mAb to CGRP/R-mAb.

medRxiv preprint doi: <https://doi.org/10.1101/2023.08.04.23293651>; this version posted August 8, 2023. The copyright holder for this preprint (which was not certified by peer review) is the author/funder, who has granted medRxiv a license to display the preprint in perpetuity. It is made available under a [CC-BY 4.0 International license](https://creativecommons.org/licenses/by/4.0/).

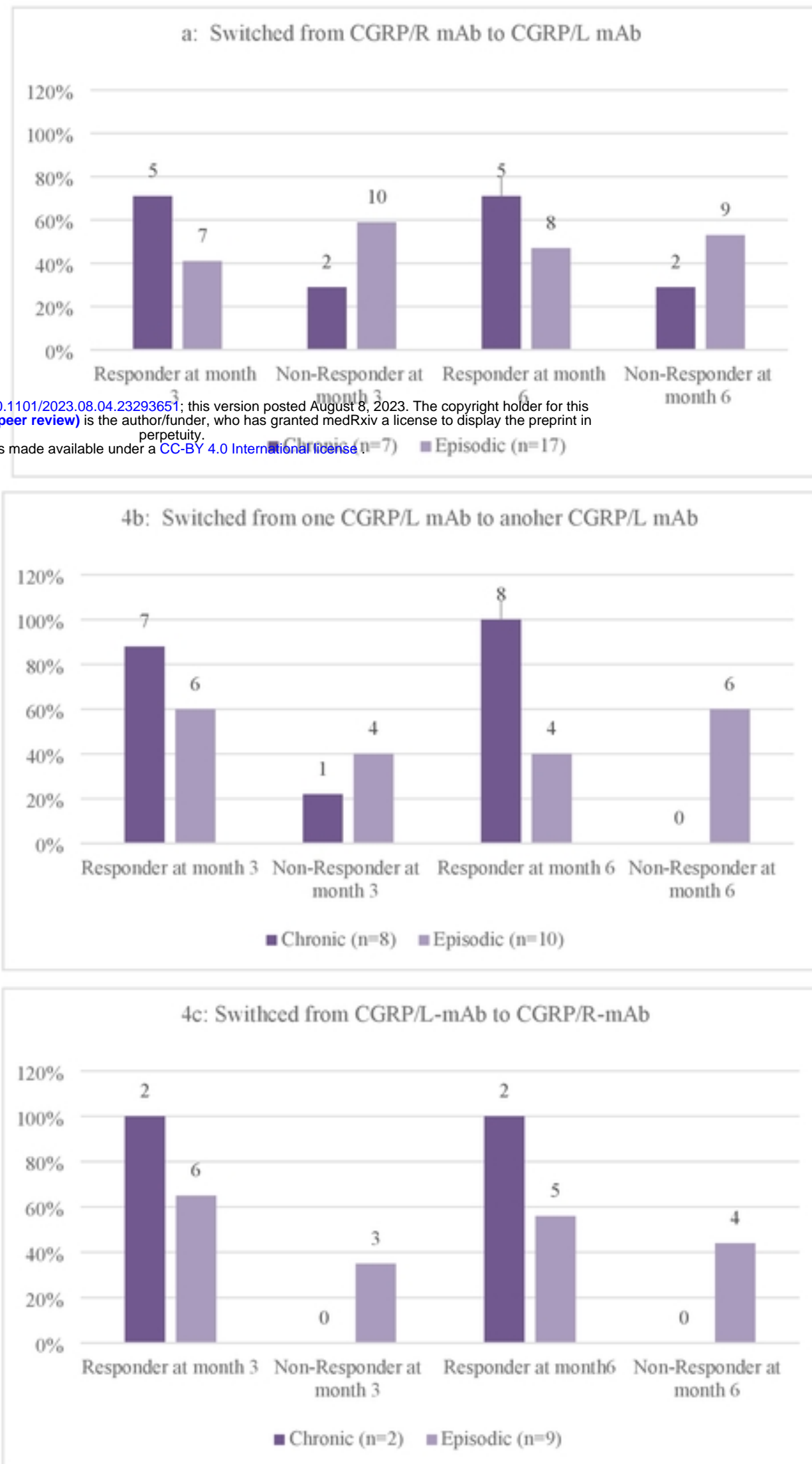


Figure 4