

## *Original Article*

1  
2  
3  
4  
5  
6  
7  
8  
9  
10  
11  
12  
13  
14  
15  
16  
17  
18

# **The diagnostic role of abductor pollicis brevis -first dorsal interosseous (APB-FDI) index in diagnosing Amyotrophic lateral sclerosis (ALS) and comparison of its diagnostic performance with other tests demonstrating split hand phenomenon among Bangladeshi population**

Md. Shuktarul Islam<sup>1</sup>, Hashmi Sina<sup>2</sup>, Iftikher Alam<sup>2</sup>, Md. Arifuzzaman<sup>2</sup>, Reaz Mahmud<sup>2\*</sup>

1. National Institute of Neurosciences and Hospital
2. Department of Neurology, Dhaka Medical College, Dhaka

\* Corresponding author

Mail- [reazdmc22@yahoo.com](mailto:reazdmc22@yahoo.com)

**Acknowledgement:** Patients who participate.

### **Conflict of Interest**

The authors declare that there is no conflict of interests regarding the publication of this paper

Research number: ERC-SSMC/2019/224.

**Funding:** Received no funds from any source.

19

20 **The diagnostic role of abductor pollicis brevis -first dorsal interosseous (APB-FDI) index in**  
21 **diagnosing Amyotrophic lateral sclerosis (ALS) and comparison of its diagnostic**  
22 **performance with other tests demonstrating split hand phenomenon among Bangladeshi**  
23 **population**

## 24 **Abstract**

### 25 **Background:**

26 The split hand phenomenon is an early and distinctive feature of amyotrophic lateral sclerosis  
27 (ALS), resulting from the differential wasting of the intrinsic hand muscles, particularly the thenar  
28 muscles. This study aimed to assess the diagnostic role of the APB-FDI Index in the diagnosis of  
29 Amyotrophic Lateral Sclerosis (ALS) among the Bangladeshi population. We also compared its  
30 diagnostic performances with FDI-ADM and ADM-APB ratios measuring the split hand  
31 phenomenon.

32 **Methods:** We carried out this cross-sectional study in the Department of Neurology, Sir  
33 Salimullah Medical College Mitford Hospital, and Dhaka Medical College Hospital, Dhaka, from  
34 March 2019 to September 2021. We determined the APB-FDI index with  $\text{APB (CMAP) X FDI (CMAP) / ADM (CMAP)}$ . We also compared the findings with age and gender-matched healthy  
36 control and disease control (Hirayama disease). We studied the value of using APB-FDI, FDI-  
37 ADM, and ADM-APB ratios for diagnosis. We analyzed the data with ROC curves and calculated  
38 AUC for each ratio. We also used IDI and DCA to compare diagnostic accuracy.

### 39 **Results:**

40 We studied 43 people with ALS, 30 healthy people, and 10 Hirayama patients. Most ALS patients  
41 had cervical phenotypes (31, 72%) and a median ALS functional rating score of 27(IQR,25-32).  
42 The cutoff values of APB-FDI Index, ADM-APB CMAP amplitude ratio, and FDI-ADM CMAP  
43 amplitude ratio are 4.27, 2.20 respectively. The APB-FDI Index has a high AUC of 0.9, with good  
44 sensitivity and specificity. However, for Hirayama disease, the APB-FDI Index cutoff value is  
45 11.6. The APB-FDI Index is clinically effective with optimal threshold probabilities identified  
46 through the Youden-Index ((APB-FDI Index-0.72, ADM-APB CMAP amplitude ratio-0.51, and  
47 FDI-ADM CMAP amplitude ratio-0.17). Its standardized net benefits exceed healthy control and  
48 Hirayama when risk thresholds are between 0.1 and 0.8. The IDI results showed that the APB-FDI  
49 Index was superior to the ADM-APB CMAP amplitude ratio and FDI-ADM CMAP amplitude  
50 ratio in healthy control and Hirayama although p value is insignificant.

51 **Conclusion:** APB-FDI Index is the sensitive, specific, and early diagnostic marker for ALS. Its  
52 diagnostic performance is better than the other tests.

53 **Keywords:** amyotrophic lateral sclerosis; compound muscle action potential; split hand; APB-FDI  
54 index.

55

56

57

58

59

60

61 **The diagnostic role of abductor pollicis brevis -first dorsal interosseous (APB-FDI) index in**  
62 **diagnosing Amyotrophic lateral sclerosis (ALS) and comparison of its diagnostic**  
63 **performance with other tests demonstrating split hand phenomenon among Bangladeshi**  
64 **population**

## 65 **Introduction:**

66 Amyotrophic lateral sclerosis (ALS) is a progressive degenerative disorder [1] involving the  
67 motor neurons, a heterogeneous disease that begins focally and becomes widespread within a short  
68 period. The patient dies within three years of symptom onset due to respiratory muscle  
69 involvement [2]. The mechanisms of neuronal degeneration include oxidative stress,  
70 excitotoxicity, mitochondrial dysfunction, glial activation, RNA processing, and growth factor  
71 abnormalities. They may occur parallelly or in sequence [3]. There is no definitive diagnostic tool  
72 for diagnosing ALS. The progressive upper motor neuron (UNM) and lower motor neuron (LMN)  
73 findings in the history and examination may diagnose ALS with 95% accuracy [4]. For the  
74 uniformity of the diagnosis, El Escorial criteria were developed [5,6]. The sensitivity of these  
75 criteria is low in case of early stages of the disease [7]. Possible differentials like Spinal muscular  
76 atrophy (SMA), Hirayama disease, cervical myeloradiculopathy, and Multifocal motor neuropathy  
77 with conduction block (MMCB) are sometimes difficult to exclude [8]. The median diagnostic  
78 time from the symptom onset is 11.5 months, and about half of the patients received alternative  
79 diagnoses [9]. A dissociated pattern of muscle atrophy, first described as a split hand by Wilbourn  
80 [10], was observed in 60-70 % of ALS patients [9,11]. Here the abductor pollicis brevis (APB)  
81 and first dorsal interosseous (FDI) muscles are involved more than the hypothenar muscles. The  
82 cause of differential muscle involvement in ALS is unknown; there are theories for cortical and

83 peripheral mechanisms.[12] Among the postulated peripheral mechanism, higher nodal  
84 persistence of sodium currents in the APB and FDI than in ADM might be a mechanism [13].  
85 Furthermore, the cortical mechanism involves preferential involvement of corticomotoneuronal  
86 input to the thenar muscles [14]. In our day-to-day activities, using a pincer grasp is essential  
87 (adductor pollicis, first dorsal interosseous and flexor pollicis brevis muscles.), making the spinal  
88 motor neurons innervating these muscles liable to more oxidative stress.

89 The corticospinal connections to FDI far outnumber those of ADM. It may produce more  
90 glutamate excitotoxicity in the FDI spinal neurons [15]. The APB-FDI index quantifies this  
91 preferential muscle involvement, which is derived by multiplying the APB and FDI CMAP  
92 amplitudes and dividing the product by the ADM CMAP amplitude according to the following

93 formula: (APB FDI Index =  $\frac{APB_{CMAP} \times FDI_{CMAP}}{ADM_{CMAP}}$  [16]. This index helps detect the early stages of ALS,

94 not fulfilling the diagnostic criteria [11]. This phenomenon did not differ in different stages and  
95 certainty [17]. The cutoff value of this index is 5.2 and exhibits 74% sensitivity and 80% specificity  
96 in diagnosing ALS [11]. It is more sensitive than the two other ratios used to quantify the split  
97 hand phenomenon (ADM/APB CMAP amplitude ratio >1.7, 51% sensitive, and FDI/ADM less  
98 than 0.9 is 34 % sensitive) [16]). This method was not examined among the Bangladeshi  
99 population, and the cutoff value is largely unknown among the Bangladeshi people. We planned  
100 to assess the diagnostic role of the APB FDI Index, ADM/APB CMAP amplitude ratio, and  
101 FDI/ADM CMAP amplitude ratio in the diagnosis of Amyotrophic Lateral Sclerosis (ALS) and to  
102 determine their cutoff values for the Bangladeshi population. We also compared their diagnostic  
103 performance in diagnosing ALS.

## 105 **Methods:**

106 This cross-sectional study was done in the Department of Neurology at Sir Salimullah Medical  
107 College Mitford Hospital, Dhaka, and Dhaka Medical College from March 2019 to September  
108 2020. We obtained Ethical clearance from the ethical review committee of Sir Salimullah Medical  
109 College Mitford Hospital (SSMC/2019/224).

## 110 **Participants:**

111 We enrolled all the probable, possible, and definite cases of Amyotrophic lateral sclerosis (ALS),  
112 according to the revised El Escorial Diagnostic Criteria for ALS [5], presented in  
113 electrophysiology lab of the neurology department of Sir Salimullah Medical College Mitford  
114 Hospital and Dhaka Medical College. Patients aged 18 years or more and of both sexes were  
115 included in this study. Patients with undetectable CMAP amplitude of any muscle (APB, FDI, and  
116 ADM), associated radiculopathy, peripheral neuropathy, or neuromuscular disease were excluded  
117 from the study. We recruited healthy volunteers as the control. We also took patients with  
118 Hirayama disease, diagnosed according to criteria outlined by Tashiro et al[18]. and confirmed  
119 with MRI cervical spine flexion and extension view as disease control. Both the cases and control  
120 participants gave Informed written consent. The calculated sample size was 30 for ALS and  
121 healthy-control, considering the abnormal split hand index proportion of 41% in the case and 5%  
122 in the healthy control group, according to Kuwabara et al. 2008[19]. With a 5% level of  
123 significance in the two-tailed test and 90% power. We used the following formula to calculate the  
124 sample size

$$125 \text{ Sample size} = \left(\frac{r+1}{r}\right) \frac{P(1-p)(z_{\beta} + Z_{\alpha/2})^2}{(p_1 - p_2)^2}$$

126 ( $Z_{\alpha} = 1.96$  at 5% level of significance,  $Z_{\beta} = 1.28$  at 90% power,  $P_1 = 0.41$ ,  $P_2 = 0.05$ ,  $P = (p_1 + p_2)$   
127  $\div 2 = 0.23$ ).

128 We also compared the electrophysiology findings of 10 Hirayama patients with the ALS patients.

### 129 **Study procedure:**

130 The demographic profile and complaints were recorded in a preformed case record form. The  
131 expert neurologist did detail Neurologic examinations. The hemoglobin, total count, differential  
132 count, blood sugar, serum creatinine, brain CT scan, and MRI cervical spine were done to exclude  
133 the other diagnoses for all the included patients. Revised El Escorial Diagnostic Criteria for ALS  
134 diagnose patients with ALS [5]. The disability of ALS was assessed with ALS Functional Rating  
135 Scale-Revised (ALS-FRS-R) [20]. The Hirayama disease was diagnosed with Tashiro criteria  
136 [18].

### 137 **NCS assessment:**

138 The NCS was done with NIHON KOHDEN Neuropack MEB-7102 mobile unit with a two-  
139 channel evoked potential/EMG measuring system (Nihon Kohden Corporation, Tokyo, Japan)  
140 according to the American Association of Electrodiagnostic Medicine, American Academy of  
141 Neurology, and American Academy of Physical Medicine and Rehabilitation guidelines. We  
142 maintained the temperature at 33-34 degrees centigrade. We did the neurophysiological study on  
143 the most affected hand and opposite lower limb in cervical onset MND, including the measurement  
144 of motor conduction velocity (MCV), distal motor latency (DML), and compound muscle action  
145 potential amplitude (CMAP), F-latency, sensory conduction velocity (SCV), distal latency and  
146 sensory nerve action potential amplitude (SNAP) of the examined nerves. In limb onset type MND,

147 we did the electrophysiological study on the most affected lower limb and opposite upper limb,  
148 and in bulbar onset MND in the right hand and left leg.

149 Motor nerve conduction studies were performed on the median and ulnar nerves with compound  
150 muscle action potential (CMAP) responses recorded from the abductor pollicis brevis (APB), first  
151 dorsal interosseous (FDI), and abductor digit minimi (ADM) muscles. The Responses were  
152 recorded by 10 mm gold disc electrodes positioned in a belly tendon arrangement over each  
153 muscle. We Placed the active electrode over the midpoint of the respective muscle, ensuring a  
154 negative take-off of the CMAP response, while the reference electrode was positioned over the  
155 base of the thumb (APB and FDI CMAP recordings) and base of digit 5 (for ADM CMAP  
156 recordings). We Set the distance between the stimulating cathode and active electrode for APB  
157 and ADM, CMAP to 5 cm, and for FDI CMAP to 8 cm. We set the filter at 3 and 10 kHz, the  
158 sweep speed at 20 msec, or 2 msec/division, and the sensitivity for recording CMAP responses at  
159 5 mV. The pulse duration was 0.2 ms. We increased an additional 25% in the current to ensure the  
160 Supramaximal stimulation. Measurements of the compound muscle action potential (CMAP)  
161 included latency (onset and peak) and conduction velocity (CV). In the study, we used belly tendon  
162 montage, gave the stimulation at the wrist using an orthodromic technique with a bipolar  
163 stimulator, and expressed the distal latency as a millisecond and conduction velocity as a meter  
164 per second.

165 We Calculated the APB FDI index by multiplying the CMAP amplitude recorded over the APB  
166 and FDI muscles and dividing this product by the CMAP amplitude recorded over the ADM  
167 muscle, as follows:  $APB\ FDI\ index = \frac{APB\ CMAP \times FDI\ CMAP}{ADM\ CMAP}$ . We also  
168 calculated ADM/APB CMAP amplitude ratio, and FDI/ADM CMAP amplitude ratio. For the



169 analysis, we took the values from the most affected hand in the case of ALS and Hirayama disease.  
170 In the case of control, we generally use right-hand parameters.

171

## 172 **Statistical analysis:**

173 Data were analyzed using SPSS 20 and R (v4.1.1). Qualitative data were expressed in number,  
174 percentage, normally distributed quantitative data as mean (SD), and non-normal data as median  
175 (IQR). Comparisons between groups (continuous parameters) were made by Student's t-test and  
176 skewed parameters with Mann Whitney U test. The Chi-Square test compared categorical  
177 parameters. Several indicators were used to measure the performance of the APB-FDI Index, FDI-  
178 ADM, and ADM-APB ratios. The prediction scoring systems were analyzed using the receiver  
179 operating characteristic (ROC) curve and the area under the ROC curves (AUC). DeLong's test  
180 was used to determine the statistical difference between AUCs. The Integrated Discrimination  
181 Improvement (IDI) indicator was also used to evaluate their performance. Decision Curve Analysis  
182 (DCA) was also performed to assess the clinical usefulness of these ratios. The significance of the  
183 results, as determined by a 95% confidence interval and a value of  $p < 0.05$ , was considered  
184 statistically significant.

## 185 **Results:**

186 This cross-sectional study was conducted in the Neurology department of Sir Salimullah Medical  
187 College Mitford Hospital and Dhaka Medical College, Dhaka, from March 2019 to March 2022.  
188 We screened 57 suspected patients with ALS and included 43 patients after considering the  
189 patient's inclusion, exclusion criteria, and consent. We had 30 age and sex-matched healthy control

190 (Figure 1). We also included 10 Hirayama patients to compare the index and the ratios (APB-FDI  
191 Index, ADM-APB CMAP amplitude ratio, and FDI-ADM CMAP amplitude ratio)

192 **Figure 1: Patients and volunteer selection for this study.**

### 193 **Demographic and clinical profile of the participants:**

194 The age of the ALS group was generally >40 years (88.4%), and the mean age (SD) was 56.1(14.8).  
195 The age of patients with ALS was comparable with the control. Whereas the Hirayama patients  
196 were generally < 40 years (90%), and the mean age was 24.7(13.7). The males were similarly  
197 frequent in ALS, 34(79.1), and Hirayama groups, 7(70%). 15(34.4%) of the ALS patients were  
198 underweight. The mean (SD) weight of the ALS and Hirayama was 18.8(1.8) and 21.6(2.2),  
199 respectively (Table 1).

200

201 **Table 1: Demographic characteristics of the study participants**

202

Trait	Group I (cases) N=43	Group II(Control) N=30	Group III (Hirayama) N=10
Age in years, mean (SD)	56.1(14.8)	57.7(9.7)	24.7(13.7)
Age groups, n (%)			
<40 years	5(11.6)	2(6.7)	9(90)
40-60 years	22(51.2)	21(70)	0(0)
>60 years	16(37.2)	7(23.3)	1(10)

Sex (Male), n (%)	34(79.1)	22(73.3)	7(70)
BMI, Mean (SD)	18.8(1.8)	22.8(1.65)	21.6(2.2)
BMI groups, n (%)			
Underweight (<18.5 kg/m <sup>2</sup> )	15(34.9)	0(0)	1(10)
Normal weight (18.5-22.9 kg/m <sup>2</sup> )	21(48.8)	18(60)	7(70)
Overweight (23-24.9 kg/m <sup>2</sup> )	6(14)	11(36.7)	1(10)
Obesity (25-29.9 Kg/m <sup>2</sup> )	1(2.3)	1(3.3)	1(10)

203

204 In this study total of 28(65.1) had definite ALS and presented with median (IQR), 6(5-10) months  
 205 of illness. They were generally cervical phenotype, 31(72.1%), and they had ALS functional rating  
 206 score, median (IQR) of 27(25-32). (Table 2).

207

208 **Table 2: Clinical characteristics of the ALS patients**

Clinical Characteristics	Results
<b>Disease Categories according to El scorial criteria, n (%)</b>	
Possible	7(16.3)
Probable	8(18.6)
Definite	28(65.1)
Age of onset, Median (IQR)	57(46-64)
Phenotype according to the onset	
Bulbar	3(7)

Cervical	31(72.1)
Lumbar	2(4.7)
Mixed	7(16.3)
Disease duration, months, median (IQR)	6(5-10)
ALS function rating score, median (IQR)	27(25-32)

209

210 The median (IQR) CMAP amplitude of FDI, APB, and ADM, 2.8(0.8-5.3), 2.3(0.8-4.6), and

211 3.8(1.8-6.9) respectively were significantly low (p-value <0.001) than the healthy control. Among

212 ALS patients amplitude of FDI and APB is lower than the amplitude of ADM. The median (IQR)

213 of APB-FDI index, APB-ADM ratio and FDI-ADM ratio were 1.7(0.3-3.8), 0.6(0.3-1.1) and

214 0.8(0.4-1.1) were significantly lower than that of healthy control (p value<0.001, 0.016, 0.003

215 respectively). The ADM-APB ratio of 1.7(0.9-3.2) is significantly higher than the healthy control

216 (p-value 0.016). (Table 3)

217 **Table 3: Comparison of Electrophysiologic findings with the healthy controls and Hirayama**

218 **disease**

Muscle examined	Group I, n=30	CMAP amplitude in mV Group II, n=30	P value <sup>a</sup>	CMAP amplitude in mV Group III, n=30	P value <sup>b</sup>

FDI (CMAP amplitude in mV)	2.8(0.8-5.3)	10.4(8.5-12.6)	<0.001	1.3(0.9-4.9)	0.7
APB (CMAP amplitude in mV)	2.3(0.8-4.6)	7.9(6.5-9.3)	<0.001	6.4(5.3-8.1)	<0.001
ADM(CMAP amplitude in mV)	3.8(1.8-6.9)	9.7(6.2-11.8)	<0.001	0.7(0.4-3.6)	0.003
APB-FDI Index <sup>c</sup>	1.7(0.3-3.8)	9.9(6.1-13.1)	<0.001	13.6(6.9-15.7)	<0.001
APB/ADM	0.6(0.3-1.1)	0.8(0.7-1.2)	0.016	6.3(3.2-13,9)	<0.001
ADM/APB	1.7(0.9-3.2)	1.2(0.9-1.4)	0.016	0.2(0.1-0.3)	<0.001
FDI/ADM	0.8(0.4-1.1)	1.2(0.9-1.4)	0.003	2(1.2-2.7)	0.002
a-comparison between ALS and healthy control					
b-Comparison between the ALS and Hirayama					
c- calculated with the formula APB FDI index (SI) = APB <sub>CMAP</sub> X FDI <sub>CMAP</sub> /ADM <sub>CMAP</sub>					

219 APB-FDI Index, FDI-ADM, and ADM-APB ratios.

220 CMAP amplitude of the FDI did not differ between the ALS and Hirayama patients (p-value 0.7).

221 Whereas the median (IQR) amplitude of the APB, 6.4(5.3-8.1), is significantly higher (p-value

222 <0.001), and the amplitude of ADM, 0.7(0.4-3.6) was significantly lower (p value0.003) in the

223 Hirayama than ALS.

224 The median (IQR) of APB-FDI index, and FDI-ADM ratio was 13.6(6.9-15.7), and 2(1.2-2.7)  
225 were significantly higher in Hirayama group than that of healthy control (p value<0.001, <0.001,  
226 0.002 respectively). Whereas the ADM-APB ratio of 0.2(0.1-0.3) is significantly lower in the  
227 Hirayama group than in the ALS group (p-value <0.001).

228 There was no correlation between the disease severity of ALS and the APB-FDI index ( $r = -0.16$ ,  
229 p-value 0.28) (Supplement 1).

### 230 **Comparison of ROC curves**

231 To diagnose ALS, the APB-FDI Index, ADM-APB CMAP amplitude ratio, and FDI-ADM CMAP  
232 amplitude ratio are used with cutoff values of 4.27, 1.04, and 2.20, respectively. The APB-FDI  
233 Index has a high sensitivity and specificity with an AUC of 0.9. However, when differentiating  
234 Hirayama disease, the APB-FDI Index's cutoff value is higher at 11.6, but its specificity is lower  
235 at 0.7. In comparison, the APB-FDI Index is the most effective in diagnosing ALS compared to  
236 healthy individuals, but it has lower performance in differentiating Hirayama disease (Figure 2).

### 237 **Figure 2: Comparison of the ROC curve and diagnostic performances of APB-FDI Index,** 238 **ADM-APB CMAP amplitude ratio, and FDI-ADM CMAP amplitude ratio**

### 239 **Comparison of IDI**

240 We evaluated the prediction performance of the scoring systems by calculating IDIs,  
241 corresponding P values, and confidence intervals using 1000 times bootstrap resampling (Table  
242 4). The IDI results showed that the APB-FDI Index was superior to the ADM-APB CMAP  
243 amplitude ratio and FDI-ADM CMAP amplitude ratio in healthy control and Hirayama although  
244 p value is insignificant. The IDI for APB-FDI Index in comparison to ADM-APB CMAP  
245 amplitude ratio and FDI-ADM CMAP amplitude ratio was 0.55 (95% CI -0.661, -0.434;

246 p=0.481) and -0.55 (95% CI -0.658, -0.440; p=0.504), respectively in healthy control. In  
247 Hirayama, the IDI for APB-FDI Index in comparison to ADM-APB CMAP amplitude ratio and  
248 FDI-ADM CMAP amplitude ratio was -0.228 (95% CI -0.416, -0.015; p=0.487) and -0.368  
249 (95% CI -0.541, -0.172; p=0.465), respectively.

250

251 **Table 4. Pairwise comparison of IDIs in overall patients**

<b>Comparison of models (New model VS reference model)</b>	<b>IDI</b>	<b>95% CI of IDI</b>	<b>P-value of IDI</b>
<b>For healthy control</b>			
<b>FDI-APB index vs FDI-ADM ratio</b>	<b>-0.549</b>	<b>-0.658, -0.440</b>	<b>0.504</b>
<b>FDI-APB index vs ADM-APB</b>	<b>-0.545</b>	<b>-0.661, -0.434</b>	<b>0.481</b>
<b>FDI-ADM ratio vs ADM-APB</b>	<b>0.007</b>	<b>-0.035, 0.051</b>	<b>0.495</b>
<b>For Hirayama</b>			
<b>FDI-APB index vs FDI-ADM ratio</b>	<b>-0.368</b>	<b>-0.541, -0.172</b>	<b>0.465</b>

<b>FDI-APB index vs ADM-APB</b>	<b>-0.228</b>	<b>-0.416, -0.015</b>	<b>0.487</b>
<b>FDI-ADM ratio vs ADM-APB</b>	<b>0.133</b>	<b>-0.028, 0.262</b>	<b>0.495</b>

252

### 253 **Comparison of DCA curves**

254 The results of DCA (Fig 3) demonstrate the clinical value of evaluating standardized net benefits  
255 (sNBs) and risk threshold probabilities using the APB-FDI Index, ADM-APB CMAP amplitude  
256 ratio, and FDI-ADM CMAP amplitude ratio. The sNBs of the APB-FDI Index were higher than  
257 the extreme curve for healthy control and Hirayama when the range of risk threshold probabilities  
258 was between 0.1 and 0.8. Compared to the ADM-APB CMAP and FDI-ADM CMAP amplitude  
259 ratios, the APB-FDI Index had higher sNBs when the range of threshold probabilities was between  
260 0.1 and 0.8, indicating its broad clinical utility. Optimal threshold probabilities were also  
261 determined for each index using the Youden-Index (APB-FDI Index-0.72, ADM-APB CMAP  
262 amplitude ratio-0.51, and FDI-ADM CMAP amplitude ratio-0.17), and the DCA results show that  
263 the APB-FDI Index had higher sNBs than the other two ratios. Furthermore, the results and  
264 conclusions remained consistent for threshold probabilities between 0.45 and 0.80.

265 **Figure 3.** DCA curves of APB-FDI Index, ADM-APB CMAP amplitude ratio, and FDI-ADM  
266 CMAP amplitude ratio

267

268

269

270



## 271 **Discussion:**

272 Our study confirms the split hand phenomenon in ALS patients, where the CMAP amplitude of  
273 the ADM muscle is higher than that of the FDI and APB muscles. We measured this phenomenon  
274 using the APB-FDI index, APB-ADM ratio, and FDI-ADM ratio. The cutoff values for these  
275 measurements are 4.27, 1.04, and 2.20, respectively. The APB-FDI index is more sensitive and  
276 specific than the other two ratios, with a high AUC. However, for Hirayama disease, the APB-FDI  
277 index cutoff value is 11.6, and it shows broad clinical utility with standardized net benefits  
278 exceeding those of healthy controls and Hirayama patients when the risk thresholds are between  
279 0.1 and 0.8. The IDI results indicate that the APB-FDI index is superior to the ADM-APB CMAP  
280 amplitude ratio and FDI-ADM CMAP amplitude ratio in healthy controls and Hirayama patients.

281 This study was done among a small number of Bangladeshi ALS patients. NCS parameters may  
282 differ in demography and physical factors [20]; we cannot generalize the findings to different  
283 races, ages, and physical traits. It needs a multicentered and multinational prospective study to  
284 generalize.

285 In the present study, most ALS patients were 40 years or more, were generally male, and one-third  
286 had low body mass index. It is concordant with the demography and characteristics of ALS patients  
287 [2,4,21]. Most of the patients were a cervical onset phenotype. The predominant phenotype of ALS  
288 is bulbar in some studies [22], but in China dominant type is limb onset [23] in the case of sporadic  
289 ALS. As in this study, we studied hand cervical phenotype is frequent here. The patients with  
290 Hirayama were generally young and male, as found in the other studies [25,26].

291 The diagnosis of ALS is not always straightforward. There are no specific biomarkers of ALS, and  
292 it is mainly diagnosed by criteria [27,28]. Accurate and early diagnosis is essential to increasing

293 the life expectancy of ALS patients [29]. The most used diagnostic criteria are the revised El  
294 Escorial criteria (rEEC) and Awaji criteria (AC), has sensitivity ranges from 40-70%, which  
295 increases with the progression of the disease [30]. Electrophysiology may help diagnose early  
296 ALS, as some electrophysiologic findings may appear earlier. Spilt hand phenomenon is  
297 commonly found across all stages and degrees of certainty of ALS [17,18].

298 The split hand phenomenon was first described by Wilbourn [10]. Satoshi Kuwabara [18], in their  
299 research electro physiologically confirmed the preferential involvement of APB and FDI among  
300 ALS patients. In their study, they elucidate APB-ADM, FDI-ADM, and FDI-APB ratio. Among  
301 the healthy control, the ratio of APB-ADM, FDI-ADM, and FDI-APB were 1(.3), 1.5(0.4), and  
302 1.6(0.5), respectively [10]. Among the healthy subjects, the APB-ADM ratio was 0.8(0.7-1.2),  
303 FDI-ADM was 1.2(0.9-1.4) [18], and both were almost similar. In our study The cutoff values,  
304 ADM-APB CMAP amplitude ratio, and FDI-ADM CMAP amplitude ratio are 4.27, 1.04, and  
305 2.20, respectively. In this study, among the ALS patients, the APB-ADM value was 0.6(0.3-1.1),  
306 and the FDI-ADM value was 0.8(0.4-1.1). The slight difference in the value might be due to  
307 different reporting parameters. Moreover, they used the mean, whereas we used the median. And  
308 in our study, the parameter was not normally distributed. They examined the ratio in lower motor  
309 neuron disorders (LMND), cervical spondylotic amyotrophy (CSA), and polyneuropathy. They  
310 found that the findings are specific to ALS [18].

311 We found few studies comparing the findings in Hirayama disease, which also presents with the  
312 small muscle of hand wasting [31]. This study also found that the split hand phenomenon is unique  
313 to ALS. The ratio of APB-ADM and FDI-ADM is reversed in Hirayama disease 6.3(3.2-13,9) and  
314 2(1.2-2.7), respectively. In the case of Hirayama disease, the reverse split hand phenomenon is  
315 described in some studies. One study reported APB-ADM ratio  $0.89 \pm 0.98$  [17]. APB amplitude

316 of Hirayama in our study was 6.4(5.3-8.1), similar to Kalita et al. [32]. They found CMAP ratio of  
317 ADM-APB was 0.43 (0.29), and in our study, the median value was 0.2(0.1-0.3). Moreover, we  
318 found wasting is more prominent in APB than in the FDI (.28 vs. 2.3).

319 In a study, an ADM-APB ratio >1.7 was found to be 51% sensitive and 99% sensitive [16]; in our  
320 study, we found the median ratio of 1.7of (0.9-3.2), and a value >2.2 can diagnose ALS with 21%  
321 sensitivity and 96% specificity.

322 The split hand index was first examined by Menon et al. [11]; they found the index in ALS was  
323  $3.5 \pm 0.6$ , SI cutoff value of 5.2 exhibiting a sensitivity of 74% and specificity of 80%. Our study  
324 found that the median index was 1.7(0.3-3.8), and a cutoff value lower than 4.2 can diagnose ALS  
325 with 72% sensitivity and 100% specificity. In another study, the spilt hand index in Hirayama was  
326 found as 13.68 (9.39), whereas in our study, it was 13.6(6.9-15.7), and in ALS, they found it 2.13  
327 (1.90) [32]. In this study, we affirmed the findings of other studies.

328 We evaluate which ratio performs better using indicators such as AUCs, IDIs, and DCAs. Based  
329 on DCA curve analysis, when the threshold probabilities were between 0.5 to 0.7, the order of  
330 performance was as follows: APB-FDI, FDI-ADM, and ADM-APB ratios. The APB-FDI index  
331 outperformed in all threshold probabilities, but FDI-ADM performed better than ADM-APB after  
332 threshold probabilities of 0.5.

333 Using decision curve analysis (DCA) has several advantages, including the consideration of patient  
334 and physician preferences and the use of a threshold probability metric. DCA helps in evaluating  
335 the benefits and harms associated with prediction models by assessing the value of correctly  
336 treating a positive case versus the risk of treating a false positive case. This makes it an essential

337 tool in clinical decision-making. When determining the risk threshold, a model with a higher  
338 standardized net benefit (sNB) is deemed superior [32].

339 This study found that the APB-FDI index is more effective than other groups, with an AUC of  
340 0.93 and a 95% confidence interval of 0.99-0.98. However, the AUC for FDI-ADM and ADM-  
341 APB were only 0.75 and 0.47, respectively. The Youden Index, which summarizes the receiver  
342 operating characteristic curve and places equal importance on sensitivity and specificity [33],  
343 showed a high score of 0.72 for the APB-FDI index and a very low score of 0.18 for ADM-APB.

344 This study found that the overall IDA was less than 0, meaning the model's performance could  
345 have been better. Nevertheless, the APB-FDI index performed slightly better than the other two  
346 ratios, although the difference was not significant.

347 Our research has shown that the APB-FDI index is a more effective diagnostic tool than others, as  
348 it simultaneously considers all three muscles' involvement. Nevertheless, the APB-FDI test may  
349 be helpful in cases of severe muscle atrophy and concomitant entrapment neuropathy. It should  
350 still be routinely administered to evaluate small muscle wasting in the hands. This can help reduce  
351 unnecessary interventions for ALS patients, as research has shown that 5% of ALS patients  
352 undergo spinal surgery and 42% have lower back operations[35].

353 In this study, we provided a comprehensive analysis of the diagnostic performances. However, it  
354 is essential to note that our study had certain limitations. The small sample size and the cross-  
355 sectional design are inherent limitations that may affect the generalizability of our findings.  
356 Additionally, as our data was obtained in real-time, the results may change throughout the disease.  
357 Future studies should establish whether this phenomenon is maintained in advanced disease stages  
358 through prospective analysis. Unfortunately, due to the limited sample size, we could not conduct

359 subgroup analysis. We recommend further studies comparing this phenomenon in different  
360 phenotypes of ALS while also considering the duration of the disease. It should be noted that most  
361 patients were evaluated during the routine diagnostic process.

## 362 **Conclusion**

363 APB-FDI Index, depicting the split hand phenomenon, is a highly sensitive and specific diagnostic  
364 marker and may be helpful in early and conflicting instances to diagnose ALS. Its diagnostic value  
365 is also higher than other diagnostic tests, like APB-ADM and FDI-ADM ratio, which reproduce  
366 the split hand phenomenon.

## 367 **Acknowledgements**

368 We are grateful to every patient who gave their valuable consent for participation in this study;  
369 without their help, it would be impossible to conduct this study.

## 370 **References:**

- 371 1. van den Bos, M.A., Geevasinga, N., Higashihara, M., Menon, P. and Vucic, S., 2019.  
372 Pathophysiology and diagnosis of ALS: insights from advances in neurophysiological  
373 techniques. *International Journal of Molecular Sciences*, 20(11), p.2818.
- 374 2. Coupe, C. and Gordon, P.H., 2013. Amyotrophic lateral sclerosis-clinical features,  
375 pathophysiology and management. *European Neurol Rev*, 8, pp.38-44.
- 376 3. Rossi, F. H., Franco, M. C., Estevez, A. G. . Pathophysiology of Amyotrophic Lateral  
377 Sclerosis. In: Estévez, A. G. , editor. *Current Advances in Amyotrophic Lateral Sclerosis*  
378 [Internet]. London: IntechOpen; 2013 [cited 2022 May 02]. Available from:  
379 <https://www.intechopen.com/chapters/45326> doi: 10.5772/56562

- 380 4. Gordon PH. Amyotrophic Lateral Sclerosis: An update for 2013 Clinical Features,  
381 Pathophysiology, Management and Therapeutic Trials. *Aging Dis.* 2013 Oct 1;4(5):295-  
382 310. doi: 10.14336/AD.2013.0400295. PMID: 24124634; PMCID: PMC3794725.
- 383 5. Brooks BR. El Escorial World Federation of Neurology criteria for the diagnosis of  
384 amyotrophic lateral sclerosis. Subcommittee on Motor Neuron Diseases/Amyotrophic  
385 Lateral Sclerosis of the World Federation of Neurology Research Group on Neuromuscular  
386 Diseases and the El Escorial "Clinical limits of amyotrophic lateral sclerosis" workshop  
387 contributors. *J Neurol Sci.* 1994 Jul;124 Suppl:96-107. doi: 10.1016/0022-510x(94)90191-  
388 0. PMID: 7807156.
- 389 6. Brooks BR, Miller RG, Swash M, Munsat TL; World Federation of Neurology Research  
390 Group on Motor Neuron Diseases. El Escorial revisited: revised criteria for the diagnosis  
391 of amyotrophic lateral sclerosis. *Amyotroph Lateral Scler Other Motor Neuron Disord.*  
392 2000 Dec;1(5):293-9. doi: 10.1080/146608200300079536. PMID: 11464847.
- 393 7. Agosta F, Al-Chalabi A, Filippi M, Hardiman O, Kaji R, Meininger V, Nakano I, Shaw P,  
394 Shefner J, van den Berg LH, Ludolph A; WFN Research Group on ALS/MND. The El  
395 Escorial criteria: strengths and weaknesses. *Amyotroph Lateral Scler Frontotemporal*  
396 *Degener.* 2015 Mar;16(1-2):1-7. doi: 10.3109/21678421.2014.964258. Epub 2014 Dec 8.  
397 PMID: 25482030.
- 398 8. Ghasemi M. Amyotrophic lateral sclerosis mimic syndromes. *Iran J Neurol.* 2016 Apr  
399 3;15(2):85-91. PMID: 27326363; PMCID: PMC4912674.
- 400 9. Paganoni S, Macklin EA, Lee A, Murphy A, Chang J, Zipf A, Cudkowicz M, Atassi N.  
401 Diagnostic timelines and delays in diagnosing amyotrophic lateral sclerosis (ALS).  
402 *Amyotroph Lateral Scler Frontotemporal Degener.* 2014 Sep;15(5-6):453-6. doi:

- 403 10.3109/21678421.2014.903974. Epub 2014 Jul 1. PMID: 24981792; PMCID:  
404 PMC4433003.
- 405 10. Wilbourn AJ. The "split hand syndrome". *Muscle Nerve*. 2000 Jan;23(1):138. doi:  
406 10.1002/(sici)1097-4598(200001)23:1<138:aid-mus22>3.0.co;2-7. PMID: 10590421.
- 407 11. Menon P, Kiernan MC, Yiannikas C, Stroud J, Vucic S. Split-hand index for the diagnosis  
408 of amyotrophic lateral sclerosis. *Clin Neurophysiol*. 2013 Feb;124(2):410-6. doi:  
409 10.1016/j.clinph.2012.07.025. Epub 2012 Sep 25. PMID: 23017503.
- 410 12. Eisen A, Kuwabara S. The split hand syndrome in amyotrophic lateral sclerosis. *J Neurol*  
411 *Neurosurg Psychiatry*. 2012 Apr;83(4):399-403. doi: 10.1136/jnnp-2011-301456. Epub  
412 2011 Nov 19. PMID: 22100761.
- 413 13. Kuwabara S, Kanai K. [Altered axonal ion channel function in amyotrophic lateral  
414 sclerosis]. *Brain Nerve*. 2007 Oct;59(10):1109-15. Japanese. PMID: 17969351.
- 415 14. Weber M, Eisen A, Stewart H, Hirota N. The split hand in ALS has a cortical basis. *J*  
416 *Neurol Sci*. 2000 Nov 1;180(1-2):66-70. doi: 10.1016/s0022-510x(00)00430-5. PMID:  
417 11090867.
- 418 15. Benny R, Shetty K. The split hand sign. *Ann Indian Acad Neurol*. 2012 Jul;15(3):175-6.  
419 doi: 10.4103/0972-2327.99700. PMID: 22919187; PMCID: PMC3424792.
- 420 16. Corcia P, Bede P, Pradat P, *et al.* Split-hand and split-limb phenomena in amyotrophic  
421 lateral sclerosis: pathophysiology, electrophysiology and clinical manifestations. *Journal*  
422 *of Neurology, Neurosurgery & Psychiatry* 2021;**92**:1126-1130.
- 423 17. GALNARES-OLALDE, Javier A. López-Hernández, Juan C. Saráchaga-Adib, Jorge de.  
424 *et al.* Split hand phenomenon: An early marker for amyotrophic lateral sclerosis. *Rev. mex.*

425 *neurocienc.* [online]. 2021, vol.22, n.4, pp.141-145. Epub 30-Jul-2021. ISSN 2604-  
426 6180. <https://doi.org/10.24875/rmn.20000135>

427

428 18. Tashiro K, Kikuchi S, Itoyama Y et al., “Nationwide survey of juvenile muscular atrophy  
429 of distal upper extremity (Hirayama disease) in Japan,” *Amyotrophic Lateral Sclerosis*, vol.  
430 7, no. 1, pp.38–45, 2006.

431 19. Kuwabara S, Sonoo M, Komori T, Shimizu T, Hirashima F, Inaba A, Misawa S, Hatanaka  
432 Y; Tokyo Metropolitan Neuromuscular Electrodiagnosis Study Group. Dissociated small  
433 hand muscle atrophy in amyotrophic lateral sclerosis: frequency, extent, and specificity.  
434 *Muscle Nerve*. 2008 Apr;37(4):426-30. doi: 10.1002/mus.20949. PMID: 18236469.

435 20. Cedarbaum JM, Stambler N, Malta E, Fuller C, Hilt D, Thurmond B, Nakanishi A. The  
436 ALSFRS-R: a revised ALS functional rating scale that incorporates assessments of  
437 respiratory function. BDNF ALS Study Group (Phase III). *J Neurol Sci*. 1999 Oct  
438 31;169(1-2):13-21. doi: 10.1016/s0022-510x(99)00210-5. PMID: 10540002.

439 21. Fong SY, Goh KJ, Shahrizaila N, Wong KT, Tan CT. Effects of demographic and physical  
440 factors on nerve conduction study values of healthy subjects in a multi-ethnic Asian  
441 population. *Muscle Nerve*. 2016 Aug;54(2):244-8. doi: 10.1002/mus.25029. Epub 2016  
442 May 19. PMID: 26790132.

443 22. Mariosa D, Beard JD, Umbach DM, Bellocco R, Keller J, Peters TL, Allen KD, Ye W,  
444 Sandler DP, Schmidt S, Fang F, Kamel F. Body Mass Index and Amyotrophic Lateral  
445 Sclerosis: A Study of US Military Veterans. *Am J Epidemiol*. 2017 Mar 1;185(5):362-371.  
446 doi: 10.1093/aje/kww140. PMID: 28158443; PMCID: PMC5860019.



- 447 23. Chen L, Zhang B, Chen R, Tang L, Liu R, Yang Y, Yang Y, Liu X, Ye S, Zhan S, Fan D.  
448 Natural history and clinical features of sporadic amyotrophic lateral sclerosis in China. *J*  
449 *Neurol Neurosurg Psychiatry*. 2015 Oct;86(10):1075-81. doi: 10.1136/jnnp-2015-310471.  
450 Epub 2015 Jun 29. PMID: 26124198.
- 451 24. Talman P, Duong T, Vucic S, *et al*. Identification and outcomes of clinical phenotypes in  
452 amyotrophic lateral sclerosis/motor neuron disease: Australian National Motor Neuron  
453 Disease observational cohort *BMJ Open* 2016;6:e012054. doi: 10.1136/bmjopen-2016-  
454 012054
- 455 25. Hirayama K. [Juvenile non-progressive muscular atrophy localized in the hand and  
456 forearm--observations in 38 cases]. *Rinsho Shinkeigaku*. 1972 Jul;12(7):313-24. Japanese.  
457 PMID: 4674765.
- 458 26. Zhou B, Chen L, Fan D, Zhou D. Clinical features of Hirayama disease in mainland China.  
459 *Amyotroph Lateral Scler*. 2010;11(1-2):133-9. doi: 10.3109/17482960902912407. PMID:  
460 19412815.
- 461 27. de Carvalho M, Dengler R, Eisen A, England JD, Kaji R, Kimura J, Mills K, Mitsumoto  
462 H, Nodera H, Shefner J, Swash M. Electrodiagnostic criteria for diagnosis of ALS. *Clin*  
463 *Neurophysiol*. 2008 Mar;119(3):497-503. doi: 10.1016/j.clinph.2007.09.143. Epub 2007  
464 Dec 27. PMID: 18164242.
- 465 28. Li TM, Swash M, Alberman E, Day SJ. Diagnosis of motor neuron disease by neurologists:  
466 a study in three countries. *J Neurol Neurosurg Psychiatry*. 1991 Nov;54(11):980-3. doi:  
467 10.1136/jnnp.54.11.980. PMID: 1800671; PMCID: PMC1014620.
- 468 29. Rooney J, Byrne S, Heverin M, Tobin K, Dick A, Donaghy C, *et al*. A multidisciplinary  
469 clinic approach improves survival in ALS: a comparative study of ALS in Ireland and

- 470 Northern Ireland. *Journal of neurology, neurosurgery, and psychiatry*. 2015;86(5):496–  
471 501. pmid:25550416
- 472 30. Bademain Jean Fabrice Ido, Imen Kacem, Mahamadi Ouedraogo, Amina Nasri, Saloua  
473 Mrabet, Amina Gargouri, Mouna Ben Djebara, Bawindsongré Jean Kabore, Riadh  
474 Gouider, "Sensitivity of Awaji Criteria and Revised El Escorial Criteria in the Diagnosis  
475 of Amyotrophic Lateral Sclerosis (ALS) at First Visit in a Tunisian Cohort", *Neurology*  
476 *Research International*, vol. 2021, Article  
477 ID 8841281, 6 pages, 2021. <https://doi.org/10.1155/2021/8841281>
- 478 31. Singh RJ, Preethish-Kumar V, Polavarapu K, Vengalil S, Prasad C, Nalini A. Reverse split  
479 hand syndrome: Dissociated intrinsic hand muscle atrophy pattern in Hirayama  
480 disease/brachial monomelic amyotrophy. *Amyotroph Lateral Scler Frontotemporal*  
481 *Degener*. 2017 Feb;18(1-2):10-16. doi: 10.1080/21678421.2016.1223140. Epub 2016 Aug  
482 30. PMID: 27575868.
- 483 32. Kalita J, Kumar S, Misra UK, Neyaz Z. Split hand index and ulnar to median ratio in  
484 Hirayama disease and amyotrophic lateral sclerosis. *Amyotroph Lateral Scler*  
485 *Frontotemporal Degener*. 2017 Nov;18(7-8):598-603. doi:  
486 10.1080/21678421.2017.1336561. Epub 2017 Jun 15. PMID: 28616933
- 487 33. Zhang Z, Rousson V, Lee WC, Ferdynus C, Chen M, Qian X, Guo Y; written on behalf of  
488 AME Big-Data Clinical Trial Collaborative Group. Decision curve analysis: a technical  
489 note. *Ann Transl Med*. 2018 Aug;6(15):308. doi: 10.21037/atm.2018.07.02. PMID:  
490 30211196; PMCID: PMC6123195.

- 491 34. Schisterman EF, Faraggi D, Reiser B, Hu J. Youden Index and the optimal threshold for  
492 markers with mass at zero. *Stat Med.* 2008 Jan 30;27(2):297-315. doi: 10.1002/sim.2993.  
493 PMID: 17624866; PMCID: PMC2749250.
- 494 35. Yoshor, D., Klugh, A., Appel, S. H. & Haverkamp, L. J. Incidence and characteristics of  
495 spinal decompression surgery after the onset of symptoms of amyotrophic lateral  
496 sclerosis. *Neurosurgery.* **57**, 984–988 (2005).

## 497 **Supporting Information**

- 498 S1- Correlation between the disease severity of ALS assessed with ALS functional rating scale and  
499 the APB-FDI index

500

501

502

503

504

505

506

507

508

509

510

511

512

513

514

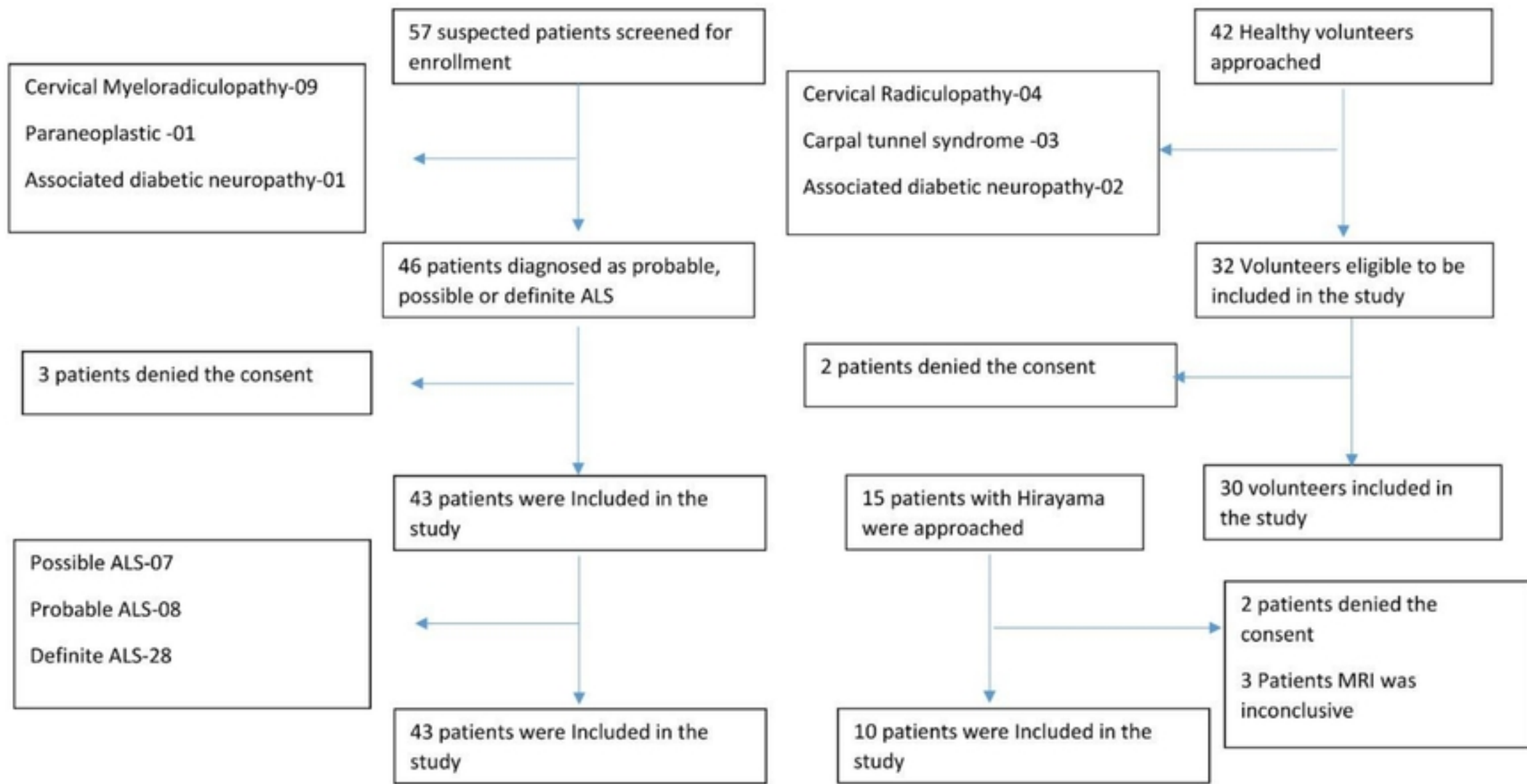


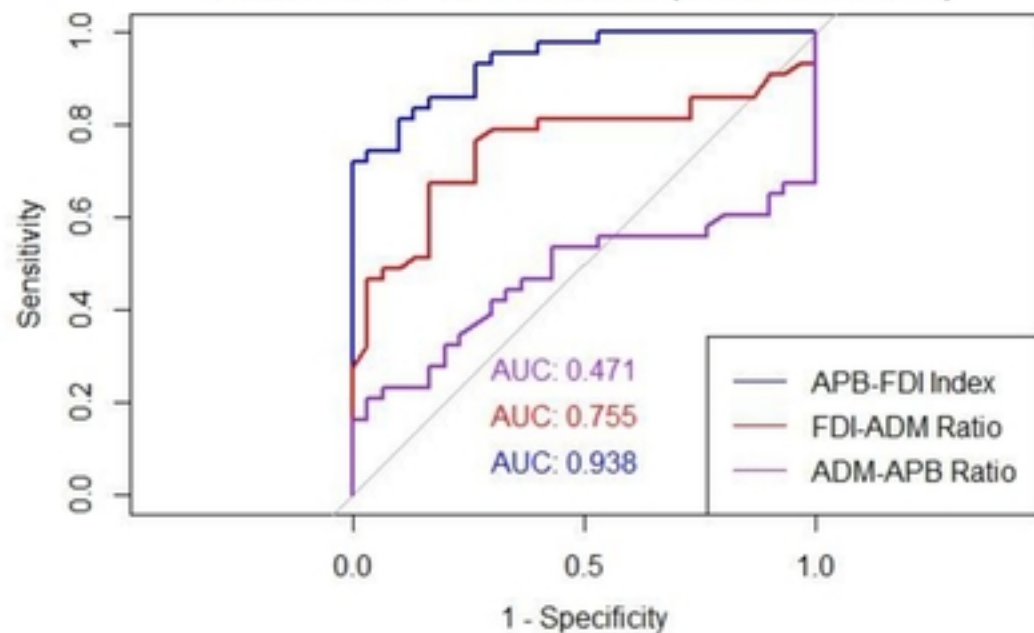
Figure 1

## **Figure 1: Patients and volunteer selection for this study**

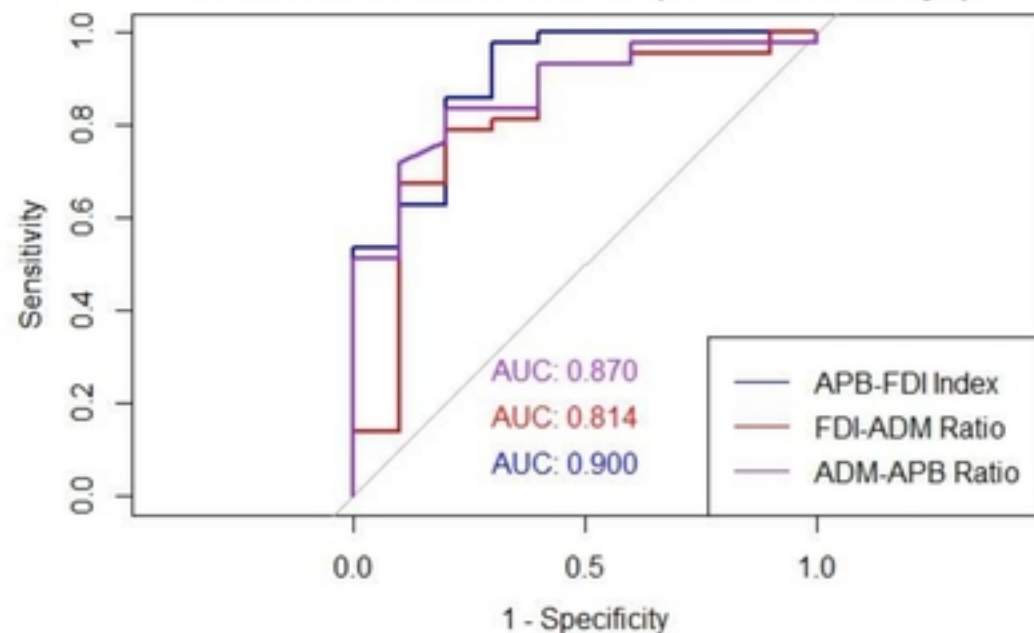
We screened 57 suspected patients with Motor Neuron Disease and included 43 patients after screening. We had 30 healthy volunteers and ten patients with Hirayama disease for comparison

medRxiv preprint doi: <https://doi.org/10.1101/2023.08.04.23293649>; this version posted August 8, 2023. The copyright holder for this preprint (which was not certified by peer review) is the author/funder, who has granted medRxiv a license to display the preprint in perpetuity. It is made available under a [CC-BY 4.0 International license](#) .

**ROC Curves of ALS Indices (Case vs Control)**



**ROC Curves of ALS Indices (Case vs Hiramaya)**



Index/Ratio	AUC	95%CI	P-value	Optimal cut-off	sensitivity	specificity	Youden's index
<b>FDI-APB index</b>	0.938	0.889-0.987	<0.001	4.27	72.09	100	0.7209
<b>FDI-ADM ratio</b>	0.755	0.641-0.870	<0.001	1.04	67.44	83.33	0.5078
<b>ADM-APB</b>	0.471	0.336-0.606	0.67	2.205	20.93	96.67	0.1760

Index/Ratio	AUC	95%CI	P-value	Optimal cut-off	sensitivity	specificity	Youden's index
<b>FDI-APB index</b>	0.900	0.786-1.0	<0.001	11.66	0.977	0.7	0.677
<b>FDI-ADM ratio</b>	0.814	0.643-0.985	0.0003	1.215	0.791	0.8	0.591
<b>ADM-APB</b>	0.870	0.758-0.982	<0.001	0.325	0.837	0.8	0.637

**Figure 2**

**Figure 2: Comparison of the ROC curve and diagnostic performances of APB-FDI Index, ADM-APB CMAP amplitude ratio, and FDI-ADM CMAP amplitude ratio**

medRxiv preprint doi: <https://doi.org/10.1101/2023.08.04.23293649>; this version posted August 8, 2023. The copyright holder for this preprint (which was not certified by peer review) is the author/funder, who has granted medRxiv a license to display the preprint in perpetuity. It is made available under a [CC-BY 4.0 International license](#) .



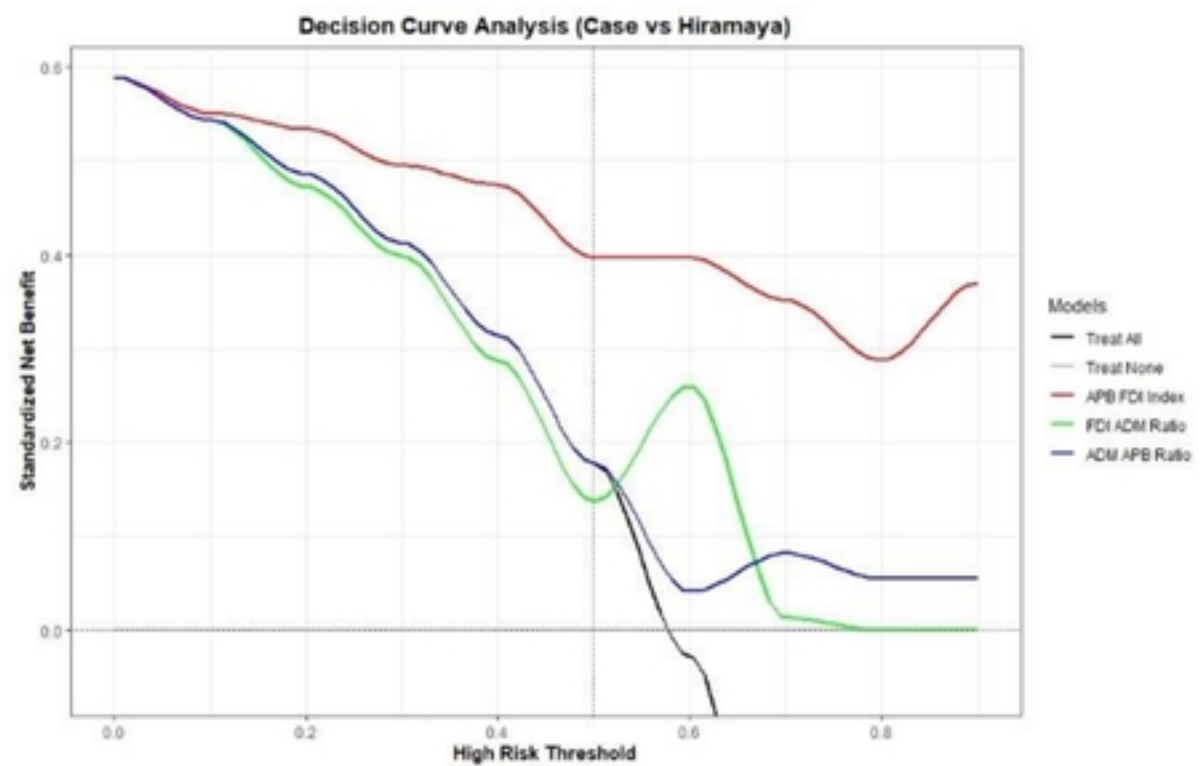
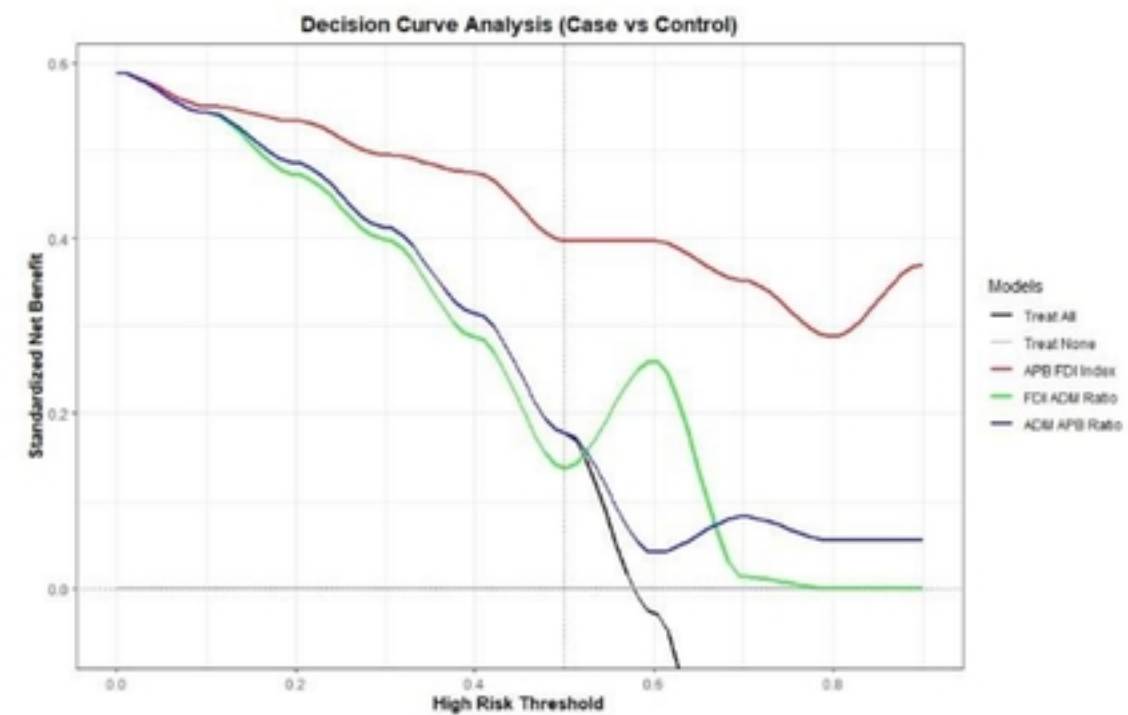


Figure 3