

The Therapy Intensity Level scale for traumatic brain injury: clinimetric assessment on neuro-monitored patients across 52 European intensive care units

Shubhayu Bhattacharyay^{1,2,*}, Erta Beqiri³, Patrick Zuercher⁴, Lindsay Wilson⁵, Ewout W Steyerberg⁶, David W Nelson⁷, Andrew I R Maas^{8,9}, David K Menon¹, Ari Ercole^{1,10}, and the CENTER-TBI investigators and participants[†]

¹Division of Anaesthesia, University of Cambridge, Cambridge, United Kingdom.

²Department of Clinical Neurosciences, University of Cambridge, Cambridge, United Kingdom.

³Brain Physics Laboratory, Division of Neurosurgery, University of Cambridge, Cambridge, United Kingdom.

⁴Department of Intensive Care Medicine, Inselspital, Bern University Hospital, University of Bern, Switzerland.

⁵Division of Psychology, University of Stirling, Stirling, United Kingdom.

⁶Department of Biomedical Data Sciences, Leiden University Medical Center, Leiden, The Netherlands.

⁷Department of Physiology and Pharmacology, Section for Perioperative Medicine and Intensive Care, Karolinska Institutet, Stockholm, Sweden.

⁸Department of Neurosurgery, Antwerp University Hospital, Edegem, Belgium.

⁹Department of Translational Neuroscience, Faculty of Medicine and Health Science, University of Antwerp, Antwerp, Belgium.

¹⁰Cambridge Centre for Artificial Intelligence in Medicine, Cambridge, United Kingdom.

*Corresponding author: sb2406@cam.ac.uk (SB)

†A full list of the CENTER-TBI investigators and participants are listed after the acknowledgements.

Running title: Assessment of the Therapy Intensity Level scale

Keywords: traumatic brain injury, therapy intensity level, intracranial pressure, intensive care unit, clinimetrics

Shubhayu Bhattacharyay

sb2406@cam.ac.uk

+44 (0)1223 217889

Division of Anaesthesia, University of Cambridge,

Box 93, Addenbrooke's Hospital,

Hills Road,

Cambridge CB2 0QQ, United Kingdom

Erta Beqiri

vb391@cam.ac.uk

+44 (0)7912 138171

Brain Physics Lab, Division of Neurosurgery, University of Cambridge,

Box 167, Level A4, A Block, Addenbrooke's Hospital,

Hills Road,

Cambridge CB2 0QQ, United Kingdom

Patrick Zuercher

patrick.zuercher@insel.ch

+41 31 664 15 77

Department of Intensive Care Medicine, Inselspital,

Lindsay Wilson
Bern University Hospital, University of Bern,
Freiburgstrasse 18,
CH-3010 Bern, Switzerland
l.wilson@stir.ac.uk
+44 (0)1786 473171
Division of Psychology,
Faculty of Natural Sciences,
University of Stirling,
Stirling FK9 4LA, United Kingdom

Ewout W Steyerberg
e.w.steyerberg@lumc.nl
+31 (0)71 5269700
Dept of Biomedical Data Sciences, Leiden University Medical Center,
Leiden, The Netherlands

David W Nelson
david.nelson@regionstockholm.se
+46 812379168
Function Perioperative medicine and Intensive Care (PMI),
Karolinska University Hospital, Solna,
17176 Stockholm, Sweden

Andrew I R Maas
andrew.maas@uza.be
+32 38214632
Department of Neurosurgery, Antwerp University Hospital,
Drie Eikenstraat 655, 2650 Edegem, Belgium

David K Menon
dkm13@cam.ac.uk
+44 (0)1223 217889
Division of Anaesthesia, University of Cambridge,
Box 93, Addenbrooke's Hospital,
Hills Road,
Cambridge CB2 0QQ, United Kingdom

Ari Ercole
ae105@cam.ac.uk
+44 (0)1223 217889
Division of Anaesthesia, University of Cambridge,
Box 93, Addenbrooke's Hospital,
Hills Road,
Cambridge CB2 0QQ, United Kingdom

35 ABSTRACT

36
37 Intracranial pressure (ICP) data from traumatic brain injury (TBI) patients in the intensive
38 care unit (ICU) cannot be interpreted appropriately without accounting for the effect of
39 administered therapy intensity level (TIL) on ICP. A 15-point scale was originally proposed
40 in 1987 to quantify the hourly intensity of ICP-targeted treatment. This scale was
41 subsequently modified – through expert consensus – during the development of TBI
42 Common Data Elements to address statistical limitations and improve usability. The
43 latest, 38-point scale (hereafter referred to as TIL) permits integrated scoring for a 24-
44 hour period and has a five-category, condensed version (TIL^(Basic)) based on qualitative
45 assessment. Here, we perform a total- and component-score analysis of TIL and TIL^(Basic)
46 to: (1) validate the scales across the wide variation in contemporary ICP management,
47 (2) compare their performance against that of predecessors, and (3) derive guidelines for
48 proper scale use. From the observational Collaborative European NeuroTrauma
49 Effectiveness Research in TBI (CENTER-TBI) study, we extract clinical data from a
50 prospective cohort of ICP-monitored TBI patients ($n=873$) from 52 ICUs across 19
51 countries. We calculate daily TIL and TIL^(Basic) scores (TIL₂₄ and TIL^(Basic)₂₄, respectively)
52 from each patient's first week of ICU stay. We also calculate summary TIL and TIL^(Basic)
53 scores by taking the first-week maximum (TIL_{max} and TIL^(Basic)_{max}) and first-week median
54 (TIL_{median} and TIL^(Basic)_{median}) of TIL₂₄ and TIL^(Basic)₂₄ scores for each patient. We find that,
55 across all measures of construct and criterion validity, the latest TIL scale performs
56 significantly greater than or similarly to all alternative scales (including TIL^(Basic)) and
57 integrates the widest range of modern ICP treatments. TIL_{median} outperforms both TIL_{max}
58 and summarised ICP values in detecting refractory intracranial hypertension (RICH)
59 during ICU stay. The RICH detection thresholds which maximise the sum of sensitivity
60 and specificity are TIL_{median}≥7.5 and TIL_{max}≥14. The TIL₂₄ threshold which maximises the
61 sum of sensitivity and specificity in the detection of surgical ICP control is TIL₂₄≥9. The
62 median scores of each TIL component therapy over increasing TIL₂₄ reflect a credible
63 staircase approach to treatment intensity escalation, from head positioning to surgical ICP
64 control, as well as considerable variability in the use of cerebrospinal fluid drainage and
65 decompressive craniectomy. Since TIL^(Basic)_{max} suffers from a strong statistical ceiling
66 effect and only covers 17% (95% CI: 16–18%) of the information in TIL_{max}, TIL^(Basic) should
67 not be used instead of TIL for rating maximum treatment intensity. TIL^(Basic)₂₄ and
68 TIL^(Basic)_{median} can be suitable replacements for TIL₂₄ and TIL_{median}, respectively (with up
69 to 33% [95% CI: 31–35%] information coverage) when TIL assessment is infeasible.
70 Accordingly, we derive numerical ranges for categorising TIL₂₄ scores into TIL^(Basic)₂₄
71 scores. In conclusion, our results validate TIL across a spectrum of ICP management and
72 monitoring approaches. TIL is a more sensitive surrogate for pathophysiology than ICP
73 and thus can be considered an intermediate outcome after TBI.

74 MAIN TEXT

75

76 Introduction

77

78 Elevated intracranial pressure (ICP) following traumatic brain injury (TBI) may impede the
79 potential recovery of injured brain tissue and damage initially unaffected brain regions.¹
80 Therefore, for TBI patients admitted to the intensive care unit (ICU), clinicians often
81 monitor ICP and apply a wide range of ICP-reducing treatments.² The selective use of
82 these treatments typically follows a staircase approach, in which therapeutic intensity –
83 defined by the risk and complexity of each treatment – is incrementally escalated until
84 adequate ICP control is achieved.^{3–5} Thus, therapeutic intensity must be considered when
85 interpreting ICP. Even if two TBI patients have comparable ICP values, a difference in the
86 intensity of their ICP-directed therapies likely indicates a difference in pathophysiological
87 severity.

88

89 Several versions of the Therapy Intensity Level (TIL) scale have been developed to rate
90 and compare the overall intensity of ICP management amongst TBI patients. TIL scales
91 assign a relative intensity score to each ICP-targeting therapy and return either the sum
92 or the maximum value of the scores of simultaneously applied therapies. In 1987, Maset
93 *et al.* produced the original, 15-point TIL scale (TIL⁽¹⁹⁸⁷⁾) to be assessed once every four
94 hours.⁶ In 2006, Shore *et al.* published the 38-point Paediatric Intensity Level of Therapy
95 (PILOT) scale,⁷ revising TIL⁽¹⁹⁸⁷⁾ to: (1) represent updated paediatric TBI management
96 practices, (2) have a more practical, daily assessment frequency, and (3) resolve a
97 statistical ceiling effect. In 2011, the interagency TBI Common Data Elements (CDE)
98 scheme developed the most recent, 38-point TIL scale (hereafter referred to as TIL) as
99 well as a condensed, five-category TIL^(Basic) scale through expert consensus.⁸ The TIL
100 scale revised PILOT to integrate additional ICP-directed therapies and to be applicable
101 to adult TBI management. Moreover, TIL^(Basic) was proposed as a simple, categorical
102 measure to use when full TIL assessment would be infeasible. Since Zuercher *et al.*
103 reported the validity and reliability of TIL in a two-centre cohort ($n=31$) in 2016,⁹ the scale
104 has become a popular research metric for quantifying ICP treatment intensity.^{10–13}

105

106 However, several critical questions regarding TIL remain unanswered. It is uncertain
107 whether the validity of TIL, reported in a relatively small population, can be generalised
108 across the wide variation of ICP management, monitoring, and data acquisition (i.e.,
109 intermittent chart recording or high-resolution storage¹⁴) strategies practised in
110 contemporary intensive care.^{11,12,15,16} Furthermore, the scoring configuration of TIL has
111 never been tested against alternatives (e.g., TIL⁽¹⁹⁸⁷⁾ and PILOT), and the relative
112 contribution of TIL's component therapies towards the total score is unknown. It is unclear
113 how TIL^(Basic) numerically relates to TIL and if the former captures the essential information
114 of the latter. In this work, we aimed to answer these questions by performing a
115 comprehensive assessment of TIL on a large, contemporary population of ICP-monitored
116 TBI patients across European ICUs.

117

118 Materials and Methods

119

120 **Therapy intensity level (TIL) and alternative scales**

121

122 TIL refers to the 38-point scale developed by the CDE scheme for TBI.⁸ The domain or
123 construct (i.e., targeted concept of a scale) of TIL is the therapeutic intensity of ICP
124 management. The TIL scale has twelve items, each representing a distinct ICP-targeting
125 treatment from one of eight modalities, as defined in Table 1. TIL was developed by an
126 international expert panel which discussed: (1) the relevant ICP-treatment modalities of
127 modern intensive care, (2) the relative risk and efficacy of individual therapies to derive
128 scores, and (3) practical and statistical limitations of previous TIL scores.⁸ In this way, TIL
129 is a formative measurement model, in which the construct (i.e., ICP treatment intensity)
130 is not unidimensional but rather defined by the combination of items (i.e., ICP-targeting
131 treatments).¹⁷ TIL was shown to have high interrater and intrarater reliability by Zuercher
132 *et al.*⁹ If a decompressive craniectomy was performed as a last resort for refractory
133 intracranial hypertension, its score was included in the day of the operation and in every
134 subsequent day of ICU stay. TIL scores can be calculated as frequently as clinically
135 desired. For our analysis, we calculated the following TIL scores from the first seven days
136 of ICU stay:

- 137 • TIL₂₄, the daily TIL score based on the sum of the highest scores per item per
138 calendar day,
- 139 • TIL_{max}, the maximum TIL₂₄ over the first week of a patient's ICU stay,
- 140 • TIL_{median}, the median TIL₂₄ over the first week of a patient's ICU stay.

141

142 We also calculated scores from four other therapeutic intensity scales to compare with
143 TIL scores. The 21-point, unweighted TIL (uwTIL) scale replaces each sub-item score in
144 TIL with its ascending rank index (i.e., 1, 2, 3, ...) within each item (Table 1). The five-
145 category TIL^(Basic) was also developed by the CDE scheme for TBI and takes the
146 maximum score, from zero (i.e., no ICP-related intervention) to four, amongst all included
147 sub-items over the calendar day.⁸ We adapted the 38-point PILOT⁷ and 15-point TIL⁽¹⁹⁸⁷⁾
148 scales⁶ with minor adjustments to fit the items of TIL with a daily assessment frequency.
149 PILOT was also shown to have high interrater and intrarater reliability by Shore *et al.*⁷
150 For the four alternative scales, daily (i.e., uwTIL₂₄, TIL^(Basic)₂₄, PILOT₂₄, and TIL⁽¹⁹⁸⁷⁾₂₄),
151 maximum (i.e., uwTIL_{max}, TIL^(Basic)_{max}, PILOT_{max}, and TIL⁽¹⁹⁸⁷⁾_{max}), and median (i.e.,
152 uwTIL_{median}, TIL^(Basic)_{median}, PILOT_{median}, and TIL⁽¹⁹⁸⁷⁾_{median}) scores were calculated in the
153 same way as TIL₂₄, TIL_{max}, and TIL_{median}, respectively.

154

155 **Study design and populations**

156

157 Our study population was prospectively recruited for the Collaborative European
158 NeuroTrauma Effectiveness Research in Traumatic Brain Injury (CENTER-TBI) core and
159 high-resolution studies. CENTER-TBI is a longitudinal, observational cohort study
160 (NCT02210221) involving 65 medical centres across 18 European countries and Israel.
161 Patients were recruited between 19 December 2014 and 17 December 2017 if they met
162 the following criteria: (1) presentation within 24 hours of a TBI, (2) clinical indication for a
163 CT scan, and (3) no severe pre-existing neurological disorder. In accordance with

164 relevant laws of the European Union and the local country, ethical approval was obtained
165 for each site, and written informed consent by the patient or legal representative was
166 documented electronically. The list of sites, ethical committees, approval numbers, and
167 approval dates can be found online: <https://www.center-tbi.eu/project/ethical-approval>.
168 The project objectives and design of CENTER-TBI have been described in detail
169 previously.^{18,19}

170
171 In this work, we applied the following inclusion criteria in addition to those of CENTER-
172 TBI (Fig. 1): (1) primary admission to the ICU, (2) at least 16 years old at ICU admission,
173 (3) invasive ICP monitoring, (4) no decision to withdraw life-sustaining therapies (WLST)
174 on the first day of ICU stay, and (5) daily assessment of TIL.

175
176 For our sub-studies evaluating the association between TIL and ICP-derived values, we
177 created two sub-populations based on the type of ICP values available. Patients with end-
178 hour ICP (ICP_{EH}) values, which were recorded by clinicians at the end of every other hour,
179 constituted the TIL-ICP_{EH} sub-population. Patients with high-resolution ICP values
180 (ICP_{HR}), which were automatically stored with monitoring software, constituted the TIL-
181 ICP_{HR} sub-population. All patients in the TIL-ICP_{HR} sub-population were also members of
182 the TIL-ICP_{EH} sub-population (Fig. 1).

183 184 **Data collection**

185
186 Data for the CENTER-TBI study was collected through the QuesGen electronic case
187 report form system (QuesGen Systems Inc, Burlingame, CA, USA) hosted on the
188 International Neuroinformatics Coordinating Facility (INCF) platform (INCF, Stockholm,
189 Sweden). All data for the validation populations, except high-resolution signals, were
190 extracted from the CENTER-TBI core study¹⁹ (v3.0, ICU stratum) using Opal database
191 software.²⁰

192 193 **ICP management data for TIL calculation**

194
195 Since TIL₂₄ was found to be a reliable summary of hourly TIL,⁹ clinical data pertinent to
196 the component items of TIL (i.e., ICP-guided treatments, Table 1) were recorded daily
197 through the first week of ICU stay. We extracted all daily TIL item values for our
198 population, and calculated TIL₂₄, uwTIL₂₄, TIL^(Basic)₂₄, PILOT₂₄, and TIL⁽¹⁹⁸⁷⁾₂₄ as defined
199 in Table 1. For patients who underwent WLST after the first day of ICU stay, we only
200 extracted TIL item information from before the documented date of WLST decision.

201 202 **ICP_{EH} and related values**

203
204 End-hour ICP (ICP_{EH}), systolic blood pressure (SBP_{EH}), and diastolic blood pressure
205 (DBP_{EH}) were recorded by clinicians every two hours for the TIL-ICP_{EH} sub-population.
206 Mean arterial pressure (MAP_{EH}) was calculated as $MAP_{EH} = (SBP_{EH} + 2DBP_{EH})/3$, and
207 cerebral perfusion pressure (CPP_{EH}) was calculated as $CPP_{EH} = MAP_{EH} - ICP_{EH}$. From
208 ICP_{EH} and CPP_{EH}, we calculated the following values:

- 209 • ICP₂₄ or CPP₂₄, the mean ICP or CPP value over a calendar day of ICU stay,
- 210 • ICP_{max} or CPP_{min}, the maximum ICP₂₄ or minimum CPP₂₄ value over the first week
- 211 of a patient's ICU stay,
- 212 • ICP_{median} or CPP_{median}, the median ICP₂₄ or CPP₂₄ value over the first week of a
- 213 patient's ICU stay.

214

215 *ICP_{HR} and related values*

216

217 High-resolution signals were collected using either ICM+ software (Cambridge Enterprise
218 Ltd, Cambridge, UK; <http://icmplus.neurosurg.cam.ac.uk>), Moberg CNS monitor (Moberg
219 Research Inc, Ambler, PA, USA; <https://www.moberg.com>), or both. Blood pressure was
220 obtained through arterial lines connected to pressure transducers. High-resolution ICP
221 (ICP_{HR}) was acquired from either an intraparenchymal strain gauge probe (Codman ICP
222 MicroSensor, Codman & Shurtleff Inc, Raynham, MA, USA), a parenchymal fibre optic
223 pressure sensor (Camino ICP Monitor, Integra Life Sciences, Plainsboro, NJ, USA;
224 <https://www.integralife.com/>), or an external ventricular drain. Detailed data collection and
225 pre-processing methods (i.e., artefact cleaning and down-sampling to ten-second
226 averaged time series) applied to high resolution signals in our study have been described
227 previously.²¹ Ten-second averaged ICP (ICP_{HR_10sec}) and CPP (CPP_{HR_10sec}) time-series
228 were retrieved for this analysis, and, from ICP_{HR_10sec} and CPP_{HR_10s}, we calculated
229 ICP₂₄/CPP₂₄, ICP_{max}/CPP_{min}, and ICP_{median}/CPP_{median} as described above.

230

231 *Physician impressions*

232

233 Attending ICU physicians were asked to record their daily concerns with the patient's ICP
234 and CPP, separately, on a scale from one (not concerned) to ten (most concerned).
235 Moreover, on each patient's ICU discharge summary, physicians were asked to record
236 whether the patient experienced refractory intracranial hypertension during his or her ICU
237 stay. Refractory intracranial hypertension was defined as recurrent, sustained (i.e., of at
238 least ten minutes) increases of ICP above 20 mmHg despite medical ICP management.
239 We extracted the daily ICP/ CPP concern ratings and refractory intracranial hypertension
240 impressions which coincided with the ICU stays of our population.

241

242 *Baseline characteristics, prognosis, and outcome*

243

244 We extracted baseline demographic characteristics, Marshall CT classifications,²² and
245 Glasgow Coma Scale (GCS)²³ scores from ICU admission.²⁴ We also extracted Glasgow
246 Outcome Scale – Extended (GOSE) functional outcome scores at six months post-
247 injury,²⁵ with imputation of missing values as previously described.²⁶ Finally, we extracted
248 ordinal functional outcome prognosis scores, calculated from a tokenised embedding of
249 all available clinical information in the first 24 hours of ICU stay, as described previously.²⁷

250

251 *Validation*

252

253 We appraised the validity of TIL according to recommendations of best practice from
254 clinimetric literature.²⁸ Based on the identified domain of TIL, we evaluated the construct
255 and criterion validities of TIL. Our qualitative and quantitative assessments of TIL were
256 performed against those of alternative scoring configurations (Table 1) for comparison.
257

258 *Construct validity*

259
260 Construct validity is the extent to which a clinical scale matches expectations of
261 associations with parameters within or outside the identified domain. Construct validity is
262 further broken down into convergent validity (i.e., associations with similar constructs),
263 discriminant validity (i.e., associations with divergent constructs), and differentiation by
264 known groups. In this work, statistical associations between study variables were
265 measured with:

- 266 • Spearman's correlation coefficients (ρ) for static (i.e., measured once) variables,
- 267 • repeated measures correlation coefficients (r_{rm})²⁹ – interpreted as within-individual
268 strength of association – for longitudinal (i.e., measured over time) variables,
- 269 • linear mixed effects regression (LMER) coefficients (β_{LMER}) of daily scale scores
270 (e.g., TIL₂₄) when regressing ICP₂₄ or CPP₂₄ on daily scale scores and the day of
271 ICU stay (Day_{ICU}), accounting for inter-patient variability with random intercepts.
272 Therefore, β_{LMER} were interpreted as the expected difference in ICP₂₄ or CPP₂₄ per
273 unit increase of daily scale score, independent of time since ICU admission or
274 inter-patient variation.
275

276 For convergent validity, we expected therapeutic intensity to correlate at least mildly (i.e.,
277 $|\rho| \geq 0.2$, $|r_{rm}| \geq 0.2$, $|\beta_{LMER}| > 0$) with markers of injury severity (i.e., baseline GCS and
278 baseline outcome prognoses), functional outcome (i.e., six-month GOSE), clinical
279 concerns of ICP status, and ICP itself. Accordingly, we calculated: (1) ρ values between
280 TIL_{max} and GCS, ordinal prognosis scores, GOSE, and ICP_{max}, (2) ρ values between
281 TIL_{median} and GCS, ordinal prognosis scores, GOSE, and ICP_{median}, (3) r_{rm} values between
282 TIL₂₄ and physician concern of ICP and ICP₂₄, and (4) β_{LMER} of TIL₂₄ when regressing
283 ICP₂₄ on Day_{ICU} and TIL₂₄ (i.e., $ICP_{24} \sim Day_{ICU} + TIL_{24}$), accounting for inter-patient
284 variability with random intercepts.
285

286 For discriminant validity, we expected therapeutic intensity to be more strongly correlated
287 with ICP and physician concerns of ICP than with CPP and physician concerns of CPP,
288 respectively. Even though CPP control through fluid loading or vasopressor therapy is a
289 component modality of TIL (Table 1), we expected TIL to capture ICP management (i.e.,
290 the construct) more accurately than CPP management. We compared: (1) ρ values of
291 TIL_{max} vs. CPP_{min} to those of TIL_{max} vs. ICP_{max}, (2) ρ values of TIL_{median} vs. CPP_{median} to
292 those of TIL_{median} vs. ICP_{median}, (3) r_{rm} values of TIL₂₄ vs. CPP₂₄ to those of TIL₂₄ vs. ICP₂₄,
293 and (4) the β_{LMER} of TIL₂₄ when regressing CPP₂₄ ~ Day_{ICU} + TIL₂₄ to the β_{LMER} of TIL₂₄ when
294 regressing ICP₂₄ ~ Day_{ICU} + TIL₂₄.
295

296 For differentiation by known groups, we expected TIL_{max} and TIL_{median} to effectively
297 discriminate patients who experienced refractory intracranial hypertension during ICU
298 stay from those who did not. We calculated the area under the receiver operating

299 characteristic curve (AUC), which, in our case, was interpreted as the probability of a
300 randomly selected patient with refractory intracranial hypertension having a higher TIL_{max}
301 or TIL_{median} score than one without it. We also compared the AUCs of TIL_{max} and TIL_{median}
302 to ICP_{max} and ICP_{median} and determined the sensitivity and specificity of refractory
303 intracranial hypertension detection at each threshold of TIL_{max} and TIL_{median} .
304

305 *Criterion validity*

306
307 Criterion (or concurrent) validity is the degree to which there is an association between a
308 clinical scale and other scales measuring the same construct, particularly a gold standard
309 assessment. Since there is no extant “gold standard” for assessing ICP management
310 intensity, we tested the concurrent criterion validity of TIL by calculating its associations
311 with its predecessors (i.e., PILOT and $TIL^{(1987)}$), mindful of their limitations as described
312 above. More specifically, we calculated: (1) ρ values between TIL_{max} and prior scale
313 maximum scores (i.e., $PILOT_{max}$ and $TIL^{(1987)}_{max}$), (2) ρ values between TIL_{median} and prior
314 scale median scores (i.e., $PILOT_{median}$ and $TIL^{(1987)}_{median}$), and (3) r_{rm} between TIL_{24} and
315 prior scale daily scores (i.e., $PILOT_{24}$ and $TIL^{(1987)}_{24}$).
316

317 *Component item analysis*

318
319 We evaluated inter-item (i.e., inter-treatment) and adjusted item-total associations of
320 TIL_{24} , $uwTIL_{24}$, $PILOT_{24}$, and $TIL^{(1987)}_{24}$ by calculating r_{rm} values. Item-total correlations
321 were adjusted by subtracting the tested item score from the total score prior to calculating
322 the correlation. We measured Cronbach’s alpha (α) to assess internal reliability amongst
323 scale items at each day of ICU stay. Moreover, we calculated the median score
324 contribution of each item per total TIL_{24} score. The association between each TIL_{24} item
325 score and ICP_{24} , CPP_{24} , physician concern of ICP, and physician concern of CPP was
326 calculated with r_{rm} values. Finally, we trained LMER models regressing ICP_{24} and CPP_{24}
327 on all TIL items (with categorical dummy encoding) and Day_{ICU} concurrently. The β_{LMER}
328 values from these models were interpreted as the average change in ICP_{24} or CPP_{24}
329 associated with each treatment when accounting for all other ICP-guided treatments, time
330 since ICU admission, and inter-patient variability with random intercepts.
331

332 *$TIL^{(Basic)}$ information coverage*

333
334 We examined the distributions of $TIL^{(Basic)}_{24}$ per TIL_{24} and TIL_{24} per $TIL^{(Basic)}_{24}$ to derive
335 thresholds for categorising TIL_{24} into $TIL^{(Basic)}_{24}$. We also calculated the information
336 coverage (IC) of $TIL^{(Basic)}$ by dividing the mutual information (MI) of $TIL^{(Basic)}$ and TIL by
337 the entropy of TIL. IC was calculated with $TIL^{(Basic)}_{24}$ and TIL_{24} for days one through seven
338 of ICU stay, with $TIL^{(Basic)}_{max}$ and TIL_{max} , and with $TIL^{(Basic)}_{median}$ and TIL_{median} .
339

340 *Statistical analysis*

341

342 *Multiple imputation of missing values*

343
344 Five of the static study variables had missing values for some of the patients in our study:
345 GCS, GOSE, baseline prognosis scores, Marshall CT classifications, and refractory
346 intracranial hypertension status. We assessed the patterns of missingness
347 (Supplementary Fig. S1) and multiply imputed ($m=100$) these variables with independent,
348 stochastic predictive mean matching functions using the *mice* package³⁰ (v3.9.0) in R
349 (v4.2.3). We assumed these variables to be missing-at-random (MAR) (as previously
350 reported on CENTER-TBI data³¹) and supported this assumption by training imputation
351 models on all study measures as well as correlated auxiliary variables (e.g., raised ICP
352 during ICU stay).

353
354 For daily longitudinal study variables, we considered a value to be missing if the patient
355 was still in the ICU and WLST had not been decided on or before that day. We assessed
356 the longitudinal patterns of missingness (Supplementary Fig. S2) and multiply imputed
357 ($m=100$) these variables with the multivariate, time-series algorithm from the *Amelia II*
358 package³² (v1.7.6) in R over the first week of ICU stay. The algorithm exploits both
359 between-variable and within-variable correlation structures over time to stochastically
360 impute missing time series values in independently trained runs. We validated the MAR
361 assumption by identifying characteristics significantly associated with longitudinal
362 variable missingness (Supplementary Table S1) and included auxiliary information
363 associated with value missingness (e.g., reasons for stopping ICP monitoring) in the
364 imputation model.

365

366 *Statistical inference*

367
368 We calculated 95% confidence intervals (CI) for ρ , r_{rm} , β_{LMER} , AUC, sensitivity, specificity,
369 α , and IC values using bootstrapping with 1,000 resamples of unique patients. For each
370 resample, one of the 100 missing value imputations was randomly chosen. Therefore,
371 confidence intervals represented the uncertainty due to patient resampling and missing
372 value imputation.

373

374 *Code*

375
376 All statistical analyses were performed in Python (v3.8.2) or R, and all visualisations were
377 created in R. All scripts used in this study are publicly available on GitHub:
378 https://github.com/sbhattacharyay/CENTER-TBI_TIL.

379

380 **Results**

381

382 *Study population*

383

384 Of the 4,509 patients available for analysis in the CENTER-TBI core study, 873 patients
385 from 52 ICUs met the additional inclusion criteria of this work. Amongst them, 837

386 constituted the TIL-ICP_{EH} sub-population and 259 constituted the TIL-ICP_{HR} sub-
387 population (Fig. 1). Summary characteristics of the overall population as well as those of
388 the TIL-ICP_{EH} and TIL-ICP_{HR} sub-populations are detailed in Table 2. Apart from two of
389 the prognosis scores pertaining to the probability of returning to pre-injury life roles (i.e.,
390 Pr(GOSE>5) and Pr(GOSE>6)), none of the tested characteristics were significantly
391 different between patients in the TIL-ICP_{HR} sub-population and those outside of it (Table
392 2).

393
394 The median ICU stay duration of our population was 14 days (IQR: 7.8–23 days), and
395 83% ($n=726$) stayed through at least seven calendar days. At each day of ICU stay, less
396 than 2.4% of the expected TIL scores were missing (Supplementary Fig. S2). Each TIL
397 component item (Table 1) is represented by at least 17% ($n=147$, intracranial surgery)
398 and each sub-item is represented by at least 4.9% ($n=43$, high-dose mannitol) of the
399 population (Supplementary Table S2). The distributions of TIL_{max}, TIL_{median}, and TIL₂₄,
400 juxtaposed against the scores of alternative scales (Table 1), are displayed in Fig. 2. The
401 distributions of TIL and PILOT were visually similar, and TIL^(Basic)_{max} had a strong ceiling
402 effect (i.e., 57% of the population had the maximum score). Whilst there was no significant
403 difference in TIL₂₄ distribution over the first seven days, most patients had their highest
404 TIL₂₄ (i.e., TIL_{max}) soon after ICU admission (median: day two, IQR: days one–three). The
405 Spearman's rank correlation coefficient (ρ) between TIL_{max} and TIL_{median} was 0.80 (95%
406 CI: 0.77–0.82), and the median TIL_{median}:TIL_{max} ratio was 0.65 (IQR: 0.45–0.80).

407 408 **Validation of TIL**

409
410 The 95% CIs of ρ values, repeated measures correlation coefficients (r_{rm}), and linear
411 mixed effect regression coefficients (β_{LMER}) of TIL with other study measures are
412 visualised in Fig. 3. Both TIL_{max} and TIL_{median} had mildly negative correlations (-
413 $0.26 < \rho_{\text{mean}} < -0.19$) with baseline GCS, six-month GOSE, and functional outcome
414 prognoses (Fig. 3A–B). The within-individual association of TIL₂₄ with physician concerns
415 of ICP was moderately positive ($r_{rm}=0.35$ [95% CI: 0.31–0.38]) and significantly higher
416 than that of TIL^(Basic)₂₄ (Fig. 3C). The association between ICP_{median} and TIL_{median} was
417 moderately positive ($0.35 < \rho_{\text{mean}} < 0.45$) with both ICP_{EH} and ICP_{HR} values, and the
418 association between ICP_{max} and TIL_{max} was moderately positive ($\rho=0.41$ [95% CI: 0.33–
419 0.46]) with ICP_{EH} values. The ICP_{max} vs. TIL_{max} correlation was not significant ($\rho=0.01$
420 [95% CI: -0.16–0.17]) with ICP_{HR} values; however, without imputing missing ICP_{HR}
421 values, the ρ was 0.43 (95% CI: 0.35–0.50). This suggests that the longitudinal
422 missingness of ICP_{HR} (Supplementary Fig. S2) for our sample size made the ICP_{max}
423 estimation significantly imprecise. Additionally, the within-individual association with ICP₂₄
424 was either weak or not significant for any daily scale score according to r_{rm} (Fig. 3C) and
425 β_{LMER} (Fig. 3D) values. On average, a single point increase in TIL₂₄ was associated with
426 a 0.22 (95% CI: 0.15–0.30) mmHg increase in daily mean ICP_{EH} and a 0.19 (95% CI: -
427 0.06–0.43) mmHg increase in daily mean ICP_{HR}. These results mostly affirm the
428 convergent validity of TIL but highlight the broad intra-patient variability between ICP and
429 therapeutic intensity. From the distribution of ICP₂₄ values at each TIL₂₄ score (Fig. 4A),
430 we observed both considerable ICP₂₄ overlap across each TIL₂₄ score and an overall
431 positive relationship between TIL₂₄ and ICP₂₄, particularly for TIL₂₄≥8.

432
433 The correlation between TIL and both prior scales (i.e., PILOT and TIL⁽¹⁹⁸⁷⁾) was positively
434 strong for maximum, median, and daily scores (Supplementary Fig. S3), establishing the
435 criterion validity of TIL. According to 95% CIs, the association of TIL with prior scales was
436 stronger than that of uwTIL or TIL^(Basic) (Supplementary Fig. S3).

437
438 According to ρ , r_{rm} , and β_{LMER} values (Fig. 3), the associations of TIL with CPP and of TIL
439 with physician concerns of CPP were weaker than or not significantly different from the
440 corresponding associations with ICP. Moreover, the trend of CPP₂₄ distributions over
441 different TIL₂₄ scores is not as visually apparent as that of ICP₂₄ distributions over different
442 TIL₂₄ scores (Fig. 4B). These results support the discriminant validity of TIL.

443
444 In our population, 157 patients (18% of 864 assessed) were reported to experience
445 refractory intracranial hypertension during ICU stay. TIL_{max} correctly discriminated these
446 patients from the others 81% (95% CI: 78–84%) of the time (Fig. 5A), and TIL_{median} did so
447 83% (95% CI: 80–86%) of the time (Fig. 5B). This performance of TIL was significantly
448 greater than or similar to that of all alternative scales (Fig. 5A–B). Furthermore, TIL_{median}
449 had significantly greater discrimination performance than ICP_{max} (Fig. 5C) and ICP_{median}
450 (Fig. 5D), respectively. The sensitivity and specificity of refractory intracranial
451 hypertension detection at each threshold of TIL_{max}, TIL_{median}, TIL^(Basic)_{max}, and
452 TIL^(Basic)_{median} are listed in Supplementary Table S3 and visualised in Fig. 5C–D. The
453 thresholds which maximised the sum of sensitivity and specificity were TIL_{max}≥14
454 (sensitivity: 68% [95% CI: 62–74%], specificity: 79% [95% CI: 77–81%]) and TIL_{median}≥7.5
455 (sensitivity: 81% [95% CI: 77–87%], specificity: 72% [95% CI: 70–75%]) (Table 3).

456 457 **TIL component items**

458
459 Whilst there was wide variation in item combinations per TIL₂₄ score (i.e., sum of median
460 scores was often under diagonal line in Fig. 6A), the average order of therapeutic
461 escalation was fairly consistent: position, sedation, CPP management, ventilatory
462 management, neuromuscular blockade, hyperosmolar therapy, temperature control, and
463 then surgery for refractory ICP. Surgical control of ICP occurred in over 50% of reported
464 cases at each TIL₂₄ above 18 (Fig. 6A), but the threshold which maximised the sum of
465 sensitivity and specificity in detecting surgical ICP control was TIL₂₄≥9 (Table 3,
466 performance at each threshold is listed in Supplementary Table S4). The inter-item r_{rm}
467 values of TIL₂₄ (Supplementary Fig. S4) were mostly positive except for cerebrospinal
468 fluid (CSF) drainage, which did not correlate significantly with most other items, and
469 decompressive craniectomy, which did not correlate significantly with CSF, ventilatory, or
470 temperature control. Consistent with Fig. 6A, this result suggested that CSF drainage and
471 decompressive craniectomy were the most variably applied therapies across study ICUs.
472 The Cronbach's alpha (α) value of TIL₂₄ was, at best, 0.65 (95% CI: 0.62–0.68) and lower
473 (albeit, not significantly) than that of uwTIL₂₄ at each day of ICU stay (Supplementary Fig.
474 S5). However, since TIL is a formative scale (i.e., the construct is multidimensional and
475 defined by the items), high inter-item correlation and α values are not necessary for item
476 validation.¹⁷ Amongst all TIL₂₄ items, sedation was most strongly correlated with adjusted
477 TIL₂₄ scores and physician concerns of ICP (Fig. 6B). From 10≤TIL₂₄≤20, a plateau effect

478 of high-dose sedation combined with neuromuscular blockade was observed in most
479 cases (Fig. 6A). When accounting for all other TIL₂₄ sub-items, time since ICU admission,
480 as well as inter-patient variability, ventilation, mannitol administration, and hypertonic
481 saline administration were most strongly associated with ICP₂₄ and vasopressors were
482 most strongly associated with CPP₂₄ (Fig. 6C).

483

484 **TIL^(Basic)**

485

486 Based on the median TIL^(Basic)₂₄ score at each TIL₂₄ score (Fig. 7A), we derived the ranges
487 for mapping TIL₂₄ onto TIL^(Basic)₂₄ in Table 3. There is, however, considerable overlap of
488 TIL₂₄ scores across TIL^(Basic)₂₄ scores (Fig. 7B), particularly in the range of $6 \leq \text{TIL}_{24} \leq 10$.
489 TIL^(Basic)₂₄=3 was not the most represented score at any TIL₂₄ score (Fig. 7A). TIL^(Basic)₂₄
490 covered up to 33% (95% CI: 31–34%) of the information (i.e., entropy) in TIL₂₄, and
491 TIL^(Basic)_{median} covered up to 28% (95% CI: 27–30%) of the information in TIL_{median} (Fig.
492 7C). TIL^(Basic)_{max} only covered 17% (95% CI: 16–18%) of the information in TIL_{max} (Fig.
493 7C).

494

495 **Discussion**

496

497 In this work, we performed a large-scale ($n=873$), multicentre (52 ICUs, 19 countries),
498 and prospective validation study of TIL and TIL^(Basic) against alternative scales. Our results
499 support the validity of TIL as a metric for scoring ICP-directed therapeutic intensity. The
500 dataset we used, as part of the CENTER-TBI study, not only reflects the modern variation
501 in ICP-directed therapeutic intensity (Fig. 2 and Fig. 6A) but also illustrates the practical
502 feasibility of daily TIL assessment: out of 885 eligible patients, 873 (99%) had daily TIL
503 scores (Fig. 1) with less than 2.4% daily missingness (Supplementary Fig. S2).

504

505 We scrutinised and validated the use of TIL as a metric for scoring ICP-directed
506 therapeutic intensity and for marking pathophysiological severity. The statistical construct
507 and criterion validity measures of TIL were significantly greater or similar to those of
508 alternative scales (Fig. 3 and Fig. 5), and TIL integrated the widest range of modern ICP
509 treatments (Table 1). Summarised TIL scores outperformed summarised ICP values in
510 detecting refractory intracranial hypertension. Our analysis yielded empirical ranges for
511 interpreting TIL in terms of refractory intracranial hypertension, surgical intervention, and
512 the condensed, TIL^(Basic) scores (Table 3). On a component level (Fig. 6A), TIL₂₄ reflected
513 a pattern of treatment intensity escalation consistent with clinical algorithms^{2,3,5} as well as
514 a wide variation in treatment combinations, particularly in the use of CSF drainage and
515 decompressive craniectomy. This finding is consistent with a previous CENTER-TBI
516 study – which revealed inter-centre variation in TIL treatment selection and time to
517 administration¹² – and encourages an investigation of differences in TIL and long-term
518 outcome between centres with known differences in ICP management strategies. In
519 summary, our results support the use of TIL as an intermediate outcome for treatment
520 effect, as done in previous studies.^{33–35}

521

522 Due to a strong ceiling effect (Fig. 2A and Fig. 5A), $TIL^{(Basic)}$ should not be used instead
523 of TIL for rating maximum treatment intensity. $TIL^{(Basic)}_{24}$ and TIL_{median} covered up to 33%
524 of the information in TIL_{24} (Fig. 7C), but the $TIL^{(Basic)}_{24}$ associations with physician
525 concerns of ICP were significantly worse than those of TIL_{24} (Fig. 3C). TIL should always
526 be preferred to $TIL^{(Basic)}$, but we believe daily or median $TIL^{(Basic)}$ can be a suitable
527 alternative when daily or median TIL assessment is infeasible.

528
529 Moreover, we evaluated TIL with both end-hour (ICP_{EH}) and high-resolution (ICP_{HR}) ICP
530 values. ICP_{HR} , if available, should be considered the gold standard in terms of precision
531 and granularity of the information provided, and neuromonitoring-related results from the
532 ICP_{HR} population should generally take precedence.¹⁴ However, 67% of expected ICP_{HR}
533 values were missing on day one of ICU stay (Supplementary Fig. S2), likely due to the
534 time required to arrange high-resolution data collection. Consequently, estimates of high-
535 resolution ICP_{max} were significantly affected by missing value imputation and became
536 imprecise at our sample size (Fig. 3A). In these cases, results from the ICP_{EH} population
537 served as a valuable reference on a substantially larger sample size (Table 2) since ICP_{EH}
538 and CPP_{EH} have been shown to be fair end-hour representations of ICP_{HR} and CPP_{HR} ,
539 respectively, in CENTER-TBI.¹⁴ The considerable overlap of ICP_{24} values across TIL_{24}
540 scores (both at low and high levels of ICP, Fig. 4A) and the insignificant-to-weak, within-
541 individual association between ICP_{24} and TIL_{24} (Fig. 3C–D) highlight the need to account
542 for therapeutic intensity when interpreting ICP. Additionally, the higher median ICP_{24}
543 values for $TIL_{24} \geq 8$ (Fig. 4A) may suggest that clinicians accept a slightly higher ICP when
544 balancing the risks of elevating therapeutic intensity against those of intracranial
545 hypertension.

546
547 We see three main opportunities to improve TIL. First, the item scores of TIL and its
548 predecessors (i.e., PILOT and $TIL^{(1987)}$) were not derived empirically. Data-driven
549 techniques, such as confirmatory factor analysis,²⁸ can be used to derive scoring
550 configurations which optimise a defined objective (e.g., maximal separation of patients).
551 However, data-driven scores do not necessarily reflect the intended construct (i.e.,
552 treatment risk and complexity),³⁶ and, in general, item scoring does not have an
553 appreciable impact on overall scale performance.²⁸ Second, the items of TIL must evolve
554 as therapeutic approaches to ICP management evolve. TIL discriminated refractory
555 intracranial hypertension status significantly better than $TIL^{(1987)}$ (Fig. 5A–B) because TIL
556 updated $TIL^{(1987)}$ with six additional items (Table 1). We recommend updating and re-
557 evaluating TIL each time ICP-treatment modalities or their perceived risks change.
558 Finally, the development of TIL was largely informed by the perspective of ICU practices
559 in high-income countries.⁸ Likewise, this assessment was performed in a cohort of
560 patients across Europe and Israel. Especially given the disproportionately higher burden
561 of TBI in low- and middle-income countries,³⁷ it is imperative to test and, if necessary,
562 adapt TIL to a more inclusive, global population of TBI.

563
564 By design, TIL does not encompass all facets of modern intensive care for TBI patients.
565 Brain tissue oxygen tension ($PbtO_2$),³⁸ cerebral microdialysis,³⁹ and brain temperature⁴⁰
566 have emerged as multimodal, neuromonitoring targets which may affect ICU
567 management in addition to ICP or CPP. Therefore, TIL should be interpreted not as

568 general treatment intensity but rather as the intensity of ICP-directed therapy specifically.
569 We encourage the development and validation of clinical scales assessing the intensity
570 of TBI treatments directed at other physiological targets. Since treatments for other
571 targets often overlap with those for ICP or CPP (e.g., vasopressors target both PbtO₂ and
572 CPP),² we also promote a consolidation of all TBI treatments in an overall therapeutic
573 intensity scale which considers the effect of each treatment on multiple physiological
574 targets.

575
576 We recognise several limitations of our analysis. Whilst numerous investigators assessed
577 TIL across the study ICUs, each TIL score was only assessed once. Therefore, we could
578 not evaluate the interrater reliability of TIL. Similarly, data needed to calculate the full TIL
579 score was only recorded once a day, so we could not determine if a daily assessment
580 frequency was sufficient. Since the prior TIL validation study reported a high interrater
581 reliability and recommended a daily assessment frequency,⁹ we assumed both to be true.
582 The results from the Randomised Evaluation of Surgery with Craniectomy for
583 Uncontrollable Elevation of Intracranial Pressure (RESCUEicp) trial⁴¹ – published amidst
584 CENTER-TBI patient recruitment in 2016 – have likely changed the global frequency and
585 perceived intensity of decompressive craniectomy for TBI. Therefore, we recognise the
586 potentially confounding effect of the trial results on treatment decision making for some
587 patients in the CENTER-TBI population and encourage a potential reappraisal of the
588 therapeutic intensity of decompressive craniectomy through expert discussion and
589 statistical validation. The physician impressions (i.e., physician concerns of ICP and CPP
590 and refractory intracranial hypertension status) were subjective, and we did not have
591 enough information to account for interrater variability. Therefore, these scores and labels
592 should be considered unrefined. Finally, because of limited dosage data for numerical
593 treatments (i.e., CSF drainage, ventilation, hyperosmolar therapy, and temperature
594 control), we did not test alternative sub-item categorisations.

595

596 **Conclusion**

597
598 TIL is a valid, generalisable measurement of ICP management amongst neuro-monitored
599 TBI patients in the ICU. On all validation metrics, TIL performs at least as well as its
600 alternatives and considers the widest range of modern treatment strategies. TIL's
601 component scores over increasing TIL reflect a clinically credible order of treatment
602 escalation, from head positioning to ICP-directed surgery. TIL^(Basic) is not suitable for
603 evaluating maximum treatment intensity, but daily TIL^(Basic) and median TIL^(Basic) can cover
604 up to a third of the information in TIL. In the setting of clinical ICP management, TIL is a
605 more sensitive marker of pathophysiological severity than ICP and can be considered an
606 intermediate outcome after TBI.

607

608 **Transparency, Rigor and Reproducibility Summary**

609
610 The CENTER-TBI study was pre-registered at clinicaltrials.gov (NCT02210221,
611 <https://clinicaltrials.gov/ct2/show/NCT02210221>). The analysis plan was registered after
612 beginning data collection but before data analysis at [Page 15 of 27](https://www.center-</p></div><div data-bbox=)

613 tbi.eu/data/approved-proposals (#491), and the lead author with primary responsibility for
614 the analysis certifies that the analysis plan was pre-specified. A sample size of 903
615 patients was planned based on availability of critically ill, ICP-monitored, adult TBI
616 patients recruited for CENTER-TBI. Actual sample size was 873, as 18 patients had a
617 documented decision to WLST on the first day of ICU stay and 12 additional patients did
618 not have daily TIL scores assessed. A patient inclusion diagram is provided (Fig. 1). TIL
619 scoring and clinical data entry was performed by investigators who were aware of relevant
620 characteristics of the participants. Participants were recruited between 19 December
621 2014 and 17 December 2017, and data (including follow-up results) were collected until
622 31 March 2021. High-resolution waveforms were stored directly from bedside monitoring
623 software, as described in the Methods and Materials. Variability amongst different TIL
624 assessors is not expected to be significant based on the established high interrater
625 reliability of TIL.⁹ All equipment and software used to perform imaging and preprocessing
626 are widely available from commercial sources or open source repositories. The clinimetric
627 validation procedure and the primary clinical metric (TIL) are established standards in the
628 field, based on previously published results^{9,28} and this study. The assumption of
629 bootstrapping-derived confidence intervals is that the sample is representative of the
630 population. This study is, itself, an external validation, and internal replication by the study
631 group was performed. Individual participant data are available online, conditional to
632 approved online study proposal, with no end date at <https://www.center-tbi.eu/data>.
633 Signed confirmation of a data access agreement is required, and all access must comply
634 with regulatory restrictions imposed on the original study. All analytic code used to
635 perform the statistical analyses are publicly available online at:
636 https://github.com/sbhattacharyay/CENTER-TBI_TIL. This paper will be published under
637 a Creative Commons Open Access license, and upon publication, will be freely available
638 at <https://www.liebertpub.com/loi/neu>.

639

640 **Acknowledgments**

641

642 We are grateful to the patients and families of our study for making our efforts to improve
643 TBI care possible. S.B. would like to thank Kathleen Mitchell-Fox (Princeton University)
644 for offering comments on the manuscript.

645

646 **Author contributions**

647

648 S.B. co-conceptualised the aims, developed the methodology and design, curated,
649 analysed, and visualised the data, acquired funding, and wrote the manuscript. E.B.
650 curated and analysed data, acquired funding, and reviewed the manuscript. P.Z. and L.W.
651 curated data, aided in the development of methodology, and reviewed the manuscript.
652 EWS and DWN curated data, acquired funding, advised statistical analysis, and reviewed
653 the manuscript. A.I.R.M. and D.K.M. curated data, acquired funding, co-conceptualised
654 the aims, co-developed the methodology, and reviewed the manuscript. A.E. served as
655 principal investigator, curated data, conceptualised the aims, co-developed the
656 methodology, and reviewed the manuscript. All authors read and approved the final
657 manuscript.

658

Conflicts of interest

659

660

661 All authors declare no financial or non-financial competing interests.

662

Funding statement

663

664

665 This research was supported by the National Institute for Health Research (NIHR) Brain
666 Injury MedTech Co-operative. CENTER-TBI was supported by the European Union 7th
667 Framework programme (EC grant 602150). Additional funding was obtained from the
668 Hannelore Kohl Stiftung (Germany), from OneMind (USA), from Integra LifeSciences
669 Corporation (USA), and from NeuroTrauma Sciences (USA). CENTER-TBI also
670 acknowledges interactions and support from the International Initiative for TBI Research
671 (InTBIR) investigators. S.B. is funded by a Gates Cambridge Scholarship. E.B. is funded
672 by the Medical Research Council (MR N013433-1) and by a Gates Cambridge
673 Scholarship. The funders had no role in study design, data collection and analysis,
674 decision to publish, or preparation of the manuscript.

675

The CENTER-TBI investigators and participants

676

677

678 The co-lead investigators of CENTER-TBI are designated with an asterisk (*), and their
679 contact email addresses are listed below.

680

681 Cecilia Åkerlund¹, Krisztina Amrein², Nada Andelic³, Lasse Andreassen⁴, Audny Anke⁵,
682 Anna Antoni⁶, Gérard Audibert⁷, Philippe Azouvi⁸, Maria Luisa Azzolini⁹, Ronald Bartels¹⁰,
683 Pál Barzó¹¹, Romuald Beauvais¹², Ronny Beer¹³, Bo-Michael Bellander¹⁴, Antonio Belli¹⁵,
684 Habib Benali¹⁶, Maurizio Berardino¹⁷, Luigi Beretta⁹, Morten Blaabjerg¹⁸, Peter Bragge¹⁹,
685 Alexandra Brazinova²⁰, Vibeke Brinck²¹, Joanne Brooker²², Camilla Brorsson²³, Andras
686 Buki²⁴, Monika Bullinger²⁵, Manuel Cabeleira²⁶, Alessio Caccioppola²⁷, Emiliana
687 Calappi²⁷, Maria Rosa Calvi⁹, Peter Cameron²⁸, Guillermo Carbayo Lozano²⁹, Marco
688 Carbonara²⁷, Simona Cavallo¹⁷, Giorgio Chevallard³⁰, Arturo Chierogato³⁰, Giuseppe
689 Citerio^{31,32}, Hans Clusmann³³, Mark Coburn³⁴, Jonathan Coles³⁵, Jamie D. Cooper³⁶,
690 Marta Correia³⁷, Amra Čović³⁸, Nicola Curry³⁹, Endre Czeiter²⁴, Marek Czosnyka²⁶, Claire
691 Dahyot-Fizelier⁴⁰, Paul Dark⁴¹, Helen Dawes⁴², Véronique De Keyser⁴³, Vincent Degos¹⁶,
692 Francesco Della Corte⁴⁴, Hugo den Boogert¹⁰, Bart Depreitere⁴⁵, Đula Đilvesi⁴⁶, Abhishek
693 Dixit⁴⁷, Emma Donoghue²², Jens Dreier⁴⁸, Guy-Loup Dulière⁴⁹, Ari Ercole⁴⁷, Patrick
694 Esser⁴², Erzsébet Ezer⁵⁰, Martin Fabricius⁵¹, Valery L. Feigin⁵², Kelly Foks⁵³, Shirin
695 Frisvold⁵⁴, Alex Furmanov⁵⁵, Pablo Gagliardo⁵⁶, Damien Galanaud¹⁶, Dashiell Gantner²⁸,
696 Guoyi Gao⁵⁷, Pradeep George⁵⁸, Alexandre Ghuysen⁵⁹, Lelde Giga⁶⁰, Ben Glocker⁶¹,
697 Jagoš Golubovic⁴⁶, Pedro A. Gomez⁶², Johannes Gratz⁶³, Benjamin Gravesteijn⁶⁴,
698 Francesca Grossi⁴⁴, Russell L. Gruen⁶⁵, Deepak Gupta⁶⁶, Juanita A. Haagsma⁶⁴, Iain
699 Haitsma⁶⁷, Raimund Helbok¹³, Eirik Helseth⁶⁸, Lindsay Horton⁶⁹, Jilske Huijben⁶⁴, Peter
700 J. Hutchinson⁷⁰, Bram Jacobs⁷¹, Stefan Jankowski⁷², Mike Jarrett²¹, Ji-yao Jiang⁵⁸, Faye
701 Johnson⁷³, Kelly Jones⁵², Mladen Karan⁴⁶, Angelos G. Koliass⁷⁰, Erwin Kompanje⁷⁴, Daniel
702 Kondziella⁵¹, Evgenios Kornaropoulos⁴⁷, Lars-Owe Koskinen⁷⁵, Noémi Kovács⁷⁶, Ana

703 Kowark⁷⁷, Alfonso Lagares⁶², Linda Lanyon⁵⁸, Steven Laureys⁷⁸, Fiona Lecky^{79,80}, Didier
704 Ledoux⁷⁸, Rolf Lefering⁸¹, Valerie Legrand⁸², Aurelie Lejeune⁸³, Leon Levi⁸⁴, Roger
705 Lightfoot⁸⁵, Hester Lingsma⁶⁴, Andrew I.R. Maas^{43,86,*}, Ana M. Castaño-León⁶², Marc
706 Maegele⁸⁷, Marek Majdan²⁰, Alex Manara⁸⁸, Geoffrey Manley⁸⁹, Costanza Martino⁹⁰,
707 Hugues Maréchal⁴⁹, Julia Mattern⁹¹, Catherine McMahon⁹², Béla Melegh⁹³, David
708 Menon^{47,*}, Tomas Menovsky^{43,86}, Ana Mikolic⁶⁴, Benoit Misset⁷⁸, Visakh
709 Muraleedharan⁵⁸, Lynnette Murray²⁸, Ancuta Negru⁹⁴, David Nelson¹, Virginia
710 Newcombe⁴⁷, Daan Nieboer⁶⁴, József Nyirádi², Otesile Olubukola⁷⁹, Matej Oresic⁹⁵,
711 Fabrizio Ortolano²⁷, Aarno Palotie^{96,97,98}, Paul M. Parizel⁹⁹, Jean-François Payen¹⁰⁰,
712 Natascha Perera¹², Vincent Perlberg¹⁶, Paolo Persona¹⁰¹, Wilco Peul¹⁰², Anna Piippo-
713 Karjalainen¹⁰³, Matti Pirinen⁹⁶, Dana Pisica⁶⁴, Horia Ples⁹⁴, Suzanne Polinder⁶⁴, Inigo
714 Pomposo²⁹, Jussi P. Posti¹⁰⁴, Louis Puybasset¹⁰⁵, Andreea Radoi¹⁰⁶, Arminas
715 Ragauskas¹⁰⁷, Rahul Raj¹⁰³, Malinka Rambadagalla¹⁰⁸, Isabel Retel Helmrich⁶⁴, Jonathan
716 Rhodes¹⁰⁹, Sylvia Richardson¹¹⁰, Sophie Richter⁴⁷, Samuli Ripatti⁹⁶, Saulius Rocka¹⁰⁷,
717 Cecilie Roe¹¹¹, Olav Roise^{112,113}, Jonathan Rosand¹¹⁴, Jeffrey V. Rosenfeld¹¹⁵, Christina
718 Rosenlund¹¹⁶, Guy Rosenthal⁵⁵, Rolf Rossaint⁷⁷, Sandra Rossi¹⁰¹, Daniel Rueckert⁶¹
719 Martin Rusnák¹¹⁷, Juan Sahuquillo¹⁰⁶, Oliver Sakowitz^{91,118}, Renan Sanchez-Porras¹¹⁸,
720 Janos Sandor¹¹⁹, Nadine Schäfer⁸¹, Silke Schmidt¹²⁰, Herbert Schoechl¹²¹, Guus
721 Schoonman¹²², Rico Frederik Schou¹²³, Elisabeth Schwendenwein⁶, Charlie Sewalt⁶⁴,
722 Ranjit D. Singh¹⁰², Toril Skandsen^{124,125}, Peter Smielewski²⁶, Abayomi Sorinola¹²⁶,
723 Emmanuel Stamatakis⁴⁷, Simon Stanworth³⁹, Robert Stevens¹²⁷, William Stewart¹²⁸,
724 Ewout W. Steyerberg^{64,129}, Nino Stocchetti¹³⁰, Nina Sundström¹³¹, Riikka Takala¹³²,
725 Viktória Tamás¹²⁶, Tomas Tamosuitis¹³³, Mark Steven Taylor²⁰, Aurore Thibaut⁷⁸, Braden
726 Te Ao⁵², Olli Tenovuo¹⁰⁴, Alice Theadom⁵², Matt Thomas⁸⁸, Dick Tibboel¹³⁴, Marjolein
727 Timmers⁷⁴, Christos Tolia¹³⁵, Tony Trapani²⁸, Cristina Maria Tudora⁹⁴, Andreas
728 Unterberg⁹¹, Peter Vajkoczy¹³⁶, Shirley Vallance²⁸, Egils Valeinis⁶⁰, Zoltán Vámos⁵⁰,
729 Mathieu van der Jagt¹³⁷, Gregory Van der Steen⁴³, Joukje van der Naalt⁷¹, Jeroen T.J.M.
730 van Dijck¹⁰², Inge A. M. van Erp¹⁰², Thomas A. van Essen¹⁰², Wim Van Hecke¹³⁸, Caroline
731 van Heugten¹³⁹, Ernest van Veen⁶⁴, Thijs Vande Vyvere¹⁴⁰, Roel P. J. van Wijk¹⁰², Alessia
732 Vargiolu³², Emmanuel Vega⁸³, Kimberley Velt⁶⁴, Jan Verheyden¹³⁸, Paul M. Vespa¹⁴¹,
733 Anne Vik^{124,142}, Rimantas Vilcinis¹³³, Victor Volovic⁶⁷, Nicole von Steinbüchel³⁸, Daphne
734 Voormolen⁶⁴, Petar Vulekovic⁴⁶, Kevin K.W. Wang¹⁴³, Daniel Whitehouse⁴⁷, Eveline
735 Wieggers⁶⁴, Guy Williams⁴⁷, Lindsay Wilson⁶⁹, Stefan Winzeck⁴⁷, Stefan Wolf¹⁴⁴, Zhihui
736 Yang¹¹⁴, Peter Ylén¹⁴⁵, Alexander Younsi⁹¹, Frederick A. Zeiler^{47,146}, Veronika
737 Zelinkova²⁰, Agate Ziverte⁶⁰, Tommaso Zoerle²⁷

738
739 ¹Department of Physiology and Pharmacology, Section of Perioperative Medicine and
740 Intensive Care, Karolinska Institutet, Stockholm, Sweden

741 ²János Szentágothai Research Centre, University of Pécs, Pécs, Hungary

742 ³Division of Clinical Neuroscience, Department of Physical Medicine and Rehabilitation,
743 Oslo University Hospital and University of Oslo, Oslo, Norway

744 ⁴Department of Neurosurgery, University Hospital Northern Norway, Tromsø, Norway

745 ⁵Department of Physical Medicine and Rehabilitation, University Hospital Northern
746 Norway, Tromsø, Norway

747 ⁶Trauma Surgery, Medical University Vienna, Vienna, Austria

- 748 ⁷Department of Anesthesiology & Intensive Care, University Hospital Nancy, Nancy,
749 France
- 750 ⁸Raymond Poincare hospital, Assistance Publique – Hopitaux de Paris, Paris, France
- 751 ⁹Department of Anesthesiology & Intensive Care, S Raffaele University Hospital, Milan,
752 Italy
- 753 ¹⁰Department of Neurosurgery, Radboud University Medical Center, Nijmegen, The
754 Netherlands
- 755 ¹¹Department of Neurosurgery, University of Szeged, Szeged, Hungary
- 756 ¹²International Projects Management, ARTTIC, Munchen, Germany
- 757 ¹³Department of Neurology, Neurological Intensive Care Unit, Medical University of
758 Innsbruck, Innsbruck, Austria
- 759 ¹⁴Department of Neurosurgery & Anesthesia & intensive care medicine, Karolinska
760 University Hospital, Stockholm, Sweden
- 761 ¹⁵NIHR Surgical Reconstruction and Microbiology Research Centre, Birmingham, UK
- 762 ¹⁶Anesthésie-Réanimation, Assistance Publique – Hopitaux de Paris, Paris, France
- 763 ¹⁷Department of Anesthesia & ICU, AOU Città della Salute e della Scienza di Torino -
764 Orthopedic and Trauma Center, Torino, Italy
- 765 ¹⁸Department of Neurology, Odense University Hospital, Odense, Denmark
- 766 ¹⁹BehaviourWorks Australia, Monash Sustainability Institute, Monash University, Victoria,
767 Australia
- 768 ²⁰Department of Public Health, Faculty of Health Sciences and Social Work, Trnava
769 University, Trnava, Slovakia
- 770 ²¹Quesgen Systems Inc., Burlingame, California, USA
- 771 ²²Australian & New Zealand Intensive Care Research Centre, Department of
772 Epidemiology and Preventive Medicine, School of Public Health and Preventive
773 Medicine, Monash University, Melbourne, Australia
- 774 ²³Department of Surgery and Perioperative Science, Umeå University, Umeå, Sweden
- 775 ²⁴Department of Neurosurgery, Medical School, University of Pécs, Hungary and
776 Neurotrauma Research Group, János Szentágothai Research Centre, University of
777 Pécs, Hungary
- 778 ²⁵Department of Medical Psychology, Universitätsklinikum Hamburg-Eppendorf,
779 Hamburg, Germany
- 780 ²⁶Brain Physics Lab, Division of Neurosurgery, Dept of Clinical Neurosciences, University
781 of Cambridge, Addenbrooke's Hospital, Cambridge, UK
- 782 ²⁷Neuro ICU, Fondazione IRCCS Cà Granda Ospedale Maggiore Policlinico, Milan, Italy
- 783 ²⁸ANZIC Research Centre, Monash University, Department of Epidemiology and
784 Preventive Medicine, Melbourne, Victoria, Australia
- 785 ²⁹Department of Neurosurgery, Hospital of Cruces, Bilbao, Spain
- 786 ³⁰NeuroIntensive Care, Niguarda Hospital, Milan, Italy
- 787 ³¹School of Medicine and Surgery, Università Milano Bicocca, Milano, Italy
- 788 ³²NeuroIntensive Care Unit, Department Neuroscience, IRCCS Fondazione San Gerardo
789 dei Tintori, Monza, Italy
- 790 ³³Department of Neurosurgery, Medical Faculty RWTH Aachen University, Aachen,
791 Germany
- 792 ³⁴Department of Anesthesiology and Intensive Care Medicine, University Hospital Bonn,
793 Bonn, Germany

- 794 ³⁵Department of Anesthesia & Neurointensive Care, Cambridge University Hospital NHS
795 Foundation Trust, Cambridge, UK
- 796 ³⁶School of Public Health & PM, Monash University and The Alfred Hospital, Melbourne,
797 Victoria, Australia
- 798 ³⁷Radiology/MRI department, MRC Cognition and Brain Sciences Unit, Cambridge, UK
- 799 ³⁸Institute of Medical Psychology and Medical Sociology, Universitätsmedizin Göttingen,
800 Göttingen, Germany
- 801 ³⁹Oxford University Hospitals NHS Trust, Oxford, UK
- 802 ⁴⁰Intensive Care Unit, CHU Poitiers, Poitiers, France
- 803 ⁴¹University of Manchester NIHR Biomedical Research Centre, Critical Care Directorate,
804 Salford Royal Hospital NHS Foundation Trust, Salford, UK
- 805 ⁴²Movement Science Group, Faculty of Health and Life Sciences, Oxford Brookes
806 University, Oxford, UK
- 807 ⁴³Department of Neurosurgery, Antwerp University Hospital, Edegem, Belgium
- 808 ⁴⁴Department of Anesthesia & Intensive Care, Maggiore Della Carità Hospital, Novara,
809 Italy
- 810 ⁴⁵Department of Neurosurgery, University Hospitals Leuven, Leuven, Belgium
- 811 ⁴⁶Department of Neurosurgery, Clinical centre of Vojvodina, Faculty of Medicine,
812 University of Novi Sad, Novi Sad, Serbia
- 813 ⁴⁷Division of Anaesthesia, University of Cambridge, Addenbrooke's Hospital, Cambridge,
814 UK
- 815 ⁴⁸Center for Stroke Research Berlin, Charité – Universitätsmedizin Berlin, corporate
816 member of Freie Universität Berlin, Humboldt-Universität zu Berlin, and Berlin Institute
817 of Health, Berlin, Germany
- 818 ⁴⁹Intensive Care Unit, CHR Citadelle, Liège, Belgium
- 819 ⁵⁰Department of Anaesthesiology and Intensive Therapy, University of Pécs, Pécs,
820 Hungary
- 821 ⁵¹Departments of Neurology, Clinical Neurophysiology and Neuroanesthesiology, Region
822 Hovedstaden Rigshospitalet, Copenhagen, Denmark
- 823 ⁵²National Institute for Stroke and Applied Neurosciences, Faculty of Health and
824 Environmental Studies, Auckland University of Technology, Auckland, New Zealand
- 825 ⁵³Department of Neurology, Erasmus MC, Rotterdam, the Netherlands
- 826 ⁵⁴Department of Anesthesiology and Intensive care, University Hospital Northern Norway,
827 Tromsø, Norway
- 828 ⁵⁵Department of Neurosurgery, Hadassah-hebrew University Medical center, Jerusalem,
829 Israel
- 830 ⁵⁶Fundación Instituto Valenciano de Neurorehabilitación (FIVAN), Valencia, Spain
- 831 ⁵⁷Department of Neurosurgery, Shanghai Renji hospital, Shanghai Jiaotong
832 University/school of medicine, Shanghai, China
- 833 ⁵⁸Karolinska Institutet, INCF International Neuroinformatics Coordinating Facility,
834 Stockholm, Sweden
- 835 ⁵⁹Emergency Department, CHU, Liège, Belgium
- 836 ⁶⁰Neurosurgery clinic, Pauls Stradins Clinical University Hospital, Riga, Latvia
- 837 ⁶¹Department of Computing, Imperial College London, London, UK
- 838 ⁶²Department of Neurosurgery, Hospital Universitario 12 de Octubre, Madrid, Spain

- 839 ⁶³Department of Anesthesia, Critical Care and Pain Medicine, Medical University of
840 Vienna, Austria
- 841 ⁶⁴Department of Public Health, Erasmus Medical Center-University Medical Center,
842 Rotterdam, The Netherlands
- 843 ⁶⁵College of Health and Medicine, Australian National University, Canberra, Australia
- 844 ⁶⁶Department of Neurosurgery, Neurosciences Centre & JPN Apex trauma centre, All
845 India Institute of Medical Sciences, New Delhi-110029, India
- 846 ⁶⁷Department of Neurosurgery, Erasmus MC, Rotterdam, the Netherlands
- 847 ⁶⁸Department of Neurosurgery, Oslo University Hospital, Oslo, Norway
- 848 ⁶⁹Division of Psychology, University of Stirling, Stirling, UK
- 849 ⁷⁰Division of Neurosurgery, Department of Clinical Neurosciences, Addenbrooke's
850 Hospital & University of Cambridge, Cambridge, UK
- 851 ⁷¹Department of Neurology, University of Groningen, University Medical Center
852 Groningen, Groningen, Netherlands
- 853 ⁷²Neurointensive Care, Sheffield Teaching Hospitals NHS Foundation Trust, Sheffield,
854 UK
- 855 ⁷³Salford Royal Hospital NHS Foundation Trust Acute Research Delivery Team, Salford,
856 UK
- 857 ⁷⁴Department of Intensive Care and Department of Ethics and Philosophy of Medicine,
858 Erasmus Medical Center, Rotterdam, The Netherlands
- 859 ⁷⁵Department of Clinical Neuroscience, Neurosurgery, Umeå University, Umeå, Sweden
- 860 ⁷⁶Hungarian Brain Research Program - Grant No. KTIA_13_NAP-A-II/8, University of
861 Pécs, Pécs, Hungary
- 862 ⁷⁷Department of Anaesthesiology, University Hospital of Aachen, Aachen, Germany
- 863 ⁷⁸Cyclotron Research Center, University of Liège, Liège, Belgium
- 864 ⁷⁹Centre for Urgent and Emergency Care Research (CURE), Health Services Research
865 Section, School of Health and Related Research (SchARR), University of Sheffield,
866 Sheffield, UK
- 867 ⁸⁰Emergency Department, Salford Royal Hospital, Salford UK
- 868 ⁸¹Institute of Research in Operative Medicine (IFOM), Witten/Herdecke University,
869 Cologne, Germany
- 870 ⁸²VP Global Project Management CNS, ICON, Paris, France
- 871 ⁸³Department of Anesthesiology-Intensive Care, Lille University Hospital, Lille, France
- 872 ⁸⁴Department of Neurosurgery, Rambam Medical Center, Haifa, Israel
- 873 ⁸⁵Department of Anesthesiology & Intensive Care, University Hospitals Southampton
874 NHS Trust, Southampton, UK
- 875 ⁸⁶Department of Translational Neuroscience, Faculty of Medicine and Health Science,
876 University of Antwerp, Antwerp, Belgium
- 877 ⁸⁷Cologne-Merheim Medical Center (CMMC), Department of Traumatology, Orthopedic
878 Surgery and Sportmedicine, Witten/Herdecke University, Cologne, Germany
- 879 ⁸⁸Intensive Care Unit, Southmead Hospital, Bristol, Bristol, UK
- 880 ⁸⁹Department of Neurological Surgery, University of California, San Francisco, California,
881 USA
- 882 ⁹⁰Department of Anesthesia & Intensive Care, M. Bufalini Hospital, Cesena, Italy
- 883 ⁹¹Department of Neurosurgery, University Hospital Heidelberg, Heidelberg, Germany
- 884 ⁹²Department of Neurosurgery, The Walton centre NHS Foundation Trust, Liverpool, UK

- 885 ⁹³Department of Medical Genetics, University of Pécs, Pécs, Hungary
886 ⁹⁴Department of Neurosurgery, Emergency County Hospital Timisoara, Timisoara,
887 Romania
888 ⁹⁵School of Medical Sciences, Örebro University, Örebro, Sweden
889 ⁹⁶Institute for Molecular Medicine Finland, University of Helsinki, Helsinki, Finland
890 ⁹⁷Analytic and Translational Genetics Unit, Department of Medicine; Psychiatric &
891 Neurodevelopmental Genetics Unit, Department of Psychiatry; Department of
892 Neurology, Massachusetts General Hospital, Boston, MA, USA
893 ⁹⁸Program in Medical and Population Genetics; The Stanley Center for Psychiatric
894 Research, The Broad Institute of MIT and Harvard, Cambridge, MA, USA
895 ⁹⁹Department of Radiology, University of Antwerp, Edegem, Belgium
896 ¹⁰⁰Department of Anesthesiology & Intensive Care, University Hospital of Grenoble,
897 Grenoble, France
898 ¹⁰¹Department of Anesthesia & Intensive Care, Azienda Ospedaliera Università di
899 Padova, Padova, Italy
900 ¹⁰²Dept. of Neurosurgery, Leiden University Medical Center, Leiden, The Netherlands and
901 Dept. of Neurosurgery, Medical Center Haaglanden, The Hague, The Netherlands
902 ¹⁰³Department of Neurosurgery, Helsinki University Central Hospital
903 ¹⁰⁴Division of Clinical Neurosciences, Department of Neurosurgery and Turku Brain Injury
904 Centre, Turku University Hospital and University of Turku, Turku, Finland
905 ¹⁰⁵Department of Anesthesiology and Critical Care, Pitié -Salpêtrière Teaching Hospital,
906 Assistance Publique, Hôpitaux de Paris and University Pierre et Marie Curie, Paris,
907 France
908 ¹⁰⁶Neurotraumatology and Neurosurgery Research Unit (UNINN), Vall d'Hebron
909 Research Institute, Barcelona, Spain
910 ¹⁰⁷Department of Neurosurgery, Kaunas University of technology and Vilnius University,
911 Vilnius, Lithuania
912 ¹⁰⁸Department of Neurosurgery, Rezekne Hospital, Latvia
913 ¹⁰⁹Department of Anaesthesia, Critical Care & Pain Medicine NHS Lothian & University
914 of Edinburgh, Edinburgh, UK
915 ¹¹⁰Director, MRC Biostatistics Unit, Cambridge Institute of Public Health, Cambridge, UK
916 ¹¹¹Department of Physical Medicine and Rehabilitation, Oslo University
917 Hospital/University of Oslo, Oslo, Norway
918 ¹¹²Division of Orthopedics, Oslo University Hospital, Oslo, Norway
919 ¹¹³Institute of Clinical Medicine, Faculty of Medicine, University of Oslo, Oslo, Norway
920 ¹¹⁴Broad Institute, Cambridge MA Harvard Medical School, Boston MA, Massachusetts
921 General Hospital, Boston MA, USA
922 ¹¹⁵National Trauma Research Institute, The Alfred Hospital, Monash University,
923 Melbourne, Victoria, Australia
924 ¹¹⁶Department of Neurosurgery, Odense University Hospital, Odense, Denmark
925 ¹¹⁷International Neurotrauma Research Organisation, Vienna, Austria
926 ¹¹⁸Klinik für Neurochirurgie, Klinikum Ludwigsburg, Ludwigsburg, Germany
927 ¹¹⁹Division of Biostatistics and Epidemiology, Department of Preventive Medicine,
928 University of Debrecen, Debrecen, Hungary
929 ¹²⁰Department Health and Prevention, University Greifswald, Greifswald, Germany

- 930 ¹²¹Department of Anaesthesiology and Intensive Care, AUVA Trauma Hospital, Salzburg,
931 Austria
- 932 ¹²²Department of Neurology, Elisabeth-TweeSteden Ziekenhuis, Tilburg, the Netherlands
- 933 ¹²³Department of Neuroanesthesia and Neurointensive Care, Odense University Hospital,
934 Odense, Denmark
- 935 ¹²⁴Department of Neuromedicine and Movement Science, Norwegian University of
936 Science and Technology, NTNU, Trondheim, Norway
- 937 ¹²⁵Department of Physical Medicine and Rehabilitation, St.Olavs Hospital, Trondheim
938 University Hospital, Trondheim, Norway
- 939 ¹²⁶Department of Neurosurgery, University of Pécs, Pécs, Hungary
- 940 ¹²⁷Division of Neuroscience Critical Care, John Hopkins University School of Medicine,
941 Baltimore, USA
- 942 ¹²⁸Department of Neuropathology, Queen Elizabeth University Hospital and University of
943 Glasgow, Glasgow, UK
- 944 ¹²⁹Dept. of Department of Biomedical Data Sciences, Leiden University Medical Center,
945 Leiden, The Netherlands
- 946 ¹³⁰Department of Pathophysiology and Transplantation, Milan University, and
947 Neuroscience ICU, Fondazione IRCCS Cà Granda Ospedale Maggiore Policlinico,
948 Milano, Italy
- 949 ¹³¹Department of Radiation Sciences, Biomedical Engineering, Umeå University, Umeå,
950 Sweden
- 951 ¹³²Perioperative Services, Intensive Care Medicine and Pain Management, Turku
952 University Hospital and University of Turku, Turku, Finland
- 953 ¹³³Department of Neurosurgery, Kaunas University of Health Sciences, Kaunas, Lithuania
- 954 ¹³⁴Intensive Care and Department of Pediatric Surgery, Erasmus Medical Center, Sophia
955 Children's Hospital, Rotterdam, The Netherlands
- 956 ¹³⁵Department of Neurosurgery, Kings college London, London, UK
- 957 ¹³⁶Neurologie, Neurochirurgie und Psychiatrie, Charité – Universitätsmedizin Berlin,
958 Berlin, Germany
- 959 ¹³⁷Department of Intensive Care Adults, Erasmus MC– University Medical Center
960 Rotterdam, Rotterdam, the Netherlands
- 961 ¹³⁸icoMetrix NV, Leuven, Belgium
- 962 ¹³⁹Movement Science Group, Faculty of Health and Life Sciences, Oxford Brookes
963 University, Oxford, UK
- 964 ¹⁴⁰Radiology Department, Antwerp University Hospital, Edegem, Belgium
- 965 ¹⁴¹Director of Neurocritical Care, University of California, Los Angeles, USA
- 966 ¹⁴²Department of Neurosurgery, St.Olavs Hospital, Trondheim University Hospital,
967 Trondheim, Norway
- 968 ¹⁴³Department of Emergency Medicine, University of Florida, Gainesville, Florida, USA
- 969 ¹⁴⁴Department of Neurosurgery, Charité – Universitätsmedizin Berlin, corporate member
970 of Freie Universität Berlin, Humboldt-Universität zu Berlin, and Berlin Institute of Health,
971 Berlin, Germany
- 972 ¹⁴⁵VTT Technical Research Centre, Tampere, Finland
- 973 ¹⁴⁶Section of Neurosurgery, Department of Surgery, Rady Faculty of Health Sciences,
974 University of Manitoba, Winnipeg, MB, Canada
- 975

976 *Co-lead investigators: andrew.maas@uza.be (AIRM) and dkm13@cam.ac.uk (DM)
977

978 **References**

- 979
- 980 1. Stocchetti N, Maas AIR. Traumatic Intracranial Hypertension. *N Engl J Med*
981 2014;370(22):2121–2130; doi: 10.1056/NEJMra1208708.
- 982 2. Meyfroidt G, Bouzat P, Casaer MP, et al. Management of moderate to severe
983 traumatic brain injury: an update for the intensivist. *Intensive Care Med*
984 2022;48(6):649–666; doi: 10.1007/s00134-022-06702-4.
- 985 3. Menon DK, Ercole A. Chapter 14 - Critical care management of traumatic brain injury.
986 Wijdicks EFM, Kramer AH. eds. *Handb Clin Neurol* 2017;140(Journal Article):239–
987 274; doi: 10.1016/B978-0-444-63600-3.00014-3.
- 988 4. Stocchetti N, Carbonara M, Citerio G, et al. Severe traumatic brain injury: targeted
989 management in the intensive care unit. *Lancet Neurol* 2017;16(6):452–464; doi:
990 10.1016/S1474-4422(17)30118-7.
- 991 5. Hawryluk GWJ, Aguilera S, Buki A, et al. A management algorithm for patients with
992 intracranial pressure monitoring: the Seattle International Severe Traumatic Brain
993 Injury Consensus Conference (SIBICC). *Intensive Care Med* 2019;45(12):1783–
994 1794; doi: 10.1007/s00134-019-05805-9.
- 995 6. Maset AL, Marmarou A, Ward JD, et al. Pressure-volume index in head injury. *J*
996 *Neurosurg* 1987;67(6):832–840; doi: 10.3171/jns.1987.67.6.0832.
- 997 7. Shore PM, Hand LL, Roy L, et al. Reliability and validity of the Pediatric Intensity
998 Level of Therapy (PILOT) scale: A measure of the use of intracranial pressure–
999 directed therapies. *Crit Care Med* 2006;34(7):1981; doi:
1000 10.1097/01.CCM.0000220765.22184.ED.
- 1001 8. Maas AIR, Harrison-Felix CL, Menon D, et al. Standardizing Data Collection in
1002 Traumatic Brain Injury. *J Neurotrauma* 2011;28(2):177–187; doi:
1003 10.1089/neu.2010.1617.
- 1004 9. Zuercher P, Groen JL, Aries MJH, et al. Reliability and Validity of the Therapy
1005 Intensity Level Scale: Analysis of Clinimetric Properties of a Novel Approach to
1006 Assess Management of Intracranial Pressure in Traumatic Brain Injury. *J*
1007 *Neurotrauma* 2016;33(19):1768–1774; doi: 10.1089/neu.2015.4266.
- 1008 10. Robba C, Graziano F, Guglielmi A, et al. Treatments for intracranial hypertension
1009 in acute brain-injured patients: grading, timing, and association with outcome. Data
1010 from the SYNAPSE-ICU study. *Intensive Care Med* 2023;49(1):50–61; doi:
1011 10.1007/s00134-022-06937-1.

- 1012 11. Huijben JA, Wieggers EJA, Lingsma HF, et al. Changing care pathways and
1013 between-center practice variations in intensive care for traumatic brain injury across
1014 Europe: a CENTER-TBI analysis. *Intensive Care Med* 2020;46(5):995–1004; doi:
1015 10.1007/s00134-020-05965-z.
- 1016 12. Huijben JA, Dixit A, Stocchetti N, et al. Use and impact of high intensity
1017 treatments in patients with traumatic brain injury across Europe: a CENTER-TBI
1018 analysis. *Crit Care* 2021;25(1):78; doi: 10.1186/s13054-020-03370-y.
- 1019 13. Bhattacharyay S, Caruso PF, Åkerlund C, et al. Mining the contribution of
1020 intensive care clinical course to outcome after traumatic brain injury. *Npj Digit Med*
1021 2023;6(1):154; doi: 10.1038/s41746-023-00895-8.
- 1022 14. Zoerle T, Birg T, Carbonara M, et al. Accuracy of Manual Intracranial Pressure
1023 Recording Compared to a Computerized High-Resolution System: A CENTER-TBI
1024 Analysis. *Neurocrit Care* 2023; doi: 10.1007/s12028-023-01697-2.
- 1025 15. Maas AIR, Menon DK, Manley GT, et al. Traumatic brain injury: progress and
1026 challenges in prevention, clinical care, and research. *Lancet Neurol*
1027 2022;21(11):1004–1060; doi: 10.1016/S1474-4422(22)00309-X.
- 1028 16. Clossen MC, Huijben JA, van der Jagt M, et al. Variation in monitoring and
1029 treatment policies for intracranial hypertension in traumatic brain injury: a survey in 66
1030 neurotrauma centers participating in the CENTER-TBI study. *Crit Care*
1031 2017;21(1):233; doi: 10.1186/s13054-017-1816-9.
- 1032 17. Avila ML, Stinson J, Kiss A, et al. A critical review of scoring options for clinical
1033 measurement tools. *BMC Res Notes* 2015;8(1):612; doi: 10.1186/s13104-015-1561-
1034 6.
- 1035 18. Maas AIR, Menon DK, Steyerberg EW, et al. Collaborative European
1036 NeuroTrauma Effectiveness Research in Traumatic Brain Injury (CENTER-TBI): A
1037 Prospective Longitudinal Observational Study. *Neurosurgery* 2015;76(1):67–80; doi:
1038 10.1227/NEU.0000000000000575.
- 1039 19. Steyerberg EW, Wieggers E, Sewalt C, et al. Case-mix, care pathways, and
1040 outcomes in patients with traumatic brain injury in CENTER-TBI: a European
1041 prospective, multicentre, longitudinal, cohort study. *Lancet Neurol* 2019;18(10):923–
1042 934; doi: 10.1016/S1474-4422(19)30232-7.
- 1043 20. Doiron D, Marcon Y, Fortier I, et al. Software Application Profile: Opal and Mica:
1044 open-source software solutions for epidemiological data management, harmonization
1045 and dissemination. *Int J Epidemiol* 2017;46(5):1372–1378; doi: 10.1093/ije/dyx180.
- 1046 21. Zeiler FA, Ercole A, Cabeleira M, et al. Patient-specific ICP Epidemiologic
1047 Thresholds in Adult Traumatic Brain Injury: A CENTER-TBI Validation Study. *J*
1048 *Neurosurg Anesthesiol* 2021;33(1):28–38; doi: 10.1097/ANA.0000000000000616.

- 1049 22. Marshall LF, Marshall SB, Klauber MR, et al. The diagnosis of head injury
1050 requires a classification based on computed axial tomography. *J Neurotrauma* 1992;9
1051 Suppl 1:S287-292.
- 1052 23. Teasdale G, Maas A, Lecky F, et al. The Glasgow Coma Scale at 40 years:
1053 standing the test of time. *The Lancet Neurology* 2014;13(8):844–854; doi:
1054 10.1016/S1474-4422(14)70120-6.
- 1055 24. Ercole A, Dixit A, Nelson DW, et al. Imputation strategies for missing baseline
1056 neurological assessment covariates after traumatic brain injury: A CENTER-TBI
1057 study. *PLoS ONE* 2021;16(8):e0253425.
- 1058 25. McMillan T, Wilson L, Ponsford J, et al. The Glasgow Outcome Scale - 40 years
1059 of application and refinement. *Nat Rev Neurol* 2016;12(8):477–485; doi:
1060 10.1038/nrneurol.2016.89.
- 1061 26. Kunzmann K, Wernisch L, Richardson S, et al. Imputation of Ordinal Outcomes:
1062 A Comparison of Approaches in Traumatic Brain Injury. *J Neurotrauma*
1063 2021;38(4):455–463; doi: 10.1089/neu.2019.6858.
- 1064 27. Bhattacharyay S, Milosevic I, Wilson L, et al. The leap to ordinal: Detailed
1065 functional prognosis after traumatic brain injury with a flexible modelling approach.
1066 *PLoS ONE* 2022;17(7):e0270973; doi: 10.1371/journal.pone.0270973.
- 1067 28. Boateng GO, Neilands TB, Frongillo EA, et al. Best Practices for Developing and
1068 Validating Scales for Health, Social, and Behavioral Research: A Primer. *Front Public*
1069 *Health* 2018;6:149; doi: 10.3389/fpubh.2018.00149.
- 1070 29. Bakdash JZ, Marusich LR. Repeated Measures Correlation. *Front Psychol*
1071 2017;8:456; doi: 10.3389/fpsyg.2017.00456.
- 1072 30. van Buuren S, Groothuis-Oudshoorn CGM. mice: Multivariate Imputation by
1073 Chained Equations in R. *J Stat Softw* 2011;45(3):1–67; doi: 10.18637/jss.v045.i03.
- 1074 31. Gravesteijn BY, Sewalt CA, Venema E, et al. Missing Data in Prediction
1075 Research: A Five-Step Approach for Multiple Imputation, Illustrated in the CENTER-
1076 TBI Study. *J Neurotrauma* 2021;38(13):1842–1857; doi: 10.1089/neu.2020.7218.
- 1077 32. Honaker J King, G, Blackwell, M. Amelia II: A Program for Missing Data. *J Stat*
1078 *Softw* 2011;45(7); doi: 10.18637/jss.v045.i07.
- 1079 33. Beqiri E, Smielewski P, Robba C, et al. Feasibility of individualised severe
1080 traumatic brain injury management using an automated assessment of optimal
1081 cerebral perfusion pressure: the COGiTATE phase II study protocol. *BMJ Open*
1082 2019;9(9):e030727; doi: 10.1136/bmjopen-2019-030727.
- 1083 34. Tas J, Beqiri E, van Kaam RC, et al. Targeting Autoregulation-Guided Cerebral
1084 Perfusion Pressure after Traumatic Brain Injury (COGiTATE): A Feasibility

- 1085 Randomized Controlled Clinical Trial. *J Neurotrauma* 2021;38(20):2790–2800; doi:
1086 10.1089/neu.2021.0197.
- 1087 35. van Erp IAM, van Essen TA, Fluiter K, et al. Safety and efficacy of C1-inhibitor in
1088 traumatic brain injury (CIAO@TBI): study protocol for a randomized, placebo-
1089 controlled, multi-center trial. *Trials* 2021;22(1):874; doi: 10.1186/s13063-021-05833-
1090 1.
- 1091 36. Schreiber JB. Issues and recommendations for exploratory factor analysis and
1092 principal component analysis. *Res Soc Adm Pharm* 2021;17(5):1004–1011; doi:
1093 10.1016/j.sapharm.2020.07.027.
- 1094 37. Clark D, Joannides A, Adeleye AO, et al. Casemix, management, and mortality of
1095 patients receiving emergency neurosurgery for traumatic brain injury in the Global
1096 Neurotrauma Outcomes Study: a prospective observational cohort study. *Lancet*
1097 *Neurol* 2022;21(5):438–449; doi: 10.1016/S1474-4422(22)00037-0.
- 1098 38. Okonkwo DO, Shutter LA, Moore C, et al. Brain Oxygen Optimization in Severe
1099 Traumatic Brain Injury Phase-II: A Phase II Randomized Trial*. *Crit Care Med*
1100 2017;45(11):1907; doi: 10.1097/CCM.0000000000002619.
- 1101 39. Hutchinson PJ, Jalloh I, Helmy A, et al. Consensus statement from the 2014
1102 International Microdialysis Forum. *Intensive Care Med* 2015;41(9):1517–1528; doi:
1103 10.1007/s00134-015-3930-y.
- 1104 40. Yokobori S, Yokota H. Targeted temperature management in traumatic brain
1105 injury. *J Intensive Care* 2016;4(1):28; doi: 10.1186/s40560-016-0137-4.
- 1106 41. Hutchinson PJ, Kolias AG, Timofeev IS, et al. Trial of Decompressive
1107 Craniectomy for Traumatic Intracranial Hypertension. *N Engl J Med*
1108 2016;375(12):1119–1130; doi: 10.1056/NEJMoa1605215.
- 1109

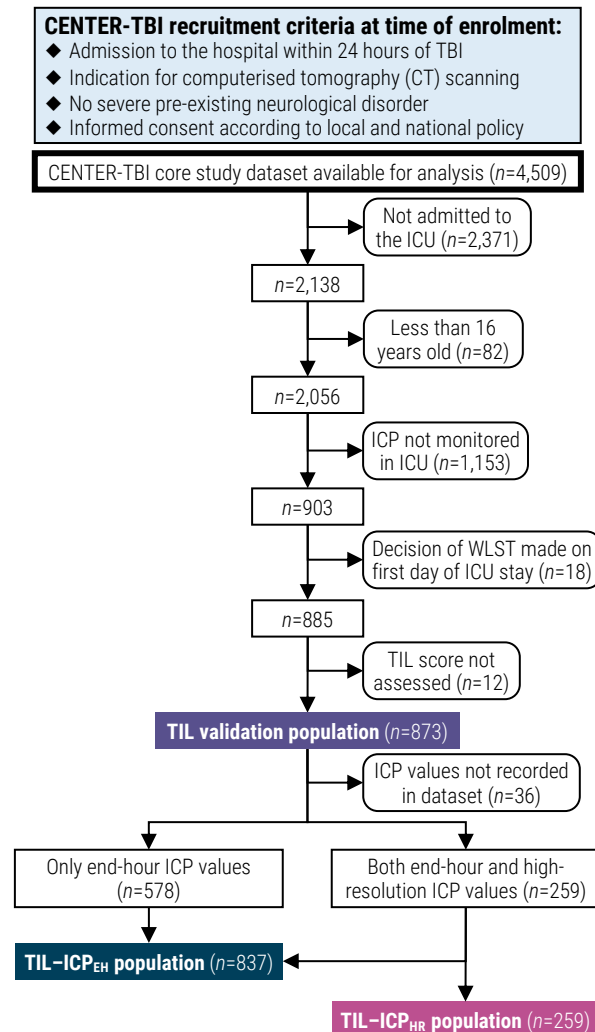


Fig. 1. Flow diagram for patient enrolment and validation population assignment. Abbreviations: CENTER-TBI=Collaborative European NeuroTrauma Effectiveness Research in TBI, ICP=intracranial pressure, ICP_{EH}=end-hour ICP, ICP_{HR}=high-resolution ICP, ICU=intensive care unit, TBI=traumatic brain injury, TIL=Therapy Intensity Level scale,^{8,9} WLST=withdrawal of life-sustaining therapies.

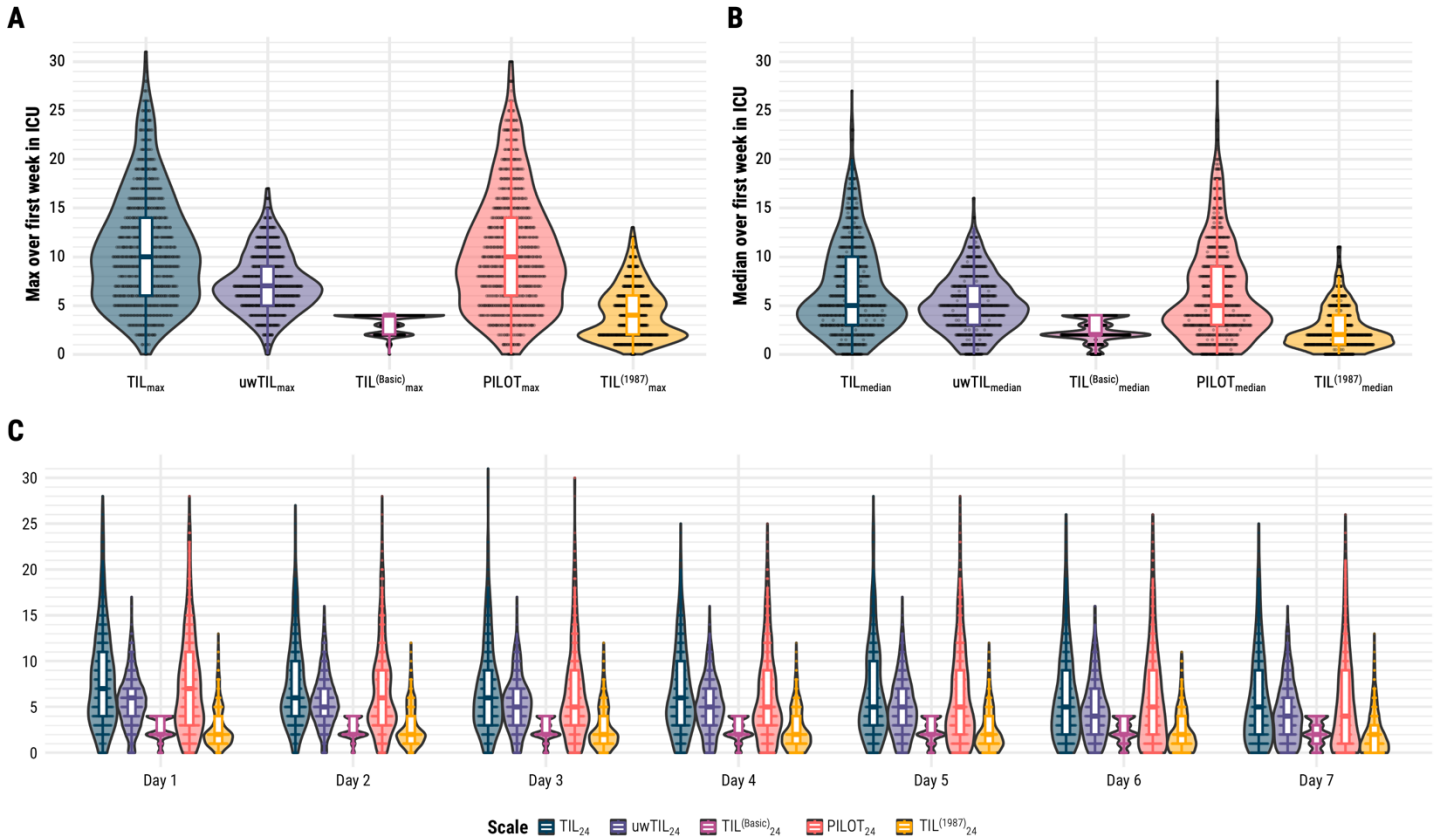


Fig. 2. Distributions of TIL and alternative scales. Abbreviations: ICU=intensive care unit, PILOT=Paediatric Intensity Level of Therapy scale,⁷ TIL=Therapy Intensity Level scale,^{8,9} TIL⁽¹⁹⁸⁷⁾=original Therapy Intensity Level scale published in 1987,⁶ TIL^(Basic)=condensed TIL scale,⁸ uwTIL=unweighted TIL scale in which sub-item scores are replaced by the ascending rank index within the item. The numeric definition of each scale is listed in Table 1. **(A)** Distributions of maximum scores of TIL (i.e., TIL_{max}) and alternative scales (i.e., uwTIL_{max}, TIL^(Basic)_{max}, PILOT_{max}, and TIL⁽¹⁹⁸⁷⁾_{max}) over the first week of ICU stay. **(B)** Distribution of median scores of TIL (i.e., TIL_{median}) and alternative scales (i.e., uwTIL_{median}, TIL^(Basic)_{median}, PILOT_{median}, and TIL⁽¹⁹⁸⁷⁾_{median}) over the first week of ICU stay. **(C)** Distributions of daily scores of TIL (i.e., TIL₂₄) and alternative scales (i.e., uwTIL₂₄, TIL^(Basic)₂₄, PILOT₂₄, and TIL⁽¹⁹⁸⁷⁾₂₄) over the first week of ICU stay.

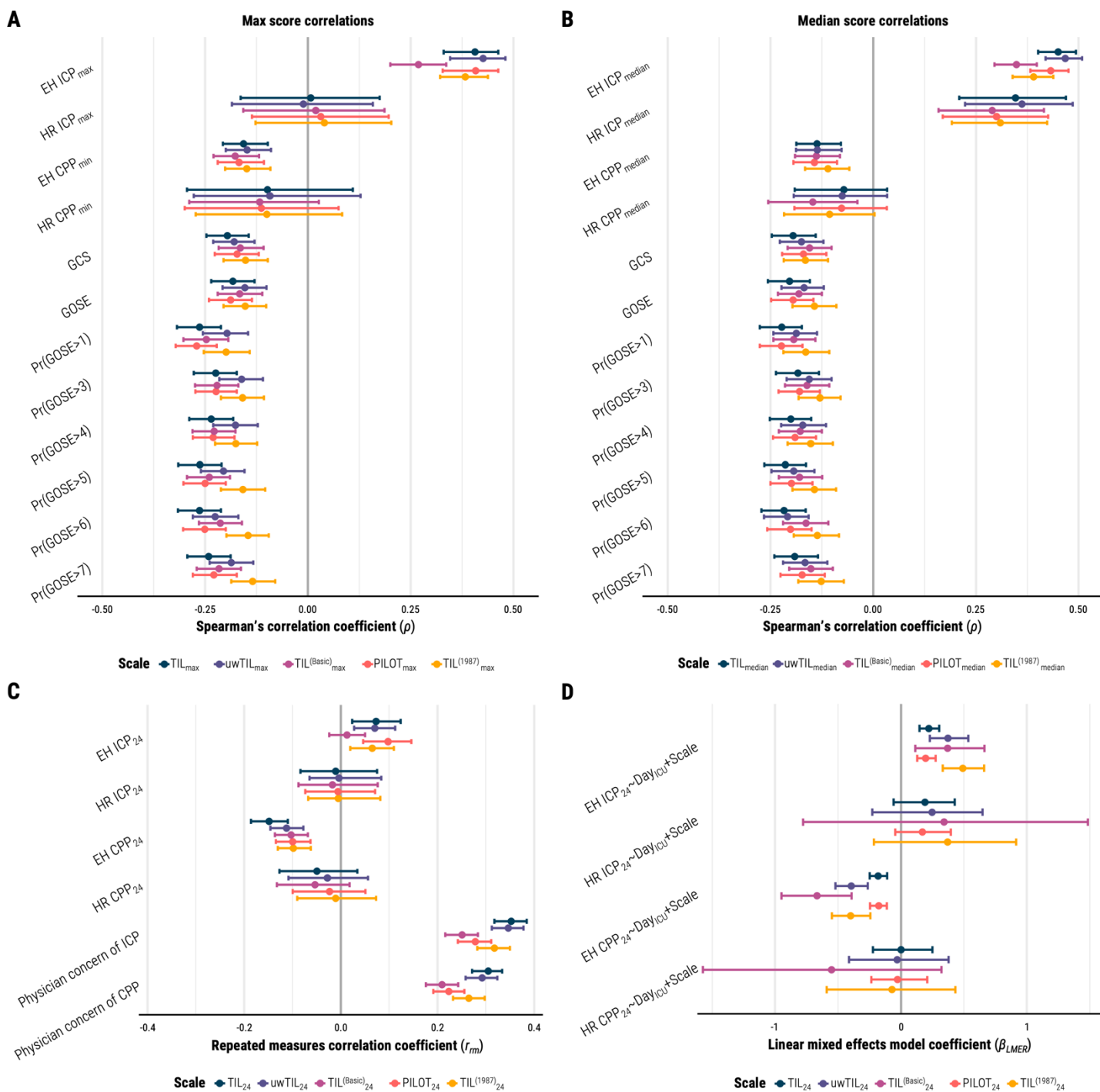


Fig. 3. Associations of TIL and alternative scales with other clinical measures.

Abbreviations: Day_{ICU}=variable representing day (from 1 to 7) of ICU stay, EH=end-hour, CPP=cerebral perfusion pressure, GCS=Glasgow Coma Scale at ICU admission, GOSE=Glasgow Outcome Scale–Extended at six months post-injury, HR=high-resolution, ICP=intracranial pressure, ICU=intensive care unit, PILOT=Paediatric Intensity Level of Therapy scale,⁷ Pr(GOSE>•)="probability of GOSE greater than • at six months post-injury" as previously calculated from the first 24 hours of admission,²⁷ TIL=Therapy Intensity Level scale,^{8,9} TIL⁽¹⁹⁸⁷⁾=original Therapy Intensity Level scale published in 1987,⁶ TIL^(Basic)=condensed TIL scale,⁸ uwTIL=unweighted TIL scale in which sub-item scores are replaced by the ascending rank index

within the item. The numeric definition of each scale is listed in Table 1, and the calculation of daily (e.g., TIL_{24}), maximum (e.g., TIL_{max}), and median (e.g., TIL_{median}) scores are described in the Methods. The bars represent 95% confidence intervals derived from bootstrapping with 1,000 resamples of unique patients over 100 missing value imputations. **(A)** Spearman's correlation coefficients (ρ) between maximum scale scores over first week of ICU stay (i.e., TIL_{max} , $uwTIL_{max}$, $TIL_{max}^{(Basic)}$, $PILOT_{max}$, and $TIL_{max}^{(1987)}$) and other clinical measures. **(B)** Spearman's correlation coefficients (ρ) between median scale scores over first week of ICU stay (i.e., TIL_{median} , $uwTIL_{median}$, $TIL_{median}^{(Basic)}$, $PILOT_{median}$, and $TIL_{median}^{(1987)}$) and other clinical measures. **(C)** Repeated measures correlation coefficients (r_m , from -1 to 1) are interpreted as the strength and direction of association between two variables after accounting for inter-patient variation. **(D)** Linear mixed effects model coefficients (β_{LMER}) are interpreted as the expected difference in dependent variable (e.g., EH ICP₂₄) per unit increase of daily scale score (e.g., TIL_{24}) after accounting for time since ICU admission (i.e., Day_{ICU}) and inter-patient variation.

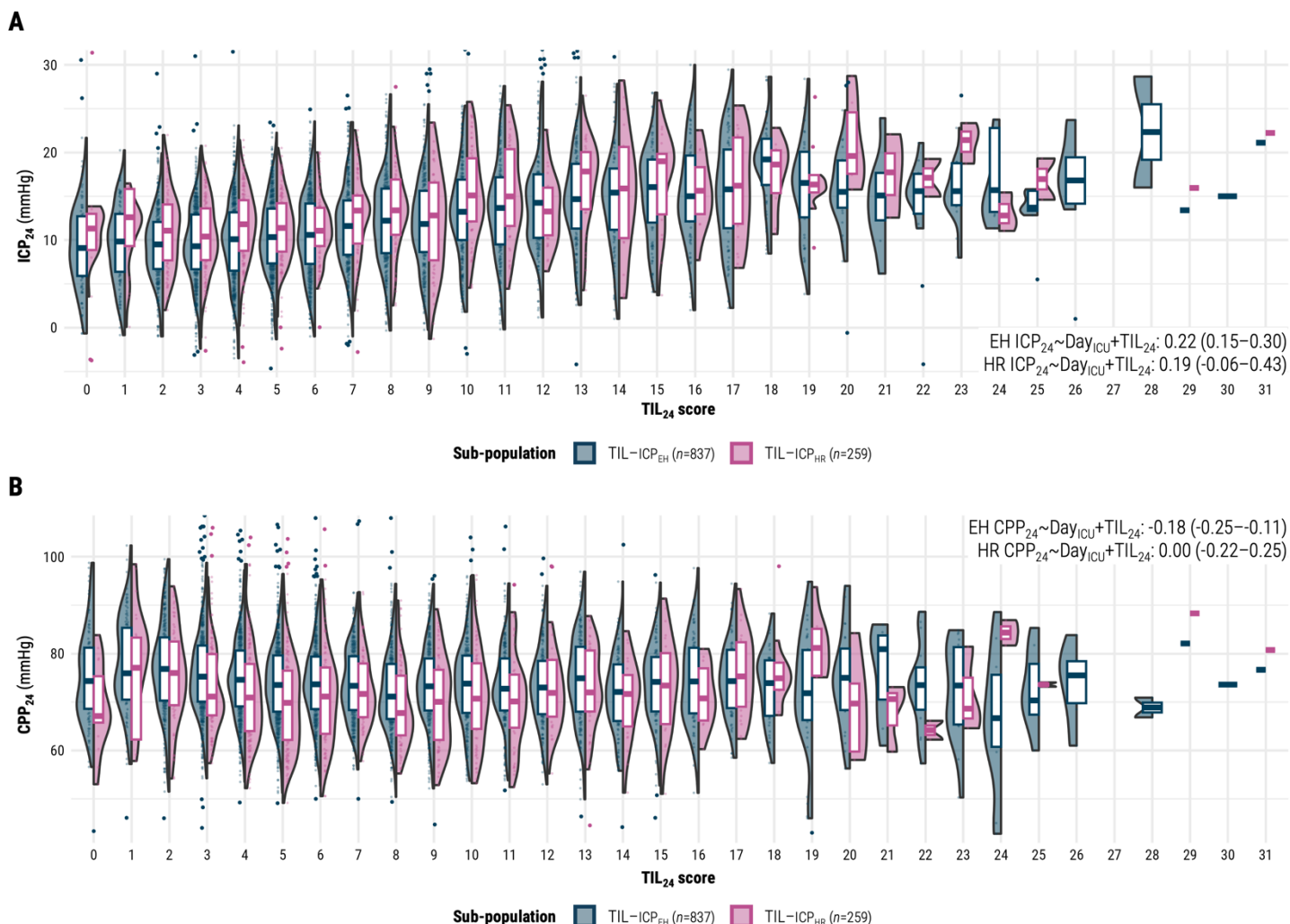


Fig 4. Distributions of daily intracranial pressure and cerebral perfusion pressure means per daily TIL score. Abbreviations: CPP=cerebral perfusion pressure, CPP₂₄=mean CPP over calendar day, Day_{ICU}=variable representing day (from 1 to 7) of ICU stay, EH=end-hour, HR=high-resolution, ICP=intracranial pressure, ICP₂₄=mean ICP over calendar day, TIL=Therapy Intensity Level scale,^{8,9} TIL₂₄=TIL score of calendar day, TIL-ICP_{EH}=end-hour ICP sub-population, TIL-ICP_{HR}=high-resolution ICP sub-population. The values in each panel are the linear mixed effects model coefficients (β_{LMER}) of TIL₂₄ with 95% confidence intervals derived from bootstrapping with 1,000 resamples of unique patients over 100 missing value imputations. The width of violin plots is scaled for each population, but the width of the points inside them demonstrates relative frequency across the populations. The violin plots do not encompass outliers based on 1.5 times the interquartile range. **(A)** Distributions of ICP₂₄ vs. TIL₂₄ for both sub-populations. **(B)** Distributions of CPP₂₄ vs. TIL₂₄ for both sub-populations.

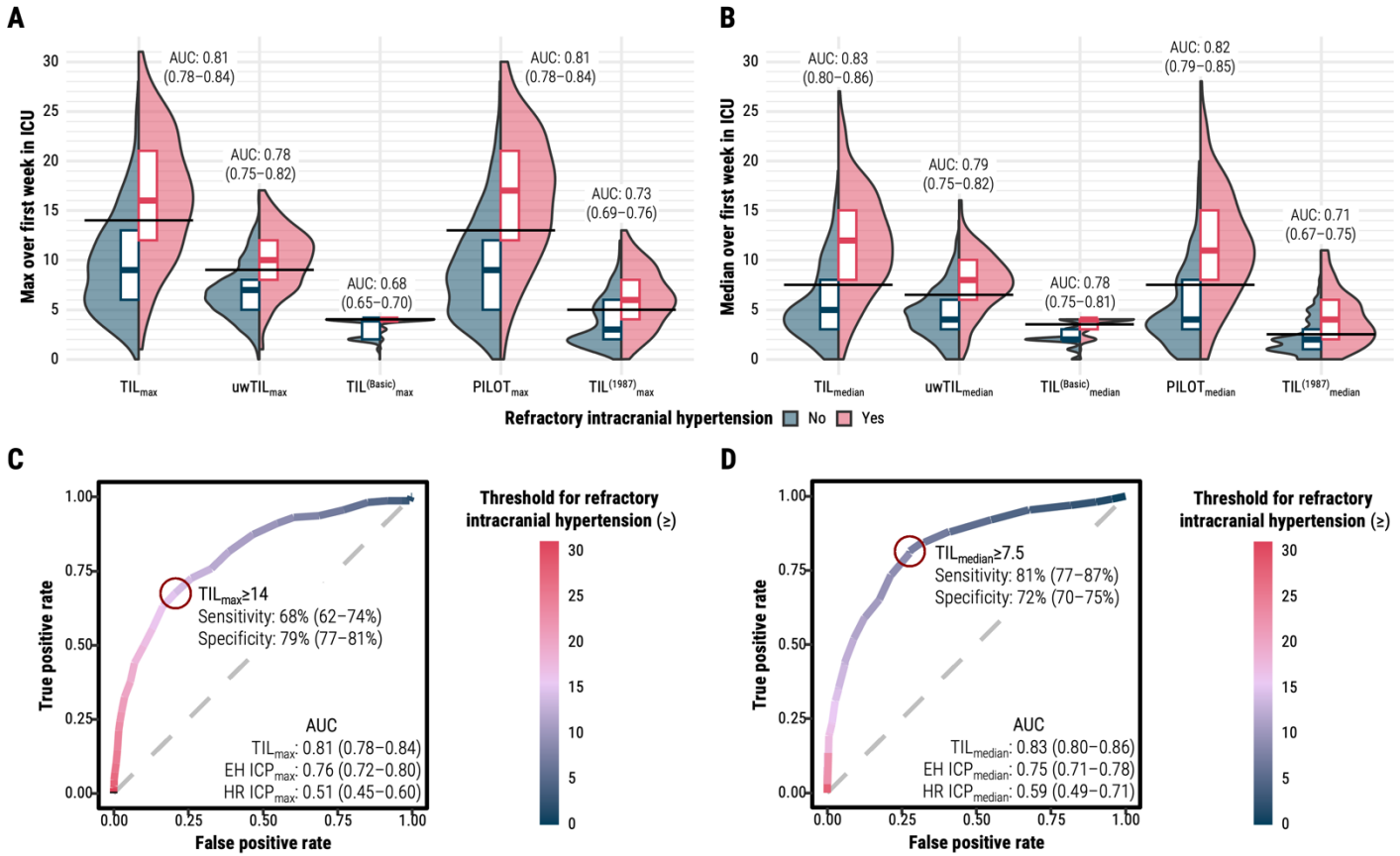


Fig 5. Discrimination of refractory intracranial hypertension status by TIL and alternative scale summary scores. Abbreviations: AUC=area under the receiver operating characteristic curve, EH=end-hour, HR=high-resolution, ICP=intracranial pressure, ICP_{max}=maximum calendar day mean of ICP over first week of ICU stay, ICP_{median}=median calendar day mean of ICP over first week of ICU stay, ICU=intensive care unit, PILOT=Paediatric Intensity Level of Therapy scale,⁷ TIL=Therapy Intensity Level scale,^{8,9} TIL⁽¹⁹⁸⁷⁾=original Therapy Intensity Level scale published in 1987,⁶ TIL^(Basic)=condensed TIL scale,⁸ uwTIL=unweighted TIL scale in which sub-item scores are replaced by the ascending rank index within the item. The 95% confidence intervals of AUC were derived from bootstrapping with 1,000 resamples of unique patients over 100 missing value imputations. **(A)** Distributions of maximum scores of TIL (i.e., TIL_{max}) and alternative scales (i.e., uwTIL_{max}, TIL^(Basic)_{max}, PILOT_{max}, and TIL⁽¹⁹⁸⁷⁾_{max}) stratified by refractory intracranial hypertension status. The horizontal black line segments represent the thresholds which maximised the sum of sensitivity and specificity for each scale. **(B)** Distributions of median scores of TIL (i.e., TIL_{median}) and alternative scales (i.e., uwTIL_{median}, TIL^(Basic)_{median}, PILOT_{median}, and TIL⁽¹⁹⁸⁷⁾_{median}) stratified by refractory intracranial hypertension status. The horizontal black line segments represent the thresholds which maximised the sum of sensitivity and specificity for each scale. **(C)** Receiver operating characteristic curve of refractory intracranial hypertension detection with TIL_{max}. The threshold which maximised the sum of sensitivity and specificity is highlighted with the dark red circle. **(D)** Receiver operating characteristic curve of refractory intracranial hypertension detection with TIL_{median}. The threshold which maximised the sum of sensitivity and specificity is highlighted with the dark red circle.

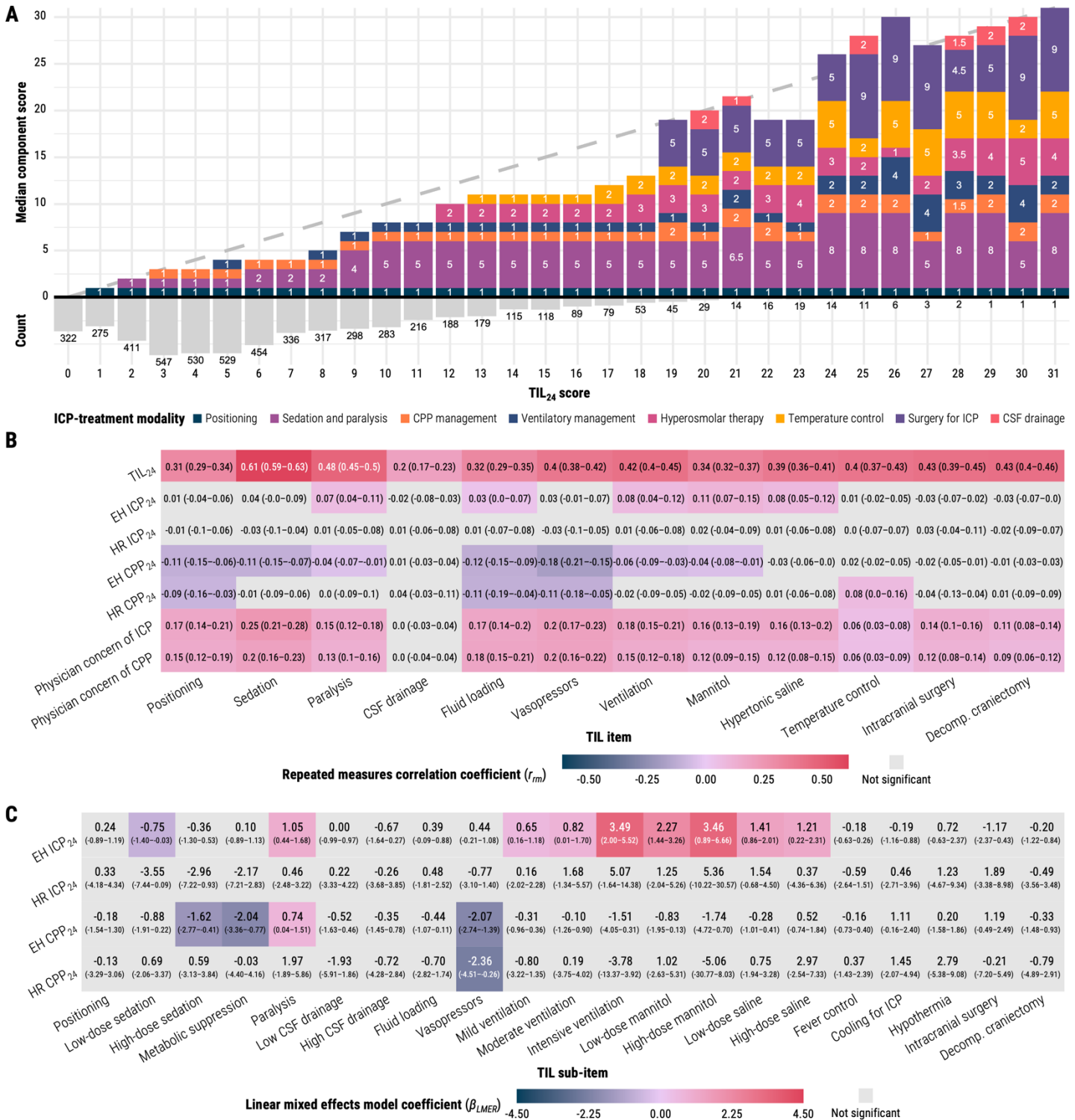


Fig 6. Association of TIL component items with TIL₂₄ and other study measures. Abbreviations: CPP=cerebral perfusion pressure, CPP₂₄=mean CPP over calendar day, CSF=cerebrospinal fluid, EH=end-hour, HR=high-resolution, ICP=intracranial pressure, ICP₂₄=mean ICP over calendar day, ICU=intensive care unit, TIL=Therapy Intensity Level scale,^{8,9} TIL₂₄=TIL score of calendar day. The 95% confidence intervals of r_{rm} and β_{LMER} values were derived from bootstrapping with 1,000 resamples of unique patients over 100 missing value

imputations. **(A)** Median component score of each ICP-treatment modality (Table 1) per each TIL₂₄ score. The histogram under the x-axis represents the relative frequency and count of each TIL₂₄ score in the population, and diagonal dashed line represents the TIL₂₄ score on both axes. If the sum of median item scores does not equal the corresponding TIL₂₄ score, this can be interpreted as high variability in the combination of simultaneously applied therapies at that TIL₂₄ score. **(B)** The repeated measures correlation coefficients (r_{rm} , from -1 to 1) are interpreted as the strength and direction of association between two variables after accounting for inter-patient variation. The component score of each item (Table 1, x-axis) was subtracted from the TIL₂₄ score (top row on y-axis) before calculating their r_{rm} values. **(C)** Linear mixed effects model coefficients (β_{LMER}) are interpreted as the expected difference in the dependent variable (y-axis) associated with the given TIL₂₄ sub-item treatment (Table 1) after accounting for all other TIL₂₄ sub-items, time since ICU admission, and inter-patient variation.

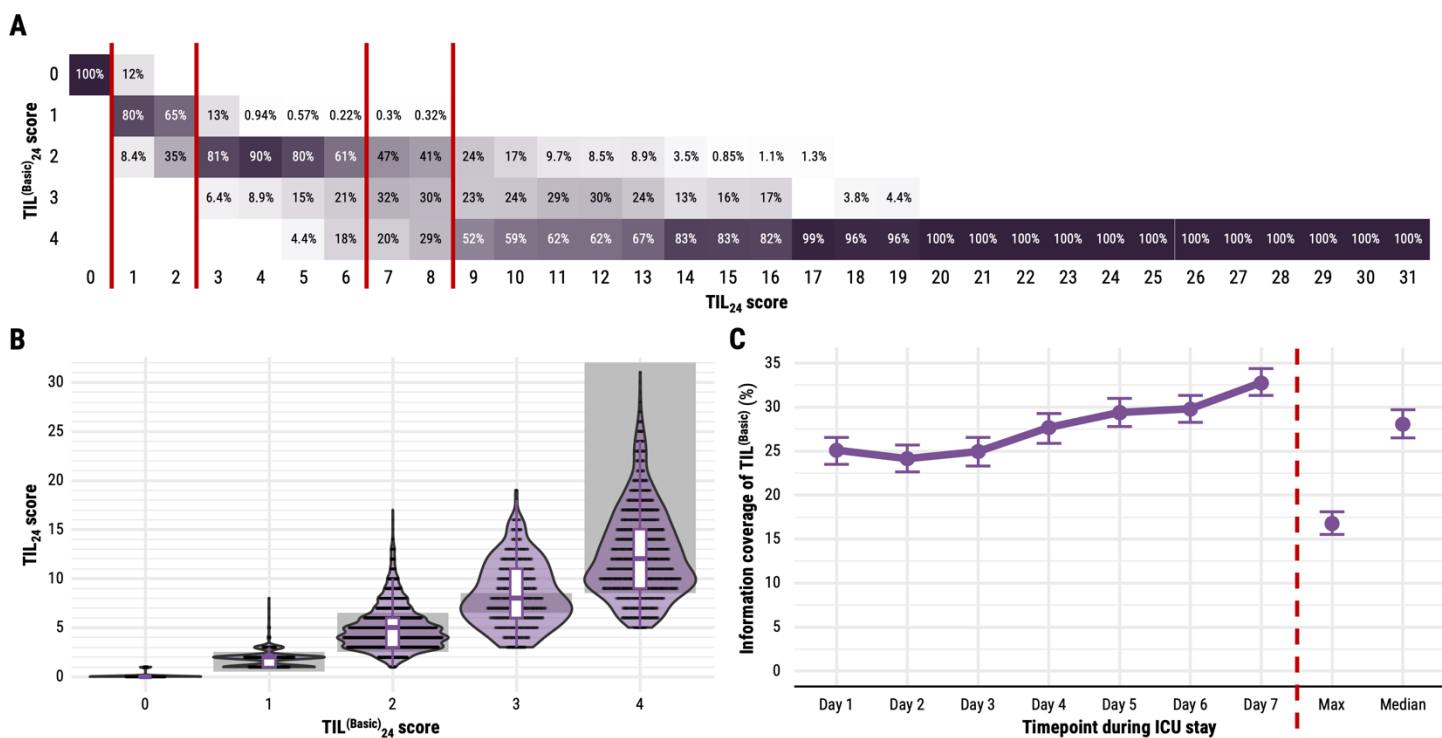


Fig 7. Relationship between TIL and TIL^(Basic). Abbreviations: AUC=area under the receiver operating characteristic curve, ICU=intensive care unit, TIL=Therapy Intensity Level scale,^{8,9} TIL^(Basic)=condensed TIL scale.⁸ The numeric definition of each scale is listed in Table 1, and the calculation of daily (e.g., TIL₂₄), maximum (e.g., TIL_{max}), and median (e.g., TIL_{median}) scores are described in the Methods. The 95% confidence intervals of information coverage were derived from bootstrapping with 1,000 resamples of unique patients over 100 missing value imputations. **(A)** Distribution of corresponding TIL^(Basic)₂₄ scores per each TIL₂₄ score. The values in each cell represent the percent of assessments at a given TIL₂₄ score (i.e., column) corresponding to a TIL^(Basic)₂₄ score (i.e., row). The vertical, dark red lines represent cut-offs across which the median corresponding TIL^(Basic)₂₄ score per TIL₂₄ score changes. **(B)** Distribution of corresponding TIL₂₄ scores per each TIL^(Basic)₂₄ score. The width of violin plots is scaled for each TIL^(Basic)₂₄ score, but the width of the points inside them demonstrates relative frequency across the TIL^(Basic)₂₄ scores. The grey, shaded zones represent the range of TIL₂₄ scores with corresponding median TIL^(Basic)₂₄ scores on the x-axis, as determined in panel (A). **(C)** The information of TIL₂₄, TIL_{max}, and TIL_{median} covered by TIL^(Basic)₂₄, TIL^(Basic)_{max}, and TIL^(Basic)_{median}, respectively. Information coverage is defined as the mutual information of TIL₂₄ and TIL^(Basic)₂₄ (or TIL_{max} and TIL^(Basic)_{max} or TIL_{median} and TIL^(Basic)_{median}) divided by the entropy of TIL₂₄ (or TIL_{max} or TIL_{median}).

Table 1. Scoring configurations for TIL and alternative scales

ICP-treatment modality	Item Sub-item	TIL		uwTIL		TIL ^{(Basic)a}	PILOT ^b		TIL ^{(1987)b}	
		Score	Max	Score	Max	Score ^a	Score	Max	Score	Max
Positioning	Head elevation for ICP control or nursed flat (180°) for CPP management	1	1	1	1	1	–	–	–	–
Sedation and neuromuscular blockade	Sedation		5		3			5		4
	Low dose sedation (as required for mechanical ventilation)	1		1		1	1		1	
	Higher dose sedation for ICP control (but not aiming for burst suppression)	2		2		2	1		1	
	High dose propofol or barbiturates for ICP control (metabolic suppression)	5		3		4	5		4	
	Neuromuscular blockade (paralysis)	3	3	1	1	–	2	2	1	1
CSF drainage	CSF drainage volume		3		2			5		2
	Low (<120 ml/24h)	2		1		2	4		1	
	High (≥120 ml/24h)	3		2		3	5		2	
CPP management	Fluid loading for maintenance of cerebral perfusion	1	1	1	1	2	–	–	–	–
	Vasopressor therapy required for management of cerebral perfusion	1	1	1	1	2	2	2	–	–
Ventilatory management	Hypocapnia for ICP control (P _a CO ₂ [mmHg])		4		3			4		2
	Mild (35≤P _a CO ₂ <40)	1		1		2	1		1	
	Moderate (30≤P _a CO ₂ <35)	2		2		3	2		1	
	Intensive (P _a CO ₂ <30)	4		3		4	4		2	
Hyperosmolar therapy	Mannitol administration		3		2			3		6
	≤2g/kg/24h	2		1		2	2		3	
	>2g/kg/24h	3		2		3	3		6	
	Hypertonic saline administration		3		2			3		–
	≤0.3g/kg/24h	2		1		2	3		–	
	>0.3g/kg/24h	3		2		3	3		–	
Temperature control	Temperature control (T [°C])		5		3			5		–
	Fever control (>38 or spontaneous <34.5)	1		1			1		–	
	Cooling for ICP control (≥35)	2		2		3	3		–	
	Hypothermia (<35)	5		3		4	5		–	

Surgery for intracranial hypertension	Intracranial operation for progressive mass lesion, NOT scheduled on admission	4	4	1	1	4	4	4	–	–
	Decompressive craniectomy	5	5	1	1	4	5	5	–	–
Maximum total possible score		38		21		4	38		15	

Abbreviations: CPP=cerebral perfusion pressure, CSF=cerebrospinal fluid, ICP=intracranial pressure, P_aCO_2 =partial pressure of carbon dioxide in arterial blood, PILOT=Paediatric Intensity Level of Therapy scale,⁷ T=body temperature in degrees Celsius, TIL=Therapy Intensity Level scale,^{8,9} TIL⁽¹⁹⁸⁷⁾=original Therapy Intensity Level scale published in 1987,⁶ TIL^(Basic)=condensed TIL scale,⁸ uwTIL=unweighted TIL scale in which sub-item scores are replaced by the ascending rank index within the item.

The TIL scale was developed by Maas *et al.*⁸ For each calendar day, the highest score for each item was summed to derive the TIL score.

^aTIL^(Basic) is the maximum score (up to 4) among all administered sub-items over the calendar day.

If no sub-items are administered on a given day, TIL^(Basic)=0.

^bPILOT scale⁷ and TIL⁽¹⁹⁸⁷⁾ scale⁶ scoring configurations have been adapted with minor adjustments to fit the items of TIL with a daily assessment frequency.

Table 2. Summary characteristics of study validation populations

Summary characteristic	TIL validation population			p-value ^c
	Overall (n=873, 52 centres)	TIL-ICP _{EH} (n=837, 51 centres)	TIL-ICP _{HR} (n=259, 21 centres)	
Age [years]	47 (29–62)	47 (29–62)	48 (30–62.5)	0.303
Sex: Female	222 (25%)	213 (25%)	55 (21%)	0.078
Baseline GCS (n ^a =822)				0.554
Mild [13–15]	122 (15%)	115 (15%)	38 (16%)	
Moderate [9–12]	139 (17%)	133 (17%)	36 (15%)	
Severe [3–8]	561 (68%)	539 (68%)	170 (70%)	
Marshall CT (n ^a =710)				0.278
No visible pathology (I)	17 (2%)	16 (2%)	6 (3%)	
Diffuse injury II	264 (37%)	248 (36%)	75 (35%)	
Diffuse injury III	93 (13%)	89 (13%)	22 (10%)	
Diffuse injury IV	16 (2%)	16 (2%)	3 (1%)	
Mass lesion (V & VI)	320 (45%)	312 (46%)	107 (50%)	
Six-month GOSE (n ^a =761)				0.329
(1) Death	199 (26%)	195 (26%)	54 (23%)	
(2 or 3) Vegetative or lower SD	182 (24%)	181 (25%)	63 (27%)	
(4) Upper SD	70 (9%)	66 (9%)	22 (9%)	
(5) Lower MD	122 (16%)	117 (16%)	44 (19%)	
(6) Upper MD	74 (10%)	71 (10%)	23 (10%)	
(7) Lower GR	56 (7%)	52 (7%)	14 (6%)	
(8) Upper GR	58 (8%)	55 (7%)	13 (6%)	
Baseline functional prognosis ^b [%] (n ^a =749)				
Pr(GOSE>1)	84.7 (63.5–94.9)	84.1 (62.1–94.7)	83.8 (66.9–94.0)	0.664
Pr(GOSE>3)	53.9 (29.9–76.0)	53.1 (29.2–75.0)	52.4 (33.9–71.1)	0.287
Pr(GOSE>4)	39.6 (20.6–59.6)	38.9 (19.8–58.3)	38.1 (22.6–54.6)	0.154
Pr(GOSE>5)	21.1 (10.2–36.8)	20.7 (10.0–36.0)	19.3 (10.5–30.1)	0.037
Pr(GOSE>6)	12.4 (5.9–20.8)	12.0 (5.8–19.9)	10.9 (5.8–17.2)	0.009
Pr(GOSE>7)	4.8 (2.2–9.2)	4.7 (2.2–9.1)	5.3 (2.2–8.5)	0.415
TIL _{max}	10 (6–14)	10 (6–14)	10 (6–14)	0.577
TIL _{median}	5 (3–10)	5 (3–10)	5 (4–10)	0.826
TIL ₂₄ scores				
Day 1 (n ^a =852)	7 (4–11)	7 (4–11)	7 (5–10)	0.134
Day 2 (n ^a =839)	6 (4–10)	6 (4–10)	6 (4–10)	0.860
Day 3 (n ^a =819)	6 (3–9)	6 (3–9)	6 (4–9)	0.926
Day 4 (n ^a =787)	6 (3–10)	6 (3–10)	5 (4–10)	0.372
Day 5 (n ^a =761)	5 (3–10)	5 (3–10)	5 (3–10)	0.941
Day 6 (n ^a =733)	5 (2–9)	5 (2.5–9)	5 (3–10)	0.337
Day 7 (n ^a =709)	5 (2–9)	4 (2–9)	5 (2–9)	0.425

Abbreviations: Baseline GCS=Glasgow Coma Scale at ICU admission, from 3 to 15, GOSE=GOS–Extended, GR=good recovery, ICP=intracranial pressure, ICP_{EH}=end-hour ICP, ICP_{HR}=high-resolution ICP, Marshall CT=Marshall computerised tomography classification, MD=moderate disability, Pr(GOSE>•)="probability of GOSE greater than • at six months post-injury" as previously calculated from the first 24 hours of admission,²⁷ SD=severe disability, TIL=Therapy Intensity Level scale, TIL₂₄=TIL score of calendar day in ICU, TIL_{max}=maximum TIL₂₄ over first week of ICU stay, TIL_{median}=median TIL₂₄ over first week of ICU stay. Data are median (IQR) for numeric characteristics and n (% of column group) for categorical characteristics, unless

otherwise indicated. Units or numerical definitions of characteristics are provided in square brackets.

^aLimited sample size of non-missing values for characteristic.

^bOrdinal functional outcome prognostic scores were calculated through tokenised embedding of all clinical information in the first 24 hours of ICU stay, as described previously.²⁷

^c*p*-values, comparing patients in TIL-ICP_{HR} sub-population to those not in TIL-ICP_{HR} sub-population, are derived from with Welch's *t*-test for numeric variables and χ^2 contingency table test for categorical variables.

Table 3. Optimised ranges for TIL categorisation

Category	Derived ranges	Performance (95% confidence intervals)			Case counts ^c		Previously proposed ranges ^d
		Sensitivity	Specificity	Accuracy	No	Yes	
Refractory intracranial hypertension ^a	TIL _{max} ≥14	68% (62–74%)	79% (77–81%)	77% (75–79%)	707	157	TIL _{max} ≥11
	TIL _{median} ≥7.5	81% (77–87%)	72% (70–75%)	74% (72–76%)			–
Day of surgical ICP control ^b	TIL ₂₄ ≥9	87% (83–91%)	74% (72–76%)	76% (74–77%)	4916	585	–
TIL ^(Basic) ₂₄				72% (70–73%)			
(1) Basic ICU care	1≤TIL ₂₄ ≤2				4932	568	1≤TIL ₂₄ ≤3
(2) Mild	3≤TIL ₂₄ ≤6				3294	2206	4≤TIL ₂₄ ≤7
(3) Moderate	7≤TIL ₂₄ ≤8				4709	791	8≤TIL ₂₄ ≤10
(4) Extreme	TIL ₂₄ ≥9				3919	1581	TIL ₂₄ ≥11

Abbreviations: ICP=intracranial pressure, ICU=intensive care unit, TIL=Therapy Intensity Level scale,^{8,9} TIL^(Basic)=condensed TIL scale.⁸ The numeric definition of each scale is listed in Table 1, and the calculation of daily (e.g., TIL₂₄), maximum (e.g., TIL_{max}), and median (e.g., TIL_{median}) scores is described in the Methods. The 95% confidence intervals of performance metrics were derived from bootstrapping with 1,000 resamples of unique patients over 100 missing value imputations.

^aRefractory intracranial hypertension was defined as recurrent, sustained (i.e., of at least ten minutes) increases of ICP above 20 mmHg despite medical ICP management during ICU stay. This information was recorded by attending physicians in patient discharge summaries.

^bIf a decompressive craniectomy was performed as a last resort for refractory intracranial hypertension, each of the days following the operation were also considered days of surgical ICP control.

^cFor refractory intracranial hypertension, case counts represent the number of patients (with non-missing values) without (i.e., No) and with (i.e., Yes) refractory intracranial hypertension. For day of surgical ICP control and TIL^(Basic)₂₄, case counts represent the number of non-missing TIL assessments not in (i.e., No) and in (i.e., Yes) the given category.

^dThresholds were previously proposed by the interagency panel which developed TIL based on expert opinion.⁸