

1 **The Therapy Intensity Level scale for traumatic brain injury:**
2 **clinimetric assessment on neuro-monitored patients across**
3 **52 European intensive care units**

4
5 **Shubhayu Bhattacharyay^{1,2,*}, Erta Beqiri³, Patrick Zuercher⁴, Lindsay Wilson⁵,**
6 **Ewout W Steyerberg⁶, David W Nelson⁷, Andrew I R Maas^{8,9}, David K Menon¹, Ari**
7 **Ercole^{1,10}, and the CENTER-TBI investigators and participants[†]**

8
9 ¹Division of Anaesthesia, University of Cambridge, Cambridge, United Kingdom.

10 ²Department of Clinical Neurosciences, University of Cambridge, Cambridge, United
11 Kingdom.

12 ³Brain Physics Laboratory, Division of Neurosurgery, University of Cambridge,
13 Cambridge, United Kingdom.

14 ⁴Department of Intensive Care Medicine, Inselspital, Bern University Hospital, University
15 of Bern, Switzerland.

16 ⁵Division of Psychology, University of Stirling, Stirling, United Kingdom.

17 ⁶Department of Biomedical Data Sciences, Leiden University Medical Center, Leiden,
18 The Netherlands.

19 ⁷Department of Physiology and Pharmacology, Section for Perioperative Medicine and
20 Intensive Care, Karolinska Institutet, Stockholm, Sweden.

21 ⁸Department of Neurosurgery, Antwerp University Hospital, Edegem, Belgium.

22 ⁹Department of Translational Neuroscience, Faculty of Medicine and Health Science,
23 University of Antwerp, Antwerp, Belgium.

24 ¹⁰Cambridge Centre for Artificial Intelligence in Medicine, Cambridge, United Kingdom.

25

26 *Corresponding author: sb2406@cam.ac.uk (SB)

27 †A full list of the CENTER-TBI investigators and participants are listed after the
28 acknowledgements.

29 ABSTRACT

30
31 The Therapy Intensity Level (TIL) scale and its abridged version (TIL^(Basic)) are used to
32 record the intensity of daily management for raised intracranial pressure (ICP) after
33 traumatic brain injury (TBI). However, it is uncertain: (1) whether TIL is valid across the
34 wide variation in modern ICP treatment strategies, (2) if TIL performs better than its
35 predecessors, (3) how TIL's component therapies contribute to the overall score, and (4)
36 whether TIL^(Basic) may capture sufficient information. We aimed to answer these questions
37 by assessing TIL on a contemporary population of ICP-monitored TBI patients ($n=873$) in
38 52 intensive care units (ICUs) across 18 European countries and Israel. From the
39 observational, prospective Collaborative European NeuroTrauma Effectiveness
40 Research in TBI (CENTER-TBI) study, we extracted first-week daily TIL scores (TIL₂₄),
41 ICP values, physician-based impressions of aberrant ICP, clinical markers of injury
42 severity, and six-month functional outcome scores. We evaluated the construct and
43 criterion validity of TIL against that of its predecessors, an unweighted version of TIL, and
44 TIL^(Basic). We calculated the median score of each TIL component therapy for each total
45 score as well as associations between each component score and markers of injury
46 severity. Moreover, we calculated the information coverage of TIL by TIL^(Basic), defined by
47 the mutual information of TIL and TIL^(Basic) divided by the entropy of TIL. The statistical
48 validity measures of TIL were significantly greater or similar to those of alternative scales,
49 and TIL integrated the widest range of modern ICP treatments. First-week median TIL₂₄
50 (TIL_{median}) outperformed first-week maximum TIL₂₄ (TIL_{max}) in discriminating refractory
51 intracranial hypertension (RIC) during ICU stay, and the thresholds which maximised the
52 sum of sensitivity and specificity for RIC detection were TIL_{median}≥7.5 (sensitivity: 81%
53 [95% CI: 77–87%], specificity: 72% [95% CI: 70–75%]) and TIL_{max}≥14 (sensitivity: 68%
54 [95% CI: 62–74%], specificity: 79% [95% CI: 77–81%]). The sensitivity-specificity-
55 optimising TIL₂₄ threshold for detecting surgical ICP control was TIL₂₄≥9 (sensitivity: 87%
56 [95% CI: 83–91%], specificity: 74% [95% CI: 72–76%]). The median component scores
57 for each TIL₂₄ reflected a credible staircase approach to treatment intensity escalation,
58 from head positioning to surgical ICP control, as well as considerable variability in the use
59 of cerebrospinal fluid drainage and decompressive craniectomy. First-week maximum
60 TIL^(Basic) (TIL^(Basic)_{max}) suffered from a strong ceiling effect and could not replace TIL_{max}.
61 TIL^(Basic)₂₄ and first-week median TIL^(Basic) (TIL^(Basic)_{median}) could be a suitable replacement
62 for TIL₂₄ and TIL_{median}, respectively (up to 33% [95% CI: 31–35%] information coverage).
63 Numerical ranges were derived for categorising TIL₂₄ scores into TIL^(Basic)₂₄ scores. Our
64 results validate the TIL scale across a spectrum of ICP management and monitoring
65 approaches and support its use as an intermediate outcome after TBI.

66 MAIN TEXT

67

68 Introduction

69

70 Elevated intracranial pressure (ICP) following traumatic brain injury (TBI) may impede the
71 potential recovery of injured brain tissue and damage initially unaffected brain regions.¹
72 Therefore, for TBI patients admitted to the intensive care unit (ICU), clinicians often
73 monitor ICP and may apply a wide range of ICP-reducing treatments.² The selective use
74 of these treatments typically follows a staircase approach, in which therapeutic intensity
75 – defined by the risk and complexity of each treatment – is incrementally escalated until
76 adequate ICP control is achieved.^{3–5} Thus, therapeutic intensity must be considered when
77 interpreting ICP. Even if two TBI patients have comparable ICP readings, a difference in
78 the intensity of their ICP-directed therapies likely indicates a difference in
79 pathophysiological severity.

80

81 Several versions of the Therapy Intensity Level (TIL) scale have been developed to rate
82 and compare the overall intensity of ICP management amongst TBI patients. TIL scales
83 assign a relative intensity score to each ICP-targeting therapy and return either the sum
84 or the maximum value of the scores of simultaneously applied therapies. In 1987, Maset
85 *et al.* produced the original, 15-point TIL scale (TIL⁽¹⁹⁸⁷⁾) to be assessed once every four
86 hours.⁶ In 2006, Shore *et al.* published the 38-point Paediatric Intensity Level of Therapy
87 (PILOT) scale,⁷ revising TIL⁽¹⁹⁸⁷⁾ to: (1) represent updated paediatric TBI management
88 practices, (2) have a more practical, daily assessment frequency, and (3) resolve a
89 statistical ceiling effect. In 2011, the interagency TBI Common Data Elements (CDE)
90 scheme developed the most recent, 38-point TIL scale as well as a condensed, four-point
91 TIL^(Basic) scale through expert consensus.⁸ The TIL scale revised PILOT to integrate
92 additional ICP-directed therapies and to be applicable to adult TBI management.
93 Moreover, TIL^(Basic) was proposed as a simple, categorical measure to use when full TIL
94 assessment would be infeasible. Since Zuercher *et al.* reported the validity and reliability
95 of TIL in a two-centre cohort ($n=31$) in 2016,⁹ the scale has become a popular research
96 metric for quantifying ICP treatment intensity.^{10–13}

97

98 However, several critical questions regarding TIL remain unanswered. It is uncertain
99 whether the validity of TIL, reported in a relatively small population, can be generalised
100 across the wide variation of ICP management, monitoring, and data acquisition (i.e.,
101 intermittent chart recording or high-resolution storage¹⁴) strategies practised in
102 contemporary intensive care.^{11,12,15,16} Moreover, the scoring configuration of TIL has
103 never been tested against alternatives (e.g., TIL⁽¹⁹⁸⁷⁾ and PILOT), and the relative
104 contribution of TIL's component therapies towards the total score is unknown. It is unclear
105 how TIL^(Basic) numerically relates to TIL and if the former captures the essential information
106 of the latter. In this work, we aimed to answer these questions by performing a
107 comprehensive assessment of TIL on a large, contemporary population of ICP-monitored
108 TBI patients across European ICUs.

109

110 Materials and Methods

111

112 **Therapy intensity level (TIL) and alternative scales**

113

114 TIL refers to the 38-point scale developed by the CDE scheme for TBI.⁸ The domain or
115 construct (i.e., targeted concept of a scale) of TIL is the therapeutic intensity of ICP
116 management. The TIL scale has twelve items, each representing a distinct ICP-targeting
117 treatment from one of eight modalities, as defined in Table 1. TIL was developed by an
118 international expert panel which discussed: (1) the relevant ICP-treatment modalities of
119 modern intensive care, (2) the relative risk and efficacy of individual therapies to derive
120 scores, and (3) practical and statistical limitations of previous TIL scores.⁸ In this way, TIL
121 is a formative measurement model, in which the construct (i.e., ICP treatment intensity)
122 is not unidimensional but rather defined by the combination of items (i.e., ICP-targeting
123 treatments).¹⁷ TIL was shown to have high interrater and intrarater reliability by Zuercher
124 *et al.*⁹ If a decompressive craniectomy was performed as a last resort for refractory
125 intracranial hypertension, its score was included in the day of the operation and in every
126 subsequent day of ICU stay. TIL scores can be calculated as frequently as clinically
127 desired. For our analysis, we calculated the following TIL scores from the first seven days
128 of ICU stay:

- 129 • TIL₂₄, the daily TIL score based on the sum of the highest scores per item per
130 calendar day,
- 131 • TIL_{max}, the maximum TIL₂₄ over the first week of a patient's ICU stay,
- 132 • TIL_{median}, the median TIL₂₄ over the first week of a patient's ICU stay.

133

134 We also calculated scores from four other therapeutic intensity scales to compare with
135 TIL scores. The 21-point, unweighted TIL (uwTIL) scale replaces each sub-item score in
136 TIL with its ascending rank index (i.e., 1, 2, 3, ...) within each item (Table 1). The four-
137 point TIL^(Basic) was also developed by the CDE scheme for TBI and takes the maximum
138 score, from one to four, amongst all included sub-items over the calendar day.⁸ We
139 adapted the 38-point PILOT⁷ and 15-point TIL⁽¹⁹⁸⁷⁾ scales⁶ with minor adjustments to fit
140 the items of TIL with a daily assessment frequency. PILOT was also shown to have high
141 interrater and intrarater reliability by Shore *et al.*⁷ For the four alternative scales, daily (i.e.,
142 uwTIL₂₄, TIL^(Basic)₂₄, PILOT₂₄, and TIL⁽¹⁹⁸⁷⁾₂₄), maximum (i.e., uwTIL_{max}, TIL^(Basic)_{max},
143 PILOT_{max}, and TIL⁽¹⁹⁸⁷⁾_{max}), and median (i.e., uwTIL_{median}, TIL^(Basic)_{median}, PILOT_{median}, and
144 TIL⁽¹⁹⁸⁷⁾_{median}) scores were calculated the same way as were TIL₂₄, TIL_{max}, and TIL_{median},
145 respectively.

146

147 **Study design and populations**

148

149 Our study population was prospectively recruited for the Collaborative European
150 NeuroTrauma Effectiveness Research in Traumatic Brain Injury (CENTER-TBI) core and
151 high-resolution studies. CENTER-TBI is a longitudinal, observational cohort study
152 (NCT02210221) involving 65 medical centres across 18 European countries and Israel.
153 Patients were recruited between 19 December 2014 and 17 December 2017 if they met
154 the following criteria: (1) presentation within 24 hours of a TBI, (2) clinical indication for a
155 CT scan, and (3) no severe pre-existing neurological disorder. In accordance with

156 relevant laws of the European Union and the local country, ethical approval was obtained
157 for each site, and written informed consent by the patient or legal representative was
158 documented electronically. The list of sites, ethical committees, approval numbers, and
159 approval dates can be found online: <https://www.center-tbi.eu/project/ethical-approval>.
160 The project objectives and design of CENTER-TBI have been described in detail
161 previously.^{18,19}

162
163 In this work, we applied the following inclusion criteria in addition to those of CENTER-
164 TBI (Figure 1): (1) primary admission to the ICU, (2) at least 16 years old at ICU
165 admission, (3) invasive ICP monitoring, (4) no decision to withdraw life-sustaining
166 therapies (WLST) on the first day of ICU stay, and (5) daily assessment of TIL.

167
168 For our sub-studies evaluating the association between TIL and ICP-derived values, we
169 created two sub-populations based on the type of ICP values available. Patients with end-
170 hour ICP (ICP_{EH}) values, which were recorded by clinicians at the end of every other hour,
171 constituted the TIL-ICP_{EH} sub-population. Patients with high-resolution ICP values
172 (ICP_{HR}), which were automatically stored with monitoring software, constituted the TIL-
173 ICP_{HR} sub-population. All patients in the TIL-ICP_{HR} sub-population were also members of
174 the TIL-ICP_{EH} sub-population (Figure 1).

175 **Data collection**

176
177
178 Data for the CENTER-TBI study was collected through the QuesGen electronic case
179 report form system (QuesGen Systems Inc, Burlingame, CA, USA) hosted on the
180 International Neuroinformatics Coordinating Facility (INCF) platform (INCF, Stockholm,
181 Sweden). All data for the validation populations, except high-resolution signals, were
182 extracted from the CENTER-TBI core study¹⁹ (v3.0, ICU stratum) using Opal database
183 software.²⁰

184 **ICP management data for TIL calculation**

185
186
187 Since TIL₂₄ was found to be a reliable summary of hourly TIL,⁹ clinical data pertinent to
188 the component items of TIL (i.e., ICP-guided treatments, Table 1) were recorded daily
189 through the first week of ICU stay. We extracted all daily TIL item values for our
190 population, and calculated TIL₂₄, uwTIL₂₄, TIL^(Basic)₂₄, PILOT₂₄, and TIL⁽¹⁹⁸⁷⁾₂₄ as defined
191 in Table 1. For patients who underwent WLST, we only extracted TIL item information
192 from before the documented date of WLST decision.

193 **ICP_{EH} and related values**

194
195
196 End-hour ICP (ICP_{EH}), systolic blood pressure (SBP_{EH}), and diastolic blood pressure
197 (DBP_{EH}) were recorded by clinicians every two hours for the TIL-ICP_{EH} sub-population.
198 Mean arterial pressure (MAP_{EH}) was calculated as $MAP_{EH} = (SBP_{EH} + 2DBP_{EH})/3$, and
199 cerebral perfusion pressure (CPP_{EH}) was calculated as $CPP_{EH} = MAP_{EH} - ICP_{EH}$. From
200 ICP_{EH} and CPP_{EH}, we calculated the following values:

- 201 • ICP_{24} or CPP_{24} , the mean ICP or CPP value over a calendar day of ICU stay,
- 202 • ICP_{max} or CPP_{min} , the maximum ICP_{24} or minimum CPP_{24} value over the first week
- 203 of a patient's ICU stay,
- 204 • ICP_{median} or CPP_{median} , the median ICP_{24} or CPP_{24} value over the first week of a
- 205 patient's ICU stay.

206

207 *ICP_{HR} and related values*

208

209 High-resolution signals were collected using either ICM+ software (Cambridge Enterprise
210 Ltd, Cambridge, UK; <http://icmplus.neurosurg.cam.ac.uk>), Moberg CNS monitor (Moberg
211 Research Inc, Ambler, PA, USA; <https://www.moberg.com>), or both. Blood pressure was
212 obtained through arterial lines connected to pressure transducers. High-resolution ICP
213 (ICP_{HR}) was acquired from either an intraparenchymal strain gauge probe (Codman ICP
214 MicroSensor, Codman & Shurtleff Inc, Raynham, MA, USA), a parenchymal fibre optic
215 pressure sensor (Camino ICP Monitor, Integra Life Sciences, Plainsboro, NJ, USA;
216 <https://www.integralife.com/>), or an external ventricular drain. Detailed data collection and
217 pre-processing methods (i.e., artefact cleaning and down-sampling to ten-second
218 averaged time series) applied to high resolution signals in our study have been described
219 previously.²¹ Ten-second mean ICP (ICP_{HR_10sec}) and CPP (CPP_{HR_10sec}) time-series were
220 retrieved for this analysis, and, from ICP_{HR_10sec} and CPP_{HR_10s} , we calculated
221 ICP_{24}/CPP_{24} , ICP_{max}/CPP_{min} , and $ICP_{median}/CPP_{median}$ as described above.

222

223 *Physician impressions*

224

225 Attending ICU physicians were asked to record their daily concerns with the patient's ICP
226 and CPP, separately, on a scale from one (not concerned) to ten (most concerned).
227 Moreover, on each patient's ICU discharge summary, physicians were asked to record
228 whether the patient experienced refractory intracranial hypertension during his or her ICU
229 stay. Refractory intracranial hypertension was defined as recurrent, sustained (i.e., of at
230 least ten minutes) increases of ICP above 20 mmHg despite medical ICP management.
231 We extracted the daily ICP/ CPP concern ratings and refractory intracranial hypertension
232 impressions which coincided with the ICU stays of our population.

233

234 *Baseline characteristics, prognosis, and outcome*

235

236 We extracted baseline demographic characteristics, Marshall CT classifications,²² and
237 Glasgow Coma Scale (GCS)²³ scores from ICU admission.²⁴ We also extracted Glasgow
238 Outcome Scale – Extended (GOSE) functional outcome scores at six months post-
239 injury,²⁵ with imputation of missing values as previously described.²⁶ Finally, we extracted
240 ordinal functional outcome prognosis scores, calculated from a tokenised embedding of
241 all available clinical information in the first 24 hours of ICU stay, as described previously.²⁷

242

243 *Validation*

244

245 We appraised the validity of TIL according to recommendations of best practice from
246 clinimetric literature.²⁸ Based on the identified domain of TIL, we evaluated the construct
247 and criterion validities of TIL. Our qualitative and quantitative assessments of TIL were
248 performed against those of alternative scoring configurations (Table 1) for comparison.
249

250 *Construct validity*

251
252 Construct validity is the extent to which a clinical scale matches expectations of
253 associations with parameters within or outside the identified domain. Construct validity is
254 further broken down into convergent validity (i.e., associations with similar constructs),
255 discriminant validity (i.e., associations with divergent constructs), and differentiation by
256 known groups. In this work, statistical associations between study variables were
257 measured with:

- 258 • Spearman's correlation coefficients (ρ) for static (i.e., measured once) variables,
- 259 • repeated measures correlation coefficients (r_{rm})²⁹ – interpreted as within-individual
260 strength of association – for longitudinal (i.e., measured over time) variables,
- 261 • linear mixed effects regression (LMER) coefficients (β_{LMER}) of daily scale scores
262 (e.g., TIL₂₄) when regressing ICP₂₄ or CPP₂₄ on daily scale scores and the day of
263 ICU stay (Day_{ICU}), accounting for inter-patient variability with random intercepts.
264 Therefore, β_{LMER} were interpreted as the expected difference in ICP₂₄ or CPP₂₄ per
265 unit increase of daily scale score, independent of time since ICU admission or
266 inter-patient variation.
267

268 For convergent validity, we expected therapeutic intensity to correlate at least mildly (i.e.,
269 $|\rho| \geq 0.2$, $|r_{rm}| \geq 0.2$, $|\beta_{LMER}| > 0$) with markers of injury severity (i.e., baseline GCS and
270 baseline outcome prognoses), functional outcome (i.e., six-month GOSE), clinical
271 concerns of ICP status, and ICP itself. Accordingly, we calculated: (1) ρ values between
272 TIL_{max} and GCS, ordinal prognosis scores, GOSE, and ICP_{max}, (2) ρ values between
273 TIL_{median} and GCS, ordinal prognosis scores, GOSE, and ICP_{median}, (3) r_{rm} values between
274 TIL₂₄ and physician concern of ICP and ICP₂₄, and (4) β_{LMER} of TIL₂₄ when regressing
275 ICP₂₄ on Day_{ICU} and TIL₂₄ (i.e., $ICP_{24} \sim Day_{ICU} + TIL_{24}$), accounting for inter-patient
276 variability with random intercepts.
277

278 For discriminant validity, we expected therapeutic intensity to be more strongly correlated
279 with ICP and physician concerns of ICP than with CPP and physician concerns of CPP,
280 respectively. Even though CPP control through fluid loading or vasopressor therapy is a
281 component modality of TIL (Table 1), we expected TIL to capture ICP management (i.e.,
282 the construct) more accurately than CPP management. We compared: (1) ρ values of
283 TIL_{max} vs. CPP_{min} to those of TIL_{max} vs. ICP_{max}, (2) ρ values of TIL_{median} vs. CPP_{median} to
284 those of TIL_{median} vs. ICP_{median}, (3) r_{rm} values of TIL₂₄ vs. CPP₂₄ to those of TIL₂₄ vs. ICP₂₄,
285 and (4) the β_{LMER} of TIL₂₄ when regressing CPP₂₄ ~ Day_{ICU} + TIL₂₄ to the β_{LMER} of TIL₂₄ when
286 regressing ICP₂₄ ~ Day_{ICU} + TIL₂₄.
287

288 For differentiation by known groups, we expected TIL_{max} and TIL_{median} to effectively
289 discriminate patients who experienced refractory intracranial hypertension during ICU
290 stay from those who did not. We calculated the area under the receiver operating

291 characteristic curve (AUC), which, in our case, was interpreted as the probability of a
292 randomly selected patient with refractory intracranial hypertension having a higher TIL_{max}
293 or TIL_{median} score than one without it. We also compared the AUCs of TIL_{max} and TIL_{median}
294 to ICP_{max} and ICP_{median} and determined the sensitivity and specificity of refractory
295 intracranial hypertension detection at each threshold of TIL_{max} and TIL_{median} .
296

297 *Criterion validity*

298
299 Criterion (or concurrent) validity is the degree to which there is an association between a
300 clinical scale and other scales measuring the same construct, particularly a gold standard
301 assessment. Since there is no extant “gold standard” for assessing ICP management
302 intensity, we tested the concurrent criterion validity of TIL by calculating its associations
303 with its predecessors (i.e., PILOT and $TIL^{(1987)}$), mindful of their limitations as described
304 above. More specifically, we calculated: (1) ρ values between TIL_{max} and prior scale
305 maximum scores (i.e., $PILOT_{max}$ and $TIL^{(1987)}_{max}$), (2) ρ values between TIL_{median} and prior
306 scale median scores (i.e., $PILOT_{median}$ and $TIL^{(1987)}_{median}$), and (3) r_{rm} between TIL_{24} and
307 prior scale daily scores (i.e., $PILOT_{24}$ and $TIL^{(1987)}_{24}$).
308

309 *Component item analysis*

310
311 We evaluated inter-item (i.e., inter-treatment) and adjusted item-total associations of
312 TIL_{24} , $uwTIL_{24}$, $PILOT_{24}$, and $TIL^{(1987)}_{24}$ by calculating r_{rm} values. Item-total correlations
313 were adjusted by subtracting the tested item score from the total score prior to calculating
314 the correlation. We measured Cronbach’s alpha (α) to assess internal reliability amongst
315 scale items at each day of ICU stay. Moreover, we calculated the median score
316 contribution of each item per total TIL_{24} score. The association between each TIL_{24} item
317 score and ICP_{24} , CPP_{24} , physician concern of ICP, and physician concern of CPP was
318 calculated with r_{rm} values. Finally, we trained LMER models regressing ICP_{24} and CPP_{24}
319 on all TIL items (with categorical dummy encoding) and Day_{ICU} concurrently. The β_{LMER}
320 values from these models were interpreted as the average change in ICP_{24} or CPP_{24}
321 associated with each treatment when accounting for all other ICP-guided treatments, time
322 since ICU admission, and inter-patient variability with random intercepts.
323

324 *$TIL^{(Basic)}$ information coverage*

325
326 We examined the distributions of $TIL^{(Basic)}_{24}$ per TIL_{24} and TIL_{24} per $TIL^{(Basic)}_{24}$ to derive
327 thresholds for categorising TIL_{24} into $TIL^{(Basic)}_{24}$. Moreover, we calculated the information
328 coverage (IC) of $TIL^{(Basic)}$ by dividing the mutual information (MI) of $TIL^{(Basic)}$ and TIL by
329 the entropy of TIL. IC was calculated with $TIL^{(Basic)}_{24}$ and TIL_{24} for days one through seven
330 of ICU stay, with $TIL^{(Basic)}_{max}$ and TIL_{max} , and with $TIL^{(Basic)}_{median}$ and TIL_{median} .
331

332 *Statistical analysis*

333

334 *Multiple imputation of missing values*

335
336 Five of the static study variables had missing values for some of the patients in our study:
337 GCS, GOSE, baseline prognosis scores, Marshall CT classifications, and refractory
338 intracranial hypertension status. We assessed the patterns of missingness
339 (Supplementary Figure S1) and multiply imputed ($m=100$) these variables with
340 independent, stochastic predictive mean matching functions using the *mice* package³⁰
341 (v3.9.0). We assumed these variables to be missing-at-random (MAR) (as previously
342 reported on CENTER-TBI data³¹) and supported this assumption by training imputation
343 models on all study measures as well as correlated auxiliary variables (e.g., raised ICP
344 during ICU stay).

345
346 For daily longitudinal study variables, we considered a value to be missing if the patient
347 was still in the ICU and WLST had not been decided on or before that day. We assessed
348 the longitudinal patterns of missingness (Supplementary Figure S2) and multiply imputed
349 ($m=100$) these variables with the multivariate, time-series algorithm from the *Amelia II*
350 package³² (v1.7.6) over the first week of ICU stay. The algorithm exploits both between-
351 variable and within-variable correlation structures over time to stochastically impute
352 missing time series values in independently trained runs. We validated the MAR
353 assumption by identifying characteristics significantly associated with longitudinal
354 variable missingness (Supplementary Table S1) and included auxiliary information
355 associated with value missingness (e.g., reasons for stopping ICP monitoring) in the
356 imputation model.

357

358 *Statistical inference*

359
360 We calculated 95% confidence intervals (CI) for ρ , r_{rm} , β_{LMER} , AUC, sensitivity, specificity,
361 α , and IC values using bootstrapping with 1,000 resamples of unique patients. For each
362 resample, one of the 100 missing value imputations was randomly chosen. Therefore,
363 confidence intervals represented the uncertainty due to patient resampling and missing
364 value imputation.

365

366 *Code*

367
368 All statistical analyses were performed in Python (v3.8.2), and all visualisations were
369 created in R (v4.2.3). All scripts used in this study are publicly available on GitHub:
370 https://github.com/sbhattacharyay/CENTER-TBI_TIL.

371

372 **Results**

373

374 *Study population*

375

376 Of the 4,509 patients available for analysis in the CENTER-TBI core study, 873 patients
377 from 52 ICUs met the additional inclusion criteria of this work. Amongst them, 837

378 constituted the TIL-ICP_{EH} sub-population and 259 constituted the TIL-ICP_{HR} sub-
379 population (Figure 1). Summary characteristics of the overall population as well as those
380 of the TIL-ICP_{EH} and TIL-ICP_{HR} sub-populations are detailed in Table 2. Apart from two
381 of the prognosis scores pertaining to the probability of returning to pre-injury life roles (i.e.,
382 Pr(GOSE>5) and Pr(GOSE>6)), none of the tested characteristics were significantly
383 different between patients in the TIL-ICP_{HR} sub-population and those outside of it (Table
384 2).

385
386 The median ICU stay duration of our population was 14 days (IQR: 7.8–23 days), and
387 83% ($n=726$) stayed through at least seven calendar days. At each day of ICU stay, less
388 than 2.4% of the expected TIL scores were missing (Supplementary Figure S2). Each TIL
389 component item (Table 1) is represented by at least 17% ($n=147$, intracranial surgery)
390 and each sub-item is represented by at least 4.9% ($n=43$, high-dose mannitol) of the
391 population (Supplementary Table S2). The distributions of TIL_{max}, TIL_{median}, and TIL₂₄,
392 juxtaposed against the scores of alternative scales (Table 1), are displayed in Figure 2.
393 The distributions of TIL and PILOT were visually similar, and TIL^(Basic)_{max} had a strong
394 ceiling effect (i.e., 57% of the population had the maximum score). Whilst there was no
395 significant difference in TIL₂₄ distribution over the first seven days, most patients had their
396 highest TIL₂₄ (i.e., TIL_{max}) soon after ICU admission (median: day two, IQR: days one–
397 three). The Spearman's rank correlation coefficient (ρ) between TIL_{max} and TIL_{median} was
398 0.80 (95% CI: 0.77–0.82), and the median TIL_{median}:TIL_{max} ratio was 0.65 (IQR: 0.45–
399 0.80).

400

401 **Validation of TIL**

402

403 The 95% CIs of ρ values, repeated measures correlation coefficients (r_{rm}), and linear
404 mixed effect regression coefficients (β_{LMER}) of TIL with other study measures are
405 visualised in Figure 3. Both TIL_{max} and TIL_{median} had mildly negative correlations (-
406 $0.26 < \rho_{\text{mean}} < -0.19$) with baseline GCS, six-month GOSE, and functional outcome
407 prognoses (Figure 3A–B). The within-individual association of TIL₂₄ with physician
408 concerns of ICP was moderately positive ($r_{rm}=0.35$ [95% CI: 0.31–0.38]) and significantly
409 higher than that of TIL^(Basic)₂₄ (Figure 3C). The association between ICP_{median} and TIL_{median}
410 was moderately positive ($0.35 < \rho_{\text{mean}} < 0.45$) with both ICP_{EH} and ICP_{HR} values, and the
411 association between ICP_{max} and TIL_{max} was moderately positive ($\rho=0.41$ [95% CI: 0.33–
412 0.46]) with ICP_{EH} values. The ICP_{max} vs. TIL_{max} correlation was not significant ($\rho=0.01$
413 [95% CI: -0.16–0.17]) with ICP_{HR} values; however, without imputing missing ICP_{HR}
414 values, the ρ was 0.43 (95% CI: 0.35–0.50). This suggests that the longitudinal
415 missingness of ICP_{HR} (Supplementary Figure S2) for our sample size made the ICP_{max}
416 estimation significantly imprecise. Moreover, the within-individual association with ICP₂₄
417 was either weak or not significant for any daily scale score according to r_{rm} (Figure 3C)
418 and β_{LMER} (Figure 3D) values. On average, a single point increase in TIL₂₄ was associated
419 with a 0.22 (95% CI: 0.15–0.30) mmHg increase in daily mean ICP_{EH} and a 0.19 (95%
420 CI: -0.06–0.43) mmHg increase in daily mean ICP_{HR}. These results mostly affirm the
421 convergent validity of TIL but highlight the broad intra-patient variability between ICP and
422 therapeutic intensity. From the distribution of ICP₂₄ values at each TIL₂₄ score (Figure

423 4A), we observed both considerable ICP₂₄ overlap across each TIL₂₄ score and an overall
424 positive relationship between TIL₂₄ and ICP₂₄, particularly for TIL₂₄≥8.

425
426 The correlation between TIL and both prior scales (i.e., PILOT and TIL⁽¹⁹⁸⁷⁾) was positively
427 strong for maximum, median, and daily scores (Supplementary Figure S3), establishing
428 the criterion validity of TIL. According to 95% CIs, the association of TIL with prior scales
429 was stronger than that of uwTIL or TIL^(Basic) (Supplementary Figure S3).

430
431 According to ρ , r_{tm} , and β_{LMER} values (Figure 3), the associations of TIL with CPP and of
432 TIL with physician concerns of CPP were weaker than or not significantly different from
433 the corresponding associations with ICP. Moreover, the trend of CPP₂₄ distributions over
434 different TIL₂₄ scores is not as visually apparent as that of ICP₂₄ distributions over different
435 TIL₂₄ scores (Figure 4B). These results support the discriminant validity of TIL.

436
437 In our population, 157 patients (18% of 864 assessed) were reported to experience
438 refractory intracranial hypertension during ICU stay. TIL_{max} correctly discriminated these
439 patients from the others 81% (95% CI: 78–84%) of the time (Figure 5A), and TIL_{median} did
440 so 83% (95% CI: 80–86%) of the time (Figure 5B). This performance of TIL was
441 significantly greater than or similar to that of all alternative scales (Figure 5A–B).
442 Additionally, TIL_{median} had significantly greater discrimination performance than ICP_{max}
443 (Figure 5C) and ICP_{median} (Figure 5D), respectively. The sensitivity and specificity of
444 refractory intracranial hypertension detection at each threshold of TIL_{max}, TIL_{median},
445 TIL^(Basic)_{max}, and TIL^(Basic)_{median} are listed in Supplementary Table S3 and visualised in
446 Figure 5C–D. The thresholds which maximised the sum of sensitivity and specificity were
447 TIL_{max}≥14 (sensitivity: 68% [95% CI: 62–74%], specificity: 79% [95% CI: 77–81%]) and
448 TIL_{median}≥7.5 (sensitivity: 81% [95% CI: 77–87%], specificity: 72% [95% CI: 70–75%])
449 (Table 3).

451 ***TIL component items***

452
453 Whilst there was wide variation in item combinations per TIL₂₄ score (i.e., sum of median
454 scores was often under diagonal line in Figure 6A), the average order of therapeutic
455 escalation was fairly consistent: position, sedation, CPP management, ventilatory
456 management, neuromuscular blockade, hyperosmolar therapy, temperature control, and
457 then surgery for refractory ICP. Surgical control of ICP occurred in over 50% of reported
458 cases at each TIL₂₄ above 18 (Figure 6A), but the threshold which maximised the sum of
459 sensitivity and specificity in detecting surgical ICP control was TIL₂₄≥9 (Table 3,
460 performance at each threshold is listed in Supplementary Table S4). The inter-item r_{tm}
461 values of TIL₂₄ (Supplementary Figure S4) were mostly positive except for cerebrospinal
462 fluid (CSF) drainage, which did not correlate significantly with most other items, and
463 decompressive craniectomy, which did not correlate significantly with CSF, ventilatory, or
464 temperature control. Consistent with Figure 6A, this result suggested that CSF drainage
465 and decompressive craniectomy were the most variably applied therapies across study
466 ICUs. The Cronbach's alpha (α) value of TIL₂₄ was, at best, 0.65 (95% CI: 0.62–0.68) and
467 lower (albeit, not significantly) than that of uwTIL₂₄ at each day of ICU stay
468 (Supplementary Figure S5). However, since TIL is a formative scale (i.e., the construct is

469 multidimensional and defined by the items), high inter-item correlation and α values are
470 not necessary for item validation.¹⁷ Amongst all TIL₂₄ items, sedation was most strongly
471 correlated with adjusted TIL₂₄ scores and physician concerns of ICP (Figure 6B). From
472 $10 \leq \text{TIL}_{24} \leq 20$, a plateau effect of high-dose sedation combined with neuromuscular
473 blockade was observed in most cases (Figure 6A). When accounting for all other TIL₂₄
474 sub-items, time since ICU admission, as well as inter-patient variability, ventilation,
475 mannitol administration, and hypertonic saline administration were most strongly
476 associated with ICP₂₄ and vasopressors were most strongly associated with CPP₂₄
477 (Figure 6C).

478

479 **TIL^(Basic)**

480

481 Based on the median TIL^(Basic)₂₄ score at each TIL₂₄ score (Figure 7A), we derived the
482 ranges for mapping TIL₂₄ onto TIL^(Basic)₂₄ in Table 3. There is, however, considerable
483 overlap of TIL₂₄ scores across TIL^(Basic)₂₄ scores (Figure 7B), particularly in the range of
484 $6 \leq \text{TIL}_{24} \leq 10$, and at no TIL₂₄ score was TIL^(Basic)₂₄=3 the most represented score (Figure
485 7A). TIL^(Basic)₂₄ covered up to 33% (95% CI: 31–34%) of the information (i.e., entropy) in
486 TIL₂₄, and TIL^(Basic)_{median} covered up to 28% (95% CI: 27–30%) of the information in
487 TIL_{median} (Figure 7C). TIL^(Basic)_{max} only covered 17% (95% CI: 16–18%) of the information
488 in TIL_{max} (Figure 7C).

489

490 **Discussion**

491

492 In this work, we performed a large-scale ($n=873$), multicentre (52 ICUs, 19 countries),
493 and prospective validation study of TIL and TIL^(Basic) against alternative scales. The
494 CENTER-TBI data not only reflect the modern variation in ICP-directed therapeutic
495 intensity (Figures 2 and 6A) but also illustrate the practical feasibility of daily TIL
496 assessment: out of 885 eligible patients, 873 (99%) had daily TIL scores (Figure 1) with
497 less than 2.4% daily missingness (Supplementary Figure S2).

498

499 Our findings support the validity of TIL as a metric for scoring ICP-directed therapeutic
500 intensity and for marking pathophysiological severity. The statistical construct and
501 criterion validity measures of TIL were significantly greater or similar to those of
502 alternative scales (Figures 3 and 5), and TIL integrated the widest range of modern ICP
503 treatments (Table 1). Our analysis yielded empirical ranges for interpreting TIL in terms
504 of refractory intracranial hypertension, surgical intervention, and the condensed, TIL^(Basic)
505 scores (Table 3). On a component level (Figure 6A), TIL₂₄ reflected a pattern of treatment
506 intensity escalation consistent with clinical algorithms^{2,3,5} as well as a wide variation in
507 treatment combinations, particularly in the use of CSF drainage and decompressive
508 craniectomy. These results support the use of TIL as an intermediate outcome for
509 treatment effect, as done in previous studies.^{33,34}

510

511 Due to a strong ceiling effect (Figures 2A and 5A), TIL^(Basic) should not be used instead of
512 TIL for rating maximum treatment intensity. TIL^(Basic)₂₄ and TIL_{median} covered up to 33% of
513 the information in TIL₂₄ (Figure 7C), but the TIL^(Basic)₂₄ associations with physician

514 concerns of ICP were significantly worse than those of TIL₂₄ (Figure 3C). TIL should
515 always be preferred to TIL^(Basic), but we believe daily or median TIL^(Basic) can be a suitable
516 alternative when daily or median TIL assessment is infeasible.

517
518 Moreover, we evaluated TIL with both end-hour (ICP_{EH}) and high-resolution (ICP_{HR}) ICP
519 values. ICP_{HR} is the gold standard, and neuromonitoring-related results from the ICP_{HR}
520 population should generally take precedence.¹⁴ However, 67% of expected ICP_{HR} values
521 were missing on day one of ICU stay (Supplementary Figure S2), likely due to the time
522 required to arrange high-resolution data collection. Consequently, estimates of high-
523 resolution ICP_{max} were significantly affected by missing value imputation and became
524 imprecise at our sample size (Figure 3A). In these cases, results from the ICP_{EH}
525 population served as a valuable reference on a substantially larger sample size (Table 2)
526 since ICP_{EH} and CPP_{EH} have been shown to be fair end-hour representations of ICP_{HR}
527 and CPP_{HR}, respectively, in CENTER-TBI.¹⁴ The considerable overlap of ICP₂₄ values
528 across TIL₂₄ scores (Figure 4A) and the insignificant-to-weak, within-individual
529 association between ICP₂₄ and TIL₂₄ (Figure 3C–D) highlight the need to account for
530 therapeutic intensity when interpreting ICP. Additionally, the higher median ICP₂₄ values
531 for TIL₂₄≥8 (Figure 4A) may suggest that clinicians accept a slightly higher ICP when
532 balancing the risks of elevating therapeutic intensity against those of intracranial
533 hypertension.

534
535 We see three main opportunities to improve TIL. First, the item scores of TIL and its
536 predecessors (i.e., PILOT and TIL⁽¹⁹⁸⁷⁾) were not derived empirically. Data-driven
537 techniques, such as confirmatory factor analysis,²⁸ can be used to derive scoring
538 configurations which optimise a defined objective (e.g., maximal separation of patients).
539 However, data-driven scores do not necessarily reflect the intended construct (i.e.,
540 treatment risk and complexity),³⁵ and, in general, item scoring does not have an
541 appreciable impact on overall scale performance.²⁸ Second, the items of TIL must evolve
542 as therapeutic approaches to ICP management evolve. TIL discriminated refractory
543 intracranial hypertension status significantly better than TIL⁽¹⁹⁸⁷⁾ (Figure 5A–B) because
544 TIL updated TIL⁽¹⁹⁸⁷⁾ with six additional items (Table 1). We recommend updating and re-
545 evaluating TIL each time ICP-treatment modalities or their perceived risks change.
546 Finally, the development of TIL was largely informed by the perspective of ICU practices
547 in high-income countries.⁸ Likewise, this assessment was performed in a cohort of
548 patients across Europe and Israel. Especially given the disproportionately higher burden
549 of TBI in low- and middle-income countries,³⁶ it is imperative to test and, if necessary,
550 adapt TIL to a more inclusive, global population of TBI.

551
552 We recognise several limitations of our analysis. Whilst numerous investigators assessed
553 TIL across the study ICUs, each TIL score was only assessed once. Therefore, we could
554 not evaluate the interrater reliability of TIL. Similarly, data needed to calculate the full TIL
555 score was only recorded once a day, so we could not determine if a daily assessment
556 frequency was sufficient. Since the prior TIL validation study reported a high interrater
557 reliability and recommended a daily assessment frequency,⁹ we assumed both to be true.
558 The results from the Randomised Evaluation of Surgery with Craniectomy for
559 Uncontrollable Elevation of Intracranial Pressure (RESCUEicp) trial³⁷ – published amidst

560 CENTER-TBI patient recruitment in 2016 – have likely changed the global frequency and
561 perceived intensity of decompressive craniectomy for TBI. Therefore, we recognise the
562 potentially confounding effect of the trial results on treatment decision making for some
563 patients in the CENTER-TBI population and encourage a potential reappraisal of the
564 therapeutic intensity of decompressive craniectomy through expert discussion and
565 statistical validation. The physician impressions (i.e., physician concerns of ICP and CPP
566 and refractory intracranial hypertension status) were subjective, and we did not have
567 enough information to account for interrater variability. Therefore, these scores and labels
568 should be considered unrefined. Finally, because of limited dosage data for numerical
569 treatments (i.e., CSF drainage, ventilation, hyperosmolar therapy, and temperature
570 control), we did not test alternative sub-item categorisations.

571

572 **Conclusion**

573

574 TIL is a valid, generalisable measurement of ICP management amongst neuro-monitored
575 TBI patients in the ICU. On all validation metrics, TIL performs at least as well as its
576 alternatives and considers the widest range of modern treatment strategies. TIL's
577 component scores over increasing TIL reflect a clinically credible order of treatment
578 escalation, from head positioning to ICP-directed surgery. TIL^(Basic) is not suitable for
579 evaluating maximum treatment intensity, but daily TIL^(Basic) and median TIL^(Basic) can cover
580 up to a third of the information in TIL. In the setting of clinical ICP management, TIL is a
581 more sensitive marker of pathophysiological severity than ICP and can be considered an
582 intermediate outcome after TBI.

583

584 **Transparency, Rigor and Reproducibility Summary**

585

586 The CENTER-TBI study was pre-registered at clinicaltrials.gov (NCT02210221,
587 <https://clinicaltrials.gov/ct2/show/NCT02210221>). The analysis plan was registered after
588 beginning data collection but before data analysis at [https://www.center-](https://www.center-tbi.eu/data/approved-proposals)
589 [tbi.eu/data/approved-proposals](https://www.center-tbi.eu/data/approved-proposals) (#491), and the lead author with primary responsibility for
590 the analysis certifies that the analysis plan was pre-specified. A sample size of 903
591 patients was planned based on availability of critically ill, ICP-monitored, adult TBI
592 patients recruited for CENTER-TBI. Actual sample size was 873, as 18 patients had a
593 documented decision to WLST on the first day of ICU stay and 12 additional patients did
594 not have daily TIL scores assessed. A patient inclusion diagram is provided (Figure 1).
595 TIL scoring and clinical data entry was performed by investigators who were aware of
596 relevant characteristics of the participants. Participants were recruited between 19
597 December 2014 and 17 December 2017, and data (including follow-up results) were
598 collected until 31 March 2021. High-resolution waveforms were stored directly from
599 bedside monitoring software, as described in the Methods and Materials. Variability
600 amongst different TIL assessors is not expected to be significant based on the established
601 high interrater reliability of TIL.⁹ All equipment and software used to perform imaging and
602 preprocessing are widely available from commercial sources or open source repositories.
603 The clinimetric validation procedure and the primary clinical metric (TIL) are established
604 standards in the field, based on previously published results^{9,28} and this study. The

605 assumption of bootstrapping-derived confidence intervals is that the sample is
606 representative of the population. This study is, itself, an external validation, and internal
607 replication by the study group was performed. Individual participant data are available
608 online, conditional to approved online study proposal, with no end date at
609 <https://www.center-tbi.eu/data>. Signed confirmation of a data access agreement is
610 required, and all access must comply with regulatory restrictions imposed on the original
611 study. All analytic code used to perform the statistical analyses are publicly available
612 online at: https://github.com/sbhattacharyay/CENTER-TBI_TIL. This paper will be
613 published under a Creative Commons Open Access license, and upon publication, will
614 be freely available at <https://www.liebertpub.com/loi/neu>.

615

616 **Acknowledgments**

617

618 This research was supported by the National Institute for Health Research (NIHR) Brain
619 Injury MedTech Co-operative. CENTER-TBI was supported by the European Union 7th
620 Framework programme (EC grant 602150). Additional funding was obtained from the
621 Hannelore Kohl Stiftung (Germany), from OneMind (USA), from Integra LifeSciences
622 Corporation (USA), and from NeuroTrauma Sciences (USA). CENTER-TBI also
623 acknowledges interactions and support from the International Initiative for TBI Research
624 (InTBIR) investigators. S.B. is funded by a Gates Cambridge Scholarship. E.B. is funded
625 by the Medical Research Council (MR N013433-1) and by a Gates Cambridge
626 Scholarship. The funders had no role in study design, data collection and analysis,
627 decision to publish, or preparation of the manuscript.

628

629 We are grateful to the patients and families of our study for making our efforts to improve
630 TBI care possible. S.B. would like to thank Kathleen Mitchell-Fox (Princeton University)
631 for offering comments on the manuscript.

632

633 **The CENTER-TBI investigators and participants**

634

635 The co-lead investigators of CENTER-TBI are designated with an asterisk (*), and their
636 contact email addresses are listed below.

637

638 Cecilia Åkerlund¹, Krisztina Amrein², Nada Andelic³, Lasse Andreassen⁴, Audny Anke⁵,
639 Anna Antoni⁶, Gérard Audibert⁷, Philippe Azouvi⁸, Maria Luisa Azzolini⁹, Ronald Bartels¹⁰,
640 Pál Barzó¹¹, Romuald Beauvais¹², Ronny Beer¹³, Bo-Michael Bellander¹⁴, Antonio Belli¹⁵,
641 Habib Benali¹⁶, Maurizio Berardino¹⁷, Luigi Beretta⁹, Morten Blaabjerg¹⁸, Peter Bragge¹⁹,
642 Alexandra Brazinova²⁰, Vibeke Brinck²¹, Joanne Brooker²², Camilla Brorsson²³, Andras
643 Buki²⁴, Monika Bullinger²⁵, Manuel Cabeleira²⁶, Alessio Caccioppola²⁷, Emiliana
644 Calappi²⁷, Maria Rosa Calvi⁹, Peter Cameron²⁸, Guillermo Carbayo Lozano²⁹, Marco
645 Carbonara²⁷, Simona Cavallo¹⁷, Giorgio Chevallard³⁰, Arturo Chierogato³⁰, Giuseppe
646 Citerio^{31,32}, Hans Clusmann³³, Mark Coburn³⁴, Jonathan Coles³⁵, Jamie D. Cooper³⁶,
647 Marta Correia³⁷, Amra Čović³⁸, Nicola Curry³⁹, Endre Czeiter²⁴, Marek Czosnyka²⁶, Claire
648 Dahyot-Fizelier⁴⁰, Paul Dark⁴¹, Helen Dawes⁴², Véronique De Keyser⁴³, Vincent Degos¹⁶,
649 Francesco Della Corte⁴⁴, Hugo den Boogert¹⁰, Bart Depreitere⁴⁵, Đula Đilvesi⁴⁶, Abhishek

650 Dixit⁴⁷, Emma Donoghue²², Jens Dreier⁴⁸, Guy-Loup Dulière⁴⁹, Ari Ercole⁴⁷, Patrick
651 Esser⁴², Erzsébet Ezer⁵⁰, Martin Fabricius⁵¹, Valery L. Feigin⁵², Kelly Foks⁵³, Shirin
652 Frisvold⁵⁴, Alex Furmanov⁵⁵, Pablo Gagliardo⁵⁶, Damien Galanaud¹⁶, Dashiell Gantner²⁸,
653 Guoyi Gao⁵⁷, Pradeep George⁵⁸, Alexandre Ghuysen⁵⁹, Lelde Giga⁶⁰, Ben Glocker⁶¹,
654 Jagoš Golubovic⁴⁶, Pedro A. Gomez⁶², Johannes Gratz⁶³, Benjamin Gravesteijn⁶⁴,
655 Francesca Grossi⁴⁴, Russell L. Gruen⁶⁵, Deepak Gupta⁶⁶, Juanita A. Haagsma⁶⁴, Iain
656 Haitisma⁶⁷, Raimund Helbok¹³, Eirik Helseth⁶⁸, Lindsay Horton⁶⁹, Jilske Huijben⁶⁴, Peter
657 J. Hutchinson⁷⁰, Bram Jacobs⁷¹, Stefan Jankowski⁷², Mike Jarrett²¹, Ji-yao Jiang⁵⁸, Faye
658 Johnson⁷³, Kelly Jones⁵², Mladen Karan⁴⁶, Angelos G. Koliass⁷⁰, Erwin Kompanje⁷⁴, Daniel
659 Kondziella⁵¹, Evgenios Kornaropoulos⁴⁷, Lars-Owe Koskinen⁷⁵, Noémi Kovács⁷⁶, Ana
660 Kowark⁷⁷, Alfonso Lagares⁶², Linda Lanyon⁵⁸, Steven Laureys⁷⁸, Fiona Lecky^{79,80}, Didier
661 Ledoux⁷⁸, Rolf Lefering⁸¹, Valerie Legrand⁸², Aurelie Lejeune⁸³, Leon Levi⁸⁴, Roger
662 Lightfoot⁸⁵, Hester Lingsma⁶⁴, Andrew I.R. Maas^{43,*}, Ana M. Castaño-León⁶², Marc
663 Maegele⁸⁶, Marek Majdan²⁰, Alex Manara⁸⁷, Geoffrey Manley⁸⁸, Costanza Martino⁸⁹,
664 Hugues Maréchal⁴⁹, Julia Mattern⁹⁰, Catherine McMahon⁹¹, Béla Melegh⁹², David
665 Menon^{47,*}, Tomas Menovsky⁴³, Ana Mikolic⁶⁴, Benoit Misset⁷⁸, Visakh Muraleedharan⁵⁸,
666 Lynnette Murray²⁸, Ancuta Negru⁹³, David Nelson¹, Virginia Newcombe⁴⁷, Daan
667 Nieboer⁶⁴, József Nyirádi², Otesile Olubukola⁷⁹, Matej Oresic⁹⁴, Fabrizio Ortolano²⁷,
668 Aarno Palotie^{95,96,97}, Paul M. Parizel⁹⁸, Jean-François Payen⁹⁹, Natascha Perera¹²,
669 Vincent Perlberg¹⁶, Paolo Persona¹⁰⁰, Wilco Peul¹⁰¹, Anna Piippo-Karjalainen¹⁰², Matti
670 Pirinen⁹⁵, Dana Pisica⁶⁴, Horia Ples⁹³, Suzanne Polinder⁶⁴, Inigo Pomposo²⁹, Jussi P.
671 Posti¹⁰³, Louis Puybasset¹⁰⁴, Andreea Radoi¹⁰⁵, Arminas Ragauskas¹⁰⁶, Rahul Raj¹⁰²,
672 Malinka Rambadagalla¹⁰⁷, Isabel Retel Helmrich⁶⁴, Jonathan Rhodes¹⁰⁸, Sylvia
673 Richardson¹⁰⁹, Sophie Richter⁴⁷, Samuli Ripatti⁹⁵, Saulius Rocka¹⁰⁶, Cecilie Roe¹¹⁰, Olav
674 Roise^{111,112}, Jonathan Rosand¹¹³, Jeffrey V. Rosenfeld¹¹⁴, Christina Rosenlund¹¹⁵, Guy
675 Rosenthal⁵⁵, Rolf Rossaint⁷⁷, Sandra Rossi¹⁰⁰, Daniel Rueckert⁶¹, Martin Rusnák¹¹⁶, Juan
676 Sahuquillo¹⁰⁵, Oliver Sakowitz^{90,117}, Renan Sanchez-Porras¹¹⁷, Janos Sandor¹¹⁸, Nadine
677 Schäfer⁸¹, Silke Schmidt¹¹⁹, Herbert Schoechl¹²⁰, Guus Schoonman¹²¹, Rico Frederik
678 Schou¹²², Elisabeth Schwendenwein⁶, Charlie Sewalt⁶⁴, Ranjit D. Singh¹⁰¹, Toril
679 Skandsen^{123,124}, Peter Smielewski²⁶, Abayomi Sorinola¹²⁵, Emmanuel Stamatakis⁴⁷,
680 Simon Stanworth³⁹, Robert Stevens¹²⁶, William Stewart¹²⁷, Ewout W. Steyerberg^{64,128},
681 Nino Stocchetti¹²⁹, Nina Sundström¹³⁰, Riikka Takala¹³¹, Viktória Tamás¹²⁵, Tomas
682 Tamosuitis¹³², Mark Steven Taylor²⁰, Braden Te Ao⁵², Olli Tenovuo¹⁰³, Alice Theadom⁵²,
683 Matt Thomas⁸⁷, Dick Tibboel¹³³, Marjolein Timmers⁷⁴, Christos Toliaas¹³⁴, Tony Trapani²⁸,
684 Cristina Maria Tudora⁹³, Andreas Unterberg⁹⁰, Peter Vajkoczy¹³⁵, Shirley Vallance²⁸,
685 Egils Valeinis⁶⁰, Zoltán Vámos⁵⁰, Mathieu van der Jagt¹³⁶, Gregory Van der Steen⁴³,
686 Joukje van der Naalt⁷¹, Jeroen T.J.M. van Dijck¹⁰¹, Inge A. M. van Erp¹⁰¹, Thomas A. van
687 Essen¹⁰¹, Wim Van Hecke¹³⁷, Caroline van Heugten¹³⁸, Dominique Van Praag¹³⁹, Ernest
688 van Veen⁶⁴, Thijs Vande Vyvere¹³⁷, Roel P. J. van Wijk¹⁰¹, Alessia Vargiolu³², Emmanuel
689 Vega⁸³, Kimberley Velt⁶⁴, Jan Verheyden¹³⁷, Paul M. Vespa¹⁴⁰, Anne Vik^{123,141}, Rimantas
690 Vilcinis¹³², Victor Volovici⁶⁷, Nicole von Steinbüchel³⁸, Daphne Voormolen⁶⁴, Petar
691 Vulekovic⁴⁶, Kevin K.W. Wang¹⁴², Daniel Whitehouse⁴⁷, Eveline Wieggers⁶⁴, Guy
692 Williams⁴⁷, Lindsay Wilson⁶⁹, Stefan Winzeck⁴⁷, Stefan Wolf¹⁴³, Zhihui Yang¹¹³, Peter
693 Ylén¹⁴⁴, Alexander Younsi⁹⁰, Frederick A. Zeiler^{47,145}, Veronika Zelinkova²⁰, Agate
694 Ziverte⁶⁰, Tommaso Zoerle²⁷

695

696 ¹Department of Physiology and Pharmacology, Section of Perioperative Medicine and
697 Intensive Care, Karolinska Institutet, Stockholm, Sweden
698 ²János Szentágothai Research Centre, University of Pécs, Pécs, Hungary
699 ³Division of Surgery and Clinical Neuroscience, Department of Physical Medicine and
700 Rehabilitation, Oslo University Hospital and University of Oslo, Oslo, Norway
701 ⁴Department of Neurosurgery, University Hospital Northern Norway, Tromsø, Norway
702 ⁵Department of Physical Medicine and Rehabilitation, University Hospital Northern
703 Norway, Tromsø, Norway
704 ⁶Trauma Surgery, Medical University Vienna, Vienna, Austria
705 ⁷Department of Anesthesiology & Intensive Care, University Hospital Nancy, Nancy,
706 France
707 ⁸Raymond Poincaré hospital, Assistance Publique – Hôpitaux de Paris, Paris, France
708 ⁹Department of Anesthesiology & Intensive Care, S Raffaele University Hospital, Milan,
709 Italy
710 ¹⁰Department of Neurosurgery, Radboud University Medical Center, Nijmegen, The
711 Netherlands
712 ¹¹Department of Neurosurgery, University of Szeged, Szeged, Hungary
713 ¹²International Projects Management, ARTTIC, München, Germany
714 ¹³Department of Neurology, Neurological Intensive Care Unit, Medical University of
715 Innsbruck, Innsbruck, Austria
716 ¹⁴Department of Neurosurgery & Anesthesia & intensive care medicine, Karolinska
717 University Hospital, Stockholm, Sweden
718 ¹⁵NIHR Surgical Reconstruction and Microbiology Research Centre, Birmingham, UK
719 ¹⁶Anesthésie-Réanimation, Assistance Publique – Hôpitaux de Paris, Paris, France
720 ¹⁷Department of Anesthesia & ICU, AOU Città della Salute e della Scienza di Torino -
721 Orthopedic and Trauma Center, Torino, Italy
722 ¹⁸Department of Neurology, Odense University Hospital, Odense, Denmark
723 ¹⁹BehaviourWorks Australia, Monash Sustainability Institute, Monash University, Victoria,
724 Australia
725 ²⁰Department of Public Health, Faculty of Health Sciences and Social Work, Trnava
726 University, Trnava, Slovakia
727 ²¹Qesgen Systems Inc., Burlingame, California, USA
728 ²²Australian & New Zealand Intensive Care Research Centre, Department of
729 Epidemiology and Preventive Medicine, School of Public Health and Preventive Medicine,
730 Monash University, Melbourne, Australia
731 ²³Department of Surgery and Perioperative Science, Umeå University, Umeå, Sweden
732 ²⁴Department of Neurosurgery, Medical School, University of Pécs, Hungary and
733 Neurotrauma Research Group, János Szentágothai Research Centre, University of Pécs,
734 Hungary
735 ²⁵Department of Medical Psychology, Universitätsklinikum Hamburg-Eppendorf,
736 Hamburg, Germany
737 ²⁶Brain Physics Lab, Division of Neurosurgery, Dept of Clinical Neurosciences, University
738 of Cambridge, Addenbrooke's Hospital, Cambridge, UK
739 ²⁷Neuro ICU, Fondazione IRCCS Cà Granda Ospedale Maggiore Policlinico, Milan, Italy
740 ²⁸ANZIC Research Centre, Monash University, Department of Epidemiology and
741 Preventive Medicine, Melbourne, Victoria, Australia

- 742 ²⁹Department of Neurosurgery, Hospital of Cruces, Bilbao, Spain
743 ³⁰NeuroIntensive Care, Niguarda Hospital, Milan, Italy
744 ³¹School of Medicine and Surgery, Università Milano Bicocca, Milano, Italy
745 ³²NeuroIntensive Care, ASST di Monza, Monza, Italy
746 ³³Department of Neurosurgery, Medical Faculty RWTH Aachen University, Aachen,
747 Germany
748 ³⁴Department of Anesthesiology and Intensive Care Medicine, University Hospital Bonn,
749 Bonn, Germany
750 ³⁵Department of Anesthesia & Neurointensive Care, Cambridge University Hospital NHS
751 Foundation Trust, Cambridge, UK
752 ³⁶School of Public Health & PM, Monash University and The Alfred Hospital, Melbourne,
753 Victoria, Australia
754 ³⁷Radiology/MRI department, MRC Cognition and Brain Sciences Unit, Cambridge, UK
755 ³⁸Institute of Medical Psychology and Medical Sociology, Universitätsmedizin Göttingen,
756 Göttingen, Germany
757 ³⁹Oxford University Hospitals NHS Trust, Oxford, UK
758 ⁴⁰Intensive Care Unit, CHU Poitiers, Poitiers, France
759 ⁴¹University of Manchester NIHR Biomedical Research Centre, Critical Care Directorate,
760 Salford Royal Hospital NHS Foundation Trust, Salford, UK
761 ⁴²Movement Science Group, Faculty of Health and Life Sciences, Oxford Brookes
762 University, Oxford, UK
763 ⁴³Department of Neurosurgery, Antwerp University Hospital and University of Antwerp,
764 Edegem, Belgium
765 ⁴⁴Department of Anesthesia & Intensive Care, Maggiore Della Carità Hospital, Novara,
766 Italy
767 ⁴⁵Department of Neurosurgery, University Hospitals Leuven, Leuven, Belgium
768 ⁴⁶Department of Neurosurgery, Clinical centre of Vojvodina, Faculty of Medicine,
769 University of Novi Sad, Novi Sad, Serbia
770 ⁴⁷Division of Anaesthesia, University of Cambridge, Addenbrooke's Hospital, Cambridge,
771 UK
772 ⁴⁸Center for Stroke Research Berlin, Charité – Universitätsmedizin Berlin, corporate
773 member of Freie Universität Berlin, Humboldt-Universität zu Berlin, and Berlin Institute of
774 Health, Berlin, Germany
775 ⁴⁹Intensive Care Unit, CHR Citadelle, Liège, Belgium
776 ⁵⁰Department of Anaesthesiology and Intensive Therapy, University of Pécs, Pécs,
777 Hungary
778 ⁵¹Departments of Neurology, Clinical Neurophysiology and Neuroanesthesiology, Region
779 Hovedstaden Rigshospitalet, Copenhagen, Denmark
780 ⁵²National Institute for Stroke and Applied Neurosciences, Faculty of Health and
781 Environmental Studies, Auckland University of Technology, Auckland, New Zealand
782 ⁵³Department of Neurology, Erasmus MC, Rotterdam, the Netherlands
783 ⁵⁴Department of Anesthesiology and Intensive care, University Hospital Northern Norway,
784 Tromsø, Norway
785 ⁵⁵Department of Neurosurgery, Hadassah-hebrew University Medical center, Jerusalem,
786 Israel
787 ⁵⁶Fundación Instituto Valenciano de Neurorehabilitación (FIVAN), Valencia, Spain

788 ⁵⁷Department of Neurosurgery, Shanghai Renji hospital, Shanghai Jiaotong
789 University/school of medicine, Shanghai, China
790 ⁵⁸Karolinska Institutet, INCF International Neuroinformatics Coordinating Facility,
791 Stockholm, Sweden
792 ⁵⁹Emergency Department, CHU, Liège, Belgium
793 ⁶⁰Neurosurgery clinic, Pauls Stradins Clinical University Hospital, Riga, Latvia
794 ⁶¹Department of Computing, Imperial College London, London, UK
795 ⁶²Department of Neurosurgery, Hospital Universitario 12 de Octubre, Madrid, Spain
796 ⁶³Department of Anesthesia, Critical Care and Pain Medicine, Medical University of
797 Vienna, Austria
798 ⁶⁴Department of Public Health, Erasmus Medical Center-University Medical Center,
799 Rotterdam, The Netherlands
800 ⁶⁵College of Health and Medicine, Australian National University, Canberra, Australia
801 ⁶⁶Department of Neurosurgery, Neurosciences Centre & JPN Apex trauma centre, All
802 India Institute of Medical Sciences, New Delhi-110029, India
803 ⁶⁷Department of Neurosurgery, Erasmus MC, Rotterdam, the Netherlands
804 ⁶⁸Department of Neurosurgery, Oslo University Hospital, Oslo, Norway
805 ⁶⁹Division of Psychology, University of Stirling, Stirling, UK
806 ⁷⁰Division of Neurosurgery, Department of Clinical Neurosciences, Addenbrooke's
807 Hospital & University of Cambridge, Cambridge, UK
808 ⁷¹Department of Neurology, University of Groningen, University Medical Center
809 Groningen, Groningen, Netherlands
810 ⁷²Neurointensive Care, Sheffield Teaching Hospitals NHS Foundation Trust, Sheffield,
811 UK
812 ⁷³Salford Royal Hospital NHS Foundation Trust Acute Research Delivery Team, Salford,
813 UK
814 ⁷⁴Department of Intensive Care and Department of Ethics and Philosophy of Medicine,
815 Erasmus Medical Center, Rotterdam, The Netherlands
816 ⁷⁵Department of Clinical Neuroscience, Neurosurgery, Umeå University, Umeå, Sweden
817 ⁷⁶Hungarian Brain Research Program - Grant No. KTIA_13_Not ApplicableP-A-II/8,
818 University of Pécs, Pécs, Hungary
819 ⁷⁷Department of Anaesthesiology, University Hospital of Aachen, Aachen, Germany
820 ⁷⁸Cyclotron Research Center, University of Liège, Liège, Belgium
821 ⁷⁹Centre for Urgent and Emergency Care Research (CURE), Health Services Research
822 Section, School of Health and Related Research (SchARR), University of Sheffield,
823 Sheffield, UK
824 ⁸⁰Emergency Department, Salford Royal Hospital, Salford UK
825 ⁸¹Institute of Research in Operative Medicine (IFOM), Witten/Herdecke University,
826 Cologne, Germany
827 ⁸²VP Global Project Management CNS, ICON, Paris, France
828 ⁸³Department of Anaesthesiology-Intensive Care, Lille University Hospital, Lille, France
829 ⁸⁴Department of Neurosurgery, Rambam Medical Center, Haifa, Israel
830 ⁸⁵Department of Anaesthesiology & Intensive Care, University Hospitals Southampton
831 NHS Trust, Southampton, UK
832 ⁸⁶Cologne-Merheim Medical Center (CMMC), Department of Traumatology, Orthopedic
833 Surgery and Sportmedicine, Witten/Herdecke University, Cologne, Germany

- 834 ⁸⁷Intensive Care Unit, Southmead Hospital, Bristol, Bristol, UK
835 ⁸⁸Department of Neurological Surgery, University of California, San Francisco, California,
836 USA
837 ⁸⁹Department of Anesthesia & Intensive Care, M. Bufalini Hospital, Cesena, Italy
838 ⁹⁰Department of Neurosurgery, University Hospital Heidelberg, Heidelberg, Germany
839 ⁹¹Department of Neurosurgery, The Walton centre NHS Foundation Trust, Liverpool, UK
840 ⁹²Department of Medical Genetics, University of Pécs, Pécs, Hungary
841 ⁹³Department of Neurosurgery, Emergency County Hospital Timisoara, Timisoara,
842 Romania
843 ⁹⁴School of Medical Sciences, Örebro University, Örebro, Sweden
844 ⁹⁵Institute for Molecular Medicine Finland, University of Helsinki, Helsinki, Finland
845 ⁹⁶Analytic and Translational Genetics Unit, Department of Medicine; Psychiatric &
846 Neurodevelopmental Genetics Unit, Department of Psychiatry; Department of Neurology,
847 Massachusetts General Hospital, Boston, MA, USA
848 ⁹⁷Program in Medical and Population Genetics; The Stanley Center for Psychiatric
849 Research, The Broad Institute of MIT and Harvard, Cambridge, MA, USA
850 ⁹⁸Department of Radiology, University of Antwerp, Edegem, Belgium
851 ⁹⁹Department of Anesthesiology & Intensive Care, University Hospital of Grenoble,
852 Grenoble, France
853 ¹⁰⁰Department of Anesthesia & Intensive Care, Azienda Ospedaliera Università di
854 Padova, Padova, Italy
855 ¹⁰¹Dept. of Neurosurgery, Leiden University Medical Center, Leiden, The Netherlands and
856 Dept. of Neurosurgery, Medical Center Haaglanden, The Hague, The Netherlands
857 ¹⁰²Department of Neurosurgery, Helsinki University Central Hospital
858 ¹⁰³Division of Clinical Neurosciences, Department of Neurosurgery and Turku Brain Injury
859 Centre, Turku University Hospital and University of Turku, Turku, Finland
860 ¹⁰⁴Department of Anesthesiology and Critical Care, Pitié -Salpêtrière Teaching Hospital,
861 Assistance Publique, Hôpitaux de Paris and University Pierre et Marie Curie, Paris,
862 France
863 ¹⁰⁵Neurotraumatology and Neurosurgery Research Unit (UNINN), Vall d'Hebron
864 Research Institute, Barcelona, Spain
865 ¹⁰⁶Department of Neurosurgery, Kaunas University of technology and Vilnius University,
866 Vilnius, Lithuania
867 ¹⁰⁷Department of Neurosurgery, Rezekne Hospital, Latvia
868 ¹⁰⁸Department of Anaesthesia, Critical Care & Pain Medicine NHS Lothian & University
869 of Edinburgh, Edinburgh, UK
870 ¹⁰⁹Director, MRC Biostatistics Unit, Cambridge Institute of Public Health, Cambridge, UK
871 ¹¹⁰Department of Physical Medicine and Rehabilitation, Oslo University
872 Hospital/University of Oslo, Oslo, Norway
873 ¹¹¹Division of Orthopedics, Oslo University Hospital, Oslo, Norway
874 ¹¹²Institute of Clinical Medicine, Faculty of Medicine, University of Oslo, Oslo, Norway
875 ¹¹³Broad Institute, Cambridge MA Harvard Medical School, Boston MA, Massachusetts
876 General Hospital, Boston MA, USA
877 ¹¹⁴National Trauma Research Institute, The Alfred Hospital, Monash University,
878 Melbourne, Victoria, Australia
879 ¹¹⁵Department of Neurosurgery, Odense University Hospital, Odense, Denmark

880 ¹¹⁶International Neurotrauma Research Organisation, Vienna, Austria
881 ¹¹⁷Klinik für Neurochirurgie, Klinikum Ludwigsburg, Ludwigsburg, Germany
882 ¹¹⁸Division of Biostatistics and Epidemiology, Department of Preventive Medicine,
883 University of Debrecen, Debrecen, Hungary
884 ¹¹⁹Department Health and Prevention, University Greifswald, Greifswald, Germany
885 ¹²⁰Department of Anaesthesiology and Intensive Care, AUVA Trauma Hospital, Salzburg,
886 Austria
887 ¹²¹Department of Neurology, Elisabeth-TweeSteden Ziekenhuis, Tilburg, the Netherlands
888 ¹²²Department of Neuroanesthesia and Neurointensive Care, Odense University Hospital,
889 Odense, Denmark
890 ¹²³Department of Neuromedicine and Movement Science, Norwegian University of
891 Science and Technology, NTNU, Trondheim, Norway
892 ¹²⁴Department of Physical Medicine and Rehabilitation, St.Olavs Hospital, Trondheim
893 University Hospital, Trondheim, Norway
894 ¹²⁵Department of Neurosurgery, University of Pécs, Pécs, Hungary
895 ¹²⁶Division of Neuroscience Critical Care, Johns Hopkins University School of Medicine,
896 Baltimore, USA
897 ¹²⁷Department of Neuropathology, Queen Elizabeth University Hospital and University of
898 Glasgow, Glasgow, UK
899 ¹²⁸Dept. of Department of Biomedical Data Sciences, Leiden University Medical Center,
900 Leiden, The Netherlands
901 ¹²⁹Department of Pathophysiology and Transplantation, Milan University, and
902 Neuroscience ICU, Fondazione IRCCS Cà Granda Ospedale Maggiore Policlinico,
903 Milano, Italy
904 ¹³⁰Department of Radiation Sciences, Biomedical Engineering, Umeå University, Umeå,
905 Sweden
906 ¹³¹Perioperative Services, Intensive Care Medicine and Pain Management, Turku
907 University Hospital and University of Turku, Turku, Finland
908 ¹³²Department of Neurosurgery, Kaunas University of Health Sciences, Kaunas, Lithuania
909 ¹³³Intensive Care and Department of Pediatric Surgery, Erasmus Medical Center, Sophia
910 Children's Hospital, Rotterdam, The Netherlands
911 ¹³⁴Department of Neurosurgery, Kings college London, London, UK
912 ¹³⁵Neurologie, Neurochirurgie und Psychiatrie, Charité – Universitätsmedizin Berlin,
913 Berlin, Germany
914 ¹³⁶Department of Intensive Care Adults, Erasmus MC– University Medical Center
915 Rotterdam, Rotterdam, the Netherlands
916 ¹³⁷icoMetrix NV, Leuven, Belgium
917 ¹³⁸Movement Science Group, Faculty of Health and Life Sciences, Oxford Brookes
918 University, Oxford, UK
919 ¹³⁹Psychology Department, Antwerp University Hospital, Edegem, Belgium
920 ¹⁴⁰Director of Neurocritical Care, University of California, Los Angeles, USA
921 ¹⁴¹Department of Neurosurgery, St.Olavs Hospital, Trondheim University Hospital,
922 Trondheim, Norway
923 ¹⁴²Department of Emergency Medicine, University of Florida, Gainesville, Florida, USA

924 ¹⁴³Department of Neurosurgery, Charité – Universitätsmedizin Berlin, corporate member
925 of Freie Universität Berlin, Humboldt-Universität zu Berlin, and Berlin Institute of Health,
926 Berlin, Germany

927 ¹⁴⁴VTT Technical Research Centre, Tampere, Finland

928 ¹⁴⁵Section of Neurosurgery, Department of Surgery, Rady Faculty of Health Sciences,
929 University of Manitoba, Winnipeg, MB, Canada

930

931 *Co-lead investigators: andrew.maas@uza.be (AIRM) and dkm13@cam.ac.uk (DM)

932

933 **References**

934

935 1. Stocchetti N, Maas AIR. Traumatic Intracranial Hypertension. *N Engl J Med*
936 2014;370(22):2121–2130; doi: 10.1056/NEJMra1208708.

937 2. Meyfroidt G, Bouzat P, Casaer MP, et al. Management of moderate to severe
938 traumatic brain injury: an update for the intensivist. *Intensive Care Med*
939 2022;48(6):649–666; doi: 10.1007/s00134-022-06702-4.

940 3. Menon DK, Ercole A. Chapter 14 - Critical care management of traumatic brain injury.
941 Wijdicks EFM, Kramer AH. eds. *Handb Clin Neurol* 2017;140(Journal Article):239–
942 274; doi: 10.1016/B978-0-444-63600-3.00014-3.

943 4. Stocchetti N, Carbonara M, Citerio G, et al. Severe traumatic brain injury: targeted
944 management in the intensive care unit. *Lancet Neurol* 2017;16(6):452–464; doi:
945 10.1016/S1474-4422(17)30118-7.

946 5. Hawryluk GWJ, Aguilera S, Buki A, et al. A management algorithm for patients with
947 intracranial pressure monitoring: the Seattle International Severe Traumatic Brain
948 Injury Consensus Conference (SIBICC). *Intensive Care Med* 2019;45(12):1783–
949 1794; doi: 10.1007/s00134-019-05805-9.

950 6. Maset AL, Marmarou A, Ward JD, et al. Pressure-volume index in head injury. *J*
951 *Neurosurg* 1987;67(6):832–840; doi: 10.3171/jns.1987.67.6.0832.

952 7. Shore PM, Hand LL, Roy L, et al. Reliability and validity of the Pediatric Intensity
953 Level of Therapy (PILOT) scale: A measure of the use of intracranial pressure–
954 directed therapies. *Crit Care Med* 2006;34(7):1981; doi:
955 10.1097/01.CCM.0000220765.22184.ED.

956 8. Maas AIR, Harrison-Felix CL, Menon D, et al. Standardizing Data Collection in
957 Traumatic Brain Injury. *J Neurotrauma* 2011;28(2):177–187; doi:
958 10.1089/neu.2010.1617.

959 9. Zuercher P, Groen JL, Aries MJH, et al. Reliability and Validity of the Therapy
960 Intensity Level Scale: Analysis of Clinimetric Properties of a Novel Approach to
961 Assess Management of Intracranial Pressure in Traumatic Brain Injury. *J*
962 *Neurotrauma* 2016;33(19):1768–1774; doi: 10.1089/neu.2015.4266.

- 963 10. Robba C, Graziano F, Guglielmi A, et al. Treatments for intracranial hypertension
964 in acute brain-injured patients: grading, timing, and association with outcome. Data
965 from the SYNAPSE-ICU study. *Intensive Care Med* 2023;49(1):50–61; doi:
966 10.1007/s00134-022-06937-1.
- 967 11. Huijben JA, Wiegers EJA, Lingsma HF, et al. Changing care pathways and
968 between-center practice variations in intensive care for traumatic brain injury across
969 Europe: a CENTER-TBI analysis. *Intensive Care Med* 2020;46(5):995–1004; doi:
970 10.1007/s00134-020-05965-z.
- 971 12. Huijben JA, Dixit A, Stocchetti N, et al. Use and impact of high intensity
972 treatments in patients with traumatic brain injury across Europe: a CENTER-TBI
973 analysis. *Crit Care* 2021;25(1):78; doi: 10.1186/s13054-020-03370-y.
- 974 13. Bhattacharyay S, Caruso PF, Åkerlund C, et al. Contribution of Clinical Course to
975 Outcome after Traumatic Brain Injury: Mining Patient Trajectories from European
976 Intensive Care Unit Data. 2023; doi: 10.48550/arXiv.2303.04630.
- 977 14. Zoerle T, Birg T, Carbonara M, et al. Accuracy of Manual Intracranial Pressure
978 Recording Compared to a Computerized High-Resolution System: A CENTER-TBI
979 Analysis. *Neurocrit Care* 2023; doi: 10.1007/s12028-023-01697-2.
- 980 15. Maas AIR, Menon DK, Manley GT, et al. Traumatic brain injury: progress and
981 challenges in prevention, clinical care, and research. *Lancet Neurol*
982 2022;21(11):1004–1060; doi: 10.1016/S1474-4422(22)00309-X.
- 983 16. Clossen MC, Huijben JA, van der Jagt M, et al. Variation in monitoring and
984 treatment policies for intracranial hypertension in traumatic brain injury: a survey in 66
985 neurotrauma centers participating in the CENTER-TBI study. *Crit Care*
986 2017;21(1):233; doi: 10.1186/s13054-017-1816-9.
- 987 17. Avila ML, Stinson J, Kiss A, et al. A critical review of scoring options for clinical
988 measurement tools. *BMC Res Notes* 2015;8(1):612; doi: 10.1186/s13104-015-1561-
989 6.
- 990 18. Maas AIR, Menon DK, Steyerberg EW, et al. Collaborative European
991 NeuroTrauma Effectiveness Research in Traumatic Brain Injury (CENTER-TBI): A
992 Prospective Longitudinal Observational Study. *Neurosurgery* 2015;76(1):67–80; doi:
993 10.1227/NEU.0000000000000575.
- 994 19. Steyerberg EW, Wiegers E, Sewalt C, et al. Case-mix, care pathways, and
995 outcomes in patients with traumatic brain injury in CENTER-TBI: a European
996 prospective, multicentre, longitudinal, cohort study. *Lancet Neurol* 2019;18(10):923–
997 934; doi: 10.1016/S1474-4422(19)30232-7.
- 998 20. Doiron D, Marcon Y, Fortier I, et al. Software Application Profile: Opal and Mica:
999 open-source software solutions for epidemiological data management, harmonization
1000 and dissemination. *Int J Epidemiol* 2017;46(5):1372–1378; doi: 10.1093/ije/dyx180.

- 1001 21. Zeiler FA, Ercole A, Cabeleira M, et al. Patient-specific ICP Epidemiologic
1002 Thresholds in Adult Traumatic Brain Injury: A CENTER-TBI Validation Study. *J*
1003 *Neurosurg Anesthesiol* 2021;33(1):28–38; doi: 10.1097/ANA.0000000000000616.
- 1004 22. Marshall LF, Marshall SB, Klauber MR, et al. The diagnosis of head injury
1005 requires a classification based on computed axial tomography. *J Neurotrauma* 1992;9
1006 Suppl 1:S287-292.
- 1007 23. Teasdale G, Maas A, Lecky F, et al. The Glasgow Coma Scale at 40 years:
1008 standing the test of time. *The LancetNeurology* 2014;13(8):844–854; doi:
1009 10.1016/S1474-4422(14)70120-6.
- 1010 24. Ercole A, Dixit A, Nelson DW, et al. Imputation strategies for missing baseline
1011 neurological assessment covariates after traumatic brain injury: A CENTER-TBI
1012 study. *PLoS ONE* 2021;16(8):e0253425.
- 1013 25. McMillan T, Wilson L, Ponsford J, et al. The Glasgow Outcome Scale - 40 years
1014 of application and refinement. *Nat Rev Neurol* 2016;12(8):477–485; doi:
1015 10.1038/nrneurol.2016.89.
- 1016 26. Kunzmann K, Wernisch L, Richardson S, et al. Imputation of Ordinal Outcomes:
1017 A Comparison of Approaches in Traumatic Brain Injury. *J Neurotrauma*
1018 2021;38(4):455–463; doi: 10.1089/neu.2019.6858.
- 1019 27. Bhattacharyay S, Milosevic I, Wilson L, et al. The leap to ordinal: Detailed
1020 functional prognosis after traumatic brain injury with a flexible modelling approach.
1021 *PLoS ONE* 2022;17(7):e0270973; doi: 10.1371/journal.pone.0270973.
- 1022 28. Boateng GO, Neilands TB, Frongillo EA, et al. Best Practices for Developing and
1023 Validating Scales for Health, Social, and Behavioral Research: A Primer. *Front Public*
1024 *Health* 2018;6:149; doi: 10.3389/fpubh.2018.00149.
- 1025 29. Bakdash JZ, Marusich LR. Repeated Measures Correlation. *Front Psychol*
1026 2017;8:456; doi: 10.3389/fpsyg.2017.00456.
- 1027 30. van Buuren S, Groothuis-Oudshoorn CGM. mice: Multivariate Imputation by
1028 Chained Equations in R. *J Stat Softw* 2011;45(3):1–67; doi: 10.18637/jss.v045.i03.
- 1029 31. Gravesteijn BY, Sewalt CA, Venema E, et al. Missing Data in Prediction
1030 Research: A Five-Step Approach for Multiple Imputation, Illustrated in the CENTER-
1031 TBI Study. *J Neurotrauma* 2021;38(13):1842–1857; doi: 10.1089/neu.2020.7218.
- 1032 32. Honaker J King, G, Blackwell, M. Amelia II: A Program for Missing Data. *J Stat*
1033 *Softw* 2011;45(7); doi: 10.18637/jss.v045.i07.
- 1034 33. Beqiri E, Smielewski P, Robba C, et al. Feasibility of individualised severe
1035 traumatic brain injury management using an automated assessment of optimal

- 1036 cerebral perfusion pressure: the COGiTATE phase II study protocol. *BMJ Open*
1037 2019;9(9):e030727; doi: 10.1136/bmjopen-2019-030727.
- 1038 34. Tas J, Beqiri E, van Kaam RC, et al. Targeting Autoregulation-Guided Cerebral
1039 Perfusion Pressure after Traumatic Brain Injury (COGiTATE): A Feasibility
1040 Randomized Controlled Clinical Trial. *J Neurotrauma* 2021;38(20):2790–2800; doi:
1041 10.1089/neu.2021.0197.
- 1042 35. Schreiber JB. Issues and recommendations for exploratory factor analysis and
1043 principal component analysis. *Res Soc Adm Pharm* 2021;17(5):1004–1011; doi:
1044 10.1016/j.sapharm.2020.07.027.
- 1045 36. Clark D, Joannides A, Adeleye AO, et al. Casemix, management, and mortality of
1046 patients receiving emergency neurosurgery for traumatic brain injury in the Global
1047 Neurotrauma Outcomes Study: a prospective observational cohort study. *Lancet*
1048 *Neurol* 2022;21(5):438–449; doi: 10.1016/S1474-4422(22)00037-0.
- 1049 37. Hutchinson PJ, Koliass AG, Timofeev IS, et al. Trial of Decompressive
1050 Craniectomy for Traumatic Intracranial Hypertension. *N Engl J Med*
1051 2016;375(12):1119–1130; doi: 10.1056/NEJMoa1605215.
- 1052

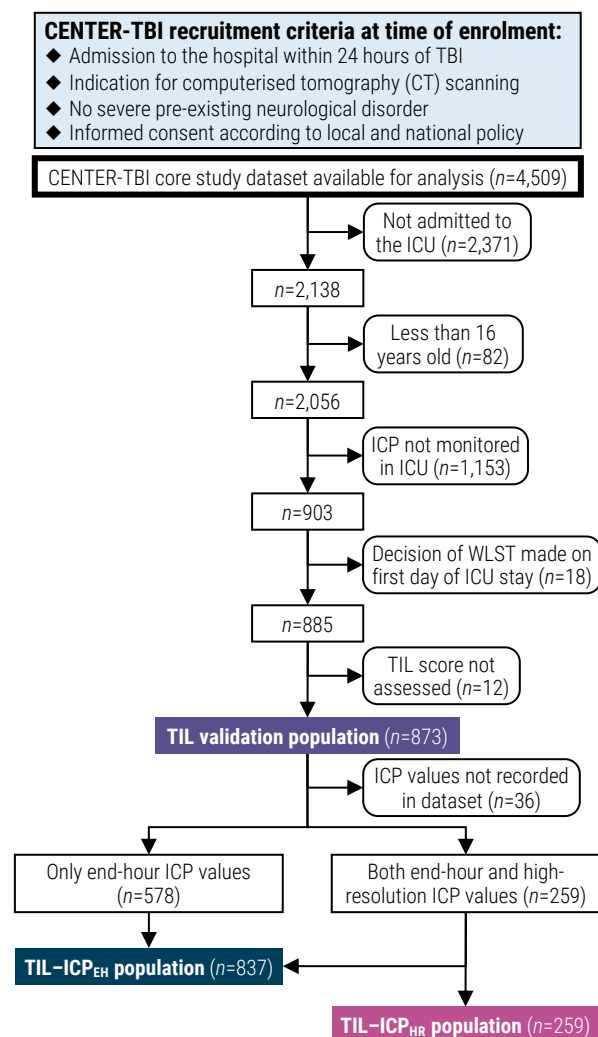


Fig. 1. Flow diagram for patient enrolment and validation population assignment. Abbreviations: CENTER-TBI=Collaborative European NeuroTrauma Effectiveness Research in TBI, ICP=intracranial pressure, ICP_{EH}=end-hour ICP, ICP_{HR}=high-resolution ICP, ICU=intensive care unit, TBI=traumatic brain injury, TIL=Therapy Intensity Level scale,^{8,9} WLST=withdrawal of life-sustaining therapies.

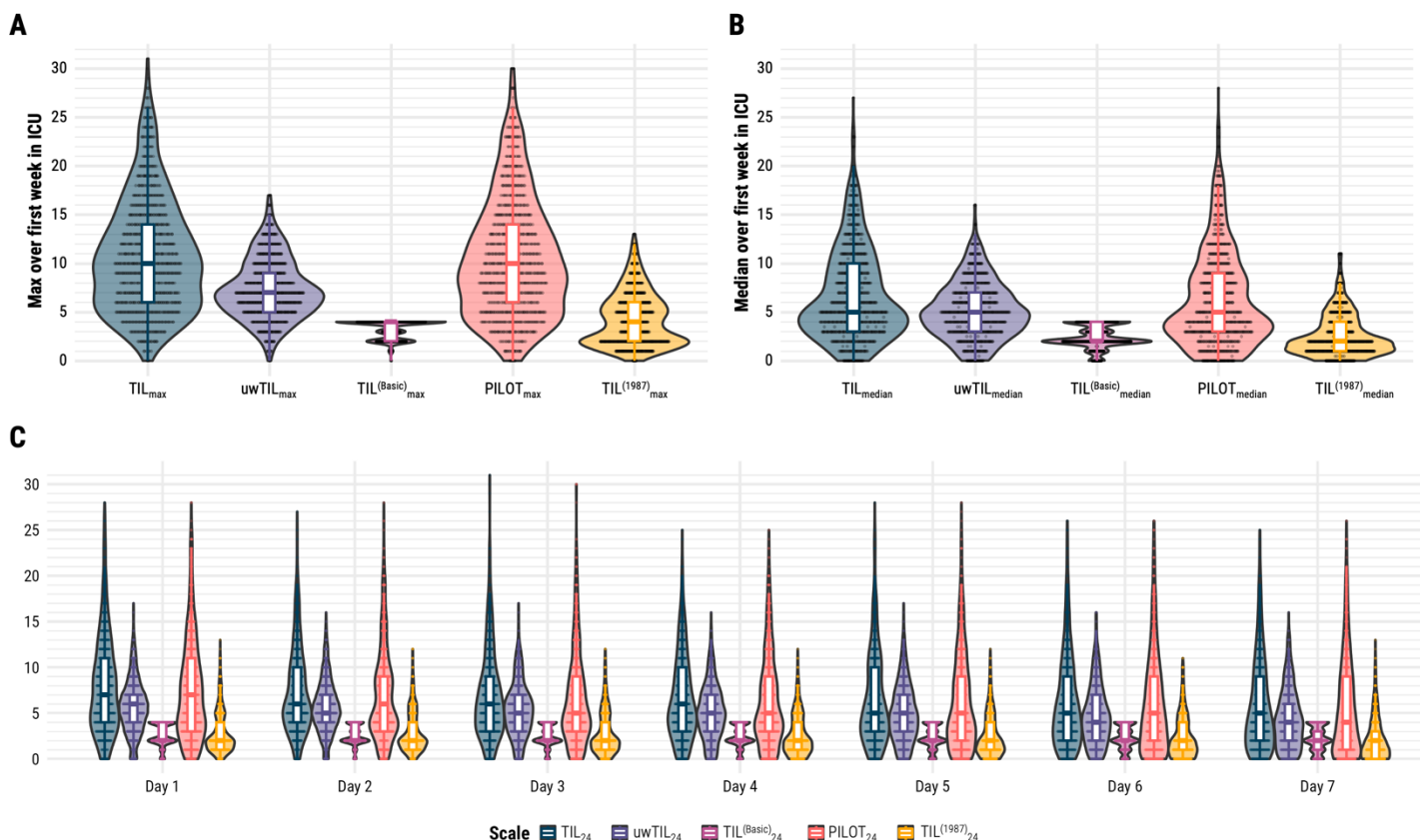


Fig. 2. Distributions of TIL and alternative scales. Abbreviations: ICU=intensive care unit, PILOT=Paediatric Intensity Level of Therapy scale,⁷ TIL=Therapy Intensity Level scale,^{8,9} TIL⁽¹⁹⁸⁷⁾=original Therapy Intensity Level scale published in 1987,⁶ TIL^(Basic)=condensed TIL scale,⁸ uwTIL=unweighted TIL scale in which sub-item scores are replaced by the ascending rank index within the item. The numeric definition of each scale is listed in Table 1. **(A)** Distributions of maximum scores of TIL (i.e., TIL_{max}) and alternative scales (i.e., uwTIL_{max}, TIL^(Basic)_{max}, PILOT_{max}, and TIL⁽¹⁹⁸⁷⁾_{max}) over the first week of ICU stay. **(B)** Distribution of median scores of TIL (i.e., TIL_{median}) and alternative scales (i.e., uwTIL_{median}, TIL^(Basic)_{median}, PILOT_{median}, and TIL⁽¹⁹⁸⁷⁾_{median}) over the first week of ICU stay. **(C)** Distributions of daily scores of TIL (i.e., TIL₂₄) and alternative scales (i.e., uwTIL₂₄, TIL^(Basic)₂₄, PILOT₂₄, and TIL⁽¹⁹⁸⁷⁾₂₄) over the first week of ICU stay.

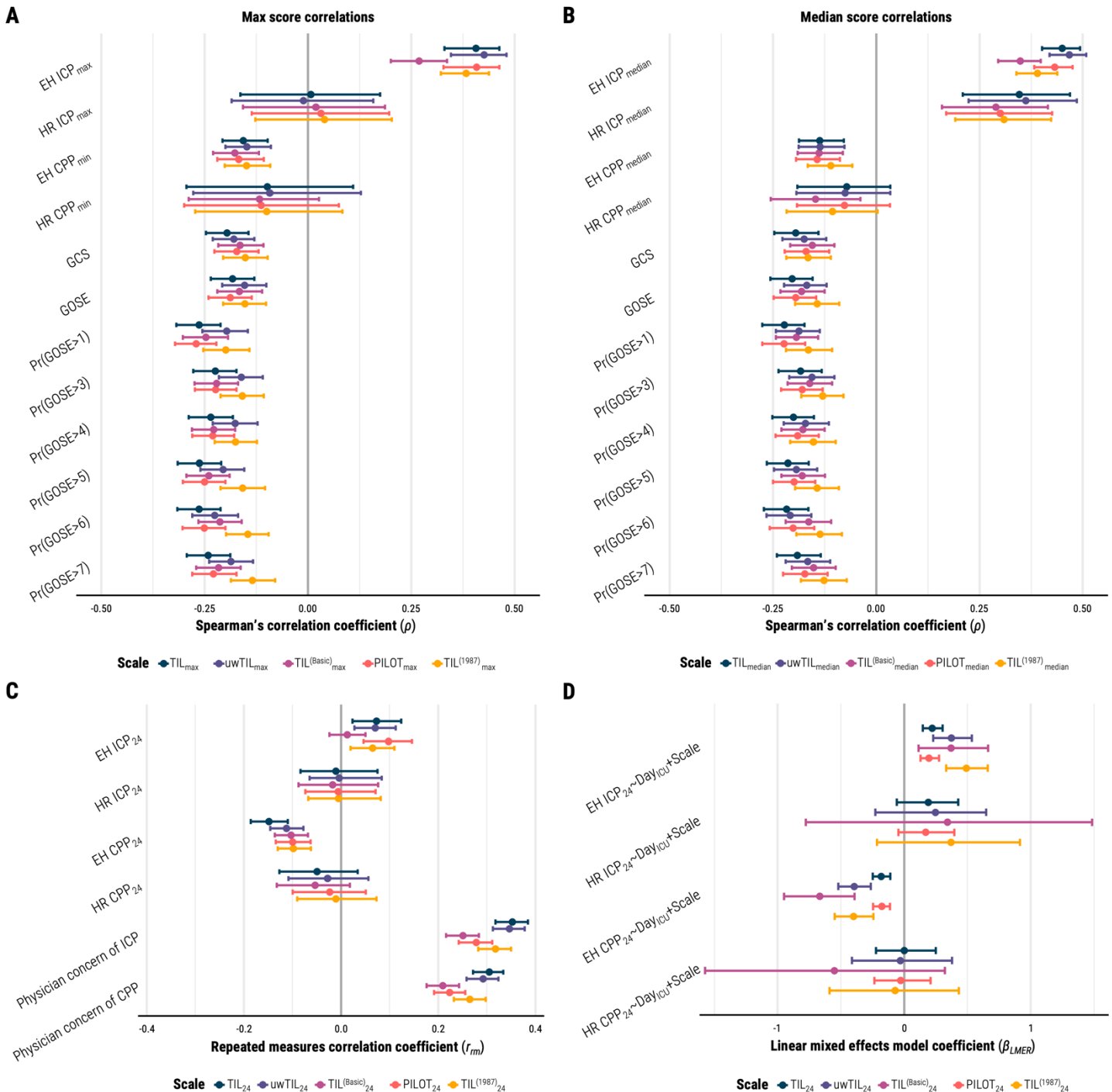


Fig. 3. Associations of TIL and alternative scales with other clinical measures.

Abbreviations: Day_{ICU}=variable representing day (from 1 to 7) of ICU stay, EH=end-hour, CPP=cerebral perfusion pressure, GCS=Glasgow Coma Scale at ICU admission, GOSE=Glasgow Outcome Scale–Extended at six months post-injury, HR=high-resolution, ICP=intracranial pressure, ICU=intensive care unit, PILOT=Paediatric Intensity Level of Therapy scale,⁷ Pr(GOSE>●)="probability of GOSE greater than ● at six months post-injury" as previously calculated from the first 24 hours of admission,²⁷ TIL=Therapy Intensity Level scale,^{8,9} TIL⁽¹⁹⁸⁷⁾=original Therapy Intensity Level scale published in 1987,⁶ TIL^(Basic)=condensed TIL scale,⁸ uwTIL=unweighted TIL scale in which sub-item scores are replaced by the ascending rank index

within the item. The numeric definition of each scale is listed in Table 1, and the calculation of daily (e.g., TIL_{24}), maximum (e.g., TIL_{max}), and median (e.g., TIL_{median}) scores are described in the Methods. The bars represent 95% confidence intervals derived from bootstrapping with 1,000 resamples of unique patients over 100 missing value imputations. **(A)** Spearman's correlation coefficients (ρ) between maximum scale scores over first week of ICU stay (i.e., TIL_{max} , $uwTIL_{max}$, $TIL^{(Basic)}_{max}$, $PILOT_{max}$, and $TIL^{(1987)}_{max}$) and other clinical measures. **(B)** Spearman's correlation coefficients (ρ) between median scale scores over first week of ICU stay (i.e., TIL_{median} , $uwTIL_{median}$, $TIL^{(Basic)}_{median}$, $PILOT_{median}$, and $TIL^{(1987)}_{median}$) and other clinical measures. **(C)** Repeated measures correlation coefficients (r_m , from -1 to 1) are interpreted as the strength and direction of association between two variables after accounting for inter-patient variation. **(D)** Linear mixed effects model coefficients (β_{LMER}) are interpreted as the expected difference in dependent variable (e.g., EH ICP₂₄) per unit increase of daily scale score (e.g., TIL_{24}) after accounting for time since ICU admission (i.e., Day_{ICU}) and inter-patient variation.

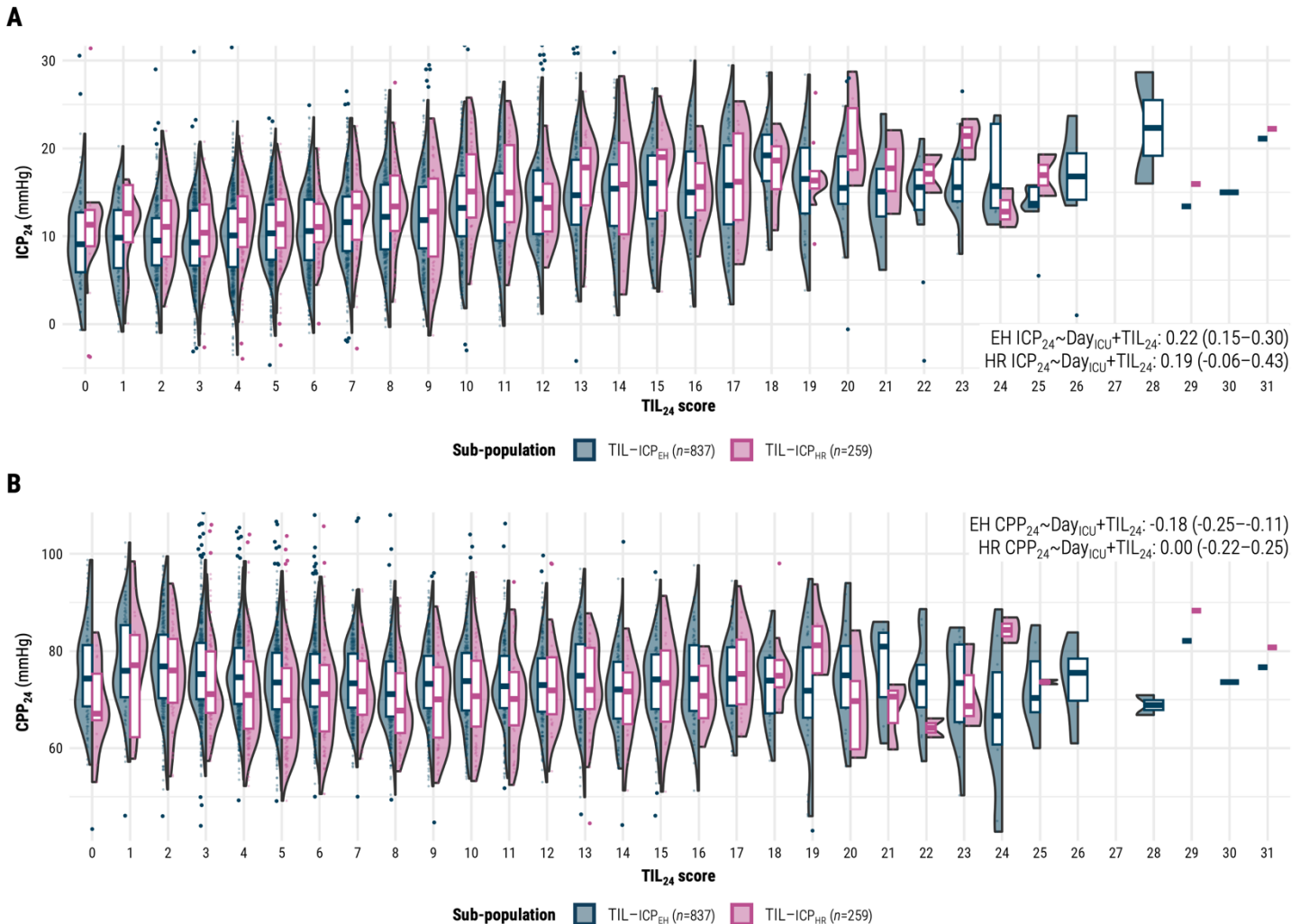


Fig 4. Distributions of daily intracranial pressure and cerebral perfusion pressure means per daily TIL score. Abbreviations: CPP=cerebral perfusion pressure, CPP₂₄=mean CPP over calendar day, Day_{ICU}=variable representing day (from 1 to 7) of ICU stay, EH=end-hour, HR=high-resolution, ICP=intracranial pressure, ICP₂₄=mean ICP over calendar day, TIL=Therapy Intensity Level scale,^{8,9} TIL₂₄=TIL score of calendar day, TIL-ICP_{EH}=end-hour ICP sub-population, TIL-ICP_{HR}=high-resolution ICP sub-population. The values in each panel are the linear mixed effects model coefficients (β_{LMER}) of TIL₂₄ with 95% confidence intervals derived from bootstrapping with 1,000 resamples of unique patients over 100 missing value imputations. The width of violin plots is scaled for each population, but the width of the points inside them demonstrates relative frequency across the populations. The violin plots do not encompass outliers based on 1.5 times the interquartile range. **(A)** Distributions of ICP₂₄ vs. TIL₂₄ for both sub-populations. **(B)** Distributions of CPP₂₄ vs. TIL₂₄ for both sub-populations.

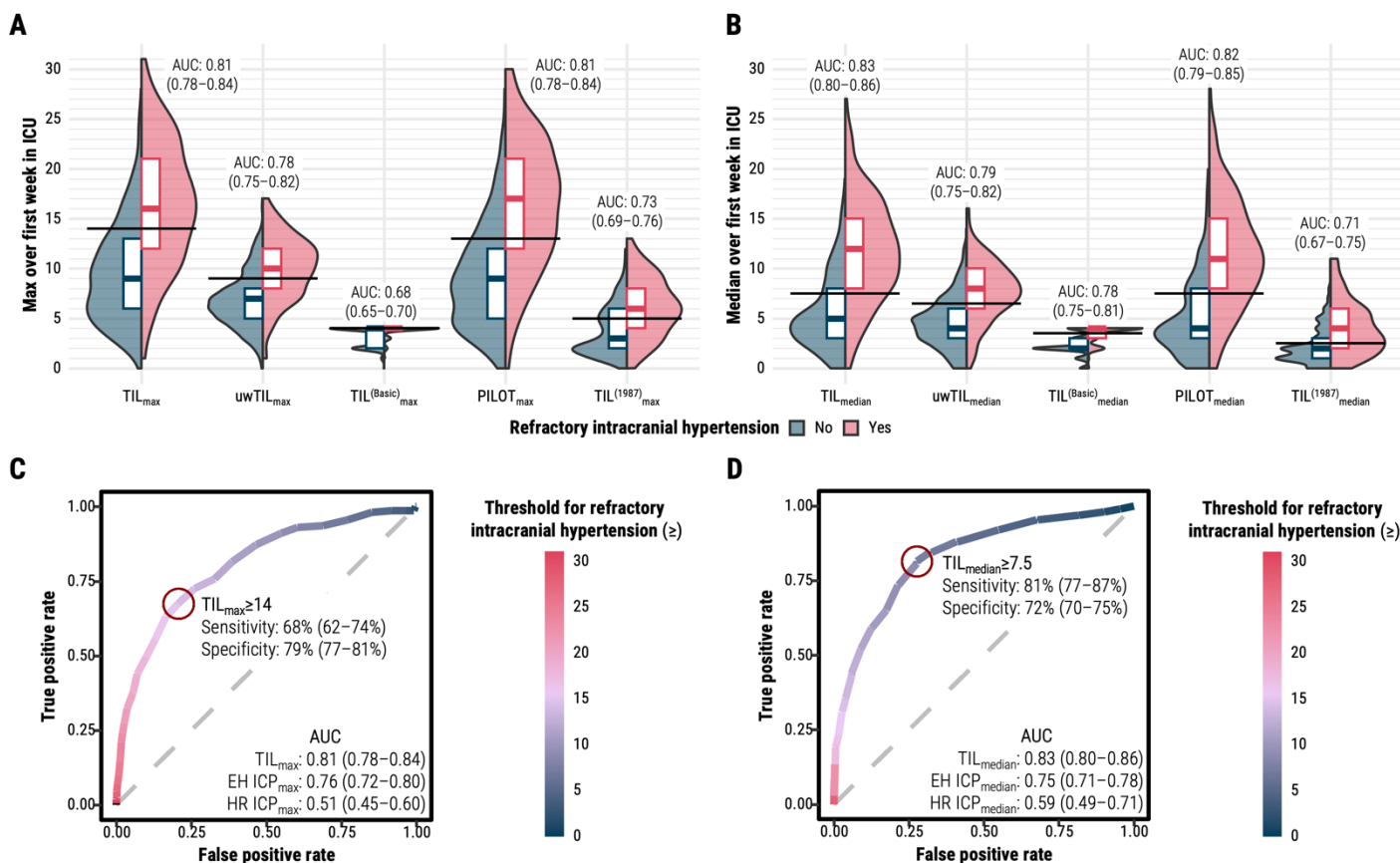


Fig 5. Discrimination of refractory intracranial hypertension status by TIL and alternative scale summary scores. Abbreviations: AUC=area under the receiver operating characteristic curve, EH=end-hour, HR=high-resolution, ICP=intracranial pressure, ICP_{max}=maximum calendar day mean of ICP over first week of ICU stay, ICP_{median}=median calendar day mean of ICP over first week of ICU stay, ICU=intensive care unit, PILOT=Paediatric Intensity Level of Therapy scale,⁷ TIL=Therapy Intensity Level scale,^{8,9} TIL⁽¹⁹⁸⁷⁾=original Therapy Intensity Level scale published in 1987,⁶ TIL^(Basic)=condensed TIL scale,⁸ uwTIL=unweighted TIL scale in which sub-item scores are replaced by the ascending rank index within the item. The 95% confidence intervals of AUC were derived from bootstrapping with 1,000 resamples of unique patients over 100 missing value imputations. **(A)** Distributions of maximum scores of TIL (i.e., TIL_{max}) and alternative scales (i.e., uwTIL_{max}, TIL^(Basic)_{max}, PILOT_{max}, and TIL⁽¹⁹⁸⁷⁾_{max}) stratified by refractory intracranial hypertension status. The horizontal black line segments represent the thresholds which maximised the sum of sensitivity and specificity for each scale. **(B)** Distributions of median scores of TIL (i.e., TIL_{median}) and alternative scales (i.e., uwTIL_{median}, TIL^(Basic)_{median}, PILOT_{median}, and TIL⁽¹⁹⁸⁷⁾_{median}) stratified by refractory intracranial hypertension status. The horizontal black line segments represent the thresholds which maximised the sum of sensitivity and specificity for each scale. **(C)** Receiver operating characteristic curve of refractory intracranial hypertension detection with TIL_{max}. The threshold which maximised the sum of sensitivity and specificity is highlighted with the dark red circle. **(D)** Receiver operating characteristic curve of refractory intracranial hypertension detection with TIL_{median}. The threshold which maximised the sum of sensitivity and specificity is highlighted with the dark red circle.

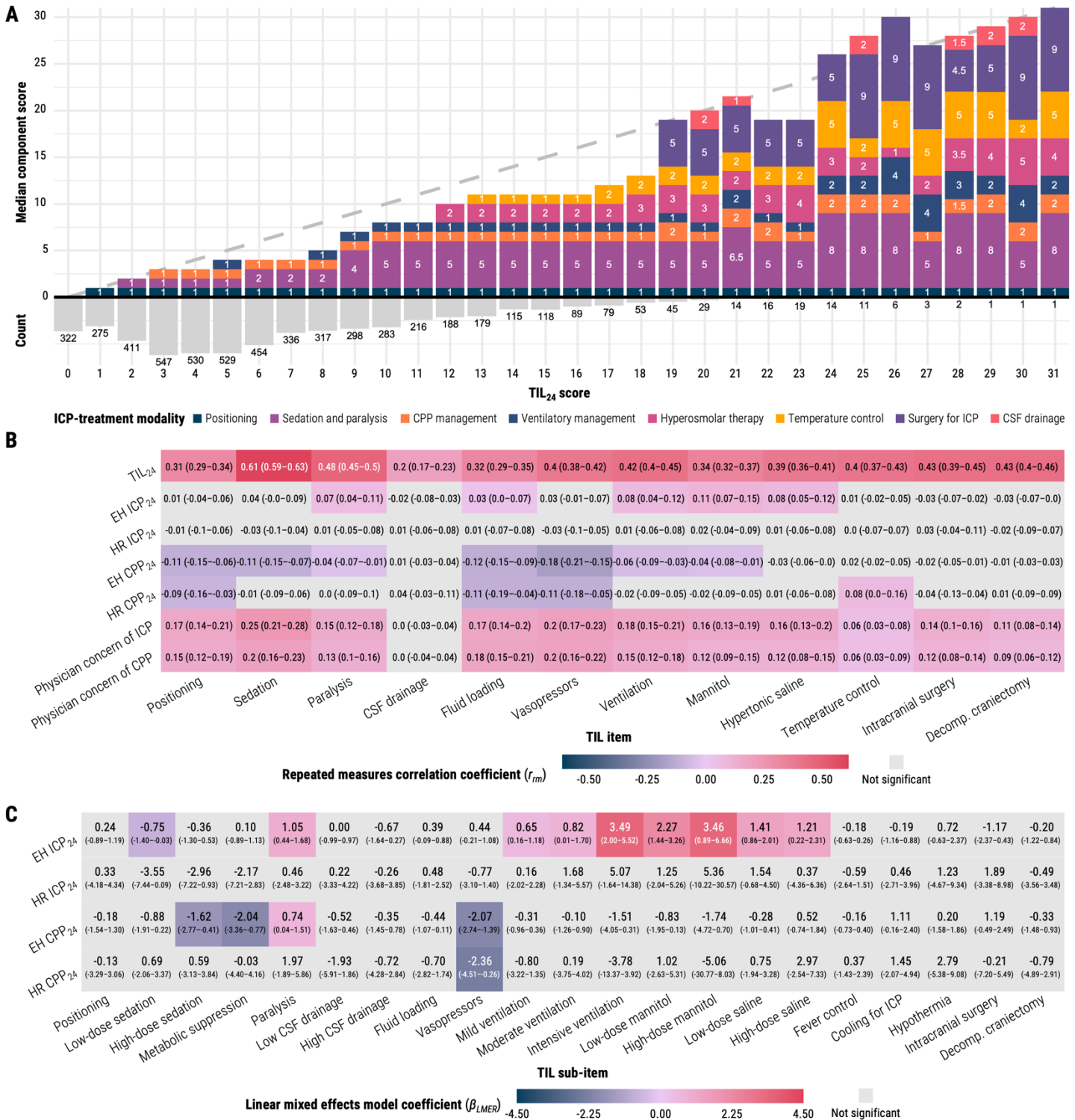


Fig 6. Association of TIL component items with TIL₂₄ and other study measures. Abbreviations: CPP=cerebral perfusion pressure, CPP₂₄=mean CPP over calendar day, CSF=cerebrospinal fluid, EH=end-hour, HR=high-resolution, ICP=intracranial pressure, ICP₂₄=mean ICP over calendar day, ICU=intensive care unit, TIL=Therapy Intensity Level scale,^{8,9} TIL₂₄=TIL score of calendar day. The 95% confidence intervals of r_{m} and β_{LMER} values were derived from bootstrapping with 1,000 resamples of unique patients over 100 missing value

imputations. **(A)** Median component score of each ICP-treatment modality (Table 1) per each TIL₂₄ score. The histogram under the x-axis represents the relative frequency and count of each TIL₂₄ score in the population, and diagonal dashed line represents the TIL₂₄ score on both axes. If the sum of median item scores does not equal the corresponding TIL₂₄ score, this can be interpreted as high variability in the combination of simultaneously applied therapies at that TIL₂₄ score. **(B)** The repeated measures correlation coefficients (r_{rm} , from -1 to 1) are interpreted as the strength and direction of association between two variables after accounting for inter-patient variation. The component score of each item (Table 1, x-axis) was subtracted from the TIL₂₄ score (top row on y-axis) before calculating their r_{rm} values. **(C)** Linear mixed effects model coefficients (β_{LMER}) are interpreted as the expected difference in the dependent variable (y-axis) associated with the given TIL₂₄ sub-item treatment (Table 1) after accounting for all other TIL₂₄ sub-items, time since ICU admission, and inter-patient variation.

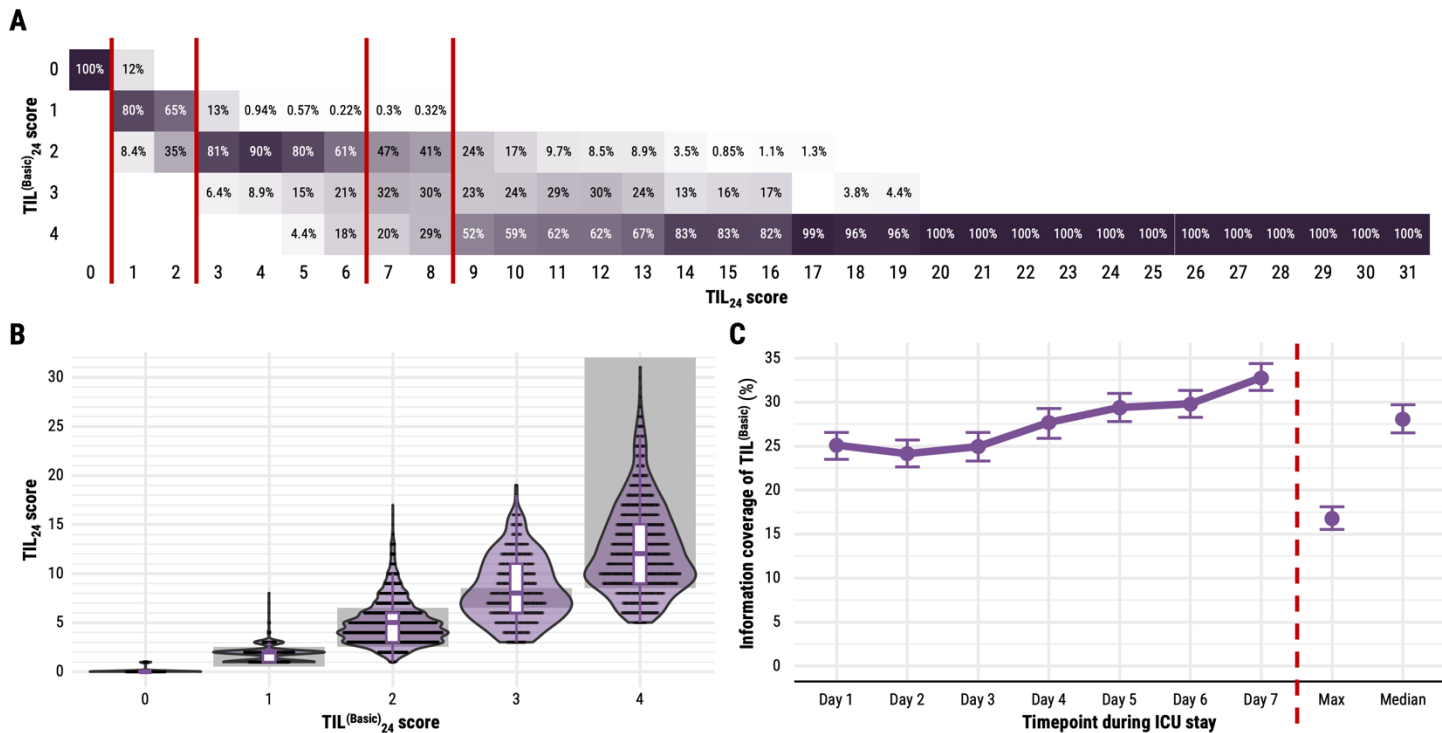


Fig 7. Relationship between TIL and TIL^(Basic). Abbreviations: AUC=area under the receiver operating characteristic curve, ICU=intensive care unit, TIL=Therapy Intensity Level scale,^{8,9} TIL^(Basic)=condensed TIL scale.⁸ The numeric definition of each scale is listed in Table 1, and the calculation of daily (e.g., TIL₂₄), maximum (e.g., TIL_{max}), and median (e.g., TIL_{median}) scores are described in the Methods. The 95% confidence intervals of information coverage were derived from bootstrapping with 1,000 resamples of unique patients over 100 missing value imputations. **(A)** Distribution of corresponding TIL^(Basic)₂₄ scores per each TIL₂₄ score. The values in each cell represent the percent of assessments at a given TIL₂₄ score (i.e., column) corresponding to a TIL^(Basic)₂₄ score (i.e., row). The vertical, dark red lines represent cut-offs across which the median corresponding TIL^(Basic)₂₄ score per TIL₂₄ score changes. **(B)** Distribution of corresponding TIL₂₄ scores per each TIL^(Basic)₂₄ score. The width of violin plots is scaled for each TIL^(Basic)₂₄ score, but the width of the points inside them demonstrates relative frequency across the TIL^(Basic)₂₄ scores. The grey, shaded zones represent the range of TIL₂₄ scores with corresponding median TIL^(Basic)₂₄ scores on the x-axis, as determined in panel (A). **(C)** The information of TIL₂₄, TIL_{max}, and TIL_{median} covered by TIL^(Basic)₂₄, TIL^(Basic)_{max}, and TIL^(Basic)_{median}, respectively. Information coverage is defined as the mutual information of TIL₂₄ and TIL^(Basic)₂₄ (or TIL_{max} and TIL^(Basic)_{max} or TIL_{median} and TIL^(Basic)_{median}) divided by the entropy of TIL₂₄ (or TIL_{max} or TIL_{median}).

Table 1. Scoring configurations for TIL and alternative scales

ICP-treatment modality	Item Sub-item	TIL		uwTIL		TIL ^{(Basic)*}	PILOT [†]		TIL ^{(1987)†}	
		Score	Max	Score	Max	Score*	Score	Max	Score	Max
Positioning	Head elevation for ICP control or nursed flat (180°) for CPP management	1	1	1	1	1	–	–	–	–
Sedation and neuromuscular blockade	Sedation		5		3			5		4
	Low dose sedation (as required for mechanical ventilation)	1		1		1	1		1	
	Higher dose sedation for ICP control (but not aiming for burst suppression)	2		2		2	1		1	
	High dose propofol or barbiturates for ICP control (metabolic suppression)	5		3		4	5		4	
	Neuromuscular blockade (paralysis)	3	3	1	1	–	2	2	1	1
CSF drainage	CSF drainage volume		3		2			5		2
	Low (<120 ml/24h)	2		1		2	4		1	
	High (≥120 ml/24h)	3		2		3	5		2	
CPP management	Fluid loading for maintenance of cerebral perfusion	1	1	1	1	2	–	–	–	–
	Vasopressor therapy required for management of cerebral perfusion	1	1	1	1	2	2	2	–	–
Ventilatory management	Hypocapnia for ICP control (P _a CO ₂ [mmHg])		4		3			4		2
	Mild (35≤P _a CO ₂ <40)	1		1		2	1		1	
	Moderate (30≤P _a CO ₂ <35)	2		2		3	2		1	
	Intensive (P _a CO ₂ <30)	4		3		4	4		2	
Hyperosmolar therapy	Mannitol administration		3		2			3		6
	≤2g/kg/24h	2		1		2	2		3	
	>2g/kg/24h	3		2		3	3		6	
	Hypertonic saline administration		3		2			3		–
	≤0.3g/kg/24h	2		1		2	3		–	
	>0.3g/kg/24h	3		2		3	3		–	
Temperature control	Temperature control (T [°C])		5		3			5		–
	Fever control (>38 or spontaneous <34.5)	1		1			1		–	
	Cooling for ICP control (≥35)	2		2		3	3		–	
	Hypothermia (<35)	5		3		4	5		–	

Surgery for intracranial hypertension	Intracranial operation for progressive mass lesion, NOT scheduled on admission	4	4	1	1	4	4	4	4	–	–
	Decompressive craniectomy	5	5	1	1	4	5	5	5	–	–
Maximum total possible score		38		21		4	38		15		

Abbreviations: CPP=cerebral perfusion pressure, CSF=cerebrospinal fluid, ICP=intracranial pressure, P_aCO_2 =partial pressure of carbon dioxide in arterial blood, PILOT=Paediatric Intensity Level of Therapy scale,⁷ T=body temperature in degrees Celsius, TIL=Therapy Intensity Level scale,^{8,9} TIL⁽¹⁹⁸⁷⁾=original Therapy Intensity Level scale published in 1987,⁶ TIL^(Basic)=condensed TIL scale,⁸ uwTIL=unweighted TIL scale in which sub-item scores are replaced by the ascending rank index within the item.

The TIL scale was developed by Maas *et al.*⁸ For each calendar day, the highest score for each item was summed to derive the TIL score.

*TIL^(Basic) is the maximum score (from 1 to 4) among all included sub-items over the calendar day.

†PILOT scale⁷ and TIL⁽¹⁹⁸⁷⁾ scale⁶ scoring configurations have been adapted with minor adjustments to fit the items of TIL with a daily assessment frequency.

Table 2. Summary characteristics of study validation populations

Summary characteristic	TIL validation population			p-value [‡]
	Overall (n=873, 52 centres)	TIL-ICP _{EH} (n=837, 51 centres)	TIL-ICP _{HR} (n=259, 21 centres)	
Age [years]	47 (29–62)	47 (29–62)	48 (30–62.5)	0.303
Sex: Female	222 (25%)	213 (25%)	55 (21%)	0.078
Baseline GCS (n*=822)				0.554
Mild [13–15]	122 (15%)	115 (15%)	38 (16%)	
Moderate [9–12]	139 (17%)	133 (17%)	36 (15%)	
Severe [3–8]	561 (68%)	539 (68%)	170 (70%)	
Marshall CT (n*=710)				0.278
No visible pathology (I)	17 (2%)	16 (2%)	6 (3%)	
Diffuse injury II	264 (37%)	248 (36%)	75 (35%)	
Diffuse injury III	93 (13%)	89 (13%)	22 (10%)	
Diffuse injury IV	16 (2%)	16 (2%)	3 (1%)	
Mass lesion (V & VI)	320 (45%)	312 (46%)	107 (50%)	
Six-month GOSE (n*=761)				0.329
(1) Death	199 (26%)	195 (26%)	54 (23%)	
(2 or 3) Vegetative or lower SD	182 (24%)	181 (25%)	63 (27%)	
(4) Upper SD	70 (9%)	66 (9%)	22 (9%)	
(5) Lower MD	122 (16%)	117 (16%)	44 (19%)	
(6) Upper MD	74 (10%)	71 (10%)	23 (10%)	
(7) Lower GR	56 (7%)	52 (7%)	14 (6%)	
(8) Upper GR	58 (8%)	55 (7%)	13 (6%)	
Baseline functional prognosis [‡] [%] (n*=749)				
Pr(GOSE>1)	84.7 (63.5–94.9)	84.1 (62.1–94.7)	83.8 (66.9–94.0)	0.664
Pr(GOSE>3)	53.9 (29.9–76.0)	53.1 (29.2–75.0)	52.4 (33.9–71.1)	0.287
Pr(GOSE>4)	39.6 (20.6–59.6)	38.9 (19.8–58.3)	38.1 (22.6–54.6)	0.154
Pr(GOSE>5)	21.1 (10.2–36.8)	20.7 (10.0–36.0)	19.3 (10.5–30.1)	0.037
Pr(GOSE>6)	12.4 (5.9–20.8)	12.0 (5.8–19.9)	10.9 (5.8–17.2)	0.009
Pr(GOSE>7)	4.8 (2.2–9.2)	4.7 (2.2–9.1)	5.3 (2.2–8.5)	0.415
TIL _{max}	10 (6–14)	10 (6–14)	10 (6–14)	0.577
TIL _{median}	5 (3–10)	5 (3–10)	5 (4–10)	0.826
TIL ₂₄ scores				
Day 1 (n*=852)	7 (4–11)	7 (4–11)	7 (5–10)	0.134
Day 2 (n*=839)	6 (4–10)	6 (4–10)	6 (4–10)	0.860
Day 3 (n*=819)	6 (3–9)	6 (3–9)	6 (4–9)	0.926
Day 4 (n*=787)	6 (3–10)	6 (3–10)	5 (4–10)	0.372
Day 5 (n*=761)	5 (3–10)	5 (3–10)	5 (3–10)	0.941
Day 6 (n*=733)	5 (2–9)	5 (2.5–9)	5 (3–10)	0.337
Day 7 (n*=709)	5 (2–9)	4 (2–9)	5 (2–9)	0.425

Abbreviations: Baseline GCS=Glasgow Coma Scale at ICU admission, from 3 to 15, GOSE=GOS–Extended, GR=good recovery, ICP=intracranial pressure, ICP_{EH}=end-hour ICP, ICP_{HR}=high-resolution ICP, Marshall CT=Marshall computerised tomography classification, MD=moderate disability, Pr(GOSE>•)="probability of GOSE greater than • at six months post-injury" as previously calculated from the first 24 hours of admission,²⁷ SD=severe disability, TIL=Therapy Intensity Level scale, TIL₂₄=TIL score of calendar day in ICU, TIL_{max}=maximum TIL₂₄ over first week of ICU stay, TIL_{median}=median TIL₂₄ over first week of ICU stay. Data are median (IQR) for numeric characteristics and n (% of column group) for categorical characteristics, unless

otherwise indicated. Units or numerical definitions of characteristics are provided in square brackets.

*Limited sample size of non-missing values for characteristic.

†Ordinal functional outcome prognostic scores were calculated through tokenised embedding of all clinical information in the first 24 hours of ICU stay, as described previously.²⁷

‡*p*-values, comparing patients in TIL-ICP_{HR} sub-population to those not in TIL-ICP_{HR} sub-population, are derived from with Welch's *t*-test for numeric variables and χ^2 contingency table test for categorical variables.

Table 3. Optimised ranges for TIL categorisation

Category	Derived ranges	Performance (95% confidence intervals)			Case counts [‡]		Previously proposed ranges [§]
		Sensitivity	Specificity	Accuracy	No	Yes	
Refractory intracranial hypertension*	TIL _{max} ≥14	68% (62–74%)	79% (77–81%)	77% (75–79%)	707	157	TIL _{max} ≥11
	TIL _{median} ≥7.5	81% (77–87%)	72% (70–75%)	74% (72–76%)			–
Day of surgical ICP control [†]	TIL ₂₄ ≥9	87% (83–91%)	74% (72–76%)	76% (74–77%)	4916	585	–
TIL ^(Basic) ₂₄				72% (70–73%)			
(1) Basic ICU care	1≤TIL ₂₄ ≤2				4932	568	1≤TIL ₂₄ ≤3
(2) Mild	3≤TIL ₂₄ ≤6				3294	2206	4≤TIL ₂₄ ≤7
(3) Moderate	7≤TIL ₂₄ ≤8				4709	791	8≤TIL ₂₄ ≤10
(4) Extreme	TIL ₂₄ ≥9				3919	1581	TIL ₂₄ ≥11

Abbreviations: ICP=intracranial pressure, ICU=intensive care unit, TIL=Therapy Intensity Level scale,^{8,9} TIL^(Basic)=condensed TIL scale.⁸ The numeric definition of each scale is listed in Table 1, and the calculation of daily (e.g., TIL₂₄), maximum (e.g., TIL_{max}), and median (e.g., TIL_{median}) scores is described in the Methods. The 95% confidence intervals of performance metrics were derived from bootstrapping with 1,000 resamples of unique patients over 100 missing value imputations. *Refractory intracranial hypertension was defined as recurrent, sustained (i.e., of at least ten minutes) increases of ICP above 20 mmHg despite medical ICP management during ICU stay. This information was recorded by attending physicians in patient discharge summaries.

[†]If a decompressive craniectomy was performed as a last resort for refractory intracranial hypertension, each of the days following the operation were also considered days of surgical ICP control.

[‡]For refractory intracranial hypertension, case counts represent the number of patients (with non-missing values) without (i.e., No) and with (i.e., Yes) refractory intracranial hypertension. For day of surgical ICP control and TIL^(Basic)₂₄, case counts represent the number of non-missing TIL assessments not in (i.e., No) and in (i.e., Yes) the given category.

[§]Thresholds were previously proposed by the interagency panel which developed TIL based on expert opinion.⁸