

1 **TITLE PAGE:**

2

3 **Health Economics Assessment of Statin Therapy Initiation Thresholds for**  
4 **Atherosclerosis Prevention in China: a Cost-Effectiveness Analysis**

5

6 **Authors:**

7 Tianyu Feng<sup>a</sup>, Xiaolin Zhang<sup>a</sup>, Jiaying Xu<sup>a</sup>, Shang Gao<sup>a</sup>, Xihe Yu<sup>a</sup>

8

9 **Affiliations:**

10 <sup>a</sup> School of Public Health, Jilin University, Changchun, China;

11

12 **\*Corresponding Author:**

13 Xihe Yu, Ph.D

14 Professor

15 School of Public Health

16 Jilin University

17 Changchun City, Jilin Province, China, 130021

18 Tel: 0431-85619446

19 E-mail: [xhyu@jlu.edu.cn](mailto:xhyu@jlu.edu.cn)

20

21 **Abstract**

22 **Background:** The latest revised Chinese guidelines for the management of  
23 dyslipidemia have lowered the 10-year risk threshold for initiating statins for primary  
24 prevention of atherosclerotic heart disease. The aim of this study was to examine the  
25 negative impact of different statin treatment initiation thresholds on diabetes in a  
26 Chinese population and to assess their health economics value.

27 **Methods:** In this study, we constructed an event probability-based Microsimulation  
28 model to assess the health economics value of statin therapy. The model was based on  
29 the Prediction for atherosclerotic cardio-vascular disease (ASCVD) risk in China  
30 (China-PAR) and used data from a nationally representative survey and published  
31 meta-analysis of the Chinese middle-aged and elderly population as input. We  
32 evaluated four different strategies: a 7.5% 10-year risk threshold strategy, a guideline  
33 strategy, a 15% 10-year risk threshold strategy, and a 20% 10-year risk threshold  
34 strategy. Additionally, we calculated the incremental cost per quality-adjusted life year  
35 (QALY) obtained for each strategy to better understand the economics of the various  
36 strategies.

37 **Result:** The incremental cost per QALY for the 10% 10-year risk threshold strategy,  
38 compared to the untreated, was \$52,218.75. The incremental cost per QALY for the  
39 guideline strategy, compared to the 7.5% 10-year risk threshold strategy, was  
40 \$464,614.36. These results were robust in most sensitivity analyses.

41 **Conclusion:** The current 10-year ASCVD risk thresholds used in China's  
42 dyslipidemia management guidelines are cost-effective in preventing ASCVD events  
43 and should be maintained with the current statin initiation thresholds. Relaxing the  
44 initiation threshold as willingness to pay increases would be more cost-effective.

45

46 **Keyword:** Statins; Cost-effectiveness analysis; CHARLS; Risk threshold

47

## 48 **Introduction**

49 The disease spectrum in China has undergone significant changes in the last three  
50 decades. Cardiovascular diseases have replaced infectious diseases as the leading  
51 cause of death[1]. According to statistics, more than 40% of deaths in China are due  
52 to cardiovascular diseases, with dyslipidemia being an important risk factor for  
53 atherosclerotic cardiovascular disease (ASCVD)[2, 3]. To reduce the risk of major  
54 cardiovascular adverse events, clinical guidelines from various countries have  
55 recommended the use of statins to manage dyslipidemia[4-6]. A mixture of risk factor  
56 rules and absolute risk rules are used in the vast majority of guidelines to determine  
57 the conditions that trigger statin intervention, but the threshold for statin initiation  
58 recommended in different guidelines varies widely. For example, in the 2016  
59 guidelines in China, statins are recommended for primary prevention when a patient  
60 has a 10-year ASCVD risk of 10%[4], whereas in Scotland, intervention is triggered  
61 when a patient has a 10-year ASCVD risk of 20%[7]. Some countries have set this  
62 standard even lower, such as the American Heart Association in its 2018 guideline on  
63 blood cholesterol management and the National Institute for Health and Clinical  
64 Excellence (NICE) in the UK in the latest version of its revised guideline in 2023,  
65 which sets a 10-year incidence of ASCVD of 7.5% as the threshold for triggering  
66 statin intervention[5, 6]. An Australian study concluded that a 10-year risk threshold  
67 of 15% is more cost-effective than a risk threshold of 5% or 10% for patients with  
68 coronary heart disease (CHD) and stroke[8]. It is important to consider the economic  
69 value when developing intervention initiation thresholds, especially in developing  
70 countries such as China.

71

72 Chinese guidelines for dyslipidemia management recommend initiating statin therapy  
73 when a patient's 10-year risk of ASCVD exceeds 10%. However, this threshold  
74 remains a subject of debate within the academic community[4, 9]. Economic  
75 considerations must be taken into account when setting the threshold. A threshold that

76 is too low may result in increased treatment costs for less vulnerable subgroups  
77 without a corresponding increase in health benefits. Conversely, a threshold that is too  
78 high may result in undertreatment of patients who could benefit from statins.  
79 Although statins effectively control dyslipidemia, they also increase the user's risk of  
80 developing diabetes, which significantly affects the occurrence of ASCVD[10-12].  
81 With the highest burden of diabetes in the world[13], China needs to investigate the  
82 effect of different statin initiation thresholds on diabetes risk and analyze the  
83 cost-effectiveness of statins in preventing ASCVD. This study aims to provide  
84 valuable reference information for clinicians and policymakers to develop rational,  
85 effective, safe, and economically feasible dyslipidemia management programs. Each  
86 country must conduct a cost-effectiveness analysis to determine the optimal threshold  
87 for initiating treatment based on its population profile, healthcare level, and economic  
88 level.  
89

## 90 **Methods**

### 91 **Model Structure**

92 This study developed a microsimulation model to simulate lifetime ASCVD-related  
93 outcomes and costs for individuals aged 40-89 years[14]. The model is based on a  
94 modified Markov state model, where individuals transition between health states  
95 based on transfer probabilities. Upon entering the model, each individual is assigned  
96 parameters such as age, sex, physiological indicators, disease history, and treatment  
97 status based on demographic distribution parameters obtained from the 2015 China  
98 Health and Retirement Longitudinal Study (CHARLS). The upper age limit of  
99 individuals in the model is 89 years old due to the small proportion of the Chinese  
100 population aged 90 and above[15]. Individual physiological parameters are updated  
101 according to a regression equation as a function of age, as described in Table S5 of the  
102 Supplementary Material.

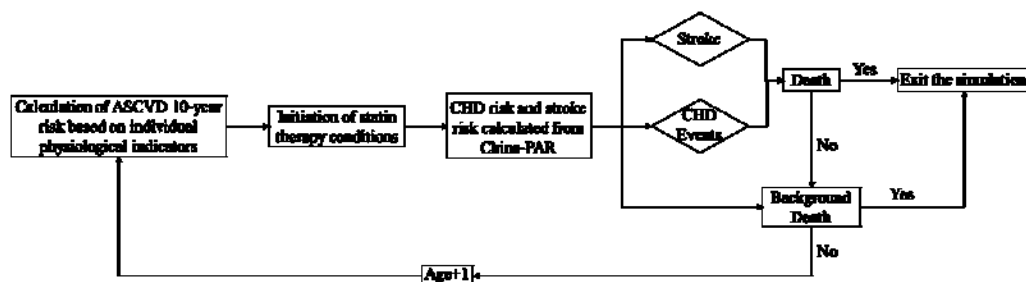
103

104 The probabilities of lethal and nonlethal cardiovascular and stroke events for  
105 individuals in the model were calculated from the risk function constructed by  
106 China-PAR (Supplementary material Table S6) [9, 16]. The risk of ASCVD is  
107 recalculated for individuals in each cycle based on their current physiological  
108 parameters, medical history, and treatment status. In the model, individuals are also  
109 affected by background mortality. The probability of a diabetic event is based on the  
110 annual incidence of diabetes in Chinese adults obtained from previous studies, with  
111 the relative risk of statin-induced diabetes calculated and reassigned if the individual  
112 is taking statins. Individuals who discontinue treatment will have their baseline  
113 incidence rate restored in the next cycle.

114

115 The model runs on a one-year cycle, with cost and health utility values updated at the  
116 end of each cycle. If an individual does not die or reach the modeled age of simulation  
117 termination, the simulation proceeds to the next cycle. If an individual dies or reaches

118 the age of simulation termination, the simulation stops and costs, health benefits, and  
119 occurrences of events are recorded throughout the simulation period. The model  
120 structure is shown in Figure 1 and was implemented using Treeage Pro2019 software.



121  
122 Figure1. Structure of the microsimulation model. CHD events include all fatal  
123 coronary events and non-fatal AMI.

124

### 125 Risk of ASCVD events

126 This study used a total risk equation derived from China-PAR to assess the 10-year  
127 composite risk of ASCVD events[9, 16]. The 2016 revised Chinese guidelines for the  
128 prevention and treatment of dyslipidemia in adults and the Chinese guidelines for  
129 cardiovascular disease prevention both recommend using China-PAR as an ASCVD  
130 risk assessment tool[4]. The China-PAR risk assessment tool has been widely used in  
131 clinical care in China and has been shown to be reliable and valid. China-PAR  
132 predicts fatal CHD events (all events caused by acute myocardial infarction (AMI) or  
133 other fatal events caused by coronary death), non-fatal AMI, and the 10-year  
134 composite probability of fatal and non-fatal stroke. The 10-year probability was  
135 converted to a 1-year probability using the DEALE method[17]. The 10-year  
136 composite probability of fatal AMI included the 10-year probability of CHD (29.46%)  
137 and stroke (70.54%), using their respective proportions of total CHD and stroke  
138 events[18]. Patients who survived a CHD event or stroke and did not have a recurrent  
139 CHD or stroke event had more than twice the background mortality rate at all  
140 follow-up cycles[19]. In the model, individuals who never experienced any ASCVD  
141 event were likely to die from background mortality (Supplementary material Tables

142 S2).

143

#### 144 **Simulation population**

145 At the beginning of the simulation, the model consisted of 10,000 individuals without  
146 a history of ASCVD. Parameters for ASCVD-related risk factors were obtained from  
147 the 2015 CHARLS, and all other model inputs are shown in the Supplementary  
148 Material (Supplementary material Tables S1, S3 and S4)[20]. To model changes in  
149 ASCVD risk factors (mainly HDL-C, TC, SBP, and WC) over time, cross-sectional  
150 linear regression was performed using CHARLS data to obtain the relationship  
151 between ASCVD risk factors and age (Supplementary material Tables S5) in the  
152 China-PAR risk function[17]. Data on the prevalence of diabetes and the increased  
153 risk of developing diabetes due to statins at each age were obtained from studies in  
154 the literature[21].

155

#### 156 **Treatment Strategies**

157 The guideline treatment-initiation strategy is illustrated in electronic supplementary  
158 material Fig. S1. This study discusses statin treatment regimens based on the 2023  
159 edition of the Chinese guidelines for lipid management, focusing on the 10-year  
160 ASCVD composite risk threshold in the guidelines. The China-PAR risk equation was  
161 used to determine patients' 10-year risk of combined ASCVD onset[22]. The  
162 guidelines recommend the use of moderate-intensity statins as primary prevention.  
163 High-intensity statin therapy was not analyzed because the guidelines suggest that it  
164 should be used with caution in the Chinese population[4]. Based on previous studies,  
165 it was assumed that 40% of patients would discontinue treatment on their own after  
166 one year, and that all patients should adhere to long-term statin treatment[23, 24].

167

168 Since diabetes significantly affects the risk of developing combined ASCVD and  
169 statins can slightly increase the risk of developing type 2 diabetes[17, 25], this study

170 focuses on the effect of statin-induced diabetes on the combined risk of ASCVD[26,  
171 27]. It was assumed that patients with statin-induced diabetes had good glycemic  
172 control and no other comorbidities. In the simulation model, only the effects of  
173 statin-induced diabetes on quality of life and costs were included.

174

175 We analyzed 10-year risks of 7.5%, 10%, and 15% to explore optimal treatment  
176 initiation thresholds. These simulated regimens were similar to the strategies in the  
177 guidelines, with treatment initiation based on the China-PAR risk function.  
178 Treatment-free simulations were also performed.

179

### 180 **Cost and health utility**

181 This study uses the perspective of the Chinese health care system, and costs include  
182 only direct medical costs associated with ASCVD, such as statin purchase, inpatient,  
183 and outpatient costs (Table 1). Drug costs were obtained based on the 2020 national  
184 negotiated prices. We followed the methodology of a similar study and calculated  
185 annual drug costs by averaging the lowest winning prices of statins from local  
186 government procurement catalogs in each region of China in the first quarter of 2020.  
187 Assuming that post-CHD and post-stroke individuals require one outpatient visit per  
188 year for the remainder of their lives, we expanded the costs to 2022 using the China  
189 Healthcare Component Consumer Price Index.

Parameter	Value	Distribution	Standard error	References
Acute disutility				[28]
Coronary heart disease	0.439	Beta	0.018	
Stroke	0.92	Beta	0.04	
Post-event long-term disutility				[28,29]
Acute myocardial infarction	0.107	Beta	0.019	
Stroke	0.266	Beta	0.02	
Treatment effect on CHD (OR)	0.7	Log-normal	0.072	[22]
Treatment effect on stroke (OR)	0.81	Log-normal	0.069	[22]
Risk of statin-induced diabetes (OR)	1.21	Beta		[30]
Annual statin treatment costs	1,149.75	Gamma		



Costs (2022 CN¥)	AMI	Stroke		
Hospitalization costs	22,611	13,983	Gamma	[31]
First-year long-term costs	5,255.85	2652	Gamma	[32]
Office visit costs in subsequent years	585.87	565	Gamma	[33]
CHD mortality by age group	Men	Women		[32]
34-44	0.12	0.18	Beta	
45-54	0.21	0.23	Beta	
55-64	0.29	0.27	Beta	
65-74	0.33	0.43	Beta	
75-84	0.48	0.51	Beta	
Stroke mortality by age group	Men	Women		[32]
34-44	0.25	0.18	Beta	
45-54	0.18	0.14	Beta	
55-64	0.12	0.15	Beta	
65-74	0.2	0.2	Beta	
75-84	0.45	0.45	Beta	

190 Table 1. Parameters used in the model.

191

192 QALYs were calculated using age-specific utility weights and event-related negative  
 193 utility weights, which can be further categorized into acute and long-term negative  
 194 utility for patients surviving only in the acute phase(Table 1). Age-specific utility  
 195 weights were derived from the EQ-5D survey of the Chinese general population  
 196 (Supplementary material Tables S2)[34]. Acute and long-term negative utility weights  
 197 were extracted from the Global Burden of Disease project and the Chinese EQ-5D  
 198 survey of patients with chronic diseases[29]. In the baseline case, an annual discount  
 199 rate of 3% was used[35].

## 200 **Intervention Strategy Comparisons**

201 This study evaluates strategies using the incremental cost-benefit ratio (ICER). The  
 202 cost-benefit ratio of each alternative is calculated, and inferior strategies are removed.  
 203 China's gross domestic product (GDP) per capita in 2022 (CNY85,700) is used as the  
 204 cost-effectiveness criterion, and three times the GDP (CNY257,100) is used as the  
 205 minimum criterion to be cost-effective[36]. In addition, this study employs

206 cost-acceptability curves to illustrate the probability that each strategy is  
207 cost-effective at different levels of willingness-to-pay (WTP).

208

### 209 **Sensitivity Analysis**

210 We performed one-way and probabilistic sensitivity analyses (PSA) on the model  
211 parameters to assess the robustness of the results when the parameters were varied. In  
212 the univariate sensitivity analysis, we focused on the effects of statin effectiveness,  
213 price, and induction of diabetes on the optimal ASCVD treatment threshold. In PSA,  
214 we assessed overall model uncertainty through 1000 randomized simulations.

215

### 216 **Model Validation**

217 The model used in this study was adapted from an extensively validated  
218 Microsimulation model[14, 37], and its internal and external validity were validated  
219 based on the model output[38, 39]. Specifically, the internal validity of the model was  
220 validated by regression analysis, calculating the expected probabilities of CHD and  
221 stroke events for each sex-different age group in the untreated group model against  
222 the mean of the simulation results (Supplementary material Figure S2). External  
223 validity was verified by comparing simulated ASCVD incidence in the age-sex group  
224 (10-year interval) with results from other studies (Supplementary material Table  
225 S6)[40].

226

227

## 228 **Results**

### 229 **Model calibration and validation**

230 Fig S2 in supplementary material displays the internal validation results of the model.  
231 The coefficient of determination  $R^2$  for the linear regression on the mean of the  
232 1-year expected probability of CHD and stroke events and the corresponding  
233 simulated values for the untreated group is 0.9278, indicating good internal validity.  
234 The simulated stroke incidence in Table 2 aligns well with the prospective study  
235 results. China's current published life expectancy per capita is 75.4 years, while the  
236 untreated model simulates a life expectancy of 74.9 years, demonstrating good  
237 external validity.

238

239

### 240 **Clinical Event Results**

241 An ASCVD threshold of 7.5% or higher was associated with an estimated 48% of  
242 adults being eligible for statin therapy. Strategies with higher ASCVD thresholds were  
243 linked to fewer cases of statin-induced diabetes but more CVD events. When applied  
244 to the 573 million adults aged 40 to 75 years in China, shifting from a 15% to a 10%  
245 ASCVD threshold was associated with an estimated 1,088,716 additional CVD events  
246 avoided. Shifting from a 10% to a 7.5% ASCVD threshold was associated with an  
247 estimated 687,610 additional CVD events avoided. In contrast, the number of  
248 statin-induced diabetes cases was small. This result demonstrates the net effect of  
249 statins in reducing cardiovascular events.

250

### 251 **Cost-effectiveness analysis**

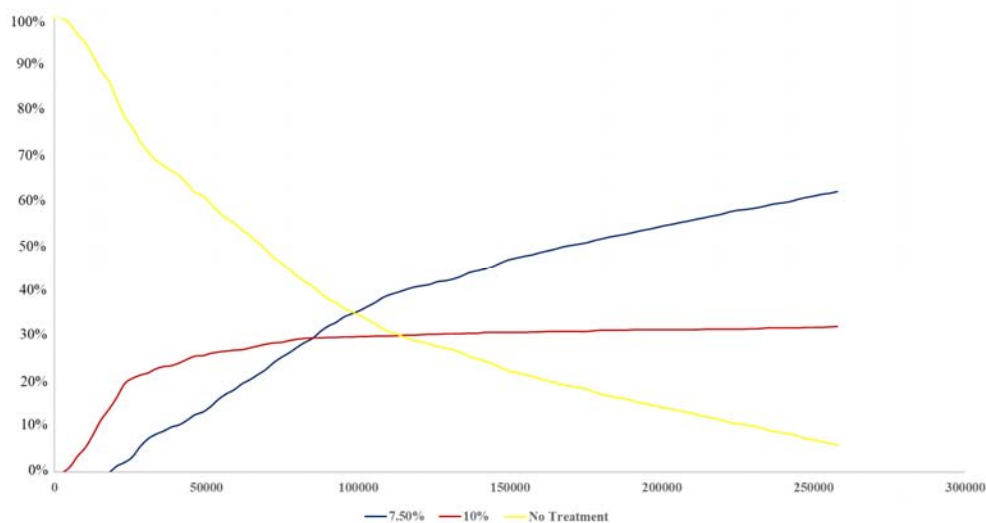
252 Table 2 presents the base case results of this study. The ICERs for the 15% risk  
253 threshold strategy compared to no treatment were \$43,951.82/QALY. The 15% risk  
254 threshold strategy is the expansion advantage strategy and was removed from the  
255 analysis. The ICERs for the guideline strategy compared to the untreated were

256 \$52,218.75/QALY. The ICERs for the 7.5% risk threshold strategy compared to the  
257 guideline strategy were \$464,614.36/QALY. Therefore, when using the 3-GDP  
258 criterion, the 7.5% risk threshold strategy was optimal among the three strategies.  
259 When using the 1-GDP criterion, the 10% risk threshold strategy was optimal among  
260 the three strategies.

261

## 262 Sensitivity Analysis

263 The acceptability curves for the PSA results are displayed in the Figure 2. When using  
264 the 3-GDP cost-effectiveness criterion, the guidance strategy has a 32% probability of  
265 being optimal, while the 7.5% risk threshold strategy has a 62% probability. When  
266 using the 1-GDP criterion, the guidance strategy and the 7.5% risk threshold strategy  
267 have equal cost-effectiveness, both with a 30% probability of being optimal. The  
268 cost-acceptability curve suggests that the current guideline strategy is more  
269 cost-effective than the 7.5% risk threshold strategy when the WTP is below 1-GDP.



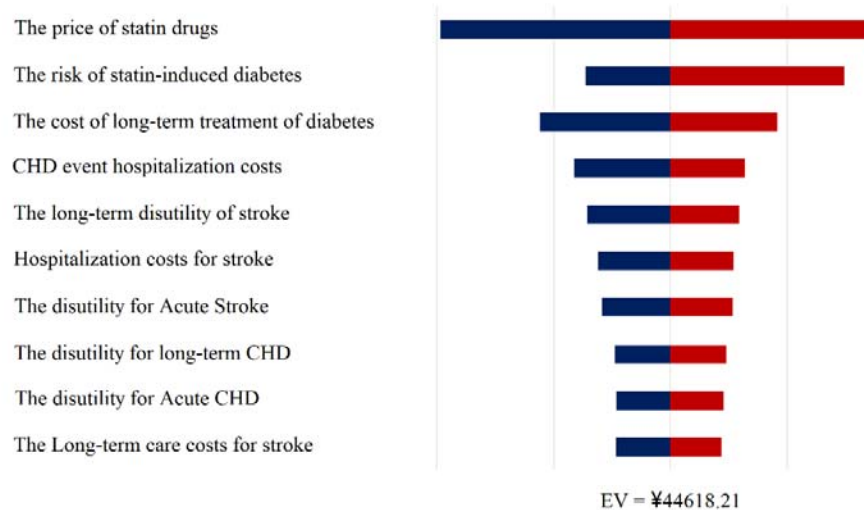
270

271 Figure 2. Acceptability curves were generated using probabilistic sensitivity analysis  
272 results. The horizontal coordinate of the figure represents willingness to pay,  
273 calculated in RMB.

274

275 The tornado plot displays the one-way sensitivity analysis results (figure 3). When all

276 parameters are varied within their range of variability, the degree of variation in ICER  
277 remains within an acceptable range around 1-GDP. Changes in statin prices and the  
278 risk of statin-induced diabetes have the greatest impact on cost-effectiveness results.



279

280 Figure 3. The tornado plot displays the results of the deterministic sensitivity analysis.

281 The price of statins and the risk of statin-induced diabetes had the greatest impact on

282 the results.

283

ASCVD Risk Threshold, %	Adults Statin Eligible, %	Statin-Induced Diabetes Cases	CVD Events	Mean discounted QALYs	Life Expectancy	Mean discounted costs(CN¥ in 2018)	ICER
No Treatment			0.44	12.17	75.34	49360.91	
15%	39%	0.00695	0.43	12.46	75.63	62236.63	Extended dominance
10%	47%	0.00755	0.43	12.47	75.79	65128.64	52218.75
7.50%	56.00%	0.00745	0.43	12.47	75.81	66866.81	464614.36

284 Table 2. Base-case results of ICERs

285

286 **Discussion**

287 The primary goal of healthcare systems is to optimize health benefits for the  
288 population while minimizing expenditure, particularly in the health economics of  
289 preventative therapeutic measures[41]. Statins have been demonstrated to be effective  
290 in preventing ASCVD, yet their use has been associated with an increased incidence  
291 of diabetes, presenting a challenge for policymakers, healthcare professionals, and  
292 patients[42, 43]. Our analysis revealed that using a 7.5% 10-year ASCVD risk as the  
293 initiation threshold for statin prevention of ASCVD events was more effective than  
294 the current Chinese dyslipidemia management guidelines' recommendation of a 10%  
295 10-year ASCVD risk when 3-GDP was used as the criterion. Sensitivity analysis  
296 results indicated that the effects of statin sales price and the risk prevention strategy  
297 for statin-induced diabetes were more pronounced. Notably, when the price of statins  
298 is reduced by 20%, the ICER for the 7.5% threshold strategy will be less than 2-GDP.  
299 Overall, our findings suggest that the optimal treatment threshold varies depending on  
300 the cost-effectiveness threshold used.

301

302 For adults without cardiovascular disease, the decision to initiate statin therapy should  
303 be based on evidence-based evidence and patient preference. When a patient's  
304 ASCVD risk reaches the initiation threshold, they may have valid personal reasons for  
305 declining statin treatment[44]. In China, financial reasons often lead patients to  
306 discontinue treatment. For many lower-income patients without well-established  
307 health insurance, the cost is prohibitive[45]. Our one-way sensitivity analysis  
308 indicated that statin-induced diabetes has a significant impact on simulation outcomes.  
309 Therefore, greater attention should be paid to the glycemic profile of patients taking  
310 statins and to their long-term normative glucose monitoring.

311

312 Studies evaluating the economics of statin clinical guidelines in other countries and

313 regions have concluded that the threshold for initiating statin therapy could be further  
314 reduced. Pandya et al. assessed the cost-effectiveness of the 2013 ACC/AHA  
315 guidelines and alternative risk thresholds for preventing ASCVD events. They  
316 determined that the 10-year ASCVD  $\geq 7.5\%$  risk threshold used in the ACC/AHA  
317 guidelines was acceptably cost-effective, but that cost-effectiveness would be more  
318 pronounced if the 10-year ASCVD risk threshold were further reduced (e.g., to  $\geq 3\%$   
319 or  $\geq 4\%$ )[14]. Linda J et al. analyzed current cardiovascular prevention guidelines in  
320 Australia and determined that the greatest cost-effectiveness was achieved by  
321 recommending statins for individuals with a five-year ASCVD risk greater than 5% or  
322 a 10-year ASCVD risk greater than 10%[8]. These studies suggest that more  
323 aggressive statin therapy initiation threshold strategies could be further explored.  
324 However, because these studies were primarily based on the demographics, healthcare  
325 levels, and economic development of developed countries, their results may not be  
326 replicable in developing countries like China. Specific statin initiation thresholds  
327 should consider the country's willingness to pay.

328

329 Past economic studies of statins have not addressed the impact of diabetes, preventing  
330 the analysis from fully reflecting the actual outcomes of statins in preventing ASCVD.  
331 However, the risk functions used in past studies are not the parameters currently  
332 needed on the front line and are more difficult to obtain, causing the analysis results to  
333 deviate somewhat from the actual situation and making it challenging to meet the  
334 practical needs of grassroots work. As a result, previous studies have struggled to  
335 produce results that provide practical guidance. By improving the model structure and  
336 correcting the parameters, this study obtained valuable references for practical clinical  
337 work. Cobiac et al. used the average cost-effectiveness ratio of each strategy, rather  
338 than ICER, to compare different absolute risk threshold strategies[8]. Jiang et al.  
339 analyzed the cost-effectiveness of different risk thresholds using a DEM model based  
340 on a national survey[46]. Unlike our study, their study did not include the risk of



341 statin-induced diabetes in the model, omitting an important factor for ASCVD  
342 prevention. Our study addressed this omission.

343

344 Based on this study's results, we recommend that China maintain its current statin  
345 initiation threshold. Although our findings suggest that relaxing the threshold would  
346 provide greater health economic benefits, clinical event results indicate that it would  
347 only marginally reduce the number of ASCVD events. ASCVD is a complex disease  
348 influenced by many factors and may not be best addressed solely through statins.  
349 Additionally, cost-effectiveness results show that a 7.5% 10-year ASCVD risk  
350 threshold would be more cost-effective with increased willingness to pay. However,  
351 China's current economic level is not yet comparable to developed countries, and the  
352 average Chinese patient's willingness to pay is low. Therefore, Chinese health  
353 policymakers should consider relaxing the treatment initiation threshold only after  
354 further economic improvement. Finally, hastily lowering the prophylaxis initiation  
355 threshold may cause a broken window effect, leading to increased use of other drugs  
356 such as anticoagulants and further burdening China's healthcare system.

357

358 Markov model studies tend to have certain limitations. Firstly, Markov cohort models  
359 use average probabilities to model individual life courses, making it challenging to  
360 obtain more realistic simulation results[47]. In this study, we calculated the absolute  
361 ASCVD risk for each individual in the model based on demographic and clinical  
362 characteristics from the CHARLS study, allowing treatment decisions to be made  
363 based on individual risk. Secondly, a major characteristic of Markov cohort models is  
364 their memoryless nature, which also makes it difficult to model the impact of  
365 historical events on patient disease outcomes and costs[48]. Microsimulation models  
366 can address this by tracking each individual historically and adjusting individual  
367 transition probabilities and cost parameters across health states based on historical  
368 events.

369

370 This study inevitably has some unavoidable limitations. Firstly, the ASCVD risk  
371 function used in this study can only calculate the 10-year combined ASCVD risk,  
372 while the risks of developing AMI and stroke cannot be determined separately and  
373 must be simulated using a fixed probability level. Secondly, this study focused on the  
374 impact of statin-induced diabetes risk on ASCVD prevention and did not explore the  
375 health damage and economic loss due to complications in diabetic patients. This is a  
376 limitation of our study. Thirdly, previous studies have suggested that statin adherence  
377 significantly impacts ASCVD prevention. Due to the lack of data on long-term statin  
378 therapy in China, we used studies from other countries to model the impact of poor  
379 adherence, which may not accurately reflect the Chinese reality. Finally, although this  
380 study modeled the potential risk of statin-induced diabetes, it did not include all  
381 potential benefits and risks, such as reduced risk of advanced/aggressive prostate  
382 cancer, reduced mortality from in-hospital sepsis, and statin-induced  
383 rhabdomyolysis[49-52]. Previous studies have generally considered statin-induced  
384 diabetes to be the most significant negative scenario, so the potential factors not  
385 included in the analysis likely had minimal impact on this study[46].

386

387 **Conclusions**

388 When willingness to pay is at 1-GDP, the current 10% 10-year ASCVD risk threshold  
389 used in China's dyslipidemia management guidelines is cost-effective in preventing  
390 ASCVD events. Therefore, the current statin initiation threshold should be maintained.  
391 However, relaxing the 10-year ASCVD risk threshold would be a better strategy as  
392 willingness to pay increases. Changes in statin prices and the risk of statin-induced  
393 diabetes have a significant impact on cost-effectiveness outcomes.

394

395 **Abbreviations**

396 AMI: Acute myocardial infarction

397 ASCVD: Atherosclerotic cardiovascular disease

398 CHD: Coronary heart disease

399 CHARLS: China Health and Retirement Longitudinal Study

400 China-PAR: Prediction for Atherosclerotic Cardiovascular Disease Risk in China

401 ICER: Incremental cost-benefit ratio

402 PSA: Probabilistic sensitivity analyses

403 QALY: Quality-adjusted life year

404 WTP: Willingness-to-pay

405

406 **Declarations**

407 **Availability of data and materials**

408 The datasets supporting the conclusions are available from the corresponding author  
409 (Yu X, xhyu@jlu.edu.cn) on reasonable request.

410

411 **Funding**

412 No fund was received for this study.

413

414

415 **Consent for publication**

416 Not applicable.

417

418 **Author information**

419 **Authors and Affiliations**

420 School of Public Health, Jilin University, Changchun, China

421 Tianyu Feng

422

423 School of Public Health, Jilin University, Changchun, China

424 Xiaolin Zhang

425

426 School of Public Health, Jilin University, Changchun, China

427 Jiaying Xua

428

429 School of Public Health, Jilin University, Changchun, China

430 Shang Gao

431

432 School of Public Health, Jilin University, Changchun, China

433 Xihe Yu

434

435 **Contributions**

436 Tianyu Feng and Xihe Yu design research and draft paper. Data collection and

437 analysis is done by Xiaolin Zhang and Jiaying Xu. Jiaying Xu and Shang Gao revised

438 the article and put forward suggestions. All authors commented on previous versions

439 of the manuscript. All authors read and approved the final manuscript.

440

441 **Acknowledgment**

442 Not applicable.

443 **Ethics declarations**

444 **Ethics approval and consent to participate**

445 Not applicable.

446

447 **Consent for publication**

448 Not applicable.

449 **Competing interests**

450 The authors declare that they have no competing interests.

451

452 **References**

- 453 1. Wang, L., et al., Prevalence and Treatment of Diabetes in China, 2013-2018.  
454 JAMA, 2021. 326(24): p. 2498-2506.
- 455 2. Zhou, M., et al., Cause-specific mortality for 240 causes in China during  
456 1990-2013: a systematic subnational analysis for the Global Burden of Disease Study  
457 2013. Lancet, 2016. 387(10015): p. 251-72.
- 458 3. Yang, G., et al., Rapid health transition in China, 1990-2010: findings from the  
459 Global Burden of Disease Study 2010. Lancet, 2013. 381(9882): p. 1987-2015.
- 460 4. Joint committee for guideline, r., 2016 Chinese guidelines for the management of  
461 dyslipidemia in adults. J Geriatr Cardiol, 2018. 15(1): p. 1-29.
- 462 5. Grundy, S.M., et al., 2018  
463 AHA/ACC/AACVPR/AAPA/ABC/ACPM/ADA/AGS/APhA/ASPC/NLA/PCNA  
464 Guideline on the Management of Blood Cholesterol: A Report of the American  
465 College of Cardiology/American Heart Association Task Force on Clinical Practice  
466 Guidelines. Circulation, 2019. 139(25): p. e1082-e1143.
- 467 6. guideline CG181, N.I.C.E., Cardiovascular disease: risk assessment and reduction,  
468 including lipid modification. Methods. 2023, London.
- 469 7. Network, S.I.G., Risk estimation and the prevention of cardiovascular disease.  
470 2007: Edinburgh: SIGN.
- 471 8. Cobiac, L.J., et al., Improving the cost-effectiveness of cardiovascular disease  
472 prevention in Australia: a modelling study. BMC Public Health, 2012. 12: p. 398.
- 473 9. Yang, X.L., et al., Risk stratification of atherosclerotic cardiovascular disease in  
474 Chinese adults. Chronic Dis Transl Med, 2016. 2(2): p. 102-109.
- 475 10. Casula, M., et al., Statin use and risk of new-onset diabetes: A meta-analysis of  
476 observational studies. Nutr Metab Cardiovasc Dis, 2017. 27(5): p. 396-406.
- 477 11. Mansi, I.A., et al., Association of Statin Therapy Initiation With Diabetes  
478 Progression: A Retrospective Matched-Cohort Study. JAMA Intern Med, 2021.  
479 181(12): p. 1562-1574.

- 480 12. Galicia-Garcia, U., et al., Statin Treatment-Induced Development of Type 2  
481 Diabetes: From Clinical Evidence to Mechanistic Insights. *Int J Mol Sci*, 2020.  
482 21(13).
- 483 13. Li, Y., et al., Prevalence of diabetes recorded in mainland China using 2018  
484 diagnostic criteria from the American Diabetes Association: national cross sectional  
485 study. *BMJ*, 2020. 369: p. m997.
- 486 14. Pandya, A., et al., Cost-effectiveness of 10-Year Risk Thresholds for Initiation of  
487 Statin Therapy for Primary Prevention of Cardiovascular Disease. *JAMA*, 2015.  
488 314(2): p. 142-50.
- 489 15. MD, W. Population pyramids of the World from 1950 to 2100—China 2022.  
490 2022.
- 491 16. Yang, X., et al., Predicting the 10-Year Risks of Atherosclerotic Cardiovascular  
492 Disease in Chinese Population: The China-PAR Project (Prediction for ASCVD Risk  
493 in China). *Circulation*, 2016. 134(19): p. 1430-1440.
- 494 17. Beck, J.R., et al., A convenient approximation of life expectancy (the "DEALE").  
495 II. Use in medical decision-making. *Am J Med*, 1982. 73(6): p. 889-97.
- 496 18. Wu, Y., et al., Estimation of 10-year risk of fatal and nonfatal ischemic  
497 cardiovascular diseases in Chinese adults. *Circulation*, 2006. 114(21): p. 2217-25.
- 498 19. Greving, J.P., et al., Cost-effectiveness of aspirin treatment in the primary  
499 prevention of cardiovascular disease events in subgroups based on age, gender, and  
500 varying cardiovascular risk. *Circulation*, 2008. 117(22): p. 2875-83.
- 501 20. Yang, Z.J., et al., Prevalence of cardiovascular disease risk factor in the Chinese  
502 population: the 2007-2008 China National Diabetes and Metabolic Disorders Study.  
503 *Eur Heart J*, 2012. 33(2): p. 213-20.
- 504 21. Sattar, N., et al., Statins and risk of incident diabetes: a collaborative  
505 meta-analysis of randomised statin trials. *Lancet*, 2010. 375(9716): p. 735-42.
- 506 22. Brugts, J.J., et al., The benefits of statins in people without established  
507 cardiovascular disease but with cardiovascular risk factors: meta-analysis of

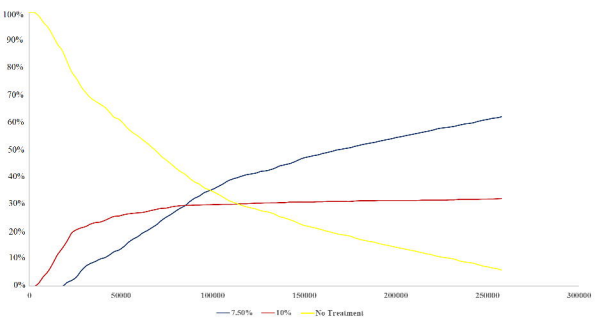
- 508 randomised controlled trials. *BMJ*, 2009. 338: p. b2376.
- 509 23. Simons, L.A., et al., Discontinuation rates for use of statins are high. *BMJ*, 2000.  
510 321(7268): p. 1084.
- 511 24. Simons, L.A., M. Ortiz, and G. Calcino, Persistence with antihypertensive  
512 medication: Australia-wide experience, 2004-2006. *Med J Aust*, 2008. 188(4): p.  
513 224-7.
- 514 25. Poznyak, A., et al., The Diabetes Mellitus-Atherosclerosis Connection: The Role  
515 of Lipid and Glucose Metabolism and Chronic Inflammation. *Int J Mol Sci*, 2020.  
516 21(5).
- 517 26. Laakso, M. and J. Kuusisto, Diabetes Secondary to Treatment with Statins. *Curr*  
518 *Diab Rep*, 2017. 17(2): p. 10.
- 519 27. Aiman, U., A. Najmi, and R.A. Khan, Statin induced diabetes and its clinical  
520 implications. *J Pharmacol Pharmacother*, 2014. 5(3): p. 181-5.
- 521 28. Organization, W.H., The global burden of disease: 2004 update. 2008: World  
522 Health Organization.
- 523 29. Tan, Z., et al., Health-related quality of life as measured with EQ-5D among  
524 populations with and without specific chronic conditions: a population-based survey  
525 in Shaanxi Province, China. *PLoS One*, 2013. 8(7): p. e65958.
- 526 30. Thakker, D., et al., Statin use and the risk of developing diabetes: a network  
527 meta-analysis. *Pharmacoepidemiol Drug Saf*, 2016. 25(10): p. 1131-1149.
- 528 31. Wang, S., et al., Direct medical costs of hospitalizations for cardiovascular  
529 diseases in Shanghai, China: trends and projections. *Medicine (Baltimore)*, 2015.  
530 94(20): p. e837.
- 531 32. Gu, D., et al., The Cost-Effectiveness of Low-Cost Essential Antihypertensive  
532 Medicines for Hypertension Control in China: A Modelling Study. *PLoS Med*, 2015.  
533 12(8): p. e1001860.
- 534 33. Zhao, W., et al., Economic burden of obesity-related chronic diseases in Mainland  
535 China. *Obes Rev*, 2008. 9 Suppl 1: p. 62-7.



- 536 34. Sun, S., et al., Population health status in China: EQ-5D results, by age, sex and  
537 socio-economic status, from the National Health Services Survey 2008. *Qual Life Res*,  
538 2011. 20(3): p. 309-20.
- 539 35. Wang, X., et al., Guideline for postmarketing Chinese medicine  
540 pharmacoeconomic evaluation. *Chin J Integr Med*, 2015. 21(6): p. 473-80.
- 541 36. Robinson, L.A., et al., Understanding and improving the one and three times GDP  
542 per capita cost-effectiveness thresholds. *Health Policy Plan*, 2017. 32(1): p. 141-145.
- 543 37. Bleibler, F., et al., Expected lifetime numbers and costs of fractures in  
544 postmenopausal women with and without osteoporosis in Germany: a discrete event  
545 simulation model. *BMC Health Serv Res*, 2014. 14: p. 284.
- 546 38. Eddy, D.M., et al., Model transparency and validation: a report of the  
547 ISPOR-SMDM Modeling Good Research Practices Task Force-7. *Med Decis Making*,  
548 2012. 32(5): p. 733-43.
- 549 39. Vemer, P., et al., AdViSHE: A Validation-Assessment Tool of Health-Economic  
550 Models for Decision Makers and Model Users. *Pharmacoeconomics*, 2016. 34(4): p.  
551 349-61.
- 552 40. Wang, W., et al., Prevalence, Incidence, and Mortality of Stroke in China: Results  
553 from a Nationwide Population-Based Survey of 480 687 Adults. *Circulation*, 2017.  
554 135(8): p. 759-771.
- 555 41. Boone, J., Basic versus supplementary health insurance: Access to care and the  
556 role of cost effectiveness. *J Health Econ*, 2018. 60: p. 53-74.
- 557 42. Collins, R., et al., Interpretation of the evidence for the efficacy and safety of  
558 statin therapy. *Lancet*, 2016. 388(10059): p. 2532-2561.
- 559 43. Simic, I. and Z. Reiner, Adverse effects of statins - myths and reality. *Curr Pharm*  
560 *Des*, 2015. 21(9): p. 1220-6.
- 561 44. Rosenbaum, L., Beyond belief--how people feel about taking medications for  
562 heart disease. *N Engl J Med*, 2015. 372(2): p. 183-7.
- 563 45. Xiong, X., et al., Impact of universal medical insurance system on the

- 564 accessibility of medical service supply and affordability of patients in China. PLoS  
565 One, 2018. 13(3): p. e0193273.
- 566 46. Jiang, Y. and W. Ni, Economic Evaluation of the 2016 Chinese Guideline and  
567 Alternative Risk Thresholds of Initiating Statin Therapy for the Management of  
568 Atherosclerotic Cardiovascular Disease. *Pharmacoeconomics*, 2019. 37(7): p.  
569 943-952.
- 570 47. Caro, J.J., J. Moller, and D. Getsios, Discrete event simulation: the preferred  
571 technique for health economic evaluations? *Value Health*, 2010. 13(8): p. 1056-60.
- 572 48. Hiligsmann, M., et al., Development and validation of a Markov microsimulation  
573 model for the economic evaluation of treatments in osteoporosis. *Value Health*, 2009.  
574 12(5): p. 687-96.
- 575 49. Boudreau, D.M., O. Yu, and J. Johnson, Statin use and cancer risk: a  
576 comprehensive review. *Expert Opin Drug Saf*, 2010. 9(4): p. 603-21.
- 577 50. Ouellette, D.R., et al., Sepsis outcomes in patients receiving statins prior to  
578 hospitalization for sepsis: comparison of in-hospital mortality rates between patients  
579 who received atorvastatin and those who received simvastatin. *Ann Intensive Care*,  
580 2015. 5: p. 9.
- 581 51. Mendes, P., P.G. Robles, and S. Mathur, Statin-induced rhabdomyolysis: a  
582 comprehensive review of case reports. *Physiother Can*, 2014. 66(2): p. 124-32.
- 583 52. Ganda, O.P., Statin-induced diabetes: incidence, mechanisms, and implications.  
584 *F1000Res*, 2016. 5





The price of statin drugs

The risk of statin-induced diabetes

The cost of long-term treatment of diabetes

CHD event hospitalization costs

The long-term disutility of stroke

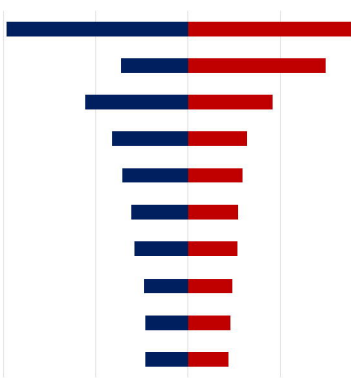
Hospitalization costs for stroke

The disutility for Acute Stroke

The disutility for long-term CHD

The disutility for Acute CHD

The Long-term care costs for stroke



EV = ¥44618.21