

Broad and Functional anti-HCMV IgG responses induced by mRNA-1647manuscript_submissiondraft

1 **Human Cytomegalovirus mRNA-1647 Vaccine Candidate Elicits Potent and**
2 **Broad Neutralization and Higher Antibody-Dependent Cellular Cytotoxicity Responses**
3 **than that of the Partially Effective gB/MF59 Vaccine**

4 **Running Title:** Broad and functional HCMV-specific IgG responses elicited by mRNA-1647 in
5 humans.

6 Xintao Hu^{1§}, Krithika P. Karthigeyan^{1§}, Savannah Herbek¹, Sarah M. Valencia², Jennifer A. Jenks²,
7 Helen Webster², Itzayana G. Miller¹, Megan Connors¹, Justin Pollara², Caroline Andy³, Linda M.
8 Gerber³, Emmanuel B. Walter², Kathryn M. Edwards⁴, David I. Bernstein⁵, Jacob Hou⁶, Matthew
9 Koch⁶, Lori Panther⁶, Andrea Carfi⁶, Kai Wu⁶, Sallie R. Permar^{1*}

10
11 ¹Weill Cornell Department of Pediatrics, New York, NY 10065
12 ²Duke Human Vaccine Institute, Duke University Medical Center, Durham, UN 27710
13 ³Weill Cornell Department of Population Health Sciences, New York, NY 10065
14 ⁴Department of Pediatrics, Vanderbilt University Medical Center, Nashville, TN 37232
15 ⁵Department of Pediatrics, Cincinnati Children's Hospital Medical Center, University of Cincinnati,
16 Cincinnati, OH 45229
17 ⁶Moderna, Inc., Cambridge, MA 02139

18
19 Xintao Hu: xih4005@med.cornell.edu
20 Krithika P. Karthigeyan: kpk4001@med.cornell.edu
21 Savannah Herbek: sah4019@med.cornell.edu
22 Sarah M. Valencia: sarah.valencia@duke.edu
23 Jennifer A. Jenks: jennifer.jenks@duke.edu
24 Helen Webster: helen.webster12@gmail.com
25 Itzayana G. Miller: igm4001@med.cornell.edu
26 Megan Connors: mec4016@med.cornell.edu
27 Justin Pollara: jpollara@duke.edu
28 Caroline Andy: cma2008@med.cornell.edu
29 Linda M. Gerber: lig2002@med.cornell.edu
30 Emmanuel B. Walter: chip.walter@duke.edu
31 Kathryn M. Edwards: kathryn.edwards@vumc.org
32 David I. Bernstein: David.Bernstein@cchmc.org
33 Jacob Hou: Jacob.Hou@modernatx.com
34 Matthew Koch: Matthew.Koch@modernatx.com
35 Lori Panther: Lori.Panther@modernatx.com
36 Andrea Carfi: Andrea.Carfi@modernatx.com
37 Kai Wu: Kai.Wu@modernatx.com
38 [§]equal contribution to this manuscript
39 ^{*}Corresponding author: Sallie R. Permar, M.D., Ph.D., Phone: +1 212 746 4111; Email:
40 sap4017@med.cornell.edu
41

42

Broad and Functional anti-HCMV IgG responses induced by mRNA-1647manuscript_submissiondraft

43 **Summary**

44 mRNA-1647 HCMV vaccine elicited polyfunctional and durable antibody responses in humans.

45 While the mRNA-1647-elicited glycoprotein B (gB)-specific IgG responses were lower than that

46 of the moderately-effective gB/MF59 vaccine, the pentameric complex (PC)-specific IgG

47 responses were strong.

48

49

50

51

52

53

54

55

56

57

58

59

60

61

62

63

64 **ABSTRACT**

65 **Background.** The MF59-adjuvanted gB subunit (gB/MF59) vaccine demonstrated ~50% efficacy
66 against human cytomegalovirus (HCMV) acquisition in multiple clinical trials, suggesting efforts
67 to improve this vaccine design might yield a vaccine suitable for licensure. A vaccine candidate
68 employing nucleoside-modified mRNAs encoding HCMV gB and pentameric complex (PC)
69 encapsulated in lipid nanoparticle, mRNA-1647, is currently in late-stage efficacy trials. Yet, its
70 immunogenicity has not been compared to the partially-effective gB/MF59 vaccine.

71 **Methods.** We assessed neutralizing and Fc-mediated IgG effector antibody responses induced
72 by mRNA-1647, a vaccine comprising an equal mass of 6 mRNAs encoding gB and PC antigens,
73 in both HCMV seropositive and seronegative vaccinees from a first-in-human clinical trial through
74 1-year following 3rd vaccination using a systems serology approach. Further, we compared peak
75 anti-gB antibody responses in seronegative mRNA-1647 vaccinees to that of seronegative female
76 adolescent gB/MF59 vaccine recipients.

77 **Results.** mRNA-1647 vaccination boosted pre-existing HCMV-specific IgG responses in
78 seropositive vaccinees, including neutralizing and Fc-mediated effector antibody responses. In
79 seronegative vaccinees, mRNA-1647 induced durable and functional HCMV-specific IgG
80 responses. Elicited gB-specific IgG responses were lower than the PC-specific IgG responses.
81 Additionally, gB-specific IgG and antibody-dependent cellular phagocytosis (ADCP) responses
82 were lower than those elicited by gB/MF59. However, mRNA-1647 elicited robust neutralization
83 and high antibody-dependent cellular cytotoxicity (ADCC) responses.

84 **Conclusions.** mRNA-1647 vaccination induced polyfunctional and durable HCMV-specific
85 antibody responses. mRNA-1647-elicited gB-specific IgG responses were lower than PC-specific
86 IgG responses and lower than those elicited by the partially effective gB/MF59. However, higher
87 neutralization and ADCC responses were elicited by mRNA-1647 than gB/MF59.

Broad and Functional anti-HCMV IgG responses induced by mRNA-1647manuscript_submissiondraft

88 **Clinical Trials Registration.** ClinicalTrials.gov (NCT03382405, mRNA-1647) and
89 (NCT00133497, gB/MF59).

90 **Keywords.** human cytomegalovirus; mRNA-1647 vaccine; pentameric complex (PC); durability;
91 gB/MF59 vaccine.

92

93

94

95

96

97

98

99

100

101

102

103

104

105

106

107

108

109 **INTRODUCTION**

110 Human cytomegalovirus (HCMV), a ubiquitous herpes virus, leads to life-threatening diseases in
111 newborns infected in utero (1) and in immunocompromised individuals (2), with severe symptoms
112 such as enteritis, pneumonitis, and neurologic deficits (1, 2), highlighting the need for an effective
113 vaccine to prevent infection and disease (3, 4). Viral attachment is mediated by major envelope
114 glycoprotein complexes on the virion surface (3, 5), including glycoprotein B (gB), the primary
115 viral fusion protein (6), and gH/gL/UL128/UL130/UL131A pentameric complex (PC), which is
116 essential for entry into epithelial, endothelial, dendritic, and monocytic cells (7). Both gB and PC
117 are viable targets for antibody based anti-CMV interventions (3, 8).

118 MF59-adjuvanted HCMV Towne gB subunit vaccine (gB/MF59) is the most efficacious HCMV
119 vaccine tested to date, with approximately 50% protection in several phase 2 trials (9-12). Yet,
120 efficacy was not high enough to advance to late-stage clinical trials. Therefore, efforts are needed
121 to develop a better vaccine that elicits more protective responses. Interestingly, this vaccine
122 achieved moderate protection with only limited neutralizing antibody (NAb) responses, suggesting
123 a role for non-NAb responses in preventing HCMV acquisition (9, 13, 14). However, inducing
124 broad and potent NAb responses might also enhance vaccine efficacy (3).

125 Frequent reinfection and reactivation in HCMV-exposed individuals represent another challenge
126 to preventing and controlling disease (15). Vaccination may enhance immunity to prevent
127 reinfection or end-organ disease in affected populations (3). Although the precise immune
128 correlates of protection against HCMV acquisition, congenital HCMV (cCMV) transmission, or
129 end-organ disease have yet to be established, there is growing evidence that Fc-mediated
130 effector antibody functions are important in preventing cCMV transmission (16, 17). Adding
131 antigens that induce potent NAb and Fc-mediated effector responses might elicit polyfunctional
132 humoral responses that improve vaccine efficacy (3, 8).

Broad and Functional anti-HCMV IgG responses induced by mRNA-1647manuscript_submissiondraft

133 The modified mRNA encapsulated in lipid nanoparticle (LNP) vaccine platform has remarkable
134 advantages for both manufacturing ease and safe induction of effective immunity in humans (3,
135 18). Toward this end, Moderna developed an HCMV vaccine candidate, mRNA-1647, comprised
136 of both gB and PC (19, 20), which induced durable and functional antibody responses in
137 preclinical studies in mice and non-human primates (NHP) (19, 20). In this report, we
138 comprehensively assessed the polyfunctional humoral responses elicited by mRNA-1647 in
139 HCMV seronegative and seropositive vaccinees and compare the gB-specific IgG responses with
140 those induced by the partially effective gB/MF59 vaccine.

141 **METHODS**

142 **Study Participants and Design**

143 Information about study participants is summarized in Table 1. Both gB/MF59 and mRNA-1647
144 vaccines were delivered via intramuscular injection (IM) in a three-dose series at months 0, 1 or
145 2 and 6 (Figure 1A). gB/MF59 samples came from a Phase 2 study in healthy adolescent females
146 (NCT00133497). mRNA-1647 samples are from a Phase 1 study in healthy adults
147 (NCT03382405). Information about study products and design is detailed in supplementary
148 materials.

149 **IgG Binding Assays**

150 Sera IgG binding to HCMV TB40/E virions, Towne gB, Towne gB AD2S1 peptide and VR1814
151 PC was measured by ELISA as previously described (9, 16, 21). Sera IgG binding to gB
152 expressed on the cell surface was measured by flow cytometry as previously described (9, 16,
153 21). IgG and subclasses IgG1, IgG2, IgG3 binding to HCMV antigens (gB, gB AD-1, gB AD4, gB
154 AD5, gB AD4+AD5, PC) and Fc γ receptors (Fc γ R1A, Fc γ R2A, Fc γ R2B, Fc γ R3A) and neonatal
155 receptor (FcRN) were measured by binding antibody multiplex assay (BAMA) as described (9, 16,

Broad and Functional anti-HCMV IgG responses induced by mRNA-1647manuscript_submissiondraft

156 21). Results were acquired on a Bio-Plex 200 system (Bio-Rad) and reported as mean
157 fluorescence intensity (MFI).

158 **Functional Ab Assays**

159 Neutralization was measured by employing HCMV immediate early-1 (IE-1) gene expression to
160 quantify reduction in virus infection in fibroblast HFF-1 or epithelial ARPE-19 cells (9, 16, 21).
161 ID₅₀s were calculated using non-linear regression analysis (Sigmoidal, 4PL) using GraphPad
162 Prism. ADCC was measured using cell-surface expression of CD107a as a marker for NK cell
163 degranulation, as described (16, 21). Primary human NK cells were incubated with AD169-
164 derivative BadrUL131-Y4/GFP-infected MRC-5 cell monolayers (22). The frequencies of
165 CD107a+ live NK cells were determined by flow cytometry. For ADCP assays, an optimized
166 amount of AD169r virions (1x10³ PFU/well) was conjugated to AF647 NHS ester before incubation
167 with diluted sera (1:100). Virus-antibody immune complexes were spinoculated and incubated
168 with THP-1 cells and stained with Aqua Live/Dead dye, and the percentage of AF647+ cells was
169 reported for each sample based on the live, singlet population.

170 **RESULTS**

171 **mRNA-1647 vaccination elicited durable HCMV-specific IgG responses**

172 HCMV gB- specific IgG responses were significantly increased above baseline at seven months
173 post-vaccination (peak timepoint) in seronegative vaccinees and elevated in seropositive
174 vaccinees (Figure 1B, 1C). Similarly, PC-specific peak IgG responses were also significantly
175 increased at month 7 in seronegative vaccinees and elevated in seropositive vaccinees (Figure
176 1D,1E). Peak gB-specific IgG responses in seronegative vaccinees were comparable to
177 responses induced by natural infection, whereas PC-specific IgG responses were 10-fold higher
178 than those induced by natural infection (Figure S2A-S1B). Peak gB- and PC-specific (Figure S3A-
179 3F) IgG1, IgG2, and IgG3 responses were elicited in seronegative vaccinees, while only IgG1

Broad and Functional anti-HCMV IgG responses induced by mRNA-1647manuscript_submissiondraft

180 responses were elevated above baseline in seropositive vaccinees (Figure S3A, 3D). gB- and
181 PC-specific IgG responses persisted through one year after the last vaccination in seronegative
182 vaccinees (Figure 1B, D). While IgG responses declined between month 7 to 12, no significant
183 change was observed in vaccine-elicited IgG levels between month 12 to 18 (Figure 1B-1E).
184 Interestingly, the relative avidity index (RAI) for gB-specific IgG declined significantly between
185 month 7 and 12 only in seronegative vaccinees (Figure S4A-S4B). In contrast, PC-specific IgG
186 maintained an equivalent RAI at both month 12 and 18 relative to month 7 in seronegative and
187 seropositive vaccinees (Figure S4C-S4D).

188 Significant increases in HCMV-binding IgG levels against TB40/E (gB1 genotype) (21) were
189 observed in seronegative, but not seropositive individuals, after vaccination (Figure 1F, 1G),
190 though this was significantly lower than those elicited by natural infection (Figure S2C). Virion-
191 binding IgG responses in seronegative vaccinees declined in magnitude (Figure 1F), but not in
192 avidity (Figure S4E), between months 7 and 12 and returned to baseline by month 18. In
193 seropositive vaccinees, there was no change in magnitude or avidity of virion-binding IgG after
194 vaccination (Figure 1G, Figure S4F),

195 IgG binding to gB-transfected cells was previously identified as a correlate of protection against
196 HCMV acquisition in the gB/MF59 vaccine trials (9). Thus, we measured IgG binding to mRNA-
197 1647 vaccine strain-matched Merlin and heterologous gB1 genotype (Towne) gB-transfected
198 cells for both vaccine populations. IgG responses to cell-associated Merlin and Towne gB were
199 elicited in seronegative vaccinees (Figure 1H; Figure S5), and Merlin gB-transfected IgG binding
200 responses remained high one year after the last vaccination. Only Towne cell-associated gB
201 responses were significantly increased by vaccination in seropositive vaccinees (Figure 1I; Figure
202 S5), demonstrating that mRNA-1647 was able to elicit broad IgG responses and boost pre-
203 existing responses against the cell-associated conformation of gB.

204 **mRNA-1647 induced broad and long-lasting NAb responses**

Broad and Functional anti-HCMV IgG responses induced by mRNA-1647manuscript_submissiondraft

205 We measured NAb responses against homologous (Towne, gB1) and heterologous (AD169r, gB2)
206 gB genotype strains in fibroblasts and epithelial cells. Low level fibroblast NAb responses against
207 Towne (Figure 2A, 2B) and AD169r (Figure 2C, 2D) were elicited by month 7 after vaccination in
208 seronegative mRNA-1647 vaccinees and were increased above baseline in seropositive
209 vaccinees . In contrast, mRNA-1647 elicited potent epithelial NAb responses against AD169r in
210 seronegative vaccinees at month 7 after vaccination, and >400-fold above the fibroblast
211 neutralization titer (median ID50 40660 vs. 99). These responses were durable through one year
212 after the last vaccination (Figure 2E). The magnitude of vaccine-elicited epithelial, but not
213 fibroblast, NAb responses was significantly higher than those induced by natural infection (Figure
214 S6A-S6C). This response was also increased by 55-fold compared to pre-existing responses in
215 seropositive vaccinees and maintained through one year after the final vaccination (Figure 2F).

216 IgG responses against gB antigenic domains (AD) were detectable against AD4, and AD4&AD5
217 (Figure S7B, S7D) in seronegative vaccinees at month 7 after mRNA-1647 vaccination, revealing
218 an AD4 dominant IgG response that did not correlate with fibroblast NAb responses. In
219 seropositive vaccinees, anti-AD4, AD4&D5, and AD2S1 responses were boosted by vaccination
220 (Figure S7B, S7D-S7E), and these responses also did not correlate with fibroblast NAb responses.
221 However, nAb responses against AD169r correlated strongly with AD4, AD4&AD5-specific IgG
222 binding when seronegative and seropositive vaccinee responses were combined (Table S1).

223 **mRNA-1647 elicited Fc-mediated functional antibody responses**

224 We next evaluated vaccine-induced antigen-specific Fc-mediated IgG responses. In all vaccinees,
225 we found significant increases in both gB- and PC-specific (Figure 3A, 3B) IgG responses that
226 bound to all tested FcRs (Fc γ R1A, Fc γ R2A, Fc γ R2B, Fc γ R3A and FcRN). Both ADCC and ADCP
227 responses were significantly increased in seronegative vaccinees following vaccination but not in
228 seropositive vaccinees (Figure 3C, 3D). ADCC and ADCP responses in seropositive vaccinees
229 at baseline were significantly higher than peak responses for seronegative vaccines, suggesting

Broad and Functional anti-HCMV IgG responses induced by mRNA-1647manuscript_submissiondraft

230 that these responses are more potently elicited by infection than vaccination. AD169r virion-
231 specific ADCC strongly correlated with all tested gB-specific, but not PC-specific, FcR-binding
232 IgG levels in seronegative vaccinees (Table S2; Figure 3E-3F). When our analysis was expanded
233 to the total vaccinated population, we observed strong correlation between ADCC and gB-specific
234 FcR-binding IgG levels; particularly, gB-specific Fc γ R3A-binding (Figure 3F, $r = 0.87$, $p < 0.001$),
235 which is expressed on NK cells that mediate ADCC (23). Similarly, we observed positive
236 correlation between AD169r virion-specific ADCP response and all evaluated gB- and PC-specific
237 IgG FcR binding responses levels in seronegative vaccinees, and the correlation became stronger
238 when the analysis was extended to the total vaccinated population (Table S2; Figure 3G-3H), in
239 particular for gB-specific Fc γ R1A ($r = 0.93$, $p < 0.001$) and Fc γ R2A ($r = 0.93$, $p < 0.001$) (Figure
240 3H).

241 **mRNA-1647 induced higher PC- than gB-specific IgG responses**

242 To evaluate if balanced humoral responses were induced for both antigens encoded by the
243 mRNA-1647 formulation, we compared vaccine-elicited PC- and gB-specific IgG responses. We
244 found significantly higher PC- than gB-specific IgG responses in seronegative vaccinees, including
245 total IgG, IgG1, and IgG3 (Figure 4A - 4D) responses. There was a trend towards higher PC- than
246 gB-specific total IgG and IgG1 responses in seropositive vaccinees, but only PC-specific IgG3
247 responses were significantly higher (Figure 4E, 4F and 4H).

248 PC-specific FcR-binding IgG responses were also higher in seronegative vaccinees compared to
249 gB-specific responses (Figure 4I-4M); which was also observed when data was normalized to gB-
250 and PC-specific IgG levels, (Figure S8) with the exception of Fc γ R1A binding. Further, PC-specific
251 Fc γ R3A-binding IgG responses also trended higher than gB-specific responses in seropositive
252 vaccinees (Figure 4Q). This difference may be underestimated as the PC-specific, but not gB-
253 specific, responses were at the maximum limit of detection (Figure 4Q). Although no significant

Broad and Functional anti-HCMV IgG responses induced by mRNA-1647manuscript_submissiondraft

254 difference was found for Fc γ R1A, 2A and 2B IgG binding between PC-specific and gB-specific
255 IgG responses in seropositive vaccinees, these responses were also at the maximum limit of
256 detection (Figure 4N-4Q). FcRN-binding IgG responses that were PC-specific were elicited by
257 month 7 in seropositive vaccinees (Figure 4R).

258 **mRNA-1647 elicited broad and potent NAb and higher ADCC responses, but lower gB-**
259 **specific IgG and ADCP responses compared to gB/MF59 in seronegative vaccinees**

260 We compared peak gB-specific IgG responses in HCMV-seronegative vaccinees at month 7 post-
261 vaccination among two vaccine cohorts. The vaccines were delivered intramuscularly on a similar
262 schedule, and included a gB1 genotype antigen (Figure 5A). gB/MF59 vaccine induced
263 significantly higher gB-specific IgG responses compared to the mRNA-1647 vaccine, yet with
264 similar avidity (Figure 5B, 5C). Vaccine-induced gB-specific IgG subclass responses, including
265 IgG1 and IgG3 (Figure 5D - 5F), were also significantly elevated in the gB/MF59 vaccine cohort,
266 in which total IgG and IgG1 was higher than that induced by natural infection (Figure 5B, 5D).
267 Interestingly, ratios of gB-specific IgG2/IgG1 and IgG3/IgG1 were higher in the mRNA-1647 vs
268 gB/MF59 vaccine cohort (Figure 5E-5F) suggesting distinct vaccine-induced IgG subclass
269 patterns. Despite the inclusion of 2 major glycoprotein complexes in mRNA-1647, gB/MF59
270 vaccination elicited higher virion-binding IgG against TB40/E in terms of both magnitude (Figure
271 5G) and avidity (Figure 5H).

272 gB/MF59 immunization also elicited higher cell-associated autologous Towne gB-specific IgG
273 responses than the mRNA-1647 vaccine (Figure 5I). IgG against cell-associated Merlin gB (Figure
274 5J) that trended higher in the gB/MF59 cohort than that induced by mRNA-1647. Finally, no
275 difference in gB AD-specific IgG responses was found among gB/MF59 and mRNA-1647 vaccine
276 cohorts (Figure S9A-S9E, Table 2).

Broad and Functional anti-HCMV IgG responses induced by mRNA-1647manuscript_submissiondraft

277 Despite the lower gB-specific IgG responses compared to those elicited by gB/MF59, mRNA-
278 1647 vaccine induced higher heterologous virus (AD169r) NAb responses in both epithelial
279 (Figure 5K) and fibroblast (Figure 5L) cells, including fibroblast NAb responses against the
280 gB/MF59 homologous Towne virus (Figure 5M), indicating that mRNA-1647 vaccine-induced PC-
281 specific antibody responses may contribute to the fibroblast-tropic NAb responses (24).
282 Additionally, the gB/MF59 vaccine induced higher gB-specific IgG Fc γ R2A, 2B, 3A and FcRN
283 binding responses compared to that of mRNA-1647, yet similar levels of binding to Fc γ R1A
284 (Figure 6A – 6E). When normalized to gB-specific IgG responses, the gB/MF59 vaccinees still
285 had higher Fc γ R2B, 3A, and FcRN, but lower Fc γ R1A (Figure S10C- S10E and S10A), binding
286 responses (Figure S10B). Finally, mRNA-1647 vaccine induced higher ADCC, yet lower ADCP
287 (Figure 6F, 6G) responses compared to the gB/MF59 vaccine. No significant correlation was
288 found between tested FcR binding and ADCC/ADCP responses in the gB/MF59 cohort (Table
289 S3). The humoral response comparison between the vaccine cohorts is summarized in Table 2.

290 **DISCUSSION**

291 In this report, we demonstrate that mRNA-1647 HCMV vaccine induced potent and durable
292 HCMV-specific IgG responses in seronegative participants in a first-in-human vaccine trial,
293 mirroring preclinical immunogenicity results (19, 20). It also boosted pre-existing HCMV-specific
294 IgG responses in seropositive vaccinees. mRNA-1647 elicited broad and potent neutralization as
295 well as Fc-mediated effector functions, including robust ADCC responses. These features support
296 its advancement into ongoing late-stage clinical trial assessing its efficacy for prevention of HCMV
297 acquisition in seronegative women.

298 Humoral immune correlates of protection against HCMV acquisition or vertical transmission are
299 still being investigated (8); hence broad and polyfunctional humoral immunity is desirable.
300 Interestingly, gB-specific IgG responses in mRNA-1647 vaccinees was considerably lower than

Broad and Functional anti-HCMV IgG responses induced by mRNA-1647manuscript_submissiondraft

301 that of the PC-specific IgG response and that elicited by the gB/MF59 vaccine, indicating potential
302 room for improvement of the immunogenicity of the gB antigen. The lower magnitude of gB vs
303 PC-specific IgG responses could be in part be due to the lower total amount of gB vs PC mRNA
304 in the vaccine formulation (gB vs. PC: 30 μ g vs.150 μ g), suggesting re-formulation of the vaccine
305 could lead to more balanced responses. Alternative approaches could combine mRNA and
306 protein antigens in a co-delivery strategy, similar to that applied other vaccine platforms (28, 29).
307 Of note, PC was recently shown to be dispensable for cCMV transmission in NHPs (25); yet, the
308 impact of the addition of PC to an HCMV vaccine on efficacy is yet unclear, but will be informed
309 by the ongoing mRNA-1647 trial.

310 While neutralization responses were absent or minimal in gB/MF59 vaccinees, the PC-specific
311 IgG and neutralization responses elicited by mRNA-1647 were quite robust (Table 2). Yet, the
312 magnitude of gB-specific IgG responses elicited by mRNA-1647, assayed against the
313 heterologous Towne gB protein, were significantly lower than that elicited by the gB/MF59 vaccine.
314 The elicited IgG binding to cell-associated Towne gB, the immune correlate of protection in the
315 gB/MF59 vaccine trials (9), was also lower in the mRNA-1647 group. However, IgG binding to
316 cell-associated Merlin gB, which is strain matched to the mRNA-1647 vaccine, was equivalent
317 among the vaccinees (Figure 5J). Further, ADCC responses elicited by mRNA-1647 were more
318 robust than that of the gB/MF59 vaccine, while ADCP responses were lower. Both effector
319 responses have recently been associated with reduced cCMV transmission risk (16, 17). The
320 lower ADCP responses elicited by mRNA-1647 vs gB/MF59 vaccine could be attributable to the
321 distinct gB-specific FcR binding (Figure S10) or IgG subclass ratios (Figure 4D-F), but also
322 indicate that PC-specific responses may contribute little to this response. Conversely, the higher
323 ADCC response in mRNA-1647 vs gB/MF59 vaccine indicates that the PC is an important target
324 of ADCC.

Broad and Functional anti-HCMV IgG responses induced by mRNA-1647manuscript_submissiondraft

325 The expected differences in gB conformation can potentially explain differences in the vaccine-
326 elicited functional responses; gB/MF59 vaccine has a truncated transmembrane domain and a
327 mutated furin cleavage site (9), while the mRNA-1647 encodes an intact gB protein (19, 20) that
328 may be expressed in the context of a cell membrane. Yet, the gB AD-specific IgG responses were
329 not distinct. One report demonstrated that a Towne ectodomain gB antigen induced better
330 immunogenicity than the full length gB antigen when delivered in the same viral vector (26).
331 Distinct vaccinee populations may also be a confounding factor for comparison between the
332 cohorts, as previously described in immunity elicited by gB/MF59 (9) and natural infection (27).
333 The gB/MF59 vaccinees were a lower age range (12-17) than that of mRNA-1647 (18-49) and
334 only female gender, though most vaccinees in the mRNA-1647 cohort were female (76%).

335 Durable IgG responses elicited by mRNA-based HCMV vaccine mirrors results of the preclinical
336 models including mice, NHPs (20), and rabbits (30). Yet, it is critical to assess durability at longer
337 intervals given the mRNA-167 vaccine strategy to vaccinate in adolescence for protection against
338 HCMV through reproductive years. Our observation of humoral immune responses lasting over 1
339 year after mRNA-1647 vaccination may stem from long-lived germinal center reactions upon
340 mRNA-LNP vaccination as observed in SARS-CoV2 mRNA-LNP-immunized mice (31) and
341 humans (32). Yet, due to sample availability, we were unable to compare response durability with
342 that of gB/MF59 vaccine, which is a limitation of this study.

343 The immune responses required to prevent cCMV transmission may be distinct from those to
344 prevent acquisition. While prevention of mucosal HCMV acquisition may be a challenge, rapid
345 control of viral replication could be effective in eliminating transmission through vaccine-induced
346 Fc-mediated antibody functions such as ADCC (33), ADCP (34) or T cell responses (3). Though
347 T cell responses were not evaluated here, prior studies demonstrated that the mRNA-1647
348 vaccine is able to elicit potent cell-mediated immunity (20).

Broad and Functional anti-HCMV IgG responses induced by mRNA-1647manuscript_submissiondraft

349 The advantages of mRNA-LNP vaccine, such as rapid development and flexible re-formulation
350 provide an opportunity to iteratively redesign vaccine immunogens. The impact of the addition of
351 PC and lower magnitude gB-specific IgG responses between the mRNA-1647 and the gB/MF59
352 vaccine on HCMV acquisition will be informed by the ongoing efficacy trial (NCT05085366), an
353 important benchmark for the HCMV field and the immunogenicity requirements of a successful
354 HCMV vaccine.

355

356 **Acknowledgments.**

357 **Author Contributions.** Investigators were X.H., K.P.K., S.H., S.M.V., J.A.J, H.W., I.G.M., M.C.,
358 and J.P., E.B.W., K.M.E., D.I.B., and S.R.P. **Study design** was carried out by X.H., and S.R.P.
359 **The trial was managed** by J.H., M.K., K. M. E., D.I.B., K.W., A.C. **Data analysis and**
360 **interpretation** was carried out by X.H., K.P.K., S.H., S.M.V., J.A.J, H.W., J.P., C.A., L.M.G. and
361 S.R.P. **Manuscript** was drafted by X.H. and edited by K.P.K. and S.R.P. All authors had full
362 access to the presented data, provided critical input during manuscript preparation, and approved
363 the manuscript for submission. We also thank Ms. Carolyn Weinbaum and other members of Dr.
364 Sallie Permar's lab for their support.

365 **Financial support:**

366 This work was supported by Moderna Therapeutics SRA Project# OA22BEA4 and NIH R21
367 project # 5R21 AI136556 to S.R.P.

368 **Potential conflicts of interest.**

369 S.R.P. is a consultant to Moderna, Merck, Pfizer, GSK, Dynavax, and Hoopika CMV vaccine
370 programs and leads sponsored programs with Moderna and Merck. S.R.P. also serves on the
371 board of the National CMV Foundation and as an educator on CMV for Medscape. E.B.W has

Broad and Functional anti-HCMV IgG responses induced by mRNA-1647manuscript_submissiondraft

372 received funding support from Pfizer, Moderna, Sequiris, Najit Technologies Inc, and Clinetic for
373 the conduct of clinical trials and clinical research. E.B.W has served as an advisor to Vaxcyte and
374 consultant to ILiAD biotechnologies. J.H., M.K., K.W., A.C. has Moderna company' stocks. The
375 other authors have no financial conflicts of interest.

376 **References:**

- 377 1. Boppana SB, Ross SA, Fowler KB. Congenital cytomegalovirus infection: clinical outcome. Clin
378 Infect Dis. 2013 Dec;57 Suppl 4:S178-81.
- 379 2. Emery VC. Investigation of CMV disease in immunocompromised patients. J Clin Pathol. 2001
380 Feb;54(2):84-8.
- 381 3. Hu X, Wang HY, Otero CE, Jenks JA, Permar SR. Lessons from Acquired Natural Immunity and
382 Clinical Trials to Inform Next-Generation Human Cytomegalovirus Vaccine Development. Annu Rev Virol.
383 2022 Sep 29;9(1):491-520.
- 384 4. Schleiss MR, Permar SR, Plotkin SA. Progress toward Development of a Vaccine against Congenital
385 Cytomegalovirus Infection. Clin Vaccine Immunol. 2017 Dec;24(12).
- 386 5. Shenk TE, Stinski MF. Human cytomegalovirus. Preface. Curr Top Microbiol Immunol. 2008;325:v.
- 387 6. Isaacson MK, Compton T. Human cytomegalovirus glycoprotein B is required for virus entry and
388 cell-to-cell spread but not for virion attachment, assembly, or egress. J Virol. 2009 Apr;83(8):3891-903.
- 389 7. Wang D, Shenk T. Human cytomegalovirus virion protein complex required for epithelial and
390 endothelial cell tropism. Proc Natl Acad Sci U S A. 2005 Dec 13;102(50):18153-8.
- 391 8. Nelson CS, Baraniak I, Lilleri D, Reeves MB, Griffiths PD, Permar SR. Immune Correlates of
392 Protection Against Human Cytomegalovirus Acquisition, Replication, and Disease. J Infect Dis. 2020 Mar
393 5;221(Suppl 1):S45-S59.
- 394 9. Jenks JA, Nelson CS, Roark HK, Goodwin ML, Pass RF, Bernstein DI, et al. Antibody binding to native
395 cytomegalovirus glycoprotein B predicts efficacy of the gB/MF59 vaccine in humans. Sci Transl Med. 2020
396 Nov 4;12(568).
- 397 10. Byrne C, Coombs D, Gantt S. Modestly protective cytomegalovirus vaccination of young children
398 effectively prevents congenital infection at the population level. Vaccine. 2022 Aug 19;40(35):5179-88.
- 399 11. Pass RF, Zhang C, Evans A, Simpson T, Andrews W, Huang ML, et al. Vaccine prevention of
400 maternal cytomegalovirus infection. N Engl J Med. 2009 Mar 19;360(12):1191-9.
- 401 12. Bernstein DI, Munoz FM, Callahan ST, Rupp R, Wootton SH, Edwards KM, et al. Safety and efficacy
402 of a cytomegalovirus glycoprotein B (gB) vaccine in adolescent girls: A randomized clinical trial. Vaccine.
403 2016 Jan 12;34(3):313-9.
- 404 13. Nelson CS, Huffman T, Jenks JA, Cisneros de la Rosa E, Xie G, Vandergrift N, et al. HCMV
405 glycoprotein B subunit vaccine efficacy mediated by nonneutralizing antibody effector functions. Proc Natl
406 Acad Sci U S A. 2018 Jun 12;115(24):6267-72.
- 407 14. Baraniak I, Kropff B, Ambrose L, McIntosh M, McLean GR, Pichon S, et al. Protection from
408 cytomegalovirus viremia following glycoprotein B vaccination is not dependent on neutralizing antibodies.
409 Proc Natl Acad Sci U S A. 2018 Jun 12;115(24):6273-8.
- 410 15. Coppola T, Mangold JF, Cantrell S, Permar SR. Impact of Maternal Immunity on Congenital
411 Cytomegalovirus Birth Prevalence and Infant Outcomes: A Systematic Review. Vaccines (Basel). 2019 Sep
412 26;7(4).
- 413 16. Semmes EC, Miller IG, Wimberly CE, Phan CT, Jenks JA, Harnois MJ, et al. Maternal Fc-mediated
414 non-neutralizing antibody responses correlate with protection against congenital human cytomegalovirus
415 infection. J Clin Invest. 2022 Aug 15;132(16).
- 416 17. Semmes EC, Miller IG, Rodgers N, Phan CT, Hurst JH, Walsh KC, et al. ADCC-activating antibodies
417 correlate with protection against congenital human cytomegalovirus infection. medRxiv.
418 2023:2023.03.15.23287332.
- 419 18. Jackson LA, Anderson EJ, Roupheal NG, Roberts PC, Makhene M, Coler RN, et al. An mRNA Vaccine
420 against SARS-CoV-2 - Preliminary Report. N Engl J Med. 2020 Nov 12;383(20):1920-31.
- 421 19. Ciaramella G, John S, Mousavi K, inventors; HUMAN CYTOMEGALOVIRUS RNA VACCINES. United
422 States of America patent 10,716,846. 2020 Jul 21.

Broad and Functional anti-HCMV IgG responses induced by mRNA-1647manuscript_submissiondraft

- 423 20. John S, Yuzhakov O, Woods A, Deterling J, Hassett K, Shaw CA, et al. Multi-antigenic human
424 cytomegalovirus mRNA vaccines that elicit potent humoral and cell-mediated immunity. *Vaccine*. 2018
425 Mar 14;36(12):1689-99.
- 426 21. Harnois MJ, Dennis M, Stohr D, Valencia SM, Rodgers N, Semmes EC, et al. Characterization of
427 Plasma Immunoglobulin G Responses in Elite Neutralizers of Human Cytomegalovirus. *J Infect Dis*. 2022
428 Nov 1;226(9):1667-77.
- 429 22. Wang D, Shenk T. Human cytomegalovirus UL131 open reading frame is required for epithelial
430 cell tropism. *J Virol*. 2005 Aug;79(16):10330-8.
- 431 23. Coenon L, Villalba M. From CD16a Biology to Antibody-Dependent Cell-Mediated Cytotoxicity
432 Improvement. *Front Immunol*. 2022;13:913215.
- 433 24. Wen Y, Monroe J, Linton C, Archer J, Beard CW, Barnett SW, et al. Human cytomegalovirus
434 gH/gL/UL128/UL130/UL131A complex elicits potently neutralizing antibodies in mice. *Vaccine*. 2014 Jun
435 24;32(30):3796-804.
- 436 25. Wang H-Y, Taher H, Kreklywich CN, Schmidt KA, Scheef EA, Barfield R, et al. The pentameric
437 complex is not required for vertical transmission of cytomegalovirus in seronegative pregnant rhesus
438 macaques. *bioRxiv*. 2023:2023.06.15.545169.
- 439 26. Kirchmeier M, Fluckiger AC, Soare C, Bozic J, Ontsouka B, Ahmed T, et al. Enveloped virus-like
440 particle expression of human cytomegalovirus glycoprotein B antigen induces antibodies with potent and
441 broad neutralizing activity. *Clin Vaccine Immunol*. 2014 Feb;21(2):174-80.
- 442 27. Semmes EC, Hurst JH, Walsh KM, Permar SR. Cytomegalovirus as an immunomodulator across the
443 lifespan. *Curr Opin Virol*. 2020 Oct;44:112-20.
- 444 28. Haynes BF, Gilbert PB, McElrath MJ, Zolla-Pazner S, Tomaras GD, Alam SM, et al. Immune-
445 correlates analysis of an HIV-1 vaccine efficacy trial. *N Engl J Med*. 2012 Apr 5;366(14):1275-86.
- 446 29. Felber BK, Lu Z, Hu X, Valentin A, Rosati M, Rimmel CAL, et al. Co-immunization of DNA and
447 Protein in the Same Anatomical Sites Induces Superior Protective Immune Responses against SHIV
448 Challenge. *Cell Rep*. 2020 May 12;31(6):107624.
- 449 30. Nelson CS, Jenks JA, Pardi N, Goodwin M, Roark H, Edwards W, et al. Human Cytomegalovirus
450 Glycoprotein B Nucleoside-Modified mRNA Vaccine Elicits Antibody Responses with Greater Durability
451 and Breadth than MF59-Adjuvanted gB Protein Immunization. *J Virol*. 2020 Apr 16;94(9).
- 452 31. Lederer K, Castano D, Gomez Atria D, Oguin TH, 3rd, Wang S, Manzoni TB, et al. SARS-CoV-2 mRNA
453 Vaccines Foster Potent Antigen-Specific Germinal Center Responses Associated with Neutralizing
454 Antibody Generation. *Immunity*. 2020 Dec 15;53(6):1281-95 e5.
- 455 32. Lederer K, Bettini E, Parvathaneni K, Painter MM, Agarwal D, Lundgreen KA, et al. Germinal center
456 responses to SARS-CoV-2 mRNA vaccines in healthy and immunocompromised individuals. *Cell*. 2022 Mar
457 17;185(6):1008-24 e15.
- 458 33. Richardson SI, Moore PL. Targeting Fc effector function in vaccine design. *Expert Opin Ther*
459 *Targets*. 2021 Jun;25(6):467-77.
- 460 34. Tay MZ, Wiehe K, Pollara J. Antibody-Dependent Cellular Phagocytosis in Antiviral Immune
461 Responses. *Front Immunol*. 2019;10:332.
- 462 35. Polack FP, Thomas SJ, Kitchin N, Absalon J, Gurtman A, Lockhart S, et al. Safety and Efficacy of the
463 BNT162b2 mRNA Covid-19 Vaccine. *N Engl J Med*. 2020 Dec 31;383(27):2603-15.
- 464 36. Anderson EJ, Roupheal NG, Widge AT, Jackson LA, Roberts PC, Makhene M, et al. Safety and
465 Immunogenicity of SARS-CoV-2 mRNA-1273 Vaccine in Older Adults. *N Engl J Med*. 2020 Dec
466 17;383(25):2427-38.

467

Broad and Functional anti-HCMV IgG responses induced by mRNA-1647manuscript_submissiondraft

468 **Table 1: Vaccine participants in the mRNA-1647 vaccine cohort and the timepoints**
 469 **evaluated for humoral responses in current report**

Participant ID	Age range (years)	Gender	Serostatus at baseline	Timepoints analyzed for humoral immune responses			
				Month 0	Month 7	Month 12	Month18
SP-01	16-20	F ^a	S(+) ^c (n=6)	Y ^e	Y	Y	Y
SP-02	46-50	M ^b		Y	Y	Y	Y
SP-03	36-40	M		Y	Y	Y	ND
SP-04	41-45	M		Y	Y	Y	ND
SP-05	36-40	F		Y	Y	Y	Y
SP-06	26-30	F		Y	Y	Y	Y
SN-01	41-45	M	S(-) ^d (n=17)	Y	Y	Y	ND
SN-02	26-30	F		Y	Y	Y	ND
SN-03	21-25	F		Y	Y	Y	Y
SN-04	36-40	F		Y	Y	Y	Y
SN-05	26-30	M		Y	Y	Y	Y
SN-06	41-45	F		Y	Y	Y	Y
SN-07	16-20	M		Y	Y	Y	ND
SN-08	21-25	F		Y	Y	Y	ND
SN-09	31-35	M		Y	Y	Y	ND
SN-10	21-25	F		Y	Y	Y	ND
SN-11	26-30	F		Y	Y	Y	ND
SN-12	26-30	F		Y	Y	ND ^f	ND
SN-13	46-50	F		Y	Y	Y	ND
SN-14	46-50	F		Y	Y	Y	ND
SN-15	36-40	F		Y	Y	Y	ND
SN-16	41-45	F		Y	Y	ND	Y
SN-17	26-30	F		Y	Y	Y	Y

470

471 F^a: female; M^b: male;

472 S(+)^c: HCMV seropositive at baseline; S(-)^d: HCMV seronegative at baseline

473 Y^e :Yes, denotes the sample has been analyzed at this particular timepoint; ND^f: not done due to unavailability of
 474 samples;

475

476

477

478

479

480

Broad and Functional anti-HCMV IgG responses induced by mRNA-1647manuscript_submissiondraft

481 **Table 2: Comparison of humoral responses in the mRNA-1647 vaccine cohort and gB/MF59**
 482 **vaccine cohort**

Humoral Response	mRNA-1647 Seronegative vaccinees (n = 17)	gB/MF59 Seronegative vaccinees (n = 29)	FDR-adjusted p-value
	Median (Range)	Median (Range)	
IgG binding			
<i>Soluble gB</i>			
gB-specific (Log ₁₀ ED ₅₀)	4.03 (2.82, 4.44)	5.03 (3.78, 5.69)	< 0.001
Avidity (%RAI)	83.00 (65.00, 89.00)	81.91 (68.99, 97.27)	0.402
<i>Virion-specific</i>			
TB40e-specific (Log ₁₀ ED ₅₀)	2.31 (1.48, 2.67)	2.86 (1.85, 3.66)	< 0.001
Avidity (%RAI)	73.10 (56.10, 90.80)	86.72 (63.58, 98.87)	0.001
<i>Cell-associated gB (%binding)</i>			
Towne	1.90 (0.10, 5.70)	6.76 (0.79, 9.33)	< 0.001
Merlin	6.81 (0.71, 12.75)	9.64 (0.54, 19.50)	0.116
gB-specific IgG subclass (Log₁₀MFI)			
IgG1	1.57 (0.00, 2.50)	4.10 (1.09, 4.39)	< 0.001
IgG2	1.41 (0.48, 3.11)	2.22 (0.00, 3.17)	0.094
IgG3	2.96 (0.00, 4.39)	4.18 (2.65, 4.46)	< 0.001
Neutralization (Log₁₀ID₅₀)			
Towne (fibroblast)	2.00 (1.08, 2.34)	1.00 (1.00, 1.37)	< 0.001
AD169r (fibroblast)	1.60 (1.00, 1.87)	1.00 (1.00, 1.06)	< 0.001
AD169r (epithelial)	4.61 (3.26, 5.24)	1.20 (1.00, 2.79)	< 0.001
gB AD mapping (Log₁₀MFI)			
AD-1	1.1 (0.0, 1.7)	1.0 (0.0, 2.4)	0.892
AD-2 site 1 (AUC)	-0.6 (-0.8, 0.5)	-0.5 (-0.7, 0.4)	0.3
AD-4	1.9 (0.0, 3.0)	1.5 (0.0, 2.5)	0.686
AD-5	0.0 (0.0, 1.9)	1.0 (0.0, 2.3)	0.3
AD-4&5	1.6 (0.0, 2.9)	1.7 (0.0, 2.8)	0.686
gB-specific FcR binding (Log₁₀MFI)			
FcR _γ R1A	3.68 (2.51, 3.98)	3.72 (2.50, 4.10)	0.826
FcR _γ R2A	3.14 (0.93, 4.14)	4.36 (2.26, 4.40)	< 0.001
FcR _γ R2B	2.81 (1.20, 3.76)	4.35 (2.10, 4.41)	< 0.001
FcR _γ R3A	2.58 (1.04, 3.62)	4.27 (2.64, 4.40)	< 0.001
FcRN	2.26 (1.00, 3.72)	3.72 (2.11, 4.39)	< 0.001
Fc-mediated effector functions			
ADCC (% CD107A)	3.20 (0.30, 8.90)	1.60 (0.00, 16.80)	0.032
ADCP (% Phagocytosis)	15.20 (7.80, 30.50)	20.20 (13.10, 47.10)	< 0.001

483 p<0.05 (bolded) is considered significant. Underlined values represent significantly higher responses.

484 FDR: False discovery rate, RAI: Relative Avidity Index, MFI: Mean Fluorescent Intensity.

Broad and Functional anti-HCMV IgG responses induced by mRNA-1647manuscript_submissiondraft

485 **Figure Legends**

486 **Figure 1. mRNA-1647 vaccine-induced long-lasting antigen-specific IgG antibody**
487 **responses in HCMV seropositive and seronegative vaccinees.**

488 (A) The immunization schedule for HCMV mRNA-1647 vaccine candidate with doses
489 administered at months 0, 2, and 6 for both HCMV seropositive (N=6) and seronegative
490 (N=17) vaccine recipients. The soluble gB-specific, PC-specific, and TB40/E virion-bound
491 IgG antibody titers (ED50: effective dose 50) were determined via ELISA for both
492 seropositive (B, D, F) and seronegative (C, E, G) vaccinees, respectively, at the indicated
493 time points including the 1-year follow-up after last vaccination. The dotted line indicates
494 the limit of detection (ED50=30). IgG binding activities to Merlin gB-transfected cells were
495 evaluated for seronegative (H) and seropositive (I) vaccinees at the indicated time points
496 via flow cytometry-based assay. p values from Wilcoxon matched-pairs signed rank test
497 are reported. *p<0.05, **p<0.01, ***p<0.001.

498 **Figure 2 Durable neutralizing antibody responses elicited by the mRNA-1647 vaccine in**
499 **both seropositive and seronegative vaccine recipients.**

500 Fibroblast neutralization reactivities against Towne virus in HFF-1 cells were compared before
501 (month 0) and after (month7) vaccination for both seronegative (A) and seropositive (B) vaccinees.
502 Similarly, fibroblast neutralization responses against AD169r virus in HFF-1 cells and epithelial
503 neutralization antibody responses against AD169 in ARPE-19 cells were monitored before
504 vaccination (month 0), month 7, 12 to 18 after vaccination for both seronegative (C, E) and
505 seropositive (D, F) vaccinees, respectively, to assess durability. p values from Wilcoxon matched
506 pairs signed rank test are reported. *p<0.05, **p<0.01, ***p<0.001.

507 **Figure 3. FcRs binding magnitude and IgG Fc-portion mediated functionalities induced by**
508 **the mRNA-1647 vaccine in both seropositive and seronegative vaccinees.**

Broad and Functional anti-HCMV IgG responses induced by mRNA-1647manuscript_submissiondraft

509 gB-specific (A) and PC-specific (B) IgG Fc antibody (Fc γ R1A, Fc γ R2A (H131), Fc γ R2B, Fc γ R3A
510 (V158), and FcRN) responses were plotted for both seronegative and seropositive vaccinees
511 before vaccination (month 0) and at the peak time point (month 7). Vaccine-induced IgG antibody
512 Fc-mediated AD169r virion ADCC (C) and ADCP (D) responses were assessed for both
513 seronegative and seropositive vaccinees. p values from Wilcoxon matched-pairs signed rank test
514 are reported. Spearman correlation analysis between AD169r virion ADCC (E) and ADCP (G)
515 responses and gB-specific and PC-specific IgG FcR binding magnitude with the spearman r value
516 shown for seronegative only (S(-)) and all vaccinees (ALL) is reported. Correlation for ADCC and
517 gB-specific FcR binding magnitude (F), ADCP and gB-specific (H) FcR binding magnitude for
518 seronegative only (S(-)) and all vaccinees (ALL) is reported; S-: seronegative samples; ALL
519 include seronegative (open diamond symbol) and seropositive samples (open circle
520 symbol)). *p<0.05, **p<0.01, ***p<0.001.

521 **Figure 4. mRNA-1647 induced higher PC-specific IgG responses than gB-specific**
522 **responses in the same formulation**

523 The magnitude of mRNA-1647 vaccine-induced total IgG responses and IgG subclass (IgG1,
524 IgG2 and IgG3) responses were compared between gB-specific and PC-specific responses for
525 both seronegative (A-D) and seropositive (E-H) vaccinees at month 7. The total IgG responses
526 were measured by ELISA, while the IgG subclass (IgG1, IgG2, and IgG3) responses were
527 detected via BAMA. p values from Wilcoxon matched pairs signed rank test are reported. The
528 level of IgG Fc antibody responses (Fc γ R1A, Fc γ R2A, Fc γ R2B, Fc γ R3A, and FcRN) were
529 compared among gB and PC antigen components in the same vaccine formulation in both
530 seronegative (I-M) and seropositive (N-R) vaccinees in mRNA-1647 vaccine cohort. p values from
531 non-parametric t-tests are reported (Mann-Whitney). *p<0.05, **p<0.01, ***p<0.001.

532 **Figure 5. Comparison of gB-specific peak IgG binding antibody and neutralizing antibody**
533 **responses.**

Broad and Functional anti-HCMV IgG responses induced by mRNA-1647manuscript_submissiondraft

534 (A): Cartoons illustrating the immunization schedules for mRNA-1647 and gB/MF59 vaccine
535 cohorts for vaccine-induced gB-specific antibody peak responses comparison at month 7. Soluble
536 gB-specific total IgG antibody titers (B) relative avidity index (RAI) (C) and IgG subclass IgG1 (D),
537 IgG2 (E), and IgG3 (F) responses were compared between the two vaccine cohorts. TB40/E
538 virion-bound IgG titers (G) and RAI (H) were also compared between the two vaccine cohorts.
539 Similarly, Towne gB (I) and Merlin gB (J) cell-associated IgG antibody responses were compared
540 among the two vaccine cohorts. The epithelial neutralizing antibody against AD169r (K) in ARPE-
541 19 cells and fibroblast neutralizing antibody against AD169r (L) and against Towne (M) in HFF-1
542 cells were compared between mRNA-1647 and gB/MF59 vaccine cohorts. Additionally, the
543 HCMV infected individuals were also included for the comparison. Open blue circle denotes the
544 seropositive samples at baseline from the mRNA-1647 vaccine cohort while open purple circle
545 denotes the in-house HCMV seropositive subjects in some assays to increase the statistical
546 power. But the statistical analysis indicated the increased sample # didn't change the conclusion.
547 P values from non-parametric t-tests are reported (Mann-Whitney). * $p < 0.05$, ** $p < 0.01$,
548 *** $p < 0.001$.

549 **Figure 6. gB/MF59 vaccine elicited higher peak FcRs and ADCP but lower ADCC functional**
550 **antibody responses than the mRNA-1647 vaccine candidate.**

551 gB-specific Fc γ R1A (A), 2A (B), 2B (C), 3A (D), and FcRN (E) antibody responses were compared
552 between the two vaccine cohorts indicative of overall higher-level responses except for Fc γ R1A
553 response in the gB/MF59 vaccine cohort; AD169r virion ADCC (F) and ADCP (G) effector
554 antibody responses were compared between two vaccine cohorts suggesting elevated ADCC
555 responses, but lower ADCP responses were found in mRNA-1647 cohort. Additionally, the HCMV
556 infected individuals were also included in the comparison. Open blue circle denotes the
557 seropositive samples at baseline from the mRNA-1647 vaccine. p values from non-parametric t-
558 tests are reported (Mann-Whitney). * $p < 0.05$, ** $p < 0.01$, *** $p < 0.001$.

Broad and Functional anti-HCMV IgG responses induced by mRNA-1647 manuscript_submissiondraft

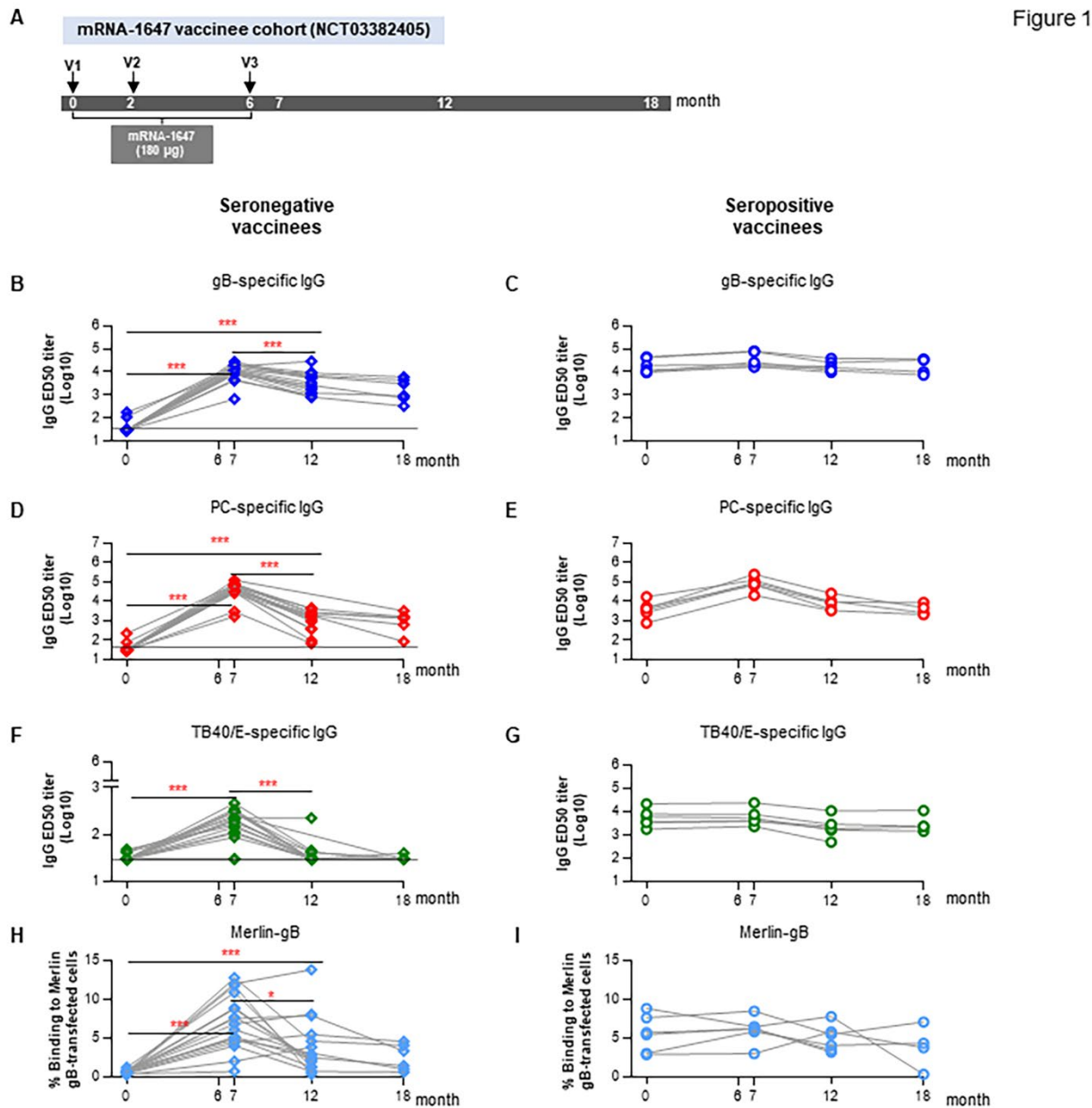


Figure 1

Figure 1. mRNA-1647 vaccine-induced long-lasting antigen-specific IgG antibody responses in HCMV seropositive and seronegative vaccinees.

(A) The immunization schedule for HCMV mRNA-1647 vaccine candidate with doses administered at months 0, 2, and 6 for both HCMV seropositive (N=6) and seronegative (N=17) vaccine recipients. The soluble gB-specific, PC-specific, and TB40/E virion-bound IgG antibody titers (ED50: effective dose 50) were determined via ELISA for both seropositive (B, D, F) and seropositive (C, E, G) vaccinees, respectively, at the indicated time points including the 1-year follow-up after last vaccination. The dotted line indicates the limit of detection (ED50=30). IgG binding activities to Merlin gB-transfected cells were evaluated for seronegative (H) and seropositive (I) vaccinees at the indicated time points via flow cytometry-based assay. p values from Wilcoxon matched-pairs signed rank test are reported. *p<0.05, ***p<0.001.

1

Broad and Functional anti-HCMV IgG responses induced by mRNA-1647 manuscript_submissiondraft

Figure 2

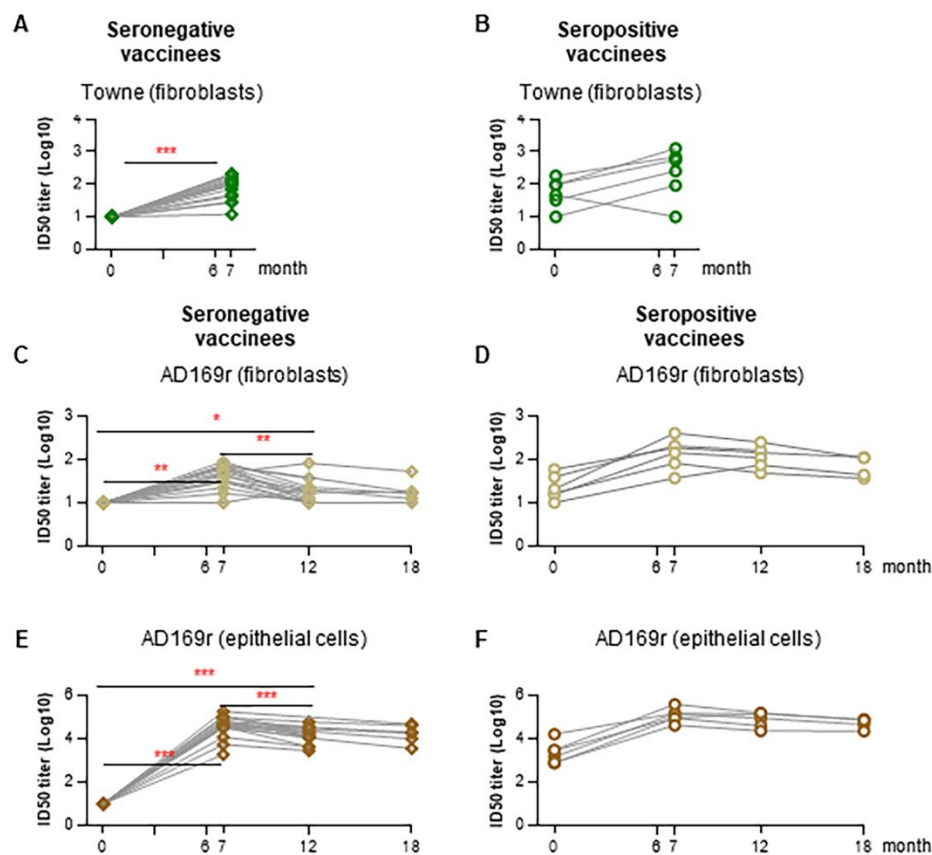


Figure 2 Durable neutralizing antibody responses elicited by the mRNA-1647 vaccine in both seropositive and seronegative vaccine recipients.

Fibroblast neutralization reactivities against Towne virus in HFF-1 cells were compared before (month 0) and after (month 7) vaccination for both seronegative (A) and seropositive (B) vaccinees. Similarly, fibroblast neutralization responses against AD169r virus in HFF-1 cells and epithelial neutralization antibody responses against AD169 in ARPE cells were monitored before vaccination (month 0), month 7, 12 to 18 after vaccination for both seronegative (C, E) and seropositive (D, F) vaccinees, respectively, to assess durability. p values from Wilcoxon matched pairs signed rank test are reported. * $p < 0.05$, ** $p < 0.01$, *** $p < 0.001$.

Broad and Functional anti-HCMV IgG responses induced by mRNA-1647 manuscript_submissiondraft

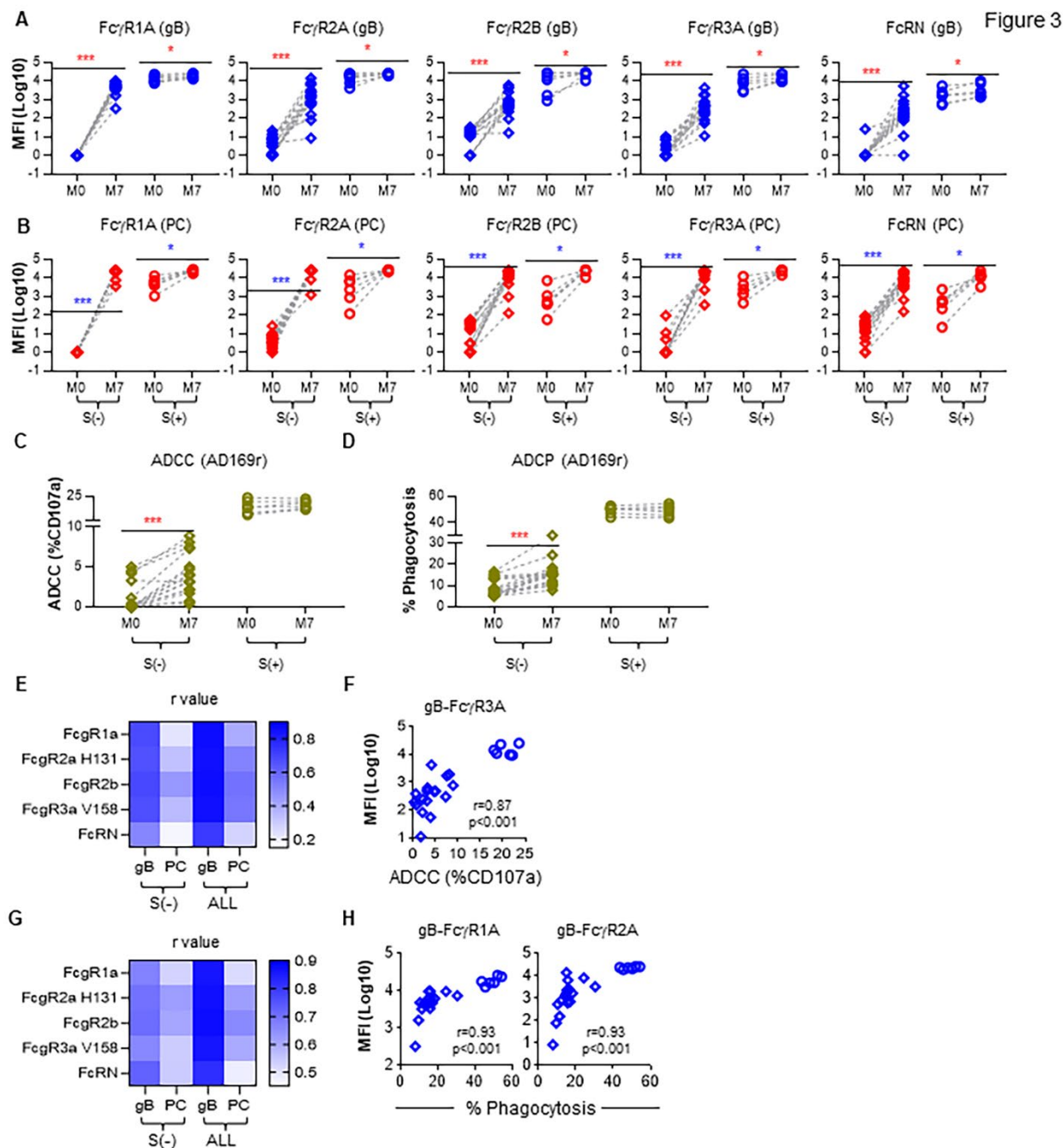


Figure 3. FcRs binding magnitude and IgG Fc-portion mediated functionalities induced by the mRNA-1647 vaccine in both seropositive and seronegative vaccinees.

gB-specific (A) and PC-specific (B) IgG Fc antibody ($Fc\gamma R1A$, $Fc\gamma R2A$ (H131), $Fc\gamma R2B$, $Fc\gamma R3A$ (V158), and $FcRN$) responses were plotted for both seronegative and seropositive vaccinees before vaccination (month 0) and at the peak time point (month 7). Vaccine-induced IgG antibody Fc-mediated AD169 virion ADCC (C) and ADCP (D) responses were assessed for both seronegative and seropositive vaccinees. p values from Wilcoxon matched-pairs signed rank test are reported. Spearman correlation analysis between AD169 virion ADCC (E) and ADCP (G) responses and gB-specific and PC-specific IgG FcR binding magnitude with the Spearman r value shown for seronegative only (S(-)) and all vaccinees (ALL) is reported. Correlation for ADCC and gB-specific FcR binding magnitude (F), ADCP and gB-specific (H) FcR binding magnitude for seronegative only (S(-)) and all vaccinees (ALL) is reported; S(-): seronegative samples; ALL include seronegative (open diamond symbol) and seropositive samples (open circle symbol). * $p < 0.05$, ** $p < 0.01$, *** $p < 0.001$.

Broad and Functional anti-HCMV IgG responses induced by mRNA-1647 manuscript_submissiondraft

Figure 4

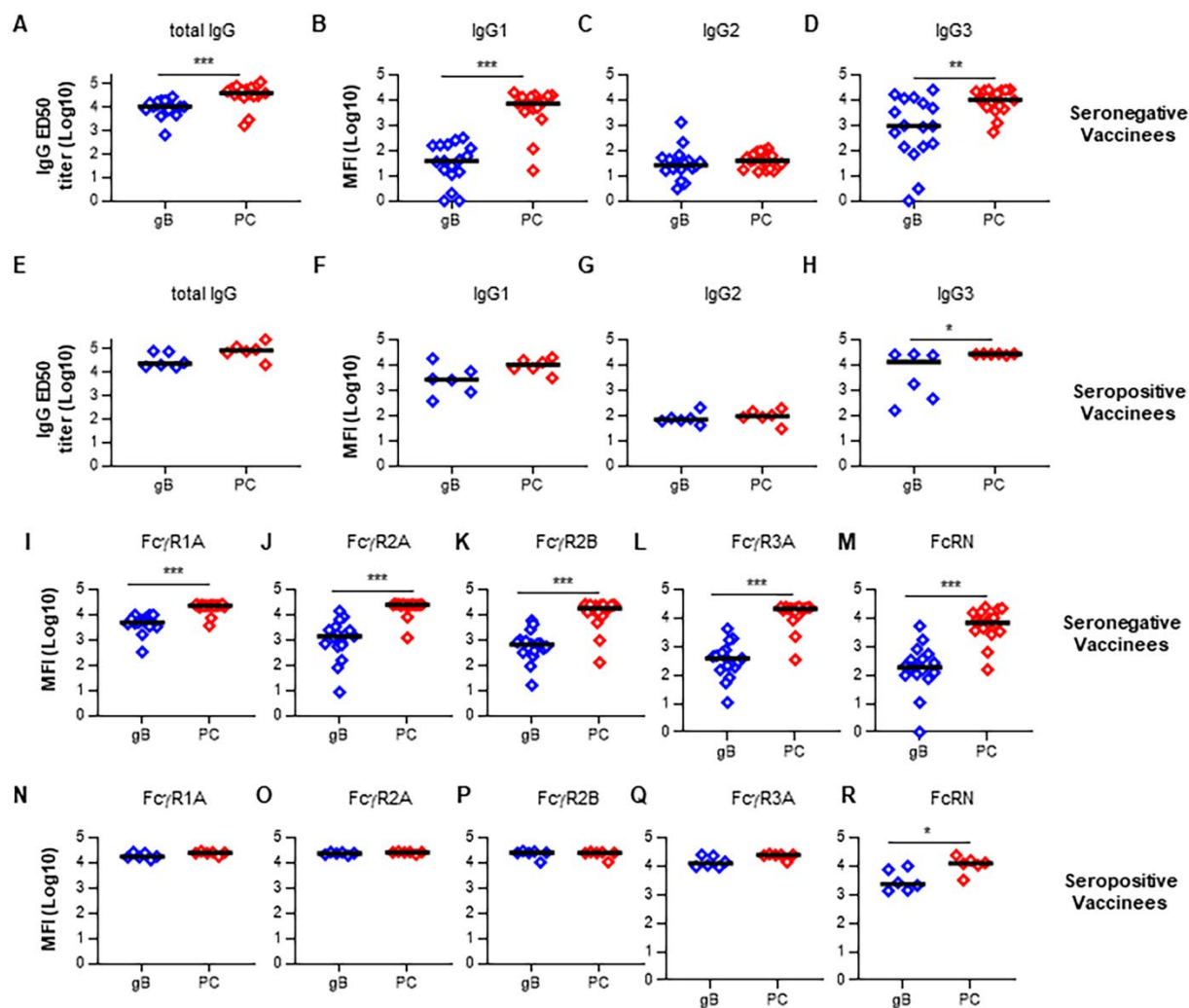


Figure 4. mRNA-1647 induced higher PC-specific IgG responses than gB-specific responses in the same formulation
 The magnitude of mRNA-1647 vaccine-induced total IgG responses and IgG subclass (IgG1, IgG2 and IgG3) responses were compared between gB-specific and PC-specific responses for both seronegative (A-D) and seropositive (E-H) vaccinees at month 7. The total IgG responses were measured by ELISA, while the IgG subclass (IgG1, IgG2, and IgG3) responses were detected via BAMA. p values from Wilcoxon matched pairs signed rank test are reported. The level of IgG Fc antibody responses (Fc γ R1A, Fc γ R2A, Fc γ R2B, Fc γ R3A, and FcRN) were compared among gB and PC antigen components in the same vaccine formulation in both seronegative (I-M) and seropositive (N-R) vaccinees in mRNA-1647 vaccine cohort. p values from non-parametric tests are reported (Mann-Whitney). *p<0.05, **p<0.01, ***p<0.001.

Broad and Functional anti-HCMV IgG responses induced by mRNA-1647 manuscript_submissiondraft

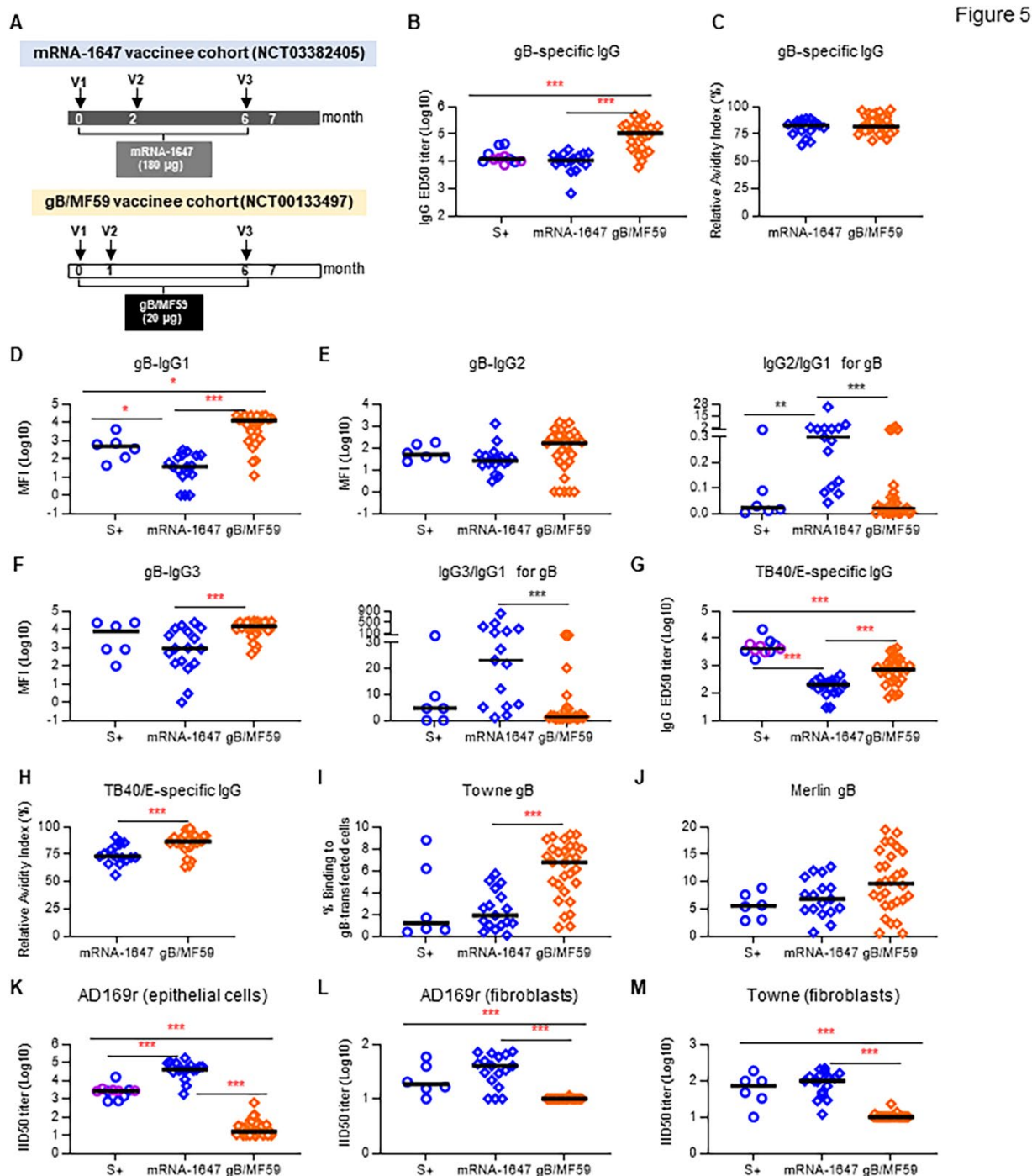


Figure 5

Figure 5. Comparison of gB-specific peak IgG binding antibody and neutralizing antibody responses.

(A): Cartoons illustrating the immunization schedules for mRNA-1647 and gB/MF59 vaccine cohorts for vaccinee-induced gB-specific antibody responses comparison. Soluble gB-specific total IgG antibody titers (B) relative avidity index (RAI) (C) and IgG subclass IgG1 (D), IgG2 (E), and IgG3 (F) responses were compared between the two vaccine cohorts. TB40/E virion-bound IgG titers (G) and RAI (H) were also compared between the two vaccine cohorts. Similarly, Towne gB cell-associated (I) and Merlin gB cell-associated IgG antibody responses were compared among the two vaccine cohorts. The epithelial neutralizing antibody against AD169r (K) in ARPE cells and fibroblast neutralizing antibody against AD169r (L) and against Towne (M) in HFF cells were compared between mRNA-1647 and gB/MF59 vaccine cohorts. Additionally, the HCMV infected individuals were also included for the comparison. Open purple circle denotes the in-house HCMV seropositive subjects. P values from non-parametric t-tests are reported (Mann-Whitney). *p<0.05, **p<0.01, ***p<0.001.

Broad and Functional anti-HCMV IgG responses induced by mRNA-1647manuscript_submissiondraft

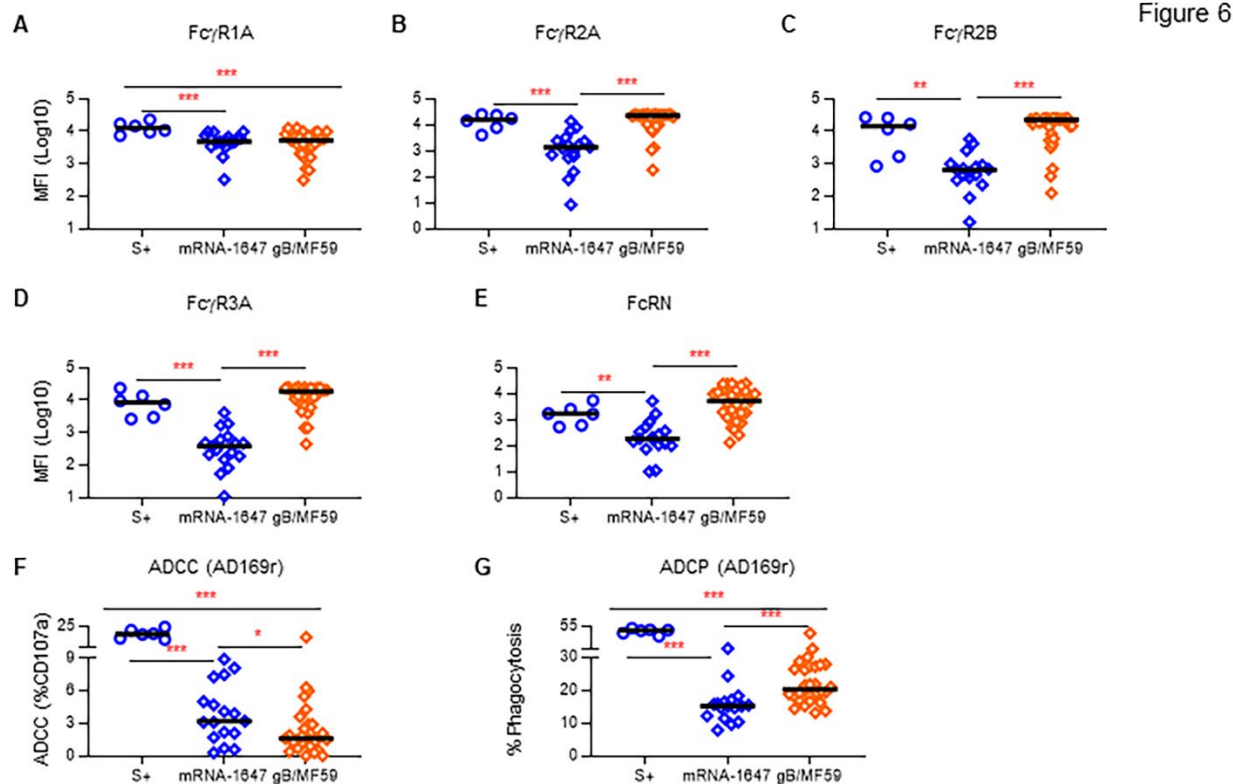


Figure 6. gB/MF59 vaccine elicited higher peak FcRs and ADCP but lower ADCC functional antibody responses than the mRNA-1647 vaccine candidate.

(A) gB-specific Fc γ R1A (A), 2A (B), 2B (C), 3A (D), and FcRN (E) antibody responses were compared between the two vaccine cohorts indicative of overall higher-level responses except for Fc γ R1A response in the gB/MF59 vaccine cohort; AD169 virion ADCC (F) and ADCP (G) effector antibody responses were compared between two vaccine cohorts suggesting elevated ADCC responses, but lower ADCP responses were found in mRNA-1647 cohort. Additionally, the HCMV infected individuals were also included in the comparison. p values from non-parametric t-tests are reported (Mann-Whitney). *p < 0.05, **p < 0.01, ***p < 0.001.