

1 Cine phase contrast magnetic resonance imaging of calf muscle  
2 contraction in pediatric patients with cerebral palsy and healthy  
3 children: comparison of voluntary motion and electrically evoked  
4 motion

5

6 Claudia Weidensteiner<sup>1,2\*</sup>, Xeni Deligianni<sup>1</sup> Tanja Haas<sup>1</sup>, Philipp Madoerin<sup>1</sup>, Oliver Bieri<sup>1,2</sup>, Meritxell  
7 Garcia<sup>3,4</sup>, Jacqueline Romkes<sup>5</sup>, Erich Rutz<sup>6</sup>, Francesco Santini<sup>1,2</sup>, Reinald Brunner<sup>5,7</sup>

8

9 <sup>1</sup>Department of Radiology, Division of Radiological Physics, University Hospital Basel, Basel,  
10 Switzerland

11 <sup>2</sup>Department of Biomedical Engineering, University of Basel, Basel, Switzerland

12 <sup>3</sup>Department of Radiology, Division of Neuroradiology, University Hospital Basel, Basel, Switzerland

13 <sup>4</sup>Department of Neuroradiology, University Hospital Zürich, Zürich, Switzerland

14 <sup>5</sup>Laboratory for Movement Analysis, University Children's Hospital Basel, Basel, Switzerland

15 <sup>6</sup>Hugh Williamson Gait Laboratory, The Royal Children's Hospital Melbourne, Parkville, Australia

16 <sup>7</sup>Department of Orthopedic Surgery, University Children's Hospital Basel, Basel, Switzerland

17

18 \*Corresponding author

19 [claudia.weidensteiner@unibas.ch](mailto:claudia.weidensteiner@unibas.ch) (CW)

20

## 21 Abstract

22 The aim of this study is to investigate the feasibility of phase contrast imaging for assessment of  
23 muscle function in children with cerebral palsy. Time-resolved cine phase contrast MRI at 3T was  
24 synchronized with (a) electrical muscle stimulation (EMS) of the calf muscle and (b) voluntary  
25 plantarflexion following visual instructions. Fourteen ambulatory pediatric patients with equinus and  
26 13 normally developing, healthy children were scanned. Ten patients were scanned pre and post  
27 botulinum toxin treatment. Four patients and four healthy children performed voluntary  
28 plantarflexion additionally to EMS. The achieved force was higher for the voluntary task for both  
29 patients and healthy controls, but its periodicity was worse compared to the stimulated contraction  
30 in patients. Therefore, it was possible to acquire contraction velocity time courses showing two  
31 distinct velocity peaks – the first for voluntary muscle contraction and the second for release – in  
32 four out of four healthy controls but in none of the patients. During EMS, two distinct velocity peaks  
33 could be resolved if the tolerated current was high enough to evoke sufficient contraction. That was  
34 achieved in 21% of the scans in patients (15 out of 72 scans during EMS in total) compared to 82%  
35 (14 out of 17) in healthy children. Then, the data quality was sufficient to generate strain maps.  
36 However, it was not possible to detect an effect of botulinum toxin in these patients since we did not  
37 succeed in acquiring data with sufficient quality both pre- and post-treatment. In conclusion, both  
38 EMS and voluntary motion worked well in healthy, normally developing children. Compliance was  
39 higher for the voluntary task for both patients and healthy controls. In conclusion, it was necessary to  
40 use EMS for a successful measurement of contraction/release velocity and strain in CP patients and  
41 although in this cohort the results were inconclusive, in the future optimization of the stimulation  
42 protocol could increase the acceptance and improve the output.

43

## 44 Introduction

45 Cerebral palsy (CP) is a sensorimotor dysfunction caused by damage to the developing brain leading  
46 to weakness and spasticity of the affected muscles (1). In patients with affected legs, contractures  
47 lead to toe-walking (equinus) and gait disorders. Botulinum toxin A (BTX) has been established as an  
48 important treatment modality, particularly for the management of spasticity (2) to reduce  
49 inadequate muscle activity in CP patients, e.g. the calf muscles. BTX is injected locally into the  
50 affected calf muscles to control functional equinus and spasticity and thus improve gait function. The  
51 motivation for this study in CP patients was to find a method to assess muscle function with the aim  
52 of measuring the extent of the paralyzing effect of BTX with MRI. Time-resolved cine phase contrast  
53 (PC) MRI can be used to study muscle function and was applied to assess voluntary leg muscle  
54 contraction in adults, e.g., as described by Mazzoli et al. and Sinha et al. (3–7). The cine PC approach  
55 relies on the consistently repeated execution of the motion task over some minutes until data  
56 acquisition is completed. During the acquisition time, phase maps at each time point of the periodic  
57 motion cycle are acquired with a time resolution of several milliseconds. From these phase maps,  
58 maps of velocity vectors can be calculated showing the motion of the muscle during the cycle.  
59 However, in CP, there is the challenge that patients cannot always freely control movement of their  
60 limbs and a regular periodic motion cannot be performed. Therefore, voluntary exercise paradigms  
61 might not be adequate for examination. A PC MRI method to measure involuntary muscle  
62 contraction induced by electrical muscle stimulation (EMS) has been developed (8) and applied in  
63 adult healthy volunteers and patients (9,10), but not in children, yet. EMS evokes a regular,  
64 controlled motion but the stimulation current may feel unpleasant, and the maximum tolerated  
65 current may be too low to evoke motion – especially in young children. We applied both methods in  
66 pediatric patients with CP and healthy children to check the feasibility of a children-adapted  
67 experimental set-up for assessing calf muscle function with time-resolved PC MRI.

## 68 Materials and methods

69 Two groups of children were recruited between February 22nd, 2018 and July 29th, 2021 and  
70 included in the study: 13 healthy, normally developing controls (6 males and 7 females, age range at  
71 MRI scan 9 to 16 years) and 14 ambulatory patients diagnosed with CP (9 males and 3 females, age  
72 range 8 to 15 years, 4 bilateral spastic CP functionally diparetic and 10 unilateral spastic CP  
73 functionally hemiparetic) were prospectively monitored. Participant characteristics can be found in  
74 Tables 1 and 2. Results of the clinical examinations and the gait analysis are presented in (11). All  
75 patients were toe-walking and were scheduled for muscle lengthening surgery with a preoperative  
76 BTX test injection to investigate potential muscle weakening, which can be a side effect of the muscle  
77 lengthening surgery (12). Functional mobility level was classified as Gross Motor Functional  
78 Classification Scale level (GMFCS) I (n = 11), II (n = 2), and III (n=1) (13). Eleven of the 14 patients  
79 received BTX injections in the affected leg (dose see Table 1), as described in (14). In the bilaterally  
80 affected patients, only the more affected leg was treated. In the healthy controls, the dominant leg  
81 (defined as preferred leg for kicking a ball) was scanned. Healthy controls were scanned once or  
82 twice (reason described below), patients were scanned one to three times (pre-BTX, 6 weeks post-  
83 BTX, 12 weeks post BTX), see Tables 3 and 4. Exclusion criteria were previous surgeries on the  
84 affected limb(s), claustrophobia, and difficulties in following instructions in the scanner. The study  
85 was conducted in accordance with the Declaration of Helsinki. Prior to participation, informed  
86 written consent was obtained from the participants' parents and additionally from those participants  
87 aged 12 years or older. The study was approved by the local ethics committee (Ethikkommission  
88 Nordwest- und Zentralschweiz, EKNZ BASEC 2016-01408).

89

90

91

92

93 **Table 1. Participant characteristics of CP patients**

| patient number | sex | age range [years] | type of CP | GMFCS | height range [cm] | BMI percentile range [%] | BTX total dose [U] | treated muscles |
|----------------|-----|-------------------|------------|-------|-------------------|--------------------------|--------------------|-----------------|
| 1              | m   | 12-16             | uni        | I     | 140-150           | 0-10                     | 150                | Gl+Gm+S         |
| 2              | m   | 7-11              | uni        | I     | 150-160           | 90-100                   | 150                | Gl+Gm+S         |
| 3              | f   | 7-11              | uni        | I     | 140-150           | 20-30                    | 150                | Gl+Gm+S         |
| 4              | m   | 7-11              | bi         | I     | 130-140           | 40-50                    | 150                | Gl+Gm+S         |
| 5              | m   | 12-16             | bi         | II    | 130-140           | 0-10                     | 225                | Gl+Gm+S         |
| 6              | m   | 7-11              | bi         | III   | 120-130           | 0-10                     | 200                | Gl+Gm           |
| 7              | m   | 7-11              | uni        | II    | 150-160           | 70-80                    | 0                  | –               |
| 8              | m   | 12-16             | uni        | I     | 160-170           | 60-70                    | 0                  | –               |
| 9              | m   | 7-11              | uni        | I     | 130-140           | 90-100                   | 250                | Gl+Gm+S         |
| 10             | m   | 7-11              | uni        | I     | 130-140           | 0-10                     | 0                  | –               |
| 11             | f   | 7-11              | uni        | I     | 140-150           | 10-20                    | 200                | Gl+Gm+S         |
| 12             | m   | 7-11              | uni        | I     | 120-130           | 50-60                    | 150                | Gl+Gm           |
| 13             | m   | 12-16             | uni        | I     | 150-160           | 0-10                     | 100                | Gl+Gm           |
| 14             | f   | 12-16             | bi         | I     | 160-170           | 50-60                    | 300                | Gl+Gm+S         |

94 11 of the 14 patients were treated with botulinum toxin A (BTX) injection in the calf muscles  
 95 (gastrocnemius lateralis Gl, gastrocnemius medialis Gm, soleus S) of the (more) affected leg. CP:  
 96 cerebral palsy, m: male, f: female, uni: unilateral, bi: bilateral, GMFCS: Gross Motor Functions  
 97 Classification System, BMI: Body Mass Index, U: Units.

98

99 **Table 2. Participant characteristics of controls (healthy, normally developing children)**

| control number | sex | age range (1st session) [years] | height range (1st session) [cm] | BMI percentile range (1st session) [%] | age (2nd session) | height range (2nd session) [cm] | BMI percentile range [%] |
|----------------|-----|---------------------------------|---------------------------------|--|-------------------|---------------------------------|--------------------------|
| 1              | m   | 7-11                            | 130-140                         | 60-70                                  | 12-16             | 140-150                         | 50-60                    |
| 2              | m   | 12-16                           | 160-170                         | 60-70                                  |                   |                                 |                          |
| 3              | f   | 7-11                            | 140-150                         | 50-60                                  |                   |                                 |                          |
| 4              | m   | 7-11                            | 130-140                         | 30-40                                  |                   |                                 |                          |
| 5              | f   | 12-16                           | 170-180                         | 0-10                                   |                   |                                 |                          |
| 6              | f   | 12-16                           | 170-180                         | 50-60                                  |                   |                                 |                          |
| 7              | f   | 7-11                            | 130-140                         | 30-40                                  | 12-16             | 150-160                         | 30-40                    |
| 8              | f   | 7-11                            | 130-140                         | 0-10                                   | 12-16             | 150-160                         | 0-10                     |
| 9              | m   | 12-16                           | 160-170                         | 0-10                                   |                   |                                 |                          |
| 10             | m   | 7-11                            | 120-130                         | 20-30                                  |                   |                                 |                          |
| 11             | f   | 12-16                           | 160-170                         | 20-30                                  |                   |                                 |                          |
| 12             | m   | 7-11                            | 130-140                         | 40-50                                  |                   |                                 |                          |
| 13             | f   | 7-11                            | 140-150                         | 10-20                                  |                   |                                 |                          |

100 m: male, f: female, uni: unilateral, bi: bilateral, GMFCS: Gross Motor Functions Classification System,

101 BMI: Body Mass Index, U: Units.

102

103 **Table 3. Overview of performed scans and data quality in patients**

| patient number | EMS              |                  |                      |                      |                                  |                                  |                       |                       | voluntary motion |                      |                       |
|----------------|------------------|------------------|----------------------|----------------------|----------------------------------|----------------------------------|-----------------------|-----------------------|------------------|----------------------|-----------------------|
|                | pre BTX, VENC 25 | pre BTX, VENC 10 | 6w post BTX, VENC 25 | 6w post BTX, VENC 10 | 6w post non-treated leg, VENC 25 | 6w post non-treated leg, VENC 10 | 12w post BTX, VENC 25 | 12w post BTX, VENC 10 | pre BTX, VENC 10 | 6w post BTX, VENC 10 | 12w post BTX, VENC 10 |
|                | 1                | 15 mA, 5%        |                      | 14 mA, 4%            | 14 mA, 4%                        | 13 mA, 5%                        | 13 mA, 0%             | 18 mA, 3%             | 18 mA, 2%        |                      |                       |
| 2              | 16 mA, 21%       |                  | 15 mA, 9%            | 15 mA, 9%            | 15 mA, 3%                        | 15 mA, 2%                        | 16 mA, 2%             | 16 mA, 2%             |                  |                      |                       |
| 3              | 16 mA, 2%        |                  | 15 mA, 2%            |                      | 17 mA, 1%                        |                                  | 19 mA, 13%            | 19 mA, 3%             |                  |                      |                       |
| 4              | 15 mA, 14%       | 15 mA, 14%       | 18 mA, 23%           |                      | 19 mA, 1%                        |                                  | 19 mA, 9%             | 19 mA, 7%             |                  |                      |                       |
| 5              | 14 mA, 10%       | 14 mA, 10%       | 9 mA, 15%            | 9 mA, 13%            | 7 mA, 16%                        | 7 mA, 15%                        | 16 mA, 2%             | 16 mA, 2%             |                  |                      |                       |
| 6              | 8 mA, 2%         | 8 mA, 2%         | 15 mA, 3%            | 15 mA, 1%            |                                  |                                  | 8 mA, 0%              | 10 mA, 3%             |                  |                      |                       |
| 7              | 10 mA, 3%        | 20 mA, 2%        |                      |                      |                                  |                                  |                       |                       |                  |                      |                       |
| 8              | 10 mA, 1%        |                  |                      |                      |                                  |                                  |                       |                       |                  |                      |                       |
| 9              | 14 mA, 8%        | 14 mA, 8%        | 15 mA, 1%            | 15 mA, 0%            | 16 mA, 0%                        | 18 mA, 0%                        | 13 mA, 2%             | 13 mA, 2%             |                  |                      | 10 N, 5%              |
| 10             | 13 mA, 2%        | 14 mA, 3%        |                      |                      |                                  |                                  |                       |                       |                  |                      |                       |
| 11             | 6 mA, 0%         | 7 mA, 0%         |                      |                      |                                  |                                  |                       |                       |                  |                      |                       |
| 12             | 5 mA, 0%         |                  | 7 mA, 0%             | 7 mA, 0%             | 5 mA, 0%                         | 5 mA, 0%                         | 10 mA, 0%             | 10 mA, 0%             |                  |                      | 20 N, 11%             |
| 13             | 12 mA, 0%        |                  | 19 mA, 2%            | 19 mA, 1%            |                                  |                                  | 12 mA, 0%             | 14 mA, 0%             |                  | 20 N, 10%            | 20 N, 21%             |
| 14             | 13 mA, 11%       | 13 mA, 10%       | 8 mA, 0%             | 8 mA, 1%             | 8 mA, 0%                         | 8 mA, 0%                         |                       |                       | 20 N, 15%        | 20 N, 33%            |                       |

104 The phase contrast cine scans were performed pre and post botulinum toxin A (BTX) injection with

105 VENC values 10 or 25 cm/s and during stimulated motion (EMS) or a voluntary exercise task. Data

106 quality was rated as good (*blue*), mediocre (*yellow*), and not sufficient (*red*). *Empty cells* mean the

107 scans were not performed. The scans were performed in the treated leg. At 6w post BTX also the

108 non-treated leg was scanned in some patients. The amplitude of the stimulation current (in mA) or

109 the pre-set force level for the voluntary paradigm (in N) is also stated along with the achieved

110 relative maximum force (in %). VENC: velocity encoding.

111

112 **Table 4. Overview of performed scans and data quality in controls (healthy, normally developing**  
 113 **children)**

| control number | EMS                  |                      |                      | voluntary motion     |                      |
|----------------|----------------------|----------------------|----------------------|----------------------|----------------------|
|                | 1st session, VENC 25 | 1st session, VENC 10 | 2nd session, VENC 10 | 1st session, VENC 10 | 2nd session, VENC 10 |
| 1              | 20 mA, 1%            |                      | 25 mA, 4%            |                      | 30 N, 10%            |
| 2              | 23 mA, 1%            |                      |                      |                      |                      |
| 3              | 24 mA, 0%            |                      |                      |                      |                      |
| 4              | 26 mA, 15%           |                      |                      |                      |                      |
| 5              | 28 mA, 9%            |                      |                      |                      |                      |
| 6              | 22 mA, 8%            |                      |                      |                      |                      |
| 7              | 20 mA, 14%           |                      | 23 mA, 23%           |                      | 40 N, 14%            |
| 8              | 20 mA, 9%            |                      | 26 mA, 39%           |                      | 40 N, 16%            |
| 9              | 16 mA, 15%           |                      |                      |                      |                      |
| 10             | 23 mA, 5%            |                      |                      |                      |                      |
| 11             | 21 mA, 16%           |                      |                      |                      |                      |
| 12             | 13 mA, 3%            | 13 mA, 3%            |                      |                      |                      |
| 13             |                      | 22 mA, 19%           |                      | 40 N, 12%            |                      |

114 The phase contrast cine scans were performed in the dominant leg with velocity encoding (VENC)  
 115 values 10 or 25 cm/s and during stimulated motion (EMS) or a voluntary exercise task. Data quality  
 116 was rated as good (*blue*) and not sufficient (*red*). *Empty cells* mean the scans were not performed.  
 117 The amplitude of the stimulation current (in mA) or the pre-set force level for the voluntary paradigm  
 118 (in N) is also stated along with the achieved relative maximum force (in %).

119

120 The triceps surae muscle group of the (more) affected leg (the dominant leg of the healthy controls)  
 121 was imaged in a 3T whole body clinical MRI scanner (Prisma, Siemens Healthineers, Erlangen,  
 122 Germany). Two self-adhesive electrodes with MRI-visible markers were attached to the muscle belly.  
 123 The children were placed feet first supine on the scanner bed and a flexible 18-channel body coil  
 124 (Siemens Healthineers, Erlangen, Germany) was placed on the lower legs. The foot was attached with  
 125 straps to a home-built foot pedal device with a built-in force sensor (15). Before starting the scans,  
 126 the children were asked to press their front foot on the pedal with maximum force. The maximum  
 127 voluntary force (MVF) was measured as the mean of two trials. One to three PC MRI experiments  
 128 (evoked motion – using up to two PC MRI protocols with different velocity encoding VENC – and

129 voluntary motion, see below) with periodic plantarflexion were performed in one session in each  
130 participant, as listed in Tables 3 and 4. The number of experiments was dependent on the  
131 compliance of the participants. We added a sequence with VENC 10 cm/s to the protocol during the  
132 course of the study, as we noted that a higher sensitivity compared to VENC 25 cm/s was needed  
133 (see Discussion). The voluntary paradigm was performed in four patients (in two of these patients at  
134 two timepoints) and in four healthy controls (Tables 3 and 4). In three of these controls, this scan  
135 session took place three years after the first MRI scan with evoked motion only, so also the evoked  
136 motion protocol with VENC 10 cm/s was repeated at the second MRI session. Finally, in eight  
137 patients the evoked motion was also measured in the contralateral, non-treated leg 6 weeks post  
138 BTX-injection.

139 The set-up for the EMS scans was similar to the one described in (8). For the induction of a periodic  
140 contraction, a two-channel commercially available EMS device (InTENSity Twin Stim III TENS and EMS  
141 Combo, Current Solutions LLC, Austin, TX) connected to a 5.1 x 8.9 cm<sup>2</sup> rectangular self-adhesive gel-  
142 based electrodes (TENSUnits.com, USA) was used. For localization purposes, glycerin markers were  
143 placed on the surface of both electrodes. The electrodes were positioned over the gastrocnemii  
144 (approx. 7 cm below the popliteal fossa) and soleus (approx. 10 cm below the first electrode)  
145 muscles. The EMS cycle (1 s ramp up, 1 s plateau, 1 s ramp down, 1 s recovery, Fig 1 top left) had 30  
146 pulses/s and a pulse width of 300  $\mu$ s. The evoked force was recorded during the experiment with the  
147 force sensor in the pedal. Before starting the scan, the amplitude of the stimulation current was  
148 individually adjusted within the comfort levels (healthy controls 13–28 mA, patients 5–20 mA) to a  
149 point that an induced visible force output of at least 5% MVF was reached if possible. Two three-  
150 directional cine gradient echo PC velocity encoding sequences were applied using the same set-up.  
151 Both sequences were synchronized to the EMS-cycle. The acquisition window was 3.5 s during each  
152 EMS-cycle of 4 s. The sequence with VENC 10 cm/s was acquired with following parameters: 1  
153 parasagittal slice based on the position of the two markers, voxels: 2.2x2.2x5.0 mm<sup>3</sup>, echo time 9.7  
154 ms, bandwidth/pixel 400 Hz/px, flip angle 10°, FOV 280x140 mm<sup>2</sup>, acquisition time 2:28 min, 67



155 temporal phases, temporal resolution of 52 ms. The sequence with VENC 25 cm/s was performed  
156 with the following parameters: 3 parasagittal slices with a spatial resolution of  $2.2 \times 2.2 \times 5.0 \text{ mm}^3$ , echo  
157 time 7.2 ms, bandwidth/ pixel = 400 Hz/px, flip angle  $10^\circ$ , FOV  $280 \times 140 \text{ mm}^2$ , 3 k-space lines per  
158 segment, acquisition time 3 min, 27 temporal frames, temporal resolution of 126 ms.

159 **Fig 1. Cine phase contrast MR experiment with synchronized EMS in a girl with diparetic cerebral**  
160 **palsy.** The experiments were performed in the more affected leg before BTX treatment. Top left:  
161 time courses of the evoked force on the pedal with the mean force curve (over the whole  
162 experiment) in black. Top right: current amplitude of the EMS cycle. Middle left: time course of the  
163 velocity magnitude (ROI median) showing two peaks, one at contraction (left) and one at release  
164 (right) acquired with VENC 10 cm/s. Middle right: for comparison, time course of the velocity  
165 magnitude (ROI median) acquired with VENC 25 cm/s. Bottom left: Bottom right: time course of the  
166 strain magnitude (ROI median of the strain compression component, acquired with VENC 10 cm/s).  
167 Bottom right: strain map at the temporal frame when the maximum occurs overlaid on an  
168 anatomical image of the calf (magnitude of the strain compression component, VENC 10 cm/s). The  
169 positions of the electrodes for stimulation are marked with asterisks. EMS: electrical muscle  
170 stimulation, VENC: velocity encoding.

171 In a subgroup of patients and healthy controls, a voluntary exercise paradigm was projected on a  
172 screen in the scanner room after a short rest phase following the scans with evoked motion. The  
173 paradigm consisted of a periodic curve with a pre-set amplitude (depending on the individual MVF,  
174 range 10–20 N in patients, 30–40 N in healthy children) and a period of 4 s. The shape of the  
175 predefined curve was the average of the force time courses of two adult volunteers who previously  
176 performed a periodic exercise (pressing the pedal for 1 s after a trigger signal every 4 s) in the same  
177 set-up. The force generated by the plantarflexion on the pedal was recorded and overlaid in real-  
178 time on the predefined curve. The paradigm was presented in the form of a video game: the fish –  
179 the force on the pedal – is supposed to hit as many bubbles – the predefined curve – as possible, see  
180 Fig 2 top left. The patient was supposed to follow the predefined curve by pressing the pedal. After a

181 training period of 5 min the voluntary motion was performed during the scan. The code for the  
182 display of the exercise paradigm and the real-time force values were written in Python 3 (code  
183 available on <https://github.com/BAMMri>). The cine PC sequence with VENC 10 cm/s was applied  
184 with the acquisition synchronized to the default periodic curve, i.e., the acquisition window (3.5 s)  
185 started every 4 s in the resting phase. The sequence with VENC 25 cm/s was not performed for the  
186 voluntary exercise paradigm (due to its lower sensitivity compared to VENC 10 cm/s, see Discussion).

187 **Fig 2. Cine phase contrast MR experiment with voluntary motion in a girl with diparetic cerebral**  
188 **palsy.** The experiments were performed in the more affected leg before BTX treatment. The subject  
189 is the same as in Fig 1. Top left: time courses of the force on the pedal with the mean force curve in  
190 black. Top right: visual paradigm for instruction and feedback for the participant. Middle left: time  
191 course of the velocity magnitude (ROI median, acquired with VENC 10 cm/s) showing several small  
192 peaks. Bottom left: time course of the strain magnitude (ROI median of the strain compression  
193 component, acquired with VENC 10 cm/s). Bottom right: strain map at the temporal frame when the  
194 maximum occurs overlaid on an anatomical image of the calf (magnitude of the strain compression  
195 component). VENC: velocity encoding. BTX: botulinum toxin A.

196

197 Data were processed processing offline using Matlab (The Mathworks, Inc., Natick, MA, release  
198 R2017a). To visualize the contraction time course, a ROI was drawn manually on the triceps surae  
199 muscles visible in the image slice and the velocity vector field was displayed for every temporal phase  
200 (8). For the VENC 25 cm/s dataset, a ROI was drawn only on one slice, which was chosen after visual  
201 inspection (showing the largest area of triceps surae muscles). For the velocity time course, the ROI  
202 median of the magnitude of the velocity vectors was calculated for each phase. Strain vectors were  
203 extracted from the velocity and displacement fields as described in (8). The tensors were  
204 diagonalized, and the principal eigenvalue with the largest absolute value, which was the  
205 compression component, was visualized. For the strain time course, the ROI median of the

206 magnitude of the strain compression component was calculated for each temporal frame. The data  
207 of control 3 was not processed as the MRI scan and force measurement under stimulation failed due  
208 to severe motion artifacts.

209 The velocity time courses were used to assess the data quality. The visibility of two clear velocity  
210 peaks (first peak for muscle contraction and one second later a peak for the release) was graded as  
211 good, the visibility of one peak or several not well-defined peaks was graded as mediocre, no visible  
212 peaks were graded as not sufficient.

213 Mean force time courses over the 4 s period were calculated from the recorded force data during  
214 each cine scan (i.e., as directly recorded with the foot pedal). The maximum force during stimulation  
215 was calculated as the difference between minimal and maximal value of the mean force time course.  
216 The relative maximum force was calculated as percentage of the MFV for each participant. If there  
217 was no detectable periodic motion in the force data, the maximum force was set to zero.

## 218 Results

219 The maximum tolerated stimulation current and the developed force at this current showed a  
220 relatively large variability, even for the same participant between two sessions. The time course of  
221 the contraction speed showed two distinctive peaks for contraction and release (as in patient 14  
222 shown in Fig 1) in 16 of 72 scans in patients and 14 of 17 scans in healthy children (as in control 13  
223 shown in Fig 3). In these cases, the data quality was rated as good (Table 2), which was sufficient to  
224 calculate strain maps from the velocity vector. In these cases, the strain time courses showed a  
225 curved shaped like a bell (Figs 1 and 3). However, the strain maps (compression components) for the  
226 temporal frame where the maximum strain occurs were inhomogeneous with pronounced local  
227 differences (Figs 1 and 3). The maximum strain value in the time courses was in the range of 0.063 to  
228 0.089 for the n=5 patient experiments with mediocre or good data quality pre BTX (acquired with  
229 VENC 25 cm/s), leading to a mean of 0.079 and a median of 0.081. In the normally developing  
230 children the corresponding range was 0.084 to 0.146 (n=9, acquired with VENC 25 cm/s), leading to a

231 higher mean and median of 0.11 and 0.10, respectively. All the time courses for contraction/release  
232 velocity, strain, and evoked force during EMS can be found in S1 Graphs, and all the time courses for  
233 the direct comparison between EMS and voluntary motion paradigm can be found in S2 Graphs.

234 **Fig 3. Cine phase contrast MR experiment with synchronized EMS and voluntary motion in a**  
235 **normally developing girl.** The left column shows the results during stimulated motion (EMS), the  
236 right column during voluntary motion. Top row: time courses of the force on the pedal with the  
237 mean force curve in black for the stimulated and voluntary motion, respectively. Middle row: time  
238 course of the velocity magnitude (ROI median, acquired with VENC 10 cm/s) showing two peaks at  
239 contraction (left peak) and release (right peak). The peaks for the voluntary motion are relatively  
240 broad and not so well defined, corresponding to the lower periodicity of the force time courses.  
241 Bottom row: time courses of the strain compression component (ROI median, acquired with VENC 10  
242 cm/s). EMS: electrical muscle stimulation, VENC: velocity encoding.

243

244 Contraction and release velocities were considerably below 1 cm/s. Due to the low contraction  
245 speeds, the sequence with the lower VENC of 10 cm/s, i.e., with the higher sensitivity for lower  
246 velocities, produced a higher signal-to-noise ratio, as can be seen in the velocity time courses (S1  
247 Graphs). A higher noise level led to a higher offset in the plots with VENC 25 cm/s vs. 10 cm/s since  
248 the velocity time courses were calculated with absolute values. The data quality of VENC 25 cm/s and  
249 VENC 10 cm/s was directly compared in 32 cases. In 7 cases, the data quality was rated higher for  
250 VENC 10 cm/s, for the rest of the cases the data quality rating did not change.

251 Regarding the voluntary motion experiments, the pre-set amplitude of the voluntary force paradigm  
252 could be generated by the participants without much effort. The voluntary force amplitude was  
253 higher than the amplitude of the stimulated force (Table 2). However, the periodicity was lower,  
254 especially in patients (as shown in Fig 2 for patient 14, plots for all are shown in S2 Graphs). It was  
255 possible to resolve two distinct peaks in 4 of 4 scans in healthy children (i.e., data quality was rated

256 as good, as shown in Fig 3 for control 13 and in S2 Graphs), and in 0 of 6 scans in patients (i.e., data  
257 quality was rated as mediocre – as in Fig 2 – or not sufficient, see Table 2).

258 The MVF (S3 Table) in the affected legs in patients before treatment was lower than in the legs of  
259 normally developing children (unpaired t-test,  $n=14/13$ , mean=119 N/247 N, median 113 N/260 N,  
260  $p<0.001$ ). The MFV in the less-affected legs (i.e., non-treated) in patients was not different to the one  
261 in legs of normally developing children (unpaired t-test,  $n=10/13$ , mean=181 N/247 N, median 157  
262 N/260 N,  $p=0.09$ ). The relative maximum force during stimulation was not different in patients both  
263 for affected and less-affected legs vs. healthy controls (unpaired t-test,  $n=14/13$ , mean=6%/9%,  
264 median=3%/9%,  $p=0.21$  and  $n=8/13$ , mean=4%/9%, median 2%/9%,  $p=0.06$ ).

265 In patients, there was no difference in relative maximum force of the treated leg pre vs. 6 weeks post  
266 BTX-injection (paired t-test,  $n=10$ , mean=7%/6%, median=7%/3%,  $p= 0.49$ ) and pre vs. 12 w post BTX  
267 (paired t-test,  $n=9$ , mean=7%/3%, median=5%/2%,  $p=0.23$ ). There was also no difference in the  
268 relative maximum force of the treated vs. the non-treated leg at 6 weeks post BTX-injection (paired t-  
269 test,  $n=8$ , mean=7%/4%, median=3%/2%,  $p=0.31$ ). The MFV in the treated leg did not significantly  
270 differ pre vs 6 w or 12 w post BTX (paired t-test,  $n=10$ , mean=118 N/110 N, median=113 N/108 N,  
271  $p=0.66$ ; paired t-test,  $n=9$ , mean=119 N/135 N, median=121 N/113 N,  $p=0.23$ ). The MFV in the  
272 treated leg was lower than in the non-treated leg at 6 w post BTX (paired t-test,  $n=10$ , mean=110  
273 N/181 N, median=108 N/157 N,  $p= 0.006$ ). There was no clear difference in data quality of the  
274 treated leg compared to the non-treated leg at 6 w post BTX.

## 275 Discussion

276 The cine PC approach relies on the consistently repeated execution of the motion task over some  
277 minutes, which is problematic in patients with poor coordination skills and weakness, as in CP  
278 patients.

279 In this pilot study, the voluntary motion using our paradigm was well tolerated in both patients and  
280 healthy controls, and the children were very motivated. The force output during voluntary motion  
281 was larger than the one achieved with the maximum tolerated stimulation current, which is  
282 promising for detectable contraction velocities. Yet in patients during voluntary motion, the  
283 periodicity over the acquisition time was not sufficient to resolve two distinct velocity peaks for  
284 contraction and release. A periodic motion can be achieved with the EMS-paradigm. However, if the  
285 tolerated stimulation current is too low to evoke a detectable periodic motion, then the dynamic MR  
286 measurement fails. In our experience, this is the case in about 60% of the sessions with pediatric  
287 patients, where no velocity peak at all was visible in the velocity time courses (data quality rated as  
288 not sufficient).

289 In adults, the compliance and the tolerated stimulation current is higher, as demonstrated in (8–  
290 10,16). In these studies, two distinct velocity peaks could be detected, and the data quality was high  
291 enough to generate strain maps.

292 In healthy children both EMS and voluntary tasks worked well. In general, the relative maximum  
293 force on the pedal was higher than in the CP patients, which led to a detectable motion. The data  
294 quality was sufficient to generate meaningful velocity and strain time courses. Yet the strain maps  
295 were relatively inhomogeneous in the contracting muscles and conclusions about regional  
296 differences in the strain are difficult to be drawn. This inhomogeneous pattern in the strain maps has  
297 also been observed in healthy adults (8,9) in experiments with mediocre data quality (when there  
298 were no clear two velocity peaks present). The observed values for the maximum strain (in  
299 experiments with good or mediocre data quality) were in the same range as the strain values for  
300 adults in the calf during stimulated plantarflexion (9). The strain seemed to be lower in patients.  
301 Comparing EMS and voluntary motion, the evoked strain seemed to be higher than the strain during  
302 voluntary motion, both in patients and controls. Due to the high number of experiments without  
303 sufficient data quality we refrain from drawing further conclusions about strain quantification.

304 Our aim was to find an experimental set-up with EMS to allow us to generate strain maps in CP  
305 patients pre and post BTX therapy to evaluate the spatial extent of the paralyzing effect of BTX.  
306 However, it was not possible to achieve sufficient data quality pre and post BTX in the same patient.  
307 A comparison of strain maps pre and post BTX was thus not possible. A limitation of this study was  
308 that the voluntary paradigm was only applied for a subgroup of participants. This decision was based  
309 on our assumption that CP patients would not be able to perform a periodic voluntary motion over  
310 some minutes, therefore only a limited number of children were asked to undergo this task for  
311 comparison. The test in the subgroup of patients confirmed these doubts and data quality was also  
312 not sufficient for the voluntary paradigm due to the lack of periodicity. The recordings of the force on  
313 the pedal clearly showed lack of periodicity both in the voluntary motion and extra voluntary  
314 movements during stimulation (see S1 Graphs and S2 Graphs). So, these recordings were very helpful  
315 to explain the data quality of the cine PC MRI scans. It was also very practical to adjust the  
316 stimulation current with the participant already in the exam position inside the scanner.

317 The contraction velocities were below 1 cm/s, for both healthy children and patients and for both  
318 evoked and voluntary motion (see S1 Graphs and S2 Graphs). This is lower than the peak contraction  
319 values for evoked motion in adults, which was in the range of 0.5 to 10 cm/s in the thigh, and where  
320 VENC values of 25 cm/s (thigh) and 30 cm/s (lower leg) were used (8–10,16). A PC sequence with a  
321 low VENC is therefore appropriate in children. Since this was established after the initial tests and the  
322 start of the study, a delayed decision was taken to add the sequence with VENC 10 cm/s, which  
323 created an inherent inhomogeneity in the VENC values of the study. All the scans with the voluntary  
324 motion (which took place in the third year of the study) were acquired with the VENC 10 cm/s  
325 sequence only. It offered a higher sensitivity in combination with a better temporal resolution, but  
326 only one slice could be acquired in two and a half minutes compared to three slices in three minutes  
327 with the VENC 25 cm/s sequence. To achieve a lower VENC a higher gradient strength or longer  
328 gradient duration is needed which changes the timing of the sequence. Thus, multislice acquisition is  
329 not feasible with a low VENC in a short acquisition time.

330 One way to achieve higher success rates for these acquisitions could be a reduction in scan time.  
331 Compressed sensing reconstruction has already demonstrated the ability to speed up CP contrast  
332 MRI in the lower leg to 40 s for one slice (17) and 1 min 18 s for three slices (18). Patients might be  
333 able to achieve a sufficient periodicity in the voluntary motion over such a short period. Compressed  
334 sensing can also enable three-dimensional (3D) coverage of the total muscle belly in a reasonable  
335 acquisition time (3,4). A longer training period than the 5 minutes used in our study might also help  
336 to increase the periodicity and therefore improve data quality. However, an increase of the duration  
337 of the plantar flexion exercise may entail fatigue of the patients and an irregularity of motion.

338 In the EMS experiments, different settings of the stimulation parameters might be better tolerated.  
339 We chose our setting according to our experiences in adults and used stimulation parameters that  
340 are close to the settings for EMS used in physiotherapy in CP patients (19). However, in our  
341 experience, the maximum tolerated current was different from session to session in the same  
342 participant and depended on the mood and physical condition of the child at the day of the exam. It  
343 is very important for the success of the MRI acquisition to provide a pleasant atmosphere and to  
344 entertain the children by showing a movie or by other distractions during the exam inside the  
345 scanner.

346 In conclusion, cine PC MRI in combination with EMS or a voluntary motion paradigm to study  
347 plantarflexion is challenging in pediatric CP patients. The voluntary task in the form of a video game  
348 was well received, however, CP patients are often unable to perform a consistent periodic motion for  
349 a couple of minutes during data acquisition. Therefore, data quality was too low. EMS was not well  
350 tolerated in a big part of the sessions making clinical studies with several time points (like in our case,  
351 pre and post BTX treatment) difficult. It does nevertheless make repeatable exercise in the scanner  
352 potentially more feasible since an external device controls the movement. We already saw that the  
353 force curve became more periodic in the force pedal recordings. So, the critical point remains to  
354 increase acceptance and improve the sensation of the stimulation. In normally developing children,  
355 cine PC MRI both with EMS and the voluntary motion paradigm worked well. Contraction velocity



356 and strain time courses were successfully generated in most cases. Although this method is still  
357 limited due to the difficulty in acquiring results with sufficiently high velocity and strain in such a  
358 cohort, it has proven its feasibility. With appropriate adaptations in the EMS stimulation protocol, it  
359 could be a very promising tool for studying muscle dynamics in healthy children and pediatric  
360 patients with neuromuscular diseases which is worth further investigation.

## 361 References

- 362 1. Mathewson MA, Lieber RL. Pathophysiology of muscle contractures in cerebral palsy. *Phys Med*  
363 *Rehabil Clin N Am*. 2015 Feb;26(1):57–67.
- 364 2. Strobl W, Theologis T, Brunner R, Kocer S, Viehweger E, Pascual-Pascual I, et al. Best clinical  
365 practice in botulinum toxin treatment for children with cerebral palsy. *Toxins*. 2015 May  
366 11;7(5):1629–48.
- 367 3. Mazzoli V, Schoormans J, Froeling M, Sprengers AM, Coolen BF, Verdonschot N, et al.  
368 Accelerated 4D self-gated MRI of tibiofemoral kinematics. *NMR Biomed*. 2017;30(11):e3791.
- 369 4. Mazzoli V, Gottwald LM, Peper ES, Froeling M, Coolen BF, Verdonschot N, et al. Accelerated 4D  
370 phase contrast MRI in skeletal muscle contraction. *Magn Reson Med*. 2018 Nov;80(5):1799–811.
- 371 5. Sinha U, Malis V, Csapo R, Moghadasi A, Kinugasa R, Sinha S. Age-related differences in strain  
372 rate tensor of the medial gastrocnemius muscle during passive plantarflexion and active  
373 isometric contraction using velocity encoded MR imaging: potential index of lateral force  
374 transmission. *Magn Reson Med*. 2015 May;73(5):1852–63.
- 375 6. Sinha U, Malis V, Csapo R, Narici M, Sinha S. Shear strain rate from phase contrast velocity  
376 encoded MRI: Application to study effects of aging in the medial gastrocnemius muscle. *J Magn*  
377 *Reson Imaging JMRI*. 2018 Nov;48(5):1351–7.
- 378 7. Hernandez R, Sinha U, Malis V, Cunnane B, Smitaman E, Sinha S. Strain and Strain Rate Tensor  
379 Mapping of Medial Gastrocnemius at Submaximal Isometric Contraction and Three Ankle Angles.  
380 *Tomography*. 2023 Apr 11;9(2):840–56.
- 381 8. Deligianni X, Pansini M, Garcia M, Hirschmann A, Schmidt-Trucksäss A, Bieri O, et al. Synchronous  
382 MRI of muscle motion induced by electrical stimulation. *Magn Reson Med*. 2017 Feb;77(2):664–  
383 72.
- 384 9. Deligianni X, Hirschmann A, Place N, Bieri O, Santini F. Dynamic MRI of plantar flexion: A  
385 comprehensive repeatability study of electrical stimulation-gated muscle contraction  
386 standardized on evoked force. *PLoS One*. 2020;15(11):e0241832.
- 387 10. Deligianni X, Santini F, Paoletti M, Solazzo F, Bergsland N, Savini G, et al. Dynamic magnetic  
388 resonance imaging of muscle contraction in facioscapulohumeral muscular dystrophy. *Sci Rep*.  
389 2022 May 4;12(1):7250.

- 390 11. Brunner R, De Pieri E, Wyss C, Weidensteiner C, Bracht-Schweizer K, Romkes J, et al. The Non-  
391 Affected Muscle Volume Compensates for the Partial Loss of Strength after Injection of  
392 Botulinum Toxin A. *Toxins*. 2023 Apr 3;15(4):267.
- 393 12. Rutz E, Hofmann E, Brunner R. Preoperative botulinum toxin test injections before muscle  
394 lengthening in cerebral palsy. *J Orthop Sci Off J Jpn Orthop Assoc*. 2010 Sep;15(5):647–53.
- 395 13. Palisano RJ, Rosenbaum P, Bartlett D, Livingston MH. Content validity of the expanded and  
396 revised Gross Motor Function Classification System. *Dev Med Child Neurol*. 2008  
397 Oct;50(10):744–50.
- 398 14. Weidensteiner C, Madoerin P, Deligianni X, Haas T, Bieri O, Akinci D’Antonoli T, et al.  
399 Quantification and Monitoring of the Effect of Botulinum Toxin A on Paretic Calf Muscles of  
400 Children With Cerebral Palsy With MRI: A Preliminary Study. *Front Neurol*. 2021;12:630435.
- 401 15. Santini F, Bieri O, Deligianni X. OpenForce MR: A low-cost open-source MR-compatible force  
402 sensor. *Concepts Magn Reson Part B Magn Reson Eng*. 2018;48B(4):e21404.
- 403 16. Deligianni X, Klenk C, Place N, Garcia M, Pansini M, Hirschmann A, et al. Dynamic MR imaging of  
404 the skeletal muscle in young and senior volunteers during synchronized minimal neuromuscular  
405 electrical stimulation. *Magma N Y N*. 2020 Jun;33(3):393–400.
- 406 17. Malis V, Sinha U, Sinha S. Compressed sensing velocity encoded phase contrast imaging:  
407 Monitoring skeletal muscle kinematics. *Magn Reson Med*. 2020;84(1):142–56.
- 408 18. Malis V, Sinha U, Sinha S. 3D Muscle Deformation Mapping at Submaximal Isometric  
409 Contractions: Applications to Aging Muscle. *Front Physiol*. 2020 Dec 3;11:600590.
- 410 19. Kerr C, McDowell B, McDonough S. Electrical stimulation in cerebral palsy: a review of effects on  
411 strength and motor function. *Dev Med Child Neurol*. 2004 Mar;46(3):205–13.

412

413 **S 1. Overview of all acquired time courses of the experiments under EMS.** First column: velocity  
414 time course, second column: strain time course (magnitude of contraction component), third  
415 column: all force time courses during MRI acquisition (plantarflexion on foot pedal), fourth column:  
416 mean force time course. Plots of all experiments in n=14 pediatric cerebral palsy (CP) patients and  
417 n=13 controls (healthy, normally developing children) are shown. The patients were scanned pre, 6  
418 weeks, and 12 weeks post BTX injection. The velocity data were acquired with the cine phase  
419 contrast MR sequences with VENC 25 cm/s and/or VENC 10 cm/s. EMS: electrical muscle stimulation,  
420 VENC: velocity encoding, BTX: botulinum toxin A.

421 **S 2. Comparison of the results under EMS and voluntary motion.** All the force plots of the  
422 plantarflexion on the foot pedal, velocity time courses, and strain time courses of the cine phase

423 contrast MR sequences (VENC 10 cm/s) for all the four pediatric cerebral palsy (CP) patients and the  
424 four controls (healthy, normally developing children) that performed the voluntary paradigm  
425 experiments are shown. The amplitude of the EMS current (in mA), the pre-set force amplitude of  
426 the voluntary motion paradigm (in N), and the mean force amplitudes (in N) are stated in the graphs.  
427 The mean force is shown in black. For the strain time courses the magnitude of the contraction  
428 component is shown. The patients were scanned pre, 6 weeks and 12 weeks post BTX injection. EMS:  
429 electrical muscle stimulation, vol: voluntary motion, VENC: velocity encoding, BTX: botulinum toxin A.

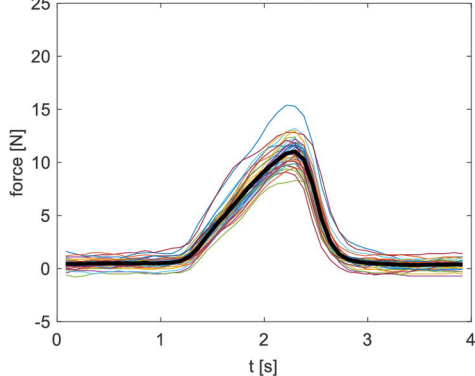
430

431 **S3. Maximum voluntary force for plantarflexion in pediatric CP patients and healthy, normally**  
432 **developing children (controls).** Patient force measurements were performed pre, 6 weeks and 12  
433 weeks post botulinum toxin A (BTX) injection.

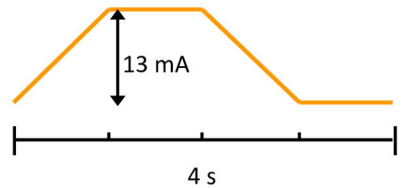
434

435

evoked force during image acquisition

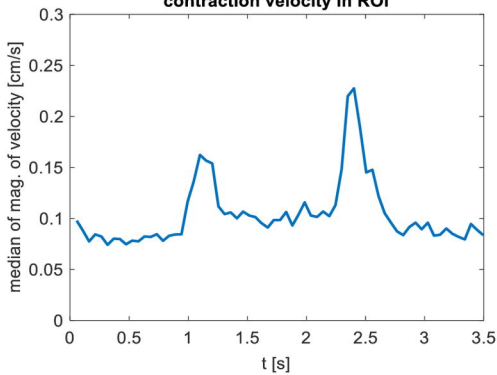


recorded evoked force



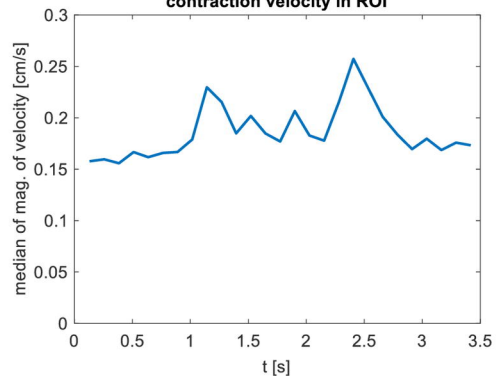
EMS cycle

contraction velocity in ROI



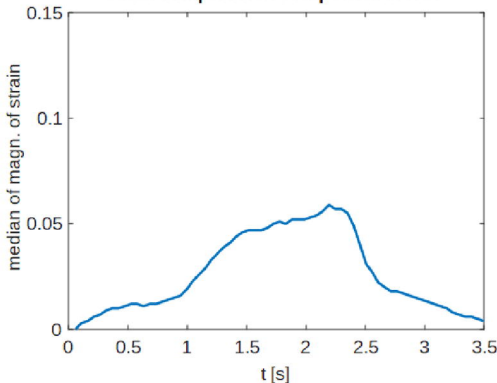
median velocity in ROI (VENC 10 cm/s)

contraction velocity in ROI

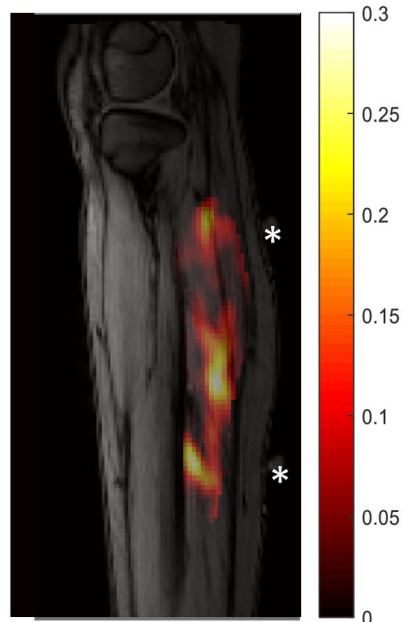


median velocity in ROI (VENC 25 cm/s)

strain compression component in ROI

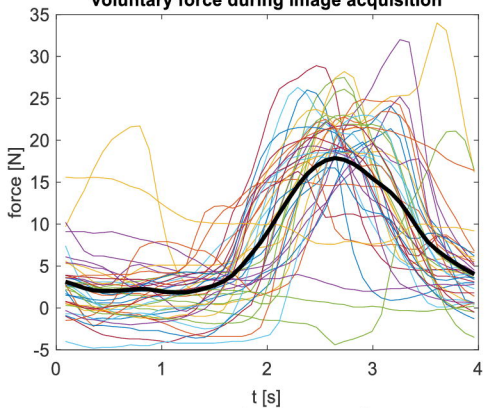


median strain in ROI (VENC 10 cm/s)



strain map in ROI (VENC 10 cm/s)  
on anatomical image of calf

voluntary force during image acquisition

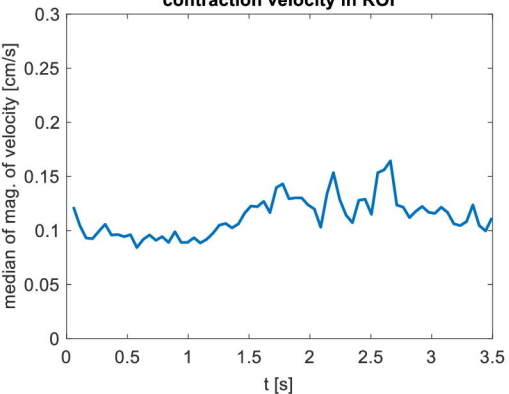


recorded voluntary force



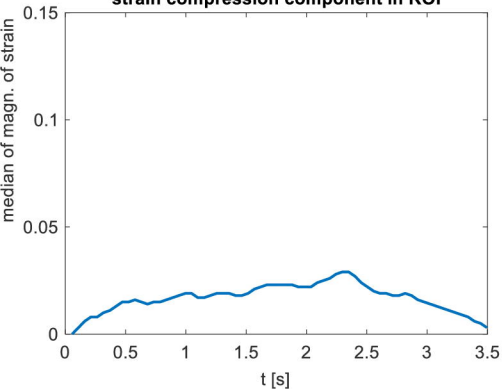
visual instruction

contraction velocity in ROI

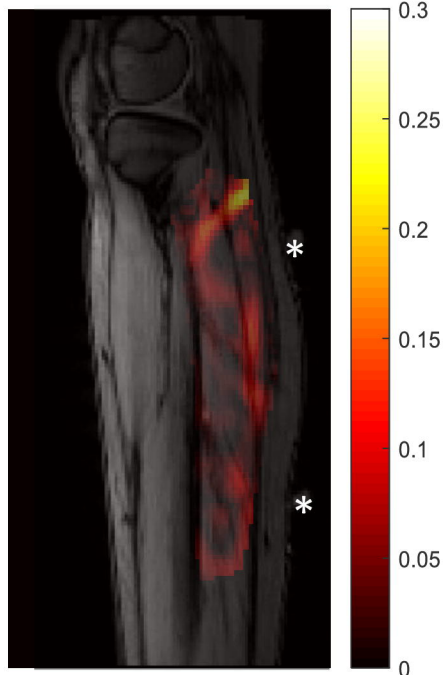


median velocity in ROI

strain compression component in ROI



median strain in ROI

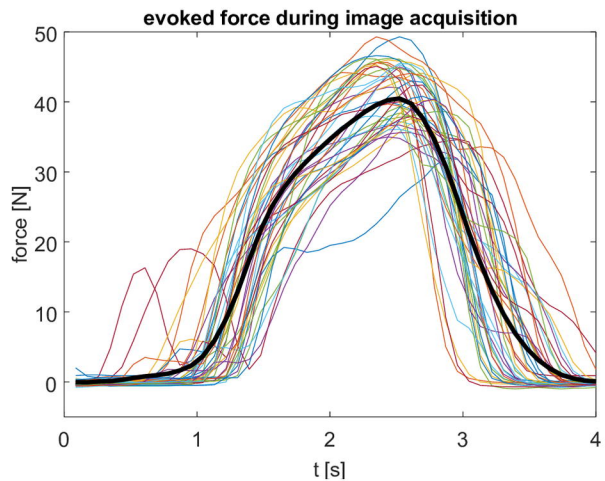
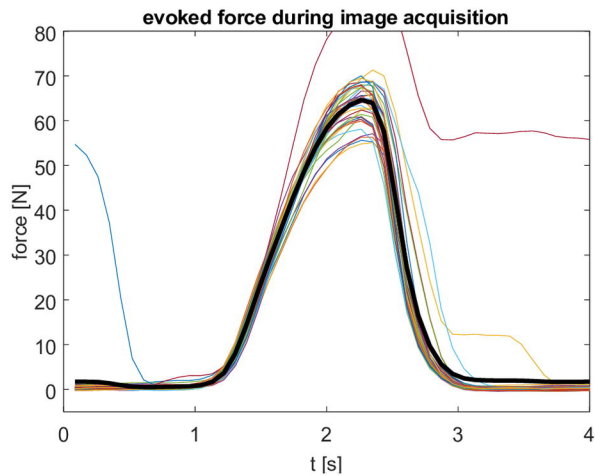


strain map in ROI  
on anatomical image of calf

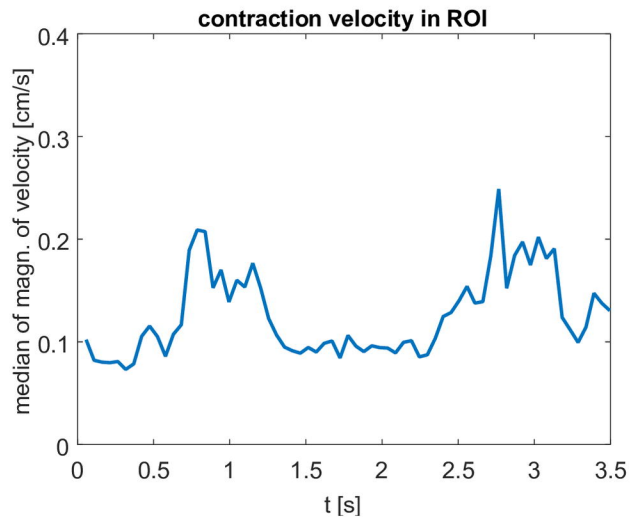
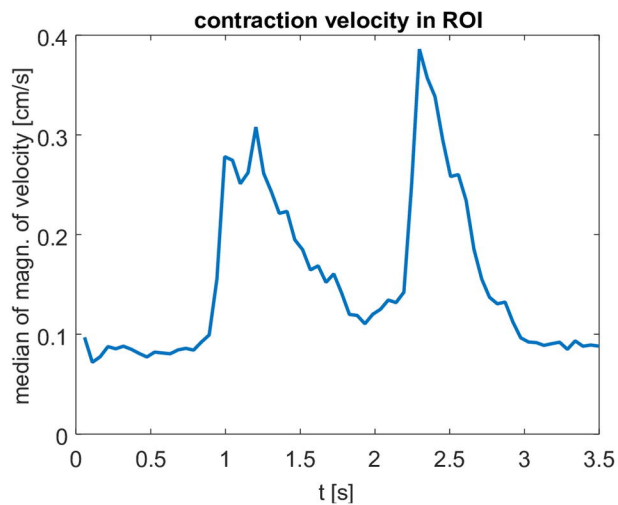
EMS

voluntary motion

recorded force



median velocity in ROI



median strain in ROI

