

1 **Title page**

2 **Linear age-course association between non-alcoholic fatty liver disease, components of**
3 **metabolic syndrome, and mortality**

4

5 Xinyu Zhao^{a,b}, Shuohua Chen^c, Xiao mo Wang^a, Zhenyu Wang^a, Yuanyuan Sun^a, Chenlu Yang^a,

6 Mengyi Zheng^d, Yanhong Wang^a, Wei Liao^a, Shouling Wu^{c,*}, Li Wang^{a,*}

7

8 ^aDepartment of Epidemiology and Biostatistics, Institute of Basic Medical Sciences Chinese
9 Academy of Medical Sciences; School of Basic Medicine Peking Union Medical College, Beijing,
10 China

11 ^bDepartment of Clinical Epidemiology and EBM, Beijing Friendship Hospital, Capital Medical
12 University; National Clinical Research Center for Digestive Diseases, Beijing, China

13 ^cDepartment of Cardiology, Kailuan General Hospital, Tangshan, China

14 ^dCardiovascular Center, Beijing Tongren Hospital, Capital Medical University, Beijing, China

15 ***Corresponding author:**

16 Li Wang

17 Department of Epidemiology and Biostatistics, Institute of Basic Medical Sciences Chinese
18 Academy of Medical Sciences; School of Basic Medicine Peking Union Medical College, 5 Dong
19 Dan San Tiao, Beijing 100005, China. E-mail address: liwang@ibms.pumc.edu.cn

20 Shouling Wu

21 Department of Cardiology, Kailuan General Hospital, Tangshan 063000, China. E-mail address:
22 drwusl@163.com

23

24 The total word count of the manuscript: 4195

25

1 **Abstract**

2 **Background:** The study aimed to explore the relationship between non-alcoholic fatty liver
3 disease (NAFLD) and mortality by age and metabolic syndrome (MetS) components.

4 **Method:** We enrolled 104,173 participants in the Kailuan cohort from June 2006 through October
5 2013. Cox regression models were used to evaluate the hazard ratio (HR) and 95% confidence
6 interval (CI). Population-attributable fractions (PAFs) of metabolic components were also
7 calculated.

8 **Results:** Compared with non-NAFLD, the excess risk of all-cause and cardiovascular disease
9 (CVD)-related mortality in NAFLD increased with the number of MetS components but decreased
10 with age. The highest all-cause and CVD-related death risks were observed in NAFLD aged 18-39
11 with 4-5 MetS (HR=2.81, 95% CI:1.55-5.08) and those aged 40-49 years with 3 MetS (HR=2.25,
12 95% CI:1.55-5.08), respectively. However, there was no significant extra risk of liver-related
13 death in NAFLD patients of any age. For PAF, 28.5% of all-cause and 43.4% of CVD-related
14 mortality among NAFLD patients was preventable by controlling MetS components < 2, with the
15 highest PAF in those aged 50-69 and 18-49, respectively. Elevated blood pressure (PAF of 24.7%
16 for all-cause; 38.6% for CVD-related), elevated fasting glucose (PAF of 13.4% all-cause; 9.2%
17 CVD-related), and elevated triglycerides (PAF of 3.9% all-cause; 14.0% CVD-related) were the
18 essential mortality contributors in NAFLD participants.

19 **Conclusion:** The excess risk of all-cause and CVD-related mortality in NAFLD patients decreases
20 with age. A substantial proportion of risks could be averted if NAFLD patients are controlled
21 under two MetS components, especially managing blood pressure, fasting glucose, and
22 triglycerides for the young.

23 **Key words:** Non-alcoholic fatty liver disease; metabolic syndrome; mortality; attributable
24 population fraction; cohort.

25 **Abbreviations:** non-alcoholic fatty liver disease (NAFLD); metabolic syndrome (MetS);
26 cardiovascular disease (CVD); elevated blood pressure (BP); systolic blood pressure (SBP);
27 diastolic blood pressure (DBP); elevated fasting blood glucose (FBG); triglyceride (TG); high-
28 density lipoprotein (HDL).

29

30

31

1 **1. Introduction**

2 Non-alcoholic fatty liver disease (NAFLD) is the most prevalent chronic liver disease worldwide,
3 with a global prevalence of 30%¹. NAFLD may increase the risk of cardiovascular disease,
4 chronic kidney disease, and some specific cancers^{2,3}. However, its impact on mortality is still
5 controversial due to the difference in the study population's characteristics and the diagnosis
6 method of NAFLD⁴⁻⁸. Most NAFLD-related mortality studies were based on western people or
7 limited by highly selected patient populations^{4,5,9,10}.

8 The participants with NAFLD are often accompanied by components of metabolic syndrome
9 (MetS). Studies have shown that the risk of all-cause mortality gradually increased with the
10 number of components of MetS¹¹. Also, the early onset of the individual component of MetS, such
11 as obesity, diabetes, and hypertension, has been reported to have a higher risk of death than those
12 with late onset¹²⁻¹⁴. Furthermore, our cohort study in a Northern Chinese population has shown a
13 modified effect of age on the association between NAFLD and mortality¹⁵. All the above
14 information suggests that age may modify the effect of NAFLD on all-cause mortality.
15 Additionally, it is unclear what extent of deaths can be reduced by controlling MetS components
16 of NAFLD patients to normal levels.

17 Using the Kailuan cohort in China, we aimed to: (1) evaluate the association between the excess
18 risk of mortality among patients with NAFLD versus non-NAFLD participants by the number of
19 MetS components; (2) quantify the proportions of deaths in the NAFLD and non-NAFLD that can
20 be reduced by controlling different MetS components to normal levels.

21 **2. Methods**

22 ***2.1 Study population***

23 Starting from 2006 and being followed up every two years, the Kailuan cohort is an ongoing
24 longitudinal prospective cohort based on the Kailuan community in Tangshan, China. In this
25 study, we enrolled 159,018 participants who entered the cohort between 2006-2013. We excluded
26 54,804 participants due to the following: (1) having liver cirrhosis at baseline (n=170); (2)
27 excessive alcohol consumption (alcohol intake ≥ 30 g/day for men and ≥ 20 g/day for women) or
28 with alcohol intake missing (n=42524); (3) hepatitis B surface antigen (HBsAg) positive or
29 missing (n=4931); (4) missing on the fatty liver by B ultrasound (n=6864); (5) death within one
30 year from the baseline (n=315); or (6) three or more missing values of MetS components (n=41).
31 Finally, 104,173 participants were included (Supplementary Figure 1).

32 The Ethics Committees of the Kailuan General Hospital and the Institute of Basic Medical
33 Sciences Chinese Academy of Medical Sciences approved this study. We obtained informed
34 consent from all participants.

35 ***2.2 Definition of NAFLD, MetS, and its metabolism components***

36 Using abdominal ultrasonography (PHILIPS HD-15), fatty liver was diagnosed by experienced
37 radiologists blinded to clinical presentation and laboratory results. Participants with fatty liver

1 were defined as NAFLD because we excluded individuals with excessive alcohol consumption or
2 other causes of chronic liver disease. We utilized the diagnostic criteria proposed by the
3 International Diabetes Federation (2009) ¹⁶ to define MetS by the presence of ≥ 3 of the following
4 components: abdominal obesity, elevated blood pressure (BP), fasting blood glucose (FBG) serum
5 triglyceride (TG), and high-density lipoprotein (HDL) (detailed in Supplementary text).

6 **2.3 Follow-up and outcome assessment**

7 We followed all the participants to the date of death, or 12-31-2019, which came first. Death
8 certificates were obtained annually from the Kailuan social security system and provincial vital
9 statistics offices. The cause of death listed on the death certificate was classified following the 10th
10 version of the International Classification of Diseases (ICD-10). We defined the cause of death
11 due to cardiovascular disease (CVD) with codes of ICD-10 I00-I69 ¹⁷ and liver-related mortality
12 with ICD-10 of C22, B15-B19, I85, K70- K76 ¹⁸. Death causes were collected before 31
13 December 2016, so the follow-up ended at the date of death or 12-31-2016 when analyzing the
14 risk of CVD-related and liver-related death.

15 **2.4 Potential confounders**

16 We conducted questionnaire surveys to collect demographic characteristics (age, sex, and
17 education level), lifestyle factors (smoking, drinking, and physical activity), medical history, and
18 medications of all the participants. Height, weight, waist, and blood pressure were measured by
19 trained field workers. Laboratory tests, including TG, HDL, alanine aminotransferase (ALT),
20 FBG, and HBsAg were assessed in the central lab.

21 **2.5 Statistical methods**

22 Variables were presented as mean \pm standard deviation or number (%) and compared using
23 analysis of variance or Chi-square test, respectively. The age- and sex- standardized prevalence of
24 MetS component for NAFLD and non-NAFLD populations were estimated using the Chinese
25 2010 census population as the reference ¹⁹. We conducted the Kaplan-Meier to calculate the
26 mortality rate. Compared to the non-NAFLD, the Cox proportional hazards model with age as the
27 timescale was used to estimate the HRs and 95% confidence intervals (CIs) of NAFLD with the
28 different numbers of MetS components after adjusting for age, sex, education, smoking, physical
29 activity, salt intake, and ALT level. We divided the participants into six groups (18-39, 40-49, 50-
30 59, 60-69, 70-79, and ≥ 80 years) because we found an age-dependent hazard ratio (HR) between
31 NAFLD and death risk (Supplementary Figure 2). We also conducted sensitivity analyses to verify
32 the results: (1) using the original complete dataset, (2) excluding females, (3) excluding drinkers,
33 (4) defining NAFLD as the participants diagnosed with moderate or severe fatty liver for the low
34 sensitivity and specificity of ultrasound in the diagnosis of mild fatty liver ^{20,21}, and (5) excluding
35 participants with cancers or cardiovascular disease (myocardial infarction, stroke, subarachnoid
36 hemorrhage, cerebral infarction, cerebral hemorrhage or heart failure) at baseline.

1 Furthermore, we assessed the adjusted overall and age-specific population-attributable fraction
2 (PAF) of deaths that contributed to MetS components in the NAFLD and compared them with that
3 in the non-NAFLD using a method for cohort study²². We used multiple imputations by chained
4 equations to impute one complete dataset with five interactions, which showed equal distribution
5 before and after imputation (Supplementary Table 1).

6 Analyses were implemented with SAS version 9.4 (SAS Institute Inc. Cary, NC), R version 3.5.2
7 (<https://www.r-project.org/>), or Stata 15.0.

8 **3. Results**

9 ***3.1 Baseline characteristics and the prevalence of metabolic components***

10 Among 104,173 participants with a mean age of 49.2±14.0 years old, NAFLD was identified in
11 32,384 (31.1%) participants, 74.9% of whom combined with >1 MetS component, significantly
12 higher than in the non-NAFLD (35.7%). In the NAFLD group, the average age and the proportion
13 of people with low education levels, high-intensity physical exercise, salt preference, and high
14 ALT gradually increased with the increasing number of MetS components (Table 1).

15 The standardized prevalence of each MetS component in the NAFLD group was significantly
16 higher than that in the non-NAFLD group (Table 2). The highest difference in prevalence between
17 NAFLD and non-NAFLD was abdominal obesity (62.7% vs. 27.3%), then the elevated TG (47.5%
18 vs. 18.4%) and elevated BP (50.9% vs. 30.7%).

19 ***3.2 Associations between NAFLD with the different numbers of MetS components and CVD-,*** 20 ***liver-related, and all-cause mortality.***

21 During a median follow-up of 12.7 years, 10442 subjects died. The 10-year all-cause mortality
22 rates (Figure 1A) of the non-NAFLD (7.5%) were significantly lower than the NAFLD with 3
23 (10.3%) and 4-5 MetS components (11.6%) but higher than the NAFLD with 0-1 MetS
24 component (1.5%), $p < 0.001$. Similar phenomena were observed in CVD-related death (Figure
25 1B, $p < 0.001$). Although existing an increased trend, we did not observe a significant difference
26 in liver-related mortality between NAFLD with the different numbers of MetS components and
27 non-NAFLD (Figure 1C, $p=0.314$).

28 ***3.3 Associations between NAFLD with the different numbers of MetS components and CVD- ,*** 29 ***liver-related, and all-cause mortality by age***

30 Figure 2A showed that the excess risk of all-cause mortality for NAFLD vs. non-NAFLD
31 increased with the number of metabolic component abnormalities but linearly declined with age.
32 In the subjects with 4-5 MetS components but aged < 40, NAFLD patients had the highest all-
33 cause mortality risk (HR=2.81, 95% CI:1.55-5.08, $p=0.001$).

34 For CVD-related mortality (Figure 2B), higher risks for NAFLD vs. non-NAFLD was only

1 observed in those aged 40-69 and with >2 MetS components. For the NAFLD patients with 3
2 MetS components, the HR(95% CI) for those aged 30-49, 50-59, and 60-69 was 2.25(1.46-3.45),
3 1.34(1.03-1.74), and 1.41(1.15-1.74). For NAFLD patients with 4-5 MetS components, the
4 HR(95% CI) at the corresponding age was 1.86 (0.97-3.57), 1.85(1.37-2.49), and 1.64(1.27-2.12).
5 However, we did not observe an excess risk of liver-related death risk in NAFLD patients in any
6 age group (figure 2C). So we did not perform further PAF-related analyses for liver-related death.

7 The sensitivity analysis showed a consistent result after excluding females, drinkers, individuals
8 with cancers or CVD, NAFLD with mild fatty liver, or using original data (Supplementary Table
9 2-4).

10 ***3.4 Association between metabolic components and all-cause and CVD-related death by*** 11 ***NAFLD status***

12 Table 3 showed the association between MetS components and all-cause mortality by NAFLD
13 status. Due to the limited outcome events in the NAFLD patients, we regrouped the age category
14 into <50, 50-69, and ≥70 years. Both in the NAFLD and non-NAFLD populations, elevated FBG
15 (HR=1.36, 95% CI:1.27-1.46 in the NAFLD; HR=1.29, 95% CI:1.23-1.36 in the non-NAFLD)
16 and elevated BP (HR=1.49, 95% CI:1.38-1.62 in the NAFLD; HR=1.39, 95% CI:1.32-1.47 in the
17 non-NAFLD) were significantly associated with all-cause death after multivariable adjustments.
18 Elevated TG (HR=1.08, 95% CI:1.01-1.16) was only observed to be a risk factor for death in the
19 NAFLD, and abdominal obesity in the non-NAFLD (HR=1.07, 95% CI:1.01-1.12). However,
20 HRs of elevated BP on death declined with age in both NAFLD and non-NAFLD groups.
21 HR(95%CI) decreased from 1.66(1.32-2.09) for those aged 18-49 to 1.21(1.04-1.40) for those
22 aged ≥70 in the NAFLD and from 1.66 (1.40-1.98) to 1.12(1.03-1.21) in the non-NAFLD
23 correspondingly.

24 Regarding CVD-related death (Table 4), the results were similar to all-cause mortality. The risk
25 effect of elevated BP (HR=1.94, 95% CI:1.63-2.30 in the NAFLD; HR=1.65, 95% CI:1.49-1.84 in
26 the non-NAFLD) and evaluated TG ((HR=1.33, 95% CI:1.16-1.53 in the NAFLD; HR=1.13, 95%
27 CI:1.01-1.27 in the non-NAFLD) on CVD-related death was more prominent than that on the all-
28 cause mortality. And the risk effect of evaluated TG also declined with age. HR(95%CI) decreased
29 from 1.58(0.99-2.55) to 1.24(0.98-1.57) in the NAFLD group and from 1.56(1.02-2.37) to
30 1.03(0.85-1.24) in the non-NAFLD group.

31 ***3.5 PAFs of metabolic components to all-cause/CVD-related mortality among NAFLD and*** 32 ***non-NAFLD patients***

33 The prevalence of MetS components by age was shown in Supplementary Table 5. The MetS
34 components increased with age, except for the reduced HDL in the NAFLD and non-NAFLD
35 participants.

36 Table 3 showed the PAFs of MetS components to all-cause death by NAFLD status. For both
37 NAFLD and non-NAFLD participants, the largest adjusted PAF of MetS components was elevated

1 BP (24.7% in the NAFLD and 17.0% in the non-NAFLD), and then the elevated FBG (13.4% in
2 the NAFLD and 7.5% in the non-NAFLD). With age increasing, the PAF of elevated BP (from
3 26.2% to 13.0% in the NAFLD and from 17.6% to 6.8% in the non-NAFLD) and elevated FBG
4 (from 12.7% to 8.5% in the NAFLD, and from 11.8% to 2.7% in the non-NAFLD) were both
5 declined.

6 Like all-cause of death, elevated BP had the largest adjusted PAF for CVD-related death in both
7 NAFLD patients (38.6%) and non-NAFLD (25.9%) (Table 4). However, the elevated TG (14.0%)
8 had a slightly higher PAF than the elevated FBG (9.2%) for NAFLD patients. The elevated FBG
9 (8.5%) still had the second-largest PAF for non-NAFLD patients. Similarly, the PAFs of elevated
10 BP (from 44.9% to 20.9% in the NAFLD and from 19.9% to 8.0% in the non-NAFLD) and
11 elevated TG (from 24.0% to 9.7% in the NAFLD, and from 11.7% to 0.5% in the non-NAFLD)
12 dramatically declined with age.

13 For the multiple MetS components, 28.5% of all-cause deaths and 43.4% of CVD-related deaths
14 could be potentially averted by controlling the subjects with NAFLD to combining less than one
15 MetS component, more than twice in the subjects without NAFLD (all-cause mortality: 12.5%;
16 CVD-related mortality: 16.3%).

17 **4. Discussion**

18 Our study found that the standardized prevalence of abdominal obesity, elevated BP, TG, and
19 FBG, and reduced HDL reached 62.7%, 50.9%, 47.5%, 36.9%, and 21.8% among NAFLD
20 patients, respectively. Compared to non-NAFLD, The highest all-cause and CVD-related death
21 risks were observed in NAFLD aged 18-39 with 4-5 MetS (HR=2.81, 95% CI:1.55-5.08) and
22 those aged 40-49 years with 3 MetS (HR=2.25, 95% CI:1.55-5.08). Higher than in non-NAFLD,
23 all-cause of death could be attributable to 24.7% of elevated BP and 13.4% of elevated FBG in the
24 NAFLD population. Similarly, CVD-related death could be attributable to 38.6% of high BP,
25 9.2% of elevated FBG, and 14.0% of elevated TG.

26 Our analysis showed that patients with NAFLD aged 18-39 with 4-5 MetS components had the
27 highest excess risk of all-cause mortality compared with non-NAFLD. Notably, we identified a
28 monotonic relationship between the increasing age of NAFLD patients and lowered extra risk of
29 all-cause mortality and CVD-related mortality, which could be supported by the research on the
30 early onset of hypertension¹², obesity¹³, and diabetes¹⁴ to the excess deaths or CVD-related
31 mortality.

32 The present study indicated that 28.5% of all-cause deaths and 43.4% of CVD-related deaths
33 among NAFLD patients could be attributable to presenting ≥ 2 MetS component, suggesting that
34 reducing MetS components < 1 may substantially reduce mortality, consistent with a previous
35 study using the NHANES III data²³. Furthermore, our study showed that 24.7% of the all-cause
36 and 38.6% of CVD-related mortality in NAFLD participants were attributable to elevated BP,
37 slightly lower than a study from the NHANES III data (adjusted PAF of 23% of all-cause and 52.8%
38 of CVD-related mortality)²³. With a prevalence of elevated BP of 50.9% in our NAFLD

1 population, hypertension is an independent driver of the progression of NAFLD to non-alcoholic
2 steatohepatitis, advanced liver fibrosis, cirrhosis, and hepatocellular carcinoma^{24,25}. Also, CVD
3 risk has been proven to be increased with more advanced liver disease from a meta-analysis of 36
4 longitudinal studies, furtherly supporting our results². Our former study found that even in the
5 NAFLD with normal BMI, those with hypertension had a higher risk of all-cause death and CVD
6²⁶, suggesting the importance of controlling blood pressure for NAFLD participants.

7 Elevated FBG was found to be attributed to 13.4% of all-cause mortality in NAFLD, higher than
8 that in non-NAFLD (7.5%). The higher prevalence of elevated FBG in the NAFLD (36.9%) than
9 that in non-NAFLD (20.0%) could explain the difference since the similar HR for elevated FBG
10 and all-cause mortality in the NAFLD (HR=1.36) and non-NAFLD (HR=1.29) group. Similar
11 results were observed for CVD-related death (PAF: 13.4% in NAFLD vs. 7.5% in non-NAFLD).
12 Diabetes could promote NAFLD progression to cirrhosis and fibrosis and increase the all-cause
13 mortality risk^{27,28}. Insulin resistance could explain the higher risk of all-cause and CVD-related
14 mortality in the participants with elevated FBG.

15 Elevated TG was found to be the second-largest contributor to CVD-related death (PAF=14%) in
16 NAFLD patients, higher than that of elevated FBG (9.2%). It can be explained by the significant
17 risk effect (elevated TG: HR=1.33 vs. elevated FBG: HR=1.23) and higher prevalence (elevated
18 TG: 47.5% vs. elevated FBG: 36.9%) of elevated TG in NAFLD patients. Serum elevated TG has
19 been suggested to be an indicator of atherogenic dyslipidemia. Together with hyperglycemia,
20 oxidative stress and inflammation activation, dysregulated lipid metabolism could create a pro-
21 atherogenic environment attributing to CVD development²⁹. We also found that the PAFs of
22 elevated BP and elevated TG to all-cause or CVD-related mortality in NAFLD patients declined
23 with age, which could be explained by the decreased HRs of elevated BP and TG with age.

24 This study has some limitations. Firstly, we did not collect hepatitis C infection information, so
25 patients with hepatitis C were not excluded. However, given the relatively low rate of hepatitis C
26 infection in the Chinese population (1%-3%), the estimated association between NAFLD, MetS,
27 and all-cause mortality has little impact³⁰. Secondly, 80% of the participants were male, so the
28 impact of NAFLD and MetS components on all-cause mortality in females and its potential sex
29 differences needs further exploration. Finally, the association between NAFLD and liver-related
30 mortality needs more cases and longer follow-ups to prove.

31 **5. Conclusion**

32 For NAFLD patients combined with more than one MetS component, its excess risk of all-cause
33 and CVD-related mortality decreased with age. Substantial proportions of deaths, especially CVD-
34 related deaths, could be averted if NAFLD patients are controlled under two MetS components,
35 especially controlling elevated blood pressure, fasting glucose, and triglycerides.

36 **Acknowledgement**

1 The authors thank all the members of the Kailuan Study Team for their contribution and the
2 participants who contributed their data.

3 **Funding:** This work was supported by CAMS Innovation Fund for Medical Sciences (CIFMS)(2021-
4 I2M-1-023), the Capital's Funds for Health Improvement and Research (CHF 2022-1-2021), and the
5 Beijing Municipal Administration of Hospitals Incubating Program (PX2022001).

6 **Declarations**

7 **Conflict of interest:** All authors, including Xinyu Zhao, Shuohua Chen, Xiao mo Wang , Zhenyu
8 Wang , Yuanyuan Sun , Chenlu Yang , Mengyi Zheng , Yanhong Wang, Wei Liao, Shouling Wu, and
9 Li Wang, report no conflicts of interest.

10 **Ethical approval and Informed consent:** The Ethics Committees of the Kailuan General Hospital
11 and the Institute of Basic Medical Sciences Chinese Academy of Medical Sciences approved this
12 study. We obtained informed consent from all participants.

13 **Data availability:** The data used or analyzed during this study are included in this article and available
14 from the corresponding author upon reasonable request.

15

16 **Reference**

- 17 1. Younossi ZM, Golabi P, Paik JM, Henry A, Van Dongen C, Henry L. The global epidemiology of
18 nonalcoholic fatty liver disease (NAFLD) and nonalcoholic steatohepatitis (NASH): a
19 systematic review. *Hepatology*. 2023;77:1335-1347. doi: 10.1097/hep.0000000000000004
- 20 2. Mantovani A, Csermely A, Petracca G, Beatrice G, Corey KE, Simon TG, Byrne CD, Targher G.
21 Non-alcoholic fatty liver disease and risk of fatal and non-fatal cardiovascular events: an
22 updated systematic review and meta-analysis. *Lancet Gastroenterol Hepatol*. 2021;6:903-913.
23 doi: 10.1016/S2468-1253(21)00308-3
- 24 3. Adams LA, Anstee QM, Tilg H, Targher G. Non-alcoholic fatty liver disease and its relationship
25 with cardiovascular disease and other extrahepatic diseases. *Gut*. 2017;66:1138-1153. doi:
26 10.1136/gutjnl-2017-313884
- 27 4. Chinnadurai R, Ritchie J, Green D, Kalra PA. Non-alcoholic fatty liver disease and clinical
28 outcomes in chronic kidney disease. *Nephrol Dial Transplant*. 2019;34:449-457. doi:
29 10.1093/ndt/gfx381
- 30 5. Valbusa F, Agnoletti D, Scala L, Grillo C, Arduini P, Bonapace S, Calabria S, Scaturro G,
31 Mantovani A, Zoppini G, et al. Non-alcoholic fatty liver disease and increased risk of all-cause
32 mortality in elderly patients admitted for acute heart failure. *Int J Cardiol*. 2018;265:162-168.
33 doi: 10.1016/j.ijcard.2018.04.129
- 34 6. Hwang Y-C, Ahn H-Y, Park S-W, Park C-Y. Nonalcoholic Fatty Liver Disease Associates With
35 Increased Overall Mortality and Death From Cancer, Cardiovascular Disease, and Liver

- 1 Disease in Women but Not Men. *Clinical gastroenterology and hepatology*. 2018;16:1131-
2 1137.e1135. doi: 10.1016/j.cgh.2017.11.026
- 3 7. Carrillo-Larco RM, Guzman-Vilca WC, Castillo-Cara M, Alvizuri-Gomez C, Alqahtani S, Garcia-
4 Larsen V. Phenotypes of non-alcoholic fatty liver disease (NAFLD) and all-cause mortality:
5 unsupervised machine learning analysis of NHANES III. *BMJ Open*. 2022;12:e067203. doi:
6 10.1136/bmjopen-2022-067203
- 7 8. van Kleef LA, Sonneveld MJ, Kavousi M, Ikram MA, de Man RA, de Kneegt RJ. Fatty liver disease
8 is not associated with increased mortality in the elderly: A prospective cohort study.
9 *Hepatology*. 2023;77:585-593. doi: 10.1002/hep.32635
- 10 9. Wild SH, Walker JJ, Morling JR, McAllister DA, Colhoun HM, Farran B, McGurnaghan S,
11 McCrimmon R, Read SH, Sattar N, et al. Cardiovascular Disease, Cancer, and Mortality Among
12 People With Type 2 Diabetes and Alcoholic or Nonalcoholic Fatty Liver Disease Hospital
13 Admission. *Diabetes Care*. 2018;41:341-347. doi: 10.2337/dc17-1590
- 14 10. Keskin M, Hayiroğlu Mİ, Uzun AO, Güvenç TS, Şahin S, Kozan Ö. Effect of Nonalcoholic Fatty
15 Liver Disease on In-Hospital and Long-Term Outcomes in Patients With ST-Segment Elevation
16 Myocardial Infarction. *Am J Cardiol*. 2017;120:1720-1726. doi:
17 10.1016/j.amjcard.2017.07.107
- 18 11. Pegah, Golabi, Munkhzul, Otgonsuren, Leyla, Avila d, Mehmet, Sayiner, Nila, Rafiq.
19 Components of metabolic syndrome increase the risk of mortality in nonalcoholic fatty liver
20 disease (NAFLD). *Medicine*. 2018:e0214.
- 21 12. Wang C, Yuan Y, Zheng M, Pan A, Wang M, Zhao M, Li Y, Yao S, Chen S, Wu S, et al. Association
22 of Age of Onset of Hypertension With Cardiovascular Diseases and Mortality. *J Am Coll*
23 *Cardiol*. 2020;75:2921-2930. doi: 10.1016/j.jacc.2020.04.038
- 24 13. Wang Z. Age-dependent decline of association between obesity and mortality: a systematic
25 review and meta-analysis. *Obesity research & clinical practice*. 2015;9:1-11. doi:
26 10.1016/j.orcp.2014.01.006
- 27 14. Sattar N, Rawshani A, Franzén S, Rawshani A, Svensson AM, Rosengren A, McGuire DK,
28 Eliasson B, Gudbjörnsdóttir S. Age at Diagnosis of Type 2 Diabetes Mellitus and Associations
29 With Cardiovascular and Mortality Risks. *Circulation*. 2019;139:2228-2237. doi:
30 10.1161/circulationaha.118.037885
- 31 15. Wang X, Wu S, Yuan X, Chen S, Fu Q, Sun Y, Lan Y, Hu S, Wang Y, Lu Y, et al. Metabolic
32 Dysfunction-associated Fatty Liver Disease and Mortality Among Chinese Adults: a
33 Prospective Cohort Study. *J Clin Endocrinol Metab*. 2022;107:e745-e755. doi:
34 10.1210/clinem/dgab644
- 35 16. Alberti KGMM, Eckel RH, Grundy SM, Zimmet PZ, Cleeman JI, Donato KA, Fruchart J-C, James
36 WPT, Loria CM, Smith SC. Harmonizing the Metabolic Syndrome. *Circulation*. 2009;120:1640-
37 1645. doi: doi:10.1161/CIRCULATIONAHA.109.192644
- 38 17. Lazo M, Hernaez R, Bonekamp S, Kamel IR, Brancati FL, Guallar E, Clark JM. Non-alcoholic
39 fatty liver disease and mortality among US adults: prospective cohort study. *Bmj*.
40 2011;343:d6891. doi: 10.1136/bmj.d6891
- 41 18. Asrani SK, Larson JJ, Yawn B, Therneau TM, Kim WR. Underestimation of liver-related
42 mortality in the United States. *Gastroenterology*. 2013;145:375-382.e371-372. doi:
43 10.1053/j.gastro.2013.04.005
- 44 19. Census Office of The State Council PaESDotNBoS. *Tabulation on the population census of the*

- 1 *people's republic of China by county 2010*. China Statistics Press; 2012.
- 2 20. Hernaez R, Lazo M, Bonekamp S, Kamel IR, Brancati FL, Guallar E, Clark JM. Diagnostic
3 accuracy and reliability of ultrasonography for the detection of fatty liver: A meta-analysis.
4 *Hepatology*. 2011;54:1082-1090.
- 5 21. Charatcharoenwitthaya P, Lindor KD. Role of radiologic modalities in the management of non-
6 alcoholic steatohepatitis. *Clinics in Liver Disease*. 2007;11:37-54.
- 7 22. Spiegelman D, Hertzmark E, Wand HC. Point and interval estimates of partial population
8 attributable risks in cohort studies: examples and software. *Cancer Causes Control*.
9 2007;18:571-579. doi: 10.1007/s10552-006-0090-y
- 10 23. Paik JM, Deshpande R, Golabi P, Younossi I, Henry L, Younossi ZM. The impact of modifiable
11 risk factors on the long-term outcomes of non-alcoholic fatty liver disease. *Alimentary
12 pharmacology & therapeutics*. 2020;51:291-304. doi: 10.1111/apt.15580
- 13 24. Kanwal F, Kramer JR, Li L, Dai J, Natarajan Y, Yu X, Asch SM, El-Serag HB. Effect of Metabolic
14 Traits on the Risk of Cirrhosis and Hepatocellular Cancer in Nonalcoholic Fatty Liver Disease.
15 *Hepatology*. 2020;71:808-819. doi: 10.1002/hep.31014
- 16 25. Ciardullo S, Monti T, Sala I, Grassi G, Mancina G, Perseghin G. Nonalcoholic Fatty Liver Disease
17 and Advanced Fibrosis in US Adults Across Blood Pressure Categories. *Hypertension*.
18 2020;76:562-568. doi: 10.1161/HYPERTENSIONAHA.120.15220
- 19 26. Lan Y, Lu Y, Li J, Hu S, Chen S, Wang Y, Yuan X, Liu H, Wang X, Wu S, et al. Outcomes of subjects
20 who are lean, overweight or obese with nonalcoholic fatty liver disease: A cohort study in
21 China. *Hepatol Commun*. 2022;6:3393-3405. doi: 10.1002/hep4.2081
- 22 27. Alexopoulos AS, Crowley MJ, Wang Y, Moylan CA, Guy CD, Henao R, Piercy DL, Seymour KA,
23 Sudan R, Portenier DD, et al. Glycemic Control Predicts Severity of Hepatocyte Ballooning and
24 Hepatic Fibrosis in Nonalcoholic Fatty Liver Disease. *Hepatology*. 2021;74:1220-1233. doi:
25 10.1002/hep.31806
- 26 28. Zoppini G, Fedeli U, Gennaro N, Saugo M, Targher G, Bonora E. Mortality from chronic liver
27 diseases in diabetes. *Am J Gastroenterol*. 2014;109:1020-1025. doi: 10.1038/ajg.2014.132
- 28 29. Deprince A, Haas JT, Staels B. Dysregulated lipid metabolism links NAFLD to cardiovascular
29 disease. *Mol Metab*. 2020;42:101092. doi: 10.1016/j.molmet.2020.101092
- 30 30. de Martel C, Maucort-Boulch D, Plummer M, Franceschi S. World-wide relative contribution
31 of hepatitis B and C viruses in hepatocellular carcinoma. *Hepatology*. 2015;62:1190-1200.
32 doi: 10.1002/hep.27969

33
34 **Figure legends:**

35
36 **Figure 1. The cumulative all-cause, CVD-, and liver-related mortality rates of participants**
37 **with different numbers of metabolic syndrome components**

38
39 **Figure 2. The excess risk of all-cause, CVD-, and liver-related mortality among patients with**
40 **NAFLD vs. non-NAFLD according to the number of metabolic components.**

41 Adjusted HRs: Adjusted for sex, education, smoking, physical activity, salt intake, and alanine
42 aminotransferase.

43

Table 1. Baseline characteristics of subjects with and without NAFLD.

Variable	Non-NAFLD	NAFLD				<i>p</i> -value
		G ₀₋₁	G ₂	G ₃	G ₄₋₅	
N	71789	8115	10229	9260	4780	
Age, years	49.1±14.6	48.5±12.9	51.6±12.7	53.4±12.1	54.3±11.5	<0.001
Male	52865(73.6)	6403(78.9)	8172(79.9)	7211(77.9)	3485(72.9)	<0.001
Education						<0.001
Primary school or below	6355(8.9)	541(6.7)	897(8.8)	958(10.3)	555(11.6)	
Junior high school	47265(65.8)	5437(67.0)	7129(69.7)	6509(70.3)	3341(69.9)	
Senior high school	10750(15.0)	1243(15.3)	1412(13.8)	1214(13.1)	589(12.3)	
College and above	7419(10.3)	894(11.0)	791(7.7)	579(6.3)	295(6.2)	
Physical activity level*						0.003
Inactive	8765(12.2)	1002(12.3)	1202(11.8)	1044(11.3)	534(11.2)	
Moderate	53227(74.1)	6127(75.5)	7623(74.5)	6843(73.9)	3397(71.1)	
Frequently	9797(13.6)	986(12.2)	1404(13.7)	1373(14.8)	849(17.8)	
Smoking status						<0.001
Never	52061(72.5)	5692(70.1)	7150(69.9)	6484(70.0)	3367(70.4)	
Past	2923(4.1)	341(4.2)	584(5.7)	552(6.0)	270(5.6)	
Current	16805(23.4)	2082(25.7)	2495(24.4)	2224(24.0)	1143(23.9)	
Salt intake						<0.001
Low (<6g/d)	7391(10.3)	790(9.7)	982(9.6)	905(9.8)	484(10.1)	
Medium (6-11g/d)	58454(81.4)	6627(81.7)	8200(80.2)	7429(80.2)	3731(78.1)	
High (>11g/d)	5944(8.3)	698(8.6)	1047(10.2)	926(10.0)	565(11.8)	
ALT (U/L)						<0.001
<40	69126(96.3)	7279(89.7)	8917(87.2)	7898(85.3)	3943(82.5)	
40-79	2246(3.1)	713(8.8)	1099(10.7)	1138(12.3)	697(14.6)	
80-	417(0.6)	123(1.5)	213(2.1)	224(2.4)	140(2.9)	

Data are presented as mean (standard deviation) or number (percentage).

*We defined physical activity as inactive, moderately active, and active regarding the frequency of physical activity (≥ 20 min/time) during leisure time with responses of never, sometimes, and \geq four times/week, respectively.

Abbreviations: NAFLD: Non-alcoholic fatty liver disease; G₀₋₁, G₂, G₃, G₄₋₅: with 0-1, 2, 3, and 4-5 metabolic syndrome components, respectively; ALT, aminotransferase.

Table 2. Standardized prevalence of metabolic syndrome components stratified by NAFLD.

MetS components	non-NAFLD		NAFLD		<i>P</i>
	n/N	Standardized prevalence (%)	n/N	Standardized prevalence (%)	
Total population					
Elevated FBG	16935/71789	20.0	13166/32384	36.9	<0.001
Elevated BP	27109/71789	30.7	19147/32384	50.9	<0.001
Abdominal Obesity	21063/71789	27.3	20889/32384	62.7	<0.001
Elevated TG	14245/71789	18.4	16184/32384	47.5	<0.001
Reduced HDL	7821/71789	15.1	4738/32384	21.8	<0.001
G ₀₋₁	46167/71789	68.2	8129/32384	29.0	<0.001
G ₂	16746/71789	21.0	10197/32384	30.5	<0.001
G ₃	7054/71789	8.5	9285/32384	26.5	<0.001
G ₄₋₅	1822/71789	2.3	4773/32384	14.0	<0.001

Standardized prevalence: based on the direct standardization method using the Chinese 2010 census population as the reference; Elevated FBG: administration of anti-diabetes drugs or fasting blood glucose ≥ 5.6 mmol/L; elevated BP: administration of anti-hypertensive drugs and/or systolic blood pressure (SBP) ≥ 140 mmHg or diastolic blood pressure (DBP) ≥ 90 mmHg; abdominal obesity: waist circumference > 90 cm (male) or > 85 cm (female); elevated TG: TG ≥ 1.7 mmol/L; reduced HDL: HDL < 1.0 mmol/L (male) or < 1.3 mmol/L (female). Abbreviations: NAFLD: Non-alcoholic fatty liver disease; MetS: metabolic syndrome; FBG: fasting blood glucose; BP: blood pressure; TG: triglycerides; HDL: high-density lipoprotein cholesterol; G₀₋₁, G₂, G₃, G₄₋₅: with 0-1, 2, 3, and 4-5 metabolic syndrome components, respectively.

Table 3. Adjusted hazard ratios and population-attributable fractions (95% CI) of metabolic components to all-cause mortality by NAFLD status

MetS components	NAFLD		non-NAFLD	
	HR (95%CI)	PAF (95%CI)	HR (95%CI)	PAF (95%CI)
Elevated FBG				
All age groups	1.36(1.27-1.46)	13.4(10.2-16.6)	1.29(1.23-1.36)	7.5(5.8-9.2)
18-49 years old	1.39(1.12-1.72)	12.7(3.6-21.5)	1.61(1.34-1.94)	11.8(6.4-17.2)
50-69 years old	1.43(1.30-1.56)	16.0(11.7-20.2)	1.39(1.29-1.49)	10.3(7.7-0.12.9)
70 years old or older	1.22(1.07-1.38)	8.5(2.8-14.1)	1.10(1.01-1.20)	2.7(0.2-5.1)
Elevated BP				
All age groups	1.49(1.38-1.62)	24.7(20.1-29.3)	1.39(1.32-1.47)	17.0(14.3-19.7)
18-49 years old	1.66(1.32-2.09)	26.2(14.7-37.1)	1.66(1.40-1.98)	17.6(10.7-24.4)
50-69 years old	1.60(1.44-1.77)	28.3(22.4-34.0)	1.56(1.45-1.68)	21.7(18.2-25.2)
70 years old or older	1.21(1.04-1.40)	13.0(3.3-22.6)	1.12(1.03-1.21)	6.8(2.0-11.5)
Abdominal obesity				
All age groups	1.07(0.99-1.16)	5.0(0.0-10.3)	1.07(1.01-1.12)	2.4(0.4-4.4)
18-49 years old	1.00(0.80-1.24)	-	1.26(1.05-1.51)	6.5(0.8-12.1)
50-69 years old	1.17(1.05-1.29)	10.3(3.6-16.9)	1.11(1.03-1.19)	3.8(1.0-6.6)
70 years old or older	0.93(0.80-1.08)	-	0.97(0.90-1.05)	-
Reduced HDL				
All age groups	0.80(0.71-0.89)	-	0.89(0.81-0.98)	-
18-49 years old	1.04(0.75-1.45)	0.5(0.0-4.5)	0.61(0.44-0.85)	-
50-69 years old	0.70(0.60-0.82)	-	0.91(0.80-1.05)	-
70 years old or older	0.93(0.75-1.14)	-	1.02(0.87-1.20)	0.2(0.0-1.2)
Elevated TG				
All age groups	1.08(1.01-1.16)	3.9(0.4-7.3)	1.05(0.99-1.12)	1.1(0.0-2.4)
18-49 years old	1.09(0.87-1.35)	4.5(7.5-16.4)	1.25(1.03-1.51)	5.3(0.0-10.7)
50-69 years old	1.06(0.97-1.16)	3.1(0.0-7.8)	1.07(0.99-1.16)	1.7(0.0-3.8)
70 years old or older	1.11(0.98-1.26)	4.6(0.0-10.3)	0.94(0.85-1.04)	-
≥2 MetS components				
All age groups	1.51(1.37-1.66)	28.5(22.5-34.2)	1.32(1.26-1.39)	12.5(10.2-14.7)
18-49 years old	1.38(1.08-1.78)	21.2(5.5-35.8)	1.75(1.48-2.07)	18.4(12.3-24.5)
50-69 years old	1.60(1.41-1.82)	32.3(24.5-39.6)	1.51(1.41-1.62)	18.3(15.1-21.4)
70 years old or older	1.35(1.13-1.61)	22.0(10.0-33.5)	1.04(0.96-1.12)	1.7(2.1-5.5)

Elevated FBG: administration of anti-diabetes drugs or fasting blood glucose ≥ 5.6 mmol/L; elevated BP: a dministration of anti-hypertensive drugs or systolic blood pressure(SBP) ≥ 140 mmHg or diastolic blood pressure(DBP) ≥ 90 mmHg; abdominal obesity: waist circumference > 90 cm(male) or > 85 cm(female); elevated TG: TG ≥ 1.7 mmol/L; reduced HDL: HDL < 1.0 mmol/L(male) or < 1.3 mmol/L(female).

Abbreviations: NAFLD: Non-alcoholic fatty liver disease; MetS: metabolic syndrome; FBG: fasting blood glucose; BP: blood pressure; TG: triglycerides; HDL: high-density lipoprotein cholesterol; G₀₋₁, G₂, G₃, G₄₋₅: with 0-1, 2, 3, and 4-5 metabolic syndrome components, respectively.

Note: The individual PAF cannot be computed for health metrics with adjusted HRs < 1.0. The negative values of the lower 95% CI in PAF were rounded to zero. HRs of each metabolism syndrome were estimated after adjusting age, sex, education, smoke status, physical activity, salt intake, ALT level, and the other 4 MetS components. HRs of the MetS components were calculated after adjusting age, sex, education, smoke status, physical activity, salt intake, and aminotransferase level. In the subgroup analyses by age, age was not adjusted.

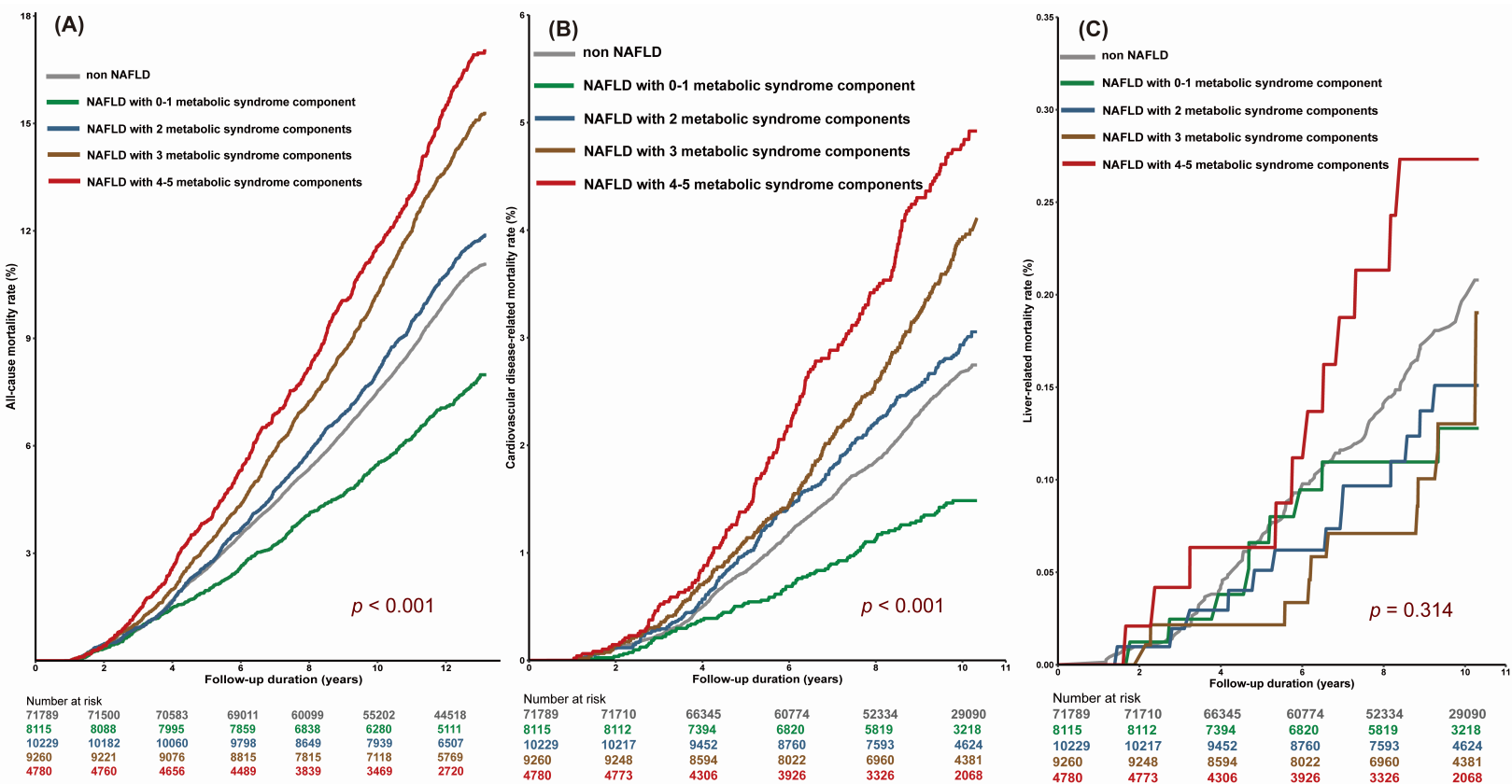
Table 4. Adjusted hazard ratios and population-attributable fractions (95% CI) of metabolic components to CVD-related mortality by NAFLD status.

MetS components	NAFLD		non-NAFLD	
	HR (95%CI)	PAF (95%CI)	HR (95%CI)	PAF (95%CI)
Elevated FBG				
All age groups	1.23(1.07-1.41)	9.2(3.0-15.4)	1.33(1.20-1.48)	8.5(5.1-12.0)
18-49 years old	1.18(0.75-1.85)	6.4(0.0-24.5)	2.04(1.36-3.05)	18.9(5.2-32.0)
50-69 years old	1.30(1.09-1.56)	12.2(3.7-20.5)	1.51(1.31-1.76)	13.6(8.1-19.0)
70 years old or older	1.08(0.85-1.37)	3.4(0.0-14.0)	1.05(0.89-1.23)	1.3(0.0-5.8)
Elevated BP				
All age groups	1.94(1.63-2.30)	38.6(29.9-46.8)	1.65(1.49-1.84)	25.9(20.5-31.1)
18-49 years old	2.48(1.46-4.19)	44.9(20.4-64.1)	1.73(1.17-2.57)	19.9(3.3-35.5)
50-69 years old	2.21(1.76-2.78)	44.6(33.5-54.4)	2.25(1.92-2.63)	38.4(31.2-45.1)
70 years old or older	1.37(1.03-1.82)	20.9(2.7-37.9)	1.14(0.98-1.33)	8.0(0.0-17.0)
Abdominal obesity				
All age groups	1.09(0.93-1.27)	6.0(0.0-16.7)	1.08(0.98-1.20)	3.0(0.0-7.1)
18-49 years old	0.90(0.57-1.43)	-	1.44(0.96-2.17)	11.0(0.0-24.5)
50-69 years old	1.18(0.97-1.45)	11.2(0.0-24.3)	1.11(0.96-1.29)	4.2(0.0-10.1)
70 years old or older	1.00(0.75-1.33)	-	0.99(0.86-1.15)	-
Reduced HDL				
All age groups	0.76(0.60-0.97)	-	0.80(0.65-0.99)	-
18-49 years old	0.71(0.31-1.64)	-	0.52(0.23-1.19)	-
50-69 years old	0.71(0.52-0.96)	-	0.76(0.56-1.03)	-
70 years old or older	0.88(0.59-1.33)	-	0.98(0.72-1.32)	-
Elevated TG				
All age groups	1.33(1.16-1.53)	14.0(7.1-20.8)	1.13(1.01-1.27)	2.7(0.0-5.5)
18-49 years old	1.58(0.99-2.55)	24.0(0.0-47.4)	1.56(1.02-2.37)	11.7(0.0-25.6)
50-69 years old	1.34(1.12-1.61)	15.0(5.6-24.3)	1.14(0.96-1.34)	3.2(0.0-7.6)
70 years old or older	1.24(0.98-1.57)	9.7(0.0-20.4)	1.03(0.85-1.24)	0.5(0.0-4.0)
≥2 MetS components				
All age groups	1.97(1.60-2.43)	43.4(32.3-53.3)	1.43(1.29-1.58)	16.3(11.7-20.8)
18-49 years old	2.36(1.27-4.38)	48.7(17.2-71.2)	2.30(1.57-3.39)	28.3(13.6-41.8)
50-69 years old	2.16(1.62-2.87)	47.9(33.5-60.1)	1.78(1.54-2.06)	25.6(19.1-31.8)
70 years old or older	1.51(1.06-2.15)	29.4(0.0-49.5)	1.05(0.91-1.21)	2.3(0.0-9.4)

Elevated FBG: administration of anti-diabetes drugs or fasting blood glucose ≥ 5.6 mmol/L; elevated BP: administration of anti-hypertensive drugs and/or systolic blood pressure(SBP) ≥ 140 mmHg or diastolic blood pressure(DBP) ≥ 90 mmHg; abdominal obesity: waist circumference > 90 cm(male) or > 85 cm(female); elevated TG: TG ≥ 1.7 mmol/L; reduced HDL: HDL < 1.0 mmol/L(male) or < 1.3 mmol/L(female).

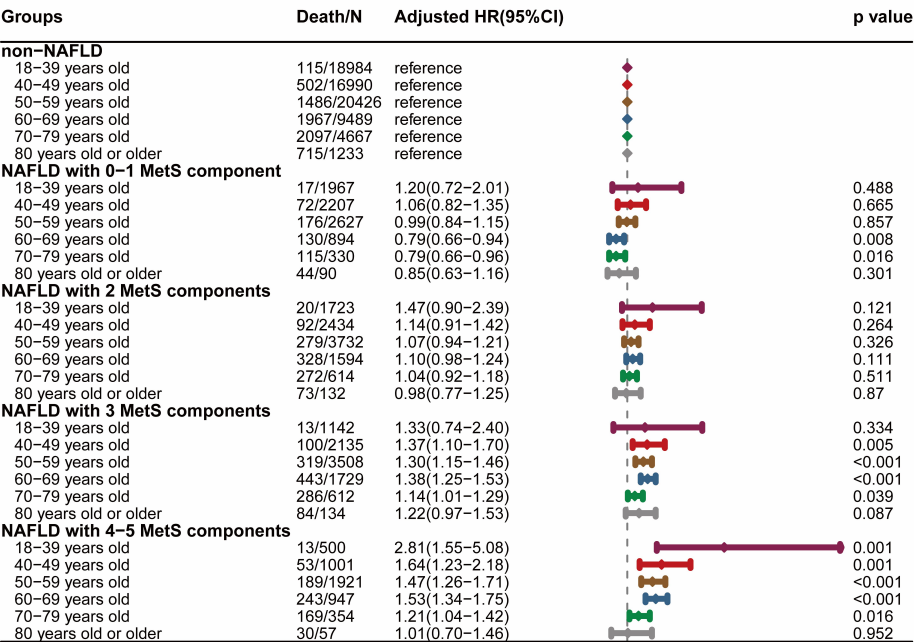
Abbreviations: CVD: cerebrovascular disease; NAFLD: Non-alcoholic fatty liver disease; MetS: metabolic syndrome; FBG: fasting blood glucose; BP: blood pressure; TG: triglycerides; HDL: high-density lipoprotein cholesterol; G₀₋₁, G₂, G₃, G₄₋₅: with 0-1, 2, 3, and 4-5 metabolic syndrome components, respectively.

Note: The individual PAF cannot be computed for health metrics with adjusted HRs < 1.0 . The negative values of the lower 95% CI in PAF were rounded to zero. HRs of each metabolism syndrome were estimated after adjusting for age, sex, education, smoke status, physical activity, salt intake, ALT level, and the other 4 MetS components. HRs of MetS components were calculated after adjusting age, sex, education, smoke status, physical activity, salt intake, and aminotransferase level. In the subgroup analyses by age, age was not adjusted.



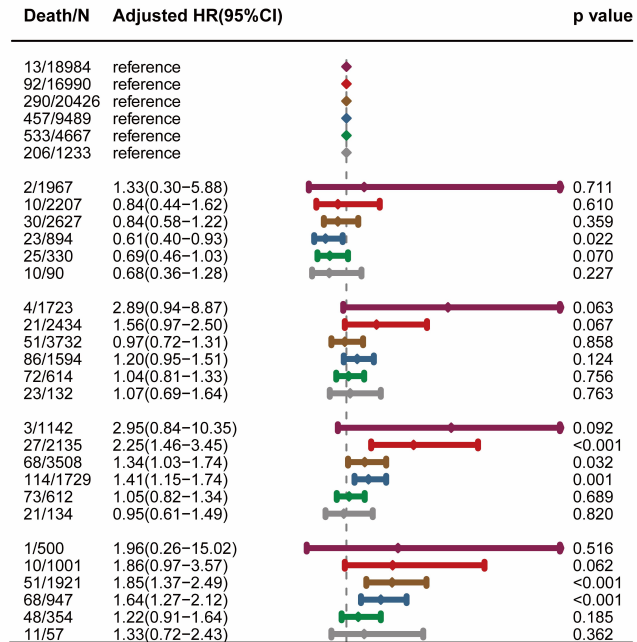
A

All-cause mortality



B

CVD-related mortality



C

Liver-related mortality

