

Device measured sedentary behaviour, sleep, light and moderate-vigorous physical activity and cardio-metabolic health: A compositional individual participant data analysis in the ProPASS consortium

Blodgett JM PhD¹, Ahmadi MN PhD², Atkin AJ PhD³, Chastin S PhD⁵, Chan HW PhD⁶, Suorsa K PhD^{7,8}, Bakker EA PhD^{9,10}, Hettiarachchi P PhD¹¹, Johansson PJ PhD^{11,12}, Sherar LB PhD¹³, Rangul V PhD¹⁴, Pulsford RM PhD¹⁵, Mishra G PhD⁶, Eijsvogel TMH PhD¹⁰, Stenholm S PhD^{7,8}, Hughes AD PhD^{17,18}, Teixeira-Pinto AM PhD¹⁹, Eklund U PhD^{20,21}, Lee IM ScD^{22,23}, ProPASS collaboration²⁴, Holtermann A PhD²⁵, Koster A PhD²⁶, Stamatakis E PhD^{2*}, Hamer M PhD^{1*}

***Joint senior authors**

¹ Institute of Sport Exercise and Health, Division of Surgery and Interventional Sciences, UCL, United Kingdom.

² Charles Perkins Centre, University of Sydney, New South Wales, Australia.

³ School of Health Sciences and Norwich Epidemiology Centre, University of East Anglia, Norwich, UK

⁴ School of Health and Life Science Glasgow Caledonian University, Glasgow UK

⁵ Department of Movement and Sport Sciences, Ghent University, Ghent, Belgium

⁶ School of Public Health, The University of Queensland, Brisbane, Queensland, Australia

⁷ Department of Public Health, University of Turku and Turku University Hospital, Turku, Finland

⁸ Centre for Population Health Research, University of Turku and Turku University Hospital; Turku, Finland

⁹ Department of Physical Education and Sports, Faculty of Sport Sciences, Sport and Health University Research Institute (iMUDS), University of Granada, Granada, Spain;

¹⁰ Department of Medical BioSciences, Exercise Physiology research group, Radboud University Medical Center, Nijmegen, the Netherlands

¹¹ Occupational and Environmental Medicine, Department of Medical Sciences, Uppsala University, Sweden

¹² Occupational and Environmental Medicine, Uppsala University Hospital, Uppsala, Sweden

¹³ School of Sport, Exercise and Health Sciences, Loughborough University, United Kingdom

¹⁴ HUNT Research Centre, Department of Public Health and Nursing, Faculty of Medicine and Health Sciences, Norwegian University of Science and Technology (NTNU), Norway

¹⁵ Faculty of Health and Life Sciences, University of Exeter, United Kingdom

¹⁶ MRC Unit for Lifelong Health and Ageing, UCL Institute of Cardiovascular Science, UCL, United Kingdom.

¹⁷ UCL BHF Research Accelerator, University College London, London, UK

¹⁸ University College London Hospitals NIHR Biomedical Research Centre, London, UK

¹⁹ School of Public Health, Faculty of Medicine and Health, University of Sydney, Australia

²⁰ Department of Sport Medicine, Norwegian School of Sport Sciences, Oslo, Norway

²¹ Department of Chronic Diseases, Norwegian Public Health Institute, Oslo, Norway

²² Division of Preventive Medicine, Brigham and Women's Hospital and Harvard Medical School, Boston, Massachusetts, USA

²³ Department of Epidemiology, Harvard TH Chan School of Public Health, Boston, Massachusetts, USA

²⁴ Names & affiliations of ProPASS collaborators are provided in Author Information section.

²⁵ National Research Centre for the Working Environment, Copenhagen, Denmark

²⁶ Department of Social Medicine, CAPHRI Care and Public Health Research Institute, Maastricht University, Maastricht, the Netherlands.

ABSTRACT

Background/Aims: Physical inactivity, sedentary behaviour (SB) and inadequate sleep are key behavioural risk factors of cardiometabolic diseases; each is mainly considered in isolation. The study aim was to investigate associations of five movement behaviour compositions with adiposity and cardiometabolic biomarkers.

Methods: Cross-sectional data from 15,246 participants from the Prospective Physical Activity, Sitting and Sleep consortium (ProPASS) were analysed. Time spent in sleep, SB, standing, light-intensity physical activity (LIPA) and moderate-vigorous physical activity (MVPA) made up the composition. Outcomes included BMI, waist circumference, HDL cholesterol, total:HDL cholesterol ratio, triglycerides and HbA1c. Compositional linear regression examined associations between compositions and each outcome, including modelling reallocation of time between behaviours.

Results: The average daily composition of the sample (age: 53.7 ± 9.7 years; 54.7% female) was 7.7hrs sleeping, 10.4hrs sedentary, 3.1hrs standing, 1.5hrs LIPA and 1.3hrs MVPA. A greater proportion of MVPA time and smaller proportion of SB time was associated with better outcomes. Reallocating time from SB, standing, LIPA or sleep into MVPA had the largest theoretical improvement across all outcomes. For example, replacing 30min of SB, sleep, standing or LIPA with MVPA was associated with -0.63 (95% CI -0.48, -0.79), -0.43 (-0.25, -0.59), -0.40 (-0.25, -0.56) and -0.15 (0.05, -0.34) kg/m² lower BMI, respectively. A larger proportion of standing time was beneficial for outcomes; sleep had a detrimental association when replacing LIPA or MVPA and positive association when replacing SB. The minimal displacement into MVPA for improved cardiometabolic health ranged from 3.8 (HbA1c) to 12.7 (triglycerides) min/day.

Conclusions: Compositional data analyses revealed a distinct hierarchy of behaviours. MVPA demonstrated the strongest, most time-efficient protective associations with cardiometabolic outcomes. Theoretical benefits from reallocating SB into sleep, standing or LIPA required substantial changes in daily activity.

1 INTRODUCTION

2 Cardiometabolic diseases - including cardiovascular disease (CVD), obesity and
3 diabetes mellitus - are the leading cause of mortality worldwide¹. The global burden of these
4 diseases has risen over the past three decades, with annual CVD-related deaths increasing
5 from 12.1 to 18.6 million, while diabetes-related deaths have doubled to 1.25 million^{2,3}.
6 Concerningly, these trends are forecasted to continue^{4,5}. Positive engagement in health
7 behaviours, such as physical activity, reducing sedentary behaviour, and ensuring sufficient
8 quality and quantity of sleep, can help prevent cardiometabolic disease^{1,6}, yet are largely
9 underutilised.

10

11 Regular moderate-vigorous physical activity (MVPA) has established cardiometabolic
12 benefits via direct inflammatory, metabolic or cardiovascular mechanisms^{7,8}. However, the
13 effects of light intensity physical activity (LIPA) are less clear⁹. This may be due to poor
14 ascertainment of LIPA using self-reported questionnaires¹⁰ or threshold-based approaches of
15 hip or wrist-based accelerometry which fail to distinguish between standing and subtle
16 ambulatory activities¹¹. There is a strong argument against classifying passive standing as
17 LIPA, given the very low energy expenditure involved¹². Finally, there is consistent evidence
18 of associations between sedentary behaviour (SB) and increased cardiometabolic disease
19 risk¹³, while the role of sleep is less clear¹⁴.

20

21 Time spent in these daily movement behaviours (sleep, SB, standing, LIPA, MVPA)
22 form a 24-hour composition, with any change in one behaviour resulting in a corresponding
23 increase or decrease in another. However, controlled exercise trials and observational studies
24 have mainly examined each behaviour in isolation^{9,14,15}. Assumptions that these behaviours
25 are independent and that the 24-hr day is infinite can lead to potentially imprecise estimates

1 that cannot be translated to real-world interventions or guidelines. Treating these data as a
2 complete 24-hour day using compositional data analysis can overcome this limitation¹⁶.
3 Previous evidence of movement compositions have suggested that more time in MVPA and
4 less time in SB are associated with favourable health outcomes¹⁷⁻¹⁹. However, these studies
5 have largely relied upon small sample sizes, considered compositions with awake time only
6 or incorporated self-reported sleep measures, and were unable to differentiate between
7 sedentary and standing activity (i.e. due to wrist or hip worn accelerometers).

8
9 The majority of current public health guidelines (i.e. WHO, USA, UK) focus solely
10 on physical activity and sedentary behaviour^{20,21}. There is a clear need for better empirical
11 evidence to support “24-hour” guidelines²² and encompass recommendations on daily sleep,
12 SB and activity intensity volume. The Prospective Physical Activity, Sitting, and Sleep
13 consortium (ProPASS) resource²³ overcomes major limitations of previous literature¹⁷⁻¹⁹ by
14 using harmonized individual-level data from six studies with thigh-worn accelerometry and
15 a unified approach to derive 24-hour movement behaviours. Our aim was to examine the
16 associations between compositions of movement behaviours (defined as time spent in sleep,
17 SB, standing, LIPA, MVPA) and six cardiometabolic outcomes. Using the mean sample
18 behavioural profile, we also estimated the impact of reallocating time from one behaviour to
19 another.

20

21 **METHODS**

22

23 *Sample*

24 ProPASS is an international research collaboration platform consisting of
25 observational cohort studies with thigh-worn accelerometry²³. We used cross-sectional data

1 from six participating studies: The Maastricht Study (TMS; Netherlands, n=7515)²⁴, the 1970
2 British Birth Cohort Study (BCS70; United Kingdom, n=5263)²⁵, the Australian Longitudinal
3 Study on Women's Health (ALSWH; Australia, n=950)²⁶, the Danish PHysical ACTivity
4 cohort with Objective measurements cohort (DPhacto; Denmark, n=780)²⁷, the Nijmegen
5 Exercise Study (NES; Netherlands, n=537)²⁸ and the Finnish Retirement and Aging Study
6 (FIREA; Finland, n=253)²⁹. Ethical approval and informed consent were provided for each
7 cohort; study details are available elsewhere²³⁻²⁹. Device-measured activity data were
8 available for 15,271 participants.

9

10 ***Movement behaviours***

11 All cohorts collected movement behaviour data using a 7-day, 24-hour/day thigh-
12 worn accelerometer protocol; four studies used ActivPAL3/4 devices (BCS70, TMS,
13 ALSWH, NES;), one used Axivity devices (FIREA) and one used ActiGraph devices
14 (DPhacto). Raw accelerometer data was centrally processed using previously validated
15 software, ActiPASS v 1.32, which implements algorithms for non-wear, sleep detection and
16 validated activity across different thigh-worn accelerometer brands^{11,30-33}. ActiPASS
17 identifies behaviours in 2-second windows with a 50% overlap, resulting in a resolution of 1-
18 second epochs. We classified five movement behaviours: sleep, SB (sitting or lying episodes
19 outside of sleep intervals), standing, LIPA (ambulatory movement without purposeful
20 walking, walking with cadence <100steps/minutes) and MVPA (running, cycling, inclined
21 stepping, walking with cadence ≥ 100 steps/minute)^{11,30-34}. Participants with at least one valid
22 wear day (≥ 20 hours of wear/day)²⁵, ≥ 1 period of walking detection and >0 minutes of sleep
23 were included in analyses. Time spent in each behaviour was calculated as average
24 minutes/day.

25

1 ***Cardiometabolic outcomes***

2 Two markers of adiposity were assessed by trained nurses or researchers during home
3 or clinic-based visits: *body mass index* (BMI, kg/m²; calculated from height and weight) and
4 *waist circumference* (cm). Cardiometabolic blood biomarkers were measured in five studies
5 (not available in DPhacto) and included: *high-density lipoprotein cholesterol* (HDL;
6 mmol/L), *total:HDL cholesterol ratio*, *triglycerides* (mmol/L) and *HbA1c* (glycated
7 hemoglobin, mmol/mol; measured in ALSWH, BCS70 and TMS only). Full details of
8 ascertainment of outcomes by study, including assay details, are provided in Supplementary
9 Tables 1 and 2.

10

11 ***Covariates***

12 Covariates were selected a priori based on data availability and known associations
13 with movement behaviours and cardiovascular outcomes¹⁷⁻¹⁹. The following covariates were
14 collected in all cohorts: *age* (years), *sex* (male, female), *smoking status* (non-smoker, current
15 smoker), *alcohol consumption* (tertiles based on self-reported weekly consumption), *self-*
16 *rated health* (five-point Likert scale), *lipid-modifying, hypertensive or glucose-lowering*
17 *medications* (yes, no) and *history of cardiovascular disease* (CVD; yes, no). Additionally, a
18 subset of cohorts collected data on *mobility limitations* (n=4 cohorts; continuous score from 0
19 to 100 of the SF-36 10-item physical function subscale, where 0 indicates poor mobility and
20 100 indicates no mobility problems), *occupational class* (n=5 cohorts; not working, low,
21 intermediate, high occupational class) and *education* (n=4 cohorts; none or lower than high
22 school, high school qualifications/typically attained at age 16y, further education
23 qualifications/typically attained at age 16-18y, university degree and higher/typically 18+y).
24 Full details of ascertainment and subsequent harmonisation of covariates in each cohort are
25 provided in Supplementary Table 1.

1

2 *Statistical analyses*

3 We define a composition as the average daily time spent in each of SB, sleep,
4 standing, LIPA and MVPA behaviours. First, average daily times are normalised such that
5 the sum of all behaviours is equivalent to 1440 minutes (24 hours) to account for any non-
6 wear time. The 24-hour time composition is then expressed as a set of four isometric log-ratio
7 (*ilr*) coordinates^{16,35}, capturing information and variability of the relative time spent in each
8 of the five behaviours. Therefore, we used the following set of *ilr* coordinates to capture time
9 spent in all five behaviours: 1) SB compared to sleep, standing, LIPA and MVPA; 2) sleep
10 compared to standing, LIPA and MVPA; 3) standing compared to LIPA and MVPA; 4) LIPA
11 compared to MVPA. Inclusion of all four coordinates in a single regression model allows the
12 relation between all behaviours to be captured. We pivoted the data to create five sets of
13 coordinates; each set permits investigation of the first coordinate (i.e., the behaviour of
14 interest relative to time spent in the other four behaviours)³⁵.

15

16 Using these coordinates, we conducted a one-stage individual participant meta-
17 analysis using linear regression for each outcome. Coefficients indicate the change in
18 outcome (e.g., kg/m² or mmol/L) for each 1-unit *ilr* increase. We tested for sex-interactions
19 before building models in two stages: 1) adjusted for sex, age and cohort; 2) adjusted for sex,
20 age, cohort, smoking, alcohol, self-reported health, medications, and CVD history. Due to
21 cohort-specific missing data, sex-age-cohort adjusted models were examined in both the
22 maximal available sample and those with complete covariate data and differences in
23 movement behaviours and outcomes were compared between subsamples. Sensitivity
24 analyses further considered models adjusted for education, mobility limitations and
25 occupational class in the three cohorts with data on all three additional covariates (ALSWH,

1 BCS70, TMS). Differences in movement behaviours and outcomes were examined across all
2 three sample sizes. To provide results ready for translation to behavioural interventions, we
3 conducted isotemporal substitution to model how reallocation of time from one behaviour to
4 another – based on the mean 24-hour behavioural profile – impacted each outcome^{36,37} in sex-
5 age-cohort adjusted models. To enable comparisons with existing literature¹⁷, we repeated
6 regression and reallocation plots using a four-part composition of SB, sleep, MVPA and
7 LIPA, where standing was included as LIPA. All analyses were performed in RStudio using
8 the *cCompositions*, *robCompositions* and *zCompositions* packages.

9

10 **RESULTS**

11

12 ***Sample description***

13 Of 15,271 participants with valid accelerometer data on all five behaviours, 15,253
14 (99.9%) had data on at least one outcome. Table 1 provides descriptive characteristics of the
15 sample for all movement behaviours, outcomes and covariates. Briefly, 54.7% (n=8,341) of
16 the sample were female, with a mean age of 53.7yrs \pm 9.7 (range: 18-87). The majority of the
17 sample were non-smokers (85.4%), self-rated their health as good or better (87.8%), were not
18 taking take lipid-modifying, hypertensive or glucose-lowering medications (70.1%) and had
19 no history of CVD (90.2%). Average daily wear time across the wear period was 22.8hrs
20 \pm 1.8. The mean composition of the full sample, defined as the average time spent in each
21 behaviour normalised to a 24-hour day, was 7.7 hrs sleeping, 10.4 hrs sedentary, 3.1 hrs
22 standing, 1.5 hrs in LIPA and 1.3 hrs in MVPA. Supplementary Figure 1a demonstrates
23 absolute differences in time spent in each movement behaviour by cohort, while
24 Supplementary Figure 1b provides percent differences compared to the overall mean sample
25 composition. Inter-cohort differences were largest for standing, LIPA and MVPA, with

1 comparable time spent sleeping and in SB. The maximal available sample in sex-age-cohort
2 adjusted models ranged from 11,270 (triglycerides; n=9,450 complete cases) to 15,204 (BMI;
3 n=12,166 complete cases).

4

5 *[Table 1 placeholder]*

6

7 ***Association between movement behaviours and adiposity***

8 A greater proportion of time spent sedentary was associated with higher BMI
9 (Supplemental Table 3); conversely – and in order of size of association – more time
10 engaging in MVPA, LIPA, standing or sleep was associated with lower BMI. Associations
11 were robust to adjustment for all covariates (Models 2-3, Supplemental Tables 3-4).
12 Reallocation of time from any behaviour into MVPA, while holding the others constant, had
13 the largest theoretical reduction in BMI (Figure 1). For example, reallocating 30 minutes of
14 SB, sleep, standing or LIPA into MVPA was associated with -0.63 (95% CI: -0.48, -0.79), -
15 0.43 (-0.25, -0.59), -0.40 (-0.25, -0.56), or -0.15 (0.05, -0.34) kg/m² lower BMI, respectively.
16 Conversely, reallocating time from LIPA or MVPA into sleep, standing or SB was associated
17 with higher BMI (Figure 1a-b). The minimal daily behavioural change required to observe
18 significant theoretical reductions in BMI was displacement of 7.2 minutes of SB into MVPA.

19

20 Associations were similar for waist circumference across MVPA, standing, sleep and
21 SB (Figure 2). Reallocating 30 minutes of SB, sleep or standing into MVPA was associated
22 with lower waist circumferences of -2.44 (-1.97, -2.78), 1.75 (-1.38, -2.22), and -1.34 (-0.98,
23 -1.78) cm, respectively. Although displacement of LIPA into MVPA remained favourable for
24 waist circumference (30 min: -2.49 (-1.95, -2.94) cm), there was a negative association with
25 waist circumference if time spent in LIPA replaced time spent sleeping or standing (Figure

1 2d). However, associations were attenuated after adjustment for covariates (Models 2-3,
2 Supplemental Tables 3-4). The minimal behavioural change required to observe statistically
3 significant theoretical reductions in waist circumference was displacement of 5.0 min/day of
4 LIPA into MVPA.

5

6 *[Figure 1 placeholder]*

7 *[Figure 2 placeholder]*

8 *Association between movement behaviours and lipids*

9 A smaller proportion of time in SB and a greater proportion in MVPA was associated
10 with higher HDL cholesterol, lower total:HDL cholesterol ratio and lower triglyceride levels
11 (Supplementary Table 3; Figure 3-5a,e). For example, reallocation models suggested that
12 improvements were observed after as few as 6.0, 8.9 and 12.7 minutes of SB were replaced
13 by MVPA (Figure 3-5e), respectively. Associations remained after adjustment for covariates
14 (Models 2-3, Supplemental Tables 3-4).

15

16 Beyond the beneficial impact of reallocating time from LIPA to MVPA, there was
17 little evidence that LIPA displacement was associated with HDL or total:HDL cholesterol
18 ratio (Figures 3-5d, Supplementary Tables 3-4). Conversely, positive associations between a
19 greater proportion of time spent standing and favourable lipid outcomes remained across all
20 outcomes and models. Standing was detrimental when displacing MVPA time, but
21 advantageous when replacing 1+hr sleep or 1.75+hr of SB (Figures 3-5c). Reallocating time
22 between LIPA and standing – in either direction – was negligible for HDL and total:HDL
23 cholesterol ratio, while theoretical reductions in triglycerides level were observed after 39
24 minutes of LIPA was displaced into standing.

25

26 Finally, the role of sleep differed by displaced behaviour and outcome (Figure 3-5b).
27 When sleep displaced MVPA or standing time (Figures 4-6b), there were deleterious
28 associations with all outcomes. For example, replacing 30 minutes of MVPA with sleep was
29 associated with a -0.10 mmol/L (-0.08, -0.12), +0.17 (0.12,0.21) and +0.13 mmol/L (0.08,
30 0.17) difference in HDL, total:HDL cholesterol ratio and triglycerides. Reallocation between
31 sleep, SB and LIPA was negligible, with a meaningful change in HDL only emerging after
32 ~1.5 hours of displacement from SB to sleep (Figure 3b).

33 [Figure 3 placeholder]

34 [Figure 4 placeholder]

35 [Figure 5 placeholder]

36

37 ***Association between movement behaviours and HbA1c***

38 A greater proportion of time spent in MVPA, standing or sleeping and a smaller
39 proportion of time spent in SB was associated with lower HbA1c. Associations remained
40 after adjustment for covariates (Supplementary Tables 3- 4). Relative to other time
41 reallocations, displacement of any other behaviour into MVPA was associated with the most
42 favourable estimates for HbA1c levels (Figure 6). When MVPA replaced 30 minutes spent in
43 SB, sleep, standing or LIPA, we observed lower HbA1c of 1.33(1.06, 1.61), 1.12(0.80, 1.40),
44 1.04 (0.72, 1.36) and 2.00 (1.63, 2.37) mmol/mol, respectively (Figure 6e).

45

46 LIPA was the most deleterious behaviour for HbA1c; for example, a 30 minute
47 displacement of MVPA, standing, sleep or SB into LIPA was associated with 2.33 (1.89,
48 2.77), 0.70 (0.31, 1.11), 0.63 (0.29, 1.00) and 0.42 (0.11, 0.78) mmol/mol higher HbA1c,
49 respectively (Figure 6d). Note these displacement changes were observed in the age-sex-
50 cohort models, but associations were attenuated after adjustment for covariates, most notably
51 with the addition of physical limitations (Supplementary Tables 3-4, Models 2-3). While
52 more time in SB was associated with higher HbA1c levels, with no impact of displacement
53 between standing and sleeping (Figure 6a-c). The minimal daily behavioural change needed
54 to observe a significant change in HbA1c was 3.8 minutes of MVPA displacing LIPA. A
55 summary of all behavioural displacements across each outcome is provided in Supplementary
56 Table 5.

57

58 *[Figure 6 placeholder]*

59 ***Sensitivity analyses***

60 When regression models and reallocation plots were replicated using a four-part
61 composition that combined standing and LIPA into one behaviour, results remained largely
62 unchanged. However, there was a clearer and more consistent hierarchy of behaviours for all
63 outcomes (Supplementary Figures 2-7); MVPA followed by LIPA then sleep were the most
64 beneficial behaviours for positive cardiometabolic outcomes, with SB the most deleterious
65 (Supplementary Table 6,7).

66 Compared to the complete cases sample (up to n=12,193), those missing one or more
67 covariate (n=3,047) had lower HDL cholesterol (1.48 ± 0.42 vs 1.57 ± 0.47 mmol/L), lower
68 HDL:total cholesterol ratio (3.61 ± 1.22 vs 3.79 ± 1.28), higher triglycerides (1.53 ± 1.12 vs
69 1.47 ± 1.02 mmol/L), and higher HbA1c (38.6 ± 9.8 vs 37.9 ± 8.6 mmol/mol) levels. However,
70 adiposity measures were comparable and there was no different in movement behaviour
71 compositions (Supplemental Table 8).

72

73 **DISCUSSION**

74 In this large individual participant data analysis of over 15,000 participants, we
75 examined cross-sectional associations between device-measured 24-hour movement
76 behaviours and cardiometabolic health outcomes. Our findings revealed a clear hierarchy of
77 favourable movement behaviours across the 24-hour day; MVPA was most strongly
78 associated with healthier cardiometabolic outcomes. Using the mean 24-h behavioural
79 composition as a starting point (7.7hrs sleeping, 10.4hrs SB, 3.1hrs standing, 1.5hrs LIPA,
80 1.3hrs MVPA), we observed theoretical benefits across all outcomes when as little as 4-12
81 minutes per day were reallocated into MVPA. Conversely, a greater proportion of time spent

82 sedentary was detrimentally associated with all outcomes. More time spent standing was
83 favourably associated with outcomes, although there were inconsistent – and often null –
84 associations for LIPA. Associations between sleep and biomarkers were complex, with an
85 unfavourable association when sleep replaced any time spent active (MVPA, LIPA, standing)
86 and modest theoretical benefits when it replaced SB.

87 *Hypothesised mechanisms*

88 The inflammatory, metabolic or vascular mechanisms through which MVPA
89 contributes to improved cardiovascular health are well established^{7,8}. Our findings further
90 suggest that even small changes in MVPA are associated with statistically significant and
91 clinically meaningful cardiometabolic benefits. This builds on recent evidence reporting that
92 small amounts of daily vigorous PA (accumulated in <2 minutes bouts) are associated with
93 lower mortality, cancer and CVD risk^{38,39}. The acute benefits of standing on postprandial
94 glucose response may partially explain the small but significant associations observed
95 above^{40,41}. High muscle contractions involved in extended standing periods may also
96 influence lipoprotein lipase activity, a key enzyme in glucose and lipid metabolism, and
97 contribute to decreased inflammatory pathways^{40,41}. There were some positive associations of
98 displacing SB or sleep into LIPA for BMI, however it was surprising to observe null or
99 negative associations between LIPA and other cardiometabolic biomarkers. Given the
100 inclusion of fast walking in MVPA, it is plausible that higher levels of slow walking
101 (classified as LIPA) may be indicative of underlying health problems. Physical health
102 limitations can contribute to greater levels of sedentary behaviour and less PA, and thus
103 reverse causation may play a role⁴².

104

105 Mechanisms underlying association between insufficient sleep or too much sedentary
106 behaviour and poor cardiometabolic health often focus on indirect factors that lead to weight

107 gain or decreased energy expenditure⁴³. However, chronic sleep deprivation has also been
108 linked to the modification of gene expression and lipoproteins involved in inflammatory and
109 cholesterol pathways^{44,45}. Our findings suggest that any theoretical cardiometabolic benefits
110 from increased sleep – beyond the reference composition of 7.7.hours – are secondary to the
111 direct physiological benefits of PA. However, it is unclear how the effects of displacing sleep
112 and PA would differ in individuals with high levels of sleep deprivation. We hypothesise that
113 individuals with insufficient sleep (i.e. <6 hours) may benefit from prioritising sleep over PA;
114 the need for a more personalised approach to 24-hour behaviour is further discussed below.

115

116 *Comparison to existing evidence*

117 Our study provides novel insights by distinguishing standing from ambulatory LIPA,
118 and identifying the minimal theoretical displacements between behaviours required to
119 observe statistical associations with cardiometabolic health outcomes. To our knowledge, this
120 is the first study to suggest that more time spent standing may be more beneficial than LIPA
121 for cardiometabolic outcomes. This must be interpreted with caution, given the likely
122 inclusion of moderate-fast paced walking in MVPA rather than LIPA and the lack of context
123 on the active or passive nature of the standing behaviour (e.g. resistance training, standing
124 desk, waiting for a bus). Further research must investigate how context and the cognitive and
125 musculoskeletal demands of standing and LIPA activities impact cardiometabolic health.
126 Sensitivity analyses of the four-part composition is comparable to previous compositional
127 studies, which have identified the benefits of MVPA and the detrimental consequences of SB
128 for various health outcomes¹⁷⁻¹⁹. However, the studies reported inconsistent evidence
129 regarding the role of sleep or LIPA activity on cardiometabolic outcomes, which may have
130 been due to inadequate ascertainment of sleep using self-reported data¹⁷.

131

132 ***Implications***

133 Our findings have substantial implications from both research and clinical
134 perspectives. First, they underscore the importance of MVPA across different adiposity and
135 cardiometabolic biomarker outcomes. Our modelled reallocation suggest that population-
136 level benefits can theoretically be observed after relatively short displacements of time (e.g.
137 replacing other behaviour with 4 to 12 minutes of MVPA). However, it is crucial to examine
138 if these effect sizes can be replicated in longitudinal observational or interventional studies
139 using posture-based accelerometer data. Recently, there have been increased public
140 recommendations on the ‘sit less, move more’ approach that highlights benefits of light-
141 intensity activities for cardiovascular health⁴⁶. The benefits of such activities may be more
142 meaningful for mental health or musculoskeletal outcomes^{47,48}, rather than cardiometabolic
143 outcome. Conversely, the findings here reaffirm the importance of the intensity of the activity
144 that is replacing SB; our models suggest that replacing 30 min of SB with MVPA rather than
145 LIPA result in substantially better cardiometabolic outcomes. It is crucial finding a balance
146 between increasing time spent in higher intensity activities and decreasing time spent
147 sedentary. For example, compositional analysis of hip-worn accelerometer data from the
148 National Health and Nutrition Examinations Survey suggests comparable mortality risk
149 between meeting US PA guidelines or by an additional 2.5 minutes of MVPA to ‘offset’
150 every 1hour of SB¹⁸. Therefore, optimal cardiometabolic outcomes can be achieved most
151 efficiently if MVPA is specifically targeted.

152

153 Findings must be interpreted at the population level as the starting point for all
154 reallocation plots is the mean sample composition, which has relatively high levels of sleep
155 (7.7hrs/day), standing (3.1hrs/day) and MVPA (1.3hrs/day). Displacement into and away
156 from MVPA did not demonstrate symmetrical associations with outcomes (Figures 1-6), and

157 as introduced above, outcomes resulting from behavioural changes are likely to diverge
158 depending on the initial starting profile. For example, previous investigation of dose-response
159 associations between MVPA and cardiovascular outcomes have demonstrated steep risk
160 reductions at low levels of MVPA, with benefits plateauing at higher MVPA volumes.
161 Therefore, the theoretical benefits of displacing time in other behaviours into MVPA may be
162 even larger in those who engage in little to no MVPA at baseline. This highlights an
163 increasing need to identify personalised recommendations – or the “sweet spot”⁴⁹ – based on
164 an individual’s current 24-hour movement behaviours.

165

166 Modelling displacement of time between five key daily behaviours can inform design
167 of more realistic lifestyle-based interventions and enable personalised behavioural changes.
168 For example, interventions focusing on displacement between sleep, SB, standing and LIPA
169 would likely require >1 hour of daily behavioural change to impact desired outcomes. This
170 may have limited real-world plausibility compared to the potential impacts of displacing an
171 additional ~5 minutes in any other behaviour into MVPA.

172

173 *Strengths and limitations*

174 Strengths of this study include the inclusion of 15,000+ participants from six cohorts
175 and five countries to increase generalisability of our findings; the use of a thigh-mounted
176 accelerometer wear position to sensitively capture postural changes; uniform ActiPASS
177 processing of raw accelerometer data files; separation of standing from ambulatory LIPA;
178 ascertainment of blood-based cardiometabolic biomarkers; and the complex compositional
179 data analysis approach that simultaneously considered how time spent in different movement
180 behaviours influences cardiometabolic outcomes.

181

182 There are some limitations that must be acknowledged. First, the data are cross-
183 sectional, and therefore causality between movement behaviours and outcomes cannot be
184 inferred. Recent mendelian randomisation of device-measured activity in UK Biobank
185 suggest causal associations between MVPA and adiposity, with bidirectional associations
186 between SB and adiposity⁵⁰. Despite clear advances in the ActiPASS-based detection of
187 activity intensity and sedentary behaviour, sleep time may have been overestimated as time
188 spent in bed rather than biological sleep; nevertheless, previous work has suggested strong
189 agreement between our sleep algorithm and polysomnography³³. MVPA levels were very
190 high in this cohort. This may be due to both specific cohort characteristics (e.g. high exercise
191 sample in NES, manual occupation in DPhacto, etc.) or high levels of moderate activity
192 classified as MVPA. Finally, there may be some residual confounding. Due to differences in
193 measurement protocols between studies, some harmonised covariates had lower granularity
194 than the original data collected (e.g. smoking, alcohol, medication use). We did not adjust the
195 blood biomarker models for adiposity measures, to avoid overadjustment given that adiposity
196 is likely to be on the causal pathway.

197

198 **CONCLUSION**

199

200 This study provides novel evidence of the hierarchy of movement behaviours and
201 their impact on cardiometabolic health markers. Findings emphasise a key public health
202 message that positive cardiometabolic health outcomes can be most efficiently and feasibly
203 achieved with small increases in MVPA. Standing – and for some outcomes LIPA – had
204 positive associations with outcomes, although this was only observed after displacement of
205 substantial amounts of time. SB was the sole behaviour with clear adverse associations with
206 outcomes, regardless of duration. Compositional data analysis sheds novel insights on the

207 complex interplay of 24-hour behaviours for cardiometabolic health outcomes. Taken
208 together, our results suggest that prioritising a balance of more time in MVPA and less time
209 in SB is the most efficient and effective way to improve and/or maintain good
210 cardiometabolic health.

ACKNOWLEDGMENTS

The data on which this research is based were drawn from six observational studies in the Netherlands, United Kingdom, Australia, Denmark and Finland. We are grateful to all participants who provided the survey data.

SOURCES OF FUNDING

This project was funded by a British Heart Foundation Special Grant (SP/F/20/150002), and National Health and Medical Research Council (Australia) Investigator (APP1194510) and Ideas (APP1180812) Grants. The establishment of the ProPASS consortium was supported by an unrestricted 2018-20 grant by PAL Technologies (Glasgow, UK). ActiPASS development was partly funded by FORTE, Swedish Research Council for Health, Working Life and Welfare (2021–01561).

ES is funded by a National Health and Medical Research Council Investigator Grant (APP1194510). GDM is supported by a National Health and Medical Research Council Principal Research Fellowship (APP1121844). AH receives support from the British Heart Foundation, the Horizon 2020 Framework Programme of the European Union, the National Institute for Health Research University College London Hospitals Biomedical Research Centre, the UK Medical Research Council, the National Institute for Health Research, the Wellcome Trust, and works in a unit that receives support from the UK Medical Research Council.

CONFLICT OF INTEREST

There are no conflicts of interest to disclose.

DATA AVAILABILITY STATEMENT

Access to data is not available directly from the authors of this manuscript. Access to cohort data may be available by contacting individual cohort and following their specific governance and access requirements.

AUTHOR INFORMATION

ProPASS collaboration: Nidhi Gupta, Coen Stehouwer, Hans Savelberg, Bastiaan de Galan, Carla van de Kallen, Dick H.J. Thijssen

REFERENCES

1. World Health Organisation. Cardiovascular diseases (CVDs) Factsheet. [https://www.who.int/en/news-room/fact-sheets/detail/cardiovascular-diseases-\(cvds\)](https://www.who.int/en/news-room/fact-sheets/detail/cardiovascular-diseases-(cvds))
2. Roth GA, Mensah GA, Johnson CO, *et al.* Global Burden of Cardiovascular Diseases and Risk Factors, 1990-2019: Update From the GBD 2019 Study. *J Am Coll Cardiol* 2020;**76**:2982-3021. doi: 10.1016/j.jacc.2020.11.010
3. Lin X, Xu Y, Pan X, *et al.* Global, regional, and national burden and trend of diabetes in 195 countries and territories: an analysis from 1990 to 2025. *Sci Rep* 2020;**10**:14790. doi: 10.1038/s41598-020-71908-9
4. Benjamin EJ, Virani SS, Callaway CW, *et al.* Heart Disease and Stroke Statistics-2018 Update: A Report From the American Heart Association. *Circulation* 2018;**137**:e67-e492. doi: 10.1161/cir.0000000000000558
5. Lin J, Thompson TJ, Cheng YJ, *et al.* Projection of the future diabetes burden in the United States through 2060. *Popul Health Metr* 2018;**16**:9. doi: 10.1186/s12963-018-0166-4
6. Yusuf S, Hawken S, Ounpuu S, *et al.* Effect of potentially modifiable risk factors associated with myocardial infarction in 52 countries (the INTERHEART study): case-control study. *Lancet* 2004;**364**:937-952. doi: 10.1016/s0140-6736(04)17018-9
7. Platt C, Houstis N, Rosenzweig A. Using exercise to measure and modify cardiac function. *Cell Metab* 2015;**21**:227-236. doi: 10.1016/j.cmet.2015.01.014
8. Che L, Li D. The Effects of Exercise on Cardiovascular Biomarkers: New Insights, Recent Data, and Applications. *Adv Exp Med Biol* 2017;**999**:43-53. doi: 10.1007/978-981-10-4307-9_3
9. Chastin SFM, De Craemer M, De Cocker K, *et al.* How does light-intensity physical activity associate with adult cardiometabolic health and mortality? Systematic review with meta-analysis of experimental and observational studies. *Br J Sports Med* 2019;**53**:370-376. doi: 10.1136/bjsports-2017-097563
10. Quinlan C, Rattray B, Pryor D, *et al.* The accuracy of self-reported physical activity questionnaires varies with sex and body mass index. *PLoS One* 2021;**16**:e0256008. doi: 10.1371/journal.pone.0256008
11. Skotte J, Korshøj M, Kristiansen J, Hanisch C, Holtermann A. Detection of physical activity types using triaxial accelerometers. *J Phys Act Health* 2014;**11**:76-84. doi: 10.1123/jpah.2011-0347
12. Kowalsky RJ, Stoner L, Faghy MA, Barone Gibbs B. A Call to Clarify the Intensity and Classification of Standing Behavior. *Int J Environ Res Public Health* 2021;**18**. doi: 10.3390/ijerph18168460
13. Carter S, Hartman Y, Holder S, Thijssen DH, Hopkins ND. Sedentary Behavior and Cardiovascular Disease Risk: Mediating Mechanisms. *Exerc Sport Sci Rev* 2017;**45**:80-86. doi: 10.1249/JES.0000000000000106
14. Nagai M, Hoshida S, Kario K. Sleep duration as a risk factor for cardiovascular disease- a review of the recent literature. *Curr Cardiol Rev* 2010;**6**:54-61. doi: 10.2174/157340310790231635
15. Hadgraft NT, Winkler E, Climie RE, *et al.* Effects of sedentary behaviour interventions on biomarkers of cardiometabolic risk in adults: systematic review with meta-analyses. *Br J Sports Med* 2021;**55**:144-154. doi: 10.1136/bjsports-2019-101154
16. Chastin SF, Palarea-Albaladejo J, Dontje ML, Skelton DA. Combined Effects of Time Spent in Physical Activity, Sedentary Behaviors and Sleep on Obesity and Cardio-Metabolic Health Markers: A Novel Compositional Data Analysis Approach. *PLoS One* 2015;**10**:e0139984. doi: 10.1371/journal.pone.0139984

17. Janssen I, Clarke AE, Carson V, *et al.* A systematic review of compositional data analysis studies examining associations between sleep, sedentary behaviour, and physical activity with health outcomes in adults. *Appl Physiol Nutr Metab* 2020;**45**:S248-s257. doi: 10.1139/apnm-2020-0160
18. Chastin SFM, McGregor DE, Biddle SJH, *et al.* Striking the Right Balance: Evidence to Inform Combined Physical Activity and Sedentary Behavior Recommendations. *J Phys Act Health* 2021;**18**:631-637. doi: 10.1123/jpah.2020-0635
19. Chastin S, McGregor D, Palarea-Albaladejo J, *et al.* Joint association between accelerometry-measured daily combination of time spent in physical activity, sedentary behaviour and sleep and all-cause mortality: a pooled analysis of six prospective cohorts using compositional analysis. *Br J Sports Med* 2021;**55**:1277-1285. doi: 10.1136/bjsports-2020-102345
20. Bull FC, Al-Ansari SS, Biddle S, *et al.* World Health Organization 2020 guidelines on physical activity and sedentary behaviour. *British Journal of Sports Medicine* 2020;**54**:1451. doi: 10.1136/bjsports-2020-102955
21. Piercy KL, Troiano RP, Ballard RM, *et al.* The Physical Activity Guidelines for Americans. *Jama* 2018;**320**:2020-2028. doi: 10.1001/jama.2018.14854
22. Tremblay MS, Chaput JP, Adamo KB, *et al.* Canadian 24-Hour Movement Guidelines for the Early Years (0-4 years): An Integration of Physical Activity, Sedentary Behaviour, and Sleep. *BMC Public Health* 2017;**17**:874. doi: 10.1186/s12889-017-4859-6
23. Stamatakis E, Koster A, Hamer M, *et al.* Emerging collaborative research platforms for the next generation of physical activity, sleep and exercise medicine guidelines: the Prospective Physical Activity, Sitting, and Sleep consortium (ProPASS). In: *Br J Sports Med*; 2020, p435-437.
24. Schram MT, Sep SJ, van der Kallen CJ, *et al.* The Maastricht Study: an extensive phenotyping study on determinants of type 2 diabetes, its complications and its comorbidities. *Eur J Epidemiol* 2014;**29**:439-451. doi: 10.1007/s10654-014-9889-0
25. Elliott J, Shepherd P. Cohort profile: 1970 British Birth Cohort (BCS70). *Int J Epidemiol* 2006;**35**:836-843. doi: 10.1093/ije/dyl174
26. Chan HW, Dharmage S, Dobson A, *et al.* Cohort profile: a prospective Australian cohort study of women's reproductive characteristics and risk of chronic disease from menarche to premenopause (M-PreM). *BMJ Open* 2022;**12**:e064333. doi: 10.1136/bmjopen-2022-064333
27. Jørgensen MB, Gupta N, Korshøj M, *et al.* The DPhacto cohort: An overview of technically measured physical activity at work and leisure in blue-collar sectors for practitioners and researchers. *Appl Ergon* 2019;**77**:29-39. doi: 10.1016/j.apergo.2019.01.003
28. Maessen MF, Verbeek AL, Bakker EA, *et al.* Lifelong Exercise Patterns and Cardiovascular Health. *Mayo Clin Proc* 2016;**91**:745-754. doi: 10.1016/j.mayocp.2016.02.028
29. Leskinen T, Pulakka A, Heinonen OJ, *et al.* Changes in non-occupational sedentary behaviours across the retirement transition: the Finnish Retirement and Aging (FIREA) study. *J Epidemiol Community Health* 2018;**72**:695-701. doi: 10.1136/jech-2017-209958
30. Hettiarachchi P, Aili K, Holtermann A, *et al.* Validity of a Non-Proprietary Algorithm for Identifying Lying Down Using Raw Data from Thigh-Worn Triaxial Accelerometers. *Sensors (Basel)* 2021;**21**. doi: 10.3390/s21030904
31. Crowley P, Skotte J, Stamatakis E, *et al.* Comparison of physical behavior estimates from three different thigh-worn accelerometers brands: a proof-of-concept for the

- Prospective Physical Activity, Sitting, and Sleep consortium (ProPASS). *Int J Behav Nutr Phys Act* 2019;**16**:65. doi: 10.1186/s12966-019-0835-0
32. C lark B, Winker E, Ahmadi M, Trost S. Comparison of Three Algorithms Using Thigh-Worn Accelerometers for Classifying Sitting, Standing, and Stepping in Free-Living Office Workers. *J Meas Phys Behav* 2021;**4**:89-95. doi:
 33. Johansson PJ, Crowley P, Axelsson J, *et al.* Development and performance of a sleep estimation algorithm using a single accelerometer placed on the thigh: an evaluation against polysomnography. *Journal of Sleep Research* 2022:e13725. doi:
 34. Tudor-Locke C, Han H, Aguiar EJ, *et al.* How fast is fast enough? Walking cadence (steps/min) as a practical estimate of intensity in adults: a narrative review. *Br J Sports Med* 2018;**52**:776-788. doi: 10.1136/bjsports-2017-097628
 35. Mitchell JJ, Blodgett JM, Chastin SF, *et al.* Exploring the associations of daily movement behaviours and mid-life cognition: a compositional analysis of the 1970 British Cohort Study. *J Epidemiol Community Health* 2023. doi: 10.1136/jech-2022-219829
 36. McGregor DE, Palarea-Albaladejo J, Dall PM, Hron K, Chastin S. Cox regression survival analysis with compositional covariates: Application to modelling mortality risk from 24-h physical activity patterns. *Stat Methods Med Res* 2020;**29**:1447-1465. doi: 10.1177/0962280219864125
 37. Dumuid D, Pedišić Ž, Stanford TE, *et al.* The compositional isotemporal substitution model: A method for estimating changes in a health outcome for reallocation of time between sleep, physical activity and sedentary behaviour. *Stat Methods Med Res* 2019;**28**:846-857. doi: 10.1177/0962280217737805
 38. Stamatakis E, Ahmadi MN, Gill JMR, *et al.* Association of wearable device-measured vigorous intermittent lifestyle physical activity with mortality. *Nat Med* 2022;**28**:2521-2529. doi: 10.1038/s41591-022-02100-x
 39. Ahmadi MN, Clare PJ, Katzmarzyk PT, *et al.* Vigorous physical activity, incident heart disease, and cancer: how little is enough? *Eur Heart J* 2022;**43**:4801-4814. doi: 10.1093/eurheartj/ehac572
 40. Healy GN, Winkler EA, Owen N, Anuradha S, Dunstan DW. Replacing sitting time with standing or stepping: associations with cardio-metabolic risk biomarkers. *Eur Heart J* 2015;**36**:2643-2649. doi: 10.1093/eurheartj/ehv308
 41. Henson J, Edwardson CL, Bodicoat DH, *et al.* Reallocating sitting time to standing or stepping through isotemporal analysis: associations with markers of chronic low-grade inflammation. *J Sports Sci* 2018;**36**:1586-1593. doi: 10.1080/02640414.2017.1405709
 42. Dumurgier J, Elbaz A, Ducimetière P, *et al.* Slow walking speed and cardiovascular death in well functioning older adults: prospective cohort study. *Bmj* 2009;**339**:b4460. doi: 10.1136/bmj.b4460
 43. Grandner MA, Jackson NJ, Izci-Balserak B, *et al.* Social and Behavioral Determinants of Perceived Insufficient Sleep. *Front Neurol* 2015;**6**:112. doi: 10.3389/fneur.2015.00112
 44. Aho V, Ollila HM, Kronholm E, *et al.* Prolonged sleep restriction induces changes in pathways involved in cholesterol metabolism and inflammatory responses. *Sci Rep* 2016;**6**:24828. doi: 10.1038/srep24828
 45. Yaribeygi H, Maleki M, Sathyapalan T, Jamialahmadi T, Sahebkar A. Pathophysiology of Physical Inactivity-Dependent Insulin Resistance: A Theoretical Mechanistic Review Emphasizing Clinical Evidence. *J Diabetes Res* 2021;**2021**:7796727. doi: 10.1155/2021/7796727

46. Dunstan DW, Dogra S, Carter SE, Owen N. Sit less and move more for cardiovascular health: emerging insights and opportunities. *Nat Rev Cardiol* 2021;**18**:637-648. doi: 10.1038/s41569-021-00547-y
47. Glass NL, Bellettiere J, Jain P, LaMonte MJ, LaCroix AZ. Evaluation of Light Physical Activity Measured by Accelerometry and Mobility Disability During a 6-Year Follow-up in Older Women. *JAMA Netw Open* 2021;**4**:e210005. doi: 10.1001/jamanetworkopen.2021.0005
48. Loprinzi PD. Objectively measured light and moderate-to-vigorous physical activity is associated with lower depression levels among older US adults. *Aging Ment Health* 2013;**17**:801-805. doi: 10.1080/13607863.2013.801066
49. Holtermann A, Rasmussen CL, Hallman DM, *et al.* 24-Hour Physical Behavior Balance for Better Health for All: "The Sweet-Spot Hypothesis". *Sports Med Open* 2021;**7**:98. doi: 10.1186/s40798-021-00394-8
50. Carrasquilla GD, García-Ureña M, Fall T, Sørensen TIA, Kilpeläinen TO. Mendelian randomization suggests a bidirectional, causal relationship between physical inactivity and adiposity. *Elife* 2022;**11**. doi: 10.7554/eLife.70386

Table 1. Descriptive characteristics in maximal available sample (n=15,253)

OUTCOMES mean±SD	Full sample (n=15,243)	Females (n=8,341; 54.7%)	Males (n=6,912; 45.3%)
BMI (kg/m ²)	27.0 ±4.9	26.7 ±5.4	27.4 ±4.3
Waist circumference (cm)	94.1 ±13.9	89.2 ±13.2	100.2 ±12.1
HDL cholesterol (mmol/L)	1.57 ±0.46	1.7 ±0.5	1.4 ±0.4
HDL: total cholesterol ratio	3.64 ±1.23	3.3 ±1.0	4.0 ±1.3
HbA1c (mmol/mol)	38.0 ±8.7	36.7 ±7.3	39.4 ±9.8
Triglycerides (mmol/L)	1.48 ±1.04	1.3 ±0.8	1.7 ±1.2
MOVEMENT BEHAVIOR COMPOSITION * (hrs/day; % of day)			
Sleep	7.7 31.9%	7.9 32.8%	7.4 30.9%
Sedentary behavior	10.4 43.2%	9.9 42.3%	10.9 45.4%
Standing	3.1 13.0%	3.3 13.9%	2.9 11.9%
LIPA	1.5 6.4%	1.5 6.3%	1.6 6.5%
MVPA	1.3 5.5%	1.4 5.7%	1.3 5.3%
MAIN ANALYSES COVARIATES mean±SD or n(%)			
Age (years)	53.7 ±9.7	52.7 ±9.1	55.1 ±10.2
Cohort			
TMS	7,515 (49.3)	3,790 (45.4)	3,725 (53.9)
BCS70	5,236 (34.3)	2,797 (33.5)	2,439 (35.3)
ALSWH	941 (6.1)	941 (11.3)	0 (0)
DPhacto	777 (5.1)	359 (4.3)	412 (6.0)
NES	537 (3.5)	244 (2.9)	293 (4.2)
FIREA	253 (1.7)	210 (2.5)	43 (0.6)
Smoking status			
Non-smoker	12,953 (85.4)	7,205 (86.8)	5,748 (83.7)
Current smoker	2,211 (14.6)	1,093 (13.2)	1,118 (16.3)
Alcohol consumption			
Tertile 1 (low)	4,463 (33.8)	3,058 (42.6)	1,405 (23.3)
Tertile 2	4,514 (34.2)	2,529 (35.2)	1,985 (32.9)
Tertile 3 (high)	4,231 (32.0)	1,591 (22.2)	2,640 (43.8)
Self-reported health†			
Excellent	1,849 (12.3)	1,102 (13.4)	747 (11.0)
Very good	4,905 (32.7)	2,701 (32.9)	2,204 (32.4)
Good	6,329 (42.2)	3,337 (40.6)	2,992 (44.1)
Fair	1,634 (10.9)	908 (11.1)	726 (10.7)
Poor	287 (1.9)	164 (2.0)	123 (1.8)
Medication (lipid-modifying, hypertensive or glucose-lowering)	4,333 (29.9)	1,859 23.3)	2,474 (38.1)
History of CVD	1,486 (9.8)	615 7.4)	871 (12.7)
SUPPLEMENTARY ANALYSES COVARIATES ‡ mean(SD) or n(%)			
Physical function (SF-36)	87.2 ±18.8	86.5 ±18.9)	88.0 ±18.6
Occupational class			
Not working	3,850 (29.3)	2,014 (28.1)	1,836 (30.6)
Low	2,152 (16.4)	1,023 (14.3)	1,129 (18.8)
Intermediate	3,645 (27.7)	1,927 (26.9)	1,718 (28.7)
High	3,502 (26.6)	2,192 (30.6)	1,310 (21.9)
Education			
None or less than high school	1,666 (11.9)	764 (9.9)	902 (14.2)
High school (~16y)	3,908 (27.8)	2,209 (28.7)	1,699 (26.7)
Further education (~16-18y)	5,399 (38.4)	2,955 (38.4)	2,444 (38.4)
University degree or higher	3,080 (21.9)	1,760 (22.9)	1,320 (20.7)

* Re-scaled to a 24-hour day to create the composition

† Note: response terminology differs slightly by cohort, given translation of original question (see Supplementary Table 1)

‡ Covariates available in restricted cohorts only (see Supplementary Table 1)

ALSWH Australian Longitudinal Study of Women's Health; **BMI** Body Mass Index; **BCS70** 1970 British Cohort Study; **CVD** cardiovascular disease; **DPhacto** Danish PHysical ACTivity cohort with Objective measurements; **FIREA** Finnish Retirement and Aging Study; **HDL** High Density Lipoprotein; **LIPA** Light-intensity Physical Activity; **MVPA** Moderate-Vigorous intensity Physical Activity; **NES** Nijmegen Exercise Study; **SD** standard deviation; **SF-36** Short-Form 36; **TMS** The Maastricht Study

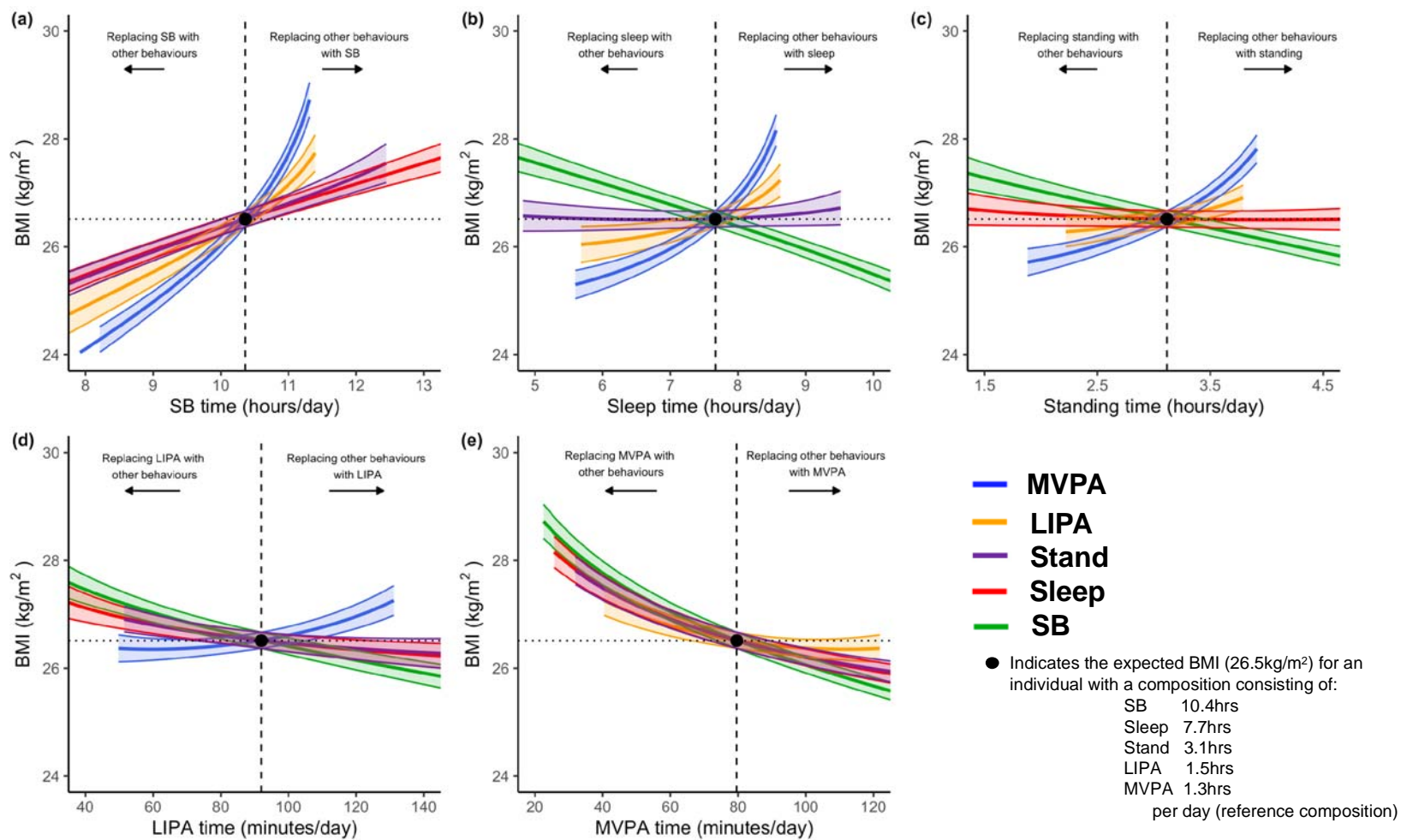


Figure 1. Substitution models (n=15,204) for **BMI** for a) sedentary behavior; b) sleep; c) Standing; d) Light Intensity Physical Activity (LIPA); e) Moderate-to-Vigorous Intensity Physical Activity (MVPA). Data to the left of the reference line indicates the predicted change in BMI if a given behavior (e.g. SB in panel a) is replaced by each of the other four behaviors. Data to the right of the reference line indicates the predicted change in BMI if a given behavior (e.g. SB in panel a) replaces each of the other four behaviors. Model adjusted for sex (ref: female), age (ref: 53.7 years; mean-centred) and cohort (ref: Maastricht Study).

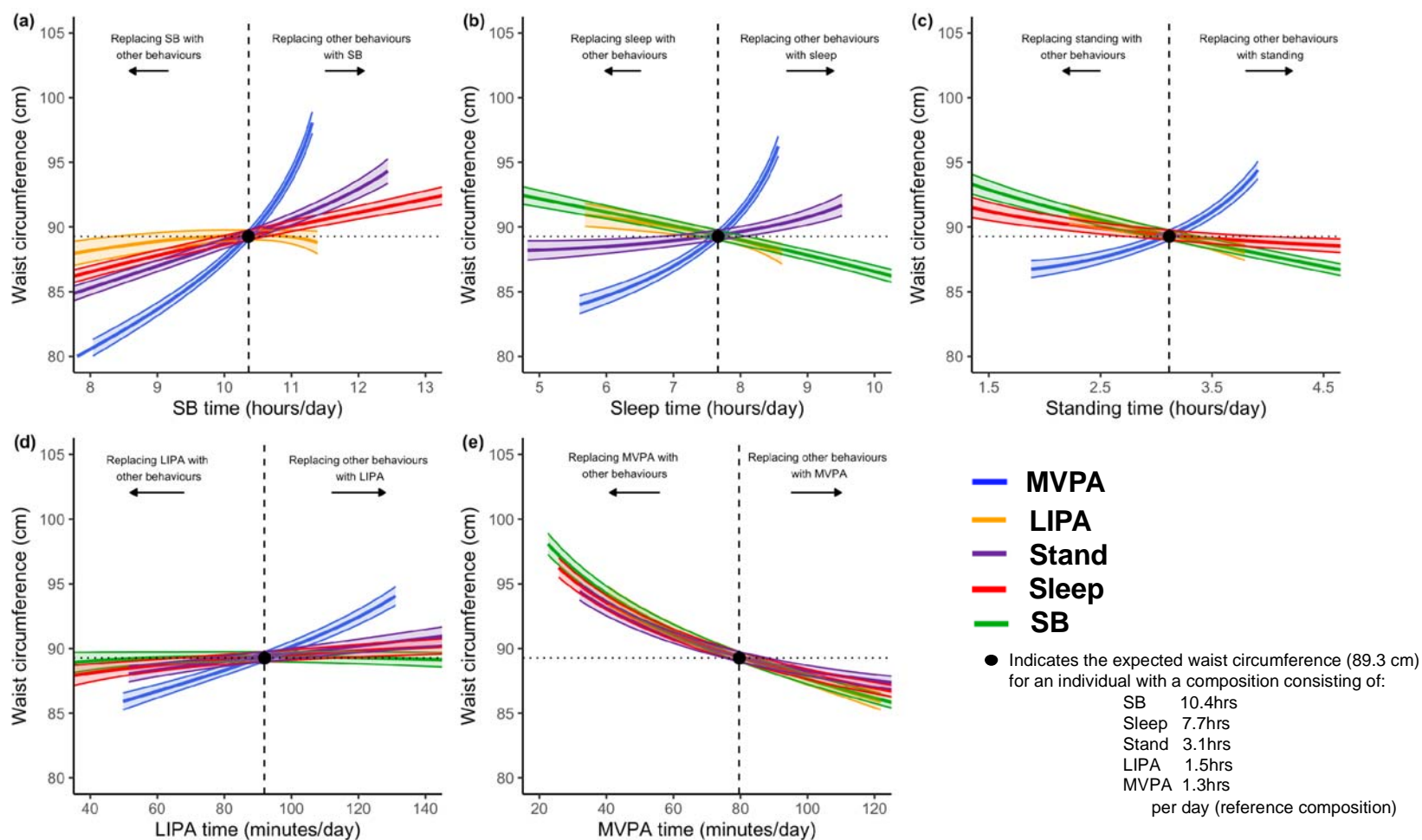


Figure 2. Substitution models (n=14,541) for waist circumference outcome for a) sedentary behavior; b) sleep; c) Standing; d) Light Intensity Physical Activity (LIPA); e) Moderate to Vigorous Intensity Physical Activity (MVPA). Model adjusted for sex (ref: female), age (ref: 53.7 years; mean-centred) and cohort (ref: Maastricht Study)

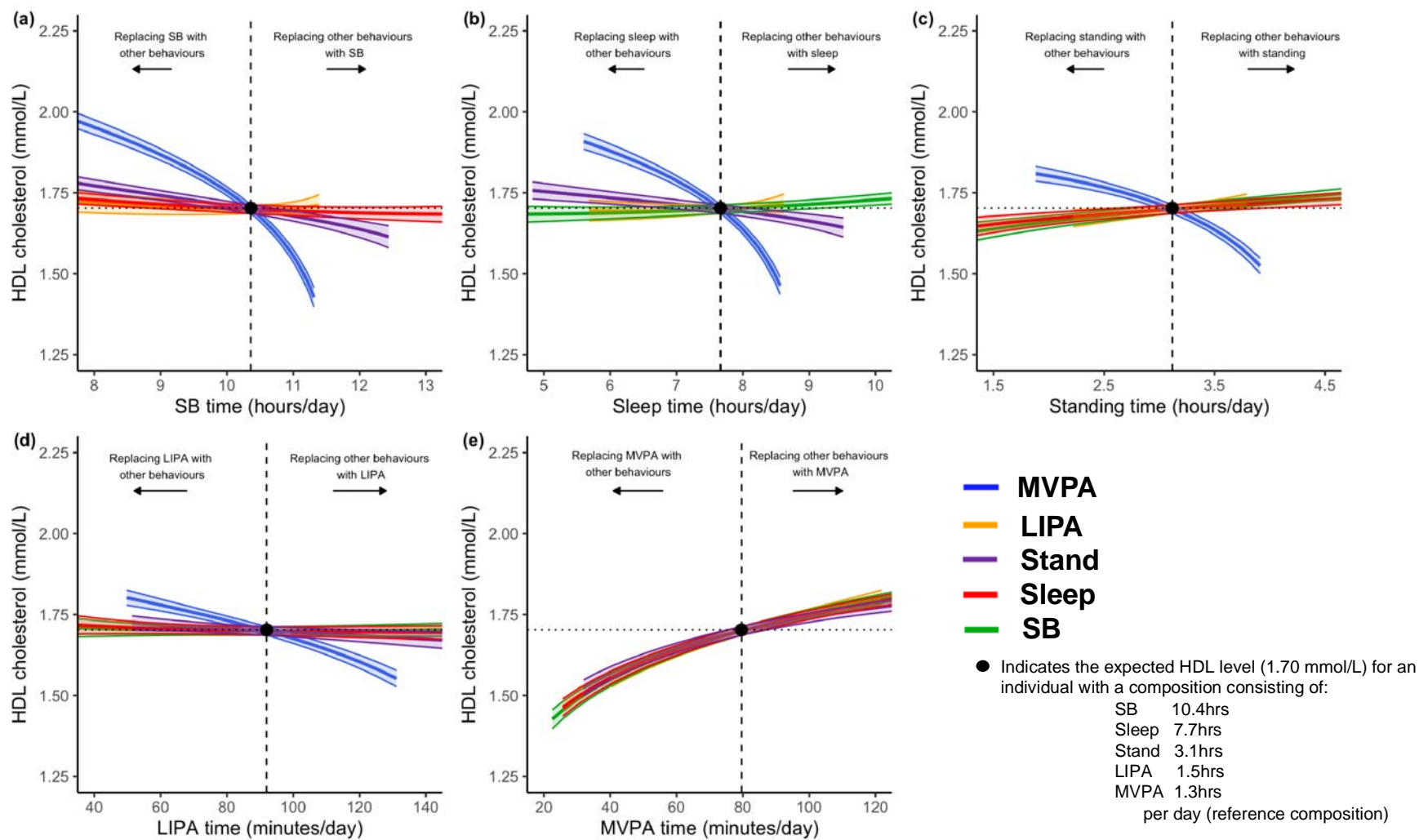


Figure 3. Substitution models ($n=13,060$) for *HDL cholesterol* outcome for a) sedentary behavior; b) sleep; c) Standing; d) Light Intensity Physical Activity (LIPA); e) Moderate to Vigorous Intensity Physical Activity (MVPA). Model adjusted for sex (ref: female), age (ref: 53.7 years; mean-centred) and cohort (ref: Maastricht Study).

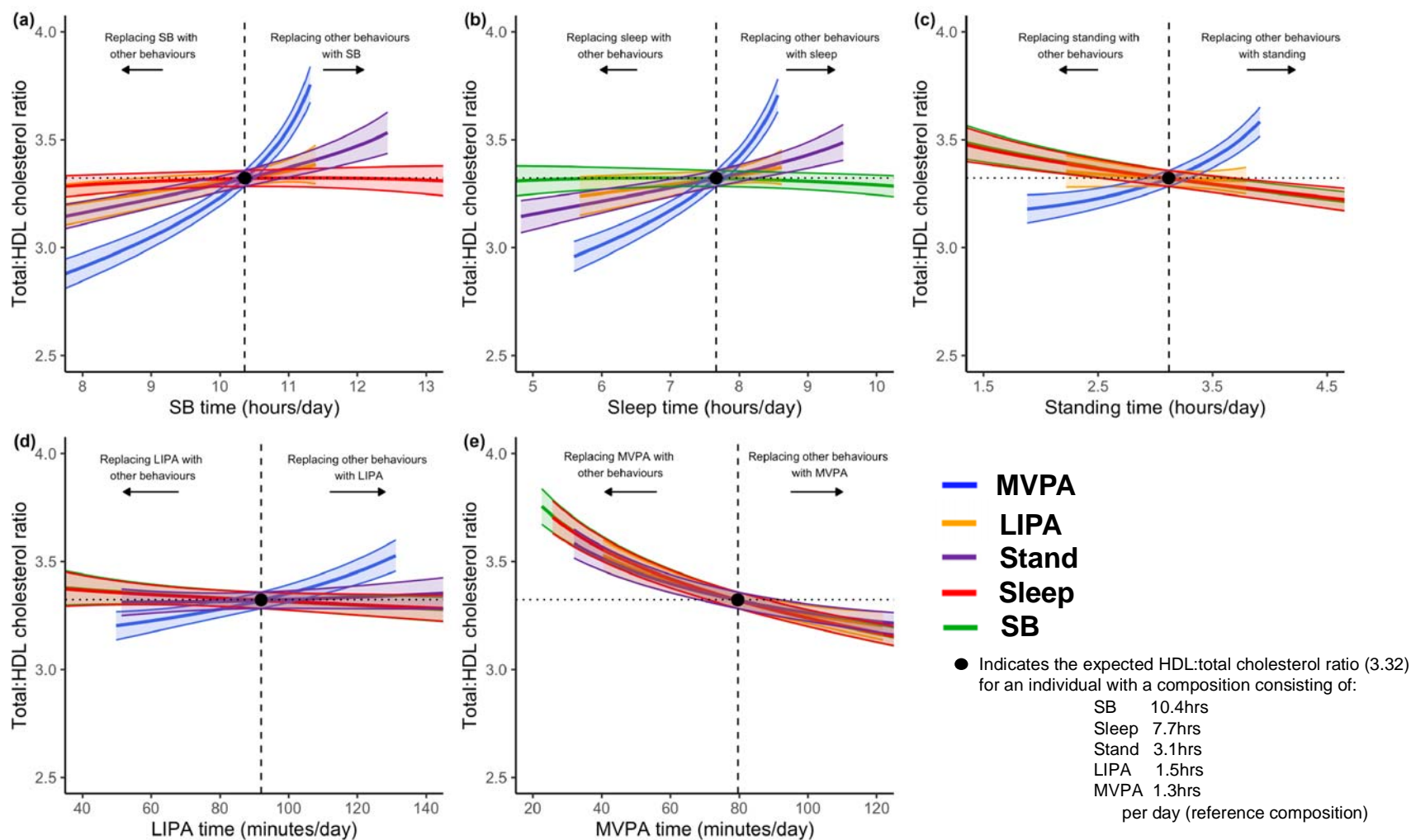


Figure 4. Substitution models (n=13,059) for *total:HDL cholesterol ratio* outcome for a) sedentary behavior; b) sleep; c) Standing; d) Light Intensity Physical Activity (LIPA); e) Moderate to Vigorous Intensity Physical Activity (MVPA). Model adjusted for sex (ref: female), age (ref: 53.7 years; mean-centred) and cohort (ref: Maastricht Study).

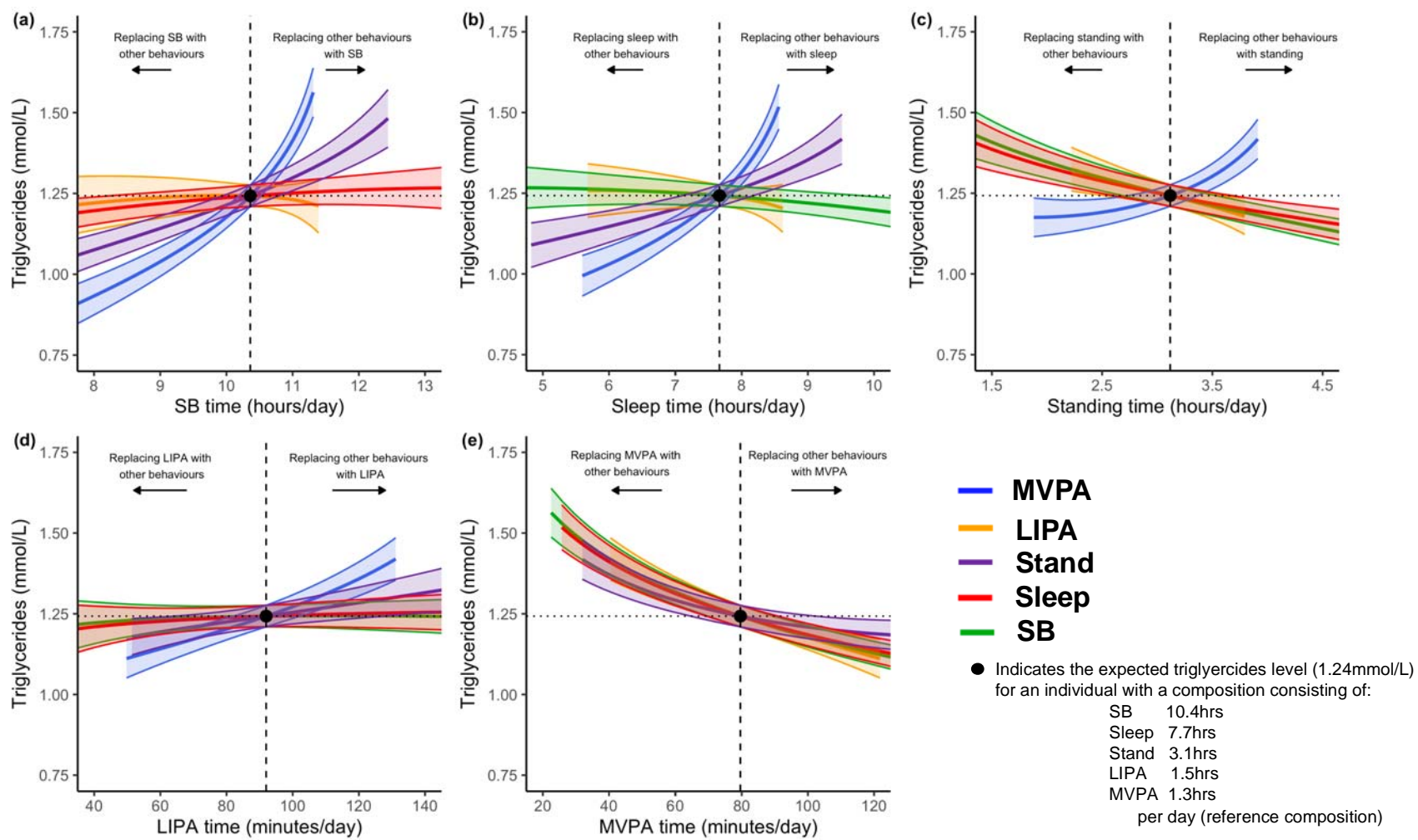


Figure 5. Substitution models (n=12,240) for triglycerides outcome for a) sedentary behavior; b) sleep; c) Standing; d) Light Intensity Physical Activity (LIPA); e) Moderate to Vigorous Intensity Physical Activity (MVPA). Model adjusted for sex (ref: female), age (ref: 53.7 years; mean-centred) and cohort (ref: Maastricht Study).

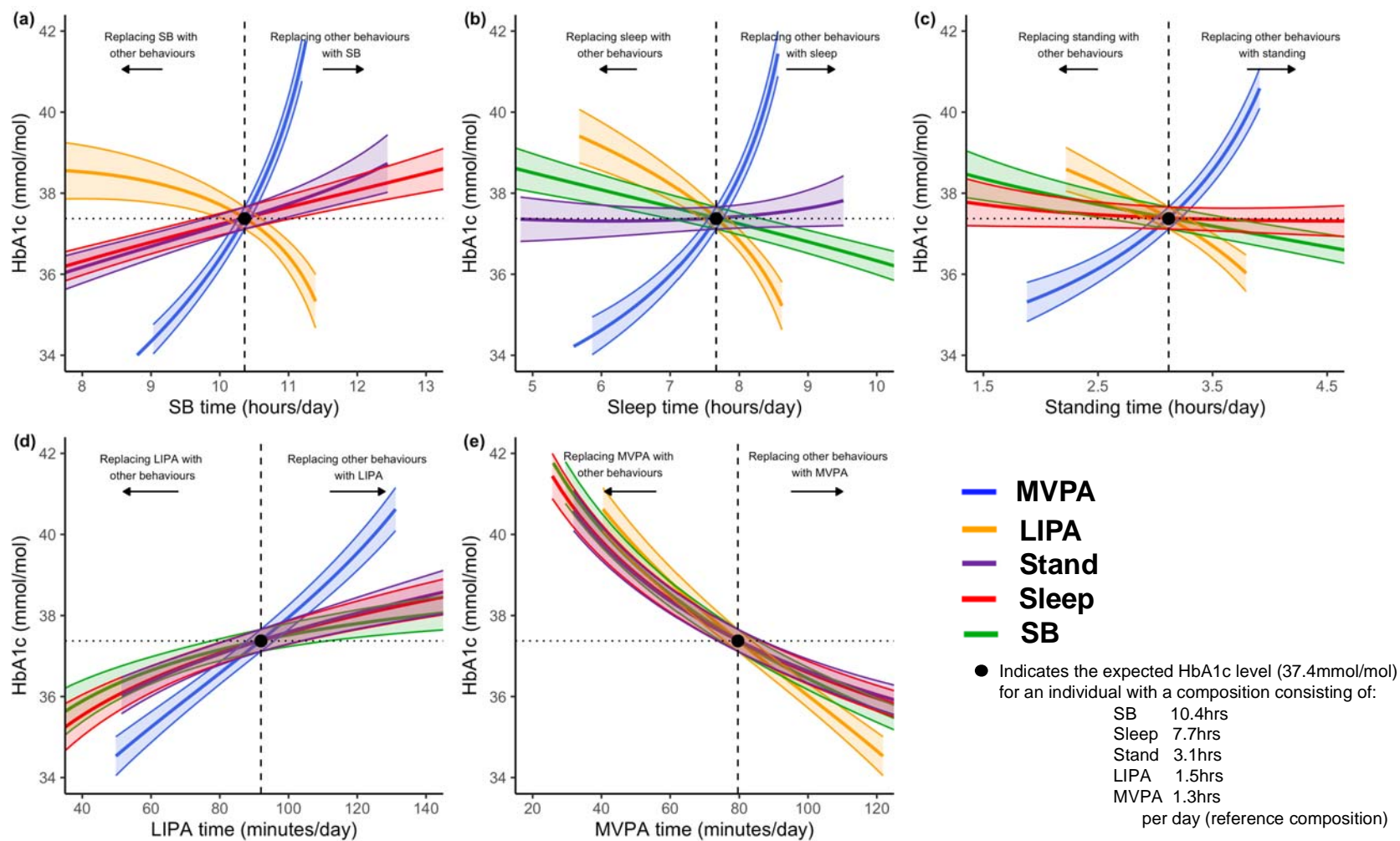


Figure 6. Substitution models (n=11,270) for *HbA1c* outcome for a) sedentary behavior; b) sleep; c) Light Intensity Physical Activity (LIPA); d) Moderate to Vigorous Intensity Physical Activity (MVPA). Model adjusted for sex (ref: female), age (ref: 53.7 years; mean-centred) and cohort (ref: Maastricht Study)