

1 **Effects of successful percutaneous coronary intervention of chronic total occlusions with**
2 **demonstrable viability or ischemia: A protocol for a systematic review**

3

4 Luís Leite^{1,2,3,4*¶}, Tomás Carlos^{1¶}, Gustavo Campos¹, Helena Donato⁵, Rodolfo Silva^{2,3,4}, Antero
5 Abrunhosa^{2,4}, Lino Gonçalves^{1,3,6}, Maria João Ferreira^{1,2,3,4}

6

7 1 Cardiology Department, Centro Hospitalar e Universitário de Coimbra, Coimbra, Portugal

8 2 Institute for Nuclear Sciences Applied to Health (ICNAS), University of Coimbra, Coimbra,
9 Portugal

10 3 Faculty of Medicine, University of Coimbra, Coimbra, Portugal

11 4 Coimbra Institute for Biomedical Imaging and Translational Research (CIBIT), Coimbra,
12 Portugal

13 5 Documentation and Scientific Information Service, Centro Hospitalar e Universitário de
14 Coimbra, Coimbra, Portugal

15 6 Coimbra Institute for Clinical and Biomedical Research (iCBR), Coimbra, Portugal

16

17 * Corresponding author

18 E-mail: luispelite@gmail.com

19 ORCID: 0000-0002-8493-6935

20

21 ¶ These authors contributed equally to this work

22

NOTE: This preprint reports new research that has not been certified by peer review and should not be used to guide clinical practice.

23 **ABSTRACT**

24 **Background**

25 Chronic coronary total occlusion (CTO) is a common finding in patients referred to coronary
26 angiography. To sustain blood flow distally to the occlusion site, collateral circulation is formed
27 from preexisting vessels. While these collaterals may partial or completely preserve perfusion at
28 rest, they may be insufficient when increased blood flow is needed. According to current
29 guidelines, percutaneous coronary intervention (PCI) is recommended solely in patients with
30 resistant angina despite optimal medical therapy or when a large area of documented ischemia in
31 the territory of the occluded vessel is present. Randomised controlled trials (RCTs) suggest its
32 benefit in the improvement of patients' quality of life and symptoms, despite their conflicting
33 results concerning prognosis and left ventricular function. However, most of these studies often
34 lack data regarding myocardial ischemic burden and viability, assessed by imaging methods.
35 Therefore, the purpose of the systematic review is to comprise and analyse the literature on
36 whether viability or ischemia-guided PCI of CTO, identified by imaging methods, has an impact
37 on the clinical outcomes of the patients.

38

39 **Methods**

40 We will conduct a thorough research in different databases, including PubMed/MEDLINE,
41 EMBASE, Cochrane Central Register of Controlled Trials (CENTRAL), Web of Science Core
42 Collection, Clinical trials in the European Union, and ClinicalTrials.gov. We will include RCTs,
43 cohort studies, cross-sectional studies, and case-control studies, in which patients with established
44 CTO were tested for viability and/or ischemia before the decision to perform PCI and were
45 evaluated by post-intervention testing or clinical endpoint follow-up. Two authors will
46 independently review the selected studies, and any discrepancies will be solved by a third element.
47 Subsequently, data from the various eligible studies will be extracted and analysed by two
48 different authors. No subgroup analysis is planned.

49 **Ethics and disclosure:** Ethical approval will not be required for this study as it is an analysis of
50 previously published articles (i.e., secondary data). The results will be published in a peer-
51 reviewed journal.

52 **PROSPERO registration:** CRD42023426858.

53

54 **INTRODUCTION**

55 Chronic total coronary occlusions (CTO) are defined as angiographic evidence of complete vessel
56 occlusion with Thrombolysis in Myocardial Infarction (TIMI) flow grade 0 within an epicardial
57 coronary artery, and an estimated duration of at least three months [1]. Its prevalence is not
58 entirely established, with reporting rates varying from 16%-18% [2] to approximately 30% [3,4]
59 in patients referred for coronary angiography. Notably, within the subgroup diagnosed with stable
60 angina pectoris, it is believed that up to one fourth of this population exhibit this type of coronary
61 disease [5].

62 In the presence of a CTO, blood supply to the myocardium is solely from collateral vessels. The
63 development of a collateral circulation network is a complex physiologic response induced by the
64 chronic state of hypoxia, by the pressure gradient created, as well as by several different humoral
65 factors. There is an individual variation on the ability to develop well-formed collaterals that may
66 avoid a transmural myocardial infarction and preserve ventricular function. However, it is widely
67 believed that, although the collateral network may have the ability to preserve perfusion at rest, it
68 could be insufficient when increased blood flow is needed [4].

69 Moreover, the chronic supply defect from the main artery may cause myocardium hibernation,
70 characterized by reversible reduced regional contractile function that could partial or completely
71 recover after reperfusion or revascularization [6,7]. Bearing this in mind, it would be reasonable
72 to refer these patients to percutaneous coronary intervention (PCI). Nonetheless, current
73 guidelines, prevailing since 2018, recommend CTO PCI only in patients with angina resistant to

74 optimal medical therapy or with a large area of documented ischemia in the territory of the
75 occluded vessel (with a class of evidence IIa) [8].

76 Until recently, there was reluctance in attempting PCI in CTO patients, with solely an estimate
77 10%-15% of all eligible CTO lesions being referred [9,10]. This was based on lower procedural
78 success and high rate of complications, such as urgent coronary artery bypass graft (CABG)
79 surgery, coronary perforation, acute reocclusion, collateral loss and major adverse cardiac events,
80 including death [11]. During the past decade, important developments in interventional materials
81 and techniques have led to the achievement of high rates of procedural success, defined as a
82 residual stenosis <30% with antegrade TIMI flow grade 3 in the CTO target vessel [12,13].
83 Indeed, recent studies such as the EXPLORE trial, suggested that PCI of CTO was safe even in
84 patients with a concurrent ST-elevation myocardial infarction (STEMI) in other main artery, with
85 no periprocedural death or emergency CABG [14]. Also, evidence suggests that the higher
86 mortality and morbidity found in patients with multivessel disease, in comparison to single-vessel
87 disease, might be partially attributed to the presence of concomitant CTO, contributing to the
88 declining of LV function [15].

89 Hence, it urges to clearly define which patients are candidates for PCI on top of optimal medical
90 therapy (OMT), since currently we have no accurate method that predicts who will benefit from
91 that [16]. In the past few years, randomized clinical trials (RCTs) have focused on evaluating
92 whether CTO-PCI in addition to OMT improved patients' symptoms and prognosis. Overall, it is
93 generally accepted that it improves patients' quality of life and symptoms, mainly angina and
94 physical exercise limitation, when compared to no PCI [16–20]. DECISION-CTO trial was one
95 of the few studies that did not show this relative benefit [21]. However, in this study,
96 revascularization of non-CTO lesions was performed after randomization in OMT+CTO-PCI or
97 solely OMT, potentially contributing to the absence of differences [20]. When prognosis and LV
98 function are concerned, studies show more conflicting results. In a subgroup analysis of the
99 EXPLORE trial, Elias *et al.* demonstrated that in the dysfunctional segments afflicted by the
100 chronic occlusion, PCI was associated with marked improvement of regional function, measured

101 by cardiac magnetic resonance imaging (cMRI), especially if transmural extent of infarction (TEI)
102 was lower than 50% [22]. Different research using cMRI suggested that in segments with TEI
103 below 75% there was a tendency for improvement in segmental wall thickening (SWT), and that
104 the extent of improvement in LV ejection fraction (LVEF) correlated with the size of infarcted
105 area before procedure [23]. However, mean LVEF remained practically unchanged, with the same
106 finding being observed in the COMET-CTO trial [20]. Furthermore, REVASC trial showed no
107 differences in regional wall motion of the myocardium affected by the CTO lesions after PCI
108 [24]. Moreover, IMPACTOR-CTO trial evaluated the impact of PCI on the composite endpoint
109 of all-cause death, myocardial infarction, and unplanned revascularization six months after the
110 procedure, with no significant differences described [17]. Lastly, OAT-trial demonstrated a
111 tendency for reinfarction in the PCI group, at a follow-up time of approximately four years [25].

112 In the published RCTs there are very few data regarding myocardial ischemic burden and
113 viability, often assessed by imaging methods, such as cMRI, single-photon emission computed
114 tomography (SPECT), stress echocardiography or positron emission tomography (PET).
115 Currently, ISCHEMIA-CTO trial is underway to evaluate whether CTO-PCI improves quality of
116 life and major adverse cardiovascular events in patients with significant ischemic burden [26].

117 To the best of our knowledge, a systematic review of the literature on whether viability or
118 ischemia-guided PCI of CTO have an impact in clinical outcomes is yet to be conducted. We aim
119 to address this subject, evaluating all-cause mortality, nonfatal myocardial infarction,
120 symptomatic improvement, and ischemic burden reduction in the follow-up of patients with
121 documented viability or ischemia previously to the decision to perform PCI.

122

123 **METHODS AND ANALYSIS**

124 The protocol and completed systematic review will be reported following the Preferred Reporting
125 Items for Systematic Reviews and Meta-analyses (PRISMA) Protocols and the Prisma checklists,
126 respectively.

127

128 Eligibility criteria

129 In this systematic review, our objective is to identify RCTs, cohort studies (prospective or
130 retrospective in nature), cross-sectional studies, and case-control studies, in which patients with
131 established CTO were tested for viability and/or ischemia before the decision to perform PCI and
132 were evaluated by post-intervention testing or clinical endpoint follow-up. The diverse testing
133 modalities encompassed cMRI, PET, SPECT or stress echocardiography. Studies lacking
134 viability and/or ischemia testing before PCI or lacking measured clinical endpoints or post-
135 intervention testing will be excluded. Table 1 presents our PICO description. If the same study is
136 represented in different articles, the one with the largest sample size or more suitable data for our
137 specific aim will be selected. No restriction regarding publication year will be set; therefore, we
138 will be including studies from inception to the 31st of October 2023. There will be no restrictions
139 on publication status or language of publication. We will resort to a professional translator if
140 needed.

141

142 **Table 1.** PICO description

Abbreviation	PICO	Elements
P	Population	Patients with a CTO who had performed viability or ischemia exams before the decision to perform PCI, with a post-intervention clinical evaluation and/or cardiac testing (LV function, ischemia burden evaluation)
I	Intervention	Successful PCI with documented viability or ischemia
C	Comparator	Patients with a CTO who had no demonstrable viability or ischemia before performing successful PCI, had

		demonstrable viability or ischemia but have not performed PCI or in whom PCI was unsuccessful
O	Outcome	All-cause mortality, nonfatal myocardial infarction, symptomatic improvement, left ventricular function improvement, and ischemic burden reduction

143

144 **Information sources**

145 We will comprise literature published in the following databases: PubMed/MEDLINE,
146 EMBASE, Cochrane Central Register of Controlled Trials (CENTRAL), Web of Science Core
147 Collection, and we will also consult Clinical trials in the European Union, and ClinicalTrials.gov
148 to check for ongoing or unpublished trials. If any relevant unpublished trial is found, the
149 corresponding author listed will be contacted to grant access to the required information. If no
150 response is given or the author decides not to share the data, this will be listed as the reason for
151 excluding such a trial Grey literature will also be queried to include all possible articles on the
152 subject. We will also hand search in the reference list of the included articles. No pre-prints will
153 be included.

154

155 **Search strategy**

156 Detailed search strategies will be conducted in the previously described databases, in consultation
157 with a medical librarian with expertise in systematic review searching. The search strategy will
158 contain controlled vocabulary (e.g., Medical Subject Headings (MeSH)) and text words searches
159 adapted to each one of the databases regarding its own special requirements. To merge the search
160 terms effectively, Boolean operators “AND” and “OR” will be used. An example of the search
161 strategy used in PubMed/MEDLINE is depicted in Table 2.

162

163 **Table 2.** Search strategy

PubMed/MEDLINE	
Query	Search
#1	(Coronary Occlusion[Title/Abstract]) AND (chronic[Title/Abstract])) OR ((("Coronary Occlusion/diagnosis"[Mesh] OR "Coronary Occlusion/diagnostic imaging"[Mesh] OR "Coronary Occlusion/therapy"[Mesh])) AND "Chronic Disease"[Mesh])
#2	("Heart/diagnostic imaging"[Mesh] OR "Cardiac Imaging Techniques"[Mesh] OR "Ventricular Function, Left"[Mesh] OR "Positron-Emission Tomography"[Mesh] OR "Magnetic Resonance Imaging, Cine"[Mesh] OR "Adenosine"[Mesh] OR "Contrast Media"[Mesh] OR "Dobutamine"[Mesh] OR "Gadolinium"[Mesh] OR "Echocardiography"[Mesh] OR "Fibrosis"[Mesh] OR "Necrosis"[Mesh] OR "Myocardial Ischemia"[Mesh] OR "Myocardial Stunning"[Mesh] OR "Ventricular Dysfunction, Left"[Mesh]) OR (Cardiac Imaging Techniques[Title/Abstract] OR Techniques, Intracardiac Imaging[Title/Abstract] OR Ventricular Function, Left[Title/Abstract] OR Myocardial Perfusion Imaging[Title/Abstract] OR Positron-Emission Tomography[Title/Abstract] OR Positron Emission Tomography Computed Tomography[Title/Abstract] OR Magnetic Resonance Imaging Cine[Title/Abstract] OR Adenosine[Title/Abstract] OR Contrast Media[Title/Abstract] OR Dobutamine[Title/Abstract] OR Gadolinium[Title/Abstract] OR Echocardiography[Title/Abstract] OR Echocardiography, Stress[Title/Abstract] OR Fibrosis[Title/Abstract] OR Necrosis[Title/Abstract] OR Myocardial Ischemia[Title/Abstract] OR Ventricular Dysfunction, Left[Title/Abstract] OR Myocardial Stunning[Title/Abstract] OR Myocardial hibernation[Title/Abstract])

#3	(Percutaneous Coronary Intervention[Title/Abstract] OR Angioplasty, Balloon, Coronary[Title/Abstract] OR Atherectomy, Coronary[Title/Abstract] OR Coronary Revascularization, Percutaneous[Title/Abstract] OR Myocardial Revascularization[Title/Abstract] OR "percutaneous coronary intervention"[MeSH Terms] OR "Myocardial Revascularization"[Mesh])
#4	Search #1 AND #2 AND #3

164

165 **Data management**

166 All studies and literature reviewed will be imported to EndNote citation software and all
167 duplicates will be removed.

168

169 **Selection process**

170 Two independent reviewers will conduct the selection phase of the studies during the month of
171 January 2024. Any discrepancy found between the two reviewers will be solved by a third
172 reviewer. The remaining studies will be full-text reviewed and included or excluded according to
173 our predefined eligibility criteria. A flow chart similar to Fig. 1 will be presented to detail the
174 study selection process for this review.

175

176 Fig. 1. Flowchart diagram presenting the selection process for the studies.

177

178 **Data collection process**

179 Data collection will be performed after the selection process. Two independent reviewers will
180 extract the relevant data for our systematic review from the various eligible studies. A third
181 reviewer will solve any found discrepancies and validate the other results.

182

183 **Data items**

184 Collected data from the obtained studies will encompass authors' names, sample size, study
185 design, number of eligible patients, average age, gender distribution, type of cardiac exam
186 conducted pre and post intervention, decision to perform PCI or solely OMT, success of PCI,
187 definition of myocardial ischemia and viability assessment for each study and type of clinical
188 follow-up performed. Reasons for the exclusion of full text records will be reported.

189 Details on the selection process of the studies and included patients will be documented into a
190 flow chart, following PRISMA checklists.

191

192 **Outcomes**

193 Our systematic review aims to assess whether viability or ischemia-guided PCI of CTO have an
194 impact on clinical outcomes. To achieve this, we will analyse diverse parameters across the
195 different studies such as all-cause mortality, nonfatal myocardial infarction, symptomatic
196 improvement, left ventricular improvement and ischemic burden reduction post PCI (successful
197 vs non successful) or solely OMT. No subgroup analysis is planned at first hand; however, it may
198 be performed if motivated by the literature review.

199

200 **Risk of bias**

201 Risk of bias of individual studies will be assessed independently by two reviewers, with a third
202 reviewer assisting with any disagreements. Since we will be including diverse types of studies,
203 we will use different tools to identify the risk of bias depending on each study's characteristics.

204 We will use Cochrane Risk of Bias 2.0 –tool for assessing risk of bias in randomized trials, and
205 ROBINS-I tool - Risk Of Bias In Non-randomized Studies - of Interventions.

206

207 **Data synthesis**

208 We will provide a narrative synthesis of the findings from the selected studies, structured around
209 the viability and/or ischemia exam, and type of clinical outcome measured.

210

211 **Confidence in cumulative evidence**

212 The strength of the body evidence will be assessed using the Grading Recommendations
213 Assessment, Development and Evaluation (GRADE).

214

215 **Patient and public involvement**

216 This is a protocol for a systematic review based on previously published data. No participant
217 recruitment or involvement will be necessary.

218

219 **Ethics and dissemination**

220 This systematic review will be conducted upon public and already published data; therefore, no
221 ethical approval is necessary. The resulting work will be published in a peer-reviewed journal and
222 presented at relevant conferences. Any necessary modifications of the protocol will be dated and
223 reported through a detailed description of the rationale for the adjustments.

224

225 **DISCUSSION**

226 Even though CTO are a common finding in patients with coronary artery disease, there are
227 conflicting results regarding the benefit of performing PCI in these lesions. Most clinical studies

228 lack data regarding myocardial ischemia burden and viability documentation, therefore a
229 systematic review on the clinical impact of ischemia/viability-guided CTO PCI is needed.

230 This study has limitations as it is a secondary study dependent on the published data. Moreover,
231 there are several imaging modalities to diagnose ischemia or viability, each one with its own
232 criteria. On the other hand, the clinical impact of the intervention is measured with different
233 outcomes within each study, which could make the discussion more demanding to perform.
234 Therefore, we will provide a narrative synthesis of the findings, structured around the diagnostic
235 exams and type of clinical outcome.

236

237 **SUPPORTING INFORMATION**

238 S1 Checklist. PRISMA-P (Preferred Reporting Items for Systematic review and Meta- Analysis
239 Protocols) 2015 checklist: Recommended items to address in a systematic review protocol*.

240

241 **AUTHOR CONTRIBUTIONS**

242 Conceptualization: Luís Leite, Tomás Carlos, Maria João Ferreira.

243 Investigation: Luís Leite, Tomás Carlos, Gustavo Campos, Lino Gonçalves, Maria João Ferreira.

244 Methodology: Luís Leite, Tomás Carlos, Gustavo Campos, Helena Donato.

245 Supervision: Maria João Ferreira.

246 Writing – original draft: Luís Leite, Tomás Carlos, Gustavo Campos.

247 Writing – review & editing: Luís Leite, Tomás Carlos, Gustavo Campos, Helena Donato, Rodolfo

248 Silva, Antero Abrunhosa, Lino Gonçalves, Maria João Ferreira.

249

250 Data Availability Statement: No datasets were generated or analyzed during the current study. All
251 relevant data from this study will be made available upon study completion.

252

253 Funding: The authors received no specific funding for this work.

254

255 Competing interests: The authors have declared that no competing interests exist.

256

257 REFERENCES

- 258 1. Sianos G, Werner GS, Galassi AR, Papafaklis MI, Escaned J, Hildick-Smith D, et al.
259 Recanalisation of Chronic Total coronary Occlusions: 2012 consensus document from
260 the EuroCTO club. *EuroIntervention*. 2012;8:139–45.
- 261 2. Azzalini L, Jolicoeur EM, Pighi M, Millán X, Picard F, Tadros VX, et al. Epidemiology,
262 Management Strategies, and Outcomes of Patients With Chronic Total Coronary
263 Occlusion. *Am J Cardiol*. 2016;118:1128–35.
- 264 3. Neumann FJ, Sousa-Uva M, Ahlsson A, Alfonso F, Banning AP, Benedetto U, et al.
265 2018 ESC/EACTS Guidelines on myocardial revascularization. *Eur Heart J*.
266 2019;40:87–165.
- 267 4. Stuijzand WJ, Driessen RS, Raijmakers PG, Rijniere MT, Maeremans J, Hollander
268 MR, et al. Prevalence of ischaemia in patients with a chronic total occlusion and
269 preserved left ventricular ejection fraction. *Eur Heart J Cardiovasc Imaging*.
270 2017;18:1025–33.
- 271 5. Fefer P, Knudtson ML, Cheema AN, Galbraith PD, Osherov AB, Yalonetsky S, et al.
272 Current perspectives on coronary chronic total occlusions. *J Am Coll Cardiol*.
273 2012;59:991–7.
- 274 6. Heusch G. Myocardial stunning and hibernation revisited. *Nat Rev Cardiol*.
275 2021;18:522–36.
- 276 7. Ferrari R, Ceconi C, Curello S, Benigno M, Canna G La, Visioli O. Left ventricular
277 dysfunction due to the new ischemic outcomes: stunning and hibernation. *J Cardiovasc*
278 *Pharmacol*. 1996;28:18–26.
- 279 8. Neumann FJ, Sousa-Uva M, Ahlsson A, Alfonso F, Banning AP, Benedetto U, et al.
280 2018 ESC/EACTS Guidelines on myocardial revascularization. *Eur Heart J*.
281 2019;40:87–165.
- 282 9. Grantham JA, Marso SP, Spertus J, House J, Holmes DR, Rutherford BD. Chronic Total
283 Occlusion Angioplasty in the United States. *JACC Cardiovasc Interv*. 2009;2:479–86.

- 284 10. Fefer P, Knudtson ML, Cheema AN, Galbraith PD, Osherov AB, Yalonetsky S, et al.
285 Current Perspectives on Coronary Chronic Total Occlusions. *J Am Coll Cardiol*.
286 2012;59:991–7.
- 287 11. Suero JA, Marso SP, Jones PG, Laster SB, Huber KC, Giorgi L V, et al. Procedural
288 outcomes and long-term survival among patients undergoing percutaneous coronary
289 intervention of a chronic total occlusion in native coronary arteries: a 20-year
290 experience. *J Am Coll Cardiol*. 2001;38:409–14.
- 291 12. Christopoulos G, Karpaliotis D, Alaswad K, Lombardi WL, Grantham JA, Rangan B
292 V., et al. The efficacy of “hybrid” percutaneous coronary intervention in chronic total
293 occlusions caused by in-stent restenosis: Insights from a US multicenter registry.
294 *Catheter Cardiovasc Interv*. 2014;84:646–51.
- 295 13. Sianos G, Werner GS, Galassi AR, Papafaklis MI, Escaned J, Hildick-Smith D, et al.
296 Recanalisation of Chronic Total coronary Occlusions: 2012 consensus document from
297 the EuroCTO club. *EuroIntervention*. 2012;8:139–45.
- 298 14. Henriques JPS, Hoebbers LP, Råmunddal T, Laanmets P, Eriksen E, Bax M, et al.
299 Percutaneous intervention for concurrent chronic total occlusions in patients
300 with STEMI. *J Am Coll Cardiol*. 2016;68:1622–32.
- 301 15. Claessen BE, van der Schaaf RJ, Verouden NJ, Stegenga NK, Engstrom AE, Sjauw KD,
302 et al. Evaluation of the Effect of a Concurrent Chronic Total Occlusion on Long-Term
303 Mortality and Left Ventricular Function in Patients After Primary Percutaneous
304 Coronary Intervention. *JACC Cardiovasc Interv*. 2009;2:1128–34.
- 305 16. Rinfret S, Sandesara PB. Reducing ischemia with CTO PCI. *JACC Cardiovasc Interv*.
306 2021;14:1419–22.
- 307 17. Obedinskiy AA, Kretov EI, Boukhris M, Kurbatov VP, Osiev AG, Ibn Elhadj Z, et al.
308 The IMPACTOR-CTO Trial. *JACC Cardiovasc Interv*. 2018;11:1309–11.
- 309 18. Werner GS, Martin-Yuste V, Hildick-Smith D, Boudou N, Sianos G, Gelev V, et al. A
310 randomized multicentre trial to compare revascularization with optimal medical therapy
311 for the treatment of chronic total coronary occlusions. *Eur Heart J*. 2018;39:2484–93.
- 312 19. Grantham JA, Jones PG, Cannon L, Spertus JA. Quantifying the Early Health Status
313 Benefits of Successful Chronic Total Occlusion Recanalization. *Circ Cardiovasc Qual*
314 *Outcomes*. 2010;3:284–90.
- 315 20. Juricic SA, Tesic MB, Galassi AR, Petrovic ON, Dobric MR, Orlic DN, et al.
316 Randomized Controlled Comparison of Optimal Medical Therapy with Percutaneous
317 Recanalization of Chronic Total Occlusion (COMET-CTO). *Int Heart J*. 2021;62:16–22.
- 318 21. Lee SW, Lee PH, Ahn JM, Park DW, Yun SC, Han S, et al. Randomized Trial
319 Evaluating Percutaneous Coronary Intervention for the Treatment of Chronic Total
320 Occlusion. *Circulation*. 2019;139:1674–83.
- 321 22. Elias J, van Dongen IM, Hoebbers LP, Ouweneel DM, Claessen BEPM, Råmunddal T, et al.
322 Improved recovery of regional left ventricular function after PCI of chronic total
323 occlusion in STEMI patients: a cardiovascular magnetic resonance study of the
324 randomized controlled EXPLORE trial. *J Cardiovasc Magn Reson*. 2017 Dec 19;19:53.

- 325 23. Baks T, van Geuns RJ, Duncker DJ, Cademartiri F, Mollet NR, Krestin GP, et al.
326 Prediction of Left Ventricular Function After Drug-Eluting Stent Implantation for
327 Chronic Total Coronary Occlusions. *J Am Coll Cardiol*. 2006;47:721–5.
- 328 24. Mashayekhi K, Nührenberg TG, Toma A, Gick M, Ferenc M, Hochholzer W, et al. A
329 Randomized Trial to Assess Regional Left Ventricular Function After Stent Implantation
330 in Chronic Total Occlusion. *JACC Cardiovasc Interv*. 2018;11:1982–91.
- 331 25. Hochman JS, Lamas GA, Buller CE, Dzavik V, Reynolds HR, Abramsky SJ, et al.
332 Coronary intervention for persistent occlusion after myocardial infarction. *N Engl J*
333 *Med*. 2006;355:2395–407.
- 334 26. Råmunddal T, Holck EN, Karim S, Eftekhari A, Escaned J, Ioanes D, et al. International
335 randomized trial on the effect of revascularization or optimal medical therapy of chronic
336 total coronary occlusions with myocardial ischemia - ISCHEMIA-CTO trial – rationale
337 and design. *Am Heart J*. 2023;257:41–50.
- 338

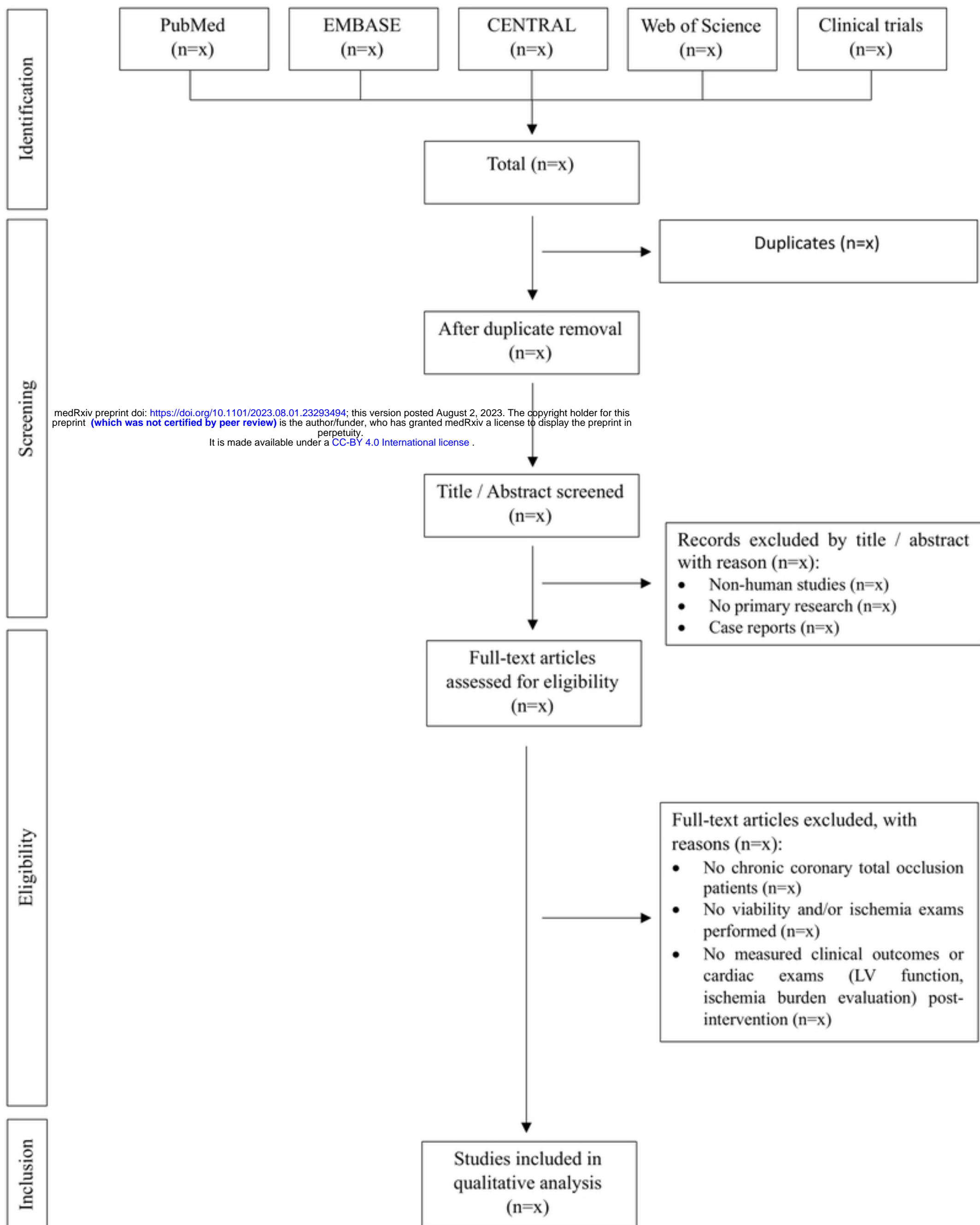


Figure 1