

Sodium-glucose Cotransporter-2 Inhibitors Stabilize Coronary Plaques in Acute Coronary Syndrome with Diabetes Mellitus

Atsumasa Kurozumi MD¹, Koki Shishido MD¹, Takayoshi Yamashita MD¹, Daisuke Sato MD¹, Syuhei Uchida MD¹, Eiji Koyama MD¹, Yusuke Tamaki MD¹, Takahiro Hayashi MD, PhD¹, Hirokazu Miyashita MD¹, Hiroaki Yokoyama MD¹, Tomoki Ochiai MD¹, Masashi Yamaguchi MD¹, Noriaki Moriyama MD¹, Kazuki Tobita MD¹, Takashi Matsumoto MD¹, Shingo Mizuno MD¹, Futoshi Yamanaka MD, PhD¹, Yutaka Tanaka MD, PhD¹, Masato Murakami MD, PhD¹, Saeko Takahashi MD¹, Shigeru Saito MD¹

¹Department of Cardiology, Shonan Kamakura General Hospital, Kamakura, Japan

Short title:

SGLT2i stabilizes coronary artery lesion

Address for Correspondence:

Koki Shishido, MD

Department of Cardiology, Shonan Kamakura General Hospital, Kamakura, Japan

Okamoto 1370-1, Kamakura City 247-8533, Japan

Tel: +81-467-461717, Fax: +81-467-46-1907

Email: koki10192002@yahoo.co.jp

Total word count: 5721 words

ABSTRACT

Background: Sodium-glucose cotransporter-2 inhibitors (SGLT2i) are widely used in cardiology and are effective in treating acute coronary syndrome (ACS). Their effects on unstable plaque in ACS patients remains unclear. This study aimed to examine the effectiveness of SGLT2i in coronary plaque phenotypes based on optical coherence tomography (OCT) images and the prognosis of ACS with type 2 diabetes mellitus (T2DM).

Methods: This retrospective study included 109 patients in the total cohort and 29 patients in the OCT cohort. Based on SGLT2i administration after ACS, the total cohort was categorized into non-SGLT2i (n = 69) and SGLT2i (n = 40) groups. The OCT cohort had 15 and 14 patients in non-SGLT2i and SGLT2i groups, respectively. OCT images of unstable plaque were analyzed in non-stented lesions during ACS catheterization and at 6-month follow-ups. The total cohort was assessed after 1 year for major adverse cardiovascular events (MACE), including all-cause mortality, revascularization, cerebrovascular disease, and heart failure hospitalization.

Results: SGLT2i improved unstable lesions with a significantly thicker fibrous cap ($48 \pm 15 \mu\text{m}$ vs. $26 \pm 24 \mu\text{m}$, $p = 0.005$), reduced lipid arc ($-29 \pm 12^\circ$ vs. $-18 \pm 14^\circ$, $p = 0.028$), and higher % decrease in total lipid arc ($-35 \pm 13\%$ vs. $-19 \pm 18\%$, $p = 0.01$) as well as a lower MACE incidence (Log rank $p = 0.023$, HR 4.72 [1.08, 20.63]) and revascularization rate (adjusted HR 6.77 [1.08, 42.52]) compared to the non-SGLT2i group.

Conclusions: SGLT2i stabilizes atherosclerosis and improves ACS prognosis in patients with T2DM.

Keywords: SGLT2i; unstable plaque; OCT; ACS; atherosclerosis

Clinical Perspective

What is new?

- We analyzed serial OCT images both baseline and follow-up in patients with ACS and T2DM undergoing PCI, and evaluated how effect SGLT2i had on unstable plaques.
- ACS patients with SGLT2i administration showed coronary atherosclerotic lesions to be stabilized on follow-up.

What are the clinical implications?

- SGLT2i can stabilize unstable plaques by controlling the inflammatory cascade on patients with T2DM.
- SGLT2i administration will be one option to improve their prognosis in patients with ACS and T2DM undergoing PCI.

Abbreviations

Acute coronary syndrome = ACS

Estimated glomerular filtration rate = eGFR

Fibrous cap thickness = FCT

Hemoglobin A1c = HbA1c

Low-density lipoprotein cholesterol = LDL

Major adverse cardiovascular events = MACE

Optical coherence tomography = OCT

Sodium-glucose cotransporter-2 inhibitors = SGLT2i

Triglyceride = TG

Type 2 diabetes mellites = T2DM

INTRODUCTION

Patients with acute coronary syndrome (ACS) undergoing percutaneous coronary intervention (PCI) have a poor prognosis compared to patients with chronic coronary syndrome despite recent advances in medications, such as statins and antiplatelet agents, and device technologies, such as drug-eluting stents. In particular, patients with high coronary risk factors such as diabetes mellitus, occasionally show restenosis or de-novo lesion progression, which is difficult to prevent.¹⁻⁴

Sodium-glucose cotransporter-2 inhibitors (SGLT2i) are drugs that inhibit sodium-glucose channels in the renal proximal tubules.^{5,6} SGLT2i have been shown to have a primary preventive effect against cardiovascular events in patients with type 2 diabetes mellitus (T2DM).^{7,8} Some studies have shown that SGLT2i improved a prognosis of heart failure with reduced and preserved ejection fraction.⁹⁻¹¹ SGLT2i have become essential drugs for treating heart failure.¹² The cardioprotective effect of these drugs are attributed to a variety of mechanisms, not only sodium diuresis.¹³ Recent studies have demonstrated that SGLT2i administered to patients helped to prevent myocardial infarction in patients with T2DM,^{14,15} and to prevent subsequent cardiovascular events after myocardial infarction.¹⁶⁻¹⁸ Based on animal studies showing reduced aortic plaque lesions,¹⁹⁻²¹ SGLT2i are expected to be effective in treating atherosclerosis. On T2DM patients with stable angina pectoris, SGLT2i was reported to ameliorate coronary artery lesions.²² However, their effects on coronary artery lesions in patients with ACS have not been reported. Moreover, few studies have investigated their effects on the clinical outcomes in patients with ACS without heart failure symptoms.

This study aimed to investigate the effects of SGLT2i on the histological changes in coronary artery plaques using optical coherence tomography (OCT) and on the clinical events in patients with T2DM after ACS.

METHODS

Study design, setting, and population

This retrospective cohort study included 580 patients who underwent primary PCI for ACS between March 2019 and December 2021 at the Shonan Kamakura General Hospital, Japan. The study flow chart is shown in Figure 1. T2DM, defined as previously diagnosed or with HbA1c \geq 6.5% and blood glucose \geq 200 mg/dL on admission,²³ coexisted in 133 patients.

We excluded patients who (a) had an estimated glomerular filtration rate (eGFR) \leq 25 ml/min/1.73 m², (b) were treated with SGLT2i before ACS hospitalization, (c) died during ACS hospitalization and (d) could not be followed up at one year after ACS. Consequently, 109 patients (69 non-SGLT2i and 40 SGLT2i) were included in the total cohort. For OCT analysis, we included 29 patients (OCT cohort: 15 non-SGLT2i and 14 SGLT2i) with OCT images of the culprit lesion at the follow-up catheterization six months after ACS catheterization (Figure 1).

Participant data were obtained from our database. The authors vouch for the completeness and accuracy of the data and all analyses. The study protocol was approved by the Mirai Medical Center Ethics Committee (TGE02092-024) and was conducted in accordance with the tenets of the Declaration of Helsinki. Informed consent was exempted using an opt-out form.

Imaging study

We analyzed the OCT images twice for each patient. The first was at the primary PCI (baseline), and the second was at the follow-up catheterization six months later (follow-up).

We selected non-stented lesions with 1 mm slices from the distal and proximal sites of the stent edge at ACS catheterization (baseline) and at the follow-up OCT (follow-up)

corresponding to each image as a reference for the side branch (Supplemental Figure 1). Slices unsuitable for analysis, such as those with insufficient blood cell removal, were excluded.

Unstable coronary lesions were defined as indistinguishable three-layer structures (intima, media, and adventitia), high signal intensity in the fibrous capsule due to macrophage accumulation, and attenuated OCT signal over the fibrous capsule. Two cardiologists calculated the fibrous cap thickness (FCT) and lipid arc on the OCT images (Utreon™ 1.0 Software, Dragonfly™ Imaging Catheters, and the OPTIS™ Imaging Systems by Abbott Laboratories [United States]) (Figure 2). The lipid length was defined as the number of slices with unstable coronary lesions.

To evaluate unstable coronary lesions, we compared the rate of change in the FCT (Figure 2B), lipid arc (Figure 2C), lumen area (Figure 2D), and lipid length from baseline to follow-up between the non-SGLT2i and SGLT2i groups. FCT change was calculated as follows: $\text{minFCT}_{\text{follow}} - \text{minFCT}_{\text{base}}$, where $\text{minFCT}_{\text{base}}$ and $\text{minFCT}_{\text{follow}}$ are the minimum FCT in all slices at baseline and follow-up, respectively. Similarly, lipid arc change was calculated as $\text{maxARC}_{\text{follow}} - \text{maxARC}_{\text{base}}$, where $\text{maxARC}_{\text{base}}$ and $\text{maxARC}_{\text{follow}}$ are the maximum lipid arc in all slices at baseline and follow-up, respectively. Lipid arc change was also measured as % change in total lipid arc on all slices from baseline ($\text{totalARC}_{\text{base}}$) to follow-up ($\text{totalARC}_{\text{follow}}$): $\Delta\text{totalARC}/\text{totalARC}_{\text{base}} \times 100$ ($\Delta\text{totalARC} = \text{totalARC}_{\text{follow}} - \text{totalARC}_{\text{base}}$). Minimum lumen area change was calculated as follows: $\text{minLA}_{\text{follow}} - \text{minLA}_{\text{base}}$, where $\text{minLA}_{\text{base}}$ and $\text{minLA}_{\text{follow}}$ are the minimum LA in all slices at baseline and follow-up, respectively. Mean lumen area change was also defined as follows: $\text{meanLA}_{\text{follow}} - \text{meanLA}_{\text{base}}$, where $\text{meanLA}_{\text{base}}$ and $\text{meanLA}_{\text{follow}}$ are the mean LA in all slices at baseline and follow-up. The lipid length change was defined as follows: $\text{LL}_{\text{follow}} - \text{LL}_{\text{base}}$, where LL_{base} and $\text{LL}_{\text{follow}}$ are the lipid length at baseline and follow-up.

Clinical outcome assessment

To evaluate the prognostic effect of SGLT2i, we analyzed the clinical outcomes in the non-SGLT2i and SGLT2i groups one year after ACS. Clinical outcomes included all-cause mortality, revascularization (ACS or coronary lesion progression), cerebrovascular disease, and hospitalization for heart failure, defined as major adverse cardiovascular events (MACE).

Statistical analysis

The SGLT2i and non-SGLT2i groups were compared for categorical variables using the χ^2 test and for continuous variables using paired or unpaired t-test. Univariate analysis of atherosclerosis-related variables was performed using the paired or unpaired t-test for categorical variables and the Pearson correlation test for continuous variables. The cumulative incidence of MACE was evaluated using the Kaplan–Meier curve and proportional hazards models. Baseline characteristics exhibiting P value <0.05 in the univariate analysis were included in a logistic regression analysis to determine the predictive factors of the incidence of 1-year MACE. We evaluated the incidence rates of cardiac death, non-cardiac death, revascularization, hospitalization for heart failure, and stroke using the log-rank test and unadjusted or adjusted hazard ratios using proportional hazards models. P value < 0.05 indicated statistical significance. JMP Pro® 16 (SAS Institute, Cary, North Carolina) was used for the analyses.

RESULTS

Baseline

Table 1 shows the baseline characteristics of patients in the total and OCT cohorts. In the total cohort, the mean age was significantly lower in the SGLT2i group (65.5 ± 13.5 years) than in

the non-SGLT2i group (73.8 ± 11.8 years) ($p = 0.001$). HbA1c values were significantly higher in the SGLT2i than in the non-SGLT2i group at ACS hospitalization (8.7 ± 2.2 % vs. 7.2 ± 1.2 %, $p < 0.001$) but not at follow-up (7.2 ± 0.8 % vs. 7.0 ± 0.7 %, $p = 0.278$). The eGFR values were significantly higher in the SGLT2i group than in the non-SGLT2i both at baseline (67.9 ± 18.6 ml/min/1.73 m² vs. 57.9 ± 17.4 ml/min/1.73 m², $p = 0.006$) and at follow-up (63.5 ± 18.8 ml/min/1.73 m² vs. 55.1 ± 13.9 ml/min/1.73 m², $p = 0.02$).

In the OCT cohort, the SGLT2i and non-SGLT2i groups showed no significant differences in the baseline characteristics, including age, sex, risk for cardiovascular disease, and medications. The HbA1c values were significantly higher in the SGLT2i group (8.4 ± 1.5 % vs. 7.2 ± 1.4 %, $p = 0.045$) at ACS hospitalization but not at follow-up (7.1 ± 0.6 % vs. 7.1 ± 0.5 %, $p = 0.965$). The LDL cholesterol and TG at baseline showed no differences between the two groups. However, at the follow-up, the SGLT2i group had significantly lower LDL cholesterol (64.8 ± 12.2 mg/dL vs. 81.8 ± 22.3 mg/dL, $p = 0.021$) and TG (136.0 ± 68.3 mg/dL vs. 189.9 ± 63.4 mg/dL, $p = 0.043$).

OCT analysis

To assess the effectiveness of SGLT2i for atherosclerosis, we evaluated the histological changes in the coronary artery plaque distal and proximal from the stent edge at ACS catheterization (baseline) and at follow-up by OCT (Figure 3). The period from baseline to follow-up in the OCT analysis showed no difference between the non-SGLT2i and SGLT2i groups (191 ± 19 days vs. 213 ± 42 days, $p = 0.095$). As shown in Table 2, the minimum FCT, maximum lipid arc, minimum/mean lumen area and lipid length at ACS catheterization were not significantly different. However, the minimum FCT at follow-up was thicker in the SGLT2i group (154 ± 44 μm vs. 122 ± 30 μm, $p = 0.037$). Although the maximum lipid arc was numerically larger in the SGLT2i group, the difference between the two groups was not

significant at follow-up ($76 \pm 47^\circ$ vs. $58 \pm 36^\circ$, $p = 0.272$). The minimum lumen area had no difference at follow-up while the SGLT2i group had larger lumen area ($3.96 \pm 2.36 \text{ mm}^2$ vs. $3.52 \pm 1.54 \text{ mm}^2$, $p=0.569$). The mean lumen area was the same as well ($7.20 \pm 3.23 \text{ mm}^2$ vs. $6.71 \pm 2.37 \text{ mm}^2$, $p=0.567$). The lipid length had no difference at follow-up between two groups ($9.43 \pm 6.10 \text{ mm}$ vs. $11.20 \pm 5.97 \text{ mm}$, $p=0.452$). The SGLT2i group had a significantly greater absolute change in min FCT ($48 \pm 15 \mu\text{m}$ vs. $26 \pm 24 \mu\text{m}$, $p = 0.005$), max lipid arc ($-29 \pm 12^\circ$ vs. $-18 \pm 14^\circ$, $p = 0.028$), and % change in the total lipid arc ($-35 \pm 13\%$ vs. $-19 \pm 18\%$, $p = 0.01$). The two groups showed no significant differences on the absolute change in minimum lumen area ($0.29 \pm 1.41 \text{ mm}^2$ vs. $-0.03 \pm 1.56 \text{ mm}^2$, $p=0.582$), mean lumen area ($0.39 \pm 1.14 \text{ mm}^2$ vs. $-0.09 \pm 0.93 \text{ mm}^2$, $p=0.242$), and lipid length ($-1.14 \pm 1.85 \text{ mm}$ vs. $-1.07 \pm 2.38 \text{ mm}$, $p=0.927$).

The measurements of unstable plaque between the two cardiologists were comparable (Supplemental Table 1).

Table 3 shows the univariate analysis for FCT and lipid arc based on atherosclerosis-related variables, including sex, age, cardiovascular risks, medications, and laboratory data. None of these factors strongly correlated with minimum FCT or maximum lipid arc. SGLT2i use significantly correlated with the absolute change in the min FCT and max lipid arc.

Clinical outcomes

To determine the effect of SGLT2i on clinical outcomes after ACS, we compared the incidence of MACE between the two groups for one year. Kaplan–Meier analysis showed a significantly lower incidence of MACE in the SGLT2i group than in the non-SGLT2i group (log-rank $p = 0.023$, unadjusted HR 4.72 [1.08, 20.63]) (Figure 4). Multivariable analysis of factors associated with MACE were TG value at hospitalization, SGLT2i, MRA, RAA inhibitor, anticoagulant drug, NSTEMI, stent number and LVEF at baseline (Supplemental

Table 2). The SGLT2i group showed a lower rate of all-cause mortality, revascularization due to ACS or coronary lesion progression, cerebrovascular disease, and hospitalization for heart failure but not significantly different (Supplemental Table 3). The SGLT2i group had a significantly lower revascularization rate after adjusting for age and HbA1c level at baseline (adjusted HR 6.77 [1.08, 42.52]).

DISCUSSION

To the best of our knowledge, this is the first study to demonstrate the coronary lipid plaque-stabilizing effects of SGLT2i on ACS patients using coronary imaging. Regarding clinical events, SGLT2i reduced cardiovascular events after ACS. The main findings of this report are that: 1) in patients with T2DM after ACS, OCT analysis showed that the minimum FCT, the maximum lipid arc, and the % change of total lipid arc from baseline to follow-up improved significantly in the SGLT2i group, and 2) the patients with SGLT2i were associated with a lower clinical event rate, in particular lower subsequent coronary revascularizations, compared to those with non-SGLT2i.

Effect of SGLT2i on cardiovascular prognosis

SGLT2i has been developed as an anti-diabetic drug that acts on Na-Glu channels to excrete sugar into the urine. SGLT2 inhibitors are one of four widely used drugs for heart failure, and several large randomized studies have reported that they reduce the risk of death from cardiovascular events or hospitalization for heart failure not only in patients with reduced ejection fraction but also in those with preserved ejection fraction.⁹⁻¹² In addition, SGLT2i has been reported to be beneficial in patients with post-acute myocardial infarction, by improving cardiac function and reducing hospitalization for heart failure.¹⁶⁻¹⁸ Consistent with those previous findings,¹⁶⁻¹⁸ we found that SGLT2i reduced clinical events and improved the prognosis of patients with ACS and T2DM after a one-year follow up.

Coronary atherosclerosis in T2DM

Cholesterol-lowering agents, such as statin and ezetimibe, are the most common treatment to stabilize coronary atherosclerosis.^{24,25} Moreover, additional PCSK9 inhibitor showed coronary plaque regression in patients of acute myocardial infarct even with statin.^{26,27} However, even with these treatments, some coronary lesions may progress. Patients with T2DM are at high risk of coronary lesion progression.¹⁻³ T2DM has been shown to accelerate the development of atherosclerosis and increase plaque instability/vulnerability, leading to ACS. The cholesterol-lowering management was reported not to be enough to control lipid plaque in patients with T2DM.²⁸ In addition to the effects of SGLT2i on heart failure,⁹⁻¹² SGLT2i not only has a primary preventive effect on AMI^{14,15} but also has secondary preventive effects on cardiovascular events after AMI.¹⁶⁻¹⁸ It was known that SGLT2 was overexpressed in the inflammatory process on atherosclerotic plaque of DM patients.²⁹ SGLT2i can reduce or stabilize plaques by controlling the inflammatory cascade.³⁰⁻³³ Moreover, SGLT2i has been shown to improve insulin sensitivity in patients with T2DM,³⁴ which could also have a cardiovascular protective effect.³⁵ Their effects on atherosclerosis have been demonstrated in animal models¹⁹⁻²¹ and in patients with stable ischemic heart disease²², but not in patients with ACS.

Effect of SGLT2i on coronary unstable plaque

Unstable plaques defined on OCT imaging, are known to increase the incidence of cardiovascular events such as ACS. The thickness of the fibrous cap, the size of the necrotic core, and the presence of macrophages indicate plaque instability.³⁶⁻³⁸ In this study, patients treated with SGLT2i had thicker fibrous caps and reduced lipid plaque arcs than those who did not receive SGLT2i. HbA1c value was worse in the SGLT2i group during hospitalization for ACS whether it was comparable at follow-up. The decrease of HbA1c value might be one of the reasons for plaque stabilization. However, the HbA1c level showed no correlation with

the stabilization of unstable plaques in our results. As in previous studies,²² SGLT2i could stabilize unstable coronary plaque lesions in patients with ACS and T2DM, not by controlling diabetes, but by other mechanisms such as controlling inflammation in the hyperinflammatory cascade of ACS. Further investigation is required to elucidate the mechanism of action. Moreover, the SGLT2i group had lower LDL cholesterol, which could be one factor to improve unstable coronary lesions. However, it has been reported that diabetic patients are less likely to get plaque regression even with tight LDL control.²⁸ No relationship between LDL values and unstable plaque was found in univariate analysis, suggesting that the effect of lower LDL is less than the effect of SGLT2i administration to stabilize coronary plaques. SGLT2i can affect unstable plaques even under lipid control.

We also found a reduction in the revascularization rate at one year after ACS. These findings suggest that histological improvements lead to better clinical outcomes.

Therefore, SGLT2i administration should be considered in patients with ACS and T2DM undergoing PCI to stabilize coronary atherosclerotic lesions, in addition to improving cardiac function and controlling heart failure.

STUDY LIMITATIONS

This study has some limitations. Firstly, it was a single-center, retrospective study. Secondly, the OCT cohort comprised a small patient group. Thirdly, core laboratories did not perform the OCT analysis. Finally, our physicians decided by themselves without consensus whether to administer SGLT2i to patients or not. Therefore, some of the baseline characteristics differed significantly between the SGLT2i group and non-SGLT2i group. These differences might have influenced our study results. This is a pilot study to investigate SGLT2i on effective for coronary plaque. Prospective large-scale studies, including patients without diabetes, are required to overcome these limitations and make further progress in this area.

CONCLUSIONS

SGLT2i administration for six months after ACS stabilized coronary lipid plaques as visualized by OCT imaging. It also reduced cardiovascular events one year after ACS. Our results suggest that SGLT2i improves atherosclerosis, which could explain the better prognosis of ACS. SGLT2i should, therefore, be used aggressively in patients with ACS and T2DM.

Acknowledgements

None.

Sources of Funding

None.

Disclosures

None.

Supplemental Material

Figure S1

Table S1-S3

REFERENCES

1. Cosentino F, Grant PJ, Aboyans V, Bailey CJ, Ceriello A, Delgado V, Federici M, Filippatos G, Grobbee DE, Hansen TB, et al. 2019 ESC Guidelines on diabetes, pre-diabetes, and cardiovascular diseases developed in collaboration with the EASD. *Eur Heart J*. 2020;41:255-323.
2. Wilson S, Mone P, Kansakar U, Jankauskas SS, Donkor K, Adebayo A, Varzideh F, Eacobacci M, Gambardella J, Lombardi A, et al. Diabetes and restenosis. *Cardiovasc Diabetol*. 2022;21:23.
3. Godoy LC, Rao V, Farkouh ME. Coronary revascularization of patients with diabetes mellitus in the setting of acute coronary syndromes. *Circulation*. 2019;140: 1233-1235.
4. Zhang J, Zhang Q, Zhao K, Bian YJ, Liu Y, Xue YT. Risk factors for in-stent restenosis after coronary stent implantation in patients with coronary artery disease: A retrospective observational study. *Medicine (Baltimore)*. 2022;101:e31707
5. Verma A, Patel AB, Waikar SS. SGLT2 Inhibitor: Not a traditional diuretic for heart failure. *Cell Metab*. 2020;32:13-14.
6. Zelniker TA, Braunwald E. Mechanisms of cardiorenal effects of sodium-glucose cotransporter 2 inhibitors: JACC State-of-the-Art Review. *J Am Coll Cardiol*. 2020;75:422-434.
7. Zinman B, Wanner C, Lachin JM, Fitchett D, Bluhmki E, Hantel S, Mattheus M, Devins T, Johansen OE, Woerle HJ, et al. Empagliflozin, cardiovascular outcomes, and mortality in Type 2 diabetes. *N Engl J Med*. 2015;373:2117-2128.
8. Neal B, Perkovic V, Mahaffey KW, Zeeuw DD, Fulcher G, Erondy N, Shaw W, Law G, Desai M, Matthews DR, et al. Canagliflozin and cardiovascular and renal events in Type 2 diabetes. *N Engl J Med*. 2017;377:644-657.
9. McMurray JJV, Solomon SD, Inzucchi SE, Køber L, Kosiborod MN, Martinez FA,

- Ponikowski P, Sabatine MS, Anand IS, Bělohávek J, et al. Dapagliflozin in patients with heart failure and reduced ejection fraction. *N Engl J Med*. 2019;381:1995-2008.
10. Packer M, Anker SD, Butler J, Filippatos G, Ferreira JP, Pocock SJ, Sattar N, Brueckmann M, Jamal W, Cotton D, et al. Empagliflozin in patients with heart failure, reduced ejection Fraction, and volume overload: EMPEROR-reduced trial. *J Am Coll Cardiol*. 2021;77:1381-1392.
 11. Anker SD, Butler J, Filippatos G, Ferreira JP, Bocchi E, Böhm M, Rocca HB, Choi D, Chopra V, Chuquiure-Valenzuela E, et al. Empagliflozin in heart failure with a preserved ejection fraction. *N Engl J Med*. 2021;385:1451-1461.
 12. Bauersachs J. Heart failure drug treatment: the fantastic four. *Eur Heart J*. 2021;42:681-683.
 13. Gallwitz B. The cardiovascular benefits associated with the use of sodium-glucose cotransporter 2 inhibitors – real-world Data. *Eur Endocrinol*. 2018;14:17-23.
 14. Zhu J, Yu X, Zheng Y, Li J, Wang Y, Lin Y, He Z, Zhao W, Chen C, Qiu K, et al. Association of glucose-lowering medications with cardiovascular outcomes: an umbrella review and evidence map. *Lancet Diabetes Endocrinol*. 2020;8:192-205.
 15. Zheng SL, Roddick AJ, Aghar-Jaffar R, Shun-Shin MJ, Francis D, Oliver N, Meeran K. Association between use of sodium-glucose cotransporter 2 inhibitors, glucagon-like peptide 1 agonists, and dipeptidyl peptidase 4 inhibitors with all-cause mortality in patients with Type 2 diabetes: A systematic review and meta-analysis. *JAMA*. 2018;319:1580-1591.
 16. Zhu Y, Zhang JL, Yan XJ, Sun L, Ji Y, Wang FF. Effect of dapagliflozin on the prognosis of patients with acute myocardial infarction undergoing percutaneous coronary intervention. *Cardiovasc Diabetol*. 2022;21:186.
 17. Harrington J, Udell JA, Jones WS, Anker SD, Bhatt DL, Petrie MC, Vedin O, Sumin M,

- Zwiener I, Hernandez AF, et al. Empagliflozin in patients post myocardial infarction rationale and design of the EMPACT-MI trial. *Am Heart J.* 2022;253:86–98.
18. Lewinski DV, Kolesnik E, Tripolt NJ, Pferschy PN, Benedikt M, Wallner M, Alber H, Berger R, Lichtenauer M, Saely CH, et al. Empagliflozin in acute myocardial infarction: the EMMY trial. *Eur Heart J.* 2022;43:4421-4432.
19. Terasaki M, Hiromura M, Mori Y, Kohashi K, Nagashima M, Kushima H, Watanabe T, Hirano T. Amelioration of hyperglycemia with a sodium-glucose cotransporter 2 inhibitor prevents macrophage-driven atherosclerosis through macrophage foam cell formation suppression in type 1 and type 2 diabetic mice. *PLoS One.* 2015;10: e0143396.
20. Liu Y, Xu J, Wu M, Xu B, Kang L. Empagliflozin protects against atherosclerosis progression by modulating lipid profiles and sympathetic activity. *Lipids Health Dis.* 2021;20:5.
21. Chen Y, Jandeleit-Dahm K, Peter K. Sodium-Glucose Co-Transporter 2 (SGLT2) Inhibitor Dapagliflozin Stabilizes Diabetes-Induced Atherosclerotic Plaque Instability. *J Am Heart Assoc.* 2022;11(1):e022761.
22. Sardu C, Trotta MC, Sasso FC, Sacra C, Carpinella G, Mauro C, Minicucci F, Calabrò P, Amico MD', Ascenzo FD', et al. SGLT2-inhibitors effects on the coronary fibrous cap thickness and MACEs in diabetic patients with inducible myocardial ischemia and multi vessels non-obstructive coronary artery stenosis. *Cardiovasc Diabetol.* 2023;22(1):80.
23. American Diabetes Association. 2. Classification and diagnosis of diabetes: Standards of medical care in diabetes-2021. *Diabetes Care.* 2021;44(Suppl.1):S15-33.
24. Komukai K, Kubo T, Kitabata H, Matsuo Y, Ozaki Y, Takarada S, Okumoto Y, Shiono Y, Orii M, Shimamura K, et al. Effect of Atorvastatin Therapy on Fibrous Cap Thickness in

- Coronary Atherosclerotic Plaque as Assessed by Optical Coherence Tomography: The EASY-FIT Study. *J Am Coll Cardiol.* 2014;64(21):2207-17.
25. Habara M, Nasu K, Terashima M, Ko E, Yokota D, Ito T, Kurita T, Teramoto T, Kimura M, Kinoshita Y, et al. Impact on optical coherence tomographic coronary findings of fluvastatin alone versus fluvastatin + ezetimibe. *Am J Cardiol.* 2014;115(4):580-7.
26. Räber L, Ueki Y, Otsuka T, Losdat S, Häner JD, Lonborg J, Fahrni G, Iglesias JF, van Geuns R, Ondracek AS, et al. Effect of alirocumab added to high-intensity statin therapy on coronary atherosclerosis in patients with acute myocardial infarction: the PACMAN-AMI randomized clinical trial. *JAMA.* 2022;327(18):1771–81.
27. Nicholls SJ, Kataoka Y, Nissen SE, Prati F, Windecker S, Puri R, Hucko T, Aradi D, Herrman JR, Hermanides RS, et al. Effect of evolocumab on coronary plaque phenotype and burden in statin-treated patients following myocardial infarction. *JACC Cardiovasc Imaging.* 2022;15(7):1308–21.
28. Iwai T, Kataoka Y, Nicholls SJ, Puri R, Murata S, Nishimura K, Murai K, Kitahara S, Sawada K, Matama H, et al. Phenotypic Features of Coronary Atheroma in Diabetic and Nondiabetic Patients With Low-Density Lipoprotein Cholesterol <55 mg/dL. (letter) *JACC Cardiovasc Imaging.* 2022;15(6):1166-1169.
29. D’Onofrio N, Sardu C, Trotta MC, Scisciola L, Turriziani F, Ferraraccio F, Panarese I, Petrella L, Fanelli M, Modugno P, et al. Sodium–glucose co-transporter2 expression and

- inflammatory activity in diabetic atherosclerotic plaques: effects of sodium–glucose co-transporter2 inhibitor treatment. *Mol Metab.* 2021;54:101337.
30. Mortanges AP, Salvador D, Laimer M, Muka T, Wilhelm M, Bano A. The role of SGLT2 inhibitors in atherosclerosis: A narrative mini-review. *Front Pharmacol.* 2021;12:751214.
31. Cowie MR, Fisher M. SGLT2 inhibitors: mechanisms of cardiovascular benefit beyond glycaemic control. *Nat Rev Cardiol.* 2020;17:761-772.
32. Elrakaybi A, Laubner K, Zhou Q, Hug MJ, Seufert J. Cardiovascular protection by SGLT2 inhibitors— Do anti-inflammatory mechanisms play a role? *Mol Metab.* 2022;64:101549.
33. Spigoni V, Fantuzzi F, Carubbi C, Pozzi G, Masselli E, Gobbi G, Solini A, Bonadonna RC, Cas AD. Sodium-glucose cotransporter 2 inhibitors antagonize lipotoxicity in human myeloid angiogenic cells and ADP-dependent activation in human platelets: potential relevance to prevention of cardiovascular events. *Cardiovasc Diabetol.* 2020;19:46.
34. Merovci A, Herrera CS, Daniele G, Eldor R, Fiorentino TV, Tripathy D, Xiong J, Perez Z, Norton L, Abdul-Ghani MA, et al. Dapagliflozin improves muscle insulin sensitivity but enhances endogenous glucose production. *J Clin Invest.* 2014; 124:509–514.
35. Hill MA, Yang Y, Zhang L, Sun Z, Jia G, Parrish AR, Sowers JR. Insulin resistance, cardiovascular stiffening and cardiovascular disease. *Metabolism.* 2021;119:154766.
36. Sinclair H, Bourantas C, Bagnall A, Mintz GS, Kunadian V. OCT for the identification of vulnerable plaque in acute coronary syndrome. *JACC Cardiovasc Imaging.* 2015;8:198-209.
37. Russo M, Kim HO, Kurihara O. Characteristics of non-culprit plaques in acute coronary syndrome patients with layered culprit plaque. *Eur Heart J Cardiovasc Imaging.* 2020;21:1421-1430.
38. van Veelen A, van der Sangen NMR, Henriques JPS, Claessen BEPM. Identification and

treatment of the vulnerable coronary plaque. *Rev Cardiovasc Med.* 2022;23:39.

Table 1. Baseline characteristics of ACS patients with T2DM

Total cohort	non-SGLT2i (n=69)	SGLT2i (n=40)	P value	OCT analysis	non-SGLT2i (n=15)	SGLT2i (n=14)	P value
Age	73.81±11.76	65.48±13.46	0.001	Age	68.87±10.63	64.19±11.02	0.213
Male	50 (72.5)	32 (80.0)	0.380	Male	13 (86.7)	11 (78.6)	0.564
CVD risks				CVD risks			
Smoke	33 (47.8)	30 (75.0)	0.006	Smoke	10 (66.7)	12 (85.7)	0.231
Dyslipidemia	55 (79.7)	32 (80.0)	0.971	Dyslipidemia	15 (100.0)	12 (85.7)	0.129
Hypertension	54 (78.3)	29 (72.5)	0.496	Hypertension	10 (66.7)	10 (71.4)	0.782
CKD	17 (24.6)	7 (17.5)	0.386	CKD	4 (26.7)	4 (28.6)	0.924
Past CVD history	10 (14.5)	2 (5.0)	0.127	Past CVD history	1 (6.7)	0 (0.0)	0.326
Family history	19 (27.5)	13 (32.5)	0.583	Family history	5 (33.3)	5 (35.7)	0.893
laboratory data				laboratory data			
HbA1c baseline	7.21±1.19	8.71±2.15	<0.001	HbA1c baseline	7.20±1.41	8.36±1.46	0.045
HbA1c follow-up	7.02±0.73	7.19±0.81	0.278	HbA1c follow-up	7.07±0.55	7.06±0.52	0.965
LDL baseline	132.56±46.14	146.50±41.95	0.123	LDL baseline	155.93±36.18	159.43±32.29	0.794
LDL follow-up	79.02±23.24	69.70±24.57	0.058	LDL follow-up	81.80±22.34	64.79±12.20	0.021
TG baseline	155.79±101.08	187.68±107.97	0.129	TG baseline	175.53±90.33	218.71±176.92	0.440
TG follow-up	146.37±82.83	133.73±72.29	0.434	TG follow-up	189.87±63.42	136.00±68.28	0.043
eGFR baseline	57.90±17.35	67.88±18.59	0.006	eGFR baseline	70.17±14.65	71.91±14.58	0.759
eGFR follow-up	55.14±13.91	63.45±18.83	0.020	eGFR follow-up	59.70±11.17	67.84±12.74	0.088
peak CK	2116.22±2071.79	2013.15±1810.44	0.796	peak CK	1800.53±1531.08	2237.79±2025.30	0.442
echocardiography data				Medication			
LVEF baseline	53.53±11.70	52.60±8.10	0.630	Antidiabetic drugs			
LVEF follow-up	54.15±11.70	56.01±10.04	0.403	Insulin	1 (6.7)	0 (0.0)	0.326
LVDd baseline	45.54±4.79	45.29±5.69	0.805	SGLT2i	-	12 Dapa, 2 Empa	-
LVDd follow-up	45.07±6.01	43.51±5.26	0.236	DPP4i	7 (46.7)	8 (57.1)	0.573
Medication				Biguanide			
Antidiabetic drugs				SU	0 (0.0)	1 (7.1)	0.292
Insulin	14 (20.3)	7 (17.5)	0.722	αGI	0 (0.0)	3 (21.4)	0.058
SGLT2i	-	31 Dapa, 9 Empa	-	GLP-1	0 (0.0)	1 (7.1)	0.292
				Antilipidemic drugs			

DPP4i	41 (59.4)	25 (62.5)	0.751	Statin	15 (100.0)	14 (100.0)	1.000
Biguanide	17 (24.6)	16 (40.0)	0.092	Ezetimibe	5 (33.3)	6 (42.9)	0.597
SU	2 (2.9)	1 (2.5)	0.902	βblocker	15 (100.0)	12 (85.7)	0.129
Thiazolidine	4 (5.8)	1 (2.5)	0.428	RAAS inhibitor	13 (86.7)	13 (92.9)	0.587
αGI	6 (8.7)	9 (22.5)	0.044	MRA	2 (13.3)	2 (14.3)	0.941
GLP-1	0 (0.0)	2 (5.0)	0.061				
Antilipidemic drugs				ACS			
Statin	68 (98.6)	40 (100.0)	0.444	UAP	2 (13.3)	1 (7.1)	
Ezetimibe	20 (29.0)	19 (47.5)	0.052	STEMI	11 (73.3)	11 (78.6)	0.861
Fibrate	0 (0.0)	1 (2.5)	0.187	NSTEMI	2 (13.3)	2 (14.3)	
βblocker	57 (82.6)	36 (90.0)	0.293	Plaque Rapture	7 (46.7)	5 (35.7)	
RAAS inhibitor	56 (81.2)	37 (92.5)	0.107	Plaque Erosion	6 (40.0)	6 (42.9)	0.779
MRA	13 (18.8)	8 (20.0)	0.882	Calcified Nodule	2 (13.3)	3 (21.4)	
	ACS			PCI			
UAP	11 (15.9)	5 (12.5)		LAD	9 (60.0)	7 (50.0)	
STEMI	41 (59.4)	29 (72.5)	0.369	LCx	0 (0.0)	3 (21.4)	0.156
NSTEMI	17 (24.6)	6 (15.0)		RCA	6 (40.0)	3 (21.4)	
				LMT	0 (0.0)	1 (7.1)	
	PCI			DES	15 (100.0)	14 (100.0)	1.000
LAD	22 (31.9)	18 (45.0)		Stent number	1.20±0.40	1.14±0.35	0.697
LCx	8 (11.6)	6 (15.0)	0.723				
RCA	19 (27.5)	14 (35.0)		follow-up catheterization			
LMT	0 (0.0)	1 (2.5)		Day from A to B	190.93±18.62	213.29±42.03	0.095
DES	66 (95.7)	40 (100.0)		Day from A to B	190.93±18.62	213.29±42.03	0.095
DCB	2 (2.9)	0 (0.0)					
Stent number	1.22±0.53	1.58±0.70	0.008				
	Reasons for follow-up catheterization						
symptomatic	28 (40.6)	21 (52.5)					
asymptomatic	9 (13.0)	3 (7.5)	0.419				
no follow-up	32 (46.4)	16 (40.0)					

The values show the count (percentage), or the mean \pm 95% confidence interval.

ACS, acute coronary syndrome; α GI, alpha-glucosidase inhibitor; CK, creatine kinase;

CKD, chronic kidney disease; CVD, cardiovascular disease; Dapa, dapagliflozin; DCB,

drug-coated balloon; DES, drug-eluting stent; DPP4i, dipeptidyl peptidase-4 inhibitor; eGFR,

estimated glomerular filtration rate; Empa, empagliflozin; FCT, fibrous cap thickness; GLP-1,

glucagon-like peptide-1; HbA1c, hemoglobin A1c; LAD, left anterior descending branch;

LCx, left circumflex branch; LDL, low-density lipoprotein cholesterol; LMT, left main trunk;

LVDd, left ventricular diameter at end diastole; LVEF, left ventricular ejection fraction; MRA,

mineralocorticoid receptor antagonist; NSTEMI, non-ST-segment elevation myocardial

infarct; OCT, optical coherence tomography; PCI, percutaneous coronary intervention; RAAS,

renin-angiotensin-aldosterone system; RCA, right coronary artery; SGLT2i, sodium-glucose

cotransporter-2 inhibitors; STEMI, ST-segment elevation myocardial infarct; SU,

sulfonylurea; TG, triglyceride; T2DM, type 2 diabetes mellites; UAP, unstable angina

pectoris.

Table 2. SGLT2i effect for unstable plaque

	non-SGLT2i	SGLT2i	P value
ACS catheterization			
min FCT (μm)	97 \pm 29	106 \pm 40	0.488
max Lipid Arc ($^{\circ}$)	93 \pm 48	86 \pm 44	0.703
min Lumen Area (mm^2)	3.55 \pm 1.98	3.67 \pm 1.52	0.863
mean Lumen Area (mm^2)	6.80 \pm 2.78	6.81 \pm 2.70	0.992
Lipid Length (mm)	12.27 \pm 6.67	10.57 \pm 7.11	0.528
follow-up catheterization			
min FCT (μm)	122 \pm 30	154 \pm 44	0.037
max Lipid Arc ($^{\circ}$)	76 \pm 47	58 \pm 36	0.272
min Lumen Area (mm^2)	3.52 \pm 1.54	3.96 \pm 2.36	0.569
mean Lumen Area (mm^2)	6.71 \pm 2.37	7.20 \pm 3.23	0.567
Lipid Length (mm)	11.20 \pm 5.97	9.43 \pm 6.10	0.452
absolute change in min FCT (μm)	26 \pm 24	48 \pm 15	0.005
absolute change in max Lipid Arc ($^{\circ}$)	-18 \pm 14	-29 \pm 12	0.028
% change in total Lipid Arc	-19 \pm 18	-35 \pm 13	0.010
absolute change in min Lumen Area (mm^2)	-0.03 \pm 1.56	0.29 \pm 1.41	0.582
absolute change in mean Lumen Area (mm^2)	-0.09 \pm 0.93	0.39 \pm 1.14	0.242
absolute change in Lipid Length (mm)	-1.07 \pm 2.38	-1.14 \pm 1.85	0.927

The minimum FCT and maximum lipid arc at baseline had no difference between two groups.

The minimum FCT at follow-up got thicker in SGLT2i group than in non-SGLT2i group

whether the maximum lipid arc at follow-up could not show any statistical difference. The

minimum FCT, the maximum lipid arc, and the % change of total lipid arc in SGLT2i group

statistically improved from baseline to follow-up in comparison with non-SGLT2i group. The

minimum / mean lumen area and the lipid length at baseline and follow-up had no difference

between two groups. The values show the mean \pm 95% confidence interval.

FCT, fibrous cap thickness; SGLT2i, sodium-glucose cotransporter-2 inhibitors.

Table 3. Univariate analysis with atherosclerosis-related variables

Categorical Variables	Univariate Analysis (P value)	
	absolute change in min FCT	absolute change in max Lipid Arc
Sex	0.769	0.706
Hypertension	0.292	0.171
Smoke	0.092	0.301
Family history	0.337	0.752
SGLT2i	0.005	0.010
beta-blocker	0.233	0.070
RAAS inhibitor	0.868	0.815
MRA	0.912	0.321

Continuous Variables	Univariate Analysis	
	absolute change in min FCT	absolute change in max Lipid Arc
Age	0.296	0.675
HbA1c at baseline	0.091	0.404
HbA1c at follow-up	0.721	0.392
absolute change in HbA1c	0.138	0.706
LDL at baseline	0.555	0.827
LDL at follow-up	0.170	0.108
absolute change in LDL	0.190	0.511
TG at baseline	0.962	0.968
TG at follow-up	0.237	0.730
absolute change in TG	0.582	0.828
eGFR at baseline	0.207	0.825
eGFR at follow-up	0.481	0.240
absolute change in eGFR	0.425	0.33

The values show the P value by univariate analysis. Categorical and continuous variables related to atherosclerosis had no relations with change in minimum FCT and maximum Lipid Arc on univariate analysis.

CKD, chronic kidney disease; FCT, fibrous cap thickness; HbA1c, hemoglobin A1c; LDL, low-density lipoprotein cholesterol; MRA, mineralocorticoid receptor antagonist; RAAS, renin-angiotensin-aldosterone system; TG, triglyceride.

Figure 1.

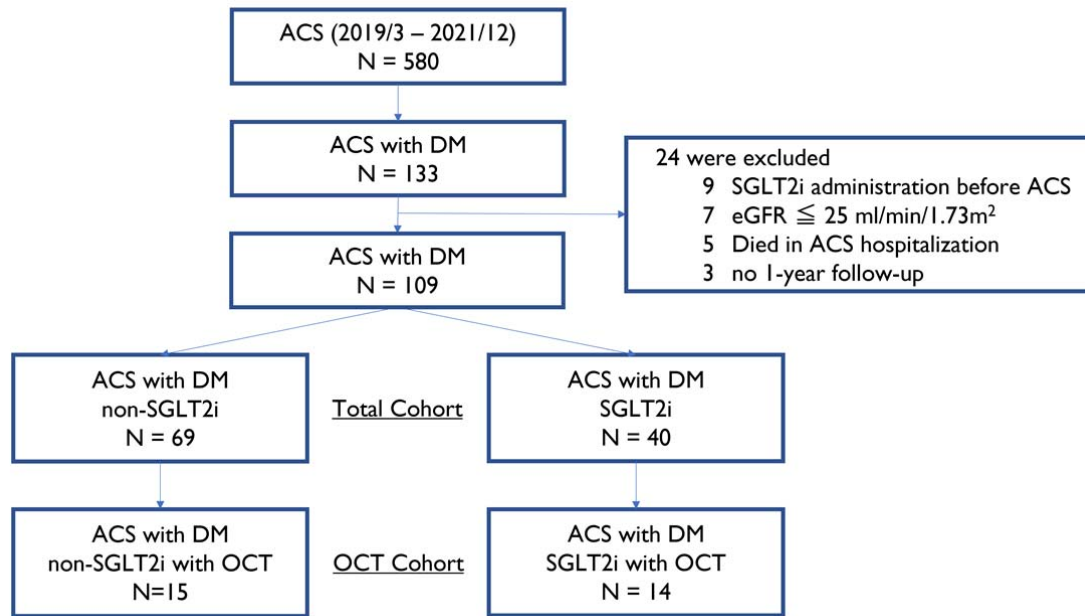


Figure 1. Flow chart of cohort formation

The chart shows the patient selection and exclusion criteria and the number of patients in each cohort.

Figure 2.

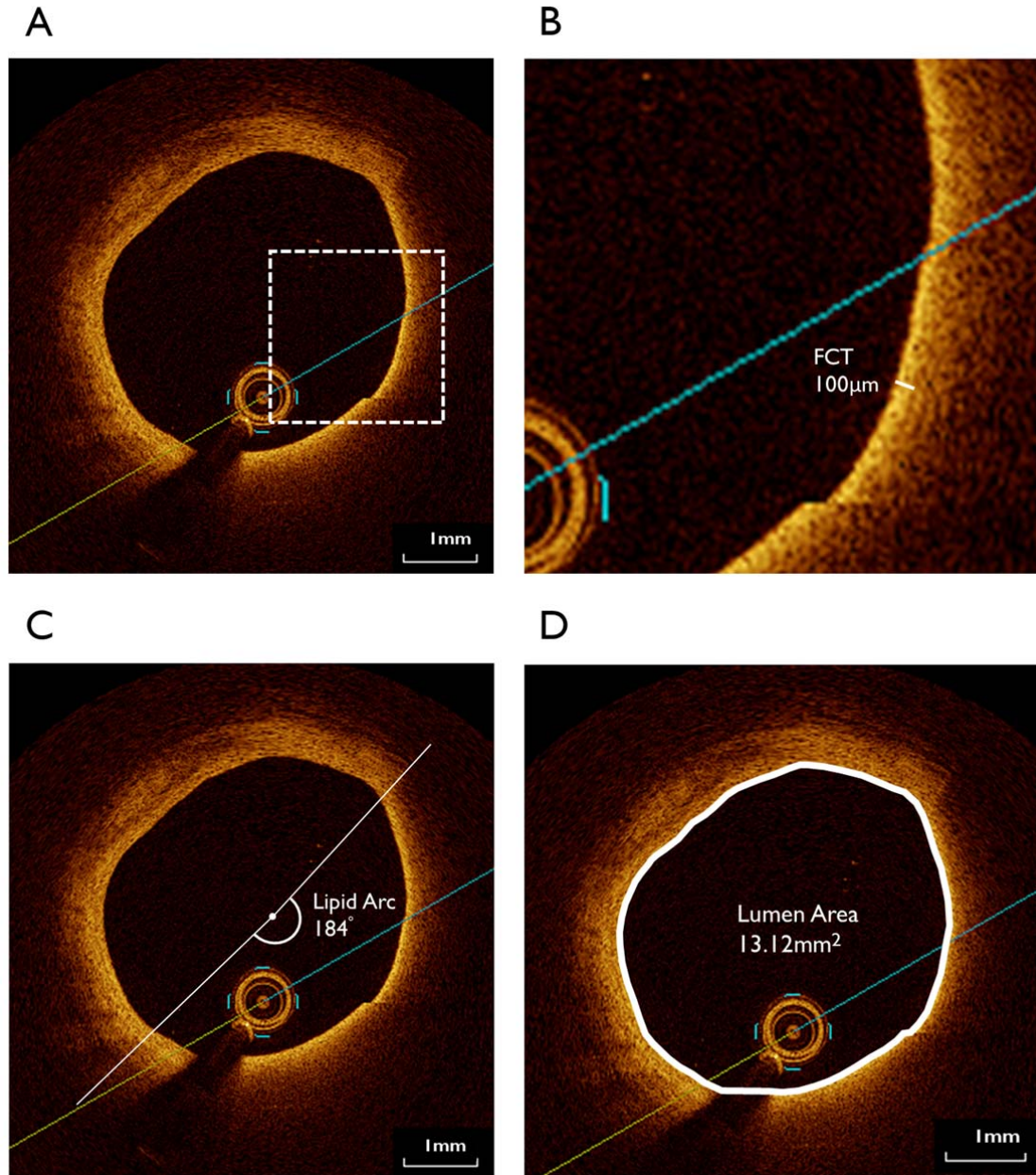


Figure 2. OCT measurement

OCT imaging was used to (A) confirm the presence of unstable lipid plaques, (B) measure the fibrous cap thickness, (C) measure the lipid arc, (D) measure the lumen area.

Figure 3.

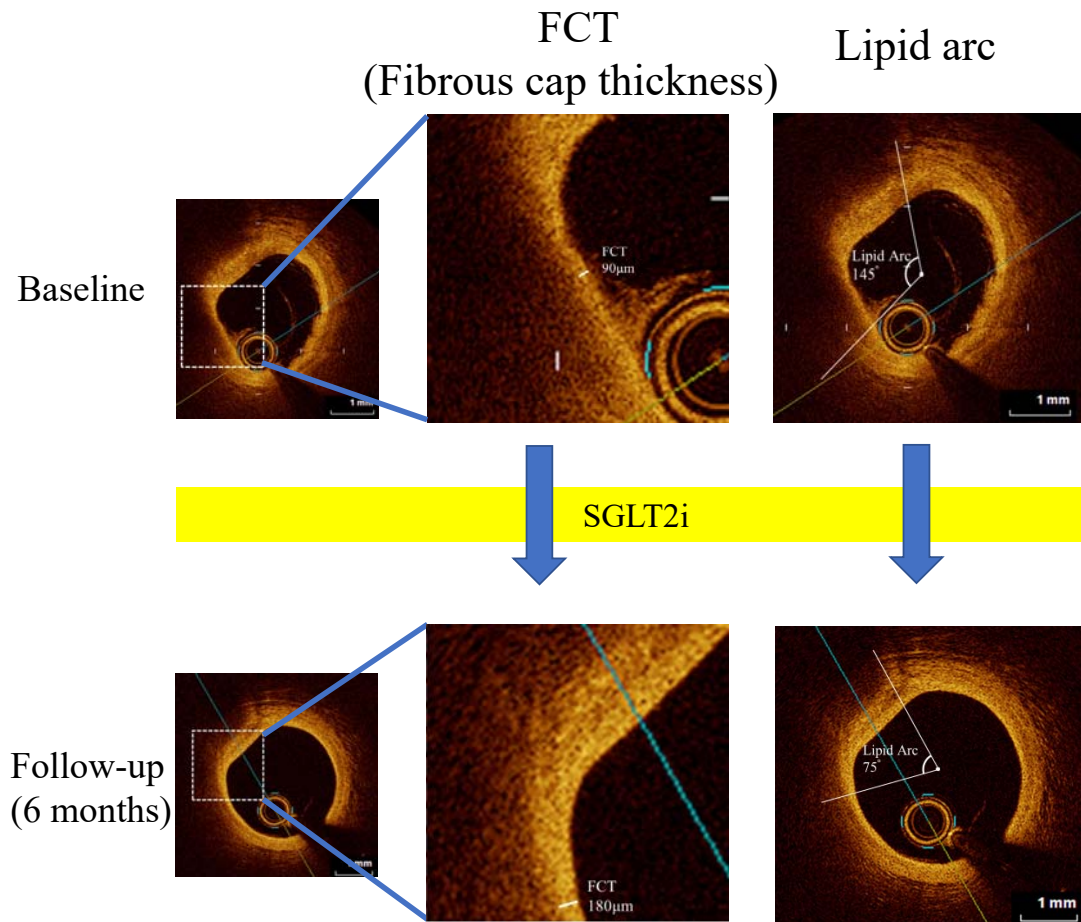


Figure 3. Representative images

The representative case showed NSTEMI and was performed PCI for LAD lesion. The OCT images had an unstable lesion at baseline (FCT 90 μm, Lipid arc 145°). The patient started to take SGLT2i from the hospitalization. After 6 months, OCT follow-up showed the lesion was improved (FCT 180 μm, Lipid arc 75°).

Figure 4.

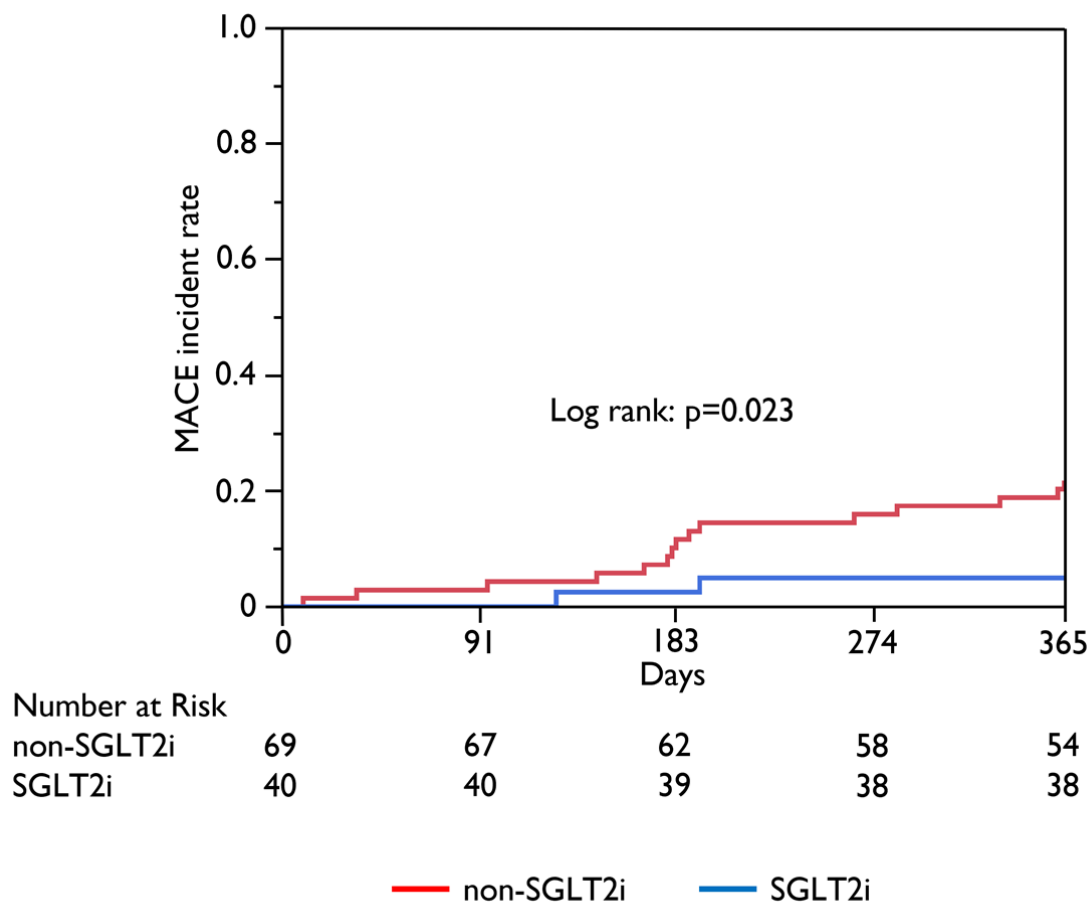


Figure 4. ACS prognosis and incidence rate of MACE

The cumulative incidence of MACE was evaluated using the Kaplan-Meier analysis. MACE included all-cause mortality, revascularization due to ACS or coronary lesion progression, cerebrovascular disease, and hospitalization for heart failure. The incidence of MACE was significantly lower in the SGLT2i group than in the non-SGLT2i group (log-rank test, $p = 0.023$).