

1 **Are viral loads in the febrile phase a predictive factor of dengue**
2 **disease severity?**

3 Shashika Dayarathna¹, Heshan Kuruppu¹, Tehani Silva¹, Laksiri Gomes¹, N.L. Ajantha
4 Shyamali¹, Chandima Jeewandara¹, Dinuka Ariyaratne¹, Shyrar Tanussiya Ramu¹, Ananda
5 Wijewickrama², Graham S. Ogg³, Gathsaurie Neelika Malavige^{1,3*}

6
7 ¹Allergy Immunology and Cell Biology Unit, Department of Immunology and Molecular
8 Medicine, University of Sri Jayewardenepura, Nugegoda, Sri Lanka; ²National Institute of
9 Infectious Diseases, Angoda, Sri Lanka; ³MRC Human Immunology Unit, MRC Weatherall
10 Institute of Molecular Medicine, University of Oxford, Oxford, United Kingdom

11
12
13 Correspondence should be addressed to:

14 Prof. Neelika Malavige DPhil (Oxon), FRCP (Lond), FRCPath (UK)

15 AICBU, Department of Immunology and Molecular Medicine, Faculty of Medical Sciences,
16 University of Sri Jayawardanapura, Sri Lanka

17 Tel +94 (0) 772443193; Fax: +94 (0) 112802026, Email: gathsaurie.malavige@ndm.ox.ac.uk

18

19

20

21

NOTE: This preprint reports new research that has not been certified by peer review and should not be used to guide clinical practice.

22 Abstract

23 **Background:** As many studies have shown conflicting results regarding the extent of viraemia
24 and clinical disease severity, we sought to investigate if viraemia during early dengue illness
25 is associated with subsequent clinical disease severity.

26 **Methodology/Principal Findings:** 424 adult patients, in whom the dengue virus (DENV)
27 serotype could be identified, who presented within the first 4 days of illness, were recruited
28 from a tertiary care hospital from Sri Lanka from September 2016 to September 2022 following
29 informed written consent. To characterize subsequent clinical disease severity, all patients were
30 followed throughout their illness daily and disease severity classified according to WHO 1997
31 and 2009 disease classification.

32 315 patients had DF, 109 progressed to develop DHF and of those 17 developed shock (DSS).
33 Although the viral loads were higher in the febrile phase in patients who progressed to develop
34 DHF than in patients with DF this was not significant ($p=0.15$). Significant differences were
35 observed in viral loads in patients infected with different DENV serotypes ($p=0.0001$), with
36 patients infected with DENV2 having the lowest viral loads and the highest viral loads in
37 DENV1. Although those infected with DENV2 had lower viral loads, infection with DENV2
38 was significantly associated with a higher risk of developing DHF ($p=0.016$, Odds ratio 1.8;
39 95% CI 1.116 to 2.905). Based on the WHO 2009 disease classification, 268 had dengue with
40 warning signs (DWW), 139 dengue without warning signs (DWOWS), and 17 had severe
41 dengue (SD). No significant difference was observed in the viral loads between those with SD,
42 DWW and DWOWS ($p=0.34$).

43 **Conclusions/Significance:** Viral loads in the febrile phase do not appear to significantly
44 associate with subsequent clinical disease severity in a large Sri Lankan cohort.

45

46 **Author summary**

47 As many studies have shown conflicting results regarding the extent of viraemia and clinical
48 disease severity, we sought to investigate if viraemia during early dengue illness was associated
49 with subsequent clinical disease severity. We assessed the viral loads and subsequent clinical
50 disease severity in 424 patients, during early illness, to determine if viral loads associate with
51 disease subsequent disease severity. Although the viral loads were higher in early illness in
52 patients who progressed to develop dengue haemorrhagic fever (DHF) than in patients with
53 dengue fever, this was not significant. Significant differences were observed in viral loads in
54 patients infected with different DENV serotypes, with patients infected with DENV2 having
55 the lowest viral loads and the highest viral loads in DENV1. Although those infected with
56 DENV2 had lower viral loads, infection with DENV2 was significantly associated with a
57 higher risk of developing DHF. Therefore, viral loads in early illness, do not appear to strongly
58 associate with subsequent clinical disease severity in this Sri Lankan cohort.

59

60

61

62

63

64

65

66

67 **Introduction**

68 Dengue, which was named as one of the top ten threats to global health by the WHO is the
69 most rapidly increasing mosquito borne viral infection [1]. As it is a climate sensitive infection,
70 due to the rise in global temperatures, it is predicted that burden of infection due to dengue is
71 likely to further increase, resulting in potential overwhelming of the health-care systems in
72 further areas and countries [2]. As there is no effective treatment for dengue, all patients with
73 a suspected dengue infection are closely monitored for early detection of complications for
74 timely interventions in the form of meticulous fluid management [3].

75

76 While most dengue infections result in asymptomatic or mild illness, some individuals develop
77 vascular leakage resulting in pleural effusions, ascites, shock and other complications such as
78 bleeding and organ dysfunction [3]. The reasons for occurrence of vascular leakage and other
79 complications in some individuals are unknown, but a secondary dengue infection, pregnancy,
80 presence of comorbidities such as diabetes, obesity and chronic kidney disease are known risk
81 factors [4-6]. A dysfunctional innate immune response that results in an impaired antiviral
82 immunity, with an enhanced proinflammatory response, presence of poor quality non-
83 neutralizing antibodies and a sub-optimum T cell response are known to contribute to severe
84 disease [7, 8].

85

86 Although severe clinical disease manifestations occur due to an aberrant and suboptimum
87 immune response, the dengue virus (DENV) is known to lead to induction of many
88 inflammatory mediators and therefore, directly contributes to disease pathogenesis [9].
89 Therefore, targeting the DENV and inhibiting viral replication has been one of the main
90 strategies for developing a treatment for dengue [10]. However, many studies have shown

91 conflicting results regarding the extent of viraemia and clinical disease severity. In a recent
92 very large study from Vietnam, it was shown that higher plasma viraemia increased the risk of
93 severe disease, hospitalization and plasma leakage, irrespective of the infecting serotype and
94 the immune status [11]. However, they also show that although the viral loads were highest for
95 DENV1 and lowest with infections with DENV2, infection with DENV2 was associated with
96 a higher risk of developing severe dengue [11]. Another study from Vietnam showed that viral
97 loads during early illness was significantly less in those with secondary dengue infection,
98 although secondary dengue is an important risk factor for severe dengue [12]. A study from
99 Indonesia showed that DENV3 was associated with a higher risk of plasma leakage compared
100 to other serotypes and that there was a trend towards higher viraemia in those who develop
101 severe dengue [13]. Studies from Colombia and India showed that the viral loads had no
102 relationship with clinical disease severity [14, 15].

103

104 The contradictory findings in different studies could be due to different viral dynamics based
105 on timing, different genotypes of the virus, differences in host responses based on genetic
106 predisposition and ethnicities. As many antiviral trials for dengue failed to show efficacy so
107 far, and as many trials are underway, it would be important to understand if viral loads during
108 early illness associate with subsequent disease severity in different countries and in different
109 populations. In this study, we have characterized the viral loads during early illness in patients
110 presenting to a large tertiary care hospital in Sri Lanka, over a period of 6 years, to understand
111 the relationship between viral loads, different DENV serotypes and clinical disease severity.

112

113

114

115 **Methodology**

116 **Patients with acute dengue infection**

117 Adult patients (n=502) with a suspected acute dengue infection were recruited from the
118 National Institute of Infectious Diseases, Sri Lanka from September 2016 to September 2022
119 following informed written consent to the study. Blood samples was collected from each
120 patient, during the first four days since onset of symptoms (days of illness \leq 4 days), which
121 was during the febrile phase. A second blood sample could only be collected from 161 patients
122 at day 5 to 7 of illness for dengue antibody assays. Any patient who had features of plasma
123 leakage at the time of recruitment, were excluded from the study. To characterize clinical
124 disease severity, all patients were followed throughout their illness daily, and all clinical and
125 laboratory features were recorded. If the patients showed a rise in the haematocrit, with
126 subsequent reduction in platelet counts (these parameters were monitored on a daily basis in
127 all patients), ultrasound scans were performed to detect pleural effusions and ascites.

128

129 **Ethics approval**

130 Ethical approval was obtained from the Ethics Review Committee of the Faculty of Medical
131 Sciences, University of Sri Jayewardenepura.

132

133 **Determining the DENV serotype and viral loads**

134 Blood samples were centrifuged, and the obtained serum samples were aliquoted and stored at
135 -80°C to avoid repeated freeze-thawing. Viral RNA was extracted from the serum using
136 QIAmp Viral RNA Mini Kit (Qiagen, USA, Cat: 52906). cDNA transcription was performed
137 with a high-capacity cDNA reverse transcription kit (Applied Biosystems, USA, cat: 4368814).

138 Oligonucleotide primers, dual labelled probes for DEN 1 to 4 serotypes (Life Technologies,
139 India) and TaqMan Multiplex Master Mix (Applied Biosystems, USA, Cat: 4461881) were
140 used for the multiplex quantitative real-time PCR in ABI 7500 real time PCR system (Applied
141 Biosystems, USA) as previously described [16]. The standard curve was generated using four
142 gBlock fragments with known copy numbers (Integrated DNA Technologies, USA).

143

144 **Dengue IgM and IgG antibody assays**

145 Dengue antibody assays were performed in 161 patients, in whom a second sample could be
146 collected between day 5 to 7 of illness, using a commercial capture-IgM and IgG Enzyme-
147 Linked Immunosorbent Assay (ELISA) (Panbio, Australia). Results were interpreted according
148 to the manufacturer's instructions. According to the WHO 2011 criteria, patients with an IgM:
149 IgG ratio of >1.2 were classified as having a primary dengue infection, while patients with
150 IgM: IgG ratios <1.2 were categorized under secondary dengue infection [3].

151

152 **Statistical analysis**

153 Statistical analysis was done using GraphPad Prism version 9.5.1 (Dotmatics, California,
154 USA). As the data were not normally distributed, differences in the viral loads for different
155 clinical disease severity and serotypes were compared using the Mann-Whitney U test (two
156 tailed). The Kruskal-Wallis test was used to compare the viral loads between different
157 serotypes, when more than one parameter was compared. Spearman rank order correlation
158 coefficient was used to evaluate the correlation between variables including the association
159 between viral loads and laboratory parameters.

160

161 **Results**

162 **Patient characteristics**

163 Of the 502 patients recruited, the DENV serotype was identified in 424 (84.5%) patients and
164 were included in the analysis. In order to determine the relationship between viral loads in the
165 febrile phase and subsequent clinical disease severity, patients were classified as having DF or
166 DHF, according to the WHO 1997 criteria[3], and analysis was also carried out by classifying
167 them as having dengue with warning signs (DWW), without warning signs (DWoWS) and with
168 severe disease (SD) according to the WHO 2009 disease classification guidelines [17]. The
169 clinical and laboratory characteristics of patients when classified as DF/DHF, and DWW,
170 DWoWS and SD are shown in table 1 and 2. The mean age of those who were recruited to the
171 study was 33.28 years (SD \pm 13.73) and median age 29.5 years. 241 (56.8%) patients were in
172 the 20- to 40-year-old age group. There was no correlation with the age and the viral loads
173 during the febrile phase of illness (Spearman's $R=-0.07$, $p=0.146$).

174

175 According to the WHO 1997 guidelines, those who had features of plasma leakage (pleural
176 effusions or ascites), along with platelet counts $<100,000$ cells/mm³ or a rise in haematocrit of
177 $>20\%$ were classified as having DHF. Patients with DHF, who had a narrowing pulse pressure
178 ≤ 20 were classified as having shock. Accordingly, 315 patients had DF, 109 progressed to
179 develop DHF and of them 17 developed shock (DSS). Of those who had probable dengue
180 (qPCR negative, but NS1 antigen test or dengue IgM/IgG rapid test positive), 52 had DF, 20
181 DHF and 6 patients DSS. Among the 424 qPCR positive patients, 273 (64.4%) were of males
182 and 151 (35.6%) were of females, and 70 (25.6%) of males developed DHF vs 39 (25.8%)
183 females.

184

185 Based on the WHO 2009 disease classification, 268 had DWW, 139 DWoWS, and 17 had SD.
186 Of those who had probable dengue (qPCR negative, but NS1 antigen test or dengue IgM/IgG
187 rapid test positive), 53 had DWW, 19 DWoWS and 6 had SD.

188

189 **Viral loads at febrile phase and relationship with clinical disease severity based on WHO**
190 **1997 disease classification**

191 263 (62.0%) of patients were infected with DENV2, 97 (22.9%) with DENV1 and 61 (14.4%)
192 with DENV3, while DENV4 was not detected in any of the patients. Three patients were found
193 to be infected with two DENV serotypes: DENV1 and DENV2 (n=2) and DENV2 and DENV3
194 (n=1). Although the viral loads were higher in the febrile phase in patients who progressed to
195 develop DHF (median 1.82×10^4 copies/ μ l, IQR: 1.06×10^6 copies/ μ l to 6.72×10^2 copies/ μ l) than
196 in patients with DF (median 7.85×10^3 copies/ μ l, IQR: 7.80×10^5 copies/ μ l to 1.41×10^2
197 copies/ μ l), this was not significant (p=0.15) (Figure 1A). There were no significant differences
198 in viral loads during the febrile phase in those who progressed to develop DSS vs DHF and DF
199 (p=0.35).

200

201 However, significant differences were observed in viral loads in patients infected with different
202 DENV serotypes (p=0.0001) (Figure 1B). The lowest viral loads were detected in those
203 infected with DENV2, while the highest viral loads were observed in those infected with
204 DENV1. Although those infected with DENV2 had lower viral loads, infection with DENV2
205 was significantly associated with a higher risk of developing DHF (p=0.016, Odds ratio 1.8;
206 95% CI 1.116 to 2.905), when compared to being infected with other serotypes.

207

208 Significant differences were seen in the febrile phase in viral loads of patients infected with
209 different viral serotypes, who subsequently progressed to develop DHF ($p=0.013$), (Figure 1C)
210 or DF ($p=0.0004$), (Figure 1D). Although not significant, those who were infected with either
211 DENV2 or DENV3 and subsequently progressed to DHF, had higher viral loads in the febrile
212 phase than those who had DF. In contrast, in those infected with DENV1, those who progressed
213 to DHF, had lower viral loads in the febrile phase than those who had DF.

214

215 Although a second blood sample was obtained in 161/502 initial cohort of patients, as the virus
216 serotype could only be determined in 153/161 patients, we only included this cohort in the
217 analysis of primary and secondary dengue. Accordingly, 49/153 (32.02%) had a primary
218 dengue infection and 104/153 (67.97%) had a secondary dengue infection. There was no
219 significant difference between the viral loads of those with primary and secondary dengue
220 during early illness ($p=0.6$) (Figure 2). There was no difference between the viral loads in
221 primary and secondary dengue in those infected with different DENV serotypes. However, the
222 number of patients infected with DENV1 ($n=32$) and DENV3 ($n=24$) who were included in the
223 analysis was too small for a meaningful analysis.

224

225 **Association of viral loads with laboratory parameters**

226 The viral loads in the febrile phase inversely correlated with the lowest platelet counts of those
227 who progressed to develop DHF (Spearman's $R= -0.24$, $p=0.01$) (Figure 3A), but not with their
228 lowest leucocyte counts (Spearman's $R= -0.06$, $p=0.56$). No such association was seen in those
229 with DF for platelet counts (Spearman's $R= 0.02$, $p=0.69$) (Figure 3B) or leucocyte counts
230 (Spearman's $R= -0.09$, $p=0.13$). Liver enzymes (AST and ALT) could only be done in 179
231 patients, as these investigations were not routinely done throughout the years which the

232 samples were collected. There was no correlation seen with the viral loads and ALT
233 (Spearman's $R = -0.05$, $p = 0.5$) (Figure 3C) or AST (Spearman's $R = -0.006$, $p = 0.9286$) (Figure
234 3D). However, a significant difference was observed in AST ($p = 0.0005$) and ALT ($p = 0.01$)
235 levels between those who developed DHF and DF.

236

237 **Viral loads and relationship with clinical disease severity at the time of recruitment based**
238 **on WHO 2009 criteria**

239 No significant difference was observed in the viral loads between those with SD, DWW and
240 DWoWS ($p = 0.34$) (Figure 4A). However, significant differences were observed with the viral
241 loads for different DENV serotypes, DWW ($p = 0.0001$) (Figure 4B, C and D). Overall, the viral
242 loads were lower with DENV2, compared to viral loads due to DENV1 and DENV2 in patients
243 of all clinical disease categories.

244

245

246

247

248

249

250

251

252

253 **Discussion**

254 In this study we have assessed the viral loads during early illness, during a period of six years
255 in a large cohort of patients from Sri Lanka, who were followed up daily throughout the course
256 of their illness, to determine their clinical disease severity. Using the WHO 1997 dengue
257 disease classification we found that there was a trend towards viral loads being higher in those
258 who progressed to DHF, although such a difference was not seen when the WHO 2009 dengue
259 disease classification was used. As reported previously from a large study in Vietnam, and
260 many other studies DENV2 was associated with lower viral loads, but with a higher risk of
261 developing DHF [11, 18]. Interestingly, the viral loads were significantly higher in those
262 infected with DENV3 in the febrile phase of those who progressed to DHF, compared to those
263 infected with other serotypes, whereas the viral loads were highest for DENV1 in those who
264 had DF. Higher viral loads for DENV1, followed by DENV3 has been shown in two previous
265 studies from Vietnam [11, 12] further showing that the kinetics of viral loads significantly
266 differ between the DENV serotypes during early illness. These differences in the viral loads
267 and NS1 antigen levels for different DENV serotypes, have significant implications when
268 evaluating point-of care diagnostics and antiviral drugs for dengue, as it would be important to
269 assess them across different geographical regions and populations.

270

271 Although many studies do not show a statistically significant association with viral loads and
272 clinical disease severity, there is a trend towards increased disease severity when infected with
273 DENV2, which had the lowest viral loads of the DENV serotypes. It is possibly due to greater
274 immune evasive capacity by DENV2 infection, as strains of DENV2 have shown an enhanced
275 ability to inhibit type 1 interferon signaling compared to other DENV serotypes [19]. Apart
276 from these variations seen between DENV serotypes and particular genotypes, there is a huge

277 individual variation between viral loads. Our data along with many other studies show several
278 log differences of viral loads for different DENV serotypes in patients with varying disease
279 severity during the febrile phase. Many factors such as the initial viral inoculum, the incubation
280 period, previous immunity, and presence of comorbid illnesses has shown to affect viral loads
281 [20]. It was shown that the incubation period was shorter in those with secondary dengue
282 infection compared to primary infection, supporting the role of antibody dependent
283 enhancement in disease pathogenesis [20, 21].

284

285 Although we analyzed the differences in viral loads in the febrile phase in those with primary
286 and secondary dengue, the sample size was small and only a few patients infected were infected
287 with DENV1 and DENV3, were possible to include in analysis. However, our results were
288 similar to the large study done in Vietnam comparing viral loads in relation to immune status,
289 which showed no difference in early illness [11]. A previous study done in Vietnam and in
290 Singapore for evaluation of the antiviral effect of cefgosvir showed that the viral loads were
291 not in fact different in the early phase, but those with secondary dengue, cleared the plasma
292 viraemia earlier than those with primary dengue [12, 22]. Therefore, although patients with
293 secondary dengue have shorter incubation periods and possibly higher viral infection in FcγR
294 bearing cells, due to antibody dependent enhancement, this is not reflected in the viraemia seen
295 in serum. This possibly suggests that the viral loads and viral kinetics seen in serum may not
296 necessarily reflect the viraemia within immune cells and tissues.

297

298 In summary, although the degree of viraemia leads to severe disease, there is an important role
299 played by the host-immune response to which could lead to resolution of infection or lead to
300 immunopathogenesis. While use of antivirals would be an important treatment strategy for

301 dengue, drugs that target certain immune mediators, such as leukotrienes, chymase, tryptase,
302 platelet activating factor, growth factors, cytokines and other lipid mediators would be of
303 potential benefit.

304

305 **Acknowledgements**

306 We are grateful to the NIH, USA (grant number 5U01AI151788-02), Accelerating Higher
307 Education Expansion and Development (AHEAD) Operation of the Ministry of Higher
308 Education funded by the World Bank, and the UK Medical Research Council.

309

310

311

312

313

314

315

316

317

318

319

320 **References**

- 321 1. Ten threats to global health in 2019 [Internet]. World Health Organization; 2019.
322 Available from: [https://www.who.int/news-room/spotlight/ten-threats-to-global-health-in-](https://www.who.int/news-room/spotlight/ten-threats-to-global-health-in-2019)
323 [2019](https://www.who.int/news-room/spotlight/ten-threats-to-global-health-in-2019)
- 324 2. Colon-Gonzalez FJ, Sewe MO, Tompkins AM, Sjodin H, Casallas A, Rocklov J, et al.
325 Projecting the risk of mosquito-borne diseases in a warmer and more populated world: a multi-
326 model, multi-scenario intercomparison modelling study. *Lancet Planet Health*.
327 2021;5(7):e404-e14. doi: 10.1016/S2542-5196(21)00132-7. PubMed PMID: 34245711;
328 PubMed Central PMCID: PMC8280459.
- 329 3. WHO, editor. Comprehensive guidelines for prevention and control of dengue fever
330 and dengue haemorrhagic fever. SEARO, New Delhi, India: World Health Organization; 2011.
- 331 4. Malavige GN, Jeewandara C, Ogg GS. Dengue and COVID-19: two sides of the same
332 coin. *Journal of biomedical science*. 2022;29(1):48. Epub 20220703. doi: 10.1186/s12929-022-
333 00833-y. PubMed PMID: 35786403; PubMed Central PMCID: PMC8251039.
- 334 5. Macias AE, Werneck GL, Castro R, Mascarenas C, Coudeville L, Morley D, et al.
335 Mortality among Hospitalized Dengue Patients with Comorbidities in Mexico, Brazil, and
336 Colombia. *The American journal of tropical medicine and hygiene*. 2021;105(1):102-9. Epub
337 20210510. doi: 10.4269/ajtmh.20-1163. PubMed PMID: 33970884; PubMed Central PMCID:
338 PMC8274750.
- 339 6. Sangkaew S, Ming D, Boonyasiri A, Honeyford K, Kalayanarooj S, Yacoub S, et al.
340 Risk predictors of progression to severe disease during the febrile phase of dengue: a systematic
341 review and meta-analysis. *The Lancet infectious diseases*. 2021;21(7):1014-26. Epub
342 20210225. doi: 10.1016/S1473-3099(20)30601-0. PubMed PMID: 33640077; PubMed Central
343 PMCID: PMC8240557.

- 344 7. Malavige GN, Jeewandara C, Ogg GS. Dysfunctional Innate Immune Responses and
345 Severe Dengue. *Front Cell Infect Microbiol.* 2020;10:590004. doi:
346 10.3389/fcimb.2020.590004. PubMed PMID: 33194836; PubMed Central PMCID:
347 PMCPMC7644808.
- 348 8. St John AL, Rathore APS. Adaptive immune responses to primary and secondary
349 dengue virus infections. *Nature reviews Immunology.* 2019;19(4):218-30. doi:
350 10.1038/s41577-019-0123-x. PubMed PMID: 30679808.
- 351 9. Bhatt P, Sabeena SP, Varma M, Arunkumar G. Current Understanding of the
352 Pathogenesis of Dengue Virus Infection. *Curr Microbiol.* 2021;78(1):17-32. Epub 20201124.
353 doi: 10.1007/s00284-020-02284-w. PubMed PMID: 33231723; PubMed Central PMCID:
354 PMCPMC7815537.
- 355 10. Troost B, Smit JM. Recent advances in antiviral drug development towards dengue
356 virus. *Current opinion in virology.* 2020;43:9-21. Epub 20200811. doi:
357 10.1016/j.coviro.2020.07.009. PubMed PMID: 32795907.
- 358 11. Vuong NL, Quyen NTH, Tien NTH, Tuan NM, Kien DTH, Lam PK, et al. Higher
359 Plasma Viremia in the Febrile Phase Is Associated With Adverse Dengue Outcomes
360 Irrespective of Infecting Serotype or Host Immune Status: An Analysis of 5642 Vietnamese
361 Cases. *Clin Infect Dis.* 2021;72(12):e1074-e83. doi: 10.1093/cid/ciaa1840. PubMed PMID:
362 33340040; PubMed Central PMCID: PMCPMC8204785.
- 363 12. Tricou V, Minh NN, Farrar J, Tran HT, Simmons CP. Kinetics of viremia and NS1
364 antigenemia are shaped by immune status and virus serotype in adults with dengue. *PLoS*
365 *neglected tropical diseases.* 2011;5(9):e1309. Epub 2011/09/13. doi:
366 10.1371/journal.pntd.0001309. PubMed PMID: 21909448; PubMed Central PMCID:
367 PMC3167785.

- 368 13. Nainggolan L, Dewi BE, Hakiki A, Pranata AJ, Sudiro TM, Martina B, et al.
369 Association of viral kinetics, infection history, NS1 protein with plasma leakage among
370 Indonesian dengue infected patients. PloS one. 2023;18(5):e0285087. Epub 20230502. doi:
371 10.1371/journal.pone.0285087. PubMed PMID: 37130105; PubMed Central PMCID:
372 PMCPMC10153689.
- 373 14. Singla M, Kar M, Sethi T, Kabra SK, Lodha R, Chandele A, et al. Immune Response
374 to Dengue Virus Infection in Pediatric Patients in New Delhi, India--Association of Viremia,
375 Inflammatory Mediators and Monocytes with Disease Severity. PLoS neglected tropical
376 diseases. 2016;10(3):e0004497. doi: 10.1371/journal.pntd.0004497. PubMed PMID:
377 26982706; PubMed Central PMCID: PMCPMC4794248.
- 378 15. Perdomo-Celis F, Salgado DM, Narvaez CF. Magnitude of viremia, antigenemia and
379 infection of circulating monocytes in children with mild and severe dengue. Acta tropica.
380 2017;167:1-8. Epub 20161213. doi: 10.1016/j.actatropica.2016.12.011. PubMed PMID:
381 27986543.
- 382 16. Silva T, Jeewandara C, Gomes L, Gangani C, Mahapatuna SD, Pathmanathan T, et al.
383 Urinary leukotrienes and histamine in patients with varying severity of acute dengue. PloS one.
384 2021;16(2):e0245926. Epub 20210205. doi: 10.1371/journal.pone.0245926. PubMed PMID:
385 33544746; PubMed Central PMCID: PMCPMC7864425.
- 386 17. WHO. Dengue guidelines, for diagnosis, treatment, prevention and control. 2009 21st
387 April 2009. Report No.
- 388 18. Vicente CR, Herbinger KH, Froschl G, Malta Romano C, de Souza Areias Cabidelle
389 A, Cerutti Junior C. Serotype influences on dengue severity: a cross-sectional study on 485
390 confirmed dengue cases in Vitoria, Brazil. BMC infectious diseases. 2016;16:320. Epub
391 20160708. doi: 10.1186/s12879-016-1668-y. PubMed PMID: 27393011; PubMed Central
392 PMCID: PMCPMC4938938.

- 393 19. Medina FA, Torres-Malave G, Chase AJ, Santiago GA, Medina JF, Santiago LM, et al.
394 Differences in type I interferon signaling antagonism by dengue viruses in human and non-
395 human primate cell lines. *PLoS neglected tropical diseases*. 2015;9(3):e0003468. Epub
396 20150313. doi: 10.1371/journal.pntd.0003468. PubMed PMID: 25768016; PubMed Central
397 PMCID: PMC4359095.
- 398 20. Ben-Shachar R, Schmidler S, Koelle K. Drivers of Inter-individual Variation in Dengue
399 Viral Load Dynamics. *PLoS Comput Biol*. 2016;12(11):e1005194. Epub 20161117. doi:
400 10.1371/journal.pcbi.1005194. PubMed PMID: 27855153; PubMed Central PMCID:
401 PMC45113863.
- 402 21. Riswari SF, Velies DS, Lukman N, Jaya UA, Djauhari H, Ma'roef CN, et al. Dengue
403 incidence and length of viremia by RT-PCR in a prospective observational community contact
404 cluster study from 2005-2009 in Indonesia. *PLoS neglected tropical diseases*.
405 2023;17(2):e0011104. Epub 20230206. doi: 10.1371/journal.pntd.0011104. PubMed PMID:
406 36745606; PubMed Central PMCID: PMC9901748.
- 407 22. Sung C, Wei Y, Watanabe S, Lee HS, Khoo YM, Fan L, et al. Extended Evaluation of
408 Virological, Immunological and Pharmacokinetic Endpoints of CELADEN: A Randomized,
409 Placebo-Controlled Trial of Celgosivir in Dengue Fever Patients. *PLoS neglected tropical*
410 *diseases*. 2016;10(8):e0004851. doi: 10.1371/journal.pntd.0004851. PubMed PMID:
411 27509020; PubMed Central PMCID: PMC4980036.

412

413

414

415

416

417 Tables

Clinical findings	DF (n=315)	DHF (n=109)
	N (%)	N (%)
Fever	267 (84.6)	102 (93.6)
Arthralgia	177 (56.2)	78 (71.6)
Myalgia	173 (54.9)	72 (66.1)
Flushing	22 (7.0)	7 (6.4)
Rashes	4 (1.3)	2 (1.8)
Itching	5 (1.6)	3 (2.8)
Abdominal pain	56 (17.8)	43 (39.4)
Vomiting	64 (20.3)	32 (29.4)
Diarrhoea	83 (26.3)	41 (37.6)
Pleural effusion	0	17 (15.6)
Ascites	0	90 (82.6)
Hepatomegaly	3 (1)	2 (1.8)
Epistaxis	0	2 (1.8)
Haematemesis	0	0
Melena	2 (0.6)	0
Vaginal bleeding	5 (1.6)	5 (4.6)
Lowest platelet count /mm³		
<20,000	10 (3.2)	50 (45.9)
20,000 to 50,000	57 (18.1)	44 (40.4)
50,000 to 100,000	115 (36.5)	9 (8.3)
>100,000	131 (41.6)	5 (4.6)

Lowest WBC count cells/μl		
<2000	33 (10.5)	14 (12.8)
2000 to 5000	241 (76.5)	85 (78.0)
>5000	39 (12.4)	9 (8.3)

418

419 **Table 1: Clinical and laboratory features of patients who were classified as having DHF**

420 **and DF based on the WHO 1997 disease classification**

Clinical findings	SD (n=17)	DWW (n=268)	DWoWS (n=139)
	N (%)	N (%)	N (%)
Fever	15 (88.2)	243 (90.7)	111 (79.9)
Arthralgia	11 (64.7)	178 (66.4)	66 (47.5)
Myalgia	10 (58.8)	171 (63.8)	64 (46.0)
Flushing	1 (5.9)	21 (7.8)	7 (5.0)
Rashes	1 (5.9)	3 (1.1)	1 (0.7)
Itching	1 (5.9)	5 (1.9)	2 (1.4)
Abdominal pain	4 (23.5)	93 (34.7)	2 (1.4)
Vomiting	4 (23.5)	92 (34.3)	0
Diarrhoea	4 (23.5)	98 (36.6)	22 (15.8)
Pleural effusion	1 (5.9)	16 (5.9)	0
Ascites	9 (52.9)	81 (30.2)	0
Epistaxis	0	2 (0.7)	0
Haematemesis	0	0	0
Melena	0	2 (0.27)	0

Vaginal bleeding	2 (11.8)	8 (2.9)	2 (1.44%)
Lowest platelet count /mm³			
<20,000	7 (41.2)	53 (19.8)	0
20,000 to 50,000	5 (29.4)	96 (35.8)	0
50,000 to 100,000	1 (5.9)	86 (32.1)	37 (26.6)
>100,000	4 (23.5)	33 (12.3)	102 (73.4)
Lowest WBC count cells/μl			
<2000	3 (17.6)	32 (11.9)	12 (8.6)
2000 to 5000	9 (52.9)	215 (80.2)	102 (73.4)
>5000	5 (29.4)	21 (7.8)	25 (17.9)

421

422 **Table 2: Clinical and laboratory features of patients who were classified as having**
 423 **severe dengue (SD), dengue with warning signs (DWW) and dengue without warning**
 424 **signs (DWoWS) according to the WHO 2009 disease classification**

425

426

427

428

429

430

431

432 **Figure legends**

433 **Figure 1. Viral loads in patients with varying clinical disease severity and infected with**
434 **different DENV serotypes.** Viral loads in serum samples were measured by qPCR in those
435 with DF (n=313) and in those who progressed to DHF (n=108), during the febrile phase (A).
436 Viral loads were compared in patients infected with different DENV virus serotypes, DENV1
437 (n=97), DENV2 (n=263) and DENV3 (n=61) (B) in those with DHF (C) and DF (D) infected
438 with different virus serotypes. The Mann-Whitney test was used to compare the differences in
439 viral loads between those with DF and DHF, while Kruskal-Wallis test was performed to
440 compare the differences in viral loads in those infected different serotypes. All tests were two
441 sided. Data are presented as median values +/- interquartile ranges as appropriate.

442

443 **Figure 2: Viral loads in patients with primary and secondary dengue.** Viral loads in serum
444 samples were measured by qPCR in those primary (n=49) and secondary (n=104) dengue. They
445 were also compared in those with primary and secondary dengue, infected with different
446 DENV serotypes. The Mann-Whitney test was used to compare the differences in viral loads
447 between those with primary and secondary dengue. All tests were two sided. Data are presented
448 as median values +/- interquartile ranges as appropriate.

449

450 **Figure 3. Association between the viral loads and the laboratory parameters in patients**
451 **with varying severity of acute dengue.** The correlation between the viral loads and the lowest
452 platelet counts detected throughout the course of illness of the patients in DHF (n=108) (A),
453 and DF (n=313) (B) were assessed. Data of 3 patients who had co-infection are not included
454 in the analysis. Further, the viral loads and AST levels (C) and ALT levels (D) were measured
455 in patients with DF and DHF patients (n=179). Spearman rank order correlation coefficient

456 was used to evaluate the correlation between the viral loads and AST and ALT. All tests were
457 two sided.

458

459 **Figure 4. Viral loads in patients with varying clinical disease severity (classified according**
460 **to the WHO 2009 disease classification) and infected with different DENV serotypes.** Viral
461 loads between patients with SD (n=17), DWW (n=266) and DWoWS (n=138) were compared
462 (A). Data of 3 patients who had co-infection are not shown. Viral loads of different serotypes
463 in patients with SD (n=17) (B), in those with DWW (n=266) (C) and in those with DWoWS
464 (n=138) (D) were also compared. Kruskal-Wallis test was performed to compare the viral
465 loads among the three groups of varying severity and the infected serotype. All tests were two
466 sided. Data are presented as median values +/- interquartile ranges as appropriate and the p
467 value is indicated.

468

469

470

471

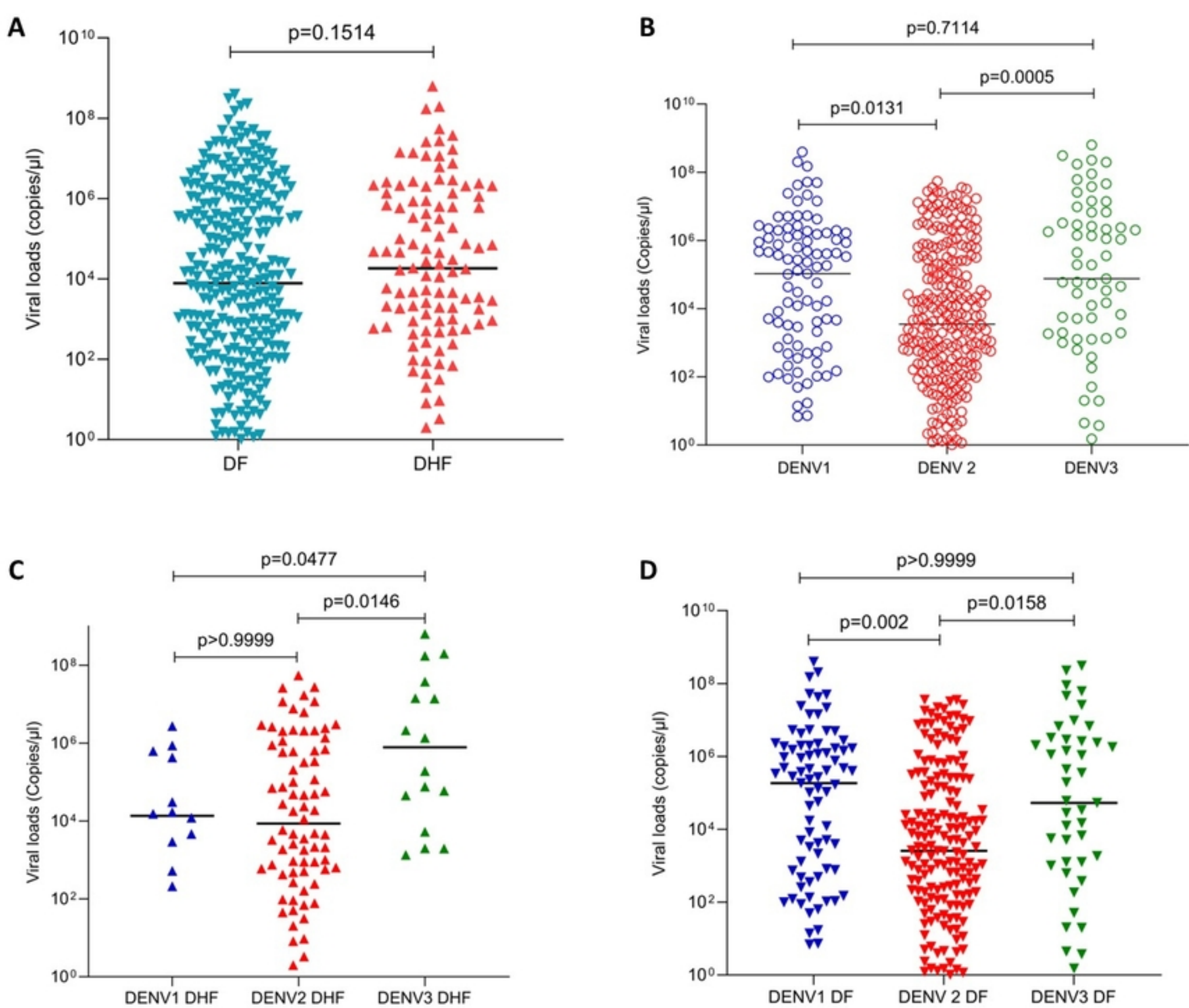
472

473

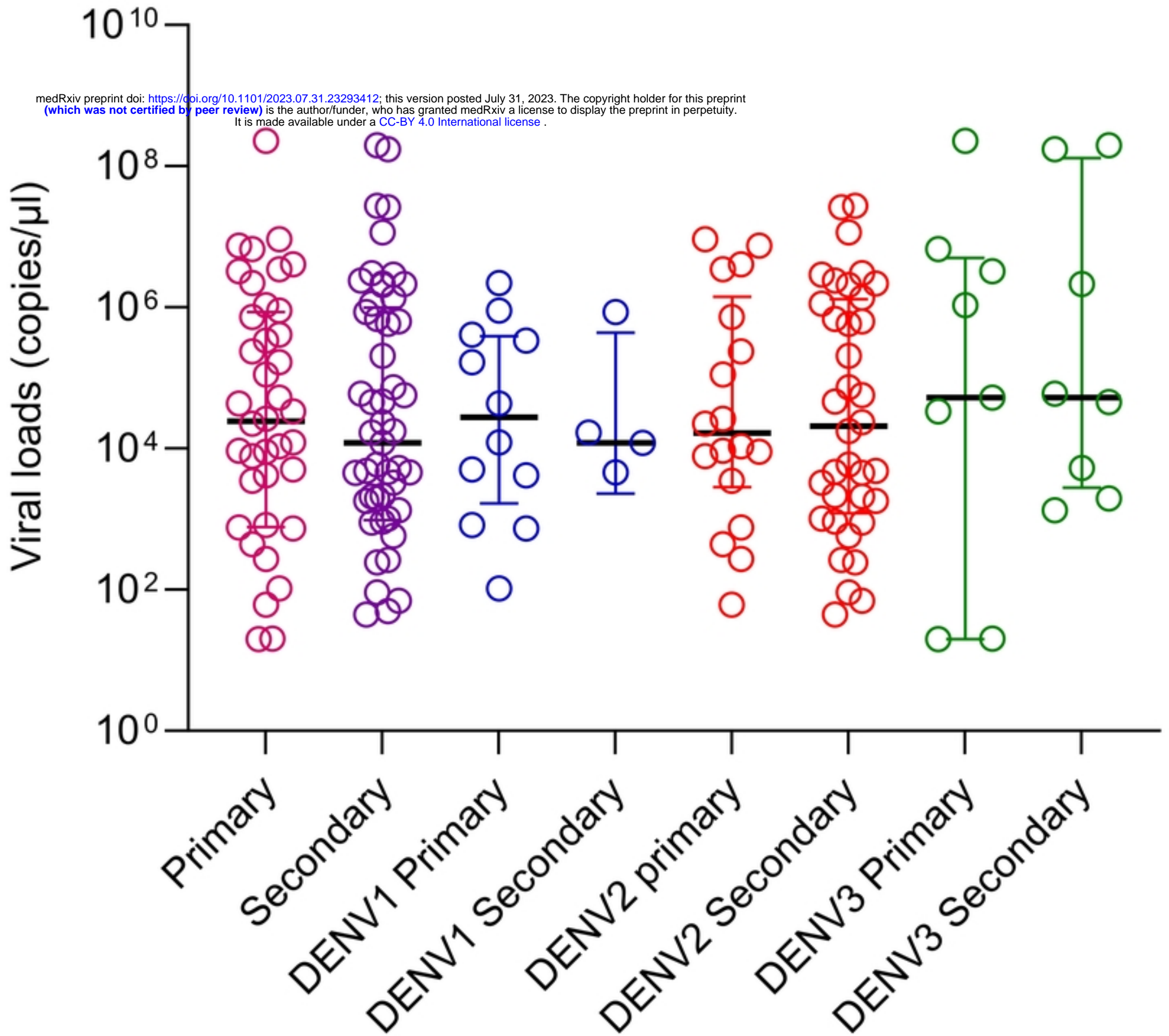
474

475

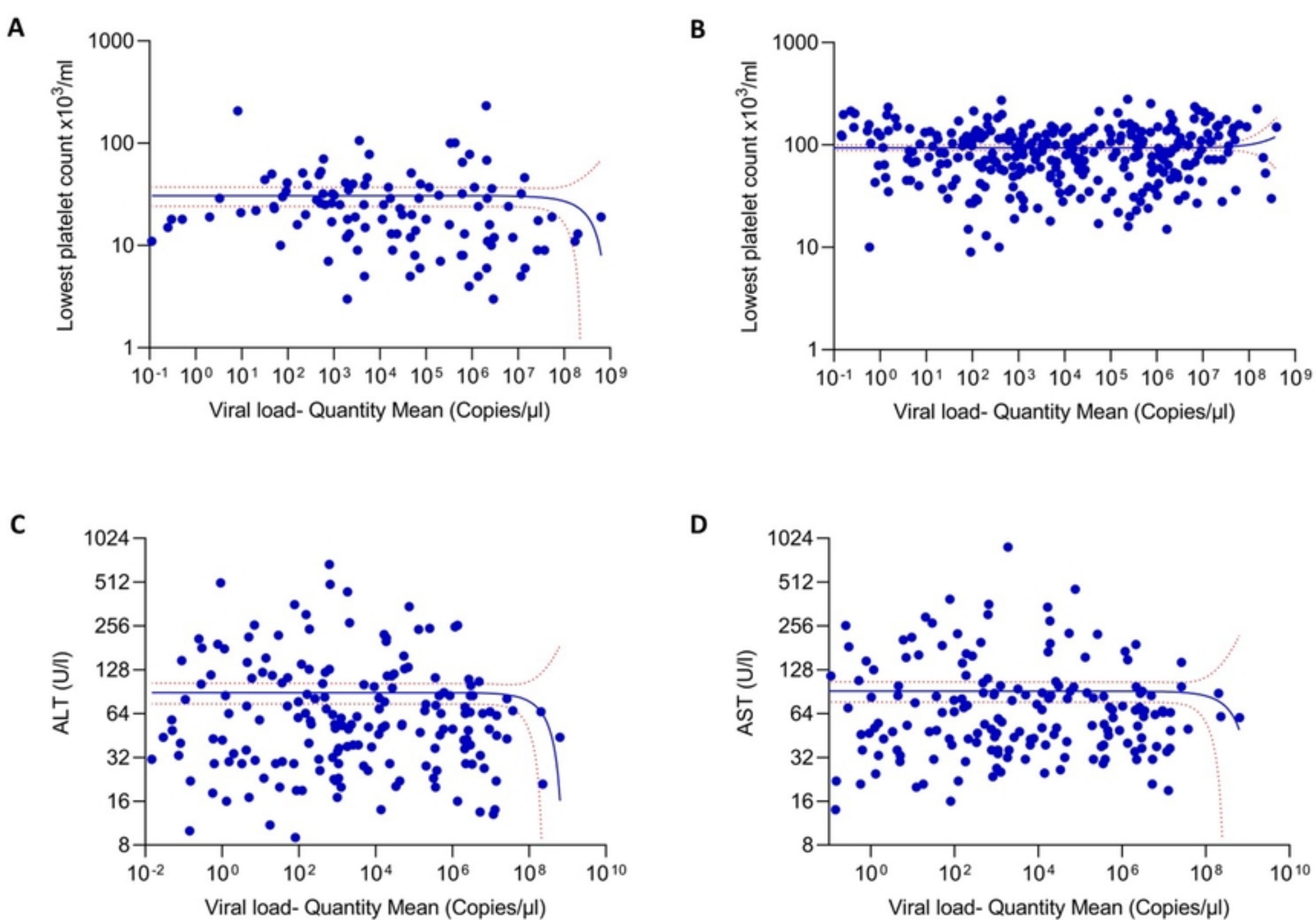
476



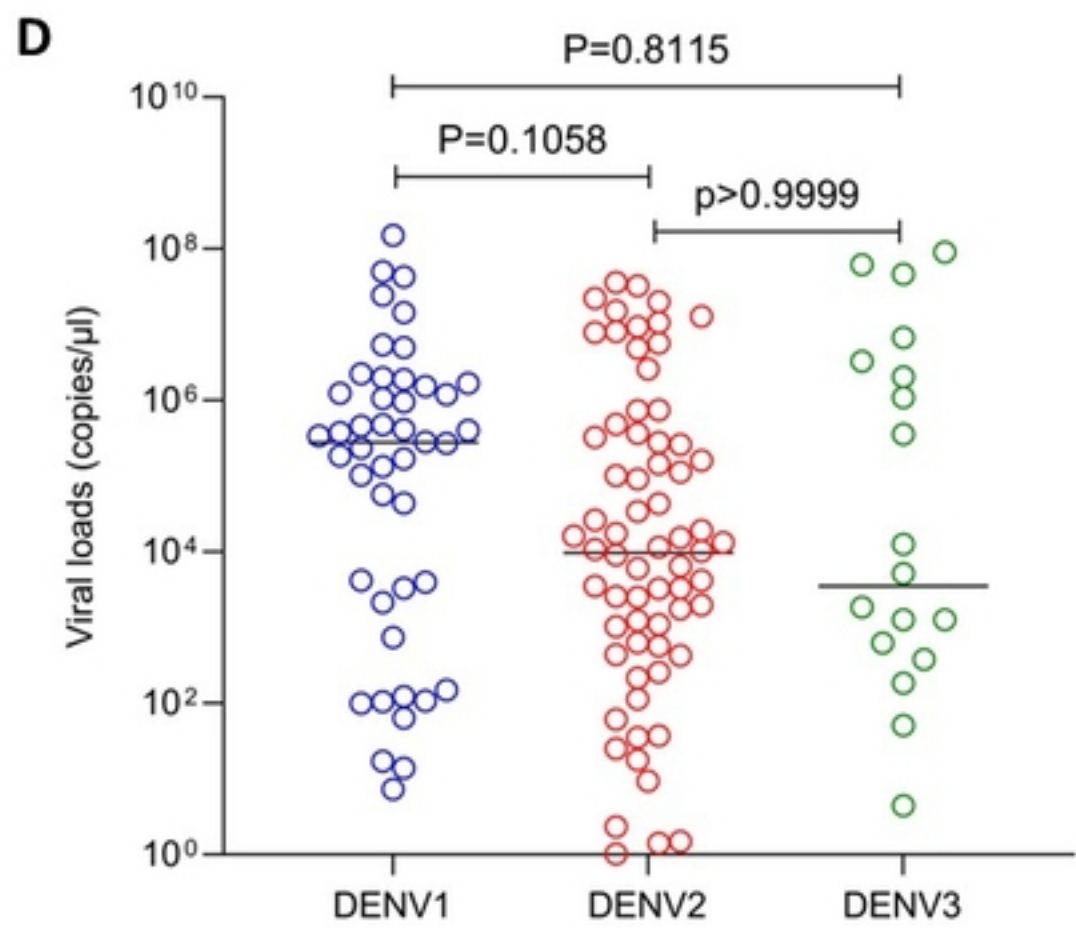
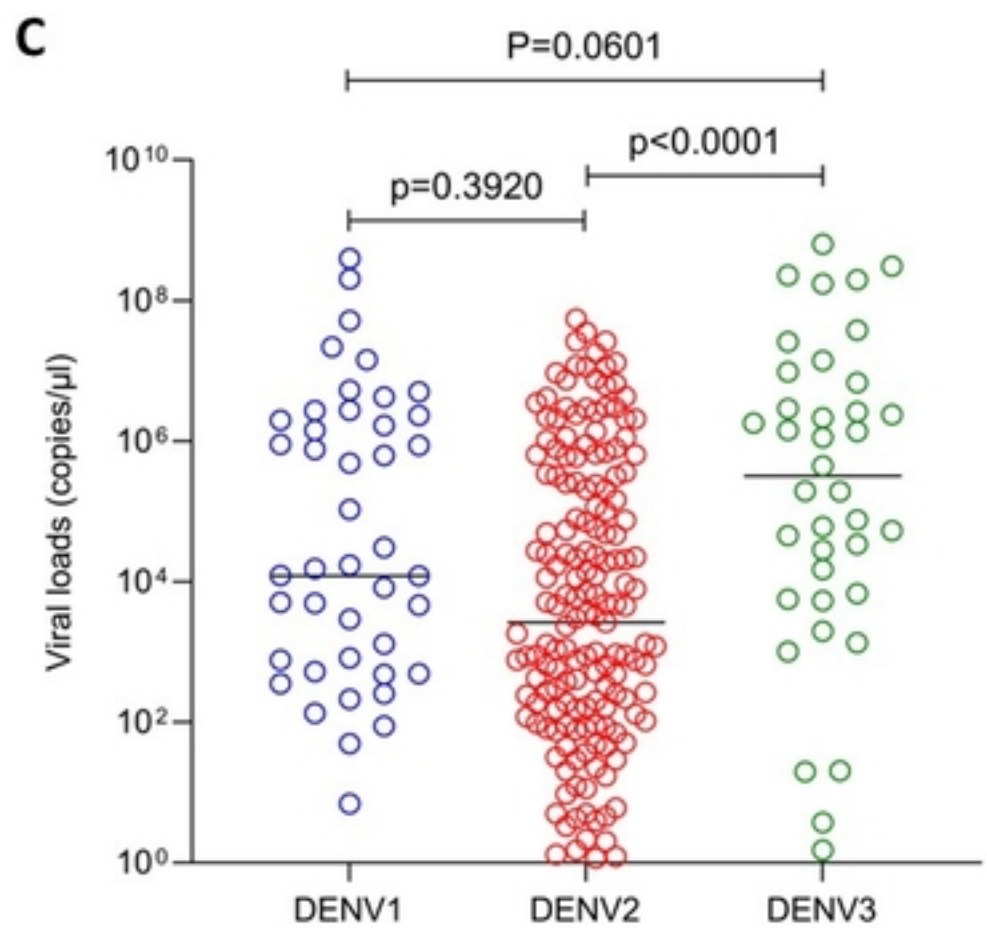
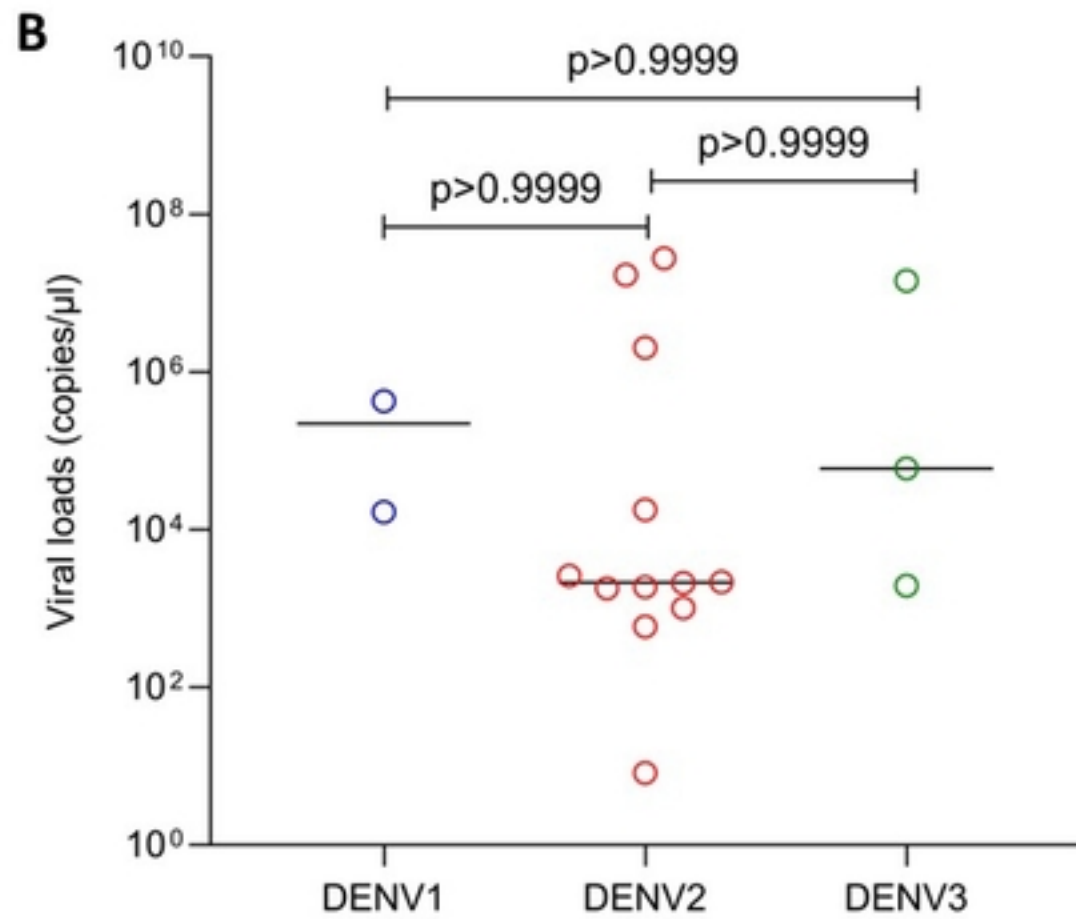
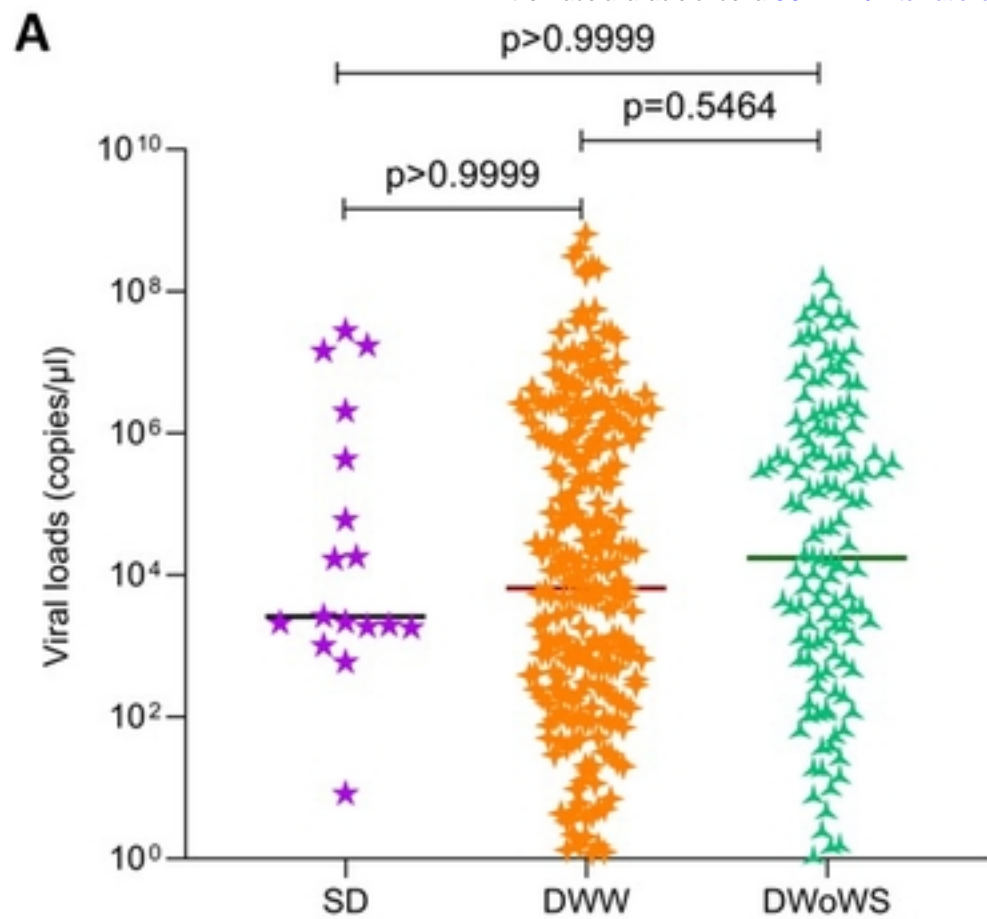
Figure



Figure



Figure



Figure