

1  
2                   Oxidative Status of the Ultra-Processed Foods in the  
3                   Western Diet  
4  
5  
6  
7

8                   Lisaura Maldonado-Pereira<sup>1,2</sup>, Carlo Barnaba<sup>3\*</sup>, Ilce Gabriela Medina-Meza<sup>1,2 \*</sup>  
9

10  
11                   <sup>1</sup>Department of Chemical Engineering and Materials Science, Michigan State  
12                   University, East Lansing, MI, USA

13                   <sup>2</sup>Department of Biosystems and Agricultural Engineering, East Lansing, MI, USA

14                   <sup>3</sup>Institute for Quantitative Health Sciences and Engineering, Michigan State University,  
15                   East Lansing, MI, USA  
16  
17  
18  
19  
20  
21  
22  
23  
24  
25  
26  
27  
28

29                   **Corresponding Authors**

30                   Medina-Meza Ilce Gabriela, PhD.

31                   Department of Biosystems and Agricultural Engineering

32                   469 Wilson Rd. | Room 302C

33                   East Lansing, MI

34                   [ilce@msu.edu](mailto:ilce@msu.edu)

35                   Phone: 517-884-1971  
36

37                   Barnaba-Carlo, PhD

38                   Institute for Quantitative Health Sciences and Engineering, Michigan State University

39                   Service Road

40                   [barnabac@msu.edu](mailto:barnabac@msu.edu)

41                   East Lansing, MI  
42

43 **Abstract**

44  
45 Ultra-processed foods (UPFs) and their nutritional value have become a trending topic in  
46 the scientific community because of their increasing demand, and their potentially adverse  
47 effects on human health. Besides the poor nutritional value attributed to UPFs, countless  
48 studies have also reported the presence of different dietary oxidized substances in these meals.  
49 DOxS are associated with several chronic diseases such as cardiometabolic diseases (CMD),  
50 cancer, diabetes, Parkinson's, and Alzheimer's disease. In this study, a database of DOxS and  
51 other dietary metabolites detected in 63 UPFs meals part of the Western diet is reported.  
52 Significant differences were found in DOxS and phytosterol contents between ready-to-eat and  
53 fast food (FF). Putative biomarkers were suggested for RTE (brassicasterol) and FF ( $7\alpha$ -OH and  
54  $7\beta$ -OH), as well as for all 6 different food categories: dairy (brassicasterol), eggs & derivatives  
55 (stigmasterol and  $\beta$ -sitosterol), meat & poultry ( $7\alpha$ -OH), seafood, baby food ( $\beta$ -sitosterol), and  
56 others (campesterol). Ideally, the use of dietary biomarkers could potentially help in the future to  
57 identify in an early stage the presence of different chronic diseases, and even, prevent their  
58 development. Nevertheless, an exposure assessment is critical to understand the exposure  
59 level of DOxS and their relationship with different chronic diseases.

60  
61 **Keywords:** Dietary Oxysterols, phytosterols, ultra-processed foods, cholesterol oxidation  
62 products, lipid oxidation

## 63 1. Introduction

64 Metabolic disorders are worldwide linked to poor dietary habits where Ultra processed foods  
65 (UPFs) are emerging as a serious threat to public health.<sup>1, 2</sup> UPFs are a risk factor for metabolic  
66 disorders, including but not limited to metabolic and cardiovascular disorders,  
67 neurodegeneration, and cancer.<sup>3-5</sup> UPFs have also been correlated with eating addictive-  
68 behaviors because of uncontrollable patterns of seeking and bingeing fat and sugar intake from  
69 highly palatable foods, causing long-term changes in the brain.<sup>6-8</sup> The adverse effect of long-  
70 term exposure to UPFs is linked to their high caloric content, compared to the lower amount of  
71 essential micronutrients, such as minerals and vitamins.<sup>9</sup> UPFs have become the most  
72 convenient and accessible food option for developed countries reaching 57% of the American's  
73 caloric consumption in 2018,<sup>10</sup> where 52.9% of UPFs are mostly consumed away from home by  
74 US youth aged 2-19 years.<sup>11, 12</sup>

75 The USDA's 2020-2025 Dietary Guidelines state that 60% of Americans have one or more  
76 preventable chronic diseases related to dietary patterns<sup>13</sup>. In the last decade, the USDA dietary  
77 and nutritional guidelines have been highlighting the need for healthy habits; however, these  
78 dietary recommendations still need to be met by the population. The most popular UPFs  
79 consumed in the USA are fast-food (FF) including small, large, and non-chain restaurants, and  
80 ready-to-eat (RTE), previously processed products, packed for sale which require minimum  
81 preparation at home.<sup>14-16</sup> FF and RTE are highly top preference among children and youth<sup>17, 18</sup>  
82 because of the flavor, attractive design and marketing.<sup>19, 20</sup>

83 While is true that UPFs undergo extensive changes during industrial transformation to  
84 preserve microbiological safety and stability<sup>21</sup> including high temperatures, exposure to light,  
85 type of cooking, packaging conditions, aging and storage, a caveat is that UPFs embody both  
86 an unbalanced ingredient profile as they are mostly constructed from a narrow range of cheap,  
87 extracted, refined and fractionated ingredients and detrimental processing that promotes

88 oxidation of sensible compounds such as lipids and cholesterol,<sup>22-26</sup> where changes are difficult  
89 to discriminate. Thus, the need for a reliable biomarker of processing is needed.

90 Dietary oxysterols (DOxS) are oxidized compounds derived from cholesterol oxidation in  
91 food,<sup>27, 28</sup> which have been proposed as markers of thermal processing of food.<sup>26, 29, 30</sup> We also  
92 reported the occurrence of DOxS on infant formulations and baby foods, identifying 7-  
93 Ketocholesterol as marker of spray dry in infant formulations.<sup>26</sup> DOxS are bioactive lipids known  
94 to exert cytotoxic, pro-inflammatory and pro-apoptotic properties.<sup>27, 31-33</sup> The establishment of  
95 food processing biomarkers will help to distinguish the extent of processing beyond a qualitative  
96 classification. Thus, the systematic mapping of DOxS in the food system is needed to identify  
97 levels of food processing, especially in food products within the category of UPFs<sup>10</sup> to better  
98 assessment of the actual effect of processing on the UPFs nutritional quality.

99 The aim of the study is to fingerprint – for the first time – the content of DOxS and other  
100 bioactive lipids on >50 fast food and ready-to-eat meals consumed in the United States. These  
101 efforts represent the first step for building a large database that will be widely available to  
102 consumers and industry. Importantly, the database allows us to search for markers of food ultra-  
103 processing and evaluate its impact on the nutritional quality of the Western Diet. We believe that  
104 the information presented in this study will enable information regarding unintentional  
105 processing-formed compounds which will help to understand the relationship between them and  
106 the WD with the purpose of ensuring food nutritional safety and health.

107

## 108 **2. Materials and Methods**

### 109 **2.1. Materials, Chemicals and Reagents**

110 Methanol was from Sigma-Aldrich Chloroform was obtained from Omni Solv (Burlington,  
111 MA), hexane was purchased from VWR BDH Chemicals (Batavia, IL), 1-butanol and potassium  
112 chloride (KCl) from J. T. Baker (Allentown, PA) and diethyl ether was purchased from Fisher

113 Chemical (Pittsburgh, PA). Sodium sulfate anhydrous (Na<sub>2</sub>SO<sub>4</sub>), Sodium chloride,<sup>34</sup> were also  
 114 purchased from VWR BDH Chemicals. standards of 7 $\alpha$ -hydroxycholesterol (7 $\alpha$ -OH), 7 $\beta$ -  
 115 hydroxycholesterol (7 $\beta$ -OH), 5,6 $\alpha$ -epoxycholesterol (5,6 $\alpha$ -epoxy), 5,6 $\beta$ -epoxycholesterol (5,6 $\beta$ -  
 116 epoxy), triol, 7-ketocholesterol (7-keto) were purchased from Steraloids (Newport, RI), and  
 117 purified by using aminopropyl<sup>35</sup> cartridges (500 mg/ 3 mL) from Phenomenex (Torrance, CA).

## 118 **2.2. UPFs Selection, Collection and Preparation**

119 The UPFs were selected, and classified into two main groups: fast-foods (FF) and ready-to-  
 120 eat according to our previous study.<sup>36</sup> FF (n=23) were collected from retail stores, supermarkets,  
 121 food chains, restaurants, and takeaway in the Greater Lansing area (Michigan, USA) between  
 122 February 2018 and October 2019, covering 75% of the national market.<sup>16, 17, 37</sup> The RTE (n=39)  
 123 were selected based on the Total Dietary Study 2011-2017 inventory<sup>38 39</sup>. The complete list of  
 124 the food meals, their respective test code, and their group is provided in **Table 1**. Additionally,  
 125 foods were grouped into categories according to the fat source as follows: eggs and egg's  
 126 derivatives (E), dairy products (D), meat and poultry (MP), seafood (S), baby food (BF). Food  
 127 items that did not fit in any of the previous categories, such as potato-products (potato crisps  
 128 with and without added flavors, and French fries from restaurants and takeaway, pasta, salad  
 129 dressings, and popcorn (sweet or salty) were grouped as other products (O).

130 **Table 1.** Ultra-processed foods meals ID used in this study, divided by group and category.  
 131

Category	Sample ID	Ultra-processed Foods (UPF)	Group
	D1 - RTE	American Cheese – Happy Farms	Ready to Eat (RTE)
	D2 - RTE	Cheddar cheese – Happy Farms	
	D3 - RTE	Margarine (regular, not low-fat, salted) – Countryside Creamery	
	D5 - RTE	Cream (half & half) -Meijer	
	D6 - RTE	Swiss cheese - Kroger	
	D7 - RTE	Cream cheese – Happy Farms	
	D8 - RTE	Ice cream (regular, not low-fat, vanilla) - Purple Cow	
	D9 - RTE	Yogurt (low-fat, fruit flavored) - Yoplait	
	D10 - RTE	Chocolate milk - Nesquick	
	D11 - RTE	Infant formula – Little Journey (with iron milk-based	

		powder)	
	* D4 – RTE	Butter – Praire Farms	
<b>Meat &amp; Poultry</b>	MP1 - RTE	Bologna - Eckrich	
	MP2 - RTE	Salami – Oscar Mayer	
	MP3 - RTE	Soup bean w/bacon/pork (canned, prepared w/water) - Campbell's	
	MP4 – RTE	Chili con carne w/beans (canned) - Campbell's	
	MP5 – RTE	Lasagna w/meat (frozen, heated) – Michael Angelo’s	
	MP6 – RTE	Chicken noodle soup - Kroger	
	MP7 – RTE	Beef and vegetables soup – Kroger	
	MP8 – RTE	Mini Ravioli - Chef Boyardee	
	MP9 - RTE	Spaghetti - Chef Boyardee	
<b>Seafood</b>	S1 - RTE	Clam chowder (New England, canned, prep w/ whole milk) – Kroger	
<b>Eggs &amp; derivatives</b>	E1 - RTE	Mayonnaise (regular, bottled) – Hellmann’s	
	E2 - RTE	Macaroni salad (from grocery/deli) - Meijer	
<b>Baby food</b>	BF1 - RTE	Baby food - beef and broth/gravy – Beech Nut	
	BF2 - RTE	Baby food – chicken and broth/gravy - Gerber	
	BF3 - RTE	Baby food - vegetables and beef - Gerber	
	BF4 - RTE	Baby food - vegetables and chicken - Gerber	
	BF5 - RTE	Baby food - chicken noodle dinner - Gerber	
	BF6 - RTE	Baby food - macaroni, tomato and cheese - Gerber	
	BF7 - RTE	Baby food - turkey and rice - Gerber	
	BF8 - RTE	Baby food – turkey and broth/gravy – Beech Nut	
	BF9 - RTE	Baby food – fruit yogurt - Gerber	
	BF10 - RTE	Baby food – chicken with rice - Gerber	
	BF11 - RTE	Baby food – vegetables and turkey - Gerber	
	BF12 - RTE	Baby food – macaroni and cheese with vegetables - Gerber	
	BF13 - RTE	Pasta pick-ups (cheese ravioli) - Gerber	
<b>Others</b>	O1 - RTE	Popcorn w/butter (microwave) - Kroger	
	O2 - RTE	Salad dressing (creamy/buttermilk type, regular) – Aldi’s Tuscan Garden	
	O3 - RTE	Macaroni & cheese (boiled) - Kraft	
	O4 - RTE	Macaroni & cheese (microwaved) - Kraft	
<b>Meat &amp; Poultry</b>	MP10 - FF	Hamburger on bun – McDonald’s	<b>Fast Food (FF)</b>
	MP11 - FF	Chicken nuggets – McDonald’s	
	MP12 - FF	Cheeseburger on bun – McDonald’s	
	MP13 - FF	Steak tacos w/beans, lettuce, rice and cheese - Chipotle	
	MP14 - FF	Cheese and chicken quesadilla - Chipotle	
	MP15 - FF	Chicken burrito w/lettuce, cheese, pico - Chipotle	

	MP16 - FF	Chicken drumstick - KFC
	MP17 - FF	Chicken wing - KFC
	MP18 - FF	Beef w/vegetables - Panda Express
	MP19 - FF	Chicken w/vegetables - Panda Express
	MP20 - FF	Chicken filet - (broiled sandwich) – Chick Fil'A
	MP21 - FF	Roast beef, ham & Provolone - Jimmy Johns
	MP22 - FF	Sliced turkey and bacon - Jimmy Johns
	MP23 - FF	Supreme pizza - Marco's Pizza
	MP24 - FF	Pepperoni pizza, hand tossed - Domino's
Seafood	S2 - FF	Fish sandwich on bun – McDonald's
	S3 - FF	Fried Shrimp – Panda Express
Others	O5 - FF	French-Fries – McDonald's
	O6 - FF	McDonald's Biscuit - Big Breakfast
	O7 - FF	McDonald's Hotcakes - Big Breakfast
	O8 - FF	Biscuit - KFC
	O9 - FF	French Fries - KFC
	O10 - FF	Mashed potato - KFC

132 \* The only processed (category 3 NOVA) food in this study.

133

134 FF were purchased from the selected franchises and brought to the laboratory for immediate  
 135 analysis. RTE meals were purchased from different local supermarket stores, and immediately  
 136 brought to the laboratory. Storage conditions were followed according to the label instructions  
 137 (fresh foods were kept in a fridge at 4°C and frozen meals were kept at -20°C or the  
 138 temperature indicated in the label).

139 Once the UPF samples arrived at the laboratory, we promptly recorded the following  
 140 essential information: (1) UPF's name; (2) price; (3) place of purchase, date, and time of  
 141 collection; (4) type of food (Ready-to-Eat - RTE or Fast-Food - FF); (5) nutritional declaration  
 142 (including energy, fat, saturated fatty acids, carbohydrates, sugars, fiber, protein, and salt); (6)  
 143 portion size; (7) list of ingredients; (8) expiration date; and (9) any other pertinent details. For  
 144 certain UPFs that required additional preparation before analysis, we strictly followed the  
 145 manufacturer's instructions, which are listed in **Table 2**. We conducted the analysis using the  
 146 Sensory Lab kitchen facility at Michigan State University, ensuring accuracy and precision. The

147 experiments were performed with three biological replicates, and we stored the samples  
 148 appropriately, taking into consideration their specific food matrices.

149 **Table 2** – Additional cooking preparations according to the label’s instructions.

Food Group	Sample	Sample Collection	Cooking Conditions	Lipid Extraction
Seafood	S1-RTE		Microwave: High heat for 2 min and then for 30 s at a time until cooked, stirring each time, about 3 min.	Entire product used
	S2-FF	McDonald’s	-	Entire product except for the bun
Meat & Poultry	MP3-RTE		Microwave: Covered on high heat for 2 ½ to 3 min.	Entire product used
	MP4-RTE		Oven bake: 25 - 35 min at 400°F.	
	MP5-RTE		Microwave: Covered, on high heat for 4 to 5 min or until hot.	
	MP6-RTE		Microwave: 1 minute 30 seconds or until warm on high heat.	
	MP7-RTE			
	MP8-RTE			
	MP9-RTE			
	MP10-FF	McDonald’s	-	Entire product except for the bun
	MP11-FF	McDonald’s	-	Entire product used
	MP12-FF	McDonald’s	-	Entire product except for the bun
	MP13-FF	Chipotle	-	Entire product except for the tortilla
	MP14-FF	Chipotle	-	Entire product used
	MP15-FF	Chipotle	-	Entire product except for the tortilla



	MP16-FF	KFC	-	Entire product except for the bones
	MP17-FF	KFC	-	Entire product except for bones
	MP20-FF	Chick Fil'A	-	Entire product except for the bun
	MP21-FF	Jimmy John's	-	
	MP22-FF	Jimmy John's	-	
<b>Others</b>	O1-RTE		Microwave: 2 – 2 ½ min on high heat.	Entire product except for the bread
	O2-RTE		-	
	O3-RTE		Boil pan: Stir for 7 to 8 min in boiling water.	Entire product used
	O4-RTE		Microwave: Uncovered, on high heat 8 to 10 min or until water is absorbed, stirring every 3 min.	

150 – Not Apply

151

### 152 **2.3. Lipid Extraction**

153 A cold lipid extraction according to Folch and coworkers<sup>40</sup> with some modifications  
 154 depending on the food matrix was performed. Thirty grams of sample were homogenized using  
 155 an Ultra-Turrax® (Tekmar TP 18/10S1 Cincinnati, OH) for 3 min at 300 rpm, Then, placed in a  
 156 500 mL glass bottle with screwcap with 200 mL of a chloroform:methanol solution (1:1, v/v).  
 157 Bottle was kept in an oven at 60°C for 20 min before adding 100 mL chloroform. After 2 min of  
 158 vortex, the content of the bottle was filtered. The filtrate was mixed thoroughly with a 100 mL of  
 159 1 M KCl solution. Samples were left overnight at 4°C. Then, the lower phase containing lipids  
 160 was collected and dried at 60°C with a vacuum evaporator at 25 in Hg. Total fat content was  
 161 determined gravimetrically and fatty acids profiles were previously reported.<sup>36</sup> In addition, fat  
 162 content is reported in both units—percentage of total fatty acid weight (% w/w) per 100 g of

163 fresh sample and weight of total fat per serving size (g per serving size)—for nutritional  
164 comparison purposes.

#### 165 **2.4. Thiobarbituric Acid Reactive Substances (TBARS)**

166 The method modified by Miller <sup>41</sup>, was used to measure lipid oxidation in all UPFs with  
167 some modifications. Briefly, 60 mg of fat were weighed into a 10 mL glass test tube with screw  
168 cap and the following reagents were added: 100  $\mu$ L BHT solution (0.2 mg/mL in water) and 4.9  
169 mL extracting solution (10% TCA in 0.1 M H<sub>2</sub>PO<sub>3</sub>). Sample blanks were analyzed along with  
170 each sample. A standard curve of 0-5 mL TEP solution (10  $\mu$ M) was prepared. Test tubes were  
171 incubated overnight in the dark at room temperature. TBARS were expressed as  $\mu$ g  
172 malondialdehyde (MDA)/g fat sample.

#### 173 **2.5. Total Cholesterol, Tocopherols and Phytosterols Content**

174 A simultaneous isolation method for cholesterol, tocopherols, and phytosterols developed in  
175 our laboratory<sup>26</sup> was used. 200 mg of lipid were mixed with 50  $\mu$ g of 19-hydroxycholesterol and  
176 140  $\mu$ g of 5 $\alpha$ -cholestane as internal standards for the determination of phytosterols, tocopherols  
177 and total cholesterol, respectively. Subsequently, the sample was mixed with 10 mL of 1 N KOH  
178 solution in methanol and left it under gentle agitation and covered from the light for at least 15 h.  
179 One-tenth of the unsaponifiable matter was subjected to silylation.

180 Sample was mixed with 100  $\mu$ L of pyridine and 100  $\mu$ L of the Sweeley's reactive mixture  
181 (pyridine/hexamethyldisilazane/trimethylchlorosilane, 10:2:1, v/v/v) at 75°C for 45 min, dried  
182 under nitrogen stream and dissolved in 1 mL of n-hexane. One microliter of the silylated solution  
183 was injected into a gas chromatograph using a fitted with a Zebron™ZB-5HT (Phenomenex,  
184 Torrance, CA) capillary column (30 m  $\times$  0.25 mm  $\times$  0.25  $\mu$ m). Oven temperature conditions were  
185 set up as follow: 260 to 300°C at 2.5°C/min, then from 300 to 320°C at 8°C/min, and finally hold  
186 at 320°C for 1 min. The injector and detector were both set at 320°C. Helium was used as the

187 carrier gas at a flow rate of 54.0 mL/min, the split ratio at 1:50, and pressure constant at 134  
188 kPa.

## 189 **2.6. DOxS Quantification**

190 The other nine-tenths of the sample was used for the quantification of dietary DOxS.  
191 Purification by NH<sub>2</sub>-SPE was performed according to Kilvington et al.<sup>26</sup> The enriched fraction  
192 was recovered and evaporated to dryness under a nitrogen stream. Subsequently, the purified  
193 fraction was silylated with Sweeley's reactive mixture (at 75 °C for 45 min), dried under a  
194 nitrogen stream and dissolved in 1 mL of n-hexane.

195 DOxS acquisition was done using a GCMS-QP2010 SE single quadrupole Shimadzu  
196 Corporation (Kyoto, Japan). with one µL of the silylated sample. DOxS were injected into a  
197 single quad GCMS-QP2010 SE with the following conditions: from 250 to 280 °C at 2°C/min,  
198 hold at 280 °C for 7 min, and from 280 to 315°C at 1.5 °C/min. Helium was used as a carrier  
199 gas (flow rate of 0.37 mL/min); the split ratio was 1:15 and pressure 49.2 KPa. The interface  
200 temperature for the GC-MS was 320 °C, with the electron multiplier voltage set at 0 kV and  
201 injector at 320 °C. A fused silica column (30 m x 0.25 mm i.d. x 0.25 µm thickness) coated with  
202 5% phenyl polysiloxane (Phenomenex Zebron ZB-5) and selected ion monitoring (SIM) mode  
203 were used.

## 204 **2.7. Statistical Analysis**

205 Descriptive statistics were calculated overall, by category, and by food origin. Both mean,  
206 and confidence interval (95%) were computed. When comparing RTE vs FF, data did not follow  
207 a normal distribution after a density plot analysis and was not homogenous after a residual plot  
208 analysis. Therefore, a Matt-Whitney *U*-test was performed, at  $p < 0.05$  significance level.  
209 Statistical differences between food categories were evaluated by using the non-parametric  
210 Kruskal-Wallis ANOVA by Ranks test, at  $p < 0.05$  significance level. Spearman's correlation  
211 across nutritional and non-nutritional variables was also tested. All the statistical analyses were

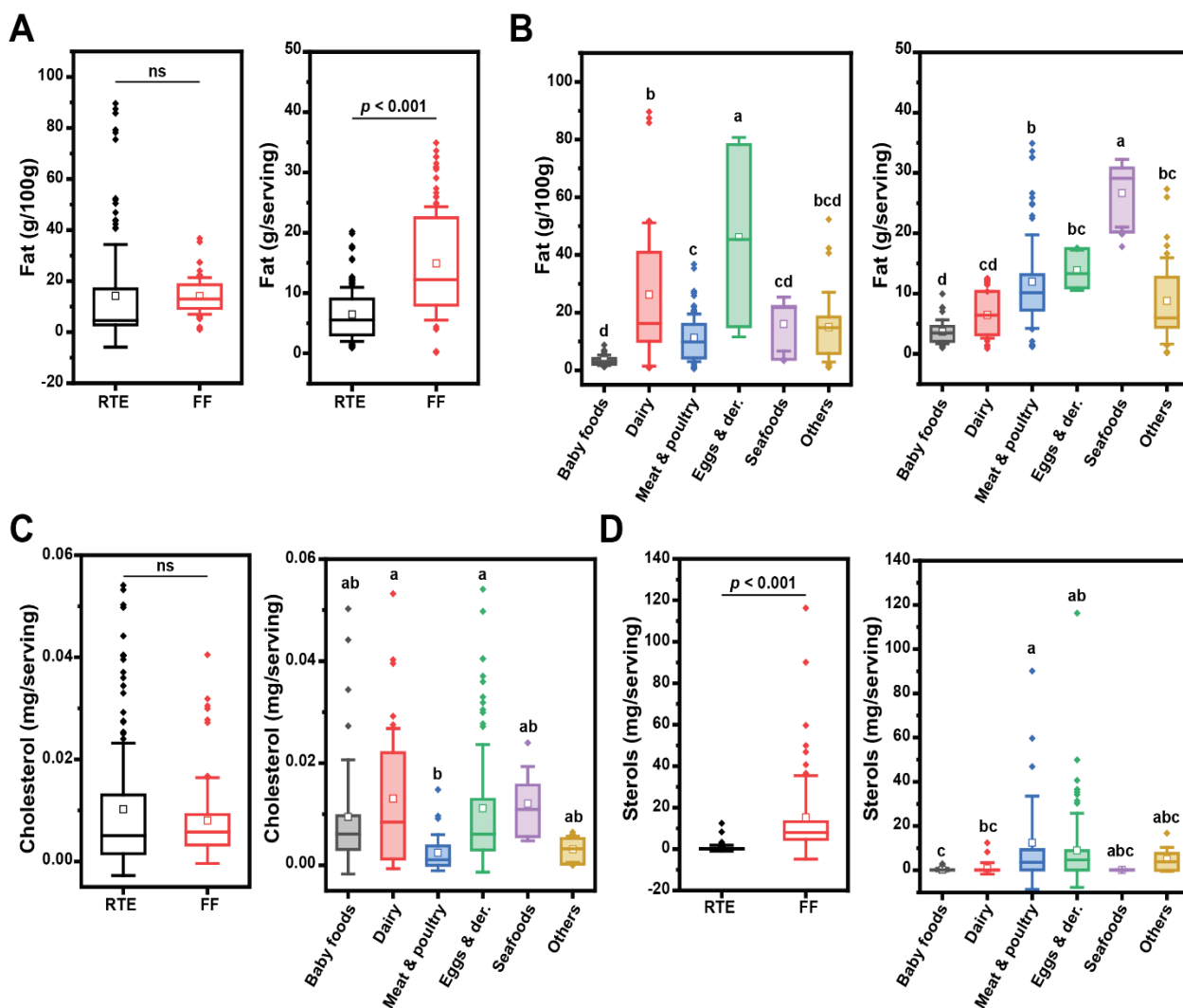
212 computed using Rstudio (Version 1.4.1717 © 2009-2021 RStudio, PBC.). Principal Component  
213 Analysis was performed in OriginPro (v. 2023, OriginLab) using correlation matrix on normalized  
214 data.

215

## 216 3. Results

### 217 3.1. Fat, sterols content, and FAME nutritional indexes in RTE and FF.

218 We performed quantitative assessment of total fat, cholesterol and phytosterols content in  
219 the selected UPFs (**Figure 1**). Fat content in UPFs was statistically similar between FF and RTE  
220 when measured on a weight basis; however, if computed according to the serving size, FF  
221 showed a significantly higher amount of fat (**Fig. 1A**). As expected, fat-enriched food categories  
222 were dairy, and egg and derivatives, whereas seafood categories had the higher fat content  
223 when computed on serving basis (**Fig. 1B**).



**Figure 1.** Total fat (A, B), cholesterol (C), and sterols (D) contents in UPFs by group and category. Box plots represent confidence interval (25-75%)  $\pm$  1SD, line indicates median and white square indicates mean; outliers are also represented as diamonds. When comparing RTE and FF a paired *t*-test was used. The grouping letters in the graph represent distinct categories within the variable under analysis, highlighting significant differences between the groups as determined by the ANOVA, followed by post-hoc Tukey test ( $p < 0.05$ ).

224 Cholesterol and phytosterols are the sterol-like compounds present in UPFs from animal  
225 and vegetable origin, respectively. For cholesterol, no significant difference between RTE and  
226 FF was observed, and only marginal differences between food categories were observed (**Fig.**  
227 **1C**). FF had a higher sterols content (**Fig. 1D**); when looking at food categories, meat and egg  
228 products showed higher variance in sterols content (**Fig. 1D**, right panel). As expected,  
229 cholesterol was abundant in dairy products and eggs products (category D and E, respectively).  
230 Dietary cholesterol from dairy products ranges between 80 mg to 110 g<sup>42</sup>. The lack of vegetable  
231 oils and other ingredients source of phytosterols, drive the Dairy category to rank 4<sup>th</sup> in the  
232 phytosterols content. Interestingly, Dairy products also were 4<sup>th</sup> in the DOxS content. Eggs and  
233 derivatives category had the highest phytosterols content among all categories and was the 2<sup>nd</sup>  
234 highest category in cholesterol content (**Fig. 1 C,D**). The UPFs comprising the Eggs category,  
235 Mayonnaise (E1-RTE) and macaroni salad (E2-RTE) are not solely composed of eggs. They  
236 contain a significant amount of soybean oil<sup>43, 44</sup> which is a main source of phytosterols and  
237 places this category in the first place compared to the rest of the categories. E's position in the  
238 cholesterol content assay was expected due to its already known high cholesterol content which  
239 ranges from 193-275 mg per egg<sup>45-48</sup>. BF have high cholesterol content and a discrete amount  
240 of phytosterol (**Fig. 1C**), due to their formulation that includes meat-derivatives as main  
241 ingredients, as well as vegetable oils<sup>26, 49-51</sup>. Meat and Poultry had lower cholesterol content  
242 than Dairy and eggs category (**Fig. 1C**), with a few exceptions. MP6-RTE, MP16-FF, MP17-FF,  
243 and BF1-RTE (samples principally made of chicken, and beef) contain the highest cholesterol  
244 amounts (**Table S2, Supplemental Information**). Therefore, the ingredients used during the  
245 confection of these meals need to be taken into consideration. The noodles present in the  
246 chicken noodle soup (MP6-RTE) are enriched with eggs, the main reason for this meal's high  
247 cholesterol content. Interestingly, the ingredient containing cholesterol in the chicken drumstick  
248 (MP16-FF) and chicken wing (MP17-FF) samples is whey (10.3 mg cholesterol per cup).<sup>52</sup>

249 Additionally, for MP16-FF and MP17-FF, there's a potential accumulation of these ingredients  
250 during the frying step depending on how frequently the frying oil of these fast food is replaced.  
251 In our previous study, we characterized the fatty acids composition of both RTE and FF classes  
252 <sup>36</sup>. Herein, to help further discussion in oxidative status of UPFs, based on our previous data, we  
253 computed a series of fatty acids nutritional indexes as reviewed by Chen and Liu.<sup>53</sup> (**Fig. 2A**).  
254 The PUFA/SFA index is used to determine the impact of fatty acids on cardiovascular health,  
255 since a diet rich in PUFA has been linked to lower serum cholesterol levels.<sup>53</sup> In the present  
256 study, no significant difference in PUFA/SFA index was observed between FF and RTE. The  
257 indexes of atherogenicity (IA) and thrombogenicity were both proposed in the early '90s and are  
258 linked to specific nutritional attributes of fatty acids. These indexes measure the  
259 atherogenic/thrombogenic potential of fatty acids, as a ratio between common saturated fatty  
260 acids and total unsaturated fatty acids.<sup>54</sup> We calculate these indices for the UPFs profiled in this  
261 study (see **Material and Methods**). RTE had a significantly higher IA and IT index value  
262 compared to FF (**Fig. 2A**); dairy foods were the class that most contributed to the high IA and IT  
263 values (**Fig. 1B,C**), for their load of SFA.<sup>36</sup> Finally, the HH  
264 (Hypocholesterolemic/Hypercholesterolemic ratio), the HPI (Health-Promoting Index) and the UI  
265 (Unsaturated Index) are higher for foods with higher health benefits. In our database, FF scored  
266 higher than RTE for all the three indexes (**Fig. 2A**).

### 267 **3.2. Oxidative status of the UPFs**

268 The thiobarbituric acid reactive substances assay (TBARs) is widely used to measure  
269 oxidative stress in biological samples<sup>55</sup> as well as foods.<sup>56</sup> Lipid peroxidation results in the  
270 formation of conjugated dienes, lipid hydroperoxides and degradation products such as alkanes,  
271 aldehydes and isoprostanes. The formed hydroperoxides are further decomposed to flavorful  
272 secondary oxidation products, which are mainly aldehydes, such as hexanal, 4-hydroxynonenal  
273 (HNE), and malondialdehyde (MDA). The TBARs method detects lipid peroxidation products,

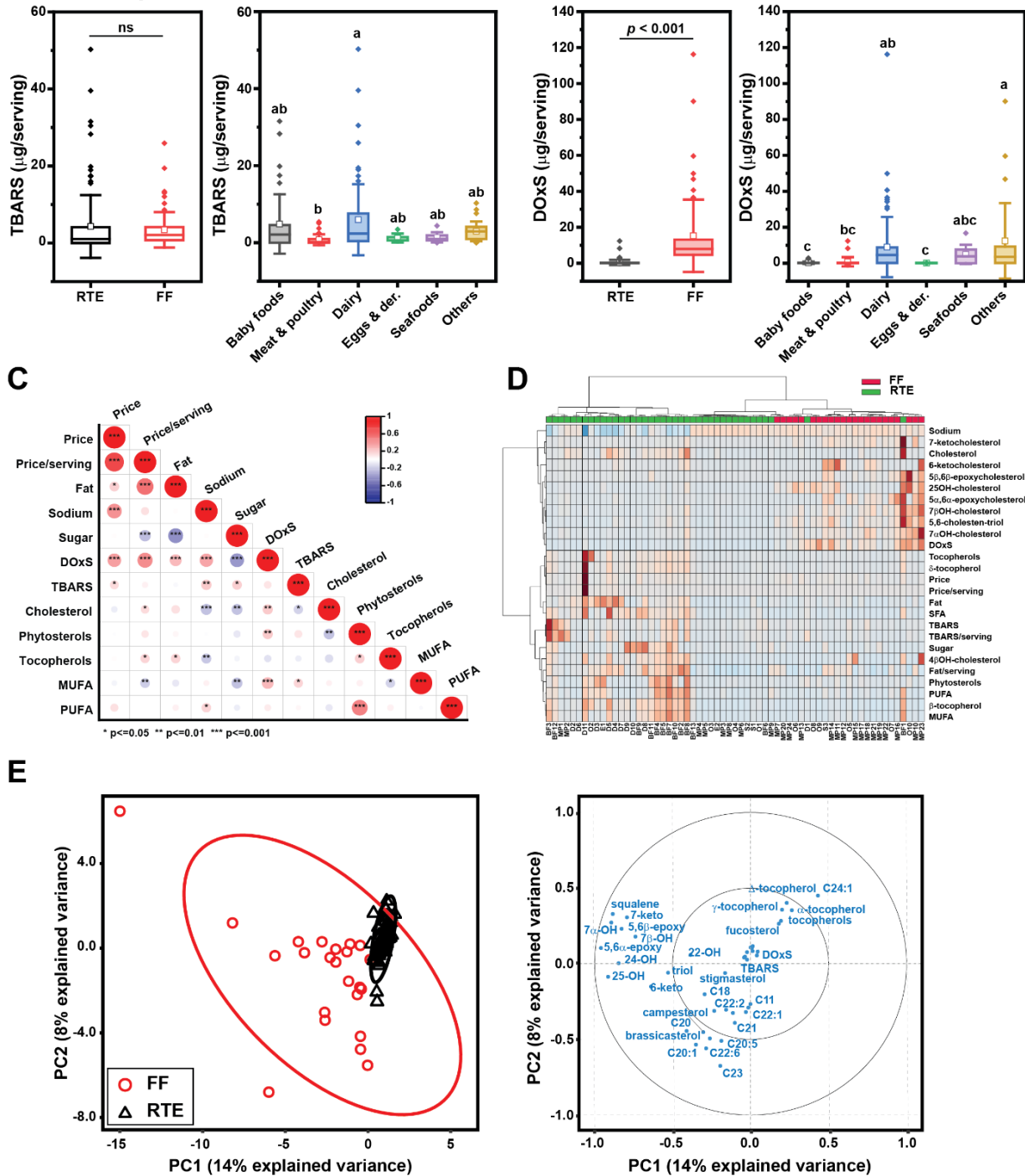
274 such as malondialdehyde (MDA), a final product of fatty acids peroxidation. In this study, MDA  
275 concentration values were not significantly different between FF and RTE, but significant  
276 differences were found between UPFs' categories (**Fig. 3A**). The highest values for significant  
277 amounts of MDA were observed in Meat and Poultry category, followed by Baby Food and  
278 Others category (**Table S1 Supplemental information**). Notability, in several samples, MDA  
279 was not detected. It could be possible that second stage oxidation molecules were not either  
280 present or the sample was at later stages of the oxidative chain reaction, in which complex and  
281 non-reactive species are formed and unable to be detected.

282 We then quantified the total amount of DOxS, which reports cholesterol oxidation. DOxS are  
283 cholesteryl-derivatives that accumulate in significant amount within food matrices because of  
284 food manufacturing. Importantly, DOxS have known biological effects in both *in vitro* and animal  
285 models.<sup>57, 58</sup> The FF group showed lower DOxS content (0.15-0.67 µg/serving 95% CI)  
286 compared to RTE (10.5-20.1 µg/serving 95% CI) (**Fig. 3B**). As expected, dairy foods contained  
287 higher amounts of DOxS because they are rich in cholesterol.<sup>42, 59, 60</sup> DOxS content was  
288 positively correlated with price (both absolute and *per serving* base), as well as fat and sodium  
289 content ( $p < 0.001$ ) (**Fig. 3C**). Conversely, the negative correlation of those macronutrients with  
290 cholesterol content reaffirms that DOxS accumulation is indeed driven by food processing.



291

### A.3 DOxS quantification in UPFs



**Figure 3.** Oxidative status of UPFs contents in UPFs by group and category. (A) TBARS values; (B) DOxS amounts; (C) Pearson correlation between oxidative status and selected compositional variables; (D) heat-maps showing clustering of RTE and FF according to oxidative markers and selected classes of lipids; (E) principal components analysis of lipids and sterols, showing clustering of RTE and FF (left), as well as variables loadings (right). When comparing RTE and FF a paired *t*-test was used. The grouping letters in the graph represent distinct categories within the variable under analysis, highlighting significant differences between the groups as determined by the ANOVA, followed by post-hoc Tukey test ( $p < 0.05$ ).

292 Twelve DOxS (7 $\alpha$ -OH, 7 $\beta$ -OH, 4 $\beta$ -OH, 5,6 $\alpha$ -epoxy, 5,6 $\beta$ -epoxy, triol, 6-keto, 7-keto, 20 $\alpha$ -  
293 OH, 22-OH, 24-OH, and 25-OH) were identified in FF meals and RTE foods. The DOxS content  
294 for individual food samples is reported in the Supplemental Material (**Table S4-S5**  
295 **Supplemental material**). DOxS content were significantly higher in the O group, followed by  
296 MP, and S (**Table 1**). 7 $\alpha$ -OH was the most abundant DOxS in all UPFs, followed by 7 $\beta$ -OH.  
297 Notably, 4 $\beta$ -OH was only detected in FF meals. Also, two side-chain COPs (22-OH and 25-OH)  
298 were the most abundant specifically in baby food samples. The heat-map in **Fig. 3D** highlights  
299 compositional differences between FF and RTE, which were better resolved using sparse  
300 Partial-Least Square-Discriminant Analysis (sPLS-DA) (**Fig. 3E**). For the sPLS-DA we included  
301 the FAME data from our previous study published somewhere else <sup>36</sup>. The multivariate analysis  
302 showed that RTE are tightly grouped when considering reduced variables featuring lipid and  
303 sterols composition. On the other hand, FF were broadly distributed across a dimension  
304 comprising several DOxS, but also long-chain FAME and phytosterols. These differences in  
305 oxidative load hints that specific compounds may serve as potential biomarkers for processing.

### 306 3.2.1. *Baby Food (BF)*

307 Large quantities of phytosterols and cholesterol in BF meals are intended to fulfill the  
308 infant's nutritional needs during this critical period when their body - especially the brain - is  
309 under growth and development. For BF, the ingredients used during their confections such as  
310 meat and plant-based oils (i.e., soy, coconut, palm, or sunflower oils, etc.) could be beneficial  
311 for infants based on their phytosterols and cholesterol specific nutritional needs. However,  
312 infants' diet should be closely monitored to avoid uncontrolled accumulation of these  
313 compounds that could result in serious health problem such as accelerated atherosclerosis – a  
314 consequence of an increased absorption of phytosterols and cholesterol in infants with  
315 sitosterolemia <sup>61</sup>, or the development of parenteral nutrition-associated liver disease which is  
316 related to a higher intake of phytosterols <sup>62</sup>.

317 In addition to phytosterols and cholesterol, we found 0.31 mg per serving of DOxS ingested  
318 by infants that is obtained through these same ingredients. Potentially, DOxS could negatively  
319 affect the infant's health in the long run because of their accumulation through this specific diet.  
320 Low concentrations of DOxS (1 nM) have been reported in studies of different cardiometabolic,  
321 neurodegenerative, inflammatory bowel, ocular diseases, and have been even related to ageing  
322 regulation<sup>63-65</sup>. Unfortunately, even though there's abundant information regarding DOxS and  
323 adverse health effects on adults, little is known about their relationship with infants' health and  
324 their diet.

325 Maldonado and coworkers performed a dietary exposure assessment of DOxS in BF and  
326 infant formulas (IF) after their consumption throughout the first year of life<sup>66</sup> (Maldonado et al,  
327 2022). They confirmed the dominant presence of cholesterol and phytosterols amounts ingested  
328 and absorbed by this specific population group. 5,6 $\beta$ -epoxycholesterol, 7 $\beta$ -OH, and 7 $\alpha$ -OH were  
329 the highest DOxS exposed through infants' diet with 1,244.4, 191.8, and 165.5  $\mu$ g/day,  
330 respectively; but 5,6 $\beta$ -epoxycholesterol was the most absorbed DOxS with a value of 0.040  
331 mg/kg-day<sup>66</sup>. Further studies focused on DOxS and their effect on infant's health are required to  
332 address this knowledge gap.

### 333 3.2.2. *Eggs and Its Derivatives*

334 For years, the recommended cholesterol daily intake was 300mg/day, and people took close  
335 attention to their egg's daily consumption. Recently, this value was eliminated from the 2015-  
336 2020 Dietary Guidelines for Americans, the 2016 Japanese Dietary Guidelines, and the 2016  
337 Chinese Dietary Guidelines<sup>67</sup> because of the lack of evidence of an overall positive association  
338 between egg consumption and risk of coronary heart disease<sup>68 69, 70</sup>. Even though, dietary  
339 cholesterol intake raises plasma cholesterol and LDL cholesterol, the effect is not as significant  
340 as originally thought, and its consumption also provides other nutrients such as proteins,  
341 unsaturated fats, folate, B vitamins, and minerals which are beneficial to human health (Hu,  
342 2017).

343 Eggs and derivatives emerged as the second-highest category with respect to secondary  
344 oxidation products (MDA), indicating a higher extent of lipid oxidation in comparison to other  
345 categories. Initially, we hypothesized a positive correlation between MDA levels and DOxS (as  
346 observed in the Meat and Poultry category, which will be discussed in the next section).  
347 However, for the Eggs category, this was not the case, as it exhibited the lowest content of  
348 DOxS among all the groups.

### 349 *3.2.3. Meat and poultry (MP)*

350 MP had the highest quantities of MDA compared to the other categories. These results were  
351 obtained mainly from samples made of pork and chicken. As we mentioned above, MP and E  
352 categories showed an opposite association related to DOxS versus MDA results. MP showed a  
353 higher DOxS content with high MDA values, while E showed the lowest DOxS content with high  
354 MDA values. As we mentioned before, this behavior could be caused by the presence of  
355 phytosterols in the sample -MP had significantly lower phytosterols' contents- because of the  
356 addition of other ingredients to the whole meal. MDA values are aligned with previous studies<sup>71-</sup>  
357<sup>75</sup> that report lipid oxidation changes in food samples after the addition of different ingredients  
358 and spices, with considerable amounts of phytochemicals that hinder the lipid oxidation process  
359 in the sample.

### 360 *3.2.4. Dairy products*

361 Our initial hypothesis suggested that the lower presence of phytosterols in the Eggs  
362 category would lead to a higher DOxS content, as these phytosterols may have less antioxidant  
363 effect on cholesterol, resulting in the formation of more DOxS. However, our findings  
364 contradicted this hypothesis. Interestingly, the processing of dairy products involves subjecting  
365 them to very high temperatures, but the duration of these heating steps is considerably shorter  
366 (e.g., pasteurization: 17-20 seconds) compared to other cooking processes used for the  
367 samples in our study (e.g., frying: 10-15 minutes). Previous research has indicated that when  
368 comparing high cooking temperatures with short cooking times against low cooking

369 temperatures with longer cooking times, there is typically less formation of different DOxS.  
370 Hashari and co-workers reported 360.5 ug 7 $\beta$ -OH/100 g sample of sausage for oven roasting  
371 (150°C) for 15min, but 204.3 ug 7 $\beta$ -OH/100 g sample sausage for microwave cooking (350°C)  
372 for 2min.<sup>76, 77</sup> Moreover, Alina and co-workers detected 2.28 ppm of 5,6 $\beta$ -Epoxy after oven  
373 roasting mutton samples (190°C) for 25 min, but 0.83 ppm of 5,6 $\beta$ -Epoxy after grilling (230°C) for  
374 20 min.<sup>78</sup>

375 Lastly, the D category was one of the only two categories where tocopherols could be  
376 detected in. It is possible that they can demote certain types of cancer, heart disease, and other  
377 chronic ailments.<sup>79-81</sup> They are commonly found in vegetables and their oils, but traces of  
378 tocopherols were found in the D category of this study. Their presence is potentially associated  
379 with the use of vegetable colors and other preservatives used during dairy products  
380 manufacturing.

### 381 3.2.5. *Seafood*

382 Seafood is known as one of the main sources of several essential lipids ( $\omega$ -3 fatty acids,  
383 vitamins-D, and vitamin B12) which are crucial to different biological functions of the human  
384 body<sup>82</sup>, and exert nutraceutical properties<sup>83</sup>. In 2017, the Center of the Plate: Seafood and  
385 Vegetarian Consumer Trend Report states that 36% of adults are eating more seafood in place  
386 of meat.<sup>84</sup> Even though the seafood category contains the lowest cholesterol and phytosterols  
387 amounts, it ranked on the 3<sup>rd</sup> position of DOxS content (**Fig. 2**). Results are comparable with  
388 previous studies.<sup>85-89</sup> The small number of foods used in this category may be the reason for the  
389 observed results.

### 390 3.2.6. *Other products (O)*

391 The "Others" products category ranked 1st in both tocopherols and DOxS contents, as  
392 shown in **Fig. 2**. The higher presence of tocopherols in this category can be attributed to the  
393 significant use of vegetable oils during the preparation of these meals. Interestingly, while DOxS  
394 have been detected in other foods such as biscuits and French fries (especially those from

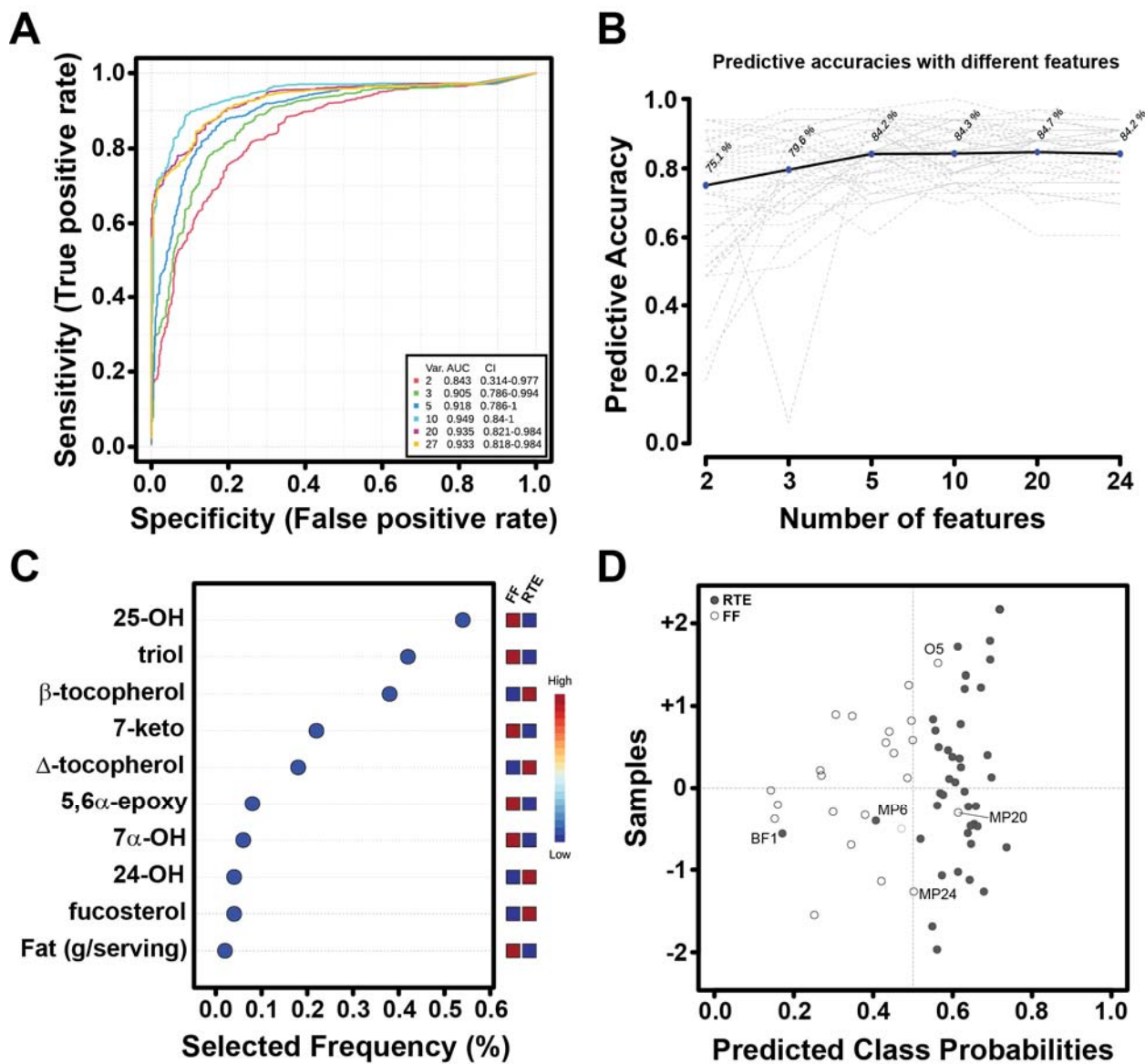
395 European countries) according to a study in 2002,<sup>90</sup> no research has reported their content in  
396 the same products available in the Western Diet. It is well-established that high cooking  
397 temperatures (ranging from 180°C to 200°C) and the specific type of oil used during deep frying  
398 of French fries are primary factors that promote the formation of DOxS. These findings highlight  
399 the importance of considering both the cooking methods and the choice of ingredients, such as  
400 oils, in the context of dietary habits, as they can significantly influence the formation of  
401 potentially harmful compounds like DOxS in our food.

402

### 403 ***3.4 DOxS as biomarkers of food processing: a preliminary assessment***

404 We looked for specific lipid oxidative biomarkers for differentiating food belonging to the FF and  
405 RTE categories. To improve discriminatory power, we used a multivariate exploratory ROC  
406 analysis to assist the identification of a minimum number of features to use in the model. The  
407 model predicts high power discrimination between FF and RTE even when using only to  
408 features (AUC = 0.843), whereas the highest power is achieved with 10 features (AUC = 0.949)  
409 (**Fig. 4A**). The accuracy is >75% for all the considered models (**Fig. 4B**). From the VIP plot (**Fig.**  
410 **4C**), a few DOxS were selected as top features, including 25-OH, triol and 7-keto, which were  
411 previously highlighted in the heatmap (**Fig. 3D**). Finally, using the first 2 features (25-OH and  
412 triol), we achieved sufficient discrimination between FF and RTE, being only 5 food items (three  
413 meat products, one baby food and a miscellaneous) assigned to the wrong category.

414 Overall, our results demonstrate clear differences in the oxidative status of FF and RTE,  
415 particularly when referring to DOxS.



**Figure 4.** Biomarker analysis for UPFs. (A) ROC curves based on cross validation performance using a SVM classification method and a built-in SVM feature ranking method. (B) Predictive accuracies with increasing number of features. (C) Top ten significant features with selected frequencies for RTE and FF groups. (D) Predicted class probabilities as a result of average cross-validation for each sample using the best classifier (according to the AUC value). Misclassified samples are labeled.

416

417

#### 418 **4. Discussion**

419 The use of the ambiguous term "ultra-processed foods" in the NOVA classification has given  
420 rise to misleading perceptions among consumers and the scientific community regarding the  
421 advantages of food preservation technologies. Numerous studies have linked the consumption  
422 of UPFs with adverse health outcomes, but there is a lack of quantitative data or biomarkers to  
423 assess the "level" of processing in these food items. Moreover, the variability in manufacturing  
424 processes and the sample matrix further complicate the analysis of food composition and its  
425 metabolites. In this study, we present an initial evaluation of the oxidative status of UPFs using  
426 an onsite database and quantitative lipidomics focusing on the main lipid oxidative species.

#### 427 ***FF and RTE have distinct oxidative signatures.***

428 We previously reported that RTE meals not only have higher fat content compared to FF meals,  
429 but also a different FAME composition.<sup>36</sup> These differences are due to the extensive formulation  
430 and ingredients used to produce more palatable and tasty meals in addition to the cooking and  
431 preservation methods employed during their manufacturing. In the present study, we confirmed  
432 that formulation also affects the sterols composition of UPFs (**Fig. 1**), and most importantly their  
433 oxidative status. Although both groups (FF and RTE) are considered UPFs, there is a clear  
434 distinction between these meals due to type of transformation,<sup>91 enzymatical</sup> source of lipid and  
435 protein (animal-based vs plant-based), type of preservation technology (e.g., thermal vs  
436 nonthermal, wet versus dry), additives addition (e.g, edulcorates, colorants, acidifies). The  
437 question that raises is if the differences in composition and manipulation, from both a  
438 manufacturing and preparation point of view, will be reflected in major lipid oxidative markers.  
439 For instance, although no difference was observed in secondary oxidative products (measured  
440 as MDA), FF accumulates more DOxS, which are derived from chemical oxidation of cholesterol  
441 (**Fig. 2A,B**).

#### 442 ***DOxS, UPFs, Nutrition and Public Health***



443 The recent alterations to dietary guidelines worldwide stem from emerging research findings.  
444 Some of these studies propose that cholesterol alone may not be the sole culprit responsible for  
445 chronic diseases like CHD. Instead, they indicate that various other factors, such as overall  
446 dietary patterns and their impact on the gut microbiota, play a significant role in the development  
447 of human pathological conditions. Recent studies have reported association of specific gut  
448 metagenomic species with multiple plasma metabolites.<sup>92-99</sup> Characterization of these  
449 interactions was stored in an online atlas created by Dekkers and coworkers,<sup>100</sup> expecting to  
450 help the scientific community in the process of understanding the effects of the gut microbiota  
451 on health. It is possible that DOxS could be also influencing changes on the gut microbiota which  
452 could end up affecting human health.<sup>101</sup>

#### 453 ***Identification of oxidized biomarkers***

454 **Table S6 (Supplemental Information)** shows results of the biomarker analysis using  
455 MetaboAnalyst package.<sup>102</sup> Brassicasterol was the potential biomarker for RTE meals, while  $7\alpha$ -  
456 OH and  $7\beta$ -OH were both suggested for FF meals. While both groups fall under the category of  
457 UPFs, the distinct production and processing characteristics of each group have a notable  
458 influence on the biomarker analysis outcomes. Our findings suggest that brassicasterol and  $7\alpha$ -  
459 OH +  $7\beta$ -OH may potentially serve as biomarkers for ready-to-eat (RTE) and fast-food (FF)  
460 meals, respectively. However, we acknowledge the significant impact of the diverse food  
461 categories on these results, and further investigations are required to validate these potential  
462 biomarkers. **Table S6** also shows potential biomarkers for each individual food category.

463 Maldonado and co-workers<sup>66</sup> reported  $7\alpha$ -OH as a potential biomarker of the BF category  
464 after comparing it against powdered and liquid IF (PIF and LIF, respectively) from Kilvington's  
465 study.<sup>26</sup> In our study, when comparing BF against all other categories, the biomarker analysis  
466 pointed to  $\beta$ -sitosterol as a potential biomarker for this specific category. However, we believe  
467 that  $7\alpha$ -OH could potentially be a more accurate biomarker, as it reflects the processing  
468 differences between these two types of infant foods. On the other hand, the presence of  $\beta$ -

469 sitosterol in these meals may be more closely associated with the use of vegetable oils, which  
470 are key ingredients in many of these products. Thus, further investigation is needed to ascertain  
471 the most suitable biomarker for distinguishing between these food categories accurately.  
472 Further research quantifying DOxS in a broader dataset of UPFs found in the WD is suggested  
473 to increase the diet's variability and evaluate any possible changes in the results obtained from  
474 the biomarker analysis. This expanded analysis will provide valuable insights into the specific  
475 biomarkers that can best differentiate between different categories of UPFs, contributing to a  
476 better understanding of their impact on human health.

477 Consumer awareness of foods and their healthiness is of critical importance,<sup>103, 104</sup> and  
478 varies across culture. A pilot study performed in Europe found that Italian and Dutch consumers  
479 have weaker negative opinion towards UPF compared to Brazilian consumers.<sup>103</sup> However,  
480 healthiness perception of UPF seems to be linked to heuristic assessment.<sup>104</sup> For instance, the  
481 National Health Institute (NIH) recognizes the need for more data to provide insight into  
482 personalized foods with the program precision nutrition.<sup>105</sup> A dietary assessment will enable the  
483 development of an exposure assessment that would become the starting point of a most-  
484 needed risk assessment to elucidate the association between these food meals and disease  
485 risk.<sup>106</sup> Several dietary markers of exposure for many foods have been putatively identified.<sup>107-110</sup>

486

## 487 **5. Conclusion**

488 Our study revealed significant differences in DOxS content between RTE and FF meals.  
489 Similarly, the levels of phytosterols exhibited a significant difference between RTE and FF  
490 meals. These findings underscore the substantial influence of the parameters and conditions  
491 used in the manufacturing processes of these two groups of UPFs. Furthermore, the  
492 composition of the food matrix played a pivotal role in determining the presence of these  
493 bioactive lipids, as observed when comparing all six food categories. Overall, not all UPFs are  
494 deemed to be “unhealthy”, a lot of these compounds such as phytosterols and tocopherols are

495 needed to avoid oxidative species that promote development or worsening of human illnesses.  
496 However, for RTE meals, there's definitely room for improvement in finding a solution to avoid  
497 the excessive addition of certain nutritional attributes such as sodium, sugar, and fat as part  
498 of the current "solutions" for different nutritional and/or safety processes (i.e., microbial  
499 reduction, preservation, shelf-life extension, etc.). Meanwhile, FF meals seem to be a big source  
500 of DOxS. The intake of these toxicological compounds, raises even more health concerns from  
501 a chemical and molecular point of view regarding UPFs. Unfortunately, the presence of DOxS in  
502 UPFs increase the risk of development of cardiometabolic disorders (CMD), which are one of  
503 the most challenging global health issues of the 21st century, recognized by the World Health  
504 Organization (WHO),<sup>111</sup> and the American Society of Endocrinology.<sup>112</sup> Oxidative compounds  
505 like these cholesterol oxidation products<sup>113</sup>, need to be avoided for the sake of the society's  
506 health.

507 Therefore, we believe that the use of DOxS as biomarkers could potentially help in a future  
508 to identify in an early stage the presence of different chronic diseases, and even, prevent their  
509 development. Nevertheless, an exposure assessment is critical to understand the exposure  
510 level of these toxicological compounds – DOxS – and their relationship with CMD and other  
511 chronic diseases.

512 Until now, no nutritional database of UPFs has been fully developed yet. Maldonado and  
513 coworkers already analyzed the nutritional aspects of these same 63 UPFs evaluated in this  
514 study.<sup>114</sup> Our results aim to expand that database which will serve as our contribution to the  
515 scientific community, and general society, in the ongoing quest of elucidating the relationship of  
516 DOxS and human health. The creation of a DOxS database of UPFs in WD developed in this  
517 study is just the first step to assess and determine the potential health risk caused by the  
518 consumption of these UPFs.

519 **Acknowledgments:**

520 This study was partially funded by the Centre for Research Ingredients Safety (CRIS) of  
521 Michigan State University with the GR100229 grant, and the USDA National Institute of Food  
522 and Agriculture, Hatch project MICL02526 to I.G.M.M.

523

524 **Conflict of interest**

525 Authors declare non conflict of interest for this study.

526

527

528 **References**

- 529 (1) Andrade, C. Ultraprocessed Food and Cardiovascular Risk: Estimating the  
530 Number Needed to Harm in an Unfamiliar Situation. *Indian Journal of*  
531 *Psychological Medicine* **2019**, *41* (5), 501-502. DOI:  
532 10.4103/ijpsym.ijpsym\_340\_19.
- 533 (2) Lane, M. M.; Davis, J. A.; Beattie, S.; Gomez-Donoso, C.; Loughman, A.;  
534 O'Neil, A.; Jacka, F.; Berk, M.; Page, R.; Marx, W.; et al. Ultraprocessed food and  
535 chronic noncommunicable diseases: A systematic review and meta-analysis of  
536 43 observational studies. *Obesity Reviews* **2021**, *22* (3). DOI:  
537 10.1111/obr.13146.
- 538 (3) Abramova, M.; Singh, R. B.; Chibisov, S.; Cornelissen, G.; Takahashi, T.;  
539 Singh, V.; Pella, D. Chapter 31 - Diet and Cancer: A Dysfunction of the Brain. In  
540 *The Role of Functional Food Security in Global Health*, Academic Press, 2019;  
541 pp 525-540.
- 542 (4) Jirillo, F.; Jirillo, E.; Magrone, T. Chapter 30 - Synbiotics and the Immune  
543 System. In *Probiotics, Prebiotics, and Synbiotics*, Academic Press, 2016; pp 449-  
544 458.
- 545 (5) López-Taboada, I.; González-Pardo, H.; Conejo, N. M. Western Diet:  
546 Implications for Brain Function and Behavior. *Front Psychol* **2020**, *11*, 564413.  
547 DOI: 10.3389/fpsyg.2020.564413 From NLM.
- 548 (6) Avena, N. M.; Rada, P.; Hoebel, B. G. Sugar and Fat Bingeing Have Notable  
549 Differences in Addictive-like Behavior. *The Journal of Nutrition* **2009**, *139* (3),  
550 623-628. DOI: 10.3945/jn.108.097584 (accessed 11/15/2022).
- 551 (7) Gordon, E. L.; Ariel-Donges, A. H.; Bauman, V.; Merlo, L. J. What Is the  
552 Evidence for "Food Addiction?" A Systematic Review. *Nutrients* **2018**, *10* (4),  
553 477.
- 554 (8) Lustig, R. H. Ultraprocessed Food: Addictive, Toxic, and Ready for  
555 Regulation. *Nutrients* **2020**, *12* (11). DOI: 10.3390/nu12113401.
- 556 (9) Monteiro, C. A.; Cannon, G.; Lawrence, M.; Costa Louzada, M. L.; Pereira  
557 Machado, P. Ultra-processed foods, diet quality, and health using the NOVA  
558 classification system. Rome, 2019.
- 559 (10) Juul, F.; Martinez-Steele, E.; Parekh, N.; Monteiro, C. A.; Chang, V. W.  
560 Ultra-processed food consumption and excess weight among US adults. *British*  
561 *Journal of Nutrition* **2018**, *120* (1), 90-100. DOI: 10.1017/s0007114518001046.
- 562 (11) Urban, L. E.; Weber, J. L.; Heyman, M. B.; Schichtl, R. L.; Verstraete, S.;  
563 Lowery, N. S.; Das, S. K.; Schleicher, M. M.; Rogers, G.; Economos, C.; et al.  
564 Energy Contents of Frequently Ordered Restaurant Meals and Comparison with  
565 Human Energy Requirements and U.S. Department of Agriculture Database  
566 Information: A Multisite Randomized Study. *Journal of the Academy of Nutrition*  
567 *and Dietetics* **2016**, *116* (4), 590-598.e596. DOI: 10.1016/j.jand.2015.11.009  
568 PubMed.

- 569 (12) Wang, L.; Martínez Steele, E.; Du, M.; Pomeranz, J. L.; O'Connor, L. E.;  
570 Herrick, K. A.; Luo, H.; Zhang, X.; Mozaffarian, D.; Zhang, F. F. Trends in  
571 Consumption of Ultraprocessed Foods Among US Youths Aged 2-19 Years,  
572 1999-2018. *Jama* **2021**, 326 (6), 519-530. DOI: 10.1001/jama.2021.10238 From  
573 NLM.
- 574 (13) USDA; USDH. *Dietary Guidelines for Americans 2020-2025*. 2020. (accessed  
575 April 6, 2021).
- 576 (14) Collins. Ready-to-Eat. HarperCollins Publishers: 2022.
- 577 (15) Huang, L.; Hwang, C. A. 16 - In-package pasteurization of ready-to-eat meat  
578 and poultry products. In *Advances in Meat, Poultry and Seafood Packaging*,  
579 Woodhead Publishing, 2012; pp 437-450.
- 580 (16) Dunford, E. K.; Wu, J.; Wellard-Cole, L.; Watson, W.; Crino, M.; Petersen,  
581 K.; Neal, B. A comparison of the Health Star Rating system when used for  
582 restaurant fast foods and packaged foods. *Appetite* **2017**, 117, 1-8. DOI:  
583 10.1016/j.appet.2017.06.005.
- 584 (17) Powell, L. M.; Nguyen, B. T. Fast-Food and Full-Service Restaurant  
585 Consumption Among Children and Adolescents Effect on Energy, Beverage, and  
586 Nutrient Intake. *Jama Pediatrics* **2013**, 167 (1), 14-20. DOI:  
587 10.1001/jamapediatrics.2013.417.
- 588 (18) Dunford, E. K.; Popkin, B. M.; Ng, S. W. Recent Trends in Junk Food Intake  
589 in US Children and Adolescents, 2003-2016. *American Journal of Preventive*  
590 *Medicine* **2020**, 59 (1), 49-58. DOI: 10.1016/j.amepre.2020.01.023.
- 591 (19) Santana, M. O.; Guimarães, J. S.; Leite, F. H. M.; Mais, L. A.; Horta, P. M.;  
592 Martins, A. P. B.; Claro, R. M. Analysing persuasive marketing of ultra-processed  
593 foods on Brazilian television. *International Journal of Public Health* **2020**, 65 (7),  
594 1067-1077.
- 595 (20) Harris, J. L.; Pomeranz, J. L. Infant formula and toddler milk marketing:  
596 opportunities to address harmful practices and improve young children's diets.  
597 *Nutr Rev* **2020**, 78 (10), 866-883. DOI: 10.1093/nutrit/nuz095 From NLM.
- 598 (21) Cacace, F.; Bottani, E.; Rizzi, A.; Vignali, G. Evaluation of the economic and  
599 environmental sustainability of high pressure processing of foods. *Innovative*  
600 *Food Science & Emerging Technologies* **2020**, 60. DOI:  
601 10.1016/j.ifset.2019.102281.
- 602 (22) Arneht, W.; Munch, S. Contents of cholesteroloxydes in heated meat  
603 products - 1. Possibility of technological influence. *Fleischwirtschaft* **2002**, 82 (6),  
604 109-113.
- 605 (23) Baggio, S. R.; Bragagnolo, N. Cholesterol oxide, cholesterol, total lipid and  
606 fatty acid contents in processed meat products during storage. *LWT - Food*  
607 *Science and Technology* **2006**, 39 (5), 513-520. DOI: 10.1016/j.lwt.2005.03.007.
- 608 (24) Dantas, N. M.; Sampaio, G. R.; Ferreira, F. S.; Labre, T. D.; Torres, E.;  
609 Saldanha, T. Cholesterol Oxidation in Fish and Fish Products. *Journal of Food*  
610 *Science* **2015**, 80 (12), R2627-R2639. DOI: 10.1111/1750-3841.13124.

- 611 (25) Medina-Meza, L. G.; Barnaba, C.; Barbosa-Canovas, G. V. Effects of high  
612 pressure processing on lipid oxidation: A review. *Innovative Food Science &*  
613 *Emerging Technologies* **2014**, *22*, 1-10. DOI: 10.1016/j.ifset.2013.10.012.
- 614 (26) Kilvington, A.; Barnaba, C.; Rajasekaran, S.; Laurens, M. L. L.; Gabriela  
615 Medina-Meza, I. Lipid profiling and dietary assessment of infant formulas reveal  
616 high intakes of major cholesterol oxidative product (7-ketocholesterol). *Food*  
617 *Chemistry* **2021**, 129529. DOI: <https://doi.org/10.1016/j.foodchem.2021.129529>.
- 618 (27) Maldonado-Pereira, L.; Schweiss, M.; Barnaba, C.; Medina-Meza, I. G. The  
619 role of cholesterol oxidation products in food toxicity. *Food and Chemical*  
620 *Toxicology* **2018**, *118*, 908-939. DOI: 10.1016/j.fct.2018.05.059.
- 621 (28) Poli, G.; Iaia, N.; Leoni, V.; Biasi, F. High cholesterol diet, oxysterols and  
622 their impact on the gut-brain axis. *Redox Experimental Medicine* **2022**, *2022* (1),  
623 R15-R25.
- 624 (29) Rodriguez-Estrada, M. T.; Garcia-Llatas, G.; Lagarda, M. J. 7-  
625 Ketocholesterol as marker of cholesterol oxidation in model and food systems:  
626 when and how. *Biochemical and biophysical research communications* **2014**, *446*  
627 (3), 792-797.
- 628 (30) Leal-Castaneda, E. J.; Inchingolo, R.; Cardenia, V.; Hernandez-Becerra, J.  
629 A.; Romani, S.; Rodriguez-Estrada, M. T.; Galindo, H. S. G. Effect of Microwave  
630 Heating on Phytosterol Oxidation. *Journal of Agricultural and Food Chemistry*  
631 **2015**, *63* (22), 5539-5547. DOI: 10.1021/acs.jafc.5b00961.
- 632 (31) Bjorkhem, I.; Lovgren-Sandblom, A.; Leoni, V.; Meaney, S.; Brodin, L.;  
633 Salvesson, L.; Winge, K.; Palhagen, S.; Svenningsson, P. Oxysterols and  
634 Parkinson's disease: Evidence that levels of 24S-hydroxycholesterol in  
635 cerebrospinal fluid correlates with the duration of the disease. *Neuroscience*  
636 *Letters* **2013**, *555*, 102-105. DOI: 10.1016/j.neulet.2013.09.003.
- 637 (32) Gargiulo, S.; Gamba, P.; Testa, G.; Leonarduzzi, G.; Poli, G. The role of  
638 oxysterols in vascular ageing. *Journal of Physiology-London* **2016**, *594* (8), 2095-  
639 2113. DOI: 10.1113/jp271168.
- 640 (33) Lemaire-Ewing, S.; Prunet, C.; Montange, T.; Vejux, A.; Berthier, A.;  
641 Bessede, G.; Corcos, L.; Gambert, P.; Neel, D.; Lizard, G. Comparison of the  
642 cytotoxic, pro-oxidant and pro-inflammatory characteristics of different oxysterols.  
643 *Cell Biol Toxicol* **2005**, *21* (2), 97-114. DOI: 10.1007/s10565-005-0141-2.
- 644 (34) Overholt, M. F.; Mancini, S.; Galloway, H. O.; Preziuso, G.; Dilger, A. C.;  
645 Boler, D. D. Effects of salt purity on lipid oxidation, sensory characteristics, and  
646 textural properties of fresh, ground pork patties. *LWT - Food Science and*  
647 *Technology* **2016**, *65*, 890-896. DOI: 10.1016/j.lwt.2015.08.067.
- 648 (35) Liao, P. L.; Cheng, Y. W.; Li, C. H.; Lo, Y. L.; Kang, J. J. Cholesterol-3-beta,  
649 5-alpha, 6-beta-triol induced PI3K-Akt-eNOS-dependent cyclooxygenase-2  
650 expression in endothelial cells. *Toxicology Letters* **2009**, *190* (2), 172-178. DOI:  
651 10.1016/j.toxlet.2009.07.012.
- 652 (36) Maldonado-Pereira, L.; Barnaba, C.; de Los Campos, G.; Medina-Meza, I.  
653 G. Evaluation of the nutritional quality of ultra-processed foods (ready to eat +

- 654 fast food): Fatty acids, sugar, and sodium. *J Food Sci* **2022**. DOI: 10.1111/1750-  
655 3841.16235.
- 656 (37) Tran, A.; Moran, A.; Bleich, S. N. Calorie changes among food items sold in  
657 US convenience stores and pizza restaurant chains from 2013 to 2017.  
658 *Preventive medicine reports* **2019**, *15*, 100932.
- 659 (38) Xue, J. P.; Zartarian, V. G.; Liu, S. V.; Geller, A. M. Methyl mercury  
660 exposure from fish consumption in vulnerable racial/ethnic populations:  
661 Probabilistic SHEDS-Dietary model analyses using 1999-2006 NHANES and  
662 1990-2002 TDS data. *Science of the Total Environment* **2012**, *414*, 373-379.  
663 DOI: 10.1016/j.scitotenv.2011.10.010.
- 664 (39) FDA. *Total dietary study*.  
665 <http://www.fda.gov/Food/FoodScienceResearch/TotalDietStudy/ucm184232.htm>,  
666 2014-2017. (accessed 2017 1/20/2017).
- 667 (40) Folch, J.; Lees, M.; Sloane Stanley, G. A simple method for the isolation and  
668 purification of total lipides from animal tissues. *J biol Chem* **1957**, *226* (1), 497-  
669 509.
- 670 (41) Miller, D. D. *Food chemistry: A laboratory manual*; Wiley New York, 1998.
- 671 (42) Lordan, R.; Tsoupras, A.; Mitra, B.; Zabetakis, I. Dairy Fats and  
672 Cardiovascular Disease: Do We Really Need to be Concerned? *Foods* **2018**, *7*  
673 (3). DOI: 10.3390/foods7030029.
- 674 (43) USDA. Macaroni salad - Meijer. USDA, Ed.; 2021.
- 675 (44) USDA. Mayonnaise - Hellmann's. USDA, Ed.; 2021.
- 676 (45) Kang, J. W.; Zivkovic, A. M. Are eggs good again? A precision nutrition  
677 perspective on the effects of eggs on cardiovascular risk, taking into account  
678 plasma lipid profiles and TMAO. *The Journal of Nutritional Biochemistry* **2022**,  
679 *100*, 108906. DOI: <https://doi.org/10.1016/j.jnutbio.2021.108906>.
- 680 (46) Kralik, G.; Kralik, Z.; Galović, O.; Hanžek, D. Cholesterol Content and Fatty  
681 Acids Profile in Conventional and Omega-3 Enriched Eggs. *Brazilian Journal of*  
682 *Poultry Science* **2022**, *20*.
- 683 (47) Ceylan, N.; Ciftçi, I.; Mızrak, C.; Kahraman, Z.; Efil, H. Influence of different  
684 dietary oil sources on performance and fatty acid profile of egg yolk in laying  
685 hens. *Journal of Animal and Feed Sciences* **2011**, *20* (1), 71-83, journal article.  
686 DOI: 10.22358/jafs/66159/2011.
- 687 (48) Spence, J. D.; Jenkins, D. J.; Davignon, J. Dietary cholesterol and egg  
688 yolks: not for patients at risk of vascular disease. *Can J Cardiol* **2010**, *26* (9),  
689 e336-339. DOI: 10.1016/s0828-282x(10)70456-6 From NLM.
- 690 (49) Kilvington, A.; Maldonado-Pereira, L.; Torres-Palacios, C.; Medina-Meza,  
691 I. Phytosterols and their oxidative products in infant formula. *Journal of Food*  
692 *Process Engineering* **2019**, e13151.
- 693 (50) Küster, A.; Croyal, M.; Moyon, T.; Darmaun, D.; Ouguerram, K.; Ferchaud-  
694 Roucher, V. Characterization of lipoproteins and associated lipidome in very  
695 preterm infants: a pilot study. *Pediatric Research* **2022**. DOI: 10.1038/s41390-  
696 022-02159-9.



- 697 (51) Escobar-Sáez, D.; Montero-Jiménez, L.; García-Herrera, P.; Sánchez-Mata,  
698 M. C. Plant-based drinks for vegetarian or vegan toddlers: Nutritional evaluation  
699 of commercial products, and review of health benefits and potential concerns.  
700 *Food Research International* **2022**, *160*, 111646. DOI:  
701 <https://doi.org/10.1016/j.foodres.2022.111646>.
- 702 (52) USDA. Beverages, Whey Protein Isolate. USDA, Ed.; 2019.
- 703 (53) Chen, J. P.; Liu, H. B. Nutritional Indices for Assessing Fatty Acids: A Mini-  
704 Review. *International Journal of Molecular Sciences* **2020**, *21* (16). DOI:  
705 10.3390/ijms21165695.
- 706 (54) Ulbricht, T.; Southgate, D. Coronary heart disease: seven dietary factors.  
707 *The lancet* **1991**, *338* (8773), 985-992.
- 708 (55) Giustarini, D.; Dalle-Donne, I.; Tsikas, D.; Rossi, R. Oxidative stress and  
709 human diseases: Origin, link, measurement, mechanisms, and biomarkers.  
710 *Critical Reviews in Clinical Laboratory Sciences* **2009**, *46* (5-6), 241-281. DOI:  
711 10.3109/10408360903142326.
- 712 (56) Papastergiadis, A.; Mubiru, E.; Van Langenhove, H.; De Meulenaer, B.  
713 Malondialdehyde Measurement in Oxidized Foods: Evaluation of the  
714 Spectrophotometric Thiobarbituric Acid Reactive Substances (TBARS) Test in  
715 Various Foods. *Journal of Agricultural and Food Chemistry* **2012**, *60* (38), 9589-  
716 9594. DOI: 10.1021/jf302451c.
- 717 (57) Griffiths, W. J.; Abdel-Khalik, J.; Hearn, T.; Yutuc, E.; Morgan, A. H.; Wang,  
718 Y. Q. Current trends in oxysterol research. *Biochemical Society Transactions*  
719 **2016**, *44*, 652-658. DOI: 10.1042/bst20150255.
- 720 (58) Zmysłowski, A.; Szterk, A. Oxysterols as a biomarker in diseases. *Clin Chim*  
721 *Acta* **2019**, *491*, 103-113. DOI: 10.1016/j.cca.2019.01.022.
- 722 (59) Angulo, A. J.; Romera, J. M.; Ramirez, M.; Gil, A. Determination of  
723 cholesterol oxides in dairy products. Effect of storage conditions. *Journal of*  
724 *Agricultural and Food Chemistry* **1997**, *45* (11), 4318-4323. DOI:  
725 10.1021/jf970431+.
- 726 (60) Pikul, J.; Rudzińska, M.; Teichert, J.; Lasik, A.; Danków, R.; Przybylski, R.  
727 Cholesterol oxidation during storage of UHT-treated bovine and caprine milk.  
728 *International Dairy Journal* **2013**, *30* (1), 29-32. DOI:  
729 10.1016/j.idairyj.2012.11.005.
- 730 (61) Yoo, E.-G. Sitosterolemia: a review and update of pathophysiology, clinical  
731 spectrum, diagnosis, and management. *Ann Pediatr Endocrinol Metab* **2016**, *21*  
732 (1), 7-14. DOI: 10.6065/apem.2016.21.1.7.
- 733 (62) Kurvinen, A.; Nissinen, M. J.; Andersson, S.; Korhonen, P.; Ruuska, T.;  
734 Taimisto, M.; Kalliomäki, M.; Lehtonen, L.; Sankilampi, U.; Arikoski, P.; et al.  
735 Parenteral plant sterols and intestinal failure-associated liver disease in  
736 neonates. *J Pediatr Gastroenterol Nutr* **2012**, *54* (6), 803-811. DOI:  
737 10.1097/MPG.0b013e3182474118 From NLM.

- 738 (63) Poli, G.; Biasi, F.; Leonarduzzi, G. Oxysterols in the pathogenesis of major  
739 chronic diseases. *Redox Biology* **2013**, *1* (1), 125-130. DOI:  
740 10.1016/j.redox.2012.12.001.
- 741 (64) de Medina, P.; Silvente-Poirot, S.; Poirot, M. Oxysterols are potential  
742 physiological regulators of ageing. *Ageing Res Rev* **2022**, *77*, 101615. DOI:  
743 10.1016/j.arr.2022.101615.
- 744 (65) Kulig, W.; Cwiklik, L.; Jurkiewicz, P.; Rog, T.; Vattulainen, I. Cholesterol  
745 oxidation products and their biological importance. *Chem Phys Lipids* **2016**, *199*,  
746 144-160. DOI: 10.1016/j.chemphyslip.2016.03.001.
- 747 (66) Maldonado-Pereira, L.; Barnaba, C.; Medina-Meza, I. G. Dietary exposure  
748 assessment of infant formula and baby foods? oxidized lipids in the US  
749 population. *Food and Chemical Toxicology* **2023**, *172*. DOI:  
750 10.1016/j.fct.2022.113552.
- 751 (67) Zhu, H.; Chen, Z.-Y. Do We No Longer Need To Worry about Dietary  
752 Cholesterol? *Journal of Agricultural and Food Chemistry* **2017**, *65* (46), 9931-  
753 9933. DOI: 10.1021/acs.jafc.7b04829.
- 754 (68) Orsavova, J.; Misurcova, L.; Ambrozova, J.; Vicha, R.; Mlcek, J. Fatty Acids  
755 Composition of Vegetable Oils and Its Contribution to Dietary Energy Intake and  
756 Dependence of Cardiovascular Mortality on Dietary Intake of Fatty Acids.  
757 *International Journal of Molecular Sciences* **2015**, *16* (6), 12871-12890. DOI:  
758 10.3390/ijms160612871.
- 759 (69) Hu, F. B. Diet and Heart Disease. In *International Encyclopedia of Public*  
760 *Health*, 2nd ed.; Inc., E. Ed.; 2017; Vol. 2.
- 761 (70) Alphonse, P. A.; Ramprasath, V.; Jones, P. J. Effect of dietary cholesterol  
762 and plant sterol consumption on plasma lipid responsiveness and cholesterol  
763 trafficking in healthy individuals. *Br J Nutr* **2017**, *117* (1), 56-66. DOI:  
764 10.1017/S0007114516004530.
- 765 (71) Jung, S.; Nam, K. C.; Jo, C. Detection of malondialdehyde in processed  
766 meat products without interference from the ingredients. *Food Chem* **2016**, *209*,  
767 90-94. DOI: 10.1016/j.foodchem.2016.04.035.
- 768 (72) Wang, W.; Zhang, Z.; Liu, X.; Cao, X.; Wang, L.; Ding, Y.; Zhou, X. An  
769 Improved GC-MS Method for Malondialdehyde (MDA) Detection: Avoiding the  
770 Effects of Nitrite in Foods. *Foods* **2022**, *11* (9). DOI: 10.3390/foods11091176.
- 771 (73) Sobral, M. M. C.; Casal, S.; Faria, M. A.; Cunha, S. C.; Ferreira, I. M. P. L.  
772 Influence of culinary practices on protein and lipid oxidation of chicken meat  
773 burgers during cooking and in vitro gastrointestinal digestion. *Food Chem Toxicol*  
774 **2020**, *141*, 111401. DOI: 10.1016/j.fct.2020.111401.
- 775 (74) dos Santos, J. J. A.; Pascoal, L. A. F.; Grisi, C. V. B.; Santos, V. d. C.; de  
776 Santana Neto, D. C.; Jordão Filho, J.; Herminio, M. P. F.; Dantas, A. F. Soybean  
777 oil and selenium yeast levels in the diet of rabbits on performance, fatty acid  
778 profile, enzyme activity and oxidative stability of meat. *Livestock Science* **2022**,  
779 *263*, 105021. DOI: <https://doi.org/10.1016/j.livsci.2022.105021>.

- 780 (75) He, W.-S.; Sun, Y.; Li, Z.; Yang, H.; Li, J.; Wang, Q.; Tan, C.; Zou, B.  
781 Enhanced antioxidant capacity of lipoic acid in different food systems through  
782 lipase-mediated esterification with phytosterols. *Journal of the Science of Food*  
783 *and Agriculture* **2022**, n/a (n/a), <https://doi.org/10.1002/jsfa.12073>. DOI:  
784 <https://doi.org/10.1002/jsfa.12073> (accessed 2022/10/09).
- 785 (76) Hashari, S. Z.; Rahim, A. A.; Meng, G. Y.; Ramiah, S. K. Quantification of  
786 Cooking Method Effect on COP Content in Meat Types Using Triple Quadrupole  
787 GC-MS/MS. *Molecules* **2020**, 25 (21). DOI: 10.3390/molecules25214978.
- 788 (77) Khan, M. I.; Min, J. S.; Lee, S. O.; Yim, D. G.; Seol, K. H.; Lee, M.; Jo, C.  
789 Cooking, storage, and reheating effect on the formation of cholesterol oxidation  
790 products in processed meat products. *Lipids Health Dis* **2015**, 14, 89. DOI:  
791 10.1186/s12944-015-0091-5.
- 792 (78) Rahim, A.; Nurul, A.; Sakinah, F.; Zam Hashari, S.; Juhana, M.; Mashitoh,  
793 A.; Syuhada, H.; Mawaddah, A.; Nurulhuda, S. Effect of Grilling and Roasting on  
794 Formation of Cholesterol Oxidation Products (COPs) in Chicken and Mutton.  
795 *World Applied Sciences Journal* **2012**, 17, 21-24.
- 796 (79) Shahidi, F.; de Camargo, A. C. Tocopherols and Tocotrienols in Common  
797 and Emerging Dietary Sources: Occurrence, Applications, and Health Benefits.  
798 *Int J Mol Sci* **2016**, 17 (10). DOI: 10.3390/ijms17101745.
- 799 (80) Wen Lee, H.; Bi, X.; Jeyakumar Henry, C. Carotenoids, tocopherols and  
800 phylloquinone content of 26 green leafy vegetables commonly consumed in  
801 Southeast Asia. *Food Chem* **2022**, 385, 132729. DOI:  
802 10.1016/j.foodchem.2022.132729.
- 803 (81) Halder, M.; Petsophonsakul, P.; Akbulut, A. C.; Pavlic, A.; Bohan, F.;  
804 Anderson, E.; Maresz, K.; Kramann, R.; Schurgers, L. Vitamin K: Double Bonds  
805 beyond Coagulation Insights into Differences between Vitamin K1 and K2 in  
806 Health and Disease. *Int J Mol Sci* **2019**, 20 (4). DOI: 10.3390/ijms20040896.
- 807 (82) Hosomi, R.; Yoshida, M.; Fukunaga, K. Seafood consumption and  
808 components for health. *Glob J Health Sci* **2012**, 4 (3), 72-86. DOI:  
809 10.5539/gjhs.v4n3p72 From NLM.
- 810 (83) Nag, M.; Lahiri, D.; Dey, A.; Sarkar, T.; Pati, S.; Joshi, S.; Bunawan, H.;  
811 Mohammed, A.; Edinur, H. A.; Ghosh, S.; et al. Seafood Discards: A Potent  
812 Source of Enzymes and Biomacromolecules With Nutritional and Nutraceutical  
813 Significance. *Front Nutr* **2022**, 9, 879929. DOI: 10.3389/fnut.2022.879929.
- 814 (84) *Consumer & Restaurant Menu Trends: The Clean Label Influence*;  
815 Technomic, I., 2020. Retrieved from Healthy eating consumer trend report,  
816 Technomic. [https://cleanlabel.globalfoodforums.com/wp-](https://cleanlabel.globalfoodforums.com/wp-content/uploads/sites/3/2020/08/Consumer-Restaurant-Menu-Trends-Clean-Label-L-Freier-A-Harvey-Technomic-2017.pdf)  
817 [content/uploads/sites/3/2020/08/Consumer-Restaurant-Menu-Trends-Clean-](https://cleanlabel.globalfoodforums.com/wp-content/uploads/sites/3/2020/08/Consumer-Restaurant-Menu-Trends-Clean-Label-L-Freier-A-Harvey-Technomic-2017.pdf)  
818 [Label-L-Freier-A-Harvey-Technomic-2017.pdf](https://cleanlabel.globalfoodforums.com/wp-content/uploads/sites/3/2020/08/Consumer-Restaurant-Menu-Trends-Clean-Label-L-Freier-A-Harvey-Technomic-2017.pdf).
- 819 (85) Osada; Kyoichi; Takehiro, K.; Li, C.; Koji, Y.; Michihiro, S. Levels and  
820 formation of oxidized cholesterol in processed marine foods. **1993**, 41.

- 821 (86) Ohshima, T.; Li, N.; Koizumi, C. Oxidative decomposition of cholesterol in  
822 fish products. *Journal of the American Oil Chemists' Society* **1993**, *70* (6), 595-  
823 600, journal article. DOI: 10.1007/bf02545326.
- 824 (87) Shozen, K.-i. Formation of Cholesterol Oxides in Marine Fish Products  
825 Induced by Grilling. *Fisheries science* **1995**, *61* (5), 817-821.
- 826 (88) Dantas, N. M.; Sampaio, G. R.; Ferreira, F. S.; Labre, T. a. S.; Torres, E. A.;  
827 Saldanha, T. Cholesterol Oxidation in Fish and Fish Products. *J Food Sci* **2015**,  
828 *80* (12), R2627-2639. DOI: 10.1111/1750-3841.13124.
- 829 (89) Dantas, N. M.; de Oliveira, V. S.; Sampaio, G. R.; Chrysostomo, Y. S. K.;  
830 Chávez, D. W. H.; Gamallo, O. D.; Sawaya, A. C. H. F.; Torres, E. A. F. D.;  
831 Saldanha, T. Lipid profile and high contents of cholesterol oxidation products  
832 (COPs) in different commercial brands of canned tuna. *Food Chem* **2021**, *352*,  
833 129334. DOI: 10.1016/j.foodchem.2021.129334.
- 834 (90) Guardiola, F. *Cholesterol and phytosterol oxidation products: analysis,*  
835 *occurrence, and biological effects*; The American Oil Chemists Society, 2002.
- 836 (91) McClements, D. J.; Decker, E. A.; Weiss, J. Emulsion-based delivery  
837 systems for lipophilic bioactive components. *J Food Sci* **2007**, *72* (8), R109-124.  
838 DOI: 10.1111/j.1750-3841.2007.00507.x From Nlm.
- 839 (92) Pedersen, H. K.; Gudmundsdottir, V.; Nielsen, H. B.; Hyotylainen, T.;  
840 Nielsen, T.; Jensen, B. A.; Forslund, K.; Hildebrand, F.; Prifti, E.; Falony, G.; et  
841 al. Human gut microbes impact host serum metabolome and insulin sensitivity.  
842 *Nature* **2016**, *535* (7612), 376-381. DOI: 10.1038/nature18646.
- 843 (93) Kurilshikov, A.; van den Munckhof, I. C. L.; Chen, L.; Bonder, M. J.; Schraa,  
844 K.; Rutten, J. H. W.; Riksen, N. P.; de Graaf, J.; Oosting, M.; Sanna, S.; et al. Gut  
845 Microbial Associations to Plasma Metabolites Linked to Cardiovascular  
846 Phenotypes and Risk. *Circ Res* **2019**, *124* (12), 1808-1820. DOI:  
847 10.1161/CIRCRESAHA.118.314642.
- 848 (94) Visconti, A.; Le Roy, C. I.; Rosa, F.; Rossi, N.; Martin, T. C.; Mohny, R. P.;  
849 Li, W.; de Rinaldis, E.; Bell, J. T.; Venter, J. C.; et al. Interplay between the  
850 human gut microbiome and host metabolism. *Nat Commun* **2019**, *10* (1), 4505.  
851 DOI: 10.1038/s41467-019-12476-z.
- 852 (95) Vojinovic, D.; Radjabzadeh, D.; Kurilshikov, A.; Amin, N.; Wijmenga, C.;  
853 Franke, L.; Ikram, M. A.; Uitterlinden, A. G.; Zhernakova, A.; Fu, J.; et al.  
854 Relationship between gut microbiota and circulating metabolites in population-  
855 based cohorts. *Nat Commun* **2019**, *10* (1), 5813. DOI: 10.1038/s41467-019-  
856 13721-1.
- 857 (96) Bar, N.; Korem, T.; Weissbrod, O.; Zeevi, D.; Rothschild, D.; Leviatan, S.;  
858 Kosower, N.; Lotan-Pompan, M.; Weinberger, A.; Le Roy, C. I.; et al. A reference  
859 map of potential determinants for the human serum metabolome. *Nature* **2020**,  
860 *588* (7836), 135-140. DOI: 10.1038/s41586-020-2896-2.
- 861 (97) Partula, V.; Deschasaux-Tanguy, M.; Mondot, S.; Victor-Bala, A.;  
862 Bouchemal, N.; Lécuyer, L.; Bobin-Dubigeon, C.; Torres, M. J.; Kesse-Guyot, E.;  
863 Charbit, B.; et al. Associations between untargeted plasma metabolomic

- 864 signatures and gut microbiota composition in the Milieu Intérieur population of  
865 healthy adults. *British Journal of Nutrition* **2021**, 126 (7), 982-992. DOI:  
866 10.1017/S0007114520004870 From Cambridge University Press Cambridge  
867 Core.
- 868 (98) Asnicar, F.; Berry, S. E.; Valdes, A. M.; Nguyen, L. H.; Piccinno, G.; Drew,  
869 D. A.; Leeming, E.; Gibson, R.; Le Roy, C.; Khatib, H. A.; et al. Microbiome  
870 connections with host metabolism and habitual diet from 1,098 deeply  
871 phenotyped individuals. *Nat Med* **2021**, 27 (2), 321-332. DOI: 10.1038/s41591-  
872 020-01183-8.
- 873 (99) Forslund, S. K.; Chakaroun, R.; Zimmermann-Kogadeeva, M.; Markó, L.;  
874 Aron-Wisnewsky, J.; Nielsen, T.; Moitinho-Silva, L.; Schmidt, T. S. B.; Falony, G.;  
875 Vieira-Silva, S.; et al. Combinatorial, additive and dose-dependent drug-  
876 microbiome associations. *Nature* **2021**, 600 (7889), 500-505. DOI:  
877 10.1038/s41586-021-04177-9.
- 878 (100) Dekkers, K. F.; Sayols-Baixeras, S.; Baldanzi, G.; Nowak, C.; Hammar, U.;  
879 Nguyen, D.; Varotsis, G.; Brunkwall, L.; Nielsen, N.; Eklund, A. C.; et al. An  
880 online atlas of human plasma metabolite signatures of gut microbiome  
881 composition. *Nat Commun* **2022**, 13 (1), 5370. DOI: 10.1038/s41467-022-33050-  
882 0.
- 883 (101) Yan, C.; Kwek, E.; Ding, H. F.; He, Z. Y.; Ma, K. Y.; Zhu, H. Y.; Chen, Z. Y.  
884 Dietary Oxidized Cholesterol Aggravates Chemically Induced Murine Colon  
885 Inflammation and Alters Gut Microbial Ecology. *Journal of Agricultural and Food*  
886 *Chemistry* **2022**. DOI: 10.1021/acs.jafc.2c05001.
- 887 (102) Pang, Z. Q.; Zhou, G. Y.; Ewald, J.; Chang, L.; Hacariz, O.; Basu, N.; Xia,  
888 J. G. Using MetaboAnalyst 5.0 for LC-HRMS spectra processing, multi-omics  
889 integration and covariate adjustment of global metabolomics data. *Nature*  
890 *Protocols* **2022**, 17 (8), 1735-1761. DOI: 10.1038/s41596-022-00710-w.
- 891 (103) Bolhuis, D.; Mosca, A. C.; Pellegrini, N. Consumer Awareness of the  
892 Degree of Industrial Food Processing and the Association with Healthiness-A  
893 Pilot Study. *Nutrients* **2022**, 14 (20). DOI: 10.3390/nu14204438.
- 894 (104) Machin, L.; Antunez, L.; Curutchet, M. R.; Ares, G. The heuristics that  
895 guide healthiness perception of ultra-processed foods: a qualitative exploration.  
896 *Public Health Nutrition* **2020**, 23 (16), 2932-2940. DOI:  
897 10.1017/s1368980020003158.
- 898 (105) NIH. *Nutrition for Precision Health, powered by the All of Us Research*  
899 *Program*. 2022. <https://commonfund.nih.gov/nutritionforprecisionhealth>  
900 (accessed).
- 901 (106) Yin, X. F.; Gibbons, H.; Rundle, M.; Frost, G.; McNulty, B. A.; Nugent, A.  
902 P.; Walton, J.; Flynn, A.; Gibney, M. J.; Brennan, L. Estimation of Chicken Intake  
903 by Adults Using Metabolomics-Derived Markers. *Journal of Nutrition* **2017**, 147  
904 (10), 1850-1857. DOI: 10.3945/jn.117.252197.

- 905 (107) Cross, A. J.; Major, J. M.; Sinha, R. Urinary Biomarkers of Meat  
906 Consumption. *Cancer Epidemiology Biomarkers & Prevention* **2011**, *20* (6),  
907 1107-1111. DOI: 10.1158/1055-9965.epi-11-0048.
- 908 (108) O'Gorman, A.; Gibbons, H.; Brennan, L. Metabolomics in the identification  
909 of biomarkers of dietary intake. *Computational and Structural Biotechnology*  
910 *Journal* **2013**, *4* (5). DOI: 10.5936/csbj.201301004.
- 911 (109) O'Gorman, A.; Brennan, L. The role of metabolomics in determination of  
912 new dietary biomarkers. *Proceedings of the Nutrition Society* **2017**, *76* (3), 295-  
913 302. DOI: 10.1017/s0029665116002974.
- 914 (110) Prendiville, O.; Walton, J.; Flynn, A.; Nugent, A. P.; McNulty, B. A.;  
915 Brennan, L. Classifying Individuals Into a Dietary Pattern Based on Metabolomic  
916 Data. *Molecular Nutrition & Food Research* **2021**, *65* (11). DOI:  
917 10.1002/mnfr.202001183.
- 918 (111) Organization, W. H. *Cardiovascular diseases*.  
919 <http://www.who.int/mediacentre/factsheets/fs317/en/>, 2017. (accessed.
- 920 (112) Rakhra, V.; Galappaththy, S. L.; Bulchandani, S.; Cabandugama, P. K.  
921 Obesity and the Western Diet: How We Got Here. *Mo Med* **2020**, *117* (6), 536-  
922 538. From NLM.
- 923 (113) Maldonado-Pereira, L.; Barnaba, C.; Medina-Meza, I. G. Dietary Exposure  
924 to Oxidized Lipids in US Infants. *medRxiv* **2022**, 2022.2006.2022.22276754. DOI:  
925 10.1101/2022.06.22.22276754.
- 926 (114) Maldonado-Pereira, L.; Barnaba, C.; De los Campos, G.; Medina-Meza, I.  
927 Evaluation of the Nutritional Quality of Ultra-Processed Foods (Ready to Eat +  
928 Fast Food): Fatty Acid Composition. *medRxiv* **2021**, 2021.2004.2016.21255610.  
929 DOI: 10.1101/2021.04.16.21255610.
- 930
- 931