

1
2 **Ezetimibe and Atherosclerotic Cardiovascular Disease:**
3 **A Systematic Review and Meta-Analyses**
4
5

6
7 Fatemeh Omid¹, Maryam Rahmanna², Parsa Mohammadsharifi³, Mohammad Javad Nasiri^{2*}
8 and Tala Sarmastzadeh^{2*}
9

10
11
12 ¹Department of Cardiology, Imam Hossein Hospital, Shahid Beheshti University of Medical Sciences, Tehran, Iran

13 ²School of Medicine, Shahid Beheshti University of Medical Sciences, Tehran, Iran

14 ³School of Pharmacy, Iran University of Medical Sciences, Tehran, Iran
15
16
17
18

19
20 Correspondence:

21 Tala Sarmastzadeh, MD, MPH

22 Email: t.sarmastzadeh@sbmu.ac.ir

23 Mohammad Javad Nasiri, PhD, MPH

24 Email: mj.nasiri@hotmail.com
25
26
27
28
29
30
31

32 **Abstract:**

33

34 **Introduction:** Individuals diagnosed with atherosclerotic cardiovascular disease
35 (ASCVD), particularly those who have experienced acute coronary syndrome (ACS)
36 within the past year, are at a heightened risk of recurrent cardiovascular events. Lowering
37 low-density lipoprotein cholesterol (LDL-C) levels has been proven effective in reducing
38 this risk. However, there is a lack of a comprehensive meta-analysis investigating the
39 LDL-C-lowering effectiveness and coronary atherosclerotic plaque compositions of
40 Ezetimibe. This study aims to address this gap in knowledge.

41

42 **Methods:** We conducted a systematic review of randomized controlled trials that
43 evaluated the LDL-C-lowering efficacy and coronary atherosclerotic plaques efficacy of
44 ezetimibe in patients with ASCVD. We searched relevant databases, including
45 MEDLINE, EMBASE, and the Cochrane Central Register of Controlled Trials, for
46 publications from database inception until Jul 2023. Meta-analyses were performed to
47 assess the LDL-C-lowering and coronary atherosclerotic plaques efficacy of ezetimibe in
48 the overall ASCVD population.

49

50 **Results:** The meta-analysis included a total of 20 eligible studies. Our findings revealed
51 that combination therapy of ezetimibe with statins resulted in a more substantial absolute
52 reduction in LDL-C compared to statin monotherapy (mean difference of -14.06 mg/dL;
53 95% confidence interval [CI] -18.0 to -10.0 ; $p = 0.0001$) after 6-12 months of treatment
54 (or at a time point nearest to 6 -12months). Moreover, the subgroups analysis indicates
55 that the intervention measures were effective in reducing the volume of fibro-fatty plaque
56 (FFP) when compared to the control group [weighted mean difference (WMD) = -1.01 ,
57 95% confidence interval (CI) (-3.6 and 1.6), and $p = 0.003$], necrotic core (NC) volume
58 [WMD = -5.41 , 95% CI (-13.3 and 2.5), and $p = 0.35$], and change dense calcification
59 (change DC) volume [WMD = -1.14 , 95% CI (-1.4 and -0.8), and $p = 0.62$] between the
60 treatment group and the control group.

61

62 **Conclusions:** Our study indicates that the addition of ezetimibe to statin therapy results
63 in a modest yet significant further reduction in LDL-C compared to statin monotherapy.
64 Ezetimibe led to a significant reduction in FFP volume; however, there were no
65 statistically significant differences observed for NC, or change DC volumes.

66

67

68 **Keywords:** Ezetimibe, cardiovascular disease, low-density lipoprotein cholesterol, systematic review

69

70 **Introduction:**

71 Atherosclerotic cardiovascular disease (ACD) is the leading cause of mortality
72 worldwide. ACD is primarily caused by elevated concentrations of low-density
73 lipoprotein cholesterol (LDL-C) [1, 2]. To prevent future cardiovascular events, it
74 is highly recommended to focus on the development of novel drugs that target and
75 effectively lower lipoprotein levels. The use of tolerated statins is recommended
76 for reducing LDL-C in patients with ACD. However, it is important to note that
77 even with statin therapy, additional lipid-lowering therapies may be necessary for
78 many patients with clinical ACD. Ezetimibe, a new cholesterol absorption inhibitor
79 drug, has demonstrated the ability to further lower LDL-C levels [3-5]. In a
80 randomized controlled trial, it was demonstrated that the combination of ezetimibe
81 with statins significantly reduces levels of LDL-C [6]. Additionally, the
82 combination of ezetimibe and statins leads to a substantial decrease in coronary
83 plaque volume compared to statin treatment alone [7]. Although the effectiveness
84 of ezetimibe in treating ACD has been acknowledged, there is an absence of a
85 comprehensive meta-analysis regarding the efficacy of ezetimibe in LDL-C
86 lowering in ACD patients. Hence, the objective of this study was to conduct a
87 systematic evaluation of the effectiveness of ezetimibe in LDL-C lowering in ACD
88 patients, to offer valuable insights for therapeutic approaches.

89

90

91 **Methods:**

92 *Search strategy*

93 We conducted a comprehensive search in Pubmed/MEDLINE, EMBASE, and
94 Cochrane Library to identify relevant studies published until July 1, 2023, that

95 reported on the efficacy and effectiveness of ezetimibe in patients with ACD. The
96 search terms used were ezetimibe, coronary artery, atherosclerosis, and
97 randomized controlled trial. Only studies published in English were included. This
98 study adhered to the Preferred Reporting Items for Systematic Reviews and Meta-
99 Analyses statement (PRISMA) for its design and reporting (Prospero pending ID:
100 449721) [8].

101 *Study Selection*

102 The retrieved records from the database searches were combined, and duplicates
103 were eliminated using EndNote X7 (Thomson Reuters, Toronto, ON, Canada).
104 Two reviewers (MR and MJN) independently assessed the records based on their
105 title/abstract and full text to exclude any that were not relevant to the objectives of
106 the study.

107 The studies included in the analysis met the following criteria:

108 *Participants:* The patients included in the studies had a diagnosis of ACD, which
109 included individuals with a history of myocardial infarction, stable or unstable
110 angina, coronary or other arterial revascularization, stroke, transient ischemic
111 attack, or peripheral arterial disease.

112 *Intervention:* The intervention being investigated was the use of ezetimibe therapy,
113 either as a standalone treatment or in combination with other lipid-lowering
114 therapies.

115 *Comparison:* patients who received standard treatment or in combination with
116 other lipid-lowering therapies.

117

118 *Outcome:* The primary outcome was the average change observed in LDL-C levels
119 when compared to the baseline measurements.

120 *Data extraction*

121 Two reviewers (MR and MJN) designed a data extraction form and extracted data
122 from all eligible studies, with differences being resolved by consensus. The
123 following data were extracted: first author's name; year of publication; study
124 duration; type of study; country or countries where the study was conducted;
125 number of patients with ACD; patient age; treatment protocols; demographics (i.e.,
126 age, sex, nationality); and treatment outcomes.

127 *Quality assessment*

128 The quality assessment of the included studies was conducted by two reviewers
129 (MR and PM) using Cochrane tool [9]. In case of any discrepancies, a third
130 reviewer (MJN) was involved. This tool encompasses various domains, including
131 random sequence generation, allocation concealment, blinding of participants and
132 personnel, blinding of outcome assessors, completeness of outcome data, and other
133 factors such as selective reporting and other potential biases. Each study was
134 categorized as having a low risk of bias when no concerns regarding bias were
135 identified, a high risk of bias when there were concerns about bias, or an unclear
136 risk of bias when there was insufficient information available.

137 *Data analysis*

138 The statistical analysis was performed using Comprehensive Meta-Analysis
139 software, version 3.0 (Biostat Inc., Englewood, NJ, USA). The weighted mean
140 difference (WMD) was used as the pooled statistic, with a corresponding 95%
141 confidence interval (CI). The degree of heterogeneity among the studies was
142 assessed using the I² value and p-value. In cases where the statistical heterogeneity
143 between the studies was low (I² ≤ 50% or p ≥ 0.1), the fixed-effect model was
144 utilized. Conversely, if a significant level of inter-study heterogeneity was
145 observed (I² > 50% or p < 0.1), the random-effects model was employed.
146 Cochran's Q test and the I² statistic were used to assess between-study

147 heterogeneity. To evaluate publication bias, Begg's test was applied, where a P
148 value of less than 0.05 was considered indicative of statistically significant
149 publication bias.

150

151 **Results:**

152 Figure 1 displays the systematic review flow diagram. Through the systematic
153 literature review, a total of 20 records meeting the eligibility criteria were
154 identified. These records reported the primary outcome, either the change in LDL-
155 C from baseline or the LDL-C level at the endpoint, or both. They provided
156 sufficient independent information for the meta-analysis. The inclusion/exclusion
157 justifications are summarized, and Table 1 lists the 20 studies included in the meta-
158 analysis. The table presents details about the study design, duration, baseline
159 demographic characteristics.

160 Although the objective was to evaluate LDL-C lowering with ezetimibe therapy,
161 with or without other LLTs, all the included studies compared combination
162 ezetimibe plus statin therapy with statin monotherapy. The mean age of
163 participants across the studies ranged from 57 to 71 years, depending on the
164 treatment group (Table 1).

165 *Quality assessment*

166 Regarding the risk of bias across the 20 trials, insufficient detail was provided
167 about the randomization methodology, resulting in an unclear risk of selection bias
168 for random sequence generation and allocation concealment. Other biases were
169 assessed as low in the trials (Table 2).

170

171 *Efficacy of LDL-C Lowering of Ezetimibe*

172 As indicated in Figure 1, patients receiving combination of statin and ezetimibe
173 were found to have a significant additional reduction in LDL-C (−14.06 mg/dL;

174 95% confidence interval [CI] -18.0 to -10.0 , $p < 0.0001$) than those receiving
175 statin alone.

176 *Fibro-fatty plaque (FFP) volume*

177 The efficacy of FFP was evaluated in four studies. There was no heterogeneity
178 among the studies ($I^2 = 58.4\%$, $p = 0.065$). Using a random-effects model analysis,
179 it was found that treatment interventions in the study group effectively reduced
180 FFP when compared to the control group, showing a statistically significant
181 difference [WMD = -1.01 , 95% CI (-3.6 and 1.6), and $p = 0.45$], as shown in
182 Figure2.

183

184 *Necrotic core (NC) volume*

185 The efficacy of NC was reported in three out of the four research studies. There
186 was no heterogeneity among the studies ($I^2 = 70.4\%$, $p = 0.03$). Using a random-
187 effects model analysis, the results showed no significant difference in the reduction
188 of NC between the treatment group and the control group [WMD = -5.41 , 95% CI
189 (-13.3 and 2.5), and $p = 0.18$], as shown in Figure 3.

190

191 *Change dense calcification (change DC) volume*

192 All research studies examined the efficacy of change DC. There was no
193 heterogeneity among the studies ($I^2 = 0\%$, $p = 0.42$). Using a fixed-effects model
194 analysis, the results showed no significant difference in the reduction of change
195 DC between the treatment group and the control group [WMD = -1.14 , 95% CI ($-$
196 1.4 and -0.8), and $p = 0.00$], as shown in Figure 4.

197

198

199

200 **Discussion:**

201 *Principal findings*

202 In this meta-analysis we demonstrated that, for patients with ACD, ezetimibe
203 added to statin therapy provided an additional reduction of LDL-C compared with
204 statin monotherapy.

205 *Comparisons with other studies*

206 Our results are consistent with prior evidence on lipid-lowering therapies. For
207 instance, a meta-analysis by Shaya et al showed larger relative in LDL-C by
208 addition of ezetimibe to statin therapy, compared with statin monotherapy [10].
209 Another meta-analysis demonstrated that ezetimibe significantly decreased
210 coronary atherosclerotic plaque compared to the control group (placebo or statin
211 monotherapy) [11]. Likewise, Toyota et al confirms that all 3 strategies for
212 enhancing LDL-C reduction- i.e. more-intensive statin therapy, adding ezetimibe,
213 and adding PCSK9, could improves clinical outcomes in high atherosclerotic
214 cardiovascular disease [12].

215

216 *Strength and limitations of this study*

217 The final result of our study is along with the Shaya et al. meta-analysis published
218 in 2020 which demonstrated a decreased risk of ACD in patients receiving
219 ezetimibe [10]. However, our study has some strengths and is different in some
220 ways. We also included studies focused on the FFP volume, NC volume and DC
221 volume. Studies in which the sample population had specific comorbidities were
222 excluded to lessen the potential effect of the confounding factors. Also, we
223 excluded the articles in which the full text was not found. Against this, we included
224 eight other studies that not previously included. Our calculated WMD (-14.06,
225 95%CI 18.0-10.0) was a little higher than Shaya et al. (-21.8, CI 95% -26.5-,17.1)
226 but in line with its direction and statistical significance.

227 The major limitation of our study is its originality, as the data on the efficacy of
228 ezetimibe on LDL-C has been known and ascertained for some time and also
229 reported by international guideline. However, an update of data relating to
230 scientific evidence can still have value. Some other limitations of our study are
231 associated with the studies we included and are as follows: First, there have not
232 been any recent clinical trials studies on the topic and the most recent one was
233 published in 2021. Further new investigations with a large number of populations
234 are required to elucidate the issue. Second, there were confounding factors in the
235 included studies which we have inability to subgroup analysis, due to insufficient
236 and inconsistent data. Third, the mortality benefits of ezetimibe despite its
237 intensive lowering of LDL-C levels should be investigated. The survival advantage
238 relies on several factors, including the efficacy of the drug, competing risks, off-
239 target effects, baseline cardiovascular risk, and follow-up duration of the study.

240

241 *Clinical implications*

242 This systematic review informs decision makers about the benefits of ezetimibe on
243 important cardiovascular outcomes. The key observations are that moderate to high
244 certainty evidence favors ezetimibe for lowering LDL-C levels and. Furthermore,
245 these agents lead to reducing the volume of FFP.

246 *Conclusions*

247 Our study indicates that the addition of ezetimibe to statin therapy results in a
248 modest yet significant further reduction in LDL-C compared to statin
249 monotherapy. Ezetimibe led to a significant reduction in FFP volume; however,
250 there were no statistically significant differences observed for NC, or change DC
251 volumes.

252

253 **References:**

254

- 255 1. Kronenberg, F., et al., *Lipoprotein (a) in atherosclerotic cardiovascular disease and aortic*
256 *stenosis: a European Atherosclerosis Society consensus statement*. *European heart journal*, 2022.
257 **43**(39): p. 3925-3946.
- 258 2. Mortensen, M.B. and B.G. Nordestgaard, *Elevated LDL cholesterol and increased risk of*
259 *myocardial infarction and atherosclerotic cardiovascular disease in individuals aged 70–100*
260 *years: a contemporary primary prevention cohort*. *The Lancet*, 2020. **396**(10263): p. 1644-1652.
- 261 3. Ouchi, Y., et al., *Ezetimibe lipid-lowering trial on prevention of atherosclerotic cardiovascular*
262 *disease in 75 or older (ewtopia 75) A randomized, controlled trial*. *Circulation*, 2019. **140**(12): p.
263 992-1003.
- 264 4. Phan, B.A.P., T.D. Dayspring, and P.P. Toth, *Ezetimibe therapy: mechanism of action and clinical*
265 *update*. *Vascular health and risk management*, 2012: p. 415-427.
- 266 5. Vavlukis, M. and A. Vavlukis, *Adding ezetimibe to statin therapy: latest evidence and clinical*
267 *implications*. *Drugs in Context*, 2018. **7**.
- 268 6. Murphy, S.A., et al., *Reduction in total cardiovascular events with ezetimibe/simvastatin post-*
269 *acute coronary syndrome: the IMPROVE-IT trial*. *Journal of the American College of Cardiology*,
270 2016. **67**(4): p. 353-361.
- 271 7. Ueda, Y., et al., *Effect of Ezetimibe on Stabilization and Regression of Intracoronary Plaque—The*
272 *ZIPANGU Study—*. *Circulation Journal*, 2017. **81**(11): p. 1611-1619.
- 273 8. Moher, D., et al., *Preferred reporting items for systematic reviews and meta-analyses: the*
274 *PRISMA statement*. *Annals of internal medicine*, 2009. **151**(4): p. 264-269.
- 275 9. Higgins, J.P., et al., *The Cochrane Collaboration’s tool for assessing risk of bias in randomised*
276 *trials*. *Bmj*, 2011. **343**.
- 277 10. Shaya, F.T., et al., *Lipid-lowering efficacy of ezetimibe in patients with atherosclerotic*
278 *cardiovascular disease: a systematic review and meta-analyses*. *American Journal of*
279 *Cardiovascular Drugs*, 2020. **20**: p. 239-248.
- 280 11. Chai, B., et al., *Meta-analysis and trial sequential analysis of ezetimibe for coronary*
281 *atherosclerotic plaque compositions*. *Frontiers in Pharmacology*, 2023. **14**: p. 1166762.
- 282 12. Toyota, T., et al., *More- Versus Less-Intensive Lipid-Lowering Therapy*. *Circ Cardiovasc Qual*
283 *Outcomes*, 2019. **12**(8): p. e005460.
- 284 13. Hougaard, M., et al., *Influence of ezetimibe in addition to high-dose atorvastatin therapy on*
285 *plaque composition in patients with ST-segment elevation myocardial infarction assessed by*
286 *serial: Intravascular ultrasound with iMap: the OCTIVUS trial*. *Cardiovasc Revasc Med*, 2017.
287 **18**(2): p. 110-117.
- 288 14. Lee, J.H., et al., *Early Effects of Intensive Lipid-Lowering Treatment on Plaque Characteristics*
289 *Assessed by Virtual Histology Intravascular Ultrasound*. *Yonsei medical journal*, 2016. **57**(5): p.
290 1087-1094.
- 291 15. Kovarnik, T., et al., *Virtual histology evaluation of atherosclerosis regression during atorvastatin*
292 *and ezetimibe administration: HEAVEN study*. *Circ J*, 2012. **76**(1): p. 176-83.
- 293 16. Brohet, C., et al., *LDL-C goal attainment with the addition of ezetimibe to ongoing simvastatin*
294 *treatment in coronary heart disease patients with hypercholesterolemia*. *Curr Med Res Opin*,
295 2005. **21**(4): p. 571-8.

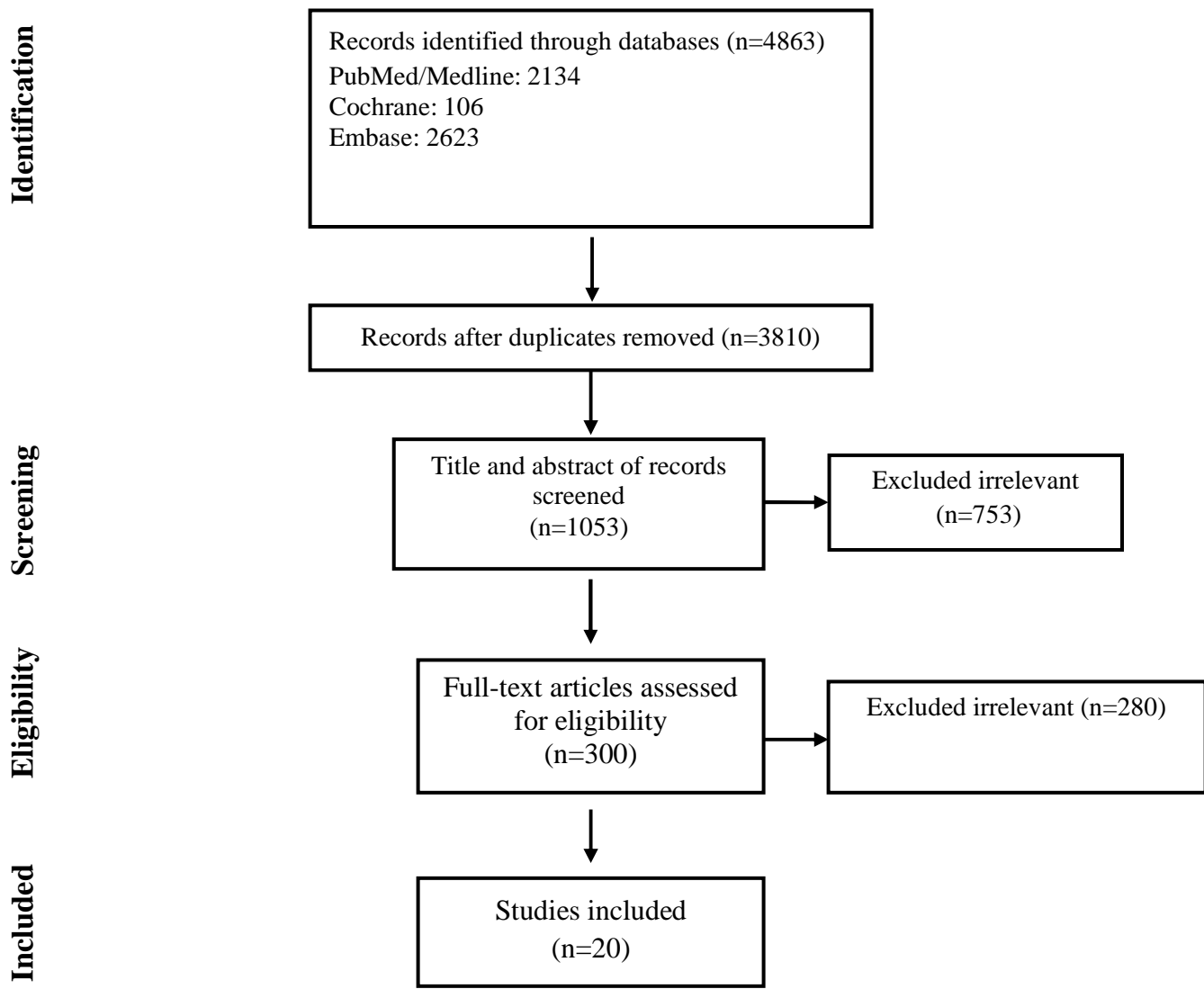
- 296 17. Cannon, C.P., et al., *Ezetimibe added to statin therapy after acute coronary syndromes*. New
297 England Journal of Medicine, 2015. **372**(25): p. 2387-2397.
- 298 18. Hibi, K., et al., *Effects of Ezetimibe-Statin Combination Therapy on Coronary Atherosclerosis in*
299 *Acute Coronary Syndrome*. Circ J, 2018. **82**(3): p. 757-766.
- 300 19. Joshi, S., et al., *Efficacy of Combination Therapy of Rosuvastatin and Ezetimibe vs Rosuvastatin*
301 *Monotherapy on Lipid Profile of Patients with Coronary Artery Disease*. Journal of Clinical &
302 Diagnostic Research, 2017. **11**(12).
- 303 20. Masuda, J., et al., *Effect of combination therapy of ezetimibe and rosuvastatin on regression of*
304 *coronary atherosclerosis in patients with coronary artery disease*. Int Heart J, 2015. **56**(3): p. 278-
305 85.
- 306 21. Ran, D., et al., *A randomized, controlled comparison of different intensive lipid-lowering*
307 *therapies in Chinese patients with non-ST-elevation acute coronary syndrome (NSTE-ACS):*
308 *Ezetimibe and rosuvastatin versus high-dose rosuvastatin*. Int J Cardiol, 2017. **235**: p. 49-55.
- 309 22. Ren, Y., et al., *Comparison of the effect of rosuvastatin versus rosuvastatin/ezetimibe on markers*
310 *of inflammation in patients with acute myocardial infarction*. Exp Ther Med, 2017. **14**(5): p.
311 4942-4950.
- 312 23. Ueda, Y., et al., *Effect of Ezetimibe on Stabilization and Regression of Intracoronary Plaque -*
313 *The ZIPANGU Study*. Circ J, 2017. **81**(11): p. 1611-1619.
- 314 24. Wang, J., et al., *Efficacy of ezetimibe combined with atorvastatin in the treatment of carotid*
315 *artery plaque in patients with type 2 diabetes mellitus complicated with coronary heart disease*.
316 Int Angiol, 2017. **36**(5): p. 467-473.
- 317 25. Wang, X., et al., *Effects of Combination of Ezetimibe and Rosuvastatin on Coronary Artery Plaque*
318 *in Patients with Coronary Heart Disease*. Heart Lung Circ, 2016. **25**(5): p. 459-65.
- 319 26. West, A.M., et al., *The effect of ezetimibe on peripheral arterial atherosclerosis depends upon*
320 *statin use at baseline*. Atherosclerosis, 2011. **218**(1): p. 156-62.
- 321 27. Zou, Y., et al. *Effect of Ezetimibe Combined with Low-dose Atorvastatin Calcium on Carotid*
322 *Atherosclerosis in Elderly Patients with Coronary Heart Disease*. in *Journal of the American*
323 *Geriatrics Society*. 2016. WILEY-BLACKWELL 111 RIVER ST, HOBOKEN 07030-5774, NJ USA.
- 324 28. El-Tamalawy, M.M., et al., *Effect of Combination Therapy of Ezetimibe and Atorvastatin on*
325 *Remnant Lipoprotein Versus Double Atorvastatin Dose in Egyptian Diabetic Patients*. J Clin
326 Pharmacol, 2018. **58**(1): p. 34-41.
- 327 29. Klassen, A., et al., *Evaluation of two highly effective lipid-lowering therapies in subjects with*
328 *acute myocardial infarction*. Sci Rep, 2021. **11**(1): p. 15973.
- 329 30. Oh, P.C., et al., *Effect of Atorvastatin (10 mg) and Ezetimibe (10 mg) Combination Compared to*
330 *Atorvastatin (40 mg) Alone on Coronary Atherosclerosis*. Am J Cardiol, 2021. **154**: p. 22-28.
- 331 31. Pinto, L.C.S., et al., *Main differences between two highly effective lipid-lowering therapies in*
332 *subclasses of lipoproteins in patients with acute myocardial infarction*. Lipids Health Dis, 2021.
333 **20**(1): p. 124.
- 334 32. Blom, D.J., et al., *A 52-week placebo-controlled trial of evolocumab in hyperlipidemia*. N Engl J
335 Med, 2014. **370**(19): p. 1809-19.

336

337

338

339
340
341
342
343



344

345 Figure1. Flow chart of study selection for inclusion in the systematic review.

346

347

348

349

350

351

352 **Table 1.** Demographics and baseline characteristics of patients included in the meta-analysis
 353 according to study and treatment group

Authors	Study design	Sample size T/C	Age		Intervention		Duration
			T	C	T	C	
Hougaard, 2017 [13]	RCT	43/44	55.3 ± 11.0		EZ (10) + AT (80)	PL (10) + AT (80)	12 months
Jung-(2016) [14]	RCT	34/36	60.9 ± 10.9		EZ (10) + SI (40)	PR (20)	03 months
Kovarnik(201 2) [15]	RCT	42/47	63.5 ± 9.3		EZ (10) + AT (80)	AT (10)	12 months
Brohet et al. (2005) [16]	RCT	208/210	63.6± 11.1		EZE 10 mg QD+ SIM 10/20 mg QD	SIM 10/20 mg QD	6 weeks
Cannon et al. (2015) [17]	RCT	9067/9077	63.6± 9.7		EZE 10 mg QD + SIM 40–80 mg QD	IM 40–80 mg QD	6 years
Hibi et al. (2018) [18]	RCT	50/53	63± 10.0		EZE 10 mg QD+PITA 2 mg	PITA 2 mg QD	10 months
Joshi et al. (2017) [19]	RCT	40/40	60.3± 9.8		EZE 10 mg QD +ROSU 10 mg QD	ROSU 10 mg QD	24 weeks

Masuda et al. (2015) [20]	RCT	21/19	64.0± 7.9	EZE 10 mg QD + ROSU 5 mg QD	ROSU 5 mg QD	6 months
Ran et al. (2017) [21]	RCT	42/42	60.4± 8.2	EZE 10 mg QD + ROSU 10 mg QD	ROSU 10 mg QD	10 weeks
Ren et al. (2017) [22]	RCT	55/58	57.3± 1.5	EZE 10 mg QD + ROSU 10 mg QD	ROSU 10 mg QD	12 months
Ueda et al. (2017) [23]	RCT	54/54	71± 8.0	EZE 10 mg QD + ATOR 10–20 mg QD	ATOR 10–20 mg QD	9 months
Wang et al. (2017) [24]	RCT	51/49	58± 10.0	EZE 10 mg QD + ATOR 20 mg QD	ATOR 20 mg QD	12 months
Wang et al. (2016) [25]	RCT	50/48	63± 10.0	EZE 10 mg QD + ROSU 10 mg QD	ROSU 10 mg QD	12 months
West et al. (2011) [26]	RCT	18/33	62± 8.0	EZE 10 mg QD + SIM 40 mg QD	EZE 10 mg QD	2 years
Zou et al. (2016) [27]	RCT	40/40	69.3± 5.8	EZE 10 mg QD + ATOR 10 mg QD	ATOR 10 mg QD	12 months
El-Tamalawy et al (2018) [28]	RCT	33/32	61 ± 7.1	EZE 10 mg/day + ATOR 40 mg daily	ATOR 80 mg daily	3 months
Klassen et al(2021) [29]	RCT	10/10	62 (59–64)	EZE 10 mg QD + ROSU 20 mg QD or SIM 40 mg	ROSU 20 mg QD	1 month
Oh et al(2021) [30]	RCT	18/19	56.3 § 7.1	ATO10 mg + EZE10 mg	ATO 40 mg	12 months

Pinto et al(2021) [31]	RCT	50/51	59 (52–65)	EZE 10mg+SIM 40 mg	ROSU 20 mg	1 month
Blom et al(2014) [32]	RCT	63/73	55.9±9.0	EZE 10 mg+ ATOR 80 mg	ATOR 80 mg	1-2 months

354 T, treatment group; C, control group; EZ, ezetimibe; ATOR, atorvastatin; SIM, simvastatin

355

356

357

358 **Table 2.** Quality assessment

Author	Random sequence generation	Allocation concealment	Blinding of participants and personnel	Blinding of outcome assessment	Incomplete outcome data
Brohet et al	L	U	L	U	L
Cannon et al	U	U	U	U	L
Hibi et al	L	U	H	L	L
Joshi et al	L	U	U	U	L
Masuda et al	L	L	H	H	L
Ran et al	L	U	H	U	L
Ren et al	L	U	U	U	L
Ueda et al	L	U	H	L	L
Wang 2017 et al	U	U	U	U	L
Wang 2016 et al	L	U	U	U	L
West et al	L	U	L	L	L
Zou et al	U	U	U	U	L
El-Tamalawy et al	L	U	L	L	L
Klassen et al	L	U	L	L	L
Oh et al	L	U	L	L	L
Zou et al	U	U	U	U	L
El-Tamalawy et al	L	U	L	L	L
Klassen et al	L	U	L	L	L
Oh et al	L	U	L	L	L
Pinto et al	L	U	L	L	L
Blom et al	L	U	L	L	L
Mikkle et al	L	U	L	L	L
Jung et al	L	U	L	L	L
Kovarnik et al	L	H	L	L	L

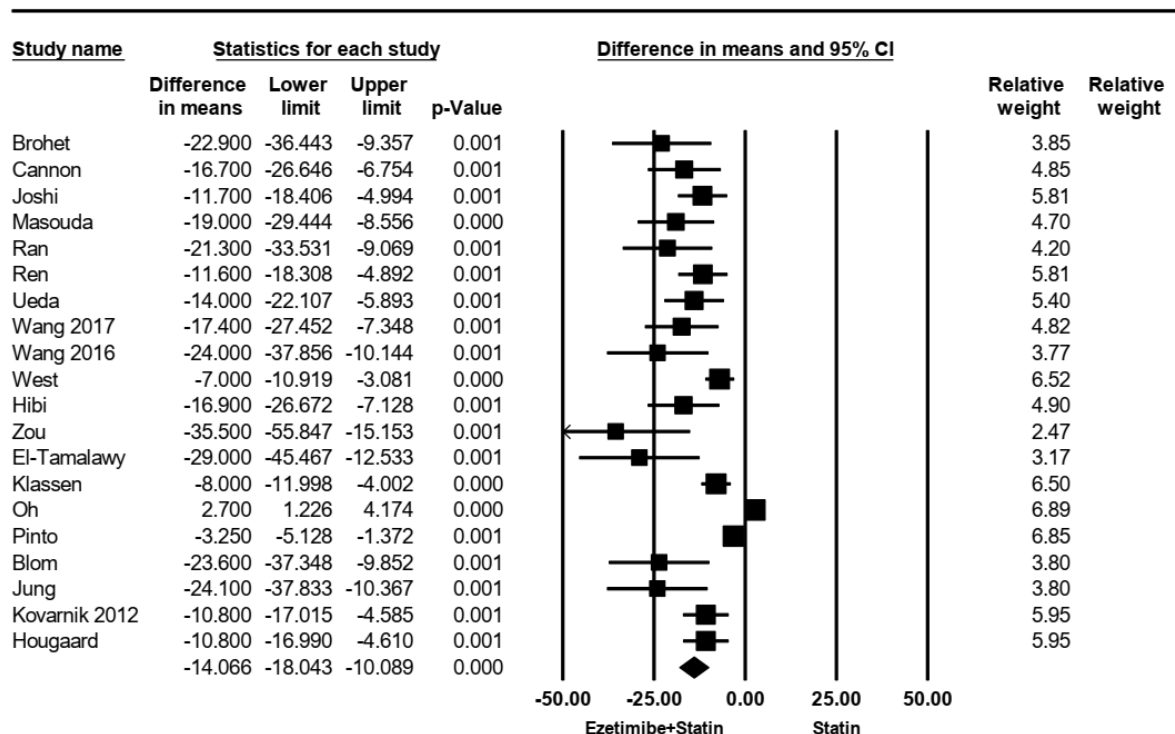
359 L; low, H; high, U; unclear

360

361

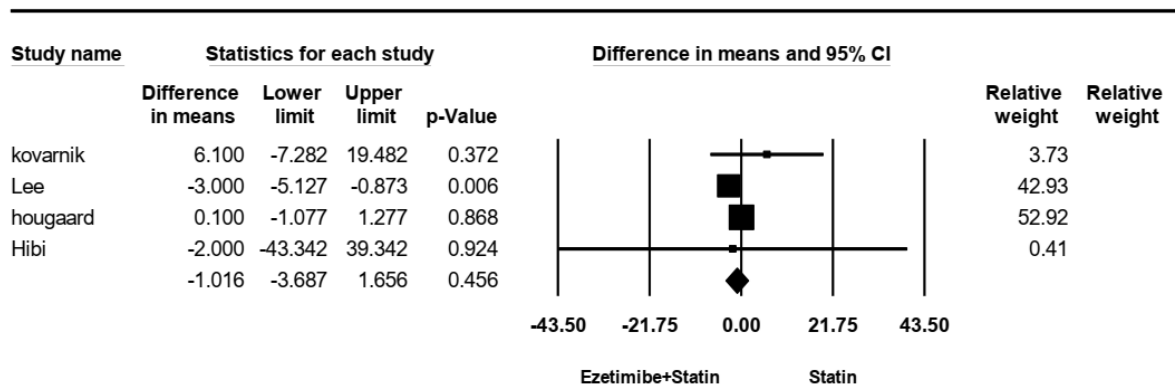
362

363
364
365
366



367
368
369
370
371
372
373

Figure 1. Treatment difference in mean LDL-C change (mg/dL) from baseline between combination ezetimibe plus statin therapy and statin monotherapy comparator at 6 months or at the reported timepoint closest to 6 months

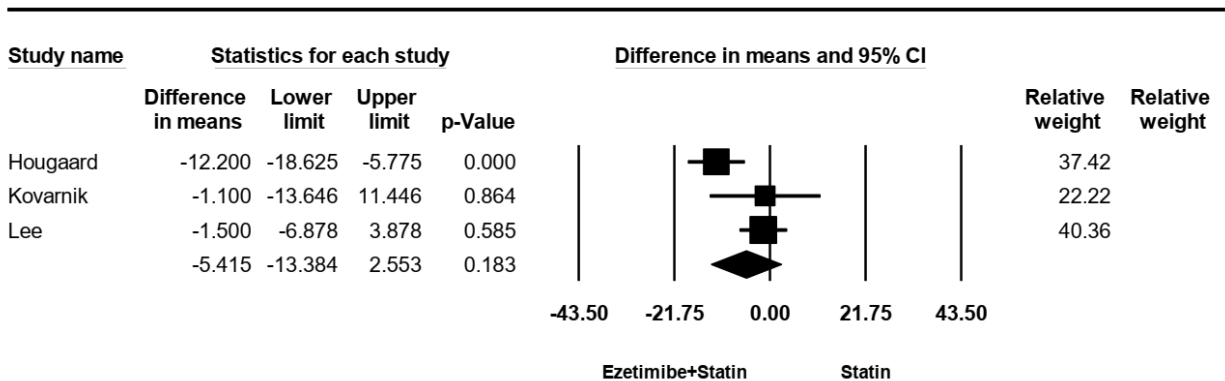


374

375 Figure 2, Forst plot for Fibro-Fatty plaque volume

376

377



378

379 Figure 3, The forest plot for necrotic core volume

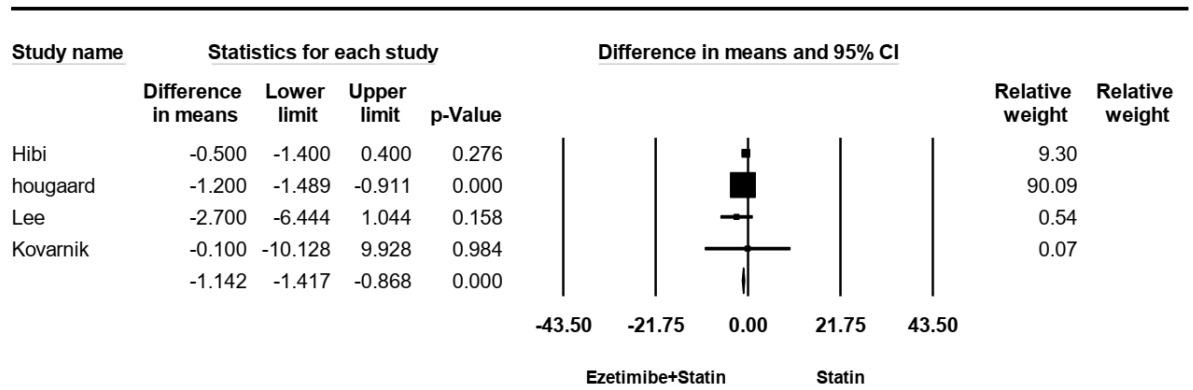
380

381

382

383

384



385

386 Figure 4, The forest plot for Dense calcification volume

387

388

389

390

391