

1 **Construction and validation of a predictive model**  
2 **of mortality of tuberculosis-destroyed lung**  
3 **patients requiring mechanical ventilation: A**  
4 **single-center retrospective case-control study**

5  
6 Kunping Cui\*<sup>1</sup>, Yi Mao\*<sup>1</sup>, Liangshuang Jiang<sup>2</sup>, Yongli Zheng<sup>2</sup>, Lang Yang<sup>1</sup>, Yixiang  
7 Yang<sup>1</sup>, Guihui Wu<sup>#3</sup>, Shenjie Tang<sup>#4</sup>

8  
9 \* These two authors contributed equally to the article

10 #These two authors are Corresponding Author

11 <sup>1</sup> Intensive care unit, Public Health Clinical Center of Chengdu, Sichuan, China

12 <sup>2</sup> Public Health Clinical Center of Chengdu, Sichuan, China

13 <sup>3</sup> Tuberculosis department, Public Health Clinical Center of Chengdu, Sichuan, China

14 <sup>4</sup> Tuberculosis department, Beijing Chest Hospital capital University, Beijing, China

15  
16 **Corresponding Author**

17 Guihui Wu

18 E-mail: 3119213561@qq.com

19 shenjie Tang

20 E-mail: tangsj1106@vip.sina.com

21  
22 **Background** The mortality rate for intensive care unit (ICU) tuberculosis-destroyed lung (TDL)  
23 patients requiring mechanical ventilation remains high.

24 **Methods** We conducted a retrospective analysis of adult TDL patients requiring mechanical  
25 ventilation who were admitted to the ICU of a tertiary infectious disease hospital in Chengdu,  
26 Sichuan Province, China from January 2019 to March 2023. Univariate and multivariate COX  
27 regression analyses were conducted to determine independent patient prognostic risk factors  
28 that were used to construct a predictive model of patient mortality.

**NOTE: This preprint reports new research that has not been certified by peer review and should not be used to guide clinical practice.**

29 **Results** For the 331 study subjects, the median age was 63.0 (50.0-71.0) years, 262 (79.2%)  
30 were males and the mortality rate was 48.64% (161/331). Training and validation data sets were  
31 obtained from 245 and 86 patients, respectively. Analysis of the training data set revealed that a  
32 body mass index (BMI) of <18.5kg/m<sup>2</sup>, blood urea nitrogen level of ≥7.14mmol/L and septic  
33 shock were independent risk factors for increased mortality of TDL patients requiring  
34 mechanical ventilation. These variables were then used to construct a risk-based model for  
35 predicting patient mortality. Area under the curve, sensitivity and specificity values obtained  
36 using the model for the training data set were 0.808, 79.17% and 68.80%, respectively, and  
37 corresponding values obtained using the validation data set were 0.876, 95.12% and 62.22%.  
38 respectively. Results of concurrent correction curve and decision curve analyses verified the  
39 model possessed high predictiveability.

40 **Conclusions** This model may facilitate early identification and classification-based clinical  
41 management of TDL patients requiring mechanical ventilation who are at high risk of death.

42 **Key words** tuberculosis-destroyed lung; mechanical ventilation; risk prediction model.

43

44 Tuberculosis(TB) is a chronic infectious disease caused by *Mycobacterium tuberculosis*. In  
45 2021, about 10.6 million new TB cases and approximately 1.5 million TB-related deaths, of which  
46 90% were caused by pulmonary TB, were reported globally[1]. Importantly, pulmonary TB is  
47 associated with a high lung injury rate approaching 68% [2-4], with lung injury leading to  
48 development of TB-destroyed lung (TDL) disease in 1.30% of cases[5].TDL is a consequence of  
49 improper anti-TB treatment management during the early TB disease stage that causes marked  
50 unilateral or bilateral erosion and/or deterioration of lung tissue structure that results in  
51 insufficient gas exchange area. As the disease progresses, lung function continues to decline until  
52 the normal exchange of inhaled air or oxygen is no longer adequate, resulting in irreversible  
53 pulmonary ventilation and ventilation dysfunction [6] that are often accompanied by different  
54 degrees of hypoxia, repeated secondary infections, hemoptysis, empyema and  
55 pneumothorax. Notably, the TDL patient mortality rate has been reported to be 28%[7-11], while  
56 the mortality rate of TDL patients requiring mechanical ventilation (TDL-MV) is much higher  
57 (61%)[11]. Therefore, early identification of risk factors affecting TDL-MV patient prognosis and  
58 clinical decision-making with regard to implementation of active interventions are of great

59 importance for improving TDL-MV patient prognosis.

60 At present, Acute Physiological and Chronic Health Assessment (APACHE II) and Sequential  
61 Organ Failure Assessment(SOFA) scores are often used to assess disease severity of ICU patients  
62 with TDL-MV. However, these scoring systems do not provide consistent and accurate mortality  
63 risk estimates for patients with specific diseases and thus are of limited value when used for this  
64 purpose. For example, although APACHE II scoring has been widely used for conducting clinical  
65 early prognostic assessments of patients with certain critical diseases,this method requires  
66 collection of numerous types of data and thus is complicated, difficult to implement and performs  
67 poorly when used within 24 h of ICU admission[12]. SOFA scoringis also of limited value, since  
68 this method is mainly used to assess critically ill patients with sepsis or organ dysfunction  
69 [13,14]. Meanwhile,it has been reported that APACHE II and SOFA scoring-based methods cannot  
70 be used to accurately predict TDL-MV patient mortality rates [15]. Nevertheless, in the face of  
71 relentless global TB epidemics, increased clinical awareness of TB pulmonary injury has  
72 stimulated research to enhance understanding of its impact on patient outcomes, including a  
73 small number of studies based on small numbers of patients exploring risk factors affecting  
74 TDL-MV patient prognosis[7,11]. In order to build on the results of those limited studies, here we  
75 identified clinical characteristics and independent risk factors related to ICU TDL-MV patient  
76 mortality and used them to construct a predictive model. The resulting model should help  
77 clinicians achieve early prognosis and improved interventional treatments of TDL-MV patients in  
78 order to improve treatment outcomes for this patient population.

79

## 80 **MATERIALS AND METHODS**

### 81 **Study design**

82 The study was conducted at the Public Health Clinical Center of Chengdu, a 1,500-bed  
83 tertiary hospital specializing in infectious diseases in Chengdu, a city In southwestern China. The  
84 Research Ethics Committee of the center approved the study design (approval  
85 number:YJ-K2022-02-01) and exempted the study from the informed consent requirement. In  
86 this study, 499 prospective TDL patients seeking care at the above mentioned center from  
87 January 2019 to March 2023 were screened based on information obtained from the electronic  
88 information management system of Chengdu Public Health Clinical Medical Center. Thereafter,

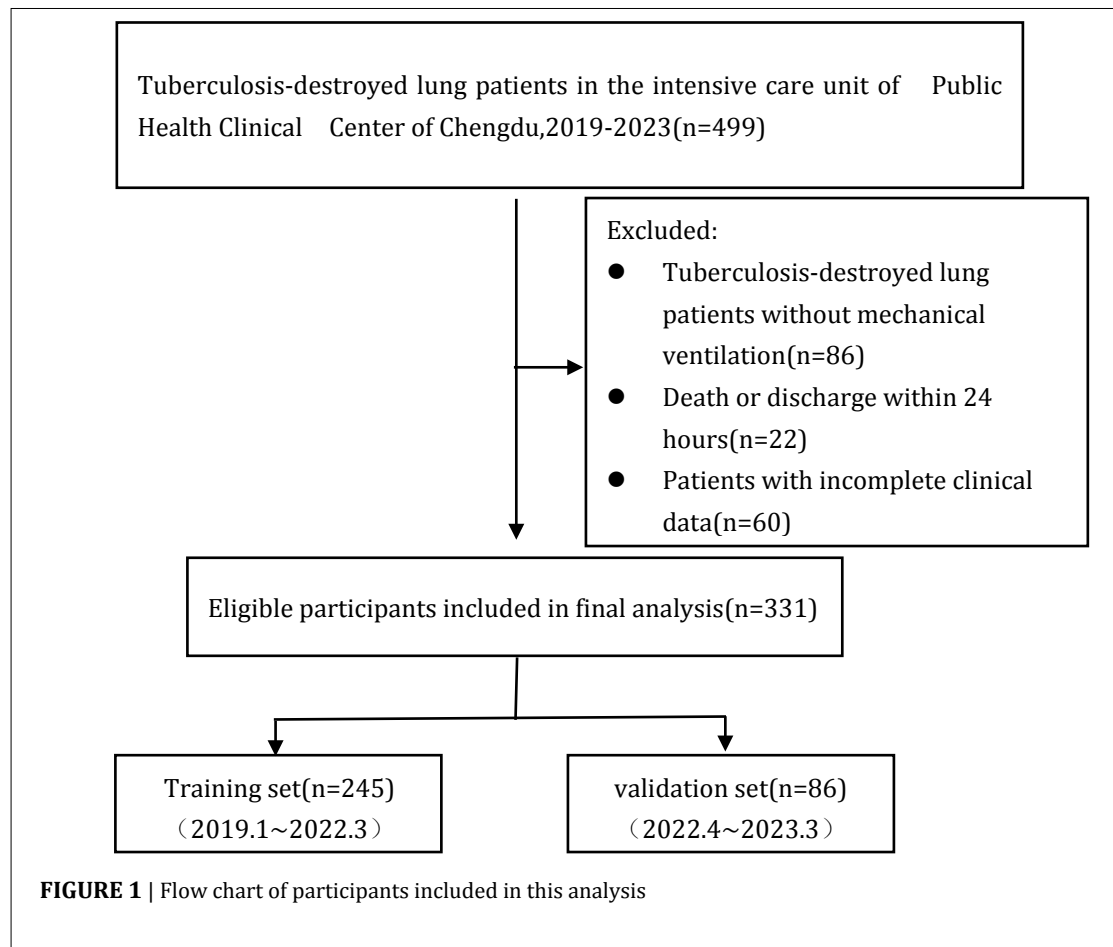
89 study subjects were selected based on study inclusion and exclusion criteria, resulting in  
90 enrollment of a total of 331 adult ICU patients with TDL-MV in the study. Of these patients, 245  
91 who were admitted to the ICU between January 2019 and March 2022 were assigned to the  
92 model training group and the remaining 86 patients who were admitted to the ICU between April  
93 2022 and March 2023 were assigned to the model validation group. A flow chart outlining the  
94 design of the study is presented in Figure 1. All TDL-MV patients enrolled in the study were  
95 diagnosed independently by at least three ICU medical specialists as based on patient  
96 epidemiological history, clinical manifestations and auxiliary examination findings (e.g.,  
97 laboratory, imaging, pathological test results, etc.).TDL patients were diagnosed based  
98 onstandard clinical TDL diagnostic criteria as indicated in the guidance document WS288-2017  
99 *Tuberculosis Diagnosis published in China in 2017*, which include the following: chest imaging  
100 examinations showing reduced lung tissue volume, secondary bronchiectasis or multiple fibrous  
101 thick-wall cavities and calcification, thoracic collapse, traction and displacement of adjacent  
102 hilum and mediastinum structures, pleural thickening and adhesion, etc.

103 MV therapeutic indications: (1)Loss of consciousness due to acute respiratory failure; (2)  
104 Respiratory rate >35~40 times/min or <6~8 breaths/min, abnormal respiratory rhythm or  
105 weak or absent spontaneous respiration; (3)PaO<sub>2</sub>< 50mmHg(especially after inhalation of  
106 oxygen); (4) Progressive increase of arterial PCO<sub>2</sub>level and pH decrease; (5) Respiratory failure  
107 after conventional treatmentand/or a trend of worsening respiratory function.

108 Inclusion criteria: (1)Patients ≥18 years of age, (2)Patients meeting both TDL diagnostic  
109 criteria and MV therapeutic indications.

110 Exclusion criteria: (1)Younger than 18 years of age;(1)TDL patients who did not require MV;  
111 (3) Patients with end-stage disease, irreversible disease and patients who could not benefit from  
112 ICU treatment; (4) Patients who died or were discharged within 24 h; (5) Patients with  
113 incomplete clinical data.

114



115

## 116 Clinical data and laboratory test results

117 To determine risk factors that are associated with TDL-MV patient mortality, the following  
118 data were collected: (1) Patient demographic characteristics, including  
119 gender, age, race, residence, BMI, marriage history, smoking and alcohol consumption history. (2)  
120 TB epidemiological characteristics, including bacillus Calmette-Guérin (BCG) vaccination history  
121 and history of TB and/or drug-resistant TB infection. (3) Complications, including hemoptysis,  
122 pneumothorax and septic shock. (4) Comorbidities, including hypertension, diabetes, chronic  
123 liver disease, chronic kidney disease, HIV positive and chronic pulmonary heart disease. (5)  
124 Critical illness score obtained within 24 h after check-in based on APACHE II or SOFA scoring  
125 criteria. (6) Laboratory examination findings obtained within 24 h after check-in that included  
126 blood levels of white blood cells, red blood cells, hemoglobin, platelets, alanine aminotransferase,  
127 aspartate aminotransferase, total bilirubin, albumin, blood urea nitrogen (BUN), serum  
128 creatinine, pH, arterial partial pressure of carbon dioxide (PCO<sub>2</sub>), ratio of partial pressure of  
129 arterial oxygen to fraction of inspired oxygen (PO<sub>2</sub>/FiO<sub>2</sub>), lactic acid and levels of CD3<sup>+</sup> T cells,

130 CD4+ T cells and CD8+ T cells. (7) Findings indicating damaged lung. (8) 30-day prognosis  
131 (survival versus non-survival).

## 132 **Construction and validation of prediction model**

133 Patients who provided model training set data were assigned to survival and non-survival  
134 groups according to 30-day prognosis results. In order to identify variables with statistical and  
135 clinical significance, patient data were screened via univariate analysis ( $P < 0.05$ ). Next, potential  
136 risk factors affecting TDL-MV patient prognosis were identified using univariate COX regression  
137 analysis ( $P < 0.1$ ) then independent prognostic risk factors were screened using stepwise  
138 multivariate COX regression analysis ( $P < 0.05$ ). Thereafter, the prognostic model of TDL-MV  
139 patient mortality was generated based on the abovementioned mortality-related independent  
140 risk factors and their associated  $\beta$  coefficients.

141 The effectiveness of the model was internally verified using the training data set via three  
142 types of analysis: receiver operating characteristic (ROC) curve analysis (prediction model,  
143 APACHE II score and SOFA score), calibration curve analysis and decision curve analysis. Next, the  
144 validation data set was used to validate the model using the above mentioned analyses then the  
145 clinical efficacy of the model for predicting patient mortality was evaluated. Model-based  
146 predictions related to TDL-MV patient mortality were next stratified into low-risk and high-risk  
147 predictions of mortality according to scores obtained using the training set then Kaplan-Meier  
148 survival curves were plotted based on mortality rates obtained from training and validation data  
149 sets.

## 150 **Statistical analysis**

151 Data were analyzed using IBM SPSS Statistics 23.0 statistical data analysis software (IBM,  
152 Armonk, New York, USA). ROC curve and survival curve analyses were conducted using MedCalc  
153 (MedCalc Software, Ltd., Ostend, Belgium). Calibration curves and decision curves were drawn  
154 using R software (version 4.5.3, <https://CRAN.R-project.org>, R Foundation, Vienna, Austria). The  
155 calibration curves was plotted used the "rms" package. The decision curve analysis was performed  
156 with the "rmda" package.

157 The Kolmogorov-Smirnov test was used for normality testing of continuous variables then  
158 normally distributed continuous variables were expressed as the mean  $\pm$  standard deviation  
159 (SD). The independent sample t test was used to conduct comparisons between groups.

160 Non-normally distributed continuous variables were expressed as quartile median values and  
 161 inter quartile range (IQR) values. Comparisons between groups were conducted using the  
 162 Mann-Whitney U test. Categorical variables were analyzed using the Chi-square test for  
 163 continuity correction ( $\chi^2$ ). For univariate Cox regression analysis, variables with P values of <0.1  
 164 were selected for multivariate Cox regression analysis; those with P values of <0.05 were  
 165 considered statistically significant. Survival curves were plotted using the Kaplan-Meier method.

## 166 Demographic and clinical characteristics of the study population

167 Ultimately, 331 TDL-MV patients who met all inclusion and exclusion criteria were included  
 168 in the study, with demographic and clinical characteristics of all subjects shown in Table 1. The  
 169 overall median age of subjects was 63.0(50.0-71.1) years. Study subjects included 262 males  
 170 (79.2%) and 69 females (20.8%);269 subjects were members of the Han nationality (81.3%) and  
 171 214 were members of other nationalities (64.7%); 255 were married (77.0%); 203 were smokers  
 172 (61.3%); 127 consumed alcoholic beverages (38.4%);82 (24.8%) previously received the BCG  
 173 vaccine. Clinically,279 (84.3%) patients were diagnosed with TB based on positive clinical  
 174 findings, 71 (21.5%) with drug-resistant TB, 22 (6.6%) with hemoptysis, 29 (8.8%) with  
 175 pneumothorax, 107 (32.3%) with chronic pulmonary heart disease, 78 (23.6%) with septic shock  
 176 and 161 (48.64%) died.

177 Of the 331 TDL-MVpatients, 28 were afflicted with miliary pulmonary TB with  
 178 extrapulmonary TB involving the central nervous system TB (n=13), tuberculous pericarditis  
 179 (n=45), TB of the abdominal cavity(n=35) and urinary TB (n= 7).No statistical differences in  
 180 baseline characteristics were observed between the training set and the validation set except for  
 181 BCG vaccination history, chronic kidney disease history, chronic pulmonary heart disease and  
 182 blood lactic acid level (more detailed information is presented in Table 1).

183 **TABLE 1** | Baseline characteristics of the study population.

Variable	Total (N=331)	Training set (N=245)	Validation set (N=86)	statistic al values	P-valu e
Gender				1.579	0.209
Male	262 (79.2)	198 (80.8)	64 (74.4)		
Female	69 (20.8)	47 (19.2)	22 (25.6)		
Age (years) median(IQR)	63.0 (50.0,71.0)	63.0 (48.0,71.0)	64.5 (52.0,73.0)	-1.105	0.269
Race				0.082	0.775

Han nationality	269 (81.3)	200(81.6)	69 (80.2)		
Others	62 (18.7)	45 (18.4)	17 (19.8)		
Residence				1.330	0.249
Urban residence	117 (35.3)	91 (37.1)	26 (30.2)		
Rural residence	214 (64.7)	154 (62.9)	60 (69.8)		
Marriage history				0.940	0.332
Married	255 (77.0)	192 (78.4)	63 (73.3)		
Unmarried	76 (23.0)	53 (21.6)	23 (26.7)		
Smoking consumption history	203 (61.3)	153 (62.4)	50 (58.1)	0.498	0.480
Alcohol consumption history	127 (38.4)	97 (39.6)	30 (34.9)	0.597	0.440
BMI (kg / m <sup>2</sup> ), median(IQR)	19.0 (18.2,20.3)	19.0 (18.6,20.0)	19.0 (18.0,23.0)	-0.734	0.463
APACHE II, median(IQR)	17.0 (13.0,21.0)	17.0 (13.0,20.0)	19.0 (14.0,23.0)	-1.556	0.120
SOFA, median(IQR)	3.0 (3.0,5.0)	3.0 (3.0,5.0)	4.0 (3.0,6.0)	-0.321	0.748
BCG vaccination history	82(24.8)	53 (21.6)	29 (33.7)	4.991	0.025
Etiology of tuberculosis				0.263	0.608
+	279 (84.3)	208 (84.9)	71 (82.6)		
-	52 (15.7)	37 (15.1)	15 (17.4)		
History of drug-resistant tuberculosis	71 (21.5)	54 (22.0)	17 (19.8)	0.195	0.659
History of hypertension	61 (18.4)	45 (18.4)	16 (18.6)	0.002	0.961
History of diabetes	62 (18.7)	44 (18.0)	18 (18.7)	0.369	0.543
History of chronic liver disease	20 (6.0)	15 (6.1)	5 (5.8)	0.011	0.918
History of chronic kidney disease	8 (2.4)	3 (1.2)	5 (5.8)	3.906	0.048
HIV positive	5 (1.5)	5 (2.0)	0 (0)	0.674	0.412



Chronic cor pulmonale	107 (32.3)	93 (38.0)	14 (16.3)	13.677	0.000
hemoptysis	22 (6.6)	16 (6.5)	6 (7.0)	0.020	0.886
pneumothorax	29 (8.8)	20 (8.2)	9 (10.5)	0.422	0.516
Septic shock	78 (23.6)	60 (24.5)	18 (20.9)	0.448	0.503
White blood cells (10 <sup>9</sup> /L) ,median(IQR)	8.47 (6.46,11.64)	8.32 (6.46,11.61)	9.17 (6.65,11.97)	-0.902	0.367
Red blood cells (10 <sup>12</sup> /L) ,mean±SD	3.94±0.93	3.89±0.87	4.01±1.06	-1.666	0.098
Hemoglobin (g/L) ,mean±SD	109.4±24.8	108.0±24.2	113.2±26.1	-1.687	0.093
Platelets (10 <sup>9</sup> /L) ,median(IQR)	222.0 (141.5,288.0)	220.0 (140.0,291.0)	222.0 (154.0,285.0)	-0.212	0.832
Alanine Aminotransferase (U/L) ,median(IQR)	20.0 (11.0,38.0)	20.0 (11.0,39.0)	21.0 (12.0,36.0)	-0.155	0.877
Aspartate Aminotransferase (U/L) ,median(IQR)	33.0 (21.0,58.5)	34.0 (21.0,59.0)	30.0 (21.0,58.0)	-0.488	0.678
Total Bilirubin(umol/L) , median(IQR)	9.9 (6.8,15.4)	10.1 (6.9,15.3)	9.8 (6.8,15.6)	-0.416	0.678
Albumin(g/L),median(IQR)	27.5 (23.8,31.1)	27.4 (23.6,30.9)	28.4 (24.6,31.8)	-1.204	0.228
Blood urea nitrogen(mmol/L), median(IQR)	5.46 (3.78,8.24)	5.27 (3.61,8.24)	5.80 (4.40,8.48)	-1.136	0.256
Serum creatinine(umol/L), median(IQR)	52.5 (43.9,76.7)	51.4 (44.0,76.8)	55.0 (43.3,76.5)	-0.864	0.388
pH,median(IQR)	7.42 (7.37,7.47)	7.42 (7.37,7.47)	7.41 (7.37,7.47)	-0.642	0.521
PCO2 (mmHg) ,median(IQR)	38.9 (31.8,49.1)	38.6 (31.5,49.2)	39.8 (32.6,49.0)	-0.595	0.552
PO <sub>2</sub> /FiO <sub>2</sub> (mmHg) ,median(IQR)	157.3 (126.0,197.1)	159.5 (130.0,197.0)	139.6 (112.0,202.5)	-1.472	0.141
Lactic acid(mmol/L) ,median(IQR)	2.10 (1.59,2.81)	2.19 (1.65,3.03)	1.81 (1.36,2.38)	-3.428	0.001

CD3+ T cells (cells/ul) ,median (IQR)	336.0 (196.5,538.5)	341.0 (190.0, 541.0)	319.0 (205.0, 531.0)	-0.062	0.950
CD4+ T cells (cells/ul) ,median (IQR)	186.0 (84.5,295.5)	179.0 (79.0,286.0)	197.0 (105.0,304.0)	-0.987	0.324
CD8+ T cells (cells/ul) ,median (IQR)	121.0 (68.0,216.5)	126.0 (68.0,222.0)	114.0 (69.0,215.0)	0.511	0.609

184 **Note:**The continuous variables of normal distribution are expressed as mean  $\pm$  standard deviation, the non-normal continuous  
185 variables are expressed as median (25th,75th range), and the categorical variables are expressed as number (%).

186 **Abbreviations:** BMI, Body Mass Index,APACHE II, Acute Physiology And Chronic Health Evaluation II; SOFA, Sequential Organ  
187 Failure Assessment.

188

## 189 Construction of the mortality prediction model

190 Univariate analysis of training set data revealed 13 variables with statistically significant  
191 associations with patient mortality rate, including patient age, BMI, septic shock, and blood levels  
192 of platelets, serum albumin, urea nitrogen, serum creatinine, lactic acid, arterial blood pH,  
193  $PO_2/FiO_2$  and blood levels of CD3+T cells, CD4+ T cells and CD8+T cells ( $P < 0.05$ ) (Table 2). Of  
194 these variables, those significantly associated with greater mortality ( $P$  values of  $<0.1$ ) were  
195 identified using univariate COX regression analysis(detailed information presented in Table  
196 3),including BMI, septic shock, $PO_2/FiO_2$ , levels of serum albumin, BUN and serum creatinine and  
197 blood levels of CD8+T cells. Ultimately, variables with  $P$  values of $<0.5$ ,including BMI, septic shock  
198 and BUN (Table 4), were considered independent risk factors for increased TDL-MV patient  
199 mortality as based on regression  $\beta$  values (Table 5). Variables with  $\beta$  values of $<1$  received 1 point  
200 and those with  $\beta$  values of $>1$  received 2 points;independent variable scores for each patient were  
201 added together to obtain model-based mortality risk prediction scores that the minimum was 0  
202 and the maximum was 4 pointes.

203 **TABLE 2 |** Baseline characteristics of the study population in the training set.

Variable	Total (N=245)	Survivors (N=125)	Non-survivors (N=120)	statistic al values	$P$ -valu e
Gender				0.413	0.521
Male	198 (80.8)	103 (82.4)	95 (79.2)		
Female	47 (19.2)	22 (17.6)	25 (20.8)		

Age (years) median(IQR)	63.0 (48.0,71.0)	59.0 (46.0,69.0)	64.0 (51.0,74.5)	-2.227	0.026
Race				0.454	0.501
Han nationality	200 (81.6)	100 (80.0)	100 (83.3)		
Others	45 (18.4)	25 (20.0)	20 (16.7)		
residence				1.372	0.241
Urban residence	91 (37.1)	42 (33.6)	49 (40.8)		
Rural residence	154 (62.9)	83 (66.4)	71 (59.2)		
Marriage history				0.000	0.990
Married	192 (78.4)	98 (78.4)	94 (78.3)		
Unmarried	53 (21.6)	27 (21.6)	26 (21.7)		
Smoking consumption history	153 (62.3)	77 (61.6)	76 (63.3)	0.078	0.779
Alcohol consumption history	97 (39.6)	52 (41.6)	45 (37.5)	0.430	0.512
BMI (kg / m <sup>2</sup> ) ,median(IQR)	19.0 (18.6,20.0)	19.3 (18.8,20.0)	18.8 (17.8,19.5)	-4.361	0.000
APACHE II,median(IQR)	17.0 (13.0,20.0)	15.0 (12.0,18.0)	18.5 (15.0,24.0)	-5.318	0.000
SOFA,median(IQR)	3.0 (3.0,5.0)	3.0 (3.0,4.0)	4.0 (3.0,7.0)	-5.707	0.000
BCG vaccination history	53 (21.6)	30 (24.0)	23 (19.2)	0.844	0.358
Etiology of tuberculosis				0.098	0.754
+	208 (84.9)	107 (85.6)	101 (84.2)		
-	37 (15.1)	18 (14.4)	19 (15.8)		
History of drug-resistant tuberculosis	54 (22.0)	29 (23.2)	25 (20.8)	0.200	0.655
History of hypertension	45 (18.4)	22 (17.6)	23 (19.2)	0.100	0.752
History of diabetes	44 (18.0)	17 (13.6)	27 (22.5)	3.291	0.070
History of chronic	15 (6.1)	11 (8.8)	4 (3.3)	3.183	0.074

liver disease					
History of chronic	3 (1.2)	0 (0)	3 (2.5)	1.434	0.231
kidney disease					
HIV positive	5 (2.0)	4 (3.2)	1 (0.8)	0.736	0.391
Chronic cor pulmonale	93 (38.0)	51 (40.8)	42 (35.0)	0.875	0.350
hemoptysis	16 (6.5)	9 (7.2)	7 (5.8)	0.187	0.665
pneumothorax	20 (8.2)	12 (9.6)	8 (6.7)	0.703	0.402
Septic shock	60 (24.5)	6 (4.8)	54 (45.0)	53.504	0.000
White blood cells (10 <sup>9</sup> /L),median(IQR)	8.32 (6.46,11.61)	8.40 (6.36,11.44)	8.08 (6.51,11.62)	-0.307	0.759
Red blood cells (10 <sup>12</sup> /L),median(IQR)	3.85 (3.37,4.40)	110.0 (95.0,124.0)	104.0 (88.0,121.0)	-1.715	0.086
Hemoglobin (g/L),mean±SD	108.0±24.2	110.8±23.6	105.1±24.6	1.844	0.066
Platelets (10 <sup>9</sup> /L),median(IQR)	220.0 (140.0,291.0)	238.0 (162.0,307.0)	199.5 (112.5,264.0)	-2.536	0.011
Alanine Aminotransferase (U/L),median(IQR)	20.0 (11.0,39.0)	22.0 (12.0, 39.0)	19.0 (10.0, 40.5)	-0.909	0.363
Aspartate Aminotransferase (U/L),median(IQR)	34.0 (21.0,59.0)	35.0 (22.0,56.0)	32.0 (21.0,59.5)	-0.290	0.772
Total Bilirubin(umol/L),me dian(IQR)	10.1 (6.9,15.3)	9.7 (7.1,15.0)	10.3 (6.7,15.7)	-0.330	0.741
Albumin(g/L),median (IQR)	27.4 (23.6,30.9)	28.10 (24.90,31.80)	26.55 (22.25,29.95)	-3.072	0.002
Blood urea nitrogen(mmol/L),me dian(IQR)	5.27 (3.61,8.24)	4.49 (3.32,6.40)	6.91 (4.51,9.71)	-4.849	0.000
Serum creatinine(umol/L),m edian(IQR)	51.4 (44.0,76.8)	50.0 (43.0,64.0)	56.8 (45.8,86.0)	-2.982	0.003
pH,median(IQR)	7.42 (7.37,7.47)	7.44 (7.39,7.48)	7.41 (7.35,7.46)	-2.184	0.029
PCO2 (mmHg),median(IQ R)	38.6 (31.5,49.2)	37.9 (31.5,47.3)	39.2 (31.5,53.2)	-0.345	0.730

PO <sub>2</sub> /FiO <sub>2</sub> (mmHg) ,median(IQ R)	159.5 (130.0,197.0)	169.7 (142.0,200.3)	146.2 (123.3,187.4)	-3.509	0.000
Lactic acid(mmol/L) ,median (IQR)	2.19 (1.65,3.03)	2.06 (1.60,2.62)	2.46 (1.70,3.39)	-2.591	0.010
CD3+ T cells (cells/ul) ,median(IQ R)	341.0 (190.0,541.0)	382.0 (209.0,579.0)	294.5 (144.0,467.5)	-2.766	0.006
CD4+ T cells (cells/ul) ,median(IQ R)	179.0 (79.0,286.0)	201.0 (102.0,325.0)	156.0 (64.5,262.5)	-2.209	0.027
CD8+ T cells (cells/ul) ,median(IQ R)	126.0 (68.0,222.0)	153.0 (77.0,265.0)	110.5 (55.0,191.5)	-2.557	0.011

204 **Note:**The continuous variables of normal distribution are expressed as mean ± standard deviation, the non-normal continuous  
205 variables are expressed as median (25th,75th range), and the categorical variables are expressed as number (%).

206 **Abbreviations:** BMI, Body Mass Index,APACHE II, Acute Physiology And Chronic Health Evaluation II; SOFA, Sequential Organ  
207 Failure Assessment.

208

209 **TABLE 3|** Assignment table

factor	Variable name	Assignment specification
Age	X1	0= $\leq$ 60 years, 1= $>$ 60 years
BMI	X2	0= $\geq$ 18.5kg / m <sup>2</sup> , 1= $<$ 18.5kg / m <sup>2</sup>
Septic shock	X3	0=no, 1=yes
Platelets	X4	0= $\geq$ 100*10 <sup>9</sup> /L, 1= $<$ 100*10 <sup>9</sup> /L
Albumin	X5	0= $\geq$ 30g/L,1= $<$ 30 g/L
Blood urea nitrogen	X6	0= $<$ 7.14mmol/L,1= $\geq$ 7.14mmol/L
Serum creatinine	X7	0= $\leq$ 133umol/L,1= $>$ 133umol/L
Lactic acid	X8	0= $\leq$ 2.2mmol/L,1= $>$ 2.2mmol/L
pH	X9	0=7.35~7.45,1= $<$ 7.35 or $>$ 7.45
PO <sub>2</sub> /FiO <sub>2</sub>	X10	0= $\geq$ 200mmHg,1= $<$ 200mmHg
CD3+T cells	X11	0= $\geq$ 770 cells/ul,1= $<$ 770 cells/ul
CD4+T cells	X12	0= $\geq$ 414 cells/ul,1= $<$ 414 cells/ul
CD8+T cells	X13	0= $\geq$ 238 cells/ul,1= $<$ 238 cells/ul
Survival time	Time	30 days of follow-up (days)
prognosis	Y	0=Survivors, 1=Non-survivors

210 **Abbreviations:** BMI, Body Mass Index.

211 **TABLE 4** | Univariate and multivariate Cox regression analysis of clinical factors in the training set.

Variable	Univariate analysis		Multivariate analysis		
	HR (95%CI)	P	$\beta$	HR (95%CI)	P
Age	1.295(0.900~1.861)	0.163			
BMI	2.931(2.013~4.266)	0.000	0.762	2.144(1.447~3.176)	0.000
Septic shock	4.491(3.105~6.497)	0.000	1.226	3.407(2.309~5.028)	0.000
Platelets	1.328(0.822~2.147)	0.247			
Albumin	1.577(1.043,2.384)	0.031			
Blood urea nitrogen	2.231(1.558~3.195)	0.000	0.682	1.977(1.374~2.845)	0.000
Serum creatinine	3.188(1.850~5.493)	0.000			
Lactic acid	1.338(0.934~1.916)	0.112			
pH	0.954(0.665~1.370)	0.800			
PO <sub>2</sub> /FiO <sub>2</sub>	1.531(0.964~2.432)	0.071			
CD3 <sup>+</sup> T cells	1.471(0.718~3.015)	0.292			
CD4 <sup>+</sup> T cells	1.623(0.850~3.102)	0.143			
CD8 <sup>+</sup> T cells	1.615(1.008~2.587)	0.046			

212

213 **Abbreviations:** CI, confidence interval; HR, Harard ratio;BMI, Body Mass Index.

214

215 **TABLE 5** | Construction of a risk prediction model for death in patients with TDL-MV

Variable	score
BMI<18.5kg/m <sup>2</sup>	1
Septic shock	2
Blood urea nitrogen≥7.14mmol/L	1
Total score	4

216 **Abbreviations:** BMI, Body Mass Index.

217

## 218 Validation of the mortality prediction model

219 Using the training data set to test the risk prediction model revealed an area under the curve

220 (AUC) value for 30-day TDL-MV patient mortality of 0.808, a sensitivity rate of 79.1% and a

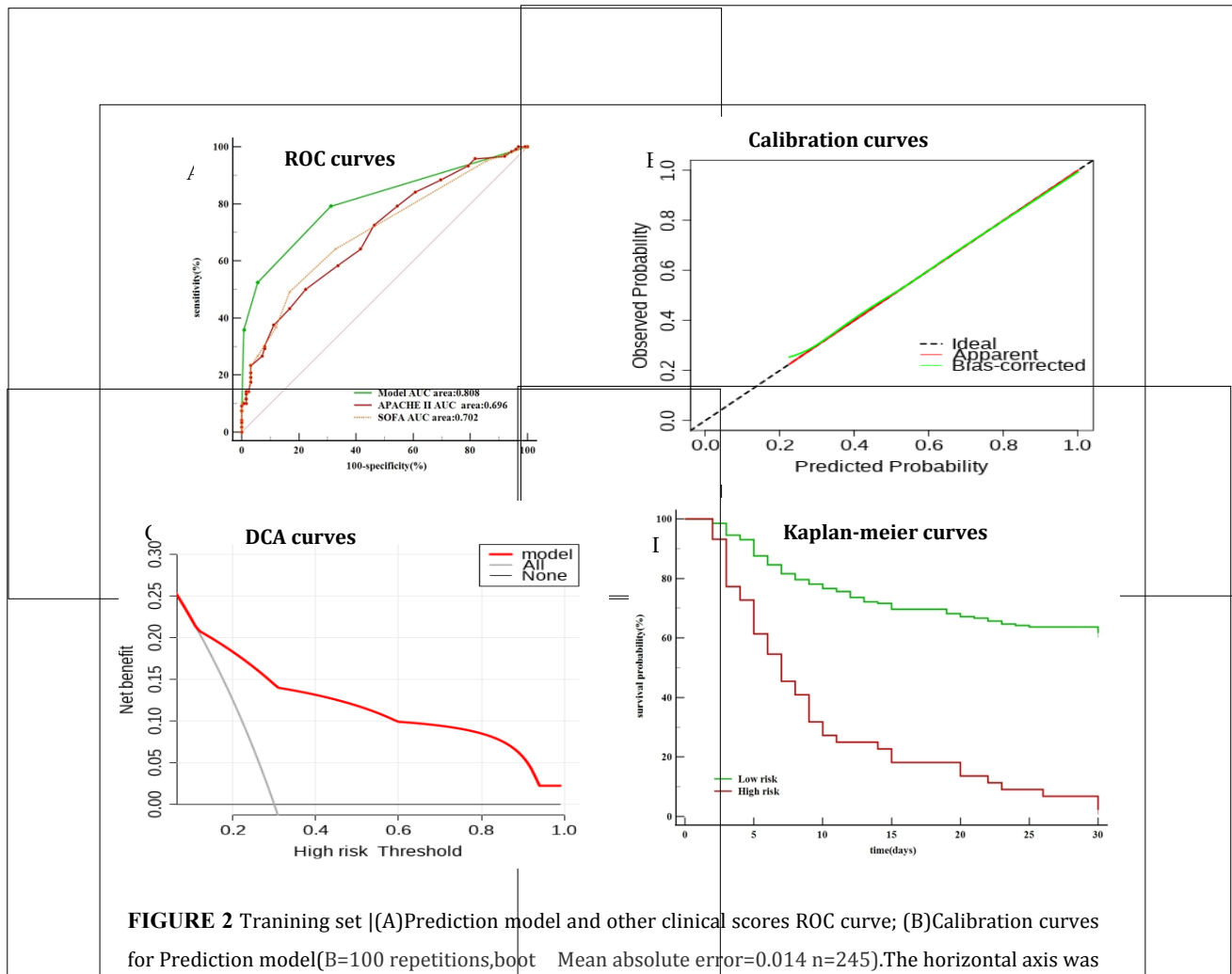
221 specificity rate of 68.80%. Meanwhile,the SOFA score AUC value was 0.702, the sensitivity rate

222 was 49.17% and the specificity rate was 83.20%, an APACHE II score-based AUC value of 0.696,  
223 sensitivity rate of 50.00% and specificity rate of 77.60%(Figure 2A).

224 Use of the validation data set to validate the mortality risk prediction model revealed an AUC  
225 value for 30-day TDL-MVpatient mortality of 0.876, a sensitivity rate of 95.12% and a specificity  
226 rate of 62.22%. Meanwhile, the SOFA score-based AUC value was 0.738, the sensitivity rate was  
227 53.66% and the specificity rate was 84.44%, while the APACHE II score-based AUC value was  
228 0.803, the sensitivity rate was 82.93% and the specificity rate was 66.67%(Figure 3A).

229 Notably, predicted mortality rates obtained using the risk prediction model for both the  
230 training and validation data sets were close to the actual observed TDL-MV patient mortality  
231 rate, thus indicating good calibration curve agreement (Figure 2B, 3B). Moreover, results  
232 obtained via decision curve analysis also showed that the prediction model provided a good net  
233 benefit (Figure 2C, 3C).

234  
235  
236  
237  
238  
239  
240  
241  
242  
243  
244  
245

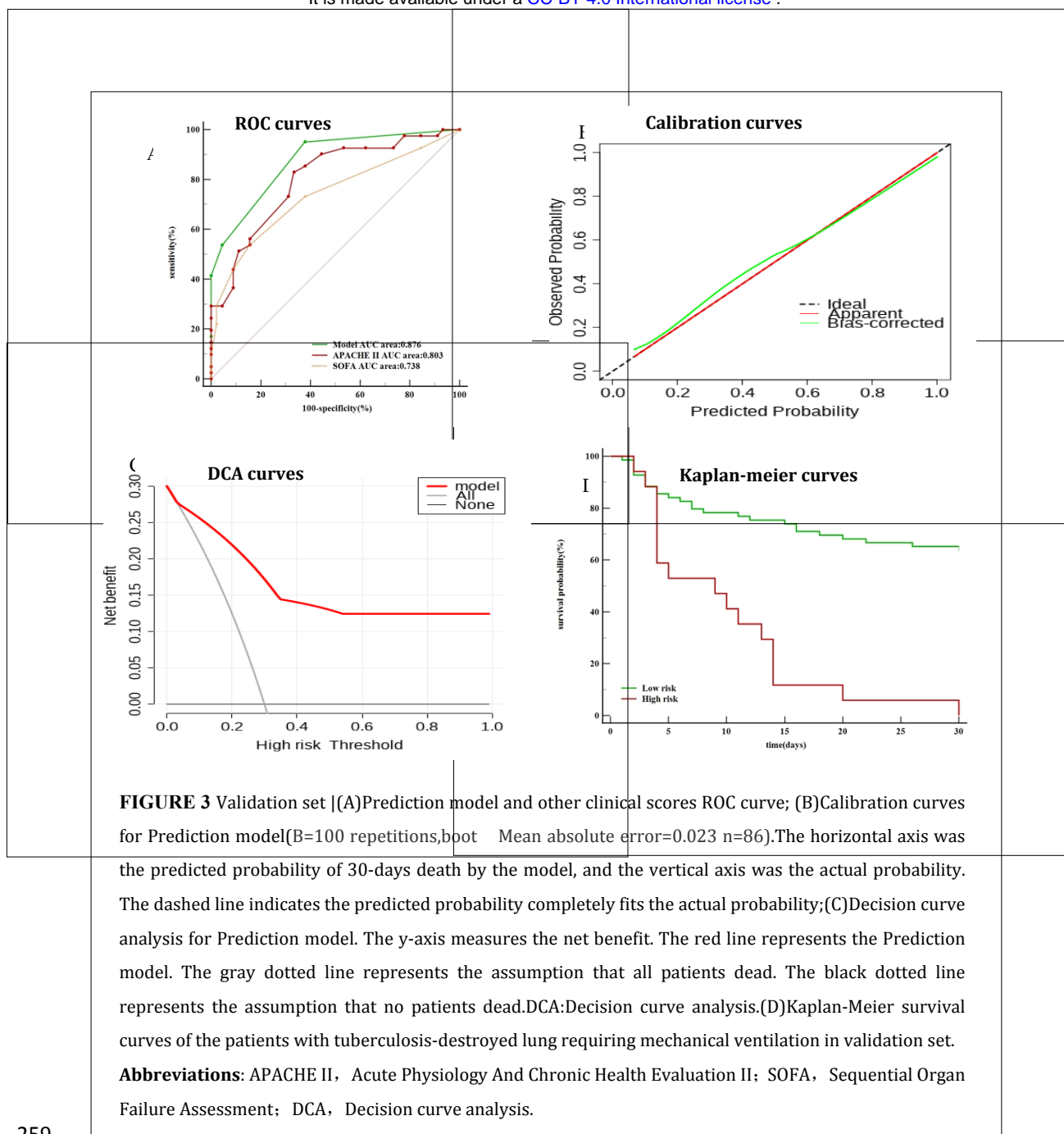


**FIGURE 2** Training set (A) Prediction model and other clinical scores ROC curve; (B) Calibration curves for Prediction model (B=100 repetitions, boot Mean absolute error=0.014 n=245). The horizontal axis was the predicted probability of 30-days death by the model, and the vertical axis was the actual probability. The dashed line indicates the predicted probability completely fits the actual probability; (C) Decision curve analysis for Prediction model. The y-axis measures the net benefit. The red line represents the Prediction model. The gray dotted line represents the assumption that all patients dead. The black dotted line represents the assumption that no patients dead. DCA: Decision curve analysis. (D) Kaplan-Meier survival curves of the patients with tuberculosis-destroyed lung requiring mechanical ventilation in training set.

**Abbreviations:** APACHE II, Acute Physiology And Chronic Health Evaluation II; SOFA, Sequential Organ Failure Assessment; DCA, Decision curve analysis.

246  
247  
248  
249  
250  
251  
252  
253  
254  
255  
256  
257  
258





259

260

## 261 Prognostic comparison and risk stratification

262 Analysis of training data set-derived patient scores generated using the risk prediction  
 263 model revealed an increase in TDL-MV patient mortality rate with increasing score. With regard  
 264 to mortality risk, comparisons of patient scores to a critical threshold value resulted in the  
 265 assignment of 44 patients to the high-risk group (3~7 points) and 201 patients to the low-risk  
 266 group (0~2 points) (Table 6). An analysis of Kaplan-Meier curves revealed significant differences  
 267 in survival between high-risk and low-risk patient groups as stratified using the risk prediction  
 268 model developed using both training and validation data sets (Figure 2D, 3D).

269

270 **TABLE 6** | Mortality rates of the TDL-MV patients according to the risk prediction model.

Score	Training set (n=245)			validation set(n=86)		
	Survivors (N=125), n	Non-survivors (N=120),n	Mortality (48.98%)	Survivors (N=45),n	Non-survivors (N=41),n	Mortality (47.67%)
0	86	25	22.5	28	2	6.6
1	32	32	50.0	15	17	53.1
2	6	20	76.9	2	5	71.4
3	1	34	97.1	0	10	100
4	0	4	100	0	7	100
≤2	124	77	38.3	45	24	34.7
>2	1	43	97.7	0	17	100

271

## 272 DISCUSSION

273 In this study, we constructed and validated a predictive model of mortality of  
 274 tuberculosis-destroyed lung patients requiring mechanical ventilation. Internal verification of the  
 275 risk prediction model indicated good discrimination and prediction performance of the model,  
 276 thus demonstrating that use of the risk prediction model would not only enable more efficient  
 277 utilization of limited medical resources, but would also reduce the TDL-MV patient mortality rate.

278 Malnutrition has been shown in numerous studies to be associated with increased TB  
 279 incidence and severity, anti-TB treatment failure, poorer TB treatment outcomes and increased  
 280 mortality[16-19]. Results obtained in the current study showed that BMI, serum albumin level  
 281 and blood CD4+ T cell level were significantly reduced in TDL-MV patients, with more  
 282 pronounced reductions observed in the patient group with a high risk of death, BMI is an  
 283 independent risk factor for TDL-MV patient death, which suggest that ineffective anti-TB  
 284 treatment of patients with early-stage TB may cause long-term nutritional and immune  
 285 depletion and significantly reduced anti-TB therapeutic responses after disease progression to  
 286 late-stage TB disease, as consistent with results of previously reported studies of patients with

287 severe lung destruction[20-22].Septic shock is likely induced capillary endothelial injury, tissue  
288 microcirculation ischemia and hypoxia. In turn,these effects can lead to vascular paralysis, organ  
289 function impairment and severe microcirculatory dysfunction.that can persist even after  
290 normalization of hemodynamics has been achieved through fluid resuscitation and  
291 administration of vasopressors and anti-infective therapies [23].which is one of several direct  
292 causes of ICU patient death and is associated with a mortality rate of about 50% [24-26]. The  
293 results of a retrospective nested cohort study reported in 2013 indicated that although clinical  
294 manifestations of M.tuberculosis infection-induced septic shock resembled those associated with  
295 other bacterial infections, the mortality rate of M.tuberculosis infection-induced septic  
296 shock(79.2%)was significantly greater than corresponding rates obtained for all other types of  
297 bacterial infections (49.7%)[27]. Indeed, in the current study the mortality rate of ICU TDL-MV  
298 patients with septic shock was markedly higher (~92.3%), a result that may reflect the fact that  
299 our patients were late-stage TB patients and thus had more severe TB disease than patients in  
300 the above mentioned studies. BUN was used to assess renal impairment and protein catabolic  
301 function [28-31].A retrospective observational study reported in 2021 involving 845 patients  
302 with acute exacerbations of chronic obstructive pulmonary disease (AECOPD).which revealed  
303 that the elevated BUN level was associated with increased AECOPD patient mortality[32].  
304 Meanwhile, results of an other retrospective study involving 2682 ICU patients with intracranial  
305 hemorrhage indicated that an elevated BUN level was significantly associated with poor  
306 prognosis[33]. In addition, results of other studies have confirmed that an elevated BUN level is  
307 associated with increased long-term mortality of severely ill patients[34]. Similarly, in our study  
308 of TDL-MV patients, the average BUN level of the patient group with greater risk of death  
309 exceeded that of the patient group with greater survival. Moreover, an increased BUN level was  
310 found to be an independent risk factor for increased TDL-MV patient mortality,The underlying  
311 mechanism needs further study.

312 In recent years, the mortality prediction of ICU patients has been widely investigated, but  
313 the general ICU severity predictive model were not sufficient for predicting mortality in the  
314 population of TDL-MV patients accurately and reliably. In our study,Analysis of risk prediction  
315 performance of the model using calibration curve and decision curves generated revealed that  
316 the model had excellent prediction ability and predicted patient mortality more accurately than

317 did predictive methods based on traditional APACHE II and SOFA scores. Nevertheless, our study  
318 had several limitations. First, it was a single-center, retrospective, observational cohort study  
319 based in western China and thus our patient population may not be representative of TDL-MV  
320 patients in other regions or countries. Therefore, multi-center, prospective studies of TDL-MV  
321 patient prognostic risk factors are needed to externally validate the model. Second, the economic  
322 health of western China is relatively poor, especially in rural areas. As a result, some TDL patients  
323 resource-poor regions who need mechanical ventilation do not have access to ICUs and thus are  
324 under represented in ICU patient populations in such regions, thus leading to bias. Third, the  
325 prediction model was constructed using a retrospective design that would inevitably introduce  
326 bias into the results to thereby reduce the statistical strength of our conclusions. Fourth,  
327 although laboratory data may change as TB progresses, such changes are not adequately  
328 captured in retrospective study-based predictive models, since such studies cannot incorporate  
329 dynamic changes of indicators in the final analysis.

330

## 331 **CONCLUSION**

332 In this study, a mortality prediction model based on independent risk factors of BMI <  
333 18.5kg/m<sup>2</sup>, septic shock and a BUN level ≥7.14mmol/L was found to have good predictive power  
334 and differentiation ability. Moreover, internal validation of the model using retrospective data of  
335 adult TDL-MV patients admitted to the ICU of Chengdu Public Health Clinical Medical Center  
336 revealed that results obtained using the model were highly stable, reliable and reproducible.  
337 Thus, this model may be clinically useful for achieving early and rapid screening of patients with  
338 TDL who need mechanical ventilation and thus are at high risk of death.

339

## 340 **ACKNOWLEDGMENTS**

341 We would like to thank the general practices and patients that participated in follow-up.

342

## 343 **FUNDING**

344 This work was supported in part by special funds of Chengdu Science and Technology Bureau  
345 (2022-YF05-02139-SN), Chengdu Health Commission (2022101) and Sichuan Provincial Science  
346 and Technology Department (23ZDYF1334).

347

## 348 **AUTHOR CONTRIBUTION**

349 KC, LJ and YZ received ethical approval for the study. KC, LY and YY participated in patient  
350 recruitment and data analysis. KC wrote the first draft of the manuscript. All authors reviewed  
351 and edited the manuscript and approved the final version of the manuscript.

352

## 353 **INSTITUTIONAL REVIEW BOARD STATEMENT**

354 The study was carried out in accordance with the principles of the Declaration of Helsinki. This  
355 study was approved by the Medical Ethics Committee of Chengdu Public Health Clinical Medical  
356 Center (YJ-K2022-02-01).

357

## 358 **INFORMED CONSENT**

359 Not applicable.

360

## 361 **DATA AVAILABILITY STATEMENT**

362 The original contributions presented in the study are included in the article, and further inquiries  
363 may be directed to the appropriate authors.

364

## 365 **REFERENCES**

- 366 1.Bagechi S. WHO's Global Tuberculosis Report 2022. *Lancet Microbe*. 2023 Jan;4(1):e20. doi:  
367 10.1016/S2666-5247(22)00359-7. Epub 2022 Dec 12. PMID: 36521512.
- 368 2.Han D, Lee H Y, Kim K, et al. Burden and clinical characteristics of high grade tuberculosis destroyed lung: a  
369 nationwide study[J]. *Journal of Thoracic Disease*, 2019, 11(10):4224.
- 370 3.Bongomin F. Post-tuberculosis chronic pulmonary aspergillosis: An emerging public health concern[J]. *PLoS*  
371 *Pathogens*, 2020, 16(8):e1008742.
- 372 4. Willcox PA, Ferguson AD. Chronic obstructive airways disease following treated pulmonary tuberculosis. *Respir*  
373 *Med*. 1989 May; 83(3):195-8. doi: 10.1016/s0954-6111(89)80031-9. PMID: 2595036.
- 374 5. Fawibe A E, Salami A K, Oluboyo P O, et al. Profile and outcome of unilateral tuberculous lung destruction in  
375 Ilorin, Nigeria[J]. *West African Journal of Medicine*, 2011, 30(2):130-135.
- 376 16. Bobrowitz ID, Rodescu D, Marcus H, Abeles H. The destroyed tuberculous lung. *Scand J Respir Dis*.

- 377 1974;55(1):82-8. PMID: 4854707.
- 378 7.Ryu YJ, Lee JH, Chun EM, Chang JH, Shim SS. Clinical outcomes and prognostic factors in patients with  
379 tuberculous destroyed lung. *Int J Tuberc Lung Dis.* 2011 Feb;15(2):246-50, i. PMID: 21219689.
- 380 8.Kosif Mısırlıoğlu A, Bayram S, Kiral H, et al. Factors affecting complication rates of pneumonectomy in destroyed  
381 lung. *Turk Gogus Kalp Damar Cerrahisi Derg.* 2018 Apr 30;26(2):272-278. doi:  
382 10.5606/tgkdc.dergisi.2018.14635. PMID: 32082745; PMCID: PMC7024126.
- 383 9.Olgac G, Yilmaz MA, Ortakoylu MG, et al. Decision-making for lung resection in patients with empyema and  
384 collapsed lung due to tuberculosis. *J Thorac Cardiovasc Surg.* 2005 Jul;130(1):131-5. doi:  
385 10.1016/j.jtcvs.2004.08.040. PMID: 15999052.
- 386 10.Ruan H, Gong C, Wang J. The Efficacy and Safety of Surgical Treatment for Patients With Tuberculosis Destroyed  
387 Lung With or Without Chronic Pulmonary Aspergillosis. *World J Surg.* 2021 May;45(5):1595-1601. doi:  
388 10.1007/s00268-021-05969-w. Epub 2021 Feb 8. PMID: 33558999; PMCID: PMC8026452.
- 389 11.Park JH, Na JO, Kim EK, et al. The prognosis of respiratory failure in patients with tuberculous destroyed lung.  
390 *Int J Tuberc Lung Dis.* 2001 Oct;5(10):963-7. PMID: 11605892.
- 391 12.Knaus WA, Draper EA, Wagner DP, Zimmerman JE. APACHE II: a severity of disease classification system. *Crit*  
392 *Care Med.* 1985 Oct;13(10):818-29. PMID: 3928249.
- 393 13.Minne L, Abu-Hanna A, de Jonge E. Evaluation of SOFA-based models for predicting mortality in the ICU: A  
394 systematic review. *Crit Care.* 2008;12(6):R161. doi: 10.1186/cc7160. Epub 2008 Dec 17. PMID: 19091120;  
395 PMCID: PMC2646326.
- 396 14.Khwannimit B, Bhurayanontachai R, Vattanavanit V. Comparison of the performance of SOFA, qSOFA and SIRS  
397 for predicting mortality and organ failure among sepsis patients admitted to the intensive care unit in a  
398 middle-income country. *J Crit Care.* 2018 Apr;44:156-160. doi: 10.1016/j.jcrc.2017.10.023. Epub 2017 Oct 18.  
399 PMID: 29127841.
- 400 15.Kim WY, Kim MH, Jo EJ, Eom JS, Mok J, Kim KU, et al. Predicting Mortality in Patients with Tuberculous  
401 Destroyed Lung Receiving Mechanical Ventilation. *Tuberc Respir Dis (Seoul).* 2018 Jul;81(3):247-255. doi:  
402 10.4046/trd.2017.0126. Epub 2018 Jun 19. PMID: 29926549; PMCID: PMC6030661.
- 403 16. Sinha P, Lönnroth K, Bhargava A, Heysell SK, Sarkar S, Salgame P, Rudgard W, Boccia D, Van Aartsen D,  
404 Hochberg NS. Food for thought: addressing undernutrition to end tuberculosis. *Lancet Infect Dis.* 2021  
405 Oct;21(10):e318-e325. doi: 10.1016/S1473-3099(20)30792-1. Epub 2021 Mar 27. PMID: 33770535; PMCID:  
406 PMC8458477.

- 407 20. Darnton-Hill I, Mandal PP, de Silva A, Bhatia V, Sharma M. Opportunities to prevent and manage undernutrition  
408 to amplify efforts to end TB. *Int J Tuberc Lung Dis*. 2022 Jan 1;26(1):6-11. doi: 10.5588/ijtld.21.0488. PMID:  
409 34969422; PMCID: PMC8734190.
- 410 18. Koo HK, Min J, Kim HW, Lee J, Kim JS, Park JS, Lee SS. Prediction of treatment failure and compliance in patients  
411 with tuberculosis. *BMC Infect Dis*. 2020 Aug 24;20(1):622. doi: 10.1186/s12879-020-05350-7. PMID:  
412 32831044; PMCID: PMC7446045.
- 413 19. Horita N, Miyazawa N, Yoshiyama T, Ishigatsubo Y. [Prognosis of patients with tuberculosis]. *Kekkaku*. 2013  
414 Jun;88(6):565-70. Japanese. PMID: 23898497.
- 415 20. Peng JC, Zhu YW, Xing SP, Li W, Gao Y, Gong WW. Association of geriatric nutritional risk index with all-cause  
416 hospital mortality among elderly patients in intensive care unit. *Front Nutr*. 2023 Mar 23;10:1117054. doi:  
417 10.3389/fnut.2023.1117054. PMID: 37032766; PMCID: PMC10076778.
- 418 21. Koekkoek KW, van Zanten AR. Nutrition in the critically ill patient. *Curr Opin Anaesthesiol*. 2017  
419 Apr;30(2):178-185. doi: 10.1097/ACO.0000000000000441. PMID: 28151828.
- 420 22. Li G, Zhou CL, Ba YM, Wang YM, Song B, Cheng XB, Dong QF, Wang LL, You SS. Nutritional risk and therapy for  
421 severe and critical COVID-19 patients: A multicenter retrospective observational study. *Clin Nutr*. 2021  
422 Apr;40(4):2154-2161. doi: 10.1016/j.clnu.2020.09.040. Epub 2020 Oct 1. PMID: 33077274; PMCID:  
423 PMC7527833.
- 424 23. Raia L, Zafrani L. Endothelial Activation and Microcirculatory Disorders in Sepsis. *Front Med (Lausanne)*. 2022  
425 Jun 3;9:907992. doi: 10.3389/fmed.2022.907992. PMID: 35721048; PMCID: PMC9204048.
- 426 24. Shankar-Hari M, Phillips GS, Levy ML, Seymour CW, Liu VX, Deutschman CS, Angus DC, Rubenfeld GD, Singer M;  
427 Sepsis Definitions Task Force. Developing a New Definition and Assessing New Clinical Criteria for Septic  
428 Shock: For the Third International Consensus Definitions for Sepsis and Septic Shock (Sepsis-3). *JAMA*. 2016  
429 Feb 23;315(8):775-87. doi: 10.1001/jama.2016.0289. PMID: 26903336; PMCID: PMC4910392.
- 430 25. Xie J, Wang H, Kang Y, Zhou L, Liu Z, Qin B, Ma X, Cao X, Chen D, Lu W, Yao C, Yu K, Yao X, Shang H, Qiu H, Yang  
431 Y; CHinese Epidemiological Study of Sepsis (CHESS) Study Investigators. The Epidemiology of Sepsis in Chinese  
432 ICUs: A National Cross-Sectional Survey. *Crit Care Med*. 2020 Mar;48(3):e209-e218. doi:  
433 10.1097/CCM.0000000000004155. PMID: 31804299.
- 434 26. Zhou J, Qian C, Zhao M, Yu X, Kang Y, Ma X, Ai Y, Xu Y, Liu D, An Y, Wu D, Sun R, Li S, Hu Z, Cao X, Zhou F, Jiang L,  
435 Lin J, Mao E, Qin T, He Z, Zhou L, Du B; China Critical Care Clinical Trials Group. Epidemiology and outcome of  
436 severe sepsis and septic shock in intensive care units in mainland China. *PLoS One*. 2014 Sep 16;9(9):e107181.

- 437 doi: 10.1371/journal.pone.0107181. PMID: 25226033; PMCID: PMC4167333.
- 438 27.Kethireddy S, Light RB, Mirzanejad Y, Maki D, Arabi Y, Lapinsky S, Simon D, Kumar A, Parrillo JE, Kumar A;  
439 Cooperative Antimicrobial Therapy of Septic Shock (CATSS) Database Group. Mycobacterium tuberculosis  
440 septic shock. *Chest*. 2013 Aug;144(2):474-482. doi: 10.1378/chest.12-1286. PMID: 23429859.
- 441 28.Peng R, Liu K, Li W, Yuan Y, Niu R, Zhou L, Xiao Y, Gao H, Yang H, Zhang C, Zhang X, He M, Wu T. Blood urea  
442 nitrogen, blood urea nitrogen to creatinine ratio and incident stroke: The Dongfeng-Tongji cohort.  
443 *Atherosclerosis*. 2021 Sep;333:1-8. doi: 10.1016/j.atherosclerosis.2021.08.011. Epub 2021 Aug 6. PMID:  
444 34390959.
- 445 29.Baum N, Dichoso CC, Carlton CE. Blood urea nitrogen and serum creatinine. Physiology and interpretations.  
446 *Urology*. 1975 May;5(5):583-8. doi: 10.1016/0090-4295(75)90105-3. PMID: 1093306.
- 447 30.Kirtane AJ, Leder DM, Waikar SS, Chertow GM, Ray KK, Pinto DS, Karmaliotis D, Burger AJ, Murphy SA, Cannon  
448 CP, Braunwald E, Gibson CM; TIMI Study Group. Serum blood urea nitrogen as an independent marker of  
449 subsequent mortality among patients with acute coronary syndromes and normal to mildly reduced  
450 glomerular filtration rates. *J Am Coll Cardiol*. 2005 Jun 7;45(11):1781-6. doi: 10.1016/j.jacc.2005.02.068.  
451 PMID: 15936606.
- 452 31.Hong C, Zhu H, Zhou X, Zhai X, Li S, Ma W, Liu K, Shirai K, Sheerah HA, Cao J. Association of Blood Urea Nitrogen  
453 with Cardiovascular Diseases and All-Cause Mortality in USA Adults: Results from NHANES 1999-2006.  
454 *Nutrients*. 2023 Jan 16;15(2):461. doi: 10.3390/nu15020461. PMID: 36678332; PMCID: PMC9865447.
- 455 32. Chen L, Zheng H, Wu S, et al. The association of blood urea nitrogen levels upon emergency admission with  
456 mortality in acute exacerbation of chronic obstructive pulmonary disease. *Chron Respir Dis*. 2021  
457 Jan-Dec;18:14799731211060051. doi: 10.1177/14799731211060051. PMID: 34806456; PMCID:  
458 PMC8743930.
- 459 33. Luo H, Yang X, Chen K, Lan S, Liao G, Xu J. Blood creatinine and urea nitrogen at ICU admission and the risk of  
460 in-hospital death and 1-year mortality in patients with intracranial hemorrhage. *Front Cardiovasc Med*. 2022  
461 Nov 10;9:967614. doi: 10.3389/fcvm.2022.967614. PMID: 36440028; PMCID: PMC9685426.
- 462 34. Beier K, Eppanapally S, Bazick HS, Chang D, Mahadevappa K, Gibbons FK, Christopher KB. Elevation of  
463 blood urea nitrogen is predictive of long-term mortality in critically ill patients independent of "normal"  
464 creatinine. *Crit Care Med*. 2011 Feb;39(2):305-13. doi: 10.1097/CCM.0b013e3181ffe22a. PMID: 21099426;  
465 PMCID: PMC3448784.