

# The temporal relationship between preeclampsia and heart failure

Charlotte Baker, DrPH, MPH, CPH<sup>1</sup>, Peter D Smits, PhD<sup>1</sup>, Patricia Rodriguez, PhD<sup>1</sup>, Brianna M Goodwin Cartwright, MS<sup>1</sup>, Samuel Gratzl, PhD<sup>1</sup>, Rajdeep Brar, MD<sup>1</sup>, Emily Garrett, MD<sup>2</sup>, and Nicholas L Stucky, MD, PhD<sup>1</sup>

<sup>1</sup>Truveta, Inc, Bellevue, WA

<sup>2</sup>Providence Medical Group, Renton, WA

\*nicholass@truveta.com

## Corresponding author:

Dr Nicholas Stucky

Truveta, Inc

1745 114th Ave SE, Bellevue, WA 98004

Email: nicholass@truveta.com

**Keywords:** Maternal Health, Health Disparities, Heart Failure, Hypertensive Disorders of Pregnancy, Preeclampsia

## Key Points:

*Question:* Does having preeclampsia increase the rate of heart failure at or after delivery across demographics and obstetrics related comorbidities?

*Findings:* In this retrospective cohort study that included 718,166 deliveries, the risk of heart failure at any point after delivery was 2.82 times greater in women that had preeclampsia than those that did not, after controlling for obstetric comorbidities, race, ethnicity, and age.

*Meaning:* Regular long term clinical follow up or screening of women with preeclampsia for heart failure may be warranted.

## Abstract

**Importance:** Hypertensive disorders of pregnancy (e.g., preeclampsia) occur in approximately 8 to 10% of pregnancies in the US. Preeclampsia is a significant risk factor for future cardiovascular disease but in the US there is no universal long-term clinical follow up or screening for these conditions.

**Objective:** To determine whether having preeclampsia increases the rate of heart failure at or after delivery across demographics and obstetrics related comorbidities.

**Design:** Retrospective cohort study. We examined deliveries between January 1, 2018 and March 31, 2023 and assessed the time to heart failure stratified by preeclampsia status. Index event (T0) was first recorded delivery in time frame.

**Setting:** Population based using nationally representative data from electronic health records by Truveta

**Participants:** Female. 16 to 50 years of age. First recorded delivery in time frame identified using ICD-9-CM, ICD-10-CM, and SNOMED CT codes for delivery. Exclusion criteria: missing information on sex, race, ethnicity, age; if last contact with the health care system was T0; recent history of related cardiovascular conditions; or congenital heart disease.

**Exposure:** Preeclampsia on or before delivery.

**Main Outcomes and Measures:** Diagnosis of heart failure (HF) at or after T0. Other measures included were Leonard's obstetric comorbidity score, age, race, ethnicity, and disability. We used Cox proportional hazards models to assess time till HF.

**Results:** 718,166 individuals were included and 14,204 had preeclampsia. After adjusting for obstetric comorbidities, race, ethnicity, age and disability, Black patients had a higher hazard of HF compared to white women (HR 3.48; CI 2.97, 4.06). Black patients with preeclampsia had a higher hazard of HF than white patients without preeclampsia (HR 4.63; CI 1.65, 12.99). Black patients without preeclampsia had a risk of HF similar to other racial groups with preeclampsia.

**Conclusions and Relevance:** The risk for HF after preeclampsia was significant and should continue to be explored. Modifiable factors for both preeclampsia and HF which should be a focus include substance use disorder and pregestational diabetes. Regular long term clinical follow up or screening of women with preeclampsia for HF may be warranted.

## 1 Introduction

2 There are higher rates of poor maternal health outcomes in the US than in other high income coun-  
3 tries<sup>1-3</sup> and these geographic disparities have only increased in the last decade<sup>4,5</sup>. These maternal  
4 health outcomes are driven by a number of factors including social determinants of health, commu-  
5 nity resources, clinical practices, and individual behaviors<sup>6-8</sup>. Legal restriction on the availability  
6 of elective pregnancy termination<sup>9-11</sup>, diminishing availability of obstetric care even in urban ar-  
7 eas<sup>12-14</sup>, and bias against patients in medicine<sup>15-17</sup> are maternal health concerns most visible in  
8 US media. There is a need to identify and address these issues of maternal health concern in order  
9 to reverse these disparities and improve overall maternal health outcomes in the US.

10 One specific issue of concern is the incidence and subsequent health problems related to hy-  
11 pertensive disorders of pregnancy (HDP), namely preeclampsia and gestational hypertension, that  
12 occur in approximately 8 to 10% of pregnancies in the US<sup>18,19</sup>. Preeclampsia, a pregnancy related  
13 condition characterized by high blood pressure, occurs most often during a person's first preg-  
14 nancy<sup>20,21</sup>. More than 80% of pregnancies have at least one risk factor for HDP<sup>18</sup> such as age,  
15 pregestational hypertension, and pregestational diabetes<sup>20,22,23</sup>. Preeclampsia can cause maternal  
16 seizure (eclampsia), stroke, hemorrhage, kidney and cardiac injury.

17 A type of cardiovascular disease, heart failure (HF), has been connected to having preeclamp-  
18 sia<sup>24-27</sup>. HF risk factors are often preventable and modifiable but HF is not typically considered  
19 a potential health problem of otherwise healthy women of childbearing age. Recent work has sug-  
20 gested that women with HDP during or after pregnancy are at greater risk for having HF within  
21 and after 90 days post-pregnancy<sup>25</sup>.

22 The purpose of this study is to determine whether having a diagnosis of preeclampsia or eclamp-  
23 sia (referred to hereforth as preeclampsia) at or before delivery increases the rate of HF after delivery  
24 across age, race, and ethnicity demographic characteristics and obstetrics related comorbidities.

## 25 Methods

### 26 Data Source

27 Clinical data was compiled from a subset of Truveta data and consisted of de-identified medical  
28 records representing ambulatory centers, hospitals, imaging centers, and clinics and medical of-  
29 fices. Truveta (<https://www.truveta.com/>) provides access to continuously updated and linked  
30 electronic health records (EHR) and claims data including demographics, diagnoses, encounters, im-  
31 munizations, medications, laboratory results, procedures, clinical notes, and images. Truveta Data  
32 used in this study was accessed on 2023-07-25. Through syntactic normalization, similar data fields  
33 from different health care organizations are mapped to a common schema referred to as the Tru-  
34 veta Data Model (TDM). Once organized into common fields, the values are normalized to common  
35 ontologies such as ICD-10, SNOMED-CT, LOINC, RxNorm, and CVX, through semantic normal-  
36 ization. The normalization process employs an expert-led, artificial intelligence driven process to  
37 accomplish high-confidence modeling at scale. This study performs analysis of de-identified EHR  
38 data accessed via Truveta Studio. Truveta Studio only contains data that has been de-identified by  
39 expert determination in accordance with HIPAA Privacy Rule, and therefore this study was exempt  
40 from Institutional Review Board approval. Truveta data has been used in previous research<sup>28-30</sup>  
41 and is available to all Truveta subscribers at (<https://studio.truveta.com>).

## 42 Study design and population

43 This observational cohort study follows the STROBE reporting guideline<sup>31</sup>.

### 44 Eligibility criteria

45 Eligible female patients had a delivery between January 1, 2018 and March 31, 2023 and were  
46 16 to 50 years of age. If patients had multiple deliveries within the time period, only the first  
47 was included. Patients were identified using ICD-9-CM, ICD-10-CM, and SNOMED CT codes for  
48 delivery (Supplement). The first delivery in the dataset was considered the index event, or time  
49 zero (T0).

50 Patients were excluded if they had missing information on sex, race, ethnicity, or age. Patients  
51 were also excluded if their last contact with the health care system was on the day of delivery.  
52 Consistent with previous literature, patients were excluded if they had congenital heart disease<sup>32</sup>  
53 or a history of HF, chronic kidney disease, pulmonary embolism, myocardial infarction, cardiomy-  
54 opathy, or ischemic heart disease less than a year prior to delivery<sup>25</sup> as identified by diagnostic or  
55 billing codes (Supplement).

### 56 Outcome

57 The outcome of interest was HF at or after T0. A binary yes/no HF variable was defined using  
58 ICD-9-CM, ICD-10-CM, and SNOMED CT codes.

### 59 Exposure

60 The exposure of interest was preeclampsia at or before T0. A binary yes/no variable for preeclampsia  
61 was defined using ICD-9-CM, ICD-10-CM, and SNOMED CT codes.

### 62 Covariates

63 We used Leonard's validated obstetric comorbidity score<sup>33</sup> to control for indicators of severe ma-  
64 ternal morbidity during and after delivery. Included comorbidities and the method to calculate the  
65 score can be found elsewhere<sup>33</sup>, but were identified using ICD-9-CM, ICD-10-CM, and SNOMED  
66 CT codes (Supplement). We modified the obstetric comorbidity score to include eclampsia in  
67 the severe preeclampsia category. Pregestational diabetes (type 1 and type 2), body mass index  
68 (BMI)  $\geq 40$ , gestational diabetes, pregestational hypertension, and age were added to the model as  
69 covariates in addition to their inclusion in the obstetric comorbidity score. Age was assessed cate-  
70 gorically (16-17, 18-24, 25-34, 35-44, and  $\geq 45$ ). Race was categorized as Black or African American  
71 (henceforth referred to as Black), white, Asian, and other. Because of small population sizes that  
72 complicate statistical modeling, the "other" is a composite category of individuals who were catego-  
73 rized by the health systems as "other", Native American and Alaska Native, or Native Hawaiian or  
74 other Pacific Islanders. Ethnicity was a binary variable of Hispanic and/or Latino and not Hispanic  
75 and/or Latino. We expanded Gleason's ICD-9-CM definitions of intellectual, physical, and sensory  
76 disability<sup>34</sup> to include ICD-10-CM and SNOMED CT codes and created a binary yes/no disability  
77 variable.

78 All medical definitions used in this study were reviewed and approved by a clinical informaticist.

## 79 Study Population Flowchart

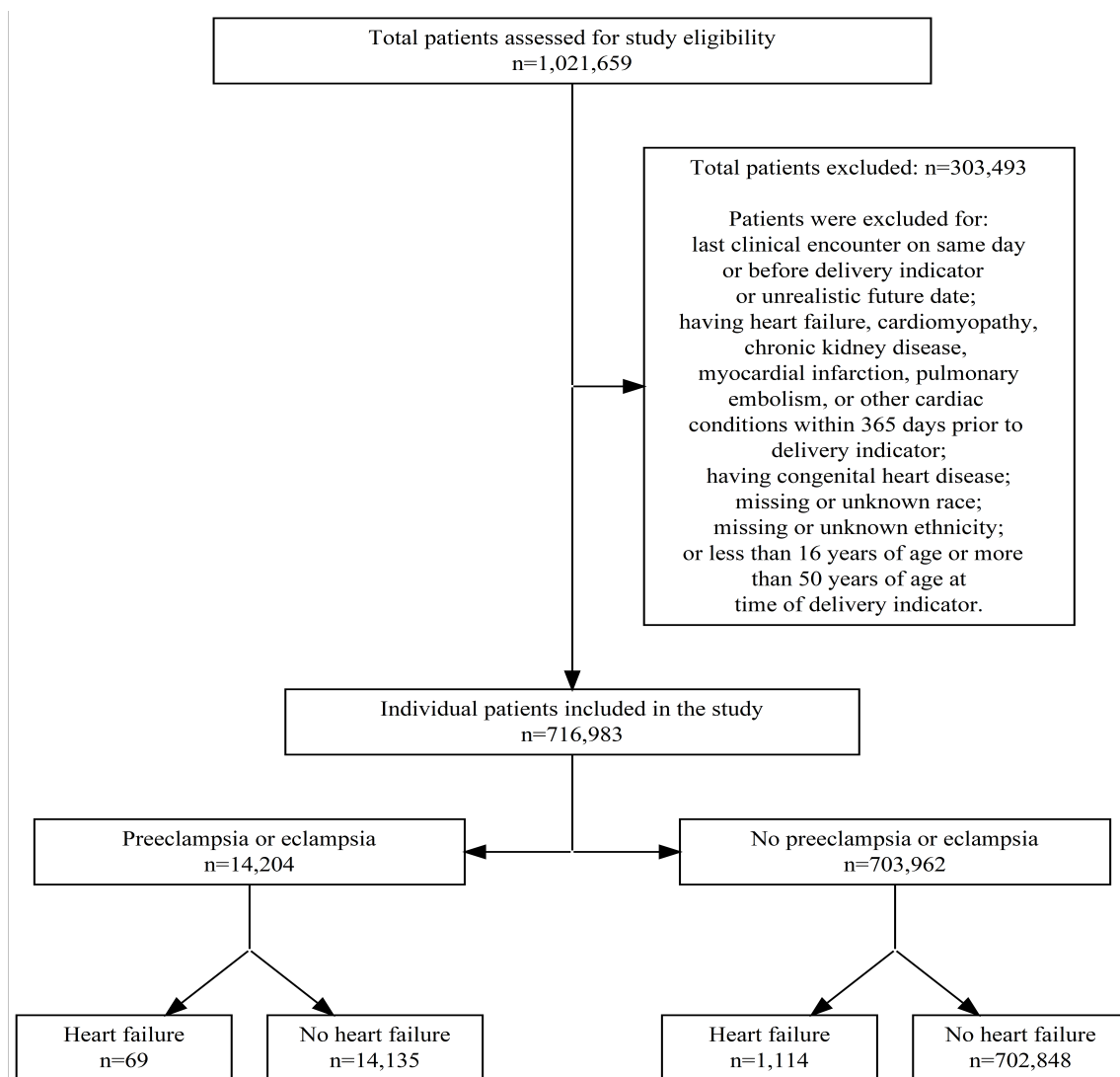


Figure 1: Cohort flowchart for the study of the risk of heart failure after preeclampsia or eclampsia between January 1, 2018 and March 31, 2023 in a subset of Truveta data. All medical conditions and diseases identified using ICD-9-CM, ICD-10-CM, and SNOMED CT codes (See study supplement).

## 80 Statistical analysis

81 We calculated descriptive statistics to describe the study population. Due to right censoring, time  
82 to HF was assessed using Cox proportional hazards models. We completed two sets of analyses using

83 the most recent encounter in the data as the censoring date. In the first, women were followed for  
84 90 days until time of HF or their censoring, whichever occurred first. In the second, women were  
85 followed until the end of the available data until time of HF or their censoring, whichever occurred  
86 first. We plotted Kaplan-Meier curves of time to HF stratified by preeclampsia status and race.

87 For the survival analysis, all categorical covariates with more than 2 levels were transformed into  
88 multiple indicator variables, or dummy coded, with the most frequently occurring state being the  
89 reference state. Our first model included all of the covariates as additive effects, while our second  
90 model considered interaction terms between preeclampsia and race, preeclampsia and substance use  
91 disorder, preeclampsia and disability, substance use disorder and race, and disability and race.

92 All models were fit using the `survival` R package<sup>35,36</sup>. We compared these models using Akaike  
93 Information Criterion (AIC)<sup>37</sup>, where the selected final model was that which had the lowest AIC  
94 value.

95 We used the final model to estimate model based hazard ratios comparing different combinations  
96 of preeclampsia, race (white or Black), substance use disorder (Yes or No), and disability status (Yes  
97 or No). These hazard ratios were estimated from marginal means calculated using the `emmeans` R  
98 package<sup>38</sup>. This approach accounts for interaction effects which prevent the simple exponentiation  
99 of the regression coefficients and provides interpretable results. Statistical significance ( $\alpha=0.05$ )  
100 of specific variables was determined using confidence intervals (not inclusive of 1.0) and p-values  
101  $\leq 0.05$ ).

## 102 Statistical programs and packages used

103 Statistical analysis was completed using Python and R software. Data preparation was completed  
104 using Python 3.10.5<sup>39,40</sup> and packages `pandas`<sup>41,42</sup>, `NumPy`<sup>43</sup>, `PyYAML`<sup>44</sup>, and `matplotlib`<sup>45</sup>. All  
105 analyses were conducted in R Version 4.1.3<sup>46</sup> using packages `dplyr`<sup>47</sup>, `ggplot2`<sup>48</sup>, `janitor`<sup>49</sup>,  
106 `gtsummary`<sup>50</sup>, `broom`<sup>51</sup>, `emmeans`<sup>38</sup>, `scales`<sup>52</sup>, `MASS`<sup>53</sup>, `xtable`<sup>54</sup>, `etm`<sup>55</sup>, `survival`<sup>35,36</sup>, and `survminer`<sup>56</sup>.  
107 The study population flowchart was made using R Version 4.2.3 and packages `xml2`<sup>57</sup>, `DiagrammeR`<sup>58</sup>,  
108 `DiagrammeRsvg`<sup>59</sup>, and `rsvg`<sup>60</sup>.

## 109 Results

### 110 Description of study patients

111 There were 1,021,660 patients 16 to 50 years of age that had pregnancy indicators or a delivery on  
112 or after January 1, 2018 (Figure 1) that were considered for inclusion. Of that number, 303,493  
113 people were excluded because of either 1) missing or unknown sex, race, ethnicity, and/or age; 2)  
114 no contact with the health system after T0 or beyond the date the data were obtained for the study  
115 (2023-07-25); 3) congenital heart disease; and/or 4) having a history of HF, chronic kidney disease,  
116 pulmonary embolism, myocardial infarction, cardiomyopathy, or ischemic heart disease between 0  
117 and 365 days prior to T0. A total of 718,166 people met the inclusion criteria and were included in  
118 the study.

### 119 Demographics

120 A total of 14,204 patients had preeclampsia at or before delivery (Table 1; Figure 1) and 69 of  
121 these patients had HF at or after delivery. A total of 703,962 patients did not have preeclampsia

122 and 1,114 patients without preeclampsia were diagnosed with HF at or after delivery. Most people  
123 (57.3%) were between 25 and 34 years of age at the time of delivery. Black patients made up 13.7%  
124 of those without preeclampsia and 17.2% of those with preeclampsia. Asian patients made up 8.1%  
125 of those without preeclampsia and 6.4% of those with preeclampsia. White patients made up the  
126 majority of the study population (65.1%) and most of the study population was not Hispanic or  
127 Latino (81.1%).

128 32.1% of patients with preeclampsia and 2.0% of patients without preeclampsia had a pre-  
129 existing heart condition at least a year before their delivery. These conditions included but were not  
130 limited to hypertensive crisis, cardiac arrhythmia in childbirth, acute pericarditis, and hypertensive  
131 chronic kidney disease (Table 1). The prevalence of pregestational hypertension was 1.1% of patients  
132 without preeclampsia and 7.9% of patients with preeclampsia.

	No Preeclampsia/Eclampsia (N=703,962)	Preeclampsia/Eclampsia (N=14,204)	Overall (N=718,166)
Heart Failure Event			
No	702,848 (99.8%)	14,135 (99.5%)	716,983 (99.8%)
Yes	1,114 (0.2%)	69 (0.5%)	1,183 (0.2%)
Race			
Black	96,499 (13.7%)	2,445 (17.2%)	98,944 (13.8%)
Asian	57,221 (8.1%)	913 (6.4%)	58,134 (8.1%)
White	458,193 (65.1%)	8,452 (59.5%)	466,645 (65.0%)
Other Race	92,049 (13.1%)	2,394 (16.9%)	94,443 (13.2%)
Ethnicity			
Hispanic or Latino	132,846 (18.9%)	2,973 (20.9%)	135,819 (18.9%)
Not Hispanic or Latino	571,116 (81.1%)	11,231 (79.1%)	582,347 (81.1%)
Age Group			
0-17	7,372 (1.0%)	104 (0.7%)	7,476 (1.0%)
18-24	121,109 (17.2%)	2,485 (17.5%)	123,594 (17.2%)
25-34	403,675 (57.3%)	7,756 (54.6%)	411,431 (57.3%)
35-44	160,597 (22.8%)	3,733 (26.3%)	164,330 (22.9%)
≥45	11,209 (1.6%)	126 (0.9%)	11,335 (1.6%)
Bleeding Conditions			
No	692,071 (98.3%)	13,591 (95.7%)	705,662 (98.3%)
Yes	11,891 (1.7%)	613 (4.3%)	12,504 (1.7%)
Pregestational Diabetes			
No	693,740 (98.5%)	13,556 (95.4%)	707,296 (98.5%)
Yes	10,222 (1.5%)	648 (4.6%)	10,870 (1.5%)
Gestational Diabetes			
No	658,686 (93.6%)	12,621 (88.9%)	671,307 (93.5%)
Yes	45,276 (6.4%)	1,583 (11.1%)	46,859 (6.5%)
Pregestational Hypertension			
No	696,451 (98.9%)	13,076 (92.1%)	709,527 (98.8%)
Yes	7,511 (1.1%)	1,128 (7.9%)	8,639 (1.2%)
Other Preexisting Cardiac Conditions			
No	690,070 (98.0%)	9,645 (67.9%)	699,715 (97.4%)
Yes	13,892 (2.0%)	4,559 (32.1%)	18,451 (2.6%)

Continued on next page



**Table 1 – continued from previous page**

Feature	No Preeclampsia/Eclampsia	Preeclampsia/Eclampsia	Overall
BMI $\geq 40$			
No	689,056 (97.9%)	13,424 (94.5%)	702,480 (97.8%)
Yes	14,906 (2.1%)	780 (5.5%)	15,686 (2.2%)
Substance Use Disorder			
No	639,677 (90.9%)	12,220 (86.0%)	651,897 (90.8%)
Yes	64,285 (9.1%)	1,984 (14.0%)	66,269 (9.2%)
Disability			
No	624,955 (88.8%)	12,036 (84.7%)	636,991 (88.7%)
Yes	79,007 (11.2%)	2,168 (15.3%)	81,175 (11.3%)
Obstetric Comorbidity Index			
Mean (SD)	19.7 (23.7)	49.0 (47.7)	20.2 (24.8)
Median [Min, Max]	12.0 [0, 256]	38.0 [0, 292]	13.0 [0, 292]

Table 1: Demographic and comorbidity characteristics of people that delivered at or after January 1, 2018 to March 31, 2023 in a subset of Truveta data.

### 133 **Time to heart failure after delivery**

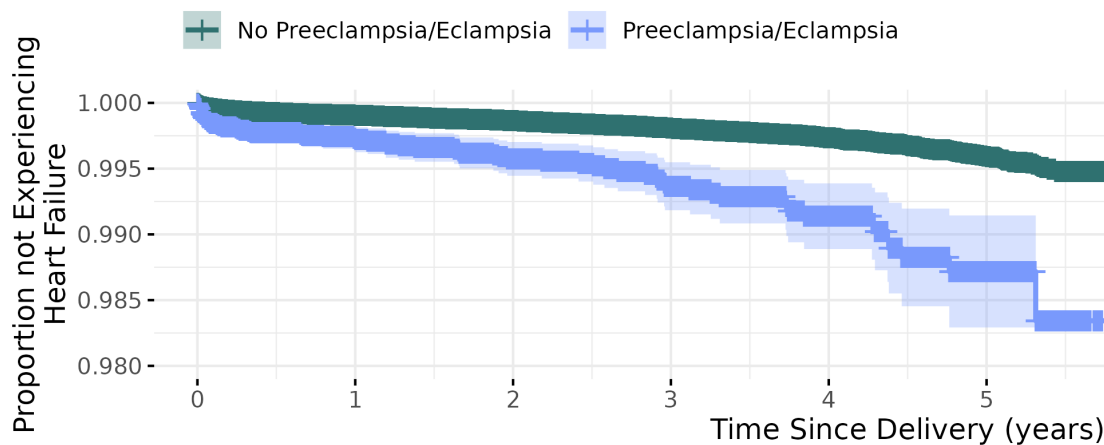
134 The differences in prevalence seen in Table 1 carried over to analyses of time to HF after delivery.  
135 We used Kaplan-Meier curves to compare differences in patient time to HF at any point between  
136 patients with preeclampsia and patients without preeclampsia (Figure 2 A) as well as time to HF  
137 within 90 days of delivery (Figure 2 B). The prevalence of HF is small so the Y-axes in the graph  
138 exclude 0-0.98 to highlight the differences. In both cases, there is a nearly immediate separation  
139 in the curves and patients with preeclampsia have greater hazard of having the event of HF than  
140 patients without preeclampsia. There were significant differences in time to HF stratified by race  
141 (Figure 3) and disability (not shown) based on the Kaplan-Meier curves. The hazard of HF for  
142 Black patients and Asian patients with and without preeclampsia approach each other between the  
143 4- and 5-year marks.

### 144 **Multivariate time to event analysis**

145 We selected the Cox proportional hazards model of time till HF which featured multiple interaction  
146 terms as our final model because it had a lower AIC (29491.4) than the model which had only  
147 additive effects among the covariates (29504.9) (Supplement). The interaction model was used for  
148 all subsequent hazard ratio calculations (Table 2, Table 3, Supplement).

## Time to Heart Failure After Delivery by Preeclampsia Status

### A. Survival Without Heart Failure Occurrence Any Time After Delivery



### B. Survival Without Heart Failure within 90 Days of Delivery

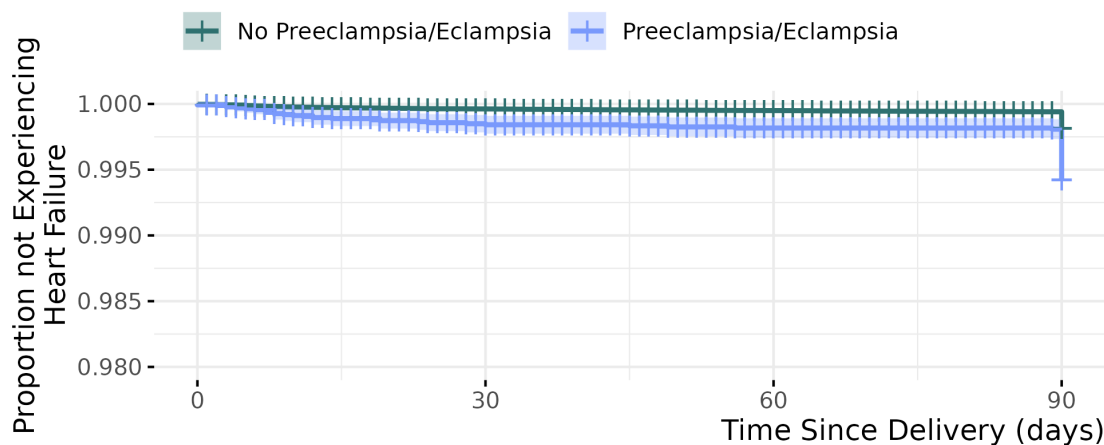
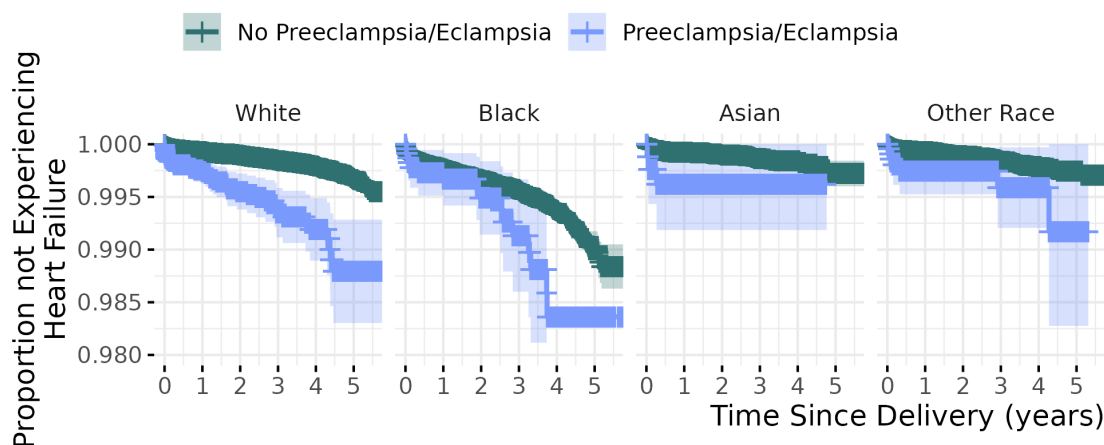


Figure 2: Time to Heart Failure After Delivery by Preeclampsia Status. Figure 2A displays the proportion of patients without heart failure at any point at or after delivery. Figure 2B displays the proportion of patients without heart failure within 90 days of delivery. In both figures (2A and 2B) the top line [green] is the proportion of patients without preeclampsia. The prevalence of HF is small so the Y-axes in the graph exclude 0-0.98 to highlight the differences. Graphs are not adjusted for additional factors.

## Time to Heart Failure at or After Delivery by Preeclampsia Status and Race

### A. Survival Without Heart Failure Occurrence Any Time at or After Delivery



### B. Survival Without Heart Failure within 90 Days of Delivery

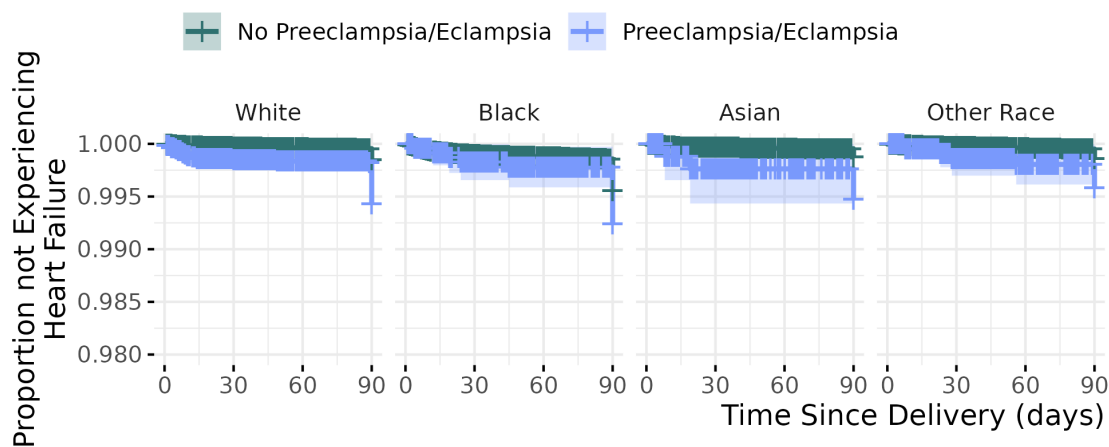


Figure 3: Time to Heart Failure After Delivery by Preeclampsia Status and Race. Figure 3A displays the proportion of patients without heart failure at any point at or after delivery. Figure 3B displays the proportion of patients without heart failure within 90 days of delivery. In both figures (3A and 3B) the top line [green] is the proportion of patients without preeclampsia. The prevalence of HF is small so the Y-axes in the graph exclude 0-0.98 to highlight the differences. Graphs are not adjusted for additional factors.

Characteristic	HR <sup>1</sup>	95% CI <sup>1</sup>	p-value
Preeclampsia/Eclampsia			
No Preeclampsia/Eclampsia	—	—	
Preeclampsia/Eclampsia	2.81	1.91, 4.13	<0.001
Race			
White	—	—	
Black	3.48	2.97, 4.06	<0.001
Asian	0.93	0.69, 1.25	0.6
Other Race	1.17	0.90, 1.53	0.2
Ethnicity			
Not Hispanic or Latino	—	—	
Hispanic or Latino	0.78	0.62, 0.96	0.021
Age Group			
0-17	—	—	
18-24	1.82	0.67, 4.92	0.2
25-34	3.10	1.16, 8.28	0.024
35-44	4.64	1.73, 12.4	0.002
≥45	7.21	2.61, 19.9	<0.001
Pregestational Diabetes (Type 1 and Type 2)			
No	—	—	
Yes	1.82	1.40, 2.36	<0.001
Gestational Diabetes			
No	—	—	
Yes	0.94	0.76, 1.17	0.6
Pregestational Hypertension			
No	—	—	
Yes	1.41	1.07, 1.87	0.016
Other Preexisting Cardiac Conditions			
No	—	—	
Yes	1.30	1.00, 1.69	0.049
BMI ≥40			
No	—	—	
Yes	2.04	1.65, 2.54	<0.001
Substance Use Disorder			
No	—	—	
Yes	1.83	1.49, 2.26	<0.001
Disability			
No	—	—	
Yes	1.29	1.05, 1.57	0.014
Obstetric Comorbidity Index Score	1.01	1.00, 1.01	<0.001

Table 2: Hazard of heart failure after delivery for women with preeclampsia January 1, 2018 to March 31, 2023. <sup>1</sup>HR = Hazard Ratio, CI = Confidence Interval

Preeclampsia/Eclampsia		Race		Substance Use Disorder		Disabilities		Hazard Ratio	[95%]
N	D	N	D	N	D	N	D		
Yes	Yes	Black	White	No	No	No	No	1.65	[0.53, 5.11]
Yes	Yes	Black	White	Yes	Yes	No	No	0.97	[0.28, 3.43]
Yes	Yes	Black	White	No	No	Yes	Yes	1.23	[0.35, 4.25]
Yes	Yes	Black	White	Yes	Yes	Yes	Yes	0.72	[0.20, 2.66]
Yes	No	Black	White	No	No	No	No	4.63	[1.65, 12.99]
Yes	No	Black	White	Yes	Yes	No	No	1.59	[0.33, 7.74]
Yes	No	Black	White	No	No	Yes	Yes	1.92	[0.41, 9.07]
Yes	No	Black	White	Yes	Yes	Yes	Yes	0.66	[0.11, 3.90]
Yes	No	White	White	No	No	No	No	2.81	[1.33, 5.92]
Yes	No	White	White	Yes	Yes	No	No	1.63	[0.49, 5.47]
Yes	No	White	White	No	No	Yes	Yes	1.56	[0.47, 5.23]
Yes	No	White	White	Yes	Yes	Yes	Yes	0.91	[0.23, 3.60]
Yes	No	Black	Black	No	No	No	No	1.33	[0.48, 3.70]
Yes	No	Black	Black	Yes	Yes	No	No	0.78	[0.18, 3.34]
Yes	No	Black	Black	No	No	Yes	Yes	0.74	[0.18, 3.12]
Yes	No	Black	Black	Yes	Yes	Yes	Yes	0.43	[0.08, 2.22]
No	No	Black	White	No	No	No	No	3.48	[2.57, 4.70]
No	No	Black	White	Yes	Yes	No	No	2.05	[1.10, 3.83]
No	No	Black	White	No	No	Yes	Yes	2.59	[1.43, 4.67]
No	No	Black	White	Yes	Yes	Yes	Yes	1.52	[0.76, 3.06]

Table 3: Hazard ratios associated comparisons between heart failure and different combinations of preeclampsia/eclampsia status (Yes/No), substance use disorder (Yes/No), physical disability (Yes/No) and their interaction with race (white/Black). The state of each of these variables is shown in the [N]umerator and [D]enominator columns beneath each variable name. Hazard ratio is provided with 95% confidence intervals.

149 We found that the hazard of HF was greater in patients with preeclampsia during the index  
150 pregnancy compared with patients that did not have preeclampsia after adjusting for multiple  
151 factors including obstetric comorbidities, age, race, ethnicity, and BMI  $\geq 40$  (HR 2.81; CI 1.91,  
152 4.13) (Table 2). Black women have 3.48 (CI 2.97, 4.06) times the hazard of HF compared to white  
153 women (Table 2). Women with substance use disorder are 1.83 (CI 1.49, 2.26) times more likely  
154 than women without substance use disorder to have HF after delivery (Table 2). Women with  
155 disabilities have a higher hazard of HF (HR 1.29; CI 1.05, 1.57) than women without disabilities  
156 (Table 2).

157 When specifically comparing Black and white women, we found that Black women without  
158 preeclampsia have a hazard of HF 3.43 (CI 2.57, 4.70) times greater after delivery than white  
159 women without preeclampsia (Table 3, Supplement). In our population, the hazard of HF after  
160 delivery for Black women with preeclampsia compared to white women without preeclampsia was  
161 4.63 times greater but had a wide confidence interval (CI 1.65,12.99) (Table 3, Supplement). The  
162 hazard of HF for white women with preeclampsia compared to those without was 2.81 (CI 1.35,  
163 5.92) (Table 3, Supplement).

## 164 Discussion

165 The purpose of this large retrospective cohort study was to determine whether having a diagnosis of  
166 preeclampsia at or before delivery increases the risk of HF at or after delivery across demographics,  
167 obstetrics related comorbidities, age, race and/or ethnicity. Even following resolution, preeclampsia  
168 is a significant risk factor for future cardiovascular disease, but there is no regular implementation  
169 of long term clinical follow up or screening in the US. Prior research has connected the risk of HF to  
170 preeclampsia<sup>24-27</sup>, but more information is needed to assess the role of disparities in this outcome.  
171 In this study of 718,166 deliveries, the risk of HF at any point after delivery was greater in women  
172 that had preeclampsia than those that did not, after controlling for obstetrics comorbidities, race,  
173 ethnicity, and age.

174 The variables that we identified as the most important for the occurrence of HF are non-  
175 modifiable socio-demographic factors (e.g., race, ethnicity); and preventable or modifiable disease  
176 (e.g., substance use disorder, BMI  $\geq 40$ , preeclampsia, gestational diabetes)(Table 2, Table 3, Supplement).  
177 These findings are in line with previous research on preeclampsia<sup>18</sup>, HF<sup>21</sup>, and the combination  
178 of the preeclampsia and HF<sup>25</sup>. Despite our findings, however, the etiology of the occurrence of  
179 HF after HDP, especially preeclampsia, is not completely explained. We identified preeclampsia,  
180 diabetes, substance use disorder, and disability as important risk factors for HF after delivery  
181 (Table 2, Supplement). Despite a small number of cases of HF at or after delivery, we found that  
182 the risk for HF after preeclampsia was significant for all women and should continue to be explored.

183 It was clear in this analysis that race was significantly associated with both the occurrence of  
184 preeclampsia and the occurrence of HF when stratified by preeclampsia status. This was expected,  
185 especially given known disparities in maternal health outcomes in the US<sup>61,62</sup> and poor health  
186 outcomes for non-white populations in the US. Importantly, regardless of preeclampsia status,  
187 Black patients have similar risk of HF 5 or more years after delivery. Black patients without  
188 preeclampsia have risk of HF similar to other racial groups with preeclampsia. When considering HF  
189 and preeclampsia comorbidities, disparate outcomes existed for women with preeclampsia compared  
190 to those without preeclampsia within race categories. We also found that the risk of HF was  
191 higher for non-white women with substance use disorder (Supplement). There is a demonstrated  
192 connection between substance use disorder and HF hospitalizations<sup>63</sup>. Programs already exist

193 to address substance use disorder in childbearing persons and their children<sup>64</sup>), but these results  
194 indicate that more can be done. Our results suggest that the combined effect of substance use  
195 disorder and preeclampsia on HF should be consistently included in further research.

## 196 **Strengths and Limitations**

197 We did not include tobacco use, income, insurance type, urban/rural locality, parity, or previous  
198 preeclampsia, factors that are important in the discussion of HF after pregnancy. We also did  
199 not include any pregnant people that were below age 16 despite teenagers being at greater risk  
200 for preeclampsia than older persons. We did not include people that did not have a biological sex  
201 of female in the EHR. This study did not include two important clinical variables - severity of  
202 preeclampsia or gestational hypertension - outside of their inclusion in the obstetric comorbidity  
203 index. We acknowledge that the study results may be different when stratified by the severity of  
204 preeclampsia. We also measured pregnancy by using delivery as the indicator. This means that we  
205 may have undercounted the number of pregnant people, underestimated the risk of HF in people  
206 with preeclampsia, and underestimated the effect of repeat preeclampsia on risk of HF. We were  
207 unable to estimate any differences in outcome associated with caregiver type (e.g., physician, nurse  
208 practitioner, doula, midwife).

209 Our approach has multiple strengths. This study used a nationally representative dataset derived  
210 from EHR. The results could be considered generalizable for patients aged 16 to 50 that were white,  
211 Black, and Asian, but care should be given when applying these results to populations that are not  
212 specified here such as Native Hawaiian or Pacific Islander. Another strength of this study is the  
213 use of an obstetric specific comorbidity index over the Elixhauser or Charlson comorbidity indexes.  
214 While not containing all possible comorbidities for pregnancy, the care given to include gestational  
215 diabetes, advanced maternal age, placental abruption, anemia, and mental health issues among  
216 others makes this index better suited to account for comorbidities that are present or co-occur  
217 during pregnancy rather than those that occur with other life illnesses.

218 While using a large cohort is a strength, ours is subject to a variety of known limitations to EHR  
219 data. We are only able to identify events that are captured by the constituent health care systems  
220 that are a part of the Truvena member system. Events and comorbidity status may be misclassified  
221 when captured outside of member healthcare systems. These are common and well understood  
222 limitations associated with using EHR data<sup>65,66</sup>. Finally, the number of exclusion criteria used in  
223 this study dramatically decreased the number of patients with preeclampsia. This directly affected  
224 the statistical outcomes of this study and may not represent the full effects of preeclampsia on HF  
225 after delivery for women with existing heart issues or newly diagnosed pregestational hypertension.  
226 Despite these limitations, our results still underscore the need to examine the relationship between  
227 preeclampsia and HF.

## 228 **Conclusion**

229 The purpose of this large retrospective cohort study was to determine whether having a diagnosis of  
230 preeclampsia at or before delivery increases the risk of HF at or after delivery across demographics,  
231 obstetrics related comorbidities, age, race, and ethnicity. We found this to be the case for each of  
232 these factors. Regular long term clinical follow up or screening of women with preeclampsia for HF  
233 may be warranted. Future research should focus on the impact of obstetrics related comorbidities  
234 that are modifiable, the impact of society on these outcomes, the impact of parity and prior history  
235 of preeclampsia, and further examine the impact of different types of disability on the incidence of



236 HDP and/or HF in pregnant women. We expect that each of these factors will help explain more  
237 of the disparity and provide guidance for clinical intervention over time.

## 238 Acknowledgements

239 The authors thank the clinical informatics team for their assistance and input during the design  
240 and development of this study. We also thank the Truveta communications team for their ongoing  
241 support as we conduct research that saves lives with data.

## 242 Funding

243 This study was funded internally by Truveta Inc.

## 244 Competing Interests

245 All authors, with the exception of Dr. Emily K. Garrett, are employees of Truveta Incorporated.

## 246 Institutional Review Board Approval

247 This study performs analysis of de-identified electronic health records (EHR) data accessed via Tru-  
248 veta Studio. Truveta Studio only contains data that has been de-identified by expert determination  
249 in accordance with HIPAA Privacy Rule, and therefore this study was exempt from Institutional  
250 Review Board approval.

## 251 Data Availability Statement

252 Code necessary to generate all analyses and figures is included in a GitHub repository ([https://github.com/Truveta/baker\\_et\\_al\\_preeclampsia\\_heart\\_failure](https://github.com/Truveta/baker_et_al_preeclampsia_heart_failure)).  
253

## 254 References

- 255 [1] Andreea A. Creanga, Cynthia J. Berg, Carla Syverson, Kristi Seed, F. Carol Bruce, and  
256 William M. Callaghan. Pregnancy-Related Mortality in the United States, 2006–2010. *Obstet-*  
257 *rics & Gynecology*, 125(1), 2015. ISSN 0029-7844. URL [https://journals.lww.com/green](https://journals.lww.com/greenjournal/Fulltext/2015/01000/Pregnancy_Related_Mortality_in_the_United_States,.3.aspx)  
258 [journal/Fulltext/2015/01000/Pregnancy\\_Related\\_Mortality\\_in\\_the\\_United\\_States](https://journals.lww.com/greenjournal/Fulltext/2015/01000/Pregnancy_Related_Mortality_in_the_United_States,.3.aspx)  
259 [,.3.aspx](https://journals.lww.com/greenjournal/Fulltext/2015/01000/Pregnancy_Related_Mortality_in_the_United_States,.3.aspx).
- 260 [2] Jamila Taylor, Anna Bernstein, Thomas Waldrop, and Vina Smith-Ramakrishnan. The Wors-  
261 ening U.S. Maternal Health Crisis in Three Graphs, mar 2022. URL [https://tcf.org/cont](https://tcf.org/content/commentary/worsening-u-s-maternal-health-crisis-three-graphs/?agreed=1&utm_medium=email&utm_source=transaction)  
262 [ent/commentary/worsening-u-s-maternal-health-crisis-three-graphs/?agreed=1&ut](https://tcf.org/content/commentary/worsening-u-s-maternal-health-crisis-three-graphs/?agreed=1&utm_medium=email&utm_source=transaction)  
263 [m\\_medium=email&utm\\_source=transaction](https://tcf.org/content/commentary/worsening-u-s-maternal-health-crisis-three-graphs/?agreed=1&utm_medium=email&utm_source=transaction).

- 264 [3] Munira Z. Gunja, Evan D. Gumas, and Reginald D. Williams II. The U.S. Maternal Mortality  
265 Crisis Continues to Worsen: An International Comparison. 2022. doi: 10.26099/8VEM-FC65.  
266 URL [https://www.commonwealthfund.org/blog/2022/us-maternal-mortality-crisis-c-](https://www.commonwealthfund.org/blog/2022/us-maternal-mortality-crisis-c-continues-worsen-international-comparison)  
267 [ontinues-worsen-international-comparison](https://www.commonwealthfund.org/blog/2022/us-maternal-mortality-crisis-c-continues-worsen-international-comparison). Publisher: Commonwealth Fund.
- 268 [4] Donna Hoyert. Maternal mortality rates in the United States, 2021. Technical report, National  
269 Center for Health Statistics (U.S.), March 2023. URL [https://www.cdc.gov/nchs/data/he-](https://www.cdc.gov/nchs/data/hestat/maternal-mortality/2021/maternal-mortality-rates-2021.htm)  
270 [stat/maternal-mortality/2021/maternal-mortality-rates-2021.htm](https://www.cdc.gov/nchs/data/hestat/maternal-mortality/2021/maternal-mortality-rates-2021.htm).
- 271 [5] U.S. Government Accountability Office. Maternal Health: Outcomes Worsened and Disparities  
272 Persisted During the Pandemic. Technical Report GAO-23-105871, October 2022. URL [https:](https://www.gao.gov/products/gao-23-105871)  
273 [//www.gao.gov/products/gao-23-105871](https://www.gao.gov/products/gao-23-105871).
- 274 [6] Ruofei Du, Mir M. Ali, Yi-Shan Sung, Ambrish A. Pandit, Nalin Payakachat, Songthip T.  
275 Ounpraseuth, Everett F. Magann, and Hari Eswaran. Maternal comorbidity index and severe  
276 maternal morbidity among medicaid covered pregnant women in a US Southern rural state.  
277 *The Journal of Maternal-Fetal & Neonatal Medicine*, 36(1):2167073, December 2023. ISSN  
278 1476-7058. doi: 10.1080/14767058.2023.2167073. URL [https://doi.org/10.1080/14767058](https://doi.org/10.1080/14767058.2023.2167073)  
279 [.2023.2167073](https://doi.org/10.1080/14767058.2023.2167073). Publisher: Taylor & Francis.
- 280 [7] Felix M. Muchomba, Julien Teitler, and Nancy E. Reichman. Association Between Housing  
281 Affordability and Severe Maternal Morbidity. *JAMA Network Open*, 5(11):e2243225–e2243225,  
282 November 2022. ISSN 2574-3805. doi: 10.1001/jamanetworkopen.2022.43225. URL [https:](https://doi.org/10.1001/jamanetworkopen.2022.43225)  
283 [//doi.org/10.1001/jamanetworkopen.2022.43225](https://doi.org/10.1001/jamanetworkopen.2022.43225).
- 284 [8] Meghan Tipre, Bolanle Bolaji, Christina Blanchard, Alex Harrelson, Jeff Szychowski, Rachel  
285 Sinkey, Zoe Julian, Alan Tita, and Monica L. Baskin. Relationship Between Neighborhood  
286 Socioeconomic Disadvantage and Severe Maternal Morbidity and Maternal Mortality. *Ethnicity*  
287 *& disease*, 32(4):293–304, 2022. ISSN 1945-0826 1049-510X. doi: 10.18865/ed.32.4.293. Place:  
288 United States.
- 289 [9] Sara K. Redd, Kelli Stidham Hall, Monica S. Aswani, Bisakha Sen, Martha Wingate, and  
290 Whitney S. Rice. Variation in Restrictive Abortion Policies and Adverse Birth Outcomes in  
291 the United States from 2005 to 2015. *Women's Health Issues*, 32(2):103–113, March 2022. ISSN  
292 1049-3867. doi: 10.1016/j.whi.2021.10.006. URL [https://doi.org/10.1016/j.whi.2021.1](https://doi.org/10.1016/j.whi.2021.10.006)  
293 [0.006](https://doi.org/10.1016/j.whi.2021.10.006). Publisher: Elsevier.
- 294 [10] Louise Marie Roth and Jennifer Hyunkyung Lee. Undue Burdens: State Abortion Laws in the  
295 U.S., 1994-2022. *Journal of health politics, policy and law*, page 10449905, January 2023. ISSN  
296 1527-1927 0361-6878. doi: 10.1215/03616878-10449905. Place: United States.
- 297 [11] Eugene Declercq, Ruby Barnard-Mayers, Laurie Zephyrin, and Kay Johnson. The U.S.  
298 Maternal Health Divide: The Limited Maternal Health Services and Worse Outcomes of  
299 States Proposing New Abortion Restrictions. 2022. doi: 10.26099/Z7DZ-8211. URL  
300 [https://www.commonwealthfund.org/publications/issue-briefs/2022/dec/us-mat-](https://www.commonwealthfund.org/publications/issue-briefs/2022/dec/us-maternal-health-divide-limited-services-worse-outcomes)  
301 [ernal-health-divide-limited-services-worse-outcomes](https://www.commonwealthfund.org/publications/issue-briefs/2022/dec/us-maternal-health-divide-limited-services-worse-outcomes). Publisher: Commonwealth  
302 Fund.

- 303 [12] C. Brigance, R. Lucas, E. Jones, A. Davis, Oinuma, and Z. Henderson. Nowhere to Go:  
304 Maternity Care Deserts Across the US. Technical Report 3, March of Dimes, 2022. URL  
305 <https://www.marchofdimes.org/research/maternity-care-deserts-report.aspx>.
- 306 [13] Michael Ollove. A Shortage in the Nation’s Maternal Health Care, August 2016. URL <http://pew.org/2boYfvJ>.
- 308 [14] Centers for Medicare & Medicaid Services. Improving access to maternal health care in rural  
309 communities. Technical report, 2020. URL <https://www.cms.gov/About-CMS/Agency-Information/OMH/equity-initiatives/rural-health/09032019-Maternal-Health-Care-in-Rural-Communities.pdf>.
- 312 [15] Esther H. Chen, Frances S. Shofer, Anthony J. Dean, Judd E. Hollander, William G.  
313 Baxt, Jennifer L. Robey, Keara L. Sease, and Angela M. Mills. Gender Disparity in Anal-  
314 gesic Treatment of Emergency Department Patients with Acute Abdominal Pain. *Academic Emergency Medicine*, 15(5):414–418, May 2008. ISSN 10696563, 15532712. doi:  
315 10.1111/j.1553-2712.2008.00100.x. URL [https://onlinelibrary.wiley.com/doi/10](https://onlinelibrary.wiley.com/doi/10.1111/j.1553-2712.2008.00100.x)  
316 [.1111/j.1553-2712.2008.00100.x](https://onlinelibrary.wiley.com/doi/10.1111/j.1553-2712.2008.00100.x).
- 318 [16] Northwell Health. Gaslighting in women’s health: when doctors dismiss symptoms. URL  
319 <https://www.northwell.edu/katz-institute-for-womens-health/articles/gaslighting-in-womens-health>.
- 321 [17] Calvin Apodaca, Reggie Casanova-Perez, Emily Bascom, Deepthi Mohanraj, Cezanne Lane,  
322 Drishti Vidyarthi, Erin Beneteau, Janice Sabin, Wanda Pratt, Nadir Weibel, and Andrea L  
323 Hartzler. Maybe they had a bad day: how LGBTQ and BIPOC patients react to bias in  
324 healthcare and struggle to speak out. *Journal of the American Medical Informatics Association*,  
325 29(12):2075–2082, December 2022. ISSN 1527-974X. doi: 10.1093/jamia/ocac142. URL  
326 <https://doi.org/10.1093/jamia/ocac142>.
- 327 [18] Sarahn M. Wheeler, Sabrena O. Myers, Geeta K. Swamy, and Evan R. Myers. Estimated  
328 Prevalence of Risk Factors for Preeclampsia Among Individuals Giving Birth in the US in  
329 2019. *JAMA Network Open*, 5(1):e2142343–e2142343, January 2022. ISSN 2574-3805. doi:  
330 10.1001/jamanetworkopen.2021.42343. URL [https://doi.org/10.1001/jamanetworkopen](https://doi.org/10.1001/jamanetworkopen.2021.42343)  
331 [.2021.42343](https://doi.org/10.1001/jamanetworkopen.2021.42343).
- 332 [19] Nicole D. Ford, Shanna Cox, Jean Y. Ko, Lijing Ouyang, Lisa Romero, Tiffany Colarusso,  
333 Cynthia D. Ferre, Charlan D. Kroelinger, Donald K. Hayes, and Wanda D. Barfield. Hy-  
334 pertensive disorders in pregnancy and mortality at delivery hospitalization — united states,  
335 2017–2019. *MMWR. Morbidity and Mortality Weekly Report*, 71(17):585–591, apr 2022. doi:  
336 10.15585/mmwr.mm7117a1. URL <https://doi.org/10.15585/mmwr.mm7117a1>.
- 337 [20] National Institutes of Health. Who is at risk of preeclampsia?, June 2022. URL <https://www.nichd.nih.gov/health/topics/preeclampsia/conditioninfo/risk>.
- 339 [21] US Preventive Services Task Force. Draft Evidence Review: Hypertensive Disorders of Preg-  
340 nancy: Screening, February 2023. URL [https://www.uspreventiveservicestaskforce.or](https://www.uspreventiveservicestaskforce.org/uspstf/document/draft-evidence-review/hypertensive-disorders-pregnancy-screening)  
341 [g/uspstf/document/draft-evidence-review/hypertensive-disorders-pregnancy-scr](https://www.uspreventiveservicestaskforce.org/uspstf/document/draft-evidence-review/hypertensive-disorders-pregnancy-screening)  
342 [eening](https://www.uspreventiveservicestaskforce.org/uspstf/document/draft-evidence-review/hypertensive-disorders-pregnancy-screening).

- 343 [22] Kirsten Duckitt and Deborah Harrington. Risk factors for pre-eclampsia at antenatal booking:  
344 systematic review of controlled studies. *BMJ (Clinical research ed.)*, 330(7491):565, March  
345 2005. ISSN 1756-1833 0959-8138. doi: 10.1136/bmj.38380.674340.E0. Place: England.
- 346 [23] Fred A. English, Louise C. Kenny, and Fergus P. McCarthy. Risk factors and effective man-  
347 agement of preeclampsia. *Integrated blood pressure control*, 8:7–12, 2015. ISSN 1178-7104. doi:  
348 10.2147/IBPC.S50641. Place: New Zealand.
- 349 [24] Michael C. Honigberg. Understanding Heart Failure in Women With Preeclampsia. *Journal of*  
350 *the American College of Cardiology*, 78(23):2291–2293, December 2021. ISSN 07351097. doi:  
351 10.1016/j.jacc.2021.09.1361. URL [https://linkinghub.elsevier.com/retrieve/pii/S07](https://linkinghub.elsevier.com/retrieve/pii/S0735109721077366)  
352 [35109721077366](https://linkinghub.elsevier.com/retrieve/pii/S0735109721077366).
- 353 [25] Dominique Williams, Molly J. Stout, Joshua I. Rosenbloom, Margaret A. Olsen, Karen E.  
354 Joynt Maddox, Elena Deych, Victor G. Davila-Roman, and Kathryn J. Lindley. Preeclampsia  
355 Predicts Risk of Hospitalization for Heart Failure With Preserved Ejection Fraction. *Journal*  
356 *of the American College of Cardiology*, 78(23):2281–2290, December 2021. ISSN 07351097. doi:  
357 10.1016/j.jacc.2021.09.1360. URL [https://linkinghub.elsevier.com/retrieve/pii/S07](https://linkinghub.elsevier.com/retrieve/pii/S0735109721077354)  
358 [35109721077354](https://linkinghub.elsevier.com/retrieve/pii/S0735109721077354).
- 359 [26] Mulubrhan F. Mogos, Mariann R. Piano, Barbara L. McFarlin, Jason L. Salemi, Kylea L.  
360 Liese, and Joan E. Briller. Heart Failure in Pregnant Women: A Concern Across the Pregnancy  
361 Continuum. *Circulation: Heart Failure*, 11(1):e004005, January 2018. ISSN 1941-3289, 1941-  
362 3297. doi: 10.1161/CIRCHEARTFAILURE.117.004005. URL [https://www.ahajournals.](https://www.ahajournals.org/doi/10.1161/CIRCHEARTFAILURE.117.004005)  
363 [org/doi/10.1161/CIRCHEARTFAILURE.117.004005](https://www.ahajournals.org/doi/10.1161/CIRCHEARTFAILURE.117.004005).
- 364 [27] Pensée Wu, Randula Haththotuwa, Chun Shing Kwok, Aswin Babu, Rafail A. Kotronias, Claire  
365 Rushton, Azfar Zaman, Anthony A. Fryer, Umesh Kadam, Carolyn A. Chew-Graham, and Ma-  
366 mas A. Mamas. Preeclampsia and Future Cardiovascular Health. *Circulation: Cardiovascular*  
367 *Quality and Outcomes*, 10(2):e003497, February 2017. doi: 10.1161/CIRCOUTCOMES.116.0  
368 03497. URL <https://doi.org/10.1161/CIRCOUTCOMES.116.003497>. Publisher: American  
369 Heart Association.
- 370 [28] Peter D. Smits, Samuel Gratzl, Michael Simonov, Senthil K. Nachimuthu, Brianna M. Good-  
371 win Cartwright, Michael D. Wang, Charlotte Baker, Patricia Rodriguez, Mackenzie Bogiages,  
372 Benjamin M. Althouse, and Nicholas L. Stucky. Risk of COVID-19 breakthrough infection  
373 and hospitalization in individuals with comorbidities. *Vaccine*, 41(15):2447–2455, April 2023.  
374 ISSN 1873-2518. doi: 10.1016/j.vaccine.2023.02.038.
- 375 [29] Brianna M. Goodwin Cartwright, Michael Wang, Patricia Rodriguez, Sarah Stewart, Christo-  
376 pher M. Worsham, Nick Stucky, and Anupam B. Jena. Changes in Minoxidil Prescribing After  
377 Media Attention About Oral Use for Hair Loss. *JAMA network open*, 6(5):e2312477, May  
378 2023. ISSN 2574-3805. doi: 10.1001/jamanetworkopen.2023.12477.
- 379 [30] Benjamin M. Althouse, Charlotte Baker, Peter D. Smits, Samuel Gratzl, Ryan H. Lee, Bri-  
380 anna M. Goodwin Cartwright, Michael Simonov, Michael D. Wang, and Nicholas L. Stucky.  
381 Racial inequality in COVID-treatment and in-hospital length of stay in the US over time. *Frontiers in Public Health*,  
382 10:1074775, 2022. ISSN 2296-2565. doi: 10.3389/fpubh.2022.1074775.

- 383 [31] Erik von Elm, Douglas G Altman, Matthias Egger, Stuart J Pocock, Peter C Gøtzsche, and  
384 Jan P Vandenbroucke. The strengthening the reporting of observational studies in epidemiology  
385 (STROBE) statement: guidelines for reporting observational studies. *The Lancet*, 370(9596):  
386 1453–1457, oct 2007. doi: 10.1016/s0140-6736(07)61602-x. URL [https://doi.org/10.1016%](https://doi.org/10.1016%2Fs0140-6736%2807%2961602-x)  
387 [2Fs0140-6736%2807%2961602-x](https://doi.org/10.1016%2Fs0140-6736%2807%2961602-x).
- 388 [32] Michael C. Honigberg, Seyedeh Maryam Zekavat, Krishna Aragam, Derek Klarin, Deepak L.  
389 Bhatt, Nandita S. Scott, Gina M. Peloso, and Pradeep Natarajan. Long-Term Cardiovascular  
390 Risk in Women With Hypertension During Pregnancy. *Journal of the American College of*  
391 *Cardiology*, 74(22):2743–2754, December 2019. ISSN 0735-1097. doi: 10.1016/j.jacc.2019.09.0  
392 52. URL <https://www.sciencedirect.com/science/article/pii/S0735109719379197>.
- 393 [33] Stephanie A. Leonard, Chris J. Kennedy, Suzan L. Carmichael, Deirdre J. Lyell, and Elliott K.  
394 Main. An Expanded Obstetric Comorbidity Scoring System for Predicting Severe Maternal  
395 Morbidity. *Obstetrics and gynecology*, 136(3):440–449, September 2020. ISSN 1873-233X 0029-  
396 7844. doi: 10.1097/AOG.0000000000004022. Place: United States.
- 397 [34] Jessica L. Gleason, Jagteshwar Grewal, Zhen Chen, Alison N. Cernich, and Katherine L.  
398 Grantz. Risk of Adverse Maternal Outcomes in Pregnant Women With Disabilities. *JAMA*  
399 *network open*, 4(12):e2138414, December 2021. ISSN 2574-3805. doi: 10.1001/jamanetworko  
400 pen.2021.38414. Place: United States.
- 401 [35] Terry M. Therneau and Patricia M. Grambsch. *Modeling Survival Data: Extending the Cox*  
402 *Model*. Springer, New York, 2000. ISBN 0-387-98784-3.
- 403 [36] Terry M Therneau. *A Package for Survival Analysis in R*, 2023. URL [https://CRAN.R-pro](https://CRAN.R-project.org/package=survival)  
404 [ject.org/package=survival](https://CRAN.R-project.org/package=survival). R package version 3.5-5.
- 405 [37] Hirotugu Akaike. A new look at the statistical model identification. *IEEE transactions on*  
406 *automatic control*, 19(6):716–723, 1974.
- 407 [38] Russell V. Lenth, Ben Bolker, Paul Buerkner, Iago Giné-Vázquez, Maxime Herve, Maarten  
408 Jung, Jonathon Love, Fernando Miguez, Hannes Riebl, and Henrik Singmann. emmeans:  
409 Estimated Marginal Means, aka Least-Squares Means, March 2023. URL [https://CRAN.R-p](https://CRAN.R-project.org/package=emmeans)  
410 [roject.org/package=emmeans](https://CRAN.R-project.org/package=emmeans).
- 411 [39] Python Software Foundation. python, June 2022. URL <https://www.python.org/>.
- 412 [40] Guido Van Rossum and Fred L. Drake. *Python 3 Reference Manual*. CreateSpace, Scotts  
413 Valley, CA, 2009. ISBN 1441412697. doi: 10.5555/1593511.
- 414 [41] Wes McKinney. Data Structures for Statistical Computing in Python. In Stéfan van der Walt  
415 and Jarrod Millman, editors, *Proceedings of the 9th Python in Science Conference*, pages 56 –  
416 61, 2010. doi: 10.25080/Majora-92bf1922-00a.
- 417 [42] The pandas development team. pandas-dev/pandas: Pandas, jan 2023. URL [https://doi.](https://doi.org/10.5281/zenodo.7549438)  
418 [org/10.5281/zenodo.7549438](https://doi.org/10.5281/zenodo.7549438). If you use this software, please cite it as below.
- 419 [43] Charles R. Harris, K. Jarrod Millman, Stéfan J. van der Walt, Ralf Gommers, Pauli Vir-  
420 tanen, David Cournapeau, Eric Wieser, Julian Taylor, Sebastian Berg, Nathaniel J. Smith,

- 421 Robert Kern, Matti Picus, Stephan Hoyer, Marten H. van Kerkwijk, Matthew Brett, Allan Hal-  
422 dane, Jaime Fernández del Río, Mark Wiebe, Pearu Peterson, Pierre Gérard-Marchant, Kevin  
423 Sheppard, Tyler Reddy, Warren Weckesser, Hameer Abbasi, Christoph Gohlke, and Travis E.  
424 Oliphant. Array programming with NumPy. *Nature*, 585(7825):357–362, September 2020. doi:  
425 10.1038/s41586-020-2649-2. URL <https://doi.org/10.1038/s41586-020-2649-2>.
- 426 [44] Kirill Simonov. PyYAML, October 2021. URL <https://pyyaml.org/wiki/PyYAMLDocumentation>.  
427 ation.
- 428 [45] J. D. Hunter. Matplotlib: A 2d graphics environment. *Computing in Science & Engineering*,  
429 9(3):90–95, 2007. doi: 10.1109/MCSE.2007.55.
- 430 [46] R Core Team. *R: A Language and Environment for Statistical Computing*. Vienna, Austria,  
431 2022. <https://www.R-project.org/>.
- 432 [47] Hadley Wickham, Romain François, Lionel Henry, and Kirill Müller. *dplyr: A Grammar of*  
433 *Data Manipulation*, 2022. <https://CRAN.R-project.org/package=dplyr>.
- 434 [48] Hadley Wickham. *ggplot2: Elegant Graphics for Data Analysis*, 2016.  
435 <https://ggplot2.tidyverse.org>.
- 436 [49] Sam Firke, Bill Denney, Chris Haid, Ryan Knight, Malte Grosser, and Jonathan Zadra. janitor:  
437 Simple Tools for Examining and Cleaning Dirty Data, February 2023. URL [https://CRAN.R](https://CRAN.R-project.org/package=janitor)  
438 [-project.org/package=janitor](https://CRAN.R-project.org/package=janitor).
- 439 [50] Daniel D. Sjoberg, Joseph Larmarange, Michael Curry, Jessica Lavery, Karissa Whiting,  
440 Emily C. Zabor, Xing Bai, Esther Drill, Jessica Flynn, Margie Hannum, Stephanie Lobaugh,  
441 Shannon Pileggi, Amy Tin, and Gustavo Zapata Wainberg. gtsummary: Presentation-Ready  
442 Data Summary and Analytic Result Tables, January 2023. URL [https://CRAN.R-project.o](https://CRAN.R-project.org/package=gtsummary)  
443 [rg/package=gtsummary](https://CRAN.R-project.org/package=gtsummary).
- 444 [51] David Robinson, Alex Hayes, Simon Couch [aut, cre, Posit Software, PBC, Indrajeet Patil,  
445 Derek Chiu, Matthieu Gomez, Boris Demeshev, Dieter Menne, Benjamin Nutter, Luke John-  
446 ston, Ben Bolker, Francois Briatte, Jeffrey Arnold, Jonah Gabry, Luciano Selzer, Gavin Simp-  
447 son, Jens Preussner, Jay Hesselberth, Hadley Wickham, Matthew Lincoln, Alessandro Gas-  
448 parini, Lukasz Komsta, Frederick Novometsky, Wilson Freitas, Michelle Evans, Jason Cory  
449 Brunson, Simon Jackson, Ben Whalley, Karissa Whiting, Yves Rosseel, Michael Kuehn, Jorge  
450 Cimentada, Erle Holgersen, Karl Dunkle Werner, Ethan Christensen, Steven Pav, Paul PJ, Ben  
451 Schneider, Patrick Kennedy, Lily Medina, Brian Fannin, Jason Muhlenkamp, Matt Lehman,  
452 Bill Denney, Nic Crane, Andrew Bates, Vincent Arel-Bundock, Hideaki Hayashi, Luis Tobalina,  
453 Annie Wang, Wei Yang Tham, Clara Wang, Abby Smith, Jasper Cooper, E. Auden Krauska,  
454 Alex Wang, Malcolm Barrett, Charles Gray, Jared Wilber, Vilmantas Gegzna, Eduard Szoecs,  
455 Frederik Aust, Angus Moore, Nick Williams, Marius Barth, Bruna Wundervald, Joyce Cahoon,  
456 Grant McDermott, Kevin Zarca, Shiro Kuriwaki, Lukas Wallrich, James Martherus, Chuliang  
457 Xiao, Joseph Larmarange, Max Kuhn, Michal Bojanowski, Hakon Malmedal, Clara Wang, Ser-  
458 gio Oller, Luke Sonnet, Jim Hester, Ben Schneider, Bernie Gray, Mara Averick, Aaron Jacobs,  
459 Andreas Bender, Sven Templar, Paul-Christian Buerkner, Matthew Kay, Erwan Le Pennec,  
460 Johan Junkka, Hao Zhu, Benjamin Soltoff, Zoe Wilkinson Saldana, Tyler Littlefield, Charles T.  
461 Gray, Shabbh E. Banks, Serina Robinson, Roger Bivand, Riinu Ots, Nicholas Williams, Nina

- 462 Jakobsen, Michael Weylandt, Lisa Lendway, Karl Hailperin, Josue Rodriguez, Jenny Bryan,  
463 Chris Jarvis, Greg Macfarlane, Brian Mannakee, Drew Tyre, Shreyas Singh, Laurens Gef-  
464 fert, Hong Ooi, Henrik Bengtsson, Eduard Szocs, David Hugh-Jones, Matthieu Stigler, Hugo  
465 Tavares, R. Willem Vervoort, Brenton M. Wiernik, Josh Yamamoto, Jasme Lee, Taren Sanders,  
466 Ilaria Prodocimi, Daniel D. Sjoberg, and Alex Reinhart. broom: Convert Statistical Objects  
467 into Tidy Tibbles, March 2023. URL <https://CRAN.R-project.org/package=broom>.
- 468 [52] Hadley Wickham and Dana Seidel. *scales: Scale Functions for Visualization*, 2020.  
469 <https://CRAN.R-project.org/package=scales>.
- 470 [53] W. N. Venables and B. D. Ripley. *Modern Applied Statistics with S*. Springer, New York,  
471 fourth edition, 2002. URL <https://www.stats.ox.ac.uk/pub/MASS4/>.
- 472 [54] David B. Dahl, David Scott, Charles Roosen, and Magnusson. *xtable: Export Tables to LaTeX*  
473 *or HTML*. 2019. URL <https://CRAN.R-project.org/package=xtable>.
- 474 [55] Mark Clements and Arthur Allignol. *etm: Empirical Transition Matrix*, September 2020. URL  
475 <https://CRAN.R-project.org/package=etm>.
- 476 [56] Alboukadel Kassambara, Marcin Kosinski, and Przemyslaw Biecek. *survminer: Drawing Sur-*  
477 *vival Curves using 'ggplot2'*, 2021. URL <https://CRAN.R-project.org/package=survminer>.  
478 R package version 0.4.9.
- 479 [57] Hadley Wickham, Jim Hester, and Jeroen Ooms. *xml2: Parse XML*, 2021. URL <https://CRAN.R-project.org/package=xml2>. R package version 1.3.3.
- 481 [58] Richard Iannone. *DiagrammeR: Graph/Network Visualization*, 2022. URL [https://CRAN.R](https://CRAN.R-project.org/package=DiagrammeR)  
482 [-project.org/package=DiagrammeR](https://CRAN.R-project.org/package=DiagrammeR). R package version 1.0.9.
- 483 [59] Richard Iannone. *DiagrammeRsvg: Export DiagrammeR Graphviz Graphs as SVG*, 2016. URL  
484 <https://CRAN.R-project.org/package=DiagrammeRsvg>. R package version 0.1.
- 485 [60] Jeroen Ooms. *rsvg: Render SVG Images into PDF, PNG, (Encapsulated) PostScript, or*  
486 *Bitmap Arrays*, 2022. URL <https://CRAN.R-project.org/package=rsvg>. R package version  
487 2.4.0.
- 488 [61] Jay J. Shen, Zahra Mojtahedi, Jennifer Vanderlaan, and Sfurti Rathi. Disparities in Adverse  
489 Maternal Outcomes Among Five Race and Ethnicity Groups. *Journal of women's health (2002)*,  
490 31(10):1432–1439, October 2022. ISSN 1931-843X 1540-9996. doi: 10.1089/jwh.2021.0495.  
491 Place: United States.
- 492 [62] Jennifer D. Runkle, Jessica L. Matthews, Laurel Sparks, Leo McNicholas, and Margaret M.  
493 Sugg. Racial and ethnic disparities in pregnancy complications and the protective role of  
494 greenspace: A retrospective birth cohort study. *The Science of the total environment*, 808:  
495 152145, February 2022. ISSN 1879-1026 0048-9697. doi: 10.1016/j.scitotenv.2021.152145.  
496 Place: Netherlands.
- 497 [63] Marin Nishimura, Harpreet Bhatia, Janet Ma, Stephen D. Dickson, Laith Alshawabkeh, Eric  
498 Adler, Alan Maisel, Michael H. Criqui, Barry Greenberg, and Isac C. Thomas. The impact of  
499 substance abuse on heart failure hospitalizations. *The American Journal of Medicine*, 133(2):  
500 207–213.e1, feb 2020. doi: 10.1016/j.amjmed.2019.07.017. URL [https://doi.org/10.1016%](https://doi.org/10.1016%2Fj.amjmed.2019.07.017)  
501 [2Fj.amjmed.2019.07.017](https://doi.org/10.1016%2Fj.amjmed.2019.07.017).

- 502 [64] Keith A. Dookeran, Marina G. Feffer, Kyla M. Quigley, Phoebe E. Troller, Chariya A. Christ-  
503 mon, and Janine Y. Khan. Disparity in neonatal abstinence syndrome by race/ethnicity,  
504 socioeconomic status, and geography, in neonates  $\geq$  35 weeks gestational age. *PLOS ONE*, 18  
505 (4):e0284040, apr 2023. doi: 10.1371/journal.pone.0284040. URL <https://doi.org/10.1371%2Fjournal.pone.0284040>.
- 507 [65] Suchitra Kataria and Vinod Ravindran. Electronic health records: A critical appraisal of  
508 strengths and limitations. *Journal of the Royal College of Physicians of Edinburgh*, 50(3):  
509 262–268, sep 2020. doi: 10.4997/jrcpe.2020.309. URL <https://doi.org/10.4997%2Fjrcpe.2020.309>.
- 511 [66] Brent A. Williams, Stephen Voyce, Stephen Sidney, Véronique L. Roger, Timothy B. Plante,  
512 Sharon Larson, Michael J. LaMonte, Darwin R. Labarthe, Bailey M. DeBarmore, Alexander R.  
513 Chang, Alanna M. Chamberlain, and Catherine P. Benziger. Establishing a national cardio-  
514 vascular disease surveillance system in the united states using electronic health record data:  
515 Key strengths and limitations. *Journal of the American Heart Association*, 11(8), apr 2022.  
516 doi: 10.1161/jaha.121.024409. URL <https://doi.org/10.1161%2Fjaha.121.024409>.