

Frequency of Atypical Pulmonary Manifestations of COVID-19 Patients on Chest CT-scan: A cross-sectional study

Soheila Borji¹, Pouria Isavand², Mobin Azami³, Ehsan Ghafouri^{4*}

- 1 Assistant Professor of Radiology, Department of Radiology, School of Medicine, Vali-e-Asr Hospital, Zanzan University of Medical Sciences, Zanzan, Iran, soheilaborji61@zums.ac.ir
- 2 Resident of Radiology, Department of Radiology, School of Medicine, Vali-e-Asr Hospital, Zanzan University of Medical Sciences, Zanzan, Iran, Pouriaisavand@gmail.com
- 3 Student of the Research Committee, Kurdistan University of Medical Sciences, Sanandaj, Iran. mobinaz98@yahoo.com
- 4 General practitioner, School of Medicine, Vali-e-Asr Hospital, Zanzan University of Medical Sciences, Zanzan, Iran. Ehsanghafouri.md@gmail.com

* **Corresponding author:** Ehsan Ghafouri, General practitioner, School of Medicine, Vali-e-Asr Hospital, Zanzan University of Medical Sciences, Zanzan, Iran

Ehsanghafouri.md@gmail.com, Postal code: 4515777978

Frequency of Atypical Pulmonary Manifestations of COVID-19 Patients on Chest CT-scan: A cross-sectional study

Abstract

Background: Chest CT examination is significant in COVID-19 diagnosis due to its high sensitivity. Although typical chest CT findings have been discussed thoroughly in the literature throughout the pandemic, we aimed to investigate the prevalence of the atypical conclusions during the start of the Omicron variant insurgency and compare the results to studies conducted before its outbreak.

Methods: 606 confirmed COVID-19 cases were included in this study based on inclusion and exclusion criteria during January and February 2022. Demographic information of patients, including age and sex, was recorded. The computed tomography (CT) examination was carried out using a 100-slice scanner (Philips Brilliance 6 CT Scanner). One radiology attending and one resident evaluated SARS-CoV-2 RT-PCR-positive patients for atypical pulmonary CT findings. The obtained data were evaluated using R software version 4.1.1.

Results: 55% of patients were female, and the median age was 56 (IQR: 42, 69) 59% of patients had atypical findings on their pulmonary CT examination. These findings showed that pleural abnormalities were the most frequent atypical findings, with pleural thickening being the most common (17%). The double halo sign represented the least frequent atypical sign (0.2%).

Conclusion: Atypical findings were more prevalent in this study than its predecessors, while we acknowledge that other factors, such as study design and patient population, could have impacted it. The presence of atypical signs generally was not correlated with specific demographic groups, while some of these signs were more frequent in some groups.

Keywords: COVID-19, SARS-CoV-2, Omicron, atypical signs, CT-scan

Introduction

In December 2019, the world encountered a new virus outbreak called coronavirus disease 2019 (COVID-19), leading to acute hypoxic respiratory failure and severe pneumonia [1-4]. According to the genomic sequencing analysis, this virus, identified as severe acute respiratory syndrome coronavirus 2 (SARS-CoV-2), belongs to the Orthocoronavirinae subfamily of Coronaviridae and mainly affects the upper respiratory tract [5, 6]. Several viruses in this subfamily, including the Middle East Respiratory Disease coronavirus and Severe Acute Respiratory Syndrome coronavirus, are well known for being the primary causes of highly contagious diseases (MERS-CoV)[5, 7, 8].

Since the pandemic's start, SARS-CoV-2 has evolved into new variants of concern, according to its genomic sequencing analysis, with different virulence, infectiousness, and clinical picture. On 26 November 2021, WHO designated B.1.1.529 as a variant of concern and named it "Omicron." As of 6 January 2022, the variant has been confirmed in 149 countries. Following the original BA.1 variant, several subvariants of Omicron have emerged: BA.2, BA.3, BA.4, and BA.5. Omicron (BA.1) has more mutations than any previous SARS-CoV-2 variant with 50 mutations[9].

The most frequent symptoms of COVID-19 are fever, dry cough, dyspnea, sore throat, and fatigue. Besides, other symptoms have been observed, including abdominal pain, vomiting, and diarrhea [8, 10]. Multiple studies have reported nonspecific or atypical symptoms in some COVID-19 patients [11].

Besides the clinical manifestation described above, the gold-standard method for diagnosing the SARS-CoV-2 infection is reverse transcription polymerase chain reaction (RT-PCR). However, the physician may use other paraclinical and diagnostic measures for early detection and to identify the extent of lung involvement. [12-14]. Pulmonary computed tomography has been reported to have 97% sensitivity [15]. Thus, the obtained data in pulmonary CT examination plays an essential role in disease monitoring and the subsequent inquiry into the effectiveness and adequacy of our therapeutic approach [16]. According to several studies, the most common reported CT lesions to include reversed halo sign, vascular enlargement, crazy paving patterns, reticular patterns, air-bronchogram, airway changes, and pleural changes. [12].

1
2
3
4 Furthermore, vascular dilation, air bubble sign, subpleural lines, halo and reverse halo sign, and
5 bronchial dilatation have been reported to be accepted as the radiologic signs seen in COVID-19
6 patients [17]. Unlike the typical signs of COVID-19 on chest CT scans, which have been well
7 demonstrated in different studies, the atypical manifestations have not been paid attention to the
8 same extent in the "Omicron era." In a review article, researchers have summarized the atypical
9 chest CT findings of COVID-19 patients as, Central involvement, Isolated upper lobe involvement,
10 Solitary involvement, Peribronchovascular involvement, Lobar consolidation, Tree-in-bud
11 pattern, Nodules, Pleural effusion, Pericardial effusion, Subpleural sparing, and White lung [17].
12 Therefore, this study aimed to investigate the atypical pulmonary manifestations in COVID-19
13 patients and their frequency in the patient population during the first two months of 2022, after
14 WHO designated Omicron as a variant of concern.
15
16
17
18
19
20
21
22
23
24

25 **Study design and data collection**

26
27 A cross-sectional study was performed on COVID-19 patients during January and February 2022
28 at Vali-e-Asr and Mousavi Hospitals in Zanjan, Iran. The RT-PCR-positive patients were re-
29 evaluated to meet the inclusion and exclusion criteria: having no lung disease and history of
30 lobectomy, patients older than 18, and not pregnant women. After applying the mentioned criteria,
31 606 patients were selected for investigation through chest CT examination, irrespective of disease
32 severity and stage. The Iran National Committee for Ethics in Biomedical Research approved this
33 study with the ethics code of IR.ZUMS.REC.1401.175. Subsequently, CT images were obtained
34 for each patient.
35
36
37
38
39
40
41
42

43 **CT imaging protocol**

44
45 The CT examination was carried out using a 100-slice scanner (Philips Brilliance 6 CT Scanner)
46 in a supine position with a single breath-hold. The CT imaging protocol parameters were as
47 follows: scan direction (craniocaudally), tube voltage (120kV), tube current (100 mA), slice
48 collimation (6×1.5 mm), pitch (1.5), rotation time (0.75 s), and scan time (18.02 s). Finally, slice
49 thickness and an interval were set as 3 mm to reconstruct images.
50
51
52
53
54

55 **CT imaging interpretation**

56
57 Obtained CT images were evaluated independently by a senior attending with experience of 7
58 years in practice and a third-year radiology resident. Initially, all patients were assessed for the
59
60
61
62
63
64
65

1
2
3
4 presence or absence of atypical signs. In this study, (1) isolated upper lobe involvement, (2) solitary
5 involvement, (3) peribronchovascular involvement, (4) lobar consolidation, (5) tree-in-bud
6 pattern, (7) centrilobular nodules, (8) pleural effusion, (9) pleural thickening, (9) pericardial
7 effusion, (10) subpleural sparing, (11) white lung, (12) halo sign, (13) reverse halo sign, (14)
8 double halo sign, (16) target shaped opacity, (17) lymphadenopathy, (18) cavitation, (19) air
9 bubble sign, and (20) airway changes, were evaluated as atypical findings.

16 **Statistical analysis**

17
18 The R software 4.1.1 was used to analyze the data. Clinical findings, patient age, and sex were all
19 recorded in terms of relative frequency and percentage. The age is considered to be median (IQR).
20 Pearson's Chi-squared test and Fisher's exact test were used to compare atypical results by sex.
21 Patients' ages were also classified into three age groups: less than 40, 40 to 60, and more than 60.
22 They also were compared regarding atypical findings using Fisher's exact test. Some of the cases
23 are shown in the figures.

30 **Results**

33 **Demographics and atypical findings**

34
35 The demographics and atypical findings of evaluated patients in our study are shown in Table 1.
36 According to obtained results, 55% of patients were female, and the median age was 56 (IQR: 42,
37 69) years. Patients more than 60 years of age (42%) were shown to have some atypical findings
38 on their pulmonary CT examination more frequently. It has been demonstrated that 59% of all
39 investigated patients had atypical manifestations. The pleural thickening was the most frequent
40 atypical finding (17%) in COVID-19 patients, while the double halo sign represented the least
41 frequent atypical sign (0.2%). No patient in our study exhibited any evidence of cavitation on their
42 lung CT scan.

51 **Atypical findings according to sex and age**

52
53 In this part, we investigated the prevalence of atypical findings according to sex and age. The
54 presence of atypical findings on lung CT generally did not significantly differ in men compared to
55 women (Table 2). Moreover, our analysis demonstrated that peribronchovascular involvement
56 (p=0.003), pericardial effusion (p=0.013), and reverse halo sign (p=0.008) were significantly more
57
58
59
60
61
62
63
64
65

1
2
3
4 frequent in women than men. Meanwhile, pleural thickening ($p=0.023$) and subpleural sparing
5
6 ($p=0.008$) were more common in men (Table 2).
7

8
9 The frequency of atypical manifestations based on age categories was studied. Patients below 40
10 years of age, 40-60 years, and more than 60 represented 61%, 55%, and 60% positive for atypical
11 signs, respectively, with no statistically significant correlation between the existence of atypical
12 findings in general and patients' age ($p=0.5$). Detailed analysis indicated that solitary involvement
13 ($p=0.018$), halo sign ($p=0.004$), reverse halo sign ($p<0.001$), target-shaped opacity ($p=0.011$),
14 pleural effusion ($p<0.001$), pleural thickening ($p<0.001$), white lung ($p<0.001$), lymphadenopathy
15 ($p<0.001$), airway changes ($p<0.001$) and pericardial effusion ($p=0.040$) were significantly
16 different between age categories with the later six being more frequent in patients above 60 years
17 of age (Table 3).
18
19
20
21
22
23
24

25 **Discussion**

26
27
28 Due to the high sensitivity of pulmonary computed tomography examination in diagnosing SARS-
29 CoV-2 infections, it is essential to investigate its disparate radiologic manifestations. Contrary to
30 the typical findings which have been robustly canvassed since the start of the pandemic, atypical
31 manifestations generate a significant problem in diagnosis, and their prevalence can potentially
32 vary with each variant of concern. In this study, we evaluated atypical findings in pulmonary CT
33 examination in confirmed COVID-19 patients in the first two months of 2022 after WHO
34 designated Omicron as a variant of concern. The results showed that 59% of patients had at least
35 one atypical sign on their lung CT. On the other hand, it was revealed that atypical findings, in
36 general, were not significantly different based on sex and age. However, it was shown that the type
37 of atypical radiologic signs could vary in patients regarding age and sex.
38
39
40
41
42
43
44
45

46
47 Compared to previous studies, our findings represented more incidence of atypical pulmonary
48 signs in COVID-19 patients [18, 19]. Gurumurthy et al. [19] have investigated typical pulmonary
49 manifestations of COVID-19 in India, reported the prevalence of atypical signs as 21.1% out of
50 298 cases, and reported that pulmonary cysts (9%) were the most frequent pulmonary atypical
51 manifestation. Here, we demonstrated that pleural thickening was the most frequent atypical
52 finding (17%), with 59% of SARS-CoV2 RT-PCR positive patients having at least one atypical
53 radiologic sign on their lung CT imaging. Moreover, Haghighi-Morad et al. [18] have investigated
54 the Atypical presentation of COVID-19 and have stated that 3% of patients had atypical findings
55
56
57
58
59
60
61
62
63
64
65

1
2
3
4 on their lung CT. In both of these studies, contrary to our findings, the frequency of atypical
5 pulmonary CT manifestations in male patients was higher than in female patients. These discrepant
6 findings may be caused by variations in sample size, patient characteristics, epidemiologic
7 variables in specific populations, disease severity, the number and variety of atypical parameters
8 evaluated across studies, and most importantly, the variant that is identified as the primary variant
9 of concern during the study. In a systematic review and meta-analysis conducted by Zarifian et al.
10 [20] pleural thickening (33.35%) and bronchial wall thickening (15.48%), were major atypical
11 lung CT findings, with other signs such as pleural effusion (6.96%), lymphadenopathy (5.19%),
12 cavitation (1.1%), and pneumothorax (0.89%) being other atypical radiologic manifestations
13 investigated, all similar to our findings. The major discrepancy, was Halo sign which was not
14 deemed as an atypical finding and its prevalence was much higher (25.63%).
15
16
17
18
19
20
21
22
23
24

25 In another study, Korkmaz et al. [21] have shown that the most common atypical finding in
26 COVID-19 patients was nodular lesions. However, they have revealed that the atypical results can
27 vary due to the pandemic period as they showed that central distribution, as an atypical
28 manifestation, was significantly different between those infected during the first six months of the
29 pandemic (March to August 2020) and in the second (September 2020 to February 2021)
30 (p=0.001). This information can be summarized by asserting that the frequency of atypical
31 radiologic signs in COVID-19 patients relies on a number of variables, including but not limited
32 to the variation of concern.
33
34
35
36
37
38
39

40 Awareness of CT findings, including atypical manifestations, can be considered an effective
41 implementation to prevent misdiagnoses of COVID-19 patients. We showed that 59% of
42 investigated patients were positive for atypical findings. The pleural abnormalities were shown to
43 be the most frequent atypical manifestation (23.4%) in RT-PCR-positive patients in our study. As
44 Saha et al. [22] discussed, various types of pleural involvement and their frequencies vary
45 depending on disease severity and stage, as pleural thickening and pleural retraction are more
46 common and have been more commonly attributed to the early disease. In contrast, the prevalence
47 of pleural effusion is much lower, and pneumothorax is uncommon. Our results are similar to
48 previous studies regarding the frequency of pleural involvement. Bai et al. [23] have investigated
49 the frequency of pleural lesions in 219 patients with COVID-19 and reported that common pleural
50 abnormality among COVID-19 patients was pleural thickening (15%) followed by pleural effusion
51
52
53
54
55
56
57
58
59
60
61
62
63
64
65

1
2
3
4 (4%), which is congruent with our findings. Recent studies have indicated the importance of
5 pleural abnormalities in the disease outcome. Hence, it has been shown that patients with pleural
6 effusion have more pulmonary inflammatory responses due to refractory disease [24]. More
7 interestingly, Hussein et al. [25] have suggested that effusion development may have been solely
8 related to the virus.
9
10
11
12
13
14
15
16
17
18

19 **Conclusion**

20
21 This study investigated the frequency of atypical pulmonary CT manifestations in COVID-19
22 patients during January and February of 2022 after WHO designated Omicron as a variant of
23 concern. Our results showed that the prevalence of atypical pulmonary manifestations in COVID-
24 19 patients was 59% in general. The pleural abnormalities were the most frequent atypical findings
25 in the studied patients. Given the importance of these manifestations in misdiagnosis and
26 quarantine delays, they should be given more attention in pulmonary CT scans. They could be
27 more prevalent in new variants of concern.
28
29
30
31
32
33
34

35 **Abbreviations**

36 37 38 39 40 41 42 43 44 45 46 47 48 49 50 51 52 53 54 55 56 57 58 59 60 61 62 63 64 65	Coronavirus disease 2019	COVID-19
	Severe acute respiratory syndrome coronavirus 2	SARS-CoV-2
	Severe Acute Respiratory Syndrome coronavirus-1	SARS-CoV-1
	Reverse transcription polymerase chain reaction	RT-PCR
	Computed tomography scan	CT-scan

1
2
3
4
5
6
7
8
9
10
11
12
13
14
15
16
17
18
19
20
21
22
23
24
25
26
27
28
29
30
31
32
33
34
35
36
37
38
39
40
41
42
43
44
45
46
47
48
49
50
51
52
53
54
55
56
57
58
59
60
61
62
63
64
65

References

1. Bai, Y., et al., Presumed asymptomatic carrier transmission of COVID-19. 2020. 323(14): p. 1406-1407.
2. Qasem, A., et al., Coronavirus Disease 2019 (COVID-19) Diagnostic Tools: A Focus on Detection Technologies and Limitations. 2021. 43(2): p. 728-748.
3. Radpour, A., et al., COVID-19 Evaluation by Low-Dose High Resolution CT Scans Protocol. *Academic Radiology*, 2020. 27(6): p. 901.
4. Boraschi, P., COVID-19 Pulmonary Involvement: Is Really an Interstitial Pneumonia? *Academic Radiology*, 2020. 27(6): p. 900.
5. Ksiazek, T.G., et al., A novel coronavirus associated with severe acute respiratory syndrome. 2003. 348(20): p. 1953-1966.
6. Zhou, P., et al., A pneumonia outbreak associated with a new coronavirus of probable bat origin. 2020. 579(7798): p. 270-273.
7. Killerby, M.E., et al., Middle East respiratory syndrome coronavirus transmission. 2020. 26(2): p. 191.
8. Louis, T.J., et al., Extra-Pulmonary Complications in SARS-CoV-2 Infection: A Comprehensive Multi Organ-System Review. 2022. 10(1): p. 153.
9. Kumar, S., K. Karuppanan, and G. Subramaniam, Omicron (BA. 1) and sub- variants (BA. 1.1, BA. 2, and BA. 3) of SARS- CoV- 2 spike infectivity and pathogenicity: A comparative sequence and structural- based computational assessment. *Journal of Medical Virology*, 2022. 94(10): p. 4780-4791.
10. Guan, W.-j., et al., Clinical characteristics of 2019 novel coronavirus infection in China. 2020.
11. Zhou, F., et al., Clinical course and risk factors for mortality of adult inpatients with COVID-19 in Wuhan, China: a retrospective cohort study. 2020. 395(10229): p. 1054-1062.
12. Calabrò, E., et al., Atypical CT Pattern in COVID-19 Infection: Are Lung Cavitations Really Uncommon. 2020. 5: p. 1899.
13. Wu, J., et al., Chest CT Findings in Patients With Coronavirus Disease 2019 and Its Relationship With Clinical Features. *Invest Radiol*, 2020. 55(5): p. 257-261.
14. Li, Y. and L. Xia, Coronavirus Disease 2019 (COVID-19): Role of Chest CT in Diagnosis and Management. *AJR Am J Roentgenol*, 2020. 214(6): p. 1280-1286.
15. Ai, T., et al., Correlation of Chest CT and RT-PCR Testing for Coronavirus Disease 2019 (COVID-19) in China: A Report of 1014 Cases. *Radiology*, 2020. 296(2): p. E32-E40.
16. Bernheim, A., et al., Chest CT Findings in Coronavirus Disease-19 (COVID-19): Relationship to Duration of Infection. *Radiology*, 2020. 295(3): p. 200463.
17. Ceylan, N., et al., Atypical chest CT findings of COVID-19 pneumonia: a pictorial review. *Diagnostic and interventional radiology (Ankara, Turkey)*, 2021. 27(3): p. 344-349.
18. Haghghi-Morad, M., et al., Atypical presentation of COVID-19; an observational retrospective study. *BMC Infectious Diseases*, 2020. 20(1): p. 870.
19. Gurumurthy, B., et al., Spectrum of atypical pulmonary manifestations of COVID-19 on computed tomography. *Egyptian Journal of Radiology and Nuclear Medicine*, 2021. 52(1): p. 72.

1
2
3
4
5
6
7
8
9
10
11
12
13
14
15
16
17
18
19
20
21
22
23
24
25
26
27
28
29
30
31
32
33
34
35
36
37
38
39
40
41
42
43
44
45
46
47
48
49
50
51
52
53
54
55
56
57
58
59
60
61
62
63
64
65

20. Zarifian, A., et al., Chest CT findings of coronavirus disease 2019 (COVID-19): A comprehensive meta-analysis of 9907 confirmed patients. *Clinical Imaging*, 2021. 70: p. 101-110.
21. Korkmaz, İ. and F.J.C. Keleş, COVID-19-Related Lung Involvement at Different Time Intervals: Evaluation of Computed Tomography Images With Semiquantitative Scoring System and COVID-19 Reporting and Data System Scoring. 2021. 13(10).
22. Saha, B.K., et al., Pleural abnormalities in COVID-19: a narrative review. *Journal of thoracic disease*, 2021. 13(7): p. 4484-4499.
23. Bai, H.X., et al., Performance of radiologists in differentiating COVID-19 from non-COVID-19 viral pneumonia at chest CT. 2020. 296(2): p. E46-E54.
24. Mo, P., et al., Clinical Characteristics of Refractory Coronavirus Disease 2019 in Wuhan, China. *Clinical Infectious Diseases*, 2021. 73(11): p. e4208-e4213.
25. Hussein, M., et al., Pleural effusion as an isolated finding in COVID-19 infection. *Respiratory Medicine Case Reports*, 2020. 31: p. 101269.

Table 1 - Demographics and the frequency of atypical findings

Variable	N (total=606) 1
Sex	
Female	332 (55%)
Male	274 (45%)
Age	56 (42, 69) 2
Atypical Findings	355 (59%)
Isolated Upper Lobe Involvement	10 (1.7%)
Solitary Involvement	17 (2.8%)
Peribronchovascular Involvement	43 (7.1%)
Lobar Consolidation	3 (0.5%)
Tree in bud Pattern	3 (0.5%)
Centrilobular Nodules	13 (2.1%)
Pleural Effusion	39 (6.4%)
Pleural Thickening	103 (17%)
Pericardial Effusion	18 (3.0%)
Subpleural Sparing	29 (4.8%)
White Lung	15 (2.5%)
Halo sign	42 (6.9%)
Reverse Halo Sign	59 (9.7%)
Double Halo Sign	1 (0.2%)
Target Shaped Opacity	28 (4.6%)
Lymphadenopathy	29 (4.8%)
Cavitation	0 (0%)
Air Bubble Sign	14 (2.3%)
Airway Changes	102 (17%)
Age group	
(0,40yrs]	145 (24%)
(40,60yrs]	208 (34%)
(more than 60yrs)	253 (42%)

1 N: number of patients (%)

2 Median (IQR= Interquartile range)

Table 2 - Atypical findings according to sex

CT findings	Female, N = 332 ₁	Male, N = 274 ₁	p-value ₂
Atypical Findings	192 (58%)	163 (59%)	0.7
Isolated Upper Lobe Involvement	5 (1.5%)	5 (1.8%)	0.8
Solitary Involvement	9 (2.7%)	8 (2.9%)	0.9
Peribronchovascular Involvement	33 (9.9%)	10 (3.6%)	0.003
Lobar Consolidation	2 (0.6%)	1 (0.4%)	>0.9
Tree in bud Pattern	0 (0%)	3 (1.1%)	0.092
Centrilobular Nodules	5 (1.5%)	8 (2.9%)	0.2
Pleural Effusion	19 (5.7%)	20 (7.3%)	0.4
Pleural Thickening	46 (14%)	57 (21%)	0.023
Pericardial Effusion	15 (4.5%)	3 (1.1%)	0.013
Subpleural Sparing	9 (2.7%)	20 (7.3%)	0.008
White Lung	7 (2.1%)	8 (2.9%)	0.5
Halo sign	20 (6.0%)	22 (8.0%)	0.3
Reverse Halo Sign	42 (13%)	17 (6.2%)	0.008
Double Halo Sign	1 (0.3%)	0 (0%)	>0.9
Target Shaped Opacity	11 (3.3%)	17 (6.2%)	0.092
Lymphadenopathy	16 (4.8%)	13 (4.7%)	>0.9
Cavitation	0 (0%)	0 (0%)	
Air Bubble Sign	7 (2.1%)	7 (2.6%)	0.7
Airway Changes	52 (16%)	50 (18%)	0.4

₁ N: number of patients (%)

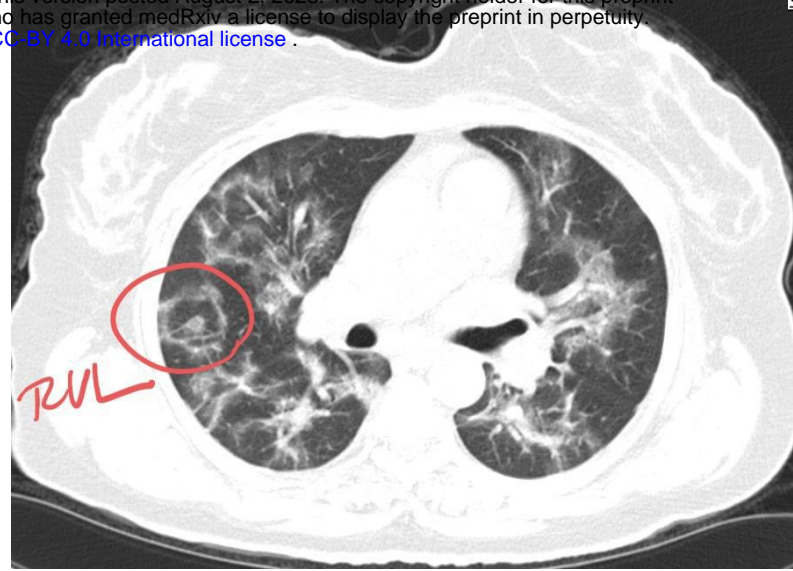
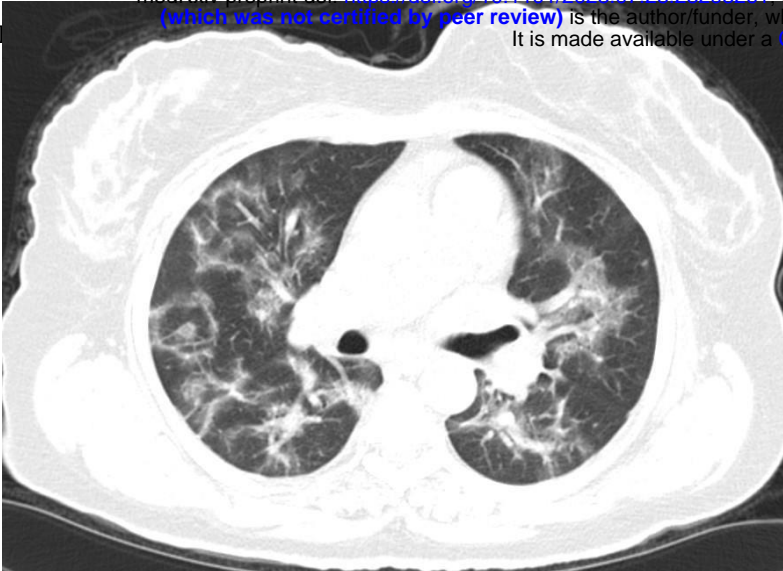
₂ Pearson's Chi-squared test; Fisher's exact test

Table 3 - Atypical findings in regards to patient's age

CT findings	(0,40yrs], N = 145 ₁	(40,60yrs], N = 208 ₁	>60yrs, N = 253 ₁	p-value ₂
Atypical Findings	89 (61%)	115 (55%)	151 (60%)	0.5
Isolated Upper Lobe Involvement	3 (2.1%)	4 (1.9%)	3 (1.2%)	0.8
Solitary Involvement	9 (6.2%)	5 (2.4%)	3 (1.2%)	0.018
Peribronchovascular Involvement	11 (7.6%)	10 (4.8%)	22 (8.7%)	0.3
Lobar Consolidation	1 (0.7%)	2 (1.0%)	0 (0%)	0.3
Tree in bud Pattern	1 (0.7%)	1 (0.5%)	1 (0.4%)	>0.9
Centrilobular Nodules	3 (2.1%)	3 (1.4%)	7 (2.8%)	0.6
Pleural Effusion	6 (4.1%)	4 (1.9%)	29 (11%)	<0.001
Pleural Thickening	12 (8.3%)	26 (12%)	65 (26%)	<0.001
Pericardial Effusion	2 (1.4%)	3 (1.4%)	13 (5.1%)	0.040
Subpleural Sparing	8 (5.5%)	14 (6.7%)	7 (2.8%)	0.12
White Lung	2 (1.4%)	0 (0%)	13 (5.1%)	<0.001
Halo sign	17 (12%)	17 (8.2%)	8 (3.2%)	0.004
Reverse Halo Sign	19 (13%)	29 (14%)	11 (4.3%)	<0.001
Double Halo Sign	0 (0%)	1 (0.5%)	0 (0%)	0.6
Target Shaped Opacity	10 (6.9%)	14 (6.7%)	4 (1.6%)	0.011
Lymphadenopathy	3 (2.1%)	4 (1.9%)	22 (8.7%)	<0.001
Cavitation	0 (0%)	0 (0%)	0 (0%)	-
Air Bubble Sign	5 (3.4%)	6 (2.9%)	3 (1.2%)	0.2
Airway Changes	10 (6.9%)	26 (12%)	66 (26%)	<0.001

₁ N: number of patients (%)

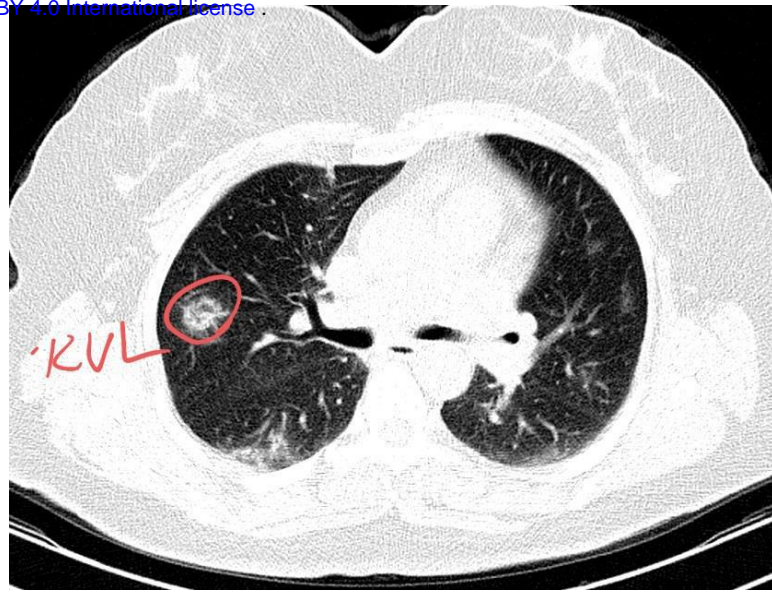
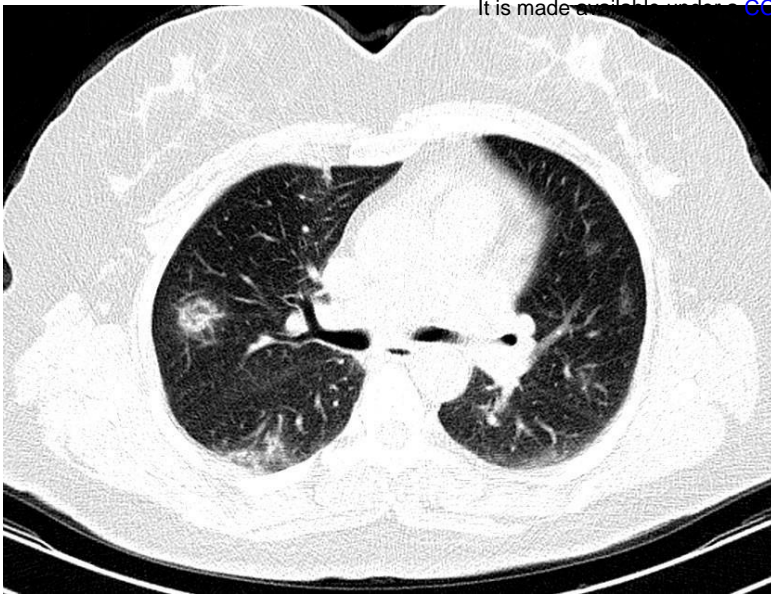
₂ Pearson's Chi-squared test; Fisher's exact test



Target sign in right upper lobe – a woman presenting with fever, dry cough, dyspnea and tachypnea



Pleural thickening – a man with coughing, dyspnea and tachypnea



Reverse halo sign in right upper lobe – a woman with dry cough and fever



Isolated upper lobe involvement in left upper lobe – a man with fever, sore throat and mild cough