

1 , Onodera's Prognostic Nutritional Index, Prognosis

2

3

4 **Introduction**

5 Colorectal cancer (CRC) ranks as the third most prevalent malignant tumor and the second
6 most fatal tumor-related disease globally, contributing to approximately 900,000 deaths
7 annually [1,3]. Owing to the asymptomatic nature during early stages, 72% of CRC patients
8 exhibit tumor cell invasion into adjacent tissues or lymph nodes at diagnosis, with 14%
9 already presenting distant metastasis, significantly impacting overall prognosis [2]. Prognosis
10 assessment in CRC traditionally relies on TNM staging classification; however, patients with
11 CRC at the same pathological stage often experience varying prognosis, particularly in stages
12 II and III [4-5]. Hence, a comprehensive evaluation of CRC prognosis is imperative,
13 necessitating the development of robust prognostic indicators and identification of patients
14 with adverse prognostic characteristics.

15 Tumor-associated inflammation is considered the 7th hallmark of cancer [6]. Early
16 speculations on the relationship between tumor-associated inflammation and malignancy have
17 led to a growing body of evidence supporting the role of inflammation in tumor
18 microenvironment regulation, tumor cell proliferation, invasion, and immunosuppression
19 [7,9]. Chronic inflammation plays a pivotal role in genomic destabilization, inducing DNA
20 damage, affecting DNA repair systems, and altering cell cycle checkpoints, contributing to
21 cellular carcinogenesis, including in colorectal cells [6]. The accumulation of mutations in
22 genes such as TP53, within the context of chronic inflammation, initiates carcinogenesis in
23 intestinal epithelial cells [11]. Subsequent genetic alterations, such as p53 gene deletions,
24 promote the expression of inflammation-related genes, fostering a vicious cycle of
25 inflammation promotion and malignant growth. For instance, functional p53 gene deletion
26 increases nuclear factor- κ B (NF- κ B) transcription factor expression, contributing to CRC

27 progression [10]. NF- κ B activation induces the expression of inflammatory cytokines,
28 adhesion molecules, prostaglandin synthase pathway, nitric oxide synthase, and angiogenic
29 factors, amplifying the systemic inflammatory response and promoting tumor angiogenesis,
30 proliferation, immune evasion, and distant metastasis [6,8]. To predict patient survival,
31 various blood markers, such as C-reactive protein [12], SIRI [13], SII [14], NLR [15], and
32 PLR [15], have emerged as potential avenues in CRC prognostic management. However,
33 these indicators predominantly focus on inflammation-related indicators and lack a
34 comprehensive assessment of other significant prognostic factors.

35 Preoperative malnutrition is particularly prevalent in CRC patients and profoundly
36 influences survival outcomes. Weight loss, muscle loss, and weakness resulting from
37 decreased intake, metabolic changes, and gastrointestinal abnormalities contribute to adverse
38 postoperative outcomes and long-term prognosis [16,17]. Remarkably, approximately 35% of
39 CRC patients undergoing surgery suffer from preoperative moderate to severe malnutrition, a
40 higher incidence than other non-gastrointestinal malignancies [16,18]. Preoperative

1 malnutrition in CRC patients is associated with increased postoperative mortality within 30
2 days after surgery and elevated risks of complications, such as anastomotic fistulas, infections,
3 septic shock, cardiovascular events, anastomotic leakage, and prolonged hospitalization
4 [16,19,20]. Moreover, it predicts poorer overall and disease-free survival in the long term
5 [16,21]. Onodera's Prognostic Nutritional Index (OPNI), calculated as serum albumin + 5 ×
6 total lymphocyte count, has emerged as a common assessment tool for nutritional and
7 immune status. Low preoperative OPNI values in CRC patients have been consistently
8 associated with higher risks of serious postoperative complications and poorer overall
9 survival.

10 In this study, we proposed a novel prognostic index integrating SIRI and OPNI to
11 investigate its value in predicting long-term survival in resectable CRC cases. Our objective
12 was to validate its predictive superiority and provide valuable research evidence for
13 individualized prediction and decision-making in CRC management.

14

15 **Material and methods**

16 **Patients**

17 Between January 2015 and December 2017, a consecutive cohort of 260 patients with CRC
18 who underwent radical resection at the First Affiliated Hospital of Chongqing Medical
19 University (Chongqing, People's Republic of China) were retrospectively reviewed. The
20 exclusion criteria are as follows: 1) neoadjuvant radiotherapy or radiochemotherapy ahead of
21 surgery; 2) patients with a history of other primary or secondary malignancies; 3) patients who
22 underwent emergency surgery prior to inclusion in the study; 4) patients with blood diseases,
23 autoimmune disease or infection which may influence biomarkers. 5) patients who died
24 directly or indirectly from diseases other than CRC. Finally, 210 cases were included based
25 on the criteria above. The study has been approved by the independent Ethics Committee at
26 The First Affiliated Hospital of Chongqing Medical University (K2023-304) and was
27 performed following the ethical standards of the World Medical Association Declaration of
28 Helsinki.

29

30 **Data collection**

31 Patient baseline characteristics were retrospectively reviewed and collected through the
32 electronic medical record system, such as age, gender, past medical history, family history,
33 smoking history, and alcohol history. Blood markers were measured within three days before
34 surgery and included absolute neutrophil count, monocyte count, absolute lymphocyte count,
35 platelets, albumin, and tumor marker carcinoembryonic antigen (CEA). Then, some blood
36 indicators were calculated accordingly: neutrophil × monocyte-to-lymphocyte ratio (SIRI,
37 Systemic Inflammation Response Index), serum albumin + 5 × total lymphocyte(OPNI,
38 Onodera's Prognostic Nutritional Index), neutrophil-to-lymphocyte ratio (NLR),
39 platelet-to-lymphocyte ratio (PLR) and monocyte-to-lymphocyte ratio (MLR).

40

41 **Follow-up**

42 All patients included in the study underwent radical resection. Patients with a high risk of

1 local recurrence and distant metastasis were given adjuvant chemotherapy according to their
2 wishes. Trained study interviewers followed up all patients via telephone. Overall survival
3 (OS) was defined as the period from pathological diagnosis to death due to cancer or the most
4 recent follow-up.

8 **Statistical analysis**

9 The X-tile program determined the optimal cutoff values for NLR, PLR, MLR, SIRI, and
10 OPNI (Yale University, Newhaven, Connecticut). Pearson's χ^2 test was applied to reveal the
11 correlation between variables, and then the heat map showed the degree of correlation among
12 the blood indicators. The LASSO algorithm was utilized to develop a novel and
13 comprehensive indicator. The Kaplan-Meier method calculated survival curves and compared
14 differences with the log-rank test. Hazard ratios (HRs) and 95% confidence intervals (CIs)
15 were estimated based on the univariate and multivariate Cox regression model to find
16 independent prognostic factors of CRC. The receiver operating characteristic (ROC) method
17 was utilized to compare the predictive capability based on the area under the curve (AUC). A
18 P-value less than 0.05 was statistical significance.

20 **Results**

21 **Patients' characteristics**

22 Two hundred and ten patients were enrolled in the final analysis. The baseline characteristics
23 are shown in **Table 1**. 118 (56.2%) were male patients, and 161 (78.5%) were diagnosed with
24 stage II-III, which accounted for a large proportion of patients with outcome events. 75
25 (35.7%) patients had a BMI greater than 24 or less than 18.5, accounting for approximately
26 half of the patients with a BMI within the 18.5-24 range.

28 **Correlation between preoperative blood indicators**

29 The heat map depicted the correlations between the nine preoperative blood indicators,
30 represented by the intensity of color shading (**Fig.1**). Strong correlations were observed
31 among some indicators, with the MLR and MC displaying the strongest correlation. Pearson's
32 χ^2 test revealed that preoperative OPNI was significantly correlated with ALC, SII, SIRI,
33 NLR, PLR, and MLR ($p < 0.001$, $p < 0.001$, $p < 0.01$, $p < 0.001$, $p < 0.001$, $p = 0.001$, respectively).
34 However, no significant correlation was found between ANC and MC.

36 **Establishment of a comprehensive blood indicator**

37 Considering the correlation between preoperative blood indicators and the limitations of
38 traditional Cox regression modeling, the LASSO Cox regression model was employed to
39 analyze the contribution of nine indicators to the endpoint event, assigning coefficients that
40 help eliminate variables contributing minimally. As a result, the comprehensive indicator PSI
41 was formulated as $(0.9858 \times \text{OPNI}) - (7.2153 \times \text{SIRI})$. Based on this formula, the 210 patients
42 were categorized into three groups using the optimal cut-point obtained from X-tile software

1 (Yale University, Newhaven, Connecticut): the high PSI group (≥ 43.4), the medium PSI
2 group (28.3-43.4), and the low PSI group (< 28.3).

4 **Prognostic impact of preoperative OPNI or SIRI in resectable CRC**

5 Patients with high levels of OPNI (≥ 49.6) exhibited significantly better overall survival (OS)
6 compared to those with low OPNI values (<49.6) ($p<0.001$, **Fig.2B**). Similarly, patients with
7 high SIRI values (≥ 2.0) demonstrated poorer survival in resectable CRC ($p<0.001$, **Fig.2A**).

9 **Prognostic impact of preoperative PSI in resectable CRC**

10 The prognostic value of PSI was assessed in comparison with lower counterparts, revealing
11 that patients with higher PSI values (28.3-43.4 and >43.4) had notably improved OS ($p<0.001$,
12 $p<0.001$, respectively, **Fig.3**). In both univariate and multivariate Cox models (**Table 2**), the
13 PSI score was significantly associated with survival outcomes. Patients with a PSI score of
14 28.3-43.4 displayed a lower HR of 0.293 (95% CI: 0.154-0.558, $p<0.001$) and 0.312 (95% CI:
15 0.153-0.636, $p=0.001$) in univariate and multivariate Cox models, respectively. Likewise, for
16 patients with a PSI score >43.4 , the HR was 0.111 (95% CI: 0.051-0.242, $p<0.001$) in the
17 univariate Cox model and 0.146 (95% CI: 0.060-0.351, $p<0.001$) in the multivariate Cox
18 model, indicating a significantly reduced risk of poor survival. According to the results
19 obtained from multivariate Cox regression analysis, PSI maintained its significance as an
20 independent prognostic factor for OS ($p\leq 0.001$). Furthermore, PSI demonstrated superior
21 predictive ability compared to stage, OPNI, and SIRI alone, with AUC values of 0.734 (95%
22 CI: 0.654-0.815), 0.635 (95% CI: 0.552-0.717), 0.721 (95% CI: 0.642-0.800), and 0.645
23 (95% CI: 0.556-0.733), respectively (**Fig.4 A, B**).

24 Additionally, age (<60 vs. ≥ 60) and tumor stage (stage III vs. I) were identified as
25 independent prognostic factors. The HRs were 0.365 (95% CI: 0.177-0.755, $p=0.007$) and
26 5.258 (95% CI: 1.918-14.416, $p=0.001$), respectively. Moreover, site, SIRI, and OPNI were
27 also found to have significant prognostic value in predicting the outcome of resectable CRC.

29 **Discussion**

30 To the best of our knowledge, this study represents one of the few attempts to establish a
31 comprehensive blood indicator for evaluating the prognosis of CRC patients by combining
32 systemic inflammation and nutritional status. Our findings revealed that preoperative PSI
33 served as an independent prognostic factor for CRC, with higher PSI levels associated with
34 improved long-term survival. Moreover, the predictive value of PSI surpassed that of
35 individual stage, OPNI, and SIRI in predicting clinical outcomes.

36 Systemic inflammation has been widely recognized as a critical factor promoting tumor
37 proliferation, invasion, and metastasis, an established hallmark of malignancy [22,23].
38 Various blood markers have been explored to assess systemic inflammation and predict
39 clinical outcomes in malignant diseases. Qi et al. were among the first to demonstrate that
40 SIRI was associated with long-term survival in pancreatic cancer, serving as an independent
41 prognostic factor for postoperative recurrence and clinical outcomes [35]. Subsequent studies
42 validated preoperative SIRI levels as predictive of long-term survival in several malignancies,
43 including gastric [24], lung [25], and breast cancer [26]. In the context of CRC, Cao et al.
44 reported that higher preoperative SIRI levels were linked to poorer overall and disease-free

1 survival [13]. Compared to other inflammation-related markers, such as NLR, PLR, and SII,
2 SIRI demonstrated superior predictive value for CRC survival. Although evidence is
3 accumulating, more research is still needed to fully understand the relationship between SIRI
4 and CRC prognosis.

5 Preoperative malnutrition is more prevalent in CRC patients compared to other
6 malignancies, often stemming from decreased food intake, intestinal obstruction, and
7 abnormal gastrointestinal function caused by disease progression [27]. Numerous studies have
8 confirmed its predictive ability for adverse short- and long-term outcomes in CRC, including
9 surgical site infections, pneumonia, septic shock, and poorer survival [16,28,29]. Onodera and
10 colleagues first proposed the Onodera's Prognostic Nutritional Index (OPNI), which has since
11 been widely adopted to assess preoperative nutritional status and predict prognosis in various
12 malignancies, including oral cavity, colorectal, and liver cancers [30,31,32]. A high
13 preoperative OPNI value was associated with better OS in CRC, establishing OPNI as an
14 independent predictor for CRC cases [31]. Consequently, preoperative identification of
15 malnourished patients allows for early initiation of nutritional support, forming the foundation
16 for enhanced recovery after surgery (ERAS) protocols, reducing postoperative complications,
17 and improving long-term prognosis [33,34].

18 While individual inflammatory or nutritional indicators exhibit prognostic predictive
19 value, their accuracy and comprehensiveness can be enhanced. To address this, we utilized the
20 LASSO method to analyze the contribution of nine indicators to the endpoint event, assigning
21 coefficients that help eliminate variables contributing minimally. In this study, we established
22 a comprehensive blood indicator (PSI) based on SIRI and OPNI and demonstrated that PSI
23 more accurately predicted survival in resectable CRC patients. Our results indicated that both
24 OPNI and SIRI were significant prognostic factors based on univariate analysis. Furthermore,
25 multivariate analysis identified PSI as an independent prognostic predictor for overall survival
26 (OS). Patients with PSI scores of 28.3-43.4 and >43.4 exhibited lower HRs of 0.312 (95% CI:
27 0.153-0.636, $p=0.001$) and 0.146 (95% CI: 0.060-0.351, $p<0.001$), respectively. Importantly,
28 compared to single indicators, including stage, OPNI, and SIRI, PSI demonstrated superior
29 prognostic survival prediction, with an AUC value of 0.734 (95% CI: 0.654-0.815).
30 Additionally, our finding that high preoperative SIRI levels in CRC were associated with
31 poorer OS aligns with the results of SIRI in prognostic studies of other malignancies. Thus,
32 PSI stands as a reliable prognostic predictor, accurately assessing the systemic inflammation
33 response and nutritional condition, thereby supporting a more comprehensive evaluation of
34 CRC patient survival.

35 Nevertheless, this study does have certain limitations that warrant consideration. First,
36 the included OPNI evaluated nutritional status at a single point in time, and subsequent
37 nutritional improvements were not accounted for. Developing a dynamic evaluation system to
38 assess patients' nutritional status and consider its overall impact on short- and long-term
39 prognosis may lead to a more comprehensive and accurate prognostic assessment. Second, the
40 small sample size limits the generalizability of our results, necessitating external validation.
41 Third, being a single-center study, potential selection bias may exist. Therefore, multi-center
42 studies are still needed to corroborate our findings.

43

44 **Conclusion**

1 In conclusion, our study presented a novel comprehensive blood indicator (PSI) based on
2 SIRI and OPNI, demonstrating its potential as an independent prognostic factor for CRC. PSI
3 outperformed individual inflammatory and nutritional markers in predicting clinical outcomes.
4 This supports more accurate and comprehensive risk management and personalized treatment
5 for resectable CRC patients.

6

7 **List of Abbreviations**

8	CRC	colorectal cancer
9	OS	overall survival
10	DFS	disease free survival
11	SIRI	systemic inflammation response index
12	CEA	carcinoembryonic antigen
13	OPNI	Onodera's prognostic nutritional Index
14	NLR	neutrophil-to-lymphocyte ratio
15	PLR	platelet-to-lymphocyte ratio
16	MLR	monocyte-to-lymphocyte ratio
17	BMI	body mass index
18	HR	hazard ratio
19	CI	confidence interval
20	NI	not included.
21	Ref	reference
22	SII	systemic immune-inflammation index
23	AUC	area under the curve
24	ANC	absolute neutrophil count
25	ALC	absolute lymphocyte count
26	MC	monocyte count

27

28 **Declarations**

29 **Authors' contribution**

30 HC was in charge of acquiring and analyzing data, composing manuscripts, and conducting
31 critical revisions. JCL took responsibility for patient follow-up and collecting clinicopathological
32 data. YC, QZ, and YL provided technical support for data analysis and proofread the article for
33 grammar. HJJ supervised the conception, design, and review of selected topics.

34 **Funding**

35 The author(s) reported that there is no funding associated with the work featured in this article.

36 **Acknowledgement**

37 None.

38 **Availability of data and materials**

39 The datasets used in this study are available on request from the corresponding author.

40 **Ethics approval and consent to participate**

41 This study was approved by the ethics committee of Chongqing Medical University(K2023-304)
42 and followed the ethical standards of the Helsinki Declaration.

43 **Consent to participate**

44 Not applicable.

1 **Competing interests**

2 The authors have declared that no competing interest exists.

3

4 **Reference**

- 5 1. J F, M E, F L, M C, L M, M P, et al. Cancer today [Internet]. [cited 2021 Nov 1]. Available
6 from: <https://gco.iarc.fr/today>
- 7 2. American Cancer Society. Survival Rates for Colorectal Cancer [Internet]. Cancer.org.
8 American Cancer Society ; 2014. Available from:
9 [https://www.cancer.org/cancer/colon-rectal-cancer/detection-diagnosis-staging/survival-rates.](https://www.cancer.org/cancer/colon-rectal-cancer/detection-diagnosis-staging/survival-rates.html)
10 html
- 11 3. Dekker E, Tanis PJ, Vleugels JLA, Kasi PM, Wallace MB. Colorectal cancer. The Lancet
12 [Internet]. 2019;394:1467–80. Available from: <https://pubmed.ncbi.nlm.nih.gov/31631858/>
- 13 4. Fang SH, Efron JE, Berho M, Wexner SD. Dilemma of Stage II Colon Cancer and Decision
14 Making for Adjuvant Chemotherapy. journal of the American college of surgeons.
15 2014;219:1056–69.
- 16 5. Zhang C, Yin S, Tan Y, Huang J, Wang P, Hou W, et al. Patient Selection for Adjuvant
17 Chemotherapy in High-Risk Stage II Colon Cancer. American journal of clinical oncology.
18 2020;43:279–87.
- 19 6. Colotta F, Allavena P, Sica A, Garlanda C, Mantovani A. Cancer-related inflammation, the
20 seventh hallmark of cancer: links to genetic instability. Carcinogenesis. 2009;30:1073–81.
- 21 7. Balkwill F, Mantovani A. Inflammation and cancer: back to Virchow? The Lancet.
22 2001;357:539–45.
- 23 8. Karin M. Nuclear factor- κ B in cancer development and progression. Nature.
24 2006;441:431–6.
- 25 9. Coussens LM, Werb Z. Inflammation and cancer. Nature. 2002;420:860–7.
- 26 10. Bondar T, Medzhitov R. The Origins of Tumor-Promoting Inflammation. Cancer Cell.
27 2013;24:143–4.
- 28 11. Chang W-CL, Coudry RA, Clapper ML, Zhang X, Williams K-L, Spittle CS, et al. Loss of
29 p53 enhances the induction of colitis-associated neoplasia by dextran sulfate sodium.
30 Carcinogenesis. 2007;28:2375–81.
- 31 12. Kajsa Björkman, Tuomas Kaprio, Beilmann-Lehtonen I, Stenman U-H, Böckelman C,
32 Haglund C. TATI, TAT-2, and CRP as Prognostic Factors in Colorectal Cancer. ONCOLOGY.
33 2021;100:22–30.
- 34 13. Cao Y, Zheng X, Hu Y, Li J, Huang B, Zhao N, et al. Levels of systemic inflammation
35 response index are correlated with tumor-associated bacteria in colorectal cancer. Cell Death
36 & Disease. 2023;14.
- 37 14. Chen J-H, Zhai E-T, Yuan Y-J, Wu K-M, Xu J-B, Peng J-J, et al. Systemic
38 immune-inflammation index for predicting prognosis of colorectal cancer. World Journal of
39 Gastroenterology. 2017;23:6261.
- 40 15. Chen W, Shen X, Xu B. Value Research of NLR, PLR, and RDW in Prognostic
41 Assessment of Patients with Colorectal Cancer. Journal of healthcare engineering.
42 2022;2022:1–6.
- 43 16. Hu W-H, Cajas-Monson LC, Eisenstein S, Parry L, Cosman B, Ramamoorthy S.

- 1 Preoperative malnutrition assessments as predictors of postoperative mortality and morbidity
- 2 in colorectal cancer: an analysis of ACS-NSQIP. *Nutrition Journal*. 2015;14.
- 3 17. Capra S, Ferguson M, Ried K. Cancer: impact of nutrition intervention
- 4 outcome—nutrition issues for patients. *Nutrition* [Internet]. 2001;17:769–72. Available from:
- 5 <https://www.sciencedirect.com/science/article/abs/pii/S0899900701006323>
- 6 18. Lohsiriwat V. The influence of preoperative nutritional status on the outcomes of an
- 7 enhanced recovery after surgery (ERAS) programme for colorectal cancer surgery.
- 8 *Techniques in Coloproctology*. 2014;18:1075–80.
- 9 19. Smith R, Broach RB, Hedrick TL, Mahmoud NN, Paulson ES. Impact of BMI on
- 10 Postoperative Outcomes in Patients Undergoing Proctectomy for Rectal Cancer. *Diseases of*
- 11 *the colon and rectum*. 2014;57:687–93.
- 12 20. Yamano T, Yoshimura M, Kobayashi M, Beppu N, Hamanaka M, Babaya A, et al.
- 13 Malnutrition in rectal cancer patients receiving preoperative chemoradiotherapy is common
- 14 and associated with treatment tolerability and anastomotic leakage. *International Journal of*
- 15 *Colorectal Disease*. 2016;31:877–84.
- 16 21. Gupta A, Gupta E, Hilsden R, Hawel JD, Elnahas AI, Schlachta CM, et al. Preoperative
- 17 malnutrition in patients with colorectal cancer. *Canadian Journal of Surgery* [Internet].
- 18 2021;64:E621–9. Available from: <https://www.ncbi.nlm.nih.gov/pmc/articles/PMC8628841/>
- 19 22. Singh N, Baby D, Rajguru JP, Patil PB, Thakkannavar SS, Pujari VB. Inflammation and
- 20 Cancer. *Annals of African Medicine*. 2019;18:121–6.
- 21 23. Hanahan D. Hallmarks of Cancer: New Dimensions. *Cancer Discovery*. 2022;12:31–46.
- 22 24. Li S, Lan X, Gao H, Li Z, Chen L, Wang W, et al. Systemic Inflammation Response Index
- 23 (SIRI), cancer stem cells and survival of localised gastric adenocarcinoma after curative
- 24 resection. *Journal of Cancer Research and Clinical Oncology*. 2017;143:2455–68.
- 25 25. Ahmet Kucuk, Emine Elif Özkan, Sukran Eskici Oztep, Huseyin Mertsoylu, Berrin
- 26 Pehlivan, Ugur Selek, et al. The Influence of Systemic Inflammation Response Index on
- 27 Survival Outcomes of Limited-Stage Small-Cell Lung Cancer Patients Treated with
- 28 Concurrent Chemoradiotherapy. *Journal of oncology*. 2020;2020:1–8.
- 29 26. Zhu M, Chen L, Kong X, Wang X, Fang Y, Li X, et al. The Systemic Inflammation
- 30 Response Index as an Independent Predictor of Survival in Breast Cancer Patients: A
- 31 Retrospective Study. *Frontiers in Molecular Biosciences*. 2022;9.
- 32 27. Hébuterne X, Lemarié E, Michallet M, de Montreuil CB, Schneider SM, Goldwasser F.
- 33 Prevalence of Malnutrition and Current Use of Nutrition Support in Patients With Cancer.
- 34 *Journal of Parenteral and Enteral Nutrition*. 2014;38:196–204.
- 35 28. Martínez-Escribano C, Moreno FA, Pérez-López M, Cunha-Pérez C, Ángel
- 36 Belenguer-Varea, David Cuesta Peredo, et al. Malnutrition and Increased Risk of Adverse
- 37 Outcomes in Elderly Patients Undergoing Elective Colorectal Cancer Surgery: A
- 38 Case-Control Study Nested in a Cohort. *Nutrients*. 2022;14:207–7.
- 39 29. Sousa IM, Silva FM, Carvalho ALM, da Rocha IMG, Fayh APT. Accuracy of isolated
- 40 nutrition indicators in diagnosing malnutrition and their prognostic value to predict death in
- 41 patients with gastric and colorectal cancer: A prospective study. *Journal of Parenteral and*
- 42 *Enteral Nutrition*. 2021;46:508–16.
- 43 30. Yoshida R, Shunsuke Gohara, Sakata J, Matsuoaka Y, Akiyuki Hirose, Kawahara K, et al.
- 44 Onodera's prognostic nutritional index correlates with tumor immune environment and

- 1 survival in patients with oral squamous cell carcinoma undergoing chemoradiotherapy.
2 Human pathology. 2020;13:100850–0.
- 3 31. Borda F, Borda A, Zozaya JM, Urman J, Jiménez J, Ibáñez B. Valor pronóstico del índice
4 de Onodera en la supervivencia del cáncer colorrectal. Anales del Sistema Sanitario de
5 Navarra. 2014;37:213–21.
- 6 32. Xu Y, Yuan X, Zhang X, Hu W, Wang Z, Yao L, et al. Prognostic value of inflammatory
7 and nutritional markers for hepatocellular carcinoma. Medicine. 2021;100:e26506–6.
- 8 33. Garla P, Waitzberg DL, Tesser A. Nutritional Therapy in Gastrointestinal Cancers.
9 Gastroenterology Clinics of North America. 2018;47:231–42.
- 10 34. Winkels RM, Heine-Bröring RC, van Zutphen M, van Harten-Gerritsen S, Kok DE, van
11 Duijnhoven FJ, et al. The COLON study: Colorectal cancer: Longitudinal, Observational
12 study on Nutritional and lifestyle factors that may influence colorectal tumour recurrence,
13 survival and quality of life. BMC Cancer [Internet]. 2014 [cited 2019 Dec 11];14. Available
14 from: <https://www.ncbi.nlm.nih.gov/pmc/articles/PMC4046039/>
- 15 35. Qi Q, Zhuang L, Shen Y, Geng Y, Yu S, Chen H, et al. A novel systemic inflammation
16 response index (SIRI) for predicting the survival of patients with pancreatic cancer after
17 chemotherapy. Cancer. 2016;122:2158–67.

Table 1. Baseline clinicopathological characteristics of patients with CRC

Varibales	No.of patiens(%)	No.of outcomes(%)
Gender		
Male	118 (56.2%)	36 (66.7%)
Female	92 (43.8%)	18 (33.3%)
Age (years)		
≥60	121 (57.6%)	43 (79.6%)
<60	89 (42.4%)	11 (20.4%)
BMI		
≥24	55 (26.2%)	10 (18.5%)
<18.5	20 (9.5%)	7 (13.0%)
18.5– 23.9	135 (64.3%)	37 (68.5%)
Smoking		
No	126 (60%)	32 (59.3%)
Yes	84 (40%)	22 (40.7%)
Drinking		
No	136 (64.8%)	34 (63.0%)
Yes	74 (35.2%)	20 (37.0%)
Family history of cancer		
No	201 (95.7%)	51 (94.4%)
Yes	9 (4.3%)	3 (5.6%)
Tumor stage		
I	49 (23.3%)	5 (9.3%)
II	86 (41.0%)	22 (40.7%)
III	75 (37.5%)	27 (50%)
Tumor site		
Colon	88 (41.9%)	21 (38.9%)
Rectum	116 (55.2%)	29 (53.7%)
Others ^a	6 (2.9%)	4 (7.4%)
Adjuvant therapy		
No	71 (33.8%)	19 (35.2%)
Yes	139 (66.2%)	35 (64.8%)
PSI		
< 28.3	21 (10%)	14 (25.9%)
28.3-43.4	94 (44.8)	28 (51.9%)
≥ 43.4	95 (45.2)	12 (22.2%)

Abbreviation: *BMI* body mass index

Notes: ^a included cecum, and the junction of the rectum and sigmoid colon; PSI: the novel prognostic indicator.

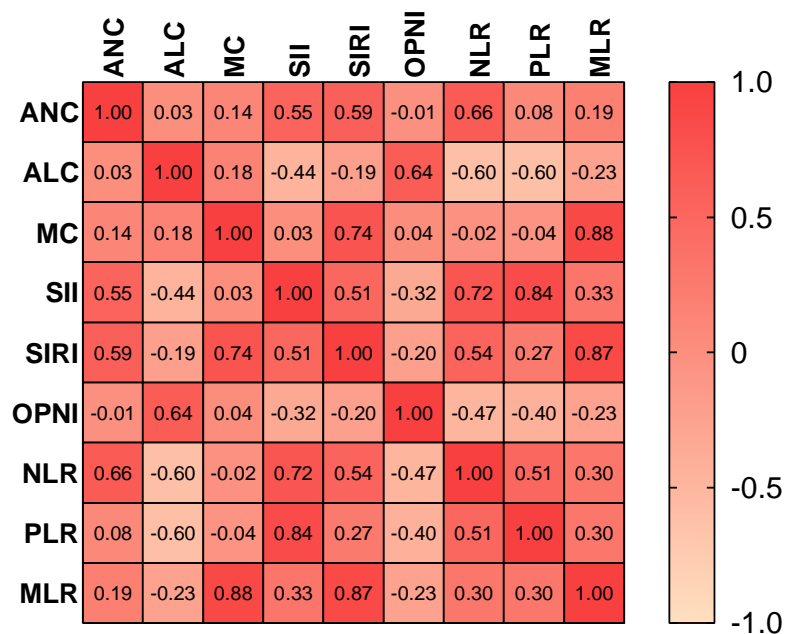
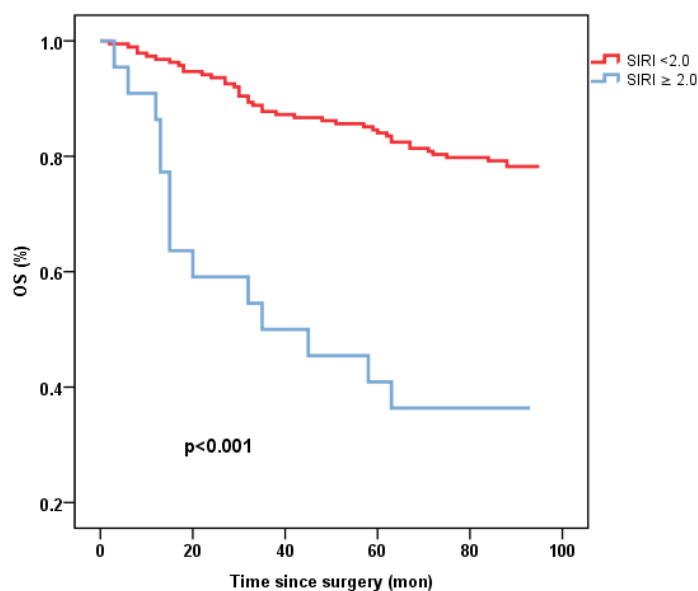
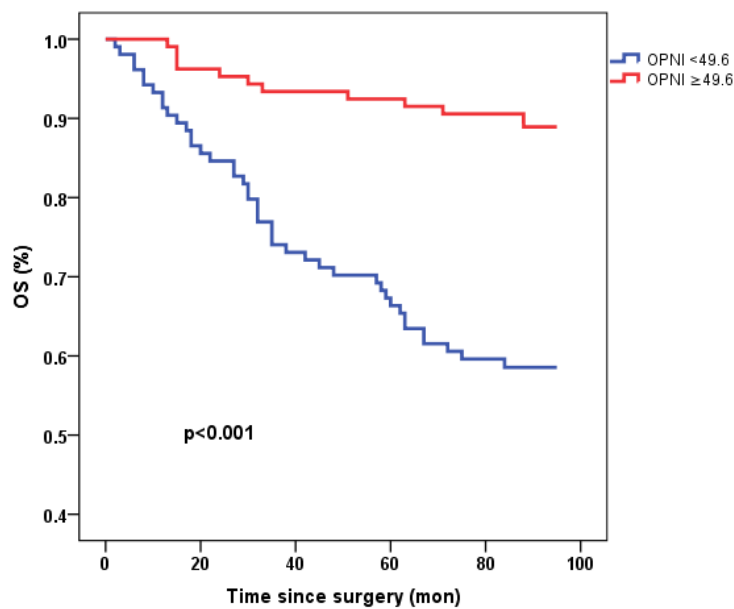


Fig. 1 Correlation heat map of nine indicators.

Abbreviations: *OPNI* Onodera' s Prognostic Nutritional Index, *NLR* neutrophil-to-lymphocyte ratio, *PLR* platelet-to-lymphocyte ratio, *MLR* monocyte-to-lymphocyte ratio, *ANC* absolute neutrophil count, *ALC* absolute lymphocyte count, *MC* monocyte count, *SII* systemic immune-inflammation index



A



B

Fig.2 Kaplan-Meier survival curves of OS stratified by preoperative SIRI (A) and OPNI levels (B) in 210 resectable CRC patients (with log-rank test).

Abbreviations: OS overall survival, SIRI systemic inflammation response index, OPNI Onodera's Prognostic Nutritional Index.

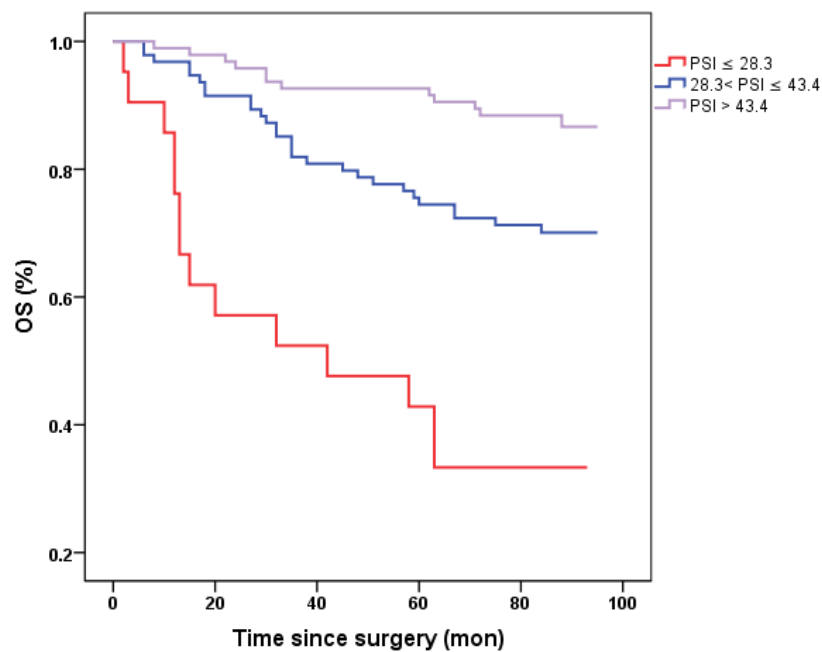


Fig.3 Kaplan-Meier survival curves of OS stratified by preoperative PSI in 210

resectable CRC patients (with log-rank test).

Abbreviations: *OS* overall survival.

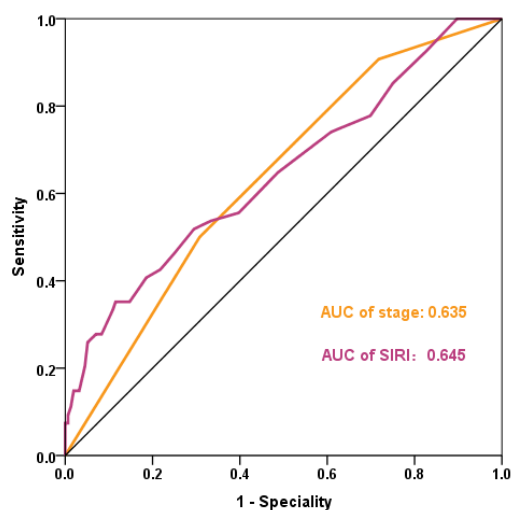
Notes: the novel prognostic indicator (*PSI*).

Table 2. univariate and multivariate analysis for overall survival (OS)

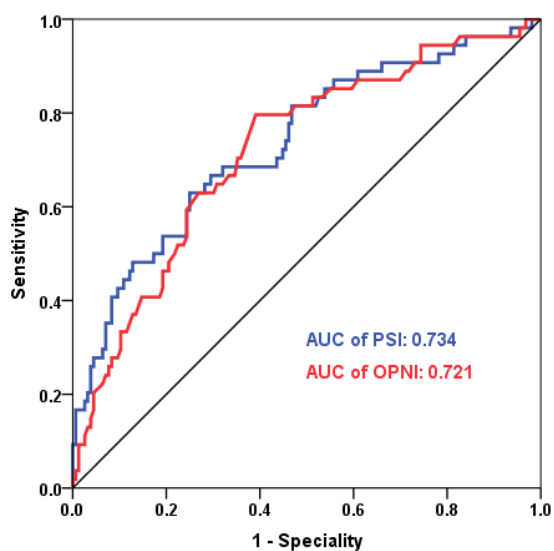
Varibales	Univariate analysis		Multivariate analysis	
	HR (95%CI)	P	HR (95%CI)	P
Gender(male vs female)	1.582 (0.898-2.786)	0.112	2.075 (0.952-4.524)	0.066
Age(years, <60 vs ≥60)	0.296 (0.152-0.573)	<0.001	0.365 (0.177-0.755)	0.007
BMI				
<18.5	Ref.	-	Ref.	-
18.5– 23.9	0.720 (0.321-1.616)	0.426	0.515 (0.217-1.222)	0.132
≥ 24	0.466 (0.177-1.225)	0.122	0.346 (0.124-0.969)	0.043
Smoking(yes vs no)	0.958 (0.557-1.649)	0.878	0.334(0.146-0.761)	0.009
Drinking (yes vs no)	1.096 (0.631-1.905)	0.744	1.503 (0.681-3.317)	0.313
Family history of cancer(yes vs no)	1.319 (0.411-4.228)	0.642	1.553 (0.452-5.332)	0.485
Adjuvant therapy (yes vs no)	1.064 (0.608-1.859)	0.829	0.944 (0.512-1.743)	0.855
Tumor stage				
I	Ref.	-	Ref.	-
II	2.756 (1.043-7.277)	0.041	2.566 (0.940-7.008)	0.066
III	4.491(1.728-11.670)	0.002	5.258 (1.918-14.416)	0.001
Tumor site				
Others ^a	Ref.	-	Ref.	-
Rectum	0.274 (0.096-0.783)	0.016	0.786 (0.208-2.967)	0.723
Colon	0.264 (0.090-0.772)	0.015	0.626 (0.173-2.269)	0.476
CEA (ng/l, < 5 vs ≥ 5)	1.168 (0.682-1.997)	0.572	1.053 (0.571-1.943)	0.869
SIRI (< 2.0 vs ≥ 2.0)	0.215 (0.117-0.398)	<0.001		NI
OPNI (< 49.6 vs ≥ 49.6)	4.856 (2.502-9.425)	<0.001		NI
PSI score				
≤ 28.3	Ref.	-	Ref.	-
28.3-43.4	0.293 (0.154-0.558)	<0.001	0.312 (0.153-0.636)	0.001
>43.4	0.111 (0.051-0.242)	<0.001	0.146 (0.060-0.351)	<0.001

Abbreviations: *BMI* body mass index, *HR* hazard ratio, *CI* confidence interval, *SIRI* systemic inflammation response index, *CEA* carcinoembryonic antigen, *OPNI* Onodera's Prognostic Nutritional Index, *NI* not included, *Ref* reference.

Notes: ^a included cecum, and the junction of the rectum and sigmoid colon; *PSI*: the novel prognostic indicator.



A



B

Fig.4 ROC curves for prognostic indicators in CRC - Categorized by Correlation (Positive or Negative). **A:** AUC of stage and SIRI; **B:** AUC of PSI and OPNI.

Abbreviations: *AUC* Area Under the Curve, *OPNI* Onodera's Prognostic Nutritional Index, *SIRI* systemic inflammation response index.

Notes: *PSI*: the novel prognostic indicator.