

1 **Evaluation of fractional flow reserve and atherosclerotic plaque characteristics on**  
2 **coronary non-contrast T1-weighted magnetic resonance imaging**

3

4 Hiroki Sugane MD,<sup>1,2,3</sup> Yasuhide Asaumi MD, PhD,<sup>1,2</sup> Soshiro Ogata PhD,<sup>4</sup> Michito Kimura  
5 MS,<sup>4</sup> Tomoaki Kanaya MD, PhD,<sup>1,5</sup> Tomoya Hoshi MD, PhD,<sup>6</sup> Akira Sato MD, PhD,<sup>7</sup> Hiroyuki  
6 Miura MD<sup>1</sup>, Yoshiyuki Tomishima MD<sup>1</sup>, Yoshiaki Morita MD, PhD,<sup>8</sup> Kazuhiro Nakao MD,  
7 PhD,<sup>1</sup> Fumiyuku Otsuka MD, PhD,<sup>1</sup> Yu Kataoka MD, PhD,<sup>1</sup> Tomohiro Kawasaki MD, PhD,<sup>9</sup>  
8 Kunihiro Nishimura MD, PhD,<sup>4</sup> Jagat Narula MD, PhD,<sup>10</sup> Satoshi Yasuda MD, PhD,<sup>1,2,11</sup> and  
9 Teruo Noguchi MD, PhD<sup>1</sup>

10

11 1) Department of Cardiovascular Medicine, National Cerebral and Cardiovascular Center,  
12 Suita, Osaka, Japan

13 2) Department of Advanced Cardiovascular Medicine, Tohoku University Graduate School  
14 of Medicine, Sendai, Japan

15 3) Department of Cardiology, Chikamori Hospital, Kochi-city, Japan

16 4) Department of Preventative Medicine, National Cerebral and Cardiovascular Center,  
17 Suita, Osaka, Japan

18 5) Department of Cardiovascular Medicine, Dokkyo Medical Univeristy, Mibu, Japan

19 6) Department of Cardiovascular Medicine, University of Tsukuba, Tsukuba, Japan

20 7) Second department of Internal Medicine, University of Yamanashi, Yamanashi, Japan

21 8) Department of Radiology, National Cerebral and Cardiovascular Center, Suita, Osaka,  
22 Japan

23 9) Department of Cardiology, Shin-Koga Hospital, Kurume, Japan

24 10) Mount Sinai Heart, Icahn School of Medicine at Mount Sinai, New York, New York, USA.

25 11) Department of Cardiovascular Medicine, Tohoku University Graduate School of  
26 Medicine, Sendai, Japan

27

28 **Short title:** Plaque characteristics on CMR and flow disturbance

29

30 **Address for correspondence:**

31 Yasuhide Asaumi MD, PhD

32 Department of Cardiovascular Medicine

33 National Cerebral and Cardiovascular Center

34 6-1 Kishibe-shimmachi, Suita, Osaka, 564-8565

35 Tel: +81-6-6170-1070

- 1 Fax: +81-6-6170-1782
- 2 E-mail: [asamiya@ncvc.go.jp](mailto:asamiya@ncvc.go.jp)

## 1 **Abstract**

2 **Background:** The relationship between high-risk coronary plaque characteristics regardless  
3 of the severity of lesion stenosis and myocardial ischemia remains unsettled. High-intensity  
4 plaques (HIPs) on non-contrast T1-weighted magnetic resonance imaging (T1WI) have  
5 been characterized as high-risk coronary plaques. We sought to elucidate whether the  
6 presence of coronary HIPs on T1WI influences fractional flow reserve (FFR) in the distal  
7 segment of the vessel.

8 **Methods:** We retrospectively analyzed 232 vessels in 190 patients with chronic stable  
9 coronary syndrome who underwent both invasive FFR measurement and coronary T1WI  
10 using a multicenter registry. The plaque-to-myocardial signal intensity ratio (PMR) of the  
11 most stenotic lesion was evaluated; a coronary plaque with PMR >1.4 was defined as a HIP.

12 **Results:** The median PMR of coronary plaques on T1WI in vessels with FFR  $\leq 0.80$  was  
13 significantly higher than that of plaques with FFR >0.80 (1.18 [interquartile range (IQR):  
14 0.96–1.45] vs. 0.97 [IQR: 0.85–1.12];  $p < 0.001$ ). Multivariable analysis showed that an  
15 increase in PMR of the most stenotic segment is associated with lower FFR (beta-coefficient,  
16 -0.051;  $p < 0.001$ ). The presence of coronary HIPs was an independent predictor of FFR  
17  $\leq 0.80$  (odds ratio, 5.54; 95% confidence interval, 1.50–20.5;  $p = 0.010$ ).

1 **Conclusions:** Coronary plaques with high PMR are associated with low FFR in the  
2 corresponding vessel, indicating that plaque morphology might influence the degree of  
3 myocardial ischemia.

4 **Trial registration:** UMIN 000029246

5

6

7 **Key Words:** myocardial ischemia, high-risk plaque, cardiac magnetic resonance imaging,

8 plaque morphology

9

## 1 **Clinical Perspective**

### 2 ***What is new?***

3 • Incremental of coronary plaque to myocardial signal intensity ratio on T1-weighted  
4 magnetic resonance imaging (T1WI), which is represented as instability of coronary  
5 plaques was associated with low fractional flow reserve (FFR) value in patients with  
6 chronic coronary syndrome (CCS).

7 • The presence of a coronary high-intensity plaque (HIP) detected with T1WI is a  
8 strong predictor of low fractional flow reserve (FFR) even after adjusting age, gender,  
9 proximal left anterior descending artery, the severity of stenosis in the most stenotic  
10 lesion and variables related to plaque volume evaluated on computed tomography  
11 angiography.

### 12 ***What are the clinical implications?***

13 • Non-contrast T1WI without contrast media is an anatomy-based, but not  
14 ischemia-based, screening method for predicting future coronary events.

15 • The presence of a coronary HIP on T1WI, which represents a complicated atheroma,  
16 is an additional determinant of coronary physiology.

## 1 **Abbreviations**

2 AHA = the American Heart Association

3 CCS = chronic coronary syndrome

4 CMR = cardiac magnetic resonance imaging

5 CTA = computed tomography angiography

6 FFR = fractional flow reserve

7 HIP = high-intensity plaque

8 ICA = invasive coronary angiography

9 LAD = left anterior descending artery

10 MR = magnetic resonance

11 PMR = plaque-to-myocardial signal intensity ratio

12 QCA = quantitative coronary angiography

13 T1WI = T1-weighted magnetic resonance imaging

14

## 1 **Introduction**

2 Fractional flow reserve (FFR) is the current reference standard for functional evaluation of  
3 myocardial ischemia.<sup>1</sup> Numerous studies involving coronary computed tomography  
4 angiography (CTA) have reported that, in addition to the anatomical severity of coronary  
5 lesion stenosis, high-risk plaque features of coronary lesions are associated with low FFR.<sup>2, 3</sup>  
6 Given that a high-risk plaque feature is a potential substrate for future coronary events,<sup>4</sup> this  
7 finding could partly account for the ability of FFR to predict future cardiac events.<sup>5</sup> High-risk  
8 plaques could cause functional stenosis in the presence of hyperemic agents that dilate  
9 coronary resistance vessels and possibly uninvolved epicardial coronary artery segments.  
10 The lack of vasodilatation at the site of the lesion might result from the Glagovian limit in  
11 maximally positively remodeled lesions and endothelial dysfunction.<sup>6, 7</sup> However, the precise  
12 interplay between plaque composition and coronary flow attenuation of lesion stenosis  
13 remains to be fully elucidated.

14 Cardiac magnetic resonance imaging (CMR) of plaques, which is performed without  
15 radiation or iodinated contrast exposure, has been used for plaque characterization.<sup>8</sup>  
16 Coronary high-intensity plaques (HIPs) on T1-weighted magnetic resonance imaging (T1WI)  
17 are associated with future coronary events in patients with chronic coronary syndrome

1 (CCS).<sup>9-11</sup> Based on histological studies of coronary or carotid artery atherosclerosis, HIPs  
2 on T1WI could represent complicated plaques according to the current AHA classification of  
3 atherosclerosis.<sup>8, 12</sup> However, the exact plaque features responsible for the increased signal  
4 intensity on non-contrast T1WI have not yet been fully identified.

5 We undertook a retrospective analysis of a multicenter registry to investigate the  
6 association between invasive FFR and the presence of coronary HIPs with high-risk plaque  
7 characteristics in patients with chronic coronary artery disease.

8

## 9 **Methods**

### 10 ***Study population***

11 This study was a retrospective and multicenter observational study (UMIN 000029246).  
12 Patients were eligible for this study if they had CCS with planned invasive coronary  
13 angiography (ICA) and FFR evaluation for moderately stenotic lesions, i.e., lesions with  
14 visually estimated diameter stenosis of 40–80% on angiography due to angina pectoris,  
15 presence of myocardial ischemia detected with cardiac radionuclide myocardial perfusion  
16 imaging or exercise electrocardiography, coronary stenosis detected on CTA, or history of  
17 myocardial infarction. Between August 2012 and November 2019, 1,360 consecutive



1 patients fulfilled these criteria at 4 hospitals: National Cerebral and Cardiovascular Center,  
2 Tsukuba University Hospital, Dokkyo Medical University Hospital, and Shin Koga Hospital.  
3 Patients were excluded if they had (1) no FFR measurements during the index ICA because  
4 of coronary artery stenosis >80% based on visual estimation or obviously thrombotic lesions,  
5 (2) FFR measurements for a culprit vessel with a history of previous myocardial infarction,  
6 (3) previous coronary stent implantation in a vessel where FFR was measured, (4) stage 4  
7 or 5 chronic kidney disease, (5) devices in the body for which CMR is unsafe, (6)  
8 claustrophobia, (7) chronic atrial fibrillation, frequent atrial or ventricular extrasystoles on  
9 12-lead electrocardiography at rest, (8) history of cardiac surgery or thoracic surgery with  
10 sternotomy (e.g., coronary artery bypass grafting), (9) hesitancy in undergoing magnetic  
11 resonance examination, or (10) poor CMR imaging quality for analysis. The final analysis  
12 included 232 vessels in 190 patients who underwent non-contrast T1WI within 6 months  
13 before or after ICA with FFR measurement (median, 24 days; interquartile range [IQR], 7–  
14 51) (**Figure 1**). Coronary CTA with both T1WI and FFR values were also available for a  
15 sub-analysis of 101 vessels in 80 patients (**Figure S1**). The study protocol was approved by  
16 the institutional review board (IRB) or ethics committee of each participating center. Waiver  
17 of written informed consent was approved by each IRB or ethics committee because of the

1 retrospective nature of the study. The present study followed the Declaration of Helsinki and  
2 the ethical standards of the responsible committee on human experimentation.

3

#### 4 ***ICA and FFR***

5 Selective ICA was performed according to standard practice. Intracoronary nitroglycerin was  
6 administered before contrast injection, inducing epicardial vasodilation. The 0.014-inch  
7 pressure guide wire (Certus; Abbott, Plymouth, MN) was advanced distal to the stenosis  
8 through a 5-Fr or 6-Fr guiding catheter. Equalizing was performed with the guidewire sensor  
9 positioned at the guiding catheter tip. FFR was measured during maximal hyperemia  
10 induced by an intravenous adenosine infusion administered at 140  $\mu\text{g}/\text{kg}/\text{min}$  and increased  
11 up to 200  $\mu\text{g}/\text{kg}/\text{min}$  as needed. Low FFR was defined as a FFR value  $\leq 0.80$ .

12

#### 13 ***ICA and quantitative coronary angiography***

14 Localization on the coronary tree and quantitative assessment of stenosis severity during  
15 ICA was performed offline independently by two expert interventional cardiologists who were  
16 blinded to clinical and FFR data. Lesions within the proximal left anterior descending artery  
17 (LAD) were defined as being in segment 6, according to the AHA definition of the left

1 coronary artery system.<sup>13</sup>

2 Quantitative coronary angiography (QCA) was performed using an algorithm that  
3 automatically detects arterial contours from acquired ICA digital images (MEDIS, Leiden, the  
4 Netherlands). For image calibration, diagnostic or guiding catheters served as the scaling  
5 devices to estimate absolute coronary dimensions. The diameter of the catheter was then  
6 used to obtain a calibration factor. The automated algorithm was applied to each selected  
7 arterial segment. The following absolute coronary dimensions were obtained: the minimal  
8 lumen diameter (MLD, smallest diameter of the lumen), reference lumen diameter (RLD,  
9 average diameter of the lumen assuming no atherosclerotic disease), and lesion length  
10 (distance between the borders separating normal and diseased vessel). Percent diameter  
11 stenosis (%DS) was calculated based on these values.<sup>14</sup>

12

### 13 ***CMR protocols and CMR image analysis***

14 Non-contrast T1WI was performed on a 3-T magnetic resonance (MR) system with a  
15 32-channel cardiac coil (MAGNETOM Verio; Siemens AG Healthcare Sector, Erlangen,  
16 Germany), a 1.5-T MR system (Achieva, Philips Healthcare, Best, The Netherlands) with a  
17 32-element Torso/cardiac phased-array coil, or a 1.5-T MR imager (Intera; Philips Medical

1 Systems, Best, the Netherlands) with 5-element cardiac coils. The procedures for acquiring  
2 MR images have been previously described.<sup>9-11, 15</sup> The plaque-to-myocardium signal  
3 intensity ratio (PMR) was defined as the signal intensity of the coronary plaque divided by  
4 the signal intensity of the nearby left ventricular myocardium. The methods used to evaluate  
5 images of plaques in this study have been described previously.<sup>9-11</sup> A coronary plaque with  
6 PMR >1.4 was defined as a coronary HIP, as reported previously.<sup>9</sup> The location of the lesion  
7 of interest was determined by carefully comparing images using fiducial points such as side  
8 branches. All imaging data were analyzed by two independent cardiologists (YM and TM)  
9 who were blinded to clinical data, including FFR.

10

### 11 ***Coronary CTA and analysis***

12 Coronary CTA was performed using a dual-source CT scanner (SOMATOM Definition Flash,  
13 Siemens Healthcare, Erlangen, Germany). Quantitative lesion analysis was performed using  
14 software (Ziostation2, Ziosoft, Tokyo, Japan) that facilitates plaque volume measurement  
15 and assessment of the remodeling index,<sup>16</sup> presence of spotty calcifications, and plaque  
16 attenuation in Hounsfield units (HUs). Total plaque volume analysis was performed for the  
17 lesion and for the entire vessel of interest. Remodeling index  $\geq 1.1$  was interpreted as

1 positive remodeling. The assessment of plaque composition included very low-attenuation  
2 non-calcified plaques (VLNCPs) ( $\leq 30$  HU), low-attenuation non-calcified plaques (LNCPs)  
3 (31–50 HU), and non-calcified plaques (NCPs) (51–150 HU). The lumen (151–350 HU) and  
4 calcified plaques (CP) (351–1,000 HU) were also defined.<sup>17</sup> Total non-calcified plaque  
5 volume was defined as the sum of VLNCP, LNCP, and NCP plaque volumes. Spotty  
6 calcification was defined as calcifications  $< 3$  mm in size on focal multiplanar reconstruction  
7 images and cross-sectional images.<sup>16, 18</sup>

8

### 9 ***Statistical analysis***

10 Continuous variables were presented as medians with interquartile range (IQR); they were  
11 compared using the Mann-Whitney U test. Baseline categorical variables were compared  
12 using Fisher's exact test or the chi-square test, as appropriate. Differences in the prevalence  
13 of coronary HIPs across four subgroups stratified by FFR value of 0.8 and %DS of 50% on  
14 ICA were analyzed using Fisher's exact test for proportions. Multivariable analyses with a  
15 mixed model that included  $\text{FFR} \leq 0.80$ ,  $\text{\%DS} \geq 50\%$ , male gender, and age were conducted to  
16 identify factors associated with HIPs in all lesions. Mixed effects models were also used to  
17 identify factors associated with FFR values or  $\text{FFR} \leq 0.80$ . A mixed logistic regression model

1 with a random intercept was used to account for the correlation in outcomes between  
2 multiple vessels within the same patient. All candidate predictors were first tested for  
3 associations in univariable analyses. Subsequently, multivariable stepwise logistic  
4 regression with a p value of 0.10 for backward elimination was performed to select the best  
5 predictive model using covariates that significantly predicted FFR value or  $FFR \leq 0.80$  in the  
6 mixed models. Regression coefficients and odds ratios (ORs) with 95% confidence intervals  
7 (CIs) were reported as effect sizes for mixed effects models. Intraclass correlation  
8 coefficients with 95% CIs were calculated to assess interobserver agreement for PMR on  
9 non-contrast T1WI, VLNCP volume, non-calcified plaque volume, and lesion length on CTA.  
10 Bland-Altman plots were constructed to visualize agreement. All analyses were performed  
11 using Stata 17 SE (Stata Corp LP, College Station, TX) or GraphPad Prism 8 (GraphPad  
12 Software, Boston, MA) statistical software. A two-sided  $p < 0.05$  was considered statistically  
13 significant.

14

## 15 **Results**

16 The clinical characteristics of the study population are summarized in **Table 1**. Among the  
17 190 patients, median age was 70 (IQR, 63–76) years and 77% of patients were male. There

1 were 68 patients with 1 diseased vessel (35.8%), 72 with 2 diseased vessels (37.9%), and  
2 50 with 3 diseased vessels (26.3%). Of those, 149 (78.4%), 40 (21.1%), and 1 (0.5%)  
3 underwent 1-, 2-, or 3-vessel FFR evaluation, respectively. In lesion-based analysis, 69% of  
4 vessels with FFR measurements were located in the LAD. **Table 2** shows ICA and CMR  
5 findings. Median %DS in target plaques on ICA was 49.2% (IQR, 41.3–57.2). FFR in the  
6 distal segment of the same vessel was 0.77 (IQR, 0.70–0.83); PMR on T1WI was 1.09 (IQR,  
7 0.90–1.31). Compared with lesions with FFR >0.80, lesions with FFR ≤0.80 were more  
8 frequently located in the LAD (83.4% vs. 44.8%, p<0.001), had smaller MLD (1.15 [IQR,  
9 0.96–1.39] vs. 1.46 [IQR, 1.27–1.66] mm; p<0.001), or had longer lesion length (10.8 [IQR,  
10 7.7–14.8] vs. 9.7 [IQR, 5.8–11.3] mm; p=0.022).

11 **Figures 2 and 3** show representative cases of coronary non-HIPs and HIPs on T1WI,  
12 respectively. In the per-vessel analysis, FFR values in the distal segment of vessels with  
13 plaques was inversely correlated with PMR at the lesion (r=-0.275; p<0.001) (**Figure 4A**).  
14 PMR at lesions with FFR ≤0.80 was higher than PMR at lesions with FFR >0.8 (1.18 [IQR,  
15 0.96–1.45] vs. 0.97 [IQR, 0.85 –1.12]; p<0.001) (**Figure 4B**). **Figure 4C** is a scatterplot  
16 showing the relationships among %DS, FFR, and presence of HIPs in all vessels. There was  
17 no correlation between %DS and FFR (r=-0.143). When lesions were subdivided into four

1 groups according to %DS <50% or ≥50% and FFR value ≤0.80 or >0.80, the prevalence of  
2 HIPs in the FFR ≤0.80 groups was higher than that in the FFR >0.80 groups, regardless of  
3 the degree of coronary stenosis on ICA (p=0.003, Fisher's exact test: **Figure 4D**).  
4 Multivariable logistic regression showed that FFR ≤0.80 is an independent determinant of  
5 HIP after adjusting for %DS ≥50%, male gender, and age (OR, 4.21; 95% CI, 1.74–10.2;  
6 p=0.001). Multivariable analysis showed proximal LAD lesion (standardized coefficient,  
7 -0.046; p<0.001), PMR (standardized coefficient, -0.052; p<0.001), MLD on ICA  
8 (standardized coefficient, 0.097; p<0.001), age (standardized coefficient, 0.002; p=0.003),  
9 and male gender (standardized coefficient, -0.032; p=0.013) were associated with FFR,  
10 but %DS was not (**Table S1**). After dichotomizing FFR based on the cutoff value for  
11 myocardial ischemia of 0.80, multivariable analysis showed that proximal LAD lesion (OR,  
12 5.47; 95% CI, 1.53–19.5; p=0.009), PMR (OR, 9.08; 95% CI, 2.54–32.4; p=0.001), and MLD  
13 (OR, 0.06; 95% CI, 0.01–0.31, p=0.001) are associated with FFR ≤0.80 even after adjusting  
14 for age and male gender (**Table 3, Model I**). PMR >1.4 was also a predictor of FFR ≤0.80  
15 (OR, 5.54; 95% CI, 1.50–20.5, p=0.010) (**Table 3, Model II**).

16 To clarify the effects of plaque volume on FFR beyond the effect of coronary stenosis,  
17 we explored the relationships among plaque volume from CTA, FFR, and coronary HIP in



1 101 vessels from 80 patients (**Figure S1**). In the per-vessel analysis (**Table 4**), the  
2 prevalence of coronary HIPs on T1W and LAD lesions were higher in vessels with FFR  
3  $\leq 0.80$ . Vessels with FFR  $\leq 0.80$  also tended to have a higher VLNCP volume than vessels  
4 with FFR  $\leq 0.80$ , regardless of the degree of coronary stenosis. Multivariable analysis  
5 showed that FFR is inversely correlated with PMR (beta-coefficient, -0.031; 95% CI, -0.057  
6 to -0.006;  $p=0.017$ ) and proximal LAD lesion (beta-coefficient, -0.055; 95% CI, -0.082 to  
7 -0.027,  $p<0.001$ ) after adjusting for age, male gender, and variables related to plaque  
8 volume and CTA-verified extent of coronary stenosis (**Table S2**). Even after stratification  
9 based on FFR of 0.80 for the presence of myocardial ischemia and adjusting for age, male  
10 gender, proximal LAD lesion, and CTA-derived variables, higher PMR value or PMR  $>1.4$   
11 were independently associated with FFR  $\leq 0.80$  (OR, 4.06; 95% CI, 1.17–14.1;  $p=0.028$ , and  
12 OR, 5.75; 95% CI, 1.33–24.8;  $p=0.019$ , respectively) (**Table 5**).

### 13 **Reproducibility**

14 A total of 42 lesions from 42 patients who underwent T1WI and 12 lesions from 9 patients  
15 who underwent CTA were reanalyzed to test interobserver variability. For PMR,  
16 interobserver reproducibility, expressed as an ICC, was 0.950 (95% CI, 0.917–0.970). For  
17 VLNCP volume, total NCP volume, and lesion length on CTA, ICCs were 0.993 (95% CI,

1 0.976–0.998), 0.923 (95% CI, 0.632–0.979), and 0.938 (95% CI, 0.812–0.981), respectively.

2 The Bland-Altman plots showed small differences in variables measured by two observers

3 **(Figure S2).**

4

## 5 **Discussion**

6 This study demonstrated an association between high-risk coronary plaque characteristics

7 detected on non-contrast T1WI and myocardial ischemia in corresponding vessels evaluated

8 with invasive FFR measurements, regardless of the extent of coronary diameter stenosis in

9 patients with chronic coronary artery disease.

10 Although several studies have previously shown a similar relationship between

11 plaque characteristics and coronary flow attenuation regardless of the degree of coronary

12 stenosis, most of these studies were derived from CTA analyses. Bauer et al. showed that a

13 higher burden from low attenuated non-calcified plaques is associated with the presence of

14 myocardial ischemia across from a corresponding coronary atheroma.<sup>19</sup> Park et al.

15 demonstrated that the presence of a coronary atheroma with lower attenuation, positive

16 vessel remodeling, or both is associated with the presence of myocardial ischemia.<sup>2</sup> Larger

17 volume of lower-attenuation plaques with positive vessel remodeling on CTA is associated

1 with future coronary events in patients with suspected coronary artery disease.<sup>4, 16</sup> Taken  
2 together, coronary plaques with high-risk features might therefore be susceptible to  
3 hemodynamic perturbances in coronary flow.

4 In the present study, coronary HIPs with high PMR were associated with low FFR in  
5 the distal segment of corresponding vessels. As shown in **Figure 4**, coronary PMR was  
6 inversely correlated with FFR and the presence of coronary HIPs with high PMR was  
7 associated with  $FFR \leq 0.80$ , regardless of %DS and lesion length on ICA. Moreover, the  
8 prevalence of coronary HIPs was significantly higher in segments with  $FFR \leq 0.80$  than in  
9 those with  $FFR > 0.80$ , regardless of stenosis severity (**Figure 4C-D** and **Table 2**). To predict  
10 future coronary events in patients with CCS as part of risk stratification, both ischemia-based  
11 approaches (e.g., flow disturbance from coronary stenosis) and plaque  
12 characteristics-based approaches (e.g., plaque characteristics) are currently used.  
13 According to the Providing Regional Observations to Study Predictors of Events in Coronary  
14 Tree (PROSPECT) study, both coronary stenosis and plaque characteristics play important  
15 roles in the development of future coronary events.<sup>20</sup> FFR measurement is the standard  
16 reference for evaluating vessel-based myocardial ischemia during ICA.<sup>21, 22</sup> Low FFR is  
17 associated with coronary events.<sup>23</sup> During the development of coronary atherosclerosis and

1 coronary events, coronary flow disturbance and plaque characteristics with high-risk  
2 features overlap with each other. Taken together, non-contrast T1WI without contrast media  
3 is an anatomy-based, but not ischemia-based, screening method for predicting future  
4 coronary events.<sup>9</sup>

5 This study also showed that proximal LAD lesion MLD of the lesion are associated  
6 with the functional severity of the stenosis, but not %DS. Previous studies involving more  
7 patients that examined the relationship between %DS and FFR showed that FFR is  
8 moderately correlated with %DS.<sup>24</sup> However, one-third of patients had discordance  
9 between %DS of 50% and FFR of 0.80,<sup>24, 25</sup> which suggests FFR  $\leq$ 0.80 and %DS on ICA  
10 might result in low predictive accuracy. In particular, a higher prevalence of positive  
11 mismatch (FFR  $\leq$ 0.80 in lesions with %DS <50%) and lower prevalence of negative  
12 mismatch (FFR >0.80 in lesions with %DS  $\geq$ 50%) were observed in LAD lesions versus  
13 non-LAD lesions.<sup>25, 26</sup> A large territory of myocardium is supplied by the LAD<sup>27</sup>, which leads  
14 to a greater likelihood of functional significance in LAD lesions than in non-LAD lesions.<sup>24, 26,</sup>

15 <sup>28</sup>

16 The mechanism underlying the association between coronary HIPs and myocardial  
17 ischemia remains unknown. As shown in **Table 5** and **Table S2**, we examined independent

1 determinants of low FFR, including both T1WI and CTA parameters to adjust for plaque  
2 volume. From this analysis, an incremental increase in coronary PMR on non-contrast T1WI  
3 was an independent determinant of FFR, even after the volume of low-attenuation plaques  
4 in the corresponding segment on CTA was taken into account. Lesions with coronary HIPs  
5 have larger CTA-verified necrotic cores and positive vessel remodeling.<sup>15, 18</sup> Regarding  
6 luminal geometry in atherosclerotic lesions, positive remodeling with a large necrotic core at  
7 the site of the lesion represents extraluminal expansion and a stretched smooth muscle layer,  
8 which might restrict further vessel dilation according to the limits of the Glagovian  
9 phenomenon in hyperemia.<sup>29</sup> The presence of plaque rupture, which is frequently observed  
10 in high-risk plaques,<sup>30</sup> might contribute to turbulent flow at the lesion and reduce myocardial  
11 blood flow independent of the degree of stenosis in the distal segment of the lesion.<sup>26, 31</sup> This  
12 mechanism is also supported by more severe endothelial dysfunction in target vessels  
13 harboring a high total plaque and necrotic core volume.<sup>7</sup> Based on studies that evaluated  
14 associations between histological findings in carotid and coronary atherosclerosis and  
15 non-contrast T1WI findings, lesions with coronary HIPs might be associated with  
16 complicated atherosclerotic plaque.<sup>8, 12, 32</sup> Our present findings suggest that the presence of  
17 a HIP, which represents a complicated atheroma, is an additional determinant of coronary

1 physiology. However, because of the limited spatial resolution or parametric mapping  
2 capability of T1WI to identify individual plaque components, the plaque component reflected  
3 by PMR as evaluated by non-contrast T1WI has not been adequately identified.

4         This study has several limitations. First, although our study was a multicenter study,  
5 the number of enrolled vessels or patients was small; the number of lesions with HIPs was  
6 also relatively small (n=46; 19.8%). Second, FFR measurements for LAD lesions comprised  
7 68.5% (159/232 vessels) of all FFR measurements and vessels with FFR  $\leq 0.80$  accounted  
8 for 62.5% (145/232 vessels) of vessels in the present study. FFR measurements are  
9 dependent on operators' visual assessment to identify intermediate stenosis with FFR  
10 indication. In addition, the operators' knowledge that LAD lesions are more susceptible to  
11 lower FFR than non-LAD lesions with the same degree of intermediate stenosis might have  
12 led to a higher rate of FFR measurement in LAD lesions than in non-LAD lesions. These  
13 facts might have resulted in selection bias.

14         In conclusion, coronary plaques with high PMR are associated with low FFR,  
15 indicating that plaque morphology might influence the degree of myocardial ischemia.

1 **Declarations**

2 **Ethics approval and consent to participate**

3 This study protocol was approved by the institutional review board of National Cerebral and  
4 Cardiovascular Center (M28-141) and the institutional review board or ethics committee of  
5 each participating center. Waiver of written informed consent was approved by each  
6 institutional review board or ethics committee because of the retrospective nature of the  
7 study.

8

9 **Consent for publication**

10 Not applicable. Only non-identifiable data was used.

11

12 **Availability of data and materials**

13 The datasets used and/or analyzed during the current study are available from the  
14 corresponding author on reasonable request.

15

16 **Competing interests**

17 Yasuhide Asami has received research support from Abbott Medical Japan LCC and

1 Terumo Corporation. The other authors report no conflicts of interest.

2

### 3 **Funding**

4 This study was supported in part by a grant-in-aid for scientific research (KAKENHI grant

5 numbers 17K09566 and 21K08044, Dr. Asaumi; and 18K08126 and 22K08223, Dr. Noguchi),

6 Senshin-Iyaku Zaidan (Dr. Asaumi).

7

### 8 **Authors' contributions**

9 YA and TN conceived and designed this study. HS, YA, TK, and TN

10 implemented the study protocol, performed data analysis, and wrote the

11 manuscript. TK, TH, HM, and YM set up the CMR sequence and performed

12 CMR image analysis. AS, KN, TH, AS, and TK supervised CMR image

13 analysis. HM and YT performed CTA and ICA analyses. SO and KN performed

14 statistical analysis. FO, YK, TK, JN, and SY critically revised the

15 manuscript. All authors read and approved the final manuscript.

16

### 17 **Acknowledgements**



1 None

2

## 1 **References**

- 2 1. Lawton JS, Tamis-Holland JE, Bangalore S, Bates ER, Beckie TM, Bischoff JM, Bittl  
3 JA, Cohen MG, DiMaio JM, Don CW, Femes SE, Gaudino MF, Goldberger ZD, Grant MC,  
4 Jaswal JB, Kurlansky PA, Mehran R, Metkus TS, Jr., Nnacheta LC, Rao SV, Sellke FW,  
5 Sharma G, Yong CM and Zwischenberger BA. 2021 ACC/AHA/SCAI Guideline for Coronary  
6 Artery Revascularization: A Report of the American College of Cardiology/American Heart  
7 Association Joint Committee on Clinical Practice Guidelines. *Circulation*.  
8 2021;145:e18-e144.
- 9 2. Park HB, Heo R, o Hartaigh B, Cho I, Gransar H, Nakazato R, Leipsic J, Mancini GB,  
10 Koo BK, Otake H, Budoff MJ, Berman DS, Erglis A, Chang HJ and Min JK. Atherosclerotic  
11 plaque characteristics by CT angiography identify coronary lesions that cause ischemia: a  
12 direct comparison to fractional flow reserve. *JACC Cardiovasc Imaging*. 2015;8:1-10.
- 13 3. Driessen RS, Stuijzand WJ, Raijmakers PG, Danad I, Min JK, Leipsic JA, Ahmadi A,  
14 Narula J, van de Ven PM, Huisman MC, Lammertsma AA, van Rossum AC, van Royen N  
15 and Knaapen P. Effect of Plaque Burden and Morphology on Myocardial Blood Flow and  
16 Fractional Flow Reserve. *J Am Coll Cardiol*. 2018;71:499-509.
- 17 4. Motoyama S, Ito H, Sarai M, Kondo T, Kawai H, Nagahara Y, Harigaya H, Kan S,

- 1 Anno H, Takahashi H, Naruse H, Ishii J, Hecht H, Shaw LJ, Ozaki Y and Narula J. Plaque  
2 Characterization by Coronary Computed Tomography Angiography and the Likelihood of  
3 Acute Coronary Events in Mid-Term Follow-Up. *J Am Coll Cardiol*. 2015;66:337-46.
- 4 5. De Bruyne B, Pijls NH, Kalesan B, Barbato E, Tonino PA, Piroth Z, Jagic N,  
5 Mobius-Winkler S, Rioufol G, Witt N, Kala P, MacCarthy P, Engstrom T, Oldroyd KG,  
6 Mavromatis K, Manoharan G, Verlee P, Frobert O, Curzen N, Johnson JB, Juni P, Fearon  
7 WF and Investigators FT. Fractional flow reserve-guided PCI versus medical therapy in  
8 stable coronary disease. *The New England journal of medicine*. 2012;367:991-1001.
- 9 6. Lerman A and Burnett JC, Jr. Intact and altered endothelium in regulation of  
10 vasomotion. *Circulation*. 1992;86:III12-19.
- 11 7. Lavi S, Bae JH, Rihal CS, Prasad A, Barsness GW, Lennon RJ, Holmes DR, Jr. and  
12 Lerman A. Segmental coronary endothelial dysfunction in patients with minimal  
13 atherosclerosis is associated with necrotic core plaques. *Heart*. 2009;95:1525-30.
- 14 8. Moody AR, Murphy RE, Morgan PS, Martel AL, Delay GS, Alder S, MacSweeney ST,  
15 Tennant WG, Gladman J, Lowe J and Hunt BJ. Characterization of complicated carotid  
16 plaque with magnetic resonance direct thrombus imaging in patients with cerebral ischemia.  
17 *Circulation*. 2003;107:3047-52.

- 1 9. Noguchi T, Kawasaki T, Tanaka A, Yasuda S, Goto Y, Ishihara M, Nishimura K,  
2 Miyamoto Y, Node K and Koga N. High-intensity signals in coronary plaques on noncontrast  
3 T1-weighted magnetic resonance imaging as a novel determinant of coronary events. *J Am*  
4 *Coll Cardiol.* 2014;63:989-99.
- 5 10. Hoshi T, Sato A, Akiyama D, Hiraya D, Sakai S, Shindo M, Mori K, Minami M and  
6 Aonuma K. Coronary high-intensity plaque on T1-weighted magnetic resonance imaging  
7 and its association with myocardial injury after percutaneous coronary intervention. *Eur*  
8 *Heart J.* 2015;36:1913-22.
- 9 11. Hosoda H, Asaumi Y, Noguchi T, Morita Y, Kataoka Y, Otsuka F, Nakao K, Fujino M,  
10 Nagai T, Nakai M, Nishimura K, Kono A, Komori Y, Hoshi T, Sato A, Kawasaki T, Izumi C,  
11 Kusano K, Fukuda T and Yasuda S. Three-dimensional assessment of coronary  
12 high-intensity plaques with T1-weighted cardiovascular magnetic resonance imaging to  
13 predict periprocedural myocardial injury after elective percutaneous coronary intervention.  
14 *Journal of Cardiovascular Magnetic Resonance.* 2020;22:5.
- 15 12. Kuroiwa Y, Uchida A, Yamashita A, Miyati T, Maekawa K, Gi T, Noguchi T, Yasuda S,  
16 Imamura T and Asada Y. Coronary high-signal-intensity plaques on T1-weighted magnetic  
17 resonance imaging reflect intraplaque hemorrhage. *Cardiovasc Pathol.* 2019;40:24-31.

- 1 13. Austen WG, Edwards JE, Frye RL, Gensini GG, Gott VL, Griffith LS, McGoon DC,  
2 Murphy ML and Roe BB. A reporting system on patients evaluated for coronary artery  
3 disease. Report of the Ad Hoc Committee for Grading of Coronary Artery Disease, Council  
4 on Cardiovascular Surgery, American Heart Association. *Circulation*. 1975;51:5-40.
- 5 14. Popma J, Almonacid A and Burke D. Qualitative and quantitative coronary  
6 angiography. In: E. J. Topol and P. S. Teirstein, eds. *Textbook of interventional cardiology*.  
7 sixth ed.: Elsevier; 2011: 757-775.
- 8 15. Kanaya T, Noguchi T, Otsuka F, Asaumi Y, Kataoka Y, Morita Y, Miura H, Nakao K,  
9 Fujino M, Kawasaki T, Nishimura K, Inoue T, Narula J and Yasuda S. Optical coherence  
10 tomography-verified morphological correlates of high-intensity coronary plaques on  
11 non-contrast T1-weighted magnetic resonance imaging in patients with stable coronary  
12 artery disease. *Eur Heart J Cardiovasc Imaging*. 2019;20:75-83.
- 13 16. Motoyama S, Sarai M, Harigaya H, Anno H, Inoue K, Hara T, Naruse H, Ishii J,  
14 Hishida H, Wong ND, Virmani R, Kondo T, Ozaki Y and Narula J. Computed tomographic  
15 angiography characteristics of atherosclerotic plaques subsequently resulting in acute  
16 coronary syndrome. *J Am Coll Cardiol*. 2009;54:49-57.
- 17 17. Noguchi T, Tanaka A, Kawasaki T, Goto Y, Morita Y, Asaumi Y, Nakao K, Fujiwara R,

- 1 Nishimura K, Miyamoto Y, Ishihara M, Ogawa H, Koga N, Narula J and Yasuda S. Effect of  
2 Intensive Statin Therapy on Coronary High-Intensity Plaques Detected by Noncontrast  
3 T1-Weighted Imaging: The AQUAMARINE Pilot Study. *J Am Coll Cardiol*. 2015;66:245-256.
- 4 18. Kawasaki T, Koga S, Koga N, Noguchi T, Tanaka H, Koga H, Serikawa T, Orita Y,  
5 Ikeda S, Mito T, Goto Y, Shintani Y, Tanaka A and Fukuyama T. Characterization of  
6 hyperintense plaque with noncontrast T(1)-weighted cardiac magnetic resonance coronary  
7 plaque imaging: comparison with multislice computed tomography and intravascular  
8 ultrasound. *JACC Cardiovasc Imaging*. 2009;2:720-8.
- 9 19. Bauer RW, Thilo C, Chiaramida SA, Vogl TJ, Costello P and Schoepf UJ.  
10 Noncalcified atherosclerotic plaque burden at coronary CT angiography: a better predictor of  
11 ischemia at stress myocardial perfusion imaging than calcium score and stenosis severity.  
12 *AJR Am J Roentgenol*. 2009;193:410-8.
- 13 20. Stone GW, Maehara A, Lansky AJ, de Bruyne B, Cristea E, Mintz GS, Mehran R,  
14 McPherson J, Farhat N, Marso SP, Parise H, Templin B, White R, Zhang Z, Serruys PW and  
15 Investigators P. A prospective natural-history study of coronary atherosclerosis. *The New  
16 England journal of medicine*. 2011;364:226-35.
- 17 21. van Nunen LX, Zimmermann FM, Tonino PAL, Barbato E, Baumbach A, Engstrøm T,

- 1 Klaus V, MacCarthy PA, Manoharan G, Oldroyd KG, Ver Lee PN, van't Veer M, Fearon WF,  
2 De Bruyne B and Pijls NHJ. Fractional flow reserve versus angiography for guidance of PCI  
3 in patients with multivessel coronary artery disease (FAME): 5-year follow-up of a  
4 randomised controlled trial. *The Lancet*. 2015;386:1853-1860.
- 5 22. Zimmermann FM, Ferrara A, Johnson NP, van Nunen LX, Escaned J, Albertsson P,  
6 Erbel R, Legrand V, Gwon HC, Remkes WS, Stella PR, van Schaardenburgh P, Bech GJ, De  
7 Bruyne B and Pijls NH. Deferral vs. performance of percutaneous coronary intervention of  
8 functionally non-significant coronary stenosis: 15-year follow-up of the DEFER trial. *Eur*  
9 *Heart J*. 2015;36:3182-8.
- 10 23. Ahn JM, Park DW, Shin ES, Koo BK, Nam CW, Doh JH, Kim JH, Chae IH, Yoon JH,  
11 Her SH, Seung KB, Chung WY, Yoo SY, Lee JB, Choi SW, Park K, Hong TJ, Lee SY, Han M,  
12 Lee PH, Kang SJ, Lee SW, Kim YH, Lee CW, Park SW, Park SJ and Investigatorsdagger I-F.  
13 Fractional Flow Reserve and Cardiac Events in Coronary Artery Disease: Data From a  
14 Prospective IRIS-FFR Registry (Interventional Cardiology Research Incooperation Society  
15 Fractional Flow Reserve). *Circulation*. 2017;135:2241-2251.
- 16 24. Toth G, Hamilos M, Pyxaras S, Mangiacapra F, Nelis O, De Vroey F, Di Serafino L,  
17 Muller O, Van Mieghem C, Wyffels E, Heyndrickx GR, Bartunek J, Vanderheyden M, Barbato

- 1 E, Wijns W and De Bruyne B. Evolving concepts of angiogram: fractional flow reserve  
2 discordances in 4000 coronary stenoses. *Eur Heart J*. 2014;35:2831-8.
- 3 25. Ciccarelli G, Barbato E, Toth GG, Gahl B, Xaplanteris P, Fournier S, Milkas A,  
4 Bartunek J, Vanderheyden M, Pijls N, Tonino P, Fearon WF, Juni P and De Bruyne B.  
5 Angiography Versus Hemodynamics to Predict the Natural History of Coronary Stenoses:  
6 Fractional Flow Reserve Versus Angiography in Multivessel Evaluation 2 Substudy.  
7 *Circulation*. 2018;137:1475-1485.
- 8 26. Park SJ, Kang SJ, Ahn JM, Shim EB, Kim YT, Yun SC, Song H, Lee JY, Kim WJ,  
9 Park DW, Lee SW, Kim YH, Lee CW, Mintz GS and Park SW. Visual-functional mismatch  
10 between coronary angiography and fractional flow reserve. *JACC Cardiovasc Interv*.  
11 2012;5:1029-36.
- 12 27. Kalbfleisch H and Hort W. Quantitative study on the size of coronary artery supplying  
13 areas postmortem. *Am Heart J*. 1977;94:183-8.
- 14 28. Leone AM, De Caterina AR, Basile E, Gardi A, Laezza D, Mazzari MA, Mongiardo R,  
15 Kharbanda R, Cuculi F, Porto I, Niccoli G, Burzotta F, Trani C, Banning AP, Rebuszi AG and  
16 Crea F. Influence of the amount of myocardium subtended by a stenosis on fractional flow  
17 reserve. *Circ Cardiovasc Interv*. 2013;6:29-36.



- 1 29. Korshunov VA, Schwartz SM and Berk BC. Vascular remodeling: hemodynamic and  
2 biochemical mechanisms underlying Glagov's phenomenon. *Arteriosclerosis, thrombosis,*  
3 *and vascular biology.* 2007;27:1722-8.
- 4 30. Bentzon JF, Otsuka F, Virmani R and Falk E. Mechanisms of plaque formation and  
5 rupture. *Circ Res.* 2014;114:1852-66.
- 6 31. Kang SJ, Lee JY, Ahn JM, Song HG, Kim WJ, Park DW, Yun SC, Lee SW, Kim YH,  
7 Mintz GS, Lee CW, Park SW and Park SJ. Intravascular ultrasound-derived predictors for  
8 fractional flow reserve in intermediate left main disease. *JACC Cardiovasc Interv.*  
9 2011;4:1168-74.
- 10 32. Asaumi Y, Noguchi T, Morita Y, Matsuyama TA, Otsuka F, Fujiwara R, Kanaya T,  
11 Nagai T, Higashi M, Kusano K, Anzai T, Ishibashi-Ueda H, Ogawa H and Yasuda S.  
12 Non-contrast T1-weighted magnetic resonance imaging at 3.0 Tesla in a patient undergoing  
13 elective percutaneous coronary intervention - clinical and pathological significance of  
14 high-intensity plaque. *Circ J.* 2015;79:218-20.
- 15

1 **Figure Legends**

2 **Figure 1. Study flow chart**

3 ICA = invasive coronary angiography, ECG = electrocardiography, FFR = fractional flow  
4 reserve, MR = magnetic resonance, T1WI = T1-weighted magnetic resonance imaging.

5

6 **Figure 2. Representative FFR and non-HIP lesion on T1WI, CTA, coronary angiography.**

7 Coronary CTA showed an intermediate stenosis in a proximal lesion in the LAD (A and B,  
8 white arrows). The PMR of this lesion on non-contrast T1WI was 0.89 (white arrow, C).

9 Invasive coronary angiography demonstrated intermediate stenosis in a proximal lesion in  
10 the LAD (D and E, white arrows). FFR in the vessel distal to the corresponding plaque was

11 0.85 (F). Ao = ascending aorta, CTA = computed tomography angiography, FFR = fractional  
12 flow reserve, HIP = high-intensity plaque, LAD = left anterior descending artery, PA =

13 pulmonary artery, PMR = plaque-to-myocardial signal intensity ratio, T1WI = T1-weighted  
14 magnetic resonance imaging.

15

16 **Figure 3. Representative FFR and HIP on T1WI, CTA, and coronary angiography.**

17 Coronary computed tomography angiography showed moderate stenosis in an ostial lesion

1 in the LAD (A and B, white arrowheads). The PMR value of this lesion was 3.08 (white  
2 arrowhead, C). Invasive coronary angiography demonstrated moderate stenosis in an ostial  
3 lesion in the LAD (D and E, white arrowheads). The FFR value in a vessel distal to the  
4 corresponding plaque was 0.70 (F). Ao = ascending aorta, CTA = computed tomography  
5 angiography, FFR = fractional flow reserve, HIP = high-intensity plaque, LAD = left anterior  
6 descending artery, PA = pulmonary artery, PMR = plaque-to-myocardial signal intensity ratio,  
7 T1WI = T1-weighted magnetic resonance imaging.

8

9 **Figure 4. Correlation between PMR and FFR or %DS among all lesions**

10 (A) Scatter plots demonstrating the relationship between PMR and FFR

11 (B) Differences in PMR between lesions with  $FFR \leq 0.80$  and lesions with  $FFR > 0.80$

12 (C) Scatter plots demonstrating the relationships among FFR, %DS, and  $PMR > 1.4$

13 (D) Prevalence of HIPs in groups with  $FFR > 0.80$  and  $\%DS \leq 50\%$  (Group A),  $FFR > 0.80$

14 and  $\%DS > 50\%$  (Group B),  $FFR \leq 0.80$  and  $\%DS \leq 50\%$  (Group C), or  $FFR \leq 0.80$  and  $\%DS$

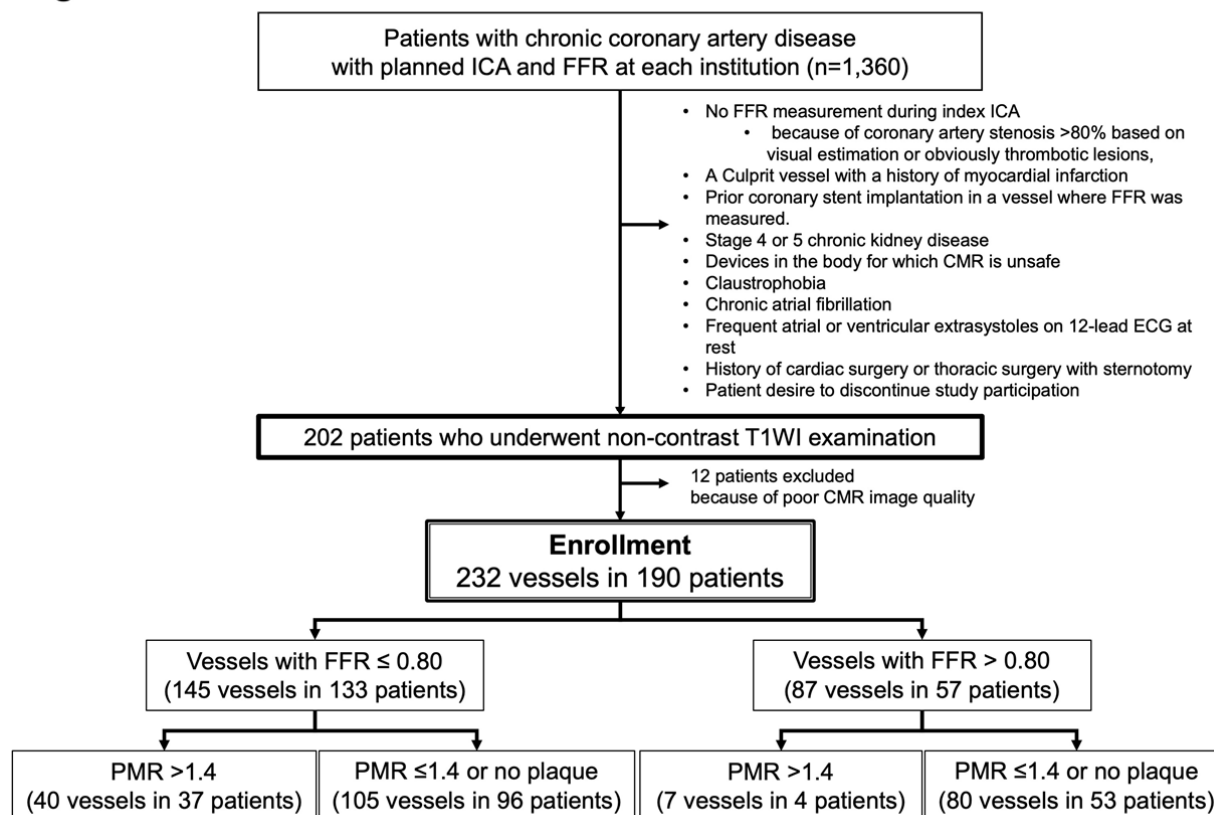
15  $> 50\%$  (Group D)

16 FFR = fractional flow reserve, HIP = high-intensity plaque, PMR = plaque-to-myocardial

17 signal intensity ratio, %DS = percent diameter stenosis.

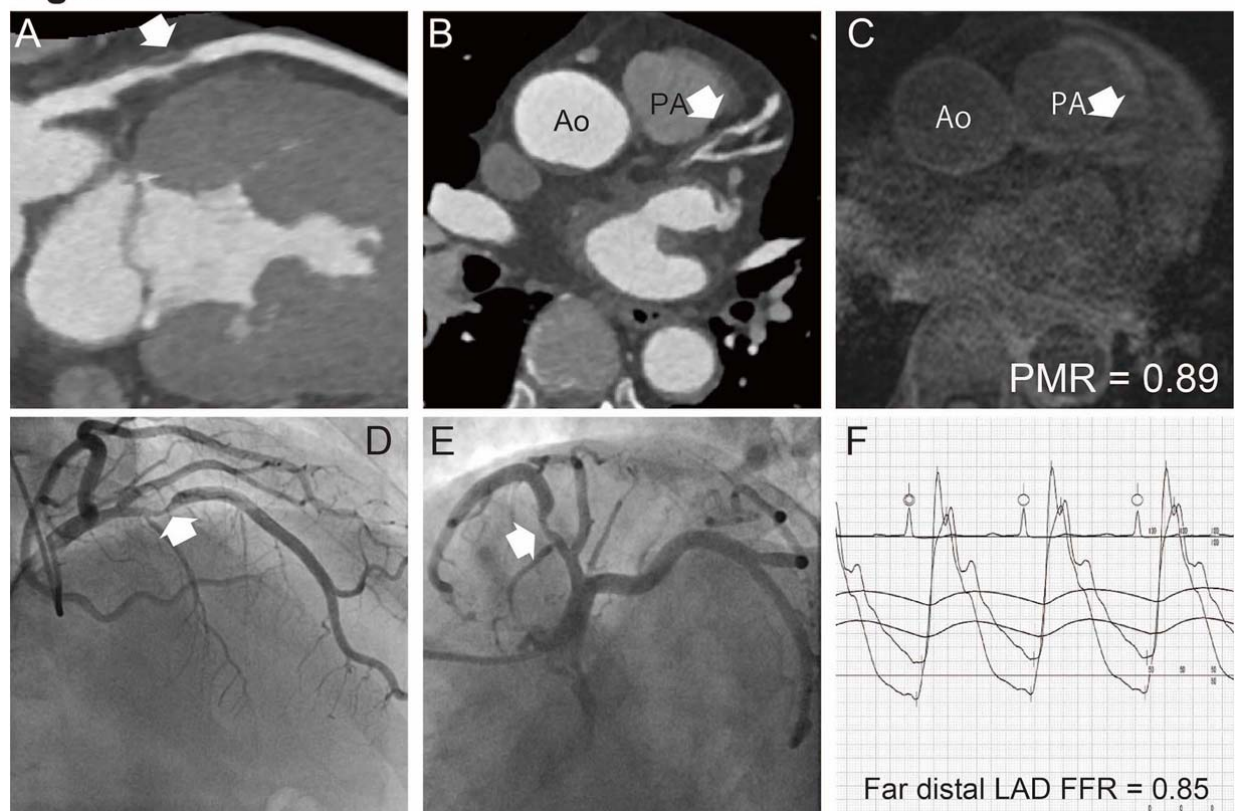
18

**Figure 1**



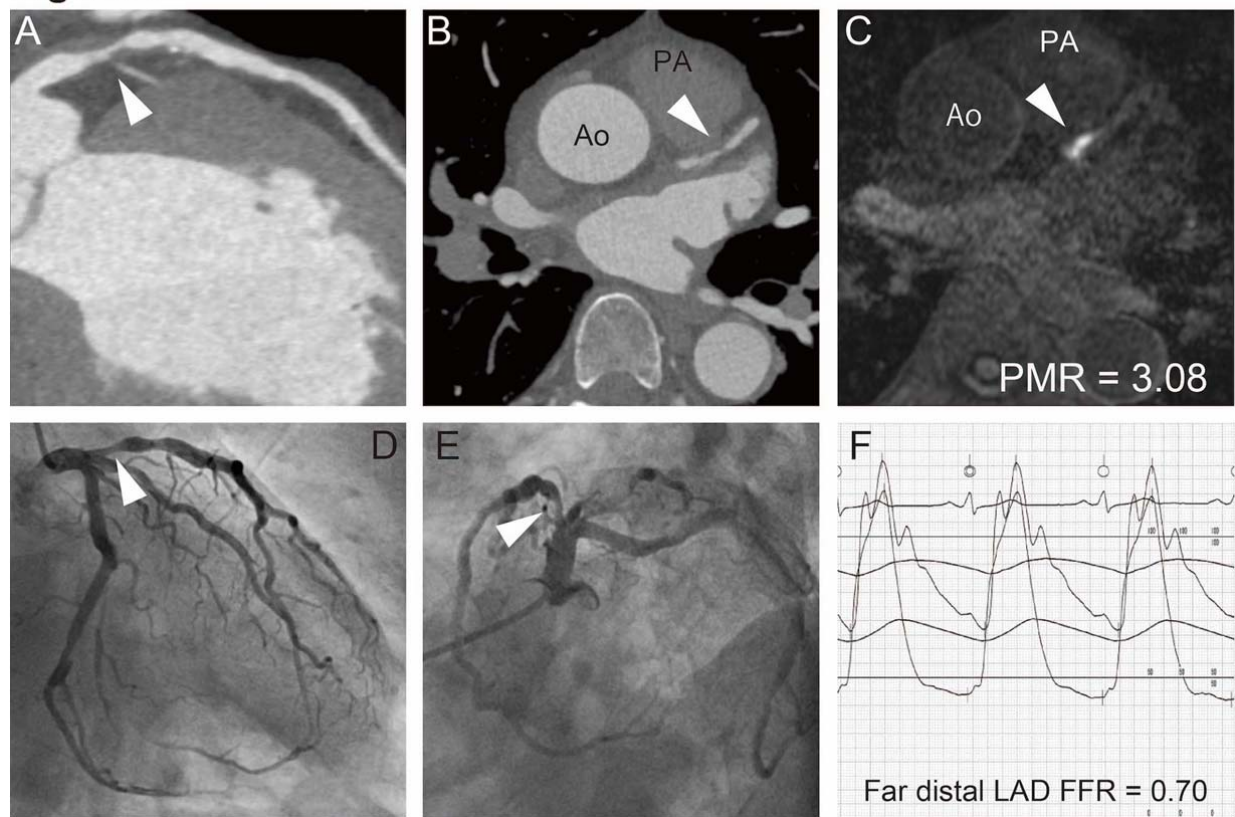
1  
2

**Figure 2**



1  
2

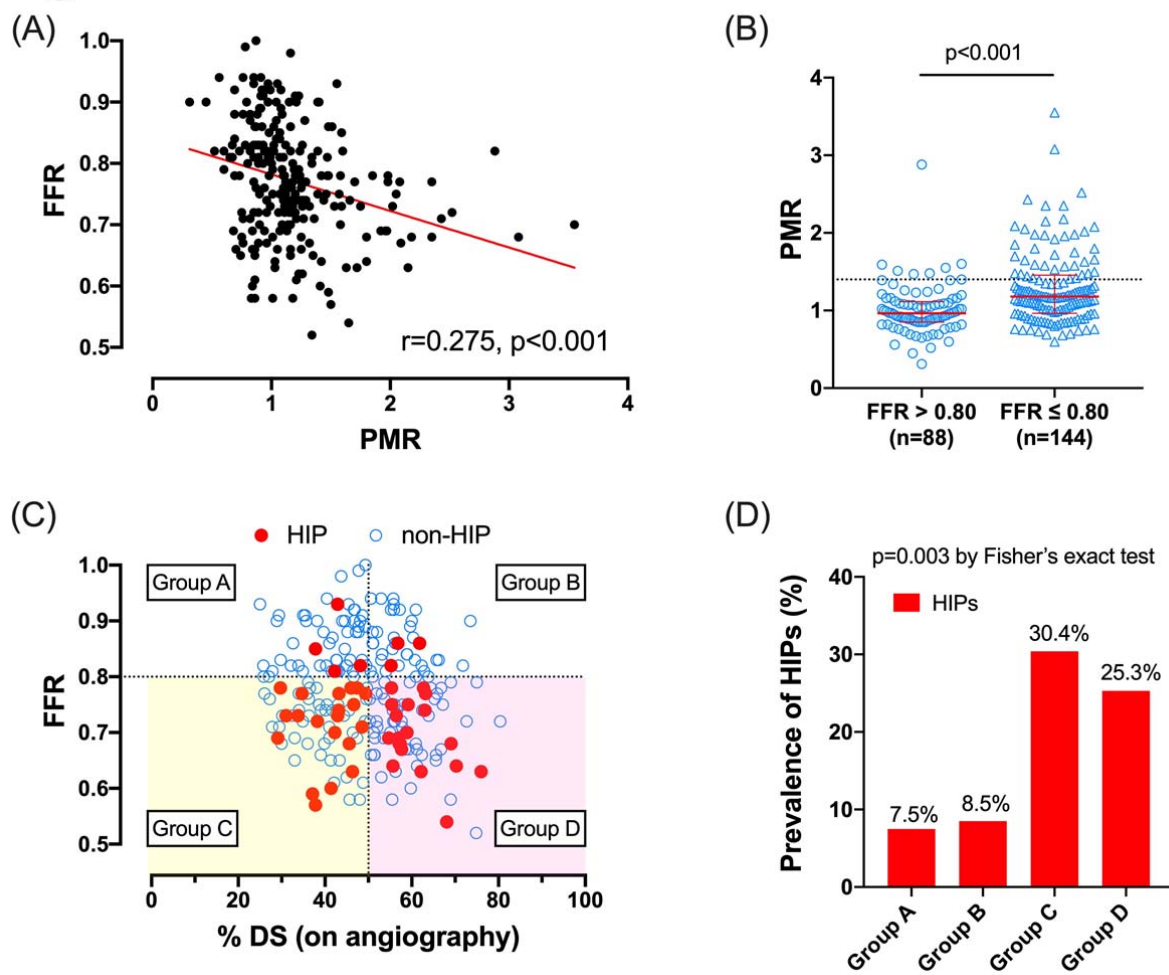
**Figure 3**



1

2

## Figure 4



1

**Table 1. Baseline characteristics of the study patients (n=190)**

Characteristic	
Demographic	
Age, years	70 (63–76)
Male	147 (77.4)
Body mass index, kg/m <sup>2</sup>	23.7 (21.8–26.2)
Hypertension	146 (76.8)
Dyslipidemia	143 (75.3)
Diabetes mellitus	78 (41.1)
Current smoking	24 (12.6)
Chronic kidney disease	42 (22.1)
Prior cerebral infarction	16 (8.4)
Peripheral artery disease	27 (14.2)
Prior PCI	51 (26.9)
Prior myocardial infarction	39 (20.5)
Left ventricular ejection fraction, %	60 (55–63)
Number of diseased vessels on ICA (1/2/3)	68 (35.8) / 72 (37.9) / 50 (26.3)
Number of vessels with FFR measurements (1/2/3)	149 (78.4) / 40 (21.1) / 1 (0.5)
Medications	
Aspirin	163 (85.7)
Statin	151 (80.0)
Beta-blocker	107 (56.3)
ACEI or ARB	81 (42.6)

Values are n (%) or medians (interquartile range).

ACEI = angiotensin-converting enzyme inhibitor; ARB = angiotensin receptor blocker; FFR = fractional flow reserve; ICA = invasive coronary angiography; PCI = percutaneous coronary intervention.



**Table 2. Clinical demographics, ICA findings, and CMR plaque characteristics**

	All (n=232)	Vessels with FFR ≤0.80 (n=145)	Vessels with FFR >0.80 (n=87)	p value
ICA assessment of vessels				
FFR	0.77 (0.70–0.83)	0.72 (0.68–0.77)	0.86 (0.82–0.91)	<0.001
Left main trunk	4 (1.7)	2 (1.4)	2 (2.3)	<0.001
Left anterior descending artery	159 (68.5)	121 (83.4)	38 (43.7)	
Left circumflex artery	35 (15.1)	10 (6.9)	25 (28.7)	
Right coronary artery	34 (14.7)	12 (8.3)	22 (24.1)	
Lesion percent diameter stenosis	49.2 (41.3–57.2)	51.0 (41.0–59.0)	47.7 (41.7–55.6)	0.087
Lesion MLD, mm	1.30 (1.08–1.56)	1.15 (0.96–1.39)	1.46 (1.27–1.66)	<0.001
Lesion length, mm	10.1 (7.0–14.1)	10.8 (7.7–14.8)	9.7 (5.8–11.3)	0.022
CMR plaque characteristics				
PMR	1.09 (0.90–1.31)	1.18 (0.96–1.45)	0.97 (0.85–1.12)	<0.001
Presence of HIPs (PMR ≥1.4)	47 (20.3)	40 (27.6)	7 (8.0)	<0.001

Values are n (%) or medians (interquartile range).

CMR = cardiac magnetic resonance; FFR = fractional flow reserve; HIP = high-intensity plaque; ICA = invasive coronary angiography; MLD = minimum lumen diameter; PMR = plaque-to-myocardium signal intensity ratio.

**Table 3. Determinants of FFR  $\leq 0.8$  (232 lesions from 190 patients)**

	Univariable analysis			Multivariable analysis (Model I)				Multivariable analysis (Model II)		
	OR	95% CI	p value	OR	95% CI	p value		OR	95% CI	p value
Age	0.97	0.94–0.99	0.030	0.95	0.91–0.99	0.024	Age			
Male gender	2.65	1.41–4.98	0.002	2.75	1.05–7.20	0.040	Male gender	4.27	1.23–14.8	0.022
Proximal LAD lesion	4.10	1.59–10.6	0.004	3.64	1.36–9.75	0.004	Proximal LAD lesion	5.47	1.53–19.5	0.009
PMR	8.52	3.23–22.4	<0.001	9.08	2.54–32.4	0.001	PMR >1.4	5.54	1.50–20.5	0.010
Minimum lesion diameter (per 1 mm)	0.11	0.03–0.38	0.001	0.06	0.01–0.31	0.001	Minimum lesion diameter (per 1 mm)	0.04	0.01–0.293	0.002
% diameter stenosis (per 1%)	1.02	0.99–1.04	0.124				% diameter stenosis (per 1 %)			
Lesion length (per 1 mm)	1.05	0.99–1.11	0.053				Lesion length (per 1 mm)			

CI = confidence interval; FFR = fractional flow reserve; LAD = left anterior descending artery; OR = odds ratio; PMR = plaque-to-myocardium signal intensity ratio.

**Table 4. Clinical demographics, ICA findings, CMR plaque characteristics, and CTA findings (Study 2: CTA sub-study)**

	Vessels with FFR ≤0.80 (n=58)	Vessels with FFR >0.80 (n=43)	p value
<b>ICA assessment of vessels</b>			
FFR	0.73 (0.69–0.77)	0.86 (0.82–0.91)	<0.001
Left main trunk	1 (1.7)	2 (4.7)	<0.001
Left anterior descending artery	46 (79.3)	17 (41.7)	
Left circumflex artery	5 (8.6)	10 (23.3)	
Right coronary artery	6 (10.3)	13 (30.2)	
Lesion percent diameter stenosis, %	51 (39.6–59.7)	49.5 (43.2–56.8)	0.773
Lesion MLD, mm	1.3 (1.1–1.5)	1.4 (1.2–1.7)	0.069
Lesion length, mm	10.1 (7.0–15.0)	10.9 (6.9–13.4)	0.642
<b>CMR plaque characteristics</b>			
PMR	1.17 (0.95–1.54)	0.95 (0.86–1.08)	<0.001
Presence of HIPs (PMR >1.4)	17 (29)	3 (7)	0.003
<b>CTA findings</b>			
Stenosis, %	52.2 (42.7–59.7)	48.5 (42.9–56.9)	0.559
Plaque length, mm	20.7 (16.0–24.3)	18.0 (12.0–23.0)	0.065
Minimal lesion diameter, mm	1.5 (1.1–1.6)	1.5 (1.3–1.8)	
Very low-attenuation non-calcified plaque volume, mm <sup>3</sup>	25.0 (15.8–39.5)	18.0 (11.0–26.0)	0.066
Non-calcified plaque volume, mm <sup>3</sup>	127 (82.5–167)	99 (62–147)	0.081
Calcified plaque, volume, mm <sup>3</sup>	10.8 (1.0–33.0)	11.0 (2.0–39.0)	0.565
Lumen area, mm <sup>3</sup>	123 (81–172)	119 (80–188)	0.885
Plaque burden, %	54.1 (47.7–60.0)	50.6 (42.7–56.9)	0.091
Remodeling index	1.12 (0.98–1.33)	1.05 (0.95–1.20)	0.322
Positive remodeling	30 (51)	20 (47)	0.604
Spotty calcification	20 (34)	14 (33)	0.839

Values are n (%) or medians (interquartile range).

CTA = computed tomography angiography; CMR = cardiac magnetic resonance; FFR= fractional flow reserve; HIP = high-intensity plaque; ICA = invasive coronary angiography; MLD = minimum lumen diameter; PMR = plaque-to-myocardium signal intensity ratio.

**Table 5. Determinants of FFR  $\leq 0.80$  (101 lesions in 80 patients)**

	Univariable analysis			Multivariable analysis: Model I			Model II			
	OR	95% CI	p value	OR	95% CI	p value		OR	95% CI	p value
Age	0.89	0.84–0.95	<0.001	0.88	0.83–0.94	<0.001	Age	0.88	0.83–0.94	<0.001
Male gender	2.39	1.36–21.14	0.017				Male gender			
Proximal LAD lesion	1.98	1.02–25.0	0.048	4.42	1.63–12.0	0.003	Proximal LAD lesion	4.49	1.66–12.1	0.003
PMR	4.36	1.30–14.62	0.017	4.06	1.17–14.1	0.028	PMR >1.4	5.75	1.33–24.8	0.019
Very low-attenuation non-calcified plaque volume	1.01	0.99–1.04	0.325				Very low-attenuation non-calcified plaque volume			
Total non-calcified plaque volume	1.00	0.99–1.01	0.254				Total non-calcified plaque volume			
Positive remodeling	1.20	0.51–2.84	0.671				Positive remodeling			
Spotty calcification	1.09	0.43–2.75	0.857				Spotty calcification			
MLD on CTA	0.28	0.07–1.16	0.079				MLD on CTA			
% diameter stenosis on CTA	1.01	0.98–1.05	0.541				% diameter stenosis on CTA			
Lesion length on CTA	1.06	1.00–1.12	0.067				Lesion length on CTA			

CI = confidence interval; CTA = computed tomography angiography; FFR = fractional flow reserve; MLD = minimum lumen diameter; OR = odds ratio;

PMR = plaque-to-myocardium signal intensity ratio.