

1 **Positive Airway Pressure Therapy Predicts Lower Mortality and Major Adverse**
2 **Cardiovascular Events Incidence in Medicare Beneficiaries with Obstructive Sleep Apnea**

3
4 Diego R Mazzotti, Ph.D.*^{1,2}, Lemuel R. Waitman, Ph.D.³, Jennifer Miller, Ph.D., APRN-NP⁴,
5 ACNPC-AG, Krishna M. Sundar, M.D.⁵, Nancy H. Stewart, D.O., M.S.², David Gozal, M.D.,
6 M.B.A., Ph.D.⁶, Xing Song, Ph.D.³, Greater Plains Collaborative.

7
8 ¹Division of Medical Informatics, Department of Internal Medicine, University of Kansas Medical
9 Center, Kansas City, KS, USA

10 ²Division of Medical Informatics, Department of Pulmonary, Critical Care and Sleep Medicine,
11 University of Kansas Medical Center, Kansas City, KS, USA

12 ³Department of Health Management and Informatics, School of Medicine, University of Missouri-
13 Columbia, MO, USA

14 ⁴College of Nursing, University of Nebraska Medical Center, Omaha, NE, USA

15 ⁵Department Division of Pulmonary and Critical Care Medicine, Department of Medicine
16 University of Utah, Salt Lake City, UT, USA

17 ⁶Joan C. Edwards School of Medicine, Marshall University, Huntington, WV, USA

18
19 **Acknowledgements:** The authors would like to acknowledge the technical and scientific
20 resources and support from the Greater Plains Collaborative team members, as well as all
21 Medicare beneficiaries whose data were contributing to this investigation.

22
23
24 ***Corresponding author**

25 Diego R. Mazzotti, Ph.D.

26 Division of Medical Informatics, Department of Internal Medicine

27 University of Kansas Medical Center

28 3901 Rainbow Boulevard

29 Kansas City, KS, 66160

30 Mailstop 3065

31 Office: +1 (913) 588-8223 | Fax: +1 (913) 588-4880 | Email: droblesmazzotti@kumc.edu

32

33

1 **Key words list:** obstructive sleep apnea, positive airway pressure, Center for Medicare and
2 Medicaid Services, cardiovascular disease, inverse probability of treatment weights.

3
4 **Abbreviations list:** ATE: average treatment effect, CCI: Charlson comorbidity index, CI:
5 confidence interval, CMS: Centers for Medicare & Medicaid Services, COPD: chronic
6 obstructive pulmonary disease, CPAP: continuous positive airway pressure, CV: cardiovascular,
7 DME: durable medical equipment, HF: heart failure, HR: hazards ratio, MACE: major adverse
8 cardiovascular events, MI: myocardial infarction, OSA: obstructive sleep apnea, PAP: positive
9 airway pressure, PS: propensity scores, RCT: randomized controlled trials.

10

11 **Abstract**

12 **Background:** Obesity is associated with obstructive sleep apnea (OSA) and cardiovascular
13 risk. Positive airway pressure (PAP) is the first line treatment for OSA, but evidence on its
14 beneficial effect on major adverse cardiovascular events (MACE) prevention is limited. Using
15 claims data, the effects of PAP on mortality and incidence of MACE among Medicare
16 beneficiaries with OSA were examined.

17 **Methods:** A cohort of Medicare beneficiaries with ≥ 2 distinct OSA claims was defined from
18 multi-state, state-wide, multi-year (2011-2020) Medicare fee-for-service claims data. Evidence
19 of PAP initiation and utilization was based on PAP claims after OSA diagnosis. MACE was
20 defined as a composite of myocardial infarction, heart failure, stroke, or coronary
21 revascularization. Doubly robust Cox proportional hazards models with inverse probability of
22 treatment weights estimated treatment effects controlling for sociodemographic and clinical
23 factors.

24 **Results:** Among 888,835 beneficiaries with OSA (median age 73 years; 43.9% women; median
25 follow-up 1,141 days), those with evidence of PAP initiation (32.6%) had significantly lower all-
26 cause mortality (HR [95%CI]: 0.53 [0.52-0.54]) and MACE incidence risk (0.90 [0.89-0.91]).

1 Higher quartiles of annual PAP claims were progressively associated with lower mortality (Q2:
2 0.84 [0.81-0.87], Q3: 0.76 [0.74-0.79], Q4: 0.74 [0.72-0.77]) and MACE incidence risk (Q2: 0.92
3 [0.89-0.95], Q3: 0.89 [0.86-0.91], Q4: 0.87 [0.85-0.90]).

4 **Conclusion:** PAP utilization was associated with lower all-cause mortality and MACE incidence
5 among Medicare beneficiaries with OSA. Results might inform trials assessing the importance
6 of OSA therapy towards minimizing cardiovascular risk and mortality in older adults.

7

1 Introduction

2 Obesity is a chronic condition with significant public health burden¹, affecting 40% of
3 adults in the U.S.² and accounting for millions of cardiovascular (CV) disease deaths every
4 year³. There is greater attention about the importance of adequate sleep habits⁴ and its relation
5 to cardiometabolic risk^{5,6}. Obstructive sleep apnea (OSA) is a highly prevalent disorder
6 contributing to these associations, with population rates of 9%-37% in men and 4-50% in
7 women⁷, affecting nearly 1 billion people worldwide⁸. OSA becomes more prevalent with age^{9,10}
8 and obesity¹¹, and is associated with coronary heart disease, stroke, and CV mortality^{12,13}. The
9 CV risk due to OSA is greater among those with excessive sleepiness^{14,15}, worse nocturnal
10 hypoxemia¹⁶, and differential heart rate responses to respiratory events¹⁷. Thus, there is
11 increasing attention on therapies that may modify CV risk for primary and secondary
12 prevention^{5,6,18} through targeting sleep disordered breathing¹⁹.

13 Positive airway pressure (PAP) is the first line of therapy for moderate-severe OSA.
14 Despite epidemiological studies strongly suggesting that OSA is a modifiable CV risk factor²⁰⁻²⁶,
15 a meta-analysis of randomized controlled trials (RCTs) failed to demonstrate that PAP prevents
16 CV outcomes²⁷. Studies have shown that patient selection and treatment adherence may
17 explain some of the negative results^{28,29}. These challenges are intensified by the lack of large,
18 equitable, and multi-centric pragmatic studies assessing the effectiveness of PAP on improving
19 CV risk. Such studies are expensive and time-consuming, leading to recruitment and retention
20 challenges, and delayed policy changes^{30,31}. Whether long-term PAP therapy prevents CV
21 disease in a clinical population is a critical question that remains unanswered.

22 Insurance claims data allow the design of observational studies that complement RCTs,
23 by adopting causal inference methods^{29,32,33}. When robustly applied, they have the potential to
24 characterize the effect of OSA therapies in representative clinical settings³⁴. A study on a
25 French nationwide claims database found that continuous PAP (CPAP) therapy termination was

1 associated with all-cause mortality and incidence of heart failure³⁵. In the U.S., Centers for
2 Medicare & Medicaid Services (CMS) beneficiaries represent a large population of older adults
3 with access to healthcare coverage. Studies exploring a 5% sample of randomly selected
4 beneficiaries found that those with OSA had higher healthcare utilization when compared to
5 matched controls³⁶. Moreover, those adherent to CPAP based on Durable Medical Equipment
6 (DME) claims were found to have reduced risk of stroke³⁷ and healthcare expenses among
7 those with pre-existing CV diseases³⁸. However, a major limitation is the reliance only on a
8 sample of beneficiaries, which might represent challenges characterizing the effects of PAP on
9 the incidence of individual CV diseases with accuracy. State-wide Medicare claims, particularly
10 within underserved states in the U.S., might reflect a broader representation of individuals with
11 OSA and provide more generalizable effect estimates.

12 In this study, we aimed to determine the effect of PAP utilization on all-cause mortality
13 and incidence of MACE and its components among Medicare beneficiaries in the Central U.S.
14 By leveraging a robust causal inference design, we determined the average treatment effect of
15 PAP initiation on the risk of incident MACE and mortality. Next, we established clinically relevant
16 cut-offs of PAP utilization based on DME claims over the first year after PAP initiation to
17 determine PAP utilization exposure groups. We demonstrate that these groups are differentially
18 associated with incident MACE and mortality among older adults. Finally, we provide effect
19 estimates of PAP exposure groups stratified by relevant sociodemographic and clinical factors.

20

21 **Methods**

22 Additional details are presented in the ***Supplemental materials***.

23

24 *Study cohort*

25 Medicare beneficiaries (>65 years) enrolled to part A and B, and ≥ 2 distinct OSA claims
26 were collected from multi-state, state-wide, multi-year (2011-2020) Medicare fee-for-service

1 claims data. State-level Medicare claims data were originally obtained as part of the Greater
2 Plains Collaborative Reusable Observable Unified Study Environment (GROUSE)³⁹, with a
3 catchment area across 11 states in the Central U.S. The study protocol has been approved by
4 Institutional Review Boards at each institution. The study cohort was defined based on a
5 validated EHR algorithm to identify participants with OSA⁴⁰ (see **Supplemental Table 1**). We
6 further required >1 year enrolment with Medicare before their first OSA claim, to better capture
7 newly diagnosed OSA and complete PAP utilization history. For the analysis of incident MACE,
8 we further excluded beneficiaries with history of MACE prior to their OSA diagnosis date.

9

10 *Study design*

11 This is an observational, retrospective analysis of state-wide Medicare claims data. We
12 proposed two complementary causal inference designs to estimate the average treatment effect
13 (ATE) of PAP initiation (**Figure 1**) and PAP utilization exposure groups (**Figure 2**). For the PAP
14 initiation analyses, prescription time-distribution matching⁴¹ was used to identify the “time zero”
15 (exposure assignment, covariate determination, and start of follow-up) for the group that did not
16 initiate PAP (*pseudo landmark date*, **Figure 1**), matched on the distribution of the time from
17 diagnosis and start of PAP therapy in the group that initiated PAP (*landmark T*, **Figure 1**). For
18 the analysis of PAP utilization exposure groups, we included beneficiaries that have been
19 enrolled and have not experienced events at the 1-year mark since their PAP initiation date.
20 Exposure groups were defined based on the distribution of claim counts during this first year of
21 PAP utilization and “time zero” was the date of the first anniversary of PAP initiation (**Figure 2**).

22

23 *PAP utilization definitions*

24 Evidence of PAP initiation was based on the first PAP initiation claim after OSA
25 diagnosis (**Supplemental methods**). PAP utilization exposure groups were used as surrogate
26 measures of PAP adherence. We explored different surrogates based on the total count of PAP

1 claims during first year of utilization. Prior studies have suggested that a greater number of DME
2 claims, such as mask refills, correlates with objective adherence based on hours of use⁴². A
3 comprehensive comparison of all methods is presented in the **Supplemental methods** and
4 informed the selection of the quartile-based PAP utilization exposure group definition, which
5 was then used in our primary analysis.

6

7 *Study Outcomes*

8 We assessed two primary outcomes: all-cause mortality and incidence of MACE. All-
9 cause mortality was obtained by identifying date of death provided in the Medicare beneficiary
10 summary file. MACE was defined as a composite of first occurrence of myocardial infarction
11 (MI), heart failure (HF), stroke or coronary revascularization, identified by diagnostic and
12 procedure codes (**Supplemental Table 1**). Secondary analyses using each component of
13 MACE as outcomes are also presented.

14

15 *Covariates*

16 We included the following covariates: age, sex, race (White, Black, American Indian,
17 Asian, Other), socioeconomic status, prior history of type 2 diabetes, hypertension, obesity,
18 atrial fibrillation, MACE (only in models assessing all-cause mortality), chronic obstructive
19 pulmonary disease (COPD), chronic kidney disease (CKD), anxiety disorder, hypersomnia,
20 insomnia, Charlson comorbidity index (CCI)^{43,44}, prescriptions of anticoagulants,
21 antihypertensives, antilipidemic agents and blood glucose regulators (see **Supplemental Table**
22 **1** for definitions).

23

24 *Statistical analyses*

25 Sociodemographic characteristics and clinical history were described between PAP
26 initiation exposure groups using counts and percentages for categorical data and median and

1 interquartile range for continuous data. Univariate associations between sociodemographic and
2 clinical history variables with PAP initiation exposure groups were performed using chi-squared
3 tests. We used Kaplan-Meier survival analyses and log-rank tests to compare survival curves
4 between PAP initiation exposure groups for MACE and all-cause mortality. We assessed the
5 proportional hazards assumption by assessing scaled Schoenfeld residuals, which did not find
6 strong evidence of violation. We implemented a causal inference framework to determine the
7 effect of PAP initiation or PAP utilization exposure groups on the outcomes of interest (all-cause
8 mortality and MACE. Specific details are presented in the **Supplemental methods**. Briefly, we
9 derived propensity scores (PS) based on PAP initiation or utilization, and then calculated
10 weights that were used in fully adjusted weighted Cox regression models assessing the effect of
11 PAP initiation or PAP utilization exposure groups on the outcomes of interest, representing
12 causal estimate of the ATE derived from a doubly robust estimator. This framework was applied
13 to our primary analyses, as well as to secondary analyses assessing individual components of
14 MACE. Results of stratified analysis by sociodemographic and clinical characteristics are also
15 presented. We determined statistical significance based on Bonferroni-corrected thresholds of
16 $p < 0.025$ (2 primary outcomes) and provide E-values to assess the strength of association a
17 potential unmeasured confounder would need to express to nullify observed associations⁴⁵.

18

19 **Results**

20 *Sample characterization*

21 Our sample included 888,835 eligible Medicare beneficiaries with evidence of OSA
22 diagnosis (median [Q1, Q3] age 73 [69, 78] years; 43.9% women; median [Q1, Q3] follow-up 3
23 [1.5, 5.1] years). **Figure 3** shows the study flowchart. Among eligible participants, 290,015
24 (32.6%) had evidence of PAP initiation. **Table 1** shows the sample characteristics according to
25 PAP initiation groups. Participants that have initiated PAP were younger, more likely to be
26 women and White, more likely to have been diagnosed with hypersomnia and insomnia, and

1 less likely to be diagnosed with COPD, type 2 diabetes, hypertension, obesity, atrial fibrillation,
2 CKD, anxiety disorders, and to have had a first MACE at OSA diagnosis. Overall, 5-year
3 cumulative mortality rate was 20.5% (based on total N=888,835) and 5-year cumulative MACE
4 incidence was 41.0% (based on those without MACE at baseline, N=572,072). When stratified
5 by PAP initiation exposure groups, those who initiated PAP had a 5-year cumulative mortality
6 rate and cumulative MACE incidence of 12.4% and 27.4% respectively. Those who did not
7 initiate PAP had a 5-year incidence rates of mortality and MACE event of 17.7% and 30.7%,
8 respectively ($p < 0.001$ for both).

9

10 *PAP initiation is associated with greater survival and MACE-free probability*

11 Kaplan-Meier survival curves for all-cause mortality and MACE, according to PAP
12 initiation exposure groups are presented in **Figure 4**. Log-rank test indicates significant
13 differences in all-cause mortality and MACE-free survival probabilities ($p < 0.001$), with
14 participants that have initiated PAP presenting greater survival than those without.

15

16 *PAP initiation is independently associated with lower mortality and lower incidence of MACE*

17 Results of doubly robust Cox proportional hazards models are presented in **Figure 5**.
18 Patients with evidence of PAP initiation had significantly lower all-cause mortality risk (HR
19 [95%CI] = 0.53 [0.52-0.54]; $p < 0.001$) and lower MACE incidence risk (0.90 [0.89-0.91]; $p < 0.001$)
20 when compared to those without evidence of initiating PAP. The risk ratio of an unmeasured
21 confounder (E-value) would need to be 2.47 to explain away the effect of PAP initiation on
22 mortality, and 1.36 to explain away the effect on MACE.

23 Analyses of secondary outcomes (MI, HF, stroke, and coronary revascularization) are
24 presented in **Figure 6**. OSA patients with evidence of PAP initiation had significantly lower
25 incidence risk of MI (0.84 [0.82-0.85]; $p < 0.001$; E-value: 1.48), HF (0.89 [0.88-0.90]; $p < 0.001$; E-

1 value: 1.39), and stroke (0.86 [0.84-0.88]; $p < 0.001$; E-value: 1.41). Moreover, PAP initiation was
2 associated with higher incidence risk of revascularization (1.08 [1.05-1.11]; $p < 0.001$).

3 Next, we investigated whether the effect of PAP initiation was consistent across
4 subgroups of sociodemographic and clinical factors. Results of primary outcomes are presented
5 in **Supplemental Figure 1** and of secondary outcomes are presented in **Supplemental Figure**
6 **2**. We observed that effect estimates regarding all-cause mortality are consistent across
7 subgroups, with significantly lower risk among those that initiated PAP across all strata, and key
8 differences in certain subgroups. We observed stronger protective effects of PAP initiation
9 among women (0.52 [0.51-0.53]) as compared to men (0.53 [0.53-0.54]), those with evidence of
10 obesity diagnosis (0.51 [0.50-0.51]) as compared to those without (0.55 [0.54-0.55]), those with
11 evidence of history of atrial fibrillation (0.47 [0.46-0.48]) as compared to those without (0.54
12 [0.53-0.54]), and those without evidence of hypersomnia (0.52 [0.52-0.53]) as compared to
13 those with (0.63 [0.61-0.65]).

14 Regarding incidence of MACE, we observed stronger PAP initiation effects among those
15 75 years or older (75-79 years: 0.89 [0.87-0.90]; 80+: 0.86 [0.85-0.88], as compared to those
16 <75 years (65-69 years: 0.91 [0.90-0.93]; 70-74 years: 0.92 [0.90-0.93]). We also observed
17 stronger protective effects of PAP initiation among women (0.88 [0.87-0.89]) as compared to
18 men (0.91 [0.90-0.92]), those with lower social economic status (0.86 [0.85-0.87]) as compared
19 to those with higher (0.91 [0.91-0.92]), those with evidence of insomnia diagnosis (0.87 [0.85-
20 0.89]) as compared to those without (0.90 [0.89-0.91]), those with evidence of obesity diagnosis
21 (0.88 [0.87-0.89]) as compared to those without (0.91 [0.90-0.92]), those with evidence of
22 COPD diagnosis (0.88 [0.86-0.89]) as compared to those without (0.90 [0.90-0.91]), those with
23 evidence of type 2 diabetes diagnosis (0.88 [0.87-0.89]) as compared to those without (0.91
24 [0.90-0.92]), those with evidence of atrial fibrillation diagnosis (0.85 [0.83-0.87]) as compared to
25 those without (0.90 [0.90-0.91]), and those with higher CCI scores (CCI=1-2 comorbidities: 0.88

1 [0.87-0.90]; CCI=3-4 comorbidities: 0.89 [0.88-0.91]; CCI=5+ comorbidities: 0.89 [0.87-0.91]) as
2 compared to those with less comorbidities (CCI=0: 0.94 [0.92-0.96]).

3 Stratified analyses regarding secondary outcomes (MACE components) consistently
4 showed significantly lower incidence of MI, HF, and stroke as well as higher incidence of
5 coronary revascularization procedures across all subgroups of sociodemographic and clinical
6 factors (**Supplemental Figure 2**). Important differences were observed for certain subgroups.
7 Regarding MI, strongest beneficial effects of PAP initiation were observed among women (0.80
8 [0.79-0.82]), those with lower social economic status (0.80 [0.78-0.82]), those with evidence of
9 hypersomnia diagnosis (0.77 [0.73-0.81]), those with evidence of insomnia diagnosis (0.79
10 [0.76-0.82]), and those with evidence of anxiety disorder diagnosis (0.79 [0.76-0.82]). Regarding
11 HF, strongest beneficial effects of PAP initiation were observed in those 75 years or older (75-
12 79 years: 0.86 [0.84-0.88]; 80+ years: 0.86 [0.84-0.88]), and those with evidence of atrial
13 fibrillation diagnosis (0.84 [0.81-0.87]). Regarding stroke, strongest beneficial effects of PAP
14 initiation were observed among women (0.83 [0.81-0.85]), those with lower social economic
15 status (0.82 [0.80-0.84]), those with evidence of obesity diagnosis (0.82 [0.80-0.84]), those with
16 evidence of CPOD diagnosis (0.81 [0.79-0.84]), those with evidence of hypertension diagnosis
17 (0.85 [0.83-0.86]), and those with highest CCI scores (0.82 [0.79-0.84]). Regarding coronary
18 revascularization, strongest detrimental effects of PAP initiation were observed among those
19 with 80+ years (1.18 [1.12-1.24]), men (1.10 [1.08-1.13]), and those taking antihypertensive
20 medications (1.12 [1.09-1.15]).

21

22 *Determination of first year PAP utilization exposure groups*

23 To inform our proposed analysis assessing the effect of PAP utilization exposure groups,
24 we first observed the distribution of total PAP claims per patient at the end of first year of PAP
25 utilization (**Supplemental Figure 3**). PAP claim counts showed a bimodal distribution,
26 suggesting two utilization patterns were more prevalent: a mode on 3 claims and a mode on 14

1 claims, which may be suggestive of CMS PAP reimbursement models⁴⁶ and may correlate with
2 PAP adherence^{47,48}. Because Medicare claims databases do not include PAP adherence
3 tracking, we explored different PAP exposure group definitions (see *PAP utilization definitions*
4 and **Supplemental Figure 4**) to determine relevant cut-offs in the distribution of PAP claims.
5 We further assessed associations between different PAP exposure group definitions and our
6 primary and secondary outcomes. In general, a greater count of PAP claims during the first year
7 was progressively associated with lower all-cause mortality and lower MACE incidence risk
8 (**Supplemental Figure 5**), reaching a plateau after approximately 15-16 claims. When using the
9 numeric count of PAP claims as our exposure, each additional PAP claim was significantly
10 associated with lower hazards of all-cause mortality (0.98 [0.98-0.98]) and MACE (0.99 [0.99-
11 0.99]). To address the non-linearity of the associations between PAP claim counts and
12 outcomes, we performed spline extrapolation analyses and estimated the HR as a function of
13 PAP claim counts (**Supplemental Figure 6**). Results suggest HR estimates are the highest
14 (e.g., greater hazards) around 4-5 PAP claims and lowest at 17-19 PAP claims across all study
15 outcomes. Taken together, these exploratory analyses helped to inform us that using a quartile-
16 based definition of PAP exposure groups based on claim counts (Q1: 1 to 7 claims; Q2: 8 to 12
17 claims; Q3: 13 to 15 claims; and Q4: >15 claims) provided a realistic representation of PAP
18 utilization patterns that demonstrated clinically relevant variation in incident outcome risk.
19 Therefore, we focused the description of the following results based on this definition.

20

21 *Greater PAP utilization is progressively associated with lower risk of mortality and MACE*

22 Results of doubly robust Cox proportional hazards models assessing the effect of PAP
23 utilization exposure groups based on quartiles of PAP claim counts on all-cause mortality and
24 incidence of MACE are presented in **Figure 7** (among all participants) and **Supplemental**
25 **Figure 7** (stratified by sociodemographic and clinical characteristics), and results for secondary
26 outcomes are presented in **Figure 8 and Supplemental Figure 8**. Among patients with OSA

1 and with evidence of PAP utilization in their first year of therapy, higher quartiles of claim counts
2 (i.e., higher PAP utilization) were progressively associated with lower all-cause mortality (Q2:
3 0.84 [0.81-0.87], Q3: 0.76 [0.74-0.79], Q4: 0.74 [0.72-0.77]) and lower MACE incidence (Q2:
4 0.92 [0.89-0.95], Q3: 0.89 [0.86-0.91], Q4: 0.87 [0.85-0.90]), when compared to those with \leq
5 PAP claims in their first year. Similar results were observed for secondary outcomes, with lower
6 MI incidence risk on Q3 (0.88 [0.83-0.93]) and Q4 (0.84 [0.79-0.88]), lower HF incidence risk
7 (Q2: 0.91 [0.88-0.95], Q3: 0.86 [0.83-0.89], Q4: 0.85 [0.82-0.88]) and lower stroke incidence risk
8 (Q2: 0.85 [0.80-0.91], Q3: 0.86 [0.81-0.90], Q4: 0.80 [0.76-0.85]). No evidence of association
9 with incident coronary revascularization was observed (**Figure 8**).

10 Analyses stratified by sociodemographic and clinical characteristics (**Supplemental**
11 **Figure 7**) were consistent overall, supporting the protective effects of higher PAP claim counts
12 against all-cause mortality and incident MACE across several strata. Exceptions include certain
13 race groups, likely due to the limited sample size of subgroups resulting in wide confidence
14 intervals and less accurate estimates. Regarding all-cause mortality, key differences across
15 strata include stronger protective effects of higher PAP utilization among those with 65-69
16 years, and those without evidence of hypertension. Regarding MACE, stronger protective
17 effects of higher PAP utilization were observed among those with 65-69 years, those with higher
18 socioeconomic status, those without history of hypertension, those without evidence of atrial
19 fibrillation, and those without evidence of insomnia. Regarding secondary outcomes,
20 (**Supplemental Figure 8**), stronger protective effects of higher PAP utilization were observed
21 against MI among those with 80+ years, those with lower socioeconomic status, and those with
22 evidence of hypersomnia. Regarding HF, stronger protective effects of higher PAP utilization
23 were observed among those with 65-69 years, those without evidence of insomnia, those
24 without evidence of hypertension, and those within less comorbidities according to the CCI.
25 Regarding stroke, protective effects of higher PAP utilization were observed among those
26 without evidence of insomnia. Finally, no consistent associations were observed regarding

1 coronary revascularization procedures. Effects estimates and confidence intervals are shown

2 **Supplemental Figures 7 and 8.**

3

4 **Discussion**

5 This study provided a systematic assessment of the effects of PAP initiation and
6 utilization on MACE and mortality among older adults that are Medicare beneficiaries across 11
7 states in the U.S. Our main findings suggest significant associations between claims-based PAP
8 initiation and utilization and lower all-cause mortality and incidence of MACE. Associations of
9 PAP initiation and utilization were also significant for MACE components, with consistent effects
10 on MI, HF, and stroke. We observed that PAP initiation effects were stronger in women (for both
11 mortality and MACE) in those 75 years or older (MACE only), with lower socioeconomic status
12 (MACE only) and with clinical comorbidities (both mortality and MACE). Higher PAP utilization
13 exposure groups were progressively associated with lower incidence of primary and secondary
14 outcomes, with consistent effects in stratified analysis, but with particularly stronger beneficial
15 effects among those between 65-69 years and those without evidence of hypertension (both
16 mortality and MACE), as well as those with higher socioeconomic status, those without
17 evidence of atrial fibrillation, and those without evidence of insomnia (MACE only). We also
18 found that PAP initiation was associated with higher incidence risk of revascularization, with
19 stronger effects among those 80+ years, men, and those taking antihypertensive medications.
20 We used a robust causal inference framework to minimize immortal time bias and provided
21 more reliable estimates of treatment effects. Results from this observational study might inform
22 future trials assessing the importance of OSA therapy initiation and maintenance towards
23 minimizing CV risk and mortality in older adults.

24 Extensive epidemiological evidence suggests that moderate-severe OSA is associated
25 with hypertension⁴⁹⁻⁵¹, stroke²⁶, atrial fibrillation⁵² MI⁵³, and CV mortality⁵⁴. Several mechanisms
26 may explain the relationship between OSA and CV diseases, including sympathetic activation,

1 endothelial dysfunction, oxidative stress, systemic inflammation, cardiac remodeling due to
2 hypoxemia, intrathoracic pressure swings and changes in blood pressure⁵⁵. These overlapping
3 mechanisms indicate that therapies targeting OSA are likely to be beneficial towards CV
4 disease prevention. RCTs have established that PAP improves daytime symptoms, mood, and
5 quality of life^{56,57}, and reduces systolic and diastolic blood pressure⁴⁹, especially in patients with
6 resistant hypertension⁵¹. PAP therapy has positive effects on long-term survival in patients with
7 ischemic stroke and moderate-severe OSA⁵⁸ and it has been associated with lower rate of fatal
8 and non-fatal CV events over a 10-year follow-up⁵³.

9 Despite this consistent evidence, recent RCTs⁵⁹⁻⁶¹ investigating the effect of CPAP on
10 different fatal and non-fatal CV events were negative²⁷. These findings were supported by a
11 recent individual meta-analysis of these studies⁶², although a post-hoc on-treatment analysis
12 suggested a protective effect of good adherence to CPAP and reduced risk of MACE⁶². A
13 careful investigation of the limitations in these trials²⁹ has suggested that patient selection and
14 treatment adherence may have played an important role on explaining differences between
15 RCTs and observational studies. In fact, less than 20% of patients seeking care in sleep clinics
16 would be eligible to participate in these RCTs⁶³. Many patients present with excessive daytime
17 sleepiness, which was an important exclusion criterion in these trials, due to the ethical reason
18 of randomizing patients that are excessively sleepy into control arms²⁹. However, we^{14,64} and
19 others^{15,65} have demonstrated this subgroup is at increased risk for incident CV diseases. These
20 observations suggest that alternative approaches using causal inference in well-designed
21 observational studies could provide more generalizable evidence towards the role of PAP
22 therapy on CV outcomes risk.

23 Exploring ‘real-world data’ approaches using robust statistical methods that minimize
24 biases and confounding issues that are inherent to observational studies may help inform
25 evidence generation in a more timely and cost-effective manner. The success of these
26 approaches has been demonstrated by the current investigation, as it provided relevant and

1 generalizable evidence about the beneficial effects of PAP initiation and utilization in a defined
2 population of older adults in the U.S.. It has also been demonstrated by recent studies exploring
3 the role of CPAP on risk of mortality, HF³⁵, stroke³⁷, reduced health-care utilisation⁶⁶ and related
4 expenses among those with pre-existing CV diseases³⁸, including HF with reduced ejection
5 fraction⁶⁷. In the context of a recently published report from the AHRQ suggesting a lack of
6 strong evidence supporting the role of PAP on long-term CV outcomes⁶⁸, these studies are
7 fundamental to fill this evidence gap.

8 Our study has identified important associations within subgroups. Notably, we observed
9 greater beneficial effects of PAP initiation on MACE among older adults ≥ 75 years, suggesting
10 that primary CV prevention among those with newly diagnosed OSA at older ages could be
11 beneficial. However, these results are conflicting with a 3-month RCT of CPAP therapy among
12 elderly adults >70 years with moderate-severe OSA, which did not find significant effects on
13 blood pressure levels or neurocognitive tests, although significant improvements in sleepiness
14 were observed⁶⁹. A secondary analysis of this trial among those >80 years did not find
15 significant effects on sleepiness⁷⁰. Among those that initiated PAP therapy, our study found
16 greater beneficial effects of PAP utilization in those that are 65-69 years. Differences may be
17 explained by length of follow-up and study design considerations. Future trials assessing the
18 role of PAP therapy on health outcomes of older adults using longer follow-up times are
19 warranted. We also observed stronger PAP initiation and greater utilization effects on mortality
20 and MACE among women, in agreement with prior studies, particularly post-menopause⁵⁶. It is
21 likely that women are subjected to stronger acute detrimental effects of OSA following
22 menopause, and therefore might experience stronger therapeutic effects. Women with OSA are
23 also more likely to have comorbid metabolic conditions⁷¹. However, little is known about sex
24 differences in PAP treatment responses⁷², particularly at older ages. Patients with lower
25 socioeconomic status may be less receptive to receiving PAP therapy⁷³ and report poorer
26 treatment adherence⁷⁴. Yet, our results demonstrate that those with low-income subsidy and

1 dual Medicare/Medicaid eligibility have greater benefit of PAP against MACE. These results
2 highlight opportunities to implement care programs designed to minimize health disparities, as
3 recently proposed⁷⁵. Our study also identified stronger effects of PAP initiation among those
4 with comorbid conditions, particularly obesity and atrial fibrillation (for both mortality and MACE),
5 as well as COPD, type 2 diabetes, and those with more comorbidities according to the CCI. It is
6 likely that these subgroups are at a greater underlying risk with the added comorbid impact^{12,76-}
7 ⁷⁸, and therefore therapy benefit might be greater. Importantly, subgroups with evidence for
8 comorbidities might also represent patients at highest risk for early termination of CPAP⁷⁹, which
9 suggests that efforts to support therapy continuation might be beneficial particularly for these
10 patients.

11 We also found important differences among those with prior history of hypersomnia or
12 insomnia. While we found stronger beneficial effects of PAP initiation against mortality among
13 those without evidence of hypersomnia, we observed stronger effects of PAP initiation against
14 MACE among those with evidence of hypersomnia, with results being driven by stronger effects
15 against MI. Results were also corroborated by stronger effects of greater PAP utilization against
16 MI among those with evidence of hypersomnia. These results support the well-established
17 epidemiological relationship between excessive daytime sleepiness and increased CV risk
18 among those with OSA^{14,15,64,65}. It is important to note that granular measures of excessive
19 daytime sleepiness might provide a more robust phenotype when compared to claims for
20 hypersomnia. Moreover, only ~9% of our study cohort had evidence of hypersomnia, which
21 suggests it might not capture all patients with the excessively sleepy phenotype. We also
22 observed stronger effects of PAP initiation against MACE among those with evidence of
23 insomnia. These results also support studies that demonstrate greater CV risk associated with
24 comorbid insomnia and sleep apnea (COMISA). In summary, these results might help guide
25 future RCTs assessing the role of PAP initiation and/or strategies to increase PAP adherence
26 among higher-risk subgroups.

1 Unexpected results between PAP initiation and increased risk of coronary
2 revascularization procedures, suggesting potentially damaging effects of PAP. Interestingly,
3 these results were mostly driven by older beneficiaries (>75 years). Moreover, analysis of PAP
4 utilization based on claims did not show significant effects of greater PAP utilization and
5 increased risk of revascularization. Future studies assessing the role of PAP initiation on the
6 incident risk of revascularization procedures might provide further insights.

7 This study utilized state-wide Medicare claims data to determine the effects of PAP
8 initiation and utilization on outcomes. While we acknowledge that objective definitions of PAP
9 adherence and efficacy are preferred to estimate exposure to PAP, telemonitoring data has only
10 become available in recent years⁸⁰. Prior studies have investigated similar PAP exposure
11 definitions in a nationwide claims database in France^{35,79} and within 5% Medicare beneficiaries
12 samples in the U.S.^{36-38,81}, and reported consistent results as with objective PAP adherence
13 data^{66,67}. From an epidemiologic perspective, state-wide claims databases cover a large
14 proportion of the older adult demographic and offer a scalable approach to identify those likely
15 to be exposed to PAP independently of vendor or telemonitoring capabilities, thus maximizing
16 generalizability. A single-site study comparing objective adherence based on hours of use found
17 that mask refill claims positively correlated with PAP utilization⁴². To provide further information
18 about PAP utilization based on claims, our study presented a detailed assessment of different
19 PAP utilization exposure group definitions. We observed a bimodal distribution of PAP claim
20 counts within the first year since PAP initiation, which is suggestive of recognized CMS
21 reimbursement models⁴⁶. CMS reimburses PAP therapy among eligible beneficiaries in monthly
22 instalments; when a patient does not meet the eligibility criteria for continued therapy at the third
23 month of utilization, the device is not reimbursed, and no further claims will be identified. We
24 speculate that the first mode of the distribution (3 claims) may represent patients that did not
25 meet the CMS criteria for adherence and therefore may present lower overall PAP utilization
26 during their first year. Similarly, the second mode (14 claims) may represent patients that have

1 demonstrated early adherence and continued to use PAP throughout the year. Our results are
2 consistent with this definition, as it suggests that greater number of PAP claims are
3 progressively associated with greater beneficial outcomes. Therefore, while large scale multisite
4 studies predicting short- and long-term objective PAP adherence using claims data are still
5 needed, the definitions used in our study seem to capture relevant clinical outcomes regarding
6 PAP utilization.

7 Our study has important limitations. First, our cohort identification approach was based
8 on ICD codes, available through a Medicare claims database, thus preventing characterization
9 of disease severity based on the apnea-hypopnea index (AHI) or other novel physiological traits
10 that have been recently demonstrated to be important for CV risk stratification, such as hypoxic
11 burden¹⁶ and heart rate responses to events¹⁷. However, we used an algorithm validated in
12 different clinical sites that demonstrated excellent predictive performance⁴⁰, suggesting that our
13 cohort definition reliably captured individuals with OSA. Second, our claims-based PAP
14 utilization definition may not accurately represent more objective definitions of PAP use.
15 However, hours of use (often used as the only exposure when telemonitoring data is available)
16 may not be the only determinant of PAP efficacy, as other factors such as proportion of
17 protected sleep time (e.g., how many hours sleep on efficacious PAP relative to total sleep
18 time), efficacy of therapy reflected by the optimal pressure, minimal leak, and minimal residual
19 AHI, and even timing of PAP utilization during the night (e.g., early morning termination of
20 therapy might induce more severe rapid eye movement sleep AHI reducing overall PAP
21 efficacy^{82,83}), might be more important predictors of successful therapy, and are yet to be
22 consistently assessed in telemonitoring studies. We encourage that PAP vendors expand
23 academic-industry partnerships towards facilitating privacy-preserving linkage of PAP
24 telemonitoring databases with more granular information from EHR, claims, patient reported
25 outcomes and wearables. Such approaches will be fundamental in future studies aimed at
26 determining the effects of PAP therapy on both short- and long-term clinical outcomes. Third,

1 our covariate definition was based only on claims data, and lack granular information about
2 other relevant confounders such as body mass index, blood pressure, and laboratory
3 measurements that are predictive of CV risk. Moreover, other important factors such as diet,
4 physical activity, and healthy adherer behaviours⁸⁴ were not available and could explain some of
5 the observed effects. To mitigate this limitation, we provide E-values as a guide to understand
6 the impact of a potential unmeasured confounders in our reported associations. Results suggest
7 that unmeasured confounders with effects (in the risk ratio scale) as large as 2.47 for all-cause
8 mortality and 1.36 for MACE would have to be observed, after adjustment for other covariates,
9 to explain away associations with our primary outcomes. Finally, the present study focuses on a
10 population of older adults that are Medicare beneficiaries in the Central U.S., and extrapolation
11 of effect estimates to other demographics cannot be made. In one hand, studies in mid-life
12 adults would provide important insights about OSA natural history and early prevention of CV
13 outcomes. On the other hand, our study is generalizable to a very large proportion of older
14 adults, as >95% of those >65 years in the United States are enrolled in Medicare. There is also
15 greater confidence in the ascertainment of outcomes.

16 In conclusion, PAP utilization based on claims was associated with lower all-cause
17 mortality and MACE incidence (including MI, HF, and stroke) among Medicare beneficiaries >65
18 years. Results support the hypothesis that PAP has beneficial effects against mortality and CV
19 diseases. This study has the potential to inform future trials assessing the importance of OSA
20 therapy initiation and maintenance towards minimizing adverse health outcomes in older adults
21 leading to longer and healthier lives. These results may also inform strategies to improve
22 adherence and efficacy of PAP therapy there are patient-specific, towards personalized sleep
23 medicine.

24

25 **Funding**

1 The study was funded by the American Heart Association (20CDA35310360), Patient-Centered
2 Outcomes Research Institute (RI-CRN-2020-003-IC); NIH CTSA NCATS Frontiers: University of
3 Kansas Clinical and Translational Science Institute (UL1TR002366); Tier 2 grant, University of
4 Missouri.

5

6 **Conflict of interest statement**

7 Dr. Krishna Sundar was a past advisory board member for Resmed Inc. and is the co-founder of
8 Hypnoscore LLC through the University of Utah Technology Commercialization Office All other
9 authors declared no conflicts of interest.

10

11 **Data availability statement**

12 The data underlying this article cannot be shared publicly to protect the privacy of individuals
13 that participated in the study, as stipulated by each institution of the Greater Plains
14 Collaborative. There are established processes for interested investigators to collaborate with
15 the Greater Plains Collaborative research network, that can be accessed via this URL:
16 <https://gpcnetwork.org/>.

17

18 **Notes**

19 *Greater Plains Collaborative*: Sravani Chandaka, Kelechi (KayCee) Anuforo, Lav Patel, Daryl
20 Budine, Nathan Hensel, Siddharth Satyakam, Sharla Smith, Dennis Ridenour, Cheryl Jernigan,
21 Carol Early, Kyle Stephens, Kathy Jurius, Abbey Sidebottom, Cassandra Rodgers, Hong Zhong,
22 Vino Raj, Victor Melendez, Angie Hare, Roman Melamed, Curtis Anderson, Thomas
23 Schouweile, Christine Roering, Philip Payne, Snehil Gupta, John Newland, Albert Lai, Joyce
24 Balls-Berry, Janine Parham, Evin Fritschle, Shanelle Cripps, Kirk Knowlton, Channing Hansen,
25 Erna Serezlic, Benjamin Horne, Jeff VanWormer, Judith Hase, Janet Southworth, Eric Larose,
26 Mary Davis, Laurel Hoeth, Sandy Strey, Brad Taylor, Kris Osinski, April Haverty, Alex Stoddard,

1 Sarah Cornell, Phoenix Do, Lucy Bailey, Beth McDonough, Betsy Chrischilles, Ryan Carnahan,
2 Brian Gryzlak, Gi-Yung Ryu, Katrina Oaklander, Pastor Bruce Hanson, Brad McDowell, Jarrod
3 Field, Abu Mosa, Sasha Lawson, Jim McClay, Soliman Islam, Vasanthi Mandhadi, Kim
4 Kimminau, Dennis Ridenour, Jeff Ordway, Bill Stephens, Russ Waitman, Deandra Cassone,
5 Xiaofan Niu, Lisa Royse, Vyshnavi Paka, Lori Wilcox, Janelle Greening, Carol Geary, Goutham
6 Viswanathan, Jim Svoboda, Jim Campbel, Frances (Annette) Wolfe, Haddy Bah, Todd
7 Bjorklund, Jackson Barlocker, Josh Spuh, Louisa Stark, Mike Strong, Otolose Fahina Tavake-
8 Pas, Rachel Hess, Jacob Kean, Sarah Mumford, Ainsley Huffman, Annie Risenmay, Olivia
9 Ellsmore, Lissa Persson, Kayla Torres Morales, Sandi Stanford, Mahanaz Syed, Rae Schofield,
10 Meredith Zozus, Brian Shukwit, Matthew Decaro, Natalia Heredia, Charles Miller, Alice
11 Robinson, Elmer Bernstam, Fatima Ashraf, Shiby Antony, Juliet Fong Zechner, Philip Reeder,
12 Cindy Kao, Kate Wilkinson, Tracy Greer, Alice Robinson, Lindsay Cowell

1 References

- 2 1. Powell-Wiley TM, Poirier P, Burke LE, et al. Obesity and Cardiovascular Disease: A
3 Scientific Statement From the American Heart Association. *Circulation*. 2021;143(21).
- 4 2. Flegal KM, Kruszon-Moran D, Carroll MD, Fryar CD, Ogden CL. Trends in Obesity
5 Among Adults in the United States, 2005 to 2014. *Jama*. 2016;315(21).
- 6 3. The GBD 2015 Obesity Collaborators. Health Effects of Overweight and Obesity in 195
7 Countries over 25 Years. *New England Journal of Medicine*. 2017;377(1):13-27.
- 8 4. Hall WL. The emerging importance of tackling sleep–diet interactions in lifestyle
9 interventions for weight management. *British Journal of Nutrition*. 2022;128(3):561-568.
- 10 5. Tsao CW, Aday AW, Almarazooq ZI, et al. Heart Disease and Stroke Statistics-2022
11 Update: A Report From the American Heart Association. *Circulation*. 2022;145(8):e153-
12 e639.
- 13 6. Lloyd-Jones DM, Allen NB, Anderson CAM, et al. Life's Essential 8: Updating and
14 Enhancing the American Heart Association's Construct of Cardiovascular Health: A
15 Presidential Advisory From the American Heart Association. *Circulation*. 2022;146(5).
- 16 7. Franklin KA, Lindberg E. Obstructive sleep apnea is a common disorder in the
17 population—a review on the epidemiology of sleep apnea. *J Thorac Dis*. 2015;7(8):1311-
18 1322.
- 19 8. Benjafield AV, Ayas NT, Eastwood PR, et al. Estimation of the global prevalence and
20 burden of obstructive sleep apnoea: a literature-based analysis. *Lancet Respir Med*.
21 2019;7(8):687-698.
- 22 9. Punjabi NM. The Epidemiology of Adult Obstructive Sleep Apnea. *Proceedings of the*
23 *American Thoracic Society*. 2008;5(2):136-143.
- 24 10. Mirer AG, Young T, Palta M, Benca RM, Rasmuson A, Peppard PE. Sleep-disordered
25 breathing and the menopausal transition among participants in the Sleep in Midlife
26 Women Study. *Menopause*. 2017;24(2):157-162.
- 27 11. Jehan S, Zizi F, Pandi-Perumal SR, et al. Obstructive Sleep Apnea and Obesity:
28 Implications for Public Health. *Sleep Med Disord*. 2017;1(4).
- 29 12. Drager LF, Togeiro SM, Polotsky VY, Lorenzi-Filho G. Obstructive Sleep Apnea. *Journal*
30 *of the American College of Cardiology*. 2013;62(7):569-576.
- 31 13. Monahan K, Redline S. Role of obstructive sleep apnea in cardiovascular disease.
32 *Current Opinion in Cardiology*. 2011;26(6):541-547.
- 33 14. Mazzotti DR, Keenan BT, Lim DC, Gottlieb DJ, Kim J, Pack AI. Symptom Subtypes of
34 Obstructive Sleep Apnea Predict Incidence of Cardiovascular Outcomes. *Am J Respir*
35 *Crit Care Med*. 2019;200(4):493-506.
- 36 15. Labarca G, Dreyse J, Salas C, Letelier F, Jorquera J. A Validation Study of Four
37 Different Cluster Analyses of OSA and the Incidence of Cardiovascular Mortality in a
38 Hispanic Population. *Chest*. 2021;160(6):2266-2274.
- 39 16. Azarbarzin A, Sands SA, Stone KL, et al. The hypoxic burden of sleep apnoea predicts
40 cardiovascular disease-related mortality: the Osteoporotic Fractures in Men Study and
41 the Sleep Heart Health Study. *European Heart Journal*. 2019;40(14):1149-1157.
- 42 17. Azarbarzin A, Sands SA, Younes M, et al. The Sleep Apnea–Specific Pulse-Rate
43 Response Predicts Cardiovascular Morbidity and Mortality. *American Journal of*
44 *Respiratory and Critical Care Medicine*. 2021;203(12):1546-1555.
- 45 18. Mazzotti DR, Drager LF. Opportunities for Cardiovascular Benefits in Treating
46 Obstructive Sleep Apnea in the Secondary Prevention Scenario. *Am J Respir Crit Care*
47 *Med*. 2020;202(12):1622-1624.
- 48 19. Yeghiazarians Y, Jneid H, Tietjens JR, et al. Obstructive Sleep Apnea and
49 Cardiovascular Disease: A Scientific Statement From the American Heart Association.
50 *Circulation*. 2021;144(3):e56-e67.

- 1 20. Marin JM, Carrizo SJ, Vicente E, Agusti AGN. Long-term cardiovascular outcomes in
2 men with obstructive sleep apnoea-hypopnoea with or without treatment with continuous
3 positive airway pressure: an observational study. *Lancet (London, England)*.
4 2005;365(9464):1046-1053.
- 5 21. Gottlieb DJ, Yenokyan G, Newman AB, et al. Prospective study of obstructive sleep
6 apnea and incident coronary heart disease and heart failure: the Sleep Heart Health
7 Study. *Circulation*. 2010;122(4):352-360.
- 8 22. Shahar E, Whitney CW, Redline S, et al. Sleep-disordered breathing and cardiovascular
9 disease: cross-sectional results of the Sleep Heart Health Study. *American Journal of
10 Respiratory and Critical Care Medicine*. 2001;163(1):19-25.
- 11 23. Somers VK, White DP, Amin R, et al. Sleep apnea and cardiovascular disease: an
12 American Heart Association/American College Of Cardiology Foundation Scientific
13 Statement from the American Heart Association Council for High Blood Pressure
14 Research Professional Education Committee, Council on Clinical Cardiology, Stroke
15 Council, and Council On Cardiovascular Nursing. In collaboration with the National
16 Heart, Lung, and Blood Institute National Center on Sleep Disorders Research (National
17 Institutes of Health). *Circulation*. 2008;118(10):1080-1111.
- 18 24. Nieto FJ, Young TB, Lind BK, et al. Association of sleep-disordered breathing, sleep
19 apnea, and hypertension in a large community-based study. Sleep Heart Health Study.
20 *JAMA*. 2000;283(14):1829-1836.
- 21 25. Peppard PE, Young T, Palta M, Skatrud J. Prospective study of the association between
22 sleep-disordered breathing and hypertension. *The New England Journal of Medicine*.
23 2000;342(19):1378-1384.
- 24 26. Li M, Hou W-S, Zhang X-W, Tang Z-Y. Obstructive sleep apnea and risk of stroke: a
25 meta-analysis of prospective studies. *International Journal of Cardiology*.
26 2014;172(2):466-469.
- 27 27. Yu J, Zhou Z, McEvoy RD, et al. Association of Positive Airway Pressure With
28 Cardiovascular Events and Death in Adults With Sleep Apnea: A Systematic Review and
29 Meta-analysis. *JAMA*. 2017;318(2):156-166.
- 30 28. Javaheri S, Martinez-Garcia MA, Campos-Rodriguez F. CPAP Treatment and
31 Cardiovascular Prevention. *Chest*. 2019;156(3):431-437.
- 32 29. Pack AI, Magalang UJ, Singh B, Kuna ST, Keenan BT, Maislin G. Randomized clinical
33 trials of cardiovascular disease in obstructive sleep apnea: understanding and
34 overcoming bias. *Sleep*. 2021;44(2).
- 35 30. Wouters OJ, McKee M, Luyten J. Estimated Research and Development Investment
36 Needed to Bring a New Medicine to Market, 2009-2018. *Jama*. 2020;323(9).
- 37 31. Fogel DB. Factors associated with clinical trials that fail and opportunities for improving
38 the likelihood of success: A review. *Contemporary Clinical Trials Communications*.
39 2018;11:156-164.
- 40 32. Robins JM, Hernán MA, Brumback B. Marginal structural models and causal inference in
41 epidemiology. *Epidemiology (Cambridge, Mass.)*. 2000;11(5):550-560.
- 42 33. Shi J, Norgeot B. Learning Causal Effects From Observational Data in Healthcare: A
43 Review and Summary. *Frontiers in Medicine*. 2022;9.
- 44 34. Reynor A, McArdle N, Shenoy B, et al. Continuous positive airway pressure and adverse
45 cardiovascular events in obstructive sleep apnea: Are participants of randomized trials
46 representative of sleep clinic patients? *Sleep*. 2021.
- 47 35. Pépin J-L, Bailly S, Rinder P, et al. Relationship Between CPAP Termination and All-
48 Cause Mortality. *Chest*. 2022;161(6):1657-1665.
- 49 36. Wickwire EM, Tom SE, Vadlamani A, et al. Older adult US Medicare beneficiaries with
50 untreated obstructive sleep apnea are heavier users of health care than matched control
51 patients. *Journal of Clinical Sleep Medicine*. 2020;16(1):81-89.

- 1 37. Wickwire EM, Bailey MD, Somers VK, et al. CPAP adherence is associated with reduced
2 risk for stroke among older adult Medicare beneficiaries with obstructive sleep apnea.
3 *Journal of Clinical Sleep Medicine*. 2021;17(6):1249-1255.
- 4 38. Bock JM, Needham KA, Gregory DA, et al. Continuous Positive Airway Pressure
5 Adherence and Treatment Cost in Patients With Obstructive Sleep Apnea and
6 Cardiovascular Disease. *Mayo Clinic Proceedings: Innovations, Quality & Outcomes*.
7 2022;6(2):166-175.
- 8 39. Waitman LR, Song X, Walpitage DL, et al. Enhancing PCORnet Clinical Research
9 Network data completeness by integrating multistate insurance claims with electronic
10 health records in a cloud environment aligned with CMS security and privacy
11 requirements. *J Am Med Inform Assoc*. 2021.
- 12 40. Keenan BT, Kirchner HL, Veatch OJ, et al. Multisite validation of a simple electronic
13 health record algorithm for identifying diagnosed obstructive sleep apnea. *J Clin Sleep*
14 *Med*. 2020;16(2):175-183.
- 15 41. Zhou Z, Rahme E, Abrahamowicz M, Pilote L. Survival Bias Associated with Time-to-
16 Treatment Initiation in Drug Effectiveness Evaluation: A Comparison of Methods.
17 *American Journal of Epidemiology*. 2005;162(10):1016-1023.
- 18 42. Scharf MT, Keenan BT, Pack AI, Kuna ST. Mask Refills as a Measure of PAP
19 Adherence. *Journal of Clinical Sleep Medicine*. 2017;13(11):1337-1344.
- 20 43. de Groot V, Beckerman H, Lankhorst GJ, Bouter LM. How to measure comorbidity. a
21 critical review of available methods. *J Clin Epidemiol*. 2003;56(3):221-229.
- 22 44. Charlson ME, Pompei P, Ales KL, MacKenzie CR. A new method of classifying
23 prognostic comorbidity in longitudinal studies: development and validation. *J Chronic*
24 *Dis*. 1987;40(5):373-383.
- 25 45. VanderWeele TJ, Ding P. Sensitivity Analysis in Observational Research: Introducing
26 the E-Value. *Annals of Internal Medicine*. 2017;167(4).
- 27 46. Schwab RJ, Badr SM, Epstein LJ, et al. An official American Thoracic Society statement:
28 continuous positive airway pressure adherence tracking systems. The optimal
29 monitoring strategies and outcome measures in adults. *Am J Respir Crit Care Med*.
30 2013;188(5):613-620.
- 31 47. Billings ME. Regional differences in PAP care: more questions than answers. *Journal of*
32 *Clinical Sleep Medicine*. 2021;17(3):363-364.
- 33 48. Patel N, Sam A, Valentin A, Quan SF, Parthasarathy S. Refill Rates of Accessories for
34 Positive Airway Pressure Therapy as a Surrogate Measure of Long-Term Adherence.
35 *Journal of Clinical Sleep Medicine*. 2012;08(02):169-175.
- 36 49. Hu X, Fan J, Chen S, Yin Y, Zrenner B. The role of continuous positive airway pressure
37 in blood pressure control for patients with obstructive sleep apnea and hypertension: a
38 meta-analysis of randomized controlled trials. *J Clin Hypertens (Greenwich)*.
39 2015;17(3):215-222.
- 40 50. Bratton DJ, Gaisl T, Wons AM, Kohler M. CPAP vs Mandibular Advancement Devices
41 and Blood Pressure in Patients With Obstructive Sleep Apnea: A Systematic Review and
42 Meta-analysis. *JAMA*. 2015;314(21):2280-2293.
- 43 51. Liu L, Cao Q, Guo Z, Dai Q. Continuous Positive Airway Pressure in Patients With
44 Obstructive Sleep Apnea and Resistant Hypertension: A Meta-Analysis of Randomized
45 Controlled Trials. *J Clin Hypertens (Greenwich)*. 2016;18(2):153-158.
- 46 52. Tung P, Levitzky YS, Wang R, et al. Obstructive and Central Sleep Apnea and the Risk
47 of Incident Atrial Fibrillation in a Community Cohort of Men and Women. *J Am Heart*
48 *Assoc*. 2017;6(7).
- 49 53. Marin JM, Carrizo SJ, Vicente E, Agusti AG. Long-term cardiovascular outcomes in men
50 with obstructive sleep apnoea-hypopnoea with or without treatment with continuous
51 positive airway pressure: an observational study. *Lancet*. 2005;365(9464):1046-1053.

- 1 54. Javaheri S, Barbe F, Campos-Rodriguez F, et al. Sleep Apnea. *Journal of the American*
2 *College of Cardiology*. 2017;69(7):841-858.
- 3 55. Drager LF, McEvoy RD, Barbe F, Lorenzi-Filho G, Redline S, Initiative I. Sleep Apnea
4 and Cardiovascular Disease: Lessons From Recent Trials and Need for Team Science.
5 *Circulation*. 2017;136(19):1840-1850.
- 6 56. Campos-Rodriguez F, Queipo-Corona C, Carmona-Bernal C, et al. Continuous Positive
7 Airway Pressure Improves Quality of Life in Women with Obstructive Sleep Apnea. A
8 Randomized Controlled Trial. *Am J Respir Crit Care Med*. 2016;194(10):1286-1294.
- 9 57. Engleman HM, Cheshire KE, Deary IJ, Douglas NJ. Daytime sleepiness, cognitive
10 performance and mood after continuous positive airway pressure for the sleep
11 apnoea/hypopnoea syndrome. *Thorax*. 1993;48(9):911-914.
- 12 58. Lyons OD, Ryan CM. Sleep Apnea and Stroke. *Can J Cardiol*. 2015;31(7):918-927.
- 13 59. McEvoy RD, Antic NA, Heeley E, et al. CPAP for Prevention of Cardiovascular Events in
14 Obstructive Sleep Apnea. *N Engl J Med*. 2016;375(10):919-931.
- 15 60. Peker Y, Glantz H, Eulenburg C, Wegscheider K, Herlitz J, Thunstrom E. Effect of
16 Positive Airway Pressure on Cardiovascular Outcomes in Coronary Artery Disease
17 Patients with Nonsleepy Obstructive Sleep Apnea. The RICCADSA Randomized
18 Controlled Trial. *Am J Respir Crit Care Med*. 2016;194(5):613-620.
- 19 61. Sanchez-de-la-Torre M, Sanchez-de-la-Torre A, Bertran S, et al. Effect of obstructive
20 sleep apnoea and its treatment with continuous positive airway pressure on the
21 prevalence of cardiovascular events in patients with acute coronary syndrome (ISAACC
22 study): a randomised controlled trial. *Lancet Respir Med*. 2020;8(4):359-367.
- 23 62. Sánchez-de-la-Torre M, Gracia-Lavedan E, Benitez ID, et al. Adherence to CPAP
24 Treatment and the Risk of Recurrent Cardiovascular Events. *Jama*. 2023;330(13).
- 25 63. Reynor A, McArdle N, Shenoy B, et al. Continuous positive airway pressure and adverse
26 cardiovascular events in obstructive sleep apnea: are participants of randomized trials
27 representative of sleep clinic patients? *Sleep*. 2022;45(4).
- 28 64. Allen AJH, Jen R, Mazzotti DR, et al. Symptom subtypes and risk of incident
29 cardiovascular and cerebrovascular disease in a clinic-based obstructive sleep apnea
30 cohort. *J Clin Sleep Med*. 2022.
- 31 65. Wu B, Tarraf W, Wallace DM, et al. Cardiovascular correlates of sleep apnea
32 phenotypes: Results from the Hispanic Community Health Study/Study of Latinos
33 (HCHS/SOL). *PLoS One*. 2022;17(4):e0265151.
- 34 66. Malhotra A, Sterling KL, Cistulli PA, et al. Dose-Response Relationship between
35 Obstructive Sleep Apnea Therapy Adherence and Healthcare Utilization. *Annals of the*
36 *American Thoracic Society*. 2023;20(6):891-897.
- 37 67. Malhotra A, Cole KV, Malik AS, et al. Positive Airway Pressure Adherence and Health
38 Care Resource Utilization in Patients With Obstructive Sleep Apnea and Heart Failure
39 With Reduced Ejection Fraction. *Journal of the American Heart Association*.
40 2023;12(10).
- 41 68. U.S. Department of Health and Human Services Agency for Healthcare Research and
42 Quality. *Long-Term Health Outcomes in Obstructive Sleep Apnea: A Systematic Review*
43 *of Comparative Studies Evaluating Positive Airway Pressure and the Validity of*
44 *Breathing Measures as Surrogate Outcomes*. 12/01/2022 2022. SLPT0919.
- 45 69. Ponce S, Pastor E, Orosa B, et al. The role of CPAP treatment in elderly patients with
46 moderate obstructive sleep apnoea: a multicentre randomised controlled trial. *European*
47 *Respiratory Journal*. 2019;54(2).
- 48 70. Martinez-Garcia MA, Oscullo G, Ponce S, et al. Effect of continuous positive airway
49 pressure in very elderly with moderate-to-severe obstructive sleep apnea pooled results
50 from two multicenter randomized controlled trials. *Sleep Medicine*. 2022;89:71-77.

- 1 71. Greenberg-Dotan S, Reuveni H, Simon-Tuval T, Oksenberg A, Tarasiuk A. Gender
2 differences in morbidity and health care utilization among adult obstructive sleep apnea
3 patients. *Sleep*. 2007;30(9):1173-1180.
- 4 72. Ayub S, Won CHJ. Obstructive Sleep Apnea in Women. *Journal of Sleep Medicine*.
5 2019;16(2):75-80.
- 6 73. Simon-Tuval T, Reuveni H, Greenberg-Dotan S, Oksenberg A, Tal A, Tarasiuk A. Low
7 Socioeconomic Status Is a Risk Factor for CPAP Acceptance Among Adult OSAS
8 Patients Requiring Treatment. *Sleep*. 2009;32(4):545-552.
- 9 74. Billings ME, Auckley D, Benca R, et al. Race and residential socioeconomics as
10 predictors of CPAP adherence. *Sleep*. 2011;34(12):1653-1658.
- 11 75. May AM, Patel SR, Yamauchi M, et al. Moving toward Equitable Care for Sleep Apnea in
12 the United States: Positive Airway Pressure Adherence Thresholds: An Official American
13 Thoracic Society Policy Statement. *American Journal of Respiratory and Critical Care
14 Medicine*. 2023;207(3):244-254.
- 15 76. Dalmar A, Singh M, Heis Z, et al. Risk of Atrial Fibrillation and Stroke After Bariatric
16 Surgery in Patients With Morbid Obesity With or Without Obstructive Sleep Apnea.
17 *Stroke*. 2021;52(7):2266-2274.
- 18 77. Stewart NH, Walters RW, Mokhlesi B, Lauderdale DS, Arora VM. Sleep in hospitalized
19 patients with chronic obstructive pulmonary disease: an observational study. *Journal of
20 Clinical Sleep Medicine*. 2020;16(10):1693-1699.
- 21 78. Protasiewicz Timofticiuc DC, Vladu IM, □tefan A-G, et al. Associations of Chronic
22 Diabetes Complications and Cardiovascular Risk with the Risk of Obstructive Sleep
23 Apnea in Patients with Type 2 Diabetes. *Journal of Clinical Medicine*. 2022;11(15).
- 24 79. Pépin J-L, Bailly S, Rinder P, et al. CPAP Therapy Termination Rates by OSA
25 Phenotype: A French Nationwide Database Analysis. *Journal of Clinical Medicine*.
26 2021;10(5).
- 27 80. Pépin JL, Bailly S, Tamisier R. Big Data in sleep apnoea: Opportunities and challenges.
28 *Respirology*. 2019:resp.13669.
- 29 81. Wickwire EM, Bailey MD, Somers VK, et al. CPAP adherence is associated with reduced
30 inpatient utilization among older adult Medicare beneficiaries with pre-existing
31 cardiovascular disease. *Journal of Clinical Sleep Medicine*. 2022;18(1):39-45.
- 32 82. Mokhlesi B, Punjabi NM. "REM-related" Obstructive Sleep Apnea: An Epiphenomenon
33 or a Clinically Important Entity? *Sleep*. 2012;35(1):5-7.
- 34 83. Varga AW, Mokhlesi B. REM obstructive sleep apnea: risk for adverse health outcomes
35 and novel treatments. *Sleep and Breathing*. 2018;23(2):413-423.
- 36 84. Kapur VK, Psaty BM. Obtaining Valid Estimates of the Effect of CPAP Therapy. *Chest*.
37 2022;161(6):1444-1445.

38

1 **Table 1:** Sample characteristics by positive airway pressure initiation groups among eligible
 2 Medicare beneficiaries.

Variable	No evidence of PAP initiation (N = 598,820)	PAP initiation (N = 290,015)	p ^a
Sociodemographic, N (%)			
Age Group			
65-69 years	159,589 (26.7%)	89,414 (30.8%)	<0.001
70-74 years	189,168 (31.6%)	94,955 (32.7%)	
75-79 years	118,730 (19.8%)	54,425 (18.8%)	
80+ years	131,333 (21.9%)	51,221 (17.7%)	
Sex			
Men	336,287 (56.2%)	161,950 (55.8%)	<0.001
Women	262,533 (43.8%)	128,065 (44.2%)	
Race			
White	502,414 (83.9%)	257,910 (88.9%)	<0.001
Black	36,381 (6.1%)	10,741 (3.7%)	
Asian	5,769 (1.0%)	2,346 (0.8%)	
Native American	1,644 (0.3%)	721 (0.2%)	
Other	2,765 (0.5%)	1,296 (0.4%)	
Unknown	49,847 (8.3%)	17,001 (5.9%)	
Socio-Economic Status			
Low-income subsidy or dual eligibility	177,559 (29.6%)	72,957 (25.2%)	<0.001
Disease History^b, N (%)			
Hypersomnia	35,466 (5.9%)	45,238 (15.6%)	<0.001
Insomnia	86,778 (14.5%)	48,274 (16.7%)	<0.001
COPD	152,907 (25.5%)	60,129 (20.7%)	<0.001
Type 2 Diabetes	265,375 (44.3%)	114,327 (39.4%)	<0.001
Hypertension	510,338 (85.2%)	246,707 (85.1%)	<0.001
Obesity	261,592 (43.7%)	111,381 (38.4%)	<0.001
Atrial Fibrillation	97,427 (16.3%)	34,943 (12.0%)	<0.001
Chronic Kidney Disease	150,949 (25.2%)	55,058 (19.0%)	<0.001
Anxiety Disorders	141,939 (23.7%)	66,305 (22.9%)	<0.001
MACE	225,435 (37.6%)	91,328 (31.5%)	<0.001
Myocardial Infarction	81,770 (13.7%)	31,329 (10.8%)	<0.001
Stroke	50,487 (8.4%)	20,977 (7.2%)	<0.001
Heart Failure	159,068 (26.6%)	59,788 (20.6%)	<0.001
Coronary Revascularisation	36,154 (6.0%)	18,324 (6.3%)	<0.001
Charlson Comorbidity Index			
Median (Q1, Q3)	3 (1, 5)	2 (1, 5)	<0.001
Medication History^b, N (%)			
Any use of Anticoagulants	88,130 (14.7%)	36,141 (12.5%)	<0.001
Any use of Antihypertensives	390,196 (65.2%)	168,153 (58.0%)	<0.001
Any use of Antilipemic agents	293,312 (49.0%)	127,081 (43.8%)	<0.001
Any use of Blood Glucose Regulators	143,556 (24.0%)	52,235 (18.0%)	<0.001
Outcomes Incidence, N (%)			
All-cause mortality	105,768 (17.7%)	35,981 (12.4%)	<0.001
MACE ^c	114,502/373,385 (30.7%)	49,844/181632 (27.4%)	<0.001
Myocardial infarction	37,379/373,385 (10.0%)	15,607/181632 (8.6%)	<0.001
Stroke	30,817/373,385 (8.2%)	14,485/181632 (8.0%)	0.001
Heart failure	79,293/373,385 (21.2%)	33,260/181632 (18.3%)	<0.001
Coronary revascularisation	16,644/373,385 (4.5%)	8,526/181632 (4.7%)	<0.001

3 ^a chi-squared tests

4 ^b Positive history is defined when there is evidence of diagnosis codes indicating the condition
 5 prior to the first observed OSA diagnosis

6 ^c for MACE incidence, denominators represent patients without history of MACE.

1 Abbreviations – N: sample size; PAP: positive airway pressure; MACE: major adverse
2 cardiovascular events; COPD: chronic obstructive pulmonary disease
3

1 **Figure Legends**

2 **Figure 1.** Overview of the PAP initiation analysis study design.

3

4 **Figure 2.** Overview of the PAP utilization exposure group study design.

5

6 **Figure 3.** Study cohort definitions and CONSORT diagram.

7

8 **Figure 4:** Unadjusted and adjusted Kaplan-Meier survival curves describing the survival
9 probabilities between PAP initiation exposure groups and all-cause mortality (top) and MACE
10 (bottom). Numbers in boxes represent annual survival probabilities per group. The results of log-
11 rank tests comparing exposure groups are also shown.

12

13 **Figure 5.** Summary of IPTW-adjusted Cox proportional hazards models assessing the effect of
14 PAP initiation on all-cause mortality (ACM) and MACE in all eligible participants. Results were
15 derived from IPTW-weighted Cox proportional hazards models adjusted for age, sex, race, low-
16 income-subsidy or dual-eligibility indicator, type 2 diabetes, hypertension, obesity, atrial
17 fibrillation, MACE (all-cause mortality only), COPD, CKD, hypersomnia, and insomnia, anxiety
18 disorder, hypersomnia, insomnia, CCI, prescriptions of anticoagulants, antihypertensives,
19 antilipidemic agents and blood glucose regulators. Reference category is no evidence of PAP
20 initiation. Abbreviations: ACM: all-cause mortality; COPD: chronic obstructive pulmonary
21 disease; CKD: chronic kidney disease; CCI: Charlson comorbidity index; PAP: positive airway
22 pressure; HR: hazard ratio; CI: confidence interval; MACE: major adverse cardiovascular event;
23 IPTW: inverse probability of treatment weights.

24

1 and within categories of relevant sociodemographic and clinical characteristics. Among
2 stratified models, stratification variable was not included as a covariate in propensity score
3 models nor in outcome models.

4
5 **Figure 6.** Summary of IPTW-adjusted Cox proportional hazards models assessing the effect of
6 PAP initiation on myocardial infarction (MI), heart failure (HF), stroke (STROKE) and coronary
7 revascularization (REVASC) in all eligible participants. Results were derived from IPTW-
8 weighted Cox proportional hazards models adjusted for age, sex, race, low-income-subsidy or
9 dual-eligibility indicator, type 2 diabetes, hypertension, obesity, atrial fibrillation, COPD, CKD,
10 hypersomnia, and insomnia, anxiety disorder, hypersomnia, insomnia, CCI, prescriptions of
11 anticoagulants, antihypertensives, antilipidemic agents and blood glucose regulators. Reference
12 category is no evidence of PAP initiation. Abbreviations: ACM: all-cause mortality; COPD:
13 chronic obstructive pulmonary disease; CKD: chronic kidney disease; CCI: Charlson
14 comorbidity index; PAP: positive airway pressure; HR: hazard ratio; CI: confidence interval;
15 MACE: major adverse cardiovascular event; IPTW: inverse probability of treatment weights.

16
17 **Figure 7.** Summary of IPTW-adjusted Cox proportional hazards models assessing the effect of
18 PAP utilization exposure groups based on quartiles of PAP claim counts on all-cause mortality
19 (ACM) and MACE among all participants. PAP exposure groups were defined as follows: Q1
20 (reference): 1-7 claims; level 2: 8-12 claims; level 3: 13-15 claims; level 4: >15 claims). Results
21 were derived from IPTW-weighted Cox proportional hazards models adjusted for age, sex, race,
22 low-income-subsidy or dual-eligibility indicator, type 2 diabetes, hypertension, obesity, atrial
23 fibrillation, MACE (all-cause mortality only), COPD, CKD, hypersomnia, and insomnia, anxiety
24 disorder, hypersomnia, insomnia, CCI, prescriptions of anticoagulants, antihypertensives,
25 antilipidemic agents and blood glucose regulators. Abbreviations: ACM: all-cause mortality;
26 COPD: chronic obstructive pulmonary disease; CKD: chronic kidney disease; CCI: Charlson

1 comorbidity index; PAP: positive airway pressure; HR: hazard ratio; CI: confidence interval;
2 MACE: major adverse cardiovascular event; IPTW: inverse probability of treatment weights.

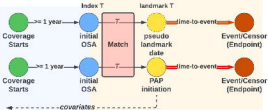
3

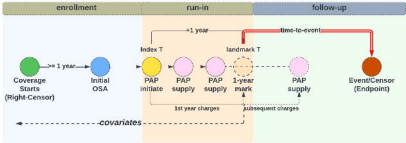
4 **Figure 8.** Summary of IPTW-adjusted Cox proportional hazards models assessing the effect of
5 PAP utilization exposure groups based on quartiles of PAP claim counts on myocardial
6 infarction (MI), heart failure (HF), stroke (STROKE) and coronary revascularization (REVASC)
7 in all eligible participants. PAP exposure groups were defined as follows: Q1 (reference): 1-7
8 claims; level 2: 8-12 claims; level 3: 13-15 claims; level 4: >15 claims). Results were derived
9 from IPTW-weighted Cox proportional hazards models adjusted for age, sex, race, low-income-
10 subsidy or dual-eligibility indicator, type 2 diabetes, hypertension, obesity, atrial fibrillation,
11 COPD, CKD, hypersomnia, and insomnia, anxiety disorder, hypersomnia, insomnia, CCI,
12 prescriptions of anticoagulants, antihypertensives, antilipidemic agents and blood glucose
13 regulators. Abbreviations: ACM: all-cause mortality; COPD: chronic obstructive pulmonary
14 disease; CKD: chronic kidney disease; CCI: Charlson comorbidity index; PAP: positive airway
15 pressure; HR: hazard ratio; CI: confidence interval; IPTW: inverse probability of treatment
16 weights.

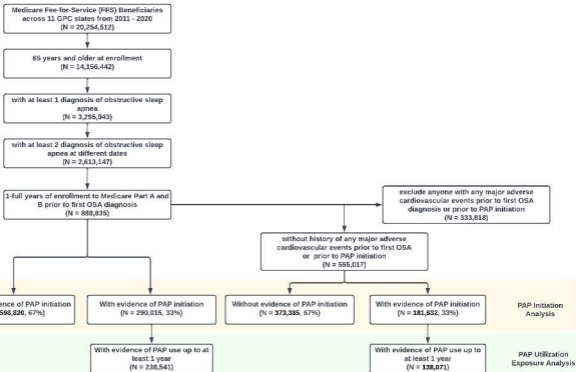
enrollment

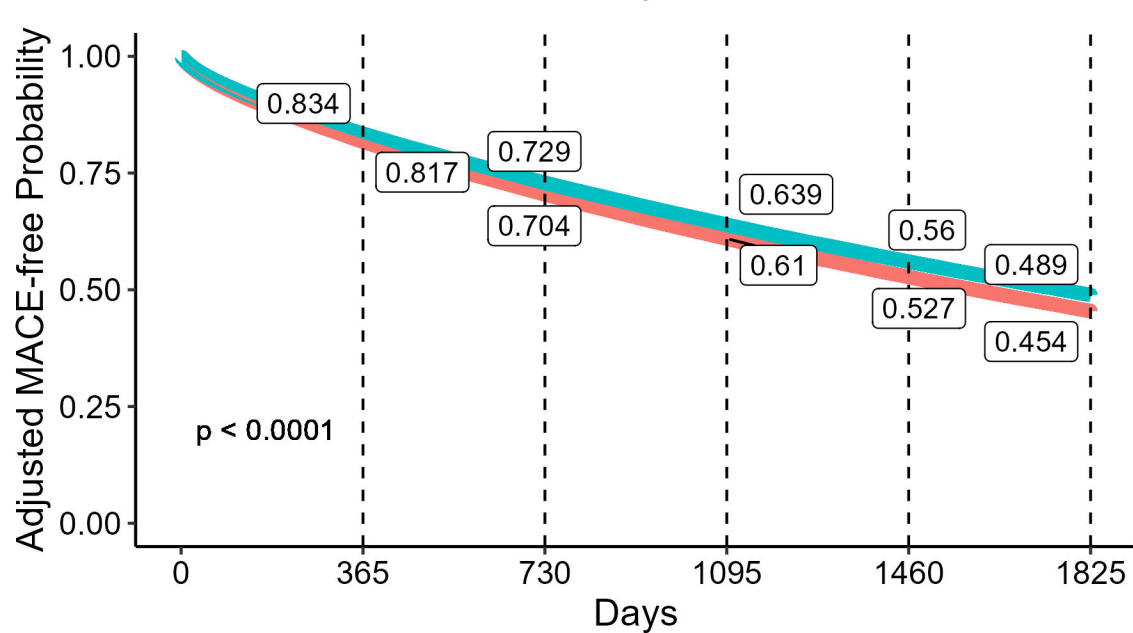
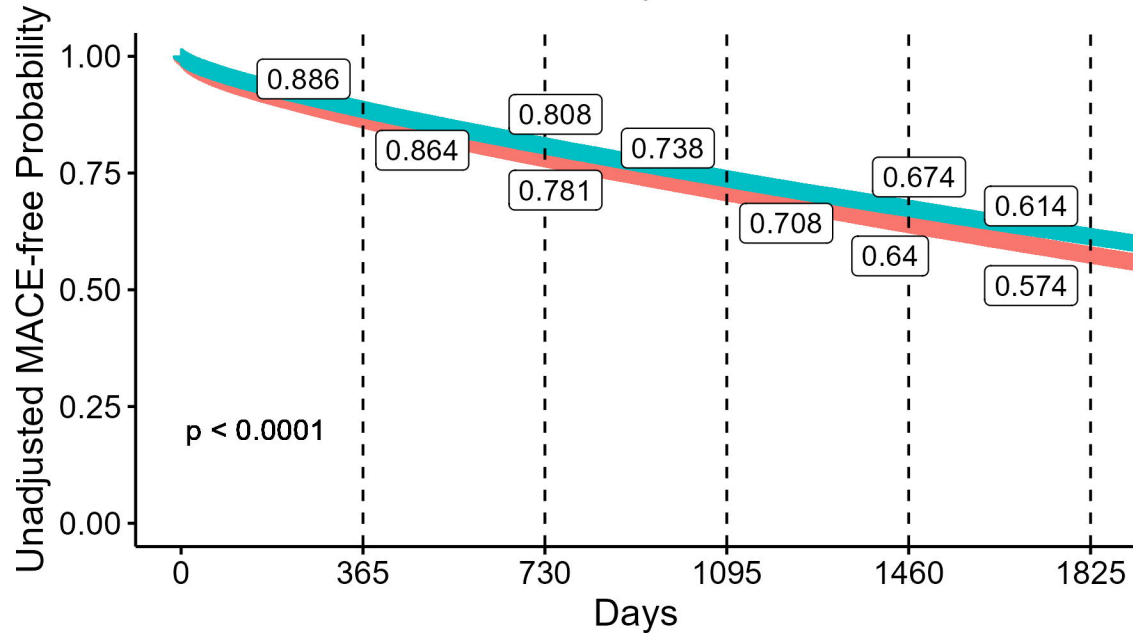
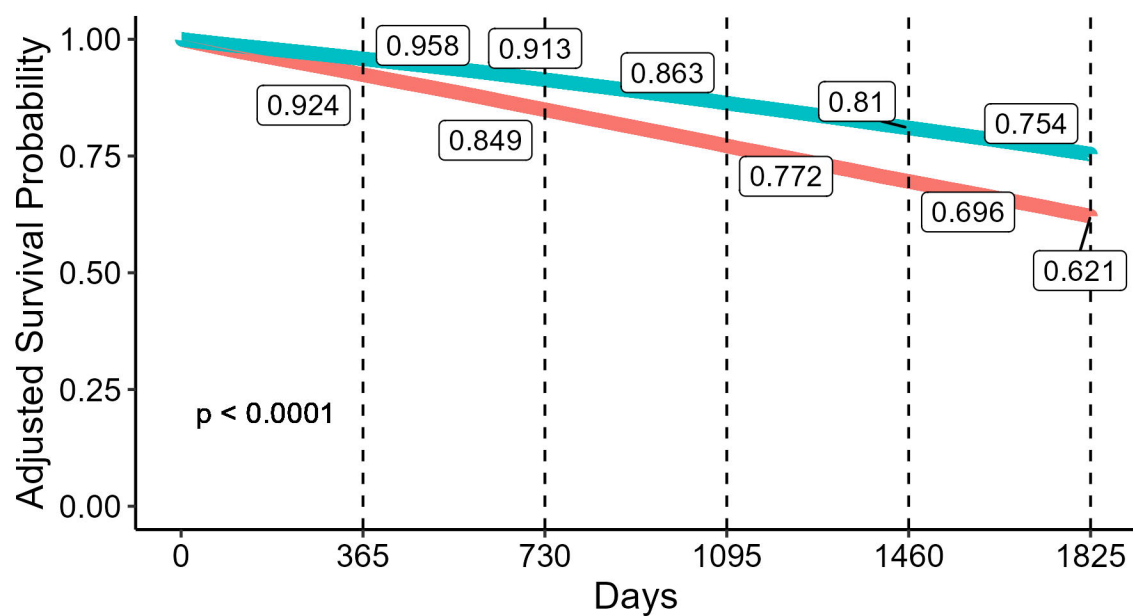
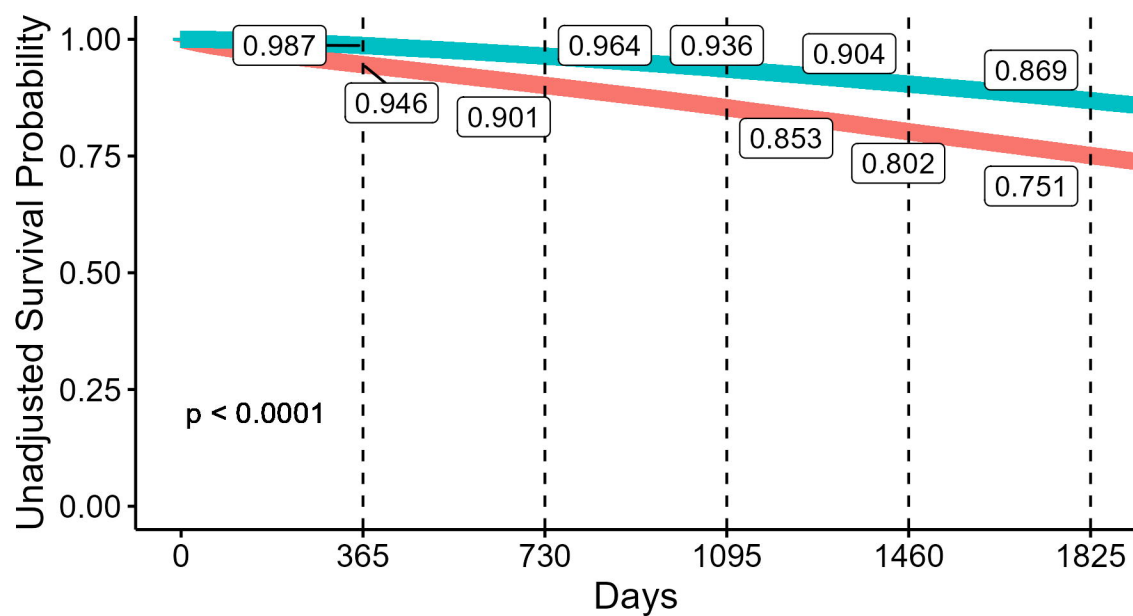
run-in

follow-up









Strata + wo/ PAP + w/ PAP

Full Model

ACM...

ACM.HR (95% CI)

MACE...

MACE.HR (95% CI)



0.53 (0.52-0.54) ****



0.90 (0.89-0.91) ****



