

## A SCOPING REVIEW OF ALZHEIMER'S DISEASE HYPOTHESES: THE CASE FOR A MULTI-FACTORIAL THEORY

---

Simon Duchesne<sup>1</sup>, Louis-Simon Rousseau<sup>3,4</sup>, Florence Belzile<sup>3,4</sup>, Laurie-Ann Welsh<sup>3,4</sup>,  
Beatrice Cournoyer<sup>3</sup>, Marianne Arseneau<sup>3</sup>, Véronick Lapierre<sup>3,4</sup>, Sara-Maude Poulin<sup>3</sup>, Olivier  
Potvin<sup>2,3</sup>, Carol Hudon<sup>3,4,5</sup>

<sup>1</sup> Department of Radiology and Nuclear Medicine, Université Laval, Quebec City, QC, Canada

<sup>2</sup> Quebec Heart and Lung Research Institute, Quebec City, QC, Canada

<sup>3</sup> CERVO Brain Research Centre, Quebec City, QC, Canada

<sup>4</sup> School of Psychology, Université Laval, Quebec City, QC, Canada

<sup>5</sup> VITAM Research Centre, Quebec City, QC, Canada

### **Corresponding author:**

Simon Duchesne, Ph.D.  
simon.duchesne@fmed.ulaval.ca  
Department of Radiology and Nuclear Medicine  
Université Laval  
1050 Avenue de la Médecine  
Quebec City, QC  
Canada G1V 0A6

## RESEARCH IN CONTEXT

1. We propose a scoping review of 105 original manuscripts describing hypotheses and theories of Alzheimer's disease (AD) that have been published in the past decades, characterized as having a single or multifactorial focus.
2. We found that three quarter of studies proposed a hypothesis characterized as being single-focus (77/105), with the most important theoretical groupings being the Amyloid group, followed by Metabolism and Mitochondrial dysfunction, then Cerebrovascular. Three stages can be discerned in terms of hypotheses generation. The first phase (~1980-1995) included the establishment of the main thrusts that have endured to this day (Amyloid, Glial, Infection, Inflammation, Metabolism, Oxidative stress, and Proteinopathies hypotheses; multifactoriality; and neurotoxicity). In the second phase (1995-2005), the importance of the Cerebrovasculature, Mitochondrial dysfunction, and Neurotransmitters were recognized. Lately (2005-2020), evidence towards Genetics (outside of the autosomal dominant form of AD), and especially Gut/Brain interactions came to the fore.
3. When viewed together, these multi-faceted reports reinforce the notion that AD affects multiple sub-cellular, cellular, anatomical, and physiological systems at the same time but at varying degree between individuals. A major impediment remains provide a comprehensive view of all these systems and their interactions to manage its inherent complexity.

## HIGHLIGHTS

- We propose a scoping review of hypotheses and theories for Alzheimer's disease (AD)
- Out of over 11,000 abstracts, we reviewed 105 articles, separated as having a single-focus or multi-factorial approach
- The diversity of reports calls for an integrative view of AD in order to encompass its inherent complexity

## ABSTRACT

**Introduction** - There is a common agreement that Alzheimer's disease (AD) is inherently complex; otherwise, a general disagreement remains on its etiological underpinning, with numerous alternative hypotheses having been proposed.

**Methods** - We performed a scoping review of 105 original manuscripts describing hypotheses and theories of AD published in the past decades, characterized them as having a single or multifactorial focus, and tracked their impact.

**Results** - Three stages can be discerned in terms of hypotheses generation, with three quarter of studies proposing a hypothesis characterized as being single-focus. The most important theoretical groupings were the Amyloid group, followed by Metabolism and Mitochondrial dysfunction, then Cerebrovascular. Lately, evidence towards Genetics and especially Gut/Brain interactions came to the fore.

**Discussion** - When viewed together, these multi-faceted reports reinforce the notion that AD affects multiple sub-cellular, cellular, anatomical, and physiological systems at the same time but at varying degree between individuals. A major impediment remains provide a comprehensive view of all these systems and their interactions to manage its inherent complexity.

## KEYWORDS

Alzheimer's disease, theory, hypothesis, scoping review, amyloid, metabolism, mitochondrial dysfunction, cerebrovascular disease

## 1. INTRODUCTION

After more than a century of research, Alzheimer's disease (AD) remains perplexing, a thorn in the side of modern medical science. Its etiological underpinning remains under debate, with numerous alternative hypotheses having been proposed. None were confirmed to a level sufficient for its operationalization into a therapeutic approach unequivocally proven effective and efficient in a clinical setting. Surveying this landscape of ideas – some vibrantly pursued, others nearly forgotten - should provide insights as to future general directions for research.

There is however a common agreement that AD is inherently complex. Its most common, pseudo-sporadic form is primarily associated with aging, and hence overlaps exist between the wide variability in anatomical and physiological changes that accompany the latter with those of the former, early in the disease process at the very least. Beyond aging but related to it, multiple risk factors have been identified from epidemiological studies, ranging from education in early life; hearing loss, traumatic brain injury, hypertension, alcohol consumption, and obesity at mid-life; to smoking, depression, social isolation, physical inactivity, air pollution, and diabetes, in later years (1). Yet, the compounding factor of time renders difficult the determination of whether some of these factors are early disease markers, etiological agents, catalysts, or a combination of these roles. The sheer breadth of these identified risk constructs, with impacts at scales ranging from proteins to behaviors, further points to the complexity of uncovering disease pathways at the most fundamental levels – and therefore amenable to therapeutic approaches, pharmacological or otherwise – that compound into the observed pathological cognitive and behavioral presentations. A common agreement on what constitutes AD seems therefore a first and necessary step to address this complexity and work together towards a solution. In fact, the discordance between the clinical presentation of AD and some of its most accepted biomarkers (e.g., amyloid beta (A $\beta$ ), present in

AD but also prevalent at all ages without necessarily affecting cognition (2), and histopathological findings (e.g., similar lesions being associated with dementia or not (3)), means that the very definition of the disease remains a question as much of viewpoints as one of evidence. Thus, one could argue that there are three effective, overlapping yet still irreconciled definitions of AD: one arising from a clinical/cognitive viewpoint; a second, informed by *in vivo* biomarkers; and a third, defined by histopathological evidence.

An important aspect of this debate was introduced by Alois Alzheimer himself, when he first described the disease in his seminal paper (4), relating his observations on one patient, who had first come to the clinic at 51 years of age with clear clinical dementia. Based on the age of this patient and her rapid decline, it could be argued that this was a form of autosomal dominant AD. For the first time, A $\beta$  plaques were observed and reported. Yet, this seminal observation has set the parameters of a major argument that still rages more than a century later: are A $\beta$  plaques fundamental or accessory to the pseudo-sporadic form of the disease, form that is by far the most prevalent? Is AD an amyloidosis, first and foremost, in all cases – not only early in life, but in older patients as well? This amyloid hypothesis (5), which has been at the center of research for the past few decades, is the field's major attempt at a "great unifying theory". It also oriented minds into a paradigm often seen in medical research, the search for a single etiological cause, regardless of the complexities inherent to human biology. Consequently, this singular view of the disease set in motion a quest, so far with limited positive results, for a similarly singular cure. Yet, the amyloid hypothesis is now seriously under siege. While it never made unanimity, as theories are initially wont to be, significant drawbacks in the past few years have led many to look anew for alternatives. First is the high prevalence of amyloid deposition in otherwise cognitively healthy individuals (6) and the lack of association between amyloid deposition and transverse and

longitudinal cognitive status in otherwise cognitively healthy individuals (7). Next we can find the highly combinatorial nature of pathologies present (especially cerebrovascular lesions) when one looks at large post-mortem samples (8), meaning that amyloid is likely not the only aetiology driving decline. Finally, the accumulated failures of tens of phase III trials focused on A $\beta$  removal to reach meaningful clinical changes (9), even when compared to those few that succeeded with modest (but, to be fair, statistically significant) success (10).

Thus, to solve the riddle of AD properly, one must find a theory able to explain these multiple events. Many have attempted to do so in the past. It is their work which is reviewed here (using the “Scoping Review” frame), in an attempt first to enumerate, then to assess the relative importance of the diversity of hypotheses and theories that have been proposed in the past decades. From this wide array of ideas, some conclusions are drawn to orient the field.

## **2. METHODS**

### *2.1 Literature search strategy and sources*

This review follows the PRISMA guidelines (11) and was conducted using the Web of Science, Embase, Medline, and PsycInfo databases for articles published from their inception through to 30 Oct 2020. Keywords referred to the variables of interest (AD theory). The search strategy is presented in Supplementary Material Table 1. Due to the sheer volume of work that has been published on AD, we limited the number of databases and search terms/synonyms. This qualifies our work as a scoping rather than systematic review.

### *2.2 Study selection process*

Inclusion criteria were established as follows: (1) must be a peer-reviewed, scientific article; (2) must be written in either English or French; (3) must describe a hypothesis or theory related to AD; and (4) must not report solely on a pre-clinical model of AD .

Article selection was performed using the Covidence systematic review software (Veritas Health Innovation). After the initial search (L.S.R.), duplicates were removed. Next, a first sort was performed based on article titles and abstracts, followed by a second sort based on the full-text articles. All articles were evaluated against the inclusion and exclusion criteria, and some articles were excluded accordingly. The screening was made by independent reviewers (L.S.R.; F.B.; L.A.W.; B.C.; M.A.; V.L.; S.M.P.). Articles that were not included by reviewers were reevaluated by a third and included or excluded by common agreement.

### *2.3 Study selection*

On 30 oct 2020, 11,023 studies were uploaded to Covidence from Embase (n = 3,142), Medline (n = 2,320), Web of Science (n = 4,240), and PsycInfo (n = 1,321) databases. Of these studies, 3,841 duplicates were removed. Two reviewers (L.S.R.; F.B.) screened the remaining 7,182 titles and abstracts according to the inclusion and exclusion criteria. The intervention of a third independent reviewer was not required. A total of 6,678 references were excluded. Full-text screening of the 504 articles led to the exclusion of 383 articles after review by six reviewers (L.S.R., L.A.W., B.C., M.A., V.L., S.M.P.). The excluded articles were either not describing a model (120), duplicates (86), described a non-etiological model (56), were proceedings (38) or non-peer reviewed articles (27), were in another language than English or French (23), were not applicable to AD (14), were inaccessible (12), were only concerned with the familial form of AD or Down syndrome (3), were not relevant for clinical (i.e. in humans) applications (2), or retracted (1)(see Figure 2).

A final streamlining review of the 121 remaining articles was completed (S.D.) to remove papers from an author or group of authors that published the same hypothesis/theory more than once. We included only the earliest paper in our review, as it was felt to represent the original inception of the idea. It is acknowledged that the latest manuscript, on the other hand, might have proposed the most up to date version of the hypothesis/theory under consideration.

Following this streamlining yielded a final tally of 105 papers that were included in this review (Supplementary Material Table 2).

#### 2.4 Data extraction and classification

Characteristics of the included studies were extracted and are reported in Supplemental Material 2: lead author; country of lead author; whether there were other authors; title; year of publication; study design; and abstract.

Citations count for each paper as of 28 Feb 2023 were obtained via the Google Scholar search engine. While it is known that this count may include self-citations, it was the only count that could be reliably obtained for each paper across publishers and other citation engines.

Studies were then classified (S.D.) according to two epistemological dimensions. First was whether the hypothesis/theory being proposed was *unifactorial* (e.g., amyloid beta over-production initiates a cascade of downstream effects leading to neuronal death and dementia) or *multifactorial* (e.g., the co-existence and interactions between amyloid, tau, and inflammation lead to neuronal death and dementia). Secondly, studies were grouped according to the primary factor that was pushed forward in the article, according to the modified theoretical grouping of Ambrose 2015 (see Table 1).



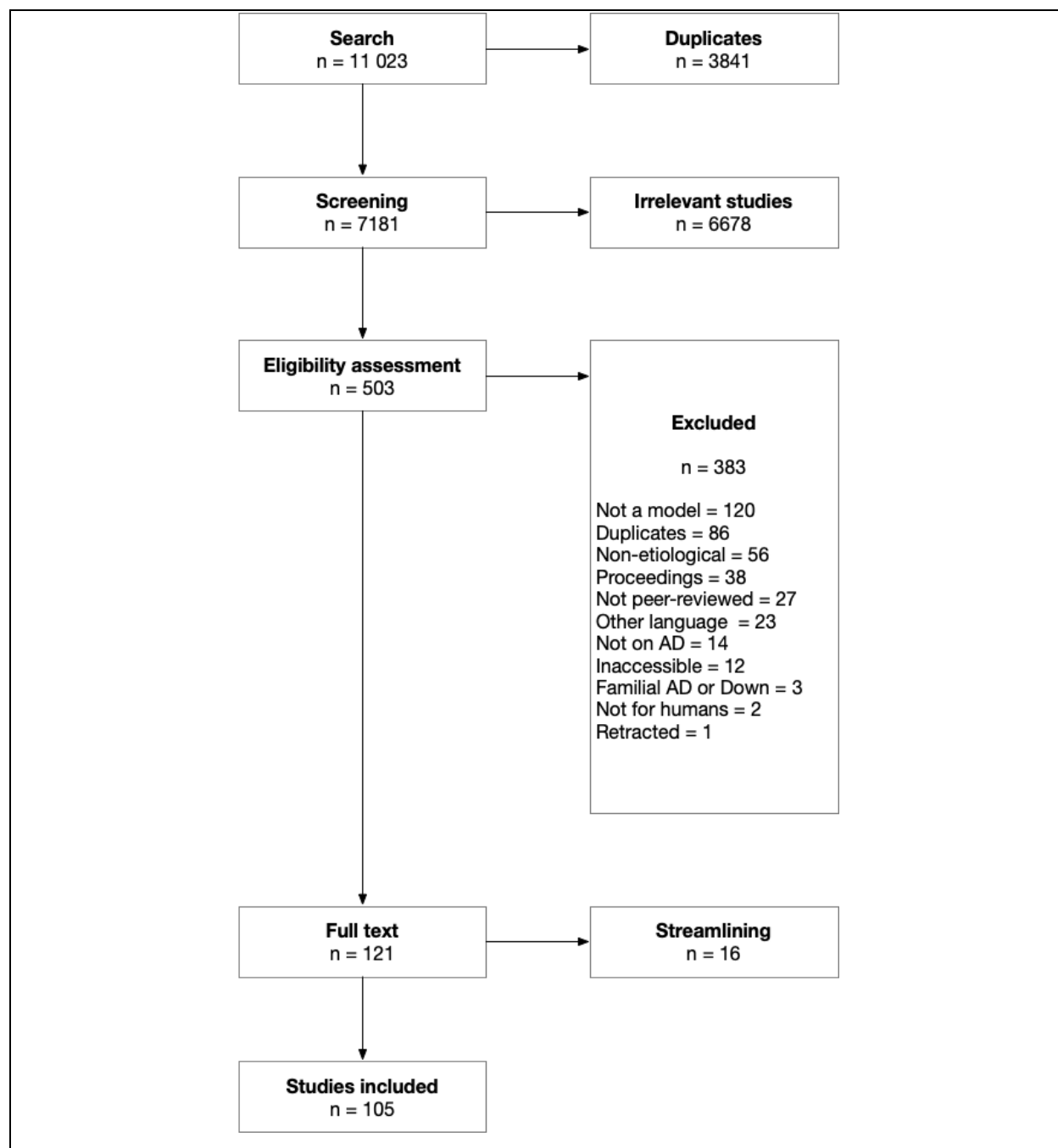


Figure 1 - PRISMA flowchart. Following the search strategy, 11,023 abstracts were extracted from the Embase, Web of Science, Medline, and Psycinfo databases. After removing duplicates and irrelevant studies, applying exclusion criteria and streamlining to keep only seminal and original articles, a total of 105 studies were included in this scoping review.

Table 1 - Theoretical groupings (Modified from Ambrose 2015)

<b>Grouping</b>	<b>Description</b>	<b>Studies</b>
Amyloid	Abnormal production, accumulation, or removal of amyloid-beta n-meric species and/or plaques	(12, 13, 14, 15, 16, 17, 18, 19, 20, 21, 22, 23, 24, 25)
Cerebrovascular	Vascular abnormalities affecting blood flow and perfusion, cerebrovascular lesions (infarcts, microbleeds, white matter hyperintensities)	(26, 27, 28, 29, 30, 31, 32, 33)
Genetics	Inherited genetic mutation(s), including APOE	(34, 35, 36)
Gut/brain axis	Dysbiosis in the gut microbiome	(37, 38, 39)
Infection	Protein misfolding in cells following infection by transmissible agents such as prion, subviral entities, HSV type 1	(40, 41, 42, 43, 44, 45)
Inflammation/Immunological response	Autoimmune response and inflammation	(46, 47, 48, 49)
Metabolism	Cortical glucose utilization and transport across the blood-brain barrier	(50, 51, 52, 53, 54, 55, 56, 57, 58)
Metals	Neurotoxicity (e.g., Al, Hg) or deficiency in trace elements (e.g., Fe, Cu, Se)	(59, 60, 61, 62, 63, 64, 65, 66)
Mitochondrial dysfunction	Dysfunction in brain mitochondria leading to energy deficits and oxidative stress	(67, 68, 69, 70, 71, 72, 73)
Neurotransmitter	Deficits in cholinergic, noradrenergic, and other neurotransmitters	(74, 75, 76, 77)
Oxidative stress	Accumulation of oxidative damage in the brain from free radicals	(78, 79, 80, 81, 82, 83)
Proteinopathy	Tau, TDP43, and/or other proteins dysregulation	(84, 85, 86, 87)
White matter disease	Degeneration and disruption of white matter connections	(88, 89)
Others	Calcium channel blockers; nerve growth factors; autophagy, neuronal cell cycle abnormalities	(90, 91, 92, 93, 94, 95, 96, 97, 98, 99, 100, 101, 102, 103, 104, 105, 106, 107, 108, 109, 110, 111, 112, 113, 114)

### 3 RESULTS

#### 3.1 Studies overview

Out of 105 papers, a slim majority (58/105) was written by multiple, as opposed to a single, authors. First authors were mainly from the United States (51/105), Canada (7/105), or Europe (35/105) (see Table 2).

*Table 2 - First author provenance*

Country	N papers
United States	51
Canada	8
France	7
UK	6
Italy	6
Australia	4
Germany	3
China	2
Poland	2
Spain	2
The Netherlands	2
Turkey	2
Brazil	1
Chile	1
Czech Republic	1
Hong-Kong	1
Iran	1
Israel	1
Portugal	1
Russia	1
Singapore	1
Switzerland	1
Total	105

#### 3.2 Study categories and impact

Three quarter of studies proposed a hypothesis characterized as being single-focus (77/105), with the most important theoretical grouping being, unsurprisingly, the Amyloid group (14/105), followed by Metabolism (9/105) (16/105 when joined to Mitochondrial dysfunction articles), and Cerebrovascular (8/105) (Table 3).

Impact, as measured by total citations count, followed a similar pattern. Out of a total of 18,054 citations for the 105 papers, the most cited single-focused grouping was Amyloid (53.3%), followed by Mitochondrial dysfunction (6.3%, reaching 10.0% when adding Metabolism articles), then Oxidative Stress (5.5%) and Cerebrovascular (5.0%).

*Table 3 - Theoretical groupings frequency*

<b>Grouping</b>	<b>N articles</b>	<b>N unifactorial</b>	<b>% unifactorial</b>	<b>Total citations</b>
Amyloid	14	10	71%	9631
Cerebrovascular	8	7	88%	904
Genetics	3	2	67%	147
Glia dysfunction	2	2	100%	441
Gut/brain axis	3	2	67%	466
Infection	7	7	100%	99
Inflammation	4	3	75%	84
Metabolism	9	7	78%	665
Metals	8	8	100%	658
Mitochondrial dysfunction	7	6	86%	1136
Neurotransmitters	4	3	75%	576
Oxidative stress	6	4	67%	985
Proteinopathy	4	4	100%	153
Other	26	12	46%	2109
<b>Total</b>	<b>105</b>	<b>77</b>	<b>73%</b>	<b>18,054</b>

### **3.3 Evolution**

The number of articles proposing, repositioning, or actualizing individual hypotheses and theories across time is shown in Figure 3, from the very first (King et al.,’s aluminum toxicity hypothesis in 1981)(65) to the latest entries in 2020. Likewise, a similar timeline but this time showing the impact (i.e., citation count) for each one of these articles is shown in Figure 4.

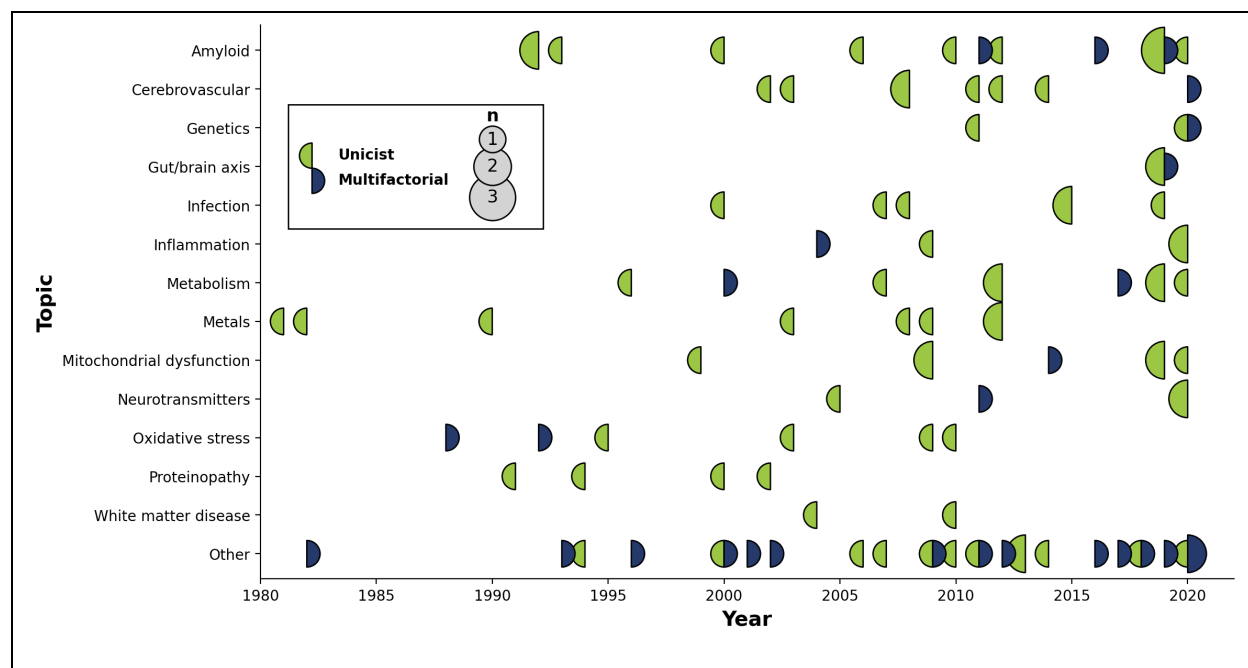


Figure 2 - Display of articles by topic through time. Circles are sized according to the number of publications that year, with a color code indicating whether the published articles were unifactorial (left circle hemisphere) or multifactorial (right circle hemisphere)

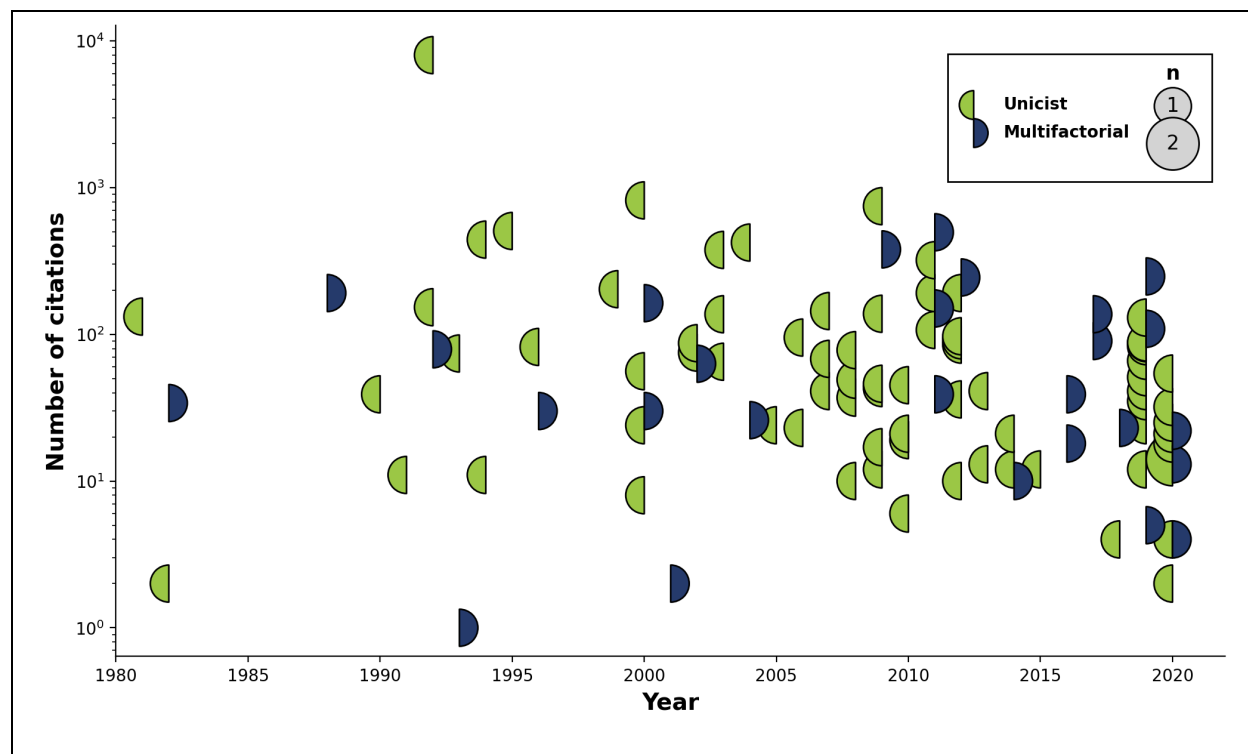


Figure 3 - Display of articles' citation count by topic through time. Circles are sized according to the number of citations that the articles achieved that year, with a color code indicating whether the published articles were unifactorial (left circle hemisphere) or multifactorial (right circle hemisphere)

## 4 DISCUSSION

### 4.1 Summary of findings

We have conducted a scoping review of AD-related hypothesis or theories in the literature dating from the early 1980s to the current era. We selected 105 papers for review, written mostly by authors based in North America and Europe, and spanning a wide range of conceptual groupings.

#### 4.1.1 *Uni- or multi-factorial?*

The idea that failure of a single pathway is responsible for the ensuing cascade of anatomical and physiological aberrations has been espoused not only for those hypothesizing about the role of A $\beta$ , but all others as well, be they molecular, proteinic, cellular, or tissular entities, with roughly three quarters of all theories being unifactorial (*cf.* Table 3). Given the massive increase in neuroscientific knowledge of the last few decades, clearly adding to previous knowledge on the intricate complexity of the brain, and the lack of any clinically meaningful results in therapeutic pursuits when targeting individual pathways (*cf.* section 4.2), it remains puzzling why there remains such an emphasis on unifactorial hypotheses. This includes the Amyloid hypothesis subgroup, the most studied of them all, for which unifactoriality was *de rigeur* until 2011; since then, *more* unifactorial point of view articles have been published than those espousing a multifactorial framework in which A $\beta$  is a strong contributor. In essence, the field seems to have doubled down on the amyloid cascade hypothesis, albeit modified, regardless of disproving evidence as to its centrality.

#### 4.1.2 *Novelty and endurance of hypotheses*

Three stages can be discerned in terms of hypotheses generation. The first phase (~1980-1995) included the establishment of the main thrusts that have endured to this day. First was the Amyloid hypothesis, with the field-defining work of Hardy et al. (cited 7,991 times)(19), before the

separation into clear autosomal dominant and pseudo-sporadic cases (often confounded with Early and Late Onset AD designations). In the same period were also introduced seminal reports for the Glial (16), Infection (44), Inflammation (81), Metabolism (55), Oxidative stress (81), and Proteinopathies (84) hypotheses; the concept of interdependence across all scales, central to multifactoriality (104); as well as the by now marginal notion of neurotoxicity of trace elements (65). In the second phase (1995-2005), the importance of the Cerebrovasculature (33), Mitochondrial dysfunction (70), and Neurotransmitters (76) were recognized. Lately (2005-2020), evidence towards Genetics (outside of the autosomal dominant form)(36), and especially Gut/Brain interactions (37) came to the fore. The latter category has seen a rapid increase in impact when compared to others, with a rate of 62.0 citations/year since publication (second only to the seminal Hardy et al. paper, with 257.8 citations/year since publication).

#### *4.1.3 Biases*

There are obvious biases in the impact statistics that must temper any interpretation. First, citation counts from Google Scholar often include self-citations; real numbers will therefore be smaller than recorded. Secondly, articles may be cited for positive (e.g., new evidence corroborating the hypothesis), negative (e.g., new evidence against the hypothesis), or even neutral (e.g., overview of the field) reasons, including positioning of one's hypothesis against the leading one (which, in the case of AD, would favor the citation rates attached to the Amyloid group). Raw citation count therefore may not reflect actual acceptance of any idea. Finally, the field is heavily biased towards ground-breaking, first-in-field articles; while seminal, they may not represent the best or most up to date version of a particular hypothesis. In particular, the article of Hardy et al. (19) which we mentioned established the amyloid cascade hypothesis and was cited 7,991 times, represents 44.2% of *all* citations from the 105 papers in this scoping review. The power law of distributions

is evidently quite at work here as elsewhere; the 10-most cited papers (Amyloid: 2; Cerebrovascular: 2; general theories around aging: 2; and Mitochondrial dysfunction, Oxidative stress, Neurotransmitters, and Glial disease: 1 each) are responsible for 69.2% of all citations.

## **4.2 Future considerations**

### *4.2.1 Which hypotheses or theory have notable evidence?*

We posit that to answer this question successfully a theory would need to fulfill three criteria: 1) unequivocal clinical benefit from a therapeutic intervention, with 2) unambiguous disease-modifying results confirming a 3) global theoretical framework of the etiology.

As of now, only three classes of interventions have achieved results. First are anti-cholinesterase inhibitors, approved in the late 1990s (115) following clinical trials that demonstrated a statistically significant yet weak improvement in cognition for a limited time period. Acting on the principle that they enhance the availability of important neurotransmitters, they appear to provide but a temporary respite to clinical disease progression, while not influencing biomarkers of neurodegeneration. They remain seen as symptoms-, rather than disease-, modifiers (116). Hence, while our first criteria seem met, the latter two are not.

A second class of intervention has gained traction in the past few years. Three A $\beta$  antibodies have been approved by the Food and Drugs Agency in the United States following successful clinical trials, for which the primary outcome was biomarker defined, rather than clinical (117). While the aptitude of both compounds at A $\beta$  plaque removal is not in question (criteria 2), they had no effect on anatomy or physiology (e.g. neurodegeneration, neuroinflammation, neurometabolism) as well as limited clinically-observable effects (criteria 1), the latter remaining in doubt (9, 118), especially in the face of severe side-effects that point to an incomplete understanding of the role of A $\beta$  (119).



Such antibodies are not the only compounds that have attempted to reduce production, block aggregation, or remove A $\beta$  plaques; as a general rule, these few successes are not strong indicators of the centrality of the amyloid hypothesis in any general theory of AD (criteria 3).

Finally, non-pharmaceutical combinatory approaches targeting lifestyle interventions, nutrition, physical exercise, and aggressive management of co-morbidities (e.g. hypertension, diabetes) have had also significant successes, with effect sizes that are actually equal to pharmacological approaches such as A $\beta$  antibodies (120)(criteria 1). The difficulty here is to understand which one, or many, etiological pathways are affected and with which efficiency (criteria 2). It does however provide strong evidence that *multi-scale targeting* stands a better chance than other, single-pathway focused interventions (criteria 3).

#### *4.2.2 Theory vs. practice: pharmaceutical trials*

Hypothesis-driven research, relatively free from the pressure of providing immediate returns to its largely state funders in terms of success or failure, has therefore kept on exploring avenues, new and old, with what can be seen at times steadfastness. Witness to this effect the 33% *increase* in A $\beta$ -centric theoretical works that have been proposed in the 2010-2020 interval.

On the contrary, the field of pharmaceutical trials seems to have already integrated the notion of multi-factoriality, exploring a host of different avenues, often in combination. This can be seen for example in the 54% *decrease* (41 vs. 19) in the number of A $\beta$ -centric clinical trials between 2010 and 2022 (121) (122).

#### *4.2.3 Single vs. multiple factors*

On the face of the evidence presented it is therefore hard to refute completely any one of the hypotheses that have been proposed. While many concepts can be proven as extremely unlikely and rejected on this basis, most articles present compelling evidence to this or that effect that is

either borne out in a clinical population or animal model. Viewed differently, they reinforce the notion in fact that AD affects multiple sub-cellular, cellular, anatomical, and physiological systems at the same time but at varying degree between individuals. The biggest hurdle to overcome seems rather to provide a comprehensive view of all these systems at the same time, and their interactions. The emphasis on unifactorial viewpoints is possibly an artefact of research, including the well-known bias towards positive research reporting (123). The necessity to provide results that have reached statistical significance will naturally be easier to achieve in limited experimental settings, given statistical power considerations, and thus favour the study of individual effects over the logistically much more difficult task of deciphering interactions in a system; complexity increasing factorially with each new factor and parameter being considered.

#### **4 CONCLUSION**

Hence, while new frontiers keep being opened, it could be argued that most of the anatomical and physiological systems that impact or are impacted by AD, at various time and spatial scales, have already been well surveyed. A corollary of this observation is endurance. Indeed, some hypotheses have been proposed and therefore tested for over 30 years. The fact that we are still discussing whether AD is primarily an amyloidopathy, what is the importance of metabolism, or what role plays the cerebrovasculature, attests to both the complexity of the matter and the need for a holistic framework that could reframe the debate in simpler lines. Geometry provides an analogy: problems that are arduous in cartesian space become simpler when expressed in polar coordinates. Such a transformation might be necessary for the field to reach clarity.

#### **5 ACKNOWLEDGMENTS AND SOURCES OF FUNDING**

S.D. would like to acknowledge funding by the Canadian Institute for Health Research (Operating grant #PJT-159778). L.S.R. would like to acknowledge funding from the Fonds de recherche du Québec – Santé (scholarship #271206).

## 6 DISCLOSURES

The authors have no conflict to disclose.

## 7 AUTHOR CONTRIBUTIONS

- Guarantors of integrity of entire study: all authors;
- Study concepts and design: S.D.; L.S.R.; C.H.;
- Literature research: L.S.R.
- Data acquisition and processing: L.S.R.; F.B.; L.A.W.; B.C.; M.A.; V.L.; S.M.P.; S.D.
- Methods, analysis and interpretation: L.S.R.; S.D.
- Manuscript preparation: S.D.; O.P.; C.H.
- Revision/review, all authors; and
- Manuscript definition of intellectual content, editing, and final version approval: all authors.

## 8 REFERENCES

1. Livingston G, Huntley J, Sommerlad A, Ames D, Ballard C, Banerjee S, et al. Dementia prevention, intervention, and care: 2020 report of the Lancet Commission. *Lancet*. 2020;396(10248):413-46.
2. Braak H, Thal DR, Ghebremedhin E, Del Tredici K. Stages of the pathologic process in Alzheimer disease: age categories from 1 to 100 years. *J Neuropathol Exp Neurol*. 2011;70(11):960-9.

3. Boyle PA, Yu L, Wilson RS, Schneider JA, Bennett DA. Relation of neuropathology with cognitive decline among older persons without dementia. *Front Aging Neurosci.* 2013;5:50.
4. Alzheimer A. Über eine eigenartige Erkrankung der Hirnrinde. *Allg Zeitschr Psychiatr.* 1907;64:146-8.
5. Hardy JA, Higgins GA. Alzheimer's disease: the amyloid cascade hypothesis. *Science.* 1992;256(5054):184-5.
6. Jansen WJ, Ossenkuppele R, Knol DL, Tijms BM, Scheltens P, Verhey FR, et al. Prevalence of cerebral amyloid pathology in persons without dementia: a meta-analysis. *JAMA.* 2015;313(19):1924-38.
7. Parent C, Rousseau LS, Predovan D, Duchesne S, Hudon C. Longitudinal association between ss-amyloid accumulation and cognitive decline in cognitively healthy older adults: A systematic review. *Aging Brain.* 2023;3:100074.
8. Boyle PA, Yu L, Wilson RS, Leurgans SE, Schneider JA, Bennett DA. Person-specific contribution of neuropathologies to cognitive loss in old age. *Ann Neurol.* 2017.
9. Knopman DS, Jones DT, Greicius MD. Failure to demonstrate efficacy of aducanumab: An analysis of the EMERGE and ENGAGE trials as reported by Biogen, December 2019. *Alzheimers Dement.* 2021;17(4):696-701.
10. van Dyck CH, Swanson CJ, Aisen P, Bateman RJ, Chen C, Gee M, et al. Lecanemab in Early Alzheimer's Disease. *N Engl J Med.* 2023;388(1):9-21.
11. Page MJ, McKenzie JE, Bossuyt PM, Boutron I, Hoffmann TC, Mulrow CD, et al. The PRISMA 2020 statement: an updated guideline for reporting systematic reviews. *Rev Esp Cardiol (Engl Ed).* 2021;74(9):790-9.
12. Anastasio TJ. Data-driven modeling of Alzheimer Disease pathogenesis. *Journal of Theoretical Biology.* 2011;290(1):60-72.
13. Caselli RJ, Knopman DS, Bu G. An agnostic reevaluation of the amyloid cascade hypothesis of Alzheimer's disease pathogenesis: The role of APP homeostasis. *Alzheimer's and Dementia.* 2020.
14. Castellani RJ, Plascencia-Villa G, Perry G. The amyloid cascade and Alzheimer's disease therapeutics: theory versus observation. *Laboratory Investigation.* 2019;99(7):958-70.
15. Ethell DW, et al. An amyloid-notch hypothesis for Alzheimer's disease. *The Neuroscientist.* 2010;16(6):614-7.
16. Frederickson RC. Astroglia in Alzheimer's disease. *Neurobiology of Aging.* 1992;13(2):239-53.
17. Gallardo G, Holtzman DM. Amyloid-beta and Tau at the Crossroads of Alzheimer's Disease. *Advances in Experimental Medicine and Biology.* 2019;1184:187-203.
18. Han PC, Shi J. A Theoretical Analysis of the Synergy of Amyloid and Tau in Alzheimer's Disease. *Journal of Alzheimers Disease.* 2016;52(4):1461-70.
19. Hardy JA, Higgins GA. Alzheimer's disease: The amyloid cascade hypothesis. *Science.* 1992;256(5054):184-5.
20. Paroni G, Bisceglia P, Seripa D. Understanding the Amyloid Hypothesis in Alzheimer's Disease. *Journal of Alzheimer's Disease.* 2019;68(2):493-510.
21. Petrella JR, Hao W, Rao A, Doraiswamy PM. Computational Causal Modeling of the Dynamic Biomarker Cascade in Alzheimer's Disease. *Computational and Mathematical Methods in Medicine.* 2019;2019:6216530.

22. Roberts GW, Nash M, Ince PG, Royston MC, Gentleman SM. On the origin of Alzheimer's disease: A hypothesis. *Neuroreport: An International Journal for the Rapid Communication of Research in Neuroscience*. 1993;4(1):7-9.
23. Sambamurti K, Suram A, Venugopal C, Prakasam A, Zhou Y, Lahiri DK, et al. A partial failure of membrane protein turnover may cause Alzheimer's disease: A new hypothesis. *Current Alzheimer Research*. 2006;3(1):81-90.
24. Selkoe DJ. Toward a comprehensive theory for Alzheimer's disease. Hypothesis: Alzheimer's disease is caused by the cerebral accumulation and cytotoxicity of amyloid  $\beta$ -protein. 2000. p. 17-25.
25. Tam JHK, Pasternak SH. Amyloid and alzheimer's disease: Inside and out. *Canadian Journal of Neurological Sciences*. 2012;39(3):286-98.
26. Ambrose CT. A therapeutic approach for senile dementias: Neuroangiogenesis. *Journal of Alzheimer's Disease*. 2014;43(1):1-17.
27. Cordonnier C, Van Der Flier WM. Brain microbleeds and Alzheimer's disease: Innocent observation or key player? *Brain*. 2011;134(2):335-44.
28. Henry-Feugeas MC. Alzheimer's disease in late-life dementia: a minor toxic consequence of devastating cerebrovascular dysfunction. *Med Hypotheses*. 2008;70(4):866-75.
29. Kapadia A, Mirrahimi A, Dmytriw AA. Intersection between sleep and neurovascular coupling as the driving pathophysiology of Alzheimer's disease. *Med Hypotheses*. 2020;144.
30. Orehek AJ. The Micron Stroke Hypothesis of Alzheimer's Disease and Dementia. *Med Hypotheses*. 2012;78(5):562-70.
31. Pluta R, Ułamek M. Brain ischemia and ischemic blood-brain barrier as etiological factors in sporadic Alzheimer's disease. *Neuropsychiatric Disease and Treatment*. 2008;4(5):855-64.
32. Vagnucci AH, Jr., Li WW. Alzheimer's disease and angiogenesis. *Lancet*. 2003;361(9357):605-8.
33. Zlokovic BV. Vascular disorder in Alzheimer's disease: Role in pathogenesis of dementia and therapeutic targets. *Advanced Drug Delivery Reviews*. 2002;54(12):1553-9.
34. Bruni AC, Bernardi L, Gabelli C. From beta amyloid to altered proteostasis in Alzheimer's disease. *Ageing Research Reviews*. 2020.
35. Kaeser GE, Chun J. Mosaic Somatic Gene Recombination as a Potentially Unifying Hypothesis for Alzheimer's Disease. *Frontiers in Genetics*. 2020;11.
36. Yurov YB, Vorsanova SG, Iourov IY. The DNA replication stress hypothesis of Alzheimer's disease. *TheScientificWorldJournal*. 2011;11:2602-12.
37. Angelucci F, Cechova K, Amlerova J, Hort J. Antibiotics, gut microbiota, and Alzheimer's disease. *Journal of Neuroinflammation*. 2019;16(1).
38. Bostanciklioglu M. The role of gut microbiota in pathogenesis of Alzheimer's disease. *Journal of Applied Microbiology*. 2019;127(4):954-67.
39. Cerovic M, Forloni G, Balducci C. Neuroinflammation and the Gut Microbiota: Possible Alternative Therapeutic Targets to Counteract Alzheimer's Disease? *Front Aging Neurosci*. 2019;11.
40. Bastian FO. Is Alzheimer's Disease Infectious? Relative to the CJD Bacterial Infection Model of Neurodegeneration. *Aims Neuroscience*. 2015;2(4):240-58.
41. Baudron CR, Varon C, Megraud F, Salle S N. Alzheimer's disease: the infectious hypothesis. *Geriatric Et Psychologie Neuropsychiatrie De Vieillesse*. 2015;13(4):418-24.
42. Block J. Alzheimer's disease might depend on enabling pathogens which do not necessarily cross the blood-brain barrier. *Med Hypotheses*. 2019;125:129-36.

43. Dezfulian M, Shokrgozar MA, Sardari S, Parivar K, Javadi G. Can phages cause Alzheimer's disease? *Med Hypotheses*. 2008;71(5):651-6.
44. Fulop T, Munawara U, Larbi A, Desroches M, Rodrigues S, Catanzaro M, et al. Targeting Infectious Agents as a Therapeutic Strategy in Alzheimer's Disease. *CNS Drugs*. 2020;34(7):673-95.
45. McDonald RJ. Multiple combinations of co-factors produce variants of age-related cognitive decline: a theory. *Canadian journal of experimental psychology = Revue canadienne de psychologie expérimentale*. 2002;56(3):221-39.
46. Barger SW. An unconventional hypothesis of oxidation in Alzheimer's disease: intersections with excitotoxicity. *Frontiers in bioscience : a journal and virtual library*. 2004;9:3286-95.
47. Bermejo-Pareja F, Del Ser T, Valenti M, de la Fuente M, Bartolome F, Carro E. Salivary lactoferrin as biomarker for Alzheimer's disease: Brain-immunity interactions. *Alzheimer's & dementia : the journal of the Alzheimer's Association*. 2020;16(8):1196-204.
48. Maccioni RB, Farias GA, Rojo LE, Sekler MA, Kujis RO, Maccioni RB, et al. *What Have We Learned from the Tau Hypothesis?* New York: Springer; 2009. 49-+ p.
49. Seaton A, Tran L, Chen R, Maynard RL, Whalley LJ. Pollution, Particles, and Dementia: A Hypothetical Causative Pathway. *International journal of environmental research and public health*. 2020;17(3).
50. Accardi G, Caruso C, Colonna-Romano G, Camarda C, Monastero R, Candore G. Can Alzheimer disease be a form of type 3 diabetes? *Rejuvenation Res*. 2012;15(2):217-21.
51. Demetrius LA, Simon DK. An inverse-Warburg effect and the origin of Alzheimer's disease. *Biogerontology*. 2012;13(6):583-94.
52. Folch J, Olloquequi J, Ettcheto M, Busquets O, Sanchez-Lopez E, Cano A, et al. The Involvement of Peripheral and Brain Insulin Resistance in Late Onset Alzheimer's Dementia. *Front Aging Neurosci*. 2019;11:236.
53. Lahiri DK, Maloney B, Basha MR, Ge YW, Zawia NH. How and when environmental agents and dietary factors affect the course of Alzheimer's disease: the "LEARn" model (latent early-life associated regulation) may explain the triggering of AD. *Current Alzheimer Research*. 2007;4(2):219-28.
54. Lynch C, Mobley W. Comprehensive theory of Alzheimer's disease. The effects of cholesterol on membrane receptor trafficking. 2000. p. 104-11.
55. MeierRuge W, BertoniFreddari C. The significance of glucose turnover in the brain in the pathogenetic mechanisms of Alzheimer's disease. *Reviews in the Neurosciences*. 1996;7(1):1-19.
56. Mullins RJ, Diehl TC, Chia CW, Kapogiannis D. Insulin resistance as a link between amyloid-beta and tau pathologies in Alzheimer's disease. *Front Aging Neurosci*. 2017;9(MAY).
57. Rorbach-Dolata A, Piwowar A. Neurometabolic Evidence Supporting the Hypothesis of Increased Incidence of Type 3 Diabetes Mellitus in the 21st Century. *BioMed Research International*. 2019;2019.
58. Suresh J, Khor IW, Kaur P, Heng HL, Torta F, Dawe GS, et al. Shared signaling pathways in Alzheimer's and metabolic disease may point to new treatment approaches. *FEBS Journal*. 2020:19.
59. Bjorksten JA. Aluminium as a cause of senile dementia. *Comprehensive Therapy*. 1982;8(5):73-6.
60. Brewer GJ. Metals in the causation and treatment of Wilson's disease and Alzheimer's disease, and copper lowering therapy in medicine. *Inorganica Chimica Acta*. 2012;393:135-41.

61. Bush AI, et al. Copper, zinc, and the metallobiology of Alzheimer disease. *Alzheimer Disease and Associated Disorders*. 2003;17(3):147-50.
62. Constantinidis J. Alzheimer's disease: The zinc theory. *Encephale*. 1990;16(4):231-9.
63. Craddock TJA, Tuszynski JA, Chopra D, Casey N, Goldstein LE, Hameroff SR, et al. The zinc dyshomeostasis hypothesis of Alzheimer's disease. *PLoS ONE*. 2012;7(3).
64. Dwyer BE, Zacharski LR, Balestra DJ, Lerner AJ, Perry G, Zhu X, et al. Getting the iron out: phlebotomy for Alzheimer's disease? *Med Hypotheses*. 2009;72(5):504-9.
65. King SW, Savory J, Wills MR. The clinical biochemistry of aluminum. *Crit Rev Clin Lab Sci*. 1981;14(1):1-20.
66. Klevay LM. Alzheimer's disease as copper deficiency. *Med Hypotheses*. 2008;70(4):802-7.
67. Albeni BC. Dysfunction of mitochondria: Implications for Alzheimer's disease. 2019. p. 13-27.
68. Area-Gomez E, Guardia-Laguarta C, Schon EA, Przedborski S. Mitochondria, OxPhos, and neurodegeneration: Cells are not just running out of gas. *Journal of Clinical Investigation*. 2019;129(1).
69. Bonda DJ, Wang X, Gustaw-Rothenberg KA, Perry G, Smith MA, Zhu X. Mitochondrial Drugs for Alzheimer Disease. *Pharmaceuticals (Basel, Switzerland)*. 2009;2(3):287-98.
70. Bonilla E, Tanji K, Hirano M, Vu TH, DiMauro S, Schon EA. Mitochondrial involvement in Alzheimer's disease. *Biochimica Et Biophysica Acta-Bioenergetics*. 1999;1410(2):171-82.
71. Chen M, Nguyen HT. Our "energy-Ca<sup>2+</sup> signaling deficits" hypothesis and its explanatory potential for key features of Alzheimer's disease. *Front Aging Neurosci*. 2014;6(DEC).
72. Ebanks B, Ingram TL, Chakrabarti L. ATP synthase and Alzheimer's disease: putting a spin on the mitochondrial hypothesis. *Aging*. 2020;12(16):16647-62.
73. Swerdlow RH, Khan SM. The Alzheimer's disease mitochondrial cascade hypothesis: An update. *Experimental Neurology*. 2009;218(2):308-15.
74. Bi D, Wen L, Wu Z, Shen Y. GABAergic dysfunction in excitatory and inhibitory (E/I) imbalance drives the pathogenesis of Alzheimer's disease. *Alzheimer's and Dementia*. 2020;16(9):1312-29.
75. Craig LA, Hong NS, McDonald RJ. Revisiting the cholinergic in the development of Alzheimer's disease. *Neuroscience and Biobehavioral Reviews*. 2011;35(6):1397-409.
76. Schmitt HP. Neuro-modulation, aminergic neuro-disinhibition and neuro-degeneration. Draft of a comprehensive theory for Alzheimer disease. *Med Hypotheses*. 2005;65(6):1106-19.
77. Sordillo LA, Sordillo PP, Alfano RR, Alfano RR, Demos SG, Seddon AB. Abnormal Tryptophan Metabolism in Alzheimer's Disease (ALZ): Label-free spectroscopy suggests an alternative theory of ALZ causation. *Optical Biopsy XVIII: Toward Real-Time Spectroscopic Imaging and Diagnosis*. 2020;11234.
78. Aliev G, Palacios HH, Lipsitt AE, Fischbach K, Lamb BT, Obrenovich ME, et al. Nitric oxide as an initiator of brain lesions during the development of Alzheimer disease. *Neurotoxicity Research*. 2009;16(3):293-305.
79. Benzi G, Moretti A. Are reactive oxygen species involved in Alzheimer's disease? *Neurobiology of Aging*. 1995;16(4):661-74.
80. Harman D. Free radical theory of aging: A hypothesis on pathogenesis of senile dementia of the Alzheimer's type. *Age (Dordr)*. 1992;16(1):23-30.

81. Henderson AS. The risk factors for Alzheimer's disease: A review and a hypothesis. *Acta Psychiatrica Scandinavica*. 1988;78(3):257-75.
82. Rodrigues R, Bonda DJ, Perry G, Castellani RJ, Casadesus G, Lee H-g, et al. Oxidative stress and neurodegeneration: An inevitable consequence of aging? Implications for therapy. *Brain protection in schizophrenia, mood and cognitive disorders*. 2010:305-23.
83. Veurink G, Fuller SJ, Atwood CS, Martins RN. Genetics, lifestyle and the roles of amyloid  $\beta$  and oxidative stress in Alzheimer's disease. *Annals of Human Biology*. 2003;30(6):639-67.
84. Di Patre PL. Cytoskeletal alterations might account for the phylogenetic vulnerability of the human brain to Alzheimer's disease. *Med Hypotheses*. 1991;34(2):165-70.
85. Liautard JP. A hypothesis on the etiology of Alzheimer's disease - Description of a model involving a misfolded chaperone. *Med Hypotheses*. 1994;43(6):372-80.
86. Masliah E. The role of synaptic proteins in Alzheimer's disease. 2000. p. 68-75.
87. Torreilles F, Touchon J. Pathogenic theories and intrathecal analysis of the sporadic form of Alzheimer's disease. *Prog Neurobiol*. 2002;66(3):191-203.
88. Erol A, et al. Are paradoxical cell cycle activities in neurons and glia related to the metabolic theory of Alzheimer's disease? *Journal of Alzheimer's Disease*. 2010;19(1):129-35.
89. Streit WJ. Microglia and Alzheimer's disease pathogenesis. *Journal of Neuroscience Research*. 2004;77(1):1-8.
90. Arendt T, Bruckner MK. Linking cell-cycle dysfunction in Alzheimer's disease to a failure of synaptic plasticity. *Biochimica et biophysica acta*. 2007;1772(4):413-21.
91. Armstrong RA. The pathogenesis of Alzheimer's disease: A reevaluation of the "amyloid cascade hypothesis". *Int J Alzheimers Dis*. 2011.
92. Axelsen PH, Komatsu H, Murray IVJ. Oxidative stress and cell membranes in the pathogenesis of Alzheimer's disease. *Physiology*. 2011;26(1):54-69.
93. Ball MJ. Alzheimer's disease. A challenging enigma. *Archives of Pathology and Laboratory Medicine*. 1982;106(4):157-62.
94. Bugiani O. The puzzle of preserved cognition in the oldest old. *Neurological Sciences*. 2020;41(2):441-7.
95. Castello MA, Soriano S. Rational heterodoxy: Cholesterol reformation of the amyloid doctrine. *Ageing Research Reviews*. 2013;12(1):282-8.
96. Clarke RP. Does longer-term memory storage never become overloaded, and would such overload cause Alzheimer's disease and other dementia? *Med Hypotheses*. 2000;55(5):419-28.
97. Denis PA. Alzheimer's disease: A gas model. The NADPH oxidase-Nitric Oxide system as an antibubble biomachinery. *Med Hypotheses*. 2013;81(6):976-87.
98. Fotuhi M, Hachinski V, Whitehouse PJ. Changing perspectives regarding late-life dementia. *Nature Reviews Neurology*. 2009;5(12):649-58.
99. Fox M. 'Evolutionary medicine' perspectives on Alzheimer's Disease: Review and new directions. *Ageing Research Reviews*. 2018;47:140-8.
100. Khachaturian ZS, Disterhoft JF, Gispen Willem H., Traber Jorg, S. KZ. Calcium hypothesis of Alzheimer's disease and brain aging. *Calcium hypothesis of aging and dementia*. 1994:1-11.
101. Lopes JP, Oliveira CR, Agostinho P. Cell cycle re-entry in Alzheimer's disease: A major neuropathological characteristic? *Current Alzheimer Research*. 2009;6(3):205-12.
102. Maurizi CP. Choroid plexus portals and a deficiency of melatonin can explain the neuropathology of Alzheimer's disease. *Med Hypotheses*. 2010;74(6):1059-66.



103. Mesulam MM. A plasticity-based theory of the pathogenesis of Alzheimer's disease. 2000. p. 42-52.
104. Miller DW. Reflections on the psychobiological nature of reality, with a theory about Alzheimer's disease. *Advances*. 1993;9(1):69-76.
105. Moulton PV, Yang W. Air Pollution, Oxidative Stress, and Alzheimer's Disease. *Journal of Environmental and Public Health*. 2012;2012:9.
106. Nehls M. Unified theory of Alzheimer's disease (UTAD): Implications for prevention and curative therapy. *Journal of Molecular Psychiatry*. 2016;4(1).
107. Offringa-Hup A. Alzheimer's disease: The derailed repair hypothesis. *Med Hypotheses*. 2020;136.
108. Roccisano D, Henneberg M, Saniotis A. A possible cause of Alzheimer's dementia - Industrial soy foods. *Med Hypotheses*. 2014;82(3):250-4.
109. Schiel KA. A new etiologic model for Alzheimers Disease. *Med Hypotheses*. 2018;111:27-35.
110. Tse KH, Herrup K. Re-imagining Alzheimer's disease – the diminishing importance of amyloid and a glimpse of what lies ahead. *Journal of Neurochemistry*. 2017;143(4):432-44.
111. Uleman JF, Melis RJF, Quax R, van der Zee EA, Thijssen D, Dresler M, et al. Mapping the multicausality of Alzheimer's disease through group model building. *GeroScience*. 2020:15.
112. Webber KM, Casadesus G, Zhu X, Obrenovich ME, Atwood CS, Perry G, et al. The cell cycle and hormonal fluxes in Alzheimer disease: A novel therapeutic target. *Current Pharmaceutical Design*. 2006;12(6):691-7.
113. Ying W. Deleterious network hypothesis of Alzheimer's disease. *Med Hypotheses*. 1996;46(5):421-8.
114. Zuodong S. The theory of dove-like particles. *IBRO Reports*. 2019;6:S363.
115. McGleenon BM, Dynan KB, Passmore AP. Acetylcholinesterase inhibitors in Alzheimer's disease. *British journal of clinical pharmacology*. 1999;48(4):471-80.
116. Marucci G, Buccioni M, Ben DD, Lambertucci C, Volpini R, Amenta F. Efficacy of acetylcholinesterase inhibitors in Alzheimer's disease. *Neuropharmacology*. 2021;190:108352.
117. Sevigny J, Chiao P, Bussiere T, Weinreb PH, Williams L, Maier M, et al. The antibody aducanumab reduces Abeta plaques in Alzheimer's disease. *Nature*. 2016;537(7618):50-6.
118. Sabbagh MN, Cummings J. Open Peer Commentary to "Failure to demonstrate efficacy of aducanumab: An analysis of the EMERGE and ENGAGE Trials as reported by Biogen December 2019". *Alzheimers Dement*. 2021;17(4):702-3.
119. Atwood CS, Perry G. Russian Roulette with Alzheimer's Disease Patients: Do the Cognitive Benefits of Lecanemab Outweigh the Risk of Edema and Stroke? *J Alzheimers Dis*. 2023.
120. Ngandu T, Lehtisalo J, Solomon A, Levalahti E, Ahtiluoto S, Antikainen R, et al. A 2 year multidomain intervention of diet, exercise, cognitive training, and vascular risk monitoring versus control to prevent cognitive decline in at-risk elderly people (FINGER): a randomised controlled trial. *Lancet*. 2015;385(9984):2255-63.
121. Mangialasche F, Solomon A, Winblad B, Mecocci P, Kivipelto M. Alzheimer's disease: clinical trials and drug development. *Lancet Neurol*. 2010;9(7):702-16.
122. Cummings J, Lee G, Nahed P, Kamar M, Zhong K, Fonseca J, et al. Alzheimer's disease drug development pipeline: 2022. *Alzheimers Dement (N Y)*. 2022;8(1):e12295.
123. Dalton JE, Bolen SD, Mascha EJ. Publication Bias: The Elephant in the Review. *Anesth Analg*. 2016;123(4):812-3.



