

# 1 Reversion of the inflammatory markers in patients with chronic limb 2 threatening ischaemia

## 3 Reversion of inflammation in CLTI

4 Joana Ferreira,<sup>1,2,3,4,5,\*</sup> Susana Roque,<sup>2,3</sup> Alexandre Lima Carneiro,<sup>6</sup> Adhemar Longatto-  
5 Filho<sup>2,3,7,8</sup> Isabel Vila,<sup>4,9,10</sup> Cristina Cunha,<sup>4,9,10</sup> Cristina Silva,<sup>4,9,10</sup> Amílcar Mesquita,<sup>11</sup> Jorge  
6 Cotter,<sup>2,3,4,9,10</sup> Margarida Correia-Neves,<sup>2,3</sup> Armando Mansilha,<sup>1,12,13</sup> Pedro Cunha,<sup>2,3,4,9,10</sup>

7 <sup>1</sup> Vascular Surgery Department – Physiology and Surgery, Centro Hospitalar Universitário de São João, Porto,  
8 Portugal

9 <sup>2</sup> Life and Health Science Research Institute (ICVS), School of Medicine, University of Minho, Braga, Portugal

10 <sup>3</sup> ICVS/3B's—PT Government Associated Laboratory, 4710-057 Braga, Portugal

11 <sup>4</sup> Academic Center Hospital da Senhora da Oliveira, Guimarães, Portugal

12 <sup>5</sup> Clinical Academic Center Hospital de Trás-os-Montes e Alto Douro—Professor Doutor Nuno Grande—  
13 CACTMAD, Vila Real, Portugal

14 <sup>6</sup> Radiology Department - ULSAM, Viana do Castelo, Portugal

15 <sup>7</sup> Department of Pathology (LIM-14), University of São Paulo School of Medicine, São Paulo, Brazil

16 <sup>8</sup> Molecular Oncology Research Center, Barretos Cancer Hospital, Barretos, São Paulo, Brazil

17 <sup>9</sup> Medicine Department, Hospital da Senhora da Oliveira, Guimarães, Portugal

18 <sup>10</sup> Center for the Research and Treatment of Arterial Hypertension and Cardiovascular Risk, Internal Medicine  
19 Department, Hospital da Senhora da Oliveira, Guimarães, Portugal

20 <sup>11</sup> Vascular Surgery Department - Hospital da Senhora da Oliveira, Guimarães, Portugal

21 <sup>12</sup> Department of Angiology and Vascular Surgery, Centro Hospitalar Universitário de São João, Porto, Portugal

22 <sup>13</sup> Faculty of Medicine, University of Porto, Porto, Portugal

23 \* Joana Ferreira, Centro Hospitalar Universitário de São João, 4200-319, Porto, Portugal, [joana222@gmail.com](mailto:joana222@gmail.com)

### 24 ABSTRACT

25 **Introduction:** Peripheral arterial disease (PAD) affects over 202 million individuals worldwide,  
26 with 1.3% suffering from chronic limb-threatening ischaemia (CLTI). Atherosclerosis,  
27 characterized by intense inflammation, is the primary cause of PAD. Inflammation is linked to  
28 higher mortality rates, especially in CLTI patients. This study aims to compare the evolution of  
29 inflammatory markers between claudication and CLTI patients over three, six, and twelve  
30 months.

31 **Methods:** A prospective, single-center observational study was conducted from January 2018 to  
32 July 2022. A PAD cohort was observed at admission and at three, six, and twelve months, with  
33 data on clinical, analytical, and inflammatory markers collected. The analyzed markers included  
34 positive acute phase proteins (C-reactive protein - CRP and fibrinogen) and negative acute  
35 phase proteins (albumin, total cholesterol, and high-density lipoprotein - HDL).

36 **Results:** The study involved 119 subjects (mean age: 67.58 ± 9.60 years; 79.80% males), with  
37 65 patients having claudication and 54 with CLTI. At admission, CLTI patients exhibited  
38 significantly higher serum levels of CRP and fibrinogen (positive acute phase proteins) and  
39 lower levels of albumin, total cholesterol, and HDL (negative acute phase proteins) compared to  
40 claudication patients. Three months after CLTI resolution, negative acute phase proteins  
41 increased, and positive acute phase proteins decreased. However, no significant changes in  
42 inflammatory proteins were observed in patients with claudication over time.

43 **Conclusion:** CLTI patients demonstrate an inflammatory state, which may have deleterious  
44 consequences and be partially reversible after the resolution of the ischemic process.  
45 Recognizing the potential for reversibility through revascularization/amputation underscores the  
46 significance of timely intervention.

47 **Keywords:** atherosclerosis, peripheral arterial disease, critical limb ischaemia, inflammation

### 48 1. INTRODUCTION

49 Lower extremity peripheral arterial disease (PAD) is characterized by atherosclerosis occurring  
50 in the lower limbs and affects over 230 million adults worldwide[1,2]. Due to its high  
51 prevalence in low and middle-income countries PAD is becoming an increasingly global  
52 problem. The most advanced stage of PAD is chronic limb threatening ischemia (CLTI) which  
53 accounts for 11% of diagnosed PAD cases[1]. Patients with CLTI have a worse prognosis, with  
54 at least 20% of them dying within one year of diagnosis[3].

55 PAD and inflammation are particularly connected. Inflammation plays a significant role in the  
56 initiation and progression of atherosclerosis, particularly in PAD[4,5]. Traditional  
57 cardiovascular risk factor exerts their proatherogenic role, at least in part, through an  
58 inflammatory mechanism[4,6]. Also important is to acknowledge the important role of  
59 inflammation on the acceleration of the systemic arteriosclerotic process, leading equally to  
60 terminal cardiovascular and renal disease[7,8]. Pro-inflammatory cytokines [interleukin-6 (IL-6)  
61 and tumor-necrosis factor- $\alpha$  (TNF $\alpha$ ), TNF soluble receptor-II (TNF $\alpha$ SRII)] are strongly linked  
62 to PAD[6]. The lower limbs, which possess a large vascular bed, frequently harbor inflamed  
63 plaques that release inflammatory mediators. These mediators contribute to the development of  
64 coronary artery disease, thereby explaining the higher incidence of coronary artery disease in  
65 PAD patients[4]. The prevalence of coronary artery disease in PAD ranges from 43% to 90%,  
66 while the prevalence of PAD in coronary artery disease patients is less than 25%[4]. Studies  
67 have shown that the severity of coronary atherosclerosis is related with the degree of  
68 inflammatory response in the affected PAD limb[4]. Consequently, it has been suggested that it  
69 is not PAD itself, but rather its systemic inflammatory activity, that is associated with an  
70 increased number of coronary events[4].

71 The main aim of this study is to determine the evolution of the inflammatory parameters at  
72 three, six and twelve months in patients with claudication and with CLTI.

73 The second objective is to assess the differences in inflammatory parameters between patients  
74 with claudication and those with CLTI, through time.

## 75 2. METHODS

### 76 2.1 Study Type, Inclusion/Exclusion Criteria, Ethical Considerations

77 An observational, prospective, study was conducted from January 2018 to July 2020 at a single  
78 institution. Consecutive patients with PAD, attending the Vascular Surgery consultations or  
79 admitted at the Vascular Surgery ward who fulfilled the required criteria were included.  
80 Inclusion criteria: Patients with PAD suggested by the clinical history and objective  
81 examination and, confirmed with ankle-brachial index (ABI). Exclusion Criteria: Any disease  
82 responsible for body composition changes or pro-inflammatory state in the last three months.

83 Ethics approval was obtained from the local Hospital, with the protocol number 75/2017. All  
84 the participants signed the informed consent.

### 85 2.2. Clinical Characteristics

86 Patient's age, gender, PAD clinical stage (CLTI and claudication), arterial hypertension,  
87 diabetes, dyslipidemia, smoking habits and medication were collected at admission and defined  
88 as previously stated [9]. Fontaine stage III was defined as persistent rest pain for more than two  
89 weeks [10]. Fontaine stage IV was defined as ischemic skin lesions [10]. Both cases were  
90 confirmed with the following hemodynamic parameters: ankle pressure below 50mmHg, or  
91 absent palpable ankle pulses or toe pressure below 30mmHg in patients with diabetes and  
92 incompressible vessels [11].

93 The patients were schedule for an evaluation at three, six and twelve months. The clinical  
94 evolution, amputation rate (major and minor), death and causes of death were registered.

### 95 2.3. Inflammatory Parameter

96 The serum inflammatory parameters determined were positive acute phase proteins (C-reactive  
97 Protein- CRP- and fibrinogen) and negative acute phase proteins (albumin, total cholesterol and  
98 high-density lipoprotein- HDL).

99 Blood Samples were collected after a 10–12 hours fast in the morning, taken into appropriate  
100 Vacutainer, centrifuged within 5min for 4000 cycle/minute, and serum was separated. The  
101 serum inflammatory parameters were evaluated at admission, three, six and twelve months of  
102 follow up, and tests were performed by routine procedures in the department of clinical  
103 chemistry.

#### 104 *2.4. Statistical Analysis*

105 Continuous variables were expressed as the mean  $\pm$  standard deviation (SD) and as the  
106 percentage for categorical variables. The Shapiro–Wilk test was used to assess all continuous  
107 variables for normality. Between-group differences in continuous variables were assessed with  
108 Student's t-test or with the Mann-Whitney U test, and the effect size  $r$  was determined by  
109 calculating the ratio between test statistics  $Z$  and the square root of the number of pairs  $n$ .  
110 Categorical variables between two groups were compared with Chi-square. Wilcoxon Signed  
111 Rank test and paired samples t-test were used to study the evolution of acute phase proteins and  
112 analytic data, comparing 4 time points ( $t$  = admission;  $t$  = 3 months,  $t$  = 6 months and  $t$  = 12  
113 months).

114 A p-value of less than .05 was considered significant. Statistical evaluation was performed using  
115 SPSS software, version 20.0 (SPSS, Inc., Chicago, IL, USA).

### 116 **3. RESULTS**

#### 117 *3.1. Clinical Characteristics at Admission*

118 A total 119 patients (95 men) with an average age of  $67.58 \pm 9.60$  years-old with PAD were  
119 enrolled in the study. The group of patients was evenly distributed as 65 patients (54.62%) had  
120 claudication and 54 (45.38%) had CLTI. Nineteen of these patients had rest pain.

121 No differences were registered between patients with claudication and CLTI on age, gender,  
122 cardiovascular risk factors and medication, except on smoking habits (Table I). There was a  
123 significant higher prevalence of smokers and a higher smoking load in claudication group  
124 [Claudication: Median = 40.00; IQR = 45.00; CLTI: Median = 13.00; IQR = 40.00;  $p = 0.031$ ]  
125 (Table 1).

126 **Tab. 1** - Cardiovascular risk factor and comorbidities of the PAD population

#### 127 *3.2. Clinical Evolution*

128 During the follow-up, 28 (23.53%) patients had completed four clinical visits and reached the  
129 end of the follow-up; 52 (43.70%) patients had three appointments and 93 (78.15%) two. Out of  
130 the 65 patients with claudication, 14 (21.54%) improved their symptoms with medical therapy,  
131 five (7.69%) had worsening symptoms and one patient was readmitted due to CLTI. Six  
132 (5.04%) deaths were registered: five in patients with CLTI, one in a patient with claudication.  
133 The causes of death were: acute myocardial infarction (3 patients); heart failure (2 patients);  
134 pulmonary infection (1 patients); lung cancer (1 patient). Thirty patients (55.56%) with CLTI  
135 were submitted to minor amputation [23 (42.59%) and 12 (22.22%) to major amputations].

#### 136 *3.3. Inflammatory Parameters*

137 At admission patients with CLTI had significantly higher serum levels of positive acute phase  
138 proteins (CRP, and fibrinogen) and lower serum level of negative acute phase proteins  
139 (albumin, total cholesterol and HDL), when compared to patients with claudication (Table 2).

140 **Tab. 1** - Positive (CRP and fibrinogen) and negative (HDL, albumin and total cholesterol) acute phase proteins  
141 determined in PAD patients, at admission.

142 No differences were found in patients with CLTI, between Fontaine stage III and IV on the  
143 serum level of acute phase proteins (Table 3).

144 **Tab. 3** - Evolution of negative acute phase proteins (HDL, albumin and total cholesterol) and positive acute phase  
145 proteins (CRP and fibrinogen) in patients with CLTI at three, six and twelve months

#### 146 *3.4. Evolution of Inflammatory Parameters*

147 Analyzing the evolution of acute phase proteins patients, we noted that three months after the  
148 resolution of the ischemic process in patients with CLTI (by amputation or revascularization)  
149 there was an increase in serum levels of HDL and albumin (negative acute phase proteins) and  
150 decrease in CRP and fibrinogen (positive acute phase proteins (Table 4). These differences were  
151 not registered at six or twelve months (Table 4). No differences were noted through time in  
152 patients with claudication (Table 5)

153 **Tab. 4** - Evolution of negative acute phase proteins (HDL and albumin) and positive acute phase proteins (CRP and  
154 fibrinogen) in patients with CLTI at three, six and twelve months

155 **Tab. 5** - Evolution of inflammatory markers in patients with claudication through the time points analysed.

156 We also noted that for most inflammatory markers the difference between those who had  
157 claudication and patients with CLTI was present at three months but disappeared at six and  
158 twelve months. (Fig. 1)

159 **Fig. 1** - Comparison of acute phase proteins between patients with claudication and with CLTI at three, six and  
160 twelve months.

## 161 **4. DISCUSSION**

162 To the best of our knowledge, this paper is one of the first reporting the possibility of partially  
163 reversing the inflammatory state in patients with CLTI, after resolution of the critical limb  
164 ischemia event. The novelty of this study lies in the observation that three months following the  
165 resolution of the ischemic process, there is a reversal of the inflammatory markers, and the  
166 differences between CLTI and claudicants disappear at six months. To our knowledge, no other  
167 study has compared the inflammatory markers between CLTI and claudicants over such an  
168 extended period of time.

### 169 *4.1. Inflammatory Parameters in CLTI and Patients with Claudication*

170 We observed that patients with CLTI have a significant higher level in CRP and fibrinogen  
171 (positive acute phase proteins) and a significant lower serum level of albumin, total cholesterol  
172 and HDL (negative acute phase proteins) compared to patients with claudication, as we have  
173 previously demonstrated [9].

174 We hypothesized that this inflammatory pattern could be caused by the extension of  
175 atherosclerosis lesions, tissue infection or the ischemic tissue process. It has been reported that  
176 the severe reduction in tissue oxygenation present in patients with CLTI, can trigger an  
177 inflammatory reaction, leading to an increase in fibrinogen levels [12]. The elevated fibrinogen  
178 levels result in higher blood viscosity, promoting thrombosis, and potentially explaining the  
179 higher risk of graft occlusion, stroke, myocardial infarction or death observed in CLTI patients  
180 [3,12]. Increased plasma viscosity also impairs the vessel perfusion, particularly in small vessels  
181 such as capillaries, increasing tissue ischemia [13].

182 The inflammatory reaction also contributes to the generation of a proatherogenic lipid profile  
183 characterized by low HDL, oxidized LDL and high triglycerides [14]. We observed that the  
184 CLTI patients had low HDL and high triglyceride levels. Additionally, patients with CLTI had a  
185 lower albumin level which are considered a powerful predictor of mortality [14].

186 To investigate whether the inflammation in CLTI patients is primarily caused by tissue  
187 infection, we compared the serum levels of acute phase proteins between patients in Fontaine  
188 stage III and stage IV, but no differences were found, as suggested by other authors [13].

189 Our hypothesis was that the differences in inflammatory markers between CLTI and claudicants  
190 could be explained by the activity and extension of the atherosclerotic process in patients with  
191 critical limb ischemia. However, the pattern of evolution of the inflammatory markers (that we  
192 discuss below) suggests that it is the ischemic tissue process, rather than the extension of  
193 atherosclerotic plaques, that causes the differences between CLTI and claudicants.

### 194 *4.2. Evolution of Inflammatory Parameters*

195 We observed that three months after the resolution of the CLTI state (by amputation or surgery),  
196 there was a reversion, at least in part, of the inflammatory parameters, with an increase in the

197 negative acute phase proteins (HDL and albumin) and a decrease in positive acute phase  
198 proteins (CRP and fibrinogen). These differences were not observed in patients with  
199 claudication or at other periods of time in patients with CLTI. At three months, patients with  
200 CLTI maintained a higher serum level of CRP and fibrinogen and lower levels of albumin  
201 compared to patients with claudication. However, these differences disappeared at six months.  
202 Our findings align with two previous studies: Bismuth et al. reported a decrease in CRP and an  
203 increase in HDL, and albumin after revascularization in 30 patients with CLTI [15]. Woodburn  
204 et al. compared fibrinogen levels in 56 patients with CLTI at admission and 16 weeks after  
205 revascularization, observing a reduction in fibrinogen levels, although they remained higher  
206 than those of the controls [3]. The normalization of fibrinogen levels following successful  
207 vascular surgery of critically ischemic limbs (revascularization or amputation) suggests that  
208 tissue ischemia may stimulate hepatic fibrinogen synthesis, possibly through interleukin-6  
209 produced by activated monocytes [12]. Both of these studies analyzed the data at three months,  
210 and no other study has examined the data over a longer follow-up period.

#### 211 *4.3. Clinical Implications*

212 Demonstrating that following the resolution of CLTI that there is a decrease in serum levels of  
213 inflammatory markers suggests that the deleterious impact of inflammation can be mitigated  
214 with a prompt intervention.

215 This study also highlights the potential role of anti-inflammatory medical therapy in PAD  
216 patients. For example, cankinumab is an interleukin-1 $\beta$  inhibitor that improved walking  
217 performance in patients with claudication while reducing blood CRP and IL-6 [16]. Statins have  
218 been associated with a reduction in systemic inflammation, as measured by CRP, and have  
219 shown benefits in terms of lower mortality, reduced major adverse cardiovascular and  
220 cerebrovascular events, and longer amputation-free survival in CLI patients [6,16,17]. The  
221 benefit of statins are closely related to their anti-inflammatory effect [18]. Fibrates also exhibit  
222 fibrinogen-lowering action[6].

#### 223 *4.4. Strengths and Limitations*

224 Strengths of the paper:

- 225 1. Comprehensive investigation: The paper explores the association between PAD and  
226 inflammation, and the evolution of inflammatory parameters in patients with  
227 claudication and those with CLTI over a period of three, six, and twelve months.
- 228 2. Comparison between claudication and CLTI patients over an extended period of time:  
229 The study compares patients with claudication and CLTI in terms of their inflammatory  
230 parameters. By examining the differences between these two groups, the researchers  
231 can better understand the impact of disease severity on inflammation.
- 232 3. Findings on the reversal of inflammatory state in CLTI patients: The study reports that  
233 three months after the resolution of the ischemic process, there is a partial reversal of  
234 the inflammatory state in CLTI patients. This finding suggests that prompt intervention  
235 and anti-inflammatory therapies may help alleviate the detrimental effects of  
236 inflammation in PAD patients.
- 237 4. Comparing the Stage III and IV of Fontaine Classification: The paper reports no  
238 difference in the serum levels of acute phase proteins between patients on stage III and  
239 IV. This fact underlines the role of the ischemic tissue in the inflammatory changes  
240 registered in patients with CLTI.

241 This research work as several limitations:

- 242 1. Sample size: The study included a total of 119 patients, followed by the main author  
243 which may not be representative of the entire PAD population followed at our  
244 institution. A larger sample size could provide more robust and generalizable results.
- 245 2. Prevalence of men in the studied population: Approximately 80% of the recruited  
246 sample were men. As such the results cannot be generalized to all population.
- 247 3. Short follow-up period (even if the longest recorded in the literature): The study  
248 evaluated the evolution of inflammatory parameters at three, six, and twelve months.

249 However, a longer follow-up period could provide more insights into the long-term  
250 changes and trends in inflammatory markers. However, as far as we know this is the  
251 longest follow-up published.

- 252 4. Single-center study: The study was conducted at a single institution, which may limit  
253 the generalizability of the findings. A multi-center study could provide a more  
254 comprehensive understanding of the topic.
- 255 5. Other factors: The paper did not investigate other potential factors that could influence  
256 the inflammatory state, as the genetic, the practice of exercise or dietary habits.
- 257 6. Causality: This research work is also not able to establish any a causal relationship  
258 between the resolution of the ischemia process and the improve in the inflammatory  
259 data.

## 260 **5. CONCLUSIONS**

261 This study provides valuable insights into the evolution of inflammatory parameters in patients  
262 with PAD, specifically comparing those with CLTI to claudicants. It emphasizes that patients  
263 with CLTI exhibits an inflammatory state that can be at least partially reverted after the  
264 resolution of the ischemic process, thereby mitigating the negative impact of inflammation.

## 265 **FUNDING**

266 This work was supported by the Portuguese Society of Vascular Surgery.  
267 This work was developed under the scope of project NORTE-01-0145-FEDER- 000013,  
268 supported by the Northern Portugal Regional Operational Programme (NORTE 2020) under the  
269 Portugal Partnership Agreement, through the European Regional Development Fund (FEDER),  
270 and by National funds, through the Foundation for Science and Technology (FCT) - project  
271 UIDB/50026/2020 and UIDP/50026/2020.

## 272 **CONFLITS OF INTEREST STATEMENT**

273 The authors have no conflicts of interest to declare.

## 274 **AUTHOR'S CONTRIBUTIONS**

275 Joana Ferreira – Conceived of the presented idea; wrote the manuscript, collected and analysed  
276 the data. Susana Roque - Determined the serum level of inflammatory markers, conceived the  
277 methods relating to the laboratory measurements of myokines, revised the manuscript.  
278 Alexandre Lima Carneiro – Helped in the manuscript writing, in the data analysis and made the  
279 statistical analysis. Adhemar Longatto-Filho- Analyzed the data and revised the manuscript.  
280 Isabel Vila – Collected the clinical data, helped in the manuscript writing and revised the paper.  
281 Cristina Cunha - Collected the clinical data, helped in the manuscript writing and revised the  
282 paper. Cristina Silva - Collected the clinical data, helped in the manuscript writing and revised  
283 the paper. Amílcar Mesquita – Revised the paper and contributed to the final manuscript. Jorge  
284 Cotter – Revised the paper and contributed to the final manuscript. Margarida Correia-Neves –  
285 Revised the paper and contributed to the final manuscript. Armando Mansilha – Supervise the  
286 paper, revised the paper and contributed to the final manuscript. Pedro Cunha – Contributed to  
287 the design, collected the data, revised the paper and contributed to the final manuscript.

## 288 **REFERENCES**

289 [1] Criqui MH, Matsushita K, Aboyans V, Hess CN, Hicks CW, Kwan TW, McDermott MM,  
290 Misra S, Ujueta F; American Heart Association Council on Epidemiology and Prevention;  
291 Council on Arteriosclerosis, Thrombosis and Vascular Biology; Council on Cardiovascular  
292 Radiology and Intervention; Council on Lifestyle and Cardiometabolic Health; Council on  
293 Peripheral Vascular Disease; and Stroke Council. Lower Extremity Peripheral Artery Disease:  
294 Contemporary Epidemiology, Management Gaps, and Future Directions: A Scientific Statement  
295 From the American Heart Association. *Circulation*. 2021 Aug 31;144(9):e171-e191. doi:  
296 10.1161/CIR.0000000000001005. Epub 2021 Jul 28. Erratum in: *Circulation*. 2021 Aug  
297 31;144(9):e193. PMID: 34315230; PMCID: PMC9847212.

- 298 [2] Signorelli SS, Fiore V, Malaponte G. Inflammation and peripheral arterial disease: the value  
299 of circulating biomarkers (Review). *Int J Mol Med*. 2014 Apr;33(4):777-83. doi:  
300 10.3892/ijmm.2014.1657. Epub 2014 Feb 13. PMID: 24535646.
- 301 [3] Woodburn KR, Rumley A, Lowe GD, Pollock JG. Fibrinogen and markers of fibrinolysis  
302 and endothelial damage following resolution of critical limb ischaemia. *Eur J Vasc Endovasc*  
303 *Surg*. 1995 Oct;10(3):272-8. doi: 10.1016/s1078-5884(05)80042-5. PMID: 7552524.
- 304 [4] Brevetti G, Giugliano G, Brevetti L, Hiatt WR. Inflammation in peripheral artery disease.  
305 *Circulation*. 2010 Nov 2;122(18):1862-75. doi: 10.1161/CIRCULATIONAHA.109.918417.  
306 PMID: 21041698.
- 307 [5] Cauley JA, Kassem AM, Lane NE, Thorson S; Osteoporotic Fractures in Men (MrOS) Study  
308 Research Group. Prevalent peripheral arterial disease and inflammatory burden. *BMC Geriatr*.  
309 2016 Dec 9;16(1):213. doi: 10.1186/s12877-016-0389-9. PMID: 27938334; PMCID:  
310 PMC5148838.
- 311 [6] Doweik L, Maca T, Schillinger M, Budinsky A, Sabeti S, Minar E. Fibrinogen predicts  
312 mortality in high risk patients with peripheral artery disease. *Eur J Vasc Endovasc Surg*. 2003  
313 Oct;26(4):381-6. doi: 10.1016/s1078-5884(03)00340-x. PMID: 14511999.
- 314 [7] Zanolli L, Briet M, Empana JP, Cunha PG, Mäki-Petäjä KM, Protogerou AD, Tedgui A,  
315 Touyz RM, Schiffrin EL, Spronck B, Bouchard P, Vlachopoulos C, Bruno RM, Boutouyrie P;  
316 Association for Research into Arterial Structure, Physiology (ARTERY) Society, the European  
317 Society of Hypertension (ESH) Working Group on Vascular Structure and Function, and the  
318 European Network for Noninvasive Investigation of Large Arteries. Vascular consequences of  
319 inflammation: a position statement from the ESH Working Group on Vascular Structure and  
320 Function and the ARTERY Society. *J Hypertens*. 2020 Sep;38(9):1682-1698. doi:  
321 10.1097/HJH.0000000000002508. PMID: 32649623; PMCID: PMC7610698.
- 322 [8] Laurent S, Boutouyrie P, Cunha PG, Lacolley P, Nilsson PM. Concept of Extremes in  
323 Vascular Aging. *Hypertension*. 2019 Aug;74(2):218-228. doi:  
324 10.1161/HYPERTENSIONAHA.119.12655. Epub 2019 Jun 17. PMID: 31203728.
- 325 [9] Ferreira J, Carneiro A, Vila I, Silva C, Cunha C, Longatto-Filho A, Mesquita A, Cotter J,  
326 Mansilha A, Correia-Neves M, Cunha P. Inflammation and Loss of Skeletal Muscle Mass in  
327 Chronic Limb Threatening Ischemia. *Ann Vasc Surg*. 2023 Jan;88:164-173. doi:  
328 10.1016/j.avsg.2022.07.009. Epub 2022 Aug 2. PMID: 35926785.
- 329 [10] Novo S, Coppola G, Milio G. Critical limb ischemia: definition and natural history. *Curr*  
330 *Drug Targets Cardiovasc Haematol Disord*. 2004 Sep;4(3):219-25. doi:  
331 10.2174/1568006043335989. PMID: 15379613.
- 332 [11] Gerassimidis T, Karkos CD, Karamanos D, Kamparoudis A. Current endovascular  
333 management of the ischaemic diabetic foot. *Hippokratia*. 2008 Apr;12(2):67-73. PMID:  
334 18923656; PMCID: PMC2464305.
- 335 [12] Pedrinelli R, Dell' Omo G, Barchielli A, Berchiolli R, Melillo E, Mariani M, Balbarini A,  
336 Ferrari M. Fibrinogen and mortality in chronic critical limb ischaemia. *J Intern Med*. 1999  
337 Jan;245(1):75-81. doi: 10.1046/j.1365-2796.1999.00410.x. PMID: 10095820.

- 338 [13] Rudofsky G, Strubel G, Michler E, Kuegler C, Biro F. Influence of fibrinogen and  
339 hematocrit on the early outcome of angioplasty in patients with PAOD. *J Endovasc Ther.* 2004  
340 Apr;11(2):125-31. doi: 10.1583/01-651R.1. PMID: 15056033.
- 341 [14] Kaysen GA. Biochemistry and biomarkers of inflamed patients: why look, what to assess.  
342 *Clin J Am Soc Nephrol.* 2009 Dec;4 Suppl 1:S56-63. doi: 10.2215/CJN.03090509. PMID:  
343 19996007.
- 344 [15] Bismuth J, Kofoed SC, Jensen AS, Sethi A, Sillesen H. Serum lipids act as inverse acute  
345 phase reactants and are falsely low in patients with critical limb ischemia. *J Vasc Surg.* 2002  
346 Nov;36(5):1005-10. doi: 10.1067/mva.2002.128301. PMID: 12422112.
- 347 [16] Bonaca MP, Hamburg NM, Creager MA. Contemporary Medical Management of  
348 Peripheral Artery Disease. *Circ Res.* 2021 Jun 11;128(12):1868-1884. doi:  
349 10.1161/CIRCRESAHA.121.318258. Epub 2021 Jun 10. PMID: 34110910.
- 350 [17] Gary T, Belaj K, Hafner F, Eller P, Rief P, Hackl G, Brodmann M. Graz Critical Limb  
351 Ischemia Score: A Risk Score for Critical Limb Ischemia in Peripheral Arterial Occlusive  
352 Disease. *Medicine (Baltimore).* 2015 Jul;94(27):e1054. doi: 10.1097/MD.0000000000001054.  
353 PMID: 26166076; PMCID: PMC4504640.
- 354 [18] Paquissi FC. The role of inflammation in cardiovascular diseases: the predictive value of  
355 neutrophil-lymphocyte ratio as a marker in peripheral arterial disease. *Ther Clin Risk Manag.*  
356 2016 May 27;12:851-60. doi: 10.2147/TCRM.S107635. PMID: 27313459; PMCID:  
357 PMC4892833.



**Tab. 1 - Cardiovascular risk factor and comorbidities of the PAD population**

	<b>Claudication (n=65)</b>	<b>CLTI (n=54)</b>	<b><math>\chi^2</math></b>	<b>df</b>	<b>p-value</b>	<b>Phi</b>
<b>Male (n; %)</b>	55; 84.61	40; 74.07	1.555	1	0.212	0.115
<b>Hypertension (n; %)</b>	49; 75.38	37; 68.52	0.694	1	0.405	0.076
<b>Dyslipidemia (n; %)</b>	41; 63.08	32; 59.26	0.181	1	0.670	0.039
<b>Smoker/ex-smoker (n; %)</b>	53; 81.53	30; 55.56	7.969	1	<b>0.005*</b>	0.261
<b>Diabetes (n; %)</b>	23; 35.38	28; 51.85	3.266	1	0.071	- 0.166
<b>Coronary artery disease (n; %)</b>	9; 13.85	6; 11.11	0.200	1	0.654	0.041
<b>Statins (n;%)</b>	58; 89.23	44; 81.48	0.961	1	0.327	0.090
<b>Fibrate (n;%)</b>	4; 6.15	5; 9.26	Fisher	-	0.512	0.063
<b>Ezetimibe (n;%)</b>	3; 4.615	3; 5.55	Fisher	-	0.812	0.022
<b>Antiplatelet (n;%)</b>	54; 83.08	40; 74.07	1.042	1	0.307	0.094
<b>ACEi/ARA (n;%)</b>	20; 30.77	16; 29.63	0.000	1	0.989	0.001
<b>Beta-blockers (n;%)</b>	13; 20.00	11; 20.37	0.003	1	0.953	0.005

**Note:** Application of Chi-Square test and Fisher's exact test.

**ACEi:** angiotensin-converting enzyme inhibitors.

**ARA:** angiotensin receptor antagonists

**CLTI:** chronic limb-threatening ischemia

**Tab. 2 - Positive (CRP and fibrinogen) and negative (HDL, albumin and total cholesterol) acute phase proteins determined in PAD patients, at admission**

	Claudication (n=65)		CLTI (n=54)		U	p-value	r
	Median	IQR	Median	IQR			
CRP (g/dL)	2.90	2.15	6.80	.	900.00	<b>0.000*</b>	- 0.383
Fibrinogen (mg/dL)	293.00	88.00	415.50	298.75	1162.50	<b>0.000*</b>	- 0.375
HDL (mg/dL)	50.00	16.00	37.00	.	652.50	<b>0.000*</b>	0.462
Albumin (g/dL)	4.00	0.35	3.60	.	997.50	<b>0.003*</b>	0.281
	Claudication (n=65)		CLTI (n=54)		Levene's F test; p		Cohen's d
<b>Total cholesterol (mg/dL)</b>	161.79 ± 34.43		146.42 ± 38.27		$F(104) = 0.033; p = 0.856$		$t(104) = 2.176; p = 0.034^*$

**Note:** Application of Mann-Whitney U test. CRP and fibrinogen do not have a normal distribution, determined with Shapiro-Wilk test ( $p < 0.05$ ).

CLTI: chronic limb-threatening ischemia

CRP: c-reactive protein

**Tab. 3 - Positive (CRP and fibrinogen) and negative (HDL, albumin and total cholesterol) acute phase proteins determined in patients with CLTI (Fontaine III vs Fontaine IV), at admission**

	IV (n=35)		III (n=19)		U	p-value	r
	Median	IQR	Median	IQR			
CRP (g/dL)	38.15	64.15	10.71	4.40	287.00	0.714	- 0.050
Fibrinogen (mg/dL)	491.69	297.50	327.58	120.00	187.50	0.373	- 0.121
HDL (mg/dL)	38.90	18.00	50.07	20.00	232.00	0.730	- 0.047
Albumin (g/dL)	3.39	0.85	4.05	0.60	190.50	0.051	- 0.269
	IV (n=35)		III (n=19)		Levene's F test; p		Cohen's d
Total cholesterol (mg/dL)	143.52 ± 36.78		152.80 ± 41.97		F(46) = 1.198; p = 0.280		t(46) = - 0.776; p = 0.442

**Note:** Application of Mann-Whitney U test. CRP and fibrinogen do not have a normal distribution, determined with Shapiro-Wilk test ( $p < 0.05$ ).

CLTI: chronic limb-threatening ischemia

CRP: c-reactive protein

**Tab. 4 - Evolution of negative acute phase proteins (HDL, albumin and total cholesterol) and positive acute phase proteins (CRP and fibrinogen) in patients with CLTI at three, six and twelve months**

	HDL (mg/DL)		Albumin (g/dL)		Total cholesterol (mg/dL)	<i>p</i>	CRP (g/DL)		Fibrinogen (mg/dL)	
	Median	IQR	Median	IQR			Median	IQR	Median	IQR
<b>Admission (n=54)</b>	<b>37.00*</b>	15.00	<b>3.60**</b>	-	146.42 ± 38.27		<b>6.80*</b>	-	<b>398.00**</b>	303.75
<b>3 months (n= 32)</b>	<b>45.00*</b>	17.50	<b>3.70**</b>	-	154.80 ± 46.36	0.352	<b>2.90*</b>	-	<b>370.28**</b>	181.00
<b>6 months (n= 13)</b>	44.00	-	4.50	-	156.81 ± 52.51	0.563	4.90	-	298.00	125.00
<b>12 months (n=3)</b>	44.00	-	4.30	-	152.33 ± 67.72	0.634	3.90	-	292.00	84.59

**Note:** \**p* = 0.026 (*p* = 0.674; *p* = 0.180) \*\* *p* = 0.000 (*p* = 0.114; *p* = 0.109); \**p* = 0.038 (*p* = 0.374; *p* = 0.655) \*\* *p* = 0.036 (*p* = 0.929; *p* = 0.180)

CRP: C-Reactive Protein

**Tab. 5 - Evolution of negative acute phase proteins (HDL and albumin) and positive acute phase proteins (CRP and fibrinogen) in patients with claudication at three, six and twelve months**

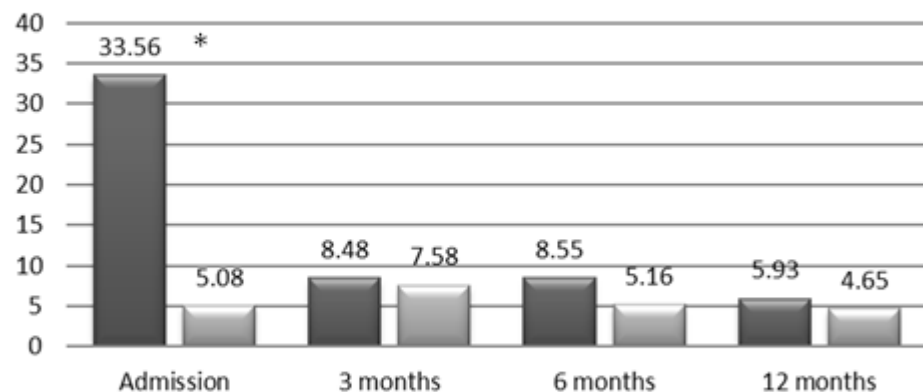
	HDL (mg/DL)		Albumin (g/dL)		CRP (g/DL)		Fibrinogen (mg/dL)	
	Median	IQR	Median	IQR	Median	IQR	Median	IQR
<b>Admission (n=65)</b>	50.00	16.00	4.00	0.35	2.90	2.15	293.00	88.00
<b>3 months (n=61)</b>	53.00	19.00	3.90	0.32	3.10	2.33	311.00	90.00
<b>6 months (n=39)</b>	53.00	54.00	3.95	0.33	3.70	6.33	295.00	143.00
<b>12 months (n=25)</b>	49.00	17.00	4.10	0.73	2.90	1.42	294.00	96.50

**Note:** Application of Friedman test. HDL and albumin do not have a normal distribution, determined with Shapiro-Wilk test (\*< 0.05).

**CRP:** c-reactive protein

## CRP (g/dL)

■ CLTI ■ Claudication



p = 0.000

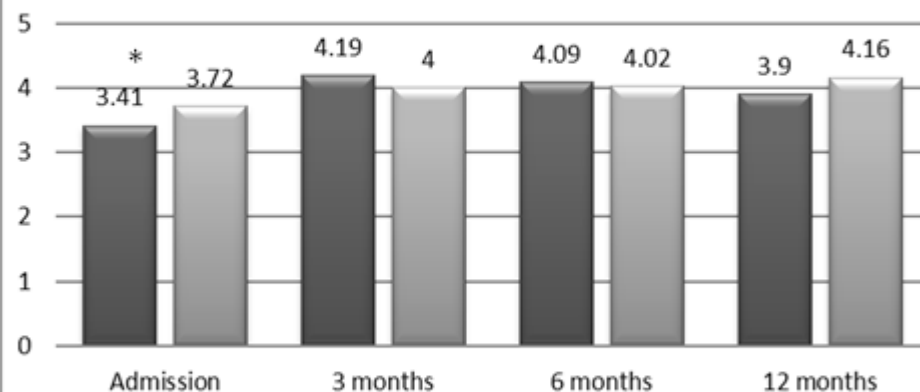
p = 0.051

p = 0.273

p = 0.433

## Albumin (g/dL)

■ CLTI ■ Claudication



p = 0.003

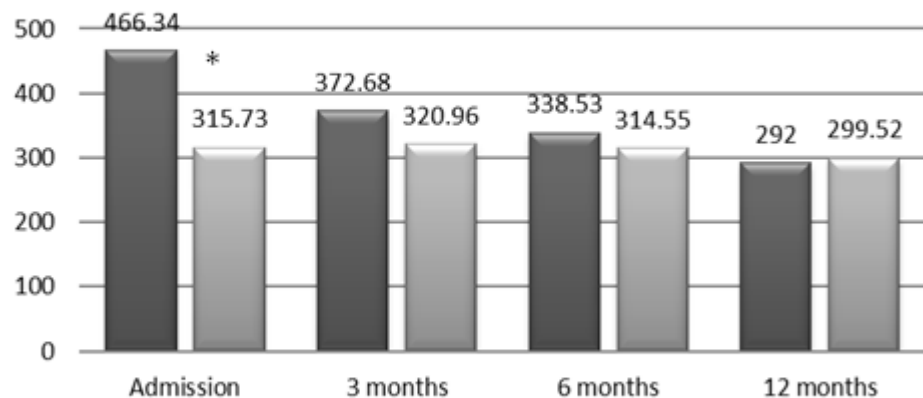
p = 0.041

p = 0.453

p = 0.673

## Fibrinogen (mg/dL)

■ CLTI ■ Claudication



p = 0.000

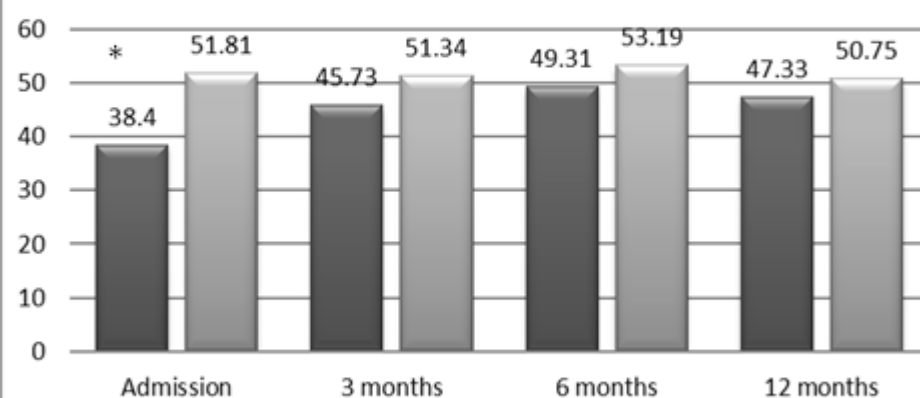
p = 0.012

p = 0.686

p = 0.656

## HDL (mg/dL)

■ CLTI ■ Claudication



p = 0.000

p = 0.033

p = 0.429

p = 0.856

\* p < 0.005