

1 **Title:** Plasma proteomic signatures of adiposity are associated with cardiovascular risk factors and
2 type 2 diabetes risk in a multi-ethnic Asian population.

3

4 **Authors:** Charlie G.Y. Lim¹, Bige Ozkan^{2,3}, Yujian Liang¹, Jiali Yao¹, Nang Ei Ei Khaing¹, Mary R. Rooney²,
5 Chiadi E. Ndumele^{2,3}, E Shyong Tai^{1,4}, Josef Coresh², Xueling Sim^{1,*}, and Rob M. van Dam^{1,5,*}

6

7 **Authors affiliations:**

8 ¹ Saw Swee Hock School of Public Health, National University of Singapore, 12 Science Drive 2,
9 Singapore 117549 (C.G.Y.L., Y.L., J.Y., N.E.E.K., E.S.T., X.S., R.M.vD.)

10 ² Department of Epidemiology and the Welch Center for Prevention, Epidemiology, and Clinical
11 Research, Johns Hopkins Bloomberg School of Public Health, Baltimore, Maryland, USA (B.O., M.R.R.,
12 C.E.N., J.C.)

13 ³ Ciccarone Center for the Prevention of Cardiovascular Disease, Division of Cardiology, Johns
14 Hopkins University School of Medicine, Baltimore, Maryland, USA (B.O., C.E.N.)

15 ⁴ Department of Medicine, Yong Loo Lin School of Medicine, National University of Singapore, 10
16 Medical Dr, Singapore 117597 (E.S.T.)

17 ⁵ Departments of Exercise and Nutrition Sciences and Epidemiology, Milken Institute School of Public
18 Health, The George Washington University, 950 New Hampshire Ave, NW, Washington, DC 20052
19 (R.M.vD.)

20 *These authors jointly supervised this work

21

22 **Author contributions**

23 Concept and design: C.G.Y.L., X.S., and R.M.vD. Acquisition, analysis, or interpretation of data:
24 C.G.Y.L., X.S., R.M.vD, B.O., M.R.R., C.E.N., J.C., J.Y., Y.L., E.S.T., N.E.E.K. Drafting of manuscript:
25 C.G.Y.L., X.S., R.M.vD. Critical revision of manuscript: E.S.T., B.O., M.R.R., C.E.N., J.C.

26

27 **Disclaimers:** The National University of Singapore has signed a collaboration agreement with
28 SomaLogic to conduct SomaScan of MEC stored samples at no charge in exchange for the rights to
29 analyze linked MEC phenotype data.

30

31 **Conflict of interest:** All authors report no conflict of interest.

32

33 **Corresponding Authors:**

34 Xueling Sim

35 Saw Swee Hock School of Public Health, National University of Singapore

36 12 Science Drive 2, Singapore 117549

37 Tel: +65 6601 5096

38 E-mail: ephsx@nus.edu.sg

39

40 Rob M. van Dam

41 Department of Exercise and Nutrition Sciences, Milken Institute School of Public Health, The George

42 Washington University

43 950 New Hampshire Ave NW #2, Washington DC 20052

44 Tel: +1-202-994-9412

45 E-mail: rvandam@gwu.edu

46

47 **Data availability:** Summary statistics for all measured proteins are provided in the Supplementary

48 Tables. Data from the Multi-Ethnic Cohort study can be requested by researchers for scientific

49 purposes through an application process at the listed website ([https://blog.nus.edu.sg/sphs/data-](https://blog.nus.edu.sg/sphs/data-and-samples-request/)

50 [and-samples-request/](https://blog.nus.edu.sg/sphs/data-and-samples-request/)). Data will be shared through an institutional data sharing agreement.

51

52 **Abstract**

53 The molecular mechanisms connecting obesity and cardiometabolic diseases are not clearly
54 understood. We evaluated the associations between body mass index (BMI), waist circumference
55 (WC), and ~5,000 plasma proteins in the Singapore Multi-Ethnic Cohort (MEC1). Among 410 BMI-
56 associated and 385 WC-associated proteins, we identified protein signatures of BMI and WC and
57 validated them in an independent dataset across two time points and externally in the
58 Atherosclerosis Risk in Communities (ARIC) study. Among participants with more precise adiposity
59 measurements, the BMI- and WC-protein signatures were highly correlated with total and visceral
60 body fat, respectively. Both protein signatures were significantly associated with cardiometabolic
61 risk factors. In prospective analyses, both protein signatures were strongly associated with type 2
62 diabetes (T2D) risk in both MEC1 and ARIC and explained the associations between anthropometric
63 measurements and T2D risk. Our protein signatures have potential uses for the monitoring of
64 metabolically unhealthy obesity and the changes therein during interventions.

65 Introduction

66 Obesity is a metabolic disorder resulting from a complex interplay between genetic, psychosocial,
67 and environmental factors (1). Although an overwhelming body of evidence point to obesity as a
68 major risk factor for metabolic diseases such as type 2 diabetes (T2D) and cardiovascular diseases
69 (CVDs) (2), the molecular markers and mechanisms connecting obesity and these metabolic diseases
70 are not fully understood.

71 Proteins are the interface between genetics, environment, and phenotype (3) and can therefore
72 serve as important biomarkers for the identification of biological pathways linking genetic and
73 environmental exposures to disease risk (4). Recent advances in high-throughput proteomic
74 technologies have enabled the measurement of a vast number of proteins across a wide range of
75 concentrations with good reproducibility (5), unlocking the potential for large-scale interrogation of
76 the human proteome to uncover novel interactions between the human proteome and health.
77 Recent studies in European populations have identified proteins associated with body mass index
78 (BMI) (6,7), highlighting pathways involved in lipid metabolism and inflammations that may
79 contribute to obesity-related diseases (7). However, these studies were based on platforms that
80 covered a limited number of proteins (~1100 proteins) and used BMI as the only measure of
81 adiposity in participants of predominantly European ancestry. The latter may be particularly
82 important given the well-recognized differences in the association of BMI in populations of Asian
83 Ancestry compared to those of European ancestry and the potential role of visceral adiposity in the
84 pathophysiology of type 2 diabetes in Asia (8). Moreover, these studies did not examine whether the
85 obesity-related proteins may mediate the cardiometabolic effects of obesity.

86 We evaluated the associations between ~5000 plasma proteins, and BMI and waist circumference
87 (WC) in a multi-ethnic Asian population comprising of Chinese, Malay, and Indian adults. Using
88 machine learning techniques, we developed protein signatures of BMI and WC and evaluated their
89 associations with total and visceral body fat, CVD risk factors, and the incidence of T2D.

90 Results

91 The study design and baseline characteristics of study participants are shown in **Figure 1** and
92 **Supplementary Table 1**. Participants were male (44.0%) and female (56.0%) adults with a mean (\pm
93 SD) age of 47.6 (\pm 12.0) years. The ethnic distribution was 34.8% Chinese, 32.6% Malay, and 32.7%
94 Indian.

95 Association with demographic characteristics and stability over time

96 We evaluated the associations between plasma protein levels and demographic characteristics in
97 non-overlapping participants from the Population Set and controls in the type 2 diabetes case
98 control set (T2DCC Set). The Population Set was a random sample of 631 participants from the
99 Singapore Multi-Ethnic Cohort Phase 1 (MEC1) (9), and the T2DCC set was a nested case-control
100 study (616 cases, 1,200 controls) in the MEC1. At Bonferroni threshold for ~5,000 proteins tested
101 ($\alpha = 1.00 \times 10^{-05}$), 25.8% ($n = 1,286$) of the proteins were significantly associated with sex, 17.7%
102 ($n = 879$) were associated with age, and 27.3% ($n = 1,358$) were associated with ethnicity
103 (**Supplementary Table 2**). Of the significant associations in our study, 76.6% of the associations with
104 age and 84.2% of the associations with sex were also significant and directionally consistent with a
105 recent proteome-wide association study among 35,559 Icelanders (10) (**Supplementary Figure 1**).

106 We also evaluated the reproducibility of protein levels among this group of individuals without T2D
107 and measured at both baseline and follow-up ($n = 1,085$) over a mean duration of 6.4 (± 1.6) years.
108 About 59% of the proteins had median fold change values ranging from 0.95 to 1.05 (median relative
109 change $\leq 5\%$ from baseline to follow-up). A fifth of the proteins (20.9%) had good reproducibility
110 over time [intraclass correlation coefficient (ICC) 0.75–1.00], 41.7% of the proteins had moderate
111 reproducibility (ICC 0.50–0.75), and 18.8% of the proteins had poor reproducibility (ICC 0–0.25)
112 (**Supplementary Table 3**). Proteins with a low ICC tended to have high median fold changes values
113 (**Supplementary Figure 2**).

114 **Discovery of the general and abdominal adiposity signatures**

115 Using the Population Set as discovery, we evaluated the ethnic-specific associations between plasma
116 protein levels with (i) BMI, and (ii) WC (**Supplementary Table 4**). In the meta-analysis adjusted for
117 age and sex, 410 proteins were associated with BMI, and 385 proteins were associated with WC,
118 with 359 proteins in common between BMI and WC (**Supplementary Table 4 and Figure 2**). Across
119 the three ethnic groups, there were no evidence of statistical heterogeneity ($P_{\text{het}} > 1.00 \times 10^{-5}$) and all
120 associations were in the same direction except one protein (complement factor D) for WC which was
121 excluded from further analyses. All 359 overlapping protein-BMI and protein-WC associations were
122 directionally consistent. Proteins that were associated with only one of the adiposity measures at
123 Bonferroni threshold were directionally consistent and nominally associated for the other adiposity
124 measure ($P < 0.05$; $n = 51$ for BMI and $n = 25$ for WC). The top four most strongly associated proteins
125 were the same for BMI and WC, namely leptin (LEP), heart-type fatty acid binding protein (FABP3),
126 insulin-like growth factor-binding protein 1 (IGFBP1), and growth hormone receptor (GHR). Proteins
127 known to be associated with adiposity such as C-reactive protein (CRP), adiponectin (ADIPOQ), and
128 insulin (INS) were also significantly associated with BMI and WC in our study.

129 We performed a look-up of the 410 BMI-associated proteins in three recent proteomics association
130 studies in European adults, namely the DIOGenes study (n = 494) adults, the INTERVAL study (n =
131 3,301), and the KORA study (n = 4,600) (3,6,7). We considered our observed protein-BMI association
132 to be replicated if it was directionally consistent and significant at the Bonferroni threshold ($P <$
133 $0.05/410$) in the corresponding study. Out of the 410 BMI-associated proteins observed in our study,
134 101 proteins were not measured in any of the other three studies, and 263 (85%) out of the
135 remaining 309 BMI-associated proteins were replicated in at least one study (**Supplementary Table**
136 **4**).

137 Using the proteins associated with BMI and WC in our study, we performed feature selection using
138 elastic net regression. We identified 124 proteins with non-zero coefficients for BMI (here after
139 referred to as BMI-protein signature) and 125 proteins with non-zero coefficients for WC (WC-
140 protein signature) (**Figure 3**), with 60 overlapping proteins in both signatures. The coefficients for
141 the proteins included in the BMI and WC signatures are reported in **Supplementary Table 5**. We
142 compared our protein signatures with the published results for 11,471 participants of the Fenland
143 Study (11). Of the 124 proteins in our BMI-protein signature, 28 (22.3%) were included in the
144 Fenland Study signature for percentage of body fat. Similarly, of the 125 proteins in our WC-protein
145 signature, 34 (27.2%) were included in the Fenland Study signature for visceral fat mass
146 (**Supplementary Table 5**).

147 **Internal validation of the general and abdominal adiposity signatures**

148 Validation of the protein signatures identified in the Population Set was done using the T2DCC Set.
149 As expected, the BMI-protein signature was strongly correlated with BMI at baseline and follow-up (r
150 = 0.842 and 0.823) (**Table 1 and Supplementary Figure 3**). Similarly, the WC-protein signature was
151 strongly correlated with participants' WC at baseline and follow-up ($r = 0.778$ and 0.783). Among 814
152 participants with both baseline and follow-up data, the changes in BMI ($r = 0.632$) and changes in
153 WC ($r = 0.438$) over a ~6-year period were directly correlated with changes in the respective protein
154 signatures over the same period (**Supplementary Figure 4**). We also examined the correlations
155 between changes in anthropometric measurements and changes in individual proteins in the
156 respective signatures (**Supplementary Table 6**). The Pearson correlation coefficients for the
157 correlations between changes in BMI and proteins in the BMI-protein signature ranged from 0.438
158 (leptin) to -0.469 (adiponectin), and the correlation coefficients for changes in WC and proteins in
159 the WC-protein signature ranged from 0.343 (growth hormone receptor) and -0.326 for (sex
160 hormone-binding globulin). All correlation coefficients reported here were significant ($P < 0.001$).

161 We further evaluated the relationship between the anthropometric measurements, protein
162 signatures, and direct measures of general and visceral adiposity among a subset of ethnic Chinese
163 participants [n = 207 for Dual-Energy X-ray Absorptiometry (DXA) and n = 151 for Computed
164 Tomography (CT) measurements] (**Table 1 and Supplementary Table 7**). As expected, BMI and WC
165 were directly correlated with total body fat mass ($r = 0.872$) and visceral fat area ($r = 0.799$),
166 respectively. The BMI-protein signature was directly and strongly correlated with total body fat mass
167 ($r = 0.782$), android fat mass ($r = 0.787$), and trunk fat mass ($r = 0.801$), and moderately correlated
168 with subcutaneous adipose tissue (SAT) ($r = 0.596$) and visceral adipose tissue (VAT) ($r = 0.676$). In
169 comparison with the BMI-protein signature, the WC-protein signature was less strongly correlated
170 with total body fat mass ($r = 0.619$) and SAT ($r = 0.433$) and more strongly correlated with VAT ($r =$
171 0.735). Both the BMI-protein and WC-protein signatures were inversely correlated with lean mass
172 percentage ($r = -0.488$ and $r = -0.232$ respectively). The scatterplots suggested a direct linear
173 relationship between total body fat mass and the BMI-protein signature (beta = 4.98 kg per SD; $P <$
174 0.001) and VAT area with the WC-protein signature (beta = 48.1 cm² per SD; $P < 0.001$) (**Figure 4**).

175 **Association between protein signatures of adiposity and cardiometabolic risk factors**

176 Using the T2DCC Set, we examined the associations between CVD risk factors and the protein
177 signatures. All adiposity-related predictors (BMI, BMI-protein signature, WC, and WC-protein
178 signature) were significantly associated with higher systolic blood pressure, low-density lipoprotein
179 (LDL) cholesterol, triglycerides, fasting glucose, hemoglobin A1c and lower high-density (HDL)
180 lipoprotein cholesterol, after adjustment for age, sex, and ethnicity. (**Supplementary Table 8**). A
181 comparison of effect sizes revealed significantly stronger associations of the protein signatures with
182 HDL-cholesterol, triglycerides, hemoglobin A1C, compared to the anthropometric measurements.

183 We also evaluated our protein signatures' ability to differentiate between metabolically healthy and
184 metabolically healthy obesity in the T2DCC set. We defined metabolically unhealthy obesity as
185 having 2 out of 4 metabolic abnormalities: (i) hypertension; (ii) elevated fasting plasma glucose; (iii)
186 elevated triglycerides; (iv) reduced HDL cholesterol. Among 1,262 overweight (BMI ≥ 23 kg/m²)
187 participants in the T2DCC set, 717 (56.8%) were metabolically unhealthy. After adjusting for age, sex,
188 ethnicity, and BMI, having a higher BMI-protein signature (per SD increment, OR = 2.36, 95% CI 1.93
189 to 2.88) or WC-protein signature (OR = 2.75, 95% CI 2.28 to 3.32) was associated with a higher odds
190 of being metabolically unhealthy. Results were similar when we used the international BMI cut-off of
191 25.0 kg/m² for overweight definition.

192 **Association between protein signatures of adiposity and T2D incidence**

193 We evaluated the associations between the incidence of T2D and the protein signatures within the
194 T2DCC Set. All predictor variables were standardized to facilitate the comparison of effect sizes
195 (**Figure 5 and Supplementary Table 9**). Both BMI (OR 1.91, 95% CI 1.70 to 2.14) and the BMI-protein
196 signature (OR 2.44, 95% CI 2.15 to 2.77) were significantly associated with T2D incidence, adjusted
197 for age, sex, and ethnicity. Mediation analysis was used to evaluate if the effects of BMI on T2D
198 incidence were mediated through the proteins in the BMI-protein signature. There was no evidence
199 of a direct effect of BMI (OR_{BMI-direct} 0.90, 95% CI 0.74 to 1.09), suggesting that the effect of BMI on
200 T2D incidence was mediated through the proteins in the general adiposity signature (OR_{BMI-indirect}
201 2.13, 95% CI 1.81 to 2.50). Similarly, both WC (OR 2.09, 95% CI 1.86 to 2.36) and the WC-protein
202 signature (OR 2.84, 95% CI 2.47 to 3.25) were significantly associated with T2D incidence, adjusted
203 for age, sex, and ethnicity. The direct effect of WC on T2D incidence was non-significant (OR_{WC-direct}
204 1.07, 95% CI 0.90 to 1.27), whereas the indirect effect of WC on T2D incidence was significant (OR_{WC-}
205 _{direct} 1.96, 95% CI 1.72 to 2.23), suggesting that the effect of WC on T2D incidence was mediated
206 through proteins in the WC-protein signature.

207 As the effects of adiposity on insulin resistance may be modified by ethnicity (12,13), we conducted
208 further mediation analyses stratified by ethnicity (**Supplementary Table 9**). We found a stronger
209 association between the BMI-protein signature and T2D among Malays (OR 2.96, 95% CI 2.33 to
210 3.77) and Chinese (OR 2.37, 95% CI 1.94 to 2.88) compared with Indians (OR 1.91, 95% CI 1.55 to
211 2.35) (*P*-interaction = 0.019). Similarly, the WC-protein signature was more strongly associated with
212 T2D incidence among Malays (OR 3.59, 95% CI 2.77 to 4.67) and Chinese (OR 2.72, 95% CI 2.20 to
213 3.37) compared with Indians (OR 2.21, 95% CI 1.76 to 2.77) (*P*-interaction = 0.028).

214 Finally, we evaluated the discrimination of our protein signatures in predicting T2D incidence using
215 the area under the receiver operating characteristic curve (AUC), which is an indicator of the model's
216 ability to differentiate between individuals that develop T2D versus those who do not
217 (**Supplementary Table 10**). After accounting for age, sex, and ethnicity, the AUC for using the BMI-
218 protein signature to predict T2D (AUC = 0.709, 95% CI 0.685 to 0.734) was significantly higher than
219 using BMI to predict T2D (AUC = 0.665, 95% CI 0.639, 0.691, *P*-value for difference in AUC <0.001).
220 Similarly, the AUC for using the WC-protein signature to predict T2D (AUC = 0.736, 95% CI 0.712 to
221 0.759) was significantly higher than WC (AUC = 0.682, 95% CI 0.657, 0.708, *P*-value for difference in
222 AUC <0.001).

223 **External validation in the ARIC study**

224 We performed external validation of our results in the ARIC study (n = 8,428), a population-based
225 U.S. cohort study. Participants in the ARIC study had a mean age of 56.7 (± 5.7) years, more likely to

226 be female (57%), and were white (81%) and African Americans (19%) (**Supplementary Table 11**). After
227 Bonferroni adjustment ($P < 0.05/124$ for BMI and $0.05/125$ for WC), 118 (95.2%) out of 124 proteins
228 in the BMI-protein signature and 124 (99.2%) out of 125 of the proteins in the WC-protein signature
229 were directionally consistent and significantly associated with BMI and WC, respectively
230 (**Supplementary Table 5 and Supplementary Figure 5**). Concordant with our findings, the BMI-
231 protein signature was highly correlated with BMI ($r = 0.822$) and the WC-protein signature was highly
232 correlated with WC ($r = 0.773$). A higher BMI-protein signature (HR per SD increment = 1.80, 95% CI
233 1.72 to 1.89) and WC-protein signature (HR = 1.97, 95% CI 1.87 to 2.07) at baseline was strongly
234 associated with the incidence of T2D over a median follow-up of 19.4 years.

235 **Pathway enrichment analysis**

236 In our pathway enrichment analysis, we identified 36 significant annotations from the BMI-protein
237 signature, and 28 significant annotations from the WC-protein signature (**Supplementary Table 12**).
238 Here, we highlight enriched pathways associated with the BMI- or WC-protein signature. Pathways
239 related to post-translational protein phosphorylation (REAC:R-HSA-8957275), the regulation of
240 insulin-like growth factor (IGF) transport and uptake by insulin-like growth factor binding proteins
241 (IGFBPs) (REAC:R-HSA-381426), and complement and coagulation cascades (KEGG:04610) were
242 significantly enriched ($P_{\text{FDR}} < 0.05$) in both BMI- and WC-protein signatures. In addition, pathways
243 involved in adenosine monophosphate-activated protein kinase (AMPK) signalling (KEGG:04152),
244 extracellular matrix (ECM) receptor interaction (KEGG:04512), and cell adhesion molecules (CAMs)
245 (KEGG:04514) were significantly enriched ($P_{\text{FDR}} < 0.05$) in the WC-protein signature.

246 **Discussion**

247 We conducted the largest study in populations of Asian ancestry involving ~5000 plasma proteins.
248 We identified 410 proteins that were associated with BMI and 385 proteins associated with waist
249 circumference of which 359 were shared. These associations were consistent across all three ethnic
250 groups in our study population and many replicated findings in white, African American, and
251 European populations highlighting the robustness of these findings to ethnic and geographical
252 variation. In addition, we identified associations with age and sex with effect sizes highly correlated
253 with findings from populations of European ancestry. Almost 2/3 of the proteins examined showed
254 <5% change within individuals over a period 6 years while about 20% showed poor reproducibility
255 over this time frame which may be helpful to evaluate associations with disease or to monitor
256 changes in physiology over time.

257 Of the 359 proteins associated with BMI and WC, we replicated several candidate proteins that were
258 recently identified to be obesity-associated proteins in European populations. These proteins include
259 kallistatin (SERPINA4) (3,6,7,14), E-selectin (SELE) (3,6,7,11,15,16), seizure-6-like protein (SEZ6L) (17),
260 reticulon-4 receptor (RTN4R) (3,7,18), and neuronal growth regulator 1 (NEGR1) (3,19,20). Previous
261 studies suggested that SERPINA4, SELE, and SEZ6L may be involved in the regulation of inflammation
262 and the immune system (16,21–23), and RTN4R and NEGR1 may be involved in the regulation of
263 energy metabolism through AMPK activation. We also identified novel proteins that were not
264 previously identified to be related to adiposity, most likely by virtue of the number of proteins
265 represented on this version of the assay. Some of these include serine protease high temperature
266 requirement A1 (HTRA1), syndecan-3 (SDC3), and complexin-2 (CPLX2). HTRA1 was previously shown
267 to regulate the availability of IGFs by cleaving IGFs (24) and may modulate IGF-1 signalling (25). In
268 addition, HTRA1 was recently suggested to inhibit adipogenesis by regulating the formation of
269 adipocytes and may potentially be an indicator of adipose tissue dysfunction (26). Polymorphisms in
270 the SDC3 gene have been associated with obesity in Korean (27) and Taiwanese adults (28). SDC3 is
271 involved in the regulation of appetite through the melanocortin system (29) and may therefore be a
272 potential therapeutic target to treating obesity. CPLX2 was recently suggested to play a role in the
273 translocation of glucose transporter 4 (GLUT4) which plays critical roles in glucose uptake regulation
274 (30), although it should be noted that GLUT4 translocation is an intracellular process and it is unclear
275 whether plasma levels of CPLX2 are related to this process. In addition, CPLX2 may also have a role in
276 the regulation of the immune system (31). We believe that at least a proportion of these findings are
277 replicable and biologically relevant and thus form a novel resource for the study of obesity and its
278 effects on human physiology.

279 Using supervised machine learning techniques, we identified protein signatures of BMI and WC
280 which were validated externally in the ARIC study. These signatures showed consistent associations
281 with BMI and WC at different time points, and the changes in the signatures were correlated with
282 changes in BMI and WC over time. The ability of these protein signatures to capture dynamic
283 changes in adiposity may provide the ability to better evaluate the response to treatment in
284 overweight/obese individuals. In contrast to the associations with BMI and WC, where >85% of
285 associations overlapped between these two anthropometric measures, slightly less than half of the
286 proteins included in these machine learning derived signatures overlapped. We further showed that
287 the BMI-protein signature was highly correlated with total body fat mass whereas the WC-protein
288 signature was more strongly correlated with VAT area and less strongly correlated with total body
289 fat mass, suggesting that the two signatures were able to capture the differences in plasma proteins

290 associated with adiposity in different anatomical compartments. To our knowledge, this has not
291 been demonstrated previously.

292 Compared to the anthropometric measures, both the BMI- and WC-protein signatures were more
293 strongly associated with HDL-cholesterol, triglycerides, and hemoglobin A1c levels. In prospective
294 analyses, both protein signatures were significantly associated with the incidence of T2D and fully
295 explained the associations between anthropometric measurements and diabetes risk. In addition,
296 our protein signatures were able to better differentiate those at a higher risk of T2D compared to
297 the anthropometric measurements. These findings suggest that the signatures are likely to capture
298 physiologically relevant changes that are not captured by traditional measures of adiposity.

299 Our observed differences in plasma protein signatures between metabolically healthy and
300 metabolically unhealthy obesity may inform potential therapeutic targets and biological pathways
301 behind the development of metabolically unhealthy obesity (32). Pathways related to complement
302 and coagulation cascades, IGF and IGFBPs regulation, and post-translational protein phosphorylation
303 were significantly enriched in both the BMI-and WC-protein signatures. The complement system is
304 part of the human innate immune system, and dysregulation of the complement system from an
305 overexpression of cytokines and adipose tissue-derived factors may lead to chronic inflammation
306 and the development of metabolic disorders such as insulin resistance and T2D (33). Similarly,
307 imbalances in levels of IGFs and IGFBPs has been linked to the dysregulation of fat metabolism and
308 insulin resistance (34–36), and the regulation of the bioactivity of IGFBP-1 through post-translational
309 phosphorylation may play an important role in mediating the effects of IGFBP-1 on glucose
310 metabolism (37). In addition, pathways involving AMPK signalling, ECM-receptor interaction, and
311 CAMs were enriched in the WC-protein signature. AMPK is the key enzyme involved in the regulation
312 of nutrient metabolism (38), and the dysregulation of AMPK has been linked to insulin resistance and
313 T2D (39). The over-activation of ECM receptor signalling pathways may lead to an increased
314 deposition of ECM that may further trigger inflammatory pathways downstream (40). Elevation of
315 CAMs have been previously associated with obesity and T2D (41,42), and is suggested to play an
316 important role in inflammation and atherogenesis (43). Taken together, the pathways enriched in
317 the adiposity-related protein signatures depict a state of dysregulated cell signalling, systemic
318 inflammation, and impaired glucose and fat metabolism. In addition, several of the pathways (e.g.,
319 complement pathways, ECM-receptor interaction, and IGFBP regulation) enriched in our adiposity-
320 related protein signatures were also enriched in a set of T2D-associated proteins identified by a
321 recent study on diabetes and plasma proteins among European adults (44), implying that pathways
322 associated with obesity may have a central role in the pathogenesis of diabetes.

323 Previous studies have reported ethnic differences in the association between obesity and insulin
324 resistance (12,45). Khoo et al. (12) demonstrated that the association of body fat percentage with
325 insulin resistance was weaker among ethnic Indians than Chinese and Malays residing in Singapore.
326 Furthermore, Retnakaran et al. (45) found that pre-pregnancy BMI was more strongly associated
327 with insulin resistance in East Asian women than South Asian women in Canada. In our study, while
328 the associations between plasma proteins and anthropometric measurements were consistent
329 across different populations, we observed stronger associations between the BMI- and WC-protein
330 signatures and T2D risk among Chinese and Malays compared with Indians. This suggested that the
331 observed ethnic differences in the associations between obesity and T2D may be explained by
332 potential differential effects of obesity-related proteins on T2D incidence.

333 The strengths of our study include the use of BMI and WC to capture both general and abdominal
334 adiposity signatures, the rigorous validation of our protein signatures which included (i) replication
335 of associations between proteins and anthropometric measures in an independent sample cross-
336 sectionally and longitudinally, (ii) validation against more precise measures of adiposity with DXA
337 and CT scans, and (iii) external replication of associations of proteins with anthropometric measures
338 and T2D incidence in a non-Asian population. Potential limitations of our study include the use of
339 BMI and WC as the proxy for general adiposity and abdominal adiposity in our training dataset.
340 Among participants with DXA and CT scans, BMI was highly correlated with total body fat mass ($r =$
341 0.87) and WC was highly correlated ($r = 0.80$) with VAT area, suggesting that BMI and WC were
342 indicative of general and abdominal adiposity in our sample. Second, the plasma proteome includes
343 both secreted proteins and leakage proteins, and the concentration of leakage proteins in the
344 plasma may not be a direct reflection of its biological activity in the cells. Nonetheless, the plasma
345 proteome including both secreted and leakage proteins have been shown to be informative about
346 the current and future state of health (11,46). Third, we were not able to infer causality as the
347 associations between plasma proteins and anthropometric measurements were cross-sectional.
348 Even though our participants did not have T2D at baseline, it is possible that early manifestations of
349 diabetes may have influenced plasma protein levels. Last, while studies have demonstrated the
350 specificity of the SomaScan assay (3,46), it remains possible that some proteins may not be correctly
351 identified by the SomaScan platform used in our study.

352 In conclusion, our findings on adiposity-related proteins are robust across ethnic and geographically
353 diverse groups. Our protein signatures have potential uses for the assessment of metabolically
354 adverse adiposity and to monitor changes therein during interventions. While further studies are
355 needed to evaluate the causal relationship between the identified proteins and adiposity, the large
356 extent to which the proteins appear to mediate associations between body fatness and the risk of

357 type 2 diabetes can lead to a better understanding of the mechanisms relating obesity and diabetes
358 and why sub-groups of the population appear to be more affected by the effects of obesity on
359 metabolic health than others.

360 **Online Methods**

361 **Study design**

362 An overview of this study is shown in **Figure 1**. Participants in this study were sampled from the
363 Singapore Multi-Ethnic Cohort Phase 1 (MEC1), a prospective cohort study initiated to investigate
364 the impact of lifestyle factors and molecular biomarkers on health and chronic diseases. Details
365 about the MEC1 have been previously documented (9). Briefly, the MEC1 is a population-based
366 cohort comprising of 14,465 male and female adults recruited between 2004 to 2010 when they
367 were 21 years and older. Oversampling of ethnic minorities (Malay and Indians) was done to achieve
368 a good representation of three major Asian ethnic groups in Singapore—Chinese, Malay, and Indian.
369 Between 2011 to 2016 (mean follow-up of 6.4 years), 6,112 participants agreed to a follow-up visit.
370 For both the baseline and follow-up study, participants completed a standardized interviewer-
371 administered questionnaire on socio-demographic characteristics, lifestyle, and medical history.
372 Participants were also invited to a health screening facility for a physical examination conducted by
373 trained research staff. Height was measured without shoes on a portable stadiometer while weight
374 was measured on a digital scale. WC was measured by trained research staff using a stretch-resistant
375 tape at the mid-point between the last rib and iliac crest. Blood was drawn for biomarker
376 measurements and biobanking. For the latter, the blood samples were transported at 4–8°C to
377 biobank laboratories where they were processed and stored frozen at -80°C on the same day.

378 At follow-up, a subset of Chinese participants also underwent Dual-Energy X-ray Absorptiometry
379 (DXA) and Computed Tomography (CT) scan for a more comprehensive assessment of body fat
380 composition and intra-abdominal fat distribution, as previously described (47). For the DXA
381 measurements, body composition measurements including total body fat mass, trunk fat mass,
382 android fat mass, and lean body mass were assessed using a medium speed total body acquisition
383 mode (Discovery Wi, Hologic, Bedford, MA, and software Hologic Apex 3.01). For the CT scan, images
384 at the inter-vertebral space L2/L3 and L4/L5 levels were identified by a single observer (sliceOmatic
385 version 5.0, Tomovision, Magog, Canada). The images were subsequently analyzed by two
386 independent readers using a workstation (eFilm Workstation version 4.0, Hartland, USA) and the
387 readings for visceral adipose tissue (VAT) area and subcutaneous adipose tissue (SAT) area were
388 averaged. The average inter-observer coefficient of variation was 2.34% for SAT and 3.22% for VAT
389 at L2/L3 level. For the present analysis, we used SAT and VAT area at the L2/L3 inter-vertebral space

390 as VAT area at L2/L3 was found to be most strongly correlated with VAT volume and cardiovascular
391 risk factors among Chinese adults (48).

392 We selected two groups of participants to be profiled on the SomaScan proteomic assay. The first
393 group was a random sample of 720 participants (hereafter referred as the Population Set) with
394 plasma samples available at both baseline and follow-up and equal numbers in each sex and ethnic
395 group (n = 120 each). For the second group, we conducted a nested case-control study including 759
396 incident type 2 diabetes (T2D) cases and 1,484 matched controls, hereafter referred as the T2D case-
397 control (T2DCC) set. Incident diabetes cases were ascertained through record linkage with a national
398 health care database, self-reports of a physician-diagnosis of diabetes at follow-up, or having a
399 fasting blood glucose $\geq 7\text{mmol/L}$ or random blood glucose $\geq 11\text{mmol/L}$ or glycated hemoglobin A1c \geq
400 6.5% at follow-up (49). Controls were selected using risk-set sampling and were matched 1:2
401 according to age (± 5 years), sex, ethnicity, and date of blood collection (± 2 years). Of 4,897 samples
402 from 2,981 participants sent to SomaLogic, 609 samples were not measured due to shipment issues.
403 We excluded samples that did not pass SomaLogic quality control (n = 82), duplicate samples at
404 baseline (n = 4), participants from ethnic groups other than Chinese, Malay, or Indian (n = 2),
405 participants with physician diagnosed heart diseases, stroke, or T2D at baseline (n = 26), and those
406 with missing anthropometric data (n = 10). The final number of participants for analyses was 631
407 from the Population Set, and 616 cases and 1,200 controls from the T2DCC Set. (**Supplementary**
408 **Table 13**). Among these participants, 598 of the Population set, 327 cases, and 487 controls had
409 both baseline and follow-up data. Written consent was obtained from all participants and this study
410 was approved by the National University of Singapore Institutional Review Board (reference code: N-
411 18-059).

412 We externally replicated our findings in the Atherosclerosis Risk in Communities (ARIC) Study, a
413 population-based cohort study in the USA. Participants were male and female adults and white and
414 African American. Details on the ARIC study have been reported elsewhere (50). After exclusion of
415 participants with prevalent diabetes (defined based on self-report diagnosis, medication use, fasting
416 glucose $\geq 7\text{mmol/L}$, or HbA1c $\geq 6.5\%$) or heart diseases at baseline, we included a total of 8,428 ARIC
417 participants with proteomic data measured on the SomaScan V4 platform during Visit 2 (1990-1992)
418 in our analyses. Over a median follow-up duration of 19.4 years, 1,800 diabetes incident cases were
419 ascertained based on self-reported diagnosis by a healthcare provider or glucose-lowering
420 medication use reported by participants during annual follow-up telephone calls or clinic visits.

421 **Proteomic assay**

422 Relative protein abundances were measured in plasma samples using an aptamer-based technology
423 (SomaScan V4 assay) by SomaLogic, Inc. (Boulder, Colorado, US). Details of the SomaScan assay
424 (51,52), and the reproducibility and specificity of the SomaScan assay have been reported previously
425 (3,11,46,53,54).

426 For this study, relative fluorescence units (RFU) for 5,284 SOMAmers were obtained (**Supplementary**
427 **Table 2**). After the exclusion of 298 SOMAmers that targeted non-human proteins, 7 deprecated
428 SOMAmers and 1 SOMAmer that targeted a protein whose annotation was withdrawn by the
429 National Center for Biotechnology Information (55), 4,978 SOMAmers targeting 4,775 human
430 proteins remained. A total of 82 samples (2%) were excluded from the subsequent analyses as the
431 scale factors exceeded the SomaLogic's recommended range of 0.4–2.5.

432 As an additional quality check, we compared SomaLogic's measurement of four proteins (C-reactive
433 protein, insulin, adiponectin, and interleukin-1 receptor antagonist) against the values measured by
434 our laboratories using traditional assays. The Spearman rank correlation coefficients were: 0.97–0.98
435 for C-reactive protein, 0.47–0.58 for insulin, 0.88–0.90 for adiponectin and 0.60 for interleukin-1
436 receptor antagonist protein. More details of the assays are reported in **Supplementary Table 14**.

437 **Statistical analysis**

438 All data analyses were performed using R version 4.2.0 and were based on \log_2 transformed RFU.
439 For all analyses except for the intraclass correlation (ICC) and median fold change over time, protein
440 levels in the log-scale were winsorized at ± 5 standard deviations to reduce the impact of extreme
441 outliers. All *P*-values reported are from two-sided tests.

442 **Protein stability over time and association with demographic characteristics**

443 To evaluate the reliability of protein levels over a ~6-year period among participants who did not
444 develop T2D during the period, we computed the median fold change over time (ratio between
445 protein levels at baseline and follow-up) and ICC among participants from the Population Set and
446 controls from the T2DCC Set with both baseline and follow-up data ($n = 1,085$). We used a two-way
447 mixed-effects model for absolute agreement ICC (56). ICC values above 0.75 suggest that the intra-
448 individual variability in protein level is low, while values between 0.50–0.75 suggest moderate
449 variability over time, and values below 0.50 suggest high variability over time (56).

450 We also evaluated the associations between protein levels and age, sex, and ethnicity using
451 multivariable linear regression models that mutually adjusted for the mentioned demographic
452 predictors. The overall significance of ethnicity was determined using a likelihood ratio test. A

453 Bonferroni corrected threshold ($0.05/4978 = 1.00 \times 10^{-5}$) was used to determine statistical
454 significance.

455 **Discovery and internal validation of protein signatures of general (BMI) and abdominal (WC)** 456 **adiposity**

457 We used BMI as a proxy of general adiposity and WC as a proxy of abdominal adiposity. Using data
458 from the Population Set at baseline as the discovery dataset, we evaluated ethnic-specific
459 associations between protein levels and adiposity (BMI or WC) adjusted for age and sex. The ethnic-
460 specific results were pooled using fixed-effects inverse-variance meta-analysis.

461 To identify a set of proteins for the general and abdominal adiposity signatures, we first selected
462 proteins that were consistently associated across the ethnic groups using the following criteria: (i)
463 significantly associated with the trait of interest (BMI or WC) at the Bonferroni corrected threshold
464 ($P < 1.00 \times 10^{-05}$), (ii) had the same direction of association across three ethnic groups, and (iii) had no
465 evidence of statistical heterogeneity using the Cochran Q test ($P_{\text{het}} > 1.00 \times 10^{-05}$). For proteins
466 targeted by multiple SOMAmers, the SOMAmer with the smallest P -value was selected. Using the
467 associated proteins, we performed 100 replicates of 10-fold cross validation elastic net regression
468 analysis (57). The elastic net regression is a regularized regression method that enables automatic
469 variable selection and variance reduction (57). The output from the elastic net regression analysis
470 was a selected list of proteins with non-zero beta coefficients. The BMI-protein and WC-protein
471 signatures were calculated as the weighted sum of the concentration of the proteins, with the
472 weights being the beta coefficients from the elastic net regression model.

473 Using the T2DCC Set as the validation dataset, we first examined the cross-sectional correlations
474 between the protein signatures and BMI and WC at baseline and follow-up, and the correlations
475 between changes in the protein signatures and changes in BMI and WC over a ~6-year period. On a
476 subset of Chinese participants with body composition measurements (total body fat mass, trunk fat
477 mass, android fat mass, and percentage of lean mass) ($n = 207$) and VAT and SAT measurements ($n =$
478 151), we also computed the Pearson correlation coefficients.

479 **Association between adiposity signatures and CVD risk factors**

480 We evaluated the associations between the adiposity signatures and CVD risk factors (systolic blood
481 pressure, high-density lipoprotein cholesterol, low-density lipoprotein cholesterol, triglycerides,
482 fasting glucose, and glycated hemoglobin A1c) among participants in the T2DCC Set. We used linear
483 regression models adjusted for age, sex, and ethnicity and standardized all predictor variables to
484 facilitate the comparison of effect sizes with BMI and WC. The difference in standardized beta

485 coefficients was evaluated using the Z-test. Participants on anti-hypertensive medication were
486 excluded from analyses involving systolic blood pressure, and participants on lipid-lowering
487 medications were excluded from analyses involving blood lipids.

488 We also evaluated our protein signatures' ability to differentiate between metabolically healthy and
489 metabolically healthy obesity (58). For this analysis, we focused on overweight or obese individuals
490 ($\text{BMI} \geq 23.0 \text{ kg/m}^2$) in the T2DCC set. We defined metabolically unhealthy as having 2 or more of the
491 4 metabolic abnormalities: (i) hypertension defined as having a systolic blood pressure ≥ 130 mmHg
492 or diastolic blood pressure ≥ 85 mmHg; (ii) elevated fasting plasma glucose defined as ≥ 5.6 mmol/L,
493 (iii) elevated triglycerides defined as ≥ 1.7 mmol/L, and (iii) reduced high density lipoprotein
494 cholesterol defined as < 1.0 mmol/L for males and < 1.3 mmol/L for females. We used logistic
495 regression models with metabolic health status as outcome and standardized protein signatures as
496 predictors, adjusted for age, sex, ethnicity, and BMI.

497 **Association between adiposity signatures and T2D incidence**

498 We applied the BMI and WC protein signatures on the T2DCC Set to examine the association with
499 T2D incidence using logistic regression models adjusted for age, sex, and ethnicity. Variables were
500 expressed as per 1 standard deviation (SD) to facilitate comparison with BMI and WC. Mediation
501 analysis using natural effects models (Medflex R package version 0.6-7) (59) was used to evaluate if
502 the association between the BMI and WC and T2D incidence was mediated by the respective protein
503 signatures. We assessed the discrimination of the models using the AUC calculated using the pROC R
504 package version 1.18.2.

505 **External validation of protein signatures in the ARIC study**

506 Data from the ARIC study was used for the external validation of our findings. First, we evaluated the
507 associations between anthropometric measurements and each protein in the BMI- and WC-protein
508 signatures, adjusted for age, sex, race, and study center. We consider our adiposity-protein
509 associations replicated if it was statistically significant at the Bonferroni threshold ($P < 0.05/124$ for
510 BMI and $P < 0.05/125$ for WC) and directionally consistent with the ARIC study. Next, we computed
511 the BMI- and WC-protein signature for each ARIC participant using the weights identified in the
512 Singapore cohort and assessed their correlations with BMI and WC. Finally, we evaluated the
513 associations between T2D incidence and both protein signatures using Cox proportional hazards
514 model, adjusted for age, sex, race, and study center.

515 **Functional annotation and pathway enrichment analysis**

516 We performed functional annotation of the proteins using the UniProt Knowledgebase (60). We also
517 queried the Gene Ontology (GO) (61), Kyoto Encyclopedia of Genes and Genomes (KEGG) (62), and
518 Reactome (63) databases using the gprofiler2 R package version 0.2.1 (64) to identify functional
519 annotations and pathways that are significantly overexpressed in the sets of proteins in the BMI- and
520 WC-protein signatures using the hypergeometric test. We used all proteins measured by the
521 SomaScan V4 as the custom background to avoid false positives due to the functional properties of
522 the assay (65). Annotations were considered to be significant at a false discovery rate (FDR)
523 corrected P -value of 0.05 (66).

524 **Acknowledgements**

525 We thank all participants, study team and investigators for their contributions to research. The MEC
526 study is supported by individual research and clinical scientist award schemes from the Singapore
527 National Medical Research Council (NMRC, including MOH-000271-00) and the Singapore Biomedical
528 Research Council (BMRC), the Singapore Ministry of Health (MOH), the National University of
529 Singapore (NUS) and the Singapore National University Health System (NUHS). The Atherosclerosis
530 Risk in Communities study has been funded in whole or in part with Federal funds from the National
531 Heart, Lung, and Blood Institute, National Institutes of Health, Department of Health and Human
532 Services, under Contract nos. (75N92022D00001, 75N92022D00002, 75N92022D00003,
533 75N92022D00004, 75N92022D00005). The funders had no role in the design, implementation,
534 analysis, and interpretation of the data.

535

536 **References**

- 537 1. Hruby A, Hu FB. The Epidemiology of Obesity: A Big Picture. *Pharmacoeconomics*. 2015 Dec
538 4;33(7):673–89.
- 539 2. Riaz H, Khan MS, Siddiqi TJ, Usman MS, Shah N, Goyal A, et al. Association Between Obesity
540 and Cardiovascular Outcomes: A Systematic Review and Meta-analysis of Mendelian
541 Randomization Studies. *JAMA Netw Open*. 2018 Nov 2;1(7):e183788–e183788.
- 542 3. Sun BB, Maranville JC, Peters JE, Stacey D, Staley JR, Blackshaw J, et al. Genomic atlas of the
543 human plasma proteome. *Nature*. 2018 Jun 6;558(7708):73–9.
- 544 4. Hanash S. Disease proteomics. *Nature*. 2003 Mar 13;422(6928):226–32.
- 545 5. Haslam DE, Li J, Dillon ST, Gu X, Cao Y, Zeleznik OA, et al. Stability and reproducibility of
546 proteomic profiles in epidemiological studies: comparing the Olink and SOMAscan platforms.
547 *Proteomics*. 2022 Jul 1;22(13–14):2100170.
- 548 6. Carayol J, Chabert C, Di Cara A, Armenise C, Lefebvre G, Langin D, et al. Protein quantitative
549 trait locus study in obesity during weight-loss identifies a leptin regulator. *Nat Commun*. 2017
550 Dec 1;8(1).
- 551 7. Zaghlool SB, Sharma S, Molnar M, Matías-García PR, Elhadad MA, Waldenberger M, et al.
552 Revealing the role of the human blood plasma proteome in obesity using genetic drivers. *Nat*
553 *Commun*. 2021 Feb 24;12(1):1–13.
- 554 8. Ma RCW, Chan JCN. Type 2 diabetes in East Asians: similarities and differences with
555 populations in Europe and the United States. *Ann N Y Acad Sci*. 2013;1281(1):64–91.
- 556 9. Tan KHX, Tan LWL, Sim X, Tai ES, Lee JJM, Chia KS, et al. Cohort Profile: The Singapore Multi-
557 Ethnic Cohort (MEC) study. *Int J Epidemiol*. 2018;47(3):699–699j.
- 558 10. Ferkingstad E, Sulem P, Atlason BA, Sveinbjornsson G, Magnusson MI, Styrismisdottir EL, et al.
559 Large-scale integration of the plasma proteome with genetics and disease. *Nat Genet*. 2021
560 Dec 2;53(12):1712–21.
- 561 11. Williams SA, Kivimaki M, Langenberg C, Hingorani AD, Casas JP, Boucharde C, et al. Plasma
562 protein patterns as comprehensive indicators of health. *Nat Med*. 2019 Dec 2;25(12):1851–7.
- 563 12. Khoo CM, Khee-Shing Leow M, Sadananthan SA, Lim R, Venkataraman K, Khoo EYH, et al.
564 Body Fat Partitioning Does Not Explain the Interethnic Variation in Insulin Sensitivity Among
565 Asian Ethnicity: The Singapore Adults Metabolism Study. *Diabetes*. 2014 Mar 1;63(3):1093–

- 566 102.
- 567 13. Khoo CM, Sairazi S, Taslim S, Gardner D, Wu Y, Lee J, et al. Ethnicity Modifies the
568 Relationships of Insulin Resistance, Inflammation, and Adiponectin With Obesity in a
569 Multiethnic Asian Population. *Diabetes Care*. 2011 May 1;34(5):1120–6.
- 570 14. Zhu H, Chao J, Kotak I, Guo D, Parikh SJ, Bhagatwala J, et al. Plasma kallistatin is associated
571 with adiposity and cardiometabolic risk in apparently healthy African American adolescents.
572 *Metabolism*. 2013 May;62(5):642.
- 573 15. Lee CH, Kuo FC, Tang WH, Lu CH, Su SC, Liu JS, et al. Serum E-selectin concentration is
574 associated with risk of metabolic syndrome in females. *PLoS One*. 2019 Sep 1;14(9).
- 575 16. Zanni M V., Stanley TL, Makimura H, Chen CY, Grinspoon SK. Effects of TNF-alpha antagonism
576 on E-selectin in obese subjects with metabolic dysregulation. *Clin Endocrinol (Oxf)*.
577 2010;73(1):48.
- 578 17. Harlid S, Myte R, Van Guelpen B. The Metabolic Syndrome, Inflammation, and Colorectal
579 Cancer Risk: An Evaluation of Large Panels of Plasma Protein Markers Using Repeated,
580 Prediagnostic Samples. *Mediators Inflamm*. 2017;2017.
- 581 18. Wang X, Yang Y, Zhao D, Zhang S, Chen Y, Chen Y, et al. Inhibition of high-fat diet-induced
582 obesity via reduction of ER-resident protein Nogo occurs through multiple mechanisms. *J Biol*
583 *Chem*. 2022 Feb 1;298(2):101561.
- 584 19. Willer CJ, Speliotes EK, Loos RJF, Li S, Lindgren CM, Heid IM, et al. Six new loci associated with
585 body mass index highlight a neuronal influence on body weight regulation. *Nat Genet*. 2009
586 Jan;41(1):25–34.
- 587 20. Bauer F, Elbers CC, Adan RAH, Loos RJF, Onland-Moret NC, Grobbee DE, et al. Obesity genes
588 identified in genome-wide association studies are associated with adiposity measures and
589 potentially with nutrient-specific food preference. *Am J Clin Nutr*. 2009 Oct 1;90(4):951–9.
- 590 21. Frühbeck G, Gómez-Ambrosi J, Rodríguez A, Ramírez B, Valentí V, Moncada R, et al. Novel
591 protective role of kallistatin in obesity by limiting adipose tissue low grade inflammation and
592 oxidative stress. *Metabolism*. 2018 Oct 1;87:123–35.
- 593 22. Qiu WQ, Luo S, Ma SA, Saminathan P, Li H, Gunnarsen JM, et al. The Sez6 Family Inhibits
594 Complement by Facilitating Factor I Cleavage of C3b and Accelerating the Decay of C3
595 Convertases. *Front Immunol*. 2021 Apr 15;12:1171.

- 596 23. Shah T, Zabaneh D, Gaunt T, Swerdlow DI, Shah S, Talmud PJ, et al. Gene-centric analysis
597 identifies variants associated with interleukin-6 levels and shared pathways with other
598 inflammation markers. *Circ Cardiovasc Genet*. 2013 Apr;6(2):163–70.
- 599 24. Hou J, Clemmons DR, Smeekens S. Expression and characterization of a serine protease that
600 preferentially cleaves insulin-like growth factor binding protein-5. *J Cell Biochem*. 2005 Feb
601 15;94(3):470–84.
- 602 25. Jacobo SMP, DeAngelis MM, Kim IK, Kazlauskas A. Age-Related Macular Degeneration-
603 Associated Silent Polymorphisms in HtrA1 Impair Its Ability To Antagonize Insulin-Like Growth
604 Factor 1. *Mol Cell Biol*. 2013 May 1;33(10):1976.
- 605 26. Tiaden AN, Bahrenberg G, Mirsaidi A, Glanz S, Blüher M, Richards PJ. Novel Function of Serine
606 Protease HTRA1 in Inhibiting Adipogenic Differentiation of Human Mesenchymal Stem Cells
607 via MAP Kinase-Mediated MMP Upregulation. *Stem Cells*. 2016 Jun 1;34(6):1601–14.
- 608 27. Ha E, Kim MJ, Choi BK, Rho JJ, Oh DJ, Rho TH, et al. Positive Association of Obesity with Single
609 Nucleotide Polymorphisms of Syndecan 3 in the Korean Population. *J Clin Endocrinol Metab*.
610 2006 Dec 1;91(12):5095–9.
- 611 28. Chang BCC, Hwang LC, Huang WH. Positive Association of Metabolic Syndrome with a Single
612 Nucleotide Polymorphism of Syndecan-3 (rs2282440) in the Taiwanese Population. *Int J*
613 *Endocrinol*. 2018;2018.
- 614 29. Reizes O, Benoit SC, Strader AD, Clegg DJ, Akunuru S, Seeley RJ. Syndecan-3 Modulates Food
615 Intake by Interacting with the Melanocortin/AgRP Pathway. *Ann N Y Acad Sci*. 2003 Jun
616 1;994(1):66–73.
- 617 30. Pavarotti MA, Tokarz V, Frendo-Cumbo S, Bilan PJ, Liu Z, Zanni-Ruiz E, et al. Complexin-2
618 redistributes to the membrane of muscle cells in response to insulin and contributes to
619 GLUT4 translocation. *Biochem J*. 2021 Jan 29;478(2):407–22.
- 620 31. Tsuru E, Oryu K, Sawada K, Nishihara M, Tsuda M. Complexin 2 regulates secretion of
621 immunoglobulin in antibody-secreting cells. *Immunity, Inflamm Dis*. 2019 Dec 1;7(4):318–25.
- 622 32. Iacobini C, Pugliese G, Blasetti Fantauzzi C, Federici M, Menini S. Metabolically healthy versus
623 metabolically unhealthy obesity. *Metabolism*. 2019 Mar 1;92:51–60.
- 624 33. Shim K, Begum R, Yang C, Wang H. Complement activation in obesity, insulin resistance, and
625 type 2 diabetes mellitus. *World J Diabetes*. 2020 Jan 1;11(1):1.

- 626 34. Friedrich N, Thuesen B, Jørgensen T, Juul A, Spielhagen C, Wallaschofski H, et al. The
627 Association Between IGF-I and Insulin Resistance: A general population study in Danish
628 adults. *Diabetes Care*. 2012 Apr;35(4):768.
- 629 35. Haywood NJ, Slater TA, Matthews CJ, Wheatcroft SB. The insulin like growth factor and
630 binding protein family: Novel therapeutic targets in obesity & diabetes. *Mol Metab*. 2019 Jan
631 1;19:86.
- 632 36. Clemmons DR. Role of IGF-binding proteins in regulating IGF responses to changes in
633 metabolism. *J Mol Endocrinol*. 2018 Jul 1;61(1):T139–69.
- 634 37. Heald AH, Siddals KW, Fraser W, Taylor W, Kaushal K, Morris J, et al. Low Circulating Levels of
635 Insulin-Like Growth Factor Binding Protein-1 (IGFBP-1) Are Closely Associated With the
636 Presence of Macrovascular Disease and Hypertension in Type 2 Diabetes. *Diabetes*. 2002 Aug
637 1;51(8):2629–36.
- 638 38. Herzig S, Shaw RJ. AMPK: guardian of metabolism and mitochondrial homeostasis. *Nat Rev*
639 *Mol Cell Biol* 2017 192. 2017 Oct 4;19(2):121–35.
- 640 39. Coughlan KA, Valentine RJ, Ruderman NB, Saha AK. AMPK activation: a therapeutic target for
641 type 2 diabetes? *Diabetes, Metab Syndr Obes Targets Ther*. 2014 Jun 24;7:241.
- 642 40. Lin D, Chun TH, Kang L. Adipose extracellular matrix remodelling in obesity and insulin
643 resistance. *Biochem Pharmacol*. 2016 Nov 1;119:8–16.
- 644 41. Hegazy GA, Awan Z, Hashem E, Al-Ama N, Abunaji AB. Levels of soluble cell adhesion
645 molecules in type 2 diabetes mellitus patients with macrovascular complications. *J Int Med*
646 *Res*. 2020;48(4):1–11.
- 647 42. Miller MA, Cappuccio FP. Cellular adhesion molecules and their relationship with measures of
648 obesity and metabolic syndrome in a multiethnic population. *Int J Obes* 2006 308. 2006 Mar
649 7;30(8):1176–82.
- 650 43. Hope SA, Meredith IT. Cellular adhesion molecules and cardiovascular disease. Part I. Their
651 expression and role in atherogenesis. *Intern Med J*. 2003 Aug 1;33(8):380–6.
- 652 44. Gudmundsdottir V, Zaghlool SB, Emilsson V, Aspelund T, Ilkov M, Gudmundsson EF, et al.
653 Circulating Protein Signatures and Causal Candidates for Type 2 Diabetes. *Diabetes*. 2020 Aug
654 1;69(8):1843.
- 655 45. Retnakaran R, Hanley AJG, Connelly PW, Sermer M, Zinman B. Ethnicity Modifies the Effect of

- 656 Obesity on Insulin Resistance in Pregnancy: A Comparison of Asian, South Asian, and
657 Caucasian Women. *J Clin Endocrinol Metab*. 2006 Jan 1;91(1):93–7.
- 658 46. Emilsson V, Ilkov M, Lamb JR, Finkel N, Gudmundsson EF, Pitts R, et al. Co-regulatory
659 networks of human serum proteins link genetics to disease. *Science*. 2018 Aug
660 8;361(6404):769.
- 661 47. Khaing NEE, Shyong TE, Lee J, Soekojo CY, Ng A, Van Dam RM. Epicardial and visceral adipose
662 tissue in relation to subclinical atherosclerosis in a Chinese population. *PLoS One*. 2018 Apr
663 1;13(4):e0196328.
- 664 48. Ng AC, Wai DC, Tai ES, Ng KM, Chan LL. Visceral adipose tissue, but not waist circumference is
665 a better measure of metabolic risk in Singaporean Chinese and Indian men. *Nutr Diabetes*.
666 2012 Aug 6;2(8):e38–e38.
- 667 49. American Diabetes Association. 2. Classification and Diagnosis of Diabetes: Standards of
668 Medical Care in Diabetes—2021. *Diabetes Care*. 2021 Jan 1;44(Supplement_1):S15–33.
- 669 50. Steffen BT, Tang W, Lutsey PL, Demmer RT, Selvin E, Matsushita K, et al. Proteomic analysis of
670 diabetes genetic risk scores identifies complement C2 and neuropilin-2 as predictors of type 2
671 diabetes: the Atherosclerosis Risk in Communities (ARIC) Study. *Diabetologia*. 2022 Jan
672 1;66(1):105–15.
- 673 51. Rohloff JC, Gelinis AD, Jarvis TC, Ochsner UA, Schneider DJ, Gold L, et al. Nucleic Acid Ligands
674 With Protein-like Side Chains: Modified Aptamers and Their Use as Diagnostic and
675 Therapeutic Agents. *Mol Ther Nucleic Acids*. 2014;3(10):e201.
- 676 52. Gold L, Ayers D, Bertino J, Bock C, Bock A, Brody EN, et al. Aptamer-Based Multiplexed
677 Proteomic Technology for Biomarker Discovery. *PLoS One*. 2010;5(12):e15004.
- 678 53. Kim CH, Tworoger SS, Stampfer MJ, Dillon ST, Gu X, Sawyer SJ, et al. Stability and
679 reproducibility of proteomic profiles measured with an aptamer-based platform. *Sci Reports*
680 2018 81. 2018 May 30;8(1):1–10.
- 681 54. Tin A, Yu B, Ma J, Masushita K, Daya N, Hoogeveen RC, et al. Reproducibility and Variability of
682 Protein Analytes Measured Using a Multiplexed Modified Aptamer Assay. *J Appl Lab Med*.
683 2019 Jul 1;4(1):30.
- 684 55. NCBI. LOC652493 ig kappa chain V-I region HK102-like [Homo sapiens (human)] - Gene - NCBI
685 [Internet]. 2011.

- 686 56. Koo TK, Li MY. A Guideline of Selecting and Reporting Intraclass Correlation Coefficients for
687 Reliability Research. *J Chiropr Med*. 2016 Jun 1;15(2):155.
- 688 57. Zou H, Hastie T. Regularization and variable selection via the elastic net. *J R Stat Soc Ser B*
689 (Statistical Methodol. 2005 Apr 1;67(2):301–20.
- 690 58. Blüher M. Metabolically Healthy Obesity. *Endocr Rev*. 2020 Jun 1;41(3):405–20.
- 691 59. Steen J, Loeys T, Moerkerke B, Vansteelandt S. medflex: An R Package for Flexible Mediation
692 Analysis using Natural Effect Models. *J Stat Softw*. 2017 Feb 27;76(1):1–46.
- 693 60. Bateman A, Martin MJ, Orchard S, Magrane M, Ahmad S, Alpi E, et al. UniProt: the Universal
694 Protein Knowledgebase in 2023. *Nucleic Acids Res*. 2023 Jan 6;51(D1):D523–31.
- 695 61. Ashburner M, Ball CA, Blake JA, Botstein D, Butler H, Cherry JM, et al. Gene Ontology: tool for
696 the unification of biology. *Nat Genet*. 2000 May;25(1):25.
- 697 62. Kanehisa M, Goto S. KEGG: Kyoto Encyclopedia of Genes and Genomes. *Nucleic Acids Res*.
698 2000 Jan 1;28(1):27–30.
- 699 63. Fabregat A, Jupe S, Matthews L, Sidiropoulos K, Gillespie M, Garapati P, et al. The Reactome
700 Pathway Knowledgebase. *Nucleic Acids Res*. 2018 Jan 1;46(Database issue):D649.
- 701 64. Kolberg L, Raudvere U, Kuzmin I, Vilo J, Peterson H. gprofiler2 -- an R package for gene list
702 functional enrichment analysis and namespace conversion toolset g:Profiler. *F1000Research*.
703 2020 Jul 15;9:709.
- 704 65. Reimand J, Isserlin R, Voisin V, Kucera M, Tannus-Lopes C, Rostamianfar A, et al. Pathway
705 enrichment analysis and visualization of omics data using g:Profiler, GSEA, Cytoscape and
706 EnrichmentMap. *Nat Protoc*. 2019 Feb 1;14(2):482.
- 707 66. Benjamini Y, Hochberg Y. Controlling the False Discovery Rate: A Practical and Powerful
708 Approach to Multiple Testing. *J R Stat Soc Ser B*. 1995 Jan 1;57(1):289–300.

709

710

711

712

713

714

715

716

717

718

719 Tables and Figures

Table 1. Pearson correlation coefficients between body mass index (BMI) and waist circumference (WC) protein signatures and anthropometric, DXA, and CT adiposity measurements in the T2DCC Set.

	BMI signature			WC signature		
	Cases	Controls	Combined	Cases	Controls	Combined
<u>Anthropometric measurements at baseline¹</u>						
BMI, kg/m ²	0.815	0.847	0.842	0.675	0.731	0.726
WC, cm	0.639	0.717	0.716	0.675	0.798	0.778
<u>Anthropometric measurements at follow-up²</u>						
BMI, kg/m ²	0.809	0.829	0.823	0.696	0.712	0.713
WC, cm	0.712	0.742	0.752	0.726	0.791	0.783
<u>DXA measurements³</u>						
Total body fat mass, kg	0.756	0.789	0.782	0.628	0.583	0.619
Lean mass, %	-0.482	-0.484	-0.488	-0.270	-0.171	-0.232
Android fat mass, kg	0.755	0.787	0.787	0.706	0.689	0.717
Trunk fat mass, kg	0.764	0.812	0.801	0.685	0.665	0.691
<u>CT measurements⁴</u>						
SAT volume, cm ²	0.499	0.641	0.596	0.418	0.378	0.433
VAT volume, cm ²	0.542	0.719	0.676	0.603	0.776	0.735

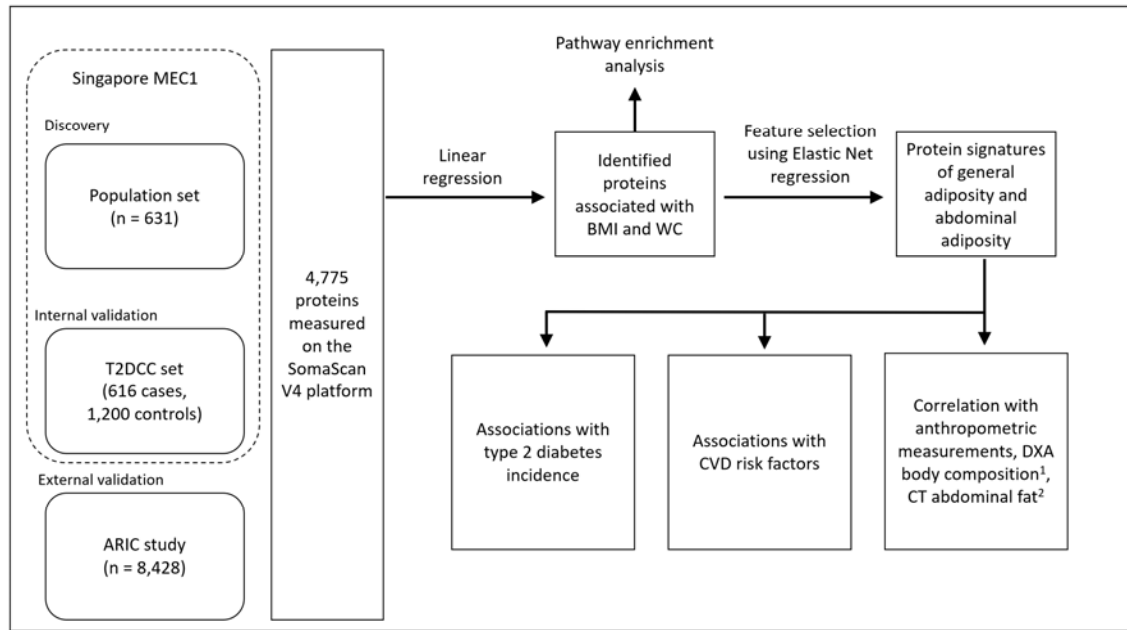
All correlation coefficients were statistically significant at $P < 0.001$. Abbreviations: BMI, body mass index; Computed Tomography, CT; DXA, Dual-Energy X-ray Absorptiometry; SAT, subcutaneous adipose tissue; T2DCC, type 2 diabetes case control; VAT, visceral adipose tissue; WC, waist circumference.

¹ Measured among all participants in the T2DCC Set at baseline; n = 616 for cases, 1,200 for controls, and 1,816 when combined.

² Measured among all participants in the T2DCC Set at follow-up; n = 327 for cases, 487 for controls, and 814 when combined.

³ Measured in a subset of Chinese participants at follow-up; n = 69 for cases, 138 for controls, and 207 when combined.

⁴ Measured in a subset of Chinese participants at follow-up; n = 51 for cases, 100 for controls, and 151 when combined.



720

721 **Figure 1.** Overview of the study design. ¹ Measured in a subset of Chinese participants in the MEC1
722 (n = 207) at follow-up. ² Measured in a subset of Chinese participants in the MEC1 (n = 151) at follow-
723 up. Abbreviations: ARIC, Atherosclerosis Risk in Communities; BMI, body mass index; CT, computed
724 tomography; CVD, cardiovascular disease; DXA, dual-energy X-ray absorptiometry; MEC1, Multi-
725 Ethnic Cohort Phase 1; T2D, type 2 diabetes; T2DCC, T2D case-control; WC, waist circumference.

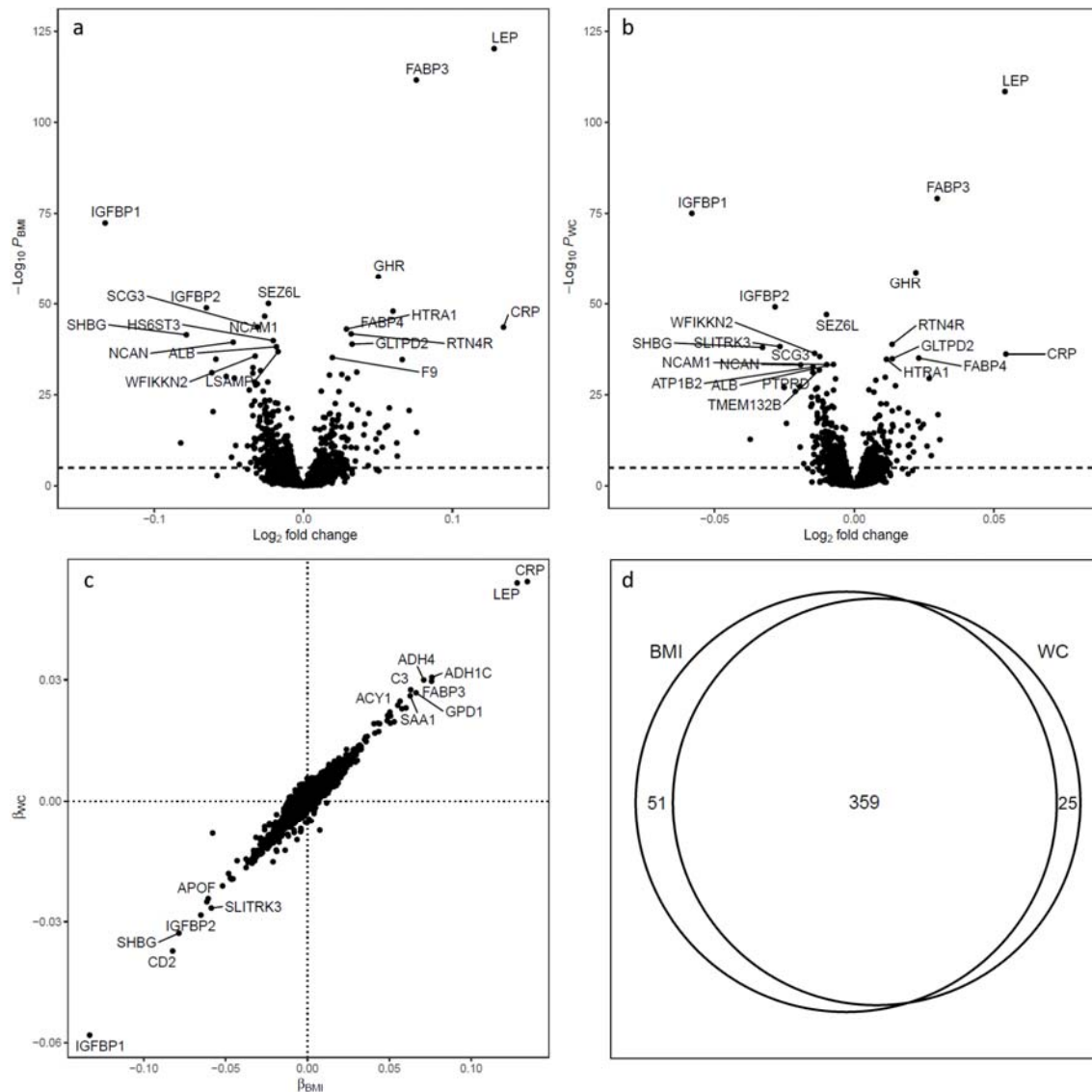
726

727

728

729

730



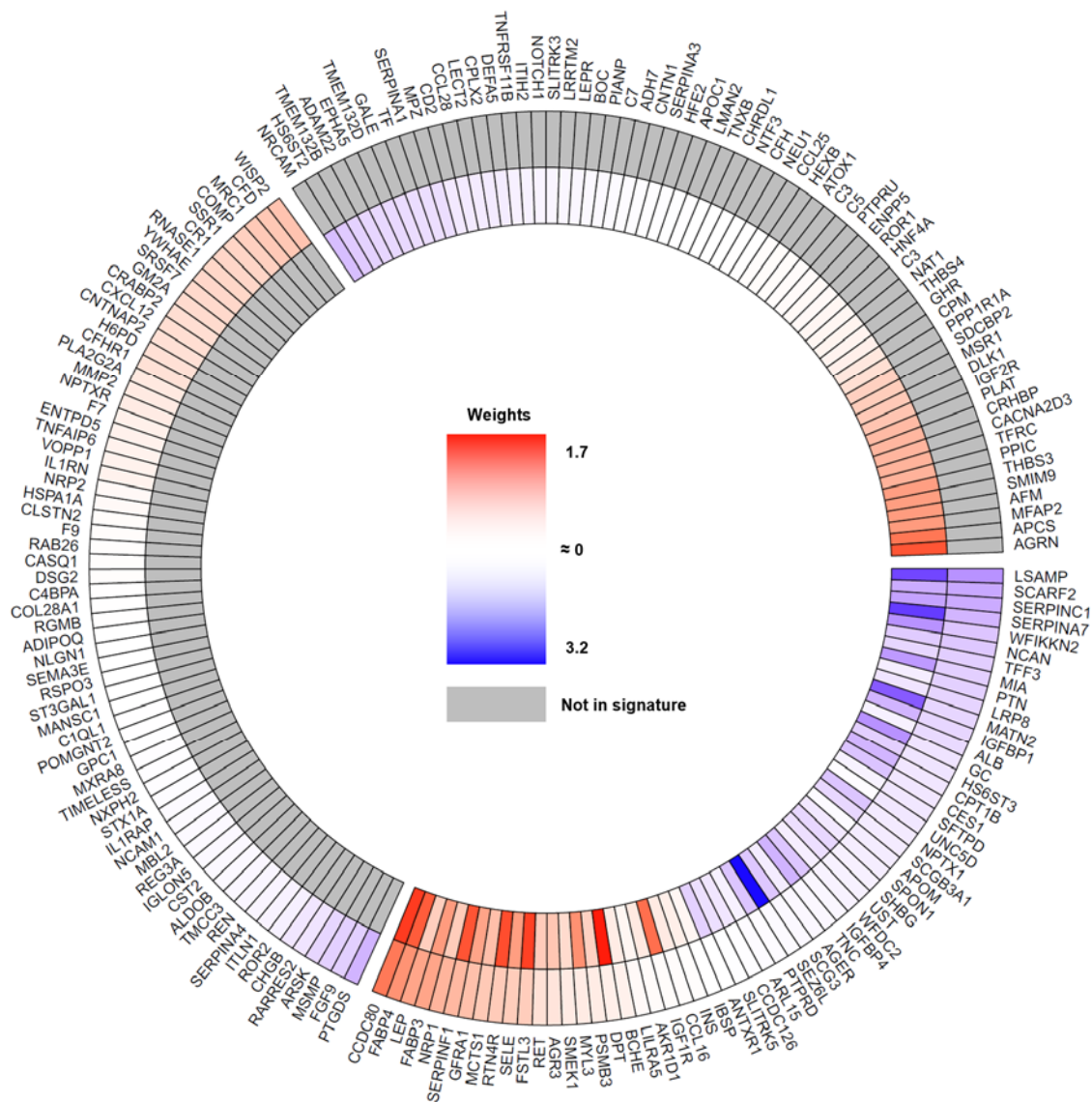
731

732 **Figure 2.** (a) Volcano-plot of $-\log_{10}(P_{\text{BMI}})$ against $\log_2(\text{fold change})$ per kg/m^2 increment of BMI. (b)
 733 Volcano-plot of $-\log_{10}(P_{\text{WC}})$ against $\log_2(\text{fold change})$ per cm increment of WC. Dashed lines represent
 734 the threshold for statistical significance after Bonferroni correction. (c) Scatterplot of the beta
 735 coefficients for WC against the beta coefficients for BMI. Text annotations are Entrez Gene symbols
 736 and the full protein names are provided in Supplementary Table 4. (d) Venn diagram of the number
 737 of proteins that were significantly associated with BMI and WC at the Bonferroni threshold.
 738 Abbreviations: BMI, body mass index; WC, waist circumference.

739

740

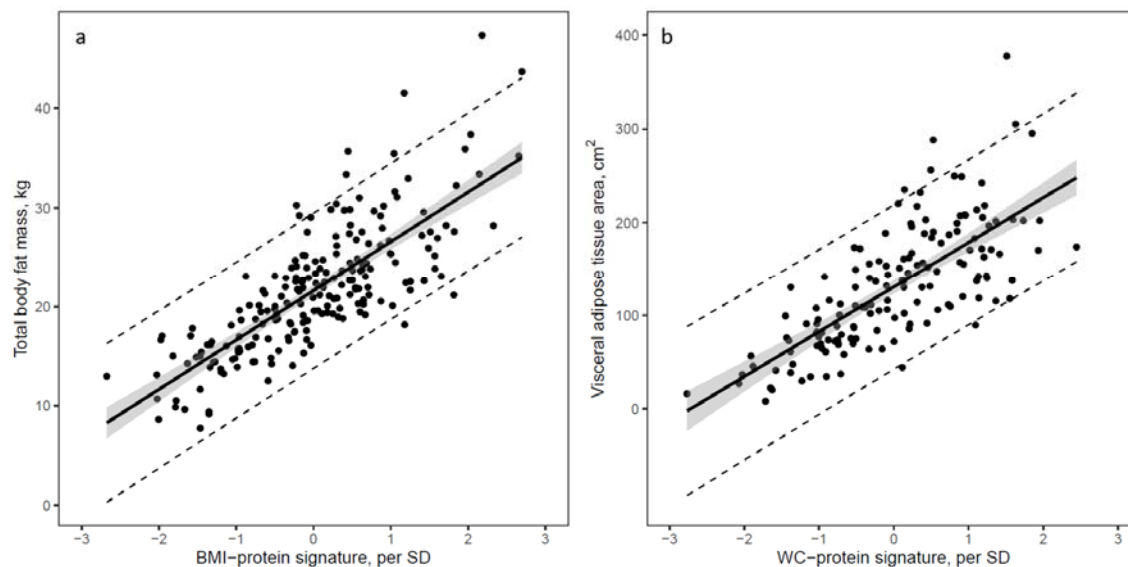
741



742
 743 **Figure 3.** Proteins in the BMI-protein signature (outer circle) and WC-protein signature (inner circle).
 744 The colours represent the direction (red = increase, blue = decrease, grey = not in signature) while
 745 the intensity of the colours represents the magnitudes of the beta coefficients from elastic net
 746 regression. The bottom right segment represents the shared proteins between the BMI-protein and
 747 WC-protein signature. Moving anticlockwise, the top right segment represents proteins that are only
 748 in the WC-protein signature. Finally, the last segment on the top left represents proteins that are
 749 only in the BMI-protein signature. Text annotations are Entrez Gene symbols and the full protein
 750 names are provided in Supplementary Table 5. Abbreviations: BMI, body mass index; WC, waist
 751 circumference.

752

753

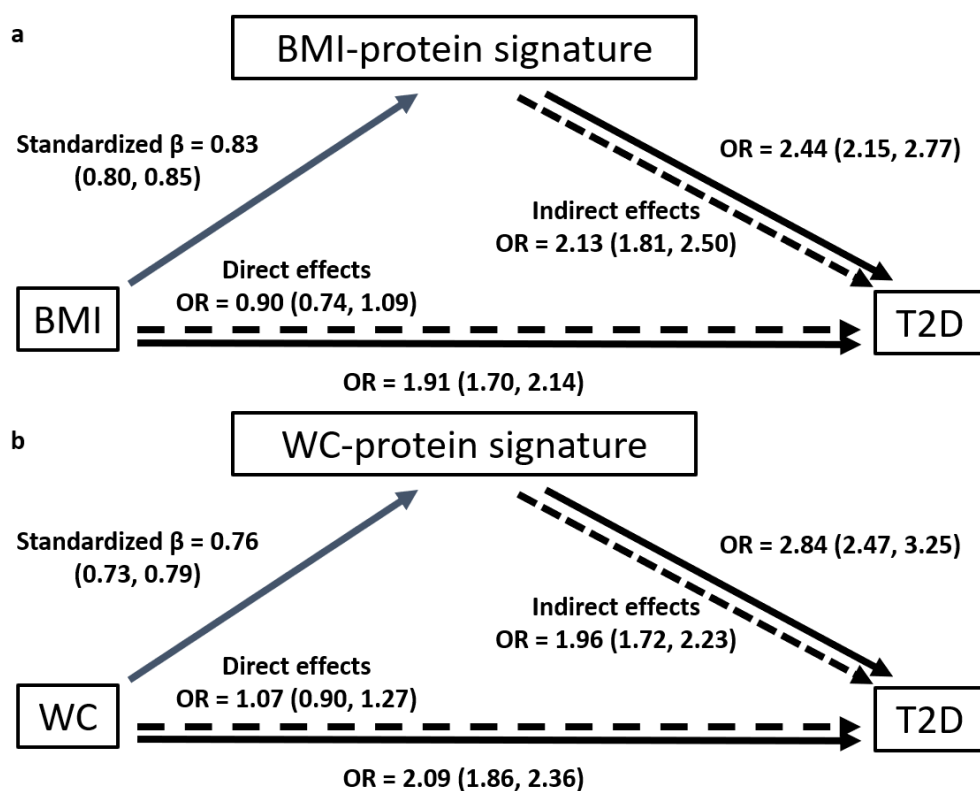


754

755 **Figure 4.** Scatterplots of (a) total body fat mass against BMI-protein signature in 207 Chinese
756 participants with DXA and (b) visceral adipose tissue volume against the WC-protein signature in 151
757 Chinese participants with CT. Linear regression was fitted with the shaded region representing the
758 95% confidence intervals and the dotted lines representing the 95% prediction intervals.
759 Abbreviations: CT, computed tomography; DXA, dual-energy X-ray absorptiometry; SD, standard
760 deviation.

761

762



763

764 **Figure 5.** Directed acyclic graphs of the associations between T2D incidence and (a) BMI and the
765 BMI-protein signature, and (b) WC and the WC-protein signature. All models were adjusted for age,
766 sex, and ethnicity, and all predictor variables were expressed as per 1 standard deviation increment
767 to facilitate the comparison of effect sizes. The direct and indirect effects were estimated using
768 mediation analysis with natural effect models. Direct effects are the independent effects of BMI/WC
769 on T2D incidence after controlling for the protein signatures. Indirect effects are the estimated
770 effects of BMI or WC on T2D incidence that is mediated through the respective protein signatures.
771 Abbreviations: BMI, body mass index; WC, waist circumference.