

One-Year Follow-up of Young People with ME/CFS Following Infectious Mononucleosis by Epstein-Barr Virus

1 **Rafael Pricoco¹, Paulina Meidel¹, Tim Hofberger¹, Hannah Zietemann¹, Yvonne Mueller¹,**
2 **Katharina Wiehler¹, Kaja Michel¹, Johannes Paulick¹, Ariane Leone¹, Matthias Haegele¹,**
3 **Sandra Mayer-Huber¹, Katrin Gerrer¹, Kirstin Mittelstrass¹, Carmen Scheibenbogen², Herbert**
4 **Renz-Polster³, Lorenz Mihatsch^{1,†,*}, Uta Behrends^{1,4,†}**

5 ¹ MRI Chronic Fatigue Center for Young People (MCFC), Children's Hospital, TUM School of
6 Medicine, Technical University of Munich and Munich Municipal Hospital Schwabing, Munich,
7 Germany

8 ² Institut für Med. Immunologie, Immundefektambulanz, Charité – Universitätsmedizin Berlin;
9 Campus Virchow-Klinikum (CVK), Berlin, Germany

10 ³ Mannheim Institute of Public Health, Social and Preventive Medicine, University Medicine
11 Mannheim, Heidelberg, Germany

12 ⁴ German Center of Infection Research (DZIF), Germany

13 [†] These authors contributed equally to this work and share last authorship

14

15 ***Correspondence:**

16 Lorenz Mihatsch

17 l.mihatsch@tum.de

18 **Keywords: Myalgic encephalomyelitis, chronic fatigue syndrome, infectious mononucleosis,**
19 **Epstein-Barr virus, EBV, adolescents, ME/CFS, follow-up**

20

21

22

23

24 **Contribution to the Field**

25 Few follow-up studies on myalgic encephalomyelitis/chronic fatigue syndrome (ME/CFS) in young
26 people exist, and none have included young adults. This study presents the first one-year follow-up
27 of a cohort of adolescent and young adult patients with ME/CFS following infectious mononucleosis
28 by the Epstein-Barr virus (EBV-IM) in Germany. Our findings shed light on the debilitating nature of
29 ME/CFS in young people and provide valuable insights into the natural course of the disease, lasting
30 longer than one year in many patients. Additionally, the study reveals that young adults with
31 ME/CFS experience more severe symptoms and have poorer physical and mental functioning
32 compared to adolescents. Adolescents have a better prognosis, with improvements in physical
33 functioning, and health-related quality of life. Overall, this study provides valuable clinical data on
34 ME/CFS following EBV-IM in young people, emphasizing the urgent need for effective biomarkers
35 and therapeutic options.

36

37

38

39

40

41

42

43

44

45

46

47

48

49

50

51

52

53

54

55 **Abstract**

56 **Background:** Infectious mononucleosis, caused by the Epstein-Barr Virus (EBV-IM), has been
57 linked to the development of myalgic encephalomyelitis/chronic fatigue-syndrome (ME/CFS) in
58 children, adolescents, and young adults. Our study presents the first cohort of young individuals in
59 Germany who were diagnosed with ME/CFS following EBV-IM.

60 **Methods:** We conducted a one-year follow-up of 25 young people diagnosed with ME/CFS at our
61 specialized tertiary outpatient service by clinical criteria requiring post-exertional malaise and with
62 documented EBV-IM as the triggering event. Demographic information, laboratory findings,
63 frequency and severity of symptoms, physical functioning, and health-related quality of life
64 (HRQoL) were assessed at first visit as well as 6 and 12 months later at follow-up visits.

65 **Results:** The physical functioning and HRQoL of the cohort were significantly impaired, with
66 young adults displaying more severe symptoms, as well as worsening of fatigue, physical and mental
67 functioning, and HRQoL throughout the study, compared to adolescents. After one year, we found
68 that 6/12 (54%) adolescents no longer met the diagnostic criteria for ME/CFS, indicating partial
69 remission, while all young adults continued to fulfill the Canadian consensus criteria. Improvement
70 in children was evident in physical functioning, symptom frequency and severity, and HRQoL, while
71 young adults had little improvement. EBV serology and EBV DNA load did not correlate with
72 distinct clinical features of ME/CFS, and clinical chemistry showed no evidence of inflammation.
73 Remarkably, the median time from symptom onset to ME/CFS diagnosis was 13.8 (IQR: 9.1–34.9)
74 months.

75 **Conclusions:** ME/CFS following EBV-IM in young people is a severely debilitating disease with
76 diagnoses protracted longer than one year in many patients and only limited responses to
77 conventional symptom-oriented medical care. Although younger children may have a better
78 prognosis, their condition can fluctuate and significantly impact their HRQoL. Our data emphasize
79 that biomarkers and effective therapeutic options are also urgently needed for this very young age
80 group to better manage their medical condition and pave the way to recovery.

81 **1 Introduction**

82 Myalgic encephalomyelitis/chronic fatigue syndrome (ME/CFS) is a complex and debilitating
83 multi-system disease characterized by fatigue and post-exertional malaise (PEM) together with
84 additional symptoms, including unrefreshing sleep, cognitive impairment, orthostatic intolerance,
85 and/or chronic pain. It has a profound impact on all aspects of daily life. Up to 25% of patients are
86 severely affected and bound to home or bed [1, 2]. ME/CFS has been identified as an important cause
87 for long-lasting school absence [3-8] and results in a significant reduction of health-related quality of
88 life (HRQoL) [7, 9-11].

89 Although ME/CFS is not rare, it is still not well recognized by doctors, teachers, and the general
90 population. Pre-pandemic global prevalence estimates for ME/CFS were 0.3–0.5%, with two age
91 peaks at onset of 11–19 and 30–39 years [12]. The prevalence reported for children and adolescents
92 ranged from 0.1% to 1.9%, depending on the case definition, geographical region, and screening
93 method. A study from the US indicated that up to 95% of children with ME/CFS may remain
94 undiagnosed [13]. The post-pubertal female-to-male ratio is 3–4:1 [13, 14], thus adolescent girls are
95 predominant amongst ME/CFS patients in pediatrics.

96 Infectious diseases are the most frequent triggers of ME/CFS, accounting for 23–90% pediatric
97 cases [4, 15-17]. Of a large pediatric cohort from Australia 80% of patients recalled an initial
98 infection, and 40% a triggering infectious mononucleosis by Epstein-Barr virus (EBV-IM) [7].
99 ME/CFS was reported in 13%, 7%, and 4% of 301 adolescents in the US at 6, 12, and 24 months
100 after the onset of EBV-IM [18, 19], respectively, and in 23% of 238 college students at 3–6 months
101 after EBV-IM. 8% of these college students were severely affected [20]. While EBV was recognized
102 as the most prominent viral trigger of ME/CFS until 2019 [7, 19-31], it became outranked by severe
103 acute respiratory coronavirus type 2 (SARS-CoV2), which was estimated to cause at least a doubling
104 of ME/CFS cases worldwide and in Germany [32-34].

105 The pathomechanisms of ME/CFS and PEM are not yet fully understood. Genetic polymorphisms
106 might contribute to pathogenic immune dysregulation after infections [35]. Evidence is increasing
107 that immunological and vascular changes might result in hypoperfusion of muscles and brain [36].
108 Microbiome dysbiosis, defects in energy metabolism, dysregulated hormones, and vagus nerve
109 dysfunction have been discussed [21, 37-39]. A causative role of herpes virus reactivation was
110 evaluated but has not been proven yet [40-45]. However, we recently reported, that EBV might as
111 well trigger pathogenic autoimmunity by molecular mimicry [46].

112

113 Several risk factors have been suggested for ME/CFS after EBV-IM, including disease severity
114 and days-in-bed during the acute phase, initial pain and autonomic symptoms, lower mental health
115 scores, higher scores for anxiety, depression, and perceived stress, female gender, as well as distinct
116 laboratory findings (e.g. elevated CRP and cytokine levels). However, different case definitions have
117 been used and findings were inconsistent [20, 28-30, 47]. Jason and colleagues found that baseline
118 anxiety, stress, depression, or coping skills did not predict the development of ME/CFS after EBV-
119 IM, while preceding symptoms of the ME/CFS spectrum before EBV-IM increased the risk [20].

120 ME/CFS is diagnosed according to clinical criteria and after exclusion of other diseases that might
121 explain the symptoms [48]. In adults the systemic exertion intolerance disease (SEID)/Institute of
122 Medicine (IOM) criteria [49] are recommended for screening and the Canadian Consensus Criteria
123 (CCC) [50] for diagnosis and research. For children and adolescents the CCC were adapted in a
124 “pediatric case definition” (here abbreviated as PCD-J) by Jason and colleagues [51] and modified in
125 a “clinical diagnostic worksheet” (here abbreviated as CDW-R) developed by Rowe and colleagues
126 who thereby referred to less typical pediatric cases [6]. All four scores require PEM as an essential
127 criterion. The interdisciplinary diagnostic workup addresses not only differential diagnoses but also
128 possible comorbidities such as autoimmune thyroiditis, orthostatic intolerance, or hypermobile Ehlers
129 Danlos (hEDS) syndrome, and includes a psychological evaluation. A 10-minute standing test
130 (NASA lean test) or tilt table test is recommended to diagnose postural orthostatic tachycardia
131 syndrome (PoTS) [6, 48] which itself is often triggered by infections.

132 As of now, no specific treatment is available for ME/CFS. A consequent self-management with
133 pacing is recommended, and can be supplemented by various relaxation strategies, and sleep hygiene.
134 Symptom-oriented, complex medical support is essential to reduce the severity and frequency of
135 symptoms, and usually includes non-pharmaceutical and pharmaceutical approaches. Psychosocial
136 support may help with implementing pacing and coping strategies, and could achieve adequate
137 measures for education and home care [6, 48, 52]. Experimental strategies targeting the immune,
138 vascular, and nervous system seem promising [53].

139 With adequate treatment, the course of disease seems to be better in children and adolescents
140 compared to adults, with pediatric recovery rates of 5–83% [6-8, 15-17, 27, 54-61]. Recovery rates in
141 young people have been operationalized by measuring school attendance, symptom frequency and
142 severity, as well as fulfillment of diagnostic criteria at clinical visits or via self-report [55, 62]. In an
143 Australian pediatric cohort, one and two thirds of the patients recovered after 5 and 10 years,
144 respectively, with a median disease duration of 5 (1–15) years in those who recovered [7].

145 However, in many ME/CFS patients the course of disease is fluctuating, with periods of
146 deterioration (“crashes”), stabilization, improvement, or relapse-remitting cycles [6, 7, 23]. About
147 40% of adult patients are estimated to improve over time, but only 5% fully recover [63, 64]. Inferior
148 outcomes might in part be due to inappropriate management resulting from inadequate disease-
149 specific knowledge of medical staff [3, 54, 65, 66], a lack of medical services and barriers to the
150 health care system for patients with ME/CFS [67-69], and stigmatization of patients.

151 Here we present a first cohort of young ME/CFS patients diagnosed after documented EBV-IM at
152 our MRI Chronic Fatigue Center for Young People (MCFC) and recruited into our prospective
153 MUC-CFS studies for pediatric and adult patients. The MCFC, so far, is the only pediatric university
154 center in Germany specialized on the diagnosis and treatment of children and adolescents with
155 ME/CFS. The MUC-CFS studies provide detailed information on patient demographics, disease
156 phenotypes, and quality of life at the time of diagnosis, as well as during follow-up visits at 6 and 12
157 months. Our primary objective was to assess disease trajectories in these young individuals and to
158 explore potential differences between children and young adults within the cohort.

159 2 **Methods**

160 2.1 **Study Design and Diagnostic Work-up**

161 This was a single-center prospective cohort study conducted at a tertiary pediatric university
162 hospital in Munich, Germany. Adolescents and adults until and including the age of 25 years who
163 were diagnosed with ME/CFS after EBV-IM were reassessed at 6 and 12 months by the
164 interdisciplinary team of the MCFC between March 2019 and November 2022.

165 Documented EBV-IM was defined as a combination of typical symptoms (e.g., fever, fatigue, sore
166 throat, lymphadenopathy, and/or splenomegaly) and typical serology (positive IgM and/or IgG
167 antibodies against EBV viral capsid antigen (VCA) without IgG antibodies against EBV nuclear
168 antigen 1 (EBNA-1), and – in some cases – with documented subsequent EBNA-1-IgG
169 seroconversion).

170 ME/CFS was diagnosed by a multidisciplinary board. Diagnostic criteria were used depending on
171 age: For adults (≥ 18 years) the CCC were used, adolescents had to fulfill either the CCC with a
172 disease duration of at least three months or the less strict criteria of the CDW-R with a disease
173 duration of at least six months. In both cases, PEM had to last for more than 14 hours after mild
174 exertion. Since ME/CFS is a diagnosis of exclusion, all patients underwent thorough medical
175 examinations (laboratory analyses, ECG, UCG, EEG, cMRI, and pulmonary function analyses),
176 including a psychological evaluation. Depending on the clinical presentation supplementary
177 investigations were implemented. Laboratory testing was performed as recommended by Rowe and
178 colleagues [6], and a 10-minute standing test (NASA lean test) was conducted to screen for
179 orthostatic intolerance (OI), PoTS, or orthostatic hypotonia (OH).

180 2.2 **Standard of Care/Treatment**

181 All patients received a comprehensive, symptom-oriented treatment, the latter of which included
182 both pharmaceutical and non-pharmaceutical interventions to manage symptoms such as pain, sleep
183 disorder, OI and/or psychological comorbidities. They were provided with extensive guidance on
184 self-management and received recommendations for psychosocial support, including adequate
185 measures for adapted school education and home care.

186

187

188

189 **2.3 Ethical Consideration**

190 Patients and parents (of patients < 18 years) provided informed consent prior to inclusion. The
191 study was approved by the local Ethics Committee (529/18 S-KK, 485/18 S-KK) and conducted in
192 accordance with the Declaration of Helsinki and its later amendments.

193 **2.4 Data Collection**

194 **2.4.1 Clinical Data**

195 Data were collected from standard clinical records and additional questionnaires from 2019 to
196 2022. For follow-up visits, questionnaires were mailed to the families one month before a personal or
197 telephone visit. Telephone visits took place when personal visits were not medically indicated, and
198 ME/CFS criteria (CCC for all and CDW-R for adolescent patients) were evaluated.

199 **2.4.2 Patient Reported Outcome Measures**

200 The Pediatric Quality of Life Inventory (PedsQL) was utilized to assess HRQoL in pediatric
201 patients. It comprises 20 items and four subscales, namely physical, emotional, social, and school
202 functioning, and has been found to have good internal consistency and reliability [70].

203 The Short Form-36 Health Survey (SF-36) was administered to all patients to measure HRQoL. It
204 is a 36-item questionnaire that consists of eight subscales (physical functioning, role physical,
205 general health, bodily pain, social functioning, vitality, role emotional, and mental health). Lower
206 scores on each subscale indicate more impairment. The SF-36 has been well-validated and has good
207 internal consistency and discriminate validity. It was designed for children older than 13 years [71].
208 Younger patients were provided with an in-house supplementary for additional explanations if
209 necessary. Score results are presented as mean \pm standard deviation (SD).

210 The Chalder Fatigue Scale (CFQ) was used as a validated instrument to measure physical and
211 mental fatigue. The scale consists of 11 items, with responses rated on a Likert scale from 0–3. The
212 total score reflects the sum of responses, with a score of 33 indicating most severe fatigue [72]. Score
213 results are presented as mean \pm SD.

214 The Charité Symptom Inventory was adapted from the CDC Symptom Inventory and rated
215 frequency and severity of typical symptoms of ME/CFS within the month prior to the visit. Scales
216 rated from 0 (not present) to 3 (severe) for the severity and from 0 (not present) to 4 (always) for the
217 frequency of symptoms [73].

218 The Bell Score is a short and widely used instrument to assess the severity of ME/CFS [74].
219 Adolescent patients received a modified version with adapted wording (e.g. “school” instead of
220 “work”).

221 **2.5 Statistical Analysis**

222 The statistical analysis was conducted using R Version from 4.2.1 (“Funny-Looking Kid”) [75].
223 Categorical variables were compared between groups using Fisher’s exact test or Pearson’s chi-
224 squared test, as appropriate. For numeric variables, we used the Wilcoxon rank-sum test or Kruskal-
225 Wallis test, as appropriate. Correlation analysis was performed using Spearman’s rank correlation
226 coefficient. Cox regression analysis was used to assess the association between independent variables
227 and the time-to first presentation in the MCFC. Repeated measures correlation were used to measure
228 within-subject correlation of patient reported outcome measures [76]. Given the small sample size
229 and lack of adjustment for multiple testing, all P-values were considered exploratory. Level of
230 significance was set to $\alpha = 0.05$.

231 3 Results

232 3.1 Baseline Demographics and Clinical Characteristics of the Cohort

233 Baseline characteristics are shown in **Table 1**. All 25 patients (80% female) had a history of EBV-
234 IM and documented serological findings, indicating EBV primary infection at the time of disease
235 onset. There were no significant differences between adolescents (48%, median age at onset 15, IQR
236 13 –15) and young adult (≥ 18 years) patients (52%, median age at onset 10, IQR 18 – 21)
237 concerning demographics, medical and family history, and current medical care. The median time
238 between EBV-IM and ME/CFS diagnosis at our center was 13.8 months (range 4–84) with no
239 significant difference between males and females ($P = 0.272$), or adult and adolescent patients
240 ($P = 0.596$). The time delay from symptom onset to diagnosis was less than 6, 12, and 24 months in
241 1/13 (8%), 5/13 (38%), and 7/13 (54%) adult patients as well as in 1/12 (8%), 5/12 (42%), and 10/12
242 (83%) adolescent patients (**Supplementary Figure S1**).

243 All adult patients met the CCC and all adolescent patients the CDW-R and/or CCC criteria, as
244 required. Adult and adolescent patients did neither significantly differ concerning the baseline Bell
245 Score nor the SF-36 physical (PCS) and mental health component summary score (MCS). However,
246 adult patients showed significantly higher CFQ scores (adults: 28 ± 4 ; adolescents: 22 ± 5 ; $P = 0.006$),
247 and significantly lower values (adults: 35 ± 11 ; adolescents: 54 ± 9 ; $P = 0.002$) in the PedsQL compared
248 to adolescent patients. All adolescents reported regular absences from school, 2/11 (18%) received
249 some form of complementary home schooling and none reported access to distance schooling. Only
250 one patient had a documented degree of disability, and none received medical care at home.

251 24/25 (96%) showed comorbidities led by PoTS in 21/23 (83%) and allergies in 12/23 (48%) of all
252 patients. Two patients examined for PoTS did not complete the NASA-lean test due to severe
253 orthostatic symptoms. One patient presented with an anxiety disorder, and two with mixed anxiety
254 and depressive disorder. 17/24 (71%) of the patients took various supplements, and 11/24 (46%) took
255 prescription-only medications, including three patients on antidepressants. 16/25 (64%) patients
256 remembered another family member with a history of EBV-IM, 10/25 (40%) reported a history of
257 autoimmune disease in their family, and 18/25 (72%) either. 2/25 (8%) reported a family member
258 with ME/CFS.

259 Our patients had consulted several (median 6, range 1–11) private practice doctors across five
260 different specialties (range 1–11) for ME/CFS symptoms. Additionally, 11/20 (55%) had visited at
261 least one hospital. 7/20 (35%) had previously consulted at least one psychotherapist/psychologist. In

262 terms of complementary therapies, 9/20 (45%) patients had sought a naturopath, 6/20 (30%)
263 traditional Chinese medicine, 4/20 (20%) homeopathy, and 5/20 (25%) osteopathy.

264 3.2 Laboratory Findings at Baseline

265 Laboratory findings at the time of diagnosis were primarily unremarkable, and none significantly
266 differed between adolescent and adult patients (**Table 2**). Besides low vitamin D levels in 14/24
267 (58%) (range 7–29 ng/ml), the most frequent laboratory findings were elevated antinuclear antibodies
268 (ANA) in 14/25 (56%) (range 1:100–1:800), elevated IgE in 7/25 (28%) and mild anemia in 4/25
269 (16%) of all patients. 2/6 (33%) adolescents had mildly positive ANA titers ($< 1:160$), 2/6 (33%)
270 adolescents and 8/8 (100%) adults showed moderately positive titers (1:160–1:640), and 2/6 (33%)
271 adolescents presented with strongly positive titers ($\geq 1:640$). ANA titers significantly differed
272 between age groups with higher titers in adolescents ($P = 0.015$). They did not significantly correlate
273 with disease severity (Bell Score: $P = 0.452$; SF-36 PF: $P = 0.858$), and were not significantly
274 different between males and females ($P = 0.521$). High titers were not associated with clinical signs
275 or any other markers of connective tissue disorders. Herpes simplex virus coinfection was not more
276 frequent in adults than in adolescents ($P > 0.999$). None of the laboratory findings indicated an
277 relevant differential diagnosis. Neither immunoglobulin serum levels nor immunophenotyping of
278 peripheral blood lymphocytes did show any evidence of primary immunodeficiency (**Supplementary**
279 **Table S1**).

280 Results from EBV serology, EBV PCR, and EBV IgG immunoblot at baseline visit are displayed
281 in **Table 3**. Adolescents and adults did not show significant differences. Quantitative analyses of
282 EBV viral load using real-time PCR did not detect EBV DNA in the plasma of any patient. 8/20
283 (40%) patients showed EBV DNA in peripheral blood cells (5/8 very low titers, 1/8 17.7 Geq/10⁵,
284 1/8 70.1 Geq/10⁵, and 1/8 121.8 Geq/10⁵), and 14/25 (66%) had EBV DNA in throat washes. The
285 detection of EBV DNA in throat washes did not significantly correlate with disease severity (Bell
286 Score: $P = 0.686$; SF-36 PCS: $P = 0.871$). All patients showed anti-EBV-VCA IgG as expected,
287 23/25 (92%) demonstrated anti-EBNA-1 IgG, and 6/25 (24%) anti-EBV-VCA IgM. The detection of
288 anti-EBV-VCA IgM did not significantly correlate with disease severity (Bell Score: $P = 0.877$; SF-
289 36 PCS: $P = 0.788$). Results of EBV immunoblots revealed IgG antibodies against early antigens
290 (EA) p54 and p138, the immediate early antigen BZLF1, virus capsid antigens (VCA) p23 and p18,
291 and the latency antigen EBNA-1 in 8/25 (32%), 5/25 (20%), 18/25 (72%), 23/25 (92%), 24/25 (96%),
292 and 22/25 (88%) patients, respectively.

293

294 3.3 ME/CFS Criteria at Follow-up Visits

295 Follow-up data were available at 6 months after the diagnosis of ME/CFS from 22/25 (88%)
296 patients, including 10/13 (77 %) adults and 12/12 (100%) adolescents, and at 12 months from 20/25
297 (80%) patients, including 9/13 (69%) adults and 11/12 (92%) adolescents. Reasons for drop out were
298 recovery (one adolescent), worsening of symptoms (one adult) and unknown (two patients).

299 The changes in CCC and CDW-R criteria fulfilment are visualized in **Fig. 1**. Of the adult patients,
300 seven fulfilled the CCC at all three visits. One became CCC negative at 6 months but met the CCC
301 criteria again at 12 months (**Fig. 1A**). Six adolescent patients were still positive for the CDW-R
302 criteria at 6 months and only four at 12 months follow-up. One patient became CDW-R negative at 6
303 months but met the CDW-R criteria again at 12 months (**Fig. 1B**). By 6 months one and by 12
304 months three additional pediatric patients had turned 18 years old, and therefore the CDW-R criteria
305 were not applicable anymore (indicated by N/A in **Fig. 1C**). The CCC criteria were fulfilled by 8/12
306 (67%) of the adolescents at the first visit, by 4/12 (33%) at the 6-month visit and by 4/11 (36%) at the
307 12-month follow-up. Two adolescent patients who were CCC positive at 12 months had been
308 negative at the previous visits (**Fig. 1C**). At the 6-month follow-up, 7/12 (58%) adolescents met
309 either the CCC or the CDW-R criteria, and 5/11 (45%) met either of both at the 12-month follow-up
310 (**Fig. 1D**). The five patients who did not fulfill CCC or CDW-R criteria anymore, still fulfilled some
311 domains of the CCC or CDW-R criteria and therefore showed only partial remission of postviral
312 disease. For two patients the only persisting symptom was OI. One patient reported fatigue with
313 limitations in daily life and headaches. Three patients had several persisting symptoms but did not
314 complain of fatigue with limitations in daily life anymore.

315 All patients in partial remission were adolescents ($P = 0.005$) and had a relatively short illness
316 duration of less than three years (mean 24 months, range 15–34 months). They had significantly less
317 fatigue (CFQ Likert score: $P = 0.001$) and higher HRQoL (PedsQL: $P = 0.026$) at diagnosis,
318 compared to patients without partial remission (**Supplementary Table S2**). Further, patients in
319 partial remission did not significantly differ in any of the other baseline characteristics and laboratory
320 parameters tested, including EBV serology, EBV PCR or EBV IgG Immunoblot (**Supplementary**
321 **Table S2 and S3**).

322 3.4 Number, Frequency, and Severity of Symptoms at Follow-up Visits

323 At the baseline visit, patients presented with 27 ± 5 symptoms in mean (\pm SD), with 15 ± 5 occurring
324 at least frequently (**Fig. 2**). The most common symptoms reported at least frequently (3 or 4 on Likert

325 scale) were fatigue (96%), performance limitations in daily life (96%), need for rest (92%) and PEM
326 (83%). The most common severe (3 on Likert scale) symptoms were post-exertional malaise (46%),
327 stress intolerance (38%), fatigue (33%), performance limitations in everyday life (33%) and
328 unrefreshing sleep (33%). The number of symptoms and the severity and frequency of individual
329 symptoms did not significantly change between the baseline and two follow-up visits
330 (**Supplementary Table S4**). Adults reported slightly more symptoms (29 ± 3) than adolescents (25 ± 7 ,
331 $P = 0.084$). Symptoms occurring at least frequently were more common in adults than adolescents
332 (19 ± 6 vs. 12 ± 3 , $P = 0.006$). This difference was also evident at the two follow-up visits
333 (**Supplementary Table S5**).

334 **3.5 Patient-Reported Outcome Measures**

335 **3.5.1 Chalder Fatigue Scale**

336 Fatigue was further characterized by the CFQ. At the first visit, the patients' CFQ Likert score was
337 25 ± 5 , and did not significantly change at the follow-up visits. While adult patients showed a
338 moderate worsening from the first (28 ± 4) to the follow-up visits (6-months: 28 ± 4 ; 12-months: 29 ± 4),
339 adolescent patients showed a moderate improvement from the first (22 ± 5) to the follow-up visits (6-
340 months: 19 ± 9 ; 12-months: 18 ± 9) (**Table 4, Fig. 3A**). At all visits, adolescent patients had
341 significantly less fatigue than adults (first visit: $P = 0.006$; 6-months: $P = 0.016$; 12 months: $P =$
342 0.003) (**Supplementary Table S6**).

343

344 **3.5.2 Bell Score**

345 The median Bell Score was 40 (IQR: 30–50) and did not significantly change at the follow-up
346 visits ($P = 0.384$). Adults had a median Bell Score of 30 at all visits. Adolescents' Bell Score
347 moderately, but not significantly, improved from the first (median: 50, IQR: 40–50) to the 6-month
348 and 12-month follow-up visits (both median: 60, IQR: 40–80) ($P = 0.232$) (**Table 4, Fig. 3B**). The
349 Bell Score of adolescents was significantly better than adults' Bell Score at all visits (first visit: $P =$
350 0.019 ; 6 months: $P = 0.019$; 12 months: $P = 0.007$) (**Supplementary Table S6**).

351

352 **3.5.3 Short Form-36**

353 SF-36 summary and subscales did not significantly change from the first to the two follow-up
354 visits, neither for all nor for adult or adolescent patients separately. However, adolescents had a
355 significantly better physical component summary score at the 12-month visit than adults ($P = 0.013$)

356 (Table 4, Fig. 3C and 3D). At the first visit adolescents were significantly better concerning physical
357 functioning ($P = 0.039$) and vitality ($P = 0.012$), at the 6 months visit at physical functioning ($P =$
358 0.039), pain ($P = 0.039$), general health ($P = 0.032$), social ($P = 0.025$), and mental health ($P =$
359 0.025), and at the 12 months visit at physical functioning ($P = 0.019$) and vitality ($P = 0.010$). There
360 was no significant difference in the mental health component summary score at none of the visits
361 (Supplementary Table S6). In the self-perceived health transition 6/10 (60%) adolescents and none
362 of the adults rated their general health at least somewhat better than in the previous year at the
363 12 months visit (Supplementary Table S7).

364

365 3.5.4 Pediatric Quality of Life Inventory

366 The PedsQL total score did not significantly change from the first to the two follow-up visits. The
367 subscale scores were lowest for the school functioning and physical functioning domains, and highest
368 for social functioning. School functioning in adolescents was the only subscale that significantly
369 increased over time ($P = 0.03$) (Table 4, Fig. 3E). Except for the school subscale at the first 6-month
370 visit and emotional subscale at the 12-months visit, all subscales were significantly different at all
371 visits between adults and adolescents (Supplementary Table S6).

372 For all patients the greatest correlation between different patient-reported outcome measures
373 (CFQ, Bell Score, PedsQL, SF-36) was between CFQ and PedsQL ($r = -0.76$, $P < 0.001$), indicating
374 that more severe fatigue was associated with lower HRQoL (Figure 4). The most prominent
375 difference between adults and adolescents was that CFQ and Bell Score correlated significantly for
376 adolescents but not for adults (adults: $r = -0.29$, $P = 0.209$; adolescents: $r = -0.77$, $P < 0.001$).

377

378 3.6 Description of Patients in Partial Remission

379 At 12 months, results from PROMs for patients in partial remission compared to patients not in
380 partial remission at this time point were median Bell Score 80 (range 40 – 100) versus 40 (range 20 –
381 80), mean CFQ Score 12.4 (SD 6.7) versus 24.4 (SD 6.2), PedsQL total score 76.1 (SD 16.8) versus
382 46.6 (SD 15.8), the SF-36 physical health summary score 44.7 (SD 7.7) versus 28.9 (SD 11.5), and
383 the SF-36 mental health summary score 50.9 (SD 7.1) versus 42.9 (SD 10.4). These results indicate
384 that not any more fulfilling the diagnostic ME/CFS criteria does not exclude an ongoing impairment
385 of daily function.

386 4 Discussion

387 This is the first report on adolescents and young adults with ME/CFS following EBV-IM in
388 Germany. The study provides baseline demographics as well as various clinical data at the initial visit
389 and at two follow-up visits at 6 and 12 months after ME/CFS diagnosis, including diagnostic scores,
390 frequency and severity of symptoms, HRQoL, and physical as well as mental functioning.

391 ME/CFS is recognized as a debilitating disease which fundamentally impacts social participation,
392 education and HRQoL [6, 7]. However, so far data on ME/CFS in pediatric cohorts have mostly been
393 collected in the US, the UK and Australia, and to our knowledge no pediatric study from Germany is
394 available [6-8, 15-17, 27, 54-61]. While some prospective pediatric studies assessed the occurrence
395 of ME/CFS following EBV-IM [18-20], to our knowledge none evaluated several diagnostic scores
396 requiring PEM longitudinally and/or compared data from adolescents and young adults.

397 398 **Baseline Demographics and ME/CFS Diagnosis**

399 Our youngest patient was 14 years-old which was in line with the published ME/CFS age peak at
400 15–40 years [12, 48, 49]. The observed female predominance (80%) in our cohort is a widely
401 recognized phenomenon in post-pubertal ME/CFS patients with 3–4 times higher prevalence reported
402 in adolescent girls than boys [6, 21, 49].

403 At the initial visit, all adult patients met the CCC and all pediatric patients met the CDW-R and/or
404 CCC criteria as was required for ME/CFS diagnosis in this study. However, due to the absence of
405 pain (n=3) or neurocognitive manifestations (n=1), 4/12 (33%) of the adolescents did not fulfill the
406 CCC, supporting the use of more sensitive diagnostic criteria for pediatric patients [77]. Different
407 adaptations have been made for diagnosing ME/CFS in children and adolescents [6, 51, 54] of which
408 the CDW-R and Jason's pediatric case definition (here abbreviated as PCD-J) require PEM as an
409 essential symptom, in line with current recommendations [54, 78]. The largest pediatric ME/CFS
410 follow-up study used the polythetic Fukuda criteria with the modification that the presence of PEM
411 was mandatory [7]. However, most other pediatric follow-up studies used the original polythetic
412 Fukuda criteria or the even broader Oxford criteria for diagnosing ME/CFS [7, 8, 15-17, 27, 55-61]
413 and might thus have included individuals without PEM. Data on the prevalence and clinical
414 outcomes of post-infectious ME/CFS in children and adolescents have thus to be reevaluated. In our
415 ongoing prospective Munich infectious mononucleosis (IMMUC) study [79] as well as the
416 Multicenter Long COVID registry (MLC-R) [80] and the German ME/CFS registry (ME/CFS-R)
417 [81] we are investigating the CCC together with the CDW-R, the PCD-J and the systemic exertion

418 intolerance disease (SEID) criteria, the latter of which have been recommended for diagnosing
419 ME/CFS in any group by the former Institute of Medicine (IOM) [49], the European Network on
420 ME/CFS research (EUROMENE) [48], and the Centers of Disease Control and Prevention (CDC)
421 [82].

422 In the present study the median diagnostic delay between the onset of EBV-IM and the diagnosis
423 of ME/CFS was more than one year (13.8 months). This is in line with most reports from other
424 countries, indicating long and difficult patient journeys before initial expert consultation or ME/CFS
425 diagnosis of pediatric [3, 65] and adult patients [54, 66]. We did not find any association of gender,
426 age, or disease severity with time to diagnosis according to previous studies [65, 83]. Published
427 reasons for the long diagnostic delay in ME/CFS include little knowledge of families and primary
428 care providers, the requirement for comprehensive differential diagnosis, as well as negative attitudes
429 and beliefs by primary care physicians and psychologists [54, 83, 84]. In Germany, the lack of
430 ME/CFS specialists is most likely contributing to this issue and, due to a higher prevalence of
431 ME/CFS, might affect the adult age-group even more than adolescents and children. Young adults in
432 our study showed a longer prior disease duration compared to children, which might also reflect
433 challenges during transition from pediatric to adult health care services [85].

434

435 **Postural Tachycardia Syndrome and Other Comorbidities**

436 In our cohort, only few patients demonstrated any other medical diagnosis prior to the onset of
437 ME/CFS but many showed current comorbidities. The latter included PoTS (83%), allergies (48%),
438 and psychiatric diagnoses (12%). The low prevalence of the latter was in line with other reports on
439 pediatric ME/CFS [6, 86, 87]. In general, comorbidities were more prevalent in studies with adult
440 ME/CFS patients (79–80%) [23, 88].

441 PoTS has been previously reported in pediatric and adult ME/CFS patients with varying
442 prevalence [6, 54]. 25/26 adolescents with ME/CFS experienced severe orthostatic symptoms
443 associated with syncope (7/25), orthostatic tachycardia with hypotension (15/25), and orthostatic
444 tachycardia without significant hypotension (3/25) during a head-up tilt table test [89]. In adult
445 ME/CFS patients, the prevalence of PoTS was generally reported to be high with reported rates
446 ranging from 5.7% to 70% [49]. The large span of percentages might be due to different cohorts as
447 well as to different PoTS tests and PoTS case definitions [90]. However, PoTS is a frequent post-
448 infectious phenomenon in adolescents and thus, not unexpectedly, a frequent comorbidity of
449 ME/CFS [91]. A timely PoTS diagnosis is important since it impacts on orthostatic performance in

450 school and other daily activities and can be treated by various non-pharmaceutical and
451 pharmaceutical interventions.

452

453 **Reported Lack of Medical Care**

454 Although ME/CFS is defined as a disorder that significantly reduces or impairs daily activities,
455 only one of our patients had previously received a certificate of disability and none was supported by
456 adequate medical devices or home care, together reflecting poor medical care and barriers to
457 specialized support as outlined in previous studies [67-69]. A large proportion of our patients took
458 various dietary supplements and/or had received complementary medical treatment which both had
459 also been demonstrated for other pediatric and adult ME/CFS cohorts and may, in addition, reflect a
460 lack of standard medical support [7, 92]. The lack of adequate medical care is especially remarkable
461 regarding the large number of medical consultations with ME/CFS symptoms prior to diagnosis
462 reported by our patients and in other studies on ME/CFS [67, 69].

463 All pupils in our study reported on frequent school absences, and, remarkably, only a minority had
464 received any educational assistance such as home or digital schooling. These findings were in line
465 with earlier studies indicating that ME/CFS is a frequent cause of prolonged school absences and
466 severely affects social participation and education of young people [3-8]. This is particularly
467 concerning, since pediatric patients with ME/CFS reported that remaining engaged in an education
468 system that flexibly accommodated their illness and aspirations was crucial for their long-term
469 functioning [7, 93, 94].

470

471 **Laboratory Findings**

472 So far, no biomarker for ME/CFS has been established. Symptom-oriented laboratory analyses are
473 recommended to evaluate potential differential diagnoses and usually show unremarkable results in
474 ME/CFS [6, 54]. This was also true for our cohort. Some patients demonstrated minor deviations of
475 hematological and immunological parameters, including mild anemia, lymphocytosis, and/or
476 neutropenia as well as mild changes in peripheral lymphocyte subtypes and serological markers of
477 inflammation, autoimmunity, and/or allergies. More than half of the patients showed elevated ANA
478 titers, as previously reported for many ME/CFS patients, without clear evidence of distinct
479 underlying autoimmune diseases [7]. The proportion of positive titers (56%) was greater than
480 expected from a previous report with 34% positive titers in this age group [7]. Although, it is not
481 unknown to have moderately elevated titers without evidence of autoimmune disorders in pediatric
482 rheumatology. Almost a third had elevated IgE levels but clear associations between IgE levels and

483 ME/CFS have not been found in earlier studies [95]. Remarkably, the majority of patients presented
484 with vitamin D deficiency. However, low serum concentrations of vitamin D did not appear to be a
485 contributing factor to the level of fatigue in another cohort of ME/CFS patients [96].

486 As expected, all patients showed anti-EBV VCA IgG as an indicator of previous EBV infection,
487 with some individuals lacking an anti-EBNA-1 seroconversion. The findings of undetectable EBNA-
488 1 IgG as well as of detectable anti-EBV VCA IgM, anti-EBV EA IgG, EBV DNA in throat washes
489 were not more frequent in our cohort than reported for the general population [97-100]. Detectable
490 EBV DNA in blood cells was more frequent than in a U.S. cohort aged 1 – 97 years (median 42
491 years) without EBV-associated disorder [101]. In sum, we found no significant correlation between
492 EBV-specific serological findings or detection of EBV DNA with disease severity or physical
493 functioning. These findings were in line with previous research that has not found a distinct pattern
494 of EBV-specific routine virological results in ME/CFS patients [42, 102]. However, findings
495 regarding EBV-specific immune responses in patients with ME/CFS are inconsistent, and EBV
496 antigen mimicry might well contribute to pathogenic autoimmunity as shown by us in more
497 comprehensive EBV-specific immunological analyses [35, 44, 46, 103-107]. EBV and herpes viruses
498 in general have been discussed as a cause or perpetuating factor of ME/CFS, while no stringent
499 causal association has been proven yet [41, 42, 102].

500

501 **Partial Remission at Follow-up**

502 In a large Australian cohort aged 16 to 77 years, post-infectious fatigue triggered by EBV, Q-fever
503 or Ross River virus was transient in most cases, as indicated by 35%, 27%, 12%, and 9% of patients
504 affected at 1.5, 3, 6, and 12 months after the onset of symptoms [19]. However, most concerningly,
505 an increasing number of studies on long-term sequelae of coronavirus disease 2019 (COVID 19)
506 currently indicate that most patients affected by post-COVID syndrome at 3 months were still not
507 recovered after 12 months [22, 108].

508 Most studies specifically assessing fatigue and ME/CFS in young people after EBV-IM evaluated
509 no longer follow-up periods than 6 months, some relied on self-reported ME/CFS or did not require
510 PEM for ME/CFS diagnosis, and none compared the course of disease in adolescents and very young
511 adults [19, 20, 24-31]. However, according to a more favorable prognosis in younger people, the
512 proportion of ME/CFS after EBV-IM in adolescents in the US decreased significantly over time, with
513 12.7%, 7%, and 4% at 6, 12, and 24 months [18, 19].

514 In our study the median time since onset of EBV-IM was 13.8 months at the first visit, indicating
515 that some patients might recover over time during the study period. Most remarkably, the majority of

516 our adolescent patients did not fulfill the criteria for ME/CFS diagnosis any more at 12 months after
517 the first visit, while all adult patients still met the CCC. The different health trajectories for
518 adolescent and adult patients were also evident in the self-perceived health transition item of the SF-
519 36 at 12 months after the first visit, with 40% and 20% of children rating their general health as much
520 better or somewhat better, and 45% and 22% of adults much worse or somewhat worse than in the
521 previous year, respectively. Furthermore, over the whole study period symptom load (see below) and
522 school functioning (PedsQL) significantly improved in adolescents while remaining stable or
523 worsening in adults.

524 These findings were in line with compelling evidence indicating a better ME/CFS prognosis of
525 children and adolescence compared to adults, with pediatric studies reporting recovery of up to 83%
526 [6-8, 15-17, 27, 54-61]. A large pediatric follow-up analysis from Australia indicated recovery in
527 50% of the cases at five and 68% of the cases at ten years after disease onset with a median disease
528 duration of five (range 1-15) years [7]. Dramatic improvement was reported to be more likely within
529 the first four years [6]. Accordingly, all patients in partial remission in our cohort had an illness
530 duration of less than three years. Although some adult patients, in general, may also experience
531 significant improvements over time, a systematic review indicated that prognosis in adults is fairly
532 poor, with only a minority of adult patients experiencing full recovery [109].

533 Importantly, only two of our pediatric patients were largely free of ME/CFS symptoms (except
534 OI) at their last visit and all remaining patients, independently of their state of partial remission, still
535 reported symptoms from several domains of the diagnostic criteria. Furthermore, we observed some
536 fluctuation of disease load over time, with some patients no longer meeting the diagnostic criteria at
537 6 but again at 12 months, thereby reflecting unstable and unpredictable dynamics of remissions.
538 Remissions and relapses were reported to be common in pediatric ME/CFS patients and can occur for
539 example after overexertion or additional infectious illnesses [6]. Our findings support the
540 recommendation that pediatric patients must be offered thorough follow-up evaluations and
541 continuous medical care even if they do not any longer fulfill the diagnostic ME/CFS criteria.

542 It remains challenging to measure recovery from ME/CFS, especially in pediatric patients.
543 Previous pediatric studies have established recovery through various measures such as school
544 attendance, fulfillment of diagnostic criteria, or self-report [55]. However, available studies have
545 used various diagnostic criteria, different follow-up periods (ranging from six months to 13 years),
546 and different inclusion criteria, thereby limiting direct comparisons. Moreover, what young people
547 with ME/CFS consider as “recovery” can largely differ [7] and patient coping at any age might
548 challenge measuring recovery [110].

549 Risk factors for prolonged disease after EBV-IM and for ME/CFS duration in general are not yet
550 clear. US college students who developed ME/CFS after IM had more physical complaints but not
551 more perceived stress, depression, anxiety, or abnormal coping before the onset of IM [20]. Some
552 studies have associated prolonged symptoms after EBV-IM with older age and severity of acute IM,
553 others have identified initial pain severity, autonomic symptoms, lower mental health scores, higher
554 anxiety and depression scales, more days-in-bed, female gender, and distinct laboratory changes
555 (CRP, vitamin B12, cytokines) during EBV-IM as risk factors for the development of ME/CFS.
556 However, the case definitions of ME/CFS varied in early studies, findings have been inconsistent,
557 and it is unknown, whether risk factors of ME/CFS onset also impact on the duration of ME/CFS [20,
558 24, 28-30, 47, 111]. Several factors have been suggested to affect the prognosis of ME/CFS in
559 general, including age, female gender, fatigue severity at disease onset, PEM severity, severity of
560 ME/CFS symptoms, comorbidities, illness duration, life stressors, and lower socioeconomic status [6,
561 15, 16, 84, 112, 113], although findings so far remained inconclusive. With better initial test results
562 and better final outcomes of adolescents compared to adults, our findings might support younger age,
563 shorter disease duration, a better Bell Score, as well as less severe fatigue (CFQ) at first presentation
564 as potential markers for a more favorable course of disease although, of course, the number of
565 patients was by far too small to draw any final conclusions.

566 The interpretation of published data on ME/CFS outcome is additionally challenged by the fact
567 that in many ME/CFS cohorts the initial trigger is less well characterized than in our cohort. An
568 Australian ME/CFS cohort included 80% post-infectious cases, with 40% of the cases described as
569 triggered by EBV-IM, although only 25% had documented serological changes at onset [7]. Other
570 pediatric studies have reported between 23% and 90% of perceived infectious triggers [15-17, 114] or
571 provide no further information on any events at onset [8, 27, 56]. Some studies, furthermore,
572 included patients with dominantly gradual onset and thus no distinct trigger [5, 17].

573

574 **Symptom Load over the Study Period**

575 Our patients reported a wide range of symptoms that persisted over time, with overall little change
576 in severity or frequency. The ME/CFS core symptoms PEM, fatigue, need for rest, performance
577 limitations in daily life, unrefreshing sleep, concentration problems, and mental exhaustibility were
578 reported to occur at least frequently and to be at least severe by a substantial proportion of patients.
579 The results of this study highlight the interindividual variability of dominant symptoms as well as the
580 fluctuation of intraindividual symptoms over the course of a year. In general, symptoms in pediatric

581 ME/CFS are reported to fluctuate more than in adults [6]. However, due to the small size of our
582 cohort we did not investigate this issue in more detail.

583 In adolescent patients, fewer symptoms were reported at 6 and 12 months compared to the initial
584 visit, which is in line with partial remission of some patients. Conversely, the number of symptoms
585 reported by adults remained stable over the whole study period. It is also worth noting that adults
586 consistently reported more symptoms and almost twice as many frequent symptoms than adolescents
587 at all visits. This supports the recommendation to quantify symptoms at the time of diagnosis and
588 might suggest prioritizing frequent symptoms in treatment protocols. Quantifying frequency and
589 specificity was recommended to increase the specificity of ME/CFS diagnosis [115], since mild
590 forms of most ME/CFS symptoms frequently occur in the general population. In our cohort a
591 substantial number of symptoms were also reported to occur only sometimes or rarely, or to be of
592 mild severity.

593

594 **Health-Related Quality of Life**

595 Previous studies have shown that children and young adults with ME/CFS experience a severe
596 illness that fundamentally affects their social life and education, and is associated with a poorer
597 HRQoL than found in peers with other chronic diseases including asthma, diabetes mellitus, epilepsy,
598 and cystic fibrosis [7, 9-11]. Remarkably, the PedsQL results were very similar between our
599 adolescent cohort and adolescent ME/CFS patients in the US, Australia or Norway [9, 10, 116, 117].
600 Furthermore, our adolescent sample also displayed the same relative distribution of subscales as
601 published cohorts, with patients reporting worse HRQoL in physical and school function and better
602 HRQoL in social and emotional functioning.

603 Adolescents in our cohort reported moderate improvements on the total score, physical and
604 psychosocial score, as well as significant improvements on the school domain, while social and
605 emotional quality of life seemed stable. The improvements in the total score, psychosocial score, and
606 school score were greater than a suggested minimal clinically meaningful difference in PedsQL
607 results from pediatric cohorts [118]. However, no clinically meaningful difference was specifically
608 suggested so far for patients with ME/CFS. The improvements observed in HRQoL of our adolescent
609 cohort are in line with the fact that some of the patients experienced a partial remission. However,
610 intensive school counselling by our team might have contributed to a better school situation and
611 changes in HRQoL.

612 Most concerningly, we found little evidence for improved HRQoL in young adults, apart from
613 improvements in the emotional and social subdomains possibly due to the implementation of

614 specialized psychosocial and medical care. Young adults in our cohort reported much lower HRQoL
615 compared to adolescents from our and other studies. We are not aware of any other studies assessing
616 HRQoL in very young adults specifically, but studies in adult ME/CFS patients in general have
617 consistently reported very low HRQoL [119, 120].

618 The transition from adolescence to young adulthood as well as from pediatrics to adult patient
619 medicine can be particularly challenging for young people with ME/CFS, with individuals facing a
620 range of uncertainties regarding health care, education, financials, and contact to peers. These factors
621 may be contributing to the lower HRQoL reported by young adults compared with adolescents in our
622 study. Unrevealing the additional age-specific risk factors for chronification will be crucial for
623 developing effective strategies to improve the well-being of this most vulnerable group of people
624 with post-infectious syndromes and ME/CFS.

625 Few studies have investigated risk factors for worse HRQoL in adolescents with ME/CFS and
626 found high frequency of PEM, cognitive symptoms, regular school absence, delayed school
627 progression, and attending physical therapy or rehabilitation as possible risk factors. After diagnosis,
628 support of school personal, regular school attendance, and participation in leisure activities have been
629 associated with higher HRQoL [10, 121]. The findings regarding a possible risk contribution of
630 depressive symptoms were inconsistent [10, 117, 120, 121]. Furthermore, it was reported that
631 adolescents meeting the Fukuda and IOM criteria displayed worse HRQoL than adolescents only
632 satisfying the Fukuda criteria, suggesting that criteria requiring PEM might select patients with worse
633 HRQoL [10]. The fact that the very strict CCC have been used to diagnose ME/CFS in our adult
634 patients might have contributed to the findings of lower HRQoL, worse physical functioning, and
635 longer disease duration in this age group. Additionally, a selection bias must be considered, as the
636 sample of young adults in this study may have been skewed by the fact that they sought treatment at
637 a pediatric clinic, potentially indicating a higher level of desperation or urgency in seeking medical
638 care.

639 Altogether, it is difficult to interpret the trajectories of HRQoL in this study, as to our best
640 knowledge, no other longitudinal evaluations of HRQoL in children or young adults with ME/CFS
641 are available, and since no matched healthy controls have been evaluated during the study period.
642 Especially a possible impact of fears elicited by the COVID-19 pandemic or by restrictions thereof
643 during the course of disease cannot be excluded.

644 **Strengths and Limitations**

645

646 As an important strength our study presents longitudinal data on ME/CFS cases that manifested
647 after serologically confirmed EBV-IM. Confirming an infectious onset or even a specific infectious
648 trigger of ME/CFS years after its occurrence can be very challenging, since self-reports are not
649 reliable and ordering former medical documents is time-consuming, and in many cases not
650 successful. This is especially true in cases of EBV-IM, where retrospective diagnoses rely on
651 sufficient serological evidence of EBV primary infection documented together with typical clinical
652 signs and symptoms. We did not include patients with probable EBV-IM (e.g. typical clinical signs
653 only) in this article which we will report on together with a young cohort of ME/CFS patients
654 triggered by other infectious diseases. Our study supports the reassurance of younger adolescents that
655 improvement of ME/CFS following EBV-IM is not uncommon, even if it takes months or years, and
656 that remission is possible, also it cannot be guaranteed, as suggested by others [6, 7, 18].

657 A second strength of our study is the inclusion of very young adult patients together with
658 adolescents. The former population often gets lost from pediatric as well as non-pediatric studies due
659 to age-specific challenges on either side, including studies on post-viral syndromes. For example, a
660 recent longitudinal study on long-term recovery from SARS-CoV-2 infection in children specifically
661 excluded participants from follow-up after their 18th birthday and thereby possibly generated a bias
662 towards lower prevalence of complex and severe symptoms [122]. For patients older than 17 years
663 pediatricians mostly cannot provide follow-up due to regulatory issues, and non-pediatric care takers
664 might face barriers to getting a complete medical history and/or to helping with issues regarding
665 school, academic career, parents, siblings, or peers. Unfortunately, we witnessed difficulties of very
666 young adults with ME/CFS to be adopted by local general practitioners which most likely further
667 impaired their clinical outcome. In our center we regularly see young people up to an age of 20 to
668 facilitate the transition within age-specific borders of medical care and to investigate age-specific
669 resilience and risk factors.

670 Third and importantly, we provide data on ME/CFS cases that were diagnosed by clinical criteria
671 requiring PEM as a hallmark of ME/CFS and as recommended by the EUROMENE [48] and others
672 [49, 50, 52]. Moreover, we compare the fulfillment of the CCC and the less strict criteria of the
673 CDW-R in our adolescent cohort, while many earlier studies reported on EBV-triggered ME/CFS
674 cases that were diagnosed by the polythetic Fukuda or even the Oxford criteria which both do not
675 essentially require PEM.

676 We furthermore provide detailed information on clinical phenotypes, including the frequency and
677 severity of typical ME/CFS symptoms, a comprehensive set of data from various well-established
678 PROMs evaluating fatigue, daily functioning, or HRQoL (CFQ, Bell Score, PedsQL, SF-36), and

679 various laboratory results, including peripheral immunophenotypes, EBV serology, and EBV DNA
680 load.

681 Overall, our study adds to the current understanding of ME/CFS in young people and highlights
682 the importance of an early diagnosis as well as of a thorough longitudinal evaluation of patients with
683 ME/CFS following EBV-IM.

684
685 The study has several limitations that must be considered when interpreting the results. First, a
686 potentially multi-faceted selection bias is limiting the generalizability of results. Since our center is
687 the only specialized pediatric ME/CFS clinic in Germany, before admission patients are faced with
688 significant waiting times and with time-consuming prerequisites such as answering questionnaires
689 and providing previous medical results. Additionally, many patients must travel a significant distance
690 to reach our clinic and therefore the study sample is most likely skewed towards individuals with
691 moderate or less severe ME/CFS and to families than can afford travelling. Moreover, our cohort was
692 limited to children and adolescents registered in upper school services and to Caucasian patients,
693 which might suggest that individuals from other groups may be underrepresented, possibly due to
694 barriers within the health care system; given the lack of knowledge on ME/CFS, it often requires
695 significant effort of patients and their families to get specialized care and not rarely the patients'
696 journeys involve multiple healthcare professionals.

697 Second, the sample size of the study and the number of individuals who experienced partial
698 remission is relatively small, which can affect the statistical power of the analyses and the
699 generalizability of the results.

700 Third, although the drop-out rate of 20% at the assessment after 12 months was deemed
701 acceptable, it is important to acknowledge that some patients were lost to follow-up, which could
702 introduce bias and potentially reduce the overall representativeness of our sample. Based on our
703 experience, discontinuation in ME/CFS studies may not be missing at random, as some patients may
704 be unwilling to continue participating due to perceived improvement, while others may feel too ill to
705 continue.

706 In addition, this study was limited in its ability to investigate risk factors prior to diagnosis of
707 ME/CFS, since patients were registered after the onset of this disease. Our study focused on
708 examining risk factors that might have contributed to the maintenance of ME/CFS. However, it is
709 important to note that additional prospective studies, such as those in US college students, are needed
710 to further explore potentially predisposing factors indicating an increased risk or resilience without
711 recall bias [20].

712 As another limitation it should be noted that the 12 months follow-up period may not provide
713 enough information to evaluate the long-term prognosis of ME/CFS, particularly in young adults.
714 Longer follow-up data would be beneficial, especially since young adults do not appear to show
715 significant improvement one year after diagnosis.

716 Finally, the lack of a matched control group in this study makes it challenging to interpret some
717 results, for example changes in HRQoL over time or frequency and severity of ME/CFS symptoms
718 that are non-specific and common in the general population.

719 While this study provides valuable insights into the clinical course of a complex chronic disease in
720 young people, these limitations suggest that caution is necessary when interpreting the results. Future
721 studies with larger sample sizes, longer follow-up periods, and appropriate control groups are
722 necessary to further validate and extend these findings.

723 **Conclusions**

724 In conclusion, ME/CFS after EBV-IM is a debilitating disease that results in severe functional
725 impairment and poor quality of life for both adolescents and young adults in Germany. Access to
726 healthcare and treatment is a fundamental barrier for patients with this condition. Laboratory findings
727 were inconclusive, and there was no evidence to suggest that EBV perpetuates the disease. While
728 patients with ME/CFS often experience a variety of fluctuating symptoms, it is possible that the
729 frequency and severity of core symptoms may be more significant in predicting prognosis. Young
730 adults reported more symptoms, greater physical impairment, and worse quality of life than
731 adolescents. While some pediatric patients showed signs of improvement over the study period,
732 young adults tended to have a poor prognosis, underscoring the need for special attention when
733 taking care for this age group. There is a clear need for more research to clarify the reasons for the
734 different health trajectories and to identify prognostic markers that allow for an evidence-based
735 stratification of multi-professional and multi-modal longitudinal care. Further research is also
736 necessary to better understand the pathomechanisms of the disease, identify reliable biomarkers for
737 early diagnosis, and to develop effective treatments that can improve outcomes and support recovery.

738 **Data Availability Statement**

739 Data is available upon reasonable request.

740 **Ethics Statement**

741 Patients and parents (of patients < 18 years) gave written and informed consent prior to inclusion.
742 The study was approved by the local Ethics Committee (529/18, 485/18) and conducted in
743 accordance with the Declaration of Helsinki.

744 **Author Contributions**

745 R.P., P.M., T.H., K.G., and U.B. designed the study. R.P., P.M., T.H., H.Z., Y.M., K.W, J.P., and
746 A.L. acquired data and investigated patients. R.P., S.M.H., L.M, and U.B. analyzed the data. R.P.,
747 M.H., L.M., and U.B. drafted and reviewed the manuscript. K.G. and U.B. supervised the work. All
748 authors discussed the results and commented on the manuscript.

749 **Funding**

750 This work has been supported by the Lost Voices and Weidenhammer-Zoebele foundations.

751

752 **Acknowledgments**

753 We thank all patients who participated in this study and their parents for supporting their
754 participation.

755 **Conflict of Interest**

756 U.B. received research grants from Federal Ministry of Education and Research (BMBF), the
757 Federal Ministry of Health (BMG), the Bavarian Ministry of Health and Care (StMGP), the Bavarian
758 Ministry of Science and Arts (StMWK), the German Center for Infection Research (DZIF), the
759 People for Children (Menschen für Kinder) Foundation, the Weidenhammer-Zöbele Foundation, the
760 Lost-Voices Foundation, and the ME/CFS Research Foundation.

761 C.S. was consulting Roche, Celltrend, and Bayer; she received support for clinical trials by Bayer,
762 Fresenius, and Miltenyi, honoraria for lectures by Fresenius, AstraZeneca, BMS, Roche, Bayer, and
763 Novartis, and research grants from the German Research Association (DFG), the BMBF, the BMG,
764 the Weidenhammer-Zoebele Foundation, the Lost-Voices Foundation, and the ME/CFS Research
765 Foundation.

766 All other authors declare that the research was conducted in the absence of any commercial or
767 financial relationships that could be construed as a potential conflict of interest.

768 **References**

769

- 770 1. Unger, E.R., et al., *Multi-Site Clinical Assessment of Myalgic Encephalomyelitis/Chronic*
771 *Fatigue Syndrome (MCAM): Design and Implementation of a Prospective/Retrospective*
772 *Rolling Cohort Study*. *Am J Epidemiol*, 2017. **185**(8): p. 617-626.
- 773 2. Pendergrast, T., et al., *Housebound versus nonhousebound patients with myalgic*
774 *encephalomyelitis and chronic fatigue syndrome*. *Chronic Illness*, 2016. **12**(4): p. 292-307.
- 775 3. Crawley, E. and J.A. Sterne, *Association between school absence and physical function in*
776 *paediatric chronic fatigue syndrome/myalgic encephalopathy*. *Arch Dis Child*, 2009. **94**(10):
777 p. 752-6.
- 778 4. Van Geelen, S.M., et al., *Adolescent Chronic Fatigue Syndrome*. 2010. **164**(9).
- 779 5. Nijhof, S.L., et al., *Adolescent Chronic Fatigue Syndrome: Prevalence, Incidence, and*
780 *Morbidity*. *PEDIATRICS*, 2011. **127**(5): p. e1169-e1175.
- 781 6. Rowe, P.C., et al., *Myalgic Encephalomyelitis/Chronic Fatigue Syndrome Diagnosis and*
782 *Management in Young People: A Primer*. *Frontiers in Pediatrics*, 2017. **5**(121).
- 783 7. Rowe, K.S., *Long Term Follow up of Young People With Chronic Fatigue Syndrome*
784 *Attending a Pediatric Outpatient Service*. *Frontiers in Pediatrics*, 2019. **7**(21).
- 785 8. Crawley, E.M., A.M. Emond, and J.A. Sterne, *Unidentified Chronic Fatigue*
786 *Syndrome/myalgic encephalomyelitis (CFS/ME) is a major cause of school absence:*
787 *surveillance outcomes from school-based clinics*. *BMJ Open*, 2011. **1**(2): p. e000252.
- 788 9. Similä, W.A., et al., *Health-related quality of life in Norwegian adolescents living with*
789 *chronic fatigue syndrome*. *Health and Quality of Life Outcomes*, 2020. **18**(1).
- 790 10. Roma, M., et al., *Impaired Health-Related Quality of Life in Adolescent Myalgic*
791 *Encephalomyelitis/Chronic Fatigue Syndrome: The Impact of Core Symptoms*. *Front Pediatr*,
792 2019. **7**: p. 26.
- 793 11. Kennedy, G., C. Underwood, and J.J.F. Belch, *Physical and Functional Impact of Chronic*
794 *Fatigue Syndrome/Myalgic Encephalomyelitis in Childhood*. *Pediatrics*, 2010. **125**(6): p.
795 e1324-e1330.
- 796 12. Bakken, I.J., et al., *Two age peaks in the incidence of chronic fatigue syndrome/myalgic*
797 *encephalomyelitis: a population-based registry study from Norway 2008-2012*. *BMC*
798 *Medicine*, 2014. **12**(1).
- 799 13. Jason, L.A., et al., *The Prevalence of Pediatric Myalgic Encephalomyelitis/Chronic Fatigue*
800 *Syndrome in a Community-Based Sample*. *Child Youth Care Forum*, 2020. **49**(4): p. 563-
801 579.
- 802 14. Crawley, E.M., A.M. Emond, and J.A.C. Sterne, *Unidentified Chronic Fatigue*
803 *Syndrome/myalgic encephalomyelitis (CFS/ME) is a major cause of school absence:*
804 *surveillance outcomes from school-based clinics*. *BMJ Open*, 2011. **1**(2): p. e000252-
805 e000252.
- 806 15. Josev, E.K., et al., *Health, Wellbeing, and Prognosis of Australian Adolescents with Myalgic*
807 *Encephalomyelitis/Chronic Fatigue Syndrome (ME/CFS): A Case-Controlled Follow-Up*
808 *Study*. *Journal of Clinical Medicine*, 2021. **10**(16): p. 3603.
- 809 16. Sankey, A., et al., *A follow-up study of chronic fatigue syndrome in children and adolescents:*
810 *symptom persistence and school absenteeism*. *Clin Child Psychol Psychiatry*, 2006. **11**(1): p.
811 126-38.
- 812 17. Bell, D.S., K. Jordan, and M. Robinson, *Thirteen-year follow-up of children and adolescents*
813 *with chronic fatigue syndrome*. *Pediatrics*, 2001. **107**(5): p. 994-8.

- 814 18. Katz, B.Z. and L.A. Jason, *Chronic fatigue syndrome following infections in adolescents.*
815 *Curr Opin Pediatr*, 2013. **25**(1): p. 95-102.
- 816 19. Hickie, I., et al., *Post-infective and chronic fatigue syndromes precipitated by viral and non-*
817 *viral pathogens: prospective cohort study.* *BMJ*, 2006. **333**(7568): p. 575.
- 818 20. Jason, L.A., et al., *Risks for Developing Myalgic Encephalomyelitis/Chronic Fatigue*
819 *Syndrome in College Students Following Infectious Mononucleosis: A Prospective Cohort*
820 *Study.* *Clinical Infectious Diseases*, 2021. **73**(11): p. e3740-e3746.
- 821 21. Choutka, J., et al., *Unexplained post-acute infection syndromes.* *Nature Medicine*, 2022.
822 **28**(5): p. 911-923.
- 823 22. Kedor, C., et al., *A prospective observational study of post-COVID-19 chronic fatigue*
824 *syndrome following the first pandemic wave in Germany and biomarkers associated with*
825 *symptom severity.* *Nature Communications*, 2022. **13**(1): p. 5104.
- 826 23. Chu, L., et al., *Onset Patterns and Course of Myalgic Encephalomyelitis/Chronic Fatigue*
827 *Syndrome.* *Front Pediatr*, 2019. **7**: p. 12.
- 828 24. Pedersen, M., et al., *Predictors of chronic fatigue in adolescents six months after acute*
829 *Epstein-Barr virus infection: A prospective cohort study.* *Brain, Behavior, and Immunity*,
830 2019. **75**: p. 94-100.
- 831 25. Moss-Morris, R., M.J. Spence, and R. Hou, *The pathway from glandular fever to chronic*
832 *fatigue syndrome: can the cognitive behavioural model provide the map?* *Psychological*
833 *Medicine*, 2011. **41**(5): p. 1099-1107.
- 834 26. Katz, B.Z., et al., *Chronic Fatigue Syndrome After Infectious Mononucleosis in Adolescents.*
835 *Pediatrics*, 2009. **124**(1): p. 189-193.
- 836 27. Gill, A.C., A. Dosen, and J.B. Ziegler, *Chronic Fatigue Syndrome in Adolescents: A Follow-*
837 *up Study.* *Archives of Pediatrics & Adolescent Medicine*, 2004. **158**(3): p. 225-229.
- 838 28. Candy, B., et al., *Recovery from infectious mononucleosis: a case for more than symptomatic*
839 *therapy? A systematic review.* *Br J Gen Pract*, 2002. **52**(483): p. 844-51.
- 840 29. White, P.D., et al., *Predictions and associations of fatigue syndromes and mood disorders*
841 *that occur after infectious mononucleosis.* *The Lancet*, 2001. **358**(9297): p. 1946-1954.
- 842 30. Buchwald, D.S., et al., *Acute infectious mononucleosis: characteristics of patients who report*
843 *failure to recover.* *The American Journal of Medicine*, 2000. **109**(7): p. 531-537.
- 844 31. White, P.D., et al., *Incidence, risk and prognosis of acute and chronic fatigue syndromes and*
845 *psychiatric disorders after glandular fever.* *The British Journal of Psychiatry*, 1998. **173**(6):
846 p. 475-481.
- 847 32. Mirin, A.A., M.E. Dimmock, and L.A. Jason, *Updated ME/CFS prevalence estimates*
848 *reflecting post-COVID increases and associated economic costs and funding implications.*
849 *Fatigue: Biomedicine, Health & Behavior*, 2022. **10**(2): p. 83-93.
- 850 33. Komaroff, A.L. and L. Bateman, *Will COVID-19 Lead to Myalgic Encephalomyelitis/Chronic*
851 *Fatigue Syndrome?* *Frontiers in Medicine*, 2021. **7**.
- 852 34. Roessler, M., et al., *Post-COVID-19-associated morbidity in children, adolescents, and*
853 *adults: A matched cohort study including more than 157,000 individuals with COVID-19 in*
854 *Germany.* *PLOS Medicine*, 2022. **19**(11): p. e1004122.
- 855 35. Piraino, B., U. Vollmer-Conna, and A.R. Lloyd, *Genetic associations of fatigue and other*
856 *symptom domains of the acute sickness response to infection.* *Brain, Behavior, and Immunity*,
857 2012. **26**(4): p. 552-558.
- 858 36. Wirth, K. and C. Scheibenbogen, *A Unifying Hypothesis of the Pathophysiology of Myalgic*
859 *Encephalomyelitis/Chronic Fatigue Syndrome (ME/CFS): Recognitions from the finding of*
860 *autoantibodies against β 2-adrenergic receptors.* *Autoimmun Rev*, 2020. **19**(6): p. 102527.
- 861 37. Renz-Polster, H., et al., *The Pathobiology of Myalgic Encephalomyelitis/Chronic Fatigue*
862 *Syndrome: The Case for Neuroglial Failure.* *Front Cell Neurosci*, 2022. **16**: p. 888232.

- 863 38. Komaroff, A.L. and W.I. Lipkin, *Insights from myalgic encephalomyelitis/chronic fatigue*
864 *syndrome may help unravel the pathogenesis of postacute COVID-19 syndrome*. Trends Mol
865 Med, 2021. **27**(9): p. 895-906.
- 866 39. Cortes Rivera, M., et al., *Myalgic Encephalomyelitis/Chronic Fatigue Syndrome: A*
867 *Comprehensive Review*. Diagnostics, 2019. **9**(3): p. 91.
- 868 40. Rasa, S., et al., *Chronic viral infections in myalgic encephalomyelitis/chronic fatigue*
869 *syndrome (ME/CFS)*. J Transl Med, 2018. **16**(1): p. 268.
- 870 41. Underhill, R.A., *Myalgic encephalomyelitis, chronic fatigue syndrome: An infectious disease*.
871 Medical Hypotheses, 2015. **85**(6): p. 765-773.
- 872 42. Ruiz-Pablos, M., et al., *Epstein-Barr Virus and the Origin of Myalgic Encephalomyelitis or*
873 *Chronic Fatigue Syndrome*. Front Immunol, 2021. **12**: p. 656797.
- 874 43. Loebel, M., et al., *Deficient EBV-Specific B- and T-Cell Response in Patients with Chronic*
875 *Fatigue Syndrome*. PLoS ONE, 2014. **9**(1): p. e85387.
- 876 44. Shikova, E., et al., *Cytomegalovirus, Epstein-Barr virus, and human herpesvirus-6*
877 *infections in patients with myalgic encephalomyelitis/chronic fatigue syndrome*. Journal of
878 Medical Virology, 2020. **92**(12): p. 3682-3688.
- 879 45. Komaroff, A.L., *Chronic fatigue syndromes: relationship to chronic viral infections*. J Virol
880 Methods, 1988. **21**(1-4): p. 3-10.
- 881 46. Sepúlveda, N., et al., *Revisiting IgG Antibody Reactivity to Epstein-Barr Virus in Myalgic*
882 *Encephalomyelitis/Chronic Fatigue Syndrome and Its Potential Application to Disease*
883 *Diagnosis*. Front Med (Lausanne), 2022. **9**: p. 921101.
- 884 47. Pedersen, M., et al., *Predictors of chronic fatigue in adolescents six months after acute*
885 *Epstein-Barr virus infection: A prospective cohort study*. Brain Behav Immun, 2019. **75**: p.
886 94-100.
- 887 48. Nacul, L., et al., *European Network on Myalgic Encephalomyelitis/Chronic Fatigue*
888 *Syndrome (EUROMENE): Expert Consensus on the Diagnosis, Service Provision, and Care*
889 *of People with ME/CFS in Europe*. Medicina (Kaunas), 2021. **57**(5).
- 890 49. Clayton, E.W., *Beyond myalgic encephalomyelitis/chronic fatigue syndrome: an IOM report*
891 *on redefining an illness*. JAMA, 2015. **313**(11): p. 1101-2.
- 892 50. Carruthers, B.M., et al., *Myalgic Encephalomyelitis/Chronic Fatigue Syndrome*. Journal of
893 Chronic Fatigue Syndrome, 2003. **11**(1): p. 7-115.
- 894 51. Jason, L.A., et al., *A Pediatric Case Definition for Myalgic Encephalomyelitis and Chronic*
895 *Fatigue Syndrome*. Journal of Chronic Fatigue Syndrome, 2006. **13**(2-3): p. 1-44.
- 896 52. Bateman, L., et al., *Myalgic Encephalomyelitis/Chronic Fatigue Syndrome: Essentials of*
897 *Diagnosis and Management*. Mayo Clin Proc, 2021. **96**(11): p. 2861-2878.
- 898 53. Carmen Scheibenbogen, J.T.B.-S., Cornelia Heindrich, Kirsten Wittke, Elisa Stein, Christiana
899 Franke, Harald Prüss, Hannah Preßler, Marie-Luise Machule, Heinrich Audebert, Carsten
900 Finke, Hanna Gwendolyn Zimmermann, Birgit Sawitzki, Christian Meisel, Markus Tölle,
901 Anne Krüger, Anna C. Aschenbrenner, Joachim L Schultze, Marc Daniel Beyer, Markus
902 Ralsler, Michael Mülleler, Leif Erik Sander, Frank Konietzschke, Friedemann Paul, Silvia
903 Stojanov, Lisa Bruckert, Dennis M Hedderich, Franziska Knolle, Gabriela Riemekasten,
904 Maria J.G.T. Vehreschild, Oliver A. Cornely, Uta Behrends, Susen Burock, *Fighting Post-*
905 *COVID and ME/CFS – development of curative therapies* Frontiers in Medicine, in press.
- 906 54. *Beyond Myalgic Encephalomyelitis/Chronic Fatigue Syndrome: Redefining an Illness*. Mil
907 Med, 2015. **180**(7): p. 721-3.
- 908 55. Moore, Y., et al., *Recovery from chronic fatigue syndrome: a systematic review—*
909 *heterogeneity of definition limits study comparison*. Archives of Disease in Childhood, 2021.
910 **106**(11): p. 1087-1094.

- 911 56. Norris, T., et al., *Natural course of chronic fatigue syndrome/myalgic encephalomyelitis in*
912 *adolescents*. Archives of Disease in Childhood, 2017. **102**(6): p. 522-528.
- 913 57. Van Geelen, S.M., et al., *Adolescent Chronic Fatigue Syndrome*. Archives of Pediatrics
914 & Adolescent Medicine, 2010. **164**(9).
- 915 58. Lim, A. and L. Lubitz, *Chronic fatigue syndrome: successful outcome of an intensive*
916 *inpatient programme*. J Paediatr Child Health, 2002. **38**(3): p. 295-9.
- 917 59. Rangel, L., et al., *The course of severe chronic fatigue syndrome in childhood*. Journal of the
918 Royal Society of Medicine, 2000. **93**(3): p. 129-134.
- 919 60. Krilov, L.R., et al., *Course and outcome of chronic fatigue in children and adolescents*.
920 Pediatrics, 1998. **102**(2 Pt 1): p. 360-6.
- 921 61. Smith, M.S., et al., *Chronic fatigue in adolescents*. Pediatrics, 1991. **88**(2): p. 195-202.
- 922 62. Devendorf, A.R., et al., *Approaching recovery from myalgic encephalomyelitis and chronic*
923 *fatigue syndrome: Challenges to consider in research and practice*. Journal of Health
924 Psychology, 2017. **24**(10): p. 1412-1424.
- 925 63. Cairns, R. and M. Hotopf, *A systematic review describing the prognosis of chronic fatigue*
926 *syndrome*. Occup Med (Lond), 2005. **55**(1): p. 20-31.
- 927 64. Collin, S.M. and E. Crawley, *Specialist treatment of chronic fatigue syndrome/ME: a cohort*
928 *study among adult patients in England*. BMC Health Serv Res, 2017. **17**(1): p. 488.
- 929 65. Knight, S., et al., *Paediatric chronic fatigue syndrome: Complex presentations and protracted*
930 *time to diagnosis*. Journal of Paediatrics and Child Health, 2013. **49**(11): p. 919-924.
- 931 66. Solomon, L. and W.C. Reeves, *Factors influencing the diagnosis of chronic fatigue*
932 *syndrome*. Arch Intern Med, 2004. **164**(20): p. 2241-5.
- 933 67. Froehlich, L., et al., *Medical Care Situation of People with Myalgic*
934 *Encephalomyelitis/Chronic Fatigue Syndrome in Germany*. Medicina, 2021. **57**(7): p. 646.
- 935 68. Friedman, K.J., *Advances in ME/CFS: Past, Present, and Future*. Frontiers in Pediatrics,
936 2019. **7**.
- 937 69. Sunnquist, M., et al., *Access to Medical Care for Individuals with Myalgic Encephalomyelitis*
938 *and Chronic Fatigue Syndrome: A Call for Centers of Excellence*. Mod Clin Med Res, 2017.
939 **1**(1): p. 28-35.
- 940 70. Varni, J.W., M. Seid, and P.S. Kurtin, *PedsQL 4.0: reliability and validity of the Pediatric*
941 *Quality of Life Inventory version 4.0 generic core scales in healthy and patient populations*.
942 Med Care, 2001. **39**(8): p. 800-12.
- 943 71. Morfeld, M., I. Kirchberger, and M. Bullinger, *SF-36 Fragebogen zum Gesundheitszustand:*
944 *Deutsche Version des Short Form-36 Health Survey*. 2011.
- 945 72. Chalder, T., et al., *Development of a fatigue scale*. Journal of Psychosomatic Research, 1993.
946 **37**(2): p. 147-153.
- 947 73. Wagner, D., et al., *Psychometric properties of the CDC Symptom Inventory for assessment of*
948 *Chronic Fatigue Syndrome*. Population Health Metrics, 2005. **3**(1).
- 949 74. Bell, D.S., *The doctor's guide to chronic fatigue syndrome: Understanding, treating, and*
950 *living with CFIDS*. 1995: Addison-Wesley Pub. Co.
- 951 75. R Core Team, *R: A Language and Environment for Statistical Computing*. 2023, R
952 Foundation for Statistical Computing: Vienna, Austria.
- 953 76. Bakdash, J.Z. and L.R. Marusich, *Repeated Measures Correlation*. Frontiers in Psychology,
954 2017. **8**.
- 955 77. Collin, S.M., et al., *Chronic fatigue syndrome (CFS) or myalgic encephalomyelitis (ME) is*
956 *different in children compared to in adults: a study of UK and Dutch clinical cohorts*. BMJ
957 Open, 2015. **5**(10): p. e008830.
- 958 78. Geraghty, K.J. and C. Adeniji, *The Importance of Accurate Diagnosis of ME/CFS in Children*
959 *and Adolescents: A Commentary*. Frontiers in Pediatrics, 2019. **6**.

- 960 79. *Epstein-Barr-Virus: Von harmlos bis folgeschwer*. 2017 [cited 2023 25.06.2023]; Available
961 from: [https://www.gesundheitsforschung-bmbf.de/de/epstein-barr-virus-von-harmlos-bis-
963 80. *Munich Long COVID Registry Study for Children, Adolescents and Adults \(MLC-R\).*
964 81. *Aufbau eines multizentrischen, altersübergreifenden, klinischen ME/CFS-Registers \(MECFS-
965 R\) sowie einer multizentrischen, altersübergreifenden ME/CFS-Biobank \(MECFS-Bio\) mit
966 Auswertung der epidemiologischen, klinischen Versorgungsdaten aus dem MECFS-R*. 2022
967 \[cited 2023 25.06.2023\]; Available from:
968 \[https://www.bundesgesundheitsministerium.de/ministerium/ressortforschung/handlungsfelder
970 82. Prevention, C.f.D.C.a. *Myalgic Encephalomyelitis/Chronic Fatigue Syndrome*. \\[cited 2023
971 25.06.\\]; Available from: \\[https://www.cdc.gov/me-cfs/healthcare-
973 83. Webb, C.M., et al., *What stops children with a chronic illness accessing health care: a mixed
974 methods study in children with Chronic Fatigue Syndrome/Myalgic Encephalomyelitis
975 \\\(CFS/ME\\\)*. BMC Health Serv Res, 2011. **11**: p. 308.
976 84. Ghali, A., et al., *Factors Influencing the Prognosis of Patients with Myalgic
977 Encephalomyelitis/Chronic Fatigue Syndrome*. Diagnostics, 2022. **12**: p. 2540.
978 85. White, P.H., et al., *Supporting the Health Care Transition From Adolescence to Adulthood in
979 the Medical Home*. Pediatrics, 2018. **142**\\\(5\\\): p. e20182587.
980 86. Loades, M.E., E.A. Sheils, and E. Crawley, *Treatment for paediatric chronic fatigue
981 syndrome or myalgic encephalomyelitis \\\(CFS/ME\\\) and comorbid depression: a systematic
982 review*. BMJ Open, 2016. **6**\\\(10\\\): p. e012271.
983 87. Loades, M.E., et al., *How common are depression and anxiety in adolescents with chronic
984 fatigue syndrome \\\(CFS\\\) and how should we screen for these mental health co-morbidities? A
985 clinical cohort study*. Eur Child Adolesc Psychiatry, 2021. **30**\\\(11\\\): p. 1733-1743.
986 88. Castro-Marrero, J., et al., *Comorbidity in Chronic Fatigue Syndrome/Myalgic
987 Encephalomyelitis: A Nationwide Population-Based Cohort Study*. Psychosomatics, 2017.
988 **58**\\\(5\\\): p. 533-543.
989 89. Stewart, J.M., et al., *Orthostatic intolerance in adolescent chronic fatigue syndrome*.
990 Pediatrics, 1999. **103**\\\(1\\\): p. 116-21.
991 90. Freeman, R., et al., *Consensus statement on the definition of orthostatic hypotension, neurally
992 mediated syncope and the postural tachycardia syndrome*. Clin Auton Res, 2011. **21**\\\(2\\\): p.
993 69-72.
994 91. Katz, B.Z., et al., *Orthostatic tolerance testing in a prospective cohort of adolescents with
995 chronic fatigue syndrome and recovered controls following infectious mononucleosis*. Clin
996 Pediatr \\\(Phila\\\), 2012. **51**\\\(9\\\): p. 835-9.
997 92. Porter, N.S., et al., *Alternative medical interventions used in the treatment and management
998 of myalgic encephalomyelitis/chronic fatigue syndrome and fibromyalgia*. J Altern
999 Complement Med, 2010. **16**\\\(3\\\): p. 235-49.
1000 93. Parslow, R., et al., *What matters to children with CFS/ME? A conceptual model as the first
1001 stage in developing a PROM*. Arch Dis Child, 2015. **100**\\\(12\\\): p. 1141-7.
1002 94. Knight, S.J., et al., *School Functioning in Adolescents With Chronic Fatigue Syndrome*.
1003 Frontiers in Pediatrics, 2018. **6**.
1004 95. Repka-Ramirez, M.S., et al., *IgE levels are the same in chronic fatigue syndrome \\\(CFS\\\) and
1005 control subjects when stratified by allergy skin test results and rhinitis types*. Ann Allergy
1006 Asthma Immunol, 2001. **87**\\\(3\\\): p. 218-21.
1007 96. Earl, K.E., et al., *Vitamin D status in chronic fatigue syndrome/myalgic encephalomyelitis: a
1008 cohort study from the North-West of England*. BMJ Open, 2017. **7**\\\(11\\\): p. e015296.\\]\\(https://www.cdc.gov/me-cfs/healthcare-
972 providers/diagnosis/index.html\\)\]\(https://www.bundesgesundheitsministerium.de/ministerium/ressortforschung/handlungsfelder
969 /gesundheitsversorgung/mecfs.html\)](https://www.gesundheitsforschung-bmbf.de/de/epstein-barr-virus-von-harmlos-bis-
962 folgeschwer-7238.php)

- 1009 97. De Paschale, M., et al., *Seroepidemiology of EBV and interpretation of the "isolated VCA*
1010 *IgG" pattern*. J Med Virol, 2009. **81**(2): p. 325-31.
- 1011 98. Niller, H.-H. and G. Bauer, *Epstein-Barr Virus: Clinical Diagnostics*, in *Epstein Barr Virus:*
1012 *Methods and Protocols*, J. Minarovits and H.H. Niller, Editors. 2017, Springer New York:
1013 New York, NY. p. 33-55.
- 1014 99. Ikuta, K., et al., *Detection of Epstein-Barr virus in salivas and throat washings in healthy*
1015 *adults and children*. Microbes Infect, 2000. **2**(2): p. 115-20.
- 1016 100. Haque, T. and D.H. Crawford, *PCR amplification is more sensitive than tissue culture*
1017 *methods for Epstein-Barr virus detection in clinical material*. Journal of General Virology,
1018 1997. **78**(12): p. 3357-3360.
- 1019 101. Kanakry, J.A., et al., *The clinical significance of EBV DNA in the plasma and peripheral*
1020 *blood mononuclear cells of patients with or without EBV diseases*. Blood, 2016. **127**(16): p.
1021 2007-17.
- 1022 102. Rasa, S., et al., *Chronic viral infections in myalgic encephalomyelitis/chronic fatigue*
1023 *syndrome (ME/CFS)*. Journal of Translational Medicine, 2018. **16**(1).
- 1024 103. Lerner, A.M., et al., *IgM serum antibodies to Epstein-Barr virus are uniquely present in a*
1025 *subset of patients with the chronic fatigue syndrome*. In Vivo, 2004. **18**(2): p. 101-6.
- 1026 104. Sairenji, T., et al., *Antibody responses to Epstein-Barr virus, human herpesvirus 6 and human*
1027 *herpesvirus 7 in patients with chronic fatigue syndrome*. Intervirology, 1995. **38**(5): p. 269-
1028 73.
- 1029 105. Lee, J.S., et al., *Salivary DNA Loads for Human Herpesviruses 6 and 7 Are Correlated With*
1030 *Disease Phenotype in Myalgic Encephalomyelitis/Chronic Fatigue Syndrome*. Front Med
1031 (Lausanne), 2021. **8**: p. 656692.
- 1032 106. Kerr, J.R., *Epstein-Barr Virus Induced Gene-2 Upregulation Identifies a Particular Subtype*
1033 *of Chronic Fatigue Syndrome/Myalgic Encephalomyelitis*. Front Pediatr, 2019. **7**: p. 59.
- 1034 107. Loebel, M., et al., *Serological profiling of the EBV immune response in Chronic Fatigue*
1035 *Syndrome using a peptide microarray*. PLoS One, 2017. **12**(6): p. e0179124.
- 1036 108. Statistics, O.f.n. *Prevalence of ongoing symptoms following coronavirus (COVID-19)*
1037 *infection in the UK*. 2023 30.03 [cited 2023 25.06]; Available from:
1038 <https://www.ons.gov.uk/peoplepopulationandcommunity/healthandsocialcare/conditionsanddiseases/bulletins/prevalenceofongoingsymptomsfollowingcoronaviruscovid19infectionintheuk/30march2023>.
1039
1040
- 1041 109. Cairns, R. and M. Hotopf, *A systematic review describing the prognosis of chronic fatigue*
1042 *syndrome*. Occupational Medicine, 2005. **55**(1): p. 20-31.
- 1043 110. Devendorf, A.R., et al., *Approaching recovery from myalgic encephalomyelitis and chronic*
1044 *fatigue syndrome: Challenges to consider in research and practice*. Journal of Health
1045 Psychology, 2019. **24**(10): p. 1412-1424.
- 1046 111. Jason, L.A., et al., *Predictors of post-infectious chronic fatigue syndrome in adolescents*.
1047 Health Psychology and Behavioral Medicine, 2014. **2**(1): p. 41-51.
- 1048 112. Lievesley, K., K.A. Rimes, and T. Chalder, *A review of the predisposing, precipitating and*
1049 *perpetuating factors in Chronic Fatigue Syndrome in children and adolescents*. Clin Psychol
1050 Rev, 2014. **34**(3): p. 233-48.
- 1051 113. Rimes, K.A., et al., *Incidence, prognosis, and risk factors for fatigue and chronic fatigue*
1052 *syndrome in adolescents: a prospective community study*. Pediatrics, 2007. **119**(3): p. e603-9.
- 1053 114. Rangel, L., et al., *The course of severe chronic fatigue syndrome in childhood*. J R Soc Med,
1054 2000. **93**(3): p. 129-34.
- 1055 115. Jason, L.A. and M. Sunnquist, *The Development of the DePaul Symptom Questionnaire:*
1056 *Original, Expanded, Brief, and Pediatric Versions*. Frontiers in pediatrics, 2018. **6**: p. 330-
1057 330.

- 1058 116. Knight, S.J., et al., *Measuring quality of life and fatigue in adolescents with chronic fatigue*
1059 *syndrome: estimates of feasibility, internal consistency and parent–adolescent agreement of*
1060 *the PedsQLTM*. *Fatigue: Biomedicine, Health & Behavior*, 2015. **3**(4): p. 220-234.
- 1061 117. Winger, A., et al., *Health related quality of life in adolescents with chronic fatigue syndrome:*
1062 *a cross-sectional study*. *Health and Quality of Life Outcomes*, 2015. **13**(1): p. 96.
- 1063 118. Varni, J.W., et al., *The PedsQL 4.0 as a pediatric population health measure: feasibility,*
1064 *reliability, and validity*. *Ambul Pediatr*, 2003. **3**(6): p. 329-41.
- 1065 119. Falk Hvidberg, M., et al., *The Health-Related Quality of Life for Patients with Myalgic*
1066 *Encephalomyelitis / Chronic Fatigue Syndrome (ME/CFS)*. *PLoS One*, 2015. **10**(7): p.
1067 e0132421.
- 1068 120. Eaton-Fitch, N., et al., *Health-related quality of life in patients with myalgic*
1069 *encephalomyelitis/chronic fatigue syndrome: an Australian cross-sectional study*. *Qual Life*
1070 *Res*, 2020. **29**(6): p. 1521-1531.
- 1071 121. Similä, W.A., et al., *Health-related quality of life in Norwegian adolescents living with*
1072 *chronic fatigue syndrome*. *Health Qual Life Outcomes*, 2020. **18**(1): p. 170.
- 1073 122. Borch, L., et al., *Long COVID symptoms and duration in SARS-CoV-2 positive children - a*
1074 *nationwide cohort study*. *Eur J Pediatr*, 2022. **181**(4): p. 1597-1607.
- 1075

1076 **5 Figure Legends**

1077

1078 **Figure 1. Alluvial chart illustrating ME/CFS diagnostic criteria fulfillment over the study**
1079 **period for adults and adolescents.**

1080 The chart depicts diagnostic criteria fulfillment (red) or non-fulfillment (green) at the first visit
1081 and at visits 6 and 12 months later. (Non-)fulfillment of Canadian Consensus Criteria (CCC) is
1082 shown for adults. (Non-)fulfillment of CCC only, Rowe's diagnostic worksheet (CDW-R) criteria
1083 only, or either of both (CCC or CDW-R) is shown for adolescents. CDW-R criteria were not
1084 applicable anymore (N/A) when adolescent patients had turned 18 years. Overall, the chart provides
1085 an overview of the changes in diagnostic status for ME/CFS patients over time.

1086

1087 **Figure 2. Frequency and severity of symptoms at diagnosis (first visit) and at visits six and**
1088 **twelf months later**

1089 The bar-chart displays individual symptoms on the x-axis, while the y-axis shows the frequency of
1090 symptoms on the left and the severity of symptoms on the right. The severity scale for each
1091 individual symptom ranged from 0 (not present) to 4 (severe), and the frequency scale from 0 (not
1092 present) to 5 (always present). At each time point, the chart shows the proportion of patients
1093 reporting each symptom with respective severity and frequency rating, indicated by color-code.

1094 The chart provides an overview of the most common symptoms in ME/CFS patients, how
1095 frequently they occurred, and how severe they were. It also illustrates how the frequency and severity
1096 of symptoms changed over time, with some symptoms improving or worsening and others remaining
1097 consistent.

1098

1099 **Figure 3. Patient reported outcome measures at diagnosis (first visit) and at visits six and**
1100 **twelf months later**

1101 Boxplots displaying the dynamics of results from the Chalder Fatigue Scale (A), the Bell Score
1102 (B), the SF-36 physical (C) and mental health component summary score (D), and the Pediatric
1103 Quality of Life Inventory (E) for the entire cohort as well as for adolescents and adults only,
1104 respectively.

1105

1106 **Figure 4. Correlation of patient reported outcomes**

1107 Heatmap of repeated measures correlations between patient reported outcomes for all patients (A),
1108 adults only (B), and adolescents only (C). Repeated measures correlations are a statistical tool to
1109 determine the overall within-patient correlation between a pair of variables.
1110

1111 **6 Tables**

1112 **Table 1. Baseline Demographics and Clinical Characteristics of the Cohort**

Characteristics	All	Adults	Adolescents	p-value ¹
Number of patients	n=25	n=13	n=12	
Age and illness duration²				
Age at first visit	18 (16 – 21)	21 (19 – 22)	16(14– 16)	<0.001
Age at onset	16 (14 – 19)	19 (18 – 21)	15 (13 – 15)	<0.001
Illness duration in months from onset to first visit	13.8 (9.1 – 34.9)	16.9 (9.4 – 44.1)	13.2 (8.8 – 22.0)	0.503
Baseline questionnaire results				
Chalder fatigue scale ³	25 (5)	28 (4)	22 (5)	0.006
Bell Score ²	40 (30 – 50)	30 (30 – 40)	50 (40 –50)	0.056
SF-36 PCS ³	29 (9)	26 (8)	32 (9)	0.151
SF-36 MCS ³	42 (11)	39 (12)	45 (9)	0.211
PedsQL ³	46 (14)	35 (11)	54 (9)	0.002
Gender⁴				
Female	20/25 (80)	11/13 (85)	9/12 (75)	0.645
ME/CFS criteria⁴				
CCC	21/25 (84)	13/13 (100)	8/12 (67)	0.039
CDW-R	12/12 (100)	N/A	12/12 (100)	0.077
Comorbidity⁴				
PoTS	19/23 (83)	11/11 (100)	8/10 (80)	>0.999
Allergies	12/25 (48)	7/13 (54)	5/12 (42)	0.543
Asthma	1/25 (4)	0/13 (0)	1/12 (8)	>0.999
Neurodermatitis	1/25 (4)	1/13 (8)	0/12 (0)	>0.999
Psychiatric disorder	3/25 (12)	2/13 (15)	1/12 (8)	>0.999
Medical history⁴				
Trauma/surgery	1/25 (4)	0/13 (0)	1/12 (8)	0.480
Asthma	2/25 (8)	1/13 (8)	1/12 (8)	>0.999
Psychiatric disorder	1/25 (4)	0/13 (0)	1/12 (8)	0.480
Current medical care⁴				
Complete vaccinations	22/22 (100)	11/11 (100)	11/11 (100)	
Nutrition supplements	17/24 (71)	10/12 (83)	7/12 (58)	0.319
Prescription medication	11/24 (46)	5/12 (42)	6/12 (50)	>0.999
Degree of disability	1/25 (4)	0/13 (0)	1/12 (8)	>0.999
Medical aid	0/25 (0)	0/13 (0)	0/12 (0)	
Long-term care level	0/25 (0)	0/13 (0)	0/12 (0)	
Family history⁴				
ME/ CFS in family	2/25 (8)	1/13 (8)	1/12 (8)	>0.999
AID in family	10/25 (40)	6/13 (46)	4/12 (33)	0.688
PID in family	0/25 (0)	0/13 (0)	0/12 (0)	
IM in family	16/25 (64)	9/13 (69)	7/12 (58)	0.688

¹ Fisher's exact test; Wilcoxon rank sum test; Pearson's Chi-squared test

² Median (IQR)

³ Mean (SD)

⁴ Number of patients with indicated characteristic/number of patients investigated (%)

CCC, Canadian Consensus Criteria [49], CDW-R, Clinical Diagnostic Worksheet [6]; PoTS, postural orthostatic tachycardia syndrome; AID, autoimmune disease; PID, primary immune deficiency; IM, infectious mononucleosis; PedsQL, Pediatric Quality of Life Inventory; SF-36 PCS, Short Form 36 Health Survey Physical Component Summary Score; SF-36 MCS, Short Form 36 Health Survey Mental Health Component Summary Score. N/A, not applicable.

1114 **Table 2.** Selected Laboratory Results at Baseline Visit

Laboratory parameter	All n/n (%) ¹	Adults n/n (%) ¹	Adolescents n/n (%) ¹	p-value ²
Blood count				
Neutropenia (<1,500/ul)	2/25 (8)	1/13 (8)	1/12 (8)	>0.999
Lymphocytes ↑	5/25 (20)	2/13 (15)	3/12 (25)	0.645
Thrombocytes ↓	0/25 (0)	0/13 (0)	0/12 (0)	
Hemoglobin ↓	4/25 (16)	1/13 (8)	3/12 (25)	0.322
Inflammation				
Sedimentation rate ↑	1/21 (5)	0/13 (0)	1/8 (12.5)	0.350
C-reactive protein ↑	0/25 (0)	0/13 (0)	0/12 (0)	
Ferritin ↑	2/23 (9)	0/13 (0)	2/10 (20)	0.178
Liver function				
GOT ↑	1/25 (4)	0/13 (0)	1/12 (8)	0.480
GPT ↑	2/25 (8)	0/13 (0)	2/12 (17)	0.220
Bilirubin ↑	1/24 (4)	1/13 (8)	0/11 (0)	>0.999
Immunoglobulins (Ig)				
IgA ↓↓	0/25 (0)	0/13 (0)	0/12 (0)	
IgM ↓↑	0/25 (0)	0/13 (0)	0/12 (0)	
IgG ↓↑	0/25 (0)	0/13 (0)	0/12 (0)	
IgE ↑	7/25 (28)	3/13 (23)	4/12 (33)	0.673
Infection Serology				
Cytomegalovirus IgG	3/25 (12)	2/13 (15)	1/12 (8)	>0.999
Herpes simplex virus IgG	3/25 (12)	2/13 (15)	1/12 (8)	>0.999
Toxoplasma IgG	1/25 (4)	1/13 (8)	0/12 (0)	>0.999
Borrelia IgG	1/25 (4)	0/13 (0)	1/12 (8)	0.480
Autoantibodies				
ANA ↑	14/25 (56)	8/13 (62)	6/12 (50)	0.561
ANCA ↑	1/25 (4)	1/13 (8)	0/12 (0)	>0.999
Anti-dsDNA ↑	0/25 (0)	0/13 (0)	0/12 (0)	
Endocrinology				
Cortisol ↓	1/25 (4)	1/13 (8)	0/12 (0)	0.480
ACTH ↑	1/23 (4)	0/12 (0)	1/11 (9)	0.478
25-OH-Vitamin-D ↓	14/24 (58)	6/12 (50)	8/12 (67)	0.680

¹ Number of patients with indicated laboratory parameter/ number of patients investigated (%)

² Fisher's exact test; Pearson's Chi-squared test

↑ above normal range; ↓ below normal range; ANA, antinuclear antibodies; ANCA, anti-cytoplasmic antibodies; anti-dsDNA, anti-double strand DNA

1115

1116

1117

1118

1119

1120

1121

1122

1123

1124

1125 **Table 3: EBV Serology, PCR and IgG Immunoblot at Baseline Visit**

EBV Diagnostics	All n/n (%)¹	Adults n/n (%)¹	Adolescents n/n (%)¹	p-value²
EBV PCR				
DNA in cell fraction				0.927
–	12/20 (60)	7/12 (58)	5/8 (62)	
(+)	5/20 (25)	3/12 (25)	2/8 (25)	
+	3/20 (15)	2/12 (17)	1/8 (12)	
DNA in plasma				
–	25/25 (100)	13/13 (100)	12/12 (100)	
+	0/25 (0)	0/12 (0)	0/12 (0)	
DNA in throat wash				>0.999
–	11/25 (44)	6/13 (46)	5/12 (42)	
+	14/25 (66)	7/13 (54)	7/12 (54)	
EBV ELISA				
VCA IgM				0.110
–	18/25 (72)	7/13 (54)	11/12 (92)	
(+)	1/25 (4)	1/13 (8)	0/12 (0)	
+	6/25 (24)	5/13 (38)	1/12 (8)	
VCA IgG				
–	0/25 (0)	0/13 (0)	0/12 (0)	
+	25/25 (100)	13/13 (100)	12/12 (100)	
EBNA1 IgG				0.220
–	2/25 (8)	0/13 (0)	2/12 (17)	
+	23/25 (92)	13/13 (100)	10/12 (83)	
EBV IgG Immunoblot				
EAp54				0.282
–	14/25 (56)	7/13 (54)	7/12 (58)	
(+)	3/25 (12)	3/13 (23)	0/12 (0)	
+	8/25 (32)	3/13 (23)	5/12 (42)	
EAp138				0.233
–	14/25 (56)	6/13 (46)	8/12 (67)	
(+)	6/25 (24)	5/13 (38)	1/12 (8)	
+	5/25 (20)	2/13 (15)	3/12 (25)	
BZLF1				0.293
–	3/25 (12)	3/13 (23)	0/12 (0)	
(+)	4/25 (16)	2/13 (15)	2/12 (17)	
+	18/25 (72)	8/13 (62)	10/12 (83)	
VCAp23				>0.999
–	2/25 (8)	1/13 (8)	1/12 (8)	
(+)	0/25 (0)	0/13 (0)	0/12 (0)	
+	23/25 (92)	12/13 (92)	11/12 (92)	
VCAp18				0.480
–	1/25 (4)	0/13 (0)	1/12 (8)	
(+)	0/25 (0)	0/13 (0)	0/12 (0)	
+	24/25 (96)	13/13 (100)	11/12 (92)	
EBNA-1				0.344
–	2/25 (8)	0/13 (0)	2/12 (17)	
(+)	1/25 (4)	1/13 (8)	0/12 (0)	
+	22/25 (88)	12/13 (92)	10/12 (83)	

¹ Number of patients with indicated laboratory parameter/ number of patients investigated (%)

² Fisher's exact test

EBV, Epstein-Barr Virus; VCA, virus capsid antigen; EBNA, EBV nuclear antigen; EA, early antigen.

Table 4. Patient-reported Outcome Measures of the Cohort

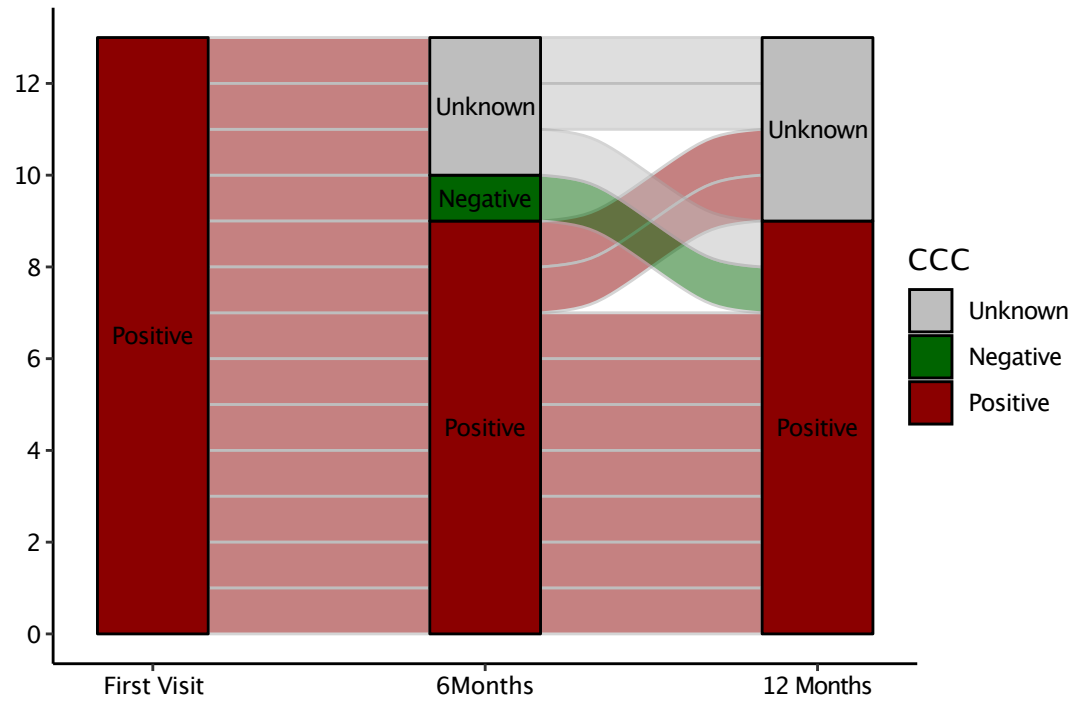
	All (n=25)				Adults (n=13)				Adolescents (n=12)			
	First Visit	6 Months	12 Months	p-value ¹	First Visit	6 Months	12 Months	p-value ¹	First Visit	6 Months	12 Months	p-value ¹
Bell Score ²	40 (30, 50)	40 (30, 63)	40 (30, 60)	0.384	30 (30, 40)	30 (30, 40)	30 (25, 35)	0.368	50 (40, 50)	60 (40, 80)	60 (40, 80)	0.232
PedsQL ³												
Total Score	46 (14)	50 (19)	50 (21)	0.718	35 (11)	37 (15)	37 (15)	0.968	54 (9)	62 (14)	61 (20)	0.368
Physical	40 (18)	46 (24)	40 (26)	0.748	30 (12)	29 (13)	25 (15)	0.842	48 (18)	60 (22)	53 (27)	0.531
Psychosocial	49 (14)	53 (18)	56 (20)	0.698	38 (13)	41 (17)	45 (19)	0.695	58 (6)	63 (14)	64 (18)	0.719
School	33 (14)	43 (22)	47 (28)	0.115	29 (18)	37 (22)	33 (26)	0.871	35 (11)	48 (23)	58 (25)	0.030
Social	66 (21)	64 (20)	64 (20)	0.919	50 (18)	49 (15)	51 (15)	0.916	77 (16)	76 (16)	76 (16)	0.944
Emotional	50 (21)	49 (24)	53 (25)	0.843	34 (15)	36 (23)	44 (21)	0.357	61 (17)	60 (19)	60 (27)	0.921
SF-36 ³												
Physical functioning	54 (25)	60 (26)	55 (34)	0.792	42 (21)	46 (20)	35 (27)	0.806	65 (25)	71 (25)	73 (31)	0.581
Role physical	12 (15)	18 (33)	22 (37)	0.897	7 (12)	3 (8)	6 (11)	0.677	17 (16)	30 (40)	38 (46)	0.843
Bodily pain	41 (26)	49 (27)	49 (29)	0.433	34 (21)	34 (15)	37 (23)	0.929	47 (29)	62 (29)	60 (31)	0.335
General health	26 (12)	28 (15)	29 (17)	0.865	22 (11)	21 (9)	20 (7)	0.969	30 (12)	35 (15)	37 (20)	0.685
Vitality	22 (14)	29 (22)	27 (26)	0.737	15 (13)	18 (11)	11 (8)	0.481	29 (12)	38 (24)	42 (28)	0.447
Social functioning	41 (27)	43 (33)	41 (35)	0.980	31 (23)	24 (22)	24 (25)	0.520	51 (27)	59 (32)	58 (36)	0.636
Role emotional	71 (39)	55 (41)	65 (44)	0.444	64 (46)	52 (44)	56 (47)	0.824	78 (33)	58 (40)	73 (41)	0.383
Mental health	59 (19)	54 (22)	59 (21)	0.756	52 (20)	43 (20)	51 (18)	0.471	65 (17)	63 (19)	66 (21)	0.923
Physical component summary score	29 (9)	34 (12)	32 (13)	0.434	26 (8)	28 (8)	25 (9)	0.839	32 (9)	38 (13)	38 (13)	0.302
Mental health component summary score	42 (11)	39 (13)	41 (12)	0.589	39 (12)	34 (11)	37 (11)	0.631	45 (9)	42 (14)	45 (12)	0.817

¹ Kruskal-Wallis rank sum test.² Median (IQR)³ Mean (SD)

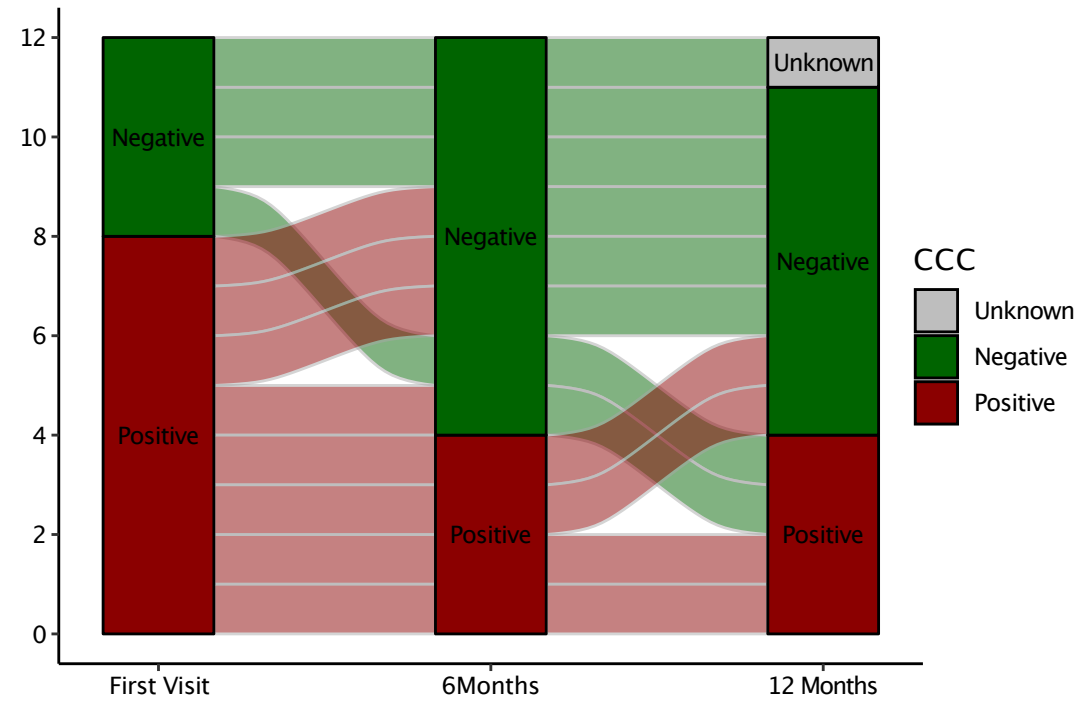
PedsQL, Pediatric Quality of Life Inventory; SF-36, Short Form 36 Health Survey.

Figure 1

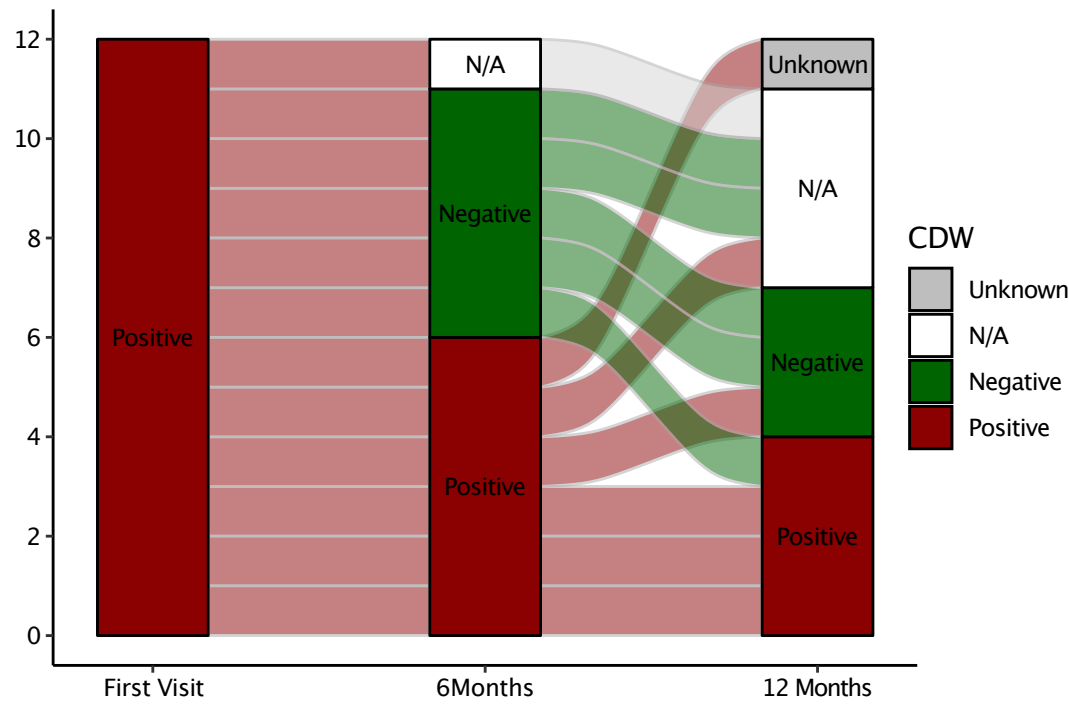
A) CCC – Adults



B) CCC – Adolescents



C) CDW-R – Adolescents



D) AnyC criteria – Adolescents

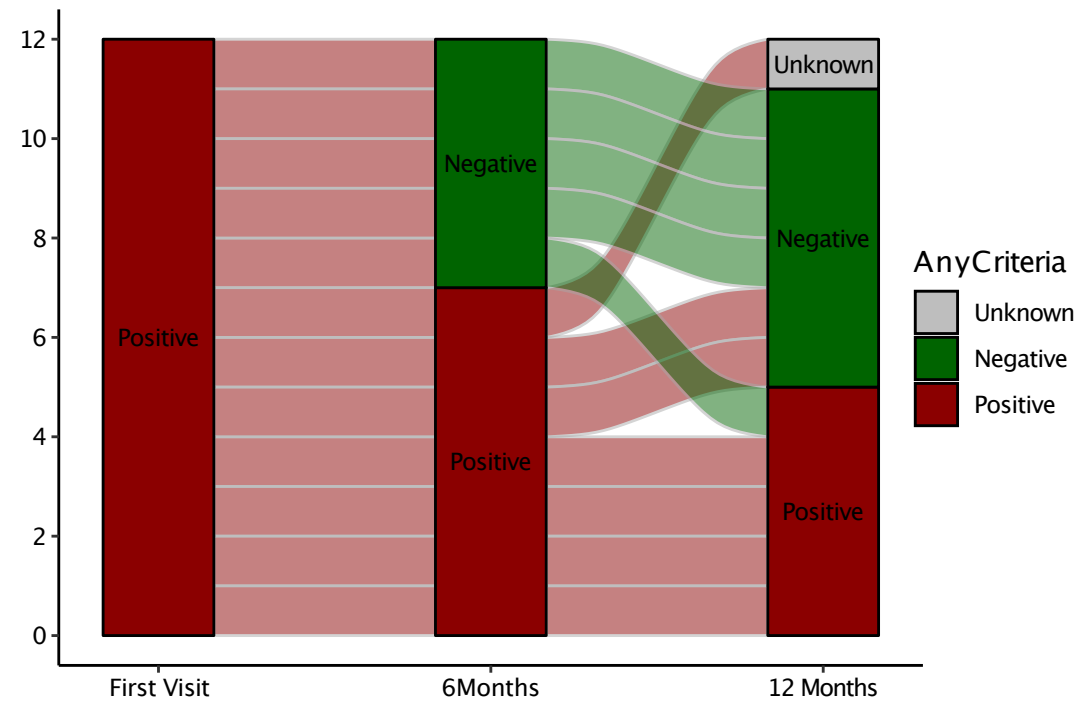
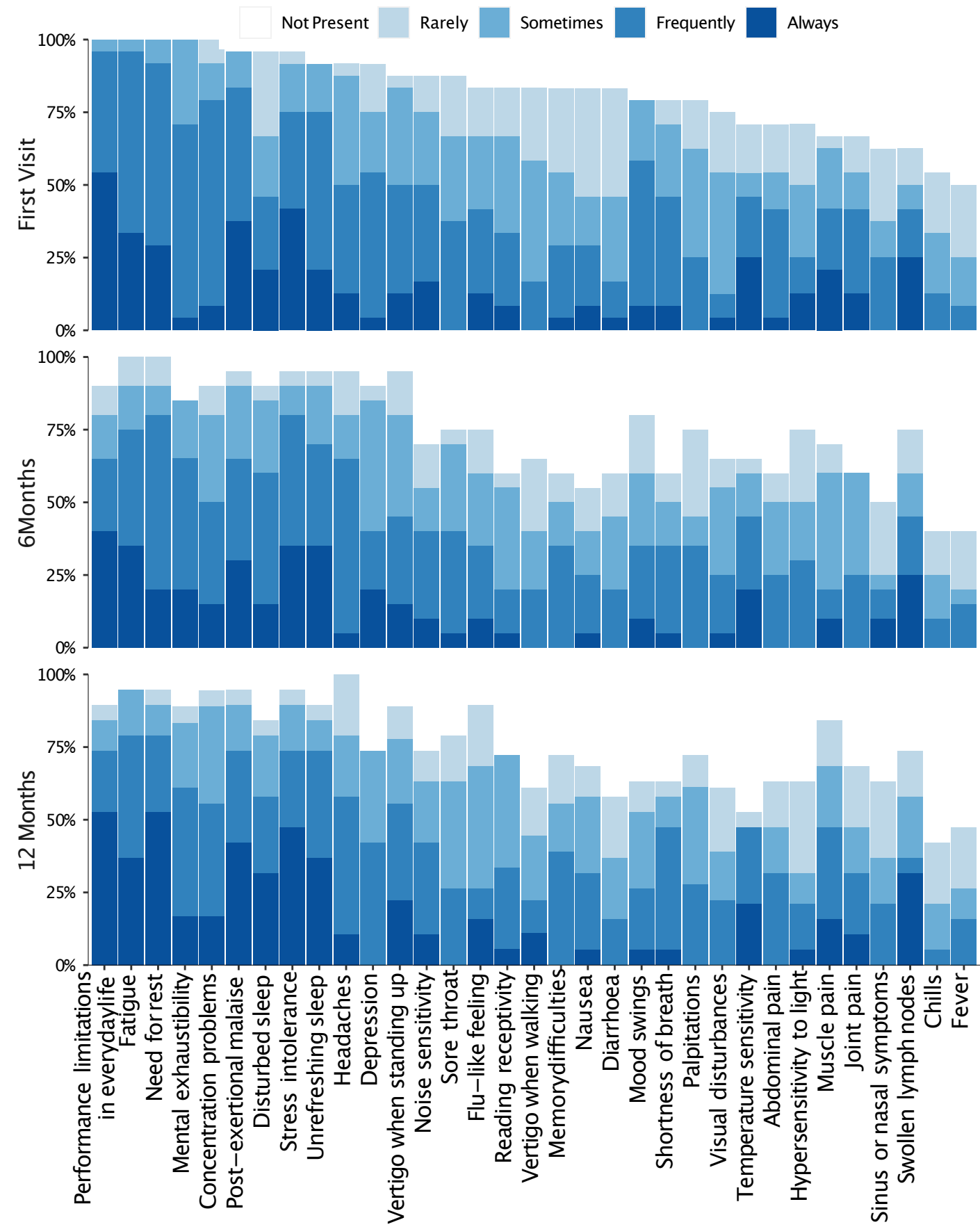


Figure 2

A) Frequency of Symptoms



B) Severity of Symptoms

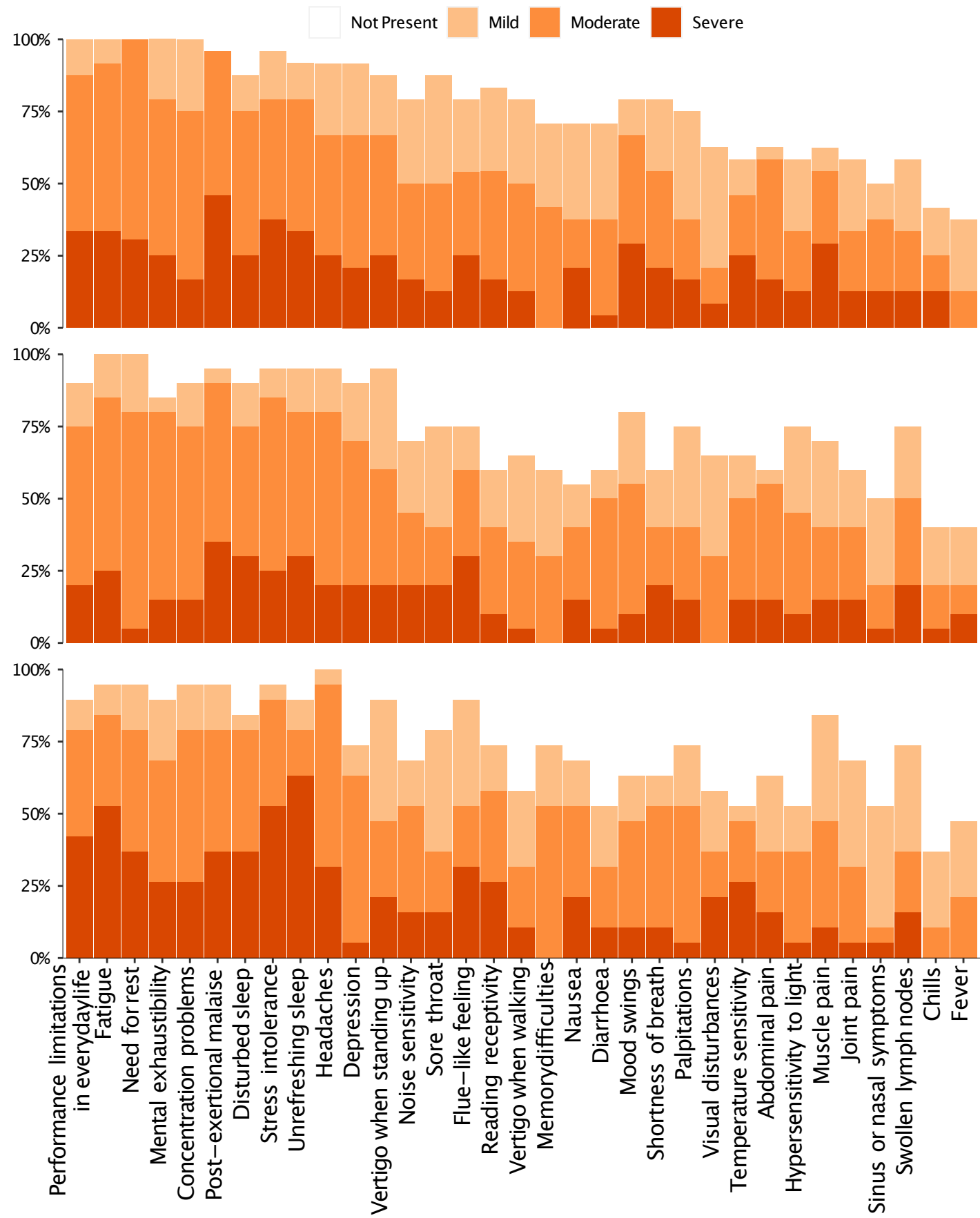
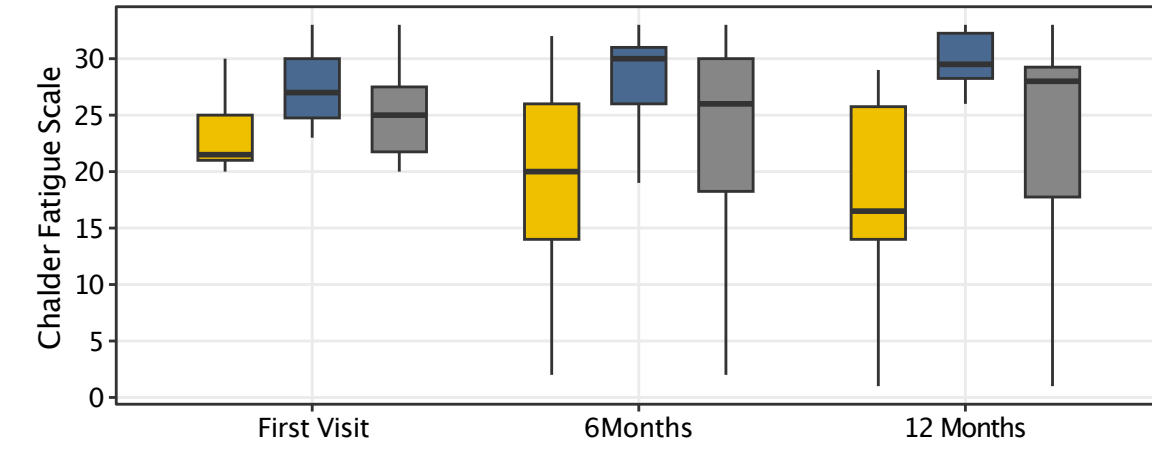
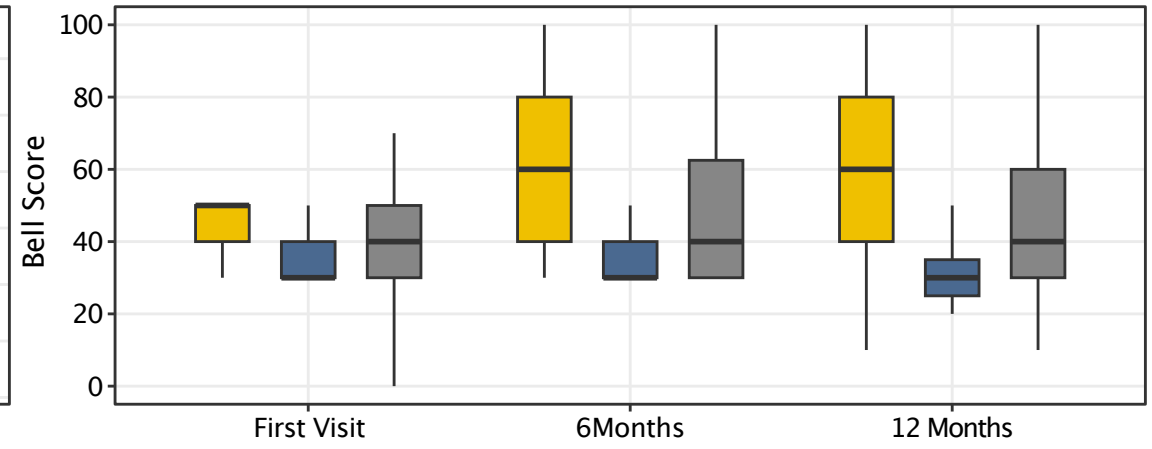


Figure 3

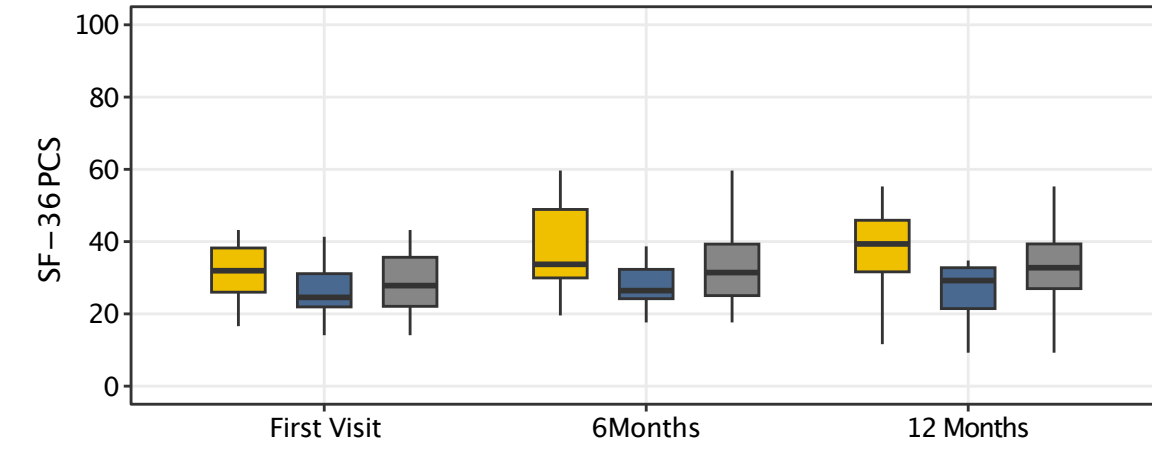
A) Chalder Fatigue Scale



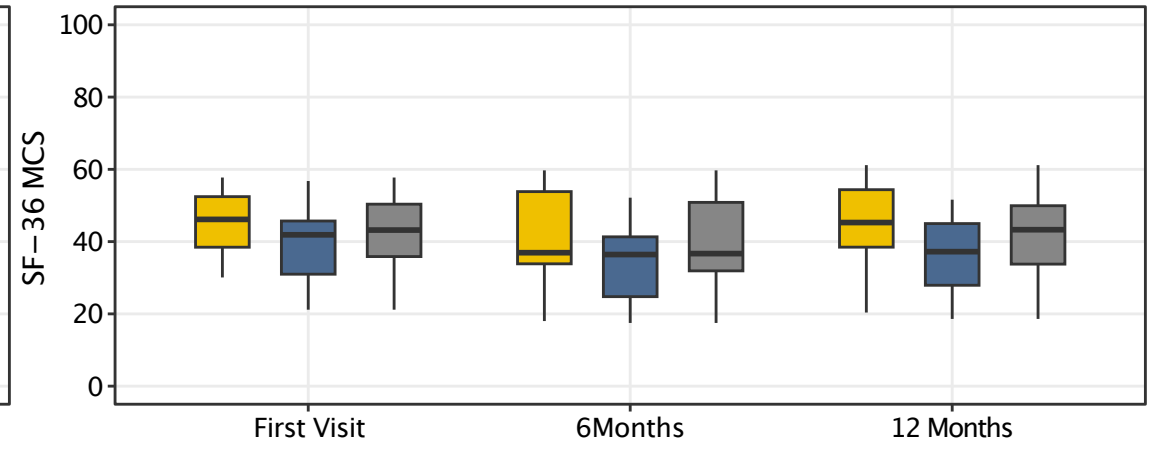
B) Bell Score



C) SF-36 Physical Component Summary Score



D) SF-36 Mental Health Component Summary Score



E) Pediatric Quality of Life Inventory

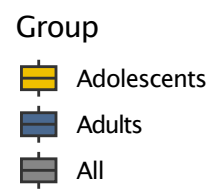
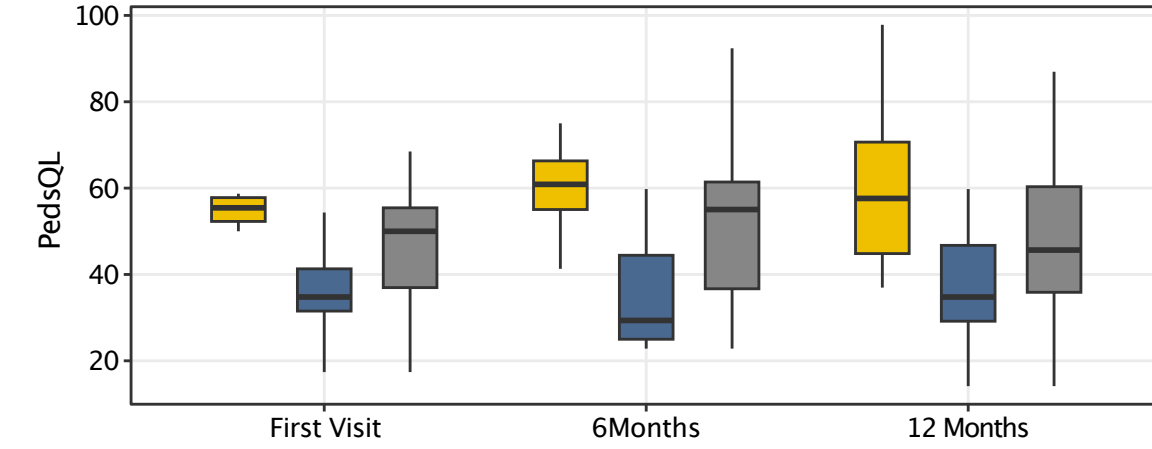
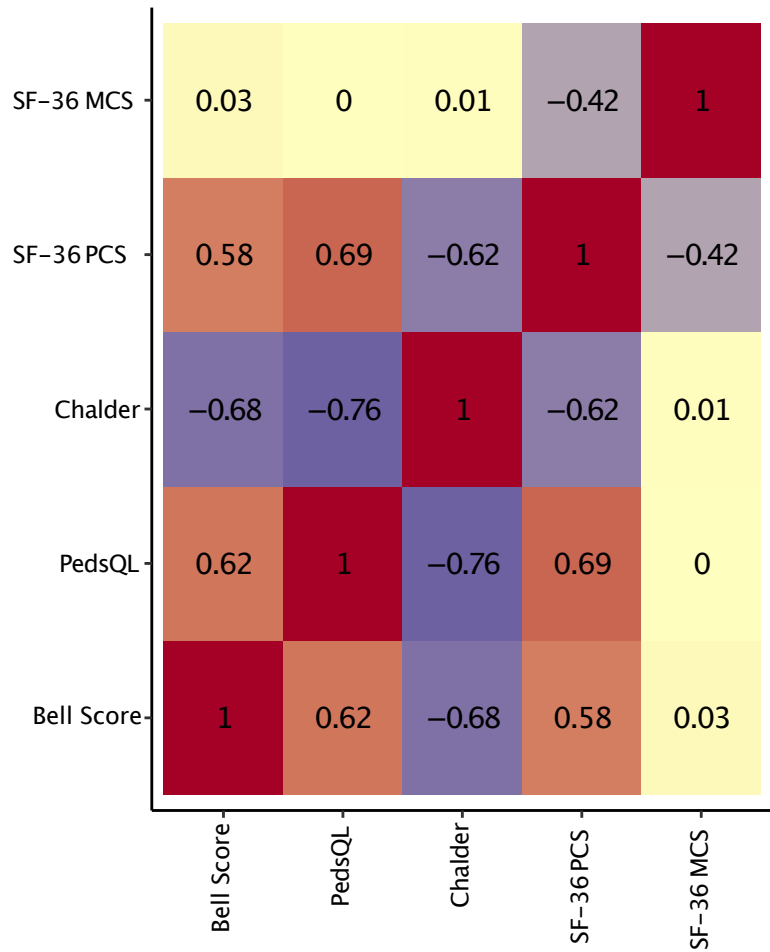
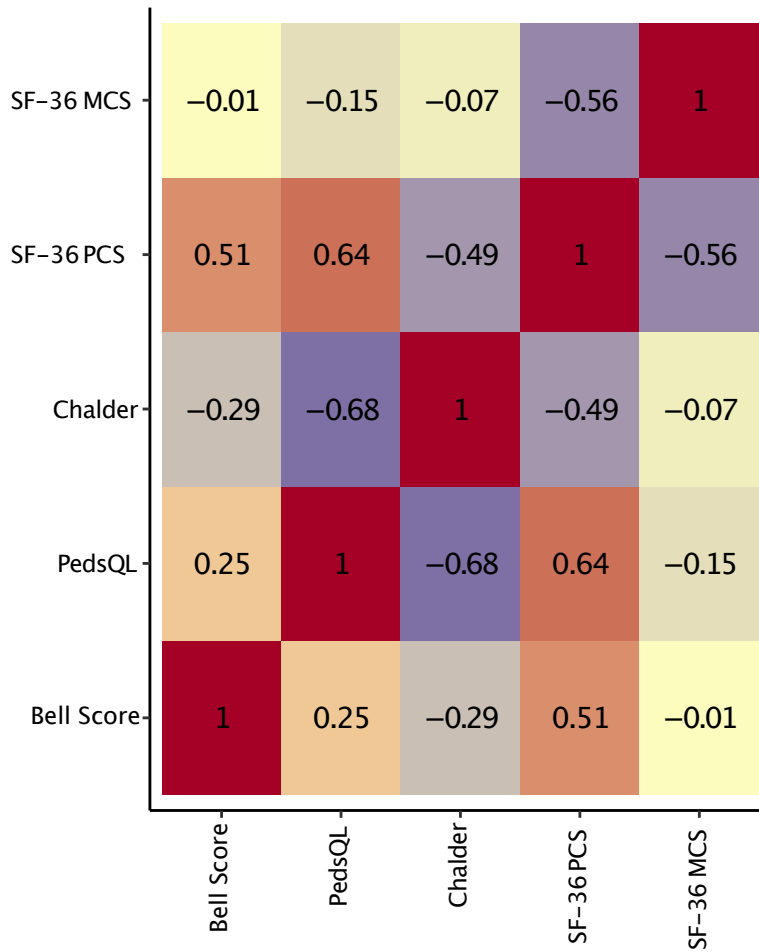


Figure 4

A) All Patients



B) Adults



C) Adolescents

