

1 Temporal changes in the positivity rate of common enteric viruses among paediatric admissions in
2 coastal Kenya, in the period spanning the COVID-19 pandemic, 2019-2022

3

4 **Authors:**

5 Arnold W. Lambisia^{1, *}, Nickson Murunga¹, Martin Mutunga¹, Robinson Cheruiyot¹, Grace
6 Maina¹, Timothy O. Makori¹, D. James Nokes^{1,2}, Charles N. Agoti^{1,3}

7

8 **Author Affiliations:**

9 ¹ Kenya Medical Research Institute-Wellcome Trust Research Programme (KWTRP), P.O Box
10 230-80108 Kilifi, Kenya.

11 ²School of Life Sciences and Zeeman Institute for Systems Biology and Infectious Disease
12 Epidemiology Research (SBIDER), University of Warwick, CV4 7AL Coventry, United Kingdom.

13 ³ Department of Public Health, Pwani University, Kilifi P.O. Box 195-80108, Kenya.

14

15 *Corresponding author:

16 Contact details: P.O. Box 230, Kilifi-80108, Kenya,

17 Email: alambisia@kemri-wellcome.org

18

19 **Key words:** Enteric viruses, COVID-19, Rotavirus A, positivity rate, Kenya, paediatrics

20 **Abstract**

21 **Background**

22 The non-pharmaceutical interventions (NPIs) implemented to curb the spread of SARS-CoV-2
23 early in the COVID-19 pandemic years, disrupted the activity of other respiratory viruses.
24 There is limited data from low-and-middle income countries (LMICs) to determine whether
25 COVID-19 NPIs also impacted the epidemiology of enteric viruses. We investigated the
26 changes in infection patterns of common enteric viruses among hospitalised children who
27 presented with diarrhoea to a referral hospital in coastal Kenya, in the period spanning the
28 COVID-19 pandemic.

29
30 **Methods**

31 A total of 870 stool samples from children under 13 years of age admitted to Kilifi County
32 Hospital between January 2019, and December 2022 were screened for rotavirus group A
33 (RVA), norovirus genogroup II (GII), astrovirus, sapovirus, and adenovirus type F40/41 using
34 real-time reverse-transcription polymerase chain reaction. The proportions positive across the
35 four years were compared using the chi-squared test statistic.

36
37 **Results**

38 One or more of the five virus targets were detected in 282 (32.4%) cases. A reduction in the
39 positivity rate of RVA cases was observed from 2019 (12.1%, 95% confidence interval (CI) 8.7%
40 -16.2%) to 2020 (1.7%, 95% CI 0.2% – 6.0%; $p < 0.001$). However, in the 2022, RVA positivity
41 rate rebounded to 23.5% (95% CI 18.2% - 29.4%). For norovirus GII, the positivity rate
42 fluctuated over the four years with its highest positivity rate observed in 2020 (16.2%; 95%
43 C.I, 10.0% – 24.1%). No astrovirus cases were detected in 2020 and 2021, but the positivity
44 rate in 2022 was similar to that in 2019 (3.1% (95% CI 1.5% - 5.7%) vs 3.3% (95% CI 1.4% –
45 6.5%)). A higher case fatality rate was observed in 2021 (9.0%) compared to the 2019 (3.2%),
46 2020 (6.8%) and 2022 (2.1%) ($p < 0.001$).

47
48 **Conclusion**

49 Our study finds that in 2020 the transmission of common enteric viruses, especially RVA and
50 astrovirus, in Kilifi Kenya may have been disrupted due to the COVID-19 NPIs. After 2020, local

51 enteric virus transmission patterns appeared to return to pre-pandemic levels coinciding with
52 the removal of most of the government COVID-19 NPIs.

53 Introduction

54 Although water sanitation and hygiene (WASH) programmes and new vaccine introductions
55 have resulted in significant reductions of paediatric diarrhoea morbidity and mortality
56 globally, virus-associated diarrhoea is still a major cause of hospital admissions in several low
57 and middle-income settings¹. In 2019, approximately 300,000 deaths were recorded globally
58 in children below 14 years of age due to rotavirus group A (RVA), norovirus GI and GII, and
59 adenovirus 40/41 infections².

60

61 Following the emergence of COVID-19, a number of reports have indicated perturbations in
62 in seasonality, prevalence and incidence of common enteric viruses associated with diarrhoea
63 disease. For instance, in France³, Poland⁴, China^{5,6} and USA⁷, the prevalence of RVA during
64 the year 2020 was lower compared to 2018 and 2019. However, in 2021 there was a surge of
65 RVA cases in these countries. Like RVA, a decrease in cases of norovirus GII, sapovirus,
66 adenovirus 40/41 and astrovirus was reported in 2020 in Spain⁸ and Korea⁹ compared to
67 previous years. However, this decrease in virus detection has been followed by remarkable
68 outbreaks in 2021^{5,10}. Sporadic outbreaks of norovirus have also been reported in China in
69 September 2020 and in the USA, where a total of 992 norovirus outbreaks were reported
70 between August 2021 and July 2022^{5,11,12}. The decline of the detection rates of enteric viruses
71 in the early COVID-19 pandemic phase has been postulated to be a result of the stringent non-
72 pharmaceutical interventions (NPIs) that were implemented to abrogate the pandemic¹³.
73 Some of the measures included those that may impact enteric pathogen transmission such as
74 frequent hand washing, increased hygiene, social distancing, closure of restaurants and
75 restricted movement either locally or internationally¹³.

76

77 In coastal Kenya, the prevalence of enteric viruses over the past decade has been monitored
78 and no significant change in the prevalence has been detected in all the viruses except for
79 sapovirus (7.6% vs 4.0%, *p value* <0.05) pre-post rotavirus vaccine introduction in July 2014¹⁴.
80 RVA positivity in hospital admissions decreased significantly only among ELISA detected cases
81 but not RT-PCR detected cases¹⁵. Continuous monitoring of these enteric viruses that
82 commonly cause diarrhoea in childhood is key in providing insights on their epidemiology for
83 disease management and informing public health policy. In this study, we aimed to describe

84 the epidemiological patterns of common enteric viruses associated with diarrhoea between
85 January 2019 and December 2022, during a period spanning the COVID-19 pandemic.

86

87 **Methods**

88 **Study site and population**

89 This study was undertaken as part of our routine surveillance of RVA in Kilifi County Hospital
90 (KCH), Kenya ^{14,16,17}. To be recruited, a participant had to satisfy the following criteria: (a)
91 admitted with diarrhoea as one of their illness symptom(s), (b) aged < 13-year-old, (c) consent
92 given from a parent or guardian to be in the study ^{14,16,17} The surveillance started in 2009 and
93 has continued to date (2023). In this analysis we focused on participants recruited between
94 1st January 2019 and 31st December 2022.

95

96 **Laboratory methods.**

97 **Molecular testing for common enteric viruses**

98 ***Total Nucleic Acid (TNA) Extraction***

99 TNA was extracted from 0.2 grams of stool (or 200ul if liquid) using the QIAamp Fast DNA Stool
100 Mini kit (Qiagen, Manchester, UK) and eluted in 200ul of elution buffer as previously described
101 ^{14,16}.

102

103 ***Virus (RT)-PCR Screening***

104 The extracted TNA was combined with the TaqMan Fast Virus 1-step master mix and virus
105 specific primers (**supplementary table 1**) for each of the five viruses ^{16,18} and processed on a
106 real-time Quantistudio 5-flex instrument. The reaction mix comprised 2.5µl of the TaqMan
107 master mix, 1.2µl of the primer-probe mix, 3.8µl of nuclease free water and 5µl of TNA. The
108 thermocycling conditions were as follows; 95°C for 20 sec and 35 cycles of 94°C for 15 sec and
109 60°C for 30 sec. A cycle threshold cut-off of < 35.0 was applied to determine virus positive
110 samples for all targets screened.

111

112 **RVA genotyping**

113 TNA from RVA positives were amplified using segment specific primers, sequenced on the
114 Illumina Miseq platform as previously described ¹⁹. Genomes were assembled from the short

115 read data using a de novo assembly approach as previously described¹⁹. RVA genotypes were
116 assigned using either BLAST or an online RVA genotyping tool²⁰.

117

118 **Statistical Analysis**

119 All statistical analysis was undertaken using R version 4.1.1 (2021-08-10). The level of
120 government intervention was summarised using the Oxford Stringency index (SI), a composite
121 measure based on nine response indicators including school closures, workplace closures, and
122 travel bans, rescaled to a value from 0 to 100 (100 = strictest)²¹. Local stringency measures
123 have been highlighted elsewhere²² and summarized in supplementary table 2.

124

125 The virus positivity rate during each year was calculated as the proportion of samples that
126 tested positive for the given virus given the total number of samples tested in the defined
127 year. The data from 2019 has been previously published elsewhere and formed a reference
128 base of the situation before COVID-19¹⁶. Comparisons across different years and groups were
129 done using the chi-squared test statistic. Kruskal Wallis and Wilcoxon rank-sum tests were
130 used to compare the distribution of continuous variables. Disease severity was estimated
131 using the Vesikari Clinical Severity Scoring System Manual as previously described^{16,23}.

132 **Results**

133 **Basic demographic characteristics**

134 Between January 2019 and December 2022, 1,613 patients aged under 13 years presented
135 with diarrhoea as one of their illness symptoms at KCH. Of these, 870 (54.0%) consented
136 enrolment into the study, gave a stool sample, and were included in this analysis. The reasons
137 for missed sample collection in the study were: consent refusal (n=344), other (n=133), death
138 (n=68), discharged before sample collection(n=35) and transferred before sample collection
139 (n=3).

140

141 All the 870 stool samples were screened for the five enteric viruses namely, RVA, norovirus
142 GII, astrovirus, sapovirus and adenovirus F40/41. The majority of the recruited patients were
143 in their first year of life (n=371, 42.6%) and all suffered moderate-to-severe diarrhoeal disease
144 (**Table 1**). The characteristics of the observed cases across the four years in terms of gender
145 and age were similar (*p value > 0.05*). However, fatal outcome appeared more likely to occur
146 in 2021 (9.0%) compared to 2019 (3.2%), 2020 (6.8%) and 2022 (2.1%) (*p value < 0.001*, **Table**
147 **1**). Less severe disease was also reported in 2020 compared to the other three years, **Table 1**.

148 **Table 1:** Demographic characteristics of children under 13 years admitted to Kilifi County
 149 Hospital, Kenya between January 2019 and December 2022

	2019 (n=314) *	2020 (n=117)	2021 (n=201)	2022 (n=238)	Total (n=870)	P value
Sex						0.586
Female	137 (43.6%)	45 (38.5%)	81 (40.3%)	107 (45.0%)	370 (42.5%)	
Male	177 (56.4%)	72 (61.5%)	120 (59.7%)	131 (55.0%)	500 (57.5%)	
Median age in months (Interquartile range)	14.0 (8.0 – 25.0)	13.7 (8.1 – 27.0)	13.0 (7.5 – 23.4)	13.2 (8.5 – 21.3)	13.7 (8.1 – 23.0)	
Age strata (months)						0.252
<12	128 (40.8%)	51 (43.6%)	89 (44.3%)	103 (43.3%)	371 (42.6%)	
12 -23	102 (32.5%)	36 (30.8%)	64 (31.8%)	86 (36.1%)	288 (33.1%)	
24 -59	56 (17.8%)	13 (11.1%)	33 (16.4%)	35 (14.7%)	137 (15.7%)	
>60	28 (8.9%)	17 (14.5%)	15 (7.5%)	14 (5.9%)	74 (8.5%)	
Outcome						<0.001
Alive	276 (87.9%)	109 (93.2%)	183 (91.0%)	231 (97.1%)	799 (91.8%)	
Dead	10 (3.2%)	8 (6.8%)	18 (9.0%)	5 (2.1%)	41 (4.7%)	
Data missing	28 (8.9%)	0 (0.0%)	0 (0.0%)	2 (0.8%)	30 (3.4%)	
Disease severity						0.01
Moderate	90 (28.7%)	47 (40.2%)	45 (22.4%)	65 (27.3%)	247 (28.4%)	
Severe	224 (71.3%)	70 (59.8%)	156 (77.6%)	173 (72.7%)	623 (71.6%)	

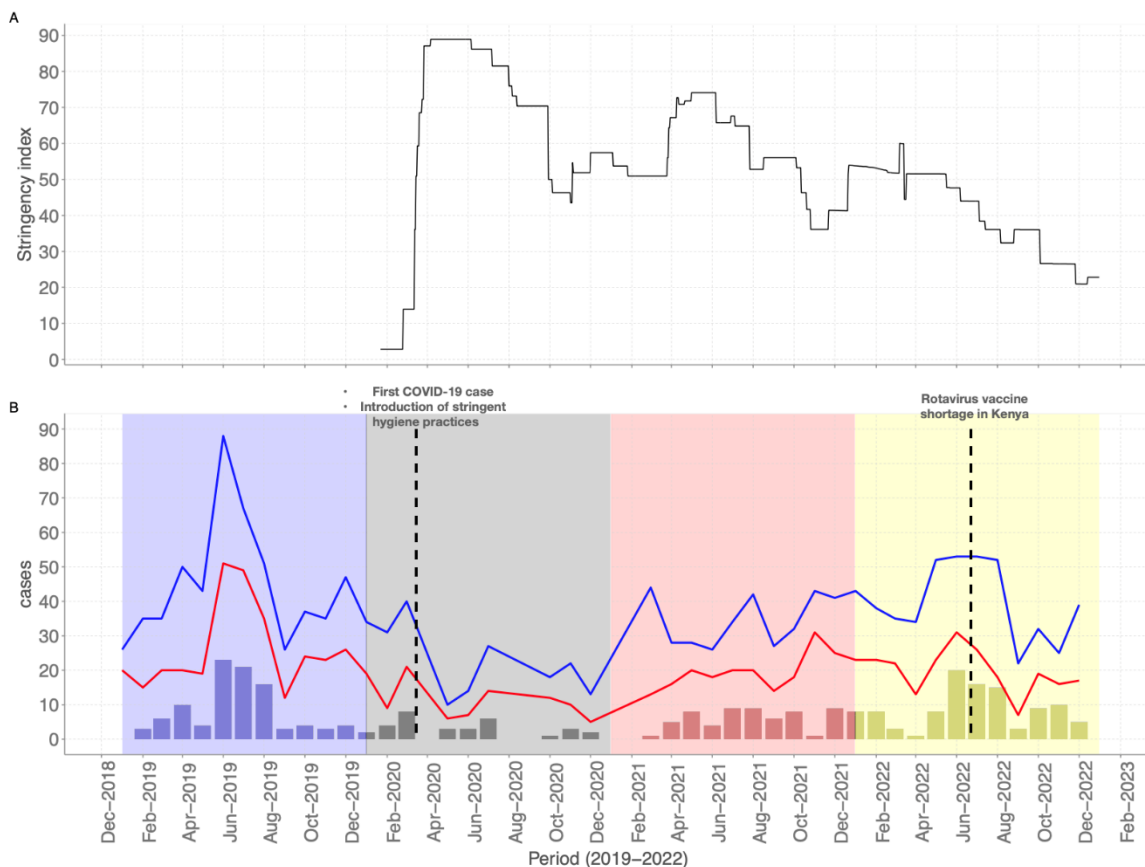
*Pre-pandemic data has been reported in an earlier manuscript ¹⁶

150

151 **Trends in diarrhoeal cases in the context of the COVID-19 pandemic**

152 After the initial detection of the first COVID-19 case in Kenya on 12th March 2020 ²⁴, the
 153 government implemented a range of NPIs to curb the pandemic (summarised in Figure 1a
 154 using the Oxford Stringency index and local restrictions listed in supplementary table 2). The
 155 trend of monthly recorded diarrhoea cases recruited into our surveillance between January
 156 2019 and December 2022 is shown in **Figure 1b**. The highest monthly peak in cases was
 157 recorded in 2019 before the COVID-19 pandemic. The lowest number of diarrhoea cases was
 158 in the 2020, but a gradual rebound was observed in 2021 and 2022.

159



160

161 **Figure 1: A)** COVID-19 stringency index quantifying the government NPI measures aimed to
 162 curb the spread of SARS-CoV-2 (source: <https://ourworldindata.org/covid-stringency-index>).
 163 B) Temporal trends of monthly diarrhoea and virus cases between January 2019 and
 164 December 2022. The blue and red line graphs show the total eligible and recruited diarrhoea
 165 cases respectively, while the bar graphs show the total virus positive cases per month.

166

167 **Single virus infections and coinfections**

168 At least one of the five virus targets were detected in 282 (32.4%) cases. The proportion of
 169 samples positive for the five viruses we tested in the stool samples for the different years is
 170 summarised in table 1. The positivity rate of RVA deeped in 2020, at 1.7% (95% C.I, 0.2% –
 171 6.0%) compared to 2019 (12.1% (95% C.I, 8.7%-14.9%) and gradually rose in 2021 (16.9% (95%
 172 C.I, 12.0% - 22.8%)) and 2022 (23.5% (95% C.I, 18.2% - 29.4%)) and the differences were
 173 statistically significant (p value < 0.001) **(Table 2)**.

174

175 The norovirus GII positivity rate fluctuated over the four years and the difference was
 176 statistically significant (p value 0.04) **(Table 2)**. The highest positivity rate for norovirus GII was

177 16.2% (95% C.I, 10.0% – 24.1%) in 2020 and lowest at 6.4% (95% C.I, 3.4% – 10.8%) in 2021
 178 **(Table 2)**. No astrovirus cases were detected in the 2020 and 2021, but the cases in 2022
 179 (3.3%) with a similar positivity rate to what was reported in 2019 (3.1%, **Table 2**). The positivity
 180 rates for sapovirus and adenovirus type F40/41 did not change across the three phases (*p*
 181 *value* > 0.05, χ^2).

182

183 **Table 2:** Comparison of the detection rates of five common enteric virus between January
 184 2019 and December 2022

Virus	Total (n=870)	2019 (n=314)		2020 (n=117)		2021 (n=201)		2022 (n=238)		P value
		Cases	Proportion (95% CI)	Cases	Proportion (95% CI)	Cases	Proportion (95% CI)	Cases	Proportion (95% CI)	
Rotavirus	130 (14.9%)	38	12.1 (8.7 - 16.2)	2	1.7 (0.2 - 6.0)	34	16.9 (12.0 - 22.8)	56	23.5 (18.2 - 29.4)	<0.001
Norovirus GII	89 (10.2%)	34	10.8 (7.6 - 14.8)	19	16.2 (10.0 - 24.1)	13	6.4 (3.4 - 10.8)	23	9.6 (6.2 - 14.1)	0.04
Astrovirus	18 (2.1%)	10	3.1 (1.5 - 5.7)	0	-	0	-	8	3.3 (1.4 - 6.5)	0.01
Sapovirus	33 (3.8%)	11	3.5 (1.7 - 6.1)	3	2.5 (0.5 - 7.3)	7	3.4 (1.4 - 7.0)	12	5.0 (2.6 - 8.6)	0.65
Adenovirus F40/41	30 (3.4%)	9	2.8 (1.3 - 5.3)	8	6.8 (2.9 - 13.0)	6	2.9 (1.1 - 6.3)	7	2.9 (1.1 - 5.9)	0.19

185

186 Between 2019 and 2022, 13 samples had a coinfection of two or more viruses of the screened
 187 viruses. The most common coinfections were RVA and norovirus GII (n=4), adenovirus 40/41
 188 and astrovirus (n=3), and adenovirus 40/41 and sapovirus (n=3) (**Supplementary table 3**).

189

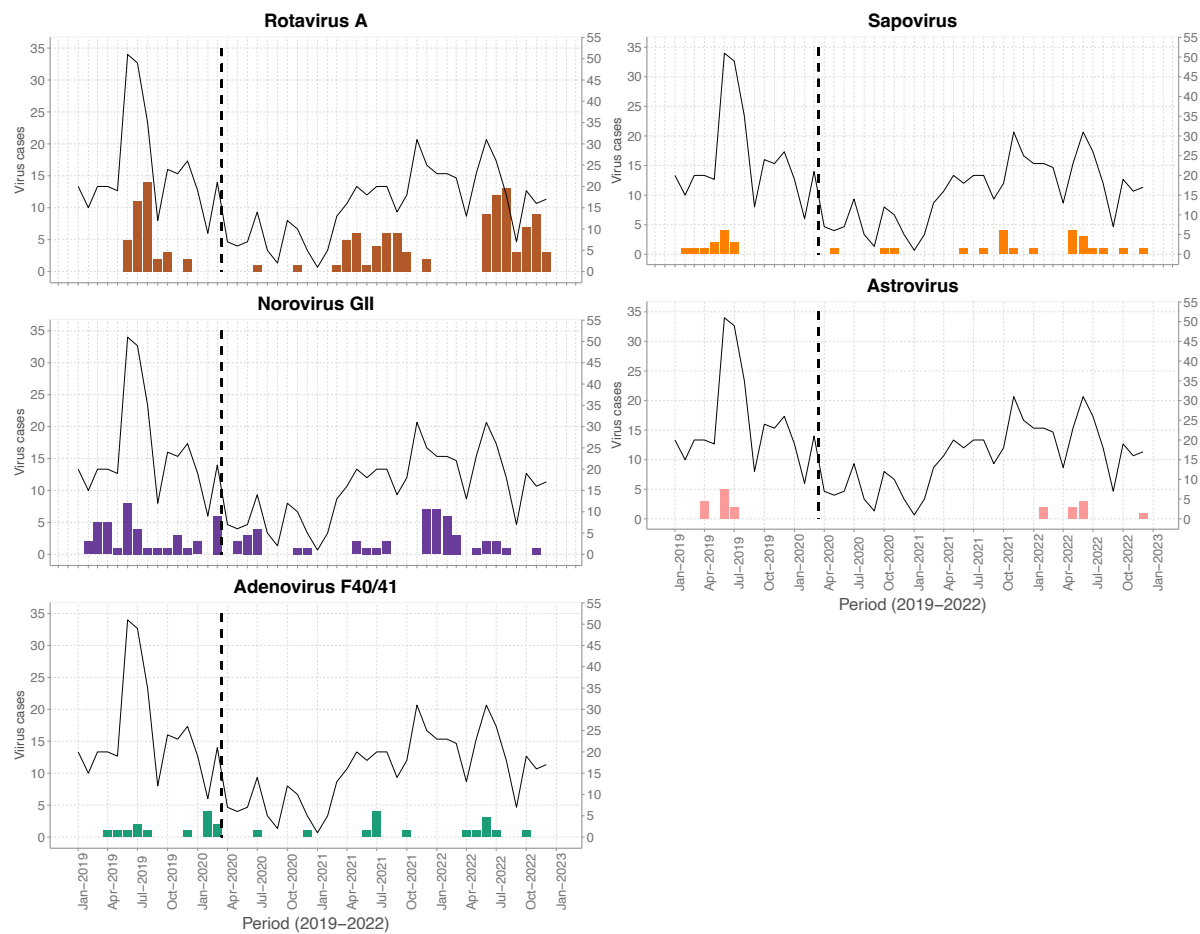
190 **Monthly virus trends**

191 In all the years, peak RVA cases were observed in the month of August, except in 2020 where
 192 only two RVA cases were detected, **Figure 2**. The peak months for norovirus GII varied across
 193 the different years. Less than five cases were reported over the four years for adenovirus
 194 40/41, sapovirus and astrovirus in each month. In 2020 and 2021, no astrovirus cases were
 195 detected but re-emerged in 2022 (**Figure 2**).

196

197

198



199

200 **Figure 2:** Monthly temporal distribution of common enteric virus cases in children under 13
 201 years admitted to KCH with diarrhoea between January 2019 and December 2022. The black
 202 trendline shows the monthly diarrhoeal cases over time and the vertical dotted line represents
 203 when the first COVID-19 case was detected in Kenya.

204

205

206 **RVA genotypes and vaccination status of positive cases**

207 Of the 130 RVA positive detected during the study, 87 (66.9%) and 70 (53.8%) successively
 208 sequenced in the VP7 and VP4 segment, respectively. The years 2019, 2020 and 2021 were
 209 predominated by the G3P[8] genotype (n=48, 80.0%). In 2022, we observed replacement of
 210 the G3P[8] genotype with multiple genotypes: G2P[4] (n=2), G9P[8] (n=10), and G9P[4] (n=4).
 211 To note, in the 2022 there was some incomplete genotyping due to failed sequencing in the
 212 VP4 and VP7 segments G2P[x] (n=5) and GxP[8] (n=8), Among the 130 RVA positive cases, 88

213 (67.7%) had received at least one dose of the Rotarix[®] vaccine two doses, 18 (12.9%) had not
214 received a vaccine and 24 (16.9%) had no vaccination records. One participant was RVA
215 positive five days after receiving a Rotarix dose and their sample genotyped as G3P[8].

216

217

218 **Disease outcome**

219 In the study, a total of 41 (4.7%) cases succumbed among the 870 that we analysed. Only nine
220 of these cases were positive for at least of the viruses we tested i.e., norovirus GII (n=4),
221 adenovirus type F40/41 (n=2), RVA (n=1), sapovirus (n=1) and a coinfection (RVA & sapovirus,
222 n=1) (**Supplementary Figure 2**). The other 32 cases had none of the five viruses detected.

223 Discussion

224 In this coastal Kenya hospital-based study, we observed a decrease in paediatric diarrhoea
225 admissions in during the first year of the COVID-19 pandemic (2020) compared to the pre-
226 pandemic year (2019). This decline may be attributed in part to be a result of the
227 implementation of NPIs such as restriction of movement and increased hygiene practices that
228 may have led to reduce transmission of the enteric pathogens as observed elsewhere⁸ and
229 the overall reduced access to the hospital occasioned by health worker strike between
230 December 2020. Peak diarrhoea cases are usually observed between June and July and in
231 2020 and 2021, this period coincided with high stringency measures in the country. After
232 March 2021, targeted vaccination campaigns started replacing NPIs and from August 2021,
233 the government dropped measures including closure of schools, curfews, lockdowns and
234 public gatherings and restrictions in public transport.

235

236 We report a significant decrease in RVA positivity rate in 2020 compared to 2019 followed by
237 a rebound in 2021 and 2022, a finding consistent with other studies elsewhere^{4,6-8}. Notably,
238 the positivity rate of RVA in 2022 was higher compared to all the previous years. Such a
239 resurgence of RVA activity was also observed in Hong Kong after the first year of the
240 pandemic⁵.

241

242 The return and increase of RVA activity in the 2021 and 2022 can be attributed in part to the
243 relaxation of the COVID-19 NPIs or circulation of strains heterologous to the Rotarix vaccine
244 (e.g. G9P[8], G9P[4] and G2P[4]). Some of these strains have been noted to have limited cross-
245 reactivity with the Rotarix G1P[8] strain. Further, vaccination delays and Rotarix[®] vaccine
246 stockouts that occurred in between June 2022 and January 2023 when a vaccine switch to
247 Rotavac was made in Kenya²⁵. The introduction of G9 genotypes in Malaysia was associated
248 with an increase RVA prevalence²⁶ similar to what we observed in 2022 whereby the G3P[8]
249 were rapidly replaced by the G9P[8], G9P[4] and G2P[4] genotypes and subsequently there
250 was an increase in RVA cases.

251

252 In Kilifi, the prevalence of norovirus GII has been on the rise post-rotavirus vaccine
253 introduction compared to the pre-vaccine period^{14,16}. Interestingly, the positivity rate of
254 norovirus GII was highest in 2020 phase compared to other years. This implies that norovirus

255 activity was less impacted by the NPI measures which is known to be highly infectious. An
256 increase in norovirus activity and multiple sporadic outbreaks have reported in the USA and
257 China during the COVID-19 phase ^{5,11,12}.

258
259 Notably, astrovirus was not detected in the 2020 and 2021 but re-emerged in the 2022 with a
260 positivity rate similar to what was observed in 2019. Astrovirus and sapovirus detection on
261 the Kenyan coast has been always characterised by very low prevalence (<5%) ^{14,16}.

262
263 In China, enteric virus coinfections especially with RVA and norovirus was associated with
264 severe disease ²⁷. Similarly in coastal Kenya, a coinfection with either RVA or/and norovirus
265 GII coincided with severe disease. However, its key to note that 71.6% of the participants in
266 the study presented with severe disease. In 2020, there was a significant difference in
267 mortality rate (9.0%) compared to the 2019 (3.2%), 2021 (6.8%) and 2022 (2.1). We
268 hypothesize that the high mortality rate in the 2020 and partly 2021 may have been caused
269 by the challenges with access to the hospitals and health care services as efforts were geared
270 towards management of COVID-19 cases.

271
272 This study had several limitations. We did not analyse healthy controls from the same
273 population to adjust the aetiological fraction for asymptomatic carriage in the population.
274 With the small number of detections for some of the virus targets, it hard to confidently infer
275 seasonality without a larger study. There was substantial data missingness e.g., on deaths and
276 almost half of the eligible participants refused consent to be in the study. For a conclusive
277 inference of changes of the incidence of these viruses before during and after the pandemic,
278 a population-based study with a clear population-based denominator is necessary.

279
280 In conclusion, our study observed a decrease in total diarrhoea admissions and enteric virus
281 activity during in 2020 and 2021. However, in 2022 an increase in RVA and astrovirus activity
282 is restored to pre-pandemic numbers. Therefore, continuous enteric virus surveillance is key
283 in understanding the temporal changes in positivity rate of these viruses to inform public
284 health policy.

285

286

287 **Declarations**

288 **Ethics approval and consent to participate.**

289 The research protocol for the study was approved at Kenya Medical Research Institute
290 (KEMRI), by the Scientific and Ethics Review Unit (SSC#2861) in Nairobi, Kenya.

291 **Acknowledgement**

292 We are grateful to the study participants who provided samples and members of the
293 pathogen epidemiology and omics group at KEMRI-Wellcome Trust Programme who did
294 sample collection and laboratory processing. This manuscript was written with the
295 permission of Director KEMRI CGMRC

296 **Funding.**

297 This study was funded by the Wellcome Trust (102975, 220985 and 226002/Z/22/Z). Dr
298 Charles Agoti was supported by the Initiative to Develop African Research Leaders (IDeAL)
299 through the DELTAS Africa Initiative [DEL-15-003]. The DELTAS Africa Initiative is an
300 independent funding scheme of the African Academy of Sciences (AAS)'s Alliance for
301 Accelerating Excellence in Science in Africa (AESA) and supported by the New Partnership for
302 Africa's Development Planning and Coordinating Agency (NEPAD Agency). The views
303 expressed in this report are those of the authors and not necessarily those of AAS, NEPAD
304 Agency and The Wellcome. This research was funded in whole or in part by the Wellcome
305 Trust [102975, 220985 and 226002/Z/22/Z], For the purpose of Open Access, the author has
306 applied a CC-BY public copyright license to any author accepted manuscript version arising
307 from this submission.

308 **Consent for publication**

309 Yes.

310 **Competing interests**

311 The authors declare no conflict of interest.

312 **Availability of data and materials**

313 All the data used can be accessed at the KWTRP Research repository via
314 <https://doi.org/10.7910/DVN/EG6MEH>.

315 **Authors' contributions**

316 CAN and DJN sourced the study funding. CNA, DJN and AWL designed the study laboratory
317 assay. AWL, MM, TOM, CR, and GM did the laboratory experiments. NM and AWL managed

318 the study data and did the data analysis. AWL and CAN wrote the first manuscript draft. All
319 authors read, revised, and approved the final manuscript.

320 References

- 321 1. Reiner RC, Wiens KE, Deshpande A, Baumann MM, Lindstedt PA, Blacker BF, et al.
322 Mapping geographical inequalities in childhood diarrhoeal morbidity and mortality in
323 low-income and middle-income countries, 2000–17: analysis for the Global Burden of
324 Disease Study 2017. *Lancet* [Internet]. 2020 Jun;395(10239):1779–801. Available
325 from: <https://linkinghub.elsevier.com/retrieve/pii/S0140673620301148>
- 326 2. Institute for Health Metrics and Evaluation I. Default results are global all-cause
327 deaths and DALYs for 2019 with trends since 1990 [Internet]. 2022 [cited 2022 Sep
328 27]. Available from: <https://vizhub.healthdata.org/gbd-results/>
- 329 3. Cohen PR, Rybak A, Werner A, Béchet S, Desandes R, Hassid F, et al. Trends in
330 pediatric ambulatory community acquired infections before and during COVID-19
331 pandemic: A prospective multicentric surveillance study in France. *Lancet Reg Heal -*
332 *Eur.* 2022;22:1–10.
- 333 4. Toczyłowski K, Jackowska K, Lewandowski D, Kuryłonek S, Waszkiewicz-Stojda M,
334 Sulik A. Rotavirus gastroenteritis in children hospitalized in northeastern Poland in
335 2006–2020: Severity, seasonal trends, and impact of immunization. *Int J Infect Dis*
336 [Internet]. 2021;108:550–6. Available from:
337 <https://doi.org/10.1016/j.ijid.2021.05.070>
- 338 5. Chan MCW. Return of Norovirus and Rotavirus Activity in Winter 2020–21 in City with
339 Strict COVID-19 Control Strategy, China. *Emerg Infect Dis* [Internet]. 2022
340 Mar;28(3):713–6. Available from: [https://wwwnc.cdc.gov/eid/article/28/3/21-](https://wwwnc.cdc.gov/eid/article/28/3/21-2117_article.htm)
341 [2117_article.htm](https://wwwnc.cdc.gov/eid/article/28/3/21-2117_article.htm)
- 342 6. Fang C, Zhou Z, Li J, Zhou M. Incident changes of rotavirus enteritis among children
343 during the coronavirus disease-2019 pandemic in Hangzhou, China. *J Infect* [Internet].
344 2022 Jan;84(1):e9–10. Available from: <https://doi.org/10.1016/j.jinf.2021.09.007>
- 345 7. Burnett E, Parashar UD, Winn A, Tate JE. Trends in Rotavirus Laboratory Detections
346 and Internet Search Volume Before and After Rotavirus Vaccine Introduction and in
347 the Context of the Coronavirus Disease 2019 Pandemic-United States, 2000-2021. *J*
348 *Infect Dis* [Internet]. 2022 Sep 21;226(6):967–74. Available from:
349 <http://www.ncbi.nlm.nih.gov/pubmed/35184198>
- 350 8. Maldonado-Barrueco A, García-Rodríguez J, Yániz-Ramírez J, Serrano-Vaquero I,
351 Parra-Alonso JC, Vega-Nieto C, et al. Impact of the SARS-CoV-2 Pandemic on the

- 352 Prevalence and Incidence of Gastrointestinal Viruses in Children up to Five Years Old:
353 a Retrospective Cohort Study. *Microbiol Spectr*. 2022;10(3).
- 354 9. Ahn SY, Park JY, Lim IS, Chae SA, Yun SW, Lee NM, et al. Changes in the Occurrence of
355 Gastrointestinal Infections after COVID-19 in Korea. *J Korean Med Sci*. 2021;36(24):1–
356 9.
- 357 10. Douglas A, Sandmann FG, Allen DJ, Celma CC, Beard S, Larkin L. Impact of COVID-19
358 on national surveillance of norovirus in England and potential risk of increased
359 disease activity in 2021. *J Hosp Infect*. 2021;112:124–6.
- 360 11. Kambhampati AK, Wikswo ME, Barclay L, Vinjé J, Mirza SA. Norovirus Outbreaks
361 Reported Through NoroSTAT — 12 States, August 2012–July 2022. *MMWR Recomm*
362 *Reports*. 2022;71(38):1222–4.
- 363 12. Lu Y, Zhang Z, Xie H, Su W, Wang H, Wang D, et al. The Rise in Norovirus-Related
364 Acute Gastroenteritis During the Fight Against the COVID-19 Pandemic in Southern
365 China. *Front Public Heal*. 2022;9(January):1–7.
- 366 13. Zhang W, Wu Y, Wen B, Zhang Y, Wang Y, Yin W, et al. Non-pharmaceutical
367 interventions for COVID-19 reduced the incidence of infectious diseases: a controlled
368 interrupted time-series study. *Infect Dis Poverty* [Internet]. 2023;12(1):15. Available
369 from: <https://doi.org/10.1186/s40249-023-01066-3>
- 370 14. Agoti CN, Curran MD, Murunga N, Ngari M, Muthumbi E, Lambisia AW, et al.
371 Differences in epidemiology of enteropathogens in children pre- and post-rotavirus
372 vaccine introduction in Kilifi, coastal Kenya. *Gut Pathog* [Internet]. 2022 Dec
373 1;14(1):32. Available from:
374 <https://gutpathogens.biomedcentral.com/articles/10.1186/s13099-022-00506-z>
- 375 15. Lambisia AW. Comparison of the Diagnostic Performance of TaqMan Array Cards,
376 Enzyme Immunoassay, Real-Time PCR and Next Generation Sequencing in
377 Investigation of Five Common Diarrhoea-Associated Enteric Viruses in Kilifi, Kenya
378 [Internet]. JKUAT-COHES; 2021. Available from:
379 <http://ir.jkuat.ac.ke/handle/123456789/5621>
- 380 16. Lambisia AW, Onchaga S, Murunga N, Lewa CS, Nyanjom SG, Agoti CN.
381 Epidemiological Trends of Five Common Diarrhea-Associated Enteric Viruses Pre- and
382 Post-Rotavirus Vaccine Introduction in Coastal Kenya. *Pathogens* [Internet]. 2020 Aug
383 15;9(8):660. Available from: <https://www.mdpi.com/2076-0817/9/8/660>

- 384 17. Nokes DJ, Abwao J, Pamba A, Peenze I, Dewar J, Maghenda JK, et al. Incidence and
385 Clinical Characteristics of Group A Rotavirus Infections among Children Admitted to
386 Hospital in Kilifi, Kenya. *PLOS Med* [Internet]. 2008 Jul 22;5(7):e153. Available from:
387 <https://doi.org/10.1371/journal.pmed.0050153>
- 388 18. Lambisia AW, Makori TO, Mutunga M, Cheruiyot R, Murunga N, Quick J, et al.
389 Genomic epidemiology of human adenovirus F40 and F41 in coastal Kenya: A
390 retrospective hospital-based surveillance study (2013-2022). *Virus Evol*.
391 2023;9(1):vead023.
- 392 19. Makori TO, Bargul JL, Lambisia AW, Mwanga MJ, Murunga N, de Laurent ZR, et al.
393 Genomic epidemiology of the rotavirus G2P[4] strains in coastal Kenya pre- and post-
394 rotavirus vaccine introduction, 2012–8. *Virus Evol* [Internet]. 2023 Jan
395 1;9(1):vead025. Available from: <https://doi.org/10.1093/ve/vead025>
- 396 20. Vennema H, Kroneman A. Rotavirus A Genotyping Tool [Internet]. [cited 2022 Apr
397 15]. Available from: <https://www.rivm.nl/mpf/typingtool/rotavirusa/>
- 398 21. Mathieu E, Ritchie H, Rodés-Guirao L, Appel C, Giattino C, Hasell J, et al. Coronavirus
399 Pandemic (COVID-19). *Our World Data*. 2020;
- 400 22. Brand SPC, Ojal J, Aziza R, Were V, Okiro EA, Kombe IK, et al. COVID-19 transmission
401 dynamics underlying epidemic waves in Kenya. *Science* (80-) [Internet]. 2021 Nov
402 19;374(6570):989–94. Available from:
403 <https://www.science.org/doi/10.1126/science.abk0414>
- 404 23. Lewis K. Vesikari Clinical Severity Scoring System Manual. *Path* [Internet].
405 2011;(May):1–50. Available from:
406 https://www.path.org/publications/files/VAD_vesikari_scoring_manual.pdf
- 407 24. Health M of. First case of coronavirus disease confirmed in Kenya. *Press Release*.
408 2020;1–3.
- 409 25. Standard. Newborns at risk as shortage of the rotavirus vaccine is felt in various
410 clinics [Internet]. [cited 2023 Jun 2]. Available from:
411 [https://www.standardmedia.co.ke/health/health-](https://www.standardmedia.co.ke/health/health-science/article/2001448711/newborns-at-risk-as-shortage-of-the-rotavirus-vaccine-is-felt-in-various-clinics)
412 [science/article/2001448711/newborns-at-risk-as-shortage-of-the-rotavirus-vaccine-](https://www.standardmedia.co.ke/health/health-science/article/2001448711/newborns-at-risk-as-shortage-of-the-rotavirus-vaccine-is-felt-in-various-clinics)
413 [is-felt-in-various-clinics](https://www.standardmedia.co.ke/health/health-science/article/2001448711/newborns-at-risk-as-shortage-of-the-rotavirus-vaccine-is-felt-in-various-clinics)
- 414 26. Amit LN, John JL, Mori D, Chin AZ, Mosiun AK, Ahmed K. Increase in rotavirus
415 prevalence with the emergence of genotype G9P[8] in replacement of genotype

416 G12P[6] in Sabah, Malaysia. Arch Virol [Internet]. 2023;168(6):173. Available from:
417 <https://doi.org/10.1007/s00705-023-05803-9>
418 27. Zhang SX, Zhou YM, Xu W, Tian LG, Chen JX, Chen SH, et al. Impact of co-infections
419 with enteric pathogens on children suffering from acute diarrhea in southwest China.
420 Infect Dis Poverty [Internet]. 2016 Dec 27;5(1):64. Available from:
421 <http://idpjournal.biomedcentral.com/articles/10.1186/s40249-016-0157-2>
422