

**Title: Impact of Emerging COVID-19 variants on psychosocial health: A**

**Systematic Review**

**Author Details:**

Salutation	Authors in order (Full Name)	Affiliations	Email	Orcid ID
Dr.	Pratyush Kumar	Intern, Dr Baba Saheb Ambedkar Medical College and Hospital, Delhi, India	pratyushkumar9958@gmail.com	0000-0002-5275-1952
Dr.	Manali Sarkar	Intern, MGM Medical College, Navi Mumbai, India	manalisarkar12@gmail.com	0000-0002-6732-2907
Dr.	Morales Femenias Yurkina	Logopedia and Phoniatics Department. Provincial General Teaching	ymoralesfemenia@gmail.com	

		Hospital Dr. Antonio Luaces Iraola. Address Máximo Gómez street. Ciego de Avila. Cuba. Code HPGDALICA		
Dr	Ramya Gnanaraj	Madras Medical College, Chennai, India	ramyagnanarajan @gmail.com	0000-0002- 8559-7963
Prof	Daniel Jesús García Martínez	Francisco De Vitoria University, Madrid, Spain.	d.garciamartinez @ufv.es	0000-0001- 8063-860X
Dr.	Yhojar A.Pisfil-Farroñay	Emerge, Unidad de Investigación en Enfermedades Emergentes y	yhojar.pf@gmail .com	0000-0002- 8863-0327

		Cambio Climático, Facultad de Salud Pública y Administración , Universidad Peruana Cayetano Heredia, Lima, Perú		
Dr.	Laxmi Chaudhary	Casualty Medical Officer (CMO), Dr. Baba Saheb Ambedkar Medical College & Hospital, Delhi, India	pinkychaudhar y9@gmail.com	
Dr.	Poonam Agrawal	Professor and Head of Department of Biochemistry, Dr Baba Saheb Ambedkar Medical College and	drpoonam24agra wal@yahoo.com	

		Hospital, Delhi, India		
Dr.	G. P. Kaushal	Professor and Head of Department of Pediatrics, Dr Baba Saheb Ambedkar Medical College and Hospital, Delhi, India	gpkaushal2005 @gmail.com	
Mr.	Mathew Mbwogge	MSc, Alumni Relations, London School of Hygiene & Tropical Medicine Keppel Street London	m.mbwogge@gm ail.com	
Dr.	Kumar Abhishek	Intern, Dr Baba Saheb Ambedkar	kra09757@gmai l.com	0000-0003- 4402-3856

		Medical College and Hospital, Delhi, India		
Mr.	Muhannad Alnaasan	University of Aleppo faculty of medicine, Aleppo, Syria	mohannad02000 @gmail.com	
Prof.	Maximiliano Ezequiel Arlettaz	National University of Entre Rios, Argentina	maximilianoarlet taz@hotmail.co m	0000-0002- 7507-7059
Dr.	Reem Kozum	Aleppo University Hospital, Syria	reem.kozum.199 8@gmail.com	
Dr.	Miguel Fernando Juárez Moyrón	General Surgeon, National Autonomous University of Mexico	miguelfernandoj m@gmail.com	0000-0002- 0560-065X
Dr.	Suhrud Panchawagh	Intern, Smt.	suhrudp@gmail.	

		Kashibai Navale Medical College & General Hospital, Pune Consultant biostatistician, Sancheti Hospital, Pune ReQuir Statistics Solutions	com	
Dr.	Asmitha P Reddy	Intern, Father Muller Medical College, Mangalore, India	asmithar1998@g mail.com	
Dr.	Vishnu B Unnithan	House Officer, Department of Nuclear Medicine, Seth GS Medical College and KEM Hospital,	vishnubunnithan @gmail.com	0000-0003- 2894-8832

		Mumbai, India.		
Dr.	Rushikesh Shukla	Jawaharlal Nehru Medical College, Datta Meghe Institute of Higher Education and Research (DU), Sawangi, Maharashtra, India	Rushikeshshukla@ yahoo.in	

## **ABSTRACT**

**Background:** The COVID-19 pandemic has had significant psychological effects on individuals and communities around the world. Studies have found that the prevalence of anxiety and depression symptoms increased significantly during the pandemic. The goal of the study is to understand how the emerging new virus variants keep the world in a state of fear and the ways in which mental health measures can be implemented and adopted to alleviate anxiety.

**Methods:** A broad search for observational studies were carried out in Pubmed, Google Scholar, Clinical Key, and World Medical Library. Studies that reported and/or related the existence of anxiety generated by suffering or not from diseases caused by the new emerging Covid-19 viruses and that for which the full text of the article was accessible were included in the study while systematic review and meta-analysis and studies in groups were excluded.

**Results:** 22 studies were included in the review. The deleterious psychosocial effects were the restructuring of life, establishment of unhealthy habits, emergence of "*corona phobia*", fear and stigma of being afflicted with the disease and spreading it to loved ones, and lack of contact with others. Increased rates of depression and anxiety were also seen. The circulating variants responsible for these main psychosocial repercussions were: *Epsilon, Zeta, Eta, Iota, Kappa, Alpha, Beta, Gamma, and Delta*. Social support was found to be protective.



**Conclusion:** Hence interventions targeted at promoting mental health should be considered a public health priority.

## **INTRODUCTION**

The COVID-19 pandemic has had significant psychological effects on individuals and communities around the world. The fear and uncertainty surrounding the virus [1] as well as the loss of loved ones [2], job insecurities [3], financial hardships [4], reduced sleep quality [5], and forced social isolation caused by lockdown measures [6] have all contributed to mental health challenges for many people.

One of the main psychological effects of the pandemic has been an increase in stress and anxiety. Studies have found that the prevalence of anxiety and depression symptoms increased significantly during the pandemic. [7,8] Other researchers have found that the pandemic has disproportionately affected vulnerable populations, such as those with pre-existing mental health conditions [9] and those who have experienced trauma or adversity. The risk of suicidal ideation increased, especially among adult. [10] The pandemic affected all age groups including children, with school closures [11], adolescents and women due to social isolation, withdrawal from social life [12] and due to domestic violence[13]. The pandemic has been particularly difficult for older adults, who may be more isolated to begin with and may be more vulnerable to the negative effects of loneliness [14].

COVID also affected people from all walks of life, including healthcare workers [15], remote workers of the information system [16], small-scale business owners and entrepreneurs [17] migrant workers [18], etc., thereby causing economic turndown and recession which in turn led to unemployment, layoffs [19] and financial hardships leading to increased stress and anxiety. Additionally, the world-recognized worry and anxiety brought on by the pandemic have recently challenged and replaced

psychological well-being, which has long been acknowledged as the mental health benefit of travel [20].

The emergence of COVID-19 variants, including the Delta, Gamma variants and the Omicron variants, and the vaccine variants [21] has added to this stress and anxiety. The uncertainty surrounding the spread and impact of these variants, as well as the potential for additional lockdowns and other measures to control their spread, has caused increased worry and concern for many people with an additional layer of fear of re-infection and the potential for more severe illness becoming a reality. The goal of the study is to understand how the emerging new virus variants keep the world in a state of fear and the ways in which mental health measures can be implemented and adopted to alleviate anxiety.

## **METHODOLOGY:**

### **Search strategy:**

A broad search for observational studies was carried out, which evaluated the repercussions or psychological and social consequences in the child and adult population during the outbreak of SARS-COV 2 and its new variants. The databases used during the search were: Pubmed, Google scholar, Clinical Key and World Medical Library. The Boolean operators used for the search strategy in the databases were: Coronavirus OR quarantine AND psychological effects OR psychosocial OR distress OR mental health OR mental health care, and their equivalents in Spanish, in title and abstract, in published scientific articles. between March 2020 and May 2022. As exclusion criteria, the following were considered: studies in groups other than the child and adult population, examples of studies of students, of health personnel.

We searched for all randomized and non-randomized studies that reported the existence of anxiety in the face of new emerging variants of the virus (Covid-19), in both the child and adult population and that were published between March 2020 and May 2022; For this, the databases were used: CENTRAL, MEDLINE through PubMed and Embase. In addition, a search was carried out in the citation indexes: Google scholar, Scopus and World Medical Library; this was done to screen for possible further studies.

The search in CENTRAL, Pubmed and Embase was: (covid or covid-19 OR coronavirus OR “coronavirus” OR SARSCoV-2 OR “Coronavirus”[Mesh] OR “severe acute respiratory syndrome coronavirus 2”[Complementary concept] OR “COVID-19”[Supplementary concept] Concept] OR “Coronavirus infections”[Mesh] OR “Coronavirus infections/psychology”[Mesh] OR “Coronavirus infections/statistics and numerical data”[Mesh]) AND (anxiety OR anxiety symptoms O anxiety disorders O anxious O “Trauma-related disorders and stressors” [Mesh] O “Anxiety” [Mesh] O “Anxiety disorders” [Mesh] O “Anxiety/epidemiology” [Mesh] O “Anxiety/statistics and numerical data” [Mesh]). No language restriction was made. This search was updated on August 31, 2022.

### **Selection criteria:**

Inclusion criteria: studies that reported and/or related the existence of anxiety generated by suffering or not from diseases caused by the new emerging Covid-19 viruses and that for which the full text of the article was accessible.

Exclusion criteria: systematic or narrative reviews and studies in groups other than children and adults, examples of studies of communities, students, health personnel, population with associated comorbidities.

## **RESULT:**

140 studies were identified from the initial search [figure 1 PRISMA flowchart]. After removing 11 duplicate studies, which were found in both Pubmed and Embase databases, 129 studies were examined; 86 of them were excluded because the full text was not available or they were systematic reviews, for which 43 full text articles were selected and evaluated for eligibility. Only 22 were considered for the qualitative synthesis and 21 additional full-text studies were excluded because they were not within the included time and were studies of population groups not selected for the review.

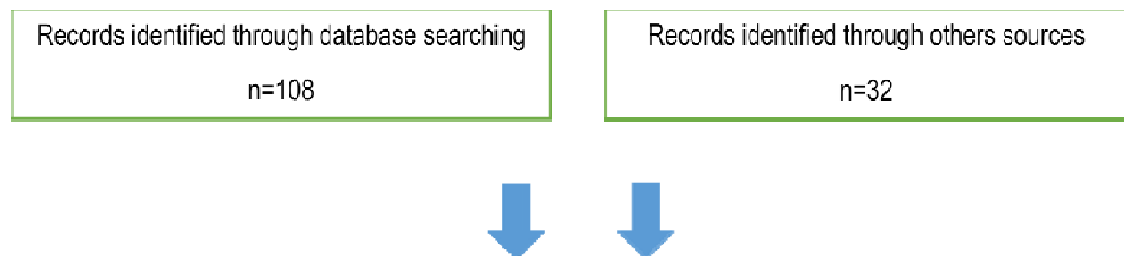
In the 22 studies [see table 1: Characteristics of the included studies] selected for the qualitative synthesis, it was found that the main psychosocial repercussions were:

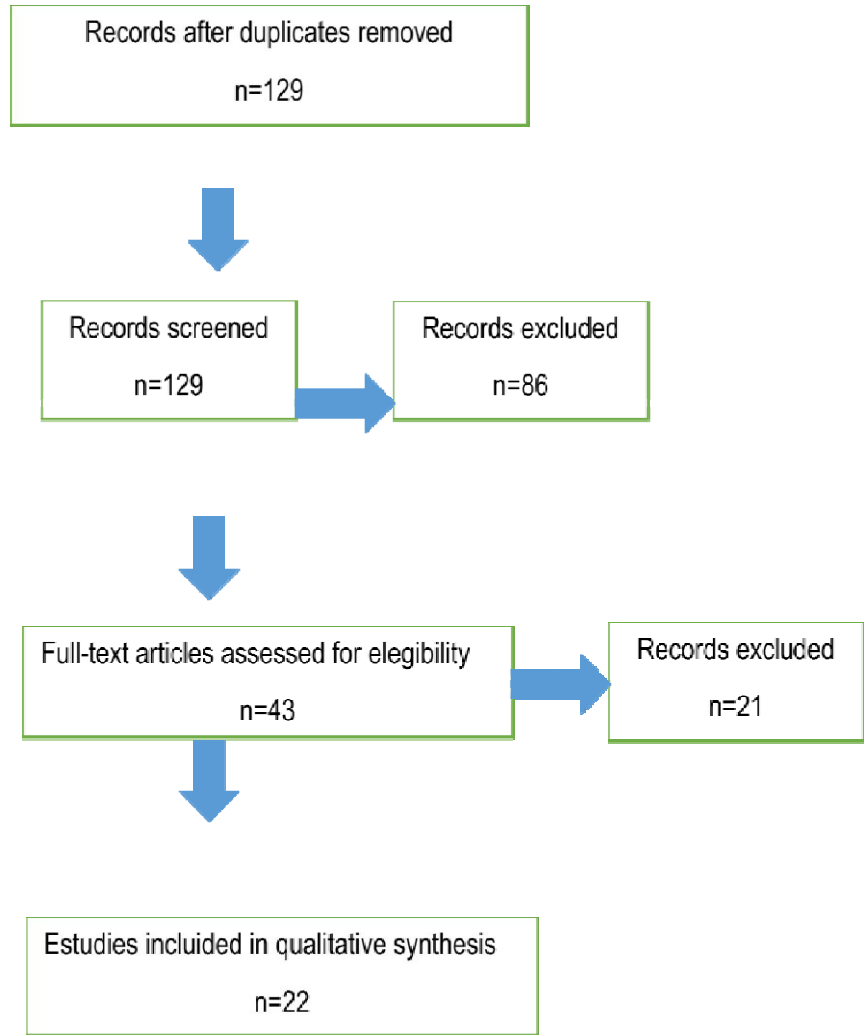
- restructuring of life with readjustments in both family and community roles and functions.
- establishment of unhealthy habits (eg poor eating habits, irregular sleep patterns, sedentary lifestyle and greater use of technological means) with derivation of physical problems.
- increase in depressive and anxiety disorders where people's mobility was lower and the daily rates of COVID-19 infection were higher.
- mass hysteria, financial burden and financial loss. The massive fear of COVID-19, called “corona phobia”.
- affectation in frequency, sharing, communication, closeness and emotional support in their relationships with family, friends and neighbors or other people, mostly experiencing emotions such as sadness, stress, fear and anxiety.
- rejection or discrimination for having presented the disease, uncertainty of the prognosis of the disease, misinformation about the disease, financial insecurity.

- The fear of infecting vulnerable people and non-compliance with academic and work demands caused frustration, worry, fear, disgust, nostalgia and guilt, thus concluding that the participants experience mild symptoms of anxiety and stress, in addition it was shown that the social support is a protective factor that favors the attenuation of symptoms.

The circulating variants responsible for these main psychosocial repercussions were: *Epsilon, Zeta, Eta, Iota, Kappa, Alpha, Beta, Gamma, Delta*. *Alpha, Beta, Gamma* and *Delta* variants were distributed throughout the world and were responsible for a second and third wave of the pandemic. The first wave predominantly infected older and immunocompromised populations and people with underlying complications. In the second wave of the pandemic, an *Alpha* variant that mostly affected the young population with community transmission and hospitalization, and the *Gamma* variant responsible for reinfection in the state of São Paulo, Brazil, were reported. The *Delta* strain drove the second wave in India and was responsible for the third wave in the UK. The limitations found in the articles reviewed were: mostly cross-sectional studies were carried out and online surveys were generally used to obtain information. The studies are mainly in the adult population and when they are carried out in the child population they are accompanied by the participation of adults (parents). No studies were found that evaluated the psychosocial impact in correspondence with each variant of COVID 19.

Figure 1 PRISMA flowchart.





Studys	Characteristics		
	Design	Population	Results
Généreux M, et al. [22].	Cross-sectional study design with a randomly selected,	Adult population (over 18 years of	Several sociodemographic, psychological, and sociocultural factors

	<p>interdisciplinary and international sample.</p>	<p>age), May to June 2020.</p>	<p>were found to be positively associated with a probable Generalized Anxiety Disorder or Major Depressive Episode, including (in descending order) weak SOC, younger age, false beliefs, isolation, perceived threat to self or family, mistrust of authorities, being a victim of stigma, threat perceived by the country or the world, financial losses, being a woman, and a high level of information about COVID-19.</p> <p>Some of the factors found in this study to be associated with decreased psychological health in times of the</p>
--	--	--------------------------------	--



			<p>pandemic were female sex, younger age, discrimination, isolation, and less ability to adapt.</p>
Idoiaga N, et al. [23] .	Descriptive study design.	228 children aged 3 to 12 years, March 2020.	<p>Children are afraid and worried about catching the virus, but mainly because they think they can infect their grandparents, and this makes them feel guilty. In addition, the confinement situation has produced mixed emotions in children. On the one hand, they are scared, nervous, lonely, sad, bored and angry.</p>
Mactavish A,et al. [24] .	Observational, descriptive study design.	Children (ages 8-13) and their parents, in the Windsor-Essex region of southwestern Ontario.	<p>Children and parents reported worse well-being and psychological distress during the pandemic.</p>

<p>Quero Acosta L, et al. [25] .</p>	<p>Observational, descriptive, multicenter (4 recruitment centers), and cross-sectional, random sample.</p>	<p>150 individuals: 77 girls (51.3%) and 73 boys (48.7%) with a mean age of 10 .85 +/- 2.01 years. September to November 2020.</p>	<p>Reported psychophysiological symptoms of depression, anxiety and irritability.</p>
<p>Yasmin F, et al. [26] .</p>	<p>Cross-sectional study design.</p>	<p>adult population, March to July 2021.</p>	<p>The population with moderate to high psychological distress and low mental well-being, it can be stated that almost three quarters of the population in Pakistan under study had difficulties in adapting to the new state of life during the pandemic lockdown.</p>
<p>Khatatbeh M, et al. [27] .</p>	<p>Cross-sectional study design.</p>	<p>adult population, June to</p>	<p>a significant level of psychological burden on Jordanians, especially</p>

		September 2020.	women.
Qin Z, et al. [28] .	Cross-sectional study design.	child population, March 2020.	self-reported psychological distress.
Bala S, et al. [29]	Cross-sectional study design.	adult population aged 20 to 55 years, May 2020.	A significant positive association was observed for COVID-19 stressors, such as worry about the economy, the effect of social networks on daily life, poor knowledge, and a negative correlation of lack of social support with a higher score. IES-R in our study. The mean IES-R score was found to be at a higher end among low- resilience copers.
Ngoc Cong Duong K, et al. [30]	Cross-sectional study design.	adult population over 18 years of age, April 2020.	Respondents experienced psychological distress, depression, stress, and anxiety. Large-scale strict social distancing substantially increased

			anxiety, depression, loneliness, and substance use.
Wang C, et al. [31]	Cross-sectional study design.	adult and adolescent population.	Thailand had all the highest scores for stress, anxiety, and depression, and Vietnam had all the lowest scores. Risk factors for adverse mental health during the COVID-19 pandemic include age <30 years, high educational level, single and separated status, discrimination by other countries, and contact with people with COVID-19. Protective factors for mental health include male gender, being with children or more than 6 people in the same household, employment, trust in doctors, high perceived probability of survival, and spending less time on health

			information.
Traunmüller C, et al. [32]	Cross-sectional study design.	adult population, March to April 2020.	they rated the psychological impact as moderate or severe and reported moderate to severe depression, anxiety, and moderate to severe stress. Being a woman, older age, lower educational level, concern for family members, Internet as the main source of information, status as a student or pupil, self-perceived poor health, and downplaying the seriousness of the problem were significantly associated with a higher psychological burden.
Passos L, et al. [33]	Cross-sectional study design.	adult population, March 2020.	Three weeks after the first confirmed cases in Portugal, participants rated the psychological impact of the outbreak as moderate or

			severe. In addition, they reported moderate to severe symptoms of depression, anxiety, and stress levels.
Tee ML, et al. [34] .	Cross-sectional study design.	adult population, March to April 2020.	psychological impact of the pandemic with higher levels of stress, anxiety, and depression.
Al Dhaheri AS, et al. [35] .	Cross-sectional study design.	adult population, May and June 2020.	Most of the participants felt horrified, apprehensive or helpless due to COVID-19. More than 40% reported increased stress from work and financial matters. Greater psychological impact was found among women, participants aged 26-35, those with a lower educational level, and participants residing in the North African region.
Barros MBA, et al.	Cross-sectional study design.	adults; April to	Frequent sadness and

[36] .		May 2020.	nervousness, as well as changes in sleep patterns, these mental health effects were greater in young adults, women and people with a history of depression.
Wang C, et al. [37] .	Longitudinal study design.	surveyed the general population twice: during the initial outbreak and the peak of the epidemic and four weeks later.	During the initial phase and four weeks later during the COVID-19 epidemic in China, there was a statistical but not clinically significant reduction in psychological impact. There were no significant temporal changes in levels of stress, anxiety, and depression between the start of the pandemic and four weeks later.
Alkhamees AA, et al. [38] .	Cross-sectional design.	population: adults between 30 and 40 years old.	A quarter of the general population experienced moderate to severe psychological impact.

<p><u>Davico</u> CH, et al. [39] .</p>	<p>Cross-sectional study.</p>	<p>children and adults in March 2020. 2,419 adults and 786 children.</p>	<p>Serious psychological impact and high risk of post-traumatic stress disorder in children were observed. Children may also be more vulnerable due to home confinement, school closures, lack of personal contact with classmates, friends, romantic partners, and teachers, and limited personal space at home.</p>
<p>Saddik B, et al. [40] .</p>	<p>cross-sectional study.</p>	<p>adults and children during March to May 2020.</p>	<p>high anxiety of parents and children.</p>
<p>Thasneem Zainudeen Z, et al. [41] .</p>	<p>Cross-sectional study.</p>	<p>409 parents and 348 children</p>	<p>154 respondents (38%) reported high psychological impact (score 14) for the psychological construct, and 189 respondents (46%) reported high psychological impact (score 6) for behavioral construct. A</p>



			<p>significantly higher proportion of respondents with non-permanent employment status of the head of the family reported high psychological impact. The prevalence of anxiety reported by the family members surveyed was 23%. Forty-five children answered the DASS-21 questionnaire; 28.5% reported anxiety, 31.4% depression and 13.3% stress. The family leader's job security status was found to be the predictive factor for mean total IES-R score (psychological construct) and ethnicity for mean total CRIES-8 and CRIES-13. Conclusion Rates of depression and anxiety during the COVID-19 pandemic were high.</p>
--	--	--	---

Gutiérrez Álvarez AK, et al. [42] .	Descriptive design, corresponding to the first stage of spread of the disease in the country.	Population children and adults.	<p>The time of social isolation caused the restructuring of the lives of its inhabitants, which generated readjustments in both family and community roles and functions.</p> <p>The main impact on the community was associated with socioeconomic factors; It manifested itself fundamentally in the difficulty of having access to basic consumer goods.</p> <p>Decompensation of comorbidities due to the stress generated.</p> <p>The natural processes of resilience of the community were developed, which were fostered by a government management that gradually gained order and efficiency.</p>
Herrera Paz	Observational study.	Adult	sadness, depression,

JJ, et al. [43]		population.	anxiety, financial concern, fear of contagion of COVID 19.
-----------------	--	-------------	--

## **DISCUSSION:**

Our review found that, during the pandemic, there was an alteration of mental health with a very large psychological impact on all age groups where anxiety, stress, different levels of depression and difficulties in adapting to the surrounding environment prevailed. COVID-19 blockages have become a major psychological risk, which poses a challenge in times of different pandemics, especially in children and adolescents. [44]

In children, peaks of anxiety and irritability could be observed and they were aware of the psychological distress it caused them. Factors that were associated with vulnerability were confinement, school closures, lack of contact with other people and limitations of personal space. Interestingly, among the factors influencing the children was the fear they had of becoming infected and infecting their grandparents, who reported feeling scared, guilty, lonely, sad and angry. Another study showed that children with psychiatric and/or developmental problems were more affected psychologically; family and social support was recommended as a preventive strategy. [45]

Among the results, it was found that the main factors associated with psychological impact were being female, average age between 26 and 35 years, low level of education, being single, difficulty in accessing basic consumer goods, sadness, personal worries, fear of contagion, having a previous history of depression; in addition, among those associated with the adult population were not having a permanent job, family worries

and using the internet as a source of information. This is in accordance to results found in previous studies. [46-49]

On the other hand, the factors that were found to be protective were being male, living in houses with children or more than 6 people, stable employment and spending less time on health information. This is similar to what has been found in studies and reviews already carried out where the company becomes an important point in the way of coping with the psychological impact of the pandemic; [50] therefore, promoting and guiding the obtaining of mental health should be considered a public health priority.

### **FUNDING**

No extramural funding was received.

### **COMPETING INTEREST**

This is to declare that the authors do not have any conflict of interest.

### **ACKNOWLEDGEMENTS**

The authors would like to acknowledge the open access resources from where data was collected under Creative Common License.

### **REFERENCES:**

1. Desforges M, Gurdasani D, Hamdy A, Leonardi AJ. Uncertainty around the Long-Term Implications of COVID-19. *Pathogens*. 2021;10(10):1267.
2. Zhai, Y., & Du, X. (2020). Loss and grief amidst COVID-19: A path to adaptation and resilience. *Brain, Behavior, and Immunity*, 87, 80-81.  
<https://doi.org/https://doi.org/10.1016/j.bbi.2020.04.053>

3. Wilson, J. M., Lee, J., Fitzgerald, H. N., Oosterhoff, B., Sevi, B., & Shook, N. J. (2020). Job Insecurity and Financial Concern During the COVID-19 Pandemic Are Associated With Worse Mental Health. *Journal of Occupational and Environmental Medicine*, *62*(9), 686-691.  
<https://doi.org/10.1097/jom.0000000000001962>
4. Witteveen, D., & Velthorst, E. (2020). Economic hardship and mental health complaints during COVID-19. *Proceedings of the National Academy of Sciences*, *117*(44), 27277-27284.
5. Karkala, A., Moschonas, S., Sykas, G., Karagianni, M., Gilou, S., Papaefthymiou, O., & Kourtidou-Papadeli, C. (2022). Sleep Quality and Mental Health Consequences of COVID-19 Pandemic in the Aviation Community in Greece. *Journal of Occupational and Environmental Medicine*, *64*(9), e567-e574. <https://doi.org/10.1097/jom.0000000000002616>
6. Pancani, L., Marinucci, M., Aureli, N., & Riva, P. (2021). Forced social isolation and mental health: a study on 1,006 Italians under COVID-19 lockdown. *Frontiers in Psychology*, *12*, 663799.
7. Lakhan, R., Agrawal, A., & Sharma, M. (2020). Prevalence of Depression, Anxiety, and Stress during COVID-19 Pandemic. *Journal of Neurosciences in Rural Practice*, *11*(4), 519-525. <https://doi.org/10.1055/s-0040-1716442>
8. Racine, N., McArthur, B. A., Cooke, J. E., Eirich, R., Zhu, J., & Madigan, S. (2021). Global Prevalence of Depressive and Anxiety Symptoms in Children and Adolescents During COVID-19: A Meta-analysis. *JAMA Pediatrics*, *175*(11), 1142-1150. <https://doi.org/10.1001/jamapediatrics.2021.2482>

9. Yao, H., Chen, J. H., & Xu, Y. F. (2020). Patients with mental health disorders in the COVID-19 epidemic. *Lancet Psychiatry*, 7(4), e21.  
[https://doi.org/10.1016/s2215-0366\(20\)30090-0](https://doi.org/10.1016/s2215-0366(20)30090-0)
10. Gunnell, D., Appleby, L., Arensman, E., Hawton, K., John, A., Kapur, N., Khan, M., O'Connor, R. C., Pirkis, J., & Caine, E. D. (2020). Suicide risk and prevention during the COVID-19 pandemic. *The Lancet Psychiatry*, 7(6), 468-471.
11. Lee, J. (2020). Mental health effects of school closures during COVID-19. *The Lancet Child & Adolescent Health*, 4(6), 421.
12. Chang, J. J., Ji, Y., Li, Y. H., Pan, H. F., & Su, P. Y. (2021). Prevalence of anxiety symptom and depressive symptom among college students during COVID-19 pandemic: A meta-analysis. *Journal of Affective Disorders*, 292, 242-254. <https://doi.org/10.1016/j.jad.2021.05.109>
13. Singh, S., & Bhattacharyya, R. (2020). A review of domestic violence against women in India during lockdown. *International Journal of Innovation, Creativity and Change*.
14. Bhutani, S., & Greenwald, B. (2021). Loneliness in the Elderly During the COVID-19 Pandemic: A Literature Review in Preparation for a Future Study. *The American Journal of Geriatric Psychiatry*, 29(4, Supplement), S87-S88.  
<https://doi.org/https://doi.org/10.1016/j.jagp.2021.01.081>
15. Greenberg, N. (2020). Mental health of health-care workers in the COVID-19 era. *Nature Reviews Nephrology*, 16(8), 425-426.
16. O Connor, M., Conboy, K., & Dennehy, D. (2022). COVID-19 affected remote workers: a temporal analysis of information system development during the

pandemic. *Journal of Decision Systems*, 31(3), 207-233.

<https://doi.org/10.1080/12460125.2020.1861772>

17. Belitski, M., Guenther, C., Kritikos, A. S., & Thurik, R. (2022). Economic effects of the COVID-19 pandemic on entrepreneurship and small businesses. *Small Business Economics*, 58(2), 593-609. <https://doi.org/10.1007/s11187-021-00544-y>
18. Koh, D. (2020). Migrant workers and COVID-19. *Occupational and Environmental Medicine*, 77(9), 634-636. <https://doi.org/10.1136/oemed-2020-106626>
19. Hayati, F. (2022). Impact of the COVID-19 Pandemic on Social and Economic Families and Ability to Meet Daily Needs. *International Archives of Medical Sciences and Public Health*, 3(1), 116-123.
20. Rokni, L. (2021). The Psychological Consequences of COVID-19 Pandemic in Tourism Sector: A Systematic Review. *Iranian Journal of Public Health*, 50(9), 1743-1756. <https://doi.org/10.18502/ijph.v50i9.7045>
21. Leach, M., MacGregor, H., Akello, G., Babawo, L., Baluku, M., Desclaux, A., Grant, C., Kamara, F., Nyakoi, M., Parker, M., Richards, P., Mokuwa, E., Okello, B., Sams, K., & Sow, K. (2022). Vaccine anxieties, vaccine preparedness: Perspectives from Africa in a Covid-19 era. *Social Science and Medicine*, 298, 114826. <https://doi.org/https://doi.org/10.1016/j.socscimed.2022.114826>
22. Généreux M, Schluter PJ, Hung KK, Wong CS, Pui Yin Mok C, O'Sullivan T, David MD, Carignan M-E, Blouin-Genest G, Champagne-Poirier O, Champagne É, Burlone N, Qadar Z, Herbosa T, Ribeiro-Alves G, Law R, Murray V, Chan EYY, Pignard-Cheynel N, Salerno S, Lits G, d'Haenens L,

- Coninck DD, Matthys K, Roy M. One Virus, Four Continents, Eight Countries: An Interdisciplinary and International Study on the Psychosocial Impacts of the COVID-19 Pandemic among Adults. *International Journal of Environmental Research and Public Health*. 2020; 17(22):8390. Disponible en: <https://www.mdpi.com/1660-4601/17/22/8390/htm#>
23. Idoiaga N, Berasategi N, Eiguren A, Picaza M. Exploring Children's Social and Emotional Representations of the COVID-19 Pandemic. *Front Psychol*. 2020 Aug 12;11:1952. Disponible en: <https://www.ncbi.nlm.nih.gov/pmc/articles/PMC7456920/pdf/fpsyg-11-01952.pdf>
24. Mactavish A, Mastronardi C, Menna R, Babb KA, Battaglia M, Amstadter AB, Rappaport LM. Children's Mental Health in Southwestern Ontario during Summer 2020 of the COVID-19 Pandemic. *J Can Acad Child Adolesc Psychiatry*. 2021 Aug;30(3):177-190. Disponible en: [https://www.ncbi.nlm.nih.gov/pmc/articles/PMC8315225/pdf/ccap30\\_p0177.pdf](https://www.ncbi.nlm.nih.gov/pmc/articles/PMC8315225/pdf/ccap30_p0177.pdf)
25. Quero Acosta L, Moreno-Montero Galvache MA, de León Molinari P, Espino Aguilar R, Coronel Rodríguez C. Estudio del impacto emocional de la pandemia por COVID-19 en niños de 7 a 15 años. *Revista de Psiquiatría Infanto-Juvenil* 38(1), enero-marzo 2021;p.20-30. Disponible en: <http://doi.org/10.31766/revpsij.v38n1a4>
26. Yasmin F, Jatoi HN, Abbasi MS, Asghar MS, Siddiqui SA, Nauman H, Khattak AK, Alam MT. Angustia psicológica, ansiedad, violencia familiar, tendencias suicidas y bienestar en Pakistán durante el cierre de COVID-19: un estudio transversal. *Psicología frontal*. 15 de marzo de 2022; 13: 830935. Disponible en:



<https://www.ncbi.nlm.nih.gov/pmc/articles/PMC8964640/pdf/fpsyg-13-830935.pdf>

27. Khatatbeh M, Khasawneh A, Hussein H, Altahat O, Alhalaiqa F. Impacto psicológico de la pandemia de COVID-19 entre la población general en Jordania. *Psiquiatría Frontal*. 14 de abril de 2021; 12: 618993. Disponible en: <https://www.ncbi.nlm.nih.gov/pmc/articles/PMC8079634/pdf/fpsyt-12-618993.pdf>
28. Qin Z, Shi L, Xue Y, Lin H, Zhang J, Liang P, Lu Z, Wu M, Chen Y, Zheng X, Qian Y, Ouyang P, Zhang R, Yi X, Zhang C. Prevalence and Risk Factors Associated With Self-reported Psychological Distress Among Children and Adolescents During the COVID-19 Pandemic in China. *JAMA Netw Open*. 2021 Jan 4;4(1):e2035487. Disponible en: <https://www.ncbi.nlm.nih.gov/pmc/articles/PMC7838937/>
29. Bala S, Pandve H, Manna R, Sreelal BS, Patel S, Saxena T, Joy SG. Impacto de la pandemia de COVID-19 en la salud mental entre los indios: un trastorno de estrés postraumático. *Ind. Psiquiatría J*. 2020 julio-diciembre;29(2):251-256. Disponible en: <https://www.industrialpsychiatry.org/article.asp?issn=0972-6748;year=2020;volume=29;issue=2;spage=251;epage=256;aulast=Bala>
30. Ngoc Cong Duong K, Nguyen Le Bao T, Thi Lan Nguyen P, et al. Impactos psicológicos de COVID-19 durante el primer cierre nacional en Vietnam: estudio de encuesta transversal basado en la web [la corrección publicada aparece en el formulario JMIR Res. 5 de marzo de 2021; 5 (3): e28357]. *Formulario JMIR Res* 2020;4(12):e24776. Disponible en: [https://www.ncbi.nlm.nih.gov/pmc/articles/PMC7935248/pdf/formative\\_v4i12e24776.pdf](https://www.ncbi.nlm.nih.gov/pmc/articles/PMC7935248/pdf/formative_v4i12e24776.pdf)

31. Wang C, Tee M, Roy AE, Fardin MA, Srichokchatchawan W, Habib HA, Tran BX, Hussain S, Hoang MT, Le XT, Ma W, Pham HQ, Shirazi M, Taneepanichskul N, Tan Y, Tee C, Xu L, Xu Z, Vu GT, Zhou D, Koh BJ, McIntyre RS, Ho C, Ho RC, Kuruchittham V. The impact of COVID-19 pandemic on physical and mental health of Asians: A study of seven middle-income countries in Asia. *PLoS One*. 2021 Feb 11;16(2):e0246824. Disponible en: <https://www.ncbi.nlm.nih.gov/pmc/articles/PMC7877638/pdf/pone.0246824.pdf>
32. Traunmüller C, Stefitz R, Gaisbachgrabner K, Schwerdtfeger A. Psychological correlates of COVID-19 pandemic in the Austrian population. *BMC Public Health*. 2020 Sep 14;20(1):1395. Disponible en: [https://www.ncbi.nlm.nih.gov/pmc/articles/PMC7487438/pdf/12889\\_2020\\_Article\\_9489.pdf](https://www.ncbi.nlm.nih.gov/pmc/articles/PMC7487438/pdf/12889_2020_Article_9489.pdf)
33. Passos L, Prazeres F, Teixeira A, Martins C. Impact on Mental Health Due to COVID-19 Pandemic: Cross-Sectional Study in Portugal and Brazil. *Int J Environ Res Public Health*. 2020 Sep 17;17(18):6794. Disponible en: <https://www.tandfonline.com/doi/full/10.1080/13548506.2020.1808236>
34. Tee ML, Tee CA, Anlacan JP, et al. Impacto psicológico de la pandemia de COVID-19 en Filipinas. *J Afecta Desorden* 2020;277:379-391. Disponible en: <https://www.ncbi.nlm.nih.gov/pmc/articles/PMC7444468/pdf/main.pdf>
35. Al Dhaheri AS, Bataineh MF, Mohamad MN, Ajab A, Al Marzouqi A, Jarrar AH, Habib-Mourad C, Abu Jamous DO, Ali HI, Al Sabbah H, Hasan H, Stojanovska L, Hashim M, Abd Elhameed OA, Shaker Obaid RR, ElFeky S, Saleh ST, Osaili TM, Cheikh Ismail L. Impact of COVID-19 on mental health and quality of life: Is there any effect? A cross-sectional study of the MENA

- region. PLoS One. 2021 Mar 25;16(3):e0249107. Disponible en: <https://www.ncbi.nlm.nih.gov/pmc/articles/PMC7993788/pdf/pone.0249107.pdf>
36. Barros MBA, Lima MG, Malta DC, Szwarcwald CL, Azevedo RCS, Romero D, Souza Júnior PRB, Azevedo LO, Machado ÍE, Damacena GN, Gomes CS, Werneck AO, Silva DRPD, Pina MF, Gracie R. Report on sadness/depression, nervousness/anxiety and sleep problems in the Brazilian adult population during the COVID-19 pandemic. Epidemiol Serv Saude. 2020;29(4):e2020427. Disponible en: <https://www.scielo.br/j/ress/a/nFWPcDjfNcLD84Qx7Hf5ynq/?lang=pt>
37. Wang C, Pan R, Wan X, Yilin B, Xu L, McIntyre RS, et al. Un estudio longitudinal sobre la salud mental de la población general durante la epidemia de COVID-19 en China. Inmunidad al comportamiento del cerebro 2020; 87:40-48. Disponible en: <https://www.ncbi.nlm.nih.gov/pmc/articles/pmid/32298802/>
38. Alkhamees AA, Alrashed SA, Alzunaydi AA, Almohimeed AS, Aljohani MS. El impacto psicológico de la pandemia de COVID-19 en la población general de Arabia Saudita. Compre Psiquiatría 2020;102:152192. Disponible en: <https://www.ncbi.nlm.nih.gov/pmc/articles/PMC7354380/>
39. Davico CH, Ghiggia A, Marcotulli D, Ricci F, Amianto F, Vitiello B. Impacto psicológico de la pandemia de COVID-19 en adultos y sus hijos en Italia. Psiquiatría Frontal. 2021; 12: 572997. Disponible en: <https://www.ncbi.nlm.nih.gov/pmc/articles/PMC7994767/>
40. Saddik B, Hussein A, Albanna A, Elbarazi I, Al-Shujairi A, Temsah M-H, et al. The psychological impact of the COVID-19 pandemic on adults and children in the United Arab Emirates: a nationwide crosssectional study. BMC Psychiatry (2021) 21:224. Disponible en: <https://doi.org/10.1186/s12888-021-03213-2>

41. Thasneem Zainudeen Z, Abd Hamid IJ, Akmal Azizuddin MN, Abu Bakar FF, Sany S, Asnira Zolkepli I, Mangantig E. Psychosocial impact of COVID-19 pandemic on Malaydian families: a cross-sectional study. *BMJ Open* 2021;11:e050523. Disponible en: <http://dx.doi.org/10.1136/bmjopen-2021-050523>
42. Gutiérrez Álvarez AK, Rodríguez Hernández L, Torralbas Fernández AT, Calcerrada Gutiérrez M, Cruz Almaguer AY, Baez Rodriguez KF, et al. Impacto psicosocial de la cuarentena por COVID-19 en la comunidad 26 de julio en Holguín. *Anales de la Academia de Ciencias de Cuba mayo-agosto 2021*;11(2)- Disponible en: <http://scielo.sld.cu/pdf/aacc/v11n2/2304-0106-aacc-11-02-e940.pdf>
43. Herrera Paz JJ, Bobadilla-Jacob P, Ben Igolnikof D, García-Zamora S, Sandoval C, Cancer M, et al. Impacto psicosocial de la pandemia por COVID-19 en adultos de Buenos Aires. *Rev Argent Cardiol* octubre 2020;88(5),p.454-459. Disponible en: <http://dx.doi.org/10.7775/rac.es.v88.i5.18857>
44. Gilsbach S., Herpertz-Dahlmann B., Konrad K. Psychological Impact of the COVID-19 Pandemic on Children and Adolescents With and Without Mental Disorder. *Front Public Health*; 2021. doi: 10.3389/fpubh.2021.679041
45. Theberath M., Bauer D., Chen W., Salinas M., Mohabbat AB., Yang J., et al. Effects of COVID-19 pandemic on mental health of children and adolescents: A systematic review of survey studies. *SAGE Open Med.* 2022. doi: 10.1177/20503121221086712. PMID: 35371484; PMCID: PMC8972920.
46. Kolakowsky-Hayner SA, Goldin Y, Kingsley K, Alzueta E, Arango-Lasprilla JC, Perrin PB, Baker FC, Ramos-Usuga D, Constantinidou F. Psychosocial Impacts of the COVID-19 Quarantine: A Study of Gender Differences in 59

- Countries. *Medicina* (Kaunas). 2021 Jul 31;57(8):789. doi: 10.3390/medicina57080789. PMID: 34440995; PMCID: PMC8400641.
47. Dubey S, Biswas P, Ghosh R, Chatterjee S, Dubey MJ, Chatterjee S, Lahiri D, Lavie CJ. Psychosocial impact of COVID-19. *Diabetes Metab Syndr*. 2020 Sep-Oct;14(5):779-788. doi: 10.1016/j.dsx.2020.05.035. Epub 2020 May 27. PMID: 32526627; PMCID: PMC7255207.
48. Saha K, Torous J, Caine ED, De Choudhury M. Psychosocial Effects of the COVID-19 Pandemic: Large-scale Quasi-Experimental Study on Social Media. *J Med Internet Res*. 2020 Nov 24;22(11):e22600. doi: 10.2196/22600. PMID: 33156805; PMCID: PMC7690250.
49. Xiong J, Lipsitz O, Nasri F, Lui LMW, Gill H, Phan L, Chen-Li D, Iacobucci M, Ho R, Majeed A, McIntyre RS. Impact of COVID-19 pandemic on mental health in the general population: A systematic review. *J Affect Disord*. 2020 Dec 1;277:55-64. doi: 10.1016/j.jad.2020.08.001. Epub 2020 Aug 8. PMID: 32799105; PMCID: PMC7413844.
50. Puig-Perez S., Cano-López I., Martínez P., Kozusznik M., Alacreu-Crespo A., Pulpulos MM., et al. Optimism as a protective factor against the psychological impact of COVID-19 pandemic through its effects on perceived stress and infection stress anticipation. *Curr Psychol* (2022). <https://doi.org/10.1007/s12144-022-02819-3>