

1 **Effectiveness of ten-valent pneumococcal conjugate vaccine on invasive pneumococcal disease**
2 **among children <2 years old: a prospective population-based study in rural Bangladesh**

3 Roly Malaker¹, Md Hassanuzaman¹, Hafizur Rahman¹, Rajib Chandra Das¹, Naito Kanon¹, Senjuti
4 Saha¹, Yogesh Hooda¹, Arif M Tanmoy¹, Sowmitra Ranjan Chakraborty¹, Shampa Saha¹, Maksuda
5 Islam¹, Gary L. Darmstadt², Abdullah H Baqui³, Mathuram Sathosam³, Shams El-Arifeen⁴, Cynthia
6 G Whitney⁵, Samir K Saha^{1,6}

7 1: Child Health Research Foundation, Dhaka, Bangladesh

8 2: Department of Pediatrics, Stanford University School of Medicine, Stanford, CA, USA

9 3: Johns Hopkins Bloomberg School of Public Health, Baltimore, USA

10 4: International Centre for Diarrhoeal Disease Research, Bangladesh, Dhaka, Bangladesh

11 5: Rollins School of Public Health, Emory University, Atlanta, USA

12 6: Bangladesh Shishu Hospital and Institute, Dhaka, Bangladesh

13

14 **Keywords:** PCV10, invasive pneumococcal disease, pneumonia, vaccine impact, indirect cohort,
15 Bangladesh, children

16

17 **# Address correspondence to:**

18 Samir K Saha: samir@chrfd.org

19 Telephone: +8801713461254

20 **Abstract:**

21 The 10-valent pneumococcal conjugate vaccine (PCV10) was introduced in March 2015 in
22 Bangladesh. In this study, we aimed to estimate the impact of PCV10 on invasive pneumococcal
23 disease (IPD) identified by blood cultures and severe pneumonia identified clinically and its
24 effectiveness on invasive disease caused by vaccine serotypes.

25
26 We conducted population-based surveillance among children aged 2- <24 months between April
27 2012 through March 2019 in Mirzapur, a rural sub-district of Bangladesh. We compared incidence
28 of IPD and severe pneumonia before (April 2012 to March 2015) and after (April 2015 to March
29 2019) the introduction of PCV10. Vaccine effectiveness was measured using an indirect cohort
30 analysis of data from four sentinel sites in which PCV10 vaccination status was compared among
31 children with IPD caused by vaccine serotype vs. non-vaccine serotypes.

32
33 We identified 24 IPD cases by blood culture and 1,704 severe pneumonia hospitalizations during
34 the surveillance period. IPD incidence in under-2-year-old children fell 25% (95% CI: -1.2% to 76%;
35 p-value =0.59) from 106 cases per 100,000 person-years at baseline to 79.3 in April 2018- March
36 2019. Vaccine serotype-IPD incidence was lower (77% reduction, 95% CI: -0.45% to 96%; p-value
37 =0.068) in April 2018 - March 2019 than in the pre-vaccine period (85.7 cases to 19.8/100,000
38 observation-years). A significant decline of 54.0% (95% CI: 47.0% to 59.0%; p-value <0.001) was
39 observed in hospitalizations due to severe pneumonia. From indirect cohort analysis, the
40 effectiveness of PCV10 against vaccine serotype IPD was 37% (95% CI: -141.0% to 83.5%; p= 0.5)
41 after the 1st dose and 63.1% (95% CI: -3.3% to 85.9%, p=0.0411) after the 2nd or the 3rd dose.

42

43 This study demonstrates that PCV10 introduction prevented hospitalizations with severe
44 pneumonia and provided individual protection against vaccine serotypes.

45

46 **Introduction:**

47 *Streptococcus pneumoniae* is the leading cause of childhood invasive diseases, including
48 pneumonia, sepsis, and meningitis, worldwide (1, 2). Approximately 45 million episodes of severe
49 pneumococcal disease occurred in 2016, leading to 350,000 deaths among children aged <5 years
50 (3, 4). According to an estimate from 2000, 21,000 deaths occur annually in Bangladesh from
51 pneumococcal disease (2). Effective vaccines against *S. pneumoniae* became available for children
52 in 2000, and the World Health Organization (WHO) recommended the inclusion of Pneumococcal
53 Conjugate Vaccine (PCV) in childhood immunization programs in 2006 (5). However, lack of data
54 on the impact of immunization in low-income settings and the limited number of serotypes
55 included in the first formulation (PCV7) hindered institution of data-driven decisions by
56 policymakers from Gavi-eligible countries, which suffer the highest disease burden (2, 3). PCV was
57 initially introduced in the USA and other affluent countries where it led to significant reductions in
58 invasive pneumococcal disease (IPD) among children (3, 6-8). Many countries, however, observed
59 the emergence of non-vaccine serotypes (NVTs), which partially offset the success of vaccination
60 (9). Because of this observation, WHO emphasized the importance of monitoring the impact of
61 PCVs after their introduction into routine vaccination programs (10).

62

63 We have been generating data from both hospital- and population-based surveillance since 2004
64 in Bangladesh. These data have been used to estimate the burden of pneumococcal disease in
65 South Asia (11-13). Since 2004, our team has maintained both community- and hospital-based
66 surveillance in Mirzapur, a rural region in Bangladesh, to assess the burden of IPD (13), in addition
67 to conducting hospital-based surveillance in three additional sites across the country. The
68 Bangladesh government introduced PCV10 (Synflorix, GSK) into its Expanded Program on
69 Immunization (EPI) in March 2015, to children in a 3-dose primary series at 6, 10 and 14 weeks
70 after birth.

71
72 In this study, we measured vaccine impact on pneumococcal disease in children aged <2 years in
73 Mirzapur subdistrict by comparing data from the pre-vaccine period (April 2012 - March 2015) to
74 that from the post-vaccine period (April 2015- March 2019). Pneumococcal pneumonia is mostly
75 non-bacteremic in this setting, and thus isolation of this organism in the bloodstream is rare.
76 Therefore, we aimed: 1) to measure the impact of vaccine by comparing incidence before and
77 after introduction of PCV10 on: a) the number of laboratory-confirmed IPD cases, and b) the
78 number of severe pneumonia cases identified clinically by physicians among children <2 years of
79 age, and 2) to analyze the effectiveness of PCV10 against vaccine type (VT)-IPD using an indirect
80 cohort method and data from laboratory-based surveillance.

81

82 **Methods**

83 **Study design**

84 To achieve the study objectives, we used two different study design approaches: (1) a before-after
85 study in Mirzapur based on community surveillance for suspected pneumococcal disease and
86 hospital case detection of blood culture-proven IPD at the population level to compare: a) overall,
87 vaccine type (VT) and non-vaccine type (NVT) IPD incidence, and b) incidence of severe
88 pneumonia, and (2) an indirect cohort study design using four sites, including the Mirzapur site,
89 to assess the effectiveness of the PCV-10 against VTs, with IPD cases identified in Mirzapur and
90 three other surveillances sites of the World Health Organization (WHO)-supported Invasive
91 Bacterial Vaccine-Preventable Disease Surveillance Network sentinel site hospitals (11).

92

93 **Study site, population, and surveillance system:**

94 Population-based surveillance was conducted at Mirzapur, Bangladesh, 65 km north of Dhaka. In
95 2011, Mirzapur had an estimated total population of 400,000, distributed in 14 unions and 219
96 villages. The Kumudini Women's Medical College Hospital (KWMCH) is the main health care facility
97 for the population of Mirzapur. The study hospital (KWMCH) is the largest (1280-bed) non-profit
98 private hospital in Bangladesh.

99

100 Ten of the 14 unions (Figure 1A) were covered by the demographic surveillance system. This
101 demographic surveillance population is an open cohort; information on vital events like migration,
102 pregnancy outcomes, births and deaths were recorded every fourth month. Children residing
103 within the study area were eligible for this community-based surveillance. Trained Village Health
104 Workers (VHWs) enrolled children in the community surveillance soon after birth once the primary
105 guardian consented to the child's participation. At enrollment, each baby was assigned a unique

106 barcode which was printed on a smart card and remained valid until the child turned 5 years of
107 age. The barcoded smart cards were used to identify the children and their study area. Most of
108 the <5 children received care at the study hospital (Figure 1B), which was provided free of charge
109 through Child Health Research Foundation (CHRF) support.

110
111 In the pre-vaccine period, surveillance was carried out in four unions; during the post-vaccine
112 period, surveillance was extended to six additional unions, for a total of ten (Figure 1A). VHWs
113 visited all children in their designated area once a week and inquired about the child's well-being.
114 If the mother/caregiver reported that a child had fever, cough or difficulty breathing, the VHW
115 assessed the sick child using an algorithm (Table 1). The child was referred to KWMCH (Figure 1B)
116 for medical care if the child met criteria provided in the algorithm for signs and symptoms of
117 possible severe pneumonia/very severe disease, or high fever/possible sepsis. Children who were
118 referred by VHWs or brought to the clinic due to family concerns of illness were evaluated clinically
119 by a study physician who provided appropriate care and obtained specimens as indicated for
120 identification of IPD.

121
122 Specimens (blood and/or CSF) for identification of IPD were collected from children who met the
123 case definition of pneumonia, severe pneumonia, meningitis, and/or sepsis according to the WHO.
124 The following case definitions were used by the study physicians of all four hospitals in the
125 surveillance network to identify children with suspected pneumococcal disease in whom blood
126 cultures were obtained for confirmation of IPD:

- 127 a. *Pneumonia*: Pneumonia was defined as history of cough or breathing difficulty with fast
128 breathing (respiration rate ≥ 50 /min for children 2- <12 months of age, ≥ 40 /min for
129 children ≥ 12 months of age).
- 130 b. *Severe pneumonia (physician confirmed)*: A case of severe pneumonia was defined as
131 history of cough or breathing difficulty and presence of any of the following danger
132 signs (chest indrawing, inability to drink/breast feed, substantial vomiting, convulsions,
133 lethargy, or fast breathing (respiratory rate ≥ 60 breaths/min in children <2 months
134 of age), stridor in a calm child, altered consciousness).
- 135 c. *Meningitis*: A case of meningitis was defined as sudden onset of fever ($>100.4^{\circ}\text{F}$) and
136 presence of at least one of the following: neck stiffness, altered consciousness, bulging
137 fontanel if <12 months of age, lethargy, convulsions, toxic appearance,
138 petechial/purpurial rash, poor sucking, or irritability.
- 139 d. *Sepsis*: A case of sepsis was defined as presence of any of the following danger signs
140 (inability to drink/breast feed, convulsions, lethargy, stridor in a calm child, persistent
141 vomiting, or severe malnutrition) excluding pneumonia and meningitis features.

142

143 Children aged 2 – <24 months who presented to the four study hospitals with suspected
144 pneumococcal disease based on clinical examination were enrolled in the hospital surveillance
145 portion of the study if their parents or legal guardian provided informed written consent for
146 recording clinical features and collecting specimens. In this study, children with severe pneumonia
147 met the clinical case definition of severe pneumonia but had negative blood cultures; IPD cases

148 met any one of the 4 clinical case definitions and had a positive blood and/or CSF culture for *S.*
149 *pneumoniae*.

150

151 **Study design**

152 To achieve the study objectives, we used two different study design approaches: (1) a before-after
153 study in Mirzapur based on community surveillance for suspected pneumococcal disease and
154 hospital case detection of blood culture-proven IPD at population level to compare: a) overall,
155 vaccine type (VT) and non-vaccine type (NVT) IPD incidence, and b) incidence of severe
156 pneumonia, and (2) an indirect cohort study design (using four sites, including the Mirzapur site)
157 to assess the effectiveness of the PCV-10 against VTs, with IPD cases identified at KWMCH in
158 Mirzapur and three other WHO - supported Invasive Bacterial Vaccine-Preventable Disease
159 Surveillance Network sentinel site hospitals, namely, Bangladesh Shishu Hospital and Institute
160 (formerly named as Dhaka Shishu Hospital), Dr. MR Khan Shishu Shasthya Foundation Hospital and
161 Institute of Child Health, and Chittagong Ma O Shishu Hospital.

162

163 **Before-after comparison of incidence of IPD among 2- <24-month-old children:**

164 For calculation of IPD incidence in Mirzapur during the pre- and post-PCV10 introduction, IPD cases
165 among children aged 2 – <24 months who presented to KWMCH were identified using standard
166 laboratory methods for culture and identification of pneumococci from blood or CSF (14). The
167 number of total IPD cases identified among 2 - <24-month-old children was used as the numerator
168 and child-years observed was used as denominator for estimation of overall crude incidence.
169 Incidence of VT and NVT IPD cases were calculated similarly using subsets of IPD cases. To measure

170 changes in incidence rates, we compared incidence for four post-vaccine years (April 2015 - March
171 2019) with that of three pre-vaccine years (April 2012 - March 2015).

172

173 **Comparison of incidence of severe pneumonia between pre-and post-vaccine periods among**
174 **children 2 - <24 months old**

175 Like IPD incidence, we measured the crude incidence of severe pneumonia identified clinically
176 among all children aged 2- <24 months who came to KWMCH from the study area (self-referred
177 and VHW-referred). The number of severe pneumonia cases in this population was considered as
178 the numerator and child-years observed as the denominator. The crude incidence was adjusted
179 based on failure of VHW-referred cases to come to the study hospital out-patient department.

180

181 **Indirect Cohort Analysis**

182 To calculate vaccine effectiveness, vaccination status for children with VT-IPD at all four study
183 hospitals was compared with vaccination status of children with NVT-IPD; the method assumes
184 that vaccination does not impact the risk for non-vaccine-type disease among vaccinated
185 individuals. A recent analysis found that results using the indirect cohort method were comparable
186 to that of a standard case-control study (15), which is complex and difficult to implement. In this
187 analysis, VT-IPD (PCV10) was defined as cases of IPD in whom PCV10 serotypes and 6A (known to
188 be cross-protected by PCV10) were identified. All other serotypes were considered NVT. All IPD
189 cases with known serotypes collected from the four WHO sentinel hospitals from April 2015
190 through March 2019 were used for this analysis. Based on the card-verified immunization status,
191 children with IPD were categorized into two groups: vaccinated and unvaccinated. The

192 unvaccinated cohort included verbally confirmed non-vaccinated children and 2 - <24-month-old
193 children who were not age-eligible for PCV at the time of the initial pneumococcal vaccination
194 program (21st March 2015). As Bangladesh's EPI did not have catch-up campaigns and only
195 children aged 6 weeks were eligible for vaccine introduction, this strategy led to an increase of
196 vaccine eligible children gradually with time. To identify vaccine eligible children, we back
197 calculated the birthdate of children and considered those born on 7th February 2015 or later as
198 eligible to receive the 1st dose of pneumococcal vaccine at 6 weeks of age. Children who sought
199 medical care two weeks or more after receiving an initial dose were considered vaccinated. Any
200 child who came to the hospital with IPD within <14 days of receiving the 1st dose of PCV10 vaccine
201 was considered non-vaccinated. Children who received two or three doses of PCV-10 were
202 considered individually for calculating vaccine impact. We calculated the odds ratio of receipt of
203 PCV10 dose among children who had vaccine-type (PCV10) IPD versus non-vaccine-type IPD and
204 used logistic regression to estimate vaccine effectiveness using the formula: *Vaccine effectiveness*
205 $= (1 - \text{odds ratio for PCV10 vaccination}) \times 100\%$.

206

207 **Laboratory methods**

208 Blood specimens were cultured using BACTEC bottles. Beep positive and/or chocolate-colored
209 blood bottles were screened by culture technique on blood and chocolate agar plates. CSF
210 specimens were plated directly on blood and chocolate agar plates. In addition, all CSF specimens
211 underwent testing for pneumococcus using an immunochromatographic method (BinaxNow [14]).
212 Pneumococcal isolates were serotyped using capsular swelling method (quellung reaction). All
213 BinaxNow positive specimens were tested for the *lytA* gene of pneumococcus and serotyped using

214 previously published seven multiplex (triplex) and three in-house multiplex (triplex) RT-PCR assays
215 covering a total of fifty serotypes (1, 2, 3, 4, 5, 6A/6B/6C/6D, 6C/6D, 7A/7F, 7B/C, 8, 9V/9A, 10A/F,
216 11A/D, 12F/12A/12B/44/46, 13, 14, 15A/B/C/F, 15A/15F, 16F, 18C/18A/18B/18F, 19A, 19F, 20,
217 22F/22A, 23A, 23F, 33F/33A/37, 34, 35B, 45 and 48) (16).

218
219 All laboratory methods were conducted at the respective four WHO sentinel site laboratories
220 except the RT-PCR and capsular swelling, which were done at Bangladesh Shishu Hospital and
221 Institute.

222

223 **Statistical analysis**

224 Statistical analyses were conducted using STATA 14.0 (Stata Corp LP, College Station, TX). Results
225 were reported as frequencies and percentages for categorical variables. We calculated incidence
226 rates (per 100,000 child years of observation) and incidence rate ratios (IRR) using Poisson
227 regression models for VT, NVT, overall IPD and physician confirmed severe pneumonia cases. The
228 crude incidence calculations were adjusted for rate of compliance with VHW's referral from the
229 community to the hospital. The corresponding confidence intervals for each IRR and adjusted IRR
230 were also calculated including their respective p-values. The level of significance was set at 5%,
231 and p-values <0.05 were considered statistically significant.

232

233 **Ethical considerations**

234 The study protocol was reviewed and approved by an independent Ethical Review Board based at
235 Bangladesh Institute of Child Health, Dhaka, Bangladesh. Informed written consent was obtained

236 by VHWs from the parents of the children before enrollment in community surveillance in
237 Mirzapur. Informed consent was also obtained for enrollment in hospital surveillance at all four
238 study hospitals, including collection of clinical data and specimens.

239

240 **Results**

241 **Comparison of incidence of IPD pre- and post PCV10 introduction in Mirzapur**

242 During the seven-year study period, we enrolled 20,187 children, including 3,395 in the pre-
243 vaccine period and 16,792 in the post-vaccine period, who were monitored for illness suggestive
244 of pneumonia or severe pneumonia as well as suspected sepsis and meningitis (Table 1). In total,
245 these children contributed 34,608 (pre-vaccine, n=9,153 and post-vaccine, n=25,455) child-years
246 of observation. In the baseline period, 500,295 visits were made by VHWs. Among assessed
247 children, VHWs referred 2,589 children to KWMCH based on the referral criteria (Table 1); of
248 these, 1327 (51%) complied and sought care at KWMCH. In the post-vaccine period, 12,830
249 children were referred by VHWs and 9,437 (73.5%) visited KWMCH (Supplemental Table 1).

250

251 During the pre-vaccine period, 2,617 children (1327 referred by VHWs and 1290 who sought care
252 on their own) met the eligibility criteria at KWMCH for suspected pneumococcal disease
253 (pneumonia, severe pneumonia, meningitis, or sepsis). Among these, 1,857 (71.0%) children were
254 enrolled and had specimens and data collected. Five (0.27%; 5/1,857) blood samples were positive
255 for pneumococci, four of which were VTs (80.0%). During the post-vaccine period, study physicians
256 identified 8,342 children with suspected pneumococcal diseases. Of these, 89.8% (n=7487) were
257 enrolled and subjected to blood culture. A total of nineteen pneumococci (0.25%; 19/7487) were

258 detected, including nine vaccine serotypes (47.3%) and ten non-vaccine serotypes (52.7%; Figure
259 2).

260

261 During the pre-PCV period, the crude incidence of invasive pneumococcal disease among children
262 2- <24 months of age in Mirzapur was 54.6 (95% CI: 6.8-102.5) cases per 100,000 child-years
263 observed. VT-IPD incidence was 43.7 (95% CI: 0.9-86.5) and NVT-IPD was 10.9 (95%CI: 10.5-32.3)
264 cases per 100,000 child-years. The average crude incidence of VT-IPD in the post-PCV period was
265 35.6 cases per 100,000 child-years observed (95% CI: -9.6-80.8). During the fourth-year post PCV
266 introduction (April 2018 – March 2019), VT-IPD declined by 66% from the pre-vaccine period; VT
267 cases reached 14.8 (95%CI: -14.2 to 43.9) and NVT cases reached 44.5 per 100,000 child-years
268 (Figure 3A).

269

270 After adjusting for compliance with referrals, average incidence of IPD in the pre-PCV period was
271 106.1 (95% CI: 39.4-172.8) and post-PCV was 79.3 (95% CI: 12.1-146.6) cases per 100,000 child-
272 years of observation (Figure 3B). Overall, IPD caused by any serotype declined 25% (p=0.58) among
273 children under age 2 years. Comparing VT-IPD in the pre- and post-PCV10 periods, we observed a
274 gradual decline of VT-IPD throughout the study period, with adjusted incidence reaching 19.8
275 cases in the final (4th) year from 85.7/100,000 child-years at baseline, a 77% decline (IRR 0.2;
276 95%CI: -0.04-1.45; p=0.068). During the 4th year of the post-PCV period, incidence of NVT-IPD was
277 59.5 cases (95% CI: 1.3-117.7) per 100,00 child-years of observation, an increase from 20.4 cases
278 in the pre-vaccine period (IRR: 2.9, 95% CI: 0.5-16.6; p=0.21). The increase in NVT-IPD was not
279 driven by any specific serotype (Figure 2).

280

281 **Comparison of incidence of severe pneumonia pre-and post-PCV-10 introduction in Mirzapur**

282 During the baseline period (April 2012 to March 2015), the average crude incidence of severe
283 pneumonia cases was 50.1/1,000 (95% CI: 45.6-54.7) child-years observed. In the fourth year of
284 the post-PCV period, incidence of severe pneumonia was lower by 33% (n= 33.8; 95%CI: 21%-44%,
285 p-value <0.001) compared to baseline. After adjusting for compliance with referrals, the reduction
286 of severe pneumonia was 54% (95% CI: 47%-59%, p-value <0.001), from 97.4 (95%CI: 91.0-103.8)
287 cases at baseline to 45.2 cases (95%CI: 40.1-50.3)/1,000 child-years observed in year 4 (Figure 4).

288

289 **PCV10 effectiveness against IPD in four sentinel sites**

290 During the post-vaccine period (23rd March 2015- 31st March 2019), 171 IPD cases were detected
291 from children evaluated at the four sentinel sites in Bangladesh (Supplementary figure-1). Among
292 these children, 140 were eligible for PCV10 based on their age. Serotype information was available
293 for 118 (84.2%, 118/140) cases, including 21 VT cases and 97 NVT cases. Among these 118 cases,
294 96 children with 14 VT disease and 82 with NVT disease were vaccinated and 22 with 7 cases of
295 VT disease and 15 with NVT disease were unvaccinated. The median age of vaccinated children
296 and unvaccinated children were 5 and 3 months, respectively. Effectiveness of the 1st PCV10 dose
297 was 37.0% (95% CI: -141.0% - 83.5%; p-value =0.49). Two or three doses gave protection of about
298 63.1% (95% CI: 3.3% – 85.9%; p-value =0.0411) against VT IPD.

299

300 **Discussion**

301 IPD is a major cause of illness in young children in Bangladesh, with 88% (2007-2013) of cases in
302 children aged <2 years (11). Since this cohort is the main target of the conjugate vaccine,
303 estimating the effectiveness of pneumococcal vaccine in this vulnerable age group (under 2 years)
304 is crucial. In addition, understanding the true burden of pneumococcal diseases in Bangladesh is
305 difficult because most children receive antibiotics before cultures are taken and blood cultures
306 have low sensitivity for determining pneumonia etiology, even among children who are not
307 previously treated. Therefore, we measured the impact of PCV10 by examining trends in both
308 culture-confirmed pneumococcal disease and physician confirmed severe pneumonia cases.

309
310 Our population-based study revealed that PCV10 introduction was associated with a 77%
311 reduction in vaccine type (PCV10+6A) IPD and a 25% reduction in overall IPD during the first 4
312 years of the program, although these reductions were not statistically significant. The decrease in
313 VT disease observed in this study is concordant with findings in other countries. For example,
314 within two years of PCV7 introduction in the United States, VT and VT related serotypes declined
315 by 78% (6). Similarly, South Africa achieved an 85% reduction rate among HIV uninfected children
316 under 2 years of age within three years of introducing PCV (PCV7 and PCV13) (8). On the other
317 hand, there have been variations in reduction of overall IPD depending on the diversity of
318 serotypes. For instance, among children <2 years of age, a 69% decline of overall IPD was observed
319 in both the United States and South Africa following two and four years of vaccine implementation,
320 respectively (6, 8). In contrast, in Brazil, the rate of IPD declined 44% among children 2- <24
321 months old three years following PCV10 induction (17). In Bangladesh, the reduction of overall IPD
322 was lower (25%) compared to what was measured in some settings [8-10] and like others. This is

323 most likely due to the large diversity of serotypes causing IPD in Bangladesh (51 different invasive
324 serotypes) along with the persistent >10-year dominance of serotype 2 that we documented (11).
325 Catch-up programs with vaccination of children up to 2 years of age in the US and up to 24 months
326 in the United Kingdom (UK) may have resulted in faster drops in VT cases than what we observed
327 (6, 7, 9).

328
329 Our study demonstrated a statistically significant reduction (54%, $p < 0.001$) of hospitalization with
330 severe pneumonia for four years following vaccine introduction in this rural population. Although
331 WHO proposes use of chest radiograph as a benchmark for evaluating the efficacy of
332 pneumococcal vaccine (18), this also leads to underestimation of the impact of pneumococcal
333 vaccine on the pneumonia burden by up to 63% (19). Similarly, a study of PCV10 vaccine
334 effectiveness against radiologic pneumonia among vaccine eligible children in rural Bangladesh
335 found 21.4% effectiveness among children 3-11 months of age who received 3 doses of PCV10
336 (20), lower than the impact we measured but similar to findings from a clinical trial evaluating
337 PCV10 efficacy against radiological confirmed pneumonia (21). This low effectiveness is possibly
338 due to high specificity that missed pneumococcal pneumonia cases (19) and serotype
339 replacement. During this post PCV period, we found an increase of NVT-IPD incidence (IRR: 2.9; p -
340 value= 0.21) compared to pre-PCV, which may have occurred in radiologic pneumonia cases as
341 well. A possible reason of higher effectiveness in our study could be our selection of only severe
342 pneumonia cases.

343

344 Consistent with other countries using PCV10, our indirect cohort analysis from multiple
345 contemporary surveillance data showed that PCV10 provides significant protection (63.1%) with
346 two or more doses of vaccine for under 2-year-old children (15, 22-24). A case-control study from
347 Pakistan showed effectiveness of PCV10 to be 81.9% against vaccine-type IPD among completely
348 vaccinated children <5 years (22). An indirect cohort analysis study in Brazil reported 72.8%
349 effectiveness against VT among children <5 years who had received one or more doses (15). A
350 serotype-specific effectiveness study from the UK revealed that PCV7 gave less protection (49%)
351 against 6B compared to the other six serotypes (25, 26). Similar results were seen against 6B in
352 the USA, where a PCV manufactured by Pfizer was used (27).

353
354 A strength of our study is the multiple approaches we were able to use to evaluate PCV10 benefits
355 among children in Bangladesh. We not only measured PCV10 impact on the burden of two types
356 of pneumococcal disease – IPD and severe pneumonia – using a population-based system, but we
357 also assessed effectiveness in vaccinated children using an indirect cohort method in four hospitals
358 with established hospital surveillance for IPD.

359
360 Multiple limitations should be considered. Overall, impact of PCV in preventing IPD was not
361 significant, due to the small number of IPD cases during the study period. This low number of
362 isolates also hindered our ability to measure the impact of vaccine on possible antimicrobial
363 resistant strains and emergence of NVT in this population. We missed very severe pneumonia
364 with/without hypoxemia cases, as the study was in our DSS area, where we have active
365 surveillance and weekly home visits for wellbeing of under-five children, thus resulting in early

366 case detection. Also, VHWs, while trained with attending physicians, might miss some of the
367 suspected cases of pneumonia, sepsis, and meningitis. This could result in reduction in estimation
368 of efficacy of the vaccine.

369
370 Despite these limitations, this study demonstrates that PCV10 is already reducing the morbidity
371 and possible mortality attributed to pneumococcal infection in a high-risk rural population,
372 including reducing a substantial number of hospitalizations with severe pneumonia. However,
373 given the diversity of serotypes causing pneumococcal disease in Bangladesh, ongoing monitoring
374 is required to capture emergence of NVT which could reduce vaccine impact in the coming years.
375 Continued surveillance will also help policy makers to make need-based decisions about future
376 formulations of pneumococcal vaccines. Finally, our findings should encourage the introduction of
377 lifesaving PCVs in other countries where these vaccines have not yet been introduced.

378

379 **Funding**

380 GlaxoSmithKline Biologicals SA provided financial support (Grant number: 200785) to the
381 demographic surveillance study under the Independent Supported Studies (ISS) Research.
382 GlaxoSmithKline Biologicals SA was provided the opportunity to review a preliminary version of
383 this manuscript for factual accuracy, but the authors are solely responsible for final content,
384 interpretation of the study design, protocol, and execution of the study.

385

386 **Author Contribution:**

387

388

389 **Acknowledgement**

390

391

392 **Author's declaration**

393 The authors declare that they have no known competing financial interests or personal

394 relationships that could have appeared to influence the work reported in this paper

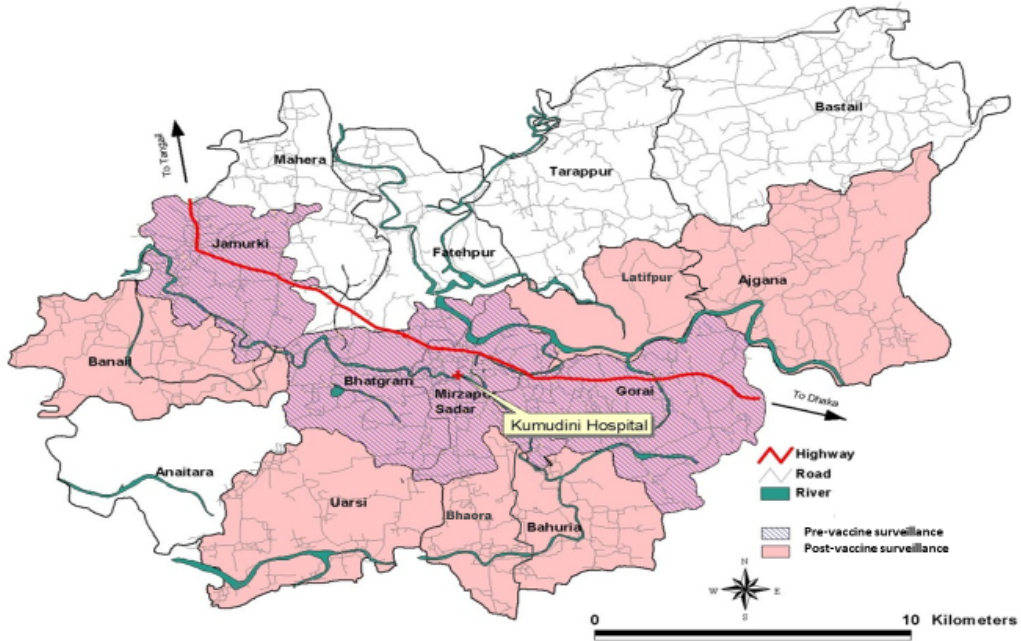
395 **Reference:**

- 396 1. Organization WH. Pneumococcal disease 2020 [Available from:
397 <https://www.who.int/immunization/diseases/pneumococcal/en/>.
398 2. O'Brien KL, Wolfson LJ, Watt JP, Henkle E, Deloria-Knoll M, McCall N, et al. Burden of
399 disease caused by Streptococcus pneumoniae in children younger than 5 years: global estimates.
400 Lancet. 2009;374(9693):893-902.
401 3. Wahl B, O'Brien KL, Greenbaum A, Majumder A, Liu L, Chu Y, et al. Burden of Streptococcus
402 pneumoniae and Haemophilus influenzae type b disease in children in the era of conjugate
403 vaccines: global, regional, and national estimates for 2000-15. Lancet Glob Health.
404 2018;6(7):e744-e57.
405 4. Collaborators GBDLRI. Estimates of the global, regional, and national morbidity, mortality,
406 and aetiologies of lower respiratory infections in 195 countries, 1990-2016: a systematic analysis
407 for the Global Burden of Disease Study 2016. Lancet Infect Dis. 2018;18(11):1191-210.
408 5. Organization WH. Pneumococcal conjugate vaccine for childhood immunization--WHO
409 position paper. Wkly Epidemiol Rec. 2007;82(12):93-104.
410 6. Whitney CG, Farley MM, Hadler J, Harrison LH, Bennett NM, Lynfield R, et al. Decline in
411 invasive pneumococcal disease after the introduction of protein-polysaccharide conjugate
412 vaccine. N Engl J Med. 2003;348(18):1737-46.
413 7. Waight PA, Andrews NJ, Ladhani SN, Sheppard CL, Slack MP, Miller E. Effect of the 13-valent
414 pneumococcal conjugate vaccine on invasive pneumococcal disease in England and Wales 4 years
415 after its introduction: an observational cohort study. Lancet Infect Dis. 2015;15(5):535-43.
416 8. von Gottberg A, de Gouveia L, Tempia S, Quan V, Meiring S, von Mollendorf C, et al. Effects
417 of vaccination on invasive pneumococcal disease in South Africa. N Engl J Med.
418 2014;371(20):1889-99.
419 9. Ladhani SN, Collins S, Djennad A, Sheppard CL, Borrow R, Fry NK, et al. Rapid increase in
420 non-vaccine serotypes causing invasive pneumococcal disease in England and Wales, 2000-17: a
421 prospective national observational cohort study. Lancet Infect Dis. 2018;18(4):441-51.
422 10. Pneumococcal conjugate vaccine for childhood immunization--WHO position paper. Wkly
423 Epidemiol Rec. 2007;82(12):93-104.
424 11. Saha SK, Hossain B, Islam M, Hasanuzzaman M, Saha S, Hasan M, et al. Epidemiology of
425 Invasive Pneumococcal Disease in Bangladeshi Children Before Introduction of Pneumococcal
426 Conjugate Vaccine. Pediatr Infect Dis J. 2016;35(6):655-61.
427 12. Saha SK, Naheed A, El Arifeen S, Islam M, Al-Emran H, Amin R, et al. Surveillance for invasive
428 Streptococcus pneumoniae disease among hospitalized children in Bangladesh: antimicrobial
429 susceptibility and serotype distribution. Clin Infect Dis. 2009;48 Suppl 2:S75-81.
430 13. Arifeen SE, Saha SK, Rahman S, Rahman KM, Rahman SM, Bari S, et al. Invasive
431 pneumococcal disease among children in rural Bangladesh: results from a population-based
432 surveillance. Clin Infect Dis. 2009;48 Suppl 2:S103-13.
433 14. Cheesbrough M. District Laboratory Practice in Tropical Countries. 2nd ed. United
434 Kingdom: Cambridge University Press; 2006.
435 15. Verani JR, Domingues CM, de Moraes JC, Brazilian Pneumococcal Conjugate Vaccine
436 Effectiveness Study G. Indirect cohort analysis of 10-valent pneumococcal conjugate vaccine

- 437 effectiveness against vaccine-type and vaccine-related invasive pneumococcal disease. *Vaccine*.
438 2015;33(46):6145-8.
- 439 16. Pimenta FC, Roundtree A, Soysal A, Bakir M, du Plessis M, Wolter N, et al. Sequential triplex
440 real-time PCR assay for detecting 21 pneumococcal capsular serotypes that account for a high
441 global disease burden. *J Clin Microbiol*. 2013;51(2):647-52.
- 442 17. Andrade AL, Minamisava R, Policena G, Cristo EB, Domingues CM, de Cunto Brandileone
443 MC, et al. Evaluating the impact of PCV-10 on invasive pneumococcal disease in Brazil: A time-
444 series analysis. *Hum Vaccin Immunother*. 2016;12(2):285-92.
- 445 18. Cherian T, Mulholland EK, Carlin JB, Ostensen H, Amin R, de Campo M, et al. Standardized
446 interpretation of paediatric chest radiographs for the diagnosis of pneumonia in epidemiological
447 studies. *Bull World Health Organ*. 2005;83(5):353-9.
- 448 19. Madhi SA, Klugman KP. World Health Organisation definition of "radiologically-confirmed
449 pneumonia" may under-estimate the true public health value of conjugate pneumococcal
450 vaccines. *Vaccine*. 2007;25(13):2413-9.
- 451 20. McCollum ED, Ahmed S, Roy AD, Chowdhury NH, Schuh HB, Rizvi SJR, et al. Effectiveness
452 of the 10-valent pneumococcal conjugate vaccine against radiographic pneumonia among
453 children in rural Bangladesh: A case-control study. *Vaccine*. 2020;38(42):6508-16.
- 454 21. Tregnaghi MW, Saez-Llorens X, Lopez P, Abate H, Smith E, Posleman A, et al. Efficacy of
455 pneumococcal nontypable *Haemophilus influenzae* protein D conjugate vaccine (PHiD-CV) in
456 young Latin American children: A double-blind randomized controlled trial. *PLoS Med*.
457 2014;11(6):e1001657.
- 458 22. Riaz A, Mohiuddin S, Husain S, Yousafzai MT, Sajid M, Kabir F, et al. Effectiveness of 10-
459 valent pneumococcal conjugate vaccine against vaccine-type invasive pneumococcal disease in
460 Pakistan. *Int J Infect Dis*. 2019;80:28-33.
- 461 23. Domingues CM, Verani JR, Montenegro Renoier EI, de Cunto Brandileone MC, Flannery
462 B, de Oliveira LH, et al. Effectiveness of ten-valent pneumococcal conjugate vaccine against
463 invasive pneumococcal disease in Brazil: a matched case-control study. *Lancet Respir Med*.
464 2014;2(6):464-71.
- 465 24. Peckeu L, van der Ende A, de Melker HE, Sanders EAM, Knol MJ. Impact and effectiveness
466 of the 10-valent pneumococcal conjugate vaccine on invasive pneumococcal disease among
467 children under 5 years of age in the Netherlands. *Vaccine*. 2021;39(2):431-7.
- 468 25. Andrews N, Waight PA, Borrow R, Ladhani S, George RC, Slack MP, et al. Using the indirect
469 cohort design to estimate the effectiveness of the seven valent pneumococcal conjugate vaccine
470 in England and Wales. *PLoS One*. 2011;6(12):e28435.
- 471 26. Pichon B, Ladhani SN, Slack MP, Segonds-Pichon A, Andrews NJ, Waight PA, et al. Changes
472 in molecular epidemiology of streptococcus pneumoniae causing meningitis following
473 introduction of pneumococcal conjugate vaccination in England and Wales. *J Clin Microbiol*.
474 2013;51(3):820-7.
- 475 27. Park SY, Van Beneden CA, Pilishvili T, Martin M, Facklam RR, Whitney CG, et al. Invasive
476 pneumococcal infections among vaccinated children in the United States. *J Pediatr*.
477 2010;156(3):478-83 e2.

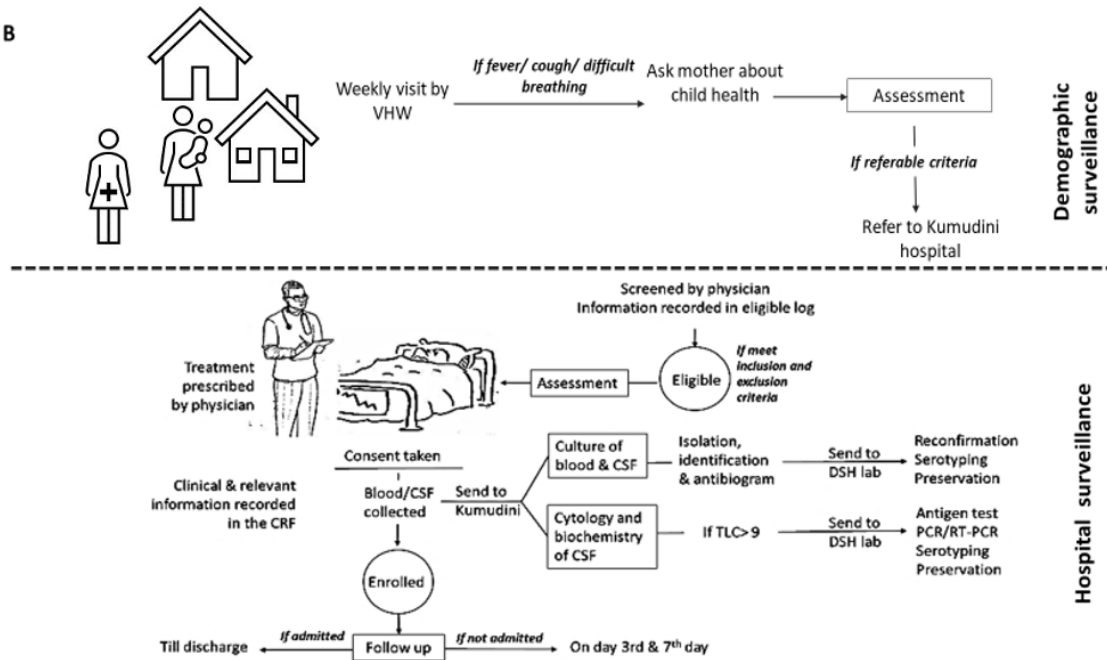
478

A



479

B

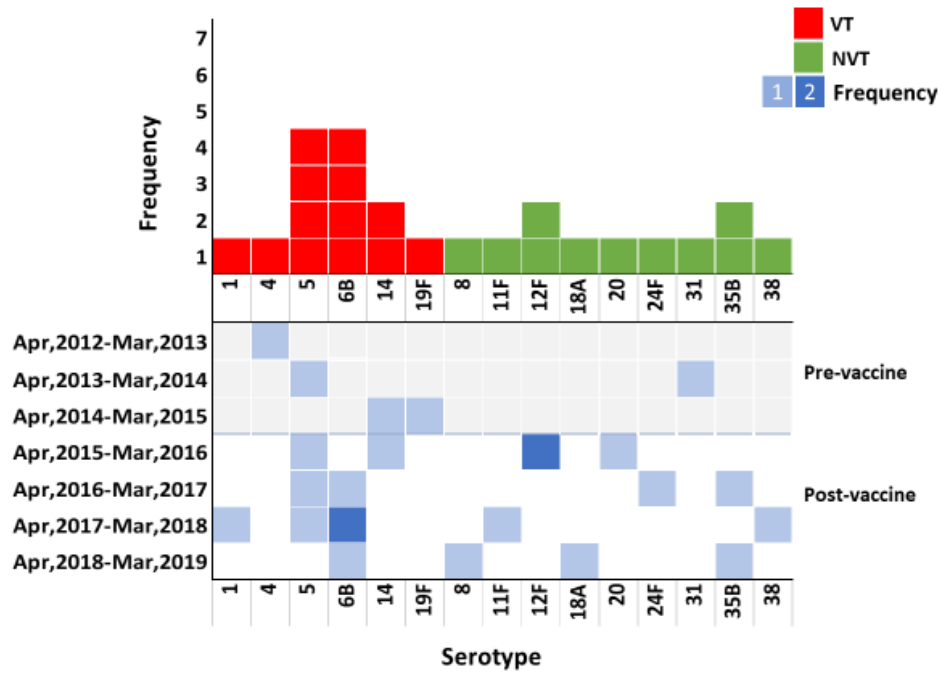


480

481 Figure 1: A. Demographic surveillance area of Mirzapur Upazila, Tangail; B. Study outline of

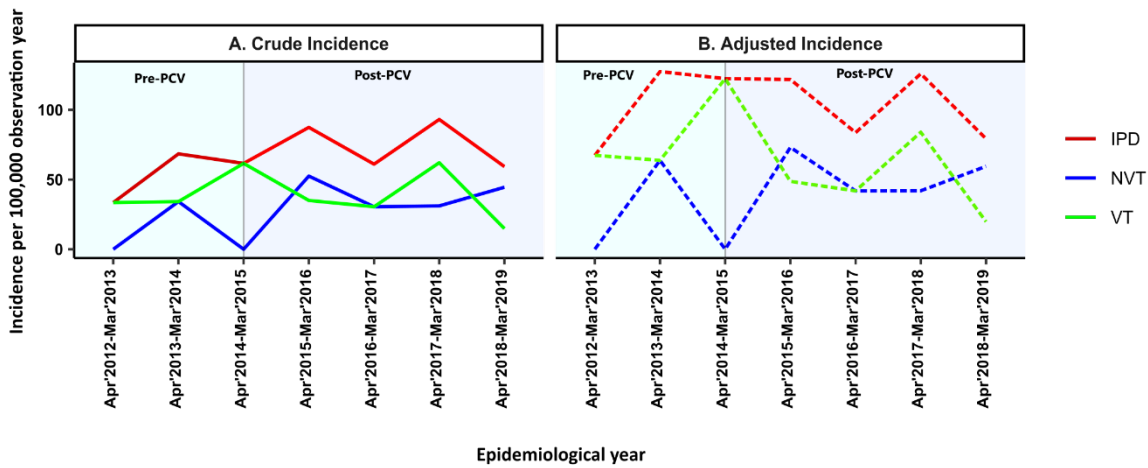
482

community and hospital-based surveillance



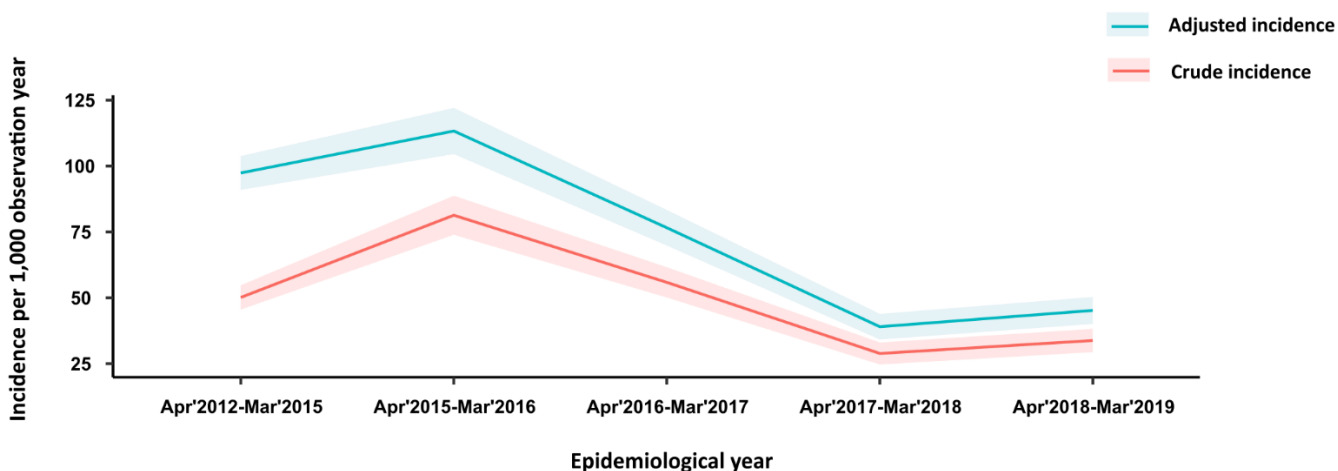
483

484 Figure 2: Serotype distribution of invasive pneumococcal cases with epidemiological year.



485

486 Figure 3: Changes in incidence for overall, vaccine type and non-vaccine type invasive
 487 pneumococcal disease between pre and post vaccine periods; A. Crude incidence. B. Adjusted
 488 incidence



489
 490 Figure 4: Crude and adjusted incidence of severe pneumonia cases seen at KWMCH among
 491 demographic surveillance area residents 2-<24 months of age. CI area showed in matched color
 492 shadow.

493
 494 Table 1: Case definition and management of children after assessment by VHWs in the Mirzapur
 495 community.

Classification	Sign/ Symptoms	Management
Possible severe Pneumonia/ Very Severe Disease	Cough, difficult breathing and/or fever (<99.5°F), with one of the following: <ul style="list-style-type: none"> ▪ Convulsion ▪ Fast breathing ▪ Chest indrawing ▪ Abnormally sleepy or difficult to wake ▪ Unconscious ▪ Not able to feed breast milk or drink at all ▪ Vomits everything 	Urgent refer to Kumudini hospital
Possible Pneumonia	Fast breathing, but no other danger sign	Refer to nearby health facilities
No pneumonia	No fast breathing, no danger sign	Home care
Low Fever	Temperature 99.5°F - 100.3°F	Home care

Moderate Fever	Temperature 100.4°F - 101.9°F	Urgent refer to Kumudini hospital
High fever/ Possible bacteremia	Temperature 102°F or above	Urgent refer to Kumudini hospital
Suspected Meningitis / Very severe disease	Fever (temperature 99.5°F and above) and at least one of the following: <ul style="list-style-type: none"> ▪ History of Stiff neck (mentioned by mother) ▪ Bulging fontanelle (if < 12 months of age) ▪ Unable to drink or breast feed ▪ Convulsions ▪ Lethargy (abnormally sleepy or difficult to wake) ▪ Unconscious ▪ Vomits everything 	Urgent refer to Kumudini hospital

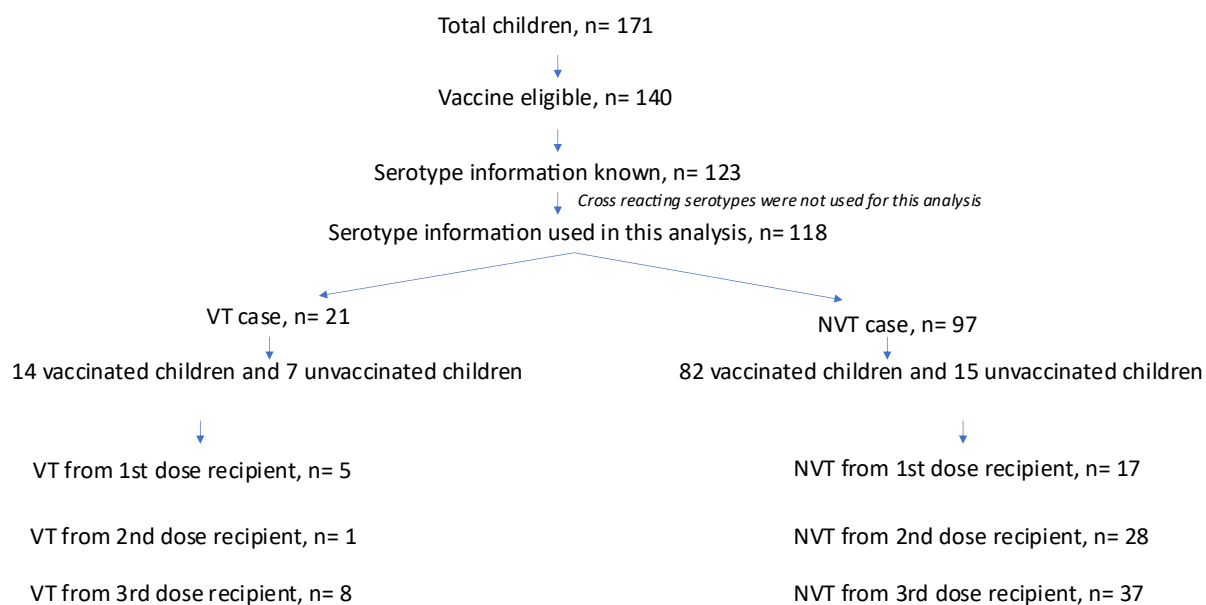
496

497 Table 2: PCV10 effectiveness estimation by number of doses among children 2- <24 months using
498 the indirect cohort method

	Doses	Number of children	VT case/Total (VT-vaccinated+ unvaccinated)	NVT case/Total (NVT-vaccinated+ NVT-unvaccinated)	Crude vaccine effectiveness	p-value
Overall	Unvaccinated children	22	7	15	n/a	n/a
	1st dose	22	5/12 (41.67%)	17/32 (53.13%)	37.0% (-141.0%, 83.5%)	0.498
	2nd dose + 3rd dose	75	9/21 (42.86%)	65/97 (67.01%)	63.0% (3.3%, 85.9%)	0.041
	Any dose	96	14/21 (66.67%)	82/97 (84.54%)	63.4% (-5.7%, 87.34%)	0.072

499

500 Supplementary Figure 1: Vaccination status of all IPD cases.



501

502

503 Supplementary Table 1: Summary data of population and hospital based surveillance

Type of surveillance	Category	Pre-vaccine			Post-vaccine			
		Apr,2012-Mar,2013	Apr,2013-Mar,2014	Apr,2014-Mar,2015	Apr,2015-Mar,2016	Apr,2016-Mar,2017	Apr,2017-Mar,2018	Apr,2018-Mar,2019
Community based surveillance	No of Enrolled children	1083	1039	1273	2542	3134	4046	7070
	Child years of observation	2985	2922	3246	5717	6552	6441	6745
	No of follow-up by VHW	212375	161507	126413	247460	386735	510815	646508
	Episodes assessed by VHW	10919	11060	11718	20136	27671	31738	30837
	Children referred by VHW	927	883	779	2311	3085	3762	3672
	Children visited to KWMCH	461	474	392	1659	2250	2783	2745
	Compliance rate, %	50%	54%	50%	72%	73%	74%	75%
Hospital based surveillance	No of eligible children (self and VHW referred)	1040	880	697	1966	2431	2046	1899
	Diagnosed with pneumonia	273	218	187	776	1,127	555	625
	2-5 months (%)	77 (28%)	53 (24%)	39 (21%)	237 (31%)	291 (26%)	185 (33%)	162 (26%)
	6-11 months (%)	86 (31%)	75 (34%)	59 (32%)	280 (36%)	401 (36%)	195 (35%)	241 (39%)
	12-23 months (%)	110 (40%)	90 (41%)	89 (48%)	259 (33%)	435 (39%)	175 (32%)	222 (36%)
	Diagnosed with severe pneumonia	131	192	136	465	366	186	228
	2-5 months (%)	59 (45%)	86 (45%)	49 (36%)	202 (43%)	112 (31%)	72 (39%)	78 (34%)
	6-11 months (%)	40 (31%)	50 (26%)	40 (30%)	136 (29%)	134 (37%)	60 (32%)	68 (30%)
	12-23 months (%)	32 (25%)	56 (29%)	47 (35%)	127 (27%)	120 (33%)	54 (29%)	82 (36%)

Diagnosed with meningitis	56	68	99	86	89	84	54
2-5 months (%)	3 (5%)	6 (8%)	19 (19%)	13 (15%)	8 (9%)	10 (12%)	2 (4%)
6-11 months (%)	14 (25%)	20 (30%)	32 (32%)	27 (31%)	25 (29%)	24 (29%)	22 (41%)
12-23 months (%)	39 (70%)	42 (62%)	48 (49%)	46 (53%)	56 (63%)	50 (60%)	30 (56%)
No of blood culture from eligible children	746	654	451	1630	2231	1882	1744
No of pneumococcal isolates	1	2	2	5	4	6	4
No of VT	1	1	2	2	2	4	1
No of NVT	0	1	0	3	2	2	3

504