

1 **The International Classification of Functioning, Disability**
2 **and Health to map leprosy-related disability in rural and**
3 **remote areas in Indonesia**

4 Luh Karunia Wahyuni^{*1¶}, Nelfidayani^{1¶}, Melinda Harini^{1¶}, Fitri Anestherita^{1¶}, Rizky Kusuma
5 Wardhani^{1¶}, Sri Linuwih Menaldi², Yunia Irawati³, Tri Rahayu³, Gitalisa Andayani³, Hisar
6 Daniel³, Intan Savitri¹, Petrus Kanisius Yogi Hariyanto¹, Isabela Andhika Paramita^{1,4}

7 **Affiliation(s)**

8 ¹ Department of Physical Medicine and Rehabilitation, Faculty of Medicine Universitas
9 Indonesia, dr. Cipto Mangunkusumo Hospital, Jakarta, Indonesia

10 ²Department of Dermatology and Venereology, Faculty of Medicine Universitas Indonesia, dr.
11 Cipto Mangunkusumo Hospital, Jakarta, Indonesia

12 ³ Department of Ophthalmology, Faculty of Medicine Universitas Indonesia, dr. Cipto
13 Mangunkusumo Hospital, Jakarta, Indonesia

14 ⁴Genomik Solidaritas Indonesia (GSI) Laboratory, Jakarta, Indonesia

15

16 * Corresponding author

17 E-mail: luhkwahyuni@gmail.com

18

19 ¶ These authors contributed equally to this work.

20 **Abstract**

21 The International Classification of Function, Disability and Health (ICF - WHO, 2001)
22 recognizes several dimensions of disability, such as body structure and function (and
23 impairment thereof), activity (and activity restrictions) and participation (and participation
24 restriction) and their interactions with contextual factor (personal and environmental). In this
25 study, we map and analyse the relationship between the components of ICF in leprosy patients
26 from two rural areas in Indonesia: Lewoleba (East Nusa Tenggara) and Likupang (North
27 Minahasa). This study was a part of a community outreach program by the KATAMATAKU
28 team from Universitas Indonesia. The body structure was graded using the WHO hand and feet
29 disability grade and the number of enlarged nerves, whilst the body function was measured by
30 the Jebsen Taylor Hand Function Test (JTT) and Timed-up and Go (TUG). Activity limitation
31 and participation restriction were measured using the Screening Activity Limitation Safety
32 Awareness (SALSA) Scale and Participation Scale (P-scale), respectively. There were 177
33 leprosy patients from the two regions and 150 patients with complete data were included in the
34 analysis. We found 82% subjects with multibacillary leprosy, 10.67% subjects with grade 2
35 WHO hand disability, and 9.33% subjects with grade 2 WHO foot disability. Assessment using
36 SALSA Scale showed 29.33% of subjects with limitation activity and 11.33% with
37 participation restriction. Age was shown to have positive correlations with SALSA, JTT, and
38 TUG. Inter-dimensional analysis showed that the SALSA scale had significant positive
39 correlations with the number of nerve enlargement, P-scale, JTT, and TUG. SALSA scores of
40 grade 2 WHO hand and foot disability were also significantly higher than grade 1 and 0.
41 Participation scale also had a positive correlation with JTT but not TUG. Hand disability
42 seemed to affect societal participation whilst foot did not. We used the ICF to describe and
43 analyse dimensions of leprosy-related disability in Indonesia.

44 **Keywords:** leprosy, ICF, disability, Lewoleba, Likupang

45 **Author Summary**

46 Disability is the long-term outcome of untreated leprosy or Hansen's disease, which is caused
47 by peripheral nerve invasion of the *Mycobacterium leprae*. It is a serious and life-limiting
48 complication to leprosy patients. Currently, there are seven regions in Indonesia which have
49 not yet achieved the state of disease elimination. In addition, Indonesia has not succeeded in
50 achieving the sub-target of rate of new cases with grade 2 disability in 2023. The concept of
51 disability and health including the body structure, body function, personal and environmental
52 domains, activity limitation, and participation restriction, is provided by the ICF. Through the
53 framework, we could assess the aspects of disability and its relationship to one another in
54 leprosy patients. Furthermore, the early detection, screening, and management programs for
55 leprosy have not included aspects of disability and rehabilitative measures for restoration.
56 Thus, the purpose of this study is to find the impact of leprosy-related disability in the patients'
57 body function, activity, and participation. We report 150 leprosy patients from two rural areas
58 of Indonesia and found significant relationships between specific indicators, which would be
59 useful for rehabilitative management programs in the future.

60 **Introduction**

61 Infiltration of *Mycobacterium leprae* into Schwann cells in leprosy can cause peripheral nerve
62 inflammation and subsequent progressive loss of nerve fibre function or neuropathy.[1] This
63 condition mainly affects the hands (44.45%), feet (39.76%), and face (15.74%).[2] The
64 subsequent loss of sensory; motor; and autonomic nerve function would appear as loss of
65 thermal, nociceptive, and pressure senses; muscle paresis; and dryness of the skin, respectively.
66 Occasionally, delayed emergence of skin lesions and sensory impairment may also occur,
67 termed as silent neuropathy.[1] When left untreated, these conditions can develop into visible

68 physical deformities (lagophthalmos, severe visual impairments, ulcers, clawing and
69 shortening of digits in the extremities), which the World Health Organization (WHO) classify
70 as grade 2 disabilities.[3] Unfortunately, the majority of newly diagnosed leprosy patients have
71 already had deformities.[2]

72 Disabilities in leprosy patients cause physical disability, psychological disturbances, and
73 extensive loss of manpower and economic loss to the society.[3] Assessment of disability in
74 leprosy patients is a very important factor in the evaluation of the effectiveness of a leprosy
75 elimination program.[3] Disability can be perceived as any impairment of a person's health
76 and mind condition that render the person to have functioning difficulty at the body, person, or
77 societal levels, in any life domain.[4,5] The International Classification of Functioning,
78 Disability and Health (ICF) recognizes dimensions of disability, which include body structure
79 and function (along with each's impairments), activity and limitations, as well as participation
80 and restrictions. Environmental aspects of the individual are also emphasized as a major
81 predictor of disability outcomes thereby shifting the paradigm of disability as a mere 'medical'
82 or 'biological' dysfunction.[4]

83 Along with India and Brazil, Indonesia is one of the major leprosy contributors in the world.
84 In the 2021 global leprosy update by WHO, the majority of new case detection came from
85 South-East Asia and more than 10,000 cases were found in Indonesia.[6] According to the
86 Indonesian Ministry of Health report, leprosy cases are still increasing annually, from 5 cases
87 per 100.000 population in 2021 to 5.5 cases per 100.000 population in 2022.[7] Recent reports
88 have shown that the number of leprosy patients with grade 2 WHO disability has widely ranged
89 from 6.31% to 68.2%.[2,8,9] As of 2021, there were 12,230 registered leprosy cases in
90 Indonesia, with a new case detection rate of 4.03 per 100,000 population and 10,976 new cases
91 reported. The proportion of new leprosy cases with grade 2 deformities was determined to be
92 2.46 per 1,000,000 population, which still surpasses the WHO's target of 0.92 per 1,000,000

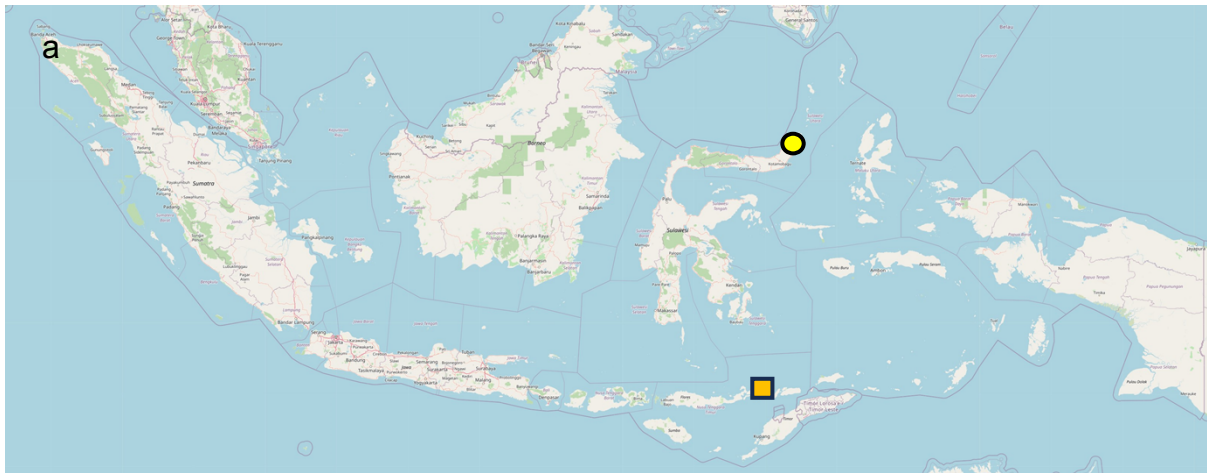
93 population by 2023.[10,11] However, studies related to the burden of leprosy are fewer than
94 those related to endemicity.[12] Not to mention that research pertaining to the specific
95 challenges encountered by leprosy-related disabilities patients in Indonesia are very scarce.
96 These data are urgently needed for initiating sustainable rehabilitative measures for disability
97 prevention and for improving the patients' well-being.

98 In this occasion, we want to present a study to analyze factors affecting leprosy-related
99 disabilities involving participants from two remote areas in Indonesia: Lewoleba, Lembata,
100 East Nusa Tenggara and Likupang, North Minahasa, North Sulawesi.

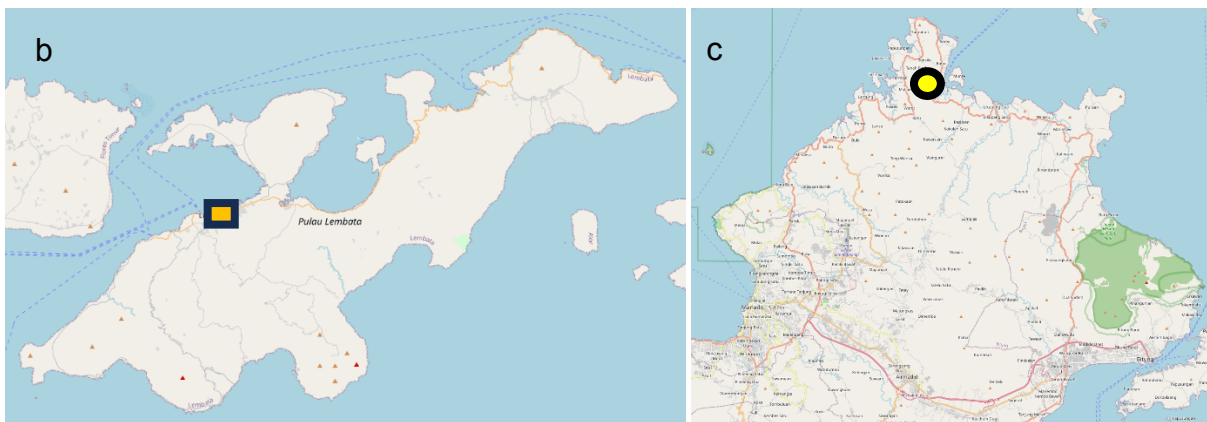
101 Lewoleba, which is the capital of Lembata island, East Nusa Tenggara, is in the Nubatukan
102 district. Lewoleba has an area of 165.64 KM² whilst Lembata spans over 1.266,4 KM².
103 Lembata island is divided into nine districts and has overall a tropical climate with a long
104 drought. Lembata has relatively high humidity at around 80%.[13] Nubatukan district has the
105 highest population density at 50.984 or 37% of total population of the island. Around 11.4%
106 of total population are aged 0-4 years. There are three hospitals and one public health center in
107 Nubatukan.[14] The population in Lembata mostly work in agriculture, forestry, hunting and
108 fisheries sectors.[14] East Nusa Tenggara is considered as one of the provinces in Indonesia
109 with high leprosy incident, with around 7 per 100.000 people and high chance of getting
110 disability due to leprosy about 27.78%.[14,15]

111 Likupang region is further divided into three subdistricts: East Likupang, West Likupang and
112 South Likupang. All of them are coastal subdistricts located at 1.6720° N, 125.0553° E, 0
113 meters above the sea level, with a total area of 298.27 square kilometer (KM²).[16,17,18] Since
114 Likupang is located near the seashore, it has high humidity, reaching 80-90% on average.[19]
115 In 2022, the region had 44.660 inhabitants, with average population growth rate of 1.39%
116 between the year 2020 and 2022. South Likupang is the subdistrict with highest population

117 density, while East Likupang is the lowest.[20] According to data from Ministry of Health in
118 2021, North Sulawesi is one of Provinces in Indonesia with high leprosy cases, with detection
119 rate of 11 per 100,000 inhabitants in 2018.[21,22] As of 2022, North Sulawesi is one of the 7
120 provinces where leprosy has not yet been eliminated. Likupang itself has 4 public health
121 centers, 3 with inpatient care, as well as 3 clinics spread over three subdistricts. [16,17,18]



122



123

124 **Figure 1. Map of Lewoleba (Lembata, East Nusa Tenggara) and Likupang (North**
125 **Minahasa, North Sulawesi), Indonesia. (A) Map of Indonesia, scaled 1: 5900000 (1062x460),**
126 **yellow circle indicates Likupang, North Minahasa and orange rectangle indicates Lewoleba, Lembata.**
127 **(B) Map of Lembata Island (East Nusa Tenggara), scaled 1: 273897 (1077 x 658), orange rectangle**
128 **indicates Lewoleba. (C) Map of North Minahasa (North Sulawesi), scaled 1: 138380 (1341 x 1077),**
129 **yellow circle indicates Likupang. The map contains information from OpenStreetMap and**

130 OpenStreetMap Foundation, which is made available under the Open Database License (accessed
131 online on 13th of July 2023). Manual markings were done to locate Lewoleba and Likupang.

132 The objectives of this study are to report leprosy cases from rural and remote areas in Indonesia,
133 map the functional disabilities of individuals diagnosed with leprosy in Likupang and
134 Lewoleba, Indonesia, using ICF, and to find correlation between each aspect of ICF in
135 Indonesian population.

136 **Materials and methods**

137 **Ethical aspects**

138 The study protocol was approved by the Ethics Committee of Faculty of Medicine,
139 Universitas Indonesia under ethical clearance ND-454/UN2.F1/ETIK/PPM.00.02/2022 and
140 was designed in consideration of the principles proposed by the Helsinki Declaration. Written
141 formal consent was obtained directly from participants.

142 **Study design and population**

143 This cross-sectional study was a part of a community outreach program by
144 KATAMATAKU and was carried out in Lewoleba, Lembata, East Nusa Tenggara (July 2022)
145 and Likupang, North Minahasa, North Sulawesi (August 2022). The KATAMATAKU team is
146 a multidisciplinary (expert) team made up of dermatologists, ophthalmologists and physical
147 medicine and rehabilitation (PMR) specialists from Faculty of Medicine Universitas Indonesia
148 in Jakarta, Indonesia. The word KATAMATAKU is an Indonesian acronym for '*Identifikasi*
149 *tanda-tanda mata, ekstremitas dan kulit pada kusta*' or identification of ocular, extremities,
150 and dermatological signs in leprosy. The collaborative team often visits remote sites with
151 higher leprosy-population density to do surveillance and charitable community engagements
152 with leprosy patients and survivors. The outreach program consisted of physical examination,

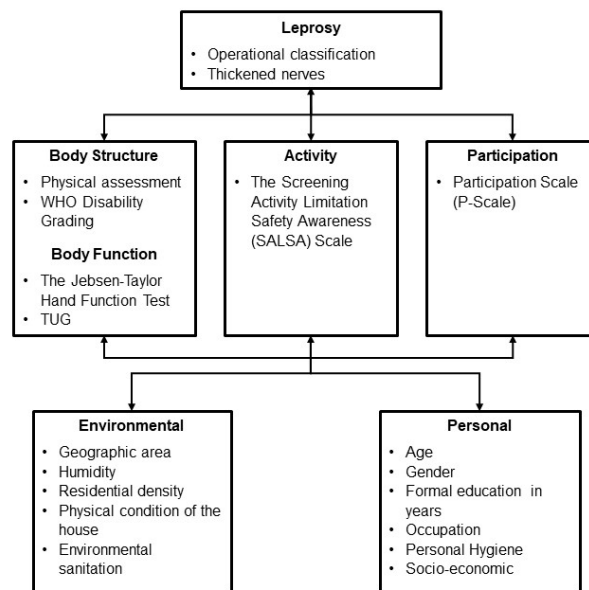
153 consultation, and treatment for leprosy patients. We contacted the local public health officers
154 a month prior to the event and the affiliated regional hospitals and primary health care facilities
155 notified the residing population nearby and registered leprosy patients.

156 The study participants from Likupang, North Minahasa and Lewoleba, Lembata were
157 those who attended the events held in July 2022 and August 2022, respectively. Patients with
158 leprosy who had provided written consent to take part in this research were eligible for
159 inclusion. Each participant filled out the SALSA questionnaire as well as the participation scale
160 (P-scale) and went through the entire assessment process, including the timed up and go (TUG)
161 test and the Jebsen-Taylor Hand Function Test (JTT).

162 **Study protocol**

163 In both Likupang and Lewoleba, information was gathered through the examination of
164 all leprosy patients. All subjects who agreed to participate in the study were given face-to-face
165 interviews with close-ended question forms. Age, gender, and educational background were
166 among the basic demographic data collected. The study variables or assessment tools along
167 with each's descriptions are listed in **Table 1**. The outcomes were analysed in accordance with
168 the International Classification of Functioning, Disability and Health (ICF) domains as listed
169 in **Figure 2**.

170



171
172 **Figure 2. Application of the International Classification of Functioning, Disability and**
173 **Health (ICF) domains in the study.[23]**

174 **Table 1. Assessment Tools.**

Item	Content	Evaluation	Note
<i>Personal factors</i>			
Age		Identity card	<18 years old, 18-59 years old, ≥60 years old
Gender		Identity card	Female, male
Formal education level		Question to the patient	- Uneducated - Primary Education - Middle School - Secondary Education - Higher Education
<i>Health condition</i>			
Diagnosis of Leprosy		Anamnesis related to history of the disease, type of leprosy, and medication	Paucibacillary, multibacillary
Number of person(s) living together with the same diagnosis		Anamnesis of any contacts within family members and whether they live together or separately with the patient	Number of family member with similar symptoms or diagnosis
<i>Body structure</i>			
Physical Examinations	Abnormalities and deformities in the skin and extremities	- Inspection of lesions and deformities - Motor and sensory nerve function	Number of nerve thickening.
The WHO classification of physical disability in leprosy.[24]		The presence of nerve impairments or visible deformity	Grade 0: no disability (no loss of sensitivity and no visible deformity or damage to the eyes, hands or feet)

			<p>Grade 1: only disability (a loss of sensitivity without visible deformity or damage to the eyes, hands or feet)</p> <p>Grade 2: the presence of visible deformity or damage to the eyes (lagophthalmos, iridocyclitis, corneal opacities, severe visual impairment), hands (claw hands, ulcers, absorption of the digits, thumb-web contracture and swollen hand), feet (plantar ulcers, footdrop, inversion of the foot, clawing of the toes, absorption of the toes, collapsed foot and callosities)</p>
<i>Body function</i>			
The Jebsen-Taylor Hand Function Test (JTT).[25]	A standardized and objective measure of fine and gross motor hand function using simulated activities of daily living (ADL)	A series of seven subtests representing fine motor, non-weighted and weighted hand function in ADL, which includes: writing, simulated page-turning, lifting small objects, simulated feeding, stacking, and lifting large, lightweight, and heavy objects.	<p>The subtests are scored by recording the number of seconds required to complete each test</p> <p>Total score is the sum of time taken for each sub-test, which are rounded to the nearest second. Shorter times indicate better performance.</p>
Timed Up and Go Test (TUG).[26]	To determine the patient's fall risk and measure the progress of balance, sit to stand and walking	<p>Assessed domains</p> <ul style="list-style-type: none"> • Balance • Gait • Walking speed 	Patients performed the test one time, and if a clear error was made, they were asked to repeat the TUG.
<i>Activity</i>			
The Screening Activity Limitation Safety Awareness (SALSA) Scale.[27,28]	Includes 20 daily activities questions related to the three areas of mobility, self-care, and work.	The ability of patients to do basic daily activities such as walking, self-care, carrying heavy objects and manipulating small objects.	<p>SALSA's Indonesian edition was used for this investigation. The total score ranges from 0-80, with the result classified as:</p> <ul style="list-style-type: none"> • no substantial limitation (0-24) • mild limitation (25-39) • moderate limitation (40-49) • severe limitation (50-59) • extreme limitation (60-80)
<i>Participation</i>			
Participation Scale (P-Scale).[29]	Consists of 18 items to measure (social) participation for use in rehabilitation, stigma reduction and social integration programmes.	<p>Assesses domains of participation including:</p> <ul style="list-style-type: none"> • Communication • Mobility • Self-Care • Domestic Life • Interpersonal Interactions 	<p>The P-scale total score varies between 0-90, with the result classified as:</p> <ul style="list-style-type: none"> • No significant restriction (0-12) • Mild restriction (13-22) • Moderate restriction (23-32) • Severe restriction (33-52)

		<ul style="list-style-type: none">• Major life areas (work, education, etc)• Community, Social and Civic	<ul style="list-style-type: none">• Extreme restriction (53-90)
--	--	---	---

175

176 *Analysis of results and statistics*

177 Microsoft Excel was used to store, organize, clean raw data and perform F tests for equal
178 variance. Statistical analysis was performed using GraphPad Prism version 10.0.0. Normality
179 and F tests were performed to all sets of data. For the comparison test between two groups,
180 non-normal groups will be analysed non-parametrically with Kolmogorov-Smirnov test if both
181 groups have equal variances. Groups with non-equal variances will be analysed using Mann-
182 Whitney U test. For the comparison between more than two groups, groups with non-normal
183 distribution will be analysed using Kruskal-Wallis test. Bivariate analyses using Pearson's and
184 Spearman's correlation tests were performed in normally and non-normally distributed
185 variables, respectively. Categorical variables are analysed using Fisher's Exact and Chi-Square
186 tests. Probability of 0.05 was considered statistically significant.

187 **Results**

188 The total number of patients examined during the events were 177 patients with leprosy. After
189 excluding patients with incomplete data, 150 patients (107 in Lewoleba and 43 in Likupang)
190 were included in the analysis. Mean age of the patients was 44.71 ± 18.7 years. Majority of the
191 patients were between 18-59 years old, male, graduated from elementary/primary schools, did
192 not have hand or foot disability, have no limitation nor restriction in functional activity and
193 participation, respectively, had been diagnosed with multibacillary type, and had none other
194 family members living together diagnosed with leprosy (**Table 2**).

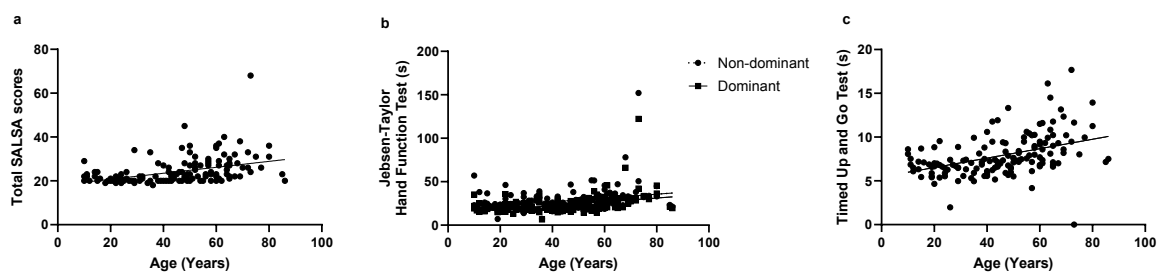
195 **Table 2. Demographics of Leprosy Patients in Lewoleba (Lembata) and Likupang (North**
 196 **Minahasa), Indonesia (n=150).**

Characteristics	n	%
<i>Age</i>		
< 18 years	13	8.67
18-59 years	97	64.67
> 60 years	40	26.67
<i>Gender</i>		
Female	46	30.67
Male	104	69.33
<i>Educational Background</i>		
Uneducated	9	6
Primary Education	80	53.33
Middle School	21	14
Secondary Education	33	22
Higher Education	7	4.67
<i>WHO Hand Disability</i>		
Grade 0	114	76
Grade 1	20	13.33
Grade 2	16	10.67
<i>WHO Foot Disability</i>		
Grade 0	110	73.33
Grade 1	26	17.33
Grade 2	14	9.33
<i>SALSA Scale</i>		
No limitation	106	70.67
Mild limitation	41	27.33
Moderate limitation	2	1.33
Severe limitation	0	0
Extreme limitation	1	0.67
<i>Participation Scale</i>		
No restriction	133	88.67
Mild restriction	10	6.67
Moderate restriction	6	4
Severe restriction	0	0
Extreme restriction	1	0.67
<i>Types of Leprosy</i>		
Paucibacillary	27	18
Multibacillary	123	82
<i>Number of family members with leprosy living together</i>		
None	103	68.67
1	38	25.33
2	5	3.33
> 2	3	2
Undisclosed	1	0.67

197

198 Analysis of the data were done according to ICF, introduced by the WHO in 2001. We divided
 199 the examinations according to several aspects. Age, gender, and types of leprosy are included
 200 into the patient's condition. The number of thickened nerves and WHO hand and foot disability

201 grading represent body structure. Jebsen-Taylor Hand Function Test and TUG are parts of body
202 function. The SALSA and Participation Scales represent activity and participation,
203 respectively. Initially, we would like to find whether there are any differences of patient's
204 condition, body structure, body function, activity, and participation according to gender, age,
205 education, and types of leprosy. All data were not normally distributed, and many sets of groups
206 did not have equal variances. We found a significant difference of the number of thickened
207 nerves between male and female (Mann-Whitney U test, median 0 vs 0, $p=0.0021$), as the
208 SALSA, P-scale, JTT, and TUG were not. There were significant positive correlations between
209 age and SALSA scales including the mobility ($r=0.3965$, $p<0.0001$), work ($r=0.2939$,
210 $p=0.0003$), and dexterity ($r=0.4738$, $p<0.0001$) aspects, JTT in both hands, and TUG as seen
211 in **Figure 3A-C**. Finally, we also found that the SALSA scales in different educational level
212 were also found to be significantly distinctive (Kruskal-Wallis test, $p<0.0099$), whereas
213 participation scales were not (**Table 3**).



214

215 **Figure 3. Significant bivariate analyses of age and activity or body function.** X-axis is age
216 defined in years, Y-axis is listed as follows; (A) total SALSA scores (Spearman's $r=0.5047$, $p<0.0001$), (B) JTT
217 in non-dominant and dominant hands (Spearman's $r=0.4203$, $p<0.0001$ vs Spearman's $r=0.4942$, $p<0.0001$,
218 respectively), C: TUG (Spearman's $r=0.4904$, $p<0.0001$). SALSA, screening of activity limitation and safety
219 awareness; JTT, Jebsen-Taylor hand function test; TUG, timed up and go test.

220 **Table 3. Comparison of SALSA and P-scales according to different educational level**
221 **using Kruskal-Wallis test.**

Assessment Tools	Uneducated	Primary Education	Middle School	Secondary Education	Higher Education	p-value
SALSA (median)	22	23	21	21	22	0.0099*
P-scale (median)	1	1	0	1	0	0.5738

222 * Significant value

223 To assess different domains in relation to body structure impairment, Kruskal-Wallis tests were
 224 performed on SALSA scores, P-scales, JTT, and TUG according to WHO hand and foot
 225 disability grades. We found significant differences of the medians of SALSA scale, P-scale,
 226 and JTT in patients with grade 0, 1, and 2 WHO hand disability, whilst only comparison of
 227 SALSA scales in patients with grade 0, 1, and 2 WHO foot disability yields significant results
 228 as seen in **Table 4 and 5**.

229 **Table 4. Comparison of hand structure impairment according to hand function**
 230 **impairment, activity limitation, and participation restriction using Kruskal-Wallis test.**

WHO Hand Disability	SALSA Scale (Median)	SALSA-Work (Median)	SALSA-Dexterity (Median)	P-scale (Median)	JTT Non-Dominant (s) (Median)	JTT Dominant (s) (Median)
Grade 0	21.5	7	5	1	24.37	20.56
Grade 1	23.5	7	6	3	26.24	25.02
Grade 2	27.5	8.5	8	1.5	35.62	24.51
p-value	0.0012*	0.0276*	0.0065*	0.0087*	0.003*	0.0137*

231 * Significant value

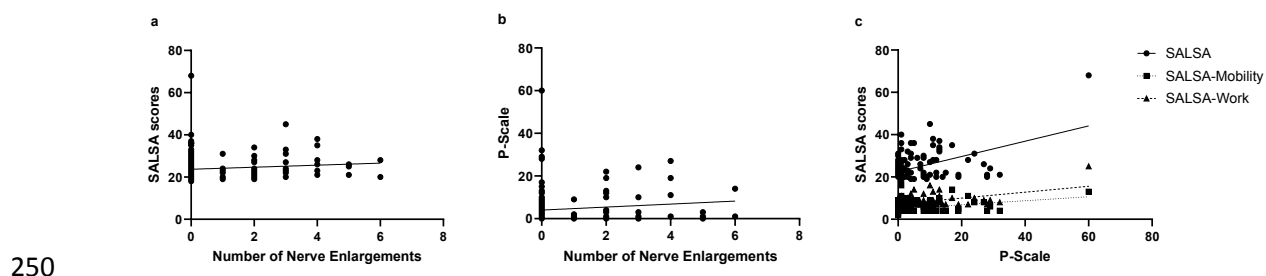
232 **Table 5. Comparison of foot structure impairment according to foot function**
 233 **impairment, activity limitation, and participation restriction using Kruskal-Wallis test.**

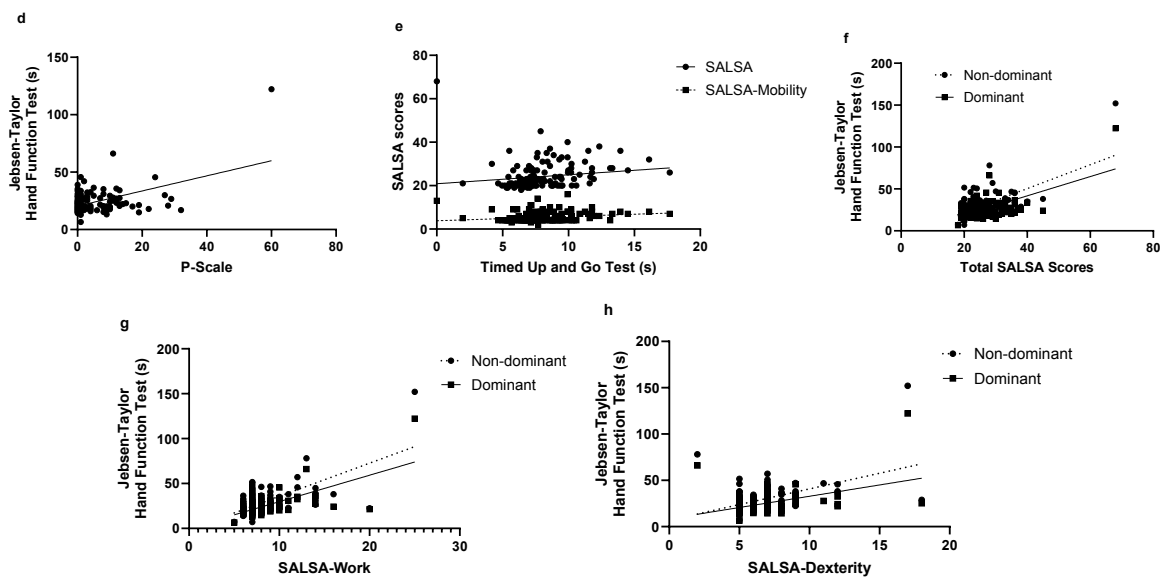
WHO Foot Disability	SALSA Scale (Median)	SALSA-Mobility (Median)	TUG (s) (Median)	P-scale (Median)
Grade 0	21.5	4	1	7.15
Grade 1	23.5	5.5	3	7.455
Grade 2	31.5	6	1.5	8.265
p-value	0.0003*	0.0371*	0.0515	0.3122

234 * Significant value

235 Finally, we would like to find correlation between each domain of ICF. Comparison tests of
 236 body structure impairment, body function impairment, activity limitation, and participation

237 restriction between types of leprosy; paucibacillary or multibacillary, were performed.
238 Variables with numerical data were compared non-parametrically using Kolmogorov-Smirnov
239 and Mann-Whitney U tests and no significant differences were found. Associations between
240 categorical variables were calculated using Fisher's Exact and Chi-Square tests with no
241 statistically significant results. We then performed statistical tests between other variables and
242 found weak but significant positive correlation between total SALSA scores and the number
243 of nerve enlargement (**Figure 4A**). There were also positive and significant correlations
244 between P-scale and the number of thickened nerves, SALSA scale, which includes the
245 SALSA-mobility and SALSA-work scores, as well as with the JTT on the dominant hand
246 (**Figure 4B-D**). We also found significant correlations between TUG and SALSA along with
247 SALSA-mobility scores (**Figure 4E**). Finally, we found positive and significant correlations
248 between the dominant and nondominant JTT results with the SALSA scales, SALSA-work,
249 and -dexterity (**Figure 4F-H**).





251

252

253 **Figure 5. Correlations between the assessment tools according to the International**

254 **Classification of Functioning, Disability and Health (ICF).** (A) Health condition (number of nerve

255 enlargement) with activity limitation (SALSA), Spearman's $r=0.1647$, $p=0.044$. (B) Health condition (number of

256 nerve enlargement) with participation restriction (P-scale), Spearman's $r=0.1673$, $p=0.0408$. (C) Participation

257 restriction (P-scale) and activity limitation (total SALSA (Spearman's $r=0.2722$, $p=0.0008$), SALSA-mobility

258 (Spearman's $r=0.2476$, $p=0.0023$) and -work (Spearman's $r=0.3347$, $p<0.0001$)). (D) Body function impairment

259 (JTT in dominant hand) with participation restriction (P-scale), Spearman's $r=0.1742$, $p=0.033$. (E) Body function

260 impairment (TUG) and activity limitation in relation to lower extremities (total SALSA (Spearman's $r=0.4232$,

261 $p<0.0001$) and SALSA-mobility ($r=0.3296$, $p<0.0001$)). (F-H) Body function impairment (JTT) and activity

262 limitation (total SALSA (Spearman's $r=0.4296$, $p<0.0001$ and Spearman's $r=0.4659$, $p<0.0001$), SALSA-work

263 (Spearman's $r=0.3967$, $p<0.0001$ and Spearman's $r=0.4236$, $p<0.0001$), and SALSA-dexterity (Spearman's

264 $r=0.4212$, $p<0.0001$ and Spearman's $r=0.3737$, $p<0.0001$)) related to upper extremities in non-dominant and

265 dominant hands, respectively.

266 Discussion

267 One of the purposes of this study is to utilize ICF to assess the functional disabilities

268 experienced by individuals diagnosed with leprosy in Likupang, North Minahasa and

269 Lewoleba, Lembata, Indonesia. ICF recognizes several dimensions of disability, including

270 impairment in body structure and function, restrictions in activity, and limitations in
271 participation. Additionally, the classification acknowledges the significant influence of
272 physical and social environmental factors on the outcomes of disability. In accordance with
273 this, our results imply potential relationships between each domain to one another in leprosy
274 patients.[4]

275 Several personal factors for leprosy and leprosy-related disabilities have been studied. A meta-
276 analysis of 17 studies found that leprosy was associated with male gender, performing manual
277 labour, ever food-shortage, sharing household with another leprosy patient, and communal
278 living with a minimum of 5 occupants.[30] Moreover, risk factors for leprosy-related
279 disabilities include advanced age, male, low education, multibacillary leprosy type, the
280 presence of leprosy reactions, nerve damage, delayed diagnosis, and treatment dropout.[31-36]

281 Findings related to demographic factors in this study, which seemed to affect the domains of
282 ICF disability, have been observed in other studies. Most of the patients in this study were
283 males within the range of productive age group, as also found in other studies from Indonesia,
284 Brazil, and India.[37-40] Our results also showed that body function, activity limitation, and
285 participation restriction had positive correlations with age. Higher male population in leprosy
286 cases could be attributed to differences in sociocultural behaviours between genders and life
287 choices that would lead to higher risk of contracting the infection.[41] More than half of this
288 study population also had low educational attainment, indicating a shared context of
289 socioeconomic vulnerability. This trend has been observed in Indonesian, Indian, and Brazilian
290 studies by Menaldi et al. (2022), Karotia (2022), and Dergan et al. (2023), respectively.
291 Unfortunately, diagnostic timepoints and treatment dropout were not explored.[8,40,42]

292 Leprosy patients with multi-bacillary type demonstrate more pronounced physical dysfunction
293 and experience greater bodily pain when compared to the pauci-bacillary group, which

294 primarily stems from nerve impairment in leprosy patients.[43] Multi-bacillary patients were
295 significantly at higher risk of developing nerve-function impairment.[44] Additionally, a study
296 by Lustosa et al. (2011) revealed that multibacillary patients were associated with lower SF-36
297 scores across four domains: physical functioning, bodily pain, general health perceptions, and
298 social functioning. These patients were also at higher risk of being found with grade II disability
299 at the time of diagnosis.[45]

300 Increased nerve thickening has been found to play a role in delaying diagnosis and potentially
301 serves as a risk factor for deformity development.[46] Deformities were also more often seen
302 in those with more than 3 thickened nerves. Our bivariate analyses found that the number of
303 nerve enlargement in leprosy patients has weak but positive correlations to functional activity
304 limitation and social participation restriction, which was represented by SALSA scale ($r=0.165$,
305 $p=0.044$) and P-scale ($r=0.167$, $p=0.041$), respectively. It has been studied that nerve
306 enlargement can lead to neuropathic pain due to entrapment syndrome. While it may not be the
307 sole cause, nerve enlargement still contributes significantly to nerve pain occurrence.[47] A
308 recent Brazilian study also suggested that leprosy patients experiencing nerve pain exhibited
309 higher SALSA scores compared to those without pain.[48]

310 There were 29.33% of participants who experienced mild (27.33%), moderate (1.33%), and
311 extreme (0.67%) activity limitations. This proportion is lower than that reported by Shivanna
312 et al. (2022) in India, Nascimento et al. (2020) in Brazil, and Abdela et al. (2020) in Ethiopia.
313 In two studies (Shivanna et al. and Nascimento et al.), most participants only felt mild
314 functional limitation. High proportion of patients with activity limitations may indicate prior
315 delayed diagnosis, inadequate management, and lack of physical rehabilitation
316 services.[49,50,51]

317 Patients in this study who had limitations in social participation accounted for only one-eighth
318 of the total participants, with 6.67% experiencing mild restriction, 4% experiencing moderate
319 restriction, and 0.67% experiencing extreme restriction. These figures are notably lower than
320 those found in studies conducted in Brazil, Ethiopia, and Nigeria, which reported participation
321 restriction rates of 24%, 55.1%, and 89.3%, respectively.[50,51,52] Variation in cultural
322 characteristics, socioeconomic conditions, stigma, and availability of rehabilitative services
323 may account for these differences.[50]

324 Functional limitation and societal restriction are impacted by many factors. According to a
325 previous study by Nogueira in Fortaleza, most of elderly people with leprosy can still do basic
326 daily tasks such as opening bottles with screw caps, cooking, carrying heavy objects, and
327 walking uneven ground.[53] Stigma and prejudice associated with leprosy can lead to societal
328 exclusion even in the absence of visible lesions or impairments.[50] Several factors such as
329 self-stigmatization, activity limitations, family-related issues, poverty, low education levels,
330 inadequate rehabilitation services that includes community-based rehabilitation programs and
331 community ignorance about the disease and its transmission can affect societal participation
332 restriction.[51]

333 This study also found significant differences of SALSA scores according to the degree of WHO
334 disability for hands and feet ($p=0.0012$ and $p=0.0003$, respectively). Similar findings from de
335 Souza et al. (2016) indicated that SALSA scores are associated with the degree of impairment
336 ($p<0.01$).[24]

337 There were significant differences between total participation scale and hand disability based
338 on WHO disability grading ($p=0.0087$). Grade 2 disabilities, particularly those affecting the
339 hands and especially with deformities and resulting amputations can cause discomfort and limit
340 patients' ability to interact with their environments, participate in community activities, and

341 pursue employment opportunities. This may lead to reduced autonomy outside the home and
342 interference with family roles.[54]

343 Bivariate analyses also found significant positive correlations between JTT in both dominant
344 and non-dominant hands, and SALSA scores, including the work and dexterity domains,
345 suggesting that reduced hand function is paralleled with limited functional activity. Meanwhile,
346 TUG test was used to determine functional mobility, which is typically reduced in people with
347 foot disability.[55] There were positive correlations between TUG test and both SALSA and
348 mobility domain of SALSA scale. TUG test and total participation scale denoted no significant
349 correlation with $p=0.3956$. There were also no significant differences of total participation
350 scale between different WHO foot disability grades ($p=0.0515$).

351 We found an interesting trend where hand function affected participation restriction whereas
352 foot did not. In an older study of 63 patients with hereditary motor and sensory neuropathy
353 (HMSN) or Charcot-Marie-Tooth disease (CMT), upper limb disability, and not lower
354 extremity, was considered to correlate independently with participation restriction.[56] The
355 latter has been linked to mortality and morbidity with age. We observe a similar trend of
356 association between the hand function and societal participation in a recent study by
357 Akbarfahimi et al. (2021) among 84 stroke patients.[57] Upper limb function measured using
358 Fugl-Meyer scale was found to correlate significantly with participation score ($r = 0.315$, p
359 $=0.003$). In an older study with 2291 healthy participants above 50 years of age, lower
360 extremity strength and balance were not significantly associated with societal participation.[58]
361 However, the odds of having self-reported limitation in social participation were higher in those
362 with slower gait speed or less than 1 m/s (odds ratio [OR] = 3.1 99% confidence interval [CI]
363 1.5–6.2) compared to those above. Some studies have even shown supporting evidence of
364 relationship between gait speed and longer life. However, none of the studies discussed the

365 reason behind this trend. Future studies detailing analysis of upper and lower extremity
366 functions and disabilities are needed.

367 Most of the population in Likupang work as fishermen, which may be the cause of higher
368 participation rates compared to studies in other countries.[59,60] Since fisherman's work is
369 rather self-reliant, they are not really affected by the stigma around them. However, fishermen
370 required a fully function hands to maintain their job. Most of them use handline fishing, using
371 hand grip and strength to be used. In addition to fishing, people of Likupang also work in other
372 industry as well, such as farming and construction worker.[61, 62] The main occupation in
373 Lembata island is corn farming industry and most of the farmers spent around 60% of their
374 working time on the field.[61,63] Working in this industry demand people to have high
375 functioning hands, due to its labor characterization of this job.[64] Farmers and fishermen with
376 leprosy will suffer greatly mainly because their incapability to work and use their tools
377 properly. This study showed a significant correlation between hand disability and participation
378 scale, which include occupational activities such as fishing and farming.

379 Based on the ICF model, environmental and personal factors are also important components of
380 disability. Risk factors for leprosy in Indonesia include floor height, house ventilation area,
381 house window usage habits, floor and wall types, environmental sanitation, history of
382 household contact, residential density, humidity, and economic status.[65,66,67] Humidity
383 poses a significantly increased risk, with an 8.415-fold greater likelihood, of leprosy occurrence
384 within the community. Similarly, personal hygiene presents a 6.926-fold higher risk of leprosy
385 occurrence in the community. Residential density in Indonesian society is associated with a
386 substantially elevated risk, estimated to be 5.754 times greater, of experiencing leprosy.[67]

387 The populations in Lewoleba and Likupang were unequally distributed with several areas
388 exhibiting higher density than others. There were also inadequate access to clean water,

389 insufficient drainage and sanitation systems, and relatively high levels of humidity, all of which
390 are risk factors for leprosy as well as posing as further challenges in managing leprosy.[68,69]
391 One possible approach to preventing leprosy in remote and rural areas is by providing public
392 education on maintaining the physical condition of houses in accordance with established
393 standards. This includes ensuring the presence of ceilings, utilizing easily cleanable flooring
394 materials, maintaining comfortable humidity levels, and limiting the occupancy of bedrooms
395 to a maximum of two individuals.[70] Conversely, marital status and proximity to healthcare
396 facilities do not significantly affect the likelihood of leprosy-related disability.[33]

397 **Limitations**

398 This study has several limitations. Firstly, this study only included the patients who were
399 willing to participate and excluded those who would potentially be more reclusive and isolated.
400 Secondly, the population included in the study also came from two different areas, each with
401 unique social and environmental characteristics. There may be some gaps in demographical
402 factors, which we could not currently analyze, that would influence the outcome of the study.
403 Finally, although we found that the personal factors identified in our study such as age, gender,
404 and educational background significantly contribute to leprosy-related disability, other
405 influential factors including personal hygiene, contact history, socio-economic status, health
406 beliefs, and religion were not specifically examined in our research,[66,71-73] highlighting
407 the need for further exploration and investigation.

408

409 **Conclusion**

410 There are significant and positive correlations between the body structure and body function
411 impairment, activity limitation and participation restriction in individuals with leprosy in
412 Indonesia, based on the ICF concept in mapping the functional disabilities. Similar trends are
413 also found in body function and activity limitation, as well as between the hand function and
414 participation restriction. Activity limitation and participation is lower in patients with more
415 severe hand disability. In contrast, foot function and disability do not seem to affect societal
416 participation.

417 **Acknowledgment**

418 This work is supported by the Directorate of Research and Community Engagement of
419 Universitas Indonesia. We would like to thank the directors and staffs of St. Damian Hospital
420 Lewoleba-Lembata-East Nusa Tenggara, Ministry of Health East Lewoleba-East Nusa
421 Tenggara, Ministry of Health North Minahasa-North Sulawesi, and Faculty of Medicine,
422 University of Sam Ratulangi, Manado City-North Sulawesi. We would like to acknowledge
423 the KATAMATAKU team and the medical students of Universitas Indonesia.

424

425 **References**

- 426 1. Lastoria JC, de Abreu MAMM. Leprosy: review of the epidemiological, clinical, and
427 etiopathogenic aspects - Part 1. *An Bras Dermatol*. 2014;89(2): 205-218. doi:
428 10.1590/abd1806-4841.20142450.
- 429 2. Rathod SP, Jagati A, Chowdhary P. Disabilities in leprosy: an open, retrospective
430 analyses of institutional records. *An Bras Dermatol*. 2020;95(1): 52-56. doi:
431 10.1016/j.abd.2019.07.001.
- 432 3. Mowla MR, Angkur DM, Hasan Z, Sultana MN, Afrin S, Akhter MS. Leprosy patients
433 with deformities at post-elimination stage: The Bangladesh experience. *Skin Health*
434 *Dis*. 2021;1(1): e5. doi: 10.1002%2Fski2.5.
- 435 4. van Brakel WH, Sihombing B, Djarir H, Beise K, Kusumawardhani L, Yulihane R, et
436 al. Disability in people affected by leprosy: the role of impairment, activity, social
437 participation, stigma and discrimination. *Glob Health Action*. 2012; 5. doi:
438 10.3402/gha.v5i0.18394.
- 439 5. Babik I, Gardner ES. Factors affecting the perception of disability: A developmental
440 perspective. *Front Psychol*. 2021;12. doi: 10.3389/fpsyg.2021.702166.
- 441 6. Control of Neglected Tropical Diseases (WHO). Global leprosy (Hansen disease)
442 update, 2021: moving towards interruption of transmission. WHO; 2022. WER No.:
443 36(97); 429–450.
- 444 7. Widi S. Prevalensi kusta di Indonesia meningkat pada 2022. *DataIndonesia.id*. 2023
445 Jan 31 [cited 2023 Apr 14]. Available from:
446 [https://dataindonesia.id/ragam/detail/prevalensi-kusta-di-indonesia-meningkat-pada-](https://dataindonesia.id/ragam/detail/prevalensi-kusta-di-indonesia-meningkat-pada-2022)
447 [2022](https://dataindonesia.id/ragam/detail/prevalensi-kusta-di-indonesia-meningkat-pada-2022).
- 448 8. Menaldi SL, Harini M, Nelfidayani N, Irawati Y, Setiono S, Wahyuni LK, et al.
449 Functional activity limitation of leprosy cases in an endemic area in Indonesia and

- 450 recommendations for integrated participation program in society. *PLoS Negl Trop Dis.*
451 2022;16(8): e0010646. doi: 10.1371/journal.pntd.0010646.
- 452 9. Gunawan H, Kamilia A, Menaldi SL, Marissa M, Prakoeswa CR, Alinda MD, et al.
453 Characteristics of grade 2 disability in Indonesian children with leprosy: A five-year
454 multicenter retrospective study. *Clin Cosmet Investig Dermatol.* 2021;14: 1149-53. doi:
455 10.2147/CCID.S325858.
- 456 10. Direktorat Pencegahan dan Pengendalian Penyakit Menular. *Laporan kinerja 2022.*
457 *Kementrian Kesehatan Republik Indonesia.* 2023 [cited 2023 Jul 07]. Available from:
458 [https://p2pm.kemkes.go.id/storage/informasi-](https://p2pm.kemkes.go.id/storage/informasi-publik/content/GHwE3BiLbOrvZZPKY1Pm91BIRWqzE4-metaTGFwa2luIFAyUE0gMjAyMi5wZGY=-.pdf)
459 [publik/content/GHwE3BiLbOrvZZPKY1Pm91BIRWqzE4-](https://p2pm.kemkes.go.id/storage/informasi-publik/content/GHwE3BiLbOrvZZPKY1Pm91BIRWqzE4-metaTGFwa2luIFAyUE0gMjAyMi5wZGY=-.pdf)
460 [metaTGFwa2luIFAyUE0gMjAyMi5wZGY=-.pdf](https://p2pm.kemkes.go.id/storage/informasi-publik/content/GHwE3BiLbOrvZZPKY1Pm91BIRWqzE4-metaTGFwa2luIFAyUE0gMjAyMi5wZGY=-.pdf).
- 461 11. Control of Neglected Tropical Diseases, SEARO Regional Office for the South East
462 Asia (RGO), ed. Cooreman EA. Towards zero leprosy: Global leprosy (Hansen's
463 disease) strategy 2021-2030. WHO. 2021 [cited 2023 Jul 07]. Available from:
464 <https://www.who.int/publications/i/item/9789290228509>.
- 465 12. Ogunsumi DO, Lal V, Puchner KP, van Brakel W, Schwienhorst-Stich E-M, Kasang
466 C, et al. Measuring endemicity and burden of leprosy across countries and regions: A
467 systematic review and Delphi survey. *PLoS Negl Trop Dis.* 2021; 15(9): e0009769. doi:
468 10.1371/journal.pntd.0009769.
- 469 13. Badan Meteorologi, Klimatologi, dan Geofisika. *Kelembaban menurut kabupaten/kota*
470 *(persen), 2020-2022* [cited 2023 Jul 5]. Available from:
471 <https://ntt.bps.go.id/indicator/151/959/1/kelembaban-menurut-kabupaten-kota.html>.
- 472 14. Badan Pusat Statistik Kabupaten Lembata ed. *Kabupaten Lembata dalam angka 2022.*
473 Badan Pusat Statistik Kabupaten Lembata; 2022. Catalog No.: 1102001.5308.
474 Publication No.: 53080.2202.

- 475 15. Pakasi TT. *Laporan validasi data kusta tahun 2021*. Kemenkes RI; 2021. Report No.:
- 476 2388.
- 477 16. Siburian CE, Wicaksono P, Perdata IRD. *Kecamatan Likupang Timur dalam angka*.
478 *BPS-Statistics of Minahasa Utara Regency*. 2022 Sept [cited 2023 Jun 10]. Available
479 from:
480 [https://minutkab.bps.go.id/publication/2022/09/26/aed2294e0e44f1a000c218fe/kecam](https://minutkab.bps.go.id/publication/2022/09/26/aed2294e0e44f1a000c218fe/kecamatan-likupang-timur-dalam-angka-2022.html)
481 [atan-likupang-timur-dalam-angka-2022.html](https://minutkab.bps.go.id/publication/2022/09/26/aed2294e0e44f1a000c218fe/kecamatan-likupang-timur-dalam-angka-2022.html).
- 482 17. Siburian CE, Wicaksono P, Perdata IRD. *Kecamatan Likupang Barat dalam angka*.
483 *BPS-Statistics of Minahasa Utara Regency*. 2022 [cited 2023 Jun 10]. Available from:
484 [https://minutkab.bps.go.id/publication/2022/09/26/ed30d43110989d0bdd02deff/keca](https://minutkab.bps.go.id/publication/2022/09/26/ed30d43110989d0bdd02deff/kecamatan-likupang-barat-dalam-angka-2022.html)
485 [matan-likupang-barat-dalam-angka-2022.html](https://minutkab.bps.go.id/publication/2022/09/26/ed30d43110989d0bdd02deff/kecamatan-likupang-barat-dalam-angka-2022.html).
- 486 18. Siburian CE, Wicaksono P, Perdata IRD. *Kecamatan Likupang Selatan dalam angka*.
487 *BPS-Statistics of Minahasa Utara Regency*. 2022 [cited 2023 Jun 10]. Available from:
488 [https://minutkab.bps.go.id/publication/2022/09/26/c6e9b24b7fcd3b642533311a/keca](https://minutkab.bps.go.id/publication/2022/09/26/c6e9b24b7fcd3b642533311a/kecamatan-likupang-selatan-dalam-angka-2022.html)
489 [matan-likupang-selatan-dalam-angka-2022.html](https://minutkab.bps.go.id/publication/2022/09/26/c6e9b24b7fcd3b642533311a/kecamatan-likupang-selatan-dalam-angka-2022.html).
- 490 19. Badan Meteorologi dan Geofisika. *Prakiraan cuaca Kabupaten Minahasa Utara –*
491 *Provinsi Sulawesi Utara*. BMKG. 2023 [cited 2023 Jun 10]. Available from:
492 [https://www.bmkg.go.id/cuaca/prakiraan-](https://www.bmkg.go.id/cuaca/prakiraan-cuaca.bmkg?AreaID=501530&Prov=31&lang=ID)
493 [cuaca.bmkg?AreaID=501530&Prov=31&lang=ID](https://www.bmkg.go.id/cuaca/prakiraan-cuaca.bmkg?AreaID=501530&Prov=31&lang=ID).
- 494 20. Badan Pusat Statistik Kabupaten Minahasa Utara. *Penduduk, laju pertumbuhan*
495 *penduduk, distribusi persentase penduduk, kepadatan penduduk, rasio jenis kelamin*
496 *penduduk menurut kecamatan di Kabupaten Minahasa Utara, 2022*. BPS- Kabupaten
497 Minahasa Utara; © 2023 [cited 2023 Jun 10]. Available from:
498 <https://minutkab.bps.go.id/statictable/2023/03/09/154/penduduk-laju-pertumbuhan->

- 499 penduduk-distribusi-persentase-penduduk-kepadatan-penduduk-rasio-jenis-kelamin-
500 penduduk-menurut-kecamatan-di-kabupaten-minahasa-utara-2022.html_
- 501 21. Kementerian Kesehatan Indonesia. *Laporan validasi data kusta tahun 2021*.
502 Kementerian Kesehatan Republik Indonesia. 2022 [cited 2023 Jun 11]. Available from:
503 [https://p2pm.kemkes.go.id/storage/informasi-publik/content/informasi-](https://p2pm.kemkes.go.id/storage/informasi-publik/content/informasi-publik_18_20220718073519.pdf)
504 [publik_18_20220718073519.pdf](https://p2pm.kemkes.go.id/storage/informasi-publik/content/informasi-publik_18_20220718073519.pdf).
- 505 22. Budiawan T, Ferdiana A, Daendel S, Widayati R, de Hart J, Soesman M, et al. “We are
506 not afraid anymore...” Capturing the most significant change of the Leprosy Friendly
507 Village approach in North Sulawesi, Indonesia. *Leprosy Review*. 2020; 91(2):173-189.
508 doi: 10.47276/lr.91.2.173.
- 509 23. World Health Organization. International classification of functioning, disability and
510 health. 2001 [cited 2023 Apr 14]. Available from:
511 <https://apps.who.int/iris/bitstream/handle/10665/42407/9241545429.pdf?sequence=1>.
- 512 24. De Souza VT, Júnior WM, De Jesus AM, De Oliveira DT, Raptis HA, De Freitas PH,
513 et al. Is the WHO disability grading system for leprosy related to the level of functional
514 activity and social participation? *Leprosy Review*. 2016;87(2):191-200. doi:
515 10.47276/lr.87.2.191.
- 516 25. Sigirtmac IC, Oksuz C. Investigation of reliability, validity, and cutoff value of the
517 Jebsen-Taylor Hand Function Test. *Journal of Hand Therapy*. 2020: 1-7. doi:
518 10.1016/j.jht.2020.01.004.
- 519 26. Bohannon RW. Reference values for the Timed Up and Go Test: a descriptive meta-
520 analysis. *J Geriatr Phys Ther*. 2006;29(2):64-68.
- 521 27. The SALSA Collaborative Study Group. SALSA scale (Screening Activity Limitation
522 and Safety Awareness) users manual version 1.1. Netherlands: The SALSA
523 Collaborative Study Group; 2010.

- 524 28. The Salsa Collaborative Study Group, The Salsa Collaborative Study Group. The
525 development of a short questionnaire for screening of activity limitation and safety
526 awareness (SALSA) in clients affected by leprosy or diabetes. *Disabil Rehabil.*
527 2007;29(9): 689–700. pmid:17453991.
- 528 29. Souza MA, Coster WJ, Mancini MC, Dutra FC, Kramer J, Sampaio RF. Rasch Analysis
529 of the Participation Scale (P-scale): Usefulness of the P-scale to a rehabilitation services
530 network. *BMC Public Health.* 2017;17(934). doi: 10.1186/s12889-017-4945-9.
- 531 30. Pescarini JM, Strina A, Nery JS, Skalinski LM, Andrade KVFD, Penna MLF, et al.
532 Socioeconomic risk markers of leprosy in high-burden countries: A systematic review
533 and meta-analysis. *PLoS Negl Trop Dis.* 2018;12(7): e0006622.
534 doi:10.1371/journal.pntd.0006622.
- 535 31. Wardhani RK, Wahyuni LK, Harini M, Lakmudin A. Hand disability grading in
536 leprosy: Associated Risk Factors. *Indian J Lepr.* 2020;92:183-189.
- 537 32. de Paula HL, de Souza CDF, Silva SR. risk factors for physical disability in patients
538 with leprosy: A systematic review and meta-analysis. *JAMA Dermatol.*
539 2019;155(10):1120-1128. doi:10.1001/jamadermatol.2019.1768.
- 540 33. Cisneros J, Ferreira JA, de Faria Grossi MA, de Filippis T, de Oliveira AL, Lyon S, et
541 al. Associations between occupation, leprosy disability and other sociodemographic
542 factors in an endemic area of Brazil. *PLOS Global Public Health.* 2022; 2(9):
543 e0000276. doi: 10.1371/journal.pgph.0000276.
- 544 34. Chen X, Liu H, Shui T, Zha S. Risk factors for physical disability in patients with
545 leprosy disease in Yunnan, China: Evidence from a retrospective observational study.
546 *PLoS Negl Trop Dis.* 2021;15(11): e0009923. Doi: 10.1371/journal.pntd.0009923.
- 547 35. Srinivas G, Muthuvel T, Lal V, Vaikundanathan K, Schwienhorst-Stich EM, Kasang
548 C. Risk of disability among adult leprosy cases and determinants of delay in diagnosis

- 549 in five states of India: A case-control study. *PLoS Negl Trop Dis*. 2019;13(6):e0007495.
550 doi: 10.1371/journal.pntd.0007495.
- 551 36. Veras GCB, Junior JFL, Candido EL, Maia ER. Risk factors for physical disability due
552 to leprosy: a case-control study. *Cad. Saude Colet*. 2021;29(3). doi:10.1590/1414-
553 462X202129030182.
- 554 37. Lubis RD, Darmi M, Prakoeswa CR, Agusni RI, Kusumaputra BH, Alinda MD, et al.
555 Leprosy epidemiology according to leprosy type in 13 teaching hospitals in Indonesia
556 between 2018 and 2020. *Open Access Macedonian Journal of Medical Sciences*.
557 2022;10(E):1812-17. Doi: 10.3889/oamjms.2022.10816.
- 558 38. Arif T, Amin SS, Adil M, Dorjay K, Raj D. Leprosy in the post-elimination era: a
559 clinico-epidemiological study from a northern Indian tertiary care hospital. *Acta*
560 *Dermatovenerologica*. 2019;28:7-10. Doi: 10.15570/actaapa.2019.2.
- 561 39. Nery JS, Ramond A, Pescarini JM, Alves A, Strina A, Ichihara MY, et al.
562 Socioeconomic determinants of leprosy new case detection in the 100 million Brazilian
563 Cohort: a population-based linkage study. *The Lancet Global Health*. 2019;7(9):e1226-
564 e1236. Doi: 10.1016/S2214-109X(19)30260-8.
- 565 40. Dergan MR, Gonçalves NV, Falcão LF, Carvalho DD, Anjos TA, Palácios VR. Socio-
566 demographic and epidemiological characterisation of leprosy in the population of Pará,
567 Amazon, from 2016 to 2020. *Archives of Current Research International*. 2023;23(5):
568 34-39. doi: 10.9734/ACRI/2023/v23i5573.
- 569 41. Costa RD, Mendonça VA, Penido RA, Lyon S, Costa AM, Costa MD, et al. Study of
570 the profile of the neutrophin BDNF in new leprosy cases before, during and after
571 multidrug therapy. *Arq Neuropsiquiatr*. 2011;69:100-104.

- 572 42. Karotia D, Kishore J, Kumar A. Epidemiological determinants of leprosy in a high
573 endemic district of India: A community based case control study. *Indian J Lepr.*
574 2022;94: 69-80.
- 575 43. Albuquerque RG, Buratto GG, Hirotsu C, Maeda SM, Floriano MC, Andersen ML, et
576 al. Comparison of quality of life evaluated by SF-36 and DLQI in multibacillary and
577 paucibacillary leprosy patients from Sao Paulo, Brazil. *International Journal of*
578 *Dermatology.* 2019;58(12):1415-22. Doi: 10.1111/ijd.14489.
- 579 44. van Brakel WH, Nicholls PG, Wilder-Smith EP, Das L, Barkataki P, Lockwood DNJ,
580 et al. Diagnosis of neuropathy in leprosy—comparing diagnostic tests in a large
581 prospective study (the INFIR Cohort Study). *PLOS Neglected Tropical Disease.*
582 2008;2(4):e212. Doi: 10.1371/journal.pntd.0000212
- 583 45. Lustosa AA, Nogueira LT, Pedrosa JI, Teles JB, Campelo V. The impact of leprosy on
584 health-related quality of life. *Rev. Soc. Bras. Med. Trop.* 2011;44(5). Doi:
585 10.1590/S0037-86822011000500019.
- 586 46. Kumar A, Girdhar A, Girdhar BK. Nerve thickening in leprosy patients and risk of
587 paralytic deformities: a field based study in Agra, India. *Lepr Rev.* 2004;75: 135-142.
- 588 47. Garbino JA, Heise CO, Marques Jr. W. Assessing nerves in leprosy. *Clinics in*
589 *Dermatology.* 2016;34: 51-58. Doi: 10.1016/j.clindermatol.2015.10.018.
- 590 48. Silva SR, de Souza SN, Santana MF, Domingos AM, Martins ND, de Paula HL, et al.
591 Assessment of neuropathic pain, functional activity limitation and quality of life of
592 people affected by leprosy in an endemic area in Northeast Brazil: a cross-sectional
593 study. *Transactions of The Royal Society of Tropical Medicine and Hygiene.*
594 2023;117(6); 451-459. Doi: 10.1093/trstmh/trac133.
- 595 49. Shivanna PH, Shruthi RT. Profile of functional limitation using Screening of Activity
596 Limitation and Safety Awareness Scale in leprosy population of Mysore district.

- 597 *Physiotherapy-The Journal of Indian Association of Physiotherapists*. 2022;16(2): 81-
598 83. Doi: 10.4103/pjiap.pjiap_17_22.
- 599 50. Nascimento DD, Ramos Jr AN, Araújo OD, Macêdo SF, Silva GV, Lopes WM, et al.
600 Activity limitation and social participation restriction of people with leprosy: a cross-
601 sectional analysis of magnitude and associated factors in a hyperendemic municipality
602 in the state of Piauí, Brazil, 2001-2014. *Epidemiologia e Serviços de Saúde*. 2020;29(3).
603 Doi: 10.5123/S1679-49742020000300012.
- 604 51. Abdela SG, van Henten S, Abegaz SH, Bayuh FB, Zewdu FT, Berhe FT, et al. Activity
605 limitation and social participation restriction among leprosy patients in Boru Meda
606 Hospital, Amhara Region, Ethiopia. *PLoS Neglected Tropical Disease*. 2020;14(9).
607 Doi: 10.1371/journal.pntd.0008702.
- 608 52. Dahiru T, Iliyasu Z, Aliyu MH. Social participation restriction among persons with
609 leprosy discharged from a multidrug therapy clinic in northern Nigeria. *Transactions*
610 *of The Royal Society of Tropical Medicine and Hygiene*. 2022;116(8): 694-703. Doi:
611 10.1093/trstmh/trac056.
- 612 53. Nogueira PS, Barbosa RG, Almeida PC, Florêncio CM, Marques MB, Teles LM.
613 Applicability of the instrument “Screening of Activity Limitation and Safety
614 Awareness” in elderly with leprosy. *Esc Anna Nery*. 2020;24(2): e20190251.
- 615 54. Arif T, Solikhah FK. Disability in Leprosy: Daily activities and social participation in
616 Indonesia. *Ethno Med*. 2021;15(3-4): 168-174. Doi: 10.31901/24566772.2021/15.3-
617 4.640.
- 618 55. Gaino JZ, Bértolo MB, Nunes CS, Sachetto Z, Landim SF, de Paiva Magalhães E. The
619 Structural Index Score and its relation to foot function, disability and physical
620 performance tests in rheumatoid arthritis (RA) — A cross-sectional study. *The Foot*.
621 2022;51. Doi: 10.1016/j.foot.2021.101876.

- 622 56. Videler A, Beelen A, van Schaik I, de Visser M, Nollet F. Limited upper limb
623 functioning has impact on restrictions in participation and autonomy of patients with
624 hereditary motor and sensory neuropathy 1a. *Journal of Rehabilitation Medicine*.
625 2009;41(9): 746–750. doi:10.2340/16501977-0419.
- 626 57. Akbarfahimi N, Mazidi MH, Hosseini SA, Vahedi M, Amirzargar N. The relationship
627 between upper limb function and participation and independence in daily activities of
628 life in people with stroke. *Journal of Rehabilitation*. 2021;22(1):86-101. doi:
629 10.32598/RJ.22.1.3238.1.
- 630 58. Warren M, Ganley KJ, Pohl PS. The association between social participation and lower
631 extremity muscle strength, balance, and gait speed in US adults. *Prev Med Rep*. 2016
632 Jun 7;4:142-7. doi: 10.1016/j.pmedr.2016.06.005.
- 633 59. Budianto PF, Susilo E, Indrayani E. *Implementasi pengembangan pariwisata di pulau-*
634 *pulau kecil terhadap masyarakat pesisir Desa Lihunu, Kecamatan Likupang,*
635 *Kabupaten Minahasa Utara, Provinsi Sulawesi Utara. Jurnal ECSOFiM*. 2013;1(1).
- 636 60. Mamahit OO, Andaki JA, Dien CR, Jusuf N, Tambani GO, Lantu S. *Persepsi anak*
637 *terhadap mata pencaharian nelayan di Desa Bahoi Kecamatan Likupang Barat*
638 *Kabupaten Minahasa Utara. Akulturasi*. 2022;10(1).
- 639 61. Badan Pusat Statistik Kabupaten Lembata ed. *Kabupaten Lembata dalam Angka 2018*.
640 Badan Pusat Statistik Kabupaten Lembata. 2018.
- 641 62. Liando VY, Aling DRR, Wasak MP. *Strategi adaptasi sosial dan ekonomi nelayan alat*
642 *tangkap Sero di Desa Jayakarsa Kecamatan Likupang Barat Kabupaten Minahasa*
643 *Utara. AKULTURASI: Jurnal Ilmiah Agrobisnis Perikanan*. 2020;8(1):62-66
- 644 63. Bupati Lembata Nusa Tenggara Timur. Penetapan Kawasan Pertanian Berbasis
645 Komoditas Unggulan Daerah di Kabupaten Lembata. *Peraturan Bupati Lembata*
646 *Nomor 8 Tahun 2021*. 2021 [cited 13 July 2023]. Available from:

- 647 <https://peraturan.bpk.go.id/Home/Details/218333/perbup-kab-lembata-no-8-tahun->
648 2021.
- 649 64. Tumewu R, Baruwadi MH, Halid A. *Alokasi waktu kerja dan waktu luang petani*
650 *jagung di Kecamatan Tilamuta Kabupaten Boalemo. Jurnal Ilmiah Agribisnis.*
651 2021;6(1):71-7.
- 652 65. Siswanti, Wijayanti Y. *Faktor risiko lingkungan kejadian kusta. Higeia.* 2018;2(3).
653 Doi: 10.15294/higeia/v2i3/23619.
- 654 66. Ratnawati R. *Faktor-faktor yang berhubungan dengan risiko kejadian penyakit kusta*
655 *(Morbus Hansen). 2-TRIK: Tunas-tunas Riset Kesehatan.* 2016;6(3): 103-109.
- 656 67. Edi GFA, Azizah R. Analysis of environmental risk factors for leprosy in Indonesian
657 Society: A Meta-Analysis. *Poltekita: Jurnal Ilmu Kesehatan.* 2023;17(1): 105-113.
- 658 68. Pollo JY, Tondobala L, Sela RLE. *Ketersediaan infrastruktur permukiman kumuh*
659 *pesisir studi kasus: Desa Likupang Dua dan Desa Likupang Kampung Ambong,*
660 *Kecamatan Likupang Timur, Kabupaten Minahasa Utara, Provinsi Sulawesi Utara.*
661 *Spasial.* 2017;4(1). Doi: 10.35793/sp.v4i1.14870.
- 662 69. Pebakirang A, Tanudjaja L, Sumarauw JSF. *Perencanaan sistem penyediaan air bersih*
663 *di Desa Munte Kecamatan Likupang Barat Kabupaten Minahasa Utara. Jurnal Sipil*
664 *Statik.* 2015;3(8): 531-542.
- 665 70. Fadlila A, Nurzila U, Adriyani R. The relationship between physical conditions of
666 house and sanitation with leprosy case in patients at Sumberglagah Mojokerto Hospital.
667 *The Indonesian Journal of Public Health.* 2022;17(3): 395-405. Doi:
668 10.20473/ijph.v11i3.2022.395-405.
- 669 71. Kasiadi Y, Kawatu PAT, Langi FFLG. *Faktor-Faktor yang berhubungan dengan*
670 *gangguan kulit pada nelayan di Desa Kalinaun Kecamatan Likupang Timur Kabupaten*
671 *Minahasa Utara. Jurnal KESMAS.* 2018;7(5).

- 672 72. Khanna D, de Wildt G, de Souza Duarte Filho LA, Bajaj M, Lai JF, Gardiner E, et al.
673 Improving treatment outcomes for leprosy in Pernambuco, Brazil: a qualitative study
674 exploring the experiences and perceptions of retreatment patients and their carers. *BMC*
675 *Infectious Diseases*. 2021;282. Doi: 10.1186/s12879-021-05980-5.
- 676 73. Wicaksono A, Faisya HAF, Budi IS. *Hubungan lingkungan fisik rumah dan*
677 *karakteristik responden dengan penyakit kusta klinis di Kota Bandar Lampung tahun*
678 *2015. Jurnal Ilmu Kesehatan Masyarakat*. 2015;6(3).

679

680

681



FIG 1A

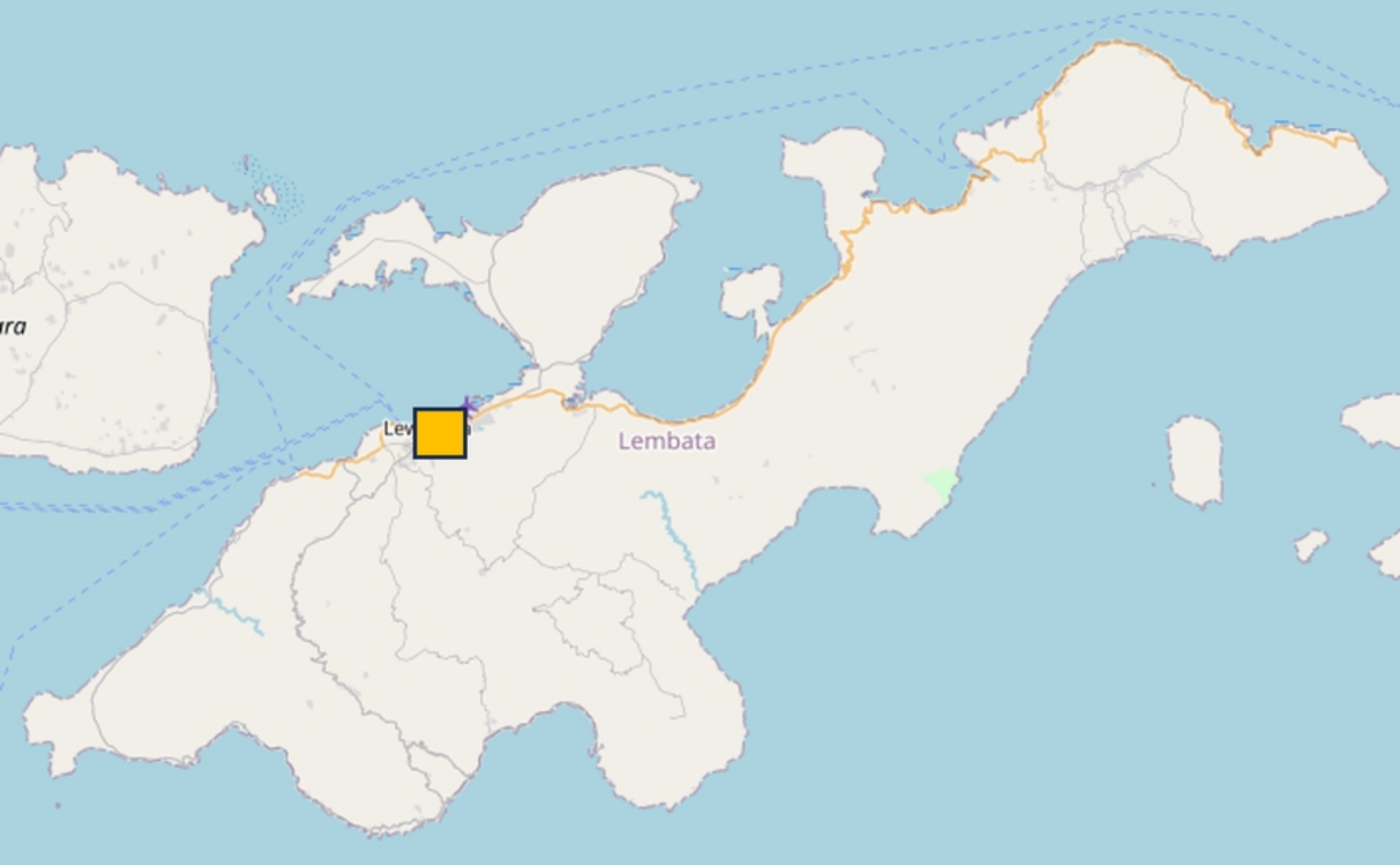


FIG 1B

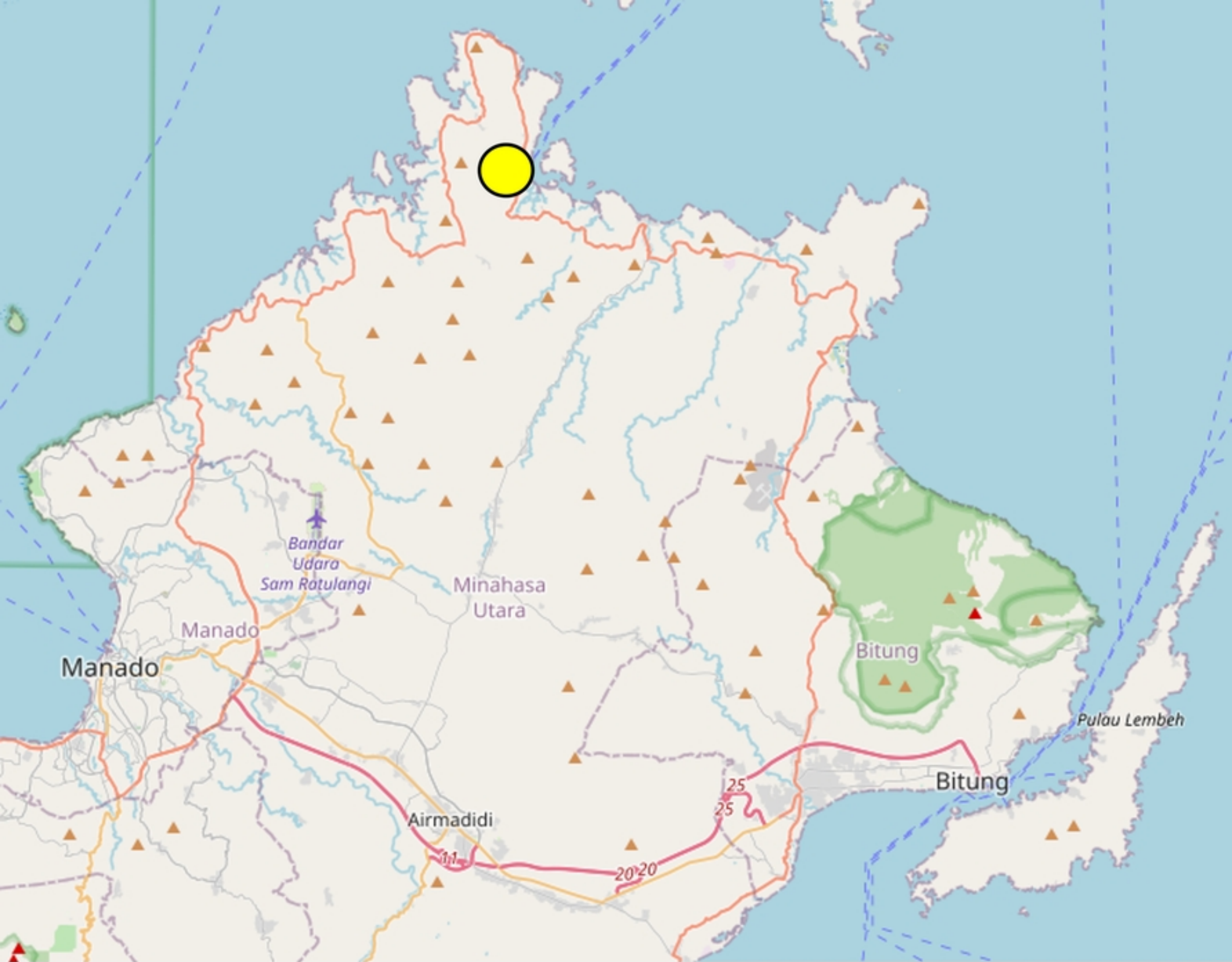


FIG 1C

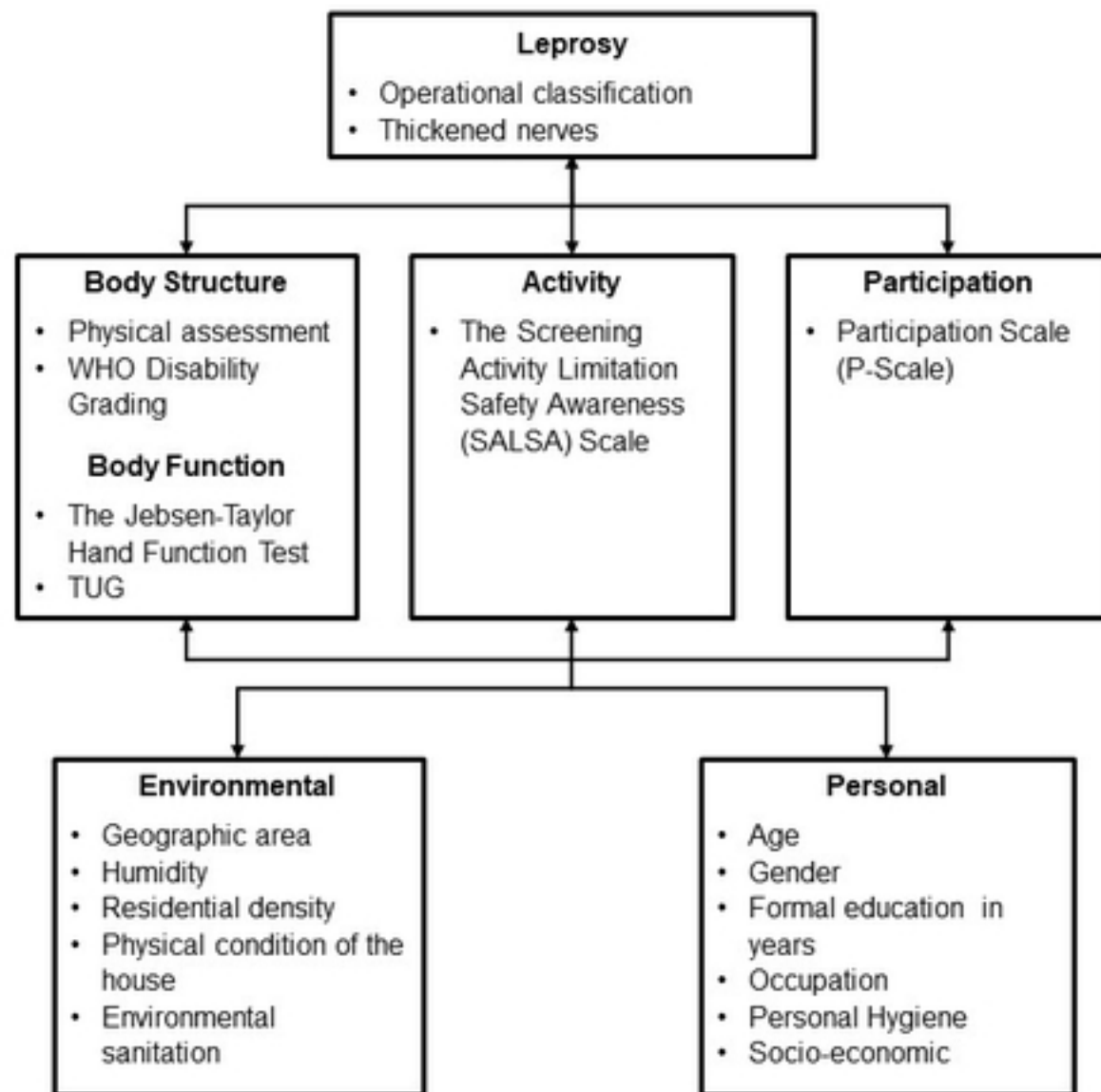


FIG 2

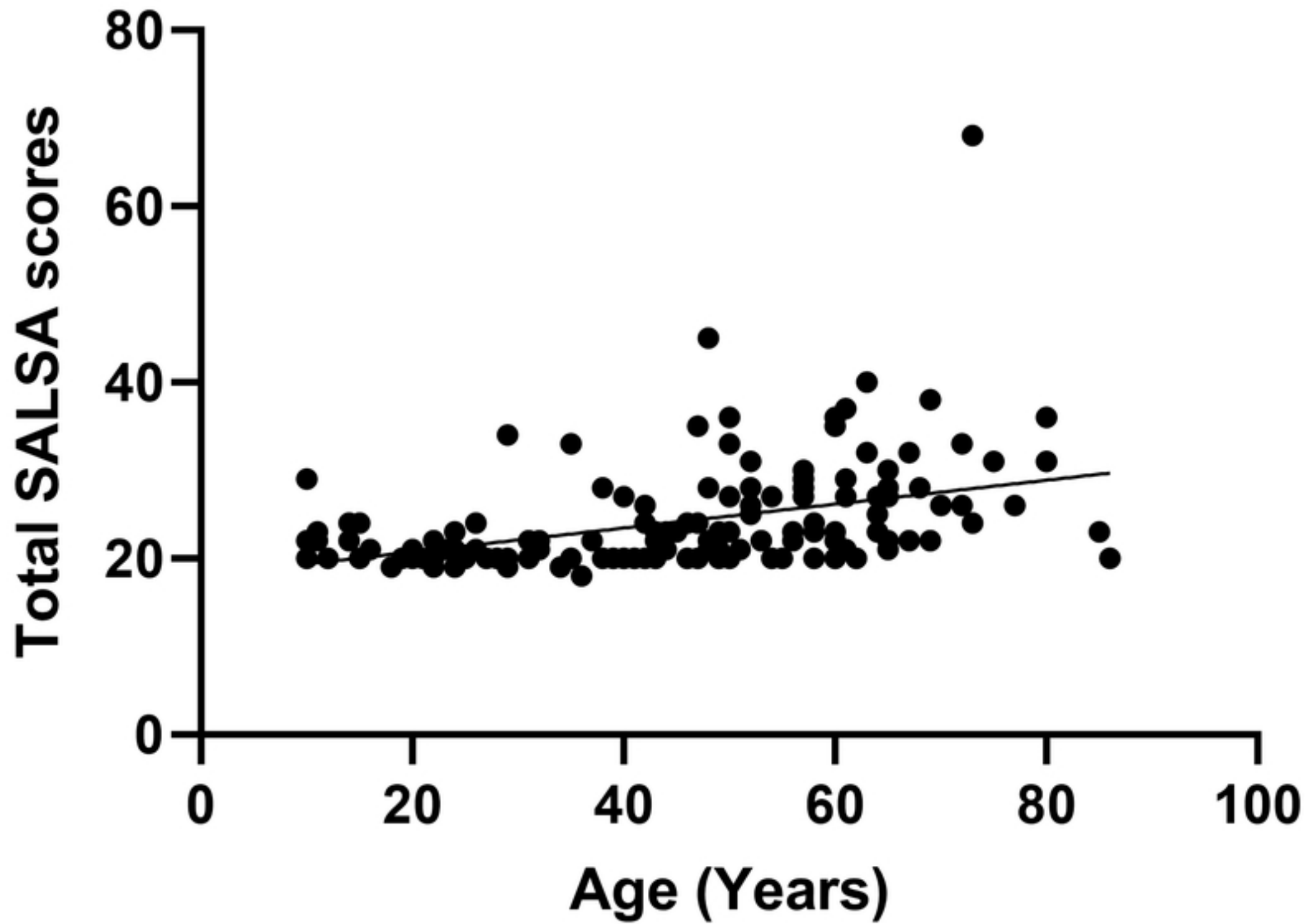


FIG 3A

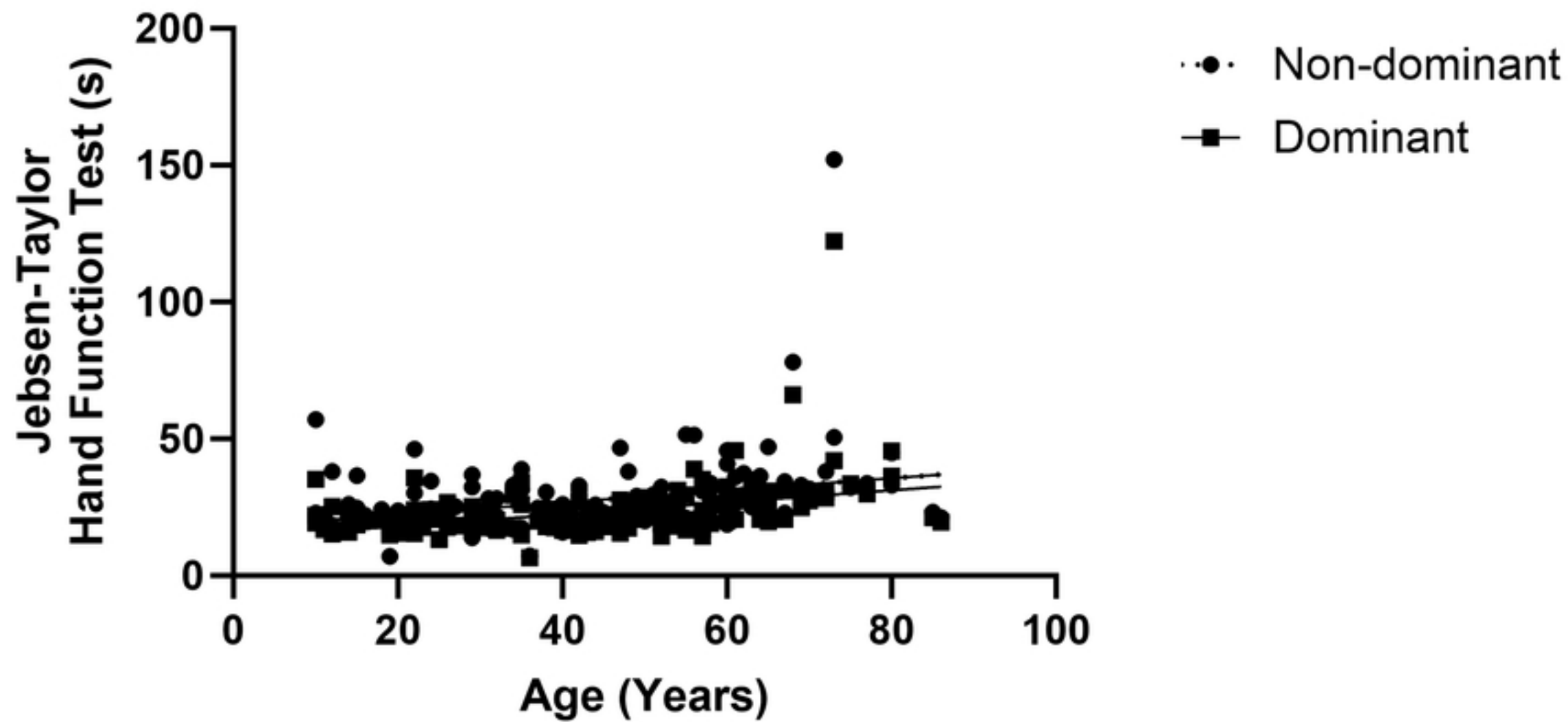


FIG 3B

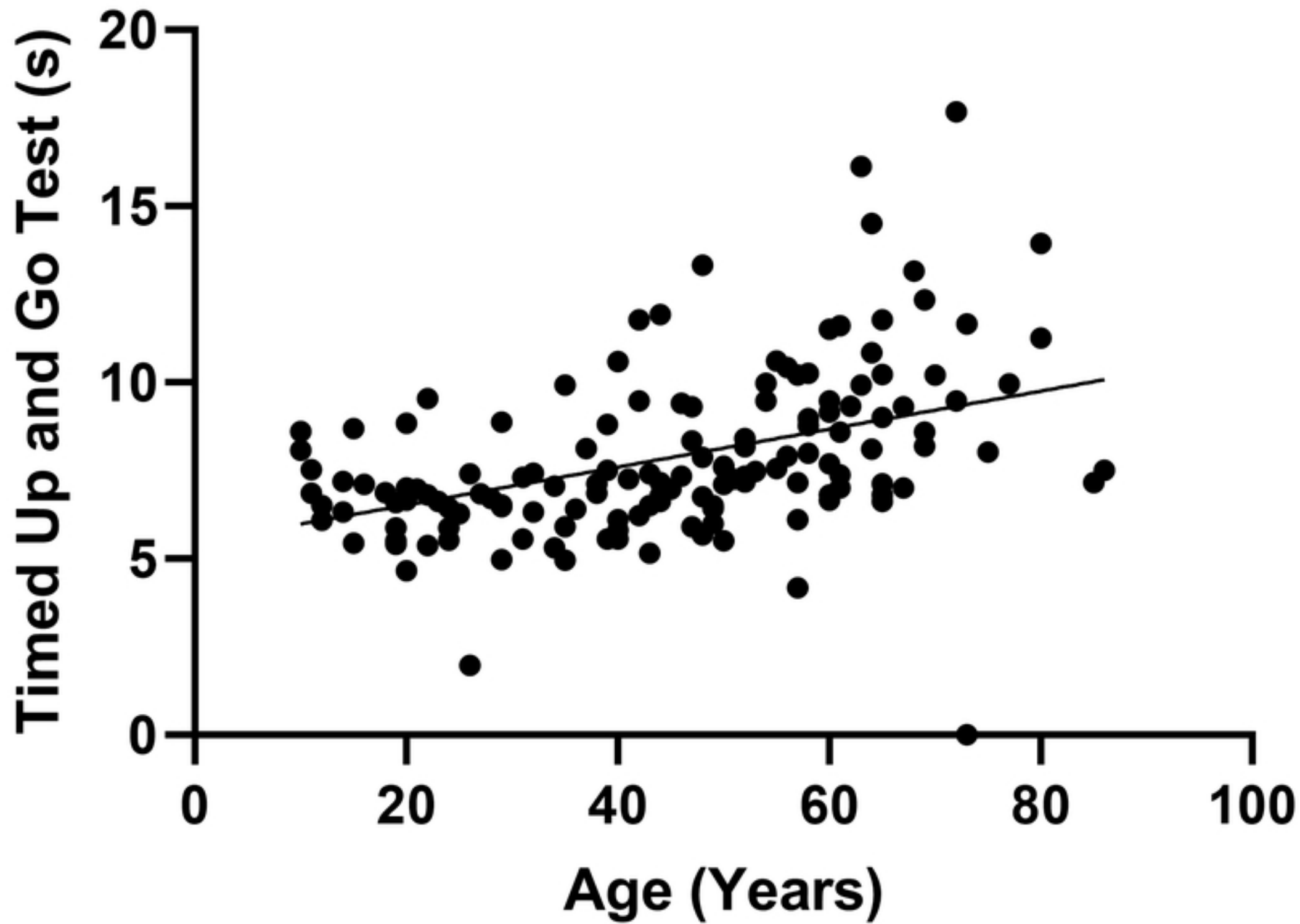


FIG 3C

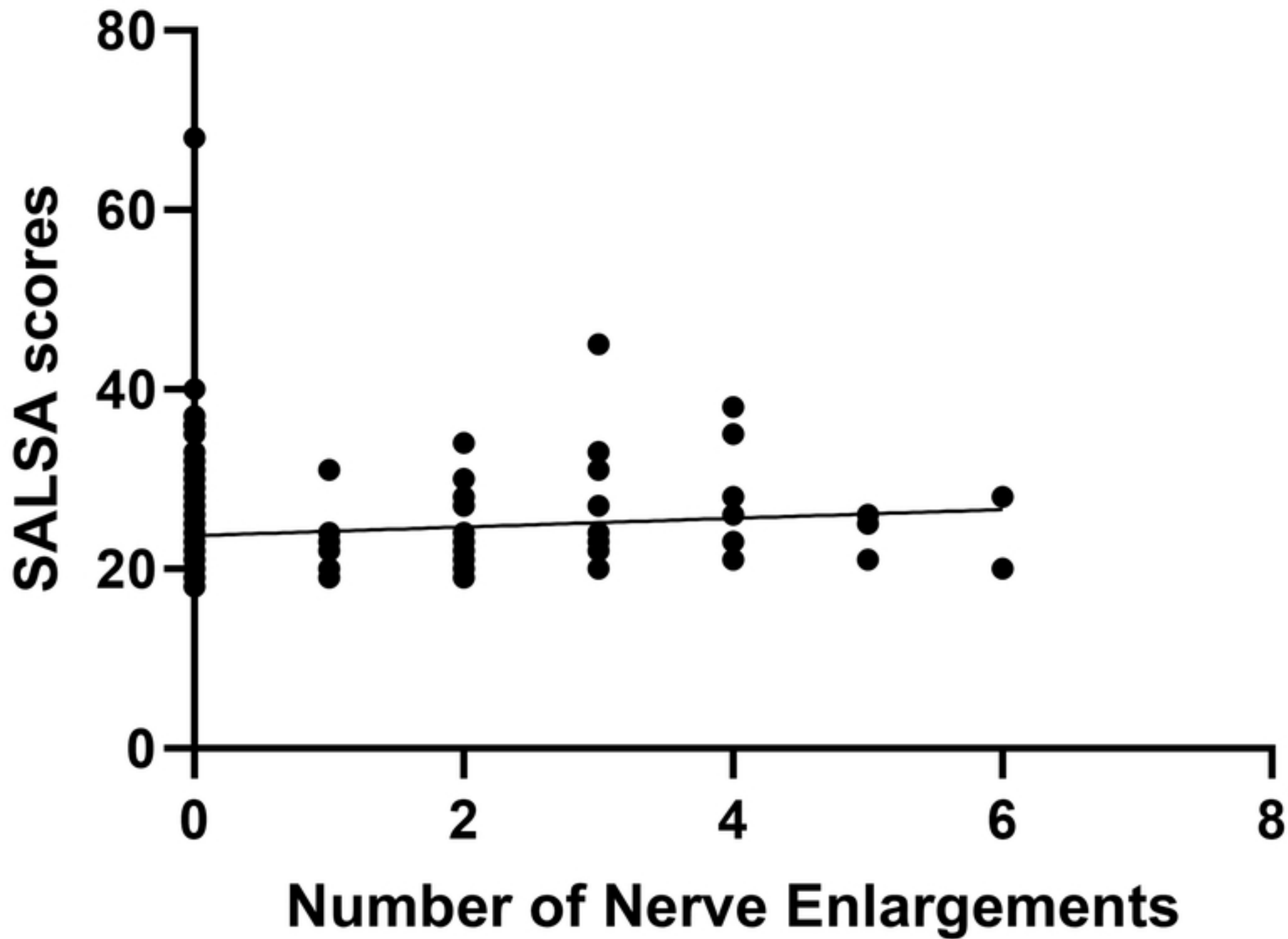


FIG 4A

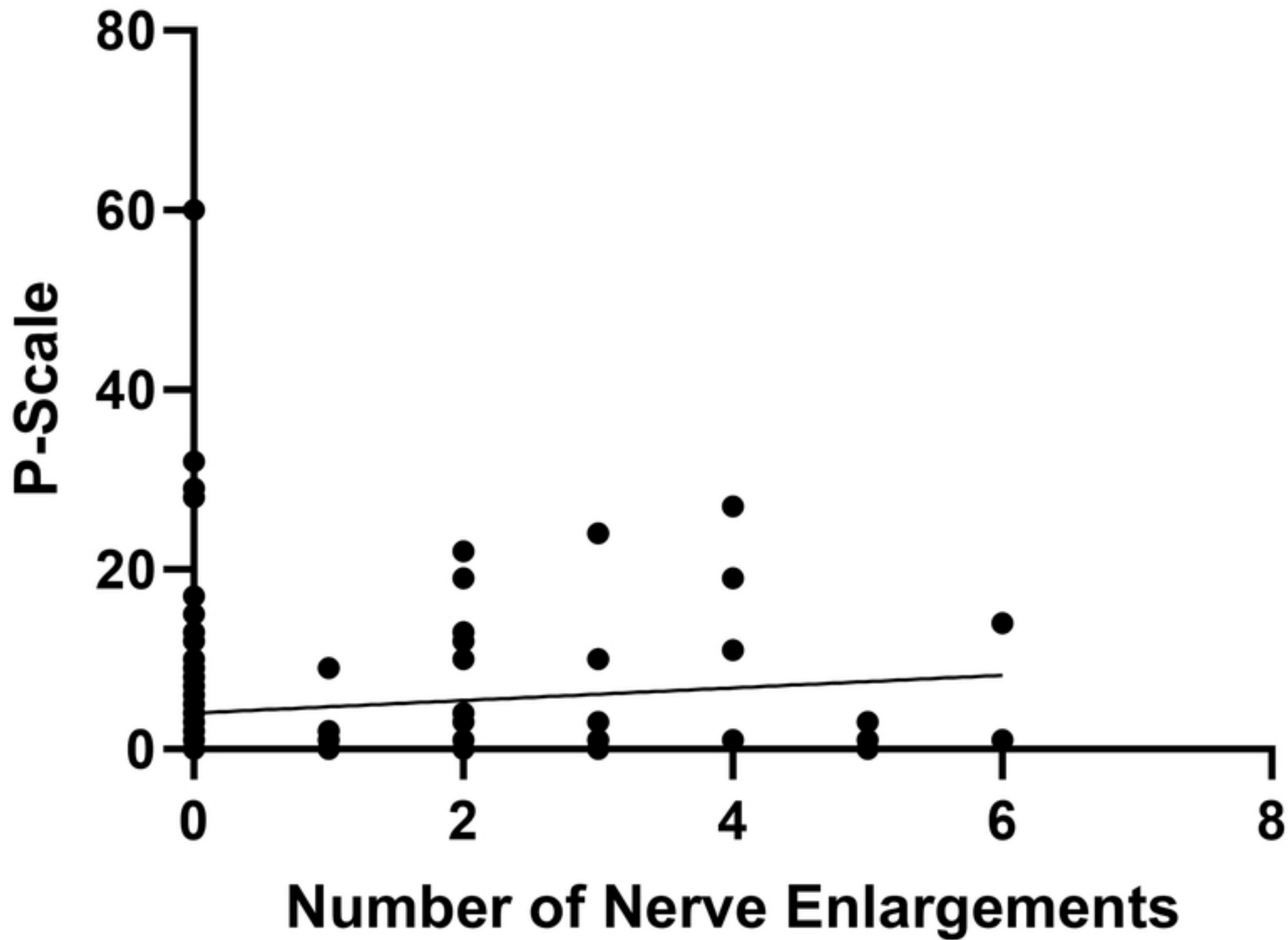


FIG 4B

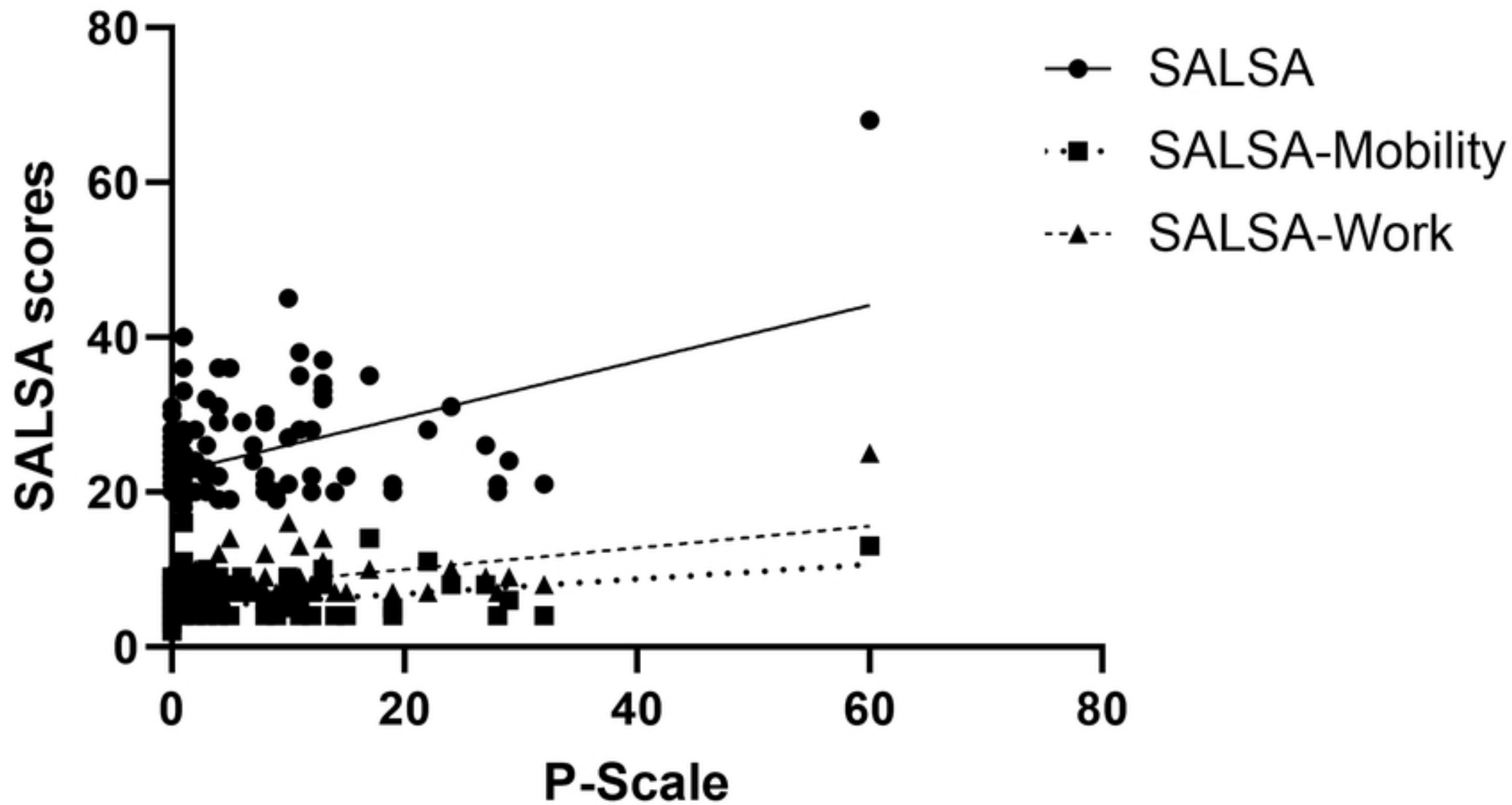


FIG 4C

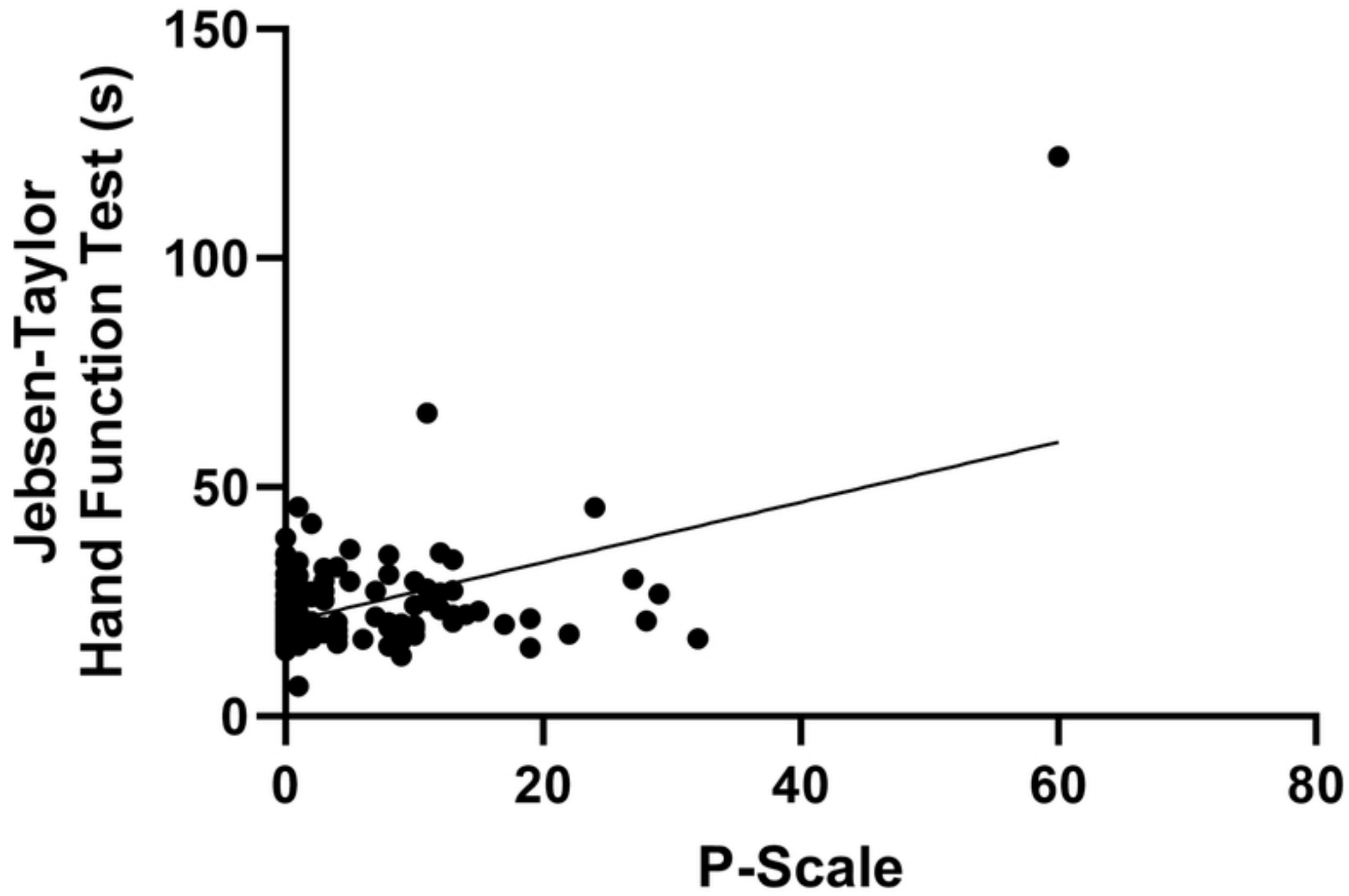


FIG 4D

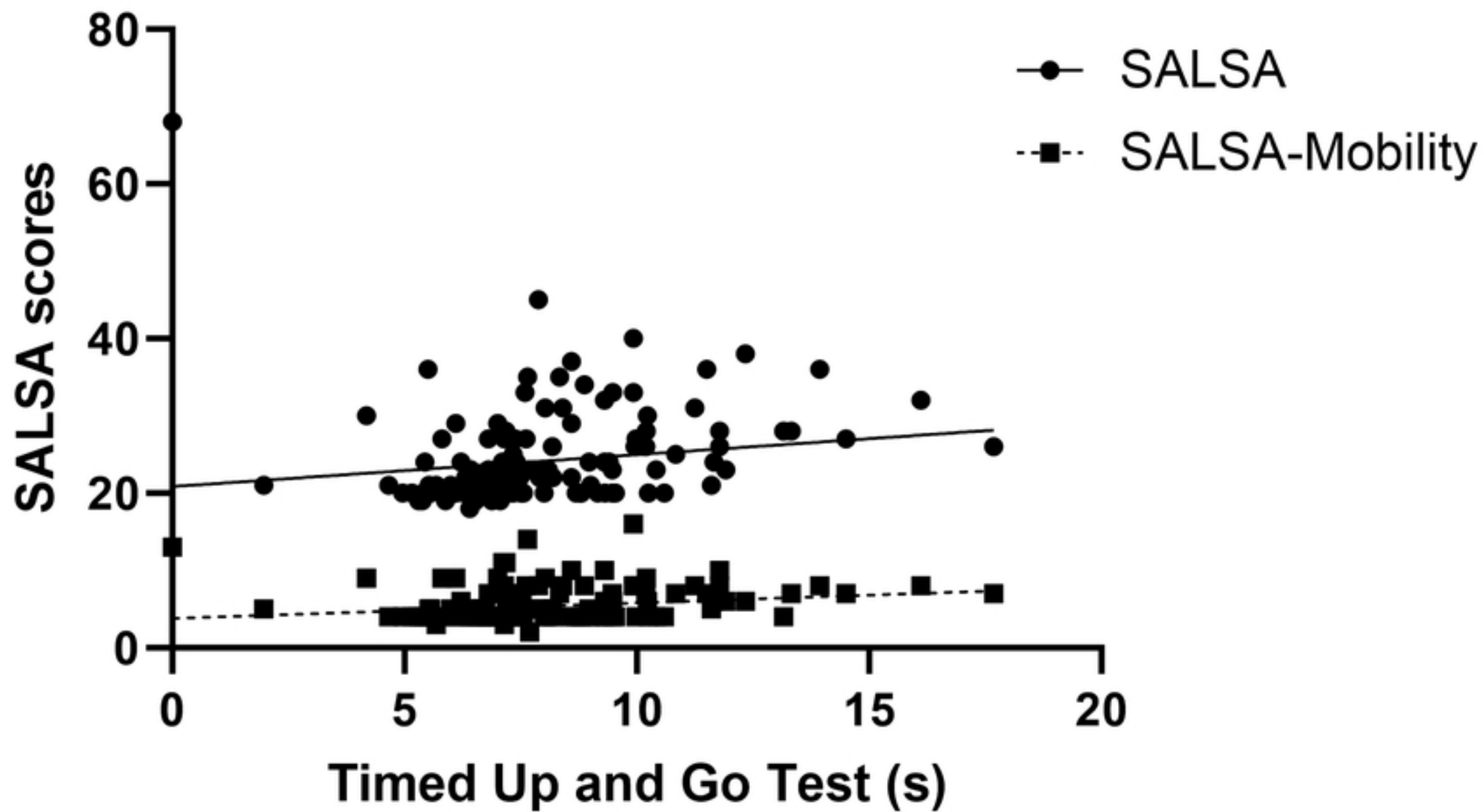


FIG 4E

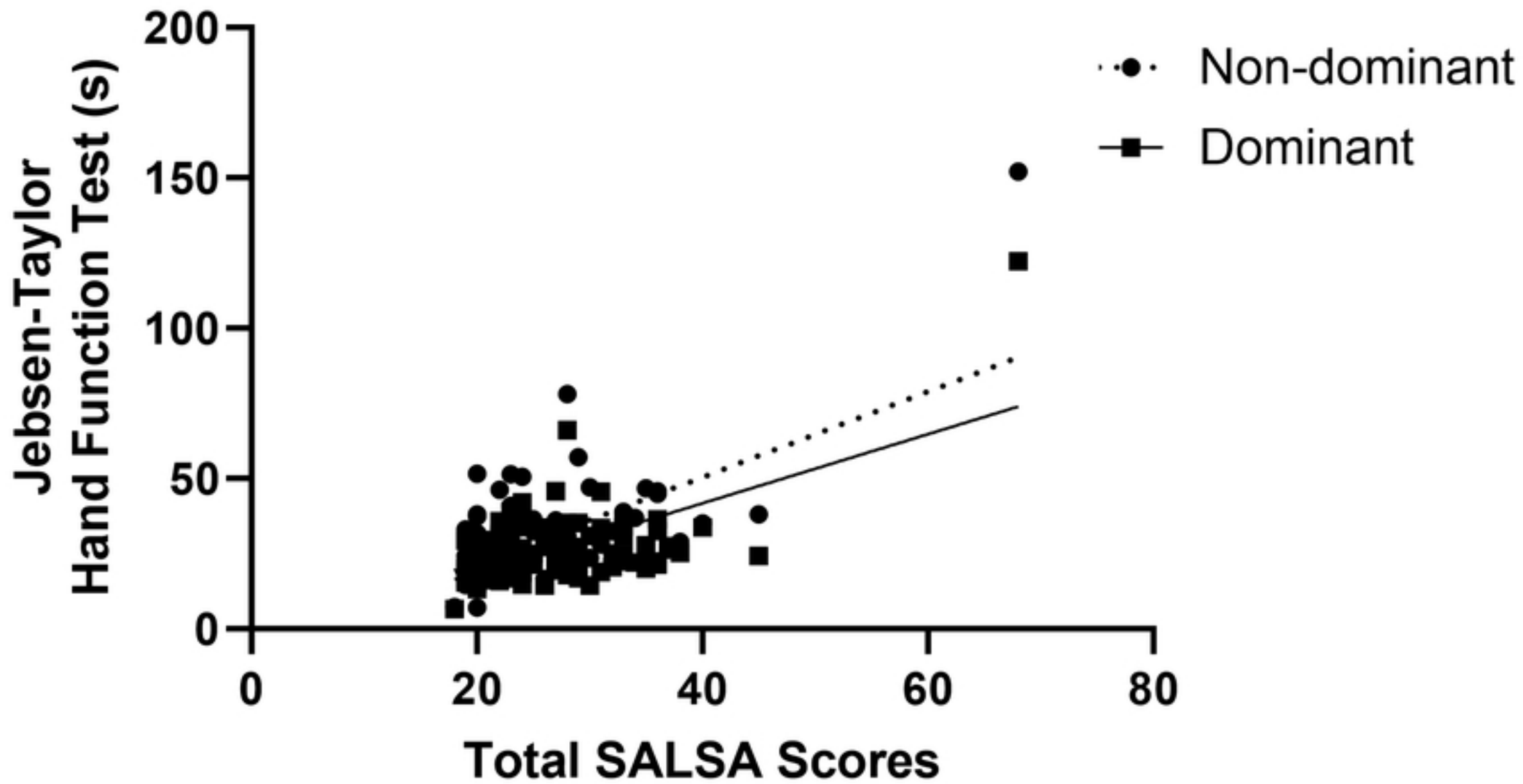


FIG 4F

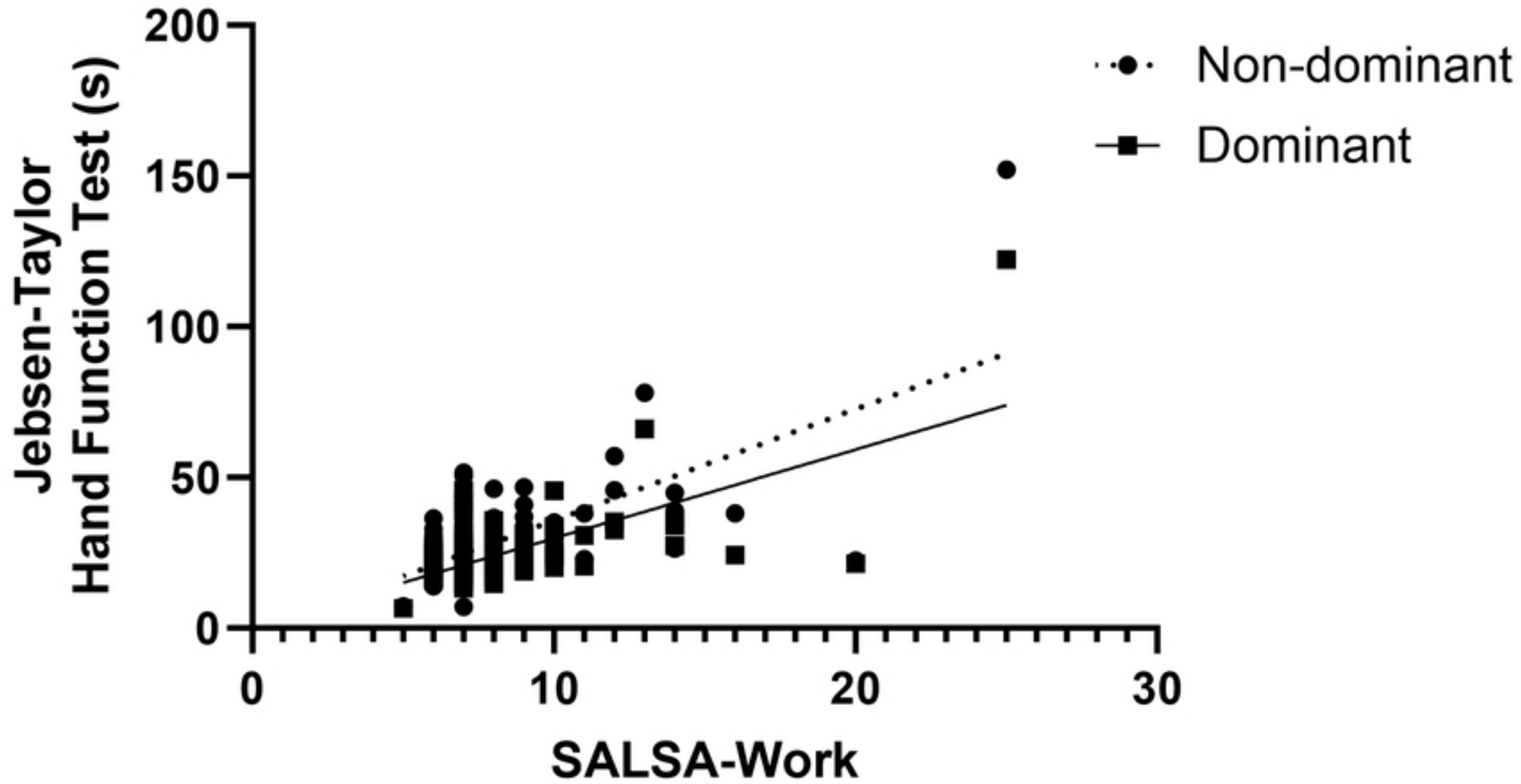


FIG 4G

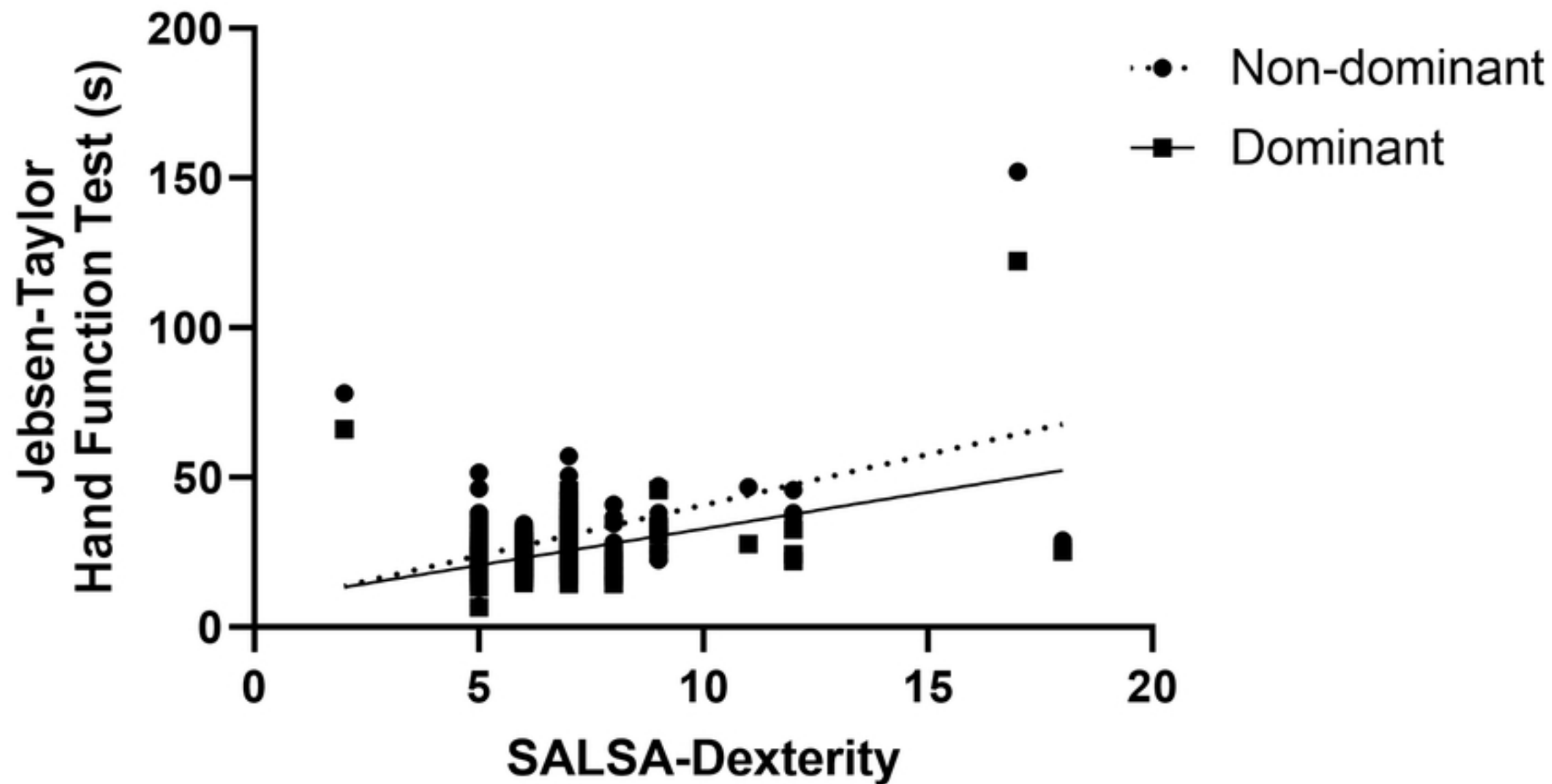


FIG 4H