

1 **Title**

2 Can a specific biobehavioral based therapeutic education program lead to changes in pain  
3 perception and brain plasticity biomarkers in chronic pain patients? A study protocol for a  
4 randomized clinical trial.

5

6 **Trial registration:** NCT05623579. Registered on ClinicalTrials.gov. Ethical committee  
7 registration number: 1901202202822.

8

9 **Abstract**

10 **Background:** Chronic pain conditions are complex multifactorial disorders with physical,  
11 psychological, and environmental factors contributing to their onset and persistence. Among  
12 these conditions, the role of brain-derived neurotrophic factor (BDNF) and the impact of a  
13 specific therapeutic education (TE) on pain management have emerged as important areas of  
14 research. **Objective:** The aim of this study is to investigate the effects of a specific type of  
15 therapeutic education on pain levels and BDNF concentrations. **Methods:** In this single-blind,  
16 randomized clinical trial, patients will be randomly assigned to one of two groups: one group  
17 will receive education with TE and the other group will receive education without TE.  
18 Assessments will be made at baseline, mid-treatment, post-intervention, and at one and eight  
19 months. **Outcomes:** The expected results of this study will shed light on the role of TE in pain  
20 management and provide insight into its effects on BDNF levels. The intervention will also  
21 provide an opportunity to biochemically measure the plastic changes, thereby improving our  
22 understanding of its effects on brain plasticity. **Conclusion:** This study aims to determine the  
23 applicability of therapeutic education as an effective non-pharmacological intervention for the  
24 management of chronic pain. The rigorous scientific methods used ensure that the proposed  
25 interventions will be clinically applicable across different health care systems.

26

27 **Key Words:** pain neuroscience education, brain derived neurotrophic factor, persistent pain,  
28 physical therapy.

## 29 **Strengths and limitations of this study**

- 30 • The study will use a specifically pain oriented methodological approach that intends to  
31 go beyond purely informational pain neuroscience education, aiming for a more useful  
32 understanding of pain from patients.
- 33 • Incorporating the salutogenic model in therapeutic education will bring a health-  
34 focused perspective to the research, potentially enriching its interpretive framework  
35 helping future interventions.
- 36 • The proposed use of clear and replicable guidelines such as GREET or TIDieR may  
37 help in the practical implementation challenge for clinicians, potentially influencing  
38 also the study's reproducibility.
- 39 • While the study plans to assess psychosocial factors, pain intensity levels, and brain  
40 plastic changes due to therapeutic education, this comprehensive approach might pose  
41 notable methodological challenges.
- 42 • Given the emerging field of brain plasticity related to therapeutic education in chronic  
43 pain patients, the limited existing research may influence the interpretive depth of the  
44 study's findings.

45

## 46 **Protocol version**

47 In this first version of the protocol dated July 2023, we are recruiting the sample, which is  
48 planned to be completed in approximately two months (September 2023) in order to start the  
49 trial in October 2023.

50

## 51 **Funding**

52 The study will be supported by funding received from CSEU La Salle N. 2022A36005.

53

## 54 **Roles and responsibilities**

55 *Contributorship:* Di Bonaventura Silvia<sup>1,2,3</sup>, Fernández Carnero Josué<sup>2,3,4,5,6,7\*</sup>, Ferrer Peña  
56 Raúl<sup>3,5,6,8</sup>

57

58 <sup>1</sup>Escuela Internacional de Doctorado, Department of Physical Therapy, Occupational Therapy,  
59 Rehabilitation and Physical Medicine, Rey Juan Carlos University, 28933 Alcorcón, Spain.

60 <sup>2</sup>Department of Physical Therapy, Occupational Therapy, Rehabilitation and Physical  
61 Medicine, Rey Juan Carlos University, 28922 Alcorcón, Spain.

62 <sup>3</sup>Cognitive Neuroscience, Pain and Rehabilitation Research Group (NECODOR), Faculty of  
63 Health Sciences, Rey Juan Carlos University, Madrid, Spain.

64 <sup>4</sup>Grupo Multidisciplinar de Investigación y Tratamiento del Dolor, Grupo de Excelencia  
65 Investigadora URJC-Banco de Santander, 28922 Madrid, Spain.

66 <sup>5</sup>La Paz Hospital Institute for Health Research, IdiPAZ, 28029 Madrid, Spain.

67 <sup>6</sup>Motion in Brains Research Group. Centro Superior de Estudios Universitarios La Salle,  
68 Universidad Autónoma de Madrid, 28023 Madrid, Spain.

69 <sup>7</sup>Grupo de Investigación de Dolor Musculoesqueletico y Control Motor, Universidad Europea  
70 de Madrid, 28670 Villaviciosa de Odón, Spain.

71 <sup>8</sup>Departamento de Fisioterapia, Facultad de Ciencias de la Salud, CSEU La Salle, Universidad  
72 Autónoma de Madrid, 28023 Madrid, Spain.

73 \*Corresponding author

74

75 *Sponsor contact information:* Raúl Ferrer Peña [raul.ferrer@lasallecampus.es](mailto:raul.ferrer@lasallecampus.es)

76 *Sponsor and funder:* CSEU La Salle (UAM), Madrid.

77 *Committees:* Rey Juan Carlos University Ethical Committee.

78

## 79 **Background**

80 Chronic pain is a prevalent health problem that affects one in five people worldwide  
81 [1]. It is a debilitating condition that can have a significant impact on a person's quality of life,  
82 affecting their ability to perform daily activities and decreasing their emotional and physical  
83 well-being [2], as well as the resources needed to cope [3]. It is crucial to keep in mind one  
84 serious drawback that accompanies chronic pain, the frequent dependence on drugs for pain  
85 relief. In particular, the use of opioids has become one of the main medications for treating  
86 pain, but at the same time, one of the causes of the increase in mortality due to overdose [4].  
87 However, physiotherapy modalities that include therapeutic education and exercise are a  
88 common non-pharmacological therapeutic approach for chronic pain and its maladaptive  
89 plasticity [6]–[8], defined as a change in the structure or function of the nervous system that  
90 results in increased pain sensitization [9], [10]. Specifically, therapeutic education (TE) plays  
91 a particularly important role in reversing maladaptive plasticity, reducing pain, disability, fear-  
92 avoidance, and pain catastrophizing, among other aspects [11] TE is a fundamental component  
93 in the management of chronic pain and addresses a variety of topics that are essential for

94 improving patients' quality of life [12], [13]. These topics include understanding pain and its  
95 mechanism of production [14], promoting self-regulation and self-care strategies [15],  
96 acquiring coping skills [16], reducing fear-avoidance and pain catastrophizing [17], as well as  
97 promoting healthy lifestyles and optimizing physical functionality[18]. One of the main goals  
98 for the patient is to reconfigure maladaptive beliefs associated with their chronic pain,  
99 involving a change in the structure and function of the nervous system that has contributed to  
100 increased pain sensitization [19], [20].

101 However, not any type of educational approach is sufficient to achieve this. There are  
102 many types of therapeutic education, addressing different topics [21], [22] and using different  
103 dosages [23]–[25], which inevitably lead to different results [26]–[28]. A specific approach is  
104 required that considers both the biological and behavioral aspects of chronic pain. Furthermore,  
105 in order to accurately determine the true impact of this type of non-only-informative  
106 intervention, it is imperative to measure and evaluate the effects of the TE not only in terms of  
107 perceived pain and psychosocial factors, but also through the lens of brain plasticity biomarkers  
108 and draw correlations within these domains.

109 In this sense, it is essential to consider biological components such as brain-derived  
110 neurotrophic factor (BDNF) and its relationship to cerebral plasticity in patients with persistent  
111 pain [29], [30]. BDNF, a protein that plays an important role in pain sensitization and neuronal  
112 plasticity, has been associated with neuronal hyperexcitability in chronic pain [31].  
113 Understanding its relationship to pain is crucial for developing new therapies. Manipulating  
114 BDNF expression could offer options for modulating neuronal plasticity and relieving pain in  
115 patients with chronic pain. However, the impact of these interventions on the adaptive changes  
116 in the brain, which are crucial in patients with persistent pain, remains largely unknown.  
117 Additionally, the lack of adherence to established guidelines for reporting interventions, such  
118 as the TIDieR checklist for general interventions [32], or GREET checklist for educational  
119 interventions [33] and the CERT checklist for exercise interventions [34]hinders their  
120 replication and adaptation to individual patients, thus limiting their practical utility [35].

121 In summary, despite the challenges that exist in the field of education and exercise for  
122 chronic pain management, this model of pain therapeutic education will address the mentioned  
123 needs, providing a comprehensive and evidence-based approach that considers changes in brain  
124 plasticity learning related, biobehavioral aspects, appropriate dosing, and objective evaluation  
125 of results.

126

## 127 **Materials and Methods**

128

### 129 **Study Setting**

130 This proposed study is a single-blind, parallel-group, randomized control trial. This study  
131 protocol follows the structure based on the PICO question (Population, Intervention,  
132 Comparison, Outcome) [36] and adheres to the recommendations of the Standard Protocol  
133 Items: Recommendations for Interventional Trials (SPIRIT) guideline [37]. In addition,  
134 specific interventions were described based on the Template for Intervention Description and  
135 Replication (TIDieR) checklist [32], the Guideline for Reporting Evidence-based practice  
136 Educational interventions and Teaching (GREET) [33], and the Consensus on Exercise  
137 Reporting Template (CERT) checklist [34]. The trial has been approved by the ethics  
138 committee of Rey Juan Carlos University (Ethical number: 1901202202822) and the entire  
139 study will be conducted at the Universidad Rey Juan Carlos located in Alcorcón, Madrid  
140 (Spain). The trial identifier code is NCT05623579, and it was registered on November 18,  
141 2022, in ClinicalTrials.gov.

142

### 143 **Eligibility criteria**

144 Patients will be recruited from the physical therapy clinics located in Madrid, Spain. The  
145 participants will be included according to the following inclusion criteria: aged between 18 and  
146 65, having a history of pain lasting more than twelve weeks, pain of at least 3 out of 10 on the  
147 visual analogue scale, possessing the ability to comprehend, speak, and write in Spanish, not  
148 currently undergoing any other treatments up to 3 months prior to the study, and explicitly  
149 accepting that they will not be allowed to initiate new treatments until the end of the follow-up  
150 period. The exclusion criteria are neurological cognitive alteration that prevents understanding  
151 the contents of the educational program (in case of doubt, assessment with the Mini Mental test  
152 will be conducted with minimum score of 25 required), systemic, oncological or inflammatory  
153 diseases; psychiatric pathologies, pregnancy, diabetes type II and the lack of ability to adhere  
154 to protocol.

155

156 The following professionals were selected to carry out the study: two physiotherapists with  
157 more than 15 years of experience in the treatment of chronic pain for the pain education and  
158 exercise therapy component, two nurses for blood collection, another physiotherapist for

159 administering questionnaires on psychosocial variables and quantitative sensory testing, and  
160 two biochemists for the analysis of BDNF.

161

## 162 **Interventions**

163 All patients who meet the inclusion criteria and agree to participate in the study will be  
164 informed verbally and in writing with the delivery of the information sheet of the specific  
165 characteristics of the study. They will be asked to sign the written informed consent form to  
166 agree to participate.

167 Sociodemographic data will then be collected and psychosocial variables on their current pain  
168 process. This data collection will be carried out in a room located in the physiotherapy  
169 gymnasium of the university center, previously designated for measurements by the evaluating  
170 researcher as well as blood extraction.

171 Once the specific questionnaires and the pressure pain threshold (PPT) at the joints of the elbow  
172 and tibialis anterior are measured, a trained professional will collect 5 ml of blood from the  
173 ulnar vein of the participants in a citrate vacutainer. The collection of the blood sample will  
174 always take place between 6 and 7 p.m. to minimize the possible effects of circadian changes  
175 [38]–[40]. Blood samples will be collected in tubes containing K3-EDTA and centrifuged at  
176 1000 g for 10 min at 4 °C. The supernatants for the total plasma (TP) condition shall be frozen  
177 at -80°C. Blood collection will be performed in both groups at rest before the intervention, 15  
178 days after the intervention, at the end of the intervention period, 1 month and 8 months after  
179 the intervention.

180 After the initial data collection, a researcher other than the initial evaluator, and the  
181 physiotherapist-therapist who will apply the subsequent treatment to ensure blinding, will  
182 proceed to randomly assign the subjects to one of the two study branches by means of a list  
183 previously generated with GraphPad software (version 5.01 Graphpad software, Inc. San  
184 Diego, California, USA).

185

### 186 ***Intervention group (Exercise + POBTE)***

187 Patients assigned to the intervention group will be instructed by a physiotherapist in the  
188 performance of the therapeutic exercise sessions according to their functional capacity, taking  
189 as a reference their HRmax [41]. They will be prescribed the reference intensity measures for  
190 the expected increase in training time and indications on potential risks, and references for the  
191 interruption of the exercise in their case. The total duration of the exercise program will be 4

192 weeks, with 3 sessions of a maximum of 45 minutes per session. On alternate days, twice a  
193 week the patient will receive *Pain Oriented Biobehavioral Therapeutic Education (POBTE)*  
194 sessions, focusing on the specific parameters described below and. The duration of the sessions  
195 will be a maximum of 45 minutes each day [42], and the education program will be 8 sessions,  
196 over 4 weeks. The intervention group will be instructed to refrain from discussing treatment  
197 details with participants assigned to the control group until the end of the treatment and follow-  
198 up period.

199 The main learning areas that will be addressed and the biobehavioral interventions proposed  
200 are summarized in Figure S2, and all the conceptual framework of the POBTE intervention is  
201 explained in more detail in Annex S4. The specific cognitive components of the intervention  
202 are listed in the general intervention checklist, following the TiDier checklist (see Annex S1),  
203 also the exercise intervention is presented in Annex S2 with the CERT checklist, and the  
204 Therapeutic Educational Intervention is presented in Annex S3 with the GREET checklist.



205

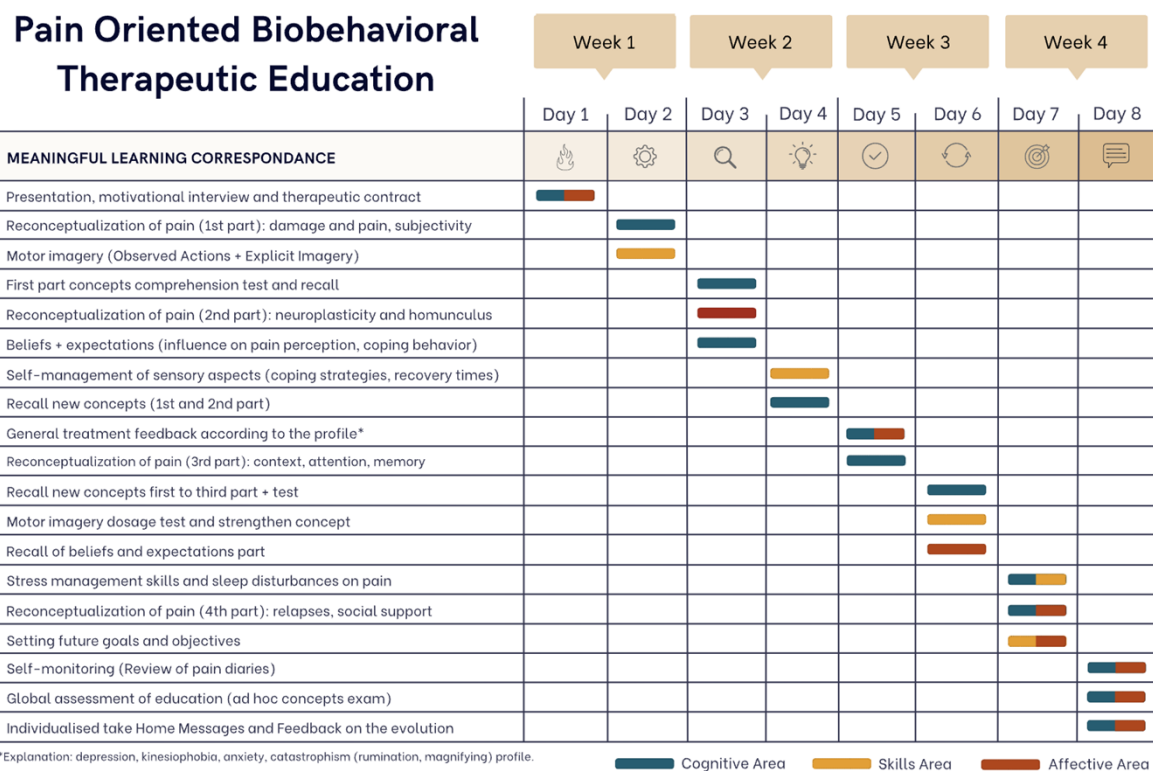
206 **Fig. S2.** *POBTE's strategies.*

207

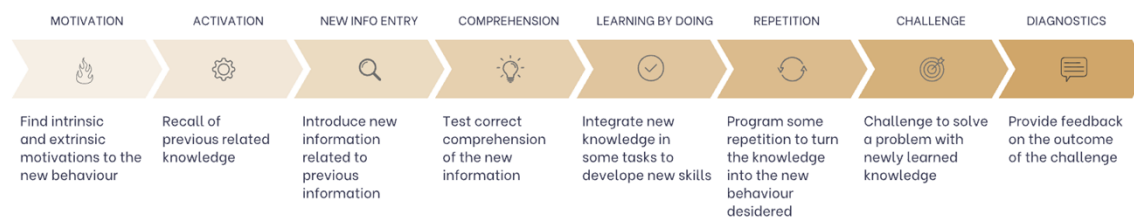
208 A chronological representation of the tasks to be performed during the POBTE intervention is  
209 presented in Figure S3. This figure is arranged to correspond to the stages of the meaningful  
210 learning phase within the intervention design.



211



#### Meaningful Learning Based Design:



212

213 **Fig. S3. POBTE's intervention.**

214

215 **Active Control group (Exercise)**

216 Patients assigned to the active control group will be instructed by a physiotherapist in the  
 217 performance of therapeutic exercise sessions according to their functional capacity, taking as a  
 218 reference their HRmax. They will be prescribed the reference intensity measures for the  
 219 expected increase in training time and indications on potential risks, and references for the  
 220 interruption of the exercise in their case. The total duration of the exercise program will be 4  
 221 weeks, with 3 sessions of a maximum of 45 minutes per session. Contents of the exercise  
 222 intervention are described in the CERT checklist (Annex S2).

223



## 224 **Interventions modifications**

225 Criteria for discontinuing or modifying allocated interventions for a given trial participant may  
226 include participant request, adverse events or harms, improved or worsened disease, and non-  
227 compliance. In the context of this study, criteria will be adapted to the specific needs and  
228 characteristics of the study population.

229

## 230 **Interventions adherence**

231 To improve adherence, we will provide clear instructions, personalized feedback and support,  
232 simplify the intervention as much as possible without losing scientific rigor, and monitor  
233 attendance, self-reports, and reminders. Written materials and videos will be provided, along  
234 with personalized feedback, progress reports, and regular check-ins. The attendance, self-  
235 reports and reminders will be used to monitor adherence.

236

## 237 **Outcomes**

### 238 **Primary outcome**

#### 239 *Pain intensity*

240 *Visual Analogue Scale (VAS):* Pain intensity will be measured using a 100 mm visual  
241 analogue scale where 0 represented ‘no pain’ and 100 the ‘worst pain imaginable’. Participants  
242 draw a mark at a point on the line that best reflects the pain they are experiencing at the time  
243 of measurement. Higher scores indicate higher pain levels. The sensitivity and specificity of  
244 this questionnaire and the acceptability of its psychometric properties have been previously  
245 approved [43].

246

### 247 **Secondary outcomes**

#### 248 *Biochemical*

249 *Plasma BDNF levels:* Within 30 minutes after collection, blood samples shall be  
250 centrifuged and the plasma separated into 0.5 ml aliquots for further analysis. Plasma BDNF  
251 levels shall be determined by enzyme-linked immunosorbent assay (ELISA) test using  
252 monoclonal antibodies specific for neurotrophin (R&D Systems, Minneapolis, MN) using the  
253 manufacturer's protocol. All samples shall be tested in duplicate to avoid intra-assay variations.  
254 The lower limit of detection for BDNF from the kit is 7.8 pg/mL. Assay (ELISA) using a  
255 ChemiKine BDNF ELISA kit, CYT306 (Chemicon/Millipore, Billerica, MA). Optical density  
256 will be measured using an ELISA reader at a wavelength of 450 nm (GloMax-Multi Microplate

257 Reader, Promega, Madison, WI) for multiplex assay measurements. Data will be expressed in  
258 pg/mg protein.

259

## 260 *Psychosocial*

261 *Anxiety and depression:* will be assessed using the Spanish validated version of the  
262 HADS self-completion scale. This scale is divided into two subscales of 7 items each: 1)  
263 depression (HADSDep); and 2) anxiety (HADSAnx). The HADS has demonstrated good  
264 reliability and validity in various pathologies [45].

265 *Quality of life:* measured with the EuroQoL-5D questionnaire (EQ-5D), it is a self-  
266 report instrument to assess health-related quality of life composed of three items, a 5-factor  
267 descriptive scale, a second item composed of a vertical VAS and a social values index  
268 generated by the instrument. The EQ-5D has shown good psychometric characteristics [46].

269 *Catastrophism:* will be measured with the Spanish version of the Pain Catastrophism  
270 Scale (ECD). This has demonstrated adequate psychometric characteristics for the assessment  
271 of this construct with internal validity (Cronbach's alpha 0.81) [47].

272 *Chronic Pain Grading Scale (CPGS):* is a self-report instrument consisting of an 8-item  
273 scale. It has a high internal consistency, Cronbach's  $\alpha$  is 0.87, similar to that of other language  
274 versions, and the intraclass correlation coefficient is 0.81. The average administration time is  
275 2 min 28 s [48].

276 *Tampa Scale for Kinesiophobia (TSK):* is a self-report questionnaire that consists of 17  
277 items. The internal consistency of the TSK has been reported to be high, with Cronbach's alpha  
278 coefficients ranging from 0.74 to 0.93, indicating strong reliability. Test-retest reliability has  
279 also been reported to be good, with correlation coefficients ranging from 0.75 to 0.88 [49].

280 *Pittsburgh Sleep Quality Index (PSQI):* is a self-rated questionnaire that consists of 19  
281 items that are categorized into seven components, including subjective sleep quality, sleep  
282 latency, sleep duration, habitual sleep efficiency, sleep disturbances, use of sleep medication,  
283 and daytime dysfunction. The internal consistency of the PSQI has been reported to be high,  
284 with Cronbach's alpha coefficients ranging from 0.77 to 0.83, indicating strong reliability. Test-  
285 retest reliability has also been reported to be good, with correlation coefficients ranging from  
286 0.85 to 0.87 [50].

287 *Perceived Stress Scale:* is a self-report questionnaire that consists of 10 items, each  
288 rated on a 5-point Likert scale ranging from 0 (never) to 4 (very often). The internal consistency  
289 of the PSS has been reported to be high, with Cronbach's alpha coefficients ranging from 0.78

290 to 0.91, indicating strong reliability. Test-retest reliability has also been reported to be good,  
291 with correlation coefficients ranging from 0.67 to 0.85 [51].

292 *International Physical Activity Questionnaire (IPAQ)*: is a self-reported questionnaire  
293 that consists of 27 items that assess the frequency, duration, and intensity of physical activity.  
294 The internal consistency of the IPAQ has been reported to be moderate to high, with Cronbach's  
295 alpha coefficients ranging from 0.73 to 0.95. Test-retest reliability has also been reported to be  
296 good, with correlation coefficients ranging from 0.70 to 0.88 [52].

297 *Chronic Pain Self-Efficacy Scale (CPSS)*: is a self-reported questionnaire that consists  
298 of 22 items that are rated on a 0-10 scale, with higher scores indicating greater self-efficacy in  
299 managing pain. The internal consistency of the CPSS has been reported to be high, with  
300 Cronbach's alpha coefficients ranging from 0.89 to 0.95, indicating strong reliability. Test-  
301 retest reliability has also been reported to be good, with correlation coefficients ranging from  
302 0.63 to 0.90 [53].

303 *Knowledge questionnaire on specific aspects of pain*: ad hoc, which includes 5  
304 questions in multi-choice test format on the contents used in the education sessions.

305 *Global Perception of Change*: the only one that will be tested after the intervention.  
306 This instrument consists of a 100mm line numbered in centimeters from -5 to 5 where the left  
307 end reads "Much Worse", 0 is printed as "no change" and 5 is marked as "fully recovered". On  
308 these values the patient is asked to answer the following question: "In relation to your pain,  
309 how would you describe your current state of health compared to when your pain began?" This  
310 version of the change perception scale has been assessed in the literature as the most  
311 appropriate in musculoskeletal pain processes, and as a valid and reliable instrument [54].

312

313 *Others*

314 *Pressure Pain Thresholds (PPT)*:

315 Pressure pain thresholds will be assessed using a pressure algometer. The algometer  
316 will be applied to different points in the body (elbow and knee) and participants will be asked  
317 to indicate the point at which pressure changes to pain. The pressure will be gradually increased  
318 at a rate of approximately 1 kg/s until the participant indicates that they feel pain. The threshold  
319 pressure at which the sensation changes from pressure to pain will be recorded in kilograms  
320 (kg) and will be used as an indicator of pressure pain threshold. Higher PPT values indicate  
321 higher pain thresholds. The validity and reliability of using a pressure algometer to measure  
322 PPT have been previously established [44].

323

324 Height and Weight: both variables will be determined by patient estimation, with no  
325 exploration of these variables in the measurement process.

326 *Sociodemographic*

327 Age, Marital status (Single, Married, Divorced, Widowed), Employment status (Active,  
328 Unemployed, Retired, Temporary disability, Student, Homemaker, Other), Educational level  
329 (none, primary, secondary, university), Gender.

330 *Exercise*

331 Among the exercise variables, the parameters described below will be considered:

332 *Blood pressure and respiratory rate:* Measured with the Anura application, which has  
333 demonstrated a reliability with conventional blood pressure measurement of 98% [55].

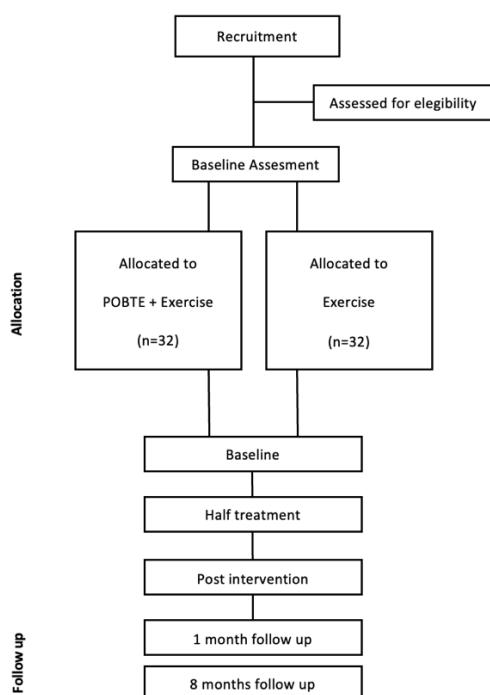
334 *Saturation and HR:* Measured with an Oxylink finger pulse oximeter.

335 All the outcome measurements will be assessed in a random order at baseline, at the halfway  
336 point of the treatment, post intervention, and one- and eight-months post intervention. (Figure  
337 S4, S5 and S1).

338

339

340



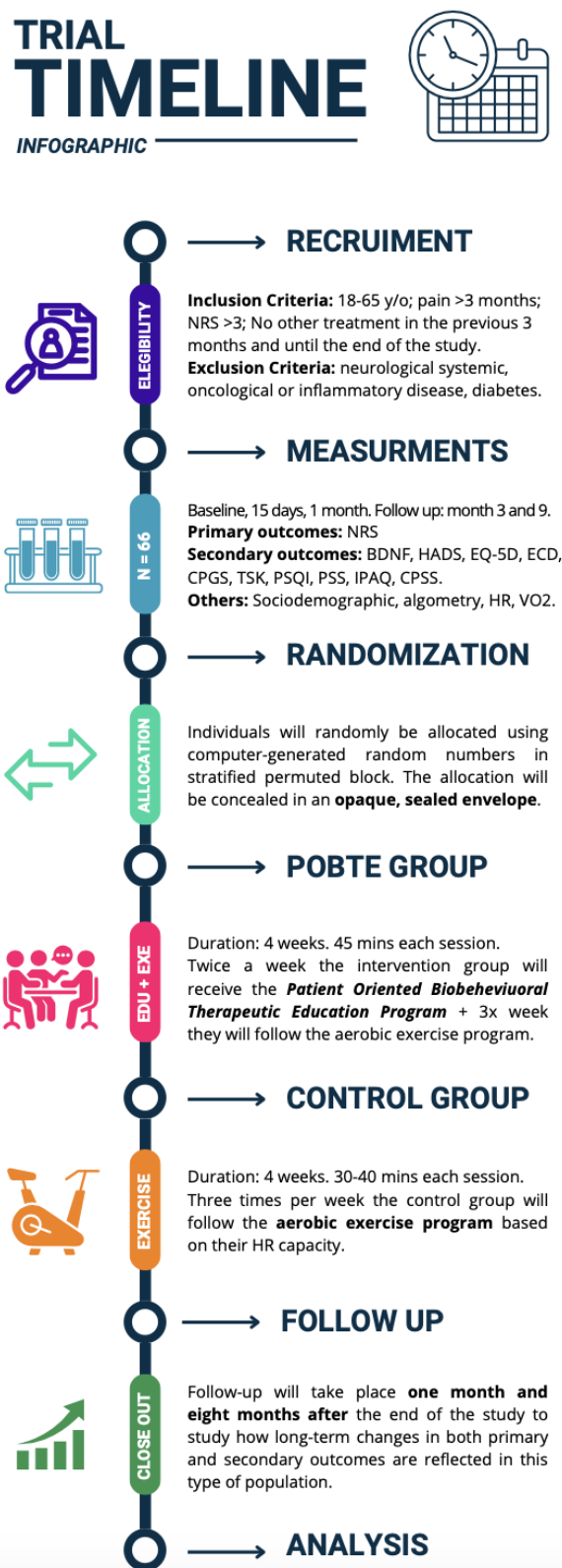
341

342 **Fig S4.** *Flow diagram*

343

## 344 Participants timeline

345 We have included a schematic diagram outlining the time schedule of participant enrolment,  
346 interventions, assessments, and visits, as shown in the following figures (S4 and S5).



347

348 **Fig S5. Trial Timeline**

Timepoint	STUDY PERIOD						
	Enrolment	Allocation	Post-allocation			Close-out	
	t-1	0	t-baseline	t1 (15 days)	t-postint	t3 (1 month later)	t4 (8 months later)
<b>ENROLMENT:</b>							
Eligibility screen	X						
Informed consent	X						
Allocation		X					
<b>INTERVENTIONS</b>							
[POBTE + Exercise]			←	→	→		
[Exercise]			←	→	→		
<b>ASSESSMENTS</b>							
Visual Analogue Scale			X	X	X	X	X
Pressure Pain Thresholds			X	X	X	X	X
Brain Derived Neurotrophic Factor			X	X	X	X	X
Hospital Anxiety and Depression Scale			X	X	X	X	X
Pain catastrophizing scale			X	X	X	X	X
Quality of Life			X	X	X	X	X
Chronic Pain Grading Scale			X	X	X	X	X
Tampa Scale for Kinesiophobia			X	X	X	X	X
Pittsburgh Sleep Quality Index			X	X	X	X	X
Perceived Stress Scale			X	X	X	X	X
International Physical Activity Questionnaire			X	X	X	X	X
Knowledge questionnaire			X	X	X	X	X
Global Perception of Change			X	X	X	X	X
Height and Weight			X	X	X	X	X
Sociodemographic outcomes			X	X	X	X	X
Blood pressure			X	X	X	X	X
Respiratory rate			X	X	X	X	X
Saturation			X	X	X	X	X
HR			X	X	X	X	X
GROC Scale							X

349

350 **Fig S1.** SPIRIT figure showing the schedule of enrolment, interventions, and assessments.

351

352

### 353 Sample Size

354 The sample size was calculated using a t-test design for independent means, using the G\*Power  
 355 program (Universität Düsseldorf, Germany) and establishing a significance level of 0.05 and a  
 356 power of 90%.

357 To determine the effect size, Cohen's d formula was used, which compares the mean difference  
 358 on the Visual Analogue Scale (VAS), set at 2 points, and the pooled standard deviation  
 359 (SD<sub>pooled</sub>). Based on data from a previous pilot study, the standard deviations for the  
 360 intervention and control groups were 1.29 and 2.61 respectively. Using these data, the  
 361 SD<sub>pooled</sub> was calculated using the formula for independent groups:  $\sqrt{((n_1-1)*SD_1^2 + (n_2-1)*SD_2^2) / (n_1+n_2-2)}$ , yielding a value of 2.13 [56].

363 Therefore, the effect size (d) was calculated as  $2/2.13 = 0.94$ . With an allocation ratio of 1:1  
 364 between groups, these data were entered into GPower [57], resulting in the need for at least 25  
 365 subjects per group to be able to detect a 2-point difference in VAS with 90% power.

366 Considering a loss rate of 25%, the final sample size was adjusted to 32 subjects per group.  
 367 Consequently, the study will require a total of 64 subjects to reach the required statistical  
 368 power.

369

## 370 **Recruitment**

371 To achieve our target sample size, from July to September 2023, we will partner with  
372 physiotherapy clinics, distribute pamphlets, utilize social media, recruit through support groups  
373 and emphasize the benefits of the intervention.

374

## 375 **Allocation**

### 376 **Sequence generation, concealment mechanism and implementation**

377 Individuals who met the inclusion criteria will randomly be allocated to one of two treatment  
378 arms: (1) POBTE plus exercise or (2) exercise therapy, using computer-generated random  
379 numbers in stratified permuted block (block size of 4 and 6). The allocation will be concealed  
380 in an opaque, sealed envelope. A research assistant opens them and assigns patients to either  
381 of the treatment arms. The randomization will be conducted after signing the informed consent  
382 and baseline assessments.

383

## 384 **Blinding**

### 385 **Masking**

386 In this trial, outcome assessors and data analysts will be blinded after intervention assignment.  
387 They won't know the participants' intervention group during outcome assessment or data  
388 analysis. Due to the intervention's nature, involving educational sessions and exercises  
389 requiring interaction, participants and educators cannot be blinded.

390

### 391 **Emergency unmasking**

392 A secure process, such as a password-protected system, will be employed. Unblinding should  
393 only occur when necessary, preserving the trial's integrity.

394

## 395 **Data Collection plan**

396 The trial will collect baseline and outcome data through questionnaires, laboratory tests, and  
397 physical assessments, with standardized and validated instruments to ensure data quality. The  
398 instruments used in the trial are validated, and information on them can be found in the  
399 protocol.

400



#### 401 **Data collection plan: retention**

402 To ensure that participants remain engaged and complete the follow-up in our trial, we have  
403 implemented several strategies. Firstly, we provide clear and concise information to our  
404 participants regarding the trial, including potential benefits and risks, to help them understand  
405 the importance of their participation. Secondly, we establish clear communication channels  
406 between the research team and participants to encourage an open and trusting relationship,  
407 where participants feel comfortable asking questions and providing feedback. Additionally, we  
408 make sure to conduct regular follow-up phone calls or emails to remind participants of  
409 upcoming study visits and address any concerns they may have.

410

#### 411 **Data Management**

412 All data will be entered into a secure database system with restricted access, and data quality  
413 will be maintained with range checks and double data entry. Data security and storage plans  
414 include regular backups, restricted access, and secure transfer methods.

415

#### 416 **Statistics: outcome**

417 Data analysis will be performed with SPSS statistical software version 25.0 (SPSS Inc.,  
418 Chicago, IL, USA). A descriptive analysis of the demographic characteristics and pain intensity  
419 of the sample will be performed, presenting continuous variables as Mean  $\pm$  Standard Deviation  
420 (SD), 95% Confidence Interval (CI), while categorical variables will be presented as Number  
421 (n) and Percentage (relative frequency, %). If the quantitative variables follow a non-normal  
422 distribution, they will be described with the median and the interquartile range.

423 Parametric tests (normal distribution) will be chosen for the comparison between groups based  
424 on the central limit theorem, since the sample size of both groups will be greater than 30.  
425 Therefore, the one-way ANOVA test will be used to analyze the group factor in the quantitative  
426 variables and the chi-square test for the qualitative variables. If the ANOVA reveals statistical  
427 significance, a post-hoc analysis with Bonferroni correction will be performed. A P-value <  
428 0.05 will be accepted as statistically significant.

429

#### 430 **Statistics: additional analyses**

431 We will conduct secondary analyses to examine treatment effects within specific subgroups of  
432 participants and adjust for potential confounding variables. Subgroup analyses will consider

433 age, gender, and duration of pain. Multiple linear regression models will be used for adjusted  
434 analyses, and sensitivity analyses will be conducted to assess the robustness of our results.

435

#### 436 **Statistics: Analyses population and missing data**

437 The analysis will be based on the intention-to-treat principle, including all randomized  
438 participants in the analysis, regardless of their compliance with the intervention protocol.  
439 Missing data will be handled using appropriate imputation methods, such as multiple  
440 imputations or last observation carried forward. Sensitivity analyses will be conducted to  
441 evaluate the impact of different imputation methods on the results. The analysis population will  
442 be clearly defined and any deviations from the intention-to-treat principle will be reported and  
443 justified.

444

#### 445 **Data monitoring: Formal committee**

446 This small-scale, low-risk intervention trial does not require a Data Monitoring Committee  
447 (DMC). Instead, the study investigators will take on the responsibility of monitoring trial data.  
448 The primary investigator will regularly review study data to ensure adherence to the protocol  
449 and to maintain the safety and well-being of participants. Should significant safety concerns or  
450 other issues arise, the primary investigator will collaborate with the study team and, if  
451 necessary, consult with an independent expert to determine the best course of action. Any  
452 concerns or protocol deviations will be reported to relevant regulatory authorities promptly.

453

#### 454 **Data monitoring: Interim analysis**

455 Although data and blood samples will be collected at 15 days during the intervention period,  
456 no interim analyses are planned for this trial, although it might be interesting to see if there are  
457 possible changes in BDNF levels, as a biomarker of brain plasticity, in relation to the learning  
458 curve [58] experienced by the patients. It is expected that the learning process they experience  
459 during the intervention will lead to significant changes in BDNF levels.

460

#### 461 **Harms**

462 The research team will monitor participants for adverse events related to the intervention or  
463 trial conduct. Solicited events will be assessed during follow-up visits, while spontaneously  
464 reported events will be identified during unscheduled interactions.

465 Adverse events will be documented, and the principal investigator will review them,  
466 determining if they require reporting to the ethics committee and regulatory authorities.  
467 Unintended effects of the trial interventions or conduct will also be monitored and managed.

468 All events will be reported in the trial report, publication, and to the ethical committee.  
469

#### 470 **Research ethics approval**

471 To get approval for our study from a research ethics committee (REC), we developed a detailed  
472 protocol, submitted necessary documentation, addressed any questions or concerns from the  
473 REC, obtained REC approval and will maintain ongoing compliance. We also have plans to  
474 communicate important protocol modifications to investigators, the REC, trial participants,  
475 trial registries, journals, and regulators.

#### 476 **Consent or assent**

477 Informed consent or assent will be obtained from potential trial participants or authorized  
478 surrogates by trained research staff. The consent process will involve the use of written  
479 informed consent documents, which will be provided to the potential participants or their  
480 authorized surrogates in advance of the trial. The documents will include a description of the  
481 study, the risks and benefits of participation, and the rights and responsibilities of the  
482 participants. The research staff will also be available to answer any questions or concerns that  
483 may arise during the consent process.

#### 484 **Consent or assent: ancillary studies**

485 We included in the informed consent form for potential ancillary studies involving participant  
486 data and biological specimens. The form will state that data and specimens may be used for  
487 future research with ethical approval, and participants could withdraw consent at any time. This  
488 ensured participants were fully informed and their rights and privacy were protected.

489

#### 490 **Confidentiality**

491 We will protect participants' personal information throughout the trial. During screening, we  
492 will only collect necessary information, and destroy any unused data. Personal information will  
493 be kept secure and restricted to authorized members of the study team during the trial, identified  
494 only by participant ID numbers. After the trial, identifying information will be removed, and

495 data will be stored securely for a specified period. We will inform participants of our  
496 confidentiality policies during informed consent.

#### 497 **Declaration of interests**

498 Despite receiving financial support for the project from a university to carry out the study, we  
499 do not have any conflicts of interest to declare.

500

#### 501 **Data access**

502 Access to the final trial dataset will be limited to authorized members of the research team,  
503 including the principal investigators and their designated staff.

504

#### 505 **Ancillary and post-trial care**

506 The study team will develop a plan for providing ancillary or post-trial care for harm to  
507 participants during a clinical trial. They will inform participants about these plans during the  
508 informed consent process and work with regulatory authorities and review boards to ensure  
509 appropriate provisions are in place.

510

#### 511 **Dissemination policy: Trial results**

512 We will communicate trial results to participants, healthcare professionals, and the public.  
513 Results will be published in a peer-reviewed journal, presented at conferences, and reported in  
514 publicly accessible databases. We'll provide lay summaries to participants and ensure  
515 healthcare professionals receive information. We'll publish regardless of the outcome, share  
516 the protocol, dataset and statistical analysis, and uphold responsible research guidelines. Our  
517 communication will be clear, timely, and accurate with integrity and transparency.

518

#### 519 **Dissemination policy: Authorship**

520 Authorship eligibility guidelines will follow international standards [59]. Contributions of  
521 eligible individuals will be clearly stated in publications, while professional writers will only  
522 be acknowledged if they meet the authorship eligibility guidelines.

523

524

525

526 **Dissemination policy: Reproducible research**

527 After the study, we will share the full protocol, de-identified participant-level dataset, and  
528 statistical analysis to encourage transparency and enable further research. We will provide  
529 technical support and educational resources to promote accessibility and reproducibility of  
530 study findings.

531

532 **Discussion**

533 The current randomized controlled trial (RCT) seeks to examine the impact of a specific  
534 therapeutic education program, combined with exercise, on BDNF levels and pain perceived  
535 intensity among individuals suffering from chronic musculoskeletal pain. This article not only  
536 aims to offer a more rigorous approach to therapeutic education from a biobehavioral  
537 perspective, but also assesses the outcomes of an intervention that encompasses both the  
538 cognitive aspect and pain-related plasticity biomarkers, such as BDNF. Consequently, it  
539 represents a valuable contribution to low-cost, non-pharmacological treatments in  
540 physiotherapy. Although the study design and methods have been meticulously planned, there  
541 are several practical and operational considerations that need to be addressed.

542 One potential limitation of our study relates to the heterogeneity of chronic pain.  
543 Despite having well-defined inclusion criteria, it is important to recognize that chronic pain is  
544 a complex and multifactorial condition [60]–[62]. While we have not imposed restrictions on  
545 the specific site of pain in our selection criteria, supported by evidence that chronic pain is  
546 centrally mediated rather than solely dependent on the location of the injury [63]–[66], it is  
547 evident that various individual factors influence the pain experience in each patient [67]–[69],  
548 which may impact the obtained results. To address this limitation, in addition to the inclusion  
549 criteria, we will consider conducting subgroup analysis if necessary and feasible. This analysis  
550 will allow us to examine possible clusters of patients with similar characteristics, which will  
551 enhance our understanding of differences and treatment responses within our sample.

552 Another concern is the possible confounding effects of medications and other interventions that  
553 participants might be undergoing. To address this issue, participants will be strictly advised to  
554 continue their regular medication regimen (if applicable) but will not be permitted to initiate  
555 any new treatments during the program and follow-up period. This measure is implemented to  
556 minimize potential confounding factors and ensure the integrity of the study results. The study  
557 team will closely screen and monitor participants to ensure compliance with this requirement.

558 Additionally, statistical analysis will consider adjusting for any confounding variables that may  
559 arise.

560 Finally, it is important to mention that the measurement of BDNF levels can pose challenges  
561 due to the inherent variability in sample collection, storage, and analysis. In this study, BDNF  
562 levels will be specifically measured in plasma samples, as they have been found to be more  
563 stable during the analysis compared to serum samples [70]. To ensure precise and reliable  
564 results, the study team will adhere to rigorous protocols for plasma sample collection,  
565 processing, and storage. The analysis will be conducted using standardized ELISA kits with  
566 regular calibration and quality control checks implemented to minimize potential sources of  
567 variation. These measures are crucial for ensuring the accuracy and validity of the BDNF  
568 measurements and upholding the integrity and reliability of the study's findings.

569 In conclusion, this randomized controlled trial (RCT) serves as a significant milestone in two  
570 important aspects. Firstly, it contributes to the development of a more structured and rigorous  
571 therapeutic education model for individuals with chronic musculoskeletal pain by  
572 implementing validated checklists and protocols [32], [33]. This standardized approach ensures  
573 the delivery of effective interventions tailored to the specific needs of these patients.

574 Secondly, the study investigates the changes occurring at the central nervous system level by  
575 measuring biomarkers such as BDNF. This provides valuable insights into the underlying  
576 mechanisms of chronic pain and the impact of non-pharmacological interventions on brain  
577 plasticity. By elucidating the relationship between therapeutic education, BDNF levels, and  
578 pain outcomes, this research can pave the way for novel and targeted strategies to enhance  
579 treatment efficacy and improve the quality of life for individuals suffering from chronic pain.

580

581 **Appendices**

582

583 **Informed consent materials**

584 We will attach the model consent form and related documentation to the annexes section of our  
585 study to ensure a clear record of the consent process that can be easily accessed and verified  
586 by future reviewers.

587

588 **Biological specimens**

589 We will collect and label blood samples, isolate plasma, and measure BDNF levels using an  
590 ELISA kit. Quality control measures will be in place to ensure accurate measurements.  
591 Specimens will be stored in secure, monitored freezers (-80°) at the research site and laboratory,  
592 and tracked using unique participant identifiers. With proper ethics approval and participant  
593 consent, stored specimens may be used in future ancillary studies. This plan ensures the proper  
594 handling and availability of biological specimens for future research.

595

596 **Acknowledgments**

597 This study is part of PhD thesis of Silvia Di Bonaventura and will be supported by Spanish  
598 Ministry of Education (Grant number: FPU20/00041).

599



600

601 **List of acronyms**

BDNF	Brain Derived Neurotrophic Factor
CERT	Consensus on Exercise Reporting Template
CP	Chronic Pain
CPGS	Chronic Pain Grading Scale
CPSS	Chronic Pain Self-Efficacy Scale
ECD	Pain catastrophizing scale
EQ-5D	EuroQol-5 Dimensions
GREET	Guideline for Reporting Evidence-based practice Educational interventions and Teaching
HADS	Hospital Anxiety and Depression Scale
HR	Heart Rate
IPAQ	International Physical Activity Questionnaire
PICO	Population, Intervention, Control, Outcomes
PPT	Pressure Pain Threshold
POBTE	Pain Oriented Biobehavioral Therapeutic Education
PSQI	Pittsburgh Sleep Quality Index
PSS	Perceived Stress Scale
REC	Research Ethic Committee
RCT	Randomized Controlled Trial
SPIRIT	Standard Protocol Items: Recommendations for Interventional Trial
TE	Therapeutic Education
TIDieR	Template for Intervention Description and Replication
TP	Total Plasma
TSK	Tampa Scale for Kinesiophobia
VAS	Visual Analogue Scale

602

603 **References**

604

- 605 [1] R. D. Treede *et al.*, “Chronic pain as a symptom or a disease: The IASP Classification  
606 of Chronic Pain for the International Classification of Diseases (ICD-11),” *Pain*, vol.  
607 160, no. 1. Lippincott Williams and Wilkins, pp. 19–27, Jan. 01, 2019. doi:  
608 10.1097/j.pain.0000000000001384.
- 609 [2] S. E. E. Mills, K. P. Nicolson, and B. H. Smith, “Chronic pain: a review of its  
610 epidemiology and associated factors in population-based studies,” *Br J Anaesth*, vol.  
611 123, no. 2, pp. e273–e283, Aug. 2019, doi: 10.1016/j.bja.2019.03.023.
- 612 [3] A. Büssing, T. Ostermann, E. Am Neugebauer, and P. Heusser, “Adaptive coping  
613 strategies in patients with chronic pain conditions and their interpretation of disease,”  
614 2010. [Online]. Available: <http://www.biomedcentral.com/1471-2458/10/507>
- 615 [4] W. Häuser, T. Schubert, T. Vogelmann, C. Maier, M. A. Fitzcharles, and T. Tölle,  
616 “All-cause mortality in patients with long-term opioid therapy compared with non-  
617 opioid analgesics for chronic non-cancer pain: A database study,” *BMC Med*, vol. 18,  
618 no. 1, Jul. 2020, doi: 10.1186/s12916-020-01644-4.
- 619 [5] W. Häuser, T. Schubert, T. Vogelmann, C. Maier, M. A. Fitzcharles, and T. Tölle,  
620 “All-cause mortality in patients with long-term opioid therapy compared with non-  
621 opioid analgesics for chronic non-cancer pain: A database study,” *BMC Med*, vol. 18,  
622 no. 1, Jul. 2020, doi: 10.1186/s12916-020-01644-4.
- 623 [6] S. J. Snodgrass, N. R. Heneghan, H. Tsao, P. T. Stanwell, D. A. Rivett, and P. M. Van  
624 Vliet, “Recognising neuroplasticity in musculoskeletal rehabilitation: A basis for  
625 greater collaboration between musculoskeletal and neurological physiotherapists,”  
626 *Man Ther*, vol. 19, no. 6, pp. 614–617, Dec. 2014, doi: 10.1016/j.math.2014.01.006.
- 627 [7] E. Dayan and L. G. Cohen, “Neuroplasticity subserving motor skill learning,” *Neuron*,  
628 vol. 72, no. 3. pp. 443–454, Nov. 03, 2011. doi: 10.1016/j.neuron.2011.10.008.
- 629 [8] J. El-Sayes, D. Harasym, C. V. Turco, M. B. Locke, and A. J. Nelson, “Exercise-  
630 Induced Neuroplasticity: A Mechanistic Model and Prospects for Promoting  
631 Plasticity,” *Neuroscientist*, vol. 25, no. 1. SAGE Publications Inc., pp. 65–85, Feb. 01,  
632 2019. doi: 10.1177/1073858418771538.
- 633 [9] C. J. Woolf, “Central sensitization: Implications for the diagnosis and treatment of  
634 pain,” *Pain*, vol. 152, no. SUPPL.3. Mar. 2011. doi: 10.1016/j.pain.2010.09.030.

- 635 [10] X. Y. Li, Y. Wan, S. J. Tang, Y. Guan, F. Wei, and D. Ma, “Maladaptive Plasticity and  
636 Neuropathic Pain,” *Neural Plasticity*, vol. 2016. Hindawi Publishing Corporation,  
637 2016. doi: 10.1155/2016/4842159.
- 638 [11] A. Louw, J. Nijs, and E. J. Puentedura, “A clinical perspective on a pain neuroscience  
639 education approach to manual therapy,” *Journal of Manual and Manipulative Therapy*,  
640 vol. 25, no. 3, pp. 160–168, May 2017, doi: 10.1080/10669817.2017.1323699.
- 641 [12] I. Saracoglu, M. I. Arik, E. Afsar, and H. H. Gokpinar, “The short-term effects of  
642 neuroscience pain education on quality of life in patients with chronic low back pain:  
643 A single-blinded randomized controlled trial,” *Eur J Integr Med*, vol. 33, Jan. 2020,  
644 doi: 10.1016/j.eujim.2019.101046.
- 645 [13] I. Saracoglu, M. I. Arik, E. Afsar, and H. H. Gokpinar, “The effectiveness of pain  
646 neuroscience education combined with manual therapy and home exercise for chronic  
647 low back pain: A single-blind randomized controlled trial,” *Physiother Theory Pract*,  
648 vol. 38, no. 7, pp. 868–878, 2022, doi: 10.1080/09593985.2020.1809046.
- 649 [14] M. Meeus, J. Nijs, J. Van Oosterwijck, V. Van Alsenoy, and S. Truijen, “Pain  
650 physiology education improves pain beliefs in patients with chronic fatigue syndrome  
651 compared with pacing and self-management education: A double-blind randomized  
652 controlled trial,” *Arch Phys Med Rehabil*, vol. 91, no. 8, pp. 1153–1159, 2010, doi:  
653 10.1016/j.apmr.2010.04.020.
- 654 [15] I. Aguirrezabal *et al.*, “Effectiveness of a primary care-based group educational  
655 intervention in the management of patients with migraine: A randomized controlled  
656 trial,” *Prim Health Care Res Dev*, 2019, doi: 10.1017/S1463423619000720.
- 657 [16] A. Malfliet *et al.*, “Blended-learning pain neuroscience education for people with  
658 chronic spinal pain: Randomized controlled multicenter trial,” *Phys Ther*, vol. 98, no.  
659 5, pp. 357–368, May 2018, doi: 10.1093/ptj/pzx092.
- 660 [17] J. A. Watson *et al.*, “Pain Neuroscience Education for Adults With Chronic  
661 Musculoskeletal Pain: A Mixed-Methods Systematic Review and Meta-Analysis,”  
662 *Journal of Pain*, vol. 20, no. 10. Churchill Livingstone Inc., pp. 1140.e1-1140.e22,  
663 Oct. 01, 2019. doi: 10.1016/j.jpain.2019.02.011.
- 664 [18] A. Louw, I. Diener, D. S. Butler, and E. J. Puentedura, “The effect of neuroscience  
665 education on pain, disability, anxiety, and stress in chronic musculoskeletal pain,”  
666 *Archives of Physical Medicine and Rehabilitation*, vol. 92, no. 12. pp. 2041–2056,  
667 Dec. 2011. doi: 10.1016/j.apmr.2011.07.198.

- 668 [19] A. May, “Chronic pain may change the structure of the brain,” *Pain*, vol. 137, no. 1.  
669 pp. 7–15, Jun. 30, 2008. doi: 10.1016/j.pain.2008.02.034.
- 670 [20] R. F. Smallwood *et al.*, “Structural brain anomalies and chronic pain: A quantitative  
671 meta-analysis of gray matter volume,” *Journal of Pain*, vol. 14, no. 7. pp. 663–675,  
672 Jul. 2013. doi: 10.1016/j.jpain.2013.03.001.
- 673 [21] B. F. Dear *et al.*, “The pain course: A randomised controlled trial comparing a remote-  
674 delivered chronic pain management program when provided in online and workbook  
675 formats,” *Pain*, vol. 158, no. 7, pp. 1289–1301, Jul. 2017, doi:  
676 10.1097/j.pain.0000000000000916.
- 677 [22] M. Mehlisen, L. Hegaard, E. Ørnbøl, J. S. Jensen, P. Fink, and L. Frostholm, “The  
678 effect of a lay-led, group-based self-management program for patients with chronic  
679 pain: A randomized controlled trial of the Danish version of the Chronic Pain Self-  
680 Management Programme,” *Pain*, vol. 158, no. 8, pp. 1437–1445, Aug. 2017, doi:  
681 10.1097/j.pain.0000000000000931.
- 682 [23] “darnall2021”.
- 683 [24] G. Lorimer Moseley, M. K. Nicholas, and P. W. Hodges, “A Randomized Controlled  
684 Trial of Intensive Neurophysiology Education in Chronic Low Back Pain.”
- 685 [25] R. B. Saper *et al.*, “Yoga, physical therapy, or education for chronic low back pain: A  
686 randomized noninferiority trial,” *Ann Intern Med*, vol. 167, no. 2, pp. 85–94, Jul. 2017,  
687 doi: 10.7326/M16-2579.
- 688 [26] A. Louw, E. J. Puentedura, K. Zimney, and S. Schmidt, “Know Pain, know gain? A  
689 perspective on pain neuroscience education in physical therapy,” *Journal of*  
690 *Orthopaedic and Sports Physical Therapy*, vol. 46, no. 3. Movement Science Media,  
691 pp. 131–134, Mar. 01, 2016. doi: 10.2519/jospt.2016.0602.
- 692 [27] L. J. Geneen *et al.*, “Effects of education to facilitate knowledge about chronic pain for  
693 adults: A systematic review with meta-analysis,” *Syst Rev*, vol. 4, no. 1, Oct. 2015, doi:  
694 10.1186/s13643-015-0120-5.
- 695 [28] L. Wood and P. A. Hendrick, “A systematic review and meta-analysis of pain  
696 neuroscience education for chronic low back pain: Short-and long-term outcomes of  
697 pain and disability,” *European Journal of Pain (United Kingdom)*, vol. 23, no. 2.  
698 Blackwell Publishing Ltd, pp. 234–249, Feb. 01, 2019. doi: 10.1002/ejp.1314.
- 699 [29] A. Merighi *et al.*, “BDNF as a pain modulator,” *Progress in Neurobiology*, vol. 85, no.  
700 3. pp. 297–317, Jul. 2008. doi: 10.1016/j.pneurobio.2008.04.004.

- 701 [30] T. Brigadski and V. Leßmann, “BDNF: a regulator of learning and memory processes  
702 with clinical potential,” *eNeuroforum*, vol. 5, no. 1, pp. 1–11, Mar. 2014, doi:  
703 10.1007/s13295-014-0053-9.
- 704 [31] J. Nijs *et al.*, “Brain-derived neurotrophic factor as a driving force behind  
705 neuroplasticity in neuropathic and central sensitization pain: A new therapeutic  
706 target?,” *Expert Opinion on Therapeutic Targets*, vol. 19, no. 4. Informa Healthcare,  
707 pp. 565–576, Apr. 01, 2015. doi: 10.1517/14728222.2014.994506.
- 708 [32] T. C. Hoffmann *et al.*, “Better reporting of interventions: Template for intervention  
709 description and replication (TIDieR) checklist and guide,” *BMJ (Online)*, vol. 348,  
710 Mar. 2014, doi: 10.1136/bmj.g1687.
- 711 [33] A. C. Phillips *et al.*, “Development and validation of the guideline for reporting  
712 evidence-based practice educational interventions and teaching (GREET),” *BMC Med  
713 Educ*, vol. 16, no. 1, Sep. 2016, doi: 10.1186/s12909-016-0759-1.
- 714 [34] S. C. Slade *et al.*, “Consensus on Exercise Reporting Template (CERT): Modified  
715 Delphi Study,” 2016. [Online]. Available: <http://www.equator->
- 716 [35] E. K.-Y. H. P. H. F. C. G.-M. O. V.-A. and J. M.-S. Javier Martinez-Calderon, “A Call  
717 for Improving Research on Pain Neuroscience Education and Chronic Pain: An  
718 Overview of Systematic Reviews,” *Journal of Orthopaedic & Sports Physical  
719 Therapy*, vol. 53:6, pp. 353–368, 2023.
- 720 [36] S. Aslam and P. Emmanuel, “Formulating a researchable question: A critical step for  
721 facilitating good clinical research,” *Indian Journal of Sexually Transmitted Diseases*,  
722 vol. 31, no. 1. pp. 47–50, Jan. 01, 2010. doi: 10.4103/0253-7184.69003.
- 723 [37] A. W. Chan *et al.*, “SPIRIT 2013 statement: Defining standard protocol items for  
724 clinical trials,” *Annals of Internal Medicine*, vol. 158, no. 3. American College of  
725 Physicians, pp. 200–207, Feb. 05, 2013. doi: 10.7326/0003-4819-158-3-201302050-  
726 00583.
- 727 [38] S. W. Cain *et al.*, “Circadian rhythms in plasma brain-derived neurotrophic factor  
728 differ in men and women,” *J Biol Rhythms*, vol. 32, no. 1, pp. 75–82, Feb. 2017, doi:  
729 10.1177/0748730417693124.
- 730 [39] S. W. Choi, S. Bhang, and J. H. Ahn, “Diurnal variation and gender differences of  
731 plasma brain-derived neurotrophic factor in healthy human subjects,” *Psychiatry Res*,  
732 vol. 186, no. 2–3, pp. 427–430, Apr. 2011, doi: 10.1016/j.psychres.2010.07.028.
- 733 [40] A. A. H. Ali and C. von Gall, “Adult Neurogenesis under Control of the Circadian  
734 System,” *Cells*, vol. 11, no. 5. MDPI, Mar. 01, 2022. doi: 10.3390/cells11050764.

- 735 [41] C. J. Keating *et al.*, “Utilizing Age-Predicted Heart Rate Maximum to Prescribe a  
736 Minimally Invasive Cycle Ergometer HIIT Protocol in Older Adults: A Feasibility  
737 Study.” [Online]. Available: <http://www.intjexersci.com>
- 738 [42] J. J. Amer-Cuenca *et al.*, “How much is needed? Comparison of the effectiveness of  
739 different pain education dosages in patients with fibromyalgia,” *Pain Medicine (United*  
740 *States)*, vol. 21, no. 4, pp. 782–793, 2020, doi: 10.1093/PM/PNZ069.
- 741 [43] A. M. Boonstra, H. R. Schiphorst Preuper, M. F. Reneman, J. B. Posthumus, R. E.  
742 Stewart, and R. Friesland, “Reliability and validity of the visual analogue scale for  
743 disability in patients with chronic musculoskeletal pain,” Wolters Kluwer Health |  
744 Lippincott Williams & Wilkins, 2008.
- 745 [44] A. M. Kinser, W. A. Sands, and M. H. Stone, “RELIABILITY AND VALIDITY OF  
746 A PRESSURE ALGOMETER.” [Online]. Available: [www.nsca-jscr.org](http://www.nsca-jscr.org)
- 747 [45] M. Carmen Terol-Cantero, V. Cabrera-Perona, and M. Martín-Aragón, “Revisión de  
748 estudios de la Escala de Ansiedad y Depresión Hospitalaria (HAD) en muestras  
749 españolas1 [macarmen@umh.es](mailto:macarmen@umh.es),” *Anales de Psicología*, vol. 31, no. 2, pp. 494–503,  
750 2015, doi: 10.6018/analesps.31.2.172701.
- 751 [46] J. M. Cabasés, “The EQ-5D as a measure of health outcomes,” *Gac Sanit*, vol. 29, no.  
752 6, pp. 401–403, Nov. 2015, doi: 10.1016/j.gaceta.2015.08.007.
- 753 [47] “CATASTR”.
- 754 [48] R. Ferrer-Peña, A. Gil-Martínez, J. Pardo-Montero, V. Jiménez-Penick, T. Gallego-  
755 Izquierdo, and R. La Touche, “Adaptación y validación de la Escala de gradación del  
756 dolor crónico al español,” *Reumatol Clin*, vol. 12, no. 3, pp. 130–138, May 2016, doi:  
757 10.1016/j.reuma.2015.07.004.
- 758 [49] S. R. Woby, N. K. Roach, M. Urmston, and P. J. Watson, “Psychometric properties of  
759 the TSK-11: A shortened version of the Tampa Scale for Kinesiophobia,” *Pain*, vol.  
760 117, no. 1–2, pp. 137–144, Sep. 2005, doi: 10.1016/j.pain.2005.05.029.
- 761 [50] C. L. Larche, I. Plante, M. Roy, P. M. Ingelmo, and C. E. Ferland, “The Pittsburgh  
762 Sleep Quality Index: Reliability, Factor Structure, and Related Clinical Factors among  
763 Children, Adolescents, and Young Adults with Chronic Pain,” *Sleep Disord*, vol. 2021,  
764 pp. 1–8, Apr. 2021, doi: 10.1155/2021/5546484.
- 765 [51] E. H. Lee, “Review of the psychometric evidence of the perceived stress scale,” *Asian*  
766 *Nursing Research*, vol. 6, no. 4, pp. 121–127, Dec. 2012. doi:  
767 10.1016/j.anr.2012.08.004.



- 768 [52] C. L. Craig *et al.*, “International physical activity questionnaire: 12-Country reliability  
769 and validity,” *Med Sci Sports Exerc*, vol. 35, no. 8, pp. 1381–1395, Aug. 2003, doi:  
770 10.1249/01.MSS.0000078924.61453.FB.
- 771 [53] S. T. Cheng *et al.*, “Developing a short multidimensional measure of pain self-  
772 efficacy: The chronic pain self-efficacy scale-short form,” *Gerontologist*, vol. 60, no.  
773 3, pp. E127–E136, Apr. 2020, doi: 10.1093/geront/gnz041.
- 774 [54] “gLOBAL RAAtING OF ChANge sCALes: A RevIew OF stReNgths AND  
775 weAkNesses AND CONsIDeRAtIONs FOR DesIgN.”
- 776 [55] C. Pham *et al.*, “Effectiveness of consumer-grade contactless vital signs monitors: a  
777 systematic review and meta-analysis,” *Journal of Clinical Monitoring and Computing*,  
778 vol. 36, no. 1. Springer Science and Business Media B.V., pp. 41–54, Feb. 01, 2022.  
779 doi: 10.1007/s10877-021-00734-9.
- 780 [56] J. , H. N. Cohen, “Statistical power analysis for the behavioral sciences (2nd ed.). .,”  
781 *Lawrence Erlbaum Associates*, 1988.
- 782 [57] F. , E. E. , L. A.-G. , & B. A. Faul, “G\*Power 3: A flexible statistical power analysis  
783 program for the social, behavioral, and biomedical sciences.,” *Behavior Research*  
784 *Methods*, 39, 175–191..
- 785 [58] J. M. J. Murre and J. Dros, “Replication and analysis of Ebbinghaus’ forgetting curve,”  
786 *PLoS One*, vol. 10, no. 7, Jul. 2015, doi: 10.1371/journal.pone.0120644.
- 787 [59] I. Vartiovaara, “Guidelines on authorship. International committee of medical journal  
788 editors,” *Br Med J (Clin Res Ed)*, vol. 291, no. 6497, p. 722, 1985, doi:  
789 10.1136/bmj.291.6497.722.
- 790 [60] I. Kela *et al.*, “Chronic Pain: A Complex Condition With a Multi-Tangential  
791 Approach,” *Cureus*, Nov. 2021, doi: 10.7759/cureus.19850.
- 792 [61] B. Sherriff, C. Clark, C. Killingback, and D. Newell, “Impact of contextual factors on  
793 patient outcomes following conservative low back pain treatment: systematic review,”  
794 *Chiropractic and Manual Therapies*, vol. 30, no. 1. BioMed Central Ltd, Dec. 01,  
795 2022. doi: 10.1186/s12998-022-00430-8.
- 796 [62] G. Rossettini, E. Carlino, and M. Testa, “Clinical relevance of contextual factors as  
797 triggers of placebo and nocebo effects in musculoskeletal pain,” *BMC Musculoskeletal*  
798 *Disorders*, vol. 19, no. 1. BioMed Central Ltd., Jan. 22, 2018. doi: 10.1186/s12891-  
799 018-1943-8.
- 800 [63] M. M. Volcheck, S. M. Graham, K. C. Fleming, A. B. Mohabbat, and C. A. Luedtke,  
801 “Central sensitization, chronic pain, and other symptoms: Better understanding, better



- 802 management,” *Cleveland Clinic journal of medicine*, vol. 90, no. 4. NLM (Medline),  
803 pp. 245–254, Apr. 03, 2023. doi: 10.3949/ccjm.90a.22019.
- 804 [64] M.-A. Fitzcharles, S. P. Cohen, D. J. Clauw, G. Littlejohn, C. Usui, and W. Häuser,  
805 “Chronic Pain 2 Nociceptive pain: towards an understanding of prevalent pain  
806 conditions,” 2021. [Online]. Available: [www.thelancet.com](http://www.thelancet.com)
- 807 [65] A. Latremoliere and C. J. Woolf, “Central Sensitization: A Generator of Pain  
808 Hypersensitivity by Central Neural Plasticity,” *Journal of Pain*, vol. 10, no. 9. pp.  
809 895–926, Sep. 2009. doi: 10.1016/j.jpain.2009.06.012.
- 810 [66] J. Nijs *et al.*, “Central sensitisation in chronic pain conditions: latest discoveries and  
811 their potential for precision medicine,” *The Lancet Rheumatology*, vol. 3, no. 5. Lancet  
812 Publishing Group, pp. e383–e392, May 01, 2021. doi: 10.1016/S2665-9913(21)00032-  
813 1.
- 814 [67] S. J. Linton, W. S. Shaw, and W. S. Shaw, “Impact of Psychological Factors in the  
815 Experience of Pain,” 2011. [Online]. Available:  
816 <https://academic.oup.com/ptj/article/91/5/700/2735743>
- 817 [68] L. M. Tracy, “Psychosocial factors and their influence on the experience of pain,” *Pain*  
818 *Rep*, vol. 2, no. 4, Jul. 2017, doi: 10.1097/PR9.0000000000000602.
- 819 [69] S. Bustan *et al.*, “Psychological, cognitive factors and contextual influences in pain  
820 and pain-related suffering as revealed by a combined qualitative and quantitative  
821 assessment approach,” *PLoS One*, vol. 13, no. 7, Jul. 2018, doi:  
822 10.1371/journal.pone.0199814.
- 823 [70] A. Polacchini *et al.*, “A method for reproducible measurements of serum BDNF:  
824 Comparison of the performance of six commercial assays,” *Sci Rep*, vol. 5, Dec. 2015,  
825 doi: 10.1038/srep17989.
- 826 [71] S. Keen, M. Lomeli-Rodriguez, and A. C. D. C. Williams, “Exploring how people with  
827 chronic pain understand their pain: A qualitative study,” *Scand J Pain*, vol. 21, no. 4,  
828 pp. 743–753, Oct. 2021, doi: 10.1515/sjpain-2021-0060.
- 829 [72] M. J. L. Sullivan, “Toward a Biopsychomotor Conceptualization of Pain Implications  
830 for Research and Intervention,” 2008.
- 831 [73] B. Lindström and M. Eriksson, “Salutogenesis,” *Journal of Epidemiology and*  
832 *Community Health*, vol. 59, no. 6. pp. 440–442, Jun. 2005. doi:  
833 10.1136/jech.2005.034777.
- 834 [74] D.P. Ausubel, “The psychology of meaningful verbal learning.,” in *New York: Grune &*  
835 *Stratton; 1963. 255 p.*, 1963.

- 836 [75] T. G. K. Bryce and E. J. Blown, “Ausubel’s meaningful learning re-visited,” *Current*  
837 *Psychology*, 2023, doi: 10.1007/s12144-023-04440-4.
- 838 [76] D. P. Ausubel, *Educational psychology: a cognitive view*. 1968.
- 839 [77] A. Antonovsky, “THE STRUCTURE AND PROPERTIES OF THE SENSE OF  
840 COHERENCE SCALE,” 1993.
- 841 [78] M. Eriksson and B. Lindström, “Antonovsky’s sense of coherence scale and its  
842 relation with quality of life: A systematic review,” *Journal of Epidemiology and*  
843 *Community Health*, vol. 61, no. 11. pp. 938–944, Nov. 2007. doi:  
844 10.1136/jech.2006.056028.
- 845 [79] P. M. Newton, A. Da Silva, and L. G. Peters, “A Pragmatic Master List of Action  
846 Verbs for Bloom’s Taxonomy,” *Front Educ (Lausanne)*, vol. 5, Jul. 2020, doi:  
847 10.3389/educ.2020.00107.
- 848 [80] N. E. Adams, “Bloom’s taxonomy of cognitive learning objectives,” *Journal of the*  
849 *Medical Library Association*, vol. 103, no. 3, pp. 152–153, 2015, doi: 10.3163/1536-  
850 5050.103.3.010.
- 851 [81] Krathwohl DR, “From One Dimension to Two Dimensions,” 2002.
- 852 [82] K. D. Torralba and L. Doo, “Active Learning Strategies to Improve Progression from  
853 Knowledge to Action,” *Rheumatic Disease Clinics of North America*, vol. 46, no. 1.  
854 W.B. Saunders, pp. 1–19, Feb. 01, 2020. doi: 10.1016/j.rdc.2019.09.001.
- 855 [83] J. Phillips and F. Wiesbauer, “The flipped classroom in medical education: A new  
856 standard in teaching,” *Trends in Anaesthesia and Critical Care*, vol. 42, pp. 4–8, Feb.  
857 2022, doi: 10.1016/j.tacc.2022.01.001.
- 858 [84] D. M. Higgins, A. M. Martin, D. G. Baker, J. J. Vasterling, and V. Risbrough, “The  
859 relationship between chronic pain and neurocognitive function a systematic review,”  
860 *Clinical Journal of Pain*, vol. 34, no. 3. Lippincott Williams and Wilkins, pp. 262–  
861 275, Mar. 01, 2018. doi: 10.1097/AJP.0000000000000536.
- 862 [85] H. Ebbinghaus, “Memory: A Contribution to Experimental Psychology,” *Ann*  
863 *Neurosci*, vol. 20, no. 4, Oct. 2013, doi: 10.5214/ans.0972.7531.200408.
- 864 [86] J. Grisart, M. Van der Linden, and C. Bastin, “The contribution of recollection and  
865 familiarity to recognition memory performance in chronic pain patients,” *Behaviour*  
866 *Research and Therapy*, vol. 45, no. 5, pp. 1077–1084, May 2007, doi:  
867 10.1016/j.brat.2006.05.002.
- 868 [87] P. A. , & G. E. J. Woźniak, “Optimization of repetition spacing in the practice of  
869 learning.,” *Acta Neurobiol Exp (Wars)*, pp. 54(1), 59–62., 1994.

- 870 [88] S. Fattinger *et al.*, “Deep sleep maintains learning efficiency of the human brain,” *Nat*  
871 *Commun*, vol. 8, May 2017, doi: 10.1038/ncomms15405.
- 872 [89] W. R. Miller and S. Rollnick, *Motivational interviewing: Preparing people to change*  
873 *addictive behavior.*, The Guilford Press. 1991.
- 874 [90] J. Nijs *et al.*, “TITLE: Integrating Motivational Interviewing in Pain Neuroscience  
875 Education for People With Chronic Pain: A Practical Guide for Clinicians RUNNING  
876 HEAD: Motivational Interviewing Plus Explaining Pain TOC CATEGORY: Pain  
877 Management ARTICLE TYPE: Perspective”, doi: 10.1093/ptj/pzaa021/5716894.
- 878 [91] X. Bosch-Capblanch, K. Abba, M. Pictor, and P. Garner, “Contracts between patients  
879 and healthcare practitioners for improving patients’ adherence to treatment, prevention  
880 and health promotion activities,” *Cochrane Database of Systematic Reviews*, no. 2.  
881 2007. doi: 10.1002/14651858.CD004808.pub3.
- 882 [92] F. Cuenca-Martínez, L. Suso-Martí, J. V. León-Hernández, and R. La Touche, “The  
883 role of movement representation techniques in the motor learning process: A  
884 neurophysiological hypothesis and a narrative review,” *Brain Sciences*, vol. 10, no. 1.  
885 MDPI AG, Jan. 01, 2020. doi: 10.3390/brainsci10010027.

Timepoint	STUDY PERIOD						
	Enrolment	Allocation	Post-allocation			Close-out	
	t-1	0	t-baseline	t1 (15 days)	t-postint	t3 (1 month later)	t4 (8 months later)
<b>ENROLMENT:</b>							
Elegibility screen	X						
Informed consent	X						
Allocation		X					
<b>INTERVENTIONS</b>							
[POBTE + Exercise]			←	→	→		
[Exercise]			←	→	→		
<b>ASSESSMENTS</b>							
Visual Analogue Scale			X	X	X	X	X
Pressure Pain Thresholds			X	X	X	X	X
Brain Derived Neurotrophic Factor			X	X	X	X	X
Hospital Anxiety and Depression Scale			X	X	X	X	X
Pain catastrophizing scale			X	X	X	X	X
Quality of Life			X	X	X	X	X
Chronic Pain Grading Scale			X	X	X	X	X
Tampa Scale for Kinesiophobia			X	X	X	X	X
Pittsburgh Sleep Quality Index			X	X	X	X	X
Perceived Stress Scale			X	X	X	X	X
International Physical Activity Questionnaire			X	X	X	X	X
Knowledge questionnaire			X	X	X	X	X
Global Perception of Change			X	X	X	X	X
Height and Weight			X	X	X	X	X
Sociodemographic outcomes			X	X	X	X	X
Blood pressure			X	X	X	X	X
Respiratory rate			X	X	X	X	X
Saturation			X	X	X	X	X
HR			X	X	X	X	X
GROC Scale							X

Figure 1 - SPIRIT