

COVID-19 mitigation behaviors and policies limited SARS-CoV-2 transmission in the United States from September 2020 through November 2021.

Authors

Velma K. Lopez,^{1*} Sarah Kada,¹ Pragati V. Prasad,² Taylor Chin,¹ Betsy L. Cadwell,³ Jessica M. Healy,⁴ Rachel B. Slayton,⁴ Matthew Biggerstaff,² Michael A. Johansson¹

Affiliations

¹ National Center for Emerging and Zoonotic Infectious Diseases (NCEZID), Division of Vector Borne Diseases, Centers for Disease Control and Prevention (CDC).

² National Center for Immunization and Respiratory Diseases, Influenza Division, CDC.

³ Global Health Center, Division Global Health Protection, CDC.

⁴ NCEZID, Division of Healthcare Quality Promotion, CDC.

*Corresponding author: oko8@cdc.gov

Abstract

United States' jurisdictions implemented varied policies to slow SARS-CoV-2 transmission. Understanding patterns of these policies alongside individual's behaviors can inform effective outbreak response. To do so, we estimated the time-varying reproduction number (R_t), a weekly measure of real-time transmission using US COVID-19 cases from September 2020-November 2021. We then assessed the association between R_t and policies, personal COVID-19 mitigation behaviors, variants, immunity, and social vulnerability indicators using two multi-level regression models. First, we fit a model with state-level policy stringency according to the Oxford Stringency Index, a composite indicator reflecting the strictness of COVID-19 policies and strength of pandemic-related communication. Our second model included a subset of specific policies. We found that personal mitigation behaviors and vaccination were more strongly associated with decreased transmission than policies. Importantly, transmission was reduced not by a single measure, but by various layered measures. These results underscore the need for policy, behavior change, and risk communication integration to reduce virus transmission during epidemics.

32 MAIN TEXT

34 Introduction

36 As SARS-CoV-2 began to spread globally in early 2020, early estimates of the basic reproduction number (R_0), a metric of
37 the average number of cases infected by each infectious person in a fully susceptible population, indicated that the virus
38 was more transmissible than influenza (1) with a median R_0 estimate of 2.79 (2). With limited knowledge about
39 transmission dynamics and no vaccines to mitigate viral spread, governments began to implement travel restrictions and
40 stay-at-home orders to reduce contact between individuals and opportunities for transmission. These non-
41 pharmaceutical intervention (NPI) policies rapidly evolved and eventually encompassed a spatially and temporally
42 diverse range of policies, such as non-essential business closures, limiting operational hours of bars and restaurants,
43 cancellation of large events, limiting the size of social gatherings, shutting down workplaces and schools, or mandating
44 the use of masks in public spaces.

46 Published evidence showed that NPI policies, such as stay-at-home orders and closure of public facilities, slowed SARS-
47 CoV-2 spread throughout the world during the early phase of the pandemic (3–5). Extensive evidence has also
48 accumulated about the effectiveness of other specific NPI policies, such as limiting the size of gatherings and closing
49 schools or universities, and their combinations being more effective than stay-at-home orders (3, 5). Changes in
50 behavior that were not explicitly linked to policies, as well as climatic and sociodemographic factors, also appeared to
51 affect transmission dynamics. For example, social structure dramatically influences SARS-CoV-2 transmission dynamics
52 by affecting how people interact. Within the United States (US), it became evident that physical distancing by staying
53 home from work was a policy option available to more wealthy and White individuals rather than frontline, essential
54 worker populations (6), who are more likely to have a lower socioeconomic status and belong to racial minoritized
55 communities (7, 8). Additionally, SARS-CoV-2 testing sites may have been disproportionately available in areas that had a
56 greater proportion of White residents (9–11). In other words, the opportunity to know one's infection status and limit
57 interactions with others, if necessary, was only available to a privileged subset of the population. Moreover, weather
58 factors added further complexity to these dynamics. For example, the literature suggests that SARS-CoV-2 transmission
59 decreases as temperature and specific humidity increases (12); potentially by weakening the viral envelope (13) and
60 impacting when people spend time indoors and under conditions more favorable to viral transmission. Additionally, as
61 the pandemic progressed, the role of post-infection and post-vaccination immunity and the role of viral evolution also
62 became apparent. Whether COVID-19 mitigation policies effectively reduced transmission thus requires an assessment
63 within the broader context of behavior, social factors, and weather conditions.

65 The US COVID-19 epidemic provides an opportunity to assess the contribution of many of these factors to SARS-CoV-2
66 transmission. Diverse COVID-19 mitigation policies were heterogeneously implemented over time and across
67 jurisdictions (14). Overall, 55 million cases and over 820,000 deaths were reported in the United States by December 31,
68 2021 (15), patterned by existing demographics and health disparities within each jurisdiction. Given the heterogeneity in
69 case and death patterns and the overall success of NPI policies in other countries, we seek to understand spatial and
70 temporal impact of COVID-19 mitigation policies on US SARS-CoV-2 transmission. We do so by first estimating the time-
71 varying reproduction number (R_t) in each US jurisdiction between September 2020 and November 2021. We then model
72 the ecological associations between R_t and time-varying mitigation policies, explicitly adjusting for factors that directly or
73 indirectly affect or modify community transmission, including personal COVID-19 mitigation behaviors, the circulation of
74 key SARS-CoV-2 variants, weather data, indicators of immunity, and COVID-19 vulnerability indicators.

76 Results

78 Between September 2020 and November 2021, R_t estimates exhibited spatiotemporal variability across the United
79 States (Figure 1). All jurisdictions experienced sustained increases in transmission ($R_t > 1$) in late 2020, followed by a
80 period of fluctuations until the Delta wave in the summer of 2021, when many had their highest R_t estimates. Despite

81 some consistency in trends, our results reveal that R_t dynamics differed substantially between jurisdictions, such as the
82 timing and rate of the transmission increases in late 2020 during the Alpha wave. The lowest mean estimated R_t over
83 this period was for Vermont in May 2021 ($R_t=0.66$) and the highest value was for the District of Columbia (DC) in
84 November 2021 ($R_t=1.62$).

85
86 Stay-at-home orders, gathering limitations, cancellation of public events, and mask mandates all exhibited
87 spatiotemporal variability (Figure 1) and moderate correlation (maximum: 0.47, Supplemental Figure 1B). Hawaii,
88 Illinois, Rhode Island, and Virginia implemented all four of these policies at least once, while other jurisdictions, such as
89 Alaska, Florida, Iowa, Missouri, Montana, Oklahoma, and South Dakota, did not implement any of them. Overall,
90 stringency of mitigation policies dipped slightly in October 2020 and decreased substantially between March and June
91 2021 (Figure 2A). Variation in policy stringency across jurisdictions persisted throughout the study period, with the
92 lowest median value in South Dakota (0.09; range: 0.06 to 0.21) and the highest median value in Hawaii (0.66; range:
93 0.44 to 0.76).

94
95 Personal COVID-19 mitigation behaviors also varied over time and space (Figure 2A). Reductions in national airline travel
96 and individual mobility showed similar patterns over time, though individual mobility also varied by jurisdiction.
97 Reductions in both were substantial and relatively static until March 2021, at which point airline travel and mobility
98 began to return closer to pre-pandemic levels. Across jurisdictions and time periods, self-reported mask use and
99 gathering attendance among survey respondents were highly negatively correlated (-0.83, Supplemental Figure 2),
00 indicating that both are likely indicators of personal risk reduction behaviors. Because of the high correlation, we
01 focused on a single variable, self-reported mask use, as an indicator of personal protection measures for further
02 analyses. Reported mask use was also positively correlated with local mobility (Supplemental Figure 1A, R^2 value of 0.68)
03 but had distinct patterns. For example, the weekly proportion of respondents that self-reported wearing a mask
04 remained above 75% in most jurisdictions until May 2021, when it declined sharply. In August 2021, all three mitigation
05 behavior indicators increased, with new reductions in national airline travel and local mobility, as well as increased
06 reported mask use (Figure 2A).

07
08 The increased personal mitigation behaviors in August 2021 coincided with the rapid increase in prevalence of the Delta
09 variant (Figure 2A, Supplemental Figure 1A). Expansion of the Alpha variant in early 2021 was generally slower, more
10 heterogeneous, and not correlated with increased mitigation behavior. In addition to potential direct effects on
11 transmission, increased temperature (highly correlated with absolute humidity, Supplemental Figure 3) was associated
12 with decreased personal mitigation behaviors and increased rates of vaccination (Supplemental Figure 1).

13
14 There was high heterogeneity in jurisdictional SARS-CoV-2 seroprevalence throughout the analysis period. By the end of
15 November 2022, seroprevalence ranged from 0.10 in Vermont to 0.46 in Wyoming (Figure 2A). The proportion of the
16 population that was fully vaccinated with an initial vaccine series increased across all jurisdictions beginning with the
17 vaccination distribution in early 2021 and ranged from 0.47 (Alabama) to 0.75 (Vermont) at the end of November 2021.
18 Increased seroprevalence and vaccination coverage were correlated with each other (0.69, Supplemental Figure 1A),
19 with long-term decreases in the mitigation behavior indicators (-0.48 to -0.98), and with the prevalence of the Delta
20 variant (0.52 and 0.83, respectively).

21
22 Community COVID-19 Vulnerability Index (CCVI) indicators showed high heterogeneity across all jurisdictions
23 (Supplemental Figure 5A) and some correlation with temperature, vaccine coverage, and personal mitigation practices
24 (Supplemental Figure 5B). Average vulnerability across the five indicators showed higher vulnerability in southern
25 jurisdictions (Figure 2B), with the highest average vulnerability in Texas (0.80), Arizona and California (0.72,
26 respectively). Vermont had the lowest average vulnerability (0.15), followed by New Hampshire (0.22) and Montana
27 (0.27).

28

29 We fitted two regression models to assess the spatiotemporal relationship of each of these factors with the dynamics of
30 R_t on the logarithmic scale over time in all jurisdictions: the Oxford Stringency Index (OSI) Model using OSI as the only
31 policy indicator and the Individual Policy Model, using four specific policies: cancellation of public events, restriction of
32 gatherings, stay at home orders, and mask mandates (See Supplement Figure 6). For both models, we assessed
33 alternative spatiotemporal model structures and found that a model with independent random effects for time and
34 state provided the best fit to the data (see Supplement 8). We also adjusted for other factors described above that
35 potentially contribute to R_t : individual behavior, the prevalence of specific variants, immunity, weather, and community
36 risk factors (i.e., the CCVI indicators). Fixed effect intercepts for both models indicate average expected R_t values well
37 above 1.0 without any mitigation behaviors or policies. With moderate values for CCVI indicators (0.5 each) and
38 temperature (12°C), estimated R_t in the absence of mitigation was 2.6 for the OSI Model (95% Credible Interval [CI]: 1.9-
39 3.5) and 2.5 (95% CI 1.9-3.4) for the policy model.

41 While some policies and behavior indicators were moderately correlated, such as restrictions on gathering sizes and
42 reduced mobility ($R^2 = 0.53$, Supplemental Figure 1), we included both types of covariates in the regression models to
43 assess the relative strength of their associations with R_t . Overall stringency, some of the specific individual policies, and
44 each of the behavioral components were associated with decreased R_t (Figure 3). Implementation of half of the strictest
45 policies (i.e., OSI at 50%) relative to no policies (OSI at 0%) was estimated to decrease R_t by 6.7% (95% CI: 5.1- 8.3%). In
46 the model with individual policies, cancellation of public events decreased R_t by 2.6% (95% CI: 1.4-3.7%), restrictions on
47 gathering sizes by 1.2% (95% CI: 0.1-2.2%), and stay-at-home orders by 2.6% (95% CI: 0.3-4.8%). Mask mandates had a
48 mean estimate corresponding to a 0.7% reduction in R_t but did not reach statistical significance (95% CI: -1.5-0.2%).
49 Strong associations were also observed for personal mitigation behaviors in both models. For the OSI Model, R_t was
50 estimated to decrease by 22% (95% CI: 18%-26%) if there were a 50% reduction in national airline travel, 2.9% (95% CI:
51 2.4-3.3%) if local movement to recreation and retail locations decreased by 10%, and 14% (95% CI: 12-15%) if self-
52 reported mask use reached 50%. Sensitivity analysis showed consistent estimates for policy impacts even when personal
53 mitigation behaviors were excluded (Supplement 10).

55 In both models, a 50% increase in the proportion of Alpha variant in circulation had a likely positive but not significant
56 association with R_t (95% CI: -0.20-0.10%, OSI Model), while a 50% increase in the proportion of Delta among current
57 variants was associated with a 0.1% (95% CI: 0.01-0.02%, OSI Model) increase (Figure 3). Seroprevalence and vaccination
58 were both associated with reduced R_t in each of the models, a 30% (95% CI: 28-32%, OSI Model) and 22% (95% CI: 18-
59 26%, OSI Model) estimated reduction if half of the population had been previously infected or fully vaccinated,
60 respectively. Increased temperature was associated with a 4.0% (95% CI: 3.0-5.0%, OSI Model) decrease in R_t per 10°C
61 increase in mean weekly temperature. Among sociodemographic factors, we found that greater population density and
62 greater racial and ethnic diversity were associated with increased R_t in both models. Coefficients were similar in
63 direction for both models, with or without informative priors (see Supplement 6), and with alternative estimates of R_t
64 (see Supplement 9), minor differences in magnitude were observed in our sensitivity analyses (Supplement 9).

66 We estimated the proportional reduction associated with each time-varying component individually and combined for
67 each jurisdiction and nationally over time using the OSI Model estimates (Figure 4, Figure 5, and Supplemental Figure 7).
68 Over the entire study period, personal mitigation behaviors were associated with the largest proportional transmission
69 reductions in all jurisdictions before vaccine implementation and remained an important or leading contributor to
70 reduction thereafter (median combined reduction over time across locations: 44%, range: 10-62%) (Figure 5). Immunity
71 was the second most important contributor overall and of growing importance as more people were infected and
72 vaccination coverage increased. These patterns, however, were starkly different across the United States (Figure 4 and
73 Supplemental Figure 7). For example, in November 2021 many jurisdictions had higher estimated reductions associated
74 with previous infections than vaccination (e.g., Wyoming). Meanwhile other jurisdictions with lower seropositivity or
75 more vaccinations had higher estimated reductions associated with vaccination (e.g., Vermont). At the end of the study
76 period, SARS-CoV-2 seroprevalence and vaccination were associated with a wide range of reductions across jurisdictions

(8-35% and 24-36%, respectively). Policies and weather were also associated with changes in transmission but with less overall estimated magnitude than the effects of behavior and immunity.

Discussion

Deciphering SARS-CoV-2 transmission drivers throughout the pandemic can inform development of policies and interventions for mitigation of respiratory pathogens. Our analysis integrates spatial and temporal patterns of potential transmission determinants to assess associations between those determinants and SARS-CoV-2 transmission. The findings presented here are derived from large scale data and are statistically supported, but they cannot establish causality due to the limitations of each dataset and the many known and unknown potential confounders. Nonetheless, two important insights for mitigation strategies were elucidated. First, while both general and specific policies and behavior were associated with reduced SARS-CoV-2 transmission, masking wear and reduced airline travel were associated with greater transmission reductions. Second, throughout the study period multiple factors contributed to limiting transmission; personal mitigation behavior had large impacts early on while the importance of previous infection and vaccination increased as population-level immunity increased over time. As these effects are considered multiplicative in the model, the findings imply that combinations of behavioral mitigation were critical to limiting transmission throughout the study period.

Early COVID-19 mitigation strategies in US jurisdictions focused on physical distancing (e.g., stay at home orders, cancelation of public events, restricting gathering sizes) and masking policies. Our estimates suggest that physical distancing policies reduced SARS-CoV-2 transmission, with an estimated mean reduction of 1-3% for individual policies and an estimated total reduction of approximately 6% if sets of policies tracked by the OSI reach 50%. These reductions are in line with other, short term, national-level assessments of NPI policies and showed reductions in COVID-19 cases (16–19), transmission (20–22), and deaths (17); there was some reduction in effectiveness for policies with longer durations (17). In contrast to our null results for masking policies, jurisdiction-specific studies show short-term effectiveness of mask mandates at reducing cases (23) and hospitalization growth rates (24). Importantly, most of these early evaluations focused on the period in which the NPIs were in effect and did not assess long-term effects or periods when the NPI was not implemented, as was done here. There is some evidence of limited prolonged reduction in COVID-19 outcomes when NPI policies were lifted (25), with more socially disadvantaged communities experiencing greater rebounds in COVID-19 burden than other communities (26). Overall, the association between individual policies and reductions in transmission was strong but accounted for only a modest overall reduction in transmission risk. This finding is due to the model's inclusion of related factors like NPI policy implementation stringency and proxies for adherence to the policies via personal mitigation behaviors.

The relationships underlying policy implementation and behavior are complex and reflect personal characteristics, community characteristics, and social structure. Like others, we found indicators of behavior such as local mobility, national airline travel, and self-reported mask use to be associated with significant reductions in R_t although not necessarily temporally aligned with the corresponding policies (27). For example, analysis of early mobility data showed that movement patterns in the United States changed drastically even before the implementation of most physical distancing policies (28), with continued reductions in movement after policies were in place (29). It is plausible that broad agreement within the physical distancing policies early in the pandemic (30) influenced personal choices to stay home. Similarly, mask use increased, and local mobility decreased rapidly as the Delta wave grew even though updated recommendations stated that vaccinated individuals could resume pre-pandemic activities without wearing a mask, once again, indicating a behavioral response that was independent of policy. Conversely, one example of temporal alignment between policy and behavior was immediately following the May 2021 guidance update when there was a rapid decrease in reported mask use and increases in local mobility, likely an effect of individuals returning to activities that had previously stopped due to the pandemic.

25 Prior to the Delta wave, vaccination rates across the United States were steadily rising, with varying geospatial,
26 socioeconomic, and race and ethnic patterns of vaccination coverage (31, 32). Many jurisdictions had also experienced
27 substantial transmission in 2020 and early 2021, resulting in greater infection-acquired immunity in their populations.
28 While we did not adjust for waning immunity (33), changing vaccine effectiveness with time from vaccination and with
29 the appearance of new variants (33, 34), we found associations of both infection-acquired immunity and vaccination
30 with decreased transmission. It is plausible that if we adjusted our model estimates for waning immunity, the strength of
31 the immunity-related associations would be attenuated. In most states, the relative impact of either infection-acquired
32 immunity or vaccination was estimated to be as high as the decreasing impact of behavior change by November 2021,
33 when the impact of vaccination was estimated to be higher than the impact of infection-acquired immunity. There were
34 also distinct differences across states, with some states showing comparable impact by late 2021 (e.g., Alabama,
35 Arkansas) and others showing much higher impact from vaccination than infection-acquired immunity (e.g., Connecticut,
36 Hawaii). Additionally, we did not adjust our model for COVID-19 testing, which may have a non-linear relationship with
37 seropositivity since testing availability and behaviors changed over time.
38

39 Social structure drives transmission patterns for all pathogens and the US COVID-19 epidemic highlighted existing social
40 fault lines that influenced not only who in society was more likely to get infected, but also who was more likely to
41 benefit from mitigation measures (35, 36). Here, we accounted for multiple social vulnerability indicators and found
42 national-level evidence of higher transmission rates in states with higher population density and greater racial and
43 ethnic diversity. Our findings are in line with several results from county level analyses. For example, higher rates of
44 SARS-CoV-2 transmission occurred in low-income and racial minoritized communities (37). Additionally, counties with
45 higher social vulnerability were more likely to become a COVID-19 burden hotspot (38), that is a geographic area with
46 elevated disease incidence (39). Because structural racism is part of the intersectional factors comprising social
47 vulnerability, it is unsurprising that hotspots were common in US counties with a greater percentage of non-White
48 residents (40–42). These findings highlight the importance of incorporating social markers of risk in infectious disease
49 transmission models (43).
50

51 Our findings are limited to associations and not causal relationships. Establishing causality between mitigation measures
52 and transmission is complicated by a variety of risk factors, from the emergence of SARS-CoV-2 variants and changes in
53 human behavior to environmental conditions—all of which fluctuate over time and space. First, many of the important
54 determinants of SARS-CoV-2 transmission are correlated and have complex interactions. To partially address this
55 limitation, we removed highly correlated variables that measured similar factors when possible. However, we did choose
56 to retain some highly correlated variables. For example, COVID-19 vaccination and the recovery of national airline travel
57 had a strong correlation (correlation coefficient: -0.94 between vaccination and travel reductions) largely driven by
58 increased travel in early 2021 which occurred at the same time as the expansion of vaccine availability and uptake.
59 Increased national travel likely has some direct relationship with vaccination due to increased willingness or interest in
60 travel for vaccinated individuals; however, other factors, such as decreased case numbers, increased numbers of people
61 with infection-acquired immunity, or changing risk perceptions, likely also contributed. Second, we applied a regression
62 framework, which assumes log-linear independence between covariates that does not account for the observed
63 correlation between variables. Overall, the potential causal pathways between the predictors and R_t are not individually
64 identifiable at this scale. We encourage caution in interpretation of any single association general insight into SARS-CoV-
65 2 transmission patterns in the US.
66

67 Related limitations apply for our assessment of policies, many of which were correlated and did not capture all
68 potentially important details of each policy. For example, we used state level policy indicators that may differ
69 substantially from policies implemented at a county or city level. Additionally, many different variations of policies were
70 implemented (e.g., some jurisdictions required masks universally, whereas others only in certain locations or where
71 physical distancing was not possible), even within jurisdictions, and those variations were not captured here. Instead, we
72 opted to use a limited set of policy classifications and assigned those to the entirety of each jurisdiction. Use of the

73 composite policy indicator, the OSI, is a complementary approach to the same challenge but is also a necessary over-
74 simplification of the diversity of policies implemented.

75
76 Our analysis found that diverse efforts had substantial associations with SARS-CoV-2 transmission across the United
77 States in 2020-2021. Ideally the wealth of data and diversity of interventions in the United States could be used to
78 develop specific recipes for control. However, that diversity and correlation between many contributing factors makes
79 precise estimates of specific interventions and combinations of intervention infeasible. Here, we focused on an
80 ecological scale analysis of key types of strategies and found evidence that personal mitigation behaviors (e.g., masking,
81 physical distancing) were more strongly associated with decreased transmission than policies. While most policies may
82 not be sufficient to control COVID-19 on their own, a combination of policies and communication efforts that promote,
83 support, and reinforce behavior change may be an essential pathway for control. The other most impactful intervention
84 was vaccination, a nationwide intervention that was not available early on but became as important as behavior
85 modification for controlling transmission in most jurisdictions by mid to late 2021 (29). Importantly, at all time points,
86 transmission was reduced not by a single measure, but by various layered measures indicating that no single measure is
87 likely to control SARS-CoV-2 on its own. Even with high rates of post-infection immunity or vaccination, behavior change
88 (e.g., mask use, physical distancing) may be needed to control transmission. These findings demonstrate the complexity
89 of the COVID-19 response and SARS-CoV-2 transmission and illustrate the ongoing importance of layered mitigation
90 approaches integrated across the public health, government, and communities.

91 **Materials and Methods**

92
93
94 *Experimental Design:* We sought to measure the association between R_t and time-varying COVID-19 mitigation policies.
95 To accomplish this, we first modeled R_t from September 6, 2020 to November 27, 2021 (64 weeks) in fifty-one
96 jurisdictions (all US states and DC). We then modeled the association between jurisdiction-specific R_t and policies using
97 Bayesian hierarchical models, explicitly adjusting for factors that directly or indirectly affect or modify community
98 transmission, including personal COVID-19 mitigation behaviors, the circulation of key SARS-CoV-2 variants, weather
99 data, indicators of immunity, and COVID-19 vulnerability indicators.

00
01 The analysis period was selected based on the availability of data. U.S. territories and affiliated jurisdictions were
02 excluded from the analysis as equivalent data for policies, behaviors, SARS-CoV-2 variants, immunity, and vulnerability
03 were not available.

04
05 *COVID-19 Time-varying Reproduction Number Estimation:* We estimated R_t , a weekly measure of real-time
06 transmission in each US jurisdiction, using COVID-19 case data reported to the Centers for Disease Control and
07 Prevention (CDC). For each reported case, an onset date was sampled from the time-specific onset-to-report delays
08 distribution in the national line list data set. To estimate R_t , onset dates were back projected from case report dates
09 using time-specific delays; infection dates were sampled using a log-normal distribution for the incubation periods [log
10 mean = 1.63 and log standard deviation = 0.5 based on published data (44)]. We then generated 10 bootstrapped
11 samples of each jurisdictional time series using a centered 14-day moving window to account for variability in daily
12 reporting when estimating R_t . Finally, for each trajectory we estimated R_t using the methods described in Cori et al (45).
13 We used a 7-day window and an uncertain serial interval (SI) (mean: 5 days, standard deviation: 1 day), with 5 samples
14 from the SI distribution and 5 samples of the R_t posterior for each SI value (46). We thus generated 250 R_t samples for
15 each time point and jurisdiction and used the mean estimate on each Wednesday as the outcome for subsequent
16 analyses.

17
18 *Covariate data:* We included data on mitigation policies, personal mitigation behaviors, the circulation of key variants,
19 weather, indicators of immunity, and vulnerability indicators described below and in the Supplemental Text. We
20 assessed correlation between covariates by estimating the median pairwise R^2 with bivariate regression models (see
21 Supplement 1).

22
23 COVID-19 mitigation policies: Standardized policy data were obtained from the Oxford COVID-19 Government Response
24 Tracker (47). The dataset includes a composite indicator (OSI) of the overall strictness of COVID-19 policies and strength
25 of pandemic-related communication (details in Supplement 1). We used a smoothed, daily time series of jurisdiction-
26 level OSI, rescaled the values to range from 0 to 1, and calculated a jurisdictional weekly mean.

27
28 We also used jurisdiction-level time series for three individual policies included in the OSI indicator (cancellation of
29 public events, restrictions on gathering sizes, and stay at home orders) and mask mandates from the Oxford COVID-19
30 Government Response Tracker (not included in OSI). We chose to examine these four policies because they were
31 commonly implemented across the United States and represented key, distinct mitigation measures. We dichotomized
32 all policy variables into the strictest policy versus all other implementations/no policy. Data management processes for
33 these data are described in the Supplemental Text.

34
35 Personal COVID-19 mitigation behaviors: Jurisdiction-level, personal behavior data were collected from a variety of
36 sources. Self-reported mask use in public (previous 5 or 7 days) and attendance at gatherings (in the past 24 hours) were
37 collected from the COVID-19 Trends and Impact Survey of Facebook users (48, 49) (See Supplemental Figure 2); mobility
38 data were collected from Google's COVID-19 Community Mobility Reports (50); and national travel estimates were
39 collected from the Transportation Security Administration (51). From the Community Mobility Report data, we included
40 the proportional reduction in weekly median mobility to retail and recreation locations relative to baseline mobility from
41 January 3- February 6, 2020. We also included the weekly median reduction in national airline travel relative to
42 maximum weekly travel in 2019. We set the reference to the maximum weekly travel in 2019 to ease interpretation of
43 the coefficients in the final model.

44
45 Circulation of key SARS-CoV-2 variants: We estimated the weekly proportion of Alpha (B.1.1.7) and Delta (B.1.617.2)
46 SARS-CoV-2 variants in circulation by fitting sequence data to a multinomial logistic regression model, which included
47 normalized survey weights to account for reporting patterns within and between jurisdictions (52).

48
49 Weather data: We pulled temperature (°C) data from weather stations included in the National Oceanic and
50 Atmospheric Administration's Integrated Surface Database (53), using the package "worldmet" (54). From station level
51 data, we calculated the weekly median temperature in each jurisdiction. Given the role of humidity in respiratory virus
52 transmission (55, 56), we also assessed associations with relative humidity and absolute humidity to guide our modeling
53 (Supplemental Figure 3).

54
55 Indicators of immunity: We included infection-acquired and vaccine-derived immunity to SARS-CoV-2 indicators in our
56 models. As a proxy measure of infection-acquired immunity, we modeled jurisdiction-level seroprevalence, adjusting
57 estimates for reduced percent of positive assays based on waning immunity using methods described by García-Carreras
58 and colleagues using data from national SARS-CoV2 serosurveys (57). For vaccination, we used the weekly jurisdictional
59 percentage of individuals with a completed primary series of COVID-19 vaccine (58).

60
61 COVID-19 vulnerability indicators: We included variables that represent static underlying components that influence
62 transmission, which were developed as part of the CCVI (59) and range from 0 to 1 across all jurisdictions: 1) Racial and
63 Ethnic Diversity 2) Percentage of Population Working or Living in Environments with High COVID-19 Infection Risk, 3)
64 Socioeconomic Status, 4) Housing type, Transportation, Household Composition and Disability, and 5) Population
65 Density (see Supplemental Figure 4 for Pearson correlation coefficients for CCVI indicators, and Supplemental Figure 5
66 for spatial distribution and correlation with time-varying covariates).

67
68 Statistical Analysis: We assessed the association between R_t and selected determinants with Bayesian Gaussian multi-
69 level regression models, using a log-link function and jurisdiction- and time-specific intercepts (as random effects to
70 account for spatiotemporal autocorrelation). We assessed two models. The first focused on general government

71 response, using the overall OSI. The second model focused on the impact of the four individual policies: cancelation of
72 public events, restrictions on gathering sizes, stay at home orders, and mask mandates. Both models were adjusted for
73 the aforementioned covariates (Supplemental Text for model statements). For each model, we ran four Markov chains
74 at 2,500 iterations each, with a burn in period of 1,250 iterations. We specified priors for an expected negative
75 association for all components likely to decrease transmission (OSI, all individual mitigation policies, mobility, masking,
76 reduced airline travel, cumulative COVID-19 cases, vaccination, and temperature) or expected positive association for
77 those which may increase transmission (variants and each CCVI indicator). Priors were specified on the log-scale. For
78 each coefficient with an expected negative association, we used a normal distribution with a mean of -0.7 and standard
79 deviation of 0.1, approximating a 50% decrease with a 95% CI of 40-60%. We used a normal prior with a mean of 0.4 and
80 a standard deviation of 0.1 for covariates with expected positive associations, approximating a 50% increase with a 95%
81 CI of 20-80%. The intercept prior had a normal distribution with a mean of 1.1 and standard deviation of 0.1, reflecting
82 an expected R_t without any mitigation behaviors or policies from 2.5 to 3.7 (95% CI). Model convergence was assessed
83 using the Gelman-Rubin convergence diagnostic (\hat{R}) and model fit was evaluated from the predictive posteriors.
84 Jurisdiction-specific results for the OSI model are presented in Supplemental Figure 7.

85
86 We conducted several sensitivity analyses. First, we compared these models to the same two models with naïve priors
87 via leave-one-out (LOO) cross-validation (60) (Supplemental Figures 6) and compared models with different structures
88 for temporal correlation (Supplemental Figures 8). Second, we re-ran the primary models using publicly available R_t
89 estimates from the Centre for Mathematical Modeling of Infectious Diseases COVID modelling group (61) and compared
90 the model results to those presented here (Supplemental Figures 9). Third, we re-ran the individual policy model
91 without the behavior covariates (Supplemental Figures 10).

92
93 Analyses were conducted using R (version 4.2.1), with the *rstanarm* package used for primary analyses. R code is
94 available in a public repository (https://github.com/cdcepi/COVID-19-Mitigation_Rt).

95
96 This activity was reviewed by CDC and was conducted consistent with applicable federal law and CDC policy^{1§}.

97
98 *CDC disclaimer:* The findings and conclusions in this report are those of the authors and do not necessarily represent the
99 official position of the U.S. Centers for Disease Control and Prevention.

00 01 **References**

- 02
03 1. M. Biggerstaff, S. Cauchemez, C. Reed, M. Gambhir, L. Finelli, Estimates of the reproduction number for
04 seasonal, pandemic, and zoonotic influenza: A systematic review of the literature. *BMC Infect. Dis.* **14**, 1–20
05 (2014).
- 06 2. Y. Liu, A. A. Gayle, A. Wilder-Smith, J. Rocklöv, The reproductive number of COVID-19 is higher compared
07 to SARS coronavirus. *J. Travel Med.* **27**, 1–4 (2020).
- 08 3. J. M. Brauner, S. Mindermann, M. Sharma, D. Johnston, J. Salvatier, T. Gavenčiak, A. B. Stephenson, G.
09 Leech, G. Altman, V. Mikulik, A. J. Norman, J. T. Monrad, T. Besiroglu, H. Ge, M. A. Hartwick, Y. W. Teh, L.
10 Chindelevitch, Y. Gal, J. Kulveit, Inferring the effectiveness of government interventions against COVID-19.
11 *Science.* **371** (2021).
- 12 4. S. Flaxman, S. Mishra, A. Gandy, H. J. T. Unwin, T. A. Mellan, H. Coupland, C. Whittaker, H. Zhu, T. Berah,
13 J. W. Eaton, M. Monod, P. N. Perez-Guzman, N. Schmit, L. Cilloni, K. E. C. Ainslie, M. Baguelin, A. Boonyasiri, O.
14 Boyd, L. Cattarino, L. V. Cooper, Z. Cucunubá, G. Cuomo-Dannenburg, A. Dighe, B. Djaafara, I. Dorigatti, S. L.
15 van Elsland, R. G. FitzJohn, K. A. M. Gaythorpe, L. Geidelberg, N. C. Grassly, W. D. Green, T. Hallett, A. Hamlet,
16 W. Hinsley, B. Jeffrey, E. Knock, D. J. Laydon, G. Nedjati-Gilani, P. Nouvellet, K. V. Parag, I. Siveroni, H. A.
17 Thompson, R. Verity, E. Volz, C. E. Walters, H. Wang, Y. Wang, O. J. Watson, P. Winskill, X. Xi, P. G. T. Walker, A.

^{1§} See e.g., 45 C.F.R. part 46, 21 C.F.R. part 56; 42 U.S.C. §241(d); 5 U.S.C. §552a; 44 U.S.C. §3501 et seq.

- 18 C. Ghani, C. A. Donnelly, S. Riley, M. A. C. Vollmer, N. M. Ferguson, L. C. Okell, S. Bhatt, Estimating the effects of
19 non-pharmaceutical interventions on COVID-19 in Europe. *Nat.* 2020 5847820. **584**, 257–261 (2020).
- 20 5. N. Haug, L. Geyrhofer, A. Londei, E. Dervic, A. Desvars-Larrive, V. Loreto, B. Pinior, S. Thurner, P. Klimek,
21 Ranking the effectiveness of worldwide COVID-19 government interventions. *Nat. Hum. Behav.* 2020 412. **4**,
22 1303–1312 (2020).
- 23 6. A. Asfaw, Racial and Ethnic Disparities in Teleworking Due to the COVID-19 Pandemic in the United
24 States: A Mediation Analysis. *Int. J. Environ. Res. Public Health* 2022 Vol 19 Page 4680. **19**, 4680 (2022).
- 25 7. T. N. Rogers, C. R. Rogers, E. VanSant-Webb, L. Y. Gu, B. Yan, F. Qeadan, Racial Disparities in COVID-19
26 Mortality Among Essential Workers in the United States. *World Med. Health Policy.* **12**, 311–327 (2020).
- 27 8. J. Gaitens, M. Condon, E. Fernandes, M. McDiarmid, COVID-19 and Essential Workers: A Narrative
28 Review of Health Outcomes and Moral Injury. *Int. J. Environ. Res. Public Health* 2021 Vol 18 Page 1446. **18**,
29 1446 (2021).
- 30 9. C. DiMaggio, M. Klein, C. Berry, S. Frangos, Black/African American Communities are at highest risk of
31 COVID-19: spatial modeling of New York City ZIP Code-level testing results. *Ann. Epidemiol.* **51**, 7–13 (2020).
- 32 10. D. S. Grigsby-Toussaint, J. C. Shin, A. Jones, Disparities in the distribution of COVID-19 testing sites in
33 black and Latino areas in new York City. *Prev. Med.* **147**, 106463 (2021).
- 34 11. A. Mody, K. Pfeifauf, C. Bradley, B. Fox, M. G. Hlatshwayo, W. Ross, V. Sanders-Thompson, K. Joynt
35 Maddox, M. Reidhead, M. Schootman, W. G. Powderly, E. H. Geng, Understanding Drivers of Coronavirus
36 Disease 2019 (COVID-19) Racial Disparities: A Population-Level Analysis of COVID-19 Testing Among Black and
37 White Populations. *Clin. Infect. Dis. Off. Publ. Infect. Dis. Soc. Am.* **73**, e2921–e2931 (2021).
- 38 12. T. P. Smith, S. Flaxman, A. S. Gallinat, S. P. Kinoshian, M. Stemkovski, H. Juliette, O. J. Watson, C.
39 Whittaker, L. Cattarino, I. Dorigatti, M. Tristem, W. D. Pearse, Temperature and population density influence
40 SARS-CoV-2 transmission in the absence of nonpharmaceutical interventions. *Proc. Natl. Acad. Sci. U. S. A.* **118**,
41 e2019284118 (2021).
- 42 13. D. Schoeman, B. C. Fielding, Coronavirus envelope protein: current knowledge. *Viol. J.* 2019 161. **16**, 1–
43 22 (2019).
- 44 14. L. Hallas, M. Pyrali, T. Hale, A. Professor, A. Brown, A. Sudarmawan, A. Detmar, A. Hatibie, A. Wagner,
45 B. Bacyte, C. Lumley, D.-Y. Li, E. Kanzig, G. Mortell, G. Xu, H. Klim, H. Jow, H. McGuire, I. Clancy, J. Ng, J. Chan,
46 D. Roberts, J. Uhm, K. Green, K. McCreery, K. Kon, Variation in US states' responses to COVID-19 (2021),
47 (available at <https://www.bsg.ox.ac.uk/research/publications/variation-us-states-responses-covid-19>).
- 48 15. Centers for Disease Control and Prevention (CDC), CDC COVID Data Tracker: Home, (available at
49 <https://covid.cdc.gov/covid-data-tracker/#datatracker-home>).
- 50 16. C. Courtemanche, J. Garuccio, A. Le, J. Pinkston, A. Yelowitz, Strong social distancing measures in the
51 united states reduced the covid-19 growth rate. *Health Aff. (Millwood)*. **39**, 1237–1246 (2020).
- 52 17. M. N. Lurie, J. Silva, R. R. Yorlets, J. Tao, P. A. Chan, Coronavirus disease 2019 epidemic doubling time in
53 the United States before and during stay-at-home restrictions. *J. Infect. Dis.* **222**, 1601–1606 (2020).
- 54 18. M. J. Siedner, G. Harling, Z. Reynolds, R. F. Gilbert, S. Haneuse, A. S. Venkataramani, A. C. Tsai, Social
55 distancing to slow the US COVID-19 epidemic: Longitudinal pretest–posttest comparison group study. *PLoS*
56 *Med.* **17**, 1–12 (2020).
- 57 19. G. A. Wellenius, S. Vispute, V. Espinosa, A. Fabrikant, T. C. Tsai, J. Hennessy, A. Dai, B. Williams, K.
58 Gadepalli, A. Boulanger, A. Pearce, C. Kamath, A. Schlosberg, C. Bendebury, C. Mandayam, C. Stanton, S.
59 Bavadekar, C. Pluntke, D. Desfontaines, B. H. Jacobson, Z. Armstrong, B. Gipson, R. Wilson, A. Widdowson, K.
60 Chou, A. Oplinger, T. Shekel, A. K. Jha, E. Gabrilovich, Impacts of social distancing policies on mobility and
61 COVID-19 case growth in the US. *Nat. Commun.* **12**, 6–12 (2021).
- 62 20. X. Liu, X. Xu, G. Li, X. Xu, Y. Sun, F. Wang, X. Shi, X. Li, G. Xie, L. Zhang, Differential impact of non-
63 pharmaceutical public health interventions on COVID-19 epidemics in the United States. *BMC Public Health*.
64 **21**, 1–7 (2021).

21. N. Dreher, Z. Spiera, F. M. McAuley, L. Kuohn, J. R. Durbin, N. F. Marayati, M. Ali, A. Y. Li, T. C. Hannah, A. Gometz, J. T. Kostman, T. F. Choudhri, Policy Interventions, Social Distancing, and SARS-CoV-2 Transmission in the United States: A Retrospective State-level Analysis. *Am. J. Med. Sci.* **361**, 575–584 (2021).
22. B. Yang, A. T. Huang, B. Garcia-Carreras, W. E. Hart, A. Staid, M. D. T. Hitchings, E. C. Lee, C. J. Howe, K. H. Grantz, A. Wesolowski, J. C. Lemaitre, S. Rattigan, C. Moreno, B. A. Borgert, C. Dale, N. Quigley, A. Cummings, A. McLorg, K. LoMonaco, S. Schlossberg, D. Barron-Kraus, H. Shrock, J. Lessler, C. D. Laird, H.-L. Yau, D. A. T. Cummings, Effect of specific non-pharmaceutical intervention policies on SARS-CoV-2 transmission in the counties of the United States. *Nat. Commun.* **12**, 3560 (2021).
23. M. E. Van Dyke, T. M. Rogers, E. Pevzner, C. L. Satterwhite, H. B. Shah, W. J. Beckman, F. Ahmed, D. C. Hunt, J. Rule, Trends in County-Level COVID-19 Incidence in Counties With and Without a Mask Mandate — Kansas, June 1–August 23, 2020. *MMWR Morb. Mortal. Wkly. Rep.* **69**, 1777–1781 (2022).
24. H. Joo, G. F. Miller, G. Sunshine, M. Gakh, J. Pike, F. P. Havers, L. Kim, R. Weber, S. Dugmeoglu, C. Watson, F. Coronado, Decline in COVID-19 Hospitalization Growth Rates Associated with Statewide Mask Mandates — 10 States, March–October 2020. *MMWR Morb. Mortal. Wkly. Rep.* **70**, 212–216 (2021).
25. S. Singh, M. Shaikh, K. Hauck, M. Miraldo, Impacts of introducing and lifting nonpharmaceutical interventions on COVID-19 daily growth rate and compliance in the United States. *Proc. Natl. Acad. Sci. U. S. A.* **118**, 1–9 (2021).
26. H. Y. Chang, W. Tang, E. Hatef, C. Kitchen, J. P. Weiner, H. Kharrazi, Differential impact of mitigation policies and socioeconomic status on COVID-19 prevalence and social distancing in the United States. *BMC Public Health.* **21**, 1–10 (2021).
27. M. A. Crane, K. M. Shermock, S. B. Omer, J. A. Romley, Change in Reported Adherence to Nonpharmaceutical Interventions During the COVID-19 Pandemic, April–November 2020. *JAMA.* **325**, 883–885 (2021).
28. J. N. Sanchez, G. A. Reyes, B. Martínez-López, C. K. Johnson, Impact of social distancing on early SARS-CoV-2 transmission in the United States. *Zoonoses Public Health*, 1–11 (2022).
29. S. Gupta, T. Nguyen, S. Raman, B. Lee, F. Lozano-Rojas, A. Bento, K. Simon, C. Wing, Tracking Public and Private Responses to the COVID-19 Epidemic. <https://doi.org/10.1086/716197>. **7**, 361–404 (2021).
30. M. É. Czeisler, M. A. Tynan, M. E. Howard, S. Honeycutt, E. B. Fulmer, D. P. Kidder, R. Robbins, L. K. Barger, E. R. Facer-Childs, G. Baldwin, S. M. W. Rajaratnam, C. A. Czeisler, Public Attitudes, Behaviors, and Beliefs Related to COVID-19, Stay-at-Home Orders, Nonessential Business Closures, and Public Health Guidance — United States, New York City, and Los Angeles, May 5–12, 2020. *MMWR Morb. Mortal. Wkly. Rep.* **69**, 751–758 (2020).
31. C. R. Berry, A. Fowler, T. Glazer, S. Handel-Meyer, A. MacMillen, Evaluating the effects of shelter-in-place policies during the COVID-19 pandemic. *Proc. Natl. Acad. Sci. U. S. A.* **118**, 1–6 (2021).
32. C. Pingali, M. Meghani, H. Razzaghi, ; Mark, J. Lamias, E. Weintraub, ; Tat', Y. A. Kenigsberg, N. P. Klein, N. Lewis, ; Bruce Fireman, ; Ousseny Zerbo, J. Bartlett, K. Goddard, J. Donahue, K. Hanson, A. Naleway, E. O. Kharbanda, ; W Katherine Yih, ; Jennifer, C. Nelson, ; Bruno, J. Lewin, J. T. B. Williams, J. M. Glanz, J. A. Singleton, S. A. Patel, COVID-19 Vaccination Coverage Among Insured Persons Aged ≥16 Years, by Race/Ethnicity and Other Selected Characteristics—Eight. **70** (2021) (available at https://www.cdc.gov/mmwr/mmwr_continuingEducation.html).
33. G. Milne, T. Hames, C. Scotton, N. Gent, A. Johnsen, R. M. Anderson, T. Ward, Does infection with or vaccination against SARS-CoV-2 lead to lasting immunity? *Lancet Respir. Med.* **9**, 1450–1466 (2021).
34. P. R. Krause, T. R. Fleming, I. M. Longini, R. Peto, S. Briand, D. L. Heymann, V. Beral, M. D. Snape, H. Rees, A.-M. Roper, R. D. Balicer, J. P. Cramer, C. Muñoz-Fontela, M. Gruber, R. Gaspar, J. A. Singh, K. Subbarao, M. D. Van Kerkhove, S. Swaminathan, M. J. Ryan, A.-M. Henao-Restrepo, SARS-CoV-2 Variants and Vaccines. *N. Engl. J. Med.* **385**, 179–186 (2021).
35. L. E. Egede, R. J. Walker, Structural Racism, Social Risk Factors, and Covid-19 — A Dangerous Convergence for Black Americans. *N. Engl. J. Med.* **383**, e77 (2020).

36. G. A. Noppert, L. C. Zalla, Who Counts and Who Gets Counted? Health Equity in Infectious Disease Surveillance. *Am. J. Public Health.* **111**, 1004–1006 (2021).
37. K. Bibbins-Domingo, This Time Must Be Different: Disparities During the COVID-19 Pandemic. *Httpsdoiorg107326M20-2247.* **173**, 233–234 (2020).
38. S. Dasgupta, V. B. Bowen, A. Leidner, K. Fletcher, T. Musial, C. Rose, A. Cha, G. Kang, E. Dirlikov, E. Pevzner, D. Rose, M. D. Ritchey, J. Villanueva, C. Philip, L. Liburd, A. M. Oster, Association Between Social Vulnerability and a County’s Risk for Becoming a COVID-19 Hotspot — United States, June 1–July 25, 2020. *Morb. Mortal. Wkly. Rep.* **69**, 1535 (2020).
39. J. Lessler, A. S. Azman, H. S. McKay, S. M. Moore, What is a Hotspot Anyway? *Am. J. Trop. Med. Hyg.* **96**, 1270 (2017).
40. L. M. Andersen, S. R. Harden, M. M. Sugg, J. D. Runkle, T. E. Lundquist, Analyzing the spatial determinants of local Covid-19 transmission in the United States. *Sci. Total Environ.* **754**, 142396 (2021).
41. H. Kim, A. Zanobetti, M. L. Bell, Temporal transition of racial/ethnic disparities in COVID-19 outcomes in 3108 counties of the United States: Three phases from January to December 2020. *Sci. Total Environ.* **791**, 148167 (2021).
42. A. R. Maroko, D. Nash, B. T. Pavilonis, COVID-19 and Inequity: a Comparative Spatial Analysis of New York City and Chicago Hot Spots. *J. Urban Health Bull. N. Y. Acad. Med.* **97**, 461–470 (2020).
43. L. C. Zalla, C. L. Martin, J. K. Edwards, D. R. Gartner, G. A. Noppert, A Geography of Risk: Structural Racism and Coronavirus Disease 2019 Mortality in the United States. *Am. J. Epidemiol.* **190**, 1439–1446 (2021).
44. C. McAloon, Á. Collins, K. Hunt, A. Barber, A. W. Byrne, F. Butler, M. Casey, J. Griffin, E. Lane, D. McEvoy, P. Wall, M. Green, L. O’Grady, S. J. More, Incubation period of COVID-19: a rapid systematic review and meta-analysis of observational research. *BMJ Open.* **10**, e039652 (2020).
45. A. Cori, N. M. Ferguson, C. Fraser, S. Cauchemez, A New Framework and Software to Estimate Time-Varying Reproduction Numbers During Epidemics. *Am. J. Epidemiol.* **178**, 1505–1512 (2013).
46. M. Alene, L. Yismaw, M. A. Assemie, D. B. Ketema, W. Gietaneh, T. Y. Birhan, Serial interval and incubation period of COVID-19: a systematic review and meta-analysis. *BMC Infect. Dis.* **21**, 1–9 (2021).
47. T. Hale, N. Angrist, R. Goldszmidt, B. Kira, A. Petherick, T. Phillips, S. Webster, E. Cameron-Blake, L. Hallas, S. Majumdar, H. Tatlow, A global panel database of pandemic policies (Oxford COVID-19 Government Response Tracker). *Nat. Hum. Behav.* **2021 54**, **5**, 529–538 (2021).
48. COVID-19 Trends and Impact Survey | Delphi Epidata API, (available at <https://cmu-delphi.github.io/delphi-epidata/symptom-survey/>).
49. J. A. Salomon, A. Reinhart, A. Bilinski, E. J. Chua, W. Ia Motte-Kerr, M. M. Rönn, M. B. Reitsma, K. A. Morris, S. LaRocca, T. H. Farag, F. Kreuter, R. Rosenfeld, R. J. Tibshirani, The US COVID-19 Trends and Impact Survey: Continuous real-time measurement of COVID-19 symptoms, risks, protective behaviors, testing, and vaccination. *Proc. Natl. Acad. Sci. U. S. A.* **118** (2021), doi:10.1073/PNAS.2111454118.
50. Google LLC, Google COVID-19 Community Mobility Reports, (available at <https://www.google.com/covid19/mobility/>).
51. tsa.gov, TSA checkpoint travel numbers (current year versus prior year(s)/same weekday) | Transportation Security Administration, (available at <https://www.tsa.gov/coronavirus/passenger-throughput>).
52. P. Paul, A. M. France, Y. Aoki, D. Batra, M. Biggerstaff, V. Dugan, S. Galloway, A. J. Hall, M. A. Johansson, R. J. Kondor, A. L. Halpin, B. Lee, J. S. Lee, B. Limbago, A. MacNeil, D. MacCannell, C. R. Paden, K. Queen, H. E. Reese, A. C. Retchless, R. B. Slayton, M. Steele, S. Tong, M. S. Walters, D. E. Wentworth, B. J. Silk, Genomic Surveillance for SARS-CoV-2 Variants Circulating in the United States, December 2020–May 2021. *MMWR Morb. Mortal. Wkly. Rep.* **70**, 846–850 (2021).
53. Global Hourly - Integrated Surface Database (ISD) | National Centers for Environmental Information (NCEI), (available at <https://www.ncei.noaa.gov/products/land-based-station/integrated-surface-database>).
54. D. Carslaw, Import Surface Meteorological Data from NOAA Integrated Surface Database (ISD) • worldmet (2021), (available at <https://davidcarslaw.github.io/worldmet/>).

- 61 55. J. Shaman, V. Pitzer, C. Viboud, M. Lipsitch, B. Grenfell, Absolute Humidity and the Seasonal Onset of
62 Influenza in the Continental US. *PLoS Curr.* **2** (2009), doi:10.1371/CURRENTS.RRN1138.
- 63 56. Y. Ma, S. Pei, J. Shaman, R. Dubrow, K. Chen, Role of meteorological factors in the transmission of SARS-
64 CoV-2 in the United States. *Nat. Commun.* **2021 121**. **12**, 1–9 (2021).
- 65 57. B. García-Carreras, M. D. T Hitchens, M. A. Johansson, M. Biggerstaff, R. B. Slayton, J. M. Healy, J.
66 Lessler, H. Salje, A. T. Huang, D. A. T Cummings, Accounting for assay performance when estimating the
67 temporal dynamics in SARS-CoV-2 seroprevalence in the U.S, doi:10.1101/2022.09.13.22279702.
- 68 58. COVID-19 Vaccination Trends in the United States, National and Jurisdictional | Data | Centers for
69 Disease Control and Prevention, (available at [https://data.cdc.gov/Vaccinations/COVID-19-Vaccination-Trends-](https://data.cdc.gov/Vaccinations/COVID-19-Vaccination-Trends-in-the-United-States-N/rh2h-3yt2)
70 [in-the-United-States-N/rh2h-3yt2](https://data.cdc.gov/Vaccinations/COVID-19-Vaccination-Trends-in-the-United-States-N/rh2h-3yt2)).
- 71 59. P. Smittenaar, N. Stewart, S. Sutermeister, L. Coome, A. Dibner-Dunlap, M. Jain, Y. Caplan, C. Campigotto,
72 S. K. Sgaier, *medRxiv*, in press, doi:10.1101/2021.05.19.21257455.
- 73 60. A. Vehtari, A. Gelman, J. Gabry, Practical Bayesian model evaluation using leave-one-out cross-validation
74 and WAIC. *Stat. Comput.* **2016 275**. **27**, 1413–1432 (2016).
- 75 61. S. Abbott, J. Hellewell, R. N. Thompson, K. Sherratt, H. P. Gibbs, N. I. Bosse, J. D. Munday, S. Meakin, E. L.
76 Doughty, J. Y. Chun, Y.-W. D. Chan, F. Finger, P. Campbell, A. Endo, C. A. B. Pearson, A. Gimma, T. Russell, C.
77 Covid, S. Flasche, A. J. Kucharski, R. M. Eggo, S. Funk, F. Chirico, C. Althaus, Estimating the time-varying
78 reproduction number of SARS-CoV-2 using national and subnational case counts. *Wellcome Open Res.* **2020**
79 **5112**. **5**, 112 (2020).

80 81 **Acknowledgments**

82 This research is based on survey results from Carnegie Mellon University’s Delphi Group. Thank you to Prabasaj Paul for
83 his thoughtful comments and review of this manuscript.

84
85 **Funding:** None.

86 87 **Author contributions:**

88 Conceptualization: VKL, MAJ

89 Methodology: VKL, MAJ, SK, JMH

90 Investigation: VKL, SK, PVP, TC

91 Visualization: VKL

92 Supervision: MAJ, RSB, MB

93 Writing—original draft: VKL

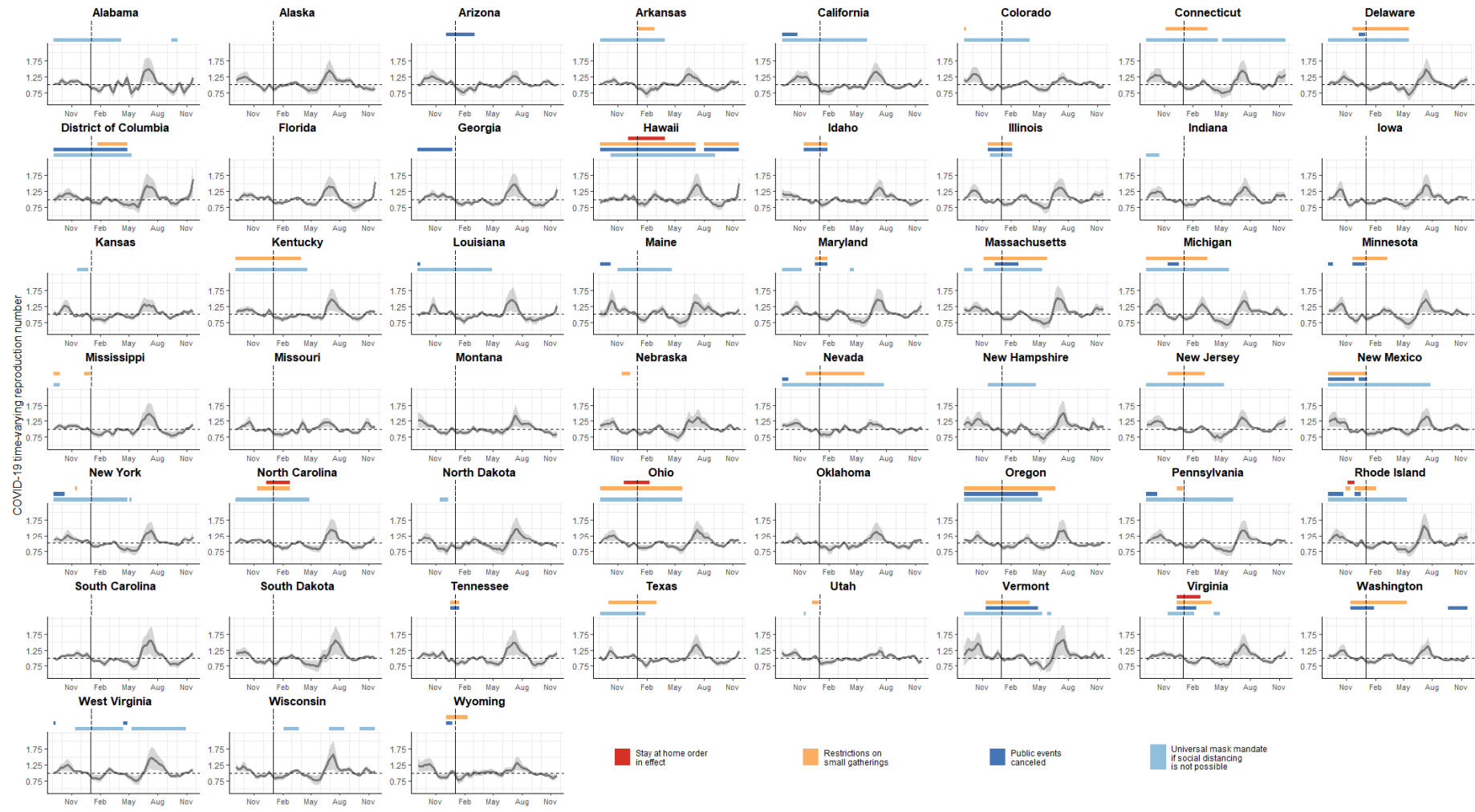
94 Writing—review & editing: VKL, SK, PVP, TC, BLC, JMH, RBS, MB, MAJ

95
96 **Competing interests:** All other authors declare they have no competing interests.

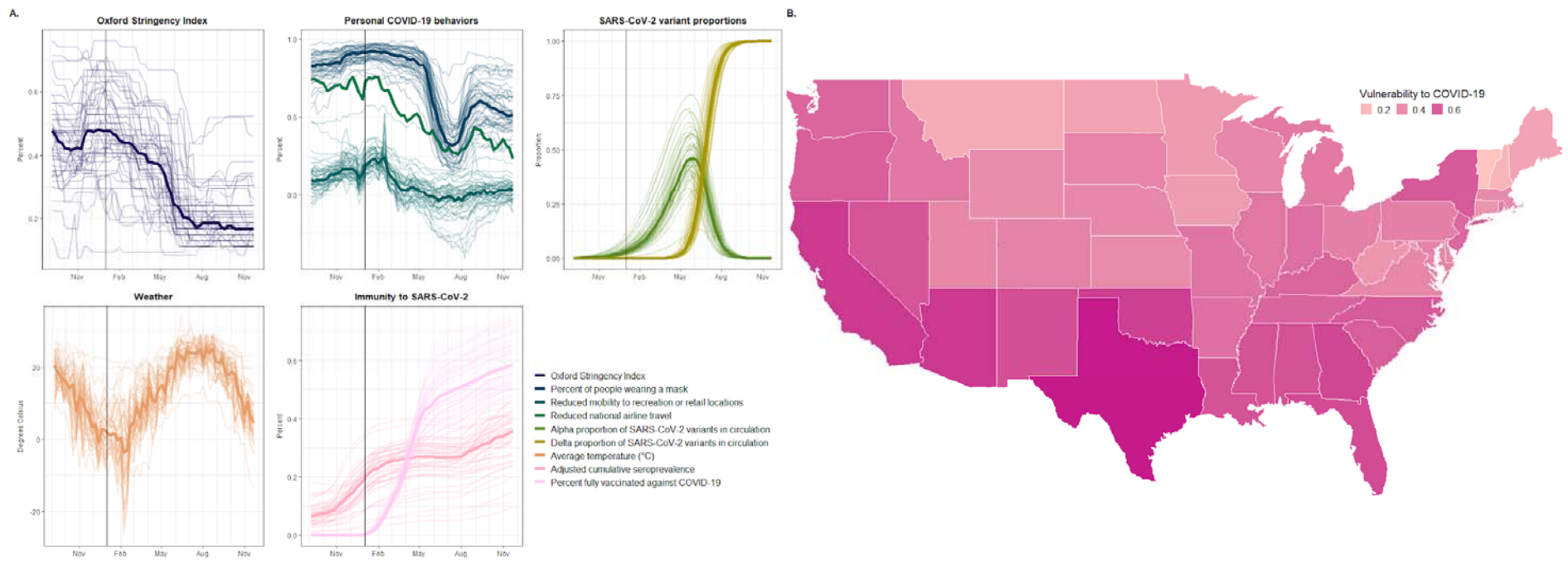
97
98 **Data and materials availability:** All data are available in the main text or the supplementary materials. COVID-19 case
99 data are available upon request at [https://data.cdc.gov/Case-Surveillance/COVID-19-Case-Surveillance-Restricted-](https://data.cdc.gov/Case-Surveillance/COVID-19-Case-Surveillance-Restricted-Access-Detail/mbd7-r32t)
00 [Access-Detail/mbd7-r32t](https://data.cdc.gov/Case-Surveillance/COVID-19-Case-Surveillance-Restricted-Access-Detail/mbd7-r32t). All other data are in the public domain and referenced in the Supplemental Text. R code is
01 available in a public repository (https://github.com/cdcepi/COVID-19-Mitigation_Rt).

12 **Figures**

13
 14 **Figure 1.** The jurisdiction-specific weekly COVID-19 time-varying reproduction number (R_t), 90% confidence intervals in grey, and time periods reflecting
 15 implementation of specific non-pharmaceutical interventions (NPIs). State-wide implementation of stay-at-home orders are in red, restrictions on gatherings
 16 in yellow, cancellation of public events in dark blue, and universal masking when physical distancing was not possible in light blue. The solid vertical line represents
 17 January 1, 2021 and the dashed horizontal line reflects an R_t value of 1.0.



0 **Figure 2. A.** Distribution of time-varying covariates, including the Oxford Stringency Index (OSI), personal COVID-19 behaviors, proportion of key SARS-CoV-2
1 variants in circulation, weather, and immunity to SARS-CoV-2. Lines reflect jurisdiction-level observations over time, with the median values across jurisdictions
2 depicted by the bold line. The solid, black vertical line represents January 1, 2021. **B.** Average of the three selected Community Covid-19 Vulnerability Index
3 (CCVI) indicators for each jurisdiction.
4



5

516 **Figure 3.** Percent change in the COVID-19 time-varying reproduction (R_t) number from policies, personal
 517 COVID-19 behaviors, proportion of key SARS-CoV-2 variants in circulation, weather, immunity to SARS-
 518 CoV-2, and variables affecting underlying trends in transmission. The results from two different linear
 519 regression models are shown below. Model one, in pink, included the Oxford Stringency Index (OSI).
 520 Model two, in purple, included a subset of policies used to comprise the OSI. Both regression models
 521 were gaussian with log link function and had jurisdiction and time specific intercepts.
 522

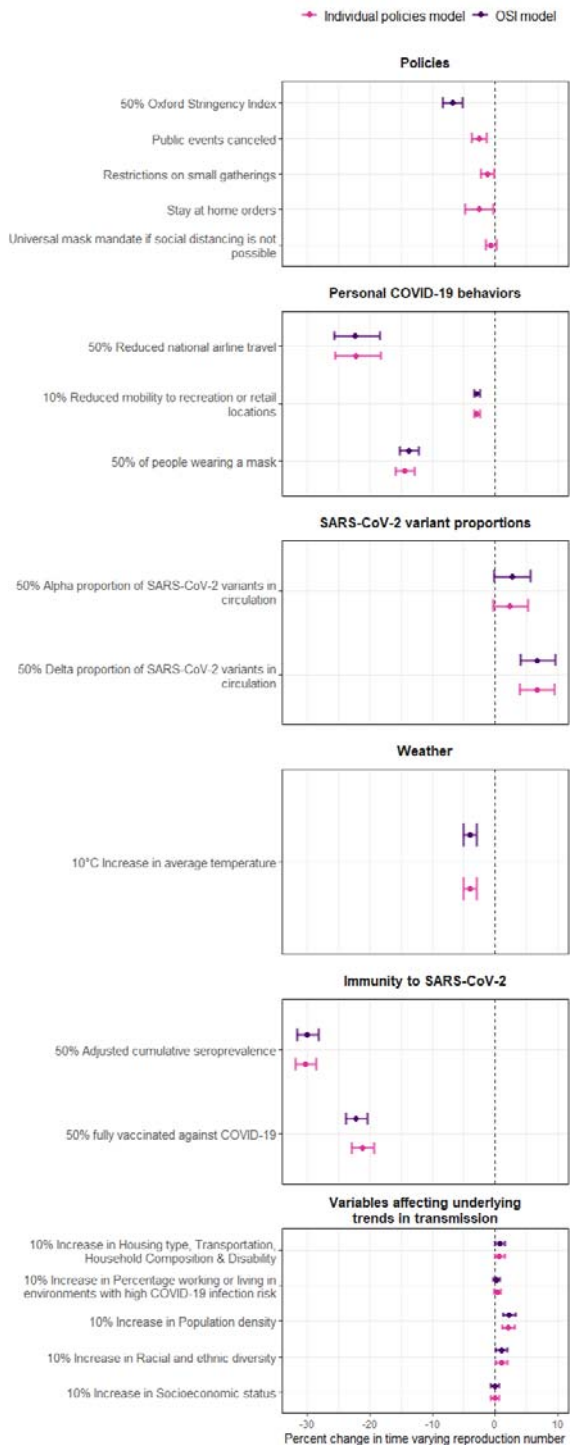
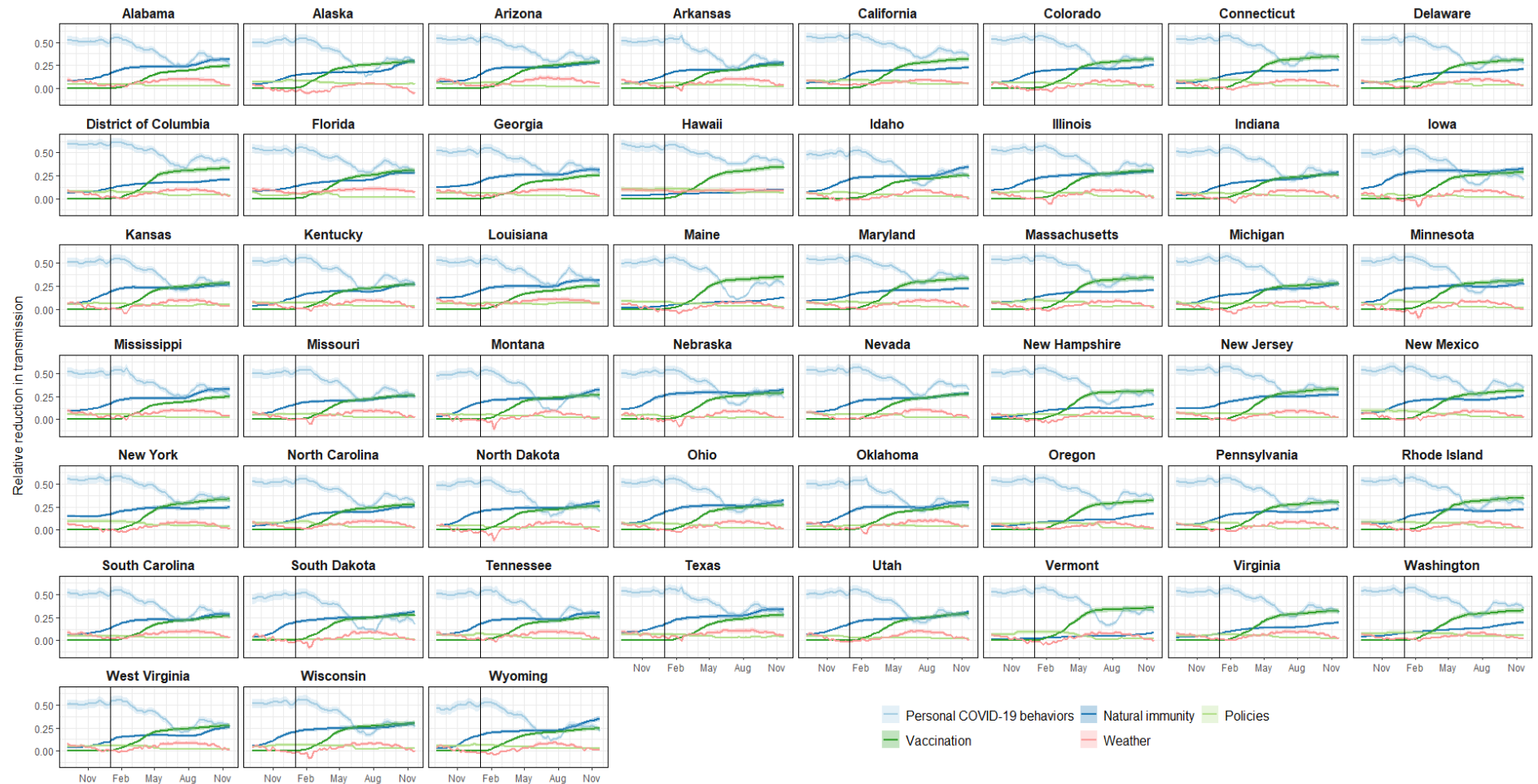
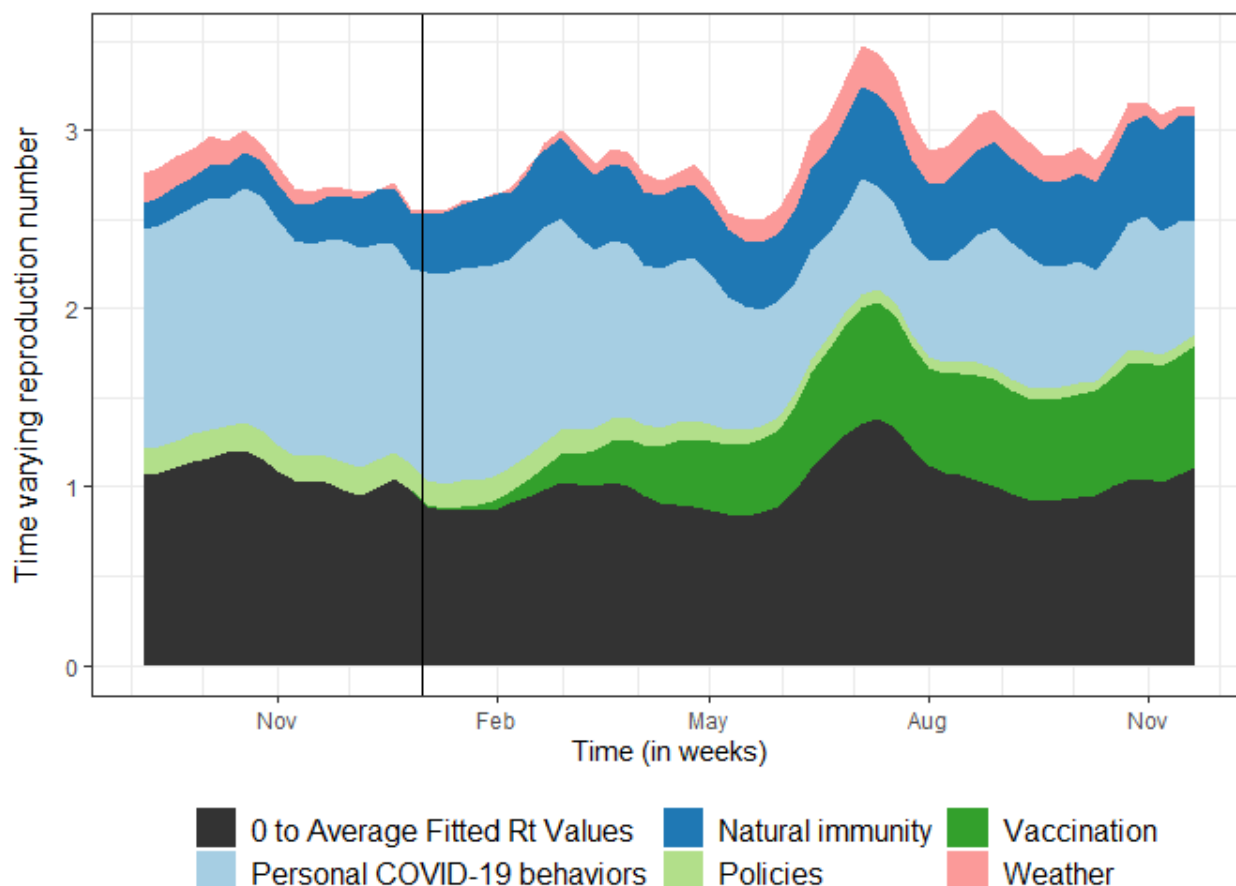


Figure 4. Estimates for jurisdiction-level proportional reductions in the COVID-19 time-varying reproduction number (R_t) over time for the Oxford Stringency Index (OSI) regression model. Colored lines depict the relative reduction for select sets of covariates and the solid vertical line represents January 1, 2021.



528 **Figure 5.** Average relative contribution of observed covariates on fitted COVID-19 time-varying
529 reproduction number (R_t) across all jurisdictions from the OSI model. The highest values over time (i.e.,
530 the top of the pink band) represent R_t estimates including only the effects of local vulnerability and
531 variants. The pink band represents reductions in R_t associated with changing weather. The blue bands
532 represent reductions in R_t associated with infection-acquired immunity (dark blue) and with behavior
533 modification (i.e., masking use, mobility, and national airline travel, combined and depicted with light
534 blue). The green bands represent reductions in R_t associated with policies (light green) and vaccination
535 (dark green). The fitted values from the regression model are represented with the top of the black band.
536 The solid vertical line represents January 1, 2021.
537



538