

1 **Molecular diagnosis of Cytomegalovirus infection: clinical performance of Transcription Mediated**
2 **Amplification (TMA) towards conventional qPCR chemistry on whole blood samples.**
3 **Running title: CMV diagnosis: clinical performance of TMA chemistry.**

4 Paolo Bottino^{a#}, Lisa Pastrone^a, Elisa Zanotto^a, Francesca Sidoti^a, Cristina Costa^a, Rossana Cavallo^a

5 ^a S.C. Microbiology and Virology U., A.O.U. “Città della Salute e della Scienza di Torino” Turin (Italy)

6
7 **Corresponding author:**

8 # paolo.bottino@unito.it

9
10 **Abstract word count: 249**

11
12
13
14
15
16
17
18
19
20
21
22
23
24
25
26
27
28
29

NOTE: This preprint reports new research that has not been certified by peer review and should not be used to guide clinical practice.

30 **Abstract.** Human Cytomegalovirus (HCMV) infection represents a life-threatening pathogen for
31 immunocompromised patients. Molecular quantitative testing on whole blood or plasma represents the gold
32 standard for diagnosis of invasive HCMV infection and for monitoring antiviral treatment in individuals at
33 risk of CMV disease. For these reasons, accurate standardization towards the 1st WHO International standard
34 between different centres and diagnostic kits represent an effort for a better clinical management of CMV-
35 positive patients. Herein, we evaluate for the first time the performance of a new TMA (Transcription
36 Mediated Amplification) kit towards qPCR chemistry, used as routine method, on whole blood samples. 755
37 clinical whole blood specimens were collected and simultaneously tested with TMA and qPCR assays. Data
38 showed 99.27% agreement for positive quantified samples and 89.39% agreement for those not detected
39 between two tested methods. Evaluation of viraemia in positive samples highlighted a good correlation for
40 TMA and qPCR chemistries in terms of International Units (ΔLog_{10} IU/ml: -0.29 ± 0.40). TMA assay showed
41 a significant correlation with qPCR also in monitored patients until three months, thus allowing accurate
42 evaluation of viraemia in transplanted patients. Moreover, preliminary data about analytical sensitivity of
43 TMA chemistry onto DBS samples showed 86.54% correlation with whole blood specimens.
44 Thus, TMA chemistry showed a good agreement with qPCR assay, used as current diagnostic routine, and
45 offers important advantages: FDA and IVD approval on plasma and whole blood, automated workflow with
46 minimal hands-on time, random access loading, thus enabling a rapid and reliable diagnostics in HCMV-
47 infected patients.

48
49
50 **Keywords:** CMV; Diagnosis; Transcription Mediated Amplification; Whole blood.
51
52
53
54
55
56
57

58 **Introduction.** Human Cytomegalovirus (HCMV), also known as human herpesvirus 5 (HHV-5), is the
59 prototype member of the *Betaherpesvirinae* and the largest member of the virus family *Herpesviridae* (1). It
60 is a ubiquitous virus that infects almost all humans at some time in their lives. The virus was first isolated by
61 three different groups of researchers: Rowe and colleagues, Weller and colleagues, and Smith simultaneously
62 in 1956 (2). The genome is a linear, double-stranded DNA molecule with a 236 kbp size and consisting of two
63 unique regions, each flanked by inverted repeats (3). Despite enclosing a much larger genome, the size of the
64 HCMV capsid is similar to that of other herpesviruses, structured as an icosahedrally ordered nucleocapsid
65 with triangulation number (T) = 16, composed of 12 pentons, 150 hexons, and 320 triplexes (4, 5). Externally
66 to the capsid, it is located the tegument, generally thought to be unstructured and amorphous in nature.
67 However, some structuring is seen with the binding of tegument proteins to the protein capsid. The tegument
68 proteins comprise more than half of the total proteins found within infectious virions (6, 7). Finally, a lipidic
69 bilayer envelope membrane, containing several virus-specific glycoproteins, in turn covers tegument and
70 HCMV nucleocapsid. This envelope is similar in structure and composition to host cell membranes (8, 9).
71 HCMV is a global herpesvirus highly prevalent worldwide with a prevalence of about 100% in both Africa
72 and Asia, and 45.6-95.7% in Europe and North America (10). The heterogeneous CMV seroprevalence appear
73 to be related with race, ethnicity, socioeconomic status and education level (11). Focusing on Italy, the
74 seroprevalence of HCMV appear to be as high as 70–80% (12, 13).

75 Cytomegalovirus infection can occur during pregnancy and alongside the entire lifetime after delivery, by
76 several transmission routes. As congenital HCMV infection (cHCMV), maternal primary and non-primary
77 infection (exogenous reinfection with a different strain or endogenous viral reactivation) of virus during
78 pregnancy can result in in utero transmission to the fetus (vertical route). Approximately 11% of live-born
79 infants with cHCMV show abnormal clinical signs at birth: hematological disorders, cerebral malformation,
80 chorioretinitis and sensorineural hearing loss (SNHL), the most common sequela (14, 15). Infants without
81 symptoms at birth are also reported to be at risk of developing long-term hearing loss (16).

82 In the postnatal period, primary HCMV infections are acquired via several ways through contact with infected
83 fluids (e.g., saliva, breast milk, blood products), at home and in nursery schools as community exposure (17).
84 Breastfeeding is known to be the first close contact with the greatest impact, probably due to viral reactivation

85 in the mammary glands and subsequent excretion of Cytomegalovirus into the milk without clinical or
86 laboratory signs of systemic infection (negative serum IgM, negative viraemia) (18). During childhood and
87 early adulthood, HCMV is transmitted through exposure to saliva, stool and urine (10).

88 Among adults genital secretions are a common fluid for CMV shedding, consistent with several studies that
89 identified sexual risk factors for CMV seropositivity or seroconversion (10, 13, 19). Another important
90 transmission route for primary infection consists in solid organ transplantation (SOT), especially in cases
91 where there is a serological mismatch between donor and recipient (the recipient is CMV seronegative and
92 the donor is seropositive) (20). Otherwise, infection can occur as reactivation in those patients with risk factors
93 such as intense immunosuppression, use of lymphocyte-depleting antibodies or prednisolone, acute rejection,
94 older age in the donor and/or recipient, concomitant viral infections or genetic polymorphisms (21, 22).

95 HCMV infection is usually asymptomatic in immunocompetent people, although clinical symptoms of
96 primary infection may include a nonspecific glandular fever (mononucleosis) syndrome characterized by flu-
97 like symptoms (23). Instead, in immunocompromised or transplanted patients, HCMV primary infection or
98 reactivation represent a fearsome complication resulting in a viral syndrome, characterized by fever and
99 malaise as well as leukopenia, thrombocytopenia and elevated liver enzymes. Pneumonia, hepatitis,
100 meningoencephalitis, pancreatitis or myocarditis may rarely be present, requiring admission to an intensive
101 care unit (20, 24). HCMV infection may also have indirect effects on graft dysfunction, acceleration of
102 coronary artery atherosclerosis, renal artery stenosis and the emergence of other opportunistic infections (25,
103 26).

104 Alongside serological tests and pp65 antigenemia, direct detection of HCMV DNA in clinical specimens is
105 currently the standard method for the diagnosis of HCMV infection (2, 27). Particularly, Quantitative
106 Polymerase chain reaction (qPCR) represents the gold standard and several IVD kits based on HCMV
107 conserved regions were developed in order to detect and quantify HCMV DNA (28–32). Whole blood and
108 plasma are the most common specimens for HCMV qPCR (33–35), although cerebrospinal fluid (CSF) and
109 bronchoalveolar lavage fluid (BAL) are sometimes used (36). Scheduled monitoring of HCMV viremia in
110 immunocompromised individuals is critical for identifying patients at risk for CMV disease, evaluating
111 preemptive therapy and determining treatment response (2).

112 In addition to qPCR, other molecular techniques such as TMA (Transcription Mediated Amplification) have
113 recently been developed and approved as commercial IVD kits. However, their clinical performance,
114 especially on whole blood, is still under study.

115 Starting from this perspective, the main aim of our work was to evaluate the clinical performances of TMA
116 chemistry on whole blood samples in a cohort of adult and pediatric individuals. Furthermore, focusing on
117 transplanted patients, HCMV viremia was monitored over time with both chemistries. Finally, for an in-depth
118 evaluation of whole blood matrix, a preliminary analysis was also performed on DBS samples in order to
119 define the analytical performance of the TMA method starting from a minimum sample volume.

120 **Materials and methods.**

121 **Setting and study design.** The University Hospital “Città della Salute e della Scienza di Torino” (Turin, Italy)
122 is a regional tertiary hospital with 1900 beds spread over three structures: a general hospital, a pediatric clinic
123 and a rehabilitation centre. The main area of excellence is represented by the transplantation of solid organs
124 (mainly kidney and liver) and tissues (corneas, skin, skeletal muscle) in adult and pediatric patients.

125 The study was performed on a total of 755 whole blood samples collected in the period May-November 2022
126 at Microbiology and Virology Laboratory of A.O.U. “Città della Salute e della Scienza di Torino” for the
127 diagnosis of HCMV infection or the monitoring of viremia in immunocompromised/transplanted patients. All
128 samples were collected in K2/EDTA Vacutainer® (Becton, Dickinson and Company, Franklin Lakes, USA).
129 Epidemiological details of patients and distribution of wards involved are resumed in Table 1.

Table 1. Details of patients' epidemiology and wards involved.

| | Patients | Age | |
|-----------------------------------|-----------------|----------------|---------------|
| | | mean | median |
| Male | 183 | 52 | 59 |
| Female | 140 | 48 | 54 |
| Ward | Patients | Samples | |
| Kidney transplantation | 65 | 106 | |
| HSC transplantation | 27 | 107 | |
| Liver transplantation | 13 | 37 | |
| Heart transplantation | 10 | 20 | |
| Lung transplantation | 4 | 22 | |
| Surgery | 38 | 91 | |
| External facilities | 38 | 63 | |
| Haematology | 26 | 44 | |
| Nephrology | 14 | 33 | |
| ICU/ED | 11 | 32 | |
| Cardiology | 9 | 18 | |
| Pneumology | 7 | 17 | |
| Oncology | 7 | 1 | |
| phlebotomy service | 6 | 9 | |
| General medicine | 3 | 6 | |
| Gastroenterology | 3 | 3 | |
| Paediatric oncology | 13 | 58 | |
| Paediatric transplantation centre | 8 | 33 | |
| Paediatric nephrology | 7 | 8 | |
| Paediatric cardiology | 4 | 14 | |
| General paediatrics | 3 | 8 | |
| Paediatric gastroenterology | 2 | 11 | |
| Paediatric pneumology | 1 | 1 | |
| Paediatric haematology | 1 | 1 | |
| Rehabilitation centre | 3 | 12 | |
| TOTAL | 323 | 755 | |

qPCR chemistry. The laboratory routine method (Standard of Care), used as reference in the current study, was a dual-step process performed as follow: an initial extraction of HCMV DNA from whole blood samples with DSP Mini Kit on QIASymphony SP/AS platform (Qiagen®, Hilden, Germany) and subsequential amplification with CMV ELITe MGB® qPCR kit (ELITechGroup, Turin, Italy) on ABI 7500 Fast Dx instrument (Applied Biosystems, Waltham, USA). Finally, results were converted in International Unit on ml (IU/ml) with the software Real Time System Analysis Software V. 2.0 (release 1.9991) (ELITechGroup,

165 Turin, Italy). The tested viral region was the exon 4 region of the CMV MIEA gene (major immediate early
166 antigen, HCMVUL123) with an amplicon size of 79 bp.

167 **TMA chemistry.** Whole blood samples were diluted in a prefilled secondary tube containing the Aptima®
168 Whole Blood Diluent (Hologic Inc., Marlborough, USA) to a volume of 500 µl and 1425 µl, respectively.
169 Then, each sample was loaded onto Panther system automated platform (Hologic Inc., Marlborough, USA)
170 and tested with the Aptima CMV Quant assay kit (Hologic Inc., Marlborough, USA). The assay has three
171 main steps: target capture, target amplification using TMA and detection of amplification products. Finally,
172 the results were converted from copies/mL to IU/mL using a conversion factor equation embedded in the
173 Panther software. For this kit, the viral region tested was the UL56 gene in the unique long (UL) region of the
174 CMV genome with an amplicon size of 108 bp.

175 Both chemistries (qPCR and TMA) have been standardized to the WHO 1st International Standard for human
176 cytomegalovirus (NIBSC code: 09/162, United Kingdom).

177 **DBS.** In order to evaluate the clinical performance of TMA chemistry on Dried Blood Spot (DBS), 52 whole
178 blood positive samples with quantifiable viremia were selected and processed according to the following
179 protocol: 50 µl of blood sample (approximately the volume of a drop) were spotted on Whatman protein
180 saver™ 903™ cards (GE HealthCare, Marlborough, USA), dried for at least 24 hours at room temperature
181 and stored at the same temperature for one week. Subsequently, each sample was pretreated with Aptima™
182 DBS Extraction Buffer (Hologic Inc., Marlborough, USA) according to the manufacturer's instructions:
183 briefly, 12 mm³ of DBS specimen was added to 1 ml of DBS Extraction Buffer and gently stirred at room
184 temperature for 30 minutes. Then, vials containing the extracted DBS were centrifuged for 2 minutes at 3,000
185 g and loaded onto the Panther System. Each sample was tested in duplicate with Aptima CMV Quant assay
186 kit.

187 **Clinical agreement.** Whole blood samples were tested simultaneously with qPCR and TMA chemistries in
188 order to evaluate overall sensitivity, specificity and quantification agreement. Moreover, 12 selected patients
189 were monitored in terms of HCMV viraemia for up to three months of hospitalization; the inclusion criteria

for patients' selection were: (1) solid organ transplantation, (2) no less than four quantifications for at least 14 days, (3) HCMV viraemia detectable in the first blood sampling with at least one of the two tested methods.

Statistical analysis. Data were analyzed as Log₁₀-transformed values. In the correlation analysis, only samples in which the assays had quantitative values were considered. The correlation between the quantitative results was evaluated with linear regression analysis and Bland-Altman plot. The correlation coefficient was calculated using Pearson's correlation. All analysis was performed using MedCalc statistical software Program version 20.305 (MedCalc Software Ltd, Ostend, Belgium).

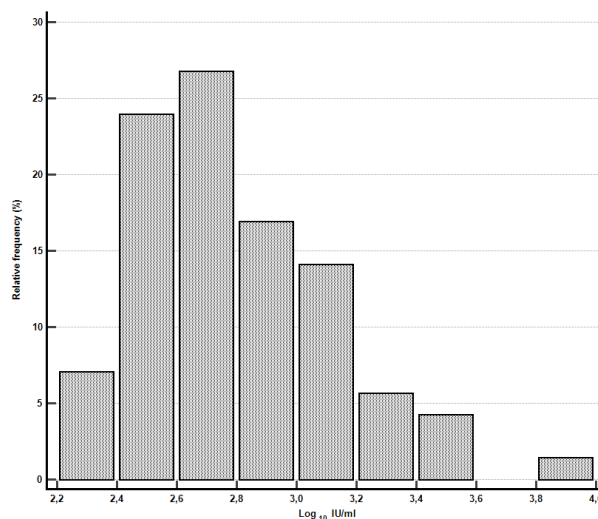
Results. TMA and qPCR performance data showed 99.28% agreement for quantified detected samples and 89.39% agreement for those negative between the two tested methods (Table 2). Cohen's kappa coefficient was excellent (K-value: 0.87).

Table 2. Comparison of clinical agreement between TMA and qPCR assays.

| qPCR | TMA | | | Total | Agreement (%) |
|--------------|--------------|----------|------------|-------|---------------|
| | Not detected | Detected | Quantified | | |
| Not detected | 337 | 34 | 6 | 377 | 89.39% |
| Detected | 9 | 23 | 71 | 103 | 22.33% |
| Quantified | 0 | 2 | 273 | 275 | 99.27% |
| Total | 346 | 59 | 350 | 755 | |

Compared to conventional qPCR, the TMA assay resulted in a higher number of detected or quantified samples (10.61%): 5 samples quantified with TMA chemistry had a mean value between 2.27 and 2.84 Log₁₀ IU/ml, while one samples had a higher value of 3.92 Log₁₀ IU/ml. When repeated, the result was confirmed. Additionally, for samples quantified with TMA assay and detected by qPCR, values ranged between 2.0 and 4.0 Log₁₀ IU/ml, with the highest distribution for those 2.4 - 2.8 Log₁₀ IU/ml (36/71, 50.70%) (Figure 1).

216 **Figure 1. Distribution of Log₁₀ IU/ml values with TMA assay in qPCR detected samples.**



225

226 Otherwise, 9 samples tested positive with qPCR and not detected with TMA, while two were quantified by

227 qPCR assay only: the mean value was 2.65 ± 0.14 Log₁₀ IU/ml (Table 1).

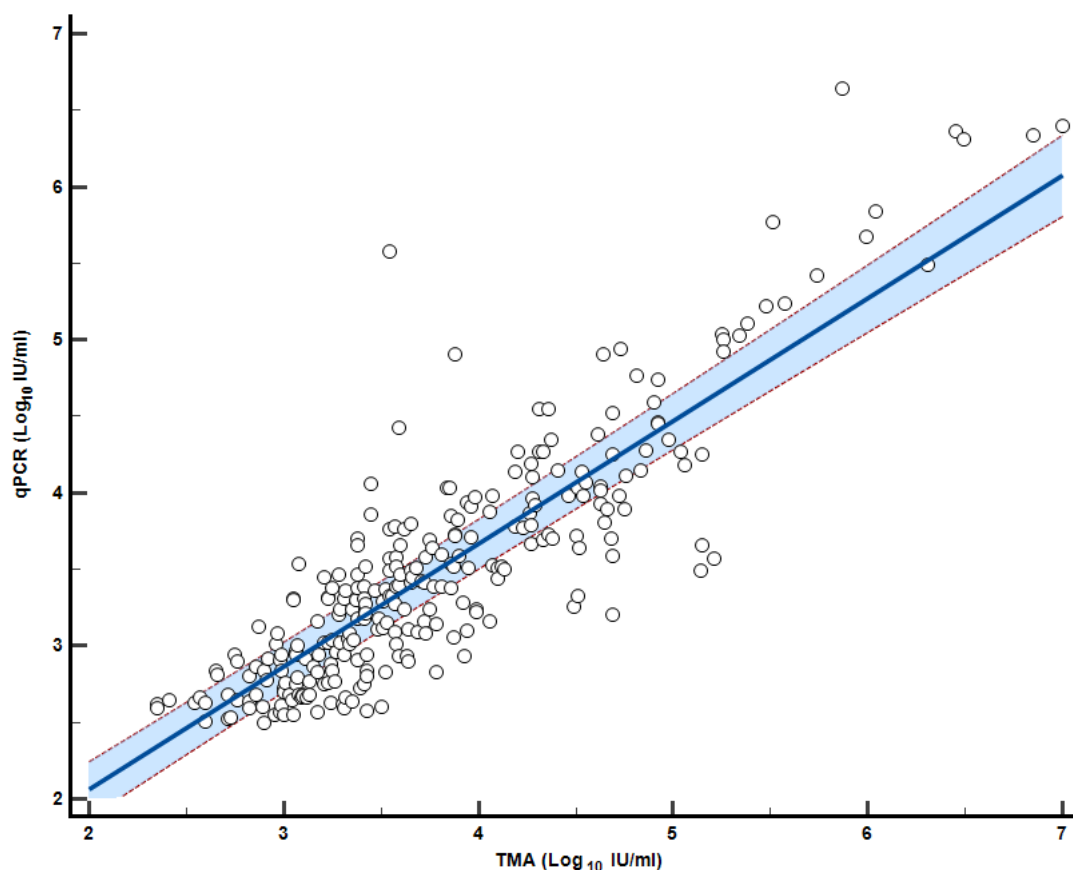
228 A total of 273 samples had quantifiable results on both assays and were used for the correlation analysis.

229 Deming's regression analysis showed a significant correlation between the two chemistries: the linear

230 regression line was calculated as follows, $Y = 0.4581 + 0.8024 x$ with an $R^2 = 0.7142$ (Figure 2). Pearson's

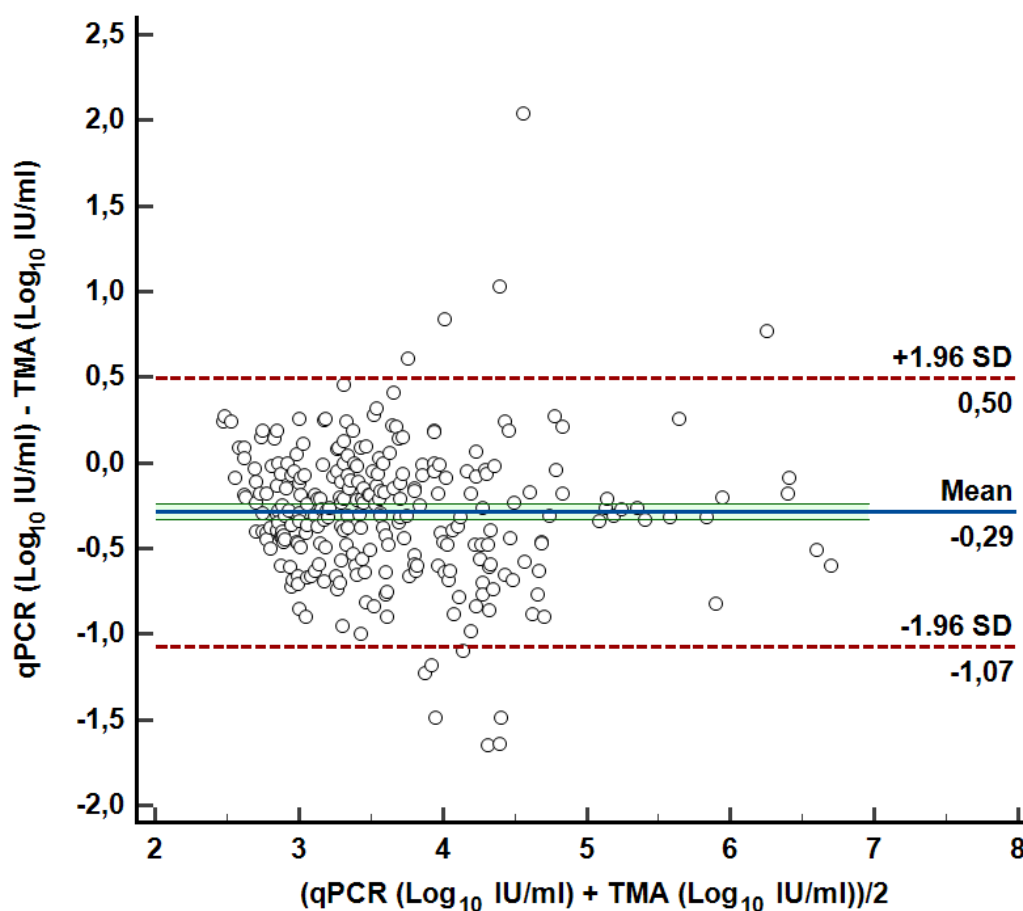
231 correlation coefficient value was 0.8796 (95% CI: 0.8496 to 0.9039) (P-value < 0.0001).

232 **Figure 2. Log₁₀-transformed quantitative viral load agreement for TMA and qPCR chemistry: linear**
233 **regression.**



243
244 The mean viral load (\pm SD) of the TMA assay was 3.79 ± 0.83 Log₁₀ IU/ml, while that obtained by qPCR was
245 3.50 ± 0.80 Log₁₀ IU/ml. The Bland-Altman analysis (Figure 3) yielded a mean bias of -0.29 Log₁₀ IU/ml (SD
246 ± 0.40 Log₁₀ IU/ml). The lower and upper limits of agreement were -1.07 (95% CI: -1.15 to -0.99) and 0.50
247 (95% CI: 0.42 to 0.58), respectively.

Figure 3. Log₁₀-transformed quantitative viral load agreement for TMA and qPCR chemistry: Bland-Altman plot.

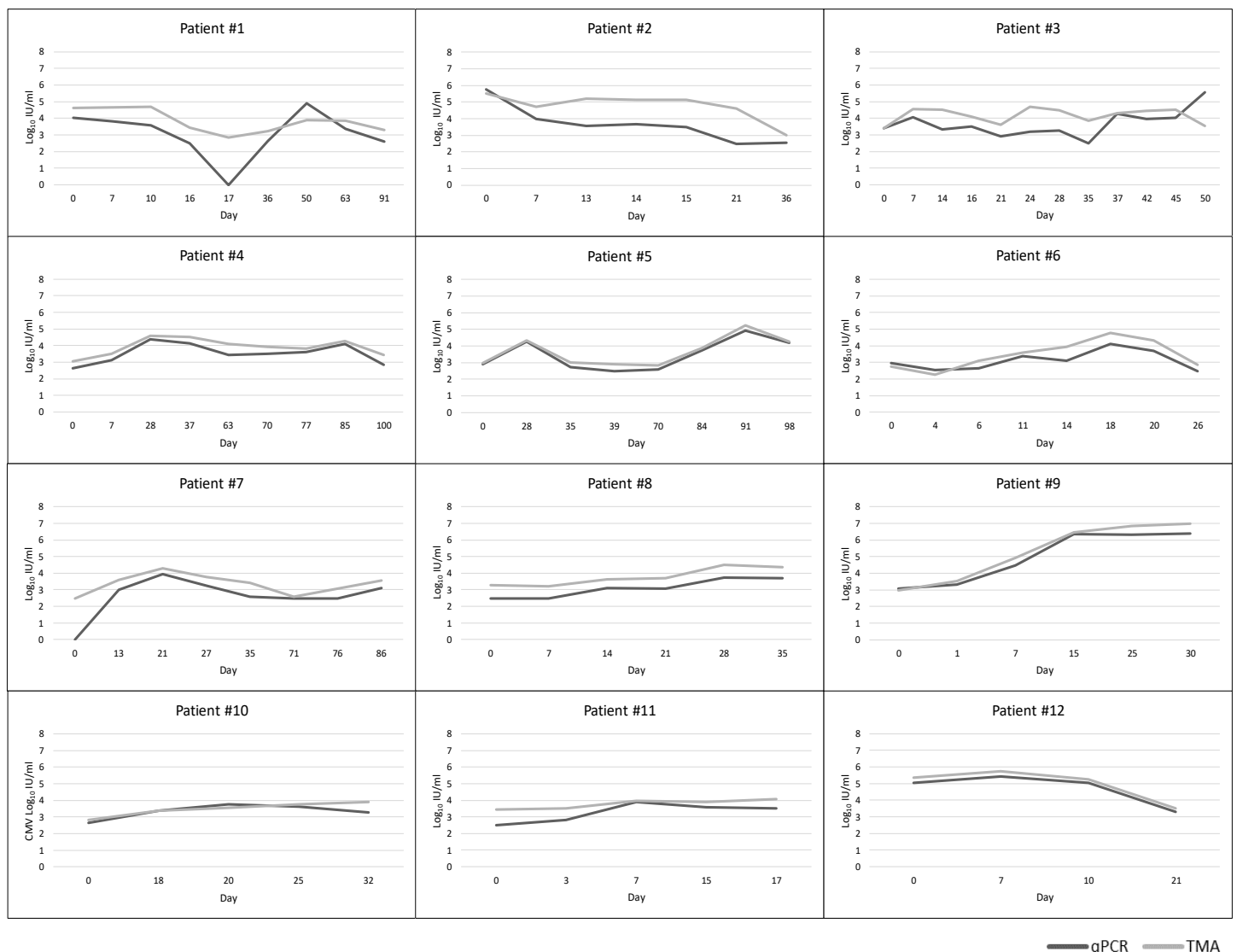


According to the abovementioned criteria, 12 transplanted patients were monitored for a period ranging from 17 days to 100 days, depending on the hospital stay (Figure 4). All patients tested positive for both methods at time 0, except one (Figure 4, Patient #7) in which initial viremia was only detectable by TMA assay. Overall, in the samples tested from these patients, the mean difference between qPCR and TMA chemistries was $-0.59 \pm 0.63 \text{ Log}_{10} \text{ IU/ml}$. The strictest agreement resulted for patient number 5, 9, 10, 12 (mean difference $-0.23 \pm 0.06 \text{ Log}_{10} \text{ IU/ml}$). Interestingly, the patient #1 resulted steadily positive for up to three months of monitoring with TMA assay, while qPCR tested negative at day 17. However, the previously day, both assays resulted positive (2.48 or less and 3.45 $\text{Log}_{10} \text{ IU/ml}$ respectively for qPCR and TMA chemistry). When retested, the trend of HCMV viremia was confirmed in the samples from both days.

The most evident difference between tested assay resulted in patient #2 with a mean value of $-1.12 \pm 0.84 \text{ Log}_{10} \text{ IU/ml}$.

274

Figure 4. Trend of HCMV viremia with qPCR and TMA assays in transplanted patients.



— qPCR — TMA

275

52 quantified samples tested simultaneously as whole blood and spotted on DBS. Overall agreement was

276

86.54% (Table 3). 7 specimens (13.46%) resulted negative and, using a conversion factor of 36.4 (37), the

277

mean value was $1.72 \pm 0.54 \text{ Log}_{10} \text{ IU/ml}$. Among positive results, 8 samples (15.38%) tested detected but not

278

quantified on DBS: though the conversion factor abovementioned, mean value for those specimens was $1.43 \pm$

279

$0.42 \text{ Log}_{10} \text{ IU/ml}$.

280

Table 3. TMA assay: overall agreement between whole blood samples and spotted on DBS.

281

| | Number of samples | (%) |
|--------------------------|----------------------|--------|
| Not detected | 7 | 13.46% |
| Detected | 8 | 15.38% |
| Quantified | 37 | 71.15% |
| Total | 52 | |
| Overall agreement | | 86.54% |

282

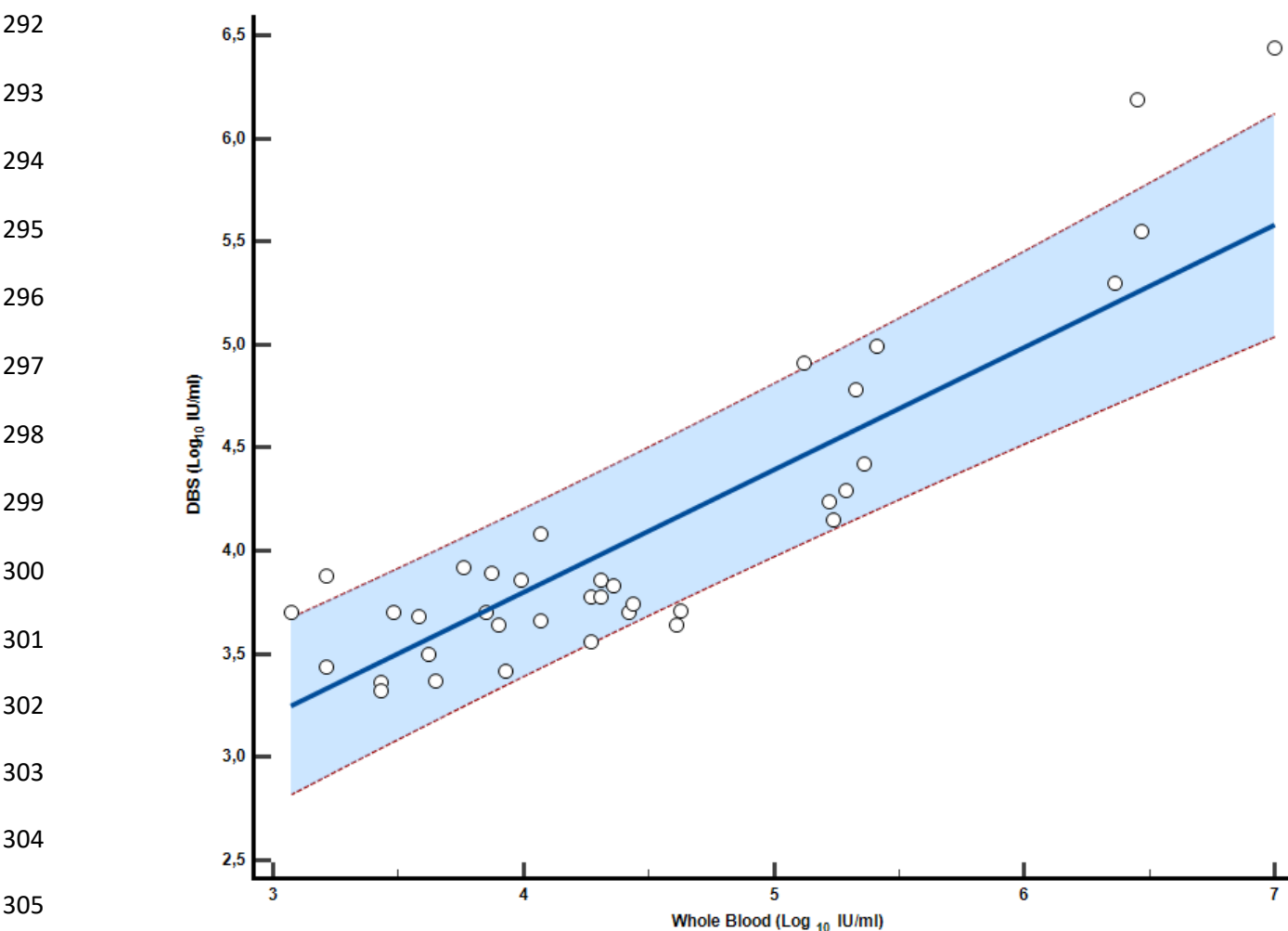
283

284

285

286 Focusing on 37 quantified specimens both on whole blood and DBS, regression analysis using the aforesaid
287 conversion factor showed a significant correlation between the two chemistries: the linear regression line was
288 calculated as follows, $Y = 1.4257 + 0.5936 x$ with an $R^2 = 0.7232$ (Figure 5). Pearson's correlation coefficient
289 value was 0.8977 (95% CI: 0.8090 to 0.9464) (P-value < 0.0001).

290 **Figure 5. Log₁₀-transformed quantitative viral load agreement for whole blood samples and the same**
291 **spotted as DBS* with TMA assay: linear regression.**



306 *For DBS samples, conversion to result on whole blood, the following formula was applied: $\text{Log}_{10}(\text{IU/ml} \times 36.4)$

307

308 **Discussion.** Early detection of HCMV viraemia is pivotal to identify progressing infection and patients at high
309 risk, which required antiviral therapy. Especially, the effectiveness of a pre-emptive therapy relies on accurate
310 laboratory tests to monitor HCMV infection (38). Specimens currently recommended as the gold standard for
311 monitoring the presence of HCMV DNA are whole blood and plasma that contain it respectively in monocytes
312 and as free fragmented HCMV genome, which is released from infected cells (34). Although there is no

313 consensus on the optimal blood compartment for routine molecular testing of HCMV DNA and the stability
314 of the viral genome in both whole blood and plasma up to 14 at 4°C (39, 40), the higher sensitivity of whole
315 blood and its higher HCMV DNA yield make it an optimal sample for monitoring viral load in
316 immunocompromised patients (41). Moreover, in order to enhance interlaboratory agreement of HCMV DNA
317 quantification, also in relation to the first WHO International Standard established in October 2010, different
318 diagnostic workflows (extraction and amplification) were evaluated to define an appropriate conversion factor
319 (CF) from genome/ml to IU/ml both on whole blood and plasma in a multicentric study (42, 43). Also due to
320 this standardization, it has been possible to better understand viral kinetics and threshold values for predicting
321 HCMV disease: although the viral load peak was reached simultaneously in the two blood compartments,
322 HCMV viraemia in whole blood was constantly higher (about 1 log₁₀ IU/ml) than in plasma since the onset
323 of infection until the peak of viral load and it decreased more rapidly than in plasma, thus avoiding unnecessary
324 prolonged treatment and saving in terms of drug toxicity and cost (44).

325 At the time of writing, several qPCR diagnostics assays have been developed and are currently available for
326 identification and quantification of HCMV in plasma and whole blood; besides these, also a recently new
327 TMA assay was introduced.

328 Differently from qPCR, target amplification via TMA is a transcription-mediated nucleic acid amplification
329 method that uses two enzymes, Moloney murine leukemia virus (MMLV) reverse transcriptase and T7 RNA
330 polymerase. The first enzyme generates a DNA copy of UL56 HCMV gene containing a promoter sequence
331 for T7 RNA polymerase, which subsequently produces multiple copies of RNA amplicon from the viral DNA
332 copy template. Detection is achieved using single-stranded nucleic acid probes, provide of a fluorophore and
333 a quencher, that hybridize specifically to the amplicon of HCMV DNA.

334 Although correlation between qPCR and TMA chemistries for HCMV detection was assessed on plasma and
335 other types of samples with excellent concordance (45, 46), EDTA/whole blood as clinical samples were not
336 yet investigated.

337 In this study, we evaluated the performance of the TMA assay (Aptima[®] CMV Quant Assay) and compared
338 the data with our qPCR SoC (CMV ELITe MGB[®] Kit). Clinical agreement between two chemistries was
339 excellent (99.28% and 89.39% for quantified and negative samples, respectively). Moreover, TMA assay

340 quantify at an average of 0.29 Log₁₀ IU/mL higher compared to the qPCR assay, as showed in the Bland-
341 Altman plot (Figure 3). Since mean difference was less than 0.5 Log, the cut-off to consider load changes
342 biologically important (47), our results could suggest no clinical implication if diagnostic platform will be
343 changed. However, this could be applied for our clinical setting where a side-to-side evaluation has been
344 performed. Indeed, data about plasma samples showed a mean difference variable between - 0.20 and 0.58
345 Log₁₀ IU/mL, according to TMA compared with different qPCR platform (45, 46).

346 Herein, TMA assay resulted more sensitive, resulting in a higher number of samples with a defined viral load
347 (Table 2). This is probably due to the differences between the two methods in terms of Limit of Detection
348 (LoD) and Limit of Quantification (LoQ). This latter amounted on 2.18 Log₁₀ IU/ml for TMA assay and 2.48
349 Log₁₀ IU/ml for qPCR; several discrepant samples stood between the range 2.2 - 2.8 Log₁₀ IU/ml, thus near
350 the lower LoQ of the qPCR assay (Figure 1). It is noteworthy that TMA assay needed a higher extraction
351 volume (700 µl) but it must be diluted in ratio 1:2.85 with the appropriate preparation buffer, while for qPCR
352 Starting volume is 200 µl of whole blood directly from vacutainer eluted in a final volume of 110 µl. Moreover,
353 TMA assay was evaluated with a fully automated sample-to-result platform, while two different platforms,
354 one for HCMV DNA extraction and the other for amplification, were used in combination for qPCR SoC.
355 All abovementioned aspects, together with gene target and amplicon size (48), have to be taken into account
356 to explain the differences between the two tested methods.

357 TMA chemistry performances were assessed to monitor viremia in transplanted patients; twelve individuals
358 were selected and tested for a period of time with both assays. Our data showed a good overlay until more
359 than three months, with TMA values on average higher than qPCR (Figure 4), in agreement with overall
360 results. The major discrepancy was observed in patient 1, in which qPCR resulted suddenly not detected while
361 TMA assay showed a linear trend in HCMV viraemia. Nevertheless, due to the reduced number of patients
362 enrolled, no correlation with antiviral therapy and clinical outcome were evaluated. Another limitation of our
363 study in this patients' cohorts is the lackness of data about antiviral-resistant HCMV strains that could affect
364 the compared methods.

365 For an in-depth analysis of whole blood as clinical specimen, TMA clinical performances were tested also
366 with low volumes such as those obtained onto DBS. In this preliminary study, 52 positive whole blood samples

367 were spotted onto DBS and results showed 86.54% of agreement (Table 3). For quantified specimens, applying
368 the abovementioned conversion factor of 36.4, linear regression was excellent (Figure 5). Focusing on
369 negative and detected DBS samples, mean viral load expected to be on whole blood was respectively $1.72 \pm$
370 $0.54 \text{ Log}_{10} \text{ IU/ml}$ and $1.43 \pm 0.42 \text{ Log}_{10} \text{ IU/ml}$, thus under the LoD of TMA assay ($2.18 \text{ Log}_{10} \text{ IU/ml}$). Since
371 low viral loads are unlikely to be associated to clinical consequences in cCMV infection (49), results herein
372 reported can be considered acceptable for clinical use. To our knowledge, this is the first evaluation of TMA
373 on low volumes resulted on Dried Blood Spot. However, the most important limit of this preliminary analysis
374 is the need for a higher number of tested specimens obtained directly from patients, even for calculate a most
375 suitable conversion factor between whole blood and DBS.

376 The excellent TMA testing results obtained in the present study, together with those of other studies, allow
377 the opportunity of further studies to better understand the impact of TMA assay, especially in transplanted
378 patients, on clinical management and decision to begin preemptive therapy or antiviral prophylaxis. However,
379 due to its recent introduction for HCMV diagnosis, no data of comparison between plasma and whole blood
380 are available to assess the most suitable matrix with TMA chemistry.

381 Alongside clinical and analytical performances, TMA assay showed the advantage to be carried out onto a
382 fully automated system with random and continuous access, thus eliminating the need to batch samples and
383 leading to faster turnaround time.

384 Laboratories evaluating a change to a different diagnostic system must considered all previously mentioned
385 aspects performing a side-to-side testing using both current and new assays to understand the most suitable
386 diagnostic workflow and clinical matrix.

387 TMA chemistry is a reliable diagnostic assay that allows accurate assessment of HCMV viremia on whole
388 blood specimens, even with small volumes such as those of Guthrie card collected for diagnosis of cCMV
389 infection. Moreover, this is the first TMA kit with FDA and CE-IVD approval on whole blood samples, thus
390 clinical laboratories can easily incorporate this test in their routine molecular workflows. The availability of
391 an automated platform with minimal hand-on time also enables timely diagnosis, prognosis and monitoring
392 of HCMV infected patients.

393

394 **Acknowledgment.** This research was supported by EU funding within the MUR PNRR Extended Partnership
395 initiative on Emerging Infectious Diseases (Project no. PE00000007, INF-ACT).

396

397

398 **References.**

- 399 1. Griffiths P, Reeves M. 2021. Pathogenesis of human cytomegalovirus in the immunocompromised
400 host. *Nat Rev Microbiol* 2021 1912 19:759–773.
- 401 2. A. Ross S, Novak Z, Pati S, B. Boppana S. 2011. Diagnosis of Cytomegalovirus Infections. *Infect*
402 *Disord Drug Targets* 11:466.
- 403 3. Cunningham C, Gatherer D, Hilfrich B, Baluchova K, Dargan DJ, Thomson M, Griffiths PD,
404 Wilkinson GWG, Schulz TF, Davison AJ. 2010. Sequences of complete human cytomegalovirus
405 genomes from infected cell cultures and clinical specimens. *J Gen Virol* 91:605.
- 406 4. Bhella D, Rixon FJ, Dargan DJ. 2000. Cryomicroscopy of human cytomegalovirus virions reveals
407 more densely packed genomic DNA than in herpes simplex virus type 1. *J Mol Biol* 295:155–161.
- 408 5. Yu X, Jih J, Jiang J, Hong Zhou Z. 2017. Atomic structure of the human cytomegalovirus capsid with
409 its securing tegument layer of pp150 HHS Public Access. *Science* (80-) 356.
- 410 6. Tomtishen J. 2012. Human cytomegalovirus tegument proteins (pp65, pp71, pp150, pp28). *Viol J*
411 9:1–9.
- 412 7. Kalejta RF. 2008. Tegument Proteins of Human Cytomegalovirus. *Microbiol Mol Biol Rev* 72:249–
413 265.
- 414 8. Garoff H, Hewson R, Opstelten D-JE. 1998. Virus Maturation by Budding. *Microbiol Mol Biol Rev*
415 62:1171.
- 416 9. Homman-Loudiyi M, Hultenby K, Britt W, Söderberg-Nauclér C. 2003. Envelopment of Human
417 Cytomegalovirus Occurs by Budding into Golgi-Derived Vacuole Compartments Positive for gB, Rab
418 3, Trans-Golgi Network 46, and Mannosidase II. *J Virol* 77:3191–3203.
- 419 10. Cannon MJ, Schmid DS, Hyde TB. 2010. Review of cytomegalovirus seroprevalence and
420 demographic characteristics associated with infection. *Rev Med Virol* 20:202–213.
- 421 11. Fowler K, Mucha J, Neumann M, Lewandowski W, Kaczanowska M, Gryś M, Schmidt E, Natenshon
422 A, Talarico C, Buck PO, Diaz-Decaro J. 2022. A systematic literature review of the global
423 seroprevalence of cytomegalovirus: possible implications for treatment, screening, and vaccine
424 development. *BMC Public Health* 22:1–15.
- 425 12. Barbi M, Binda S, Caroppo S, Calvario A, Germinario C, Bozzi A, Tanzi ML, Veronesi L, Mura I,
426 Piana A, Solinas G, Pugni L, Bevilacqua G, Mosca F. 2006. Multicity Italian study of congenital
427 cytomegalovirus infection. *Pediatr Infect Dis J* 25:156–159.
- 428 13. Rubinacci V, Fumagalli M, Meraviglia G, Gianolio L, Sala A, Stracuzzi M, Dighera A, Zuccotti GV,
429 Giacomet V. 2022. Congenital CMV, Lights and Shadows on Its Management: The Experience of a
430 Reference Center in Northern Italy. *Child* 2022, Vol 9, Page 655 9:655.
- 431 14. Lazzarotto T, Blázquez-Gamero D, Delforge ML, Foulon I, Luck S, Modrow S, Leruez-Ville M.
432 2020. Congenital Cytomegalovirus Infection: A Narrative Review of the Issues in Screening and
433 Management From a Panel of European Experts. *Front Pediatr* 8:13.
- 434 15. Kenneson A, Cannon MJ. 2007. Review and meta-analysis of the epidemiology of congenital

- 435 cytomegalovirus (CMV) infection. *Rev Med Virol* 17:253–276.
- 436 16. Bartlett AW, McMullan B, Rawlinson WD, Palasanthiran P. 2017. Hearing and neurodevelopmental
437 outcomes for children with asymptomatic congenital cytomegalovirus infection: A systematic review.
438 *Rev Med Virol* 27.
- 439 17. Gökçe Ş. 2019. Human Cytomegalovirus Infection: Biological Features, Transmission, Symptoms,
440 Diagnosis, and Treatment, p. . In Thomasini, RL (ed.), *Human Herpesvirus Infection*. IntechOpen,
441 Rijeka.
- 442 18. Chiavarini M, Bragetti P, Sensini A, Cenci E, Castronari R, Rossi MJ, Fantauzzi A, Minelli L. 2011.
443 Breastfeeding and transmission of cytomegalovirus to preterm infants. Case report and kinetic of
444 CMV-DNA in breast milk. *Ital J Pediatr* 37:6.
- 445 19. Hyde TB, Schmid DS, Cannon MJ. 2010. Cytomegalovirus seroconversion rates and risk factors:
446 implications for congenital CMV. *Rev Med Virol* 20:311–326.
- 447 20. Azevedo LS, Pierrotti LC, Abdala E, Costa SF, Strabelli TMV, Campos SV, Ramos JF, Latif AZA,
448 Litvinov N, Maluf NZ, Filho HHC, Pannuti CS, Lopes MH, dos Santos VA, Linardi C da CG,
449 Yasuda MAS, Marques HH de S. 2015. Cytomegalovirus infection in transplant recipients. *Clinics*
450 70:515.
- 451 21. Shimada T, Higashida-Konishi M, Izumi K, Hama S, Oshige T, Oshima H, Okano Y. 2022. Risk
452 factors associated with cytomegalovirus reactivation in patients receiving immunosuppressive therapy
453 for rheumatic diseases: a retrospective study. *Sci Reports* 2022 12:1–8.
- 454 22. Humar A, Snyderman D. 2009. Cytomegalovirus in solid organ transplant recipients. *Am J Transplant* 9
455 Suppl 4.
- 456 23. Van Zuylen WJ, Hamilton ST, Naing Z, Hall B, Shand A, Rawlinson WD. Congenital
457 cytomegalovirus infection: Clinical presentation, epidemiology, diagnosis and prevention
458 <https://doi.org/10.1177/1753495X14552719>.
- 459 24. Requião-Moura LR, deMatos AC ristin. C, Pacheco-Silva A. 2015. Cytomegalovirus infection in
460 renal transplantation: clinical aspects, management and the perspectives. *einstein (São Paulo)* 13:142–
461 148.
- 462 25. Paya C V. 1999. Indirect effects of CMV in the solid organ transplant patient. *Transpl Infect Dis an*
463 *Off J Transplant Soc* 1 Suppl 1:8–12.
- 464 26. Diena D, Allesina A, Fop F, Mella A, Cavallo R, Costa C, Dolla C, Gallo E, Rosa FG De, Lavacca A,
465 Giraudi R, Mariano F, Biancone L. 2023. Relationship between Cytomegalovirus Viremia and Long-
466 Term Outcomes in Kidney Transplant Recipients with Different Donor Ages. *Microorganisms*
467 11:458.
- 468 27. Razonable RR, Inoue N, Pinninti SG, Boppana SB, Lazzarotto T, Gabrielli L, Simonazzi G, Pellett
469 PE, Schmid DS. 2020. Clinical Diagnostic Testing for Human Cytomegalovirus Infections. *J Infect*
470 *Dis* 221:S74.
- 471 28. Gu J, Ji H, Liu T, Chen C, Zhao S, Cao Y, Wang N, Xiao M, Chen L, Cai H. 2022. Detection of
472 cytomegalovirus (CMV) by digital PCR in stool samples for the non-invasive diagnosis of CMV
473 gastroenteritis. *Virol J* 19:1–10.
- 474 29. Novak Z, Chowdhury N, Ross SA, Pati SK, Fowler K, Boppana SB. 2011. Diagnostic consequences
475 of cytomegalovirus glycoprotein B polymorphisms. *J Clin Microbiol* 49:3033–3035.
- 476 30. Rasmussen L, Geissler A, Cowan C, Chase A, Winters M. 2002. The genes encoding the gCIII
477 complex of human cytomegalovirus exist in highly diverse combinations in clinical isolates. *J Virol*
478 76:10841–10848.

- 479 31. Leruez-Ville M, Ducroux A, Rouzioux C. 2008. Exon 4 of the human cytomegalovirus (CMV) major
480 immediate-early gene as a target for CMV real-time PCR. *J Clin Microbiol* 46:1571–1572.
- 481 32. Chou S, Dennison KM. 1991. Analysis of interstrain variation in cytomegalovirus glycoprotein B
482 sequences encoding neutralization-related epitopes. *J Infect Dis* 163:1229–1234.
- 483 33. Lazzarotto T, Chiereghin A, Piralla A, Piccirilli G, Girello A, Campanini G, Gabrielli L, Costa C,
484 Prete A, Bonifazi F, Busca A, Cairoli R, Colombo AA, Zecca M, Sidoti F, Bianco G, Paba P, Perno
485 CF, Cavallo R, Baldanti F. 2018. Cytomegalovirus and Epstein-Barr Virus DNA Kinetics in Whole
486 Blood and Plasma of Allogeneic Hematopoietic Stem Cell Transplantation Recipients. *Biol Blood
487 Marrow Transplant* 24:1699–1706.
- 488 34. Rzepka M, Depka D, Gospodarek-Komkowska E, Bogiel T. 2022. Whole Blood versus Plasma
489 Samples-How Does the Type of Specimen Collected for Testing Affect the Monitoring of
490 Cytomegalovirus Viremia? *Pathog (Basel, Switzerland)* 11.
- 491 35. Rzepka M, Depka D, Gospodarek-Komkowska E, Bogiel T. 2023. Diagnostic Value of Whole-Blood
492 and Plasma Samples in Epstein-Barr Virus Infections. *Diagnostics (Basel, Switzerland)* 13.
- 493 36. Beam E, Germer JJ, Lahr B, Yao JDC, Limper AH, Binnicker MJ, Razonable RR. 2018.
494 Cytomegalovirus (CMV) DNA quantification in bronchoalveolar lavage fluid of
495 immunocompromised patients with CMV pneumonia. *Clin Transplant* 32:e13149.
- 496 37. Yek C, Massanella M, Peling T, Lednovich K, Nair S V., Worlock A, Vargas M, Gianella S, Ellis RJ,
497 Strain MC, Busch MP, Nugent CT, Richman DD. 2017. Evaluation of the aptima HIV-1 Quant Dx
498 assay for HIV-1 RNA quantitation in different biological specimen types. *J Clin Microbiol* 55:2544–
499 2553.
- 500 38. Ghisetti V, Barbui A, Franchello A, Varetto S, Pittaluga F, Bobbio M, Salizzoni M, Marchiaro G.
501 2004. Quantitation of Cytomegalovirus DNA by the Polymerase Chain Reaction as a Predictor of
502 Disease in Solid Organ Transplantation. *J Med Virol* 73:223–229.
- 503 39. Abdul-Ali D, Kraft CS, Ingersoll J, Frempong M, Caliendo AM. 2011. Cytomegalovirus DNA
504 stability in EDTA Anti-Coagulated Whole Blood and Plasma Samples. *J Clin Virol* 52:222.
- 505 40. Koidl C, Bozic M, Marth E, Kessler HH. 2008. Detection of CMV DNA: Is EDTA whole blood
506 superior to EDTA plasma? *J Virol Methods* 154:210–212.
- 507 41. Razonable RR, Brown RA, Wilson J, Groettum C, Kremers W, Espy M, Smith TF, Paya C V. 2002.
508 The clinical use of various blood compartments for cytomegalovirus (CMV) DNA quantitation in
509 transplant recipients with CMV disease. *Transplantation* 73:968–973.
- 510 42. Sidoti F, Piralla A, Costa C, Scarasciulli ML, Calvario A, Conaldi PG, Paba P, Perno CF, Gaeta A,
511 Antonelli G, Sodano G, Santangelo R, Sanguinetti M, Vatteroni ML, Barzon L, Palù G, Abbate I,
512 Capobianchi MR, Piccirilli G, Lazzarotto T, Baldanti F, Cavallo R. 2019. Collaborative national
513 multicenter for the identification of conversion factors from copies/mL to international units/mL for
514 the normalization of HCMV DNA load. *Diagn Microbiol Infect Dis* 95:152–158.
- 515 43. Fryer JF, Heath AB, Minor PD, Group CS. 2016. A collaborative study to establish the 1st WHO
516 International Standard for human cytomegalovirus for nucleic acid amplification technology
517 <https://doi.org/10.1016/j.biologics.2016.04.005>.
- 518 44. Lazzarotto T, Chiereghin A, Piralla A, Gibertoni D, Piccirilli G, Turello G, Campanini G, Gabrielli L,
519 Costa C, Comai G, La Manna G, Biancone L, Rampino T, Gregorini M, Sidoti F, Bianco G, Mauro
520 MV, Greco F, Cavallo R, Baldanti F. 2020. Kinetics of cytomegalovirus and Epstein-Barr virus DNA
521 in whole blood and plasma of kidney transplant recipients: Implications on management strategies.
522 *PLoS One* 15:e0238062.
- 523 45. Lima A, Healer V, Rowe L, Silbert S. 2023. Performance evaluation of the Aptima CMV quant assay

- 524 using plasma and non-plasma samples. *J Clin Virol* 164:105467.
- 525 46. Sam SS, Rogers R, Ingersoll J, Kraft CS, Caliendo AM. 2023. Evaluation of Performance
526 Characteristics of the Aptima CMV Quant Assay for the Detection and Quantitation of CMV DNA in
527 Plasma Samples. *J Clin Microbiol* 61.
- 528 47. Kraft CS, Armstrong WS, Caliendo AM. 2012. Interpreting quantitative cytomegalovirus DNA
529 testing: understanding the laboratory perspective. *Clin Infect Dis* 54:1793–1797.
- 530 48. Cook L, Starr K, Boonyaratanakornkit J, Hayden R, Sam SS, Caliendo AM. 2018. Does size matter?
531 Comparison of extraction yields for different-sized DNA fragments by seven different routine and
532 four new circulating cell-free extraction methods. *J Clin Microbiol* 56.
- 533 49. Bottino P, Balloco C, Rittà M, Bianco G, Sidoti F, Cavallo R, Costa C. 2020. Evaluation of CMV
534 DNA in dried blood spot 43:93–95.
- 535