

1 **Longitudinal analysis of the gut microbiome in adolescent patients with**  
2 **anorexia nervosa: microbiome-related factors associated with clinical**  
3 **outcome**

4 Nadia Andrea Andreani<sup>a,b,\*,#</sup>, Arunabh Sharma<sup>c,\*</sup>, Brigitte Dahmen<sup>d</sup>, Hannah E.  
5 Specht<sup>d</sup>, Nina Mannig<sup>d</sup>, Vanessa Ruan<sup>d</sup>, Lara Keller<sup>d</sup>, John F. Baines<sup>a,b</sup>, Beate  
6 Herpertz-Dahlmann<sup>d</sup>, Astrid Dempfle<sup>c</sup>, Jochen Seitz<sup>d</sup>

7 *<sup>a</sup>Max Planck Institute for Evolutionary Biology, August-Thienemann-Str. 2, 24306 Plön,*  
8 *Germany; <sup>b</sup>Section of Evolutionary Medicine, Institute for Experimental Medicine, Kiel*  
9 *University, Arnold-Heller-Str. 3, 24105 Kiel, Germany; <sup>c</sup>Institute of Medical Informatics and*  
10 *Statistics, Kiel University, Kiel, Germany; <sup>d</sup>Department of Child and Adolescent Psychiatry,*  
11 *Psychosomatics and Psychotherapy, University Hospital, RWTH Aachen University, Aachen,*  
12 *Germany*

13 \*These authors contributed equally to present study

14 # This author serves as corresponding author: Nadia Andrea Andreani, Max Planck Institute for  
15 Evolutionary Biology, August-Thienemann-Str. 2, 24306 Plön, Germany  
16 [andreani@evolbio.mpg.de](mailto:andreani@evolbio.mpg.de)

17 Author ORCID:

18 Nadia Andrea Andreani: 0000-0003-0330-9874

19 Arunabh Sharma: 0000-0001-7808-0942

20 Brigitte Dahmen

21 Hannah E. Specht

22 **NOTE: This preprint reports new research that has not been certified by peer review and should not be used to guide clinical practice.**

23 Vanessa Ruan

24 Lara Keller

25 John F. Baines

26 Beate Herpertz-Dahlmann: 0000-0001-8450-3323

27 Astrid Dempfle: 0000-0002-2618-3920

28 Jochen Seitz: 0000-0002-0110-7980

29

30 **Longitudinal analysis of the gut microbiome in adolescent patients with**  
31 **anorexia nervosa: microbiome-related factors associated with clinical**  
32 **outcome.**

33 There is mounting evidence regarding the role of gut microbiota in anorexia  
34 nervosa (AN). Previous studies have reported that patients with AN show  
35 dysbiosis compared to healthy controls (HCs); however, the underlying  
36 mechanisms are unclear, and data on influencing factors and longitudinal course  
37 of microbiome changes are scarce. Here, we present longitudinal data of 57  
38 adolescent inpatients diagnosed with AN at up to nine time points (including a 1-  
39 year follow-up examination) and compare these to up to six time points in 34  
40 HCs. 16S rRNA gene sequencing was used to investigate the microbiome  
41 composition of fecal samples, and data on food intake, weight change, hormonal  
42 recovery (leptin levels), and clinical outcomes were recorded. Differences in  
43 microbiome composition compared to HCs were greatest during acute starvation  
44 and in the low-weight group, while diminishing with weight gain and especially  
45 weight recovery at the 1-year follow-up. Illness duration and prior weight loss  
46 were strongly associated with microbiome composition at hospital admission,  
47 whereas microbial changes during treatment were associated with kilocalories  
48 consumed, weight gain, and hormonal recovery. The microbiome at admission  
49 was prognostic for hospital readmission, and a higher abundance of *Sutterella*  
50 was associated with a higher body weight at the 1-year follow-up. Identifying  
51 these clinically important factors further underlines the potential relevance of gut  
52 microbial changes and may help elucidate the underlying pathophysiology of gut-  
53 brain interactions in AN. The characterization of prognostically relevant taxa  
54 could be useful to stratify patients at admission and to potentially identify  
55 candidate taxa for future supplementation studies aimed at improving AN  
56 treatment.

57 Keywords: microbiota, anorexia nervosa, eating disorder, gut-brain axis,  
58 adolescents, longitudinal study, weight-recovered patients, low-weight patients,  
59 illness duration, long-term follow-up.

60 **Introduction:**

61 Anorexia nervosa (AN) is the third most common chronic disease in adolescence and the  
62 deadliest of all psychiatric diseases, with a standardized mortality rate 5-10 times higher than  
63 that in healthy controls (Arcelus et al., 2011; Bulik et al., 2019; Carr et al., 2016). AN is  
64 characterized by insufficient energy intake, low body weight, body image distortion, and fear  
65 of gaining weight. However, the underlying pathophysiology is poorly understood. Treatment  
66 includes weight restoration and psychotherapy but often remains insufficient, and there is a  
67 high rate of relapse (Herpertz-Dahlmann et al., 2021).

68 The gut microbiome is increasingly recognized as an influencing factor for energy  
69 extraction from food and weight regulation, as well as having an influence on the brain and  
70 behavior via the gut-brain axis. Interest in the role of the microbiome in psychiatric diseases is  
71 on a steep rise (Hills et al., 2019; Santacrose et al., 2021; Wu et al., 2021).

72 Animal models of AN show intestinal dysbiosis (Breton et al., 2021; Trinh et al., 2021)  
73 and point to the potentially important role of gut microbes in the pathogenesis and course of  
74 AN. Offspring of gnotobiotic mice transplanted with AN patients' stool showed reduced weight  
75 gain, as well as increased anxiety and obsessiveness, which are common comorbidities in AN  
76 (Hata et al., 2019). Moreover, directly transplanted "humanized" mice with AN patients' stool  
77 showed lower weight gain than HC-transplanted animals when fed a calorie-reduced diet (Fan  
78 et al., 2023).

79 Patient studies during acute starvation have confirmed intestinal dysbiosis, albeit with  
80 heterogeneous results (Di Lodovico et al., 2021; Mack et al., 2016; Seitz et al., 2020). Very  
81 few longitudinal studies have reported residual changes after short-term weight restoration  
82 (Fouladi et al., 2022; Mack et al., 2016; Schulz et al., 2021). However, to our knowledge, no  
83 study has followed patients after hospital discharge or tracked them for longer than 6 months.  
84 Thus, it remains unclear whether the microbiome normalizes over a longer period after weight

85 gain. Moreover, hospital food can act as a potential confounder when comparing the  
86 microbiome to healthy controls who eat at home. Furthermore, while studies have identified  
87 clinical factors to be associated with the microbiome in AN cross-sectionally (Borgo et al.,  
88 2017; Di Lodovico et al., 2021; Fan et al., 2023; Mack et al., 2016; Yuan et al., 2022), there  
89 are no reports of longitudinal associations, and only one study has attempted to predict the  
90 clinical course from microbiota alterations found at admission in AN (Schulz et al., 2021).

91 Here, we present the first longitudinal investigation, including data collected at the 1-  
92 year follow-up after admission, to investigate the degree of microbial normalization in  
93 individuals with AN classified as weight-recovered and on a home-based diet (thus making  
94 hospital food-related effects less likely). Up to nine time points were sampled to determine  
95 which clinical factors influence the microbiome in patients with AN, including illness duration,  
96 weight loss, and body weight at admission, and the potentially differential influence of  
97 nutritional, weight-related, and hormonal restitution during the treatment process. Furthermore,  
98 this longitudinal study allowed us to test whether microbiota can help predict weight  
99 development and relapse.

## 100 **Results**

101 Fifty-six patients aged between 12 and 20 years and diagnosed with AN or atypical AN  
102 (one patient) according to DSM-5 were admitted to the specialized inpatients eating disorder  
103 unit at the Department for Child and Adolescent Psychiatry of the RWTH Aachen University  
104 Hospital. Stool samples and clinical data were collected at up to eight timepoints (T0-T7)  
105 during inpatient stay with one additional sampling at follow-up appointment (T8) 1 year after  
106 admission (Fig 1). After discharge, eight patients were re-admitted to the department within  
107 one year due to weight loss. At follow-up assessments, patients were classified as having low  
108 weight or still weight recovered based on the age- and sex-specific percentile of the Body Mass  
109 Index (BMI) based on the German Health Interview and Examination Survey for Children and

110 Adolescents (KiGGS; Neuhauser et al., 2013). Specifically, individuals with a BMI lower than  
111 the 15<sup>th</sup> percentile ( $P < 15$ ) were classified as low weight, while individuals with a BMI greater  
112 than or equal to the 15<sup>th</sup> percentile ( $P \geq 15$ ) were classified as weight-recovered (chosen with a  
113 safety margin of 5 percentile points towards the official definition of “underweight” at the 10<sup>th</sup>  
114 BMI percentile). Inpatient treatment included weight rehabilitation with incremental increases  
115 in kilocalories (Fig 2A) and weight gain until achieving individually determined target weight,  
116 based on weight before the onset of the illness, hormonal recovery, and menstruation state (Fig  
117 2B). Additionally, serum leptin concentration was measured at admission, discharge, and  
118 follow-up appointments to test for hormonal recovery (Fig 2C). Thirty-four age-matched  
119 healthy controls (HCs; aged between 14 and 19 years) were sampled at six time-matched time  
120 points (Fig 1). A summary of the clinical characteristics of the patients included in this study  
121 is presented in Tab 1.

122 Inpatient treatment aimed at body weight rehabilitation as well as at improving eating  
123 behavior, as evidenced by the increase in BMI, percentage of Expected Body Weight (%EBW),  
124 and BMI-SDS, despite these measures being still different from the HC group (Tab 1). After 1  
125 year, patients with a BMI at or above the 15<sup>th</sup> percentile (classified as weight-recovered) had  
126 clinical characteristics that were more similar to the age-matched HC group (Tab 1 and Fig 2).

### 127 *Differences in gut microbiome between AN patients and healthy controls and longitudinal* 128 *changes in the gut microbiome*

129 A total of 22,848,660 16S rRNA sequence reads ( $63,645.29 \pm 25,857.34$  per sample, mean  $\pm$   
130 SD) were generated from the DNA extracted from 359 stool samples at nine time points, as  
131 specified in the Patients and Methods section and summarized in Tab S1\_Sheet1.

132 After clustering with  $>97\%$  similarity and rarefying 10,400 reads, 1,011 bacterial  
133 amplicon sequence variants (ASVs) were identified, which spanned 12 different phyla, 79

134 different families, and 212 different genera. Tab S1\_Sheet2 shows the total ASV counts and  
135 taxonomic classification.

136 The gut microbiome of adolescent patients with AN was significantly different from  
137 that of HCs during acute starvation at admission (Fig 3A/B, Tab S1\_Sheet3). The microbiome  
138 changed over the course of treatment but remained at least partly different from HCs at all time  
139 points, even in those patients who were classified as weight-recovered at 1-year follow-up [T8  
140  $1y(P \geq 15)$ ]. Fig 3A shows the average relative abundances of 23 genera that were significantly  
141 different in pairwise comparisons of patients at admission, discharge, and follow-up  
142 assessment, as well as in comparison to HCs at admission and 1-year follow-up (Wilcoxon  
143 signed-rank, *fdr* corrected  $p < 0.05$ ; see the following paragraphs and Tab S1 for details).  
144 Similarly, Fig 3B shows the shift in the microbiome composition in patients at all time points  
145 available between admission and follow-up, as seen in longitudinal multilevel partial least  
146 squares-discriminant analysis (mPLS-DA).

147 Longitudinal changes in alpha-diversity using Shannon and Chao1 indices are displayed  
148 in Fig 3C. Both values were lowest in the two follow-up groups. Alpha-diversity indices of  
149 fecal samples of low-weight patients at the 1-year follow-up were significantly different  
150 compared to their values at admission and discharge time points and to HCs (Fig 3C, left, and  
151 Tab S1\_Sheet3). Additionally, the Chao1 index showed a reduction during inpatient treatment,  
152 with significant differences when comparing patients at admission, discharge, and 1-year  
153 follow-up. Importantly, both values showed significant or trend-level reductions in weight-  
154 recovered patients after 1 year in comparison to HCs, hinting at a lack of complete microbiome  
155 recovery even in the weight-recovered subgroup (Fig 3C, right, and Tab S1\_Sheet3).

156 To test the hypothesis that fecal microbiomes of patients with AN have a distinctive  
157 composition both cross-sectionally and longitudinally, we used a combination of univariate  
158 and multivariate approaches by comparing the microbiome of patients at different taxonomic

159 levels (from phylum- to ASV-level) with the microbiome of the HC groups (Fig 4A, and Tab  
160 S1\_Sheet4). PERMANOVA based on Bray-Curtis dissimilarities showed significant  
161 differences in overall microbiome composition between patients with AN at admission and  
162 HCs at baseline from family- to ASV-level (PERMANOVA  $p=0.0007$  to  $0.005$ , Fig 4A). PLS-  
163 DA showed that the genera *Legionella*, *Dialister*, *Ruminococcaceae UCG-003* and  
164 *Limnobacter* contributed most strongly to this differentiation, all of which were less abundant  
165 in AN (Fig 4B and Fig S1A). Univariate comparisons between the two groups in individual  
166 taxa at the family- to ASV-level identified differences in the genera *Erysipelotrichaceae UCG-*  
167 *003*, *Dialister*, *Family XIII group*, *Anaerostipes*, *Ruminococcaceae UCG-003*, *Anaerotruncus*  
168 and *Erysipelatoclostridium* (Mann-Whitney-U-test multiple comparisons *fdr* corrected  
169  $p=0.0032$  to  $0.048$ , Tab S1\_Sheet 5).

170 At T7 discharge, PLS-DA and PERMANOVA based on Bray-Curtis dissimilarities  
171 showed a significant difference between AN and HC fecal microbiome only at the ASV-level  
172 (PERMANOVA  $p=0.007$ ; Fig 4A, 4C, Tab S1\_Sheet4, and Fig S1B), suggesting that inpatient  
173 treatment reduces the differences between these two groups. The Wilcoxon rank sum test  
174 identified five ASVs as being differentially abundant in patients at discharge compared with  
175 HCs. These were the ASV322 (uncl. *Erysipelotrichaceae UCG-003*), ASV524 (uncl.  
176 *Lachnospiraceae*), ASV578 and ASV798 (both uncl. *Ruminococcaceae UCG-005*) and  
177 ASV363 (uncl. *Dialister*) with a *fdr* corrected  $p=0.03$  to  $0.04$  [Mann-Whitney-U-test, Tab  
178 S1\_Sheet 6].

179 At T8\_1-year follow-up, the microbiome of subgroups of patients with AN and HCs  
180 were again significantly different at all taxonomic levels (PERMANOVA  $p=0.005$  to  $0.03$ , Fig  
181 4A, Tab S1\_Sheet4), as also visible in the PLS-DA graph in Fig 4C and Fig S1C, which depict  
182 the main differences among low-weight, recovered patients, and the HC group. However,  
183 separately comparing low-weight patients [T8 1y( $P<15$ )] with the HCs at 1 year showed



184 comparable differences to admission at lower taxonomic levels (PERMANOVA  $p=0.001$  to  
185  $<0.001$ ), with differences being recorded at the phylum-, class- and order-levels (Fig 4A, Fig  
186 S1D, and Tab S1\_Sheet4). On the other hand, differences between recovered AN patients [T8  
187 1y( $P\geq 15$ )] and HCs were much smaller (PERMANOVA  $p=0.063$ ) at the ASV-level when  
188 performing a PERMANOVA on Bray-Curtis dissimilarity distances (Fig 4A, Fig S1E and Tab  
189 S1\_Sheet4). Univariate comparisons of low-weight patients with HCs revealed some major  
190 differences at all taxonomic levels (from phylum- to genus- level), with corrected  $p$ -values  
191 between 0.008 and 0.04 (Mann-Whitney-U-test, Tab S1\_Sheet 7). The genera [*Eubacterium*]  
192 *hallii* group and *Agathobacter* were significantly more abundant in HCs than in low-weight  
193 patients. Interestingly, these differences were not observed when comparing recovered  
194 individuals with the HC group, with only one unique and rare taxon (family  
195 Desulfovibrionaceae) significantly more abundant in recovered patients (Mann-Whitney-U-  
196 test  $fdr$  corrected  $p=0.02$ ; Tab S1\_Sheet 8).

197 To understand the extent to which these changes are due to inpatient treatment, weight  
198 gain, and remission and to study the potentially confounding role of different foods in the  
199 hospital and at home, we performed pairwise investigations by applying multivariate and  
200 univariate approaches, comparing patients at admission, at discharge, and at the 1-year follow-  
201 up appointment. Inpatient treatment was associated with changes at all taxonomic levels  
202 (change between admission and discharge; PERMANOVA  $p=0.003$  to 0.01). However,  
203 univariate analysis identified the genus *Fusicatenibacter* as a unique taxon that was  
204 significantly more abundant at discharge (Wilcoxon signed-rank test  $fdr$  corrected  $p=0.027$ ;  
205 Tab S1\_Sheet 9). Interestingly, among low-weight patients, the overall microbiome  
206 composition was significantly different between admission and 1-year follow-up, with  
207 PERMANOVA on Bray-Curtis dissimilarity showing significant  $p$ -values at all levels,  
208 potentially due at least in part to hospital food being consumed at admission vs. home food at

209 follow-up (PERMANOVA  $p=0.0005$  to  $0.001$ ; Fig 4A, and Tab S1\_Sheet4). Specifically, low-  
210 weight patients showed a significant reduction in the relative abundance of the genera  
211 *Anaerostipes*, *Clostridium sensu stricto 1* and *Romboutsia* compared to the microbiome  
212 composition of these patients at admission (Wilcoxon signed-rank test corrected  $p$ -value=  $0.02$ ,  
213 Tab S1\_Sheet 10). On the other hand, individuals who recovered at follow-up showed a  
214 surprisingly higher similarity between admission and follow-up, with significant  $p$ -values only  
215 at the genus- and ASV-level (Fig 4A and Tab S1\_Sheet4).

216 Similarly, low-weight patients had a distinct microbiome at follow-up when compared  
217 to the assessment at discharge (PERMANOVA  $p=0.006$  to  $0.001$ , Fig 4A, and Tab S1\_Sheet4),  
218 while these differences were less marked when comparing recovered patients between follow-  
219 up and discharge, with a significant  $p$ -value of the PERMANOVA only at the ASV-level  
220 (PERMANOVA  $p = 0.02$ ). In low-weight patients, we observed 4 times higher abundance of  
221 the genus *Escherichia-Shigella* (Wilcoxon signed-rank test fdr corrected  $p = 0.04$ ) and a 2 times  
222 higher abundance of *Alistipes* (Wilcoxon signed-rank test fdr corrected  $p = 0.03$ ) between  
223 follow-up and discharge.

#### 224 ***Clinical variables associated with microbiome composition***

225 To investigate which clinical variables were associated with the overall microbiome  
226 composition, we applied PERMANOVA analysis to the Bray-Curtis dissimilarity index.  
227 Analysis at admission revealed that illness duration (phylum-family level, PERMANOVA  
228  $p=0.011$  to  $0.022$ ) and the amount of weight loss (class-genera level, PERMANOVA  $p=0.030$   
229 to  $0.047$ , Fig 5 and Tab S1\_Sheet 13) were significantly associated with microbiome  
230 composition. In contrast, BMI-SDS (PERMANOVA  $p=0.14$  to  $0.24$ ), Kcal at admission  
231 (PERMANOVA  $p=0.42$  to  $0.92$ ), and leptin concentration (PERMANOVA  $p=0.26$  to  $0.84$ )  
232 displayed little variability in the acute starvation phase and did not show a significant  
233 association with microbiome composition at this time point.

234 Next, we performed a longitudinal PERMANOVA analysis, including genus data from  
235 all nine time points. After correcting for laxative use, we found a significant association  
236 between the gut microbiome and the amount of ingested Kcals (PERMANOVA  $p=0.003$ ) and  
237 BMI-SDS (PERMANOVA  $p=0.005$ ). Even though these two variables are highly correlated,  
238 they both showed independent contributions when combined in one model (PERMANOVA  
239  $p=0.03$  for BMI-SDS;  $p=0.02$  for Kcals, respectively). Leptin concentration was measured at  
240 admission, discharge, and 1-year follow-up, and showed a significant association with the  
241 microbiome when analyzed alone (PERMANOVA  $p=0.02$ ). When analyzed together, these  
242 three potentially influencing factors (Kcal, BMI-SDS, and leptin) were strongly intercorrelated,  
243 so that only BMI-SDS and leptin at the trend-level showed independent contributions  
244 (PERMANOVA  $p=0.023$  to  $0.054$ ).

245 ***Prediction of hospital-readmission and BMI-SDS at 1-year follow-up based on baseline***  
246 ***microbiome data***

247 PERMANOVA analysis of the whole microbiome community at admission revealed a  
248 significant association with hospital readmission until the 1-year follow-up when considering  
249 the data at admission at the ASV-level ( $p=0.04$ ). The genera significantly associated with  
250 hospital readmission were *Ruminiclostridium 5* and *Intestinibacter* ( $p=0.006$  and  $0.03$ ,  
251 respectively); ASVs showing significant association with hospital readmission until the 1-year  
252 follow-up were ASV600 and ASV95 ( $p=0.0004$  and  $p=0.02$ , both uncl. *Subdoligranulum*),  
253 ASV666, and ASV83 ( $p=0.003$  and  $p=0.008$ , both uncl. *Lachnospiraceae*), ASV 238 ( $p=0.01$ ,  
254 uncl. *Clostridium sensu stricto*), ASV19 ( $p=0.03$ , uncl. *Ruminiclostridium*) and ASV873  
255 ( $p=0.03$ , uncl. *Intestinibacter*). There was no significant association between BMI-SDS at  
256 T8\_1 year follow-up and overall microbiome composition at baseline (all  $p>0.2$ ).

257 Linear model analysis related to the abundance of specific taxa at baseline to BMI-SDS  
258 at 1-year follow-up, while correcting for laxative use, illness duration, weight loss, and BMI-

259 SDS at admission, identified four genera (*Sutterella*, *Parasutterella*, *Lachnospiraceae FCS020*  
260 *group*, and *Clostridium sensu stricto*,  $p=0.008$  to  $0.040$ ; Fig 6, Tab S1\_Sheet14) and four ASVs  
261 (uncl. *Clostridium sensu stricto*, uncl. *Bacteroides*, uncl. *Alistipes*, uncl. *Parasutterella*,  
262  $p=0.002$  to  $0.01$ , Fig 6, Tab S1\_Sheet14) that were associated with the BMI-SDS at 1 year  
263 follow-up.

## 264 **Discussion**

265 Our study presents the first longitudinal investigation of fecal microbial changes in patients  
266 with AN compared with age-matched healthy controls, including a 1-year follow-up. Our  
267 results show that dysbiosis in acutely ill patients with AN is improved during inpatient  
268 treatment and long-term weight recovery. The remaining microbiome alterations in the weight-  
269 recovered subgroup after 1 year compared to HCs were small but remained significant. The  
270 differences found in the low-weight group indicate that the disease itself is the main driver of  
271 these microbiome differences and not the consequence of the consumption of hospital vs. home  
272 food. The up to nine assessment points sampled in this study allowed us to further elucidate  
273 the clinical factors associated with these longitudinal microbial changes. We found that illness  
274 duration and the amount of weight loss prior to admission were important for microbiome  
275 composition at admission, in line with an extensive body of research showing their clinical  
276 relevance as markers of disease severity. We also found that the kilocalories consumed, ensuing  
277 weight gain, and hormonal restitution were all clearly related to longitudinal microbiome  
278 composition changes during the treatment process. These results indicate that starvation is a  
279 major driving force for changes in the microbiome. These results further support previous  
280 clinical findings regarding the importance of nutritional restitution and reaching a sufficiently  
281 high target weight. Finally, our longitudinal follow-up showed that the composition of  
282 microbiota at admission can help predict relapse and that individual taxa were associated with  
283 increased or decreased BMI-SDS at the 1-year follow-up. Importantly, a higher abundance of

284 *Sutterella* is indicative of a positive clinical outcome and thus qualifies as a potential probiotic  
285 target or supplement for future animal and human studies. These findings are in line with a  
286 potentially important or contributing role of the gut microbiome on clinical outcomes, at least  
287 as a factor in maintaining the disease, as suggested by animal studies.

### 288 ***Altered microbiome characteristics in patients with AN***

289 Our data report a reduction in Shannon's and Chao 1 indices at 1-year follow-up, which were  
290 slightly more marked in low-weight patients. We did not observe any significant change in  
291 alpha-diversity measures during inpatient treatment, as found by Kleiman et al. (2015);  
292 however, the literature is heterogeneous regarding this point (Dhopatkar et al., 2023; Di  
293 Lodovico et al., 2021; Garcia & Gutierrez, 2023). The reduction in alpha-diversity after  
294 returning to a home environment could be associated with a change in diet, although this does  
295 not explain the newly appearing differences in the comparison with healthy controls. Most  
296 likely, different underlying mechanisms overlap in influencing alpha-diversity at this point in  
297 time, including remaining differences in food choice, body weight, hormonal status, and  
298 exercise, even in recovered patients with AN (Castro et al., 2021; Hübel et al., 2019).

299 Although the gut microbiome in patients with AN remained different from that in HCs  
300 at all time points, the differences diminished with weight recovery and over time. At admission,  
301 there were significant multivariate and univariate differences at different taxonomic levels,  
302 whereas after short-term weight recovery at discharge, only ASVs showed significant  
303 differences. This is in line with previous studies suggesting that the composition of the gut  
304 microbiome shifts during inpatient weight gain treatment (Fouladi et al., 2022; Kleiman et al.,  
305 2015; Mack et al., 2016; Schulz et al., 2021). The fact that patients with AN have a distinct  
306 microbiome when compared to healthy individuals is in line with several studies that have  
307 focused on the fecal microbiome in adults (Borgo et al., 2017; Fan et al., 2023; Monteleone et

308 al., 2021), or the combination of both adolescents and adults combined (Mack et al., 2016;  
309 Yuan et al., 2022).

310 One added value of our study was the presence of a long-term follow-up investigation  
311 1 year after admission. Interestingly, the microbiome of weight-recovered individuals (i.e.,  
312 those who had a BMI at least greater than or equal to the 15<sup>th</sup> percentile) showed only small  
313 differences from that of the HCs (univariate differences in Desulfovibrionaceae family, a trend  
314 in the multivariate analysis and significant alpha-diversity differences). Importantly, as the  
315 target weight was determined at an individual level, many patients had a BMI higher than the  
316 15<sup>th</sup> percentile (mean 29<sup>th</sup> percentile, range 15<sup>th</sup>-60<sup>th</sup> percentile) considered necessary for their  
317 personal recovery. These results support the hypothesis of continuous recovery of the gut  
318 microbiome with adequate weight increase and/or time. However, a complete recovery cannot  
319 yet be concluded at the 1-year follow-up in weight-recovered patients. Further research is  
320 necessary to address this phenomenon, especially as the remaining differences in nutritional  
321 uptake and the remaining lower body weight compared with HCs are common in this subgroup,  
322 as noted above. Interestingly, the low-weight subgroup showed dramatic differences when  
323 compared to controls again at the 1-year follow-up, ruling out a hospital vs. home food artifact  
324 in previous comparisons of acutely ill (hospitalized) patients with AN and HCs at home. This  
325 further underlines the importance of sustaining a healthy weight and, also for gut microbial  
326 normalization.

327 At admission, *Dialister* was significantly less abundant in patients than in age-matched  
328 HCs (as also reported in Garcia-Gil et al., 2022 and Yuan et al., 2022); interestingly, this genus  
329 increased in abundance during inpatient treatment and was not significantly differentially  
330 abundant in any other pairwise comparisons. A large cohort study found a reduced abundance  
331 of this genus in people diagnosed with depression and major depressive disorder, suggesting a  
332 role for this taxon in contributing to the psychological signs associated with AN (Cheung et

333 al., 2019; Valles-Colomer et al., 2019). Another notable increase in *Escherichia* abundance  
334 was observed between discharge and follow-up appointments in patients with insufficient  
335 weight recovery. *E. coli* is a well-known producer of caseinolytic protease B (ClpB), a protein  
336 involved in appetite regulation (Breton et al., 2021; Tennoune et al., 2014), and associated with  
337 anxiety severity (Mason et al., 2020) and AN (Yuan et al., 2022). Remarkably, this genus  
338 appears to be differentially abundant only in low-weight patients, suggesting its involvement  
339 in the chronicity of the disease. Similarly, the genus *Alistipes* was significantly more abundant  
340 in these patients (on average twice as abundant as that at discharge). A member of *Alistipes*  
341 (*Alistipes ihumii*) was isolated for the first time in 2014 from a patient with AN (Pfleiderer et  
342 al., 2014). Members of this genus are involved in anxiety and depression, as they have the  
343 potential to degrade tryptophan, the precursor of serotonin (Garcia-Gil et al., 2022; Kaur et al.,  
344 2019; Parker et al., 2020), and have been reported to be increased in patients with AN when  
345 compared to HCs (Di Lodovico et al., 2021; Prochazkova et al., 2021; Schulz et al., 2021).  
346 Overrepresented taxa in low-weight patients also include the genus *Anaerostipes*, which was  
347 found to be increased in anorexia nervosa, bulimia nervosa, and depression (Leyrolle et al.,  
348 2021). This is in line with previous research showing an increase in mucin-degrading taxa, such  
349 as *Escherichia-Shigella*, *Alistipes*, *Anaerostipes* (Di Lodovico et al., 2021; Glover et al., 2022)  
350 and a reduction in butyrate producers, and an increase in carbohydrate (fiber)-degrading taxa  
351 (Fouladi et al., 2022). In our longitudinal study, we failed to detect any major perturbation in a  
352 butyrate-producing taxon (Singh et al., 2023).

353 Low-weight patients show a reduction in *Ruminococcus*, a well-known beneficial  
354 carbohydrate-fermenter commensal, whose abundance has increased in different studies as a  
355 consequence of increased fiber intake (Kleiman et al., 2015; Mack et al., 2016; Ruusunen et  
356 al., 2019). Underrepresented genera in the AN microbiome of low-weight patients include  
357 *Agathobacter* (also as reported by (Prochazkova et al., 2021; Yuan et al., 2022)) and

358 *Romboustia* (as in (Yuan et al., 2022)). Interestingly, some of the taxa that were  
359 overrepresented in patients at admission and in low-weight patients were the same and were  
360 reported to be higher in stunted children: Family XIII AD3011 group, uncl.  
361 Erysipelotrichaceae, and uncl. Ruminococcaceae (Goloso-Gubat et al., 2020).

362 After a 1-year follow-up, the family Desulfovibrionaceae remained altered even in the  
363 weight-recovered subgroup, with a relative abundance five times higher in recovered  
364 individuals than in HCs. These bacteria were shown to be associated with binge eating  
365 disorders in obese individuals (Navarro-Tapia et al., 2021), although they represent a rare taxon  
366 (less than 0.20% of the total microbiome) in our study, and it is thus difficult to disentangle  
367 their role in the gut-brain axis.

368 Importantly, the diminishing difference between HCs and recovered AN patients was  
369 immediately offset in the case of a repeated weight loss. Low-weight patients showed renewed  
370 dysbiosis at all taxonomic levels of similar magnitude as at admission. This emphasizes the  
371 importance of maintaining a healthy target weight for regaining a healthy gut microbiome.

### 372 *Clinical factors associated with gut microbiome*

373 Interestingly, our analysis at admission showed that illness duration and weight loss were  
374 associated with alterations in the overall composition and structure of bacterial communities  
375 within the group of adolescent patients with AN. To our knowledge, this is the first time that  
376 these two variables have been linked to the microbiome at admission. This is potentially  
377 explained by the difference in age compared with adult patients, which is typically  
378 accompanied by a difference in illness duration. Studying adolescents might have the  
379 advantage of having a higher percentage of first-time ill patients with fewer compensatory or  
380 treatment-related factors, allowing for a less confounded study of the original underlying  
381 pathophysiology. Interestingly, the absolute low BMI-SDS did not reach significance cross-  
382 sectionally, which agrees with previous reports (Fan et al., 2023; Mack et al., 2016). However,



383 Di Lodovico (Di Lodovico et al., 2021) identified a correlation between *Roseburia* abundance  
384 and BMI. Borgo et al. (Borgo et al., 2017) highlighted a negative correlation of *Bacteroides* in  
385 adult samples, while Yuan et al. (Yuan et al., 2022) found *Subdoligranulum* was positively and  
386 *Bacteroides* was negatively associated with BMI in a mixed sample of adolescents and adults.  
387 This might be explained by differences in the statistical approach (PERMANOVA vs.  
388 univariate single taxa analyses) or by differences in age and illness duration.

389 Our longitudinal PERMANOVA analysis including genus-level data from all nine time  
390 points (adjusted for laxative use) helped address the question of which clinical parameters and  
391 physiological changes during treatment were related to the changing gut microbiome. Indeed,  
392 we found that all three of our hypothesized factors (kilocalories consumed, achieved weight  
393 gain, and hormonal recovery) were strongly related to changes in microbiome composition.  
394 This is consistent with the previous clinical literature, which primarily underscores the  
395 influence of nutrition (David et al., 2014). It is interesting and important to demonstrate that it  
396 is not purely nutritional rehabilitation that drives changes in the microbiome. Also, body weight  
397 recovery was an important factor, potentially because of its link to an increase in fat mass,  
398 normalization of metabolism and leaving behind the “emergency-state” of semi-starvation with  
399 all its other metabolic counter-regulations to conserve energy. Finally, hormonal restitution,  
400 studied using leptin concentration in the serum, showed an individually and independently  
401 significant contribution. Leptin is an anorexigenic hormone secreted by fat cells and is known  
402 to be severely reduced in acutely ill patients with AN and to recover with weight gain. It has  
403 numerous effects on metabolism, and its accommodation to starvation and leptin receptors is  
404 found virtually throughout the human body (Hebebrand et al., 2022). Interestingly, it is known  
405 to be both affected by (Yao et al., 2020) and to affect gut bacteria (Neuman et al., 2015), and  
406 has recently been shown to be very promising as an experimental treatment in chronic patients  
407 with AN (Gradl-Dietsch et al., 2023; Milos et al., 2020).

408 Taken together, these findings are important for understanding the underlying  
409 microbiome-gut-host interactions during AN. By identifying clinically relevant factors  
410 associated with microbiome changes, they added further validity to the relevance of the  
411 microbiome being linked to the severity and course of the disease.

#### 412 ***Prognostic relevance of baseline microbiome for clinical outcome***

413 After showing how clinical factors are associated with the microbiome in patients with AN, we  
414 also investigated the potential influence of the microbiome on the course of illness. This is the  
415 first study to show that microbiome composition at admission is prognostically relevant for  
416 hospital readmission within the first year. This shows the potential of microbiome analyses to  
417 help clinicians in the prognosis of the clinical course and potentially divert more intense  
418 resources to those most at risk. Interestingly, for most of the genera and taxa identified, a higher  
419 abundance was associated with a negative course (*Parasutterella*, *Clostridium sensu stricto*;  
420 *Lachnospiraceae FCS020* genera and uncultured *Alistipes*). Thus, the high abundance of these  
421 taxa should be regarded as a risk factor. Interestingly, a recent cross-sectional study on obesity  
422 and type 1 diabetes reported the role of the genus *Parassuterella* in the stimulation of the  
423 biosynthetic pathways of fatty acids, suggesting a role in body weight gain. Moreover,  
424 *Parassuterella* was significantly reduced during weight loss interventions (Henneke et al.,  
425 2022). *Clostridium sensu stricto 1* (also known as *Clostridium* cluster 1) levels were 22 times  
426 higher at admission than at follow-up in low-weight patients. *Clostridium sensu stricto 1* is a  
427 well-known mucin degrader that has been associated with AN, as this genus can induce a leaky  
428 gut (Di Lodovico et al., 2021; Kleiman et al., 2015; Mack et al., 2016). *Alistipes* is known to  
429 be involved in depression, which highlights the multifactorial nature of AN (Parker et al.,  
430 2020). Members of the family *Lachnospiraceae* are known to degrade carbohydrates to produce  
431 butyric acid and other SCFAs, which could help reduce inflammation (Yuan et al., 2022).  
432 Decreased *Lachnospiraceae* is a well-accepted marker of inflammation in several

433 inflammatory disorders (Geirnaert et al., 2017; Maukonen & Ouwehand, 2022). Patients with  
434 AN are thought to have chronic low-grade inflammation of unknown origin (meta-analysis by  
435 (Dalton et al., 2018)); however, recent findings are more diverse and show variable  
436 dysregulation of the immunologic state (Keeler et al., 2022; Schulz et al., 2021). AN is also  
437 associated with an increased rate of autoimmune diseases, especially Crohn’s disease and celiac  
438 disease (Hedman et al., 2019; Raevuori et al., 2014). Therefore, the immunomodulatory effects  
439 of these taxa might be important for their mechanistic role in AN outcomes.

440           In contrast, a higher *Sutterella* abundance at admission was associated with a positive  
441 outcome of increased body weight after one year. *Sutterella* are commensals associated with a  
442 positive pro-inflammatory status (Hiippala et al., 2016). They are known to modulate  
443 inflammatory processes; they decrease in multiple sclerosis and increase again after interferon  
444 therapy (Giri & Mangalam, 2019). In a mouse obesity study, *Sutterella* was not found in high-  
445 fat diet-fed animals and only appeared after the introduction of prebiotic treatment, associated  
446 with improved health (Everard et al., 2014). Due to the association of *Sutterella* with a positive  
447 clinical course in our study, they might also be interesting candidates for probiotic  
448 supplementation in Activity Based Anorexia (ABA)-animal models and patient studies.

449           These results complement our findings regarding clinical measures, such as illness  
450 duration or weight loss, being intertwined with the gut microbiome at admission. One possible  
451 interpretation is that the microbiome is initially influenced by food reduction and ensuing semi-  
452 starvation, fat mass reduction, and hormonal changes. Gut microbial changes could then exert  
453 a causal, upholding influence favoring the maintenance of the disease, as transplantation  
454 studies of stool of patients with ongoing AN into germ-free mice have shown reduced weight  
455 gain as well as brain and behavioral changes in animals similar to those in AN (Fan et al., 2023;  
456 Hata et al., 2019). Whether the gut microbiome plays a role in the initial occurrence of AN  
457 remains unclear and should be the target of future investigations.

458           Although this is one of the largest studies of patients with AN analyzing the  
459 microbiome, larger samples are still required regarding the sheer number of taxa involved and  
460 their potential interactions with each other and with the host. Furthermore, grouping patients  
461 at one year of admission together only on the basis of BMI is always somewhat artificial and  
462 demonstrates the dire need for a more stringent definition of recovery from an eating disorder  
463 including, for example, disordered eating behavior. Lastly, while longitudinal studies like ours  
464 present a major advancement compared to purely cross-sectional studies, they still only allow  
465 limited insight into causality and need to be supported by well-controlled interventional studies.  
466 Taken together, we showed reduced, yet ongoing alterations in the gut microbiome after a 1-  
467 year follow-up, even in weight-recovered patients, and identified an important relationship  
468 between illness duration and weight loss with microbiome composition at admission and  
469 provided evidence that kilocalories, body weight, and hormonal recovery are all associated  
470 with the changing microbiome during treatment and weight gain. The microbiome at admission  
471 has prognostic value for the course and outcome of the disease. Our results are consistent with  
472 the hypothesis that changes in the body environment following semi-starvation influence the  
473 composition of the gut microbiome. Together with transplantation data, our study further

474 supports the potential causal role of certain microbes, at least as maintaining factors prolonging  
475 the disease. The role of the microbiome in the etiology of the initial phase of disease warrants  
476 further investigation. Identifying taxa whose abundances are prognostic for the clinical course  
477 could help stratify patients at admission and increase therapy intensity where most needed,  
478 whereas *Sutterella* could potentially yield promising microbiome-targeted therapies as future  
479 additions to existing AN treatment.

## 480 **Patients and methods**

### 481 ***Recruitment***

482 Sixty-four female adolescents (aged between 12 and 20, mean 16 years) diagnosed with typical  
483 or atypical AN according to the DSM-5 were recruited at the Department for Child and  
484 Adolescent Psychiatry of the RWTH Aachen University Hospital and enrolled between  
485 December 2016 and January 2020. Seven patients dropped out of the study, leaving 57 patients  
486 for the analysis. The inclusion criteria were the same as those previously published before  
487 (Schulz et al., 2021) with minor modifications: diagnosis of AN according to DSM 5, female  
488 sex, and age between 12 and 20 years. The exclusion criteria were as follows: use of antibiotics  
489 or probiotics within four weeks before enrollment, IQ < 85, insufficient knowledge of the  
490 German language, severe other mental disorders, and severe gastrointestinal or metabolic  
491 illnesses such as celiac disease or diabetes mellitus. Stool samples collected within four weeks  
492 of oral or intravenous antibiotic treatment were excluded from the analysis. Admission and  
493 discharge data for a subset of the current study (20 patients with AN and 20 HCs) have been  
494 published previously (Schulz et al., 2021).

495 Additionally, 34 age-matched female HCs with normal body weight (>20th and <80th  
496 age adjusted percentile of body mass index [BMI-SDS]) were enrolled using newspaper  
497 advertisements. The same exclusion criteria as above were applied to HCs, in addition to any

498 current psychiatric illness or any lifetime eating disorder. All participants and their legal  
499 guardians provided written informed consent prior to enrollment. Consent was obtained from  
500 the ethics committee of the RWTH Aachen University Hospital for this study, and the study  
501 was conducted in accordance with the Declaration of Helsinki.

502 Clinical data included height and body weight after an overnight fast at admission and  
503 discharge, as well as weight and height prior to disease onset, weight loss prior to admission,  
504 and illness duration. For all time points, BMI as well as age- and sex-specific BMI percentiles  
505 and BMI-SDS were calculated based on German reference data from the KiGGS study  
506 (Neuhauser et al., 2013). Any medication used at admission was noted and sorted into the  
507 following groups for use as a binary covariate: laxatives, antibiotics, antidepressants,  
508 gastrointestinal medications, and others.

### 509 *Assessment timepoints*

510 Up to nine time points were chosen for sampling (Fig 1): T0 (admission), T1 (corresponding  
511 to a diet of 25 Kcal/kg/day), T2 (corresponding to a diet of 50 Kcal/kg/day), T3 (corresponding  
512 to a diet of 62.5 Kcal/kg/day), T4 (corresponding to a weight gain up to the 5<sup>th</sup> age-adjusted  
513 BMI percentile), T5 (corresponding to a weight gain up to the 10<sup>th</sup> age-adjusted BMI  
514 percentile), T6 (corresponding to a weight gain up to the 15<sup>th</sup> age-adjusted BMI percentile), T7  
515 (discharge), and T8 (1-year follow-up appointment, one year after admission). Based on the  
516 clinical course, some patients reached more than one timepoint at a time and had fewer  
517 sampling time points. Thirty-four HCs' samples were collected at six time points (T0, T2, T4,  
518 T5, T7, and T8; Fig 1).

### 519 *Questionnaires and interviews*

520 Each participant in the study completed three questionnaires at admission, T2, T4, T5,  
521 discharge, and 1-year follow-up appointment: The Eating Disorder Inventory 2 (EDI-2;

522 (Garner, 1991)), Beck Depression Inventory-II (BDI-II; (Kühner et al., 2007)) and Spence  
523 Children's Anxiety Scale (SCAS; (Spence, 1998)). Patients also underwent semi-structured  
524 EDE (Eating Disorder Examination, first German edition 2016; (Cooper & Fairburn, 1987;  
525 Luce & Crowther, 1999)) at admission, discharge, and 1-year follow-up.

### 526 *Fecal sample collection and DNA extraction*

527 Fecal samples were collected as previously described (Schulz et al., 2021). Healthy volunteers  
528 collected their stool at home using the same procedure and brought or sent the samples to the  
529 clinic to be frozen at -80°C until further use. DNA extraction from stool samples was performed  
530 using the DNeasy Power Soil Kit (Qiagen), following the manufacturer's instructions.

### 531 *16S rRNA gene sequencing and processing*

532 The V1-V2 region of the 16S rRNA gene was amplified with primers 27F and 338R using dual  
533 barcoding. During demultiplexing, no mismatches were allowed in the barcode (Casava,  
534 Illumina). QIIME2 (v2019.10) was used to process and analyze the sequence data (Bolyen et  
535 al., 2018). Paired end sequences were denoised with 'dada2' (Callahan et al., 2016) using  
536 default parameters, unless stated: reads were truncated at the first base where the quality score  
537 dropped below Q=3, the maximum number of mismatches in the overlap region was 2, and the  
538 minimum length of reads after truncation was 250 bp. Merged sequences were clustered into  
539 amplicon sequences variants (ASVs) using 'vsearch' with an identity of 0.97 (Rognes et al.,  
540 2016). Bacterial ASVs were annotated using the q2-feature-classifier plugin (Bokulich et al.,  
541 2018). The sequences were rarefied at 10,400 reads per sample.

### 542 *Statistical analysis*

543 All statistical analyses were performed using the R software (v. 4.1.1). Alpha-diversity within  
544 samples (represented by the Shannon and Chao1 indices) was determined by applying the

545 estimate and diversity functions in “vegan” package (Oksanen & et al., 2022), while microbial  
546 dissimilarities between samples (beta-diversity defined by Bray-Curtis dissimilarity) were  
547 estimated at all taxonomic levels (phylum- to ASV- levels). Different time points of the HCs  
548 were used in our analyses, and the first available time point (baseline T0) was used to compare  
549 the microbiome compositions of HCs with those of patients with AN at admission (T0) and  
550 discharge (T7). The last available time point for each HCs (usually after one year, T8) was used  
551 for follow-up (T8) comparisons. We defined a ‘core’ microbiome as taxa that were present in  
552 at least 50% of individuals.

553 *Analysis of gut microbiome in AN patients and healthy controls and longitudinal changes in*  
554 *the gut microbiome*

555 We used multivariate and univariate methods to compare the microbiomes of patients at various  
556 taxonomic levels (from phylum- to ASV-level) with a) the microbiomes of the HC group and  
557 b) those between different visits. To examine the differences in the overall microbiome  
558 composition between AN patients and the HC group at admission (T0), discharge (T7), and  
559 follow-up (T8), we used permutational multivariate analysis of variance (PERMANOVA;  
560 Anderson, 2017) implemented in the R package “vegan” (Oksanen et al., 2022) at all taxonomic  
561 levels. In all the PERMANOVA models, the number of permutations was set to 10,000. In  
562 order to determine which microbial taxa are primarily responsible for the differences between  
563 groups of samples, we performed partial least squares-discriminant analysis (PLS-DA), a  
564 supervised multivariate dimensionality reduction and classification technique using the R  
565 package “mixOmics” (Liquet et al., 2012; Rohart et al., 2017). Throughout our longitudinal  
566 analyses, the dependence on multiple samples per individual at different visits was considered.  
567 Therefore, to account for the clustering of samples by patients, we used the *strata* term in the  
568 *adonis* function to restrict the permutations within the samples from each patient for the  
569 PERMANOVA models. Additionally, we used multilevel partial least squares-discriminant



570 analysis (mPLS-DA), which accounts for clustered samples (from the same patient) and  
571 correlations among microbial taxa.

572 After the PERMANOVA tests, non-parametric univariate tests were conducted at the  
573 taxonomic levels, where significant differences were observed to identify the taxa that  
574 contributed to those differences. We used Mann-Whitney-U-tests and Wilcoxon signed-rank  
575 tests for unpaired (patients vs. HCs) and paired (patients at different visits) respectively. The  
576 false discovery rate (fdr) approach was used to correct for multiple comparisons.

#### 577 *Analysis clinical variables associated with microbiome composition*

578 PERMANOVA was also performed to examine the factors associated with microbiome  
579 composition at the different visits. For each model, the effect of laxative use was corrected by  
580 including it as the first independent variable. At T0, the association between microbiome  
581 composition and weight loss, illness duration, BMI-SDS, Kcal, and leptin was tested. We also  
582 examined longitudinally the combined and individual effects of BMI-SDS and Kcal on the  
583 microbiome composition (genus-level) considering all visits together. Additionally, the  
584 combined effects of BMI-SDS, leptin, and Kcal together and the effect of leptin alone  
585 (unadjusted) on the microbiome composition were investigated longitudinally considering  
586 visits T0, T7, and T8.

#### 587 *Analysis of prognostic relevance of baseline microbiome for clinical outcome*

588 To investigate the association of the gut microbiota (genus- and ASV-levels) at admission (T0)  
589 or discharge (T7) with the different variables of clinical outcome (duration of treatment (only  
590 with admission microbiome), hospital readmission, and BMI-SDS at 1-year follow-up), first,  
591 a linear model (or logistic model for readmission) was constructed, where the effect of weight  
592 loss (calculated as the difference in BMI-SDS between disease onset (premorbid BMI-SDS)  
593 and admission to the clinic), duration of illness, and BMI-SDS at admission were regressed out

594 to control for factors known to influence the duration of inpatient treatment. Then, the residuals  
595 of this model were used as the dependent variable in a second linear model, with microbial  
596 relative abundances as an independent variable while controlling for laxative use. For the  
597 prediction analyses, we used the square root of the transformed relative abundances of the core  
598 microbial taxa to account for non-normal distributions.

### 599 **Acknowledgements**

600 The work was partly funded by the ERA-NET Neuron “Microbiome Gut Brain Axis in  
601 Anorexia Nervosa (MiGBAN)” project sponsored by the European Union (EU) and the  
602 German Ministry for Education and Research (BMBF) under Grant 01EW1906A; the Deutsche  
603 Forschungsgemeinschaft (DFG) under the Grant SE 2787/3-1 (“The role of the intestinal  
604 microbiome regarding prognosis and therapy in adolescent Anorexia nervosa – clinical and  
605 translational analyses”); the Deutsche Forschungsgemeinschaft (DFG) Research Unit  
606 FOR5042 under Grant DE1614/4-1 (“The microbiome as a therapeutic target in inflammatory  
607 bowel diseases”); the Deutsche Forschungsgemeinschaft (DFG) Excellence Cluster under  
608 Grant EXC2167 (“Precision Medicine in Chronic 688 Inflammation PMI”).

609 The authors are grateful to Mrs. Katja Cloppenburg-Schmidt and Mrs. Yasmin Claußen for  
610 their excellent technical support, and to the Clinical Trial Center Aachen (CTC-A) for their  
611 support in conducting the study.

### 612 **Disclosure statement**

613 The authors report there are no competing interests to declare.

614 **Data availability statement**

615 Data available on request due to privacy/ethical restrictions.

616 **Author contributions**

617 JS, JB, and BHD designed the study; BD, HS, NM, VR, and JS recruited the participants and

618 helped gather clinical data and stool and blood samples; HS and LK oversaw sample logistics.

619 NA analyzed the stool samples; NA, AS, and AD performed statistical analyses. NA, AS, and

620 JS wrote the first draft of the manuscript. All coauthors revised the manuscript and agreed to

621 its publication.

## 622 **References**

- 623 Anderson, M. J. (2017). Permutational Multivariate Analysis of Variance ( PERMANOVA ). In N.  
624 Balakrishnan, T. Colton, B. Everitt, W. Piegorisch, F. Ruggeri, & J. L. Teugels (Eds.), *Wiley*  
625 *StatsRef: Statistics Reference Online* (1st ed., pp. 1–15). Wiley.  
626 <https://doi.org/10.1002/9781118445112.stat07841>
- 627 Arcelus, J., Mitchell, A. J., Wales, J., & Nielsen, S. (2011). Mortality Rates in Patients With Anorexia  
628 Nervosa and Other Eating Disorders: A Meta-analysis of 36 Studies. *Archives of General*  
629 *Psychiatry*, 68(7), 724. <https://doi.org/10.1001/archgenpsychiatry.2011.74>
- 630 Bokulich, N. A., Kaehler, B. D., Rideout, J. R., Dillon, M., Bolyen, E., Knight, R., Huttley, G. A., &  
631 Gregory Caporaso, J. (2018). Optimizing taxonomic classification of marker-gene amplicon  
632 sequences with QIIME 2's q2-feature-classifier plugin. *Microbiome*, 6(1).  
633 <https://doi.org/10.1186/s40168-018-0470-z>
- 634 Bolyen, E., Rideout, J. R., Dillon, M., Bokulich, N., Abnet, C., Al-Ghalith, G., Alexander, H., Alm, E.,  
635 Arumugam, M., Asnicar, F., Bai, Y., Bisanz, J., Bittinger, K., Brejnrod, A., Brislawn, C., Brown,  
636 C. T., Callahan, B., Caraballo-Rodríguez, A. M., Chase, J., ... Caporaso, J. G. (2018). QIIME 2:  
637 Reproducible, interactive, scalable, and extensible microbiome data science. *PeerJ*.  
638 <https://doi.org/10.7287/peerj.preprints.27295>
- 639 Borgo, F., Riva, A., Benetti, A., Casiraghi, M. C., Bertelli, S., Garbossa, S., Anselmetti, S., Scarone, S.,  
640 Pontiroli, A. E., Morace, G., & Borghi, E. (2017). Microbiota in anorexia nervosa: The triangle  
641 between bacterial species, metabolites and psychological tests. *PLOS ONE*, 12(6), e0179739.  
642 <https://doi.org/10.1371/journal.pone.0179739>
- 643 Breton, J., Tirelle, P., Hasanat, S., Pernot, A., L'Huillier, C., do Rego, J.-C., Déchelotte, P., Coëffier, M.,  
644 Bindels, L. B., & Ribet, D. (2021). Gut microbiota alteration in a mouse model of Anorexia  
645 Nervosa. *Clinical Nutrition*, 40(1), 181–189. <https://doi.org/10.1016/j.clnu.2020.05.002>
- 646 Bulik, C. M., Flatt, R., Abbaspour, A., & Carroll, I. (2019). Reconceptualizing anorexia nervosa.  
647 *Psychiatry and Clinical Neurosciences*, 73(9), 518–525. <https://doi.org/10.1111/pcn.12857>

- 648 Callahan, B. J., McMurdie, P. J., Rosen, M. J., Han, A. W., Johnson, A. J. A., & Holmes, S. P. (2016).  
649 DADA2: High-resolution sample inference from Illumina amplicon data. *Nature Methods*,  
650 *13*(7), 581–583. <https://doi.org/10.1038/nmeth.3869>
- 651 Carr, J., Kleiman, S. C., Bulik, C. M., Bulik-Sullivan, E. C., & Carroll, I. M. (2016). Can attention to the  
652 intestinal microbiota improve understanding and treatment of anorexia nervosa? *Expert*  
653 *Review of Gastroenterology & Hepatology*, *10*(5), 565–569.  
654 <https://doi.org/10.1586/17474124.2016.1166953>
- 655 Cooper, Z., & Fairburn, C. (1987). The eating disorder examination: A semi-structured interview for  
656 the assessment of the specific psychopathology of eating disorders. *International Journal of*  
657 *Eating Disorders*, *6*(1), Article 1.
- 658 Dalton, B., Bartholdy, S., Robinson, L., Solmi, M., Ibrahim, M. A., Breen, G., Schmidt, U., &  
659 Himmerich, H. (2018). A meta-analysis of cytokine concentrations in eating disorders.  
660 *Journal of Psychiatric Research*.
- 661 David, L. A., Maurice, C. F., Carmody, R. N., Gootenberg, D. B., Button, J. E., Wolfe, B. E., Ling, A. V.,  
662 Devlin, A. S., Varma, Y., Fischbach, M. A., Biddinger, S. B., Dutton, R. J., & Turnbaugh, P. J.  
663 (2014). Diet rapidly and reproducibly alters the human gut microbiome. *Nature*, *505*(7484),  
664 Article 7484. <https://doi.org/10.1038/nature12820>
- 665 Dhopatkar, N., Keeler, J. L., Mutwalli, H., Whelan, K., Treasure, J., & Himmerich, H. (2023).  
666 Gastrointestinal symptoms, gut microbiome, probiotics and prebiotics in anorexia nervosa: A  
667 review of mechanistic rationale and clinical evidence. *Psychoneuroendocrinology*, *147*,  
668 105959. <https://doi.org/10.1016/j.psyneuen.2022.105959>
- 669 Di Lodovico, L., Mondot, S., Doré, J., Mack, I., Hanachi, M., & Gorwood, P. (2021). Anorexia nervosa  
670 and gut microbiota: A systematic review and quantitative synthesis of pooled  
671 microbiological data. *Progress in Neuro-Psychopharmacology & Biological Psychiatry*, *106*,  
672 110114. <https://doi.org/10.1016/j.pnpbp.2020.110114>

- 673 Everard, A., Lazarevic, V., Gaïa, N., Johansson, M., Ståhlman, M., Backhed, F., Delzenne, N. M.,  
674 Schrenzel, J., François, P., & Cani, P. D. (2014). Microbiome of prebiotic-treated mice reveals  
675 novel targets involved in host response during obesity. *The ISME Journal*, *8*(10), 2116–2130.  
676 <https://doi.org/10.1038/ismej.2014.45>
- 677 Fan, Y., Støving, R. K., Berreira Ibraim, S., Hyötyläinen, T., Thirion, F., Arora, T., Lyu, L., Stankevic, E.,  
678 Hansen, T. H., Déchelotte, P., Sinioja, T., Ragnarsdottir, O., Pons, N., Galleron, N., Quinquis,  
679 B., Levenez, F., Roume, H., Falony, G., Vieira-Silva, S., ... Pedersen, O. (2023). The gut  
680 microbiota contributes to the pathogenesis of anorexia nervosa in humans and mice. *Nature*  
681 *Microbiology*. <https://doi.org/10.1038/s41564-023-01355-5>
- 682 Fouladi, F., Bulik-Sullivan, E. C., Glenny, E. M., Thornton, L. M., Reed, K. K., Thomas, S., Kleiman, S.,  
683 Watters, A., Oakes, J., Huh, E.-Y., Tang, Q., Liu, J., Djukic, Z., Harper, L., Trillo-Ordoñez, Y.,  
684 Sun, S., Blakely, I., Mehler, P. S., Fodor, A. A., ... Carroll, I. M. (2022). Reproducible changes in  
685 the anorexia nervosa gut microbiota following inpatient therapy remain distinct from non-  
686 eating disorder controls. *Gut Microbes*, *14*(1), 2143217.  
687 <https://doi.org/10.1080/19490976.2022.2143217>
- 688 Garcia, N., & Gutierrez, E. (2023). Anorexia nervosa and microbiota: Systematic review and critical  
689 appraisal. *Eating and Weight Disorders - Studies on Anorexia, Bulimia and Obesity*, *28*(1), 1.  
690 <https://doi.org/10.1007/s40519-023-01529-4>
- 691 Garcia-Gil, M., Ceccarini, M. R., Stoppini, F., Cataldi, S., Mazzeschi, C., Delvecchio, E., Albi, E., & Gizzi,  
692 G. (2022). Brain and gut microbiota disorders in the psychopathology of anorexia nervosa.  
693 *Translational Neuroscience*, *13*(1), 516–526. <https://doi.org/10.1515/tnsci-2022-0267>
- 694 Garner, D. M. (1991). *Eating disorder inventory-2*.
- 695 Geirnaert, A., Calatayud, M., Grootaert, C., Laukens, D., Devriese, S., Smagghe, G., De Vos, M., Boon,  
696 N., & Van de Wiele, T. (2017). Butyrate-producing bacteria supplemented in vitro to Crohn's  
697 disease patient microbiota increased butyrate production and enhanced intestinal epithelial

- 698 barrier integrity. *Scientific Reports*, 7(1), Article 1. [https://doi.org/10.1038/s41598-017-](https://doi.org/10.1038/s41598-017-11734-8)
- 699 11734-8
- 700 Giri, S., & Mangalam, A. (2019). The Gut Microbiome and Metabolome in Multiple Sclerosis. In
- 701 *Microbiome and Metabolome in Diagnosis, Therapy, and other Strategic Applications* (pp.
- 702 333–340). Elsevier. <https://doi.org/10.1016/B978-0-12-815249-2.00034-8>
- 703 Glover, J. S., Ticer, T. D., & Engevik, M. A. (2022). Characterizing the mucin-degrading capacity of the
- 704 human gut microbiota. *Scientific Reports*, 12(1), 8456. [https://doi.org/10.1038/s41598-022-](https://doi.org/10.1038/s41598-022-11819-z)
- 705 11819-z
- 706 Goloso-Gubat, M. J., Ducarmon, Q. R., Tan, R. C. A., Zwitterink, R. D., Kuijper, E. J., Nacis, J. S., &
- 707 Santos, N. L. C. (2020). Gut Microbiota and Dietary Intake of Normal-Weight and Overweight
- 708 Filipino Children. *Microorganisms*, 8(7), 1015.
- 709 <https://doi.org/10.3390/microorganisms8071015>
- 710 Gradl-Dietsch, G., Milos, G., Wabitsch, M., Bell, R., Tschöpe, F., Antel, J., & Hebebrand, J. (2023).
- 711 Rapid Emergence of Appetite and Hunger Resulting in Weight Gain and Improvement of
- 712 Eating Disorder Symptomatology during and after Short-Term Off-Label Metreleptin
- 713 Treatment of a Patient with Anorexia Nervosa. *Obesity Facts*, 16(1), 99–107.
- 714 <https://doi.org/10.1159/000527386>
- 715 Hata, T., Miyata, N., Takakura, S., Yoshihara, K., Asano, Y., Kimura-Todani, T., Yamashita, M., Zhang,
- 716 X.-T., Watanabe, N., Mikami, K., Koga, Y., & Sudo, N. (2019). The Gut Microbiome Derived
- 717 From Anorexia Nervosa Patients Impairs Weight Gain and Behavioral Performance in Female
- 718 Mice. *Endocrinology*, 160(10), Article 10. <https://doi.org/10.1210/en.2019-00408>
- 719 Hebebrand, J., Hildebrandt, T., Schlögl, H., Seitz, J., Denecke, S., Vieira, D., Gradl-Dietsch, G., Peters,
- 720 T., Antel, J., Lau, D., & Fulton, S. (2022). The role of hypoleptinemia in the psychological and
- 721 behavioral adaptation to starvation: Implications for anorexia nervosa. *Neuroscience &*
- 722 *Biobehavioral Reviews*, 141, 104807. <https://doi.org/10.1016/j.neubiorev.2022.104807>

- 723 Hedman, A., Breithaupt, L., Hübel, C., Thornton, L. M., Tillander, A., Norring, C., Birgegård, A.,  
724 Larsson, H., Ludvigsson, J. F., Sävendahl, L., Almqvist, C., & Bulik, C. M. (2019). Bidirectional  
725 relationship between eating disorders and autoimmune diseases. *Journal of Child Psychology*  
726 *and Psychiatry, 60*(7), 803–812. <https://doi.org/10.1111/jcpp.12958>
- 727 Henneke, L., Schlicht, K., Andreani, N. A., Hollstein, T., Demetrowitsch, T., Knappe, C., Hartmann, K.,  
728 Jensen-Kroll, J., Rohmann, N., Pohlschneider, D., Geisler, C., Schulte, D. M., Settgast, U., Türk,  
729 K., Zimmermann, J., Kaleta, C., Baines, J. F., Shearer, J., Shah, S., ... Laudes, M. (2022). A  
730 *dietary carbohydrate – gut Parasutterella – human fatty acid biosynthesis* metabolic axis in  
731 obesity and type 2 diabetes. *Gut Microbes, 14*(1), 2057778.  
732 <https://doi.org/10.1080/19490976.2022.2057778>
- 733 Hertz-Dahmann, B., Bonin, E., & Dahmen, B. (2021). Can you find the right support for children,  
734 adolescents and young adults with anorexia nervosa: Access to age-appropriate care  
735 systems in various healthcare systems. *European Eating Disorders Review, 29*(3), 316–328.  
736 <https://doi.org/10.1002/erv.2825>
- 737 Hiippala, K., Kainulainen, V., Kalliomäki, M., Arkkila, P., & Satokari, R. (2016). Mucosal Prevalence and  
738 Interactions with the Epithelium Indicate Commensalism of Sutterella spp. *Frontiers in*  
739 *Microbiology, 7*. <https://doi.org/10.3389/fmicb.2016.01706>
- 740 Hills, R. D., Pontefract, B. A., Mishcon, H. R., Black, C. A., Sutton, S. C., & Theberge, C. R. (2019). Gut  
741 microbiome: Profound implications for diet and disease. *Nutrients, 11*(7).  
742 <https://doi.org/10.3390/nu11071613>
- 743 Kaur, H., Bose, C., & Mande, S. S. (2019). Tryptophan Metabolism by Gut Microbiome and Gut-Brain-  
744 Axis: An in silico Analysis. *Frontiers in Neuroscience, 13*, 1365.  
745 <https://doi.org/10.3389/fnins.2019.01365>
- 746 Keeler, J. L., Treasure, J., Juruena, M. F., Kan, C., & Himmerich, H. (2022). Reply to Skokou, M.  
747 Comment on “Keeler et al. Ketamine as a Treatment for Anorexia Nervosa: A Narrative



- 748 Review. *Nutrients* 2021, 13, 4158." *Nutrients*, 14(10), 2119.
- 749 <https://doi.org/10.3390/nu14102119>
- 750 Kleiman, S. C., Watson, H. J., Bulik-Sullivan, E. C., Huh, E. Y., Tarantino, L. M., Bulik, C. M., & Carroll, I.
- 751 M. (2015). The Intestinal Microbiota in Acute Anorexia Nervosa and During Renourishment:
- 752 Relationship to Depression, Anxiety, and Eating Disorder Psychopathology. *Psychosomatic*
- 753 *Medicine*, 77(9), 969–981. <https://doi.org/10.1097/PSY.0000000000000247>
- 754 Kühner, C., Bürger, C., Keller, F., & Hautzinger, M. (2007). Reliabilität und Validität des revidierten
- 755 Beck-Depressionsinventars (BDI-II). *Der Nervenarzt*, 78(6), Article 6.
- 756 <https://doi.org/10.1007/s00115-006-2098-7>
- 757 Leyrolle, Q., Cserjesi, R., Mulders, M. D. G. H., Zamariola, G., Hiel, S., Gianfrancesco, M. A., Rodriguez,
- 758 J., Portheault, D., Amadiou, C., Leclercq, S., Bindels, L. B., Neyrinck, A. M., Cani, P. D.,
- 759 Karkkainen, O., Hanhineva, K., Lanthier, N., Trefois, P., Paquot, N., Cnop, M., ... Delzenne, N.
- 760 M. (2021). Specific gut microbial, biological, and psychiatric profiling related to binge eating
- 761 disorders: A cross-sectional study in obese patients. *Clinical Nutrition*, 40(4), 2035–2044.
- 762 <https://doi.org/10.1016/j.clnu.2020.09.025>
- 763 Liqueur, B., Cao, K.-A. L., Hocini, H., & Thiébaud, R. (2012). A novel approach for biomarker selection
- 764 and the integration of repeated measures experiments from two assays. *BMC*
- 765 *Bioinformatics*, 13(1), 325. <https://doi.org/10.1186/1471-2105-13-325>
- 766 Luce, K. H., & Crowther, J. H. (1999). The reliability of the eating disorder examination? Self-report
- 767 questionnaire version (EDE-Q). *International Journal of Eating Disorders*, 25(3), 349–351.
- 768 [https://doi.org/10.1002/\(SICI\)1098-108X\(199904\)25:3<349::AID-EAT15>3.0.CO;2-M](https://doi.org/10.1002/(SICI)1098-108X(199904)25:3<349::AID-EAT15>3.0.CO;2-M)
- 769 Mack, I., Cuntz, U., Grämer, C., Niedermaier, S., Pohl, C., Schwiertz, A., Zimmermann, K., Zipfel, S.,
- 770 Enck, P., & Penders, J. (2016). Weight gain in anorexia nervosa does not ameliorate the
- 771 faecal microbiota, branched chain fatty acid profiles and gastrointestinal complaints.
- 772 *Scientific Reports*, 6(1), 26752. <https://doi.org/10.1038/srep26752>

- 773 Mason, B. L., Li, Q., Minhajuddin, A., Czysz, A. H., Coughlin, L. A., Hussain, S. K., Koh, A. Y., & Trivedi,  
774 M. H. (2020). Reduced anti-inflammatory gut microbiota are associated with depression and  
775 anhedonia. *Journal of Affective Disorders*, 266, 394–401.  
776 <https://doi.org/10.1016/j.jad.2020.01.137>
- 777 Maukonen, J., & Ouwehand, A. C. (2022). Changes in the Microbiota Composition and Function in  
778 Relation to Aging. In *Comprehensive Gut Microbiota* (pp. 85–96). Elsevier.  
779 <https://doi.org/10.1016/B978-0-12-819265-8.00060-7>
- 780 Milos, G., Antel, J., Kaufmann, L.-K., Barth, N., Koller, A., Tan, S., Wiesing, U., Hinney, A., Libuda, L.,  
781 Wabitsch, M., von Känel, R., & Hebebrand, J. (2020). Short-term metreleptin treatment of  
782 patients with anorexia nervosa: Rapid on-set of beneficial cognitive, emotional, and  
783 behavioral effects. *Translational Psychiatry*, 10(1), 303. [https://doi.org/10.1038/s41398-020-](https://doi.org/10.1038/s41398-020-00977-1)  
784 [00977-1](https://doi.org/10.1038/s41398-020-00977-1)
- 785 Monteleone, A. M., Troisi, J., Serena, G., Fasano, A., Dalle Grave, R., Cascino, G., Marciello, F., Calugi,  
786 S., Scala, G., Corrivetti, G., & Monteleone, P. (2021). The Gut Microbiome and Metabolomics  
787 Profiles of Restricting and Binge-Purging Type Anorexia Nervosa. *Nutrients*, 13(2), 507.  
788 <https://doi.org/10.3390/nu13020507>
- 789 Navarro-Tapia, E., Almeida-Toledano, L., Sebastiani, G., Serra-Delgado, M., García-Algar, Ó., &  
790 Andreu-Fernández, V. (2021). Effects of Microbiota Imbalance in Anxiety and Eating  
791 Disorders: Probiotics as Novel Therapeutic Approaches. *International Journal of Molecular*  
792 *Sciences*, 22(5), 2351. <https://doi.org/10.3390/ijms22052351>
- 793 Neuhauser, H., Schienkiewitz, A., Schaffrath Rosario, A., Dortschy, R., & Kurth, B.-M. (2013).  
794 *Referenzperzentile für anthropometrische Maßzahlen und Blutdruck aus der Studie zur*  
795 *Gesundheit von Kindern und Jugendlichen in Deutschland (KiGGS)*. RKI-Hausdruckerei.
- 796 Neuman, H., Debelius, J. W., Knight, R., & Koren, O. (2015). Microbial endocrinology: The interplay  
797 between the microbiota and the endocrine system. *FEMS Microbiology Reviews*, 39(4),  
798 Article 4. <https://doi.org/10.1093/femsre/fuu010>

- 799 Oksanen, J., & et al. (2022). *Vegan: Community Ecology Package*. R package version 2.6-4.  
800 <https://github.com/vegandevs/vegan>
- 801 Parker, B. J., Wearsch, P. A., Veloo, A. C. M., & Rodriguez-Palacios, A. (2020). The Genus *Alistipes*:  
802 Gut Bacteria With Emerging Implications to Inflammation, Cancer, and Mental Health.  
803 *Frontiers in Immunology*, 11, 906. <https://doi.org/10.3389/fimmu.2020.00906>
- 804 Pfliederer, A., Mishra, A. K., Lagier, J.-C., Robert, C., Caputo, A., Raoult, D., & Fournier, P.-E. (2014).  
805 Non-contiguous finished genome sequence and description of *Alistipes ihumii* sp. Nov.  
806 *Standards in Genomic Sciences*, 9(3), 1221–1235. <https://doi.org/10.4056/sigs.4698398>
- 807 Prochazkova, P., Roubalova, R., Dvorak, J., Kreisinger, J., Hill, M., Tlaskalova-Hogenova, H.,  
808 Tomasova, P., Pelantova, H., Cermakova, M., Kuzma, M., Bulant, J., Bilej, M., Smitka, K.,  
809 Lambertova, A., Holanova, P., & Papezova, H. (2021). The intestinal microbiota and  
810 metabolites in patients with anorexia nervosa. *Gut Microbes*, 13(1), 1902771.  
811 <https://doi.org/10.1080/19490976.2021.1902771>
- 812 Raevuori, A., Haukka, J., Vaarala, O., Suvisaari, J. M., Gissler, M., Grainger, M., Linna, M. S., & Suokas,  
813 J. T. (2014). The increased risk for autoimmune diseases in patients with eating disorders.  
814 *PLoS One*, 9(8), Article 8. <https://doi.org/10.1371/journal.pone.0104845>
- 815 Rognes, T., Flouri, T., Nichols, B., Quince, C., & Mahé, F. (2016). VSEARCH: A versatile open source  
816 tool for metagenomics. *PeerJ*, 2016(10). <https://doi.org/10.7717/peerj.2584>
- 817 Rohart, F., Gautier, B., Singh, A., & Cao, K.-A. L. (2017). mixOmics: An R package for ‘omics feature  
818 selection and multiple data integration. *PLOS Computational Biology*, 13(11), e1005752.  
819 <https://doi.org/10.1371/journal.pcbi.1005752>
- 820 Ruusunen, A., Rocks, T., Jacka, F., & Loughman, A. (2019). The gut microbiome in anorexia nervosa:  
821 Relevance for nutritional rehabilitation. *Psychopharmacology*, 236(5), 1545–1558.  
822 <https://doi.org/10.1007/s00213-018-5159-2>

- 823 Santacroce, L., Man, A., Charitos, I. A., Haxhirexha, K., & Topi, S. (2021). Current knowledge about  
824 the connection between health status and gut microbiota from birth to elderly. A narrative  
825 review. *Frontiers in Bioscience-Landmark*, 26(6), 135. <https://doi.org/10.52586/4930>
- 826 Schulz, N., Belheouane, M., Dahmen, B., Ruan, V. A., Specht, H. E., Dempfle, A., Herpertz-Dahlmann,  
827 B., Baines, J. F., & Seitz, J. (2021). Gut microbiota alteration in adolescent anorexia nervosa  
828 does not normalize with short-term weight restoration. *International Journal of Eating  
829 Disorders*, 54(6), 969–980. <https://doi.org/10.1002/eat.23435>
- 830 Seitz, J., Dahmen, B., Keller, L., & Herpertz-Dahlmann, B. (2020). Gut Feelings: How Microbiota Might  
831 Impact the Development and Course of Anorexia Nervosa. *Nutrients*, 12(11), 3295.  
832 <https://doi.org/10.3390/nu12113295>
- 833 Singh, V., Lee, G., Son, H., Koh, H., Kim, E. S., Unno, T., & Shin, J.-H. (2023). Butyrate producers, “The  
834 Sentinel of Gut”: Their intestinal significance with and beyond butyrate, and prospective use  
835 as microbial therapeutics. *Frontiers in Microbiology*, 13, 1103836.  
836 <https://doi.org/10.3389/fmicb.2022.1103836>
- 837 Spence, S. H. (1998). A measure of anxiety symptoms among children. *Behaviour Research and  
838 Therapy*, 36(5), Article 5.
- 839 Tennoune, N., Chan, P., Breton, J., Legrand, R., Chabane, Y. N., Akkermann, K., Jarv, A., Ouelaa, W.,  
840 Takagi, K., Ghouzali, I., Francois, M., Lucas, N., Bole-Feysot, C., Pestel-Caron, M., do Rego, J.-  
841 C., Vaudry, D., Harro, J., De, E., Dechelotte, P., & Fetissoff, S. O. (2014). Bacterial ClpB heat-  
842 shock protein, an antigen-mimetic of the anorexigenic peptide alpha-MSH, at the origin of  
843 eating disorders. *Translational Psychiatry*, 4, e458. <https://doi.org/10.1038/tp.2014.98>
- 844 Trinh, S., Kogel, V., Voelz, C., Schlösser, A., Schwenzer, C., Kabbert, J., Heussen, N., Clavel, T.,  
845 Herpertz-Dahlmann, B., Beyer, C., & Seitz, J. (2021). Gut microbiota and brain alterations in a  
846 translational anorexia nervosa rat model. *Journal of Psychiatric Research*, 133, 156–165.  
847 <https://doi.org/10.1016/j.jpsychires.2020.12.030>

- 848 Wu, Y., Wang, C.-Z., Wan, J.-Y., Yao, H., & Yuan, C.-S. (2021). Dissecting the Interplay Mechanism  
849 between Epigenetics and Gut Microbiota: Health Maintenance and Disease Prevention.  
850 *International Journal of Molecular Sciences*, 22(13), 6933.  
851 <https://doi.org/10.3390/ijms22136933>
- 852 Yao, H., Fan, C., Fan, X., Lu, Y., Wang, Y., Wang, R., Tang, T., & Qi, K. (2020). Effects of gut microbiota  
853 on leptin expression and body weight are lessened by high-fat diet in mice. *British Journal of*  
854 *Nutrition*, 124(4), 396–406. <https://doi.org/10.1017/S0007114520001117>
- 855 Yuan, R., Yang, L., Yao, G., Geng, S., Ge, Q., Bo, S., & Li, X. (2022). Features of gut microbiota in  
856 patients with anorexia nervosa. *Chinese Medical Journal*, 135(16), 1993–2002.  
857 <https://doi.org/10.1097/CM9.0000000000002362>
- 858

859 **Tables**

860 **Table 1: Clinical sample characteristics.**

	AN admission	AN discharge	AN 1 year (P<15)	AN 1 year (P ≥15)	HC baseline	HC 1 year
N	57	50	19	25	34	34
Age (years)	16.07 (1.86) [12; 20.35]	16.34 (1.77) [12.23; 19.01]	17.27 (1.54) [14.21; 19.34]	16.62 (1.99) [13.10; 19.84]	16.44 (1.06) [14.11; 18.46]	17.48 (1.08) [15.05; 19.42]
BMI (Kg/m <sup>2</sup> )	15.88 (1.75) [12.50; 18.77]	18.94 (0.95) [16.85; 20.96]	17.94 (0.95) [15.85; 19.28]	19.86 (1.21) [17.09; 21.93]	21.06 (1.98) [17.65; 26.07]	21.59 (2.15) [17.82; 25.94]
%EBW	75.09 (8.41) [56.95; 87.74]	89.05 (4.14) [77.59; 97.25]	83.01 (4.07) [73.57; 87.84]	93.02 (4.49) [86.93; 104.04]	98.19 (9.26) [84.48; 122.00]	99.33 (10.04) [84.22; 124.04]
BMI-SDS (z-score)	-2.92 (1.69) [-8.08; -0.93]	-0.94 (0.46) [-2.44; -0.20]	-1.66 (0.57) [-2.95; -1.07]	-0.56 (0.37) [-1.06; 0.25]	-0.22 (0.64) [-1.30; 1.15]	-0.15 (0.70) [-1.37; 1.20]
Premorbid BMI (kg/ m <sup>2</sup> )	19.73 (2.78) [13.01; 26.60]					
Premorbid BMI-SDS (z-score)	-0.43 (1.04) [-4.24; 1.21]					
Illness duration (month)	17.66 (14.340) [1.63; 71.97]					
EDI 2 total score	297.2 (58.91) [158; 428]	285.80 (62.92) [127; 415]	281.47 (50.64) [156; 351]	266.28 (60.45) [166; 392]	182.64 (29.57) [128; 236]	182.85 (31.77) [133; 253]
BDI-II score	24.29 (11.70) [0; 47]	19.28 (13.35) [0; 54]	17.95 (13.36) [0; 44]	16.4 (12.66) [0; 53]	4.85 (4.17) [0; 17]	4.97 (3.46) [0; 11]
SCAS total score	33 (18.18) [2; 77]	28.10 (18.03) [0; 75]	22.84 (14.32) [1; 51]	25.4 (18.64) [2; 67]	16.33 (7.18) [4; 34]	14.68 (6.89) [2; 31]
EDE mean	3.22 (1.55) [0.42; 5.4]	3.38 (1.40) [0.62; 5.32]	3.88 (1.47) [1.45; 5.33]	3.30 (1.78) [0.19; 5.24]		

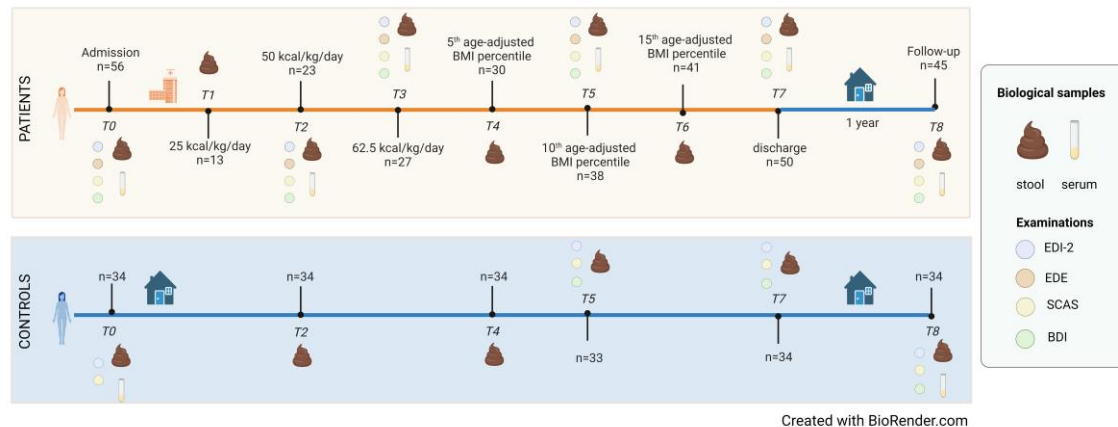
861

862 Values are reported as the mean and standard deviation in brackets, and minimum and  
 863 maximum values in square brackets. Abbreviations: AN, Anorexia Nervosa; BDI, Beck  
 864 Depression Inventory; BMI-SDS, Body mass index-standard deviation score; EDE, Eating  
 865 Disorder Examination; EDI, Eating Disorder Inventory; HC, Healthy Controls; SCAS, Spence  
 866 Children's Anxiety Scale; %EBW: Percent expected body weight.

867

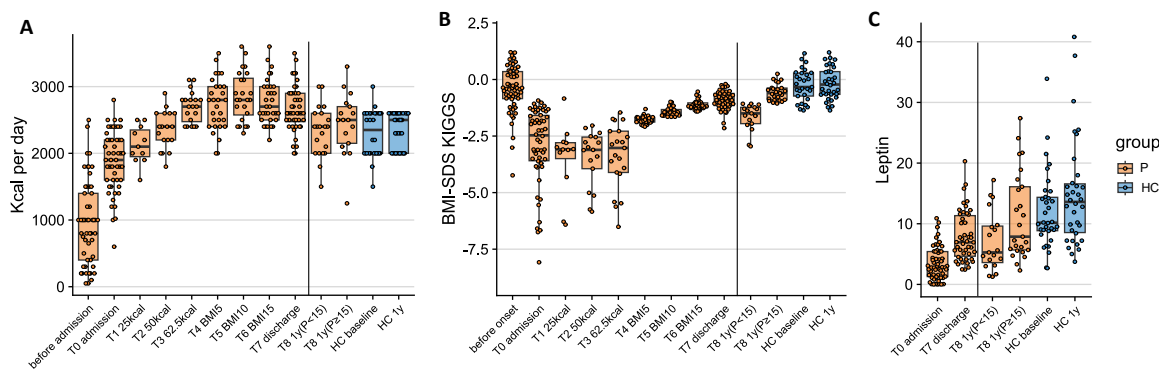
868 **Figures**

869 **Figure 1: overview of the longitudinal study**



870

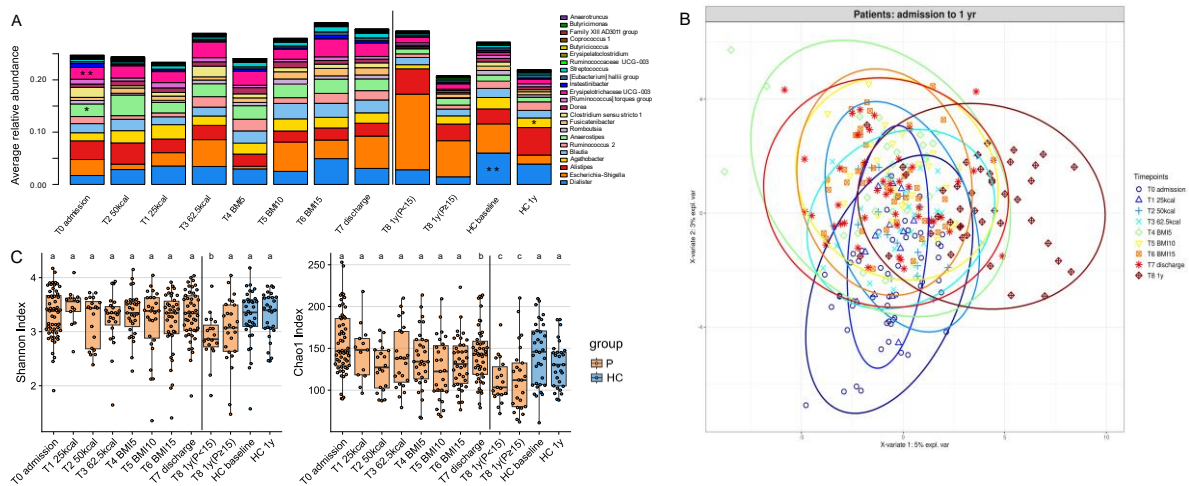
871 **Figure 2: clinical information of the patients and age-matched healthy controls**



872

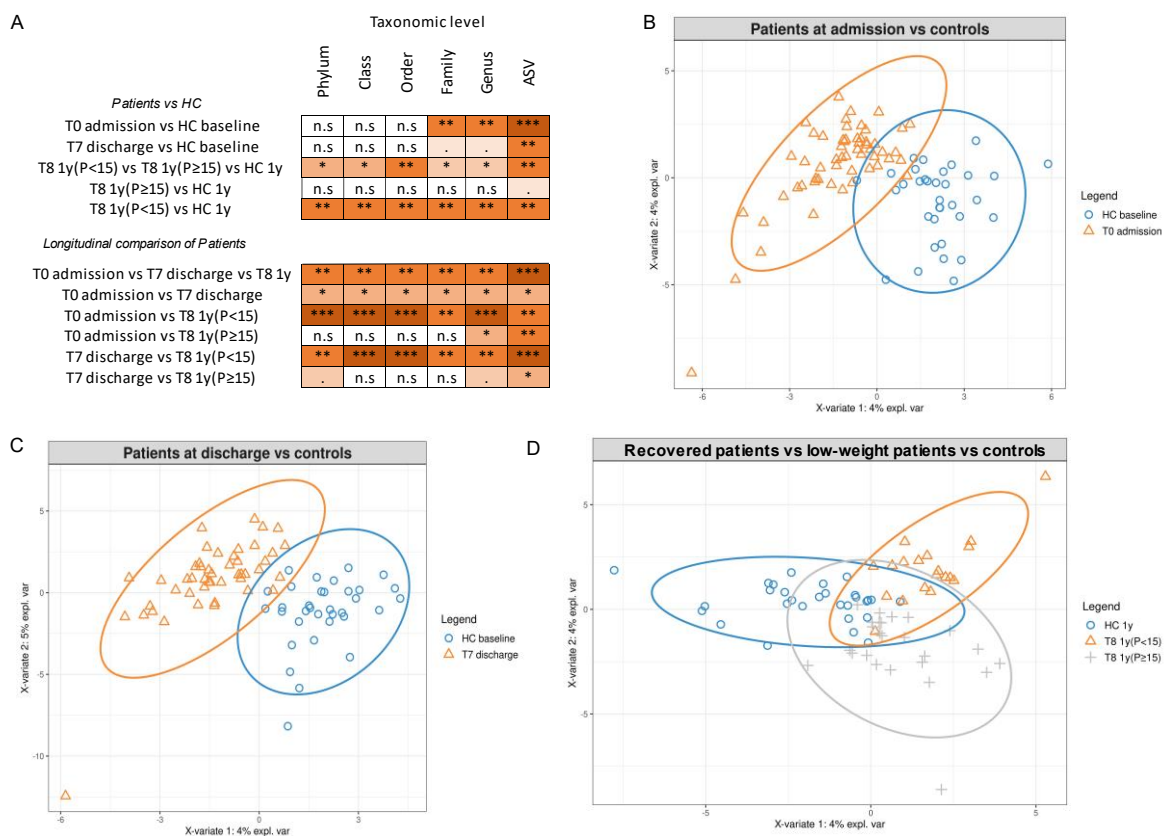
873 **Figure 3: the microbiome of patients changes during inpatient treatment and differs from**

874 **HCs**



875

876 **Figure 4: microbiome differences of patients at different timepoints and HC group**



877

878

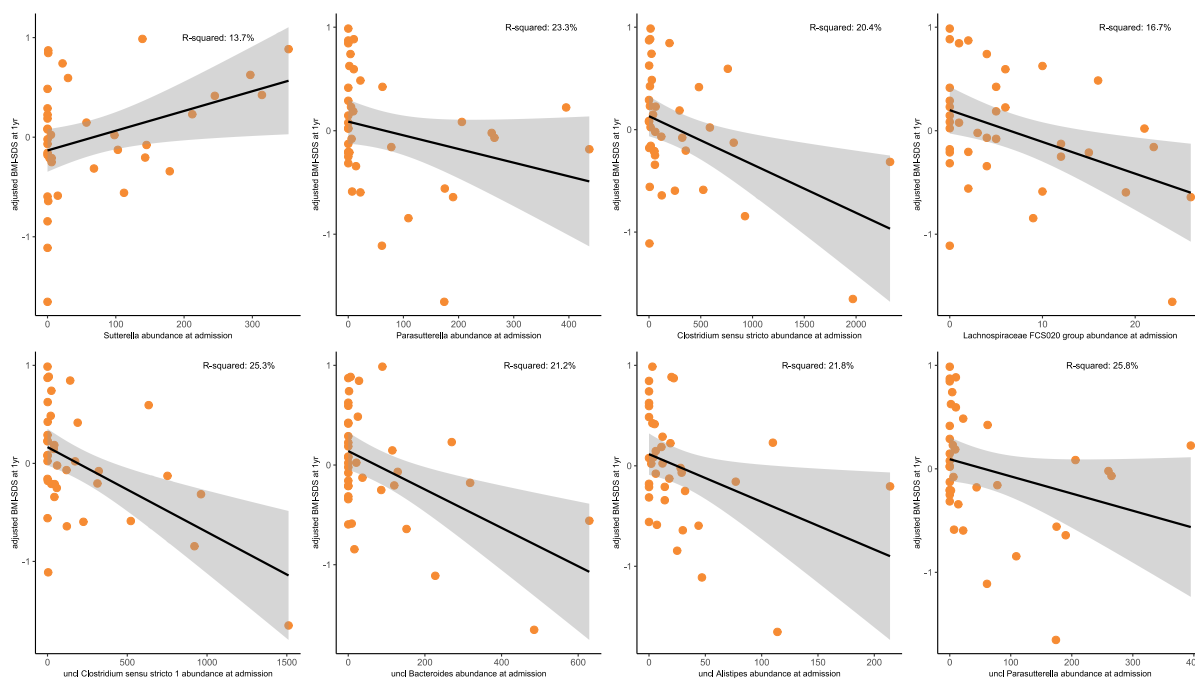


879 **Figure 5: clinical variables that are associated with microbiome composition**

	Taxonomic level					
	Phylum	Class	Order	Family	Genus	ASV
weight loss	.	*	*	*	*	ns
illness duration	*	*	*	*	.	ns
BMI-SDS	ns	ns	ns	ns	ns	ns
Leptin	n.s	n.s	n.s	n.s	n.s	ns
Kcal	n.s	n.s	n.s	n.s	n.s	ns

880

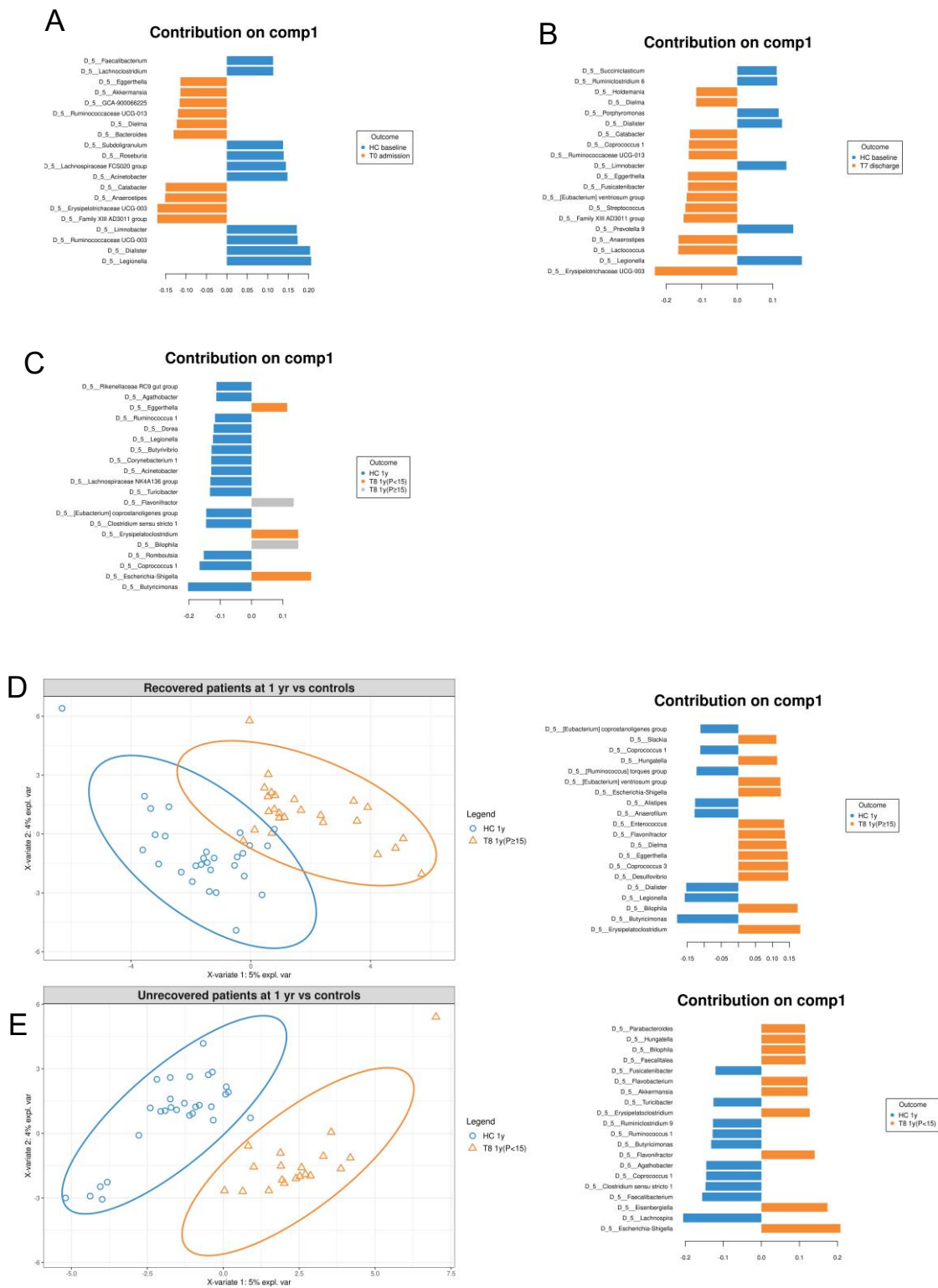
881 **Figure 6: taxa predicting BMI-SDS at 1-year follow-up**



882

883

884 **Fig S1: comparison of the microbiome of patients at admission/discharge and age-matched**  
 885 **healthy controls**



886

887 **Figure captions**

888 ***Figure 1: overview of the longitudinal study***

889 This figure summarizes the samples used in this study, where n refers to the number of  
890 individuals included at each time point.

891 ***Figure 2: clinical information of the patients and age-matched healthy controls***

892 The figure reports: **(A)** the amount of daily caloric intake of patients before admission, during  
893 inpatient treatment, and at follow-up appointment (1 year after admission), compared to HCs  
894 at baseline and at 1 year; **(B)** the BMI-SDS of patients before disease onset, during inpatient  
895 treatment, and at follow-up appointment (1 year after admission), compared to HCs at baseline  
896 and at 1 year; and **(C)** the serum concentration of leptin (ng/ml) of patients at admission,  
897 discharge, and at follow-up appointment (1 year after admission), compared to HCs at  
898 admission and at 1 year.

899 ***Figure 3: the microbiome of patients changes during inpatient treatment and differs from***  
900 ***HCs***

901 The figure reports: **(A)** the average relative abundance of 23 genera that were significantly  
902 differentially abundant in univariate pairwise comparisons of patients at different time points  
903 (T0, T7, and T8), and of healthy controls at baseline and 1 year. Stars at T0 admission report  
904 the main genera that have significantly higher abundance in fecal samples of patients at  
905 admission than in the respective HCs. For other pairwise comparisons, please refer to  
906 supplementary tables. **(B)** Multilevel PLS-DA of microbiome composition of patients at all  
907 time points; **(C)** Boxplots of alpha-diversity measures, Shannon Index (left), and Chao1 Index  
908 (right) of patients' microbiome at different time points and of healthy controls. Groups depicted  
909 with the same letter show no significant differences when pairwise comparisons are performed.

910 ***Figure 4: microbiome differences of patients at different timepoints and HC group***

911 The figure reports: **(A)** a summary of the results of PERMANOVA test on Bray Curtis  
912 dissimilarities between patients and HCs, or between patients at different time points (n.s: p-  
913 value>0.05; \*: p-value <0.01; \*\*: p-value <0.001; \*\*\*: p-value <0.0001). Details are reported  
914 in Tab S1\_Sheet4; **(B)** PLS-DA plots highlighting differences at the genus level between HCs  
915 at baseline and patients at admission, **(C)** at discharge, **(D)** and differences at the genus level  
916 between patients at the 1-year follow-up (divided into low-weight and recovered) and HCs at  
917 the 1-year follow-up.

918 ***Figure 5: clinical variables that are associated with microbiome composition***

919 n.s: p-value>0.05; \*: p-value <0.01; \*\*: p-value <0.001; \*\*\*: p-value <0.0001

920 ***Figure 6: taxa predicting BMI-SDS at 1-year follow-up***

921 Association of specific taxa at admission (T0) with BMI-SDS at 1-year follow-up, adjusted for  
922 weight loss (before admission), duration of illness, BMI-SDS at admission, and laxative use  
923 (see Patients and Methods for details on statistical models).

924 ***Fig S1: comparison of the microbiome of patients at admission/discharge and age-matched***  
925 ***healthy controls***

926 The figure reports the genera that mostly contribute to the discrimination of patients at  
927 admission **(A)** or discharge **(B)** and the HC group, and of patients at 1-year follow-up (divided  
928 into low-weight and recovered) and HCs **(C)**. Figure **(D)** shows the PLS-DA plot highlighting  
929 differences at the genus-level between recovered patients and the HC group. **(E)** The PLS-DA  
930 plot highlighting differences at the genus-level between low-weight patients and the HC group.  
931 The genera that mostly contributed to the discrimination are shown on the right side of each  
932 figure.

933