

1 Investigating Environmental Determinants of Soil-Transmitted
2 Helminths Transmission using GPS Tracking and Metagenomics
3 Technologies

4 Jeffrey Gabriel Sumboh^{1*}, Kwasi Agyenkwa-Mawuli¹, Eyram Schwinger², Irene Owusu Donkor³,
5 Jewelna E. B. Akorli¹, Duah Dwomoh⁴, Yvonne Ashong¹, Dickson Osabutey¹, Felix Owusu
6 Ababio⁵, Kwadwo Ansah Koram³, Debbie Humphries⁶, Michael Cappello⁶, Samuel K. Kwofie⁷
7 and Michael D. Wilson¹

8
9

10 ¹Department of Parasitology, Noguchi Memorial Institute for Medical Research, University of Ghana.
11 Legon, Accra, Ghana.

12 ²Department of Mathematics, University of Ghana. Legon, Accra, Ghana.

13 ³Department of Epidemiology, Noguchi Memorial Institute for Medical Research, University of Ghana.
14 Legon, Accra, Ghana.

15 ⁴Department of Biostatistics, School of Public Health, University of Ghana. Legon, Accra, Ghana.

16 ⁵Soil Research Institute, Council for Scientific and Industrial Research, Accra, Ghana.

17 ⁶ Department of Epidemiology of Microbial Diseases, Yale School of Public Health, New Haven, United
18 States of America.

19 ⁷School of Biomedical Engineering, Faculty of Engineering, University of Ghana. Legon, Accra, Ghana.

20

21 Corresponding author: Jeffrey Gabriel Sumboh, email: jsumboh@noguchi.ug.edu.gh

22 **ABSTRACT**

23 **Background:** The Global Health community aims to eliminate soil-transmitted helminth (STH)
24 infections by 2030. Current preventive methods such as Mass Drug Administration, WASH
25 practices, and health education needs to be complimented to halt transmission. We tracked the
26 movement of hookworm-infected and non-infected persons and investigated soil factors in the
27 places they frequented within an endemic community to further understand the role of human
28 movement and sources of infections.

29 **Methods:** 59 positive and negative participants wore GPS tracking devices for 10 consecutive
30 days and their movement data captured in real time. The data was overlaid on the community map
31 to determine where each group differentially spent most of their time. Soil samples were collected
32 from these identified sites and other communal places. Physical and chemical properties were
33 determined for each sample using standard methods and helminth eggs cultured into larvae using
34 the Baermann technique. Bivariate and multivariate analyses were used to determine associations
35 between larvae counts and soil factors. Helminth species were identified with metagenomic
36 sequencing and their distributions mapped to sampling sites in the community.

37 **Results:** The study found that there was no significant difference in the average larvae counts in
38 soil between sites assessed by infected and non-infected participants ($P=0.59$). However, soil
39 factors, such as pH, carbon and sandy-loamy texture were associated with high larvae counts
40 ($P<0.001$) while nitrogen and clay content were associated with low counts($P<0.001$). The
41 dominant helminth species identified were *Panagrolaimus superbus* (an anhydrobiotic helminth),
42 *Parastrongyloides trichosuri* (a parasite of small mammals), *Trichuris trichuria* (whipworm), and
43 *Ancylostoma caninum* (dog hookworm). Notably, no *Necator americanus* was identified in any
44 soil sample.

45 **Conclusion:** This study provides important insights into the association between soil factors and
46 soil-transmitted helminths. These findings contribute to our understanding of STH epidemiology
47 and support evidence-based decision-making for elimination strategies.

48

49 **Keywords:** Soil-transmitted helminths, soil factors, GPS tracking, Metagenomics

50

51

52

53 **Author Summary:**

54 Soil-transmitted helminth (STH) infections has been set to be eliminated 2030. To better
55 understand how infections spread to achieve this, we tracked the movement of people positive and
56 negative for infections. We enrolled 59 participants and equipped them with GPS tracking devices
57 for 10 days continuously monitoring their movements in real time. We identified areas where each
58 group spent the most time. Soil samples were collected from these locations and other communal
59 areas. The physical and chemical properties of the soils were analysed using standard methods and
60 helminth eggs cultured into larvae. Bivariate and multivariate analyses were used to study the
61 relationship between larvae counts and soil factors. Metagenomic sequencing identified the types
62 of helminths present in the soil samples. The study revealed that soil factors such as pH, carbon
63 content, and sandy-loamy texture were associated with high larvae counts, while nitrogen and clay
64 content were associated with lower counts. The dominant helminth species identified *were*
65 *Panagrolaimus superbus*, *Parastrongyloides trichosuri*, *Trichuris trichiura* (whipworm), and
66 *Ancylostoma caninum* (dog hookworm). Interestingly, no samples contained *Necator americanus*.
67 This study provides important insights into the connection between soil factors and STHs
68 infections enhancing our understanding of STH epidemiology to inform evidence-based strategies
69 for eliminating.

70 **Introduction**

71 Approximately 500 million individuals residing in tropical regions of Africa, South America, and
72 Asia are infected with hookworms, predominantly *Necator americanus* and *Ancylostoma*
73 *duodenale* [1]. These infections result in four million disability-adjusted life years (DALYs) [2]
74 and incur an estimated cost of USD 139 billion in annual economic productivity losses [3] The
75 primary clinical symptoms of hookworm disease include iron deficiency anaemia due to blood
76 loss, abdominal pains, diarrhoea, and protein malnutrition [4]. In children and women of
77 childbearing age, chronic infections and associated blood loss lead to low iron stores, which
78 impairs physical and cognitive development in children and increases perinatal maternal/infant
79 mortalities in pregnant women[5].

80 To combat hookworm infections, various treatment and control strategies have been implemented,
81 including Mass Drug Administration (MDA), sanitation improvements and health education
82 programs[6]. These strategies have been effective in reducing the prevalence of hookworm

83 infection, but there is still a need for further research and implementation to completely eradicate
84 this disease. The high rates of reinfection following drug treatment and emerging drug resistance
85 pose major challenges to current deworming programs[7]. Hookworm infections are mainly
86 treated with single doses of either albendazole (400 mg) or mebendazole (500 mg)[4], [8] termed
87 preventive chemotherapy (PC) and is based on MDA to all at-risk individuals in endemic areas[9],
88 [10]. As of 2016, 638.5 million people had been covered, which included 69.5% of at-risk school-
89 aged children and 50.8% of at-risk pre-school-aged children globally [11], [12]. These efforts were
90 further supplemented with the implementation of the Water, Sanitation and Hygiene (WASH)
91 programs to address the lack of potable water and sanitation facilities in schools[13].

92 The situation in Ghana is comparable to other countries where parasitic infections, specifically
93 hookworms, are prevalent, with reported rates as high as 50% [11], [14], [15]. Our cohort studies
94 conducted in rural communities in the Kintampo North Municipality (KNM), Ghana have shown
95 that prevalence reduces from around 40% to 5% and has remained at this level after 5 cycles of
96 biannual treatment with albendazole[16], [17]. Hookworm infection is more widespread in
97 resource-poor rural communities situated in the deciduous forest belt. Unfortunately, these areas
98 are often also affected by other endemic infections such as schistosomiasis, malaria, HIV, and
99 tuberculosis [18]–[22] The coexistence of these diseases exacerbates the negative impact of
100 hookworm and other parasitic infections [17], [23], [24], highlighting the need for targeted efforts
101 to address the disease transmission dynamics.

102 Ghana has joined the Global Health effort to eliminate Soil-Transmitted Helminths (STHs) by
103 2030 [25]. The plan to achieve the set goal continues to be mass administration of benzimidazoles,
104 along with health education and Water, Sanitation and Hygiene (WASH) strategies. However, a
105 critical understanding of the factors that influence persisting infections must be addressed to ensure
106 success[12]. The prevalence and distribution of hookworm infections are associated with several
107 spatial and temporal factors, including space, time, seasons, and socio-economic status[26], [27].
108 Specific geographical locations, temperature and humidity facilitate the growth and development
109 of larvae in the soil. Warm and humid weather conditions create suitable conditions for the eggs
110 to thrive[28]. Socio-economic indices i.e., poverty, lack of education, and inadequate sanitation
111 facilities increase the risk of infections and limit access to health care and hygiene education, which

112 are essential for preventing these infections[29]. Inadequate toilet facilities and open defecation
113 lead to faecal contamination of soil, promoting the spread of hookworms[30].

114 Recent health trends and services are increasingly influenced by the built environment and the use
115 of Global Positioning Systems (GPS) has gained popularity, as it provides an accurate means of
116 locating phenomena concerning important disease epidemiological variables. GPS technology has
117 become a valuable tool for health researchers, particularly in studying geographically dependent
118 diseases, such as hookworm [31].

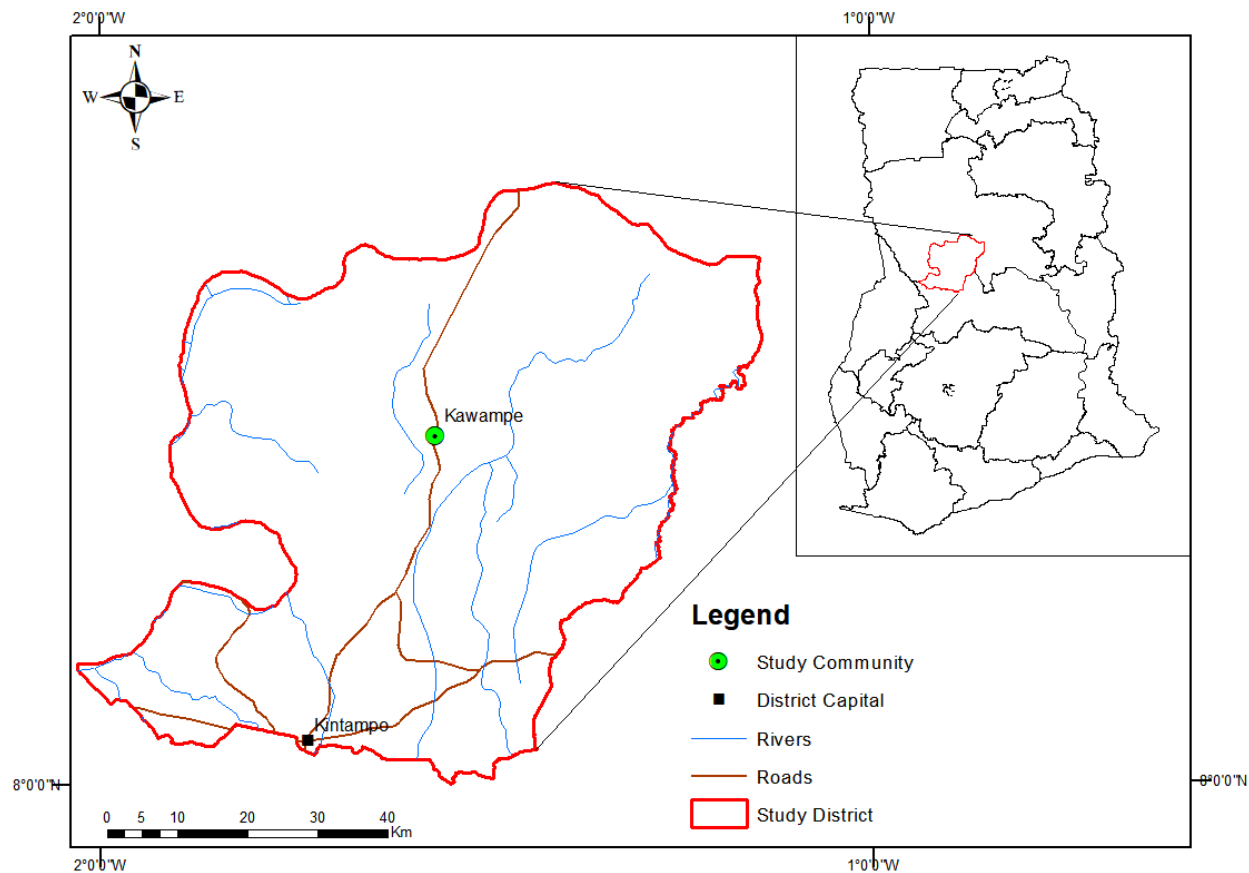
119 We, therefore, employed GPS technology to monitor the movements of hookworm-infected and
120 non-infected participants to identify the sites in the community that were likely sources of
121 infections and the soil properties that are associated with the presence of helminth larvae.

122 **Materials and Methods**

123 **Study area**

124 Kawampe, the study site is a rural community in the Kintampo North Municipality (KNM), which
125 is located between latitudes 8°45'N and 7°45'N and longitudes 1°20'W and 2°1'E and, covers an
126 area of 5108 square kilometers in the forest-savanna transition zone of the middle belt of Ghana
127 (Figure 1). The soil type at KNM is classified as predominantly forest ochrosols, which have high
128 percentages of magnesium, calcium and lime making the soil less acidic and more alkaline[32].
129 Kawampe has a population of approximately 3000 inhabitants, 85% of them belonging to the
130 Kokomba ethnic group and predominantly Christians. The vegetation is woody savanna grassland
131 interspersed with forest covers [33]. The main occupations are farming and charcoal
132 production[34]. The area experiences two rainy seasons, the major and minor from May to July
133 and September to October, respectively[35], [36]. The hookworm prevalence at Kawampe has
134 dropped significantly following baseline studies there in 2015 [34], [37]. It is currently at 9.2% in
135 2018 and 5.3 % in 2020 (Wilson et. al, *unpublished*).

136



137

138 **Figure 1: Map of Ghana showing the Kintampo North Municipal area.** Kawampe is located
139 on the main trunk road to the north of Ghana. *Map created with ArcGIS 10.8 with shapefiles from*
140 *<https://www.diva-gis.org/gdata>.*

141 **GPS tracking of hookworm-infected and non-infected cases**

142 Participants aged 6 years and above were screened for STH infections using Kato-Katz [21], [22].
143 Fifty-nine participants comprising 30 adults and 29 children were randomly assigned to positive
144 and negative infection groups. They were subdivided into six (6) groups of 9-10 each. At any point
145 in time, 20 participants were tagged with GPS tracking devices (i-gotU and Globalsat DG-100 data
146 logger) and followed for 10 continuous days. The GPS devices recorded coordinates every 6 to 10
147 seconds allowing for the movement patterns of each participant to be plotted. The data was
148 downloaded to a dedicated laptop using the device's software and exported to ArcGIS 10.8 and
149 Python 3.9 to produce a 20-by-20-meter grid map of the community. The K-means obtained from
150 the analyses were used to determine the centre point of each grid. The exact coordinates of each

151 individual in a group's movement, the time spent at a particular area and how far they travelled
152 were determined and overlaid on the grid map. The sites that were differentially visited most by
153 the two groups were identified. Soil samples were taken from the central point of each visited grid,
154 and public places of interest such as rubbish dumps, public toilet facilities, water sources,
155 children's playgrounds, schools and places of religious activities[38].

156 **Soil sampling**

157 The Auger soil sampler was used to collect the soil from the identified sites and communal places
158 of interest[39]. The soil was scooped from a 5cm depth, placed in a container and mixed by shaking
159 vigorously. Each soil sample was then divided into two Ziplock bags and transported to the
160 laboratories. One part was used for culturing helminth eggs to obtain larvae and, the other for the
161 determination of physical and chemical properties.

162 **Soil physical and chemical analyses**

163 A total of 21 parameters were measured: soil pH, electrical conductivity, total nitrogen, organic
164 carbon, available phosphorus, Effective Cation Exchange Capacity (ECEC), Exchangeable
165 Acidity and Hydrogen, micro-nutrients (Fe, Cu, Mn and Zn), clay and sand content, and soil
166 texture. The soil pH was measured in the supernatant of a 1:2.5 soil-water ratio using a glass
167 electrode pH meter with an H19017 Microprocessor [40]. Total nitrogen was determined by the
168 Kjeldahl digestion and distillation procedure[41]. The soil organic carbon was determined by the
169 modified dichromate oxidation method of Walkley-Black[42]. The readily acid-soluble forms of
170 phosphorus were extracted with HCl: NH₄F mixture (Bray's No. 1 extract) and determined
171 calorimetrically by ascorbic reduction[43], [44].

172 Effective cation exchange capacity (ECEC) was determined by the sum of exchangeable bases
173 (Ca²⁺, Mg²⁺, K⁺ and Na⁺) and exchangeable acidity (Al³⁺ + H⁺). These exchangeable bases were
174 determined in 1.0M ammonium acetate (NH₄OAc). The calcium and magnesium were determined
175 by EDTA titration and, potassium and sodium were determined by flame photometry [45]. The
176 Exchangeable acidity (Al³⁺+H⁺) was determined in 1.0M KCl extract. The soil micro-nutrients
177 (iron, copper, manganese, and zinc) were extracted by ethylenediamine tetra acetic acid (EDTA)
178 with ammonium acetate method and measured with an Atomic Absorption Spectrophotometer
179 [46].

180 **Culture of helminth eggs**

181 The Baermann technique was used to culture helminth eggs in the soil into larvae. Approximately
182 475g of soil was weighed and dampened thoroughly with tap water. The damp samples were then
183 transferred onto Kimwipe paper tissue wrapped neatly, placed onto a standardized mesh and placed
184 gently in the funnel of the Baermann setup with the clamp of the tubing closed. Lukewarm water
185 at about 37°C was poured gently onto the funnel until the wrapped soil samples were completely
186 immersed. It was then allowed to stand for 18 hours after which 200-300mL of water was collected
187 from the bottom of the set-up by slowly releasing the clamp. The collected water was observed
188 under the microscope for the presence of larvae. The number of larvae harvested from each soil
189 sample was estimated and stored in RNALater at -20°C.

190 The larvae were thawed at room temperature and washed in PBS, pulse vortexed and 10µL of the
191 solution was transferred onto a petri dish and viewed under the microscope for confirmation of the
192 presence of larvae. Genomic DNA was extracted from approximately 10 larvae of each sample
193 using the DNeasy® Blood and Tissue kit (Cat. No. 69506, QIAGEN,). Before tissue lysis with
194 ATL, 100µL of larval suspension was frozen at -80 C for an hour and macerated. The extraction
195 process followed the manufacturer's instructions thereafter and, DNA was eluted in 100µL of
196 elution buffer. The concentration and purity of the isolated DNA were determined using a BioDrop
197 ND-2000 spectrophotometer (NanoDrop, Wilmington, DE, USA). Two no-template control
198 extractions were also included in the process to control for contamination. The extracted DNA was
199 stored at -20°C until further use.

200 **Metagenomics sequence analyses**

201 A total of 40 DNA samples were submitted for shotgun metagenomic sequencing; 36 passed initial
202 sample quality control checks and were used in further library preparation and sequenced.
203 1,270,226,294 (190.5G) raw reads were obtained with an average of 42,340,876 per sample. Read
204 quality checks were performed on all 36 samples using the *FastQC* [47] and *MultiQC* [31]. Low-
205 quality reads and adapters were trimmed off with *Cutadapt* [48] and quality checks were repeated
206 after trimming.

207 The trimmed reads for each sample were run against a database with assigned taxonomy
208 information using *Kraken2* [49], which is a taxonomic classification system and database that uses
209 exact k-mer matches to achieve high accuracy and fast classification speeds. There are no available

210 standard *Kraken2* taxonomy databases built for helminths, therefore, a customized database named
211 *NematodeDB* was built from the genome sequences of about 160 flatworm and nematode species.
212 The taxonomic information of the genomes was obtained from the *NCBI* reference sequences
213 database[50]. The processed reads were then run against *NematodeDB* to yield *Kraken2* reports on
214 the mapped or classified reads and their taxonomy assignments.

215 **Visualization**

216 The *Kraken2* reports for all the samples were compressed and analysed using *Pavian* [51]. A
217 Sankey diagram for each sample was generated as well as the summaries of taxonomy assignments
218 of the reads. Since a customized database for only worms was used, the worm hits were classified
219 under the *Microbial reads* column in *Pavian* while the columns for other organisms remained
220 empty. Two *.xlsx* files were then generated from *Pavian* as follows: *Identified species and*
221 *abundances* containing 100 species of worms identified and the number of mapped (classified)
222 reads across the samples, *Classification summary* containing the numbers and percentages for both
223 classified and unclassified reads. The control sample also had some hits, which were inferred as
224 artefacts. This served as a guide for examining the same species for the other samples, which were
225 considered if their abundance were above the ones reported in the control.

226 **Ethical Considerations**

227 The study proposal was approved by the Noguchi Memorial Institute for Medical Research
228 Institutional Review Board (NIRB #100/16-17), the Kintampo Health Research Center Ethics
229 Review Committee (#KHRCIEC 2017-20) and NIH/NIAID (DMID Protocol #17-0061).
230 Permission was obtained from the chief, elders, and opinion leaders of the study community.
231 Informed consent was obtained from adults and assent/parental consent in the case of children.

232 **Data analyses**

233 To determine which soil parameters were significantly associated with the larval counts we
234 employed the Negative Binomial Regression Model (NBRM) method to determine the
235 associations between the soil factors and larval counts. The NBRM provides flexibility in handling
236 overdispersion and accommodating different relationships[52] between the soil factors and the
237 (larval counts).

238

239 **RESULTS**

240 **The study participants**

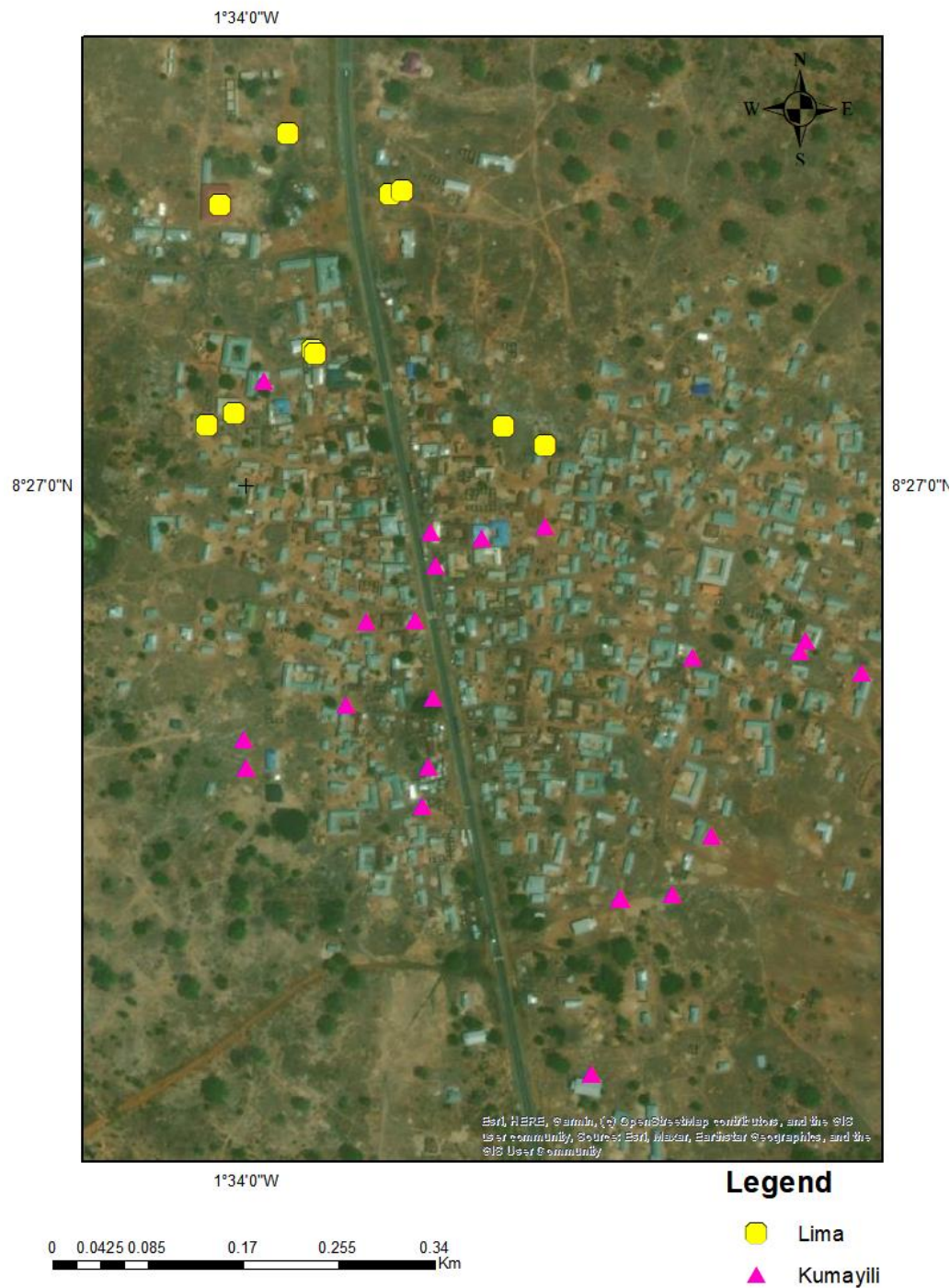
241 Out of the 59 participants who were monitored, 54.2% (n=32) were males, and 45.8% (n=27) were
242 females. The average age was 25.9 years (SD= \pm 18.6; Range=6-83), and the majority (33.9%;
243 n=20) were aged between 11 and 20 years. Hookworm was present in 52% of the participants.
244 Both children and adults constituted equal proportions of both positive and negative participants.

245 246 **Soil characteristics of the study site**

247 Two types of soil; the Lima series (Eutric Planosol) and Kumayili series (Plinthic Lixisol)[53]
248 existed at Kawampe. The Lima series consisted of 30-60cm of light brownish-pinkish grey fine
249 sandy loam or loamy fine sand, over a thin layer (15-20cm) of very pale brown or pinkish grey
250 fine sandy loam containing frequently polished ironstone concretions. This immediately covered
251 grey silty clay that is very hard and very compact and develops into a clay pan when dry and into
252 a plastic and massive pan when wet. This layer extends to over 120cm from the surface and may
253 occasionally have polished ironstone concretions in the top part of this layer.

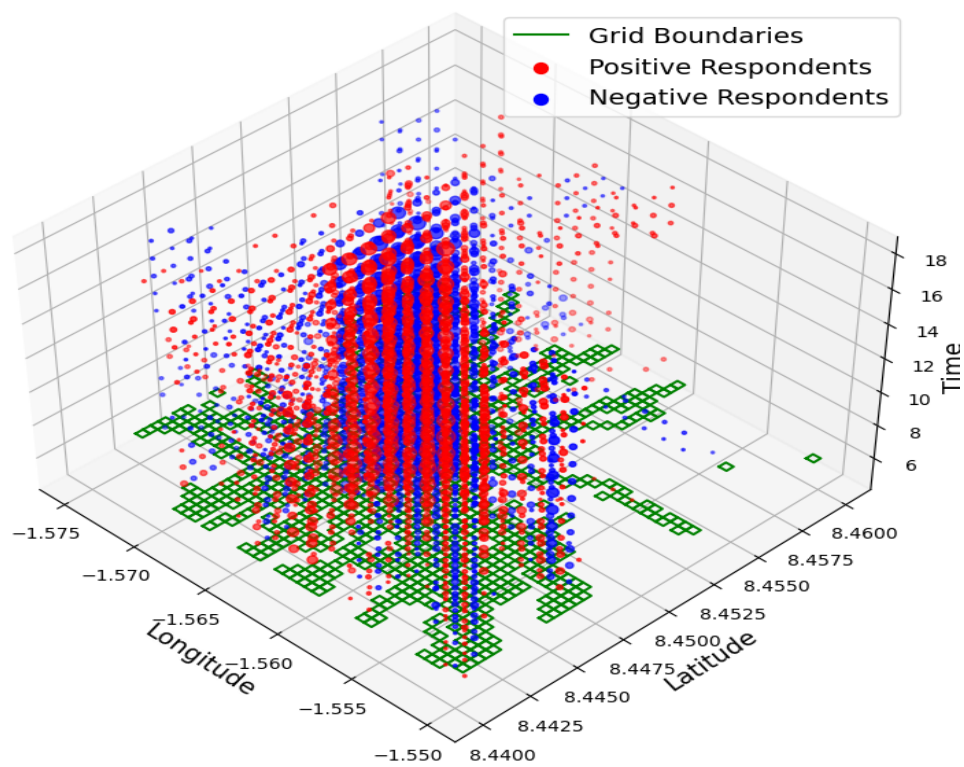
254 The Kumayili series occurred on low summits, and upper and middle slope sites with a 2-3 %
255 gradient. The topsoil consisted of about 15 cm to 30 cm of dark brown to reddish-brown sandy
256 clay loam or sandy loam over a yellowish-red sandy loam or sandy clay loam to a depth of 100-
257 125 cm. Beneath this layer is a tightly packed either ironstone concretions or iron pans.

258 The Lima soil type was found mainly to the north of Kawampe at 10 sampled sites and, the rest
259 of the sites were Kumayili (Figure 2).

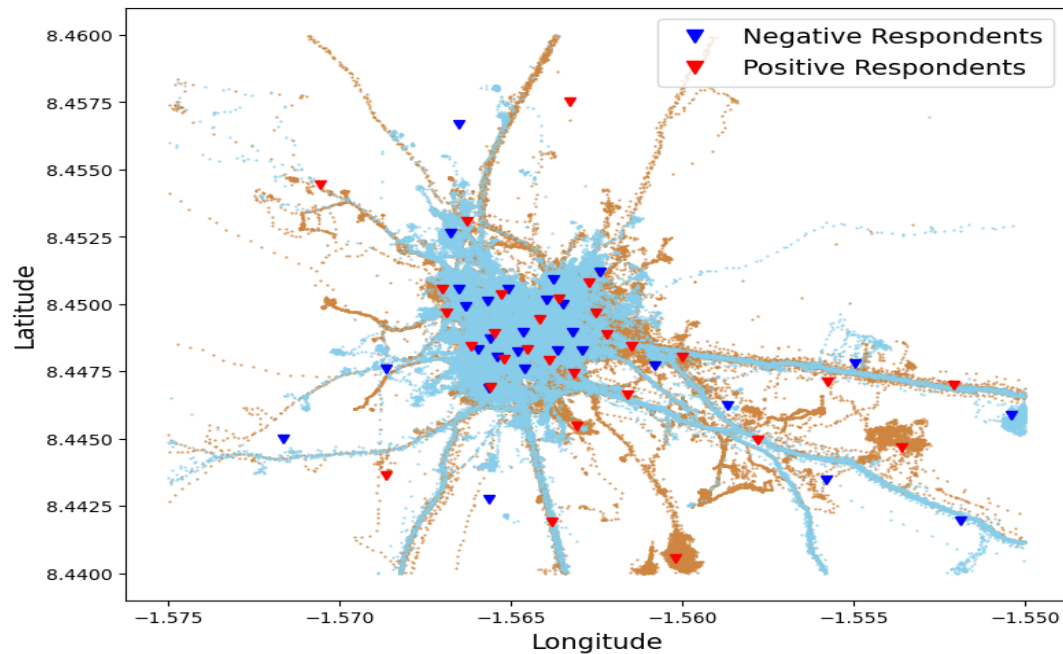


265 The participants' daily movements were mainly within the community and to neighbouring
266 farmlands (Figure 3). These movements were mostly in the mornings and evenings and virtually
267 non-existent at night. The movement dynamics of both positive and negative adult participants
268 indicated a close interaction among community members (Figures 3A and 3B). Their daily
269 movements became more individualized due to the distinct ownership of farms (Figure 3B). The
270 movements of children primarily revolved around the community, as their activities were centred
271 on community and school-based engagements.

3A



3B



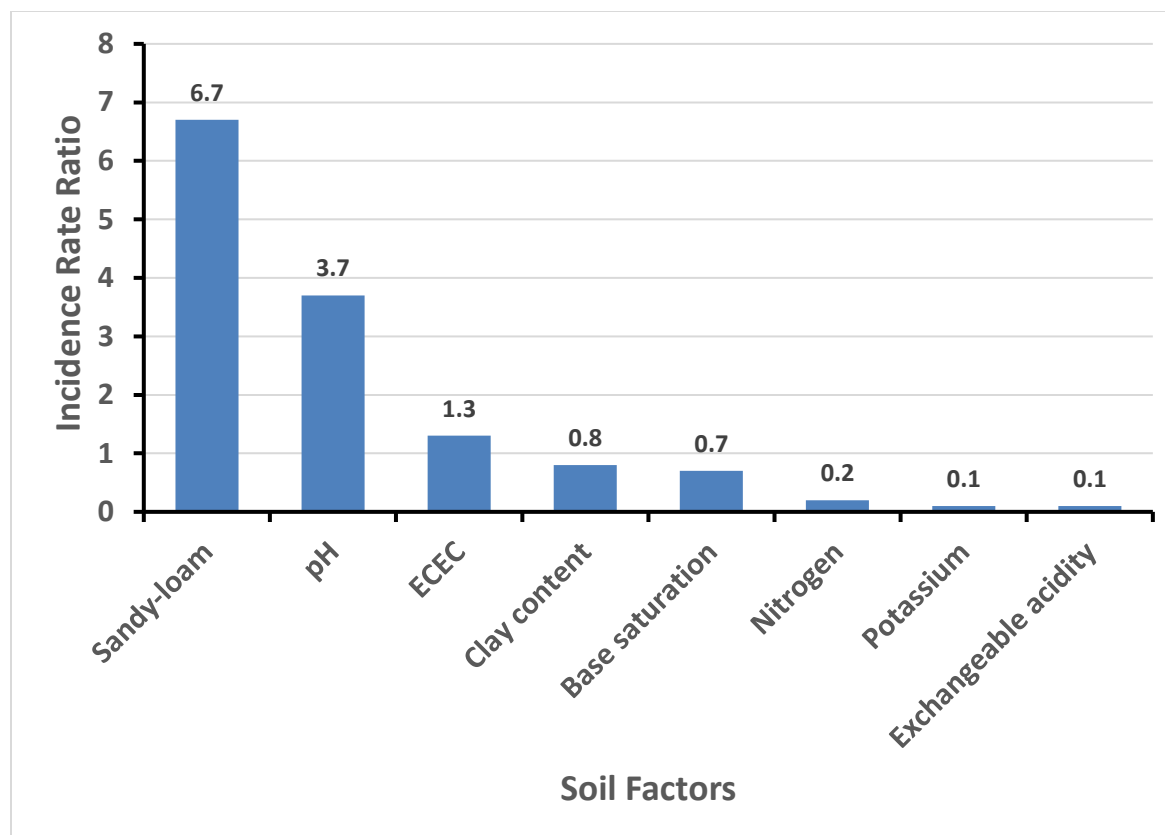
273 **Figure 3: 3A) 3-D illustration of all the participants' movements across space and time.** The
274 green patches were the areas where most participants were located, while the red and blue circles
275 indicated the length of time both positive and negative participants spent within these green
276 patches respectively. The 3B) 2-D plot illustrates the movement patterns of the positive group (red
277 lines) and negative group (blue lines). Red triangles denote the sites frequented by infected
278 individuals and where soil samples were collected, while blue triangles represent where negatives
279 were mostly found. These triangles indicate the exact centers of the grids (green patches) in 3A.

280

281 **Association of soil factors with helminth larval density**

282 At least one larva was found at every site where soil samples were collected. The highest number
283 of larvae (n=193) was observed in soil from a church area with a sandy loam texture and pH of
284 5.765. The second highest number of larvae (n=165) was detected in soil from the marketplace,
285 which had a pH of 6.84 and a loamy sand texture.

286 Soil factors that produced high larvae counts included soil pH, sandy-loamy soil type, and effective
287 cation exchange capacity (Figure 4). An increase in soil pH level was associated with an incidence
288 rate ratio of 3.7, (CI; 2.1-6.6, $P < 0.001$) based on the larvae counts and soil parameters from the
289 NBRM. Sandy-loamy soil had approximately 7 times more larvae compared to loamy soil, with
290 an incidence rate ratio of 6.7, (2.3-19.7, $P < 0.001$) and Effective cation exchange capacity had an
291 incidence rate ratio of 1.3, (1.2-1.43, $P < 0.001$).



292

293 **Figure 4: Soil factors significantly associated with high and low larvae counts.**

294 High levels of potassium, exchangeable acidity, base saturation, clay, and nitrogen content on the
295 other hand were associated with low larvae counts (Table 4). Potassium content had an incidence
296 rate ratio (IRR) of 0.1, (0.1-0.3, $P<0.001$). Exchangeable acidity had an IRR of 0.01, (0.00-0.3,
297 $P=0.002$) and that of the base saturation was 0.7, (0.4-0.9, $P=0.042$). High clay content had an
298 IRR of 0.8, a confidence interval of 0.7-0.9, and a p-value of less than 0.001. High nitrogen content
299 had an IRR of 0.2, (0.1-0.4, $P< 0.001$), which was above the median value.

300 **Identification of helminth species**

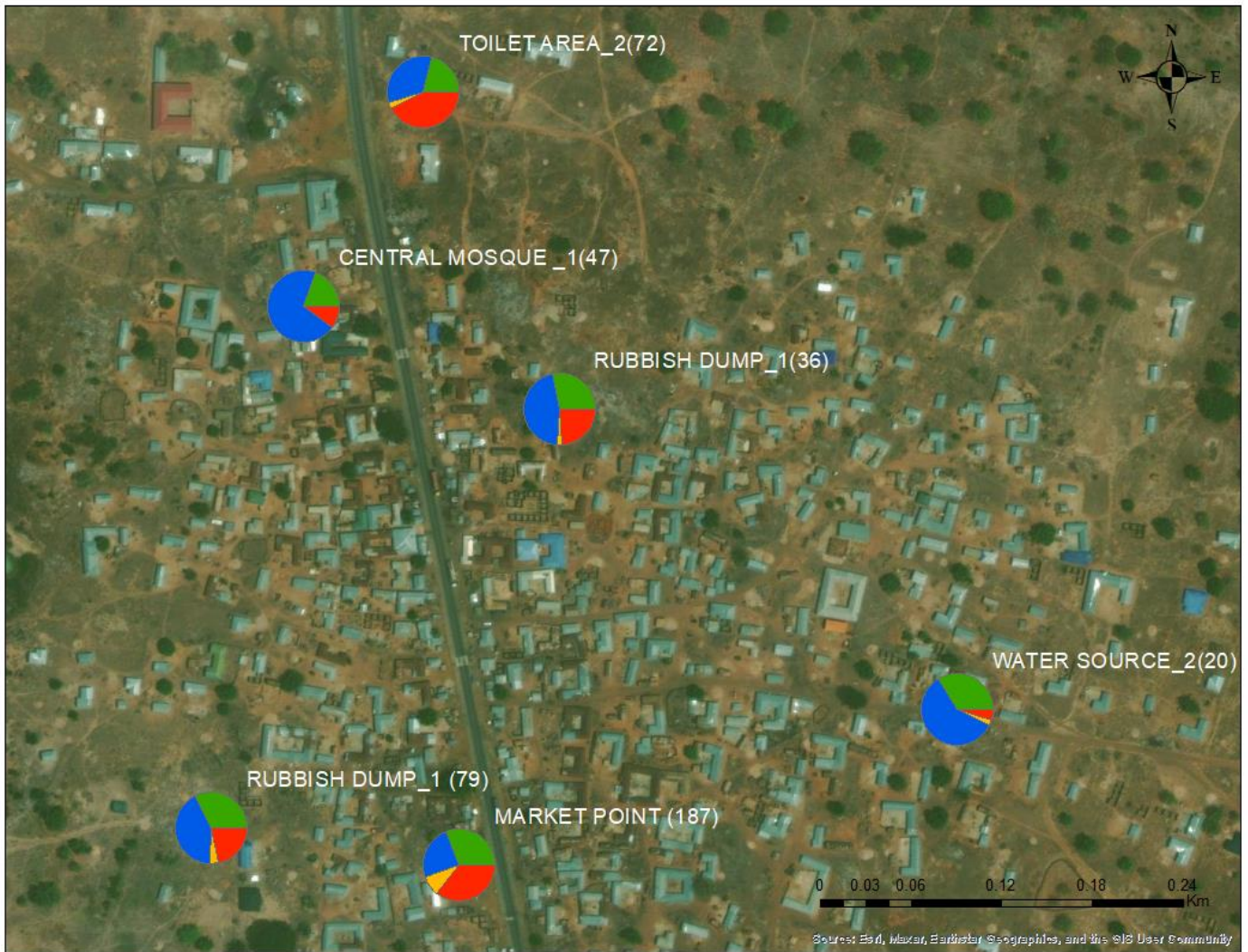
301 Four dominant species were identified in the soil samples: *Parastrongyloides trichosuri*,
302 *Panagrolaimus superbus*, *Trichuris trichiura* and *Ancylostoma caninum* (Table 1, Figure 5).
303 Interestingly, there were no hits for *Necator americanus* (human hookworm).

304 Table 1: The location and distribution of the main helminth species cultured from the soil samples
305 and identified using shotgun metagenomics.

Location	Larvae Count	<i>P. trichosuri</i> (%)	<i>P. superbus</i> (%)	<i>T. trichiura</i> (%)	<i>A. caninum</i> (%)
Market point	187	11.55	14.6	4.2	16.85
Rubbish dump_1	79	13.2	10.15	1.05	6.75
Central mosque_1	47	42.15	11.75	0.45	6.25
Toilet area_2	72	11.5	7.2	1	14.5
Rubbish dump_2	36	16.8	10.1	0.9	8.6
Water source_2	20	17.8	10.1	0.8	1.4

306

307



308

309 **Figure 5: The distribution of dominant helminth parasites found in specific areas within the**
310 **study community.** *Parastrongyloides trichosuri* (blue), *Panagrolaimus superbus* (green),
311 *Trichuris trichiura* (yellow) and *Ancylostoma caninum* (red). The counts are in parentheses.

312

313 Discussion and Conclusion

314 The global health community is targeting 2030 as the year to achieve the elimination of STH.
315 Thus, any additional intervention tool that could support the existing MDA and WASH strategies
316 is a prerequisite for this to be achieved. Our studies, therefore, focused on tracking hookworm-
317 infected individuals and gathering soil characteristics to identify specific areas in a community
318 that may contribute significantly to hookworm transmission[54]. Based on our study, the pH level

319 of soil was found to be a critical determinant of parasite growth, as it was linked to elevated larval
320 counts. The influence of soil pH on parasite development is connected to the soil's acid-base
321 equilibrium. Parasites that undergo development in soils with elevated pH levels acquire enhanced
322 tolerance towards alkaline conditions. This heightened tolerance enables them to flourish and
323 reproduce with greater efficiency. Conversely, the parasites that developed in soils with lower pH
324 levels become more susceptible to alkaline conditions, impeding their growth and reproductive
325 capabilities [55]. The levels of exchangeable cations and exchangeable acidity (ECEC) primarily
326 depend on the presence of sodium, potassium, calcium, and magnesium in the soil, and are known
327 to facilitate the absorption of nutrients essential for the survival of flora and fauna[56]. Zinc is
328 another crucial factor that contributed to elevated larvae counts. It is a vital mineral for soil-borne
329 parasites, forming a critical component of enzymes, proteins, and DNA. Incorporating zinc into
330 the soil promotes the growth of parasitic nematodes and mitigates damage caused by pests[57].

331 In this study, the soil type that exhibited the least conducive environment for larval density was
332 clay. Clay soil has limited air circulation and pore spaces, making it unsuitable for larvae
333 habitation. Soils that were primarily clay-based were found to have lower larvae counts[58]. Other
334 factors that had a significantly low impact on larval density included carbon content, base
335 saturation, and nitrogen levels in the soil. Plants and nematode growth have a symbiotic
336 relationship, flourishing on cultivated lands with aggregate quantities [32]. Carbon, base saturation
337 and nitrogen improve growth in such cases. The soils sampled were on uncultivated lands hence
338 the low larvae count[59].

339 The predominant parasite discovered in all soil samples was *Panagrolaimus superbus*, an
340 anhydrobiotic nematode capable of surviving extreme environmental conditions such as water
341 scarcity, high pressure, and temperature variations[60], [61]. This is the first report of this species
342 in Ghana. *Panagrolaimus* nematodes have colonized various habitats, including arctic and
343 antarctic biomes, as well as arid deserts. Most of these species are capable of cryptobiosis, and
344 many are parthenogenetic, allowing them to survive repeated desiccation and freezing cycles. The
345 medical significance of *P. superbus* in humans remains unknown. *Parastrongyloides trichosuri*
346 was the second most abundant helminth species found, and its discovery in Ghana was unexpected
347 as it is a nematode parasite native to Australasia, commonly infecting small mammals such as the
348 Australian Brush-tailed possums [62]. There is a high population of small mammals in Ghana,

349 particularly rodents, which can be hosts for parasites commonly found around rubbish dumps. *P.*
350 *trichosuri* may have been introduced into the soil from such rodents. *P. trichosuri* is an interesting
351 nematode that can undergo multiple reproductive cycles as a free-living worm, enabling it to
352 increase the number of its infective L3s. Thus, it can be maintained in cultured conditions for
353 several free-living life cycles without requiring a permissive host, usually its marsupial host.
354 *Trichuris trichiura*, also known as the human whipworm, was the third most common soil-
355 transmitted helminth (STH) causing trichuriasis [63]. In severe infections, trichuriasis causes
356 frequent, painful bowel movements, rectal prolapse, and stunted growth in children. Although only
357 minimally present in 21 out of the 32 soil samples, it was abundant in the remaining samples with
358 high read counts. *Ancylostoma caninum*, commonly known as the dog hookworm, is a parasitic
359 nematode that infects dogs and cats, causing eosinophilic enteritis in humans[64]. This species was
360 found in all samples, albeit in lower numbers compared to the other species mentioned above.
361 Cutaneous Larva Migrans (CLM), a condition caused by some species of hookworms, is associated
362 with this species. Larvae enter humans through direct contact with the skin, commonly transmitted
363 through faeces deposited in the soil.

364 The presence of parasites was observed in varying proportions in the two soil types (Kumayili and
365 Lima) found in the community. *Parastrongyloides trichosuri* was the most prevalent parasite in
366 all the soil samples (>50% prevalence), suggesting an abundance of small mammals in the
367 community. Kumayili soil had a higher prevalence of *Ancylostoma caninum* and *Panagrolaimus*
368 *superbus* compared to Lima soil. *Trichuris trichiura*, the only parasite identified in this study that
369 infects humans, was found to be twice as prevalent around the market area and associated with
370 Kumayili soil. Human hookworm species, *Necator Americanus* and *Ancylostoma duodenale* were
371 notably absent in the soils sampled, although they are known to usually thrive in warm and moist
372 environments with sandy loamy soils and sufficient organic matter content similar to the conditions
373 in Kawampe [65]. Several potential reasons could account for this absence. First, the soil samples
374 were collected at the end of the rainy season. It is important to note that regions characterized by
375 heavy rainfall and warm temperatures are often associated with high transmission rates of *Necator*
376 *americanus*[66], Second, it is possible that the soil sampling did not encompass areas within the
377 community where the parasites are more likely to be present[67]. Also, the time of sampling might
378 have influenced the larval load, resulting in low detection rates during the sampling period[68].

379 Lastly, the parasites may be localized to specific locations within the community which suggests
380 that a more elaborate sampling needs to be done to increase the chances of finding them [69], [70].

381 This study on soil factors for soil-transmitted helminths (STH) has provided valuable insights into
382 the relationship between soil characteristics and the presence of some STH larvae. Tracking the
383 movements of participants has also shown significant convergence of people, whether infected or
384 not in particular places within the community. Sanitation and proper waste management in such
385 concentrated areas may reduce soil infestation.

386 **Competing Interests:** The authors declare no competing interests.

387 **Funding:** An NIH/NIAID award to MDW funded the study (Ref. ID: U19AI129916). The funding
388 agency did not play any role in the design and execution of the study.

389 **Authors' Contributions:** MDW and MC conceived the project. JGS collected the field data,
390 analysed and drafted the manuscript, ES analysed the GPS movement data, KAM performed the
391 metagenomics analysis, DD, IOD, JA, KAK, DH, SKK and YA supervised the study, FOA and
392 DO performed the soil analysis, and all the authors reviewed the manuscript and approved it.

393 **Acknowledgements:** We appreciate the support of the NIINE laboratory and fieldwork teams,
394 along with that provided by the staff of the Kintampo Health and Research Centre. We are also
395 grateful to the chiefs, community leaders and participants in the Kintampo-North Municipality.

396

397

398 REFERENCES

- 399 [1] J. Kurscheid *et al.*, “Epidemiology of soil-transmitted helminth infections in semarang, central
400 java, indonesia,” *PLoS Negl Trop Dis*, vol. 14, no. 12, pp. 1–17, 2020, doi:
401 10.1371/journal.pntd.0008907.
- 402 [2] A. A. Hay, Kiadaliri, “Global, regional, and national disability-adjusted life-years (DALYs) for
403 315 diseases and injuries and healthy life expectancy (HALE), 1990-2015: a ...,” 2016. [Online].
404 Available: <http://lup.lub.lu.se/record/b002b350-12f6-4e5b-8b4f-33d074a02525>
- 405 [3] S. M. Bartsch *et al.*, “The Global Economic and Health Burden of Human Hookworm Infection,”
406 *PLoS Negl Trop Dis*, vol. 10, no. 9, p. e0004922, Sep. 2016, doi: 10.1371/journal.pntd.0004922.
- 407 [4] WHO, “Helminth control in school-age children,” 2011.

- 408 [5] J. C. Dunn, H. C. Turner, A. Tun, and R. M. Anderson, “Epidemiological surveys of, and research
409 on, soil-transmitted helminths in Southeast Asia: a systematic review,” *Parasit Vectors*, vol. 9, no.
410 1, p. 31, Dec. 2016, doi: 10.1186/s13071-016-1310-2.
- 411 [6] WHO, *A GLOBAL STRATEGY ON WATER, SANITATION AND HYGIENE TO COMBAT
412 NEGLECTED TROPICAL DISEASES*. 2021. [Online]. Available: <http://apps.who.int/bookorders>.
- 413 [7] S. Geerts and B. Gryseels, “Drug Resistance in Human Helminths : Current Situation and Lessons
414 from Livestock Drug Resistance in Human Helminths : Current Situation and Lessons from
415 Livestock,” *Clin Microbiol Rev*, vol. 13, no. 2, pp. 207–222, 2000, doi: 10.1128/CMR.13.2.207-
416 222.2000.Updated.
- 417 [8] P. J. Hotez *et al.*, “Helminth Infections: Soil-transmitted Helminth Infections and
418 Schistosomiasis,” *Disease Control Priorities in Developing Countries*, pp. 467–482, 2006, doi:
419 10.1596/978-0-821-36179-5/Chpt-24.
- 420 [9] T.-W. Jia, S. Melville, J. Utzinger, C. H. King, and X.-N. Zhou, “Soil-Transmitted Helminth
421 Reinfection after Drug Treatment: A Systematic Review and Meta-Analysis,” *PLoS Negl Trop
422 Dis*, vol. 6, no. 5, p. e1621, May 2012, doi: 10.1371/journal.pntd.0001621.
- 423 [10] P. M. Jourdan, P. H. L. Lamberton, A. Fenwick, and D. G. Addiss, “Soil-transmitted helminth
424 infections,” *The Lancet*, vol. 391, no. 10117. 2018. doi: 10.1016/S0140-6736(17)31930-X.
- 425 [11] P. J. Hotez, N. K. Biritwum, A. Fenwick, D. H. Molyneux, and J. D. Sachs, “Ghana: Accelerating
426 neglected tropical disease control in a setting of economic development,” *PLoS Negl Trop Dis*,
427 vol. 13, no. 1, pp. 1–9, 2019, doi: 10.1371/journal.pntd.0007005.
- 428 [12] M. S. Haldeman, M. S. Nolan, and K. R. N. Ng’habi, “Human hookworm infection: Is effective
429 control possible? A review of hookworm control efforts and future directions,” *Acta Tropica*, vol.
430 201. Elsevier B.V., Jan. 01, 2020. doi: 10.1016/j.actatropica.2019.105214.
- 431 [13] E. Appiah-Effah, G. A. Duku, N. Y. Azangbego, R. K. A. Aggrey, B. Gyapong-Korsah, and K. B.
432 Nyarko, “Ghana’s post-mdgs sanitation situation: An overview,” *Journal of Water Sanitation and
433 Hygiene for Development*, vol. 9, no. 3, pp. 397–415, 2019, doi: 10.2166/washdev.2019.031.
- 434 [14] L. Yelifari *et al.*, “Distribution of human *Oesophagostomum bifurcum*, hookworm and
435 *Strongyloides stercoralis* infections in northern Ghana,” *Trans R Soc Trop Med Hyg*, vol. 99, no. 1,
436 pp. 32–38, Jan. 2005, doi: 10.1016/j.trstmh.2004.02.007.
- 437 [15] G. Akosah-Brempong *et al.*, “Infection of *Plasmodium falciparum* and helminths among school
438 children in communities in Southern and Northern Ghana,” *BMC Infect Dis*, vol. 21, no. 1, pp. 1–
439 9, 2021, doi: 10.1186/s12879-021-06972-1.
- 440 [16] D. Humphries *et al.*, “Hookworm infection among school age children in Kintampo north
441 municipality, Ghana: nutritional risk factors and response to albendazole treatment.,” *Am J Trop
442 Med Hyg*, vol. 89, no. 3, pp. 540–8, Sep. 2013, doi: 10.4269/ajtmh.12-0605.

- 443 [17] D. Humphries *et al.*, “Epidemiology of hookworm infection in Kintampo North Municipality,
444 Ghana: patterns of malaria coinfection, anemia, and albendazole treatment failure.,” *Am J Trop*
445 *Med Hyg*, vol. 84, no. 5, pp. 792–800, May 2011, doi: 10.4269/ajtmh.2011.11-0003.
- 446 [18] D. N. Aribodor, S. A. Bassey, T. Yoonuan, S. O. Sam-Wobo, O. B. Aribodor, and I. K. Ugwuanyi,
447 “Analysis of Schistosomiasis and soil-transmitted helminths mixed infections among pupils in
448 Enugu State, Nigeria: Implications for control,” *Infect Dis Health*, vol. 24, no. 2, pp. 98–106, May
449 2019, doi: 10.1016/j.idh.2018.12.003.
- 450 [19] Miressa Robsen and Dufera Mebrate, “Prevalence and Predisposing Factors of Intestinal Parasitic
451 Infections Among HIV Positive Patients Visiting Nekemte Specialized Hospital, Western
452 Ethiopia,” 2022.
- 453 [20] A. Kiflie, G. Bewket, E. Abate, T. Schön, and R. Blomgran, “Differential effects of asymptomatic
454 *Ascaris lumbricoides*, *Schistosoma mansoni* or hook worm infection on the frequency and TGF-
455 beta-producing capacity of regulatory T cells during active tuberculosis,” *Tuberculosis*, vol. 131,
456 Dec. 2021, doi: 10.1016/j.tube.2021.102126.
- 457 [21] S. A. Sakyi *et al.*, “*Plasmodium falciparum* coinfection is associated with improved IgE and IgG3
458 response against hookworm antigens,” *Health Sci Rep*, vol. 5, no. 4, Jul. 2022, doi:
459 10.1002/hsr2.672.
- 460 [22] A. Mahittikorn, F. R. Masangkay, G. De Jesus Milanez, S. Kuraeiad, and M. Kotepui, “Prevalence
461 and effect of *Plasmodium* spp. and hookworm co-infection on malaria parasite density and
462 haemoglobin level: a meta-analysis,” *Sci Rep*, vol. 12, no. 1, Dec. 2022, doi: 10.1038/s41598-022-
463 10569-2.
- 464 [23] A. Abaka-Yawson *et al.*, “High prevalence of intestinal helminthic infection among children under
465 5 years in a rural Ghanaian community: an urgent call for attention,” *Journal of Parasitic*
466 *Diseases*, vol. 44, no. 3, pp. 625–632, 2020, doi: 10.1007/s12639-020-01239-z.
- 467 [24] R. Mirisho, M. L. Neizer, and B. Sarfo, “Prevalence of Intestinal Helminths Infestation in Children
468 Attending Princess Marie Louise Children’s Hospital in Accra, Ghana,” *J Parasitol Res*, vol.
469 2017, 2017, doi: 10.1155/2017/8524985.
- 470 [25] A. Montresor *et al.*, “The global progress of soil-transmitted helminthiasis control in 2020 and
471 world health organization targets for 2030,” *PLoS Negl Trop Dis*, vol. 14, no. 8, pp. 1–17, 2020,
472 doi: 10.1371/journal.pntd.0008505.
- 473 [26] H. O. Mogaji *et al.*, “Distribution of ascariasis, trichuriasis and hookworm infections in Ogun
474 State, Southwestern Nigeria,” *PLoS One*, vol. 15, no. 6, pp. 1–16, 2020, doi:
475 10.1371/journal.pone.0233423.
- 476 [27] P. Hotez, “Hookworm and poverty,” *Annals of the New York Academy of Sciences*, vol. 1136.
477 Blackwell Publishing Inc., pp. 38–44, 2008. doi: 10.1196/annals.1425.000.

- 478 [28] E. A. Chadeka *et al.*, “Spatial distribution and risk factors of *Schistosoma haematobium* and
479 hookworm infections among schoolchildren in Kwale, Kenya,” *PLoS Negl Trop Dis*, vol. 11, no.
480 9, p. e0005872, Sep. 2017, doi: 10.1371/journal.pntd.0005872.
- 481 [29] G. S. A. Gunawardena, N. D. Karunaweera, and M. M. Ismail, “Effects of climatic, socio-
482 economic and behavioural factors on the transmission of hookworm (*Necator americanus*) on two
483 low-country plantations in Sri Lanka,” *Ann Trop Med Parasitol*, vol. 99, no. 6, pp. 601–609, Sep.
484 2005, doi: 10.1179/136485905X51436.
- 485 [30] C. Bird, S. Ame, M. Albonico, and Q. Bickle, “Do shoes reduce hookworm infection in school-
486 aged children on Pemba Island, Zanzibar? A pragmatic trial,” *Trans R Soc Trop Med Hyg*, vol.
487 108, no. 5, pp. 297–304, May 2014, doi: 10.1093/trstmh/tru037.
- 488 [31] J. Kerr, S. Duncan, and J. Schipperjin, “Using global positioning systems in health research: A
489 practical approach to data collection and processing,” *Am J Prev Med*, vol. 41, no. 5, pp. 532–540,
490 2011, doi: 10.1016/j.amepre.2011.07.017.
- 491 [32] K. F. Salifu and W. L. Meyer, “Physico-chemical properties of soils associated with logged forest
492 and areas converted to teak (*Tectona grandis* Linn. F.) in Ghana,” 1998. [Online]. Available:
493 <https://about.jstor.org/terms>
- 494 [33] E. Bessah, A. Bala, S. K. Agodzo, A. A. Okhimamhe, E. A. Boakye, and S. U. Ibrahim, “The
495 impact of crop farmers’ decisions on future land use, land cover changes in Kintampo North
496 Municipality of Ghana,” *Int J Clim Chang Strateg Manag*, vol. 11, no. 1, pp. 72–87, Jan. 2019,
497 doi: 10.1108/IJCCSM-05-2017-0114.
- 498 [34] R. H. Boyko *et al.*, “Dogs and pigs are transport hosts of *Necator americanus*: Molecular evidence
499 for a zoonotic mechanism of human hookworm transmission in Ghana,” *Zoonoses Public Health*,
500 vol. 67, no. 5, pp. 474–483, 2020, doi: 10.1111/zph.12708.
- 501 [35] A. R. Orr *et al.*, “Genetic markers of benzimidazole resistance among human hookworms (*necator*
502 *americanus*) in Kintampo North Municipality, Ghana,” *American Journal of Tropical Medicine*
503 *and Hygiene*, vol. 100, no. 2, pp. 351–356, 2019, doi: 10.4269/ajtmh.18-0727.
- 504 [36] A. Kwarteng *et al.*, “The accuracy and perception of test-based management of Malaria at private
505 licensed chemical shops in the Middle Belt of Ghana,” *American Journal of Tropical Medicine*
506 *and Hygiene*, vol. 100, no. 2, pp. 264–274, 2019, doi: 10.4269/ajtmh.17-0970.
- 507 [37] D. Humphries *et al.*, “Effectiveness of Albendazole for Hookworm Varies Widely by Community
508 and Correlates with Nutritional Factors: A Cross-Sectional Study of School-Age Children in
509 Ghana,” *Am J Trop Med Hyg*, vol. 96, no. 2, pp. 347–354, Feb. 2017, doi: 10.4269/ajtmh.16-0682.
- 510 [38] B. Sartorius *et al.*, “Prevalence and intensity of soil-transmitted helminth infections of children in
511 sub-Saharan Africa, 2000–18: a geospatial analysis,” *Lancet Glob Health*, vol. 9, no. 1, pp. e52–
512 e60, 2021, doi: 10.1016/S2214-109X(20)30398-3.

- 513 [39] O. Fernández-Ugalde, A. Jones, and R. G. Meuli, “Comparison of sampling with a spade and
514 gouge auger for topsoil monitoring at the continental scale,” *Eur J Soil Sci*, vol. 71, no. 2, pp. 137–
515 150, Mar. 2020, doi: 10.1111/ejss.12862.
- 516 [40] S. Hong, P. Gan, and A. Chen, “Environmental controls on soil pH in planted forest and its
517 response to nitrogen deposition,” *Environ Res*, vol. 172, pp. 159–165, May 2019, doi:
518 10.1016/j.envres.2019.02.020.
- 519 [41] C. B. Craft, E. D. Seneca, and S. W. Broome, “Loss on Ignition and Kjeldahl Digestion for
520 Estimating Organic Carbon and Total Nitrogen in Estuarine Marsh Soils: Calibration with Dry
521 Combustion,” 1991. [Online]. Available: <https://about.jstor.org/terms>
- 522 [42] D. W. Nelson and L. E. Sommers, “Total Carbon, Organic Carbon, and Organic Matter,” 1996.
- 523 [43] T. Kai, M. Mukai, K. S. Araki, D. Adhikari, and M. Kubo, “Analysis of Chemical and Biological
524 Soil Properties in Organically and Conventionally Fertilized Apple Orchards,” *J Agric Chem
525 Environ*, vol. 05, no. 02, pp. 92–99, 2016, doi: 10.4236/jacen.2016.52010.
- 526 [44] A. Sarker, Md. A. Kashem, K. T. Osman, I. Hossain, and F. Ahmed, “Evaluation of Available
527 Phosphorus by Soil Test Methods in an Acidic Soil Incubated with Different Levels of Lime and
528 Phosphorus,” *Open Journal of Soil Science*, vol. 04, no. 03, pp. 103–108, 2014, doi:
529 10.4236/ojss.2014.43014.
- 530 [45] G. A. Thomas, R. C. Dalal, and J. Standley, “No-till effects on organic matter, pH, cation
531 exchange capacity and nutrient distribution in a Luvisol in the semi-arid subtropics,” *Soil Tillage
532 Res*, vol. 94, no. 2, pp. 295–304, Jun. 2007, doi: 10.1016/j.still.2006.08.005.
- 533 [46] G. M. Pierzynski, *Methods of phosphorus analysis for soils, sediments, residuals, and waters*.
534 [North Carolina State University], 2000.
- 535 [47] “FastQC.” Jun. 2015.
- 536 [48] M. Martin, “Cutadapt removes adapter sequences from high-throughput sequencing reads,”
537 *EMBnet J*, vol. 17, no. 1, p. 10, May 2011, doi: 10.14806/EJ.17.1.200.
- 538 [49] D. E. Wood, J. Lu, and B. Langmead, “Improved metagenomic analysis with Kraken 2,” *Genome
539 Biol*, vol. 20, no. 1, pp. 1–13, Nov. 2019, doi: 10.1186/S13059-019-1891-0/FIGURES/2.
- 540 [50] K. D. Pruitt, T. Tatusova, and D. R. Maglott, “NCBI reference sequences (RefSeq): a curated non-
541 redundant sequence database of genomes, transcripts and proteins,” *Nucleic Acids Res*, vol. 35, no.
542 suppl_1, pp. D61–D65, Jan. 2007, doi: 10.1093/NAR/GKL842.
- 543 [51] F. P. Breitwieser and S. L. Salzberg, “Pavian: interactive analysis of metagenomics data for
544 microbiome studies and pathogen identification,” *Bioinformatics*, vol. 36, no. 4, p. 1303, Feb.
545 2020, doi: 10.1093/BIOINFORMATICS/BTZ715.
- 546 [52] I. Mohammed, W. A. Rahaman, and E. Nketiah-Amponsah, “Relationship between personality
547 traits and childbearing in an African context: Evidence from Ghana.”

- 548 [53] Food and Agriculture Organization of the United Nations, *World reference base for soil resources*
549 *2014 : international soil classification system for naming soils and creating legends for soil maps.*
550 FAO, 2014.
- 551 [54] M. Scotch, B. Parmanto, C. S. Gadd, and R. K. Sharma, “Exploring the role of GIS during
552 community health assessment problem solving: Experiences of public health professionals,” *Int J*
553 *Health Geogr*, vol. 5, pp. 1–10, 2006, doi: 10.1186/1476-072X-5-39.
- 554 [55] Z. B. V. da S. Pontes, A. C. de Oliveira, F. Q. S. Guerra, L. R. de A. Pontes, and J. P. dos Santos,
555 “Distribuição de dermatófitos isolados de solos de cidades do Estado da Paraíba, Brasil,” *Rev Inst*
556 *Med Trop Sao Paulo*, vol. 55, no. 6, pp. 377–383, Nov. 2013, doi: 10.1590/S0036-
557 46652013000600002.
- 558 [56] O. E. Oyewole and I. A. Simon-Oke, “Ecological risk factors of soil-transmitted helminths
559 infections in Ifedore district, Southwest Nigeria,” *Bull Natl Res Cent*, vol. 46, no. 1, Dec. 2022,
560 doi: 10.1186/s42269-022-00700-8.
- 561 [57] S. Höss, N. Reiff, W. Traunspurger, and J. Helder, “On the balance between practical relevance
562 and standardization - Testing the effects of zinc and pyrene on native nematode communities in
563 soil microcosms,” *Science of the Total Environment*, vol. 788, Sep. 2021, doi:
564 10.1016/j.scitotenv.2021.147742.
- 565 [58] I. Drahun *et al.*, “Three years of surveillance associates agro-environmental factors with wireworm
566 infestations in Manitoba, Canada,” *Pest Manag Sci*, vol. 78, no. 1, pp. 369–378, Jan. 2022, doi:
567 10.1002/ps.6650.
- 568 [59] W. Zhou, G. Han, M. Liu, and X. Li, “Effects of soil pH and texture on soil carbon and nitrogen in
569 soil profiles under different land uses in Mun River Basin, Northeast Thailand,” *PeerJ*, vol. 2019,
570 no. 10, 2019, doi: 10.7717/peerj.7880.
- 571 [60] S. E. Etewa, S. A. Abdel-Rahman, N. F. Abd El-Aal, G. M. Fathy, M. A. El-Shafey, and A. M. G.
572 Ewis, “Geohelminths distribution as affected by soil properties, physicochemical factors and
573 climate in Sharkyia governorate Egypt,” *Journal of Parasitic Diseases*, vol. 40, no. 2, pp. 496–
574 504, 2016, doi: 10.1007/s12639-014-0532-5.
- 575 [61] P. Steinmann *et al.*, “Efficacy of single-dose and triple-dose albendazole and mebendazole against
576 soil-transmitted helminths and taenia spp.: A randomized controlled trial,” *PLoS One*, vol. 6, no. 9,
577 2011, doi: 10.1371/journal.pone.0025003.
- 578 [62] W. N. Grant *et al.*, “*Parastrongyloides trichosuri*, a nematode parasite of mammals that is uniquely
579 suited to genetic analysis,” *Int J Parasitol*, vol. 36, no. 4, pp. 453–466, Apr. 2006, doi:
580 10.1016/j.ijpara.2005.11.009.
- 581 [63] D. M. Darlan, M. F. Rozi, and H. Yulfi, “Overview of immunological responses and
582 immunomodulation properties of trichuris sp.: Prospects for better understanding human
583 trichuriasis,” *Life*, vol. 11, no. 3. MDPI AG, 2021. doi: 10.3390/LIFE11030188.

- 584 [64] K. Stracke, A. R. Jex, and R. J. Traub, “Zoonotic ancylostomiasis: An update of a continually
585 neglected zoonosis,” *American Journal of Tropical Medicine and Hygiene*, vol. 103, no. 1.
586 American Society of Tropical Medicine and Hygiene, pp. 64–68, Jul. 01, 2020. doi:
587 10.4269/ajtmh.20-0060.
- 588 [65] M. Anegagrie *et al.*, “Environmental characteristics around the household and their association
589 with hookworm infection in rural communities from bahir dar, amhara region, Ethiopia,” *PLoS*
590 *Negl Trop Dis*, vol. 15, no. 6, Jun. 2021, doi: 10.1371/journal.pntd.0009466.
- 591 [66] M. L. H. Mabaso, C. C. Appleton, J. C. Hughes, and E. Gouws, “Hookworm (*Necator americanus*)
592 transmission in inland areas of sandy soils in KwaZulu-Natal, South Africa,” *Tropical Medicine*
593 *and International Health*, vol. 9, no. 4, pp. 471–476, Apr. 2004, doi: 10.1111/j.1365-
594 3156.2004.01216.x.
- 595 [67] C. Isaac, P. N. Turay, C. U. Inegbenosun, S. A. Ezekiel, H. O. Adamu, and J. A. Ohiolei,
596 “Prevalence of soil-transmitted helminths in primary school playgrounds in Edo State, southern
597 Nigeria,” *Helminthologia (Poland)*, vol. 56, no. 4, pp. 282–295, Nov. 2019, doi: 10.2478/helm-
598 2019-0028.
- 599 [68] B. Sedionoto, S. Wasessombat, N. Jeenduang, C. Punsawad, W. Anamnart, and J. Tangpong,
600 “Environmental Risk Factors of Hookworm and *Strongyloides stercoralis* Infections Among
601 School Children in Rural Areas Kutai Kertanegara Regency, Indonesia”, doi: 10.35248/2329-89.
- 602 [69] L. H. Kwong *et al.*, “Effect of sanitation improvements on soil-transmitted helminth eggs in
603 courtyard soil from rural Bangladesh: Evidence from a cluster-randomized controlled trial,” *PLoS*
604 *Negl Trop Dis*, vol. 15, no. 7, Jul. 2021, doi: 10.1371/journal.pntd.0008815.
- 605 [70] E. Nyandwi, T. Veldkamp, S. Amer, E. Ruberanziza, N. Rujeni, and I. Umulisa, “Using Routinely
606 Collected Health Records to Identify the Fine-Resolution Spatial Patterns of Soil-Transmitted
607 Helminth Infections in Rwanda,” *Trop Med Infect Dis*, vol. 7, no. 8, Aug. 2022, doi:
608 10.3390/tropicalmed7080202.
- 609