

Interaction between *APOE4* status and lifestyle on brain and cognitive outcomes in cognitively unimpaired older adults

Francesca Felisatti,¹ Léa Chauveau,¹ Natalie L Marchant,² Fabienne Collette,³ Harriet Demnitz-King,² Tim Whitfield,² Florence Requier,³ Florence Mézenge,¹ Brigitte Landeau,¹ Cassandre Palix,¹ Sacha Haudry,¹ Marion Delarue,¹ Vincent de la Sayette,⁴ Denis Vivien,^{1,5} Géraldine Poisnel,¹ Robin de Flores,^{1*} Gaël Chételat^{1*} & Julie Gonneaud¹ for the MEDIT-AGEING Research Group[†]

1 Normandy University, UNICAEN, INSERM, U1237, PhIND “Physiopathology and Imaging of Neurological Disorders”, Institut Blood and Brain @ Caen-Normandie, Cyceron, 14000 Caen, France.

2 Division of Psychiatry, University College London, London, United Kingdom.

3 GIGA CRC In vivo Imaging, University of Liège, Liège, Belgium.

4 Service de Neurologie, CHU de Caen, Caen, France.

5 Département de Recherche Clinique, CHU Caen-Normandie, Caen, France.

*These authors contributed equally

† the full list of the Medit-Ageing Research Group is provided at the end of the manuscript in the Appendix

Correspondence to:

Julie Gonneaud, PhD

GIP Cyceron Boulevard Henri Becquerel

14000 Caen

France

Tel.: (+33) 2 31 47 01 37

Fax: (+33) 2 3147 02 75

Email: gonneaud@cyceron.fr

Abstract

INTRODUCTION: *APOE4* genotype and lifestyle have been associated with Alzheimer's disease (AD) risk, but how they interact on neuroimaging and cognitive markers of aging and AD remains unclear.

METHODS: In 135 cognitively unimpaired older adults from the baseline Age-Well trial, we investigated the interaction between *APOE4* status and cognitive activity, diet and physical activity on cognition and neuroimaging markers of neurodegeneration and amyloid.

RESULTS: Higher cognitive activity correlated with lower medial temporal lobe (MTL) volume and perfusion in *APOE4*-carriers, but increased cognitive performance irrespective of *APOE4* status. Higher adherence to the Mediterranean diet correlated with higher MTL metabolism and attention scores in *APOE4*-carriers. Conversely, physical activity correlated with higher MTL perfusion and lower amyloid in *APOE4*-non-carriers only.

DISCUSSION: Genetics and lifestyle factors act through different mechanisms to help *APOE4*-carriers resist or cope with brain alterations and postpone cognitive decline. Our results support the need of personalized lifestyle-based interventions for AD.

Trial Registration Information: EudraCT: 2016-002441-36; IDRCB: 2016-A01767-44; ClinicalTrials.gov Identifier: NCT02977819.

KEYWORDS

Reserve, aging, Alzheimer's disease, multimodal neuroimaging, cognition

INTRODUCTION

Alzheimer's disease (AD) is characterized by the accumulation of amyloid plaques and neurofibrillary tangles, accompanied by various structural and functional brain alterations. AD development and progression is likely influenced by a combination of genetic and environmental risk factors.¹ Among those, the apolipoprotein E allele $\epsilon 4$ (*APOE4*) is the major genetic risk factor for sporadic AD.² Associations between *APOE4* status and brain integrity in cognitively unimpaired individuals have been inconsistent. Robust associations were found for amyloid load, showing increased amyloid deposition in *APOE4*-carriers compared to non-carriers,^{3,4} while studies on gray matter volume (GMvol), glucose metabolism and perfusion are more discordant, showing either greater alterations,^{5,6} greater integrity in *APOE4*-carriers,^{7,8,9} or no differences between groups.^{3,10,11}

Beyond genetics, increasing evidence highlights the importance of lifestyle factors in brain integrity and cognitive performance. Cognitive activity,^{12,13,14} adherence to the Mediterranean diet^{15,16,17} and physical activity^{14,18,19} for review have been associated with greater cognition and brain integrity in cognitively unimpaired older adults, although contradictory findings exist.²⁰ Interestingly, *APOE4* genotype and lifestyle factors might interact on cerebral and cognitive markers of ageing and AD. More specifically, a healthy and stimulating lifestyle could particularly benefit *APOE4*-carriers.²¹ For instance, previous studies highlighted an interaction between *APOE4* status and cognitive activity on amyloid and cognition, such that higher cognitive activity was associated with lower amyloid deposition²² and higher cognitive scores²³ in *APOE4*-carriers when compared to non-carriers. *APOE4*-carriers with higher adherence to the Mediterranean diet also demonstrated increased cognitive functions.²⁴ Additionally, physical activity was more strongly related to increased hippocampal volume,²⁵ reduced amyloid deposition²⁶ for review and cognitive decline²⁷ in *APOE4*-carriers compared to non-carriers. However, negative findings have also been reported with no interactive effects or greater effect in *APOE4*-non-carriers for cognitive activity,^{28,27} adherence to the Mediterranean diet^{29,15,30} and physical activity.^{28,31,32} Notably, one study found that with higher cognitive activity, *APOE4*-carriers had smaller hippocampal volumes than non-carriers.²⁸ While such

negative association might suggest a detrimental effect of cognitive engagement in *APOE4*-carriers, it could alternatively indicate the existence of compensation mechanisms, helping these individuals to remain cognitively normal despite brain alterations (i.e., *resilience*). The paucity of cognitive and neuroimaging outcomes concurrently prevents from interpreting the results in terms of underlying reserve mechanisms and notably to differentiate these two opposite possible interpretations.

In that context, the aim of this study was to provide a comprehensive assessment of the interplay between *APOE4* genotype and various lifestyle factors (i.e., cognitive activity, adherence to the Mediterranean diet and physical activity) on multimodal neuroimaging markers and cognition in cognitively unimpaired older adults. By combining multimodal neuroimaging and cognition, we aim to better understand the mechanisms by which lifestyle could mitigate the effect of *APOE4*. For neuroimaging, we focused on AD-sensitive markers including neocortical amyloid burden, as well as GMvol, perfusion and glucose metabolism in the Medial Temporal Lobe (MTL), known to be the first site of neurodegeneration in the course of AD³³ and to be frequently affected in *APOE4*-carriers.³⁴

Based on the existing resistance/resilience framework,³⁵ we hypothesized three distinct scenarios (Figure 1). In these scenarios, *APOE4*-non-carriers are an optimal reference for healthy ageing (i.e., optimal brain and cognitive outcomes), in whom lifestyle is associated with mild to moderate increase in brain integrity and cognition. First, lifestyle could confer *resistance* to *APOE4*-carriers, allowing them to maintain brain integrity and avoid pathology. In this case, we expect healthier lifestyles in *APOE4*-carriers to be associated with greater brain integrity and cognitive function (i.e., *Resistance*; Figure 1A). Second, lifestyle could allow *APOE4*-carriers to better cope with brain aging and pathology. In this scenario, healthier lifestyles would be associated with equal or improved cognition in *APOE4*-carriers despite reduced brain integrity and/or greater pathology (i.e. *Resilience*; Figure 1B). A third hypothesis would be that lifestyle can be equally beneficial in carriers and non-carriers or cannot counteract the

deleterious effect of *APOE4* carriage. In this case, no interactions between *APOE4* status and lifestyle would be evidenced in terms of both brain and cognitive outcomes (Figure 1C).

METHODS

Participants

We included 135 cognitively unimpaired older adults from the baseline visit of the Age-Well randomized clinical trial (RCT; Medit-Ageing European Project;³⁶ see Flow diagram - eFigure S1). Individuals over 65 years were recruited from the general population from November 2016 to March 2018. Participants were native French speakers, retired for at least 1 year, with at least 7 years of education, and performed within the normal range on standardized cognitive evaluation. Exclusion criteria included i) history of cerebrovascular disease, ii) presence of a chronic disease or acute unstable illness, iii) evidence of major neurological or psychiatric disorders (including drug or alcohol abuse), and iv) recent or current medication use that may interfere with cognitive functioning. Baseline data were collected between November 2016 and April 2018. Participants completed lifestyle questionnaires, and underwent *APOE4* genotyping, cognitive assessments, and multimodal neuroimaging.

Standard Protocol Approvals, Registrations, and Patient Consents

The Age-Well RCT was approved by local ethics committee (Comité de Protection des Personnes Nord-Ouest III, Caen, France; registration number: EudraCT: 2016-002441-36; IDRCB: 2016-A01767-44; ClinicalTrials.gov Identifier: NCT02977819) and a written informed consent was obtained from each participant prior to examinations.

Neuroimaging acquisitions

All participants were assessed on the same magnetic resonance imaging (MRI; Philips Achievia 3.0T scanner) and positron emission tomography (PET; Discovery RX VCT 64 PET-CT scanner, General Electric Healthcare) cameras in separate sessions at the Cyceron Center (Caen, France). A high-resolution T1-weighted structural image and a 3D fluid-attenuated

inversion recovery image were acquired in all participants. FDG- and Florbetapir-PET scans were acquired on two separate days (n=92 and n=134, respectively). For Florbetapir-PET, each participant underwent a dual phase scan, an early acquisition beginning immediately after the injection, used as a proxy of brain perfusion (n=133), and a late acquisition (50-min post-injection) to obtain a measure of amyloid burden (n=134). Details on acquisition parameters and procedures are provided in eMethods.

Neuroimaging processing

Gray matter volume, perfusion and metabolism of the Medial Temporal Lobe

The hippocampus (anterior and posterior), entorhinal, perirhinal (Brodmann areas 35 and 36) and parahippocampal cortices were automatically segmented from T1-weighted MRI with the Automatic Segmentation of Hippocampal Subfields (ASHS) software,³⁷ using the ASHS-T1 atlas (ashsT1_atlas_upennpmc_07202018).³⁸ For each participant, segmentation of each MTL sub-region was visually inspected. Failed segmentations were manually edited when possible, or excluded. After exclusion of failed segmentations, resulting number of participants for the GMvol of the perirhinal cortex was 131. The whole hippocampus volume was calculated as the sum of anterior and posterior hippocampus volumes while the perirhinal cortex volume was obtained by summing Brodmann areas 35 and 36 volumes. Finally, left and right volumes were averaged and normalized by the total intracranial volume (TIV, estimated using SPM12) to account for inter-individual variability in head size (normalized volume = raw volume x 1000 / TIV).

Early Florbetapir-PET was reconstructed from 1 to 6 min for a better approximation of brain perfusion. FDG and early Florbetapir-PET images were coregistered to each subject's T1-weighted native space using rigid registration in Advanced Normalization Tools (ANTs) and then quantitatively normalized using the cerebellar cortex as a reference. ASHSs segmentations were used as regions-of-interest to extract MTL sub-regional glucose metabolism (FDG-PET) and perfusion (early Florbetapir-PET) standardized uptake value ratio (SUVr) in the resulting PET images.

Amyloid burden

Florbetapir-PET late acquisition images were processed as previously described, to obtain a global neocortical measure of amyloid burden.³⁹ Briefly, T1-weighted MRI images were segmented using FLAIR images and spatially normalized to the Montreal Neurological Institute (MNI) space using the Statistical Parametric Mapping (SPM12) software's multiple channels segmentation procedure (<http://www.fil.ion.ucl.ac.uk/spm/software/spm12>). Florbetapir-PET data were coregistered onto their corresponding T1-weighted MRI and normalized to the MNI space using the parameters from the segmentation procedure. Resulting images were quantitatively normalized using the cerebellar gray matter uptake as a reference. Global neocortical amyloid SUVR was then extracted from these images using a predetermined neocortical mask including the entire gray matter, except the cerebellum, occipital and sensory motor cortices, hippocampi, amygdala and basal nuclei.⁴⁰

APOE genotyping procedure

Fasting blood samples were obtained for all participants. *APOE* genotype was identified by restriction isotyping from genomic DNA extracted from frozen leucocytes, amplified by PCR, and restricted with HhaI.⁴¹ *APOE4*-carriers were defined as carriers of one or two $\epsilon 4$ alleles. Individuals with no $\epsilon 4$ allele were defined as *APOE4*-non-carriers.

Lifestyle assessment

Cognitive and complex mental activities

Frequency of participation in leisure cognitive activities was assessed using an adapted and French translated version of the Cognitive Activities questionnaire (CAQ)⁴² and the Lifetime of Experiences Questionnaire (LEQ).^{43,44} In this study we focused on current lifestyle. Therefore, while both questionnaires assessed lifetime activities, only the current period of the CAQ and the late-life sub-score of the LEQ were used.

The CAQ assesses the frequency of participation in cognitive activities involved in seeking or processing information (e.g., reading books or newspapers, writing letters or emails, playing

games or going to the library), relatively common and with minimal demands or requirements to participation, across different age epochs: 6, 12, 18, 40 years and the current period.⁴² For each type of activity, participants are invited to report its frequency using a 5-point response scale (1-once a year or less, 2-several times a year, 3-several times a month, 4-several times a week, 5-every day). The CAQ current period sub-score was obtained by averaging the 5 items referring to the current period, with higher scores representing a greater engagement in cognitive activities.

The LEQ assesses complex mental activity through 3 life periods: young adulthood (13–30 years), mid-life (30–65 years), and late-life (from 65 years to present date). Each life period includes a specific (e.g., education, occupational complexity) and a non-specific (e.g., visits to family or friends, music practice, writing, reading, physical activities, travelling) components, which are summed up to obtain one global score per period. Late-life LEQ (specific + non-specific) was used in the present study, with higher scores representing greater engagement in complex mental activities.

Adherence to the Mediterranean diet

Adherence to the Mediterranean diet was measured using the self-administered Mediterranean Diet Adherence Screener (MEDAS).⁴⁵ This questionnaire includes 14 questions. (12 questions on food consumption frequency, and 2 questions on food intake habits) which are considered critical to assess adherence to the traditional Mediterranean diet (e.g., “do you use olive oil as the principal source of fat for cooking?”, “do you prefer to eat chicken, turkey or rabbit instead of beef, pork, hamburgers or sausages?”). One point was given to answers that were favorable to the Mediterranean diet, and 0 point to answers that were not favorable. The MEDAS score ranges from 0 to 14, with higher scores indicating higher adherence to the Mediterranean diet.

Physical activity

We assessed physical activity with the Modifiable Activity Questionnaire (MAQ),⁴⁶ using the French version adapted to be self-administered.⁴⁷ Briefly, the questionnaire evaluates the frequency and duration of leisure and work-related physical activities over the past 12 months. As all participants were retired, only the leisure activity score was considered. Participants had to select from a list all activities they did at least 10 times over the past 12 months (e.g. gardening, walking, hiking, jogging, biking), and estimate the amount of time they spent doing each activity (i.e., how many months per year, time per month and minutes each time). For each activity, the average number of hours of physical activity per week was obtained as follows: [(number of months per year) x (number of times per month) x (minutes per time) / 60 (min)] / 52 (week per year). These scores were then summed to derive a total score. The total physical activity score reflects the average hours per week of leisure-time physical activity over the past 12 months. MAQ data was missing for one participant.

Cognitive assessment

The neuropsychological evaluation included tests assessing global cognitive functioning, episodic memory, executive functions and attention. To obtain robust proxies of cognitive abilities and limit multiple statistical testing issues, composite scores were computed. The Preclinical Alzheimer's Cognitive Composite 5 (PACC-5)⁴⁸ was calculated as an index of global cognitive functioning, along with composite scores of episodic memory, executive functions and attention. Details for each score's calculation are provided in eMethods and eTable 1.

Statistical analysis

First, *APOE4* carriers and non-carriers characteristics were compared using two-sample t-tests. General linear models were then used to assess i) the associations of *APOE4* and lifestyle factors separately with each neuroimaging and cognitive measure, and ii) the interactions between each lifestyle factor and *APOE4* on each neuroimaging and cognitive measure. All analyses were controlled for age, sex and education. In complementary analyses,

the interactions between lifestyle factors and *APOE4* on neuroimaging or cognition were further controlled for the other lifestyle factors.

Analyses were conducted using the R software (R Core Team, 2019) and results considered significant at $p < .05$. Considering the exploratory nature of this work, no correction for multiple comparisons was applied.

The MAQ (physical activity) score was not normally distributed. Therefore, MAQ values were log-transformed after the addition of a constant of 1 to each score (as values of 0 cannot be directly log-transformed).

RESULTS

Participants' characteristics

Participants' characteristics are detailed in Table 1. The 36 *APOE4*-carriers did not differ from the 99 non-carriers in terms of age, education, female/male ratio or lifestyle.

Due to missing data (see Methods), sample size slightly varies across analysis. Final sample size per neuroimaging modality is summarized in eTable 2.

Association of *APOE4* status with neuroimaging and cognition

APOE4-carriers had higher global amyloid burden compared to non-carriers ($\beta=0.24$, $p=0.006$). No associations were found between *APOE4* status and MTL subregions volume, metabolism, perfusion, nor with cognitive functions (all $p_s > 0.05$; eTable 3).

Association of lifestyle factors with neuroimaging and cognition

Higher CAQ was associated with reduced GMvol in the parahippocampal cortex ($\beta=-0.2$, $p=0.02$). No associations were found between the CAQ and the other MTL subregions or neuroimaging modalities, nor between the LEQ, MAQ or MEDAS and neuroimaging measures (all $p_s > 0.05$; eTable 4).

Higher CAQ was associated with higher PACC-5 ($\beta=0.23$, $p=0.004$), executive function ($\beta=0.24$, $p=0.003$) and attention ($\beta=0.25$, $p=0.002$). Higher LEQ was associated with higher

PACC-5 ($\beta=0.2$, $p=0.01$) and episodic memory ($\beta=0.21$, $p=0.01$). The MEDAS and MAQ were not associated with cognition (all $ps>0.05$; eTable 5).

Interactions between *APOE4* status and lifestyle factors

Full statistics are reported in Table 2.

Interactions between APOE4 status and cognitive activity

CAQ: An interaction between *APOE4* status and the CAQ was found for GMvol in the parahippocampal cortex ($\beta=-1.01$, $p=0.02$), and for perfusion in the entorhinal and perirhinal cortices ($\beta=-1.08$, $p=0.02$ and $\beta=-1.08$, $p=0.02$, respectively) such that, in *APOE4*-carriers higher CAQ was associated with lower GMvol and perfusion compared to non-carriers (Figure 2A). We found no interactions between *APOE4* status and the CAQ on cognition, suggesting that the better cognition associated with higher CAQ (see paragraph 3.3) did not differ between *APOE4*-carriers and non-carriers (Figure 2B).

LEQ: We found a significant interaction between *APOE4* status and the LEQ for perfusion in the parahippocampal cortex ($\beta=-1.26$, $p=0.02$), such that with higher LEQ, *APOE4*-carriers had lower perfusion compared to non-carriers (Figure 2A). A trend was found in the same direction for the parahippocampal cortex metabolism ($\beta=-1.32$, $p=0.05$). No interactions were found between *APOE4* status and the LEQ on cognition, suggesting that the positive association previously evidenced between the LEQ and cognition (see above) did not differ between *APOE4*-carriers and non-carriers (Figure 2B).

Interactions between APOE4 status and adherence to the Mediterranean diet

We found an interaction between *APOE4* status and the MEDAS on hippocampal and entorhinal cortex metabolism ($\beta=0.76$, $p=0.02$ and $\beta=0.93$, $p=0.006$, respectively), such that, compared to non-carriers, *APOE4*-carriers showed a higher metabolism with higher MEDAS (Figure 3A). Similarly, an interaction between *APOE4* and the MEDAS was found on attention ($\beta=0.52$, $p=0.05$; Figure 3B), revealing better attention as a function of MEDAS in *APOE4*-

carriers, compared to non-carriers. No interactions were found for the other neuroimaging or cognitive measures (Table 2 for details).

Interactions between APOE4 status and physical activity

An interaction between *APOE4* status and the MAQ was found on hippocampal perfusion ($\beta=-0.51$, $p=0.04$; Figure 4A) and amyloid deposition ($\beta=0.53$, $p=0.03$; Figure 4B). The interactions were such that, compared to *APOE4*-carriers, non-carriers with higher MAQ scores showed higher perfusion and lower amyloid deposition. No interactions were found on the other neuroimaging or cognitive measures (Table 2).

Complementary analyses

Interaction analyses were replicated while controlling for the other lifestyle factors and results remained similar, except for the interaction between *APOE4* status and the LEQ on parahippocampal cortex metabolism that became significant ($\beta=-1.56$, $p=0.026$), while the interaction between *APOE4* status and the MEDAS on attention was attenuated ($\beta=0.45$, $p=0.07$) (eTable 6).

DICUSSION

Our study provides insights on the complex interactive effects of genetics and lifestyle factors on complementary cerebral and cognitive outcomes in cognitively unimpaired older adults. Cognitive activity was associated with lower gray matter volume and perfusion within the MTL in *APOE4* carriers only, but higher cognitive performance in both *APOE4* carriers and non-carriers. Adherence to the Mediterranean diet showed a greater positive association with both cerebral glucose metabolism and cognition (i.e. attention scores) in *APOE4* carriers when compared to non-carriers. By contrast, physical activity was associated with higher MTL perfusion and lower global amyloid load in *APOE4* non-carriers only, with no effects on cognition.

In this study, *APOE4* carriage was associated with greater amyloid deposition. This finding is consistent with a large body of evidence showing increased amyloid burden in *APOE4*-carriers.^{3,4} However, *APOE4* was not associated with GMvol, metabolism or perfusion of the MTL, or with cognition. While deleterious effects of the *APOE4* allele on these measures have been evidenced,^{5,6,49,50} the literature provides mixed results.^{9,11,10,3,51,52} These inconsistencies could reflect the fact that, except for amyloid deposition, effects of *APOE4* in cognitively unimpaired individuals are more subtle.^{3,53} Differences in methodology and sample characteristics across studies, including differences in lifestyle and cognitive reserve, might also explain these discrepancies.

Concerning lifestyle factors, only cognitive activity was directly associated with differences in neuroimaging markers and cognition. More particularly, higher cognitive activity was associated with lower GMvol in the parahippocampal cortex, which contrasts with previous research showing positive associations between cognitive activity and GMvol, including in the MTL.¹⁴ On the other hand, cognitive activity was associated with greater cognitive performance (i.e., global cognition, episodic memory, executive function and attention), in line with existing literature.^{23,54} The association between higher cognitive activity and greater atrophy, lower perfusion and higher cognitive performance could suggest the existence of compensation mechanisms. Specifically, compensation mechanisms may be promoted by a greater engagement in cognitive activities, reflecting a *resilience* mechanism (Figure 1B).³⁵ The interaction between *APOE4* status and cognitive activity suggests that this effect was mainly driven by *APOE4*-carriers.

Previous literature has highlighted interactions between *APOE4* status and cognitive activity such that cognitive activity could limit the deleterious effect of *APOE4* on AD biomarkers.^{22,55} Conversely, a study showed that with higher cognitive activity, *APOE4*-carriers had smaller hippocampal volume than non-carriers.²⁸ According to the authors, this result could reflect the existence of compensatory mechanisms in *APOE4*-carriers allowing them to maintain levels of cognitive performance comparable to non-carriers. Our findings support this view showing an interaction between *APOE4* and cognitive activity on volume and perfusion of the MTL, such

that with higher engagement in cognitive activity *APOE4*-carriers had lower GMvol and perfusion, but increased cognition, similar to non-carriers. This result suggests that higher cognitive activity could promote resilience and help *APOE4*-carriers to cope with brain alterations, possibly via greater efficiency of cognitive processes⁵⁶ (Figure 1.B).

The same pattern of interactions was replicated using two different and complementary measures of cognitive engagement (i.e., the CAQ and the LEQ), even though they concerned partially different neurodegeneration markers and cognitive domains. Specifically, *APOE4* interacted with the CAQ on parahippocampal cortex volume, entorhinal and perirhinal cortices perfusion and with the LEQ on parahippocampal cortex perfusion (and metabolism, to a lesser extent). This suggests the existence of common mechanisms, supported by different types of cognitive activities that could influence complementary markers of cognitive and brain integrity.

In the current study, adherence to the Mediterranean diet was not directly associated with any of the neuroimaging or cognitive parameters considered, in contrast with most prior research.^{15,16,17} However, there was an interaction with *APOE4* status on hippocampal and entorhinal cortices metabolism and attention scores. More specifically, *APOE4*-carriers with higher adherence to the Mediterranean diet showed higher metabolism and cognitive performance compared to non-carriers. These results align with previous evidence suggesting that dietary adjustments could be of particular importance to mitigate the deleterious effects of *APOE4* on brain and cognition in carriers.^{57,58} However, prior studies provide mixed results.^{15,29,24,30,59} Methodological differences between studies (e.g., sample size, mean age, sex ratio, design) might explain these discrepancies and would require further investigations. The association of a greater adherence to Mediterranean diet with both higher MTL metabolism and attention scores in *APOE4*-carriers (in the absence of negative associations with other brain outcomes that would suggest the existence of greater brain alterations) aligns with the hypothesis of a protective effect of lifestyle that would help to limit brain changes (here neurodegeneration), in line with the concept of *resistance* (Figure 1A).³⁵ Therefore, the

Mediterranean diet would promote reserve in *APOE4*-carriers through mechanisms that are different from those outlined for cognitive activity, potentially by supporting brain maintenance.

Lastly, we found an interaction between *APOE4* status and physical activity on hippocampal perfusion and global amyloid burden, such that higher levels of physical activity were associated with higher perfusion in the hippocampus and lower amyloid load in non-carriers only. While this finding is in agreement with another study showing more prominent effects of exercise on AD biomarkers in *APOE4*-non-carriers,⁶⁰ most studies report greater effects in *APOE4*-carriers.²⁶ for review Previous studies reporting a beneficial effect of physical activity on hippocampal cerebral blood volume⁶¹ and perfusion⁶² did not investigate the modulating role of *APOE4* on these associations. Our results suggest that such effects could be driven by *APOE4*-non-carriers, in whom physical activity would support mechanisms particularly efficient to promote brain integrity.

On the other hand, physical activity was not associated with cognition, nor interacted with *APOE4* on cognition. Previous results are mixed, showing greater beneficial effect of physical activity in *APOE4*-carriers,²⁷ in non-carriers,^{31,63} in both groups,⁶⁴ no effect,⁶⁵ or decreased cognitive abilities in *APOE4*-carriers.³² These contradictory findings need to be further explored in order to clarify the mechanisms involved. Our results suggest that, contrary to cognitive activity and diet, physical activity was not associated with higher reserve in *APOE4*-carriers (Figure 1C), but was specifically associated with greater brain outcomes in non-carriers.

The strengths of this study include the assessment of multiple lifestyle factors within the same individuals, allowing investigations into the relative effect of different lifestyle factors on brain and cognitive integrity. Multimodal neuroimaging, including state-of-the-art assessment of MTL structures, combined with cognitive assessments allows a better approach to studying the reserve mechanisms underlying the moderating effect of lifestyle on *APOE4*-related changes. This study also has some limitations, including a relatively modest sample size when splitting by *APOE4* status. The use of questionnaires to assess lifestyle factors only allows the

estimation of lifestyle behaviors and can be biased by individuals' perception and memory. Nevertheless, these questionnaires are widely used and their validity and reliability have been previously reported.^{42,43,46,45} Moreover, only current lifestyle was evaluated in individuals without cognitive impairments, limiting the likelihood of major recollection biases. Due to the exploratory nature of the study, no corrections were made for multiple comparisons and further replication will be needed to address the robustness of these findings. Finally, the cross-sectional design prevents evaluating the reserve mechanisms' dynamically in *APOE4*-carriers as brain alterations progress. Longitudinal studies, including interventional studies, would enhance our understanding of the complex interactions between *APOE4* status and lifestyle.

Overall, our study demonstrates that *APOE4* genotype interacts with lifestyle to influence brain integrity and cognition with different patterns of association depending on the lifestyle factor. Our results suggest that higher cognitive activity could promote *resilience*, while higher adherence to the Mediterranean diet might instead promote *resistance* in *APOE4*-carriers. On the other hand, physical activity had a beneficial effect only in *APOE4*-non-carriers. Our findings highlight a complex interplay between genetics and lifestyle, which differentially help *APOE4*-carriers to resist or cope with brain alterations and postpone cognitive decline. In the absence of a treatment for AD, these results may deepen our understanding of how lifestyle interacts with AD genetic risk to alter the pathological phenotype and help provide lifestyle recommendations for personalized interventions to prevent or delay AD.

Acknowledgments

The authors thank all the Medit-Ageing Research Group members and the Cyceron MRI-PET staff members for their help with recruitment, data acquisition, or administrative support; the EUCLID team, the sponsor (INSERM) and the participants of the study for their contribution. The full Medit-Ageing Research Group is listed in the Appendix.

Sources of Funding

The Age-Well randomized clinical trial is part of the Medit-Ageing project and is supported by the European Union's Horizon 2020 Research and Innovation Program (grant 667696), Région Normandie (Label d'Excellence), and Fondation d'Entreprise MMA des Entrepreneurs du Futur. Institut National de la Santé et de la Recherche Médicale (Inserm) is the sponsor. The funders and sponsor had no role in the design and conduct of the study; collection, management, analysis, and interpretation of the data; preparation, review, or approval of the manuscript; and the decision to submit the manuscript for publication.

Disclosures

Dr. Chételat reported grants, personal fees, and non-financial support from Institut National de la Santé et de la Recherche Médicale (Inserm), grants from European Union's Horizon 2020 research and innovation programme under grant agreement No 667696 (PI), grants from Fondation d'entreprise MMA des Entrepreneurs du Futur, during the conduct of the study; personal fees from Fondation Entrepreneurs MMA, grants and personal fees from Fondation Alzheimer, grants from Région Normandie, grants from Fondation Recherche Alzheimer, and grants from Association France Alzheimer, outside the submitted work. F. Felisatti was funded by the European Union's Horizon 2020 Research and Innovation Program (grant 667696) and the MMA IARD SA. Dr Gonneaud received funding from the Fondation Alzheimer & Fondation de France (Allocation Jeune Chercheur) and an award from the Rotary Club Lille la Madeleine. Dr Marchant reported funding from the EU Joint Programme-Neurodegenerative Disease Research (JPND) grant funded by the UK Medical Research Council (No. MR/TO46171/1) outside the submitted work. Dr. Collette reported grants from F.R.S-FNRS (Belgium), Fond pour la Recherche Alzheimer and King Baudouin Foundation (Belgium), grants from Liège University. Tim Whitfield was funded by The Dunhill Medical Trust (grant number RTF1806\45). Florence Requier is supported by SAO-FRA (Belgium, grant 2020/0026). No other disclosures were reported.

References

1. Chételat G. Alzheimer disease: A β -independent processes-rethinking preclinical AD. *Nat Rev Neurol*. 2013;9(3):123-124. doi:10.1038/nrneurol.2013.21
2. Corder EH, Saunders AM, Strittmatter WJ, et al. Gene dose of apolipoprotein E type 4 allele and the risk of Alzheimer's disease in late onset families. *Science (80-)*. 1993;261(5123):921-923. doi:10.1126/science.8346443
3. Gonneaud J., Arenaza-Urquijo E., Fouquet M., et al. Relative effect of APOE e4 on neuroimaging biomarker changes across the lifespan. *Neurology*. 2016;87:1696-1703. <http://clinicaltrials.gov>
4. Jansen WJ, Ossenkuppele R, Knol DL, et al. Prevalence of cerebral amyloid pathology in persons without dementia: A meta-analysis. *JAMA - J Am Med Assoc*. 2015;313(19):1924-1938. doi:10.1001/jama.2015.4668
5. Honea RA, Vidoni E, Harsha A, Burns JM. Impact of APOE on the healthy aging brain: A voxel-based MRI and DTI study. *J Alzheimer's Dis*. 2009;18(3):553-564. doi:10.3233/JAD-2009-1163
6. Didic M, Felician O, Gour N, et al. Rhinal hypometabolism on FDG PET in healthy APO-E4 carriers: impact on memory function and metabolic networks. *Eur J Nucl Med Mol Imaging*. 2015;42(10):1512-1521. doi:10.1007/s00259-015-3057-y
7. Alexander GE, Bergfield KL, Chen K, et al. Gray matter network associated with risk for Alzheimer's disease in young to middle-aged adults. *Neurobiol Aging*. 2012;33(12):2723-2732. doi:10.1016/j.neurobiolaging.2012.01.014
8. Yi D, Lee DY, Sohn BK, et al. Beta-amyloid associated differential effects of APOE ϵ 4 on brain metabolism in cognitively normal elderly. *Am J Geriatr Psychiatry*. 2014;22(10):961-970. doi:10.1016/j.jagp.2013.12.173
9. Bangen KJ, Restom K, Liu TT, et al. Assessment of Alzheimer's disease risk with functional magnetic resonance imaging: An arterial spin labeling study. *J Alzheimer's Dis*. 2012;31(0):S59-S74. doi:10.3233/JAD-2012-120292
10. Jack CR, Wiste HJ, Weigand SD, et al. Age, sex, and APOE ϵ 4 effects on memory, brain structure, and β -Amyloid across the adult life Span. *JAMA Neurol*. 2015;72(5):511-519. doi:10.1001/jamaneurol.2014.4821
11. Okonkwo OC, Xu G, Oh JM, et al. Cerebral blood flow is diminished in asymptomatic middle-aged adults with maternal history of alzheimer's disease. *Cereb Cortex*. 2014;24(4):978-988. doi:10.1093/cercor/bhs381
12. Marseglia A, Darin-Mattsson A, Kalpouzos G, et al. Can active life mitigate the impact of diabetes on dementia and brain aging? *Alzheimer's Dement*. 2020;16:1534-1543. doi:10.1002/alz.12142
13. Lyons CE, Tudorascu D, Snitz BE, et al. The Relationship of Current Cognitive Activity to Brain Amyloid Burden and Glucose Metabolism. *Am J Geriatr Psychiatry*. 2018;26(9):977-984. doi:10.1016/j.jagp.2018.03.018
14. Arenaza-Urquijo EM, de Flores R, Gonneaud J, et al. Distinct effects of late adulthood cognitive and physical activities on gray matter volume. *Brain Imaging Behav*. 2017;11(2):346-356. doi:10.1007/s11682-016-9617-3
15. Mosconi L, Murray J, Tsui WH, et al. Mediterranean Diet and Magnetic Resonance

- Imaging-Assessed Brain Atrophy in Cognitively Normal Individuals at Risk for Alzheimer's Disease. *J Prev Alzheimer's Dis.* 2014;1(1):23-32.
16. Berti V, Walters M, Sterling J, et al. Mediterranean diet and 3-year Alzheimer brain biomarker changes in middle-aged adults. *Neurology.* 2018;90(20):E1789-E1798. doi:10.1212/WNL.0000000000005527
 17. Anastasiou CA, Yannakoulia M, Kosmidis MH, et al. Mediterranean diet and cognitive health: Initial results from the Hellenic Longitudinal Investigation of Ageing and Diet. *PLoS One.* 2017;12(8):1-18. doi:10.1371/journal.pone.0182048
 18. Okonkwo OC, Schultz SA, Oh JM, et al. Physical activity attenuates age-related biomarker alterations in preclinical AD. *Neurology.* 2014;63:1753-1760.
 19. Erickson KI, Hillman C, Stillman CM, et al. Physical Activity, Cognition, and Brain Outcomes: A Review of the 2018 Physical Activity Guidelines. *Med Sci Sports Exerc.* 2019;51(6):1242-1251. doi:10.1249/MSS.0000000000001936
 20. Vemuri P, Lesnick TG, Przybelski SA, et al. Effect of lifestyle activities on alzheimer disease biomarkers and cognition. *Ann Neurol.* 2012;72(5):730-738. doi:10.1002/ana.23665
 21. Kivipelto M, Rovio S, Ngandu T, et al. Apolipoprotein E 4 magnifies lifestyle risks for dementia: a population-based study. *J Cell Mol Med.* 2008;12(6B):2762-2771. doi:10.1111/j.1582-4934.2008.0296.x
 22. Wirth M, Villeneuve S, La Joie R, Marks SM, Jagust WJ. Gene-environment interactions: Lifetime cognitive activity, APOE genotype, and beta-amyloid burden. *J Neurosci.* 2014;34(25):8612-8617. doi:10.1523/JNEUROSCI.4612-13.2014
 23. Carlson MC, Helms MJ, Steffens DC, Burke JR, Potter GG, Plassman BL. Midlife activity predicts risk of dementia in older male twin pairs. *Alzheimer's Dement.* 2008;4(5):324-331. doi:10.1016/j.jalz.2008.07.002
 24. Gardener SL, Rainey-Smith SR, Barnes MB, et al. Dietary patterns and cognitive decline in an Australian study of ageing. *Mol Psychiatry.* 2014;20(7):860-866. doi:10.1038/mp.2014.79
 25. Smith JC, Nielson KA, Woodard JL, et al. Physical activity reduces hippocampal atrophy in elders at genetic risk for Alzheimer's disease. *Front Aging Neurosci.* 2014;6(61):1-7. doi:10.3389/fnagi.2014.00061
 26. Brown BM, Peiffer JJ, Martins RN. Multiple effects of physical activity on molecular and cognitive signs of brain aging: Can exercise slow neurodegeneration and delay Alzheimer's disease? *Mol Psychiatry.* 2013;18(8):864-874. doi:10.1038/mp.2012.162
 27. Woodard JL, Nielson KA, Sugarman MA, et al. Lifestyle and Genetic Contributions to Cognitive Decline and Hippocampal Integrity in Healthy Aging. *Curr Alzheimer Res.* 2012;9(4):436-446.
 28. Jeon SY, Byun MS, Yi D, et al. Midlife Lifestyle Activities Moderate APOE ϵ 4 Effect on in vivo Alzheimer's Disease Pathologies. *Front Aging Neurosci.* 2020;12(42):1-11. doi:10.3389/fnagi.2020.00042
 29. Hill E, Szoek C, Dennerstein L, Campbell S, Clifton P. Adherence to the Mediterranean Diet Is not Related to Beta-Amyloid Deposition: Data from the Women's Healthy Ageing Project. *J Prev Alzheimer's Dis.* 2018;5(2):1-5. doi:10.14283/jpad.2018.12

30. Martínez-Lapiscina EH, Galbete C, Corella D, et al. Genotype patterns at CLU, CR1, PICALM and APOE, cognition and Mediterranean diet: The PREDIMED-NAVARRA trial. *Genes Nutr.* 2014;9(393):1-13. doi:10.1007/s12263-014-0393-7
31. Tan ZS, Spartano NL, Beiser AS, et al. Physical Activity, Brain Volume, and Dementia Risk: The Framingham Study. *J Gerontol A Biol Sci Med Sci.* 2017;72(6):789-795. doi:10.1093/gerona/glw130
32. Martin-Willett R, Morris B, Wilcox R, et al. The influence of a 16-week exercise program, APOE status, and age on executive function task performance: A randomized trial. *Exp Gerontol.* 2021;152:1-11. doi:10.1016/j.exger.2021.111431
33. Schöll M, Lockhart SN, Schonhaut DR, et al. PET Imaging of Tau Deposition in the Aging Human Brain. *Neuron.* 2016;89(5):971-982. doi:10.1016/j.neuron.2016.01.028
34. Li G, Bien-Ly N, Andrews-Zwilling Y, et al. GABAergic Interneuron Dysfunction Impairs Hippocampal Neurogenesis in Adult Apolipoprotein E4 Knockin Mice. *Cell Stem Cell.* 2009;5(6):634-645. doi:10.1016/j.stem.2009.10.015
35. Arenaza-Urquijo EM, Vemuri P. Resistance vs resilience to Alzheimer disease. *Neurology.* 2018;90(15):695-703. doi:10.1212/WNL.0000000000005303
36. Poisnel G, Arenaza-Urquijo E, Collette F, et al. The Age-Well randomized controlled trial of the Medit-Ageing European project: Effect of meditation or foreign language training on brain and mental health in older adults. *Alzheimer's Dement Transl Res Clin Interv.* 2018;4:714-723. doi:10.1016/j.trci.2018.10.011
37. Yushkevich PA, Pluta JB, Wang H, et al. Automated volumetry and regional thickness analysis of hippocampal subfields and medial temporal cortical structures in mild cognitive impairment. *Hum Brain Mapp.* 2015;36(1):258-287. doi:10.1002/hbm.22627
38. Xie L, Wisse LEM, Pluta J, et al. Automated segmentation of medial temporal lobe subregions on in vivo T1-weighted MRI in early stages of Alzheimer's disease. *Hum Brain Mapp.* 2019;40(12):3431-3451. doi:10.1002/hbm.24607
39. André C, Rehel S, Kuhn E, et al. Association of Sleep-Disordered Breathing with Alzheimer Disease Biomarkers in Community-Dwelling Older Adults: A Secondary Analysis of a Randomized Clinical Trial. *JAMA Neurol.* 2020;77(6):716-724. doi:10.1001/jamaneurol.2020.0311
40. La Joie R, Perrotin A, De La Sayette V, et al. Hippocampal subfield volumetry in mild cognitive impairment, Alzheimer's disease and semantic dementia. *NeuroImage Clin.* 2013;3:155-162. doi:10.1016/j.nicl.2013.08.007
41. Hixson J., Vernier DT. Restriction isotyping of human apolipoprotein E by gene amplification and cleavage with HhaI. *J Lipid Res.* 1990;31(3):545-548.
42. Wilson RS, Barnes LL, Bennett DA. Assessment of lifetime participation in cognitively stimulating activities. *J Clin Exp Neuropsychol.* 2003;25(5):634-642. doi:10.1076/jcen.25.5.634.14572
43. Valenzuela MJ, Sachdev P. Assessment of complex mental activity across the lifespan: Development of the Lifetime of Experiences Questionnaire (LEQ). *Psychol Med.* 2007;37(7):1015-1025. doi:10.1017/S003329170600938X
44. Ourry V, Marchant NL, Schild AK, et al. Harmonisation and Between-Country Differences of the Lifetime of Experiences Questionnaire in Older Adults. *Front Aging Neurosci.* 2021;13(740005):1-12. doi:10.3389/fnagi.2021.740005

45. Schröder H, Fitó M, Estruch R, et al. A Short screener is valid for assessing mediterranean diet adherence among older spanish men and women. *J Nutr.* 2011;141(6):1140-1145. doi:10.3945/jn.110.135566
46. Kriska AM, Knowler WC, Laporle RE, et al. Development of Questionnaire to Examine Relationship of Physical Activity and Diabetes in Pima Indians. *Diabetes Care.* 1990;13(4):401-412.
47. Vuillemin A, Oppert J-M, Guillemin F, et al. Self-administered questionnaire compared with interview to assess past-year physical activity. *Med Sci Sport Exerc.* 2000;32(6):1119-1124. <http://www.msse.org>
48. Papp KV, Rentz DM, Orlovsky I, Sperling RA, Mormino EC. Optimizing the preclinical Alzheimer's cognitive composite with semantic processing: The PACCS. *Alzheimer's Dement Transl Res Clin Interv.* 2017;3(4):668-677. doi:10.1016/j.trci.2017.10.004
49. Zhang Y, Fu S, Ding D, Lutz MW, Zeng Y, Yao Y. Leisure Activities, APOE ϵ 4, and Cognitive Decline: A Longitudinal Cohort Study. *Front Aging Neurosci.* 2021;13. doi:10.3389/fnagi.2021.736201
50. Dhana K, Aggarwal NT, Rajan KB, Barnes LL, Evans DA, Morris MC. Impact of the Apolipoprotein E ϵ 4 Allele on the Relationship Between Healthy Lifestyle and Cognitive Decline: A Population-Based Study. *Am J Epidemiol.* 2021;190(7):1225-1233. doi:10.1093/aje/kwab033
51. Samuraki M, Matsunari I, Chen WP, et al. Glucose metabolism and gray-matter concentration in apolipoprotein E ϵ 4 positive normal subjects. *Neurobiol Aging.* 2012;33(10):2321-2323. doi:10.1016/j.neurobiolaging.2011.11.020
52. Small BJ, Graves AB, Mcevoy CL, Crawford FC, Mullan M, Mortimer JA. Is APOE-4 a risk factor for cognitive impairment in normal aging? *Neurology.* 2000;54:2082-2088.
53. Fouquet M, Besson FL, Gonneaud J, La Joie R, Chételat G. Imaging Brain Effects of APOE4 in Cognitively Normal Individuals Across the Lifespan. *Neuropsychol Rev.* 2014;24(3):290-299. doi:10.1007/s11065-014-9263-8
54. Pellegrini-Laplagne M, Dupuy O, Sosner P, Bosquet L. Acute Effect of a Simultaneous Exercise and Cognitive Task on Executive Functions and Prefrontal Cortex Oxygenation in Healthy Older Adults. *Brain Sci.* 2022;12(4):455. doi:10.3390/brainsci12040455
55. Arenaza-Urquijo E., Gonneaud J., Fouquet M., et al. Interaction between years of education andAPOE ϵ 4 status on frontal and temporalmetabolism. *Neurology.* 2015;85:1392-1399.
56. Stern Y, Arenaza-Urquijo EM, Bartrés-Faz D, et al. Whitepaper: Defining and investigating cognitive reserve, brain reserve, and brain maintenance. *Alzheimer's Dement.* 2020;16(9):1305-1311. doi:10.1016/j.jalz.2018.07.219
57. Yassine HN, Finch CE. APOE Alleles and Diet in Brain Aging and Alzheimer's Disease. *Front Aging Neurosci.* 2020;12(150):1-18. doi:10.3389/fnagi.2020.00150
58. Fote GM, Geller NR, Reyes-Ortiz AM, Thompson LM, Steffan JS, Grill JD. A Scoping Review of Dietary Factors Conferring Risk or Protection for Cognitive Decline in APOE ϵ 4 Carriers. *J Nutr Heal Aging.* 2021;25(10):1167-1178. doi:10.1007/s12603-021-1705-4
59. Cherbuin N, Anstey KJ. The mediterranean diet is not related to cognitive change in a

- large prospective investigation: The PATH through life study. *Am J Geriatr Psychiatry*. 2012;20(7):635-639. doi:10.1097/JGP.0b013e31823032a9
60. Liang KY, Mintun MA, Fagan AM, et al. Exercise and Alzheimer's disease biomarkers in cognitively normal older adults. *Ann Neurol*. 2010;68(3):311-318. doi:10.1002/ana.22096
 61. Pereira AC, Huddleston DE, Brickman AM, et al. An in vivo correlate of exercise-induced neurogenesis in the adult dentate gyrus. *PNAS*. 2007;104(13):5638-5643.
 62. Burdette JH, Laurienti PJ, Espeland MA, et al. Using network science to evaluate exercise-associated brain changes in older adults. *Front Aging Neurosci*. 2010;2(23):1-10. doi:10.3389/fnagi.2010.00023
 63. Fenesi B, Fang H, Kovacevic A, Oremus M, Raina P, Heisz JJ. Physical exercise moderates the relationship of apolipoprotein E (APOE) genotype and dementia risk: a population-based study. *J Alzheimer's Dis*. 2017;56(1):297-303. doi:10.3233/JAD-160424
 64. Etnier JL, Karper WB, Labban JD, et al. The physical activity and Alzheimer's disease (PAAD) study: Cognitive outcomes. *Ann Behav Med*. 2018;52(2):175-185. doi:10.1093/abm/kax035
 65. Folley S, Zhou A, Llewellyn DJ, Hyppönen E. Physical Activity, APOE Genotype, and Cognitive Decline: Exploring Gene-Environment Interactions in the UK Biobank. *J Alzheimer's Dis*. 2019;71(3):741-750. doi:10.3233/JAD-181132

Table 1 Demographics

	<i>APOE4</i> carriers	<i>APOE4</i> non-carriers	<i>p</i> Value
N (%)	36	99	
Age, years (mean \pm SD)	69.12 (\pm 4.13)	69.51 (\pm 3.69)	0.595
Female/Male ratio	18/18	65/34	0.100
Education, years (mean \pm SD)	13.11 (\pm 3.41)	13.17 (\pm 2.98)	0.920
Physical activity, hours per week (MAQ, mean \pm SD)	6.50 (\pm 5.22)	6.24 (\pm 4.81)	0.783
Cognitive activity (CAQ, mean \pm SD)	17.56 (\pm 3.59)	17.53 (\pm 3.12)	0.962
Complex mental activity (LEQ, mean \pm SD)	27.94 (\pm 4.23)	28.21 (\pm 4.61)	0.764
Adherence to the Mediterranean Diet (MEDAS, mean \pm SD)	6.89 (\pm 2.58)	7.18 (\pm 1.99)	0.487
PACC-5 score (mean \pm SD)	-0.06 (\pm 1.14)	0.02 (\pm 0.95)	0.653
Episodic memory score (mean \pm SD)	0.02 (\pm 1.11)	-0.01 (\pm 0.97)	0.873
Executive functions score (mean \pm SD)	0.09 (\pm 1.01)	-0.04 (\pm 1)	0.493
Attention score (mean \pm SD)	0.08 (\pm 1.09)	-0.03 (\pm 0.98)	0.566

P-values were obtained from two-sample t-tests. Abbreviations: SD, standard deviation; APOE, apolipoprotein E gene; PACC-5, Preclinical Alzheimer's Cognitive Composite 5.

Table 2 Interactions of APOE4 with lifestyle factors on neuroimaging values or cognitive scores

Lifestyle factors	GM volume															
	Hippocampus				Entorhinal cortex				Perirhinal cortex				Parahippocampal cortex			
	<i>b</i>	β	<i>t Value</i>	<i>p Value</i>	<i>b</i>	β	<i>t Value</i>	<i>p Value</i>	<i>b</i>	β	<i>t Value</i>	<i>p Value</i>	<i>b</i>	β	<i>t Value</i>	<i>p Value</i>
CAQ	-0.021	-0.675	-1.511	0.133	0.001	0.129	0.282	0.778	-0.019	-0.743	-1.605	0.111	-0.016	-1.007	-2.33	0.021*
LEQ	-0.001	-0.035	-0.061	0.951	0.003	0.607	1.068	0.288	-0.01	-0.595	-1.027	0.306	-0.007	-0.721	-1.291	0.199
MAQ	-0.014	-0.051	-0.208	0.836	0.008	0.134	0.537	0.592	-0.099	-0.412	-1.644	0.103	0.01	0.068	0.274	0.784
MEDAS	0.003	0.039	0.142	0.887	0.003	0.203	0.734	0.464	-0.014	-0.221	-0.775	0.44	-0.003	-0.083	-0.306	0.76
	Glucose metabolism															
	Hippocampus				Entorhinal cortex				Perirhinal cortex				Parahippocampal cortex			
CAQ	0.000	0.025	0.05	0.96	-0.001	-0.139	-0.274	0.785	-0.000	-0.036	-0.072	0.943	0.002	0.281	0.557	0.579
LEQ	-0.002	-0.45	-0.671	0.504	-0.002	-0.603	-0.889	0.377	-0.004	-0.777	-1.158	0.25	-0.006	-1.315	-1.992	0.05
MAQ	0.011	0.188	0.612	0.542	0.007	0.136	0.439	0.662	0.017	0.25	0.814	0.418	-0.007	-0.111	-0.362	0.718
MEDAS	0.011	0.762	2.314	0.023*	0.012	0.929	2.818	0.006**	0.007	0.403	1.18	0.241	0.003	0.16	0.47	0.639
	Perfusion															
	Hippocampus				Entorhinal cortex				Perirhinal cortex				Parahippocampal cortex			
CAQ	-0.003	-0.648	-1.406	0.162	-0.006	-1.081	-2.357	0.02*	-0.006	-1.083	-2.351	0.02*	-0.003	-0.646	-1.455	0.148
LEQ	-0.002	-0.607	-1.056	0.293	-0.003	-0.966	-1.685	0.095	-0.003	-0.745	-1.28	0.203	-0.004	-1.257	-2.294	0.024*
MAQ	-0.024	-0.512	-2.049	0.043*	-0.003	-0.069	-0.27	0.788	-0.008	-0.151	-0.589	0.557	-0.021	-0.418	-1.718	0.088
MEDAS	0.001	0.059	0.207	0.836	0.001	0.102	0.359	0.72	0.001	0.104	0.364	0.716	-0.000	-0.016	-0.058	0.954
	Amyloid load															
	Global SUVR															
CAQ	0.008	0.427	0.942	0.348												
LEQ	0.000	0.001	0.002	0.998												
MAQ	0.094	0.534	2.177	0.031*												
MEDAS	-0.016	-0.35	-1.274	0.205												
	Cognitive composite scores															
	Global cognition				Episodic memory				Executive function				Attention			
CAQ	-0.031	-0.25	-0.626	0.533	-0.036	-0.283	-0.674	0.502	-0.06	-0.483	-1.2	0.232	-0.007	-0.055	-0.133	0.895
LEQ	-0.019	-0.243	-0.48	0.632	-0.049	-0.616	-1.191	0.236	0.01	0.132	0.254	0.8	0.041	0.515	0.976	0.331
MAQ	-0.057	-0.05	-0.22	0.826	-0.152	-0.132	-0.568	0.571	-0.181	-0.159	-0.692	0.49	-0.087	-0.075	-0.326	0.745
MEDAS	0.082	0.275	1.099	0.274	0.008	0.027	0.106	0.916	0.09	0.302	1.196	0.234	0.156	0.518	2.026	0.045*

*P < 0.05, **P < 0.01, ***P < 0.001. Abbreviations: GM, gray matter; CAQ, Cognitive Activities Questionnaire; LEQ, Lifetime of Experiences Questionnaire; MAQ, Modifiable Activity Questionnaire; MEDAS, Mediterranean Diet Adherence Screener.

Figure 1

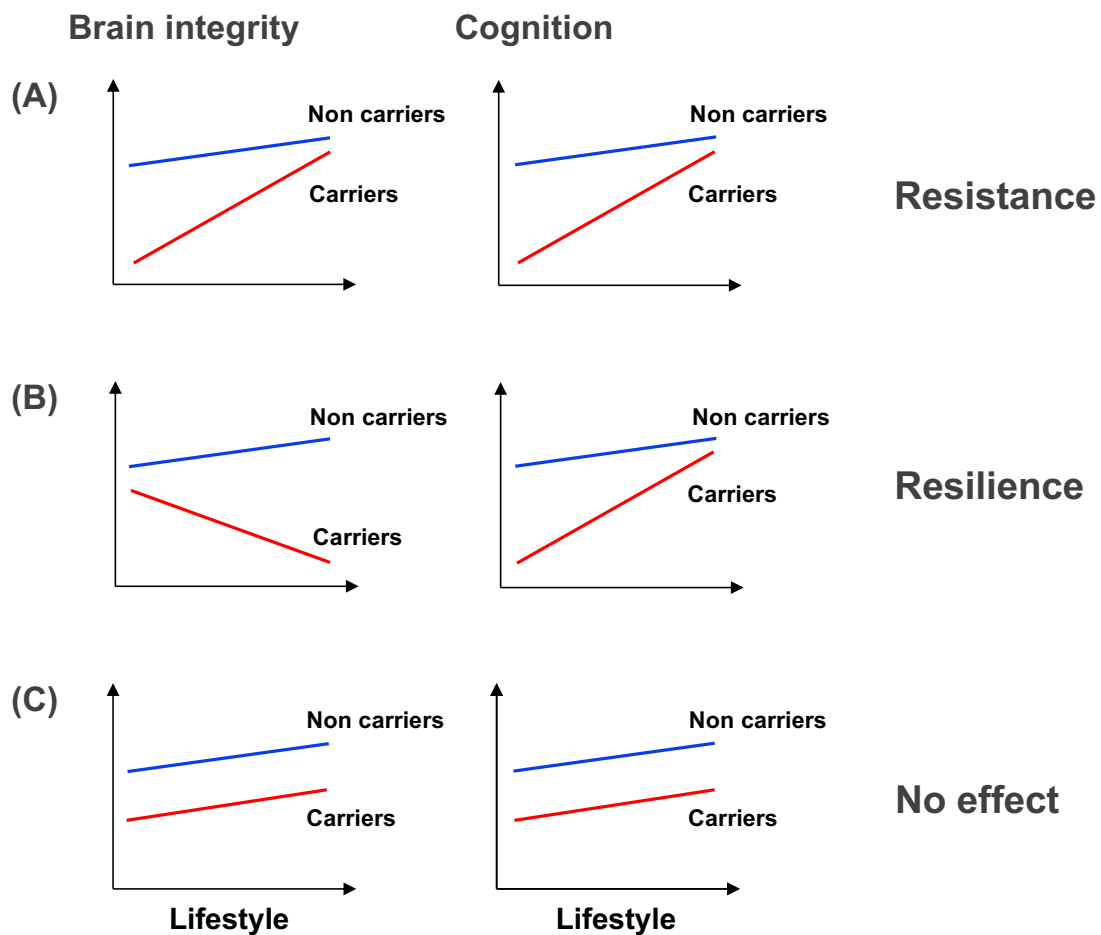


Figure 1 Potential mechanisms for the interaction between *APOE4* and lifestyle factors.

(A) Resistance in *APOE4* carriers: lifestyle counteracts the deleterious effect of *APOE4* genotype, such that *APOE4* carriers with more active lifestyle would show higher brain integrity and cognition. (B) Resilience in *APOE4* carriers: lifestyle helps *APOE4* carriers to compensate for the presence of brain alterations and remain cognitively healthy. (C) No *APOE4* x lifestyle interaction: lifestyle does not counteract the deleterious effect of *APOE4* on brain and/or cognition. The y-axis represents brain integrity or cognition. The x-axis represents the degree of engagement in lifestyle factors. Abbreviations: APOE, apolipoprotein E gene.

Figure 2

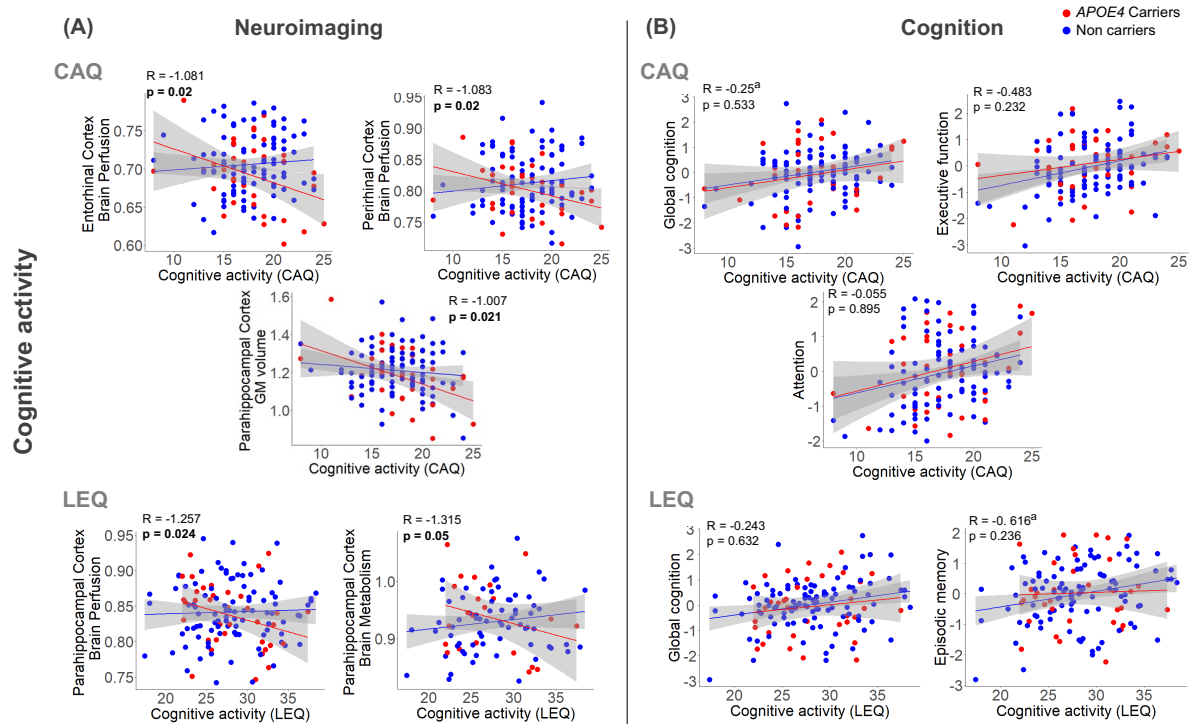


Figure 2 Interactive effects of cognitive activity (CAQ, LEQ) and APOE4 on neuroimaging (A) and cognitive (B) outcomes. Statistics were obtained from general linear models controlling for age, sex and education. Raw values are plotted. Dotted lines represent confidence intervals (95%). Abbreviations: APOE, apolipoprotein E gene; CAQ, Cognitive Activities Questionnaire; LEQ, Lifetime of Experiences Questionnaire

Figure 3

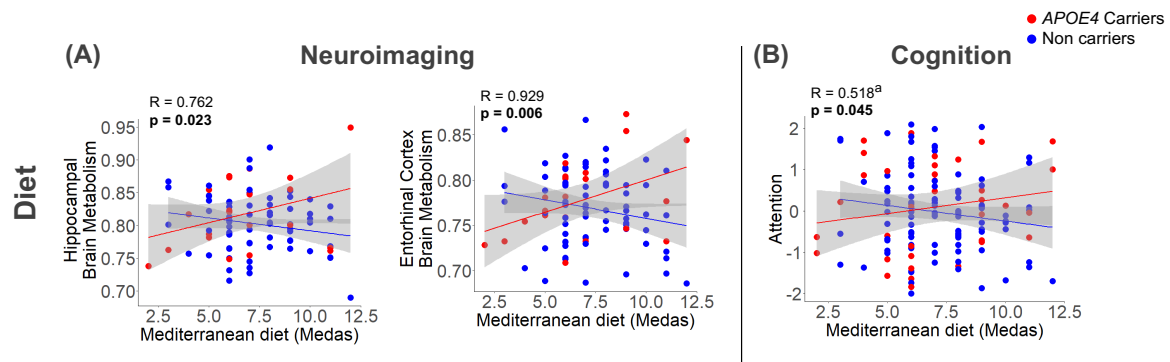


Figure 3 Interactive effects of Mediterranean diet adherence and *APOE4* on neuroimaging (A) and cognitive (B) outcomes. Statistics were obtained from general linear models controlling for age, sex and education. Raw values are plotted. Dotted lines represent confidence intervals (95%). Abbreviations: APOE, apolipoprotein E gene.

Figure 4

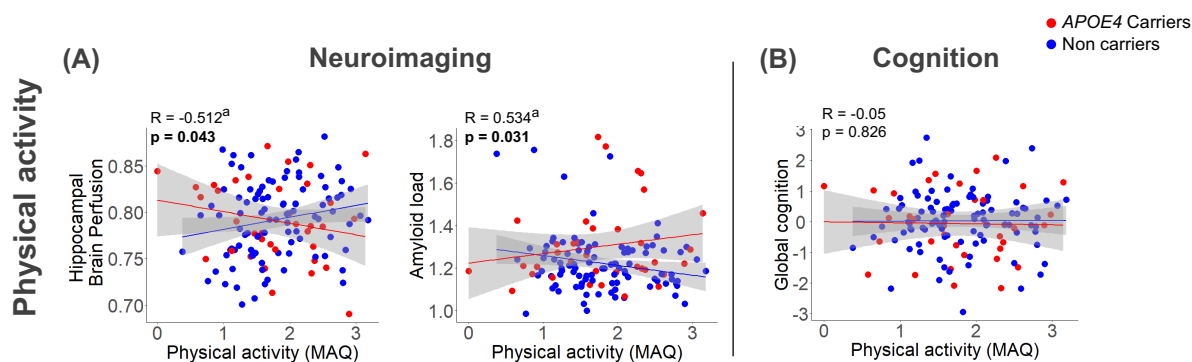


Figure 4 Interactive effects of physical activity and *APOE4* on neuroimaging (A) and cognitive (B) outcomes. Statistics were obtained from general linear models controlling for age, sex and education. Raw values are plotted. Dotted lines represent confidence intervals (95%). Abbreviations: APOE, apolipoprotein E gene.

Appendix

Collaborators - Medit-Ageing Research Group

Name	Location	Role	Contribution
Allais Florence, BA	EUCLID/F-CRIN Clinical Trials Platform, Bordeaux, France	Data manager	Data management
André Claire, PhD	Institut National de la Santé et de la Recherche Médicale, Caen, France	PhD student	Acquisition, analysis, or interpretation of data
Arenaza Urquijo Eider, PhD	Institut National de la Santé et de la Recherche Médicale, Caen, France	Postdoctoral researcher	Study design; acquisition, analysis, or interpretation of data
Baez Lugo Sebastian, MSc	University of Geneva, Geneva, Switzerland	PhD student	Acquisition, analysis, or interpretation of data
Bejanin Alexandre, PhD	Institut National de la Santé et de la Recherche Médicale, Caen, France	Postdoctoral researcher	Acquisition, analysis, or interpretation of data
Botton Maelle, MSc	Institut National de la Santé et de la Recherche Médicale, Caen, France	Neuropsychologist	Acquisition, analysis, or interpretation of data
Champetier Pierre, PhD	Institut National de la Santé et de la Recherche Médicale, Caen, France	PhD student	Acquisition, analysis, or interpretation of data
Chauveau Léa, MSc	Institut National de la Santé et de la Recherche Médicale, Caen, France	PhD student	Acquisition, analysis, or interpretation of data
Chételat Gaël, PhD	Institut National de la Santé et de la Recherche Médicale, Caen, France	Coordinator, Work Package Leader	Obtained funding, study design
Chocat Anne, MD	Institut National de la Santé et de la Recherche Médicale, Caen, France	Neurologist	Investigating doctor
Collette Fabienne, PhD	University of Liege, Liege, Belgium	Group leader	Obtained funding, study design
Dautricourt Sophie, MD, PhD	Institut National de la Santé et de la Recherche Médicale, Caen, France	PhD student	Acquisition, analysis, or interpretation of data
de Flores Robin, PhD	Institut National de la Santé et de la Recherche Médicale, Caen, France	Postdoctoral researcher	Acquisition, analysis, or interpretation of data; administrative, technical, or material support
de la Sayette Vincent, MD, PhD	Centre Hospitalier Universitaire de Caen, Caen, France	Neurologist	Principal Investigating doctor
Delarue Marion, MSc	Institut National de la Santé et de la Recherche Médicale, Caen, France	Neuropsychologist	Acquisition, analysis, or interpretation of data
Demnitz-King Harriet, MSc	University College London, United Kingdom	PhD student	Acquisition, analysis, or interpretation of data
Egret Stéphanie, MSc	Institut National de la Santé et de la Recherche Médicale, Caen, France	Neuropsychologist	Acquisition, analysis, or interpretation of data

El Sadawy Rawda, MSc	Institut National de la Santé et de la Recherche Médicale, Caen, France	Neuropsychologist	Acquisition, analysis, or interpretation of data
Espérou Hélène, MD	Institut National de la Santé et de la Recherche Médicale, Paris, France	Group leader	Sponsor
Fauvel Séverine, BA	Institut National de la Santé et de la Recherche Médicale, Caen, France	Technician	Acquisition, analysis, or interpretation of data
Felisatti Francesca, MSc	Institut National de la Santé et de la Recherche Médicale, Caen, France	PhD student	Acquisition, analysis, or interpretation of data
Ferment Victor, MSc	Institut National de la Santé et de la Recherche Médicale, Caen, France	Technician	Acquisition, analysis, or interpretation of data
Ferrand Devouge Eglantine, MD, MSc	Institut National de la Santé et de la Recherche Médicale, Caen, France	Neurologist	Investigating doctor
Frison Eric, MD, PhD	EUCLID/F-CRIN Clinical Trials, Platform, Bordeaux, France	Methodologist	Acquisition, analysis, or interpretation of data
Gonneaud Julie, PhD	Institut National de la Santé et de la Recherche Médicale, Caen, France	Group leader	Obtained funding, study design
Hamel Anaïs, MSc	Institut National de la Santé et de la Recherche Médicale, Caen, France	PhD student	Acquisition, analysis, or interpretation of data
Haudry Sacha, MSc	Institut National de la Santé et de la Recherche Médicale, Caen, France	PhD student	Acquisition, analysis, or interpretation of data
Hébert Oriane, MSc	Institut National de la Santé et de la Recherche Médicale, Caen, France	Neuropsychologist	Acquisition, analysis, or interpretation of data
Heidmann Marc, MSc	Institut National de la Santé et de la Recherche Médicale, Lyon, France	PhD student	Acquisition, analysis, or interpretation of data
Kuhn Elizabeth, PhD	Institut National de la Santé et de la Recherche Médicale, Caen, France	PhD student	Acquisition, analysis, or interpretation of data
Klimecki Olga, PhD	University of Geneva, Geneva, Switzerland	Group leader	Obtained funding; study design
Landeau Brigitte, MSc	Institut National de la Santé et de la Recherche Médicale, Caen, France	Neuroimaging developer (engineer)	Acquisition, analysis, or interpretation of data
Ledu Gwendoline, MSc	Institut National de la Santé et de la Recherche Médicale, Caen, France	Clinical research assistant	Acquisition, analysis, or interpretation of data; administrative, technical, or material support
Lefranc Valérie, BA	Institut National de la Santé et de la Recherche Médicale, Caen, France	Clinical research assistant	Acquisition, analysis, or interpretation of data; Administrative, technical, or material support
Lutz Antoine, PhD	Institut National de la Santé et de la Recherche Médicale, Lyon, France	Group leader	Obtained funding; study design
Marchant Natalie, PhD	University College London, United Kingdom	Group leader	Obtained funding; study design

Mezenge Florence, BA	Institut National de la Santé et de la Recherche Médicale, Caen, France	Neuroimaging engineer assistant	Acquisition, analysis, or interpretation of data
Moulinet Inès, PhD	Institut National de la Santé et de la Recherche Médicale, Caen, France	PhD student	Acquisition, analysis, or interpretation of data
Ourry Valentin, PhD	Institut National de la Santé et de la Recherche Médicale, Caen, France	PhD student	Acquisition, analysis, or interpretation of data
Palix Cassandre, MSc	Institut National de la Santé et de la Recherche Médicale, Caen, France	PhD student	Acquisition, analysis, or interpretation of data
Paly Léo, MSc	Institut National de la Santé et de la Recherche Médicale, Caen, France	Neuropsychologist	Acquisition, analysis, or interpretation of data
Poisnel Géraldine, PhD	Institut National de la Santé et de la Recherche Médicale, Caen, France	Group leader	Obtained funding; study design
Quillard Anne, MD	Institut National de la Santé et de la Recherche Médicale, Caen, France	Neurologist	Investigating doctor
Rauchs Géraldine, PhD	Institut National de la Santé et de la Recherche Médicale, Caen, France	Researcher	Study design
Rehel Stéphane, PhD	Institut National de la Santé et de la Recherche Médicale, Caen, France	PhD student	Acquisition, analysis, or interpretation of data
Requier Florence, MSc	University of Liege, Liege, Belgium	PhD student	Acquisition, analysis, or interpretation of data
Salmon Eric, MD, PhD	University of Liege, Liege, Belgium	Group leader	Obtained funding; study design
Smith Rhonda, MSc	Minerva Health & Care Communications Ltd, Andover, United Kingdom	Group leader	Communication, dissemination
Tomadesso Clémence, PhD	Institut National de la Santé et de la Recherche Médicale, Caen, France	PhD student	Acquisition, analysis, or interpretation of data
Touron Edelweiss, PhD	Institut National de la Santé et de la Recherche Médicale, Caen, France	PhD student	Acquisition, analysis, or interpretation of data
Turpin Anne-Laure, MSc	Institut National de la Santé et de la Recherche Médicale, Caen, France	PhD student	Acquisition, analysis, or interpretation of data
Vuilleumier Patrik, MD	University of Geneva, Geneva, Switzerland	Group leader	Obtained funding; study design
Whitfield Tim, PhD	University College London, United Kingdom	PhD student	Acquisition, analysis, or interpretation of data
Wirth Miranka, PhD	Deutsches Zentrum für Neurodegenerative Erkrankungen, Dresden, Germany	Group leader	Study design