

Synuclein quantitation in plasma using LC-MRM

1 Absolute quantification of synuclein proteoforms in plasma in
2 patients with Synucleinopathies by LC-MRM mass spectrometry

3

4 Pons Marie-Laure^{1,2}, Vignon Margaux¹, Vialaret Jérôme¹, Mondesert Etienne¹,

5 Moreau Stéphane², Lehmann Sylvain¹ and Hirtz Christophe¹

6 ¹ IRMB, Univ Montpellier, INM, INSERM, CHU Montpellier, (LBPC-PPC), Montpellier,

7 France

8 ² Shimadzu Corporation, Albert-Hahn-Straße, Duisburg – Germany

9 marielaurepons43@gmail.com (+33 4 67 33 71 73), margaux.vignon@umontpellier.fr

10 (+33 4 67 33 04 20), j-vialaret@chu-montpellier.fr (+33 4 67 33 71 73), e-

11 mondesert@chu-montpellier.fr (+33 4 67 33 83 46), sm@shimadzu.eu (+49-203-

12 76870), sylvain.lehmann@umontpellier.fr (+33 4 67 33 71 23) and

13 christophe.hirtz@umontpellier.fr (+33 4 67 33 04 20).

14 Corresponding author : Pons Marie-Laure, marielaurepons43@gmail.com (+33 4 67

15 33 71 73).

16

Synuclein quantitation in plasma using LC-MRM

17 Abstract

18 Background : Synucleinopathies include Parkinson's disease (PD), Lewy body
19 dementia (LBD) and Multiple system atrophy (MSA). Most studies of
20 synucleinopathies rely on immunoassays to quantify total or oligomeric alpha
21 synuclein. Immunoassay results are variable due to the inconstant nature of
22 antibodies and different studies found higher, lower or equal levels of alpha synuclein
23 between PD and control patients in biological matrixes. Mass spectrometry, has less
24 inherent variability.

25 Methods : Therefore, we developed the first reliable and validated mass spectrometry
26 method to quantify synuclein proteoforms in human plasma using liquid
27 chromatography coupled to mass spectrometry with multiple reaction monitoring
28 mode (LC-MRM) mass spectrometry,

29 Results : The study followed European and International guidelines (Food and Drug
30 administration and European Medicines Agency) and paves the way for precise
31 multiplex quantitation of synucleinopathies. Using a cohort of 143 patients with
32 synucleinopathies and controls we found a peptide ratio and combination between α -
33 syn EQVTNVGGAVVTGVTAVAQK and α/β -syn EGVLYVGSK peptides that
34 discriminated PD patients from the other diseases (LBD, MSA and controls). The
35 sensitivity and specificity (Area Under ROC Curve) of the method to distinguish
36 between patients with PD and control patients was 0.84 and 0.76 (0.787), for PD vs
37 LBD the values were 0.7 and 0.68 (0.743), and 0.85 and 0.85 (0.831) for PD vs MSA.

38 Conclusions : The developed and validated LC-MRM method presented here could
39 be used in clinical to discriminate PD from other synucleinopathies and control
40 patient.

41

Synuclein quantitation in plasma using LC-MRM

- 42 Keywords: Parkinson's disease, alpha synuclein, immunoassay, mass spectrometry,
43 proteoforms, ratio and combination of peptides.

Synuclein quantitation in plasma using LC-MRM

44 Introduction

45 Synucleinopathies are a group of pathologies that share cognitive, motor, non-motor
46 symptoms and molecular inclusions composed of alpha synuclein. The three most
47 well-known and common such pathologies are Lewy bodies Dementia (LBD),
48 Parkinson's disease (PD) and multi system atrophy (MSA)¹. There are three kinds of
49 synuclein: alpha, beta and gamma synuclein, that are all present in pre-synaptic
50 terminals in dopaminergic neurons.

51 Alpha synuclein inclusions, called Lewy bodies and Lewy neurites, are made of
52 aggregated, fibrillar, phosphorylated, ubiquitinated and truncated alpha synuclein
53 species. These inclusions are retrieved in the cytoplasm of the dopaminergic neurons
54 for PD and LBD pathologies and found in oligodendrocytes for MSA patients¹. Lewy
55 bodies are responsible for the neurodegeneration observed in synucleinopathies².
56 Therefore, this protein and its proteoforms have been proposed as biomarkers for
57 these pathologies³. Synuclein proteoforms include serine 129 phosphorylated, some
58 C-terminal truncations and ubiquitination sites or alternatively spliced alpha synuclein
59 isoforms with 126, 112, 98 and 41 amino acids⁴. Indeed, the alpha synuclein spliced
60 variants have been found in different mRNA level in synucleinopathies. α -syn
61 alternative proteins also arise from a reading frameshift (+2 instead of +1) resulting in
62 different and shorter protein than the full length alpha synuclein (140 aa). This type of
63 species could potentially play a role in the pathogenesis of neurodegenerative
64 disease⁵.

65 Beta synuclein is not detected in aggregates or fibrils in brains with synucleinopathies
66 and has a lower propensity to aggregate than alpha synuclein due to the absence of

Synuclein quantitation in plasma using LC-MRM

67 the 73-83 AA part of the non-amyloid component domain⁶. Gamma synuclein has
68 been detected in fibril form in PD brains⁷.

69 For several years, synucleins have been studied, and especially alpha synuclein, due
70 to their potential biomarker value in neurodegenerative disorders. So far, detection
71 and quantification of synucleins (total, oligomeric and phosphorylated at S129) in
72 human biological fluids has mainly been achieved via antibody-based assays such as
73 ELISA^{3,8}. This approach may undergo some bias due to nonspecific detection and
74 antibody affinity variability. Indeed, immunoassay kits gave highly variable results in
75 absolute concentration and with alpha synuclein level retrieved in biological fluid
76 (cerebrospinal fluid⁹, plasma and saliva).

77 To counteract antibody-based method (ELISA) issues, clinical mass spectrometry
78 (MS) approaches have been successfully developed to improve protein and
79 proteoform quantification¹⁰. Indeed, MS is a powerful tool thanks to accurate, specific
80 and multiplex quantitation. These performances are due to the analysis of mass on
81 charge (m/z) of ions from proteotypic peptides after sample ionisation¹¹. In multiple
82 reaction monitoring (MRM), at least three transitions, corresponding to the
83 fragmentation of the precursor ion into products ions, are monitored¹².

84 In conclusion, the concentration differences of alpha synuclein observed in
85 synucleinopathies in CSF, the lack of study using MS quantification (3), the risk of
86 interference by blood contamination during lumbar puncture¹³ and the high
87 expression of alpha synuclein in erythrocyte¹⁴, supports the notion that total alpha
88 synuclein in CSF is not a useful diagnostic biomarker for synucleinopathies⁷.

Synuclein quantitation in plasma using LC-MRM

89 Here we present a validated and targeted mass spectrometry method to quantify
90 synucleins proteoforms in plasma patient samples with synucleinopathies. This
91 quantification method was compared with sensitive immunoassay measurement.

92 Materials and methods

93 Reagents and internal standards

94 Recombinant human full-length alpha synuclein (α -syn) and the recombinant full-
95 length α -syn with uniform ^{15}N -label came from LGC (Teddington, UK). The
96 recombinant beta and gamma synuclein (β -syn and γ -syn) with uniform ^{15}N -label
97 were purchased from Promise Advanced Proteomics (Grenoble, France). The beta
98 and gamma recombinant light form came from Anaspec (Fremont, California, USA)
99 and Interchim (Montluçon, France) respectively. Light protein standard concentration
100 was determined for α -syn by electrochemiluminescence with the U-PLEX Human α -
101 Synuclein immunoassay kit purchased from MesoScale Discovery system (Rockville,
102 Maryland, USA). MS grade Trypsin/LysC, rLysC, Glu-C and Lys-N were purchased
103 from Promega GmbH (Walldorf, Germany). Ammonium bicarbonate, perchloric acid,
104 trifluoroacetic acid and human serum albumin (HSA) were ordered from Sigma
105 Aldrich (Saint Quentin Fallavier, France). RP-W Cartridge tips were purchased from
106 Agilent technologies (Santa Clara, California, USA). MS-grade liquid chromatography
107 solvents: acetonitrile, water and formic acid were purchased from Biosolve (Dieuze,
108 France). AQUA (absolute quantitation) peptides for α -syn-126/98; α -syn-112/98 and
109 α -syn-41 came from Thermofisher scientific (Lincoln, Massachusetts, USA) with a
110 purity of 99%. Specific peptides of the alternative α -syn and its mutated form were
111 also purchased from Thermofisher scientific (Lincoln, Massachusetts, USA) with a

Synuclein quantitation in plasma using LC-MRM

112 purity of 95%. Goat serum (*capra hircus*) was ordered from Clinisciences (Nanterre,
113 France).

114 Stock Solutions, Calibration Standards, and Quality Control (QC) samples

115 Protein and peptide standards were dissolved in 50 mM ammonium bicarbonate to a
116 final concentration of 1 μ g/ μ l. Aliquots of 10 μ l were dispensed into low protein-
117 binding Eppendorf tubes and stored at -20 °C or -80 °C, according to the suppliers'
118 instructions.

119 Method development and validation were performed on plasma QC samples at three
120 concentration levels: low (45 \pm 6.2) ng/ml, medium (87 \pm 16.9 ng/ml) and high (230 \pm
121 30.4 ng/ml), quantified by electrochemiluminescence (MesoScale Discovery).

122 Patient samples from the laboratory biobank were thawed at 4°C for one hour. They
123 were put in a 50 ml falcon and mixed for several minutes. They were then re-
124 aliquoted (50 μ l per tube) and stored at -80°C until analysis.

125 MS Calibration

126 9 points of calibration were prepared by diluting recombinant light α -syn, β -syn and γ -
127 syn standards into goat (*capra hircus*) serum. Calibration ranges (detailed in Table
128 S2 in supplemental data) were as follows: [0-5571] ng/mL for α -syn, [0-410] ng/mL
129 for β -syn and [0-1401] ng/mL for γ -syn. The calibration range for labelled peptides
130 (AQUA) including N-terminal peptide, peptides from α -syn isoforms, and peptides
131 from α -syn alternative protein, were performed separately on 8 points and the
132 concentration of each peptide is described in Table S3 in supplemental data. Peptide
133 concentrations were calculated based on the calibration curve (weighting 1/x²) using
134 Skyline software.

Synuclein quantitation in plasma using LC-MRM

135 Sample Preparation

136 95 μ l of plasma samples were thawed on ice for 1 hour. Then 855 μ l of deionised
137 water was added. Samples were then supplemented with 5.7 μ l of 10 ng/ μ l internal
138 standard of recombinant labelled U-¹⁵N alpha, beta and gamma synuclein in 50 mM
139 ammonium bicarbonate. Samples were mixed and the proteins were precipitated by
140 incubation on ice for 15 minutes with 142.5 μ l of 70% perchloric acid. After
141 incubation, samples were spun at 16,000 g for 15 min at 4°C, and the supernatants
142 were collected into new LoBind tubes with the addition of 95 μ l of 1% trifluoroacetic
143 acid. After a volume reduction by vacuum-drying at room temperature (Speedvac,
144 Labconco), the supernatants were cleaned up on RP-W cartridges using the
145 AssayMap Bravo (Agilent technologies) into a LoBind 96 deep well plate. The
146 cartridges were washed out with water at an aspiration speed of 10 μ l/min and then
147 samples were loaded on the cartridges at 5 μ l/min. Proteins were washed out on
148 bravo tips with 10% acetonitrile and 0.1% formic acid at 10 μ l/min and eluted with
149 45% acetonitrile and 0.1% formic acid at 5 μ l/min. Samples were evaporated dry at
150 room temperature under vacuum for 1h30 using a Speedvac. The samples were
151 reconstituted with 20 μ l of 50mM ammonium bicarbonate. Finally, 7 μ l of 1 μ g/ μ l
152 trypsin/lysC were added. Plasma samples were incubated for 4 hours at 37°C with
153 gentle agitation (450 rpm). After incubation, 0.5 μ L of formic acid was added to the
154 samples.

155 Liquid chromatography-mass spectrometry multiple reaction monitoring 156 analysis

157 Samples were analysed using a Shimadzu liquid chromatography system (Mikros)
158 and a triple quadrupole - Shimadzu 8060 mass spectrometer (Duisburg, Germany) in

Synuclein quantitation in plasma using LC-MRM

159 positive ionization mode. 15µl of sample were injected on a ZORBAX SB-Aq (1 x 150
160 mm, 3.5 µm) column from Agilent technologies, at 35°C. The mobile phase A was
161 composed of water with 0.1% of formic acid and the mobile phase B was composed
162 of acetonitrile with 0.1% of formic acid. The solvent gradient consisted of a slow
163 increase of the organic solvent (phase B) from 0% to 30% over 30 min. Total run time
164 for the analysis was 40 min at a flow rate of 50µl/min. The minimum dwell time used
165 was 20 ms per peptide. The ion source parameters were 3 L/min for the nebulizing
166 gas flow, 10 L/min for the heating gas flow, 300°C for the interface temperature,
167 250°C for the desolvation line temperature, 400°C for the heat block temperature and
168 10L/min for the drying gas flow. Between three and six transitions were acquired for
169 each peptide in biological samples. Peptide position, selection and transitions of the
170 synucleins are described in Table S1 in supplemental data. The concentration of the
171 α -syn and β -syn peptides was determined by comparing unlabelled and labelled
172 peptides with LC-MRM analysis.

173 Analytical method validation

174 The intra and inter-assay repeatability was determined by analysing three QC
175 plasma at three different levels of α -syn (high, medium and low) per day over 4 days.

176 Sample stability was determined by analysis three aliquots of goat serum thawed on
177 ice or at room temperature for 6h. In addition, three QC plasma were stored until 48h
178 into the liquid chromatography autosampler at 4°C. Dilution and parallelism stability
179 was determined by dilution of goat serum with ammonium bicarbonate up to fourfold.

180 Matrix effect was determined by comparing the MS signal between spiked normal
181 goat serum (n=3) with heavy recombinant standards after digestion and spiked
182 solvent (n=3) after digestion at the same concentration.

Synuclein quantitation in plasma using LC-MRM

183 The lower limit of quantification was defined as the lowest concentration with a CV
184 superior to 20% and a signal to noise ratio > 5.

185 Immunoassay

186 Plasma samples were analysed by immunochemiluminescence assay with a
187 MesoScale Discovery. Plasma samples were diluted 200-fold for the determination of
188 the total alpha synuclein concentration. All measurements were performed according
189 to the manufacturer's instructions. Antibodies were directed against α -syn C-terminal
190 part (110-125) for capture (rabbit monoclonal antibody) and the mouse monoclonal
191 detection antibody was against amino acids 15-125.

192 Patients and Biofluid Collection

193 All the participants gave their written consent to be enrolled in the study which was
194 approved by the Montpellier University Hospital's regional Ethics Committee. General
195 characteristics of the 143 patients are presented in Table 1. Mean age of the
196 population was 71 (± 8.2) years, and 65 % were men. The cohort was divided in three
197 disease groups: PD (n=82), LBD (n=32) and MSA (n=8) and a group of control
198 patients (n=21). Control patients suffered from non-neurodegenerative diseases such
199 as neurologic disorders including neuropathic affections (23.8 %), vascular affections
200 (28.6 %), immunologic affections (28.6%) and hydrocephalus (19.0 %). Exclusion
201 criteria for the control group was an abnormal Alzheimer biomarker profile (i.e. low
202 A β 42/40 ratio and increased tau/p τ protein concentration). Regarding patients with
203 Parkinson's diseases, diagnosis was determined on average 11 (± 7.4) years before
204 analysis. At diagnosis 41.9% had cognitive impairment and 69.7% presented non
205 motor signs. Mean Hoehn and Yahr score (corresponding to the Unified Parkinson's
206 Disease Rating Scale V) was 2.4 (± 0.7). Unified Parkinson's Disease Rating Scale II

Synuclein quantitation in plasma using LC-MRM

207 and III scores were respectively, 19.7 (\pm 11.2) and 36 (\pm 18.9), corresponding to a
208 light or moderate motor impairment. Plasma collected by venous puncture were
209 stored at the Montpellier Neurobank (#DC-2008-417 of the certified NFS 96-900 CHU
210 resource center BB-0033-00031). Authorization to handle personal data was granted
211 by the French Data Protection Authority (CNIL).

212 Data analysis

213 The extraction of LC-MS chromatograms of synucleins peptides for quantification
214 was realized using Skyline Software (20.1.0 version) and LabSolutions Insight
215 Browser. Liquid chromatography-mass spectrometry with multiple reaction monitoring
216 mode analyses were launched with LabSolutions software (5.99 version).

217 Statistical analysis was performed with MedCalc (19.0.3. version) and the normality
218 of the data set were checked by Shapiro-Wilk test. Comparisons between the two
219 groups were performed by Mann Whitney Wilcoxon method and clinical performance
220 were assessed by ROC curve. A statistical model: (α -syn
221 [EQVTNVGGAVVTGVTAVAQK]*-0.011268 + α/β -syn [EGVLYVGSK] * 0.0096545)
222 that defines the results was investigated by logistic regression with 'backward' and
223 'enter' methods. To select the model within the two methods, we set the following
224 parameters: p-value <0.05, a minimal number of variables (2) and if both logistic
225 regression methods gave the same coefficient result.

226 Results

227 Method development and optimization

228 To quantify alpha synuclein, we selected all the proteotypic peptides, except the C-
229 terminal part that covers about 70% of the protein sequence. The C-terminal peptide

Synuclein quantitation in plasma using LC-MRM

230 is a long peptide (38 aa), mainly composed of acidic residues and many post-
231 translational modifications (phosphorylation, nitration and truncations) that impact the
232 MS signal. In plasma, this C-terminal peptide was constantly under the limits of
233 quantification. All the peptides and transitions were selected based on the sensitivity
234 and specificity observed in the biological sample compared to the spiked internal
235 labelled standards. All the MS parameters (tension applied in all quadrupoles) were
236 optimized for synuclein and haemoglobin peptides and are described in Table S1 in
237 supplemental data. We applied the same methodology for β -syn and γ -syn.
238 The entire workflow for the liquid chromatography-mass spectrometry with multiple
239 reaction monitoring mode analysis of the alpha synuclein peptides in plasma is
240 illustrated in Figure 1.

241 Analytical method validation

242 Both β -syn and γ -syn were constantly below the limit of quantification in the patient
243 samples and plasma QC samples at all three levels of α -syn concentration (high,
244 medium and low). The alternative splicing isoforms and alternative α -syn peptides
245 were also under the limit of quantification. α -syn and α/β -syn common peptides were
246 detected and quantified in all QC and patient samples.

247 Intra and Inter-assay repeatability was less than 20 % for alpha synuclein peptides in
248 low concentration QCs, except for TVEGAGSIAAATGFVK peptides that were at 22%
249 in low QCs. In medium level QCs the coefficient of variation (CV) was $\leq 16\%$ and
250 $\leq 14\%$ in high QCs for α -syn peptides, except for EGVVHGVATVAEK and
251 (ac)MDVFMK peptides (CV >30%). Therefore, these peptides were excluded from
252 further clinical validation.

Synuclein quantitation in plasma using LC-MRM

253 The limit of quantification range was between 6.45 and 19.35 ng/ml for α -syn
254 peptides and α/β -syn common peptides. The linearity ranged from 0 to 5571 ng/ml for
255 α -syn peptides. The linearity range was from 0 to 5981 ng/ml for α/β -syn common
256 peptides.

257 The synuclein peptides was stable when stored at 4°C until 48h, stable when thaw on
258 ice until 6h and 4h at room temperature

259 The analytical validation parameters of the synuclein peptides are detailed in
260 supplemental data in Table S4 and S5.

261 Clinical validation

262 In total 143 plasma samples were quantified, divided in 4 groups: the PD group
263 (n=82), the MSA group (n=8), the LBD group (n=32) and the control group (n=21). All
264 samples were acquired by MS and immunoassay. Details of the studied population
265 are summarized in the Table 1.

266 To determine the clinical performance, we evaluated the area under ROC curve
267 (AUC), the sensitivity and specificity, and the p-value to distinguish between
268 pathological groups. The clinical performance results for alpha synuclein peptides in
269 plasma patient samples are presented in details in Table 2.

270 All peptides were able to distinguish PD patients from control patients, except for the
271 α -syn TVEGAGSIAAATGFVK peptide. The best performance peptide was α/β -syn
272 EGVLYVGSK followed by α -syn QGVAEAAGK. Indeed, these peptides also
273 separated the LBD group from PD and controls groups. The α/β -syn EGVLYVGSK
274 peptide discriminated MSA patients from controls and gave the best clinical
275 performance to distinguish PD and control patients. Respectively, the sensitivity and

Synuclein quantitation in plasma using LC-MRM

276 specificity were 0.84 and 0.76 for PD vs control. The clinical performance of the α/β -
277 syn EGVLYVGSK peptide (PD vs control) are illustrated via ROC curve in
278 supplemental data in Figure 1.

279 No peptides discriminated the PD group from the MSA group. To counteract this
280 issue, we applied a model combination of peptides. Thanks to logistic regression, a
281 peptide combination was found comprising these two following peptides: α -syn
282 EQVTNVGGAVVTGVTAVAQK and α/β -syn EGVLYVGSK, with the following
283 coefficient -0.011268 and 0.0096545, respectively. The data comparison graph
284 between groups for the peptide combination are described in Figure 2.

285 The obtained combination of these two peptides gave good discrimination of the PD
286 group from the MSA patients ($P=0.0021$). Due to their opposite coefficient signs, we
287 also investigated a ratio of the two alpha syn peptides to distinguish the four groups.

288 The best clinical performance for distinguishing PD from DLB or MSA was obtained
289 with the peptide combination. Indeed, a sensitivity and specificity of 0.7 ,0.68 and
290 0.84, 0.85 respectively were obtained. The ROC curve describing the clinical
291 performance of the peptide combination in PD vs LBD is demonstrated in Figure 3A,
292 and similarly, Figure 3B describes the clinical performance of the peptide
293 combination in PD vs MSA

294 Immunoassay quantification

295 The same plasma cohort has also been quantified by sensitive immuno-
296 chemiluminescence assay. The data comparison graph between disease is
297 presented in supplemental data Figure 2. No significant differences in α -syn level
298 quantified by immunochemiluminescence assay were observed between diseases. A
299 slightly lower level in the control group compared to the PD group was observed.

Synuclein quantitation in plasma using LC-MRM

300 Correlation

301 All the alpha and beta synuclein peptides were correlated together ($r>0.7$). No
302 correlation was found between patient characteristics (age, sex, sampling date) and
303 synuclein peptides (including combinations and ratios) with $-0.5<r<0.5$. Also, no
304 correlation between MS quantitation and immunochemiluminescence quantitation
305 was found ($-0.3<r<0.3$). No correlation between motor (UPDRS II, III or V) or non-
306 motor symptoms and cognitive symptoms were observed ($-0.3<r<0.3$).

307 Discussion

308 In this study MS clinical validation allowed us to observe a significant increase of five
309 α -syn peptides, in PD plasma patients compared to control. The same patients were
310 quantified by sensitive immunoassay for total alpha synuclein and no significant
311 difference was observed between disease groups. The most important difference
312 between these two methods is the variability introduced by the use of antibodies in
313 immunoassays. In this case, the antibodies used targeted the C-terminal part of the
314 proteins, which is problematic as this undergoes numerous post-translational
315 modifications and truncations. These variations impact the total concentration of this
316 protein as perceived by immunoassay¹⁵. Indeed, the immunoassay readout did not
317 correlate with any of the alpha synuclein peptides we observed in our MS pipeline.
318 However, all the synuclein peptides correlated amongst themselves indicating that
319 they are a robust measure of alpha synuclein levels.

320 One of our main aims of our study was to discriminate different synucleinopathies
321 and controls. Regarding this particular point, we investigated a peptide combination
322 and a ratio of alpha syn peptides and succeeded in differentiating PD from other
323 groups with good sensitivity and specificity (more than 80% for sensitivity and

Synuclein quantitation in plasma using LC-MRM

324 between 70% and more than 80% for specificity depending on pathologies). This
325 strategy was reminiscent of studies of AD that found that the ratio between amyloid
326 peptides (A β 40/42) can detect the disease. The ratio of A β 40/42 in AD allows a
327 better discrimination and enhanced clinical performance of AD patients even at
328 prodromal stage compared to the quantification of the two separated peptides¹⁶.
329 There may be some biological parallels here as alpha synuclein has already shown
330 some similarity in aggregation mechanism with the amyloid beta peptides. Indeed,
331 the peptides comprised in our peptide combination for alpha synuclein come from
332 differentially affected parts of the protein. In the first place the α/β -syn EGVLYVGSK
333 peptide (position 35-43 on sequence), is part of the N-terminal region. McGlinchey et
334 al, 2021¹⁷ have described those residues 36-40 as being important for full-length
335 structure and for the formation fibrils. These results mean that the N-terminal part can
336 modulate the mechanism of amyloid formation and the molecular interactions of fibril
337 assembly¹⁷. On the other hand the α -syn EQVTNVGGAVVTGVTAVAQK peptide
338 (position 61-80 on sequence), is part of the non-amyloid component domain that
339 constitutes the fibril core of the protein and is responsible of the aggregation
340 process^{17,18}.

341 While tantalizing, the utility of peptide combination/ratio will now need to be confirmed
342 in a larger study. For example the specificity with which we can distinguish PD from
343 MSA patients will need confirmation in a larger cohort, as MSA is rare with a
344 prevalence estimated between 0.6 and 1.6 case per 100 000 habitants per year¹⁹.
345 For PD, misdiagnosis is estimated at approximatively 25 % and with well-established
346 biomarkers, the disease could be detected 10 years earlier than it currently is^{20,21}. We
347 also note that none of our lead peptides correlated to PD severity (Unified
348 Parkinson's Disease Rating Scale UPDRS II, III and V). This could be due to the fact

Synuclein quantitation in plasma using LC-MRM

349 that most of the PD patients in our cohort were similarly affected with only light or
350 moderate evolution.

351 Conclusion

352 Here we developed for the first time a validated method for the quantitation of
353 synuclein peptides in plasma patients with synucleinopathies by a targeted and
354 multiplex liquid chromatography coupled to mass spectrometry method.

355 We established a combination and ratio of alpha synuclein peptides, that
356 distinguishing MSA from PD patients with good sensitivity and specificity (more than
357 80% for each). The AUC or sensitivity and specificity obtained for the ratio and
358 combination were satisfying and similar to the clinical performance obtained for
359 A β 40/42 ratio that is use in AD clinical routine diagnostic. We can also distinguish PD
360 patients from control and LBD pathology which is a strong finding and might
361 revolutionize the synucleinopathies domain as the CSF biomarkers did for AD several
362 years ago. The results reported here support the fact that this method will be used in
363 clinical diagnosis but they may also be important for treatments targeting abnormal
364 conformations of alpha synuclein.

365

Synuclein quantitation in plasma using LC-MRM

366 References

- 367 1. Cova I, Priori A. Diagnostic biomarkers for Parkinson's disease at a glance: where are
368 we? *J Neural Transm (Vienna Austria 1996)* 2018;125:1417–32.
- 369 2. Mehra S, Sahay S, Maji SK. α -Synuclein misfolding and aggregation: Implications in
370 Parkinson's disease pathogenesis. *Biochim Biophys Acta BBA - Proteins Proteomics*
371 2019;1867:890–908.
- 372 3. Schmid AW, Fauvet B, Moniatte M, Lashuel HA. Alpha-synuclein Post-translational
373 Modifications as Potential Biomarkers for Parkinson Disease and Other
374 Synucleinopathies. *Mol Cell Proteomics MCP* 2013;12:3543–58.
- 375 4. Vinnakota RL, Yedlapudi D, Manda KM, Bhamidipati K, Bommakanti KT, RangaLakshmi
376 GS, Kalivendi SV. Identification of an Alternatively Spliced α -Synuclein Isoform That
377 Generates a 41-Amino Acid N-Terminal Truncated Peptide, 41-syn: Role in Dopamine
378 Homeostasis. *ACS Chem Neurosci* 2018; 9:2948-58.
- 379 5. Mohaupt P, Roucou X, Delaby C, Vialaret J, Lehmann S, Hirtz C. The alternative
380 proteome in neurobiology. *Front Cell Neurosci* 2022;16:1019680.
- 381 6. Kim TE, Newman AJ, Imberdis T, Brontesi L, Tripathi A, Ramalingam N, et al. Excess
382 membrane binding of monomeric alpha-, beta- and gamma-synuclein is invariably
383 associated with inclusion formation and toxicity. *Hum Mol Genet* 2021;30:2332–46.
- 384 7. Oeckl P, Metzger F, Nagl M, Von Arnim CA, Halbgebauer S, Steinacker P, et al. Alpha-,
385 Beta-, and Gamma-synuclein Quantification in Cerebrospinal Fluid by Multiple Reaction
386 Monitoring Reveals Increased Concentrations in Alzheimer's and Creutzfeldt-Jakob
387 Disease but No Alteration in Synucleinopathies. *Mol Cell Proteomics MCP*
388 2016;15:3126–38.
- 389 8. Tsao HH, Huang CG, Wu YR. Detection and assessment of alpha-synuclein in Parkinson
390 disease. *Neurochem Int* 2022;158:105358.
- 391 9. Mollenhauer B, Bowman FD, Drake D, Duong J, Blennow K, El-Agnaf O, et al. Antibody-
392 based methods for the measurement of α -synuclein concentration in human

Synuclein quantitation in plasma using LC-MRM

- 393 cerebrospinal fluid – method comparison and round robin study. *J Neurochem* 2019;149:
394 126–38.
- 395 10. Delaby C, Vialaret J, Hirtz C, Lefebvre T, Herkert M, Puy H, et al. Analytical comparison
396 of ELISA and mass spectrometry for quantification of serum hepcidin in critically ill
397 patients. *Bioanalysis* 2021;13:1029–35.
- 398 11. Downard KM. 1912: a titanic year for mass spectrometry. *J Mass Spectrom*
399 2012;47:1034-9.
- 400 12. Vialaret J, Broutin S, Pugnier C, Santelé Sophie, Jaffuel A, Barnes A, et al. What sample
401 preparation should be chosen for targeted MS monoclonal antibody quantification in
402 human serum? *Bioanalysis* 2018;10:723–35.
- 403 13. Barkovits K, Kruse N, Linden A, Tönges L, Pfeiffer K, Mollenhauer B, Marcus K. Blood
404 Contamination in CSF and Its Impact on Quantitative Analysis of Alpha-Synuclein. *Cells*
405 2020;9:370.
- 406 14. Tönges L, Buhmann C, Klebe S, Klucken J, Kwon EH, Müller T et al. Blood-based
407 biomarker in Parkinson's disease: potential for future applications in clinical research and
408 practice. *J Neural Transm* 2022;129:1201–17.
- 409 15. Pons ML, Loftus N, Vialaret J, Moreau S, Lehmann S, Hirtz C. Proteomics Challenges for
410 the Assessment of Synuclein Proteoforms as Clinical Biomarkers in Parkinson's Disease.
411 *Front Aging Neurosci* 2022;14:818606.
- 412 16. Hansson O, Lehmann S, Otto M, Zetterberg H, Lewczuk P. Advantages and
413 disadvantages of the use of the CSF Amyloid β (A β) 42/40 ratio in the diagnosis of
414 Alzheimer's Disease. *Alzheimers Res Ther* 2019;11:34.
- 415 17. McGlinchey RP, Ni X, Shadish JA, Jiang J, Lee JC. The N terminus of α -synuclein
416 dictates fibril formation. *Proc Natl Acad Sci USA* 2021;118: e2023487118.
- 417 18. Sorrentino ZA, Giasson BI. The emerging role of α -synuclein truncation in aggregation
418 and disease. *J Biol Chem* 2020;295:10224–44.
- 419 19. Wenning GK, Krismer F. Chapter 19 - Multiple system atrophy in Handbook of Clinical
420 Neurology. Elsevier 2013;117:229–41.

Synuclein quantitation in plasma using LC-MRM

- 421 20. Tolosa E, Garrido A, Scholz SW, Poewe W. Challenges in the diagnosis of Parkinson's
422 disease. *Lancet Neurol* 2021;20:385–97.
- 423 21. Hughes AJ, Daniel SE, Kilford L, Lees A J. Accuracy of clinical diagnosis of idiopathic
424 Parkinson's disease: a clinico-pathological study of 100 cases. *J Neurol Neurosurg*
425 *Psychiatry* 1992;55:181–4.
- 426

Synuclein quantitation in plasma using LC-MRM

427 Table 1: Demographic and clinical characteristics of the plasma cohort. (UPDRS - Unified Parkinson's Disease
428 Rating Scale)

Disease group	PD	LBD	MSA	Control
Number of plasma samples	82	32	8	21
Mean age (years)	72.1	70.3	69.6	68.9
Sex (%M)	61.3	84.4	40	66.7
Disease duration (years)	8.44	5.48	3.73	2.57
Cognitive score (MMSE, MOC or MATIS) %				
Positive	30.5	50.0	9.4	9.5
Negative	17.1	37.5	87.5	52.4
N/A	52.4	12.5	3.1	38.1
Hoehn and Yahr stage (UPDRS V) %				
1	4.9	N/A	N/A	N/A
1.5	6.1			
2	45.1			
2.5	3.7			
3	32.9			
4	4.9			
N/A	2.4			

Quantitation in plasma using LC-MRM

Summary of the clinical performance for each peptide, ratio and combination from α -syn and α/β -syn peptides. NA means non assigned. AUC means area

Peptide sequence	Position on α -syn	Clinical performance in order : p value / sensibility / specificity / AUC (area under the ROC curve)		
		PD vs LBD	PD vs MSA	PD vs control
α -syn EGVVAAAEK	13-21	0.344 / NA / NA / NA	0.989 / NA / NA / NA	0.028 / 0.830 / 0.670 0.656
α -syn QGVAAEAGK	34-32	0.033 / 0.490 / 0.780 / 0.629	0.989 / NA / NA / NA	0.001 / 0.830 / 0.760 0.726
α -syn EGVLYVGSK	35-43	0.001 / 0.700 / 0.690 / 0.694	0.571 / NA / NA / NA	0.0001 / 0.840 / 0.760 0.787
α -syn GGAVVTGVTAVAQK	61-80	0.710 / NA / NA / NA	0.372 / NA / NA / NA	0.021 / 0.870 / 0.670 0.664
α -syn EGAGSIAAATGFVK	81-96	0.341 / NA / NA / NA	0.436 / NA / NA / NA	0.213 / NA / NA / NA
α -syn EGVLYVGSK / α -syn GGAVVTGVTAVAQK	Peptide Ratio	0.0003 / 0.7 / 0.7 / 0.719	0.0084 / 0.80 / 0.85 / 0.784	>0.05 / NA / NA / NA

Quantitation in plasma using LC-MRM

(α -syn	Peptide	0.0001 / 0.7 / 0.68 /	0.0021 / 0.84 / 0.85 /	0.0003 / 0.83 / 0.58 /
EGAVVTGVTAVAQK]*- 1268) + (α/β -syn VGSK] * 0.0096545)	combination	0.743	0.831	0.757

Synuclein quantitation in plasma using LC-MRM

Figure list

Figure 1: Workflow of the analysis of the synucleins peptides in plasma by liquid chromatography-mass spectrometry with multiple reaction monitoring mode

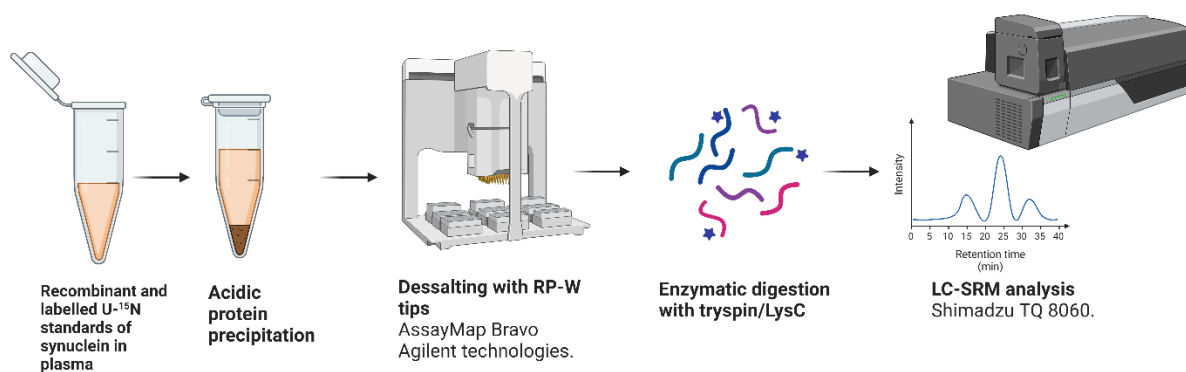
Figure 2: Comparison of the PD group with the other synucleinopathies (MSA and LBD) and the control group with the model (α -syn [EQVTNVGGAVVTGVTAVAQK]*-0.011268 + α/β -syn [EGVLYVGSK] * 0.0096545).

Figure 3A: ROC curve monitoring the clinical performance (sensitivity and specificity) for the peptide combination when PD is compared to LBD patients.

Figure 3B: ROC curve monitoring the clinical performance (sensitivity and specificity) for the peptide combination when PD is compared to MSA.

Conflict of Interest

The authors have no conflict of interest to report. Mass spectrometry experiments were carried out using the facilities of the Montpellier Proteomics Platform (PPM-PPC, BioCampus Montpellier). This article has been written in the context of the “innovation center” of Shimadzu Europa GmbH. All figures were created with the Biorender.com website.



All rights reserved. No reuse allowed without permission.

