

1 **Knowledge, attitudes and practices toward female genital schistosomiasis among**  
2 **community women and healthcare professionals in Kimpese region, Democratic**  
3 **Republic of Congo**

4 **Cecilia Wangari Wambui<sup>1\*</sup>, Joule Madinga<sup>2\*</sup>, Mercy Gloria Ashepet<sup>1,5,6</sup>, Maxson Kenneth**  
5 **Anyolitho<sup>3,7,8</sup>, Patrick Mitashi<sup>4</sup>, Tine Huysse<sup>1</sup>**

6 \* Shared first authors: [cecilia.wambui@africamuseum.be](mailto:cecilia.wambui@africamuseum.be) and [jmadinga@yahoo.fr](mailto:jmadinga@yahoo.fr)

7 <sup>1</sup>Department of Biology, Royal Museum for Central Africa, Belgium

8 <sup>2</sup>Institute National de Recherche Biomedicale (INRB), Kinshasa, DR Congo

9 <sup>3</sup>Department of Human Development and Relational Sciences, Mbarara University of  
10 Science and Technology, Mbarara, Uganda

11 <sup>4</sup>Department of Tropical Medicine, University of Kinshasa

12 <sup>5</sup>Department of Earth Science, Royal Museum for Central Africa, Belgium

13 <sup>6</sup>Division of Bioeconomics, Department of earth and environment science, KU Leuven

14 <sup>7</sup>Department of Community Health, Faculty of Public Health, Lira University, Uganda

15 <sup>8</sup>Department of Sociology, Faculty of Social Sciences, University of Antwerp, Belgium

17 **ABSTRACT**

18 **Background:** Chronic infection with *Schistosoma haematobium* causes female genital  
19 schistosomiasis (FGS), which leads to diverse lesions in the female genital tract and several  
20 complications, including women infertility and a higher risk for HIV transmission. This study,  
21 therefore, aims to understand the knowledge, attitudes, and practices (KAP) toward FGS and  
22 associated factors among women and health professionals in the schistosomiasis endemic  
23 focus of Kimpese, western Democratic Republic of Congo (DRC).

24 **Methods:** In January 2022, a semi-quantitative questionnaire was administered to randomly  
25 selected community women in Kifua II village and health professionals ( nurses and doctors)  
26 from Kimpese Health Zone. KAP statements were coded and summarized as frequencies and  
27 percentages. Association between the socio-demographic characteristics of respondents and  
28 KAP was assessed using Pearson chi-square ( $\chi^2$ ) test, Cramer's V ( $\phi$ ) and gamma ( $\gamma$ )  
29 coefficients.

30 **Results:** A total of 262 participants were included (201 community women, 20 nurses and 41  
31 doctors). Overall, respondents had high knowledge of schistosomiasis in general but low FGS-  
32 specific knowledge (91% versus 45%). Some misconceptions regarding FGS transmission  
33 were even higher among healthcare professionals compared to the community women.  
34 Almost a third (30%) of the community women and 20% of the nurses believe that FGS is  
35 transmitted by drinking untreated water, while 27% of the doctors believe that sexual contact  
36 is a mode of FGS transmission. Additionally, 30% of the doctors do not link FGS with urinating  
37 in the water. Furthermore, many community women (60%) practice open defecation or  
38 urination and do not consider avoiding contact with contaminated water sources important  
39 (72%), especially the younger ones. Finally, diagnostic technologies for FGS are lacking, with  
40 only 57% of healthcare workers having a microscope in their facilities.

41 **Conclusion:** This study reveals insufficient knowledge about FGS and existing negative  
42 attitudes toward FGS among community women associated with socio-demographic factors.  
43 Additionally, health professionals lack the means (equipment) and specialised knowledge to

44 diagnose FGS correctly, which probably leads to underreporting as this region is endemic for  
45 urinary schistosomiasis.

46 **Keywords:** Female genital schistosomiasis; Knowledge, attitudes and practices; Knowledge  
47 gaps; Misconceptions; Community women; Health professionals; Democratic Republic of  
48 Congo

#### 49 **AUTHOR'S SUMMARY**

50 Schistosomiasis is a disease caused by parasitic worms and it is contracted through  
51 contact with contaminated water. Female genital schistosomiasis (FGS) is a form of  
52 the disease that affects the female reproductive organs and can lead to infertility, but  
53 also stigma and discrimination. This study used a quantitative research approach to  
54 explore community women and healthcare workers' knowledge, attitudes and  
55 practices on and health-seeking behaviour of the women regarding FGS in Kongo  
56 Central, DRC. While both groups had high knowledge of schistosomiasis, they had a  
57 limited understanding of FGS specifically. Misconceptions about its cause and  
58 prevention were common, particularly among medical doctors. Many community  
59 members engaged in risky water contact and hygiene practices. Healthcare workers  
60 reported limited diagnostic tools and expressed interest in specialised training on FGS  
61 diagnosis, treatment, and prevention. Consequent to limited knowledge and ill-  
62 equipped laboratories, health workers are most likely underreporting the disease in  
63 the region. The study highlights the need to integrate FGS into public health education  
64 programs for both community members and healthcare workers in Kongo Central and  
65 underscores the importance of addressing misconceptions about the disease and the  
66 prevention measures.

## 67 1. INTRODUCTION

68 Human schistosomiasis (generally known as bilharzia or snail fever) is a neglected tropical  
69 parasitic infection [1], endemic to communities living in areas that have no access to adequate  
70 safe water and sanitation amenities [2]. There are over 240 million schistosomiasis infections  
71 globally, with 95% of these prevailing in Africa [2–5]. Schistosomiasis ranks second to malaria  
72 in terms of prevalence, constantly raising public health and socio-economic apprehension in  
73 Africa [6]. Three main species affect humans on the African continent: *Schistosoma*  
74 *haematobium* causes urogenital schistosomiasis, while *Schistosoma mansoni* and  
75 *Schistosoma intercalatum* cause intestinal schistosomiasis. The respective parasite species  
76 are transmitted through freshwater snails that belong to different genera, namely *Biomphalaria*  
77 (*S. mansoni*) and *Bulinus* (*S. intercalatum* and *S. haematobium*). When a person gets into  
78 contact with infested water, the parasite larvae (cercariae) penetrate the skin [7,8]. Both forms  
79 of schistosomiasis (intestinal and urogenital) cause anaemia, stunted growth, and reduced  
80 learning ability in children. The eggs of *S. mansoni* and *S. intercalatum* are lodged in the  
81 mesenteric veins of the intestines, while those of *S. haematobium* are lodged in the veins  
82 surrounding the urogenital system [9–11]. The parasite eggs trigger an inflammatory immune  
83 response that causes acute or chronic illness. The disease is often not fatal, but in its chronic  
84 form, *S. mansoni* and *S. intercalatum* mainly lead to abdominal pain, bloody diarrhoea, severe  
85 fever, hepatomegaly and hepatic fibrosis, while chronic *S. haematobium* infection can lead to  
86 haematuria, irritation in the bladder, bladder cancer, painful and frequent urination [1].

87 Chronic infection with *S. haematobium* also causes female genital schistosomiasis (FGS),  
88 characterised by schistosome eggs and /or a distinctive pathology in the female reproductive  
89 system [12–14]. Eggs that are trapped in the urogenital tissues will provoke an inflammatory  
90 reaction with diverse lesions in the genital tract of women and girls [12–14]. Other symptoms  
91 include postcoital haemorrhage, itchiness, unusual discharge, dyspareunia and incontinence  
92 [9,15]. Additionally, non-specific symptoms, for example, vaginal discharge and itchiness, are  
93 often mistaken for sexually transmitted illnesses. This leaves many girls and women

94 misdiagnosed, leading to the affected females, especially young girls, to be accused of sexual  
95 promiscuity, which in turn causes stigma and discrimination [16]. Other ripple effects  
96 associated with FGS include marital conflicts and emotional distress [16]. Besides these  
97 adverse reproductive, emotional and social consequences, FGS is also known to be a co-  
98 factor in acquiring human immunodeficiency virus type 1 (HIV-1), human papillomavirus (HPV)  
99 and cervical cancer [14,17–19].

100 Schistosomiasis genital tract manifestation has been neglected by academia compared to  
101 urinary and intestinal manifestation in terms of the number of publications [19]. In addition, the  
102 risk to sexual reproductive health is neither sufficiently addressed in public health  
103 interventions, nor are the prevention strategies being pursued [9,20]. FGS is often linked to  
104 problematic detection, as diagnosis requires specialised equipment (colposcope) and training,  
105 which leads to underreporting in most endemic areas, hence, a lack of reliable data on  
106 prevalence. However, based on the prevalence of *S. haematobium*, an estimated 56 million  
107 women and girls in most communities of Africa are at risk of FGS infection [16]. Moreover,  
108 apart from the communities lacking knowledge of FGS, many healthcare professionals are  
109 unaware of the disease, diagnosis, risks, and treatment [16]. Therefore, increasing awareness  
110 among the communities and healthcare professionals is important to enable early detection of  
111 FGS and focus on preventive measures. Studies show that community mobilization and  
112 participation (bottom-up approach) are key to sustainable and compelling communication to  
113 inform the affected communities on symptoms, prevention and control of FGS [21,22].  
114 However, for bottom-up approaches to be successful, the existing knowledge, attitudes and  
115 practices (KAP) toward the disease need to be assessed [23]. The KAP information gathered  
116 would inform the development of effective control strategies. This study, therefore, sought to  
117 fill this gap by assessing the KAP toward FGS and sociodemographic characteristics  
118 associated with the KAP among community women and health professionals in a highly  
119 endemic region in Kongo Central province, DRC.

## 120 **2. METHODOLOGY**

121 **3. 2.1 Ethical considerations**

122 The study was approved by the Ethical Committee of the University of Kinshasa, DRC  
123 ([n°191/CNES/BN/PMMF/2020](#)) (SI1). Before the start of the interviews, the community  
124 members were invited on the 7<sup>th</sup> of January 2022 for a sensitization meeting at Kifua II local  
125 health centre, where the village chief and the nurses of Kifua II local health centre were  
126 present. Permission to interview the medical doctors and the nurses was sought from the Chief  
127 Medical Officer at Kimpese Health Zone. The community surveys were conducted at the  
128 women's households in a comfortable private setting of their choice. The doctors were visited  
129 at their respective working facilities in Kimpese city, while nurses were invited at the Kimpese  
130 Health Zone office. Facemasks were provided before the start of the interviews, given the  
131 COVID-19 pandemic context. The interviewer explained the aims of the study and the  
132 guaranteed confidentiality of the data collected to the participants. In addition, they were  
133 informed about the right to stop their participation at any time without any consequence and  
134 were encouraged to ask questions about the research. Also, verbal informed consent was  
135 obtained from each respondent before participating in the study and parents consented on  
136 behalf of the girls below 18 years.

137 **2.2 Study area and setting**

138 This study was conducted in January 2022 in two areas of Kongo Central province of DRC:  
139 (i) community women were interviewed in Kifua II village located in the Health Zone (HZ) of  
140 Kwilu Ngongo and (ii) the medical doctors and nurses in the city of Kimpese HZ (Fig 1). Kongo  
141 Central province is known to be endemic for urogenital schistosomiasis [24,25] and Kifua II  
142 was selected based on its high prevalence (68%) of schistosomiasis infections and the recent  
143 studies on reinfection morbidity and co-infection of schistosomiasis with salmonella [25],  
144 Madinga, unpublished]. Kifua II lies at 20 Km from Kimpese on the national road n°1 and  
145 borders the Ngongo River, which supplies water to many households in the community. The  
146 city of Kimpese includes the central office of the rural HZ of Kimpese and the general referral  
147 hospital of this zone. Kimpese HZ is characterised by poor hygiene, with previous studies

148 reporting 41% not having a toilet in the household, while 48% opting for open defecation and  
149 urination [26]. Furthermore, there is no prior record of mass drug administration (MDA) for  
150 schistosomiasis control in Kifua II village [27] [24]. However, treatment was provided to the  
151 infected people after the schistosomiasis prevalence study in 2015 [Madinga, unpublished].

152 **Fig 1. Study area showing locations of the study groups in Kongo Central, DRC.**

### 153 **2.3 Study design**

154 A cross-sectional study design was employed with two semi-structured questionnaires for  
155 three weeks in January 2022: 1) for the community women 2) another for the healthcare  
156 professionals; with both open-ended and closed-ended questions adapted from Anyolitho et  
157 al. and Masong et al. [28,29]. The questionnaires were translated from English to French  
158 before feeding them into the open-source data collection application “KoBoToolbox”. The  
159 application enables researchers to collect data offline in remote settings and later upload the  
160 gathered information to a server once connected online [30]. The translated versions were  
161 administered by 8 trained field researchers that were competent in both French and the local  
162 language (Kikongo); six of them were female (two from Kifua II and four from Kimpese) and  
163 two were male (one of them was a medical doctor from Kimpese). The two target study groups  
164 comprised of the community women in Kifua II (only interviewed by the female researchers)  
165 and healthcare professionals (nurses and doctors) in Kimpese (all the doctors were  
166 interviewed by the medical doctor interviewer).

167 The questionnaire (Supplementary Information – SI2-3) was subdivided into four sections: **(i)**  
168 demographic information; **(ii)** knowledge indicators or familiarity with the signs and symptoms,  
169 modes of transmission, control methods and risk factors; **(iii)** attitudes toward the disease and  
170 perceptions toward the infected individuals (state of stigmatization) (statements for the  
171 community women were different from those of the healthcare professionals); **(iv)** socio-  
172 cultural and management practices related to the spread of FGS and the health-seeking  
173 behaviour of the community women. Information guides were provided to the community  
174 women and the healthcare professionals after the interviews, with relevant information about

175 FGS (SI4a-4b). The information guides were made based on available FGS literature and  
176 educational resources, such as from World Health Organisation (WHO), and then translated  
177 into French and Kikongo.

## 178 **2.4 Selection and sample size determination**

179 Sample size estimation for the women was based on similar studies conducted in Cameroon  
180 and Zimbabwe [27, 28]. The population size (N=431) of women in the target reproductive age  
181 was derived based on [United Nations World Population Prospects Report guidelines](#), using  
182 the total population of Kifua II village, estimated to be 1,400 [24]. The report suggests that  
183 49.6% of the world's population is female and 62% of them are between the ages of 15 - 59  
184 years. Hence,  $N = 1400 \times 0.496 \times 0.62$ . The sample size (n=203) was then estimated  
185 following Cochran's formula  $n = [(z^2pq)/e^2]/[1+(z^2pq/e^2N)]$ ; where, 'n' is the sample size, 'Z' is  
186 the critical value at 95% confidence level (1.96), 'e' is the margin of error (5%), 'p' is the sample  
187 proportion (50%), 'q' is 1-p and 'N' is the population size (431). The community women were  
188 selected through simple random sampling, while the selection of the healthcare professionals  
189 was purpose-driven. Head nurses from all the 20 local health posts in Kimpese Health Zone  
190 were chosen, while 41 of the available 44 medical doctors in Kimpese HZ participated in the  
191 survey.

## 192 **2.6 Data processing and statistical analysis**

193 The independent variables were the socio-demographic characteristics (age, level of  
194 education, monthly income, marital status and type of occupation). For the dependent  
195 variables, we used Likert scales for knowledge, attitude and practices. The knowledge score  
196 was obtained by combining all the correct answers (coded one) given by the respondents.  
197 Total scores (maximum of 25 correct answers) were a combination of the knowledge of  
198 symptoms, complications and modes of transmission, with low knowledge (coded zero)  
199 ranging from 0 to 8, moderate knowledge (coded one) ranging from 9 to 16 and high  
200 knowledge (coded two) ranging from 17 to 25. Statements to measure attitude were collected  
201 using a 5-point Likert scale ranging from 1 (strongly disagree) to 5 (strongly agree). Scores



202 were computed by averaging 13 statements, with the high scores indicating positive attitudes  
203 towards the disease. Cronbach's alpha ( $\alpha$ ) coefficient was used to assess the internal  
204 reliability and consistency of the Likert scales. The coefficient ranges from 0 to 1, with " $\geq .9$  -  
205 Excellent,  $\geq .8$  - Good,  $\geq .7$  - Acceptable,  $\geq .6$  - Questionable,  $\geq .5$  - Poor,  $< .5$  -  
206 Unacceptable" [31]. For the practice section, the responses indicating good practice (not  
207 involved in activities that could lead to the spread or transmission of FGS; seeking medical  
208 attention when experiencing FGS-like symptoms) were coded one and zero for otherwise  
209 (responses that reflect bad practice). Data were analysed using IBM SPSS software version  
210 19. Summarised descriptive statistics (frequency values and percentages) were obtained for  
211 the KAP variables and the respondents' sociodemographic profile. Contingency tables were  
212 computed and Pearson chi-square ( $\chi^2$ ) (for the nominal variables), Cramer's V ( $\phi$ ) and gamma  
213 ( $\gamma$ ) coefficients (for the ordinal variables) were recorded to ascertain the sociodemographic  
214 characteristics that are associated with the knowledge, attitudes, and practice variables  
215 among the respondents. For the interpretation of the results, the level of statistical significance  
216 was set at a  $p$ -value of 0.05, while the strength of the associations (using  $\phi$  and  $\gamma$  coefficients)  
217 were as follows:  $>0.5$  high association; 0.3 to 0.5 moderate; 0.1 to 0.3 low association; 0.0 to  
218 0.1 little if any association [29].

### 219 **3. RESULTS**

#### 220 **3.1 Sociodemographic characteristics of the participants**

221 A total of 262 participants were included (201 community women, 20 nurses and 41 doctors).  
222 The age of community women ranged between 15-59 years, with more than half (56.2%) aged  
223 36 and below, while only 20.9% were older than 48 years. Most (65.6%) of them were married  
224 and over a third (39.8%) of the respondents never obtained primary education. The majority  
225 (59.7%) were farmers, while slightly over one-fifth (20.9%) were unemployed. Nearly two-  
226 thirds (60.2%) had monthly earning of less than 100,000 Congolese Dollar Franc (CDF)  
227 (equivalent to USD 50). Almost two-thirds (62.3%) of the healthcare professionals were

228 between 29 and 45 years, with 85.2% of them being male. The majority (91.8%) have been  
229 practising for less than 20 years (SI5).

## 230 **3.2 Knowledge of FGS**

### 231 **3.2.1 Community women's knowledge**

232 Frequency of the level of knowledge by demographic characteristics of community women are  
233 given in the Table 1. Overall, more than half (55.7%) of women had a low level of knowledge  
234 regarding FGS. This trend was the same for all categories except among women with monthly  
235 income of 100,000 – 199,000CDF where 66.7% had a moderate level of knowledge.

236 Fig 2 shows detailed frequencies of answers to questions regarding knowledge of FGS. While  
237 schistosomiasis was known by 91% of the respondents, only 45% had heard about FGS. More  
238 than half of the respondents recognized lower abdominal pain as the sign and symptom of  
239 FGS (70.6%), reduced fertility (75.1%) and miscarriage (56.2%) as the common complications  
240 of FGS, contact with contaminated water as increasing the risk of FGS infection (57.7%) and  
241 PZQ (Biltricide®) as the drug that treats symptoms related to FGS (50.2%). Similarly, 86.1%  
242 of the respondents mentioned that FGS can be spread through defecating and urinating in  
243 water by an infected person and treating all the infected persons (72.5%) as ways of  
244 preventing FGS by the respondents. For other questions, correct answers were found by less  
245 than 50% of community women.

246 **Fig 2. Community women's, community nurses' and medical doctors' knowledge of**  
247 **female genital schistosomiasis in Kifua II and Kimpese, DRC**

248 **Table 1. Knowledge, attitude and practices towards female genital schistosomiasis by socio-demographic characteristics of**  
 249 **community women in Kifua II village**  
 250

Socio-demographic characteristics	n	Knowledge (levels)			Attitudes (means)					Practices	
		Low	Moderate	High	1	2	3	4	5	Bad	Good
<b>All</b>	201	112 (55.7%)	80 (39.8%)	9 (4.5%)	70 (34.8%)	11 (5.5%)	3 (1.5%)	98 (48.8%)	19 (9.4%)	5 (2.5%)	196 (97.5%)
<b>Age (years)</b>											
15 - 25	61	38 (62.3%)	22 (36.1%)	1 (1.6%)	22 (36%)	7 (11.5%)	2 (3.3%)	27 (44.3%)	3 (4.9%)	1 (1.6%)	60 (98.4%)
26 - 36	52	29 (55.8%)	21 (40.4%)	2 (3.8%)	<b>27</b> <b>(51.9%)</b>	3 (5.8%)	0 (0%)	17 (32.7%)	5 (9.6%)	2 (3.8%)	50 (96.2%)
37 - 47	46	23 (50%)	21 (45.65%)	2 (4.35%)	9 (19.6%)	0 (0%)	0 (0%)	32 (69.6%)	5 (10.9%)	1 (2.2%)	45 (97.8%)
48 - 59	42	22 (52.4%)	16 (38.1%)	4 (9.5%)	12 (28.6%)	1 (2.4%)	1 (2.4%)	22 (52.4%)	6 (14.3%)	1 (2.4%)	41 (97.6%)
<b>Education Level</b>											
Without education	80	43 (53.75%)	33 (41.25%)	4 (5%)	24 (30%)	4 (5%)	0 (0%)	45 (56.2%)	7 (8.8%)	2 (2.5%)	78 (97.5%)
Primary Education	108	61 (56.5%)	43 (39.8%)	4 (3.7%)	39 (36.1%)	7 (6.5%)	3 (2.8%)	49 (45.4%)	10 (9.2%)	3 (2.8%)	105 (97.2%)
Secondary & high Education	13	8 (61.5%)	4 (30.8%)	1(7.7%)	<b>5</b> <b>(45.4%)</b>	0 (0%)	0 (0%)	4 (36.4%)	2 (18.2%)	0 (0%)	13 (100%)
<b>Marital Status</b>											
Not married	69	35 (50.7%)	32 (46.4%)	2 (2.9%)	29 (42%)	1 (1.4%)	1 (1.4%)	32 (46.4%)	6 (8.7%)	2 (2.9%)	67 (97.1%)
Married	132	77 (58.3%)	48 (36.4%)	7 (5.3%)	41 (31%)	10 (7.6%)	2 (1.5%)	66 (50%)	13 (9.8%)	3 (2.3%)	129 (97.7%)
<b>Employment Status</b>											
Unemployed	100	58 (58%)	40 (40%)	2 (2%)	<b>43 (43%)</b>	4 (4%)	3 (3%)	38 (38%)	12 (12%)	4 (4%)	96 (96%)

Employed	101	54 (53.5%)	40 (39.6%)	7 (6.9%)	27 (26.7%)	7 (6.9%)	0 (0%)	60 (59.4%)	7 (6.9%)	1 (1%)	100 (99%)
<b>Monthly Income (CDF)</b>											
No response	49	30 (61.2%)	16 (32.65%)	3 (6.1%)	29 <b>(59.2%)</b>	1 (2%)	1 (2%)	16 (32.6%)	2 (4.1%)	3 (6.1%)	46 (93.9%)
Less than 100,000	120	71 (59.2%)	43 (35.8%)	6 (5%)	38 (31.7%)	8 (6.7%)	0 (0%)	63 (52.5%)	11 (9.2%)	1 (0.8%)	119 (99.2%)
100,000 - 199,000	24	8 (33.3%)	16 <b>(66.7%)</b>	0 (0%)	2 (8.3%)	2 (8.3%)	2 (8.3%)	14 (58.3%)	4 (16.7%)	1 (4.2%)	23 (95.8%)
200,000 - 299,000	5	3 (60%)	2 (40%)	0 (0%)	1 (20%)	0 (0%)	0 (0%)	2 (40%)	2 (40%)	0 (0%)	5 (100%)
300,000 - 399,000	1	0 (0%)	1 <b>(100%)</b>	0 (0%)	0 (0%)	0 (0%)	0 (0%)	1 (100%)	0 (0%)	0 (0%)	1 (100%)
More than 400,000	2	0 (0%)	2 <b>(100%)</b>	0 (0%)	0 (0%)	0 (0%)	0 (0%)	2 (100%)	0 (0%)	0 (0%)	2 (100%)

252 Table 2 shows the association between community women’s knowledge on FGS and their  
 253 sociodemographic characteristics. Age was significantly associated with knowledge of FGS  
 254 transmission ( $\phi=0.556$ ,  $p=0.000$ ), the group at risk of FGS ( $\phi=0.521$ ,  $p=0.04$ ), and FGS  
 255 disease prevention ( $0.518$ ,  $p=0.000$ ). Marital status was significantly associated with  
 256 knowledge of signs and symptoms ( $\phi=0.796$ ,  $p=0.001$ ), transmission mode ( $\phi=0.595$ ,  
 257  $p=0.001$ ), and who is at risk of getting FGS ( $\phi=0.298$ ,  $p=0.016$ ). Monthly income was  
 258 significantly associated with knowledge on signs and symptoms ( $\phi=0.866$ ,  $p=0.000$ ), FGS  
 259 complications ( $\phi=0.84$ ,  $p=0.000$ ), who is at risk of getting infected ( $0.322$ ,  $p=0.002$ ), and FGS  
 260 prevention ( $\phi=0.056$ ,  $p=0.000$ ). Type of occupation was significantly associated with  
 261 knowledge on transmission mode ( $\phi=0.669$ ,  $p=0.000$ ), who is at risk of getting infected  
 262 ( $\phi=0.344$ ,  $p=0.000$ ), FGS treatment ( $\phi=0.313$ ,  $p=0.000$ ), and FGS prevention ( $\phi=0.546$ ,  
 263  $p=0.019$ ). Level of education was significantly associated with knowledge on treatment  
 264 ( $\phi=0.224$ ,  $p=0.02$ ).

265 **Table 2. Association between community women’s knowledge on female genital**  
 266 **schistosomiasis and their sociodemographic background.**

Statement	Age		Marital status		Education level		Occupation type		Month income	
	$\phi$	p-value	$\phi$	p-value	$\phi$	p-value	$\phi$	p-value	$\phi$	p-value
Signs and symptoms	0.737	0.283	<b>0.796</b>	<b>0.001*</b>	0.730	0.546	0.757	0.160	<b>0.866</b>	<b>0.000*</b>
Complications	0.658	0.487	0.661	0.439	0.644	0.742	0.677	0.214	<b>0.840</b>	<b>0.000*</b>
Transmission	<b>0.556</b>	<b>0.000*</b>	<b>0.595</b>	<b>0.001*</b>	0.517	0.687	<b>0.699</b>	<b>0.000*</b>	0.512	0.752
Who is at risk of infection	<b>0.521</b>	<b>0.004*</b>	<b>0.298</b>	<b>0.016*</b>	0.228	0.895	<b>0.344</b>	<b>0.000*</b>	<b>0.322</b>	<b>0.002*</b>
How infected persons spread FGS	0.502	0.221	<b>0.232</b>	<b>0.009*</b>	0.165	0.592	0.125	0.708	<b>0.206</b>	<b>0.026*</b>
Treatment	0.461	0.811	0.199	0.130	<b>0.224</b>	<b>0.020*</b>	<b>0.313</b>	<b>0.000*</b>	0.194	0.064
Prevention	<b>0.518</b>	<b>0.000*</b>	<b>0.559</b>	<b>0.001*</b>	0.491	0.549	<b>0.546</b>	<b>0.019*</b>	<b>0.656</b>	<b>0.000*</b>

267 \*Cramer’s V coefficient ( $\phi$ ) test of association was significant at  $p<0.05$

268 **3.2.2 Healthcare professionals’ knowledge**

269 Lower abdominal pain, contact bleeding and genital itching or burning sensation were the most  
270 (97.6%, 90.2% and 87.7% respectively) mentioned signs and symptoms of FGS by the  
271 doctors. Similarly, the nurses mentioned lower abdominal pain (90.0%) and genital itching or  
272 burning sensation (80.0%) as the common symptoms of FGS. Almost two-thirds (65.0%) of  
273 the nurses stated irregular menstruation as a sign of FGS, while only 17.1% of the doctors  
274 mentioned it (Fig 2A). Most (92.7%) of the doctors mentioned miscarriage as the complication  
275 of FGS, while reduced fertility was mentioned as the common complication by most (80.0%)  
276 of the nurses. Urinary incontinence (involuntary urination) was mentioned by 40.0% of the  
277 nurses and only 7.3% of the doctors (Fig 2B). The majority (85.4%) of the doctors believe that  
278 women or girls who are sexually active are at risk of acquiring FGS (Fig 2C). All the doctors  
279 and 80.0% of the nurses mentioned that FGS is treated by PZQ (biltricide) (Fig 2D). The  
280 doctors and the nurses had high knowledge of FGS transmission modes; however, few  
281 misconceptions were mentioned. These include drinking untreated water (doctors: 26.8% and  
282 nurses: 5.0%), sexual contact (doctors: 26.8% and nurses: 5.0%) and eating unwashed fruits  
283 and vegetables (nurses: 20.0% and doctors: 4.9%) (Fig 2E). Almost a third (29.3%) of the  
284 doctors did not mention defecating and urinating in water as how an infected person  
285 contributes to the spread of FGS (Fig 2F). For FGS prevention, health education was  
286 mentioned by almost all the doctors (97.5%) and by only 45% of the nurses. Avoiding open  
287 defecation/urination was said by 95.2% of the doctors and 80.0% of the nurses, while treating  
288 all the infected persons by 90.2% of the doctors and 85.0% of the nurses. Lastly, some  
289 misconceptions exist on ways to prevent FGS; including avoiding eating uncooked meat and  
290 unwashed fruits and vegetables (mentioned by 30.0% of the nurses and 14.7% of the doctors),  
291 washing hands after going to the toilet (mentioned by 40.0% of the nurses and 9.8% doctors),  
292 and avoiding walking barefoot and playing in the soil (mentioned by 7.4% of the doctors and  
293 5.0% of the nurses) (Fig 2G).

## 294 **3.2 Attitudes toward FGS**

### 295 **3.2.1 Community women's attitude**

296 The Cronbach's  $\alpha$  coefficient was 0.934, indicating that the Likert scales were reliable and  
297 internally consistent. The means of the scores of attitude by sociodemographic characteristics  
298 of community women are shown in Table 1. Overall, more than half of them had a positive  
299 attitude, with 48.8% reaching a mean of 4 and 9.4% a mean of 5 (the most positive attitude).  
300 Almost one third of women (34.8%) had negative attitude towards FGS (mean = 1). Positive  
301 attitude (mean = 4) was the most frequent among all categories of sociodemographic  
302 characteristics, except among women aged 26-36 years, those with secondary and higher  
303 education, and those unemployed, with respectively 51.9%, 45.5%, 43% scoring a mean of 1.

304 Detailed responses to statements related to community women's attitudes toward FGS are  
305 summarized in the Fig 3. About a third of women (34.8%) considered FGS not a very serious  
306 disease. Regarding disease diagnosis, 34.8% would not go to the hospital if infected and  
307 35.3% would feel uncomfortable during gynaecological examination. As for treatment and  
308 prevention, 34.8% of women did not think taking FGS medication was important for their health,  
309 72.1% found it difficult to avoid risky water contact and 41.3% didn't think that defecating and  
310 urinating in the toilet was important for their health. Regarding the need of social support,  
311 38.3% didn't intend to share their FGS status with their husband nor their loved ones (63.6%),  
312 and 31.8% believed that their husbands would leave them if they were infertile.

313 **Fig 3. Community women's attitudes toward female genital schistosomiasis in Kifua II,**  
314 **DRC (SD - Strongly Disagree; D - Disagree; NS - Not Sure; A - Agree; SA - Strongly**  
315 **Agree)**

316 Associations between community women's attitudes toward FGS and their socio-demographic  
317 characteristics are summarized in Table 3. Age and monthly income were found to have a  
318 positive association with how serious FGS is considered ( $\gamma=0.218$ ,  $p=0.016$ ;  $\gamma=0.244$ ,  
319  $p=0.025$ ), openness to undergo gynaecological examination ( $\gamma=0.182$ ,  $p=0.042$ ;  $\gamma=0.342$ ,  
320  $p=0.001$ ) and taking medication ( $\gamma=0.192$ ,  $p=0.007$ ;  $\gamma=0.24$ ,  $p=0.017$ ). This implies that  
321 younger women and those with lower monthly income do not believe that FGS is a serious

322 disease, are uncomfortable to find out if they have FGS and do not agree that taking medication  
 323 is important. Avoiding risky water contact had a significant and positive association with age  
 324 ( $\gamma=0.312$ ,  $p=0.001$ ). Health importance of defecating and urinating in the toilet had a positive  
 325 association with the level of income ( $\gamma=0.304$ ,  $p=0.003$ ) and occupation ( $\gamma=0.15.327$ ,  $p=0.002$ ).  
 326 This implies that women with lower income do not consider avoiding open defecation or  
 327 urination unhygienic or important for their health. Visiting a traditional healer was found to have  
 328 a positive and significant association with age ( $\gamma=0.386$ ,  $p=0.003$ ), monthly income ( $\gamma=0.375$ ,  
 329  $p=0.006$ ) and type of occupation ( $\gamma=23.33$   $p=0.000$ ). This suggests that older women with more  
 330 income would not visit a traditional healer if they found out they have FGS. Talking to their  
 331 husbands or loved ones regarding FGS symptoms was positively associated with monthly  
 332 income ( $\gamma=0.214$ ,  $p=0.034$ ;  $\gamma=0.26$ ,  $p=0.012$ ) and occupation ( $\gamma=9.354$ ,  $p=0.025$ ;  $\gamma=17.818$ ,  
 333  $p=0.000$ ). These infer that community women with lower income are less willing to open up  
 334 and talk about their symptoms to other people.

335 **Table 3. Association between community women’s attitudes toward FGS and their**  
 336 **socio-demographic background.**

Statement	Age		Education		Monthly income		Marital status		Occupation type		
	$\gamma$	$p$ -value	$\gamma$	$p$ -value	$\gamma$	$p$ -value	$\chi^2$	$p$ -value	$\chi^2$	$p$ -value	
FGS is a very serious disease	<b>0.218</b>	<b>0.016*</b>	-	<b>0.226</b>	<b>0.047*</b>	<b>0.244</b>	<b>0.025*</b>	2.044	0.563	7.237	0.065
I would take action if I found that I had FGS by going to the hospital	0.159	0.064	-	0.157	0.16	0.145	0.17	4.241	0.237	<b>17.326</b>	<b>0.001*</b>
I feel comfortable during a gynaecological examination	<b>0.182</b>	<b>0.042*</b>	-	0.179	0.126	<b>0.342</b>	<b>0.001*</b>	1.871	0.6	<b>9.197</b>	<b>0.027*</b>
It is important to avoid contact with contaminated water	<b>0.312</b>	<b>0.001*</b>	-0.17	0.16	0.016	0.89	5.952	0.114	6.313	0.097	
Defecating and urinating in the toilet is important for my health	0.132	0.073	0.143	0.192	<b>0.304</b>	<b>0.003*</b>	4.927	0.177	<b>15.327</b>	<b>0.002*</b>	



Taking medication is important for my health	0.192	0.007*	-0.155	0.15	0.24	0.017*	1.889	0.596	15.998	0.001*
If I find out I have FGS, I need to see a traditional healer	0.386	0.003*	-0.252	0.102	0.375	0.006*	6.704	0.082	23.33	0.000*
If I find out I have FGS, I need to see a religious leader	0.112	0.418	-0.154	0.351	0.255	0.087	1.233	0.745	26.839	0.000*
My husband's family and community will not respect me if I am infertile or have FGS	0.232	0.067	-0.015	0.921	0.254	0.064	0.101	0.992	20.748	0.000*
I can talk/I talk to my husband about the symptoms of FGS	0.127	0.144	-0.176	0.112	0.218	0.034*	4.984	0.173	9.354	0.025*
I talk about FGS with my loved ones	0.108	0.23	-0.094	0.415	0.26	0.012*	3.525	0.317	17.818	0.000*

337 \*Gamma coefficient ( $\gamma$ ) test of association was significant at  $p < 0.05$

### 338 3.2.2 Healthcare professionals' attitude

339 Detailed responses to statements related to healthcare professionals' attitudes toward FGS  
 340 are shown in the Fig 4. Most (81.9%) of the healthcare professionals regard FGS a very serious  
 341 disease and 95.7% believe that it is necessary to advocate for its prevention measures.  
 342 Similarly, 96.7% consider diagnosing FGS their responsibility and very important for them.  
 343 When asked if the medication for FGS is expensive, 62.3% were not sure, while 18.0%  
 344 disagreed and 11.5% agreed that FGS medication is expensive. Most (91.8%) of the  
 345 respondents agreed to talk about FGS to their colleagues, while only 6.6% were not sure if  
 346 they could.

### 347 Fig 4. Healthcare professionals' attitudes and perception toward female genital 348 schistosomiasis

### 349 3.3 Practices

#### 350 3.3.1 Community women practices

##### 351 a) Water, sanitation, and hygiene practices

352 As shown in Table 4, the main source of water for household use was protected wells (42.3%)  
 353 or river/stream (40.3%). More than three-quarters (77.6%) of the respondents come into  
 354 contact with the river/stream daily through fetching water, followed by agriculture (48.3%)  
 355 cassava retting (43.3%), washing dishes and laundry (38.3%) and bathing (31.1%). Almost  
 356 two-thirds (63.2%) visit the river/stream twice a day, and about 50% spend more than 15  
 357 minutes in the water. At least 31.3% of the respondents do not own a latrine, while a large  
 358 majority (70.6%) defecate or urinate outside the toilet, mostly in the bush (59.7%), because  
 359 they do not have access to a toilet (46.8%). This happens on a daily basis for 46.8% of the  
 360 respondents.

361 **Table 4. Summary of community women’s practices, water, sanitation, and hygiene**  
 362 **regarding FGS.**

Variable	Response	Frequency	Percentage
Main source of water for the households	Protected well	85	42.3
	River /stream	81	40.3
	Piped water	33	16.4
	Unprotected well	2	1.0
Activities leading to water contact	Fetch water	156	77.6
	Agriculture	97	48.3
	Cassava retting	87	43.3
	Laundry & washing dishes	77	38.3
	Bathing	63	31.3
	Fishing	28	13.9
	Baptism	10	5.0
Time taken for activities in contact with water	More than 15 minutes	101	50.2
	Less than 5 minutes	56	27.9
	5 to 10 minutes	25	12.4
	10 to 15 minutes	19	9.5
Number of times for daily contact with water	Twice	127	63.2
	Once	46	22.9
	More than 3 times	17	8.5
	Thrice	11	5.5

Type of toilet for the household	Pit latrine	89	44.3
	No toilet	63	31.3
	Communal latrine	39	19.4
	Flush toilet	10	5.0
If defecate/urinate outside the toilet	Yes	142	70.6
	No	59	29.4
Where defecated/urinated outside the toilet	In the bush	120	59.7
	In an open space	65	32.3
	In the water	22	10.9
	In a tin bucket	5	2.5
	I don't remember.	2	1.0
Why did not use the toilet	No access to the toilet	94	46.8
	The Call of Nature	37	18.4
	The toilet was busy/cluttered	18	9.0
	The toilet is there but poorly maintained	14	7.0
	When in the field	9	4.5
	I don't like using the toilet	5	2.5
	Lack of water to supply the toilet	1	0.5
	The toilet is far from the house	1	0.5
How many times of defecation/urination outside the toilet	Every day and when nature calls	87	43.3
	I do not remember	42	20.9
	It was only once	10	5.0
	Occasionally and when in the field	3	1.5

363 Associations between socio-cultural factors and WASH practices of the community women  
 364 and their socio-demographic characteristics are shown in Table 5. Age ( $\phi=0.664$ ,  $p=0.000$ ),  
 365 marital status ( $\phi=0.7$ ,  $p=0.000$ ), and monthly income ( $\phi=0.682$ ,  $p=0.007$ ) were found to have  
 366 a statistically significant association with activities done in water. Level of education ( $\phi=0.239$ ,  
 367  $p=0.012$ ) was associated with the type of toilet used in the household. Defecating or urinating  
 368 outside the toilet was found to be associated with age, marital status, level of education and

369 occupation. Lastly, type of occupation ( $\phi=0.348$ ,  $p=0.051$ ), had a statistically significant  
 370 relationship with the action taken when symptoms are experienced (visiting a health facility or  
 371 not).

372 **Table 5. Association between socio-cultural factors and WASH practices of the**  
 373 **community women and their socio-demographic characteristics**

Statement	Age		Marital status		Education		Occupation type		Monthly income	
	$\phi$	$p$ -value	$\phi$	$p$ -value	$\Phi$	$p$ -value	$\phi$	$p$ -value	$\phi$	$p$ -value
Activities with water contact	<b>0.664</b>	<b>0.000*</b>	<b>0.700</b>	<b>0.000*</b>	0.587	0.974	0.658	0.101	<b>0.682</b>	<b>0.007*</b>
Type of toilet	0.509	0.178	0.224	0.034*	<b>0.239</b>	<b>0.012*</b>	0.293	0.000*	0.201	0.060
Defecating/urinating outside the toilet	<b>0.570</b>	<b>0.041*</b>	<b>0.310</b>	<b>0.004*</b>	<b>0.325</b>	<b>0.002</b>	<b>0.410</b>	<b>0.000*</b>	0.173	0.305
Action after experiencing the symptoms	0.491	0.250	0.333	0.098	0.272	0.959	<b>0.348</b>	<b>0.051*</b>	0.253	0.994

374 **b) Community women health-seeking behaviour**

375 Nearly three-quarters (73.1%) of the respondents stated that they would / visit the health facility  
 376 when they experienced / will experience any of the symptoms related to FGS. Some (15.0%)  
 377 stated that they would do nothing. Urine and stool tests were mentioned by 52.2% and 34.3%  
 378 of the respondents respectively, as the tests done when FGS related symptoms are  
 379 experienced. More than a half (57.7%) of the respondents reported to have received  
 380 PZQ/biltricide via a treatment campaign, while a few (8.0%) did not because they did not know  
 381 while family and friends advised against the treatment for 5.0%. Nearly all (95.0%) the  
 382 respondents stated that they would accept a vaccine if available (Table 6).

383 **Table 6. Summary of community women's health-seeking behaviour in Kifua II.**

Variable	Response	Frequency	Percentage
What is done after experiencing any FGS-like	Visited a health facility	147	73
	Visited a pharmacist/drug vendor	35	17

symptoms	I did nothing	31	15	
	Visited a village health worker/midwife	29	14	
	I treated myself	15	7.5	
	Visited a religious leader	1	0.5	
	I washed bathed with hot water	1	0.5	
The reason for not seeking any help	No reason	21	11	
	I didn't know who to consult	5	2.5	
	Too expensive to obtain treatment	2	1	
	I feel ashamed	2	1	
	Too difficult to get to a health facility	1	0.5	
The tests that were done	Unfriendly healthcare workers	1	0.5	
	Urine test	105	52	
	Stool test	69	34	
	None	36	18	
	Vaginal/Cervical screening	16	8	
Sexual Transmitted Infections test	6	3		
	If ever received PZQ (Biltricide) through a treatment campaign	Yes	116	58
		No	83	41
I don't know		2	1	
The last time PZQ was received	Cannot remember	59	29	
	Within the last 6 months	39	19	
	Within the last 2 years	18	9	
Reason for not receiving PZQ	I wasn't offered the drug/the drugs were not available	36	18	
	I was not ill	19	9.5	
	Did not know about the campaign	16	8	
	Family member/ neighbour/friend advised against	10	5	
	No reason	7	3.5	
	I was not eligible	3	1.5	
	Drugs don't work	1	0.5	
Whether would accept FGS vaccine if available	Yes	191	95	
	No	10	5	
Why would not receive FGS vaccine	No reason	3	1.5	
	I don't like vaccines	2	1	

Poor perception of vaccines in the community	2	1
I have never suffered from bilharzia	1	0.5
I am already old	1	0.5
I fear vaccines	1	0.5

384

### 385 **3.3.2 Healthcare professionals' practices and management of FGS**

386 More than three-quarters (77%) of the respondents consider FGS prevalent in Kimpese and  
387 65.6% of them mentioned having had patients with FGS. Some (9.8%) respondents stated to  
388 have between 5-25 cases and 8.2% between 25 -35 cases. Of those who had patients with  
389 FGS, when asked how they diagnosed the patients, 21% mentioned by clinical examination of  
390 urine sediments and stool, while 4% via symptomology. Another diagnosis mentioned was  
391 vaginal smear to reveal the *Schistosoma* species eggs. For FGS diagnostic test (referring to a  
392 microscope), 57.4% of the respondents mentioned they are available in their working stations  
393 and only 49.2% had sometimes access to PZQ (SI6).

## 394 **4. DISCUSSION**

395 This study assessed, for the first time, the KAP toward FGS among community women and  
396 health professionals in a well-known endemic area of the Kongo Central province of DRC  
397 [24,26]. Such knowledge could help in designing tailored control strategies. While 93% of  
398 women claimed to know about schistosomiasis, more than half (55%) had a low level of  
399 knowledge about FGS. This is in line with other studies conducted in endemic sub-Saharan  
400 African settings, which reported a higher level of knowledge about urinary schistosomiasis  
401 compared to the knowledge of FGS [32–34]. Higher knowledge of urinary schistosomiasis can  
402 be explained by the fact that urinary schistosomiasis is generally well recognized by the  
403 presence of blood in urine, which is a sensitive and specific symptom. In addition, this might  
404 be result of long-standing endemicity, contact with research teams and/or the organization of  
405 schistosomiasis control campaigns, through mass treatment or health education. In our study  
406 area schistosomiasis is well known since Lengeler et al successfully assessed the use of

407 questionnaires on urinary schistosomiasis to map both intestinal and urinary schistosomiasis  
408 [35]. Awareness about schistosomiasis could also increase through sensitization activities  
409 conducted in the framework of research studies or through MDA campaigns which took place  
410 recently in the region [24,25,36].

411 The association between high income and high knowledge of FGS symptoms in this study  
412 could partly be explained by the fact that people with high income are more likely to access  
413 information from sources such as written material or radio and television. A similar observation  
414 was made in endemic communities surrounding Lake Albert in Uganda [28].

415 As expected, medical doctors and nurses had a higher knowledge of FGS symptoms than the  
416 community women As reported previously by Linsuke et al. [36], healthcare staff in this region  
417 are aware of schistosomiasis symptoms, including haematuria as an indication of *S.*  
418 *haematobium*. This is probably linked to regular exposure to cases and the region's long history  
419 of high schistosomiasis prevalence [26,36].

420 Our study recorded some misconceptions, mainly linked to FGS transmission, with one in four  
421 (27%) medical doctors linking FGS transmission to sexual contact, and 85% claiming that  
422 only women and girls who are sexually active are at risk of FGS infection. The same responses  
423 were given by 4% and 21% of the community women, respectively. Similar misconception of  
424 sexual transmission of FGS has been reported in studies conducted among local health  
425 workers in Zanzibar and Ghana [37,38]. These misconceptions could be linked to confusion,  
426 as reported in Ghana, Tanzania and Zanzibar, where the respondents could not clearly  
427 distinguish the transmission modes from those of other water-borne diseases and sexually  
428 transmitted infections (STI) [32,33,39]. Moreover, only half of the health professionals linked  
429 FGS with an increased risk of infection with HIV and HPV. These results clearly point the need  
430 for updating knowledge of health professionals regarding FGS. In this context, WHO FGS  
431 training guides and atlas for primary healthcare workers to manage FGS in limited-resource  
432 settings in endemic regions could be helpful. Other misconceptions included one in four health

433 professionals and one in three of the community women who mentioned drinking untreated  
434 water and eating unwashed fruits and vegetables as transmission modes for FGS. Also, only  
435 a third of the community women linked transmission of FGS with swimming in the rivers, ponds,  
436 and streams. This was similar to what was found in the local community of Mwea in Kenya  
437 (33%) [23], but much lower than the proportion reported in the communities living around Lake  
438 Albert, Uganda (81%) [28].

439 The negative attitude that open defecation/urination is not unhygienic (41%) might be attributed  
440 to not owning a latrine as only 49% have a latrine in their household (see below). An alternative  
441 hypothesis is that open defecation and urination have been normalised as it has been going  
442 on for a long time [40]. Furthermore, some of the women do not consider FGS a serious  
443 disease; thus, knowing whether they have FGS or taking medication was not so important to  
444 them. This is an important local risk factor contributing to disease persistence in the region.  
445 Many women (72%), especially the younger ones, do not consider avoiding contact with  
446 contaminated water sources important. This sentiment is possibly linked to the fact that the  
447 Kifua II community depends directly on the water bodies for their livelihood and water needs.  
448 Also, other studies have shown that younger women and girls are the ones who tend to conduct  
449 most household chores, such as collecting water, and washing utensils or clothes, which  
450 inevitably makes it difficult to avoid water contact [28,41]. On the other hand, talking about  
451 FGS-like symptoms is considered a taboo, as women do not speak freely and 38% would not  
452 share their experiences and symptoms with their husbands, and 64% not even with their loved  
453 ones. This is also related to the belief that they would be left by their husbands or that their  
454 husbands would find a second wife if they fail to bear children (31.8%). Moreover, the cultural  
455 burden that tags the woman's value on how many children she bears worsens this [42].

456 Although the healthcare professionals recognise that FGS is a serious disease and that  
457 diagnosis of FGS is their responsibility, user friendly diagnostic technologies are limited (only  
458 57.4% of the healthcare workers had a microscope in their facility) and this is worsened by the  
459 few skilled personnel. This is in line with the survey by Linsuke et al. [36] who reported that



460 only 42% of the hospitals in Kongo Central perform urine sedimentation to diagnose *S.*  
461 *haematobium*, while none of the hospitals performs urine filtration. Therefore, most low-  
462 resource health facilities in DRC depend on syndromic approaches for diagnosis [36,43]. A  
463 cross-sectional study conducted in a nearby Health Zone (Kisantu) reported the presence of  
464 urinary schistosomiasis among pregnant women (17.4%), ranging from asymptomatic to low  
465 symptomology [43]. Furthermore, their findings confirmed coinfections of urinary  
466 schistosomiasis and STIs (*Chlamydia trachomatis*, *Neisseria gonorrhoeae* and *Trichomonas*  
467 *vaginalis*) [43]. Therefore, relying on syndromic management alone cannot suffice, as  
468 medication for the different conditions differ despite the shared symptoms. For instance, FGS  
469 is treated by anthelmintic drugs, while STIs are treated by antibacterial or antiviral drugs.  
470 Moreover, the lack of equipment leads to underdiagnosis [9,38]. Apart from microscopes,  
471 clinicians need specialised equipment like colposcopy, and specialised training to gain  
472 competence in FGS diagnosis.

473 While the village has few boreholes, obtaining water from them is not free of charge and this  
474 is costly for households with low income (more than half earn < USD 50 monthly).  
475 Consequently, a significant number of women (77.6%) undertake risky water practices daily,  
476 despite being aware of the risk of infection. Some households only purchase water for cooking  
477 and drinking, while the rivers and streams provide water for other domestic activities such as  
478 washing clothes and dishes (38.3%), bathing (31.3%) and cassava retting (43.3%). In 2010,  
479 Onyeneho [44] made similar observations in Nigeria, where community members opted for  
480 water from contaminated sources because they were nearby and the boreholes were quite  
481 distant. The lack of latrines in a third of the respondent households could explain the rampant  
482 open defecation /urination. In the last health survey report released for 2013-2014, more than  
483 20% of rural households in DRC did not have access to any sanitation facility [45]. In our study  
484 area (Kifua II), 31.3% of the households did not have a toilet/latrine, and 70.6% of the  
485 respondents urinated/defecated outside the toilet. This huge sanitation problem contributes  
486 greatly to disease transmission. In addition, working in agricultural fields for many hours

487 without latrines contributes to this. These fields are usually also located close to the water  
488 bodies (observed during the fieldwork), and thus the excreta is washed down into the water  
489 bodies when it rains. Their negative attitude that it is not unhygienic to defecate and / or urinate  
490 outside the toilet is also likely to contribute to this behaviour. Anyolitho and colleagues [28]  
491 reported that people in Ugandan communities surrounding Lake Albert believe that not  
492 defecating in the lake compromises their fish yield. In a study conducted among female heads  
493 of households in Mushandike Resettlement Irrigation Scheme, Zimbabwe, they reported 100%  
494 use of the constructed field toilets whilst working in the fields [46]. The toilets were built in a  
495 layout scheme that ensured people are nearer to them at all times than to a bush, hence  
496 promoting their usage. There is a need to consider building field latrines in Kifua II so that  
497 people working in the fields are always closer to the latrines [47]. Moreover, providing piped  
498 water supply at a central point at a reduced cost or adding the number of boreholes and  
499 washing slabs could also be considered to reduce the use of natural water bodies. Increasing  
500 the use of toilets and boreholes could considerably reduce schistosomiasis (hence, FGS) in  
501 the communities.

502 Studies have reported cases where women and girls experiencing FGS-like signs and  
503 symptoms face stigmatization, thereby negatively impacting their health-seeking behaviour  
504 [33,48,49]. However, stigma is generally low in Kifua II, probably because the community has  
505 a considerably high knowledge of schistosomiasis. It should be noted that this village has  
506 participated in many schistosomiasis-related studies before the start of this survey as  
507 mentioned above. This is probably the reason why our findings differ from other FGS KAP  
508 surveys conducted in several parts of Africa, reporting that infected and affected women or  
509 girls suffer both socially and mentally [38,50]. In some communities, young girls and women  
510 were labelled as "prostitutes" for presenting with FGS or STIs symptoms [33,38]. These  
511 stereotypes may hinder them to seek medical attention for the fear of being regarded as  
512 promiscuous. Additionally, Anyolitho et al. [28] reported that people who suffer from chronic  
513 effects of schistosomiasis such as swollen bellies and emaciation suffer from high stigma.

514 However, to thoroughly evaluate self and external stigma among community women and girls  
515 in Kifua II, further surveys that include in-depth qualitative interviews and multiple focus group  
516 discussions need to be carried out. This is because a KAP survey by interviews only, records  
517 individual opinions based on the statement given. There might be considerable gaps in what  
518 is said and what is done [51], especially around sensitive cultural issues normally not spoken  
519 in public.

520 It is encouraging that the acceptability of the treatment is high in Kifua II, and most of the  
521 women (95%) mentioned they would accept a schistosomiasis vaccine if made available.  
522 Similar reports of high treatment acceptability were obtained in a survey in Mozambique [52],  
523 while this is not the case in the north-east and south-west of Uganda, where there is persistent  
524 fear to take treatment because of conspiracy theories and rumours behind the 'real' objective  
525 of the MDA campaigns and subjective side effects of the drugs [28,52,53]. In Morogoro,  
526 Tanzania, MDA for schistosomiasis were rejected through community riots, due to the failure  
527 of communication between the campaign programs' leaders and the local people [53].  
528 Rumours spread that these campaigns are part of the government's covert birth control  
529 campaigns, while others claimed that the pills' side effects are fatal [53,54].

## 530 **CONCLUSION**

531 Community women and the health professionals of the Kimpese region are well aware of  
532 schistosomiasis, but FGS-specific knowledge is low and misconceptions about disease  
533 transmission are evident. Besides, most women still undertake risky water contact practices  
534 and do not use latrines, thus predisposing themselves and the community to FGS. Extensive  
535 qualitative research is needed to better understand factors underlying the variability of KAP  
536 among community women, and why the community engages in risky behaviour and fail to  
537 adhere to preventive measures despite being aware. This will help to optimise or adapt the  
538 WASH interventions and health communication. It is also crucial for healthcare professionals  
539 to acquire the right competencies regarding FGS as they are at the front line to offer primary  
540 health care and counselling on FGS to the communities. We concur with other researchers in

541 recommending the integration of FGS with other routine women’s reproductive health services  
542 as part of long-term control and preventive measures.

### 543 **Author contributions**

- 544 1. **Conceptualization:** Cecilia Wangari Wambui, Tine Huyse, Joule Madinga
- 545 2. **Data collection:** Cecilia Wangari Wambui
- 546 3. **Formal analysis:** Cecilia Wangari Wambui, Joule Madinga, Mercy Gloria Ashepet, Maxson  
547 Kenneth Anyolitho
- 548 4. **Methodology:** Joule Madinga, Cecilia Wangari Wambui, Maxson Anyolitho, Tine Huyse,
- 549 5. **Project administration and coordination:** Tine Huyse and Joule Madinga
- 550 6. **Supervision:** Tine Huyse, Mercy Gloria Ashepet and Joule Madinga
- 551 7. **Writing – original draft and final copy:** Cecilia Wangari Wambui and Joule Madinga,
- 552 8. **Writing – review & editing:** Tine Huyse, Mercy Gloria Ashepet and Maxson Kenneth  
553 Anyolitho

### 554 **Conflict of interest**

555 We declare no conflicting interests whatsoever.

### 556 **Acknowledgment**

557 This research is financed by the ATRAP project of the Development Cooperation program of  
558 the Royal Museum for Central Africa with support of the Directorate-General Development  
559 Cooperation and Humanitarian Aid. We would also like to thank the Kifua II community, the  
560 Kimpese healthcare professionals, the 8 field researchers (Edith Matota, Merveil Mafwana,  
561 Marceline Luntadila, Nana Nzuzi, Falone Nsimba, Gisele Nzuzi, Esther Miezi, and Benoir  
562 Nsimba) who aided in data collection, Germain Kapour, Théo Emboni and Chantal Mokoko for  
563 their support in the field. We also thank Dr. David De Coninck for his insights on data analysis.  
564 Gratitude goes to Stephen Ndung’u who assisted and guided the entry of the questionnaires  
565 into the KoboCollect toolbox and Pierre Sacré who assisted in translating the questionnaires  
566 from English to French and back to English.

## 567 5. REFERENCES

- 568 1. Gryseels B, Polman K, Clerinx J, Kestens L. Human schistosomiasis. *Lancet*.  
569 2006;368: 1106–1118. doi:10.1016/S0140-6736(06)69440-3
- 570 2. WHO. Ending the neglect to attain the Sustainable Development Goals. WHO (World  
571 Heal Organ. 2021; 2. Available: <https://apps.who.int/iris/handle/10665/70809>
- 572 3. Poggensee G, Kiwelu I, Saria M, Richter J, Krantz I, Feldmeier H. Schistosomiasis of  
573 the lower reproductive tract without egg excretion in urine. *Am J Trop Med Hyg*.  
574 1998;59: 782–783. doi:10.4269/ajtmh.1998.59.782
- 575 4. Lai Y-S, Biedermann P, Ekpo UF, Garba A, Mathieu E, Midzi N, et al. Spatial  
576 distribution of schistosomiasis and treatment needs in sub-Saharan Africa: a  
577 systematic review and geostatistical analysis | Elsevier Enhanced Reader. *Lancet*  
578 *Infect Dis*. 2015;15: 927–940. Available:  
579 [https://reader.elsevier.com/reader/sd/pii/S1473309915000663?token=693CE068678B](https://reader.elsevier.com/reader/sd/pii/S1473309915000663?token=693CE068678B84814B2F951E4386C1A923475E344BA3600933EE8556339C143E67D854124E2B2E53C880E35C658C9400&originRegion=eu-west-1&originCreation=20220102201621)  
580 [84814B2F951E4386C1A923475E344BA3600933EE8556339C143E67D854124E2B2](https://reader.elsevier.com/reader/sd/pii/S1473309915000663?token=693CE068678B84814B2F951E4386C1A923475E344BA3600933EE8556339C143E67D854124E2B2E53C880E35C658C9400&originRegion=eu-west-1&originCreation=20220102201621)  
581 [E53C880E35C658C9400&originRegion=eu-west-1&originCreation=20220102201621](https://reader.elsevier.com/reader/sd/pii/S1473309915000663?token=693CE068678B84814B2F951E4386C1A923475E344BA3600933EE8556339C143E67D854124E2B2E53C880E35C658C9400&originRegion=eu-west-1&originCreation=20220102201621)
- 582 5. Grimes JET, Croll D, Harrison WE, Utzinger J, Freeman MC, Templeton MR. The  
583 Relationship between Water, Sanitation and Schistosomiasis: A Systematic Review  
584 and Meta-analysis. *PLoS Negl Trop Dis*. 2014;8. doi:10.1371/journal.pntd.0003296
- 585 6. Musuva RM, Awiti A, Omedo M, Ogutu M, Secor WE, Montgomery SP, et al.  
586 Community knowledge, attitudes and practices on Schistosomiasis in Western Kenya-  
587 The SCORE Project. *Am J Trop Med Hyg*. 2014;90: 646–652. doi:10.4269/ajtmh.13-  
588 0488
- 589 7. Aula OP, McManus DP, Jones MK, Gordon CA. Schistosomiasis with a focus on  
590 Africa. *Trop Med Infect Dis*. 2021;6: 1–40. doi:10.3390/tropicalmed6030109
- 591 8. Colley DG, Bustinduy AL, Secor WE, King CH. Human schistosomiasis. *Lancet*.  
592 2014;383: 2253–2264. doi:10.1016/S0140-6736(13)61949-2
- 593 9. Christinet V, Lazdins-Helds JK, Stothard JR, Reinhard-Rupp J. Female genital

- 594 schistosomiasis (FGS): From case reports to a call for concerted action against this  
595 neglected gynaecological disease. *Int J Parasitol.* 2016;46: 395–404.  
596 doi:10.1016/j.ijpara.2016.02.006
- 597 10. Kjetland EF, Leutscher PDC, Ndhlovu PD. A review of female genital schistosomiasis.  
598 *Trends Parasitol.* 2012;28: 58–65. doi:10.1016/j.pt.2011.10.008
- 599 11. Kjetland EF, Kurewa EN, Ndhlovu PD, Midzi N, Gwanzura L, Mason PR, et al. Female  
600 genital schistosomiasis - A differential diagnosis to sexually transmitted disease:  
601 Genital itch and vaginal discharge as indicators of genital *Schistosoma haematobium*  
602 morbidity in a cross-sectional study in endemic rural Zimbabwe. *Trop Med Int Heal.*  
603 2008;13: 1509–1517. doi:10.1111/j.1365-3156.2008.02161.x
- 604 12. Kjetland EF, Poggensee G, Helling-Giese G, Richter J, Sjaastad A, Chitsulo L, et al.  
605 Female genital schistosomiasis due to *Schistosoma haematobium*. Clinical and  
606 parasitological findings in women in rural Malawi. *Acta Trop.* 1996;62: 239–255.  
607 doi:10.1016/S0001-706X(96)00026-5
- 608 13. Kjetland EF, Ndhlovu PD, Mduluza T, Gomo E, Gwanzura L, Mason PR, et al. Simple  
609 clinical manifestations of genital schistosoma *Haematobium* infection in rural  
610 Zimbabwean women. *Am J Trop Med Hyg.* 2005;72: 311–319.  
611 doi:10.4269/ajtmh.2005.72.311
- 612 14. Sturt AS, Webb EL, Patterson C, Phiri CR, Mweene T, Kjetland EF, et al.  
613 Cervicovaginal Immune Activation in Zambian Women With Female Genital  
614 Schistosomiasis. *Front Immunol.* 2021;12. doi:10.3389/fimmu.2021.620657
- 615 15. Helling-Giese G, Sjaastad A, Poggensee G, Kjetland EF, Richter J, Chitsulo L, et al.  
616 Female genital schistosomiasis (FGS): Relationship between gynecological and  
617 histopathological findings. *Acta Trop.* 1996;62: 257–267. doi:10.1016/S0001-  
618 706X(96)00027-7
- 619 16. Jacobson J, Pantelias A, Williamson M, Kjetland EF, Krentel A, Gyapong M, et al.  
620 Addressing a silent and neglected scourge in sexual and reproductive health in Sub-

- 621 Saharan Africa by development of training competencies to improve prevention,  
622 diagnosis, and treatment of female genital schistosomiasis (FGS) for health workers.  
623 *Reprod Health.* 2022;19: 1–14. doi:10.1186/s12978-021-01252-2
- 624 17. Hotez PJ. Empowering women and improving female reproductive health through  
625 control of neglected tropical diseases. *PLoS Negl Trop Dis.* 2009;3.  
626 doi:10.1371/journal.pntd.0000559
- 627 18. Bullington BW, Lee MH, Mlingi J, Paul N, Aristide C, Fontana E, et al. Cervicovaginal  
628 bacterial communities in reproductive-aged Tanzanian women with *Schistosoma*  
629 *mansoni*, *Schistosoma haematobium*, or without schistosome infection. *ISME J.*  
630 2021;15: 1539–1550. doi:10.1038/s41396-020-00868-9
- 631 19. Mbabazi PS, Andan O, Fitzgerald DW, Chitsulo L, Engels D, Downs JA. Examining  
632 the relationship between urogenital schistosomiasis and hiv infection. *PLoS Negl Trop*  
633 *Dis.* 2011;5. doi:10.1371/JOURNAL.PNTD.0001396
- 634 20. Kjetland EF, Leutscher PDC, Ndhlovu PD. A review of female genital schistosomiasis.  
635 *Trends in Parasitology.* Elsevier Current Trends; 2012. pp. 58–65.  
636 doi:10.1016/j.pt.2011.10.008
- 637 21. Amazigo U V., Leak SGA, Zoure HGM, Njepuome N, Lusamba-Dikassa PS.  
638 Community-driven interventions can revolutionise control of neglected tropical  
639 diseases. *Trends in Parasitology.* Elsevier Ltd; 2012. pp. 231–238.  
640 doi:10.1016/j.pt.2012.03.002
- 641 22. Hotez PJ, Kamath A. Female genital schistosomiasis – a differential diagnosis to  
642 sexually transmitted disease: genital itch and vaginal discharge as indicators of genital  
643 *Schistosoma haematobium* morbidity in a cross-sectional study in endemic rural  
644 Zimbabwe. *Trop Med Int.* 2008;3. doi:doi:10.1111/j.1365-3156.2008.02161.x
- 645 23. Okonjo E. Evaluation of the Knowledge and Activities of a Local Community in Mwea  
646 Endemic with Schistosomiasis Evaluation of the Knowledge and Activities of a Local  
647 Community in Mwea Endemic with Schistosomiasis. 2017;7: 95–104.



- 648 24. Atila DW, Luamba J, Nsembo L, Claude J, Tshijik K, Mutambel D. Identification des  
649 basommatophores hotes intermediaires des schistosomes humains a Kimpese en  
650 Republique Democratique du Congo [ Identification of basommatophores intermediate  
651 hosts of human schistosomes in Kimpese in the Democratic Republic of Congo].  
652 2021;33: 158–168.
- 653 25. Mbuyi-Kalonji L, Barbé B, Nkoki G, Madinga J, Roucher C, Linsuke S, et al. Non-  
654 typhoidal Salmonella intestinal carriage in a Schistosoma mansoni endemic  
655 community in a rural area of the Democratic Republic of Congo. PLoS Negl Trop Dis.  
656 2020;14: e0007875. doi:10.1371/JOURNAL.PNTD.0007875
- 657 26. Madinga J, Linsuke S, Mpabanzi L, Meurs L, Kanobana K, Speybroeck N, et al.  
658 Schistosomiasis in the Democratic Republic of Congo: A literature review. Parasites  
659 and Vectors. 2015;8: 1–10. doi:10.1186/s13071-015-1206-6
- 660 27. Mbuyi-Kalonji L, Barbé B, Nkoki G, Madinga J, Roucher C, Linsuke S, et al. Non-  
661 typhoidal Salmonella intestinal carriage in a Schistosoma mansoni endemic  
662 community in a rural area of the Democratic Republic of Congo. PLoS Negl Trop Dis.  
663 2020;14: 1–15. doi:10.1371/journal.pntd.0007875
- 664 28. Anyolitho MK, Poels K, Huyse T, Tumusiime J, Mugabi F, Tolo CU, et al. Knowledge,  
665 attitudes, and practices regarding schistosomiasis infection and prevention: A mixed-  
666 methods study among endemic communities of western Uganda. PLoS Negl Trop Dis.  
667 2022;16: 1–21. doi:10.1371/journal.pntd.0010190
- 668 29. Masong MC, Wepnje GB, Marlene NT, Gamba V, Mengue M-T, Kouokam E, et al.  
669 Female Genital Schistosomiasis (FGS) in Cameroon: A formative epidemiological and  
670 socioeconomic investigation in eleven rural fishing communities. PLOS Glob Public  
671 Heal. 2021;1: e0000007. doi:10.1371/journal.pgph.0000007
- 672 30. KoboToolbox. KoBoToolbox | Data Collection Tools for Challenging Environments.  
673 Available: <https://www.kobotoolbox.org/>
- 674 31. George D, Mallery P. IBM SPSS Statistics 26 Step by Step : A Simple Guide and



- 675 Reference. IBM SPSS Stat 26 Step by Step. 2019 [cited 3 Nov 2022].  
676 doi:10.4324/9780429056765
- 677 32. Yirenya-Tawiah DR, Ackumey MM, Bosompem KM. Knowledge and awareness of  
678 genital involvement and reproductive health consequences of urogenital  
679 schistosomiasis in endemic communities in Ghana: a cross-sectional study. *Reprod*  
680 *Health*. 2016;13: 117. doi:10.1186/s12978-016-0238-5
- 681 33. Mazigo HD, Samson A, Lambert VJ, Kosia AL, Ngoma DD, Murphy R, et al. “We know  
682 about schistosomiasis but we know nothing about FGS”: A qualitative assessment of  
683 knowledge gaps about female genital schistosomiasis among communities living in  
684 *Schistosoma haematobium* endemic districts of Zanzibar and Northwestern Tanzania.  
685 *PLoS Negl Trop Dis*. 2021;15: e0009789. doi:10.1371/JOURNAL.PNTD.0009789
- 686 34. Kukula VA, MacPherson EE, Tsey IH, Stothard JR, Theobald S, Gyapong M. A major  
687 hurdle in the elimination of urogenital schistosomiasis revealed: Identifying key gaps in  
688 knowledge and understanding of female genital schistosomiasis within communities  
689 and local health workers. Hsieh MH, editor. *PLoS Negl Trop Dis*. 2019;13: e0007207.  
690 doi:10.1371/journal.pntd.0007207
- 691 35. Lengeler C, Makwala J, Ngimbi D, Utzinger J. Simple school questionnaires can map  
692 both *Schistosoma mansoni* and *Schistosoma haematobium* in the Democratic  
693 Republic of Congo. *Acta Trop*. 2000;74: 77–87. doi:10.1016/S0001-706X(99)00046-7
- 694 36. Linsuke S, Mpabanzi L, Nundu S, Mukunda F, Lutumba P, Polman K. The road  
695 towards sustainable control of schistosomiasis in the Democratic Republic of Congo:  
696 Pre-assessment of staff performance and material resources in endemic regions.  
697 *Asian Pac J Trop Biomed*. 2017;7: 275–279. doi:10.1016/j.apjtb.2017.01.026
- 698 37. Mazigo HD, Samson A, Lambert VJ, Kosia AL, Ngoma DD, Murphy R, et al.  
699 Healthcare Workers’ Low Knowledge of Female Genital Schistosomiasis and  
700 Proposed Interventions to Prevent, Control, and Manage the Disease in Zanzibar. *Int J*  
701 *Public Health*. 2022;67. doi:10.3389/ijph.2022.1604767

- 702 38. Kukula VA, MacPherson EE, Tsey IH, Stothard JR, Theobald S, Gyapong M. A major  
703 hurdle in the elimination of urogenital schistosomiasis revealed: Identifying key gaps in  
704 knowledge and understanding of female genital schistosomiasis within communities  
705 and local health workers. *PLoS Negl Trop Dis*. 2019;13: e0007207.  
706 doi:10.1371/JOURNAL.PNTD.0007207
- 707 39. Kukula VA, MacPherson EE, Tsey IH, Stothard JR, Theobald S, Gyapong M. A major  
708 hurdle in the elimination of urogenital schistosomiasis revealed: Identifying key gaps in  
709 knowledge and understanding of female genital schistosomiasis within communities  
710 and local health workers. *PLoS Negl Trop Dis*. 2019;13: e0007207.  
711 doi:10.1371/JOURNAL.PNTD.0007207
- 712 40. UNICEF. Putting an end to open defecation in the DRC | UNICEF. Available:  
713 <https://www.unicef.org/drcongo/en/stories/putting-end-open-defecation-drc>
- 714 41. Sanya RE, Tumwesige E, Elliott AM, Seeley J. Perceptions about interventions to  
715 control schistosomiasis among the Lake Victoria island communities of Koome,  
716 Uganda. *PLoS Negl Trop Dis*. 2017;11: e0005982.  
717 doi:10.1371/JOURNAL.PNTD.0005982
- 718 42. Cosslett RL. Women are still being blamed for society's problems with fertility. 2021  
719 [cited 27 Jun 2023]. Available:  
720 [https://www.theguardian.com/commentisfree/2021/oct/13/women-society-fertility-](https://www.theguardian.com/commentisfree/2021/oct/13/women-society-fertility-seminars-barriers-parenthood)  
721 [seminars-barriers-parenthood](https://www.theguardian.com/commentisfree/2021/oct/13/women-society-fertility-seminars-barriers-parenthood)
- 722 43. Gadoth A, Mvumbi G, Hoff NA, Musene K, Mukadi P, Ashbaugh HR, et al. Urogenital  
723 schistosomiasis and sexually transmitted coinfections among pregnant women in a  
724 schistosome-endemic region of the Democratic Republic of Congo. *Am J Trop Med*  
725 *Hyg*. 2019;101: 828–836. doi:10.4269/ajtmh.19-0024
- 726 44. Onyeneho NG, Yinkore P, Egwuage J, Emukah E. Perceptions, attitudes and  
727 practices on schistosomiasis in delta state, Nigeria. *Tanzan J Health Res*. 2010;12.  
728 doi:10.4314/thrb.v12i4.60123

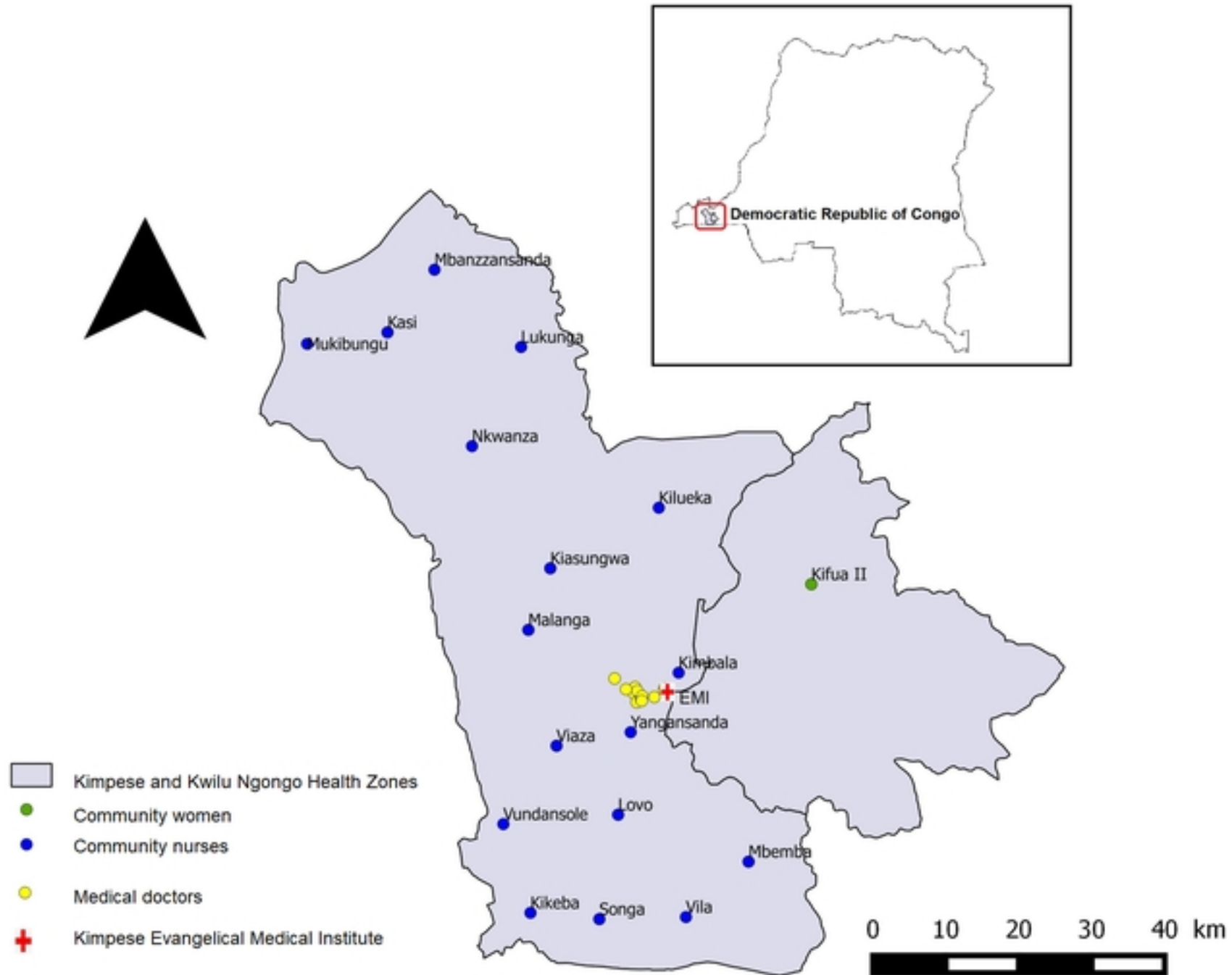
- 729 45. MPSMRM, MSP, ICF. Democratic Republic of Congo Demographic and Health Survey  
730 2013-14: Key Findings. Demogr Heal Surv. 2014; 21.
- 731 46. Chimbari M, Ndlela B, Nyati Z, Thomson A, Chandiwana SK, Bolton P. Bilharzia in a  
732 small irrigation community: an assessment of water and toilet usage. Cent Afr J Med.  
733 1992;38: 451–458.
- 734 47. Chimbari MJ. Enhancing schistosomiasis control strategy for Zimbabwe: Building on  
735 past experiences. Journal of Parasitology Research. 2012. doi:10.1155/2012/353768
- 736 48. Sturt AS, Webb EL, Francis SC, Hayes RJ, Bustinduy AL. Beyond the barrier: Female  
737 Genital Schistosomiasis as a potential risk factor for HIV-1 acquisition. Acta Trop.  
738 2020;209: 105524. doi:10.1016/j.actatropica.2020.105524
- 739 49. Mutsaka-Makuvaza MJ, Matsena-Zingoni Z, Tshuma C, Katsidzira A, Webster B, Zhou  
740 XN, et al. Knowledge, perceptions and practices regarding schistosomiasis among  
741 women living in a highly endemic rural district in Zimbabwe: Implications on infections  
742 among preschool-Aged children. Parasites and Vectors. 2019;12: 1–15.  
743 doi:10.1186/S13071-019-3668-4/TABLES/8
- 744 50. Christine Masong MI, Bunda Wepnje G, Tchoffo Marlene NI, Gamba VI, Mengue M-T,  
745 Kouokam EI, et al. Female Genital Schistosomiasis (FGS) in Cameroon: A formative  
746 epidemiological and socioeconomic investigation in eleven rural fishing communities.  
747 PLOS Glob Public Heal. 2021;1: e0000007. doi:10.1371/JOURNAL.PGPH.0000007
- 748 51. Leung F-H, Ratnapalan M, Med S, Bs MB, Frcpc M. Spotlight on focus groups. Can  
749 Fam Physician • Le Médecin Fam Can. 2009. Available:  
750 <http://mc.manuscriptcentral.com/>
- 751 52. Rassi C, Kajungu D, Martin S, Arroz J, Tallant J, Zegers de Beyl C, et al. Have You  
752 Heard of Schistosomiasis? Knowledge, Attitudes and Practices in Nampula Province,  
753 Mozambique. PLoS Negl Trop Dis. 2016;10: 1–19. doi:10.1371/journal.pntd.0004504
- 754 53. Hastings J. Rumours, riots and the rejection of mass drug administration for the  
755 treatment of schistosomiasis in Morogoro, Tanzania. J Biosoc Sci. 2016;48: S16–S39.

756 doi:10.1017/S0021932016000018

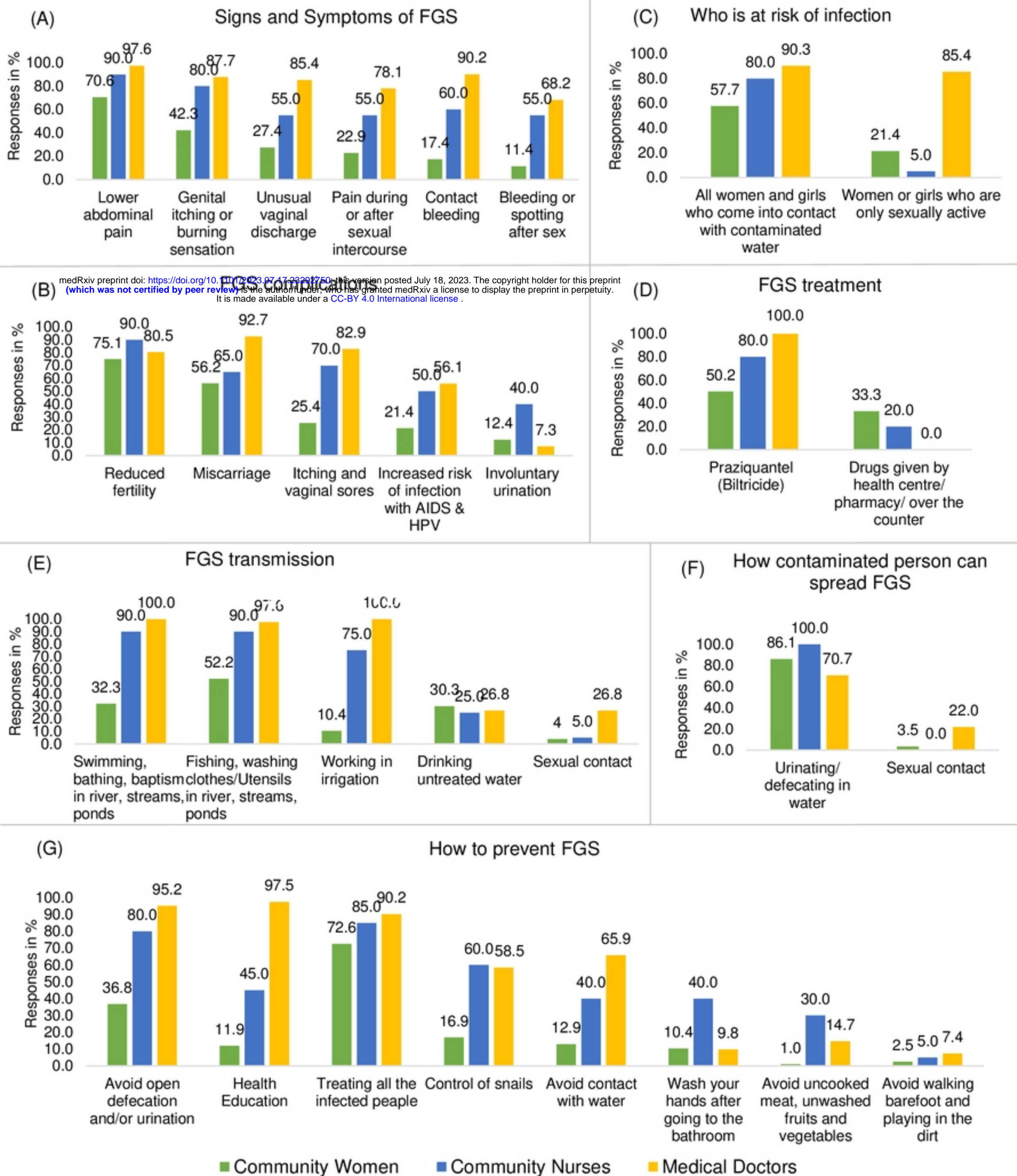
757 54. Allen T. A new approach to eradicating ' neglected ' tropical diseases LSE Professor

758 Tim Allen established that social factors crucially influence drug take-up in mass

759 disease eradication programmes. 2015.



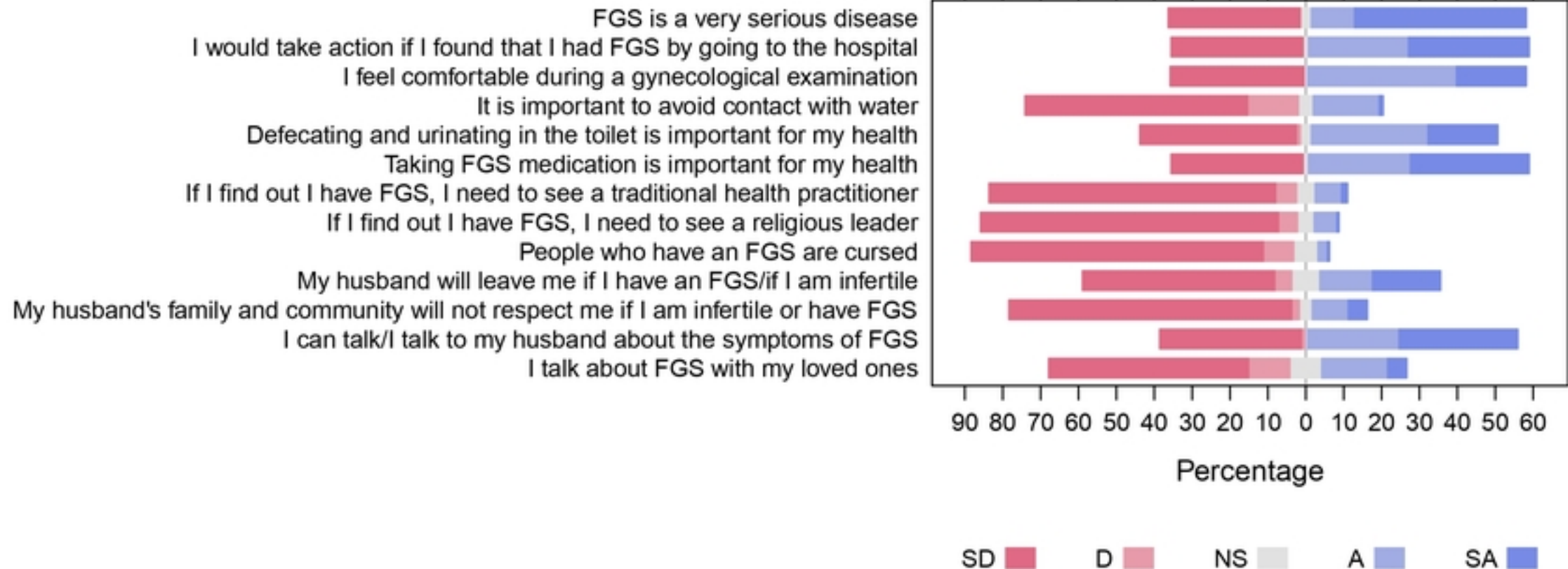
Figure



Figure

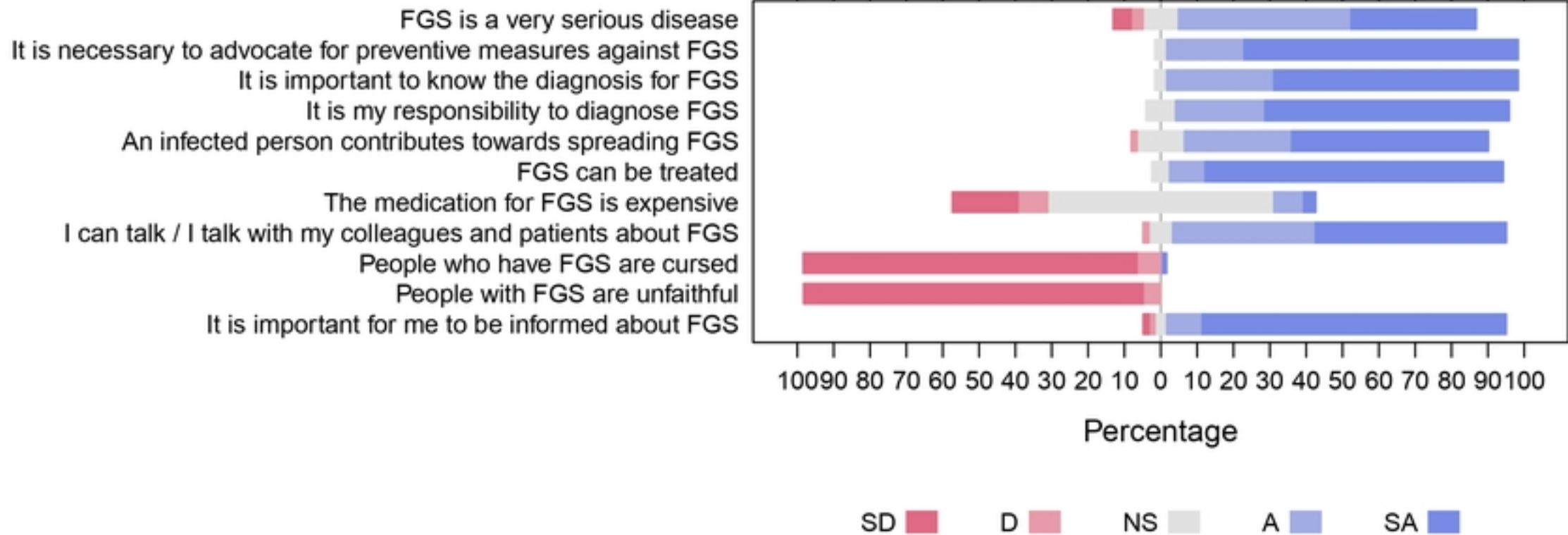


## Statement



Figure

## Statement



Figure