

1 **Serum VEGF Levels on Admission in COVID-19 Patients Correlate with SP-D and**  
2 **Neutrophils, Reflecting Disease Severity: A Prospective Study**

3

4 Mayoko Tsuji<sup>1\*</sup>, Mitsuko Kondo<sup>1</sup>, Yasuto Sato<sup>2,3</sup>, Azusa Miyoshi<sup>1</sup>, Fumi Kobayashi<sup>1</sup>,  
5 Ken Arimura<sup>1</sup>, Kaoru Yamashita<sup>4</sup>, Satoshi Morimoto<sup>4</sup>, Naoko Yanagisawa<sup>5</sup>, Atsuhiro  
6 Ichihara<sup>4</sup>, Etsuko Tagaya<sup>1</sup>.

7

8 <sup>1</sup> Department of Respiratory Medicine, Tokyo Women's Medical University, Tokyo,

9 Japan

10 <sup>2</sup> Graduate School of Public Health, Shizuoka Graduate University of Public Health,

11 Shizuoka, Japan

12 <sup>3</sup> Department of Hygiene and Public Health, Tokyo Women's Medical University,

13 Tokyo, Japan

14 <sup>4</sup> Department of Endocrinology and Hypertension, Tokyo Women's Medical University,

15 Tokyo, Japan

16 <sup>5</sup> Department of Microbiology and Immunology, Tokyo Women's Medical University,

17 Tokyo, Japan

18

19 **Corresponding author details:**

20 Name: Mayoko Tsuji

21 Email: [tsuji.mayoko@twmu.ac.jp](mailto:tsuji.mayoko@twmu.ac.jp)

22 Twitter account name (optional): @May\_resp

23

24

## 1 **ABSTRACT**

2 *Background and objective:* The COVID-19 pandemic caused by SARS-CoV-2 has  
3 resulted in significant global morbidity and mortality. This study aimed to investigate  
4 the clinical significance of serum vascular endothelial growth factor (VEGF) in  
5 COVID-19 patients and its association with disease severity and pulmonary injury.

6 *Methods:* We prospectively collected data from 71 hospitalized COVID-19 patients  
7 between June 2020 and January 2021. Patients were classified as either mild or severe  
8 based on their oxygen requirements during hospitalization. Serum VEGF levels were  
9 measured using an ELISA kit.

10 *Results:* In comparison to mild cases, significantly elevated serum VEGF levels were  
11 observed in severe COVID-19 patients. Furthermore, VEGF levels exhibited a positive  
12 correlation with white blood cell count, neutrophil count, and lymphocyte count.

13 Notably, serum surfactant protein-D (SP-D), an indicator of alveolar epithelial cell  
14 damage, was significantly higher in patients with elevated VEGF levels.

15 *Conclusion:*

16 These results suggest that elevated serum VEGF levels could serve as a prognostic  
17 biomarker for COVID-19 as it is indicative of alveolar epithelial cell injury caused by  
18 SARS-CoV-2 infection. Additionally, we observed a correlation between VEGF and  
19 neutrophil activation, which plays a role in the immune response during endothelial cell  
20 injury, indicating a potential involvement of angiogenesis in disease progression.

1 Further research is needed to elucidate the underlying mechanisms of VEGF elevation  
2 in COVID-19.

3

4

5 **Keywords:** VEGF, SP-D, alveolar epithelial cell, neutrophil activation, COVID-19,  
6 coronavirus disease, angiogenesis

7

8

## 1 INTRODUCTION

2 COVID-19, caused by SARS-CoV2, was first reported in 2019 in China <sup>1</sup>, and  
3 rapidly escalated into a global pandemic. This unprecedented crisis has resulted in  
4 approximately 7 million deaths worldwide, according to the World Health Organization  
5 (<https://covid19.who.int/>). The primary target of SARS-CoV2 infection is the alveolar  
6 type I epithelial cells (ATI). Infection of these cells can lead to cell death through  
7 apoptosis or pyroptosis mechanisms <sup>2-4</sup>. However, severe endothelial injury with  
8 intracellular viral presence has been observed in the lungs of patients with COVID-19  
9 <sup>5-7</sup>.

10 Angiogenesis, the process involving new blood vessel formation from  
11 pre-existing vessels, is a fundamental process involved in various conditions such as  
12 cancer, wound healing, and multiple myeloma <sup>8</sup>. There are two described types of  
13 angiogenesis, intussusceptive and sprouting angiogenesis <sup>9-12</sup>. Notably, intussusceptive  
14 angiogenesis has been identified as occurring in COVID-19 autopsy lung samples, and  
15 its occurrence appears to be more prominent in COVID-19 compared to influenza virus  
16 pneumoniae <sup>6</sup>.

17 COVID-19 severity has been associated with vascular complications such as  
18 cardiac failure, renal failure, coagulopathy, stroke, and pulmonary embolism <sup>13, 14</sup>. Also,  
19 severe pneumonia often progresses to a life threatening condition known as acute  
20 respiratory distress syndrome (ARDS) <sup>15, 16</sup>. The development of ARDS is attributed to

1 endothelial cell and epithelial cell damage<sup>17</sup>. Collectively, these observations highlight  
2 the critical role of vasculopathy in the pathogenesis of COVID-19.

3 The serum level of vascular endothelial growth factor (VEGF) has been found  
4 to exhibit a positive correlation with disease severity in COVID-19 patients. VEGF is  
5 recognized as an angiocrine factor and holds potential as a prognostic marker for  
6 COVID-19<sup>18, 19</sup>. However, the precise implications of VEGF in the pathophysiology of  
7 COVID-19 remain unclear, and its clinical significance in the context of the disease is  
8 yet to be determined.

9 In this study, we aimed to explore and investigate the clinical relevance of serum VEGF  
10 levels in COVID-19 patients.

11

12

## 13 **METHODS**

### 14 **Study design and population**

15 The protocol for this study was approved by the ethical committee of Tokyo  
16 Women's Medical University (TWMU), and registered at Clinical Trials (No. 5612-R).  
17 All participants gave written informed consent.

18 We prospectively collected data from patients admitted and hospitalized with  
19 COVID-19 at TWMU hospital between June, 2020 and January, 2021. The cohort  
20 included all symptomatic patients who tested positive with SARS-CoV2 through PCR

1 testing, resulting in a total of 71 confirmed cases. The severity of the disease was  
2 categorized according to the oxygen requirements upon admission, with patients either  
3 classified as mild ( $O_2$  intake  $< 3$  L/min;  $n=46$ , 64.8%) or severe ( $O_2$  intake  $\geq 3$  L/min;  $n$   
4  $=25$ , 35.2%).

5 Patients in this study were individuals who visited the Fever Outpatient Department in  
6 TWMU, and were subsequently recommended for hospitalization by Tokyo Center for  
7 Infectious Disease Control and Prevention (iCDC).

8 Demographic data, including age, sex, BMI, disease comorbidity, oxygen level,  
9 history of smoking, history of alcohol, blood cell counts, serum KL-6, serum SP-D,  
10 serum D-dimer, and serum sIL-2R levels were obtained from medical records and  
11 medical history forms. Serum VEGF levels were measured using ELISA kit.

## 12 **Analysis of serum VEGF**

13 To measure the serum VEGF levels, plasma samples were collected at the time of  
14 hospitalization. We utilized an enzyme-linked immunosorbent assay (ELISA) kit (Ray  
15 Biotech ELH-VEGF) in duplicate, and the absorbance was measured at a wave length of  
16 450 nm using an Microplate Reader (Bio-Rad 680).

17

## 18 **Outcomes**

1 The primary objectives of this study were to explore the pathogenetic and clinical  
2 significance of serum VEGF by comparing clinical findings in severe COVID-19  
3 patients.

4

5

## 6 **Statistical Analysis**

7 Continuous variables were presented as mean  $\pm$  standard error of the mean (SEM),

8 while categorical variables were expressed as numbers (proportion) in patients'

9 characteristics. Continuous variables between the 2 groups were compared using the

10 Mann-Whitney U test and Fisher's exact test was used for categorical variables.

11 Bivariate correlations were calculated using Spearman's rank correlation coefficient

12 between continuous biological variables and ordinal variables.  $p < 0.05$  was considered

13 as statistically significant.  $r = 0.2 - 0.39$  was considered as mild correlation, and  $r = 0.4$

14  $-0.69$  was considered as moderate correlation.

15 For statistical analysis, the data were analyzed using the Prism 9 software package

16 (GraphPad Software, San Diego, CA, USA).

17

18

19

## 1    **RESULTS**

### 2    **Patients' characteristics**

3    During the study period, a total of 71 patients (50 men and 21 women) with a mean of  
4    age of 58.5 years (range 49- 69) who were hospitalized due to COVID-19 agreed to  
5    participate in this research. All 71 patients had undergone SARS-CoV-2 PCR testing at  
6    least one day before admission, confirming a positive result. The severity of COVID-19  
7    was determined based on the maximum inhaled oxygen flow during hospitalization,  
8    categorizing patients as either Mild,  $< 3$  L/min ( $n = 46$ ) or Severe,  $\geq 3$  L/min ( $n = 25$ ).  
9    The majority of patients in the study were male (Mild: 60.9%, Severe: 88%,  $p = 0.028$ ),  
10    with smoking history more prevalent among the mild group (Mild: 71.1%, Severe:  
11    56.0%,  $p = 0.29$ ), while habitus of alcohol did not significantly differ between the  
12    groups (Mild: 63.0%, Severe: 64.0%,  $p > 0.999$ ). Differences between Mild group and  
13    Severe group were observed in terms of age (range; Mild: 49-69, Severe: 49- 65,  $p =$   
14    0.052) and BMI (range; Mild: 20.3- 27.4, Severe: 22.8- 30.1,  $p = 0.0087$ ).  
15    Regarding comorbidities, the frequencies of hypertension (Mild: 25.0%, Severe: 68.0%,  
16     $p = 0.0008$ ), chronic kidney disease (Mild: 13.0%, Severe: 44.0%,  $p = 0.0074$ ), and  
17    kidney transplantation (Mild: 9.1%, Severe: 66.7%,  $p = 0.023$ ) were significantly  
18    different between the mild and severe group (Table 1).

19

### 20    **Prognosis markers of COVID-19 on admission**



1 To identify prognostic markers of COVID-19, we analyzed multiple factors in serum  
2 samples obtained from COVID-19 patients on admission. Initially, we examined  
3 endothelial injury markers, such as VEGF and D-dimer. VEGF levels were significantly  
4 elevated in the Severe group ( $p = 0.027$ ) (Figure 1a). Moreover, WBC counts ( $p$   
5  $= 0.00040$ ) and neutrophil counts ( $p < 0.0001$ ) (Figure 1e and f) were significantly higher  
6 in severe COVID-19 patients. As sIL-2R stimulates lymphocytes, Conversely, there  
7 were no significant differences in KL-6 ( $p = 0.30$ ) and SP-D levels ( $p = 0.50$ ), which are  
8 indicators of alveolar epithelial damage (Figure 1c and d).

9 We then focused on exploring the relationship between serum VEGF levels and  
10 disease severity. ROC analysis demonstrated an area under the curve (AUC) of 0.68  
11 [95% CI: 0.57-0.82], with a cut off value of 394 pg/ $\mu$ l (sensitivity: 72%, Specificity:  
12 65%) determined using the Youden Index (Figure 2).

13

#### 14 **Correlation between VEGF and SP-D in VEGF high patients**

15 As VEGF is commonly produced by epithelial cells, we next examined the  
16 relationship between VEGF and epithelial damage markers such as SP-D. Patients with  
17 serum VEGF levels  $>394$  pg/ $\mu$ l were classified as the VEGF high group, based on the  
18 identified cut off value for prognosis of COVID-19 severity. One patient with interstitial  
19 pneumoniae was excluded from the analysis ( $n = 33$ ). Bivariate correlations using  
20 Spearman's rank correlation coefficient revealed a positive correlation between VEGF

1 and SP-D in the VEGF high group ( $r = 0.42$ ,  $p = 0.015$ ) (Figure 3a), while no significant  
2 correlation was observed between VEGF and KL-6 levels ( $r = -0.058$ ,  $p = 0.75$ ) (Figure  
3 3b). This data suggests that the VEGF high group of COVID-19 patients exhibits  
4 alveolar damage.

5

## 6 **Correlation between VEGF and Neutrophils**

7 Our data showed that WBC and Neutrophil levels were higher in the Severe group  
8 (Figure 1). We assessed correlations between VEGF and various markers using  
9 bivariate analysis. We observed correlations between VEGF and WBC ( $r = 0.36$ ,  $p =$   
10  $0.0019$ ) (Figure 4a), Neutrophil ( $r = 0.34$ ,  $p = 0.0041$ ) (Figure 4b), and Lymphocyte ( $r =$   
11  $0.26$ ,  $p = 0.030$ ) (Figure 4c).

12

## 13 **DISCUSSION**

14 Our prospective study revealed that serum VEGF levels served as a prognostic  
15 marker for COVID-19. These levels were correlated with white blood cell counts,  
16 neutrophil counts, and lymphocyte counts at the time of hospitalization. Notably, among  
17 patients with elevated VEGF levels ( $\text{VEGF} > 394 \text{ pg}/\mu\text{l}$ ), we observed a significant  
18 correlation with serum SP-D. This indicates a potential correlation between VEGF  
19 elevation and alveolar epithelial cell injury caused by SARS-CoV2 infection.

20

21 In this study, patient characteristics revealed a higher proportion of males,  
smokers, and individuals with a history of alcohol consumption (Table1) compared to

1 general public population. This observation can be attributed to the proximity of our  
2 study site to downtown areas. Furthermore, our data demonstrated elevated levels of  
3 WBCs, neutrophils, and VEGF at the time of hospitalization, which were associated  
4 with the severity of COVID-19 (Figures 1 and 4). Additionally, the severe COVID-19  
5 group exhibited a significantly higher prevalence of comorbidities such as hypertension,  
6 chronic kidney disease, kidney transplantation (Table 1), and uric acid (data not shown  
7 <sup>20</sup>). Based on our patient characteristics and biological markers, these findings suggest  
8 that factors contributing to disease severity are consistent with previous public reports  
9 and risk assessment tests <sup>21, 22</sup>. These results reinforce the consistency between our  
10 patient characteristics and biological markers in relation to disease severity.  
11 Furthermore, we conducted further investigation of these factors among both male and  
12 female patients. Interestingly, we observed the same trends in both genders, with a  
13 positive correlation between VEGF levels and disease severity. The trends displayed  
14 moderate correlation in females ( $r = 0.57, p = 0.0067$ ), and mild correlation in males ( $r$   
15  $= 0.39, p = 0.0052$ ) (Supplemental figure 1). Collectively, our comprehensive analysis,  
16 considering patient characteristics and relevant biological markers, suggests that the  
17 severity factors observed in our study align with those reported in the general  
18 population and are consistent with established risk assessment tests.

19           Epithelial cell injury is a common feature observed in various respiratory  
20 diseases including infectious pneumonia, ARDS, and interstitial pneumonia. Such

1 injury results in hypoxia due to inadequate oxygen uptake. In COVID-19 patients,  
2 SARS-CoV2 infects alveolar type II cells (ATII) expressing ACE2, leading to apoptosis  
3 and pyroptosis of the infected cells<sup>23,24</sup>. Subsequently, alveolar macrophages are  
4 activated and release proinflammatory cytokines following SARS-Cov2 infection<sup>25,26</sup>.  
5 These cytokines contribute to endothelial cell dysfunction, ultimately leading to  
6 angiogenesis<sup>27,28</sup>. In this study, we have identified a correlation between VEGF and  
7 SP-D (Figure 3), suggesting that elevated VEGF levels reflects epithelial cell injury,  
8 particularly in patients with high VEGF levels. Furthermore, activated endothelial cells  
9 stimulate neutrophils and promote platelet accumulation by releasing RANTES and PF4  
10<sup>29,30</sup>. Our data demonstrated that VEGF, an indicator of angiogenesis, was correlated  
11 with WBC and neutrophil counts (Figure 1e and f). Notably, among patients with high  
12 WBC and neutrophils, only one patient developed bacterial pneumonia as a  
13 complication. This finding suggests a stronger association between the effect of  
14 COVID-19 and less association with complications such as bacterial infection, which  
15 typically exhibit elevated WBC and neutrophil counts.

16 Serum SP-D is known to rapidly increase when ATII cell damage occurs, as  
17 seen in interstitial lung disease, and its level at the initial visit is considered a poor  
18 prognostic marker<sup>31</sup>. KL-6, on the other hand, also reflects ATII cell damage but is not  
19 specific to alveolar epithelial cells and increases later in response to cell damage<sup>32,33</sup>  
20 due to its higher molecular weight. In our data, SP-D levels but not KL-6 levels at the

1 time of hospitalization was elevated in patients with high levels of VEGF (Figure 3a  
2 and 3b). This discrepancy may be attributed to the fact that our samples were obtained  
3 during the early stage of infection. The correlation between VEGF and SP-D suggests  
4 an interaction between epithelial cells and endothelial cells.

5 Peng Wang et al., reported that “vasculature development related proteins”  
6 were upregulated in SARS-CoV2-infected alveolar epithelial cells *in vitro*. Additionally,  
7 “neutrophil activation related proteins” were enriched in SARS-CoV2-infected  
8 endothelial cells, leading to neutrophil activation, while mediated immunity-related  
9 proteins were also enriched<sup>34</sup>. Our data further support the cascades of SARS-CoV2  
10 mediated neutrophil activation via angiogenesis initiated by alveolar epithelial cells in  
11 COVID-19 patients.

12 VEGF is known to be produced by perivascular cells, including epithelial cells,  
13 neutrophils, and mesenchymal cells, in response to injury triggered by hypoxia. It is  
14 involved in production of MMP-9 and plays a role in angiogenesis in tumors<sup>35-37</sup>. Our  
15 data revealed an increase in oxygen demand that correlated with serum VEGF levels  
16 (Table 1), suggesting that hypoxia may be one of the factors contributing to VEGF  
17 upregulation.

18 It is worth noting that our samples were obtained from patients infected with  
19 the Delta variant, which is known to be associated with a high risk of endothelial  
20 dysfunction. Although the severity of cases after the Omicron variant is reported to be

1 less critical, some severe patients still exhibit vascular defects. Further data analysis  
2 following Omicron variant infection is warranted.

3 In conclusion, our findings demonstrate a correlation between serum VEGF  
4 levels and neutrophil counts in COVID-19 patients. Specifically, patients with  
5 remarkably high levels of VEGF showed a correlation with SP-D. These observations  
6 suggest that the pathogenesis of SARS-CoV2-induced alveolar endothelial cell and  
7 endothelial cell damage subsequently activates neutrophils. VEGF, as a prognostic  
8 marker for COVID-19, serves as an indicator of alveolar epithelial cell and endothelial  
9 cell damage, as well as neutrophilic inflammation. These findings contribute to our  
10 understanding of the complex interplay between VEGF, cellular damage, and immune  
11 response in the context of COVID-19.

12

13

#### 14 **Acknowledgements:**

15 The authors thank Atsuko Ohnishi, Masayuki Shino, and Yoshimi Sugimura for their  
16 technical support. This work was supported by a research grant from the TWUM Career  
17 Development Center for Medical Professionals. And we thank Shigeru Ashino from the  
18 Department of Microbiology and Immunology, TWUM, for technical support on the  
19 environment of the biosafety-level laboratory.

1

2

3 **Conflict of Interest:**

4 The authors have no Conflict of interest.

5

6 **Human/Animal Ethics Approval Declaration:** The protocol was approved by the

7 ethical committee, Tokyo Women's Medical University (TWMU), and registered at

8 Clinical Trials (No. 5612-R). All participants gave written informed consent.

9

10

11

12

13

## 1 REFERENCES

- 2 1 Zhu N, Zhang D, Wang W, Li X, Yang B, Song J, Zhao X, Huang B, Shi W,  
3 Lu R, Niu P, Zhan F, Ma X, Wang D, Xu W, Wu G, Gao GF, Tan W, Team CNClAR. A  
4 Novel Coronavirus from Patients with Pneumonia in China, 2019. *N Engl J Med.* 2020;  
5 **382**: 727-33.
- 6 2 Mossel EC, Wang J, Jeffers S, Edeen KE, Wang S, Cosgrove GP, Funk CJ,  
7 Manzer R, Miura TA, Pearson LD, Holmes KV, Mason RJ. SARS-CoV replicates in  
8 primary human alveolar type II cell cultures but not in type I-like cells. *Virology.* 2008;  
9 **372**: 127-35.
- 10 3 Qian Z, Travanty EA, Oko L, Edeen K, Berglund A, Wang J, Ito Y, Holmes  
11 KV, Mason RJ. Innate immune response of human alveolar type II cells infected with  
12 severe acute respiratory syndrome-coronavirus. *Am J Respir Cell Mol Biol.* 2013; **48**:  
13 742-8.
- 14 4 Wang P, Luo R, Zhang M, Wang Y, Song T, Tao T, Li Z, Jin L, Zheng H,  
15 Chen W, Zhao M, Zheng Y, Qin J. A cross-talk between epithelium and endothelium  
16 mediates human alveolar-capillary injury during SARS-CoV-2 infection. *Cell Death Dis.*  
17 2020; **11**: 1042.
- 18 5 Ahmetaj-Shala B, Peacock TP, Baillon L, Swann OC, Gashaw H, Barclay WS,  
19 Mitchell JA. Resistance of endothelial cells to SARS-CoV-2 infection *in*  
20 *vitro*. *bioRxiv.* 2020: 2020.11.08.372581.
- 21 6 Ackermann M, Verleden SE, Kuehnel M, Haverich A, Welte T, Laenger F,  
22 Vanstapel A, Werlein C, Stark H, Tzankov A, Li WW, Li VW, Mentzer SJ, Jonigk D.  
23 Pulmonary Vascular Endothelialitis, Thrombosis, and Angiogenesis in Covid-19. *N*  
24 *Engl J Med.* 2020; **383**: 120-8.
- 25 7 Iwamura C, Hirahara K, Kiuchi M, Ikehara S, Azuma K, Shimada T, Kuriyama  
26 S, Ohki S, Yamamoto E, Inaba Y, Shiko Y, Aoki A, Kokubo K, Hirasawa R, Hishiya T,  
27 Tsuji K, Nagaoka T, Ishikawa S, Kojima A, Mito H, Hase R, Kasahara Y, Kuriyama N,  
28 Tsukamoto T, Nakamura S, Urushibara T, Kaneda S, Sakao S, Tobiume M, Suzuki Y,  
29 Tsujiwaki M, Kubo T, Hasegawa T, Nakase H, Nishida O, Takahashi K, Baba K, Iizumi  
30 Y, Okazaki T, Kimura MY, Yoshino I, Igari H, Nakajima H, Suzuki T, Hanaoka H,  
31 Nakada TA, Ikehara Y, Yokote K, Nakayama T. Elevated Myl9 reflects the  
32 Myl9-containing microthrombi in SARS-CoV-2-induced lung exudative vasculitis and  
33 predicts COVID-19 severity. *Proc Natl Acad Sci U S A.* 2022; **119**: e2203437119.
- 34 8 Folkman J. Tumor angiogenesis: therapeutic implications. *N Engl J Med.* 1971;  
35 **285**: 1182-6.
- 36 9 Bär T, Wolff JR. The formation of capillary basement membranes during  
37 internal vascularization of the rat's cerebral cortex. *Z Zellforsch Mikrosk Anat.* 1972;  
38 **133**: 231-48.
- 39 10 Marin-Padilla M. Early vascularization of the embryonic cerebral cortex: Golgi  
40 and electron microscopic studies. *J Comp Neurol.* 1985; **241**: 237-49.



- 1 11 del Toro R, Prahst C, Mathivet T, Siegfried G, Kaminker JS, Larrivee B,  
2 Breant C, Duarte A, Takakura N, Fukamizu A, Penninger J, Eichmann A. Identification  
3 and functional analysis of endothelial tip cell-enriched genes. *Blood*. 2010; **116**:  
4 4025-33.
- 5 12 Gerhardt H, Golding M, Fruttiger M, Ruhrberg C, Lundkvist A, Abramsson A,  
6 Jeltsch M, Mitchell C, Alitalo K, Shima D, Betsholtz C. VEGF guides angiogenic  
7 sprouting utilizing endothelial tip cell filopodia. *J Cell Biol*. 2003; **161**: 1163-77.
- 8 13 Huang C, Wang Y, Li X, Ren L, Zhao J, Hu Y, Zhang L, Fan G, Xu J, Gu X,  
9 Cheng Z, Yu T, Xia J, Wei Y, Wu W, Xie X, Yin W, Li H, Liu M, Xiao Y, Gao H, Guo  
10 L, Xie J, Wang G, Jiang R, Gao Z, Jin Q, Wang J, Cao B. Clinical features of patients  
11 infected with 2019 novel coronavirus in Wuhan, China. *Lancet*. 2020; **395**: 497-506.
- 12 14 Smadja DM, Mentzer SJ, Fontenay M, Laffan MA, Ackermann M, Helms J,  
13 Jonigk D, Chocron R, Pier GB, Gendron N, Pons S, Diehl JL, Margadant C, Guerin C,  
14 Huijbers EJM, Philippe A, Chapuis N, Nowak-Sliwinska P, Karagiannidis C, Sanchez  
15 O, Kumpers P, Skurnik D, Randi AM, Griffioen AW. COVID-19 is a systemic vascular  
16 hemopathy: insight for mechanistic and clinical aspects. *Angiogenesis*. 2021; **24**:  
17 755-88.
- 18 15 Diehl JL, Peron N, Chocron R, Debuc B, Guerot E, Hauw-Berlemont C,  
19 Hermann B, Augy JL, Younan R, Novara A, Langlais J, Khider L, Gendron N, Goudot  
20 G, Fagon JF, Mirault T, Smadja DM. Respiratory mechanics and gas exchanges in the  
21 early course of COVID-19 ARDS: a hypothesis-generating study. *Ann Intensive Care*.  
22 2020; **10**: 95.
- 23 16 Karagiannidis C, Mostert C, Hentschker C, Voshaar T, Malzahn J, Schillinger  
24 G, Klauber J, Janssens U, Marx G, Weber-Carstens S, Kluge S, Pfeifer M,  
25 Grabenhenrich L, Welte T, Busse R. Case characteristics, resource use, and outcomes of  
26 10 021 patients with COVID-19 admitted to 920 German hospitals: an observational  
27 study. *Lancet Respir Med*. 2020; **8**: 853-62.
- 28 17 Vassiliou AG, Kotanidou A, Dimopoulou I, Orfanos SE. Endothelial Damage  
29 in Acute Respiratory Distress Syndrome. *Int J Mol Sci*. 2020; **21**.
- 30 18 Syed F, Li W, Relich RF, Russell PM, Zhang S, Zimmerman MK, Yu Q.  
31 Excessive Matrix Metalloproteinase-1 and Hyperactivation of Endothelial Cells  
32 Occurred in COVID-19 Patients and Were Associated With the Severity of COVID-19.  
33 *J Infect Dis*. 2021; **224**: 60-9.
- 34 19 Rovas A, Osiaevi I, Buscher K, Sackarnd J, Tepasse PR, Fobker M, Kühn J,  
35 Braune S, Göbel U, Thölking G, Gröschel A, Pavenstädt H, Vink H, Kumpers P.  
36 Microvascular dysfunction in COVID-19: the MYSTIC study. *Angiogenesis*. 2021; **24**:  
37 145-57.
- 38 20 Yamashita K, Morimoto S, Kimura S, Seki Y, Bokuda K, Watanabe D, Tsuji  
39 M, Arimura K, Shimamoto K, Tagaya E, Kawan M, Ichihara A. Hyperuricemia and the  
40 Severity of Coronavirus

- 1 Disease 2019 in Japan: A Retrospective Cohort Study  
2 - An Inseparable Relation with Hypertension and  
3 Chronic Kidney Disease. *Endocrinology, Diabetes and Metabolism Journal*. May 22,  
4 2023; **Volume 7**
- 5 21 Clift AK, Coupland CAC, Keogh RH, Diaz-Ordaz K, Williamson E, Harrison  
6 EM, Hayward A, Hemingway H, Horby P, Mehta N, Bengler J, Khunti K, Spiegelhalter  
7 D, Sheikh A, Valabhji J, Lyons RA, Robson J, Semple MG, Kee F, Johnson P, Jebb S,  
8 Williams T, Hippisley-Cox J. Living risk prediction algorithm (QCOVID) for risk of  
9 hospital admission and mortality from coronavirus 19 in adults: national derivation and  
10 validation cohort study. *BMJ*. 2020; **371**: m3731.
- 11 22 Eythorsson E, Bjarnadottir V, Runolfsdottir HL, Helgason D, Ingvarsson RF,  
12 Bjornsson HK, Olafsdottir LB, Bjarnadottir S, Agustsson AS, Oskarsdottir K,  
13 Thorvaldsson HH, Kristjansdottir G, Bjornsson AH, Emilsdottir AR, Armannsdottir B,  
14 Gudlaugsson O, Hansdottir S, Gottfredsson M, Bjarnason A, Sigurdsson MI, Indridason  
15 OS, Palsson R. Development of a prognostic model of COVID-19 severity: a  
16 population-based cohort study in Iceland. *Diagn Progn Res*. 2022; **6**: 17.
- 17 23 Ortiz ME, Thurman A, Pezzulo AA, Leidinger MR, Klesney-Tait JA, Karp PH,  
18 Tan P, Wohlford-Lenane C, McCray PB, Meyerholz DK. Heterogeneous expression of  
19 the SARS-Coronavirus-2 receptor ACE2 in the human respiratory tract. *EBioMedicine*.  
20 2020; **60**: 102976.
- 21 24 Calkovska A, Kolomaznik M, Calkovsky V. Alveolar type II cells and  
22 pulmonary surfactant in COVID-19 era. *Physiol Res*. 2021; **70**: S195-S208.
- 23 25 Pober JS, Sessa WC. Evolving functions of endothelial cells in inflammation.  
24 *Nat Rev Immunol*. 2007; **7**: 803-15.
- 25 26 Szmitko PE, Wang CH, Weisel RD, de Almeida JR, Anderson TJ, Verma S.  
26 New markers of inflammation and endothelial cell activation: Part I. *Circulation*. 2003;  
27 **108**: 1917-23.
- 28 27 Varga Z, Flammer AJ, Steiger P, Haberecker M, Andermatt R, Zinkernagel AS,  
29 Mehra MR, Schuepbach RA, Ruschitzka F, Moch H. Endothelial cell infection and  
30 endotheliitis in COVID-19. *Lancet*. 2020; **395**: 1417-8.
- 31 28 Liu F, Han K, Blair R, Kenst K, Qin Z, Upcin B, Wörsdörfer P, Midkiff CC,  
32 Mudd J, Belyaeva E, Milligan NS, Rorison TD, Wagner N, Bodem J, Dölken L, Aktas  
33 BH, Vander Heide RS, Yin XM, Kolls JK, Roy CJ, Rappaport J, Ergün S, Qin X.  
34 SARS-CoV-2 Infects Endothelial Cells. *Front Cell Infect Microbiol*. 2021; **11**: 701278.
- 35 29 Øynebråten I, Barois N, Bergeland T, Küchler AM, Bakke O, Haraldsen G.  
36 Oligomerized, filamentous surface presentation of RANTES/CCL5 on vascular  
37 endothelial cells. *Sci Rep*. 2015; **5**: 9261.
- 38 30 Sonmez O, Sonmez M. Role of platelets in immune system and inflammation.  
39 *Porto Biomed J*. 2017; **2**: 311-4.

- 1 31 Takahashi H, Shiratori M, Kanai A, Chiba H, Kuroki Y, Abe S. Monitoring  
2 markers of disease activity for interstitial lung diseases with serum surfactant proteins A  
3 and D. *Respirology*. 2006; **11 Suppl**: S51-4.
- 4 32 Fukaya S, Oshima H, Kato K, Komatsu Y, Matsumura H, Ishii K, Miyama H,  
5 Nagai T, Tanaka I, Mizutani A, Katayama M, Yoshida S, Torikai K. KL-6 as a novel  
6 marker for activities of interstitial pneumonia in connective tissue diseases. *Rheumatol*  
7 *Int*. 2000; **19**: 223-5.
- 8 33 Oyama T, Kohno N, Yokoyama A, Hirasawa Y, Hiwada K, Oyama H, Okuda  
9 Y, Takasugi K. Detection of interstitial pneumonitis in patients with rheumatoid arthritis  
10 by measuring circulating levels of KL-6, a human MUC1 mucin. *Lung*. 1997; **175**:  
11 379-85.
- 12 34 Mitroulis I, Alexaki VI, Kourtzelis I, Ziogas A, Hajishengallis G, Chavakis T.  
13 Leukocyte integrins: role in leukocyte recruitment and as therapeutic targets in  
14 inflammatory disease. *Pharmacol Ther*. 2015; **147**: 123-35.
- 15 35 Hanahan D, Coussens LM. Accessories to the crime: functions of cells  
16 recruited to the tumor microenvironment. *Cancer Cell*. 2012; **21**: 309-22.
- 17 36 Nozawa H, Chiu C, Hanahan D. Infiltrating neutrophils mediate the initial  
18 angiogenic switch in a mouse model of multistage carcinogenesis. *Proc Natl Acad Sci U*  
19 *S A*. 2006; **103**: 12493-8.
- 20 37 Pahler JC, Tazzyman S, Erez N, Chen YY, Murdoch C, Nozawa H, Lewis CE,  
21 Hanahan D. Plasticity in tumor-promoting inflammation: impairment of macrophage  
22 recruitment evokes a compensatory neutrophil response. *Neoplasia*. 2008; **10**: 329-40.
- 23
- 24

## 1 TABLES

Table 1 Clinical characteristics of patients(n=71)

<b>Variable</b>	<b>Mild(n=46)</b>	<b>Severe(n=25)</b>	<b>P value</b>
<b>Age</b>			
Median (IQR)	58.5(49-69)	66(49-65)	0.052
<b>Sex</b>			
Male n (%)	28(60.9%)	22(88.0%)	0.028*
<b>BMI</b>			
Median (IQR)	23.0(20.3-27.4)	26.1(22.8-30.1)	0.0087*
<b>Smoking history</b>			
	32(71.1%)	14(56.0%)	0.29
<b>Alcohol</b>			
	29(63.0%)	16(64.0%)	>0.99
<b>Comorbidities</b>			
Cancer	6(13.0%)	4(16%)	0.73
Diabetes	9(19.6%)	9(36.0%)	0.16
Hypertension	11(25.0%)	17(68.0%)	0.0008*
Dyslipidemia	13(29.6%)	13(52.0%)	0.076
Heart failure	0(0.0%)	2(8.0%)	0.13
Chronic kidney disease	6(13.0%)	11(44.0%)	0.0074*
Kidney transplantation	4(9.1%)	8(66.7%)	0.023*
Chronic liver disease	6(13.0%)	2(8.0%)	0.7
Hemodialysis	1(2.2%)	2(2.8%)	0.282
<b>FiO2</b>			
Median(IQR)	21(21-24)	40(32-100)	<0.0001*

2

3

1 **Table Legends**

2 **Table 1 Clinical characteristics of COVID-19 patients.**

3 Data are presented as Median (IQR) or n (%). Statistical analysis was performed by

4 ordinary Mann Whitney's U test. \* $p < 0.05$ .

5

6

1 **Figure Legends**

2 **Figure 1 Serum endothelial cell and alveolar epithelial cell damage markers of**

3 **COVID-19 patients on admission.**

4 Mild (n=46) and Severe(n=25). Statistical analysis was performed by ordinary

5 Mann–Whitney’s U test. VEGF-A: vascular endothelial growth factor, WBC: white

6 blood cell.

7 \* $p < 0.05$ , \*\*  $p < 0.01$ , \*\*\*  $p < 0.001$ , \*\*\*\*  $p < 0.0001$ .

8 **Figure 2 ROC analysis of Severity and VEGF.**

9 **Figure 3 VEGF correlates to acute alveolar damage in severe prognosis patients.**

10 **Figure 4** Correlations between VEGF and biological variables (white blood cell count,

11 neutrophil, and lymphocyte) using Pearson’s correlation coefficient. WBC: white blood

12 cell, VEGF: vascular endothelial growth factor.

13

14

15

Figure 1

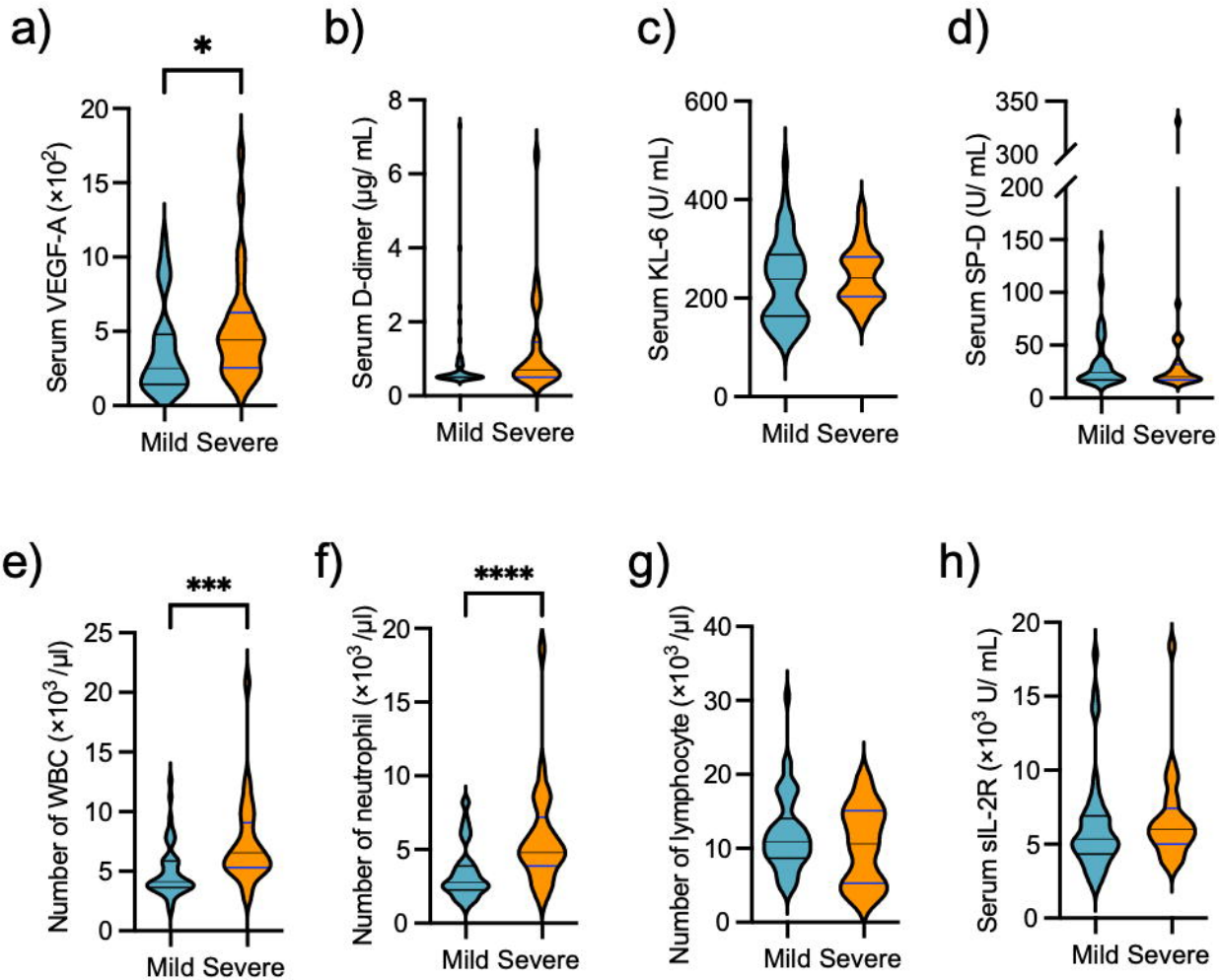


Figure2

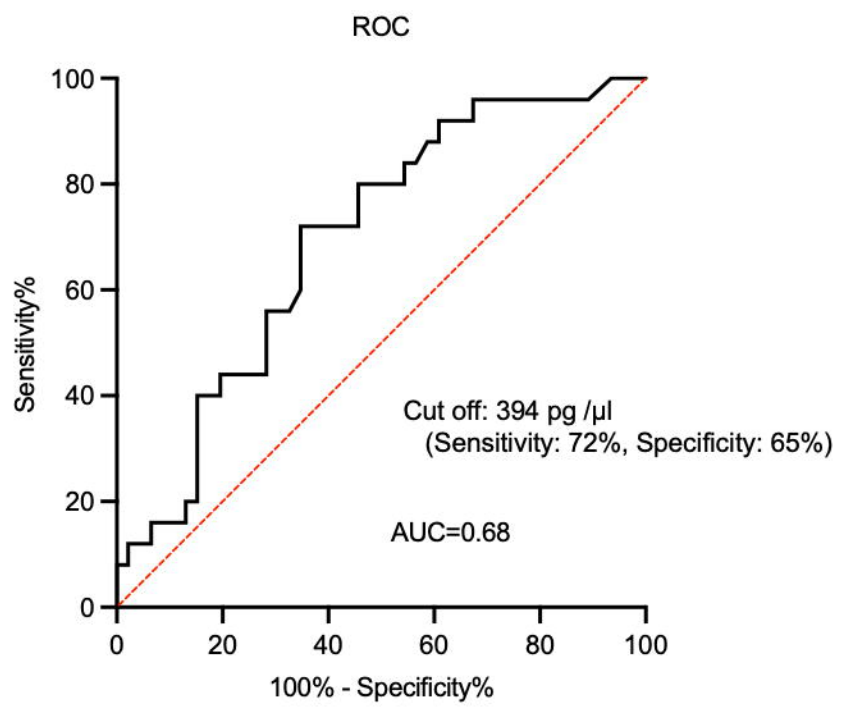




Figure3

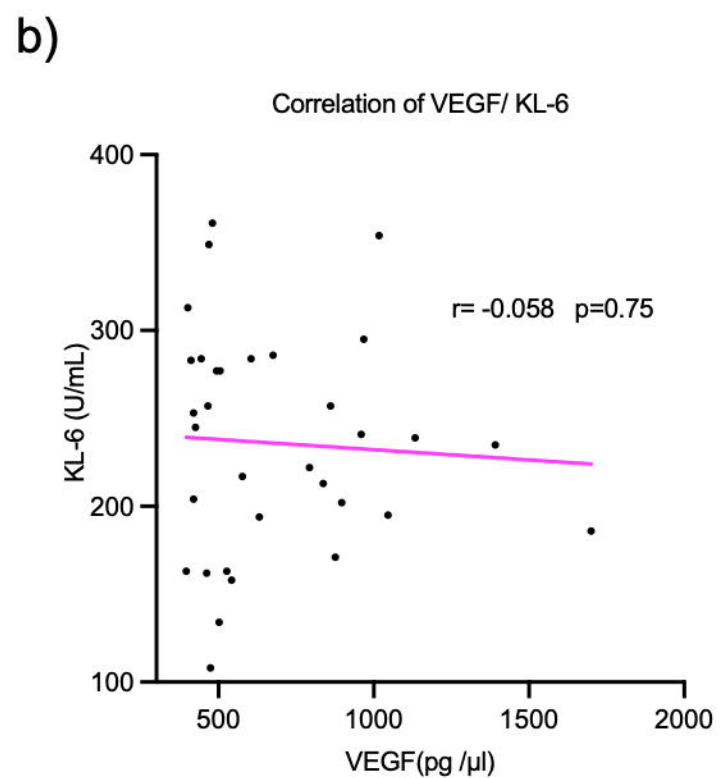
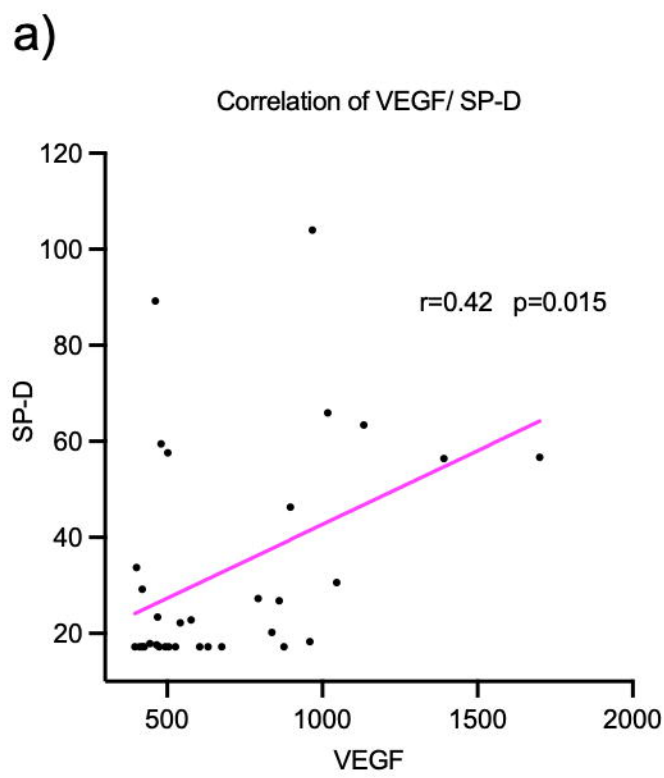
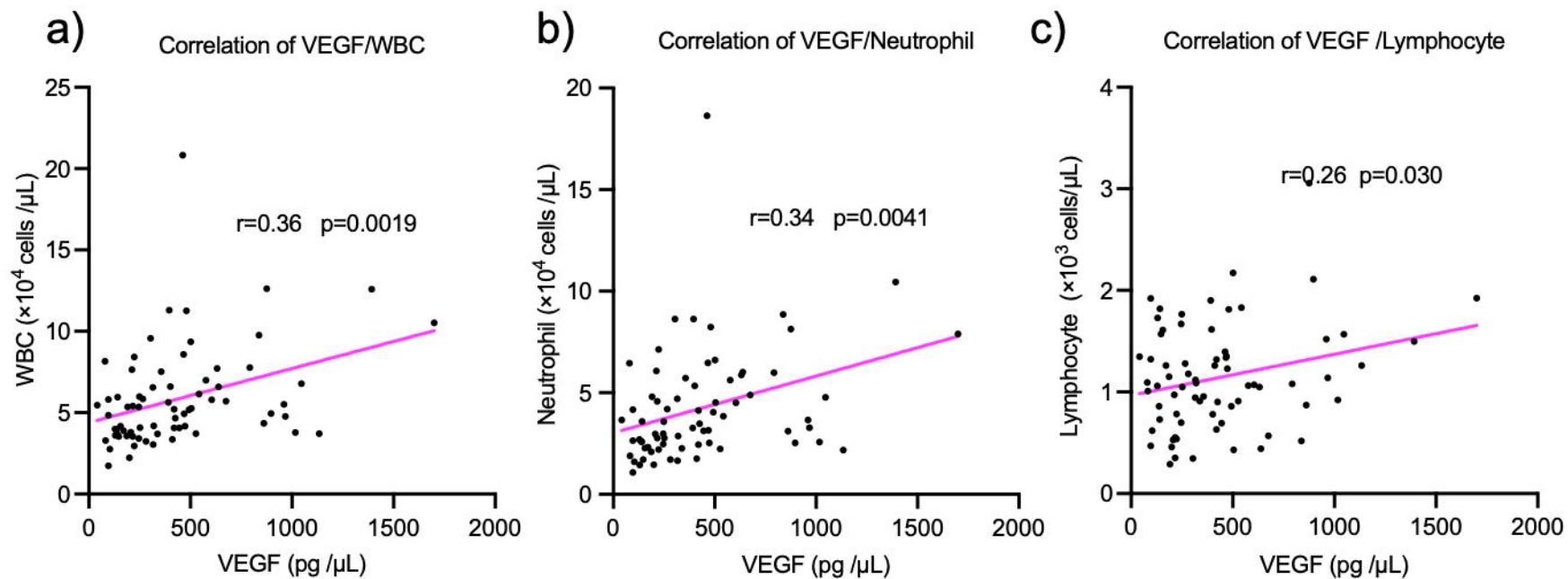
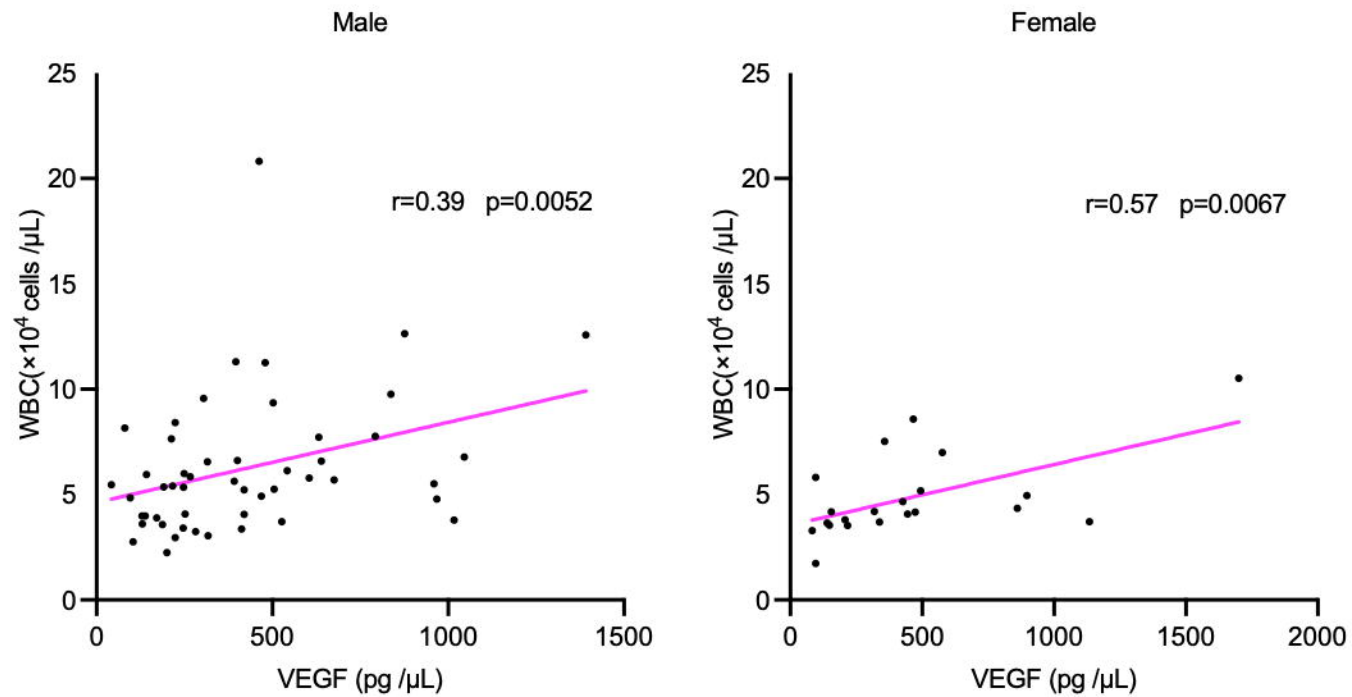


Figure4





Supplemental Figure 1. Correlations between serum VEGF and WBC by sex. Serum VEGF and WBC were correlated in both Male and Female .