

Prospective multicenter validation of a new laboratory workflow integrating the free light chains kappa quotient in CSF analysis

Protocol of the ORCAS study

Alexander Dressel^{1*}, Malte Johannes Hannich², Marie Süße³

¹ Department of Neurology, Carl-Thiem Klinikum Cottbus

² Institute for Clinical Chemistry and Laboratory Medicine, University Medicine Greifswald, Greifswald

³ Department of Neurology, University Medicine Greifswald, Greifswald

***Corresponding author:** Marie Süße, Tel: 03834866777, E-mail: marie.suesse@med.uni-greifswald.de, ORCID iD: 0000-0002-6167-4354

Running title: Protocol of the ORCAS study

Number of words: 3494

Number of figures: 1

Number of tables: 2

ABSTRACT

Introduction: Free light chain kappa (FLC κ) are a newer sensitive biomarker to detect intrathecal immunoglobulin synthesis. Here we report the study protocol of the ORCAS study which will evaluate a novel laboratory work flow recently proposed including FLC κ analysis simplifying cerebrospinal fluid (CSF) analysis.

Methods: The ORCAS study is a prospective multicenter diagnostic biomarker study across at least 4 study sites. The study protocol does not specify which assays should be applied in the participating laboratories to detect oligoclonal bands (OCB) or measure FLC κ or Ig synthesis to represent real world data. Primary outcome parameter is the sensitivity and negative predictive value of the absence of local FLC κ synthesis for the absence of intrathecal synthesis according to OCB and/or intrathecal IgG, IgA, IgM synthesis in quotient diagrams. The reference range of FLC κ will be indicated by the FLC κ quotient diagram. This study was designed according to the STARD criteria.

Perspective: The establishment of a newer biomarker in routine practice is associated with significant difficulties, such as the inconsistent comparability of different measurement platforms, the establishment of suitable cut-offs or insufficient knowledge regarding sensitivity and specificity of the biomarker. If the ORCAS study objective is achieved, the use of the proposed workflow integrating FLC κ analysis in routine practice in CSF diagnostics could help to better characterize the intraindividual and disease-specific intrathecal humoral immune response in a resource-efficient manner.

Keywords: Cerebrospinal fluid, Intrathecal immunoglobulin synthesis, Free light chain kappa, Oligoclonal IgG, Reibergram

Introduction

The presence of locally synthesized immunoglobulin (Ig) in the cerebrospinal fluid (CSF) is a biomarker for central nervous system (CNS) inflammation and a basic analysis in CSF diagnostics. In clinical routine, Ig synthesis is assessed by quantifying intrathecal IgG, IgA and IgM using the Ig CSF/serum ratio in relation to the albumin CSF/serum ratio in a respective quotient diagram (1). However, the most sensitive biomarker for intrathecal IgG synthesis is the qualitative determination of oligoclonal bands (OCB), which utilize isoelectric focusing to identify IgG clones seen in CSF but not in serum (2). More recently a newer biomarker for intrathecal Ig synthesis, the free light chain kappa (FLC κ) have been introduced in CSF analytics (3). The analysis of FLC κ has several advantages over the previous reference standard, OCB analysis, such as faster and objective quantitative results, simpler application and cost savings (4-6). FLC κ are produced in excess during Ig synthesis of all Ig classes and released into serum and CSF (7). There have been different approaches for establishing a reference value, such as the FLC κ index (5,8-9). The index is determined by the FLC κ CSF/serum quotient in relation to the albumin quotient. The diagnostic sensitivity to detect intrathecal inflammation using this approach is comparable to OCB at least in multiple sclerosis patients (3,5,9). However, there is still disagreement on which cut-off should be used for the FLC κ index. This hampered generalizability of the results and hindered transfer into clinical routine. Reiber et al. provided a quotient diagram in analogy to the established quotient diagrams for IgG, IgA and IgM which can now be used as a definite basis to identify an intrathecal synthesis of FLC κ (4). Using this quotient diagram we have shown in a monocentric study that the absence of intrathecal FLC κ synthesis predicts the absence of intrathecal Ig synthesis as determined by IgG, IgA, IgM quotient diagrams or the presence of OCB in CSF. In contrast, not all patients with intrathecal FLC κ synthesis have positive OCB or detectable intrathecal Ig synthesis in the quotient diagrams (10). We have therefore suggested to adapt the CSF laboratory analysis using the FLC κ quotient as an initial step to identify those CSF-serum sample pairs that require additional analysis with Ig quantification and OCB analysis. Among other aspects, this approach is necessary because the complete replacement of the previous reference diagnostic, OCB and Ig synthesis, for cost and simplicity reasons by FLC κ would lead to a number of diagnostic errors.

Methods

Aim of the trial

The current study is designed to determine whether the absence of intrathecal FLC κ synthesis according to the quotient diagram for FLC κ predicts the absence of quantitative or qualitative Ig synthesis in CSF.

This study is necessary in order to transfer this newer biomarker into clinical routine in a resource-oriented but considerate manner to avoid drawing false conclusions from diagnostic uncertainties. Due to the multicenter and prospective approach, generalizability, representability and feasibility of the results can be expected.

Study description and study design

This prospective multicenter diagnostic biomarker study across at least 4 study sites will include a total of at least 500 consecutive samples of lumbar CSF/serum pairs irrespective of the clinical diagnostic question. Routine diagnostics including Ig synthesis and OCB analysis will be performed in each laboratory according to local standards. The biomarker in question, FLC κ , will also be measured according to local standards. These additional data will be measured solely for the sake of the study and will not be reported to the clinician. At the end of the study the data will be reported pseudonymized to the main study site for final analysis. To evaluate the feasibility of this approach in clinical routine across laboratories the study protocol does not specify which assays should be applied in the participating laboratories to detect OCB or measure FLC κ or Ig synthesis. Table 1 lists the data to be reported.

The reference range of FLC κ will be calculated using the established FLC κ quotient diagram (4). In these quotient diagrams, Ig and FLC κ CSF/serum quotients (QIgG, QIgA, QIgM, QFLC κ) are plotted in reference to the albumin CSF/serum quotient (QAlb). The formulas used for the calculation are analogous to Reiber et al. 2019 (4) (table 2) where the upper line (Qlim) of the reference range discriminates between the blood derived- and intrathecally synthesized- Ig and FLC κ fraction (10).

The workflow to be tested is shown in figure 1. In detail this workflow includes the following steps: After determination of the routine CSF analysis (cell count, lactate, total protein) the determination of the FLC κ IF follows. If the FLC κ IF is negative, no further Ig or OCB analysis should be necessary if the negative predictive value of the FLC κ IF is sufficiently high. A prerequisite is that the FLC κ serum values are not above the upper limit of the reference value, as this can lead to false negative FLC κ values. If the FLC κ IF is positive, further analysis of

IgA, M, and G including OCB analysis is necessary to identify disease-typical patterns of the intrathecal humoral immune response.

Table 1

Data to be reported

Cell count in CSF (/μl)
Lactate concentration in CSF (mmol/l)
Albumin quotient
IgG quotient
IgA quotient
IgM quotient
OCB method, OCB pattern (I-V), OCB bands in pattern II and III, OCB result (positive/negative)
FLCκ method, assay type, FLCκ serum and CSF concentration, FLCκ index, FLCκ intrathecal fraction (IF)
Creatinine in serum mg/dl

CSF cerebrospinal fluid, Ig Immunoglobulin, OCB oligoclonal bands, FLCκ free light chains kappa

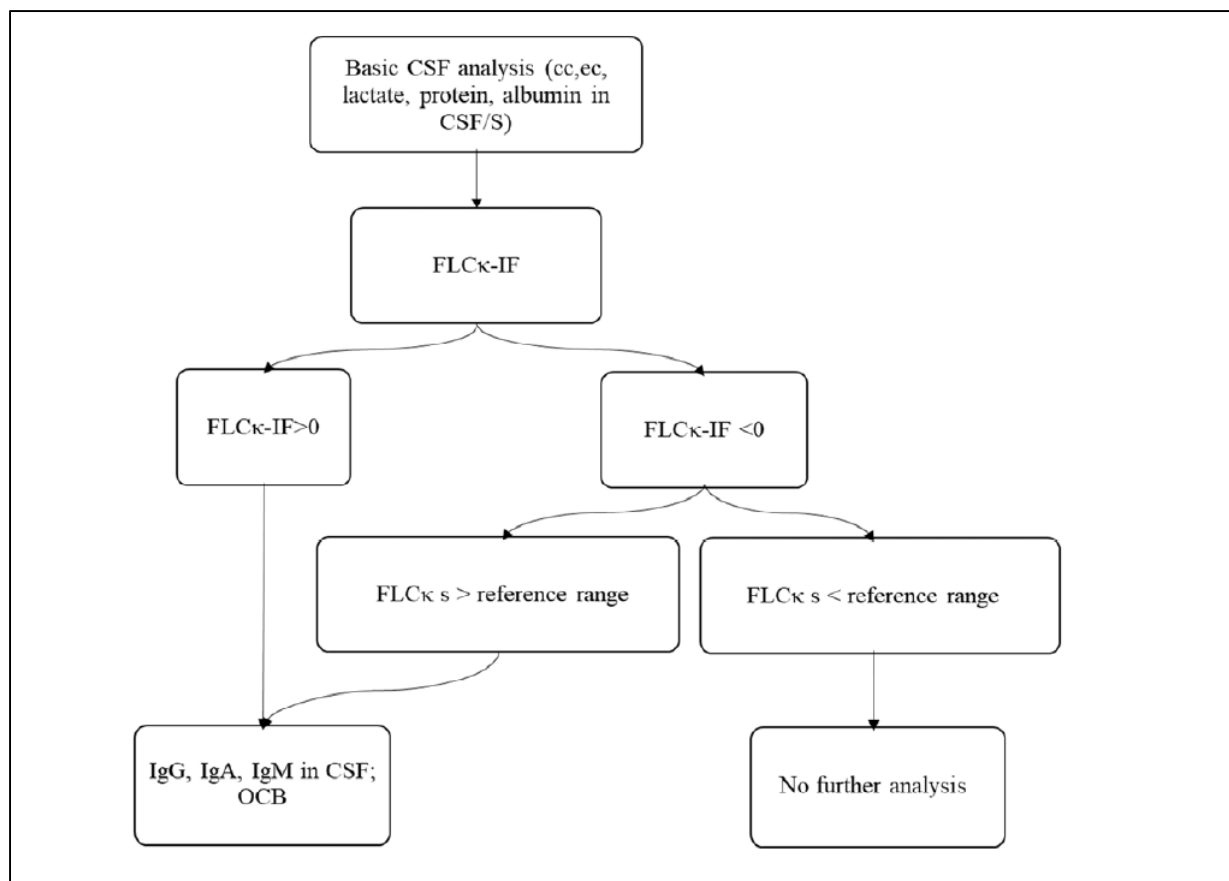
Table 2

Formulas used for calculating the reference range of the IgG, IgA, IgM and FLCκ quotient

$Q_lim(IgG) = 0.93 \times \sqrt{((QAlb)^2 + 6 \times 10^{-6})} - 1.7 \times 10^{-3}$ $Q_lim(IgA) = 0.77 \times \sqrt{((QAlb)^2 + 23 \times 10^{-6})} - 3.1 \times 10^{-3}$ $Q_lim(IgM) = 0.67 \times \sqrt{((QAlb)^2 + 120 \times 10^{-6})} - 7.1 \times 10^{-3}$ $Q_lim(FLC\kappa) = 3.27 \times \sqrt{((QAlb)^2 + 33 \times 10^{-6})} - 8.2 \times 10^{-3}$ $Ig/FLC\kappa-IF = [1 - Qlim(Ig/FLC\kappa)/QIg/QFLC\kappa] \times 100 [\%]$

Lim: upper normal limit of the reference range, Ig Immunoglobulin, Alb albumin, FLCκ free light chains kappa, IF intrathecal fraction, Q quotient

Figure 1 (10)



Workflow to be tested in this multicentric, prospective diagnostic biomarker study.

After determination of the routine CSF analysis the determination of the FLC κ IF follows. If the FLC κ IF is negative, no further Ig or OCB analysis should be necessary provided the FLC κ serum levels are not elevated. If the FLC κ IF is positive, further analysis of IgA, M, and G including OCB analysis is necessary to identify disease-typical patterns of the intrathecal humoral immune response.

CSF cerebrospinal fluid, CC cell count, EC erythrocyte count, S serum, FLC κ free light chains kappa, IF intrathecal fraction, OCB oligoclonal bands

Arms and interventions

None.

Outcome measures

Primary outcome parameter

The primary outcome parameter is the sensitivity and negative predictive value of the absence of local FLC κ synthesis for the absence of intrathecal synthesis according to OCB and/or intrathecal IgG, IgA, IgM synthesis in quotient diagrams.

The hypothesis to be tested is as follows: The FLC κ IF has a sensitivity and negative predictive value of at least 95% for the detection of intrathecal immunoglobulin synthesis (defined by QIgG, QIgA, QIgM > QlimIgG,A,M or detection of CSF specific OCB).

Secondary outcome parameters

1. The predictive value of the absence of local FLC κ synthesis for the absence of OCB determined by silver gel analysis compared to agarose gel
2. Predictive value of the absence of local FLC κ synthesis for the absence of OCB depending on the FLC κ assay used
3. Comparison of sensitivities to detect quantitative or qualitative Ig synthesis between index evaluation with different cut-offs (5,8-9) and the IF FLC κ
4. Analyzing material and personnel costs as well as turn-around time to evaluate the economical benefits of the proposed work flow

Statistical analysis

A calculation of the minimum required sample size was based on the precision of two-sided confidence intervals. Since we use sensitivity and negative predictive value as co-primary endpoints, we decided to use 97.5% confidence intervals (global alpha \leq 0.05). Precision was set at 0.05 as the maximum confidence interval width. With a sample size of 424, a two-sided 97.5% confidence interval with a width of 0.05 (0.921-0.971) is obtained in each case when sensitivity and negative predictive value of FLC κ are 95%, respectively.

The variables mentioned will be analyzed descriptively. Unless otherwise stated, all values will be given as mean values (\pm standard deviation). Nominal data are given as percentages. The normal distribution of the data will be tested using Kolmogorov-Smirnov analysis. Mean comparisons are made for non-parametric data using the Wilcoxon test, and for parametric data using the t-test. Comparison of nominal data is done via Fisher's Exact Test or Chi² test. A p-value of <0.05 will be considered significant. For post hoc tests, a Bonferroni correction will be applied. Sensitivity, specificity, positive and negative predictive value of the FLC κ IF are evaluated using contingency tables with 95% confidence intervals. A separate analysis is performed for the factors influencing renal function impairment and serum FLC κ concentration on the FLC κ IF. First, the number of false-negative FLC κ IF (OCB positivity or QIgG, QIgA, QIgM > Qlim) findings due to renal function impairment (GFR < 89 ml/min/1.73m² or creatinine values > 2 mg/dl) and/or increased serum FLC κ concentrations (> 22.4 mg/L) is described

descriptively. Furthermore, logistic regression analyses are performed to investigate these factors influencing the FLC κ IF. Furthermore, a subgroup analysis is performed separately for the two OCB methods used (silver gels and immunofixation). The number of true positive (FLC κ positive, OCB and Ig positive) and false negative (FLC κ negative, OCB and Ig positive) results will be compared.

Eligibility criteria

All consecutive paired lumbar CSF and serum samples of patients > 18 years in the respective CSF laboratories will be included. Samples with suspected artificial intrathecal Ig synthesis due to blood contamination with IF IgM > IF IgA > IF IgG and negative OCB will be excluded.

Contacts

None.

Perspective

Translation into routine clinical practice following the discovery and development of new biomarkers in research is often associated with significant obstacles. Difficulties are often caused by the inconsistent comparability of different measurement platforms, the establishment of suitable cut-offs and the establishment of quality control mechanisms.

The ORCAS Study will investigate the recently proposed laboratory work flow (10) that uses the intrathecal FLC κ synthesis as an initial step in order to identify samples that require additional CSF analysis. With this workflow, it is possible to characterize the intraindividual and disease-specific humoral immune response in a resource-efficient manner.

The most important aspect of this study is the prospective, multicenter and consecutive study design compared to many other FLC κ biomarker studies. Many study results are based on retrospective biobank samples with corresponding limitations regarding their application in routine clinical practice (11-14). Although most studies on FLC κ have been applied to samples from MS patients (3,6,8-9,14), FLC κ are not a specific biomarker for MS but indicate general intrathecal Ig synthesis (13). Therefore, they also have a role in a variety of other inflammatory and infectious CNS diseases (11,15-16). This aspect is taken into account in the present study, as consecutive samples will be analyzed independently of the indication for CSF analysis. Therefore, the primary outcome is also not the detection of a specific disease, but the presence of Ig synthesis according to previously established methods. When a diagnostic biomarker is available, it is important to consider specificity in addition to sensitivity. Since it is known that FLC κ can also be positive in a number of non-MS diseases, focusing on one disease can lead

to diagnostic misconceptions. If FLC κ are integrated into routine diagnostics, better and more accurate characterization of the intrathecal humoral immune response in a variety of inflammatory and infectious CNS diseases may become possible.

Another important aspect of the present study will be to investigate “real world data” and thus the general applicability in routine diagnostic procedures of this biomarker. For this reason, different OCB methods and FLC κ assays will be tested depending on local standard procedures. Since this aspect is important to show how measurements are made and work at different sites, we see this variability in methodological design as an advantage.

A major problem in the routine use of new biomarkers is the choice of the correct reference range. With respect to the FLC κ , there are a large number of evaluation proposals and cut-off values (as referenced in (3)). These range from laboratory-specific to multicenter disease-specific cut-offs (5,8). However, since this in turn leads to limited comparability and diagnostic uncertainty, it would be important to agree on a reference range. Here, the hyperbolic reference range according to Hansotto Reiber (4) is the most correct from a pathophysiological point of view. This application has 2 key advantages: First, it generates a reference range with a well-defined and validated cut-off. Secondly, it can be easily applied to all infectious and inflammatory CNS diseases. The latter has the advantage of not generating false positive or false negative results with too low or too high QAlb values. All these aspects are tested in the present study, in which different evaluation methods (f.e. FLC κ index with different cut-off values) are compared with the IF of FLC κ based on the FLC κ quotient diagram.

The proposed laboratory pathway uses the FLC κ IF as the primary marker to select for further Ig analysis (IgG, A, M and OCB). There are three important limitations to this approach:

As the sensitivity of FLC κ is reduced in excessively increased serum FLC κ concentrations, samples with FLC κ serum above the upper level of normal will be excluded. This means, that in these cases (i.e. FLC κ serum above the reference range) all subsequent Ig analyses are nevertheless necessary. Secondly, blood admixture to CSF is known to result in false positive intrathecal Ig quotient diagrams with intrathecal synthesis of IgM>IgA >IgG. We have previously shown that intrathecal blood admixture does not result in artificial intrathecal FLC κ synthesis (11). Therefore, samples with blood admixture and intrathecal synthesis of IgM>IgA >IgG that lack intrathecal FLC κ synthesis should not be considered false negatives. At last, when using the workflow, the information about the incidental presence of a monoclonal pattern in isoelectric focusing (i.e. pattern V) is lost. Since this pattern is very rare and a targeted

diagnosis with e.g. immunofixation in serum is more advantageous than incidental findings, this point is negligible from our point of view (12).

Conclusion: The study is intended to contribute to the useful and knowledge-based application of FLC κ in routine analysis in CSF laboratories.

List of abbreviations

CNS *central nervous system*

CSF *Cerebrospinal fluid*

FLC κ *Free light chains kappa*

GFR *glomerular filtration rate*

IF *intrathecal fraction*

Ig *Immunoglobulin*

OCB *Oligoclonal bands*

QAlb *Albumin quotient*

Qlim *upper limit of the reference range*

Declarations

Ethics approval and consent to participate

This study evaluates the sensitivity and specificity of a new laboratory parameter by using samples that would otherwise be discarded. The results are pseudonymized and not reported to the treating physician or the patient. Therefore no informed consent has to be obtained.

An ethics vote exists for this study, which approves the anonymized use of residual material for study purposes without informing the patients (BB135/22; ethics committee Universitymedicine Greifswald).

Consent for publication

Not applicable

Availability of data and materials

The datasets used and/or analysed during the current study are available from the corresponding author on reasonable request.

Competing interests

The authors declare that they have no competing interests.

Funding

None

Authors' contributions

MS and AD have written the manuscript. All authors have contributed to the study design. All authors read and approved the final manuscript.

Acknowledgements

Not applicable

References

1. Reiber, H. Proteins in cerebrospinal fluid and blood: Barriers, CSF flow rate and source-related dynamics. *Restor Neurol Neurosci.* 21:79-96, 2003.
2. Reiber H. Flow rate of cerebrospinal fluid (CSF)—A concept common to normal blood-CSF barrier function and to dysfunction in neurological diseases. *J Neurol Sci.* 122:189–203, 1994.
3. Konen FF, Schwenkenbecher P, Jendretzky KF, Gingele S, Sühs KW, Tumani H, Süße M, Skripuletz T. The Increasing Role of Kappa Free Light Chains in the Diagnosis of Multiple Sclerosis . *Cells.* 10(11):3056, 2021.
4. Reiber H, Zeman D, Kušnierová P, Mundwiler E, Bernasconi L. Diagnostic relevance of free light chains in cerebrospinal fluid-The hyperbolic reference range for reliable data interpretation in quotient diagrams. *Clin Chim Acta.* 479:153-162, 2019.
5. Süße M, Hannich M, Petersmann A, Zylla S, Pietzner M, Nauck M, Dressel A. Kappa free light chains in cerebrospinal fluid to identify patients with oligoclonal bands. *Eur J Neurol.* 25(9):1134-1139, 2018.
6. Crespi I, Sulas MG, Mora R, Naldi P, Vecchio D, Comi C, Cantello R, Bellomo G. ombined use of Kappa Free Light Chain Index and Isoelectrofocusing of Cerebro-Spinal Fluid in Diagnosing Multiple Sclerosis: Performances and Costs. *Clin Lab.* 63(3):551-559, 2017.
7. Ramsden, DB. Multiple sclerosis: assay of free immunoglobulin light chains. *Ann Clin Biochem.* 54(1):5-13, 2017.
8. Leurs CE, Twaalfhoven H, Lissenberg-Witte BI et al. Kappa free light chains is a valid tool in the diagnostics of MS: A large multicenter study. *Mult Scler.* 26(8):912-923, 2019.
9. Hegen H, Arrambide G, Gnanapavan S, Kaplan B, Khalil M, Saadeh R, Teunissen C, Tumani H, Villar LM, Willrich MAV, Zetterberg H, Deisenhammer F. Cerebrospinal fluid kappa free light chains for the diagnosis of multiple sclerosis: A consensus statement. *Mult Scler.* 29(2):182-195, 2023.
10. Hannich MJ, Abdullah MR, Budde K, Petersmann A, Nauck M, Dressel A, Süße M. A New Laboratory Workflow Integrating the Free Light Chains Kappa Quotient into Routine CSF Analysis. *Biomolecules.* 15;12(11):1690, 2022.

11. Michetti L, Maffina F, Ravasio R, Barcella V, Radaelli M, Chiudinelli L, Sessa M, Alessio MG. Free light chains as a reliable biomarker of intrathecal synthesis in the diagnosis of CNS inflammatory diseases. *J Neuroimmunol.* 379:578091, 2023.
12. Rosenstein I, Axelsson M, Novakova L, Malmeström C, Blennow K, Zetterberg H, Lycke J. Intrathecal kappa free light chain synthesis is associated with worse prognosis in relapsing-remitting multiple sclerosis. *J Neurol.* doi: 10.1007/s00415-023-11817-9. Online ahead of print, 2023.
13. Hannich MJ, Dressel A, Budde K, Petersmann A, Nauck M, Süße M. Kappa Free Light Chains in the Context of Blood Contamination, and Other IgA- and IgM-Related Cerebrospinal Fluid Disease Pattern. *Cells.* 10(3):616, 2021.
14. Marlas M, Bost C, Dorcet G, Delourme A, Biotti D, Ciron J, Renaudineau Y, Puissant-Lubrano B. Kappa-index: Real-life evaluation of a new tool for multiple sclerosis diagnosis. *Clin Immunol.* 241:109066, 2022.
15. Konen FF, Schwenkenbecher P, Jendretzky KF, Gingele S, Witte T, Sühs KW, Grothe M, Hannich MJ, Süße M, Skripuletz T. Kappa Free Light Chains in Cerebrospinal Fluid in Inflammatory and Non-Inflammatory Neurological Diseases. *Brain Sci.* 12(4):475, 2022.
16. Süße M, Feistner F, Grothe M, Nauck M, Dressel A, Hannich MJ. Free light chains kappa can differentiate between myelitis and noninflammatory myelopathy . *Neurol Neuroimmunol Neuroinflamm.* 7(6):e892, 2020.
17. Hannich M, Konen FF, Gag K, Alkhayer A, Budde K, Nauck M, Dressel A, Wurster U, Skripuletz T, Süße M. Free light chains kappa intrathecal fraction in isoelectric focusing pattern 5 suggestive of monoclonal gammopathy of undetermined significance. In preparation.